

# Arkansas

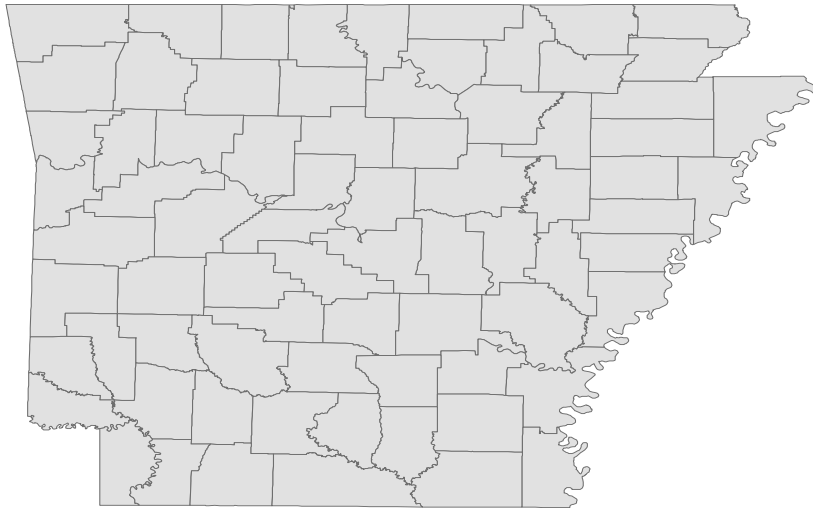
## Labor Market Report

**November 2016**



[www.discover.arkansas.gov](http://www.discover.arkansas.gov)

# Table of Contents



Monthly Spotlight.....	2
Arkansas Labor Force Summary.....	3
Arkansas Nonfarm Payroll Jobs.....	4
Arkansas Production Workers.....	6
Metropolitan Statistical Areas.....	7
Micropolitan Statistical Areas/Cities.....	14
County Labor Force Statistics.....	15
Local Workforce Development Areas.....	18

# Technical Notes

The *Arkansas Labor Market* is prepared monthly in conjunction with the U.S. Department of Labor, Bureau of Labor Statistics (BLS). The current month's estimates are preliminary, while previous data are subject to revision.

Estimates of nonfarm payroll jobs show the number of jobs by industry and reflect employment by place of work. Hours and earnings estimates are based on payroll and worker-hour data collected for production workers in manufacturing industries.

Industries are classified according to the North American Industry Classification System (NAICS). All estimates are based on a first quarter 2015 benchmark.

### **Explanation of Terms and Concepts**

#### **Monthly Business Survey of Employers**

A monthly sample survey designed to provide industry information on nonfarm payroll jobs. Data are compiled each month from mail surveys and telephone interviews conducted by the Bureau of Labor Statistics in cooperation with Department of Workforce Services. The data are based on establishment records and include all workers, full-or part-time, who received pay during the payroll period which includes the 12th of the

month. Approximately 5,000 Arkansas business establishments are surveyed.

#### **Metropolitan Statistical Area (MSA)**

A term applied by the U.S. Office of Management and Budget to counties that have one or more central cities and that meet specified criteria of population density, commuting patterns and social and economic integration.

#### **Current Population Survey (CPS)**

A monthly sample survey of the population 16 years of age and over, designed to provide data on the labor force, the employed and the unemployed. The survey is conducted each month by the Bureau of the Census for BLS. The information is collected by trained interviewers from a sample of about 60,000 households. The data collected are based on the activity reported for the calendar week including the 12th of the month. Approximately 800 Arkansas households are represented in the sample survey.

#### **Civilian Labor Force**

The sum of all employed and unemployed persons 16 years of age or older. Members of the Armed Forces are excluded.

#### **Employment**

An estimate of the number of persons who worked any time for pay or profit or worked 15 hours or more as unpaid workers in a family business during the calendar week which includes the 12th of the month. Also included are those who, although not working, had some job attachment and were not looking for work, and persons involved in labor management disputes.

#### **Unemployment**

An estimate of the number of persons who did not have a job, but were available for work and actively seeking work during the calendar week which includes the 12th of the month.

#### **Unemployment Rate**

The number of unemployed as a percentage of the civilian labor force. Unemployment rates are calculated from unrounded data.

#### **Seasonal Adjustment**

A statistical technique applied to monthly data to eliminate changes that normally occur during the year due to seasonal events such as weather, major holidays, schedule shifts, harvest times, and the opening/closing of schools.

### November Spotlight

#### Alternative Measures of Labor Underutilization

In addition to the unemployment rate, the Bureau of Labor Statistics (BLS) also calculates five additional estimates based on various definitions of 'unemployment'. These are known as Alternative Measures of Labor Underutilization and are referred to as U1-U6, with U-3 as the official unemployment rate. These measures are calculated using data from the Current Population Survey (CPS), a monthly survey conducted by the U.S. Census Bureau. Approximately 800 Arkansas households are in the survey each month.

Alternative Measures of Labor Underutilization are available at the statewide level and are produced quarterly. Estimates are calculated using a four quarter moving average. The most recent data available is for the 4th Q 2015 through 3rd Q 2016.

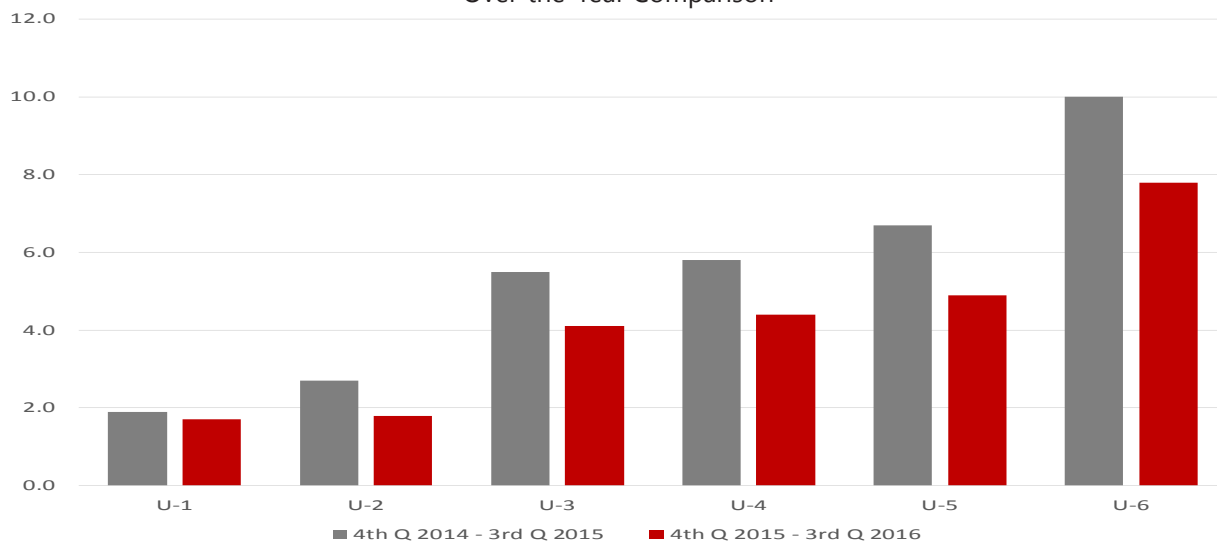
The following definitions are used to calculate each measure of Labor Underutilization:

Alternative Measures of Labor Underutilization					
State of Arkansas					
4th Q 2015 - 3rd Q 2016					
U-1	U-2	U-3	U-4	U-5	U-6
1.7%	1.8%	4.1%	4.4%	4.9%	7.8%

- U-1 Measure:** Persons unemployed for 15 weeks or longer, as a percent of the civilian labor force.
- U-2 Measure:** Job losers and persons who completed temporary jobs, as a percent of the civilian labor force.
- U-3 Measure:** Total number of unemployed persons, as a percent of the civilian labor force (this is the definition used for the official unemployment rate).
- U-4 Measure:** Total number of unemployed and discouraged workers, as a percent of the civilian labor force plus discouraged workers.
- U-5 Measure:** Total number of unemployed, discouraged workers, and all other marginally attached workers, as a percent of the civilian labor force plus marginally attached workers.
- U-6 Measure:** Total number of unemployed, discouraged workers, marginally attached workers, and those employed part-time for economic reasons (not by choice), as a percent of the civilian labor force plus marginally attached workers.

#### Alternative Measures of Labor Underutilization

State of Arkansas  
Over-the-Year Comparison



## Labor Market Report

### State of Arkansas Civilian Labor Force Summary

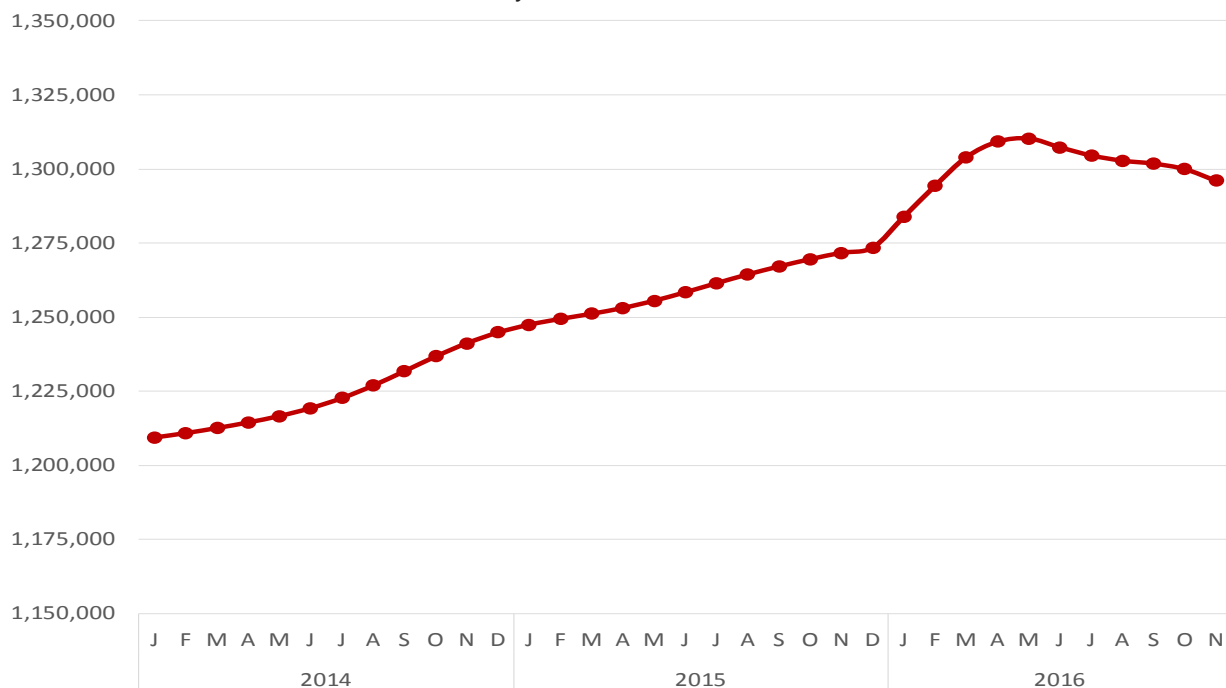
Labor force data, produced by the U.S. Department of Labor, Bureau of Labor Statistics and released by the Arkansas Department of Workforce Services, show Arkansas' seasonally adjusted unemployment rate remained unchanged at 4.0 percent between October and November. Arkansas' civilian labor force declined 5,059, a result of 3,929 fewer employed and 1,130 less unemployed Arkansans. The United States' jobless rate declined three-tenths of a percentage point, from 4.9 percent in October to 4.6 percent in November.

BLS Program Operations Manager Susan Price said, "Arkansas' unemployment rate remained at four percent for the third consecutive month, despite small declines in both employment and unemployment. Compared to November 2015, there are currently 24,265 more employed Arkansans."

#### Civilian Labor Force Estimates

	Seasonally Adjusted			Not Seasonally Adjusted		
	<b>Nov 16</b>	<b>Oct 16</b>	<b>Nov 15</b>	<b>Nov 16</b>	<b>Oct 16</b>	<b>Nov 15</b>
Civilian Labor Force	1,349,512	1,354,571	1,335,905	Civilian Labor Force	1,338,918	1,348,643
Employment	1,295,992	1,299,921	1,271,727	Employment	1,291,726	1,302,204
Unemployment	53,520	54,650	64,178	Unemployment	47,192	46,439
Unemployment Rate	4.0	4.0	4.8	Unemployment Rate	3.5	3.4
U.S. Unemployment	4.6	4.9	5.0	U.S. Unemployment	4.4	4.7

**Number of Employed (Seasonally Adjusted)**  
January 2014 - November 2016



# State of Arkansas

## Nonfarm Payroll Jobs

**Not Seasonally Adjusted**

(In Thousands)

(NAICS)	<u>Nov 16</u>	<u>Oct 16</u>	<u>Nov 15</u>	<u>OTM</u>	<u>OTY</u>
Total Nonfarm	1236.9	1237.7	1228.2	-0.8	8.7
Goods Producing	209.3	210.4	210.9	-1.1	-1.6
Mining, Logging, and Construction	55.6	57.2	57.1	-1.6	-1.5
<b>Mining &amp; Logging</b>	<b>6.5</b>	<b>6.4</b>	<b>7.6</b>	<b>0.1</b>	<b>-1.1</b>
<b>Construction</b>	<b>49.1</b>	<b>50.8</b>	<b>49.5</b>	<b>-1.7</b>	<b>-0.4</b>
Specialty Trade Contractors	31.8	32.7	31.6	-0.9	0.2
<b>Manufacturing</b>	<b>153.7</b>	<b>153.2</b>	<b>153.8</b>	<b>0.5</b>	<b>-0.1</b>
Durable Goods	72.7	72.5	74.3	0.2	-1.6
Nondurable Goods	81.0	80.7	79.5	0.3	1.5
Service Providing	1027.6	1027.3	1017.3	0.3	10.3
<b>Trade, Transportation &amp; Utilities</b>	<b>255.8</b>	<b>254.4</b>	<b>258.6</b>	<b>1.4</b>	<b>-2.8</b>
Wholesale Trade	47.5	47.1	47.2	0.4	0.3
Retail Trade	143.0	143.1	145.5	-0.1	-2.5
Transport, Warehousing & Utilities	65.3	64.2	65.9	1.1	-0.6
<b>Information</b>	<b>13.6</b>	<b>13.6</b>	<b>13.8</b>	<b>0.0</b>	<b>-0.2</b>
<b>Financial Activities</b>	<b>50.2</b>	<b>50.5</b>	<b>49.7</b>	<b>-0.3</b>	<b>0.5</b>
Finance & Insurance	37.2	37.3	36.6	-0.1	0.6
Real Estate & Rental & Leasing	13.0	13.2	13.1	-0.2	-0.1
<b>Professional &amp; Business Services</b>	<b>146.5</b>	<b>145.5</b>	<b>140.7</b>	<b>1.0</b>	<b>5.8</b>
Professional, Scientific & Technical	43.4	43.1	41.6	0.3	1.8
Management of Companies	35.3	34.9	34.6	0.4	0.7
Administrative & Support Services	67.8	67.5	64.5	0.3	3.3
<b>Educational &amp; Health Services</b>	<b>184.6</b>	<b>186.1</b>	<b>178.8</b>	<b>-1.5</b>	<b>5.8</b>
Educational Services	15.9	15.9	15.5	0.0	0.4
Health Care & Social Assistance	168.7	170.2	163.3	-1.5	5.4
Ambulatory Health Care	52.9	53.4	51.9	-0.5	1.0
Social Assistance	40.6	41.1	39.8	-0.5	0.8
<b>Leisure &amp; Hospitality</b>	<b>113.3</b>	<b>115.3</b>	<b>112.8</b>	<b>-2.0</b>	<b>0.5</b>
Arts, Entertainment & Recreation	9.4	10.2	9.2	-0.8	0.2
Accommodation & Food Services	103.9	105.1	103.6	-1.2	0.3
Accommodation Services	11.4	11.6	11.2	-0.2	0.2
Food Services	92.5	93.5	92.4	-1.0	0.1
<b>Other Services</b>	<b>44.9</b>	<b>44.8</b>	<b>44.4</b>	<b>0.1</b>	<b>0.5</b>
<b>Government</b>	<b>218.7</b>	<b>217.1</b>	<b>218.5</b>	<b>1.6</b>	<b>0.2</b>
Federal Government	20.7	20.5	20.3	0.2	0.4
State Government	81.2	81.0	80.6	0.2	0.6
Local Government	116.8	115.6	117.6	1.2	-0.8

### State of Arkansas Nonfarm Payroll Job Summary

#### October 2016 - November 2016

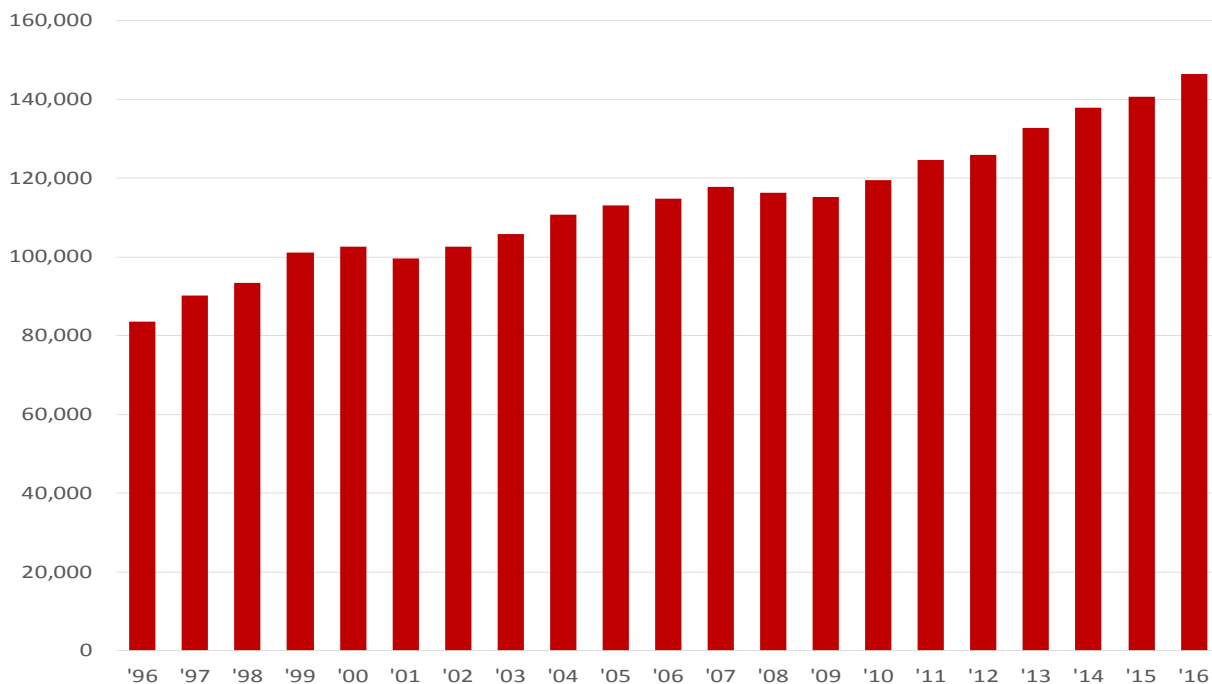
Nonfarm payroll jobs in Arkansas decreased 800 in November to total 1,236,900. Four major industry sectors posted declines, more than offsetting minor gains in six sectors. Employment in **leisure and hospitality** dropped 2,000. Seasonal losses occurred in both accommodation-food services (-1,200) and arts-entertainment-recreation (-800). Jobs in **construction** decreased 1,700, a typical seasonal reduction. **Educational and health services** lost 1,500 jobs, all in health care and social assistance. Declines were reported at hospitals, nursing care facilities, and physician's offices. Jobs in **government** rose 1,600. Most of the gains were in local government (+1,200), related in part to temporary hiring for the recent elections. **Trade-transportation-utilities** (+1,400) and **professional-business services** (+1,000) also posted increases.

#### November 2015 - November 2016

Compared to November 2015, Arkansas' nonfarm payroll employment rose 8,700. Six major industry sectors added jobs, while five sectors posted declines. Employment in **professional and business services** increased 5,800. A majority of the gains were in administrative and support services (+3,300). Jobs in **educational and health services** rose 5,800, mostly in health care and social assistance (+5,400). **Financial activities, leisure and hospitality, and other services** added 500 jobs, each. **Trade, transportation, and utilities** lost 2,800, attributed in large part to reported declines in retail trade (-2,500). Employment in **mining and logging** decreased 1,100. The industry has suffered from ongoing layoffs and closures.

Jobs in Professional and Business Services (Not Seasonally Adjusted)

November: 1996 - 2016



## Labor Market Report

# State of Arkansas

## Production Workers- Hours and Earnings

### Manufacturing

	<b>Nov 16</b>	<b>Oct 16</b>	<b>Nov 15</b>
Average Weekly Hours	40.6	40.7	41.1
Average Hourly Earnings	15.52	15.70	16.19
Average Weekly Earnings	630.11	638.99	665.41

### Durable Goods and Nondurable Goods Manufacturing

Durable Goods Manufacturing				Nondurable Goods Manufacturing			
	<b>Nov 16</b>	<b>Oct 16</b>	<b>Nov 15</b>		<b>Nov 16</b>	<b>Oct 16</b>	<b>Nov 15</b>
Average Weekly Hours	41.8	41.2	40.4	Average Weekly Hours	39.6	40.2	41.8
Average Hourly Earnings	17.27	17.56	17.69	Average Hourly Earnings	13.88	14.02	14.84
Average Weekly Earnings	721.89	723.47	714.68	Average Weekly Earnings	549.65	563.60	620.31

**Average Hourly Earnings- Manufacturing**  
November 2013 - November 2016



## Labor Market Report

# Metropolitan Statistical Areas

## Little Rock-North Little Rock-Conway MSA

The Little Rock-North Little Rock-Conway MSA= Faulkner, Grant, Lonoke, Perry, Pulaski, & Saline counties.

### Civilian Labor Force Estimates (Not Seasonally Adjusted)

	<b>Nov 16</b>	<b>Oct 16</b>	<b>Nov 15</b>	<b>OTM</b>	<b>QTY</b>
Civilian Labor Force	350,245	353,658	348,912	-3,413	1,333
Employment	339,094	342,666	335,160	-3,572	3,934
Unemployment	11,151	10,992	13,752	159	-2,601
Unemployment Rate	3.2	3.1	3.9	0.1	-0.7

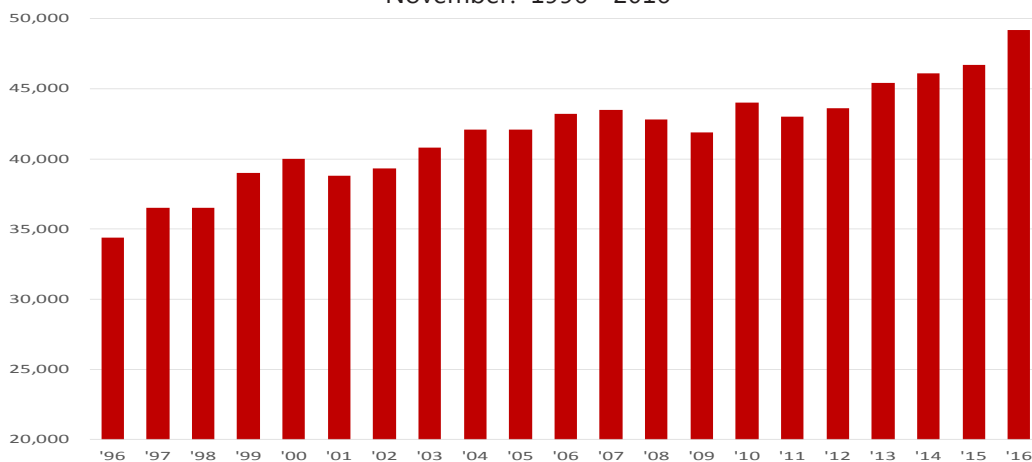
### Nonfarm Payroll Jobs (Not Seasonally Adjusted)

(In Thousands)

<b>NAICS</b>	<b>Nov 16</b>	<b>Oct 16</b>	<b>Nov 15</b>	<b>OTM</b>	<b>QTY</b>
Total Nonfarm	357.9	357.5	356.3	0.4	1.6
Goods Producing	35.6	36.0	37.4	-0.4	-1.8
Mining, Logging & Construction	15.3	15.7	17.1	-0.4	-1.8
Manufacturing	20.3	20.3	20.3	0.0	0.0
Service Providing	322.3	321.5	318.9	0.8	3.4
Trade, Transportation & Utilities	71.3	70.2	71.2	1.1	0.1
Wholesale Trade	15.1	15.2	15.2	-0.1	-0.1
Retail Trade	41.0	40.0	41.2	1.0	-0.2
Trans., Warehousing & Utilities	15.2	15.0	14.8	0.2	0.4
Information	6.1	6.1	6.5	0.0	-0.4
Financial Activities	20.7	20.7	20.7	0.0	0.0
Professional & Business Services	49.2	49.5	46.7	-0.3	2.5
Educational & Health Services	53.0	53.6	53.0	-0.6	0.0
Leisure & Hospitality	34.8	34.6	34.1	0.2	0.7
Other Services	15.2	15.2	15.0	0.0	0.2
Government	72.0	71.6	71.7	0.4	0.3
Federal Government	9.9	9.9	9.7	0.0	0.2
State Government	35.4	35.3	35.0	0.1	0.4
Local Government	26.7	26.4	27.0	0.3	-0.3

### Jobs in Professional and Business Services

November: 1996 - 2016





## Labor Market Report

# Metropolitan Statistical Areas Fayetteville-Springdale-Rogers MSA

The Fayetteville-Springdale-Rogers MSA= Benton, Madison, & Washington counties in Arkansas & McDonald county in Missouri.

### Civilian Labor Force Estimates (Not Seasonally Adjusted)

	<b>Nov 16</b>	<b>Oct 16</b>	<b>Nov 15</b>	<b>OTM</b>	<b>QTY</b>
Civilian Labor Force	261,762	262,899	257,197	-1,137	4,565
Employment	255,039	256,222	249,162	-1,183	5,877
Unemployment	6,723	6,677	8,035	46	-1,312
Unemployment Rate	2.6	2.5	3.1	0.1	-0.5

### Nonfarm Payroll Jobs (Not Seasonally Adjusted)

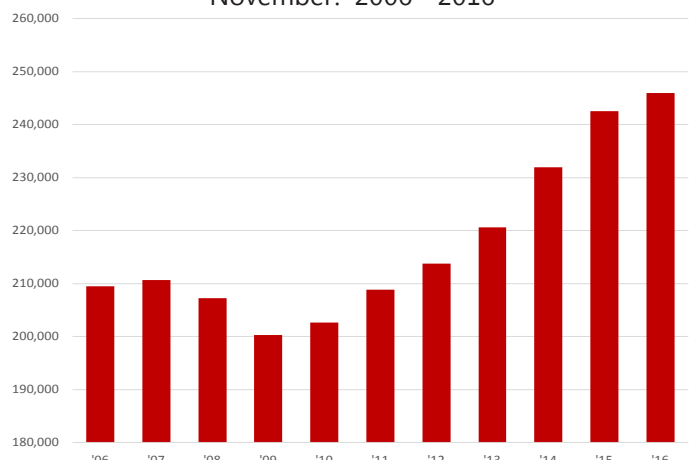
(In Thousands)

<b>NAICS</b>	<b>Nov 16</b>	<b>Oct 16</b>	<b>Nov 15</b>	<b>OTM</b>	<b>QTY</b>
Total Nonfarm	246.0	244.9	242.5	1.1	3.5
Goods Producing	36.1	36.4	36.6	-0.3	-0.5
Mining, Logging & Construction	10.2	10.4	9.9	-0.2	0.3
Manufacturing	25.9	26.0	26.7	-0.1	-0.8
Service Providing	209.9	208.5	205.9	1.4	4.0
Trade, Transportation & Utilities	55.2	55.1	55.4	0.1	-0.2
Wholesale Trade	12.3	12.2	11.9	0.1	0.4
Retail Trade	26.2	26.4	26.9	-0.2	-0.7
Trans., Warehousing & Utilities	16.7	16.5	16.6	0.2	0.1
Information	2.0	2.0	2.0	0.0	0.0
Financial Activities	7.0	7.0	6.9	0.0	0.1
Professional & Business Services	51.2	50.2	48.3	1.0	2.9
Educational & Health Services	27.4	27.5	26.4	-0.1	1.0
Leisure & Hospitality	23.7	23.5	24.7	0.2	-1.0
Other Services	7.4	7.4	7.2	0.0	0.2
Government	36.0	35.8	35.0	0.2	1.0
Federal Government	2.6	2.6	2.6	0.0	0.0
State Government	14.5	14.4	13.7	0.1	0.8
Local Government	18.9	18.8	18.7	0.1	0.2

**Number of Employed**  
November 2014 - November 2016



**Nonfarm Payroll Jobs**  
November: 2006 - 2016



## Labor Market Report

# Metropolitan Statistical Areas Fort Smith MSA

The Fort Smith MSA= Crawford & Sebastian counties in Arkansas & LeFlore & Sequoyah counties in Oklahoma.

### Civilian Labor Force Estimates (Not Seasonally Adjusted)

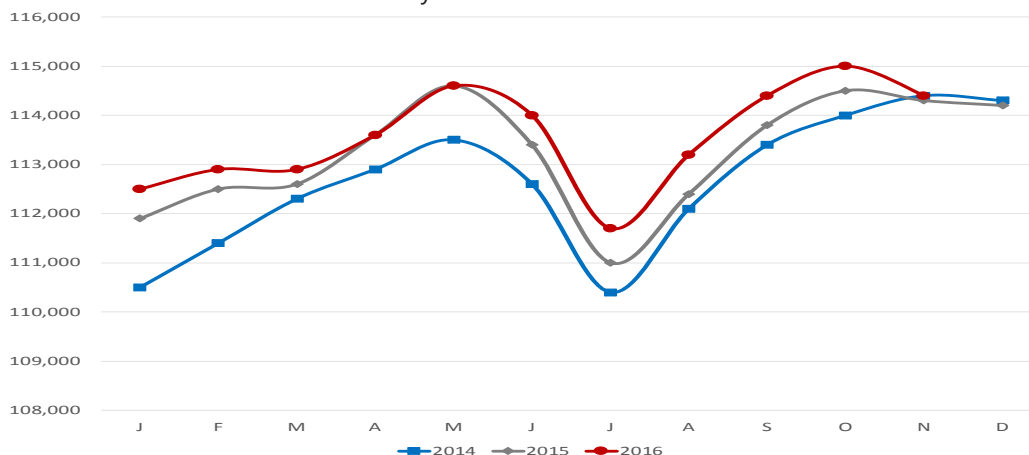
	<b>Nov 16</b>	<b>Oct 16</b>	<b>Nov 15</b>	<b>OTM</b>	<b>QTY</b>
Civilian Labor Force	120,829	121,899	121,602	-1,070	-773
Employment	115,703	116,725	115,652	-1,022	51
Unemployment	5,126	5,174	5,950	-48	-824
Unemployment Rate	4.2	4.2	4.9	0.0	-0.7

### Nonfarm Payroll Jobs (Not Seasonally Adjusted)

(In Thousands)

<b>NAICS</b>	<b>Nov 16</b>	<b>Oct 16</b>	<b>Nov 15</b>	<b>OTM</b>	<b>QTY</b>
Total Nonfarm	114.4	115.0	114.3	-0.6	0.1
Goods Producing	23.5	23.6	23.7	-0.1	-0.2
Mining, Logging & Construction	5.6	5.7	6.0	-0.1	-0.4
Manufacturing	17.9	17.9	17.7	0.0	0.2
Service Providing	90.9	91.4	90.6	-0.5	0.3
Trade, Transportation & Utilities	24.0	24.2	24.2	-0.2	-0.2
Wholesale Trade	4.2	4.2	4.1	0.0	0.1
Retail Trade	13.3	13.5	13.2	-0.2	0.1
Trans., Warehousing & Utilities	6.5	6.5	6.9	0.0	-0.4
Information	1.2	1.2	1.2	0.0	0.0
Financial Activities	3.7	3.7	3.7	0.0	0.0
Professional & Business Services	12.2	12.3	12.1	-0.1	0.1
Educational & Health Services	16.8	16.8	16.9	0.0	-0.1
Leisure & Hospitality	9.4	9.6	9.3	-0.2	0.1
Other Services	4.3	4.3	4.3	0.0	0.0
Government	19.3	19.3	18.9	0.0	0.4
Federal Government	1.4	1.4	1.3	0.0	0.1
State Government	3.2	3.2	3.2	0.0	0.0
Local Government	14.7	14.7	14.4	0.0	0.3

**Nonfarm Payroll Jobs**  
January 2014 - November 2016



## Labor Market Report

# Metropolitan Statistical Areas

## Hot Springs MSA

The Hot Springs MSA= Garland County.

### Civilian Labor Force Estimates (Not Seasonally Adjusted)

	<b>Nov 16</b>	<b>Oct 16</b>	<b>Nov 15</b>	<b>OTM</b>	<b>QTY</b>
Civilian Labor Force	39,908	40,264	39,705	-356	203
Employment	38,303	38,673	37,728	-370	575
Unemployment	1,605	1,591	1,977	14	-372
Unemployment Rate	4.0	4.0	5.0	0.0	-1.0

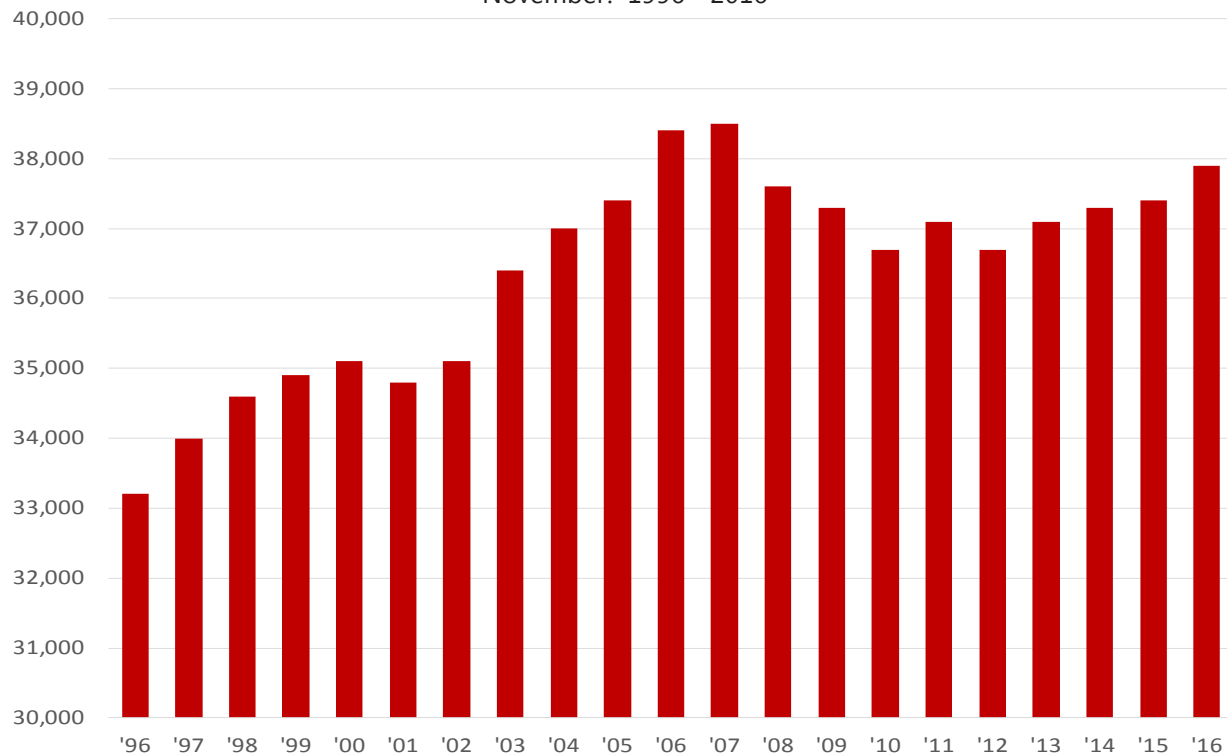
### Nonfarm Payroll Jobs (Not Seasonally Adjusted)

(In Thousands)

<b>NAICS</b>	<b>Nov 16</b>	<b>Oct 16</b>	<b>Nov 15</b>	<b>OTM</b>	<b>QTY</b>
Total Nonfarm	37.9	38.0	37.4	-0.1	0.5
Goods Producing	4.5	4.5	4.5	0.0	0.0
Service Providing	33.4	33.5	32.9	-0.1	0.5
Government	4.8	4.7	4.9	0.1	-0.1

### Nonfarm Payroll Jobs

November: 1996 - 2016



## Labor Market Report

# Metropolitan Statistical Areas

## Jonesboro MSA

The Jonesboro MSA= Craighead & Poinsett counties.

### Civilian Labor Force Estimates (Not Seasonally Adjusted)

	<b>Nov 16</b>	<b>Oct 16</b>	<b>Nov 15</b>	<b>OTM</b>	<b>QTY</b>
Civilian Labor Force	62,654	63,147	61,354	-493	1,300
Employment	60,813	61,319	58,969	-506	1,844
Unemployment	1,841	1,828	2,385	13	-544
Unemployment Rate	2.9	2.9	3.9	0.0	-1.0

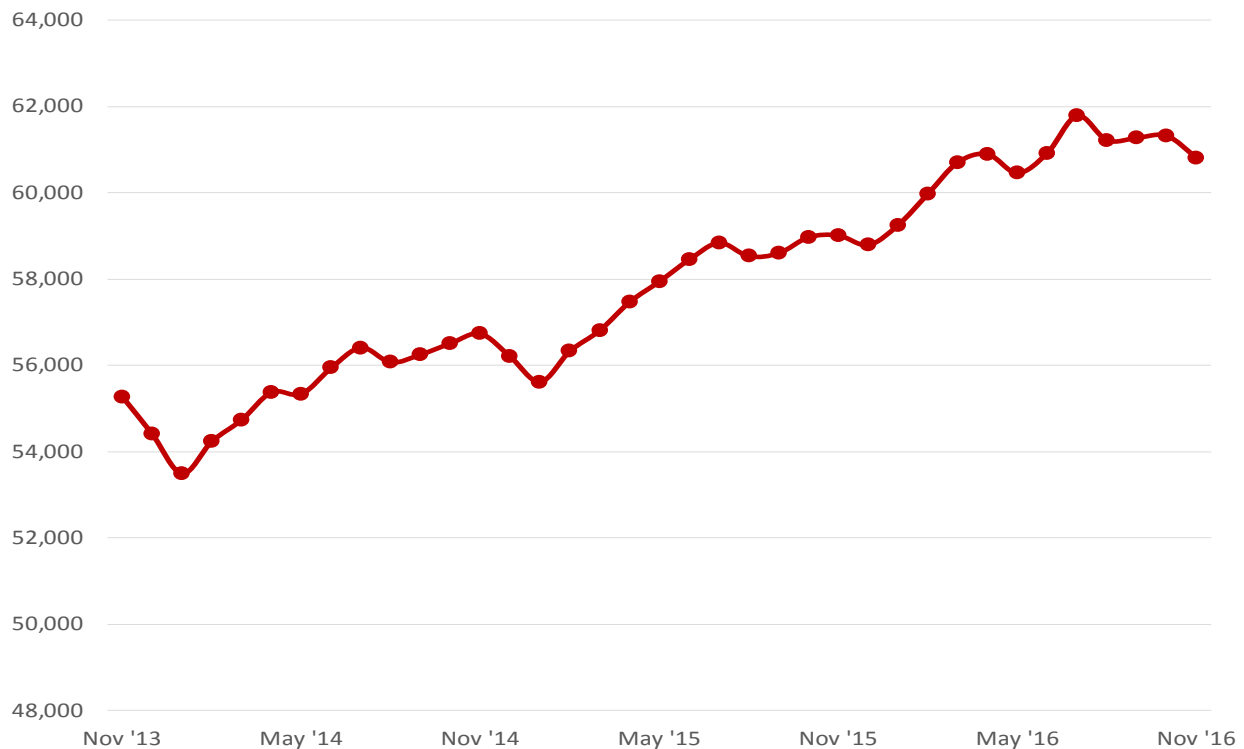
### Nonfarm Payroll Jobs (Not Seasonally Adjusted)

(In Thousands)

<b>NAICS</b>	<b>Nov 16</b>	<b>Oct 16</b>	<b>Nov 15</b>	<b>OTM</b>	<b>QTY</b>
Total Nonfarm	56.8	56.9	55.5	-0.1	1.3
Goods Producing	9.2	9.2	9.0	0.0	0.2
Service Providing	47.6	47.7	46.5	-0.1	1.1
Government	9.1	9.1	9.0	0.0	0.1

### Number of Employed

November 2013 - November 2016



## Labor Market Report

# Metropolitan Statistical Areas

## Pine Bluff MSA

The Pine Bluff MSA= Cleveland, Jefferson, & Lincoln counties.

### Civilian Labor Force Estimates (Not Seasonally Adjusted)

	<b>Nov 16</b>	<b>Oct 16</b>	<b>Nov 15</b>	<b>OTM</b>	<b>QTY</b>
Civilian Labor Force	35,672	36,059	36,564	-387	-892
Employment	33,992	34,364	34,441	-372	-449
Unemployment	1,680	1,695	2,123	-15	-443
Unemployment Rate	4.7	4.7	5.8	0.0	-1.1

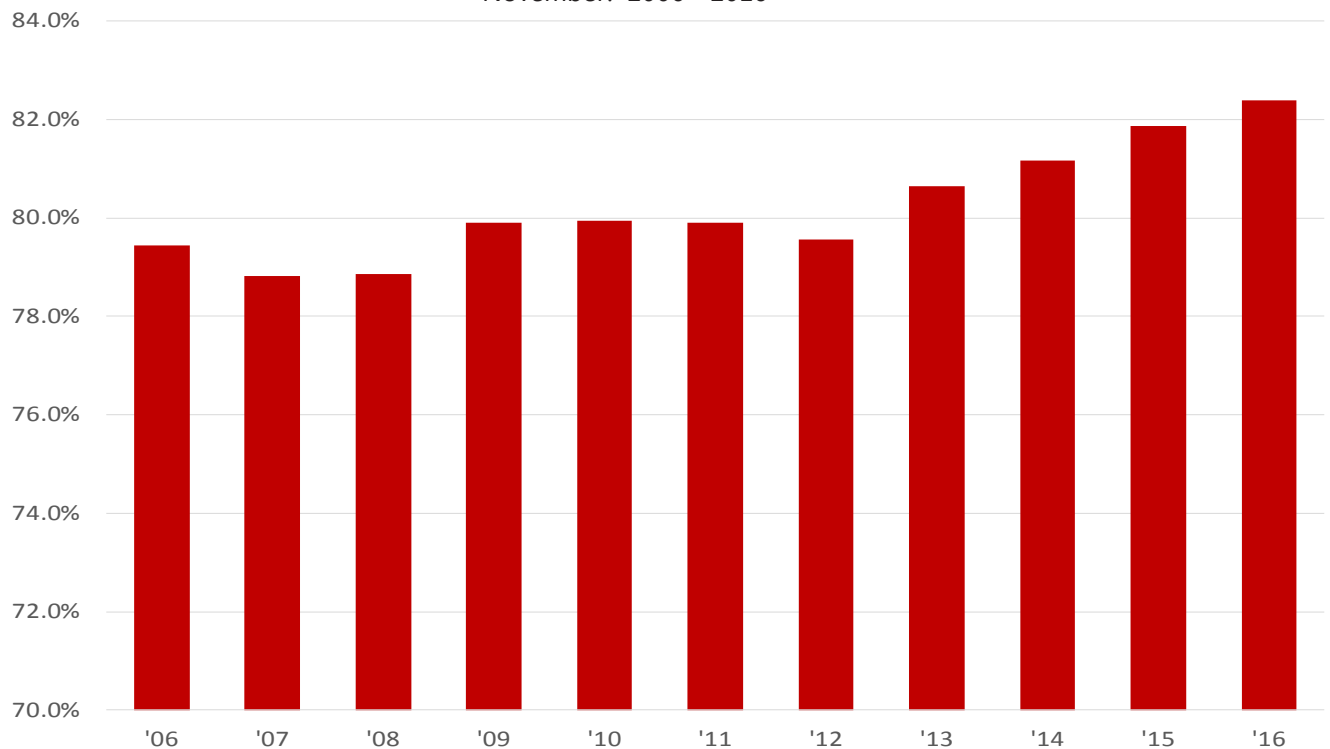
### Nonfarm Payroll Jobs (Not Seasonally Adjusted)

(In Thousands)

<b>NAICS</b>	<b>Nov 16</b>	<b>Oct 16</b>	<b>Nov 15</b>	<b>OTM</b>	<b>QTY</b>
Total Nonfarm	33.5	33.5	34.2	0.0	-0.7
Goods Producing	5.9	6.0	6.2	-0.1	-0.3
Service Providing	27.6	27.5	28.0	0.1	-0.4
Government	9.6	9.5	9.8	0.1	-0.2

### Service Providing Jobs as Percent of Total Nonfarm Payroll Employment

November: 2006 - 2016



## Labor Market Report

# Metropolitan Statistical Areas Out-of-State MSA

### Civilian Labor Force Estimates (Not Seasonally Adjusted)

#### Memphis, TN-MS-AR MSA

The Memphis, TN-MS-AR MSA= Fayette, Shelby, & Tipton counties in Tennessee; Benton, Desoto, Marshall, Tate, & Tunica counties in Mississippi; & Crittenden County in Arkansas.

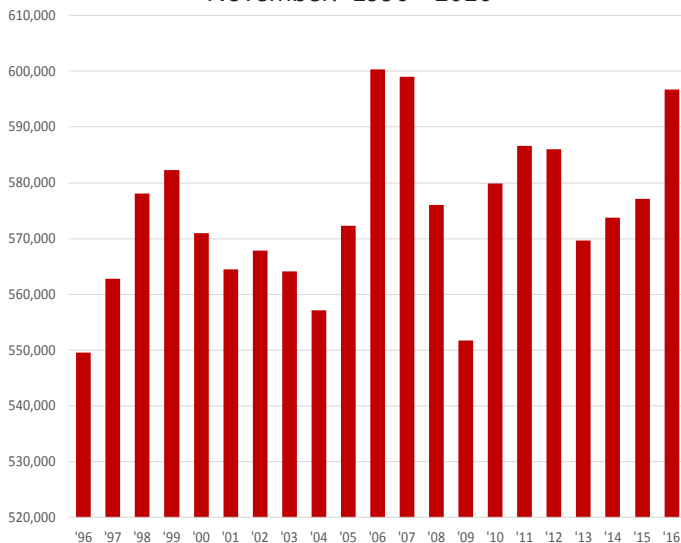
	<b>Nov 16</b>	<b>Oct 16</b>	<b>Nov 15</b>	<b>OTM</b>	<b>QTY</b>
Civilian Labor Force	628,502	629,239	614,070	-737	14,432
Employment	596,713	595,249	577,063	1,464	19,650
Unemployment	31,789	33,990	37,007	-2,201	-5,218
Unemployment Rate	5.1	5.4	6.0	-0.3	-0.9

#### Texarkana MSA

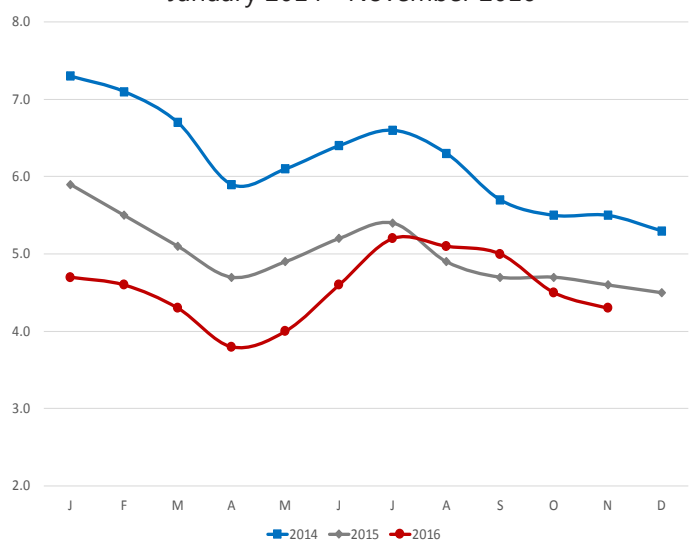
The Texarkana MSA= Bowie County in Texas & Little River & Miller counties in Arkansas.

	<b>Nov 16</b>	<b>Oct 16</b>	<b>Nov 15</b>	<b>OTM</b>	<b>QTY</b>
Civilian Labor Force	64,880	64,902	64,821	-22	59
Employment	62,102	62,007	61,870	95	232
Unemployment	2,778	2,895	2,951	-117	-173
Unemployment Rate	4.3	4.5	4.6	-0.2	-0.3

**Number of Employed- Memphis MSA**  
November: 1996 - 2016



**Unemployment Rates- Texarkana MSA**  
January 2014 - November 2016



## Labor Market Report

# Micropolitan Statistical Areas and Cities

## Civilian Labor Force Estimates

### Micropolitan Labor Force Estimates (Not Seasonally Adjusted)

Micro Area	November 2016				October 2016				November 2015			
	CLF	Emp	Unemp	Rate	CLF	Emp	Unemp	Rate	CLF	Emp	Unemp	Rate
Arkadelphia Micro	9,647	9,294	353	3.7	9,730	9,362	368	3.8	9,662	9,181	481	5.0
Batesville Micro	15,933	15,247	686	4.3	15,980	15,316	664	4.2	15,595	14,649	946	6.1
Blytheville Micro	17,902	16,850	1,052	5.9	17,899	16,909	990	5.5	18,075	16,720	1,355	7.5
Camden Micro	12,152	11,619	533	4.4	12,267	11,727	540	4.4	12,124	11,475	649	5.4
El Dorado Micro	16,752	15,965	787	4.7	16,902	16,109	793	4.7	16,619	15,725	894	5.4
Forrest City Micro	8,842	8,430	412	4.7	8,879	8,491	388	4.4	8,867	8,319	548	6.2
Harrison Micro	19,328	18,696	632	3.3	19,391	18,780	611	3.2	19,015	18,238	777	4.1
Helena-West Helena Micro	6,670	6,330	340	5.1	6,689	6,354	335	5.0	6,785	6,346	439	6.5
Magnolia Micro	9,443	8,961	482	5.1	9,505	9,043	462	4.9	9,530	8,983	547	5.7
Malvern Micro	14,321	13,829	492	3.4	14,400	13,914	486	3.4	14,286	13,636	650	4.5
Mountain Home Micro	16,122	15,497	625	3.9	16,172	15,538	634	3.9	16,285	15,517	768	4.7
Paragould Micro	19,794	19,007	787	4.0	19,929	19,136	793	4.0	20,034	19,141	893	4.5
Russellville Micro	38,337	36,845	1,492	3.9	38,638	37,178	1,460	3.8	38,746	37,044	1,702	4.4
Searcy Micro	34,184	32,728	1,456	4.3	34,470	33,028	1,442	4.2	34,450	32,627	1,823	5.3

Arkadelphia Micro= Clark County

Batesville Micro= Independence County

Blytheville Micro= Mississippi County

Camden Micro= Calhoun & Ouachita counties

El Dorado Micro= Union County

Forrest City Micro= St. Francis County

Harrison Micro= Boone & Newton counties

Helena-West Helena Micro= Phillips County

Magnolia Micro= Columbia County

Malvern Micro= Hot Spring County

Mountain Home Micro= Baxter County

Paragould Micro= Greene County

Russellville Micro= Pope & Yell counties

Searcy Micro= White County

### City Labor Force Statistics (Not Seasonally Adjusted)

City	November 2016				October 2016				November 2015			
	CLF	Emp	Unemp	Rate	CLF	Emp	Unemp	Rate	CLF	Emp	Unemp	Rate
Bella Vista	12,030	11,656	374	3.1	12,077	11,715	362	3.0	11,811	11,376	435	3.7
Benton	16,124	15,649	475	2.9	16,294	15,819	475	2.9	16,069	15,466	603	3.8
Bentonville	22,427	21,907	520	2.3	22,531	22,019	512	2.3	22,040	21,381	659	3.0
Blytheville	6,116	5,753	363	5.9	6,157	5,773	384	6.2	6,271	5,709	562	9.0
Cabot	11,728	11,401	327	2.8	11,816	11,502	314	2.7	11,671	11,276	395	3.4
Conway	32,964	31,879	1,085	3.3	33,261	32,200	1,061	3.2	32,800	31,514	1,286	3.9
El Dorado	7,264	6,885	379	5.2	7,326	6,947	379	5.2	7,245	6,781	464	6.4
Fayetteville	45,572	44,456	1,116	2.4	45,787	44,670	1,117	2.4	44,781	43,396	1,385	3.1
Fort Smith	39,744	38,452	1,292	3.3	40,350	39,075	1,275	3.2	40,038	38,331	1,707	4.3
Hot Springs	13,915	13,314	601	4.3	14,068	13,443	625	4.4	13,901	13,114	787	5.7
Jacksonville	11,845	11,348	497	4.2	11,963	11,473	490	4.1	11,797	11,215	582	4.9
Jonesboro	36,482	35,469	1,013	2.8	36,832	35,788	1,044	2.8	35,731	34,378	1,353	3.8
Little Rock	96,762	93,691	3,071	3.2	97,744	94,723	3,021	3.1	96,432	92,588	3,844	4.0
North Little Rock	30,087	29,066	1,021	3.4	30,413	29,386	1,027	3.4	30,064	28,724	1,340	4.5
Paragould	12,350	11,834	516	4.2	12,441	11,915	526	4.2	12,512	11,918	594	4.7
Pine Bluff	16,972	16,062	910	5.4	17,209	16,262	947	5.5	17,480	16,274	1,206	6.9
Rogers	33,262	32,387	875	2.6	33,377	32,553	824	2.5	32,624	31,609	1,015	3.1
Russellville	13,619	13,143	476	3.5	13,782	13,276	506	3.7	13,840	13,214	626	4.5
Searcy	10,451	10,086	365	3.5	10,552	10,178	374	3.5	10,557	10,055	502	4.8
Sherwood	15,527	15,117	410	2.6	15,700	15,283	417	2.7	15,423	14,939	484	3.1
Springdale	38,152	37,236	916	2.4	38,320	37,416	904	2.4	37,460	36,348	1,112	3.0
Texarkana, AR	13,655	13,116	539	3.9	13,762	13,175	587	4.3	13,697	13,044	653	4.8
Van Buren	10,361	10,036	325	3.1	10,506	10,189	317	3.0	10,483	10,005	478	4.6
West Memphis	10,813	10,277	536	5.0	10,865	10,327	538	5.0	10,613	10,046	567	5.3

## Labor Market Report

# County Labor Force Statistics

## Civilian Labor Force Estimates

Not Seasonally Adjusted

County	November 2016				October 2016				November 2015			
	CLF	Emp	Unemp	Rate	CLF	Emp	Unemp	Rate	CLF	Emp	Unemp	Rate
Arkansas	9,307	8,993	314	3.4	9,372	9,090	282	3.0	9,398	9,047	351	3.7
Ashley	7,904	7,450	454	5.7	8,004	7,551	453	5.7	8,288	7,751	537	6.5
Baxter	16,122	15,497	625	3.9	16,172	15,538	634	3.9	16,285	15,517	768	4.7
Benton	124,557	121,266	3,291	2.6	125,123	121,886	3,237	2.6	122,283	118,353	3,930	3.2
Boone	15,921	15,407	514	3.2	15,986	15,489	497	3.1	15,667	15,022	645	4.1
Bradley	4,511	4,297	214	4.7	4,527	4,314	213	4.7	4,551	4,329	222	4.9
Calhoun	2,332	2,244	88	3.8	2,355	2,256	99	4.2	2,328	2,219	109	4.7
Carroll	13,035	12,638	397	3.0	13,220	12,862	358	2.7	12,695	12,248	447	3.5
Chicot	3,534	3,322	212	6.0	3,549	3,345	204	5.7	3,651	3,382	269	7.4
Clark	9,647	9,294	353	3.7	9,730	9,362	368	3.8	9,662	9,181	481	5.0
Clay	6,034	5,750	284	4.7	6,033	5,754	279	4.6	6,225	5,882	343	5.5
Cleburne	9,396	8,926	470	5.0	9,443	8,988	455	4.8	9,600	9,015	585	6.1
Cleveland	3,334	3,199	135	4.0	3,345	3,219	126	3.8	3,396	3,241	155	4.6
Columbia	9,443	8,961	482	5.1	9,505	9,043	462	4.9	9,530	8,983	547	5.7
Conway	8,561	8,144	417	4.9	8,640	8,224	416	4.8	8,637	8,147	490	5.7
Craighead	52,182	50,731	1,451	2.8	52,641	51,187	1,454	2.8	51,078	49,170	1,908	3.7
Crawford	26,696	25,794	902	3.4	27,082	26,187	895	3.3	26,936	25,715	1,221	4.5
Crittenden	21,732	20,823	909	4.2	21,824	20,925	899	4.1	21,405	20,355	1,050	4.9
Cross	7,902	7,572	330	4.2	7,913	7,613	300	3.8	7,971	7,593	378	4.7
Dallas	3,027	2,899	128	4.2	3,023	2,904	119	3.9	2,899	2,730	169	5.8
Desha	5,578	5,315	263	4.7	5,614	5,372	242	4.3	5,614	5,278	336	6.0
Drew	8,053	7,666	387	4.8	8,057	7,674	383	4.8	8,017	7,565	452	5.6
Faulkner	60,164	58,181	1,983	3.3	60,721	58,767	1,954	3.2	59,976	57,516	2,460	4.1
Franklin	7,326	7,070	256	3.5	7,373	7,120	253	3.4	7,430	7,097	333	4.5
Fulton	4,676	4,501	175	3.7	4,671	4,506	165	3.5	4,830	4,619	211	4.4
Garland	39,908	38,303	1,605	4.0	40,264	38,673	1,591	4.0	39,705	37,728	1,977	5.0
Grant	8,353	8,086	267	3.2	8,424	8,166	258	3.1	8,322	7,994	328	3.9
Greene	19,794	19,007	787	4.0	19,929	19,136	793	4.0	20,034	19,141	893	4.5
Hempstead	9,902	9,571	331	3.3	9,985	9,640	345	3.5	9,819	9,412	407	4.1
Hot Spring	14,321	13,829	492	3.4	14,400	13,914	486	3.4	14,286	13,636	650	4.5
Howard	5,697	5,520	177	3.1	5,801	5,627	174	3.0	5,934	5,714	220	3.7
Independence	15,933	15,247	686	4.3	15,980	15,316	664	4.2	15,595	14,649	946	6.1
Izard	5,019	4,769	250	5.0	4,994	4,784	210	4.2	5,003	4,732	271	5.4
Jackson	6,096	5,769	327	5.4	6,124	5,800	324	5.3	6,117	5,757	360	5.9
Jefferson	28,273	26,907	1,366	4.8	28,634	27,242	1,392	4.9	29,022	27,263	1,759	6.1
Johnson	10,471	10,048	423	4.0	10,457	10,050	407	3.9	10,447	9,948	499	4.8
Lafayette	2,593	2,452	141	5.4	2,571	2,435	136	5.3	2,617	2,447	170	6.5
Lawrence	7,118	6,862	256	3.6	7,125	6,879	246	3.5	7,050	6,713	337	4.8
Lee	3,071	2,936	135	4.4	3,076	2,950	126	4.1	3,192	3,015	177	5.5
Lincoln	4,065	3,886	179	4.4	4,080	3,903	177	4.3	4,146	3,937	209	5.0
Little River	5,637	5,397	240	4.3	5,685	5,429	256	4.5	5,650	5,364	286	5.1
Logan	9,066	8,721	345	3.8	9,164	8,802	362	4.0	9,228	8,751	477	5.2
Lonoke	33,331	32,312	1,019	3.1	33,601	32,597	1,004	3.0	33,183	31,957	1,226	3.7
Madison	7,361	7,158	203	2.8	7,345	7,148	197	2.7	7,250	7,015	235	3.2
Marion	6,572	6,326	246	3.7	6,601	6,366	235	3.6	6,534	6,233	301	4.6
Miller	19,729	18,990	739	3.7	19,847	19,075	772	3.9	19,778	18,886	892	4.5

(continued on Page 16)



# County Labor Force Statistics

## Civilian Labor Force Estimates

**Not Seasonally Adjusted**

(continued from Page 15)

County	November 2016				October 2016				November 2015			
	CLF	Emp	Unemp	Rate	CLF	Emp	Unemp	Rate	CLF	Emp	Unemp	Rate
Mississippi	17,902	16,850	1,052	5.9	17,899	16,909	990	5.5	18,075	16,720	1,355	7.5
Monroe	2,870	2,734	136	4.7	2,889	2,767	122	4.2	2,925	2,754	171	5.8
Montgomery	3,069	2,929	140	4.6	3,074	2,942	132	4.3	3,213	3,023	190	5.9
Nevada	3,683	3,563	120	3.3	3,711	3,596	115	3.1	3,659	3,501	158	4.3
Newton	3,407	3,289	118	3.5	3,405	3,291	114	3.3	3,348	3,216	132	3.9
Ouachita	9,820	9,375	445	4.5	9,912	9,471	441	4.4	9,796	9,256	540	5.5
Perry	4,231	4,054	177	4.2	4,254	4,081	173	4.1	4,238	4,013	225	5.3
Phillips	6,670	6,330	340	5.1	6,689	6,354	335	5.0	6,785	6,346	439	6.5
Pike	4,203	4,032	171	4.1	4,216	4,051	165	3.9	4,151	3,936	215	5.2
Poinsett	10,472	10,082	390	3.7	10,506	10,132	374	3.6	10,276	9,799	477	4.6
Polk	8,099	7,748	351	4.3	8,061	7,709	352	4.4	8,277	7,862	415	5.0
Pope	29,384	28,237	1,147	3.9	29,653	28,523	1,130	3.8	29,712	28,388	1,324	4.5
Prairie	3,641	3,513	128	3.5	3,653	3,531	122	3.3	3,777	3,621	156	4.1
Pulaski	188,264	182,178	6,086	3.2	190,209	184,184	6,025	3.2	187,571	180,032	7,539	4.0
Randolph	6,217	5,954	263	4.2	6,231	5,984	247	4.0	6,106	5,763	343	5.6
St. Francis	8,842	8,430	412	4.7	8,879	8,491	388	4.4	8,867	8,319	548	6.2
Saline	55,902	54,283	1,619	2.9	56,449	54,871	1,578	2.8	55,622	53,648	1,974	3.5
Scott	4,456	4,315	141	3.2	4,468	4,324	144	3.2	4,525	4,337	188	4.2
Searcy	2,927	2,800	127	4.3	2,933	2,815	118	4.0	3,104	2,969	135	4.3
Sebastian	57,196	55,300	1,896	3.3	58,065	56,195	1,870	3.2	57,571	55,125	2,446	4.2
Sevier	5,662	5,403	259	4.6	5,662	5,411	251	4.4	5,602	5,315	287	5.1
Sharp	6,042	5,746	296	4.9	6,055	5,778	277	4.6	6,003	5,649	354	5.9
Stone	4,696	4,471	225	4.8	4,704	4,494	210	4.5	4,634	4,399	235	5.1
Union	16,752	15,965	787	4.7	16,902	16,109	793	4.7	16,619	15,725	894	5.4
Van Buren	6,336	5,990	346	5.5	6,397	6,047	350	5.5	6,540	6,159	381	5.8
Washington	118,824	115,993	2,831	2.4	119,360	116,550	2,810	2.4	116,706	113,228	3,478	3.0
White	34,184	32,728	1,456	4.3	34,470	33,028	1,442	4.2	34,450	32,627	1,823	5.3
Woodruff	2,928	2,786	142	4.8	2,944	2,807	137	4.7	3,011	2,842	169	5.6
Yell	8,953	8,608	345	3.9	8,985	8,655	330	3.7	9,034	8,656	378	4.2

## County Labor Force Summary

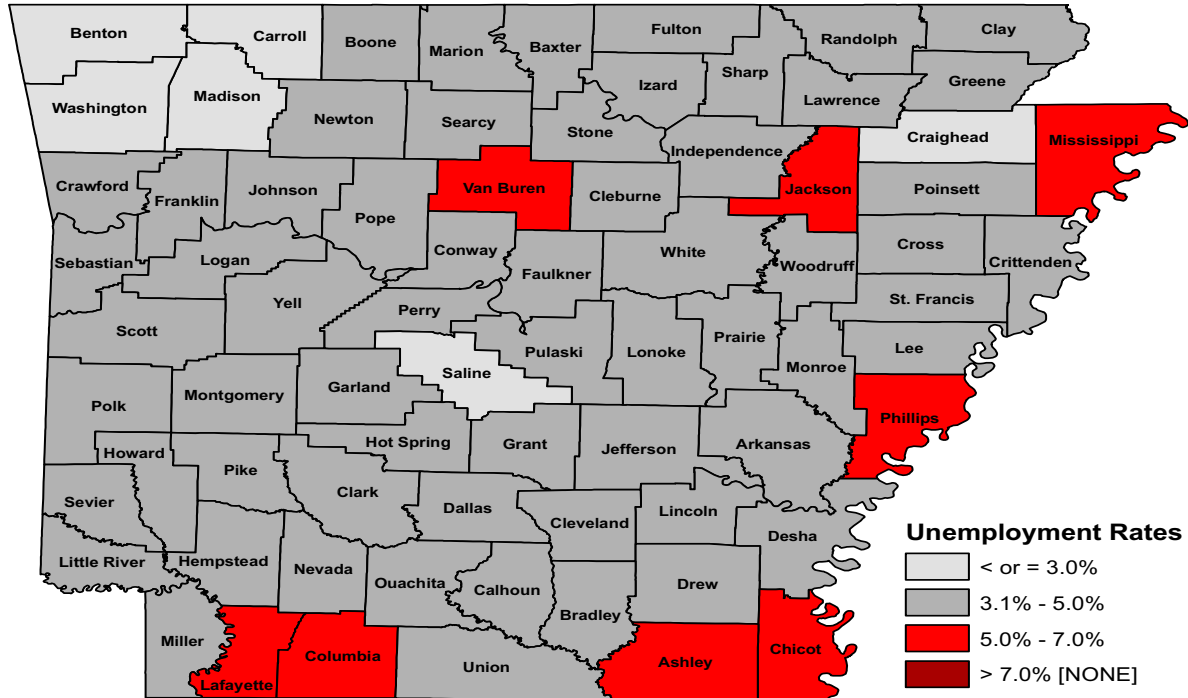
Between October and November, unemployment rates increased in fifty-three of Arkansas' 75 counties. Fourteen counties were unchanged over the month, while eight counties posted rate declines. Jobless rates ranged from a low of 2.4 percent in Washington County to a high of 6.0 percent in Chicot County.

In November, thirty-seven counties reported jobless rates at or below four percent. This is down slightly from 41 counties at or below four percent in October. For the fifth consecutive month, no county posted an unemployment rate above eight percent.

Compared to November 2015, jobless rates are down in 74 counties. Only one-- Searcy County-- posted the same unemployment rate as last November.

## Labor Market Report

### County Labor Force Statistics



### Ranked by Unemployment Rates

November 2016- Not Seasonally Adjusted

Rank	County	Rate	Rank	County	Rate	Rank	County	Rate
1	Washington	2.4	24	Marion	3.7	51	Ouachita	4.5
2	Benton	2.6	24	Miller	3.7	52	Montgomery	4.6
3	Craighead	2.8	24	Poinsett	3.7	52	Sevier	4.6
3	Madison	2.8	29	Calhoun	3.8	54	Bradley	4.7
5	Saline	2.9	29	Logan	3.8	54	Clay	4.7
6	Carroll	3.0	31	Baxter	3.9	54	Desha	4.7
7	Howard	3.1	31	Pope	3.9	54	Monroe	4.7
7	Lonoke	3.1	31	Yell	3.9	54	St. Francis	4.7
9	Boone	3.2	34	Cleveland	4.0	54	Union	4.7
9	Grant	3.2	34	Garland	4.0	60	Drew	4.8
9	Pulaski	3.2	34	Greene	4.0	60	Jefferson	4.8
9	Scott	3.2	34	Johnson	4.0	60	Stone	4.8
13	Faulkner	3.3	38	Pike	4.1	60	Woodruff	4.8
13	Hempstead	3.3	39	Crittenden	4.2	64	Conway	4.9
13	Nevada	3.3	39	Cross	4.2	64	Sharp	4.9
13	Sebastian	3.3	39	Dallas	4.2	66	Cleburne	5.0
17	Arkansas	3.4	39	Perry	4.2	66	Izard	5.0
17	Crawford	3.4	39	Randolph	4.2	68	Columbia	5.1
17	Hot Spring	3.4	44	Independence	4.3	68	Phillips	5.1
20	Franklin	3.5	44	Little River	4.3	70	Jackson	5.4
20	Newton	3.5	44	Polk	4.3	70	Lafayette	5.4
20	Prairie	3.5	44	Searcy	4.3	72	Van Buren	5.5
23	Lawrence	3.6	44	White	4.3	73	Ashley	5.7
24	Clark	3.7	49	Lee	4.4	74	Mississippi	5.9
24	Fulton	3.7	49	Lincoln	4.4	75	Chicot	6.0

## Labor Market Report

# Local Workforce Development Areas Civilian Labor Force Estimates

### LWDA Labor Force Estimates (Not Seasonally Adjusted)

LWDA	November 2016				October 2016				November 2015			
	CLF	Emp	Unemp	Rate	CLF	Emp	Unemp	Rate	CLF	Emp	Unemp	Rate
Central (minus LR)	247,410	239,510	7,900	3.2	249,778	241,994	7,784	3.1	246,622	236,940	9,682	3.9
City of Little Rock	96,762	93,691	3,071	3.2	97,744	94,723	3,021	3.1	96,432	92,588	3,844	4.0
Eastern	48,217	46,091	2,126	4.4	48,381	46,333	2,048	4.2	48,220	45,628	2,592	5.4
North Central	95,306	90,933	4,373	4.6	95,782	91,548	4,234	4.4	95,783	90,448	5,335	5.6
Northeast	119,719	115,236	4,483	3.7	120,364	115,981	4,383	3.6	118,844	113,188	5,656	4.8
Northwest	308,726	300,374	8,352	2.7	310,145	301,945	8,200	2.6	303,872	293,801	10,071	3.3
Southeast	82,912	79,121	3,791	4.6	83,606	79,876	3,730	4.5	84,405	79,787	4,618	5.5
Southwest	94,277	90,340	3,937	4.2	94,959	90,996	3,963	4.2	94,231	89,552	4,679	5.0
West Central	132,748	127,478	5,270	4.0	133,673	128,475	5,198	3.9	133,085	126,656	6,429	4.8
Western	112,839	108,948	3,891	3.4	114,213	110,337	3,876	3.4	113,967	108,887	5,080	4.5

