

Arkansas Covered Employment & Earnings

Jobs for People. People for Jobs.

DWS
Department of
WORKFORCE**Services**

2006 Annual

**COVERED EMPLOYMENT AND EARNINGS
STATE OF ARKANSAS
CALENDAR YEAR 2006**

**MIKE BEEBE, GOVERNOR
STATE OF ARKANSAS**

**ARTEE WILLIAMS, DIRECTOR
ARKANSAS DEPARTMENT OF WORKFORCE SERVICES**

**PUBLISHED BY
BUREAU OF LABOR STATISTICS PROGRAMS
ARKANSAS DEPARTMENT OF WORKFORCE SERVICES
POST OFFICE BOX 2981
LITTLE ROCK, ARKANSAS 72203-2981
BERNADETTE COLEMAN, BLS PROGRAMS MANAGER
TELEPHONE: (501) 682-3159**

STATE OF ARKANSAS HOME PAGE: <http://www.arkansas.gov>

**ARKANSAS DEPARTMENT OF WORKFORCE SERVICES
HOME PAGE: <http://www.arkansas.gov/esd/>**

**INTERNET SITE FOR LABOR MARKET INFORMATION:
<http://www.discover.arkansas.gov>**

RELEASED: JUNE 2008

TABLE OF CONTENTS

Description of Data	1
Industry Classification	1
Definition of Covered Employment and Earnings	2
Federal Government Employment	2
County Classification	2
Significant Developments During Calendar Year 2006	3

LIST OF GRAPHS AND TABLES

Graph 1	Total Covered Employment for Selected Years, Arkansas	7
Graph 2	Total Covered Earnings, by Calendar Quarter for Selected Years, Arkansas	8
Table 1	Quarterly Comparison of Covered Employment and Wages, by Industry	5
Table 2	Total Covered Employment in Arkansas, 1999-2006	6
Table 3	Total Covered Earnings, 1999-2006	9
Table 4	Total Taxable Earnings, 1999-2006	10
Table 5	State Summary - Employment and Total Earnings, by Industry, Calendar Year 2006	11
Table 6	County Summary - Employment and Total Earnings, by Industry, Calendar Year 2006	24
Table 7	Federal Government Employment and Total Earnings in Arkansas, Calendar Year 2006	62
Table 8	Workforce Information Area – Employment and Total Earnings, by Industry, Calendar Year 2006	63

EMPLOYMENT AND EARNINGS UNDER THE ARKANSAS EMPLOYMENT SECURITY LAW CALENDAR YEAR 2006

DESCRIPTION OF DATA

This publication contains covered employment and payroll data by industry and county for the Calendar Year 2006. These data are compiled from quarterly contribution and wage reports submitted by employers subject to the Arkansas Employment Security Law. An employing unit is a single physical location where business is conducted, production takes place, or services are provided. Employment data have been tabulated for each month of the quarter by industry under the **North American Industry Classification System** (NAICS) (see "Industry Classification" below) on a statewide, county and workforce area basis. Payroll data represent the total wages paid during the quarter, and are also shown by

industry for the State and by publishable industry groups for each county and workforce area. The tabulation of this data is a joint effort in conjunction with the U.S. Bureau of Labor Statistics. In addition, there are tables included which set out total covered employment by months, quarterly payrolls, and average weekly earnings for the years 1999 through 2006. Data contained in this publication are subject to revision. These revisions will be reflected in the 2007 First Quarter Covered Employment and Earnings publication. Because of industry code changes between years, substantial employment and wage shifts among industries are anticipated.

INDUSTRY CLASSIFICATION

Previously published industry data **will not** be comparable in all instances with currently published data since industry codes have been revised according to the following Manuals: (a) between January 1, 1958 and December 31, 1967, industry codes were assigned under the 1957 Standard Industrial Classification (SIC) Manual; (b) between January 1, 1968 and December 31, 1974, industry codes were assigned under the 1967 Standard Industrial Classification (SIC) Manual; (c) between January 1, 1975 and December 31, 1987, industry codes were assigned under the 1972 Standard Industrial Classification (SIC) Manual; (d) between January 1, 1988 and December 31, 2000, industry codes were assigned under the 1987 Standard Industrial Classification (SIC) Manual; and (e) since January 1, 2001, industry codes have been assigned under the 2002 North American Industry Classification System (NAICS) Manual. **The NAICS Manual represents a significant change in coding methodology as compared to the**

SIC Manual. One of the most significant changes involves how NAICS treats auxiliary units. Auxiliary units are establishments primarily engaged in performing management or support services for other establishments of the same enterprise. The SIC code for these units was based on the activity of the enterprise served. The NAICS code is based on the actual activities that the establishment performs. Comparisons of many industries **should not be made** between this publication and previous Covered Employment and Earnings publications that were based on SIC. Even though some titles are the same or similar, in nature, NAICS and SIC could differ in the classification of employers. The implementation of NAICS represents a profound change for statistical programs, and will create significant benefits along with transition obstacles for both data collectors and data users. A summary is available on the NAICS home page at <http://www.census.gov/naics>.

DEFINITION OF COVERED EMPLOYMENT AND EARNINGS

Covered Employment is the number of workers employed by employers subject to the Arkansas Employment Security Law who worked or received pay for the payroll period including the 12th of the month. An employer is subject to the law when they employ one or more employees in each of ten days during the current or preceding calendar year.

Currently excluded from coverage is employment covered by the Railroad Unemployment Insurance Act, some domestic service workers, employees of small agricultural establishments, self-employed and unpaid family workers, insurance and real estate

agents who are on commission only, and employees of churches and religious organizations except separately incorporated schools. The payroll information in this publication includes all wages and salaries paid to any covered employees by their employers including bonuses, commissions, and cash values of remuneration received in any medium other than cash. These wages include both taxable and nontaxable wages. Only the first \$10,000 paid to each worker by an employer in the calendar year is taxable under the Arkansas Employment Security Law.

FEDERAL GOVERNMENT EMPLOYMENT

Table 7 on page 62 lists the total number of civilians employed by the Federal Government in Arkansas during the Calendar Year 2006. Employment and wage data are set out by industry divisions. These data are obtained from required reports submitted by various

government agencies having employment in the State. Civilian Federal workers are covered by the Unemployment Compensation for Federal Employees (UCFE) program.

COUNTY CLASSIFICATION

Employment and payroll data by county are classified according to the county where the workers are employed. Employers with operations in more than one county are requested to furnish this agency with a breakdown of employment and wages for at least one quarter of each year by the counties in which they operate. Many such employers submit county data with each regular contribution report. **Note:** This information is invaluable in the preparation of monthly employment and payroll data by county.

Employment and payroll data for multi - area employers who do not furnish county data each quarter of the year, are prorated by county on the basis of one quarter of information. The "rest-of-state" table that appears on page 61 of this publication includes data on firms that **did not** provide a county breakdown of employment and payrolls. It also includes sales, and all other type of personnel with no permanent place of work, as well as employment of employers with no established place of business in Arkansas.

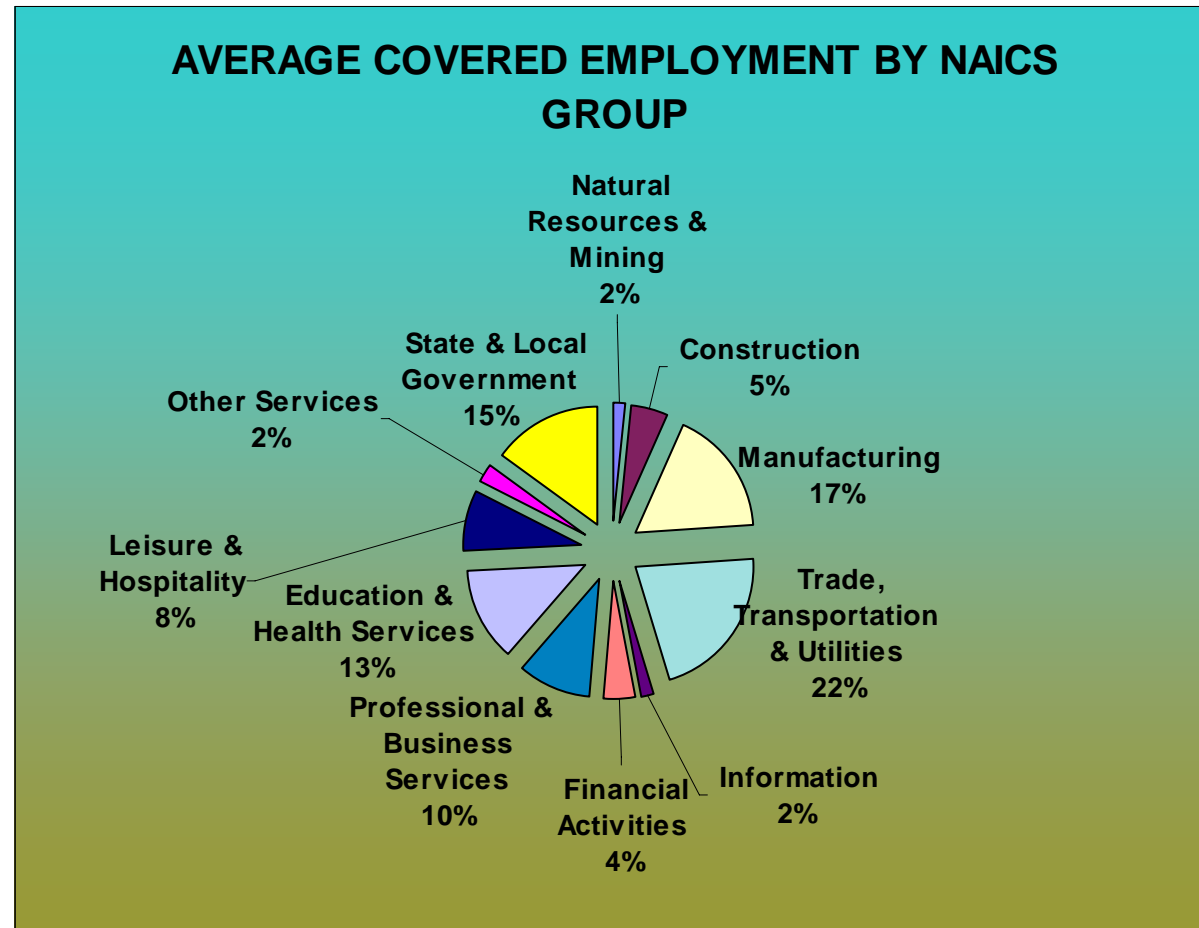
SIGNIFICANT DEVELOPMENTS DURING CALENDAR YEAR 2006

AVERAGE EMPLOYMENT CHANGES

Covered employment averaged 1,147,072 during the Calendar Year 2006 (see table 1), an increase of 20,201 (+1.79%) from the previous year and 38,418 from 2004. The sectors driving the three year increase are Education & Health Services (+4,818), State & Local Government (+10,527), Leisure & Hospitality (+3,360), and Trade, Transportation, & Utilities (+3,112).

Nine of the eleven major industries recorded gains over the year. Education & Health Services posted a gain in employment to 145,778, an increase of 4,818 jobs. Individual & Family Services (+2,903), Offices of Physicians (+501), and Nursing Care Facilities (+475) all contributed to the gain in employment. State & Local Government added 3,924 positions. Leisure & Hospitality gained 3,360, with most of the increase in Accommodations & Food Services (+3,209). Trade, Transportation, and Utilities rose by 3,112 jobs to 244,917. This increase can be contributed to gains in retail trade (+1,325), and transportation & warehousing (+1,227).

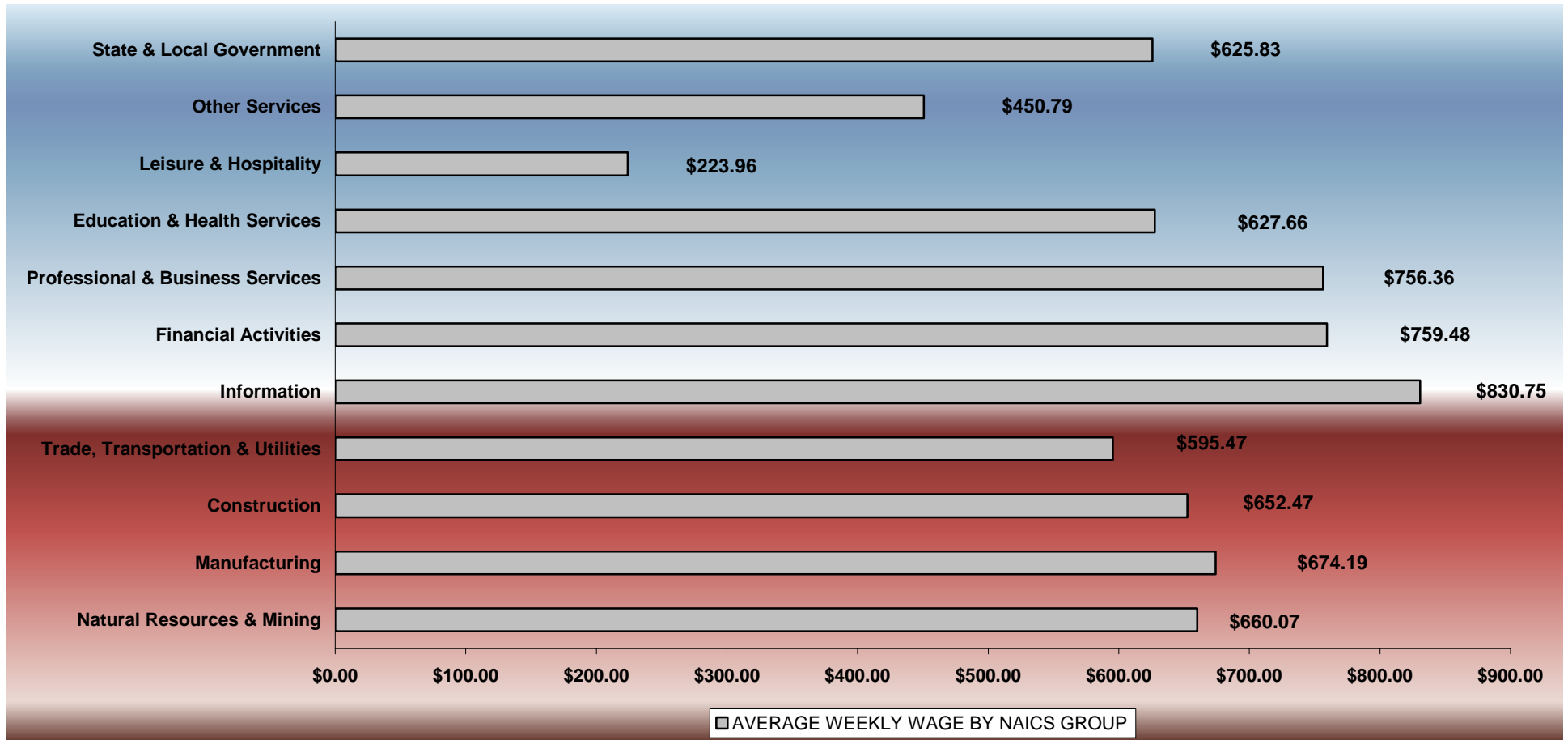
Two industries experienced losses this year. The most significant loss occurred in the Manufacturing industry (-2,175). This is a result of layoffs and the closing of factories. A slight decline occurred in Information (-132).



Pulaski ranked first among the counties in covered employment, averaging 238,413 during 2006. Benton County ranked second averaging 92,686, followed by Washington County with 90,854. Sebastian and Craighead Counties averaged 73,184 and 41,331, respectively, to also rank among the top five counties.

AVERAGE WEEKLY EARNINGS

Wages paid to covered workers totaled \$36,639,836,671 for the Calendar Year 2006 (see table 1), for an average weekly wage of \$614.27 (see table 5). This represented an increase of \$21.26 from the level of \$593.01 recorded in 2005. Employees in Information recorded the highest yearly average weekly wage with \$830.75 while Leisure & Hospitality recorded the lowest at \$223.96.



Note: Because of industry code changes between years, substantial employment and wage shifts among industries are anticipated.

TABLE 1. YEARLY COMPARISON OF COVERED EMPLOYMENT AND WAGES, BY INDUSTRY

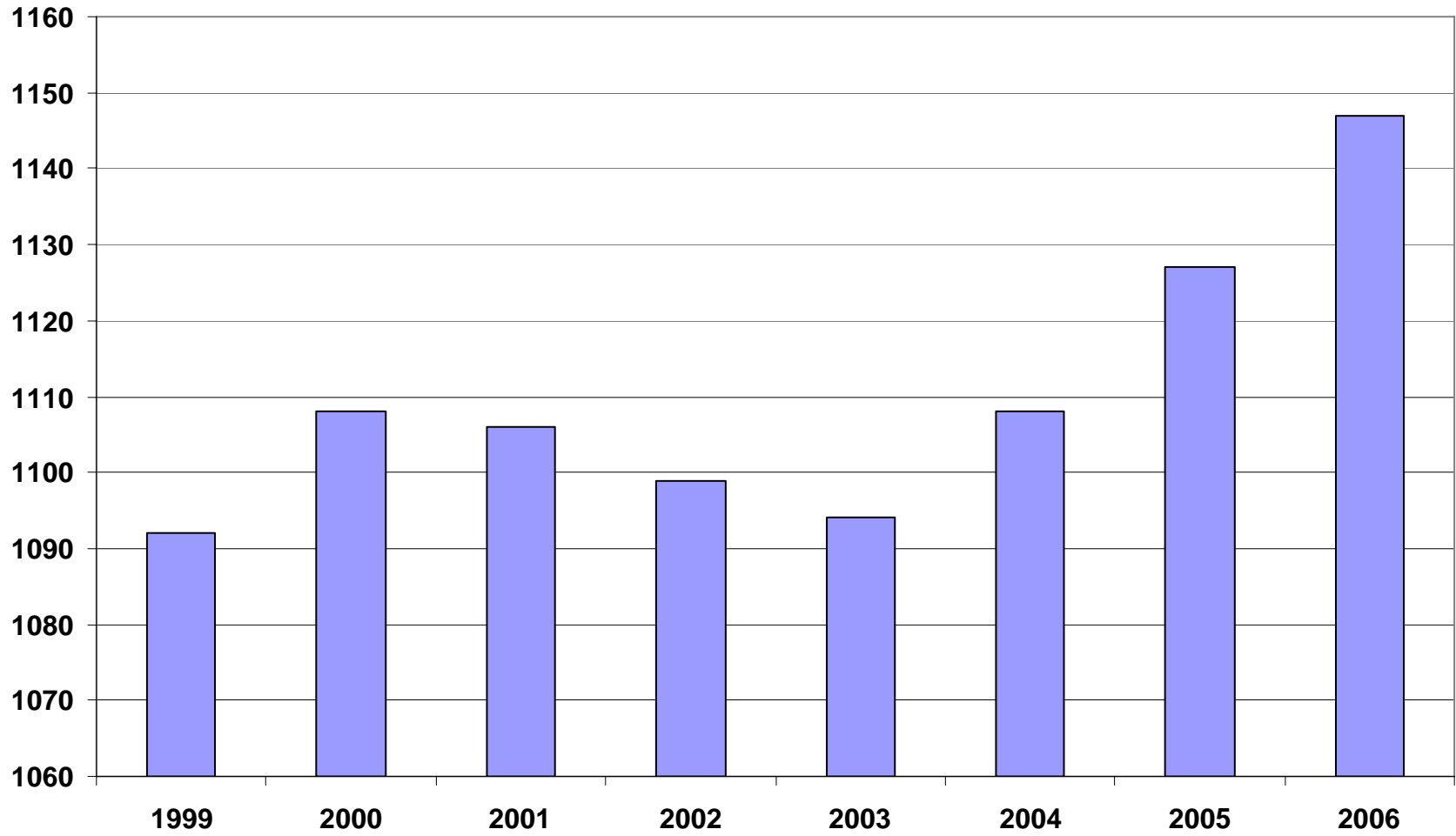
North American Industry Classification System Industry Group	Number of Employing Units	Average Covered Employment	% of Total	Net Change From 2005	Total Earnings 2006	% of Total	Average Weekly Earnings
Total	80,210	1,147,072	100.0	20,201	36,639,836,671	100.0	\$614.27
Natural Resources & Mining	2,360	18,550	1.6	262	636,706,628	1.7%	\$660.07
Agriculture, Forestry, Fishing & Hunting	1,993	13,629	1.2	-522	379,593,335	1.0%	\$535.61
Mining	367	4,921	0.4	784	257,113,293	0.7%	\$1,004.77
Construction	7,922	56,956	5.0	2,349	1,932,416,061	5.3%	\$652.47
Manufacturing	3,586	198,822	17.3	-2,175	6,970,231,559	19.0%	\$674.19
Trade, Transportation & Utilities	20,862	244,917	21.4	3,112	7,583,712,518	20.7%	\$595.47
Wholesale Trade	6,283	47,945	4.2	343	2,322,852,004	6.3%	\$931.70
Retail Trade	11,259	133,228	11.6	1,325	2,763,480,375	7.5%	\$398.89
Transportation & Warehousing	2,960	56,919	5.0	1,227	2,073,855,795	5.7%	\$700.68
Utilities	360	6,825	0.6	217	423,524,344	1.2%	\$1,193.36
Information	1,203	19,911	1.7	-132	860,130,874	2.3%	\$830.75
Financial Activities	8,045	51,171	4.5	1,404	2,020,895,233	5.5%	\$759.48
Finance & Insurance	4,731	36,949	3.2	864	1,635,161,159	4.5%	\$851.05
Real Estate & Rental & Leasing	3,314	14,222	1.2	540	385,734,074	1.1%	\$521.58
Professional & Business Services	10,837	114,217	10.0	2,698	4,492,246,455	12.3%	\$756.36
Professional & Technical Services	6,839	37,182	3.2	1,592	1,710,324,436	4.7%	\$884.59
Management of Companies & Enterprises	507	24,101	2.1	551	1,708,859,416	4.7%	\$1,363.54
Administrative & Waste Services	3,491	52,934	4.6	555	1,073,062,603	2.9%	\$389.84
Education & Health Services	10,651	145,778	12.7	4,818	4,757,943,714	13.0%	\$627.66
Educational Services	553	9,058	0.8	387	236,767,083	0.6%	\$502.67
Health Care & Social Assistance	10,098	136,720	11.9	4,431	4,521,176,631	12.3%	\$635.94
Leisure & Hospitality	6,070	97,449	8.5	3,360	1,134,905,363	3.1%	\$223.96
Arts, Entertainment & Recreation	920	9,420	0.8	151	145,526,243	0.4%	\$297.09
Accommodation & Food Services	5,150	88,029	7.7	3,209	989,379,120	2.7%	\$216.14
Other Services	5,475	25,845	2.3	580	605,839,820	1.7%	\$450.79
State & Local Government	3,199	173,456	15.1	3,924	5,644,808,446	15.4%	\$625.83
Local Government	2,002	111,286	9.7	2,043	3,382,482,377	9.2%	\$584.51
State Government	1,197	62,170	5.4	1,881	2,262,326,069	6.2%	\$699.80
Nonclassifiable Establishments	0	0	0	0	0	0	\$0.00

Note: Items do not necessarily add to totals because of rounding. Because of industry code changes between years, substantial employment and wage shifts among industries are anticipated.

TABLE 2. TOTAL COVERED EMPLOYMENT IN ARKANSAS

Period	1999	2000	2001	2002	2003	2004	2005	2006
Average	1,092,351	1,108,490	1,106,053	1,098,558	1,094,087	1,108,273	1,126,870	1,147,072
January	1,065,920	1,089,956	1,096,009	1,081,635	1,082,740	1,089,510	1,102,770	1,130,707
February	1,074,315	1,096,126	1,101,616	1,086,793	1,084,880	1,094,626	1,110,579	1,136,924
March	1,084,653	1,109,157	1,112,143	1,098,500	1,092,172	1,105,266	1,122,621	1,150,551
April	1,093,574	1,111,543	1,115,526	1,103,399	1,095,341	1,111,020	1,129,797	1,155,521
May	1,098,539	1,116,779	1,119,815	1,111,998	1,103,099	1,117,144	1,135,580	1,159,912
June	1,101,748	1,121,245	1,119,734	1,112,028	1,099,688	1,117,010	1,136,132	1,162,056
July	1,062,563	1,075,096	1,071,830	1,065,697	1,053,220	1,071,473	1,090,092	1,106,461
August	1,081,260	1,096,841	1,094,068	1,086,011	1,077,775	1,094,886	1,114,123	1,131,153
September	1,108,212	1,123,735	1,115,996	1,113,148	1,105,980	1,122,724	1,144,840	1,160,131
October	1,110,604	1,122,884	1,110,994	1,108,447	1,112,550	1,123,260	1,142,394	1,156,842
November	1,112,003	1,120,620	1,109,012	1,107,611	1,109,712	1,125,081	1,145,899	1,156,051
December	1,114,823	1,117,892	1,105,887	1,107,425	1,111,892	1,127,271	1,147,617	1,158,549

AVERAGE TOTAL COVERED EMPLOYMENT GRAPH 1
In Thousands



TOTAL COVERED EARNINGS BY CALENDAR QUARTER, GRAPH 2
In Thousands

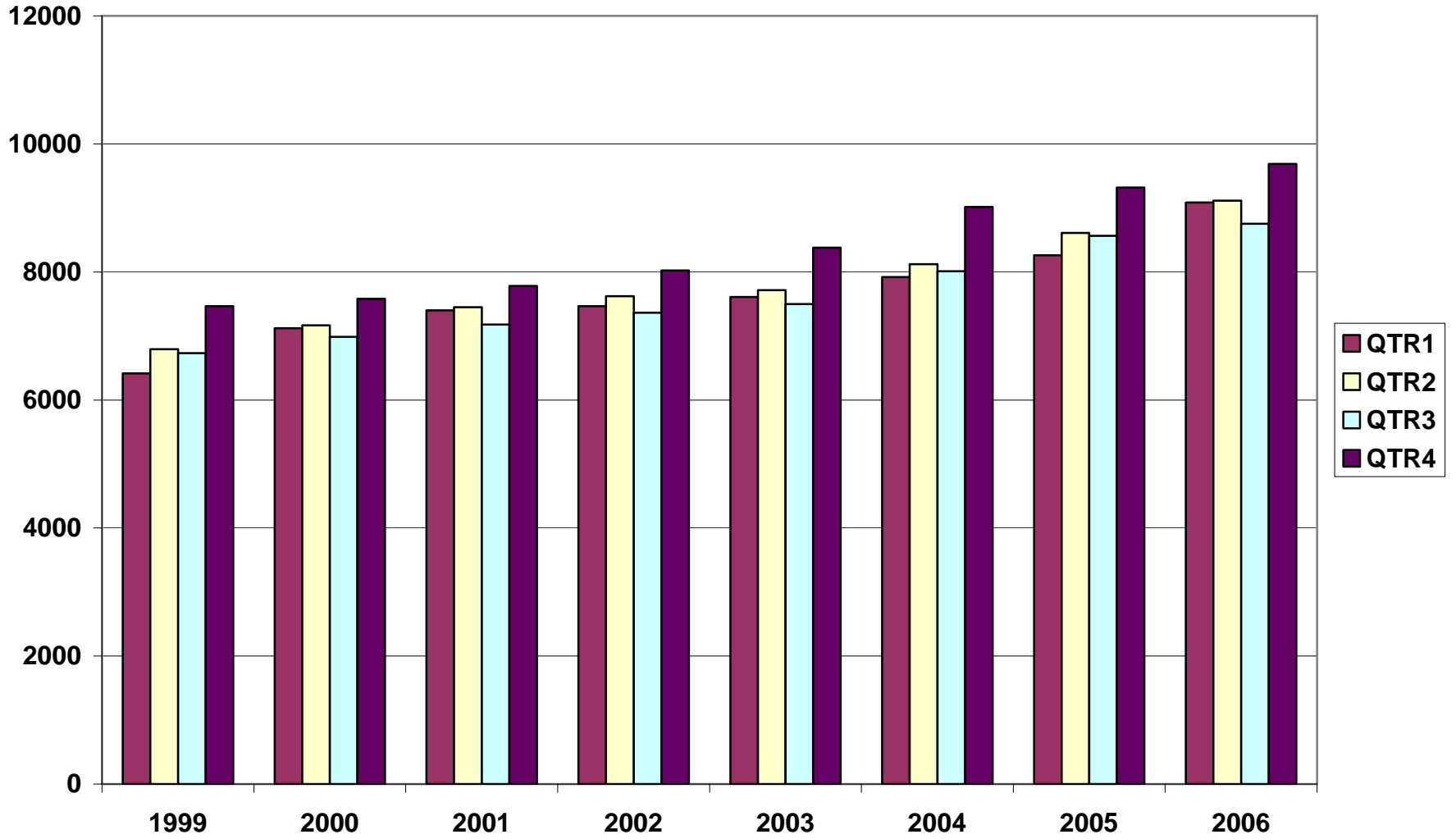


TABLE 3. TOTAL COVERED EARNINGS, 1999 - 2006

Period	1999	2000	2001	2002
Total	\$27,407,925,462	\$28,853,825,155	\$29,807,669,666	\$30,472,854,103
January - March	6,418,456,638	7,122,666,917	7,398,887,532	7,465,250,305
April - June	6,791,960,679	7,166,110,114	7,448,023,298	7,621,878,775
July - September	6,733,480,079	6,986,103,157	7,177,293,061	7,361,666,511
October - December	7,464,028,066	7,578,944,967	7,783,465,775	8,024,058,512
Average Weekly Earnings	482.51	500.57	518.26	535.62

Period	2003	2004	2005	2006
Total	\$31,202,576,767	\$33,068,302,933	\$34,748,658,215	\$36,639,836,671
January - March	7,608,130,008	7,918,843,610	8,261,160,581	9,085,903,803
April - June	7,714,813,038	8,122,370,361	8,607,765,828	9,112,836,787
July - September	7,500,204,764	8,010,367,094	8,562,914,149	8,753,099,690
October - December	8,379,428,957	9,016,721,868	9,316,817,657	9,687,996,391
Average Weekly Earnings	548.45	573.80	593.01	614.27

TABLE 4. TOTAL TAXABLE EARNINGS, 1999 - 2006

Period	1999	2000	2001	2002
Total	\$8,807,445,422	\$9,048,033,534	\$9,003,189,480	\$8,887,270,978
January - March	4,203,067,856	4,560,814,012	4,670,296,360	4,668,534,587
April - June	2,325,649,764	2,260,741,187	2,219,485,263	2,162,971,435
July - September	1,267,562,743	1,250,850,348	1,190,098,737	1,158,197,858
October - December	1,011,165,059	975,627,987	923,309,120	897,567,098

Period	2003	2004	2005	2006
Total	\$9,154,938,743	\$9,731,263,681	\$9,987,286,576	\$10,198,344,747
January - March	4,737,918,796	4,931,559,230	5,061,418,525	5,421,204,601
April - June	2,270,519,362	2,451,454,749	2,506,471,437	2,385,187,226
July - September	1,188,681,170	1,318,017,835	1,353,696,885	1,315,626,582
October - December	957,819,415	1,030,231,867	1,065,699,729	1,076,326,338

**TABLE 5. STATEWIDE SUMMARY
EMPLOYMENT AND TOTAL EARNINGS, BY INDUSTRY
CALENDAR YEAR 2006**

NORTH AMERICAN INDUSTRY CLASSIFICATION SYSTEM INDUSTRY GROUPS		AVERAGE EMPLOYING UNITS	AVERAGE COVERED EMPLOYMENT	TOTAL EARNINGS	AVERAGE WEEKLY EARNINGS
TOTAL, ALL INDUSTRIES		80,210	1,147,072	\$36,639,836,671	\$614.27
NATURAL RESOURCES & MINING		2,360	18,550	\$636,706,628	\$660.07
11	AGRICULTURE, FORESTRY, FISHING & HUNTING	1,993	13,629	\$379,593,335	\$535.61
111	CROP PRODUCTION	721	3,721	\$79,706,136	\$411.94
1111	Oilseed and Grain Farming	424	1,870	39,573,539	\$406.97
1112	Vegetable and Melon Farming	12	183	2,391,421	\$251.31
1113	Fruit and Tree Nut Farming	9	87	1,475,140	\$326.07
1114	Greenhouse & Nursery Production	50	342	8,501,835	\$478.06
1119	Other Crop Farming	227	1,239	27,764,201	\$430.93
112	ANIMAL PRODUCTION	255	3,656	\$115,593,931	\$608.03
1121	Cattle Ranching and Farming	74	314	9,099,720	\$557.31
	Hog and Pig Farming	8	145	5,536,731	\$734.31
1122					
1123	Poultry and Egg Production	84	2,561	84,182,416	\$632.13
1125	Animal Aquaculture	60	555	14,982,927	\$519.16
	Other	30	82	1,792,137	\$420.29
113	FORESTRY AND LOGGING	559	3,022	\$87,774,470	\$558.56
1131	Timber Tract Operations	45	256	9,137,204	\$686.39
1132	Forest Nurseries & Gathering of Forest Products	6	32	1,104,668	\$663.86
1133	Logging	508	2,734	77,532,598	\$545.36
	OTHER	457	3,231	\$96,518,798	\$574.48
21	MINING	367	4,921	\$257,113,293	\$1,004.77
211	OIL AND GAS EXTRACTION	85	433	\$25,029,559	\$1,111.63
212	MINING (EXCEPT OIL AND GAS)	103	2,053	\$90,337,644	\$846.21
213	SUPPORT ACTIVITIES FOR MINING	179	2,435	\$141,746,090	\$1,119.46

**TABLE 5. STATEWIDE SUMMARY
EMPLOYMENT AND TOTAL EARNINGS, BY INDUSTRY
CALENDAR YEAR 2006**

NORTH AMERICAN INDUSTRY CLASSIFICATION SYSTEM INDUSTRY GROUPS		AVERAGE EMPLOYING UNITS	AVERAGE COVERED EMPLOYMENT	TOTAL EARNINGS	AVERAGE WEEKLY EARNINGS
CONSTRUCTION		7,922	56,956	\$1,932,416,061	\$652.47
236	CONSTRUCTION OF BUILDINGS	2,239	13,211	\$486,550,973	\$708.25
2361	Residential Building Construction	1,630	4,691	142,383,441	\$583.70
2362	Nonresidential Building Construction	609	8,520	344,167,532	\$776.83
237	HEAVY & CIVIL ENGINEERING CONSTRUCTION	893	10,559	\$391,908,417	\$713.77
2371	Utility System Construction	422	4,875	173,203,196	\$683.25
2372	Land Subdivision	138	499	20,493,099	\$789.78
2373	Highway, Street & Bridge Construction	221	3,658	127,772,573	\$671.72
2379	Other Heavy Construction	113	1,527	70,439,549	\$887.10
238	SPECIALTY TRADE CONTRACTORS	4,790	33,186	\$1,053,956,671	\$610.75
2381	Building Foundation & Exterior Contractors	953	6,601	194,780,400	\$567.46
2382	Building Equipment Contractors	2,097	15,942	554,514,580	\$668.91
2383	Building Finishing Contractors	897	5,264	148,015,559	\$540.74
2389	Other Specialty Trade Contractors	843	5,379	156,646,132	\$560.03
MANUFACTURING		3,586	198,822	\$6,970,231,559	\$674.19
311	FOOD MANUFACTURING	320	50,999	\$1,401,506,180	\$528.48
3111	Animal Food Manufacturing	58	1,414	53,680,869	\$730.07
3112	Grain and Oilseed Milling	30	2,397	82,433,587	\$661.35
3114	Fruit, Vegetable & Specialty Food	35	6,949	225,325,395	\$623.57
3115	Dairy Product Manufacturing	13	716	26,048,109	\$699.62
3116	Animal Slaughtering & Processing	92	34,169	842,468,621	\$474.15
3118	Bakeries and Tortilla Manufacturing	53	3,393	107,470,002	\$609.12
3119	Other Food Manufacturing	25	1,725	59,882,007	\$667.58
	Other	14	235	4,197,590	\$343.50
312	BEVERAGE & TOBACCO PRODUCT MFG.	36	1,244	\$48,274,831	\$746.27
313	TEXTILE MILLS	20	408	\$17,267,094	\$813.87
314	TEXTILE PRODUCT MILLS	57	1,297	\$47,097,138	\$698.31
3141	Textile Furnishing Mills	17	33	526,829	\$307.01
3149	Other Textile Product Mills	40	1,264	46,570,309	\$708.53

**TABLE 5. STATEWIDE SUMMARY
EMPLOYMENT AND TOTAL EARNINGS, BY INDUSTRY
CALENDAR YEAR 2006**

NORTH AMERICAN INDUSTRY CLASSIFICATION SYSTEM INDUSTRY GROUPS		AVERAGE EMPLOYING UNITS	AVERAGE COVERED EMPLOYMENT	TOTAL EARNINGS	AVERAGE WEEKLY EARNINGS
315	APPAREL MANUFACTURING	45	1,837	\$37,677,767	\$394.43
3152	Cut & Sew Apparel Manufacturing	36	855	16,765,607	\$377.09
	Other	9	981	20,912,160	\$409.95
316	LEATHER & ALLIED PRODUCT MANUFACTURING	20	2,062	\$46,473,838	\$433.43
3162	Footwear Manufacturing	10	1,850	39,880,399	\$414.56
3169	Other Leather Product Manufacturing	10	212	6,593,439	\$598.10
321	WOOD PRODUCT MANUFACTURING	391	13,675	\$434,262,513	\$610.69
3211	Sawmills and Wood Preservation	178	6,166	209,745,321	\$654.16
3212	Veneer & Engineered Wood Products	47	3,229	117,167,026	\$697.80
3219	Other Wood Product Manufacturing	166	4,280	107,350,166	\$482.34
322	PAPER MANUFACTURING	86	11,723	\$609,402,108	\$999.68
3221	Pulp, Paper & Paperboard Mills	12	4,600	313,699,456	\$1,311.45
3222	Converted Paper Product Manufacturing	74	7,123	295,702,652	\$798.34
323	PRINTING & RELATED SUPPORT ACTIVITIES	299	4,623	\$162,629,017	\$676.50
324	PETROLEUM AND COAL PRODUCTS MFG.	20	901	\$48,599,598	\$1,037.30
325	CHEMICAL MANUFACTURING	108	4,652	\$232,459,159	\$960.96
3251	Basic Chemical Manufacturing	27	1,945	111,404,771	\$1,101.49
3252	Resin, Rubber & Artificial Fibers	5	302	16,240,101	\$1,034.14
3253	Agricultural Chemical Manufacturing	16	347	16,600,488	\$920.00
3255	Paint, Coating & Adhesive Manufacturing	8	180	9,948,572	\$1,062.88
3259	Other Chemical Preparation Manufacturing	26	940	39,872,617	\$815.72
	Other	28	938	38,392,610	\$787.12
326	PLASTICS & RUBBER PRODUCTS MFG.	171	13,035	\$490,558,846	\$723.73
3261	Plastics Product Manufacturing	128	7,860	262,205,195	\$641.53
3262	Rubber Product Manufacturing	44	5,174	228,353,651	\$848.75

**TABLE 5. STATEWIDE SUMMARY
EMPLOYMENT AND TOTAL EARNINGS, BY INDUSTRY
CALENDAR YEAR 2006**

NORTH AMERICAN INDUSTRY CLASSIFICATION SYSTEM INDUSTRY GROUPS		AVERAGE EMPLOYING UNITS	AVERAGE COVERED EMPLOYMENT	TOTAL EARNINGS	AVERAGE WEEKLY EARNINGS
327	NONMETALLIC MINERAL PRODUCT MFG.	250	4,630	\$170,083,356	\$706.44
3271	Clay Product & Refractory Manufacturing	16	451	16,435,371	\$700.81
3272	Glass & Glass Product Manufacturing	14	410	14,147,864	\$663.60
3273	Cement & Concrete Product Manufacturing	179	2,807	99,059,876	\$678.66
3274	Lime & Gypsum Product Manufacturing	4	426	19,769,426	\$892.44
3279	Other Nonmetallic Mineral Products	37	536	20,670,819	\$741.63
331	PRIMARY METAL MANUFACTURING	66	8,319	\$423,454,407	\$978.89
3311	Iron & Steel Mills and Ferroalloys	9	2,129	174,764,727	\$1,578.61
3312	Purchased Steel Product Manufacturing	13	2,423	98,367,922	\$780.72
3313	Alumina & Aluminum Production	19	1,827	81,071,426	\$853.35
3314	Other Nonferrous Metal Production	10	589	20,717,077	\$676.41
3315	Foundries	15	1,352	48,533,255	\$690.33
332	FABRICATED METAL PRODUCT MANUFACTURING	575	17,904	\$672,295,137	\$722.12
3321	Forging & Stamping	14	927	31,337,064	\$650.09
3322	Cutlery & Hand Tool Manufacturing	17	1,388	48,751,925	\$675.46
3323	Architectural & Structural Metals	202	5,161	199,961,650	\$745.09
3324	Boilers, Tanks & Shipping Containers	20	1,106	42,002,281	\$730.32
3325	Hardware Manufacturing	9	286	8,457,001	\$568.65
3326	Spring & Wire Product Manufacturing	16	719	20,610,435	\$551.26
3327	Machine Shops & Threaded Products	196	1,833	62,004,280	\$650.51
3328	Coating, Engraving & Heat Treating Metals	37	867	26,882,900	\$596.28
3329	Other Fabricated Metal Product Manufacturing	65	5,617	232,287,601	\$795.28
333	MACHINERY MANUFACTURING	254	14,613	\$509,089,251	\$669.96
3331	Agri., Construction & Mining Machinery	37	3,004	72,037,035	\$461.16
3333	Commercial & Service Industry Machinery	27	984	40,430,707	\$790.16
3334	HVAC & Commercial Refrigeration Equipment	24	5,151	194,024,973	\$724.37
3335	Metalworking Machinery Manufacturing	75	1,297	52,794,943	\$782.80
3339	Other General Purpose Machinery Manufacturing	56	3,204	112,265,714	\$673.83
	Other	35	972	37,535,879	\$742.64
334	COMPUTER & ELECTRONIC PRODUCT MFG.	82	5,717	\$196,969,535	\$662.56
3343	Audio & Video Equipment Manufacturing	11	1,375	43,553,881	\$609.15
3344	Semiconductors & Electronic Components	25	2,236	77,276,403	\$664.62
3345	Electronic Instrument Manufacturing	31	1,215	37,112,464	\$587.41
	Other	16	891	39,026,787	\$842.33

**TABLE 5. STATEWIDE SUMMARY
EMPLOYMENT AND TOTAL EARNINGS, BY INDUSTRY
CALENDAR YEAR 2006**

NORTH AMERICAN INDUSTRY CLASSIFICATION SYSTEM INDUSTRY GROUPS		AVERAGE EMPLOYING UNITS	AVERAGE COVERED EMPLOYMENT	TOTAL EARNINGS	AVERAGE WEEKLY EARNINGS
335	ELECTRICAL EQUIPMENT & APPLIANCES	72	12,083	\$455,429,821	\$724.84
3353	Electrical Equipment Manufacturing	24	4,915	188,372,536	\$737.04
	Other	48	7,167	267,057,285	\$716.58
336	TRANSPORTATION EQUIPMENT MANUFACTURING	172	16,861	\$601,079,896	\$685.56
3362	Motor Vehicle Body & Trailer Manufacturing	43	3,852	129,715,057	\$647.59
3363	Motor Vehicle Parts Manufacturing	57	6,479	203,568,437	\$604.23
3364	Aerospace Product & Parts Manufacturing	28	3,430	169,785,315	\$951.92
3366	Ship & Boat Building	26	1,695	47,084,562	\$534.20
	Other	18	1,405	50,926,525	\$697.05
337	FURNITURE & RELATED PRODUCT MFG.	274	6,471	\$193,931,799	\$576.33
3371	Household & Institutional Furniture	225	4,301	124,008,461	\$554.47
3372	Office Furniture & Fixtures Manufacturing	40	2,029	66,421,115	\$629.54
3379	Other Furniture Related Product Manufacturing	8	142	3,502,223	\$474.30
339	MISCELLANEOUS MANUFACTURING	272	5,769	\$171,690,268	\$572.32
3391	Medical Equipment & Supplies Manufacturing	98	2,641	82,672,823	\$601.99
3399	Other Miscellaneous Manufacturing	174	3,128	89,017,445	\$547.27
TRADE, TRANSPORTATION & UTILITIES		20,862	244,917	\$7,583,712,518	\$595.47
42	WHOLESALE TRADE	6,283	47,945	\$2,322,852,004	\$931.70
423	MERCHANT WHOLESALERS, DURABLE GOODS	2,101	22,246	\$960,273,150	\$830.12
4231	Motor Vehicle & Part Merchant Wholesalers	236	2,749	100,672,067	\$704.26
4232	Furniture & Furnishing Merchant Wholesalers	66	439	20,016,400	\$876.84
4233	Lumber & Supply Merchant Wholesalers	175	1,854	75,026,651	\$778.22
4234	Commercial Goods Merchant Wholesalers	245	2,551	147,276,696	\$1,110.25
4235	Metal & Mineral Merchant Wholesalers	50	794	35,194,345	\$852.41
4236	Electric Goods Merchant Wholesalers	176	2,176	101,189,375	\$894.28
4237	Hardware & Plumbing Merchant Wholesalers	224	2,492	108,857,590	\$840.05
4238	Machinery & Supply Merchant Wholesalers	691	7,301	302,132,112	\$795.81
4239	Misc. Durable Goods Merchant Wholesalers	239	1,892	69,907,914	\$710.56

**TABLE 5. STATEWIDE SUMMARY
EMPLOYMENT AND TOTAL EARNINGS, BY INDUSTRY
CALENDAR YEAR 2006**

NORTH AMERICAN INDUSTRY CLASSIFICATION SYSTEM INDUSTRY GROUPS		AVERAGE EMPLOYING UNITS	AVERAGE COVERED EMPLOYMENT	TOTAL EARNINGS	AVERAGE WEEKLY EARNINGS
424	MERCHANT WHOLESALERS, NONDURABLE GOODS	1,294	16,524	\$659,471,260	\$767.50
4241	Paper & Paper Product Merchant Wholesalers	73	1,164	46,142,068	\$762.33
4242	Druggists' Goods Merchant Wholesalers	56	1,211	52,316,649	\$830.79
4243	Apparel & Piece Goods Merchant Wholesalers	40	461	15,071,814	\$628.73
4244	Grocery Product Merchant Wholesalers	348	5,233	235,819,642	\$866.61
4245	Farm Product Merchant Wholesalers	78	861	21,673,932	\$484.10
4246	Chemical Merchant Wholesalers	82	478	22,953,593	\$923.46
4247	Petroleum Merchant Wholesalers	154	1,479	68,635,236	\$892.43
4248	Alcoholic Beverage Merchant Wholesalers	38	1,130	49,313,943	\$839.24
4249	Misc. Nondurable Goods Merchant Wholesalers	426	4,508	147,544,383	\$629.41
425	ELECTRONIC MARKETS & AGENTS & BROKERS	2,888	9,174	\$703,107,594	\$1,473.87
44-45	RETAIL TRADE	11,259	133,228	\$2,763,480,375	\$398.89
441	MOTOR VEHICLE & PARTS DEALERS	1,731	17,933	\$601,308,019	\$644.82
4411	Automobile Dealers	744	10,695	412,203,167	\$741.19
4412	Other Motor Vehicle Dealers	195	1,548	50,481,823	\$627.13
4413	Automotive Parts, Accessories & Tire Stores	792	5,690	138,623,029	\$468.51
442	FURNITURE & HOME FURNISHINGS STORES	602	4,137	\$107,564,293	\$500.01
4421	Furniture Stores	319	2,564	66,402,051	\$498.04
4422	Home Furnishings Stores	284	1,572	41,162,242	\$503.55
443	ELECTRONICS & APPLIANCE STORES	453	3,002	\$73,407,376	\$470.25
444	BUILDING MATERIAL & GARDEN SUPPLY STORES	838	11,344	\$288,906,815	\$489.77
4441	Building Material & Supplies Dealers	664	10,459	269,374,707	\$495.29
4442	Lawn & Garden Equipment & Supplies Stores	174	885	19,532,108	\$424.43
445	FOOD & BEVERAGE STORES	1,104	18,560	\$294,927,932	\$305.59
4451	Grocery Stores	630	16,137	248,919,157	\$296.64
4452	Specialty Food Stores	163	918	21,687,725	\$454.33
4453	Beer, Wine & Liquor Stores	311	1,505	24,321,050	\$310.77
446	HEALTH & PERSONAL CARE STORES	810	6,919	\$191,935,853	\$533.47
447	GASOLINE STATIONS	1,618	12,586	\$174,790,158	\$267.07
44711	Gasoline Stations with Convenience Stores	1,455	11,337	151,555,894	\$257.08
44719	Other Gasoline Stations	164	1,249	23,234,264	\$357.74

**TABLE 5. STATEWIDE SUMMARY
EMPLOYMENT AND TOTAL EARNINGS, BY INDUSTRY
CALENDAR YEAR 2006**

NORTH AMERICAN INDUSTRY CLASSIFICATION SYSTEM INDUSTRY GROUPS		AVERAGE EMPLOYING UNITS	AVERAGE COVERED EMPLOYMENT	TOTAL EARNINGS	AVERAGE WEEKLY EARNINGS
448	CLOTHING & CLOTHING ACCESSORIES STORES	1,072	8,816	\$120,232,559	\$262.27
4481	Clothing Stores	720	6,669	80,746,990	\$232.84
4482	Shoe Stores	182	1,199	17,021,100	\$273.00
4483	Jewelry, Luggage & Leather Goods Stores	171	948	22,464,469	\$455.71
451	SPORTING GOODS, HOBBY, BOOK & MUSIC STORES	581	4,550	\$65,709,659	\$277.72
4511	Sporting Goods & Musical Instrument Stores	422	3,088	48,377,266	\$301.27
4512	Book, Periodical & Music Stores	160	1,462	17,332,393	\$227.99
452	GENERAL MERCHANDISE STORES	705	36,772	\$666,984,505	\$348.81
453	MISCELLANEOUS STORE RETAILERS	1,422	6,683	\$124,693,476	\$358.81
4531	Florists	269	1,010	14,893,269	\$283.57
4532	Office Supplies, Stationery & Gift Stores	389	2,461	47,135,242	\$368.32
4533	Used Merchandise Stores	217	773	14,627,110	\$363.89
4539	Other Miscellaneous Store Retailers	548	2,439	48,037,855	\$378.76
454	NONSTORE RETAILERS	324	1,925	\$53,019,730	\$529.67
4541	Electronic Shopping & Mail -Order Houses	65	370	12,752,908	\$662.83
4542	Vending Machine Operators	83	705	16,406,108	\$447.52
4543	Direct Selling Establishments	176	849	23,860,714	\$540.47
48-49	TRANSPORTATION & WAREHOUSING	2,960	56,919	\$2,073,855,795	\$700.68
481	AIR TRANSPORTATION	48	951	\$50,727,108	\$1,025.78
484	TRUCK TRANSPORTATION	1,980	35,912	\$1,347,575,150	\$721.62
4841	General Freight Trucking	1,246	30,840	1,176,586,721	\$733.68
4842	Specialized Freight Trucking	734	5,072	170,988,429	\$648.31
485	TRANSIT & GROUND PASSENGER TRANS.	57	1,001	\$16,672,219	\$320.30
4853	Taxi & Limousine Service	18	229	2,955,846	\$248.22
4854	School & Employee Bus Transportation	8	390	7,422,978	\$366.02
4855	Charter Bus Industry Service	8	93	1,808,694	\$374.01
4859	Other Ground Passenger Transportation	17	193	2,998,481	\$298.77
	Other	8	96	1,486,220	\$297.72
486	PIPELINE TRANSPORTATION	65	922	\$48,510,126	\$1,011.81

**TABLE 5. STATEWIDE SUMMARY
EMPLOYMENT AND TOTAL EARNINGS, BY INDUSTRY
CALENDAR YEAR 2006**

NORTH AMERICAN INDUSTRY CLASSIFICATION SYSTEM INDUSTRY GROUPS		AVERAGE EMPLOYING UNITS	AVERAGE COVERED EMPLOYMENT	TOTAL EARNINGS	AVERAGE WEEKLY EARNINGS
488	SUPPORT ACTIVITIES FOR TRANSPORTATION	431	4,933	\$196,952,129	\$767.80
4881	Support Activities for Air Transportation	107	1,652	57,892,509	\$673.92
4882	Support Activities for Rail Transportation	31	408	13,361,202	\$629.77
4883	Support Activities for Water Transportation	29	665	28,695,684	\$829.83
4884	Support Activities for Road Transportation	105	505	12,104,214	\$460.94
4885	Freight Transportation Arrangement	136	1,542	80,371,692	\$1,002.34
4889	Other Support Activities for Transportation	25	162	4,526,828	\$537.37
492	COURIERS & MESSENGERS	142	3,287	\$117,906,292	\$689.82
4921	Couriers	88	3,043	111,945,904	\$707.46
4922	Local Messengers & Local Delivery	55	244	5,960,388	\$469.77
493	WAREHOUSING & STORAGE	213	9,675	\$287,952,473	\$572.36
	OTHER	24	238	\$7,560,298	\$610.88
22	UTILITIES	360	6,825	\$423,524,344	\$1,193.36
2211	Power Generation & Supply	162	5,045	341,435,281	\$1,301.50
2212	Natural Gas Distribution	34	957	58,863,826	\$1,182.86
2213	Water, Sewage and Other Systems	164	822	23,225,237	\$543.36
INFORMATION		1,203	19,911	\$860,130,874	\$830.75
511	PUBLISHING INDUSTRIES, EXCEPT INTERNET	248	6,342	\$196,019,860	\$594.39
5111	Newspaper, Book & Directory Publishers	219	6,078	181,221,479	\$573.38
5112	Software Publishers	29	265	14,798,381	\$1,073.90
512	MOTION PICTURE & SOUND RECORDING INDUSTRY	138	1,193	\$21,186,242	\$341.52
5121	Motion Picture & Video Industries	123	1,157	19,900,840	\$330.78
5122	Sound Recording Industries	16	36	1,285,402	\$686.65
515	BROADCASTING, EXCEPT INTERNET	141	2,072	\$69,599,441	\$645.97
5151	Radio & Television Broadcasting	133	2,036	68,766,110	\$649.52
5152	Cable & Other Subscription Programming	8	36	833,331	\$445.16

**TABLE 5. STATEWIDE SUMMARY
EMPLOYMENT AND TOTAL EARNINGS, BY INDUSTRY
CALENDAR YEAR 2006**

NORTH AMERICAN INDUSTRY CLASSIFICATION SYSTEM INDUSTRY GROUPS		AVERAGE EMPLOYING UNITS	AVERAGE COVERED EMPLOYMENT	TOTAL EARNINGS	AVERAGE WEEKLY EARNINGS
517	TELECOMMUNICATIONS	489	8,868	\$501,885,529	\$1,088.37
5171	Wired Telecommunications Carriers	215	3,150	218,331,014	\$1,332.91
5172	Wireless Telecommunications Carriers	119	3,956	214,381,299	\$1,042.14
5175	Cable & Other Program Distribution	88	1,263	47,571,442	\$724.34
	Other	67	499	21,601,774	\$832.50
518	ISPS, SEARCH PORTALS, & DATA PROCESSING	150	1,137	\$61,928,567	\$1,047.44
5181	ISPs, & Web Search Portals	65	166	6,649,046	\$770.28
5182	Data Processing & Related Services	85	971	55,279,521	\$1,094.82
	OTHER	37	300	\$9,511,235	\$609.69
FINANCIAL ACTIVITIES		8,045	51,171	\$2,020,895,233	\$759.48
52	FINANCE & INSURANCE	4,731	36,949	\$1,635,161,159	\$851.05
522	CREDIT INTERMEDIATION & RELATED ACTIVITIES	2,036	21,919	\$807,847,126	\$708.77
5221	Depository Credit Intermediation	1,324	18,278	650,778,600	\$684.70
5222	Nondepository Credit Intermediation	396	2,606	123,535,708	\$911.62
5223	Activities Related to Credit Intermediation	316	1,035	33,532,818	\$623.05
523	FINANCIAL INVESTMENT & RELATED ACTIVITIES	573	3,059	\$277,872,886	\$1,746.88
5231	Security & Commodity Investment Activities	321	2,308	234,002,203	\$1,949.76
5239	Other Financial Investment Activities	252	751	43,870,683	\$1,123.39
524	INSURANCE CARRIERS & RELATED ACTIVITIES	2,083	11,515	\$531,829,473	\$888.19
5241	Insurance Carriers	403	4,744	245,787,771	\$996.35
5242	Insurance Agencies, Brokerages & Support	1,681	6,771	286,041,702	\$812.41
	OTHER	39	456	\$17,611,674	\$742.73
53	REAL ESTATE & RENTAL & LEASING	3,314	14,222	\$385,734,074	\$521.58
531	REAL ESTATE	2,497	8,936	\$247,648,944	\$532.95
5311	Lessors of Real Estate	1,048	4,365	109,320,141	\$481.63
5312	Offices of Real Estate Agents & Brokers	851	2,180	69,157,317	\$610.07
5313	Activities Related to Real Estate	599	2,391	69,171,486	\$556.34

**TABLE 5. STATEWIDE SUMMARY
EMPLOYMENT AND TOTAL EARNINGS, BY INDUSTRY
CALENDAR YEAR 2006**

NORTH AMERICAN INDUSTRY CLASSIFICATION SYSTEM INDUSTRY GROUPS		AVERAGE EMPLOYING UNITS	AVERAGE COVERED EMPLOYMENT	TOTAL EARNINGS	AVERAGE WEEKLY EARNINGS
532	RENTAL & LEASING SERVICES	791	5,209	\$133,308,893	\$492.15
5321	Automotive Equipment Rental & Leasing	127	1,000	28,233,709	\$542.96
5322	Consumer Goods Rental	484	3,176	63,976,176	\$387.38
5323	General Rental Centers	35	245	7,518,762	\$590.17
5324	Machinery & Equipment Rental & Leasing	145	788	33,580,246	\$819.51
533	LESSORS OF NONFINANCIAL INTANGIBLE ASSETS	26	78	\$4,776,237	\$1,177.57
PROFESSIONAL & BUSINESS SERVICES		10,837	114,217	\$4,492,246,455	\$756.36
54	PROFESSIONAL & TECHNICAL SERVICES	6,839	37,182	\$1,710,324,436	\$884.59
5411	Legal Services	1,650	6,687	299,906,047	\$862.48
5412	Accounting & Bookkeeping Services	1,205	5,316	184,322,608	\$666.79
5413	Architectural & Engineering Services	923	6,621	311,114,012	\$903.63
5414	Specialized Design Services	155	460	14,589,254	\$609.92
5415	Computer Systems Design & Related Services	818	7,632	523,938,188	\$1,320.20
5416	Management & Technical Consulting Services	1,078	3,360	158,226,399	\$905.60
5417	Scientific Research & Development Services	114	1,127	53,650,304	\$915.47
5418	Advertising & Related Services	318	2,076	84,843,990	\$785.94
5419	Other Professional & Technical Services	580	3,903	79,733,634	\$392.86
55	MANAGEMENT OF COMPANIES & ENTERPRISES	507	24,101	\$1,708,859,416	\$1,363.54
56	ADMINISTRATIVE & WASTE SERVICES	3,491	52,934	\$1,073,062,603	\$389.84
561	ADMINISTRATIVE & SUPPORT SERVICES	3,288	50,636	\$984,196,369	\$373.78
5611	Office Administrative Services	352	1,337	66,009,156	\$949.44
5612	Facilities Support Services	16	127	4,029,302	\$610.13
5613	Employment Services	642	25,880	445,015,834	\$330.68
5614	Business Support Services	362	5,177	100,862,113	\$374.67
5615	Travel Arrangement & Reservation Services	101	441	12,079,730	\$526.76
5616	Investigation & Security Services	236	4,419	101,604,253	\$442.17
5617	Services to Buildings & Dwellings	1,301	11,705	207,260,176	\$340.52
5619	Other Support Services	278	1,550	47,335,805	\$587.29

**TABLE 5. STATEWIDE SUMMARY
EMPLOYMENT AND TOTAL EARNINGS, BY INDUSTRY
CALENDAR YEAR 2006**

NORTH AMERICAN INDUSTRY CLASSIFICATION SYSTEM INDUSTRY GROUPS		AVERAGE EMPLOYING UNITS	AVERAGE COVERED EMPLOYMENT	TOTAL EARNINGS	AVERAGE WEEKLY EARNINGS
562	WASTE MANAGEMENT & REMEDIATION SERVICES	203	2,298	\$88,866,234	\$743.68
5621	Waste Collection Services	95	1,066	39,765,962	\$717.38
5622	Waste Treatment & Disposal Services	38	722	33,576,447	\$894.32
5629	Remediation & Other Waste Services	70	510	15,523,825	\$585.36
EDUCATION & HEALTH SERVICES		10,651	145,778	\$4,757,943,714	\$627.66
61	EDUCATIONAL SERVICES	553	9,058	\$236,767,083	\$502.67
6111	Elementary & Secondary Schools	81	3,164	66,312,016	\$403.04
6112	Junior Colleges	7	255	7,249,881	\$546.75
6113	Colleges & Universities	26	3,166	96,080,773	\$583.61
6114	Business, Computer, & Management Training	44	141	10,896,321	\$1,486.13
6115	Technical & Trade Schools	100	716	28,703,076	\$770.92
6116	Other Schools & Instruction	210	1,391	19,064,288	\$263.57
6117	Educational Support Services	85	225	8,460,728	\$723.14
62	HEALTH CARE & SOCIAL ASSISTANCE	10,098	136,720	\$4,521,176,631	\$635.94
621	AMBULATORY HEALTH CARE SERVICES	4,776	42,347	\$2,053,906,772	\$932.73
6211	Offices of Physicians	2,144	20,586	1,320,465,297	\$1,233.54
6212	Offices of Dentists	914	6,018	233,911,699	\$747.47
6213	Offices of Other Health Practitioners	1,128	5,559	167,501,842	\$579.45
6214	Outpatient Care Centers	211	3,465	127,896,719	\$709.83
6215	Medical & Diagnostic Laboratories	98	788	41,547,735	\$1,013.95
6216	Home Health Care Services	136	3,763	100,438,177	\$513.29
6219	Other Ambulatory Health Care Services	147	2,168	62,145,303	\$551.25
622	HOSPITALS	108	41,501	\$1,511,847,916	\$700.56
6221	General Medical & Surgical Hospitals	78	38,222	1,396,543,211	\$702.65
6222	Psychiatric & Substance Abuse Hospitals	9	1,500	49,146,418	\$630.08
6223	Other Hospitals	20	1,779	66,158,287	\$715.16

**TABLE 5. STATEWIDE SUMMARY
EMPLOYMENT AND TOTAL EARNINGS, BY INDUSTRY
CALENDAR YEAR 2006**

NORTH AMERICAN INDUSTRY CLASSIFICATION SYSTEM INDUSTRY GROUPS		AVERAGE EMPLOYING UNITS	AVERAGE COVERED EMPLOYMENT	TOTAL EARNINGS	AVERAGE WEEKLY EARNINGS
623	NURSING & RESIDENTIAL CARE FACILITIES	505	26,975	\$528,818,851	\$377.00
6231	Nursing Care Facilities	243	20,279	395,041,414	\$374.62
6232	Residential Mental Health Facilities	125	3,026	63,362,032	\$402.68
6233	Community Care Facilities for the Elderly	90	2,218	39,160,698	\$339.54
6239	Other Residential Care Facilities	47	1,452	31,254,707	\$413.95
624	SOCIAL ASSISTANCE	4,710	25,897	\$426,603,092	\$316.79
6241	Individual & Family Services	3,570	13,206	228,443,158	\$332.66
6242	Emergency & Other Relief Services	119	864	17,231,336	\$383.53
6243	Vocational Rehabilitation Services	130	3,407	64,512,338	\$364.14
6244	Child Day Care Services	891	8,420	116,416,260	\$265.89
LEISURE & HOSPITALITY		6,070	97,449	\$1,134,905,363	\$223.96
71	ARTS, ENTERTAINMENT & RECREATION	920	9,420	\$145,526,243	\$297.09
711	PERFORMING ARTS & SPECTATOR SPORTS	202	2,166	\$40,343,488	\$358.19
7111	Performing Arts Companies	35	486	7,216,567	\$285.56
7112	Spectator Sports	54	990	16,426,088	\$319.08
7113	Performing Arts & Sports Promoters	42	550	12,973,813	\$453.63
7114	Agents & Managers for Public Figures	12	19	614,240	\$621.70
7115	Independent Artists, Writers & Performers	59	121	3,112,780	\$494.72
712	MUSEUMS, PARKS & HISTORICAL SITES	47	225	\$4,030,912	\$344.52
713	GAMBLING, RECREATION & AMUSEMENT INDUSTRY	672	7,030	\$101,151,843	\$276.70
7139	Other Amusement & Recreation Industries	632	6,528	96,091,073	\$283.07
	Other	41	502	5,060,770	\$193.87
72	ACCOMMODATION & FOOD SERVICES	5,150	88,029	\$989,379,120	\$216.14
721	ACCOMMODATION	817	11,086	\$156,728,885	\$271.88
7211	Traveler Accommodation	742	10,699	149,710,955	\$269.10
7212	RV Parks & Recreational Camps	55	318	5,825,356	\$352.28
7213	Rooming & Boarding Houses	19	69	1,192,574	\$332.38

**TABLE 5. STATEWIDE SUMMARY
EMPLOYMENT AND TOTAL EARNINGS, BY INDUSTRY
CALENDAR YEAR 2006**

NORTH AMERICAN INDUSTRY CLASSIFICATION SYSTEM INDUSTRY GROUPS		AVERAGE EMPLOYING UNITS	AVERAGE COVERED EMPLOYMENT	TOTAL EARNINGS	AVERAGE WEEKLY EARNINGS
722	FOOD SERVICES & DRINKING PLACES	4,334	76,943	\$832,650,235	\$208.11
7221	Full -Service Restaurants	1,912	34,080	393,789,437	\$222.21
7222	Limited-Service Eating Places	2,116	39,863	401,434,651	\$193.66
7223	Special Food Services	155	2,104	27,717,011	\$253.34
7224	Drinking Places, Alcoholic Beverages	150	897	9,709,136	\$208.15
OTHER SERVICES		5,475	25,845	\$605,839,820	\$450.79
811	REPAIR & MAINTENANCE	2,214	9,574	\$263,428,923	\$529.14
8111	Automotive Repair & Maintenance	1,534	6,799	174,689,999	\$494.11
8112	Electronic Equipment Repair & Maintenance	162	681	23,641,266	\$667.61
8113	Commercial Machinery Repair & Maintenance	336	1,540	51,488,266	\$642.96
8114	Household Goods Repair & Maintenance	182	554	13,609,392	\$472.42
812	PERSONAL & LAUNDRY SERVICES	1,313	8,320	\$162,309,542	\$375.16
8121	Personal Care Services	561	2,649	40,506,443	\$294.06
8122	Death Care Services	246	1,680	42,411,618	\$485.48
8123	Drycleaning & Laundry Services	339	3,248	62,590,649	\$370.59
8129	Other Personal Services	168	743	16,800,832	\$434.85
813	MEMBERSHIP ASSOCIATIONS & ORGANIZATIONS	1,021	6,505	\$157,485,164	\$465.57
8131	Religious Organizations	40	222	4,965,677	\$430.15
8132	Grantmaking & Giving Services	96	449	16,890,402	\$723.42
8133	Social Advocacy Organizations	148	1,979	46,405,027	\$450.94
8134	Civic & Social Organizations	220	1,590	21,219,873	\$256.65
8139	Professional & Similar Organizations	517	2,265	68,004,185	\$577.38
814	PRIVATE HOUSEHOLDS	928	1,447	\$22,616,191	\$300.57
	LOCAL GOVERNMENT	2,002	111,286	\$3,382,482,377	\$584.51
	STATE GOVERNMENT	1,197	62,170	\$2,262,326,069	\$699.80
	NONCLASSIFIABLE ESTABLISHMENTS	0	0	\$0	

**TABLE 6. COUNTY SUMMARY
EMPLOYMENT AND TOTAL EARNINGS, BY INDUSTRY
CALENDAR YEAR 2006**

NORTH AMERICAN INDUSTRY CLASSIFICATION SYSTEM INDUSTRY GROUP	AVERAGE EMPLOYING UNITS	AVERAGE COVERED EMPLOYMENT	TOTAL EARNINGS	AVERAGE WEEKLY EARNINGS
ARKANSAS COUNTY - TOTAL	682	9,902	\$287,807,822	\$558.95
Natural Resources & Mining	43	225	7,125,065	608.98
Construction	53	282	9,027,190	615.60
Manufacturing	32	3,555	117,747,501	636.95
Trade, Transportation & Utilities	200	2,037	61,853,520	583.94
Wholesale Trade	46	433	18,492,101	821.29
Retail Trade	101	1,052	20,944,882	382.88
Transportation, Warehousing & Utilities	53	552	22,416,537	780.96
Information	10	92	3,171,383	662.91
Financial Activities	42	325	10,798,562	638.97
Professional & Business Services	53	404	15,135,561	720.47
Education & Health Services	89	1,232	26,779,486	418.01
Leisure & Hospitality	60	534	5,259,112	189.39
Other Services	53	147	3,092,193	404.53
Local Government	32	864	22,075,275	491.35
State Government	16	206	5,742,974	536.13
ASHLEY COUNTY - TOTAL	539	8,220	\$291,742,010	\$682.53
Natural Resources & Mining	61	484	13,625,771	541.39
Construction	48	590	15,694,923	511.57
Manufacturing	30	2,915	158,789,022	1047.56
Trade, Transportation & Utilities	133	1,229	29,238,127	457.50
Wholesale Trade	24	167	6,177,853	711.41
Retail Trade	86	839	14,818,431	339.65
Transportation, Warehousing & Utilities	23	223	8,241,843	710.75
Information	8	49	1,336,767	524.63
Financial Activities	32	221	6,403,849	557.24
Professional & Business Services	49	365	9,697,723	510.94
Education & Health Services	64	594	18,249,578	590.83
Leisure & Hospitality	28	390	3,680,286	181.47
Other Services	43	193	3,830,319	381.66
Local Government	32	972	26,589,976	526.08
State Government	12	217	4,605,669	408.16

**TABLE 6. COUNTY SUMMARY
EMPLOYMENT AND TOTAL EARNINGS, BY INDUSTRY
CALENDAR YEAR 2006**

NORTH AMERICAN INDUSTRY CLASSIFICATION SYSTEM INDUSTRY GROUP	AVERAGE EMPLOYING UNITS	AVERAGE COVERED EMPLOYMENT	TOTAL EARNINGS	AVERAGE WEEKLY EARNINGS
BAXTER COUNTY - TOTAL	1,248	14,709	\$400,767,831	\$523.97
Natural Resources & Mining	6	121	3,337,433	530.42
Construction	136	714	17,911,947	482.44
Manufacturing	60	2,563	84,333,346	632.77
Trade, Transportation & Utilities	279	2,727	61,804,683	435.85
Wholesale Trade	34	208	6,424,244	593.96
Retail Trade	212	2,260	47,819,432	406.90
Transportation, Warehousing & Utilities	33	260	7,561,007	559.25
Information	25	267	8,453,575	608.87
Financial Activities	115	722	23,822,303	634.52
Professional & Business Services	138	763	21,064,285	530.91
Education & Health Services	215	3,347	114,611,424	658.52
Leisure & Hospitality	125	1,571	16,788,543	205.51
Other Services	103	439	7,438,976	325.87
Local Government	36	1,176	33,009,306	539.79
State Government	13	299	8,192,010	526.89
BENTON COUNTY - TOTAL	5,182	92,686	\$3,557,681,310	\$738.16
Natural Resources & Mining	26	659	30,643,300	894.22
Construction	787	5,300	182,926,299	663.74
Manufacturing	244	14,197	478,140,276	647.67
Trade, Transportation & Utilities	1,373	23,071	856,298,156	713.76
Wholesale Trade	619	3,453	232,254,117	1293.49
Retail Trade	586	7,993	184,389,930	443.63
Transportation, Warehousing & Utilities	169	11,626	439,654,109	727.24
Information	65	933	32,833,695	676.76
Financial Activities	577	3,748	151,347,335	776.55
Professional & Business Services	860	21,889	1,216,259,873	1068.56
Education & Health Services	446	6,457	215,202,828	640.93
Leisure & Hospitality	403	7,262	92,219,072	244.21
Other Services	308	1,766	45,199,562	492.20
Local Government	75	6,650	231,972,433	670.83
State Government	19	754	24,638,481	628.40

**TABLE 6. COUNTY SUMMARY
EMPLOYMENT AND TOTAL EARNINGS, BY INDUSTRY
CALENDAR YEAR 2006**

NORTH AMERICAN INDUSTRY CLASSIFICATION SYSTEM INDUSTRY GROUP	AVERAGE EMPLOYING UNITS	AVERAGE COVERED EMPLOYMENT	TOTAL EARNINGS	AVERAGE WEEKLY EARNINGS
BOONE COUNTY - TOTAL	1,062	13,962	\$420,523,005	\$579.21
Construction	91	480	14,304,622	573.10
Manufacturing	72	2,100	69,271,066	634.35
Trade, Transportation & Utilities	265	4,455	153,036,615	660.61
Wholesale Trade	59	652	19,836,254	585.07
Retail Trade	153	1,959	41,532,789	407.71
Transportation, Warehousing & Utilities	53	1,843	91,667,572	956.50
Information	20	422	15,299,824	697.22
Financial Activities	96	638	20,523,331	618.62
Professional & Business Services	110	610	13,880,559	437.60
Education & Health Services	169	1,139	31,970,561	539.79
Leisure & Hospitality	85	1,167	12,539,184	206.63
Local Government	60	2,114	63,039,507	573.46
State Government	21	573	20,245,506	679.47
Other	76	267	6,412,230	461.84
BRADLEY COUNTY - TOTAL	387	4,083	\$102,543,959	\$482.98
Natural Resources & Mining	49	393	8,479,964	414.95
Construction	23	175	4,329,329	475.75
Manufacturing	9	1,076	33,197,458	593.32
Trade, Transportation & Utilities	88	511	10,410,118	391.77
Wholesale Trade	15	116	2,135,599	354.04
Retail Trade	49	319	5,946,326	358.47
Transportation, Warehousing & Utilities	24	75	2,328,193	596.97
Information	3	12	345,460	553.62
Financial Activities	24	177	4,536,498	492.88
Professional & Business Services	28	88	1,603,443	350.40
Education & Health Services	86	570	14,687,013	495.51
Leisure & Hospitality	17	171	1,585,016	178.25
Other Services	33	120	2,549,200	408.53
Local & State Government	28	791	20,820,460	506.19

**TABLE 6. COUNTY SUMMARY
EMPLOYMENT AND TOTAL EARNINGS, BY INDUSTRY
CALENDAR YEAR 2006**

NORTH AMERICAN INDUSTRY CLASSIFICATION SYSTEM INDUSTRY GROUP	AVERAGE EMPLOYING UNITS	AVERAGE COVERED EMPLOYMENT	TOTAL EARNINGS	AVERAGE WEEKLY EARNINGS
CALHOUN COUNTY - TOTAL	113	3,127	\$114,876,791	\$706.48
Natural Resources & Mining	19	178	5,102,361	551.25
Construction	10	72	1,799,066	480.52
Manufacturing	11	2,145	87,510,790	784.57
Trade, Transportation & Utilities	26	207	5,210,474	484.06
Wholesale Trade & Retail Trade	18	69	913,687	254.65
Transportation, Warehousing & Utilities	8	138	4,296,787	598.77
Financial Activities	7	83	2,145,493	497.10
Education & Health Services	4	45	1,358,733	580.66
Local Government	11	203	4,700,558	445.30
State Government	9	79	2,311,133	562.59
Other	16	116	4,738,183	785.51
CARROLL COUNTY - TOTAL	840	9,863	\$226,130,694	\$440.91
Natural Resources & Mining	17	253	6,920,292	526.02
Trade, Transportation & Utilities	207	1,631	37,362,786	440.54
Wholesale Trade	23	130	2,925,459	432.76
Retail Trade	163	1,233	24,422,510	380.91
Transportation, Warehousing & Utilities	21	269	10,014,817	715.96
Professional & Business Services	81	258	6,589,553	491.17
Education & Health Services	81	788	22,436,119	547.54
Leisure & Hospitality	172	1,668	18,380,192	211.91
Local Government	25	1,035	27,458,585	510.19
State Government	11	106	2,956,385	536.35
Other	248	4,124	104,026,782	485.09

**TABLE 6. COUNTY SUMMARY
EMPLOYMENT AND TOTAL EARNINGS, BY INDUSTRY
CALENDAR YEAR 2006**

NORTH AMERICAN INDUSTRY CLASSIFICATION SYSTEM INDUSTRY GROUP	AVERAGE EMPLOYING UNITS	AVERAGE COVERED EMPLOYMENT	TOTAL EARNINGS	AVERAGE WEEKLY EARNINGS
CHICOT COUNTY - TOTAL	344	3,578	\$83,794,577	\$450.37
Natural Resources & Mining	45	263	6,936,350	507.19
Construction	19	173	5,259,986	584.70
Manufacturing	12	498	8,727,007	337.00
Trade, Transportation & Utilities	79	569	12,469,578	421.44
Wholesale Trade	15	103	3,591,230	670.51
Retail Trade	52	402	6,377,086	305.07
Transportation, Warehousing & Utilities	12	65	2,501,262	740.02
Information	6	14	353,362	485.39
Financial Activities	30	168	5,196,583	594.85
Professional & Business Services	25	89	2,874,470	621.10
Education & Health Services	66	503	11,973,944	457.79
Leisure & Hospitality	21	222	1,847,135	160.01
Other Services	15	50	1,067,777	410.68
Local Government	16	714	18,903,259	509.14
State Government	11	316	8,185,126	498.12
CLARK COUNTY - TOTAL	607	9,641	\$251,653,316	\$501.97
Natural Resources & Mining	42	243	7,155,433	566.27
Construction	29	140	3,459,576	475.22
Manufacturing	34	2,323	69,394,604	574.48
Trade, Transportation & Utilities	142	1,464	36,681,993	481.85
Wholesale Trade	20	85	2,897,669	655.58
Retail Trade	100	1,094	23,538,131	413.76
Transportation, Warehousing & Utilities	22	285	10,246,193	691.38
Information	10	30	954,567	611.90
Financial Activities	86	389	11,689,466	577.89
Professional & Business Services	46	379	15,100,264	766.20
Education & Health Services	74	1,427	37,773,185	509.05
Leisure & Hospitality	57	1,020	10,406,101	196.19
Other Services	48	214	4,525,745	406.70
Local Government	26	896	22,643,932	486.00
State Government	15	1,117	31,868,450	548.66

**TABLE 6. COUNTY SUMMARY
EMPLOYMENT AND TOTAL EARNINGS, BY INDUSTRY
CALENDAR YEAR 2006**

NORTH AMERICAN INDUSTRY CLASSIFICATION SYSTEM INDUSTRY GROUP	AVERAGE EMPLOYING UNITS	AVERAGE COVERED EMPLOYMENT	TOTAL EARNINGS	AVERAGE WEEKLY EARNINGS
CLAY COUNTY - TOTAL	409	4,455	\$101,060,893	\$436.25
Natural Resources & Mining	58	207	4,408,810	409.59
Construction	35	166	3,414,282	395.54
Manufacturing	19	1,105	26,229,677	456.49
Trade, Transportation & Utilities	98	937	22,493,991	461.66
Wholesale Trade	22	331	8,881,005	515.98
Retail Trade	54	450	7,875,677	336.57
Transportation, Warehousing & Utilities	22	156	5,737,309	707.26
Information	7	80	2,257,426	542.65
Financial Activities	36	154	4,084,265	510.02
Professional & Business Services	25	53	1,251,021	453.93
Education & Health Services	51	496	10,470,492	405.96
Leisure & Hospitality	23	219	1,756,908	154.28
Other Services	25	55	1,177,066	411.56
Local Government	22	906	21,535,808	457.12
State Government	12	78	1,981,147	488.45
CLEBURNE COUNTY - TOTAL	682	6,815	\$164,128,950	\$463.14
Natural Resources & Mining	15	84	2,315,809	530.18
Construction	74	334	7,539,173	434.08
Manufacturing	44	1,713	50,137,673	562.86
Trade, Transportation & Utilities	183	1,550	36,298,731	450.36
Wholesale Trade	39	197	5,518,440	538.70
Retail Trade	113	1,056	20,240,002	368.59
Transportation, Warehousing & Utilities	31	298	10,540,289	680.19
Information	9	60	1,496,255	479.57
Financial Activities	72	251	6,906,989	529.19
Professional & Business Services	54	195	5,145,421	507.44
Education & Health Services	74	779	19,166,077	473.14
Leisure & Hospitality	70	809	8,768,066	208.43
Other Services	58	163	3,104,824	366.31
Local Government	20	761	20,079,194	507.41
State Government	10	117	3,170,738	521.16

**TABLE 6. COUNTY SUMMARY
EMPLOYMENT AND TOTAL EARNINGS, BY INDUSTRY
CALENDAR YEAR 2006**

NORTH AMERICAN INDUSTRY CLASSIFICATION SYSTEM INDUSTRY GROUP	AVERAGE EMPLOYING UNITS	AVERAGE COVERED EMPLOYMENT	TOTAL EARNINGS	AVERAGE WEEKLY EARNINGS
CLEVELAND COUNTY - TOTAL	112	1,083	\$26,309,067	\$467.17
Natural Resources & Mining	17	169	4,634,607	527.38
Construction	7	39	598,478	295.11
Manufacturing	5	97	2,160,226	428.28
Trade, Transportation & Utilities	29	188	3,481,158	356.09
Wholesale Trade	4	15	300,008	384.63
Retail Trade	14	84	774,548	177.32
Transportation, Warehousing & Utilities	12	90	2,406,602	514.23
Local Government	12	321	8,105,923	485.62
State Government	8	66	1,520,508	443.04
Other	34	205	5,808,167	544.86
COLUMBIA COUNTY - TOTAL	698	9,408	\$288,447,756	\$589.61
Natural Resources & Mining	50	510	27,158,497	1024.08
Construction	44	302	9,744,673	620.52
Manufacturing	41	2,797	111,598,876	767.30
Trade, Transportation & Utilities	176	1,556	34,760,132	429.60
Wholesale Trade	29	275	7,681,493	537.17
Retail Trade	108	1,013	17,604,146	334.20
Transportation, Warehousing & Utilities	39	269	9,474,493	677.33
Information	10	74	1,963,234	510.20
Financial Activities	74	521	20,266,857	748.08
Professional & Business Services	59	328	7,232,486	424.04
Education & Health Services	109	860	17,518,491	391.74
Leisure & Hospitality	47	654	6,431,085	189.11
Other Services	49	207	3,323,471	308.76
Local Government	28	1,067	30,211,402	544.51
State Government	14	534	18,238,552	656.82

**TABLE 6. COUNTY SUMMARY
EMPLOYMENT AND TOTAL EARNINGS, BY INDUSTRY
CALENDAR YEAR 2006**

NORTH AMERICAN INDUSTRY CLASSIFICATION SYSTEM INDUSTRY GROUP	AVERAGE EMPLOYING UNITS	AVERAGE COVERED EMPLOYMENT	TOTAL EARNINGS	AVERAGE WEEKLY EARNINGS
CONWAY COUNTY - TOTAL	533	6,737	\$181,439,074	\$517.92
Natural Resources & Mining	19	136	4,680,168	661.79
Construction	55	516	18,619,002	693.91
Manufacturing	29	1,148	46,152,399	773.12
Trade, Transportation & Utilities	131	1,378	33,982,900	474.25
Wholesale Trade	25	218	7,271,273	641.43
Retail Trade	80	877	17,384,905	381.21
Transportation, Warehousing & Utilities	27	284	9,326,722	631.55
Information	6	28	640,172	439.68
Financial Activities	34	193	5,288,797	526.98
Professional & Business Services	46	673	11,862,089	338.96
Education & Health Services	114	879	21,941,449	480.04
Leisure & Hospitality	37	451	4,089,691	174.39
Other Services	26	91	2,356,922	498.08
Local Government	27	874	23,231,254	511.16
State Government	11	369	8,594,231	447.90
CRAIGHEAD COUNTY - TOTAL	2,631	41,331	\$1,206,486,551	\$561.36
Natural Resources & Mining	67	328	8,209,693	481.34
Construction	236	1,718	52,492,816	587.59
Manufacturing	135	6,824	233,995,010	659.42
Trade, Transportation & Utilities	736	8,439	208,819,586	475.86
Wholesale Trade	179	1,507	54,790,265	699.18
Retail Trade	442	5,803	113,593,641	376.44
Transportation, Warehousing & Utilities	115	1,130	40,435,680	688.15
Information	31	601	20,410,212	653.08
Financial Activities	258	1,569	59,921,409	734.44
Professional & Business Services	346	3,595	92,731,083	496.05
Education & Health Services	385	7,387	276,580,284	720.03
Leisure & Hospitality	194	3,992	43,168,213	207.96
Other Services	180	1,040	20,528,927	379.60
Local Government	38	3,469	102,932,121	570.62
State Government	25	2,368	86,697,197	704.08

**TABLE 6. COUNTY SUMMARY
EMPLOYMENT AND TOTAL EARNINGS, BY INDUSTRY
CALENDAR YEAR 2006**

NORTH AMERICAN INDUSTRY CLASSIFICATION SYSTEM INDUSTRY GROUP	AVERAGE EMPLOYING UNITS	AVERAGE COVERED EMPLOYMENT	TOTAL EARNINGS	AVERAGE WEEKLY EARNINGS
CRAWFORD COUNTY - TOTAL	1,207	18,943	\$528,945,727	\$536.98
Natural Resources & Mining	26	426	13,753,377	620.86
Construction	179	1,468	47,565,572	623.11
Manufacturing	76	3,686	104,521,387	545.31
Trade, Transportation & Utilities	312	6,614	189,808,540	551.88
Retail Trade	161	1,982	38,720,065	375.69
Other Trade, Transportation & Utilities	152	4,633	151,088,475	627.14
Information	14	193	6,189,534	616.73
Financial Activities	126	503	14,504,456	554.54
Professional & Business Services	146	771	23,701,065	591.17
Education & Health Services	119	1,359	38,210,558	540.71
Leisure & Hospitality	82	1,430	14,911,599	200.53
Other Services	76	343	8,921,783	500.21
Local Government	41	1,993	61,397,432	592.43
State Government	11	159	5,460,424	660.43
CRITTENDEN COUNTY - TOTAL	1,194	16,269	\$470,794,904	\$556.50
Natural Resources & Mining	45	297	7,403,542	479.38
Construction	78	571	18,148,518	611.23
Manufacturing	47	1,685	69,424,992	792.34
Trade, Transportation & Utilities	329	4,933	148,739,826	579.85
Wholesale Trade	74	791	31,799,325	773.10
Retail Trade	170	2,092	39,722,476	365.15
Transportation, Warehousing & Utilities	86	2,051	77,218,025	724.02
Information	9	91	3,050,336	644.62
Financial Activities	108	575	18,563,771	620.86
Professional & Business Services	119	797	19,997,786	482.53
Education & Health Services	193	1,955	59,820,500	588.44
Leisure & Hospitality	102	1,933	23,178,320	230.59
Other Services	103	616	13,951,541	435.55
Local Government	47	2,363	76,743,746	624.56
State Government	15	452	11,772,026	500.85

**TABLE 6. COUNTY SUMMARY
EMPLOYMENT AND TOTAL EARNINGS, BY INDUSTRY
CALENDAR YEAR 2006**

NORTH AMERICAN INDUSTRY CLASSIFICATION SYSTEM INDUSTRY GROUP	AVERAGE EMPLOYING UNITS	AVERAGE COVERED EMPLOYMENT	TOTAL EARNINGS	AVERAGE WEEKLY EARNINGS
CROSS COUNTY - TOTAL	526	5,015	\$129,899,556	\$498.12
Natural Resources & Mining	44	200	3,974,734	382.19
Construction	38	183	4,720,865	496.10
Manufacturing	17	705	22,092,288	602.63
Trade, Transportation & Utilities	131	1,183	31,854,775	517.83
Wholesale Trade	31	268	9,048,683	649.30
Retail Trade	67	658	13,283,641	388.23
Transportation, Warehousing & Utilities	32	257	9,522,451	712.54
Information	6	60	1,602,174	513.52
Financial Activities	48	398	11,710,700	565.84
Professional & Business Services	43	167	4,908,707	565.26
Education & Health Services	99	676	15,988,835	454.85
Leisure & Hospitality	31	392	3,263,115	160.08
Other Services	40	73	1,324,199	348.84
Local Government	17	764	21,655,380	545.09
State Government	11	214	6,803,784	611.41
DALLAS COUNTY - TOTAL	277	3,365	\$84,986,014	\$485.69
Natural Resources & Mining	40	213	6,031,871	544.59
Construction	13	78	2,339,657	576.84
Manufacturing	15	929	30,078,071	622.63
Trade, Transportation & Utilities	73	471	9,975,715	407.31
Wholesale Trade	9	42	1,315,804	602.47
Retail Trade	45	369	7,076,827	368.82
Transportation, Warehousing & Utilities	19	59	1,583,084	516.00
Information	3	26	619,231	458.01
Financial Activities	19	103	2,878,149	537.37
Professional & Business Services	18	52	2,393,935	885.33
Education & Health Services	37	794	16,566,522	401.24
Leisure & Hospitality	19	135	1,182,208	168.41
Other Services	15	63	1,058,531	323.12
Local Government	16	437	9,968,085	438.66
State Government	9	64	1,894,039	569.12

**TABLE 6. COUNTY SUMMARY
EMPLOYMENT AND TOTAL EARNINGS, BY INDUSTRY
CALENDAR YEAR 2006**

NORTH AMERICAN INDUSTRY CLASSIFICATION SYSTEM INDUSTRY GROUP	AVERAGE EMPLOYING UNITS	AVERAGE COVERED EMPLOYMENT	TOTAL EARNINGS	AVERAGE WEEKLY EARNINGS
DESHA COUNTY - TOTAL	465	4,890	\$135,757,659	\$533.89
Natural Resources & Mining	51	280	7,384,521	507.18
Construction	26	130	3,833,222	567.04
Manufacturing	15	1,285	49,897,599	746.75
Trade, Transportation & Utilities	131	952	22,404,420	452.58
Wholesale Trade	21	188	7,096,380	725.90
Retail Trade	79	570	9,823,061	331.41
Transportation, Warehousing & Utilities	31	194	5,484,979	543.71
Information	5	23	752,472	629.16
Financial Activities	43	227	5,675,303	480.79
Professional & Business Services	35	118	2,666,495	434.57
Education & Health Services	67	542	12,685,969	450.11
Leisure & Hospitality	35	302	2,634,223	167.74
Other Services	28	68	929,387	262.84
Local Government	19	794	22,141,636	536.27
State Government	11	169	4,752,412	540.78
DREW COUNTY - TOTAL	513	6,624	\$159,744,255	\$463.77
Natural Resources & Mining	38	304	9,396,002	594.38
Construction	26	122	3,433,422	541.21
Manufacturing	21	753	19,153,571	489.16
Trade, Transportation & Utilities	135	1,222	29,209,649	459.68
Wholesale Trade	24	236	8,542,718	696.11
Retail Trade	88	883	16,790,999	365.69
Transportation, Warehousing & Utilities	23	103	3,875,932	723.66
Information	9	79	2,339,159	569.42
Financial Activities	43	268	8,869,444	636.44
Professional & Business Services	45	329	9,335,275	545.67
Education & Health Services	85	832	17,213,326	397.87
Leisure & Hospitality	44	636	5,383,861	162.79
Other Services	28	94	1,524,217	311.83
Local Government	23	1,187	31,181,031	505.17
State Government	17	799	22,705,298	546.48

**TABLE 6. COUNTY SUMMARY
EMPLOYMENT AND TOTAL EARNINGS, BY INDUSTRY
CALENDAR YEAR 2006**

NORTH AMERICAN INDUSTRY CLASSIFICATION SYSTEM INDUSTRY GROUP	AVERAGE EMPLOYING UNITS	AVERAGE COVERED EMPLOYMENT	TOTAL EARNINGS	AVERAGE WEEKLY EARNINGS
FAULKNER COUNTY - TOTAL	2,443	37,668	\$1,193,147,101	\$609.14
Natural Resources & Mining	18	191	10,358,287	1042.92
Construction	351	2,987	94,239,609	606.73
Manufacturing	121	5,238	202,157,458	742.20
Trade, Transportation & Utilities	601	6,483	155,823,470	462.23
Wholesale Trade	151	797	29,458,887	710.81
Retail Trade	375	4,994	98,695,946	380.06
Transportation, Warehousing & Utilities	76	693	27,668,637	767.81
Information	40	356	11,864,891	640.93
Financial Activities	293	1,401	44,992,693	617.59
Professional & Business Services	325	5,254	260,948,309	955.13
Education & Health Services	311	5,211	158,186,765	583.78
Leisure & Hospitality	189	3,815	39,031,579	196.75
Other Services	135	572	12,195,486	410.01
Local Government	41	2,991	103,276,290	664.02
State Government	19	3,169	100,072,264	607.28
FRANKLIN COUNTY - TOTAL	329	4,186	\$112,862,420	\$518.50
Natural Resources & Mining	10	91	4,298,359	908.36
Construction	30	221	7,364,990	640.88
Manufacturing	23	968	29,545,254	586.96
Trade, Transportation & Utilities	89	856	22,293,504	500.84
Wholesale Trade	14	50	919,403	353.62
Retail Trade	53	477	8,398,929	338.61
Transportation, Warehousing & Utilities	22	329	12,975,172	758.43
Information	7	51	1,061,168	400.14
Financial Activities	28	219	5,324,372	467.54
Professional & Business Services	22	57	1,343,945	453.42
Education & Health Services	45	479	10,877,891	436.72
Leisure & Hospitality	26	329	2,923,032	170.86
Other Services	20	61	1,230,813	388.02
Local Government	19	727	22,647,907	599.09
State Government	10	127	3,951,185	598.30

**TABLE 6. COUNTY SUMMARY
EMPLOYMENT AND TOTAL EARNINGS, BY INDUSTRY
CALENDAR YEAR 2006**

NORTH AMERICAN INDUSTRY CLASSIFICATION SYSTEM INDUSTRY GROUP	AVERAGE EMPLOYING UNITS	AVERAGE COVERED EMPLOYMENT	TOTAL EARNINGS	AVERAGE WEEKLY EARNINGS
FULTON COUNTY - TOTAL	228	1,864	\$39,690,505	\$409.48
Construction	15	28	651,016	447.13
Manufacturing	14	130	2,307,451	341.34
Trade, Transportation & Utilities	65	392	9,194,366	451.06
Retail Trade	43	211	2,887,040	263.13
Other Trade, Transportation & Utilities	23	181	6,307,326	670.14
Financial Activities	17	108	2,764,813	492.31
Professional & Business Services	16	46	2,280,358	953.33
Education & Health Services	48	362	6,091,697	323.61
Leisure & Hospitality	15	142	1,412,954	191.35
Local Government	13	490	11,427,068	448.47
State Government	11	98	2,475,789	485.83
Other	14	67	1,084,993	311.42
GARLAND COUNTY - TOTAL	3,223	36,570	\$997,735,985	\$524.67
Natural Resources & Mining	49	348	15,316,457	846.40
Construction	434	2,377	63,683,582	515.22
Manufacturing	129	3,418	108,934,277	612.90
Trade, Transportation & Utilities	711	7,416	180,216,837	467.33
Wholesale Trade	148	1,116	40,416,585	696.45
Retail Trade	493	5,627	116,437,660	397.94
Transportation, Warehousing & Utilities	71	673	23,362,592	667.58
Information	41	434	13,755,147	609.50
Financial Activities	369	1,560	51,468,271	634.47
Professional & Business Services	413	2,725	76,411,317	539.25
Education & Health Services	423	6,968	253,560,864	699.79
Leisure & Hospitality	369	6,444	85,339,587	254.68
Other Services	225	950	19,587,969	396.52
Local Government	34	2,910	96,634,731	638.61
State Government	27	1,020	32,826,946	618.91

**TABLE 6. COUNTY SUMMARY
EMPLOYMENT AND TOTAL EARNINGS, BY INDUSTRY
CALENDAR YEAR 2006**

NORTH AMERICAN INDUSTRY CLASSIFICATION SYSTEM INDUSTRY GROUP	AVERAGE EMPLOYING UNITS	AVERAGE COVERED EMPLOYMENT	TOTAL EARNINGS	AVERAGE WEEKLY EARNINGS
GRANT COUNTY - TOTAL	298	3,647	\$96,557,233	\$509.15
Natural Resources & Mining	23	188	7,925,637	810.72
Construction	34	243	6,657,616	526.88
Manufacturing	19	863	26,773,430	596.61
Trade, Transportation & Utilities	84	627	13,658,995	418.94
Wholesale Trade	16	131	4,371,143	641.68
Retail Trade	38	436	7,550,994	333.05
Transportation, Warehousing & Utilities	30	60	1,736,858	556.69
Information	4	32	1,029,190	618.50
Financial Activities	22	101	3,148,210	599.43
Professional & Business Services	22	91	3,169,166	669.73
Education & Health Services	35	240	5,659,802	453.51
Leisure & Hospitality	22	286	2,952,963	198.56
Other Services	16	57	936,098	315.82
Local Government	10	860	23,081,878	516.14
State Government	9	60	1,564,248	501.36
GREENE COUNTY - TOTAL	898	15,101	\$415,564,112	\$529.21
Natural Resources & Mining	37	206	5,438,615	507.71
Construction	83	388	10,362,543	513.61
Manufacturing	56	5,538	193,411,481	671.62
Trade, Transportation & Utilities	240	2,140	49,202,173	442.15
Wholesale Trade	53	399	13,294,702	640.77
Retail Trade	158	1,534	28,934,875	362.74
Transportation, Warehousing & Utilities	30	206	6,972,596	650.91
Information	13	125	2,415,909	371.68
Financial Activities	87	484	14,045,751	558.08
Professional & Business Services	92	1,483	30,537,159	395.99
Education & Health Services	135	1,737	43,502,579	481.63
Leisure & Hospitality	66	1,089	10,292,901	181.76
Other Services	48	171	3,572,703	401.79
Local Government	31	1,487	44,638,792	577.30
State Government	11	253	8,143,506	619.00

**TABLE 6. COUNTY SUMMARY
EMPLOYMENT AND TOTAL EARNINGS, BY INDUSTRY
CALENDAR YEAR 2006**

NORTH AMERICAN INDUSTRY CLASSIFICATION SYSTEM INDUSTRY GROUP	AVERAGE EMPLOYING UNITS	AVERAGE COVERED EMPLOYMENT	TOTAL EARNINGS	AVERAGE WEEKLY EARNINGS
HEMPSTEAD COUNTY - TOTAL	502	8,268	\$218,732,065	\$508.75
Natural Resources & Mining	18	209	6,509,429	598.95
Construction	35	160	3,986,577	479.16
Manufacturing	29	2,707	83,415,949	592.59
Trade, Transportation & Utilities	135	1,260	29,437,716	449.29
Wholesale Trade	25	184	4,519,157	472.32
Retail Trade	86	892	16,516,294	356.08
Transportation, Warehousing & Utilities	24	185	8,402,265	873.42
Information	10	75	2,177,064	558.22
Financial Activities	44	252	8,347,490	637.02
Professional & Business Services	35	241	3,864,824	308.40
Education & Health Services	70	1,012	24,182,717	459.54
Leisure & Hospitality	44	635	6,433,959	194.85
Other Services	38	220	5,408,806	472.80
Local Government	29	975	28,577,455	563.66
State Government	17	522	16,390,079	603.82
HOT SPRING COUNTY - TOTAL	615	8,097	\$235,259,147	\$558.75
Natural Resources & Mining	38	207	5,949,133	552.69
Construction	68	560	22,079,834	758.24
Manufacturing	42	1,657	67,880,235	787.80
Trade, Transportation & Utilities	163	1,493	41,126,542	529.74
Wholesale Trade	21	101	5,183,667	986.99
Retail Trade	97	961	18,798,449	376.18
Transportation, Warehousing & Utilities	44	432	17,144,426	763.20
Information	9	71	2,530,472	685.39
Financial Activities	62	333	9,967,252	575.61
Professional & Business Services	55	254	5,624,245	425.82
Education & Health Services	60	1,020	25,405,684	478.99
Leisure & Hospitality	41	581	5,300,829	175.45
Other Services	38	298	4,757,126	306.99
Local Government	26	1,074	30,012,492	537.40
State Government	14	549	14,625,303	512.31

**TABLE 6. COUNTY SUMMARY
EMPLOYMENT AND TOTAL EARNINGS, BY INDUSTRY
CALENDAR YEAR 2006**

NORTH AMERICAN INDUSTRY CLASSIFICATION SYSTEM INDUSTRY GROUP	AVERAGE EMPLOYING UNITS	AVERAGE COVERED EMPLOYMENT	TOTAL EARNINGS	AVERAGE WEEKLY EARNINGS
HOWARD COUNTY - TOTAL	361	7,670	\$199,339,680	\$499.80
Natural Resources & Mining	21	239	7,399,044	595.35
Construction	26	106	2,711,585	491.94
Manufacturing	26	4,297	120,749,151	540.40
Trade, Transportation & Utilities	107	944	21,901,306	446.16
Wholesale Trade	21	106	3,699,733	671.21
Retail Trade	64	642	11,525,416	345.24
Transportation, Warehousing & Utilities	22	196	6,676,157	655.04
Information	7	38	905,966	458.48
Financial Activities	36	137	3,956,444	555.37
Professional & Business Services	27	126	3,042,324	464.34
Education & Health Services	43	599	12,533,301	402.38
Leisure & Hospitality	19	302	2,685,415	171.00
Other Services	20	114	2,213,567	373.41
Local Government	18	637	17,530,815	529.25
State Government	12	132	3,710,762	540.61
INDEPENDENCE COUNTY - TOTAL	933	16,172	\$445,468,459	\$529.72
Natural Resources & Mining	14	144	4,264,901	569.56
Construction	67	447	11,867,372	510.56
Manufacturing	57	4,812	153,562,387	613.70
Trade, Transportation & Utilities	277	2,983	80,733,509	520.47
Wholesale Trade	53	550	17,931,615	626.98
Retail Trade	168	1,686	31,759,898	362.26
Transportation, Warehousing & Utilities	57	746	31,041,996	800.22
Information	12	163	4,599,789	542.68
Financial Activities	85	461	14,260,143	594.87
Professional & Business Services	88	935	18,886,553	388.45
Education & Health Services	138	2,820	89,330,748	609.18
Leisure & Hospitality	66	1,123	10,262,319	175.74
Other Services	67	373	6,639,573	342.32
Local Government	46	1,457	37,213,234	491.17
State Government	17	455	13,847,931	585.29

**TABLE 6. COUNTY SUMMARY
EMPLOYMENT AND TOTAL EARNINGS, BY INDUSTRY
CALENDAR YEAR 2006**

NORTH AMERICAN INDUSTRY CLASSIFICATION SYSTEM INDUSTRY GROUP	AVERAGE EMPLOYING UNITS	AVERAGE COVERED EMPLOYMENT	TOTAL EARNINGS	AVERAGE WEEKLY EARNINGS
IZARD COUNTY - TOTAL	275	3,008	\$70,107,723	\$448.21
Natural Resources & Mining	4	88	2,962,915	647.49
Construction	22	47	989,393	404.83
Manufacturing	12	402	12,088,318	578.28
Trade, Transportation & Utilities	67	531	10,423,843	377.51
Retail Trade	51	422	7,192,350	327.76
Other Trade, Transportation & Utilities	17	109	3,231,493	570.13
Information	3	8	140,467	337.66
Financial Activities	30	152	4,242,453	536.75
Professional & Business Services	21	79	1,490,227	362.76
Education & Health Services	51	544	11,170,608	394.89
Leisure & Hospitality	23	185	1,609,865	167.35
Other Services	14	36	674,156	360.13
Local Government	18	503	12,406,110	474.31
State Government	11	435	11,909,368	526.50
JACKSON COUNTY - TOTAL	527	5,638	\$154,547,300	\$527.15
Natural Resources & Mining	45	202	4,801,042	457.07
Construction	29	179	5,532,801	594.41
Manufacturing	25	1,074	37,704,452	675.13
Trade, Transportation & Utilities	126	1,123	28,166,145	482.33
Wholesale Trade	34	219	7,969,782	699.84
Retail Trade	73	671	12,949,197	371.12
Transportation, Warehousing & Utilities	19	234	7,247,166	595.59
Information	6	37	1,215,085	631.54
Financial Activities	44	185	5,468,584	568.46
Professional & Business Services	38	215	5,930,945	530.50
Education & Health Services	92	830	25,000,452	579.25
Leisure & Hospitality	38	329	3,481,322	203.49
Other Services	36	98	1,736,836	340.82
Local Government	35	699	16,399,392	451.18
State Government	14	665	19,110,244	552.64

**TABLE 6. COUNTY SUMMARY
EMPLOYMENT AND TOTAL EARNINGS, BY INDUSTRY
CALENDAR YEAR 2006**

NORTH AMERICAN INDUSTRY CLASSIFICATION SYSTEM INDUSTRY GROUP	AVERAGE EMPLOYING UNITS	AVERAGE COVERED EMPLOYMENT	TOTAL EARNINGS	AVERAGE WEEKLY EARNINGS
JEFFERSON COUNTY - TOTAL	1,905	31,965	\$990,800,257	\$596.08
Natural Resources & Mining	41	462	16,394,250	682.41
Construction	134	1,519	65,899,854	834.30
Manufacturing	72	6,167	245,046,387	764.14
Trade, Transportation & Utilities	485	5,881	159,463,056	521.44
Wholesale Trade	85	1,029	34,357,106	642.09
Retail Trade	334	3,962	78,939,577	383.16
Transportation, Warehousing & Utilities	67	890	46,166,373	997.54
Information	19	210	6,295,305	576.49
Financial Activities	155	1,219	44,682,255	704.90
Professional & Business Services	177	1,741	55,197,578	609.70
Education & Health Services	437	5,452	157,874,782	556.87
Leisure & Hospitality	149	2,250	23,061,972	197.11
Other Services	157	768	18,397,403	460.67
Local Government	41	3,080	96,340,756	601.53
State Government	40	3,218	102,146,659	610.43
JOHNSON COUNTY - TOTAL	477	8,479	\$212,303,578	\$481.51
Natural Resources & Mining	15	201	6,317,849	604.46
Construction	30	127	3,168,221	479.74
Manufacturing	45	3,082	79,390,283	495.37
Trade, Transportation & Utilities	124	1,838	43,597,145	456.15
Information	6	33	952,959	555.34
Financial Activities	43	235	6,512,195	532.91
Professional & Business Services	50	187	4,749,867	488.47
Education & Health Services	73	1,140	30,233,266	510.01
Leisure & Hospitality	38	520	5,173,797	191.34
Other Services	30	88	1,711,279	373.97
Local Government	14	873	25,619,553	564.36
State Government	10	155	4,877,164	605.11

**TABLE 6. COUNTY SUMMARY
EMPLOYMENT AND TOTAL EARNINGS, BY INDUSTRY
CALENDAR YEAR 2006**

NORTH AMERICAN INDUSTRY CLASSIFICATION SYSTEM INDUSTRY GROUP	AVERAGE EMPLOYING UNITS	AVERAGE COVERED EMPLOYMENT	TOTAL EARNINGS	AVERAGE WEEKLY EARNINGS
LAFAYETTE COUNTY - TOTAL	172	1,426	\$36,100,261	\$486.84
Natural Resources & Mining	33	184	5,518,427	576.76
Trade, Transportation & Utilities	38	229	5,084,804	427.01
Retail Trade	22	153	2,432,099	305.69
Other Trade, Transportation & Utilities	15	76	2,652,705	671.23
Financial Activities	17	85	2,091,383	473.16
Professional & Business Services	9	59	1,848,531	602.52
Education & Health Services	23	226	4,283,435	364.49
Leisure & Hospitality	6	41	597,628	280.31
Other Services	8	80	1,296,684	311.70
Local Government	13	326	8,182,422	482.68
State Government	8	50	1,446,717	556.43
Other	19	146	5,750,230	757.41
LAWRENCE COUNTY - TOTAL	424	4,099	\$97,318,204	\$456.58
Natural Resources & Mining	35	177	5,465,500	593.82
Construction	25	65	1,504,236	445.04
Manufacturing	22	561	14,161,751	485.46
Trade, Transportation & Utilities	130	922	21,252,129	443.27
Wholesale Trade	24	207	6,300,813	585.36
Retail Trade	71	586	10,403,812	341.42
Transportation, Warehousing & Utilities	35	129	4,547,504	677.92
Information	6	20	645,143	620.33
Financial Activities	29	133	3,405,142	492.36
Professional & Business Services	24	126	3,979,189	607.32
Education & Health Services	65	447	11,181,939	481.07
Leisure & Hospitality	25	325	2,468,344	146.06
Other Services	26	80	1,167,733	280.71
Local Government	28	1,130	28,998,436	493.51
State Government	11	113	3,088,662	525.64

**TABLE 6. COUNTY SUMMARY
EMPLOYMENT AND TOTAL EARNINGS, BY INDUSTRY
CALENDAR YEAR 2006**

NORTH AMERICAN INDUSTRY CLASSIFICATION SYSTEM INDUSTRY GROUP	AVERAGE EMPLOYING UNITS	AVERAGE COVERED EMPLOYMENT	TOTAL EARNINGS	AVERAGE WEEKLY EARNINGS
LEE COUNTY - TOTAL	251	2,075	\$52,661,949	\$488.06
Natural Resources & Mining	29	206	4,987,032	465.56
Construction	8	18	351,128	375.14
Trade, Transportation & Utilities	53	349	7,935,952	437.29
Wholesale Trade	9	71	2,119,196	574.00
Retail Trade	27	190	2,933,679	296.93
Transportation, Warehousing & Utilities	18	88	2,883,077	630.04
Financial Activities	15	81	2,444,563	580.38
Professional & Business Services	19	66	2,280,541	664.49
Education & Health Services	66	302	7,441,092	473.83
Leisure & Hospitality	10	91	695,978	147.08
Local Government	16	372	9,825,322	507.93
State Government	8	456	13,420,222	565.97
Other	27	134	3,280,119	470.74
LINCOLN COUNTY - TOTAL	223	2,938	\$78,551,536	\$514.16
Natural Resources & Mining	32	184	5,247,799	548.47
Construction	13	66	1,702,661	496.11
Manufacturing	9	434	12,672,148	561.51
Trade, Transportation & Utilities	47	376	10,206,570	522.02
Wholesale Trade	7	31	1,332,150	826.40
Retail Trade	25	208	2,926,744	270.59
Transportation, Warehousing & Utilities	15	137	5,947,676	834.88
Financial Activities	22	76	2,243,200	567.61
Professional & Business Services	13	21	608,636	557.36
Education & Health Services	35	301	6,231,594	398.13
Leisure & Hospitality	15	139	1,215,732	168.20
Local & State Government	22	1,297	37,641,608	558.12
Other	16	44	781,588	341.60

**TABLE 6. COUNTY SUMMARY
EMPLOYMENT AND TOTAL EARNINGS, BY INDUSTRY
CALENDAR YEAR 2006**

NORTH AMERICAN INDUSTRY CLASSIFICATION SYSTEM INDUSTRY GROUP	AVERAGE EMPLOYING UNITS	AVERAGE COVERED EMPLOYMENT	TOTAL EARNINGS	AVERAGE WEEKLY EARNINGS
LITTLE RIVER COUNTY - TOTAL	257	4,449	\$179,042,890	\$773.91
Natural Resources & Mining	12	69	2,272,337	633.32
Construction	26	214	6,124,467	550.37
Manufacturing	14	1,441	93,103,514	1242.51
Trade, Transportation & Utilities	68	1,163	42,498,258	702.73
Wholesale Trade	10	41	1,394,229	653.95
Other Trade, Transportation & Utilities	58	1,122	41,104,029	704.51
Information	3	11	345,221	603.53
Financial Activities	24	101	2,642,671	503.17
Professional & Business Services	20	134	2,964,299	425.42
Education & Health Services	25	161	3,342,165	399.21
Leisure & Hospitality	19	231	2,131,341	177.43
Other Services	14	99	1,367,678	265.67
Local Government	20	748	20,031,064	514.99
State Government	12	79	2,219,875	540.38
LOGAN COUNTY - TOTAL	481	5,811	\$140,376,489	\$464.56
Natural Resources & Mining	19	93	3,044,100	629.47
Construction	51	158	4,016,215	488.83
Manufacturing	27	1,790	49,010,178	526.54
Trade, Transportation & Utilities	117	838	16,256,691	373.07
Wholesale Trade	18	43	936,830	418.98
Retail Trade	73	723	12,760,463	339.41
Transportation, Warehousing & Utilities	26	72	2,559,398	683.60
Information	6	45	1,508,328	644.58
Financial Activities	44	246	8,645,091	675.82
Professional & Business Services	43	178	3,476,537	375.60
Education & Health Services	77	753	16,995,269	434.04
Leisure & Hospitality	31	327	3,022,254	177.74
Other Services	29	78	1,704,923	420.35
Local & State Government	38	1,306	32,696,903	481.46

**TABLE 6. COUNTY SUMMARY
EMPLOYMENT AND TOTAL EARNINGS, BY INDUSTRY
CALENDAR YEAR 2006**

NORTH AMERICAN INDUSTRY CLASSIFICATION SYSTEM INDUSTRY GROUP	AVERAGE EMPLOYING UNITS	AVERAGE COVERED EMPLOYMENT	TOTAL EARNINGS	AVERAGE WEEKLY EARNINGS
LONOKE COUNTY - TOTAL	1,214	12,144	\$318,640,641	\$504.59
Natural Resources & Mining	70	447	14,554,948	626.18
Construction	166	935	30,912,311	635.79
Manufacturing	37	1,390	49,970,187	691.34
Trade, Transportation & Utilities	333	2,676	62,359,019	448.14
Wholesale Trade	79	441	16,452,135	717.43
Retail Trade	178	1,942	36,843,216	364.84
Transportation, Warehousing & Utilities	76	292	9,063,668	596.92
Information	17	119	4,036,508	652.31
Financial Activities	122	588	21,274,136	695.78
Professional & Business Services	141	555	15,652,515	542.36
Education & Health Services	134	1,371	32,103,055	450.30
Leisure & Hospitality	85	1,298	12,978,046	192.28
Other Services	67	197	4,409,948	430.49
Local Government	28	2,423	66,460,604	527.48
State Government	16	145	3,929,364	521.14
MADISON COUNTY - TOTAL	257	3,173	\$78,229,563	\$474.13
Natural Resources & Mining	12	57	1,538,641	519.11
Construction	45	154	4,012,007	501.00
Manufacturing	20	1,101	28,667,945	500.73
Trade, Transportation & Utilities	64	584	13,410,871	441.61
Wholesale Trade	15	41	2,055,426	964.08
Retail Trade	34	427	7,773,684	350.10
Transportation, Warehousing & Utilities	15	116	3,581,761	593.79
Information	4	35	1,562,922	858.75
Financial Activities	15	92	2,732,816	571.24
Professional & Business Services	20	85	1,770,519	400.57
Education & Health Services	36	258	4,892,357	364.67
Leisure & Hospitality	13	126	887,653	135.48
Other Services	13	25	664,078	510.83
Local Government	8	611	16,620,650	523.12
State Government	8	47	1,469,104	601.11

**TABLE 6. COUNTY SUMMARY
EMPLOYMENT AND TOTAL EARNINGS, BY INDUSTRY
CALENDAR YEAR 2006**

NORTH AMERICAN INDUSTRY CLASSIFICATION SYSTEM INDUSTRY GROUP	AVERAGE EMPLOYING UNITS	AVERAGE COVERED EMPLOYMENT	TOTAL EARNINGS	AVERAGE WEEKLY EARNINGS
MARION COUNTY - TOTAL	309	4,121	\$95,479,000	\$445.56
Natural Resources & Mining	5	59	957,710	312.16
Construction	23	68	1,329,724	376.05
Manufacturing	27	1,747	45,479,923	500.64
Trade, Transportation & Utilities	57	661	12,245,468	356.26
Wholesale Trade	7	43	1,243,828	556.27
Retail Trade	38	497	7,909,624	306.05
Transportation, Warehousing & Utilities	12	121	3,092,016	491.42
Financial Activities	35	180	4,598,553	491.30
Professional & Business Services	27	53	1,587,874	576.15
Education & Health Services	48	373	7,602,448	391.96
Leisure & Hospitality	41	254	2,541,377	192.41
Local Government	20	531	13,234,879	479.32
State Government	8	108	2,723,084	484.88
Other	20	89	3,177,960	686.68
MILLER COUNTY - TOTAL	837	12,537	\$385,780,423	\$591.76
Natural Resources & Mining	28	141	4,172,303	569.05
Construction	90	799	23,712,612	570.73
Manufacturing	34	2,714	134,782,963	955.04
Trade, Transportation & Utilities	231	2,699	74,210,542	528.76
Wholesale Trade	65	643	25,534,259	763.68
Retail Trade	127	1,469	27,395,608	358.64
Transportation, Warehousing & Utilities	39	588	21,280,675	695.99
Information	9	100	7,195,251	1383.70
Financial Activities	86	381	12,107,968	611.14
Professional & Business Services	83	931	19,802,693	409.05
Education & Health Services	89	1,074	26,920,531	482.03
Leisure & Hospitality	83	1,292	15,036,310	223.81
Other Services	63	350	5,143,548	282.61
Local Government	25	1,595	47,380,288	571.26
State Government	17	462	15,315,414	637.50

**TABLE 6. COUNTY SUMMARY
EMPLOYMENT AND TOTAL EARNINGS, BY INDUSTRY
CALENDAR YEAR 2006**

NORTH AMERICAN INDUSTRY CLASSIFICATION SYSTEM INDUSTRY GROUP	AVERAGE EMPLOYING UNITS	AVERAGE COVERED EMPLOYMENT	TOTAL EARNINGS	AVERAGE WEEKLY EARNINGS
MISSISSIPPI COUNTY - TOTAL	1,167	18,931	\$631,615,185	\$641.62
Natural Resources & Mining	101	735	19,712,595	515.77
Construction	64	562	19,890,254	680.61
Manufacturing	54	5,408	284,441,301	1011.47
Trade, Transportation & Utilities	301	3,125	83,193,639	511.96
Wholesale Trade	63	580	22,403,623	742.83
Retail Trade	185	1,926	36,068,991	360.14
Transportation, Warehousing & Utilities	53	618	24,721,025	769.26
Financial Activities	103	580	15,926,991	528.08
Professional & Business Services	97	1,151	32,150,958	537.17
Education & Health Services	207	1,712	44,872,537	504.05
Leisure & Hospitality	81	1,120	11,316,348	194.31
Local Government	46	2,358	62,481,876	509.57
State Government	24	632	17,219,990	523.98
Other	89	1,548	40,408,696	502.00
MONROE COUNTY - TOTAL	307	2,365	\$51,650,583	\$419.99
Natural Resources & Mining	35	145	3,393,266	450.04
Construction	14	36	699,375	373.60
Manufacturing	8	103	2,882,301	538.14
Trade, Transportation & Utilities	91	686	16,032,416	449.44
Wholesale Trade	23	193	5,941,253	591.99
Retail Trade	41	344	5,843,403	326.67
Transportation, Warehousing & Utilities	27	150	4,247,760	544.58
Information	7	47	881,797	360.80
Financial Activities	16	98	2,953,719	579.62
Professional & Business Services	17	43	1,033,976	462.42
Education & Health Services	44	313	5,577,877	342.71
Leisure & Hospitality	27	272	2,641,779	186.78
Other Services	19	72	1,210,913	323.43
Local Government	22	435	11,126,984	491.91
State Government	9	116	3,216,180	533.19

**TABLE 6. COUNTY SUMMARY
EMPLOYMENT AND TOTAL EARNINGS, BY INDUSTRY
CALENDAR YEAR 2006**

NORTH AMERICAN INDUSTRY CLASSIFICATION SYSTEM INDUSTRY GROUP	AVERAGE EMPLOYING UNITS	AVERAGE COVERED EMPLOYMENT	TOTAL EARNINGS	AVERAGE WEEKLY EARNINGS
MONTGOMERY COUNTY - TOTAL	187	1,666	\$35,041,268	\$404.48
Natural Resources & Mining	15	58	1,897,283	629.07
Construction	24	133	3,617,708	523.09
Trade, Transportation & Utilities	45	201	3,934,626	376.45
Wholesale Trade	9	60	1,375,462	440.85
Retail Trade	26	124	2,161,018	335.15
Transportation, Warehousing & Utilities	11	18	398,146	425.37
Financial Activities	10	74	2,053,528	533.66
Education & Health Services	16	53	1,050,361	381.12
Leisure & Hospitality	22	278	4,136,458	286.14
Other Services	12	73	1,184,965	312.16
Local Government	9	461	10,749,682	448.43
State Government	8	57	1,611,769	543.78
Other	26	279	4,804,888	331.19
NEVADA COUNTY - TOTAL	189	2,629	\$73,988,536	\$541.22
Natural Resources & Mining	15	63	1,941,857	592.75
Construction	11	18	377,362	403.16
Manufacturing	9	834	32,076,145	739.63
Trade, Transportation & Utilities	47	523	13,420,596	493.48
Wholesale Trade	5	13	192,762	285.15
Retail Trade	31	293	5,200,612	341.34
Transportation, Warehousing & Utilities	11	217	8,027,222	711.38
Financial Activities	14	64	2,124,271	638.30
Education & Health Services	16	380	7,818,245	395.66
Leisure & Hospitality	14	106	1,019,581	184.97
Other Services	15	70	898,228	246.77
Local Government	27	450	10,609,970	453.42
State Government	11	79	2,313,211	563.10
Other	12	43	1,389,070	621.23

**TABLE 6. COUNTY SUMMARY
EMPLOYMENT AND TOTAL EARNINGS, BY INDUSTRY
CALENDAR YEAR 2006**

NORTH AMERICAN INDUSTRY CLASSIFICATION SYSTEM INDUSTRY GROUP	AVERAGE EMPLOYING UNITS	AVERAGE COVERED EMPLOYMENT	TOTAL EARNINGS	AVERAGE WEEKLY EARNINGS
NEWTON COUNTY - TOTAL	135	1,075	\$20,759,175	\$371.36
Natural Resources & Mining	5	7	66,685	183.20
Construction	8	14	223,058	306.40
Manufacturing	16	95	2,073,909	419.82
Trade, Transportation & Utilities	31	161	2,677,974	319.87
Retail Trade	16	107	1,387,759	249.42
Other Trade, Transportation & Utilities	16	54	1,290,215	459.48
Education & Health Services	20	224	3,490,660	299.68
Leisure & Hospitality	17	66	747,375	217.77
Other Services	5	10	142,487	274.01
Local Government	13	360	8,293,263	443.02
State Government	7	88	1,757,145	383.99
Other	13	49	1,286,619	504.95
OUACHITA COUNTY - TOTAL	647	7,846	\$203,657,489	\$499.17
Natural Resources & Mining	45	278	8,340,499	576.96
Construction	51	285	7,371,478	497.40
Manufacturing	31	927	32,549,257	675.24
Trade, Transportation & Utilities	179	1,790	45,227,495	485.90
Wholesale Trade	31	252	10,597,998	808.76
Retail Trade	120	1,117	18,872,211	324.91
Transportation, Warehousing & Utilities	28	421	15,757,286	719.77
Information	9	92	2,660,717	556.17
Financial Activities	64	366	10,821,888	568.62
Professional & Business Services	51	351	7,899,152	432.78
Education & Health Services	93	1,257	32,377,066	495.33
Leisure & Hospitality	39	528	4,822,003	175.63
Other Services	43	164	3,203,511	375.65
Local Government	30	1,265	32,277,091	490.68
State Government	14	544	16,107,332	569.41

**TABLE 6. COUNTY SUMMARY
EMPLOYMENT AND TOTAL EARNINGS, BY INDUSTRY
CALENDAR YEAR 2006**

NORTH AMERICAN INDUSTRY CLASSIFICATION SYSTEM INDUSTRY GROUP	AVERAGE EMPLOYING UNITS	AVERAGE COVERED EMPLOYMENT	TOTAL EARNINGS	AVERAGE WEEKLY EARNINGS
PERRY COUNTY - TOTAL	158	1,205	\$27,975,287	\$446.46
Natural Resources & Mining	9	37	1,213,929	630.94
Construction	26	78	2,061,619	508.29
Manufacturing	7	81	1,920,060	455.85
Trade, Transportation & Utilities	27	188	3,544,163	362.54
Retail Trade	18	159	2,185,650	264.35
Other Trade, Transportation & Utilities	9	29	1,358,513	900.87
Financial Activities	14	51	2,034,330	767.09
Professional & Business Services	14	37	960,709	499.33
Education & Health Services	24	177	3,728,552	405.10
Local Government	12	395	9,319,240	453.71
State Government	9	53	1,429,650	518.74
Other	18	107	1,763,035	316.86
PHILLIPS COUNTY - TOTAL	766	6,480	\$162,443,832	\$482.09
Natural Resources & Mining	71	477	10,541,664	425.00
Construction	30	113	2,702,099	459.85
Manufacturing	12	402	12,417,564	594.03
Trade, Transportation & Utilities	176	1,560	38,977,658	480.49
Wholesale Trade	36	391	12,843,310	631.68
Retail Trade	104	887	16,366,580	354.84
Transportation, Warehousing & Utilities	36	283	9,767,768	663.75
Information	11	52	1,528,934	565.43
Financial Activities	55	272	7,815,288	552.55
Professional & Business Services	60	229	6,159,783	517.28
Education & Health Services	224	1,276	29,353,732	442.39
Leisure & Hospitality	39	438	3,952,428	173.53
Other Services	42	84	1,617,051	370.20
Local Government	31	1,072	33,213,447	595.82
State Government	17	506	14,164,184	538.32

**TABLE 6. COUNTY SUMMARY
EMPLOYMENT AND TOTAL EARNINGS, BY INDUSTRY
CALENDAR YEAR 2006**

NORTH AMERICAN INDUSTRY CLASSIFICATION SYSTEM INDUSTRY GROUP	AVERAGE EMPLOYING UNITS	AVERAGE COVERED EMPLOYMENT	TOTAL EARNINGS	AVERAGE WEEKLY EARNINGS
PIKE COUNTY - TOTAL	266	2,891	\$67,417,217	\$448.46
Natural Resources & Mining	31	148	4,502,053	584.99
Construction	14	112	3,342,072	573.84
Manufacturing	14	531	13,076,499	473.58
Trade, Transportation & Utilities	90	582	13,558,437	448.01
Wholesale Trade	18	122	3,872,531	610.42
Retail Trade	44	335	5,998,436	344.34
Transportation, Warehousing & Utilities	29	125	3,687,470	567.30
Information	5	30	1,252,884	803.13
Financial Activities	25	177	5,428,580	589.81
Professional & Business Services	10	31	558,339	346.36
Education & Health Services	19	247	4,349,366	338.63
Leisure & Hospitality	19	213	2,089,472	188.65
Other Services	14	125	2,484,062	382.16
Local Government	13	574	14,196,185	475.62
State Government	11	121	2,579,268	409.93
POINSETT COUNTY - TOTAL	500	5,912	\$152,362,843	\$495.61
Natural Resources & Mining	50	344	9,341,092	522.20
Construction	27	72	1,962,268	524.11
Manufacturing	25	1,206	36,133,634	576.18
Trade, Transportation & Utilities	135	1,371	36,576,858	513.06
Wholesale Trade	34	510	20,947,921	789.89
Retail Trade	75	722	11,701,833	311.68
Transportation, Warehousing & Utilities	26	139	3,927,104	543.32
Information	6	55	2,440,486	853.32
Financial Activities	46	336	10,761,724	615.94
Professional & Business Services	31	147	3,829,994	501.05
Education & Health Services	63	562	12,180,664	416.80
Leisure & Hospitality	44	404	3,254,663	154.92
Other Services	30	62	1,406,901	436.38
Local Government	31	1,148	29,431,859	493.03
State Government	12	205	5,042,700	473.05

**TABLE 6. COUNTY SUMMARY
EMPLOYMENT AND TOTAL EARNINGS, BY INDUSTRY
CALENDAR YEAR 2006**

NORTH AMERICAN INDUSTRY CLASSIFICATION SYSTEM INDUSTRY GROUP	AVERAGE EMPLOYING UNITS	AVERAGE COVERED EMPLOYMENT	TOTAL EARNINGS	AVERAGE WEEKLY EARNINGS
POLK COUNTY - TOTAL	540	6,256	\$143,818,819	\$442.10
Natural Resources & Mining	27	254	7,875,270	596.25
Construction	36	204	4,150,789	391.29
Manufacturing	45	1,363	35,904,823	506.59
Trade, Transportation & Utilities	153	1,361	27,696,527	391.35
Wholesale Trade	27	118	2,235,120	364.26
Retail Trade	83	835	14,619,932	336.71
Transportation, Warehousing & Utilities	43	408	10,841,475	511.00
Information	9	55	1,540,225	538.54
Financial Activities	40	228	6,168,217	520.26
Professional & Business Services	49	160	4,258,171	511.80
Education & Health Services	76	947	22,310,511	453.06
Leisure & Hospitality	41	458	3,794,960	159.34
Other Services	31	139	2,465,664	341.13
Local Government	21	766	20,634,270	518.03
State Government	14	322	7,019,392	419.22
POPE COUNTY - TOTAL	1,726	26,897	\$771,239,909	\$551.42
Natural Resources & Mining	23	622	17,152,737	530.32
Construction	176	1,289	43,431,707	647.96
Manufacturing	91	5,155	169,616,913	632.76
Trade, Transportation & Utilities	471	6,609	230,641,519	671.12
Wholesale Trade	101	720	23,880,230	637.83
Retail Trade	280	3,389	67,579,788	383.48
Transportation, Warehousing & Utilities	90	2,500	139,181,501	1070.63
Information	24	265	9,828,843	713.27
Financial Activities	179	857	26,875,685	603.08
Professional & Business Services	226	2,661	54,651,343	394.96
Education & Health Services	238	2,940	81,699,918	534.41
Leisure & Hospitality	133	2,397	24,557,168	197.02
Other Services	110	466	9,947,837	410.52
Local Government	40	2,132	61,868,976	558.06
State Government	16	1,505	40,967,263	523.48

**TABLE 6. COUNTY SUMMARY
EMPLOYMENT AND TOTAL EARNINGS, BY INDUSTRY
CALENDAR YEAR 2006**

NORTH AMERICAN INDUSTRY CLASSIFICATION SYSTEM INDUSTRY GROUP	AVERAGE EMPLOYING UNITS	AVERAGE COVERED EMPLOYMENT	TOTAL EARNINGS	AVERAGE WEEKLY EARNINGS
PRAIRIE COUNTY - TOTAL	241	1,495	\$36,840,191	\$473.89
Natural Resources & Mining	31	134	3,929,375	563.92
Trade, Transportation & Utilities	69	370	8,414,640	437.35
Wholesale Trade	11	65	2,094,273	619.61
Retail Trade	39	217	3,313,448	293.64
Transportation, Warehousing & Utilities	20	88	3,006,919	657.11
Information	4	9	383,634	819.73
Financial Activities	16	62	1,934,185	599.93
Professional & Business Services	16	52	1,239,003	458.21
Education & Health Services	30	167	3,961,329	456.16
Leisure & Hospitality	20	106	1,050,800	190.64
Other Services	13	38	665,576	336.83
Local Government	15	320	8,205,505	493.12
State Government	10	48	1,365,677	547.15
Other	19	189	5,690,467	579.01
PULASKI COUNTY - TOTAL	14,050	238,413	\$8,899,736,206	\$717.87
Natural Resources & Mining	48	704	33,828,347	924.07
Construction	1,138	10,519	419,269,414	766.51
Manufacturing	444	15,765	656,985,460	801.42
Trade, Transportation & Utilities	3,248	51,902	1,808,986,923	670.27
Wholesale Trade	1,095	13,355	665,222,794	957.90
Retail Trade	1,751	24,931	579,084,236	446.68
Transportation, Warehousing & Utilities	403	13,616	564,679,893	797.53
Information	237	8,762	467,960,033	1027.08
Financial Activities	1,717	16,182	825,863,840	981.46
Professional & Business Services	2,698	34,044	1,241,555,051	701.33
Education & Health Services	1,969	33,280	1,343,688,308	776.45
Leisure & Hospitality	1,022	19,935	277,612,823	267.81
Other Services	1,223	6,868	189,957,635	531.89
Local Government	104	16,122	580,789,924	692.78
State Government	202	24,330	1,053,238,448	832.49

**TABLE 6. COUNTY SUMMARY
EMPLOYMENT AND TOTAL EARNINGS, BY INDUSTRY
CALENDAR YEAR 2006**

NORTH AMERICAN INDUSTRY CLASSIFICATION SYSTEM INDUSTRY GROUP	AVERAGE EMPLOYING UNITS	AVERAGE COVERED EMPLOYMENT	TOTAL EARNINGS	AVERAGE WEEKLY EARNINGS
RANDOLPH COUNTY - TOTAL	413	5,031	\$114,099,223	\$436.14
Natural Resources & Mining	22	76	1,563,061	395.51
Construction	26	105	1,912,151	350.21
Manufacturing	40	1,070	28,252,061	507.77
Trade, Transportation & Utilities	102	945	19,867,279	404.30
Wholesale Trade	22	203	4,033,459	382.10
Retail Trade	62	606	10,722,876	340.28
Transportation, Warehousing & Utilities	18	136	5,110,944	722.70
Information	5	44	1,615,929	706.26
Financial Activities	27	151	3,401,220	433.17
Professional & Business Services	38	226	4,015,958	341.73
Education & Health Services	66	820	20,606,817	483.27
Leisure & Hospitality	29	424	3,289,706	149.21
Other Services	24	67	1,237,502	355.20
Local Government	23	847	20,555,467	466.70
State Government	12	257	7,782,072	582.32
SAINT FRANCIS COUNTY - TOTAL	670	8,135	\$201,828,121	\$477.11
Natural Resources & Mining	22	172	4,183,644	467.76
Construction	44	233	6,734,229	555.81
Manufacturing	21	1,294	36,396,402	540.90
Trade, Transportation & Utilities	189	2,106	51,325,944	468.68
Wholesale Trade	32	516	16,216,049	604.35
Retail Trade	126	1,261	23,449,706	357.62
Transportation, Warehousing & Utilities	31	329	11,660,189	681.56
Information	9	98	2,680,475	526.00
Financial Activities	50	286	7,321,914	492.33
Professional & Business Services	49	174	5,656,362	625.15
Education & Health Services	152	1,310	29,154,756	427.99
Leisure & Hospitality	49	729	7,380,704	194.70
Other Services	40	121	1,867,562	296.82
Local Government	30	1,108	33,298,898	577.95
State Government	17	505	15,827,231	602.71

**TABLE 6. COUNTY SUMMARY
EMPLOYMENT AND TOTAL EARNINGS, BY INDUSTRY
CALENDAR YEAR 2006**

NORTH AMERICAN INDUSTRY CLASSIFICATION SYSTEM INDUSTRY GROUP	AVERAGE EMPLOYING UNITS	AVERAGE COVERED EMPLOYMENT	TOTAL EARNINGS	AVERAGE WEEKLY EARNINGS
SALINE COUNTY - TOTAL	1,706	20,069	\$558,491,569	\$535.16
Natural Resources & Mining	11	32	1,296,297	779.02
Construction	302	1,945	63,338,331	626.24
Manufacturing	86	1,860	74,872,163	774.11
Trade, Transportation & Utilities	423	4,431	116,530,064	505.75
Wholesale Trade	123	552	23,704,829	825.84
Retail Trade	247	3,630	84,321,831	446.71
Transportation, Warehousing & Utilities	53	250	8,503,404	654.11
Information	17	139	3,783,364	523.43
Financial Activities	164	756	23,768,036	604.60
Professional & Business Services	212	1,193	31,864,561	513.65
Education & Health Services	185	2,665	70,157,246	506.26
Leisure & Hospitality	131	2,357	27,799,861	226.82
Other Services	127	580	13,647,531	452.50
Local & State Government	50	4,111	131,434,115	614.83
SCOTT COUNTY - TOTAL	187	2,902	\$65,756,628	\$435.75
Natural Resources & Mining	18	178	5,623,028	607.50
Trade, Transportation & Utilities	40	458	9,453,800	396.95
Wholesale Trade	7	65	1,798,246	532.03
Retail Trade	26	326	5,319,588	313.80
Transportation, Warehousing & Utilities	7	66	2,335,966	680.64
Financial Activities	18	71	1,751,544	474.42
Professional & Business Services	9	12	275,622	441.70
Education & Health Services	30	310	6,831,365	423.78
Leisure & Hospitality	19	189	1,475,337	150.12
Other Services	11	60	2,655,227	851.03
Local Government	5	345	8,861,527	493.95
State Government	8	71	1,695,105	459.13
Other	31	1,206	27,134,073	432.68

**TABLE 6. COUNTY SUMMARY
EMPLOYMENT AND TOTAL EARNINGS, BY INDUSTRY
CALENDAR YEAR 2006**

NORTH AMERICAN INDUSTRY CLASSIFICATION SYSTEM INDUSTRY GROUP	AVERAGE EMPLOYING UNITS	AVERAGE COVERED EMPLOYMENT	TOTAL EARNINGS	AVERAGE WEEKLY EARNINGS
SEARCY COUNTY - TOTAL	176	1,687	\$33,801,647	\$385.32
Construction	6	15	297,133	380.94
Manufacturing	16	268	4,996,519	358.53
Trade, Transportation & Utilities	38	289	4,641,086	308.83
Retail Trade	27	208	3,136,705	290.01
Other Trade, Transportation & Utilities	11	81	1,504,381	357.17
Financial Activities	14	92	2,327,849	486.59
Professional & Business Services	16	33	640,838	373.45
Education & Health Services	43	311	5,694,021	352.09
Leisure & Hospitality	11	112	1,017,563	174.72
Local Government	10	356	8,654,674	467.52
State Government	8	147	3,713,873	485.85
Other	15	66	1,818,091	529.75
SEBASTIAN COUNTY - TOTAL	3,631	73,184	\$2,448,250,651	\$643.33
Natural Resources & Mining	67	1,361	86,871,441	1227.48
Construction	307	2,900	99,483,409	659.70
Manufacturing	230	20,864	756,985,997	697.73
Trade, Transportation & Utilities	930	12,837	361,747,432	541.92
Wholesale Trade	240	2,558	106,952,772	804.06
Retail Trade	564	8,055	169,092,336	403.70
Transportation, Warehousing & Utilities	127	2,225	85,702,324	740.73
Information	58	1,161	51,211,859	848.27
Financial Activities	409	2,508	92,740,629	711.11
Professional & Business Services	517	9,379	348,315,409	714.19
Education & Health Services	459	9,642	362,008,537	722.02
Leisure & Hospitality	314	5,409	63,174,099	224.60
Other Services	277	1,484	35,694,147	462.55
Local Government	43	4,254	146,206,481	660.95
State Government	22	1,385	43,811,211	608.32

**TABLE 6. COUNTY SUMMARY
EMPLOYMENT AND TOTAL EARNINGS, BY INDUSTRY
CALENDAR YEAR 2006**

NORTH AMERICAN INDUSTRY CLASSIFICATION SYSTEM INDUSTRY GROUP	AVERAGE EMPLOYING UNITS	AVERAGE COVERED EMPLOYMENT	TOTAL EARNINGS	AVERAGE WEEKLY EARNINGS
SEVIER COUNTY - TOTAL	335	5,865	\$148,054,502	\$485.46
Natural Resources & Mining	19	211	6,072,151	553.42
Construction	21	164	5,453,323	639.46
Manufacturing	11	2,327	56,451,964	466.53
Trade, Transportation & Utilities	92	850	20,857,917	471.90
Wholesale Trade	15	144	6,507,144	869.01
Retail Trade	58	595	10,254,427	331.43
Transportation, Warehousing & Utilities	19	111	4,096,346	709.69
Information	6	40	1,262,372	606.91
Financial Activities	28	216	5,949,266	529.67
Professional & Business Services	30	101	6,971,836	1327.46
Education & Health Services	55	550	12,195,376	426.41
Leisure & Hospitality	21	247	2,155,171	167.80
Other Services	32	146	2,537,969	334.30
Local Government	12	827	23,289,274	541.56
State Government	9	186	4,857,883	502.26
SHARP COUNTY - TOTAL	434	3,920	\$85,000,017	\$416.99
Construction	35	223	5,965,309	514.43
Manufacturing	21	189	3,529,352	359.11
Trade, Transportation & Utilities	100	1,029	25,760,401	481.43
Retail Trade	70	645	10,914,101	325.41
Other Trade, Transportation & Utilities	30	384	14,846,300	743.50
Information	7	56	2,960,837	1016.77
Financial Activities	39	268	7,314,396	524.86
Professional & Business Services	39	171	4,036,267	453.92
Education & Health Services	85	587	11,365,717	372.35
Leisure & Hospitality	40	469	3,806,030	156.06
Local Government	29	743	16,398,334	424.43
State Government	9	97	2,511,297	497.88
Other	31	87	1,352,077	298.87

**TABLE 6. COUNTY SUMMARY
EMPLOYMENT AND TOTAL EARNINGS, BY INDUSTRY
CALENDAR YEAR 2006**

NORTH AMERICAN INDUSTRY CLASSIFICATION SYSTEM INDUSTRY GROUP	AVERAGE EMPLOYING UNITS	AVERAGE COVERED EMPLOYMENT	TOTAL EARNINGS	AVERAGE WEEKLY EARNINGS
STONE COUNTY - TOTAL	273	2,945	\$60,498,694	\$395.05
Construction	23	105	2,279,931	417.57
Manufacturing	25	479	9,869,668	396.24
Trade, Transportation & Utilities	75	711	14,963,681	404.73
Wholesale Trade	10	51	1,038,943	391.76
Retail Trade	52	609	12,417,350	392.11
Transportation, Warehousing & Utilities	13	51	1,507,388	568.40
Financial Activities	23	98	2,777,687	545.07
Professional & Business Services	10	23	613,006	512.55
Education & Health Services	44	473	11,641,130	473.29
Leisure & Hospitality	35	415	3,488,299	161.64
Other Services	14	27	566,167	403.25
Local Government	10	383	9,993,292	501.77
State Government	9	169	3,175,036	361.29
Other	7	61	1,130,797	356.49
UNION COUNTY - TOTAL	1,377	19,775	\$667,693,198	\$649.32
Natural Resources & Mining	107	526	18,209,324	665.74
Construction	91	1,304	52,334,441	771.80
Manufacturing	65	5,151	208,199,540	777.29
Trade, Transportation & Utilities	355	3,632	113,634,714	601.67
Wholesale Trade	80	575	34,678,585	1159.82
Retail Trade	218	2,274	43,427,439	367.26
Transportation, Warehousing & Utilities	58	783	35,528,690	872.60
Information	20	194	5,343,893	529.73
Financial Activities	121	734	23,161,455	606.83
Professional & Business Services	135	1,722	82,950,586	926.37
Education & Health Services	196	2,376	72,895,166	590.00
Leisure & Hospitality	86	1,051	11,676,138	213.65
Other Services	146	639	12,900,883	388.25
Local Government	37	1,914	50,899,546	511.41
State Government	18	533	15,487,512	558.79

**TABLE 6. COUNTY SUMMARY
EMPLOYMENT AND TOTAL EARNINGS, BY INDUSTRY
CALENDAR YEAR 2006**

NORTH AMERICAN INDUSTRY CLASSIFICATION SYSTEM INDUSTRY GROUP	AVERAGE EMPLOYING UNITS	AVERAGE COVERED EMPLOYMENT	TOTAL EARNINGS	AVERAGE WEEKLY EARNINGS
VAN BUREN COUNTY - TOTAL	358	3,741	\$81,758,024	\$420.28
Natural Resources & Mining	10	22	347,928	304.13
Construction	45	185	4,617,351	479.97
Manufacturing	14	554	13,418,542	465.79
Trade, Transportation & Utilities	97	793	16,762,944	406.51
Wholesale Trade	17	51	1,724,738	650.35
Retail Trade	60	607	10,950,781	346.94
Transportation, Warehousing & Utilities	21	135	4,087,425	582.25
Information	10	54	1,767,007	629.28
Financial Activities	27	147	3,839,707	502.32
Professional & Business Services	29	98	2,012,995	395.01
Education & Health Services	48	595	13,609,953	439.88
Leisure & Hospitality	32	487	5,554,967	219.36
Other Services	27	76	1,589,894	402.30
Local Government	13	643	15,814,319	472.97
State Government	8	87	2,422,417	535.46
WASHINGTON COUNTY - TOTAL	5,544	90,854	\$3,053,001,249	\$646.22
Natural Resources & Mining	40	464	14,310,870	593.12
Construction	677	5,862	210,400,207	690.24
Manufacturing	235	15,505	501,531,766	622.05
Trade, Transportation & Utilities	1,349	20,664	666,618,225	620.38
Wholesale Trade	374	3,675	189,903,990	993.74
Retail Trade	772	11,644	267,925,183	442.49
Transportation, Warehousing & Utilities	203	5,345	208,789,052	751.20
Information	95	1,477	60,530,804	788.12
Financial Activities	671	3,987	152,379,479	734.98
Professional & Business Services	915	9,145	431,804,743	908.03
Education & Health Services	615	10,571	390,331,681	710.09
Leisure & Hospitality	496	9,319	115,876,575	239.12
Other Services	369	1,977	48,336,044	470.18
Local & State Government	83	11,882	460,880,855	745.93

**TABLE 6. COUNTY SUMMARY
EMPLOYMENT AND TOTAL EARNINGS, BY INDUSTRY
CALENDAR YEAR 2006**

NORTH AMERICAN INDUSTRY CLASSIFICATION SYSTEM INDUSTRY GROUP	AVERAGE EMPLOYING UNITS	AVERAGE COVERED EMPLOYMENT	TOTAL EARNINGS	AVERAGE WEEKLY EARNINGS
WHITE COUNTY - TOTAL	1,631	23,776	\$665,031,948	\$537.90
Natural Resources & Mining	36	252	7,554,014	576.47
Construction	178	1,206	36,478,892	581.69
Manufacturing	84	3,563	130,380,413	703.71
Trade, Transportation & Utilities	473	5,905	159,405,279	519.13
Wholesale Trade	97	605	18,301,983	581.75
Retail Trade	294	3,113	60,888,269	376.14
Transportation, Warehousing & Utilities	82	2,187	80,215,027	705.35
Information	22	225	6,422,580	548.94
Financial Activities	174	916	26,695,509	560.45
Professional & Business Services	159	1,387	35,293,521	489.35
Education & Health Services	213	4,242	137,023,782	621.19
Leisure & Hospitality	121	2,253	21,130,884	180.37
Other Services	106	629	16,025,998	489.97
Local Government	46	2,492	68,932,358	531.95
State Government	19	705	19,688,718	537.06
WOODRUFF COUNTY - TOTAL	188	1,970	\$50,976,016	\$497.62
Natural Resources & Mining	20	102	2,775,438	523.27
Construction	6	65	1,581,397	467.87
Manufacturing	9	365	10,862,716	572.32
Trade, Transportation & Utilities	56	515	14,706,837	549.17
Wholesale Trade	13	210	7,921,000	725.37
Retail Trade	26	201	2,846,399	272.33
Transportation, Warehousing & Utilities	16	104	3,939,438	728.45
Financial Activities	15	60	1,703,107	545.87
Professional & Business Services	4	7	242,892	667.29
Education & Health Services	46	230	5,588,585	467.27
Leisure & Hospitality	7	56	448,836	154.13
Local Government	10	484	11,034,887	438.45
State Government	7	58	1,447,364	479.90
Other	10	28	583,957	401.07

**TABLE 6. COUNTY SUMMARY
EMPLOYMENT AND TOTAL EARNINGS, BY INDUSTRY
CALENDAR YEAR 2006**

NORTH AMERICAN INDUSTRY CLASSIFICATION SYSTEM INDUSTRY GROUP	AVERAGE EMPLOYING UNITS	AVERAGE COVERED EMPLOYMENT	TOTAL EARNINGS	AVERAGE WEEKLY EARNINGS
YELL COUNTY - TOTAL	408	6,919	\$165,625,455	\$460.34
Natural Resources & Mining	23	258	6,335,179	472.21
Construction	45	354	9,632,550	523.28
Manufacturing	22	2,893	69,623,280	462.81
Trade, Transportation & Utilities	86	699	12,787,651	351.81
Wholesale Trade	11	22	510,896	446.59
Retail Trade	56	583	9,128,815	301.12
Transportation, Warehousing & Utilities	19	94	3,147,940	644.01
Information	4	61	2,372,492	747.95
Financial Activities	37	200	5,153,881	495.57
Professional & Business Services	35	239	9,663,827	777.59
Education & Health Services	67	482	10,215,592	407.58
Leisure & Hospitality	29	344	3,549,889	198.45
Other Services	19	74	1,259,613	327.34
Local Government	28	1,202	32,287,918	516.57
State Government	13	112	2,743,583	471.08
REST-OF-STATE-TOTAL	4,308	16,424	901,507,680	\$1,055.57
Natural Resources & Mining	61	447	21,652,318	931.52
Construction	575	2,866	107,162,550	719.06
Manufacturing	48	178	7,043,475	760.96
Trade, Transportation & Utilities	1,734	6,837	494,871,409	1391.95
Wholesale Trade	1,478	5,681	448,921,882	1519.65
Retail Trade	98	457	19,671,665	827.79
Transportation, Warehousing & Utilities	157	700	26,277,862	721.92
Information	100	242	14,720,418	1169.77
Financial Activities	263	810	47,200,876	1120.63
Professional & Business Services	1,239	3,700	158,442,139	823.50
Education & Health Services	113	649	24,830,485	735.76
Leisure & Hospitality	41	68	2,307,012	652.44
Other	143	632	23,374,265	711.24

TABLE 7. FEDERAL GOVERNMENT EMPLOYMENT AND EARNINGS IN ARKANSAS
CALENDAR YEAR 2006

NORTH AMERICAN INDUSTRY CLASSIFICATION SYSTEM INDUSTRY GROUP	AVERAGE EMPLOYING UNITS	AVERAGE COVERED EMPLOYMENT	TOTAL EARNINGS	AVERAGE WEEKLY EARNINGS
Manufacturing	2	3	\$245,032	\$1,570.72
Trade, Transportation & Utilities	445	6,756	\$298,841,872	\$850.65
Information	1	34	\$1,680,647	\$950.59
Financial Activities	23	178	\$11,341,977	\$1,225.36
Professional & Business Services	32	792	\$49,052,035	\$1,191.05
Education & Health Services	6	4,023	\$305,947,987	\$1,462.49
Leisure & Hospitality	15	224	\$9,740,465	\$836.23
Other Services	2	253	\$3,710,909	\$282.07
Public Administration	482	8,591	\$507,772,096	\$1,136.64
TOTAL	1,009	20,832	\$1,188,333,020	\$1,096.99

**TABLE 8. WORKFORCE INFORMATION AREA, SUMMARY
EMPLOYMENT AND TOTAL EARNINGS, BY INDUSTRY
CALENDAR YEAR 2006**

NORTH AMERICAN INDUSTRY CLASSIFICATION SYSTEM INDUSTRY GROUP	AVERAGE EMPLOYING UNITS	AVERAGE COVERED EMPLOYMENT	TOTAL EARNINGS	AVERAGE WEEKLY EARNINGS
CENTRAL WORKFORCE INFORMATION*	5,911	73,741	\$2,158,770,085	\$562.98
Natural Resources & Mining	165	949	33,532,173	679.50
Trade, Transportation & Utilities	1,519	14,648	359,159,609	471.53
Wholesale Trade	387	2,048	77,651,377	729.15
Retail Trade	880	11,127	229,017,844	395.81
Transportation, Warehousing & Utilities	252	1,473	52,490,388	685.29
Financial Activities	611	2,905	94,922,769	628.38
Professional & Business Services	711	7,097	310,738,364	842.01
Education & Health Services	704	9,727	269,986,272	533.78
Leisure & Hospitality	452	7,848	83,502,065	204.61
Local & State Government	210	13,758	429,086,983	599.77
Other	1,550	16,812	577,841,850	660.98

*Note: Pulaski County is not included in the Central Workforce Information. Please refer to Page 53 for information on Pulaski County.
Central Workforce Includes these counties: Faulkner, Lonoke, Monroe, Prairie, and Saline.

EASTERN WORKFORCE INFORMATION	3,407	37,974	\$1,017,628,362	\$515.35
Natural Resources & Mining	211	1,352	31,090,616	442.23
Construction	198	1,118	32,656,839	561.73
Trade, Transportation & Utilities	879	10,133	278,834,155	529.18
Wholesale Trade	182	2,037	72,026,563	679.98
Retail Trade	494	5,088	95,756,082	361.92
Transportation, Warehousing & Utilities	203	3,008	111,051,510	709.98
Financial Activities	276	1,612	47,856,236	570.91
Professional & Business Services	290	1,433	39,003,179	523.42
Education & Health Services	734	5,519	141,758,915	493.95
Leisure & Hospitality	231	3,583	38,470,545	206.48
Local Government	141	5,679	174,736,793	591.71
State Government	68	2,133	61,987,447	558.87
Other	384	5,415	171,233,637	608.12

Eastern Workforce Includes these counties: Crittenden, Cross, Lee, Phillips, and Saint Francis.

**TABLE 8. WORKFORCE INFORMATION AREA, SUMMARY
EMPLOYMENT AND TOTAL EARNINGS, BY INDUSTRY
CALENDAR YEAR 2006**

NORTH AMERICAN INDUSTRY CLASSIFICATION SYSTEM INDUSTRY GROUP	AVERAGE EMPLOYING UNITS	AVERAGE COVERED EMPLOYMENT	TOTAL EARNINGS	AVERAGE WEEKLY EARNINGS
NORTH CENTRAL WORKFORCE INFORMATION	5,529	69,849	\$1,817,207,636	\$500.31
Construction	494	2,819	77,502,635	528.71
Manufacturing	305	13,281	423,860,972	613.75
Trade, Transportation & Utilities	1,522	15,533	396,415,736	490.79
Retail Trade	950	9,221	173,045,387	360.89
Other Trade, Transportation & Utilities	572	6,312	223,370,349	680.54
Financial Activities	526	2,646	75,973,388	552.16
Professional & Business Services	458	3,156	75,932,185	462.69
Education & Health Services	839	11,462	329,988,749	553.65
Leisure & Hospitality	447	6,268	59,963,542	183.97
Local Government	240	8,655	219,698,188	488.15
State Government	115	2,886	79,758,902	531.47
Other	597	3,142	78,113,339	478.10
North Central Workforce Includes these counties: Cleburne, Fulton, Independence, Izard, Jackson, Sharp, Stone, Van Buren, White, and Woodruff				
NORTHEAST WORKFORCE INFORMATION	6,442	94,860	\$2,718,507,011	\$551.12
Natural Resources & Mining	370	2,073	54,139,366	502.24
Construction	496	3,076	91,538,550	572.29
Manufacturing	351	21,712	816,624,915	723.30
Trade, Transportation & Utilities	1,743	17,878	441,405,655	474.81
Wholesale Trade	397	3,737	130,651,788	672.34
Retail Trade	1,047	11,627	219,301,705	362.72
Transportation, Warehousing & Utilities	299	2,514	91,452,162	699.56
Financial Activities	586	3,407	111,546,502	629.62
Professional & Business Services	653	6,781	168,495,362	477.85
Education & Health Services	972	13,161	419,395,312	612.82
Leisure & Hospitality	462	7,573	75,547,083	191.84
Local Government	219	11,345	310,574,359	526.45
State Government	107	3,906	129,955,274	639.82
Other	490	3,948	99,284,633	483.62
Northeast Workforce Includes these counties: Clay, Craighead, Greene, Lawrence, Mississippi, Poinsett, and Randolph.				

**TABLE 8. WORKFORCE INFORMATION AREA, SUMMARY
EMPLOYMENT AND TOTAL EARNINGS, BY INDUSTRY
CALENDAR YEAR 2006**

NORTH AMERICAN INDUSTRY CLASSIFICATION SYSTEM INDUSTRY GROUP	AVERAGE EMPLOYING UNITS	AVERAGE COVERED EMPLOYMENT	TOTAL EARNINGS	AVERAGE WEEKLY EARNINGS
NORTHWEST WORKFORCE INFORMATION	14,753	232,130	\$7,886,373,474	\$653.35
Trade, Transportation & Utilities	3,665	54,245	1,808,095,864	641.00
Retail Trade	2,001	26,328	586,297,616	428.25
Other Trade, Transportation & Utilities	1,664	27,917	1,221,798,248	841.64
Education & Health Services	1,673	23,468	796,232,099	652.47
Leisure & Hospitality	1,363	21,545	260,997,534	232.96
Local & State Government	425	26,837	928,859,740	665.60
Other	7,643	106,044	4,092,188,237	742.11

Northwest Workforce Includes these counties: Baxter, Benton, Boone, Carroll, Madison, Marion, Newton, Searcy, and Washington.

SOUTHEAST WORKFORCE INFORMATION	5,468	76,930	\$2,253,608,375	\$563.35
Natural Resources & Mining	400	2,952	87,149,966	567.74
Construction	383	3,339	116,436,681	670.61
Manufacturing	224	17,643	674,164,349	734.84
Trade, Transportation & Utilities	1,413	13,593	352,395,191	498.55
Wholesale Trade	257	2,449	86,396,288	678.43
Retail Trade	866	8,755	164,892,648	362.19
Transportation, Warehousing & Utilities	290	2,389	101,106,255	813.88
Local & State Government	359	15,931	458,104,696	552.99
Other	2,702	23,481	565,357,492	463.02

Southeast Workforce Includes these counties: Arkansas, Ashley, Bradley, Chicot, Cleveland, Desha, Drew, Grant, Jefferson, and Lincoln

SOUTHWEST WORKFORCE INFORMATION	5,765	86,365	\$2,600,699,605	\$579.09
Natural Resources & Mining	407	2,821	98,728,100	673.03
Trade, Transportation & Utilities	1,527	15,324	416,219,669	522.33
Education & Health Services	760	9,334	231,991,748	477.97
Local Government	266	10,444	283,657,970	522.31
State Government	150	3,264	100,292,509	590.90
Other	2,669	45,188	1,469,809,609	625.51

Southwest Workforce Includes these counties: Calhoun, Columbia, Dallas, Hempstead, Howard, Lafayette, Little River, Miller, Nevada, Ouachita, Sevier, and Union

**TABLE 8. WORKFORCE INFORMATION AREA, SUMMARY
EMPLOYMENT AND TOTAL EARNINGS, BY INDUSTRY
CALENDAR YEAR 2006**

NORTH AMERICAN INDUSTRY CLASSIFICATION SYSTEM INDUSTRY GROUP	AVERAGE EMPLOYING UNITS	AVERAGE COVERED EMPLOYMENT	TOTAL EARNINGS	AVERAGE WEEKLY EARNINGS
WEST CENTRAL WORKFORCE INFORMATION	8,200	109,102	\$2,945,690,236	\$519.22
Natural Resources & Mining	264	2,258	70,520,221	600.60
Construction	901	5,686	173,095,871	585.43
Trade, Transportation & Utilities	1,990	21,868	600,071,813	527.70
Financial Activities	859	4,069	126,471,985	597.73
Education & Health Services	1,108	15,333	469,958,237	589.43
Local Government	229	11,391	326,563,963	551.32
State Government	134	5,058	142,123,627	540.36
Other	2,724	43,439	1,036,884,519	459.04

West Central Workforce Includes these counties: Clark, Conway, Garland, Hot Spring, Johnson, Montgomery, Perry, Pike, Pope, and Yell

WESTERN WORKFORCE INFORMATION	6,375	111,282	\$3,440,010,734	\$594.21
Natural Resources & Mining	167	2,403	121,465,575	972.07
Trade, Transportation & Utilities	1,643	22,965	627,256,494	525.26
Wholesale Trade	388	3,514	137,033,381	749.93
Retail Trade	960	12,398	248,911,313	386.09
Transportation, Warehousing & Utilities	295	7,053	241,311,800	657.96
Financial Activities	665	3,775	129,134,309	657.84
Professional & Business Services	786	10,557	381,370,749	694.71
Education & Health Services	806	13,490	457,234,131	651.81
Leisure & Hospitality	513	8,142	89,301,281	210.92
Local & State Government	232	11,455	354,381,837	594.94
Other	1,564	38,443	1,278,326,133	639.47

Western Workforce Includes these counties: Crawford, Franklin, Logan, Polk, Scott, and Sebastian

