

# Arkansas Covered Employment & Earnings

Jobs for People. People for Jobs.

**DWS**  
Department of  
WORKFORCE**Services**

First Quarter  
2007



**COVERED EMPLOYMENT AND EARNINGS  
STATE OF ARKANSAS  
FIRST QUARTER 2007**

**MIKE BEEBE, GOVERNOR  
STATE OF ARKANSAS**

**ARTEE WILLIAMS, DIRECTOR  
DEPARTMENT OF WORKFORCE SERVICES**

**PUBLISHED BY  
LABOR MARKET INFORMATION & ANALYSIS  
BUREAU OF LABOR STATISTICS PROGRAMS  
POST OFFICE BOX 2981  
LITTLE ROCK, ARKANSAS 72203-2981  
BERNADETTE COLEMAN, BLS PROGRAMS MANAGER  
TELEPHONE: (501) 682-3159**

**STATE OF ARKANSAS HOME PAGE: <http://www.arkansas.gov>**

**DEPARTMENT OF WORKFORCE SERVICES HOME PAGE: <http://www.arkansas.gov/esd/>**

**INTERNET SITE FOR LABOR MARKET INFORMATION:  
<http://www.discover.arkansas.gov>**

**RELEASED: NOVEMBER 2008**



## TABLE OF CONTENTS

Description of Data	1
Industry Classification	1
Definition of Covered Employment and Earnings	2
Federal Government Employment	2
County Classification	2
Significant Developments During First Quarter 2007	3

## LIST OF GRAPHS AND TABLES

Graph 1	Total Covered Employment for Selected Years, Arkansas	7
Graph 2	Total Covered Earnings, by Calendar Quarter for Selected Years, Arkansas	8
Table 1	Quarterly Comparison of Covered Employment and Wages, by Industry	5
Table 2	Total Covered Employment in Arkansas, 2000-2007	6
Table 3	Total Covered Earnings, 2000-2007	9
Table 4	Total Taxable Earnings, 2000-2007	10
Table 5	State Summary - Employment and Total Earnings, by Industry, First Quarter 2007	11
Table 6	County Summary - Employment and Total Earnings, by Industry, First Quarter 2007	24
Table 7	Federal Government Employment and Total Earnings in Arkansas, First Quarter 2007	62
Table 8	Workforce Information Area – Employment and Total Earnings, by Industry, First Quarter 2007	63



## EMPLOYMENT AND EARNINGS UNDER THE ARKANSAS EMPLOYMENT SECURITY LAW FIRST QUARTER 2007

### DESCRIPTION OF DATA

This publication contains covered employment and payroll data by industry and county for the First Quarter 2007. These data are compiled from quarterly contribution and wage reports submitted by employers subject to the Arkansas Employment Security Law. An employing unit is a single physical location where business is conducted, production takes place, or services are provided. Employment data have been tabulated for each month of the quarter by industry under the **North American Industry Classification System** (NAICS) (see "Industry Classification" below) on a statewide, county and workforce area basis. Payroll data represent the total wages paid during the quarter, and are also shown by

industry for the State and by publishable industry groups for each county and workforce area. The tabulation of this data is a joint effort in conjunction with the U.S. Bureau of Labor Statistics. In addition, there are tables included which set out total covered employment by months, quarterly payrolls, and average weekly earnings for the years 2000 through 2007. Data contained in this publication are subject to revision. These revisions will be reflected in the 2007 Annual Covered Employment and Earnings publication. Because of industry code changes between years, substantial employment and wage shifts among industries are anticipated.

### INDUSTRY CLASSIFICATION

Previously published industry data **will not** be comparable in all instances with currently published data since industry codes have been revised according to the following Manuals: (a) between January 1, 1958 and December 31, 1967, industry codes were assigned under the 1957 Standard Industrial Classification (SIC) Manual; (b) between January 1, 1968 and December 31, 1974, industry codes were assigned under the 1967 Standard Industrial Classification (SIC) Manual; (c) between January 1, 1975 and December 31, 1987, industry codes were assigned under the 1972 Standard Industrial Classification (SIC) Manual; (d) between January 1, 1988 and December 31, 2000, industry codes were assigned under the 1987 Standard Industrial Classification (SIC) Manual; (e) between January 1, 2001 and December 31, 2006, industry codes were assigned under the 2002 North American Industry Classification System (NAICS) Manual; and (f) since January 1, 2007, industry codes have been assigned under the 2007 North American Industry Classification System (NAICS) Manual. **The**

**NAICS Manual represents a significant change in coding methodology as compared to the SIC Manual.** One of the most significant changes involves how NAICS treats auxiliary units. Auxiliary units are establishments primarily engaged in performing management or support services for other establishments of the same enterprise. The SIC code for these units was based on the activity of the enterprise served. The NAICS code is based on the actual activities that the establishment performs. Comparisons of many industries **should not be made** between this publication and previous Covered Employment and Earnings publications that were based on SIC. Even though some titles are the same or similar, in nature, NAICS and SIC could differ in the classification of employers. The implementation of NAICS represents a profound change for statistical programs, and will create significant benefits along with transition obstacles for both data collectors and data users. A summary is available on the NAICS home page at <http://www.census.gov/naics>.

## DEFINITION OF COVERED EMPLOYMENT AND EARNINGS

Covered Employment is the number of workers employed by employers subject to the Arkansas Employment Security Law who worked or received pay for the payroll period including the 12th of the month. An employer is subject to the law when they employ one or more employees in each of ten days during the current or preceding calendar year.

Currently excluded from coverage is employment covered by the Railroad Unemployment Insurance Act, some domestic service workers, employees of small agricultural establishments, self-employed and unpaid family workers, insurance and real estate

agents who are on commission only, and employees of churches and religious organizations except separately incorporated schools. The payroll information in this publication includes all wages and salaries paid to any covered employees by their employers including bonuses, commissions, and cash values of remuneration received in any medium other than cash. These wages include both taxable and nontaxable wages. Only the first \$10,000 paid to each worker by an employer in the calendar year is taxable under the Arkansas Employment Security Law.

## FEDERAL GOVERNMENT EMPLOYMENT

Table 7 on page 62 lists the total number of civilians employed by the Federal Government in Arkansas during the First Quarter 2007. Employment and wage data are set out by industry divisions. These data are obtained from required reports submitted by various

government agencies having employment in the State. Civilian Federal workers are covered by the Unemployment Compensation for Federal Employees (UCFE) program.

## COUNTY CLASSIFICATION

Employment and payroll data by county are classified according to the county where the workers are employed. Employers with operations in more than one county are requested to furnish this agency with a breakdown of employment and wages for at least one quarter of each year by the counties in which they operate. Many such employers submit county data with each regular contribution report. **Note:** This information is invaluable in the preparation of monthly employment and payroll data by county.

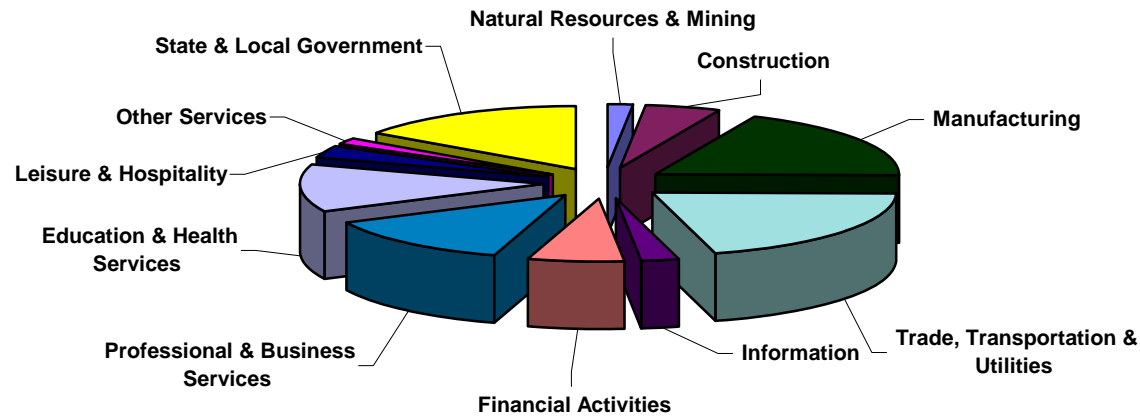
Employment and payroll data for multi - area employers, who do not furnish county data each quarter of the year, are prorated by county on the basis of one quarter's information. The "rest-of-state" table that appears on page 61 of this publication includes data on firms that **did not** provide a county breakdown of employment and payrolls. It also includes sales, and all other type of personnel with no permanent place of work, as well as employment of employers with no established place of business in Arkansas.



## SIGNIFICANT DEVELOPMENTS DURING FIRST QUARTER 2007

**AVERAGE EMPLOYMENT CHANGES**

Covered employment averaged 1,146,875 during the First Quarter 2007 (see table 1), a decrease of 10,171 (-0.9%) from the previous quarter and 6,826 (0.6%) above the average recorded one-year ago. This *over-the-year* increase is more significant when used as an economic indicator. This *over-the-year* comparison allows for the disregarding of many seasonal factors that are evident when making an *over-the-quarter* comparison.

**Average Covered Employment by NAICS Group****EMPLOYMENT CHANGES FROM FOURTH QUARTER 2006**

*Over the quarter* losses were recorded in eight of the eleven industry groups (see Table 1). Trade, Transportation and Utilities suffered the biggest decrease with the loss of 4,430 jobs. This is a result of the holiday season coming to a close causing the release of temporary workers in the retail sector. There were also seasonal decreases in Natural Resources and Mining (-4.9%), Construction (-3.3%) and Leisure and Hospitality (-1.1%). Continuing layoffs caused a loss of 2,507 jobs in Manufacturing. Other industries with declines were

Information (-452), Other Services (-303), and Financial Activities (-431).

Professional and Business Services had the biggest increase, gaining 1,017 jobs. State and Local Government (+433) had a seasonal increase in jobs due to the start of school following the holiday break. Educational and Health Services also gained 335 jobs.

## EMPLOYMENT CHANGES FROM FIRST QUARTER 2006

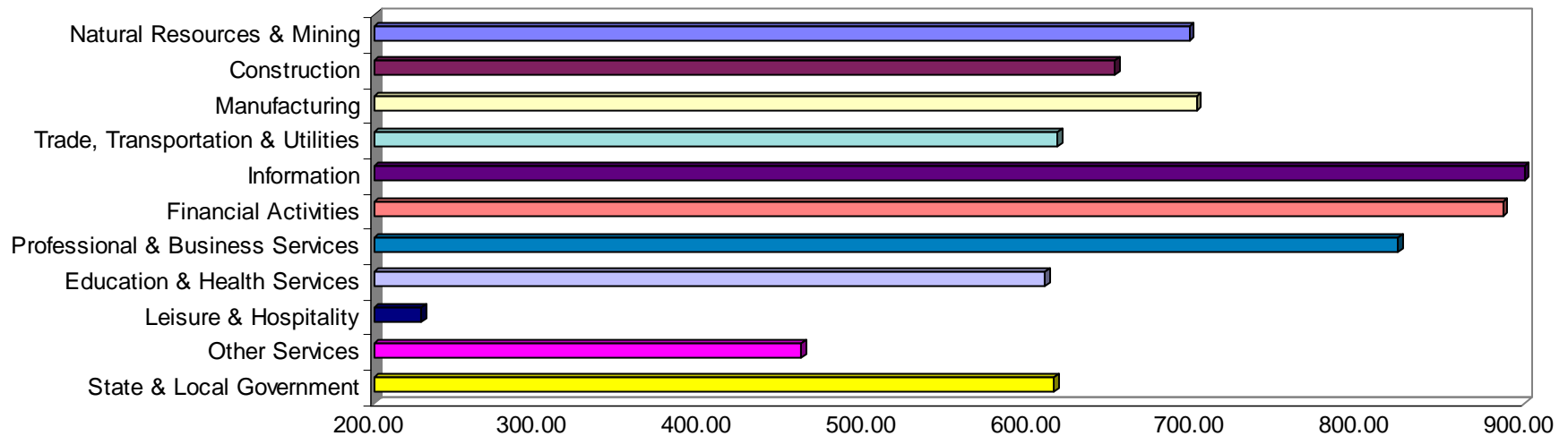
*Over-the-year* gains were recorded in nine industry groups while two recorded losses (see table 1). Significant gains were posted in Education and Health Services (+4,559), Trade, Transportation, & Utilities (2,693), and State & Local Government (+2,609). The only losses occurred in Manufacturing (-8,902) and Information (-150).

## COVERED WAGES

Wages paid to covered workers totaled \$9,457,035,252 for the First Quarter 2007 (see table 1), for an average weekly wage of \$634.30 (see table 5). Employees in Little River County recorded the highest average weekly wage (\$924.59), and workers in Newton County the lowest (\$380.82) (see table 6).

The Information sector recorded the highest average weekly wage for the State of Arkansas at \$927.30, while the Leisure & Hospitality sector recorded the lowest at \$229.42 for the State of Arkansas (see table 5).

### Average Weekly Wages by Industry Group



Note: Because of industry code changes between years, substantial employment and wage shifts among industries are anticipated.

TABLE 1. QUARTERLY COMPARISON OF COVERED EMPLOYMENT AND WAGES, BY INDUSTRY

North American Industry Classification System Industry Group	Number of Employing Units	Average Covered Employment		Net Change From:		Total Wages Paid January - March 2007	% of Total
		Jan. – Mar. 2007 Monthly Average	% of Total	Oct. – Dec. 2006	Jan. – Mar. 2006		
<b>Total</b>	<b>81,516</b>	<b>1,146,875</b>	<b>100.0</b>	<b>-10,171</b>	<b>6,826</b>	<b>\$9,457,035,252</b>	<b>100.0</b>
<b>Natural Resources and Mining</b>	2,419	18,559	1.6	-909	1,392	167,918,112	1.8
Agriculture, Forestry, Fishing and Hunting	1,990	12,506	1.1	-1,665	-162	83,691,067	0.9
Mining	429	6,053	0.5	756	1,554	84,227,045	0.9
<b>Construction</b>	8,047	54,899	4.8	-1,858	3	464,457,170	4.9
<b>Manufacturing</b>	3,629	192,230	16.8	-2,507	-8,902	1,750,362,142	18.5
<b>Trade, Transportation, and Utilities</b>	20,996	244,467	21.3	-4,430	2,693	1,958,499,078	20.7
Wholesale Trade	6,384	47,563	4.1	-595	306	615,561,530	6.5
Retail Trade	11,266	132,947	11.6	-2,678	976	700,419,895	7.4
Transportation and Warehousing	2,988	57,024	5.0	-1,199	1,197	512,565,633	5.4
Utilities	358	6,933	0.6	42	214	129,952,020	1.4
<b>Information</b>	1,195	19,596	1.7	-452	-150	236,230,742	2.5
<b>Financial Activities</b>	8,191	51,152	4.5	-431	577	589,707,696	6.2
Finance and Insurance	4,800	37,033	3.2	-117	292	490,999,508	5.2
Real Estate and Rental and Leasing	3,391	14,119	1.2	-314	285	98,708,188	1.0
<b>Professional and Business Services</b>	11,109	115,126	10.0	1,017	1,883	1,232,007,739	13.0
Professional and Technical Services	7,010	38,898	3.4	1,353	1,362	436,685,175	4.6
Management of Companies and Enterprises	509	24,584	2.1	317	710	533,980,423	5.6
Administrative and Waste Services	3,590	51,644	4.5	-653	-190	261,342,141	2.8
<b>Education and Health Services</b>	11,178	147,742	12.9	335	4,599	1,168,272,863	12.4
Educational Services	574	9,354	0.8	-53	331	63,213,346	0.7
Health Care and Social Assistance	10,604	138,388	12.1	388	4,268	1,105,059,517	11.7
<b>Leisure and Hospitality</b>	6,105	95,577	8.3	-1,066	1,959	285,049,081	3.0
Arts, Entertainment and Recreation	910	8,870	0.8	213	420	35,091,444	0.4
Accommodation and Food Services	5,195	86,707	7.6	-1,279	1,540	249,957,637	2.6
<b>Other Services</b>	5,457	25,327	2.2	-303	163	151,521,132	1.6
<b>State and Local Government</b>	3,190	182,200	15.9	433	2,609	1,453,009,497	15.4
Local Government	1,991	118,388	10.3	295	958	853,119,249	9.0
State Government	1,199	63,812	5.6	138	1,651	599,890,248	6.3
Nonclassifiable Establishments	0	0	0.0	0	0	0	0.0

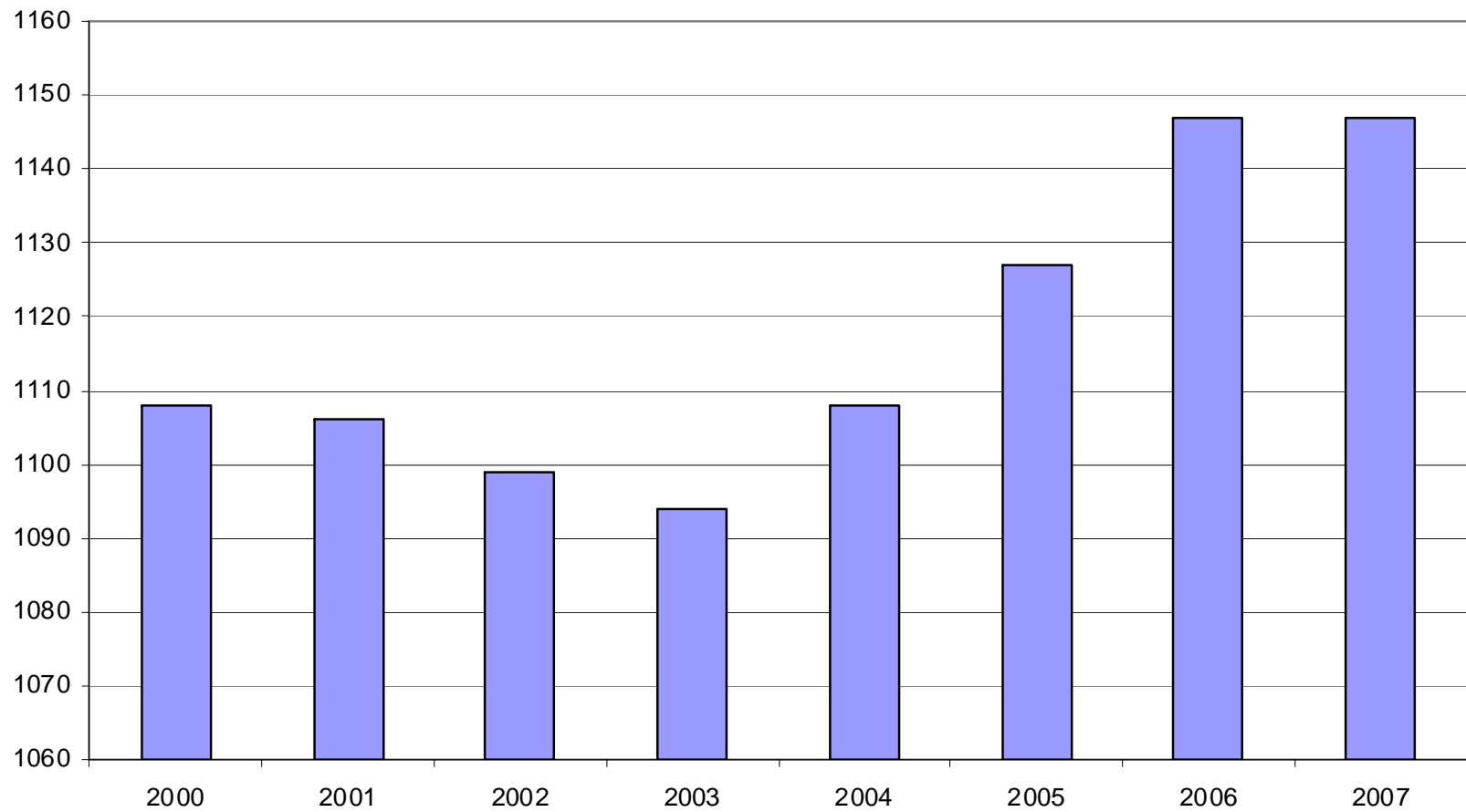
Note: Items do not necessarily add to totals because of rounding. Because of industry code changes between years, substantial employment and wage shifts among industries are anticipated.

TABLE 2. TOTAL COVERED EMPLOYMENT IN ARKANSAS

<b>Period</b>	<b>2000</b>	<b>2001</b>	<b>2002</b>	<b>2003</b>	<b>2004</b>	<b>2005</b>	<b>2006</b>	<b>2007</b>
<b>Average</b>	<b>1,108,479</b>	<b>1,106,066</b>	<b>1,098,558</b>	<b>1,094,087</b>	<b>1,108,264</b>	<b>1,126,778</b>	<b>1,146,948</b>	<b>1,146,875</b>
January	1,089,943	1,096,009	1,081,635	1,082,740	1,089,510	1,102,768	1,130,595	1,137,460
February	1,096,113	1,101,616	1,086,793	1,084,880	1,094,626	1,110,577	1,136,810	1,143,824
March	1,109,144	1,112,143	1,098,500	1,092,172	1,105,266	1,122,619	1,150,439	1,159,342
April	1,111,525	1,115,526	1,103,399	1,095,341	1,111,020	1,129,785	1,155,498	N/A
May	1,116,760	1,119,815	1,111,998	1,103,099	1,117,144	1,135,567	1,159,886	N/A
June	1,121,225	1,119,734	1,112,028	1,099,688	1,117,010	1,136,118	1,162,026	N/A
July	1,075,066	1,071,921	1,065,697	1,053,220	1,071,463	1,090,071	1,106,142	N/A
August	1,096,848	1,094,160	1,086,011	1,077,775	1,094,871	1,114,098	1,130,839	N/A
September	1,123,725	1,115,976	1,113,148	1,105,980	1,122,704	1,144,815	1,159,814	N/A
October	1,122,884	1,110,994	1,108,447	1,112,550	1,123,246	1,142,300	1,156,804	N/A
November	1,120,620	1,109,012	1,107,611	1,109,712	1,125,061	1,145,667	1,156,011	N/A
December	1,117,892	1,105,887	1,107,425	1,111,892	1,127,250	1,146,954	1,158,509	N/A

### AVERAGE TOTAL COVERED EMPLOYMENT GRAPH 1

In Thousands



TOTAL COVERED EARNINGS BY CALENDAR QUARTER, GRAPH 2  
In Thousands

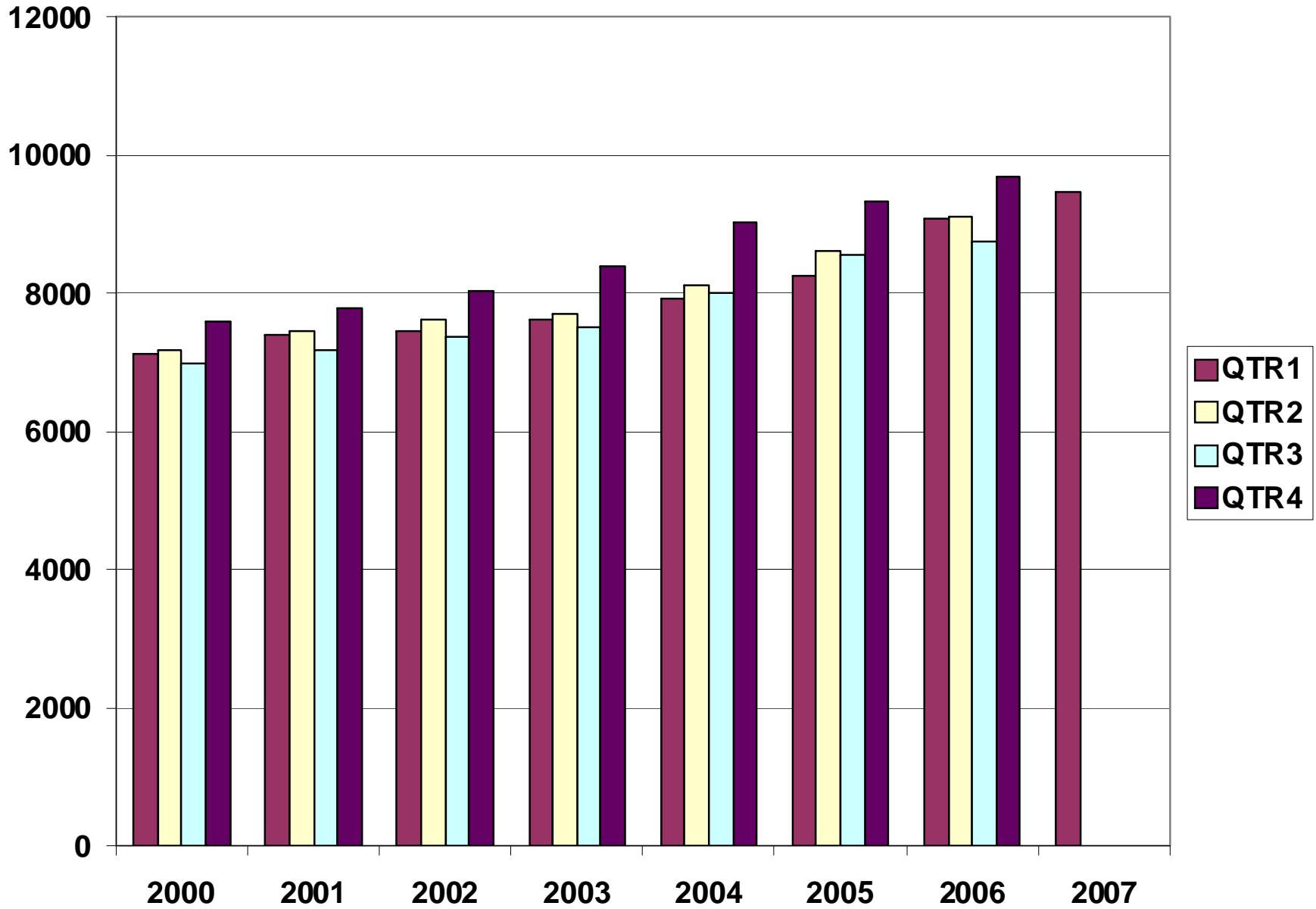


TABLE 3. TOTAL COVERED EARNINGS, 2000- 2007

<b>Period</b>	<b>2000</b>	<b>2001</b>	<b>2002</b>	<b>2003</b>
<b>Total</b>	<b>\$28,853,716,151</b>	<b>\$29,807,669,666</b>	<b>\$30,472,854,103</b>	<b>\$31,202,576,767</b>
January - March	7,122,636,896	7,398,887,532	7,465,250,305	7,608,130,008
April - June	7,166,049,182	7,448,023,298	7,621,878,775	7,714,813,038
July - September	6,986,085,106	7,177,293,061	7,361,666,511	7,500,204,764
October - December	7,578,944,967	7,783,465,775	8,024,058,512	8,379,428,957
<b>Average Weekly Earnings</b>	<b>500.58</b>	<b>518.26</b>	<b>533.44</b>	<b>548.45</b>

<b>Period</b>	<b>2004</b>	<b>2005</b>	<b>2006</b>	<b>2007</b>
<b>Total</b>	<b>\$33,068,189,304</b>	<b>\$34,753,107,631</b>	<b>\$36,636,090,775</b>	<b>\$9,457,035,252</b>
January - March	7,918,843,610	8,261,153,981	9,085,021,816	9,457,035,252
April - June	8,122,370,361	8,607,722,353	9,112,624,590	N/A
July - September	8,010,300,454	8,562,555,369	8,750,878,205	N/A
October - December	9,016,674,879	9,321,675,928	9,687,566,164	N/A
<b>Average Weekly Earnings</b>	<b>573.80</b>	<b>593.13</b>	<b>614.27</b>	<b>634.30</b>

TABLE 4. TOTAL TAXABLE EARNINGS, 2000 - 2007

<b>Period</b>	<b>2000</b>	<b>2001</b>	<b>2002</b>	<b>2003</b>
<b>Total</b>	<b>\$9,047,924,530</b>	<b>\$9,003,189,480</b>	<b>\$8,887,270,978</b>	<b>\$9,154,938,743</b>
January - March	4,560,783,991	4,670,296,360	4,668,534,587	4,737,918,796
April - June	2,260,680,255	2,219,485,263	2,162,971,435	2,270,519,362
July - September	1,250,832,297	1,190,098,737	1,158,197,858	1,188,681,170
October - December	975,627,987	923,309,120	897,567,098	957,819,415
<b>Period</b>	<b>2004</b>	<b>2005</b>	<b>2006</b>	<b>2007</b>
<b>Total</b>	<b>\$9,731,247,501</b>	<b>\$9,991,605,239</b>	<b>\$10,197,511,360</b>	<b>\$5,622,850,182</b>
January - March	4,931,559,230	5,062,670,306	5,421,204,601	5,622,850,182
April - June	2,451,454,749	2,506,505,721	2,385,110,992	N/A
July - September	1,318,017,835	1,353,660,445	1,314,939,803	N/A
October - December	1,030,215,687	1,068,768,767	1,076,255,964	N/A



**TABLE 5. STATEWIDE SUMMARY  
EMPLOYMENT AND TOTAL EARNINGS, BY INDUSTRY  
FIRST QUARTER 2007**

NORTH AMERICAN INDUSTRY CLASSIFICATION SYSTEM INDUSTRY GROUPS		NUMBER OF	EMPLOYMENT			TOTAL EARNINGS	AVERAGE
		EMPLOYING UNITS	JANUARY	FEBRUARY	MARCH	JANUARY - MARCH	WEEKLY EARNINGS
<b>TOTAL, ALL INDUSTRIES</b>		<b>81,516</b>	<b>1,137,460</b>	<b>1,143,824</b>	<b>1,159,342</b>	<b>\$9,457,035,252</b>	<b>\$634.30</b>
<b>NATURAL RESOURCES &amp; MINING</b>		<b>2,419</b>	<b>17,684</b>	<b>18,515</b>	<b>19,479</b>	<b>\$167,918,112</b>	<b>\$695.97</b>
<b>11</b>	<b>AGRICULTURE, FORESTRY, FISHING &amp; HUNTING</b>	<b>1,990</b>	<b>11,846</b>	<b>12,520</b>	<b>13,153</b>	<b>\$83,691,067</b>	<b>\$514.76</b>
<b>111</b>	<b>CROP PRODUCTION</b>	<b>710</b>	<b>2,833</b>	<b>3,070</b>	<b>3,552</b>	<b>\$15,836,439</b>	<b>\$386.52</b>
1111	Oilseed and Grain Farming	455	1,657	1,727	1,994	9,252,801	397.04
1112	Vegetable and Melon Farming	12	99	127	115	242,161	163.88
1113	Fruit and Tree Nut Farming	8	62	58	66	302,414	375.20
1114	Greenhouse & Nursery Production	54	316	371	454	2,097,854	424.29
1119	Other Crop Farming	181	699	787	923	3,941,209	377.55
<b>112</b>	<b>ANIMAL PRODUCTION</b>	<b>265</b>	<b>3,498</b>	<b>3,510</b>	<b>3,583</b>	<b>\$26,722,274</b>	<b>\$582.26</b>
1121	Cattle Ranching and Farming	77	290	277	296	1,738,759	464.95
1122	Hog and Pig Farming	9	147	146	151	1,480,158	769.31
1123	Poultry and Egg Production	87	2,500	2,509	2,499	19,752,444	607.12
1125	Animal Aquaculture	62	483	499	555	3,331,351	500.18
	Other	30	78	79	82	419,562	405.11
<b>113</b>	<b>FORESTRY AND LOGGING</b>	<b>560</b>	<b>2,782</b>	<b>2,825</b>	<b>2,865</b>	<b>\$20,859,135</b>	<b>\$568.18</b>
1131	Timber Tract Operations	54	240	263	264	2,880,258	866.59
1132	Forest Nurseries & Gathering of Forest Products	7	36	39	38	382,977	782.12
1133	Logging	499	2,506	2,523	2,563	17,595,900	534.85
	<b>OTHER</b>	<b>455</b>	<b>2,733</b>	<b>3,115</b>	<b>3,153</b>	<b>\$20,273,219</b>	<b>\$519.77</b>
<b>21</b>	<b>MINING</b>	<b>429</b>	<b>5,838</b>	<b>5,995</b>	<b>6,326</b>	<b>\$84,227,045</b>	<b>\$1,070.38</b>
<b>211</b>	<b>OIL AND GAS EXTRACTION</b>	<b>92</b>	<b>562</b>	<b>582</b>	<b>627</b>	<b>\$9,317,394</b>	<b>\$1,214.10</b>
<b>212</b>	<b>MINING (EXCEPT OIL AND GAS)</b>	<b>111</b>	<b>2,075</b>	<b>2,027</b>	<b>2,104</b>	<b>\$24,581,627</b>	<b>\$914.06</b>
<b>213</b>	<b>SUPPORT ACTIVITIES FOR MINING</b>	<b>226</b>	<b>3,201</b>	<b>3,386</b>	<b>3,595</b>	<b>\$50,328,024</b>	<b>\$1,140.66</b>

**TABLE 5. STATEWIDE SUMMARY  
EMPLOYMENT AND TOTAL EARNINGS, BY INDUSTRY  
FIRST QUARTER 2007**

NORTH AMERICAN INDUSTRY CLASSIFICATION SYSTEM INDUSTRY GROUPS		NUMBER OF	EMPLOYMENT			TOTAL EARNINGS	AVERAGE
		EMPLOYING UNITS	JANUARY	FEBRUARY	MARCH	JANUARY - MARCH	WEEKLY EARNINGS
<b>CONSTRUCTION</b>		<b>8,047</b>	<b>54,137</b>	<b>53,882</b>	<b>56,679</b>	<b>\$464,457,170</b>	<b>\$650.78</b>
<b>236</b>	<b>CONSTRUCTION OF BUILDINGS</b>	<b>2,280</b>	<b>12,748</b>	<b>12,603</b>	<b>12,934</b>	<b>\$114,373,191</b>	<b>\$689.40</b>
2361	Residential Building Construction	1,654	4,253	4,188	4,323	30,802,985	556.91
2362	Nonresidential Building Construction	626	8,495	8,415	8,611	83,570,206	755.67
<b>237</b>	<b>HEAVY &amp; CIVIL ENGINEERING CONSTRUCTION</b>	<b>889</b>	<b>9,388</b>	<b>9,126</b>	<b>9,929</b>	<b>\$91,077,873</b>	<b>\$738.95</b>
2371	Utility System Construction	429	4,551	4,566	4,776	42,872,984	712.14
2372	Land Subdivision	135	386	374	382	4,222,205	853.20
2373	Highway, Street & Bridge Construction	213	3,163	2,882	3,238	26,796,710	666.15
2379	Other Heavy Construction	112	1,288	1,304	1,533	17,185,974	961.45
<b>238</b>	<b>SPECIALTY TRADE CONTRACTORS</b>	<b>4,878</b>	<b>32,001</b>	<b>32,153</b>	<b>33,816</b>	<b>\$259,006,106</b>	<b>\$610.09</b>
2381	Building Foundation & Exterior Contractors	977	6,290	6,349	6,974	48,132,268	566.33
2382	Building Equipment Contractors	2,140	15,584	15,622	16,063	136,048,372	664.19
2383	Building Finishing Contractors	917	5,114	5,193	5,371	36,448,708	536.50
2389	Other Specialty Trade Contractors	844	5,013	4,989	5,408	38,376,758	574.70
<b>MANUFACTURING</b>		<b>3,629</b>	<b>192,967</b>	<b>191,949</b>	<b>191,774</b>	<b>\$1,750,362,142</b>	<b>\$700.43</b>
<b>311</b>	<b>FOOD MANUFACTURING</b>	<b>322</b>	<b>50,136</b>	<b>49,886</b>	<b>49,571</b>	<b>\$342,350,893</b>	<b>\$528.13</b>
3111	Animal Food Manufacturing	58	1,394	1,402	1,391	12,212,808	673.12
3112	Grain and Oilseed Milling	31	2,350	2,346	2,359	20,161,984	659.50
3114	Fruit, Vegetable & Specialty Food	35	6,889	6,847	6,817	55,032,445	617.90
3115	Dairy Product Manufacturing	13	711	708	716	6,889,775	744.71
3116	Animal Slaughtering & Processing	91	33,578	33,354	33,018	203,018,056	468.74
3118	Bakeries and Tortilla Manufacturing	54	3,261	3,272	3,296	26,360,409	618.90
3119	Other Food Manufacturing	27	1,725	1,724	1,742	17,535,809	779.57
	Other	13	228	233	232	1,139,607	379.49
<b>312</b>	<b>BEVERAGE &amp; TOBACCO PRODUCT MFG.</b>	<b>39</b>	<b>1,222</b>	<b>1,221</b>	<b>1,232</b>	<b>\$11,592,543</b>	<b>\$727.95</b>
<b>313</b>	<b>TEXTILE MILLS</b>	<b>20</b>	<b>399</b>	<b>398</b>	<b>397</b>	<b>\$4,046,533</b>	<b>\$782.09</b>
3132	Fabric Mills	6	315	314	306	3,511,446	866.67
	Other	14	84	84	91	535,087	476.76

**TABLE 5. STATEWIDE SUMMARY  
EMPLOYMENT AND TOTAL EARNINGS, BY INDUSTRY  
FIRST QUARTER 2007**

NORTH AMERICAN INDUSTRY CLASSIFICATION SYSTEM INDUSTRY GROUPS		NUMBER OF EMPLOYING UNITS	EMPLOYMENT			TOTAL EARNINGS	AVERAGE
			JANUARY	FEBRUARY	MARCH	JANUARY - MARCH	WEEKLY EARNINGS
<b>314</b>	<b>TEXTILE PRODUCT MILLS</b>	<b>60</b>	<b>1,286</b>	<b>1,288</b>	<b>1,297</b>	<b>\$12,207,999</b>	<b>\$727.78</b>
3141	Textile Furnishing Mills	14	27	29	33	127,307	\$330.10
3149	Other Textile Product Mills	46	1,259	1,259	1,264	12,080,692	\$737.14
<b>315</b>	<b>APPAREL MANUFACTURING</b>	<b>35</b>	<b>1,648</b>	<b>1,665</b>	<b>1,569</b>	<b>\$8,698,233</b>	<b>\$411.16</b>
3152	Cut & Sew Apparel Manufacturing	25	709	726	640	3,269,559	363.62
	Other	10	939	939	929	5,428,674	446.30
<b>316</b>	<b>LEATHER &amp; ALLIED PRODUCT MANUFACTURING</b>	<b>21</b>	<b>1,819</b>	<b>1,818</b>	<b>1,819</b>	<b>\$10,860,699</b>	<b>\$459.37</b>
3162	Footwear Manufacturing	11	1,603	1,597	1,598	9,399,783	452.10
3169	Other Leather Product Manufacturing	10	216	221	221	1,460,916	512.36
<b>321</b>	<b>WOOD PRODUCT MANUFACTURING</b>	<b>395</b>	<b>12,485</b>	<b>12,280</b>	<b>12,473</b>	<b>\$107,726,140</b>	<b>\$667.59</b>
3211	Sawmills and Wood Preservation	170	5,537	5,281	5,300	48,974,573	701.19
3212	Veneer & Engineered Wood Products	56	2,985	3,007	3,164	33,703,079	849.46
3219	Other Wood Product Manufacturing	169	3,963	3,992	4,009	25,048,488	483.15
<b>322</b>	<b>PAPER MANUFACTURING</b>	<b>91</b>	<b>11,351</b>	<b>11,349</b>	<b>11,285</b>	<b>\$166,599,005</b>	<b>\$1,131.26</b>
3221	Pulp, Paper & Paperboard Mills	13	4,372	4,305	4,292	88,071,337	1567.13
3222	Converted Paper Product Manufacturing	78	6,979	7,044	6,993	78,527,668	862.28
<b>323</b>	<b>PRINTING &amp; RELATED SUPPORT ACTIVITIES</b>	<b>298</b>	<b>4,546</b>	<b>4,527</b>	<b>4,582</b>	<b>\$41,456,315</b>	<b>\$700.61</b>
<b>324</b>	<b>PETROLEUM AND COAL PRODUCTS MFG.</b>	<b>22</b>	<b>923</b>	<b>909</b>	<b>920</b>	<b>\$11,047,731</b>	<b>\$926.41</b>
<b>325</b>	<b>CHEMICAL MANUFACTURING</b>	<b>116</b>	<b>4,656</b>	<b>4,652</b>	<b>4,684</b>	<b>60,637,100</b>	<b>\$1,000.08</b>
3251	Basic Chemical Manufacturing	30	1,956	1,959	1,977	29,898,797	1171.03
3252	Resin, Rubber & Artificial Fibers	8	311	307	306	4,384,430	1095.01
3253	Agricultural Chemical Manufacturing	16	343	345	343	3,804,193	851.49
3255	Paint, Coating & Adhesive Manufacturing	8	162	162	162	2,357,502	1119.42
3259	Other Chemical Preparation Manufacturing	25	955	963	981	10,314,355	821.05
	Other	29	929	916	915	9,877,823	825.90
<b>326</b>	<b>PLASTICS &amp; RUBBER PRODUCTS MFG.</b>	<b>166</b>	<b>12,485</b>	<b>12,479</b>	<b>12,552</b>	<b>\$120,979,530</b>	<b>\$744.17</b>
3261	Plastics Product Manufacturing	116	7,564	7,629	7,733	65,707,984	661.41
3262	Rubber Product Manufacturing	50	4,921	4,850	4,819	55,271,546	874.23

**TABLE 5. STATEWIDE SUMMARY  
EMPLOYMENT AND TOTAL EARNINGS, BY INDUSTRY  
FIRST QUARTER 2007**

NORTH AMERICAN INDUSTRY CLASSIFICATION SYSTEM INDUSTRY GROUPS		NUMBER OF EMPLOYING UNITS	EMPLOYMENT			TOTAL EARNINGS	AVERAGE
			JANUARY	FEBRUARY	MARCH	JANUARY - MARCH	WEEKLY EARNINGS
<b>327</b>	<b>NONMETALLIC MINERAL PRODUCT MFG.</b>	<b>254</b>	<b>4,637</b>	<b>4,465</b>	<b>4,565</b>	<b>\$42,553,088</b>	<b>\$718.51</b>
3271	Clay Product & Refractory Manufacturing	19	437	431	430	4,098,880	728.73
3272	Glass & Glass Product Manufacturing	12	401	400	399	3,187,327	612.95
3273	Cement & Concrete Product Manufacturing	179	2,780	2,617	2,725	23,772,895	675.46
3274	Lime & Gypsum Product Manufacturing	5	425	429	427	5,389,080	970.83
3279	Other Nonmetallic Mineral Products	39	594	588	584	6,104,906	797.75
<b>331</b>	<b>PRIMARY METAL MANUFACTURING</b>	<b>70</b>	<b>8,419</b>	<b>8,303</b>	<b>8,264</b>	<b>\$113,872,622</b>	<b>\$1,051.72</b>
3311	Iron & Steel Mills and Ferroalloys	11	2,142	2,142	2,089	52,284,593	1893.25
3312	Purchased Steel Product Manufacturing	16	2,557	2,483	2,439	23,909,186	737.73
3313	Alumina & Aluminum Production	19	1,735	1,694	1,728	19,815,978	886.74
3314	Other Nonferrous Metal Production	11	585	577	584	5,058,168	668.54
3315	Foundries	13	1,400	1,407	1,424	12,804,697	698.40
<b>332</b>	<b>FABRICATED METAL PRODUCT MANUFACTURING</b>	<b>580</b>	<b>17,311</b>	<b>17,240</b>	<b>17,488</b>	<b>\$169,103,143</b>	<b>\$749.90</b>
3321	Forging & Stamping	12	667	664	780	6,797,835	743.12
3322	Cutlery & Hand Tool Manufacturing	17	1,372	1,375	1,372	11,603,115	650.07
3323	Architectural & Structural Metals	203	5,180	5,178	5,306	53,024,991	781.19
3324	Boilers, Tanks & Shipping Containers	19	1,080	987	979	11,600,236	878.85
3325	Hardware Manufacturing	9	295	294	280	2,343,847	622.43
3326	Spring & Wire Product Manufacturing	14	662	667	680	4,339,006	498.41
3327	Machine Shops & Threaded Products	199	1,842	1,836	1,878	15,199,226	631.30
3328	Coating, Engraving & Heat Treating Metals	39	583	579	584	4,017,214	530.96
3329	Other Fabricated Metal Product Manufacturing	68	5,630	5,660	5,629	60,177,673	820.80
<b>333</b>	<b>MACHINERY MANUFACTURING</b>	<b>260</b>	<b>14,254</b>	<b>14,695</b>	<b>14,881</b>	<b>123,511,894</b>	<b>\$650.30</b>
3331	Agri., Construction & Mining Machinery	36	2,908	3,465	3,641	19,673,245	453.36
3333	Commercial & Service Industry Machinery	26	934	945	945	10,474,097	855.91
3334	HVAC & Commercial Refrigeration Equipment	23	4,846	4,750	4,752	41,212,139	662.84
3335	Metalworking Machinery Manufacturing	80	1,428	1,425	1,440	13,345,768	717.40
3339	Other General Purpose Machinery Manufacturing	57	3,163	3,133	3,121	28,593,652	700.70
	Other	38	975	977	982	10,212,993	803.29
<b>334</b>	<b>COMPUTER &amp; ELECTRONIC PRODUCT MFG.</b>	<b>82</b>	<b>5,657</b>	<b>5,545</b>	<b>5,201</b>	<b>47,586,487</b>	<b>\$669.48</b>
3343	Audio & Video Equipment Manufacturing	11	1,435	1,441	1,216	11,098,488	625.90
3344	Semiconductors & Electronic Components	28	2,398	2,413	2,376	19,174,557	615.68
3345	Electronic Instrument Manufacturing	29	1,156	1,113	1,069	8,998,603	622.11
	Other	14	668	578	540	8,314,839	1074.36

**TABLE 5. STATEWIDE SUMMARY  
EMPLOYMENT AND TOTAL EARNINGS, BY INDUSTRY  
FIRST QUARTER 2007**

NORTH AMERICAN INDUSTRY CLASSIFICATION SYSTEM INDUSTRY GROUPS		NUMBER OF EMPLOYING UNITS	EMPLOYMENT			TOTAL EARNINGS	AVERAGE
			JANUARY	FEBRUARY	MARCH	JANUARY - MARCH	WEEKLY EARNINGS
<b>335</b>	<b>ELECTRICAL EQUIPMENT &amp; APPLIANCES</b>	<b>72</b>	<b>11,046</b>	<b>10,651</b>	<b>10,586</b>	<b>\$110,846,897</b>	<b>\$792.37</b>
3353	Electrical Equipment Manufacturing	23	4,918	4,884	4,881	48,604,393	763.90
	Other	49	6,128	5,767	5,705	62,242,504	816.12
<b>336</b>	<b>TRANSPORTATION EQUIPMENT MANUFACTURING</b>	<b>176</b>	<b>17,042</b>	<b>16,863</b>	<b>16,833</b>	<b>\$155,504,058</b>	<b>\$707.27</b>
3362	Motor Vehicle Body & Trailer Manufacturing	44	3,814	3,702	3,638	30,209,787	625.02
3363	Motor Vehicle Parts Manufacturing	63	6,556	6,503	6,477	52,731,448	622.89
3364	Aerospace Product & Parts Manufacturing	25	3,556	3,599	3,602	45,986,918	986.55
3366	Ship & Boat Building	27	1,653	1,631	1,676	12,111,476	563.50
	Other	17	1,463	1,428	1,440	14,464,429	770.71
<b>337</b>	<b>FURNITURE &amp; RELATED PRODUCT MFG.</b>	<b>279</b>	<b>6,241</b>	<b>6,274</b>	<b>6,159</b>	<b>\$48,844,088</b>	<b>\$603.60</b>
3371	Household & Institutional Furniture	228	4,309	4,227	4,202	28,853,608	522.73
3372	Office Furniture & Fixtures Manufacturing	43	1,788	1,893	1,805	18,871,883	793.85
3379	Other Furniture Related Product Manufacturing	8	144	154	152	1,118,597	573.64
<b>339</b>	<b>MISCELLANEOUS MANUFACTURING</b>	<b>271</b>	<b>5,404</b>	<b>5,441</b>	<b>5,416</b>	<b>\$40,337,144</b>	<b>\$572.45</b>
3391	Medical Equipment & Supplies Manufacturing	99	2,473	2,480	2,483	20,496,248	636.08
3399	Other Miscellaneous Manufacturing	172	2,931	2,961	2,933	19,840,896	518.83
<b>TRADE, TRANSPORTATION &amp; UTILITIES</b>		<b>20,996</b>	<b>243,141</b>	<b>242,852</b>	<b>247,408</b>	<b>\$1,958,499,078</b>	<b>\$616.25</b>
<b>42</b>	<b>WHOLESALE TRADE</b>	<b>6,384</b>	<b>47,234</b>	<b>47,429</b>	<b>48,025</b>	<b>\$615,561,530</b>	<b>\$995.55</b>
<b>423</b>	<b>MERCHANT WHOLESALERS, DURABLE GOODS</b>	<b>2,114</b>	<b>21,865</b>	<b>21,839</b>	<b>22,094</b>	<b>\$249,416,593</b>	<b>\$874.76</b>
4231	Motor Vehicle & Part Merchant Wholesalers	239	2,679	2,684	2,710	25,953,346	741.88
4232	Furniture & Furnishing Merchant Wholesalers	73	417	428	446	5,122,904	915.73
4233	Lumber & Supply Merchant Wholesalers	185	1,839	1,868	1,902	18,989,977	781.30
4234	Commercial Goods Merchant Wholesalers	242	2,591	2,596	2,626	41,812,097	1234.99
4235	Metal & Mineral Merchant Wholesalers	50	846	832	828	10,057,932	926.20
4236	Electric Goods Merchant Wholesalers	172	2,143	2,115	2,155	28,809,657	1036.70
4237	Hardware & Plumbing Merchant Wholesalers	223	2,437	2,412	2,422	28,663,105	909.72
4238	Machinery & Supply Merchant Wholesalers	693	7,127	7,108	7,210	71,788,735	772.52
4239	Misc. Durable Goods Merchant Wholesalers	237	1,786	1,796	1,795	18,218,840	781.91

**TABLE 5. STATEWIDE SUMMARY  
EMPLOYMENT AND TOTAL EARNINGS, BY INDUSTRY  
FIRST QUARTER 2007**

NORTH AMERICAN INDUSTRY CLASSIFICATION SYSTEM INDUSTRY GROUPS		NUMBER OF	EMPLOYMENT			TOTAL EARNINGS	AVERAGE
		EMPLOYING UNITS	JANUARY	FEBRUARY	MARCH	JANUARY - MARCH	WEEKLY EARNINGS
<b>424</b>	<b>MERCHANT WHOLESALERS, NONDURABLE GOODS</b>	<b>1,282</b>	<b>16,227</b>	<b>16,316</b>	<b>16,655</b>	<b>\$172,916,006</b>	<b>\$811.08</b>
4241	Paper & Paper Product Merchant Wholesalers	76	1,170	1,207	1,185	13,216,277	856.24
4242	Druggists' Goods Merchant Wholesalers	56	1,185	1,191	1,189	14,805,912	958.41
4243	Apparel & Piece Goods Merchant Wholesalers	40	451	451	480	3,843,605	641.81
4244	Grocery Product Merchant Wholesalers	339	5,143	5,148	5,155	62,778,431	937.93
4245	Farm Product Merchant Wholesalers	75	848	881	902	4,820,012	422.77
4246	Chemical Merchant Wholesalers	81	500	521	522	6,140,301	918.34
4247	Petroleum Merchant Wholesalers	153	1,561	1,537	1,566	18,978,672	939.04
4248	Alcoholic Beverage Merchant Wholesalers	38	1,127	1,130	1,133	12,457,079	848.00
4249	Misc. Nondurable Goods Merchant Wholesalers	424	4,242	4,250	4,523	35,875,717	636.11
<b>425</b>	<b>ELECTRONIC MARKETS &amp; AGENTS &amp; BROKERS</b>	<b>2,988</b>	<b>9,142</b>	<b>9,274</b>	<b>9,276</b>	<b>\$193,228,931</b>	<b>\$1,610.26</b>
<b>44-45</b>	<b>RETAIL TRADE</b>	<b>11,266</b>	<b>132,411</b>	<b>131,588</b>	<b>134,843</b>	<b>\$700,419,895</b>	<b>\$405.26</b>
<b>441</b>	<b>MOTOR VEHICLE &amp; PARTS DEALERS</b>	<b>1,749</b>	<b>17,757</b>	<b>17,811</b>	<b>17,996</b>	<b>\$149,238,621</b>	<b>\$642.96</b>
4411	Automobile Dealers	752	10,648	10,713	10,802	102,751,682	737.24
4412	Other Motor Vehicle Dealers	195	1,508	1,499	1,546	11,630,829	589.51
4413	Automotive Parts, Accessories & Tire Stores	802	5,601	5,599	5,648	34,856,110	477.43
<b>442</b>	<b>FURNITURE &amp; HOME FURNISHINGS STORES</b>	<b>601</b>	<b>4,141</b>	<b>4,103</b>	<b>4,087</b>	<b>\$26,096,387</b>	<b>\$488.38</b>
4421	Furniture Stores	318	2,492	2,520	2,487	16,405,362	504.85
4422	Home Furnishings Stores	283	1,649	1,583	1,600	9,691,025	462.83
<b>443</b>	<b>ELECTRONICS &amp; APPLIANCE STORES</b>	<b>443</b>	<b>3,141</b>	<b>3,031</b>	<b>3,076</b>	<b>\$19,119,174</b>	<b>\$477.09</b>
<b>444</b>	<b>BUILDING MATERIAL &amp; GARDEN SUPPLY STORES</b>	<b>862</b>	<b>10,798</b>	<b>10,876</b>	<b>11,382</b>	<b>\$71,083,219</b>	<b>\$496.24</b>
4441	Building Material & Supplies Dealers	677	10,009	10,104	10,478	66,680,420	503.02
4442	Lawn & Garden Equipment & Supplies Stores	185	789	772	904	4,402,799	412.18
<b>445</b>	<b>FOOD &amp; BEVERAGE STORES</b>	<b>1,097</b>	<b>18,323</b>	<b>18,327</b>	<b>18,452</b>	<b>\$75,379,114</b>	<b>\$315.69</b>
4451	Grocery Stores	617	15,937	15,954	16,041	63,922,944	307.76
4452	Specialty Food Stores	165	889	884	911	5,432,789	467.11
4453	Beer, Wine & Liquor Stores	315	1,497	1,489	1,500	6,023,381	309.86
<b>446</b>	<b>HEALTH &amp; PERSONAL CARE STORES</b>	<b>812</b>	<b>7,009</b>	<b>7,012</b>	<b>7,021</b>	<b>\$48,113,465</b>	<b>\$527.66</b>
<b>447</b>	<b>GASOLINE STATIONS</b>	<b>1,595</b>	<b>12,109</b>	<b>12,152</b>	<b>12,419</b>	<b>\$42,955,032</b>	<b>\$270.25</b>
44711	Gasoline Stations with Convenience Stores	1,432	10,863	10,911	11,164	37,485,230	262.63
44719	Other Gasoline Stations	163	1,246	1,241	1,255	5,469,802	337.32

**TABLE 5. STATEWIDE SUMMARY  
EMPLOYMENT AND TOTAL EARNINGS, BY INDUSTRY  
FIRST QUARTER 2007**

NORTH AMERICAN INDUSTRY CLASSIFICATION SYSTEM INDUSTRY GROUPS		NUMBER OF EMPLOYING UNITS	EMPLOYMENT			TOTAL EARNINGS	AVERAGE
			JANUARY	FEBRUARY	MARCH	JANUARY - MARCH	WEEKLY EARNINGS
<b>448</b>	<b>CLOTHING &amp; CLOTHING ACCESSORIES STORES</b>	<b>1,101</b>	<b>9,448</b>	<b>9,099</b>	<b>9,196</b>	<b>\$31,570,545</b>	<b>\$262.61</b>
4481	Clothing Stores	748	7,248	6,936	7,037	21,487,461	233.67
4482	Shoe Stores	185	1,203	1,210	1,212	4,290,805	273.15
4483	Jewelry, Luggage & Leather Goods Stores	168	997	953	947	5,792,279	461.40
<b>451</b>	<b>SPORTING GOODS, HOBBY, BOOK &amp; MUSIC STORES</b>	<b>582</b>	<b>4,746</b>	<b>4,475</b>	<b>4,439</b>	<b>\$16,615,475</b>	<b>\$280.70</b>
4511	Sporting Goods & Musical Instrument Stores	432	3,157	3,050	3,075	12,138,960	301.80
4512	Book, Periodical & Music Stores	150	1,589	1,425	1,364	4,476,515	235.96
<b>452</b>	<b>GENERAL MERCHANDISE STORES</b>	<b>717</b>	<b>36,438</b>	<b>36,237</b>	<b>38,394</b>	<b>\$176,075,856</b>	<b>\$365.83</b>
<b>453</b>	<b>MISCELLANEOUS STORE RETAILERS</b>	<b>1,393</b>	<b>6,593</b>	<b>6,567</b>	<b>6,512</b>	<b>\$30,238,975</b>	<b>\$354.73</b>
4531	Florists	258	1,010	1,104	1,006	3,863,828	285.79
4532	Office Supplies, Stationery & Gift Stores	373	2,353	2,281	2,288	11,113,987	370.52
4533	Used Merchandise Stores	218	836	796	786	3,514,797	335.45
4539	Other Miscellaneous Store Retailers	544	2,394	2,386	2,432	11,746,363	375.86
<b>454</b>	<b>NONSTORE RETAILERS</b>	<b>314</b>	<b>1,908</b>	<b>1,898</b>	<b>1,869</b>	<b>\$13,934,032</b>	<b>\$566.62</b>
4541	Electronic Shopping & Mail -Order Houses	73	414	434	405	3,364,324	619.62
4542	Vending Machine Operators	77	643	646	651	3,994,497	475.16
4543	Direct Selling Establishments	164	851	818	813	6,575,211	611.34
<b>48-49</b>	<b>TRANSPORTATION &amp; WAREHOUSING</b>	<b>2,988</b>	<b>56,592</b>	<b>56,929</b>	<b>57,550</b>	<b>\$512,565,633</b>	<b>\$691.43</b>
<b>481</b>	<b>AIR TRANSPORTATION</b>	<b>47</b>	<b>943</b>	<b>920</b>	<b>911</b>	<b>\$12,417,588</b>	<b>\$1,033.02</b>
<b>484</b>	<b>TRUCK TRANSPORTATION</b>	<b>2,019</b>	<b>36,093</b>	<b>36,482</b>	<b>36,941</b>	<b>\$331,976,740</b>	<b>\$699.53</b>
4841	General Freight Trucking	1,270	31,073	31,379	31,703	290,717,147	712.53
4842	Specialized Freight Trucking	749	5,020	5,103	5,238	41,259,593	619.85
<b>485</b>	<b>TRANSIT &amp; GROUND PASSENGER TRANS.</b>	<b>62</b>	<b>1,135</b>	<b>1,108</b>	<b>1,130</b>	<b>\$4,630,645</b>	<b>\$316.81</b>
4853	Taxi & Limousine Service	20	281	282	290	928,155	251.10
4854	School & Employee Bus Transportation	8	451	441	440	2,124,982	368.15
4855	Charter Bus Industry Service	8	83	83	90	368,461	332.15
4859	Other Ground Passenger Transportation	20	224	206	208	812,943	294.05
	Other	6	96	96	102	396,104	310.91
<b>486</b>	<b>PIPELINE TRANSPORTATION</b>	<b>66</b>	<b>898</b>	<b>892</b>	<b>896</b>	<b>\$13,922,970</b>	<b>\$1,196.20</b>

**TABLE 5. STATEWIDE SUMMARY  
EMPLOYMENT AND TOTAL EARNINGS, BY INDUSTRY  
FIRST QUARTER 2007**

NORTH AMERICAN INDUSTRY CLASSIFICATION SYSTEM INDUSTRY GROUPS		NUMBER OF EMPLOYING UNITS	EMPLOYMENT			TOTAL EARNINGS	AVERAGE
			JANUARY	FEBRUARY	MARCH	JANUARY - MARCH	WEEKLY EARNINGS
<b>488</b>	<b>SUPPORT ACTIVITIES FOR TRANSPORTATION</b>	<b>420</b>	<b>4,914</b>	<b>4,882</b>	<b>4,940</b>	<b>\$50,935,470</b>	<b>\$797.66</b>
4881	Support Activities for Air Transportation	107	1,653	1,656	1,672	14,365,019	665.53
4882	Support Activities for Rail Transportation	30	398	389	389	3,233,021	634.42
4883	Support Activities for Water Transportation	26	660	623	626	6,724,914	812.94
4884	Support Activities for Road Transportation	105	513	508	530	3,028,287	450.57
4885	Freight Transportation Arrangement	128	1,513	1,531	1,553	22,367,293	1122.84
4889	Other Support Activities for Transportation	24	177	175	170	1,216,936	537.99
<b>492</b>	<b>COURIERS &amp; MESSENGERS</b>	<b>142</b>	<b>3,205</b>	<b>3,224</b>	<b>3,246</b>	<b>\$28,535,083</b>	<b>\$680.62</b>
4921	Couriers	86	2,926	2,947	2,972	26,956,812	703.31
4922	Local Messengers & Local Delivery	56	279	277	274	1,578,271	438.81
<b>493</b>	<b>WAREHOUSING &amp; STORAGE</b>	<b>210</b>	<b>9,243</b>	<b>9,251</b>	<b>9,296</b>	<b>\$68,661,586</b>	<b>\$570.17</b>
	<b>OTHER</b>	<b>22</b>	<b>161</b>	<b>170</b>	<b>190</b>	<b>\$1,485,551</b>	<b>\$658.00</b>
<b>22</b>	<b>UTILITIES</b>	<b>358</b>	<b>6,904</b>	<b>6,906</b>	<b>6,990</b>	<b>\$129,952,020</b>	<b>\$1,441.78</b>
2211	Power Generation & Supply	157	5,045	5,022	5,046	104,818,896	1600.54
2212	Natural Gas Distribution	34	1,052	1,077	1,107	19,051,213	1358.60
2213	Water, Sewage and Other Systems	167	807	807	837	6,081,911	572.63
<b>INFORMATION</b>		<b>1,195</b>	<b>19,566</b>	<b>19,622</b>	<b>19,601</b>	<b>\$236,230,742</b>	<b>\$927.30</b>
<b>511</b>	<b>PUBLISHING INDUSTRIES, EXCEPT INTERNET</b>	<b>244</b>	<b>6,237</b>	<b>6,230</b>	<b>6,211</b>	<b>\$48,855,733</b>	<b>\$603.62</b>
5111	Newspaper, Book & Directory Publishers	216	5,975	5,966	5,943	45,538,862	587.62
5112	Software Publishers	28	262	264	268	3,316,871	964.02
<b>512</b>	<b>MOTION PICTURE &amp; SOUND RECORDING INDUSTRY</b>	<b>134</b>	<b>1,153</b>	<b>1,160</b>	<b>1,184</b>	<b>\$4,978,054</b>	<b>\$328.50</b>
5121	Motion Picture & Video Industries	118	1,120	1,130	1,150	4,670,265	316.99
5122	Sound Recording Industries	16	33	30	34	307,789	732.25
<b>515</b>	<b>BROADCASTING, EXCEPT INTERNET</b>	<b>145</b>	<b>2,220</b>	<b>2,250</b>	<b>2,226</b>	<b>\$19,200,828</b>	<b>\$661.73</b>
5151	Radio & Television Broadcasting	137	2,180	2,206	2,182	18,964,733	666.33
5152	Cable & Other Subscription Programming	8	40	44	44	236,095	425.65
<b>517</b>	<b>TELECOMMUNICATIONS</b>	<b>539</b>	<b>8,668</b>	<b>8,697</b>	<b>8,708</b>	<b>\$146,615,953</b>	<b>\$1,297.68</b>
5171	Wired Telecommunications Carriers	316	4,528	4,534	4,544	82,795,410	1404.28
5172	Wireless Telecommunications Carriers	127	3,578	3,592	3,601	57,725,337	1236.77
	Other	96	562	571	563	6,095,206	829.35



**TABLE 5. STATEWIDE SUMMARY  
EMPLOYMENT AND TOTAL EARNINGS, BY INDUSTRY  
FIRST QUARTER 2007**

NORTH AMERICAN INDUSTRY CLASSIFICATION SYSTEM INDUSTRY GROUPS		NUMBER OF EMPLOYING UNITS	EMPLOYMENT			TOTAL EARNINGS	AVERAGE
			JANUARY	FEBRUARY	MARCH	JANUARY - MARCH	WEEKLY EARNINGS
518	DATA PROCESSING, HOSTING & RELATED SERVICES	87	994	988	975	\$14,162,529	\$1,105.27
	OTHER	46	294	297	297	\$2,417,645	\$628.29
<b>FINANCIAL ACTIVITIES</b>		<b>8,191</b>	<b>51,051</b>	<b>51,094</b>	<b>51,310</b>	<b>\$589,707,696</b>	<b>\$886.82</b>
52	FINANCE & INSURANCE	4,800	36,955	37,012	37,131	\$490,999,508	\$1,019.89
522	CREDIT INTERMEDIATION & RELATED ACTIVITIES	2,044	22,003	22,056	22,056	\$231,368,261	\$807.57
5221	Depository Credit Intermediation	1,340	18,258	18,199	18,222	184,608,274	779.13
5222	Nondepository Credit Intermediation	397	2,576	2,670	2,669	37,076,829	1081.01
5223	Activities Related to Credit Intermediation	307	1,169	1,187	1,165	9,683,158	634.64
523	FINANCIAL INVESTMENT & RELATED ACTIVITIES	591	3,050	3,060	3,042	\$104,636,199	\$2,638.42
524	INSURANCE CARRIERS & RELATED ACTIVITIES	2,134	11,474	11,466	11,584	\$149,716,787	\$1,000.75
5241	Insurance Carriers	418	4,786	4,810	4,858	71,980,575	1149.23
5242	Insurance Agencies, Brokerages & Support	1,716	6,688	6,656	6,726	77,736,212	893.83
	OTHER	31	428	430	449	\$5,278,261	\$931.95
53	REAL ESTATE & RENTAL & LEASING	3,391	14,096	14,082	14,179	\$98,708,188	\$537.78
531	REAL ESTATE	2,575	8,832	8,757	8,793	\$61,591,746	\$538.76
5311	Lessors of Real Estate	1,042	4,261	4,223	4,284	26,871,737	485.68
5312	Offices of Real Estate Agents & Brokers	922	2,117	2,093	2,094	15,844,340	580.01
5313	Activities Related to Real Estate	611	2,454	2,441	2,415	18,875,669	595.89
532	RENTAL & LEASING SERVICES	793	5,191	5,250	5,311	\$35,981,896	\$527.14
5321	Automotive Equipment Rental & Leasing	125	989	999	995	7,302,104	564.90
5322	Consumer Goods Rental	482	3,085	3,146	3,215	16,383,156	400.25
5323	General Rental Centers	36	246	244	249	1,979,077	618.01
5324	Machinery & Equipment Rental & Leasing	150	871	861	852	10,317,559	921.43
533	LESSORS OF NONFINANCIAL INTANGIBLE ASSETS	23	73	75	75	\$1,134,546	\$1,174.07

**TABLE 5. STATEWIDE SUMMARY  
EMPLOYMENT AND TOTAL EARNINGS, BY INDUSTRY  
FIRST QUARTER 2007**

NORTH AMERICAN INDUSTRY CLASSIFICATION SYSTEM INDUSTRY GROUPS		NUMBER OF	EMPLOYMENT			TOTAL EARNINGS	AVERAGE
		EMPLOYING UNITS	JANUARY	FEBRUARY	MARCH	JANUARY - MARCH	WEEKLY EARNINGS
<b>PROFESSIONAL &amp; BUSINESS SERVICES</b>		<b>11,109</b>	<b>113,806</b>	<b>115,021</b>	<b>116,551</b>	<b>\$1,232,007,739</b>	<b>\$823.18</b>
<b>54</b>	<b>PROFESSIONAL &amp; TECHNICAL SERVICES</b>	<b>7,010</b>	<b>39,067</b>	<b>38,906</b>	<b>38,720</b>	<b>\$436,685,175</b>	<b>\$863.58</b>
5411	Legal Services	1,669	6,597	6,562	6,603	66,265,426	773.81
5412	Accounting & Bookkeeping Services	1,246	6,578	6,741	6,318	49,249,547	578.77
5413	Architectural & Engineering Services	948	6,653	6,666	6,782	76,369,670	876.76
5414	Specialized Design Services	161	455	476	472	3,923,012	645.27
5415	Computer Systems Design & Related Services	865	8,058	7,853	7,796	137,951,826	1342.85
5416	Management & Technical Consulting Services	1,116	3,749	3,773	3,844	47,848,963	971.50
5417	Scientific Research & Development Services	99	1,014	1,017	1,041	12,681,679	952.65
5418	Advertising & Related Services	316	2,089	2,022	2,015	21,668,815	816.27
5419	Other Professional & Technical Services	590	3,874	3,796	3,849	20,726,237	415.23
<b>55</b>	<b>MANAGEMENT OF COMPANIES &amp; ENTERPRISES</b>	<b>509</b>	<b>24,346</b>	<b>24,583</b>	<b>24,823</b>	<b>\$533,980,423</b>	<b>\$1,670.82</b>
<b>56</b>	<b>ADMINISTRATIVE &amp; WASTE SERVICES</b>	<b>3,590</b>	<b>50,393</b>	<b>51,532</b>	<b>53,008</b>	<b>\$261,342,141</b>	<b>\$389.26</b>
<b>561</b>	<b>ADMINISTRATIVE &amp; SUPPORT SERVICES</b>	<b>3,384</b>	<b>48,089</b>	<b>49,210</b>	<b>50,689</b>	<b>\$238,764,523</b>	<b>\$372.32</b>
5611	Office Administrative Services	351	1,158	1,130	1,129	14,174,006	957.25
5612	Facilities Support Services	15	129	126	133	1,147,195	682.31
5613	Employment Services	669	23,398	24,041	24,892	100,826,329	321.68
5614	Business Support Services	380	5,772	6,158	6,240	31,428,495	399.16
5615	Travel Arrangement & Reservation Services	95	396	385	393	2,937,390	577.39
5616	Investigation & Security Services	253	4,549	4,501	4,488	26,082,952	444.61
5617	Services to Buildings & Dwellings	1,343	11,199	11,357	11,836	50,014,870	335.60
5619	Other Support Services	278	1,488	1,512	1,578	12,153,286	612.63
<b>562</b>	<b>WASTE MANAGEMENT &amp; REMEDIATION SERVICES</b>	<b>206</b>	<b>2,304</b>	<b>2,322</b>	<b>2,319</b>	<b>\$22,577,618</b>	<b>\$750.21</b>
5621	Waste Collection Services	101	1,120	1,150	1,159	10,854,612	730.51
5622	Waste Treatment & Disposal Services	38	664	658	657	7,643,085	891.25
5629	Remediation & Other Waste Services	67	520	514	503	4,079,921	612.57

**TABLE 5. STATEWIDE SUMMARY  
EMPLOYMENT AND TOTAL EARNINGS, BY INDUSTRY  
FIRST QUARTER 2007**

NORTH AMERICAN INDUSTRY CLASSIFICATION SYSTEM INDUSTRY GROUPS		NUMBER OF	EMPLOYMENT			TOTAL EARNINGS	AVERAGE
		EMPLOYING UNITS	JANUARY	FEBRUARY	MARCH	JANUARY - MARCH	WEEKLY EARNINGS
<b>EDUCATION &amp; HEALTH SERVICES</b>		<b>11,178</b>	<b>146,704</b>	<b>147,683</b>	<b>148,839</b>	<b>\$1,168,272,863</b>	<b>\$608.27</b>
<b>61</b>	<b>EDUCATIONAL SERVICES</b>	<b>574</b>	<b>9,020</b>	<b>9,501</b>	<b>9,542</b>	<b>\$63,213,346</b>	<b>\$519.82</b>
6111	Elementary & Secondary Schools	78	3,212	3,299	3,314	16,656,490	391.23
6112	Junior Colleges	8	260	268	274	2,025,483	582.82
6113	Colleges & Universities	29	2,975	3,354	3,307	24,331,349	582.70
6114	Business, Computer, & Management Training	45	185	176	185	4,103,029	1734.16
6115	Technical & Trade Schools	103	725	714	730	7,726,152	822.02
6116	Other Schools & Instruction	221	1,418	1,433	1,464	4,943,861	264.40
6117	Educational Support Services	90	245	257	268	3,426,982	1027.07
<b>62</b>	<b>HEALTH CARE &amp; SOCIAL ASSISTANCE</b>	<b>10,604</b>	<b>137,684</b>	<b>138,182</b>	<b>139,297</b>	<b>\$1,105,059,517</b>	<b>\$614.25</b>
<b>621</b>	<b>AMBULATORY HEALTH CARE SERVICES</b>	<b>4,868</b>	<b>42,858</b>	<b>43,074</b>	<b>43,317</b>	<b>\$481,667,584</b>	<b>\$860.00</b>
6211	Offices of Physicians	2,193	20,581	20,678	20,730	297,163,299	1106.26
6212	Offices of Dentists	917	5,988	5,999	6,055	54,888,697	702.06
6213	Offices of Other Health Practitioners	1,144	5,928	5,949	5,936	44,523,750	576.81
6214	Outpatient Care Centers	222	3,553	3,566	3,623	32,874,106	706.23
6215	Medical & Diagnostic Laboratories	100	828	827	836	9,632,294	892.35
6216	Home Health Care Services	150	3,836	3,922	3,974	26,014,635	511.71
6219	Other Ambulatory Health Care Services	142	2,144	2,133	2,163	16,570,803	593.79
<b>622</b>	<b>HOSPITALS</b>	<b>107</b>	<b>41,317</b>	<b>41,333</b>	<b>41,516</b>	<b>\$376,674,825</b>	<b>\$700.07</b>
6221	General Medical & Surgical Hospitals	76	37,976	37,961	38,098	348,334,051	704.91
6222	Psychiatric & Substance Abuse Hospitals	10	1,565	1,560	1,580	12,374,961	606.96
6223	Other Hospitals	21	1,776	1,812	1,838	15,965,813	679.03
<b>623</b>	<b>NURSING &amp; RESIDENTIAL CARE FACILITIES</b>	<b>509</b>	<b>27,055</b>	<b>27,028</b>	<b>27,284</b>	<b>\$135,186,080</b>	<b>\$383.41</b>
6231	Nursing Care Facilities	244	20,288	20,261	20,421	100,900,453	381.90
6232	Residential Mental Health Facilities	126	3,100	3,125	3,137	16,652,840	410.49
6233	Community Care Facilities for the Elderly	93	2,188	2,175	2,215	9,813,881	344.29
6239	Other Residential Care Facilities	46	1,479	1,467	1,511	7,818,906	404.84
<b>624</b>	<b>SOCIAL ASSISTANCE</b>	<b>5,120</b>	<b>26,454</b>	<b>26,747</b>	<b>27,180</b>	<b>\$111,531,028</b>	<b>\$320.20</b>
6241	Individual & Family Services	3,970	13,622	13,723	13,824	59,879,993	335.65
6242	Emergency & Other Relief Services	123	916	915	911	4,624,073	389.17
6243	Vocational Rehabilitation Services	128	3,445	3,500	3,563	16,912,106	371.41
6244	Child Day Care Services	899	8,471	8,609	8,882	30,114,856	267.68

**TABLE 5. STATEWIDE SUMMARY  
EMPLOYMENT AND TOTAL EARNINGS, BY INDUSTRY  
FIRST QUARTER 2007**

NORTH AMERICAN INDUSTRY CLASSIFICATION SYSTEM INDUSTRY GROUPS		NUMBER OF	EMPLOYMENT			TOTAL EARNINGS	AVERAGE
		EMPLOYING UNITS	JANUARY	FEBRUARY	MARCH	JANUARY - MARCH	WEEKLY EARNINGS
<b>LEISURE &amp; HOSPITALITY</b>		<b>6,105</b>	<b>94,075</b>	<b>94,872</b>	<b>97,784</b>	<b>\$285,049,081</b>	<b>\$229.42</b>
<b>71</b>	<b>ARTS, ENTERTAINMENT &amp; RECREATION</b>	<b>910</b>	<b>8,654</b>	<b>8,789</b>	<b>9,168</b>	<b>\$35,091,444</b>	<b>\$304.31</b>
<b>711</b>	<b>PERFORMING ARTS &amp; SPECTATOR SPORTS</b>	<b>208</b>	<b>2,547</b>	<b>2,581</b>	<b>2,561</b>	<b>\$11,387,902</b>	<b>\$341.78</b>
7111	Performing Arts Companies	36	295	295	339	1,420,822	352.94
7112	Spectator Sports	59	1,558	1,562	1,493	6,631,718	331.76
7113	Performing Arts & Sports Promoters	45	544	574	571	2,319,348	316.89
7114	Agents & Managers for Public Figures	12	15	16	12	114,984	617.09
7115	Independent Artists, Writers & Performers	56	135	134	146	901,030	501.04
<b>712</b>	<b>MUSEUMS, PARKS &amp; HISTORICAL SITES</b>	<b>45</b>	<b>183</b>	<b>174</b>	<b>202</b>	<b>\$898,720</b>	<b>\$371.01</b>
<b>713</b>	<b>GAMBLING, RECREATION &amp; AMUSEMENT INDUSTRY</b>	<b>657</b>	<b>5,924</b>	<b>6,034</b>	<b>6,405</b>	<b>\$22,804,822</b>	<b>\$286.59</b>
<b>72</b>	<b>ACCOMMODATION &amp; FOOD SERVICES</b>	<b>5,195</b>	<b>85,421</b>	<b>86,083</b>	<b>88,616</b>	<b>\$249,957,637</b>	<b>\$221.75</b>
<b>721</b>	<b>ACCOMMODATION</b>	<b>821</b>	<b>9,941</b>	<b>10,239</b>	<b>10,806</b>	<b>\$37,056,617</b>	<b>\$275.98</b>
7211	Traveler Accommodation	745	9,655	9,960	10,503	35,632,176	273.02
7212	RV Parks & Recreational Camps	57	211	203	231	1,088,290	389.37
7213	Rooming & Boarding Houses	19	75	76	72	336,151	347.86
<b>722</b>	<b>FOOD SERVICES &amp; DRINKING PLACES</b>	<b>4,374</b>	<b>75,480</b>	<b>75,844</b>	<b>77,810</b>	<b>\$212,901,020</b>	<b>\$214.42</b>
7221	Full -Service Restaurants	1,944	33,538	34,014	34,643	101,216,143	228.56
7222	Limited-Service Eating Places	2,137	38,829	38,659	39,824	101,393,646	199.46
7223	Special Food Services	149	2,243	2,300	2,434	7,766,348	256.88
7224	Drinking Places, Alcoholic Beverages	144	870	871	909	2,524,883	219.87
<b>OTHER SERVICES</b>		<b>5,457</b>	<b>25,076</b>	<b>25,161</b>	<b>25,743</b>	<b>\$151,521,132</b>	<b>\$460.21</b>
<b>811</b>	<b>REPAIR &amp; MAINTENANCE</b>	<b>2,205</b>	<b>9,337</b>	<b>9,385</b>	<b>9,693</b>	<b>\$66,574,059</b>	<b>\$540.67</b>
8111	Automotive Repair & Maintenance	1,518	6,683	6,756	6,862	44,156,624	501.95
8112	Electronic Equipment Repair & Maintenance	163	678	675	701	5,942,818	667.68
8113	Commercial Machinery Repair & Maintenance	341	1,464	1,451	1,601	13,531,335	691.46
8114	Household Goods Repair & Maintenance	183	512	503	529	2,943,282	439.91

**TABLE 5. STATEWIDE SUMMARY  
EMPLOYMENT AND TOTAL EARNINGS, BY INDUSTRY  
FIRST QUARTER 2007**

NORTH AMERICAN INDUSTRY CLASSIFICATION SYSTEM INDUSTRY GROUPS		NUMBER OF EMPLOYING UNITS	EMPLOYMENT			TOTAL EARNINGS	AVERAGE
			JANUARY	FEBRUARY	MARCH	JANUARY - MARCH	WEEKLY EARNINGS
<b>812</b>	<b>PERSONAL &amp; LAUNDRY SERVICES</b>	<b>1,318</b>	<b>8,216</b>	<b>8,276</b>	<b>8,482</b>	<b>\$39,698,475</b>	<b>\$366.83</b>
8121	Personal Care Services	570	2,618	2,694	2,791	10,243,784	291.74
8122	Death Care Services	244	1,626	1,649	1,686	9,957,417	463.19
8123	Drycleaning & Laundry Services	332	3,226	3,205	3,260	15,409,602	366.94
8129	Other Personal Services	172	746	728	745	4,087,672	425.11
<b>813</b>	<b>MEMBERSHIP ASSOCIATIONS &amp; ORGANIZATIONS</b>	<b>1,003</b>	<b>6,179</b>	<b>6,169</b>	<b>6,233</b>	<b>\$39,747,338</b>	<b>\$493.65</b>
8131	Religious Organizations	42	189	190	195	1,191,483	479.02
8132	Grantmaking & Giving Services	96	468	484	461	4,329,032	707.01
8133	Social Advocacy Organizations	142	1,984	1,971	1,984	12,625,459	490.58
8134	Civic & Social Organizations	214	1,420	1,419	1,416	5,024,406	272.50
8139	Professional & Similar Organizations	509	2,118	2,105	2,177	16,576,958	597.73
<b>814</b>	<b>PRIVATE HOUSEHOLDS</b>	<b>931</b>	<b>1,344</b>	<b>1,331</b>	<b>1,335</b>	<b>\$5,501,260</b>	<b>\$316.59</b>
	<b>LOCAL GOVERNMENT</b>	<b>1,991</b>	<b>117,379</b>	<b>118,575</b>	<b>119,209</b>	<b>\$853,119,249</b>	<b>\$554.32</b>
	<b>STATE GOVERNMENT</b>	<b>1,199</b>	<b>61,874</b>	<b>64,598</b>	<b>64,965</b>	<b>\$599,890,248</b>	<b>\$723.14</b>
	<b>NONCLASSIFIABLE ESTABLISHMENTS</b>	<b>0</b>	<b>0</b>	<b>0</b>	<b>0</b>	<b>\$0</b>	

**TABLE 6. COUNTY SUMMARY  
EMPLOYMENT AND TOTAL EARNINGS, BY INDUSTRY  
FIRST QUARTER 2007**

NORTH AMERICAN INDUSTRY CLASSIFICATION SYSTEM INDUSTRY GROUP	NUMBER OF EMPLOYING UNITS	EMPLOYMENT			TOTAL EARNINGS	AVERAGE WEEKLY EARNINGS
		JANUARY	FEBRUARY	MARCH	JANUARY - MARCH	
<b>ARKANSAS COUNTY - TOTAL</b>	<b>695</b>	<b>9,696</b>	<b>9,751</b>	<b>9,847</b>	<b>\$70,500,385</b>	<b>\$555.38</b>
Natural Resources & Mining	43	196	201	207	1,482,398	566.38
Construction	52	309	308	323	2,569,738	630.87
Manufacturing	34	3,460	3,498	3,555	29,213,862	641.27
Trade, Transportation & Utilities	204	1,951	1,948	1,978	15,016,080	589.63
Wholesale Trade	44	401	406	439	4,580,435	848.33
Retail Trade	100	1,078	1,069	1,059	5,451,518	392.40
Transportation, Warehousing & Utilities	60	472	473	480	4,984,127	807.15
Information	10	102	100	100	925,893	707.51
Financial Activities	44	318	320	317	2,545,101	615.01
Professional & Business Services	54	396	380	377	3,439,947	688.49
Education & Health Services	97	1,216	1,215	1,208	6,471,832	410.41
Leisure & Hospitality	60	525	528	535	1,294,621	188.14
Other Services	49	135	133	136	728,759	416.28
Local Government	32	882	899	897	5,441,531	468.91
State Government	16	206	221	214	1,370,623	493.44
<b>ASHLEY COUNTY - TOTAL</b>	<b>543</b>	<b>7,712</b>	<b>7,666</b>	<b>7,865</b>	<b>\$74,740,705</b>	<b>\$742.07</b>
Natural Resources & Mining	56	374	382	383	2,793,229	565.93
Construction	49	484	466	507	3,323,114	526.34
Manufacturing	29	2,598	2,539	2,682	42,597,412	1257.22
Trade, Transportation & Utilities	132	1,181	1,176	1,173	7,316,143	478.28
Wholesale Trade	26	175	173	157	1,527,427	697.99
Retail Trade	81	773	772	784	3,567,759	353.51
Transportation, Warehousing & Utilities	25	233	231	232	2,220,957	736.39
Information	9	53	52	52	318,345	467.93
Financial Activities	32	228	231	219	1,714,848	583.68
Professional & Business Services	51	381	386	378	2,315,823	466.74
Education & Health Services	67	584	575	582	4,832,372	640.53
Leisure & Hospitality	29	395	394	408	926,671	178.65
Other Services	45	181	196	192	1,105,071	448.18
Local Government	32	1,043	1,050	1,057	6,325,985	463.44
State Government	12	210	219	232	1,171,692	409.06

**TABLE 6. COUNTY SUMMARY  
EMPLOYMENT AND TOTAL EARNINGS, BY INDUSTRY  
FIRST QUARTER 2007**

NORTH AMERICAN INDUSTRY CLASSIFICATION SYSTEM INDUSTRY GROUP	NUMBER OF EMPLOYING UNITS	EMPLOYMENT			TOTAL EARNINGS	AVERAGE WEEKLY EARNINGS
		JANUARY	FEBRUARY	MARCH	JANUARY - MARCH	
<b>BAXTER COUNTY - TOTAL</b>	<b>1,292</b>	<b>14,757</b>	<b>14,753</b>	<b>14,970</b>	<b>\$101,400,012</b>	<b>\$526.08</b>
Natural Resources & Mining	5	101	97	106	669,514	508.23
Construction	146	718	718	742	4,423,123	468.65
Manufacturing	63	2,507	2,486	2,477	21,194,921	654.77
Trade, Transportation & Utilities	283	2,692	2,683	2,772	16,247,748	460.23
Wholesale Trade	34	229	229	238	1,714,958	568.62
Retail Trade	217	2,242	2,239	2,306	12,757,819	433.79
Transportation, Warehousing & Utilities	32	221	215	228	1,774,971	616.88
Information	23	260	259	253	2,265,492	677.21
Financial Activities	119	722	732	733	6,049,560	638.34
Professional & Business Services	140	819	829	837	5,558,144	516.16
Education & Health Services	233	3,404	3,438	3,466	28,659,561	641.61
Leisure & Hospitality	128	1,558	1,522	1,561	4,367,872	217.19
Other Services	103	404	394	412	1,688,692	322.06
Local Government	36	1,259	1,273	1,289	8,117,982	490.29
State Government	13	313	322	322	2,157,403	520.23
<b>BENTON COUNTY - TOTAL</b>	<b>5,417</b>	<b>94,163</b>	<b>94,537</b>	<b>95,882</b>	<b>\$1,033,023,240</b>	<b>\$837.68</b>
Natural Resources & Mining	29	637	641	638	6,725,676	810.06
Construction	802	5,076	4,891	5,002	41,668,128	642.38
Manufacturing	250	13,857	13,779	13,672	116,651,008	651.68
Trade, Transportation & Utilities	1,437	23,928	23,929	24,366	231,359,635	739.25
Wholesale Trade	649	3,568	3,624	3,621	73,116,057	1560.43
Retail Trade	617	8,730	8,637	8,970	50,953,269	446.46
Transportation, Warehousing & Utilities	171	11,630	11,668	11,775	107,290,309	705.94
Information	67	897	889	879	7,760,367	671.99
Financial Activities	601	3,798	3,918	3,956	50,300,118	994.49
Professional & Business Services	930	22,478	22,625	23,044	419,025,164	1418.96
Education & Health Services	477	6,556	6,627	6,738	56,190,839	650.93
Leisure & Hospitality	408	7,280	7,251	7,460	23,945,636	251.28
Other Services	322	1,736	1,732	1,804	11,220,780	491.16
Local Government	75	7,220	7,326	7,381	61,474,790	646.99
State Government	19	700	929	942	6,701,099	601.48

**TABLE 6. COUNTY SUMMARY  
EMPLOYMENT AND TOTAL EARNINGS, BY INDUSTRY  
FIRST QUARTER 2007**

NORTH AMERICAN INDUSTRY CLASSIFICATION SYSTEM INDUSTRY GROUP	NUMBER OF EMPLOYING UNITS	EMPLOYMENT			TOTAL EARNINGS	AVERAGE WEEKLY EARNINGS
		JANUARY	FEBRUARY	MARCH	JANUARY - MARCH	
<b>BOONE COUNTY - TOTAL</b>	<b>1,055</b>	<b>13,903</b>	<b>13,992</b>	<b>14,168</b>	<b>\$103,215,797</b>	<b>\$566.27</b>
Construction	92	470	451	469	3,461,366	574.66
Manufacturing	73	1,952	1,974	1,968	16,268,760	636.97
Trade, Transportation & Utilities	257	4,496	4,500	4,591	36,567,949	621.09
Wholesale Trade	56	662	647	666	4,663,402	544.90
Retail Trade	149	1,946	1,957	2,011	10,597,347	413.52
Transportation, Warehousing & Utilities	52	1,888	1,896	1,914	21,307,200	862.94
Information	20	436	442	429	3,885,031	685.96
Financial Activities	97	643	635	638	5,563,801	670.12
Professional & Business Services	111	570	572	593	3,258,187	433.37
Education & Health Services	171	1,137	1,130	1,141	8,242,567	558.14
Leisure & Hospitality	85	1,121	1,112	1,124	3,097,094	212.90
Local Government	60	2,258	2,267	2,284	15,980,623	541.61
State Government	21	558	646	657	5,259,201	652.16
Other	68	262	263	274	1,631,218	471.13
<b>BRADLEY COUNTY - TOTAL</b>	<b>389</b>	<b>4,315</b>	<b>4,449</b>	<b>4,398</b>	<b>\$26,643,117</b>	<b>\$467.13</b>
Natural Resources & Mining	49	524	661	577	2,867,267	375.53
Construction	24	239	193	242	1,216,620	416.56
Manufacturing	9	1,067	1,058	1,045	8,243,026	600.07
Trade, Transportation & Utilities	87	493	499	499	2,520,117	390.05
Wholesale Trade	16	80	79	80	569,874	550.25
Retail Trade	48	346	352	352	1,492,689	328.06
Transportation, Warehousing & Utilities	23	67	68	67	457,554	522.72
Information	3	12	12	12	114,031	730.97
Financial Activities	24	164	172	173	1,094,471	496.21
Professional & Business Services	27	83	86	82	355,041	326.42
Education & Health Services	89	610	605	606	3,735,736	473.42
Leisure & Hospitality	18	170	171	173	432,733	194.28
Other Services	33	119	115	118	649,231	425.63
Local & State Government	26	834	877	871	5,414,844	483.96



**TABLE 6. COUNTY SUMMARY  
EMPLOYMENT AND TOTAL EARNINGS, BY INDUSTRY  
FIRST QUARTER 2007**

NORTH AMERICAN INDUSTRY CLASSIFICATION SYSTEM INDUSTRY GROUP	NUMBER OF EMPLOYING UNITS	EMPLOYMENT			TOTAL EARNINGS	AVERAGE WEEKLY EARNINGS
		JANUARY	FEBRUARY	MARCH	JANUARY - MARCH	
<b>CALHOUN COUNTY - TOTAL</b>	<b>115</b>	<b>3,014</b>	<b>3,048</b>	<b>3,066</b>	<b>\$28,937,081</b>	<b>\$731.57</b>
Natural Resources & Mining	20	209	212	214	1,561,014	567.30
Construction	12	67	70	70	441,587	492.29
Manufacturing	10	2,022	2,033	2,039	21,932,046	830.53
Trade, Transportation & Utilities	27	197	205	211	1,258,522	473.78
Wholesale Trade & Retail Trade	18	65	65	68	221,908	258.63
Transportation, Warehousing & Utilities	9	132	140	143	1,036,614	576.43
Financial Activities	6	79	77	75	621,557	620.94
Education & Health Services	5	45	45	46	353,129	599.20
Local Government	11	201	208	213	1,187,725	440.66
State Government	9	83	83	83	578,994	536.60
Other	15	111	115	115	1,002,507	678.44
<b>CARROLL COUNTY - TOTAL</b>	<b>838</b>	<b>9,133</b>	<b>9,218</b>	<b>9,616</b>	<b>\$54,628,704</b>	<b>\$450.77</b>
Natural Resources & Mining	17	270	270	270	1,716,469	489.02
Trade, Transportation & Utilities	210	1,562	1,583	1,703	9,590,983	456.54
Wholesale Trade	27	146	149	148	893,441	465.41
Retail Trade	161	1,158	1,175	1,289	6,010,701	382.96
Transportation, Warehousing & Utilities	22	258	259	266	2,686,841	791.88
Professional & Business Services	78	216	227	229	1,474,048	506.20
Education & Health Services	81	802	804	827	5,721,340	542.67
Leisure & Hospitality	171	1,088	1,130	1,345	3,269,011	211.73
Local Government	25	1,088	1,107	1,115	6,767,308	471.81
State Government	11	109	108	108	747,796	530.98
Other	245	3,998	3,989	4,019	25,341,749	487.10

**TABLE 6. COUNTY SUMMARY  
EMPLOYMENT AND TOTAL EARNINGS, BY INDUSTRY  
FIRST QUARTER 2007**

NORTH AMERICAN INDUSTRY CLASSIFICATION SYSTEM INDUSTRY GROUP	NUMBER OF EMPLOYING UNITS	EMPLOYMENT			TOTAL EARNINGS	AVERAGE
		JANUARY	FEBRUARY	MARCH	JANUARY - MARCH	WEEKLY EARNINGS
<b>CHICOT COUNTY - TOTAL</b>	<b>360</b>	<b>3,409</b>	<b>3,453</b>	<b>3,493</b>	<b>\$19,908,302</b>	<b>\$443.67</b>
Natural Resources & Mining	48	233	236	257	1,382,343	439.40
Construction	16	100	96	105	702,943	538.93
Manufacturing	9	522	532	513	2,220,204	326.97
Trade, Transportation & Utilities	76	534	529	546	2,861,834	410.46
Wholesale Trade	15	102	99	107	732,885	549.11
Retail Trade	50	373	372	380	1,552,146	318.39
Transportation, Warehousing & Utilities	11	59	58	59	576,803	756.30
Information	6	14	10	10	83,751	568.45
Financial Activities	29	164	159	160	1,445,753	690.76
Professional & Business Services	28	87	89	87	710,591	623.51
Education & Health Services	81	512	547	549	3,164,259	454.11
Leisure & Hospitality	20	183	180	183	401,088	169.52
Other Services	19	35	45	46	183,392	335.88
Local Government	17	700	704	710	4,457,996	486.65
State Government	11	325	326	327	2,294,148	541.33
<b>CLARK COUNTY - TOTAL</b>	<b>616</b>	<b>9,466</b>	<b>9,802</b>	<b>9,875</b>	<b>\$68,428,779</b>	<b>\$541.85</b>
Natural Resources & Mining	45	254	262	254	1,891,703	566.94
Construction	28	93	93	96	501,181	410.13
Manufacturing	36	2,332	2,486	2,453	22,222,533	705.31
Trade, Transportation & Utilities	148	1,465	1,423	1,469	9,039,151	478.76
Wholesale Trade	18	61	57	58	549,823	720.92
Retail Trade	107	1,119	1,073	1,116	5,963,763	416.04
Transportation, Warehousing & Utilities	23	285	293	295	2,525,565	667.61
Information	9	27	26	27	230,767	665.67
Financial Activities	86	390	382	401	3,226,911	634.84
Professional & Business Services	46	374	415	412	3,982,981	765.32
Education & Health Services	76	1,395	1,440	1,448	9,082,657	489.38
Leisure & Hospitality	56	961	965	994	2,567,382	202.90
Other Services	45	215	213	213	1,180,067	424.84
Local Government	26	912	929	939	5,960,564	494.79
State Government	15	1,048	1,168	1,169	8,542,882	582.40

**TABLE 6. COUNTY SUMMARY  
EMPLOYMENT AND TOTAL EARNINGS, BY INDUSTRY  
FIRST QUARTER 2007**

NORTH AMERICAN INDUSTRY CLASSIFICATION SYSTEM INDUSTRY GROUP	NUMBER OF EMPLOYING UNITS	EMPLOYMENT			TOTAL EARNINGS	AVERAGE
		JANUARY	FEBRUARY	MARCH	JANUARY - MARCH	WEEKLY EARNINGS
<b>CLAY COUNTY - TOTAL</b>	<b>401</b>	<b>3,953</b>	<b>3,981</b>	<b>3,998</b>	<b>\$23,382,595</b>	<b>\$452.23</b>
Natural Resources & Mining	58	155	145	185	714,676	340.05
Construction	34	120	146	180	737,052	381.37
Manufacturing	18	812	799	752	5,915,440	577.70
Trade, Transportation & Utilities	95	884	854	850	5,070,860	452.16
Wholesale Trade	22	318	279	280	1,938,147	509.99
Retail Trade	51	428	432	423	1,875,002	337.25
Transportation, Warehousing & Utilities	22	138	143	147	1,257,711	678.13
Information	5	74	74	73	395,152	412.62
Financial Activities	34	152	149	151	956,243	488.21
Professional & Business Services	26	47	47	46	293,355	483.55
Education & Health Services	51	488	489	495	2,681,109	420.32
Leisure & Hospitality	21	185	195	194	421,211	169.34
Other Services	25	71	71	75	435,025	462.63
Local Government	22	889	937	923	5,270,232	442.42
State Government	12	76	75	74	492,240	504.86
<b>CLEBURNE COUNTY - TOTAL</b>	<b>684</b>	<b>6,584</b>	<b>6,675</b>	<b>6,860</b>	<b>\$41,671,072</b>	<b>\$477.98</b>
Natural Resources & Mining	18	90	126	129	861,980	576.58
Construction	72	347	347	380	2,180,239	468.47
Manufacturing	41	1,538	1,526	1,531	12,046,108	604.98
Trade, Transportation & Utilities	184	1,515	1,539	1,609	9,734,677	481.76
Wholesale Trade	42	192	196	190	1,572,190	627.70
Retail Trade	110	1,004	1,004	1,037	5,091,889	385.90
Transportation, Warehousing & Utilities	32	319	339	382	3,070,598	681.35
Information	6	58	57	60	399,601	526.95
Financial Activities	74	246	255	259	1,833,335	556.68
Professional & Business Services	57	221	226	225	1,377,331	472.98
Education & Health Services	78	792	768	778	4,559,292	450.02
Leisure & Hospitality	69	696	737	795	2,107,748	218.31
Other Services	56	152	150	159	707,058	353.94
Local Government	19	813	818	814	5,037,067	475.42
State Government	10	116	126	121	826,636	525.52

**TABLE 6. COUNTY SUMMARY  
EMPLOYMENT AND TOTAL EARNINGS, BY INDUSTRY  
FIRST QUARTER 2007**

NORTH AMERICAN INDUSTRY CLASSIFICATION SYSTEM INDUSTRY GROUP	NUMBER OF EMPLOYING UNITS	EMPLOYMENT			TOTAL EARNINGS	AVERAGE
		JANUARY	FEBRUARY	MARCH	JANUARY - MARCH	WEEKLY EARNINGS
<b>CLEVELAND COUNTY - TOTAL</b>	<b>113</b>	<b>1,063</b>	<b>1,071</b>	<b>1,089</b>	<b>\$6,506,027</b>	<b>\$465.84</b>
Natural Resources & Mining	18	144	137	142	927,517	506.01
Construction	7	30	31	32	140,903	349.64
Manufacturing	4	91	90	93	533,662	449.46
Trade, Transportation & Utilities	30	176	176	183	815,306	351.68
Retail Trade	15	81	79	86	217,176	203.73
Other Trade, Transportation, & Utilities	15	95	97	97	598,130	479.27
Local Government	11	335	343	337	1,989,517	452.33
State Government	8	63	60	63	363,703	451.24
Other	35	224	234	239	1,735,419	574.58
<b>COLUMBIA COUNTY - TOTAL</b>	<b>711</b>	<b>9,331</b>	<b>9,419</b>	<b>9,534</b>	<b>\$73,440,745</b>	<b>\$599.20</b>
Natural Resources & Mining	50	537	533	531	7,391,634	1065.44
Construction	46	313	319	339	2,383,509	566.47
Manufacturing	42	2,742	2,736	2,734	28,060,399	788.54
Trade, Transportation & Utilities	177	1,524	1,543	1,623	8,741,787	430.14
Wholesale Trade	30	255	266	300	1,863,429	523.78
Retail Trade	111	1,012	1,021	1,064	4,582,556	341.46
Transportation, Warehousing & Utilities	36	257	256	259	2,295,802	686.27
Information	9	72	75	74	480,812	502.07
Financial Activities	73	530	532	526	5,360,875	779.05
Professional & Business Services	59	323	312	303	1,740,571	428.22
Education & Health Services	118	864	868	886	4,410,192	388.75
Leisure & Hospitality	47	616	613	627	1,657,535	206.09
Other Services	49	203	204	208	865,353	324.71
Local Government	27	1,110	1,120	1,123	7,777,278	535.27
State Government	14	497	564	560	4,570,800	650.71

**TABLE 6. COUNTY SUMMARY  
EMPLOYMENT AND TOTAL EARNINGS, BY INDUSTRY  
FIRST QUARTER 2007**

NORTH AMERICAN INDUSTRY CLASSIFICATION SYSTEM INDUSTRY GROUP	NUMBER OF EMPLOYING UNITS	EMPLOYMENT			TOTAL EARNINGS	AVERAGE
		JANUARY	FEBRUARY	MARCH	JANUARY - MARCH	WEEKLY EARNINGS
<b>CONWAY COUNTY - TOTAL</b>	<b>554</b>	<b>6,590</b>	<b>6,776</b>	<b>6,880</b>	<b>\$46,435,021</b>	<b>\$529.28</b>
Natural Resources & Mining	23	158	164	170	1,536,406	720.64
Construction	57	505	494	528	4,500,896	680.20
Manufacturing	30	1,126	1,137	1,146	11,722,363	793.53
Trade, Transportation & Utilities	134	1,389	1,469	1,479	9,196,781	489.36
Wholesale Trade	25	224	223	223	1,774,920	611.34
Retail Trade	79	878	925	929	4,691,146	396.26
Transportation, Warehousing & Utilities	30	287	321	327	2,730,715	673.97
Information	5	12	12	12	122,897	787.80
Financial Activities	34	192	195	199	1,388,311	546.72
Professional & Business Services	44	619	617	640	2,288,478	281.51
Education & Health Services	125	859	869	875	5,813,371	515.38
Leisure & Hospitality	37	409	435	450	1,034,006	184.40
Other Services	28	87	82	85	607,569	552.00
Local Government	26	907	915	905	5,834,881	493.77
State Government	11	327	387	391	2,389,062	498.93
<b>CRAIGHEAD COUNTY - TOTAL</b>	<b>2,660</b>	<b>40,900</b>	<b>40,838</b>	<b>41,351</b>	<b>\$306,926,715</b>	<b>\$575.43</b>
Natural Resources & Mining	64	211	211	253	1,228,832	420.11
Construction	240	1,532	1,500	1,586	11,226,568	561.01
Manufacturing	137	6,754	6,698	6,563	60,382,851	696.20
Trade, Transportation & Utilities	735	8,468	8,424	8,587	54,921,234	497.43
Wholesale Trade	180	1,562	1,554	1,575	16,038,397	788.99
Retail Trade	443	5,816	5,772	5,867	28,694,245	379.36
Transportation, Warehousing & Utilities	112	1,090	1,098	1,145	10,188,592	705.43
Information	34	623	614	610	5,483,312	685.10
Financial Activities	261	1,516	1,523	1,530	18,827,974	950.96
Professional & Business Services	350	3,422	3,330	3,402	21,416,415	486.73
Education & Health Services	403	7,331	7,361	7,441	66,566,196	694.05
Leisure & Hospitality	199	3,996	4,003	4,108	11,178,601	213.07
Other Services	174	979	970	993	4,845,771	380.10
Local Government	38	3,653	3,736	3,769	26,914,100	556.64
State Government	25	2,415	2,468	2,509	23,934,861	747.22

**TABLE 6. COUNTY SUMMARY  
EMPLOYMENT AND TOTAL EARNINGS, BY INDUSTRY  
FIRST QUARTER 2007**

NORTH AMERICAN INDUSTRY CLASSIFICATION SYSTEM INDUSTRY GROUP	NUMBER OF EMPLOYING UNITS	EMPLOYMENT			TOTAL EARNINGS	AVERAGE
		JANUARY	FEBRUARY	MARCH	JANUARY - MARCH	WEEKLY EARNINGS
<b>CRAWFORD COUNTY - TOTAL</b>	<b>1,244</b>	<b>19,592</b>	<b>19,678</b>	<b>19,860</b>	<b>\$137,541,750</b>	<b>\$536.79</b>
Natural Resources & Mining	24	437	476	525	4,209,095	675.47
Construction	185	1,366	1,394	1,455	11,827,638	647.56
Manufacturing	75	3,745	3,752	3,717	25,865,775	532.28
Trade, Transportation & Utilities	318	6,872	6,862	6,878	51,183,579	573.04
Wholesale Trade	83	674	678	672	6,117,579	697.50
Other Trade, Transportation & Utilities	235	6,198	6,184	6,206	45,066,000	559.49
Financial Activities	136	527	530	543	3,830,303	552.45
Professional & Business Services	153	934	974	992	6,777,775	539.35
Education & Health Services	131	1,352	1,333	1,341	9,250,423	530.23
Leisure & Hospitality	85	1,478	1,494	1,533	4,068,283	208.40
Local Government	41	2,158	2,134	2,134	15,329,049	550.49
State Government	11	168	171	172	1,383,153	624.64
Other	85	555	558	570	3,816,677	523.33
<b>CRITTENDEN COUNTY - TOTAL</b>	<b>1,218</b>	<b>16,800</b>	<b>16,847</b>	<b>17,204</b>	<b>\$121,786,623</b>	<b>\$552.69</b>
Natural Resources & Mining	43	215	236	291	1,375,263	427.72
Construction	75	479	478	507	3,901,236	614.95
Manufacturing	47	1,863	1,852	1,924	19,389,172	793.48
Trade, Transportation & Utilities	331	4,883	4,875	4,952	36,887,330	578.69
Wholesale Trade	75	779	797	792	7,875,349	767.48
Retail Trade	168	2,045	2,016	2,092	10,052,533	377.02
Transportation, Warehousing & Utilities	88	2,059	2,062	2,068	18,959,448	706.94
Information	10	90	89	89	842,120	725.13
Financial Activities	107	574	579	585	5,305,591	704.47
Professional & Business Services	130	987	1,018	1,046	6,117,537	462.71
Education & Health Services	213	1,970	1,966	1,988	15,242,264	593.76
Leisure & Hospitality	100	2,159	2,160	2,178	6,884,680	244.54
Other Services	101	581	578	595	3,382,514	445.03
Local Government	46	2,509	2,517	2,542	19,231,011	586.41
State Government	15	490	499	507	3,227,905	497.93

**TABLE 6. COUNTY SUMMARY  
EMPLOYMENT AND TOTAL EARNINGS, BY INDUSTRY  
FIRST QUARTER 2007**

NORTH AMERICAN INDUSTRY CLASSIFICATION SYSTEM INDUSTRY GROUP	NUMBER OF EMPLOYING UNITS	EMPLOYMENT			TOTAL EARNINGS	AVERAGE
		JANUARY	FEBRUARY	MARCH	JANUARY - MARCH	WEEKLY EARNINGS
<b>CROSS COUNTY - TOTAL</b>	<b>528</b>	<b>4,710</b>	<b>4,764</b>	<b>4,825</b>	<b>\$29,572,834</b>	<b>\$477.27</b>
Natural Resources & Mining	44	142	171	181	739,106	345.27
Construction	36	140	133	150	801,855	437.45
Manufacturing	16	638	629	604	4,347,317	536.20
Trade, Transportation & Utilities	131	1,099	1,094	1,112	7,207,181	503.24
Wholesale Trade	30	257	264	274	2,101,951	610.15
Retail Trade	68	633	629	636	3,218,309	391.30
Transportation, Warehousing & Utilities	33	209	201	202	1,886,921	711.51
Information	6	65	65	66	455,076	535.80
Financial Activities	48	340	348	347	2,662,169	593.57
Professional & Business Services	43	176	181	180	1,180,822	507.44
Education & Health Services	103	654	665	669	4,020,306	466.68
Leisure & Hospitality	32	385	383	398	816,254	161.55
Other Services	41	77	75	79	340,031	339.69
Local Government	17	776	800	820	5,365,138	516.74
State Government	11	218	220	219	1,637,579	575.19
<b>DALLAS COUNTY - TOTAL</b>	<b>274</b>	<b>3,265</b>	<b>3,210</b>	<b>3,219</b>	<b>\$21,629,726</b>	<b>\$514.90</b>
Natural Resources & Mining	41	162	173	193	1,267,089	553.80
Construction	13	72	74	74	489,280	513.23
Manufacturing	17	892	890	887	8,431,429	729.01
Trade, Transportation & Utilities	73	444	435	440	2,335,059	408.54
Wholesale Trade	8	28	32	30	226,634	581.11
Retail Trade	46	361	349	357	1,734,892	375.22
Transportation, Warehousing & Utilities	19	55	54	53	373,533	532.10
Information	3	24	24	24	147,068	471.37
Financial Activities	19	97	99	101	710,238	551.86
Professional & Business Services	16	55	56	52	976,014	1381.80
Education & Health Services	37	800	748	724	3,831,377	389.16
Leisure & Hospitality	16	112	110	112	257,098	177.64
Other Services	14	61	60	62	262,810	331.41
Local Government	16	478	474	483	2,439,987	392.39
State Government	9	68	67	67	482,277	550.96

**TABLE 6. COUNTY SUMMARY  
EMPLOYMENT AND TOTAL EARNINGS, BY INDUSTRY  
FIRST QUARTER 2007**

NORTH AMERICAN INDUSTRY CLASSIFICATION SYSTEM INDUSTRY GROUP	NUMBER OF EMPLOYING UNITS	EMPLOYMENT			TOTAL EARNINGS	AVERAGE
		JANUARY	FEBRUARY	MARCH	JANUARY - MARCH	WEEKLY EARNINGS
<b>DESHA COUNTY - TOTAL</b>	<b>472</b>	<b>4,588</b>	<b>4,553</b>	<b>4,604</b>	<b>\$32,211,362</b>	<b>\$540.81</b>
Natural Resources & Mining	52	206	199	221	1,324,401	488.23
Construction	27	103	102	122	796,651	562.21
Manufacturing	16	1,186	1,179	1,137	11,754,782	774.60
Trade, Transportation & Utilities	130	875	860	890	5,396,125	474.38
Wholesale Trade	21	177	173	183	1,727,854	748.10
Retail Trade	78	534	525	541	2,436,757	351.46
Transportation, Warehousing & Utilities	31	164	162	166	1,231,514	577.63
Information	5	23	24	22	209,309	700.03
Financial Activities	43	216	209	210	1,341,001	487.34
Professional & Business Services	37	115	111	106	619,366	430.51
Education & Health Services	72	567	576	576	3,266,405	438.50
Leisure & Hospitality	33	278	284	283	618,394	168.88
Other Services	27	63	50	48	196,009	280.95
Local Government	19	789	788	816	5,464,376	526.96
State Government	11	167	171	173	1,224,543	553.01
<b>DREW COUNTY - TOTAL</b>	<b>512</b>	<b>6,614</b>	<b>6,707</b>	<b>6,811</b>	<b>\$39,266,225</b>	<b>\$450.10</b>
Natural Resources & Mining	38	281	282	289	1,887,611	511.27
Construction	25	90	87	97	547,157	460.83
Manufacturing	23	736	735	745	4,759,031	495.59
Trade, Transportation & Utilities	130	1,191	1,186	1,209	7,368,264	474.17
Wholesale Trade	22	233	232	225	1,844,630	616.93
Retail Trade	85	863	861	886	4,568,220	403.91
Transportation, Warehousing & Utilities	23	95	93	98	955,414	770.91
Information	9	78	76	77	695,466	694.77
Financial Activities	43	258	260	260	2,324,801	689.58
Professional & Business Services	45	314	332	325	2,119,334	503.68
Education & Health Services	86	795	802	816	4,142,367	396.16
Leisure & Hospitality	45	671	663	684	1,389,231	158.87
Other Services	28	93	94	92	423,738	350.49
Local Government	23	1,320	1,347	1,347	7,609,654	437.49
State Government	17	787	843	870	5,999,571	553.81



**TABLE 6. COUNTY SUMMARY  
EMPLOYMENT AND TOTAL EARNINGS, BY INDUSTRY  
FIRST QUARTER 2007**

NORTH AMERICAN INDUSTRY CLASSIFICATION SYSTEM INDUSTRY GROUP	NUMBER OF EMPLOYING UNITS	EMPLOYMENT			TOTAL EARNINGS	AVERAGE
		JANUARY	FEBRUARY	MARCH	JANUARY - MARCH	WEEKLY EARNINGS
<b>FAULKNER COUNTY - TOTAL</b>	<b>2,555</b>	<b>38,629</b>	<b>38,770</b>	<b>39,239</b>	<b>\$308,163,785</b>	<b>\$609.70</b>
Natural Resources & Mining	23	504	500	564	8,038,305	1183.03
Construction	364	2,856	2,836	2,896	21,573,571	579.71
Manufacturing	125	5,195	5,188	5,178	50,754,365	752.69
Trade, Transportation & Utilities	626	6,599	6,645	6,736	42,687,459	493.04
Wholesale Trade	160	776	797	789	8,795,990	859.38
Retail Trade	385	5,062	5,056	5,143	25,714,799	388.85
Transportation, Warehousing & Utilities	81	761	792	804	8,176,670	800.56
Information	41	379	378	381	3,518,129	713.42
Financial Activities	308	1,428	1,425	1,428	11,931,203	643.16
Professional & Business Services	346	5,359	5,369	5,377	64,613,774	925.85
Education & Health Services	328	5,395	5,462	5,522	38,313,327	539.81
Leisure & Hospitality	191	3,764	3,756	3,896	9,981,108	201.76
Other Services	143	581	591	608	3,056,049	396.20
Local Government	41	3,332	3,329	3,353	26,956,032	621.19
State Government	19	3,237	3,291	3,300	26,740,463	627.89
<b>FRANKLIN COUNTY - TOTAL</b>	<b>333</b>	<b>4,160</b>	<b>4,145</b>	<b>4,227</b>	<b>\$29,103,526</b>	<b>\$535.92</b>
Natural Resources & Mining	10	92	91	92	1,178,509	988.96
Construction	35	232	244	265	1,961,395	610.84
Manufacturing	23	918	891	911	7,479,038	634.53
Trade, Transportation & Utilities	89	865	854	863	6,185,675	552.85
Wholesale Trade	14	52	49	47	247,459	385.85
Retail Trade	52	470	461	467	2,093,845	345.63
Transportation, Warehousing & Utilities	23	343	344	349	3,844,371	856.33
Information	7	45	45	44	259,760	447.35
Financial Activities	29	222	222	223	1,550,948	536.60
Professional & Business Services	23	54	65	59	369,534	479.08
Education & Health Services	43	477	469	479	2,664,890	431.56
Leisure & Hospitality	25	288	286	309	674,526	176.29
Other Services	20	56	55	58	274,507	374.84
Local Government	19	779	782	784	5,437,035	535.05
State Government	10	132	141	140	1,067,709	596.60

**TABLE 6. COUNTY SUMMARY  
EMPLOYMENT AND TOTAL EARNINGS, BY INDUSTRY  
FIRST QUARTER 2007**

NORTH AMERICAN INDUSTRY CLASSIFICATION SYSTEM INDUSTRY GROUP	NUMBER OF EMPLOYING UNITS	EMPLOYMENT			TOTAL EARNINGS	AVERAGE
		JANUARY	FEBRUARY	MARCH	JANUARY - MARCH	WEEKLY EARNINGS
<b>FULTON COUNTY - TOTAL</b>	<b>238</b>	<b>1,833</b>	<b>1,841</b>	<b>1,880</b>	<b>\$9,676,745</b>	<b>\$402.07</b>
Construction	17	23	23	28	152,802	476.51
Manufacturing	14	108	114	134	503,427	326.34
Trade, Transportation & Utilities	68	385	375	370	2,336,555	477.17
Retail Trade	43	208	201	191	711,582	273.69
Other Trade, Transportation & Utilities	25	177	174	179	1,624,973	707.54
Financial Activities	15	88	87	98	659,792	557.73
Professional & Business Services	17	44	47	56	318,363	499.78
Education & Health Services	53	380	378	373	1,640,942	334.82
Leisure & Hospitality	16	121	123	130	291,520	179.88
Local Government	13	510	517	511	2,837,306	425.72
State Government	11	102	106	107	658,502	482.42
Other	14	72	71	73	277,536	296.51
<b>GARLAND COUNTY - TOTAL</b>	<b>3,290</b>	<b>36,647</b>	<b>36,455</b>	<b>37,190</b>	<b>\$252,664,649</b>	<b>\$528.66</b>
Natural Resources & Mining	49	358	359	374	4,550,647	962.56
Construction	459	2,375	2,380	2,490	16,327,363	520.06
Manufacturing	132	3,298	2,909	2,911	27,761,576	702.62
Trade, Transportation & Utilities	720	7,234	7,234	7,411	45,479,487	479.70
Wholesale Trade	154	1,046	1,035	1,077	10,017,899	732.05
Retail Trade	495	5,540	5,547	5,662	29,253,445	403.06
Transportation, Warehousing & Utilities	71	648	652	672	6,208,143	726.50
Information	41	403	410	410	3,505,370	661.43
Financial Activities	379	1,505	1,482	1,518	12,968,542	664.32
Professional & Business Services	421	2,964	2,971	2,982	21,432,765	554.67
Education & Health Services	440	7,008	7,086	7,100	60,484,675	658.58
Leisure & Hospitality	370	6,421	6,503	6,731	21,858,324	256.64
Other Services	218	926	930	955	4,842,443	397.54
Local Government	34	3,106	3,113	3,185	24,459,152	600.21
State Government	27	1,049	1,078	1,123	8,994,305	638.65

**TABLE 6. COUNTY SUMMARY  
EMPLOYMENT AND TOTAL EARNINGS, BY INDUSTRY  
FIRST QUARTER 2007**

NORTH AMERICAN INDUSTRY CLASSIFICATION SYSTEM INDUSTRY GROUP	NUMBER OF EMPLOYING UNITS	EMPLOYMENT			TOTAL EARNINGS	AVERAGE WEEKLY EARNINGS
		JANUARY	FEBRUARY	MARCH	JANUARY - MARCH	
<b>GRANT COUNTY - TOTAL</b>	<b>304</b>	<b>3,769</b>	<b>3,815</b>	<b>3,877</b>	<b>\$24,445,070</b>	<b>\$492.21</b>
Natural Resources & Mining	26	174	180	183	1,758,614	755.74
Construction	33	211	217	226	1,849,170	652.49
Manufacturing	19	923	933	934	6,571,335	543.53
Trade, Transportation & Utilities	84	590	605	600	3,107,773	399.54
Wholesale Trade	16	118	121	121	893,721	572.90
Retail Trade	39	423	426	423	1,797,750	326.15
Transportation, Warehousing & Utilities	29	49	58	56	416,302	589.38
Information	4	33	34	32	270,617	630.81
Financial Activities	23	99	98	98	787,028	615.67
Professional & Business Services	23	101	97	97	931,631	728.79
Education & Health Services	35	320	370	399	2,041,892	432.70
Leisure & Hospitality	22	281	273	275	715,267	199.11
Other Services	16	56	52	52	240,805	347.31
Local Government	10	924	899	924	5,775,723	485.21
State Government	9	57	57	57	395,215	533.35
<b>GREENE COUNTY - TOTAL</b>	<b>912</b>	<b>15,018</b>	<b>15,185</b>	<b>15,061</b>	<b>\$105,698,375</b>	<b>\$538.88</b>
Natural Resources & Mining	39	169	173	193	1,058,820	456.72
Construction	82	331	340	382	2,435,288	533.70
Manufacturing	56	5,501	5,448	5,351	49,292,122	697.86
Trade, Transportation & Utilities	243	2,164	2,208	2,302	13,024,974	450.37
Wholesale Trade	56	422	414	424	3,303,973	605.12
Retail Trade	157	1,524	1,576	1,659	7,872,212	381.73
Transportation, Warehousing & Utilities	30	218	218	219	1,848,789	651.36
Information	13	116	120	122	610,682	393.65
Financial Activities	91	504	504	508	3,809,806	579.94
Professional & Business Services	93	1,585	1,696	1,420	7,601,948	373.18
Education & Health Services	134	1,714	1,743	1,747	11,392,605	505.20
Leisure & Hospitality	71	944	959	1,006	2,479,427	196.69
Other Services	48	156	155	170	867,974	416.43
Local Government	31	1,578	1,581	1,600	11,125,812	539.50
State Government	11	256	258	260	1,998,917	595.98

**TABLE 6. COUNTY SUMMARY  
EMPLOYMENT AND TOTAL EARNINGS, BY INDUSTRY  
FIRST QUARTER 2007**

NORTH AMERICAN INDUSTRY CLASSIFICATION SYSTEM INDUSTRY GROUP	NUMBER OF EMPLOYING UNITS	EMPLOYMENT			TOTAL EARNINGS	AVERAGE WEEKLY EARNINGS
		JANUARY	FEBRUARY	MARCH	JANUARY - MARCH	
<b>HEMPSTEAD COUNTY - TOTAL</b>	<b>503</b>	<b>8,222</b>	<b>8,263</b>	<b>8,317</b>	<b>\$54,634,609</b>	<b>\$508.35</b>
Natural Resources & Mining	19	215	212	209	1,553,872	563.81
Construction	32	127	134	142	872,929	499.86
Manufacturing	29	2,639	2,607	2,543	19,510,100	578.04
Trade, Transportation & Utilities	137	1,255	1,295	1,341	7,950,345	471.52
Wholesale Trade	27	218	232	250	1,524,746	502.66
Retail Trade	85	857	880	911	4,339,022	378.14
Transportation, Warehousing & Utilities	25	180	183	180	2,086,577	886.77
Information	11	75	76	79	649,055	651.23
Financial Activities	44	264	257	259	2,291,225	677.88
Professional & Business Services	33	220	232	240	1,038,348	346.27
Education & Health Services	71	986	980	996	6,138,951	478.29
Leisure & Hospitality	44	645	650	679	1,605,229	187.66
Other Services	37	212	216	217	1,549,852	554.51
Local Government	29	1,057	1,068	1,059	7,307,258	529.61
State Government	17	527	536	553	4,167,445	595.12
<b>HOT SPRING COUNTY - TOTAL</b>	<b>592</b>	<b>8,063</b>	<b>8,147</b>	<b>8,180</b>	<b>\$61,980,745</b>	<b>\$586.44</b>
Natural Resources & Mining	34	211	212	214	1,333,980	483.27
Construction	64	621	626	592	7,904,576	991.92
Manufacturing	39	1,693	1,710	1,707	17,279,048	780.33
Trade, Transportation & Utilities	155	1,420	1,416	1,440	10,186,099	549.73
Wholesale Trade	20	101	102	105	841,973	630.85
Retail Trade	94	915	917	936	4,944,858	412.25
Transportation, Warehousing & Utilities	41	404	397	399	4,399,268	846.01
Information	9	73	73	71	662,666	704.71
Financial Activities	61	344	333	334	2,633,764	601.18
Professional & Business Services	53	219	228	235	1,335,497	451.89
Education & Health Services	62	989	970	993	6,002,676	469.25
Leisure & Hospitality	39	526	527	551	1,271,390	182.92
Other Services	36	293	290	286	1,311,154	348.19
Local Government	26	1,085	1,120	1,111	7,534,908	524.37
State Government	14	589	642	646	4,524,987	556.33

**TABLE 6. COUNTY SUMMARY  
EMPLOYMENT AND TOTAL EARNINGS, BY INDUSTRY  
FIRST QUARTER 2007**

NORTH AMERICAN INDUSTRY CLASSIFICATION SYSTEM INDUSTRY GROUP	NUMBER OF EMPLOYING UNITS	EMPLOYMENT			TOTAL EARNINGS	AVERAGE WEEKLY EARNINGS
		JANUARY	FEBRUARY	MARCH	JANUARY - MARCH	
<b>HOWARD COUNTY - TOTAL</b>	<b>356</b>	<b>7,467</b>	<b>7,773</b>	<b>7,918</b>	<b>\$50,175,569</b>	<b>\$500.00</b>
Natural Resources & Mining	22	236	230	236	1,860,987	611.76
Construction	25	87	89	89	568,731	495.27
Manufacturing	25	4,099	4,396	4,506	30,043,522	533.28
Trade, Transportation & Utilities	101	913	908	912	5,670,924	478.84
Wholesale Trade	17	100	95	90	909,775	736.66
Retail Trade	63	610	619	635	2,777,121	343.82
Transportation, Warehousing & Utilities	21	203	194	187	1,984,028	783.99
Information	6	38	38	37	233,387	476.62
Financial Activities	37	137	142	147	1,054,237	571.09
Professional & Business Services	27	146	142	133	844,985	463.17
Education & Health Services	43	570	583	583	3,293,593	437.82
Leisure & Hospitality	19	285	273	284	661,045	181.17
Other Services	21	121	127	143	590,968	348.79
Local Government	18	699	702	701	4,353,167	477.91
State Government	12	136	143	147	1,000,023	541.72
<b>INDEPENDENCE COUNTY - TOTAL</b>	<b>923</b>	<b>15,883</b>	<b>15,893</b>	<b>16,055</b>	<b>\$109,267,450</b>	<b>\$527.18</b>
Natural Resources & Mining	13	141	132	136	1,018,143	574.46
Construction	69	420	432	452	2,758,784	488.22
Manufacturing	54	4,683	4,634	4,572	36,685,454	609.54
Trade, Transportation & Utilities	267	2,966	2,918	3,024	20,766,554	537.98
Wholesale Trade	54	548	530	549	4,607,468	653.51
Retail Trade	157	1,621	1,606	1,673	7,862,812	370.31
Transportation, Warehousing & Utilities	56	797	782	802	8,296,274	804.08
Information	12	162	165	164	1,237,771	581.75
Financial Activities	83	468	467	470	3,963,653	651.02
Professional & Business Services	86	828	809	832	4,024,405	376.15
Education & Health Services	140	2,798	2,811	2,824	21,731,029	594.67
Leisure & Hospitality	68	1,025	1,024	1,063	2,552,017	189.24
Other Services	66	378	393	399	1,636,458	322.77
Local Government	48	1,604	1,623	1,639	9,278,905	440.05
State Government	17	410	485	480	3,614,277	606.59

**TABLE 6. COUNTY SUMMARY  
EMPLOYMENT AND TOTAL EARNINGS, BY INDUSTRY  
FIRST QUARTER 2007**

NORTH AMERICAN INDUSTRY CLASSIFICATION SYSTEM INDUSTRY GROUP	NUMBER OF EMPLOYING UNITS	EMPLOYMENT			TOTAL EARNINGS	AVERAGE
		JANUARY	FEBRUARY	MARCH	JANUARY - MARCH	WEEKLY EARNINGS
<b>IZARD COUNTY - TOTAL</b>	<b>278</b>	<b>2,952</b>	<b>3,012</b>	<b>3,045</b>	<b>16,736,773</b>	<b>\$428.72</b>
Natural Resources & Mining	5	91	92	94	828,679	690.37
Construction	26	56	63	69	342,964	420.99
Trade, Transportation & Utilities	65	518	529	525	2,460,928	361.26
Retail Trade	48	404	411	412	1,721,067	323.69
Other Trade, Transportation & Utilities	17	114	118	113	739,861	494.89
Information	3	7	7	8	43,350	454.72
Financial Activities	33	155	153	153	964,301	482.71
Professional & Business Services	19	71	73	76	342,332	359.09
Education & Health Services	54	548	552	566	2,849,697	394.73
Leisure & Hospitality	20	163	162	185	383,071	173.34
Local Government	18	530	538	535	3,166,461	455.85
State Government	11	439	467	470	3,320,188	556.83
Other	24	374	376	364	2,034,802	421.90
<b>JACKSON COUNTY - TOTAL</b>	<b>523</b>	<b>5,336</b>	<b>5,413</b>	<b>5,628</b>	<b>\$39,001,198</b>	<b>\$549.57</b>
Natural Resources & Mining	47	164	181	224	1,054,448	427.65
Construction	26	107	107	135	935,341	618.48
Manufacturing	26	1,089	1,113	1,169	10,875,693	744.52
Trade, Transportation & Utilities	127	1,064	1,065	1,104	6,665,470	475.78
Wholesale Trade	35	196	206	218	1,820,760	677.70
Retail Trade	73	645	635	657	3,151,127	375.42
Transportation, Warehousing & Utilities	19	223	224	229	1,693,583	578.15
Information	6	39	38	39	293,975	584.83
Financial Activities	43	180	174	174	1,559,931	681.79
Professional & Business Services	37	139	148	155	1,020,255	532.68
Education & Health Services	94	809	820	829	5,824,777	546.86
Leisure & Hospitality	39	308	319	325	897,333	217.52
Other Services	32	91	91	92	394,893	332.59
Local Government	32	674	687	701	4,063,891	454.81
State Government	14	672	670	681	5,415,191	617.73

**TABLE 6. COUNTY SUMMARY  
EMPLOYMENT AND TOTAL EARNINGS, BY INDUSTRY  
FIRST QUARTER 2007**

NORTH AMERICAN INDUSTRY CLASSIFICATION SYSTEM INDUSTRY GROUP	NUMBER OF EMPLOYING UNITS	EMPLOYMENT			TOTAL EARNINGS	AVERAGE WEEKLY EARNINGS
		JANUARY	FEBRUARY	MARCH	JANUARY - MARCH	
<b>JEFFERSON COUNTY - TOTAL</b>	<b>1,913</b>	<b>31,188</b>	<b>31,324</b>	<b>31,828</b>	<b>\$246,955,367</b>	<b>\$604.09</b>
Natural Resources & Mining	41	406	406	420	4,800,887	899.27
Construction	131	1,354	1,355	1,496	16,555,525	908.56
Manufacturing	74	5,920	5,901	5,921	58,283,272	758.09
Trade, Transportation & Utilities	470	5,714	5,699	5,817	41,852,406	560.55
Wholesale Trade	83	1,020	1,027	1,039	8,411,435	629.00
Retail Trade	320	3,843	3,819	3,911	19,666,170	392.15
Transportation, Warehousing & Utilities	67	851	853	867	13,774,801	1236.41
Information	18	204	197	200	1,662,593	638.39
Financial Activities	159	1,200	1,179	1,195	11,474,187	740.88
Professional & Business Services	180	1,675	1,694	1,752	13,054,694	588.29
Education & Health Services	465	5,503	5,471	5,498	38,065,673	533.29
Leisure & Hospitality	145	2,120	2,122	2,165	5,774,419	207.98
Other Services	149	693	700	736	4,325,549	468.86
Local Government	41	3,258	3,292	3,303	23,709,321	555.30
State Government	40	3,141	3,308	3,325	27,396,841	646.85
<b>JOHNSON COUNTY - TOTAL</b>	<b>477</b>	<b>8,447</b>	<b>8,515</b>	<b>8,598</b>	<b>\$54,078,293</b>	<b>\$488.25</b>
Natural Resources & Mining	17	203	208	209	1,689,990	629.03
Construction	28	117	116	119	776,198	508.87
Manufacturing	45	2,942	2,928	2,950	20,286,875	530.79
Trade, Transportation & Utilities	125	1,878	1,908	1,965	11,578,059	464.59
Wholesale Trade	20	56	59	59	494,408	655.71
Other Trade, Transportation, & Utilities	105	1,822	1,849	1,906	11,083,651	458.63
Information	6	33	33	33	231,455	539.52
Financial Activities	42	234	227	224	1,747,978	588.88
Professional & Business Services	50	177	182	186	1,136,416	481.19
Education & Health Services	77	1,152	1,165	1,164	7,287,655	483.13
Leisure & Hospitality	36	479	509	516	1,288,750	197.74
Other Services	27	86	88	89	414,432	363.64
Local Government	14	975	985	978	6,317,543	496.22
State Government	10	171	166	165	1,322,942	608.16

**TABLE 6. COUNTY SUMMARY  
EMPLOYMENT AND TOTAL EARNINGS, BY INDUSTRY  
FIRST QUARTER 2007**

NORTH AMERICAN INDUSTRY CLASSIFICATION SYSTEM INDUSTRY GROUP	NUMBER OF EMPLOYING UNITS	EMPLOYMENT			TOTAL EARNINGS	AVERAGE
		JANUARY	FEBRUARY	MARCH	JANUARY - MARCH	WEEKLY EARNINGS
<b>LAFAYETTE COUNTY - TOTAL</b>	<b>173</b>	<b>1,389</b>	<b>1,369</b>	<b>1,391</b>	<b>\$8,089,931</b>	<b>\$449.97</b>
Natural Resources & Mining	36	165	169	173	1,260,326	573.66
Manufacturing	6	36	19	19	188,558	588.02
Trade, Transportation & Utilities	37	232	228	238	1,286,535	425.35
Retail Trade	22	162	159	164	598,027	284.55
Other Trade, Transportation & Utilities	15	70	69	74	688,508	745.95
Financial Activities	16	64	64	66	370,600	440.84
Professional & Business Services	9	55	63	63	496,551	633.09
Education & Health Services	23	227	221	223	1,027,551	353.39
Leisure & Hospitality	6	37	35	40	117,683	242.48
Other Services	7	69	69	72	324,470	356.56
Local Government	13	343	354	344	1,919,766	425.57
State Government	8	47	47	51	346,579	551.58
Other	12	114	100	102	751,312	548.67
<b>LAWRENCE COUNTY - TOTAL</b>	<b>430</b>	<b>4,059</b>	<b>4,085</b>	<b>4,159</b>	<b>\$24,447,077</b>	<b>\$458.56</b>
Natural Resources & Mining	35	152	157	173	1,141,673	546.60
Construction	24	63	62	67	363,508	436.91
Manufacturing	21	532	528	549	3,530,113	506.30
Trade, Transportation & Utilities	131	896	900	912	5,508,985	469.46
Wholesale Trade	22	179	173	182	1,404,327	606.88
Retail Trade	71	578	586	591	2,851,291	374.92
Transportation, Warehousing & Utilities	38	139	141	139	1,253,367	690.31
Information	4	20	21	18	158,876	621.42
Financial Activities	33	127	127	127	888,507	538.16
Professional & Business Services	23	126	125	127	1,073,090	655.12
Education & Health Services	68	449	457	459	2,841,115	480.32
Leisure & Hospitality	27	327	319	334	676,049	159.20
Other Services	25	62	64	66	246,314	296.05
Local Government	28	1,191	1,209	1,212	7,212,429	460.80
State Government	11	114	116	115	806,418	539.41



**TABLE 6. COUNTY SUMMARY  
EMPLOYMENT AND TOTAL EARNINGS, BY INDUSTRY  
FIRST QUARTER 2007**

NORTH AMERICAN INDUSTRY CLASSIFICATION SYSTEM INDUSTRY GROUP	NUMBER OF EMPLOYING UNITS	EMPLOYMENT			TOTAL EARNINGS	AVERAGE
		JANUARY	FEBRUARY	MARCH	JANUARY - MARCH	WEEKLY EARNINGS
<b>LEE COUNTY - TOTAL</b>	<b>261</b>	<b>1,997</b>	<b>2,041</b>	<b>2,116</b>	<b>\$13,518,639</b>	<b>\$506.94</b>
Natural Resources & Mining	28	120	156	190	829,067	410.56
Construction	10	27	23	28	171,958	508.75
Trade, Transportation & Utilities	53	336	340	355	1,917,344	429.16
Wholesale Trade	9	64	65	72	492,861	565.86
Retail Trade	27	184	188	188	700,223	288.55
Transportation, Warehousing & Utilities	17	88	87	95	724,260	619.03
Financial Activities	16	74	75	74	669,035	692.34
Professional & Business Services	19	66	70	70	641,110	718.20
Education & Health Services	74	320	319	326	1,878,157	449.14
Leisure & Hospitality	10	84	82	84	187,427	173.01
Local Government	16	369	369	376	2,510,083	519.97
State Government	8	477	480	484	4,022,292	644.15
Other	27	124	127	129	692,166	420.34
<b>LINCOLN COUNTY - TOTAL</b>	<b>227</b>	<b>2,956</b>	<b>2,993</b>	<b>3,024</b>	<b>\$20,973,445</b>	<b>\$539.40</b>
Natural Resources & Mining	33	145	150	153	918,997	473.38
Construction	15	53	64	66	379,497	478.56
Manufacturing	9	437	438	439	3,915,568	687.67
Trade, Transportation & Utilities	46	349	346	353	2,515,491	553.91
Wholesale Trade	7	29	29	29	284,904	755.71
Retail Trade	24	187	186	194	647,406	263.49
Transportation, Warehousing & Utilities	15	133	131	130	1,583,181	927.28
Financial Activities	23	82	80	81	631,663	599.87
Professional & Business Services	13	21	19	20	108,309	416.57
Education & Health Services	36	313	322	321	1,730,730	417.78
Leisure & Hospitality	16	144	154	152	323,152	165.72
Local & State Government	22	1,374	1,384	1,402	10,262,000	569.27
Other	14	38	36	37	188,038	390.93

**TABLE 6. COUNTY SUMMARY  
EMPLOYMENT AND TOTAL EARNINGS, BY INDUSTRY  
FIRST QUARTER 2007**

NORTH AMERICAN INDUSTRY CLASSIFICATION SYSTEM INDUSTRY GROUP	NUMBER OF EMPLOYING UNITS	EMPLOYMENT			TOTAL EARNINGS	AVERAGE
		JANUARY	FEBRUARY	MARCH	JANUARY - MARCH	WEEKLY EARNINGS
<b>LITTLE RIVER COUNTY - TOTAL</b>	<b>261</b>	<b>4,559</b>	<b>4,630</b>	<b>4,722</b>	<b>\$55,735,400</b>	<b>\$924.59</b>
Natural Resources & Mining	11	59	55	56	407,659	553.38
Manufacturing	18	1,410	1,388	1,393	31,969,706	1,760.35
Trade, Transportation & Utilities	68	1,301	1,377	1,410	12,748,431	719.65
Retail Trade	42	310	312	317	1,450,701	356.53
Other Trade, Transportation & Utilities	26	991	1,065	1,093	11,297,730	827.94
Financial Activities	24	102	99	102	641,704	488.73
Professional & Business Services	21	152	150	146	815,481	420.06
Education & Health Services	26	154	159	164	843,918	408.28
Leisure & Hospitality	19	216	209	222	528,755	188.59
Other Services	15	104	97	102	378,545	288.31
Local Government	20	765	765	790	5,031,851	500.52
State Government	12	79	85	84	556,652	517.98
Other	27	217	246	253	1,812,698	583.42
<b>LOGAN COUNTY - TOTAL</b>	<b>472</b>	<b>5,927</b>	<b>5,934</b>	<b>6,016</b>	<b>\$36,787,975</b>	<b>\$474.89</b>
Natural Resources & Mining	20	120	122	147	1,322,989	784.85
Construction	50	154	159	163	975,551	472.96
Manufacturing	28	1,788	1,803	1,822	13,048,541	556.29
Trade, Transportation & Utilities	112	835	830	858	4,337,913	396.77
Wholesale Trade	17	42	41	43	219,957	402.85
Retail Trade	72	716	711	733	3,333,972	356.19
Transportation, Warehousing & Utilities	23	77	78	82	783,984	763.37
Information	6	45	45	45	369,290	631.26
Financial Activities	43	239	240	244	2,140,087	683.08
Professional & Business Services	43	198	171	149	915,045	407.65
Education & Health Services	77	743	742	740	4,140,836	429.47
Leisure & Hospitality	30	305	305	323	704,303	174.20
Other Services	26	79	80	80	445,207	429.87
Local & State Government	37	1,421	1,437	1,445	8,388,213	449.86

**TABLE 6. COUNTY SUMMARY  
EMPLOYMENT AND TOTAL EARNINGS, BY INDUSTRY  
FIRST QUARTER 2007**

NORTH AMERICAN INDUSTRY CLASSIFICATION SYSTEM INDUSTRY GROUP	NUMBER OF EMPLOYING UNITS	EMPLOYMENT			TOTAL EARNINGS	AVERAGE
		JANUARY	FEBRUARY	MARCH	JANUARY - MARCH	WEEKLY EARNINGS
<b>LONOKE COUNTY - TOTAL</b>	<b>1,261</b>	<b>12,260</b>	<b>12,372</b>	<b>12,633</b>	<b>\$80,413,954</b>	<b>\$497.98</b>
Natural Resources & Mining	74	347	356	413	2,724,421	563.36
Construction	178	999	999	1,041	7,900,073	599.90
Manufacturing	36	1,338	1,381	1,367	12,703,714	717.48
Trade, Transportation & Utilities	348	2,730	2,752	2,837	16,392,628	454.73
Wholesale Trade	89	474	498	523	4,714,125	727.68
Retail Trade	185	1,967	1,959	2,022	9,478,077	367.73
Transportation, Warehousing & Utilities	74	289	295	292	2,200,426	579.67
Information	15	102	108	114	930,194	662.53
Financial Activities	126	592	617	622	5,612,659	707.39
Professional & Business Services	142	599	598	601	3,986,954	511.72
Education & Health Services	143	1,409	1,401	1,418	8,332,711	454.81
Leisure & Hospitality	88	1,303	1,288	1,310	3,271,032	193.50
Other Services	67	182	180	182	1,071,983	454.74
Local Government	28	2,491	2,522	2,556	16,429,287	500.91
State Government	16	168	170	172	1,058,298	478.87
<b>MADISON COUNTY - TOTAL</b>	<b>260</b>	<b>3,116</b>	<b>3,120</b>	<b>3,165</b>	<b>\$19,110,962</b>	<b>\$469.12</b>
Natural Resources & Mining	10	54	52	58	351,163	494.13
Construction	45	128	131	138	804,872	467.86
Manufacturing	20	1,098	1,097	1,086	7,141,517	502.30
Trade, Transportation & Utilities	66	549	551	567	3,382,110	468.20
Wholesale Trade	14	37	37	38	474,347	977.36
Retail Trade	35	391	391	414	1,915,525	369.60
Transportation, Warehousing & Utilities	17	121	123	115	992,238	637.82
Financial Activities	16	68	69	68	568,207	639.63
Professional & Business Services	19	92	92	95	544,044	450.00
Education & Health Services	38	267	265	274	1,283,677	367.53
Leisure & Hospitality	14	131	130	138	259,099	149.85
Local Government	8	619	627	637	3,934,565	482.20
State Government	8	48	49	49	347,376	549.07
Other	16	62	57	55	494,332	655.61

**TABLE 6. COUNTY SUMMARY  
EMPLOYMENT AND TOTAL EARNINGS, BY INDUSTRY  
FIRST QUARTER 2007**

NORTH AMERICAN INDUSTRY CLASSIFICATION SYSTEM INDUSTRY GROUP	NUMBER OF EMPLOYING UNITS	EMPLOYMENT			TOTAL EARNINGS	AVERAGE
		JANUARY	FEBRUARY	MARCH	JANUARY - MARCH	WEEKLY EARNINGS
<b>MARION COUNTY - TOTAL</b>	<b>318</b>	<b>4,086</b>	<b>4,099</b>	<b>4,130</b>	<b>\$24,665,830</b>	<b>\$462.21</b>
Natural Resources & Mining	6	40	39	47	227,981	417.55
Construction	27	80	80	85	410,370	386.53
Manufacturing	26	1,755	1,767	1,749	11,673,074	511.06
Trade, Transportation & Utilities	58	638	639	657	3,386,464	404.08
Retail Trade	39	465	462	477	2,273,295	373.65
Other Trade, Transportation & Utilities	19	173	177	180	1,113,169	484.69
Financial Activities	37	179	179	187	1,331,700	563.88
Professional & Business Services	28	64	66	72	440,895	503.69
Education & Health Services	53	374	359	358	1,947,230	411.88
Leisure & Hospitality	37	203	217	226	559,950	200.03
Local Government	20	545	549	547	3,285,715	462.06
State Government	8	117	115	114	687,176	458.32
Other	18	91	89	88	715,275	615.91
<b>MILLER COUNTY - TOTAL</b>	<b>833</b>	<b>12,202</b>	<b>12,215</b>	<b>12,327</b>	<b>\$93,023,415</b>	<b>\$584.23</b>
Natural Resources & Mining	28	127	125	126	890,497	543.65
Construction	95	767	764	771	5,360,464	537.37
Manufacturing	31	2,540	2,507	2,498	30,908,898	945.37
Trade, Transportation & Utilities	230	2,551	2,576	2,602	18,533,577	553.37
Wholesale Trade	64	613	601	607	6,600,301	836.43
Retail Trade	129	1,389	1,421	1,459	6,882,422	372.04
Transportation, Warehousing & Utilities	37	549	554	536	5,050,854	711.15
Information	9	98	100	99	1,652,766	1284.20
Financial Activities	83	365	366	367	2,936,575	617.19
Professional & Business Services	81	880	896	926	4,737,870	404.65
Education & Health Services	91	1,041	1,042	1,063	6,319,965	463.59
Leisure & Hospitality	80	1,295	1,280	1,305	3,792,551	225.57
Other Services	62	334	336	336	1,477,173	338.85
Local Government	26	1,732	1,748	1,758	12,292,005	541.55
State Government	17	472	475	476	4,121,074	668.32

**TABLE 6. COUNTY SUMMARY  
EMPLOYMENT AND TOTAL EARNINGS, BY INDUSTRY  
FIRST QUARTER 2007**

NORTH AMERICAN INDUSTRY CLASSIFICATION SYSTEM INDUSTRY GROUP	NUMBER OF EMPLOYING UNITS	EMPLOYMENT			TOTAL EARNINGS	AVERAGE WEEKLY EARNINGS
		JANUARY	FEBRUARY	MARCH	JANUARY - MARCH	
<b>MISSISSIPPI COUNTY - TOTAL</b>	<b>1,175</b>	<b>18,875</b>	<b>18,910</b>	<b>19,315</b>	<b>\$171,753,766</b>	<b>\$694.14</b>
Natural Resources & Mining	100	601	591	620	3,811,749	485.45
Construction	74	599	621	696	6,411,929	772.27
Manufacturing	57	5,737	5,688	5,754	83,194,080	1117.56
Trade, Transportation & Utilities	296	2,886	2,877	2,960	18,891,212	499.77
Wholesale Trade	65	426	435	468	3,832,744	665.52
Retail Trade	181	1,838	1,822	1,858	8,786,066	367.44
Transportation, Warehousing & Utilities	50	622	620	634	6,272,402	771.58
Financial Activities	100	569	583	580	4,080,129	543.63
Professional & Business Services	94	1,113	1,091	1,236	11,163,951	748.92
Education & Health Services	212	1,691	1,697	1,715	11,201,859	506.57
Leisure & Hospitality	85	1,069	1,075	1,090	2,759,809	196.93
Local Government	46	2,450	2,474	2,483	15,567,149	485.00
State Government	24	600	650	658	4,460,370	539.47
Other	87	1,560	1,563	1,523	10,211,529	507.21
<b>MONROE COUNTY - TOTAL</b>	<b>310</b>	<b>2,373</b>	<b>2,389</b>	<b>2,467</b>	<b>\$12,524,006</b>	<b>\$399.80</b>
Natural Resources & Mining	38	111	118	140	662,497	414.32
Construction	12	35	41	33	211,914	448.65
Manufacturing	8	125	132	136	811,086	476.27
Trade, Transportation & Utilities	89	670	667	699	3,701,187	419.51
Wholesale Trade	22	189	191	208	1,411,882	554.11
Retail Trade	40	356	348	363	1,421,010	307.33
Transportation, Warehousing & Utilities	27	125	128	128	868,295	525.92
Financial Activities	16	97	93	96	796,326	642.54
Professional & Business Services	17	52	56	54	288,692	411.24
Education & Health Services	49	334	334	335	1,473,282	338.97
Leisure & Hospitality	25	236	238	241	576,028	185.92
Local Government	21	458	448	473	2,657,872	444.78
State Government	9	123	123	127	807,827	499.79
Other	26	132	139	133	537,295	306.91

**TABLE 6. COUNTY SUMMARY  
EMPLOYMENT AND TOTAL EARNINGS, BY INDUSTRY  
FIRST QUARTER 2007**

NORTH AMERICAN INDUSTRY CLASSIFICATION SYSTEM INDUSTRY GROUP	NUMBER OF EMPLOYING UNITS	EMPLOYMENT			TOTAL EARNINGS	AVERAGE WEEKLY EARNINGS
		JANUARY	FEBRUARY	MARCH	JANUARY - MARCH	
<b>MONTGOMERY COUNTY - TOTAL</b>	<b>181</b>	<b>1,501</b>	<b>1,541</b>	<b>1,592</b>	<b>\$8,110,880</b>	<b>\$403.91</b>
Natural Resources & Mining	14	53	59	59	466,367	629.38
Construction	24	112	111	108	672,678	468.98
Trade, Transportation & Utilities	43	205	208	216	949,595	348.39
Wholesale Trade	9	56	55	56	345,461	477.38
Retail Trade	24	128	131	134	510,046	299.50
Transportation, Warehousing & Utilities	10	21	22	26	94,088	314.68
Financial Activities	9	74	72	72	552,152	584.49
Education & Health Services	16	46	46	46	264,215	441.83
Leisure & Hospitality	23	183	207	234	715,716	264.69
Other Services	11	79	80	80	336,206	324.63
Local Government	9	497	504	503	2,717,076	416.90
State Government	8	53	50	55	407,925	595.80
Other	24	199	204	219	1,028,950	381.75
<b>NEVADA COUNTY - TOTAL</b>	<b>190</b>	<b>2,622</b>	<b>2,675</b>	<b>2,722</b>	<b>\$19,906,746</b>	<b>\$572.87</b>
Natural Resources & Mining	15	58	59	58	557,861	735.64
Manufacturing	10	774	766	778	9,382,469	934.07
Trade, Transportation & Utilities	46	513	530	540	3,245,370	473.11
Retail Trade	30	279	288	292	1,158,831	311.32
Other Trade, Transportation & Utilities	16	234	242	248	2,086,539	665.07
Financial Activities	13	56	55	55	424,104	589.58
Education & Health Services	18	384	384	388	1,867,923	372.89
Leisure & Hospitality	14	93	99	108	265,560	204.28
Other Services	15	69	68	71	230,535	255.77
Local Government	28	481	496	490	2,614,811	411.33
State Government	11	85	87	86	612,317	547.69
Other	20	109	131	148	705,796	419.78

**TABLE 6. COUNTY SUMMARY  
EMPLOYMENT AND TOTAL EARNINGS, BY INDUSTRY  
FIRST QUARTER 2007**

NORTH AMERICAN INDUSTRY CLASSIFICATION SYSTEM INDUSTRY GROUP	NUMBER OF EMPLOYING UNITS	EMPLOYMENT			TOTAL EARNINGS	AVERAGE
		JANUARY	FEBRUARY	MARCH	JANUARY - MARCH	WEEKLY EARNINGS
<b>NEWTON COUNTY - TOTAL</b>	<b>141</b>	<b>1,040</b>	<b>1,045</b>	<b>1,069</b>	<b>\$5,204,775</b>	<b>\$380.82</b>
Natural Resources & Mining	4	2	2	2	7,000	269.23
Construction	9	18	13	14	56,325	288.85
Manufacturing	17	81	81	78	481,052	462.55
Trade, Transportation & Utilities	33	139	145	141	707,476	384.15
Retail Trade	15	90	91	89	324,313	277.19
Other Trade, Transportation & Utilities	18	49	54	52	383,163	570.47
Education & Health Services	23	223	226	229	861,377	293.18
Leisure & Hospitality	17	45	45	66	153,614	227.24
Other Services	4	9	9	11	28,912	230.07
Local Government	13	387	392	393	2,144,072	422.17
State Government	7	90	85	87	439,851	387.42
Other	14	46	47	48	325,096	532.07
<b>OUACHITA COUNTY - TOTAL</b>	<b>659</b>	<b>7,531</b>	<b>7,617</b>	<b>7,733</b>	<b>\$48,562,259</b>	<b>\$489.78</b>
Natural Resources & Mining	47	265	255	261	2,042,321	603.46
Construction	48	254	256	263	1,765,201	526.98
Manufacturing	31	818	840	861	7,054,294	646.25
Trade, Transportation & Utilities	177	1,728	1,685	1,729	10,858,183	487.31
Wholesale Trade	30	247	245	248	2,396,977	747.50
Retail Trade	119	1,060	1,036	1,054	4,530,066	331.87
Transportation, Warehousing & Utilities	28	421	404	427	3,931,140	724.59
Information	9	91	92	92	717,438	602.05
Financial Activities	64	369	367	369	2,710,626	566.09
Professional & Business Services	55	303	347	354	1,907,498	438.44
Education & Health Services	100	1,272	1,273	1,264	7,870,787	476.85
Leisure & Hospitality	39	460	465	482	1,103,752	181.03
Other Services	45	153	153	153	743,633	373.87
Local Government	30	1,307	1,319	1,326	7,848,698	458.31
State Government	14	511	565	579	3,939,828	549.36

**TABLE 6. COUNTY SUMMARY  
EMPLOYMENT AND TOTAL EARNINGS, BY INDUSTRY  
FIRST QUARTER 2007**

NORTH AMERICAN INDUSTRY CLASSIFICATION SYSTEM INDUSTRY GROUP	NUMBER OF EMPLOYING UNITS	EMPLOYMENT			TOTAL EARNINGS	AVERAGE WEEKLY EARNINGS
		JANUARY	FEBRUARY	MARCH	JANUARY - MARCH	
<b>PERRY COUNTY - TOTAL</b>	<b>164</b>	<b>1,234</b>	<b>1,244</b>	<b>1,280</b>	<b>\$7,151,262</b>	<b>\$439.14</b>
Natural Resources & Mining	9	46	47	48	363,631	595.14
Construction	27	62	60	69	383,796	463.71
Manufacturing	7	77	71	74	430,971	447.99
Trade, Transportation & Utilities	29	190	194	197	928,275	368.70
Retail Trade	19	159	163	167	583,054	275.16
Other Trade, Transportation & Utilities	10	31	31	30	345,221	865.94
Financial Activities	15	69	72	74	655,182	703.24
Professional & Business Services	14	38	37	36	219,961	457.30
Education & Health Services	27	200	196	201	979,287	378.54
Local Government	12	404	419	424	2,367,484	438.13
State Government	9	57	56	57	364,170	494.35
Other	15	91	92	100	458,505	373.88
<b>PHILLIPS COUNTY - TOTAL</b>	<b>784</b>	<b>6,372</b>	<b>6,486</b>	<b>6,633</b>	<b>\$38,953,290</b>	<b>\$461.20</b>
Natural Resources & Mining	69	275	341	384	1,724,242	397.90
Construction	29	127	128	137	826,331	486.46
Manufacturing	12	402	401	396	2,951,153	568.00
Trade, Transportation & Utilities	178	1,602	1,601	1,647	9,894,158	470.78
Wholesale Trade	36	428	438	455	3,812,027	665.93
Retail Trade	103	870	854	878	3,932,160	348.74
Transportation, Warehousing & Utilities	39	304	309	314	2,149,971	535.22
Information	9	44	44	46	368,832	635.19
Financial Activities	54	269	266	259	2,105,593	611.97
Professional & Business Services	60	181	183	182	1,087,290	459.55
Education & Health Services	245	1,312	1,301	1,325	7,217,470	422.95
Leisure & Hospitality	38	439	437	463	1,096,650	189.00
Other Services	42	86	86	91	374,526	328.63
Local Government	31	1,124	1,132	1,157	7,876,885	532.59
State Government	17	511	566	546	3,430,160	487.72



**TABLE 6. COUNTY SUMMARY  
EMPLOYMENT AND TOTAL EARNINGS, BY INDUSTRY  
FIRST QUARTER 2007**

NORTH AMERICAN INDUSTRY CLASSIFICATION SYSTEM INDUSTRY GROUP	NUMBER OF EMPLOYING UNITS	EMPLOYMENT			TOTAL EARNINGS	AVERAGE WEEKLY EARNINGS
		JANUARY	FEBRUARY	MARCH	JANUARY - MARCH	
<b>PIKE COUNTY - TOTAL</b>	<b>274</b>	<b>2,794</b>	<b>2,823</b>	<b>2,882</b>	<b>\$16,328,689</b>	<b>\$443.36</b>
Natural Resources & Mining	28	138	139	145	1,184,551	647.77
Construction	15	88	87	85	585,507	519.68
Manufacturing	15	471	494	501	2,952,429	464.75
Trade, Transportation & Utilities	93	598	569	579	3,325,199	439.49
Wholesale Trade	19	120	118	122	955,691	612.62
Retail Trade	44	364	340	348	1,549,444	339.89
Transportation, Warehousing & Utilities	30	114	111	109	820,064	566.60
Information	6	31	31	31	317,760	788.49
Financial Activities	27	171	178	180	1,290,185	562.83
Professional & Business Services	14	36	35	37	294,052	628.32
Education & Health Services	20	248	247	250	1,104,350	342.08
Leisure & Hospitality	18	194	207	214	513,159	192.55
Other Services	14	108	117	122	621,056	413.03
Local Government	13	606	615	634	3,526,256	438.68
State Government	11	105	104	104	614,185	452.83
<b>POINSETT COUNTY - TOTAL</b>	<b>503</b>	<b>5,731</b>	<b>5,709</b>	<b>5,862</b>	<b>\$36,789,709</b>	<b>\$490.69</b>
Natural Resources & Mining	52	274	282	315	2,088,304	553.29
Construction	25	60	67	69	288,889	340.14
Manufacturing	23	1,176	1,130	1,126	8,385,710	563.86
Trade, Transportation & Utilities	131	1,265	1,264	1,319	8,710,964	522.41
Wholesale Trade	33	462	456	488	4,938,333	810.54
Retail Trade	72	665	667	684	2,792,556	319.66
Transportation, Warehousing & Utilities	26	138	141	147	980,075	530.92
Information	6	49	48	45	566,502	920.64
Financial Activities	47	319	307	313	2,572,032	632.10
Professional & Business Services	32	178	176	177	1,268,732	551.38
Education & Health Services	68	572	574	596	3,084,655	408.64
Leisure & Hospitality	47	386	390	407	779,921	152.14
Other Services	29	62	62	63	339,425	418.87
Local Government	31	1,179	1,193	1,213	7,306,858	470.35
State Government	12	211	216	219	1,397,717	499.30

**TABLE 6. COUNTY SUMMARY  
EMPLOYMENT AND TOTAL EARNINGS, BY INDUSTRY  
FIRST QUARTER 2007**

NORTH AMERICAN INDUSTRY CLASSIFICATION SYSTEM INDUSTRY GROUP	NUMBER OF EMPLOYING UNITS	EMPLOYMENT			TOTAL EARNINGS	AVERAGE
		JANUARY	FEBRUARY	MARCH	JANUARY - MARCH	WEEKLY EARNINGS
<b>POLK COUNTY - TOTAL</b>	<b>549</b>	<b>6,318</b>	<b>6,351</b>	<b>6,453</b>	<b>\$35,901,014</b>	<b>\$433.26</b>
Natural Resources & Mining	28	249	247	243	1,900,576	593.50
Construction	39	209	204	207	1,050,002	390.82
Manufacturing	44	1,322	1,349	1,364	8,226,909	470.51
Trade, Transportation & Utilities	149	1,302	1,288	1,320	6,926,739	408.82
Wholesale Trade	26	110	108	123	542,087	366.85
Retail Trade	79	809	804	812	3,741,335	356.04
Transportation, Warehousing & Utilities	44	383	376	385	2,643,317	533.21
Information	9	52	50	50	401,762	609.96
Financial Activities	40	236	239	242	1,622,594	522.24
Professional & Business Services	48	245	248	250	1,253,105	389.20
Education & Health Services	80	952	969	974	5,849,246	466.26
Leisure & Hospitality	41	449	432	463	965,164	165.72
Other Services	36	139	136	142	675,538	373.85
Local Government	21	832	846	841	5,201,042	476.47
State Government	14	331	343	357	1,828,337	409.24
<b>POPE COUNTY - TOTAL</b>	<b>1,748</b>	<b>26,539</b>	<b>27,109</b>	<b>27,606</b>	<b>\$199,505,960</b>	<b>\$566.62</b>
Natural Resources & Mining	24	551	757	767	4,523,797	503.11
Construction	180	1,208	1,209	1,299	9,110,076	565.75
Manufacturing	93	5,078	5,048	5,041	42,555,825	647.50
Trade, Transportation & Utilities	473	6,625	6,656	6,767	65,336,505	752.08
Wholesale Trade	106	731	735	734	5,982,558	627.54
Retail Trade	275	3,355	3,338	3,433	17,629,463	401.77
Transportation, Warehousing & Utilities	92	2,539	2,583	2,600	41,724,484	1246.92
Information	21	244	243	258	2,541,594	787.28
Financial Activities	185	846	844	843	7,080,706	645.09
Professional & Business Services	227	2,529	2,580	2,670	12,900,718	382.71
Education & Health Services	244	2,921	2,983	2,980	20,669,181	536.90
Leisure & Hospitality	134	2,332	2,347	2,443	6,133,642	198.74
Other Services	111	464	470	490	2,575,470	417.37
Local Government	40	2,283	2,320	2,355	15,513,539	514.52
State Government	16	1,458	1,652	1,693	10,564,907	507.61

**TABLE 6. COUNTY SUMMARY  
EMPLOYMENT AND TOTAL EARNINGS, BY INDUSTRY  
FIRST QUARTER 2007**

NORTH AMERICAN INDUSTRY CLASSIFICATION SYSTEM INDUSTRY GROUP	NUMBER OF EMPLOYING UNITS	EMPLOYMENT			TOTAL EARNINGS	AVERAGE WEEKLY EARNINGS
		JANUARY	FEBRUARY	MARCH	JANUARY - MARCH	
<b>PRAIRIE COUNTY - TOTAL</b>	<b>244</b>	<b>1,380</b>	<b>1,413</b>	<b>1,428</b>	<b>\$8,831,175</b>	<b>\$482.82</b>
Natural Resources & Mining	29	103	114	129	741,592	494.61
Trade, Transportation & Utilities	71	331	327	318	2,031,185	480.26
Wholesale Trade	11	53	54	61	445,707	612.23
Retail Trade	39	203	195	184	1,051,865	417.08
Transportation, Warehousing & Utilities	21	75	78	73	533,613	544.87
Information	4	8	8	8	102,633	986.86
Financial Activities	17	65	65	67	512,779	600.68
Professional & Business Services	17	50	48	52	314,599	484.00
Education & Health Services	29	153	159	161	994,257	485.08
Leisure & Hospitality	18	96	98	96	210,262	167.32
Other Services	14	38	40	42	166,150	319.52
Local Government	15	320	330	329	1,991,996	469.55
State Government	10	49	49	48	346,934	548.37
Other	20	167	175	178	1,418,788	629.64
<b>PULASKI COUNTY - TOTAL</b>	<b>14,396</b>	<b>236,767</b>	<b>238,085</b>	<b>240,364</b>	<b>\$2,300,041,519</b>	<b>\$742.12</b>
Natural Resources & Mining	52	665	656	675	9,212,473	1065.11
Construction	1,162	10,281	10,274	10,754	103,358,736	761.83
Manufacturing	446	15,574	15,494	15,487	170,839,952	846.84
Trade, Transportation & Utilities	3,316	51,479	51,070	51,659	458,852,830	686.66
Wholesale Trade	1,157	13,344	13,358	13,385	173,634,325	999.56
Retail Trade	1,757	24,914	24,481	24,939	144,447,334	448.44
Transportation, Warehousing & Utilities	402	13,221	13,231	13,335	140,771,171	816.49
Information	243	8,444	8,486	8,475	133,921,571	1216.49
Financial Activities	1,773	16,204	16,203	16,205	261,354,887	1240.70
Professional & Business Services	2,783	33,902	34,118	34,277	299,204,245	674.97
Education & Health Services	2,053	33,458	33,769	34,028	319,657,796	728.53
Leisure & Hospitality	1,035	19,422	19,716	20,290	69,786,185	270.99
Other Services	1,225	6,804	6,857	6,930	48,967,465	548.79
Local Government	104	16,608	16,651	16,668	147,080,931	679.83
State Government	204	23,926	24,791	24,916	277,804,448	870.65

**TABLE 6. COUNTY SUMMARY  
EMPLOYMENT AND TOTAL EARNINGS, BY INDUSTRY  
FIRST QUARTER 2007**

NORTH AMERICAN INDUSTRY CLASSIFICATION SYSTEM INDUSTRY GROUP	NUMBER OF EMPLOYING UNITS	EMPLOYMENT			TOTAL EARNINGS	AVERAGE WEEKLY EARNINGS
		JANUARY	FEBRUARY	MARCH	JANUARY - MARCH	
<b>RANDOLPH COUNTY - TOTAL</b>	<b>409</b>	<b>4,917</b>	<b>5,021</b>	<b>5,109</b>	<b>\$30,580,514</b>	<b>\$469.00</b>
Natural Resources & Mining	22	58	64	74	283,606	333.92
Construction	24	82	79	85	374,309	351.13
Manufacturing	39	1,017	1,005	999	7,928,913	605.68
Trade, Transportation & Utilities	98	960	950	973	5,070,729	405.89
Wholesale Trade	21	196	196	195	961,556	378.02
Retail Trade	60	647	638	649	2,962,749	353.52
Transportation, Warehousing & Utilities	17	117	116	129	1,146,424	730.83
Information	5	44	41	41	392,024	717.99
Financial Activities	28	164	160	164	1,458,123	689.53
Professional & Business Services	37	224	228	229	989,377	335.27
Education & Health Services	67	868	899	909	5,656,877	487.83
Leisure & Hospitality	29	342	366	419	788,867	161.53
Other Services	25	63	64	77	313,704	354.87
Local Government	23	854	849	868	5,196,979	466.47
State Government	12	241	316	271	2,127,006	592.81
<b>SAINT FRANCIS COUNTY - TOTAL</b>	<b>685</b>	<b>8,027</b>	<b>8,092</b>	<b>7,982</b>	<b>\$49,900,773</b>	<b>\$477.80</b>
Natural Resources & Mining	25	117	130	156	844,022	483.31
Construction	46	214	204	218	1,316,302	477.61
Manufacturing	16	1,303	1,320	1,115	8,466,850	522.71
Trade, Transportation & Utilities	185	2,009	2,044	2,079	12,673,345	476.94
Wholesale Trade	32	525	526	542	4,142,256	600.07
Retail Trade	124	1,189	1,231	1,256	5,824,118	365.62
Transportation, Warehousing & Utilities	29	295	287	281	2,706,971	723.85
Information	9	93	95	94	693,031	567.13
Financial Activities	55	306	311	313	1,982,664	491.98
Professional & Business Services	53	213	210	207	1,514,275	554.68
Education & Health Services	157	1,352	1,333	1,354	7,527,368	430.08
Leisure & Hospitality	52	657	664	662	1,812,014	210.87
Other Services	41	120	121	117	466,637	300.80
Local Government	29	1,130	1,139	1,142	8,287,971	560.72
State Government	17	513	521	525	4,316,294	638.91

**TABLE 6. COUNTY SUMMARY  
EMPLOYMENT AND TOTAL EARNINGS, BY INDUSTRY  
FIRST QUARTER 2007**

NORTH AMERICAN INDUSTRY CLASSIFICATION SYSTEM INDUSTRY GROUP	NUMBER OF EMPLOYING UNITS	EMPLOYMENT			TOTAL EARNINGS	AVERAGE
		JANUARY	FEBRUARY	MARCH	JANUARY - MARCH	WEEKLY EARNINGS
<b>SALINE COUNTY - TOTAL</b>	<b>1,779</b>	<b>20,368</b>	<b>20,446</b>	<b>20,876</b>	<b>\$140,797,304</b>	<b>\$526.69</b>
Natural Resources & Mining	15	33	32	31	270,418	650.04
Construction	315	1,846	1,886	1,982	14,532,661	586.93
Manufacturing	88	1,869	1,856	1,890	19,266,648	791.83
Trade, Transportation & Utilities	435	4,539	4,512	4,618	29,899,677	504.79
Wholesale Trade	127	538	530	535	5,726,267	824.36
Retail Trade	250	3,725	3,711	3,799	21,881,339	449.45
Transportation, Warehousing & Utilities	58	276	271	284	2,292,071	636.51
Information	18	150	146	153	1,127,372	579.43
Financial Activities	168	756	739	757	6,116,586	626.79
Professional & Business Services	224	1,216	1,239	1,248	7,924,647	493.86
Education & Health Services	201	2,702	2,735	2,778	18,136,346	509.47
Leisure & Hospitality	133	2,399	2,432	2,470	7,147,439	225.92
Other Services	132	566	563	635	3,531,291	461.97
Local & State Government	50	4,292	4,306	4,314	32,844,219	587.01
<b>SCOTT COUNTY - TOTAL</b>	<b>191</b>	<b>2,821</b>	<b>2,842</b>	<b>2,845</b>	<b>15,593,361</b>	<b>\$422.95</b>
Natural Resources & Mining	16	175	178	180	1,389,191	601.47
Trade, Transportation & Utilities	41	462	461	458	2,297,432	383.91
Wholesale Trade	7	64	66	65	462,662	547.53
Retail Trade	27	326	323	322	1,228,229	291.90
Transportation, Warehousing & Utilities	7	72	72	71	606,541	651.03
Financial Activities	19	74	71	71	467,029	498.96
Professional & Business Services	12	20	21	22	118,268	433.22
Education & Health Services	30	302	305	304	1,689,681	428.02
Leisure & Hospitality	20	164	163	170	369,130	171.40
Other Services	10	40	41	40	271,196	517.22
Local Government	5	369	381	380	2,194,211	448.10
State Government	8	71	76	78	439,487	450.76
Other	30	1,144	1,145	1,142	6,357,736	427.62

**TABLE 6. COUNTY SUMMARY  
EMPLOYMENT AND TOTAL EARNINGS, BY INDUSTRY  
FIRST QUARTER 2007**

NORTH AMERICAN INDUSTRY CLASSIFICATION SYSTEM INDUSTRY GROUP	NUMBER OF EMPLOYING UNITS	EMPLOYMENT			TOTAL EARNINGS	AVERAGE WEEKLY EARNINGS
		JANUARY	FEBRUARY	MARCH	JANUARY - MARCH	
<b>SEARCY COUNTY - TOTAL</b>	<b>179</b>	<b>1,624</b>	<b>1,682</b>	<b>1,661</b>	<b>\$8,198,808</b>	<b>\$380.92</b>
Construction	7	9	11	14	58,435	396.62
Manufacturing	16	276	266	247	1,229,041	359.47
Trade, Transportation & Utilities	37	254	284	279	1,115,991	315.22
Retail Trade	26	198	203	201	754,582	289.26
Other Trade, Transportation & Utilities	11	56	81	78	361,409	387.92
Financial Activities	14	82	81	88	570,962	524.94
Professional & Business Services	16	38	36	41	201,797	404.94
Education & Health Services	45	301	320	308	1,415,627	351.65
Leisure & Hospitality	11	85	94	94	213,258	180.27
Local Government	10	393	396	396	2,127,683	414.35
State Government	8	145	145	145	914,909	485.36
Other	15	41	49	49	351,105	582.91
<b>SEBASTIAN COUNTY - TOTAL</b>	<b>3,690</b>	<b>72,265</b>	<b>72,417</b>	<b>73,413</b>	<b>\$612,026,338</b>	<b>\$647.59</b>
Natural Resources & Mining	75	1,628	1,668	1,691	26,782,292	1239.33
Construction	306	2,796	2,670	2,805	24,901,994	694.79
Manufacturing	240	19,764	19,528	19,493	173,700,186	681.89
Trade, Transportation & Utilities	946	12,866	12,751	13,058	94,417,657	563.38
Wholesale Trade	249	2,538	2,559	2,616	30,271,903	905.72
Retail Trade	565	8,046	7,902	8,135	42,104,114	403.45
Transportation, Warehousing & Utilities	132	2,282	2,290	2,307	22,041,640	739.43
Information	58	1,135	1,124	1,132	13,540,645	921.49
Financial Activities	409	2,471	2,481	2,495	25,197,787	780.83
Professional & Business Services	524	8,949	9,238	9,657	81,590,621	676.22
Education & Health Services	483	10,112	10,141	10,229	97,024,072	734.54
Leisure & Hospitality	309	5,313	5,373	5,458	16,029,141	229.13
Other Services	275	1,444	1,453	1,449	8,704,800	462.22
Local Government	43	4,472	4,492	4,447	38,400,685	660.78
State Government	22	1,315	1,498	1,499	11,736,458	628.11

**TABLE 6. COUNTY SUMMARY  
EMPLOYMENT AND TOTAL EARNINGS, BY INDUSTRY  
FIRST QUARTER 2007**

NORTH AMERICAN INDUSTRY CLASSIFICATION SYSTEM INDUSTRY GROUP	NUMBER OF EMPLOYING UNITS	EMPLOYMENT			TOTAL EARNINGS	AVERAGE
		JANUARY	FEBRUARY	MARCH	JANUARY - MARCH	WEEKLY EARNINGS
<b>SEVIER COUNTY - TOTAL</b>	<b>333</b>	<b>5,884</b>	<b>6,037</b>	<b>6,122</b>	<b>38,070,087</b>	<b>\$486.91</b>
Natural Resources & Mining	17	250	253	256	1,553,600	472.36
Construction	21	141	133	152	1,198,747	649.38
Manufacturing	11	2,289	2,442	2,484	13,938,299	445.81
Trade, Transportation & Utilities	96	870	863	905	5,835,738	510.50
Wholesale Trade	14	146	145	152	1,905,445	992.59
Retail Trade	61	596	587	618	2,694,802	345.30
Transportation, Warehousing & Utilities	21	128	131	135	1,235,491	723.64
Information	6	40	39	39	312,217	610.59
Financial Activities	28	215	212	214	1,620,814	583.52
Professional & Business Services	30	102	104	107	2,808,557	2070.70
Education & Health Services	51	540	530	512	3,014,572	439.74
Leisure & Hospitality	21	249	252	248	553,776	170.62
Other Services	32	145	140	147	648,585	346.47
Local Government	11	880	877	865	5,396,584	474.97
State Government	9	163	192	193	1,188,598	500.53
<b>SHARP COUNTY - TOTAL</b>	<b>438</b>	<b>3,819</b>	<b>3,777</b>	<b>3,852</b>	<b>\$20,968,626</b>	<b>\$422.69</b>
Construction	31	213	195	203	1,375,778	519.62
Manufacturing	21	171	181	188	839,377	358.71
Trade, Transportation & Utilities	102	1,000	968	1,000	6,068,165	471.81
Retail Trade	71	632	630	664	2,824,022	338.37
Other Trade, Transportation & Utilities	31	368	338	336	3,244,143	718.47
Information	7	48	48	58	789,516	1183.09
Financial Activities	38	241	245	250	1,800,600	564.57
Professional & Business Services	39	169	156	169	1,083,346	506.08
Education & Health Services	94	595	594	595	2,950,484	381.66
Leisure & Hospitality	43	413	413	427	893,946	164.64
Local Government	24	785	792	776	4,154,831	407.48
State Government	9	111	110	108	677,681	475.34
Other	30	73	75	78	334,902	341.97

**TABLE 6. COUNTY SUMMARY  
EMPLOYMENT AND TOTAL EARNINGS, BY INDUSTRY  
FIRST QUARTER 2007**

NORTH AMERICAN INDUSTRY CLASSIFICATION SYSTEM INDUSTRY GROUP	NUMBER OF EMPLOYING UNITS	EMPLOYMENT			TOTAL EARNINGS	AVERAGE WEEKLY EARNINGS
		JANUARY	FEBRUARY	MARCH	JANUARY - MARCH	
<b>STONE COUNTY - TOTAL</b>	<b>285</b>	<b>2,784</b>	<b>2,799</b>	<b>2,879</b>	<b>\$14,381,485</b>	<b>\$392.20</b>
Natural Resources & Mining	5	12	14	16	88,354	485.46
Construction	24	80	93	106	480,775	397.66
Manufacturing	24	436	435	432	2,380,777	421.65
Trade, Transportation & Utilities	79	695	696	712	3,373,879	370.23
Wholesale Trade	11	56	57	57	315,436	428.19
Retail Trade	56	592	592	605	2,637,210	340.18
Transportation, Warehousing & Utilities	12	47	47	50	421,233	675.05
Financial Activities	26	118	121	123	805,325	513.38
Professional & Business Services	10	33	32	29	235,008	576.94
Education & Health Services	49	459	451	448	2,803,422	476.39
Leisure & Hospitality	33	308	303	362	690,003	163.65
Local Government	10	407	417	417	2,456,274	456.75
State Government	9	179	180	177	739,084	318.20
Other	16	57	57	57	328,584	443.43
<b>UNION COUNTY - TOTAL</b>	<b>1,397</b>	<b>19,389</b>	<b>19,426</b>	<b>19,739</b>	<b>\$179,190,278</b>	<b>\$706.21</b>
Natural Resources & Mining	109	575	567	567	5,058,326	683.03
Construction	91	1,211	1,254	1,316	13,943,718	851.04
Manufacturing	65	4,944	4,855	4,852	50,186,756	790.50
Trade, Transportation & Utilities	356	3,533	3,506	3,633	28,499,978	616.28
Wholesale Trade	81	593	586	605	9,145,650	1183.04
Retail Trade	217	2,179	2,155	2,251	10,592,627	371.22
Transportation, Warehousing & Utilities	58	761	765	777	8,761,701	877.96
Information	20	198	198	198	1,513,357	587.94
Financial Activities	119	739	731	733	5,943,067	622.55
Professional & Business Services	143	1,625	1,639	1,651	32,536,183	1527.64
Education & Health Services	208	2,430	2,407	2,431	17,986,339	571.09
Leisure & Hospitality	88	1,047	1,137	1,170	3,096,758	213.07
Other Services	143	551	544	602	3,595,885	488.99
Local Government	37	2,032	2,048	2,040	12,854,705	484.72
State Government	18	504	540	546	3,975,206	576.95



**TABLE 6. COUNTY SUMMARY  
EMPLOYMENT AND TOTAL EARNINGS, BY INDUSTRY  
FIRST QUARTER 2007**

NORTH AMERICAN INDUSTRY CLASSIFICATION SYSTEM INDUSTRY GROUP	NUMBER OF EMPLOYING UNITS	EMPLOYMENT			TOTAL EARNINGS	AVERAGE WEEKLY EARNINGS
		JANUARY	FEBRUARY	MARCH	JANUARY - MARCH	
<b>VAN BUREN COUNTY - TOTAL</b>	<b>355</b>	<b>3,647</b>	<b>3,654</b>	<b>3,777</b>	<b>\$20,094,670</b>	<b>\$418.60</b>
Natural Resources & Mining	12	24	24	36	270,112	742.07
Construction	43	184	177	197	1,190,008	492.15
Manufacturing	14	492	490	479	2,885,430	455.76
Trade, Transportation & Utilities	96	770	782	815	4,220,754	411.50
Wholesale Trade	15	44	46	48	355,214	594.00
Retail Trade	58	587	595	627	2,817,694	359.45
Transportation, Warehousing & Utilities	23	139	141	140	1,047,846	575.74
Information	10	54	54	52	417,570	602.26
Financial Activities	27	157	156	155	1,179,050	581.39
Professional & Business Services	26	96	97	107	499,885	384.53
Education & Health Services	51	608	605	622	3,252,509	409.03
Leisure & Hospitality	32	406	416	452	1,290,941	233.84
Other Services	25	71	74	76	422,141	440.80
Local Government	11	686	684	691	3,821,795	427.92
State Government	8	99	95	95	644,475	514.62
<b>WASHINGTON COUNTY - TOTAL</b>	<b>5,615</b>	<b>90,058</b>	<b>90,029</b>	<b>90,989</b>	<b>\$762,563,642</b>	<b>\$649.18</b>
Natural Resources & Mining	39	458	461	465	3,397,503	566.50
Construction	688	5,639	5,561	5,728	48,387,466	659.64
Manufacturing	240	15,288	15,223	15,228	127,069,389	641.11
Trade, Transportation & Utilities	1,363	20,549	20,583	20,924	177,265,416	659.20
Wholesale Trade	401	3,838	3,807	3,841	53,605,236	1077.00
Retail Trade	765	11,393	11,343	11,553	64,446,636	433.73
Transportation, Warehousing & Utilities	197	5,318	5,433	5,530	59,213,544	839.30
Information	92	1,546	1,561	1,578	17,249,289	849.65
Financial Activities	663	3,984	3,966	3,950	41,256,917	800.07
Professional & Business Services	934	8,586	8,602	8,772	97,856,898	869.89
Education & Health Services	626	10,524	10,602	10,682	91,321,590	662.54
Leisure & Hospitality	502	8,896	8,910	9,060	28,492,397	244.74
Other Services	384	1,944	1,955	1,941	11,584,502	457.76
Local & State Government	84	12,644	12,605	12,661	118,682,275	722.45

**TABLE 6. COUNTY SUMMARY  
EMPLOYMENT AND TOTAL EARNINGS, BY INDUSTRY  
FIRST QUARTER 2007**

NORTH AMERICAN INDUSTRY CLASSIFICATION SYSTEM INDUSTRY GROUP	NUMBER OF EMPLOYING UNITS	EMPLOYMENT			TOTAL EARNINGS	AVERAGE
		JANUARY	FEBRUARY	MARCH	JANUARY - MARCH	WEEKLY EARNINGS
<b>WHITE COUNTY - TOTAL</b>	<b>1,672</b>	<b>22,867</b>	<b>22,924</b>	<b>23,200</b>	<b>\$165,332,879</b>	<b>\$553.02</b>
Natural Resources & Mining	38	335	391	454	4,405,186	861.51
Construction	185	1,142	1,088	1,145	8,124,823	555.54
Manufacturing	86	2,955	2,625	2,714	31,211,666	868.42
Trade, Transportation & Utilities	479	5,774	5,781	5,890	39,803,403	526.53
Wholesale Trade	97	581	593	629	4,800,297	614.40
Retail Trade	296	3,087	3,087	3,172	15,566,733	384.37
Transportation, Warehousing & Utilities	86	2,106	2,101	2,089	19,436,373	712.41
Information	22	219	231	228	1,622,992	552.41
Financial Activities	180	947	926	917	6,939,026	573.95
Professional & Business Services	166	1,272	1,287	1,283	8,055,628	483.86
Education & Health Services	229	4,123	4,232	4,216	33,227,526	609.97
Leisure & Hospitality	117	2,214	2,249	2,260	5,445,410	186.92
Other Services	105	633	635	639	3,925,925	475.08
Local Government	46	2,655	2,694	2,683	17,197,369	494.10
State Government	19	598	785	771	5,373,925	575.74
<b>WOODRUFF COUNTY - TOTAL</b>	<b>191</b>	<b>1,889</b>	<b>1,890</b>	<b>1,931</b>	<b>\$11,780,431</b>	<b>\$476.11</b>
Natural Resources & Mining	19	104	99	118	654,711	470.68
Construction	7	60	62	66	361,658	443.93
Manufacturing	8	296	301	312	2,251,320	571.55
Trade, Transportation & Utilities	57	503	499	499	3,357,754	516.23
Wholesale Trade	13	189	177	183	1,637,782	688.43
Retail Trade	26	203	210	207	704,691	262.29
Transportation, Warehousing & Utilities	18	111	112	109	1,015,281	705.71
Financial Activities	15	64	62	62	415,003	509.41
Professional & Business Services	4	7	6	6	60,119	730.19
Education & Health Services	48	225	228	231	1,353,958	456.80
Leisure & Hospitality	7	49	53	50	95,266	144.63
Local Government	10	500	498	505	2,738,937	420.53
State Government	7	58	59	59	367,412	481.75
Other	9	23	23	23	124,293	415.70

**TABLE 6. COUNTY SUMMARY  
EMPLOYMENT AND TOTAL EARNINGS, BY INDUSTRY  
FIRST QUARTER 2007**

NORTH AMERICAN INDUSTRY CLASSIFICATION SYSTEM INDUSTRY GROUP	NUMBER OF EMPLOYING UNITS	EMPLOYMENT			TOTAL EARNINGS	AVERAGE WEEKLY EARNINGS
		JANUARY	FEBRUARY	MARCH	JANUARY - MARCH	
<b>YELL COUNTY - TOTAL</b>	<b>414</b>	<b>6,769</b>	<b>6,744</b>	<b>6,849</b>	<b>\$40,506,708</b>	<b>\$459.08</b>
Natural Resources & Mining	23	226	225	223	1,413,352	483.91
Construction	45	305	268	298	1,970,970	522.20
Manufacturing	21	2,807	2,778	2,762	16,782,502	463.99
Trade, Transportation & Utilities	90	694	681	698	3,401,359	378.64
Wholesale Trade	13	20	21	22	123,746	453.28
Retail Trade	58	585	567	583	2,536,770	337.41
Transportation, Warehousing & Utilities	19	89	93	93	740,843	621.69
Information	3	73	73	74	641,279	672.67
Financial Activities	37	191	191	201	1,389,972	550.19
Professional & Business Services	39	253	249	252	2,601,411	796.19
Education & Health Services	68	479	487	492	2,489,183	393.98
Leisure & Hospitality	29	307	317	349	794,295	188.39
Other Services	18	73	74	74	289,880	302.69
Local Government	28	1,248	1,288	1,311	8,052,089	483.02
State Government	13	113	113	115	680,416	460.47
<b>REST-OF-STATE-TOTAL</b>	<b>4,181</b>	<b>15,532</b>	<b>16,050</b>	<b>16,571</b>	<b>236,338,699</b>	<b>\$1,132.63</b>
Natural Resources & Mining	71	434	534	629	6,588,298	952.02
Construction	547	2,564	2,683	3,021	26,865,400	749.84
Manufacturing	55	158	164	161	1,838,353	878.33
Trade, Transportation & Utilities	1,657	6,329	6,420	6,457	126,240,392	1516.84
Wholesale Trade	1,408	5,164	5,267	5,276	113,941,594	1674.04
Retail Trade	97	481	472	483	5,997,148	963.76
Transportation, Warehousing & Utilities	152	684	681	698	6,301,650	704.91
Information	98	230	232	241	3,641,022	1195.21
Financial Activities	251	844	851	829	12,294,041	1124.04
Professional & Business Services	1,224	3,776	3,981	4,064	45,992,332	897.86
Education & Health Services	109	542	537	518	6,575,875	950.23
Other	169	655	648	651	6,302,986	744.39

TABLE 7. FEDERAL GOVERNMENT EMPLOYMENT AND EARNINGS IN ARKANSAS

NORTH AMERICAN INDUSTRY CLASSIFICATION SYSTEM INDUSTRY GROUP	NUMBER OF EMPLOYING UNITS	EMPLOYMENT			TOTAL
		JANUARY	FEBRUARY	MARCH	EARNINGS JAN. - MAR. 2007
Trade, Transportation & Utilities	453	6,790	6,768	6,782	82,807,238
Information	1	34	34	35	372,601
Financial Activities	23	175	173	172	2,640,241
Professional & Business Services	31	754	755	758	13,030,133
Education & Health Services	6	3,882	3,894	3,919	65,206,745
Leisure & Hospitality	15	209	200	211	2,356,172
Other Services	2	253	250	262	947,761
Public Administration	484	8,492	8,402	8,457	124,400,876
<b>TOTAL</b>	<b>1,015</b>	<b>20,589</b>	<b>20,476</b>	<b>20,596</b>	<b>\$291,761,767</b>

Note: Industries with employing units that have no employment or wages are not included in this table.

**TABLE 8. WORKFORCE INFORMATION AREA, SUMMARY  
EMPLOYMENT AND TOTAL EARNINGS, BY INDUSTRY  
FIRST QUARTER 2007**

NORTH AMERICAN INDUSTRY CLASSIFICATION SYSTEM INDUSTRY GROUP	NUMBER OF EMPLOYING UNITS	EMPLOYMENT			TOTAL EARNINGS	AVERAGE WEEKLY EARNINGS
		JANUARY	FEBRUARY	MARCH	JANUARY-MARCH	
<b>CENTRAL WORKFORCE INFORMATION*</b>	<b>6,149</b>	<b>75,010</b>	<b>75,390</b>	<b>76,643</b>	<b>\$550,730,224</b>	<b>\$559.77</b>
Natural Resources & Mining	179	1,098	1,120	1,277	12,437,233	821.21
Trade, Transportation & Utilities	1,569	14,869	14,903	15,208	94,712,136	485.92
Wholesale Trade	409	2,030	2,070	2,116	21,093,971	783.11
Retail Trade	899	11,313	11,269	11,511	59,547,090	403.06
Transportation, Warehousing & Utilities	261	1,526	1,564	1,581	14,071,075	695.18
Financial Activities	635	2,938	2,939	2,970	24,969,553	651.32
Professional & Business Services	746	7,276	7,310	7,332	77,128,666	812.07
Education & Health Services	750	9,993	10,091	10,214	67,249,923	512.22
Leisure & Hospitality	455	7,798	7,812	8,013	21,185,869	206.96
Local & State Government	209	14,470	14,568	14,672	109,832,928	579.87
Other	1,606	16,568	16,647	16,957	143,213,916	658.72

\*Note: Pulaski County is not included in the Central Workforce Information. Please refer to Page 53 for information on Pulaski County.  
Central Workforce Includes these counties: Faulkner, Lonoke, Monroe, Prairie, and Saline.

<b>EASTERN WORKFORCE INFORMATION</b>	<b>3,476</b>	<b>37,906</b>	<b>38,230</b>	<b>38,760</b>	<b>\$253,732,159</b>	<b>\$509.62</b>
Natural Resources & Mining	209	869	1,034	1,202	5,511,700	409.64
Construction	196	987	966	1,040	7,017,682	541.08
Trade, Transportation & Utilities	878	9,929	9,954	10,145	68,579,358	527.04
Wholesale Trade	182	2,053	2,090	2,135	18,424,444	677.25
Retail Trade	490	4,921	4,918	5,050	23,727,343	367.76
Transportation, Warehousing & Utilities	206	2,955	2,946	2,960	26,427,571	688.26
Financial Activities	280	1,563	1,579	1,578	12,725,052	622.15
Professional & Business Services	305	1,623	1,662	1,685	10,541,034	489.45
Education & Health Services	792	5,608	5,584	5,662	35,885,565	491.35
Leisure & Hospitality	232	3,724	3,726	3,785	10,797,025	221.77
Local Government	139	5,908	5,957	6,037	43,271,088	557.79
State Government	68	2,209	2,286	2,281	16,634,230	566.51
Other	377	5,486	5,482	5,345	42,769,425	605.03

Eastern Workforce Includes these counties: Crittenden, Cross, Lee, Phillips, and Saint Francis.

**TABLE 8. WORKFORCE INFORMATION AREA, SUMMARY  
EMPLOYMENT AND TOTAL EARNINGS, BY INDUSTRY  
FIRST QUARTER 2007**

NORTH AMERICAN INDUSTRY CLASSIFICATION SYSTEM INDUSTRY GROUP	NUMBER OF EMPLOYING UNITS	EMPLOYMENT			TOTAL EARNINGS	AVERAGE WEEKLY EARNINGS
		JANUARY	FEBRUARY	MARCH	JANUARY-MARCH	
<b>NORTH CENTRAL WORKFORCE INFORMATION</b>	<b>5,587</b>	<b>67,594</b>	<b>67,878</b>	<b>69,107</b>	<b>\$448,911,329</b>	<b>\$506.38</b>
Construction	500	2,632	2,587	2,781	17,903,172	516.44
Trade, Transportation & Utilities	1,524	15,190	15,152	15,548	98,788,139	496.78
Retail Trade	938	8,983	8,971	9,245	43,088,827	365.59
Other Trade, Transportation & Utilities	586	6,207	6,181	6,303	55,699,312	687.69
Financial Activities	534	2,664	2,646	2,661	20,120,016	582.50
Professional & Business Services	461	2,880	2,881	2,938	17,016,672	451.42
Education & Health Services	890	11,337	11,439	11,482	80,193,636	540.20
Leisure & Hospitality	444	5,703	5,799	6,049	14,647,255	192.59
Local Government	231	9,164	9,268	9,272	54,752,836	456.08
State Government	115	2,784	3,083	3,069	21,637,371	558.78
Other	888	15,240	15,023	15,307	123,852,232	522.89

North Central Workforce Includes these counties: Cleburne, Fulton, Independence, Izard, Jackson, Sharp, Stone, Van Buren, White, and Woodruff

<b>NORTHEAST WORKFORCE INFORMATION</b>	<b>6,490</b>	<b>93,453</b>	<b>93,729</b>	<b>94,855</b>	<b>\$699,578,751</b>	<b>\$572.41</b>
Natural Resources & Mining	370	1,620	1,623	1,813	10,327,660	471.38
Construction	503	2,787	2,815	3,065	21,837,543	581.45
Manufacturing	351	21,529	21,296	21,094	218,629,229	789.33
Trade, Transportation & Utilities	1,729	17,523	17,477	17,903	111,198,958	485.06
Wholesale Trade	399	3,565	3,507	3,612	32,417,477	700.20
Retail Trade	1,035	11,496	11,493	11,731	55,834,121	371.11
Transportation, Warehousing & Utilities	295	2,462	2,477	2,560	22,947,360	706.17
Financial Activities	594	3,351	3,353	3,373	32,592,814	746.39
Professional & Business Services	655	6,695	6,693	6,637	43,806,868	504.83
Education & Health Services	1,003	13,113	13,220	13,362	103,424,416	601.26
Leisure & Hospitality	479	7,249	7,307	7,558	19,083,885	199.15
Local Government	219	11,794	11,979	12,068	78,593,559	506.04
State Government	107	3,913	4,099	4,106	35,217,529	670.67
Other	480	3,879	3,867	3,876	24,866,290	493.75

Northeast Workforce Includes these counties: Clay, Craighead, Greene, Lawrence, Mississippi, Poinsett, and Randolph.

**TABLE 8. WORKFORCE INFORMATION AREA, SUMMARY  
EMPLOYMENT AND TOTAL EARNINGS, BY INDUSTRY  
FIRST QUARTER 2007**

NORTH AMERICAN INDUSTRY CLASSIFICATION SYSTEM INDUSTRY GROUP	NUMBER OF EMPLOYING UNITS	EMPLOYMENT			TOTAL EARNINGS	AVERAGE WEEKLY EARNINGS
		JANUARY	FEBRUARY	MARCH	JANUARY-MARCH	
<b>NORTHWEST WORKFORCE INFORMATION</b>	<b>15,115</b>	<b>231,880</b>	<b>232,475</b>	<b>235,650</b>	<b>\$2,112,011,770</b>	<b>\$696.26</b>
Trade, Transportation & Utilities	3,744	54,807	54,897	56,000	479,623,772	667.95
Retail Trade	2,024	26,613	26,498	27,310	150,033,487	430.52
Other Trade, Transportation & Utilities	1,720	28,194	28,399	28,690	329,590,285	891.85
Education & Health Services	1,747	23,588	23,771	24,023	195,643,808	632.49
Leisure & Hospitality	1,373	20,407	20,411	21,074	64,357,931	239.96
Local & State Government	426	28,493	28,941	29,127	239,769,824	639.22
Other	7,825	104,585	104,455	105,426	1,132,616,435	831.16
<b>SOUTHEAST WORKFORCE INFORMATION</b>	<b>5,528</b>	<b>75,310</b>	<b>75,782</b>	<b>76,836</b>	<b>\$562,150,005</b>	<b>\$569.16</b>
Natural Resources & Mining	404	2,683	2,834	2,832	20,143,264	556.77
Construction	379	2,973	2,919	3,216	28,081,318	711.50
Manufacturing	226	16,940	16,903	17,064	168,092,154	761.99
Trade, Transportation & Utilities	1,389	13,054	13,024	13,248	88,769,539	520.91
Retail Trade	840	8,501	8,461	8,616	41,397,591	373.50
Other Trade, Transportation & Utilities	549	4,553	4,563	4,632	47,371,948	795.17
Local & State Government	357	16,415	16,788	16,925	116,667,283	537.09
Other	2,773	23,245	23,314	23,551	140,396,447	462.12
<b>SOUTHWEST WORKFORCE INFORMATION</b>	<b>5,805</b>	<b>84,875</b>	<b>85,682</b>	<b>86,810</b>	<b>\$671,395,846</b>	<b>\$602.01</b>
Natural Resources & Mining	415	2,858	2,843	2,880	25,405,186	683.22
Manufacturing	295	25,205	25,479	25,594	251,606,476	761.20
Trade, Transportation & Utilities	1,525	15,061	15,151	15,584	106,964,449	539.00
Education & Health Services	791	9,313	9,240	9,280	56,958,297	472.25
Local Government	266	11,085	11,179	11,192	71,023,835	489.90
State Government	150	3,172	3,384	3,425	25,539,793	590.50
Other	2,363	18,181	18,406	18,855	133,897,810	557.33

Northwest Workforce Includes these counties: Baxter, Benton, Boone, Carroll, Madison, Marion, Newton, Searcy, and Washington.

Southeast Workforce Includes these counties: Arkansas, Ashley, Bradley, Chicot, Cleveland, Desha, Drew, Grant, Jefferson, and Lincoln

Southwest Workforce Includes these counties: Calhoun, Columbia, Dallas, Hempstead, Howard, Lafayette, Little River, Miller, Nevada, Ouachita, Sevier, and Union

**TABLE 8. WORKFORCE INFORMATION AREA, SUMMARY  
EMPLOYMENT AND TOTAL EARNINGS, BY INDUSTRY  
FIRST QUARTER 2007**

NORTH AMERICAN INDUSTRY CLASSIFICATION SYSTEM INDUSTRY GROUP	NUMBER OF EMPLOYING UNITS	EMPLOYMENT			TOTAL EARNINGS	AVERAGE
		JANUARY	FEBRUARY	MARCH	JANUARY-MARCH	WEEKLY EARNINGS
<b>WEST CENTRAL WORKFORCE INFORMATION</b>	<b>8,310</b>	<b>108,050</b>	<b>109,156</b>	<b>110,932</b>	<b>\$755,190,986</b>	<b>\$531.10</b>
Natural Resources & Mining	266	2,198	2,432	2,463	18,954,424	616.68
Construction	927	5,486	5,444	5,684	42,733,241	593.57
Trade, Transportation & Utilities	2,010	21,698	21,758	22,221	159,420,510	560.16
Financial Activities	875	4,016	3,976	4,046	32,933,703	631.34
Education & Health Services	1,155	15,297	15,489	15,549	114,177,250	568.65
Local Government	228	12,023	12,208	12,345	82,283,492	519.15
State Government	134	4,970	5,416	5,518	38,405,781	557.27
Other	2,715	42,362	42,433	43,106	266,282,585	480.45

West Central Workforce Includes these counties: Clark, Conway, Garland, Hot Spring, Johnson, Montgomery, Perry, Pike, Pope, and Yell

<b>WESTERN WORKFORCE INFORMATION</b>	<b>6,479</b>	<b>111,083</b>	<b>111,367</b>	<b>112,814</b>	<b>\$866,953,964</b>	<b>\$596.74</b>
Natural Resources & Mining	173	2,701	2,782	2,878	36,782,652	1015.23
Trade, Transportation & Utilities	1,655	23,202	23,046	23,435	165,348,995	547.59
Wholesale Trade	396	3,480	3,501	3,566	37,861,647	828.42
Other Trade, Transportation & Utilities	1,259	19,722	19,545	19,869	127,487,348	497.50
Financial Activities	676	3,769	3,783	3,818	34,808,748	706.49
Professional & Business Services	803	10,400	10,717	11,129	91,024,348	651.42
Education & Health Services	844	13,938	13,959	14,067	120,619,148	663.31
Leisure & Hospitality	510	7,997	8,053	8,256	22,810,547	216.57
Local & State Government	231	12,048	12,301	12,277	91,405,379	575.92
Other	1,587	37,028	36,726	36,954	304,154,147	634.00

Western Workforce Includes these counties: Crawford, Franklin, Logan, Polk, Scott, and Sebastian



