

Arkansas Covered Employment & Earnings

Jobs for People. People for Jobs.

DWS
Department of
WORKFORCE**Services**

Fourth Quarter
2008

**COVERED EMPLOYMENT AND EARNINGS
STATE OF ARKANSAS
FOURTH QUARTER 2008**

**MIKE BEEBE, GOVERNOR
STATE OF ARKANSAS**

**ARTEE WILLIAMS, DIRECTOR
DEPARTMENT OF WORKFORCE SERVICES**

**PUBLISHED BY
LABOR MARKET INFORMATION & ANALYSIS
BUREAU OF LABOR STATISTICS PROGRAMS
POST OFFICE BOX 2981
LITTLE ROCK, ARKANSAS 72203-2981
BERNADETTE COLEMAN, BLS PROGRAMS MANAGER
TELEPHONE: (501) 682-3159**

STATE OF ARKANSAS HOME PAGE: <http://www.arkansas.gov>

DEPARTMENT OF WORKFORCE SERVICES HOME PAGE: <http://www.arkansas.gov/esd/>

**INTERNET SITE FOR LABOR MARKET INFORMATION:
<http://www.discover.arkansas.gov>**

RELEASED: JUNE 2009

TABLE OF CONTENTS

	Page
Description of Data	1
Industry Classification	1
Definition of Covered Employment and Earnings	2
Federal Government Employment	2
County Classification	2
Significant Developments During Fourth Quarter 2008	3

LIST OF GRAPHS AND TABLES

Graph 1	Total Covered Employment for Selected Years, Arkansas	7
Graph 2	Total Covered Earnings, by Calendar Quarter for Selected Years, Arkansas	8
Table 1	Quarterly Comparison of Covered Employment and Wages, by Industry	5
Table 2	Total Covered Employment in Arkansas, 2001-2008	6
Table 3	Total Covered Earnings, 2001-2008	9
Table 4	Total Taxable Earnings, 2001-2008	10
Table 5	State Summary - Employment and Total Earnings, by Industry, Fourth Quarter 2008	11
Table 6	County Summary - Employment and Total Earnings, by Industry, Fourth Quarter 2008	24
Table 7	Federal Government Employment and Total Earnings in Arkansas, Fourth Quarter 2008	62
Table 8	Workforce Information Area – Employment and Total Earnings, by Industry, Fourth Quarter 2008	63

EMPLOYMENT AND EARNINGS
UNDER THE ARKANSAS EMPLOYMENT SECURITY LAW
FOURTH QUARTER 2008

DESCRIPTION OF DATA

This publication contains covered employment and payroll data by industry and county for the Fourth Quarter 2008. These data are compiled from quarterly contribution and wage reports submitted by employers subject to the Arkansas Employment Security Law. An employing unit is a single physical location where business is conducted, production takes place, or services are provided. Employment data have been tabulated for each month of the quarter by industry under the **North American Industry Classification System** (NAICS) (see "Industry Classification" below) on a statewide, county and workforce area basis. Payroll data represent the total wages paid during the quarter, and are also shown by

industry for the State and by publishable industry groups for each county and workforce area. The tabulation of this data is a joint effort in conjunction with the U.S. Bureau of Labor Statistics. In addition, there are tables included which set out total covered employment by months, quarterly payrolls, and average weekly earnings for the years 2001 through 2008. Data contained in this publication are subject to revision. These revisions will be reflected in the 2008 Annual Covered Employment and Earnings publication. Because of industry code changes between years, substantial employment and wage shifts among industries are anticipated.

INDUSTRY CLASSIFICATION

Previously published industry data **will not** be comparable in all instances with currently published data since industry codes have been revised according to the following Manuals: (a) between January 1, 1958 and December 31, 1967, industry codes were assigned under the 1957 Standard Industrial Classification (SIC) Manual; (b) between January 1, 1968 and December 31, 1974, industry codes were assigned under the 1967 Standard Industrial Classification (SIC) Manual; (c) between January 1, 1975 and December 31, 1987, industry codes were assigned under the 1972 Standard Industrial Classification (SIC) Manual; (d) between January 1, 1988 and December 31, 2000, industry codes were assigned under the 1987 Standard Industrial Classification (SIC) Manual; (e) between January 1, 2001 and December 31, 2006, industry codes were assigned under the 2002 North American Industry Classification System (NAICS) Manual; and (f) since January 1, 2007, industry codes have been assigned under the 2007 North American Industry Classification System (NAICS) Manual.

The NAICS Manual represents a significant change in coding methodology as compared to the SIC Manual. One of the most significant changes involves how NAICS treats auxiliary units. Auxiliary units are establishments primarily engaged in performing management or support services for other establishments of the same enterprise. The SIC code for these units was based on the activity of the enterprise served. The NAICS code is based on the actual activities that the establishment performs. Comparisons of many industries **should not be made** between this publication and previous Covered Employment and Earnings publications that were based on SIC. Even though some titles are the same or similar, in nature, NAICS and SIC could differ in the classification of employers. The implementation of NAICS represents a profound change for statistical programs, and will create significant benefits along with transition obstacles for both data collectors and data users. A summary is available on the NAICS home page at <http://www.census.gov/naics>.

DEFINITION OF COVERED EMPLOYMENT AND EARNINGS

Covered Employment is the number of workers employed by employers subject to the Arkansas Employment Security Law who worked or received pay for the payroll period including the 12th of the month. An employer is subject to the law when they employ one or more employees in each of ten days during the current or preceding calendar year.

Currently excluded from coverage is employment covered by the Railroad Unemployment Insurance Act, some domestic service workers, employees of small agricultural establishments, self-employed and unpaid family workers, insurance and real estate

agents who are on commission only, and employees of churches and religious organizations except separately incorporated schools. The payroll information in this publication includes all wages and salaries paid to any covered employees by their employers including bonuses, commissions, and cash values of remuneration received in any medium other than cash. These wages include both taxable and nontaxable wages. Only the first \$10,000 paid to each worker by an employer in the calendar year is taxable under the Arkansas Employment Security Law.

FEDERAL GOVERNMENT EMPLOYMENT

Table 7 on page 62 lists the total number of civilians employed by the Federal Government in Arkansas during the Fourth Quarter 2008. Employment and wage data are set out by industry divisions. These data are obtained from required reports submitted by various

government agencies having employment in the State. Civilian Federal workers are covered by the Unemployment Compensation for Federal Employees (UCFE) program.

COUNTY CLASSIFICATION

Employment and payroll data by county are classified according to the county where the workers are employed. Employers with operations in more than one county are requested to furnish this agency with a breakdown of employment and wages for at least one quarter of each year by the counties in which they operate. Many such employers submit county data with each regular contribution report. **Note:** This information is invaluable in the preparation of monthly employment and payroll data by county.

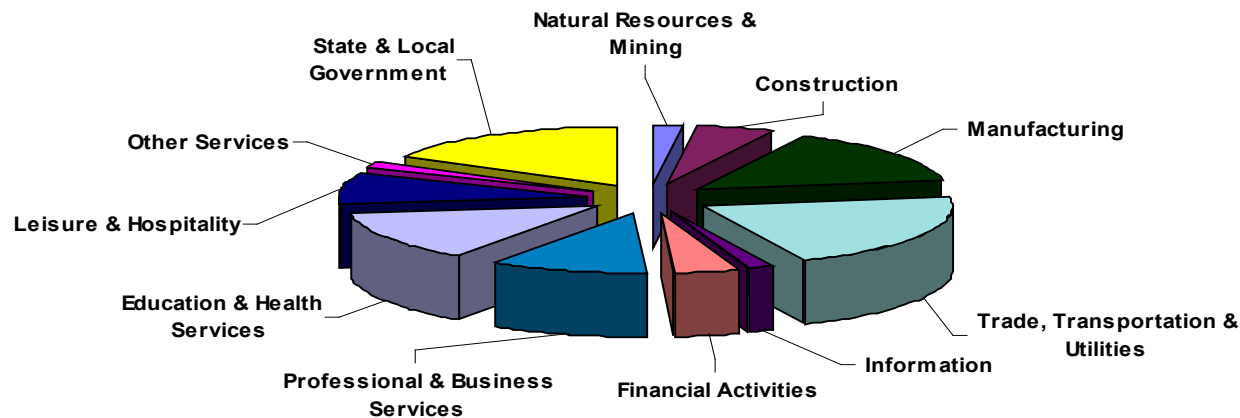
Employment and payroll data for multi - area employers, who do not furnish county data each quarter of the year, are prorated by county on the basis of one quarter's information. The "rest-of-state" table that appears on page 61 of this publication includes data on firms that **did not** provide a county breakdown of employment and payrolls. It also includes sales, and all other type of personnel with no permanent place of work, as well as employment of employers with no established place of business in Arkansas.

SIGNIFICANT DEVELOPMENTS DURING FOURTH QUARTER 2008

AVERAGE EMPLOYMENT CHANGES

Covered employment averaged 1,151,279 during the Fourth Quarter 2008 (see table 1), an increase of 11,354 (+1.0%) from the previous quarter and a decrease of 14,599 (-1.3%) from the average recorded one-year ago. This *over-the-year* decrease is more significant when used as an economic indicator. This *over-the-year* comparison allows for the disregarding of many seasonal factors that are evident when making an *over-the-quarter* comparison.

Average Covered Employment by NAICS Group



EMPLOYMENT CHANGES FROM THIRD QUARTER 2008

Over the quarter losses were experienced in eight industry groups while three enjoyed gains. The largest loss occurred in Leisure & Hospitality (-5,303), with the usual seasonal decline in Arts, Entertainment & Recreation (-2,207) and a combination of seasonal and economic factors leading to a decline in Accommodation & Food Service (-3,097). Manufacturing continued to lose jobs (-4,859), with layoffs and closures accelerated due to lack of demand. Trade, Transportation & Utilities (-2,132) also declined despite the holiday season. Almost three-quarters of lost jobs were attributed to layoffs in the Truck Transportation subsector (-1,536). Construction jobs decreased 1,896, due to the combination of seasonal factors and the

decline in the real estate market. The cutting of Employment Services jobs (-1,620), a key indicator for the health of the overall economy, led to the loss of jobs in Professional & Business Services (-1,273). Job declines also occurred in Other Services (-932), Financial Activities (-791), and Information (-455).

Growth occurred in State & Local Government (+27,345) and Education & Health Services (+1,447) due to the reopening of schools and colleges after summer vacation. A slight gain was also recorded in Natural Resources & Mining (+204).

EMPLOYMENT CHANGES FROM FOURTH QUARTER 2007

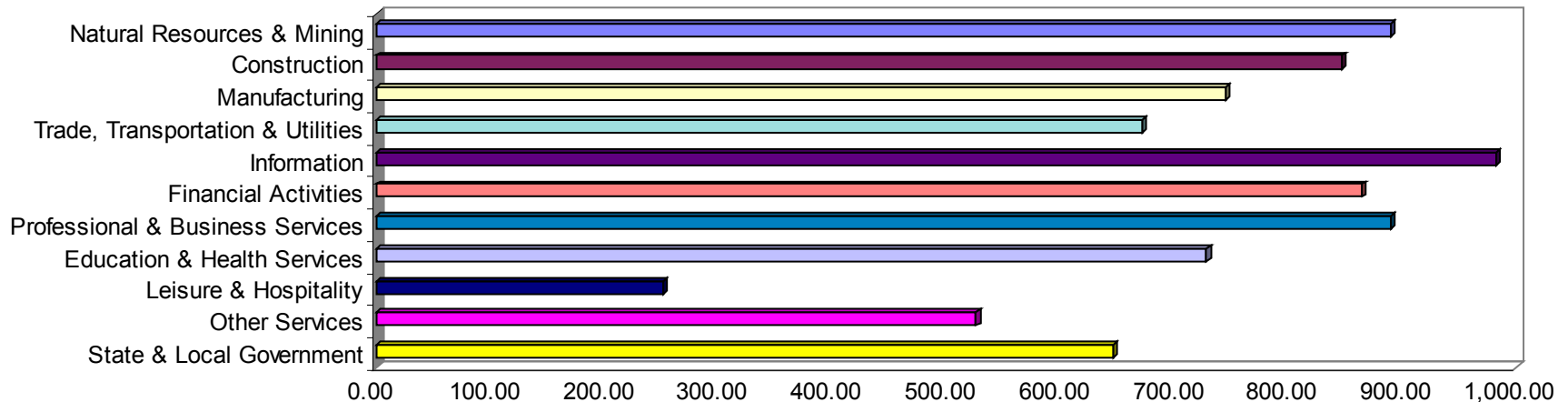
Over-the-year gains were recorded in three industry groups while eight recorded losses (see Table 1). Gains were posted in Education & Health Services (+4,329), State & Local Government (+1,866), and Natural Resources & Mining (+1,210). Significant losses occurred in Manufacturing (-8,897), Trade, Transportation & Utilities (-6,987), and Financial Activities (-2,192).

COVERED WAGES

Wages paid to covered workers totaled \$10,416,775,312 for the Fourth Quarter 2008 (see table 1), for an average weekly wage of \$696.00 (see table 5). Employees in Little River County recorded the highest average weekly wage (\$879.32), and workers in Newton County the lowest (\$399.37) (see table 6).

The Information sector recorded the highest average weekly wage for the State of Arkansas at \$982.39, while the Leisure & Hospitality sector recorded the lowest at \$251.84 for the State of Arkansas (see table 5).

Average Weekly Wages by Industry Group



Note: Because of industry code changes between years, substantial employment and wage shifts among industries are anticipated.

TABLE 1. QUARTERLY COMPARISON OF COVERED EMPLOYMENT AND WAGES, BY INDUSTRY

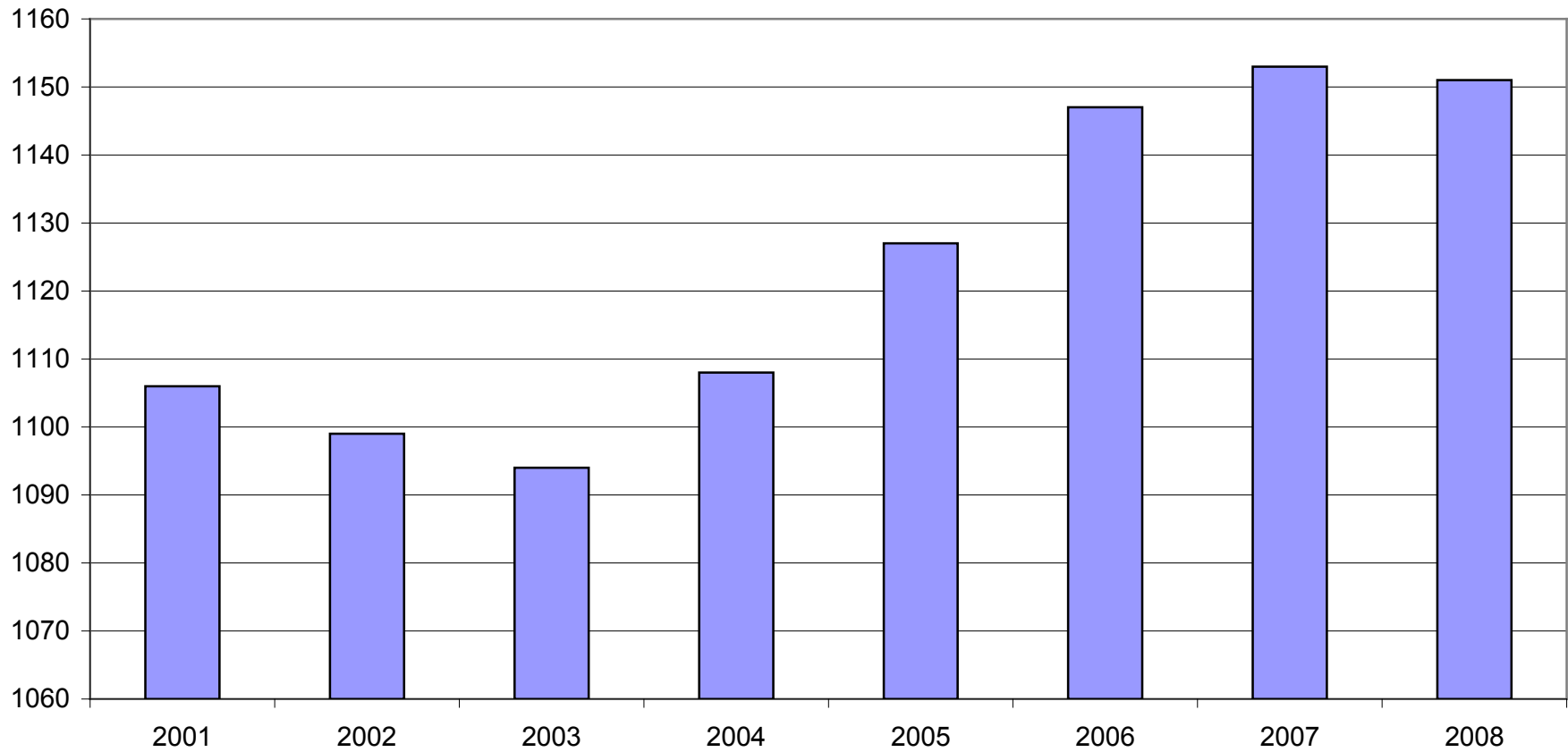
North American Industry Classification System Industry Group	Number of Employing Units	Average Covered Employment		Net Change From:		Total Wages Paid	
		Oct. – Dec. 2008 Monthly Average	% of Total	July – Sept. 2008	Oct. – Dec. 2007	Oct. – Dec. 2008	% of Total
Total	85,295	1,151,279	100.0	11,354	-14,599	\$10,416,775,312	100.0
Natural Resources and Mining	2,477	22,249	1.9	204	1,210	257,356,202	2.5
Agriculture, Forestry, Fishing and Hunting	1,948	13,269	1.2	43	-552	111,941,226	1.1
Mining	529	8,979	0.8	161	1,762	145,414,976	1.4
Construction	7,855	56,155	4.9	-1,896	-157	618,637,822	5.9
Manufacturing	3,574	177,982	15.5	-4,859	-8,897	1,724,365,054	16.6
Trade, Transportation, and Utilities	21,117	242,259	21.0	-2,132	-6,987	2,116,528,878	20.3
Wholesale Trade	6,443	48,042	4.2	-823	-323	700,422,962	6.7
Retail Trade	11,294	133,849	11.6	60	-2,888	764,777,778	7.3
Transportation and Warehousing	3,013	53,611	4.7	-1,503	-3,656	533,658,912	5.1
Utilities	367	6,758	0.6	134	-120	117,669,226	1.1
Information	1,132	18,238	1.6	-455	-1,795	232,913,476	2.2
Financial Activities	8,461	49,953	4.3	-791	-2,192	561,806,449	5.4
Finance and Insurance	4,942	35,884	3.1	-486	-1,857	448,043,200	4.3
Real Estate and Rental and Leasing	3,519	14,069	1.2	-305	-334	113,763,249	1.1
Professional and Business Services	12,073	116,835	10.1	-1,273	-739	1,352,436,026	13.0
Professional and Technical Services	7,536	38,696	3.4	444	83	544,830,344	5.2
Management of Companies and Enterprises	557	26,206	2.3	224	1,286	492,097,710	4.7
Administrative and Waste Services	3,980	51,933	4.5	-1,941	-2,108	315,507,972	3.0
Education and Health Services	13,631	156,515	13.6	1,447	4,329	1,481,907,468	14.2
Educational Services	637	10,317	0.9	953	357	77,025,511	0.7
Health Care and Social Assistance	12,994	146,198	12.7	494	3,972	1,404,881,957	13.5
Leisure and Hospitality	6,290	98,667	8.6	-5,303	-831	323,023,515	3.1
Arts, Entertainment and Recreation	929	8,668	0.8	-2,207	-269	42,608,705	0.4
Accommodation and Food Services	5,361	89,999	7.8	-3,097	-561	280,414,810	2.7
Other Services	5,465	24,635	2.1	-932	-406	168,634,706	1.6
State and Local Government	3,220	187,793	16.3	27,345	1,866	1,579,165,716	15.2
Local Government	1,977	119,979	10.4	24,930	-310	936,398,692	9.0
State Government	1,243	67,814	5.9	2,415	2,176	642,767,024	6.2
Nonclassifiable Establishments	0	0	0.0	0	0	0	0.0

Note: Items do not necessarily add to totals because of rounding. Because of industry code changes between years, substantial employment and wage shifts among industries are anticipated.

TABLE 2. TOTAL COVERED EMPLOYMENT IN ARKANSAS

Period	2001	2002	2003	2004	2005	2006	2007	2008
Average	1,106,066	1,098,558	1,094,087	1,108,264	1,126,778	1,146,948	1,152,994	1,150,586
January	1,096,009	1,081,635	1,082,740	1,089,510	1,102,768	1,130,595	1,137,437	1,141,697
February	1,101,616	1,086,793	1,084,880	1,094,626	1,110,577	1,136,810	1,143,397	1,149,049
March	1,112,143	1,098,500	1,092,172	1,105,266	1,122,619	1,150,439	1,158,895	1,157,496
April	1,115,526	1,103,399	1,095,341	1,111,020	1,129,785	1,155,498	1,159,623	1,158,601
May	1,119,815	1,111,998	1,103,099	1,117,144	1,135,567	1,159,886	1,165,224	1,164,266
June	1,119,734	1,112,028	1,099,688	1,117,010	1,136,118	1,162,026	1,164,207	1,162,315
July	1,071,921	1,065,697	1,053,220	1,071,463	1,090,071	1,106,142	1,110,571	1,116,129
August	1,094,160	1,086,011	1,077,775	1,094,871	1,114,098	1,130,839	1,139,109	1,139,948
September	1,115,976	1,113,148	1,105,980	1,122,704	1,144,815	1,159,814	1,165,135	1,163,697
October	1,110,994	1,108,447	1,112,550	1,123,246	1,142,300	1,156,804	1,162,768	1,156,197
November	1,109,012	1,107,611	1,109,712	1,125,061	1,145,667	1,156,011	1,164,246	1,150,885
December	1,105,887	1,107,425	1,111,892	1,127,250	1,146,954	1,158,509	1,165,314	1,146,754

AVERAGE TOTAL COVERED EMPLOYMENT GRAPH 1
In Thousands



TOTAL COVERED EARNINGS BY CALENDAR QUARTER, GRAPH 2
In Thousands

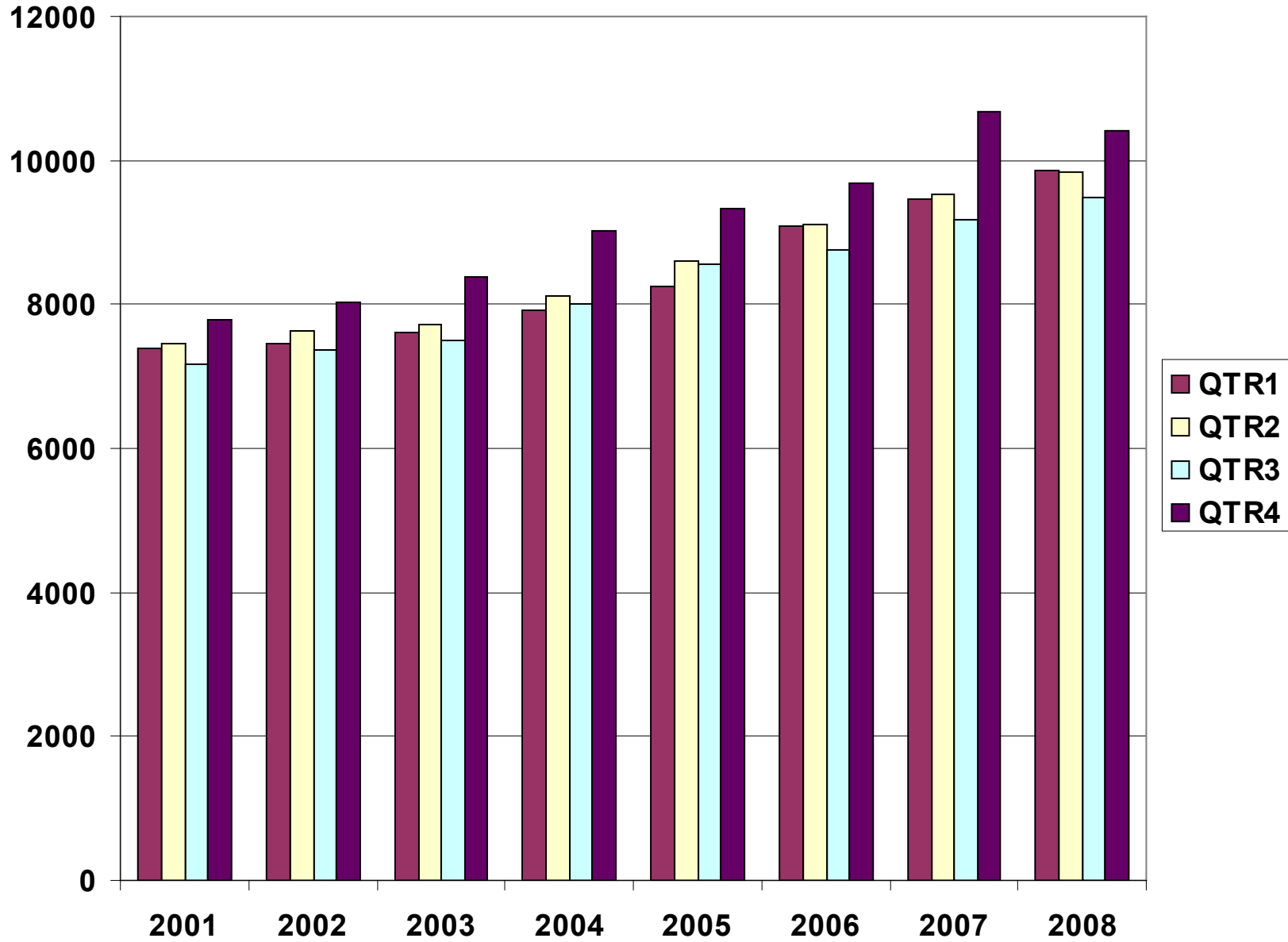


TABLE 3. TOTAL COVERED EARNINGS, 2001 - 2008

Period	2001	2002	2003	2004
Total	\$29,807,669,666	\$30,472,854,103	\$31,202,576,767	\$33,068,189,304
January - March	7,398,887,532	7,465,250,305	7,608,130,008	7,918,843,610
April - June	7,448,023,298	7,621,878,775	7,714,813,038	8,122,370,361
July - September	7,177,293,061	7,361,666,511	7,500,204,764	8,010,300,454
October - December	7,783,465,775	8,024,058,512	8,379,428,957	9,016,674,879
Average Weekly Earnings	518.26	533.44	548.45	573.80

Period	2005	2006	2007	2008
Total	\$34,753,107,631	\$36,636,090,775	\$38,833,265,464	\$39,587,430,495
January - March	8,261,153,981	9,085,021,816	9,452,711,662	9,849,712,834
April - June	8,607,722,353	9,112,624,590	9,525,837,049	9,830,766,145
July - September	8,562,555,369	8,750,878,205	9,178,902,477	9,490,176,204
October - December	9,321,675,928	9,687,566,164	10,675,814,276	10,416,775,312
Average Weekly Earnings	593.13	614.27	647.70	661.66

TABLE 4. TOTAL TAXABLE EARNINGS, 2001 - 2008

Period	2001	2002	2003	2004
Total	\$9,003,189,480	\$8,887,270,978	\$9,154,938,743	\$9,731,247,501
January - March	4,670,296,360	4,668,534,587	4,737,918,796	4,931,559,230
April - June	2,219,485,263	2,162,971,435	2,270,519,362	2,451,454,749
July - September	1,190,098,737	1,158,197,858	1,188,681,170	1,318,017,835
October - December	923,309,120	897,567,098	957,819,415	1,030,215,687
Period	2005	2006	2007	2008
Total	\$9,991,605,239	\$10,197,511,360	\$10,459,105,059	\$10,379,106,531
January - March	5,062,670,306	5,421,204,601	5,617,417,571	5,633,961,758
April - June	2,506,505,721	2,385,110,992	2,466,606,627	2,441,783,728
July - September	1,353,660,445	1,314,939,803	1,307,060,412	1,297,265,392
October - December	1,068,768,767	1,076,255,964	1,068,020,449	1,006,095,653

**TABLE 5. STATEWIDE SUMMARY
EMPLOYMENT AND TOTAL EARNINGS, BY INDUSTRY
FOURTH QUARTER 2008**

NORTH AMERICAN INDUSTRY CLASSIFICATION SYSTEM INDUSTRY GROUPS		NUMBER OF EMPLOYING UNITS	EMPLOYMENT			TOTAL EARNINGS	AVERAGE
			OCTOBER	NOVEMBER	DECEMBER	OCTOBER - DECEMBER	WEEKLY EARNINGS
TOTAL, ALL INDUSTRIES		85,295	1,156,197	1,150,885	1,146,754	\$10,416,775,312	\$696.00
NATURAL RESOURCES & MINING		2,477	22,906	22,423	21,417	\$257,356,202	\$889.79
11	AGRICULTURE, FORESTRY, FISHING & HUNTING	1,948	13,961	13,313	12,534	\$111,941,226	\$648.93
111	CROP PRODUCTION	728	4,007	3,730	3,477	\$26,620,115	\$547.81
1111	Oilseed and Grain Farming	452	2,227	2,053	1,993	15,333,191	564.07
1112	Vegetable and Melon Farming	10	123	131	88	350,246	236.33
1113	Fruit and Tree Nut Farming	9	93	79	64	430,690	421.14
1114	Greenhouse & Nursery Production	51	307	305	304	2,312,468	582.58
1119	Other Crop Farming	206	1,257	1,162	1,028	8,193,520	548.54
112	ANIMAL PRODUCTION	269	3,675	3,668	3,669	\$33,054,037	\$692.69
1121	Cattle Ranching and Farming	79	344	332	340	2,676,238	607.87
1122	Hog and Pig Farming	9	151	153	160	1,592,428	791.99
1123	Poultry and Egg Production	92	2,648	2,633	2,648	24,449,838	711.60
1125	Animal Aquaculture	62	462	478	447	3,929,294	653.76
	Other	27	70	72	74	406,239	434.02
113	FORESTRY AND LOGGING	501	2,538	2,469	2,504	\$21,697,981	\$666.65
1131	Timber Tract Operations	40	227	223	234	2,524,468	851.71
1132	Forest Nurseries & Gathering of Forest Products	6	33	33	33	548,126	1277.68
1133	Logging	455	2,278	2,213	2,237	18,625,387	638.85
	OTHER	450	3,741	3,446	2,884	\$30,569,093	\$700.47
21	MINING	529	8,945	9,110	8,883	\$145,414,976	\$1,245.72
211	OIL AND GAS EXTRACTION	105	1,021	1,071	924	\$20,269,437	\$1,550.92
212	MINING (EXCEPT OIL AND GAS)	111	2,167	2,150	2,107	\$24,996,883	\$897.96
213	SUPPORT ACTIVITIES FOR MINING	313	5,757	5,889	5,852	\$100,148,656	\$1,320.79

**TABLE 5. STATEWIDE SUMMARY
EMPLOYMENT AND TOTAL EARNINGS, BY INDUSTRY
FOURTH QUARTER 2008**

NORTH AMERICAN INDUSTRY CLASSIFICATION SYSTEM INDUSTRY GROUPS		NUMBER OF EMPLOYING UNITS	EMPLOYMENT			TOTAL EARNINGS	AVERAGE
			OCTOBER	NOVEMBER	DECEMBER	OCTOBER - DECEMBER	WEEKLY EARNINGS
CONSTRUCTION		7,855	57,364	56,024	55,076	\$618,637,822	\$847.44
236	CONSTRUCTION OF BUILDINGS	2,154	13,791	13,298	13,326	\$168,365,870	\$961.37
2361	Residential Building Construction	1,511	3,585	3,509	3,533	30,816,546	669.19
2362	Nonresidential Building Construction	643	10,206	9,789	9,793	137,549,324	1065.60
237	HEAVY & CIVIL ENGINEERING CONSTRUCTION	865	11,339	10,878	10,245	\$138,815,961	\$986.83
2371	Utility System Construction	424	6,690	6,416	5,942	88,337,406	1070.22
2372	Land Subdivision	122	319	285	281	2,955,492	770.66
2373	Highway, Street & Bridge Construction	210	3,033	2,925	2,821	29,579,006	777.53
2379	Other Heavy Construction	109	1,297	1,252	1,201	17,944,057	1104.25
238	SPECIALTY TRADE CONTRACTORS	4,836	32,234	31,848	31,505	\$311,455,991	\$751.93
2381	Building Foundation & Exterior Contractors	974	6,675	6,498	6,319	61,693,225	730.40
2382	Building Equipment Contractors	2,144	15,597	15,512	15,481	162,975,260	807.25
2383	Building Finishing Contractors	899	4,526	4,434	4,467	39,038,274	670.95
2389	Other Specialty Trade Contractors	819	5,436	5,404	5,238	47,749,232	685.35
MANUFACTURING		3,574	180,486	177,433	176,027	\$1,724,365,054	\$745.26
311	FOOD MANUFACTURING	313	48,558	48,277	48,219	\$370,347,712	\$589.19
3111	Animal Food Manufacturing	60	1,546	1,544	1,563	15,862,346	786.71
3112	Grain and Oilseed Milling	30	2,365	2,332	2,290	25,507,796	842.48
3113	Sugar & Confectionery Product Manufacturing	7	61	78	74	369,212	400.01
3114	Fruit, Vegetable & Specialty Food	25	5,814	5,835	5,906	53,981,532	709.61
3115	Dairy Product Manufacturing	11	691	677	681	6,930,385	780.54
3116	Animal Slaughtering & Processing	92	32,875	32,631	32,536	222,315,189	523.28
3117	Seafood Product Preparation & Packaging	5	201	152	110	701,899	349.84
3118	Bakeries and Tortilla Manufacturing	55	3,323	3,337	3,372	29,440,118	677.22
3119	Other Food Manufacturing	28	1,682	1,691	1,687	15,239,235	695.01
312	BEVERAGE & TOBACCO PRODUCT MFG.	43	1,252	1,235	1,219	\$12,451,648	\$775.35
313	TEXTILE MILLS	17	315	329	322	\$3,939,303	\$941.07
314	TEXTILE PRODUCT MILLS	61	1,045	1,052	1,055	\$9,797,777	\$717.33
3141	Textile Furnishing Mills	14	36	35	35	177,694	\$386.85
3149	Other Textile Product Mills	47	1,009	1,017	1,020	9,620,083	\$728.83

**TABLE 5. STATEWIDE SUMMARY
EMPLOYMENT AND TOTAL EARNINGS, BY INDUSTRY
FOURTH QUARTER 2008**

NORTH AMERICAN INDUSTRY CLASSIFICATION SYSTEM INDUSTRY GROUPS		NUMBER OF EMPLOYING UNITS	EMPLOYMENT			TOTAL EARNINGS	AVERAGE
			OCTOBER	NOVEMBER	DECEMBER	OCTOBER - DECEMBER	WEEKLY EARNINGS
315	APPAREL MANUFACTURING	35	1,478	1,472	1,461	\$7,750,945	\$405.50
3151	Apparel Knitting Mills	3	721	707	695	4,180,220	454.39
3152	Cut & Sew Apparel Manufacturing	26	549	543	535	2,537,587	359.92
3159	Accessories & Other Apparel Manufacturing	6	208	222	231	1,033,138	360.69
316	LEATHER & ALLIED PRODUCT MANUFACTURING	22	2,061	1,985	1,970	\$12,951,241	\$496.80
321	WOOD PRODUCT MANUFACTURING	378	10,710	10,449	10,335	\$86,764,940	\$635.76
3211	Sawmills and Wood Preservation	158	4,556	4,473	4,421	39,781,661	682.56
3212	Veneer & Engineered Wood Products	53	2,743	2,678	2,674	24,287,530	692.38
3219	Other Wood Product Manufacturing	167	3,411	3,298	3,240	22,695,749	526.43
322	PAPER MANUFACTURING	85	10,882	10,739	10,825	\$149,380,350	\$1,062.45
3221	Pulp, Paper & Paperboard Mills	13	4,284	4,214	4,239	74,529,300	1350.32
3222	Converted Paper Product Manufacturing	72	6,598	6,525	6,586	74,851,050	876.42
323	PRINTING & RELATED SUPPORT ACTIVITIES	281	4,445	4,443	4,398	\$45,913,562	\$797.49
324	PETROLEUM AND COAL PRODUCTS MFG.	22	998	977	985	\$15,719,217	\$1,225.51
325	CHEMICAL MANUFACTURING	128	4,821	4,787	4,818	\$66,407,262	\$1,062.30
3251	Basic Chemical Manufacturing	32	2,065	2,032	2,045	30,765,756	1155.94
3252	Resin, Rubber & Artificial Fibers	10	290	288	295	3,897,013	1030.14
3253	Agricultural Chemical Manufacturing	16	345	346	356	5,015,791	1105.53
3255	Paint, Coating & Adhesive Manufacturing	9	189	189	195	2,543,397	1024.32
3259	Other Chemical Preparation Manufacturing	31	874	866	874	11,108,420	980.67
	Other	30	1,058	1,066	1,053	13,076,885	949.87
326	PLASTICS & RUBBER PRODUCTS MFG.	155	11,271	11,099	10,786	\$112,782,969	\$784.98
3261	Plastics Product Manufacturing	108	7,286	7,142	6,876	66,988,365	725.63
3262	Rubber Product Manufacturing	47	3,985	3,957	3,910	45,794,604	891.66
327	NONMETALLIC MINERAL PRODUCT MFG.	268	4,165	4,109	3,987	\$40,432,461	\$761.00
3271	Clay Product & Refractory Manufacturing	23	486	481	457	4,458,007	722.45
3272	Glass & Glass Product Manufacturing	13	457	462	457	4,378,232	734.27
3273	Cement & Concrete Product Manufacturing	189	2,321	2,290	2,236	22,292,510	751.34
3274	Lime & Gypsum Product Manufacturing	5	321	307	295	3,570,637	892.73
3279	Other Nonmetallic Mineral Products Manufacturing	38	580	569	542	5,733,075	782.39

**TABLE 5. STATEWIDE SUMMARY
EMPLOYMENT AND TOTAL EARNINGS, BY INDUSTRY
FOURTH QUARTER 2008**

NORTH AMERICAN INDUSTRY CLASSIFICATION SYSTEM INDUSTRY GROUPS		NUMBER OF EMPLOYING UNITS	EMPLOYMENT			TOTAL EARNINGS	AVERAGE
			OCTOBER	NOVEMBER	DECEMBER	OCTOBER - DECEMBER	WEEKLY EARNINGS
331	PRIMARY METAL MANUFACTURING	85	8,368	8,257	8,123	\$113,664,046	\$1,059.89
3311	Iron & Steel Mills and Ferroalloys	13	2,281	2,279	2,280	42,846,007	1445.55
3312	Purchased Steel Product Manufacturing	17	2,372	2,323	2,286	32,233,236	1065.53
3313	Alumina & Aluminum Production	22	1,823	1,783	1,699	22,214,820	966.35
3314	Other Nonferrous Metal Production	18	699	692	667	5,357,235	600.72
3315	Foundries	15	1,193	1,180	1,191	11,012,748	713.08
332	FABRICATED METAL PRODUCT MANUFACTURING	584	16,490	16,331	16,062	\$175,113,722	\$826.69
3321	Forging & Stamping	11	728	705	659	7,233,348	797.91
3322	Cutlery & Hand Tool Manufacturing	20	1,167	1,149	1,082	10,202,793	692.90
3323	Architectural & Structural Metals	195	4,734	4,650	4,601	55,264,942	911.94
3324	Boilers, Tanks & Shipping Containers	18	681	666	647	7,505,839	868.66
3325	Hardware Manufacturing	8	196	215	203	1,682,776	632.46
3326	Spring & Wire Product Manufacturing	12	456	445	445	3,193,002	547.43
3327	Machine Shops & Threaded Products	213	1,954	1,957	1,944	18,982,000	748.16
3328	Coating, Engraving & Heat Treating Metals	39	621	618	588	4,784,705	604.36
3329	Other Fabricated Metal Product Manufacturing	68	5,953	5,926	5,893	66,264,317	860.44
333	MACHINERY MANUFACTURING	264	13,852	13,241	13,118	\$129,987,548	\$745.99
3331	Agri., Construction & Mining Machinery	40	2,978	2,902	2,970	20,970,019	546.81
3332	Industrial Machinery Manufacturing	36	776	741	713	8,503,051	879.93
3333	Commercial & Service Industry Machinery	26	888	853	852	10,650,121	947.83
3334	HVAC & Commercial Refrigeration Equipment	23	4,269	3,846	3,826	35,912,726	694.04
3335	Metalworking Machinery Manufacturing	77	1,372	1,386	1,300	15,308,384	870.55
3336	Turbine & Power Transmission Equipment Manufacturing	8	868	906	894	9,834,753	850.66
3339	Other General Purpose Machinery Manufacturing	54	2,701	2,607	2,563	28,808,494	844.63
334	COMPUTER & ELECTRONIC PRODUCT MFG.	82	3,879	3,880	3,816	\$37,178,180	\$741.22
3342	Communications Equipment Manufacturing	8	144	151	154	2,246,475	1,154.60
3343	Audio & Video Equipment Manufacturing	10	798	783	777	7,591,121	742.92
3344	Semiconductors & Electronic Components	30	2,052	2,056	2,005	18,734,983	707.26
3345	Electronic Instrument Manufacturing	27	854	858	850	8,489,518	764.68
	Other	7	31	32	30	116,083	288.05
335	ELECTRICAL EQUIPMENT & APPLIANCES	64	9,756	9,475	9,380	\$89,033,054	\$718.12
3353	Electrical Equipment Manufacturing	23	4,758	4,771	4,765	46,925,222	757.58
3359	Other Electrical Equipment & Component Manufacturing	23	2,029	1,992	1,971	21,451,820	826.17
	Other	18	2,969	2,712	2,644	20,656,012	572.59

**TABLE 5. STATEWIDE SUMMARY
EMPLOYMENT AND TOTAL EARNINGS, BY INDUSTRY
FOURTH QUARTER 2008**

NORTH AMERICAN INDUSTRY CLASSIFICATION SYSTEM INDUSTRY GROUPS		NUMBER OF EMPLOYING UNITS	EMPLOYMENT			TOTAL EARNINGS	AVERAGE
			OCTOBER	NOVEMBER	DECEMBER	OCTOBER - DECEMBER	WEEKLY EARNINGS
336	TRANSPORTATION EQUIPMENT MANUFACTURING	179	15,650	15,144	14,943	\$156,733,230	\$790.81
3362	Motor Vehicle Body & Trailer Manufacturing	41	2,169	2,012	1,990	18,063,734	675.51
3363	Motor Vehicle Parts Manufacturing	60	6,026	5,852	5,739	47,139,462	617.49
3364	Aerospace Product & Parts Manufacturing	32	4,586	4,532	4,549	67,051,189	1132.17
3366	Ship & Boat Building	26	1,465	1,356	1,297	10,237,686	573.71
	Other	20	1,404	1,392	1,368	14,241,159	789.25
337	FURNITURE & RELATED PRODUCT MFG.	254	5,628	5,487	5,504	\$46,711,684	\$648.63
3371	Household & Institutional Furniture	207	3,877	3,780	3,762	32,038,323	647.47
3372	Office Furniture & Fixtures Manufacturing	40	1,640	1,601	1,637	13,961,773	660.51
3379	Other Furniture Related Product Manufacturing	7	111	106	105	711,588	509.98
339	MISCELLANEOUS MANUFACTURING	254	4,862	4,665	4,701	\$41,304,203	\$669.93
3391	Medical Equipment & Supplies Manufacturing	97	2,380	2,354	2,334	20,695,222	675.70
3399	Other Miscellaneous Manufacturing	157	2,482	2,311	2,367	20,608,981	664.23
TRADE, TRANSPORTATION & UTILITIES		21,117	241,066	242,733	242,977	\$2,116,528,878	\$672.05
42	WHOLESALE TRADE	6,443	48,189	48,048	47,888	\$700,422,962	\$1,121.50
423	MERCHANT WHOLESALERS, DURABLE GOODS	2,308	22,202	22,062	22,002	\$285,790,677	\$995.26
4231	Motor Vehicle & Part Merchant Wholesalers	259	2,630	2,644	2,578	26,574,803	781.03
4232	Furniture & Furnishing Merchant Wholesalers	72	442	436	441	5,023,207	878.85
4233	Lumber & Supply Merchant Wholesalers	193	1,623	1,611	1,593	17,862,072	853.95
4234	Commercial Goods Merchant Wholesalers	316	2,759	2,753	2,779	43,501,392	1210.80
4235	Metal & Mineral Merchant Wholesalers	62	964	951	949	15,549,234	1252.89
4236	Electric Goods Merchant Wholesalers	186	2,141	2,140	2,119	30,269,890	1091.46
4237	Hardware & Plumbing Merchant Wholesalers	235	2,346	2,346	2,340	28,115,966	922.68
4238	Machinery & Supply Merchant Wholesalers	742	7,457	7,430	7,478	95,343,003	983.78
4239	Misc. Durable Goods Merchant Wholesalers	243	1,840	1,751	1,725	23,551,110	1022.36

**TABLE 5. STATEWIDE SUMMARY
EMPLOYMENT AND TOTAL EARNINGS, BY INDUSTRY
FOURTH QUARTER 2008**

NORTH AMERICAN INDUSTRY CLASSIFICATION SYSTEM INDUSTRY GROUPS		NUMBER OF EMPLOYING UNITS	EMPLOYMENT			TOTAL EARNINGS	AVERAGE
			OCTOBER	NOVEMBER	DECEMBER	OCTOBER - DECEMBER	WEEKLY EARNINGS
424	MERCHANT WHOLESALERS, NONDURABLE GOODS	1,308	16,033	15,965	15,921	\$197,041,542	\$948.92
4241	Paper & Paper Product Merchant Wholesalers	82	1,080	1,084	1,094	13,446,070	952.41
4242	Druggists' Goods Merchant Wholesalers	66	1,062	1,072	1,082	12,997,632	932.67
4243	Apparel & Piece Goods Merchant Wholesalers	48	429	440	435	5,059,777	895.43
4244	Grocery Product Merchant Wholesalers	344	5,507	5,489	5,506	70,492,315	985.79
4245	Farm Product Merchant Wholesalers	76	938	906	879	7,878,035	667.65
4246	Chemical Merchant Wholesalers	89	494	498	507	6,873,158	1058.11
4247	Petroleum Merchant Wholesalers	154	1,463	1,477	1,489	21,514,276	1120.98
4248	Alcoholic Beverage Merchant Wholesalers	37	1,140	1,140	1,134	15,330,122	1036.24
4249	Misc. Nondurable Goods Merchant Wholesalers	412	3,920	3,859	3,795	43,450,157	866.33
425	ELECTRONIC MARKETS & AGENTS & BROKERS	2,827	9,954	10,021	9,965	\$217,590,743	\$1,677.13
44-45	RETAIL TRADE	11,294	132,012	134,270	135,264	\$764,777,778	\$439.52
441	MOTOR VEHICLE & PARTS DEALERS	1,721	17,344	16,961	16,715	\$150,283,795	\$679.75
4411	Automobile Dealers	723	10,187	9,908	9,733	98,628,799	763.06
4412	Other Motor Vehicle Dealers	194	1,568	1,535	1,508	13,330,533	667.16
4413	Automotive Parts, Accessories & Tire Stores	804	5,589	5,518	5,474	38,324,463	533.39
442	FURNITURE & HOME FURNISHINGS STORES	585	3,665	3,758	3,724	\$26,230,010	\$543.02
4421	Furniture Stores	310	2,149	2,144	2,116	16,123,681	580.57
4422	Home Furnishings Stores	275	1,516	1,614	1,608	10,106,329	492.24
443	ELECTRONICS & APPLIANCE STORES	526	4,207	4,270	4,289	\$33,519,573	\$605.93
444	BUILDING MATERIAL & GARDEN SUPPLY STORES	848	10,609	10,556	10,471	\$69,375,004	\$506.06
4441	Building Material & Supplies Dealers	663	9,696	9,691	9,618	62,927,370	500.66
4442	Lawn & Garden Equipment & Supplies Stores	185	913	865	853	6,447,634	565.53
445	FOOD & BEVERAGE STORES	1,063	18,293	18,376	18,500	\$86,301,384	\$360.99
4451	Grocery Stores	608	15,922	15,918	16,055	73,053,636	351.99
4452	Specialty Food Stores	150	849	890	884	5,900,836	519.15
4453	Beer, Wine & Liquor Stores	305	1,522	1,568	1,561	7,346,912	364.53
446	HEALTH & PERSONAL CARE STORES	949	7,475	7,638	7,845	\$64,782,380	\$651.18

**TABLE 5. STATEWIDE SUMMARY
EMPLOYMENT AND TOTAL EARNINGS, BY INDUSTRY
FOURTH QUARTER 2008**

NORTH AMERICAN INDUSTRY CLASSIFICATION SYSTEM INDUSTRY GROUPS		NUMBER OF EMPLOYING UNITS	EMPLOYMENT			TOTAL EARNINGS	AVERAGE
			OCTOBER	NOVEMBER	DECEMBER	OCTOBER - DECEMBER	WEEKLY EARNINGS
447	GASOLINE STATIONS	1,568	11,740	11,708	11,606	\$44,379,978	\$292.16
44711	Gasoline Stations with Convenience Stores	1,418	10,444	10,416	10,315	39,087,859	289.34
44719	Other Gasoline Stations	150	1,296	1,292	1,291	5,292,119	314.84
448	CLOTHING & CLOTHING ACCESSORIES STORES	1,050	8,869	9,246	9,606	\$33,545,917	\$279.26
4481	Clothing Stores	724	6,941	7,275	7,530	23,153,249	245.70
4482	Shoe Stores	171	1,131	1,140	1,214	4,563,661	302.20
4483	Jewelry, Luggage & Leather Goods Stores	155	797	831	862	5,829,007	540.22
451	SPORTING GOODS, HOBBY, BOOK & MUSIC STORES	578	4,479	4,751	4,975	\$19,232,755	\$312.45
4511	Sporting Goods & Musical Instrument Stores	434	3,211	3,422	3,497	14,871,534	338.79
4512	Book, Periodical & Music Stores	144	1,268	1,329	1,478	4,361,221	246.98
452	GENERAL MERCHANDISE STORES	736	37,401	39,086	39,446	\$190,102,075	\$378.41
453	MISCELLANEOUS STORE RETAILERS	1,324	6,224	6,200	6,317	\$32,260,776	\$397.25
4531	Florists	245	845	847	867	3,611,671	325.70
4532	Office Supplies, Stationery & Gift Stores	352	2,245	2,236	2,272	11,687,341	399.39
4533	Used Merchandise Stores	214	789	797	841	4,166,249	396.14
4539	Other Miscellaneous Store Retailers	513	2,345	2,320	2,337	12,795,515	421.71
454	NONSTORE RETAILERS	346	1,706	1,720	1,770	\$14,764,131	\$655.72
4541	Electronic Shopping & Mail -Order Houses	100	305	318	342	3,840,830	918.49
4542	Vending Machine Operators	71	591	589	590	3,928,545	512.20
4543	Direct Selling Establishments	175	810	813	838	6,994,756	655.90
48-49	TRANSPORTATION & WAREHOUSING	3,013	54,137	53,664	53,031	\$533,658,912	\$765.72
481	AIR TRANSPORTATION	45	965	868	848	\$11,350,184	\$976.98
484	TRUCK TRANSPORTATION	2,021	33,661	33,322	32,766	\$341,228,256	\$789.43
4841	General Freight Trucking	1,290	27,938	27,647	27,067	276,995,919	773.39
4842	Specialized Freight Trucking	731	5,723	5,675	5,699	64,232,337	866.99

**TABLE 5. STATEWIDE SUMMARY
EMPLOYMENT AND TOTAL EARNINGS, BY INDUSTRY
FOURTH QUARTER 2008**

NORTH AMERICAN INDUSTRY CLASSIFICATION SYSTEM INDUSTRY GROUPS		NUMBER OF EMPLOYING UNITS	EMPLOYMENT			TOTAL EARNINGS	AVERAGE
			OCTOBER	NOVEMBER	DECEMBER	OCTOBER - DECEMBER	WEEKLY EARNINGS
485	TRANSIT & GROUND PASSENGER TRANS.	68	1,135	1,131	1,105	\$4,802,740	\$328.78
4851	Urban Transit Systems	4	59	52	50	250,530	359.10
4852	Interurban & Rural Bus Transportation	3	55	58	56	337,988	461.52
4853	Taxi & Limousine Service	24	351	347	344	1,291,336	285.99
4854	School & Employee Bus Transportation	8	356	358	355	1,597,916	344.95
4855	Charter Bus Industry Service	6	33	36	33	165,700	374.89
4859	Other Ground Passenger Transportation	23	281	280	267	1,159,270	323.10
486	PIPELINE TRANSPORTATION	68	858	856	857	\$13,486,627	\$1,210.54
488	SUPPORT ACTIVITIES FOR TRANSPORTATION	419	4,415	4,446	4,412	\$47,911,547	\$833.01
4881	Support Activities for Air Transportation	102	1,384	1,421	1,404	14,066,601	771.24
4882	Support Activities for Rail Transportation	34	358	359	351	3,457,720	747.13
4883	Support Activities for Water Transportation	23	636	626	612	7,060,531	869.45
4884	Support Activities for Road Transportation	110	505	484	502	3,405,323	527.06
4885	Freight Transportation Arrangement	127	1,382	1,405	1,393	18,636,162	1028.86
4889	Other Support Activities for Transportation	23	150	151	150	1,285,210	657.62
491	POSTAL SERVICE	7	12	12	14	\$74,790	\$454.19
492	COURIERS & MESSENGERS	143	3,311	3,532	3,879	\$33,499,875	\$721.02
4921	Couriers	82	2,989	3,184	3,557	31,276,205	741.79
4922	Local Messengers & Local Delivery	61	322	348	322	2,223,670	517.29
493	WAREHOUSING & STORAGE	230	9,602	9,338	8,987	\$79,459,499	\$656.60
	OTHER	12	178	159	163	\$1,845,394	\$851.72
22	UTILITIES	367	6,728	6,751	6,794	\$117,669,226	\$1,339.44
2211	Power Generation & Supply	161	5,071	5,085	5,118	97,197,076	1468.51
2212	Natural Gas Distribution	35	813	820	827	12,855,663	1205.97
2213	Water, Sewage and Other Systems	171	844	846	849	7,616,487	692.26
INFORMATION		1,132	18,276	18,237	18,200	\$232,913,476	\$982.39
511	PUBLISHING INDUSTRIES, EXCEPT INTERNET	258	6,010	5,988	5,930	\$50,967,755	\$656.06
5111	Newspaper, Book & Directory Publishers	228	5,785	5,761	5,702	47,412,153	634.35
5112	Software Publishers	30	225	227	228	3,555,602	1206.65

**TABLE 5. STATEWIDE SUMMARY
EMPLOYMENT AND TOTAL EARNINGS, BY INDUSTRY
FOURTH QUARTER 2008**

NORTH AMERICAN INDUSTRY CLASSIFICATION SYSTEM INDUSTRY GROUPS		NUMBER OF EMPLOYING UNITS	EMPLOYMENT			TOTAL EARNINGS	AVERAGE
			OCTOBER	NOVEMBER	DECEMBER	OCTOBER - DECEMBER	WEEKLY EARNINGS
512	MOTION PICTURE & SOUND RECORDING INDUSTRY	148	1,113	1,162	1,205	\$5,701,338	\$378.07
5121	Motion Picture & Video Industries	127	1,069	1,120	1,160	5,272,748	363.33
5122	Sound Recording Industries	21	44	42	45	428,590	755.00
515	BROADCASTING, EXCEPT INTERNET	139	2,092	2,046	2,041	\$18,829,167	\$703.22
5151	Radio & Television Broadcasting	133	2,055	2,007	2,001	18,558,238	706.36
5152	Cable & Other Subscription Programming	6	37	39	40	270,929	538.98
517	TELECOMMUNICATIONS	420	7,760	7,733	7,718	\$138,502,473	\$1,377.02
5171	Wired Telecommunications Carriers	298	4,300	4,284	4,278	64,637,316	1159.72
5179	Other Telecommunications	84	528	528	530	6,076,959	884.22
	Other	38	2,932	2,921	2,910	67,788,198	1785.17
518	DATA PROCESSING, HOSTING & RELATED SERVICES	102	994	1,005	1,000	\$15,743,432	\$1,211.44
	OTHER	65	307	303	306	\$3,169,311	\$798.45
FINANCIAL ACTIVITIES		8,461	49,961	49,785	50,113	\$561,806,449	\$865.13
52	FINANCE & INSURANCE	4,942	35,945	35,789	35,918	\$448,043,200	\$960.45
522	CREDIT INTERMEDIATION & RELATED ACTIVITIES	2,092	20,678	20,570	20,584	\$208,022,962	\$776.38
5221	Depository Credit Intermediation	1,429	17,949	17,872	17,905	175,883,781	755.47
5222	Nondepository Credit Intermediation	401	1,874	1,874	1,862	24,516,769	1008.51
5223	Activities Related to Credit Intermediation	262	855	824	817	7,622,412	704.73
523	FINANCIAL INVESTMENT & RELATED ACTIVITIES	661	3,275	3,268	3,221	\$77,229,023	\$1,825.28
524	INSURANCE CARRIERS & RELATED ACTIVITIES	2,128	11,519	11,467	11,635	\$157,994,742	\$1,053.13
5241	Insurance Carriers	388	4,960	4,941	5,007	77,485,282	1199.44
5242	Insurance Agencies, Brokerages & Support	1,740	6,559	6,526	6,628	80,509,460	942.48
	OTHER	61	473	484	478	\$4,796,473	\$771.34
53	REAL ESTATE & RENTAL & LEASING	3,519	14,016	13,996	14,195	\$113,763,249	\$622.01

**TABLE 5. STATEWIDE SUMMARY
EMPLOYMENT AND TOTAL EARNINGS, BY INDUSTRY
FOURTH QUARTER 2008**

NORTH AMERICAN INDUSTRY CLASSIFICATION SYSTEM INDUSTRY GROUPS		NUMBER OF EMPLOYING UNITS	EMPLOYMENT			TOTAL EARNINGS	AVERAGE
			OCTOBER	NOVEMBER	DECEMBER	OCTOBER - DECEMBER	WEEKLY EARNINGS
531	REAL ESTATE	2,657	8,801	8,833	8,998	\$69,452,709	\$601.82
5311	Lessors of Real Estate	1,068	4,456	4,452	4,468	32,593,440	562.32
5312	Offices of Real Estate Agents & Brokers	956	1,990	1,956	2,020	18,225,534	704.98
5313	Activities Related to Real Estate	633	2,355	2,425	2,510	18,633,735	589.86
532	RENTAL & LEASING SERVICES	841	5,148	5,096	5,130	\$43,254,683	\$649.27
5321	Automotive Equipment Rental & Leasing	124	1,001	1,035	1,018	7,658,944	578.73
5322	Consumer Goods Rental	512	2,763	2,676	2,705	16,274,360	461.15
5323	General Rental Centers	30	225	217	227	2,058,757	710.16
5324	Machinery & Equipment Rental & Leasing	175	1,159	1,168	1,180	17,262,622	1135.92
533	LESSORS OF NONFINANCIAL INTANGIBLE ASSETS	21	67	67	67	\$1,055,857	\$1,212.24
PROFESSIONAL & BUSINESS SERVICES		12,073	118,102	116,534	115,869	\$1,352,436,026	\$890.43
54	PROFESSIONAL & TECHNICAL SERVICES	7,536	38,311	38,613	39,164	\$544,830,344	\$1,083.06
5411	Legal Services	1,690	6,551	6,534	6,541	107,946,133	1269.27
5412	Accounting & Bookkeeping Services	1,254	5,019	5,315	5,586	59,869,585	867.84
5413	Architectural & Engineering Services	1,015	6,702	6,693	6,685	102,698,773	1180.26
5414	Specialized Design Services	187	449	460	466	5,160,986	866.18
5415	Computer Systems Design & Related Services	1,009	7,985	8,013	7,998	135,395,321	1302.10
5416	Management & Technical Consulting Services	1,299	4,626	4,494	4,690	64,720,410	1081.50
5417	Scientific Research & Development Services	115	1,113	1,152	1,178	16,216,862	1086.95
5418	Advertising & Related Services	350	1,868	1,847	1,901	24,748,185	1016.94
5419	Other Professional & Technical Services	617	3,998	4,105	4,119	28,074,089	530.08
55	MANAGEMENT OF COMPANIES & ENTERPRISES	557	25,999	26,364	26,256	\$492,097,710	\$1,444.45
56	ADMINISTRATIVE & WASTE SERVICES	3,980	53,792	51,557	50,449	\$315,507,972	\$467.33
561	ADMINISTRATIVE & SUPPORT SERVICES	3,750	51,251	49,048	47,940	\$289,696,588	\$450.98
5611	Office Administrative Services	416	1,405	1,398	1,451	22,141,826	1201.14
5612	Facilities Support Services	21	139	125	129	1,081,755	635.21
5613	Employment Services	738	23,120	20,984	19,785	108,736,436	392.76
5614	Business Support Services	492	7,696	7,897	8,092	47,025,388	458.18
5615	Travel Arrangement & Reservation Services	102	396	374	368	3,122,108	633.12
5616	Investigation & Security Services	247	4,539	4,510	4,500	29,439,667	501.42
5617	Services to Buildings & Dwellings	1,408	12,334	12,179	12,012	62,805,802	396.81
5619	Other Support Services	326	1,622	1,581	1,603	15,343,606	736.75

**TABLE 5. STATEWIDE SUMMARY
EMPLOYMENT AND TOTAL EARNINGS, BY INDUSTRY
FOURTH QUARTER 2008**

NORTH AMERICAN INDUSTRY CLASSIFICATION SYSTEM INDUSTRY GROUPS		NUMBER OF EMPLOYING UNITS	EMPLOYMENT			TOTAL EARNINGS	AVERAGE
			OCTOBER	NOVEMBER	DECEMBER	OCTOBER - DECEMBER	WEEKLY EARNINGS
562	WASTE MANAGEMENT & REMEDIATION SERVICES	230	2,541	2,509	2,509	\$25,811,384	\$788.00
5621	Waste Collection Services	108	1,295	1,276	1,267	12,415,669	746.52
5622	Waste Treatment & Disposal Services	43	739	739	746	8,707,659	903.53
5629	Remediation & Other Waste Services	79	507	494	496	4,688,056	722.68
EDUCATION & HEALTH SERVICES		13,631	156,260	156,406	156,878	\$1,481,907,468	\$728.32
61	EDUCATIONAL SERVICES	637	10,309	10,337	10,305	\$77,025,511	\$574.30
6111	Elementary & Secondary Schools	79	3,381	3,413	3,412	21,373,345	483.28
6112	Junior Colleges	9	296	292	307	2,269,173	585.09
6113	Colleges & Universities	29	3,668	3,683	3,576	29,091,769	614.39
6114	Business, Computer, & Management Training	53	235	240	245	4,645,209	1488.85
6115	Technical & Trade Schools	109	771	782	811	9,747,519	951.53
6116	Other Schools & Instruction	248	1,558	1,568	1,578	6,020,079	295.33
6117	Educational Support Services	110	400	359	376	3,878,417	788.56
62	HEALTH CARE & SOCIAL ASSISTANCE	12,994	145,951	146,069	146,573	\$1,404,881,957	\$739.19
621	AMBULATORY HEALTH CARE SERVICES	5,079	45,127	45,259	45,777	\$679,240,472	\$1,151.18
6211	Offices of Physicians	2,251	21,389	21,461	21,689	442,981,931	1583.95
6212	Offices of Dentists	959	6,259	6,304	6,376	76,780,305	935.56
6213	Offices of Other Health Practitioners	1,181	6,162	6,167	6,238	54,740,550	680.37
6214	Outpatient Care Centers	259	3,984	3,953	3,964	40,607,562	787.41
6215	Medical & Diagnostic Laboratories	108	854	874	890	13,104,959	1155.16
6216	Home Health Care Services	184	4,136	4,159	4,183	31,593,512	584.29
6219	Other Ambulatory Health Care Services	137	2,343	2,341	2,437	19,431,653	629.72
622	HOSPITALS	124	42,622	42,383	42,408	\$435,165,072	\$788.17
6221	General Medical & Surgical Hospitals	91	38,821	38,581	38,625	397,018,964	789.64
6222	Psychiatric & Substance Abuse Hospitals	11	1,844	1,840	1,828	16,534,021	692.22
6223	Other Hospitals	22	1,957	1,962	1,955	21,612,087	849.06
623	NURSING & RESIDENTIAL CARE FACILITIES	526	28,561	28,754	28,744	\$158,116,918	\$423.99
6231	Nursing Care Facilities	256	21,167	21,314	21,283	116,525,942	421.72
6232	Residential Mental Health Facilities	127	3,405	3,430	3,429	19,986,598	449.37
6233	Community Care Facilities for the Elderly	96	2,418	2,438	2,435	12,071,900	382.09
6239	Other Residential Care Facilities	47	1,571	1,572	1,597	9,532,478	464.09

**TABLE 5. STATEWIDE SUMMARY
EMPLOYMENT AND TOTAL EARNINGS, BY INDUSTRY
FOURTH QUARTER 2008**

NORTH AMERICAN INDUSTRY CLASSIFICATION SYSTEM INDUSTRY GROUPS		NUMBER OF EMPLOYING UNITS	EMPLOYMENT			TOTAL EARNINGS	AVERAGE WEEKLY EARNINGS
			OCTOBER	NOVEMBER	DECEMBER	OCTOBER - DECEMBER	
624	SOCIAL ASSISTANCE	7,265	29,641	29,673	29,644	\$132,359,495	\$343.36
6241	Individual & Family Services	6,045	15,903	16,022	16,049	72,466,277	348.58
6242	Emergency & Other Relief Services	126	949	948	962	5,337,054	430.79
6243	Vocational Rehabilitation Services	131	3,784	3,788	3,761	19,233,778	391.65
6244	Child Day Care Services	963	9,005	8,915	8,872	35,322,386	304.24
LEISURE & HOSPITALITY		6,290	99,792	98,752	97,457	\$323,023,515	\$251.84
71	ARTS, ENTERTAINMENT & RECREATION	929	9,280	8,455	8,269	\$42,608,705	\$378.13
711	PERFORMING ARTS & SPECTATOR SPORTS	236	2,180	1,856	1,877	\$13,861,089	\$540.96
7111	Performing Arts Companies	40	550	301	278	1,848,283	377.79
7112	Spectator Sports	64	847	845	958	5,607,822	488.34
7113	Performing Arts & Sports Promoters	48	653	572	503	3,515,113	469.43
7114	Agents & Managers for Public Figures	21	21	27	21	503,604	1684.29
7115	Independent Artists, Writers & Performers	63	109	111	117	2,386,267	1634.06
712	MUSEUMS, PARKS & HISTORICAL SITES	51	271	261	248	\$1,360,588	\$402.54
713	GAMBLING, RECREATION & AMUSEMENT INDUSTRY	642	6,829	6,338	6,144	\$27,387,028	\$327.28
72	ACCOMMODATION & FOOD SERVICES	5,361	90,512	90,297	89,188	\$280,414,810	\$239.67
721	ACCOMMODATION	853	11,597	11,269	10,786	\$44,482,444	\$305.04
7211	Traveler Accommodation	772	11,210	10,921	10,450	42,859,666	303.57
7212	RV Parks & Recreational Camps	63	312	271	263	1,280,656	349.33
7213	Rooming & Boarding Houses	18	75	77	73	342,122	350.89
722	FOOD SERVICES & DRINKING PLACES	4,508	78,915	79,028	78,402	\$235,932,366	\$230.37
7221	Full -Service Restaurants	1,967	33,831	33,803	33,549	107,462,150	245.09
7222	Limited-Service Eating Places	2,243	41,703	41,830	41,583	115,901,638	213.77
7223	Special Food Services	152	2,340	2,358	2,241	9,362,268	311.36
7224	Drinking Places, Alcoholic Beverages	146	1,041	1,037	1,029	3,206,310	238.15

**TABLE 5. STATEWIDE SUMMARY
EMPLOYMENT AND TOTAL EARNINGS, BY INDUSTRY
FOURTH QUARTER 2008**

NORTH AMERICAN INDUSTRY CLASSIFICATION SYSTEM INDUSTRY GROUPS		NUMBER OF EMPLOYING UNITS	EMPLOYMENT			TOTAL EARNINGS	AVERAGE
			OCTOBER	NOVEMBER	DECEMBER	OCTOBER - DECEMBER	WEEKLY EARNINGS
OTHER SERVICES		5,465	24,645	24,545	24,714	\$168,634,706	\$526.57
811	REPAIR & MAINTENANCE	2,183	9,225	9,135	9,105	\$75,152,668	\$631.46
8111	Automotive Repair & Maintenance	1,492	6,298	6,239	6,232	45,956,671	565.05
8112	Electronic Equipment Repair & Maintenance	158	672	658	656	6,618,737	769.08
8113	Commercial Machinery Repair & Maintenance	347	1,626	1,623	1,610	18,022,745	855.96
8114	Household Goods Repair & Maintenance	186	629	615	607	4,554,515	567.82
812	PERSONAL & LAUNDRY SERVICES	1,347	7,938	7,926	8,046	\$43,345,822	\$418.36
8121	Personal Care Services	587	2,671	2,692	2,727	11,157,894	318.28
8122	Death Care Services	241	1,609	1,599	1,650	12,608,007	598.92
8123	Drycleaning & Laundry Services	337	2,994	2,973	2,976	16,124,456	416.08
8129	Other Personal Services	182	664	662	693	3,455,465	394.96
813	MEMBERSHIP ASSOCIATIONS & ORGANIZATIONS	1,051	6,281	6,284	6,347	\$44,596,246	\$544.18
8131	Religious Organizations	47	238	248	250	1,550,399	486.12
8132	Grantmaking & Giving Services	104	489	510	535	5,213,983	784.37
8133	Social Advocacy Organizations	187	2,029	2,043	2,075	14,450,570	542.50
8134	Civic & Social Organizations	205	1,436	1,426	1,410	5,286,097	285.55
8139	Professional & Similar Organizations	508	2,089	2,057	2,077	18,095,197	671.03
814	PRIVATE HOUSEHOLDS	884	1,201	1,200	1,216	\$5,539,970	\$353.46
	LOCAL GOVERNMENT	1,977	119,603	120,170	120,163	\$936,398,692	\$600.36
	STATE GOVERNMENT	1,243	67,736	67,843	67,863	\$642,767,024	\$729.11
	NONCLASSIFIABLE ESTABLISHMENTS	0	0	0	0	\$0	

**TABLE 6. COUNTY SUMMARY
EMPLOYMENT AND TOTAL EARNINGS, BY INDUSTRY
FOURTH QUARTER 2008**

NORTH AMERICAN INDUSTRY CLASSIFICATION SYSTEM INDUSTRY GROUP	NUMBER OF EMPLOYING UNITS	EMPLOYMENT			TOTAL EARNINGS	AVERAGE WEEKLY EARNINGS
		OCTOBER	NOVEMBER	DECEMBER	OCTOBER - DECEMBER	
ARKANSAS COUNTY - TOTAL	758	10,262	9,851	9,833	\$84,949,892	\$654.64
Natural Resources & Mining	47	264	225	209	2,134,545	705.71
Construction	47	335	344	333	3,581,917	816.79
Manufacturing	33	3,669	3,345	3,326	31,220,441	696.78
Trade, Transportation & Utilities	198	2,143	2,115	2,124	20,140,529	728.27
Wholesale Trade	43	403	386	391	6,726,031	1315.39
Retail Trade	96	1,114	1,126	1,144	6,953,410	474.18
Transportation, Warehousing & Utilities	59	626	603	589	6,461,088	820.14
Information	11	105	104	107	911,870	665.92
Financial Activities	50	314	319	319	4,247,468	1029.61
Professional & Business Services	62	430	417	408	5,417,315	996.14
Education & Health Services	141	1,293	1,269	1,271	7,403,499	445.73
Leisure & Hospitality	59	484	470	480	1,335,435	214.91
Other Services	62	142	147	143	827,163	441.86
Local Government	32	846	854	873	6,256,955	561.18
State Government	16	237	242	240	1,472,755	472.69
ASHLEY COUNTY - TOTAL	584	7,891	7,845	7,776	\$70,736,209	\$694.27
Natural Resources & Mining	61	413	361	322	3,162,148	665.81
Construction	50	587	617	635	5,700,860	715.38
Manufacturing	26	2,454	2,429	2,398	32,514,292	1030.53
Trade, Transportation & Utilities	135	1,202	1,182	1,188	8,434,450	544.91
Wholesale Trade	23	181	168	165	2,082,530	934.99
Retail Trade	83	752	760	777	3,885,385	391.71
Transportation, Warehousing & Utilities	29	269	254	246	2,466,535	740.18
Information	8	46	46	45	338,778	570.65
Financial Activities	39	251	246	250	2,302,622	711.34
Professional & Business Services	51	418	413	401	2,678,119	501.65
Education & Health Services	100	694	687	693	5,436,845	604.95
Leisure & Hospitality	28	406	425	422	1,069,935	197.05
Other Services	42	186	174	174	1,024,008	442.53
Local Government	32	989	1,012	998	6,762,078	520.33
State Government	12	245	253	250	1,312,074	404.79

**TABLE 6. COUNTY SUMMARY
EMPLOYMENT AND TOTAL EARNINGS, BY INDUSTRY
FOURTH QUARTER 2008**

NORTH AMERICAN INDUSTRY CLASSIFICATION SYSTEM INDUSTRY GROUP	NUMBER OF EMPLOYING UNITS	EMPLOYMENT			TOTAL EARNINGS	AVERAGE
		OCTOBER	NOVEMBER	DECEMBER	OCTOBER - DECEMBER	WEEKLY EARNINGS
BAXTER COUNTY - TOTAL	1,349	14,673	14,530	14,392	\$111,586,909	\$590.68
Natural Resources & Mining	5	133	129	114	973,136	597.26
Construction	148	730	694	676	5,639,805	619.76
Manufacturing	66	2,431	2,339	2,305	20,970,464	684.01
Trade, Transportation & Utilities	290	2,630	2,629	2,615	16,068,836	470.94
Wholesale Trade	40	214	214	221	1,630,448	579.75
Retail Trade	217	2,213	2,208	2,180	12,711,684	444.40
Transportation, Warehousing & Utilities	33	203	207	214	1,726,704	638.57
Information	22	239	242	235	2,174,067	700.71
Financial Activities	125	687	687	680	7,403,633	831.81
Professional & Business Services	146	847	837	812	6,787,171	627.51
Education & Health Services	272	3,436	3,441	3,485	33,487,672	745.79
Leisure & Hospitality	123	1,517	1,480	1,423	4,618,443	241.13
Other Services	103	374	369	363	1,829,055	381.64
Local Government	36	1,299	1,332	1,335	9,231,703	537.16
State Government	13	350	351	349	2,402,924	528.12
BENTON COUNTY - TOTAL	5,562	94,972	94,831	94,155	\$1,037,645,915	\$843.28
Natural Resources & Mining	30	811	808	793	10,419,351	996.88
Construction	663	3,929	3,866	3,813	39,618,960	787.63
Manufacturing	241	13,130	12,904	12,743	124,556,210	741.26
Trade, Transportation & Utilities	1,511	22,624	22,523	22,529	234,900,816	800.99
Wholesale Trade	685	3,802	3,801	3,814	76,617,729	1548.66
Retail Trade	638	9,111	9,303	9,396	55,850,663	463.45
Transportation, Warehousing & Utilities	188	9,711	9,419	9,319	102,432,424	830.90
Information	76	850	828	810	9,701,808	899.87
Financial Activities	585	3,828	3,822	3,859	44,790,122	898.10
Professional & Business Services	1,035	23,335	23,531	23,341	388,607,303	1277.35
Education & Health Services	537	7,424	7,453	7,426	67,519,521	698.62
Leisure & Hospitality	448	8,648	8,655	8,406	29,451,023	264.36
Other Services	340	1,652	1,614	1,626	11,275,275	531.89
Local Government	78	7,663	7,752	7,739	69,063,328	688.33
State Government	18	1,078	1,075	1,070	7,742,198	554.35

**TABLE 6. COUNTY SUMMARY
EMPLOYMENT AND TOTAL EARNINGS, BY INDUSTRY
FOURTH QUARTER 2008**

NORTH AMERICAN INDUSTRY CLASSIFICATION SYSTEM INDUSTRY GROUP	NUMBER OF EMPLOYING UNITS	EMPLOYMENT			TOTAL EARNINGS	AVERAGE
		OCTOBER	NOVEMBER	DECEMBER	OCTOBER - DECEMBER	WEEKLY EARNINGS
BOONE COUNTY - TOTAL	1,079	13,660	13,603	13,657	\$108,264,153	\$610.56
Construction	96	438	441	439	3,626,823	635.02
Manufacturing	72	1,823	1,733	1,755	16,286,585	707.67
Trade, Transportation & Utilities	259	4,338	4,365	4,384	38,002,568	670.12
Wholesale Trade	58	640	625	611	5,199,398	639.58
Retail Trade	146	1,851	1,867	1,894	10,880,685	447.42
Transportation, Warehousing & Utilities	55	1,847	1,873	1,879	21,922,485	903.56
Information	20	422	421	422	3,841,110	700.72
Financial Activities	98	627	625	633	5,294,201	648.14
Professional & Business Services	113	519	499	489	4,128,101	632.14
Education & Health Services	200	1,199	1,198	1,222	9,739,254	621.03
Leisure & Hospitality	76	1,097	1,106	1,080	3,369,709	236.86
Local Government	58	2,325	2,331	2,347	16,620,560	547.70
State Government	21	590	597	600	5,334,095	688.83
Other	66	282	287	286	2,021,147	545.52
BRADLEY COUNTY - TOTAL	398	3,779	3,519	3,491	\$24,534,789	\$524.78
Natural Resources & Mining	44	272	270	291	2,112,640	585.27
Construction	20	175	163	150	1,095,705	518.15
Manufacturing	11	789	521	505	5,483,010	697.14
Trade, Transportation & Utilities	81	477	479	476	2,822,779	454.90
Wholesale Trade	15	67	69	69	593,457	668.06
Retail Trade	44	365	366	358	1,778,091	376.79
Transportation, Warehousing & Utilities	22	45	44	49	451,231	754.57
Information	4	16	16	18	104,067	480.31
Financial Activities	27	163	161	159	1,375,237	657.06
Professional & Business Services	27	81	81	81	406,015	385.58
Education & Health Services	110	638	631	636	4,462,501	540.58
Leisure & Hospitality	16	184	208	199	433,301	169.19
Other Services	32	109	111	115	852,581	587.31
Local & State Government	26	875	878	861	5,386,953	475.57

**TABLE 6. COUNTY SUMMARY
EMPLOYMENT AND TOTAL EARNINGS, BY INDUSTRY
FOURTH QUARTER 2008**

NORTH AMERICAN INDUSTRY CLASSIFICATION SYSTEM INDUSTRY GROUP	NUMBER OF EMPLOYING UNITS	EMPLOYMENT			TOTAL EARNINGS	AVERAGE
		OCTOBER	NOVEMBER	DECEMBER	OCTOBER - DECEMBER	WEEKLY EARNINGS
CALHOUN COUNTY - TOTAL	125	2,937	2,940	2,956	\$32,733,223	\$855.18
Natural Resources & Mining	18	209	207	202	1,867,844	697.48
Construction	13	59	57	55	407,424	549.83
Manufacturing	10	1,943	1,943	1,946	24,533,391	970.77
Trade, Transportation & Utilities	34	188	190	201	1,291,185	514.62
Retail Trade	21	77	80	88	287,338	270.65
Other Trade, Transportation & Utilities	13	111	110	113	1,003,847	693.58
Financial Activities	6	89	88	84	600,579	531.02
Education & Health Services	8	49	47	48	373,127	597.96
Leisure & Hospitality	6	22	22	24	39,436	133.83
Local & State Government	19	275	281	283	1,707,952	469.78
Other	11	103	105	113	1,912,285	1374.76
CARROLL COUNTY - TOTAL	844	10,326	10,013	9,869	\$64,970,310	\$496.33
Natural Resources & Mining	15	266	275	278	2,133,249	601.08
Construction	80	315	305	306	2,262,860	563.93
Trade, Transportation & Utilities	212	1,679	1,671	1,659	10,694,344	492.70
Wholesale Trade	28	168	168	172	978,360	444.44
Retail Trade	164	1,241	1,239	1,218	6,790,672	423.76
Transportation, Warehousing & Utilities	20	270	264	269	2,925,312	840.69
Information	13	96	96	96	769,948	616.95
Financial Activities	76	379	370	383	3,400,585	693.24
Professional & Business Services	65	230	210	214	1,370,435	483.57
Education & Health Services	95	963	970	969	7,233,998	575.25
Leisure & Hospitality	170	1,743	1,437	1,252	4,711,319	245.31
Local Government	25	1,045	1,048	1,063	7,012,930	512.79
State Government	11	106	108	107	765,626	550.41
Other	82	3,504	3,523	3,542	24,615,016	537.46

**TABLE 6. COUNTY SUMMARY
EMPLOYMENT AND TOTAL EARNINGS, BY INDUSTRY
FOURTH QUARTER 2008**

NORTH AMERICAN INDUSTRY CLASSIFICATION SYSTEM INDUSTRY GROUP	NUMBER OF EMPLOYING UNITS	EMPLOYMENT			TOTAL EARNINGS	AVERAGE
		OCTOBER	NOVEMBER	DECEMBER	OCTOBER - DECEMBER	WEEKLY EARNINGS
CHICOT COUNTY - TOTAL	412	3,567	3,491	3,417	\$22,557,247	\$496.95
Natural Resources & Mining	48	287	270	260	2,083,925	588.62
Construction	14	108	111	105	933,748	665.06
Manufacturing	11	472	431	385	1,886,489	338.00
Trade, Transportation & Utilities	70	568	557	552	3,859,492	531.10
Wholesale Trade	14	104	101	98	1,283,857	977.80
Retail Trade	47	393	394	383	1,866,138	368.07
Transportation, Warehousing & Utilities	9	71	62	71	709,497	802.60
Information	6	10	10	10	61,027	469.44
Financial Activities	29	171	173	178	1,489,444	658.46
Professional & Business Services	30	82	76	78	628,992	615.05
Education & Health Services	138	629	632	628	3,832,343	468.18
Leisure & Hospitality	21	140	125	138	317,119	181.59
Other Services	17	42	39	36	219,395	432.73
Local Government	17	718	728	707	5,186,168	555.88
State Government	11	340	339	340	2,059,105	466.32
CLARK COUNTY - TOTAL	634	9,860	9,789	9,767	\$68,204,435	\$535.07
Natural Resources & Mining	33	209	188	203	1,758,131	676.20
Construction	35	119	119	122	708,786	454.35
Manufacturing	34	2,329	2,255	2,273	18,825,427	633.56
Trade, Transportation & Utilities	145	1,574	1,571	1,566	9,847,704	482.39
Wholesale Trade	20	80	85	87	844,731	773.56
Retail Trade	102	1,200	1,192	1,194	6,448,167	414.96
Transportation, Warehousing & Utilities	23	294	294	285	2,554,806	675.34
Information	9	46	45	46	354,781	597.61
Financial Activities	85	363	354	359	2,741,392	587.95
Professional & Business Services	52	328	335	336	4,224,338	975.82
Education & Health Services	93	1,370	1,349	1,352	9,960,648	564.63
Leisure & Hospitality	58	1,049	1,055	1,032	3,057,302	224.98
Other Services	48	204	218	213	1,214,389	441.33
Local Government	27	1,006	1,030	1,008	6,859,220	520.01
State Government	15	1,263	1,270	1,257	8,652,317	526.83

**TABLE 6. COUNTY SUMMARY
EMPLOYMENT AND TOTAL EARNINGS, BY INDUSTRY
FOURTH QUARTER 2008**

NORTH AMERICAN INDUSTRY CLASSIFICATION SYSTEM INDUSTRY GROUP	NUMBER OF EMPLOYING UNITS	EMPLOYMENT			TOTAL EARNINGS	AVERAGE
		OCTOBER	NOVEMBER	DECEMBER	OCTOBER - DECEMBER	WEEKLY EARNINGS
CLAY COUNTY - TOTAL	422	3,993	3,976	3,920	\$26,231,930	\$509.17
Natural Resources & Mining	61	243	223	193	1,425,873	499.31
Construction	32	136	165	141	1,109,784	579.42
Manufacturing	17	625	614	632	4,326,293	533.61
Trade, Transportation & Utilities	98	959	951	943	7,054,536	570.62
Wholesale Trade	22	338	345	352	2,922,442	651.60
Retail Trade	49	420	421	423	2,302,500	420.37
Transportation, Warehousing & Utilities	27	201	185	168	1,829,594	762.12
Information	4	65	64	62	366,456	442.76
Financial Activities	33	127	129	130	1,085,430	648.92
Professional & Business Services	27	50	52	53	397,630	592.00
Education & Health Services	65	526	523	518	3,061,475	450.86
Leisure & Hospitality	23	196	186	188	446,566	180.80
Other Services	28	71	70	73	480,729	518.40
Local Government	22	918	922	910	6,031,732	506.16
State Government	12	77	77	77	445,426	444.98
CLEBURNE COUNTY - TOTAL	708	6,905	6,735	6,771	\$48,539,083	\$548.79
Natural Resources & Mining	23	213	221	234	2,550,245	881.02
Construction	87	530	456	483	4,973,010	781.22
Manufacturing	40	1,272	1,163	1,163	9,664,888	619.89
Trade, Transportation & Utilities	183	1,552	1,547	1,536	10,655,879	530.54
Wholesale Trade	42	200	206	205	2,105,824	795.35
Retail Trade	111	995	992	995	5,385,287	416.75
Transportation, Warehousing & Utilities	30	357	349	336	3,164,768	700.89
Information	7	55	55	61	304,267	410.62
Financial Activities	76	312	314	319	2,798,652	683.43
Professional & Business Services	59	222	217	218	1,797,831	631.48
Education & Health Services	87	839	849	851	6,216,187	564.99
Leisure & Hospitality	68	843	836	832	2,576,463	236.79
Other Services	50	147	148	165	763,660	383.11
Local Government	18	795	807	792	5,453,516	525.69
State Government	10	125	122	117	784,485	497.35

**TABLE 6. COUNTY SUMMARY
EMPLOYMENT AND TOTAL EARNINGS, BY INDUSTRY
FOURTH QUARTER 2008**

NORTH AMERICAN INDUSTRY CLASSIFICATION SYSTEM INDUSTRY GROUP	NUMBER OF EMPLOYING UNITS	EMPLOYMENT			TOTAL EARNINGS	AVERAGE
		OCTOBER	NOVEMBER	DECEMBER	OCTOBER - DECEMBER	WEEKLY EARNINGS
CLEVELAND COUNTY - TOTAL	122	1,106	1,098	1,080	\$6,006,364	\$422.07
Natural Resources & Mining	15	181	171	176	1,226,033	535.85
Construction	9	24	26	26	119,823	363.84
Manufacturing	6	89	90	89	590,928	508.84
Trade, Transportation & Utilities	31	174	176	170	943,790	418.84
Retail Trade	16	77	79	76	231,786	230.56
Other Trade Transportation & Utilities	15	97	97	94	712,004	570.52
Education & Health Services	29	119	119	120	511,960	330.01
Other Services	5	16	16	16	132,455	636.80
Local Government	11	348	349	339	1,725,912	384.45
State Government	8	63	63	62	368,959	452.90
Other	8	92	88	82	386,504	340.43
COLUMBIA COUNTY - TOTAL	744	9,137	9,106	9,054	\$80,953,268	\$684.38
Natural Resources & Mining	47	548	562	544	10,269,865	1432.87
Construction	42	346	338	325	3,445,619	788.05
Manufacturing	38	2,472	2,420	2,404	28,045,720	887.07
Trade, Transportation & Utilities	168	1,455	1,457	1,474	10,196,358	536.48
Wholesale Trade	27	202	193	196	2,568,830	1003.06
Retail Trade	108	980	991	1,012	4,983,461	385.53
Transportation, Warehousing & Utilities	33	273	273	266	2,644,067	751.44
Information	9	59	60	64	468,622	590.95
Financial Activities	78	401	400	393	4,200,080	811.77
Professional & Business Services	64	350	338	346	2,464,838	550.11
Education & Health Services	161	970	974	958	5,467,390	434.77
Leisure & Hospitality	48	595	599	590	1,976,255	255.64
Other Services	49	218	221	215	1,077,330	380.14
Local Government	26	1,138	1,146	1,149	8,270,767	555.97
State Government	14	585	591	592	5,070,424	661.82

**TABLE 6. COUNTY SUMMARY
EMPLOYMENT AND TOTAL EARNINGS, BY INDUSTRY
FOURTH QUARTER 2008**

NORTH AMERICAN INDUSTRY CLASSIFICATION SYSTEM INDUSTRY GROUP	NUMBER OF EMPLOYING UNITS	EMPLOYMENT			TOTAL EARNINGS	AVERAGE WEEKLY EARNINGS
		OCTOBER	NOVEMBER	DECEMBER	OCTOBER - DECEMBER	
CONWAY COUNTY - TOTAL	599	6,878	6,922	7,010	\$54,751,888	\$607.16
Natural Resources & Mining	26	247	246	250	3,343,847	1038.57
Construction	57	527	517	567	6,561,790	939.95
Manufacturing	25	1,005	992	1,017	11,920,340	912.69
Trade, Transportation & Utilities	139	1,406	1,471	1,461	10,896,796	579.68
Wholesale Trade	23	201	205	205	2,477,632	935.78
Retail Trade	85	837	904	889	5,009,093	439.52
Transportation, Warehousing & Utilities	31	368	362	367	3,410,071	717.36
Information	5	13	13	14	167,903	968.67
Financial Activities	35	174	176	174	1,422,972	626.68
Professional & Business Services	44	560	562	585	2,712,351	366.68
Education & Health Services	156	941	937	918	6,003,938	495.54
Leisure & Hospitality	47	513	494	499	1,267,994	194.30
Other Services	26	153	156	166	1,449,079	704.01
Local Government	28	914	936	943	6,294,161	520.05
State Government	11	425	422	416	2,710,717	495.29
CRAIGHEAD COUNTY - TOTAL	2,657	42,749	42,502	42,575	\$362,171,674	\$653.84
Natural Resources & Mining	65	425	416	349	3,170,162	614.77
Construction	230	1,805	1,787	1,730	17,313,326	750.73
Manufacturing	138	6,992	6,941	6,846	67,862,472	753.67
Trade, Transportation & Utilities	718	8,627	8,762	8,826	64,010,195	563.48
Wholesale Trade	181	1,712	1,704	1,693	20,949,788	946.28
Retail Trade	423	5,701	5,875	5,948	31,122,141	409.84
Transportation, Warehousing & Utilities	114	1,214	1,183	1,185	11,938,266	769.12
Information	31	526	530	517	4,435,596	650.73
Financial Activities	263	1,622	1,602	1,609	17,378,878	829.82
Professional & Business Services	355	4,074	3,945	3,994	32,141,875	617.44
Education & Health Services	424	7,371	7,293	7,358	83,797,192	878.11
Leisure & Hospitality	201	4,025	3,984	4,046	12,273,763	234.96
Other Services	169	870	872	879	4,941,411	435.07
Local Government	38	3,816	3,823	3,802	29,415,275	593.32
State Government	25	2,596	2,547	2,619	25,431,529	756.10

**TABLE 6. COUNTY SUMMARY
EMPLOYMENT AND TOTAL EARNINGS, BY INDUSTRY
FOURTH QUARTER 2008**

NORTH AMERICAN INDUSTRY CLASSIFICATION SYSTEM INDUSTRY GROUP	NUMBER OF EMPLOYING UNITS	EMPLOYMENT			TOTAL EARNINGS	AVERAGE
		OCTOBER	NOVEMBER	DECEMBER	OCTOBER - DECEMBER	WEEKLY EARNINGS
CRAWFORD COUNTY - TOTAL	1,299	20,025	19,980	19,667	\$150,816,038	\$583.25
Natural Resources & Mining	28	394	401	400	4,884,277	943.21
Construction	192	1,289	1,249	1,226	12,440,925	762.75
Manufacturing	79	3,844	3,815	3,777	29,416,070	593.59
Trade, Transportation & Utilities	314	6,739	6,781	6,549	51,301,423	589.90
Wholesale Trade	80	757	765	762	8,029,917	811.32
Retail Trade	160	1,981	2,022	2,042	10,909,191	416.46
Transportation, Warehousing & Utilities	74	4,001	3,994	3,745	32,362,315	636.14
Information	11	171	164	162	1,380,010	640.77
Financial Activities	137	576	569	582	5,510,307	736.31
Professional & Business Services	168	1,283	1,260	1,231	9,309,324	569.24
Education & Health Services	153	1,490	1,517	1,494	11,382,943	583.61
Leisure & Hospitality	87	1,545	1,539	1,565	4,644,192	230.53
Other Services	79	381	378	384	2,714,197	547.99
Local Government	40	2,144	2,138	2,128	16,423,356	591.26
State Government	11	169	169	169	1,409,014	641.34
CRITTENDEN COUNTY - TOTAL	1,312	17,034	16,980	16,600	\$137,008,753	\$624.68
Natural Resources & Mining	41	318	302	268	3,335,749	866.88
Construction	70	552	627	564	6,428,516	851.12
Manufacturing	46	2,097	2,102	2,053	21,092,315	778.54
Trade, Transportation & Utilities	340	4,884	4,929	4,852	42,163,685	663.49
Wholesale Trade	80	805	823	830	10,651,824	1000.05
Retail Trade	172	2,124	2,182	2,126	11,233,767	403.05
Transportation, Warehousing & Utilities	88	1,955	1,924	1,896	20,278,094	810.31
Information	7	71	72	71	605,166	652.59
Financial Activities	107	589	590	572	5,055,868	666.33
Professional & Business Services	135	939	836	780	6,345,016	573.09
Education & Health Services	305	2,186	2,163	2,161	18,168,831	644.06
Leisure & Hospitality	105	1,800	1,780	1,810	6,745,195	288.79
Other Services	95	590	571	551	3,541,237	477.34
Local Government	46	2,452	2,453	2,460	19,777,586	619.70
State Government	15	556	555	458	3,749,589	551.49

**TABLE 6. COUNTY SUMMARY
EMPLOYMENT AND TOTAL EARNINGS, BY INDUSTRY
FOURTH QUARTER 2008**

NORTH AMERICAN INDUSTRY CLASSIFICATION SYSTEM INDUSTRY GROUP	NUMBER OF EMPLOYING UNITS	EMPLOYMENT			TOTAL EARNINGS	AVERAGE
		OCTOBER	NOVEMBER	DECEMBER	OCTOBER - DECEMBER	WEEKLY EARNINGS
CROSS COUNTY - TOTAL	565	5,067	5,060	5,073	\$35,875,140	\$544.66
Natural Resources & Mining	38	240	237	213	1,353,974	452.83
Construction	33	155	147	148	1,063,346	545.31
Manufacturing	15	722	720	727	4,789,518	509.58
Trade, Transportation & Utilities	146	1,307	1,304	1,291	10,667,208	630.87
Wholesale Trade	28	290	296	296	3,317,416	867.98
Retail Trade	83	748	762	764	4,483,706	455.01
Transportation, Warehousing & Utilities	35	269	246	231	2,866,086	886.60
Information	4	40	41	43	296,040	550.94
Financial Activities	46	334	331	330	2,638,044	611.84
Professional & Business Services	47	131	137	137	1,187,872	676.85
Education & Health Services	132	740	754	756	5,320,447	545.69
Leisure & Hospitality	34	359	360	385	1,063,199	222.24
Other Services	42	74	72	73	378,896	399.26
Local Government	17	738	729	742	5,367,048	560.68
State Government	11	227	228	228	1,749,548	591.13
DALLAS COUNTY - TOTAL	276	3,377	3,380	3,401	\$23,639,305	\$537.04
Natural Resources & Mining	40	190	193	197	1,474,338	586.61
Construction	15	66	65	57	535,728	657.60
Manufacturing	16	939	927	931	7,711,293	636.23
Trade, Transportation & Utilities	62	454	451	459	3,201,238	541.60
Wholesale Trade	6	23	24	23	191,270	630.56
Retail Trade	42	343	338	345	2,287,784	514.57
Transportation, Warehousing & Utilities	14	88	89	91	722,184	621.86
Information	3	20	20	20	169,525	652.02
Financial Activities	20	104	101	100	848,191	641.76
Professional & Business Services	16	38	40	40	347,176	678.96
Education & Health Services	49	847	865	872	5,399,488	482.21
Leisure & Hospitality	15	128	125	118	305,649	190.12
Other Services	15	61	61	63	326,692	407.52
Local Government	16	456	453	465	2,874,449	482.78
State Government	9	74	79	79	445,538	443.17

**TABLE 6. COUNTY SUMMARY
EMPLOYMENT AND TOTAL EARNINGS, BY INDUSTRY
FOURTH QUARTER 2008**

NORTH AMERICAN INDUSTRY CLASSIFICATION SYSTEM INDUSTRY GROUP	NUMBER OF EMPLOYING UNITS	EMPLOYMENT			TOTAL EARNINGS	AVERAGE WEEKLY EARNINGS
		OCTOBER	NOVEMBER	DECEMBER	OCTOBER - DECEMBER	
DESHA COUNTY - TOTAL	492	4,735	4,529	4,489	\$35,020,437	\$587.63
Natural Resources & Mining	51	339	277	254	2,191,731	581.36
Construction	21	183	111	115	1,122,382	633.28
Manufacturing	19	934	912	911	10,426,066	872.69
Trade, Transportation & Utilities	121	957	893	867	6,771,451	575.14
Wholesale Trade	18	156	154	159	2,168,416	1066.96
Retail Trade	77	552	543	554	2,934,367	410.65
Transportation, Warehousing & Utilities	26	249	196	154	1,668,668	642.87
Information	6	27	27	27	218,228	621.73
Financial Activities	45	201	203	207	1,744,129	658.74
Professional & Business Services	35	67	66	72	449,930	506.49
Education & Health Services	104	667	652	656	3,953,985	462.00
Leisure & Hospitality	36	276	269	265	641,910	182.88
Other Services	24	68	64	66	295,341	344.22
Local Government	19	840	873	869	5,980,874	534.55
State Government	11	176	182	180	1,224,410	525.20
DREW COUNTY - TOTAL	540	6,625	6,615	6,693	\$44,142,762	\$511.05
Natural Resources & Mining	42	352	322	333	3,051,241	699.24
Construction	22	112	106	99	674,686	491.16
Manufacturing	22	722	730	734	5,065,092	534.71
Trade, Transportation & Utilities	128	1,204	1,222	1,216	7,821,947	495.62
Wholesale Trade	20	182	186	187	1,697,786	705.94
Retail Trade	88	921	935	926	4,962,272	411.62
Transportation, Warehousing & Utilities	20	101	101	103	1,161,889	879.11
Information	7	71	73	70	507,111	546.85
Financial Activities	49	228	228	236	2,324,071	775.03
Professional & Business Services	51	306	307	319	2,253,669	558.02
Education & Health Services	113	949	951	976	5,382,801	431.91
Leisure & Hospitality	45	645	666	657	1,566,242	183.66
Other Services	21	61	64	68	350,950	419.63
Local Government	23	1,304	1,276	1,313	9,155,163	542.70
State Government	17	671	670	672	5,989,789	686.67

**TABLE 6. COUNTY SUMMARY
EMPLOYMENT AND TOTAL EARNINGS, BY INDUSTRY
FOURTH QUARTER 2008**

NORTH AMERICAN INDUSTRY CLASSIFICATION SYSTEM INDUSTRY GROUP	NUMBER OF EMPLOYING UNITS	EMPLOYMENT			TOTAL EARNINGS	AVERAGE
		OCTOBER	NOVEMBER	DECEMBER	OCTOBER - DECEMBER	WEEKLY EARNINGS
FAULKNER COUNTY - TOTAL	2,746	39,119	39,221	39,108	\$350,246,117	\$688.19
Natural Resources & Mining	41	951	939	941	19,911,740	1623.11
Construction	379	2,766	2,744	2,723	27,844,705	780.48
Manufacturing	124	4,443	4,382	4,359	47,869,889	837.90
Trade, Transportation & Utilities	642	6,976	6,988	7,070	49,881,616	547.26
Wholesale Trade	173	931	921	918	10,638,169	886.27
Retail Trade	380	5,051	5,089	5,145	27,586,330	416.49
Transportation, Warehousing & Utilities	89	994	978	1,007	11,657,117	903.02
Information	32	373	378	375	3,824,640	783.84
Financial Activities	325	1,534	1,537	1,531	14,228,821	713.51
Professional & Business Services	376	4,770	4,783	4,767	61,607,016	992.81
Education & Health Services	410	5,595	5,649	5,649	49,549,074	676.87
Leisure & Hospitality	207	4,286	4,314	4,212	12,152,522	218.89
Other Services	152	615	621	632	4,243,965	524.29
Local Government	39	3,379	3,460	3,449	29,798,639	668.41
State Government	19	3,431	3,426	3,400	29,333,490	659.97
FRANKLIN COUNTY - TOTAL	327	4,215	4,246	4,230	\$33,066,620	\$601.27
Natural Resources & Mining	12	170	169	174	2,730,150	1228.14
Construction	30	215	227	199	1,868,327	672.62
Manufacturing	22	930	945	940	8,075,724	662.04
Trade, Transportation & Utilities	85	811	810	825	6,616,733	624.26
Wholesale Trade	17	49	48	48	313,323	498.66
Retail Trade	48	479	476	489	2,713,017	433.57
Transportation, Warehousing & Utilities	20	283	286	288	3,590,393	966.81
Information	7	52	51	53	255,280	377.63
Financial Activities	30	238	239	239	1,856,898	598.48
Professional & Business Services	24	72	74	76	631,153	656.08
Education & Health Services	48	483	483	475	2,826,657	452.68
Leisure & Hospitality	22	279	282	278	803,426	220.98
Other Services	18	48	51	51	338,262	520.40
Local Government	19	790	787	793	5,892,623	573.77
State Government	10	127	128	127	1,171,387	707.64

**TABLE 6. COUNTY SUMMARY
EMPLOYMENT AND TOTAL EARNINGS, BY INDUSTRY
FOURTH QUARTER 2008**

NORTH AMERICAN INDUSTRY CLASSIFICATION SYSTEM INDUSTRY GROUP	NUMBER OF EMPLOYING UNITS	EMPLOYMENT			TOTAL EARNINGS	AVERAGE
		OCTOBER	NOVEMBER	DECEMBER	OCTOBER - DECEMBER	WEEKLY EARNINGS
FULTON COUNTY - TOTAL	239	1,964	1,942	1,981	\$11,425,289	\$447.87
Construction	14	18	19	24	171,263	647.91
Manufacturing	12	130	125	125	607,179	368.73
Trade, Transportation & Utilities	63	362	357	377	2,658,468	559.76
Wholesale Trade	13	64	64	65	418,988	500.98
Retail Trade	40	176	175	187	820,719	352.04
Transportation, Warehousing & Utilities	10	122	118	125	1,418,761	897.00
Financial Activities	14	96	86	90	651,038	552.35
Professional & Business Services	14	56	54	55	369,226	516.40
Education & Health Services	65	421	420	424	2,180,095	397.71
Leisure & Hospitality	19	152	160	148	381,474	191.37
Local Government	13	550	544	552	3,447,842	483.39
State Government	11	112	111	111	666,148	460.26
Other	14	67	66	75	292,556	324.58
GARLAND COUNTY - TOTAL	3,337	35,986	35,663	35,981	\$271,766,201	\$582.69
Natural Resources & Mining	45	383	382	377	3,254,376	657.63
Construction	432	2,181	2,174	2,179	17,044,746	601.99
Manufacturing	119	2,431	2,305	2,300	21,736,391	712.92
Trade, Transportation & Utilities	730	7,264	7,363	7,419	49,997,184	523.35
Wholesale Trade	163	1,032	1,026	1,025	10,456,427	782.69
Retail Trade	505	5,675	5,778	5,781	33,298,063	445.87
Transportation, Warehousing & Utilities	62	557	559	613	6,242,694	833.21
Information	39	381	380	390	3,476,758	697.07
Financial Activities	374	1,455	1,470	1,491	13,362,692	698.30
Professional & Business Services	434	3,384	3,341	3,480	25,361,830	573.52
Education & Health Services	493	7,201	7,211	7,260	74,817,675	796.68
Leisure & Hospitality	370	6,034	5,726	5,772	21,662,782	285.14
Other Services	239	966	956	959	5,458,406	437.22
Local Government	34	3,132	3,170	3,179	26,551,537	646.27
State Government	28	1,174	1,185	1,175	9,041,824	590.43

**TABLE 6. COUNTY SUMMARY
EMPLOYMENT AND TOTAL EARNINGS, BY INDUSTRY
FOURTH QUARTER 2008**

NORTH AMERICAN INDUSTRY CLASSIFICATION SYSTEM INDUSTRY GROUP	NUMBER OF EMPLOYING UNITS	EMPLOYMENT			TOTAL EARNINGS	AVERAGE
		OCTOBER	NOVEMBER	DECEMBER	OCTOBER - DECEMBER	WEEKLY EARNINGS
GRANT COUNTY - TOTAL	316	3,822	3,831	3,818	\$27,274,650	\$548.70
Natural Resources & Mining	22	158	154	158	1,919,625	942.53
Construction	31	206	202	193	1,767,960	678.85
Manufacturing	16	930	916	917	6,878,314	574.49
Trade, Transportation & Utilities	88	611	626	617	4,769,095	593.61
Wholesale Trade	20	143	142	145	2,043,732	1096.82
Retail Trade	42	414	430	417	2,251,561	412.05
Transportation, Warehousing & Utilities	26	54	54	55	473,802	670.79
Information	5	27	25	25	262,883	787.86
Financial Activities	26	102	103	102	813,739	611.68
Professional & Business Services	27	86	81	80	1,026,681	959.22
Education & Health Services	45	466	460	461	2,485,289	413.50
Leisure & Hospitality	20	243	255	254	734,110	225.28
Other Services	17	45	45	49	207,094	343.82
Local Government	10	889	906	903	5,999,035	513.12
State Government	9	59	58	59	410,825	538.67
GREENE COUNTY - TOTAL	923	15,326	15,203	15,231	\$108,699,855	\$548.18
Natural Resources & Mining	35	230	212	192	1,959,178	713.12
Construction	82	401	386	364	3,167,566	635.08
Manufacturing	65	5,194	5,072	5,023	45,039,247	679.81
Trade, Transportation & Utilities	241	2,251	2,281	2,271	14,270,106	484.07
Wholesale Trade	56	419	413	398	3,568,215	669.46
Retail Trade	157	1,627	1,665	1,672	8,798,944	409.05
Transportation, Warehousing & Utilities	28	205	203	201	1,902,947	721.09
Information	12	100	104	103	490,787	368.92
Financial Activities	89	490	487	486	4,187,987	660.60
Professional & Business Services	94	1,747	1,769	1,927	9,143,628	387.67
Education & Health Services	147	1,806	1,780	1,780	12,512,534	538.11
Leisure & Hospitality	67	1,068	1,059	1,034	3,002,021	219.16
Other Services	50	177	171	181	1,003,707	437.85
Local Government	30	1,597	1,613	1,603	11,864,737	568.88
State Government	11	265	269	267	2,058,357	593.02

**TABLE 6. COUNTY SUMMARY
EMPLOYMENT AND TOTAL EARNINGS, BY INDUSTRY
FOURTH QUARTER 2008**

NORTH AMERICAN INDUSTRY CLASSIFICATION SYSTEM INDUSTRY GROUP	NUMBER OF EMPLOYING UNITS	EMPLOYMENT			TOTAL EARNINGS	AVERAGE WEEKLY EARNINGS
		OCTOBER	NOVEMBER	DECEMBER	OCTOBER - DECEMBER	
HEMPSTEAD COUNTY - TOTAL	498	7,843	7,870	7,898	\$58,492,108	\$571.69
Natural Resources & Mining	17	211	209	210	1,748,669	640.54
Construction	30	446	498	507	5,259,730	836.52
Manufacturing	27	2,035	1,991	1,980	17,446,230	670.34
Trade, Transportation & Utilities	134	1,283	1,311	1,302	9,135,487	541.12
Wholesale Trade	27	252	249	246	2,253,601	696.20
Retail Trade	86	889	896	895	4,529,802	390.05
Transportation, Warehousing & Utilities	21	142	166	161	2,352,084	1157.33
Information	9	57	57	58	500,166	671.06
Financial Activities	42	231	230	235	1,999,694	663.03
Professional & Business Services	39	198	181	190	1,227,019	497.64
Education & Health Services	72	982	973	977	5,911,216	465.25
Leisure & Hospitality	44	584	590	601	1,577,613	205.11
Other Services	39	196	197	198	1,444,298	563.96
Local Government	29	1,046	1,058	1,063	7,799,686	568.34
State Government	16	574	575	577	4,442,300	593.94
HOT SPRING COUNTY - TOTAL	606	7,467	7,452	7,477	\$58,559,065	\$603.39
Natural Resources & Mining	30	208	204	206	1,380,235	515.40
Construction	69	325	327	310	2,717,680	651.93
Manufacturing	32	1,353	1,305	1,335	14,150,046	817.78
Trade, Transportation & Utilities	158	1,458	1,460	1,482	13,201,156	692.37
Wholesale Trade	21	90	91	90	3,387,158	2884.32
Retail Trade	97	973	973	977	5,185,347	409.38
Transportation, Warehousing & Utilities	40	395	396	415	4,628,651	885.70
Information	8	54	59	54	502,255	694.04
Financial Activities	61	310	305	307	2,514,666	629.40
Professional & Business Services	49	192	209	210	1,323,545	499.89
Education & Health Services	83	1,114	1,124	1,124	8,461,285	580.79
Leisure & Hospitality	41	516	505	502	1,398,573	211.92
Other Services	35	171	177	170	864,906	385.32
Local Government	26	1,110	1,115	1,113	7,681,005	531.02
State Government	14	656	662	664	4,363,713	508.08

**TABLE 6. COUNTY SUMMARY
EMPLOYMENT AND TOTAL EARNINGS, BY INDUSTRY
FOURTH QUARTER 2008**

NORTH AMERICAN INDUSTRY CLASSIFICATION SYSTEM INDUSTRY GROUP	NUMBER OF EMPLOYING UNITS	EMPLOYMENT			TOTAL EARNINGS	AVERAGE
		OCTOBER	NOVEMBER	DECEMBER	OCTOBER - DECEMBER	WEEKLY EARNINGS
HOWARD COUNTY - TOTAL	365	7,486	7,530	7,548	\$52,323,168	\$535.13
Natural Resources & Mining	24	235	236	235	1,970,017	643.94
Construction	21	117	121	112	1,143,981	754.27
Manufacturing	23	4,090	4,058	4,096	30,072,630	566.79
Trade, Transportation & Utilities	103	933	963	963	6,354,594	512.92
Wholesale Trade	18	81	82	82	889,836	838.15
Retail Trade	62	618	641	636	3,227,793	393.07
Transportation, Warehousing & Utilities	23	234	240	245	2,236,965	717.97
Information	5	37	36	37	242,880	509.54
Financial Activities	40	162	156	164	1,089,088	521.43
Professional & Business Services	26	105	118	125	814,662	540.23
Education & Health Services	51	548	560	559	3,367,863	466.23
Leisure & Hospitality	20	298	305	286	780,350	202.57
Other Services	22	110	110	111	652,596	454.98
Local Government	18	703	719	713	4,842,265	523.39
State Government	12	148	148	147	992,242	516.88
INDEPENDENCE COUNTY - TOTAL	941	15,292	15,134	15,188	\$121,237,209	\$613.36
Natural Resources & Mining	13	103	120	121	1,178,805	790.79
Construction	67	480	439	432	3,496,391	597.23
Manufacturing	54	3,798	3,715	3,787	37,268,462	761.10
Trade, Transportation & Utilities	250	2,928	2,939	2,969	23,345,635	609.72
Wholesale Trade	49	524	502	500	4,429,143	669.80
Retail Trade	154	1,585	1,614	1,638	9,065,984	432.53
Transportation, Warehousing & Utilities	47	819	823	831	9,850,508	919.21
Information	9	142	140	141	1,082,563	590.60
Financial Activities	88	487	493	491	4,151,319	651.26
Professional & Business Services	95	853	771	740	4,508,249	440.09
Education & Health Services	170	2,947	2,952	2,971	27,632,023	718.90
Leisure & Hospitality	66	1,026	997	967	2,792,448	215.52
Other Services	65	368	371	376	1,831,727	379.11
Local Government	47	1,642	1,676	1,680	9,974,559	460.55
State Government	17	518	521	513	3,975,028	591.05

**TABLE 6. COUNTY SUMMARY
EMPLOYMENT AND TOTAL EARNINGS, BY INDUSTRY
FOURTH QUARTER 2008**

NORTH AMERICAN INDUSTRY CLASSIFICATION SYSTEM INDUSTRY GROUP	NUMBER OF EMPLOYING UNITS	EMPLOYMENT			TOTAL EARNINGS	AVERAGE
		OCTOBER	NOVEMBER	DECEMBER	OCTOBER - DECEMBER	WEEKLY EARNINGS
IZARD COUNTY - TOTAL	288	3,160	3,122	3,096	\$19,475,937	\$479.25
Natural Resources & Mining	4	90	90	92	789,798	670.08
Construction	27	85	90	90	592,270	515.76
Trade, Transportation & Utilities	68	515	505	518	3,051,960	457.93
Retail Trade	49	387	381	395	1,947,040	386.34
Other Trade, Transportation & Utilities	19	128	124	123	1,104,920	679.95
Financial Activities	30	152	150	148	1,445,855	741.46
Professional & Business Services	22	87	83	77	506,324	473.05
Education & Health Services	66	634	640	631	3,524,498	426.95
Leisure & Hospitality	18	197	182	170	366,382	154.01
Local Government	18	553	558	544	3,433,541	478.76
State Government	11	484	480	488	3,087,495	490.70
Other	24	363	344	338	2,677,814	591.35
JACKSON COUNTY - TOTAL	513	5,801	5,695	5,524	\$43,156,232	\$585.14
Natural Resources & Mining	49	252	228	206	1,670,733	562.03
Construction	22	102	118	97	1,292,181	940.68
Manufacturing	25	1,300	1,249	1,155	10,905,147	679.42
Trade, Transportation & Utilities	116	1,099	1,084	1,058	8,129,401	578.84
Wholesale Trade	26	190	193	202	2,331,590	919.76
Retail Trade	71	658	656	662	3,840,117	448.47
Transportation, Warehousing & Utilities	19	251	235	194	1,957,694	664.38
Information	4	35	33	35	247,815	555.22
Financial Activities	40	160	159	164	1,264,064	603.95
Professional & Business Services	36	125	128	133	977,822	584.59
Education & Health Services	115	844	860	838	7,024,879	637.74
Leisure & Hospitality	30	277	270	259	782,199	223.95
Other Services	30	86	84	83	471,190	429.79
Local Government	32	743	699	711	4,596,847	492.71
State Government	14	778	783	785	5,793,954	569.93

**TABLE 6. COUNTY SUMMARY
EMPLOYMENT AND TOTAL EARNINGS, BY INDUSTRY
FOURTH QUARTER 2008**

NORTH AMERICAN INDUSTRY CLASSIFICATION SYSTEM INDUSTRY GROUP	NUMBER OF EMPLOYING UNITS	EMPLOYMENT			TOTAL EARNINGS	AVERAGE WEEKLY EARNINGS
		OCTOBER	NOVEMBER	DECEMBER	OCTOBER - DECEMBER	
JEFFERSON COUNTY - TOTAL	2,048	30,538	30,597	30,632	\$268,790,556	\$675.94
Natural Resources & Mining	47	509	518	503	5,380,485	811.54
Construction	125	1,337	1,330	1,257	17,403,610	1023.50
Manufacturing	70	5,769	5,750	5,750	65,604,852	876.69
Trade, Transportation & Utilities	439	5,365	5,422	5,510	43,341,644	613.73
Wholesale Trade	81	1,017	1,023	1,039	11,689,522	876.12
Retail Trade	295	3,503	3,543	3,629	20,847,777	450.68
Transportation, Warehousing & Utilities	63	845	856	842	10,804,345	980.46
Information	13	137	142	142	1,214,226	665.57
Financial Activities	160	1,184	1,168	1,174	11,216,856	734.12
Professional & Business Services	184	1,548	1,520	1,528	13,800,847	692.95
Education & Health Services	640	5,175	5,202	5,216	46,677,115	690.80
Leisure & Hospitality	147	2,141	2,149	2,120	6,195,099	223.03
Other Services	137	640	647	654	4,541,324	539.93
Local Government	44	3,360	3,352	3,353	25,712,559	589.53
State Government	42	3,373	3,397	3,425	27,701,939	627.05
JOHNSON COUNTY - TOTAL	474	8,995	9,005	8,998	\$63,556,766	\$543.26
Natural Resources & Mining	18	264	270	270	2,608,211	748.63
Construction	27	142	138	135	1,144,311	636.32
Manufacturing	44	3,087	3,072	3,044	20,850,214	522.83
Trade, Transportation & Utilities	119	2,177	2,190	2,190	16,258,963	572.22
Retail Trade	80	922	943	945	4,811,028	395.10
Other Trade, Transportation & Utilities	39	1,255	1,247	1,245	11,447,935	705.05
Information	5	33	33	33	253,099	589.97
Financial Activities	47	208	211	224	1,764,925	633.42
Professional & Business Services	50	158	158	163	1,287,786	620.42
Education & Health Services	81	1,157	1,162	1,161	9,010,162	597.49
Leisure & Hospitality	35	533	520	514	1,374,169	202.37
Other Services	24	58	59	65	385,298	488.54
Local Government	14	1,011	1,025	1,031	7,350,705	553.09
State Government	10	167	167	168	1,268,923	583.32

**TABLE 6. COUNTY SUMMARY
EMPLOYMENT AND TOTAL EARNINGS, BY INDUSTRY
FOURTH QUARTER 2008**

NORTH AMERICAN INDUSTRY CLASSIFICATION SYSTEM INDUSTRY GROUP	NUMBER OF EMPLOYING UNITS	EMPLOYMENT			TOTAL EARNINGS	AVERAGE
		OCTOBER	NOVEMBER	DECEMBER	OCTOBER - DECEMBER	WEEKLY EARNINGS
LAFAYETTE COUNTY - TOTAL	180	1,388	1,404	1,403	\$9,809,617	\$539.63
Natural Resources & Mining	39	175	173	175	1,651,067	728.52
Construction	9	59	59	62	932,379	1195.36
Manufacturing	6	41	37	36	544,565	1102.36
Trade, Transportation & Utilities	32	183	186	179	1,332,159	560.99
Wholesale Trade	6	33	34	34	314,010	717.46
Retail Trade	19	122	125	121	648,866	406.90
Transportation, Warehousing & Utilities	7	28	27	24	369,283	1078.72
Financial Activities	18	64	66	66	402,940	474.42
Professional & Business Services	10	87	97	95	673,460	557.04
Education & Health Services	33	256	254	255	1,181,534	356.42
Leisure & Hospitality	6	54	56	56	214,742	298.53
Local Government	13	325	328	333	2,020,914	472.99
State Government	8	55	56	57	351,290	482.54
Other	6	89	92	89	504,567	431.25
LAWRENCE COUNTY - TOTAL	440	4,027	4,047	3,986	\$25,679,102	\$491.37
Natural Resources & Mining	38	175	167	171	1,443,430	649.32
Construction	25	71	68	69	430,708	477.86
Manufacturing	23	481	496	432	3,204,248	524.80
Trade, Transportation & Utilities	124	838	823	823	5,610,613	521.24
Wholesale Trade	20	186	179	186	1,550,654	649.44
Retail Trade	64	506	497	499	2,601,236	399.66
Transportation, Warehousing & Utilities	40	146	147	138	1,458,723	781.04
Financial Activities	36	158	154	160	1,138,172	556.47
Professional & Business Services	23	96	98	97	824,592	653.92
Education & Health Services	85	509	509	493	3,281,293	501.14
Leisure & Hospitality	24	329	353	351	733,617	163.89
Local Government	28	1,187	1,198	1,197	7,901,849	509.07
State Government	11	120	120	122	724,590	461.91
Other	23	63	61	71	385,990	456.79

**TABLE 6. COUNTY SUMMARY
EMPLOYMENT AND TOTAL EARNINGS, BY INDUSTRY
FOURTH QUARTER 2008**

NORTH AMERICAN INDUSTRY CLASSIFICATION SYSTEM INDUSTRY GROUP	NUMBER OF EMPLOYING UNITS	EMPLOYMENT			TOTAL EARNINGS	AVERAGE
		OCTOBER	NOVEMBER	DECEMBER	OCTOBER - DECEMBER	WEEKLY EARNINGS
LEE COUNTY - TOTAL	293	2,261	2,223	2,100	\$14,679,658	\$514.52
Natural Resources & Mining	34	322	303	206	1,974,307	548.27
Construction	10	46	42	43	344,074	606.12
Trade, Transportation & Utilities	53	387	375	368	2,460,293	502.44
Wholesale Trade	8	72	70	69	673,240	736.32
Retail Trade	28	210	201	201	965,812	364.18
Transportation, Warehousing & Utilities	17	105	104	98	821,241	617.32
Financial Activities	18	88	84	82	639,977	581.44
Professional & Business Services	14	73	72	74	897,868	946.12
Education & Health Services	111	377	388	375	2,326,697	470.99
Leisure & Hospitality	8	76	69	67	186,133	202.61
Local Government	15	346	344	343	2,158,016	482.09
State Government	8	501	503	500	3,411,058	523.38
Other	22	45	43	42	281,235	499.23
LINCOLN COUNTY - TOTAL	262	2,997	2,982	2,965	\$20,922,795	\$539.84
Natural Resources & Mining	34	223	193	174	1,866,678	730.12
Construction	13	67	67	66	412,370	475.81
Manufacturing	10	357	347	354	2,762,412	602.53
Trade, Transportation & Utilities	49	346	355	350	2,723,924	598.10
Wholesale Trade	8	26	31	25	273,598	769.98
Retail Trade	25	190	190	194	844,010	339.32
Transportation, Warehousing & Utilities	16	130	134	131	1,606,316	938.45
Financial Activities	22	72	72	73	590,737	628.22
Professional & Business Services	12	26	25	24	215,796	663.99
Education & Health Services	72	370	375	383	2,068,576	423.19
Leisure & Hospitality	16	159	156	155	343,243	168.53
Local & State Government	20	1,340	1,357	1,350	9,740,824	555.44
Other	14	37	35	36	198,235	423.58

**TABLE 6. COUNTY SUMMARY
EMPLOYMENT AND TOTAL EARNINGS, BY INDUSTRY
FOURTH QUARTER 2008**

NORTH AMERICAN INDUSTRY CLASSIFICATION SYSTEM INDUSTRY GROUP	NUMBER OF EMPLOYING UNITS	EMPLOYMENT			TOTAL EARNINGS	AVERAGE
		OCTOBER	NOVEMBER	DECEMBER	OCTOBER - DECEMBER	WEEKLY EARNINGS
LITTLE RIVER COUNTY - TOTAL	259	4,747	4,720	4,817	\$54,427,664	\$879.32
Natural Resources & Mining	12	74	74	79	575,963	585.53
Construction	25	951	983	1,097	15,770,340	1200.70
Manufacturing	18	1,388	1,338	1,359	23,424,041	1323.27
Trade, Transportation & Utilities	60	677	673	648	4,102,248	473.81
Retail Trade	36	415	402	400	2,046,911	388.14
Other Trade, Transportation & Utilities	24	262	271	248	2,055,337	607.31
Financial Activities	23	98	99	98	664,887	520.12
Professional & Business Services	22	135	129	119	859,804	518.06
Education & Health Services	33	177	185	177	1,247,880	534.27
Leisure & Hospitality	17	212	213	211	558,541	202.66
Local Government	20	839	833	837	6,185,483	568.92
State Government	12	98	98	97	604,450	476.07
Other	17	98	95	95	434,027	347.78
LOGAN COUNTY - TOTAL	511	5,595	5,629	5,672	\$38,971,969	\$532.29
Natural Resources & Mining	22	168	167	169	2,368,361	1084.41
Construction	52	201	212	200	1,672,527	629.64
Manufacturing	30	1,265	1,245	1,247	9,895,049	607.79
Trade, Transportation & Utilities	117	844	876	896	5,706,995	503.44
Wholesale Trade	16	28	28	39	246,620	599.08
Retail Trade	75	709	738	748	4,215,136	443.15
Transportation, Warehousing & Utilities	26	107	110	109	1,245,239	881.48
Information	7	41	43	43	338,324	614.76
Financial Activities	46	269	274	273	2,918,800	825.45
Professional & Business Services	46	116	123	128	768,496	483.23
Education & Health Services	95	797	787	804	5,147,317	497.42
Leisure & Hospitality	32	338	330	335	838,682	192.96
Other Services	27	86	85	85	501,479	452.05
Local & State Government	37	1,470	1,487	1,492	8,815,939	457.28

**TABLE 6. COUNTY SUMMARY
EMPLOYMENT AND TOTAL EARNINGS, BY INDUSTRY
FOURTH QUARTER 2008**

NORTH AMERICAN INDUSTRY CLASSIFICATION SYSTEM INDUSTRY GROUP	NUMBER OF EMPLOYING UNITS	EMPLOYMENT			TOTAL EARNINGS	AVERAGE WEEKLY EARNINGS
		OCTOBER	NOVEMBER	DECEMBER	OCTOBER - DECEMBER	
LONOKE COUNTY - TOTAL	1,363	12,694	12,595	12,523	\$93,352,190	\$569.73
Natural Resources & Mining	75	490	487	439	4,761,256	775.95
Construction	178	958	939	911	9,591,822	788.28
Manufacturing	40	1,281	1,192	1,154	12,697,297	807.87
Trade, Transportation & Utilities	360	2,770	2,805	2,770	19,846,761	548.83
Wholesale Trade	85	479	486	475	5,655,439	906.32
Retail Trade	201	1,997	2,031	2,031	11,406,887	434.45
Transportation, Warehousing & Utilities	74	294	288	264	2,784,435	759.53
Information	16	85	86	90	1,226,679	1084.60
Financial Activities	139	517	510	510	5,494,960	825.03
Professional & Business Services	148	575	565	587	4,513,914	603.17
Education & Health Services	179	1,460	1,509	1,510	10,210,410	526.07
Leisure & Hospitality	108	1,541	1,515	1,542	3,987,568	200.13
Other Services	76	196	196	198	1,218,337	476.53
Local Government	28	2,668	2,638	2,659	18,755,973	543.42
State Government	16	153	153	153	1,047,213	526.50
MADISON COUNTY - TOTAL	262	3,166	3,160	3,145	\$20,934,015	\$510.08
Natural Resources & Mining	12	41	41	38	280,253	538.95
Construction	42	84	83	72	523,193	505.18
Manufacturing	22	1,155	1,173	1,177	7,995,555	526.43
Trade, Transportation & Utilities	59	604	602	584	3,832,769	494.13
Wholesale Trade	10	29	26	25	215,740	622.33
Retail Trade	37	435	438	427	2,344,506	416.18
Transportation, Warehousing & Utilities	12	140	138	132	1,272,523	716.24
Financial Activities	17	74	76	76	620,486	633.58
Professional & Business Services	19	131	127	130	716,281	426.02
Education & Health Services	41	240	238	241	1,366,127	438.47
Leisure & Hospitality	14	114	106	105	230,847	163.92
Local Government	9	598	589	596	4,277,673	553.65
State Government	8	57	57	57	391,690	528.60
Other	19	68	68	69	699,141	787.03

**TABLE 6. COUNTY SUMMARY
EMPLOYMENT AND TOTAL EARNINGS, BY INDUSTRY
FOURTH QUARTER 2008**

NORTH AMERICAN INDUSTRY CLASSIFICATION SYSTEM INDUSTRY GROUP	NUMBER OF EMPLOYING UNITS	EMPLOYMENT			TOTAL EARNINGS	AVERAGE
		OCTOBER	NOVEMBER	DECEMBER	OCTOBER - DECEMBER	WEEKLY EARNINGS
MARION COUNTY - TOTAL	315	4,009	3,956	3,770	\$25,084,152	\$493.28
Natural Resources & Mining	6	46	48	53	310,427	487.33
Construction	27	81	74	74	436,099	439.47
Manufacturing	22	1,632	1,598	1,464	10,514,930	516.94
Trade, Transportation & Utilities	55	611	616	611	3,503,822	439.92
Wholesale Trade	8	31	34	31	416,691	1001.66
Retail Trade	37	454	455	461	2,214,250	372.98
Transportation, Warehousing & Utilities	10	126	127	119	872,881	541.49
Financial Activities	37	202	195	188	1,379,259	544.09
Professional & Business Services	28	51	55	53	500,327	726.16
Education & Health Services	57	369	357	356	2,173,404	463.54
Leisure & Hospitality	38	229	224	218	624,097	214.64
Local Government	20	553	560	562	3,733,196	514.33
State Government	8	110	109	107	687,553	486.71
Other	17	125	120	84	1,221,038	856.47
MILLER COUNTY - TOTAL	846	13,002	12,886	12,922	\$107,196,677	\$637.41
Natural Resources & Mining	27	136	137	139	1,086,485	608.56
Construction	89	847	798	810	6,567,980	617.39
Manufacturing	33	2,327	2,318	2,317	28,666,658	950.21
Trade, Transportation & Utilities	230	3,340	3,361	3,372	29,792,590	682.54
Wholesale Trade	55	516	525	519	9,153,208	1354.02
Retail Trade	134	1,348	1,354	1,338	7,550,247	431.28
Transportation, Warehousing & Utilities	41	1,476	1,482	1,515	13,089,135	675.29
Information	8	90	92	94	1,706,861	1427.14
Financial Activities	77	324	318	327	3,359,138	799.99
Professional & Business Services	86	927	889	875	5,749,375	493.04
Education & Health Services	116	1,060	1,058	1,065	7,393,634	536.04
Leisure & Hospitality	81	1,339	1,296	1,286	4,207,329	247.62
Other Services	56	337	334	327	1,640,246	379.28
Local Government	26	1,758	1,769	1,795	12,758,418	553.22
State Government	17	517	516	515	4,267,963	636.25

**TABLE 6. COUNTY SUMMARY
EMPLOYMENT AND TOTAL EARNINGS, BY INDUSTRY
FOURTH QUARTER 2008**

NORTH AMERICAN INDUSTRY CLASSIFICATION SYSTEM INDUSTRY GROUP	NUMBER OF EMPLOYING UNITS	EMPLOYMENT			TOTAL EARNINGS	AVERAGE
		OCTOBER	NOVEMBER	DECEMBER	OCTOBER - DECEMBER	WEEKLY EARNINGS
MISSISSIPPI COUNTY - TOTAL	1,222	20,087	19,942	19,344	\$185,639,830	\$721.54
Natural Resources & Mining	96	984	945	621	7,418,710	671.38
Construction	68	754	735	688	8,463,252	897.13
Manufacturing	59	6,082	6,050	5,964	85,713,724	1093.06
Trade, Transportation & Utilities	293	2,942	2,957	2,928	22,072,890	577.06
Wholesale Trade	66	498	483	483	5,818,692	917.20
Retail Trade	176	1,825	1,858	1,844	9,438,504	394.09
Transportation, Warehousing & Utilities	51	619	616	601	6,815,694	856.67
Financial Activities	102	583	584	594	4,752,659	622.81
Professional & Business Services	102	1,199	1,116	1,056	9,610,756	657.93
Education & Health Services	268	1,662	1,630	1,615	11,101,456	522.09
Leisure & Hospitality	84	1,255	1,263	1,236	3,321,302	204.17
Local Government	46	2,339	2,329	2,320	16,676,125	550.71
State Government	24	673	678	674	4,607,579	525.08
Other	80	1,614	1,655	1,648	11,901,377	558.57
MONROE COUNTY - TOTAL	325	2,278	2,269	2,236	\$14,742,763	\$501.57
Natural Resources & Mining	34	149	146	131	853,707	462.46
Construction	12	35	35	34	186,755	414.40
Manufacturing	7	114	109	108	881,442	614.53
Trade, Transportation & Utilities	86	628	623	617	5,531,950	683.41
Wholesale Trade	21	147	146	139	1,730,352	924.33
Retail Trade	42	321	315	314	2,215,943	538.29
Transportation, Warehousing & Utilities	23	160	162	164	1,585,655	752.92
Financial Activities	16	87	86	87	744,864	661.12
Professional & Business Services	15	39	39	37	263,648	529.06
Education & Health Services	72	364	363	372	1,725,543	362.33
Leisure & Hospitality	26	235	242	236	638,095	206.53
Local Government	22	387	390	376	2,569,968	514.37
State Government	9	138	137	136	814,740	457.46
Other	26	102	99	102	532,051	405.22

**TABLE 6. COUNTY SUMMARY
EMPLOYMENT AND TOTAL EARNINGS, BY INDUSTRY
FOURTH QUARTER 2008**

NORTH AMERICAN INDUSTRY CLASSIFICATION SYSTEM INDUSTRY GROUP	NUMBER OF EMPLOYING UNITS	EMPLOYMENT			TOTAL EARNINGS	AVERAGE
		OCTOBER	NOVEMBER	DECEMBER	OCTOBER - DECEMBER	WEEKLY EARNINGS
MONTGOMERY COUNTY - TOTAL	189	1,515	1,528	1,510	\$9,300,332	\$471.39
Natural Resources & Mining	12	52	51	51	559,722	838.74
Construction	21	89	85	83	723,480	649.64
Manufacturing	11	150	146	145	735,464	384.86
Trade, Transportation & Utilities	47	222	256	254	1,535,890	484.20
Wholesale Trade	12	78	74	79	499,630	499.13
Retail Trade	25	134	171	168	981,927	479.07
Transportation, Warehousing & Utilities	10	10	11	7	54,333	447.80
Financial Activities	11	70	68	69	568,600	633.89
Professional & Business Services	15	32	35	53	236,888	455.55
Education & Health Services	18	65	68	70	423,625	481.57
Leisure & Hospitality	23	222	194	152	751,200	305.20
Local Government	9	496	507	513	3,066,105	466.73
State Government	8	52	53	55	396,796	572.30
Other	14	65	65	65	302,562	358.06
NEVADA COUNTY - TOTAL	190	2,353	2,376	2,388	\$16,627,937	\$539.16
Natural Resources & Mining	12	28	28	37	309,863	768.89
Trade, Transportation & Utilities	41	498	501	509	3,259,216	498.76
Retail Trade	28	275	274	279	1,252,787	349.16
Other Trade, Transportation & Utilities	13	223	227	230	2,006,429	680.91
Financial Activities	15	62	65	65	517,085	621.50
Professional & Business Services	9	39	41	42	308,265	583.10
Education & Health Services	22	401	407	409	2,364,442	448.35
Leisure & Hospitality	12	99	96	99	259,579	203.75
Other Services	18	63	69	69	247,916	284.63
Local Government	28	506	510	497	2,840,712	433.28
State Government	11	85	85	86	566,106	510.31
Other	22	572	574	575	5,954,753	798.47

**TABLE 6. COUNTY SUMMARY
EMPLOYMENT AND TOTAL EARNINGS, BY INDUSTRY
FOURTH QUARTER 2008**

NORTH AMERICAN INDUSTRY CLASSIFICATION SYSTEM INDUSTRY GROUP	NUMBER OF EMPLOYING UNITS	EMPLOYMENT			TOTAL EARNINGS	AVERAGE
		OCTOBER	NOVEMBER	DECEMBER	OCTOBER - DECEMBER	WEEKLY EARNINGS
NEWTON COUNTY - TOTAL	130	1,064	1,041	1,044	\$5,449,706	\$399.37
Construction	7	24	25	26	135,052	415.54
Manufacturing	16	69	61	62	434,779	522.57
Trade, Transportation & Utilities	26	146	148	145	874,875	459.90
Retail Trade	13	92	92	91	436,145	366.00
Other Trade, Transportation & Utilities	13	54	56	54	438,730	617.35
Education & Health Services	26	220	218	230	924,095	319.24
Leisure & Hospitality	18	70	66	58	201,825	240.08
Other Services	4	8	3	6	26,862	364.64
Local Government	13	388	381	380	2,124,426	426.68
State Government	7	99	99	97	465,463	364.12
Other	13	40	40	40	262,329	504.48
OUACHITA COUNTY - TOTAL	659	7,581	7,563	7,596	\$55,227,098	\$560.45
Natural Resources & Mining	47	261	251	253	2,217,642	668.97
Construction	45	263	256	258	1,992,980	591.92
Manufacturing	31	889	878	909	7,952,735	685.82
Trade, Transportation & Utilities	170	1,765	1,789	1,819	12,957,656	556.53
Wholesale Trade	28	232	236	229	2,559,508	847.43
Retail Trade	113	1,080	1,089	1,122	5,491,969	385.10
Transportation, Warehousing & Utilities	29	453	464	468	4,906,179	817.47
Information	7	59	62	63	526,518	660.35
Financial Activities	67	316	314	318	3,026,957	736.84
Professional & Business Services	51	397	376	378	2,692,611	539.85
Education & Health Services	120	1,216	1,213	1,214	9,092,760	575.99
Leisure & Hospitality	37	473	468	461	1,180,554	194.32
Other Services	40	138	136	141	829,520	461.27
Local Government	30	1,224	1,232	1,199	8,499,007	536.61
State Government	14	580	588	583	4,258,158	561.19

**TABLE 6. COUNTY SUMMARY
EMPLOYMENT AND TOTAL EARNINGS, BY INDUSTRY
FOURTH QUARTER 2008**

NORTH AMERICAN INDUSTRY CLASSIFICATION SYSTEM INDUSTRY GROUP	NUMBER OF EMPLOYING UNITS	EMPLOYMENT			TOTAL EARNINGS	AVERAGE
		OCTOBER	NOVEMBER	DECEMBER	OCTOBER - DECEMBER	WEEKLY EARNINGS
PERRY COUNTY - TOTAL	160	1,370	1,385	1,400	\$10,689,271	\$593.68
Construction	22	58	66	68	563,554	677.35
Manufacturing	7	69	70	64	442,326	502.83
Trade, Transportation & Utilities	29	239	246	252	2,024,917	634.04
Retail Trade	17	157	163	164	589,318	280.98
Other Trade, Transportation & Utilities	12	82	83	88	1,435,599	1309.45
Financial Activities	14	62	61	69	1,183,877	1422.93
Professional & Business Services	15	36	36	38	287,674	603.51
Education & Health Services	31	198	208	206	1,377,319	519.35
Local Government	12	422	424	429	2,487,124	450.16
State Government	9	52	51	52	349,999	521.09
Other	21	234	223	222	1,972,481	670.38
PHILLIPS COUNTY - TOTAL	904	6,632	6,631	6,573	\$44,319,760	\$515.61
Natural Resources & Mining	65	453	411	380	2,511,898	465.97
Construction	31	155	153	155	1,105,850	551.18
Manufacturing	13	331	345	333	2,665,894	609.72
Trade, Transportation & Utilities	175	1,649	1,639	1,616	11,772,776	554.00
Wholesale Trade	35	467	455	446	4,365,254	736.38
Retail Trade	97	863	874	875	4,695,945	414.88
Transportation, Warehousing & Utilities	43	319	310	295	2,711,577	677.22
Information	9	50	51	49	362,795	558.15
Financial Activities	54	272	278	265	1,964,443	556.24
Professional & Business Services	59	163	161	169	1,599,170	748.56
Education & Health Services	372	1,466	1,463	1,461	8,589,311	451.51
Leisure & Hospitality	39	368	376	380	968,061	198.75
Other Services	40	80	80	79	476,320	459.92
Local Government	30	1,058	1,066	1,080	8,630,040	621.58
State Government	17	587	608	606	3,673,202	470.66

**TABLE 6. COUNTY SUMMARY
EMPLOYMENT AND TOTAL EARNINGS, BY INDUSTRY
FOURTH QUARTER 2008**

NORTH AMERICAN INDUSTRY CLASSIFICATION SYSTEM INDUSTRY GROUP	NUMBER OF EMPLOYING UNITS	EMPLOYMENT			TOTAL EARNINGS	AVERAGE
		OCTOBER	NOVEMBER	DECEMBER	OCTOBER - DECEMBER	WEEKLY EARNINGS
PIKE COUNTY - TOTAL	279	2,761	2,730	2,739	\$17,824,745	\$499.81
Natural Resources & Mining	26	148	143	147	1,264,909	666.44
Construction	12	24	27	25	179,402	544.74
Manufacturing	16	372	370	364	2,164,771	451.68
Trade, Transportation & Utilities	96	646	647	639	4,320,680	516.09
Wholesale Trade	21	159	155	156	1,344,407	660.10
Retail Trade	48	360	361	357	1,936,827	414.62
Transportation, Warehousing & Utilities	27	127	131	126	1,039,446	624.67
Information	5	29	29	29	336,734	893.19
Financial Activities	26	182	184	186	1,719,129	718.70
Professional & Business Services	13	36	37	38	1,006,377	2092.26
Education & Health Services	20	216	221	233	1,329,283	457.85
Leisure & Hospitality	21	244	214	199	538,955	189.31
Other Services	20	126	129	132	670,376	399.75
Local Government	13	591	582	600	3,671,971	477.93
State Government	11	147	147	147	622,158	325.57
POINSETT COUNTY - TOTAL	505	5,459	5,504	5,400	\$40,290,264	\$568.22
Natural Resources & Mining	51	394	356	287	3,205,567	713.35
Construction	21	84	88	86	793,482	709.73
Manufacturing	23	782	773	776	6,544,641	647.92
Trade, Transportation & Utilities	126	1,357	1,351	1,326	10,475,148	599.24
Wholesale Trade	31	477	459	443	5,849,889	978.95
Retail Trade	68	698	725	733	3,201,864	342.71
Transportation, Warehousing & Utilities	27	182	167	150	1,423,395	658.27
Information	6	50	53	53	695,411	1028.71
Financial Activities	53	287	290	291	3,151,048	837.75
Professional & Business Services	34	169	172	174	1,280,340	573.71
Education & Health Services	83	585	664	591	3,647,802	457.50
Leisure & Hospitality	43	339	350	409	814,398	171.16
Other Services	23	55	54	53	401,526	571.97
Local Government	30	1,145	1,141	1,136	7,863,747	530.31
State Government	12	212	212	218	1,417,154	509.40

**TABLE 6. COUNTY SUMMARY
EMPLOYMENT AND TOTAL EARNINGS, BY INDUSTRY
FOURTH QUARTER 2008**

NORTH AMERICAN INDUSTRY CLASSIFICATION SYSTEM INDUSTRY GROUP	NUMBER OF EMPLOYING UNITS	EMPLOYMENT			TOTAL EARNINGS	AVERAGE
		OCTOBER	NOVEMBER	DECEMBER	OCTOBER - DECEMBER	WEEKLY EARNINGS
POLK COUNTY - TOTAL	565	6,359	6,390	6,372	\$39,117,660	\$472.11
Natural Resources & Mining	27	219	218	215	2,028,183	717.86
Construction	41	176	170	168	1,132,896	508.63
Manufacturing	40	1,320	1,332	1,327	8,539,960	495.29
Trade, Transportation & Utilities	152	1,299	1,317	1,315	7,632,464	448.06
Wholesale Trade	22	92	86	85	804,431	705.85
Retail Trade	84	858	874	881	4,333,667	382.73
Transportation, Warehousing & Utilities	46	349	357	349	2,494,366	545.61
Information	9	55	58	58	405,173	546.79
Financial Activities	43	252	247	248	2,130,265	658.10
Professional & Business Services	57	246	235	239	1,372,929	440.04
Education & Health Services	87	1,017	1,030	1,044	6,555,386	489.41
Leisure & Hospitality	38	463	474	449	1,068,672	177.93
Other Services	37	146	150	144	839,993	440.56
Local Government	20	828	823	827	5,475,458	509.91
State Government	14	338	336	338	1,936,281	441.54
POPE COUNTY - TOTAL	1,806	27,041	26,962	26,405	\$225,213,236	\$646.36
Natural Resources & Mining	28	455	488	539	3,853,864	600.10
Construction	190	1,979	1,927	1,565	22,014,735	928.59
Manufacturing	85	4,966	4,952	4,844	45,767,385	715.47
Trade, Transportation & Utilities	470	6,383	6,358	6,381	63,450,139	765.73
Wholesale Trade	102	661	646	648	7,003,941	826.75
Retail Trade	276	3,343	3,361	3,368	17,830,905	408.54
Transportation, Warehousing & Utilities	92	2,379	2,351	2,365	38,615,293	1255.99
Information	16	223	218	226	2,053,774	710.57
Financial Activities	196	815	803	819	7,053,497	667.92
Professional & Business Services	255	2,504	2,437	2,266	19,998,515	640.36
Education & Health Services	273	3,110	3,146	3,172	23,363,992	571.88
Leisure & Hospitality	134	2,470	2,458	2,431	6,928,176	217.26
Other Services	103	480	467	481	2,978,033	481.26
Local Government	40	2,291	2,331	2,304	16,653,214	554.87
State Government	16	1,365	1,377	1,377	11,097,912	621.77

**TABLE 6. COUNTY SUMMARY
EMPLOYMENT AND TOTAL EARNINGS, BY INDUSTRY
FOURTH QUARTER 2008**

NORTH AMERICAN INDUSTRY CLASSIFICATION SYSTEM INDUSTRY GROUP	NUMBER OF EMPLOYING UNITS	EMPLOYMENT			TOTAL EARNINGS	AVERAGE
		OCTOBER	NOVEMBER	DECEMBER	OCTOBER - DECEMBER	WEEKLY EARNINGS
PRAIRIE COUNTY - TOTAL	256	1,449	1,420	1,393	\$10,319,386	\$558.75
Natural Resources & Mining	29	141	121	122	1,269,808	763.11
Construction	15	44	42	41	409,829	744.69
Trade, Transportation & Utilities	68	347	331	307	2,415,283	565.86
Wholesale Trade	11	54	54	52	693,188	999.79
Retail Trade	37	183	190	186	736,986	304.25
Transportation, Warehousing & Utilities	20	110	87	69	985,109	854.63
Financial Activities	19	74	74	77	764,231	783.83
Professional & Business Services	17	57	59	59	392,857	518.05
Education & Health Services	43	193	199	202	1,134,462	440.74
Leisure & Hospitality	17	60	63	65	177,080	217.36
Other Services	14	38	35	39	198,239	408.46
Local Government	15	306	314	303	2,117,808	529.50
State Government	10	54	55	55	388,799	547.09
Other	9	135	127	123	1,050,990	629.96
PULASKI COUNTY - TOTAL	15,131	241,206	241,193	241,339	\$2,595,233,214	\$827.51
Natural Resources & Mining	62	814	782	769	10,890,843	1062.69
Construction	1,172	9,951	9,731	9,733	130,131,955	1020.92
Manufacturing	434	15,767	15,793	15,800	197,003,630	959.93
Trade, Transportation & Utilities	3,418	49,667	50,217	50,234	485,478,515	746.30
Wholesale Trade	1,212	13,676	13,604	13,571	195,900,061	1106.65
Retail Trade	1,787	24,388	25,037	25,213	156,317,456	483.31
Transportation, Warehousing & Utilities	419	11,603	11,576	11,450	133,260,998	888.06
Information	228	7,974	7,979	7,957	132,425,842	1278.12
Financial Activities	1,819	15,489	15,538	15,650	222,140,525	1098.25
Professional & Business Services	2,959	34,640	34,554	34,413	389,062,050	866.58
Education & Health Services	2,386	36,278	36,002	36,243	432,189,795	919.03
Leisure & Hospitality	1,082	20,392	20,346	20,029	80,446,154	305.50
Other Services	1,229	6,795	6,795	6,906	54,861,262	617.70
Local Government	103	17,160	17,050	17,040	159,811,977	719.60
State Government	239	26,279	26,406	26,565	300,790,666	875.88

**TABLE 6. COUNTY SUMMARY
EMPLOYMENT AND TOTAL EARNINGS, BY INDUSTRY
FOURTH QUARTER 2008**

NORTH AMERICAN INDUSTRY CLASSIFICATION SYSTEM INDUSTRY GROUP	NUMBER OF EMPLOYING UNITS	EMPLOYMENT			TOTAL EARNINGS	AVERAGE
		OCTOBER	NOVEMBER	DECEMBER	OCTOBER - DECEMBER	WEEKLY EARNINGS
RANDOLPH COUNTY - TOTAL	430	4,928	4,907	4,885	\$30,022,946	\$470.68
Natural Resources & Mining	25	115	108	92	577,683	423.21
Construction	26	84	81	79	439,199	415.38
Manufacturing	38	738	723	692	4,563,778	489.17
Trade, Transportation & Utilities	103	887	896	901	5,568,798	478.80
Wholesale Trade	22	215	208	209	1,217,494	444.56
Retail Trade	63	555	571	567	3,184,432	434.06
Transportation, Warehousing & Utilities	18	117	117	125	1,166,872	750.08
Information	5	41	39	40	351,019	675.04
Financial Activities	30	129	129	131	1,121,611	665.38
Professional & Business Services	37	261	258	254	1,363,474	407.05
Education & Health Services	80	975	987	982	6,815,390	534.23
Leisure & Hospitality	28	405	387	386	930,570	182.30
Other Services	23	57	48	67	317,439	425.90
Local Government	23	893	916	921	5,533,853	467.78
State Government	12	343	335	340	2,440,132	553.15
SAINT FRANCIS COUNTY - TOTAL	801	7,613	7,606	7,622	\$53,634,229	\$541.88
Natural Resources & Mining	32	252	229	160	1,389,557	500.26
Construction	44	244	231	209	1,905,782	642.98
Manufacturing	15	675	687	687	5,831,670	656.79
Trade, Transportation & Utilities	181	1,884	1,894	1,935	14,186,648	573.05
Wholesale Trade	30	524	522	516	5,564,666	822.12
Retail Trade	124	1,105	1,120	1,159	5,806,177	395.95
Transportation, Warehousing & Utilities	27	255	252	260	2,815,805	847.20
Information	7	77	76	77	593,930	595.92
Financial Activities	62	323	313	334	2,117,364	503.73
Professional & Business Services	57	316	322	348	2,751,507	643.98
Education & Health Services	264	1,427	1,431	1,435	9,401,911	505.40
Leisure & Hospitality	57	694	690	713	1,970,775	216.88
Other Services	36	84	83	89	362,610	326.87
Local Government	28	1,095	1,107	1,101	8,754,833	611.67
State Government	18	542	543	534	4,367,642	622.56

**TABLE 6. COUNTY SUMMARY
EMPLOYMENT AND TOTAL EARNINGS, BY INDUSTRY
FOURTH QUARTER 2008**

NORTH AMERICAN INDUSTRY CLASSIFICATION SYSTEM INDUSTRY GROUP	NUMBER OF EMPLOYING UNITS	EMPLOYMENT			TOTAL EARNINGS	AVERAGE
		OCTOBER	NOVEMBER	DECEMBER	OCTOBER - DECEMBER	WEEKLY EARNINGS
SALINE COUNTY - TOTAL	1,896	21,240	21,166	21,177	\$168,190,323	\$610.43
Natural Resources & Mining	14	35	38	38	604,818	1257.42
Construction	326	1,978	1,909	1,881	18,788,150	751.69
Manufacturing	83	1,778	1,739	1,704	20,309,872	897.70
Trade, Transportation & Utilities	439	4,624	4,688	4,709	36,706,792	604.15
Wholesale Trade	121	587	592	585	11,445,565	1497.33
Retail Trade	259	3,729	3,790	3,815	22,184,145	451.69
Transportation, Warehousing & Utilities	59	308	306	309	3,077,082	769.33
Information	14	124	121	126	1,069,578	665.30
Financial Activities	199	770	762	759	6,831,333	688.11
Professional & Business Services	248	1,225	1,214	1,190	9,378,081	596.36
Education & Health Services	247	2,997	3,015	3,015	22,665,186	579.42
Leisure & Hospitality	137	2,481	2,464	2,520	7,922,553	244.91
Other Services	141	600	614	620	4,326,143	544.35
Local & State Government	48	4,628	4,602	4,615	39,587,817	659.85
SCOTT COUNTY - TOTAL	198	2,908	2,924	2,943	\$18,935,469	\$497.97
Natural Resources & Mining	17	181	179	219	1,637,208	652.53
Construction	10	28	27	25	122,350	352.93
Trade, Transportation & Utilities	40	445	445	443	2,871,481	497.11
Wholesale Trade	10	69	68	72	653,062	721.08
Retail Trade	24	317	318	311	1,584,054	386.42
Transportation, Warehousing & Utilities	6	59	59	60	634,365	822.43
Financial Activities	24	89	85	86	523,805	464.92
Professional & Business Services	12	7	7	8	133,700	1402.45
Education & Health Services	35	297	292	290	2,036,610	534.68
Leisure & Hospitality	18	148	145	140	392,418	209.14
Local Government	5	406	410	400	2,719,418	516.08
State Government	8	78	74	76	443,234	448.62
Other	29	1,229	1,260	1,256	8,055,245	496.37

**TABLE 6. COUNTY SUMMARY
EMPLOYMENT AND TOTAL EARNINGS, BY INDUSTRY
FOURTH QUARTER 2008**

NORTH AMERICAN INDUSTRY CLASSIFICATION SYSTEM INDUSTRY GROUP	NUMBER OF EMPLOYING UNITS	EMPLOYMENT			TOTAL EARNINGS	AVERAGE
		OCTOBER	NOVEMBER	DECEMBER	OCTOBER - DECEMBER	WEEKLY EARNINGS
SEARCY COUNTY - TOTAL	194	1,754	1,691	1,712	\$9,548,083	\$427.26
Construction	7	30	29	32	112,608	285.57
Manufacturing	18	226	207	224	1,084,733	381.01
Trade, Transportation & Utilities	41	326	320	321	1,474,297	351.83
Wholesale Trade	6	63	61	56	286,170	366.88
Retail Trade	26	220	214	220	902,730	318.54
Transportation, Warehousing & Utilities	9	43	45	45	285,397	495.19
Information	5	13	13	13	119,902	709.48
Financial Activities	15	90	86	84	557,684	494.99
Professional & Business Services	14	27	26	28	218,070	621.28
Education & Health Services	53	341	344	338	1,951,142	440.14
Leisure & Hospitality	15	117	121	120	321,278	207.10
Local Government	10	361	362	368	2,269,897	480.13
State Government	8	145	142	141	901,236	485.93
Other	8	78	41	43	537,236	765.29
SEBASTIAN COUNTY - TOTAL	3,855	72,236	71,377	70,928	\$632,649,999	\$680.50
Natural Resources & Mining	79	2,103	2,135	2,143	35,886,160	1297.83
Construction	325	2,826	2,734	2,751	28,959,633	804.11
Manufacturing	236	17,166	16,675	16,504	152,637,420	699.65
Trade, Transportation & Utilities	974	13,320	13,635	13,772	108,858,115	616.82
Wholesale Trade	255	2,726	2,765	2,769	36,212,338	1011.71
Retail Trade	574	8,244	8,483	8,596	48,115,727	438.48
Transportation, Warehousing & Utilities	145	2,350	2,387	2,407	24,530,050	792.38
Information	53	1,006	977	966	11,787,514	922.41
Financial Activities	432	2,560	2,556	2,585	29,123,202	872.71
Professional & Business Services	567	9,379	8,575	8,009	69,866,089	621.00
Education & Health Services	542	10,691	10,862	10,983	114,706,702	813.58
Leisure & Hospitality	305	5,607	5,619	5,588	18,337,628	251.68
Other Services	277	1,350	1,366	1,360	9,499,603	537.84
Local Government	43	4,661	4,661	4,670	39,699,342	654.76
State Government	22	1,567	1,582	1,597	13,288,591	646.14

**TABLE 6. COUNTY SUMMARY
EMPLOYMENT AND TOTAL EARNINGS, BY INDUSTRY
FOURTH QUARTER 2008**

NORTH AMERICAN INDUSTRY CLASSIFICATION SYSTEM INDUSTRY GROUP	NUMBER OF EMPLOYING UNITS	EMPLOYMENT			TOTAL EARNINGS	AVERAGE
		OCTOBER	NOVEMBER	DECEMBER	OCTOBER - DECEMBER	WEEKLY EARNINGS
SEVIER COUNTY - TOTAL	322	5,541	5,541	5,511	\$34,815,107	\$484.20
Natural Resources & Mining	17	231	224	229	1,737,704	586.27
Construction	18	135	136	136	1,091,334	618.79
Manufacturing	12	2,062	2,012	2,003	11,431,324	434.10
Trade, Transportation & Utilities	91	817	827	806	5,649,920	532.17
Wholesale Trade	14	134	131	126	1,651,783	974.89
Retail Trade	58	587	591	583	2,844,795	372.79
Transportation, Warehousing & Utilities	19	96	105	97	1,153,342	893.14
Information	4	43	42	41	302,297	553.66
Financial Activities	31	179	179	181	1,424,932	610.08
Professional & Business Services	28	63	66	74	466,604	530.43
Education & Health Services	49	543	551	550	3,763,984	528.35
Leisure & Hospitality	24	256	254	248	695,537	211.75
Other Services	28	122	128	119	561,790	351.34
Local Government	11	877	907	911	6,330,495	542.07
State Government	9	213	215	213	1,359,186	489.33
SHARP COUNTY - TOTAL	441	3,783	3,733	3,749	\$22,541,562	\$461.78
Construction	30	222	214	215	1,780,408	631.13
Manufacturing	25	174	172	170	1,006,106	449.96
Trade, Transportation & Utilities	94	961	954	954	6,337,383	509.75
Wholesale Trade	10	41	39	35	141,492	283.93
Retail Trade	69	630	631	636	2,941,461	357.83
Transportation, Warehousing & Utilities	15	290	284	283	3,254,430	876.34
Information	7	56	56	60	700,144	939.37
Financial Activities	35	230	229	231	1,766,716	590.87
Professional & Business Services	45	151	145	149	1,101,361	571.15
Education & Health Services	111	606	604	609	3,506,669	444.88
Leisure & Hospitality	33	400	393	387	903,468	176.69
Local Government	24	793	779	785	4,388,013	429.62
State Government	9	106	105	107	681,604	494.63
Other	28	84	82	82	369,690	344.00

**TABLE 6. COUNTY SUMMARY
EMPLOYMENT AND TOTAL EARNINGS, BY INDUSTRY
FOURTH QUARTER 2008**

NORTH AMERICAN INDUSTRY CLASSIFICATION SYSTEM INDUSTRY GROUP	NUMBER OF EMPLOYING UNITS	EMPLOYMENT			TOTAL EARNINGS	AVERAGE
		OCTOBER	NOVEMBER	DECEMBER	OCTOBER - DECEMBER	WEEKLY EARNINGS
STONE COUNTY - TOTAL	299	2,904	2,868	2,873	\$16,703,301	\$445.88
Natural Resources & Mining	5	22	20	21	88,470	324.07
Construction	26	104	93	92	599,858	478.99
Manufacturing	27	375	374	373	2,037,862	419.14
Trade, Transportation & Utilities	73	671	674	687	4,183,595	475.12
Wholesale Trade	8	55	54	55	305,308	429.61
Retail Trade	55	578	581	596	3,511,692	461.76
Transportation, Warehousing & Utilities	10	38	39	36	366,595	748.66
Financial Activities	34	125	120	117	900,365	573.97
Professional & Business Services	16	30	29	36	204,097	495.78
Education & Health Services	51	498	502	505	3,646,902	559.20
Leisure & Hospitality	32	418	392	376	951,935	185.23
Local Government	10	410	415	418	2,696,296	500.58
State Government	9	175	175	174	826,216	363.86
Other	16	76	74	74	567,705	584.86
UNION COUNTY - TOTAL	1,411	19,090	18,497	18,614	\$183,349,406	\$752.86
Natural Resources & Mining	118	552	547	558	7,057,295	982.86
Construction	90	1,708	1,313	1,385	18,327,241	959.91
Manufacturing	64	3,737	3,638	3,597	44,488,240	935.70
Trade, Transportation & Utilities	362	3,707	3,706	3,739	35,154,564	727.46
Wholesale Trade	80	739	743	738	12,768,442	1327.28
Retail Trade	218	2,148	2,149	2,195	11,734,341	417.12
Transportation, Warehousing & Utilities	64	820	814	806	10,651,781	1007.42
Information	14	161	159	156	1,141,774	553.54
Financial Activities	122	753	766	776	6,482,445	651.83
Professional & Business Services	141	1,652	1,581	1,568	18,342,348	881.66
Education & Health Services	226	2,471	2,444	2,465	24,255,403	758.46
Leisure & Hospitality	88	1,158	1,164	1,178	3,553,947	234.33
Other Services	132	599	585	582	5,079,590	663.77
Local Government	35	1,997	2,009	2,000	15,019,374	577.09
State Government	19	595	585	610	4,447,185	573.34

**TABLE 6. COUNTY SUMMARY
EMPLOYMENT AND TOTAL EARNINGS, BY INDUSTRY
FOURTH QUARTER 2008**

NORTH AMERICAN INDUSTRY CLASSIFICATION SYSTEM INDUSTRY GROUP	NUMBER OF EMPLOYING UNITS	EMPLOYMENT			TOTAL EARNINGS	AVERAGE
		OCTOBER	NOVEMBER	DECEMBER	OCTOBER - DECEMBER	WEEKLY EARNINGS
VAN BUREN COUNTY - TOTAL	371	3,686	3,710	3,734	\$24,553,447	\$509.09
Natural Resources & Mining	11	41	30	30	362,376	827.97
Construction	45	295	276	281	2,880,146	780.10
Trade, Transportation & Utilities	101	809	811	836	5,576,561	523.98
Wholesale Trade	16	41	43	39	476,133	893.31
Retail Trade	57	602	599	617	3,149,004	399.72
Transportation, Warehousing & Utilities	28	166	169	180	1,951,424	874.42
Information	11	52	50	48	500,631	770.20
Financial Activities	30	155	160	162	1,255,673	607.49
Professional & Business Services	28	103	126	120	688,633	455.34
Education & Health Services	62	637	659	662	4,503,057	530.73
Leisure & Hospitality	24	424	429	429	1,486,372	267.56
Local Government	11	625	641	643	4,035,702	487.86
State Government	8	88	84	83	610,755	552.72
Other	40	457	444	440	2,653,541	456.64
WASHINGTON COUNTY - TOTAL	5,758	90,129	89,683	89,049	\$849,510,983	\$729.15
Natural Resources & Mining	38	491	490	483	5,067,762	798.83
Construction	632	4,788	4,675	4,623	47,520,305	778.52
Manufacturing	240	14,568	14,478	14,282	126,378,197	673.10
Trade, Transportation & Utilities	1,361	19,829	20,036	20,106	178,277,185	686.01
Wholesale Trade	415	3,653	3,662	3,621	58,239,095	1228.95
Retail Trade	757	10,934	11,115	11,199	65,559,795	455.04
Transportation, Warehousing & Utilities	189	5,242	5,259	5,286	54,478,295	796.35
Information	93	1,483	1,465	1,443	16,531,602	868.82
Financial Activities	663	3,746	3,679	3,679	38,540,694	800.97
Professional & Business Services	991	8,917	8,648	8,602	129,228,321	1139.68
Education & Health Services	713	11,458	11,478	11,473	128,878,872	864.35
Leisure & Hospitality	548	9,690	9,581	9,314	31,955,490	257.98
Other Services	397	1,921	1,912	1,908	12,757,743	512.82
Local & State Government	82	13,238	13,241	13,136	134,374,812	782.77

**TABLE 6. COUNTY SUMMARY
EMPLOYMENT AND TOTAL EARNINGS, BY INDUSTRY
FOURTH QUARTER 2008**

NORTH AMERICAN INDUSTRY CLASSIFICATION SYSTEM INDUSTRY GROUP	NUMBER OF EMPLOYING UNITS	EMPLOYMENT			TOTAL EARNINGS	AVERAGE
		OCTOBER	NOVEMBER	DECEMBER	OCTOBER - DECEMBER	WEEKLY EARNINGS
WHITE COUNTY - TOTAL	1,862	25,475	25,499	25,150	\$227,359,818	\$689.24
Natural Resources & Mining	50	1,419	1,498	1,316	23,762,013	1295.43
Construction	202	2,137	2,120	1,999	32,333,339	1192.70
Manufacturing	82	2,602	2,575	2,567	26,186,406	780.35
Trade, Transportation & Utilities	507	6,005	6,026	6,101	47,193,786	600.64
Wholesale Trade	103	614	604	600	6,279,342	797.07
Retail Trade	304	3,249	3,268	3,357	18,019,311	421.14
Transportation, Warehousing & Utilities	100	2,142	2,154	2,144	22,895,133	820.42
Information	22	163	158	148	1,189,842	585.46
Financial Activities	190	957	958	959	8,704,737	698.95
Professional & Business Services	191	1,296	1,255	1,256	10,649,092	645.52
Education & Health Services	309	4,381	4,379	4,326	40,817,585	719.81
Leisure & Hospitality	138	2,464	2,476	2,422	6,574,755	206.09
Other Services	107	582	584	583	4,037,025	532.66
Local Government	45	2,681	2,695	2,705	20,029,410	571.98
State Government	19	788	775	768	5,881,828	582.30
WOODRUFF COUNTY - TOTAL	234	1,989	1,962	1,943	\$13,549,297	\$530.50
Natural Resources & Mining	24	147	138	124	1,440,835	812.96
Construction	9	59	60	63	430,466	545.81
Manufacturing	7	375	372	373	2,324,348	478.92
Trade, Transportation & Utilities	54	446	443	428	3,573,793	626.21
Wholesale Trade	12	158	151	140	1,932,724	993.35
Retail Trade	27	200	205	202	806,099	306.46
Transportation, Warehousing & Utilities	15	88	87	86	834,970	738.26
Financial Activities	16	59	61	61	608,961	776.41
Professional & Business Services	5	5	5	5	45,399	698.45
Education & Health Services	83	234	240	246	1,532,907	491.32
Leisure & Hospitality	10	98	87	87	197,968	167.96
Local Government	10	486	478	477	2,868,044	459.30
State Government	7	58	57	57	404,968	543.34
Other	9	22	21	22	121,608	431.74

**TABLE 6. COUNTY SUMMARY
EMPLOYMENT AND TOTAL EARNINGS, BY INDUSTRY
FOURTH QUARTER 2008**

NORTH AMERICAN INDUSTRY CLASSIFICATION SYSTEM INDUSTRY GROUP	NUMBER OF EMPLOYING UNITS	EMPLOYMENT			TOTAL EARNINGS	AVERAGE
		OCTOBER	NOVEMBER	DECEMBER	OCTOBER - DECEMBER	WEEKLY EARNINGS
YELL COUNTY - TOTAL	428	6,950	7,009	6,930	\$47,063,499	\$519.93
Natural Resources & Mining	25	247	244	255	1,789,967	553.71
Construction	43	257	301	274	2,555,876	708.92
Manufacturing	19	2,780	2,778	2,726	18,276,958	509.15
Trade, Transportation & Utilities	84	682	679	685	3,555,847	401.07
Wholesale Trade	16	25	22	23	153,345	505.53
Retail Trade	51	563	562	566	2,531,400	345.46
Transportation, Warehousing & Utilities	17	94	95	96	871,102	705.35
Information	3	73	73	73	851,609	897.38
Financial Activities	38	206	197	195	1,455,719	561.76
Professional & Business Services	38	288	296	292	3,542,462	933.21
Education & Health Services	90	654	652	655	4,117,575	484.55
Leisure & Hospitality	30	375	364	348	869,396	184.57
Other Services	18	65	64	63	308,547	370.85
Local Government	27	1,201	1,236	1,241	9,042,718	567.37
State Government	13	122	125	123	696,825	434.61
REST-OF-STATE-TOTAL	4,641	18,358	18,370	18,536	\$283,885,305	\$1,185.44
Natural Resources & Mining	78	574	596	607	9,631,634	1250.81
Construction	553	4,105	4,014	3,936	51,846,278	992.49
Manufacturing	66	254	254	249	2,951,206	899.67
Trade, Transportation & Utilities	1,657	6,091	6,122	6,102	121,886,289	1535.77
Wholesale Trade	1,376	4,924	4,938	4,918	109,207,035	1705.12
Retail Trade	123	435	419	430	5,383,401	967.54
Transportation, Warehousing & Utilities	158	732	765	754	7,295,853	747.96
Information	105	240	216	234	3,399,407	1136.93
Financial Activities	291	792	751	748	14,047,665	1415.00
Professional & Business Services	1,581	4,786	4,923	5,147	63,256,204	982.61
Education & Health Services	115	731	724	729	8,995,020	950.45
Leisure & Hospitality	58	71	73	96	709,237	681.96
Other	137	714	697	688	7,162,365	787.45

TABLE 7. FEDERAL GOVERNMENT EMPLOYMENT AND EARNINGS IN ARKANSAS

NORTH AMERICAN INDUSTRY CLASSIFICATION SYSTEM INDUSTRY GROUP	NUMBER OF EMPLOYING UNITS	EMPLOYMENT			TOTAL EARNINGS
		OCTOBER	NOVEMBER	DECEMBER	OCT. - DEC. 2008
Trade, Transportation & Utilities	614	6,575	6,535	6,611	81,165,894
Information	1	33	33	33	471,495
Financial Activities	23	165	164	168	3,076,504
Professional & Business Services	30	764	764	767	14,072,983
Education & Health Services	5	4,646	4,656	4,657	106,207,469
Leisure & Hospitality	15	238	232	238	2,841,914
Other Services	2	271	264	269	1,062,805
Public Administration	508	8,841	8,781	8,665	140,604,137
TOTAL	1,198	21,533	21,429	21,408	\$349,503,201

**TABLE 8. WORKFORCE INFORMATION AREA, SUMMARY
EMPLOYMENT AND TOTAL EARNINGS, BY INDUSTRY
FOURTH QUARTER 2008**

NORTH AMERICAN INDUSTRY CLASSIFICATION SYSTEM INDUSTRY GROUP	NUMBER OF EMPLOYING UNITS	EMPLOYMENT			TOTAL EARNINGS	AVERAGE WEEKLY EARNINGS
		OCTOBER	NOVEMBER	DECEMBER	OCTOBER - DECEMBER	
CENTRAL WORKFORCE INFORMATION*	6,586	76,780	76,671	76,437	\$636,850,779	\$639.29
Natural Resources & Mining	193	1,766	1,731	1,671	27,401,329	1223.56
Construction	910	5,781	5,669	5,590	56,821,261	769.52
Trade, Transportation & Utilities	1,595	15,345	15,435	15,473	114,382,402	570.69
Wholesale Trade	411	2,198	2,199	2,169	30,162,713	1060.10
Retail Trade	919	11,281	11,415	11,491	64,130,291	432.89
Transportation, Warehousing & Utilities	265	1,866	1,821	1,813	20,089,398	842.91
Financial Activities	698	2,982	2,969	2,964	28,064,209	726.46
Professional & Business Services	804	6,666	6,660	6,640	76,155,516	880.21
Education & Health Services	951	10,609	10,735	10,748	85,284,675	613.27
Leisure & Hospitality	495	8,603	8,598	8,575	24,877,818	222.73
Local & State Government	206	15,144	15,175	15,146	124,414,447	631.50
Other	734	9,884	9,699	9,630	99,449,122	785.60

*Note: Pulaski County is not included in the Central Workforce Information. Please refer to Page 53 for information on Pulaski County.
Central Workforce Includes these counties: Faulkner, Lonoke, Monroe, Prairie, and Saline.

EASTERN WORKFORCE INFORMATION	3,875	38,607	38,500	37,968	\$285,517,540	\$572.57
Natural Resources & Mining	210	1,585	1,482	1,227	10,565,485	567.81
Construction	188	1,152	1,200	1,119	10,847,568	721.20
Trade, Transportation & Utilities	895	10,111	10,141	10,062	81,250,610	618.53
Wholesale Trade	181	2,158	2,166	2,157	24,572,400	874.95
Retail Trade	504	5,050	5,139	5,125	27,185,407	409.66
Transportation, Warehousing & Utilities	210	2,903	2,836	2,780	29,492,803	798.92
Financial Activities	287	1,606	1,596	1,583	12,415,696	598.78
Professional & Business Services	312	1,622	1,528	1,508	12,781,433	633.22
Education & Health Services	1,184	6,196	6,199	6,188	43,807,197	544.01
Leisure & Hospitality	243	3,297	3,275	3,355	10,933,363	254.16
Local Government	136	5,689	5,699	5,726	44,687,523	602.58
State Government	69	2,413	2,437	2,326	16,951,039	545.12
Other	351	4,936	4,943	4,874	41,277,626	645.67

Eastern Workforce Includes these counties: Crittenden, Cross, Lee, Phillips, and Saint Francis.

**TABLE 8. WORKFORCE INFORMATION AREA, SUMMARY
EMPLOYMENT AND TOTAL EARNINGS, BY INDUSTRY
FOURTH QUARTER 2008**

NORTH AMERICAN INDUSTRY CLASSIFICATION SYSTEM INDUSTRY GROUP	NUMBER OF EMPLOYING UNITS	EMPLOYMENT			TOTAL EARNINGS	AVERAGE WEEKLY EARNINGS
		OCTOBER	NOVEMBER	DECEMBER	OCTOBER - DECEMBER	
NORTH CENTRAL WORKFORCE INFORMATION	5,896	70,959	70,400	70,009	\$548,541,175	\$598.89
Construction	529	4,032	3,885	3,776	48,549,332	958.15
Trade, Transportation & Utilities	1,509	15,348	15,340	15,464	114,706,461	573.56
Retail Trade	937	9,060	9,102	9,285	49,486,714	416.08
Other Trade, Transportation & Utilities	572	6,288	6,238	6,179	65,219,747	804.64
Financial Activities	553	2,733	2,730	2,742	23,547,380	662.28
Professional & Business Services	511	2,928	2,813	2,789	20,848,034	564.02
Education & Health Services	1,119	12,041	12,105	12,063	100,584,802	641.05
Leisure & Hospitality	438	6,299	6,222	6,077	17,013,464	211.11
Local Government	228	9,278	9,292	9,307	60,923,770	504.33
State Government	115	3,232	3,213	3,203	22,712,481	543.26
Other	894	15,068	14,800	14,588	139,655,451	724.95

North Central Workforce Includes these counties: Cleburne, Fulton, Independence, Izard, Jackson, Sharp, Stone, Van Buren, White, and Woodruff

NORTHEAST WORKFORCE INFORMATION	6,599	96,569	96,081	95,341	\$778,735,601	\$624.01
Natural Resources & Mining	371	2,566	2,427	1,905	19,200,603	642.35
Construction	484	3,335	3,310	3,157	31,717,317	746.72
Manufacturing	363	20,894	20,669	20,365	217,254,403	809.58
Trade, Transportation & Utilities	1,703	17,861	18,021	18,018	129,062,286	552.57
Wholesale Trade	398	3,845	3,791	3,764	41,877,174	847.72
Retail Trade	1,000	11,332	11,612	11,686	60,649,621	404.16
Transportation, Warehousing & Utilities	305	2,684	2,618	2,568	26,535,491	778.09
Financial Activities	606	3,396	3,375	3,401	32,815,785	744.48
Professional & Business Services	672	7,596	7,410	7,555	54,762,295	560.15
Education & Health Services	1,152	13,434	13,386	13,337	124,217,142	713.84
Leisure & Hospitality	470	7,617	7,582	7,650	21,522,237	217.37
Local Government	217	11,895	11,942	11,889	85,287,318	550.91
State Government	107	4,286	4,238	4,317	37,124,767	667.18
Other	454	3,689	3,721	3,747	25,771,448	533.05

Northeast Workforce Includes these counties: Clay, Craighead, Greene, Lawrence, Mississippi, Poinsett, and Randolph.

**TABLE 8. WORKFORCE INFORMATION AREA, SUMMARY
EMPLOYMENT AND TOTAL EARNINGS, BY INDUSTRY
FOURTH QUARTER 2008**

NORTH AMERICAN INDUSTRY CLASSIFICATION SYSTEM INDUSTRY GROUP	NUMBER OF EMPLOYING UNITS	EMPLOYMENT			TOTAL EARNINGS	AVERAGE WEEKLY EARNINGS
		OCTOBER	NOVEMBER	DECEMBER	OCTOBER - DECEMBER	
NORTHWEST WORKFORCE INFORMATION	15,493	233,753	232,508	230,793	\$2,232,994,226	\$739.26
Construction	1,702	10,419	10,192	10,061	99,875,705	751.44
Trade, Transportation & Utilities	3,814	52,787	52,910	52,954	487,629,512	709.29
Retail Trade	2,035	26,551	26,931	27,086	157,691,130	451.67
Other Trade, Transportation & Utilities	1,779	26,236	25,979	25,868	329,938,382	975.11
Education & Health Services	1,994	25,650	25,697	25,740	253,274,085	758.21
Leisure & Hospitality	1,450	23,225	22,776	21,976	75,484,031	256.25
Local & State Government	425	30,005	30,134	30,054	267,399,310	684.17
Other	6,108	91,667	90,799	90,008	1,049,331,583	888.72
Northwest Workforce Includes these counties: Baxter, Benton, Boone, Carroll, Madison, Marion, Newton, Searcy, and Washington.						
SOUTHEAST WORKFORCE INFORMATION	5,932	75,322	74,358	74,194	\$604,935,701	\$623.57
Natural Resources & Mining	411	2,998	2,761	2,680	25,129,051	687.17
Construction	352	3,134	3,077	2,979	32,813,061	823.97
Manufacturing	224	16,185	15,471	15,369	162,431,896	797.11
Trade, Transportation & Utilities	1,340	13,047	13,027	13,070	101,629,101	599.14
Retail Trade	813	8,281	8,366	8,458	46,554,797	427.94
Other Trade, Transportation & Utilities	527	4,766	4,661	4,612	55,074,304	905.30
Education & Health Services	1,492	11,000	10,978	11,040	82,214,914	574.62
Local & State Government	360	16,673	16,789	16,794	122,446,377	562.26
Other	1,753	12,285	12,255	12,262	78,271,301	490.81
Southeast Workforce Includes these counties: Arkansas, Ashley, Bradley, Chicot, Cleveland, Desha, Drew, Grant, Jefferson, and Lincoln						
SOUTHWEST WORKFORCE INFORMATION	5,875	84,482	83,813	84,108	\$709,594,578	\$648.77
Natural Resources & Mining	418	2,850	2,841	2,858	31,966,752	862.90
Trade, Transportation & Utilities	1,487	15,300	15,415	15,471	122,427,215	611.71
Retail Trade	925	8,882	8,930	9,014	46,886,094	403.34
Other Trade, Transportation & Utilities	562	6,418	6,485	6,457	75,541,121	900.44
Financial Activities	539	2,783	2,782	2,807	24,616,016	678.53
Education & Health Services	940	9,520	9,531	9,549	69,818,721	563.36
Leisure & Hospitality	398	5,218	5,188	5,158	15,349,532	227.59
Local & State Government	412	14,668	14,781	14,801	105,954,364	552.57
Other	1,681	34,143	33,275	33,464	339,461,978	776.52
Southwest Workforce Includes these counties: Calhoun, Columbia, Dallas, Hempstead, Howard, Lafayette, Little River, Miller, Nevada, Ouachita, Sevier, and Union						

**TABLE 8. WORKFORCE INFORMATION AREA, SUMMARY
EMPLOYMENT AND TOTAL EARNINGS, BY INDUSTRY
FOURTH QUARTER 2008**

NORTH AMERICAN INDUSTRY CLASSIFICATION SYSTEM INDUSTRY GROUP	NUMBER OF EMPLOYING UNITS	EMPLOYMENT			TOTAL EARNINGS	AVERAGE WEEKLY EARNINGS
		OCTOBER	NOVEMBER	DECEMBER	OCTOBER - DECEMBER	
WEST CENTRAL WORKFORCE INFORMATION	8,512	108,823	108,445	108,217	\$826,929,438	\$586.29
Construction	908	5,701	5,681	5,328	54,214,360	748.71
Manufacturing	392	18,542	18,245	18,112	154,869,322	651.00
Trade, Transportation & Utilities	2,017	22,051	22,241	22,329	175,089,276	606.49
Retail Trade	1,286	14,164	14,408	14,409	78,622,075	422.13
Other Trade, Transportation & Utilities	731	7,887	7,833	7,920	96,467,201	941.69
Financial Activities	887	3,845	3,829	3,893	33,787,469	674.08
Professional & Business Services	965	7,518	7,446	7,461	59,981,766	617.26
Education & Health Services	1,338	16,026	16,078	16,151	138,865,502	664.09
Local Government	230	12,174	12,356	12,361	89,657,760	560.85
State Government	135	5,423	5,459	5,434	39,201,184	554.45
Other	1,640	17,543	17,110	17,148	81,262,799	362.02

West Central Workforce Includes these counties: Clark, Conway, Garland, Hot Spring, Johnson, Montgomery, Perry, Pike, Pope, and Yell

WESTERN WORKFORCE INFORMATION	6,755	111,338	110,546	109,812	\$913,557,755	\$635.59
Natural Resources & Mining	185	3,235	3,269	3,320	49,534,339	1163.58
Construction	650	4,735	4,619	4,569	46,196,658	765.69
Trade, Transportation & Utilities	1,682	23,458	23,864	23,800	182,987,211	593.74
Wholesale Trade	400	3,721	3,760	3,775	46,259,691	948.41
Retail Trade	965	12,588	12,911	13,067	71,870,792	430.06
Transportation, Warehousing & Utilities	317	7,149	7,193	6,958	64,856,728	702.67
Financial Activities	712	3,984	3,970	4,013	42,063,277	811.14
Professional & Business Services	874	11,103	10,274	9,691	82,081,691	609.69
Education & Health Services	960	14,775	14,971	15,090	142,655,615	734.24
Leisure & Hospitality	502	8,380	8,389	8,355	26,085,018	239.60
Local & State Government	229	12,578	12,595	12,617	97,274,643	594.02
Other	961	29,090	28,595	28,357	244,679,303	656.24

Western Workforce includes these counties: Crawford, Franklin, Logan, Polk, Scott, and Sebastian

