

Arkansas Covered Employment & Earnings

Jobs for People. People for Jobs.

DWS
Department of
WORKFORCE**Services**

2008 Annual

**COVERED EMPLOYMENT AND EARNINGS
STATE OF ARKANSAS
CALENDAR YEAR 2008**

**MIKE BEEBE, GOVERNOR
STATE OF ARKANSAS**

**ARTEE WILLIAMS, DIRECTOR
ARKANSAS DEPARTMENT OF WORKFORCE SERVICES**

**PUBLISHED BY
BUREAU OF LABOR STATISTICS PROGRAMS
ARKANSAS DEPARTMENT OF WORKFORCE SERVICES
POST OFFICE BOX 2981
LITTLE ROCK, ARKANSAS 72203-2981
BERNADETTE COLEMAN, BLS PROGRAMS MANAGER
TELEPHONE: (501) 682-3159**

STATE OF ARKANSAS HOME PAGE: <http://www.arkansas.gov>

**ARKANSAS DEPARTMENT OF WORKFORCE SERVICES
HOME PAGE: <http://www.arkansas.gov/esd/>**

**INTERNET SITE FOR LABOR MARKET INFORMATION:
<http://www.discover.arkansas.gov>**

RELEASED: JULY 2009

TABLE OF CONTENTS

	Page
Description of Data	1
Industry Classification	1
Definition of Covered Employment and Earnings	2
Federal Government Employment	2
County Classification	2
Significant Developments During Calendar Year 2008	3

LIST OF GRAPHS AND TABLES

Graph 1	Total Covered Employment for Selected Years, Arkansas	7
Graph 2	Total Covered Earnings, by Calendar Quarter for Selected Years, Arkansas	8
Map 1	Average Employment by County, Calendar Year 2008	13
Table 1	Quarterly Comparison of Covered Employment and Wages, by Industry	5
Table 2	Total Covered Employment in Arkansas, 2000-2008	6
Table 3	Total Covered Earnings, 2000-2008	9
Table 4	Total Taxable Earnings, 2000-2008	10
Table 5	County Rankings of Average Employment, Calendar Year 2008	11
Table 6	County Rankings of Average Weekly Wages, Calendar Year 2008	12
Table 7	State Summary - Employment and Total Earnings, by Industry, Calendar Year 2008	15
Table 8	County Summary - Employment and Total Earnings, by Industry, Calendar Year 2008	28
Table 9	Federal Government Employment and Total Earnings in Arkansas, Calendar Year 2008	66
Table 10	Workforce Information Area – Employment and Total Earnings, by Industry, Calendar Year 2008	67

EMPLOYMENT AND EARNINGS UNDER THE ARKANSAS EMPLOYMENT SECURITY LAW CALENDAR YEAR 2008

DESCRIPTION OF DATA

This publication contains covered employment and payroll data by industry and county for the Calendar Year 2008. These data are compiled from quarterly contribution and wage reports submitted by employers subject to the Arkansas Employment Security Law. An employing unit is a single physical location where business is conducted, production takes place, or services are provided. Employment data have been tabulated for each month of the quarter by industry under the **North American Industry Classification System** (NAICS) (see "Industry Classification" below) on a statewide, county and workforce area basis. Payroll data represent the total wages paid during the quarter, and are also shown by

industry for the State and by publishable industry groups for each county and workforce area. The tabulation of this data is a joint effort in conjunction with the U.S. Bureau of Labor Statistics. In addition, there are tables included which set out total covered employment by months, quarterly payrolls, and average weekly earnings for the years 2001 through 2008. Data contained in this publication are subject to revision. These revisions will be reflected in the 2009 First Quarter Covered Employment and Earnings publication. Because of industry code changes between years, substantial employment and wage shifts among industries are anticipated.

INDUSTRY CLASSIFICATION

Previously published industry data **will not** be comparable in all instances with currently published data since industry codes have been revised according to the following Manuals: (a) between January 1, 1958 and December 31, 1967, industry codes were assigned under the 1957 Standard Industrial Classification (SIC) Manual; (b) between January 1, 1968 and December 31, 1974, industry codes were assigned under the 1967 Standard Industrial Classification (SIC) Manual; (c) between January 1, 1975 and December 31, 1987, industry codes were assigned under the 1972 Standard Industrial Classification (SIC) Manual; (d) between January 1, 1988 and December 31, 2000, industry codes were assigned under the 1987 Standard Industrial Classification (SIC) Manual; (e) January 1, 2001, industry codes have been assigned under the 2002 North American Industry Classification System (NAICS) Manual; and (f) since January 1, 2007, industry codes have been assigned under the 2007 North American Industry Classification System (NAICS) Manual. **The NAICS Manual**

represents a significant change in coding methodology as compared to the SIC Manual. One of the most significant changes involves how NAICS treats auxiliary units. Auxiliary units are establishments primarily engaged in performing management or support services for other establishments of the same enterprise. The SIC code for these units was based on the activity of the enterprise served. The NAICS code is based on the actual activities that the establishment performs. Comparisons of many industries **should not be made** between this publication and previous Covered Employment and Earnings publications that were based on SIC. Even though some titles are the same or similar, in nature, NAICS and SIC could differ in the classification of employers. The implementation of NAICS represents a profound change for statistical programs, and will create significant benefits along with transition obstacles for both data collectors and data users. A summary is available on the NAICS home page at <http://www.census.gov/naics>.

DEFINITION OF COVERED EMPLOYMENT AND EARNINGS

Covered Employment is the number of workers employed by employers subject to the Arkansas Employment Security Law who worked or received pay for the payroll period including the 12th of the month. An employer is subject to the law when they employ one or more employees in each of ten days during the current or preceding calendar year.

Currently excluded from coverage is employment covered by the Railroad Unemployment Insurance Act, some domestic service workers, employees of small agricultural establishments, self-employed and unpaid family workers, insurance and real estate

agents who are on commission only, and employees of churches and religious organizations except separately incorporated schools. The payroll information in this publication includes all wages and salaries paid to any covered employees by their employers including bonuses, commissions, and cash values of remuneration received in any medium other than cash. These wages include both taxable and nontaxable wages. Only the first \$10,000 paid to each worker by an employer in the calendar year is taxable under the Arkansas Employment Security Law.

FEDERAL GOVERNMENT EMPLOYMENT

Table 9 on page 66 lists the total number of civilians employed by the Federal Government in Arkansas during the Calendar Year 2008. Employment and wage data are set out by industry divisions. These data are obtained from required reports submitted by various

government agencies having employment in the State. Civilian Federal workers are covered by the Unemployment Compensation for Federal Employees (UCFE) program.

COUNTY CLASSIFICATION

Employment and payroll data by county are classified according to the county where the workers are employed. Employers with operations in more than one county are requested to furnish this agency with a breakdown of employment and wages for at least one quarter of each year by the counties in which they operate. Many such employers submit county data with each regular contribution report. **Note:** This information is invaluable in the preparation of monthly employment and payroll data by county.

Employment and payroll data for multi - area employers who do not furnish county data each quarter of the year, are prorated by county on the basis of one quarter's information. The "rest-of-state" table that appears on page 65 of this publication includes data on firms that **did not** provide a county breakdown of employment and payrolls. It also includes sales, and all other type of personnel with no permanent place of work, as well as employment of employers with no established place of business in Arkansas.

SIGNIFICANT DEVELOPMENTS DURING CALENDAR YEAR 2008

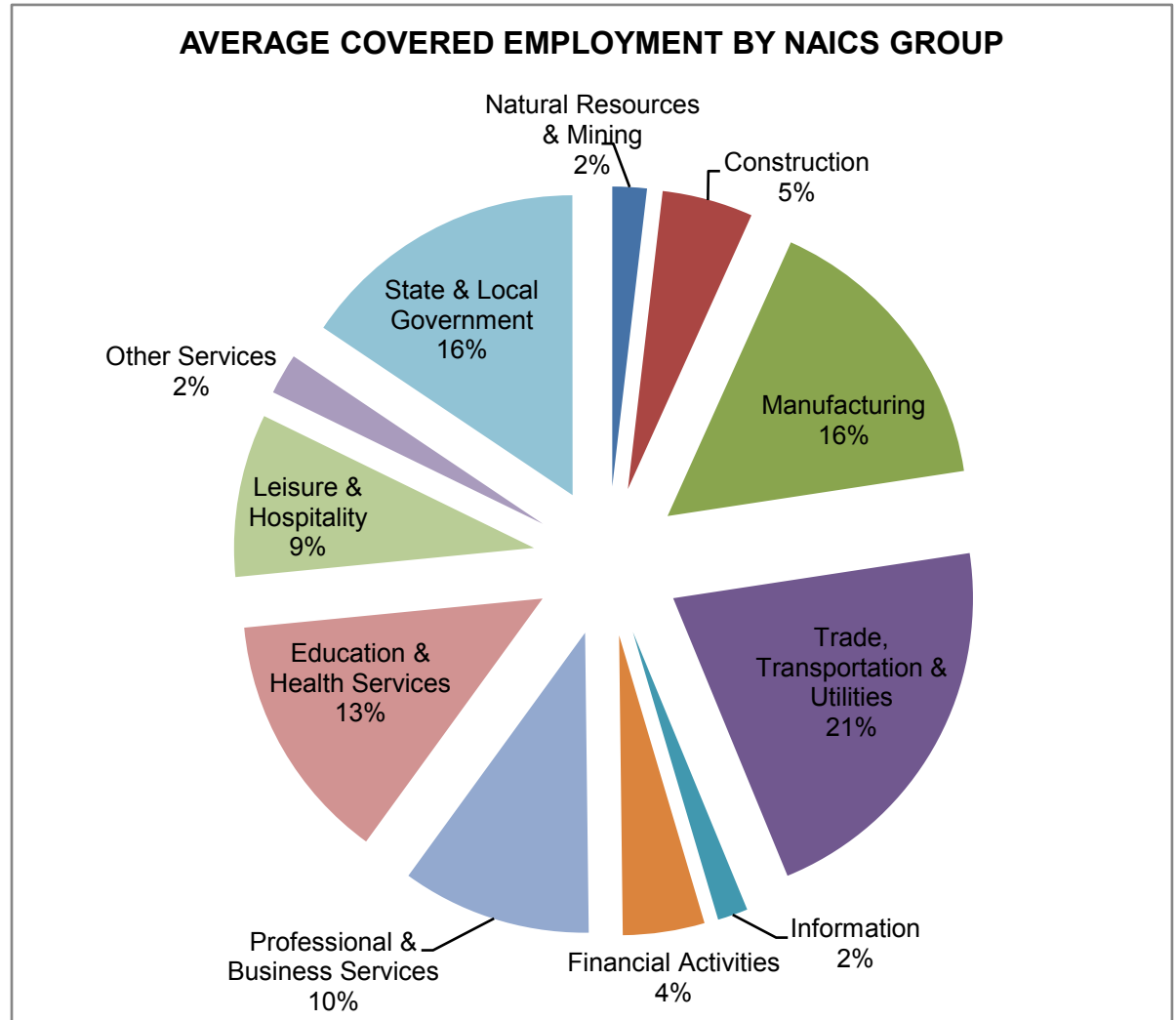
AVERAGE EMPLOYMENT CHANGES

Covered employment averaged 1,150,678 during the Calendar Year 2008 (see table 1), a decrease of 2,758 (-0.24%) from the previous year. Five industries gained jobs from the Calendar Year 2007 while six suffered losses.

Education & Health Services (+4,714) gained the most jobs in 2008. 95% of the new jobs can be attributed to the Health Care & Social Assistance subsector due to the increased demand for elderly care. State & Local Government added 2,361 jobs because of the expanded need for instructors at public educational facilities. The continued increase in oil and gas related activities in Arkansas led to a 1,244 job gain in Natural Resources & Mining. The opening of new restaurants across the state contributed to the growth seen in Leisure & Hospitality (+1,176). Jobs in Professional & Business Services (+449) also saw a slight increase.

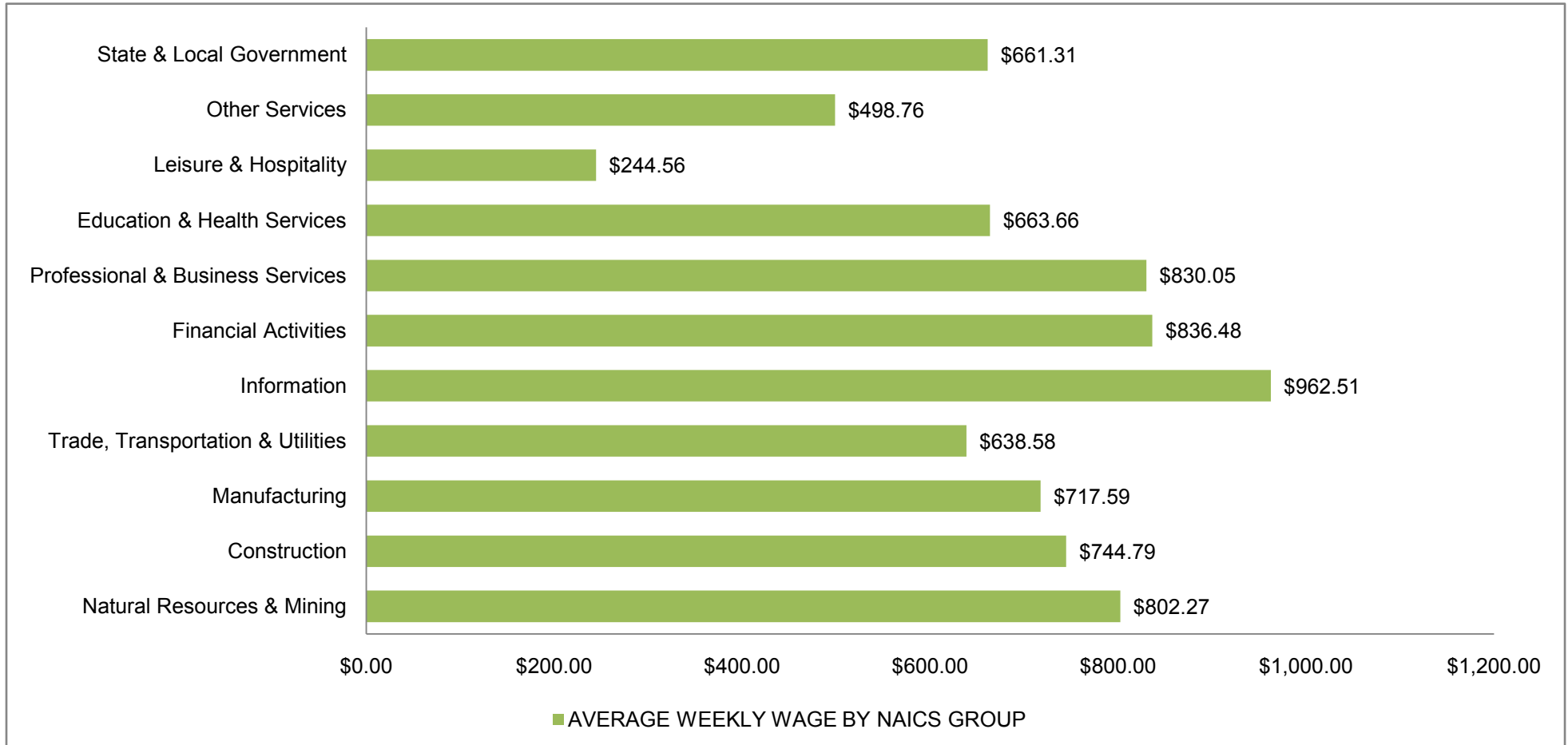
Layoffs and closures continue in the Manufacturing industry, leading to a job loss of 6,986. Declines in the trucking industry caused the elimination of 2,781 jobs in Trade, Transportation & Utilities. Financial Services suffered a job drop of 1,276 due to affects from the global financial crisis. Smaller losses were seen in Information (-1,183), Other Services (-247), and Construction (-227).

Pulaski County ranked first among counties in covered employment (see Table 5), with an average of 241,567. Benton County (94,690), Washington County (89,548), Sebastian County (71,946), and Craighead County (41,881) round out the top five counties in covered employment.



AVERAGE WEEKLY EARNINGS

Wages paid to covered workers totaled \$39,621,503,294 for the Calendar Year 2008 (see table 1), for an average weekly wage of \$662.18 (see table 7). This represented an increase of \$14.78 from the level of \$647.40 recorded in 2007. Employees in Information recorded the highest weekly wage with \$962.51 while Leisure & Hospitality recorded the lowest yearly average weekly wage at \$244.56. Workers in Little River County received the highest weekly wage at \$831.99 while Searcy County received the lowest at \$401.08. (see Table 6)



Note: Because of industry code changes between years, substantial employment and wage shifts among industries are anticipated.

TABLE 1. YEARLY COMPARISON OF COVERED EMPLOYMENT AND WAGES, BY INDUSTRY

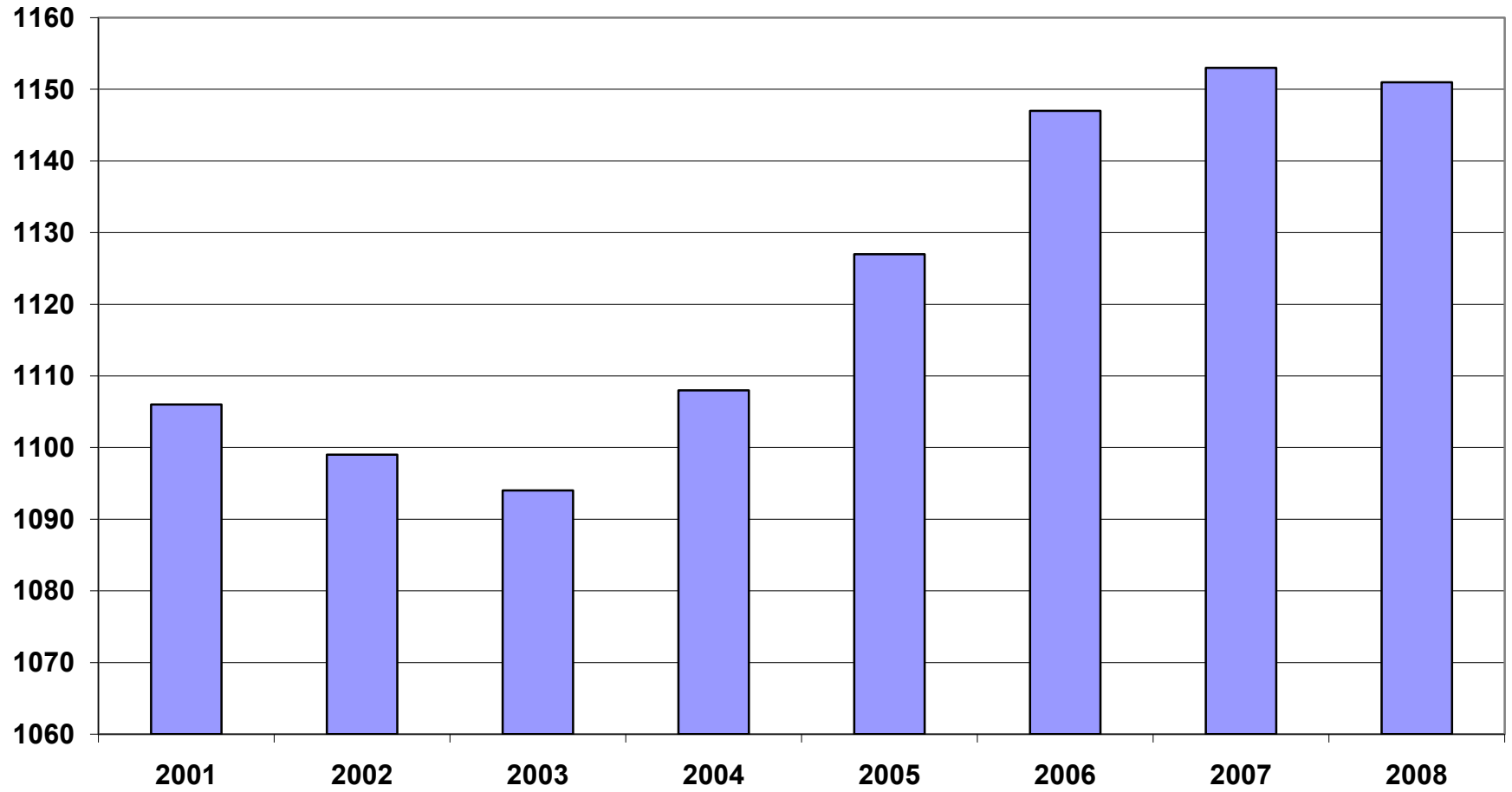
North American Industry Classification System Industry Group	Number of Employing Units	Average Covered Employment	% of Total	Net Change From 2007	Total Earnings 2008	% of Total	Average Weekly Earnings
Total	84,580	1,150,678	100.0	-2,758	39,621,503,294	100.0	\$662.18
Natural Resources & Mining	2,456	21,350	1.9	1,244	890,679,642	2.2%	\$802.27
Agriculture, Forestry, Fishing & Hunting	1,946	13,035	1.1	-233	390,169,579	1.0%	\$575.62
Mining	510	8,315	0.7	1,477	500,510,063	1.3%	\$1,157.57
Construction	7,893	56,331	4.9	-227	2,181,641,366	5.5%	\$744.79
Manufacturing	3,581	182,395	15.9	-6,986	6,805,978,761	17.2%	\$717.59
Trade, Transportation & Utilities	21,101	243,726	21.2	-2,781	8,093,240,814	20.4%	\$638.58
Wholesale Trade	6,431	48,479	4.2	304	2,577,097,402	6.5%	\$1,022.29
Retail Trade	11,299	133,684	11.6	-568	2,968,722,675	7.5%	\$427.06
Transportation & Warehousing	3,006	54,773	4.8	-2,496	2,072,459,393	5.2%	\$727.64
Utilities	365	6,790	0.6	-21	474,961,344	1.2%	\$1,345.19
Information	1,121	18,647	1.6	-1,183	933,296,438	2.4%	\$962.51
Financial Activities	8,432	50,689	4.4	-1,276	2,204,823,985	5.6%	\$836.48
Finance & Insurance	4,921	36,413	3.2	-1,098	1,788,611,010	4.5%	\$944.62
Real Estate & Rental & Leasing	3,511	14,276	1.2	-178	416,212,975	1.1%	\$560.67
Professional & Business Services	11,831	117,368	10.2	449	5,065,913,849	12.8%	\$830.05
Professional & Technical Services	7,400	38,785	3.4	180	1,915,530,460	4.8%	\$949.78
Management of Companies & Enterprises	555	25,766	2.2	992	1,941,462,442	4.9%	\$1,449.03
Administrative & Waste Services	3,876	52,817	4.6	-723	1,208,920,947	3.1%	\$440.17
Education & Health Services	13,279	154,805	13.5	4,714	5,342,381,913	13.5%	\$663.66
Educational Services	617	9,754	0.8	253	283,443,400	0.7%	\$558.83
Health Care & Social Assistance	12,662	145,051	12.6	4,461	5,058,938,513	12.8%	\$670.71
Leisure & Hospitality	6,232	100,797	8.8	1,176	1,281,862,650	3.2%	\$244.56
Arts, Entertainment & Recreation	918	9,855	0.9	111	171,474,874	0.4%	\$334.61
Accommodation & Food Services	5,314	90,942	7.9	1,065	1,110,387,776	2.8%	\$234.80
Other Services	5,428	25,215	2.2	-247	653,961,769	1.7%	\$498.76
State & Local Government	3,226	179,357	15.6	2,361	6,167,722,107	15.6%	\$661.31
Local Government	1,984	113,240	9.8	493	3,626,195,054	9.2%	\$615.81
State Government	1,242	66,117	5.7	1,868	2,541,527,053	6.4%	\$739.23
Nonclassifiable Establishments	0	0	0	0	0	0	\$0.00

Note: Items do not necessarily add to totals because of rounding. Because of industry code changes between years, substantial employment and wage shifts among industries are anticipated.

TABLE 2. TOTAL COVERED EMPLOYMENT IN ARKANSAS

Period	2001	2002	2003	2004	2005	2006	2007	2008
Average	1,106,053	1,098,558	1,094,087	1,108,273	1,126,778	1,146,948	1,153,436	1,150,678
January	1,096,009	1,081,635	1,082,740	1,089,510	1,102,768	1,130,595	1,137,437	1,141,856
February	1,101,616	1,086,793	1,084,880	1,094,626	1,110,577	1,136,810	1,143,397	1,149,443
March	1,112,143	1,098,500	1,092,172	1,105,266	1,122,619	1,150,439	1,158,895	1,157,690
April	1,115,526	1,103,399	1,095,341	1,111,020	1,129,785	1,155,498	1,159,623	1,159,841
May	1,119,815	1,111,998	1,103,099	1,117,144	1,135,567	1,159,886	1,165,224	1,166,111
June	1,119,734	1,112,028	1,099,688	1,117,010	1,136,118	1,162,026	1,164,207	1,164,167
July	1,071,830	1,065,697	1,053,220	1,071,473	1,090,071	1,106,142	1,110,571	1,114,279
August	1,094,068	1,086,011	1,077,775	1,094,886	1,114,098	1,130,839	1,139,109	1,138,583
September	1,115,996	1,113,148	1,105,980	1,122,724	1,144,815	1,159,814	1,165,135	1,162,333
October	1,110,994	1,108,447	1,112,550	1,123,260	1,142,300	1,156,804	1,164,709	1,156,197
November	1,109,012	1,107,611	1,109,712	1,125,081	1,145,667	1,156,011	1,166,114	1,150,885
December	1,105,887	1,107,425	1,111,892	1,127,271	1,146,954	1,158,509	1,166,810	1,146,754

AVERAGE TOTAL COVERED EMPLOYMENT GRAPH 1
In Thousands



TOTAL COVERED EARNINGS BY CALENDAR QUARTER, GRAPH 2
In Thousands

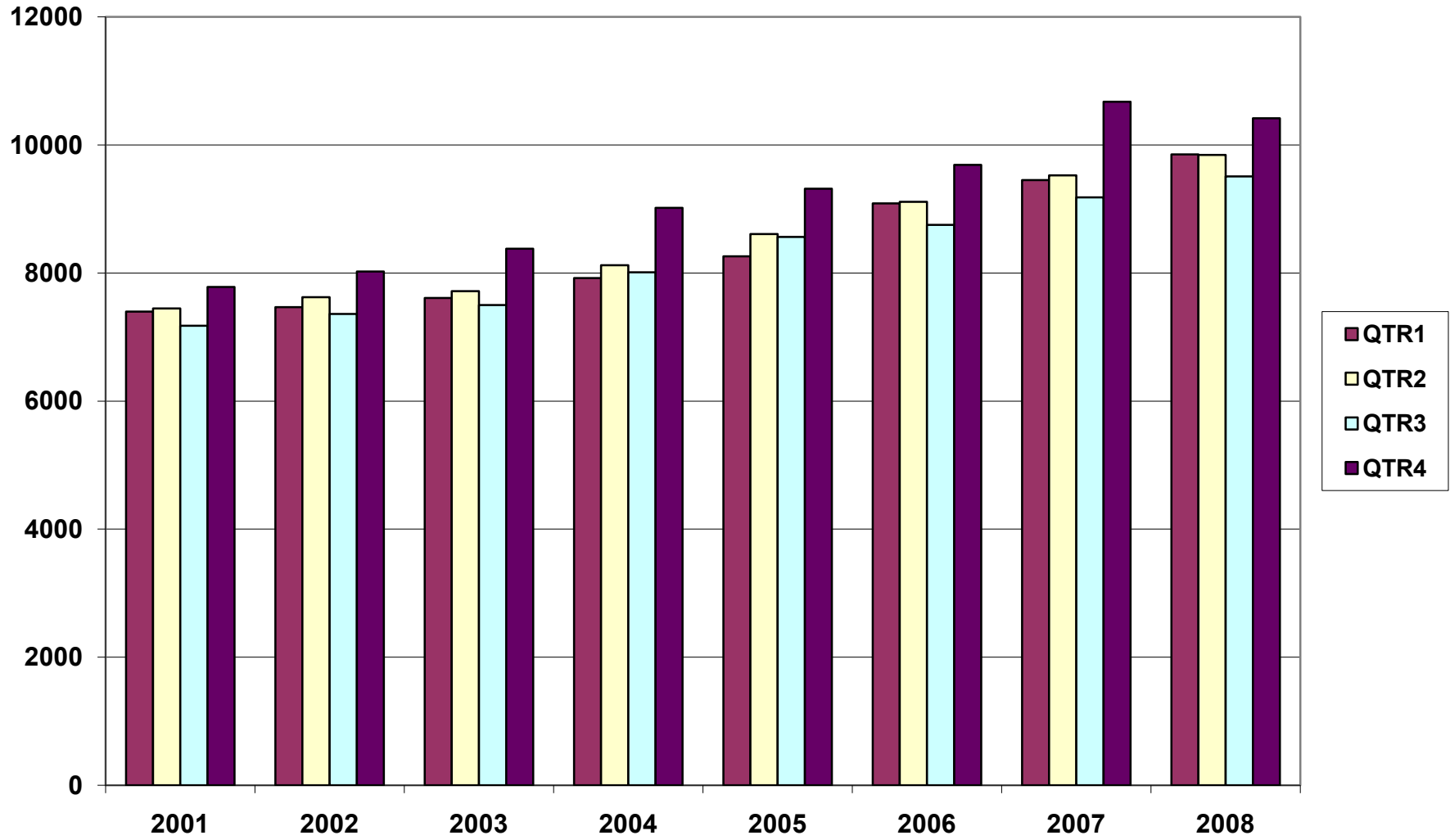


TABLE 3. TOTAL COVERED EARNINGS, 2000 - 2007

Period	2001	2002	2003	2004
Total	\$29,807,669,666	\$30,472,854,103	\$31,202,576,767	\$33,068,302,933
January - March	7,398,887,532	7,465,250,305	7,608,130,008	7,918,843,610
April - June	7,448,023,298	7,621,878,775	7,714,813,038	8,122,370,361
July - September	7,177,293,061	7,361,666,511	7,500,204,764	8,010,367,094
October - December	7,783,465,775	8,024,058,512	8,379,428,957	9,016,721,868
Average Weekly Earnings	518.26	533.44	548.45	573.80

Period	2005	2006	2007	2008
Total	\$34,753,107,631	\$36,636,090,775	\$38,830,050,835	\$39,621,503,294
January - March	8,261,153,981	9,085,021,816	9,452,711,662	9,851,866,058
April - June	8,607,722,353	9,112,624,590	9,525,837,049	9,843,711,293
July - September	8,562,555,369	8,750,878,205	9,178,902,477	9,509,150,631
October - December	9,321,675,928	9,687,566,164	10,672,599,647	10,416,775,312
Average Weekly Earnings	593.13	614.27	647.40	662.18

TABLE 4. TOTAL TAXABLE EARNINGS, 2000 - 2007

Period	2001	2002	2003	2004
Total	\$9,003,189,480	\$8,887,270,978	\$9,154,938,743	\$9,731,263,681
January - March	4,670,296,360	4,668,534,587	4,737,918,796	4,931,559,230
April - June	2,219,485,263	2,162,971,435	2,270,519,362	2,451,454,749
July - September	1,190,098,737	1,158,197,858	1,188,681,170	1,318,017,835
October - December	923,309,120	897,567,098	957,819,415	1,030,231,867
Period	2005	2006	2007	2008
Total	\$9,991,605,239	\$10,197,511,360	\$10,463,390,568	\$10,358,632,809
January - March	5,062,670,306	5,421,204,601	5,617,417,571	5,635,750,082
April - June	2,506,505,721	2,385,110,992	2,466,606,627	2,419,313,519
July - September	1,353,660,445	1,314,939,803	1,307,060,412	1,297,473,555
October - December	1,068,768,767	1,076,255,964	1,072,305,958	1,006,095,653

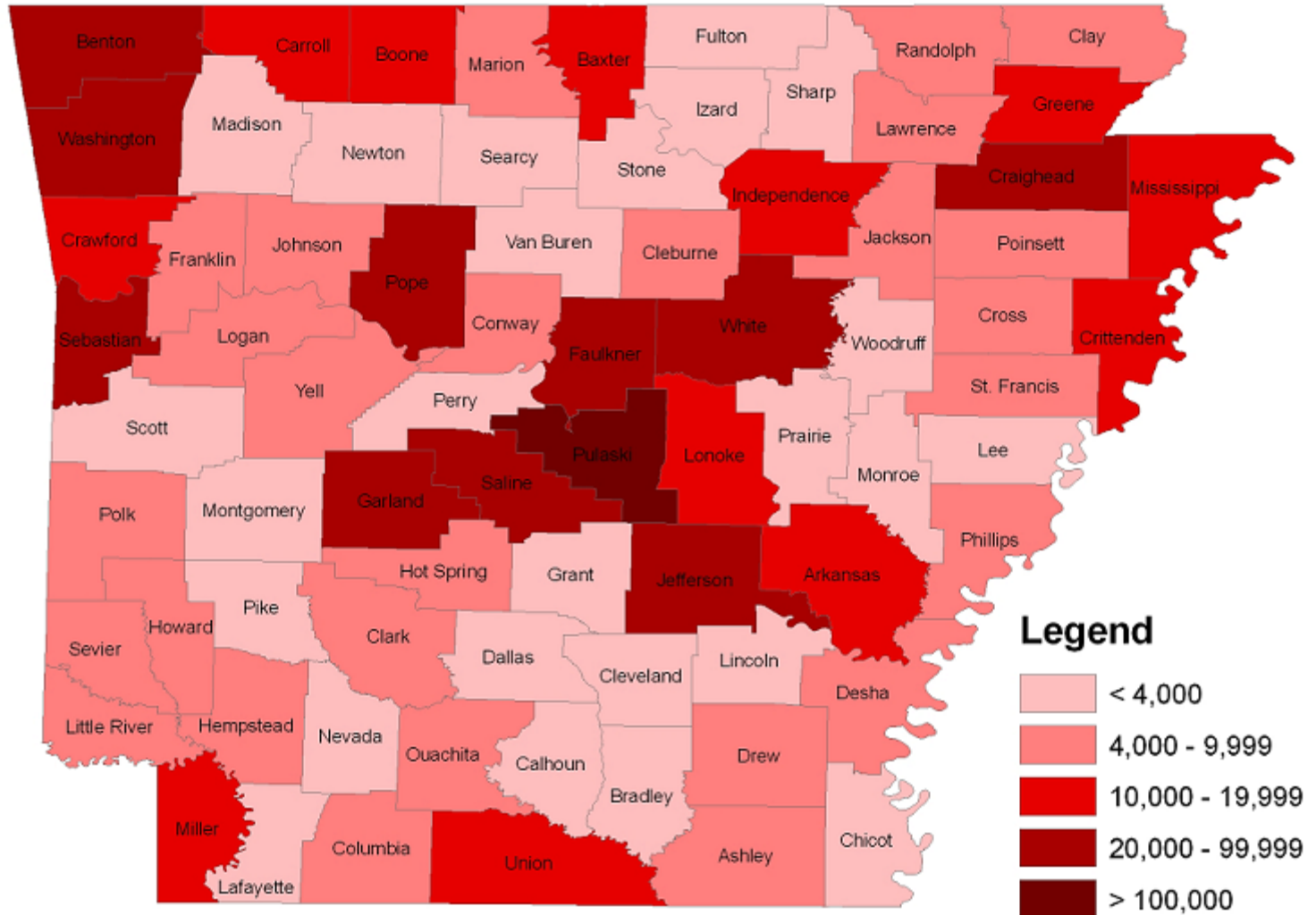
**TABLE 5. COUNTY RANKINGS OF AVERAGE EMPLOYMENT
CALENDAR YEAR 2008**

Rank	County	Average Employment	Rank	County	Average Employment
1	Pulaski	241,567	39	Logan	5,766
2	Benton	94,690	40	Sevier	5,691
3	Washington	89,548	41	Jackson	5,656
4	Sebastian	71,946	42	Poinsett	5,442
5	Craighead	41,881	43	Cross	4,940
6	Faulkner	38,999	44	Randolph	4,777
7	Garland	36,522	45	Desha	4,611
8	Jefferson	30,619	46	Little River	4,457
9	Pope	26,639	47	Franklin	4,233
10	White	24,553	48	Marion	4,048
11	Saline	21,234	49	Clay	4,018
12	Crawford	19,926	50	Lawrence	4,002
13	Mississippi	19,744	51	Bradley	3,845
14	Union	19,138	52	Grant	3,843
15	Crittenden	16,792	53	Sharp	3,713
16	Independence	15,315	54	Van Buren	3,704
17	Greene	14,937	55	Chicot	3,536
18	Baxter	14,699	56	Dallas	3,323
19	Boone	13,669	57	Madison	3,174
20	Miller	12,966	58	Izard	3,103
21	Lonoke	12,633	59	Calhoun	2,957
22	Arkansas	10,116	60	Stone	2,937
23	Carroll	10,050	61	Lincoln	2,924
24	Clark	9,775	62	Scott	2,857
25	Columbia	9,210	63	Pike	2,678
26	Johnson	8,798	64	Nevada	2,408
27	Hempstead	7,888	65	Monroe	2,387
28	Ashley	7,831	66	Lee	2,098
29	Saint Francis	7,651	67	Fulton	1,958
30	Ouachita	7,600	68	Woodruff	1,920
31	Hot Spring	7,495	69	Searcy	1,755
32	Howard	7,483	70	Montgomery	1,580
33	Cleburne	6,996	71	Prairie	1,444
34	Conway	6,889	72	Lafayette	1,391
35	Yell	6,834	73	Perry	1,347
36	Drew	6,669	74	Newton	1,041
37	Phillips	6,523	75	Cleveland	1,029
38	Polk	6,329			

**TABLE 6. COUNTY RANKINGS OF AVERAGE WEEKLY WAGES
CALENDAR YEAR 2008**

Rank	County	Average Weekly Wage	Rank	County	Average Weekly Wage
1	Little River	\$831.99	39	Cross	\$528.22
2	Benton	\$818.31	40	Johnson	\$527.14
3	Calhoun	\$790.90	41	Howard	\$524.32
4	Pulaski	\$773.40	42	Dallas	\$522.07
5	Union	\$741.20	43	Grant	\$521.56
6	Mississippi	\$705.67	44	Cleburne	\$518.73
7	Washington	\$690.26	45	Saint Francis	\$518.13
8	Ashley	\$678.42	46	Prairie	\$512.90
9	Faulkner	\$662.95	47	Lee	\$511.62
10	Sebastian	\$660.04	48	Logan	\$510.67
11	Jefferson	\$636.78	49	Woodruff	\$503.92
12	Columbia	\$636.35	50	Yell	\$501.44
13	White	\$632.91	51	Phillips	\$498.82
14	Miller	\$618.01	52	Madison	\$498.38
15	Pope	\$615.23	53	Bradley	\$498.35
16	Craighead	\$611.95	54	Lafayette	\$495.47
17	Boone	\$607.44	55	Drew	\$489.52
18	Crittenden	\$596.41	56	Lawrence	\$485.66
19	Arkansas	\$595.60	57	Sevier	\$479.96
20	Franklin	\$582.10	58	Van Buren	\$479.91
21	Hot Spring	\$581.21	59	Clay	\$477.92
22	Independence	\$575.78	60	Pike	\$477.15
23	Conway	\$573.13	61	Carroll	\$475.99
24	Nevada	\$570.98	62	Chicot	\$475.24
25	Saline	\$568.53	63	Marion	\$471.73
26	Desha	\$565.04	64	Scott	\$468.19
27	Baxter	\$562.75	65	Izard	\$465.81
28	Crawford	\$562.05	66	Polk	\$462.98
29	Jackson	\$558.63	67	Randolph	\$461.26
30	Greene	\$551.32	68	Sharp	\$453.56
31	Garland	\$550.27	69	Monroe	\$448.29
32	Hempstead	\$545.67	70	Cleveland	\$446.44
33	Lonoke	\$534.71	71	Montgomery	\$443.63
34	Clark	\$532.03	72	Fulton	\$437.36
35	Perry	\$530.92	73	Stone	\$427.22
36	Ouachita	\$530.78	74	Newton	\$407.10
37	Lincoln	\$528.79	75	Searcy	\$401.08
38	Poinsett	\$528.24			

**MAP 1. ANNUAL AVERAGE EMPLOYMENT BY COUNTY
CALENDAR YEAR 2008**



**TABLE 7. STATEWIDE SUMMARY
EMPLOYMENT AND TOTAL EARNINGS, BY INDUSTRY
CALENDAR YEAR 2008**

NORTH AMERICAN INDUSTRY CLASSIFICATION SYSTEM INDUSTRY GROUPS		AVERAGE EMPLOYING UNITS	AVERAGE COVERED EMPLOYMENT	TOTAL EARNINGS	AVERAGE WEEKLY EARNINGS
TOTAL, ALL INDUSTRIES		84,580	1,150,678	\$39,621,503,294	\$662.18
NATURAL RESOURCES & MINING		2,456	21,350	\$890,679,642	\$802.27
11	AGRICULTURE, FORESTRY, FISHING & HUNTING	1,946	13,035	\$390,169,579	\$575.62
111	CROP PRODUCTION	723	3,590	\$83,047,047	\$444.86
1111	Oilseed and Grain Farming	450	1,995	47,700,260	459.81
1112	Vegetable and Melon Farming	9	89	1,025,039	221.49
1113	Fruit and Tree Nut Farming	9	127	2,372,717	359.28
1114	Greenhouse & Nursery Production	53	371	9,065,630	469.92
1119	Other Crop Farming	202	1,007	22,883,401	437.01
112	ANIMAL PRODUCTION	267	3,682	\$120,004,467	\$626.77
1121	Cattle Ranching and Farming	77	334	8,743,446	503.42
1122	Hog and Pig Farming	9	150	5,695,628	730.21
1123	Poultry and Egg Production	91	2,627	89,583,248	655.79
1125	Animal Aquaculture	62	500	14,358,496	552.25
	Other	28	71	1,623,649	439.77
113	FORESTRY AND LOGGING	509	2,616	\$83,252,939	\$612.01
1131	Timber Tract Operations	41	236	9,830,640	801.06
1132	Forest Nurseries & Gathering of Forest Products	6	32	1,581,415	950.37
1133	Logging	462	2,348	71,840,884	588.40
	OTHER	447	3,147	\$103,865,126	\$634.70
21	MINING	510	8,315	\$500,510,063	\$1,157.57
211	OIL AND GAS EXTRACTION	103	961	\$66,411,778	\$1,328.98
212	MINING (EXCEPT OIL AND GAS)	113	2,196	\$102,352,717	\$896.32
213	SUPPORT ACTIVITIES FOR MINING	294	5,159	\$331,745,568	\$1,236.62

**TABLE 7. STATEWIDE SUMMARY
EMPLOYMENT AND TOTAL EARNINGS, BY INDUSTRY
CALENDAR YEAR 2008**

NORTH AMERICAN INDUSTRY CLASSIFICATION SYSTEM INDUSTRY GROUPS		AVERAGE EMPLOYING UNITS	AVERAGE COVERED EMPLOYMENT	TOTAL EARNINGS	AVERAGE WEEKLY EARNINGS
CONSTRUCTION		7,893	56,331	\$2,181,641,366	\$744.79
236	CONSTRUCTION OF BUILDINGS	2,174	13,204	\$560,347,860	\$816.11
2361	Residential Building Construction	1,532	3,652	112,441,126	592.09
2362	Nonresidential Building Construction	643	9,552	447,906,734	901.76
237	HEAVY & CIVIL ENGINEERING CONSTRUCTION	862	10,359	\$460,645,640	\$855.16
2371	Utility System Construction	417	5,708	268,209,059	903.62
2372	Land Subdivision	124	343	12,564,549	704.45
2373	Highway, Street & Bridge Construction	213	2,948	108,767,560	709.53
2379	Other Heavy Construction	109	1,359	71,104,472	1,006.18
238	SPECIALTY TRADE CONTRACTORS	4,857	32,768	\$1,160,647,866	\$681.16
2381	Building Foundation & Exterior Contractors	971	6,785	231,220,101	655.35
2382	Building Equipment Contractors	2,154	15,804	601,488,207	731.91
2383	Building Finishing Contractors	905	4,768	151,714,959	611.91
2389	Other Specialty Trade Contractors	827	5,412	176,224,599	626.19
MANUFACTURING		3,581	182,395	\$6,805,978,761	\$717.59
311	FOOD MANUFACTURING	311	48,775	\$1,434,275,507	\$565.50
3111	Animal Food Manufacturing	61	1,560	61,720,456	760.85
3112	Grain and Oilseed Milling	30	2,355	91,056,225	743.56
3113	Sugar & Confectionery Product Manufacturing	7	58	1,209,057	400.88
3114	Fruit, Vegetable & Specialty Food	24	5,748	202,978,679	679.09
3115	Dairy Product Manufacturing	11	689	27,567,314	769.43
3116	Animal Slaughtering & Processing	92	33,138	872,554,013	506.36
3117	Seafood Product Preparation & Packaging	5	177	3,343,273	363.24
3118	Bakeries and Tortilla Manufacturing	53	3,373	114,259,654	651.44
3119	Other Food Manufacturing	28	1,677	59,586,836	683.30
312	BEVERAGE & TOBACCO PRODUCT MFG.	43	1,244	\$49,475,932	\$764.84
313	TEXTILE MILLS	17	291	\$12,928,742	\$854.40
314	TEXTILE PRODUCT MILLS	62	1,024	\$37,676,787	\$707.57
3141	Textile Furnishing Mills	15	34	658,128	372.24
3149	Other Textile Product Mills	47	990	37,018,659	719.09

**TABLE 7. STATEWIDE SUMMARY
EMPLOYMENT AND TOTAL EARNINGS, BY INDUSTRY
CALENDAR YEAR 2008**

NORTH AMERICAN INDUSTRY CLASSIFICATION SYSTEM INDUSTRY GROUPS		AVERAGE EMPLOYING UNITS	AVERAGE COVERED EMPLOYMENT	TOTAL EARNINGS	AVERAGE WEEKLY EARNINGS
315	APPAREL MANUFACTURING	36	1,482	\$32,021,858	\$415.52
3151	Apparel Knitting Mills	3	707	17,292,161	470.36
3152	Cut & Sew Apparel Manufacturing	27	554	10,566,357	366.79
3159	Accessories & Other Apparel Manufacturing	6	221	4,163,340	362.28
316	LEATHER & ALLIED PRODUCT MANUFACTURING	22	1,930	\$48,105,110	\$479.33
321	WOOD PRODUCT MANUFACTURING	381	11,151	\$362,223,780	\$624.68
3211	Sawmills and Wood Preservation	159	4,679	160,578,014	659.98
3212	Veneer & Engineered Wood Products	55	2,846	108,372,467	732.29
3219	Other Wood Product Manufacturing	168	3,625	93,273,299	494.82
322	PAPER MANUFACTURING	86	10,939	\$588,347,859	\$1,034.32
3221	Pulp, Paper & Paperboard Mills	13	4,276	297,837,256	1,339.49
3222	Converted Paper Product Manufacturing	73	6,664	290,510,603	838.35
323	PRINTING & RELATED SUPPORT ACTIVITIES	282	4,512	\$166,613,458	\$710.13
324	PETROLEUM AND COAL PRODUCTS MFG.	23	1,007	\$52,681,663	\$1,006.07
325	CHEMICAL MANUFACTURING	128	4,811	\$251,483,846	\$1,005.24
3251	Basic Chemical Manufacturing	31	2,048	120,567,608	1,132.13
3252	Resin, Rubber & Artificial Fibers	10	290	15,424,098	1,022.82
3253	Agricultural Chemical Manufacturing	16	343	17,412,398	976.25
3255	Paint, Coating & Adhesive Manufacturing	10	191	9,662,968	972.91
3259	Other Chemical Preparation Manufacturing	31	899	41,531,332	888.41
	Other	32	1,039	46,885,442	867.80
326	PLASTICS & RUBBER PRODUCTS MFG.	157	11,297	\$457,623,028	\$779.01
3261	Plastics Product Manufacturing	109	7,253	260,803,981	691.50
3262	Rubber Product Manufacturing	48	4,044	196,819,047	935.95
327	NONMETALLIC MINERAL PRODUCT MFG.	267	4,375	\$165,928,683	\$729.36
3271	Clay Product & Refractory Manufacturing	22	535	19,229,786	691.22
3272	Glass & Glass Product Manufacturing	13	441	15,879,828	692.47
3273	Cement & Concrete Product Manufacturing	188	2,467	91,445,052	712.83
3274	Lime & Gypsum Product Manufacturing	5	348	16,829,689	930.02
3279	Other Nonmetallic Mineral Products	38	584	22,544,328	742.37

**TABLE 7. STATEWIDE SUMMARY
EMPLOYMENT AND TOTAL EARNINGS, BY INDUSTRY
CALENDAR YEAR 2008**

NORTH AMERICAN INDUSTRY CLASSIFICATION SYSTEM INDUSTRY GROUPS		AVERAGE EMPLOYING UNITS	AVERAGE COVERED EMPLOYMENT	TOTAL EARNINGS	AVERAGE WEEKLY EARNINGS
331	PRIMARY METAL MANUFACTURING	84	8,403	\$462,070,480	\$1,057.48
3311	Iron & Steel Mills and Ferroalloys	14	2,250	188,033,317	1,607.12
3312	Purchased Steel Product Manufacturing	17	2,377	112,574,962	910.77
3313	Alumina & Aluminum Production	22	1,922	90,386,449	904.37
3314	Other Nonferrous Metal Production	17	674	24,233,749	691.44
3315	Foundries	16	1,181	46,842,003	762.75
332	FABRICATED METAL PRODUCT MANUFACTURING	578	16,772	\$683,571,281	\$783.78
3321	Forging & Stamping	11	746	29,509,499	760.71
3322	Cutlery & Hand Tool Manufacturing	20	1,197	42,976,981	690.46
3323	Architectural & Structural Metals	195	4,942	217,507,969	846.39
3324	Boilers, Tanks & Shipping Containers	18	697	31,235,132	861.80
3325	Hardware Manufacturing	8	241	7,623,471	608.32
3326	Spring & Wire Product Manufacturing	12	495	14,016,908	544.56
3327	Machine Shops & Threaded Products	207	1,997	70,029,842	674.38
3328	Coating, Engraving & Heat Treating Metals	39	636	19,078,424	576.88
3329	Other Fabricated Metal Product Manufacturing	69	5,822	251,593,055	831.04
333	MACHINERY MANUFACTURING	267	13,981	\$502,559,301	\$691.27
3331	Agri., Construction & Mining Machinery	42	3,034	75,128,253	476.19
3332	Industrial Machinery Manufacturing	36	800	35,742,381	859.19
3333	Commercial & Service Industry Machinery	27	933	41,090,195	846.94
3334	HVAC & Commercial Refrigeration Equipment	23	4,382	159,006,956	697.82
3335	Metalworking Machinery Manufacturing	77	1,371	56,359,379	790.54
3336	Turbine & Power Transmission Equipment Manufacturing	7	649	25,989,512	770.11
3339	Other General Purpose Machinery Manufacturing	55	2,813	109,242,625	746.83
334	COMPUTER & ELECTRONIC PRODUCT MFG.	83	4,048	\$149,617,057	\$710.78
3342	Communications Equipment Manufacturing	9	151	8,799,290	1,120.64
3343	Audio & Video Equipment Manufacturing	10	855	30,392,140	683.58
3344	Semiconductors & Electronic Components	30	2,165	74,892,301	665.24
3345	Electronic Instrument Manufacturing	28	845	35,070,256	798.14
	Other	7	32	463,070	278.29
335	ELECTRICAL EQUIPMENT & APPLIANCES	65	9,683	\$373,926,240	\$742.63
3353	Electrical Equipment Manufacturing	23	4,745	186,856,641	757.30
3359	Other Electrical Equipment & Component Manufacturing	23	2,010	85,807,298	820.97
	Other	19	2,929	101,262,301	664.85

**TABLE 7. STATEWIDE SUMMARY
EMPLOYMENT AND TOTAL EARNINGS, BY INDUSTRY
CALENDAR YEAR 2008**

NORTH AMERICAN INDUSTRY CLASSIFICATION SYSTEM INDUSTRY GROUPS		AVERAGE EMPLOYING UNITS	AVERAGE COVERED EMPLOYMENT	TOTAL EARNINGS	AVERAGE WEEKLY EARNINGS
336	TRANSPORTATION EQUIPMENT MANUFACTURING	178	15,901	\$626,858,807	\$758.13
3362	Motor Vehicle Body & Trailer Manufacturing	40	2,346	78,466,131	643.21
3363	Motor Vehicle Parts Manufacturing	60	6,245	208,218,748	641.19
3364	Aerospace Product & Parts Manufacturing	31	4,412	239,407,174	1,043.51
3366	Ship & Boat Building	28	1,552	45,773,412	567.18
	Other	20	1,346	54,993,342	785.71
337	FURNITURE & RELATED PRODUCT MFG.	259	5,806	\$184,843,666	\$612.24
3371	Household & Institutional Furniture	212	3,984	121,120,231	584.65
3372	Office Furniture & Fixtures Manufacturing	40	1,701	60,829,610	687.71
3379	Other Furniture Related Product Manufacturing	7	121	2,893,825	459.92
339	MISCELLANEOUS MANUFACTURING	254	4,964	\$163,145,676	\$632.03
3391	Medical Equipment & Supplies Manufacturing	95	2,444	85,762,674	674.83
3399	Other Miscellaneous Manufacturing	159	2,519	77,383,002	590.76
TRADE, TRANSPORTATION & UTILITIES		21,101	243,726	\$8,093,240,814	\$638.58
42	WHOLESALE TRADE	6,431	48,479	\$2,577,097,402	\$1,022.29
423	MERCHANT WHOLESALERS, DURABLE GOODS	2,244	22,207	\$1,039,072,895	\$899.81
4231	Motor Vehicle & Part Merchant Wholesalers	253	2,657	102,440,900	741.44
4232	Furniture & Furnishing Merchant Wholesalers	71	450	20,524,379	877.11
4233	Lumber & Supply Merchant Wholesalers	188	1,683	69,315,845	792.04
4234	Commercial Goods Merchant Wholesalers	298	2,726	169,255,185	1,194.02
4235	Metal & Mineral Merchant Wholesalers	60	936	49,061,026	1,007.99
4236	Electric Goods Merchant Wholesalers	183	2,182	111,484,731	982.56
4237	Hardware & Plumbing Merchant Wholesalers	232	2,375	107,785,096	872.75
4238	Machinery & Supply Merchant Wholesalers	720	7,380	333,653,300	869.43
4239	Misc. Durable Goods Merchant Wholesalers	241	1,818	75,552,433	799.19

**TABLE 7. STATEWIDE SUMMARY
EMPLOYMENT AND TOTAL EARNINGS, BY INDUSTRY
CALENDAR YEAR 2008**

NORTH AMERICAN INDUSTRY CLASSIFICATION SYSTEM INDUSTRY GROUPS		AVERAGE EMPLOYING UNITS	AVERAGE COVERED EMPLOYMENT	TOTAL EARNINGS	AVERAGE WEEKLY EARNINGS
424	MERCHANT WHOLESALERS, NONDURABLE GOODS	1,285	16,333	\$733,136,475	\$863.21
4241	Paper & Paper Product Merchant Wholesalers	77	1,109	51,296,077	889.51
4242	Druggists' Goods Merchant Wholesalers	62	1,098	49,644,423	869.49
4243	Apparel & Piece Goods Merchant Wholesalers	46	490	18,007,454	706.73
4244	Grocery Product Merchant Wholesalers	336	5,552	274,067,990	949.30
4245	Farm Product Merchant Wholesalers	75	890	25,808,966	557.67
4246	Chemical Merchant Wholesalers	90	533	26,320,301	949.64
4247	Petroleum Merchant Wholesalers	153	1,468	83,478,276	1,093.56
4248	Alcoholic Beverage Merchant Wholesalers	37	1,157	53,484,655	888.98
4249	Misc. Nondurable Goods Merchant Wholesalers	410	4,036	151,028,333	719.62
425	ELECTRONIC MARKETS & AGENTS & BROKERS	2,902	9,938	\$804,888,032	\$1,557.52
44-45	RETAIL TRADE	11,299	133,684	\$2,968,722,675	\$427.06
441	MOTOR VEHICLE & PARTS DEALERS	1,721	17,780	\$619,521,339	\$670.07
4411	Automobile Dealers	724	10,547	420,060,728	765.91
4412	Other Motor Vehicle Dealers	196	1,601	53,150,566	638.43
4413	Automotive Parts, Accessories & Tire Stores	801	5,631	146,310,045	499.67
442	FURNITURE & HOME FURNISHINGS STORES	589	3,806	\$102,838,962	\$519.62
4421	Furniture Stores	314	2,240	64,098,853	550.30
4422	Home Furnishings Stores	276	1,565	38,740,109	476.04
443	ELECTRONICS & APPLIANCE STORES	532	4,108	\$125,637,693	\$588.15
444	BUILDING MATERIAL & GARDEN SUPPLY STORES	852	10,918	\$282,337,446	\$497.30
4441	Building Material & Supplies Dealers	666	9,944	257,117,374	497.24
4442	Lawn & Garden Equipment & Supplies Stores	186	974	25,220,072	497.95
445	FOOD & BEVERAGE STORES	1,070	18,460	\$323,301,259	\$336.80
4451	Grocery Stores	610	16,086	275,117,826	328.90
4452	Specialty Food Stores	155	856	21,956,366	493.27
4453	Beer, Wine & Liquor Stores	305	1,517	26,227,067	332.48
446	HEALTH & PERSONAL CARE STORES	939	7,547	\$240,426,399	\$612.64
447	GASOLINE STATIONS	1,566	11,905	\$174,479,957	\$281.85
44711	Gasoline Stations with Convenience Stores	1,415	10,652	152,194,055	274.77
44719	Other Gasoline Stations	151	1,253	22,285,902	342.04

**TABLE 7. STATEWIDE SUMMARY
EMPLOYMENT AND TOTAL EARNINGS, BY INDUSTRY
CALENDAR YEAR 2008**

NORTH AMERICAN INDUSTRY CLASSIFICATION SYSTEM INDUSTRY GROUPS		AVERAGE EMPLOYING UNITS	AVERAGE COVERED EMPLOYMENT	TOTAL EARNINGS	AVERAGE WEEKLY EARNINGS
448	CLOTHING & CLOTHING ACCESSORIES STORES	1,062	8,941	\$126,334,428	\$271.73
4481	Clothing Stores	726	6,946	87,208,793	241.45
4482	Shoe Stores	176	1,153	17,279,234	288.20
4483	Jewelry, Luggage & Leather Goods Stores	160	842	21,846,401	498.96
451	SPORTING GOODS, HOBBY, BOOK & MUSIC STORES	577	4,579	\$71,337,947	\$299.60
4511	Sporting Goods & Musical Instrument Stores	432	3,230	53,857,258	320.66
4512	Book, Periodical & Music Stores	145	1,348	17,480,689	249.38
452	GENERAL MERCHANDISE STORES	735	37,613	\$721,973,595	\$369.13
453	MISCELLANEOUS STORE RETAILERS	1,321	6,292	\$126,276,678	\$385.95
4531	Florists	246	912	14,620,954	308.30
4532	Office Supplies, Stationery & Gift Stores	351	2,182	44,882,926	395.57
4533	Used Merchandise Stores	212	830	16,360,129	379.06
4539	Other Miscellaneous Store Retailers	512	2,368	50,412,669	409.41
454	NONSTORE RETAILERS	337	1,737	\$54,256,972	\$600.69
4541	Electronic Shopping & Mail -Order Houses	92	327	13,508,759	794.45
4542	Vending Machine Operators	71	611	16,069,631	505.78
4543	Direct Selling Establishments	174	799	24,678,582	593.98
48-49	TRANSPORTATION & WAREHOUSING	3,006	54,773	\$2,072,459,393	\$727.64
481	AIR TRANSPORTATION	48	974	\$49,334,466	\$974.07
484	TRUCK TRANSPORTATION	2,017	34,436	\$1,330,100,147	\$742.79
4841	General Freight Trucking	1,285	28,745	1,109,796,663	742.47
4842	Specialized Freight Trucking	732	5,692	220,303,484	744.31
485	TRANSIT & GROUND PASSENGER TRANS.	65	1,078	\$18,353,719	\$327.42
4851	Urban Transit Systems	4	58	1,242,132	411.85
4852	Interurban & Rural Bus Transportation	3	59	1,255,285	409.15
4853	Taxi & Limousine Service	23	324	4,860,220	288.47
4854	School & Employee Bus Transportation	7	302	5,205,130	331.45
4855	Charter Bus Industry Service	6	53	1,347,079	488.78
4859	Other Ground Passenger Transportation	21	283	4,443,873	301.98
486	PIPELINE TRANSPORTATION	68	862	\$52,363,113	\$1,168.19

**TABLE 7. STATEWIDE SUMMARY
EMPLOYMENT AND TOTAL EARNINGS, BY INDUSTRY
CALENDAR YEAR 2008**

NORTH AMERICAN INDUSTRY CLASSIFICATION SYSTEM INDUSTRY GROUPS		AVERAGE EMPLOYING UNITS	AVERAGE COVERED EMPLOYMENT	TOTAL EARNINGS	AVERAGE WEEKLY EARNINGS
488	SUPPORT ACTIVITIES FOR TRANSPORTATION	418	4,515	\$188,289,526	\$801.98
4881	Support Activities for Air Transportation	102	1,433	52,941,024	710.47
4882	Support Activities for Rail Transportation	33	371	13,154,970	681.89
4883	Support Activities for Water Transportation	23	622	28,372,923	877.22
4884	Support Activities for Road Transportation	110	514	13,707,334	512.85
4885	Freight Transportation Arrangement	127	1,413	75,350,854	1,025.52
4889	Other Support Activities for Transportation	23	162	4,762,421	565.34
491	POSTAL SERVICE	7	13	\$323,520	\$478.58
492	COURIERS & MESSENGERS	141	3,365	\$124,979,078	\$714.25
4921	Couriers	84	3,047	116,507,573	735.32
4922	Local Messengers & Local Delivery	57	319	8,471,505	510.70
493	WAREHOUSING & STORAGE	230	9,351	\$302,016,339	\$621.11
	OTHER	13	178	\$6,699,485	\$723.80
22	UTILITIES	365	6,790	\$474,961,344	\$1,345.19
2211	Power Generation & Supply	161	5,082	389,587,836	1,474.24
2212	Natural Gas Distribution	34	866	57,991,607	1,287.79
2213	Water, Sewage and Other Systems	170	843	27,381,901	624.64
INFORMATION		1,121	18,647	\$933,296,438	\$962.51
511	PUBLISHING INDUSTRIES, EXCEPT INTERNET	255	6,065	\$199,718,122	\$633.26
5111	Newspaper, Book & Directory Publishers	227	5,837	185,965,045	612.69
5112	Software Publishers	28	228	13,753,077	1,160.01
512	MOTION PICTURE & SOUND RECORDING INDUSTRY	144	1,215	\$22,414,363	\$354.77
5121	Motion Picture & Video Industries	123	1,172	20,927,958	343.40
5122	Sound Recording Industries	21	43	1,486,405	664.76
515	BROADCASTING, EXCEPT INTERNET	142	2,111	\$76,947,835	\$700.98
5151	Radio & Television Broadcasting	137	2,073	75,952,306	704.59
5152	Cable & Other Subscription Programming	6	39	995,529	490.89

**TABLE 7. STATEWIDE SUMMARY
EMPLOYMENT AND TOTAL EARNINGS, BY INDUSTRY
CALENDAR YEAR 2008**

NORTH AMERICAN INDUSTRY CLASSIFICATION SYSTEM INDUSTRY GROUPS		AVERAGE EMPLOYING UNITS	AVERAGE COVERED EMPLOYMENT	TOTAL EARNINGS	AVERAGE WEEKLY EARNINGS
517	TELECOMMUNICATIONS	422	7,962	\$561,058,676	\$1,355.14
5171	Wired Telecommunications Carriers	301	4,405	266,685,360	1,164.26
5179	Other Telecommunications	86	546	24,465,617	861.71
	Other	36	3,010	269,907,699	1,724.43
518	DATA PROCESSING, HOSTING & RELATED ACTIVITIES	99	989	\$61,779,009	\$1,201.27
	OTHER	59	305	\$11,378,433	\$717.43
FINANCIAL ACTIVITIES		8,432	50,689	\$2,204,823,985	\$836.48
52	FINANCE & INSURANCE	4,921	36,413	\$1,788,611,010	\$944.62
522	CREDIT INTERMEDIATION & RELATED ACTIVITIES	2,099	21,168	\$832,190,256	\$756.03
5221	Depository Credit Intermediation	1,430	18,235	690,395,918	728.10
5222	Nondepository Credit Intermediation	397	2,000	109,455,404	1,052.46
5223	Activities Related to Credit Intermediation	272	933	32,338,934	666.56
523	FINANCIAL INVESTMENT & RELATED ACTIVITIES	644	3,230	\$337,656,264	\$2,010.34
524	INSURANCE CARRIERS & RELATED ACTIVITIES	2,127	11,554	\$599,203,900	\$997.33
5241	Insurance Carriers	390	4,954	296,206,280	1,149.83
5242	Insurance Agencies, Brokerages & Support	1,737	6,600	302,997,620	882.86
	OTHER	52	462	\$19,560,590	\$814.21
53	REAL ESTATE & RENTAL & LEASING	3,511	14,276	\$416,212,975	\$560.67
531	REAL ESTATE	2,653	8,927	\$253,768,269	\$546.67
5311	Lessors of Real Estate	1,071	4,460	119,034,667	513.26
5312	Offices of Real Estate Agents & Brokers	959	2,012	62,397,838	596.40
5313	Activities Related to Real Estate	623	2,454	72,335,764	566.86
532	RENTAL & LEASING SERVICES	839	5,282	\$158,387,734	\$576.66
5321	Automotive Equipment Rental & Leasing	125	1,043	29,728,072	548.12
5322	Consumer Goods Rental	512	2,918	65,513,673	431.76
5323	General Rental Centers	31	242	8,005,628	636.18
5324	Machinery & Equipment Rental & Leasing	173	1,079	55,140,361	982.75

**TABLE 7. STATEWIDE SUMMARY
EMPLOYMENT AND TOTAL EARNINGS, BY INDUSTRY
CALENDAR YEAR 2008**

NORTH AMERICAN INDUSTRY CLASSIFICATION SYSTEM INDUSTRY GROUPS		AVERAGE EMPLOYING UNITS	AVERAGE COVERED EMPLOYMENT	TOTAL EARNINGS	AVERAGE WEEKLY EARNINGS
533	LESSORS OF NONFINANCIAL INTANGIBLE ASSETS	19	68	\$4,056,972	\$1,147.33
PROFESSIONAL & BUSINESS SERVICES		11,831	117,368	\$5,065,913,849	\$830.05
54	PROFESSIONAL & TECHNICAL SERVICES	7,400	38,785	\$1,915,530,460	\$949.78
5411	Legal Services	1,675	6,533	316,347,478	931.21
5412	Accounting & Bookkeeping Services	1,251	5,730	218,724,305	734.07
5413	Architectural & Engineering Services	996	6,693	349,350,969	1,003.78
5414	Specialized Design Services	180	460	18,563,595	776.07
5415	Computer Systems Design & Related Services	986	7,874	533,491,175	1,302.95
5416	Management & Technical Consulting Services	1,249	4,506	231,261,522	986.98
5417	Scientific Research & Development Services	108	1,104	58,145,622	1,012.85
5418	Advertising & Related Services	337	1,955	93,422,323	918.97
5419	Other Professional & Technical Services	618	3,930	96,223,471	470.85
55	MANAGEMENT OF COMPANIES & ENTERPRISES	555	25,766	\$1,941,462,442	\$1,449.03
56	ADMINISTRATIVE & WASTE SERVICES	3,876	52,817	\$1,208,920,947	\$440.17
561	ADMINISTRATIVE & SUPPORT SERVICES	3,653	50,357	\$1,110,367,281	\$424.04
5611	Office Administrative Services	398	1,348	72,707,066	1,037.25
5612	Facilities Support Services	18	211	4,902,968	446.86
5613	Employment Services	720	22,857	446,150,225	375.37
5614	Business Support Services	460	7,140	169,586,389	456.76
5615	Travel Arrangement & Reservation Services	102	394	12,626,949	616.31
5616	Investigation & Security Services	245	4,548	112,502,838	475.71
5617	Services to Buildings & Dwellings	1,393	12,215	237,388,324	373.73
5619	Other Support Services	318	1,645	54,502,522	637.16
562	WASTE MANAGEMENT & REMEDIATION SERVICES	223	2,460	\$98,553,666	\$770.43
5621	Waste Collection Services	106	1,261	48,528,670	740.08
5622	Waste Treatment & Disposal Services	42	721	33,737,528	899.86
5629	Remediation & Other Waste Services	75	478	16,287,468	655.27

**TABLE 7. STATEWIDE SUMMARY
EMPLOYMENT AND TOTAL EARNINGS, BY INDUSTRY
CALENDAR YEAR 2008**

NORTH AMERICAN INDUSTRY CLASSIFICATION SYSTEM INDUSTRY GROUPS		AVERAGE EMPLOYING UNITS	AVERAGE COVERED EMPLOYMENT	TOTAL EARNINGS	AVERAGE WEEKLY EARNINGS
EDUCATION & HEALTH SERVICES		13,279	154,805	\$5,342,381,913	\$663.66
61	EDUCATIONAL SERVICES	617	9,754	\$283,443,400	\$558.83
6111	Elementary & Secondary Schools	75	3,191	75,415,168	454.49
6112	Junior Colleges	8	286	8,065,628	542.34
6113	Colleges & Universities	29	3,476	110,755,005	612.75
6114	Business, Computer, & Management Training	46	215	19,086,474	1,707.20
6115	Technical & Trade Schools	107	766	35,599,651	893.75
6116	Other Schools & Instruction	242	1,463	20,644,734	271.37
6117	Educational Support Services	110	358	13,876,740	745.42
62	HEALTH CARE & SOCIAL ASSISTANCE	12,662	145,051	\$5,058,938,513	\$670.71
621	AMBULATORY HEALTH CARE SERVICES	5,042	44,969	\$2,288,292,419	\$978.58
6211	Offices of Physicians	2,228	21,279	1,432,967,653	1,295.04
6212	Offices of Dentists	952	6,299	262,265,037	800.69
6213	Offices of Other Health Practitioners	1,181	6,123	199,539,336	626.70
6214	Outpatient Care Centers	254	3,968	154,139,429	747.03
6215	Medical & Diagnostic Laboratories	107	855	46,474,692	1,045.31
6216	Home Health Care Services	184	4,132	118,621,258	552.08
6219	Other Ambulatory Health Care Services	137	2,314	74,285,014	617.35
622	HOSPITALS	125	42,401	\$1,661,135,130	\$753.40
6221	General Medical & Surgical Hospitals	91	38,690	1,521,002,228	756.01
6222	Psychiatric & Substance Abuse Hospitals	11	1,748	60,610,886	666.82
6223	Other Hospitals	22	1,963	79,522,016	779.05
623	NURSING & RESIDENTIAL CARE FACILITIES	525	28,466	\$606,559,843	\$409.77
6231	Nursing Care Facilities	253	21,098	449,670,142	409.87
6232	Residential Mental Health Facilities	128	3,387	75,570,866	429.08
6233	Community Care Facilities for the Elderly	97	2,412	45,386,429	361.86
6239	Other Residential Care Facilities	46	1,570	35,932,406	440.13

**TABLE 7. STATEWIDE SUMMARY
EMPLOYMENT AND TOTAL EARNINGS, BY INDUSTRY
CALENDAR YEAR 2008**

NORTH AMERICAN INDUSTRY CLASSIFICATION SYSTEM INDUSTRY GROUPS		AVERAGE EMPLOYING UNITS	AVERAGE COVERED EMPLOYMENT	TOTAL EARNINGS	AVERAGE WEEKLY EARNINGS
624	SOCIAL ASSISTANCE	6,971	29,214	\$502,951,121	\$331.08
6241	Individual & Family Services	5,763	15,568	273,413,951	337.74
6242	Emergency & Other Relief Services	127	946	20,359,291	413.87
6243	Vocational Rehabilitation Services	129	3,735	73,310,375	377.46
6244	Child Day Care Services	952	8,965	135,867,504	291.45
LEISURE & HOSPITALITY		6,232	100,797	\$1,281,862,650	\$244.56
71	ARTS, ENTERTAINMENT & RECREATION	918	9,855	\$171,474,874	\$334.61
711	PERFORMING ARTS & SPECTATOR SPORTS	232	2,405	\$51,796,957	\$414.18
7111	Performing Arts Companies	38	436	6,921,833	305.30
7112	Spectator Sports	62	1,216	25,472,513	402.84
7113	Performing Arts & Sports Promoters	48	620	12,429,235	385.52
7114	Agents & Managers for Public Figures	21	25	1,195,086	919.30
7115	Independent Artists, Writers & Performers	63	109	5,778,290	1,019.46
712	MUSEUMS, PARKS & HISTORICAL SITES	51	262	\$5,201,940	\$381.82
713	GAMBLING, RECREATION & AMUSEMENT INDUSTRY	635	7,188	\$114,475,977	\$306.27
72	ACCOMMODATION & FOOD SERVICES	5,314	90,942	\$1,110,387,776	\$234.80
721	ACCOMMODATION	845	11,682	\$177,284,437	\$291.84
7211	Traveler Accommodation	765	11,169	169,108,628	291.17
7212	RV Parks & Recreational Camps	61	442	6,959,840	302.81
7213	Rooming & Boarding Houses	19	70	1,215,969	334.06
722	FOOD SERVICES & DRINKING PLACES	4,469	79,260	\$933,103,339	\$226.40
7221	Full -Service Restaurants	1,953	34,462	433,509,847	241.91
7222	Limited-Service Eating Places	2,223	41,472	453,571,610	210.32
7223	Special Food Services	148	2,299	33,924,962	283.78
7224	Drinking Places, Alcoholic Beverages	145	1,028	12,096,920	226.30

**TABLE 7. STATEWIDE SUMMARY
EMPLOYMENT AND TOTAL EARNINGS, BY INDUSTRY
CALENDAR YEAR 2008**

NORTH AMERICAN INDUSTRY CLASSIFICATION SYSTEM INDUSTRY GROUPS		AVERAGE EMPLOYING UNITS	AVERAGE COVERED EMPLOYMENT	TOTAL EARNINGS	AVERAGE WEEKLY EARNINGS
OTHER SERVICES		5,428	25,215	\$653,961,769	\$498.76
811	REPAIR & MAINTENANCE	2,176	9,429	\$293,788,309	\$599.19
8111	Automotive Repair & Maintenance	1,488	6,456	180,483,273	537.61
8112	Electronic Equipment Repair & Maintenance	159	678	25,598,241	726.07
8113	Commercial Machinery Repair & Maintenance	345	1,659	69,835,125	809.51
8114	Household Goods Repair & Maintenance	184	636	17,871,670	540.39
812	PERSONAL & LAUNDRY SERVICES	1,325	8,151	\$165,578,357	\$390.65
8121	Personal Care Services	577	2,728	44,665,205	314.86
8122	Death Care Services	240	1,635	44,173,272	519.56
8123	Drycleaning & Laundry Services	331	3,104	63,118,970	391.05
8129	Other Personal Services	177	685	13,620,910	382.40
813	MEMBERSHIP ASSOCIATIONS & ORGANIZATIONS	1,043	6,416	\$173,322,532	\$519.50
8131	Religious Organizations	46	249	6,122,097	472.82
8132	Grantmaking & Giving Services	104	497	19,971,058	772.75
8133	Social Advocacy Organizations	183	2,014	54,988,471	525.06
8134	Civic & Social Organizations	204	1,527	22,444,359	282.66
8139	Professional & Similar Organizations	506	2,128	69,796,547	630.75
814	PRIVATE HOUSEHOLDS	885	1,219	\$21,272,571	\$335.59
	LOCAL GOVERNMENT	1,984	113,240	\$3,626,195,054	\$615.81
	STATE GOVERNMENT	1,242	66,117	\$2,541,527,053	\$739.23
	NONCLASSIFIABLE ESTABLISHMENTS	0	0	\$0	

**TABLE 8. COUNTY SUMMARY
EMPLOYMENT AND TOTAL EARNINGS, BY INDUSTRY
CALENDAR YEAR 2008**

NORTH AMERICAN INDUSTRY CLASSIFICATION SYSTEM INDUSTRY GROUP	AVERAGE EMPLOYING UNITS	AVERAGE COVERED EMPLOYMENT	TOTAL EARNINGS	AVERAGE WEEKLY EARNINGS
ARKANSAS COUNTY - TOTAL	752	10,116	\$313,303,641	\$595.60
Natural Resources & Mining	45	228	8,423,697	710.50
Construction	47	326	11,961,916	705.63
Manufacturing	33	3,633	125,116,503	662.29
Trade, Transportation & Utilities	202	2,047	68,562,239	644.12
Wholesale Trade	43	403	20,912,773	997.94
Retail Trade	99	1,101	24,414,791	426.44
Transportation, Warehousing & Utilities	60	544	23,234,675	821.36
Information	11	105	3,789,498	694.05
Financial Activities	52	330	12,446,091	725.30
Professional & Business Services	62	414	17,194,565	798.71
Education & Health Services	136	1,276	27,785,830	418.76
Leisure & Hospitality	59	519	5,231,573	193.85
Other Services	60	143	3,230,895	434.49
Local Government	32	859	23,626,085	528.93
State Government	16	234	5,934,749	487.73
ASHLEY COUNTY - TOTAL	586	7,831	\$276,260,389	\$678.42
Natural Resources & Mining	63	394	12,065,918	588.93
Construction	49	586	19,170,001	629.10
Manufacturing	27	2,491	133,478,630	1030.47
Trade, Transportation & Utilities	137	1,224	31,601,106	496.50
Wholesale Trade	24	182	7,222,146	763.12
Retail Trade	85	801	15,277,569	366.79
Transportation, Warehousing & Utilities	28	241	9,101,391	726.25
Information	8	48	1,372,744	549.98
Financial Activities	40	251	7,946,718	608.85
Professional & Business Services	52	380	9,119,454	461.51
Education & Health Services	98	698	21,589,496	594.82
Leisure & Hospitality	28	422	4,289,048	195.45
Other Services	42	189	4,350,852	442.70
Local Government	32	911	26,186,079	552.78
State Government	12	238	5,090,343	411.31

**TABLE 8. COUNTY SUMMARY
EMPLOYMENT AND TOTAL EARNINGS, BY INDUSTRY
CALENDAR YEAR 2008**

NORTH AMERICAN INDUSTRY CLASSIFICATION SYSTEM INDUSTRY GROUP	AVERAGE EMPLOYING UNITS	AVERAGE COVERED EMPLOYMENT	TOTAL EARNINGS	AVERAGE WEEKLY EARNINGS
BAXTER COUNTY - TOTAL	1,339	14,699	\$430,135,699	\$562.75
Natural Resources & Mining	5	131	3,877,832	569.26
Construction	151	722	19,789,189	527.09
Manufacturing	66	2,479	90,407,044	701.33
Trade, Transportation & Utilities	290	2,683	65,948,588	472.70
Wholesale Trade	39	216	6,422,862	571.84
Retail Trade	218	2,255	52,539,388	448.06
Transportation, Warehousing & Utilities	34	212	6,986,338	633.74
Information	23	241	8,254,989	658.71
Financial Activities	126	709	25,614,056	694.75
Professional & Business Services	142	872	24,648,413	543.59
Education & Health Services	262	3,440	121,561,705	679.57
Leisure & Hospitality	121	1,514	18,103,356	229.95
Other Services	104	383	7,334,246	368.26
Local Government	37	1,194	35,427,444	570.60
State Government	13	332	9,168,837	531.10
BENTON COUNTY - TOTAL	5,549	94,690	\$4,029,265,934	\$818.31
Natural Resources & Mining	30	782	34,863,607	857.36
Construction	687	4,111	155,403,142	726.96
Manufacturing	244	13,081	469,485,775	690.21
Trade, Transportation & Utilities	1,509	23,074	929,912,319	775.03
Wholesale Trade	685	3,867	308,225,197	1532.82
Retail Trade	635	9,171	218,939,891	459.10
Transportation, Warehousing & Utilities	189	10,036	402,747,231	771.74
Information	74	869	36,632,255	810.66
Financial Activities	587	3,907	178,323,425	877.73
Professional & Business Services	1,016	22,961	1,507,473,227	1262.57
Education & Health Services	529	7,399	257,813,613	670.08
Leisure & Hospitality	441	8,606	116,843,468	261.10
Other Services	336	1,657	44,507,612	516.55
Local Government	78	7,259	267,723,658	709.26
State Government	19	984	30,283,833	591.85

**TABLE 8. COUNTY SUMMARY
EMPLOYMENT AND TOTAL EARNINGS, BY INDUSTRY
CALENDAR YEAR 2008**

NORTH AMERICAN INDUSTRY CLASSIFICATION SYSTEM INDUSTRY GROUP	AVERAGE EMPLOYING UNITS	AVERAGE COVERED EMPLOYMENT	TOTAL EARNINGS	AVERAGE WEEKLY EARNINGS
BOONE COUNTY - TOTAL	1,081	13,669	\$431,763,981	\$607.44
Construction	96	459	14,120,872	591.62
Manufacturing	73	1,849	65,855,782	684.94
Trade, Transportation & Utilities	261	4,442	155,070,678	671.35
Wholesale Trade	59	654	20,147,027	592.42
Retail Trade	149	1,889	42,046,491	428.05
Transportation, Warehousing & Utilities	54	1,899	92,877,160	940.55
Information	20	425	15,607,151	706.21
Financial Activities	98	639	21,806,408	656.27
Professional & Business Services	113	514	14,727,591	551.02
Education & Health Services	198	1,191	35,850,734	578.87
Leisure & Hospitality	78	1,112	13,068,649	226.01
Local Government	61	2,155	66,279,625	591.47
State Government	21	598	21,338,456	686.21
Other	63	285	8,038,035	542.38
BRADLEY COUNTY - TOTAL	400	3,845	\$99,639,145	\$498.35
Natural Resources & Mining	47	354	8,790,822	477.55
Construction	20	170	4,608,820	521.36
Manufacturing	10	863	26,395,800	588.19
Trade, Transportation & Utilities	82	473	10,384,980	422.22
Wholesale Trade	16	73	2,430,614	640.31
Retail Trade	44	346	6,171,744	343.03
Transportation, Warehousing & Utilities	23	54	1,782,622	634.84
Information	4	15	473,672	607.27
Financial Activities	27	161	4,760,940	568.67
Professional & Business Services	28	87	1,555,077	343.74
Education & Health Services	108	632	16,618,741	505.68
Leisure & Hospitality	17	155	1,593,586	197.72
Other Services	32	121	2,881,389	457.94
Local & State Government	26	812	21,575,318	510.97

**TABLE 8. COUNTY SUMMARY
EMPLOYMENT AND TOTAL EARNINGS, BY INDUSTRY
CALENDAR YEAR 2008**

NORTH AMERICAN INDUSTRY CLASSIFICATION SYSTEM INDUSTRY GROUP	AVERAGE EMPLOYING UNITS	AVERAGE COVERED EMPLOYMENT	TOTAL EARNINGS	AVERAGE WEEKLY EARNINGS
CALHOUN COUNTY - TOTAL	122	2,957	\$121,612,344	\$790.90
Natural Resources & Mining	18	197	6,753,459	659.26
Construction	12	56	1,402,364	481.58
Manufacturing	10	1,977	91,762,334	892.59
Trade, Transportation & Utilities	32	205	5,294,082	496.63
Retail Trade	20	80	1,104,128	265.42
Other Trade, Transportation & Utilities	12	126	4,189,954	639.49
Financial Activities	6	83	2,566,385	594.62
Education & Health Services	8	49	1,438,199	564.44
Leisure & Hospitality	6	23	160,532	134.22
Local & State Government	20	268	6,788,038	487.09
Other	11	101	5,446,951	1037.12
CARROLL COUNTY - TOTAL	844	10,050	\$248,754,852	\$475.99
Natural Resources & Mining	17	277	8,095,083	562.00
Construction	82	345	10,193,330	568.19
Trade, Transportation & Utilities	210	1,689	41,573,469	473.35
Wholesale Trade	28	155	3,581,562	444.36
Retail Trade	162	1,250	26,138,623	402.13
Transportation, Warehousing & Utilities	20	284	11,853,284	802.63
Information	14	101	3,121,432	594.33
Financial Activities	77	376	12,856,169	657.54
Professional & Business Services	66	224	5,866,041	503.61
Education & Health Services	92	898	27,089,581	580.13
Leisure & Hospitality	168	1,564	18,929,528	232.76
Local Government	25	1,016	28,340,618	536.43
State Government	11	106	3,166,148	574.41
Other	82	3,454	89,523,453	498.44

**TABLE 8. COUNTY SUMMARY
EMPLOYMENT AND TOTAL EARNINGS, BY INDUSTRY
CALENDAR YEAR 2008**

NORTH AMERICAN INDUSTRY CLASSIFICATION SYSTEM INDUSTRY GROUP	AVERAGE EMPLOYING UNITS	AVERAGE COVERED EMPLOYMENT	TOTAL EARNINGS	AVERAGE WEEKLY EARNINGS
CHICOT COUNTY - TOTAL	404	3,536	\$87,384,181	\$475.24
Natural Resources & Mining	48	257	7,421,068	555.30
Construction	14	123	3,902,309	610.12
Manufacturing	10	458	8,382,311	351.96
Trade, Transportation & Utilities	69	561	13,589,143	465.83
Wholesale Trade	14	102	4,217,857	795.22
Retail Trade	46	397	6,761,653	327.54
Transportation, Warehousing & Utilities	9	63	2,609,633	796.59
Information	6	10	224,860	432.42
Financial Activities	30	169	5,747,438	654.01
Professional & Business Services	29	83	2,867,653	664.42
Education & Health Services	131	644	15,218,740	454.45
Leisure & Hospitality	20	146	1,364,770	179.76
Other Services	18	43	898,087	401.65
Local Government	17	702	19,123,604	523.88
State Government	11	339	8,644,198	490.37
CLARK COUNTY - TOTAL	633	9,775	\$270,432,427	\$532.03
Natural Resources & Mining	34	214	6,910,436	621.00
Construction	33	106	2,570,023	466.26
Manufacturing	35	2,377	78,994,087	639.09
Trade, Transportation & Utilities	149	1,605	40,401,999	484.09
Wholesale Trade	21	90	3,493,639	746.50
Retail Trade	104	1,217	26,210,782	414.18
Transportation, Warehousing & Utilities	24	299	10,697,578	688.04
Information	9	47	1,462,198	598.28
Financial Activities	88	378	11,881,860	604.49
Professional & Business Services	50	317	14,822,940	899.23
Education & Health Services	89	1,332	36,338,014	524.63
Leisure & Hospitality	58	1,041	11,581,139	213.94
Other Services	46	206	4,596,780	429.12
Local Government	27	966	27,154,042	540.57
State Government	15	1,185	33,718,909	547.21

**TABLE 8. COUNTY SUMMARY
EMPLOYMENT AND TOTAL EARNINGS, BY INDUSTRY
CALENDAR YEAR 2008**

NORTH AMERICAN INDUSTRY CLASSIFICATION SYSTEM INDUSTRY GROUP	AVERAGE EMPLOYING UNITS	AVERAGE COVERED EMPLOYMENT	TOTAL EARNINGS	AVERAGE WEEKLY EARNINGS
CLAY COUNTY - TOTAL	419	4,018	\$99,854,720	\$477.92
Natural Resources & Mining	62	210	5,160,435	472.57
Construction	32	148	3,815,789	495.81
Manufacturing	17	684	18,988,506	533.86
Trade, Transportation & Utilities	97	939	25,093,711	513.92
Wholesale Trade	23	345	10,203,231	568.74
Retail Trade	49	428	8,427,524	378.66
Transportation, Warehousing & Utilities	26	166	6,462,956	748.72
Information	4	68	1,463,803	413.97
Financial Activities	34	129	3,751,063	559.19
Professional & Business Services	27	51	1,392,732	525.16
Education & Health Services	65	526	11,820,721	432.17
Leisure & Hospitality	21	203	1,792,647	169.82
Other Services	27	74	1,845,618	479.63
Local Government	22	910	22,802,207	481.87
State Government	12	77	1,927,488	481.39
CLEBURNE COUNTY - TOTAL	711	6,996	\$188,710,972	\$518.73
Natural Resources & Mining	21	178	7,354,447	794.56
Construction	86	598	21,585,637	694.16
Manufacturing	41	1,311	40,976,162	601.07
Trade, Transportation & Utilities	184	1,570	41,060,036	502.94
Wholesale Trade	44	201	7,556,993	723.02
Retail Trade	112	1,010	20,891,101	397.77
Transportation, Warehousing & Utilities	28	359	12,611,942	675.59
Information	7	56	1,411,758	484.81
Financial Activities	78	307	10,263,819	642.94
Professional & Business Services	57	225	5,906,712	504.85
Education & Health Services	88	832	21,776,320	503.34
Leisure & Hospitality	71	896	10,599,441	227.49
Other Services	50	157	3,037,052	372.01
Local Government	19	742	21,385,643	554.26
State Government	10	122	3,353,945	528.68

**TABLE 8. COUNTY SUMMARY
EMPLOYMENT AND TOTAL EARNINGS, BY INDUSTRY
CALENDAR YEAR 2008**

NORTH AMERICAN INDUSTRY CLASSIFICATION SYSTEM INDUSTRY GROUP	AVERAGE EMPLOYING UNITS	AVERAGE COVERED EMPLOYMENT	TOTAL EARNINGS	AVERAGE WEEKLY EARNINGS
CLEVELAND COUNTY - TOTAL	122	1,029	\$23,888,297	\$446.44
Natural Resources & Mining	16	159	4,392,135	531.22
Construction	9	29	541,938	359.38
Manufacturing	6	92	2,326,037	486.21
Trade, Transportation & Utilities	29	168	3,408,930	390.22
Retail Trade	15	72	858,085	229.19
Other Trade, Transportation & Utilities	15	96	2,550,845	510.99
Education & Health Services	30	118	1,994,558	325.06
Other Services	5	18	565,051	603.69
Local Government	11	311	7,758,610	479.76
State Government	8	63	1,574,819	480.71
Other	9	72	1,326,219	354.23
COLUMBIA COUNTY - TOTAL	739	9,210	\$304,761,732	\$636.35
Natural Resources & Mining	49	605	35,196,992	1118.79
Construction	43	349	12,912,891	711.53
Manufacturing	38	2,484	108,903,751	843.12
Trade, Transportation & Utilities	171	1,497	37,229,129	478.25
Wholesale Trade	27	232	7,932,343	657.52
Retail Trade	111	998	19,214,686	370.25
Transportation, Warehousing & Utilities	33	268	10,082,100	723.46
Information	9	68	1,950,689	551.67
Financial Activities	78	408	14,677,004	691.79
Professional & Business Services	64	344	9,503,024	531.25
Education & Health Services	150	950	20,405,302	413.06
Leisure & Hospitality	49	636	7,026,686	212.47
Other Services	49	225	4,157,985	355.38
Local Government	26	1,089	32,466,768	573.33
State Government	14	554	20,331,511	705.76

**TABLE 8. COUNTY SUMMARY
EMPLOYMENT AND TOTAL EARNINGS, BY INDUSTRY
CALENDAR YEAR 2008**

NORTH AMERICAN INDUSTRY CLASSIFICATION SYSTEM INDUSTRY GROUP	AVERAGE EMPLOYING UNITS	AVERAGE COVERED EMPLOYMENT	TOTAL EARNINGS	AVERAGE WEEKLY EARNINGS
CONWAY COUNTY - TOTAL	595	6,889	\$205,309,841	\$573.13
Natural Resources & Mining	24	234	10,888,070	894.81
Construction	56	518	21,677,002	804.76
Manufacturing	25	1,044	47,342,102	872.05
Trade, Transportation & Utilities	140	1,462	39,968,590	525.74
Wholesale Trade	25	210	8,035,384	735.84
Retail Trade	84	882	18,914,161	412.40
Transportation, Warehousing & Utilities	32	370	13,019,045	676.67
Information	6	13	669,971	991.08
Financial Activities	36	181	5,472,354	581.42
Professional & Business Services	43	536	9,885,882	354.69
Education & Health Services	154	924	23,820,861	495.77
Leisure & Hospitality	45	503	4,971,426	190.07
Other Services	28	163	6,131,052	723.34
Local Government	28	908	24,376,904	516.28
State Government	11	404	10,105,627	481.04
CRAIGHEAD COUNTY - TOTAL	2,652	41,881	\$1,332,710,851	\$611.95
Natural Resources & Mining	63	298	7,779,200	502.01
Construction	230	1,759	60,225,180	658.43
Manufacturing	136	6,941	251,243,433	696.10
Trade, Transportation & Utilities	727	8,696	242,655,288	536.62
Wholesale Trade	186	1,715	74,324,929	833.43
Retail Trade	425	5,784	122,269,164	406.52
Transportation, Warehousing & Utilities	117	1,197	46,061,195	740.01
Information	31	552	19,015,281	662.46
Financial Activities	261	1,630	66,687,985	786.79
Professional & Business Services	352	3,681	102,631,513	536.18
Education & Health Services	417	7,307	295,548,413	777.83
Leisure & Hospitality	203	4,050	53,622,446	254.62
Other Services	169	896	18,983,993	407.45
Local Government	38	3,552	115,298,710	624.24
State Government	25	2,520	99,019,409	755.64

**TABLE 8. COUNTY SUMMARY
EMPLOYMENT AND TOTAL EARNINGS, BY INDUSTRY
CALENDAR YEAR 2008**

NORTH AMERICAN INDUSTRY CLASSIFICATION SYSTEM INDUSTRY GROUP	AVERAGE EMPLOYING UNITS	AVERAGE COVERED EMPLOYMENT	TOTAL EARNINGS	AVERAGE WEEKLY EARNINGS
CRAWFORD COUNTY - TOTAL	1,289	19,926	\$582,365,557	\$562.05
Natural Resources & Mining	27	438	18,386,772	807.29
Construction	189	1,338	47,441,736	681.87
Manufacturing	78	3,731	111,079,874	572.54
Trade, Transportation & Utilities	313	6,778	204,159,876	579.25
Wholesale Trade	81	746	30,100,566	775.95
Retail Trade	158	1,987	41,163,971	398.40
Transportation, Warehousing & Utilities	73	4,044	132,895,339	631.97
Information	12	175	5,974,129	656.50
Financial Activities	138	567	18,528,060	628.41
Professional & Business Services	164	1,301	33,758,881	499.01
Education & Health Services	151	1,457	43,619,451	575.73
Leisure & Hospitality	87	1,555	18,231,523	225.47
Other Services	79	378	10,135,539	515.65
Local Government	41	2,038	65,131,494	614.59
State Government	11	170	5,918,222	669.48
CRITTENDEN COUNTY - TOTAL	1,291	16,792	\$520,778,628	\$596.41
Natural Resources & Mining	41	256	7,642,231	574.09
Construction	71	524	19,421,564	712.77
Manufacturing	46	2,163	85,461,390	759.82
Trade, Transportation & Utilities	341	4,863	158,912,995	628.42
Wholesale Trade	80	803	38,131,214	913.19
Retail Trade	173	2,119	43,306,028	393.02
Transportation, Warehousing & Utilities	88	1,941	77,475,753	767.60
Information	7	70	2,666,935	732.67
Financial Activities	109	595	20,510,650	662.92
Professional & Business Services	133	853	23,779,011	536.09
Education & Health Services	285	2,182	68,748,463	605.91
Leisure & Hospitality	105	1,915	27,142,797	272.57
Other Services	94	590	13,514,264	440.49
Local Government	46	2,285	78,526,742	660.89
State Government	15	495	14,451,586	561.44

**TABLE 8. COUNTY SUMMARY
EMPLOYMENT AND TOTAL EARNINGS, BY INDUSTRY
CALENDAR YEAR 2008**

NORTH AMERICAN INDUSTRY CLASSIFICATION SYSTEM INDUSTRY GROUP	AVERAGE EMPLOYING UNITS	AVERAGE COVERED EMPLOYMENT	TOTAL EARNINGS	AVERAGE WEEKLY EARNINGS
CROSS COUNTY - TOTAL	557	4,940	\$135,687,929	\$528.22
Natural Resources & Mining	37	213	4,574,319	412.99
Construction	33	164	4,362,187	511.51
Manufacturing	15	674	21,081,828	601.51
Trade, Transportation & Utilities	144	1,250	36,963,874	568.67
Wholesale Trade	29	287	10,984,217	736.01
Retail Trade	79	724	16,277,598	432.36
Transportation, Warehousing & Utilities	37	239	9,702,059	780.66
Information	4	42	1,155,175	528.93
Financial Activities	46	337	10,426,414	594.98
Professional & Business Services	47	157	4,656,444	570.36
Education & Health Services	127	724	18,343,058	487.23
Leisure & Hospitality	34	377	3,906,332	199.26
Other Services	42	77	1,505,398	375.97
Local Government	17	701	21,506,540	590.00
State Government	11	224	7,206,360	618.68
DALLAS COUNTY - TOTAL	277	3,323	\$90,210,832	\$522.07
Natural Resources & Mining	40	199	5,573,146	538.57
Construction	15	62	2,114,485	655.86
Manufacturing	17	924	32,599,353	678.47
Trade, Transportation & Utilities	63	461	11,408,379	475.90
Wholesale Trade	7	25	757,455	582.66
Retail Trade	42	345	7,695,064	428.93
Transportation, Warehousing & Utilities	15	91	2,955,860	624.65
Information	3	22	650,890	568.96
Financial Activities	20	105	3,013,341	551.89
Professional & Business Services	16	42	1,535,332	702.99
Education & Health Services	49	813	18,891,123	446.85
Leisure & Hospitality	15	130	1,201,658	177.76
Other Services	15	60	1,103,632	353.73
Local Government	16	433	10,234,060	454.52
State Government	9	73	1,885,433	496.69

**TABLE 8. COUNTY SUMMARY
EMPLOYMENT AND TOTAL EARNINGS, BY INDUSTRY
CALENDAR YEAR 2008**

NORTH AMERICAN INDUSTRY CLASSIFICATION SYSTEM INDUSTRY GROUP	AVERAGE EMPLOYING UNITS	AVERAGE COVERED EMPLOYMENT	TOTAL EARNINGS	AVERAGE WEEKLY EARNINGS
DESHA COUNTY - TOTAL	492	4,611	\$135,481,864	\$565.04
Natural Resources & Mining	50	256	7,067,047	530.88
Construction	20	122	3,931,962	619.79
Manufacturing	19	1,009	43,693,414	832.76
Trade, Transportation & Utilities	125	902	23,774,750	506.88
Wholesale Trade	19	165	7,369,241	858.89
Retail Trade	78	566	10,775,682	366.12
Transportation, Warehousing & Utilities	28	171	5,629,827	633.13
Information	6	24	854,293	684.53
Financial Activities	45	205	6,052,073	567.74
Professional & Business Services	36	101	2,729,878	519.78
Education & Health Services	102	639	14,547,688	437.81
Leisure & Hospitality	35	281	2,625,898	179.71
Other Services	24	68	1,288,425	364.37
Local Government	19	825	23,943,435	558.12
State Government	11	178	4,973,001	537.27
DREW COUNTY - TOTAL	539	6,669	\$169,758,949	\$489.52
Natural Resources & Mining	44	314	9,924,223	607.80
Construction	23	107	2,492,677	448.00
Manufacturing	22	792	20,351,219	494.15
Trade, Transportation & Utilities	129	1,215	30,433,187	481.69
Wholesale Trade	20	195	6,891,376	679.62
Retail Trade	89	921	19,358,582	404.21
Transportation, Warehousing & Utilities	20	100	4,183,229	804.47
Information	6	73	1,949,577	513.59
Financial Activities	49	241	8,913,932	711.29
Professional & Business Services	49	311	9,286,322	574.22
Education & Health Services	112	925	21,216,911	441.10
Leisure & Hospitality	43	644	5,814,922	173.64
Other Services	22	73	1,429,666	376.62
Local Government	23	1,201	34,315,495	549.47
State Government	17	774	23,630,818	587.13

**TABLE 8. COUNTY SUMMARY
EMPLOYMENT AND TOTAL EARNINGS, BY INDUSTRY
CALENDAR YEAR 2008**

NORTH AMERICAN INDUSTRY CLASSIFICATION SYSTEM INDUSTRY GROUP	AVERAGE EMPLOYING UNITS	AVERAGE COVERED EMPLOYMENT	TOTAL EARNINGS	AVERAGE WEEKLY EARNINGS
FAULKNER COUNTY - TOTAL	2,692	38,999	\$1,344,424,882	\$662.95
Natural Resources & Mining	39	822	65,179,708	1524.89
Construction	376	2,960	110,682,667	719.09
Manufacturing	123	4,586	191,709,772	803.91
Trade, Transportation & Utilities	632	6,936	191,875,262	531.99
Wholesale Trade	167	870	38,133,870	842.92
Retail Trade	378	5,075	109,450,255	414.74
Transportation, Warehousing & Utilities	87	992	44,291,137	858.62
Information	33	366	14,866,979	781.16
Financial Activities	320	1,522	57,409,009	725.37
Professional & Business Services	369	4,919	246,903,437	965.27
Education & Health Services	394	5,571	175,405,329	605.49
Leisure & Hospitality	201	4,189	46,270,269	212.42
Other Services	148	656	17,849,060	523.25
Local Government	39	3,145	112,590,848	688.46
State Government	19	3,327	113,682,542	657.11
FRANKLIN COUNTY - TOTAL	328	4,233	\$128,129,477	\$582.10
Natural Resources & Mining	12	176	8,856,693	967.73
Construction	31	237	8,076,942	655.38
Manufacturing	22	939	32,874,629	673.27
Trade, Transportation & Utilities	86	827	25,443,715	591.66
Wholesale Trade	17	47	1,173,086	479.99
Retail Trade	49	486	9,715,947	384.46
Transportation, Warehousing & Utilities	20	294	14,554,682	952.03
Information	6	51	1,047,190	394.87
Financial Activities	29	238	6,897,916	557.36
Professional & Business Services	23	78	2,183,823	538.42
Education & Health Services	47	472	10,964,111	446.71
Leisure & Hospitality	25	289	3,061,754	203.74
Other Services	18	50	1,224,135	470.82
Local Government	19	752	22,827,602	583.77
State Government	10	126	4,670,967	712.91

**TABLE 8. COUNTY SUMMARY
EMPLOYMENT AND TOTAL EARNINGS, BY INDUSTRY
CALENDAR YEAR 2008**

NORTH AMERICAN INDUSTRY CLASSIFICATION SYSTEM INDUSTRY GROUP	AVERAGE EMPLOYING UNITS	AVERAGE COVERED EMPLOYMENT	TOTAL EARNINGS	AVERAGE WEEKLY EARNINGS
FULTON COUNTY - TOTAL	239	1,958	\$44,530,258	\$437.36
Construction	15	30	795,730	510.08
Manufacturing	12	121	2,150,889	341.85
Trade, Transportation & Utilities	63	380	10,355,241	524.05
Wholesale Trade	14	66	1,713,410	499.25
Retail Trade	40	186	2,938,409	303.81
Transportation, Warehousing & Utilities	9	128	5,703,422	856.88
Financial Activities	14	98	2,815,892	552.57
Professional & Business Services	14	62	1,488,160	461.59
Education & Health Services	64	409	8,290,419	389.81
Leisure & Hospitality	18	170	1,684,899	190.60
Local Government	13	505	13,019,554	495.79
State Government	11	112	2,747,006	471.67
Other	14	71	1,182,468	320.28
GARLAND COUNTY - TOTAL	3,322	36,522	\$1,045,045,111	\$550.27
Natural Resources & Mining	45	374	14,973,482	769.92
Construction	438	2,199	63,103,932	551.86
Manufacturing	119	2,522	88,019,781	671.17
Trade, Transportation & Utilities	733	7,355	190,686,362	498.58
Wholesale Trade	162	1,024	38,665,759	726.14
Retail Trade	507	5,741	127,814,339	428.14
Transportation, Warehousing & Utilities	64	590	24,206,264	788.99
Information	40	387	14,227,594	707.00
Financial Activities	374	1,514	53,286,019	676.84
Professional & Business Services	427	3,477	96,935,904	536.14
Education & Health Services	479	7,127	270,152,995	728.95
Leisure & Hospitality	371	6,518	91,828,138	270.93
Other Services	235	971	21,301,955	421.89
Local Government	34	2,968	104,757,502	678.76
State Government	28	1,110	35,771,447	619.74

**TABLE 8. COUNTY SUMMARY
EMPLOYMENT AND TOTAL EARNINGS, BY INDUSTRY
CALENDAR YEAR 2008**

NORTH AMERICAN INDUSTRY CLASSIFICATION SYSTEM INDUSTRY GROUP	AVERAGE EMPLOYING UNITS	AVERAGE COVERED EMPLOYMENT	TOTAL EARNINGS	AVERAGE WEEKLY EARNINGS
GRANT COUNTY - TOTAL	313	3,843	\$104,225,874	\$521.56
Natural Resources & Mining	23	162	7,360,525	873.76
Construction	31	210	7,124,246	652.40
Manufacturing	16	939	26,958,426	552.11
Trade, Transportation & Utilities	87	628	16,415,444	502.68
Wholesale Trade	20	141	5,846,655	797.42
Retail Trade	42	427	8,734,644	393.38
Transportation, Warehousing & Utilities	26	60	1,834,145	587.87
Information	4	28	1,036,644	711.98
Financial Activities	26	105	3,277,412	600.26
Professional & Business Services	26	97	3,593,256	712.38
Education & Health Services	45	456	9,423,948	397.43
Leisure & Hospitality	20	253	2,844,973	216.25
Other Services	17	50	832,375	320.14
Local Government	10	854	23,649,666	532.55
State Government	9	59	1,708,959	557.03
GREENE COUNTY - TOTAL	927	14,937	\$428,226,819	\$551.32
Natural Resources & Mining	37	205	5,744,192	538.85
Construction	84	378	11,428,478	581.42
Manufacturing	63	5,183	187,274,921	694.86
Trade, Transportation & Utilities	242	2,308	56,493,223	470.71
Wholesale Trade	56	427	14,793,559	666.26
Retail Trade	157	1,675	34,241,092	393.12
Transportation, Warehousing & Utilities	29	206	7,458,572	696.28
Information	12	107	2,174,618	390.84
Financial Activities	91	500	15,380,033	591.54
Professional & Business Services	93	1,435	30,216,041	404.93
Education & Health Services	147	1,766	47,923,897	521.86
Leisure & Hospitality	68	1,109	11,919,876	206.70
Other Services	51	182	3,861,718	408.04
Local Government	31	1,497	47,214,101	606.52
State Government	11	270	8,595,721	612.23

**TABLE 8. COUNTY SUMMARY
EMPLOYMENT AND TOTAL EARNINGS, BY INDUSTRY
CALENDAR YEAR 2008**

NORTH AMERICAN INDUSTRY CLASSIFICATION SYSTEM INDUSTRY GROUP	AVERAGE EMPLOYING UNITS	AVERAGE COVERED EMPLOYMENT	TOTAL EARNINGS	AVERAGE WEEKLY EARNINGS
HEMPSTEAD COUNTY - TOTAL	499	7,888	\$223,819,031	\$545.67
Natural Resources & Mining	17	220	6,732,919	588.54
Construction	31	325	13,089,319	774.52
Manufacturing	28	2,117	68,635,345	623.48
Trade, Transportation & Utilities	133	1,356	35,205,959	499.29
Wholesale Trade	28	261	7,869,008	579.80
Retail Trade	86	905	17,897,264	380.31
Transportation, Warehousing & Utilities	20	190	9,439,687	955.43
Information	9	57	2,069,032	698.05
Financial Activities	43	242	8,239,528	654.76
Professional & Business Services	40	243	5,341,353	422.71
Education & Health Services	71	957	24,419,406	490.70
Leisure & Hospitality	44	630	6,617,022	201.98
Other Services	38	200	5,614,897	539.89
Local Government	29	984	30,055,222	587.38
State Government	17	556	17,799,029	615.63
HOT SPRING COUNTY - TOTAL	606	7,495	\$226,522,697	\$581.21
Natural Resources & Mining	30	203	5,400,668	511.62
Construction	69	333	10,204,194	589.29
Manufacturing	34	1,385	61,293,900	851.07
Trade, Transportation & Utilities	158	1,436	43,891,029	587.78
Wholesale Trade	21	92	6,006,657	1255.57
Retail Trade	97	949	20,148,355	408.29
Transportation, Warehousing & Utilities	40	395	17,736,017	863.49
Information	8	59	1,939,551	632.19
Financial Activities	61	314	10,045,994	615.26
Professional & Business Services	49	214	5,517,731	495.84
Education & Health Services	80	1,122	31,062,442	532.40
Leisure & Hospitality	41	525	5,614,195	205.65
Other Services	36	176	3,241,842	354.22
Local Government	26	1,084	30,244,545	536.56
State Government	14	645	18,066,606	538.66

**TABLE 8. COUNTY SUMMARY
EMPLOYMENT AND TOTAL EARNINGS, BY INDUSTRY
CALENDAR YEAR 2008**

NORTH AMERICAN INDUSTRY CLASSIFICATION SYSTEM INDUSTRY GROUP	AVERAGE EMPLOYING UNITS	AVERAGE COVERED EMPLOYMENT	TOTAL EARNINGS	AVERAGE WEEKLY EARNINGS
HOWARD COUNTY - TOTAL	364	7,483	\$204,021,584	\$524.32
Natural Resources & Mining	24	244	7,717,663	608.26
Construction	21	128	4,704,102	706.75
Manufacturing	23	4,041	115,632,494	550.29
Trade, Transportation & Utilities	104	963	25,002,063	499.28
Wholesale Trade	18	87	3,680,288	813.50
Retail Trade	62	623	12,127,325	374.35
Transportation, Warehousing & Utilities	24	253	9,194,450	698.88
Information	5	37	955,690	496.72
Financial Activities	40	168	4,346,868	497.58
Professional & Business Services	27	125	3,438,798	529.05
Education & Health Services	50	558	13,720,456	472.86
Leisure & Hospitality	20	311	3,161,292	195.48
Other Services	22	117	2,564,473	421.51
Local Government	18	646	18,685,037	556.23
State Government	12	145	4,092,648	542.79
INDEPENDENCE COUNTY - TOTAL	946	15,315	\$458,536,437	\$575.78
Natural Resources & Mining	14	123	4,377,839	684.47
Construction	70	476	13,325,202	538.35
Manufacturing	55	3,927	138,901,649	680.21
Trade, Transportation & Utilities	254	2,993	89,035,158	572.07
Wholesale Trade	49	545	18,569,550	655.24
Retail Trade	156	1,643	33,557,656	392.78
Transportation, Warehousing & Utilities	49	805	36,907,952	881.70
Information	9	139	4,290,140	593.54
Financial Activities	88	502	16,129,656	617.90
Professional & Business Services	96	809	17,476,013	415.42
Education & Health Services	165	2,944	102,006,047	666.32
Leisure & Hospitality	66	1,026	11,168,134	209.33
Other Services	67	391	7,217,213	354.97
Local Government	47	1,501	39,054,302	500.36
State Government	17	485	15,555,084	616.78

**TABLE 8. COUNTY SUMMARY
EMPLOYMENT AND TOTAL EARNINGS, BY INDUSTRY
CALENDAR YEAR 2008**

NORTH AMERICAN INDUSTRY CLASSIFICATION SYSTEM INDUSTRY GROUP	AVERAGE EMPLOYING UNITS	AVERAGE COVERED EMPLOYMENT	TOTAL EARNINGS	AVERAGE WEEKLY EARNINGS
IZARD COUNTY - TOTAL	287	3,103	\$75,160,717	\$465.81
Natural Resources & Mining	4	87	3,264,868	721.68
Construction	27	83	2,120,230	491.25
Trade, Transportation & Utilities	69	525	11,167,387	409.06
Retail Trade	49	406	7,596,679	359.83
Other Trade, Transportation & Utilities	20	119	3,570,708	577.04
Financial Activities	30	152	4,516,440	571.41
Professional & Business Services	21	81	1,837,852	436.34
Education & Health Services	64	611	12,763,660	401.73
Leisure & Hospitality	18	196	1,598,047	156.79
Other Services	11	55	1,558,853	545.05
Local Government	18	509	13,747,963	519.42
State Government	11	466	13,097,685	540.51
Other	14	338	9,487,732	539.81
JACKSON COUNTY - TOTAL	515	5,656	\$164,300,441	\$558.63
Natural Resources & Mining	49	219	5,545,233	486.94
Construction	24	123	4,176,400	652.97
Manufacturing	26	1,223	43,150,632	678.51
Trade, Transportation & Utilities	117	1,114	30,332,408	523.62
Wholesale Trade	27	212	8,643,239	784.04
Retail Trade	72	667	14,220,995	410.02
Transportation, Warehousing & Utilities	19	235	7,468,174	611.14
Information	5	38	1,092,349	552.81
Financial Activities	40	167	5,468,396	629.71
Professional & Business Services	37	134	3,916,084	562.01
Education & Health Services	113	855	25,644,983	576.81
Leisure & Hospitality	31	291	3,361,237	222.13
Other Services	29	93	1,948,986	403.02
Local Government	32	678	17,186,234	487.47
State Government	14	723	22,477,499	597.87

**TABLE 8. COUNTY SUMMARY
EMPLOYMENT AND TOTAL EARNINGS, BY INDUSTRY
CALENDAR YEAR 2008**

NORTH AMERICAN INDUSTRY CLASSIFICATION SYSTEM INDUSTRY GROUP	AVERAGE EMPLOYING UNITS	AVERAGE COVERED EMPLOYMENT	TOTAL EARNINGS	AVERAGE WEEKLY EARNINGS
JEFFERSON COUNTY - TOTAL	2,029	30,619	\$1,013,868,588	\$636.78
Natural Resources & Mining	46	477	19,529,669	787.36
Construction	124	1,404	69,293,415	949.12
Manufacturing	71	5,787	239,602,001	796.22
Trade, Transportation & Utilities	442	5,496	164,310,122	574.93
Wholesale Trade	82	1,063	39,808,282	720.17
Retail Trade	297	3,591	79,999,468	428.42
Transportation, Warehousing & Utilities	64	842	44,502,372	1016.41
Information	13	157	5,299,706	649.16
Financial Activities	160	1,182	46,577,042	757.79
Professional & Business Services	181	1,655	55,326,621	642.88
Education & Health Services	622	5,173	162,492,005	604.07
Leisure & Hospitality	146	2,134	23,733,370	213.88
Other Services	138	666	16,675,402	481.50
Local Government	44	3,231	100,675,300	599.21
State Government	42	3,259	110,353,935	651.18
JOHNSON COUNTY - TOTAL	477	8,798	\$241,163,031	\$527.14
Natural Resources & Mining	18	258	9,141,678	681.40
Construction	26	148	4,514,649	586.62
Manufacturing	45	3,050	82,056,546	517.38
Trade, Transportation & Utilities	118	2,118	59,128,251	536.87
Retail Trade	79	912	18,252,521	384.88
Other Trade, Transportation & Utilities	39	1,206	40,875,730	651.80
Information	5	34	840,595	475.45
Financial Activities	47	219	6,765,386	594.08
Professional & Business Services	49	165	5,076,193	591.63
Education & Health Services	83	1,142	33,113,231	557.61
Leisure & Hospitality	36	514	5,478,830	204.98
Other Services	26	66	1,525,248	444.42
Local Government	14	918	28,302,827	592.90
State Government	10	167	5,219,597	601.06

**TABLE 8. COUNTY SUMMARY
EMPLOYMENT AND TOTAL EARNINGS, BY INDUSTRY
CALENDAR YEAR 2008**

NORTH AMERICAN INDUSTRY CLASSIFICATION SYSTEM INDUSTRY GROUP	AVERAGE EMPLOYING UNITS	AVERAGE COVERED EMPLOYMENT	TOTAL EARNINGS	AVERAGE WEEKLY EARNINGS
LAFAYETTE COUNTY - TOTAL	180	1,391	\$35,838,468	\$495.47
Natural Resources & Mining	39	175	5,819,306	639.48
Construction	9	56	2,458,828	844.38
Manufacturing	6	43	1,554,207	695.08
Trade, Transportation & Utilities	32	196	5,083,337	498.76
Wholesale Trade	6	43	1,443,264	645.47
Retail Trade	20	127	2,330,023	352.82
Transportation, Warehousing & Utilities	7	26	1,310,050	968.97
Financial Activities	18	61	1,594,746	502.76
Professional & Business Services	10	90	2,600,733	555.71
Education & Health Services	31	249	4,517,107	348.87
Leisure & Hospitality	7	52	664,235	245.65
Local Government	13	321	8,096,402	485.05
State Government	8	56	1,482,499	509.10
Other	7	93	1,967,068	406.76
LAWRENCE COUNTY - TOTAL	439	4,002	\$101,067,297	\$485.66
Natural Resources & Mining	38	178	5,360,970	579.19
Construction	25	69	1,714,471	477.83
Manufacturing	23	504	13,420,242	512.07
Trade, Transportation & Utilities	127	858	22,106,200	495.48
Wholesale Trade	21	181	5,824,237	618.81
Retail Trade	67	527	10,530,589	384.27
Transportation, Warehousing & Utilities	39	149	5,751,374	742.30
Financial Activities	36	158	4,193,044	510.35
Professional & Business Services	24	108	3,571,052	635.87
Education & Health Services	80	470	12,669,986	518.41
Leisure & Hospitality	24	340	2,851,385	161.28
Local Government	28	1,132	30,592,939	519.72
State Government	11	120	3,076,443	493.02
Other	23	67	1,510,565	433.57

**TABLE 8. COUNTY SUMMARY
EMPLOYMENT AND TOTAL EARNINGS, BY INDUSTRY
CALENDAR YEAR 2008**

NORTH AMERICAN INDUSTRY CLASSIFICATION SYSTEM INDUSTRY GROUP	AVERAGE EMPLOYING UNITS	AVERAGE COVERED EMPLOYMENT	TOTAL EARNINGS	AVERAGE WEEKLY EARNINGS
LEE COUNTY - TOTAL	289	2,098	\$55,815,519	\$511.62
Natural Resources & Mining	34	209	5,068,507	466.37
Construction	10	36	1,128,646	602.91
Trade, Transportation & Utilities	52	369	9,123,521	475.48
Wholesale Trade	8	67	2,453,584	704.24
Retail Trade	27	202	3,523,999	335.49
Transportation, Warehousing & Utilities	17	101	3,145,938	599.00
Financial Activities	17	80	2,623,476	630.64
Professional & Business Services	15	67	3,069,421	881.00
Education & Health Services	107	377	8,906,732	454.33
Leisure & Hospitality	8	84	776,315	177.73
Local Government	15	327	9,301,713	547.03
State Government	8	500	14,788,688	568.80
Other	23	50	1,028,500	395.58
LINCOLN COUNTY - TOTAL	261	2,924	\$80,400,892	\$528.79
Natural Resources & Mining	34	170	5,367,243	607.15
Construction	13	75	1,889,659	484.53
Manufacturing	10	367	11,269,002	590.49
Trade, Transportation & Utilities	50	358	10,482,607	563.10
Wholesale Trade	7	28	1,146,264	787.27
Retail Trade	26	193	2,989,462	297.87
Transportation, Warehousing & Utilities	17	137	6,346,881	890.92
Financial Activities	22	76	2,392,284	605.34
Professional & Business Services	12	25	732,105	563.16
Education & Health Services	70	371	7,749,543	401.70
Leisure & Hospitality	17	162	1,441,805	171.15
Local & State Government	21	1,289	38,323,304	571.75
Other	13	33	753,340	439.01

**TABLE 8. COUNTY SUMMARY
EMPLOYMENT AND TOTAL EARNINGS, BY INDUSTRY
CALENDAR YEAR 2008**

NORTH AMERICAN INDUSTRY CLASSIFICATION SYSTEM INDUSTRY GROUP	AVERAGE EMPLOYING UNITS	AVERAGE COVERED EMPLOYMENT	TOTAL EARNINGS	AVERAGE WEEKLY EARNINGS
LITTLE RIVER COUNTY - TOTAL	261	4,457	\$192,824,618	\$831.99
Natural Resources & Mining	11	73	2,157,763	568.43
Construction	25	735	38,670,978	1011.80
Manufacturing	17	1,378	96,557,944	1347.52
Trade, Transportation & Utilities	61	664	15,732,555	455.65
Retail Trade	37	400	7,661,612	368.35
Other Trade, Transportation & Utilities	24	264	8,070,943	587.92
Financial Activities	23	97	2,451,139	485.95
Professional & Business Services	23	142	3,583,968	485.37
Education & Health Services	33	172	4,139,883	462.87
Leisure & Hospitality	18	209	2,233,006	205.47
Local Government	20	792	23,065,020	560.05
State Government	12	95	2,489,664	503.98
Other	17	99	1,742,698	338.52
LOGAN COUNTY - TOTAL	505	5,766	\$153,115,878	\$510.67
Natural Resources & Mining	22	162	7,611,264	903.52
Construction	53	192	5,636,334	564.54
Manufacturing	30	1,465	45,470,061	596.88
Trade, Transportation & Utilities	117	873	20,158,059	444.05
Wholesale Trade	16	33	854,110	497.73
Retail Trade	76	744	15,257,394	394.37
Transportation, Warehousing & Utilities	26	96	4,046,555	810.61
Information	7	42	1,316,328	602.71
Financial Activities	45	276	10,047,939	700.11
Professional & Business Services	44	126	2,852,298	435.33
Education & Health Services	94	783	19,698,229	483.80
Leisure & Hospitality	30	339	3,194,486	181.22
Other Services	27	84	1,944,977	445.28
Local & State Government	37	1,426	35,185,903	474.51

**TABLE 8. COUNTY SUMMARY
EMPLOYMENT AND TOTAL EARNINGS, BY INDUSTRY
CALENDAR YEAR 2008**

NORTH AMERICAN INDUSTRY CLASSIFICATION SYSTEM INDUSTRY GROUP	AVERAGE EMPLOYING UNITS	AVERAGE COVERED EMPLOYMENT	TOTAL EARNINGS	AVERAGE WEEKLY EARNINGS
LONOKE COUNTY - TOTAL	1,340	12,633	\$351,256,731	\$534.71
Natural Resources & Mining	75	462	16,487,608	686.30
Construction	175	967	34,545,510	687.01
Manufacturing	40	1,300	51,002,186	754.47
Trade, Transportation & Utilities	356	2,810	73,243,571	501.26
Wholesale Trade	85	495	19,818,934	769.97
Retail Trade	196	2,022	42,916,888	408.17
Transportation, Warehousing & Utilities	76	293	10,507,749	689.67
Information	16	89	3,907,741	844.37
Financial Activities	140	530	19,924,171	722.94
Professional & Business Services	145	583	16,865,024	556.31
Education & Health Services	171	1,470	38,822,649	507.88
Leisure & Hospitality	105	1,527	16,299,585	205.27
Other Services	74	215	4,873,356	435.90
Local Government	28	2,522	70,879,689	540.47
State Government	16	156	4,405,641	543.10
MADISON COUNTY - TOTAL	263	3,174	\$82,256,870	\$498.38
Natural Resources & Mining	12	47	1,263,854	517.13
Construction	43	87	2,236,518	494.37
Manufacturing	22	1,155	31,607,286	526.26
Trade, Transportation & Utilities	60	603	14,934,935	476.30
Wholesale Trade	10	29	1,250,517	829.26
Retail Trade	37	423	8,488,418	385.91
Transportation, Warehousing & Utilities	12	151	5,196,000	661.74
Financial Activities	17	76	2,324,273	588.13
Professional & Business Services	20	121	2,685,619	426.83
Education & Health Services	42	249	5,202,378	401.79
Leisure & Hospitality	13	123	1,022,885	159.93
Local Government	9	586	16,858,866	553.26
State Government	8	57	1,640,852	553.59
Other	19	69	2,479,404	691.03

**TABLE 8. COUNTY SUMMARY
EMPLOYMENT AND TOTAL EARNINGS, BY INDUSTRY
CALENDAR YEAR 2008**

NORTH AMERICAN INDUSTRY CLASSIFICATION SYSTEM INDUSTRY GROUP	AVERAGE EMPLOYING UNITS	AVERAGE COVERED EMPLOYMENT	TOTAL EARNINGS	AVERAGE WEEKLY EARNINGS
MARION COUNTY - TOTAL	318	4,048	\$99,298,042	\$471.73
Natural Resources & Mining	7	48	1,047,593	419.71
Construction	27	82	1,757,759	412.23
Manufacturing	22	1,647	43,428,743	507.08
Trade, Transportation & Utilities	57	635	13,412,188	406.18
Wholesale Trade	9	32	1,350,517	811.61
Retail Trade	37	472	8,604,645	350.58
Transportation, Warehousing & Utilities	11	131	3,457,026	507.49
Financial Activities	36	194	5,652,790	560.35
Professional & Business Services	28	53	1,677,539	608.69
Education & Health Services	57	363	8,140,774	431.28
Leisure & Hospitality	39	238	2,607,887	210.72
Local Government	20	540	14,331,601	510.38
State Government	8	108	2,811,675	500.65
Other	18	139	4,429,493	612.82
MILLER COUNTY - TOTAL	852	12,966	\$416,682,660	\$618.01
Natural Resources & Mining	26	133	3,933,219	568.71
Construction	91	788	24,063,705	587.26
Manufacturing	33	2,345	122,578,234	1005.23
Trade, Transportation & Utilities	229	3,466	108,119,187	599.89
Wholesale Trade	55	533	25,954,395	936.44
Retail Trade	134	1,388	28,944,828	401.03
Transportation, Warehousing & Utilities	41	1,545	53,219,964	662.43
Information	9	93	5,877,018	1215.26
Financial Activities	81	338	11,634,789	661.97
Professional & Business Services	85	947	21,323,317	433.01
Education & Health Services	115	1,078	28,136,324	501.93
Leisure & Hospitality	82	1,298	16,492,532	244.35
Other Services	57	350	6,487,756	356.47
Local Government	26	1,622	50,372,994	597.23
State Government	17	510	17,663,585	666.05

**TABLE 8. COUNTY SUMMARY
EMPLOYMENT AND TOTAL EARNINGS, BY INDUSTRY
CALENDAR YEAR 2008**

NORTH AMERICAN INDUSTRY CLASSIFICATION SYSTEM INDUSTRY GROUP	AVERAGE EMPLOYING UNITS	AVERAGE COVERED EMPLOYMENT	TOTAL EARNINGS	AVERAGE WEEKLY EARNINGS
MISSISSIPPI COUNTY - TOTAL	1,230	19,744	\$724,497,789	\$705.67
Natural Resources & Mining	96	655	18,278,237	536.65
Construction	68	774	36,404,711	904.51
Manufacturing	58	6,084	340,251,163	1075.49
Trade, Transportation & Utilities	298	2,944	84,435,441	551.55
Wholesale Trade	67	500	21,161,219	813.89
Retail Trade	180	1,847	36,714,463	382.27
Transportation, Warehousing & Utilities	52	598	26,559,759	854.12
Financial Activities	105	595	18,294,018	591.27
Professional & Business Services	104	1,316	41,838,434	611.39
Education & Health Services	264	1,673	43,284,458	497.55
Leisure & Hospitality	86	1,192	12,441,791	200.73
Local Government	46	2,288	65,848,878	553.46
State Government	24	646	18,691,919	556.44
Other	81	1,578	44,728,739	545.10
MONROE COUNTY - TOTAL	323	2,387	\$55,644,166	\$448.29
Natural Resources & Mining	35	143	3,498,093	470.43
Construction	12	38	835,957	423.06
Manufacturing	7	111	3,196,426	553.78
Trade, Transportation & Utilities	87	703	18,930,371	517.85
Wholesale Trade	22	205	6,931,843	650.27
Retail Trade	42	337	6,806,293	388.40
Transportation, Warehousing & Utilities	24	161	5,192,235	620.19
Financial Activities	16	92	2,981,857	623.30
Professional & Business Services	16	46	1,094,550	457.59
Education & Health Services	69	360	6,672,523	356.44
Leisure & Hospitality	25	260	2,636,182	194.98
Local Government	22	388	10,325,387	511.77
State Government	9	137	3,452,262	484.60
Other	27	109	2,020,558	356.49

**TABLE 8. COUNTY SUMMARY
EMPLOYMENT AND TOTAL EARNINGS, BY INDUSTRY
CALENDAR YEAR 2008**

NORTH AMERICAN INDUSTRY CLASSIFICATION SYSTEM INDUSTRY GROUP	AVERAGE EMPLOYING UNITS	AVERAGE COVERED EMPLOYMENT	TOTAL EARNINGS	AVERAGE WEEKLY EARNINGS
MONTGOMERY COUNTY - TOTAL	186	1,580	\$36,448,298	\$443.63
Natural Resources & Mining	13	57	2,224,013	750.34
Construction	22	85	2,476,200	560.23
Manufacturing	10	154	3,119,189	389.51
Trade, Transportation & Utilities	45	226	5,425,167	461.64
Wholesale Trade	11	74	2,186,773	568.29
Retail Trade	24	137	2,975,661	417.70
Transportation, Warehousing & Utilities	10	14	262,733	360.90
Financial Activities	11	72	2,206,257	589.28
Professional & Business Services	14	34	756,826	428.07
Education & Health Services	17	68	1,576,285	445.78
Leisure & Hospitality	23	295	4,303,162	280.52
Local Government	9	471	11,597,685	473.53
State Government	8	54	1,633,350	581.68
Other	15	65	1,130,164	334.37
NEVADA COUNTY - TOTAL	191	2,408	\$71,495,578	\$570.98
Natural Resources & Mining	12	46	1,390,853	581.46
Trade, Transportation & Utilities	41	494	12,607,261	490.78
Retail Trade	28	285	5,186,593	349.97
Other Trade, Transportation & Utilities	13	209	7,420,668	682.80
Financial Activities	15	64	1,860,016	558.90
Professional & Business Services	9	42	1,287,253	589.40
Education & Health Services	22	402	8,594,857	411.16
Leisure & Hospitality	13	103	1,092,895	204.05
Other Services	18	65	905,222	267.82
Local Government	28	463	11,113,421	461.60
State Government	11	86	2,400,778	536.85
Other	22	643	30,243,022	904.50

**TABLE 8. COUNTY SUMMARY
EMPLOYMENT AND TOTAL EARNINGS, BY INDUSTRY
CALENDAR YEAR 2008**

NORTH AMERICAN INDUSTRY CLASSIFICATION SYSTEM INDUSTRY GROUP	AVERAGE EMPLOYING UNITS	AVERAGE COVERED EMPLOYMENT	TOTAL EARNINGS	AVERAGE WEEKLY EARNINGS
NEWTON COUNTY - TOTAL	134	1,041	\$22,037,219	\$407.10
Construction	8	26	493,744	365.20
Manufacturing	16	68	1,843,529	521.36
Trade, Transportation & Utilities	27	148	3,254,621	422.90
Retail Trade	13	95	1,522,966	308.29
Other Trade, Transportation & Utilities	14	54	1,731,655	616.69
Education & Health Services	27	218	3,601,119	317.67
Leisure & Hospitality	18	74	889,645	231.20
Other Services	4	10	133,500	256.73
Local Government	13	361	8,668,211	461.76
State Government	7	94	1,941,846	397.27
Other	14	42	1,211,004	554.49
OUACHITA COUNTY - TOTAL	656	7,600	\$209,764,502	\$530.78
Natural Resources & Mining	47	260	8,620,959	637.64
Construction	46	264	7,928,094	577.51
Manufacturing	31	890	30,278,055	654.24
Trade, Transportation & Utilities	170	1,748	48,092,851	529.10
Wholesale Trade	27	239	9,510,098	765.22
Retail Trade	116	1,066	20,234,030	365.02
Transportation, Warehousing & Utilities	28	443	18,348,723	796.52
Information	7	61	2,039,548	642.98
Financial Activities	65	341	10,997,055	620.18
Professional & Business Services	51	364	9,365,625	494.80
Education & Health Services	118	1,241	33,854,985	524.62
Leisure & Hospitality	37	509	4,788,023	180.90
Other Services	41	146	3,428,379	451.58
Local Government	30	1,204	33,115,961	528.94
State Government	14	574	17,254,967	578.09

**TABLE 8. COUNTY SUMMARY
EMPLOYMENT AND TOTAL EARNINGS, BY INDUSTRY
CALENDAR YEAR 2008**

NORTH AMERICAN INDUSTRY CLASSIFICATION SYSTEM INDUSTRY GROUP	AVERAGE EMPLOYING UNITS	AVERAGE COVERED EMPLOYMENT	TOTAL EARNINGS	AVERAGE WEEKLY EARNINGS
PERRY COUNTY - TOTAL	159	1,347	\$37,188,074	\$530.92
Construction	22	63	2,157,822	658.68
Manufacturing	7	73	1,825,373	480.87
Trade, Transportation & Utilities	29	234	6,279,101	516.03
Retail Trade	18	161	2,340,327	279.54
Other Trade, Transportation & Utilities	12	73	3,938,774	1037.61
Financial Activities	15	66	2,990,811	871.45
Professional & Business Services	15	37	1,158,386	602.07
Education & Health Services	29	195	4,498,859	443.67
Local Government	12	411	9,756,390	456.50
State Government	9	51	1,465,472	552.59
Other	21	217	7,055,860	625.30
PHILLIPS COUNTY - TOTAL	886	6,523	\$169,199,125	\$498.82
Natural Resources & Mining	66	366	7,909,325	415.58
Construction	31	159	4,548,282	550.11
Manufacturing	13	354	11,243,450	610.79
Trade, Transportation & Utilities	175	1,639	43,137,307	506.14
Wholesale Trade	34	460	16,069,027	671.78
Retail Trade	97	895	17,594,113	378.04
Transportation, Warehousing & Utilities	44	283	9,474,167	643.80
Information	9	48	1,471,643	589.60
Financial Activities	56	273	8,462,018	596.08
Professional & Business Services	60	178	5,991,516	647.31
Education & Health Services	352	1,421	32,526,739	440.19
Leisure & Hospitality	39	395	4,086,352	198.95
Other Services	40	83	1,653,009	383.00
Local Government	30	1,031	33,722,420	629.01
State Government	17	577	14,447,064	481.50

**TABLE 8. COUNTY SUMMARY
EMPLOYMENT AND TOTAL EARNINGS, BY INDUSTRY
CALENDAR YEAR 2008**

NORTH AMERICAN INDUSTRY CLASSIFICATION SYSTEM INDUSTRY GROUP	AVERAGE EMPLOYING UNITS	AVERAGE COVERED EMPLOYMENT	TOTAL EARNINGS	AVERAGE WEEKLY EARNINGS
PIKE COUNTY - TOTAL	276	2,678	\$66,445,368	\$477.15
Natural Resources & Mining	26	148	5,129,489	666.51
Construction	12	24	749,839	600.83
Manufacturing	16	318	7,498,342	453.46
Trade, Transportation & Utilities	95	653	16,575,284	488.14
Wholesale Trade	21	164	5,452,395	639.35
Retail Trade	47	368	7,135,722	372.90
Transportation, Warehousing & Utilities	27	121	3,987,167	633.69
Information	5	28	1,216,469	835.49
Financial Activities	26	187	6,053,001	622.48
Professional & Business Services	14	37	2,159,981	1122.65
Education & Health Services	20	235	4,917,595	402.42
Leisure & Hospitality	20	234	2,438,831	200.43
Other Services	19	125	2,362,210	363.42
Local Government	13	542	14,596,707	517.91
State Government	11	148	2,747,620	357.02
POINSETT COUNTY - TOTAL	500	5,442	\$149,482,827	\$528.24
Natural Resources & Mining	51	330	10,731,331	625.37
Construction	22	87	2,505,763	553.88
Manufacturing	22	803	25,096,017	601.02
Trade, Transportation & Utilities	126	1,340	39,209,313	562.71
Wholesale Trade	32	470	21,848,011	893.94
Retail Trade	68	706	12,396,121	337.66
Transportation, Warehousing & Utilities	27	164	4,965,181	582.22
Information	6	53	2,541,259	922.08
Financial Activities	52	286	9,595,642	645.22
Professional & Business Services	32	176	5,338,935	583.36
Education & Health Services	81	588	13,428,906	439.20
Leisure & Hospitality	44	393	3,286,032	160.80
Other Services	23	56	1,375,655	472.41
Local Government	30	1,122	30,701,762	526.22
State Government	12	208	5,672,212	524.43

**TABLE 8. COUNTY SUMMARY
EMPLOYMENT AND TOTAL EARNINGS, BY INDUSTRY
CALENDAR YEAR 2008**

NORTH AMERICAN INDUSTRY CLASSIFICATION SYSTEM INDUSTRY GROUP	AVERAGE EMPLOYING UNITS	AVERAGE COVERED EMPLOYMENT	TOTAL EARNINGS	AVERAGE WEEKLY EARNINGS
POLK COUNTY - TOTAL	559	6,329	\$152,369,542	\$462.98
Natural Resources & Mining	26	218	7,543,273	665.43
Construction	43	173	4,201,124	467.00
Manufacturing	42	1,312	34,149,926	500.56
Trade, Transportation & Utilities	150	1,347	30,188,648	431.00
Wholesale Trade	22	103	3,006,506	561.33
Retail Trade	84	888	16,852,352	364.96
Transportation, Warehousing & Utilities	45	357	10,329,790	556.44
Information	9	53	1,579,033	572.94
Financial Activities	41	253	7,358,840	559.35
Professional & Business Services	55	255	5,332,804	402.17
Education & Health Services	86	1,022	25,091,507	472.14
Leisure & Hospitality	37	448	4,229,403	181.55
Other Services	37	150	3,383,153	433.74
Local Government	20	774	21,694,130	539.01
State Government	14	323	7,617,701	453.54
POPE COUNTY - TOTAL	1,796	26,639	\$852,235,146	\$615.23
Natural Resources & Mining	28	666	21,648,845	625.11
Construction	189	1,578	63,909,791	778.86
Manufacturing	87	4,953	176,451,151	685.10
Trade, Transportation & Utilities	470	6,491	248,472,652	736.15
Wholesale Trade	103	656	25,396,902	744.52
Retail Trade	275	3,371	70,491,344	402.14
Transportation, Warehousing & Utilities	92	2,464	152,584,406	1190.87
Information	16	223	8,745,154	754.15
Financial Activities	193	822	26,742,027	625.63
Professional & Business Services	248	2,441	71,196,066	560.90
Education & Health Services	271	3,079	87,959,044	549.37
Leisure & Hospitality	132	2,433	27,286,934	215.68
Other Services	106	484	11,369,373	451.74
Local Government	40	2,136	64,458,218	580.33
State Government	16	1,333	43,995,891	634.71

**TABLE 8. COUNTY SUMMARY
EMPLOYMENT AND TOTAL EARNINGS, BY INDUSTRY
CALENDAR YEAR 2008**

NORTH AMERICAN INDUSTRY CLASSIFICATION SYSTEM INDUSTRY GROUP	AVERAGE EMPLOYING UNITS	AVERAGE COVERED EMPLOYMENT	TOTAL EARNINGS	AVERAGE WEEKLY EARNINGS
PRAIRIE COUNTY - TOTAL	252	1,444	\$38,512,355	\$512.90
Natural Resources & Mining	28	141	4,569,745	623.26
Construction	15	66	1,779,256	518.43
Trade, Transportation & Utilities	65	323	8,279,976	492.97
Wholesale Trade	10	57	2,486,820	839.01
Retail Trade	36	183	2,733,392	287.24
Transportation, Warehousing & Utilities	20	82	3,059,764	717.58
Financial Activities	19	71	2,332,145	631.68
Professional & Business Services	17	58	1,467,100	486.44
Education & Health Services	42	187	4,274,225	439.55
Leisure & Hospitality	17	72	731,006	195.25
Other Services	15	40	793,683	381.58
Local Government	15	297	8,411,044	544.62
State Government	10	54	1,605,477	571.75
Other	9	137	4,268,698	599.20
PULASKI COUNTY - TOTAL	14,952	241,567	\$9,715,081,369	\$773.40
Natural Resources & Mining	60	782	42,159,086	1036.77
Construction	1,172	10,164	453,259,672	857.59
Manufacturing	439	15,607	716,764,299	883.19
Trade, Transportation & Utilities	3,389	50,399	1,842,639,225	703.10
Wholesale Trade	1,202	13,719	722,604,456	1012.92
Retail Trade	1,777	24,757	608,674,116	472.81
Transportation, Warehousing & Utilities	410	11,922	511,360,653	824.85
Information	225	8,247	534,498,880	1246.37
Financial Activities	1,808	15,726	903,225,055	1104.52
Professional & Business Services	2,903	34,710	1,371,753,162	760.01
Education & Health Services	2,337	35,967	1,516,357,660	810.76
Leisure & Hospitality	1,063	20,764	313,162,065	290.04
Other Services	1,218	6,955	211,917,131	585.96
Local Government	103	16,435	615,924,818	720.70
State Government	237	25,810	1,193,420,316	889.21

**TABLE 8. COUNTY SUMMARY
EMPLOYMENT AND TOTAL EARNINGS, BY INDUSTRY
CALENDAR YEAR 2008**

NORTH AMERICAN INDUSTRY CLASSIFICATION SYSTEM INDUSTRY GROUP	AVERAGE EMPLOYING UNITS	AVERAGE COVERED EMPLOYMENT	TOTAL EARNINGS	AVERAGE WEEKLY EARNINGS
RANDOLPH COUNTY - TOTAL	429	4,777	\$114,578,221	\$461.26
Natural Resources & Mining	25	99	2,085,478	405.10
Construction	26	83	1,554,225	360.11
Manufacturing	37	678	17,232,577	488.78
Trade, Transportation & Utilities	105	911	21,217,411	447.89
Wholesale Trade	22	212	4,776,200	433.25
Retail Trade	64	581	11,969,846	396.20
Transportation, Warehousing & Utilities	19	118	4,471,365	728.71
Information	5	40	1,550,084	745.23
Financial Activities	32	141	4,294,809	585.76
Professional & Business Services	36	264	4,944,423	360.17
Education & Health Services	79	958	25,475,624	511.39
Leisure & Hospitality	27	386	3,707,016	184.69
Other Services	24	65	1,259,660	372.68
Local Government	23	858	22,265,541	499.05
State Government	12	295	8,991,373	586.14
SAINT FRANCIS COUNTY - TOTAL	782	7,651	\$206,140,200	\$518.13
Natural Resources & Mining	31	186	4,665,783	482.40
Construction	44	237	7,033,693	570.73
Manufacturing	16	742	23,782,857	616.39
Trade, Transportation & Utilities	180	1,982	54,634,230	530.10
Wholesale Trade	31	536	19,802,237	710.47
Retail Trade	123	1,191	23,894,303	385.82
Transportation, Warehousing & Utilities	26	256	10,937,690	821.64
Information	7	80	2,552,812	613.66
Financial Activities	62	322	8,292,671	495.26
Professional & Business Services	57	291	9,620,173	635.75
Education & Health Services	246	1,412	34,470,374	469.47
Leisure & Hospitality	56	696	7,805,192	215.66
Other Services	38	96	1,522,649	305.02
Local Government	28	1,070	34,214,065	614.92
State Government	18	538	17,545,701	627.17

**TABLE 8. COUNTY SUMMARY
EMPLOYMENT AND TOTAL EARNINGS, BY INDUSTRY
CALENDAR YEAR 2008**

NORTH AMERICAN INDUSTRY CLASSIFICATION SYSTEM INDUSTRY GROUP	AVERAGE EMPLOYING UNITS	AVERAGE COVERED EMPLOYMENT	TOTAL EARNINGS	AVERAGE WEEKLY EARNINGS
SALINE COUNTY - TOTAL	1,873	21,234	\$627,754,610	\$568.53
Natural Resources & Mining	14	38	2,121,311	1073.54
Construction	323	1,985	69,090,994	669.36
Manufacturing	84	1,830	78,753,833	827.59
Trade, Transportation & Utilities	438	4,633	135,074,809	560.67
Wholesale Trade	121	593	30,446,308	987.36
Retail Trade	260	3,743	93,423,106	479.99
Transportation, Warehousing & Utilities	58	298	11,205,395	723.12
Information	13	124	4,183,330	648.78
Financial Activities	194	785	25,989,908	636.70
Professional & Business Services	242	1,262	35,501,239	540.98
Education & Health Services	238	2,964	82,176,916	533.17
Leisure & Hospitality	138	2,537	30,915,434	234.34
Other Services	140	621	15,073,894	466.80
Local & State Government	48	4,457	148,872,942	642.35
SCOTT COUNTY - TOTAL	194	2,857	\$69,556,730	\$468.19
Natural Resources & Mining	16	180	5,781,793	617.71
Construction	10	35	698,848	383.98
Trade, Transportation & Utilities	41	453	10,499,475	445.72
Wholesale Trade	10	68	2,254,953	637.71
Retail Trade	25	323	5,720,972	340.62
Transportation, Warehousing & Utilities	6	62	2,523,550	782.74
Financial Activities	23	83	1,978,541	458.42
Professional & Business Services	12	9	324,808	694.03
Education & Health Services	35	302	7,818,216	497.85
Leisure & Hospitality	17	156	1,569,462	193.47
Local Government	5	365	10,386,317	547.22
State Government	8	75	1,814,613	465.29
Other	29	1,200	28,684,657	459.69

**TABLE 8. COUNTY SUMMARY
EMPLOYMENT AND TOTAL EARNINGS, BY INDUSTRY
CALENDAR YEAR 2008**

NORTH AMERICAN INDUSTRY CLASSIFICATION SYSTEM INDUSTRY GROUP	AVERAGE EMPLOYING UNITS	AVERAGE COVERED EMPLOYMENT	TOTAL EARNINGS	AVERAGE WEEKLY EARNINGS
SEARCY COUNTY - TOTAL	195	1,755	\$36,602,335	\$401.08
Construction	7	24	494,998	396.63
Manufacturing	18	235	4,245,954	347.46
Trade, Transportation & Utilities	41	327	5,551,598	326.49
Wholesale Trade	6	63	1,027,939	313.78
Retail Trade	26	218	3,372,914	297.54
Transportation, Warehousing & Utilities	9	47	1,150,745	470.84
Information	6	14	427,438	587.14
Financial Activities	14	97	2,458,250	487.36
Professional & Business Services	15	33	861,814	502.22
Education & Health Services	53	333	6,692,835	386.51
Leisure & Hospitality	15	131	1,392,459	204.41
Local Government	10	357	8,916,477	480.31
State Government	8	146	3,782,966	498.28
Other	8	58	1,777,546	589.37
SEBASTIAN COUNTY - TOTAL	3,809	71,946	\$2,469,350,974	\$660.04
Natural Resources & Mining	77	1,995	130,155,113	1254.63
Construction	320	2,790	103,702,772	714.80
Manufacturing	233	17,464	647,653,594	713.17
Trade, Transportation & Utilities	969	13,304	404,930,581	585.32
Wholesale Trade	253	2,709	125,681,242	892.19
Retail Trade	575	8,213	184,145,734	431.18
Transportation, Warehousing & Utilities	141	2,383	95,103,605	767.48
Information	52	990	49,859,257	968.52
Financial Activities	431	2,546	106,126,451	801.61
Professional & Business Services	557	9,285	281,597,621	583.24
Education & Health Services	529	10,648	426,372,269	770.05
Leisure & Hospitality	304	5,714	73,045,150	245.84
Other Services	272	1,369	36,370,485	510.91
Local Government	43	4,364	159,040,125	700.84
State Government	22	1,476	50,497,556	657.93

**TABLE 8. COUNTY SUMMARY
EMPLOYMENT AND TOTAL EARNINGS, BY INDUSTRY
CALENDAR YEAR 2008**

NORTH AMERICAN INDUSTRY CLASSIFICATION SYSTEM INDUSTRY GROUP	AVERAGE EMPLOYING UNITS	AVERAGE COVERED EMPLOYMENT	TOTAL EARNINGS	AVERAGE WEEKLY EARNINGS
SEVIER COUNTY - TOTAL	327	5,691	\$142,035,590	\$479.96
Natural Resources & Mining	18	246	6,979,084	545.58
Construction	19	150	5,016,231	643.11
Manufacturing	12	2,151	51,126,782	457.09
Trade, Transportation & Utilities	95	841	22,205,953	507.77
Wholesale Trade	14	133	6,156,451	890.18
Retail Trade	62	595	11,191,035	361.70
Transportation, Warehousing & Utilities	19	113	4,858,467	826.83
Information	4	46	1,376,544	575.48
Financial Activities	31	186	5,246,736	542.47
Professional & Business Services	28	78	2,960,307	729.86
Education & Health Services	50	534	13,420,714	483.32
Leisure & Hospitality	24	256	2,622,034	196.97
Other Services	29	132	2,303,944	335.66
Local Government	11	869	23,522,877	520.56
State Government	9	202	5,254,384	500.23
SHARP COUNTY - TOTAL	446	3,713	\$87,571,529	\$453.56
Construction	29	195	6,160,523	607.55
Manufacturing	25	176	3,761,085	410.96
Trade, Transportation & Utilities	95	968	24,753,487	491.77
Wholesale Trade	11	41	845,978	396.80
Retail Trade	69	637	11,288,165	340.79
Transportation, Warehousing & Utilities	15	290	12,619,344	836.83
Information	7	57	2,988,568	1008.29
Financial Activities	36	237	6,912,076	560.86
Professional & Business Services	46	167	4,814,432	554.40
Education & Health Services	109	585	13,002,446	427.43
Leisure & Hospitality	37	395	3,613,036	175.90
Local Government	24	735	17,294,303	452.49
State Government	9	110	2,825,457	493.96
Other	29	89	1,446,116	312.47

**TABLE 8. COUNTY SUMMARY
EMPLOYMENT AND TOTAL EARNINGS, BY INDUSTRY
CALENDAR YEAR 2008**

NORTH AMERICAN INDUSTRY CLASSIFICATION SYSTEM INDUSTRY GROUP	AVERAGE EMPLOYING UNITS	AVERAGE COVERED EMPLOYMENT	TOTAL EARNINGS	AVERAGE WEEKLY EARNINGS
STONE COUNTY - TOTAL	301	2,937	\$65,246,226	\$427.22
Natural Resources & Mining	5	41	455,217	213.52
Construction	26	102	2,371,882	447.19
Manufacturing	27	404	8,709,924	414.60
Trade, Transportation & Utilities	74	695	16,392,071	453.57
Wholesale Trade	8	56	1,230,802	422.67
Retail Trade	56	601	13,567,918	434.15
Transportation, Warehousing & Utilities	11	39	1,593,351	785.68
Financial Activities	32	128	3,440,721	516.94
Professional & Business Services	15	32	861,709	517.85
Education & Health Services	56	499	13,132,058	506.09
Leisure & Hospitality	33	389	3,791,270	187.43
Local Government	10	398	10,759,894	519.90
State Government	9	177	3,317,998	360.50
Other	15	73	2,013,482	530.42
UNION COUNTY - TOTAL	1,407	19,138	\$737,626,047	\$741.20
Natural Resources & Mining	115	528	22,547,747	821.23
Construction	89	1,294	58,593,029	870.78
Manufacturing	64	4,351	187,358,958	828.10
Trade, Transportation & Utilities	362	3,704	138,348,095	718.29
Wholesale Trade	79	701	52,890,214	1450.96
Retail Trade	219	2,185	45,002,267	396.08
Transportation, Warehousing & Utilities	64	818	40,455,614	951.09
Information	15	170	5,216,077	590.05
Financial Activities	122	745	24,333,875	628.13
Professional & Business Services	142	1,663	109,262,122	1263.50
Education & Health Services	223	2,464	84,494,423	659.45
Leisure & Hospitality	88	1,174	14,041,984	230.02
Other Services	135	604	20,363,053	648.34
Local Government	36	1,863	55,271,114	570.53
State Government	19	579	17,795,570	591.06

**TABLE 8. COUNTY SUMMARY
EMPLOYMENT AND TOTAL EARNINGS, BY INDUSTRY
CALENDAR YEAR 2008**

NORTH AMERICAN INDUSTRY CLASSIFICATION SYSTEM INDUSTRY GROUP	AVERAGE EMPLOYING UNITS	AVERAGE COVERED EMPLOYMENT	TOTAL EARNINGS	AVERAGE WEEKLY EARNINGS
VAN BUREN COUNTY - TOTAL	368	3,704	\$92,433,932	\$479.91
Natural Resources & Mining	11	52	1,985,448	734.26
Construction	45	249	7,717,511	596.04
Trade, Transportation & Utilities	99	858	21,796,514	488.54
Wholesale Trade	16	53	2,000,847	726.00
Retail Trade	57	626	12,480,632	383.41
Transportation, Warehousing & Utilities	26	180	7,315,035	781.52
Information	11	49	1,785,862	700.89
Financial Activities	29	152	4,747,468	600.64
Professional & Business Services	27	108	2,378,311	423.49
Education & Health Services	61	636	15,859,600	479.55
Leisure & Hospitality	24	432	5,753,352	256.11
Local Government	11	591	15,541,705	505.72
State Government	8	87	2,507,892	554.35
Other	42	490	12,360,269	485.10
WASHINGTON COUNTY - TOTAL	5,728	89,548	\$3,214,178,555	\$690.26
Natural Resources & Mining	38	494	18,255,720	710.67
Construction	645	4,947	187,043,080	727.10
Manufacturing	238	14,621	499,017,359	656.35
Trade, Transportation & Utilities	1,362	20,042	687,403,155	659.58
Wholesale Trade	414	3,681	209,086,996	1092.34
Retail Trade	758	11,062	259,029,528	450.31
Transportation, Warehousing & Utilities	190	5,299	219,286,631	795.82
Information	93	1,518	67,778,297	858.65
Financial Activities	666	3,869	156,461,263	777.69
Professional & Business Services	978	8,730	465,156,308	1024.66
Education & Health Services	696	11,274	443,951,505	757.28
Leisure & Hospitality	536	9,617	126,198,745	252.36
Other Services	394	1,929	48,881,049	487.31
Local & State Government	83	12,508	514,032,074	790.31

**TABLE 8. COUNTY SUMMARY
EMPLOYMENT AND TOTAL EARNINGS, BY INDUSTRY
CALENDAR YEAR 2008**

NORTH AMERICAN INDUSTRY CLASSIFICATION SYSTEM INDUSTRY GROUP	AVERAGE EMPLOYING UNITS	AVERAGE COVERED EMPLOYMENT	TOTAL EARNINGS	AVERAGE WEEKLY EARNINGS
WHITE COUNTY - TOTAL	1,822	24,553	\$808,072,205	\$632.91
Natural Resources & Mining	46	1,213	74,467,823	1180.60
Construction	200	1,656	81,806,623	950.00
Manufacturing	81	2,650	104,302,843	756.91
Trade, Transportation & Utilities	501	6,005	186,839,903	598.35
Wholesale Trade	100	604	22,519,736	717.01
Retail Trade	304	3,270	70,059,598	412.02
Transportation, Warehousing & Utilities	97	2,131	94,260,569	850.64
Information	22	168	5,212,455	596.66
Financial Activities	191	976	31,469,416	620.06
Professional & Business Services	187	1,294	36,927,351	548.80
Education & Health Services	293	4,297	149,857,637	670.67
Leisure & Hospitality	133	2,394	25,085,123	201.51
Other Services	104	592	15,776,397	512.49
Local Government	45	2,556	74,487,225	560.43
State Government	19	754	21,839,409	557.01
WOODRUFF COUNTY - TOTAL	233	1,920	\$50,311,627	\$503.92
Natural Resources & Mining	24	140	4,203,644	577.42
Construction	9	56	1,598,541	548.95
Manufacturing	7	339	9,135,494	518.24
Trade, Transportation & Utilities	58	451	13,342,834	568.94
Wholesale Trade	13	152	6,788,824	858.91
Retail Trade	28	204	3,009,632	283.71
Transportation, Warehousing & Utilities	17	95	3,544,378	717.49
Financial Activities	16	60	1,896,980	608.01
Professional & Business Services	5	7	264,210	725.85
Education & Health Services	79	234	5,509,031	452.75
Leisure & Hospitality	10	72	671,355	179.31
Local Government	10	482	11,556,228	461.07
State Government	7	58	1,659,117	550.11
Other	8	22	474,193	414.50

**TABLE 8. COUNTY SUMMARY
EMPLOYMENT AND TOTAL EARNINGS, BY INDUSTRY
CALENDAR YEAR 2008**

NORTH AMERICAN INDUSTRY CLASSIFICATION SYSTEM INDUSTRY GROUP	AVERAGE EMPLOYING UNITS	AVERAGE COVERED EMPLOYMENT	TOTAL EARNINGS	AVERAGE WEEKLY EARNINGS
YELL COUNTY - TOTAL	424	6,834	\$178,196,510	\$501.44
Natural Resources & Mining	24	238	6,454,267	521.51
Construction	44	338	10,691,705	608.31
Manufacturing	19	2,731	71,340,105	502.35
Trade, Transportation & Utilities	84	676	13,644,680	388.16
Wholesale Trade	16	26	623,554	461.21
Retail Trade	51	561	9,619,715	329.76
Transportation, Warehousing & Utilities	17	89	3,401,411	734.96
Information	3	72	2,682,769	716.55
Financial Activities	38	192	5,294,155	530.26
Professional & Business Services	37	292	12,929,595	851.53
Education & Health Services	89	638	14,835,804	447.18
Leisure & Hospitality	29	340	3,343,156	189.09
Other Services	17	69	1,189,511	331.52
Local Government	27	1,128	32,854,896	560.13
State Government	13	121	2,935,867	466.60
REST-OF-STATE-TOTAL	4,510	17,933	\$1,052,841,958	\$1,129.03
Natural Resources & Mining	76	483	30,199,878	1202.42
Construction	555	3,825	175,871,985	884.22
Manufacturing	67	252	11,643,098	888.51
Trade, Transportation & Utilities	1,650	6,117	469,933,668	1477.39
Wholesale Trade	1,373	4,917	418,425,377	1636.49
Retail Trade	121	454	22,590,304	956.89
Transportation, Warehousing & Utilities	156	745	28,917,987	746.46
Information	98	215	12,452,137	1113.79
Financial Activities	273	775	55,626,463	1380.31
Professional & Business Services	1,495	4,819	233,283,947	930.95
Education & Health Services	113	675	31,269,643	890.87
Other	186	775	32,561,139	807.97

TABLE 9. FEDERAL GOVERNMENT EMPLOYMENT AND EARNINGS IN ARKANSAS

NORTH AMERICAN INDUSTRY CLASSIFICATION SYSTEM INDUSTRY GROUP	AVERAGE EMPLOYING UNITS	AVERAGE COVERED EMPLOYMENT	TOTAL EARNINGS	AVERAGE WEEKLY EARNINGS
Trade, Transportation & Utilities	614	6,629	\$301,587,909	\$874.91
Information	1	34	\$1,716,381	\$970.80
Financial Activities	23	164	\$11,269,171	\$1,321.43
Professional & Business Services	30	796	\$52,179,895	\$1,260.63
Education & Health Services	5	4,504	\$377,406,479	\$1,611.42
Leisure & Hospitality	15	240	\$10,128,697	\$811.59
Other Services	2	265	\$4,207,125	\$305.31
Public Administration	496	8,600	\$530,084,016	\$1,185.34
TOTAL	1,188	21,231	\$1,288,579,673	\$1,167.18

**TABLE 10. WORKFORCE INFORMATION AREA, SUMMARY
EMPLOYMENT AND TOTAL EARNINGS, BY INDUSTRY
CALENDAR YEAR 2008**

NORTH AMERICAN INDUSTRY CLASSIFICATION SYSTEM INDUSTRY GROUP	AVERAGE EMPLOYING UNITS	AVERAGE COVERED EMPLOYMENT	TOTAL EARNINGS	AVERAGE WEEKLY EARNINGS
CENTRAL WORKFORCE INFORMATION*	6,480	76,697	\$2,417,592,744	\$606.18
Natural Resources & Mining	191	1,606	91,856,465	1099.92
Trade, Transportation & Utilities	1,582	15,406	427,403,989	533.51
Wholesale Trade	405	2,220	97,817,775	847.35
Retail Trade	912	11,360	255,329,934	432.24
Transportation, Warehousing & Utilities	265	1,826	74,256,280	782.04
Financial Activities	689	3,000	108,637,090	696.39
Professional & Business Services	789	6,868	301,831,350	845.14
Education & Health Services	914	10,552	307,351,642	560.14
Leisure & Hospitality	486	8,585	96,852,476	216.95
Local & State Government	206	14,483	474,225,832	629.68
Other	1,630	16,200	609,433,900	723.45
EASTERN WORKFORCE INFORMATION	3,805	38,004	\$1,087,621,401	\$550.36
Natural Resources & Mining	209	1,230	29,860,165	466.86
Construction	189	1,120	36,494,372	626.62
Trade, Transportation & Utilities	893	10,104	302,771,927	576.26
Wholesale Trade	182	2,153	87,440,279	781.02
Retail Trade	499	5,131	104,596,041	392.02
Transportation, Warehousing & Utilities	212	2,820	110,735,607	755.15
Financial Activities	290	1,607	50,315,229	602.12
Professional & Business Services	312	1,546	47,116,565	586.09
Education & Health Services	1,117	6,116	162,995,366	512.51
Leisure & Hospitality	242	3,467	43,716,988	242.49
Local Government	136	5,414	177,271,480	629.68
State Government	69	2,334	68,439,399	563.90
Other	354	5,069	168,639,910	639.79

*Note: Pulaski County is not included in the Central Workforce Information. Please refer to Page 53 for information on Pulaski County.
Central Workforce includes these counties: Faulkner, Lonoke Monroe, Prairie, and Saline.

Eastern Workforce includes these counties: Crittenden, Cross, Lee, Phillips, and Saint Francis.

**TABLE 10. WORKFORCE INFORMATION AREA, SUMMARY
EMPLOYMENT AND TOTAL EARNINGS, BY INDUSTRY
CALENDAR YEAR 2008**

NORTH AMERICAN INDUSTRY CLASSIFICATION SYSTEM INDUSTRY GROUP	AVERAGE EMPLOYING UNITS	AVERAGE COVERED EMPLOYMENT	TOTAL EARNINGS	AVERAGE WEEKLY EARNINGS
NORTH CENTRAL WORKFORCE INFORMATION	5,868	69,855	\$2,034,874,344	\$560.19
Construction	531	3,568	141,658,279	763.51
Trade, Transportation & Utilities	1,516	15,561	445,075,039	550.04
Retail Trade	943	9,250	189,610,785	394.20
Other Trade, Transportation & Utilities	573	6,311	255,464,254	778.45
Financial Activities	554	2,779	87,660,864	606.62
Professional & Business Services	505	2,919	75,870,834	499.85
Education & Health Services	1,092	11,902	367,842,201	594.34
Leisure & Hospitality	441	6,261	67,325,894	206.79
Local Government	229	8,697	234,033,051	517.49
State Government	115	3,094	89,381,092	555.55
Other	892	15,082	526,027,090	670.73

North Central Workforce Includes these counties: Cleburne, Fulton, Independence, IZard, Jackson, Sharp, Stone, Van Buren, White, and Woodruff

NORTHEAST WORKFORCE INFORMATION	6,596	94,801	\$2,950,418,524	\$598.50
Natural Resources & Mining	372	1,975	55,139,843	536.90
Construction	487	3,298	117,648,617	686.01
Manufacturing	356	20,877	853,506,859	786.20
Trade, Transportation & Utilities	1,726	17,996	491,210,587	524.91
Wholesale Trade	407	3,850	152,931,386	763.89
Retail Trade	1,010	11,548	236,548,799	393.92
Transportation, Warehousing & Utilities	309	2,598	101,730,402	753.02
Financial Activities	611	3,439	122,196,594	683.32
Professional & Business Services	668	7,031	189,933,130	519.49
Education & Health Services	1,133	13,288	450,152,005	651.47
Leisure & Hospitality	473	7,673	89,621,193	224.62
Local Government	218	11,359	334,724,138	566.69
State Government	107	4,136	145,974,565	678.72
Other	456	3,738	100,310,993	516.07

Northeast Workforce includes these counties: Clay, Craighead, Greene, Lawrence, Mississippi, Poinsett, and Randolph.

**TABLE 10. WORKFORCE INFORMATION AREA, SUMMARY
EMPLOYMENT AND TOTAL EARNINGS, BY INDUSTRY
CALENDAR YEAR 2008**

NORTH AMERICAN INDUSTRY CLASSIFICATION SYSTEM INDUSTRY GROUP	AVERAGE EMPLOYING UNITS	AVERAGE COVERED EMPLOYMENT	TOTAL EARNINGS	AVERAGE WEEKLY EARNINGS
NORTHWEST WORKFORCE INFORMATION	15,451	232,674	\$8,594,293,487	\$710.33
Construction	1,746	10,803	391,532,632	696.98
Trade, Transportation & Utilities	3,818	53,645	1,917,061,551	687.23
Retail Trade	2,035	26,835	620,682,864	444.80
Other Trade, Transportation & Utilities	1,783	26,810	1,296,378,687	929.89
Education & Health Services	1,956	25,365	909,904,244	689.85
Leisure & Hospitality	1,429	22,979	299,056,622	250.28
Local & State Government	431	28,401	1,034,713,187	700.62
Other	6,079	91,483	4,042,025,251	849.68
Northwest Workforce includes these counties: Baxter, Benton, Boone, Carroll, Madison, Marion, Newton, Searcy, and Washington.				
SOUTHEAST WORKFORCE INFORMATION	5,898	75,023	\$2,304,211,820	\$590.64
Natural Resources & Mining	416	2,771	90,342,347	626.98
Construction	350	3,152	124,916,943	762.13
Manufacturing	224	16,431	637,573,343	746.21
Trade, Transportation & Utilities	1,356	13,075	372,962,508	548.55
Retail Trade	821	8,415	175,341,680	400.71
Other Trade, Transportation & Utilities	535	4,660	197,620,828	815.54
Education & Health Services	1,454	10,932	298,637,460	525.34
Local & State Government	361	16,139	481,087,718	573.25
Other	1,749	12,525	298,691,501	458.61
Southeast Workforce includes these counties: Arkansas, Ashley, Bradley, Chicot, Cleveland, Desha, Drew, Grant, Jefferson, and Lincoln.				
SOUTHWEST WORKFORCE INFORMATION	5,875	84,512	\$2,750,692,986	\$625.92
Natural Resources & Mining	416	2,926	113,423,110	745.46
Trade, Transportation & Utilities	1,498	15,597	464,328,851	572.51
Retail Trade	937	8,997	178,588,855	381.73
Other Trade, Transportation & Utilities	561	6,600	285,739,996	832.58
Financial Activities	542	2,838	90,961,482	616.37
Education & Health Services	920	9,467	256,032,779	520.09
Leisure & Hospitality	403	5,331	60,101,899	216.81
Local & State Government	415	13,984	411,236,982	565.53
Other	1,697	34,377	1,354,607,883	757.78
Southwest Workforce includes these counties: Calhoun, Columbia, Dallas, Hempstead, Howard, Lafayette, Little River, Miller, Nevada, Ouachita, Sevier, and Union.				

**TABLE 10. WORKFORCE INFORMATION AREA, SUMMARY
EMPLOYMENT AND TOTAL EARNINGS, BY INDUSTRY
CALENDAR YEAR 2008**

NORTH AMERICAN INDUSTRY CLASSIFICATION SYSTEM INDUSTRY GROUP	AVERAGE EMPLOYING UNITS	AVERAGE COVERED EMPLOYMENT	TOTAL EARNINGS	AVERAGE WEEKLY EARNINGS
WEST CENTRAL WORKFORCE INFORMATION	8,474	108,557	\$3,158,986,503	\$559.61
Construction	911	5,392	182,055,157	649.31
Manufacturing	397	18,607	617,940,576	638.66
Trade, Transportation & Utilities	2,023	22,256	664,473,115	574.15
Retail Trade	1,286	14,299	303,902,927	408.72
Other Trade, Transportation & Utilities	737	7,957	360,570,188	871.44
Financial Activities	889	3,945	130,737,864	637.31
Professional & Business Services	946	7,550	220,439,504	561.49
Education & Health Services	1,311	15,862	508,275,130	616.22
Local Government	230	11,532	348,099,716	580.49
State Government	135	5,218	155,660,386	573.68
Other	1,638	18,200	331,305,055	350.07

West Central Workforce includes these counties: Clark, Conway, Garland, Hot Spring, Johnson, Montgomery, Perry, Pike, Pope, and Yell

WESTERN WORKFORCE INFORMATION	6,684	111,057	\$3,554,888,158	\$615.57
Natural Resources & Mining	180	3,169	178,334,908	1082.21
Construction	646	4,765	169,757,756	685.11
Trade, Transportation & Utilities	1,677	23,583	695,380,354	567.05
Wholesale Trade	399	3,706	163,070,463	846.19
Retail Trade	967	12,641	272,856,370	415.10
Transportation, Warehousing & Utilities	311	7,236	259,453,521	689.54
Financial Activities	707	3,963	150,937,747	732.44
Professional & Business Services	855	11,054	326,050,235	567.23
Education & Health Services	942	14,684	533,563,783	698.78
Leisure & Hospitality	500	8,501	103,331,778	233.75
Local & State Government	230	11,889	384,784,630	622.40
Other	953	29,453	1,012,746,967	661.25

Western Workforce includes these counties: Crawford, Franklin, Logan, Polk, Scott, and Sebastian.

