

Arkansas Covered Employment & Earnings

Third Quarter
2010

Jobs for People. People for Jobs.

DWS
Department of
WORKFORCE**Services**

**COVERED EMPLOYMENT AND EARNINGS
STATE OF ARKANSAS
THIRD QUARTER 2010**

**MIKE BEEBE, GOVERNOR
STATE OF ARKANSAS**

**ARTEE WILLIAMS, DIRECTOR
DEPARTMENT OF WORKFORCE SERVICES**

**PUBLISHED BY
LABOR MARKET INFORMATION & ANALYSIS
BUREAU OF LABOR STATISTICS PROGRAMS
POST OFFICE BOX 2981
LITTLE ROCK, ARKANSAS 72203-2981
BERNADETTE COLEMAN, BLS PROGRAMS MANAGER
TELEPHONE (501) 682-3159
SUSAN PRICE, QCEW LEAD ANALYST
TELEPHONE (501) 682-3103**

STATE OF ARKANSAS WEBPAGE: <http://www.arkansas.gov>

DEPARTMENT OF WORKFORCE SERVICES WEBPAGE: <http://www.arkansas.gov/esd/>

WEBPAGE FOR LABOR MARKET INFORMATION: <http://www.discover.arkansas.gov>

RELEASED: November 2012

TABLE OF CONTENTS

DESCRIPTION OF DATA	PAGE
Industry Classification	1
Definition of Covered Employment and Earnings	2
Federal Government	2
County Classification	2
Significant Developments During Third Quarter 2010	3

LIST OF GRAPHS AND TABLES

Graph 1	Average Total Covered Employment for Selected Years, Arkansas	7
Graph 2	Total Covered Earnings, by Calendar Quarter for Selected Years, Arkansas	8
Table 1	Quarterly Comparison of Covered Employment and Wages, by Industry	5
Table 2	Total Covered Employment in Arkansas, 2003 – 2010	6
Table 3	Total Covered Earnings, 2003 – 2010	9
Table 4	Total Taxable Earnings, 2003 – 2010	10
Table 5	State Summary – Employment and Total Earnings, by Industry, Third Quarter 2010	11
Table 6	County Summary – Employment and Total Earnings, by Industry, Third Quarter 2010	26
Table 7	Federal Government Employment and Total Earnings in Arkansas, Third Quarter 2010	64
Table 8	Workforce Investment Area – Employment and Total Earnings, by Industry, Third Quarter 2010	65

EMPLOYMENT AND EARNINGS
UNDER THE ARKANSAS EMPLOYMENT SECURITY LAW
THIRD QUARTER 2010

DESCRIPTION OF DATA

This publication contains covered employment and payroll data by industry and county for the Third Quarter 2010. These data are compiled from quarterly contributions and wage reports submitted by employers subject to the Arkansas Employment Security Law. An employing unit is a single physical location where business is conducted, production takes place, or services are provided. Employment data have been tabulated for each month of the quarter by industry under the **North American Industry Classification System** (NAICS) (see "Industry Classification" below) on a statewide, county and workforce area basis. Payroll data represent the total wages paid during the quarter, and are also shown by industry for the State and

by publishable industry groups for each county and workforce area. The tabulation of this data is a joint effort in conjunction with the U.S. Bureau of Labor Statistics. In addition, there are tables included which set out total covered employment by months, quarterly payrolls, and average weekly earnings for the years 2003 through 2010. Data contained in this publication are subject to revisions. These revisions are typically reflected in the 2010 Annual Covered Employment and Earnings publication. Because of industry code changes between years, substantial employment and wage shifts among industries are anticipated.

INDUSTRY CLASSIFICATION

Previously published industry data will not be comparable in all instances with currently published data since industry codes have been revised. The last two revisions have occurred using the North American Industry Classification System (NAICS) which is a six digit industry code instead of the Standard Industrial Classification system which was a four digit industry code, which had been used previously. The following are the NAICS Manuals used to revise the data: (a) between January 1, 2001 and December 31, 2006 industry codes were assigned under the 2002 North American Industry Classification System (NAICS) Manual; (b) since January 1, 2007 industry codes are assigned under the 2007 North American Industry Classification System Manual. The NAICS Manual represents a significant change in coding methodology as compared to the SIC Manual. One of the most significant changes involves how NAICS treats auxiliary units.

Auxiliary units are establishments primarily engaged in performing management of support services for other establishments of the same enterprise. The SIC code for these units was based on the activity of the enterprise served. The NAICS code is based on the actual activities that the establishment performs. Comparisons of many industries should not be made between this publication and previous Covered Employment and Earnings publications that were based on SIC. Even though some titles are the same or similar, in nature, NAICS and SIC could differ in classification of employers. The implementation of NAICS represents a profound change for statistical programs and will create significant benefits along with transition obstacles for both data collectors and data users. A summary is available on the NAICS home page at <http://www.census.gov/naics>.

DEFINITION OF COVERED EMPLOYMENT AND EARNINGS

Covered Employment is the number of workers employed by employers subject to the Arkansas Employment Security Law who worked or received pay for the payroll period including the 12th of the month. An employer is subject to the law when they employ one or more employees in each of ten days during the current or preceding calendar year.

Currently excluded from coverage is employment covered by the Railroad Unemployment Insurance Act, some domestic service workers, employees of small agricultural establishments, self-

employed and unpaid family workers, insurance and real estate agents who are on commission only, and employees of churches and religious organizations except separately incorporated schools. The payroll information in this publication includes all wages and salaries paid to any covered employees by their employers including bonuses, commissions, and cash values of remuneration received in any medium other than cash. These wages include both taxable and nontaxable wages. Only the first \$10,000 paid to each worker by an employer in the calendar year is taxable under the Arkansas Employment Security Law.

FEDERAL GOVERNMENT EMPLOYMENT

Table 7 on page 64 lists the total number of civilians employed by the Federal Government in Arkansas during the Third Quarter 2010. Employment and wage data are set out by industry divisions.

These data are obtained from required reports submitted by various government agencies having employment in the State. Civilian Federal workers are covered by the Unemployment Compensation for Federal Employees (UCFE) program.

COUNTY CLASSIFICATION

Employment and payroll data by county are classified according to the county where the workers are employed. Employers with operations in more than one county are requested to furnish this agency with a breakdown of employment and wages for at least one quarter of each year by the counties in which they operate. Many such employers submit county data with each regular contribution report. Note: This information is invaluable in the preparation of monthly employment and payroll data by county.

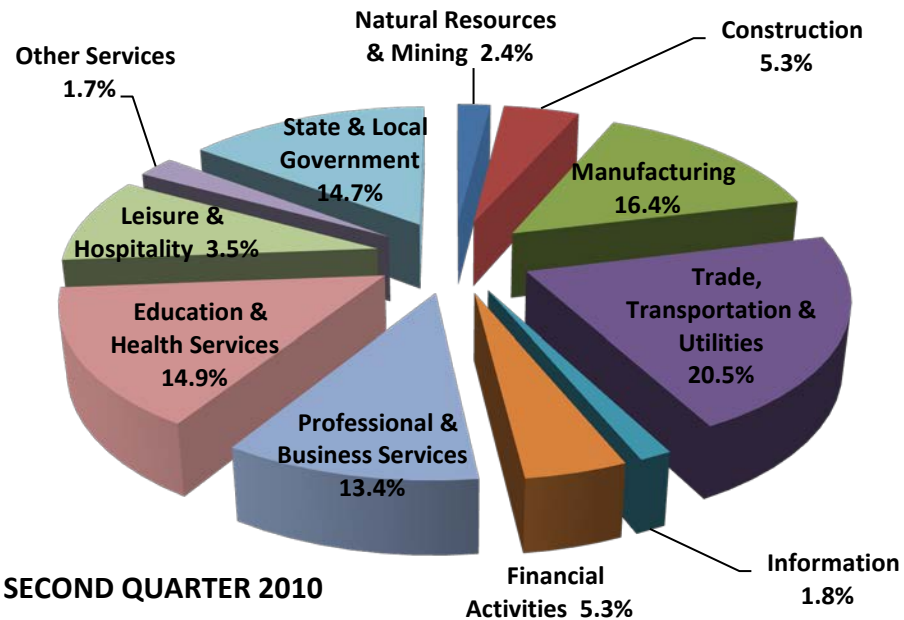
Employment and payroll data for multi-area employers, who do not furnish county data each quarter of the year, are prorated by county on the basis of one quarter's information. The "rest-of-state" table that appears on page 62 of this publication includes data on firms that did not provide a county breakdown of employment and payrolls. It also includes sales, and all other type of personnel with no permanent place of work, as well as employment of employers with no established place of business in Arkansas.

SIGNIFICANT DEVELOPMENTS DURING THIRD QUARTER 2010

AVERAGE EMPLOYMENT CHANGES

Covered employment averaged 1,099,273 during the Third Quarter 2010 (see table 1), a decrease of 25,809 (2.3%) from the previous quarter and an increase of 6,828 (0.6%) from the average recorded one-year ago. This over-the-year increase is more significant when used as an economic indicator. This over-the-year comparison allows for the disregarding of many seasonal factors that are evident when making an over-the-quarter comparison.

Average Covered Employment by NAICS



EMPLOYMENT CHANGES FROM SECOND QUARTER 2010

Compared to Second Quarter 2010, covered employment decreased in two major industry sectors, State and Local Government reported the largest drop (-28,086), caused mostly by fluctuations in public school employment. Manufacturing also reported losses (-2,633).

Trade, Transportation, and Utilities added 1,812, mostly in Retail Trade. Professional and Business Services increased by 1,343, with the largest gains seen in Administrative and Waste Services.

EMPLOYMENT CHANGES FROM THIRD QUARTER 2009 (QUARTER YEAR AGO COMPARISON)

Over the year gains were recorded in six industry groups while five recorded losses (see Table 1). The largest gains were posted in Trade, Transportation and Utilities (1,812) and Professional and Business Services (1,343). Significant losses occurred in State and Local Government (-28,086), and Manufacturing (-2,633).

COVERED WAGES

Wages paid to covered workers totaled \$9,653,588,807 for the Third Quarter 2010 (see Table 1), for an average weekly wage of \$675.52 (see Table 5). Employees in Calhoun County recorded the highest average weekly wage (\$834.38), and workers in Newton County the lowest (\$397.52) (see Table 6).

The Information sector recorded the highest average weekly wage for the State of Arkansas at \$891.05; while the Other Services sector recorded the lowest at \$503.95 for the State of Arkansas (see Table 5).

Average Weekly Wage by Industry

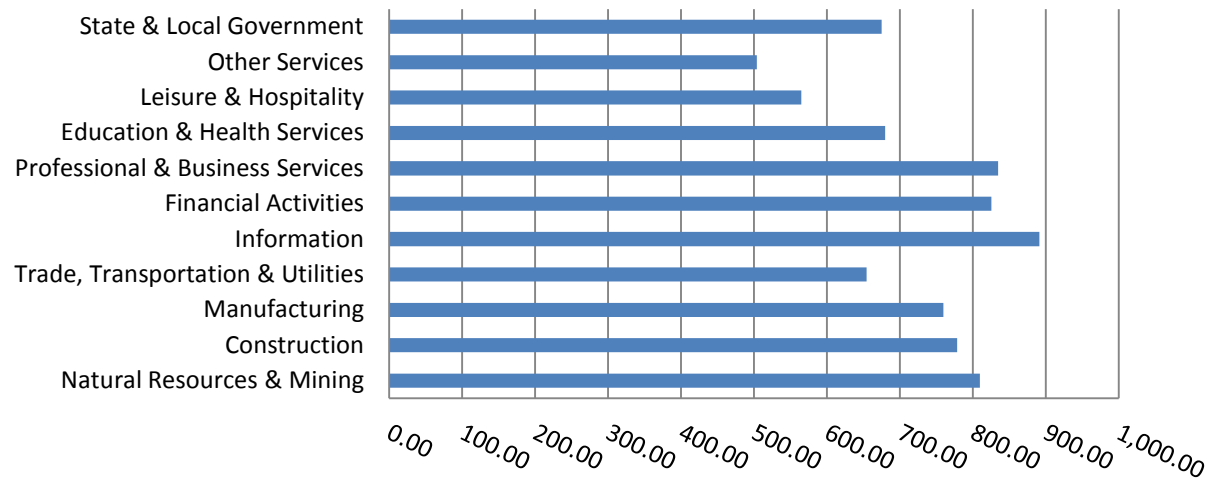


TABLE 1. QUARTERLY COMPARISON OF COVERED EMPLOYMENT AND WAGES, BY INDUSTRY

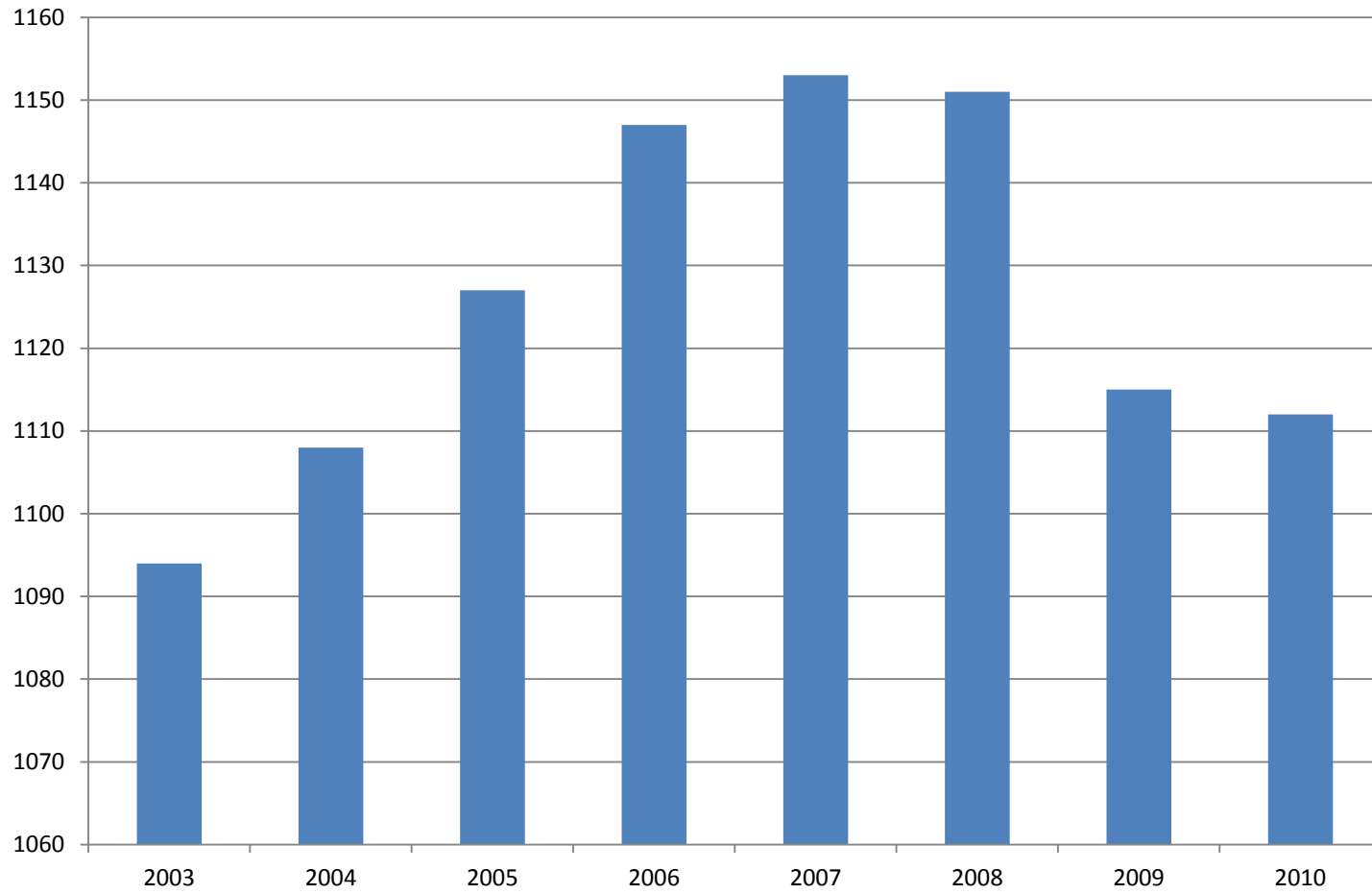
North American Industry Classification System	Number of Employing Units	Monthly Employment Average	Percent of Total	Net Change From:		Total Wages Paid July - Sept 2010	Percent of Total
				April - June 2010	July - Sept 2009		
Total	84,309	1,099,273	100	-25,809	6,828	\$9,653,588,807	100
Natural Resources & Mining	2,506	21,909	2.0	301	860	230,588,051	2.4
Agriculture, Forestry, Fishing & Hunting	1,968	13,463	1.2	381	586	107,206,089	1.1
Mining	538	8,447	0.8	-79	275	123,381,962	1.3
Construction	7,070	50,662	4.6	715	-2,987	512,795,648	5.3
Manufacturing	3,254	160,229	14.6	-2,633	-3,524	1,582,461,835	16.4
Trade, Transportation & Utilities	20,685	232,382	21.1	1,812	1,324	1,976,350,095	20.5
Wholesale Trade	6,454	46,599	4.2	-184	-357	620,935,105	6.4
Retail Trade	10,979	129,674	11.8	759	587	755,135,959	7.8
Transportation & Warehousing	2,847	48,794	4.4	1,264	567	482,647,216	5.0
Utilities	405	7,315	0.7	-27	527	117,631,815	1.2
Information	1,117	15,290	1.4	-284	-919	177,114,693	1.8
Financial Activities	8,002	48,024	4.4	-105	-1,071	515,346,211	5.3
Finance & Insurance	4,673	34,368	3.1	-18	-808	414,236,337	4.3
Real Estate & Rental & Leasing	3,329	13,656	1.2	-87	-263	101,109,874	1.0
Professional & Business Services	12,203	119,190	10.8	1,343	6,902	1,293,337,294	13.4
Professional & Technical Services	7,608	38,029	3.5	-288	1,357	473,464,040	4.9
Management of Companies & Enterprises	519	26,377	2.4	201	127	481,938,538	5.0
Administrative & Waste Services	4,076	54,784	5.0	1,431	5,418	337,934,716	3.5
Education & Health Services	14,630	163,123	14.8	642	3,224	1,441,405,503	14.9
Educational Services	690	9,943	0.9	-327	23	79,273,469	0.8
Health Care & Social Assistance	13,940	153,181	13.9	970	3,202	1,362,132,034	14.1
Leisure & Hospitality	6,371	101,862	9.3	538	-346	342,501,774	3.5
Arts, Entertainment & Recreation	906	10,929	1.0	225	127	44,435,689	0.5
Accommodation & Food Services	5,465	90,933	8.3	313	-473	298,066,085	3.1
Other Services	5,378	25,020	2.3	-53	57	163,912,087	1.7
State & Local Government	3,093	161,581	14.7	-28,086	-30	1,417,775,616	14.7
Local Government	1,974	93,543	8.5	-27,141	-731	712,399,489	7.4
State Government	1,119	68,038	6.2	-945	701	705,376,127	7.3
Nonclassifiable Establishments	0	0	0.0	0	0	0	0.0

Note: Items do not necessarily add to totals because of rounding. Because of industry code changes between years, substantial employment and wage shifts among industries are anticipated.

TABLE 2. TOTAL COVERED EMPLOYMENT IN ARKANSAS

Period	2003	2004	2005	2006	2007	2008	2009	2010
Average	1,094,087	1,108,264	1,126,778	1,146,948	1,152,994	1,150,965	1,112,738	1,106,964
January	1,082,740	1,089,510	1,102,768	1,130,595	1,137,437	1,141,856	1,119,299	1,089,984
February	1,084,880	1,094,626	1,110,577	1,136,810	1,143,397	1,149,443	1,119,476	1,091,282
March	1,092,172	1,105,266	1,122,619	1,150,439	1,158,895	1,157,690	1,124,386	1,106,198
April	1,095,341	1,111,020	1,129,785	1,155,498	1,159,623	1,159,841	1,123,383	1,115,341
May	1,103,099	1,117,144	1,135,567	1,159,886	1,165,224	1,166,111	1,122,322	1,123,250
June	1,099,688	1,117,010	1,136,118	1,162,026	1,164,207	1,164,167	1,117,884	1,130,164
July	1,053,220	1,071,463	1,090,071	1,106,142	1,110,571	1,114,279	1,071,048	1,073,743
August	1,077,775	1,094,871	1,114,098	1,130,839	1,139,109	1,138,583	1,093,192	1,099,795
September	1,105,980	1,122,704	1,144,815	1,159,814	1,165,135	1,162,333	1,116,580	1,124,281
October	1,112,550	1,123,246	1,142,300	1,156,804	1,162,768	1,157,196	1,113,157	NA
November	1,109,712	1,125,061	1,145,667	1,156,011	1,164,246	1,152,159	1,115,443	NA
December	1,111,892	1,127,250	1,146,954	1,158,509	1,165,314	1,147,927	1,114,919	NA

AVERAGE TOTAL COVERED EMPLOYMENT In Thousands



TOTAL COVERED EARNINGS BY CALENDAR YEAR

In Thousands

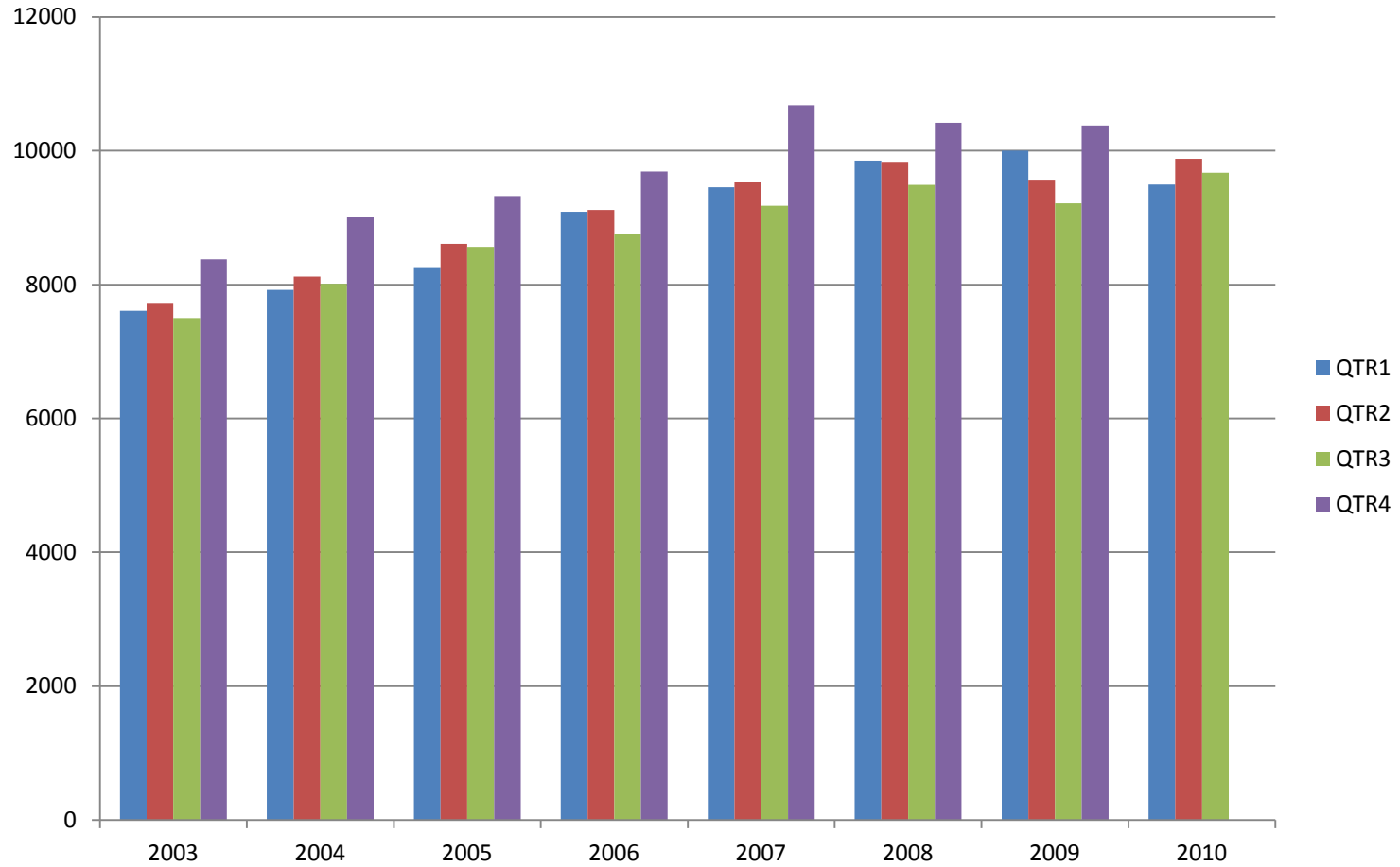


TABLE 3. TOTAL COVERED EARNINGS 2003 - 2010

Period	2003	2004	2005	2006
Total	31,202,576,767	33,068,189,304	34,753,107,631	36,636,090,775
January - March	7,608,130,008	7,918,843,610	8,261,153,981	9,085,021,816
April - June	7,714,813,038	8,122,370,361	8,607,722,353	9,112,624,590
July - September	7,500,204,764	8,010,300,454	8,562,555,369	8,750,878,205
October - December	8,379,428,957	9,016,674,879	9,321,675,928	9,687,566,164
Average Weekly Earnings	548.45	573.80	593.13	614.27

Period	2007	2008	2009	2010
Total	38,833,265,464	39,643,043,332	39,152,288,387	29,013,324,040
January - March	9,452,711,662	9,851,866,058	9,998,452,028	9,486,245,580
April - June	9,525,837,049	9,843,715,293	9,566,968,853	9,873,489,653
July - September	9,178,902,477	9,509,150,631	9,213,797,140	9,653,588,807
October - December	10,675,814,276	10,438,311,360	10,373,070,366	NA
Average Weekly Earnings	647.70	662.37	676.65	672.63

TABLE 4. TOTAL TAXABLE EARNINGS, 2003 - 2010

Period	2003	2004	2005	2006
Total	9,154,938,743	9,731,247,501	9,991,605,239	10,197,511,360
January - March	4,737,918,796	4,931,559,230	5,062,670,306	5,421,204,601
April - June	2,270,519,362	2,451,454,749	2,506,505,721	2,385,110,992
July - September	1,188,681,170	1,318,017,835	1,353,660,445	1,314,939,803
October - December	957,819,415	1,030,215,687	1,068,768,767	1,076,255,964

Period	2007	2008	2009	2010
Total	10,459,105,059	10,360,487,108	9,788,841,583	10,161,303,119
January - March	5,617,417,571	5,635,750,082	5,423,705,265	5,607,134,758
April - June	2,466,606,627	2,419,313,519	2,293,670,854	2,977,100,591
July - September	1,307,060,412	1,297,473,555	1,165,280,065	1,577,067,770
October - December	1,068,020,449	1,007,949,952	906,185,399	NA

TABLE 5. STATEWIDE SUMMARY

NORTH AMERICAN INDUSTRY CLASSIFICATION SYSTEM - INDUSTRY GROUPS		NUMBER OF EMPLOYING UNITS	July	Aug	Sept	TOTAL EARNINGS July - Sept	AVERAGE WEEKLY EARNINGS
TOTAL, ALL INDUSTRIES		84,309	1,073,743	1,099,795	1,124,281	\$9,653,588,807	\$675.52
NATURAL RESOURCES & MINING		2,506	21,698	21,772	22,258	\$230,588,051	\$809.59
11	AGRICULTURE, FORESTRY, FISHING & HUNTING	1,968	13,260	13,319	13,809	\$107,206,089	\$612.55
111	CROP PRODUCTION	819	4,214	4,221	4,334	\$24,750,489	\$447.31
1111	Oilseed & Grain Farming	487	2,344	2,407	2,492	14,402,782	458.89
1112	Vegetable & Melon Farming	11	96	77	85	374,099	334.61
1113	Fruit & Tree Nut Farming	8	129	120	89	523,906	357.70
1114	Greenhouse & Nursery Production	48	334	304	294	1,889,944	467.96
1119	Other Crop Farming	265	1,311	1,313	1,374	7,559,758	436.36
112	ANIMAL PRODUCTION	278	3,465	3,448	3,437	\$30,970,404	\$690.53
1121	Cattle Ranching & Farming	90	359	346	348	2,132,567	467.36
1122	Hog & Pig Farming	8	74	72	73	798,027	840.91
1123	Poultry & Egg Production	97	2,515	2,531	2,527	24,455,222	745.21
1125	Animal Aquaculture	57	447	430	420	3,115,868	554.39
1129	Other Animal Production	26	70	69	69	468,720	520.03
113	FORESTRY & LOGGING	438	2,461	2,476	2,456	\$21,765,548	\$679.40
1131	Timber Tract Operations	38	215	215	216	2,422,277	865.30
1132	Forest Nurseries & Gathering of Forest Products	7	39	37	38	404,289	818.40
1133	Logging	393	2,207	2,224	2,202	18,938,982	658.91
	OTHER	433	3,120	3,174	3,582	\$29,719,648	\$694.45
21	MINING	538	8,438	8,453	8,449	\$123,381,962	\$1,123.63
211	OIL & GAS EXTRACTION	96	961	944	953	\$15,259,635	\$1,232.14
212	MINING (EXCEPT OIL & GAS)	107	2,117	2,151	2,134	\$24,441,100	\$881.01
213	SUPPORT ACTIVITES FOR MINING	335	5,360	5,358	5,362	\$83,681,227	\$1,200.94

TABLE 5. STATEWIDE SUMMARY

NORTH AMERICAN INDUSTRY CLASSIFICATION SYSTEM - INDUSTRY GROUPS		NUMBER OF EMPLOYING UNITS	EMPLOYMENT			TOTAL EARNINGS July - Sept	AVERAGE WEEKLY EARNINGS
			July	Aug	Sept		
CONSTRUCTION		7,070	51,150	50,821	50,016	\$512,795,648	\$778.60
236	CONSTRUCTION OF BUILDINGS	1,748	10,084	10,037	10,051	\$100,730,478	\$770.43
2361	Residential Building Construction	1,170	3,011	3,037	3,034	22,888,313	581.58
2362	Nonresidential Building Construction	578	7,073	7,000	7,017	77,842,165	851.76
237	HEAVY & CIVIL ENGINEERING CONSTRUCTION	848	11,628	11,275	10,672	\$143,542,693	\$986.60
2371	Utility System Construction	453	6,959	6,615	6,073	92,161,728	1,082.51
2372	Land Subdivision	95	278	275	282	2,433,290	672.49
2373	Highway, Street & Bridge Construction	202	2,943	3,037	2,995	29,441,211	757.01
2379	Other Heavy Construction	98	1,448	1,348	1,322	19,506,464	1,093.13
238	SPECIALTY TRADE CONTRACTORS	4,474	29,438	29,509	29,293	\$268,522,477	\$702.25
2381	Building Foundation & Exterior Contractors	849	5,765	5,863	5,832	47,908,522	633.21
2382	Building Equipment Contractors	2,031	14,693	14,782	14,665	146,961,211	768.33
2383	Building Finishing Contractors	809	3,887	3,836	3,833	29,982,710	598.74
2389	Other Specialty Trade Contractors	785	5,093	5,028	4,963	43,670,034	668.11
MANUFACTURING		3,254	160,411	160,411	159,866	\$1,582,461,835	\$759.71
311	FOOD MANUFACTURING	293	46,011	46,137	46,150	\$370,422,403	\$618.10
3111	Animal Food Manufacturing	51	1,622	1,656	1,668	16,446,642	767.36
3112	Grain & Oilseed Milling	31	2,352	2,371	2,379	26,168,935	850.32
3113	Sugar & Confectionery Product Manufacturing	7	67	64	64	290,535	343.83
3114	Fruit, Vegetable & Specialty Food	22	5,748	5,698	5,773	53,293,350	714.24
3115	Dairy Product Manufacturing	11	703	701	697	7,143,507	784.63
3116	Animal Slaughtering & Processing	86	30,653	30,796	30,755	219,684,100	549.83
3117	Seafood Product Preparation & Packaging	5	117	115	117	613,586	405.72
3118	Bakeries and Tortilla Manufacturing	55	3,099	3,090	3,070	31,512,238	785.40
3119	Other Food Manufacturing	25	1,650	1,646	1,627	15,269,510	715.77

TABLE 5. STATEWIDE SUMMARY

NORTH AMERICAN INDUSTRY CLASSIFICATION SYSTEM - INDUSTRY GROUPS		NUMBER OF EMPLOYING UNITS	EMPLOYMENT			TOTAL EARNINGS July - Sept	AVERAGE WEEKLY EARNINGS
			July	Aug	Sept		
312	BEVERAGE & TOBACCO PRODUCT MANUFACTURING	40	1,063	1,039	1,054	\$11,817,244	\$864.09
313	TEXTILE MILLS	14	96	93	91	\$911,185	\$750.98
314	TEXTILE PRODUCT MILLS	58	977	974	962	\$9,337,894	\$739.75
3141	Textile Furnishing Mills	12	23	22	23	140,055	475.30
3149	Other Textile Product Mills	46	954	952	939	9,197,839	746.07
315	APPAREL MANUFACTURING	28	1,261	1,281	1,283	\$6,681,449	\$403.10
3151	Apparel Knitting Mills	2	629	625	614	3,264,992	403.35
3152	Cut & Sew Apparel Manufacturing	20	410	429	442	2,258,054	406.78
3159	Accessories & Other Apparel Manufacturing	6	222	227	227	1,158,403	395.45
316	LEATHER & ALLIED PRODUCT MANUFACTURING	19	1,241	1,247	1,247	\$7,150,940	\$441.83
321	WOOD PRODUCT MANUFACTURING	339	9,584	9,586	9,584	\$84,253,362	\$676.19
3211	Sawmills & Wood Preservation	138	4,329	4,343	4,366	37,582,437	665.20
3212	Veneer & Engineered Wood Products	56	2,564	2,595	2,574	28,338,493	845.68
3219	Other Wood Product Manufacturing	145	2,691	2,648	2,644	18,332,432	529.95
322	PAPER MANUFACTURING	81	10,515	10,454	10,400	\$146,563,777	\$1,078.21
3221	Pulp, Paper & Paperboard Mills	14	4,264	4,269	4,256	74,251,469	1,339.82
3222	Converted Paper Product Manufacturing	67	6,251	6,185	6,144	72,312,308	898.14
323	PRINTING & RELATED SUPPORT ACTIVITIES	264	5,113	5,137	5,159	\$48,041,387	\$719.48
324	PETROLEUM & COAL PRODUCTS MANUFACTURING	19	1,027	959	949	\$12,197,576	\$959.05

TABLE 5. STATEWIDE SUMMARY

NORTH AMERICAN INDUSTRY CLASSIFICATION SYSTEM - INDUSTRY GROUPS		NUMBER OF EMPLOYING UNITS	EMPLOYMENT			TOTAL EARNINGS July - Sept	AVERAGE WEEKLY EARNINGS
			July	Aug	Sept		
325	CHEMICAL MANUFACTURING	122	4,682	4,689	4,652	\$62,153,580	\$1,022.83
3251	Basic Chemical Manufacturing	32	1,780	1,785	1,779	27,274,651	1,177.80
3252	Resin, Rubber & Artificial Fibers	9	278	281	280	3,882,163	1,067.80
3253	Agricultural Chemical Manufacturing	15	295	289	283	3,708,385	987.06
3254	Pharmaceutical & Medicine Manufacturing	13	172	178	179	2,024,705	883.25
3255	Paint, Coating & Adhesive Manufacturing	9	168	168	167	2,491,712	1,143.16
3256	Soap, Cleaning Compound, & Toilet Preparation Manufacturing	15	981	973	951	11,363,474	902.70
3259	Other Chemical Preparation Manufacturing	29	1,008	1,015	1,013	11,408,490	867.17
326	PLASTICS & RUBBER PRODUCTS MANUFACTURING	149	10,347	10,447	10,351	\$111,444,610	\$825.75
3261	Plastics Product Manufacturing	107	6,657	6,658	6,576	63,981,133	742.29
3262	Rubber Product Manufacturing	42	3,690	3,789	3,775	47,463,477	973.26
327	NONMETALLIC MINERAL PRODUCT MANUFACTURING	254	3,530	3,486	3,483	\$35,608,376	\$782.68
3271	Clay Product & Refractory Manufacturing	16	352	353	348	3,820,701	837.32
3272	Glass & Glass Product Manufacturing	16	369	368	369	3,313,139	691.29
3273	Cement & Concrete Product Manufacturing	185	2,110	2,071	2,068	20,588,884	760.33
3274	Lime & Gypsum Product Manufacturing	5	224	222	222	2,623,084	906.18
3279	Other Nonmetallic Mineral Products Manufacturing	32	475	472	476	5,262,568	853.44
331	PRIMARY METAL MANUFACTURING	70	6,464	6,466	6,511	\$93,300,151	\$1,107.49
3311	Iron & Steel Mills & Ferroalloys	9	2,210	2,213	2,222	45,401,803	1,576.73
3312	Purchased Steel Product Manufacturing	14	997	1,000	1,025	13,330,693	1,017.97
3313	Alumina & Aluminum Production	20	1,481	1,462	1,445	17,071,698	897.82
3314	Other Nonferrous Metal Production	12	735	737	748	7,256,271	754.29
3315	Foundries	15	1,041	1,054	1,071	10,239,686	746.37

TABLE 5. STATEWIDE SUMMARY

NORTH AMERICAN INDUSTRY CLASSIFICATION SYSTEM - INDUSTRY GROUPS		NUMBER OF EMPLOYING UNITS	EMPLOYMENT			TOTAL EARNINGS July - Sept	AVERAGE WEEKLY EARNINGS
			July	Aug	Sept		
332	FABRICATED METAL PRODUCT MANUFACTURING	541	14,713	14,669	14,721	\$155,914,910	\$815.83
3321	Forging & Stamping	12	484	477	461	5,083,604	824.99
3322	Cutlery & Hand Tool Manufacturing	16	981	981	992	8,798,549	687.35
3323	Architectural & Structural Metals	168	3,680	3,675	3,648	39,009,516	818.16
3324	Boilers, Tanks & Shipping Containers	18	569	564	561	6,366,192	867.25
3325	Hardware Manufacturing	7	268	261	265	2,387,103	693.79
3326	Spring & Wire Product Manufacturing	12	500	476	466	3,847,024	615.66
3327	Machine Shops & Threaded Products	210	1,826	1,822	1,828	16,633,570	700.97
3328	Coating, Engraving & Heat Treating Metals	36	571	572	573	4,547,972	611.62
3329	Other Fabricated Metal Product Manufacturing	62	5,834	5,841	5,927	69,241,380	907.78
333	MACHINERY MANUFACTURING	230	11,547	11,409	11,104	\$109,204,920	\$739.90
3331	Agriculture, Construction & Mining Machinery	38	2,756	2,659	2,541	18,405,909	533.88
3332	Industrial Machinery Manufacturing	33	692	686	665	7,603,033	858.81
3333	Commercial & Service Industry Machinery	20	828	828	727	8,278,018	801.64
3334	HVAC & Commercial Refrigeration Equipment	18	3,881	3,837	3,738	38,970,107	785.01
3335	Metalworking Machinery Manufacturing	67	977	989	1,001	10,626,531	826.52
3336	Turbine & Power Transmission Equipment Manufacturing	8	592	582	584	6,129,033	804.55
3339	Other General Purpose Machinery Manufacturing	46	1,821	1,828	1,848	19,192,289	805.71
334	COMPUTER & ELECTRONIC PRODUCT MANUFACTURING	70	3,134	3,162	3,195	\$31,276,028	\$760.46
3342	Communications Equipment Manufacturing	7	111	106	105	1,486,194	1,065.12
3343	Audio & Video Equipment Manufacturing	8	560	559	558	5,270,238	725.23
3344	Semiconductors & Electronic Components	27	1,919	1,957	1,981	18,419,409	725.74
3345	Electronic Instrument Manufacturing	25	536	532	542	6,030,404	864.37
	Other	3	8	8	9	69,783	644.15
335	ELECTRICAL EQUIPMENT & APPLIANCES	55	8,312	8,300	8,174	\$83,700,701	\$779.29
3353	Electrical Equipment Manufacturing	19	3,864	3,865	3,877	42,197,595	839.04
3359	Other Electrical Equipment & Component Manufacturing	21	1,655	1,661	1,639	17,997,497	838.20
	Other	15	2,793	2,774	2,658	23,505,609	659.50

TABLE 5. STATEWIDE SUMMARY

NORTH AMERICAN INDUSTRY CLASSIFICATION SYSTEM - INDUSTRY GROUPS		NUMBER OF EMPLOYING UNITS	EMPLOYMENT			TOTAL EARNINGS July - Sept	AVERAGE WEEKLY EARNINGS
			July	Aug	Sept		
336	TRANSPORTATION EQUIPMENT MANUFACTURING	165	12,164	12,259	12,384	\$128,970,100	\$808.61
3362	Motor Vehicle Body & Trailer Manufacturing	38	1,446	1,408	1,408	12,021,031	650.89
3363	Motor Vehicle Parts Manufacturing	55	5,519	5,534	5,553	55,683,004	773.81
3364	Aerospace Product & Parts Manufacturing	30	3,420	3,402	3,390	44,527,752	1,006.23
3366	Ship & Boat Building	25	1,162	1,197	1,254	9,406,384	600.80
	Other	17	617	718	779	7,331,929	800.37
337	FURNITURE & RELATED PRODUCT MANUFACTURING	221	4,303	4,347	4,199	\$36,377,445	\$653.34
3371	Household & Institutional Furniture	181	2,871	2,852	2,781	22,826,968	619.45
3372	Office Furniture & Fixtures Manufacturing	32	1,340	1,400	1,327	12,906,976	732.37
3379	Other Furniture Related Product Manufacturing	8	92	95	91	643,501	534.17
339	MISCELLANEOUS MANUFACTURING	222	4,327	4,270	4,213	\$37,133,797	\$668.96
3391	Medical Equipment & Supplies Manufacturing	89	2,295	2,295	2,271	21,559,851	725.16
3399	Other Miscellaneous Manufacturing	133	2,032	1,975	1,942	15,573,946	604.13
TRADE, TRANSPORTATION & UTILITIES		20,685	232,524	232,910	231,711	\$1,976,350,095	\$654.21
42	WHOLESALE TRADE	6,454	46,840	46,624	46,332	\$620,935,105	\$1,025.01
423	MERCHANT WHOLESALERS, DURABLE GOODS	2,229	20,510	20,381	20,365	\$239,468,667	\$902.15
4231	Motor Vehicle & Part Merchant Wholesalers	255	2,492	2,513	2,551	24,683,536	753.86
4232	Furniture & Furnishings Merchant Wholesalers	60	353	343	345	4,118,228	912.93
4233	Lumber & Supply Merchant Wholesalers	187	1,409	1,408	1,392	13,721,514	752.32
4234	Commercial Goods Merchant Wholesalers	316	2,803	2,792	2,782	39,646,097	1,092.17
4235	Metal & Mineral Merchant Wholesalers	57	825	830	834	10,091,836	935.67
4236	Electric Goods Merchant Wholesalers	184	1,966	1,844	1,842	23,304,044	951.50
4237	Hardware & Plumbing Merchant Wholesalers	218	2,162	2,161	2,130	25,436,995	909.67
4238	Machinery & Supply Merchant Wholesalers	719	6,657	6,645	6,640	81,332,918	941.19
4239	Miscellaneous Durable Goods Merchant Wholesalers	233	1,843	1,845	1,849	17,133,499	714.08

TABLE 5. STATEWIDE SUMMARY

NORTH AMERICAN INDUSTRY CLASSIFICATION SYSTEM - INDUSTRY GROUPS		NUMBER OF EMPLOYING UNITS	EMPLOYMENT			TOTAL EARNINGS July - Sept	AVERAGE WEEKLY EARNINGS
			July	Aug	Sept		
424	MERCHANT WHOLESALERS, NONDURABLE GOODS	1,242	16,341	16,261	16,203	\$182,712,234	\$863.94
4241	Paper & Paper Product Merchant Wholesalers	74	1,070	1,095	1,098	12,797,870	905.10
4242	Druggist' Goods Merchant Wholesalers	64	985	992	957	10,736,686	844.48
4243	Apparel & Piece Goods Merchant Wholesalers	43	547	550	557	4,655,564	649.55
4244	Grocery Product Merchant Wholesalers	331	5,730	5,719	5,718	73,903,193	993.45
4245	Farm Product Merchant Wholesalers	74	855	885	905	6,817,165	594.78
4246	Chemical merchant Wholesalers	96	570	574	559	8,380,245	1,135.59
4247	Petroleum Merchant Wholesalers	139	1,566	1,580	1,570	18,727,958	916.42
4248	Alcoholic Beverage Merchant Wholesalers	37	1,202	1,209	1,204	13,979,754	892.42
4249	Miscellaneous Nondurable Goods Merchant Wholesaler	384	3,816	3,657	3,635	32,713,799	679.63
425	ELECTRONIC MARKETS & AGENTS & BROKERS	2,983	9,989	9,982	9,764	\$198,754,204	\$1,542.50
44 - 45	RETAIL TRADE	10,979	129,884	130,157	128,982	\$755,135,959	\$447.95
441	MOTOR VEHICLE & PARTS DEALERS	1,633	16,683	16,745	16,729	\$153,779,292	\$707.53
4411	Automobile Dealers	674	9,670	9,711	9,741	103,626,266	821.16
4412	Other Motor Vehicle Dealers	174	1,365	1,370	1,346	11,824,668	668.65
4413	Automotive Parts, Accessories & Tire Stores	785	5,648	5,664	5,642	38,328,358	521.71
442	FURNITURE & HOME FURNISHINGS STORES	557	3,361	3,340	3,319	\$23,051,061	\$530.89
4421	Furniture Stores	304	2,020	2,015	2,001	14,781,202	565.12
4422	Home Furnishings Stores	253	1,341	1,325	1,318	8,269,859	479.02
443	ELECTRONICS & APPLIANCE STORES	537	3,918	3,944	3,940	\$30,709,477	\$600.47
444	BUILDING MATERIAL & GARDEN SUPPLY STORES	844	10,384	10,193	10,062	\$67,651,167	\$509.54
4441	Building Material & Supplies Dealers	637	9,140	8,972	8,860	60,299,233	515.91
4442	Lawn & Garden Equipment & Supplies Stores	207	1,244	1,221	1,202	7,351,934	462.67

TABLE 5. STATEWIDE SUMMARY

NORTH AMERICAN INDUSTRY CLASSIFICATION SYSTEM - INDUSTRY GROUPS		NUMBER OF EMPLOYING UNITS	EMPLOYMENT			TOTAL EARNINGS July - Sept	AVERAGE WEEKLY EARNINGS
			July	Aug	Sept		
445	FOOD & BEVERAGE STORES	1,019	17,822	17,913	17,712	\$82,871,005	\$357.81
4451	Grocery Stores	569	15,388	15,455	15,282	69,795,543	349.20
4452	Specialty Food Stores	148	919	919	904	5,757,447	484.55
4453	Beer, Wine & Liquor Stores	302	1,515	1,539	1,526	7,318,015	368.73
446	HEALTH & PERSONAL CARE STORES	981	7,710	7,748	7,683	\$65,949,995	\$657.67
447	GASOLINE STATIONS	1,524	11,645	11,778	11,637	\$47,725,059	\$314.13
44711	Gasoline Stations with Convenience Stores	1,413	10,719	10,824	10,730	42,752,272	305.70
44719	Other Gasoline Stations	111	926	954	907	4,972,787	411.76
448	CLOTHING & CLOTHING ACCESSORIES STORES	994	8,305	8,530	8,277	\$30,073,104	\$276.36
4481	Clothing Stores	707	6,453	6,645	6,452	20,829,207	245.87
4482	Shoe Stores	149	1,133	1,152	1,096	4,510,387	307.86
4483	Jewelry, Luggage & Leather Goods Stores	138	719	733	729	4,733,510	500.85
451	SPORTING GOODS, HOBBY, BOOK & MUSIC STORES	525	4,096	4,405	4,265	\$17,175,396	\$310.48
4511	Sporting Goods & Musical Instrument Stores	403	2,958	3,201	3,155	13,107,023	324.75
4512	Book, Periodical & Music Stores	122	1,138	1,204	1,110	4,068,373	271.97
452	GENERAL MERCHANDISE STORES	764	37,799	37,597	37,411	\$191,426,694	\$0.00
453	MISCELLANEOUS STORE RETAILERS	1,252	6,480	6,270	6,265	\$30,867,762	\$374.62
4531	Florists	224	734	734	727	2,799,722	294.35
4532	Office Supplies, Stationery & Gift Stores	316	1,986	2,025	2,063	10,719,386	407.26
4533	Used Merchandise Stores	231	1,126	1,226	1,172	5,112,386	334.78
4539	Other Miscellaneous Store Retailers	481	2,634	2,285	2,303	12,236,268	390.99
454	NONSTORE RETAILERS	349	1,681	1,694	1,682	\$13,855,947	\$632.30
4541	Electronic Shopping & Mail-Order Houses	136	452	457	444	4,418,177	753.57
4542	Vending Machine Operators	63	495	493	499	3,488,301	541.35
4543	Direct Selling Establishments	150	734	744	739	5,949,469	619.28
48 - 49	TRANSPORTATION & WAREHOUSING	2,847	48,448	48,785	49,149	482,647,216	\$760.89
481	AIR TRANSPORTATION	50	793	809	819	\$10,711,174	\$1,020.99

TABLE 5. STATEWIDE SUMMARY

NORTH AMERICAN INDUSTRY CLASSIFICATION SYSTEM - INDUSTRY GROUPS		NUMBER OF EMPLOYING UNITS	EMPLOYMENT			TOTAL EARNINGS July - Sept	AVERAGE WEEKLY EARNINGS
			July	Aug	Sept		
484	TRUCK TRANSPORTATION	1,905	32,090	32,256	32,214	\$324,096,887	\$774.56
4841	General Freight Trucking	1,172	25,595	25,734	25,728	260,448,813	779.99
4842	Specialized Freight Trucking	733	6,495	6,522	6,486	63,648,074	753.12
485	TRANSIT & GROUND PASSENGER TRANSPORTATION	76	1,036	1,059	1,228	\$4,527,690	\$314.43
4851	Urban Transit Systems	3	52	54	58	157,239	221.26
4852	Interurban & Rural Bus Transportation	3	65	70	66	364,747	418.77
4853	Taxi & Limousine Service	26	302	306	306	1,225,501	309.42
4854	School & Employee Bus Transportation	8	195	218	386	1,100,395	317.82
4855	Charter Bus Industry Service	8	74	69	75	360,763	381.89
4859	Other Ground Passenger Transportation	28	348	342	337	1,319,045	296.39
486	PIPELINE TRANSPORTATION	31	348	346	343	\$6,288,364	\$1,399.38
488	SUPPORT ACTIVITIES FOR TRANSPORTATION	397	4,042	4,033	4,039	\$41,954,358	\$799.22
4881	Support Activities for Air Transportation	95	1,367	1,355	1,344	12,555,010	712.57
4882	Support Activities for Rail Transportation	33	318	301	290	3,084,411	783.04
4883	Support Activities for Water Transportation	26	553	544	548	6,335,044	888.71
4884	Support Activities for Road Transportation	115	442	448	487	3,133,058	525.06
4885	Freight Transportation Arrangement	113	1,297	1,321	1,308	16,344,937	960.75
4889	Other Support Activities for Transportation	15	65	64	62	501,898	606.40
491	POSTAL SERVICE	12	15	15	17	\$78,140	\$383.67
492	COURIERS & MESSENGERS	148	2,948	2,979	3,017	\$30,716,631	\$792.54
4921	Couriers	80	2,631	2,648	2,673	28,379,914	823.59
4922	Local Messengers & Local Delivery	68	317	331	344	2,336,717	543.59
493	WAREHOUSING & STORAGE	217	7,008	7,128	7,311	\$62,641,183	\$674.02
	OTHER	11	168	160	161	\$1,632,789	\$770.55

TABLE 5. STATEWIDE SUMMARY

NORTH AMERICAN INDUSTRY CLASSIFICATION SYSTEM - INDUSTRY GROUPS		NUMBER OF EMPLOYING UNITS	EMPLOYMENT			TOTAL EARNINGS July - Sept	AVERAGE WEEKLY EARNINGS
			July	Aug	Sept		
22	UTILITIES	405	7,352	7,344	7,248	\$117,631,815	\$1,237.05
2211	Power Generation & Supply	158	5,095	5,075	5,010	90,485,335	1,375.58
2212	Natural Gas Distribution	70	1,393	1,400	1,382	20,045,088	1,107.97
2213	Water, Sewage and Other Systems	177	864	869	856	7,101,392	632.98
INFORMATION		1,117	15,334	15,292	15,244	\$177,114,693	\$891.05
511	PUBLISHING INDUSTRIES, EXCEPT INTERNET	235	3,989	3,973	3,966	\$34,766,811	\$672.63
5111	Newspaper, Book & Directory Publishers	208	3,746	3,730	3,724	31,011,874	638.98
5112	Software Publishers	27	243	243	242	3,754,937	1,190.28
512	MOTION PICTURE & SOUND RECORDING INDUSTRY	145	1,304	1,269	1,227	\$5,955,016	\$361.64
5121	Motion Picture & Video Industries	124	1,266	1,231	1,189	5,573,824	348.96
5122	Sound Recording Industries	21	38	38	38	381,192	771.64
515	BROADCASTING, EXCEPT INTERNET	128	1,735	1,743	1,773	\$15,891,288	\$698.39
5151	Radio & Television Broadcasting	123	1,700	1,708	1,735	15,677,190	703.44
5152	Cable & Other Subscription Programming	5	35	35	38	214,098	457.47
517	TELECOMMUNICATIONS	388	6,530	6,529	6,502	\$99,598,697	\$1,175.01
5171	Wired Telecommunications Carriers	282	3,969	3,965	3,948	60,299,728	1,171.13
5179	Other Telecommunications	64	415	411	404	6,274,176	1,177.14
	Other	42	2,146	2,153	2,150	33,024,793	1,181.75
518	DATA PROCESSING, HOSTING & RELATED SERVICES	156	1,480	1,482	1,503	\$18,125,638	\$936.81
519	OTHER INFORMATION SERVICES	65	296	296	273	\$2,777,243	\$740.93
FINANCIAL ACTIVITIES		8,002	48,144	48,061	47,866	\$515,346,211	\$825.47
52	FINANCE & INSURANCE	4,673	34,481	34,349	34,273	\$414,236,337	\$927.16

TABLE 5. STATEWIDE SUMMARY

NORTH AMERICAN INDUSTRY CLASSIFICATION SYSTEM - INDUSTRY GROUPS		NUMBER OF EMPLOYING UNITS	EMPLOYMENT			TOTAL EARNINGS July - Sept	AVERAGE WEEKLY EARNINGS
			July	Aug	Sept		
522	CREDIT INTERMEDIATION & RELATED ACTIVITIES	1,853	19,273	19,228	19,210	\$194,189,263	\$776.51
5221	Depository Credit Intermediation	1,392	17,257	17,199	17,171	166,049,399	742.23
5222	Nondepository Credit Intermediation	337	1,626	1,643	1,666	23,210,339	1,085.36
5223	Activities Related to Credit Intermediation	124	390	386	373	4,929,525	990.06
523	FINANCIAL INVESTMENT & RELATED ACTIVITIES	666	3,068	3,080	3,030	\$70,670,880	\$1,776.93
524	INSURANCE CARRIERS & RELATED ACTIVITIES	2,075	11,659	11,560	11,549	\$144,193,552	\$957.07
5241	Insurance Carriers	420	5,490	5,435	5,406	76,534,801	1,081.49
5242	Insurance Agencies, Brokerages & Support	1,655	6,169	6,125	6,143	67,658,751	846.86
	OTHER	79	481	481	484	\$5,182,642	\$827.11
53	REAL ESTATE & RENTAL & LEASING	3,329	13,663	13,712	13,593	\$101,109,874	\$569.54
531	REAL ESTATE	2,540	8,842	8,934	8,835	\$62,448,059	\$541.55
5311	Lessors of Real Estate	1,075	4,525	4,561	4,519	29,494,704	500.29
5312	Offices of Real Estate Agents & Brokers	800	1,648	1,664	1,650	12,391,092	576.28
5313	Activities Related to Real Estate	665	2,669	2,709	2,666	20,562,263	589.90
532	RENTAL & LEASING SERVICES	770	4,760	4,716	4,698	\$38,019,240	\$619.00
5321	Automotive Equipment Rental & Leasing	123	907	879	878	6,357,266	550.70
5322	Consumer Goods Rental	432	2,404	2,362	2,353	15,265,737	494.85
5323	General Rental Centers	29	248	251	244	2,055,800	638.51
5324	Machinery & Equipment Rental & Leasing	186	1,201	1,224	1,223	14,340,437	907.16
533	LESSORS OF NONFINANCIAL INTANGIBLE ASSETS	19	61	62	60	\$642,575	\$810.31

TABLE 5. STATEWIDE SUMMARY

NORTH AMERICAN INDUSTRY CLASSIFICATION SYSTEM - INDUSTRY GROUPS		NUMBER OF EMPLOYING UNITS	EMPLOYMENT			TOTAL EARNINGS July - Sept	AVERAGE WEEKLY EARNINGS
			July	Aug	Sept		
PROFESSIONAL & BUSINESS SERVICES		12,203	118,536	119,333	119,702	\$1,293,337,294	\$834.69
54	PROFESSIONAL & TECHNICAL SERVICES	7,608	38,158	38,027	37,903	\$473,464,040	\$957.69
5411	Legal Services	1,683	6,271	6,192	6,149	70,177,070	\$870.12
5412	Accounting & Bookkeeping Services	1,285	4,791	4,742	4,779	49,174,623	\$792.90
5413	Architectural & Engineering Services	971	6,342	6,338	6,307	85,292,830	\$1,036.65
5414	Specialized Design Services	173	444	461	466	5,360,470	\$902.28
5415	Computer Systems Design & Related Services	1,061	7,973	7,988	7,955	130,852,785	\$1,262.62
5416	Management & Technical Consulting Services	1,340	5,382	5,398	5,480	70,593,969	\$1,001.90
5417	Scientific Research & Development Services	116	1,174	1,148	1,134	16,335,960	\$1,090.81
5418	Advertising & Related Services	365	1,940	1,917	1,896	20,973,136	\$841.29
5419	Other Professional & Technical Services	614	3,841	3,843	3,737	24,703,197	\$499.15
55	MANAGEMENT OF COMPANIES & ENTERPRISES	519	26,393	26,456	26,282	\$481,938,538	\$1,405.47
56	ADMINISTRATIVE & SUPPORT SERVICES	4,076	53,985	54,850	55,517	\$337,934,716	\$474.50
561	ADMINISTRATIVE & SUPPORT SERVICES	3,833	50,888	51,788	52,434	\$308,410,777	\$458.85
5611	Office Administrative Services	558	1,739	1,710	1,725	21,341,018	\$951.85
5612	Facilities Support Services	20	128	135	136	1,313,311	\$759.58
5613	Employment Services	783	20,428	21,118	21,861	112,592,254	\$409.78
5614	Business Support Services	434	9,800	9,833	9,838	65,704,928	\$514.49
5615	Travel Arrangement & Reservation Services	83	358	329	327	2,638,396	\$600.45
5616	Investigation & Security Services	247	4,622	4,583	4,509	28,338,289	\$476.86
5617	Services to Buildings & Dwellings	1,430	11,951	12,225	12,208	61,823,811	\$392.12
5619	Other Support Services	278	1,862	1,855	1,830	14,658,770	\$609.84
562	WASTE MANAGEMENT & REMEDIATION SERVICES	243	3,097	3,062	3,083	\$29,523,939	\$737.20
5621	Waste Collection Services	110	1,214	1,223	1,238	11,362,836	\$713.52
5622	Waste Treatment & Disposal Services	35	886	884	877	10,959,203	\$955.44
5629	Remediation & Other Waste Services	98	997	955	968	7,201,900	\$569.17

TABLE 5. STATEWIDE SUMMARY

NORTH AMERICAN INDUSTRY CLASSIFICATION SYSTEM - INDUSTRY GROUPS		NUMBER OF EMPLOYING UNITS	EMPLOYMENT			TOTAL EARNINGS July - Sept	AVERAGE WEEKLY EARNINGS
			July	Aug	Sept		
EDUCATION & HEALTH SERVICES		14,630	161,742	163,378	164,250	\$1,441,405,503	\$679.71
61	EDUCATIONAL SERVICES	690	9,521	9,787	10,520	\$79,273,469	\$613.31
6111	Elementary & Secondary Schools	89	2,841	3,176	3,394	20,569,669	\$504.39
6112	Junior Colleges	7	182	205	215	1,440,510	\$552.20
6113	Colleges & Universities	32	3,543	3,530	3,778	31,630,369	\$672.69
6114	Business, Computer, & Management Training	47	239	246	237	4,099,947	\$1,310.45
6115	Technical & Trade Schools	105	809	819	884	11,019,893	\$1,012.36
6116	Other Schools & Instruction	267	1,409	1,386	1,578	5,508,240	\$290.68
6117	Educational Support Services	143	498	425	434	5,004,841	\$851.12
62	HEALTH CARE & SOCIAL ASSISTANCE	13,940	152,221	153,591	153,730	\$1,362,132,034	\$684.02
621	AMBULATORY HEALTH CARE SERVICES	5,072	45,872	45,955	45,980	\$602,042,842	\$1,008.17
6211	Offices of Physicians	2,244	21,416	21,466	21,406	367,266,649	\$1,318.35
6212	Offices of Dentists	981	6,623	6,685	6,618	72,665,103	\$841.56
6213	Offices of Other Health Practitioners	1,193	6,425	6,447	6,555	55,729,289	\$662.00
6214	Outpatient Care Centers	265	3,801	3,787	3,802	38,691,302	\$783.91
6215	Medical & Diagnostic Laboratories	110	899	897	887	12,278,965	\$1,056.13
6216	Home Health Care Services	150	4,237	4,209	4,242	33,937,950	\$617.26
6219	Other Ambulatory Health Care Services	129	2,471	2,464	2,470	21,473,584	\$669.20
622	HOSPITALS	122	42,038	42,279	42,363	\$432,673,128	\$788.19
6221	General Medical & Surgical Hospitals	88	37,786	38,001	38,045	393,039,762	\$796.80
6222	Psychiatric & Substance Abuse Hospitals	10	1,937	1,941	1,914	16,619,107	\$662.15
6223	Other Hospitals	24	2,315	2,337	2,404	23,014,259	\$752.69
623	NURSING & RESIDENTIAL CARE FACILITIES	549	30,829	31,127	31,157	\$173,057,740	\$428.90
6231	Nursing Care Facilities	262	22,744	22,893	22,912	128,324,764	\$432.00
6232	Residential Mental Health Facilities	137	4,194	4,197	4,243	23,838,745	\$435.43
6233	Community Care Facilities for the Elderly	107	2,686	2,836	2,794	13,284,040	\$368.63
6239	Other Residential Care Facilities	43	1,205	1,201	1,208	7,610,191	\$485.94

TABLE 5. STATEWIDE SUMMARY

NORTH AMERICAN INDUSTRY CLASSIFICATION SYSTEM - INDUSTRY GROUPS		NUMBER OF EMPLOYING UNITS	EMPLOYMENT			TOTAL EARNINGS July - Sept	AVERAGE WEEKLY EARNINGS
			July	Aug	Sept		
624	SOCIAL ASSISTANCE	8,197	33,482	34,230	34,230	\$154,358,324	\$349.43
6241	Individual & Family Services	7,005	19,045	19,197	19,108	85,007,639	\$342.06
6242	Emergency & Other Relief Services	122	1,097	1,080	1,106	6,092,192	\$428.23
6243	Vocational Rehabilitation Services	127	4,074	3,879	3,805	21,996,832	\$431.72
6244	Child Day Care Services	943	9,266	10,074	10,211	41,261,661	\$322.22
	LEISURE & HOSPITALITY	6,371	101,879	102,154	101,553	\$342,501,774	\$564.90
71	ARTS, ENTERTAINMENT & RECREATION	906	11,515	11,050	10,222	\$44,435,689	\$312.76
711	PERFORMING ARTS & SPECTATOR SPORTS	210	2,520	2,348	2,307	\$10,881,297	\$349.97
7111	Performing Arts Companies	43	594	571	618	2,043,547	\$264.49
7112	Spectator Sports	52	1,096	1,110	1,106	5,737,482	\$399.77
7113	Performing Arts & Sports Promoters	37	737	595	497	2,546,271	\$321.27
7114	Agents & Managers for Public Figures	23	21	19	24	189,573	\$683.56
7115	Independent Artists, Writers, & Performers	55	72	53	62	364,424	\$449.72
712	MUSEUMS, PARKS, & HISTORICAL SITES	53	349	348	351	\$2,015,317	\$443.77
713	GAMBLING, RECREATIONAL & AMUSEMENT INDUSTRY	643	8,646	8,354	7,564	\$31,539,075	\$296.30
72	ACCOMODATION & FOOD SERVICES	5,465	90,364	91,104	91,331	\$298,066,085	\$252.14
721	ACCOMODATION	882	12,514	12,281	11,545	\$46,360,697	\$294.40
7211	Travel Accommodation	799	11,291	11,259	11,108	43,404,743	\$297.60
7212	RV Parks & Recreational Camps	63	1,156	944	348	2,645,720	\$249.41
7213	Rooming & Boarding Houses	20	67	78	89	310,234	\$305.95
722	FOOD SERVICES & DRINKING PLACES	4,583	77,850	78,823	79,786	\$251,705,388	\$245.65
7221	Full - Service Restaurants	1,952	33,553	33,806	34,077	114,618,543	\$260.76
7222	Limited - Service Eating Places	2,318	41,505	41,919	42,072	125,388,004	\$230.57
7223	Special Food Services	164	1,776	2,055	2,565	8,658,553	\$312.40
7224	Drinking Places, Alcoholic Beverages	149	1,016	1,043	1,072	3,040,288	\$224.08

TABLE 5. STATEWIDE SUMMARY

NORTH AMERICAN INDUSTRY CLASSIFICATION SYSTEM - INDUSTRY GROUPS		NUMBER OF EMPLOYING UNITS	EMPLOYMENT			TOTAL EARNINGS July - Sept	AVERAGE WEEKLY EARNINGS
			July	Aug	Sept		
OTHER SERVICES		5,378	25,174	24,964	24,921	\$163,912,087	\$503.95
811	REPAIR & MAINTENANCE	2,184	8,957	9,009	9,080	\$70,056,435	\$597.75
8111	Automotive Repair & Maintenance	1,460	6,135	6,158	6,138	44,117,133	\$552.38
8112	Electronic Equipment Repair & Maintenance	164	721	736	824	7,083,791	\$716.67
8113	Commercial Machinery Repair & Maintenance	379	1,558	1,583	1,594	14,916,118	\$726.97
8114	Household Goods Repair & Maintenance	181	543	532	524	3,939,393	\$568.54
812	PERSONAL & LAUNDRY SERVICES	1,309	8,169	8,241	8,249	\$41,765,545	\$390.86
8121	Personal Care Services	577	2,687	2,739	2,745	11,203,152	\$316.40
8122	Death Care Services	245	1,659	1,639	1,627	10,476,313	\$490.89
8123	Drycleaning & Laundry Service	291	3,117	3,139	3,187	16,782,964	\$410.14
8129	Other Personal Services	196	706	724	690	3,303,116	\$359.56
813	MEMBERSHIP ASSOCIATIONS & ORGANIZATIONS	1,097	6,966	6,642	6,526	\$47,358,395	\$542.81
8131	Religious Organizations	48	216	203	210	1,310,746	\$480.89
8132	Grantmaking & Giving Organizations	109	502	502	510	5,363,522	\$817.53
8133	Social Advocacy Organizations	218	2,202	2,229	2,183	16,143,104	\$563.25
8134	Civic & Social Organizations	198	1,739	1,366	1,353	5,484,510	\$283.91
8139	Professional & Similar Organizations	524	2,307	2,342	2,270	19,056,513	\$635.59
814	PRIVATE HOUSEHOLDS	788	1,082	1,072	1,066	\$4,731,712	\$339.11
LOCAL GOVERNMENT		1,974	70,348	93,159	117,123	712,399,489	\$585.82
STATE GOVERNMENT		1,119	66,803	67,540	69,771	705,376,127	\$797.49
NONCLASSIFIABLE ESTABLISHMENTS		0	0	0	0	0	0

TABLE 6. COUNTY SUMMARY

NORTH AMERICAN INDUSTRY CLASSIFICATION SYSTEM - INDUSTRY GROUPS	NUMBER OF EMPLOYING UNITS	EMPLOYMENT			TOTAL EARNINGS	AVERAGE WEEKLY EARNINGS
		JUL	AUG	SEPT	JUL - SEPT	
ARKANSAS COUNTY - TOTAL	751	9,448	9,521	9,472	\$79,449,071	\$644.65
Natural Resources & Mining	41	188	224	212	3,047,978	1,127.21
Construction	47	298	293	285	2,626,260	691.85
Manufacturing	33	3,428	3,426	3,339	32,454,463	734.77
Trade, Transportation & Utilities	213	2,105	2,064	2,069	17,453,377	645.67
Wholesale Trade	50	450	417	399	5,041,401	918.96
Retail Trade	96	1,025	1,014	1,024	5,773,850	435.01
Transportation, Warehousing & Utilities	67	630	633	646	6,638,126	802.45
Information	10	106	105	105	957,978	699.59
Financial Activities	45	325	315	319	3,142,026	756.08
Professional & Business Services	47	401	407	401	3,934,320	750.97
Education & Health Services	159	1,089	1,138	1,170	7,122,900	483.88
Leisure & Hospitality	51	460	472	463	1,346,068	222.67
Other Services	58	143	135	132	837,391	471.33
Local Government	32	721	763	807	5,207,704	524.56
State Government	15	184	179	170	1,318,606	570.91
ASHLEY COUNTY - TOTAL	588	7,522	7,758	8,097	\$72,285,833	\$713.58
Natural Resources & Mining	47	329	326	359	2,390,663	544.07
Construction	44	656	654	714	5,823,527	663.98
Manufacturing	29	2,562	2,583	2,624	36,999,489	1,099.03
Trade, Transportation & Utilities	136	1,229	1,232	1,230	8,475,799	529.93
Wholesale Trade	24	207	205	208	2,486,781	925.60
Retail Trade	84	780	789	781	3,726,953	365.99
Transportation, Warehousing & Utilities	28	242	238	241	2,262,065	724.02
Information	7	40	43	44	342,681	622.68
Financial Activities	37	228	232	229	1,810,164	606.28
Professional & Business Services	52	423	422	414	2,563,175	469.82
Education & Health Services	125	746	757	774	6,095,460	617.76
Leisure & Hospitality	28	376	388	347	1,024,760	212.86
Other Services	40	174	165	162	854,011	393.37
Local Government	32	559	736	979	4,651,542	472.05
State Government	11	200	220	221	1,254,562	451.66

TABLE 6. COUNTY SUMMARY

NORTH AMERICAN INDUSTRY CLASSIFICATION SYSTEM - INDUSTRY GROUPS	NUMBER OF EMPLOYING UNITS	EMPLOYMENT			TOTAL EARNINGS	AVERAGE WEEKLY EARNINGS
		JUL	AUG	SEPT	JUL - SEPT	
BAXTER COUNTY - TOTAL	1,309	13,405	13,668	14,138	\$101,570,680	\$568.77
Natural Resources & Mining	6	117	127	130	950,365	586.40
Construction	134	681	670	685	4,847,323	549.42
Manufacturing	63	2,087	2,105	2,112	19,078,662	698.41
Trade, Transportation & Utilities	270	2,444	2,421	2,409	14,884,568	472.22
Wholesale Trade	40	187	177	178	1,502,773	639.84
Retail Trade	205	2,096	2,084	2,078	11,820,001	435.87
Transportation, Warehousing & Utilities	25	161	160	153	1,561,794	760.37
Information	21	224	224	217	2,136,759	741.50
Financial Activities	115	723	716	708	6,780,392	728.79
Professional & Business Services	142	830	829	821	5,403,676	502.82
Education & Health Services	278	3,385	3,394	3,408	31,046,898	703.31
Leisure & Hospitality	126	1,620	1,617	1,609	5,359,185	255.21
Other Services	102	373	367	370	1,717,399	357.05
Local Government	40	610	866	1,294	6,857,427	571.29
State Government	12	311	332	375	2,508,026	568.54
BENTON COUNTY - TOTAL	5,374	88,300	90,645	92,462	\$982,556,702	\$835.44
Natural Resources & Mining	37	785	775	770	9,152,047	906.44
Construction	529	3,520	3,453	3,402	32,686,001	727.03
Manufacturing	218	11,985	12,058	11,964	120,599,570	772.92
Trade, Transportation & Utilities	1,422	20,698	21,032	20,941	224,017,282	824.88
Wholesale Trade	650	3,817	3,862	3,791	78,926,324	1,587.95
Retail Trade	612	8,713	8,986	8,910	56,266,991	487.98
Transportation, Warehousing & Utilities	160	8,168	8,184	8,240	88,823,967	833.52
Information	72	774	764	759	8,248,263	828.67
Financial Activities	542	3,477	3,479	3,463	39,296,616	870.38
Professional & Business Services	1,052	24,106	24,229	24,113	369,397,315	1,176.64
Education & Health Services	603	7,983	8,111	8,281	75,988,646	719.42
Leisure & Hospitality	455	8,605	8,688	8,519	31,435,523	281.05
Other Services	349	1,744	1,793	1,880	12,342,846	525.82
Local Government	78	3,744	5,458	7,215	51,206,424	719.79
State Government	17	879	805	1,155	8,186,169	665.42

TABLE 6. COUNTY SUMMARY

NORTH AMERICAN INDUSTRY CLASSIFICATION SYSTEM - INDUSTRY GROUPS	NUMBER OF EMPLOYING UNITS	EMPLOYMENT			TOTAL EARNINGS	AVERAGE WEEKLY EARNINGS
		JUL	AUG	SEPT	JUL - SEPT	
BOONE COUNTY - TOTAL	1,053	12,653	12,893	13,635	\$108,693,616	\$640.19
Construction	86	423	426	431	3,146,155	567.22
Manufacturing	68	1,668	1,686	1,676	15,177,462	696.32
Trade, Transportation & Utilities	248	3,843	3,827	3,784	37,159,822	748.68
Wholesale Trade	52	557	558	544	4,769,991	663.51
Retail Trade	144	1,813	1,793	1,773	10,602,354	454.86
Transportation, Warehousing & Utilities	52	1,473	1,476	1,467	21,787,477	1,138.56
Information	22	361	370	369	3,336,095	699.88
Financial Activities	93	567	563	557	5,004,803	684.62
Professional & Business Services	116	955	977	976	8,054,269	639.16
Education & Health Services	200	1,359	1,369	1,381	10,156,368	570.40
Leisure & Hospitality	83	1,175	1,116	1,151	3,708,614	248.64
Local Government	57	1,323	1,542	2,284	13,814,511	619.14
State Government	19	693	740	754	7,136,144	753.00
Other	61	286	277	272	1,999,373	552.57
BRADLEY COUNTY - TOTAL	393	3,559	3,635	3,838	\$29,107,653	\$608.88
Natural Resources & Mining	44	280	276	283	1,948,451	535.93
Construction	20	177	193	193	1,403,644	575.34
Manufacturing	11	928	913	898	11,449,910	964.69
Trade, Transportation & Utilities	81	516	511	506	3,068,289	461.88
Wholesale Trade	14	92	91	87	968,614	827.88
Retail Trade	41	355	353	354	1,538,053	334.21
Transportation, Warehousing & Utilities	26	69	67	65	561,622	644.80
Information	4	14	13	14	104,454	587.92
Financial Activities	26	145	141	144	1,131,290	607.13
Professional & Business Services	26	78	79	86	487,517	462.98
Education & Health Services	115	613	633	621	4,084,612	504.88
Leisure & Hospitality	13	195	193	198	504,224	198.57
Other Services	28	102	107	91	457,076	351.60
Local Government	14	238	304	533	2,406,202	516.54
State Government	11	273	272	271	2,061,984	583.14

TABLE 6. COUNTY SUMMARY

NORTH AMERICAN INDUSTRY CLASSIFICATION SYSTEM - INDUSTRY GROUPS	NUMBER OF EMPLOYING UNITS	EMPLOYMENT			TOTAL EARNINGS	AVERAGE WEEKLY EARNINGS
		JUL	AUG	SEPT	JUL - SEPT	
CALHOUN COUNTY - TOTAL	121	2,994	3,029	3,028	\$32,825,517	\$836.94
Natural Resources & Mining	15	101	113	101	891,828	653.35
Construction	14	97	98	99	648,764	509.23
Manufacturing	8	2,014	2,011	2,011	25,099,765	959.62
Trade, Transportation & Utilities	30	244	248	241	1,847,065	581.51
Retail Trade	17	82	81	84	381,424	356.36
Other Trade, Transportation & Utilities	13	162	167	157	1,465,641	695.94
Financial Activities	7	94	92	92	672,852	558.54
Education & Health Services	13	43	48	49	450,247	742.17
Leisure & Hospitality	6	21	23	21	42,912	152.35
Local Government	11	174	182	202	933,380	386.01
State Government	8	84	84	83	758,956	697.78
Other	9	122	130	129	1,479,748	896.27
CARROLL COUNTY - TOTAL	792	9,566	10,028	10,055	\$64,326,565	\$500.68
Natural Resources & Mining	15	290	294	292	2,522,683	664.56
Construction	67	284	284	274	2,507,765	687.31
Trade, Transportation & Utilities	197	1,568	1,584	1,576	9,701,458	473.52
Wholesale Trade	24	183	182	188	994,333	414.94
Retail Trade	155	1,141	1,153	1,131	5,900,579	397.57
Transportation, Warehousing & Utilities	18	244	249	257	2,806,546	863.55
Information	8	72	72	70	558,321	602.07
Financial Activities	73	366	363	360	3,100,259	656.97
Professional & Business Services	60	209	202	208	1,349,270	503.02
Education & Health Services	92	932	928	942	7,555,186	622.24
Leisure & Hospitality	163	1,796	1,777	1,788	5,678,678	244.44
Local Government	26	551	986	1,043	5,922,176	529.71
State Government	10	112	110	111	816,650	565.94
Other	81	3,386	3,428	3,391	24,614,119	556.61

TABLE 6. COUNTY SUMMARY

NORTH AMERICAN INDUSTRY CLASSIFICATION SYSTEM - INDUSTRY GROUPS	NUMBER OF EMPLOYING UNITS	EMPLOYMENT			TOTAL EARNINGS	AVERAGE WEEKLY EARNINGS
		JUL	AUG	SEPT	JUL - SEPT	
CHICOT COUNTY - TOTAL	407	3,222	3,349	3,415	\$22,607,534	\$522.44
Natural Resources & Mining	50	262	264	280	2,053,979	588.08
Construction	14	178	162	166	2,009,366	916.40
Trade, Transportation & Utilities	71	492	495	505	3,191,685	493.66
Wholesale Trade	13	64	64	73	526,063	603.98
Retail Trade	46	366	360	364	1,929,017	408.40
Transportation, Warehousing & Utilities	12	62	71	68	736,605	845.70
Information	5	9	9	9	66,170	565.56
Financial Activities	28	164	166	160	1,352,992	637.20
Professional & Business Services	23	60	63	62	492,155	613.91
Education & Health Services	148	678	698	725	4,449,325	488.70
Leisure & Hospitality	17	156	161	154	388,652	190.42
Local Government	18	572	669	707	4,431,967	525.03
State Government	10	305	307	309	2,166,995	542.97
Other	23	346	355	338	2,004,248	445.16
CLARK COUNTY - TOTAL	621	8,715	9,134	9,468	\$67,049,277	\$566.42
Natural Resources & Mining	31	228	227	225	2,028,695	688.47
Construction	33	112	118	124	766,855	499.91
Manufacturing	35	1,966	1,985	1,976	18,409,689	716.79
Trade, Transportation & Utilities	139	1,398	1,478	1,427	9,551,982	512.27
Wholesale Trade	20	51	51	51	614,410	926.71
Retail Trade	98	1,170	1,243	1,192	7,181,011	459.68
Transportation, Warehousing & Utilities	21	177	184	184	1,756,561	743.78
Information	9	33	31	31	300,436	729.80
Financial Activities	77	308	303	305	2,562,857	645.66
Professional & Business Services	53	381	364	370	4,225,555	874.55
Education & Health Services	96	1,318	1,336	1,388	9,440,369	538.98
Leisure & Hospitality	61	997	1,009	1,083	3,216,238	240.27
Other Services	46	231	245	245	1,545,368	494.62
Local Government	27	723	932	1,017	6,209,878	536.32
State Government	14	1,020	1,106	1,277	8,791,355	596.17

TABLE 6. COUNTY SUMMARY

NORTH AMERICAN INDUSTRY CLASSIFICATION SYSTEM - INDUSTRY GROUPS	NUMBER OF EMPLOYING UNITS	EMPLOYMENT			TOTAL EARNINGS	AVERAGE WEEKLY EARNINGS
		JUL	AUG	SEPT	JUL - SEPT	
CLAY COUNTY - TOTAL	406	3,807	4,083	4,027	\$25,785,348	\$499.33
Natural Resources & Mining	59	276	280	282	1,866,861	514.10
Construction	29	150	152	152	1,084,105	551.05
Manufacturing	16	760	783	723	5,901,417	601.00
Trade, Transportation & Utilities	99	906	907	903	6,194,041	526.29
Wholesale Trade	24	297	288	280	2,179,862	581.56
Retail Trade	46	420	427	412	2,187,189	400.90
Transportation, Warehousing & Utilities	29	189	192	211	1,826,990	712.18
Information	4	61	60	60	333,839	425.63
Financial Activities	28	112	112	111	780,704	537.80
Professional & Business Services	25	69	68	64	392,159	450.24
Education & Health Services	60	471	490	495	2,942,644	466.40
Leisure & Hospitality	25	184	227	236	532,132	189.80
Other Services	28	75	78	79	490,433	487.83
Local Government	22	687	872	870	4,829,329	458.81
State Government	11	56	54	52	437,684	623.48
CLEBURNE COUNTY - TOTAL	695	6,485	6,724	6,992	\$46,733,004	\$533.86
Natural Resources & Mining	30	377	399	415	4,306,364	834.40
Construction	72	420	412	380	3,228,922	614.80
Manufacturing	39	1,197	1,224	1,232	9,578,350	605.09
Trade, Transportation & Utilities	176	1,543	1,538	1,530	11,708,492	585.98
Wholesale Trade	45	275	283	289	2,942,938	801.82
Retail Trade	104	975	957	953	5,405,842	432.41
Transportation, Warehousing & Utilities	27	293	298	288	3,359,712	882.05
Information	8	56	57	56	403,588	551.10
Financial Activities	73	272	260	247	2,196,371	650.65
Professional & Business Services	59	258	254	257	1,619,535	486.01
Education & Health Services	83	814	872	871	5,185,699	468.01
Leisure & Hospitality	78	920	936	905	2,919,826	244.04
Other Services	50	176	174	173	878,014	387.42
Local Government	18	347	490	817	3,912,742	545.91
State Government	9	105	108	109	795,101	569.83

TABLE 6. COUNTY SUMMARY

NORTH AMERICAN INDUSTRY CLASSIFICATION SYSTEM - INDUSTRY GROUPS	NUMBER OF EMPLOYING UNITS	EMPLOYMENT			TOTAL EARNINGS	AVERAGE WEEKLY EARNINGS
		JUL	AUG	SEPT	JUL - SEPT	
CLEVELAND COUNTY - TOTAL	124	931	1,138	1,141	\$6,148,520	\$442.02
Natural Resources & Mining	14	184	182	174	1,429,680	610.97
Construction	7	29	30	27	132,899	356.62
Manufacturing	6	100	98	95	657,501	517.85
Trade, Transportation & Utilities	31	162	171	167	846,758	390.81
Retail Trade	16	80	79	80	248,419	239.86
Other Trade, Transportation & Utilities	15	82	92	87	598,339	529.04
Education & Health Services	32	137	143	140	608,981	334.60
Other Services	5	14	15	14	117,131	628.61
Local Government	11	124	322	349	1,574,793	457.12
State Government	7	57	56	54	343,086	474.09
Other	11	124	121	121	437,691	275.97
COLUMBIA COUNTY - TOTAL	752	8,337	8,516	8,700	\$69,133,001	\$624.34
Natural Resources & Mining	46	474	470	474	6,083,697	990.08
Construction	40	295	291	287	2,502,023	661.39
Manufacturing	39	2,044	2,027	1,993	23,327,631	887.75
Trade, Transportation & Utilities	164	1,575	1,562	1,532	10,257,293	506.98
Wholesale Trade	27	234	232	233	2,211,404	730.08
Retail Trade	102	1,081	1,076	1,047	5,380,263	387.52
Transportation, Warehousing & Utilities	35	260	254	252	2,665,626	803.06
Information	9	69	71	70	475,155	522.15
Financial Activities	73	379	388	387	3,514,979	702.90
Professional & Business Services	62	314	312	318	2,087,174	510.23
Education & Health Services	181	1,050	1,059	1,066	5,824,794	423.36
Leisure & Hospitality	48	623	629	633	1,782,033	218.16
Other Services	51	264	261	261	995,447	292.26
Local Government	26	675	895	1,103	7,165,917	618.66
State Government	13	575	551	576	5,116,858	693.78

TABLE 6. COUNTY SUMMARY

NORTH AMERICAN INDUSTRY CLASSIFICATION SYSTEM - INDUSTRY GROUPS	NUMBER OF EMPLOYING UNITS	EMPLOYMENT			TOTAL EARNINGS	AVERAGE WEEKLY EARNINGS
		JUL	AUG	SEPT	JUL - SEPT	
CONWAY COUNTY - TOTAL	582	6,684	6,771	6,845	\$52,322,074	\$594.79
Natural Resources & Mining	32	251	230	229	2,585,931	840.50
Construction	53	563	556	526	6,052,661	849.10
Manufacturing	22	933	919	918	11,916,220	992.74
Trade, Transportation & Utilities	132	1,590	1,595	1,576	12,036,656	583.43
Wholesale Trade	22	227	226	225	2,380,792	810.34
Retail Trade	84	875	888	865	4,794,884	421.05
Transportation, Warehousing & Utilities	26	488	481	486	4,860,980	770.97
Information	4	10	10	10	133,057	1,023.52
Financial Activities	32	169	171	170	1,292,833	584.99
Professional & Business Services	40	525	522	496	2,313,851	346.06
Education & Health Services	166	997	994	989	6,802,186	526.76
Leisure & Hospitality	41	473	420	476	1,242,554	209.45
Other Services	24	104	91	101	652,512	508.72
Local Government	26	733	826	927	4,596,594	426.69
State Government	10	336	437	427	2,697,019	518.66
CRAIGHEAD COUNTY - TOTAL	2,690	39,974	41,463	42,584	\$338,225,788	\$629.35
Natural Resources & Mining	70	350	350	446	2,351,291	473.48
Construction	218	1,675	1,711	1,695	15,752,812	715.46
Manufacturing	131	6,009	6,017	5,959	58,363,773	748.88
Trade, Transportation & Utilities	727	8,534	8,593	8,526	63,786,295	573.81
Wholesale Trade	185	1,626	1,624	1,626	18,533,691	877.15
Retail Trade	430	5,682	5,748	5,652	32,410,584	437.85
Transportation, Warehousing & Utilities	112	1,226	1,221	1,248	12,842,020	802.04
Information	30	496	495	497	4,589,202	711.72
Financial Activities	265	1,512	1,520	1,525	15,431,674	781.47
Professional & Business Services	355	3,915	4,010	3,961	26,390,565	512.38
Education & Health Services	450	7,885	8,195	8,170	84,425,975	803.42
Leisure & Hospitality	217	4,166	4,166	4,381	13,656,113	247.89
Other Services	165	866	868	871	4,709,902	417.24
Local Government	39	1,828	2,839	3,841	23,561,083	639.07
State Government	23	2,738	2,699	2,712	25,207,103	713.83

TABLE 6. COUNTY SUMMARY

NORTH AMERICAN INDUSTRY CLASSIFICATION SYSTEM - INDUSTRY GROUPS	NUMBER OF EMPLOYING UNITS	EMPLOYMENT			TOTAL EARNINGS	AVERAGE WEEKLY EARNINGS
		JUL	AUG	SEPT	JUL - SEPT	
CRAWFORD COUNTY - TOTAL	1,313	18,259	19,493	19,713	\$141,397,840	\$567.83
Natural Resources & Mining	30	305	293	307	4,022,388	1,025.68
Construction	183	1,228	1,209	1,196	10,551,154	670.21
Manufacturing	83	4,097	4,084	4,112	32,034,613	601.37
Trade, Transportation & Utilities	310	6,234	6,341	6,238	47,065,569	577.33
Wholesale Trade	82	723	731	745	7,771,801	815.59
Retail Trade	162	1,951	1,959	1,899	10,843,245	430.76
Transportation, Warehousing & Utilities	66	3,560	3,651	3,594	28,450,523	607.64
Information	12	128	127	120	892,171	549.03
Financial Activities	129	518	541	554	4,179,260	597.92
Professional & Business Services	162	1,213	1,229	1,237	8,427,387	528.62
Education & Health Services	167	1,642	1,667	1,699	12,687,009	584.62
Leisure & Hospitality	99	1,527	1,525	1,551	4,874,982	244.40
Other Services	86	371	370	379	2,508,839	516.93
Local Government	42	859	1,965	2,179	13,012,751	600.23
State Government	10	137	142	141	1,141,717	627.32
CRITTENDEN COUNTY - TOTAL	1,350	15,286	15,230	15,896	\$119,099,690	\$592.19
Natural Resources & Mining	50	296	299	345	1,836,570	450.88
Construction	55	350	379	404	3,333,013	678.87
Manufacturing	42	1,670	1,652	1,650	17,731,256	822.97
Trade, Transportation & Utilities	326	4,953	4,623	4,522	40,031,738	655.28
Wholesale Trade	79	772	776	759	8,356,178	835.87
Retail Trade	165	2,308	1,968	1,902	11,275,771	421.19
Transportation, Warehousing & Utilities	82	1,873	1,879	1,861	20,399,789	838.70
Information	6	58	59	59	528,652	693.16
Financial Activities	100	580	586	583	4,976,089	656.56
Professional & Business Services	124	1,129	1,120	998	6,845,086	486.49
Education & Health Services	382	2,176	2,184	2,178	16,249,788	573.56
Leisure & Hospitality	112	1,924	1,883	1,811	6,909,177	283.81
Other Services	95	513	519	497	3,099,106	467.74
Local Government	44	1,203	1,511	2,307	14,249,038	654.90
State Government	14	434	415	542	3,310,177	549.16

TABLE 6. COUNTY SUMMARY

NORTH AMERICAN INDUSTRY CLASSIFICATION SYSTEM - INDUSTRY GROUPS	NUMBER OF EMPLOYING UNITS	EMPLOYMENT			TOTAL EARNINGS	AVERAGE WEEKLY EARNINGS
		JUL	AUG	SEPT	JUL - SEPT	
CROSS COUNTY - TOTAL	535	4,530	4,870	4,965	\$36,009,351	\$578.48
Natural Resources & Mining	34	187	200	208	1,485,776	576.25
Construction	23	105	104	107	806,900	589.26
Manufacturing	13	673	674	674	5,617,602	641.45
Trade, Transportation & Utilities	140	1,263	1,254	1,282	10,323,186	627.08
Wholesale Trade	31	312	309	316	2,899,740	714.16
Retail Trade	76	725	721	701	4,643,160	499.07
Transportation, Warehousing & Utilities	33	226	224	265	2,780,286	897.35
Information	4	31	33	34	263,349	620.13
Financial Activities	43	306	298	300	2,414,532	616.37
Professional & Business Services	47	107	108	108	879,490	628.36
Education & Health Services	135	746	759	772	5,370,846	544.32
Leisure & Hospitality	33	329	339	327	850,032	197.15
Other Services	37	61	62	60	334,281	421.54
Local Government	16	343	664	723	4,400,369	586.98
State Government	10	379	375	370	3,262,988	669.93
DALLAS COUNTY - TOTAL	263	2,899	3,017	3,026	\$19,655,473	\$507.26
Natural Resources & Mining	36	207	211	208	1,617,005	596.09
Construction	12	75	120	73	737,446	635.00
Manufacturing	14	609	611	617	5,093,697	639.88
Trade, Transportation & Utilities	63	519	511	507	3,676,332	551.97
Wholesale Trade	6	43	42	42	916,534	1,665.42
Retail Trade	41	373	371	374	1,940,605	400.57
Transportation, Warehousing & Utilities	16	103	98	91	819,193	647.41
Information	3	16	16	16	117,727	566.00
Financial Activities	17	74	74	74	586,602	609.77
Professional & Business Services	18	51	51	49	295,777	452.03
Education & Health Services	52	898	902	888	4,982,260	427.74
Leisure & Hospitality	11	97	100	105	288,737	220.63
Other Services	14	68	67	69	365,018	412.92
Local Government	15	231	300	366	1,549,751	398.70
State Government	8	54	54	54	345,121	491.63

TABLE 6. COUNTY SUMMARY

NORTH AMERICAN INDUSTRY CLASSIFICATION SYSTEM - INDUSTRY GROUPS	NUMBER OF EMPLOYING UNITS	EMPLOYMENT			TOTAL EARNINGS	AVERAGE WEEKLY EARNINGS
		JUL	AUG	SEPT	JUL - SEPT	
DESHA COUNTY - TOTAL	497	3,884	4,243	4,378	\$27,717,817	\$511.51
Natural Resources & Mining	55	257	263	336	2,410,779	649.92
Construction	18	133	128	120	1,139,216	690.02
Manufacturing	17	485	491	494	3,759,818	590.24
Trade, Transportation & Utilities	108	899	952	951	6,068,484	499.79
Wholesale Trade	16	165	161	155	1,777,700	852.89
Retail Trade	65	548	534	539	2,644,830	376.52
Transportation, Warehousing & Utilities	27	186	257	257	1,645,954	542.62
Information	6	33	32	32	291,955	694.58
Financial Activities	44	226	229	222	1,573,302	536.29
Professional & Business Services	33	81	88	88	500,070	449.03
Education & Health Services	129	729	727	740	4,647,723	488.41
Leisure & Hospitality	36	323	313	301	779,215	191.91
Other Services	22	88	85	89	441,005	388.44
Local Government	19	489	769	829	5,132,159	567.49
State Government	10	141	166	176	974,091	465.40
DREW COUNTY - TOTAL	527	5,785	5,948	6,507	\$41,514,620	\$525.24
Natural Resources & Mining	49	335	341	377	2,748,565	602.36
Construction	20	98	96	98	709,209	560.49
Manufacturing	20	862	881	891	6,760,619	592.31
Trade, Transportation & Utilities	121	1,146	1,138	1,135	7,579,327	511.58
Wholesale Trade	17	166	163	162	1,612,927	758.07
Retail Trade	84	888	883	880	5,066,733	441.06
Transportation, Warehousing & Utilities	20	92	92	93	899,667	749.51
Information	8	60	60	63	445,090	561.27
Financial Activities	45	231	233	234	1,988,581	657.45
Professional & Business Services	45	303	307	309	2,184,415	548.53
Education & Health Services	117	785	783	779	4,924,834	484.24
Leisure & Hospitality	44	580	607	628	1,539,936	195.80
Other Services	19	64	63	59	362,779	450.10
Local Government	23	707	768	1,262	6,626,990	558.75
State Government	16	614	671	672	5,644,275	665.57

TABLE 6. COUNTY SUMMARY

NORTH AMERICAN INDUSTRY CLASSIFICATION SYSTEM - INDUSTRY GROUPS	NUMBER OF EMPLOYING UNITS	EMPLOYMENT			TOTAL EARNINGS	AVERAGE WEEKLY EARNINGS
		JUL	AUG	SEPT	JUL - SEPT	
FAULKNER COUNTY - TOTAL	2,724	37,994	38,599	40,175	\$335,137,043	\$662.33
Natural Resources & Mining	50	877	879	882	15,682,329	1,371.87
Construction	321	2,668	2,686	2,687	26,045,473	747.48
Manufacturing	110	3,510	3,456	3,406	40,167,913	893.71
Trade, Transportation & Utilities	633	7,212	7,259	7,271	53,821,225	571.26
Wholesale Trade	172	1,237	1,245	1,256	14,431,896	890.97
Retail Trade	382	5,117	5,137	5,135	29,852,234	447.66
Transportation, Warehousing & Utilities	79	858	877	880	9,537,095	841.63
Information	29	328	326	328	3,677,759	864.27
Financial Activities	322	1,453	1,462	1,447	13,231,089	699.98
Professional & Business Services	384	6,057	6,151	6,052	68,532,113	866.11
Education & Health Services	435	5,983	6,039	6,082	47,065,095	599.93
Leisure & Hospitality	219	4,426	4,541	4,561	13,728,084	234.18
Other Services	164	721	712	739	4,676,359	496.85
Local Government	39	1,737	2,184	3,403	19,027,026	599.52
State Government	18	3,022	2,904	3,317	29,482,578	736.09
FRANKLIN COUNTY - TOTAL	326	3,817	4,162	4,236	\$33,407,925	\$631.15
Natural Resources & Mining	12	256	257	252	2,787,887	840.99
Construction	28	99	104	101	949,664	720.90
Manufacturing	16	884	882	866	8,505,086	745.71
Trade, Transportation & Utilities	90	884	884	895	7,484,595	648.60
Wholesale Trade	18	57	57	55	565,645	772.39
Retail Trade	52	485	499	511	2,498,388	385.65
Transportation, Warehousing & Utilities	20	342	328	329	4,420,562	1,021.15
Information	5	27	27	27	205,001	584.05
Financial Activities	29	228	224	224	1,681,618	574.06
Professional & Business Services	23	89	90	90	577,319	495.27
Education & Health Services	52	569	578	582	3,747,077	500.12
Leisure & Hospitality	23	285	281	285	807,340	218.93
Other Services	20	66	65	61	465,416	559.39
Local Government	19	341	671	752	5,225,042	683.55
State Government	9	89	99	101	971,880	776.06

TABLE 6. COUNTY SUMMARY

NORTH AMERICAN INDUSTRY CLASSIFICATION SYSTEM - INDUSTRY GROUPS	NUMBER OF EMPLOYING UNITS	EMPLOYMENT			TOTAL EARNINGS	AVERAGE WEEKLY EARNINGS
		JUL	AUG	SEPT	JUL - SEPT	
FULTON COUNTY - TOTAL	220	1,836	1,856	1,981	\$10,917,600	\$444.11
Construction	10	21	21	19	165,906	627.64
Manufacturing	12	131	140	137	557,998	315.61
Trade, Transportation & Utilities	51	337	332	317	2,308,448	540.28
Retail Trade	32	172	174	168	782,452	351.30
Other Trade, Transportation & Utilities	19	165	158	149	1,525,996	746.09
Financial Activities	16	104	100	93	786,249	610.92
Professional & Business Services	15	59	59	63	451,135	575.18
Education & Health Services	63	466	476	470	2,442,933	399.26
Leisure & Hospitality	16	154	152	154	448,463	224.98
Local Government	13	393	397	546	2,664,749	460.29
State Government	10	110	117	117	854,415	573.18
Other	14	61	62	65	237,304	291.29
GARLAND COUNTY - TOTAL	3,181	34,329	35,046	35,014	\$254,874,331	\$563.44
Natural Resources & Mining	37	328	329	345	3,346,477	770.72
Construction	366	1,788	1,801	1,776	13,851,766	595.82
Manufacturing	105	2,080	2,081	2,081	19,193,766	709.60
Trade, Transportation & Utilities	711	7,258	7,205	7,132	49,483,642	528.79
Wholesale Trade	147	1,047	1,063	1,058	10,885,379	792.93
Retail Trade	501	5,683	5,627	5,569	33,189,742	453.77
Transportation, Warehousing & Utilities	63	528	515	505	5,408,521	806.28
Information	36	334	329	324	2,902,540	678.64
Financial Activities	340	1,373	1,392	1,411	12,255,116	677.23
Professional & Business Services	407	3,251	3,244	3,182	23,591,777	562.60
Education & Health Services	524	7,361	7,445	7,376	70,814,479	736.71
Leisure & Hospitality	355	6,606	6,522	6,185	24,379,137	291.30
Other Services	240	979	967	952	5,454,952	434.38
Local Government	34	1,978	2,634	3,094	20,484,854	613.45
State Government	26	993	1,097	1,156	9,115,825	648.08

TABLE 6. COUNTY SUMMARY

NORTH AMERICAN INDUSTRY CLASSIFICATION SYSTEM - INDUSTRY GROUPS	NUMBER OF EMPLOYING UNITS	EMPLOYMENT			TOTAL EARNINGS	AVERAGE WEEKLY EARNINGS
		JUL	AUG	SEPT	JUL - SEPT	
GRANT COUNTY - TOTAL	316	3,428	3,409	3,625	\$24,807,990	\$547.21
Natural Resources & Mining	21	162	171	172	2,143,556	979.54
Construction	30	175	170	163	1,355,643	615.83
Manufacturing	14	857	854	853	6,273,481	564.64
Trade, Transportation & Utilities	86	641	620	625	4,435,439	542.72
Wholesale Trade	17	135	123	130	1,523,329	906.02
Retail Trade	46	450	441	438	2,458,752	426.94
Transportation, Warehousing & Utilities	23	56	56	57	453,358	619.06
Information	3	15	8	13	127,020	814.23
Financial Activities	25	92	95	89	672,532	562.32
Professional & Business Services	21	62	63	61	635,275	788.18
Education & Health Services	56	471	470	470	2,619,394	428.40
Leisure & Hospitality	23	269	267	262	743,541	215.02
Other Services	19	48	45	44	216,047	363.92
Local Government	10	580	591	815	5,157,686	599.31
State Government	8	56	55	58	428,376	584.95
GREENE COUNTY - TOTAL	921	13,430	13,867	14,187	\$109,062,576	\$606.70
Natural Resources & Mining	33	215	213	235	1,588,527	552.92
Construction	83	374	387	389	3,036,899	609.41
Manufacturing	61	4,383	4,517	4,511	45,931,374	790.36
Trade, Transportation & Utilities	234	2,278	2,308	2,284	14,845,178	498.66
Wholesale Trade	60	507	509	499	4,576,271	697.07
Retail Trade	146	1,563	1,589	1,568	8,500,135	415.59
Transportation, Warehousing & Utilities	28	208	210	217	1,768,772	642.80
Information	12	125	124	118	625,921	393.58
Financial Activities	80	475	467	473	3,850,034	627.89
Professional & Business Services	105	1,020	1,048	1,043	6,645,510	492.95
Education & Health Services	150	1,754	1,802	1,784	13,445,102	581.03
Leisure & Hospitality	72	1,091	1,114	1,125	3,267,822	226.46
Other Services	50	173	179	181	981,467	424.94
Local Government	30	1,119	1,286	1,631	10,852,948	620.55
State Government	11	423	422	413	3,991,794	732.26

TABLE 6. COUNTY SUMMARY

NORTH AMERICAN INDUSTRY CLASSIFICATION SYSTEM - INDUSTRY GROUPS	NUMBER OF EMPLOYING UNITS	EMPLOYMENT			TOTAL EARNINGS	AVERAGE WEEKLY EARNINGS
		JUL	AUG	SEPT	JUL - SEPT	
HEMPSTEAD COUNTY - TOTAL	495	7,312	7,567	7,902	\$62,920,906	\$637.38
Natural Resources & Mining	16	170	174	172	1,506,301	673.66
Construction	32	960	1,054	1,041	14,056,087	1,061.77
Manufacturing	27	1,586	1,569	1,553	13,686,328	670.85
Trade, Transportation & Utilities	132	1,268	1,297	1,281	9,024,038	541.46
Wholesale Trade	26	234	240	238	2,067,140	669.99
Retail Trade	82	867	872	855	4,586,791	408.05
Transportation, Warehousing & Utilities	24	167	185	188	2,370,107	1,012.87
Information	8	55	55	55	384,772	538.14
Financial Activities	37	209	210	220	1,709,736	617.46
Professional & Business Services	43	137	135	138	1,114,206	627.13
Education & Health Services	81	1,056	1,054	1,045	7,290,077	533.23
Leisure & Hospitality	41	570	573	574	1,793,508	241.05
Other Services	34	175	165	164	1,124,997	515.11
Local Government	28	448	585	939	5,137,324	601.18
State Government	16	678	696	720	6,093,532	671.54
HOT SPRING COUNTY - TOTAL	590	7,411	7,605	7,775	\$57,252,080	\$579.70
Natural Resources & Mining	26	186	183	178	1,523,373	642.68
Construction	63	352	356	340	3,072,481	676.56
Manufacturing	29	1,343	1,363	1,346	15,337,584	873.51
Trade, Transportation & Utilities	150	1,323	1,337	1,322	9,669,632	560.39
Wholesale Trade	18	78	76	78	701,838	698.11
Retail Trade	97	903	912	897	4,838,360	411.71
Transportation, Warehousing & Utilities	35	342	349	347	4,129,434	918.06
Information	8	51	54	51	427,116	631.83
Financial Activities	57	266	264	271	2,184,021	629.22
Professional & Business Services	47	629	544	554	3,897,723	520.83
Education & Health Services	91	1,177	1,197	1,172	8,215,837	534.68
Leisure & Hospitality	43	561	524	520	1,418,876	204.01
Other Services	36	172	192	184	989,548	416.71
Local Government	27	719	904	1,149	5,395,485	449.17
State Government	13	632	687	688	5,120,404	588.76

TABLE 6. COUNTY SUMMARY

NORTH AMERICAN INDUSTRY CLASSIFICATION SYSTEM - INDUSTRY GROUPS	NUMBER OF EMPLOYING UNITS	EMPLOYMENT			TOTAL EARNINGS	AVERAGE WEEKLY EARNINGS
		JUL	AUG	SEPT	JUL - SEPT	
HOWARD COUNTY - TOTAL	353	6,664	6,641	6,864	\$48,580,326	\$555.85
Natural Resources & Mining	20	212	216	219	1,750,304	624.29
Construction	16	123	123	123	972,987	608.50
Manufacturing	23	3,589	3,528	3,414	27,646,138	605.82
Trade, Transportation & Utilities	97	946	914	912	6,477,151	539.22
Wholesale Trade	18	70	67	68	586,800	660.56
Retail Trade	58	633	620	623	3,287,837	404.44
Transportation, Warehousing & Utilities	21	243	227	221	2,602,514	869.15
Information	5	36	36	36	219,176	468.32
Financial Activities	39	166	163	159	987,486	466.97
Professional & Business Services	23	100	98	99	692,089	537.75
Education & Health Services	59	647	638	643	4,199,617	502.67
Leisure & Hospitality	19	315	314	318	849,052	206.90
Other Services	24	122	117	113	708,297	464.36
Local Government	17	295	388	713	3,232,463	534.35
State Government	11	113	106	115	845,566	584.22
INDEPENDENCE COUNTY - TOTAL	937	14,664	14,767	15,533	\$114,542,780	\$587.87
Natural Resources & Mining	12	249	240	243	2,749,057	866.66
Construction	72	446	452	480	3,667,095	614.12
Manufacturing	52	3,817	3,790	3,776	31,544,502	639.51
Trade, Transportation & Utilities	240	3,090	3,087	3,045	21,965,323	549.66
Wholesale Trade	38	442	456	447	4,166,111	714.80
Retail Trade	155	1,800	1,783	1,765	9,269,451	399.98
Transportation, Warehousing & Utilities	47	848	848	833	8,529,761	778.33
Information	10	134	132	133	1,008,657	583.38
Financial Activities	86	513	513	523	4,274,646	636.83
Professional & Business Services	88	508	525	523	3,583,160	531.42
Education & Health Services	172	3,089	3,049	3,087	28,261,055	706.97
Leisure & Hospitality	70	1,046	1,073	1,097	3,331,390	239.05
Other Services	71	384	367	364	1,880,854	389.28
Local Government	47	783	974	1,607	7,089,734	486.35
State Government	17	605	565	655	5,187,307	655.93

TABLE 6. COUNTY SUMMARY

NORTH AMERICAN INDUSTRY CLASSIFICATION SYSTEM - INDUSTRY GROUPS	NUMBER OF EMPLOYING UNITS	EMPLOYMENT			TOTAL EARNINGS	AVERAGE WEEKLY EARNINGS
		JUL	AUG	SEPT	JUL - SEPT	
IZARD COUNTY - TOTAL	273	2,581	2,891	2,966	\$18,264,758	\$499.52
Natural Resources & Mining	5	106	107	111	1,116,203	795.02
Construction	28	78	77	78	498,216	493.45
Trade, Transportation & Utilities	67	547	544	551	3,268,361	459.34
Retail Trade	46	388	380	386	2,045,292	409.00
Other Trade, Transportation & Utilities	21	159	164	165	1,223,069	578.37
Financial Activities	28	143	144	143	1,000,513	536.95
Professional & Business Services	21	86	86	85	513,522	461.11
Education & Health Services	58	607	630	627	3,274,353	405.38
Leisure & Hospitality	16	127	121	117	353,160	223.28
Local Government	18	260	509	528	2,847,215	506.59
State Government	10	389	431	472	3,367,181	601.43
Other	22	238	242	254	2,026,034	636.98
JACKSON COUNTY - TOTAL	478	4,978	5,189	5,193	\$38,463,091	\$577.87
Natural Resources & Mining	54	312	301	302	2,119,335	534.51
Construction	22	114	119	111	944,453	633.58
Manufacturing	18	882	883	852	8,419,225	742.41
Trade, Transportation & Utilities	110	1,016	1,014	987	7,349,788	562.18
Wholesale Trade	25	203	205	203	2,154,475	813.73
Retail Trade	68	703	695	656	4,054,941	455.58
Transportation, Warehousing & Utilities	17	110	114	128	1,140,372	747.62
Information	4	32	32	32	163,966	394.15
Financial Activities	37	158	157	154	1,270,538	625.16
Professional & Business Services	37	128	146	151	1,157,540	628.53
Education & Health Services	101	810	829	820	6,233,177	584.96
Leisure & Hospitality	28	292	292	285	775,669	205.98
Other Services	22	74	75	73	457,127	475.18
Local Government	32	459	635	699	3,552,358	457.21
State Government	13	701	706	727	6,019,915	650.99

TABLE 6. COUNTY SUMMARY

NORTH AMERICAN INDUSTRY CLASSIFICATION SYSTEM - INDUSTRY GROUPS	NUMBER OF EMPLOYING UNITS	EMPLOYMENT			TOTAL EARNINGS	AVERAGE WEEKLY EARNINGS
		JUL	AUG	SEPT	JUL - SEPT	
JEFFERSON COUNTY - TOTAL	2,091	28,751	29,264	29,831	\$245,808,789	\$645.73
Natural Resources & Mining	39	421	432	427	4,435,348	799.64
Construction	106	1,456	1,366	1,361	18,724,719	1,033.01
Manufacturing	69	5,202	5,185	5,216	56,406,120	834.25
Trade, Transportation & Utilities	432	5,224	5,220	5,218	39,591,947	583.36
Wholesale Trade	83	1,000	985	975	9,562,916	745.55
Retail Trade	289	3,326	3,340	3,359	19,194,493	441.85
Transportation, Warehousing & Utilities	60	898	895	884	10,834,538	933.99
Information	13	140	134	130	1,136,705	649.30
Financial Activities	147	1,146	1,136	1,125	10,953,349	741.91
Professional & Business Services	179	1,643	1,685	1,765	14,563,469	659.89
Education & Health Services	748	5,250	5,322	5,237	41,816,515	610.41
Leisure & Hospitality	140	2,050	2,048	2,063	5,850,143	219.13
Other Services	138	683	669	657	4,140,119	475.57
Local Government	43	2,300	2,727	3,166	17,720,578	499.13
State Government	37	3,236	3,340	3,466	30,469,777	700.21
JOHNSON COUNTY - TOTAL	472	7,775	7,936	8,424	\$57,257,440	\$547.47
Natural Resources & Mining	21	257	256	249	2,303,909	697.73
Construction	22	90	88	89	628,316	543.06
Manufacturing	39	2,796	2,834	2,854	19,448,722	529.02
Trade, Transportation & Utilities	109	1,994	1,980	1,989	15,042,326	582.14
Retail Trade	71	947	937	918	4,903,877	403.88
Other Trade, Transportation & Utilities	38	1,047	1,043	1,071	10,138,449	740.16
Information	5	32	32	31	191,693	465.65
Financial Activities	46	209	219	207	1,619,831	588.67
Professional & Business Services	46	156	155	144	1,095,306	555.52
Education & Health Services	97	1,128	1,140	1,168	9,230,109	619.91
Leisure & Hospitality	37	473	483	510	1,404,499	221.09
Other Services	27	69	68	65	385,485	440.39
Local Government	14	433	544	981	4,740,663	558.73
State Government	9	138	137	137	1,166,581	653.42

TABLE 6. COUNTY SUMMARY

NORTH AMERICAN INDUSTRY CLASSIFICATION SYSTEM - INDUSTRY GROUPS	NUMBER OF EMPLOYING UNITS	EMPLOYMENT			TOTAL EARNINGS	AVERAGE WEEKLY EARNINGS
		JUL	AUG	SEPT	JUL - SEPT	
LAFAYETTE COUNTY - TOTAL	178	1,280	1,287	1,331	\$8,019,761	\$474.79
Natural Resources & Mining	32	185	183	182	1,471,519	617.42
Construction	9	63	63	64	592,734	719.92
Manufacturing	5	30	30	30	237,113	607.98
Trade, Transportation & Utilities	36	202	202	211	1,138,695	427.28
Retail Trade	22	144	141	147	546,206	291.78
Other Transportation & Utilities	14	58	61	64	592,489	747.15
Financial Activities	17	59	60	60	385,133	496.52
Professional & Business Services	12	47	47	47	444,910	728.17
Education & Health Services	35	243	241	239	1,296,244	413.74
Leisure & Hospitality	6	54	59	60	149,527	199.46
Local Government	13	252	267	306	1,469,467	411.04
State Government	7	47	47	44	330,408	552.52
Other	6	98	88	88	504,011	424.49
LAWRENCE COUNTY - TOTAL	421	3,540	3,848	4,093	\$25,662,410	\$515.82
Natural Resources & Mining	37	190	186	194	1,540,863	623.83
Construction	25	73	76	77	581,530	593.80
Manufacturing	23	476	482	485	3,402,911	544.20
Trade, Transportation & Utilities	114	865	872	872	6,140,511	543.14
Wholesale Trade	23	180	179	186	1,852,144	784.25
Retail Trade	61	538	545	540	2,861,274	406.84
Transportation, Warehousing & Utilities	30	147	148	146	1,427,093	746.78
Financial Activities	33	154	149	148	1,076,247	550.70
Professional & Business Services	26	100	106	106	834,315	617.10
Education & Health Services	79	493	513	542	3,525,333	525.54
Leisure & Hospitality	25	269	264	280	679,675	192.93
Local Government	27	744	1,017	1,208	6,656,920	517.42
State Government	10	103	107	110	736,415	531.07
Other	22	73	76	71	487,690	511.56

TABLE 6. COUNTY SUMMARY

NORTH AMERICAN INDUSTRY CLASSIFICATION SYSTEM - INDUSTRY GROUPS	NUMBER OF EMPLOYING UNITS	EMPLOYMENT			TOTAL EARNINGS	AVERAGE WEEKLY EARNINGS
		JUL	AUG	SEPT	JUL - SEPT	
LEE COUNTY - TOTAL	300	1,918	2,066	2,187	\$14,615,835	\$546.57
Natural Resources & Mining	34	223	231	306	1,776,382	539.39
Construction	8	21	23	34	136,118	402.72
Trade, Transportation & Utilities	48	358	360	353	2,384,673	513.83
Wholesale Trade	7	82	79	75	675,755	660.78
Retail Trade	25	199	202	197	942,996	363.90
Transportation, Warehousing & Utilities	16	77	79	81	765,922	745.79
Financial Activities	16	69	72	78	598,353	630.51
Professional & Business Services	17	59	58	59	740,289	970.66
Education & Health Services	130	436	411	436	2,696,298	484.97
Leisure & Hospitality	8	89	84	87	229,961	204.11
Local Government	15	181	338	342	1,853,628	496.82
State Government	7	452	456	461	4,034,243	680.04
Other	17	30	33	31	165,890	407.26
LINCOLN COUNTY - TOTAL	269	2,627	2,784	2,843	\$20,165,280	\$563.79
Natural Resources & Mining	34	154	153	193	1,427,527	658.86
Construction	14	81	84	82	560,712	523.87
Manufacturing	9	349	333	324	2,503,132	574.20
Trade, Transportation & Utilities	48	332	335	328	2,564,024	594.67
Wholesale Trade	10	37	40	45	370,509	700.84
Retail Trade	23	165	159	165	699,149	329.94
Transportation, Warehousing & Utilities	15	130	136	118	1,494,366	898.06
Financial Activities	20	69	67	68	538,466	609.12
Professional & Business Services	13	28	31	29	232,776	610.43
Education & Health Services	86	388	399	404	2,183,041	422.99
Leisure & Hospitality	12	138	137	133	310,023	175.35
Local Government	7	167	318	355	1,889,916	519.21
State Government	12	889	893	895	7,762,492	669.16
Other	14	32	34	32	193,171	454.88

TABLE 6. COUNTY SUMMARY

NORTH AMERICAN INDUSTRY CLASSIFICATION SYSTEM - INDUSTRY GROUPS	NUMBER OF EMPLOYING UNITS	EMPLOYMENT			TOTAL EARNINGS	AVERAGE WEEKLY EARNINGS
		JUL	AUG	SEPT	JUL - SEPT	
LITTLE RIVER COUNTY - TOTAL	249	3,683	3,712	3,868	\$37,508,825	\$768.52
Natural Resources & Mining	10	71	73	73	576,760	613.36
Construction	22	245	238	258	2,145,363	668.13
Manufacturing	18	1,370	1,373	1,353	22,059,581	1,242.84
Trade, Transportation & Utilities	59	627	635	626	4,068,445	497.28
Retail Trade	37	380	381	372	2,008,643	409.12
Other Trade, Transportation & Utilities	22	247	254	254	2,059,802	629.59
Financial Activities	23	95	102	98	619,415	484.55
Professional & Business Services	16	100	102	98	727,534	559.64
Education & Health Services	38	158	171	156	999,322	475.49
Leisure & Hospitality	15	197	198	186	578,550	229.80
Local Government	20	646	650	839	4,702,794	508.32
State Government	11	80	76	82	547,633	531.00
Other	17	94	94	99	483,428	388.71
LOGAN COUNTY - TOTAL	511	5,107	5,432	5,576	\$38,077,277	\$545.27
Natural Resources & Mining	26	183	185	179	2,228,637	940.22
Construction	45	199	237	254	1,822,235	609.44
Manufacturing	24	1,223	1,238	1,262	10,312,754	639.23
Trade, Transportation & Utilities	126	880	887	878	5,223,711	455.75
Wholesale Trade	16	82	82	82	299,617	281.07
Retail Trade	77	687	695	687	3,631,195	405.01
Transportation, Warehousing & Utilities	33	111	110	109	1,292,899	904.13
Information	6	42	42	42	418,489	766.46
Financial Activities	46	252	252	252	2,255,645	688.54
Professional & Business Services	44	112	103	103	635,319	461.04
Education & Health Services	100	783	804	805	5,712,237	551.09
Leisure & Hospitality	33	324	339	331	916,447	212.76
Other Services	25	81	81	80	501,872	478.58
Local Government	22	499	722	848	4,549,474	507.43
State Government	14	529	542	542	3,500,457	500.80

TABLE 6. COUNTY SUMMARY

NORTH AMERICAN INDUSTRY CLASSIFICATION SYSTEM - INDUSTRY GROUPS	NUMBER OF EMPLOYING UNITS	EMPLOYMENT			TOTAL EARNINGS	AVERAGE WEEKLY EARNINGS
		JUL	AUG	SEPT	JUL - SEPT	
LONOKE COUNTY - TOTAL	1,306	12,521	12,935	13,141	\$91,180,366	\$545.16
Natural Resources & Mining	79	519	503	499	4,393,898	666.65
Construction	147	774	769	754	6,541,279	657.17
Manufacturing	38	1,388	1,381	1,382	16,299,296	906.14
Trade, Transportation & Utilities	327	2,904	2,845	2,857	18,442,484	494.53
Wholesale Trade	80	497	470	470	4,849,011	778.71
Retail Trade	179	2,163	2,141	2,119	11,099,787	398.80
Transportation, Warehousing & Utilities	68	244	234	268	2,493,686	771.40
Information	17	102	96	92	1,073,821	854.50
Financial Activities	126	486	492	494	5,211,086	816.96
Professional & Business Services	148	692	692	668	5,462,094	614.27
Education & Health Services	203	1,643	1,698	1,685	11,444,910	525.49
Leisure & Hospitality	109	1,545	1,565	1,564	4,499,589	222.16
Other Services	71	204	215	219	1,257,835	454.97
Local Government	26	2,111	2,524	2,774	15,286,042	476.12
State Government	15	153	155	153	1,268,032	634.76
MADISON COUNTY - TOTAL	238	2,828	3,149	3,145	\$19,892,480	\$503.24
Natural Resources & Mining	10	38	37	37	294,510	606.82
Construction	29	70	75	71	637,198	680.77
Manufacturing	20	1,124	1,124	1,111	7,590,321	521.47
Trade, Transportation & Utilities	47	526	544	536	3,383,182	486.14
Wholesale Trade	6	17	17	17	147,717	668.40
Retail Trade	33	417	431	418	2,285,470	416.60
Transportation, Warehousing & Utilities	8	92	96	101	949,995	758.58
Financial Activities	15	72	76	72	600,332	629.72
Professional & Business Services	25	153	157	151	888,674	444.86
Education & Health Services	42	230	236	243	1,312,911	427.33
Leisure & Hospitality	14	196	188	197	544,074	216.10
Local Government	9	307	598	609	3,551,489	541.33
State Government	7	44	45	45	350,163	603.04
Other	20	68	69	73	739,626	812.78

TABLE 6. COUNTY SUMMARY

NORTH AMERICAN INDUSTRY CLASSIFICATION SYSTEM - INDUSTRY GROUPS	NUMBER OF EMPLOYING UNITS	EMPLOYMENT			TOTAL EARNINGS	AVERAGE WEEKLY EARNINGS
		JUL	AUG	SEPT	JUL - SEPT	
MARION COUNTY - TOTAL	312	3,298	3,365	3,576	\$21,297,734	\$480.01
Natural Resources & Mining	6	22	20	19	112,180	424.39
Construction	22	75	70	63	308,491	342.26
Manufacturing	20	1,217	1,249	1,297	8,714,565	534.43
Trade, Transportation & Utilities	53	544	537	533	3,026,722	432.76
Wholesale Trade	5	33	34	31	299,864	706.12
Retail Trade	39	482	474	473	2,424,900	391.60
Transportation, Warehousing & Utilities	9	29	29	29	301,958	800.95
Financial Activities	35	217	211	201	1,518,312	557.04
Professional & Business Services	30	105	109	113	878,446	619.93
Education & Health Services	64	357	354	358	2,192,663	473.34
Leisure & Hospitality	38	241	239	244	631,767	201.37
Local Government	20	348	409	575	2,670,176	462.61
State Government	7	81	78	79	465,918	451.76
Other	17	91	89	94	778,494	655.67
MILLER COUNTY - TOTAL	855	12,591	12,706	13,287	\$102,818,653	\$614.95
Natural Resources & Mining	27	143	147	161	1,227,961	628.33
Construction	83	850	878	830	7,104,400	640.92
Manufacturing	32	2,364	2,339	2,329	31,003,700	1,017.45
Trade, Transportation & Utilities	230	3,370	3,328	3,295	26,066,395	601.95
Wholesale Trade	58	565	568	575	5,620,257	759.36
Retail Trade	129	1,363	1,343	1,325	7,486,115	428.57
Transportation, Warehousing & Utilities	43	1,442	1,417	1,395	12,960,023	703.05
Information	8	78	76	77	1,413,094	1,411.68
Financial Activities	78	380	381	377	3,076,282	623.82
Professional & Business Services	91	1,373	1,387	1,419	7,569,875	418.02
Education & Health Services	127	892	899	904	5,612,714	480.61
Leisure & Hospitality	82	1,368	1,364	1,353	4,697,655	265.38
Other Services	56	413	329	329	1,624,375	350.01
Local Government	25	875	1,091	1,721	8,737,290	546.87
State Government	16	485	487	492	4,684,912	738.48

TABLE 6. COUNTY SUMMARY

NORTH AMERICAN INDUSTRY CLASSIFICATION SYSTEM - INDUSTRY GROUPS	NUMBER OF EMPLOYING UNITS	EMPLOYMENT			TOTAL EARNINGS	AVERAGE WEEKLY EARNINGS
		JUL	AUG	SEPT	JUL - SEPT	
MISSISSIPPI COUNTY - TOTAL	1,249	16,610	17,144	18,061	\$154,386,698	\$687.59
Natural Resources & Mining	108	687	699	918	4,664,410	467.19
Construction	67	592	584	597	6,585,530	857.16
Manufacturing	55	5,399	5,434	5,416	73,706,664	1,046.79
Trade, Transportation & Utilities	304	3,181	3,192	3,154	25,046,644	606.70
Wholesale Trade	62	507	493	485	4,734,243	735.70
Retail Trade	179	1,844	1,854	1,816	9,768,183	408.81
Transportation, Warehousing & Utilities	63	830	845	853	10,544,218	962.53
Financial Activities	102	571	559	556	3,969,352	543.30
Professional & Business Services	98	944	1,148	1,204	7,504,478	525.43
Education & Health Services	286	1,565	1,644	1,681	10,940,286	516.29
Leisure & Hospitality	85	1,172	1,140	1,131	3,309,182	221.80
Local Government	45	1,555	1,824	2,407	12,342,863	492.28
State Government	22	614	597	663	4,584,845	564.59
Other	77	330	323	334	1,732,444	405.06
MONROE COUNTY - TOTAL	329	2,065	2,249	2,257	\$13,760,272	\$483.25
Natural Resources & Mining	37	159	162	171	1,285,946	603.16
Construction	15	51	54	54	512,739	744.18
Manufacturing	6	104	104	109	1,019,117	741.90
Trade, Transportation & Utilities	82	656	650	636	4,312,002	512.40
Wholesale Trade	18	209	208	206	1,656,036	613.42
Retail Trade	38	300	292	279	1,396,070	369.89
Transportation, Warehousing & Utilities	26	147	150	151	1,259,896	648.98
Financial Activities	18	85	86	89	690,132	612.54
Professional & Business Services	17	36	33	33	171,223	387.38
Education & Health Services	77	301	316	311	1,728,101	429.73
Leisure & Hospitality	25	237	235	231	589,301	193.45
Local Government	22	223	397	403	2,133,052	481.18
State Government	8	116	119	120	836,095	543.51
Other	22	97	93	100	482,564	384.00

TABLE 6. COUNTY SUMMARY

NORTH AMERICAN INDUSTRY CLASSIFICATION SYSTEM - INDUSTRY GROUPS	NUMBER OF EMPLOYING UNITS	EMPLOYMENT			TOTAL EARNINGS	AVERAGE WEEKLY EARNINGS
		JUL	AUG	SEPT	JUL - SEPT	
MONTGOMERY COUNTY - TOTAL	183	1,815	1,770	1,563	\$9,061,586	\$406.20
Natural Resources & Mining	12	41	42	42	297,059	548.42
Construction	24	84	80	85	606,081	561.71
Trade, Transportation & Utilities	45	257	261	253	1,572,405	470.64
Wholesale Trade	14	79	77	75	577,047	576.47
Retail Trade	23	169	174	168	947,754	428.01
Transportation, Warehousing & Utilities	8	9	10	10	47,604	378.81
Financial Activities	11	83	84	86	512,808	467.75
Professional & Business Services	13	26	26	24	230,521	699.96
Education & Health Services	18	93	91	91	538,139	451.59
Leisure & Hospitality	21	706	580	249	1,629,751	245.01
Local Government	9	293	369	495	2,394,776	477.65
State Government	7	42	40	42	317,075	590.09
Other	23	190	197	196	962,971	381.17
NEVADA COUNTY - TOTAL	193	1,980	2,036	2,168	\$14,876,337	\$555.14
Natural Resources & Mining	11	39	37	38	252,184	510.49
Trade, Transportation & Utilities	42	499	504	501	3,529,778	541.60
Retail Trade	28	284	283	275	1,363,533	373.71
Other Trade, Transportation & Utilities	14	215	221	226	2,166,245	755.14
Financial Activities	13	61	63	58	442,853	561.52
Professional & Business Services	9	45	45	45	305,887	522.88
Education & Health Services	32	396	395	400	2,131,668	413.03
Leisure & Hospitality	13	91	90	91	238,529	202.37
Other Services	15	60	60	57	251,810	328.31
Local Government	28	270	309	447	1,666,538	374.84
State Government	10	71	71	72	556,683	600.31
Other	20	448	462	459	5,500,407	927.19

TABLE 6. COUNTY SUMMARY

NORTH AMERICAN INDUSTRY CLASSIFICATION SYSTEM - INDUSTRY GROUPS	NUMBER OF EMPLOYING UNITS	EMPLOYMENT			TOTAL EARNINGS	AVERAGE WEEKLY EARNINGS
		JUL	AUG	SEPT	JUL - SEPT	
NEWTON COUNTY - TOTAL	128	833	1,024	1,036	\$5,026,467	\$400.95
Construction	7	23	27	24	117,169	365.39
Manufacturing	10	34	38	38	230,902	484.41
Trade, Transportation & Utilities	29	165	167	170	958,217	440.49
Retail Trade	13	105	104	107	483,069	352.78
Other Trade, Transportation & Utilities	16	60	63	63	475,148	589.51
Education & Health Services	30	249	230	234	970,732	314.19
Leisure & Hospitality	18	82	76	72	256,387	257.24
Other Services	3	5	5	4	21,009	346.30
Local Government	13	152	361	374	1,795,827	467.22
State Government	6	84	82	81	399,408	373.16
Other	12	39	38	39	276,816	550.69
OUACHITA COUNTY - TOTAL	663	7,564	7,591	7,770	\$53,253,804	\$536.07
Natural Resources & Mining	41	253	249	250	2,489,272	763.89
Construction	47	218	223	222	1,757,523	611.74
Manufacturing	28	885	898	897	7,693,523	662.47
Trade, Transportation & Utilities	174	1,842	1,804	1,792	12,449,897	528.33
Wholesale Trade	28	255	240	244	2,557,739	798.71
Retail Trade	115	1,108	1,090	1,092	5,390,463	378.10
Transportation, Warehousing & Utilities	31	479	474	456	4,501,695	737.30
Information	7	51	51	51	378,615	571.06
Financial Activities	63	320	309	315	2,385,389	583.13
Professional & Business Services	48	485	507	509	3,321,668	510.69
Education & Health Services	123	1,194	1,199	1,205	9,336,273	598.81
Leisure & Hospitality	42	532	519	509	1,299,868	192.29
Other Services	46	167	166	165	858,920	398.02
Local Government	30	910	983	1,132	5,409,713	412.69
State Government	14	707	683	723	5,873,143	641.43

TABLE 6. COUNTY SUMMARY

NORTH AMERICAN INDUSTRY CLASSIFICATION SYSTEM - INDUSTRY GROUPS	NUMBER OF EMPLOYING UNITS	EMPLOYMENT			TOTAL EARNINGS	AVERAGE WEEKLY EARNINGS
		JUL	AUG	SEPT	JUL - SEPT	
PERRY COUNTY - TOTAL	163	1,099	1,277	1,289	\$8,366,305	\$526.79
Construction	21	85	87	86	712,814	637.58
Manufacturing	6	48	49	48	356,600	567.53
Trade, Transportation & Utilities	29	205	210	208	1,144,212	423.83
Retail Trade	16	167	172	171	678,081	306.82
Other Trade, Transportation & Utilities	13	38	38	37	466,131	951.94
Financial Activities	14	31	30	30	322,651	818.22
Professional & Business Services	15	51	53	45	370,097	573.20
Education & Health Services	35	215	225	223	1,174,627	408.85
Local Government	12	189	366	395	1,884,896	457.87
State Government	8	41	43	45	299,715	536.16
Other	23	234	214	209	2,100,693	737.86
PHILLIPS COUNTY - TOTAL	962	6,090	6,339	6,523	\$41,241,263	\$502.17
Natural Resources & Mining	88	377	370	404	2,083,687	417.77
Construction	27	147	146	139	957,844	511.67
Manufacturing	12	369	329	336	2,854,104	636.98
Trade, Transportation & Utilities	169	1,529	1,544	1,546	10,759,149	537.54
Wholesale Trade	34	377	379	376	3,401,095	693.35
Retail Trade	88	834	846	839	4,710,723	431.56
Transportation, Warehousing & Utilities	47	318	319	331	2,647,331	631.12
Information	10	52	53	51	379,866	561.93
Financial Activities	45	230	225	226	1,971,808	668.18
Professional & Business Services	54	317	288	255	2,032,491	545.39
Education & Health Services	439	1,455	1,531	1,523	9,110,894	466.29
Leisure & Hospitality	38	377	388	359	1,119,670	229.88
Other Services	37	81	76	76	379,252	375.62
Local Government	29	629	870	1,111	5,890,665	520.84
State Government	14	527	519	497	3,701,833	553.64

TABLE 6. COUNTY SUMMARY

NORTH AMERICAN INDUSTRY CLASSIFICATION SYSTEM - INDUSTRY GROUPS	NUMBER OF EMPLOYING UNITS	EMPLOYMENT			TOTAL EARNINGS	AVERAGE WEEKLY EARNINGS
		JUL	AUG	SEPT	JUL - SEPT	
PIKE COUNTY - TOTAL	261	2,446	2,647	2,586	\$15,482,053	\$465.27
Natural Resources & Mining	24	124	126	130	1,113,905	676.46
Construction	13	34	36	33	205,157	459.65
Manufacturing	16	355	358	358	2,351,912	506.77
Trade, Transportation & Utilities	87	614	619	597	3,690,975	465.44
Wholesale Trade	17	167	167	161	1,231,886	574.31
Retail Trade	46	376	380	374	1,824,424	372.58
Transportation, Warehousing & Utilities	24	71	72	62	634,665	714.44
Information	4	22	22	22	242,706	848.62
Financial Activities	21	189	191	188	1,469,551	597.05
Professional & Business Services	9	25	26	27	338,176	1,000.52
Education & Health Services	25	291	287	275	1,470,520	397.83
Leisure & Hospitality	19	263	263	238	721,177	217.83
Other Services	20	113	121	69	628,105	478.37
Local Government	13	288	471	519	2,489,454	449.52
State Government	10	128	127	130	760,415	455.79
POINSETT COUNTY - TOTAL	515	4,759	4,991	5,042	\$34,013,164	\$530.64
Natural Resources & Mining	57	308	310	324	2,785,694	682.43
Construction	25	99	99	95	849,875	669.37
Manufacturing	21	633	630	606	5,097,210	629.36
Trade, Transportation & Utilities	125	1,270	1,270	1,268	9,143,990	554.14
Wholesale Trade	29	401	406	409	4,475,962	849.44
Retail Trade	70	720	714	693	3,449,214	374.22
Transportation, Warehousing & Utilities	26	149	150	166	1,218,814	604.87
Information	6	57	58	58	758,600	1,011.92
Financial Activities	44	291	294	293	2,294,901	603.18
Professional & Business Services	32	122	123	124	1,357,278	848.83
Education & Health Services	96	624	611	613	3,753,123	468.67
Leisure & Hospitality	44	364	373	366	908,093	189.99
Other Services	23	55	57	58	295,827	401.58
Local Government	31	797	1,027	1,090	5,647,162	447.22
State Government	11	139	139	147	1,121,411	608.91

TABLE 6. COUNTY SUMMARY

NORTH AMERICAN INDUSTRY CLASSIFICATION SYSTEM - INDUSTRY GROUPS	NUMBER OF EMPLOYING UNITS	EMPLOYMENT			TOTAL EARNINGS	AVERAGE WEEKLY EARNINGS
		JUL	AUG	SEPT	JUL - SEPT	
POLK COUNTY - TOTAL	546	5,588	5,873	6,028	\$37,275,891	\$491.86
Natural Resources & Mining	24	221	226	221	2,044,192	706.19
Construction	43	190	195	203	1,380,740	541.89
Manufacturing	35	1,167	1,168	1,175	8,189,541	538.43
Trade, Transportation & Utilities	145	1,222	1,208	1,231	7,333,021	462.23
Wholesale Trade	22	75	70	71	668,977	714.72
Retail Trade	81	828	829	844	4,286,974	395.56
Transportation, Warehousing & Utilities	42	319	309	316	2,377,070	581.10
Information	9	58	60	62	382,515	490.40
Financial Activities	44	241	234	233	1,813,167	590.99
Professional & Business Services	53	182	183	184	1,109,591	466.41
Education & Health Services	86	1,050	1,074	1,080	7,015,333	505.28
Leisure & Hospitality	41	454	453	457	1,191,193	201.53
Other Services	30	136	139	132	792,206	449.18
Local Government	23	410	666	734	4,087,752	521.18
State Government	13	257	267	316	1,936,640	532.04
POPE COUNTY - TOTAL	1,782	24,592	25,224	26,014	\$199,299,950	\$606.52
Natural Resources & Mining	32	804	834	603	5,186,401	534.07
Construction	174	1,239	1,250	1,264	11,683,055	718.38
Manufacturing	79	4,447	4,413	4,533	42,709,735	735.91
Trade, Transportation & Utilities	447	6,057	6,065	6,076	53,479,577	678.18
Wholesale Trade	94	601	599	600	6,292,909	806.78
Retail Trade	276	3,260	3,258	3,267	17,444,481	411.41
Transportation, Warehousing & Utilities	77	2,196	2,208	2,209	29,742,187	1,037.89
Information	21	216	208	210	2,185,334	795.44
Financial Activities	181	756	740	732	6,309,408	653.51
Professional & Business Services	253	2,467	2,529	2,543	18,389,741	562.91
Education & Health Services	303	3,289	3,343	3,321	24,033,116	557.23
Leisure & Hospitality	138	2,313	2,357	2,430	7,131,898	231.81
Other Services	98	428	439	439	2,484,627	439.03
Local Government	40	1,150	1,475	2,275	12,482,745	587.88
State Government	16	1,426	1,571	1,588	13,224,313	665.60

TABLE 6. COUNTY SUMMARY

NORTH AMERICAN INDUSTRY CLASSIFICATION SYSTEM - INDUSTRY GROUPS	NUMBER OF EMPLOYING UNITS	EMPLOYMENT			TOTAL EARNINGS	AVERAGE WEEKLY EARNINGS
		JUL	AUG	SEPT	JUL - SEPT	
PRAIRIE COUNTY - TOTAL	254	1,215	1,310	1,373	\$8,479,669	\$502.01
Natural Resources & Mining	29	170	160	154	1,524,098	726.68
Construction	13	61	63	63	475,405	586.68
Trade, Transportation & Utilities	65	302	307	321	1,933,654	479.81
Wholesale Trade	10	62	59	58	625,954	806.99
Retail Trade	34	177	179	172	670,707	293.14
Transportation, Warehousing & Utilities	21	63	69	91	636,993	659.19
Financial Activities	19	57	56	56	401,653	548.46
Professional & Business Services	14	37	40	40	242,186	477.68
Education & Health Services	52	200	204	215	1,216,655	453.58
Leisure & Hospitality	17	93	99	85	242,351	201.90
Other Services	14	45	39	42	208,780	382.38
Local Government	15	194	287	342	1,771,975	496.86
State Government	9	37	36	37	285,838	599.66
Other	7	19	19	18	177,074	729.70
PULASKI COUNTY - TOTAL	14,994	229,898	231,622	235,086	\$2,346,366,738	\$777.30
Natural Resources & Mining	65	817	833	810	10,005,266	938.58
Construction	1,108	8,942	8,851	8,842	94,573,362	819.40
Manufacturing	388	13,230	13,149	13,137	149,641,317	873.89
Trade, Transportation & Utilities	3,408	45,568	45,684	45,653	429,379,566	723.77
Wholesale Trade	1,255	12,834	12,648	12,558	171,780,310	1,042.10
Retail Trade	1,744	23,780	24,028	23,895	153,479,674	493.96
Transportation, Warehousing & Utilities	409	8,954	9,008	9,200	104,119,582	884.60
Information	233	7,081	7,076	7,045	94,647,830	1,030.18
Financial Activities	1,753	15,415	15,355	15,287	211,949,561	1,061.98
Professional & Business Services	3,064	33,956	34,036	33,957	344,911,722	780.73
Education & Health Services	2,428	37,485	37,440	37,939	403,931,875	825.91
Leisure & Hospitality	1,081	21,329	21,319	21,088	81,686,069	295.76
Other Services	1,170	7,252	7,150	7,068	55,765,688	599.39
Local Government	99	11,925	13,464	16,610	125,759,379	691.00
State Government	197	26,898	27,265	27,650	344,115,103	970.64

TABLE 6. COUNTY SUMMARY

NORTH AMERICAN INDUSTRY CLASSIFICATION SYSTEM - INDUSTRY GROUPS	NUMBER OF EMPLOYING UNITS	EMPLOYMENT			TOTAL EARNINGS	AVERAGE WEEKLY EARNINGS
		JUL	AUG	SEPT	JUL - SEPT	
RANDOLPH COUNTY - TOTAL	424	4,650	4,818	4,881	\$27,738,272	\$446.10
Natural Resources & Mining	25	119	121	118	619,503	399.34
Construction	31	96	99	100	528,025	413.06
Manufacturing	31	770	746	745	4,572,392	466.68
Trade, Transportation & Utilities	102	894	895	910	5,548,376	474.40
Wholesale Trade	20	196	198	201	1,238,488	480.34
Retail Trade	63	572	569	577	3,038,890	408.20
Transportation, Warehousing & Utilities	19	126	128	132	1,270,998	759.86
Information	4	41	40	40	391,983	747.58
Financial Activities	27	117	117	115	855,936	565.97
Professional & Business Services	45	276	280	274	1,416,735	393.90
Education & Health Services	73	1,059	1,080	1,086	6,926,138	495.61
Leisure & Hospitality	33	423	420	406	1,070,340	197.76
Other Services	20	57	55	56	277,305	380.91
Local Government	22	606	713	738	3,632,625	407.53
State Government	11	192	252	293	1,898,914	594.59
SAINT FRANCIS COUNTY - TOTAL	813	7,164	7,568	7,709	\$52,130,788	\$536.08
Natural Resources & Mining	33	200	194	230	1,640,667	606.76
Construction	44	185	174	169	1,436,173	627.70
Manufacturing	13	684	672	717	5,494,945	611.70
Trade, Transportation & Utilities	171	2,043	2,034	2,019	14,725,748	557.46
Wholesale Trade	36	636	644	645	5,924,224	710.20
Retail Trade	113	1,181	1,162	1,136	6,299,453	417.86
Transportation, Warehousing & Utilities	22	226	228	238	2,502,071	834.39
Information	7	73	72	73	556,423	589.02
Financial Activities	62	326	323	328	2,540,941	600.18
Professional & Business Services	49	272	327	341	2,499,469	613.62
Education & Health Services	305	1,507	1,450	1,468	9,543,695	497.72
Leisure & Hospitality	52	675	652	654	1,961,621	228.51
Other Services	33	81	84	94	370,057	329.72
Local Government	28	587	1,036	1,056	6,880,977	592.73
State Government	16	531	550	560	4,480,072	630.02

TABLE 6. COUNTY SUMMARY

NORTH AMERICAN INDUSTRY CLASSIFICATION SYSTEM - INDUSTRY GROUPS	NUMBER OF EMPLOYING UNITS	EMPLOYMENT			TOTAL EARNINGS	AVERAGE WEEKLY EARNINGS
		JUL	AUG	SEPT	JUL - SEPT	
SALINE COUNTY - TOTAL	1,824	19,926	20,821	20,960	\$152,545,167	\$570.48
Natural Resources & Mining	11	40	36	35	501,169	1,041.93
Construction	300	1,961	1,987	1,930	17,064,984	669.97
Manufacturing	79	1,217	1,213	1,208	13,218,671	838.50
Trade, Transportation & Utilities	411	4,432	4,411	4,398	31,976,013	557.29
Wholesale Trade	115	543	543	536	5,794,795	824.45
Retail Trade	245	3,636	3,612	3,598	23,720,315	504.69
Transportation, Warehousing & Utilities	51	253	256	264	2,460,903	734.67
Information	11	103	103	103	1,007,247	752.24
Financial Activities	184	683	681	667	5,770,969	655.72
Professional & Business Services	252	1,389	1,412	1,403	11,586,007	635.99
Education & Health Services	256	3,101	3,145	3,100	22,708,487	560.71
Leisure & Hospitality	139	2,754	2,787	2,754	8,887,001	247.24
Other Services	135	644	666	654	4,125,530	484.75
Local Government	30	2,457	3,229	3,554	26,762,641	668.40
State Government	16	1,145	1,151	1,154	8,936,448	597.76
SCOTT COUNTY - TOTAL	189	2,774	2,808	2,903	\$17,739,533	\$482.47
Natural Resources & Mining	17	214	216	212	1,792,524	644.33
Trade, Transportation & Utilities	40	437	428	420	2,706,966	486.14
Wholesale Trade	8	63	62	62	562,706	694.41
Retail Trade	26	325	318	308	1,546,741	375.33
Transportation, Warehousing & Utilities	6	49	48	50	597,519	938.02
Financial Activities	23	69	66	67	452,152	516.55
Professional & Business Services	10	7	8	8	44,023	441.70
Education & Health Services	33	302	311	304	2,288,178	575.84
Leisure & Hospitality	16	137	143	145	470,663	255.56
Local Government	5	308	320	447	1,714,584	368.07
State Government	7	71	70	67	423,932	470.34
Other	38	1,229	1,246	1,233	7,846,511	488.33

TABLE 6. COUNTY SUMMARY

NORTH AMERICAN INDUSTRY CLASSIFICATION SYSTEM - INDUSTRY GROUPS	NUMBER OF EMPLOYING UNITS	EMPLOYMENT			TOTAL EARNINGS	AVERAGE WEEKLY EARNINGS
		JUL	AUG	SEPT	JUL - SEPT	
SEARCY COUNTY - TOTAL	192	1,538	1,691	1,723	\$8,599,261	\$400.74
Construction	8	18	17	23	114,865	457.02
Manufacturing	16	209	217	230	988,818	347.85
Trade, Transportation & Utilities	40	275	278	261	1,256,382	356.18
Wholesale Trade	8	52	51	40	209,283	337.73
Retail Trade	25	199	204	198	845,120	324.51
Transportation, Warehousing & Utilities	7	24	23	23	201,979	665.86
Information	5	14	13	13	71,689	413.59
Financial Activities	14	106	104	98	635,464	476.12
Professional & Business Services	13	23	21	20	167,823	605.13
Education & Health Services	55	381	383	383	1,950,957	392.52
Leisure & Hospitality	13	120	112	101	287,475	199.22
Local Government	10	196	340	379	1,815,689	457.93
State Government	7	110	111	111	619,652	430.71
Other	11	86	95	104	690,447	559.07
SEBASTIAN COUNTY - TOTAL	3,801	65,272	66,907	66,867	\$584,880,464	\$678.10
Natural Resources & Mining	72	1,479	1,467	1,467	24,390,798	1,275.47
Construction	293	2,527	2,494	2,444	22,801,489	704.87
Manufacturing	204	14,828	14,776	14,480	148,868,693	779.29
Trade, Transportation & Utilities	964	12,754	12,816	12,701	99,978,255	602.86
Wholesale Trade	251	2,707	2,676	2,655	28,895,297	829.58
Retail Trade	571	7,697	7,789	7,731	44,513,122	442.45
Transportation, Warehousing & Utilities	142	2,350	2,351	2,315	26,569,836	873.93
Information	52	869	858	857	10,989,571	981.45
Financial Activities	413	2,443	2,462	2,466	24,587,237	769.77
Professional & Business Services	585	8,582	8,455	8,350	69,056,303	627.73
Education & Health Services	554	10,681	10,800	10,752	108,463,833	776.54
Leisure & Hospitality	324	5,478	5,529	5,480	18,947,044	265.20
Other Services	277	1,352	1,340	1,373	8,489,031	481.92
Local Government	43	2,707	4,357	4,628	32,469,137	640.86
State Government	20	1,572	1,553	1,869	15,839,073	731.91

TABLE 6. COUNTY SUMMARY

NORTH AMERICAN INDUSTRY CLASSIFICATION SYSTEM - INDUSTRY GROUPS	NUMBER OF EMPLOYING UNITS	EMPLOYMENT			TOTAL EARNINGS	AVERAGE WEEKLY EARNINGS
		JUL	AUG	SEPT	JUL - SEPT	
SEVIER COUNTY - TOTAL	326	5,580	5,605	5,652	\$35,563,806	\$487.44
Natural Resources & Mining	14	213	216	222	1,595,030	565.41
Construction	16	138	132	141	1,329,787	746.65
Manufacturing	10	2,175	2,137	2,094	13,745,722	495.17
Trade, Transportation & Utilities	98	878	863	853	5,419,064	482.09
Wholesale Trade	18	133	127	124	1,139,752	684.95
Retail Trade	61	643	631	626	3,162,873	384.15
Transportation, Warehousing & Utilities	19	102	105	103	1,116,439	831.10
Information	3	22	21	21	159,446	574.93
Financial Activities	31	202	196	195	1,315,010	511.74
Professional & Business Services	28	87	84	85	521,213	469.84
Education & Health Services	49	590	586	518	3,242,231	441.68
Leisure & Hospitality	25	281	295	287	767,865	205.33
Other Services	32	152	153	156	802,543	401.74
Local Government	12	668	774	899	5,513,056	543.46
State Government	8	174	148	181	1,152,839	528.91
SHARP COUNTY - TOTAL	431	3,499	3,470	3,709	\$20,859,491	\$450.81
Construction	28	132	131	135	1,117,951	648.21
Manufacturing	19	159	155	168	992,999	475.42
Trade, Transportation & Utilities	94	954	928	929	5,706,085	468.44
Wholesale Trade	14	45	49	45	215,284	357.42
Retail Trade	65	626	614	619	2,934,581	364.29
Transportation, Warehousing & Utilities	15	283	265	265	2,556,220	725.58
Information	7	54	55	54	628,359	889.61
Financial Activities	36	228	227	226	1,688,474	572.17
Professional & Business Services	45	131	135	133	956,448	553.18
Education & Health Services	101	663	689	696	3,954,401	445.58
Leisure & Hospitality	34	403	412	392	1,018,868	194.80
Local Government	25	533	548	789	3,695,273	456.02
State Government	8	93	96	98	637,975	512.98
Other	34	149	94	89	462,658	321.59

TABLE 6. COUNTY SUMMARY

NORTH AMERICAN INDUSTRY CLASSIFICATION SYSTEM - INDUSTRY GROUPS	NUMBER OF EMPLOYING UNITS	EMPLOYMENT			TOTAL EARNINGS	AVERAGE WEEKLY EARNINGS
		JUL	AUG	SEPT	JUL - SEPT	
STONE COUNTY - TOTAL	295	2,661	2,878	2,767	\$15,362,395	\$426.82
Construction	22	78	83	80	508,568	486.98
Manufacturing	25	321	297	284	1,738,068	444.67
Trade, Transportation & Utilities	72	683	688	673	3,874,857	437.47
Wholesale Trade	11	43	43	44	253,926	450.76
Retail Trade	49	596	601	582	3,218,067	417.44
Transportation, Warehousing & Utilities	12	44	44	47	402,864	688.66
Financial Activities	29	115	111	110	522,054	358.55
Professional & Business Services	13	31	28	29	168,711	442.42
Education & Health Services	57	521	521	531	3,629,105	532.41
Leisure & Hospitality	35	413	411	404	1,117,842	210.07
Local Government	10	248	494	415	2,343,254	467.37
State Government	8	150	152	155	865,772	437.18
Other	24	101	93	86	594,164	489.70
UNION COUNTY - TOTAL	1,357	16,217	16,781	17,146	\$165,762,509	\$762.86
Natural Resources & Mining	109	550	553	530	5,812,192	821.36
Construction	84	1,066	1,083	1,085	12,049,333	859.81
Manufacturing	54	2,771	2,750	2,749	33,555,900	936.36
Trade, Transportation & Utilities	340	3,683	3,674	3,656	32,738,287	686.01
Wholesale Trade	69	701	716	712	11,089,196	1,201.99
Retail Trade	214	2,148	2,132	2,127	11,354,644	408.97
Transportation, Warehousing & Utilities	57	834	826	817	10,294,447	959.08
Information	13	151	151	154	1,209,472	612.08
Financial Activities	114	732	751	741	6,216,273	645.02
Professional & Business Services	134	1,578	1,563	1,520	33,187,967	1,643.16
Education & Health Services	250	2,353	2,389	2,404	19,433,787	627.58
Leisure & Hospitality	91	1,212	1,232	1,218	3,710,371	233.82
Other Services	116	538	520	526	3,334,637	485.82
Local Government	35	1,007	1,559	1,964	9,667,173	492.47
State Government	17	576	556	599	4,847,117	646.20

TABLE 6. COUNTY SUMMARY

NORTH AMERICAN INDUSTRY CLASSIFICATION SYSTEM - INDUSTRY GROUPS	NUMBER OF EMPLOYING UNITS	EMPLOYMENT			TOTAL EARNINGS	AVERAGE WEEKLY EARNINGS
		JUL	AUG	SEPT	JUL - SEPT	
VAN BUREN COUNTY - TOTAL	374	3,340	3,421	3,609	\$23,057,100	\$513.10
Natural Resources & Mining	8	36	38	42	543,539	1,081.31
Construction	41	271	199	183	2,022,657	714.80
Manufacturing	12	60	66	58	507,131	636.03
Trade, Transportation & Utilities	103	955	928	952	6,885,920	560.51
Wholesale Trade	13	30	27	27	271,786	746.66
Retail Trade	59	612	608	633	3,314,568	412.79
Transportation, Warehousing & Utilities	31	313	293	292	3,299,566	847.93
Information	8	49	47	51	415,799	652.75
Financial Activities	31	165	162	164	1,319,990	620.39
Professional & Business Services	32	139	141	130	754,993	424.95
Education & Health Services	63	655	660	663	4,578,395	534.15
Leisure & Hospitality	30	521	528	517	1,724,319	254.10
Other Services	28	82	84	83	483,783	448.36
Local Government	11	332	493	691	3,263,218	496.74
State Government	7	75	75	75	557,356	571.65
WASHINGTON COUNTY - TOTAL	5,498	84,923	86,463	88,785	\$801,402,053	\$710.84
Natural Resources & Mining	40	417	426	419	4,709,562	861.19
Construction	493	3,886	3,874	3,846	40,463,837	804.57
Manufacturing	229	13,325	13,313	13,430	122,978,067	708.28
Trade, Transportation & Utilities	1,350	20,241	20,366	20,154	178,049,752	676.23
Wholesale Trade	412	3,562	3,596	3,559	53,023,734	1,141.76
Retail Trade	753	10,384	10,430	10,281	63,221,597	469.19
Transportation, Warehousing & Utilities	185	6,295	6,340	6,314	61,804,421	752.68
Information	90	1,207	1,220	1,215	13,816,398	875.45
Financial Activities	585	3,361	3,351	3,325	35,477,972	815.70
Professional & Business Services	954	9,194	9,387	9,361	127,909,740	1,056.39
Education & Health Services	738	12,465	12,525	12,614	122,602,035	752.39
Leisure & Hospitality	556	9,289	9,427	9,647	32,450,200	264.02
Other Services	381	1,809	1,827	1,831	11,787,156	497.55
Local Government	60	3,713	4,925	7,573	47,129,398	670.90
State Government	22	6,016	5,822	5,370	64,027,936	858.65

TABLE 6. COUNTY SUMMARY

NORTH AMERICAN INDUSTRY CLASSIFICATION SYSTEM - INDUSTRY GROUPS	NUMBER OF EMPLOYING UNITS	EMPLOYMENT			TOTAL EARNINGS	AVERAGE WEEKLY EARNINGS
		JUL	AUG	SEPT	JUL - SEPT	
WHITE COUNTY - TOTAL	1,830	24,164	25,154	25,590	\$208,364,599	\$641.91
Natural Resources & Mining	56	1,704	1,684	1,696	24,823,278	1,126.76
Construction	197	1,419	1,476	1,433	13,271,759	707.65
Manufacturing	74	2,386	2,393	2,426	25,610,224	820.27
Trade, Transportation & Utilities	473	6,008	6,025	6,085	48,162,829	613.45
Wholesale Trade	95	627	617	613	5,911,236	734.59
Retail Trade	282	3,139	3,138	3,152	17,689,373	432.94
Transportation, Warehousing & Utilities	96	2,242	2,270	2,320	24,562,220	829.66
Information	21	140	140	144	1,789,820	974.14
Financial Activities	180	964	949	952	8,586,437	691.62
Professional & Business Services	192	1,550	1,484	1,485	11,463,689	585.41
Education & Health Services	315	4,739	4,747	4,736	41,861,401	679.25
Leisure & Hospitality	144	2,374	2,431	2,519	7,249,079	228.41
Other Services	114	573	587	584	4,137,270	547.45
Local Government	46	1,696	2,597	2,733	16,437,205	539.88
State Government	18	611	641	797	4,971,608	559.93
WOODRUFF COUNTY - TOTAL	222	1,782	1,945	1,980	\$12,792,171	\$517.27
Natural Resources & Mining	26	153	144	155	1,091,689	557.36
Construction	7	50	46	43	348,162	578.02
Manufacturing	7	364	358	348	2,467,700	532.21
Trade, Transportation & Utilities	47	422	433	445	3,340,372	592.97
Wholesale Trade	11	153	164	173	1,736,580	817.86
Retail Trade	23	184	184	186	792,808	330.24
Transportation, Warehousing & Utilities	13	85	85	86	810,984	731.06
Financial Activities	14	65	65	65	488,843	578.51
Professional & Business Services	6	8	9	8	80,601	744.01
Education & Health Services	82	267	273	270	1,733,141	493.77
Leisure & Hospitality	7	75	79	75	219,948	221.65
Local Government	10	311	473	507	2,547,507	455.37
State Government	6	45	43	42	354,366	629.05
Other	10	22	22	22	119,842	419.03

TABLE 6. COUNTY SUMMARY

NORTH AMERICAN INDUSTRY CLASSIFICATION SYSTEM - INDUSTRY GROUPS	NUMBER OF EMPLOYING UNITS	EMPLOYMENT			TOTAL EARNINGS	AVERAGE WEEKLY EARNINGS
		JUL	AUG	SEPT	JUL - SEPT	
YELL COUNTY - TOTAL	448	5,448	5,748	6,136	\$38,236,360	\$509.10
Natural Resources & Mining	27	239	233	231	1,785,604	586.15
Construction	40	252	264	272	1,884,444	551.87
Manufacturing	19	2,160	2,181	2,208	15,871,076	559.25
Trade, Transportation & Utilities	82	637	646	642	3,419,416	409.92
Wholesale Trade	17	33	36	34	231,713	519.15
Retail Trade	47	512	516	516	2,294,497	342.94
Transportation, Warehousing & Utilities	18	92	94	92	893,206	741.45
Financial Activities	36	158	155	156	1,242,218	611.23
Professional & Business Services	43	201	204	206	1,388,613	524.47
Education & Health Services	112	676	711	717	4,306,641	472.36
Leisure & Hospitality	34	336	330	328	884,059	205.25
Local Government	27	578	810	1,162	6,022,907	545.06
State Government	12	110	111	113	684,723	473.09
Other	16	101	103	101	746,659	564.94
STATEWIDE COUNTY - TOTAL	4,904	17,643	17,381	17,933	\$272,913,411	\$1,189.27
Natural Resources & Mining	77	514	529	515	9,196,217	1,362.13
Construction	542	4,503	4,146	3,683	66,218,404	1,239.15
Manufacturing	38	190	188	190	2,076,746	843.75
Trade, Transportation & Utilities	1,712	5,374	5,389	5,332	101,697,253	1,458.13
Wholesale Trade	1,453	4,338	4,334	4,316	89,820,153	1,595.91
Retail Trade	109	456	461	434	5,885,722	1,005.36
Transportation, Warehousing & Utilities	150	580	594	582	5,991,378	787.37
Information	119	374	372	383	4,276,375	874.10
Financial Activities	298	879	888	874	12,685,685	1,108.47
Professional & Business Services	1,707	4,070	4,089	5,070	57,146,392	996.87
Education & Health Services	183	908	936	1,036	10,158,493	813.98
Leisure & Hospitality	55	88	91	87	794,256	689.06
State Government	9	510	519	520	5,995,356	893.19
Other	164	233	234	243	2,668,234	867.25

TABLE 7. FEDERAL GOVERNMENT EMPLOYMENT AND EARNINGS IN ARKANSAS

NORTH AMERICAN INDUSTRY CLASSIFICATION SYSTEM - INDUSTRY GROUPS	NUMBER OF EMPLOYING UNITS	EMPLOYMENT JUL	EMPLOYMENT AUG	EMPLOYMENT SEPT	TOTAL EARNINGS JUL-SEPT	AVERAGE WEEKLY EARNINGS
TOTAL	1,258	24,769	22,186	21,574	\$315,628,993	\$1,062.87
Trade, Transportation & Utilities	618	6,149	6,047	6,039	66,149,441	837.14
Information	2	58	58	58	694,571	921.18
Financial Activities	19	185	185	182	2,870,682	1,200.12
Professional & Business Services	29	944	909	857	16,699,441	1,422.04
Education & Health Services	18	4,915	4,920	4,906	80,679,277	1,263.03
Leisure & Hospitality	22	471	468	439	3,782,223	633.40
Other Services	3	7	7	7	38,446	422.48
Public Administration	547	12,040	9,592	9,086	144,714,912	1,087.17

TABLE 8. WORKFORCE INVESTMENT AREA SUMMARY

NORTH AMERICAN INDUSTRY CLASSIFICATION SYSTEM - INDUSTRY GROUPS	NUMBER OF EMPLOYING UNITS	EMPLOYMENT			TOTAL	AVERAGE
		July	Aug	Sept	EARNINGS July - Sept	WEEKLY EARNINGS
CENTRAL WORKFORCE INFORMATION*	6,437	73,721	75,914	77,906	\$601,102,517	\$609.63
Natural Resources & Mining	206	1,765	1,740	1,741	23,387,440	1,028.80
Construction	796	5,515	5,559	5,488	50,639,880	705.60
Trade, Transportation & Utilities	1,518	15,506	15,472	15,483	110,485,378	548.77
Wholesale Trade	395	2,548	2,525	2,526	27,357,692	830.81
Retail Trade	878	11,393	11,361	11,303	66,739,113	452.22
Transportation, Warehousing & Utilities	245	1,565	1,586	1,654	16,388,573	787.09
Information	66	583	575	573	6,064,691	808.52
Financial Activities	669	2,764	2,777	2,753	25,304,929	704.08
Professional & Business Services	815	8,211	8,328	8,196	85,993,623	802.29
Education & Health Services	1,023	11,228	11,402	11,393	84,163,248	570.86
Leisure & Hospitality	509	9,055	9,227	9,195	27,946,326	234.71
State & Local Government	198	11,042	12,831	15,104	104,521,695	618.84
Other	637	8,052	8,003	7,980	82,595,307	793.03

*Note: Pulaski County is not included in the Central Workforce Information. Please refer to Page 55 for information on Pulaski County.

Central Workforce Includes these counties: Faulkner, Lonoke, Monroe, Prairie, and Saline.

EASTERN WORKFORCE INFORMATION	3,960	34,988	36,073	37,280	\$263,096,927	\$560.40
Natural Resources & Mining	239	1,283	1,294	1,493	8,823,082	500.27
Construction	157	808	826	853	6,670,048	618.92
Trade, Transportation & Utilities	854	10,146	9,815	9,722	78,224,494	608.15
Wholesale Trade	187	2,179	2,187	2,171	21,256,992	750.41
Retail Trade	467	5,247	4,899	4,775	27,872,103	431.07
Transportation, Warehousing & Utilities	200	2,720	2,729	2,776	29,095,399	816.33
Financial Activities	266	1,511	1,504	1,515	12,501,723	636.87
Professional & Business Services	291	1,884	1,901	1,761	12,996,825	540.80
Education & Health Services	1,391	6,320	6,335	6,377	42,971,521	521.04
Leisure & Hospitality	243	3,394	3,346	3,238	11,070,461	256.04
Local & State Government	193	5,266	6,734	7,969	52,063,990	601.67
Other	326	4,376	4,318	4,352	37,774,783	668.19

Eastern Workforce Includes these counties: Crittenden, Cross, Lee, Phillips, and Saint Francis.

TABLE 8. WORKFORCE INVESTMENT AREA SUMMARY

NORTH AMERICAN INDUSTRY CLASSIFICATION SYSTEM - INDUSTRY GROUPS	NUMBER OF EMPLOYING UNITS	EMPLOYMENT			TOTAL EARNINGS July - Sept	AVERAGE WEEKLY EARNINGS
		July	Aug	Sept		
NORTH CENTRAL WORKFORCE INFORMATION	5,755	65,990	68,295	70,320	\$509,356,989	\$574.49
Natural Resources & Mining	204	2,968	2,938	2,979	36,830,723	956.60
Construction	499	3,029	3,016	2,942	25,773,689	661.82
Manufacturing	269	9,527	9,522	9,510	83,297,497	673.08
Trade, Transportation & Utilities	1,433	15,555	15,517	15,514	114,570,475	567.54
Wholesale Trade	272	1,919	1,947	1,944	18,253,137	725.00
Retail Trade	883	9,195	9,134	9,100	49,507,375	416.52
Transportation, Warehousing & Utilities	278	4,441	4,436	4,470	46,809,963	809.34
Information	69	552	549	556	4,898,328	682.19
Financial Activities	530	2,727	2,688	2,677	22,134,115	631.22
Professional & Business Services	508	2,898	2,867	2,864	20,749,334	554.91
Education & Health Services	1,095	12,631	12,746	12,771	101,153,660	611.91
Leisure & Hospitality	458	6,325	6,435	6,465	19,158,564	229.97
Other Services	354	1,532	1,473	1,463	8,826,353	455.88
Local Government	230	5,362	7,610	9,332	48,353,255	500.29
State Government	106	2,884	2,934	3,247	23,610,996	601.07
North Central Workforce Includes these counties: Cleburne, Fulton, Independence, Izard, Jackson, Sharp, Stone, Van Buren, White, and Woodruff.						
NORTHEAST WORKFORCE INFORMATION	6,626	86,770	90,214	92,875	\$714,874,256	\$611.32
Natural Resources & Mining	389	2,145	2,159	2,517	15,417,149	521.60
Construction	478	3,059	3,108	3,105	28,418,776	707.31
Manufacturing	338	18,430	18,609	18,445	196,975,741	819.26
Trade, Transportation & Utilities	1,705	17,928	18,037	17,917	130,705,035	559.79
Wholesale Trade	403	3,714	3,697	3,686	37,590,661	781.72
Retail Trade	995	11,339	11,446	11,258	62,215,469	421.74
Transportation, Warehousing & Utilities	307	2,875	2,894	2,973	30,898,905	815.66
Information	70	898	892	886	7,445,876	642.11
Financial Activities	579	3,232	3,218	3,221	28,258,848	674.31
Professional & Business Services	686	6,446	6,783	6,776	44,541,040	513.81
Education & Health Services	1,194	13,851	14,335	14,371	125,958,601	683.02
Leisure & Hospitality	501	7,669	7,704	7,925	23,423,357	232.01
Other Services	371	1,511	1,521	1,537	8,228,737	415.61
Local Government	216	7,336	9,578	11,785	67,522,930	542.95
State Government	99	4,265	4,270	4,390	37,978,166	678.08
Northeast Workforce Includes these counties: Clay, Craighead, Greene, Lawrence, Mississippi, Poinsett, and Randolph.						

TABLE 8. WORKFORCE INVESTMENT AREA SUMMARY

NORTH AMERICAN INDUSTRY CLASSIFICATION SYSTEM - INDUSTRY GROUPS	NUMBER OF EMPLOYING UNITS	EMPLOYMENT			TOTAL	AVERAGE WEEKLY EARNINGS
		July	Aug	Sept	EARNINGS July - Sept	
NORTHWEST WORKFORCE INFORMATION	14,896	217,344	222,926	228,555	\$2,113,365,558	\$729.19
Natural Resources & Mining	126	1,757	1,776	1,772	18,559,317	807.34
Construction	1,375	8,980	8,896	8,819	84,828,804	733.32
Trade, Transportation & Utilities	3,656	50,304	50,756	50,364	472,437,385	719.99
Retail Trade	1,979	25,350	25,659	25,369	153,850,081	464.84
Other Trade, Transportation & Utilities	1,677	24,954	25,097	24,995	318,587,304	979.67
Information	228	2,755	2,769	2,751	29,322,817	817.74
Education & Health Services	2,102	27,341	27,530	27,844	253,776,396	708.02
Leisure & Hospitality	1,466	23,124	23,240	23,328	80,351,903	266.07
Other Services	966	4,401	4,449	4,548	28,845,295	496.84
Local Government	313	10,944	15,485	21,346	134,763,117	650.95
State Government	107	8,330	8,125	8,081	84,510,066	794.85
Other	4,557	79,408	79,900	79,702	925,970,458	894.04
Northwest Workforce Includes these counties: Baxter, Benton, Boone, Carroll, Madison, Marion, Newton, Searcy, and Washington.						
SOUTHEAST WORKFORCE INFORMATION	5,963	69,157	71,049	73,147	\$569,613,107	\$616.11
Natural Resources & Mining	394	2,572	2,632	2,813	24,036,526	691.89
Construction	320	3,281	3,176	3,209	34,485,195	823.31
Trade, Transportation & Utilities	1,327	12,746	12,738	12,734	93,275,129	563.22
Retail Trade	790	7,983	7,952	7,984	43,280,249	417.57
Other Trade, Transportation & Utilities	537	4,763	4,786	4,750	49,994,880	806.86
Information	60	424	411	415	3,546,746	654.78
Education & Health Services	1,715	10,886	11,070	11,060	78,552,785	549.05
Other Services	355	1,418	1,394	1,339	8,025,602	446.17
Local Government	209	6,457	7,967	9,802	54,799,537	522.00
State Government	137	5,955	6,159	6,292	52,424,244	657.28
Other	1,446	25,418	25,502	25,483	220,467,343	665.90
Southeast Workforce Includes these counties: Arkansas, Ashley, Bradley, Chicot, Cleveland, Desha, Drew, Grant, Jefferson, and Lincoln.						

TABLE 8. WORKFORCE INVESTMENT AREA SUMMARY

NORTH AMERICAN INDUSTRY CLASSIFICATION SYSTEM - INDUSTRY GROUPS	NUMBER OF EMPLOYING UNITS	EMPLOYMENT			TOTAL	AVERAGE
		July	Aug	Sept	EARNINGS July - Sept	WEEKLY EARNINGS
SOUTHWEST WORKFORCE INFORMATION	5,805	77,101	78,488	80,742	\$650,918,918	\$635.60
Natural Resources & Mining	377	2,618	2,642	2,630	25,274,053	739.22
Trade, Transportation & Utilities	1465	15653	15542	15407	116692440	577.85
Wholesale Trade	267	2,318	2,317	2,324	26,862,246	890.79
Retail Trade	906	9,106	9,021	8,947	46,889,397	399.67
Transportation, Warehousing & Utilities	292	4,229	4,204	4,136	42,940,797	788.40
Information	63	544	543	543	5,172,562	732.31
Financial Activities	512	2,771	2,789	2,776	21,912,010	606.60
Education & Health Services	1,040	9,520	9,581	9,517	64,799,234	522.53
Leisure & Hospitality	399	5,361	5,396	5,355	16,198,607	232.01
Other Services	411	2,123	1,994	2,002	10,789,279	406.90
Local & State Government	399	10,095	11,542	14,372	86,337,634	553.31
Other	1,139	28,416	28,459	28,140	303,743,099	824.50
Southwest Workforce Includes these counties: Calhoun, Columbia, Dallas, Hempstead, Howard, Lafayette, Little River, Miller, Nevada, Ouachita, Sevier, and Union						
WEST CENTRAL WORKFORCE INFORMATION	8,283	100,314	103,158	105,114	\$759,201,456	\$567.75
Construction	809	4,599	4,636	4,595	39,463,630	658.50
Manufacturing	357	16,253	16,309	16,449	146,224,451	688.50
Trade, Transportation & Utilities	1,931	21,333	21,396	21,222	159,090,823	574.08
Retail Trade	1,259	14,062	14,107	13,937	78,097,111	428.02
Other Trade, Transportation & Utilities	672	7,271	7,289	7,285	80,993,712	855.61
Financial Activities	815	3,542	3,549	3,556	29,771,294	645.28
Professional & Business Services	926	7,712	7,667	7,591	55,841,360	561.01
Education & Health Services	1,467	16,545	16,769	16,720	136,026,023	627.39
Leisure & Hospitality	758	12,776	12,536	12,069	42,164,435	260.30
Local Government	229	7,084	9,331	12,014	66,702,252	541.45
State Government	125	4,866	5,356	5,603	42,177,425	615.06
Other	866	5,604	5,609	5,295	41,739,763	583.49
West Central Workforce Includes these counties: Clark, Conway, Garland, Hot Spring, Johnson, Montgomery, Perry, Pike, Pope, and Yell						

TABLE 8. WORKFORCE INVESTMENT AREA SUMMARY

NORTH AMERICAN INDUSTRY CLASSIFICATION SYSTEM - INDUSTRY GROUPS	NUMBER OF EMPLOYING UNITS	EMPLOYMENT			TOTAL	AVERAGE
		July	Aug	Sept	EARNINGS July - Sept	WEEKLY EARNINGS
WESTERN WORKFORCE INFORMATION	6,686	100,817	104,675	105,323	\$852,778,930	\$633.16
Natural Resources & Mining	181	2,658	2,644	2,638	37,266,426	1,083.12
Construction	599	4,274	4,275	4,228	37,675,045	680.46
Manufacturing	380	23,347	23,306	23,045	215,265,935	712.74
Trade, Transportation & Utilities	1,675	22,411	22,564	22,363	169,792,117	581.88
Wholesale Trade	397	3,707	3,678	3,670	38,764,043	809.19
Retail Trade	969	11,973	12,089	11,980	67,319,665	431.03
Transportation, Warehousing & Utilities	309	6,731	6,797	6,713	63,708,409	726.34
Information	87	1,130	1,121	1,115	12,919,320	885.73
Financial Activities	684	3,751	3,779	3,796	34,969,079	712.50
Professional & Business Services	877	10,185	10,068	9,972	79,849,942	609.66
Education & Health Services	992	15,027	15,234	15,222	139,913,667	709.89
Leisure & Hospitality	536	8,205	8,270	8,249	27,207,669	253.95
Other Services	448	2,050	2,040	2,071	13,047,291	488.71
Local Government	154	5,124	8,701	9,588	61,058,740	601.82
State Government	73	2,655	2,673	3,036	23,813,699	657.04

Western Workforce Includes these counties: Crawford, Franklin, Logan, Polk, Scott, and Sebastian

