

Arkansas Covered Employment & Earnings

Second Quarter
2011

Jobs for People. People for Jobs.

DWS
Department of
WORKFORCE**Services**

**COVERED EMPLOYMENT AND EARNINGS
STATE OF ARKANSAS
SECOND QUARTER 2011**

**MIKE BEEBE, GOVERNOR
STATE OF ARKANSAS**

**ARTEE WILLIAMS, DIRECTOR
DEPARTMENT OF WORKFORCE SERVICES**

**PUBLISHED BY
LABOR MARKET INFORMATION & ANALYSIS
BUREAU OF LABOR STATISTICS PROGRAMS
POST OFFICE BOX 2981
LITTLE ROCK, ARKANSAS 72203-2981
BERNADETTE COLEMAN, BLS PROGRAMS MANAGER
TELEPHONE (501) 682-3159
SUSAN PRICE, QCEW LEAD ANALYST
TELEPHONE (501) 682-3103**

STATE OF ARKANSAS WEBPAGE: <http://www.arkansas.gov>

DEPARTMENT OF WORKFORCE SERVICES WEBPAGE: <http://www.arkansas.gov/esd/>

WEBPAGE FOR LABOR MARKET INFORMATION: <http://www.discover.arkansas.gov>

RELEASED: NOVEMBER 2011

TABLE OF CONTENTS

	DESCRIPTION OF DATA	PAGE
	Industry Classification	1
	Definition of Covered Employment and Earnings	2
	Federal Government	2
	County Classification	2
	Significant Developments During Second Quarter 2011	3

LIST OF GRAPHS AND TABLES

Graph 1	Average Total Covered Employment for Selected Years, Arkansas	7
Graph 2	Total Covered Earnings, by Calendar Quarter for Selected Years, Arkansas	8
Table 1	Quarterly Comparison of Covered Employment and Wages, by Industry	5
Table 2	Total Covered Employment in Arkansas, 2004 – 2011	6
Table 3	Total Covered Earnings, 2004 – 2011	9
Table 4	Total Taxable Earnings, 2004 – 2011	10
Table 5	State Summary – Employment and Total Earnings, by Industry, Second Quarter 2011	12
Table 6	County Summary – Employment and Total Earnings, by Industry, Second Quarter 2011	26
Table 7	Federal Government Employment and Total Earnings in Arkansas, Second Quarter 2011	64
Table 8	Workforce Investment Area – Employment and Total Earnings, by Industry, Second Quarter 2011	65

EMPLOYMENT AND EARNINGS
UNDER THE ARKANSAS EMPLOYMENT SECURITY LAW
SECOND QUARTER 2011

DESCRIPTION OF DATA

This publication contains covered employment and payroll data by industry and county for the Second Quarter 2011. These data are compiled from quarterly contributions and wage reports submitted by employers subject to the Arkansas Employment Security Law. An employing unit is a single physical location where business is conducted, production takes place, or services are provided. Employment data have been tabulated for each month of the quarter by industry under the **North American Industry Classification System** (NAICS) (see "Industry Classification" below) on a statewide, county and workforce area basis. Payroll data represent the total wages paid during the quarter, and are also shown by industry for the State and

by publishable industry groups for each county and workforce area. The tabulation of this data is a joint effort in conjunction with the U.S. Bureau of Labor Statistics. In addition, there are tables included which set out total covered employment by months, quarterly payrolls, and average weekly earnings for the years 2004 through 2011. Data contained in this publication are subject to revisions. Revisions for a quarter are typically reflected in the specified year's Annual Covered Employment and Earnings publication. Industry codes changes between years could cause significant employment and wages shifts among industries.

INDUSTRY CLASSIFICATION

Previously published industry data will not be comparable in all instances with currently published data since industry codes have been revised. The last two revisions have occurred using the North American Industry Classification System (NAICS) which is a six digit industry code. Since 2001, NAICS codes are revised every five years. The most recent revision is NAICS 2012. These revisions are being incorporated in 2011 publications.

Auxiliary units are establishments primarily engaged in performing management of support services for other establishments of the same enterprise. The NAICS code is based on the actual activities that the establishment performs. Comparisons of many industries should

not be made between this publication and previous Covered Employment and Earnings publications that were based on previous coding revisions. A summary is available on the NAICS home page at <http://www.census.gov/naics>.

DEFINITION OF COVERED EMPLOYMENT AND EARNINGS

Covered Employment is the number of workers employed by employers subject to the Arkansas Employment Security Law who worked or received pay for the payroll period including the 12th of the month. An employer is subject to the law when they employ one or more employees in each of ten days during the current or preceding calendar year.

Currently excluded from coverage is employment covered by the Railroad Unemployment Insurance Act, some domestic service workers, employees of small agricultural establishments, self-

employed and unpaid family workers, insurance and real estate agents who are on commission only, and employees of churches and religious organizations except separately incorporated schools. The payroll information in this publication includes all wages and salaries paid to any covered employees by their employers including bonuses, commissions, and cash values of remuneration received in any medium other than cash. These wages include both taxable and nontaxable wages. Only the first \$12,000 paid to each worker by an employer in the calendar year is taxable under the Arkansas Employment Security Law.

FEDERAL GOVERNMENT EMPLOYMENT

Table 7 on page 63 lists the total number of civilians employed by the Federal Government in Arkansas during the Second Quarter 2011. Employment and wage data are set out by industry divisions.

These data are obtained from required reports submitted by various government agencies having employment in the State. Civilian Federal workers are covered by the Unemployment Compensation for Federal Employees (UCFE) program.

COUNTY CLASSIFICATION

Employment and payroll data by county are classified according to the county where the workers are employed. Employers with operations in more than one county are requested to furnish this agency with a breakdown of employment and wages for at least one quarter of each year by the counties in which they operate. Many such employers submit county data with each regular contribution report. Note: This information is invaluable in the preparation of monthly employment and payroll data by county.

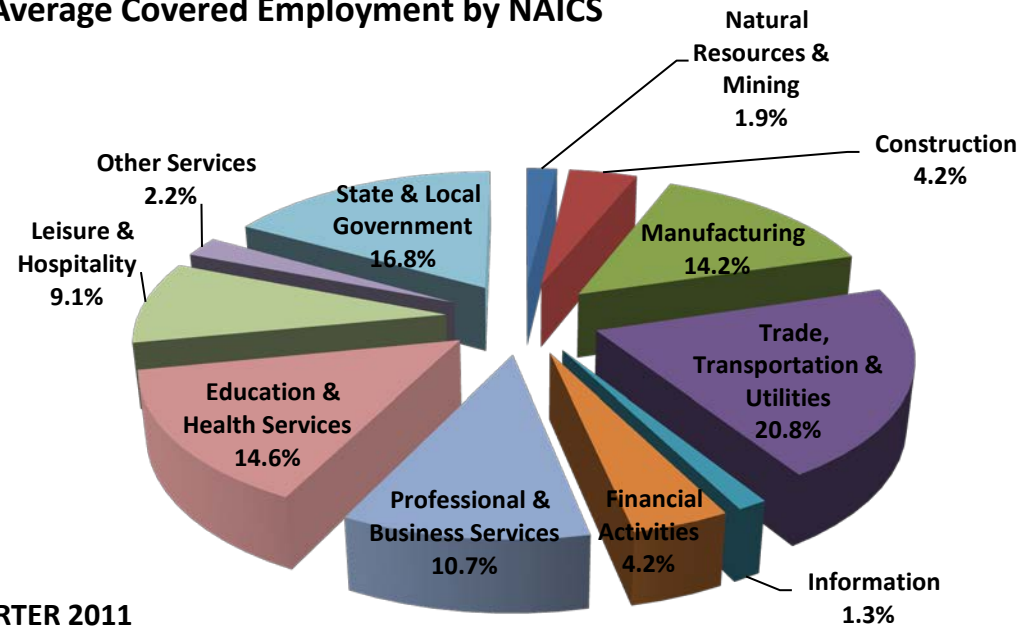
Employment and payroll data for multi-area employers, who do not furnish county data each quarter of the year, are prorated by county on the basis of one quarter's information. The "rest-of-state" table that appears on page 62 of this publication includes data on firms that did not provide a county breakdown of employment and payrolls. It also includes sales, and all other type of personnel with no permanent place of work, as well as employment of employers with no established place of business in Arkansas.

SIGNIFICANT DEVELOPMENTS DURING SECOND QUARTER 2011

AVERAGE EMPLOYMENT CHANGES

Covered employment averaged 1,126,473 during the Second Quarter 2011 (see table 1), an increase of 23,188 (2.1%) from the previous quarter and an increase of 30,682 (2.8%) from the average recorded one-year ago. This over-the year increase is more significant when used as an economic indicator. This over-the-year comparison allows for the disregarding of many seasonal factors that are evident when making an over-the-quarter comparison.

Average Covered Employment by NAICS



EMPLOYMENT CHANGES FROM FIRST QUARTER 2011

Compared to First Quarter 2011, covered employment increased in six major industry sectors, more than offsetting the decline in one sector. Leisure and Hospitality posted the greatest gain (+7,189). Trade, Transportation, and Utilities added 4,669, mostly in Retail Trade. The Construction industry increased by 3,281 jobs. Professional and Business Services added 2,893, with the largest gains seen in Administration and Waste Services. State and Local Government increased by 1,487, with the largest gain in Local government. Natural Resources and Mining increased by 1,343, with the largest gain in Agriculture, Forestry, Fishing and Hunting. The Information sector posted a decline of -124.

EMPLOYMENT CHANGES FROM SECOND QUARTER 2010 (QUARTER YEAR AGO COMPARISON)

Over the year gains were recorded in four industry groups while seven recorded losses (see Table 1). The largest gains were posted in Trade, Transportation & Utilities (3,773), Professional & Business Services (2,272), and Education & Health Services (1,936). Significant losses occurred in Construction (-2,375), Information (-705) and Natural Resources and Mining (-477).

COVERED WAGES

Wages paid to covered workers totaled \$10,128,274,611 for the Second Quarter 2010 (see Table 1), for an average weekly wage of \$691.63 (see Table 5). Employees in Little River County recorded the highest average weekly wage (\$870.91), and workers in Newton County the lowest (\$440.61) (see Table 6).

The Information sector recorded the highest average weekly wage for the State of Arkansas at \$908.92; while the Leisure and Hospitality sector recorded the lowest at \$260.68 for the State of Arkansas (see Table 5).

Average Weekly Wage by Industry

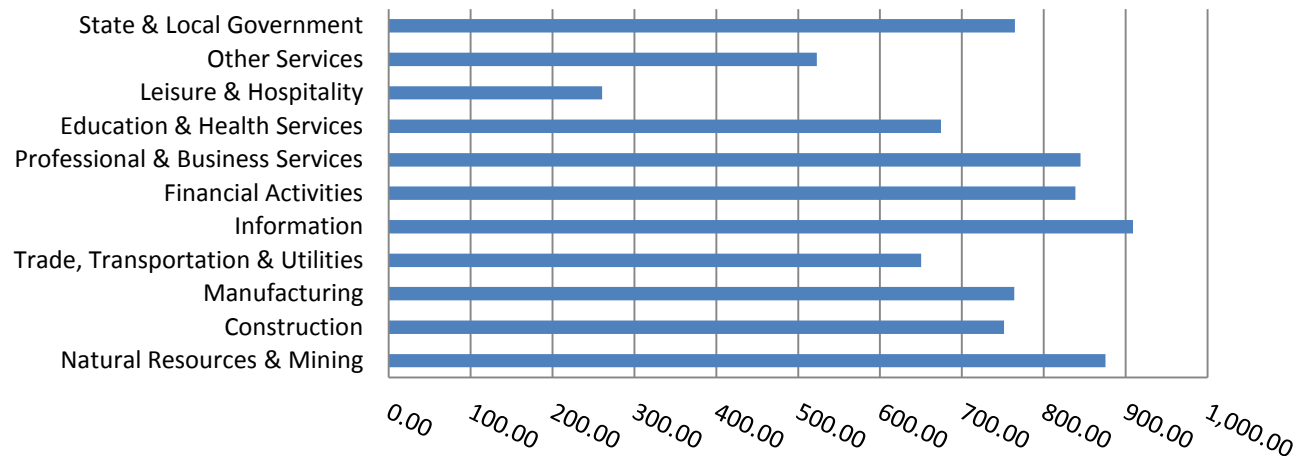


TABLE 1. QUARTERLY COMPARISON OF COVERED EMPLOYMENT AND WAGES, BY INDUSTRY

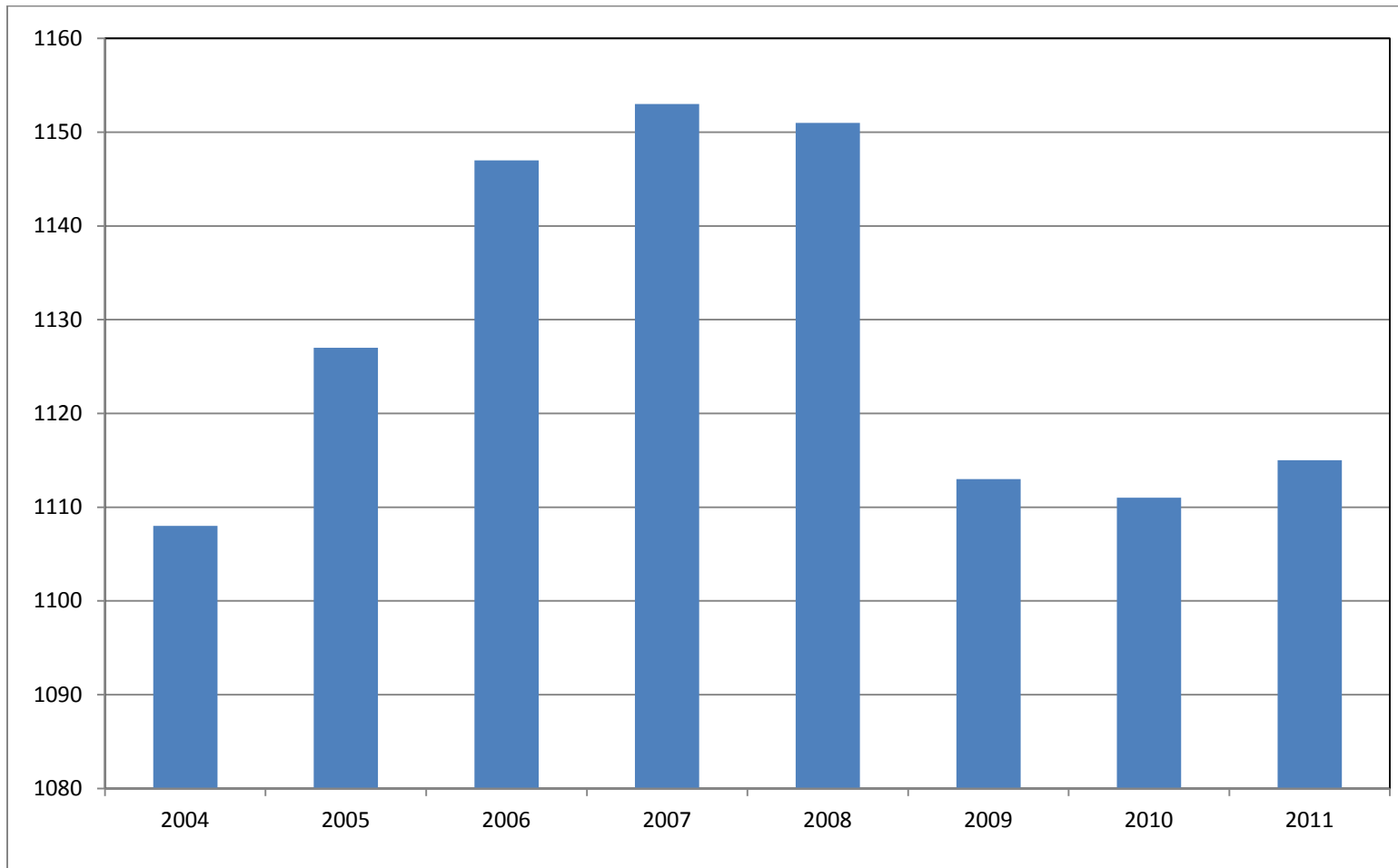
	Number of Employing Units	Monthly Employment Average	Percent of Total	Net Change From:		Total Wages Paid Apr - Jun 2010	Percent of Total
				Jan - Mar 2011	Apr - Jun 2010		
Total	84,225	1,126,473	100	23,188	30,682	\$10,128,274,611	100
Natural Resources & Mining	2,497	21,131	1.9	1,343	-477	240,461,955	2.4
Agriculture, Forestry, Fishing & Hunting	1,968	12,229	1.1	1,100	-853	93,922,339	0.9
Mining	529	8,902	0.8	243	376	146,539,616	1.4
Construction	6,891	47,572	4.2	3,281	-2,375	464,736,758	4.6
Manufacturing	3,156	159,932	14.2	42	-767	1,588,213,744	15.7
Trade, Transportation & Utilities	20,748	234,343	20.8	4,669	3,773	1,980,493,689	19.6
Wholesale Trade	6,524	46,690	4.1	1,108	-93	626,449,567	6.2
Retail Trade	10,927	130,985	11.6	2,350	2,070	746,344,547	7.4
Transportation & Warehousing	2,890	49,509	4.4	1,257	1,979	479,854,753	4.7
Utilities	407	7,160	0.6	-46	-182	127,844,822	1.3
Information	1,113	14,869	1.3	-124	-705	175,695,350	1.7
Financial Activities	7,869	47,690	4.2	450	-439	519,915,132	5.1
Finance & Insurance	4,663	34,451	3.1	16	65	419,147,130	4.1
Real Estate & Rental & Leasing	3,206	13,239	1.2	435	-504	100,768,002	1.0
Professional & Business Services	12,256	120,119	10.7	2,893	2,272	1,319,545,655	13.0
Professional & Technical Services	7,652	38,911	3.5	-366	594	501,841,525	5.0
Management of Companies & Enterprises	503	25,814	2.3	225	-362	464,063,812	4.6
Administrative & Waste Services	4,101	55,394	4.9	3,034	2,041	353,640,318	3.5
Education & Health Services	14,785	164,417	14.6	1,045	1,936	1,441,725,855	14.2
Educational Services	702	11,382	1.0	-324	1,112	86,391,221	0.9
Health Care & Social Assistance	14,083	153,034	13.6	1,369	823	1,355,334,634	13.4
Leisure & Hospitality	6,472	102,199	9.1	7,189	875	346,335,895	3.4
Arts, Entertainment & Recreation	927	10,569	0.9	2,127	-135	42,671,603	0.4
Accommodation & Food Services	5,545	91,630	8.1	5,063	1,010	303,664,292	3.0
Other Services	5,358	24,896	2.2	912	-177	169,209,356	1.7
State & Local Government	3,080	189,306	16.8	1,487	-361	1,881,941,222	18.6
Local Government	1,959	119,897	10.6	1,383	-787	1,184,902,352	11.7
State Government	1,121	69,409	6.2	105	426	697,038,870	6.9
Nonclassifiable Establishments	0	0	0.0	0	0	0	0.0

Note: Items do not necessarily add to totals because of rounding. Because of industry code changes between years, substantial employment and wage shifts among industries are anticipated.

TABLE 2. TOTAL COVERED EMPLOYMENT IN ARKANSAS

Period	2004	2005	2006	2007	2008	2009	2010	2011
Average	1,108,264	1,126,778	1,146,948	1,152,994	1,150,965	1,112,591	1,110,947	1,114,879
January	1,089,510	1,102,768	1,130,595	1,137,437	1,141,856	1,119,299	1,089,984	1,098,349
February	1,094,626	1,110,577	1,136,810	1,143,397	1,149,443	1,119,476	1,091,282	1,098,445
March	1,105,266	1,122,619	1,150,439	1,158,895	1,157,690	1,124,386	1,106,198	1,113,061
April	1,111,020	1,129,785	1,155,498	1,159,623	1,159,841	1,123,383	1,115,341	1,129,635
May	1,117,144	1,135,567	1,159,886	1,165,224	1,166,111	1,122,322	1,123,250	1,126,371
June	1,117,010	1,136,118	1,162,026	1,164,207	1,164,167	1,117,884	1,130,164	1,123,412
July	1,071,463	1,090,071	1,106,142	1,110,571	1,114,279	1,071,048	1,073,743	N/A
August	1,094,871	1,114,098	1,130,839	1,139,109	1,138,583	1,093,192	1,099,795	N/A
September	1,122,704	1,144,815	1,159,814	1,165,135	1,162,333	1,116,580	1,124,281	N/A
October	1,123,246	1,142,300	1,156,804	1,162,768	1,157,196	1,113,157	1,125,073	N/A
November	1,125,061	1,145,667	1,156,011	1,164,246	1,152,159	1,115,443	1,126,781	N/A
December	1,127,250	1,146,954	1,158,509	1,165,314	1,147,927	1,114,919	1,125,466	N/A

AVERAGE TOTAL COVERED EMPLOYMENT In Thousands



TOTAL COVERED EARNINGS BY CALENDAR YEAR

In Thousands

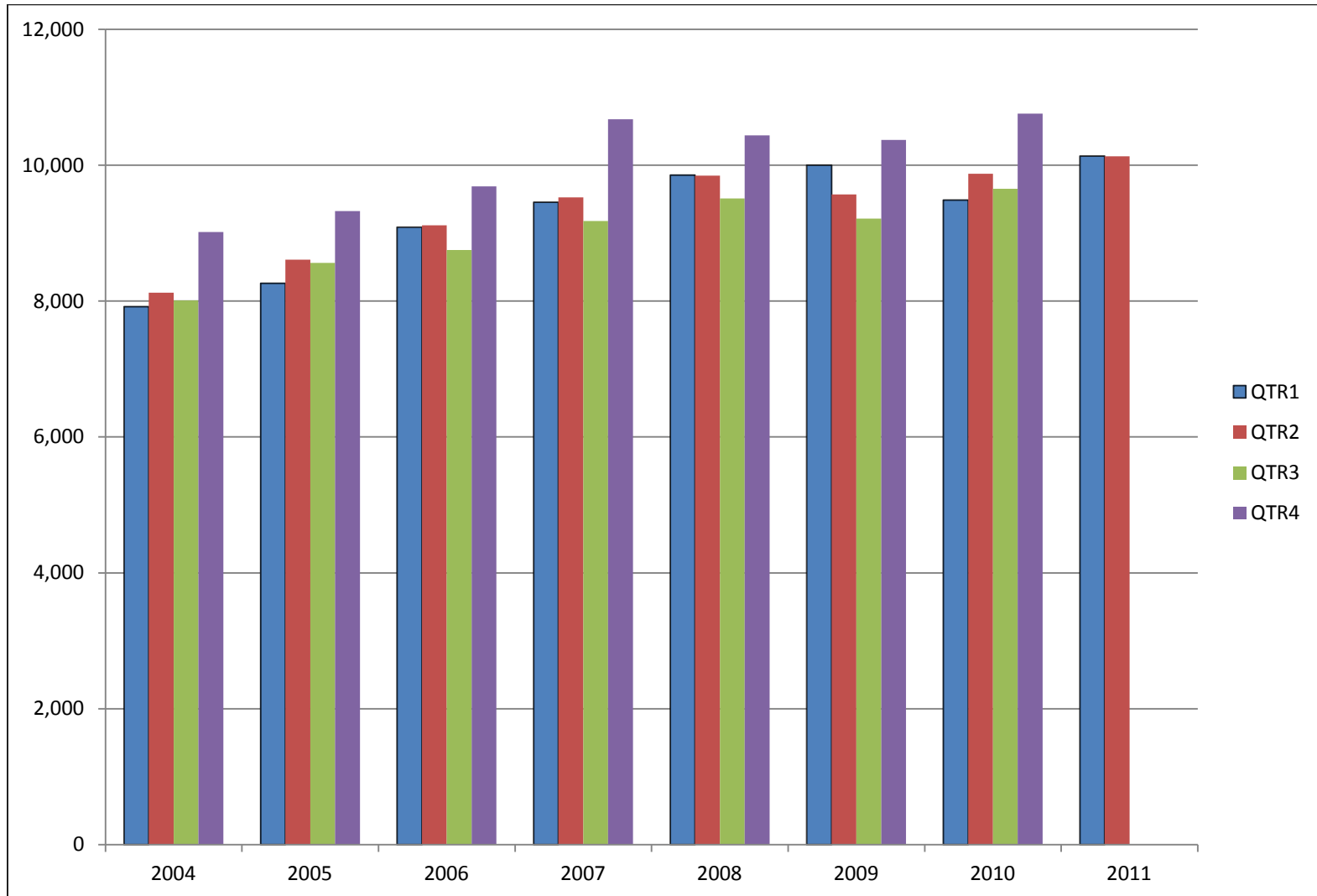


TABLE 3. TOTAL COVERED EARNINGS 2004 - 2011

Period	2004	2005	2006	2007
Total	\$33,068,189,304	\$34,753,107,631	\$36,636,090,775	\$38,833,265,464
January - March	7,918,843,610	8,261,153,981	9,085,021,816	9,452,711,662
April - June	8,122,370,361	8,607,722,353	9,112,624,590	9,525,837,049
July - September	8,010,300,454	8,562,555,369	8,750,878,205	9,178,902,477
October - December	9,016,674,879	9,321,675,928	9,687,566,164	10,675,814,276
Average Weekly Earnings	\$573.80	\$593.13	\$614.27	\$648.84

Period	2008	2009	2010	2011
Total	\$39,643,039,342	\$39,149,476,305	\$39,769,504,992	\$20,262,309,865
January - March	9,851,866,058	9,998,452,028	9,486,245,580	10,134,035,254
April - June	9,843,711,293	9,566,968,853	9,873,489,653	10,128,274,611
July - September	9,509,150,631	9,213,797,140	9,653,588,807	NA
October - December	10,438,311,360	10,370,258,284	10,756,180,952	NA
Average Weekly Earnings	\$662.37	\$676.69	\$688.42	\$699.02

TABLE 4. TOTAL TAXABLE EARNINGS, 2004 - 2011

Period	2004	2005	2006	2007
Total	9,731,247,501	9,991,605,239	10,197,511,360	10,459,105,059
January - March	4,931,559,230	5,062,670,306	5,421,204,601	5,617,417,571
April - June	2,451,454,749	2,506,505,721	2,385,110,992	2,466,606,627
July - September	1,318,017,835	1,353,660,445	1,314,939,803	1,307,060,412
October - December	1,030,215,687	1,068,768,767	1,076,255,964	1,068,020,449

Period	2008	2009	2010	2011
Total	10,360,487,108	9,788,841,583	11,341,960,644	8,676,717,970
January - March	5,635,750,082	5,423,705,265	5,612,918,478	5,828,877,821
April - June	2,419,313,519	2,293,670,854	2,978,439,739	2,847,840,149
July - September	1,297,473,555	1,165,280,065	1,579,787,090	N/A
October - December	1,007,949,952	906,185,399	1,170,815,337	N/A

TABLE 5: STATEWIDE SUMMARY

NORTH AMERICAN INDUSTRY CLASSIFICATION SYSTEM - INDUSTRY GROUPS		NUMBER OF	EMPLOYMENT			TOTAL EARNINGS	AVERAGE
		EMPLOYING UNITS	APRIL	MAY	JUNE	APR-JUN 2011	WEEKLY EARNINGS
TOTAL, ALL INDUSTRIES		84,225	1,129,635	1,126,371	1,123,412	\$10,128,274,611	\$691.63
NATURAL RESOURCES & MINING		2,497	21,105	20,900	21,388	\$240,461,955	\$875.35
11	AGRICULTURE, FORESTRY, FISHING & HUNTING	1,968	12,215	12,058	12,413	\$93,922,339	\$590.81
111	CROP PRODUCTION	824	3,997	3,959	4,294	\$24,129,728	\$454.56
1111	Oilseed & Grain Farming	509	2,328	2,316	2,444	14,105,596	459.25
1112	Vegetable & Melon Farming	10	88	88	80	432,574	389.94
1113	Fruit & Tree Nut Farming	12	83	93	215	487,300	287.61
1114	Greenhouse & Nursery Production	47	470	426	379	2,632,999	476.56
1119	Other Crop Farming	246	1,028	1,036	1,176	6,471,259	460.92
112	ANIMAL PRODUCTION & AQUACULTURE	277	2,885	2,844	2,889	\$25,610,363	\$685.78
1121	Cattle Ranching & Farming	92	337	309	324	2,107,860	501.47
1122	Hog & Pig Farming	8	74	73	74	762,195	795.89
1123	Poultry & Egg Production	98	1,962	1,952	1,973	18,895,554	740.70
1125	Animal Aquaculture	57	449	450	458	3,409,196	579.76
1129	Other Animal Production	22	63	60	60	435,558	549.25
113	FORESTRY & LOGGING	426	2,242	2,131	2,174	\$17,765,830	\$626.21
1131	Timber Tract Operations	37	186	187	188	1,784,665	734.13
1132	Forest Nurseries & Gathering of Forest Products	5	22	21	22	212,411	754.12
1133	Logging	384	2,034	1,923	1,964	15,768,754	614.58
	OTHER	441	3,091	3,124	3,056	\$26,416,418	\$657.54
21	MINING	529	8,890	8,842	8,975	\$146,539,616	\$1,266.22
211	OIL & GAS EXTRACTION	95	1,442	1,392	1,507	\$27,725,069	\$1,473.88
212	MINING (EXCEPT OIL & GAS)	114	2,150	2,126	2,179	\$26,438,107	\$945.17
213	SUPPORT ACTIVITES FOR MINING	320	5,298	5,324	5,289	\$92,376,440	\$1,339.81

TABLE 5: STATEWIDE SUMMARY

NORTH AMERICAN INDUSTRY CLASSIFICATION SYSTEM - INDUSTRY GROUPS		NUMBER OF	EMPLOYMENT			TOTAL EARNINGS	AVERAGE
		EMPLOYING UNITS	APRIL	MAY	JUNE	APR-JUN 2011	WEEKLY EARNINGS
CONSTRUCTION		6,891	47,242	47,200	48,273	\$464,736,758	\$751.48
236	CONSTRUCTION OF BUILDINGS	1,645	9,168	9,392	9,555	\$95,918,340	\$787.30
2361	Residential Building Construction	1,090	2,684	2,665	2,722	22,031,339	629.93
2362	Nonresidential Building Construction	555	6,484	6,727	6,833	73,887,001	850.67
237	HEAVY & CIVIL ENGINEERING CONSTRUCTION	815	9,951	9,923	9,979	\$114,463,579	\$884.82
2371	Utility System Construction	430	5,492	5,693	5,668	66,717,268	913.56
2372	L& Subdivision	91	301	308	306	2,671,864	673.86
2373	Highway, Street & Bridge Construction	202	2,731	2,717	2,782	26,768,360	750.58
2379	Other Heavy Construction	92	1,427	1,205	1,223	18,306,087	1,095.84
238	SPECIALTY TRADE CONTRACTORS	4,431	28,123	27,885	28,739	\$254,354,839	\$692.62
2381	Building Foundation & Exterior Contractors	845	5,237	5,234	5,408	42,989,365	624.76
2382	Building Equipment Contractors	2,015	14,366	14,222	14,705	142,624,093	760.24
2383	Building Finishing Contractors	803	3,984	3,889	3,916	32,123,830	628.82
2389	Other Specialty Trade Contractors	768	4,536	4,540	4,710	36,617,551	612.96
MANUFACTURING		3,156	160,432	160,366	158,997	\$1,588,213,744	\$763.89
311	FOOD MANUFACTURING	285	44,964	44,555	43,363	\$339,336,741	\$589.31
3111	Animal Food Manufacturing	48	1,644	1,652	1,671	17,683,554	821.59
3112	Grain & Oilseed Milling	31	2,268	2,265	2,244	21,867,473	744.63
3113	Sugar & Confectionery Product Manufacturing	6	43	42	43	242,795	437.73
3114	Fruit, Vegetable & Specialty Food	22	4,950	4,952	4,925	45,739,947	711.90
3115	Dairy Product Manufacturing	11	703	702	719	7,199,654	782.23
3116	Animal Slaughtering & Processing	83	30,682	30,303	29,122	204,230,217	523.05
3117	Seafood Product Preparation & Packaging	5	85	102	100	442,887	356.11
3118	Bakeries & Tortilla Manufacturing	56	2,971	2,954	2,944	25,641,124	667.18
3119	Other Food Manufacturing	23	1,618	1,583	1,595	16,289,090	783.78
312	BEVERAGE & TOBACCO PRODUCT MANUFACTURING	42	1,028	1,036	1,062	\$11,931,259	\$880.80
313	TEXTILE MILLS	14	88	81	83	\$782,161	\$716.26

TABLE 5: STATEWIDE SUMMARY

NORTH AMERICAN INDUSTRY CLASSIFICATION SYSTEM - INDUSTRY GROUPS		NUMBER OF	EMPLOYMENT			TOTAL EARNINGS	AVERAGE
		EMPLOYING UNITS	APRIL	MAY	JUNE	APR-JUN 2011	WEEKLY EARNINGS
314	TEXTILE PRODUCT MILLS	55	852	935	851	\$9,165,861	\$801.82
3141	Textile Furnishing Mills	12	22	18	17	144,487	584.97
3149	Other Textile Product Mills	43	830	917	834	9,021,374	806.61
315	APPAREL MANUFACTURING	26	1,175	1,156	1,165	\$6,536,955	\$431.50
316	LEATHER & ALLIED PRODUCT MANUFACTURING	18	1,296	1,320	1,306	\$8,270,445	\$486.63
321	WOOD PRODUCT MANUFACTURING	335	9,295	9,291	9,229	\$81,223,455	\$673.88
3211	Sawmills & Wood Preservation	133	4,022	4,031	4,024	36,617,427	699.69
3212	Veneer & Engineered Wood Products	53	2,562	2,564	2,519	26,251,735	792.43
3219	Other Wood Product Manufacturing	149	2,711	2,696	2,686	18,354,293	523.37
322	PAPER MANUFACTURING	82	10,349	10,320	10,327	\$144,279,004	\$1,074.18
3221	Pulp, Paper & Paperboard Mills	13	4,228	4,227	4,275	76,002,159	1,377.77
3222	Converted Paper Product Manufacturing	69	6,121	6,093	6,052	68,276,845	862.60
323	PRINTING & RELATED SUPPORT ACTIVITIES	256	5,508	5,462	5,419	\$47,455,793	\$668.21
324	PETROLEUM & COAL PRODUCTS MANUFACTURING	18	966	965	968	\$12,129,331	\$965.53
325	CHEMICAL MANUFACTURING	120	4,899	4,921	4,896	\$66,482,750	\$1,042.55
3251	Basic Chemical Manufacturing	28	1,740	1,769	1,770	27,607,913	1,206.87
3252	Resin, Rubber & Artificial Fibers	7	260	267	271	3,804,356	1,100.16
3253	Agricultural Chemical Manufacturing	19	381	377	374	5,550,852	1,131.60
3254	Pharmaceutical & Medicine Manufacturing	12	155	155	159	1,836,329	903.56
3255	Paint, Coating & Adhesive Manufacturing	9	192	192	193	2,772,631	1,108.90
3256	Soap, Cleaning Compound, & Toilet Preparation Manufacturing	13	988	983	1,004	12,381,336	960.41
3259	Other Chemical Preparation Manufacturing	32	1,183	1,178	1,125	12,529,333	829.43
326	PLASTICS & RUBBER PRODUCTS MANUFACTURING	142	10,570	10,554	10,628	\$119,798,083	\$870.68
3261	Plastics Product Manufacturing	99	6,532	6,493	6,525	62,854,582	741.94
3262	Rubber Product Manufacturing	43	4,038	4,061	4,103	56,943,501	1,076.94

TABLE 5: STATEWIDE SUMMARY

NORTH AMERICAN INDUSTRY CLASSIFICATION SYSTEM - INDUSTRY GROUPS		NUMBER OF	EMPLOYMENT			TOTAL EARNINGS	AVERAGE
		EMPLOYING UNITS	APRIL	MAY	JUNE	APR-JUN 2011	WEEKLY EARNINGS
327	NONMETALLIC MINERAL PRODUCT MANUFACTURING	252	3,422	3,435	3,441	\$33,236,550	\$744.80
3271	Clay Product & Refractory Manufacturing	14	357	363	363	3,383,176	720.90
3272	Glass & Glass Product Manufacturing	16	373	376	379	3,675,374	751.92
3273	Cement & Concrete Product Manufacturing	180	1,943	1,955	1,954	17,819,925	702.72
3274	Lime & Gypsum Product Manufacturing	5	208	207	209	2,748,986	1,016.64
3279	Other Nonmetallic Mineral Products Manufacturing	37	541	534	536	5,609,089	803.48
331	PRIMARY METAL MANUFACTURING	72	8,636	8,695	8,710	\$122,147,608	\$1,082.44
3311	Iron & Steel Mills & Ferroalloys	9	2,346	2,364	2,391	49,780,471	1,617.77
3312	Purchased Steel Product Manufacturing	18	2,518	2,528	2,539	32,174,243	978.88
3313	Alumina & Aluminum Production	20	1,487	1,513	1,502	18,727,369	959.95
3314	Other Nonferrous Metal Production	8	756	776	771	6,970,793	698.50
3315	Foundries	17	1,529	1,514	1,507	14,494,732	735.15
332	FABRICATED METAL PRODUCT MANUFACTURING	532	13,835	13,771	13,879	\$146,864,974	\$816.97
3321	Forging & Stamping	12	427	423	436	4,879,612	875.63
3322	Cutlery & H& Tool Manufacturing	16	977	956	963	9,020,600	718.81
3323	Architectural & Structural Metals	160	3,544	3,560	3,615	39,429,750	848.88
3324	Boilers, Tanks & Shipping Containers	17	569	571	579	6,299,727	845.71
3325	Hardware Manufacturing	8	349	353	346	3,465,940	763.20
3326	Spring & Wire Product Manufacturing	15	443	442	430	4,170,546	731.89
3327	Machine Shops & Threaded Products	204	1,734	1,688	1,740	15,735,124	703.44
3328	Coating, Engraving & Heat Treating Metals	36	560	570	569	4,890,142	664.21
3329	Other Fabricated Metal Product Manufacturing	64	5,232	5,208	5,201	58,973,533	870.10
333	MACHINERY MANUFACTURING	218	12,112	12,118	11,988	\$120,392,891	\$767.10
3331	Agriculture, Construction & Mining Machinery	37	3,226	3,208	3,100	26,550,623	642.65
3332	Industrial Machinery Manufacturing	28	587	596	591	7,008,672	911.72
3333	Commercial & Service Industry Machinery	21	882	869	863	9,722,785	858.35
3334	HVAC & Commercial Refrigeration Equipment	18	3,868	3,871	3,846	38,388,807	764.69
3335	Metalworking Machinery Manufacturing	63	1,017	999	1,007	10,294,480	785.86
3336	Turbine & Power Transmission Equipment Manufacturing	7	653	673	665	8,039,568	931.84
3339	Other General Purpose Machinery Manufacturing	44	1,879	1,902	1,916	20,387,956	825.86

TABLE 5: STATEWIDE SUMMARY

NORTH AMERICAN INDUSTRY CLASSIFICATION SYSTEM - INDUSTRY GROUPS		NUMBER OF	EMPLOYMENT			TOTAL EARNINGS	AVERAGE
		EMPLOYING UNITS	APRIL	MAY	JUNE	APR-JUN 2011	WEEKLY EARNINGS
334	COMPUTER & ELECTRONIC PRODUCT MANUFACTURING	68	3,124	3,163	3,155	\$32,128,542	\$785.24
3342	Communications Equipment Manufacturing	8	118	115	112	1,625,490	1,087.28
3343	Audio & Video Equipment Manufacturing	7	561	542	543	4,926,831	690.74
3344	Semiconductors & Electronic Components	27	1,955	1,997	1,977	20,137,434	783.79
3345	Electronic Instrument Manufacturing	23	477	495	506	5,323,493	831.19
	Other	3	13	14	17	115,294	604.69
335	ELECTRICAL EQUIPMENT & APPLIANCES	57	7,260	7,446	7,312	\$82,178,038	\$861.30
3353	Electrical Equipment Manufacturing	20	3,801	3,813	3,849	43,193,940	869.57
3359	Other Electrical Equipment & Component Manufacturing	22	1,698	1,728	1,743	18,825,337	840.45
	Other	15	1,761	1,905	1,720	20,158,761	863.72
336	TRANSPORTATION EQUIPMENT MANUFACTURING	156	12,982	13,143	13,130	\$136,462,789	\$802.23
3362	Motor Vehicle Body & Trailer Manufacturing	35	1,572	1,624	1,628	13,000,216	621.90
3363	Motor Vehicle Parts Manufacturing	54	5,966	6,036	5,986	57,313,558	735.28
3364	Aerospace Product & Parts Manufacturing	28	3,294	3,275	3,301	47,291,197	1,105.71
3366	Ship & Boat Building	25	1,294	1,293	1,285	9,609,894	572.74
	Other	14	856	915	930	9,247,924	790.13
337	FURNITURE & RELATED PRODUCT MANUFACTURING	201	3,759	3,737	3,829	\$30,888,078	\$629.41
3371	Household & Institutional Furniture	164	2,623	2,620	2,606	19,988,985	587.70
3372	Office Furniture & Fixtures Manufacturing	28	1,037	1,019	1,127	10,222,516	741.14
3379	Other Furniture Related Product Manufacturing	9	99	98	96	676,577	532.88
339	MISCELLANEOUS MANUFACTURING	207	4,312	4,262	4,256	\$36,522,436	\$656.92
3391	Medical Equipment & Supplies Manufacturing	86	2,372	2,359	2,354	22,452,629	731.32
3399	Other Miscellaneous Manufacturing	121	1,940	1,903	1,902	14,069,807	565.17

TABLE 5: STATEWIDE SUMMARY

NORTH AMERICAN INDUSTRY CLASSIFICATION SYSTEM - INDUSTRY GROUPS		NUMBER OF	EMPLOYMENT			TOTAL EARNINGS	AVERAGE
		EMPLOYING UNITS	APRIL	MAY	JUNE	APR-JUN 2011	WEEKLY EARNINGS
TRADE, TRANSPORTATION & UTILITIES		20,748	234,726	233,725	234,578	\$1,980,493,689	\$650.10
42	WHOLESALE TRADE	6,524	46,822	46,577	46,670	\$626,449,567	\$1,032.10
423	MERCHANT WHOLESALERS, DURABLE GOODS	2,168	20,833	20,771	20,801	\$247,225,004	\$914.22
4231	Motor Vehicle & Part Merchant Wholesalers	248	2,529	2,569	2,578	24,235,517	728.61
4232	Furniture & Furnishings Merchant Wholesalers	57	359	339	338	4,747,273	1,057.46
4233	Lumber & Supply Merchant Wholesalers	181	1,413	1,395	1,386	13,770,924	757.73
4234	Commercial Goods Merchant Wholesalers	303	2,823	2,786	2,764	42,649,319	1,175.46
4235	Metal & Mineral Merchant Wholesalers	54	854	849	859	10,800,705	972.86
4236	Appliances & Electronics Goods Merchant Wholesalers	185	2,001	2,004	2,028	26,385,018	1,009.26
4237	Hardware & Plumbing Merchant Wholesalers	218	2,142	2,140	2,133	25,225,160	907.43
4238	Machinery & Supply Merchant Wholesalers	703	6,751	6,728	6,759	81,047,874	924.17
4239	Miscellaneous Durable Goods Merchant Wholesalers	219	1,961	1,961	1,956	18,363,214	720.94
424	MERCHANT WHOLESALERS, NONDURABLE GOODS	1,195	15,987	15,889	15,926	\$180,515,891	\$871.46
4241	Paper & Paper Product Merchant Wholesalers	72	1,085	1,057	1,066	12,407,134	892.51
4242	Druggist' Goods Merchant Wholesalers	64	964	947	956	10,720,657	862.92
4243	Apparel & Piece Goods Merchant Wholesalers	40	546	546	535	5,301,786	751.99
4244	Grocery Product Merchant Wholesalers	314	5,324	5,341	5,348	67,808,492	977.21
4245	Farm Product Merchant Wholesalers	74	847	830	820	6,298,192	582.07
4246	Chemical merchant Wholesalers	92	598	599	602	8,768,970	1,124.85
4247	Petroleum Merchant Wholesalers	135	1,504	1,464	1,462	18,162,741	946.14
4248	Alcoholic Beverage Merchant Wholesalers	37	1,243	1,249	1,249	14,706,659	907.20
4249	Miscellaneous Nondurable Goods Merchant Wholesaler	367	3,876	3,856	3,888	36,341,260	721.73
425	ELECTRONIC MARKETS & AGENTS & BROKERS	3,161	10,002	9,917	9,943	\$198,708,672	\$1,535.59
44 - 45	RETAIL TRADE	10,927	131,362	130,602	130,991	\$746,344,547	\$438.30
441	MOTOR VEHICLE & PARTS DEALERS	1,604	16,943	16,793	16,887	\$158,957,342	\$724.62
4411	Automobile Dealers	657	9,909	9,818	9,914	108,802,921	847.08
4412	Other Motor Vehicle Dealers	163	1,275	1,257	1,268	11,412,532	693.07
4413	Automotive Parts, Accessories & Tire Stores	784	5,759	5,718	5,705	38,741,889	520.34
442	FURNITURE & HOME FURNISHINGS STORES	534	3,289	3,229	3,268	\$22,518,996	\$531.03
4421	Furniture Stores	294	2,030	1,986	1,990	14,851,251	570.63
4422	Home Furnishings Stores	240	1,259	1,243	1,278	7,667,745	468.12

TABLE 5: STATEWIDE SUMMARY

NORTH AMERICAN INDUSTRY CLASSIFICATION SYSTEM - INDUSTRY GROUPS		NUMBER OF	EMPLOYMENT			TOTAL EARNINGS	AVERAGE
		EMPLOYING UNITS	APRIL	MAY	JUNE	APR-JUN 2011	WEEKLY EARNINGS
443	ELECTRONICS & APPLIANCE STORES	525	4,409	4,297	4,307	\$31,808,676	\$564.09
444	BUILDING MATERIAL & GARDEN SUPPLY STORES	843	10,926	10,797	10,609	\$64,480,530	\$460.23
4441	Building Material & Supplies Dealers	634	9,489	9,397	9,228	56,339,185	462.45
4442	Lawn & Garden Equipment & Supplies Stores	209	1,437	1,400	1,381	8,141,345	445.42
445	FOOD & BEVERAGE STORES	1,013	17,863	17,917	17,969	\$85,224,497	\$365.91
4451	Grocery Stores	561	15,416	15,563	15,634	71,739,704	355.17
4452	Specialty Food Stores	140	925	885	891	6,107,313	521.80
4453	Beer, Wine & Liquor Stores	312	1,522	1,469	1,444	7,377,480	383.88
446	HEALTH & PERSONAL CARE STORES	964	7,832	7,743	7,816	\$66,465,047	\$655.73
447	GASOLINE STATIONS	1,555	11,452	11,293	11,283	\$46,433,693	\$314.90
44711	Gasoline Stations with Convenience Stores	1,446	10,278	10,146	10,108	40,237,948	304.13
44719	Other Gasoline Stations	109	1,174	1,147	1,175	6,195,745	408.98
448	CLOTHING & CLOTHING ACCESSORIES STORES	1,013	8,113	8,045	8,018	\$30,364,228	\$289.84
4481	Clothing Stores	722	6,227	6,178	6,191	20,648,386	256.24
4482	Shoe Stores	150	1,143	1,128	1,099	4,283,414	293.32
4483	Jewelry, Luggage & Leather Goods Stores	141	743	739	728	5,432,428	567.26
451	SPORTING GOODS, HOBBY, BOOK & MUSIC STORES	498	3,922	3,879	3,859	\$16,321,023	\$323.02
4511	Sporting Goods & Musical Instrument Stores	406	3,267	3,215	3,244	13,930,162	330.52
4512	Book, Periodical & Music Stores	92	655	664	615	2,390,861	285.28
452	GENERAL MERCH&ISE STORES	790	38,607	38,630	39,133	\$177,602,950	\$352.20
453	MISCELLANEOUS STORE RETAILERS	1,235	6,299	6,285	6,179	\$32,194,310	\$395.96
4531	Florists	210	763	770	718	3,090,699	316.85
4532	Office Supplies, Stationery & Gift Stores	313	1,981	1,960	1,950	10,520,629	412.13
4533	Used Merchandise Stores	236	1,215	1,251	1,232	6,480,184	404.39
4539	Other Miscellaneous Store Retailers	476	2,340	2,304	2,279	12,102,798	403.43
454	NONSTORE RETAILERS	353	1,707	1,694	1,663	\$13,973,255	\$636.77
4541	Electronic Shopping & Mail-Order Houses	136	479	481	462	4,363,731	708.17
4542	Vending Machine Operators	73	494	503	494	3,626,368	561.27
4543	Direct Selling Establishments	144	734	710	707	5,983,156	641.90

TABLE 5: STATEWIDE SUMMARY

NORTH AMERICAN INDUSTRY CLASSIFICATION SYSTEM - INDUSTRY GROUPS		NUMBER OF	EMPLOYMENT			TOTAL EARNINGS	AVERAGE
		EMPLOYING UNITS	APRIL	MAY	JUNE	APR-JUN 2011	WEEKLY EARNINGS
48 - 49	TRANSPORTATION & WAREHOUSING	2,890	49,385	49,394	49,747	\$479,854,753	\$745.56
481	AIR TRANSPORTATION	47	936	926	922	\$12,085,995	\$1,001.82
483	SUPPORT ACTIVITIES FOR TRANSPORTATION	4	93	88	86	\$1,430,462	\$1,236.35
484	TRUCK TRANSPORTATION	1,926	32,336	32,426	32,733	\$320,126,505	\$757.73
4841	General Freight Trucking	1,201	26,062	26,090	26,256	259,147,416	762.72
4842	Specialized Freight Trucking	725	6,274	6,336	6,477	60,979,089	737.26
485	TRANSIT & GROUND PASSENGER TRANSPORTATION	76	1,338	1,360	1,334	\$5,557,895	\$318.10
4853	Taxi & Limousine Service	25	316	323	323	1,327,055	318.34
4854	School & Employee Bus Transportation	11	442	439	437	1,959,278	343.05
4855	Charter Bus Industry Service	6	58	58	59	319,422	421.22
4859	Other Ground Passenger Transportation	28	409	423	404	1,485,840	277.42
	Other	6	113	117	111	466,300	315.57
486	PIPELINE TRANSPORTATION	31	473	472	473	\$9,677,216	\$1,574.90
487	SCENIC & SIGHTSEEING TRANSPORTATION	6	48	56	74	\$204,476	\$265.09
488	SUPPORT ACTIVITIES FOR TRANSPORTATION	409	4,289	4,234	4,261	\$45,118,203	\$814.45
4881	Support Activities for Air Transportation	99	1,377	1,366	1,363	12,936,339	727.06
4882	Support Activities for Rail Transportation	35	347	326	332	3,318,298	761.95
4883	Support Activities for Water Transportation	25	584	586	591	6,827,468	894.70
4884	Support Activities for Road Transportation	120	484	477	499	3,436,062	543.11
4885	Freight Transportation Arrangement	114	1,410	1,394	1,390	18,017,480	991.39
4889	Other Support Activities for Transportation	16	87	85	86	582,556	521.07
491	POSTAL SERVICE	7	11	11	19	\$48,803	\$274.69
492	COURIERS & MESSENGERS	165	2,943	2,939	2,928	\$30,250,520	\$792.38
4921	Couriers	79	2,562	2,572	2,579	27,671,493	827.92
4922	Local Messenger & Local Delivery	86	381	367	349	2,579,027	542.53
493	WARHOUSING & STORAGE	219	6,918	6,882	6,917	\$55,354,678	\$616.60

TABLE 5: STATEWIDE SUMMARY

NORTH AMERICAN INDUSTRY CLASSIFICATION SYSTEM - INDUSTRY GROUPS		NUMBER OF	EMPLOYMENT			TOTAL EARNINGS	AVERAGE
		EMPLOYING UNITS	APRIL	MAY	JUNE	APR-JUN 2011	WEEKLY EARNINGS
22	UTILITIES	407	7,157	7,152	7,170	\$127,844,822	\$1,373.56
2211	Power Generation & Supply	157	4,976	4,981	5,001	102,223,067	1,577.08
2212	Natural Gas Distribution	71	1,274	1,290	1,287	18,276,629	1,095.22
2213	Water, Sewage & Other Systems	179	907	881	882	7,345,126	634.84
INFORMATION		1,113	14,887	14,869	14,852	\$175,695,350	\$908.92
511	PUBLISHING INDUSTRIES, EXCEPT INTERNET	231	3,860	3,868	3,893	\$32,449,032	\$644.37
5111	Newspaper, Book & Directory Publishers	205	3,606	3,620	3,638	28,193,357	598.87
5112	Software Publishers	26	254	248	255	4,255,675	1,297.33
512	MOTION PICTURE & SOUND RECORDING INDUSTRY	144	1,237	1,233	1,273	\$5,607,620	\$345.73
5121	Motion Picture & Video Industries	122	1,199	1,198	1,237	5,238,772	332.68
5122	Sound Recording Industries	22	38	35	36	368,848	780.91
515	BROADCASTING, EXCEPT INTERNET	126	1,726	1,686	1,679	\$16,348,140	\$741.04
5151	Radio & Television Broadcasting	122	1,695	1,652	1,643	16,102,306	744.67
5152	Cable & Other Subscription Programming	4	31	34	36	245,834	561.69
517	TELECOMMUNICATIONS	383	6,447	6,465	6,378	\$102,270,911	\$1,223.48
5171	Wired Telecommunications Carriers	271	3,920	3,910	3,857	58,917,698	1,163.38
5174	Satellite Telecommunications	4	3	3	2	21,383	616.82
	Other	108	2,524	2,552	2,519	43,331,830	1,316.61
518	DATA PROCESSING, HOSTING & RELATED SERVICES	160	1,327	1,326	1,336	\$15,857,086	\$917.35
519	OTHER INFORMATION SERVICES	69	290	291	293	\$3,162,561	\$835.04
FINANCIAL ACTIVITIES		7,869	47,777	47,557	47,735	\$519,915,132	\$838.62
52	FINANCE & INSURANCE	4,663	34,532	34,410	34,410	\$419,147,130	\$935.89
522	CREDIT INTERMEDIATION & RELATED ACTIVITIES	1,858	18,949	18,943	18,977	\$190,831,935	\$774.38
5221	Depository Credit Intermediation	1,397	17,100	17,104	17,138	165,446,980	743.64
5222	Nondepository Credit Intermediation	339	1,524	1,530	1,523	21,130,834	1,065.40
5223	Activities Related to Credit Intermediation	122	325	309	316	4,254,121	1,033.39

TABLE 5: STATEWIDE SUMMARY

NORTH AMERICAN INDUSTRY CLASSIFICATION SYSTEM - INDUSTRY GROUPS		NUMBER OF	EMPLOYMENT			TOTAL EARNINGS	AVERAGE
		EMPLOYING UNITS	APRIL	MAY	JUNE	APR-JUN 2011	WEEKLY EARNINGS
523	FINANCIAL INVESTMENT & RELATED ACTIVITIES	675	3,089	3,052	3,014	\$72,904,528	\$1,837.70
524	INSURANCE CARRIERS & RELATED ACTIVITIES	2,050	11,923	11,847	11,851	\$148,563,573	\$962.46
5241	Insurance Carriers	408	5,375	5,367	5,367	74,115,555	1,061.74
5242	Insurance Agencies, Brokerages & Support	1,642	6,548	6,480	6,484	74,448,018	880.50
	OTHER	80	571	568	568	\$6,847,094	\$925.66
53	REAL ESTATE & RENTAL & LEASING	3,206	13,245	13,147	13,325	\$100,768,002	\$585.50
531	REAL ESTATE	2,487	8,652	8,538	8,682	\$61,083,516	\$544.84
5311	Lessors of Real Estate	1,073	4,383	4,370	4,455	28,941,730	505.67
5312	Offices of Real Estate Agents & Brokers	743	1,610	1,602	1,612	12,059,276	576.89
5313	Activities Related to Real Estate	671	2,659	2,566	2,615	20,082,510	591.13
532	RENTAL & LEASING SERVICES	699	4,527	4,544	4,588	\$39,033,973	\$659.48
5321	Automotive Equipment Rental & Leasing	117	907	917	925	6,783,648	569.46
5322	Consumer Goods Rental	364	2,188	2,188	2,188	15,368,368	540.30
5323	General Rental Centers	40	239	240	242	2,265,684	725.17
5324	Machinery & Equipment Rental & Leasing	178	1,193	1,199	1,233	14,616,273	930.48
533	LESSORS OF NONFINANCIAL INTANGIBLE ASSETS	20	66	65	55	\$650,513	\$807.09
PROFESSIONAL & BUSINESS SERVICES		12,256	120,803	119,443	120,110	\$1,319,545,655	\$845.03
54	PROFESSIONAL & TECHNICAL SERVICES	7,652	39,993	38,385	38,354	\$501,841,525	\$992.10
5411	Legal Services	1,678	6,091	5,943	5,996	66,736,452	854.17
5412	Accounting & Bookkeeping Services	1,264	6,516	5,296	4,942	56,232,784	774.55
5413	Architectural & Engineering Services	930	6,212	6,103	6,194	82,259,220	1,025.60
5414	Specialized Design Services	183	465	424	421	4,978,559	877.02
5415	Computer Systems Design & Related Services	1,112	8,780	8,792	8,816	153,999,389	1,346.76
5416	Management & Technical Consulting Services	1,404	4,844	4,843	4,958	71,053,466	1,119.63
5417	Scientific Research & Development Services	111	1,248	1,250	1,251	17,730,160	1,091.38
5418	Advertising & Related Services	370	2,128	2,102	2,090	22,920,309	836.91
5419	Other Professional & Technical Services	600	3,709	3,632	3,686	25,931,186	542.68

TABLE 5: STATEWIDE SUMMARY

NORTH AMERICAN INDUSTRY CLASSIFICATION SYSTEM - INDUSTRY GROUPS		NUMBER OF	EMPLOYMENT			TOTAL EARNINGS	AVERAGE
		EMPLOYING UNITS	APRIL	MAY	JUNE	APR-JUN 2011	WEEKLY EARNINGS
55	MANAGEMENT OF COMPANIES & ENTERPRISES	503	25,692	25,725	26,024	\$464,063,812	\$1,382.88
56	ADMINISTRATIVE & SUPPORT SERVICES	4,101	55,118	55,333	55,732	\$353,640,318	\$491.08
561	ADMINISTRATIVE & SUPPORT SERVICES	3,850	52,203	52,419	52,750	\$324,422,890	\$475.73
5611	Office Administrative Services	558	1,908	1,920	1,931	24,660,569	988.18
5612	Facilities Support Services	20	149	146	147	1,709,195	892.37
5613	Employment Services	804	20,552	20,727	21,011	113,465,496	420.36
5614	Business Support Services	422	10,003	9,952	9,849	67,127,661	519.76
5615	Travel Arrangement & Reservation Services	82	308	313	325	2,425,581	591.70
5616	Investigation & Security Services	243	4,542	4,488	4,464	26,141,260	447.06
5617	Services to Buildings & Dwellings	1,462	12,748	12,871	13,031	71,693,030	428.06
5619	Other Support Services	259	1,993	2,002	1,992	17,200,098	662.98
562	WASTE MANAGEMENT & REMEDIATION SERVICES	251	2,915	2,914	2,982	\$29,217,428	\$765.23
5621	Waste Collection Services	108	1,130	1,122	1,128	10,765,286	735.00
5622	Waste Treatment & disposal Services	34	926	926	940	10,710,408	885.26
5629	Remediation & Other Waste Services	109	859	866	914	7,741,734	676.98
EDUCATION & HEALTH SERVICES		14,785	165,663	164,991	162,596	\$1,441,725,855	\$674.52
61	EDUCATIONAL SERVICES	702	12,058	11,914	10,175	\$86,391,221	\$583.84
6111	Elementary & Secondary Schools	90	4,461	4,604	3,250	25,405,343	476.07
6112	Junior Colleges	7	209	213	202	1,685,637	623.39
6113	Colleges & Universities	32	4,105	3,973	3,797	33,441,885	649.88
6114	Business, Computer, & Management Training	46	253	254	251	4,274,992	1,301.50
6115	Technical & Trade Schools	105	875	877	837	11,059,461	985.78
6116	Other Schools & Instruction	263	1,703	1,550	1,411	6,233,214	308.41
6117	Educational Support Services	159	452	443	427	4,290,689	748.99

TABLE 5: STATEWIDE SUMMARY

NORTH AMERICAN INDUSTRY CLASSIFICATION SYSTEM - INDUSTRY GROUPS		NUMBER OF	EMPLOYMENT			TOTAL EARNINGS	AVERAGE
		EMPLOYING UNITS	APRIL	MAY	JUNE	APR-JUN 2011	WEEKLY EARNINGS
62	HEALTH CARE & SOCIAL ASSISTANCE	14,083	153,605	153,077	152,421	\$1,355,334,634	\$681.26
621	AMBULATORY HEALTH CARE SERVICES	5,050	46,253	45,778	45,624	\$602,266,782	\$1,009.66
6211	Offices of Physicians	2,221	21,356	21,278	21,141	367,087,256	1,328.30
6212	Offices of Dentists	985	6,695	6,416	6,379	68,865,985	815.40
6213	Offices of Other Health Practitioners	1,189	6,682	6,579	6,588	59,599,496	692.92
6214	Outpatient Care Centers	272	4,000	3,999	4,004	40,091,656	770.80
6215	Medical & Diagnostic Laboratories	107	892	866	870	10,900,338	957.18
6216	Home Health Care Services	146	4,189	4,188	4,205	35,294,699	647.35
6219	Other Ambulatory Health Care Services	130	2,439	2,452	2,437	20,427,352	643.29
622	HOSPITALS	111	41,453	41,582	41,538	\$419,676,076	\$777.44
6221	General Medical & Surgical Hospitals	78	37,011	37,101	37,013	373,880,512	776.42
6222	Psychiatric & Substance Abuse Hospitals	10	2,021	2,021	2,055	19,751,521	747.59
6223	Other Hospitals	23	2,421	2,460	2,470	26,044,043	817.60
623	Residential & Mental Health Facilities	548	31,049	31,054	31,163	\$174,668,454	\$432.18
6231	Nursing Care Facilities (Skilled Nursing Facilities)	260	22,759	22,768	22,813	128,493,051	433.89
6232	Residential Mental Health Facilities	135	4,348	4,341	4,380	25,609,323	452.20
6233	Continuing Care & Assisted Living Facilities	111	2,761	2,770	2,781	13,402,917	372.11
6239	Other Residential Care Facilities	42	1,181	1,175	1,189	7,163,163	466.30
624	SOCIAL ASSISTANCE	8,374	34,850	34,663	34,096	\$158,723,322	\$353.53
6241	Individual & Family Services	7,178	19,038	18,996	19,209	86,750,530	349.73
6242	Emergency & Other Relief Services	124	1,116	1,094	1,103	6,573,329	457.87
6243	Vocational Rehabilitation Services	128	3,986	3,976	3,978	21,227,724	410.28
6244	Child Day Care Services	944	10,710	10,597	9,806	44,171,739	327.63
	LEISURE & HOSPITALITY	6,472	101,357	102,074	103,167	\$346,335,895	\$260.68
71	ARTS, ENTERTAINMENT & RECREATION	927	9,934	10,504	11,270	\$42,671,603	\$310.56
711	PERFORMING ARTS & SPECTATOR SPORTS	213	2,790	2,486	2,399	\$11,980,568	\$360.23
7111	Performing Arts Companies	48	381	608	535	1,781,735	269.80
7112	Spectator Sports	52	1,718	1,175	1,203	6,919,606	389.85
7113	Performing Arts & Sports Promoters	37	612	630	586	2,721,836	343.61
7114	Agents & Managers for Public Figures	21	23	22	25	274,291	904.26
7115	Independent Artists, Writers, & Performers	55	56	51	50	283,100	416.12

TABLE 5: STATEWIDE SUMMARY

NORTH AMERICAN INDUSTRY CLASSIFICATION SYSTEM - INDUSTRY GROUPS		NUMBER OF	EMPLOYMENT			TOTAL EARNINGS	AVERAGE
		EMPLOYING UNITS	APRIL	MAY	JUNE	APR-JUN 2011	WEEKLY EARNINGS
712	MUSEUMS, PARKS, & HISTORICAL SITES	54	299	316	358	\$2,353,947	\$558.29
713	GAMBLING, RECREATIONAL & AMUSEMENT INDUSTRY	660	6,845	7,702	8,513	\$28,337,088	\$283.58
72	ACCOMODATION & FOOD SERVICES	5,545	91,423	91,570	91,897	\$303,664,292	\$254.93
721	ACCOMODATION	885	10,930	11,032	12,009	\$45,309,970	\$307.80
7211	Travel Accommodation	801	10,516	10,523	10,834	42,698,344	309.15
7212	RV Parks & Recreational Camps	63	320	421	1,113	2,265,880	282.04
7213	Rooming & Boarding Houses	21	94	88	62	345,746	327.00
722	FOOD SERVICES & DRINKING PLACES	4,660	80,493	80,538	79,888	\$258,354,322	\$247.47
7223	Special Food Services	163	2,880	2,511	1,931	9,748,812	307.26
7224	Drinking Places, Alcoholic Beverages	157	1,065	1,005	965	3,238,219	246.22
7225	Restaurants & Other Eating Places	4,340	76,548	77,022	76,992	\$245,367,291	245.59
11	Full-Service Restaurants	1,984	34,358	34,454	34,518	117,251,971	261.86
13	Limited-Service Eating Places	2,014	38,746	39,157	39,158	116,853,879	230.36
14	Cafeterias, Grill Buffets, & Buffets	86	1,781	1,675	1,566	6,089,895	279.84
15	Snack & Nonalcoholic Beverage Bars	256	1,663	1,736	1,750	5,171,546	231.78
OTHER SERVICES		5,358	24,984	24,642	25,062	\$169,209,356	\$522.82
811	REPAIR & MAINTENANCE	2,209	9,420	9,178	9,166	\$74,899,626	\$622.55
8111	Automotive Repair & Maintenance	1,456	6,239	6,039	6,063	45,750,944	575.65
8112	Electronic Equipment Repair & Maintenance	166	769	766	814	7,701,653	756.62
8113	Commercial Machinery Repair & Maintenance	403	1,836	1,816	1,727	17,550,714	752.96
8114	Household Goods Repair & Maintenance	184	576	557	562	3,896,315	530.47
812	PERSONAL & LAUNDRY SERVICES	1,323	8,401	8,282	8,269	\$44,105,958	\$407.92
8121	Personal Care Services	604	2,952	2,937	2,901	12,545,307	329.36
8122	Death Care Services	250	1,637	1,592	1,588	11,694,505	560.25
8123	Drycleaning & Laundry Service	280	3,088	3,059	3,069	16,128,267	403.85
8129	Other Personal Services	189	724	694	711	3,737,879	405.16

TABLE 5: STATEWIDE SUMMARY

NORTH AMERICAN INDUSTRY CLASSIFICATION SYSTEM - INDUSTRY GROUPS		NUMBER OF	EMPLOYMENT			TOTAL EARNINGS	AVERAGE
		EMPLOYING UNITS	APRIL	MAY	JUNE	APR-JUN 2011	WEEKLY EARNINGS
813	MEMBERSHIP ASSOCIATIONS & ORGANIZATIONS	1,084	6,102	6,160	6,611	\$45,558,744	\$557.07
8131	Religious Organizations	47	214	219	238	1,339,423	460.65
8132	Grantmaking & Giving Organizations	108	512	505	506	5,874,647	890.14
8133	Social Advocacy Organizations	222	2,102	2,090	2,082	15,459,372	568.62
8134	Civic & Social Organizations	196	1,292	1,330	1,674	5,250,224	282.03
8139	Professional & Similar Organizations	511	1,982	2,016	2,111	17,635,078	666.17
814	PRIVATE HOUSEHOLDS	742	1,061	1,022	1,016	\$4,645,028	\$345.90
	LOCAL GOVERNMENT	1,959	120,125	120,775	118,790	\$1,184,902,352	\$760.21
	STATE GOVERNMENT	1,121	70,534	69,829	67,864	\$697,038,870	\$772.50
	NONCLASSIFIABLE ESTABLISHMENTS	0	0	0	0	\$0	\$0.00

TABLE 6. COUNTY SUMMARY

NORTH AMERICAN INDUSTRY CLASSIFICATION SYSTEM - INDUSTRY GROUPS	NUMBER OF	EMPLOYMENT			TOTAL EARNINGS	AVERAGE
	EMPLOYING UNITS	APRIL	MAY	JUNE	APR - JUN 2011	WEEKLY EARNINGS
ARKANSAS COUNTY - TOTAL	739	9,700	9,690	9,720	\$79,764,216	\$632.33
Natural Resources & Mining	44	206	191	199	1,920,294	743.53
Construction	46	317	319	319	2,679,331	647.44
Manufacturing	31	3,560	3,608	3,618	32,114,422	687.10
Trade, Transportation & Utilities	208	2,074	2,062	2,065	17,211,153	640.51
Wholesale Trade	43	447	447	448	5,517,324	948.75
Retail Trade	97	1,045	1,037	1,036	5,722,095	423.50
Transportation, Warehousing & Utilities	68	582	578	581	5,971,734	791.55
Information	10	101	104	107	939,118	694.61
Financial Activities	43	309	312	309	2,797,467	694.16
Professional & Business Services	40	336	323	306	3,579,478	855.99
Education & Health Services	164	1,134	1,152	1,139	6,952,117	468.42
Leisure & Hospitality	52	510	481	516	1,426,583	218.45
Other Services	54	136	130	126	811,656	477.82
Local Government	32	810	808	824	7,987,501	754.82
State Government	15	207	200	192	1,345,096	518.21
ASHLEY COUNTY - TOTAL	593	7,884	8,065	8,032	\$75,218,837	\$723.83
Natural Resources & Mining	45	352	349	346	2,358,147	519.76
Construction	43	609	739	690	6,589,863	746.19
Manufacturing	28	2,549	2,588	2,624	35,658,557	1,060.29
Trade, Transportation & Utilities	143	1,247	1,253	1,276	7,979,837	487.69
Wholesale Trade	23	190	190	189	1,876,855	761.20
Retail Trade	93	845	867	877	3,999,374	356.48
Transportation, Warehousing & Utilities	27	212	196	210	2,103,608	785.51
Information	6	37	35	36	263,696	563.45
Financial Activities	37	233	225	224	2,092,708	708.11
Professional & Business Services	50	243	250	246	1,571,261	490.66
Education & Health Services	128	821	834	828	6,526,162	606.54
Leisure & Hospitality	30	412	408	389	1,144,714	218.50
Other Services	40	174	164	159	929,889	431.77
Local Government	32	970	990	993	8,810,956	688.55
State Government	11	237	230	221	1,293,047	433.71

TABLE 6. COUNTY SUMMARY

NORTH AMERICAN INDUSTRY CLASSIFICATION SYSTEM - INDUSTRY GROUPS	NUMBER OF	EMPLOYMENT			TOTAL EARNINGS	AVERAGE
	EMPLOYING UNITS	APRIL	MAY	JUNE	APR - JUN 2011	WEEKLY EARNINGS
BAXTER COUNTY - TOTAL	1,267	14,181	14,005	13,643	\$106,070,085	\$585.19
Natural Resources & Mining	6	112	118	119	816,474	539.88
Construction	135	628	601	616	4,140,040	517.83
Manufacturing	60	2,144	2,140	2,142	20,002,613	718.33
Trade, Transportation & Utilities	260	2,562	2,542	2,547	14,695,864	443.26
Wholesale Trade	37	196	207	207	1,668,236	631.11
Retail Trade	201	2,212	2,178	2,177	11,450,289	402.37
Transportation, Warehousing & Utilities	22	154	157	163	1,577,339	767.94
Information	22	212	213	214	1,992,351	719.52
Financial Activities	99	625	617	625	6,397,581	790.77
Professional & Business Services	133	820	789	824	5,562,475	527.60
Education & Health Services	275	3,524	3,466	3,457	31,920,200	705.10
Leisure & Hospitality	128	1,547	1,539	1,568	4,789,394	237.48
Other Services	97	353	345	343	1,821,668	403.83
Local Government	40	1,289	1,281	872	11,350,506	761.00
State Government	12	365	354	316	2,580,919	575.46
BENTON COUNTY - TOTAL	5,375	93,383	93,488	94,167	\$992,950,957	\$815.34
Natural Resources & Mining	39	734	734	753	8,156,000	847.44
Construction	511	3,196	3,244	3,293	31,955,831	757.67
Manufacturing	208	11,399	11,327	11,311	105,706,591	716.69
Trade, Transportation & Utilities	1,439	21,595	21,546	21,720	220,445,789	784.33
Wholesale Trade	649	4,386	4,367	4,389	83,575,945	1,467.57
Retail Trade	628	9,313	9,271	9,365	56,484,405	466.38
Transportation, Warehousing & Utilities	162	7,896	7,908	7,966	80,385,439	780.42
Information	70	757	751	759	8,528,392	868.15
Financial Activities	528	3,499	3,465	3,491	40,137,606	885.94
Professional & Business Services	1,049	24,400	24,450	24,717	362,057,352	1,135.72
Education & Health Services	615	8,576	8,464	8,389	77,547,488	703.75
Leisure & Hospitality	475	8,662	8,894	9,261	33,863,892	291.41
Other Services	346	1,798	1,803	1,875	12,809,050	539.80
Local Government	78	7,537	7,592	7,610	82,400,600	836.25
State Government	17	1,230	1,218	988	9,342,366	627.45

TABLE 6. COUNTY SUMMARY

NORTH AMERICAN INDUSTRY CLASSIFICATION SYSTEM - INDUSTRY GROUPS	NUMBER OF	EMPLOYMENT			TOTAL EARNINGS	AVERAGE
	EMPLOYING UNITS	APRIL	MAY	JUNE	APR - JUN 2011	WEEKLY EARNINGS
BOONE COUNTY - TOTAL	1,031	13,837	13,740	13,864	\$112,358,764	\$625.68
Construction	86	408	378	459	3,145,789	583.09
Manufacturing	64	1,829	1,811	1,821	16,165,302	683.11
Trade, Transportation & Utilities	248	3,905	3,850	3,845	32,776,263	652.05
Wholesale Trade	53	569	548	537	4,632,213	646.30
Retail Trade	145	1,867	1,842	1,858	10,400,511	431.13
Transportation, Warehousing & Utilities	50	1,469	1,460	1,450	17,743,539	935.07
Information	21	393	396	391	3,745,835	732.56
Financial Activities	94	547	554	538	5,000,806	704.11
Professional & Business Services	113	986	942	935	7,843,159	632.19
Education & Health Services	193	1,369	1,362	1,366	10,546,454	594.04
Leisure & Hospitality	84	1,061	1,102	1,118	3,526,547	248.04
Local Government	55	2,296	2,300	2,346	20,592,061	684.53
State Government	19	795	808	809	7,202,070	689.06
Other	54	248	237	236	1,814,478	580.76
BRADLEY COUNTY - TOTAL	386	3,426	3,464	3,404	\$25,308,994	\$567.37
Natural Resources & Mining	43	310	314	235	2,506,864	673.47
Construction	19	118	129	127	801,602	494.61
Manufacturing	12	487	493	504	4,966,769	772.36
Trade, Transportation & Utilities	77	499	498	495	3,211,869	496.78
Wholesale Trade	14	90	88	88	963,121	835.56
Retail Trade	41	357	357	354	1,759,523	380.19
Transportation, Warehousing & Utilities	22	52	53	53	489,225	714.54
Information	4	13	9	10	109,049	786.41
Financial Activities	25	143	143	142	1,158,371	624.57
Professional & Business Services	28	97	90	91	711,111	590.30
Education & Health Services	113	611	615	620	3,912,618	489.12
Leisure & Hospitality	11	150	163	160	455,940	222.45
Other Services	29	101	99	100	456,020	350.78
Local Government	14	567	561	557	4,757,313	651.54
State Government	11	330	350	363	2,261,468	500.36

TABLE 6. COUNTY SUMMARY

NORTH AMERICAN INDUSTRY CLASSIFICATION SYSTEM - INDUSTRY GROUPS	NUMBER OF	EMPLOYMENT			TOTAL EARNINGS	AVERAGE
	EMPLOYING UNITS	APRIL	MAY	JUNE	APR - JUN 2011	WEEKLY EARNINGS
CALHOUN COUNTY - TOTAL	123	2,964	2,957	2,905	\$31,731,635	\$829.67
Natural Resources & Mining	16	78	71	71	819,442	859.55
Construction	14	99	95	101	652,451	510.39
Manufacturing	8	1,983	1,984	1,928	23,572,100	922.77
Trade, Transportation & Utilities	31	239	236	240	1,933,984	624.20
Retail Trade	18	72	69	72	378,740	410.34
Transportation, Warehousing & Utilities	13	167	167	168	1,555,244	714.95
Financial Activities	6	81	87	87	575,289	520.62
Education & Health Services	14	52	52	48	428,331	650.30
Leisure & Hospitality	5	16	15	15	39,431	197.81
Other Services	4	7	6	6	33,410	405.79
Local Government	11	204	212	213	1,469,051	538.97
State Government	8	87	84	82	685,684	625.43
Other	6	118	115	114	1,522,462	1,012.50
CARROLL COUNTY - TOTAL	782	9,980	10,333	10,375	\$64,300,734	\$483.53
Natural Resources & Mining	15	226	210	207	1,604,662	575.90
Trade, Transportation & Utilities	193	1,600	1,610	1,629	9,799,305	467.32
Wholesale Trade	24	181	175	171	1,044,715	457.47
Retail Trade	151	1,139	1,139	1,143	5,527,274	372.85
Transportation, Warehousing & Utilities	18	280	296	315	3,227,316	835.88
Information	8	78	79	82	601,363	580.65
Financial Activities	69	352	360	361	3,029,640	651.58
Professional & Business Services	59	215	214	208	1,454,051	526.77
Education & Health Services	95	975	985	941	7,235,123	575.54
Leisure & Hospitality	163	1,345	1,657	1,751	4,881,808	237.02
Other Services	43	129	129	120	675,890	412.63
Local Government	24	1,085	1,097	1,084	8,399,670	593.50
State Government	10	112	110	111	715,112	495.57
Other	103	3,863	3,882	3,881	25,904,110	514.18

TABLE 6. COUNTY SUMMARY

NORTH AMERICAN INDUSTRY CLASSIFICATION SYSTEM - INDUSTRY GROUPS	NUMBER OF	EMPLOYMENT			TOTAL EARNINGS	AVERAGE
	EMPLOYING UNITS	APRIL	MAY	JUNE	APR - JUN 2011	WEEKLY EARNINGS
CHICOT COUNTY - TOTAL	424	3,356	3,336	3,369	\$22,827,096	\$523.59
Natural Resources & Mining	53	237	204	215	1,719,186	604.78
Construction	14	163	164	183	1,604,045	725.81
Manufacturing	10	315	304	296	1,510,683	381.00
Trade, Transportation & Utilities	69	489	491	495	3,003,353	469.89
Wholesale Trade	12	65	65	65	496,408	587.47
Retail Trade	45	366	376	383	1,899,073	389.55
Transportation, Warehousing & Utilities	12	58	50	47	607,872	905.02
Information	5	10	9	9	65,541	540.17
Financial Activities	29	170	169	167	1,423,502	649.21
Professional & Business Services	19	47	47	47	601,650	984.70
Education & Health Services	164	687	690	690	4,472,218	499.30
Leisure & Hospitality	18	168	175	174	430,909	192.34
Other Services	15	73	73	77	436,826	452.04
Local Government	18	696	705	701	5,348,351	587.17
State Government	10	301	305	315	2,210,832	553.95
CLARK COUNTY - TOTAL	611	9,463	9,147	8,648	\$66,340,294	\$561.64
Natural Resources & Mining	32	196	193	202	1,650,841	644.61
Construction	31	114	120	112	757,533	505.25
Manufacturing	35	1,859	1,526	1,519	16,439,265	773.59
Trade, Transportation & Utilities	135	1,445	1,456	1,456	10,425,713	552.20
Wholesale Trade	17	108	110	109	1,165,726	822.67
Retail Trade	95	1,146	1,160	1,162	7,454,383	496.03
Transportation, Warehousing & Utilities	23	191	186	185	1,805,604	741.42
Information	9	28	27	27	236,432	665.38
Financial Activities	75	305	317	318	2,599,161	638.09
Professional & Business Services	51	628	614	591	4,572,250	575.63
Education & Health Services	99	1,378	1,375	1,320	9,186,184	520.47
Leisure & Hospitality	61	1,032	1,064	981	3,100,334	232.52
Other Services	42	200	197	192	1,149,553	450.39
Local Government	27	1,071	1,089	931	7,917,229	591.09
State Government	14	1,207	1,169	999	8,305,799	567.92

TABLE 6. COUNTY SUMMARY

NORTH AMERICAN INDUSTRY CLASSIFICATION SYSTEM - INDUSTRY GROUPS	NUMBER OF	EMPLOYMENT			TOTAL EARNINGS	AVERAGE
	EMPLOYING UNITS	APRIL	MAY	JUNE	APR - JUN 2011	WEEKLY EARNINGS
CLAY COUNTY - TOTAL	405	3,871	3,770	3,830	\$26,124,872	\$525.57
Natural Resources & Mining	64	278	267	274	1,515,629	427.06
Construction	29	147	146	164	914,697	461.89
Manufacturing	14	616	605	646	4,645,777	574.24
Trade, Transportation & Utilities	99	891	854	847	6,753,332	601.26
Wholesale Trade	26	304	296	279	2,734,191	717.82
Retail Trade	46	416	389	398	2,331,710	447.29
Transportation, Warehousing & Utilities	27	171	169	170	1,687,431	763.54
Information	4	61	62	61	356,374	446.96
Financial Activities	27	108	107	109	790,009	562.68
Professional & Business Services	25	70	55	54	426,594	549.97
Education & Health Services	58	504	487	479	3,129,927	491.35
Leisure & Hospitality	20	208	198	205	515,412	194.67
Other Services	31	80	77	77	541,305	533.83
Local Government	23	852	856	858	6,175,006	555.34
State Government	11	56	56	56	360,810	495.62
CLEBURNE COUNTY - TOTAL	685	6,882	6,817	6,957	\$51,341,917	\$573.59
Natural Resources & Mining	34	369	354	358	4,590,104	979.88
Construction	66	323	301	322	2,401,228	585.76
Manufacturing	36	1,120	1,116	1,125	9,967,293	684.36
Trade, Transportation & Utilities	172	1,599	1,567	1,591	12,389,359	601.03
Wholesale Trade	43	300	282	290	3,281,778	868.50
Retail Trade	102	963	943	954	5,184,178	418.30
Transportation, Warehousing & Utilities	27	336	342	347	3,923,403	883.32
Information	7	52	55	54	343,882	492.90
Financial Activities	72	228	224	227	1,998,213	679.13
Professional & Business Services	63	291	263	289	1,997,386	546.78
Education & Health Services	79	841	844	823	5,350,262	492.29
Leisure & Hospitality	79	922	952	1,036	3,096,425	245.55
Other Services	50	180	171	170	962,207	426.20
Local Government	18	850	867	858	7,554,197	677.00
State Government	9	107	103	104	691,361	508.10

TABLE 6. COUNTY SUMMARY

NORTH AMERICAN INDUSTRY CLASSIFICATION SYSTEM - INDUSTRY GROUPS	NUMBER OF	EMPLOYMENT			TOTAL EARNINGS	AVERAGE
	EMPLOYING UNITS	APRIL	MAY	JUNE	APR - JUN 2011	WEEKLY EARNINGS
CLEVELAND COUNTY - TOTAL	120	1,116	1,099	1,080	\$6,773,540	\$474.39
Natural Resources & Mining	11	146	146	150	1,114,371	581.82
Construction	5	30	29	20	110,872	323.87
Manufacturing	6	102	101	101	670,791	509.20
Trade, Transportation & Utilities	35	158	153	151	834,913	417.04
Retail Trade	16	64	66	64	204,768	243.58
Other Trade, Transportation & Utilities	19	94	87	87	630,145	542.60
Education & Health Services	28	151	151	153	624,273	316.62
Other Services	5	13	12	13	111,916	679.65
Local Government	11	344	341	326	2,542,121	580.26
State Government	7	53	52	54	343,153	498.04
Other	12	119	114	112	421,130	281.69
COLUMBIA COUNTY - TOTAL	745	8,584	8,519	8,575	\$71,544,697	\$642.98
Natural Resources & Mining	44	409	409	415	5,870,299	1,098.69
Construction	42	326	323	326	2,985,212	706.56
Manufacturing	36	1,958	1,968	1,989	21,907,230	854.69
Trade, Transportation & Utilities	164	1,519	1,501	1,509	9,890,765	503.97
Wholesale Trade	30	224	221	212	2,099,556	737.46
Retail Trade	100	1,027	1,017	1,026	4,953,077	372.32
Transportation, Warehousing & Utilities	34	268	263	271	2,838,132	816.65
Information	9	68	69	67	440,101	497.85
Financial Activities	70	369	357	358	3,171,629	675.20
Professional & Business Services	60	355	345	339	3,060,371	679.73
Education & Health Services	180	1,088	1,052	1,031	6,160,232	448.31
Leisure & Hospitality	49	583	598	600	1,808,452	234.33
Other Services	52	212	200	186	1,013,655	391.17
Local Government	26	1,138	1,126	1,157	9,967,491	672.37
State Government	13	559	571	598	5,269,260	703.69

TABLE 6. COUNTY SUMMARY

NORTH AMERICAN INDUSTRY CLASSIFICATION SYSTEM - INDUSTRY GROUPS	NUMBER OF	EMPLOYMENT			TOTAL EARNINGS	AVERAGE
	EMPLOYING UNITS	APRIL	MAY	JUNE	APR - JUN 2011	WEEKLY EARNINGS
CONWAY COUNTY - TOTAL	573	6,953	6,997	6,933	\$58,497,980	\$646.44
Natural Resources & Mining	35	273	276	271	2,970,625	836.01
Construction	52	658	639	641	8,115,912	966.41
Manufacturing	18	932	925	920	12,081,792	1,004.00
Trade, Transportation & Utilities	129	1,556	1,636	1,635	12,110,497	578.98
Wholesale Trade	23	218	230	236	2,464,854	831.60
Retail Trade	80	799	807	789	4,409,947	424.92
Transportation, Warehousing & Utilities	26	539	599	610	5,235,696	691.21
Information	3	9	9	10	97,347	802.31
Financial Activities	32	169	166	169	1,297,069	593.90
Professional & Business Services	42	473	459	433	2,443,988	413.18
Education & Health Services	160	958	961	949	6,191,728	498.21
Leisure & Hospitality	41	479	469	488	1,342,979	215.82
Other Services	25	106	97	96	602,197	464.78
Local Government	26	957	977	993	8,651,752	682.12
State Government	10	383	383	328	2,592,094	546.78
CRAIGHEAD COUNTY - TOTAL	2,667	43,172	43,008	42,740	\$359,941,851	\$644.30
Natural Resources & Mining	71	312	320	326	2,256,750	543.62
Construction	201	1,574	1,535	1,695	13,784,489	662.16
Manufacturing	121	6,041	6,078	6,103	62,620,997	793.05
Trade, Transportation & Utilities	722	8,748	8,668	8,631	63,207,633	560.00
Wholesale Trade	181	1,631	1,618	1,621	18,506,102	876.93
Retail Trade	429	5,904	5,846	5,797	32,490,106	427.29
Transportation, Warehousing & Utilities	112	1,213	1,204	1,213	12,211,425	776.31
Information	29	496	497	506	4,012,601	617.74
Financial Activities	264	1,477	1,454	1,433	15,169,053	802.14
Professional & Business Services	352	4,230	4,255	4,410	27,720,581	496.09
Education & Health Services	467	8,534	8,358	8,175	87,656,344	806.97
Leisure & Hospitality	225	4,407	4,505	4,528	14,726,420	252.86
Other Services	155	814	797	810	4,663,642	444.54
Local Government	37	3,847	3,935	3,585	38,448,347	780.57
State Government	23	2,692	2,606	2,538	25,674,994	756.13

TABLE 6. COUNTY SUMMARY

NORTH AMERICAN INDUSTRY CLASSIFICATION SYSTEM - INDUSTRY GROUPS	NUMBER OF	EMPLOYMENT			TOTAL EARNINGS	AVERAGE
	EMPLOYING UNITS	APRIL	MAY	JUNE	APR - JUN 2011	WEEKLY EARNINGS
CRAWFORD COUNTY - TOTAL	1,306	19,632	19,671	19,623	\$154,137,564	\$603.64
Natural Resources & Mining	27	448	394	340	4,447,765	868.36
Construction	175	919	940	969	7,808,348	637.17
Manufacturing	82	4,408	4,395	4,377	38,114,238	667.34
Trade, Transportation & Utilities	314	6,247	6,270	6,280	48,184,005	591.55
Wholesale Trade	85	754	765	766	7,928,080	800.68
Retail Trade	158	1,930	1,932	1,920	10,382,154	414.37
Transportation, Warehousing & Utilities	71	3,563	3,573	3,594	29,873,771	642.49
Information	12	119	119	122	1,107,742	710.09
Financial Activities	127	519	518	510	4,188,110	624.75
Professional & Business Services	157	1,033	1,027	1,013	8,391,500	630.17
Education & Health Services	180	1,687	1,693	1,707	11,947,640	542.00
Leisure & Hospitality	95	1,508	1,544	1,526	4,880,092	246.00
Other Services	84	392	398	383	2,869,457	564.52
Local Government	43	2,218	2,236	2,257	21,216,383	729.56
State Government	10	134	137	139	982,284	552.88
CRITTENDEN COUNTY - TOTAL	1,344	15,762	15,689	15,856	\$127,737,449	\$623.12
Natural Resources & Mining	47	258	283	280	1,696,317	476.81
Construction	52	334	373	404	3,956,741	821.87
Manufacturing	42	1,604	1,597	1,595	16,746,273	805.78
Trade, Transportation & Utilities	315	4,408	4,385	4,394	36,082,395	631.43
Wholesale Trade	71	711	711	710	7,799,995	844.28
Retail Trade	163	1,908	1,895	1,907	10,109,331	408.57
Transportation, Warehousing & Utilities	81	1,789	1,779	1,777	18,173,069	784.62
Information	5	58	58	59	455,980	601.29
Financial Activities	96	500	501	504	4,375,731	670.95
Professional & Business Services	121	1,050	1,038	1,081	7,343,754	534.78
Education & Health Services	402	2,288	2,296	2,260	17,859,364	602.19
Leisure & Hospitality	117	1,916	1,937	2,013	7,208,343	283.58
Other Services	90	485	473	478	2,922,074	469.59
Local Government	43	2,329	2,329	2,328	25,267,892	834.68
State Government	14	532	419	460	3,822,585	625.18

TABLE 6. COUNTY SUMMARY

NORTH AMERICAN INDUSTRY CLASSIFICATION SYSTEM - INDUSTRY GROUPS	NUMBER OF	EMPLOYMENT			TOTAL EARNINGS	AVERAGE
	EMPLOYING UNITS	APRIL	MAY	JUNE	APR - JUN 2011	WEEKLY EARNINGS
CROSS COUNTY - TOTAL	514	5,156	5,147	5,185	\$37,997,761	\$566.16
Natural Resources & Mining	31	189	203	202	1,151,293	447.28
Construction	18	79	83	91	568,989	518.99
Manufacturing	12	740	749	767	5,569,504	569.71
Trade, Transportation & Utilities	136	1,296	1,261	1,299	9,853,928	589.73
Wholesale Trade	29	328	326	333	3,145,992	735.56
Retail Trade	74	751	731	758	4,221,411	434.90
Transportation, Warehousing & Utilities	33	217	204	208	2,486,525	912.26
Information	4	34	33	33	247,466	571.08
Financial Activities	41	295	298	297	2,513,089	651.62
Professional & Business Services	44	182	172	171	1,474,407	648.09
Education & Health Services	132	827	826	804	5,415,197	508.61
Leisure & Hospitality	34	353	345	353	948,082	208.17
Other Services	36	63	62	61	323,014	400.76
Local Government	16	735	740	725	6,699,685	702.76
State Government	10	363	375	382	3,233,107	666.16
DALLAS COUNTY - TOTAL	268	2,955	2,905	2,930	\$20,661,629	\$542.44
Natural Resources & Mining	37	182	172	178	1,230,627	533.82
Construction	13	56	57	57	1,312,882	1,782.19
Manufacturing	14	618	611	584	4,885,953	621.91
Trade, Transportation & Utilities	64	501	498	493	3,496,071	540.74
Wholesale Trade	9	45	42	44	904,919	1,594.10
Retail Trade	38	359	363	358	1,869,098	399.38
Transportation, Warehousing & Utilities	17	97	93	91	722,054	592.98
Information	3	17	16	16	131,617	619.86
Financial Activities	13	63	65	65	551,959	659.97
Professional & Business Services	16	51	50	49	281,227	432.66
Education & Health Services	60	883	857	874	5,253,157	463.76
Leisure & Hospitality	10	101	111	124	298,725	205.17
Other Services	15	70	65	66	387,377	444.75
Local Government	15	364	355	376	2,506,593	528.26
State Government	8	49	48	48	325,441	517.94

TABLE 6. COUNTY SUMMARY

NORTH AMERICAN INDUSTRY CLASSIFICATION SYSTEM - INDUSTRY GROUPS	NUMBER OF	EMPLOYMENT			TOTAL EARNINGS	AVERAGE
	EMPLOYING UNITS	APRIL	MAY	JUNE	APR - JUN 2011	WEEKLY EARNINGS
DESHA COUNTY - TOTAL	505	4,474	4,453	4,508	\$33,729,442	\$579.36
Natural Resources & Mining	60	246	244	253	1,887,587	586.27
Construction	17	116	119	119	975,222	635.74
Manufacturing	18	820	832	867	9,467,597	867.34
Trade, Transportation & Utilities	108	869	861	880	5,869,865	519.00
Wholesale Trade	18	186	185	183	1,987,015	827.69
Retail Trade	63	513	508	531	2,517,662	374.35
Transportation, Warehousing & Utilities	27	170	168	166	1,365,188	625.09
Information	6	33	32	33	244,187	575.01
Financial Activities	31	214	217	221	1,620,721	573.64
Professional & Business Services	36	98	98	95	537,282	426.08
Education & Health Services	138	726	729	730	4,377,310	462.31
Leisure & Hospitality	39	322	318	333	814,036	193.07
Other Services	22	44	46	47	200,435	337.62
Local Government	20	836	813	794	6,726,848	635.43
State Government	10	150	144	136	1,008,352	541.15
DREW COUNTY - TOTAL	525	6,491	6,452	6,404	\$48,164,645	\$574.50
Natural Resources & Mining	45	343	355	367	2,936,323	636.26
Construction	21	100	105	114	756,055	546.94
Manufacturing	20	823	813	813	5,883,728	554.42
Trade, Transportation & Utilities	120	1,157	1,141	1,160	7,434,704	496.15
Wholesale Trade	19	164	165	163	1,637,316	767.97
Retail Trade	82	897	885	908	4,787,974	410.75
Transportation, Warehousing & Utilities	19	96	91	89	1,009,414	843.99
Information	8	60	57	57	443,942	588.78
Financial Activities	48	240	242	244	2,190,949	696.42
Professional & Business Services	42	257	251	255	4,012,910	1,213.70
Education & Health Services	120	842	843	840	5,394,094	492.99
Leisure & Hospitality	45	626	617	585	1,544,982	195.04
Other Services	18	64	60	60	391,370	490.85
Local Government	22	1,341	1,337	1,322	11,663,805	672.91
State Government	16	638	631	587	5,511,783	685.32

TABLE 6. COUNTY SUMMARY

NORTH AMERICAN INDUSTRY CLASSIFICATION SYSTEM - INDUSTRY GROUPS	NUMBER OF	EMPLOYMENT			TOTAL EARNINGS	AVERAGE
	EMPLOYING UNITS	APRIL	MAY	JUNE	APR - JUN 2011	WEEKLY EARNINGS
FAULKNER COUNTY - TOTAL	2,724	40,602	40,664	40,417	\$369,006,536	\$699.81
Natural Resources & Mining	55	1,363	1,400	1,451	22,869,024	1,252.37
Construction	318	2,565	2,552	2,621	22,795,061	679.81
Manufacturing	105	3,330	3,334	3,355	38,451,415	885.66
Trade, Transportation & Utilities	633	7,280	7,256	7,280	52,679,763	557.25
Wholesale Trade	173	1,020	1,039	1,025	12,306,879	920.90
Retail Trade	379	5,355	5,298	5,303	29,431,984	425.67
Transportation, Warehousing & Utilities	81	905	919	952	10,940,900	909.52
Information	31	362	368	373	3,541,747	741.00
Financial Activities	312	1,445	1,468	1,469	13,491,242	710.49
Professional & Business Services	388	6,204	6,149	6,217	79,617,737	989.41
Education & Health Services	433	5,940	5,924	5,880	49,506,835	643.86
Leisure & Hospitality	229	4,527	4,572	4,546	14,003,983	236.84
Other Services	164	729	751	748	5,024,736	520.45
Local Government	38	3,508	3,557	3,542	38,711,957	842.23
State Government	18	3,349	3,333	2,935	28,313,036	679.40
FRANKLIN COUNTY - TOTAL	332	4,267	4,288	4,276	\$35,178,381	\$632.69
Natural Resources & Mining	14	275	288	294	3,781,194	1,018.18
Construction	30	104	102	107	1,049,013	773.42
Manufacturing	15	854	852	846	7,901,236	714.48
Trade, Transportation & Utilities	88	848	861	851	7,058,326	636.27
Wholesale Trade	16	59	63	56	482,396	625.41
Retail Trade	53	506	514	512	2,585,171	389.41
Transportation, Warehousing & Utilities	19	283	284	283	3,990,759	1,083.46
Information	5	26	20	24	190,690	628.65
Financial Activities	27	229	232	229	1,662,841	556.13
Professional & Business Services	26	147	109	111	825,615	519.15
Education & Health Services	56	568	582	568	3,746,077	503.19
Leisure & Hospitality	23	280	295	297	845,088	223.65
Other Services	19	66	65	63	527,956	628.02
Local Government	20	765	778	795	6,593,241	650.78
State Government	9	105	104	91	997,104	767.00

TABLE 6. COUNTY SUMMARY

NORTH AMERICAN INDUSTRY CLASSIFICATION SYSTEM - INDUSTRY GROUPS	NUMBER OF	EMPLOYMENT			TOTAL EARNINGS	AVERAGE
	EMPLOYING UNITS	APRIL	MAY	JUNE	APR - JUN 2011	WEEKLY EARNINGS
FULTON COUNTY - TOTAL	216	1,932	1,960	1,971	\$12,849,307	\$505.75
Construction	9	16	16	16	121,189	582.64
Manufacturing	12	133	131	130	631,397	369.81
Trade, Transportation & Utilities	51	327	339	349	2,399,250	545.49
Retail Trade	34	179	185	190	800,442	333.42
Other Trade, Transportation & Utilities	17	148	154	159	1,598,808	800.34
Information	4	34	25	23	155,594	437.88
Financial Activities	15	86	98	102	765,417	617.60
Professional & Business Services	17	63	65	56	525,531	659.11
Education & Health Services	58	425	419	422	2,290,767	417.57
Leisure & Hospitality	17	142	158	163	387,988	193.38
Local Government	13	571	578	579	4,730,226	631.71
State Government	10	109	109	111	737,487	517.29
Other	10	26	22	20	104,461	354.51
GARLAND COUNTY - TOTAL	3,114	35,872	35,323	35,316	\$271,660,451	\$588.59
Natural Resources & Mining	36	318	309	323	4,016,390	975.64
Construction	343	1,627	1,657	1,710	11,973,149	553.27
Manufacturing	107	2,226	2,187	2,180	21,562,248	754.73
Trade, Transportation & Utilities	701	7,243	7,253	7,281	48,410,016	513.00
Wholesale Trade	142	907	900	896	8,525,527	727.87
Retail Trade	499	5,790	5,808	5,828	33,535,025	444.10
Transportation, Warehousing & Utilities	60	546	545	557	6,349,464	889.11
Information	34	315	324	313	2,732,071	662.27
Financial Activities	340	1,440	1,413	1,415	12,382,900	669.54
Professional & Business Services	391	3,064	3,017	3,098	23,415,550	588.69
Education & Health Services	512	7,451	7,469	7,501	70,065,194	721.15
Leisure & Hospitality	359	6,924	6,414	6,674	24,914,125	287.30
Other Services	232	994	990	984	5,723,518	445.02
Local Government	33	3,126	3,146	2,843	37,299,462	944.33
State Government	26	1,144	1,144	994	9,165,828	644.48

TABLE 6. COUNTY SUMMARY

NORTH AMERICAN INDUSTRY CLASSIFICATION SYSTEM - INDUSTRY GROUPS	NUMBER OF	EMPLOYMENT			TOTAL EARNINGS	AVERAGE
	EMPLOYING UNITS	APRIL	MAY	JUNE	APR - JUN 2011	WEEKLY EARNINGS
GRANT COUNTY - TOTAL	309	3,673	3,650	3,707	\$26,800,870	\$560.73
Natural Resources & Mining	22	162	156	158	1,826,068	885.29
Construction	26	159	157	166	1,598,170	765.16
Manufacturing	15	855	857	867	6,806,523	609.05
Trade, Transportation & Utilities	81	633	634	631	3,792,967	461.17
Wholesale Trade	15	119	114	108	970,023	656.46
Retail Trade	44	456	462	463	2,375,544	396.96
Transportation, Warehousing & Utilities	22	58	58	60	447,400	586.63
Information	3	15	14	14	161,691	867.75
Financial Activities	24	95	82	85	683,998	602.46
Professional & Business Services	20	77	78	64	728,406	767.55
Education & Health Services	56	453	455	456	2,696,106	456.14
Leisure & Hospitality	22	258	254	240	738,314	226.57
Other Services	22	51	46	49	224,742	355.23
Local Government	10	856	860	919	7,148,835	626.08
State Government	8	59	57	58	395,050	523.94
GREENE COUNTY - TOTAL	899	14,567	14,749	14,571	\$119,316,492	\$627.40
Natural Resources & Mining	37	242	244	264	1,811,175	557.28
Construction	77	325	328	323	2,632,649	622.47
Manufacturing	58	4,753	4,808	4,867	47,312,766	756.75
Trade, Transportation & Utilities	229	2,407	2,374	2,350	14,993,360	485.21
Wholesale Trade	55	484	488	496	4,707,777	740.06
Retail Trade	146	1,706	1,675	1,646	8,490,424	389.76
Transportation, Warehousing & Utilities	28	217	211	208	1,795,159	651.36
Information	11	109	106	110	527,772	374.75
Financial Activities	81	469	465	472	4,122,999	676.72
Professional & Business Services	101	1,176	1,344	1,081	7,817,440	500.98
Education & Health Services	145	1,825	1,814	1,784	13,504,180	574.65
Leisure & Hospitality	71	1,021	1,016	1,051	3,061,647	228.80
Other Services	48	195	170	174	1,194,501	511.42
Local Government	30	1,639	1,661	1,672	18,438,420	855.80
State Government	11	406	419	423	3,899,583	721.08

TABLE 6. COUNTY SUMMARY

NORTH AMERICAN INDUSTRY CLASSIFICATION SYSTEM - INDUSTRY GROUPS	NUMBER OF	EMPLOYMENT			TOTAL EARNINGS	AVERAGE
	EMPLOYING UNITS	APRIL	MAY	JUNE	APR - JUN 2011	WEEKLY EARNINGS
HEMPSTEAD COUNTY - TOTAL	501	8,421	8,291	8,303	\$73,901,118	\$681.76
Natural Resources & Mining	16	184	194	186	1,764,390	721.93
Construction	32	1,180	1,162	1,180	18,388,262	1,204.84
Manufacturing	30	1,689	1,690	1,676	14,060,847	641.90
Trade, Transportation & Utilities	128	1,348	1,298	1,318	9,945,046	578.96
Wholesale Trade	25	269	270	275	2,662,619	754.85
Retail Trade	80	854	851	861	4,598,121	413.52
Transportation, Warehousing & Utilities	23	225	177	182	2,684,306	1,060.71
Information	8	51	51	51	385,309	581.16
Financial Activities	37	225	225	223	2,178,903	747.14
Professional & Business Services	38	153	149	147	1,235,684	635.10
Education & Health Services	89	1,108	1,068	1,078	6,987,996	495.58
Leisure & Hospitality	42	584	586	589	1,813,755	237.95
Other Services	36	166	166	165	1,171,939	544.16
Local Government	29	1,012	1,004	988	9,887,144	759.54
State Government	16	721	698	702	6,081,843	661.72
HOT SPRING COUNTY - TOTAL	591	8,078	8,090	8,068	\$62,786,076	\$597.83
Natural Resources & Mining	26	149	149	149	1,068,932	551.85
Construction	64	377	363	358	2,972,074	624.65
Manufacturing	30	1,312	1,308	1,316	14,428,088	845.92
Trade, Transportation & Utilities	148	1,317	1,316	1,313	10,284,699	601.47
Wholesale Trade	17	75	78	76	853,530	860.12
Retail Trade	94	882	879	885	4,893,326	426.77
Transportation, Warehousing & Utilities	37	360	359	352	4,537,843	977.77
Information	7	48	49	47	385,729	618.16
Financial Activities	51	264	259	264	2,300,078	674.44
Professional & Business Services	49	910	938	946	5,133,883	424.03
Education & Health Services	95	1,154	1,159	1,157	7,780,597	517.44
Leisure & Hospitality	43	519	526	546	1,364,982	197.99
Other Services	38	163	159	160	841,906	403.08
Local Government	27	1,149	1,158	1,141	10,793,001	722.36
State Government	13	716	706	671	5,432,107	598.93

TABLE 6. COUNTY SUMMARY

NORTH AMERICAN INDUSTRY CLASSIFICATION SYSTEM - INDUSTRY GROUPS	NUMBER OF	EMPLOYMENT			TOTAL EARNINGS	AVERAGE
	EMPLOYING UNITS	APRIL	MAY	JUNE	APR - JUN 2011	WEEKLY EARNINGS
HOWARD COUNTY - TOTAL	352	7,494	7,435	7,302	\$51,438,261	\$533.96
Natural Resources & Mining	19	183	182	183	1,381,051	581.58
Construction	18	116	120	124	1,049,924	673.03
Manufacturing	21	4,035	4,000	3,917	27,469,336	530.38
Trade, Transportation & Utilities	99	918	943	943	6,365,745	523.90
Wholesale Trade	19	76	76	75	819,098	832.70
Retail Trade	57	629	632	631	3,415,984	416.65
Transportation, Warehousing & Utilities	23	213	235	237	2,130,663	717.80
Information	5	33	32	32	177,849	423.11
Financial Activities	34	145	142	146	987,355	526.22
Professional & Business Services	21	108	94	97	818,626	631.82
Education & Health Services	64	665	638	647	4,217,189	499.08
Leisure & Hospitality	22	333	326	338	861,293	199.36
Other Services	21	112	107	108	644,097	454.55
Local Government	17	720	734	656	6,633,654	725.52
State Government	11	126	117	111	832,142	542.47
INDEPENDENCE COUNTY - TOTAL	929	15,122	15,133	15,113	\$121,153,016	\$616.26
Natural Resources & Mining	14	220	221	231	2,043,356	701.70
Construction	71	444	443	454	3,506,170	603.37
Manufacturing	46	3,438	3,436	3,398	32,033,170	719.65
Trade, Transportation & Utilities	236	2,978	2,965	2,971	21,893,059	566.78
Wholesale Trade	37	405	399	398	3,681,268	706.76
Retail Trade	151	1,734	1,713	1,726	8,831,303	393.97
Transportation, Warehousing & Utilities	48	839	853	847	9,380,488	852.59
Information	10	131	131	136	952,271	552.15
Financial Activities	85	512	512	515	4,490,046	673.27
Professional & Business Services	86	546	509	505	3,639,663	538.41
Education & Health Services	176	3,022	3,015	3,085	27,646,065	699.39
Leisure & Hospitality	72	1,040	1,078	1,066	3,221,750	233.51
Other Services	69	419	401	375	2,586,231	499.43
Local Government	47	1,659	1,698	1,718	13,675,414	621.85
State Government	17	713	724	659	5,465,821	601.79

TABLE 6. COUNTY SUMMARY

NORTH AMERICAN INDUSTRY CLASSIFICATION SYSTEM - INDUSTRY GROUPS	NUMBER OF	EMPLOYMENT			TOTAL EARNINGS	AVERAGE
	EMPLOYING UNITS	APRIL	MAY	JUNE	APR - JUN 2011	WEEKLY EARNINGS
IZARD COUNTY - TOTAL	264	3,078	3,011	2,845	\$20,538,083	\$530.51
Natural Resources & Mining	5	136	137	142	1,314,432	730.92
Construction	24	56	55	67	391,868	508.04
Manufacturing	11	239	226	223	1,791,611	600.94
Trade, Transportation & Utilities	68	562	555	549	3,168,434	438.88
Wholesale Trade	10	19	18	16	123,252	536.66
Retail Trade	47	411	413	410	2,083,926	389.71
Transportation, Warehousing & Utilities	11	132	124	123	961,256	585.30
Financial Activities	30	144	143	148	1,075,875	570.76
Professional & Business Services	17	81	75	79	514,170	504.91
Education & Health Services	51	633	616	633	3,546,420	434.86
Leisure & Hospitality	18	118	110	122	312,393	205.97
Local Government	18	554	564	423	4,388,623	657.21
State Government	10	522	512	441	3,884,771	607.79
Other	12	33	18	18	149,486	499.95
JACKSON COUNTY - TOTAL	480	5,262	5,248	5,283	\$41,936,573	\$612.78
Natural Resources & Mining	55	280	288	296	2,181,816	582.75
Construction	24	122	120	125	1,159,161	728.88
Manufacturing	19	917	926	925	9,375,227	781.62
Trade, Transportation & Utilities	111	1,049	1,032	1,040	7,055,471	521.69
Wholesale Trade	24	206	204	204	2,054,220	772.07
Retail Trade	70	735	716	726	3,983,250	422.24
Transportation, Warehousing & Utilities	17	108	112	110	1,018,001	711.89
Information	4	19	21	21	132,134	499.88
Financial Activities	34	152	156	155	1,300,853	648.37
Professional & Business Services	37	163	141	136	1,364,404	715.60
Education & Health Services	100	808	822	818	6,855,840	646.29
Leisure & Hospitality	28	284	280	286	754,684	204.89
Other Services	23	65	71	65	427,688	491.03
Local Government	32	690	681	698	5,249,278	585.49
State Government	13	713	710	718	6,080,017	655.34

TABLE 6. COUNTY SUMMARY

NORTH AMERICAN INDUSTRY CLASSIFICATION SYSTEM - INDUSTRY GROUPS	NUMBER OF	EMPLOYMENT			TOTAL EARNINGS	AVERAGE
	EMPLOYING UNITS	APRIL	MAY	JUNE	APR - JUN 2011	WEEKLY EARNINGS
JEFFERSON COUNTY - TOTAL	2,104	30,154	29,864	29,826	\$262,554,924	\$674.39
Natural Resources & Mining	40	303	282	288	3,192,965	844.03
Construction	106	1,472	1,222	1,231	16,252,563	955.56
Manufacturing	63	5,388	5,402	5,379	57,917,293	826.61
Trade, Transportation & Utilities	433	5,261	5,220	5,243	40,796,674	598.74
Wholesale Trade	80	985	973	992	9,231,396	722.14
Retail Trade	288	3,322	3,303	3,324	19,513,511	452.62
Transportation, Warehousing & Utilities	65	954	944	927	12,051,767	984.49
Information	12	129	125	122	1,013,102	621.79
Financial Activities	145	1,144	1,136	1,145	11,579,508	780.20
Professional & Business Services	171	1,739	1,692	1,726	14,409,935	644.83
Education & Health Services	786	5,208	5,221	5,183	44,224,470	653.71
Leisure & Hospitality	136	2,012	2,037	1,978	5,968,796	228.54
Other Services	133	669	673	663	4,052,286	466.41
Local Government	42	3,233	3,238	3,248	32,123,801	762.75
State Government	37	3,596	3,616	3,620	31,023,531	660.94
JOHNSON COUNTY - TOTAL	463	8,709	8,697	8,724	\$61,142,183	\$539.98
Natural Resources & Mining	17	121	122	120	996,497	633.50
Construction	26	111	130	154	1,121,706	655.33
Manufacturing	36	3,200	3,188	3,185	20,397,818	491.72
Trade, Transportation & Utilities	104	1,959	1,957	1,958	13,321,853	523.37
Retail Trade	64	849	846	861	4,173,323	376.79
Other Trade, Transportation & Utilities	40	1,110	1,111	1,097	9,148,530	636.29
Information	4	31	33	31	169,304	411.26
Financial Activities	47	200	205	202	1,854,993	705.23
Professional & Business Services	43	160	161	155	1,141,826	553.57
Education & Health Services	98	1,209	1,191	1,161	8,877,303	575.29
Leisure & Hospitality	37	495	485	509	1,444,076	223.81
Other Services	28	72	70	72	424,745	458.03
Local Government	14	1,017	1,023	1,042	10,369,876	776.46
State Government	9	134	132	135	1,022,186	588.25

TABLE 6. COUNTY SUMMARY

NORTH AMERICAN INDUSTRY CLASSIFICATION SYSTEM - INDUSTRY GROUPS	NUMBER OF	EMPLOYMENT			TOTAL EARNINGS	AVERAGE
	EMPLOYING UNITS	APRIL	MAY	JUNE	APR - JUN 2011	WEEKLY EARNINGS
LAFAYETTE COUNTY - TOTAL	178	1,332	1,309	1,288	\$9,765,357	\$573.57
Natural Resources & Mining	32	166	165	165	1,307,307	608.24
Construction	9	61	60	66	665,321	821.05
Manufacturing	5	36	33	32	295,033	674.10
Trade, Transportation & Utilities	36	207	204	201	1,443,372	544.26
Retail Trade	22	136	135	132	760,135	435.27
Other Trade, Transportation & Utilities	14	71	69	69	683,237	754.40
Financial Activities	14	51	50	48	351,517	544.42
Professional & Business Services	14	54	53	52	624,176	905.92
Education & Health Services	33	240	230	229	1,245,487	411.19
Leisure & Hospitality	7	52	52	51	135,368	201.54
Local Government	13	332	328	317	2,934,832	693.21
State Government	7	48	49	47	280,038	448.78
Other	8	85	85	80	482,906	445.76
LAWRENCE COUNTY - TOTAL	413	4,066	4,041	4,065	\$28,440,132	\$539.20
Natural Resources & Mining	41	164	180	189	1,300,019	562.86
Construction	25	106	115	124	845,042	565.25
Manufacturing	23	469	470	478	3,556,526	579.21
Trade, Transportation & Utilities	109	848	855	868	5,764,320	517.40
Wholesale Trade	21	194	198	191	1,779,990	704.57
Retail Trade	60	531	541	558	2,825,808	400.07
Transportation, Warehousing & Utilities	28	123	116	119	1,158,522	746.79
Financial Activities	33	143	143	143	1,075,749	578.67
Professional & Business Services	26	97	96	97	719,324	572.41
Education & Health Services	74	551	503	502	3,799,696	563.53
Leisure & Hospitality	22	270	272	262	683,318	196.13
Local Government	27	1,234	1,237	1,229	9,581,871	597.62
State Government	10	105	102	103	630,086	469.05
Other	23	79	68	70	484,181	514.90

TABLE 6. COUNTY SUMMARY

NORTH AMERICAN INDUSTRY CLASSIFICATION SYSTEM - INDUSTRY GROUPS	NUMBER OF	EMPLOYMENT			TOTAL EARNINGS	AVERAGE
	EMPLOYING UNITS	APRIL	MAY	JUNE	APR - JUN 2011	WEEKLY EARNINGS
LEE COUNTY - TOTAL	310	2,076	2,078	2,085	\$15,360,780	\$568.17
Natural Resources & Mining	34	216	212	231	1,446,570	506.56
Construction	9	24	28	28	167,806	484.06
Trade, Transportation & Utilities	47	346	351	357	2,374,021	519.78
Wholesale Trade	7	80	80	82	714,042	680.90
Retail Trade	24	190	194	199	945,598	374.30
Transportation, Warehousing & Utilities	16	76	77	76	714,381	719.90
Financial Activities	15	75	75	82	685,673	682.04
Professional & Business Services	15	53	53	54	622,568	897.93
Education & Health Services	145	405	406	401	2,562,195	487.85
Leisure & Hospitality	7	101	100	98	233,262	180.03
Local Government	15	333	331	321	2,819,074	660.46
State Government	7	494	493	485	4,299,050	673.97
Other	16	29	29	28	150,561	404.01
LINCOLN COUNTY - TOTAL	264	2,908	2,912	2,921	\$22,379,066	\$590.82
Natural Resources & Mining	30	170	159	159	1,179,007	557.54
Construction	15	73	74	73	515,951	541.21
Manufacturing	9	345	365	371	2,785,707	594.69
Trade, Transportation & Utilities	49	343	338	348	3,114,305	698.43
Wholesale Trade	10	58	54	55	606,980	838.76
Retail Trade	25	162	163	163	690,071	326.33
Transportation, Warehousing & Utilities	14	123	121	130	1,817,254	1,121.30
Financial Activities	19	61	61	65	526,633	649.90
Professional & Business Services	13	27	28	31	244,142	655.12
Education & Health Services	84	397	403	399	2,216,851	426.67
Leisure & Hospitality	12	136	138	143	316,060	174.91
Local Government	7	373	373	355	2,972,955	623.13
State Government	12	941	932	934	8,304,756	682.75
Other	14	42	41	43	202,699	371.24

TABLE 6. COUNTY SUMMARY

NORTH AMERICAN INDUSTRY CLASSIFICATION SYSTEM - INDUSTRY GROUPS	NUMBER OF	EMPLOYMENT			TOTAL EARNINGS	AVERAGE
	EMPLOYING UNITS	APRIL	MAY	JUNE	APR - JUN 2011	WEEKLY EARNINGS
LITTLE RIVER COUNTY - TOTAL	248	3,790	3,748	3,551	\$41,849,023	\$870.91
Natural Resources & Mining	11	66	54	54	533,310	707.31
Construction	21	197	220	186	1,792,452	685.97
Manufacturing	18	1,350	1,304	1,297	24,173,893	1,411.94
Trade, Transportation & Utilities	56	609	622	625	4,165,102	517.88
Wholesale Trade	9	41	41	39	464,736	886.34
Retail Trade	34	367	378	381	2,091,305	428.60
Transportation, Warehousing & Utilities	13	201	203	205	1,609,061	609.72
Financial Activities	22	96	92	90	698,892	580.15
Professional & Business Services	16	92	90	88	785,123	671.05
Education & Health Services	40	159	155	154	902,873	445.20
Leisure & Hospitality	17	192	184	198	556,197	223.61
Local Government	20	857	860	690	7,277,457	697.72
State Government	11	80	74	74	510,467	516.67
Other	16	92	93	95	453,257	373.56
LOGAN COUNTY - TOTAL	501	5,316	5,333	5,292	\$37,686,492	\$545.57
Natural Resources & Mining	22	106	97	98	1,295,614	993.32
Construction	49	230	237	240	1,954,097	637.83
Manufacturing	23	1,147	1,162	1,146	9,345,402	624.21
Trade, Transportation & Utilities	120	913	903	898	5,436,316	462.25
Wholesale Trade	14	74	73	68	300,326	322.35
Retail Trade	75	705	699	700	3,517,891	385.85
Transportation, Warehousing & Utilities	31	134	131	130	1,618,099	945.34
Information	6	41	41	41	398,238	747.16
Financial Activities	40	211	211	215	1,742,499	631.26
Professional & Business Services	47	105	111	114	738,097	516.15
Education & Health Services	100	759	760	723	4,995,790	514.22
Leisure & Hospitality	29	284	284	280	767,293	208.81
Other Services	29	126	125	126	919,842	563.05
Local Government	22	866	869	874	7,006,411	619.73
State Government	14	528	533	537	3,086,893	445.78

TABLE 6. COUNTY SUMMARY

NORTH AMERICAN INDUSTRY CLASSIFICATION SYSTEM - INDUSTRY GROUPS	NUMBER OF	EMPLOYMENT			TOTAL EARNINGS	AVERAGE
	EMPLOYING UNITS	APRIL	MAY	JUNE	APR - JUN 2011	WEEKLY EARNINGS
LONOKE COUNTY - TOTAL	1,300	13,019	13,060	13,054	\$94,952,715	\$559.94
Natural Resources & Mining	84	518	540	527	4,527,360	659.16
Construction	138	732	704	737	6,322,652	671.46
Manufacturing	42	1,387	1,406	1,398	14,465,096	796.49
Trade, Transportation & Utilities	319	2,839	2,853	2,897	17,730,601	476.39
Wholesale Trade	79	400	393	394	4,188,451	814.29
Retail Trade	173	2,199	2,218	2,253	11,232,410	388.62
Transportation, Warehousing & Utilities	67	240	242	250	2,309,740	728.17
Information	17	92	93	94	814,678	673.84
Financial Activities	129	492	482	488	4,987,936	787.32
Professional & Business Services	151	649	626	605	5,035,640	618.12
Education & Health Services	208	1,653	1,655	1,660	10,413,146	483.70
Leisure & Hospitality	100	1,488	1,511	1,473	4,264,848	220.08
Other Services	71	226	218	219	1,324,654	461.07
Local Government	26	2,787	2,816	2,800	23,954,129	657.85
State Government	15	156	156	156	1,111,975	548.31
MADISON COUNTY - TOTAL	232	3,084	3,042	3,014	\$21,889,642	\$552.68
Natural Resources & Mining	10	29	23	32	224,533	616.85
Construction	25	56	59	54	482,805	659.27
Manufacturing	20	1,068	1,065	1,065	7,394,630	533.60
Trade, Transportation & Utilities	45	554	519	526	3,511,328	506.76
Wholesale Trade	5	17	16	17	207,065	955.68
Retail Trade	33	439	417	417	2,305,875	418.01
Transportation, Warehousing & Utilities	7	98	86	92	998,388	834.77
Information	5	40	38	40	410,219	802.25
Financial Activities	16	73	72	71	564,750	603.37
Professional & Business Services	24	178	182	185	1,957,030	828.66
Education & Health Services	43	243	239	235	1,404,960	452.19
Leisure & Hospitality	13	177	177	178	519,123	225.18
Other Services	15	26	28	31	214,940	583.55
Local Government	9	600	599	556	4,926,825	647.84
State Government	7	40	41	41	278,499	526.80

TABLE 6. COUNTY SUMMARY

NORTH AMERICAN INDUSTRY CLASSIFICATION SYSTEM - INDUSTRY GROUPS	NUMBER OF	EMPLOYMENT			TOTAL EARNINGS	AVERAGE
	EMPLOYING UNITS	APRIL	MAY	JUNE	APR - JUN 2011	WEEKLY EARNINGS
MARION COUNTY - TOTAL	307	3,605	3,609	3,619	\$23,548,503	\$501.64
Natural Resources & Mining	5	28	27	28	151,323	420.73
Construction	23	68	66	68	347,018	396.44
Manufacturing	20	1,431	1,408	1,409	9,715,534	527.79
Trade, Transportation & Utilities	57	543	544	559	3,031,581	425.03
Wholesale Trade	6	35	39	44	314,005	614.09
Retail Trade	42	474	472	482	2,370,446	383.07
Transportation, Warehousing & Utilities	9	34	33	33	347,130	801.07
Information	4	61	60	60	695,436	886.66
Financial Activities	37	208	213	216	1,601,678	580.25
Professional & Business Services	27	58	50	50	363,644	531.13
Education & Health Services	60	338	350	333	1,977,128	446.88
Leisure & Hospitality	37	193	213	214	577,222	214.85
Other Services	12	28	19	17	122,536	441.84
Local Government	18	574	581	588	4,552,428	602.73
State Government	7	75	78	77	412,975	414.36
MILLER COUNTY - TOTAL	870	13,486	13,557	13,611	\$119,106,030	\$676.10
Natural Resources & Mining	24	130	115	116	1,118,373	714.92
Construction	88	914	971	964	7,874,144	637.81
Manufacturing	28	2,375	2,375	2,396	38,142,759	1,231.76
Trade, Transportation & Utilities	232	3,358	3,405	3,422	26,900,730	609.51
Wholesale Trade	56	547	561	569	5,862,555	806.74
Retail Trade	126	1,301	1,316	1,338	7,124,805	415.72
Transportation, Warehousing & Utilities	50	1,510	1,528	1,515	13,913,370	705.20
Information	5	77	76	76	1,179,336	1,188.45
Financial Activities	80	370	373	381	3,152,841	647.31
Professional & Business Services	89	1,358	1,338	1,322	6,509,467	373.86
Education & Health Services	132	868	885	893	6,080,967	530.35
Leisure & Hospitality	89	1,391	1,374	1,398	4,607,298	255.40
Other Services	62	346	330	389	1,769,106	383.34
Local Government	25	1,802	1,825	1,765	17,432,666	746.09
State Government	16	497	490	489	4,338,343	678.29

TABLE 6. COUNTY SUMMARY

NORTH AMERICAN INDUSTRY CLASSIFICATION SYSTEM - INDUSTRY GROUPS	NUMBER OF	EMPLOYMENT			TOTAL EARNINGS	AVERAGE
	EMPLOYING UNITS	APRIL	MAY	JUNE	APR - JUN 2011	WEEKLY EARNINGS
MISSISSIPPI COUNTY - TOTAL	1,233	19,126	19,252	19,407	\$184,684,685	\$737.55
Natural Resources & Mining	105	532	550	618	3,714,426	504.22
Construction	71	634	667	731	8,625,163	979.54
Manufacturing	57	6,856	6,856	6,920	91,392,351	1,022.22
Trade, Transportation & Utilities	300	3,176	3,193	3,187	26,483,094	639.54
Wholesale Trade	63	488	498	502	6,523,752	1,011.75
Retail Trade	175	1,860	1,855	1,843	9,549,430	396.49
Transportation, Warehousing & Utilities	62	828	840	842	10,409,912	957.09
Information	11	83	82	85	558,770	515.79
Financial Activities	98	550	550	559	3,999,154	556.29
Professional & Business Services	91	1,187	1,276	1,372	8,484,042	510.52
Education & Health Services	284	1,763	1,746	1,686	11,150,663	495.33
Leisure & Hospitality	86	1,129	1,152	1,141	3,411,839	230.08
Other Services	63	257	245	256	1,245,568	379.21
Local Government	45	2,305	2,291	2,278	20,690,929	694.62
State Government	22	654	644	574	4,928,686	607.58
MONROE COUNTY - TOTAL	322	2,302	2,264	2,263	\$14,953,890	\$505.33
Natural Resources & Mining	35	166	163	175	1,173,363	537.25
Construction	15	61	56	52	538,034	734.68
Manufacturing	6	102	107	104	845,005	623.01
Trade, Transportation & Utilities	78	658	636	643	4,576,166	545.19
Wholesale Trade	18	241	229	232	2,113,267	694.70
Retail Trade	37	278	272	280	1,349,936	375.33
Transportation, Warehousing & Utilities	23	139	135	131	1,112,963	634.17
Financial Activities	18	84	86	89	690,068	614.85
Professional & Business Services	15	45	43	31	219,124	424.93
Education & Health Services	77	325	324	324	1,777,974	421.69
Leisure & Hospitality	27	223	226	231	747,918	253.82
Local Government	22	397	390	386	3,050,304	600.10
State Government	8	131	127	124	767,168	463.45
Other	21	110	106	104	568,766	410.17

TABLE 6. COUNTY SUMMARY

NORTH AMERICAN INDUSTRY CLASSIFICATION SYSTEM - INDUSTRY GROUPS	NUMBER OF	EMPLOYMENT			TOTAL EARNINGS	AVERAGE
	EMPLOYING UNITS	APRIL	MAY	JUNE	APR - JUN 2011	WEEKLY EARNINGS
MONTGOMERY COUNTY - TOTAL	175	1,514	1,517	1,843	\$10,303,667	\$487.85
Natural Resources & Mining	8	32	26	36	273,315	670.99
Construction	21	67	69	76	489,521	532.86
Trade, Transportation & Utilities	45	255	245	245	1,484,751	459.91
Wholesale Trade	14	73	77	75	539,042	552.86
Retail Trade	22	169	157	156	869,297	416.20
Transportation, Warehousing & Utilities	9	13	11	14	76,412	464.04
Financial Activities	10	63	78	81	584,909	608.01
Professional & Business Services	13	25	20	22	134,997	464.97
Education & Health Services	18	91	89	89	557,343	478.13
Leisure & Hospitality	21	222	241	551	1,465,555	333.54
Local Government	9	512	509	513	3,890,819	585.32
State Government	7	44	42	39	313,799	579.32
Other	23	203	198	191	1,108,658	432.17
NEVADA COUNTY - TOTAL	187	2,221	2,246	2,266	\$18,082,923	\$619.78
Natural Resources & Mining	9	32	32	32	209,246	503.00
Trade, Transportation & Utilities	39	484	490	495	3,415,172	536.50
Wholesale Trade	3	14	14	14	56,032	307.87
Retail Trade	26	264	269	274	1,294,556	370.19
Transportation, Warehousing & Utilities	10	206	207	207	2,064,584	768.46
Financial Activities	13	64	53	62	465,432	600.04
Professional & Business Services	12	62	62	62	442,762	549.33
Education & Health Services	33	400	405	406	2,436,916	464.38
Leisure & Hospitality	10	61	67	94	221,573	230.33
Other Services	15	57	56	52	204,030	285.36
Local Government	27	441	441	424	3,294,684	582.17
State Government	10	76	74	77	519,392	528.02
Other	19	544	566	562	6,873,716	948.71

TABLE 6. COUNTY SUMMARY

NORTH AMERICAN INDUSTRY CLASSIFICATION SYSTEM - INDUSTRY GROUPS	NUMBER OF	EMPLOYMENT			TOTAL EARNINGS	AVERAGE
	EMPLOYING UNITS	APRIL	MAY	JUNE	APR - JUN 2011	WEEKLY EARNINGS
NEWTON COUNTY - TOTAL	130	1,073	1,081	1,061	\$6,138,423	\$440.61
Construction	7	22	23	20	67,966	241.30
Manufacturing	10	53	55	52	325,287	469.16
Trade, Transportation & Utilities	31	160	164	153	954,669	461.86
Wholesale Trade	3	10	10	9	79,528	632.85
Retail Trade	14	103	104	95	438,077	334.75
Transportation, Warehousing & Utilities	14	47	50	49	437,064	690.83
Education & Health Services	31	216	220	220	969,911	341.20
Leisure & Hospitality	17	85	96	96	354,655	295.46
Other Services	4	4	4	5	23,143	410.82
Local Government	13	398	389	380	2,768,820	547.52
State Government	6	91	88	93	402,846	341.78
Other	11	44	42	42	271,126	488.81
OUACHITA COUNTY - TOTAL	651	7,629	7,582	7,532	\$56,165,250	\$569.90
Natural Resources & Mining	40	207	204	206	1,546,065	578.26
Construction	42	223	230	220	1,697,064	581.92
Manufacturing	27	948	942	902	8,451,835	698.58
Trade, Transportation & Utilities	168	1,610	1,612	1,630	10,863,360	516.68
Wholesale Trade	25	227	228	229	2,587,469	872.97
Retail Trade	114	1,081	1,076	1,095	5,197,481	368.82
Transportation, Warehousing & Utilities	29	302	308	306	3,078,410	775.55
Information	7	49	51	53	389,891	588.07
Financial Activities	62	316	319	320	2,398,723	579.64
Professional & Business Services	48	462	423	430	3,367,604	590.98
Education & Health Services	130	1,223	1,228	1,220	8,642,498	543.29
Leisure & Hospitality	42	505	503	512	1,289,591	195.79
Other Services	41	152	149	153	1,067,908	542.82
Local Government	30	1,177	1,164	1,155	10,585,832	698.77
State Government	14	757	757	731	5,864,879	602.87

TABLE 6. COUNTY SUMMARY

NORTH AMERICAN INDUSTRY CLASSIFICATION SYSTEM - INDUSTRY GROUPS	NUMBER OF	EMPLOYMENT			TOTAL EARNINGS	AVERAGE
	EMPLOYING UNITS	APRIL	MAY	JUNE	APR - JUN 2011	WEEKLY EARNINGS
PERRY COUNTY - TOTAL	160	1,351	1,375	1,410	\$10,008,799	\$558.44
Construction	22	89	93	96	859,237	713.26
Manufacturing	5	41	39	39	276,677	536.54
Trade, Transportation & Utilities	27	200	198	200	1,170,325	451.63
Wholesale Trade	7	12	12	13	122,346	763.07
Retail Trade	15	160	158	159	595,881	288.28
Transportation, Warehousing & Utilities	5	28	28	28	452,098	1,242.03
Financial Activities	13	33	33	33	350,037	815.94
Professional & Business Services	15	47	43	46	364,504	618.50
Education & Health Services	35	231	244	243	1,215,418	390.64
Leisure & Hospitality	8	51	50	49	152,378	234.43
Local Government	12	457	453	460	3,009,982	507.02
State Government	8	49	51	48	306,409	477.77
Other	15	153	171	196	2,303,832	1,022.41
PHILLIPS COUNTY - TOTAL	947	6,315	6,268	6,294	\$45,001,073	\$550.13
Natural Resources & Mining	76	319	322	351	1,720,198	400.17
Construction	26	117	121	131	906,665	567.02
Manufacturing	12	332	350	350	2,872,112	642.24
Trade, Transportation & Utilities	168	1,465	1,450	1,462	10,630,728	560.49
Wholesale Trade	33	370	370	371	3,618,887	751.69
Retail Trade	86	783	770	770	4,210,083	418.23
Transportation, Warehousing & Utilities	49	312	310	321	2,801,758	685.64
Information	9	43	44	44	350,580	617.58
Financial Activities	42	225	217	216	1,763,054	618.33
Professional & Business Services	52	268	246	253	1,918,841	577.33
Education & Health Services	446	1,515	1,506	1,484	9,710,623	497.43
Leisure & Hospitality	40	372	360	374	1,077,491	224.82
Other Services	34	70	72	72	372,140	401.30
Local Government	28	1,073	1,068	1,060	10,050,708	724.58
State Government	14	516	512	497	3,627,933	548.99

TABLE 6. COUNTY SUMMARY

NORTH AMERICAN INDUSTRY CLASSIFICATION SYSTEM - INDUSTRY GROUPS	NUMBER OF	EMPLOYMENT			TOTAL EARNINGS	AVERAGE
	EMPLOYING UNITS	APRIL	MAY	JUNE	APR - JUN 2011	WEEKLY EARNINGS
PIKE COUNTY - TOTAL	260	2,395	2,430	2,447	\$15,944,095	\$505.97
Natural Resources & Mining	26	122	120	120	943,100	601.21
Construction	14	45	35	39	213,626	414.27
Manufacturing	18	207	209	206	1,240,740	460.33
Trade, Transportation & Utilities	84	550	565	549	3,362,479	466.32
Wholesale Trade	13	126	130	128	986,655	592.94
Retail Trade	50	366	370	363	1,790,587	375.99
Transportation, Warehousing & Utilities	21	58	65	58	585,237	746.16
Information	5	24	24	23	293,020	952.39
Financial Activities	23	198	198	198	1,751,831	680.59
Professional & Business Services	9	35	27	28	450,429	1,154.95
Education & Health Services	21	262	275	267	1,380,416	396.22
Leisure & Hospitality	21	232	255	274	707,814	214.64
Other Services	18	68	68	66	392,960	448.93
Local Government	11	529	525	536	4,561,709	662.08
State Government	10	123	129	141	645,971	379.31
POINSETT COUNTY - TOTAL	518	5,180	5,143	5,157	\$38,307,261	\$571.07
Natural Resources & Mining	61	330	340	354	2,668,981	601.48
Construction	26	106	101	110	722,098	525.67
Manufacturing	21	633	643	639	5,384,435	648.86
Trade, Transportation & Utilities	126	1,302	1,278	1,288	9,085,854	542.07
Wholesale Trade	28	404	397	391	4,282,023	828.99
Retail Trade	70	730	728	742	3,483,977	365.45
Transportation, Warehousing & Utilities	28	168	153	155	1,319,854	639.88
Information	6	57	57	59	612,308	816.77
Financial Activities	42	274	277	267	2,260,923	637.84
Professional & Business Services	29	171	182	193	1,500,635	634.25
Education & Health Services	102	622	618	593	3,704,573	466.39
Leisure & Hospitality	41	376	349	359	957,073	203.75
Other Services	23	57	53	52	292,987	417.36
Local Government	30	1,111	1,107	1,102	10,018,458	696.37
State Government	11	141	138	141	1,098,936	603.81

TABLE 6. COUNTY SUMMARY

NORTH AMERICAN INDUSTRY CLASSIFICATION SYSTEM - INDUSTRY GROUPS	NUMBER OF	EMPLOYMENT			TOTAL EARNINGS	AVERAGE
	EMPLOYING UNITS	APRIL	MAY	JUNE	APR - JUN 2011	WEEKLY EARNINGS
POLK COUNTY - TOTAL	528	5,958	5,976	5,944	\$39,844,601	\$514.31
Natural Resources & Mining	22	143	144	148	1,254,630	665.59
Construction	40	196	204	225	1,328,509	490.53
Manufacturing	34	1,144	1,150	1,136	8,830,527	594.11
Trade, Transportation & Utilities	138	1,213	1,206	1,214	7,187,668	456.56
Wholesale Trade	20	71	72	68	768,619	840.63
Retail Trade	80	845	841	841	4,045,356	369.43
Transportation, Warehousing & Utilities	38	297	293	305	2,373,693	612.04
Information	9	57	57	59	408,396	544.77
Financial Activities	41	231	228	233	1,769,825	590.20
Professional & Business Services	48	161	156	154	1,138,599	557.86
Education & Health Services	88	1,066	1,086	1,080	7,522,252	537.10
Leisure & Hospitality	41	487	481	500	1,257,754	197.72
Other Services	33	133	135	136	857,690	489.92
Local Government	21	785	791	767	6,365,852	626.99
State Government	13	342	338	292	1,922,899	456.53
POPE COUNTY - TOTAL	1,759	26,486	26,180	25,821	\$216,818,962	\$637.50
Natural Resources & Mining	36	778	789	803	7,949,880	774.09
Construction	168	1,210	1,154	1,163	11,520,346	753.77
Manufacturing	76	4,498	4,534	4,520	40,185,285	684.29
Trade, Transportation & Utilities	440	5,930	5,898	5,902	58,115,194	756.41
Wholesale Trade	91	598	583	583	6,097,032	797.62
Retail Trade	270	3,262	3,256	3,258	17,212,321	406.31
Transportation, Warehousing & Utilities	79	2,070	2,059	2,061	34,805,841	1,297.60
Information	22	213	208	203	2,073,155	766.70
Financial Activities	176	740	722	721	6,169,528	652.19
Professional & Business Services	247	2,755	2,508	2,539	21,415,914	633.44
Education & Health Services	304	3,404	3,434	3,366	24,228,643	547.94
Leisure & Hospitality	136	2,501	2,470	2,403	7,595,826	237.71
Other Services	97	448	451	420	2,598,306	454.59
Local Government	41	2,378	2,383	2,362	21,248,871	688.42
State Government	16	1,631	1,629	1,419	13,718,014	676.58

TABLE 6. COUNTY SUMMARY

NORTH AMERICAN INDUSTRY CLASSIFICATION SYSTEM - INDUSTRY GROUPS	NUMBER OF	EMPLOYMENT			TOTAL EARNINGS	AVERAGE
	EMPLOYING UNITS	APRIL	MAY	JUNE	APR - JUN 2011	WEEKLY EARNINGS
PRAIRIE COUNTY - TOTAL	246	1,319	1,305	1,323	\$9,436,274	\$551.71
Natural Resources & Mining	25	148	146	151	1,398,824	725.41
Construction	13	73	73	82	765,335	774.63
Trade, Transportation & Utilities	62	272	278	277	1,858,151	518.51
Wholesale Trade	10	82	85	85	802,586	734.97
Retail Trade	34	134	139	136	623,919	352.03
Transportation, Warehousing & Utilities	18	56	54	56	431,646	600.06
Financial Activities	19	55	52	54	391,437	561.07
Professional & Business Services	14	47	34	34	300,265	602.54
Education & Health Services	51	206	204	204	1,222,659	459.53
Leisure & Hospitality	17	81	76	87	237,473	224.60
Other Services	14	42	41	43	204,485	374.51
Local Government	15	337	344	331	2,605,334	594.10
State Government	9	39	38	38	285,053	572.01
Other	7	19	19	22	167,258	643.30
PULASKI COUNTY - TOTAL	14,978	236,036	235,103	234,866	\$2,431,101,686	\$794.65
Natural Resources & Mining	63	787	777	808	11,110,040	1,080.88
Construction	1,089	8,350	8,137	8,410	89,183,550	826.64
Manufacturing	373	12,901	12,925	12,878	155,881,315	929.43
Trade, Transportation & Utilities	3,420	46,392	46,135	46,178	439,364,100	730.99
Wholesale Trade	1,238	12,493	12,390	12,372	174,323,109	1,079.81
Retail Trade	1,758	24,425	24,211	24,218	155,748,408	493.34
Transportation, Warehousing & Utilities	424	9,474	9,534	9,588	109,292,583	881.99
Information	236	6,871	6,884	6,849	98,130,908	1,099.09
Financial Activities	1,754	15,697	15,582	15,672	211,273,041	1,038.43
Professional & Business Services	3,036	33,986	33,596	33,810	366,968,143	835.22
Education & Health Services	2,419	37,494	37,335	37,054	385,179,565	794.47
Leisure & Hospitality	1,117	21,106	21,233	21,231	81,169,780	294.66
Other Services	1,173	7,043	7,046	7,272	56,433,623	609.67
Local Government	101	17,291	17,316	17,313	203,666,140	905.24
State Government	197	28,118	28,137	27,391	332,741,481	917.99

TABLE 6. COUNTY SUMMARY

NORTH AMERICAN INDUSTRY CLASSIFICATION SYSTEM - INDUSTRY GROUPS	NUMBER OF	EMPLOYMENT			TOTAL EARNINGS	AVERAGE
	EMPLOYING UNITS	APRIL	MAY	JUNE	APR - JUN 2011	WEEKLY EARNINGS
RANDOLPH COUNTY - TOTAL	416	4,835	4,764	4,775	\$31,618,917	\$507.63
Natural Resources & Mining	27	116	101	106	648,304	463.18
Construction	32	72	76	73	443,074	462.66
Manufacturing	32	772	739	733	4,837,194	497.45
Trade, Transportation & Utilities	100	890	888	895	5,388,085	465.17
Wholesale Trade	21	192	192	193	1,254,250	501.63
Retail Trade	57	577	576	577	2,886,546	385.04
Transportation, Warehousing & Utilities	22	121	120	125	1,247,289	786.44
Information	5	42	42	42	374,982	686.78
Financial Activities	30	121	128	131	784,435	476.38
Professional & Business Services	40	261	254	252	1,263,416	380.13
Education & Health Services	69	1,096	1,069	1,101	7,798,870	551.05
Leisure & Hospitality	30	377	377	360	1,013,258	209.90
Other Services	18	47	45	41	237,991	412.94
Local Government	22	771	776	780	6,225,789	617.41
State Government	11	270	269	261	2,603,519	751.02
SAINT FRANCIS COUNTY - TOTAL	823	7,566	7,616	7,640	\$55,270,373	\$558.88
Natural Resources & Mining	35	170	178	189	1,355,010	582.30
Construction	42	181	192	206	1,649,080	657.27
Manufacturing	12	715	704	713	5,609,288	607.15
Trade, Transportation & Utilities	171	2,015	2,051	2,040	14,703,844	555.71
Wholesale Trade	37	607	619	620	6,134,690	766.90
Retail Trade	109	1,116	1,138	1,133	5,700,525	388.40
Transportation, Warehousing & Utilities	25	292	294	287	2,868,629	758.29
Information	8	73	73	73	608,243	640.93
Financial Activities	64	281	295	294	2,452,650	650.57
Professional & Business Services	49	341	334	313	2,108,451	492.48
Education & Health Services	317	1,506	1,521	1,515	10,054,321	510.84
Leisure & Hospitality	49	603	592	644	1,739,208	218.25
Other Services	32	88	87	89	354,873	310.20
Local Government	28	1,100	1,096	1,088	10,488,670	737.05
State Government	16	493	493	476	4,146,735	654.54

TABLE 6. COUNTY SUMMARY

NORTH AMERICAN INDUSTRY CLASSIFICATION SYSTEM - INDUSTRY GROUPS	NUMBER OF	EMPLOYMENT			TOTAL EARNINGS	AVERAGE
	EMPLOYING UNITS	APRIL	MAY	JUNE	APR - JUN 2011	WEEKLY EARNINGS
SALINE COUNTY - TOTAL	1,818	21,096	21,035	21,069	\$161,905,479	\$591.18
Natural Resources & Mining	12	39	38	40	537,519	1,060.20
Construction	278	1,808	1,770	1,750	15,184,041	657.66
Manufacturing	80	1,276	1,279	1,290	14,290,872	857.71
Trade, Transportation & Utilities	406	4,483	4,466	4,504	32,161,786	551.69
Wholesale Trade	110	498	490	494	5,662,094	881.67
Retail Trade	241	3,684	3,670	3,681	23,314,880	487.57
Transportation, Warehousing & Utilities	55	301	306	329	3,184,812	785.21
Information	10	82	82	81	793,351	747.27
Financial Activities	183	657	656	657	6,614,006	774.78
Professional & Business Services	246	1,399	1,393	1,389	10,964,104	605.16
Education & Health Services	268	3,197	3,165	3,164	24,732,025	599.14
Leisure & Hospitality	149	2,760	2,812	2,805	9,304,774	256.33
Other Services	140	682	650	649	4,270,532	497.48
Local Government	30	3,602	3,611	3,622	35,642,447	759.13
State Government	16	1,111	1,113	1,118	7,410,022	511.67
SCOTT COUNTY - TOTAL	186	2,925	2,941	2,935	\$19,458,758	\$510.22
Natural Resources & Mining	16	160	159	165	1,452,598	692.59
Trade, Transportation & Utilities	39	451	460	457	2,880,218	485.87
Wholesale Trade	8	67	66	65	719,656	838.76
Retail Trade	24	321	328	325	1,400,538	331.83
Transportation, Warehousing & Utilities	7	63	66	67	760,024	894.85
Financial Activities	22	66	65	66	425,036	497.89
Professional & Business Services	12	11	10	10	96,204	716.16
Education & Health Services	33	282	272	271	2,130,101	595.83
Leisure & Hospitality	15	144	149	148	480,031	251.19
Other Services	12	49	49	49	348,321	546.81
Local Government	5	421	429	420	3,877,568	704.59
State Government	7	62	61	63	372,881	462.63
Other	25	1,279	1,287	1,286	7,395,800	443.07

TABLE 6. COUNTY SUMMARY

NORTH AMERICAN INDUSTRY CLASSIFICATION SYSTEM - INDUSTRY GROUPS	NUMBER OF	EMPLOYMENT			TOTAL EARNINGS	AVERAGE
	EMPLOYING UNITS	APRIL	MAY	JUNE	APR - JUN 2011	WEEKLY EARNINGS
SEARCY COUNTY - TOTAL	190	1,716	1,688	1,717	\$9,616,799	\$433.36
Construction	7	11	12	11	81,846	555.52
Manufacturing	17	186	185	181	874,691	365.67
Trade, Transportation & Utilities	41	291	278	284	1,406,770	380.59
Wholesale Trade	9	52	53	52	261,997	385.10
Retail Trade	26	217	203	210	907,871	332.55
Transportation, Warehousing & Utilities	6	22	22	22	236,902	828.33
Information	5	13	13	13	82,336	487.20
Financial Activities	14	95	97	106	617,826	478.44
Professional & Business Services	12	38	27	28	126,971	315.06
Education & Health Services	56	367	360	354	2,056,634	439.05
Leisure & Hospitality	12	101	95	128	288,322	205.36
Local Government	10	373	380	374	2,760,180	565.19
State Government	7	118	117	118	586,681	383.54
Other	9	123	124	120	734,542	461.88
SEBASTIAN COUNTY - TOTAL	3,760	65,196	64,715	62,884	\$595,210,604	\$712.45
Natural Resources & Mining	68	1,585	1,596	1,596	30,703,872	1,483.25
Construction	285	2,291	2,347	2,395	22,367,135	733.92
Manufacturing	200	13,418	13,532	12,331	141,409,936	830.76
Trade, Transportation & Utilities	949	12,797	12,614	12,633	96,881,844	587.67
Wholesale Trade	242	2,716	2,652	2,665	28,632,824	822.55
Retail Trade	565	7,876	7,766	7,757	43,317,930	427.22
Transportation, Warehousing & Utilities	142	2,205	2,196	2,211	24,931,090	870.13
Information	52	842	843	851	10,971,774	998.40
Financial Activities	398	2,488	2,396	2,409	24,596,580	778.30
Professional & Business Services	584	7,851	7,613	7,503	70,729,957	710.68
Education & Health Services	564	10,556	10,361	10,285	101,887,293	753.56
Leisure & Hospitality	321	5,417	5,460	5,495	19,095,360	269.16
Other Services	279	1,326	1,282	1,353	8,418,885	490.49
Local Government	40	4,639	4,691	4,429	51,525,860	864.20
State Government	20	1,986	1,980	1,604	16,622,108	688.67

TABLE 6. COUNTY SUMMARY

NORTH AMERICAN INDUSTRY CLASSIFICATION SYSTEM - INDUSTRY GROUPS	NUMBER OF	EMPLOYMENT			TOTAL EARNINGS	AVERAGE
	EMPLOYING UNITS	APRIL	MAY	JUNE	APR - JUN 2011	WEEKLY EARNINGS
SEVIER COUNTY - TOTAL	324	5,116	4,996	4,982	\$33,124,671	\$506.44
Natural Resources & Mining	16	218	211	211	1,566,415	564.81
Construction	18	147	132	137	1,368,426	759.11
Trade, Transportation & Utilities	95	851	839	849	4,965,401	451.30
Wholesale Trade	16	97	96	105	1,153,065	892.93
Retail Trade	64	664	663	666	3,057,846	354.07
Transportation, Warehousing & Utilities	15	90	80	78	754,490	702.07
Information	3	21	21	21	184,553	676.02
Financial Activities	28	186	181	183	1,384,905	581.08
Professional & Business Services	30	100	79	82	671,904	594.08
Education & Health Services	49	513	517	513	3,283,930	491.14
Leisure & Hospitality	24	296	278	277	695,471	188.59
Local Government	12	901	900	917	6,655,605	565.09
State Government	8	245	213	196	1,439,780	508.04
Other	41	1,638	1,625	1,596	10,908,281	518.07
SHARP COUNTY - TOTAL	415	3,664	3,637	3,694	\$23,017,365	\$483.10
Natural Resources & Mining	3	7	5	6	\$26,254	336.59
Construction	26	124	126	132	1,104,289	667.11
Manufacturing	18	170	174	177	888,731	393.65
Trade, Transportation & Utilities	87	942	941	947	6,112,122	498.41
Wholesale Trade	14	41	43	38	437,792	828.11
Retail Trade	56	602	582	594	2,692,338	349.44
Transportation, Warehousing & Utilities	17	299	316	315	2,981,992	739.95
Information	7	50	38	39	582,776	1,058.95
Financial Activities	36	207	202	201	1,691,393	639.87
Professional & Business Services	47	141	132	131	1,031,289	589.08
Education & Health Services	93	686	663	664	3,995,413	458.03
Leisure & Hospitality	36	367	395	387	1,052,257	211.34
Other Services	29	80	79	142	470,490	360.71
Local Government	25	788	786	773	5,525,058	543.25
State Government	8	102	96	95	537,293	423.18

TABLE 6. COUNTY SUMMARY

NORTH AMERICAN INDUSTRY CLASSIFICATION SYSTEM - INDUSTRY GROUPS	NUMBER OF	EMPLOYMENT			TOTAL EARNINGS	AVERAGE
	EMPLOYING UNITS	APRIL	MAY	JUNE	APR - JUN 2011	WEEKLY EARNINGS
STONE COUNTY - TOTAL	293	2,631	2,640	2,716	\$15,399,644	\$444.94
Natural Resources & Mining	7	8	8	91	78,418	169.13
Construction	22	61	65	61	348,968	430.65
Manufacturing	24	188	205	199	1,082,645	422.03
Trade, Transportation & Utilities	71	684	687	694	3,804,742	425.19
Wholesale Trade	12	47	45	47	310,675	515.79
Retail Trade	47	600	604	609	3,059,050	389.37
Transportation, Warehousing & Utilities	12	37	38	38	435,017	888.39
Financial Activities	28	101	102	103	488,003	368.03
Professional & Business Services	16	43	34	32	184,892	391.44
Education & Health Services	54	533	514	505	3,563,674	529.89
Leisure & Hospitality	34	374	387	381	1,018,601	205.83
Local Government	10	423	420	436	3,524,804	635.98
State Government	8	147	151	148	768,552	397.66
Other	19	69	67	66	536,345	612.73
UNION COUNTY - TOTAL	1,350	17,234	17,074	17,168	\$168,446,435	\$755.15
Natural Resources & Mining	109	510	489	498	6,491,710	1,000.73
Construction	79	1,209	1,191	1,168	13,492,032	872.63
Manufacturing	53	2,787	2,800	2,819	36,196,542	993.70
Trade, Transportation & Utilities	340	3,705	3,630	3,621	33,874,680	713.51
Wholesale Trade	70	750	743	748	11,939,281	1,229.46
Retail Trade	213	2,116	2,071	2,056	11,065,002	409.01
Transportation, Warehousing & Utilities	57	839	816	817	10,870,397	1,014.79
Information	13	141	144	140	983,837	534.21
Financial Activities	118	766	764	777	6,525,894	652.79
Professional & Business Services	136	1,476	1,434	1,467	21,072,759	1,111.02
Education & Health Services	254	2,400	2,394	2,367	20,392,647	657.17
Leisure & Hospitality	90	1,221	1,229	1,262	3,719,453	231.23
Other Services	107	492	473	520	2,851,998	443.20
Local Government	34	1,922	1,925	1,945	18,021,708	718.03
State Government	17	605	601	584	4,823,175	621.81

TABLE 6. COUNTY SUMMARY

NORTH AMERICAN INDUSTRY CLASSIFICATION SYSTEM - INDUSTRY GROUPS	NUMBER OF	EMPLOYMENT			TOTAL EARNINGS	AVERAGE
	EMPLOYING UNITS	APRIL	MAY	JUNE	APR - JUN 2011	WEEKLY EARNINGS
VAN BUREN COUNTY - TOTAL	371	3,897	3,881	3,877	\$31,785,033	\$629.34
Natural Resources & Mining	13	223	216	212	3,454,719	1,224.64
Construction	43	216	230	245	1,986,449	663.40
Manufacturing	10	61	63	62	529,384	656.80
Trade, Transportation & Utilities	101	1,123	1,121	1,133	11,176,438	763.75
Wholesale Trade	10	36	35	35	283,455	617.10
Retail Trade	58	588	585	585	2,970,169	389.89
Transportation, Warehousing & Utilities	33	499	501	513	7,922,814	1,208.42
Information	8	49	49	50	421,029	656.49
Financial Activities	32	153	150	146	1,135,444	583.58
Professional & Business Services	31	139	125	126	789,365	467.08
Education & Health Services	60	681	688	662	4,148,102	471.32
Leisure & Hospitality	28	394	374	396	1,470,444	291.52
Other Services	27	72	70	71	437,384	473.87
Local Government	11	716	726	709	5,790,022	621.18
State Government	7	70	69	65	446,253	504.81
WASHINGTON COUNTY - TOTAL	5,460	89,121	88,891	89,917	837,010,037	\$720.92
Natural Resources & Mining	45	458	447	452	4,989,419	848.49
Construction	476	3,815	3,793	3,914	38,112,819	763.35
Manufacturing	223	12,755	12,770	12,772	113,840,776	685.98
Trade, Transportation & Utilities	1,347	20,347	20,394	20,522	175,472,994	660.98
Wholesale Trade	403	3,624	3,628	3,673	51,678,422	1,091.61
Retail Trade	764	10,297	10,307	10,352	62,131,301	463.17
Transportation, Warehousing & Utilities	180	6,426	6,459	6,497	61,663,271	734.19
Information	85	1,069	1,074	1,074	10,689,324	766.79
Financial Activities	566	3,290	3,315	3,282	35,990,714	840.05
Professional & Business Services	945	9,654	9,519	9,565	121,212,919	973.35
Education & Health Services	739	12,798	12,822	12,823	131,534,154	789.59
Leisure & Hospitality	574	9,772	9,904	9,721	33,661,483	264.25
Other Services	378	1,837	1,808	1,827	12,275,935	517.71
Local Government	60	8,160	8,262	8,241	93,281,877	872.83
State Government	22	5,166	4,783	5,724	65,947,623	971.01

TABLE 6. COUNTY SUMMARY

NORTH AMERICAN INDUSTRY CLASSIFICATION SYSTEM - INDUSTRY GROUPS	NUMBER OF	EMPLOYMENT			TOTAL EARNINGS	AVERAGE
	EMPLOYING UNITS	APRIL	MAY	JUNE	APR - JUN 2011	WEEKLY EARNINGS
WHITE COUNTY - TOTAL	1,823	25,436	25,371	25,218	\$214,356,599	\$650.67
Natural Resources & Mining	52	1,525	1,479	1,588	24,383,362	1,225.38
Construction	190	1,179	1,200	1,213	10,130,565	650.84
Manufacturing	70	2,572	2,556	2,535	25,674,464	773.18
Trade, Transportation & Utilities	477	6,326	6,284	6,350	49,786,597	605.97
Wholesale Trade	98	607	595	614	5,870,926	746.05
Retail Trade	282	3,270	3,245	3,250	17,520,925	414.06
Transportation, Warehousing & Utilities	97	2,449	2,444	2,486	26,394,746	825.46
Information	19	171	177	174	1,400,655	619.21
Financial Activities	171	865	866	858	8,190,551	730.06
Professional & Business Services	193	1,433	1,419	1,436	9,808,500	527.87
Education & Health Services	315	4,808	4,822	4,738	43,826,115	703.91
Leisure & Hospitality	148	2,448	2,453	2,346	7,043,596	224.29
Other Services	123	551	526	531	4,195,228	602.07
Local Government	47	2,798	2,821	2,807	24,879,183	681.38
State Government	18	760	768	642	5,037,783	535.74
WOODRUFF COUNTY - TOTAL	219	1,835	1,894	1,819	\$13,115,342	\$545.53
Natural Resources & Mining	27	152	150	158	1,029,005	516.22
Construction	6	37	42	43	314,208	594.34
Manufacturing	7	226	303	228	1,949,359	594.26
Trade, Transportation & Utilities	50	418	408	410	3,184,267	594.52
Wholesale Trade	12	155	155	163	1,630,001	795.25
Retail Trade	25	188	178	174	760,638	325.06
Transportation, Warehousing & Utilities	13	75	75	73	793,628	821.28
Financial Activities	13	59	56	57	430,376	577.43
Professional & Business Services	6	8	6	7	83,225	914.56
Education & Health Services	78	278	279	281	1,826,170	502.89
Leisure & Hospitality	7	62	55	55	179,385	240.68
Local Government	10	524	523	509	3,673,097	544.75
State Government	6	49	50	48	334,335	524.86
Other	9	22	22	23	111,915	385.47

TABLE 6. COUNTY SUMMARY

NORTH AMERICAN INDUSTRY CLASSIFICATION SYSTEM - INDUSTRY GROUPS	NUMBER OF	EMPLOYMENT			TOTAL EARNINGS	AVERAGE
	EMPLOYING UNITS	APRIL	MAY	JUNE	APR - JUN 2011	WEEKLY EARNINGS
YELL COUNTY - TOTAL	441	6,298	6,223	6,264	\$41,162,419	\$505.67
Natural Resources & Mining	26	205	179	188	1,541,887	622.06
Construction	34	216	198	203	1,381,210	516.60
Manufacturing	20	2,435	2,438	2,455	15,097,493	475.44
Trade, Transportation & Utilities	88	672	641	648	3,182,775	374.55
Wholesale Trade	16	33	16	15	176,697	637.13
Retail Trade	51	530	530	538	2,188,943	316.11
Transportation, Warehousing & Utilities	21	109	95	95	817,135	630.67
Financial Activities	33	157	161	159	1,196,476	578.85
Professional & Business Services	44	216	205	216	1,535,389	556.23
Education & Health Services	110	698	711	709	4,130,785	450.07
Leisure & Hospitality	32	334	325	333	941,202	218.95
Other Services	15	51	44	41	255,813	434.07
Local Government	27	1,203	1,212	1,204	11,267,104	718.46
State Government	12	111	109	108	632,285	444.85
Other	2	64	65	64	741,110	886.14
STATEWIDE COUNTY - TOTAL	5,351	18,965	19,374	18,069	\$261,478,467	\$1,069.73
Natural Resources & Mining	70	471	445	374	11,023,533	1,972.01
Construction	561	2,916	3,145	3,035	35,433,247	898.96
Manufacturing	35	273	268	273	2,952,720	837.10
Trade, Transportation & Utilities	1,899	5,770	5,739	5,752	103,732,479	1,386.84
Wholesale Trade	1,617	4,582	4,599	4,616	90,412,857	1,512.25
Retail Trade	109	451	444	428	5,847,975	1,020.05
Transportation, Warehousing & Utilities	173	737	696	708	7,471,647	805.34
Information	130	421	406	402	4,776,130	896.81
Financial Activities	321	939	982	994	15,909,129	1,259.46
Professional & Business Services	1,896	5,117	5,166	5,212	65,342,246	973.15
Education & Health Services	185	1,908	2,048	883	11,035,612	526.28
Leisure & Hospitality	64	98	93	100	762,364	604.57
Other	190	1,052	1,082	1,044	10,511,007	763.25

TABLE 7. FEDERAL GOVERNMENT EMPLOYMENT AND EARNINGS IN ARKANSAS

NORTH AMERICAN INDUSTRY CLASSIFICATION SYSTEM - INDUSTRY GROUPS	NUMBER OF EMPLOYING UNITS	EMPLOYMENT			TOTAL EARNINGS	AVERAGE WEEKLY EARNINGS
		APR	MAY	JUN	APR - JUN 2011	
TOTAL	1,253	21,184	21,113	21,252	\$346,646,424	\$1,258.80
Trade, Transportation & Utilities	615	5,955	5,915	5,891	76,983,815	1,000.25
Information	2	57	57	60	714,124	947.11
Financial Activities	19	172	171	168	3,324,603	1,501.40
Professional & Business Services	30	868	894	944	16,804,572	1,433.10
Education & Health Services	17	4,960	4,950	4,949	92,984,000	1,444.10
Leisure & Hospitality	22	350	355	395	3,573,244	749.63
Other Services	3	8	8	8	46,233	444.55
Public Administration	545	8,814	8,763	8,837	152,215,833	1,329.85

TABLE 8. WORKFORCE INVESTMENT AREA SUMMARY

NORTH AMERICAN INDUSTRY CLASSIFICATION SYSTEM - INDUSTRY GROUPS	NUMBER OF	EMPLOYMENT			TOTAL EARNINGS	AVERAGE
	EMPLOYING UNITS	APRIL	MAY	JUNE	APR - JUN 2011	WEEKLY EARNINGS
CENTRAL WORKFORCE INVESTMENT AREA	6,410	78,338	78,328	78,126	\$650,254,894	\$639.11
Natural Resources & Mining	211	2,234	2,287	2,344	30,506,090	1,025.47
Construction	762	5,239	5,155	5,242	45,605,123	673.08
Trade, Transportation & Utilities	1,498	15,532	15,489	15,601	109,006,467	539.56
Wholesale Trade	390	2,241	2,236	2,230	25,073,277	862.70
Retail Trade	864	11,650	11,597	11,653	65,953,129	436.10
Transportation, Warehousing & Utilities	244	1,641	1,656	1,718	17,980,061	827.37
Information	67	601	605	605	5,543,532	706.39
Financial Activities	661	2,733	2,744	2,757	26,174,689	733.58
Professional & Business Services	814	8,344	8,245	8,276	96,136,870	892.24
Education & Health Services	1,037	11,321	11,272	11,232	87,652,639	598.01
Leisure & Hospitality	522	9,079	9,197	9,142	28,558,996	240.37
Local Government	131	10,631	10,718	10,681	103,964,171	749.04
State Government	66	4,786	4,767	4,371	37,887,254	627.92
Other	641	7,838	7,849	7,875	79,219,063	775.88

*Note: Pulaski County is not included in the Central Workforce Investment. Please refer to Page 53 for information on Pulaski County.
Central Workforce Includes these counties: Faulkner, Lonoke, Monroe, Prairie, and Saline.

EASTERN WORKFORCE INVESTMENT AREA	3,938	36,875	36,798	37,060	\$281,367,436	\$586.37
Natural Resources & Mining	223	1,152	1,198	1,253	7,369,388	472.00
Construction	147	735	797	860	7,249,281	699.38
Trade, Transportation & Utilities	837	9,530	9,498	9,552	73,644,916	594.65
Wholesale Trade	177	2,096	2,106	2,116	21,413,606	782.15
Retail Trade	456	4,748	4,728	4,767	25,186,948	408.09
Transportation, Warehousing & Utilities	204	2,686	2,664	2,669	27,044,362	778.28
Financial Activities	258	1,376	1,386	1,393	11,790,197	654.83
Professional & Business Services	281	1,894	1,843	1,872	13,468,021	554.11
Education & Health Services	1,442	6,541	6,555	6,464	45,601,700	538.01
Leisure & Hospitality	247	3,345	3,334	3,482	11,206,386	254.51
Local Government	130	5,570	5,564	5,522	55,326,029	766.54
State Government	61	2,398	2,292	2,300	19,129,410	631.54
Other	312	4,334	4,331	4,362	36,582,108	648.04

Eastern Workforce Includes these counties: Crittenden, Cross, Lee, Phillips, and Saint Francis.

TABLE 8. WORKFORCE INVESTMENT AREA SUMMARY

NORTH AMERICAN INDUSTRY CLASSIFICATION SYSTEM - INDUSTRY GROUPS	NUMBER OF	EMPLOYMENT			TOTAL EARNINGS	AVERAGE
	EMPLOYING UNITS	APRIL	MAY	JUNE	APR - JUN 2011	WEEKLY EARNINGS
NORTH CENTRAL WORKFORCE INVESTMENT AREA	5,695	69,739	69,592	69,493	\$545,492,879	\$602.82
Construction	481	2,578	2,598	2,678	21,464,095	630.67
Manufacturing	253	9,064	9,136	9,002	83,923,281	711.97
Trade, Transportation & Utilities	1,424	16,008	15,899	16,034	120,969,739	582.30
Retail Trade	872	9,270	9,164	9,218	47,886,219	399.63
Other Trade, Transportation & Utilities	552	6,738	6,735	6,816	73,083,520	831.26
Information	67	540	530	531	4,293,861	618.92
Financial Activities	516	2,507	2,509	2,512	21,566,171	661.11
Professional & Business Services	513	2,908	2,769	2,797	19,938,425	542.98
Education & Health Services	1,064	12,715	12,682	12,631	103,048,828	625.34
Leisure & Hospitality	467	6,151	6,242	6,238	18,537,523	229.61
Local Government	231	9,573	9,664	9,510	78,989,902	634.10
State Government	106	3,292	3,292	3,031	23,983,673	575.63
Other	573	4,403	4,271	4,529	48,777,381	852.56

North Central Workforce Includes these counties: Cleburne, Fulton, Independence, IZard, Jackson, Sharp, Stone, Van Buren, White, and Woodruff.

NORTHEAST WORKFORCE INVESTMENT AREA	6,551	94,817	94,727	94,545	\$788,434,210	\$640.46
Natural Resources & Mining	406	1,974	2,002	2,131	13,915,284	525.83
Construction	461	2,964	2,968	3,220	27,967,212	705.20
Manufacturing	326	20,140	20,199	20,386	219,750,046	835.10
Trade, Transportation & Utilities	1,685	18,262	18,110	18,066	131,675,678	558.19
Wholesale Trade	395	3,697	3,687	3,673	39,788,085	830.41
Retail Trade	983	11,724	11,610	11,561	62,058,001	410.40
Transportation, Warehousing & Utilities	307	2,841	2,813	2,832	29,829,592	811.19
Financial Activities	575	3,142	3,124	3,114	28,202,322	693.84
Professional & Business Services	664	7,192	7,462	7,459	47,932,032	500.21
Education & Health Services	1,199	14,895	14,595	14,320	130,744,253	688.70
Leisure & Hospitality	495	7,788	7,869	7,906	24,368,967	238.66
Local Government	214	11,759	11,863	11,504	109,578,820	719.91
State Government	99	4,324	4,234	4,096	39,196,614	714.82
Other	427	2,377	2,301	2,343	15,102,982	496.41

Northeast Workforce Includes these counties: Clay, Craighead, Greene, Lawrence, Mississippi, Poinsett, and Randolph.

TABLE 8. WORKFORCE INVESTMENT AREA SUMMARY

NORTH AMERICAN INDUSTRY CLASSIFICATION SYSTEM - INDUSTRY GROUPS	NUMBER OF	EMPLOYMENT			TOTAL EARNINGS	AVERAGE
	EMPLOYING UNITS	APRIL	MAY	JUNE	APR - JUN 2011	WEEKLY EARNINGS
NORTHWEST WORKFORCE INVESTMENT AREA	14,774	229,980	229,877	231,377	\$2,173,883,944	\$725.75
Natural Resources & Mining	130	1,704	1,677	1,705	16,645,195	755.25
Trade, Transportation & Utilities	3,661	51,557	51,447	51,785	462,094,563	688.92
Wholesale Trade	1,189	9,070	9,043	9,099	143,462,126	1,216.62
Retail Trade	2,004	26,061	25,933	26,099	152,016,049	449.22
Transportation, Warehousing & Utilities	468	16,426	16,471	16,587	166,616,388	777.02
Education & Health Services	2,107	28,406	28,268	28,118	265,192,052	721.74
Leisure & Hospitality	1,503	22,943	23,677	24,035	82,462,446	269.33
Other Services	949	4,430	4,380	4,461	29,791,423	518.04
Local Government	307	22,312	22,481	22,051	231,032,967	797.61
State Government	107	7,992	7,597	8,277	87,469,091	845.77
Other	6,010	90,636	90,350	90,945	999,196,207	847.95
Northwest Workforce Includes these counties: Baxter, Benton, Boone, Carroll, Madison, Marion, Newton, Searcy, and Washington.						
SOUTHEAST WORKFORCE INVESTMENT AREA	5,969	73,182	72,985	72,971	\$603,521,630	\$635.55
Natural Resources & Mining	393	2,475	2,400	2,370	20,640,812	657.46
Construction	312	3,157	3,057	3,042	31,883,674	794.92
Manufacturing	212	15,244	15,363	15,440	157,782,070	790.74
Trade, Transportation & Utilities	1,323	12,730	12,651	12,744	93,249,640	564.44
Retail Trade	794	8,027	8,024	8,103	43,469,595	415.31
Other Trade, Transportation & Utilities	529	4,703	4,627	4,641	49,780,045	822.25
Education & Health Services	1,781	11,030	11,093	11,038	81,396,219	566.44
Local Government	208	10,026	10,026	10,039	90,082,486	690.85
State Government	137	6,512	6,517	6,480	53,697,068	635.18
Other	1,603	12,008	11,878	11,818	74,789,661	483.40
Southeast Workforce Includes these counties: Arkansas, Ashley, Bradley, Chicot, Cleveland, Desha, Drew, Grant, Jefferson, and Lincoln.						

TABLE 8. WORKFORCE INVESTMENT AREA SUMMARY

NORTH AMERICAN INDUSTRY CLASSIFICATION SYSTEM - INDUSTRY GROUPS	NUMBER OF	EMPLOYMENT			TOTAL EARNINGS	AVERAGE
	EMPLOYING UNITS	APRIL	MAY	JUNE	APR - JUN 2011	WEEKLY EARNINGS
SOUTHWEST WORKFORCE INVESTMENT AREA	5,797	81,226	80,619	80,413	\$695,817,029	\$662.82
Natural Resources & Mining	373	2,365	2,298	2,315	23,838,235	788.35
Trade, Transportation & Utilities	1452	15349	15278	15346	117259428	588.60
Retail Trade	892	8,870	8,840	8,890	45,806,150	397.39
Other Trade, Transportation & Utilities	560	6,479	6,438	6,456	71,453,278	851.14
Information	60	514	516	512	4,686,656	701.39
Financial Activities	497	2,732	2,708	2,740	22,443,339	633.16
Education & Health Services	1,078	9,599	9,481	9,460	66,032,223	533.92
Leisure & Hospitality	407	5,335	5,323	5,458	16,046,607	229.78
Other Services	374	1,764	1,704	1,794	9,830,874	431.14
Local Government	259	10,870	10,874	10,603	96,666,717	689.64
State Government	139	3,850	3,776	3,739	30,970,444	628.86
Other	1,158	28,848	28,661	28,446	308,042,506	827.02

Southwest Workforce Includes these counties: Calhoun, Columbia, Dallas, Hempstead, Howard, Lafayette, Little River, Miller, Nevada, Ouachita, Sevier, and Union

WEST CENTRAL WORKFORCE INVESTMENT AREA	8,149	107,183	106,044	105,538	\$815,406,036	\$590.31
Construction	775	4,514	4,458	4,552	39,404,314	672.38
Trade, Transportation & Utilities	1,901	21,127	21,165	21,187	161,868,302	588.45
Retail Trade	1,240	13,953	13,971	13,999	77,123,033	424.53
Other Trade, Transportation & Utilities	661	7,174	7,194	7,188	84,745,269	907.25
Financial Activities	800	3,569	3,552	3,560	30,486,982	658.69
Professional & Business Services	904	8,313	7,992	8,074	60,608,730	573.72
Education & Health Services	1,452	16,836	16,908	16,762	133,613,611	610.50
Leisure & Hospitality	759	12,789	12,299	12,808	43,029,271	262.03
Local Government	227	12,399	12,475	12,025	119,009,805	744.30
State Government	125	5,542	5,494	4,882	42,134,492	610.84
Other	1,206	22,094	21,701	21,688	185,250,529	652.84

West Central Workforce Includes these counties: Clark, Conway, Garland, Hot Spring, Johnson, Montgomery, Perry, Pike, Pope, and Yell

TABLE 8. WORKFORCE INVESTMENT AREA SUMMARY

NORTH AMERICAN INDUSTRY CLASSIFICATION SYSTEM - INDUSTRY GROUPS	NUMBER OF	EMPLOYMENT			TOTAL EARNINGS	AVERAGE
	EMPLOYING UNITS	APRIL	MAY	JUNE	APR - JUN 2011	WEEKLY EARNINGS
WESTERN WORKFORCE INVESTMENT AREA	6,613	103,294	102,924	100,954	\$881,516,400	\$662.26
Natural Resources & Mining	169	2,717	2,678	2,641	42,935,673	1,232.98
Trade, Transportation & Utilities	1,648	22,469	22,314	22,333	167,628,377	576.37
Wholesale Trade	385	3,741	3,691	3,688	38,831,901	805.86
Retail Trade	955	12,183	12,080	12,055	65,249,040	414.60
Transportation, Warehousing & Utilities	308	6,545	6,543	6,590	63,547,436	745.24
Financial Activities	655	3,744	3,650	3,662	34,384,891	717.71
Professional & Business Services	874	9,308	9,026	8,905	81,919,972	694.03
Education & Health Services	1,021	14,918	14,754	14,634	132,229,153	688.72
Leisure & Hospitality	524	8,120	8,213	8,246	27,325,618	256.56
Other Services	456	2,092	2,054	2,110	13,942,151	514.29
Local Government	151	9,694	9,794	9,542	96,585,315	767.79
State Government	73	3,157	3,153	2,726	23,984,169	612.53
Other	1,042	27,075	27,288	26,155	260,581,081	746.84

Western Workforce Includes these counties: Crawford, Franklin, Logan, Polk, Scott, and Sebastian

