

# Arkansas Covered Employment & Earnings

Annual  
2011

Jobs for People. People for Jobs.

**DWS**

Department of  
WORKFORCE**Services**







**COVERED EMPLOYMENT AND EARNINGS  
STATE OF ARKANSAS  
ANNUAL 2011**

**MIKE BEEBE, GOVERNOR  
STATE OF ARKANSAS**

**ARTEE WILLIAMS, DIRECTOR  
DEPARTMENT OF WORKFORCE SERVICES**

**PUBLISHED BY  
LABOR MARKET INFORMATION & ANALYSIS  
BUREAU OF LABOR STATISTICS PROGRAMS  
POST OFFICE BOX 2981  
LITTLE ROCK, ARKANSAS 72203-2981  
BERNADETTE COLEMAN, BLS PROGRAMS MANAGER  
TELEPHONE (501) 682-3159  
SUSAN PRICE, QCEW LEAD ANALYST  
TELEPHONE (501) 682-3103**

**STATE OF ARKANSAS WEBPAGE: <http://www.arkansas.gov>**

**DEPARTMENT OF WORKFORCE SERVICES WEBPAGE: <http://www.arkansas.gov/esd/>**

**WEBPAGE FOR LABOR MARKET INFORMATION: <http://www.discover.arkansas.gov>**

**RELEASED: JANUARY 2013**



## TABLE OF CONTENTS

	Page
Description of Data	1
Industry Classification	1
Definition of Covered Employment and Earnings	2
Federal Government	2
County Classification	2
Significant Developments During Calendar Year 2011	3

## GRAPHS AND TABLES

Graph 1	Average Total Covered Employment for Selected Years, Arkansas	7
Graph 2	Total Covered Earnings, by Calendar Quarter for Selected Years, Arkansas	8
Table 1	Annual Comparison of Covered Employment and Wages, by Industry	5
Table 2	Total Covered Employment in Arkansas, 2004 – 2011	6
Table 3	Total Covered Earnings, 2004 – 2011	9
Table 4	Total Taxable Earnings, 2004 – 2011	10
Table 5	State Summary – Employment and Total Earnings, by Industry, Calendar Year 2011	11
Table 6	County Summary – Employment and Total Earnings, by Industry, Calendar Year 2011	24
Table 7	Federal Government Employment and Total Earnings in Arkansas, Calendar Year 2011	62
Table 8	Workforce Investment Area – Employment and Total Earnings, by Industry, Calendar Year 2011	63





EMPLOYMENT AND EARNINGS  
UNDER THE ARKANSAS EMPLOYMENT SECURITY LAW  
ANNUAL 2011

#### DESCRIPTION OF DATA

This publication contains covered employment and payroll data by industry and county for the Calendar Year 2011. These data are compiled from quarterly contributions and wage reports submitted by employers subject to the Arkansas Employment Security Law. An employing unit is a single physical location where business is conducted, production takes place, or services are provided. Employment and wage data have been tabulated annually for the calendar year by industry under the **North American Industry Classification System** (NAICS) (see "Industry Classification" below) on a statewide, county and workforce area basis. Payroll data represent the total wages paid during the calendar year, and are also shown by

industry for the State and by publishable industry groups for each county and workforce area. The tabulation of this data is a joint effort in conjunction with the U.S. Bureau of Labor Statistics. In addition, there are tables included which set out total covered employment by months, quarterly payrolls, and average weekly earnings for the years 2004 through 2011. Data contained in this publication are subject to revision. Because of industry code changes between years, substantial employment and wage shifts among industries are anticipated.

#### INDUSTRY CLASSIFICATION

Previously published industry data will not be comparable in all instances with currently published data since industry codes have been revised. The last two revisions were based on the North American Industry Classification System (NAICS) a six digit industry code instead of the Standard Industrial Classification (SIC) system, a four digit industry code, which had been used previously. The following are the NAICS Manuals used to revise the data: (a) between January 1, 2001 and December 31, 2006 industry codes were assigned under the 2002 North American Industry Classification System (NAICS) Manual; (b) since January 1, 2007 industry codes have been assigned under the 2007 North American Industry Classification System Manual. The NAICS Manual represents a significant change in coding methodology as compared to the SIC Manual. One of the most significant changes involves how NAICS treats auxiliary units.

Auxiliary units are establishments primarily engaged in performing management of support services for other establishments of the same enterprise. The SIC code for these units was based on the activity of the enterprise served. The NAICS code is based on the actual activities that the establishment performs. Comparisons of many industries should not be made between this publication and previous Covered Employment and Earnings publications that were based on SIC. Even though some titles are the same or similar in nature, NAICS and SIC could differ in classification of employers. The implementation of NAICS represents a profound change for statistical programs and will create significant benefits along with transition obstacles for both data collectors and data users. A summary is available on the NAICS home page at <http://www.census.gov/naics>.

## DEFINITION OF COVERED EMPLOYMENT AND EARNINGS

Covered Employment is the number of workers employed by businesses subject to the Arkansas Employment Security Law who worked or received pay for the payroll period including the 12<sup>th</sup> of the month. An employer is subject to the law when they employ one or more employees in each of ten days during the current or preceding calendar year.

Currently excluded from coverage is employment covered by the Railroad Unemployment Insurance Act, some domestic service workers, employees of small agricultural establishments, self-

employed and unpaid family workers, insurance and real estate agents who are on commission only, and employees of churches and religious organizations except separately incorporated schools. The payroll information in this publication includes all wages and salaries paid to any covered employees by their employers including bonuses, commissions, and cash values of remuneration received in any medium other than cash. These wages include both taxable and nontaxable wages. Only the first \$12,000 paid to each worker by an employer in the calendar year is taxable under the Arkansas Employment Security Law.

## FEDERAL GOVERNMENT EMPLOYMENT

Table 7 on page 62 lists the average number of civilians employed by the Federal Government in Arkansas during the Calendar Year 2011. Employment and wage data are set out by industry divisions.

These data are obtained from required reports submitted by various government agencies having employment in the State. Civilian Federal workers are covered by the Unemployment Compensation for Federal Employees (UCFE) program.

## COUNTY CLASSIFICATION

Employment and payroll data by county are classified according to the county where the workers are employed. Employers with operations in more than one county are requested to furnish this agency with a breakdown of employment and wages for at least one quarter of each year by the counties in which they operate. Many such employers submit county data with each regular contribution report. Note: This information is invaluable in the preparation of monthly employment and payroll data by county.

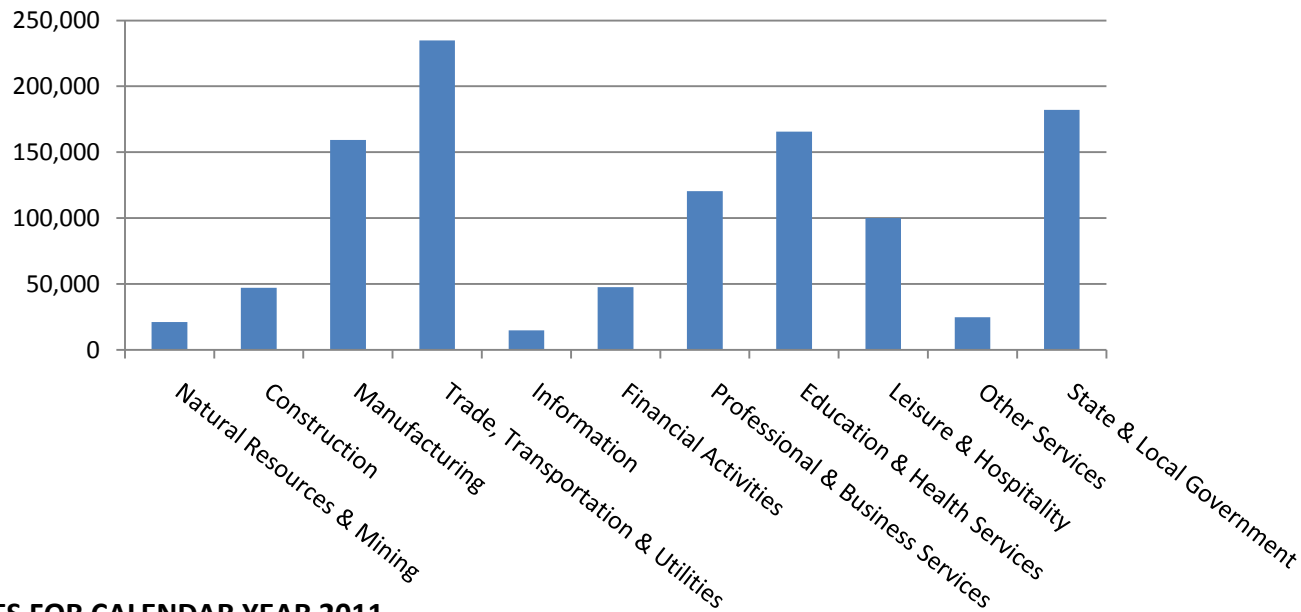
Employment and payroll data for multi-area employers, who do not furnish county data each quarter of the year, are prorated by county on the basis of one quarter's information. The "Statewide County" table that appears on page 61 of this publication includes data on firms that did not provide a county breakdown of employment and payrolls. It also includes sales, and all other types of personnel with no permanent place of work, as well as employment of employers with no established place of business in Arkansas.

## SIGNIFICANT DEVELOPMENTS DURING CALENDAR YEAR 2011

### AVERAGE EMPLOYMENT CHANGES

Covered employment averaged 1,118,522 during the Calendar Year 2011 (see Table 1, page 5), an increase of 7,575 from the previous year. The largest employment gains occurred in Trade, Transportation & Utilities (+3,411), Education and Health Services (+2,917), and Professional & Business Services (+2,880). The greatest annual loss occurred in Construction dropping, 1,509 jobs.

#### Average Covered Employment by NAICS



### EMPLOYMENT CHANGES FOR CALENDAR YEAR 2011

Six of the eleven major industry sectors recorded job gains over the year. The increase in Trade, Transportation & Utilities brought the sector's employment average up to 234,850. Jobs in Education and Health Services averaged 165,655 in 2011. Professional & Business Services posted an increase of 2,880. A majority of the gain occurred in Administrative & Waste Services.

Five industries experienced losses over the year. The most significant decline occurred in Construction, mostly attributed to losses in Heavy & Civil Engineering Construction (-656), as well as Specialty Trade Contractors (-579). Losses also occurred in the Information (-598), State & Local Government (-509), Manufacturing (-468), and Financial Activities (-212) sectors.

## EMPLOYMENT CHANGES FOR CALENDAR YEAR 2011

Pulaski County posted the highest average covered employment in 2011 at 234,216. Benton County came in second with 93,151 in covered employment, slightly higher than Washington County with 88,674. Sebastian County had the fourth highest number of covered employment with 64,437, followed by Craighead County with 43,410. Four of the five counties showed job growth over the year, Sebastian County experienced a decline.

## COVERED WAGES

Wages paid to covered workers totaled \$41,173,761,909 for the Calendar Year 2011 (see Table 1), for an average weekly wage of \$707.90 (see Table 5). Employees in Benton County recorded the highest average weekly wage (\$912.72), and workers in Newton County the lowest (\$419.12) (see Table 6).

The Information sector recorded the highest average weekly wage for the State of Arkansas at \$971.15; while the Leisure and Hospitality sector recorded the lowest at \$263.53 for the State of Arkansas (see Table 5).

## Average Weekly Wage by Industry

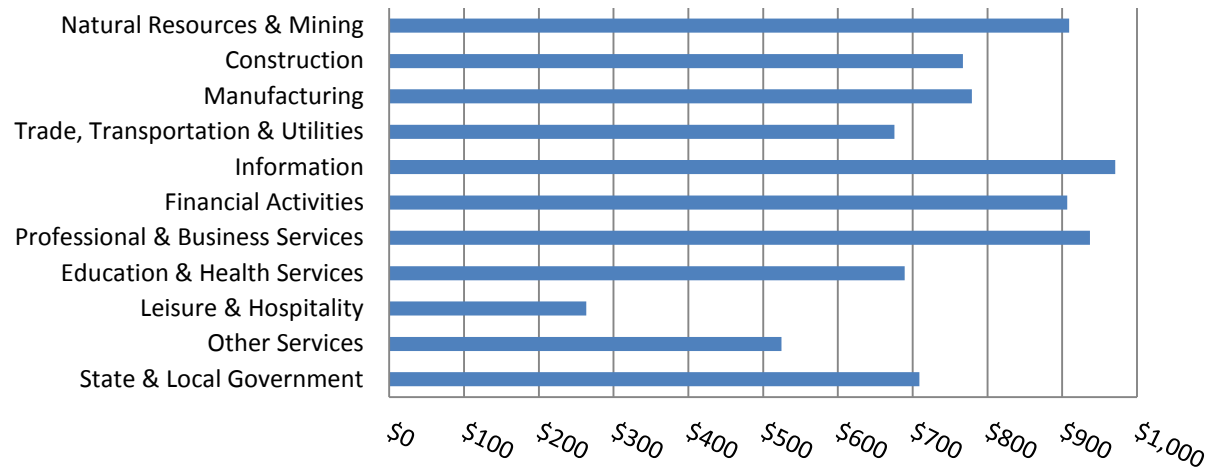


TABLE 1. YEARLY COMPARISON OF COVERED EMPLOYMENT AND WAGES, BY INDUSTRY

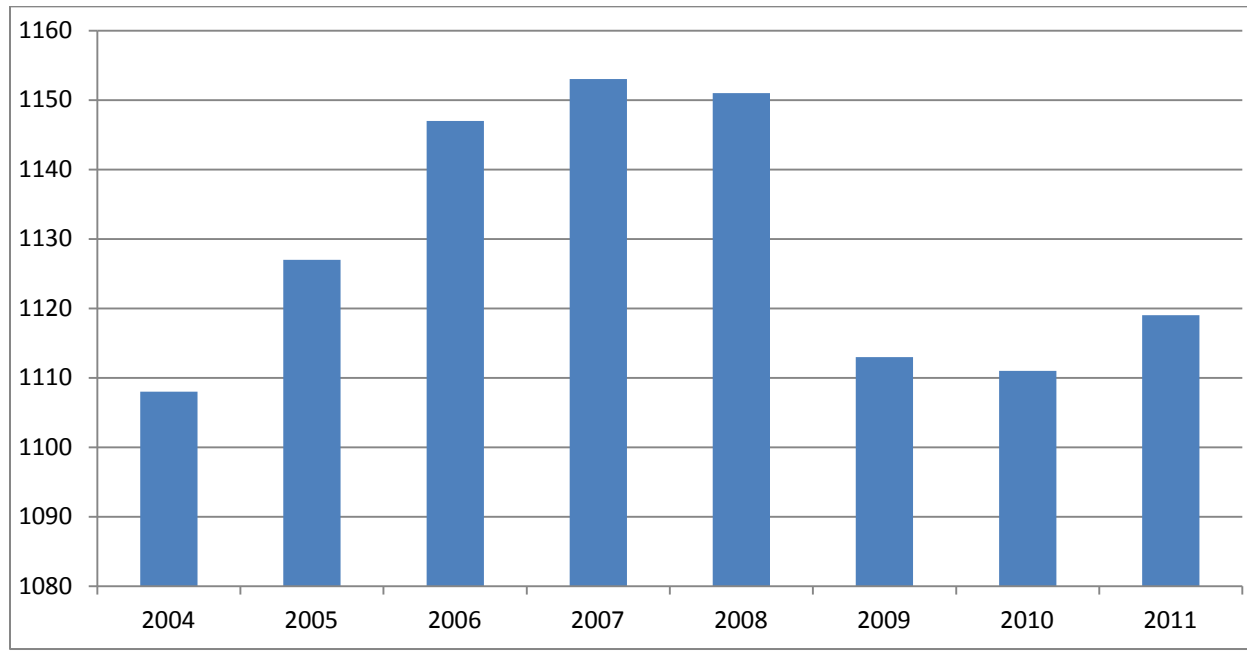
North American Industry Classification System	Number of Employing Units	Average Covered Employment	Percent of Total	Net Change From:		Total Earnings 2011	Percent of Total	Average Weekly Earnings
				2010	2010			
<b>Total</b>	<b>84,188</b>	<b>1,118,522</b>	<b>100</b>	7575		<b>\$41,173,761,909</b>	<b>100</b>	<b>707.90</b>
<b>Natural Resources &amp; Mining</b>	2,499	21,225	1.9%	131		1,003,402,486	2.4%	<b>909.13</b>
Agriculture, Forestry, Fishing & Hunting	1,971	12,137	1.1%	-600		395,839,531	1.0%	627.20
Mining	528	9,088	0.8%	730		607,562,955	1.5%	1,285.64
<b>Construction</b>	6,884	47,217	4.2%	-1509		1,883,751,069	4.6%	<b>767.22</b>
<b>Manufacturing</b>	3,160	159,352	14.2%	-468		6,455,488,171	15.7%	<b>779.06</b>
<b>Trade, Transportation &amp; Utilities</b>	20,826	234,850	21.0%	3411		8,252,880,720	20.0%	<b>675.79</b>
Wholesale Trade	6,556	46,642	4.2%	200		2,640,061,401	6.4%	1,088.51
Retail Trade	10,962	131,413	11.7%	1900		3,074,707,222	7.5%	449.95
Transportation & Warehousing	2,898	49,625	4.4%	1457		2,024,159,139	4.9%	784.41
Utilities	410	7,170	0.6%	-147		513,952,958	1.2%	1,378.48
<b>Information</b>	1,114	14,777	1.3%	-598		746,234,744	1.8%	<b>971.15</b>
<b>Financial Activities</b>	7,911	47,757	4.3%	-212		2,251,465,689	5.5%	<b>906.62</b>
Finance & Insurance	4,698	34,549	3.1%	112		1,832,687,144	4.5%	1,020.12
Real Estate & Rental & Leasing	3,213	13,208	1.2%	-324		418,778,545	1.0%	609.74
<b>Professional &amp; Business Services</b>	12,331	120,593	10.8%	2880		5,877,015,638	14.3%	<b>937.20</b>
Professional & Technical Services	7,705	39,086	3.5%	666		2,152,423,955	5.2%	1,059.02
Management of Companies & Enterprises	507	26,049	2.3%	-158		2,303,295,237	5.6%	1,700.42
Administrative & Waste Services	4,119	55,458	5.0%	2372		1,421,296,446	3.5%	492.85
<b>Education &amp; Health Services</b>	14,532	165,655	14.8%	2917		5,938,454,109	14.4%	<b>689.39</b>
Educational Services	707	11,612	1.0%	1234		348,149,893	0.8%	576.58
Health Care & Social Assistance	13,825	154,043	13.8%	1683		5,590,304,216	13.6%	697.90
<b>Leisure &amp; Hospitality</b>	6,475	100,115	9.0%	1335		1,371,909,846	3.3%	<b>263.53</b>
Arts, Entertainment & Recreation	927	9,594	0.9%	-80		171,296,248	0.4%	343.36
Accommodation & Food Services	5,548	90,521	8.1%	1414		1,200,613,598	2.9%	255.06
<b>Other Services</b>	5,374	24,802	2.2%	197		676,595,433	1.6%	<b>524.61</b>
<b>State &amp; Local Government</b>	3,082	182,179	16.3%	-509		6,716,564,004	16.3%	<b>709.00</b>
Local Government	1,959	112,820	10.1%	-819		3,838,413,448	9.3%	654.28
State Government	1,123	69,359	6.2%	310		2,878,150,556	7.0%	798.01
<b>Nonclassifiable Establishments</b>	0	0	0.0	0		0	0.0	0.00

Note: Items do not necessarily add to totals because of rounding. Because of industry code changes between years, substantial employment and wage shifts among industries are anticipated.

TABLE 2. TOTAL COVERED EMPLOYMENT IN ARKANSAS

<b>Period</b>	<b>2004</b>	<b>2005</b>	<b>2006</b>	<b>2007</b>	<b>2008</b>	<b>2009</b>	<b>2010</b>	<b>2011</b>
<b>Average</b>	<b>1,108,264</b>	<b>1,126,778</b>	<b>1,146,948</b>	<b>1,152,994</b>	<b>1,150,965</b>	<b>1,112,591</b>	<b>1,110,947</b>	<b>1,118,510</b>
January	1,089,510	1,102,768	1,130,595	1,137,437	1,141,856	1,119,299	1,089,984	1,098,349
February	1,094,626	1,110,577	1,136,810	1,143,397	1,149,443	1,119,476	1,091,282	1,098,445
March	1,105,266	1,122,619	1,150,439	1,158,895	1,157,690	1,124,386	1,106,198	1,113,061
April	1,111,020	1,129,785	1,155,498	1,159,623	1,159,841	1,123,383	1,115,341	1,129,635
May	1,117,144	1,135,567	1,159,886	1,165,224	1,166,111	1,122,322	1,123,250	1,126,371
June	1,117,010	1,136,118	1,162,026	1,164,207	1,164,167	1,117,884	1,130,164	1,123,412
July	1,071,463	1,090,071	1,106,142	1,110,571	1,114,279	1,071,048	1,073,743	1,080,937
August	1,094,871	1,114,098	1,130,839	1,139,109	1,138,583	1,093,192	1,099,795	1,106,262
September	1,122,704	1,144,815	1,159,814	1,165,135	1,162,333	1,116,580	1,124,281	1,132,779
October	1,123,246	1,142,300	1,156,804	1,162,768	1,157,196	1,113,157	1,125,073	1,138,038
November	1,125,061	1,145,667	1,156,011	1,164,246	1,152,159	1,115,443	1,126,781	1,138,693
December	1,127,250	1,146,954	1,158,509	1,165,314	1,147,927	1,114,919	1,125,466	1,136,143

**Graph 1**  
**AVERAGE TOTAL COVERED EMPLOYMENT**  
In Thousands



Graph 2  
TOTAL COVERED EARNINGS BY CALENDAR YEAR  
In Thousands

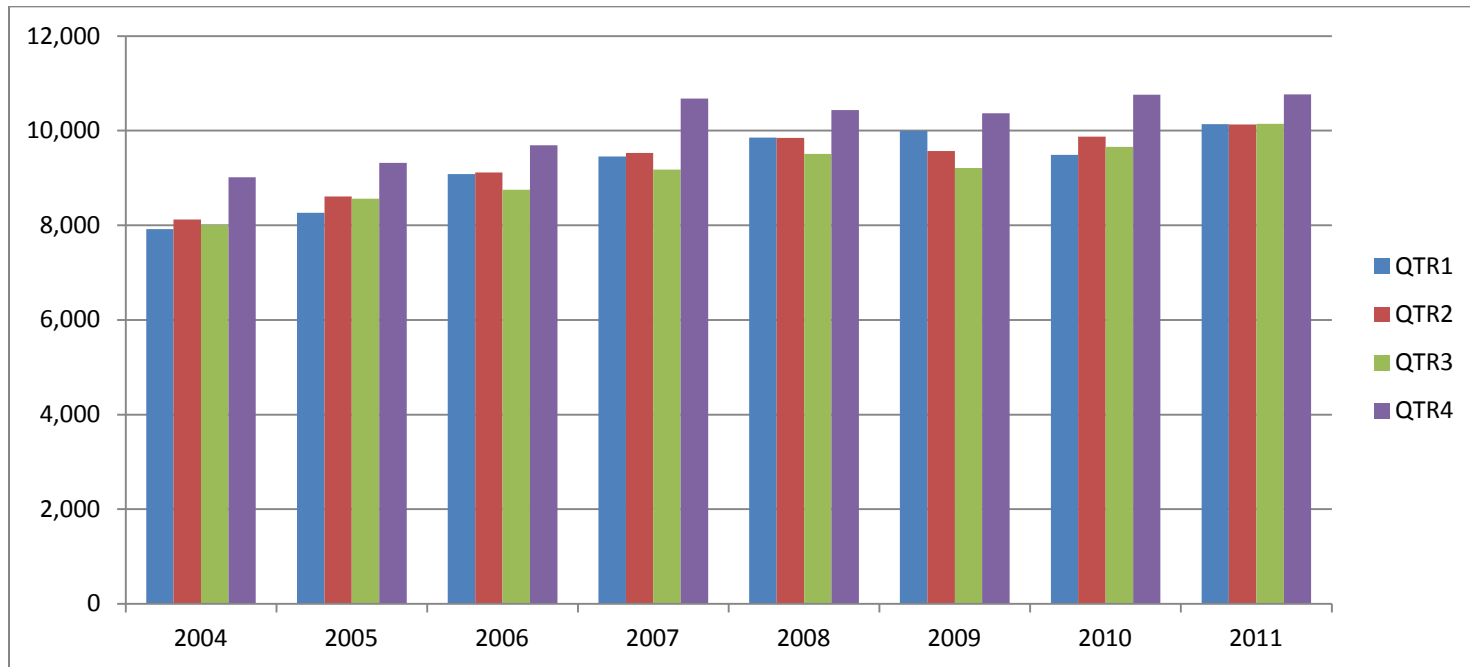




TABLE 3. TOTAL COVERED EARNINGS 2004 - 2011

<b>Period</b>	<b>2004</b>	<b>2005</b>	<b>2006</b>	<b>2007</b>
<b>Total</b>	<b>\$33,068,189,304</b>	<b>\$34,753,107,631</b>	<b>\$36,636,090,775</b>	<b>\$38,833,265,464</b>
January - March	7,918,843,610	8,261,153,981	9,085,021,816	9,452,711,662
April - June	8,122,370,361	8,607,722,353	9,112,624,590	9,525,837,049
July - September	8,010,300,454	8,562,555,369	8,750,878,205	9,178,902,477
October - December	9,016,674,879	9,321,675,928	9,687,566,164	10,675,814,276
<b>Average Weekly Earnings</b>	<b>\$573.80</b>	<b>\$593.13</b>	<b>\$614.27</b>	<b>\$647.70</b>

<b>Period</b>	<b>2008</b>	<b>2009</b>	<b>2010</b>	<b>2011</b>
<b>Total</b>	<b>\$39,643,039,342</b>	<b>\$39,149,476,305</b>	<b>\$39,769,504,992</b>	<b>\$41,173,761,909</b>
January - March	9,851,866,058	9,998,452,028	9,486,245,580	10,134,035,254
April - June	9,843,711,293	9,566,968,853	9,873,489,653	10,128,274,611
July - September	9,509,150,631	9,213,797,140	9,653,588,807	10,147,287,431
October - December	10,438,311,360	10,370,258,284	10,756,180,952	10,764,164,613
<b>Average Weekly Earnings</b>	<b>\$662.37</b>	<b>\$676.69</b>	<b>\$688.42</b>	<b>\$707.91</b>

TABLE 4. TOTAL TAXABLE EARNINGS, 2004 - 2011

<b>Period</b>	<b>2004</b>	<b>2005</b>	<b>2006</b>	<b>2007</b>
<b>Total</b>	<b>9,731,247,501</b>	<b>9,991,605,239</b>	<b>10,197,511,360</b>	<b>10,459,105,059</b>
<b>January - March</b>	4,931,559,230	5,062,670,306	5,421,204,601	5,617,417,571
<b>April - June</b>	2,451,454,749	2,506,505,721	2,385,110,992	2,466,606,627
<b>July - September</b>	1,318,017,835	1,353,660,445	1,314,939,803	1,307,060,412
<b>October - December</b>	1,030,215,687	1,068,768,767	1,076,255,964	1,068,020,449

<b>Period</b>	<b>2008</b>	<b>2009</b>	<b>2010</b>	<b>2011</b>
<b>Total</b>	<b>10,360,487,108</b>	<b>9,787,660,886</b>	<b>11,332,118,456</b>	<b>11,292,185,376</b>
<b>January - March</b>	5,635,750,082	5,423,705,265	5,607,134,758	5,737,042,926
<b>April - June</b>	2,419,313,519	2,293,670,854	2,977,100,591	2,847,840,149
<b>July - September</b>	1,297,473,555	1,165,280,065	1,577,067,770	1,579,822,306
<b>October - December</b>	1,007,949,952	905,004,702	1,170,815,337	1,127,479,995

TABLE 5. STATEWIDE SUMMARY  
CALENDAR YEAR 2011

NORTH AMERICAN INDUSTRY CLASSIFICATION SYSTEM - INDUSTRY GROUPS		AVERAGE EMPLOYING UNITS	AVERAGE COVERED EMPLOYMENT	TOTAL CALENDAR EARNINGS	AVERAGE WEEKLY EARNINGS
<b>TOTAL, ALL INDUSTRIES</b>		<b>84,188</b>	<b>1,118,522</b>	<b>\$41,173,761,909</b>	<b>\$707.90</b>
<b>NATURAL RESOURCES &amp; MINING</b>		<b>2,499</b>	<b>21,225</b>	<b>\$1,003,402,486</b>	<b>\$909.13</b>
<b>11</b>	<b>AGRICULTURE, FORESTRY, FISHING &amp; HUNTING</b>	<b>1,971</b>	<b>12,137</b>	<b>\$395,839,531</b>	<b>\$627.20</b>
<b>111</b>	<b>CROP PRODUCTION</b>	<b>827</b>	<b>3,990</b>	<b>\$96,864,250</b>	<b>\$466.86</b>
1111	Oilseed & Grain Farming	512	2,326	57,345,452	474.12
1112	Vegetable & Melon Farming	10	98	1,922,868	377.33
1113	Fruit & Tree Nut Farming	12	101	1,711,153	325.81
1114	Greenhouse & Nursery Production	47	351	8,840,616	484.36
1119	Other Crop Farming	246	1,114	27,044,161	466.86
<b>112</b>	<b>ANIMAL PRODUCTION &amp; AQUACULTURE</b>	<b>278</b>	<b>2,852</b>	<b>\$111,355,316</b>	<b>\$750.86</b>
1121	Cattle Ranching & Farming	92	327	8,621,256	507.01
1122	Hog & Pig Farming	9	87	4,683,122	1,035.17
1123	Poultry & Egg Production	99	1,974	83,946,783	817.81
1125	Animal Aquaculture	57	402	12,483,723	597.19
1129	Other Animal Production	21	62	1,620,432	502.62
<b>113</b>	<b>FORESTRY &amp; LOGGING</b>	<b>425</b>	<b>2,221</b>	<b>\$75,813,085</b>	<b>\$656.44</b>
1131	Timber Tract Operations	37	185	7,903,912	821.61
1132	Forest Nurseries & Gathering of Forest Products	5	22	914,401	799.30
1133	Logging	383	2,014	66,994,772	639.70
<b>114</b>	<b>FISHING, HUNTING &amp; TRAPPING</b>	<b>4</b>	<b>23</b>	<b>\$496,252</b>	<b>\$414.93</b>
<b>115</b>	<b>SUPPORT ACTIVITIES FOR AGRICULTURE &amp; FORESTRY</b>	<b>437</b>	<b>3,051</b>	<b>\$111,310,628</b>	<b>\$701.60</b>
1151	Support Activities for Crop Production	302	1,722	71,849,377	802.39
1152	Support Activities for Animal Production	60	678	17,572,151	498.42
1153	Support Activities for Forestry	75	651	21,889,100	646.61
<b>21</b>	<b>MINING</b>	<b>528</b>	<b>9,088</b>	<b>\$607,562,955</b>	<b>\$1,285.64</b>
<b>211</b>	<b>OIL &amp; GAS EXTRACTION</b>	<b>93</b>	<b>1,526</b>	<b>\$129,388,897</b>	<b>\$1,630.57</b>
<b>212</b>	<b>MINING (EXCEPT OIL &amp; GAS)</b>	<b>113</b>	<b>2,156</b>	<b>\$106,206,777</b>	<b>\$947.33</b>
<b>213</b>	<b>SUPPORT ACTIVITIES FOR MINING</b>	<b>322</b>	<b>5,406</b>	<b>\$371,967,281</b>	<b>\$1,323.20</b>

TABLE 5. STATEWIDE SUMMARY  
CALENDAR YEAR 2011

NORTH AMERICAN INDUSTRY CLASSIFICATION SYSTEM - INDUSTRY GROUPS		AVERAGE EMPLOYING UNITS	AVERAGE COVERED EMPLOYMENT	TOTAL CALENDAR EARNINGS	AVERAGE WEEKLY EARNINGS
<b>CONSTRUCTION</b>		<b>6,884</b>	<b>47,217</b>	<b>\$1,883,751,069</b>	<b>\$767.22</b>
<b>236</b>	<b>CONSTRUCTION OF BUILDINGS</b>	<b>1,643</b>	<b>9,480</b>	<b>\$404,068,464</b>	<b>\$819.68</b>
2361	Residential Building Construction	1,090	2,727	90,056,066	635.07
2362	Nonresidential Building Construction	553	6,753	314,012,398	894.22
<b>237</b>	<b>HEAVY &amp; CIVIL ENGINEERING CONSTRUCTION</b>	<b>813</b>	<b>9,791</b>	<b>\$455,985,974</b>	<b>\$895.61</b>
2371	Utility System Construction	430	5,564	265,856,402	918.88
2372	Land Subdivision	89	300	11,230,433	719.90
2373	Highway, Street & Bridge Construction	202	2,728	107,373,890	756.92
2379	Other Heavy Construction	92	1,199	71,525,249	1,147.19
<b>238</b>	<b>SPECIALTY TRADE CONTRACTORS</b>	<b>4,428</b>	<b>27,946</b>	<b>\$1,023,696,631</b>	<b>\$704.45</b>
2381	Building Foundation & Exterior Contractors	848	5,259	174,995,224	639.91
2382	Building Equipment Contractors	2,009	14,338	580,886,250	779.11
2383	Building Finishing Contractors	801	3,896	122,912,133	606.70
2389	Other Specialty Trade Contractors	770	4,453	144,903,024	625.78
<b>MANUFACTURING</b>		<b>3,160</b>	<b>159,352</b>	<b>\$6,455,488,171</b>	<b>\$779.06</b>
<b>311</b>	<b>FOOD MANUFACTURING</b>	<b>283</b>	<b>44,472</b>	<b>\$1,380,139,088</b>	<b>\$596.81</b>
3111	Animal Food Manufacturing	48	1,646	64,475,058	753.28
3112	Grain & Oilseed Milling	29	2,290	97,487,428	818.67
3113	Sugar & Confectionery Product Manufacturing	6	47	1,066,975	436.57
3114	Fruit, Vegetable & Specialty Food	22	4,921	183,975,843	718.96
3115	Dairy Product Manufacturing	11	645	26,501,480	790.15
3116	Animal Slaughtering & Processing	83	30,204	830,481,683	528.76
3117	Seafood Product Preparation & Packaging	5	102	1,988,466	374.90
3118	Bakeries and Tortilla Manufacturing	56	2,958	106,969,542	695.44
3119	Other Food Manufacturing	23	1,659	67,192,613	778.88
<b>312</b>	<b>BEVERAGE &amp; TOBACCO PRODUCT MANUFACTURING</b>	<b>41</b>	<b>1,042</b>	<b>\$48,951,769</b>	<b>\$903.44</b>
<b>313</b>	<b>TEXTILE MILLS</b>	<b>14</b>	<b>85</b>	<b>\$2,932,416</b>	<b>\$663.44</b>
<b>314</b>	<b>TEXTILE PRODUCT MILLS</b>	<b>57</b>	<b>960</b>	<b>\$39,630,542</b>	<b>\$793.88</b>
3141	Textile Furnishing Mills	13	32	1,364,639	820.10
3149	Other Textile Product Mills	44	928	38,265,903	792.98

TABLE 5. STATEWIDE SUMMARY  
CALENDAR YEAR 2011

NORTH AMERICAN INDUSTRY CLASSIFICATION SYSTEM - INDUSTRY GROUPS		AVERAGE EMPLOYING UNITS	AVERAGE COVERED EMPLOYMENT	TOTAL CALENDAR EARNINGS	AVERAGE WEEKLY EARNINGS
<b>315</b>	<b>APPAREL MANUFACTURING</b>	<b>26</b>	<b>1,166</b>	<b>\$27,064,230</b>	<b>\$446.37</b>
<b>316</b>	<b>LEATHER &amp; ALLIED PRODUCT MANUFACTURING</b>	<b>18</b>	<b>1,314</b>	<b>\$32,319,232</b>	<b>\$473.00</b>
<b>321</b>	<b>WOOD PRODUCT MANUFACTURING</b>	<b>336</b>	<b>9,265</b>	<b>\$328,966,176</b>	<b>\$682.81</b>
3211	Sawmills & Wood Preservation	134	4,040	148,913,830	708.84
3212	Veneer & Engineered Wood Products	53	2,538	106,398,192	806.19
3219	Other Wood Product Manufacturing	149	2,687	73,654,154	527.14
<b>322</b>	<b>PAPER MANUFACTURING</b>	<b>82</b>	<b>10,279</b>	<b>\$599,942,025</b>	<b>\$1,122.42</b>
3221	Pulp, Paper & Paperboard Mills	13	4,247	315,588,647	1,429.01
3222	Converted Paper Product Manufacturing	69	6,032	284,353,378	906.55
<b>323</b>	<b>PRINTING &amp; RELATED SUPPORT ACTIVITIES</b>	<b>256</b>	<b>5,379</b>	<b>\$199,962,524</b>	<b>\$714.90</b>
<b>324</b>	<b>PETROLEUM &amp; COAL PRODUCTS MANUFACTURING</b>	<b>18</b>	<b>949</b>	<b>\$49,556,374</b>	<b>\$1,004.22</b>
<b>325</b>	<b>CHEMICAL MANUFACTURING</b>	<b>120</b>	<b>4,895</b>	<b>\$273,495,630</b>	<b>\$1,074.47</b>
3251	Basic Chemical Manufacturing	28	1,778	115,649,914	1,250.86
3252	Resin, Rubber & Artificial Fibers	7	268	15,848,684	1,137.25
3253	Agricultural Chemical Manufacturing	19	372	21,973,634	1,135.94
3254	Pharmaceutical & Medicine Manufacturing	12	158	7,845,956	954.96
3255	Paint, Coating & Adhesive Manufacturing	9	193	11,714,173	1,167.22
3256	Soap, Cleaning Compound, & Toilet Preparation Manufacturing	13	1,011	49,759,505	946.50
3259	Other Chemical Preparation Manufacturing	32	1,115	50,703,764	874.50
<b>326</b>	<b>PLASTICS &amp; RUBBER PRODUCTS MANUFACTURING</b>	<b>141</b>	<b>10,494</b>	<b>\$469,378,370</b>	<b>\$860.16</b>
3261	Plastics Product Manufacturing	99	6,463	256,234,002	762.43
3262	Rubber Product Manufacturing	42	4,031	213,144,368	1,016.85
<b>327</b>	<b>NONMETALLIC MINERAL PRODUCT MANUFACTURING</b>	<b>251</b>	<b>3,376</b>	<b>\$135,558,988</b>	<b>\$772.19</b>
3271	Clay Product & Refractory Manufacturing	14	354	14,065,024	764.07
3272	Glass & Glass Product Manufacturing	16	379	14,983,066	760.25
3273	Cement & Concrete Product Manufacturing	180	1,909	72,025,175	725.56
3274	Lime & Gypsum Product Manufacturing	5	208	11,183,633	1,033.99
3279	Other Nonmetallic Mineral Products Manufacturing	36	526	23,302,090	851.93

TABLE 5. STATEWIDE SUMMARY  
CALENDAR YEAR 2011

NORTH AMERICAN INDUSTRY CLASSIFICATION SYSTEM - INDUSTRY GROUPS		AVERAGE EMPLOYING UNITS	AVERAGE COVERED EMPLOYMENT	TOTAL CALENDAR EARNINGS	AVERAGE WEEKLY EARNINGS
<b>331</b>	<b>PRIMARY METAL MANUFACTURING</b>	<b>72</b>	<b>8,700</b>	<b>\$500,296,380</b>	<b>\$1,105.87</b>
3311	Iron & Steel Mills & Ferroalloys	9	2,373	203,643,157	1,650.32
3312	Purchased Steel Product Manufacturing	18	2,576	133,424,080	996.06
3313	Alumina & Aluminum Production	20	1,501	75,221,615	963.74
3314	Other Nonferrous Metal Production	8	737	27,587,451	719.85
3315	Foundries	17	1,513	60,420,077	767.96
<b>332</b>	<b>FABRICATED METAL PRODUCT MANUFACTURING</b>	<b>535</b>	<b>13,849</b>	<b>\$600,476,575</b>	<b>\$833.82</b>
3321	Forging & Stamping	12	439	19,845,501	869.35
3322	Cutlery & Hand Tool Manufacturing	16	958	36,864,690	740.02
3323	Architectural & Structural Metals	160	3,585	161,161,288	864.51
3324	Boilers, Tanks & Shipping Containers	18	559	26,951,910	927.20
3325	Hardware Manufacturing	8	351	14,895,929	816.13
3326	Spring & Wire Product Manufacturing	15	438	17,215,187	755.85
3327	Machine Shops & Threaded Products	204	1,731	65,279,158	725.23
3328	Coating, Engraving & Heat Treating Metals	37	578	19,315,461	642.65
3329	Other Fabricated Metal Product Manufacturing	65	5,210	238,947,451	881.99
<b>333</b>	<b>MACHINERY MANUFACTURING</b>	<b>220</b>	<b>11,664</b>	<b>\$470,421,576</b>	<b>\$775.60</b>
3331	Agriculture, Construction & Mining Machinery	38	2,997	104,181,889	668.50
3332	Industrial Machinery Manufacturing	29	582	27,562,109	910.72
3333	Commercial & Service Industry Machinery	21	869	39,560,358	875.46
3334	HVAC & Commercial Refrigeration Equipment	18	3,650	142,297,221	749.72
3335	Metalworking Machinery Manufacturing	63	998	41,938,145	808.12
3336	Turbine & Power Transmission Equipment Manufacturing	7	681	30,834,168	870.73
3339	Other General Purpose Machinery Manufacturing	44	1,887	84,047,686	856.55
<b>334</b>	<b>COMPUTER &amp; ELECTRONIC PRODUCT MANUFACTURING</b>	<b>68</b>	<b>3,101</b>	<b>\$126,370,229</b>	<b>\$783.68</b>
3342	Communications Equipment Manufacturing	8	113	6,619,000	1,126.45
3343	Audio & Video Equipment Manufacturing	7	527	18,731,846	683.54
3344	Semiconductors & Electronic Components	27	1,940	77,177,020	765.04
3345	Electronic Instrument Manufacturing	23	505	23,362,399	889.66
	Other	3	16	479,964	576.88
<b>335</b>	<b>ELECTRICAL EQUIPMENT &amp; APPLIANCES</b>	<b>56</b>	<b>7,209</b>	<b>\$344,238,000</b>	<b>\$918.29</b>
3353	Electrical Equipment Manufacturing	19	3,684	201,000,384	1,049.24
3359	Other Electrical Equipment & Component Manufacturing	22	1,746	77,424,327	852.77
	Other	15	1,779	65,813,289	711.43

TABLE 5. STATEWIDE SUMMARY  
CALENDAR YEAR 2011

NORTH AMERICAN INDUSTRY CLASSIFICATION SYSTEM - INDUSTRY GROUPS		AVERAGE EMPLOYING UNITS	AVERAGE COVERED EMPLOYMENT	TOTAL CALENDAR EARNINGS	AVERAGE WEEKLY EARNINGS
<b>336</b>	<b>TRANSPORTATION EQUIPMENT MANUFACTURING</b>	<b>157</b>	<b>13,269</b>	<b>\$556,145,257</b>	<b>\$806.02</b>
3362	Motor Vehicle Body & Trailer Manufacturing	35	1,620	54,051,520	641.64
3363	Motor Vehicle Parts Manufacturing	54	6,028	231,122,499	737.34
3364	Aerospace Product & Parts Manufacturing	29	3,298	186,815,796	1,089.33
3366	Ship & Boat Building	25	1,331	40,229,812	581.25
	Other	14	992	43,925,630	851.54
<b>337</b>	<b>FURNITURE &amp; RELATED PRODUCT MANUFACTURING</b>	<b>202</b>	<b>3,632</b>	<b>\$121,555,162</b>	<b>\$643.61</b>
3371	Household & Institutional Furniture	165	2,577	78,896,161	588.76
3372	Office Furniture & Fixtures Manufacturing	28	957	39,894,024	801.66
3379	Other Furniture Related Product Manufacturing	9	98	2,764,977	542.58
<b>339</b>	<b>MISCELLANEOUS MANUFACTURING</b>	<b>207</b>	<b>4,252</b>	<b>\$148,087,628</b>	<b>\$669.76</b>
3391	Medical Equipment & Supplies Manufacturing	86	2,384	93,132,989	751.27
3399	Other Miscellaneous Manufacturing	121	1,868	54,954,639	565.75
	<b>TRADE, TRANSPORTATION &amp; UTILITIES</b>	<b>20,826</b>	<b>234,850</b>	<b>\$8,252,880,720</b>	<b>\$675.79</b>
<b>42</b>	<b>WHOLESALE TRADE</b>	<b>6,556</b>	<b>46,642</b>	<b>\$2,640,061,401</b>	<b>\$1,088.51</b>
<b>423</b>	<b>MERCHANT WHOLESALERS, DURABLE GOODS</b>	<b>2,164</b>	<b>20,798</b>	<b>\$1,039,455,665</b>	<b>\$961.13</b>
4231	Motor Vehicle & Part Merchant Wholesalers	246	2,586	102,670,538	763.51
4232	Furniture & Furnishings Merchant Wholesalers	56	353	17,944,921	977.61
4233	Lumber & Supply Merchant Wholesalers	181	1,387	56,759,239	786.97
4234	Commercial Goods Merchant Wholesalers	303	2,766	174,368,328	1,212.31
4235	Metal & Mineral Merchant Wholesalers	53	837	44,908,176	1,031.80
4236	Appliances & Electronics Goods Merchant Wholesalers	185	2,024	113,035,540	1,073.99
4237	Hardware & Plumbing Merchant Wholesalers	220	2,144	111,922,667	1,003.90
4238	Machinery & Supply Merchant Wholesalers	700	6,721	334,585,925	957.35
4239	Miscellaneous Durable Goods Merchant Wholesalers	220	1,980	83,260,331	808.67
<b>424</b>	<b>MERCHANT WHOLESALERS, NONDURABLE GOODS</b>	<b>1,195</b>	<b>15,748</b>	<b>\$757,724,605</b>	<b>\$925.30</b>
4241	Paper & Paper Product Merchant Wholesalers	71	1,073	54,705,918	980.46
4242	Druggist' Goods Merchant Wholesalers	65	963	47,919,294	956.93
4243	Apparel & Piece Goods Merchant Wholesalers	41	553	21,655,972	753.09
4244	Grocery Product Merchant Wholesalers	313	5,290	280,047,599	1,018.06
4245	Farm Product Merchant Wholesalers	73	871	28,215,403	622.97
4246	Chemical merchant Wholesalers	93	599	35,279,777	1,132.65
4247	Petroleum Merchant Wholesalers	135	1,481	79,720,549	1,035.17
4248	Alcoholic Beverage Merchant Wholesalers	37	1,247	61,040,145	941.34
4249	Miscellaneous Nondurable Goods Merchant Wholesaler	367	3,671	149,139,948	781.28

TABLE 5. STATEWIDE SUMMARY  
CALENDAR YEAR 2011

NORTH AMERICAN INDUSTRY CLASSIFICATION SYSTEM - INDUSTRY GROUPS		AVERAGE EMPLOYING UNITS	AVERAGE COVERED EMPLOYMENT	TOTAL CALENDAR EARNINGS	AVERAGE WEEKLY EARNINGS
<b>425</b>	<b>ELECTRONIC MARKETS &amp; AGENTS &amp; BROKERS</b>	<b>3,197</b>	<b>10,096</b>	<b>\$842,881,131</b>	<b>\$1,605.51</b>
<b>44 - 45</b>	<b>RETAIL TRADE</b>	<b>10,962</b>	<b>131,413</b>	<b>\$3,074,707,222</b>	<b>\$449.95</b>
<b>441</b>	<b>MOTOR VEHICLE &amp; PARTS DEALERS</b>	<b>1,606</b>	<b>16,831</b>	<b>\$638,557,124</b>	<b>\$729.60</b>
4411	Automobile Dealers	657	9,895	436,199,026	847.75
4412	Other Motor Vehicle Dealers	161	1,245	44,066,674	680.67
4413	Automotive Parts, Accessories & Tire Stores	788	5,691	158,291,424	534.89
<b>442</b>	<b>FURNITURE &amp; HOME FURNISHINGS STORES</b>	<b>538</b>	<b>3,321</b>	<b>\$92,919,440</b>	<b>\$538.06</b>
4421	Furniture Stores	294	1,999	60,737,703	584.31
4422	Home Furnishings Stores	244	1,322	32,181,737	468.14
<b>443</b>	<b>ELECTRONICS &amp; APPLIANCE STORES</b>	<b>528</b>	<b>4,386</b>	<b>\$133,114,349</b>	<b>\$583.65</b>
<b>444</b>	<b>BUILDING MATERIAL &amp; GARDEN SUPPLY STORES</b>	<b>844</b>	<b>10,276</b>	<b>\$264,814,752</b>	<b>\$495.58</b>
4441	Building Material & Supplies Dealers	634	9,014	234,075,471	499.38
4442	Lawn & Garden Equipment & Supplies Stores	210	1,262	30,739,281	468.42
<b>445</b>	<b>FOOD &amp; BEVERAGE STORES</b>	<b>1,013</b>	<b>17,951</b>	<b>\$345,544,465</b>	<b>\$370.18</b>
4451	Grocery Stores	559	15,494	290,645,341	360.74
4452	Specialty Food Stores	140	916	24,427,599	512.84
4453	Beer, Wine & Liquor Stores	314	1,541	30,471,525	380.27
<b>446</b>	<b>HEALTH &amp; PERSONAL CARE STORES</b>	<b>967</b>	<b>7,893</b>	<b>\$272,813,500</b>	<b>\$664.69</b>
<b>447</b>	<b>GASOLINE STATIONS</b>	<b>1,561</b>	<b>11,382</b>	<b>\$189,973,058</b>	<b>\$320.97</b>
44711	Gasoline Stations with Convenience Stores	1,451	10,225	164,259,713	308.93
44719	Other Gasoline Stations	110	1,157	25,713,345	427.39
<b>448</b>	<b>CLOTHING &amp; CLOTHING ACCESSORIES STORES</b>	<b>1,020</b>	<b>8,426</b>	<b>\$125,413,103</b>	<b>\$286.23</b>
4481	Clothing Stores	729	6,511	84,420,633	249.34
4482	Shoe Stores	149	1,142	18,752,313	315.78
4483	Jewelry, Luggage & Leather Goods Stores	142	773	22,240,157	553.29
<b>451</b>	<b>SPORTING GOODS, HOBBY, BOOK &amp; MUSIC STORES</b>	<b>500</b>	<b>4,028</b>	<b>\$68,786,651</b>	<b>\$328.41</b>
4511	Sporting Goods & Musical Instrument Stores	408	3,361	59,073,904	338.01
4512	Book, Periodical & Music Stores	92	667	9,712,747	280.04



TABLE 5. STATEWIDE SUMMARY  
CALENDAR YEAR 2011

NORTH AMERICAN INDUSTRY CLASSIFICATION SYSTEM - INDUSTRY GROUPS		AVERAGE EMPLOYING UNITS	AVERAGE COVERED EMPLOYMENT	TOTAL CALENDAR EARNINGS	AVERAGE WEEKLY EARNINGS
<b>452</b>	<b>GENERAL MERCHANDISE STORES</b>	<b>795</b>	<b>38,789</b>	<b>\$753,704,050</b>	<b>\$373.67</b>
<b>453</b>	<b>MISCELLANEOUS STORE RETAILERS</b>	<b>1,237</b>	<b>6,407</b>	<b>\$131,099,689</b>	<b>\$393.50</b>
4531	Florists	210	747	11,907,175	306.54
4532	Office Supplies, Stationery & Gift Stores	311	2,065	43,809,378	407.98
4533	Used Merchandise Stores	233	1,267	25,379,843	385.22
4539	Other Miscellaneous Store Retailers	483	2,328	50,003,293	413.06
<b>454</b>	<b>NONSTORE RETAILERS</b>	<b>353</b>	<b>1,723</b>	<b>\$57,967,041</b>	<b>\$646.98</b>
4541	Electronic Shopping & Mail-Order Houses	136	482	18,402,692	734.23
4542	Vending Machine Operators	74	500	14,763,664	567.83
4543	Direct Selling Establishments	143	741	24,800,685	643.64
<b>48 - 49</b>	<b>TRANSPORTATION &amp; WAREHOUSING</b>	<b>2,898</b>	<b>49,625</b>	<b>\$2,024,159,139</b>	<b>\$784.41</b>
<b>481</b>	<b>AIR TRANSPORTATION</b>	<b>48</b>	<b>951</b>	<b>\$54,960,801</b>	<b>\$1,111.40</b>
<b>483</b>	<b>SUPPORT ACTIVITIES FOR TRANSPORTATION</b>	<b>4</b>	<b>87</b>	<b>\$5,645,745</b>	<b>\$1,247.95</b>
<b>484</b>	<b>TRUCK TRANSPORTATION</b>	<b>1,928</b>	<b>32,479</b>	<b>\$1,342,326,465</b>	<b>\$794.79</b>
4841	General Freight Trucking	1,201	26,149	1,083,405,951	796.77
4842	Specialized Freight Trucking	727	6,330	258,920,514	786.61
<b>485</b>	<b>TRANSIT &amp; GROUND PASSENGER TRANSPORTATION</b>	<b>79</b>	<b>1,281</b>	<b>\$21,404,488</b>	<b>\$321.33</b>
4853	Taxi & Limousine Service	26	322	5,302,044	316.65
4854	School & Employee Bus Transportation	12	403	7,183,210	342.78
4855	Charter Bus Industry Service	6	58	1,203,972	399.19
4859	Other Ground Passenger Transportation	29	391	5,750,099	282.81
	Other	6	107	1,965,163	353.19
<b>486</b>	<b>PIPELINE TRANSPORTATION</b>	<b>31</b>	<b>449</b>	<b>\$38,057,832</b>	<b>\$1,630.03</b>
<b>487</b>	<b>SCENIC AND SIGHTSEEING TRANSPORTATION</b>	<b>6</b>	<b>55</b>	<b>\$722,422</b>	<b>\$252.60</b>
<b>488</b>	<b>SUPPORT ACTIVITIES FOR TRANSPORTATION</b>	<b>406</b>	<b>4,282</b>	<b>\$184,804,801</b>	<b>\$829.97</b>
4881	Support Activities for Air Transportation	99	1,312	51,395,728	753.34
4882	Support Activities for Rail Transportation	34	348	13,431,001	742.21
4883	Support Activities for Water Transportation	24	578	27,384,144	911.10
4884	Support Activities for Road Transportation	120	525	14,272,993	522.82
4885	Freight Transportation Arrangement	112	1,431	75,931,081	1,020.41
4889	Other Support Activities for Transportation	17	88	2,389,854	522.26

TABLE 5. STATEWIDE SUMMARY  
CALENDAR YEAR 2011

NORTH AMERICAN INDUSTRY CLASSIFICATION SYSTEM - INDUSTRY GROUPS		AVERAGE EMPLOYING UNITS	AVERAGE COVERED EMPLOYMENT	TOTAL CALENDAR EARNINGS	AVERAGE WEEKLY EARNINGS
<b>491</b>	<b>POSTAL SERVICE</b>	<b>8</b>	<b>19</b>	<b>\$378,625</b>	<b>\$383.22</b>
<b>492</b>	<b>COURIERS &amp; MESSENGERS</b>	<b>167</b>	<b>3,028</b>	<b>\$123,014,272</b>	<b>\$781.26</b>
4921	Couriers	80	2,644	112,078,868	815.19
4922	Local Messengers & Local Delivery	87	384	10,935,404	547.65
<b>493</b>	<b>WARHOUSING &amp; STORAGE</b>	<b>221</b>	<b>6,994</b>	<b>\$252,843,688</b>	<b>\$695.22</b>
<b>22</b>	<b>UTILITIES</b>	<b>410</b>	<b>7,170</b>	<b>\$513,952,958</b>	<b>\$1,378.48</b>
2211	Power Generation & Supply	157	4,990	408,452,770	1,574.12
2212	Natural Gas Distribution	73	1,278	75,125,976	1,130.46
2213	Water, Sewage and Other Systems	180	902	30,374,212	647.58
<b>INFORMATION</b>		<b>1,114</b>	<b>14,777</b>	<b>\$746,234,744</b>	<b>\$971.15</b>
<b>511</b>	<b>PUBLISHING INDUSTRIES, EXCEPT INTERNET</b>	<b>231</b>	<b>3,889</b>	<b>\$136,241,863</b>	<b>\$673.70</b>
5111	Newspaper, Book & Directory Publishers	205	3,635	119,421,967	631.80
5112	Software Publishers	26	254	16,819,896	1,273.46
<b>512</b>	<b>MOTION PICTURE &amp; SOUND RECORDING INDUSTRY</b>	<b>142</b>	<b>1,219</b>	<b>\$25,375,421</b>	<b>\$400.32</b>
5121	Motion Picture & Video Industries	121	1,182	23,837,511	387.83
5122	Sound Recording Industries	21	37	1,537,910	799.33
<b>515</b>	<b>BROADCASTING, EXCEPT INTERNET</b>	<b>125</b>	<b>1,711</b>	<b>\$65,729,470</b>	<b>\$738.77</b>
5151	Radio & Television Broadcasting	121	1,676	64,808,273	743.62
5152	Cable & Other Subscription Programming	4	35	921,197	506.15
<b>517</b>	<b>TELECOMMUNICATIONS</b>	<b>386</b>	<b>6,332</b>	<b>\$440,748,191</b>	<b>\$1,338.59</b>
5171	Wired Telecommunications Carriers	272	3,863	246,486,788	1,227.06
5172	Wireless Telecommunication Carriers (except Satellite)	45	2,077	172,169,280	1,594.10
5174	Satellite Telecommunications	4	3	87,180	558.85
5179	Other Telecommunications	65	389	22,004,943	1,087.85
<b>518</b>	<b>DATA PROCESSING, HOSTING &amp; RELATED SERVICES</b>	<b>163</b>	<b>1,343</b>	<b>\$65,708,227</b>	<b>\$940.89</b>
<b>519</b>	<b>OTHER INFORMATION SERVICES</b>	<b>67</b>	<b>283</b>	<b>\$12,431,572</b>	<b>\$844.77</b>

TABLE 5. STATEWIDE SUMMARY  
CALENDAR YEAR 2011

NORTH AMERICAN INDUSTRY CLASSIFICATION SYSTEM - INDUSTRY GROUPS		AVERAGE EMPLOYING UNITS	AVERAGE COVERED EMPLOYMENT	TOTAL CALENDAR EARNINGS	AVERAGE WEEKLY EARNINGS
<b>FINANCIAL ACTIVITIES</b>		<b>7,911</b>	<b>47,757</b>	<b>\$2,251,465,689</b>	<b>\$906.62</b>
<b>52</b>	<b>FINANCE &amp; INSURANCE</b>	<b>4,698</b>	<b>34,549</b>	<b>\$1,832,687,144</b>	<b>\$1,020.12</b>
<b>522</b>	<b>CREDIT INTERMEDIATION &amp; RELATED ACTIVITIES</b>	<b>1,872</b>	<b>18,944</b>	<b>\$814,992,249</b>	<b>\$827.33</b>
5221	Depository Credit Intermediation	1,409	17,072	703,901,791	792.91
5222	Nondepository Credit Intermediation	340	1,551	92,723,599	1,149.68
5223	Activities Related to Credit Intermediation	123	321	18,366,859	1,100.34
<b>523</b>	<b>FINANCIAL INVESTMENT &amp; RELATED ACTIVITIES</b>	<b>675</b>	<b>3,088</b>	<b>\$339,303,658</b>	<b>\$2,113.04</b>
<b>524</b>	<b>INSURANCE CARRIERS &amp; RELATED ACTIVITIES</b>	<b>2,065</b>	<b>11,958</b>	<b>\$646,770,416</b>	<b>\$1,040.13</b>
5241	Insurance Carriers	415	5,388	332,777,502	1,187.74
5242	Insurance Agencies, Brokerages & Support	1,650	6,570	313,992,914	919.08
	<b>OTHER</b>	<b>86</b>	<b>559</b>	<b>\$31,620,821</b>	<b>\$1,087.82</b>
<b>53</b>	<b>REAL ESTATE &amp; RENTAL &amp; LEASING</b>	<b>3,213</b>	<b>13,208</b>	<b>\$418,778,545</b>	<b>\$609.74</b>
<b>531</b>	<b>REAL ESTATE</b>	<b>2,498</b>	<b>8,644</b>	<b>\$257,344,965</b>	<b>\$572.53</b>
5311	Lessors of Real Estate	1,078	4,413	120,996,210	527.27
5312	Offices of Real Estate Agents & Brokers	749	1,611	52,876,726	631.20
5313	Activities Related to Real Estate	671	2,620	83,472,029	612.68
<b>532</b>	<b>RENTAL &amp; LEASING SERVICES</b>	<b>695</b>	<b>4,497</b>	<b>\$158,569,268</b>	<b>\$678.10</b>
5321	Automotive Equipment Rental & Leasing	117	903	27,319,733	581.82
5322	Consumer Goods Rental	358	2,105	58,580,819	535.18
5323	General Rental Centers	42	246	9,387,079	733.82
5324	Machinery & Equipment Rental & Leasing	178	1,243	63,281,637	979.05
<b>533</b>	<b>LESSORS OF NONFINANCIAL INTANGIBLE ASSETS</b>	<b>20</b>	<b>67</b>	<b>\$2,864,312</b>	<b>\$822.13</b>

TABLE 5. STATEWIDE SUMMARY  
CALENDAR YEAR 2011

NORTH AMERICAN INDUSTRY CLASSIFICATION SYSTEM - INDUSTRY GROUPS		AVERAGE EMPLOYING UNITS	AVERAGE COVERED EMPLOYMENT	TOTAL CALENDAR EARNINGS	AVERAGE WEEKLY EARNINGS
<b>PROFESSIONAL &amp; BUSINESS SERVICES</b>		<b>12,331</b>	<b>120,593</b>	<b>\$5,877,015,638</b>	<b>\$937.20</b>
<b>54</b>	<b>PROFESSIONAL &amp; TECHNICAL SERVICES</b>	<b>7,705</b>	<b>39,086</b>	<b>\$2,152,423,955</b>	<b>\$1,059.02</b>
5411	Legal Services	1,683	6,021	320,163,355	1,022.59
5412	Accounting & Bookkeeping Services	1,271	5,499	228,721,923	799.87
5413	Architectural & Engineering Services	933	6,198	352,762,813	1,094.53
5414	Specialized Design Services	183	460	23,447,493	980.25
5415	Computer Systems Design & Related Services	1,127	8,877	641,930,511	1,390.65
5416	Management & Technical Consulting Services	1,429	5,040	313,627,735	1,196.69
5417	Scientific Research & Development Services	110	1,241	72,314,827	1,120.60
5418	Advertising & Related Services	369	2,106	94,650,463	864.29
5419	Other Professional & Technical Services	600	3,644	104,804,835	553.09
<b>55</b>	<b>MANAGEMENT OF COMPANIES &amp; ENTERPRISES</b>	<b>507</b>	<b>26,049</b>	<b>\$2,303,295,237</b>	<b>\$1,700.42</b>
<b>56</b>	<b>ADMINISTRATIVE &amp; SUPPORT SERVICES</b>	<b>4,119</b>	<b>55,458</b>	<b>\$1,421,296,446</b>	<b>\$492.85</b>
<b>561</b>	<b>ADMINISTRATIVE &amp; SUPPORT SERVICES</b>	<b>3,861</b>	<b>52,502</b>	<b>\$1,302,966,761</b>	<b>\$477.26</b>
5611	Office Administrative Services	562	1,974	107,525,913	1,047.52
5612	Facilities Support Services	20	145	6,278,720	832.72
5613	Employment Services	807	20,902	457,123,478	420.57
5614	Business Support Services	426	10,054	274,178,515	524.43
5615	Travel Arrangement & Reservation Services	83	316	10,156,717	618.11
5616	Investigation & Security Services	242	4,512	109,152,197	465.22
5617	Services to Buildings & Dwellings	1,464	12,627	266,828,110	406.38
5619	Other Support Services	257	1,972	71,723,111	699.44
<b>562</b>	<b>WASTE MANAGEMENT &amp; REMEDIATION SERVICES</b>	<b>258</b>	<b>2,956</b>	<b>\$118,329,685</b>	<b>\$769.81</b>
5621	Waste Collection Services	109	1,133	42,854,269	727.38
5622	Waste Treatment & disposal Services	34	924	45,376,161	944.39
5629	Remediation & Other Waste Services	115	899	30,099,255	643.86

TABLE 5. STATEWIDE SUMMARY  
CALENDAR YEAR 2011

NORTH AMERICAN INDUSTRY CLASSIFICATION SYSTEM - INDUSTRY GROUPS		AVERAGE EMPLOYING UNITS	AVERAGE COVERED EMPLOYMENT	TOTAL CALENDAR EARNINGS	AVERAGE WEEKLY EARNINGS
<b>EDUCATION &amp; HEALTH SERVICES</b>		<b>14,532</b>	<b>165,655</b>	<b>\$5,938,454,109</b>	<b>\$689.39</b>
<b>61</b>	<b>EDUCATIONAL SERVICES</b>	<b>707</b>	<b>11,612</b>	<b>\$348,149,893</b>	<b>\$576.58</b>
6111	Elementary & Secondary Schools	91	4,275	98,342,612	442.39
6112	Junior Colleges	7	204	6,315,406	595.34
6113	Colleges & Universities	32	3,948	133,003,974	647.86
6114	Business, Computer, & Management Training	45	231	19,351,829	1,611.04
6115	Technical & Trade Schools	104	862	46,206,823	1,030.85
6116	Other Schools & Instruction	265	1,614	26,126,169	311.29
6117	Educational Support Services	163	478	18,803,080	756.48
<b>62</b>	<b>HEALTH CARE &amp; SOCIAL ASSISTANCE</b>	<b>13,825</b>	<b>154,043</b>	<b>\$5,590,304,216</b>	<b>\$697.90</b>
<b>621</b>	<b>AMBULATORY HEALTH CARE SERVICES</b>	<b>5,081</b>	<b>46,422</b>	<b>\$2,532,512,398</b>	<b>\$1,049.12</b>
6211	Offices of Physicians	2,233	21,489	1,565,561,879	1,401.04
6212	Offices of Dentists	985	6,609	287,895,738	837.71
6213	Offices of Other Health Practitioners	1,208	6,757	244,909,092	697.02
6214	Outpatient Care Centers	275	4,015	162,412,050	777.91
6215	Medical & Diagnostic Laboratories	108	890	47,212,032	1,020.14
6216	Home Health Care Services	142	4,212	140,158,220	639.92
6219	Other Ambulatory Health Care Services	130	2,450	84,363,387	662.19
<b>622</b>	<b>HOSPITALS</b>	<b>111</b>	<b>41,590</b>	<b>\$1,714,051,663</b>	<b>\$792.56</b>
6221	General Medical & Surgical Hospitals	78	37,084	1,536,064,788	796.56
6222	Psychiatric & Substance Abuse Hospitals	10	2,038	76,552,513	722.36
6223	Other Hospitals	23	2,468	101,434,362	790.38
<b>623</b>	<b>NURSING &amp; RESIDENTIAL CARE FACILITIES</b>	<b>558</b>	<b>31,292</b>	<b>\$699,611,506</b>	<b>\$429.95</b>
6231	Nursing Care Facilities (Skilled Nursing Facilities)	264	22,903	513,332,904	431.03
6232	Residential Mental Health Facilities	141	4,393	101,138,608	442.74
6233	Continuing Care & Assisted Living Facilities	111	2,816	55,103,488	376.31
6239	Other Residential Care Facilities	42	1,180	30,036,506	489.51
<b>624</b>	<b>SOCIAL ASSISTANCE</b>	<b>8,075</b>	<b>34,739</b>	<b>\$644,128,649</b>	<b>\$356.58</b>
6241	Individual & Family Services	6,866	19,309	355,225,001	353.79
6242	Emergency & Other Relief Services	125	1,123	26,095,768	446.88
6243	Vocational Rehabilitation Services	130	3,986	87,029,336	419.88
6244	Child Day Care Services	954	10,321	175,778,544	327.52

TABLE 5. STATEWIDE SUMMARY  
CALENDAR YEAR 2011

NORTH AMERICAN INDUSTRY CLASSIFICATION SYSTEM - INDUSTRY GROUPS		AVERAGE EMPLOYING UNITS	AVERAGE COVERED EMPLOYMENT	TOTAL CALENDAR EARNINGS	AVERAGE WEEKLY EARNINGS
<b>LEISURE &amp; HOSPITALITY</b>		<b>6,475</b>	<b>100,115</b>	<b>\$1,371,909,846</b>	<b>\$263.53</b>
<b>71</b>	<b>ARTS, ENTERTAINMENT &amp; RECREATION</b>	<b>927</b>	<b>9,594</b>	<b>\$171,296,248</b>	<b>\$343.36</b>
<b>711</b>	<b>PERFORMING ARTS &amp; SPECTATOR SPORTS</b>	<b>212</b>	<b>2,290</b>	<b>\$51,852,439</b>	<b>\$435.44</b>
7111	Performing Arts Companies	48	454	7,248,792	307.05
7112	Spectator Sports	52	1,184	25,837,250	419.65
7113	Performing Arts & Sports Promoters	36	571	10,322,747	347.66
7114	Agents & Managers for Public Figures	22	26	2,018,411	1,492.91
7115	Independent Artists, Writers, & Performers	54	55	6,425,239	2,246.59
<b>712</b>	<b>MUSEUMS, PARKS, &amp; HISTORICAL SITES</b>	<b>54</b>	<b>336</b>	<b>\$10,033,394</b>	<b>\$574.26</b>
<b>713</b>	<b>GAMBLING, RECREATIONAL &amp; AMUSEMENT INDUSTRY</b>	<b>661</b>	<b>6,968</b>	<b>\$109,410,415</b>	<b>\$301.96</b>
<b>72</b>	<b>ACCOMODATION &amp; FOOD SERVICES</b>	<b>5,548</b>	<b>90,521</b>	<b>\$1,200,613,598</b>	<b>\$255.06</b>
<b>721</b>	<b>ACCOMODATION</b>	<b>882</b>	<b>11,014</b>	<b>\$176,405,816</b>	<b>\$308.01</b>
7211	Travel Accommodation	799	10,414	167,194,506	308.75
7212	RV Parks & Recreational Camps	62	509	7,651,843	289.10
7213	Rooming & Boarding Houses	21	91	1,559,467	329.56
<b>722</b>	<b>FOOD SERVICES &amp; DRINKING PLACES</b>	<b>4,666</b>	<b>79,507</b>	<b>1,024,207,782</b>	<b>\$247.73</b>
7223	Special Food Services	165	2,565	40,433,340	303.14
7224	Dirinking Places, Alcoholic Beverages	160	991	12,819,782	248.77
7225	Restaurants & Other Eating Places	4,341	75,951	970,954,660	245.85
722511	Full-Service Restaurants	1,985	34,074	463,103,143	261.37
722513	Limited-Service Eating Places	2,011	38,414	460,588,151	230.58
722514	Cafeterias, Grill Buffets, & Buffets	88	1,777	26,017,938	281.57
722515	Snack & Nonalcholic Beverage Bars	257	1,687	21,245,428	242.18
<b>OTHER SERVICES</b>		<b>5,374</b>	<b>24,802</b>	<b>\$676,595,433</b>	<b>\$524.61</b>
<b>811</b>	<b>REPAIR &amp; MAINTENANCE</b>	<b>2,214</b>	<b>9,308</b>	<b>\$300,001,507</b>	<b>\$619.82</b>
8111	Automotive Repair & Maintenance	1,460	6,196	184,852,597	573.73
8112	Electronic Equipment Repair & Maintenance	166	819	31,687,052	744.04
8113	Commercial Machinery Repair & Maintenance	404	1,745	68,362,297	753.39
8114	Household Goods Repair & Maintenance	184	548	15,099,561	529.88

TABLE 5. STATEWIDE SUMMARY  
CALENDAR YEAR 2011

NORTH AMERICAN INDUSTRY CLASSIFICATION SYSTEM - INDUSTRY GROUPS		AVERAGE EMPLOYING UNITS	AVERAGE COVERED EMPLOYMENT	TOTAL CALENDAR EARNINGS	AVERAGE WEEKLY EARNINGS
<b>812</b>	<b>PERSONAL &amp; LAUNDRY SERVICES</b>	<b>1,330</b>	<b>8,251</b>	<b>\$174,405,345</b>	<b>\$406.49</b>
8121	Personal Care Services	608	2,856	48,773,804	328.42
8122	Death Care Services	251	1,612	45,446,352	542.16
8123	Drycleaning & Laundry Service	281	3,090	66,034,106	410.97
8129	Other Personal Services	190	693	14,151,083	392.69
<b>813</b>	<b>MEMBERSHIP ASSOCIATIONS &amp; ORGANIZATIONS</b>	<b>1,084</b>	<b>6,226</b>	<b>\$183,528,036</b>	<b>\$566.88</b>
8131	Religious Organizations	48	211	5,413,718	493.41
8132	Grantmaking & Giving Organizations	110	529	23,602,244	858.01
8133	Social Advocacy Organizations	222	2,106	61,680,644	563.23
8134	Civic & Social Organizations	194	1,366	20,758,493	292.24
8139	Professional & Similar Organizations	510	2,014	72,072,937	688.19
<b>814</b>	<b>PRIVATE HOUSEHOLDS</b>	<b>746</b>	<b>1,017</b>	<b>18,660,545</b>	<b>\$352.86</b>
	<b>LOCAL GOVERNMENT</b>	<b>1,959</b>	<b>112,820</b>	<b>3,838,413,448</b>	<b>\$654.28</b>
	<b>STATE GOVERNMENT</b>	<b>1,123</b>	<b>69,359</b>	<b>2,878,150,556</b>	<b>\$798.01</b>
	<b>NONCLASSIFIABLE ESTABLISHMENTS</b>	<b>0</b>	<b>0</b>	<b>0</b>	<b>\$0.00</b>

TABLE 6. COUNTY SUMMARY  
CALENDAR YEAR 2011

NORTH AMERICAN INDUSTRY CLASSIFICATION SYSTEM - INDUSTRY GROUPS	AVERAGE EMPLOYING UNITS	AVERAGE COVERED EMPLOYMENT	TOTAL CALENDAR EARNINGS	AVERAGE WEEKLY EARNINGS
<b>ARKANSAS COUNTY - TOTAL</b>	<b>734</b>	<b>9,673</b>	<b>\$321,191,411</b>	<b>\$638.56</b>
Natural Resources & Mining	44	195	7,511,337	740.76
Construction	46	307	10,233,583	641.04
Manufacturing	30	3,542	129,264,696	701.82
Trade, Transportation & Utilities	208	2,088	72,509,892	667.83
Wholesale Trade	44	425	22,665,501	1,025.59
Retail Trade	97	1,042	24,046,622	443.80
Transportation, Warehousing & Utilities	67	621	25,797,769	798.89
Information	10	103	3,706,588	692.04
Financial Activities	44	316	13,272,201	807.70
Professional & Business Services	42	334	16,307,487	938.94
Education & Health Services	158	1,167	29,037,580	478.50
Leisure & Hospitality	52	504	5,877,174	224.25
Other Services	53	130	3,178,811	470.24
Local Government	32	799	25,013,385	602.04
State Government	15	188	5,278,677	539.96
<b>ASHLEY COUNTY - TOTAL</b>	<b>587</b>	<b>7,884</b>	<b>\$300,412,528</b>	<b>\$732.77</b>
Natural Resources & Mining	46	319	10,018,593	603.97
Construction	43	656	23,742,527	696.02
Manufacturing	28	2,607	150,486,150	1,110.07
Trade, Transportation & Utilities	139	1,253	34,253,517	525.72
Wholesale Trade	23	187	8,724,962	897.26
Retail Trade	89	839	16,397,706	375.85
Transportation, Warehousing & Utilities	27	227	9,130,849	773.54
Information	6	38	1,128,901	571.31
Financial Activities	37	225	8,024,534	685.86
Professional & Business Services	50	250	6,560,369	504.64
Education & Health Services	125	830	25,486,657	590.52
Leisure & Hospitality	30	397	4,424,323	214.32
Other Services	40	167	3,874,492	446.16
Local Government	32	924	27,218,466	566.48
State Government	11	218	5,193,999	458.19



TABLE 6. COUNTY SUMMARY  
CALENDAR YEAR 2011

NORTH AMERICAN INDUSTRY CLASSIFICATION SYSTEM - INDUSTRY GROUPS	AVERAGE EMPLOYING UNITS	AVERAGE COVERED EMPLOYMENT	TOTAL CALENDAR EARNINGS	AVERAGE WEEKLY EARNINGS
<b>BAXTER COUNTY - TOTAL</b>	<b>1,271</b>	<b>13,875</b>	<b>\$420,507,911</b>	<b>\$582.82</b>
Natural Resources & Mining	6	104	3,058,724	565.59
Construction	135	603	16,750,052	534.19
Manufacturing	59	2,145	79,497,951	712.73
Trade, Transportation & Utilities	266	2,517	59,568,696	455.13
Wholesale Trade	37	196	6,789,194	666.13
Retail Trade	206	2,161	46,797,810	416.45
Transportation, Warehousing & Utilities	23	160	5,981,692	718.95
Information	22	209	8,112,224	746.43
Financial Activities	103	621	27,994,718	866.92
Professional & Business Services	134	801	23,953,025	575.08
Education & Health Services	269	3,540	128,601,814	698.62
Leisure & Hospitality	127	1,493	19,064,735	245.57
Other Services	98	343	6,768,985	379.51
Local Government	40	1,150	36,813,575	615.61
State Government	12	349	10,323,412	568.85
<b>BENTON COUNTY - TOTAL</b>	<b>5,394</b>	<b>93,151</b>	<b>\$4,421,078,653</b>	<b>\$912.72</b>
Natural Resources & Mining	39	728	38,569,676	1,018.85
Construction	517	3,170	127,921,940	776.04
Manufacturing	209	11,152	438,937,552	756.91
Trade, Transportation & Utilities	1,448	21,819	949,513,468	836.88
Wholesale Trade	658	4,441	359,914,187	1,558.53
Retail Trade	629	9,423	234,826,499	479.24
Transportation, Warehousing & Utilities	161	7,955	354,772,782	857.64
Information	71	759	35,484,779	899.08
Financial Activities	530	3,465	179,343,478	995.36
Professional & Business Services	1,044	24,642	1,833,725,154	1,431.05
Education & Health Services	614	8,549	320,732,192	721.48
Leisure & Hospitality	478	8,867	135,128,643	293.07
Other Services	349	1,827	51,619,096	543.34
Local Government	78	7,063	273,663,849	745.12
State Government	17	1,110	36,438,826	631.30

TABLE 6. COUNTY SUMMARY  
CALENDAR YEAR 2011

NORTH AMERICAN INDUSTRY CLASSIFICATION SYSTEM - INDUSTRY GROUPS	AVERAGE EMPLOYING UNITS	AVERAGE COVERED EMPLOYMENT	TOTAL CALENDAR EARNINGS	AVERAGE WEEKLY EARNINGS
<b>BOONE COUNTY - TOTAL</b>	<b>1,025</b>	<b>13,654</b>	<b>\$446,386,033</b>	<b>\$628.71</b>
Natural Resources & Mining	4	4	83,701	402.41
Construction	84	465	14,022,633	579.93
Manufacturing	64	1,792	65,326,188	701.05
Trade, Transportation & Utilities	249	3,847	138,475,624	692.23
Wholesale Trade	53	541	18,156,560	645.41
Retail Trade	146	1,827	42,591,581	448.31
Transportation, Warehousing & Utilities	50	1,479	77,727,483	1,010.66
Information	21	389	14,694,752	726.46
Financial Activities	95	556	20,977,822	725.57
Professional & Business Services	112	957	31,407,590	631.13
Education & Health Services	188	1,397	43,095,328	593.24
Leisure & Hospitality	84	1,074	13,756,837	246.33
Other Services	50	239	7,115,052	572.50
Local Government	55	2,172	69,489,798	615.26
State Government	19	762	27,940,708	705.15
<b>BRADLEY COUNTY - TOTAL</b>	<b>381</b>	<b>3,382</b>	<b>\$98,488,947</b>	<b>\$560.03</b>
Natural Resources & Mining	43	280	9,197,095	631.67
Construction	18	116	3,093,847	512.91
Manufacturing	12	500	20,159,879	775.38
Trade, Transportation & Utilities	77	497	12,886,789	498.64
Wholesale Trade	14	83	4,125,343	955.83
Retail Trade	41	358	6,792,003	364.85
Transportation, Warehousing & Utilities	22	56	1,969,443	676.32
Information	4	13	450,127	665.87
Financial Activities	25	144	4,650,313	621.04
Professional & Business Services	28	104	2,968,465	548.90
Education & Health Services	109	612	16,621,736	522.30
Leisure & Hospitality	11	154	1,781,828	222.51
Other Services	29	96	2,008,202	402.28
Local Government	14	509	14,860,529	561.45
State Government	11	357	9,810,137	528.45

TABLE 6. COUNTY SUMMARY  
CALENDAR YEAR 2011

NORTH AMERICAN INDUSTRY CLASSIFICATION SYSTEM - INDUSTRY GROUPS	AVERAGE EMPLOYING UNITS	AVERAGE COVERED EMPLOYMENT	TOTAL CALENDAR EARNINGS	AVERAGE WEEKLY EARNINGS
<b>CALHOUN COUNTY - TOTAL</b>	<b>120</b>	<b>2,864</b>	<b>\$127,898,588</b>	<b>\$858.79</b>
Natural Resources & Mining	15	76	3,229,652	817.22
Construction	14	91	2,594,062	548.20
Manufacturing	8	1,915	95,358,434	957.61
Trade, Transportation & Utilities	30	240	7,512,362	601.95
Retail Trade	17	80	1,472,735	354.02
Transportation, Warehousing & Utilities	13	160	6,039,627	725.92
Financial Activities	6	81	2,467,082	585.73
Education & Health Services	13	51	1,675,660	631.85
Leisure & Hospitality	5	15	157,687	202.16
Other Services	4	6	125,969	403.75
Local Government	11	186	5,207,459	538.41
State Government	8	85	2,865,215	648.24
Other	6	118	6,705,006	1,092.73
<b>CARROLL COUNTY - TOTAL</b>	<b>782</b>	<b>9,985</b>	<b>\$256,929,427</b>	<b>\$494.84</b>
Natural Resources & Mining	15	221	6,740,628	586.55
Construction	65	270	8,924,854	635.67
Trade, Transportation & Utilities	193	1,598	39,039,208	469.81
Wholesale Trade	25	185	4,272,838	444.16
Retail Trade	150	1,122	22,641,169	388.06
Transportation, Warehousing & Utilities	18	291	12,125,201	801.30
Information	8	78	2,459,686	606.43
Professional & Business Services	59	205	5,863,142	550.01
Education & Health Services	92	959	30,651,530	614.65
Leisure & Hospitality	164	1,455	18,591,541	245.72
Other Services	43	128	2,730,415	410.22
Local Government	24	1,030	30,651,205	572.28
State Government	10	108	3,139,441	559.02
Other	109	3,933	108,137,777	528.75

TABLE 6. COUNTY SUMMARY  
CALENDAR YEAR 2011

NORTH AMERICAN INDUSTRY CLASSIFICATION SYSTEM - INDUSTRY GROUPS	AVERAGE EMPLOYING UNITS	AVERAGE COVERED EMPLOYMENT	TOTAL CALENDAR EARNINGS	AVERAGE WEEKLY EARNINGS
<b>CHICOT COUNTY - TOTAL</b>	<b>425</b>	<b>3,355</b>	<b>\$91,616,180</b>	<b>\$525.14</b>
Natural Resources & Mining	53	240	6,735,059	539.67
Construction	15	163	7,313,878	862.89
Manufacturing	10	306	6,544,839	411.31
Trade, Transportation & Utilities	70	492	12,458,231	486.95
Wholesale Trade	12	64	2,035,042	611.49
Retail Trade	45	365	7,785,211	410.18
Transportation, Warehousing & Utilities	13	63	2,637,978	805.24
Information	5	10	267,608	514.63
Financial Activities	29	166	6,121,563	709.17
Professional & Business Services	19	45	1,772,202	757.35
Education & Health Services	162	708	17,438,130	473.66
Leisure & Hospitality	19	171	1,651,977	185.78
Other Services	15	71	2,230,682	604.19
Local Government	18	678	20,307,976	576.01
State Government	10	305	8,774,035	553.22
<b>CLARK COUNTY - TOTAL</b>	<b>613</b>	<b>9,095</b>	<b>\$267,772,300</b>	<b>\$566.19</b>
Natural Resources & Mining	32	200	6,972,930	670.47
Construction	31	101	2,476,163	471.47
Manufacturing	35	1,641	65,254,737	764.72
Trade, Transportation & Utilities	136	1,478	41,758,076	543.33
Wholesale Trade	17	112	5,048,761	866.89
Retail Trade	96	1,181	29,478,790	480.02
Transportation, Warehousing & Utilities	23	185	7,230,525	751.61
Information	9	28	989,435	679.56
Financial Activities	75	308	10,811,784	675.06
Professional & Business Services	52	605	19,920,183	633.19
Education & Health Services	98	1,347	37,113,551	529.86
Leisure & Hospitality	61	1,002	12,605,914	241.94
Other Services	43	198	4,565,279	443.40
Local Government	27	1,003	29,070,234	557.37
State Government	14	1,184	36,234,014	588.52

TABLE 6. COUNTY SUMMARY  
CALENDAR YEAR 2011

NORTH AMERICAN INDUSTRY CLASSIFICATION SYSTEM - INDUSTRY GROUPS	AVERAGE EMPLOYING UNITS	AVERAGE COVERED EMPLOYMENT	TOTAL CALENDAR EARNINGS	AVERAGE WEEKLY EARNINGS
<b>CLAY COUNTY - TOTAL</b>	<b>403</b>	<b>3,738</b>	<b>\$100,405,665</b>	<b>\$516.55</b>
Natural Resources & Mining	62	275	6,232,100	435.81
Construction	29	146	3,670,469	483.47
Manufacturing	14	542	17,269,485	612.74
Trade, Transportation & Utilities	100	873	26,047,218	573.78
Wholesale Trade	26	281	9,474,140	648.38
Retail Trade	47	411	9,524,619	445.66
Transportation, Warehousing & Utilities	27	181	7,048,459	748.88
Information	4	60	1,402,438	449.50
Financial Activities	27	111	3,533,730	612.22
Professional & Business Services	25	65	1,744,155	516.02
Education & Health Services	57	490	12,365,297	485.29
Leisure & Hospitality	20	205	2,027,940	190.24
Other Services	31	76	2,127,527	538.34
Local Government	23	840	22,386,190	512.50
State Government	11	55	1,599,116	559.13
<b>CLEBURNE COUNTY - TOTAL</b>	<b>689</b>	<b>6,928</b>	<b>\$204,062,692</b>	<b>\$566.44</b>
Natural Resources & Mining	34	417	21,152,872	975.51
Construction	66	318	10,739,150	649.44
Manufacturing	36	1,185	39,829,180	646.37
Trade, Transportation & Utilities	176	1,608	51,093,726	611.05
Wholesale Trade	44	298	13,780,403	889.29
Retail Trade	104	961	21,865,217	437.55
Transportation, Warehousing & Utilities	28	349	15,448,106	851.23
Information	7	54	1,354,667	482.43
Financial Activities	73	233	7,993,305	659.73
Professional & Business Services	64	290	8,458,213	560.89
Education & Health Services	78	840	21,754,094	498.03
Leisure & Hospitality	78	920	11,621,392	242.92
Other Services	50	174	3,784,323	418.25
Local Government	18	782	23,418,442	575.90
State Government	9	107	2,863,328	514.62

TABLE 6. COUNTY SUMMARY  
CALENDAR YEAR 2011

NORTH AMERICAN INDUSTRY CLASSIFICATION SYSTEM - INDUSTRY GROUPS	AVERAGE EMPLOYING UNITS	AVERAGE COVERED EMPLOYMENT	TOTAL CALENDAR EARNINGS	AVERAGE WEEKLY EARNINGS
<b>CLEVELAND COUNTY - TOTAL</b>	<b>122</b>	<b>1,055</b>	<b>\$25,458,956</b>	<b>\$464.07</b>
Natural Resources & Mining	11	165	4,923,748	573.86
Construction	6	23	446,378	373.23
Manufacturing	6	97	2,664,391	528.23
Trade, Transportation & Utilities	34	157	3,415,545	418.37
Retail Trade	16	71	862,595	233.64
Other Trade, Transportation & Utilities	18	86	2,552,950	570.87
Financial Activities	4	16	440,817	529.83
Education & Health Services	30	151	2,676,173	340.83
Other Services	5	12	431,419	691.38
Local Government	11	325	8,365,427	495.00
State Government	7	52	1,353,011	500.37
Other	8	57	742,047	250.35
<b>COLUMBIA COUNTY - TOTAL</b>	<b>740</b>	<b>8,501</b>	<b>\$295,090,948</b>	<b>\$667.55</b>
Natural Resources & Mining	45	414	25,402,534	1,179.98
Construction	41	327	11,826,090	695.49
Manufacturing	36	1,968	94,135,339	919.87
Trade, Transportation & Utilities	165	1,491	41,060,495	529.59
Wholesale Trade	31	215	9,374,371	838.49
Retail Trade	100	1,009	20,342,701	387.72
Transportation, Warehousing & Utilities	34	267	11,343,423	817.01
Information	9	69	1,830,694	510.23
Financial Activities	70	366	13,740,484	721.97
Professional & Business Services	60	342	11,751,883	660.81
Education & Health Services	175	1,054	24,081,901	439.39
Leisure & Hospitality	48	612	12,267,318	385.47
Other Services	52	217	3,985,718	353.22
Local Government	26	1,073	34,088,332	610.95
State Government	13	568	20,920,160	708.29

TABLE 6. COUNTY SUMMARY  
CALENDAR YEAR 2011

NORTH AMERICAN INDUSTRY CLASSIFICATION SYSTEM - INDUSTRY GROUPS	AVERAGE EMPLOYING UNITS	AVERAGE COVERED EMPLOYMENT	TOTAL CALENDAR EARNINGS	AVERAGE WEEKLY EARNINGS
<b>CONWAY COUNTY - TOTAL</b>	<b>568</b>	<b>6,842</b>	<b>\$224,880,366</b>	<b>\$632.07</b>
Natural Resources & Mining	35	288	12,877,645	859.89
Construction	52	593	26,717,815	866.45
Manufacturing	18	906	47,090,020	999.53
Trade, Transportation & Utilities	129	1,614	51,891,819	618.29
Wholesale Trade	23	232	10,949,550	907.62
Retail Trade	80	803	18,209,507	436.09
Transportation, Warehousing & Utilities	26	579	22,732,762	755.04
Information	3	12	418,069	669.98
Financial Activities	32	169	5,456,106	620.86
Professional & Business Services	43	446	9,482,202	408.86
Education & Health Services	153	969	25,824,565	512.51
Leisure & Hospitality	42	470	5,190,657	212.38
Other Services	25	94	2,481,064	507.58
Local Government	26	915	26,815,590	563.59
State Government	10	366	10,634,814	558.79
<b>CRAIGHEAD COUNTY - TOTAL</b>	<b>2,663</b>	<b>43,410</b>	<b>\$1,459,318,540</b>	<b>\$646.48</b>
Natural Resources & Mining	72	345	10,588,728	590.23
Construction	199	1,653	60,261,351	701.07
Manufacturing	121	6,160	254,160,912	793.46
Trade, Transportation & Utilities	727	8,813	264,762,194	577.74
Wholesale Trade	185	1,641	79,004,422	925.85
Retail Trade	430	5,945	136,195,052	440.56
Transportation, Warehousing & Utilities	112	1,227	49,562,720	776.80
Information	29	495	17,475,082	678.91
Financial Activities	263	1,470	69,104,842	904.04
Professional & Business Services	352	4,363	115,409,768	508.69
Education & Health Services	461	8,541	354,226,921	797.57
Leisure & Hospitality	224	4,441	58,381,090	252.81
Other Services	155	821	18,990,975	444.84
Local Government	37	3,632	125,667,985	665.39
State Government	23	2,676	110,288,692	792.58

TABLE 6. COUNTY SUMMARY  
CALENDAR YEAR 2011

NORTH AMERICAN INDUSTRY CLASSIFICATION SYSTEM - INDUSTRY GROUPS	AVERAGE EMPLOYING UNITS	AVERAGE COVERED EMPLOYMENT	TOTAL CALENDAR EARNINGS	AVERAGE WEEKLY EARNINGS
<b>CRAWFORD COUNTY - TOTAL</b>	<b>1,301</b>	<b>19,305</b>	<b>\$604,944,299</b>	<b>\$602.62</b>
Natural Resources & Mining	27	352	18,360,064	1,003.06
Construction	174	919	31,558,135	660.38
Manufacturing	81	4,355	152,662,395	674.13
Trade, Transportation & Utilities	313	6,195	194,109,882	602.56
Wholesale Trade	84	765	32,366,385	813.63
Retail Trade	158	1,911	43,138,082	434.11
Transportation, Warehousing & Utilities	71	3,519	118,605,415	648.16
Information	12	119	4,259,814	688.40
Financial Activities	126	518	18,081,305	671.27
Professional & Business Services	158	1,031	31,250,273	582.90
Education & Health Services	177	1,695	49,839,839	565.46
Leisure & Hospitality	95	1,509	19,378,677	246.96
Other Services	85	390	11,125,059	548.57
Local Government	43	2,091	70,057,040	644.31
State Government	10	131	4,261,816	625.63
<b>CRITENDEN COUNTY - TOTAL</b>	<b>1,329</b>	<b>15,520</b>	<b>\$496,042,920</b>	<b>\$614.64</b>
Natural Resources & Mining	47	292	7,936,192	522.67
Construction	50	343	13,953,017	782.30
Manufacturing	42	1,600	70,648,744	849.14
Trade, Transportation & Utilities	314	4,394	147,604,333	646.00
Wholesale Trade	71	720	33,268,508	888.58
Retail Trade	162	1,902	42,336,225	428.05
Transportation, Warehousing & Utilities	81	1,772	71,999,600	781.38
Information	6	65	2,253,978	666.86
Financial Activities	95	512	18,423,876	692.00
Professional & Business Services	118	1,051	29,757,634	544.49
Education & Health Services	393	2,278	71,815,477	606.26
Leisure & Hospitality	118	1,898	28,148,321	285.20
Other Services	89	474	11,624,464	471.62
Local Government	43	2,133	79,028,863	712.51
State Government	14	480	14,848,021	594.87



TABLE 6. COUNTY SUMMARY  
CALENDAR YEAR 2011

NORTH AMERICAN INDUSTRY CLASSIFICATION SYSTEM - INDUSTRY GROUPS	AVERAGE EMPLOYING UNITS	AVERAGE COVERED EMPLOYMENT	TOTAL CALENDAR EARNINGS	AVERAGE WEEKLY EARNINGS
<b>CROSS COUNTY - TOTAL</b>	<b>517</b>	<b>5,065</b>	<b>\$149,561,834</b>	<b>\$567.86</b>
Natural Resources & Mining	32	190	5,371,806	543.71
Construction	18	84	2,537,985	581.04
Manufacturing	13	725	21,673,639	574.90
Trade, Transportation & Utilities	138	1,303	41,917,692	618.66
Wholesale Trade	29	314	12,847,480	786.84
Retail Trade	75	756	18,173,311	462.28
Transportation, Warehousing & Utilities	34	233	10,896,901	899.38
Information	4	35	1,022,229	561.66
Financial Activities	42	298	10,124,260	653.35
Professional & Business Services	44	164	5,558,131	651.75
Education & Health Services	129	806	21,064,618	502.59
Leisure & Hospitality	35	334	3,578,197	206.02
Other Services	36	65	1,445,202	427.57
Local Government	16	689	22,866,241	638.22
State Government	10	372	12,401,834	641.12
<b>DALLAS COUNTY - TOTAL</b>	<b>271</b>	<b>2,925</b>	<b>\$79,514,633</b>	<b>\$522.78</b>
Natural Resources & Mining	37	184	5,509,192	575.79
Construction	13	59	2,697,954	879.39
Manufacturing	15	604	19,964,349	635.65
Trade, Transportation & Utilities	65	494	13,959,224	543.41
Wholesale Trade	9	43	3,374,340	1,509.10
Retail Trade	39	356	7,595,622	410.31
Transportation, Warehousing & Utilities	17	95	2,989,262	605.11
Information	3	16	502,339	603.77
Financial Activities	14	66	2,641,317	769.61
Professional & Business Services	16	54	1,502,493	535.08
Education & Health Services	59	879	20,311,615	444.38
Leisure & Hospitality	11	111	1,197,947	207.54
Other Services	15	68	1,590,057	449.68
Local Government	15	342	8,348,124	469.42
State Government	8	48	1,290,022	516.84

TABLE 6. COUNTY SUMMARY  
CALENDAR YEAR 2011

NORTH AMERICAN INDUSTRY CLASSIFICATION SYSTEM - INDUSTRY GROUPS	AVERAGE EMPLOYING UNITS	AVERAGE COVERED EMPLOYMENT	TOTAL CALENDAR EARNINGS	AVERAGE WEEKLY EARNINGS
<b>DESHA COUNTY - TOTAL</b>	<b>502</b>	<b>4,479</b>	<b>\$137,654,886</b>	<b>\$591.03</b>
Natural Resources & Mining	61	273	8,330,821	586.84
Construction	17	113	3,908,809	665.22
Manufacturing	18	841	40,038,621	915.55
Trade, Transportation & Utilities	109	890	24,897,368	537.97
Wholesale Trade	18	176	8,170,321	892.74
Retail Trade	63	521	10,678,946	394.17
Transportation, Warehousing & Utilities	28	193	6,048,101	602.64
Information	6	32	988,547	594.08
Financial Activities	32	219	6,776,729	595.08
Professional & Business Services	36	90	2,262,918	483.53
Education & Health Services	133	741	18,787,385	487.58
Leisure & Hospitality	38	309	3,069,514	191.03
Other Services	22	48	825,020	330.54
Local Government	20	782	23,613,352	580.69
State Government	10	141	4,155,802	566.80
<b>DREWS COUNTY - TOTAL</b>	<b>523</b>	<b>6,377</b>	<b>\$180,238,557</b>	<b>\$543.54</b>
Natural Resources & Mining	45	364	11,094,205	586.13
Construction	22	105	3,022,938	553.65
Manufacturing	21	811	24,000,454	569.11
Trade, Transportation & Utilities	120	1,165	30,288,064	499.97
Wholesale Trade	18	162	6,708,341	796.34
Retail Trade	83	913	19,924,105	419.67
Transportation, Warehousing & Utilities	19	90	3,655,618	781.11
Information	8	61	1,908,462	601.66
Financial Activities	47	240	8,943,600	716.63
Professional & Business Services	43	260	10,214,009	755.47
Education & Health Services	116	839	21,564,769	494.29
Leisure & Hospitality	45	603	6,332,320	201.95
Other Services	18	63	1,566,075	478.04
Local Government	22	1,236	37,724,395	586.95
State Government	16	630	23,579,266	719.76

TABLE 6. COUNTY SUMMARY  
CALENDAR YEAR 2011

NORTH AMERICAN INDUSTRY CLASSIFICATION SYSTEM - INDUSTRY GROUPS	AVERAGE EMPLOYING UNITS	AVERAGE COVERED EMPLOYMENT	TOTAL CALENDAR EARNINGS	AVERAGE WEEKLY EARNINGS
<b>FAULKNER COUNTY - TOTAL</b>	<b>2,737</b>	<b>40,192</b>	<b>\$1,477,368,883</b>	<b>\$706.88</b>
Natural Resources & Mining	55	1,506	116,808,223	1,491.58
Construction	320	2,542	95,780,559	724.60
Manufacturing	106	3,320	159,048,059	921.27
Trade, Transportation & Utilities	644	7,202	213,038,441	568.85
Wholesale Trade	174	1,016	49,822,384	943.03
Retail Trade	386	5,290	121,063,668	440.10
Transportation, Warehousing & Utilities	84	896	42,152,389	904.71
Information	31	358	14,378,119	772.35
Financial Activities	318	1,488	57,724,350	746.02
Professional & Business Services	392	6,173	303,872,284	946.65
Education & Health Services	419	5,891	200,285,818	653.82
Leisure & Hospitality	231	4,472	55,185,254	237.31
Other Services	165	738	20,204,276	526.48
Local Government	38	3,239	119,310,259	708.38
State Government	18	3,263	121,733,241	717.45
<b>FRANKLIN COUNTY - TOTAL</b>	<b>333</b>	<b>4,235</b>	<b>\$141,698,904</b>	<b>\$643.44</b>
Natural Resources & Mining	14	287	15,444,347	1,034.87
Construction	30	101	4,081,503	777.13
Manufacturing	15	864	33,706,631	750.24
Trade, Transportation & Utilities	87	853	28,459,289	641.61
Wholesale Trade	16	58	2,105,940	698.26
Retail Trade	52	506	10,706,705	406.91
Transportation, Warehousing & Utilities	19	289	15,646,644	1,041.17
Information	5	24	765,834	613.65
Financial Activities	28	231	7,353,104	612.15
Professional & Business Services	27	128	3,203,338	481.27
Education & Health Services	55	575	15,418,749	515.68
Leisure & Hospitality	24	279	3,356,032	231.32
Other Services	19	62	2,141,766	664.32
Local Government	20	729	23,650,687	623.90
State Government	9	102	4,117,624	776.32

TABLE 6. COUNTY SUMMARY  
CALENDAR YEAR 2011

NORTH AMERICAN INDUSTRY CLASSIFICATION SYSTEM - INDUSTRY GROUPS	AVERAGE EMPLOYING UNITS	AVERAGE COVERED EMPLOYMENT	TOTAL CALENDAR EARNINGS	AVERAGE WEEKLY EARNINGS
<b>FULTON COUNTY - TOTAL</b>	<b>214</b>	<b>1,909</b>	<b>\$46,482,426</b>	<b>\$468.25</b>
Construction	9	16	431,297	518.39
Manufacturing	12	136	2,611,365	369.25
Trade, Transportation & Utilities	51	331	9,167,853	532.64
Retail Trade	34	180	3,387,070	361.87
Other Trade, Transportation & Utilities	17	151	5,780,783	736.22
Information	4	33	585,099	340.97
Financial Activities	15	90	2,815,646	601.63
Professional & Business Services	17	64	2,118,999	636.72
Education & Health Services	56	422	9,053,708	412.58
Leisure & Hospitality	17	144	1,508,563	201.46
Local Government	13	537	14,616,807	523.45
State Government	10	113	3,178,408	540.91
Other	10	23	394,681	330.00
<b>GARLAND COUNTY - TOTAL</b>	<b>3,110</b>	<b>35,124</b>	<b>\$1,069,859,270</b>	<b>\$585.76</b>
Natural Resources & Mining	36	329	15,538,835	908.28
Construction	345	1,676	50,199,137	576.00
Manufacturing	105	2,180	81,407,714	718.13
Trade, Transportation & Utilities	700	7,232	196,661,695	522.95
Wholesale Trade	140	899	37,250,948	796.85
Retail Trade	499	5,777	134,874,999	448.98
Transportation, Warehousing & Utilities	61	556	24,535,748	848.64
Information	35	319	11,501,476	693.36
Financial Activities	347	1,421	52,074,703	704.74
Professional & Business Services	395	3,048	98,161,262	619.33
Education & Health Services	499	7,504	294,919,547	755.80
Leisure & Hospitality	356	6,278	95,012,504	291.04
Other Services	233	975	22,435,060	442.51
Local Government	33	3,031	114,114,467	724.02
State Government	26	1,131	37,832,870	643.28

TABLE 6. COUNTY SUMMARY  
CALENDAR YEAR 2011

NORTH AMERICAN INDUSTRY CLASSIFICATION SYSTEM - INDUSTRY GROUPS	AVERAGE EMPLOYING UNITS	AVERAGE COVERED EMPLOYMENT	TOTAL CALENDAR EARNINGS	AVERAGE WEEKLY EARNINGS
<b>GRANT COUNTY - TOTAL</b>	<b>310</b>	<b>3,614</b>	<b>\$105,472,055</b>	<b>\$561.24</b>
Natural Resources & Mining	22	162	7,988,094	948.25
Construction	27	158	6,319,338	769.15
Manufacturing	15	858	27,234,020	610.41
Trade, Transportation & Utilities	83	621	16,074,190	497.78
Wholesale Trade	15	116	4,564,050	756.64
Retail Trade	45	447	9,712,213	417.84
Transportation, Warehousing & Utilities	23	58	1,797,927	596.13
Information	3	14	596,140	818.87
Financial Activities	24	92	2,828,907	591.33
Professional & Business Services	20	70	3,392,953	932.13
Education & Health Services	54	460	10,673,657	446.22
Leisure & Hospitality	23	246	2,875,048	224.75
Other Services	21	48	959,705	384.50
Local Government	10	826	24,826,855	578.01
State Government	8	59	1,703,148	555.13
<b>GREENE COUNTY - TOTAL</b>	<b>909</b>	<b>14,327</b>	<b>\$460,506,332</b>	<b>\$618.13</b>
Natural Resources & Mining	37	235	7,059,080	577.67
Construction	77	301	10,129,879	647.19
Manufacturing	60	4,718	189,165,328	771.05
Trade, Transportation & Utilities	232	2,338	61,434,008	505.31
Wholesale Trade	56	487	18,779,966	741.59
Retail Trade	147	1,638	35,413,006	415.76
Transportation, Warehousing & Utilities	29	213	7,241,036	653.76
Information	11	106	2,191,117	397.52
Financial Activities	82	475	17,654,225	714.75
Professional & Business Services	102	1,151	30,208,712	504.72
Education & Health Services	146	1,803	54,708,624	583.52
Leisure & Hospitality	73	1,029	12,574,291	235.00
Other Services	48	183	4,970,458	522.33
Local Government	30	1,581	55,312,856	672.81
State Government	11	407	15,097,754	713.37

TABLE 6. COUNTY SUMMARY  
CALENDAR YEAR 2011

<b>NORTH AMERICAN INDUSTRY CLASSIFICATION SYSTEM - INDUSTRY GROUPS</b>	<b>AVERAGE EMPLOYING UNITS</b>	<b>AVERAGE COVERED EMPLOYMENT</b>	<b>TOTAL CALENDAR EARNINGS</b>	<b>AVERAGE WEEKLY EARNINGS</b>
<b>HEMPSTEAD COUNTY - TOTAL</b>	<b>506</b>	<b>8,291</b>	<b>\$289,924,037</b>	<b>\$672.47</b>
Natural Resources & Mining	16	185	7,146,337	742.86
Construction	33	1,158	71,699,377	1,190.70
Manufacturing	31	1,690	57,711,004	656.70
Trade, Transportation & Utilities	130	1,357	42,340,993	600.04
Wholesale Trade	25	295	12,012,950	783.11
Retail Trade	81	853	18,714,331	421.91
Transportation, Warehousing & Utilities	24	209	11,613,712	1,068.62
Information	8	52	1,475,980	545.85
Financial Activities	37	226	8,525,639	725.46
Professional & Business Services	38	147	5,693,194	744.79
Education & Health Services	88	1,104	29,123,537	507.31
Leisure & Hospitality	43	588	7,102,223	232.28
Other Services	37	164	4,691,477	550.13
Local Government	29	913	30,632,893	645.23
State Government	16	707	23,781,383	646.87
<b>HOT SPRING COUNTY - TOTAL</b>	<b>589</b>	<b>8,215</b>	<b>\$252,617,665</b>	<b>\$591.36</b>
Natural Resources & Mining	26	148	4,381,848	569.37
Construction	63	432	18,132,184	807.17
Manufacturing	30	1,327	59,527,094	862.66
Trade, Transportation & Utilities	148	1,323	42,835,700	622.65
Wholesale Trade	16	76	5,546,984	1,403.59
Retail Trade	94	891	19,854,550	428.53
Transportation, Warehousing & Utilities	38	356	17,434,166	941.78
Information	7	48	1,571,285	629.52
Financial Activities	51	266	9,454,136	683.50
Professional & Business Services	49	1,051	21,727,373	397.56
Education & Health Services	92	1,150	31,916,804	533.73
Leisure & Hospitality	44	526	5,555,774	203.12
Other Services	39	165	3,360,558	391.67
Local Government	27	1,074	32,806,954	587.43
State Government	13	705	21,347,955	582.32

TABLE 6. COUNTY SUMMARY  
CALENDAR YEAR 2011

<b>NORTH AMERICAN INDUSTRY CLASSIFICATION SYSTEM - INDUSTRY GROUPS</b>	<b>AVERAGE EMPLOYING UNITS</b>	<b>AVERAGE COVERED EMPLOYMENT</b>	<b>TOTAL CALENDAR EARNINGS</b>	<b>AVERAGE WEEKLY EARNINGS</b>
<b>HOWARD COUNTY - TOTAL</b>	<b>354</b>	<b>7,216</b>	<b>\$195,173,001</b>	<b>\$520.14</b>
Natural Resources & Mining	20	186	5,795,018	599.15
Construction	18	117	4,163,492	684.33
Manufacturing	21	3,859	105,241,537	524.46
Trade, Transportation & Utilities	100	925	25,377,567	527.60
Wholesale Trade	19	78	3,612,565	890.67
Retail Trade	58	635	13,800,714	417.95
Transportation, Warehousing & Utilities	23	212	7,964,288	722.45
Information	5	32	751,431	451.58
Financial Activities	35	144	4,120,169	550.24
Professional & Business Services	22	108	3,202,064	570.17
Education & Health Services	62	649	17,180,081	509.07
Leisure & Hospitality	21	306	3,313,397	208.23
Other Services	22	117	2,663,660	437.81
Local Government	17	656	19,956,138	585.02
State Government	11	117	3,408,447	560.23
<b>INDEPENDENCE COUNTY - TOTAL</b>	<b>929</b>	<b>14,828</b>	<b>\$475,038,784</b>	<b>\$616.09</b>
Natural Resources & Mining	15	241	9,498,866	757.97
Construction	70	435	13,902,374	614.61
Manufacturing	47	3,415	126,394,642	711.76
Trade, Transportation & Utilities	239	2,912	87,408,150	577.24
Wholesale Trade	37	404	15,332,961	729.86
Retail Trade	153	1,683	36,599,187	418.20
Transportation, Warehousing & Utilities	49	825	35,476,002	826.95
Information	10	129	3,962,309	590.68
Financial Activities	84	501	18,474,016	709.12
Professional & Business Services	87	545	15,054,424	531.21
Education & Health Services	171	3,065	116,253,742	729.41
Leisure & Hospitality	72	1,037	12,728,890	236.05
Other Services	70	370	8,504,367	442.01
Local Government	47	1,519	41,740,609	528.44
State Government	17	659	21,116,395	616.21

TABLE 6. COUNTY SUMMARY  
CALENDAR YEAR 2011

<b>NORTH AMERICAN INDUSTRY CLASSIFICATION SYSTEM - INDUSTRY GROUPS</b>	<b>AVERAGE EMPLOYING UNITS</b>	<b>AVERAGE COVERED EMPLOYMENT</b>	<b>TOTAL CALENDAR EARNINGS</b>	<b>AVERAGE WEEKLY EARNINGS</b>
<b>IZARD COUNTY - TOTAL</b>	<b>266</b>	<b>3,000</b>	<b>\$80,101,329</b>	<b>\$513.47</b>
Natural Resources & Mining	5	139	5,225,932	723.01
Construction	26	85	3,085,712	698.12
Manufacturing	11	225	7,202,653	615.61
Trade, Transportation & Utilities	69	550	12,842,339	449.03
Wholesale Trade	10	21	650,349	595.56
Retail Trade	47	404	8,138,827	387.42
Transportation, Warehousing & Utilities	12	125	4,053,163	623.56
Financial Activities	30	144	4,620,333	617.03
Professional & Business Services	17	82	2,066,742	484.70
Education & Health Services	50	646	14,444,081	429.99
Leisure & Hospitality	18	101	1,064,582	202.70
Local Government	18	521	14,358,833	530.00
State Government	10	482	14,607,015	582.79
Other	12	25	583,107	448.54
<b>JACKSON COUNTY - TOTAL</b>	<b>480</b>	<b>5,209</b>	<b>\$167,658,261</b>	<b>\$618.97</b>
Natural Resources & Mining	55	264	7,919,352	576.88
Construction	24	122	4,513,584	711.47
Manufacturing	19	914	40,274,762	847.39
Trade, Transportation & Utilities	112	1,020	29,421,610	554.71
Wholesale Trade	24	199	8,929,116	862.88
Retail Trade	71	707	16,200,541	440.66
Transportation, Warehousing & Utilities	17	114	4,291,953	724.01
Information	4	22	536,586	469.04
Financial Activities	35	155	5,646,450	700.55
Professional & Business Services	38	148	5,198,191	675.44
Education & Health Services	97	828	27,266,174	633.27
Leisure & Hospitality	28	279	3,083,609	212.55
Other Services	23	69	1,825,380	508.75
Local Government	32	669	17,755,232	510.38
State Government	13	719	24,217,331	647.73



TABLE 6. COUNTY SUMMARY  
CALENDAR YEAR 2011

NORTH AMERICAN INDUSTRY CLASSIFICATION SYSTEM - INDUSTRY GROUPS	AVERAGE EMPLOYING UNITS	AVERAGE COVERED EMPLOYMENT	TOTAL CALENDAR EARNINGS	AVERAGE WEEKLY EARNINGS
<b>JEFFERSON COUNTY - TOTAL</b>	<b>2,094</b>	<b>29,410</b>	<b>\$1,031,677,998</b>	<b>\$674.60</b>
Natural Resources & Mining	40	296	15,261,402	991.52
Construction	105	1,224	64,674,736	1,016.13
Manufacturing	64	5,375	231,239,068	827.33
Trade, Transportation & Utilities	436	5,259	172,008,336	628.99
Wholesale Trade	80	993	41,435,882	802.46
Retail Trade	291	3,326	80,645,453	466.29
Transportation, Warehousing & Utilities	65	940	49,927,001	1,021.42
Information	13	123	4,201,920	656.96
Financial Activities	145	1,129	47,340,937	806.38
Professional & Business Services	170	1,650	55,807,069	650.43
Education & Health Services	773	5,234	175,298,653	644.08
Leisure & Hospitality	137	1,939	22,913,719	227.26
Other Services	132	652	16,287,068	480.39
Local Government	42	3,051	100,561,465	633.85
State Government	37	3,478	126,083,625	697.15
<b>JOHNSON COUNTY - TOTAL</b>	<b>469</b>	<b>8,607</b>	<b>\$240,941,244</b>	<b>\$538.34</b>
Natural Resources & Mining	17	128	4,200,947	631.15
Construction	27	119	3,738,117	604.09
Manufacturing	35	3,184	83,236,548	502.73
Trade, Transportation & Utilities	108	1,981	57,930,286	562.36
Retail Trade	66	868	17,954,107	397.78
Other Trade, Transportation & Utilities	42	1,113	39,976,179	690.72
Information	4	32	721,605	433.66
Financial Activities	48	204	7,057,238	665.28
Professional & Business Services	45	155	4,740,050	588.10
Education & Health Services	96	1,195	36,740,810	591.26
Leisure & Hospitality	38	472	5,597,874	228.08
Other Services	28	70	1,681,911	462.06
Local Government	14	935	30,901,012	635.56
State Government	9	132	4,394,846	640.27

TABLE 6. COUNTY SUMMARY  
CALENDAR YEAR 2011

<b>NORTH AMERICAN INDUSTRY CLASSIFICATION SYSTEM - INDUSTRY GROUPS</b>	<b>AVERAGE EMPLOYING UNITS</b>	<b>AVERAGE COVERED EMPLOYMENT</b>	<b>TOTAL CALENDAR EARNINGS</b>	<b>AVERAGE WEEKLY EARNINGS</b>
<b>LAFAYETTE COUNTY - TOTAL</b>	<b>176</b>	<b>1,287</b>	<b>\$36,333,687</b>	<b>\$542.91</b>
Natural Resources & Mining	32	159	5,846,157	707.08
Construction	8	63	3,133,180	956.40
Manufacturing	5	31	1,168,838	725.09
Trade, Transportation & Utilities	36	200	5,102,999	490.67
Retail Trade	22	131	2,307,401	338.73
Other Trade, Transportation & Utilities	14	69	2,795,598	779.15
Financial Activities	14	52	1,438,263	531.90
Education & Health Services	33	238	5,041,349	407.35
Leisure & Hospitality	6	51	558,445	210.58
Other Services	7	66	1,279,983	372.96
Local Government	13	304	8,367,958	529.35
State Government	7	47	1,185,153	484.92
Other	15	76	3,211,362	812.59
<b>LAWRENCE COUNTY - TOTAL</b>	<b>415</b>	<b>3,993</b>	<b>\$109,223,962</b>	<b>\$526.04</b>
Natural Resources & Mining	42	173	5,529,780	614.69
Construction	26	111	3,367,766	583.47
Manufacturing	23	465	13,519,458	559.12
Trade, Transportation & Utilities	111	861	23,833,730	532.34
Wholesale Trade	21	193	7,037,595	701.24
Retail Trade	61	546	12,008,498	422.95
Transportation, Warehousing & Utilities	29	122	4,787,637	754.67
Financial Activities	33	147	4,476,968	585.68
Professional & Business Services	26	95	3,274,357	662.83
Education & Health Services	72	536	15,181,354	544.68
Leisure & Hospitality	22	264	2,799,124	203.90
Local Government	27	1,164	32,597,741	538.56
State Government	10	102	2,726,822	514.11
Other	23	75	1,916,862	491.50

TABLE 6. COUNTY SUMMARY  
CALENDAR YEAR 2011

<b>NORTH AMERICAN INDUSTRY CLASSIFICATION SYSTEM - INDUSTRY GROUPS</b>	<b>AVERAGE EMPLOYING UNITS</b>	<b>AVERAGE COVERED EMPLOYMENT</b>	<b>TOTAL CALENDAR EARNINGS</b>	<b>AVERAGE WEEKLY EARNINGS</b>
<b>LEE COUNTY - TOTAL</b>	<b>307</b>	<b>2,059</b>	<b>\$59,658,719</b>	<b>\$557.20</b>
Natural Resources & Mining	35	230	6,739,073	563.47
Construction	9	25	637,885	490.68
Trade, Transportation & Utilities	48	348	9,770,380	539.92
Wholesale Trade	7	76	2,929,720	741.33
Retail Trade	25	194	3,923,151	388.89
Transportation, Warehousing & Utilities	16	78	2,917,509	719.31
Financial Activities	16	74	2,612,878	679.02
Professional & Business Services	15	57	2,540,713	857.19
Education & Health Services	139	408	10,409,482	490.64
Leisure & Hospitality	7	84	873,532	199.98
Local Government	15	319	8,824,565	531.98
State Government	7	487	16,596,332	655.36
Other	16	27	653,879	465.73
<b>LINCOLN COUNTY - TOTAL</b>	<b>264</b>	<b>2,907</b>	<b>\$87,172,822</b>	<b>\$576.68</b>
Natural Resources & Mining	31	167	5,138,390	591.71
Construction	15	71	1,997,005	540.90
Manufacturing	9	346	10,711,703	595.36
Trade, Transportation & Utilities	48	339	11,714,320	664.53
Wholesale Trade	10	53	2,118,177	768.57
Retail Trade	24	163	2,895,216	341.58
Transportation, Warehousing & Utilities	14	123	6,700,927	1,047.67
Financial Activities	19	63	2,214,564	676.00
Education & Health Services	83	397	9,059,455	438.84
Leisure & Hospitality	13	147	1,213,704	158.78
Other Services	12	35	720,789	396.04
Local Government	7	350	10,228,356	562.00
State Government	12	960	33,135,776	663.78
Other	15	32	1,038,760	624.25

TABLE 6. COUNTY SUMMARY  
CALENDAR YEAR 2011

<b>NORTH AMERICAN INDUSTRY CLASSIFICATION SYSTEM - INDUSTRY GROUPS</b>	<b>AVERAGE EMPLOYING UNITS</b>	<b>AVERAGE COVERED EMPLOYMENT</b>	<b>TOTAL CALENDAR EARNINGS</b>	<b>AVERAGE WEEKLY EARNINGS</b>
<b>LITTLE RIVER COUNTY - TOTAL</b>	<b>247</b>	<b>3,743</b>	<b>\$167,871,079</b>	<b>\$862.49</b>
Natural Resources & Mining	10	63	2,046,251	624.62
Construction	21	256	9,118,499	684.98
Manufacturing	18	1,316	100,533,309	1,469.10
Trade, Transportation & Utilities	58	600	16,006,221	513.02
Wholesale Trade	10	38	1,683,864	852.16
Retail Trade	35	371	8,375,521	434.14
Transportation, Warehousing & Utilities	13	191	5,946,836	598.76
Financial Activities	22	93	2,732,212	564.97
Education & Health Services	37	155	3,899,913	483.86
Leisure & Hospitality	17	190	2,237,714	226.49
Other Services	14	89	1,530,730	330.75
Local Government	20	800	24,128,206	580.00
State Government	11	77	2,134,828	533.17
Other	19	104	3,503,196	647.78
<b>LOGAN COUNTY - TOTAL</b>	<b>496</b>	<b>5,327</b>	<b>\$152,696,779</b>	<b>\$551.24</b>
Natural Resources & Mining	23	116	5,601,498	928.63
Construction	49	244	8,350,133	658.11
Manufacturing	23	1,167	38,641,534	636.77
Trade, Transportation & Utilities	118	914	23,781,951	500.38
Wholesale Trade	14	75	1,230,188	315.43
Retail Trade	74	698	15,464,909	426.08
Transportation, Warehousing & Utilities	30	141	7,086,854	966.56
Information	6	41	1,587,890	744.79
Financial Activities	40	212	7,619,253	691.15
Professional & Business Services	47	111	2,850,356	493.82
Education & Health Services	97	748	20,803,897	534.86
Leisure & Hospitality	28	273	3,120,569	219.82
Other Services	29	127	3,769,024	570.72
Local Government	22	823	23,248,252	543.23
State Government	14	551	13,322,422	464.97

TABLE 6. COUNTY SUMMARY  
CALENDAR YEAR 2011

NORTH AMERICAN INDUSTRY CLASSIFICATION SYSTEM - INDUSTRY GROUPS	AVERAGE EMPLOYING UNITS	AVERAGE COVERED EMPLOYMENT	TOTAL CALENDAR EARNINGS	AVERAGE WEEKLY EARNINGS
<b>LONOKE COUNTY - TOTAL</b>	<b>1,297</b>	<b>12,828</b>	<b>\$368,493,393</b>	<b>\$552.42</b>
Natural Resources & Mining	82	491	18,260,449	715.20
Construction	139	718	24,967,489	668.72
Manufacturing	41	1,379	57,355,961	799.85
Trade, Transportation & Utilities	319	2,837	72,406,186	490.81
Wholesale Trade	79	380	17,013,669	861.02
Retail Trade	173	2,211	45,952,122	399.68
Transportation, Warehousing & Utilities	67	246	9,440,395	737.99
Information	17	93	3,895,583	805.54
Financial Activities	131	490	21,471,771	842.69
Professional & Business Services	153	629	20,022,096	612.15
Education & Health Services	201	1,660	42,951,272	497.58
Leisure & Hospitality	101	1,464	16,965,772	222.86
Other Services	72	217	5,108,564	452.73
Local Government	26	2,692	80,307,829	573.69
State Government	15	158	4,780,421	581.84
<b>MADISON COUNTY - TOTAL</b>	<b>235</b>	<b>3,052</b>	<b>\$85,160,255</b>	<b>\$536.60</b>
Natural Resources & Mining	10	29	858,488	569.29
Construction	26	70	2,695,648	740.56
Manufacturing	20	1,089	31,011,609	547.64
Trade, Transportation & Utilities	45	530	14,170,162	514.16
Wholesale Trade	5	16	925,672	1,112.59
Retail Trade	33	417	9,283,123	428.11
Transportation, Warehousing & Utilities	7	97	3,961,367	785.36
Information	5	38	1,748,956	885.10
Financial Activities	16	77	2,367,083	591.18
Professional & Business Services	26	170	5,404,123	611.33
Education & Health Services	43	241	5,704,226	455.17
Leisure & Hospitality	13	168	1,890,674	216.42
Other Services	15	30	893,464	572.73
Local Government	9	571	17,212,381	579.70
State Government	7	39	1,203,441	593.41

TABLE 6. COUNTY SUMMARY  
CALENDAR YEAR 2011

NORTH AMERICAN INDUSTRY CLASSIFICATION SYSTEM - INDUSTRY GROUPS	AVERAGE EMPLOYING UNITS	AVERAGE COVERED EMPLOYMENT	TOTAL CALENDAR EARNINGS	AVERAGE WEEKLY EARNINGS
<b>MARION COUNTY - TOTAL</b>	<b>307</b>	<b>3,571</b>	<b>\$92,569,989</b>	<b>\$498.51</b>
Natural Resources & Mining	5	27	573,116	408.20
Construction	23	66	1,340,166	390.49
Manufacturing	20	1,453	39,802,949	526.80
Trade, Transportation & Utilities	57	532	12,878,548	465.53
Wholesale Trade	7	40	1,465,546	704.59
Retail Trade	41	459	10,110,795	423.61
Transportation, Warehousing & Utilities	9	33	1,302,207	758.86
Information	4	60	3,180,456	1,019.38
Financial Activities	37	196	6,018,227	590.49
Professional & Business Services	28	51	1,499,909	565.58
Education & Health Services	57	343	8,137,931	456.26
Leisure & Hospitality	38	202	2,250,843	214.28
Other Services	13	27	484,990	345.43
Local Government	18	537	14,577,103	522.03
State Government	7	77	1,825,751	455.98
<b>MILLER COUNTY - TOTAL</b>	<b>872</b>	<b>13,330</b>	<b>\$452,276,949</b>	<b>\$652.49</b>
Natural Resources & Mining	24	139	4,940,912	683.58
Construction	89	907	29,946,774	634.95
Manufacturing	28	2,369	139,422,350	1,131.79
Trade, Transportation & Utilities	234	3,394	110,843,858	628.05
Wholesale Trade	56	554	24,558,487	852.49
Retail Trade	128	1,327	29,190,453	423.03
Transportation, Warehousing & Utilities	50	1,513	57,094,918	725.70
Information	5	75	5,516,808	1,414.57
Financial Activities	81	373	13,364,805	689.05
Professional & Business Services	88	1,333	28,219,334	407.11
Education & Health Services	130	893	24,110,171	519.21
Leisure & Hospitality	90	1,383	18,402,437	255.89
Other Services	62	345	7,005,453	390.49
Local Government	25	1,633	52,012,251	612.51
State Government	16	486	18,491,796	731.71

TABLE 6. COUNTY SUMMARY  
CALENDAR YEAR 2011

NORTH AMERICAN INDUSTRY CLASSIFICATION SYSTEM - INDUSTRY GROUPS	AVERAGE EMPLOYING UNITS	AVERAGE COVERED EMPLOYMENT	TOTAL CALENDAR EARNINGS	AVERAGE WEEKLY EARNINGS
<b>MISSISSIPPI COUNTY - TOTAL</b>	<b>1,219</b>	<b>19,235</b>	<b>\$734,085,226</b>	<b>\$733.92</b>
Natural Resources & Mining	106	663	18,080,239	524.43
Construction	69	648	31,433,976	932.87
Manufacturing	57	6,879	373,609,115	1,044.45
Trade, Transportation & Utilities	298	3,159	106,690,365	649.49
Wholesale Trade	63	482	25,275,411	1,008.43
Retail Trade	173	1,845	39,090,902	407.45
Transportation, Warehousing & Utilities	62	832	42,324,052	978.27
Information	11	87	2,238,382	494.78
Financial Activities	97	542	16,327,055	579.30
Professional & Business Services	91	1,316	33,878,921	495.07
Education & Health Services	277	1,768	46,488,215	505.66
Leisure & Hospitality	84	1,098	13,213,657	231.43
Other Services	62	248	4,828,390	374.41
Local Government	45	2,200	68,449,288	598.33
State Government	22	627	18,847,623	578.08
<b>MONROE COUNTY - TOTAL</b>	<b>317</b>	<b>2,253</b>	<b>\$59,066,569</b>	<b>\$504.17</b>
Natural Resources & Mining	36	158	4,814,309	585.97
Construction	15	62	2,286,425	709.19
Manufacturing	6	107	3,390,191	609.31
Trade, Transportation & Utilities	78	652	19,868,476	586.02
Wholesale Trade	18	234	9,107,740	748.50
Retail Trade	37	281	6,189,339	423.58
Transportation, Warehousing & Utilities	23	137	4,571,397	641.69
Financial Activities	18	86	3,076,879	688.03
Professional & Business Services	15	38	808,466	409.14
Education & Health Services	72	321	7,070,549	423.59
Leisure & Hospitality	26	231	2,643,580	220.08
Local Government	22	373	9,842,858	507.47
State Government	8	125	3,297,934	507.37
Other	21	100	1,966,902	378.25

TABLE 6. COUNTY SUMMARY  
CALENDAR YEAR 2011

NORTH AMERICAN INDUSTRY CLASSIFICATION SYSTEM - INDUSTRY GROUPS	AVERAGE EMPLOYING UNITS	AVERAGE COVERED EMPLOYMENT	TOTAL CALENDAR EARNINGS	AVERAGE WEEKLY EARNINGS
<b>MONTGOMERY COUNTY - TOTAL</b>	<b>174</b>	<b>1,554</b>	<b>\$36,986,633</b>	<b>\$457.71</b>
Natural Resources & Mining	8	37	1,378,897	716.68
Construction	21	70	2,038,403	560.00
Trade, Transportation & Utilities	44	242	5,986,146	475.70
Wholesale Trade	13	68	2,027,284	573.33
Retail Trade	22	159	3,606,138	436.16
Transportation, Warehousing & Utilities	9	15	352,724	452.21
Financial Activities	10	68	2,260,958	639.41
Professional & Business Services	13	24	626,968	502.38
Education & Health Services	18	92	2,342,334	489.62
Leisure & Hospitality	21	303	4,567,186	289.87
Local Government	9	483	12,423,898	494.66
State Government	7	41	1,322,528	620.32
Other	23	194	4,039,315	400.41
<b>NEVADA COUNTY - TOTAL</b>	<b>191</b>	<b>2,216</b>	<b>\$68,757,428</b>	<b>\$596.69</b>
Natural Resources & Mining	9	33	899,541	524.21
Construction	10	22	617,042	539.37
Trade, Transportation & Utilities	40	495	13,972,992	542.85
Wholesale Trade	3	14	219,953	302.13
Retail Trade	27	273	5,457,620	384.45
Transportation, Warehousing & Utilities	10	208	8,295,419	766.96
Financial Activities	14	60	1,865,934	598.06
Education & Health Services	34	409	9,351,910	439.72
Leisure & Hospitality	10	81	932,468	221.38
Other Services	15	54	787,594	280.48
Local Government	27	399	9,633,373	464.30
State Government	10	76	2,178,939	551.35
Other	22	587	28,517,635	934.27



TABLE 6. COUNTY SUMMARY  
CALENDAR YEAR 2011

NORTH AMERICAN INDUSTRY CLASSIFICATION SYSTEM - INDUSTRY GROUPS	AVERAGE EMPLOYING UNITS	AVERAGE COVERED EMPLOYMENT	TOTAL CALENDAR EARNINGS	AVERAGE WEEKLY EARNINGS
<b>NEWTON COUNTY - TOTAL</b>	<b>130</b>	<b>1,038</b>	<b>\$22,622,349</b>	<b>\$419.12</b>
Construction	7	21	367,621	336.65
Manufacturing	10	50	1,366,471	525.57
Trade, Transportation & Utilities	30	154	3,524,081	440.07
Wholesale Trade	3	9	244,596	522.64
Retail Trade	14	97	1,681,362	333.34
Transportation, Warehousing & Utilities	13	48	1,598,123	640.27
Education & Health Services	32	230	3,997,701	334.26
Leisure & Hospitality	17	82	1,175,511	275.68
Other Services	4	5	105,169	404.50
Local Government	13	364	9,258,374	489.14
State Government	6	91	1,689,919	357.13
Other	11	41	1,137,502	533.54
<b>OUACHITA COUNTY - TOTAL</b>	<b>651</b>	<b>7,434</b>	<b>\$219,309,877</b>	<b>\$567.33</b>
Natural Resources & Mining	40	206	6,470,635	604.05
Construction	43	207	6,433,415	597.68
Manufacturing	28	878	33,199,045	727.16
Trade, Transportation & Utilities	169	1,648	45,787,968	534.31
Wholesale Trade	25	230	10,518,460	879.47
Retail Trade	114	1,090	21,372,215	377.07
Transportation, Warehousing & Utilities	30	328	13,897,293	814.80
Information	7	50	1,616,885	621.88
Financial Activities	61	320	10,350,045	622.00
Professional & Business Services	48	436	13,468,010	594.04
Education & Health Services	128	1,235	37,151,662	578.51
Leisure & Hospitality	42	486	5,216,724	206.42
Other Services	41	150	3,562,400	456.72
Local Government	30	1,088	32,846,854	580.58
State Government	14	730	23,206,234	611.33

TABLE 6. COUNTY SUMMARY  
CALENDAR YEAR 2011

NORTH AMERICAN INDUSTRY CLASSIFICATION SYSTEM - INDUSTRY GROUPS	AVERAGE EMPLOYING UNITS	AVERAGE COVERED EMPLOYMENT	TOTAL CALENDAR EARNINGS	AVERAGE WEEKLY EARNINGS
<b>PERRY COUNTY - TOTAL</b>	<b>161</b>	<b>1,329</b>	<b>\$38,180,922</b>	<b>\$552.48</b>
Construction	21	91	3,443,892	727.79
Manufacturing	5	41	1,131,052	530.51
Trade, Transportation & Utilities	28	203	4,673,108	442.70
Retail Trade	16	164	2,516,718	295.11
Other Trade, Transportation & Utilities	12	39	2,156,390	1,063.31
Financial Activities	14	33	1,557,151	907.43
Professional & Business Services	15	43	1,451,314	649.07
Education & Health Services	34	249	5,617,168	433.83
Leisure & Hospitality	9	52	662,626	245.05
Local Government	12	397	9,697,262	469.74
State Government	8	50	1,296,130	498.51
Other	15	170	8,651,219	978.64
<b>PHILLIPS COUNTY - TOTAL</b>	<b>926</b>	<b>6,230</b>	<b>\$172,356,386</b>	<b>\$532.03</b>
Natural Resources & Mining	76	345	7,385,069	411.65
Construction	26	116	3,338,958	553.54
Manufacturing	12	355	11,418,805	618.57
Trade, Transportation & Utilities	170	1,460	44,052,483	580.25
Wholesale Trade	33	365	15,322,245	807.28
Retail Trade	88	788	17,773,026	433.74
Transportation, Warehousing & Utilities	49	307	10,957,212	686.37
Information	9	45	1,400,539	598.52
Financial Activities	42	220	7,570,027	661.72
Professional & Business Services	52	269	8,246,377	589.53
Education & Health Services	424	1,510	37,420,713	476.58
Leisure & Hospitality	39	348	4,284,797	236.78
Other Services	34	71	1,554,473	421.04
Local Government	28	983	31,139,941	609.20
State Government	14	508	14,544,204	550.58

TABLE 6. COUNTY SUMMARY  
CALENDAR YEAR 2011

NORTH AMERICAN INDUSTRY CLASSIFICATION SYSTEM - INDUSTRY GROUPS	AVERAGE EMPLOYING UNITS	AVERAGE COVERED EMPLOYMENT	TOTAL CALENDAR EARNINGS	AVERAGE WEEKLY EARNINGS
<b>PIKE COUNTY - TOTAL</b>	<b>262</b>	<b>2,324</b>	<b>\$59,842,623</b>	<b>\$495.19</b>
Natural Resources & Mining	26	120	4,136,647	662.92
Construction	15	40	877,657	421.95
Manufacturing	18	199	4,725,336	456.64
Trade, Transportation & Utilities	85	545	13,389,440	472.46
Wholesale Trade	14	126	3,699,057	564.57
Retail Trade	50	356	7,204,113	389.16
Transportation, Warehousing & Utilities	21	63	2,486,270	758.93
Information	5	24	1,071,140	858.29
Financial Activities	23	194	7,035,784	697.44
Professional & Business Services	9	33	2,457,504	1,432.11
Education & Health Services	21	271	5,808,868	412.21
Leisure & Hospitality	20	220	2,413,499	210.97
Other Services	19	67	1,530,761	439.37
Local Government	11	486	13,753,823	544.23
State Government	10	125	2,642,164	406.49
<b>POINSETT COUNTY - TOTAL</b>	<b>517</b>	<b>5,055</b>	<b>\$151,398,783</b>	<b>\$575.97</b>
Natural Resources & Mining	61	331	11,400,571	662.36
Construction	26	97	3,032,426	601.19
Manufacturing	21	631	22,033,242	671.50
Trade, Transportation & Utilities	127	1,287	39,636,299	592.26
Wholesale Trade	29	384	19,808,185	992.00
Retail Trade	70	734	14,462,361	378.91
Transportation, Warehousing & Utilities	28	169	5,365,753	610.58
Information	6	56	2,497,228	857.56
Financial Activities	40	271	9,809,478	696.10
Professional & Business Services	29	182	6,503,974	687.23
Education & Health Services	101	613	15,425,187	483.91
Leisure & Hospitality	42	347	3,656,402	202.64
Other Services	23	56	1,298,288	445.84
Local Government	30	1,046	31,666,385	582.19
State Government	11	138	4,439,303	618.63

TABLE 6. COUNTY SUMMARY  
CALENDAR YEAR 2011

NORTH AMERICAN INDUSTRY CLASSIFICATION SYSTEM - INDUSTRY GROUPS	AVERAGE EMPLOYING UNITS	AVERAGE COVERED EMPLOYMENT	TOTAL CALENDAR EARNINGS	AVERAGE WEEKLY EARNINGS
<b>POLK COUNTY - TOTAL</b>	<b>528</b>	<b>5,883</b>	<b>\$152,929,551</b>	<b>\$499.91</b>
Natural Resources & Mining	23	140	5,230,657	718.50
Construction	40	198	5,043,970	489.90
Manufacturing	34	1,160	34,417,942	570.59
Trade, Transportation & Utilities	137	1,203	28,705,423	458.88
Wholesale Trade	20	69	2,825,590	787.51
Retail Trade	79	833	16,588,762	382.97
Transportation, Warehousing & Utilities	38	301	9,291,071	593.60
Information	9	58	1,544,592	512.13
Financial Activities	42	227	7,607,985	644.53
Professional & Business Services	47	150	4,263,431	546.59
Education & Health Services	87	1,071	29,533,848	530.31
Leisure & Hospitality	42	482	4,913,443	196.04
Other Services	33	135	3,456,165	492.33
Local Government	21	739	20,556,932	534.95
State Government	13	320	7,655,163	460.05
<b>POPE COUNTY - TOTAL</b>	<b>1,770</b>	<b>26,053</b>	<b>\$870,977,385</b>	<b>\$642.90</b>
Natural Resources & Mining	36	652	28,120,429	829.41
Construction	169	1,352	56,051,958	797.28
Manufacturing	76	4,530	165,462,478	702.42
Trade, Transportation & Utilities	440	5,877	237,854,082	778.31
Wholesale Trade	92	595	25,116,285	811.77
Retail Trade	270	3,221	70,043,389	418.19
Transportation, Warehousing & Utilities	78	2,061	142,694,408	1,331.45
Information	22	210	8,465,291	775.21
Financial Activities	177	735	25,825,034	675.69
Professional & Business Services	249	2,606	83,247,334	614.32
Education & Health Services	309	3,438	99,568,822	556.95
Leisure & Hospitality	136	2,441	30,121,868	237.31
Other Services	99	443	10,758,897	467.05
Local Government	41	2,205	70,494,556	614.81
State Government	16	1,564	55,006,636	676.36

TABLE 6. COUNTY SUMMARY  
CALENDAR YEAR 2011

NORTH AMERICAN INDUSTRY CLASSIFICATION SYSTEM - INDUSTRY GROUPS	AVERAGE EMPLOYING UNITS	AVERAGE COVERED EMPLOYMENT	TOTAL CALENDAR EARNINGS	AVERAGE WEEKLY EARNINGS
<b>PRAIRIE COUNTY - TOTAL</b>	<b>246</b>	<b>1,316</b>	<b>\$37,273,235</b>	<b>\$544.68</b>
Natural Resources & Mining	26	140	5,798,446	796.49
Construction	13	82	3,246,673	761.41
Trade, Transportation & Utilities	61	283	7,856,110	533.85
Wholesale Trade	10	70	3,027,820	831.82
Retail Trade	34	153	2,672,384	335.90
Transportation, Warehousing & Utilities	17	60	2,155,906	691.00
Financial Activities	19	54	1,803,778	642.37
Professional & Business Services	14	43	1,208,166	540.32
Education & Health Services	49	200	4,828,238	464.25
Leisure & Hospitality	18	97	1,046,801	207.53
Other Services	15	40	770,056	370.22
Local Government	15	316	8,839,677	537.96
State Government	9	40	1,174,953	564.88
Other	7	21	700,337	641.33
<b>PULASKI COUNTY - TOTAL</b>	<b>15,024</b>	<b>234,216</b>	<b>\$9,977,155,296</b>	<b>\$819.19</b>
Natural Resources & Mining	64	794	45,002,846	1,089.97
Construction	1,087	8,313	368,193,802	851.76
Manufacturing	372	12,900	641,137,393	955.78
Trade, Transportation & Utilities	3,439	46,677	1,823,159,462	751.14
Wholesale Trade	1,248	12,471	725,797,144	1,119.21
Retail Trade	1,768	24,659	640,622,716	499.60
Transportation, Warehousing & Utilities	423	9,547	456,739,602	920.02
Information	235	6,781	423,157,570	1,200.07
Financial Activities	1,761	15,728	942,358,243	1,152.23
Professional & Business Services	3,073	33,761	1,517,518,397	864.40
Education & Health Services	2,395	37,444	1,629,635,963	836.96
Leisure & Hospitality	1,122	20,775	323,465,481	299.42
Other Services	1,176	7,124	226,329,033	610.96
Local Government	102	16,122	659,231,508	786.35
State Government	198	27,797	1,377,965,598	953.32

TABLE 6. COUNTY SUMMARY  
CALENDAR YEAR 2011

<b>NORTH AMERICAN INDUSTRY CLASSIFICATION SYSTEM - INDUSTRY GROUPS</b>	<b>AVERAGE EMPLOYING UNITS</b>	<b>AVERAGE COVERED EMPLOYMENT</b>	<b>TOTAL CALENDAR EARNINGS</b>	<b>AVERAGE WEEKLY EARNINGS</b>
<b>RANDOLPH COUNTY - TOTAL</b>	<b>417</b>	<b>4,696</b>	<b>\$119,573,034</b>	<b>\$489.67</b>
Natural Resources & Mining	27	99	2,363,103	459.03
Construction	32	73	1,663,677	438.27
Manufacturing	33	725	18,978,559	503.41
Trade, Transportation & Utilities	101	895	22,329,521	479.79
Wholesale Trade	22	200	5,013,660	482.08
Retail Trade	58	565	12,134,580	413.02
Transportation, Warehousing & Utilities	21	130	5,181,281	766.46
Information	5	42	1,535,436	703.04
Financial Activities	29	123	3,580,066	559.74
Professional & Business Services	41	255	5,006,726	377.58
Education & Health Services	68	1,086	30,397,757	538.28
Leisure & Hospitality	29	356	3,857,873	208.40
Other Services	19	45	1,009,556	431.43
Local Government	22	735	19,388,208	507.28
State Government	11	262	9,462,552	694.55
<b>SAINT FRANCIS COUNTY - TOTAL</b>	<b>814</b>	<b>7,515</b>	<b>\$212,537,046</b>	<b>\$543.88</b>
Natural Resources & Mining	35	176	5,528,637	604.09
Construction	41	193	6,157,690	613.56
Manufacturing	12	703	22,471,461	614.71
Trade, Transportation & Utilities	169	2,024	57,383,518	545.22
Wholesale Trade	36	604	22,123,751	704.40
Retail Trade	109	1,126	23,883,328	407.90
Transportation, Warehousing & Utilities	24	294	11,376,439	744.14
Information	8	73	2,291,693	603.71
Financial Activities	64	294	10,000,700	654.15
Professional & Business Services	47	338	9,051,776	515.01
Education & Health Services	314	1,501	39,982,711	512.26
Leisure & Hospitality	49	602	6,989,352	223.27
Other Services	31	83	1,406,205	325.81
Local Government	28	1,009	33,694,574	642.19
State Government	16	519	17,578,729	651.35

TABLE 6. COUNTY SUMMARY  
CALENDAR YEAR 2011

NORTH AMERICAN INDUSTRY CLASSIFICATION SYSTEM - INDUSTRY GROUPS	AVERAGE EMPLOYING UNITS	AVERAGE COVERED EMPLOYMENT	TOTAL CALENDAR EARNINGS	AVERAGE WEEKLY EARNINGS
<b>SALINE COUNTY - TOTAL</b>	<b>1,813</b>	<b>20,828</b>	<b>\$640,734,798</b>	<b>\$591.60</b>
Natural Resources & Mining	12	37	2,189,366	1,137.92
Construction	276	1,764	62,530,333	681.69
Manufacturing	81	1,277	57,503,414	865.96
Trade, Transportation & Utilities	409	4,490	130,090,013	557.18
Wholesale Trade	111	495	22,079,310	857.78
Retail Trade	242	3,677	95,444,557	499.18
Transportation, Warehousing & Utilities	56	318	12,566,146	759.93
Information	10	81	3,313,922	786.78
Financial Activities	184	658	25,795,687	753.91
Professional & Business Services	245	1,383	46,428,152	645.59
Education & Health Services	259	3,187	100,636,340	607.25
Leisure & Hospitality	148	2,713	36,004,466	255.21
Other Services	142	660	17,205,584	501.33
Local Government	31	3,507	128,046,207	702.15
State Government	16	1,071	30,991,314	556.48
<b>SCOTT COUNTY - TOTAL</b>	<b>188</b>	<b>2,939</b>	<b>\$74,756,447</b>	<b>\$489.15</b>
Natural Resources & Mining	16	161	5,758,480	687.83
Trade, Transportation & Utilities	39	441	11,758,747	512.77
Wholesale Trade	8	67	2,941,885	844.40
Retail Trade	24	308	5,821,252	363.46
Transportation, Warehousing & Utilities	7	66	2,995,610	872.85
Financial Activities	22	66	1,782,726	519.44
Professional & Business Services	12	11	438,777	767.09
Education & Health Services	34	288	8,942,271	597.11
Leisure & Hospitality	16	149	1,929,843	249.08
Other Services	12	49	1,411,580	554.00
Local Government	5	423	10,989,982	499.64
State Government	7	64	1,599,353	480.57
Other	25	1,287	30,144,688	450.43

TABLE 6. COUNTY SUMMARY  
CALENDAR YEAR 2011

NORTH AMERICAN INDUSTRY CLASSIFICATION SYSTEM - INDUSTRY GROUPS	AVERAGE EMPLOYING UNITS	AVERAGE COVERED EMPLOYMENT	TOTAL CALENDAR EARNINGS	AVERAGE WEEKLY EARNINGS
<b>SEARCY COUNTY - TOTAL</b>	<b>192</b>	<b>1,612</b>	<b>\$35,722,451</b>	<b>\$426.16</b>
Construction	8	13	378,248	559.54
Manufacturing	17	179	3,644,397	391.53
Trade, Transportation & Utilities	41	282	5,587,730	381.05
Wholesale Trade	8	51	1,037,108	391.07
Retail Trade	27	210	3,671,123	336.18
Transportation, Warehousing & Utilities	6	21	879,499	805.40
Information	5	13	311,205	460.36
Professional & Business Services	12	31	487,184	302.22
Education & Health Services	55	362	7,871,918	418.19
Leisure & Hospitality	13	106	1,081,304	196.17
Other Services	4	11	232,847	407.08
Local Government	10	348	9,001,241	497.42
State Government	7	116	2,446,618	405.61
Other	20	151	4,679,759	596.00
<b>SEBASTIAN COUNTY - TOTAL</b>	<b>3,774</b>	<b>64,437</b>	<b>\$2,411,332,806</b>	<b>\$719.65</b>
Natural Resources & Mining	68	1,586	118,668,597	1,438.90
Construction	284	2,309	90,764,425	755.94
Manufacturing	198	13,210	583,865,117	849.98
Trade, Transportation & Utilities	957	12,686	403,192,277	611.20
Wholesale Trade	244	2,636	119,778,277	873.83
Retail Trade	568	7,861	180,734,288	442.14
Transportation, Warehousing & Utilities	145	2,189	102,679,712	902.06
Information	51	849	44,453,279	1,006.91
Financial Activities	400	2,428	104,751,048	829.67
Professional & Business Services	588	7,784	295,124,767	729.12
Education & Health Services	564	10,448	423,191,255	778.93
Leisure & Hospitality	324	5,466	77,011,929	270.95
Other Services	280	1,324	34,171,596	496.33
Local Government	40	4,469	168,709,856	725.98
State Government	20	1,878	67,428,660	690.47



TABLE 6. COUNTY SUMMARY  
CALENDAR YEAR 2011

NORTH AMERICAN INDUSTRY CLASSIFICATION SYSTEM - INDUSTRY GROUPS	AVERAGE EMPLOYING UNITS	AVERAGE COVERED EMPLOYMENT	TOTAL CALENDAR EARNINGS	AVERAGE WEEKLY EARNINGS
<b>SEVIER COUNTY - TOTAL</b>	<b>327</b>	<b>4,996</b>	<b>\$131,626,297</b>	<b>\$506.66</b>
Construction	19	125	4,621,893	711.06
Trade, Transportation & Utilities	97	831	20,624,217	477.28
Wholesale Trade	16	103	5,042,987	941.56
Retail Trade	65	645	12,537,291	373.80
Transportation, Warehousing & Utilities	16	83	3,043,939	705.27
Information	3	21	701,447	642.35
Financial Activities	28	187	5,940,845	610.95
Professional & Business Services	30	85	2,617,779	592.26
Education & Health Services	49	513	13,134,388	492.37
Leisure & Hospitality	24	258	2,628,342	195.91
Other Services	32	149	3,306,730	426.78
Local Government	12	888	25,298,295	547.87
State Government	8	214	5,443,904	489.21
Other	25	1,725	47,308,457	527.41
<b>SHARP COUNTY - TOTAL</b>	<b>410</b>	<b>3,588</b>	<b>\$88,311,461</b>	<b>\$473.33</b>
Construction	24	122	4,038,703	636.62
Manufacturing	18	166	3,634,187	421.01
Trade, Transportation & Utilities	88	932	24,295,610	501.31
Wholesale Trade	14	43	1,013,325	453.19
Retail Trade	57	593	11,327,936	367.36
Transportation, Warehousing & Utilities	17	296	11,954,349	776.66
Information	7	48	2,424,594	971.39
Financial Activities	35	200	6,639,991	638.46
Professional & Business Services	48	136	4,252,133	601.26
Education & Health Services	93	680	16,100,591	455.33
Leisure & Hospitality	32	357	3,867,136	208.31
Local Government	25	738	18,634,343	485.57
State Government	8	96	2,313,260	463.39
Other	32	113	2,110,913	359.24

TABLE 6. COUNTY SUMMARY  
CALENDAR YEAR 2011

<b>NORTH AMERICAN INDUSTRY CLASSIFICATION SYSTEM - INDUSTRY GROUPS</b>	<b>AVERAGE EMPLOYING UNITS</b>	<b>AVERAGE COVERED EMPLOYMENT</b>	<b>TOTAL CALENDAR EARNINGS</b>	<b>AVERAGE WEEKLY EARNINGS</b>
<b>STONE COUNTY - TOTAL</b>	<b>293</b>	<b>2,630</b>	<b>\$63,543,572</b>	<b>\$464.64</b>
Natural Resources & Mining	7	24	170,220	136.39
Construction	22	61	1,250,613	394.27
Manufacturing	24	195	4,229,879	417.15
Trade, Transportation & Utilities	72	680	15,656,130	442.76
Wholesale Trade	12	43	1,155,329	516.69
Retail Trade	47	597	12,838,640	413.56
Transportation, Warehousing & Utilities	13	40	1,662,161	799.12
Financial Activities	29	102	2,035,471	383.76
Professional & Business Services	16	36	799,497	427.08
Education & Health Services	52	529	15,518,900	564.16
Leisure & Hospitality	34	356	3,748,757	202.50
Local Government	10	405	14,586,268	692.61
State Government	8	160	3,197,456	384.31
Other	19	82	2,350,381	551.22
<b>UNION COUNTY - TOTAL</b>	<b>1,344</b>	<b>16,994</b>	<b>\$707,096,715</b>	<b>\$800.17</b>
Natural Resources & Mining	109	531	27,748,052	1,004.93
Construction	78	1,211	56,836,509	902.57
Manufacturing	53	2,809	146,668,587	1,004.11
Trade, Transportation & Utilities	339	3,629	139,412,718	738.77
Wholesale Trade	69	726	50,260,663	1,331.34
Retail Trade	212	2,081	45,758,305	422.86
Transportation, Warehousing & Utilities	58	822	43,393,750	1,015.20
Information	13	141	4,133,496	563.76
Financial Activities	117	757	26,663,103	677.35
Professional & Business Services	136	1,427	121,137,019	1,632.49
Education & Health Services	251	2,403	82,099,000	657.02
Leisure & Hospitality	90	1,206	14,374,382	229.21
Other Services	107	487	11,519,141	454.87
Local Government	34	1,798	56,893,632	608.51
State Government	17	595	19,611,076	633.84

TABLE 6. COUNTY SUMMARY  
CALENDAR YEAR 2011

NORTH AMERICAN INDUSTRY CLASSIFICATION SYSTEM - INDUSTRY GROUPS	AVERAGE EMPLOYING UNITS	AVERAGE COVERED EMPLOYMENT	TOTAL CALENDAR EARNINGS	AVERAGE WEEKLY EARNINGS
<b>VAN BUREN COUNTY - TOTAL</b>	<b>372</b>	<b>3,788</b>	<b>\$125,568,448</b>	<b>\$637.48</b>
Natural Resources & Mining	13	192	14,146,895	1,416.96
Construction	43	229	8,055,810	676.50
Manufacturing	10	63	2,017,506	615.84
Trade, Transportation & Utilities	103	1,107	45,131,659	784.03
Wholesale Trade	10	31	1,162,402	721.09
Retail Trade	59	583	12,241,278	403.79
Transportation, Warehousing & Utilities	34	493	31,727,979	1,237.63
Information	8	50	1,740,854	669.56
Financial Activities	32	150	4,781,713	613.04
Professional & Business Services	32	120	2,861,982	458.65
Education & Health Services	59	679	17,475,803	494.95
Leisure & Hospitality	28	386	5,565,431	277.27
Other Services	26	70	1,763,895	484.59
Local Government	11	672	20,002,501	572.42
State Government	7	70	2,024,399	556.15
<b>WASHINGTON COUNTY - TOTAL</b>	<b>5,486</b>	<b>88,674</b>	<b>3,451,506,161</b>	<b>\$748.53</b>
Natural Resources & Mining	46	423	20,870,001	948.81
Construction	478	3,821	154,960,162	779.90
Manufacturing	223	12,728	471,865,603	712.94
Trade, Transportation & Utilities	1,350	20,546	741,986,307	694.49
Wholesale Trade	405	3,647	224,856,176	1,185.68
Retail Trade	763	10,418	253,653,891	468.22
Transportation, Warehousing & Utilities	182	6,481	263,476,240	781.80
Information	85	1,052	44,518,822	813.81
Financial Activities	569	3,251	150,667,684	891.25
Professional & Business Services	955	9,590	591,043,333	1,185.22
Education & Health Services	742	12,906	526,038,747	783.83
Leisure & Hospitality	573	9,811	135,078,803	264.77
Other Services	382	1,815	49,496,361	524.44
Local Government	61	7,472	287,169,436	739.09
State Government	22	5,259	277,810,902	1,015.88

TABLE 6. COUNTY SUMMARY  
CALENDAR YEAR 2011

NORTH AMERICAN INDUSTRY CLASSIFICATION SYSTEM - INDUSTRY GROUPS	AVERAGE EMPLOYING UNITS	AVERAGE COVERED EMPLOYMENT	TOTAL CALENDAR EARNINGS	AVERAGE WEEKLY EARNINGS
<b>WHITE COUNTY - TOTAL</b>	<b>1,827</b>	<b>25,207</b>	<b>\$870,228,813</b>	<b>\$663.91</b>
Natural Resources & Mining	52	1,610	101,511,955	1,212.52
Construction	190	1,133	40,084,805	680.37
Manufacturing	71	2,467	100,037,455	779.81
Trade, Transportation & Utilities	481	6,337	218,023,858	661.63
Wholesale Trade	99	621	24,481,027	758.11
Retail Trade	284	3,259	71,053,957	419.28
Transportation, Warehousing & Utilities	98	2,457	122,488,874	958.71
Information	20	165	5,521,810	643.57
Financial Activities	171	873	34,221,434	753.84
Professional & Business Services	197	1,486	42,797,166	553.85
Education & Health Services	308	4,798	177,392,800	711.00
Leisure & Hospitality	151	2,381	27,892,481	225.28
Other Services	121	538	16,716,974	597.55
Local Government	47	2,688	84,207,265	602.44
State Government	18	731	21,820,810	574.05
<b>WOODRUFF COUNTY - TOTAL</b>	<b>217</b>	<b>1,859</b>	<b>\$51,534,890</b>	<b>\$533.11</b>
Natural Resources & Mining	27	140	4,221,271	579.84
Construction	6	38	1,128,649	571.18
Manufacturing	7	308	8,460,890	528.28
Trade, Transportation & Utilities	51	416	13,045,459	603.06
Wholesale Trade	12	161	6,888,778	822.84
Retail Trade	26	182	3,116,004	329.25
Transportation, Warehousing & Utilities	13	73	3,040,677	801.02
Financial Activities	13	58	1,972,416	653.98
Professional & Business Services	6	7	306,716	842.63
Education & Health Services	75	278	7,543,572	521.83
Leisure & Hospitality	7	56	689,529	236.79
Local Government	10	491	12,374,456	484.66
State Government	6	46	1,346,502	562.92
Other	9	21	445,430	407.90

TABLE 6. COUNTY SUMMARY  
CALENDAR YEAR 2011

NORTH AMERICAN INDUSTRY CLASSIFICATION SYSTEM - INDUSTRY GROUPS	AVERAGE EMPLOYING UNITS	AVERAGE COVERED EMPLOYMENT	TOTAL CALENDAR EARNINGS	AVERAGE WEEKLY EARNINGS
<b>YELL COUNTY - TOTAL</b>	<b>437</b>	<b>6,238</b>	<b>\$158,999,067</b>	<b>\$490.17</b>
Natural Resources & Mining	27	186	6,128,565	633.64
Construction	35	195	5,575,322	549.83
Manufacturing	20	2,454	61,510,375	482.03
Trade, Transportation & Utilities	84	645	13,234,226	394.58
Wholesale Trade	15	30	729,164	467.41
Retail Trade	49	520	9,292,712	343.67
Transportation, Warehousing & Utilities	20	95	3,212,350	650.27
Financial Activities	33	163	4,903,937	578.57
Professional & Business Services	43	206	5,866,953	547.70
Education & Health Services	108	710	17,149,899	464.52
Leisure & Hospitality	31	315	3,505,651	214.02
Local Government	27	1,150	34,856,289	582.88
State Government	12	108	2,550,571	454.16
Other	17	106	3,717,279	674.40
<b>STATEWIDE COUNTY - TOTAL</b>	<b>5,369</b>	<b>19,065</b>	<b>\$1,074,313,543</b>	<b>\$1,083.65</b>
Natural Resources & Mining	67	406	31,502,315	1,492.15
Construction	559	2,941	133,789,174	874.83
Manufacturing	37	265	12,676,262	919.90
Trade, Transportation & Utilities	1,900	5,736	441,440,060	1,479.99
Wholesale Trade	1,624	4,568	386,802,025	1,628.39
Retail Trade	105	455	23,664,367	1,000.18
Transportation, Warehousing & Utilities	171	713	30,973,668	835.41
Information	133	426	22,570,764	1,018.90
Financial Activities	327	995	65,171,085	1,259.59
Professional & Business Services	1,904	5,339	273,877,110	986.49
Education & Health Services	187	1,849	47,387,112	492.86
Leisure & Hospitality	63	80	2,864,280	688.53
Other Services	180	437	17,995,389	791.91
State Government	12	591	25,039,992	814.79

TABLE 7. FEDERAL GOVERNMENT EMPLOYMENT AND EARNINGS IN ARKANSAS

<b>NORTH AMERICAN INDUSTRY CLASSIFICATION SYSTEM INDUSTRY GROUPS</b>	<b>AVERAGE EMPLOYING UNITS</b>	<b>AVERAGE COVERED EMPLOYMENT</b>	<b>TOTAL CALENDAR EARNINGS</b>	<b>AVERAGE WEEKLY EARNINGS</b>
<b>TOTAL</b>	<b>1,252</b>	<b>21,040</b>	<b>\$1,309,399,593</b>	<b>\$1,196.80</b>
Trade, Transportation & Utilities	613	5,857	286,113,098	939.42
Information	2	55	2,657,186	929.09
Financial Activities	19	166	11,948,423	1,384.20
Professional & Business Services	30	868	63,125,578	1,398.56
Education & Health Services	18	4,964	353,452,853	1,369.29
Leisure & Hospitality	22	352	12,944,062	707.17
Other Services	3	9	196,555	419.99
Public Administration	545	8,769	578,961,838	1,269.69

TABLE 8. WORKFORCE INVESTMENT AREA SUMMARY  
CALENDAR YEAR 2011

NORTH AMERICAN INDUSTRY CLASSIFICATION SYSTEM - INDUSTRY GROUPS	AVERAGE EMPLOYING UNITS	AVERAGE COVERED EMPLOYMENT	TOTAL CALENDAR EARNINGS	AVERAGE WEEKLY EARNINGS
<b>CENTRAL WORKFORCE INVESTMENT AREA*</b>	<b>6,410</b>	<b>77,417</b>	<b>2,582,936,878</b>	<b>\$641.61</b>
Natural Resources & Mining	211	2,332	147,870,793	1,219.41
Construction	763	5,168	188,811,479	702.59
Trade, Transportation & Utilities	1,511	15,464	443,259,226	551.23
Wholesale Trade	392	2,195	101,050,923	885.32
Retail Trade	872	11,612	271,322,070	449.34
Transportation, Warehousing & Utilities	247	1,657	70,886,233	822.69
Information	67	587	22,856,864	748.82
Financial Activities	670	2,776	109,872,465	761.14
Professional & Business Services	819	8,266	372,339,164	866.24
Education & Health Services	1,000	11,259	355,772,217	607.67
Leisure & Hospitality	524	8,977	111,845,873	239.60
Local Government	132	10,127	346,346,830	657.70
State Government	66	4,657	161,977,863	668.88
Other	647	7,804	321,984,104	793.44

\*Note: Pulaski County is not included in the Central Workforce Investment Please refer to Page 53 for information on Pulaski County.  
Central Workforce Includes these counties: Faulkner, Lonoke, Monroe, Prairie, and Saline.

<b>EASTERN WORKFORCE INVESTMENT AREA</b>	<b>3,893</b>	<b>36,389</b>	<b>1,090,156,905</b>	<b>\$576.12</b>
Natural Resources & Mining	225	1,233	32,960,777	514.08
Construction	144	761	26,625,535	672.84
Trade, Transportation & Utilities	839	9,529	300,728,406	606.91
Wholesale Trade	176	2,079	86,491,704	800.05
Retail Trade	459	4,766	106,089,041	428.07
Transportation, Warehousing & Utilities	204	2,684	108,147,661	774.87
Financial Activities	259	1,398	48,731,741	670.35
Professional & Business Services	276	1,879	55,154,631	564.48
Education & Health Services	1,399	6,503	180,693,001	534.35
Leisure & Hospitality	248	3,266	43,874,199	258.34
Local Government	130	5,133	175,554,184	657.71
State Government	61	2,366	75,969,120	617.47
Other	312	4,321	149,865,311	666.98

Eastern Workforce Includes these counties: Crittenden, Cross, Lee, Phillips, and Saint Francis.

TABLE 8. WORKFORCE INVESTMENT AREA SUMMARY  
CALENDAR YEAR 2011

NORTH AMERICAN INDUSTRY CLASSIFICATION SYSTEM - INDUSTRY GROUPS	AVERAGE EMPLOYING UNITS	AVERAGE COVERED EMPLOYMENT	TOTAL CALENDAR EARNINGS	AVERAGE WEEKLY EARNINGS
<b>NORTH CENTRAL WORKFORCE INVESTMENT AREA</b>	<b>5,697</b>	<b>68,946</b>	<b>2,172,530,676</b>	<b>\$605.97</b>
Natural Resources & Mining	213	3,035	163,983,438	1,039.05
Construction	480	2,559	87,230,697	655.53
Manufacturing	255	9,074	334,692,519	709.32
Trade, Transportation & Utilities	1,442	15,893	506,086,394	612.37
Retail Trade	882	9,149	196,768,657	413.60
Other Trade, Transportation & Utilities	560	6,744	309,317,737	882.03
Information	68	545	17,440,471	615.40
Financial Activities	517	2,506	89,200,775	684.52
Professional & Business Services	522	2,914	83,914,063	553.79
Education & Health Services	1,039	12,765	422,803,465	636.96
Leisure & Hospitality	465	6,017	71,770,370	229.38
Other Services	359	1,433	37,028,824	496.92
Local Government	231	9,022	261,694,756	557.81
State Government	106	3,183	96,684,904	584.14

North Central Workforce Includes these counties: Cleburne, Fulton, Independence, Izard, Jackson, Sharp, Stone, Van Buren, White, and Woodruff.

<b>NORTHEAST WORKFORCE INVESTMENT AREA</b>	<b>6,543</b>	<b>94,454</b>	<b>3,134,511,542</b>	<b>\$638.18</b>
Natural Resources & Mining	407	2,121	61,253,601	555.38
Construction	458	3,029	113,559,544	720.98
Manufacturing	329	20,120	888,736,099	849.46
Trade, Transportation & Utilities	1,696	18,226	544,733,335	574.76
Wholesale Trade	402	3,668	164,393,379	861.89
Retail Trade	986	11,684	258,829,018	426.01
Transportation, Warehousing & Utilities	308	2,874	121,510,938	813.06
Financial Activities	571	3,139	124,486,364	762.65
Professional & Business Services	666	7,427	196,026,613	507.57
Education & Health Services	1,182	14,837	528,793,355	685.39
Leisure & Hospitality	494	7,740	96,510,377	239.79
Local Government	214	11,198	355,468,653	610.46
State Government	99	4,267	162,461,862	732.19
Other	427	2,350	62,481,739	511.31

Northeast Workforce Includes these counties: Clay, Craighead, Greene, Lawrence, Mississippi, Poinsett, and Randolph.



TABLE 8. WORKFORCE INVESTMENT AREA SUMMARY  
CALENDAR YEAR 2011

NORTH AMERICAN INDUSTRY CLASSIFICATION SYSTEM - INDUSTRY GROUPS	AVERAGE EMPLOYING UNITS	AVERAGE COVERED EMPLOYMENT	TOTAL CALENDAR EARNINGS	AVERAGE WEEKLY EARNINGS
<b>NORTHWEST WORKFORCE INVESTMENT AREA</b>	<b>14,822</b>	<b>228,612</b>	<b>9,232,483,229</b>	<b>\$776.63</b>
Natural Resources & Mining	132	1,600	73,043,583	877.93
Construction	1,343	8,499	327,361,324	740.72
Trade, Transportation & Utilities	3,679	51,825	1,964,743,824	729.06
Wholesale Trade	1,201	9,126	617,661,877	1,301.57
Retail Trade	2,009	26,134	625,257,353	460.10
Transportation, Warehousing & Utilities	469	16,565	721,824,594	837.99
Education & Health Services	2,092	28,527	1,074,831,387	724.57
Leisure & Hospitality	1,507	23,258	328,018,891	271.22
Other Services	958	4,425	119,446,379	519.11
Local Government	308	20,707	747,836,962	694.52
State Government	107	7,911	362,819,018	881.97
Other	4,696	81,860	4,234,381,861	994.75

Northwest Workforce Includes these counties: Baxter, Benton, Boone, Carroll, Madison, Marion, Newton, Searcy, and Washington.

<b>SOUTHEAST WORKFORCE INVESTMENT</b>	<b>5,942</b>	<b>72,136</b>	<b>2,379,384,340</b>	<b>\$634.32</b>
Natural Resources & Mining	396	2,461	86,198,744	673.58
Construction	314	2,936	124,753,039	817.13
Manufacturing	213	15,283	642,343,821	808.27
Trade, Transportation & Utilities	1,324	12,761	390,506,252	588.49
Retail Trade	794	8,045	179,740,070	429.65
Other Trade, Transportation & Utilities	530	4,716	210,766,182	859.46
Financial Activities	406	2,610	100,614,165	741.34
Education & Health Services	1,743	11,139	326,644,195	563.93
Other Services	347	1,322	32,082,263	466.69
Local Government	208	9,480	292,720,206	593.80
State Government	137	6,388	219,067,476	659.49
Other	854	7,756	164,454,179	407.76

Southeast Workforce Includes these counties: Arkansas, Ashley, Bradley, Chicot, Cleveland, Desha, Drew, Grant, Jefferson, and Lincoln.

TABLE 8. WORKFORCE INVESTMENT AREA SUMMARY  
CALENDAR YEAR 2011

NORTH AMERICAN INDUSTRY CLASSIFICATION SYSTEM - INDUSTRY GROUPS	AVERAGE EMPLOYING UNITS	AVERAGE COVERED EMPLOYMENT	TOTAL CALENDAR EARNINGS	AVERAGE WEEKLY EARNINGS
<b>SOUTHWEST WORKFORCE INVESTMENT</b>	<b>5,799</b>	<b>79,797</b>	<b>2,770,873,239</b>	<b>\$667.77</b>
Construction	387	4,543	203,688,287	862.22
Manufacturing	260	19,468	860,691,551	850.20
Trade, Transportation & Utilities	1,463	15,304	482,001,614	605.68
Retail Trade	898	8,851	186,924,909	406.14
Other Trade, Transportation & Utilities	565	6,453	295,076,705	879.37
Information	60	513	20,579,583	771.46
Financial Activities	499	2,725	93,849,898	662.31
Education & Health Services	1,059	9,583	267,161,187	536.13
Leisure & Hospitality	407	5,287	68,389,084	248.76
Other Services	408	1,912	42,048,912	422.93
Local Government	259	10,080	307,413,515	586.49
State Government	139	3,750	124,517,157	638.55
Other	858	6,632	300,532,451	871.45

Southwest Workforce Includes these counties: Calhoun, Columbia, Dallas, Hempstead, Howard, Lafayette, Little River, Miller, Nevada, Ouachita, Sevier, and Union

<b>WEST CENTRAL WORKFORCE INVESTMENT</b>	<b>8,062</b>	<b>105,381</b>	<b>3,221,057,475</b>	<b>\$587.80</b>
Construction	779	4,669	169,250,648	697.11
Trade, Transportation & Utilities	1,902	21,140	666,214,578	606.05
Wholesale Trade	358	2,385	99,590,035	803.02
Retail Trade	1,242	13,940	313,035,023	431.84
Transportation, Warehousing & Utilities	302	4,815	253,589,520	1,012.82
Information	91	745	27,855,596	719.04
Financial Activities	810	3,561	126,436,831	682.81
Professional & Business Services	913	8,217	247,681,143	579.66
Education & Health Services	1,428	16,925	557,002,368	632.89
Leisure & Hospitality	758	12,079	165,233,553	263.07
Other Services	522	2,154	50,063,804	446.97
Local Government	227	11,679	374,934,085	617.37
State Government	125	5,406	173,262,528	616.35
Other	598	18,806	663,122,341	678.10

West Central Workforce Includes these counties: Clark, Conway, Garland, Hot Spring, Johnson, Montgomery, Perry, Pike, Pope, and Yell

TABLE 8. WORKFORCE INVESTMENT AREA SUMMARY  
CALENDAR YEAR 2011

NORTH AMERICAN INDUSTRY CLASSIFICATION SYSTEM - INDUSTRY GROUPS	AVERAGE EMPLOYING UNITS	AVERAGE COVERED EMPLOYMENT	TOTAL CALENDAR EARNINGS	AVERAGE WEEKLY EARNINGS
<b>WESTERN WORKFORCE INVESTMENT</b>	<b>6,620</b>	<b>102,126</b>	<b>3,538,358,786</b>	<b>\$666.29</b>
Natural Resources & Mining	171	2,642	169,063,643	1,230.59
Trade, Transportation & Utilities	1,651	22,292	690,007,569	595.25
Wholesale Trade	386	3,670	161,248,265	844.94
Retail Trade	955	12,117	272,453,998	432.41
Transportation, Warehousing & Utilities	310	6,505	256,305,306	757.72
Financial Activities	658	3,682	147,195,421	768.79
Professional & Business Services	879	9,215	337,130,942	703.56
Education & Health Services	1,014	14,825	547,729,859	710.51
Leisure & Hospitality	529	8,158	109,710,493	258.62
Other Services	458	2,087	56,075,190	516.71
Local Government	151	9,274	317,212,749	657.78
State Government	73	3,046	98,385,038	621.15
Other	1,036	26,905	1,065,847,882	761.83

Western Workforce Includes these counties: Crawford, Franklin, Logan, Polk, Scott, and Sebastian

