

Arkansas Covered
Employment
& Earnings



Annual
2014

**COVERED EMPLOYMENT AND EARNINGS
STATE OF ARKANSAS
ANNUAL 2014**

**ASA HUTCHINSON, GOVERNOR
STATE OF ARKANSAS**

**DARYL E. BASSETT, DIRECTOR
DEPARTMENT OF WORKFORCE SERVICES**

**PUBLISHED BY
LABOR MARKET INFORMATION & ANALYSIS
BUREAU OF LABOR STATISTICS PROGRAMS
POST OFFICE BOX 2981
LITTLE ROCK, ARKANSAS 72203-2981
SUSAN PRICE, BLS PROGRAMS MANAGER
TELEPHONE (501) 682-3103**

STATE OF ARKANSAS WEBPAGE: <http://www.arkansas.gov>

DEPARTMENT OF WORKFORCE SERVICES WEBPAGE: <http://www.arkansas.gov/esd/>

WEBPAGE FOR LABOR MARKET INFORMATION: <http://www.discover.arkansas.gov>

RELEASED: JULY 2015

TABLE OF CONTENTS

	Page
Description of Data	1
Industry Classification	1
Definition of Covered Employment and Earnings	2
Federal Government	2
County Classification	2
Significant Developments During Calendar Year 2014	3

GRAPHS AND TABLES

Graph 1	Average Total Covered Employment for Selected Years, Arkansas	7
Graph 2	Total Covered Earnings, by Calendar Quarter for Selected Years, Arkansas	8
Table 1	Annual Comparison of Covered Employment and Wages, by Industry	5
Table 2	Total Covered Employment in Arkansas, 2007 – 2014	6
Table 3	Total Covered Earnings, 2007 – 2014	9
Table 4	Total Taxable Earnings, 2007 – 2014	10
Table 5	State Summary – Employment and Total Earnings, by Industry, Calendar Year 2014	11
Table 6	County Summary – Employment and Total Earnings, by Industry, Calendar Year 2014	23
Table 7	Federal Government Employment and Total Earnings in Arkansas, Calendar Year 2014	60
Table 8	Workforce Investment Area – Employment and Total Earnings, by Industry, Calendar Year 2014	61

EMPLOYMENT AND EARNINGS
UNDER THE ARKANSAS EMPLOYMENT SECURITY LAW
ANNUAL 2014

DESCRIPTION AND CLASSIFICATION OF DATA

This publication contains covered employment and payroll data by industry and county for the Calendar Year 2014 and a record for total covered employment by month, quarterly payroll data, average weekly earnings, and total taxable earnings for 2007 through 2014. These data are compiled from quarterly contributions and wage reports submitted by employers subject to the Arkansas Employment Security Law.

Employment data have been tabulated for each month of the quarter by industry under the **North American Industry Classification System** (NAICS) by state, county, and workforce area. Payroll data represent the total wages paid during the quarter and are classified by industry for the state and by publishable industry groups for each county and workforce area.

Due to industry classification revisions, previously published data will not always be comparable with current data. For this reason, comparisons should not be made between the same industries under different revisions. For more information, visit the NAICS home page at <http://www.census.gov/naics>.

Industry Classification Revisions

- SIC (Standard Industrial Classification) 1987 to NAICS 2002
- NAICS 2002 to NAICS 2007
- NAICS 2007 to NAICS 2012

The tabulation of this data is a joint effort in conjunction with the United States Bureau of Labor Statistics. Data included in this publication are subject to revisions. Revisions are typically reflected in the Annual Covered Employment and Earnings publication.

DEFINITION OF COVERED EMPLOYMENT AND EARNINGS

Covered Employment is the total number of workers employed by establishments subject to the Arkansas Employment Security Law that worked or received pay for the payroll period including the 12th of the month. Earnings include all wages paid to any covered employee by their employer including salaries, bonuses, commissions, fees, fringe benefits, sick pay made directly to employees or dependents, deferred compensation, and reported tips. These wages include both taxable and nontaxable wages. Only the first \$12,000 paid to each worker by an employer in the calendar year is taxable under the Arkansas Employment Security Law.

An Arkansas state unemployment account is required of any entity meeting the definition of an employer. As described by Arkansas Department of Workforce Services Law, the definition of an employer includes, but is not limited to, a sole proprietorship, partnership, corporation, associations, trust, estate, and receiver or trustee in bankruptcy. The entity must employ one or more individuals for ten or more days in a calendar year, whether or not the days are consecutive.

Currently excluded from coverage is employment covered by the Railroad Unemployment Insurance Act, some domestic service workers, employees of small agricultural establishments, self-employed workers, unpaid family workers, insurance and real estate agents paid only on a commission basis, and employees of churches and religious organizations except separately incorporated schools.

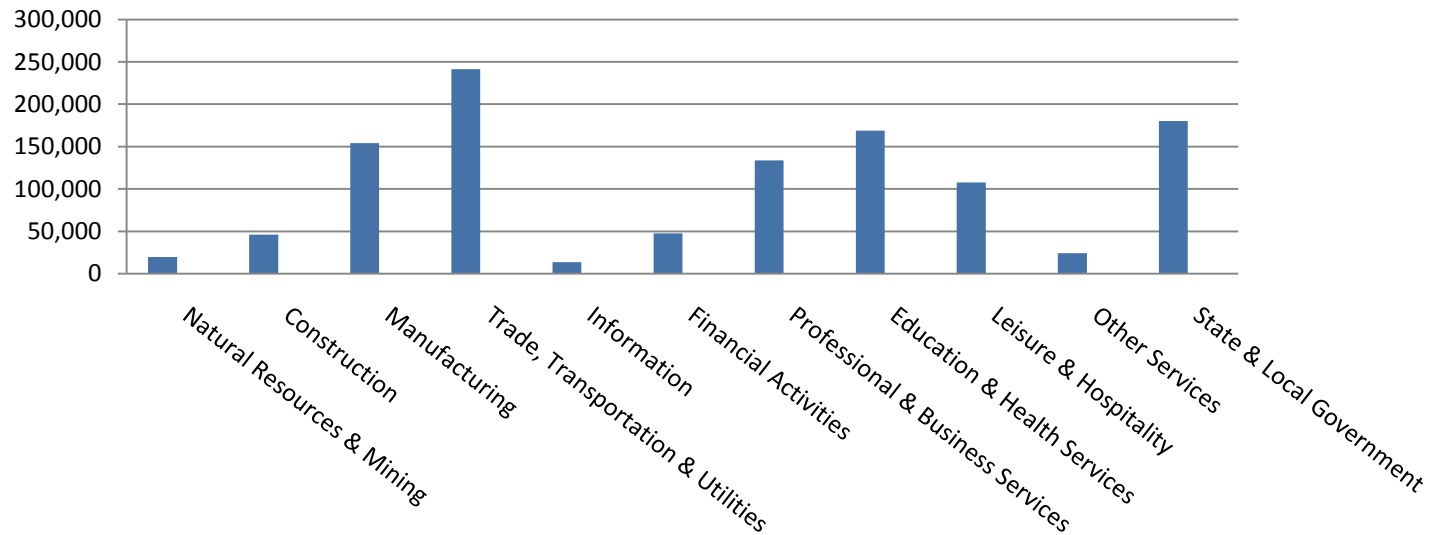
Civilian federal workers are covered by Unemployment Compensation for Federal Employees (UCFE).

SIGNIFICANT DEVELOPMENTS DURING CALENDAR YEAR 2014

AVERAGE EMPLOYMENT CHANGES

Covered employment averaged 1,137,303 during the Calendar Year 2014 (see Table 1, page 5), an increase of 12,224 from the previous year. The greatest employment gain occurred in Professional & Business Services (+4,930). The largest annual loss occurred in State and Local Government (-1,106).

Average Covered Employment by NAICS



EMPLOYMENT CHANGES FOR CALENDAR YEAR 2014

Seven of the eleven major industry sectors recorded over-the-year employment gains (see Table 1). The increase in Professional & Business Services brought the sector's employment average to 133,762. The Administrative & Waste Services subsector had an average of 60,718, an increase of 3,439 from 2013. Jobs in Trade, Transportation, and Utilities grew to 241,438. This increase can be attributed mainly to Retail Trade which expanded by 3,124 jobs. Leisure and Hospitality sectors gained 3,369 to total 107,674 employees. Most of the growth occurred in Accommodations and Food Services.

Four major industry sectors experienced over-the-year losses. State and Local Government had the most significant decline in average employment (-1,106). The other three sectors had minor decreases over-the-year, Natural Resources and Mining (-493), Information (-438) and Financial Activities (-357).

EMPLOYMENT CHANGES FOR CALENDAR YEAR 2014

Pulaski County posted the highest average covered employment for Arkansas counties in 2014 at 233,137. Benton County averaged 104,308 in covered employment, slightly higher than Washington County with 93,968. Sebastian County had the fourth highest average covered employment with 63,755, followed by Craighead County with 45,597. Of the five leading counties, only Pulaski County experienced a decline in covered employment compared to 2013.

COVERED WAGES

Wages paid to covered workers totaled \$44,974,123,701 for the Calendar Year 2014 (see Table 1), for an average weekly wage of \$760.47 (see Table 5). Employees in Benton County recorded the highest average weekly wage (\$1,026.73), and workers in Newton County the lowest (\$439.41) (see Table 6).

The Professional & Business Services sector recorded the highest average weekly wage for the State of Arkansas at \$1,038.17. The Leisure and Hospitality sector reported the lowest average weekly wage at \$278.10 (see Table 5).

Average Weekly Wage by Industry

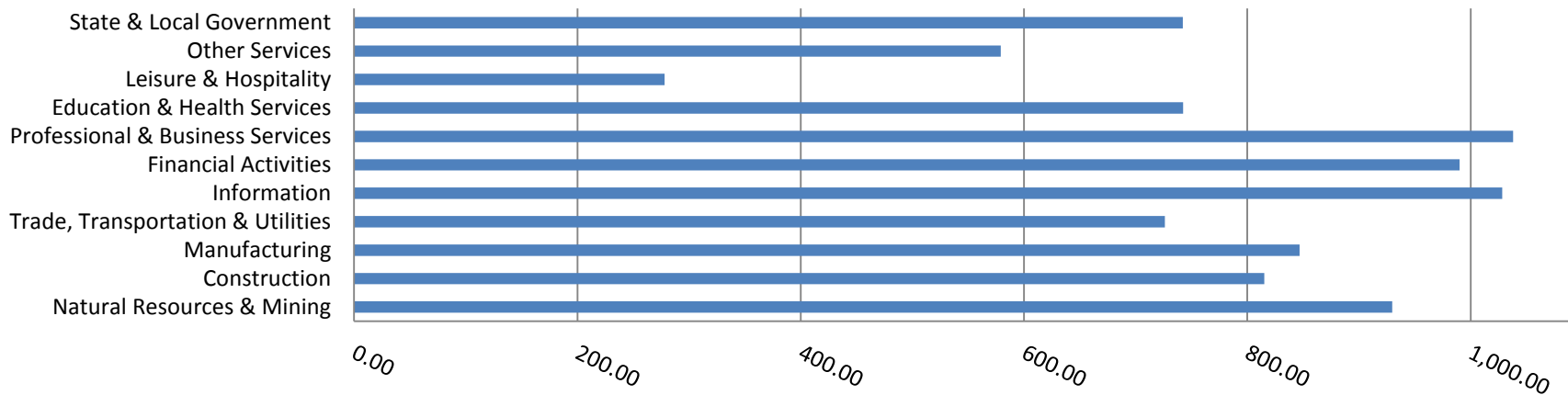


TABLE 1. YEARLY COMPARISON OF COVERED EMPLOYMENT AND WAGES, BY INDUSTRY

North American Industry Classification System - Industry Groups	Number of Employing Units	Average Covered Employment	Percent of Total	Net Change From: 2013	Total Calendar Earnings 2014	Percent of Total	Average Weekly Earnings
Total	85,765	1,137,303	100	12,224	\$44,974,123,701	100	760.47
Natural Resources & Mining	2,573	19,636	1.7	-493	949,356,610	2.1	929.76
Agriculture, Forestry, Fishing & Hunting	2,054	12,868	1.1	330	469,083,078	1.0	701.03
Mining	519	6,768	0.6	-823	480,273,532	1.1	1,364.66
Construction	6,640	46,113	4.1	665	1,954,578,048	4.3	815.13
Manufacturing	2,981	154,114	13.6	1,612	6,786,842,584	15.1	846.88
Trade, Transportation & Utilities	21,228	241,438	21.2	3,533	9,116,141,974	20.3	726.11
Wholesale Trade	6,865	46,624	4.1	-195	2,894,337,136	6.4	1,193.81
Retail Trade	11,115	136,298	12.0	3,124	3,374,557,699	7.5	476.13
Transportation & Warehousing	2,839	50,611	4.5	783	2,221,160,412	4.9	843.98
Utilities	409	7,905	0.7	-179	626,086,727	1.4	1,523.10
Information	1,111	13,694	1.2	-438	732,251,779	1.6	1,028.32
Financial Activities	8,099	47,729	4.2	-357	2,457,054,108	5.5	989.99
Finance & Insurance	4,804	34,769	3.1	-172	2,008,520,211	4.5	1,110.91
Real Estate & Rental & Leasing	3,295	12,960	1.1	-185	448,533,897	1.0	665.56
Professional & Business Services	13,081	133,762	11.8	4,930	7,221,133,307	16.1	1,038.17
Professional & Technical Services	8,266	40,638	3.6	499	2,307,846,286	5.1	1,092.12
Management of Companies & Enterprises	498	32,406	2.8	992	3,313,515,366	7.4	1,966.35
Administrative & Waste Services	4,317	60,718	5.3	3,439	1,599,771,655	3.6	506.68
Education & Health Services	14,982	168,846	14.8	215	6,518,827,569	14.5	742.46
Educational Services	749	10,638	0.9	-427	359,499,524	0.8	649.88
Health Care & Social Assistance	14,233	158,208	13.9	642	6,159,328,045	13.7	748.69
Leisure & Hospitality	6,654	107,674	9.5	3,369	1,557,081,154	3.5	278.10
Arts, Entertainment & Recreation	925	10,419	0.9	441	193,902,636	0.4	357.89
Accommodation & Food Services	5,729	97,255	8.6	2,928	1,363,178,518	3.0	269.55
Other Services	5,319	24,138	2.1	294	727,084,032	1.6	579.27
State & Local Government	3,097	180,159	15.8	-1,106	6,953,772,536	15.5	742.27
Local Government	1,962	109,803	9.7	-1,040	3,957,214,486	8.8	693.06
State Government	1,135	70,356	6.2	-66	2,996,558,050	6.7	819.06
Nonclassifiable Establishments	0	0	0.0	0	0	0.0	0.00

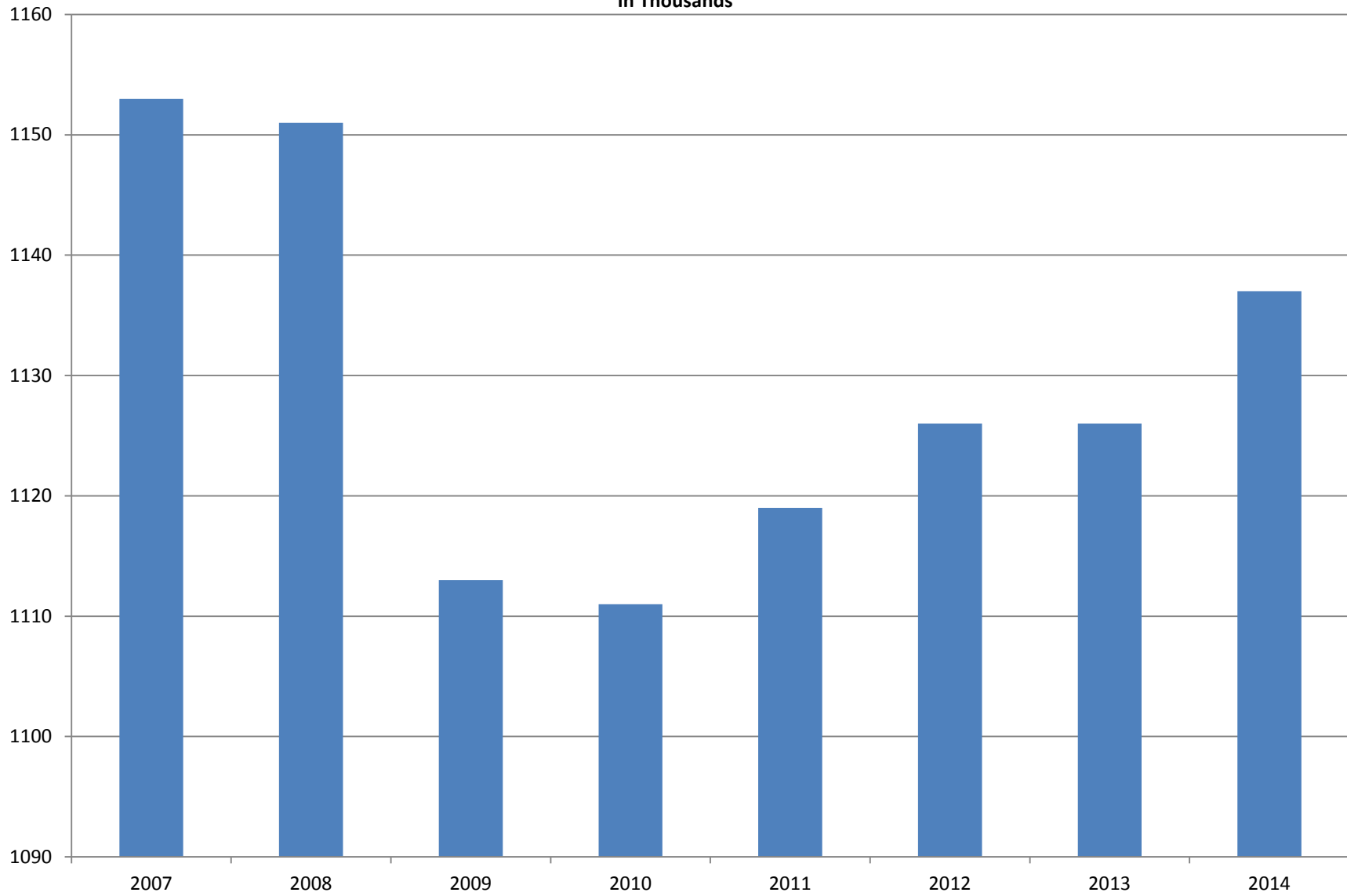
Note: Items do not necessarily add to total because of rounding. Because of industry code changes between years, substantial employment and wage shifts among industries are anticipated.

TABLE 2. TOTAL COVERED EMPLOYMENT IN ARKANSAS

PERIOD	2007	2008	2009	2010	2011	2012	2013	2014
AVERAGE	1,152,994	1,150,965	1,112,591	1,110,947	1,118,639	1,126,171	1,125,890	1,137,292
January	1,137,437	1,141,856	1,119,299	1,089,984	1,098,349	1,113,274	1,112,991	1,114,412
February	1,143,397	1,149,443	1,119,476	1,091,282	1,098,445	1,119,319	1,121,492	1,122,905
March	1,158,895	1,157,690	1,124,386	1,106,198	1,113,061	1,131,123	1,129,100	1,132,106
April	1,159,623	1,159,841	1,123,383	1,115,341	1,129,635	1,136,608	1,134,734	1,140,788
May	1,165,224	1,166,111	1,122,322	1,123,250	1,126,371	1,142,985	1,138,383	1,149,046
June	1,164,207	1,164,167	1,117,884	1,130,164	1,123,412	1,136,699	1,130,402	1,144,876
July	1,110,571	1,114,279	1,071,048	1,073,743	1,080,937	1,078,836	1,083,849	1,096,675
August	1,139,109	1,138,583	1,093,192	1,099,795	1,106,262	1,108,552	1,109,759	1,125,162
September	1,165,135	1,162,333	1,116,580	1,124,281	1,132,779	1,134,829	1,135,673	1,150,545
October	1,162,768	1,157,196	1,113,157	1,125,073	1,138,395	1,135,677	1,138,312	1,153,102
November	1,164,246	1,152,159	1,115,443	1,126,781	1,138,543	1,137,411	1,141,035	1,157,849
December	1,165,314	1,147,927	1,114,919	1,125,466	1,137,474	1,138,742	1,134,955	1,160,040

AVERAGE TOTAL COVERED EMPLOYMENT

In Thousands



TOTAL COVERED EARNINGS BY CALENDAR YEAR

In Thousands

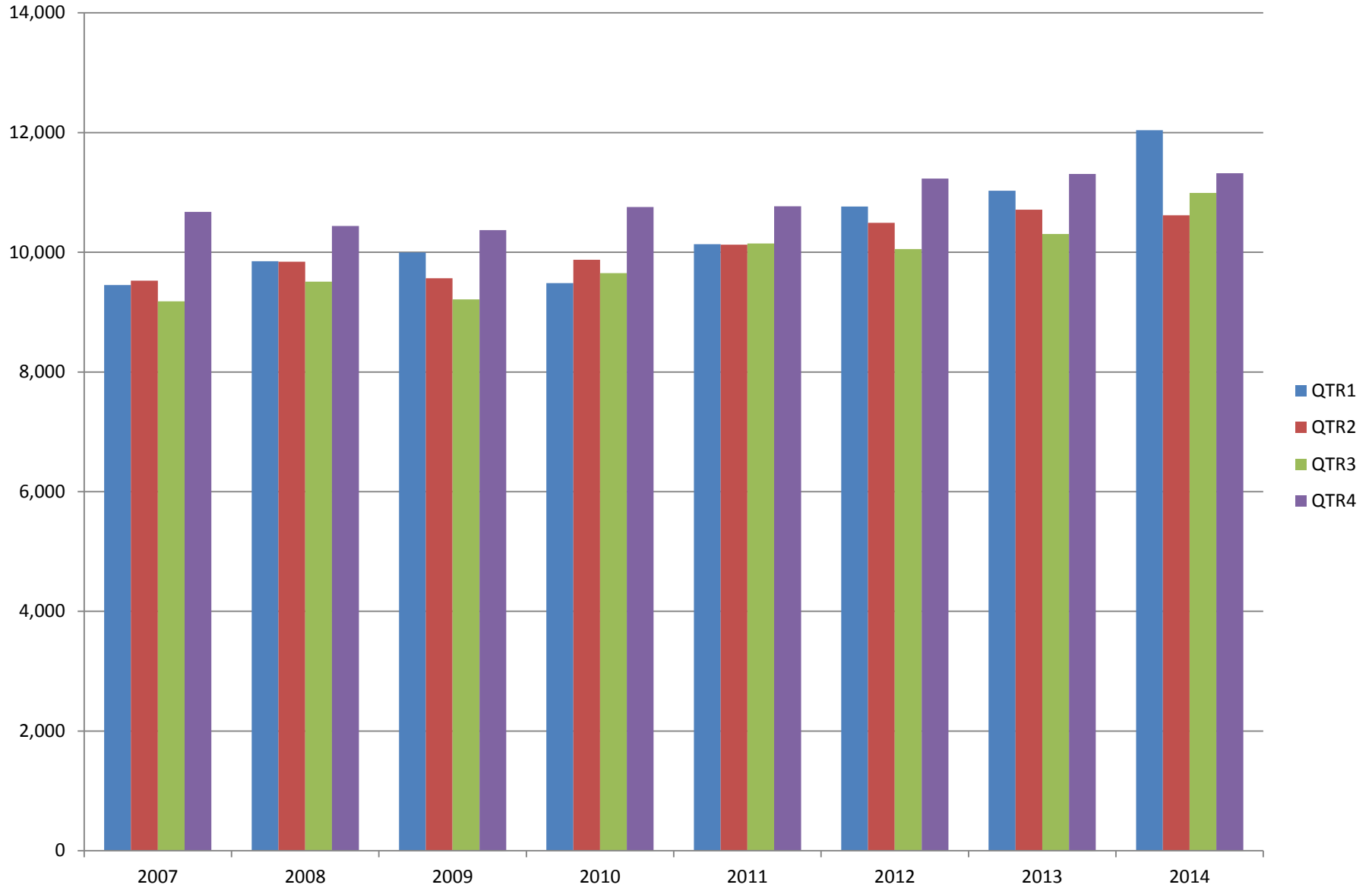


TABLE 3. TOTAL COVERED EARNINGS 2006 - 2013

PERIOD	2007	2008	2009	2010
TOTAL	\$38,833,265,464	\$39,643,039,342	\$39,149,476,305	\$39,769,504,992
January - March	9,452,711,662	9,851,866,058	9,998,452,028	9,486,245,580
April - June	9,525,837,049	9,843,711,293	9,566,968,853	9,873,489,653
July - September	9,178,902,477	9,509,150,631	9,213,797,140	9,653,588,807
October - December	10,675,814,276	10,438,311,360	10,370,258,284	10,756,180,952
Average Weekly Earnings	\$647.70	\$662.37	\$676.69	\$688.42

PERIOD	2011	2012	2013	2014
TOTAL	\$41,177,659,236	\$42,546,231,979	\$43,371,086,461	\$44,974,123,701
January - March	10,134,035,254	10,766,175,449	11,027,184,315	12,041,052,119
April - June	10,128,274,611	10,494,369,042	10,711,027,503	10,619,889,280
July - September	10,147,287,431	10,053,294,410	10,304,451,772	10,991,760,061
October - December	10,768,061,940	11,232,393,078	11,328,422,871	11,321,422,241
Average Weekly Earnings	\$707.89	\$726.53	\$740.80	\$760.48

TABLE 4. TOTAL TAXABLE EARNINGS, 2006 - 2013

PERIOD	2007	2008	2009	2010
TOTAL	10,459,105,059	10,360,487,108	9,787,660,886	11,332,118,456
January - March	5,617,417,571	5,635,750,082	5,423,705,265	5,607,134,758
April - June	2,466,606,627	2,419,313,519	2,293,670,854	2,977,100,591
July - September	1,307,060,412	1,297,473,555	1,165,280,065	1,577,067,770
October - December	1,068,020,449	1,007,949,952	905,004,702	1,170,815,337

PERIOD	2011	2012	2013	2014
TOTAL	11,479,396,226	11,627,967,713	11,644,747,978	11,919,035,738
January - March	5,828,877,821	6,167,036,199	6,184,735,653	6,288,682,396
April - June	2,910,604,359	2,838,154,846	2,805,431,293	2,831,013,392
July - September	1,601,382,146	1,494,712,584	1,506,497,129	1,552,243,963
October - December	1,138,531,900	1,128,064,084	1,148,083,903	1,247,095,987

TABLE 5. STATEWIDE SUMMARY CALENDAR YEAR 2014

North American Industry Classification System - Industry Groups		Average Employing Units	Average Covered Employment	Total Calendar Earnings	Average Weekly Earnings
TOTAL, ALL INDUSTRIES		85,765	1,137,303	\$44,974,123,701	\$760.47
NATURAL RESOURCES & MINING		2,573	19,636	\$949,356,610	\$929.76
11	AGRICULTURE, FORESTRY, FISHING & HUNTING	2,054	12,868	\$469,083,078	\$701.03
111	CROP PRODUCTION	922	4,490	\$130,022,394	\$556.89
1111	Oilseed & Grain Farming	639	2,954	86,658,467	564.15
1112	Vegetable & Melon Farming	19	146	3,575,905	471.01
1113	Fruit & Tree Nut Farming	14	69	1,681,675	468.69
1114	Greenhouse & Nursery Production	45	386	11,558,631	575.86
1119	Other Crop Farming	205	935	26,547,716	546.02
112	ANIMAL PRODUCTION & AQUACULTURE	296	3,068	\$132,404,292	\$829.93
1121	Cattle Ranching & Farming	105	385	10,469,483	522.95
1122	Hog & Pig Farming	12	136	6,635,246	938.24
1123	Poultry & Egg Production	106	2,062	100,291,659	935.35
1125	Animal Aquaculture	53	430	13,755,545	615.19
1129	Other Animal Production	20	55	1,252,359	437.89
113	FORESTRY & LOGGING	407	2,285	\$86,028,236	\$724.02
1131	Timber Tract Operations	38	172	7,928,470	886.46
1132	Forest Nurseries & Gathering of Forest Products	5	25	1,301,116	1,000.86
1133	Logging	364	2,088	76,798,650	707.33
114	FISHING, HUNTING & TRAPPING	3	19	\$482,570	\$488.43
115	SUPPORT ACTIVITIES FOR AGRICULTURE & FORESTRY	426	3,006	\$120,145,586	\$768.63
1151	Support Activities for Crop Production	295	1,460	69,525,522	915.77
1152	Support Activities for Animal Production	60	665	19,481,555	563.38
1153	Support Activities for Forestry	71	881	31,138,509	679.70
21	MINING	519	6,768	\$480,273,532	\$1,364.66
211	OIL & GAS EXTRACTION	85	1,413	\$128,771,791	\$1,752.57
212	MINING (EXCEPT OIL & GAS)	111	1,745	\$88,208,261	\$972.10
213	SUPPORT ACTIVITIES FOR MINING	323	3,610	\$263,293,480	\$1,402.59

Note: Data may not add due to rounding.

TABLE 5. STATEWIDE SUMMARY CALENDAR YEAR 2014

North American Industry Classification System - Industry Groups		Average Employing Units	Average Covered Employment	Total Calendar Earnings	Average Weekly Earnings
CONSTRUCTION		6,640	46,113	\$1,954,578,048	\$815.13
236	CONSTRUCTION OF BUILDINGS	1,613	9,389	\$438,969,167	\$899.11
2361	Residential Building Construction	1,070	2,935	108,195,008	708.92
2362	Nonresidential Building Construction	543	6,454	330,774,159	985.60
237	HEAVY & CIVIL ENGINEERING CONSTRUCTION	725	7,703	\$357,958,758	\$893.65
2371	Utility System Construction	392	4,095	187,054,309	878.44
2372	Land Subdivision	62	140	5,715,171	785.05
2373	Highway, Street & Bridge Construction	185	2,892	127,303,959	846.53
2379	Other Heavy Construction	86	576	37,885,319	1,264.87
238	SPECIALTY TRADE CONTRACTORS	4,302	29,021	\$1,157,650,123	\$767.12
2381	Building Foundation & Exterior Contractors	817	5,710	213,040,134	717.50
2382	Building Equipment Contractors	2,020	15,244	663,514,427	837.04
2383	Building Finishing Contractors	723	3,643	127,002,872	670.43
2389	Other Specialty Trade Contractors	742	4,424	154,092,690	669.83
MANUFACTURING		2,981	154,114	\$6,786,842,584	\$846.88
311	FOOD MANUFACTURING	268	42,967	\$1,450,665,326	\$649.28
3111	Animal Food Manufacturing	43	1,493	71,278,150	918.11
3112	Grain & Oilseed Milling	30	2,467	111,319,778	867.76
3113	Sugar & Confectionery Product Manufacturing	4	23	585,757	489.76
3114	Fruit, Vegetable & Specialty Food	19	4,427	184,929,909	803.33
3115	Dairy Product Manufacturing	8	522	22,657,940	834.73
3116	Animal Slaughtering & Processing	78	28,939	850,012,019	564.86
3117	Seafood Product Preparation & Packaging	4	39	629,686	310.50
3118	Bakeries & Tortilla Manufacturing	59	3,250	129,347,060	765.37
3119	Other Food Manufacturing	23	1,807	79,905,027	850.38
312	BEVERAGE & TOBACCO PRODUCT MANUFACTURING	43	1,146	\$46,604,808	\$782.06
313	TEXTILE MILLS	10	71	\$2,488,835	\$674.12
314	TEXTILE PRODUCT MILLS	54	898	\$41,950,155	\$898.37
3141	Textile Furnishing Mills	10	34	1,660,952	939.45
3149	Other Textile Product Mills	44	864	40,289,203	896.75
315	APPAREL MANUFACTURING	19	857	\$21,701,311	\$486.97
3151	Apparel Knitting Mills	3	597	15,591,613	502.24
3152	Cut & Sew Apparel Manufacturing	12	151	3,531,396	449.74
3159	Apparel Accessories, Other Apparel Manufacturing	4	109	2,578,302	454.89
316	LEATHER & ALLIED PRODUCT MANUFACTURING	14	1,030	\$28,484,656	\$531.83

Note: Data may not add due to rounding.

TABLE 5. STATEWIDE SUMMARY CALENDAR YEAR 2014

North American Industry Classification System - Industry Groups		Average Employing Units	Average Covered Employment	Total Calendar Earnings	Average Weekly Earnings
321	WOOD PRODUCT MANUFACTURING	323	9,168	\$356,926,331	\$748.69
3211	Sawmills & Wood Preservation	139	4,336	180,367,070	799.95
3212	Veneer & Engineered Wood Products	51	1,991	91,134,024	880.25
3219	Other Wood Product Manufacturing	133	2,841	85,425,237	578.24
322	PAPER MANUFACTURING	74	9,910	\$613,098,662	\$1,189.74
3221	Pulp, Paper & Paperboard Mills	12	4,111	322,433,507	1,508.31
3222	Converted Paper Product Manufacturing	62	5,799	290,665,155	963.91
323	PRINTING & RELATED SUPPORT ACTIVITIES	241	3,962	\$155,688,851	\$755.68
324	PETROLEUM & COAL PRODUCTS MANUFACTURING	18	1,087	\$67,158,468	\$1,188.14
325	CHEMICAL MANUFACTURING	112	5,055	\$302,511,150	\$1,150.85
3251	Basic Chemical Manufacturing	28	1,773	124,278,144	1,347.98
3252	Resin, Rubber & Artificial Fibers	7	295	17,453,676	1,137.79
3253	Agricultural Chemical Manufacturing	13	346	22,696,691	1,261.49
3254	Pharmaceutical & Medicine Manufacturing	13	265	13,578,438	985.37
3255	Paint, Coating & Adhesive Manufacturing	8	268	15,607,666	1,119.95
3256	Soap, Cleaning Compound, & Toilet Preparation Manufacturing	18	1,225	56,636,236	889.11
3259	Other Chemical Preparation Manufacturing	25	883	52,260,299	1,138.17
326	PLASTICS & RUBBER PRODUCTS MANUFACTURING	138	10,733	\$518,485,659	\$928.99
3261	Plastics Product Manufacturing	96	6,502	280,772,154	830.43
3262	Rubber Product Manufacturing	42	4,231	237,713,505	1,080.46
327	NONMETALLIC MINERAL PRODUCT MANUFACTURING	239	3,673	\$164,515,008	\$861.35
3271	Clay Product & Refractory Manufacturing	14	395	17,054,524	830.31
3272	Glass & Glass Product Manufacturing	11	383	16,891,925	848.16
3273	Cement & Concrete Product Manufacturing	174	1,986	82,949,363	803.21
3274	Lime & Gypsum Product Manufacturing	4	250	14,069,281	1,082.25
3279	Other Nonmetallic Mineral Products Manufacturing	36	659	33,549,915	979.05
331	PRIMARY METAL MANUFACTURING	76	9,894	\$606,056,340	\$1,177.98
3311	Iron & Steel Mills & Ferroalloys	8	2,429	230,660,090	1,826.17
3312	Purchased Steel Product Manufacturing	21	3,048	173,465,566	1,094.45
3313	Alumina & Aluminum Production	19	1,226	68,776,425	1,078.81
3314	Other Nonferrous Metal Production	8	598	24,961,486	802.72
3315	Foundries	20	2,593	108,192,773	802.40

Note: Data may not add due to rounding.

TABLE 5. STATEWIDE SUMMARY CALENDAR YEAR 2014

North American Industry Classification System - Industry Groups		Average Employing Units	Average Covered Employment	Total Calendar Earnings	Average Weekly Earnings
332	FABRICATED METAL PRODUCT MANUFACTURING	520	14,819	\$709,295,834	\$920.46
3321	Forging & Stamping	10	317	13,836,903	839.41
3322	Cutlery & Hand Tool Manufacturing	13	691	30,373,738	845.31
3323	Architectural & Structural Metals	150	3,881	194,388,606	963.22
3324	Boilers, Tanks & Shipping Containers	17	775	37,837,815	938.90
3325	Hardware Manufacturing	5	263	12,557,636	918.22
3326	Spring & Wire Product Manufacturing	13	395	17,316,916	843.08
3327	Machine Shops & Threaded Products	212	1,972	81,912,624	798.80
3328	Coating, Engraving & Heat Treating Metals	34	681	24,117,309	681.05
3329	Other Fabricated Metal Product Manufacturing	66	5,844	296,954,287	977.18
333	MACHINERY MANUFACTURING	211	11,184	\$493,318,343	\$848.26
3331	Agriculture, Construction & Mining Machinery	40	2,790	108,050,974	744.77
3332	Industrial Machinery Manufacturing	26	734	37,909,852	993.24
3333	Commercial & Service Industry Machinery	21	764	40,633,079	1,022.78
3334	HVAC & Commercial Refrigeration Equipment	20	3,058	134,205,514	843.97
3335	Metalworking Machinery Manufacturing	59	1,159	47,423,098	786.87
3336	Turbine & Power Transmission Equipment Manufacturing	6	646	30,504,996	908.10
3339	Other General Purpose Machinery Manufacturing	39	2,033	94,590,830	894.76
334	COMPUTER & ELECTRONIC PRODUCT MANUFACTURING	59	2,482	\$119,355,460	\$924.78
3343	Audio & Video Equipment Manufacturing	5	195	9,204,081	907.70
3344	Semiconductors & Electronic Components	24	1,623	76,477,427	906.17
3345	Electronic Instrument Manufacturing	20	505	24,448,960	931.03
	Other	10	159	9,224,992	1,115.75
335	ELECTRICAL EQUIPMENT & APPLIANCES	55	5,419	\$271,427,074	\$963.23
3353	Electrical Equipment Manufacturing	22	3,428	170,822,997	958.30
3359	Other Electrical Equipment & Component Manufacturing	17	1,576	77,670,461	947.76
	Other	16	415	22,933,616	1,062.73
336	TRANSPORTATION EQUIPMENT MANUFACTURING	138	13,000	\$573,404,624	\$848.23
3362	Motor Vehicle Body & Trailer Manufacturing	30	1,767	63,700,259	693.27
3363	Motor Vehicle Parts Manufacturing	45	4,553	183,836,559	776.48
3364	Aerospace Product & Parts Manufacturing	27	3,305	187,924,592	1,093.47
3366	Ship & Boat Building	20	1,669	55,276,513	636.91
	Other	16	1,706	82,666,701	931.85
337	FURNITURE & RELATED PRODUCT MANUFACTURING	181	3,430	\$118,612,155	\$665.02
3371	Household & Institutional Furniture	148	2,380	72,679,340	587.26
3372	Office Furniture & Fixtures Manufacturing	24	948	43,179,711	875.93
3379	Other Furniture Related Product Manufacturing	9	102	2,753,104	519.06
339	MISCELLANEOUS MANUFACTURING	188	3,329	\$125,093,534	\$722.63
3391	Medical Equipment & Supplies Manufacturing	75	1,611	70,528,440	841.91
3399	Other Miscellaneous Manufacturing	113	1,718	54,565,094	610.79

Note: Data may not add due to rounding.

TABLE 5. STATEWIDE SUMMARY CALENDAR YEAR 2014

North American Industry Classification System - Industry Groups		Average Employing Units	Average Covered Employment	Total Calendar Earnings	Average Weekly Earnings
TRADE, TRANSPORTATION & UTILITIES		21,228	241,438	\$9,116,141,974	\$726.11
42	WHOLESALE TRADE	6,865	46,624	\$2,894,337,136	\$1,193.81
423	MERCHANT WHOLESALERS, DURABLE GOODS	2,166	20,930	\$1,106,768,689	\$1,016.91
4231	Motor Vehicle & Part Merchant Wholesalers	229	2,661	113,615,579	821.09
4232	Furniture & Furnishings Merchant Wholesalers	54	440	24,296,075	1,061.89
4233	Lumber & Supply Merchant Wholesalers	166	1,361	61,152,210	864.07
4234	Commercial Goods Merchant Wholesalers	296	2,665	172,924,158	1,247.83
4235	Metal & Mineral Merchant Wholesalers	54	899	45,727,268	978.17
4236	Appliances & Electronics Goods Merchant Wholesalers	195	1,851	115,384,911	1,198.78
4237	Hardware & Plumbing Merchant Wholesalers	231	2,235	116,898,467	1,005.84
4238	Machinery & Supply Merchant Wholesalers	710	6,747	365,977,340	1,043.13
4239	Miscellaneous Durable Goods Merchant Wholesalers	231	2,071	90,792,681	843.08
424	MERCHANT WHOLESALERS, NONDURABLE GOODS	1,191	15,382	\$823,653,007	\$1,029.74
4241	Paper & Paper Product Merchant Wholesalers	66	1,134	63,331,580	1,074.00
4242	Druggist' Goods Merchant Wholesalers	55	547	31,516,470	1,108.02
4243	Apparel & Piece Goods Merchant Wholesalers	38	654	29,660,168	872.15
4244	Grocery Product Merchant Wholesalers	309	4,566	274,076,914	1,154.34
4245	Farm Product Merchant Wholesalers	73	877	31,446,137	689.55
4246	Chemical merchant Wholesalers	96	620	40,824,488	1,266.27
4247	Petroleum Merchant Wholesalers	139	1,815	110,105,782	1,166.62
4248	Alcoholic Beverage Merchant Wholesalers	43	1,465	73,333,537	962.64
4249	Miscellaneous Nondurable Goods Merchant Wholesaler	372	3,704	169,357,931	879.29
425	ELECTRONIC MARKETS & AGENTS & BROKERS	3,508	10,312	\$963,915,440	\$1,797.60
44 - 45	RETAIL TRADE	11,115	136,298	\$3,374,557,699	\$476.13
441	MOTOR VEHICLE & PARTS DEALERS	1,572	18,284	\$759,555,361	\$798.89
4411	Automobile Dealers	634	11,080	539,364,725	936.14
4412	Other Motor Vehicle Dealers	165	1,486	58,107,989	751.99
4413	Automotive Parts, Accessories & Tire Stores	773	5,718	162,082,647	545.12
442	FURNITURE & HOME FURNISHINGS STORES	515	3,475	\$99,727,026	\$551.89
4421	Furniture Stores	276	1,952	63,618,484	626.76
4422	Home Furnishings Stores	239	1,523	36,108,542	455.94
443	ELECTRONICS & APPLIANCE STORES	479	3,728	\$117,236,412	\$604.76
444	BUILDING MATERIAL & GARDEN SUPPLY STORES	830	10,727	\$276,309,873	\$495.35
4441	Building Material & Supplies Dealers	611	9,359	242,885,220	499.08
4442	Lawn & Garden Equipment & Supplies Stores	219	1,368	33,424,653	469.87

Note: Data may not add due to rounding.

TABLE 5. STATEWIDE SUMMARY CALENDAR YEAR 2014

North American Industry Classification System - Industry Groups		Average Employing Units	Average Covered Employment	Total Calendar Earnings	Average Weekly Earnings
445	FOOD & BEVERAGE STORES	1,007	18,520	\$377,259,364	\$391.74
4451	Grocery Stores	541	16,057	320,172,183	383.46
4452	Specialty Food Stores	124	790	22,734,403	553.42
4453	Beer, Wine & Liquor Stores	342	1,673	34,352,778	394.88
446	HEALTH & PERSONAL CARE STORES	1,034	8,036	\$287,062,990	\$686.96
447	GASOLINE STATIONS	1,635	12,193	\$201,547,515	\$317.88
44711	Gasoline Stations with Convenience Stores	1,529	10,882	175,240,273	309.69
44719	Other Gasoline Stations	106	1,311	26,307,242	385.90
448	CLOTHING & CLOTHING ACCESSORIES STORES	1,045	8,353	\$134,317,104	\$309.23
4481	Clothing Stores	767	6,423	89,484,578	267.92
4482	Shoe Stores	140	1,158	18,934,894	314.45
4483	Jewelry, Luggage & Leather Goods Stores	138	772	25,897,632	645.12
451	SPORTING GOODS, HOBBY, BOOK & MUSIC STORES	483	4,721	\$84,059,934	\$342.41
4511	Sporting Goods & Musical Instrument Stores	414	4,200	76,101,187	348.45
4512	Book, Periodical & Music Stores	69	521	7,958,747	293.77
452	GENERAL MERCH&ISE STORES	893	39,253	\$820,663,289	\$402.06
453	MISCELLANEOUS STORE RETAILERS	1,251	7,184	\$149,635,730	\$400.56
4531	Florists	192	689	12,115,211	338.15
4532	Office Supplies, Stationery & Gift Stores	290	2,078	44,085,630	407.99
4533	Used Merchandise Stores	258	1,796	36,572,081	391.60
4539	Other Miscellaneous Store Retailers	511	2,621	56,862,808	417.21
454	NONSTORE RETAILERS	371	1,824	\$67,183,101	\$708.32
4541	Electronic Shopping & Mail-Order Houses	163	718	27,744,633	743.11
4542	Vending Machine Operators	67	421	13,295,451	607.32
4543	Direct Selling Establishments	141	685	26,143,017	733.94
48 - 49	TRANSPORTATION & WAREHOUSING	2,839	50,611	\$2,221,160,412	\$843.98
481	AIR TRANSPORTATION	50	606	\$22,363,005	\$709.67
4811	Scheduled Air Transportation	21	543	17,588,405	622.91
4812	Nonsheduled Air Transportation	29	63	4,774,600	1,457.45
483	WATER TRANSPORTATION	3	19	\$1,350,310	\$1,366.71
484	TRUCK TRANSPORTATION	1,843	32,550	\$1,475,354,406	\$871.65
4841	General Freight Trucking	1,103	26,118	1,192,928,488	878.36
4842	Specialized Freight Trucking	740	6,432	282,425,918	844.41

Note: Data may not add due to rounding.

TABLE 5. STATEWIDE SUMMARY CALENDAR YEAR 2014

North American Industry Classification System - Industry Groups		Average Employing Units	Average Covered Employment	Total Calendar Earnings	Average Weekly Earnings
485	TRANSIT & GROUND PASSENGER TRANSPORTATION	88	1,603	\$31,179,435	\$374.05
4853	Taxi & Limousine Service	29	441	7,413,840	323.30
4854	School & Employee Bus Transportation	13	447	8,988,292	386.69
4855	Charter Bus Industry Service	7	101	3,055,611	581.80
4859	Other Ground Passenger Transportation	35	531	9,406,100	340.65
	Other	4	83	2,315,592	536.51
486	PIPELINE TRANSPORTATION	32	507	\$54,249,185	\$2,057.70
487	SCENIC AND SIGHTSEEING TRANSPORTATION	6	39	\$548,930	\$270.68
488	SUPPORT ACTIVITIES FOR TRANSPORTATION	424	4,738	\$223,674,381	\$907.86
4881	Support Activities for Air Transportation	100	1,161	47,176,354	781.43
4882	Support Activities for Rail Transportation	40	384	16,373,134	819.97
4883	Support Activities for Water Transportation	21	685	37,804,769	1,061.34
4884	Support Activities for Road Transportation	134	698	20,608,787	567.80
4885	Freight Transportation Arrangement	114	1,708	98,905,682	1,113.60
4889	Other Support Activities for Transportation	15	102	2,805,655	528.97
491	POSTAL SERVICE	12	259	\$11,052,882	\$820.68
492	COURIERS & MESSENGERS	161	3,158	\$136,690,043	\$832.38
493	OTHER WAREHOUSING & STORAGE	232	7,391	275,750,717	\$717.48
22	UTILITIES	409	7,905	\$626,086,727	\$1,523.10
2211	Power Generation & Supply	162	5,604	499,409,389	1,713.78
2212	Natural Gas Distribution	63	1,368	93,620,089	1,316.07
2213	Water, Sewage & Other Systems	184	933	33,057,249	681.37
INFORMATION		1,111	13,694	\$732,251,779	\$1,028.32
511	PUBLISHING INDUSTRIES, EXCEPT INTERNET	224	3,486	\$130,283,752	\$718.72
5111	Newspaper, Book & Directory Publishers	196	3,142	106,319,280	650.73
5112	Software Publishers	28	344	23,964,472	1,339.70
512	MOTION PICTURE & SOUND RECORDING INDUSTRY	138	1,077	\$21,093,988	\$376.65
5121	Motion Picture & Video Industries	120	1,048	19,807,552	363.47
5122	Sound Recording Industries	18	29	1,286,436	853.07
515	BROADCASTING, EXCEPT INTERNET	125	1,673	\$68,099,423	\$782.79
5151	Radio & Television Broadcasting	120	1,641	67,100,131	786.34
5152	Cable & Other Subscription Programming	5	32	999,292	600.54

Note: Data may not add due to rounding.

TABLE 5. STATEWIDE SUMMARY CALENDAR YEAR 2014

North American Industry Classification System - Industry Groups		Average Employing Units	Average Covered Employment	Total Calendar Earnings	Average Weekly Earnings
517	TELECOMMUNICATIONS	379	5,714	\$412,881,120	\$1,389.57
5171	Wired Telecommunications Carriers	262	3,574	257,799,626	1,387.15
5172	Wireless Telecommunications Carriers (except Satellite)	42	1,795	133,334,229	1,428.48
5174	Satellite Telecommunications Carriers	4	5	269,139	1,035.15
5179	Other Telecommunications	71	340	21,478,126	1,214.83
518	DATA PROCESSING, HOSTING & RELATED SERVICES	177	1,405	\$85,030,105	\$1,163.84
519	OTHER INFORMATION SERVICES	68	339	\$14,863,391	\$843.17
FINANCIAL ACTIVITIES		8,099	47,729	\$2,457,054,108	\$989.99
52	FINANCE & INSURANCE	4,804	34,769	\$2,008,520,211	\$1,110.91
522	CREDIT INTERMEDIATION & RELATED ACTIVITIES	1,955	19,049	\$914,259,603	\$922.98
5221	Depository Credit Intermediation	1,414	16,251	753,742,801	891.95
5222	Nondepository Credit Intermediation	388	2,312	133,025,198	1,106.48
5223	Activities Related to Credit Intermediation	153	486	27,491,604	1,087.83
523	FINANCIAL INVESTMENT & RELATED ACTIVITIES	661	3,055	\$388,400,318	\$2,444.92
524	INSURANCE CARRIERS & RELATED ACTIVITIES	2,130	12,588	\$699,254,070	\$1,068.25
5241	Insurance Carriers	348	5,404	359,242,542	1,278.41
5242	Insurance Agencies, Brokerages & Support	1,782	7,184	340,011,528	910.17
	OTHER	58	77	\$6,606,220	\$1,649.91
53	REAL ESTATE & RENTAL & LEASING	3,295	12,960	\$448,533,897	\$665.56
531	REAL ESTATE	2,613	8,613	\$280,474,866	\$626.23
5311	Lessors of Real Estate	1,118	4,040	117,287,145	558.30
5312	Offices of Real Estate Agents & Brokers	751	1,632	64,414,047	759.03
5313	Activities Related to Real Estate	744	2,941	98,773,674	645.87
532	RENTAL & LEASING SERVICES	658	4,282	\$164,173,961	\$737.32
5321	Automotive Equipment Rental & Leasing	104	890	25,807,769	557.64
5322	Consumer Goods Rental	348	2,031	60,952,833	577.14
5323	General Rental Centers	44	220	8,782,389	767.69
5324	Machinery & Equipment Rental & Leasing	162	1,141	68,630,970	1,156.73
533	LESSORS OF NONFINANCIAL INTANGIBLE ASSETS	24	65	\$3,885,070	\$1,149.43

Note: Data may not add due to rounding.

TABLE 5. STATEWIDE SUMMARY CALENDAR YEAR 2014

North American Industry Classification System - Industry Groups		Average Employing Units	Average Covered Employment	Total Calendar Earnings	Average Weekly Earnings
PROFESSIONAL & BUSINESS SERVICES		13,081	133,762	\$7,221,133,307	\$1,038.17
54	PROFESSIONAL & TECHNICAL SERVICES	8,266	40,638	\$2,307,846,286	\$1,092.12
5411	Legal Services	1,696	6,121	346,991,328	1,090.17
5412	Accounting & Bookkeeping Services	1,248	5,143	231,354,569	865.08
5413	Architectural & Engineering Services	946	5,791	346,535,063	1,150.77
5414	Specialized Design Services	176	444	21,205,755	918.48
5415	Computer Systems Design & Related Services	1,423	9,337	680,427,313	1,401.43
5416	Management & Technical Consulting Services	1,693	5,675	328,995,577	1,114.86
5417	Scientific Research & Development Services	145	1,083	67,752,441	1,203.08
5418	Advertising & Related Services	377	3,385	153,141,534	870.02
5419	Other Professional & Technical Services	562	3,659	131,442,706	690.83
55	MANAGEMENT OF COMPANIES & ENTERPRISES	498	32,406	\$3,313,515,366	\$1,966.35
56	ADMINISTRATIVE & SUPPORT SERVICES	4,317	60,718	\$1,599,771,655	\$506.68
561	ADMINISTRATIVE & SUPPORT SERVICES	4,006	57,719	\$1,474,285,946	\$491.20
5611	Office Administrative Services	584	3,920	196,891,789	965.91
5612	Facilities Support Services	26	212	8,437,097	765.34
5613	Employment Services	950	25,094	547,224,114	419.36
5614	Business Support Services	381	7,900	244,510,269	595.21
5615	Travel Arrangement & Reservation Services	97	363	12,886,794	682.71
5616	Investigation & Security Services	255	4,567	113,430,321	477.63
5617	Services to Buildings & Dwellings	1,502	14,281	302,385,617	407.19
5619	Other Support Services	211	1,382	48,519,945	675.16
562	WASTE MANAGEMENT & REMEDIATION SERVICES	311	2,999	\$125,485,709	\$804.66
5621	Waste Collection Services	126	1,090	42,638,154	752.26
5622	Waste Treatment & disposal Services	38	836	43,325,445	996.63
5629	Remediation & Other Waste Services	147	1,073	39,522,110	708.33
EDUCATION & HEALTH SERVICES		14,982	168,846	\$6,518,827,569	\$742.46
61	EDUCATIONAL SERVICES	749	10,638	\$359,499,524	\$649.88
6111	Elementary & Secondary Schools	83	3,197	97,996,143	589.47
6112	Junior Colleges	5	177	5,520,588	599.80
6113	Colleges & Universities	63	3,998	141,300,496	679.67
6114	Business, Computer, & Management Training	45	99	6,407,828	1,244.72
6115	Technical & Trade Schools	102	917	51,962,285	1,089.72
6116	Other Schools & Instruction	262	1,586	28,275,189	342.85
6117	Educational Support Services	189	664	28,036,995	812.01

Note: Data may not add due to rounding.

TABLE 5. STATEWIDE SUMMARY CALENDAR YEAR 2014

North American Industry Classification System - Industry Groups		Average Employing Units	Average Covered Employment	Total Calendar Earnings	Average Weekly Earnings
62	HEALTH CARE & SOCIAL ASSISTANCE	14,233	158,208	\$6,159,328,045	\$748.69
621	AMBULATORY HEALTH CARE SERVICES	5,328	49,364	\$2,883,119,311	\$1,123.18
6211	Offices of Physicians	2,255	22,605	1,783,918,924	1,517.63
6212	Offices of Dentists	994	7,032	319,074,139	872.59
6213	Offices of Other Health Practitioners	1,333	7,556	298,838,855	760.57
6214	Outpatient Care Centers	299	4,200	177,723,850	813.75
6215	Medical & Diagnostic Laboratories	130	1,065	56,568,406	1,021.46
6216	Home Health Care Services	160	4,585	157,483,535	660.53
6219	Other Ambulatory Health Care Services	157	2,321	89,511,602	741.65
622	HOSPITALS	110	40,814	\$1,797,472,577	\$846.93
6221	General Medical & Surgical Hospitals	80	36,065	1,607,537,067	857.18
6222	Psychiatric & Substance Abuse Hospitals	12	2,411	88,951,511	709.50
6223	Other Hospitals	18	2,338	100,983,999	830.62
623	Residential & Mental Health Facilities	620	31,185	\$746,316,033	\$460.23
6231	Nursing Care Facilities (Skilled Nursing Facilities)	268	22,461	540,517,333	462.78
6232	Residential Mental Health Facilities	174	4,320	106,012,328	471.92
6233	Continuing Care & Assisted Living Facilities	139	3,342	71,492,638	411.39
6239	Other Residential Care Facilities	39	1,062	28,293,734	512.34
624	SOCIAL ASSISTANCE	8,175	36,845	\$732,420,124	\$382.28
6241	Individual & Family Services	6,963	22,475	458,690,368	392.48
6242	Emergency & Other Relief Services	142	1,302	32,284,449	476.85
6243	Vocational Rehabilitation Services	130	3,480	73,784,663	407.74
6244	Child Day Care Services	940	9,588	167,660,644	336.28
LEISURE & HOSPITALITY		6,654	107,674	\$1,557,081,154	\$278.10
71	ARTS, ENTERTAINMENT & RECREATION	925	10,419	\$193,902,636	\$357.89
711	PERFORMING ARTS & SPECTATOR SPORTS	207	2,518	\$56,776,756	\$433.62
7111	Performing Arts Companies	45	467	8,235,586	339.14
7112	Spectator Sports	55	1,364	33,209,874	468.22
7113	Performing Arts & Sports Promoters	38	580	11,424,252	378.79
7114	Agents & Managers for Public Figures	21	36	2,132,520	1,139.17
7115	Independent Artists, Writers, & Performers	48	71	1,774,524	480.64
712	MUSEUMS, PARKS, & HISTORICAL SITES	55	536	\$15,166,010	\$544.13
713	GAMBLING, RECREATIONAL & AMUSEMENT INDUSTRY	663	7,365	\$121,959,870	\$318.45
72	ACCOMMODATION & FOOD SERVICES	5,729	97,255	\$1,363,178,518	\$269.55

Note: Data may not add due to rounding.

TABLE 5. STATEWIDE SUMMARY CALENDAR YEAR 2014

North American Industry Classification System - Industry Groups		Average Employing Units	Average Covered Employment	Total Calendar Earnings	Average Weekly Earnings
721	ACCOMMODATION	890	11,039	\$187,733,331	\$327.05
7211	Travel Accommodation	808	10,406	176,392,983	325.98
7212	RV Parks & Recreational Camps	64	541	9,417,010	334.74
7213	Rooming & Boarding Houses	18	92	1,923,338	402.04
722	FOOD SERVICES & DRINKING PLACES	4,839	86,216	\$1,175,445,187	\$262.19
7223	Special Food Services	185	2,792	48,432,038	333.59
7224	Drinking Places, Alcoholic Beverages	160	1,153	14,425,184	240.60
7225	Restaurants & Other Eating Places	4,494	82,271	1,112,587,965	260.07
722511	Full-Service Restaurants	2,035	36,838	542,774,308	283.35
722513	Limited-Service Eating Places	2,035	41,110	506,523,839	236.95
722514	Cafeterias, Grill Buffets, & Buffets	102	1,967	31,302,805	306.04
722515	Snack & Nonalcoholic Beverage Bars	322	2,356	31,987,013	261.09
	OTHER SERVICES	5,319	24,138	\$727,084,032	\$579.27
811	REPAIR & MAINTENANCE	2,209	9,630	\$342,998,640	\$684.96
8111	Automotive Repair & Maintenance	1,414	6,066	197,343,210	625.63
8112	Electronic Equipment Repair & Maintenance	176	749	32,787,657	841.83
8113	Commercial Machinery Repair & Maintenance	434	2,215	95,604,401	830.04
8114	Household Goods Repair & Maintenance	185	600	17,263,372	553.31
812	PERSONAL & LAUNDRY SERVICES	1,316	8,004	\$180,651,256	\$434.04
8121	Personal Care Services	603	2,823	52,377,776	356.81
8122	Death Care Services	248	1,586	45,961,229	557.29
8123	Drycleaning & Laundry Service	252	2,848	66,862,595	451.48
8129	Other Personal Services	213	747	15,449,656	397.74
813	MEMBERSHIP ASSOCIATIONS & ORGANIZATIONS	1,056	5,537	\$182,851,982	\$635.07
8131	Religious Organizations	55	229	6,553,672	550.36
8132	Grantmaking & Giving Organizations	109	444	20,299,509	879.22
8133	Social Advocacy Organizations	205	1,521	52,196,819	659.95
8134	Civic & Social Organizations	194	1,237	20,216,990	314.30
8139	Professional & Similar Organizations	493	2,106	83,584,992	763.25
814	PRIVATE HOUSEHOLDS	738	967	\$20,582,154	\$409.32
	LOCAL GOVERNMENT	1,962	109,803	\$3,957,214,486	\$693.06
	STATE GOVERNMENT	1,135	70,356	\$2,996,558,050	\$819.06
	NONCLASSIFIABLE ESTABLISHMENTS	0	0	0	\$0.00

Note: Data may not add due to rounding.

TABLE 6. COUNTY SUMMARY CALENDAR YEAR 2014

North American Industry Classification System - Industry Groups	Average Employing Units	Average Covered Employment	Total Calendar Earnings	Average Weekly Earnings
ARKANSAS COUNTY - TOTAL	750	9,734	\$366,921,624	\$724.90
Natural Resources & Mining	49	184	8,486,384	886.95
Construction	48	271	9,531,011	676.34
Manufacturing	30	3,499	146,789,764	806.77
Trade, Transportation & Utilities	206	2,485	99,165,087	767.41
Wholesale Trade	44	502	26,970,362	1,033.19
Retail Trade	97	1,044	25,452,380	468.84
Transportation, Warehousing & Utilities	65	939	46,742,345	957.29
Information	11	81	2,963,119	703.49
Financial Activities	47	310	13,995,365	868.20
Professional & Business Services	48	348	17,804,394	983.89
Education & Health Services	164	1,061	30,841,668	559.01
Leisure & Hospitality	55	469	5,801,631	237.89
Other Services	44	104	2,829,243	523.16
Local Government	32	714	23,353,288	628.99
State Government	16	208	5,360,670	495.62
ASHLEY COUNTY - TOTAL	566	7,049	\$274,101,659	\$747.79
Natural Resources & Mining	40	328	11,965,152	701.52
Construction	42	591	22,639,659	736.68
Manufacturing	26	1,901	119,461,297	1,208.49
Trade, Transportation & Utilities	116	1,220	36,120,002	569.36
Wholesale Trade	23	225	10,703,708	914.85
Retail Trade	71	737	15,449,326	403.12
Transportation, Warehousing & Utilities	22	258	9,966,968	742.92
Information	6	39	1,030,103	507.94
Financial Activities	35	215	8,377,399	749.32
Professional & Business Services	43	230	6,830,540	571.12
Education & Health Services	145	935	27,722,040	570.18
Leisure & Hospitality	30	395	4,659,883	226.87
Other Services	40	129	3,701,175	551.76
Local Government	32	881	27,024,878	589.91
State Government	11	185	4,569,531	475.00

Note: Data may not add due to rounding.

TABLE 6. COUNTY SUMMARY CALENDAR YEAR 2014

North American Industry Classification System - Industry Groups	Average Employing Units	Average Covered Employment	Total Calendar Earnings	Average Weekly Earnings
BAXTER COUNTY - TOTAL	1,215	14,118	\$461,212,583	\$628.24
Natural Resources & Mining	6	73	2,355,633	620.56
Construction	113	559	17,019,023	585.49
Manufacturing	55	2,322	89,714,375	743.01
Trade, Transportation & Utilities	261	2,646	67,317,590	489.26
Wholesale Trade	34	233	8,452,371	697.62
Retail Trade	203	2,238	51,811,189	445.21
Transportation, Warehousing & Utilities	24	175	7,054,030	775.17
Information	18	185	7,857,205	816.76
Financial Activities	111	724	35,913,969	953.94
Professional & Business Services	132	723	29,065,108	773.09
Education & Health Services	257	3,585	135,806,505	728.50
Leisure & Hospitality	119	1,514	20,481,887	260.16
Other Services	91	343	7,652,203	429.03
Local Government	40	1,110	37,173,166	644.03
State Government	12	334	10,855,919	625.05
BENTON COUNTY - TOTAL	5,668	104,308	\$5,569,023,184	\$1,026.73
Natural Resources & Mining	43	635	43,027,727	1,303.08
Construction	533	3,782	163,215,443	829.92
Manufacturing	189	10,913	447,369,827	788.35
Trade, Transportation & Utilities	1,530	23,961	1,106,471,601	888.04
Wholesale Trade	700	4,525	433,234,937	1,841.20
Retail Trade	678	11,138	287,312,957	496.07
Transportation, Warehousing & Utilities	152	8,298	385,923,707	894.39
Information	71	832	40,158,749	928.23
Financial Activities	577	2,943	159,716,580	1,043.65
Professional & Business Services	1,090	30,665	2,668,983,666	1,673.78
Education & Health Services	677	9,753	368,879,200	727.35
Leisure & Hospitality	500	10,445	169,798,056	312.62
Other Services	359	1,695	53,904,042	611.57
Local Government	82	7,618	309,914,041	782.34
State Government	17	1,066	37,584,252	678.02

Note: Data may not add due to rounding.

TABLE 6. COUNTY SUMMARY CALENDAR YEAR 2014

North American Industry Classification System - Industry Groups	Average Employing Units	Average Covered Employment	Total Calendar Earnings	Average Weekly Earnings
BOONE COUNTY - TOTAL	993	13,325	\$474,714,822	\$685.11
Natural Resources & Mining	5	11	208,754	\$364.95
Construction	76	402	13,991,918	669.34
Manufacturing	64	1,786	68,417,541	736.69
Trade, Transportation & Utilities	245	3,608	145,791,908	777.08
Wholesale Trade	48	311	10,760,955	665.41
Retail Trade	148	1,881	48,096,511	491.72
Transportation, Warehousing & Utilities	49	1,416	86,934,442	1,180.66
Information	14	265	11,339,117	822.87
Financial Activities	94	474	20,708,989	840.19
Professional & Business Services	108	1,061	44,919,704	814.18
Education & Health Services	165	1,394	42,053,829	580.15
Leisure & Hospitality	80	1,131	15,365,924	261.27
Other Services	66	271	8,675,633	615.64
Local Government	57	2,137	76,152,053	685.29
State Government	19	785	27,089,452	663.63
BRADLEY COUNTY - TOTAL	371	3,388	\$102,158,337	\$579.87
Natural Resources & Mining	43	268	8,810,418	632.21
Construction	16	98	3,349,651	657.31
Manufacturing	11	572	24,013,895	807.35
Trade, Transportation & Utilities	75	490	11,779,334	462.30
Wholesale Trade	15	96	3,887,462	778.74
Retail Trade	44	336	6,476,335	370.67
Transportation, Warehousing & Utilities	16	58	1,415,537	469.34
Information	4	12	423,579	678.81
Financial Activities	25	133	4,769,972	689.70
Professional & Business Services	26	102	2,946,609	555.54
Education & Health Services	99	568	16,965,734	574.41
Leisure & Hospitality	15	190	2,102,963	212.85
Other Services	32	107	2,429,521	436.65
Local Government	14	447	14,171,315	609.68
State Government	11	401	10,395,346	498.53

Note: Data may not add due to rounding.

TABLE 6. COUNTY SUMMARY CALENDAR YEAR 2014

North American Industry Classification System - Industry Groups	Average Employing Units	Average Covered Employment	Total Calendar Earnings	Average Weekly Earnings
CALHOUN COUNTY - TOTAL	109	2,593	\$126,924,779	\$941.33
Natural Resources & Mining	10	36	1,246,964	666.11
Construction	10	83	2,758,844	639.21
Manufacturing	10	1,819	101,557,126	1,073.68
Trade, Transportation & Utilities	20	225	8,309,378	710.20
Retail Trade	12	61	1,028,847	324.35
Transportation, Warehousing & Utilities	8	164	7,280,531	853.72
Financial Activities	5	79	2,734,722	665.71
Professional & Business Services	6	9	392,361	838.38
Education & Health Services	15	54	1,911,308	680.67
Leisure & Hospitality	10	16	215,855	259.44
Local Government	11	179	4,852,530	521.33
State Government	8	86	2,824,169	631.52
Other	4	7	121,522	333.85
CARROLL COUNTY - TOTAL	768	10,299	\$281,288,167	\$525.23
Natural Resources & Mining	16	200	6,589,036	633.56
Trade, Transportation & Utilities	192	1,588	43,170,804	522.80
Wholesale Trade	22	172	4,448,221	497.34
Retail Trade	150	1,145	24,673,207	414.40
Transportation, Warehousing & Utilities	20	271	14,049,376	996.98
Information	10	68	2,474,472	699.79
Financial Activities	60	360	14,786,138	789.86
Professional & Business Services	62	374	11,266,493	579.31
Education & Health Services	87	959	31,757,065	636.82
Leisure & Hospitality	172	1,552	21,449,524	265.78
Local Government	24	1,002	30,983,405	594.65
State Government	10	110	3,463,188	605.45
Other	135	4,086	115,348,042	542.89

Note: Data may not add due to rounding.

TABLE 6. COUNTY SUMMARY CALENDAR YEAR 2014

North American Industry Classification System - Industry Groups	Average Employing Units	Average Covered Employment	Total Calendar Earnings	Average Weekly Earnings
CHICOT COUNTY - TOTAL	472	3,323	\$96,610,053	\$559.10
Natural Resources & Mining	58	277	9,068,381	629.57
Construction	18	151	7,122,959	907.15
Manufacturing	10	37	1,311,147	681.47
Trade, Transportation & Utilities	67	682	19,054,531	537.29
Wholesale Trade	13	74	3,639,460	945.81
Retail Trade	41	331	7,562,403	439.37
Transportation, Warehousing & Utilities	13	277	7,852,668	545.17
Information	5	6	226,134	724.79
Financial Activities	29	137	6,089,175	854.74
Professional & Business Services	18	47	1,785,584	730.60
Education & Health Services	201	781	19,683,300	484.67
Leisure & Hospitality	23	192	2,179,149	218.26
Other Services	16	70	1,932,492	530.90
Local Government	17	644	19,421,930	579.97
State Government	10	299	8,735,271	561.83
CLARK COUNTY - TOTAL	609	9,001	\$285,903,665	\$610.84
Natural Resources & Mining	40	239	8,758,764	704.76
Construction	23	71	1,932,786	523.51
Manufacturing	30	1,413	70,853,624	964.31
Trade, Transportation & Utilities	127	1,378	37,255,619	519.92
Wholesale Trade	11	32	1,479,434	889.08
Retail Trade	96	1,169	28,123,225	462.64
Transportation, Warehousing & Utilities	20	177	7,652,960	831.48
Information	5	20	919,593	884.22
Financial Activities	73	296	15,169,337	985.53
Professional & Business Services	51	619	21,881,510	679.80
Education & Health Services	118	1,464	41,377,540	543.53
Leisure & Hospitality	59	1,123	13,875,197	237.61
Other Services	43	233	7,140,661	589.36
Local Government	26	919	28,641,356	599.34
State Government	14	1,226	38,097,678	597.59

Note: Data may not add due to rounding.

TABLE 6. COUNTY SUMMARY CALENDAR YEAR 2014

North American Industry Classification System - Industry Groups	Average Employing Units	Average Covered Employment	Total Calendar Earnings	Average Weekly Earnings
CLAY COUNTY - TOTAL	404	3,539	\$104,034,128	\$565.32
Natural Resources & Mining	61	278	7,511,584	519.62
Construction	30	146	4,248,677	559.63
Manufacturing	17	337	12,119,327	691.58
Trade, Transportation & Utilities	103	881	30,557,128	667.01
Wholesale Trade	23	261	11,093,672	817.39
Retail Trade	49	410	10,498,723	492.44
Transportation, Warehousing & Utilities	31	210	8,964,733	820.95
Information	5	44	1,308,250	571.79
Financial Activities	27	125	5,007,706	770.42
Professional & Business Services	26	101	2,789,479	531.13
Education & Health Services	50	442	11,238,843	488.99
Leisure & Hospitality	21	273	2,741,995	193.15
Other Services	31	82	2,603,133	610.49
Local Government	22	776	22,502,928	557.67
State Government	11	54	1,405,078	500.38
CLEBURNE COUNTY - TOTAL	671	6,586	\$202,979,595	\$592.69
Natural Resources & Mining	25	287	15,102,045	1,011.93
Construction	62	374	14,033,462	721.59
Manufacturing	34	974	35,039,468	691.82
Trade, Transportation & Utilities	164	1,554	51,562,416	638.09
Wholesale Trade	36	171	8,146,519	916.16
Retail Trade	101	964	23,575,714	470.31
Transportation, Warehousing & Utilities	27	419	19,840,183	910.60
Information	7	53	1,602,350	581.40
Financial Activities	72	232	8,846,720	733.32
Professional & Business Services	75	341	11,541,481	650.88
Education & Health Services	90	818	23,589,903	554.59
Leisure & Hospitality	76	967	12,401,032	246.62
Other Services	39	134	2,968,373	426.00
Local Government	18	752	23,678,916	605.54
State Government	9	100	2,613,429	502.58

Note: Data may not add due to rounding.

TABLE 6. COUNTY SUMMARY CALENDAR YEAR 2014

North American Industry Classification System - Industry Groups	Average Employing Units	Average Covered Employment	Total Calendar Earnings	Average Weekly Earnings
CLEVELAND COUNTY - TOTAL	130	1,010	\$29,291,729	\$557.73
Natural Resources & Mining	16	155	5,625,571	697.96
Construction	5	26	450,179	332.97
Manufacturing	6	90	2,941,626	628.55
Trade, Transportation & Utilities	37	201	6,054,860	579.30
Retail Trade	17	62	1,171,398	363.34
Other Trade, Transportation & Utilities	20	139	4,883,462	675.63
Financial Activities	3	19	630,450	638.11
Education & Health Services	28	136	2,702,737	382.17
Local Government	11	297	8,121,607	525.87
State Government	7	44	1,071,041	468.11
Other	17	42	1,693,658	775.48
COLUMBIA COUNTY - TOTAL	749	8,236	\$311,745,974	\$727.92
Natural Resources & Mining	43	403	27,061,782	1,291.36
Construction	44	311	12,873,371	796.03
Manufacturing	36	1,832	103,669,179	1,088.23
Trade, Transportation & Utilities	161	1,438	42,666,595	570.59
Wholesale Trade	28	205	10,894,753	1,022.02
Retail Trade	98	985	21,147,427	412.87
Transportation, Warehousing & Utilities	35	248	10,624,415	823.85
Information	8	57	2,045,827	690.23
Financial Activities	73	366	16,113,248	846.64
Professional & Business Services	61	302	11,016,709	701.52
Education & Health Services	183	1,000	24,798,533	476.89
Leisure & Hospitality	50	664	8,666,246	250.99
Other Services	51	187	3,528,180	362.83
Local Government	26	1,066	35,937,189	648.31
State Government	13	610	23,369,115	736.73

Note: Data may not add due to rounding.

TABLE 6. COUNTY SUMMARY CALENDAR YEAR 2014

North American Industry Classification System - Industry Groups	Average Employing Units	Average Covered Employment	Total Calendar Earnings	Average Weekly Earnings
CONWAY COUNTY - TOTAL	581	6,854	\$242,052,712	\$679.15
Natural Resources & Mining	33	323	14,504,860	863.59
Construction	51	489	24,428,039	960.67
Manufacturing	18	831	48,076,294	1,112.57
Trade, Transportation & Utilities	135	1,653	57,394,306	667.72
Wholesale Trade	23	198	9,261,463	899.52
Retail Trade	84	819	18,973,316	445.51
Transportation, Warehousing & Utilities	28	636	29,159,527	881.70
Information	4	17	407,840	461.36
Financial Activities	36	174	6,778,370	749.16
Professional & Business Services	45	607	14,711,131	466.07
Education & Health Services	152	849	25,421,069	575.81
Leisure & Hospitality	41	472	5,598,376	228.10
Other Services	27	105	3,823,173	700.21
Local Government	29	920	29,501,377	616.67
State Government	10	414	11,407,877	529.91
CRAIGHEAD COUNTY - TOTAL	2,710	45,597	\$1,628,323,472	\$686.75
Natural Resources & Mining	76	340	11,067,160	625.97
Construction	215	1,886	76,321,489	778.22
Manufacturing	106	5,813	255,798,741	846.24
Trade, Transportation & Utilities	753	9,674	307,156,825	610.59
Wholesale Trade	188	1,786	91,492,903	985.15
Retail Trade	446	6,449	154,560,986	460.90
Transportation, Warehousing & Utilities	119	1,439	61,102,936	816.58
Information	24	480	20,606,878	825.60
Financial Activities	269	1,571	71,894,035	880.06
Professional & Business Services	349	3,862	114,395,795	569.63
Education & Health Services	457	9,726	425,494,802	841.31
Leisure & Hospitality	245	4,902	67,545,552	264.98
Other Services	158	839	22,588,059	517.74
Local Government	35	3,739	137,820,524	708.85
State Government	23	2,765	117,633,612	818.15

Note: Data may not add due to rounding.

TABLE 6. COUNTY SUMMARY CALENDAR YEAR 2014

North American Industry Classification System - Industry Groups	Average Employing Units	Average Covered Employment	Total Calendar Earnings	Average Weekly Earnings
CRAWFORD COUNTY - TOTAL	1,263	19,062	\$644,329,145	\$650.03
Natural Resources & Mining	32	324	16,033,553	951.66
Construction	148	830	31,322,573	725.73
Manufacturing	68	4,451	166,221,439	718.17
Trade, Transportation & Utilities	320	5,921	210,325,615	683.11
Retail Trade	164	1,924	48,222,896	482.00
Other Trade, Transportation & Utilities	156	3,997	162,102,719	779.92
Information	11	109	3,946,251	696.23
Financial Activities	127	523	19,393,575	713.10
Professional & Business Services	154	1,381	43,618,338	607.40
Education & Health Services	175	1,532	47,274,283	593.42
Leisure & Hospitality	96	1,536	20,031,515	250.80
Other Services	79	368	10,856,203	567.32
Local Government	43	1,936	70,742,066	702.70
State Government	10	151	4,563,734	581.22
CRITTENDEN COUNTY - TOTAL	1,323	16,386	\$540,097,301	\$633.86
Natural Resources & Mining	55	310	10,851,933	673.20
Construction	53	500	23,933,843	920.53
Manufacturing	41	1,622	73,212,729	868.03
Trade, Transportation & Utilities	307	4,371	154,147,525	678.19
Wholesale Trade	62	720	33,646,638	898.68
Retail Trade	164	1,921	43,274,408	433.21
Transportation, Warehousing & Utilities	81	1,730	77,226,479	858.45
Information	6	66	2,401,265	699.67
Financial Activities	97	439	17,301,376	757.90
Professional & Business Services	121	1,434	41,242,457	553.09
Education & Health Services	391	2,502	77,685,593	597.10
Leisure & Hospitality	120	2,177	34,779,574	307.23
Other Services	75	400	12,224,958	587.74
Local Government	43	2,082	77,935,980	719.87
State Government	14	483	14,380,068	572.55

Note: Data may not add due to rounding.

TABLE 6. COUNTY SUMMARY CALENDAR YEAR 2014

North American Industry Classification System - Industry Groups	Average Employing Units	Average Covered Employment	Total Calendar Earnings	Average Weekly Earnings
CROSS COUNTY - TOTAL	501	4,956	\$156,921,902	\$608.90
Natural Resources & Mining	33	204	6,357,311	599.29
Construction	21	75	2,329,835	597.39
Manufacturing	12	630	20,701,011	631.90
Trade, Transportation & Utilities	133	1,267	44,234,075	671.39
Wholesale Trade	30	334	17,758,264	1,022.47
Retail Trade	75	790	20,773,784	505.69
Transportation, Warehousing & Utilities	28	143	5,702,027	766.81
Information	5	38	1,224,379	619.63
Financial Activities	46	310	11,060,624	686.14
Professional & Business Services	42	128	4,739,818	712.11
Education & Health Services	116	832	24,867,372	574.78
Leisure & Hospitality	32	315	3,608,294	220.29
Other Services	35	80	1,947,612	468.18
Local Government	16	689	23,078,377	644.14
State Government	10	388	12,773,194	633.09
DALLAS COUNTY - TOTAL	254	2,690	\$78,113,398	\$558.43
Natural Resources & Mining	33	176	5,814,278	635.30
Construction	18	72	2,854,951	762.54
Manufacturing	9	518	20,156,614	748.32
Trade, Transportation & Utilities	58	471	12,776,697	521.67
Wholesale Trade	6	21	848,204	776.74
Retail Trade	40	339	8,035,790	455.85
Transportation, Warehousing & Utilities	12	111	3,892,703	674.41
Information	4	19	510,568	516.77
Financial Activities	15	76	3,081,347	779.69
Professional & Business Services	12	32	976,102	586.60
Education & Health Services	58	742	19,971,202	517.60
Leisure & Hospitality	13	139	1,555,957	215.27
Other Services	13	64	1,290,212	387.68
Local Government	14	334	7,895,236	454.59
State Government	7	47	1,230,234	503.37

Note: Data may not add due to rounding.

TABLE 6. COUNTY SUMMARY CALENDAR YEAR 2014

North American Industry Classification System - Industry Groups	Average Employing Units	Average Covered Employment	Total Calendar Earnings	Average Weekly Earnings
DESHA COUNTY - TOTAL	534	4,487	\$145,606,087	\$624.05
Natural Resources & Mining	72	345	10,538,785	587.45
Construction	20	108	3,858,694	687.09
Manufacturing	14	812	43,151,530	1,021.97
Trade, Transportation & Utilities	114	890	27,414,863	592.37
Wholesale Trade	22	220	11,100,616	970.33
Retail Trade	67	502	10,318,374	395.28
Transportation, Warehousing & Utilities	25	168	5,995,873	686.34
Information	4	14	572,477	786.37
Financial Activities	30	206	6,830,650	637.66
Professional & Business Services	42	101	2,696,302	513.39
Education & Health Services	148	723	18,188,759	483.80
Leisure & Hospitality	38	325	4,145,332	245.29
Other Services	23	45	745,534	318.60
Local Government	19	778	23,598,025	583.30
State Government	10	140	3,865,136	530.93
DREW COUNTY - TOTAL	530	6,269	\$196,619,155	\$603.15
Natural Resources & Mining	45	293	10,796,403	708.61
Construction	19	92	2,931,819	612.84
Manufacturing	22	787	27,750,674	678.10
Trade, Transportation & Utilities	131	1,251	33,537,583	515.55
Wholesale Trade	19	170	7,368,279	833.52
Retail Trade	90	973	21,783,617	430.54
Transportation, Warehousing & Utilities	22	108	4,385,687	780.93
Information	8	54	1,945,103	692.70
Financial Activities	48	235	9,573,247	783.41
Professional & Business Services	35	233	9,668,568	798.00
Education & Health Services	123	881	28,271,631	617.12
Leisure & Hospitality	42	600	7,797,068	249.91
Other Services	19	55	1,392,965	487.05
Local Government	22	1,186	39,410,977	639.04
State Government	16	602	23,543,117	752.08

Note: Data may not add due to rounding.

TABLE 6. COUNTY SUMMARY CALENDAR YEAR 2014

North American Industry Classification System - Industry Groups	Average Employing Units	Average Covered Employment	Total Calendar Earnings	Average Weekly Earnings
FAULKNER COUNTY - TOTAL	2,790	39,914	\$1,549,319,760	\$746.47
Natural Resources & Mining	60	1,151	94,695,656	1,582.16
Construction	307	2,656	108,136,428	782.96
Manufacturing	99	3,207	160,791,629	964.19
Trade, Transportation & Utilities	657	7,178	219,128,881	587.07
Wholesale Trade	159	625	34,583,690	1,064.11
Retail Trade	405	5,706	138,902,499	468.14
Transportation, Warehousing & Utilities	93	847	45,642,692	1,036.30
Information	19	238	12,251,030	989.90
Financial Activities	323	1,538	71,857,264	898.49
Professional & Business Services	404	5,669	324,333,246	1,100.23
Education & Health Services	442	6,062	214,587,231	680.75
Leisure & Hospitality	244	4,776	62,661,197	252.31
Other Services	179	791	22,816,917	554.72
Local Government	38	3,349	132,203,126	759.14
State Government	18	3,299	125,857,155	733.66
FRANKLIN COUNTY - TOTAL	336	4,184	\$141,296,314	\$649.44
Natural Resources & Mining	18	266	18,170,051	1,313.62
Construction	32	100	3,130,331	601.99
Manufacturing	13	846	30,485,312	692.97
Trade, Transportation & Utilities	86	937	30,652,557	629.11
Wholesale Trade	13	41	874,100	409.99
Retail Trade	52	599	13,044,276	418.78
Transportation, Warehousing & Utilities	21	297	16,734,181	1,083.54
Information	5	23	732,324	612.31
Financial Activities	30	197	9,406,208	918.22
Professional & Business Services	28	110	2,876,201	502.83
Education & Health Services	55	537	13,054,038	467.48
Leisure & Hospitality	26	302	3,665,890	233.44
Other Services	15	50	1,213,358	466.68
Local Government	19	699	23,113,759	635.90
State Government	9	117	4,796,285	788.34

Note: Data may not add due to rounding.

TABLE 6. COUNTY SUMMARY CALENDAR YEAR 2014

North American Industry Classification System - Industry Groups	Average Employing Units	Average Covered Employment	Total Calendar Earnings	Average Weekly Earnings
FULTON COUNTY - TOTAL	198	1,883	\$49,097,017	\$501.42
Construction	7	30	1,151,157	737.92
Manufacturing	13	125	2,638,420	405.91
Trade, Transportation & Utilities	48	303	9,424,951	598.18
Retail Trade	31	182	3,562,813	376.46
Other Trade, Transportation & Utilities	17	121	5,862,138	931.68
Information	4	33	789,360	460.00
Financial Activities	17	97	3,677,416	729.07
Professional & Business Services	15	44	1,305,410	570.55
Education & Health Services	49	452	10,278,271	437.30
Leisure & Hospitality	15	155	1,660,150	205.97
Local Government	12	522	14,568,735	536.72
State Government	10	107	3,332,348	598.91
Other	8	15	270,799	347.18
GARLAND COUNTY - TOTAL	3,088	35,587	\$1,160,784,228	\$627.27
Natural Resources & Mining	31	290	14,631,600	970.27
Construction	342	1,660	53,571,897	620.62
Manufacturing	97	2,416	103,475,941	823.64
Trade, Transportation & Utilities	702	7,240	214,394,920	569.47
Wholesale Trade	141	841	39,959,507	913.74
Retail Trade	505	5,821	146,590,245	484.29
Transportation, Warehousing & Utilities	56	578	27,845,168	926.44
Information	33	515	16,952,785	633.04
Financial Activities	347	1,427	63,825,376	860.13
Professional & Business Services	378	3,097	101,393,107	629.60
Education & Health Services	517	7,564	316,826,968	805.50
Leisure & Hospitality	349	6,527	100,782,662	296.94
Other Services	234	945	24,072,251	489.87
Local Government	33	2,852	115,084,867	776.01
State Government	25	1,054	35,771,854	652.68

Note: Data may not add due to rounding.

TABLE 6. COUNTY SUMMARY CALENDAR YEAR 2014

North American Industry Classification System - Industry Groups	Average Employing Units	Average Covered Employment	Total Calendar Earnings	Average Weekly Earnings
GRANT COUNTY - TOTAL	342	3,858	\$133,094,649	\$663.43
Natural Resources & Mining	27	181	9,356,354	994.09
Construction	30	180	7,338,317	784.01
Manufacturing	17	1,140	47,572,135	802.50
Trade, Transportation & Utilities	89	626	17,235,353	529.47
Wholesale Trade	20	103	4,316,656	805.95
Retail Trade	47	457	10,502,352	441.94
Transportation, Warehousing & Utilities	22	66	2,416,345	704.06
Information	4	34	3,162,022	1,788.47
Financial Activities	26	85	3,027,525	684.96
Professional & Business Services	26	113	4,832,757	822.46
Education & Health Services	60	369	9,056,652	472.00
Leisure & Hospitality	23	270	2,807,621	199.97
Other Services	22	48	968,748	388.12
Local Government	10	756	25,999,706	661.37
State Government	8	56	1,737,459	596.65
GREENE COUNTY - TOTAL	887	15,063	\$518,220,031	\$661.61
Natural Resources & Mining	39	268	8,335,318	598.11
Construction	62	270	9,691,338	690.27
Manufacturing	64	5,302	233,538,726	847.06
Trade, Transportation & Utilities	236	2,500	71,684,025	551.42
Wholesale Trade	50	517	22,079,961	821.30
Retail Trade	156	1,755	41,712,886	457.08
Transportation, Warehousing & Utilities	30	228	7,891,178	665.59
Information	9	87	1,994,718	440.92
Financial Activities	78	470	17,500,135	716.04
Professional & Business Services	92	1,058	27,990,905	508.78
Education & Health Services	149	1,815	59,257,225	627.86
Leisure & Hospitality	66	1,085	13,892,610	246.24
Other Services	50	208	5,103,903	471.88
Local Government	30	1,586	53,560,282	649.44
State Government	12	414	15,670,846	727.93

Note: Data may not add due to rounding.

TABLE 6. COUNTY SUMMARY CALENDAR YEAR 2014

North American Industry Classification System - Industry Groups	Average Employing Units	Average Covered Employment	Total Calendar Earnings	Average Weekly Earnings
HEMPSTEAD COUNTY - TOTAL	505	7,689	\$255,846,730	\$639.89
Natural Resources & Mining	22	213	8,279,929	747.56
Construction	32	187	7,366,690	757.58
Manufacturing	28	2,036	79,589,404	751.75
Trade, Transportation & Utilities	133	1,530	52,401,339	658.64
Wholesale Trade	21	277	10,367,693	719.78
Retail Trade	82	895	20,585,395	442.32
Transportation, Warehousing & Utilities	30	358	21,448,251	1,152.14
Information	8	44	1,386,322	605.91
Financial Activities	41	236	9,679,271	788.73
Professional & Business Services	32	161	7,977,982	952.94
Education & Health Services	87	954	23,742,151	478.60
Leisure & Hospitality	44	586	7,647,354	250.96
Other Services	34	152	3,755,295	475.11
Local Government	27	838	29,404,146	674.78
State Government	17	752	24,616,847	629.52
HOT SPRING COUNTY - TOTAL	609	8,265	\$276,013,928	\$642.22
Natural Resources & Mining	25	148	4,485,128	582.79
Construction	57	342	11,304,817	635.67
Manufacturing	30	1,408	65,130,215	889.56
Trade, Transportation & Utilities	151	1,474	53,414,303	696.88
Wholesale Trade	17	101	4,523,888	861.36
Retail Trade	95	834	18,893,963	435.67
Transportation, Warehousing & Utilities	39	539	29,996,452	1,070.23
Information	7	53	1,938,949	703.54
Financial Activities	53	238	9,873,195	797.77
Professional & Business Services	56	953	23,433,090	472.86
Education & Health Services	108	1,100	34,416,547	601.69
Leisure & Hospitality	47	570	6,487,570	218.88
Other Services	35	142	3,219,905	436.07
Local Government	27	964	34,355,638	685.36
State Government	13	873	27,954,571	615.79

Note: Data may not add due to rounding.

TABLE 6. COUNTY SUMMARY CALENDAR YEAR 2014

North American Industry Classification System - Industry Groups	Average Employing Units	Average Covered Employment	Total Calendar Earnings	Average Weekly Earnings
HOWARD COUNTY - TOTAL	355	7,014	\$210,959,267	\$578.40
Natural Resources & Mining	14	192	6,216,121	622.61
Construction	17	124	5,360,724	831.38
Manufacturing	22	3,594	111,085,885	594.40
Trade, Transportation & Utilities	94	892	27,083,423	583.90
Wholesale Trade	16	83	3,129,784	725.16
Retail Trade	55	597	14,329,224	461.58
Transportation, Warehousing & Utilities	23	212	9,624,415	873.04
Information	5	26	665,106	491.94
Financial Activities	34	143	4,595,890	618.06
Professional & Business Services	24	140	4,244,617	583.05
Education & Health Services	70	623	19,086,795	589.17
Leisure & Hospitality	23	311	3,743,651	231.49
Other Services	24	146	4,136,698	544.88
Local Government	17	701	20,876,344	572.71
State Government	11	122	3,864,013	609.08
INDEPENDENCE COUNTY - TOTAL	907	14,390	\$485,515,109	\$648.84
Natural Resources & Mining	16	282	13,773,119	939.25
Construction	65	404	15,011,041	714.54
Manufacturing	42	2,657	110,246,147	797.94
Trade, Transportation & Utilities	240	2,917	92,429,881	609.36
Wholesale Trade	33	473	18,281,913	743.29
Retail Trade	160	1,699	38,982,752	441.24
Transportation, Warehousing & Utilities	47	745	35,165,216	907.72
Information	10	114	3,585,591	604.86
Financial Activities	79	500	21,762,540	837.02
Professional & Business Services	93	957	23,008,512	462.35
Education & Health Services	165	3,015	121,411,305	774.41
Leisure & Hospitality	72	1,117	13,095,542	225.46
Other Services	62	341	7,306,286	412.04
Local Government	47	1,471	43,435,558	567.84
State Government	16	615	20,449,587	639.45

Note: Data may not add due to rounding.

TABLE 6. COUNTY SUMMARY CALENDAR YEAR 2014

North American Industry Classification System - Industry Groups	Average Employing Units	Average Covered Employment	Total Calendar Earnings	Average Weekly Earnings
IZARD COUNTY - TOTAL	251	3,050	\$90,544,651	\$570.90
Natural Resources & Mining	5	170	7,418,795	839.23
Construction	21	93	3,202,693	662.26
Trade, Transportation & Utilities	65	563	14,480,320	494.61
Wholesale Trade	11	20	561,275	539.69
Retail Trade	44	409	8,557,617	402.37
Transportation, Warehousing & Utilities	10	134	5,361,428	769.44
Financial Activities	25	140	5,025,597	690.33
Professional & Business Services	17	81	1,922,679	456.48
Education & Health Services	47	629	16,726,372	511.38
Leisure & Hospitality	21	118	1,338,807	218.19
Local Government	17	480	14,418,934	577.68
State Government	10	459	15,578,285	652.68
Other	23	317	10,432,169	632.87
JACKSON COUNTY - TOTAL	452	5,190	\$180,625,432	\$669.28
Natural Resources & Mining	53	272	9,179,123	648.98
Construction	25	127	5,305,979	803.45
Manufacturing	17	916	44,987,589	944.48
Trade, Transportation & Utilities	109	1,021	32,306,843	608.51
Wholesale Trade	22	217	10,910,826	966.93
Retail Trade	70	708	16,877,621	458.43
Transportation, Warehousing & Utilities	17	96	4,518,396	905.13
Information	4	36	846,589	452.24
Financial Activities	34	153	5,740,692	721.56
Professional & Business Services	31	126	4,203,281	641.53
Education & Health Services	85	811	29,384,751	696.78
Leisure & Hospitality	27	288	3,367,102	224.83
Other Services	21	64	2,009,262	603.74
Local Government	33	619	17,639,611	548.02
State Government	13	757	25,654,610	651.73

Note: Data may not add due to rounding.

TABLE 6. COUNTY SUMMARY CALENDAR YEAR 2014

North American Industry Classification System - Industry Groups	Average Employing Units	Average Covered Employment	Total Calendar Earnings	Average Weekly Earnings
JEFFERSON COUNTY - TOTAL	2,169	26,861	\$991,695,458	\$709.99
Natural Resources & Mining	36	207	9,178,314	852.69
Construction	96	640	33,416,508	1,004.10
Manufacturing	64	5,068	251,106,235	952.83
Trade, Transportation & Utilities	433	4,702	155,632,809	636.52
Wholesale Trade	75	594	25,108,709	812.90
Retail Trade	297	3,234	80,631,293	479.47
Transportation, Warehousing & Utilities	61	874	49,892,807	1,097.80
Information	14	98	3,785,913	742.92
Financial Activities	156	1,120	51,897,918	891.10
Professional & Business Services	152	1,679	51,270,347	587.24
Education & Health Services	878	4,801	176,356,508	706.41
Leisure & Hospitality	138	1,817	23,500,147	248.72
Other Services	127	610	18,224,152	574.53
Local Government	39	2,878	94,318,044	630.23
State Government	36	3,241	123,008,563	729.88
JOHNSON COUNTY - TOTAL	496	8,255	\$251,263,817	\$585.34
Natural Resources & Mining	16	134	4,700,733	674.62
Construction	35	185	5,836,450	606.70
Manufacturing	36	2,689	83,734,354	598.84
Trade, Transportation & Utilities	121	1,866	57,932,490	597.05
Retail Trade	77	889	19,526,796	422.40
Other Trade, Transportation & Utilities	44	977	38,405,694	755.96
Information	5	50	1,103,140	424.28
Financial Activities	50	190	6,449,598	652.79
Professional & Business Services	51	232	7,229,399	599.25
Education & Health Services	89	1,246	40,100,452	618.91
Leisure & Hospitality	38	490	5,873,649	230.52
Other Services	32	68	1,549,669	438.25
Local Government	14	970	32,220,182	638.78
State Government	9	135	4,533,701	645.83

Note: Data may not add due to rounding.

TABLE 6. COUNTY SUMMARY CALENDAR YEAR 2014

North American Industry Classification System - Industry Groups	Average Employing Units	Average Covered Employment	Total Calendar Earnings	Average Weekly Earnings
LAFAYETTE COUNTY - TOTAL	167	1,211	\$39,192,728	\$622.38
Natural Resources & Mining	30	160	7,945,581	955.00
Construction	10	63	4,166,116	1,271.71
Manufacturing	6	39	1,506,523	742.86
Trade, Transportation & Utilities	30	195	5,161,463	509.02
Retail Trade	17	110	1,987,305	347.43
Other Trade, Transportation & Utilities	13	85	3,174,158	718.14
Financial Activities	12	48	1,403,297	562.22
Professional & Business Services	11	45	1,439,129	615.01
Education & Health Services	35	211	5,324,498	485.28
Leisure & Hospitality	5	40	553,129	265.93
Local Government	13	273	8,719,892	614.25
State Government	7	50	1,215,875	467.64
Other	8	87	1,757,225	388.42
LAWRENCE COUNTY - TOTAL	414	4,072	\$120,289,683	\$568.09
Natural Resources & Mining	54	223	7,332,270	632.31
Construction	22	139	4,746,950	656.74
Manufacturing	22	468	14,934,204	613.67
Trade, Transportation & Utilities	109	863	27,778,640	619.01
Wholesale Trade	20	250	10,470,560	805.43
Retail Trade	58	492	11,999,948	469.04
Transportation, Warehousing & Utilities	31	121	5,308,132	843.63
Financial Activities	34	147	4,559,726	596.51
Professional & Business Services	28	104	3,909,433	722.90
Education & Health Services	60	519	14,979,722	555.05
Leisure & Hospitality	28	336	3,654,441	209.16
Local Government	27	1,093	33,734,580	593.54
State Government	10	104	2,738,541	506.39
Other	20	76	1,921,176	486.13

Note: Data may not add due to rounding.

TABLE 6. COUNTY SUMMARY CALENDAR YEAR 2014

North American Industry Classification System - Industry Groups	Average Employing Units	Average Covered Employment	Total Calendar Earnings	Average Weekly Earnings
LEE COUNTY - TOTAL	299	1,956	\$62,870,045	\$618.12
Natural Resources & Mining	37	223	8,129,156	701.03
Construction	10	42	1,261,235	577.49
Trade, Transportation & Utilities	47	345	11,499,712	641.01
Wholesale Trade	9	104	4,836,830	894.38
Retail Trade	26	190	4,012,697	406.14
Transportation, Warehousing & Utilities	12	51	2,650,185	999.32
Financial Activities	18	66	2,311,597	673.54
Professional & Business Services	15	75	3,501,603	897.85
Education & Health Services	130	355	10,805,901	585.37
Leisure & Hospitality	9	85	1,098,524	248.53
Local Government	15	269	7,250,436	518.33
State Government	7	479	16,609,908	666.85
Other	11	17	401,973	454.72
LINCOLN COUNTY - TOTAL	284	2,951	\$95,492,457	\$622.30
Natural Resources & Mining	36	178	6,205,289	670.41
Construction	16	95	2,973,983	602.02
Manufacturing	9	329	11,220,505	655.86
Trade, Transportation & Utilities	44	364	13,293,073	702.30
Wholesale Trade	8	58	2,685,220	890.32
Retail Trade	22	174	3,484,507	385.11
Transportation, Warehousing & Utilities	14	132	7,123,346	1,037.78
Financial Activities	20	71	2,483,573	672.69
Professional & Business Services	12	24	731,092	585.81
Education & Health Services	99	400	11,056,260	531.55
Leisure & Hospitality	14	165	1,700,316	198.17
Local Government	7	334	10,144,528	584.09
State Government	12	961	34,748,842	695.37
Other	15	30	934,996	599.36

Note: Data may not add due to rounding.

TABLE 6. COUNTY SUMMARY CALENDAR YEAR 2014

North American Industry Classification System - Industry Groups	Average Employing Units	Average Covered Employment	Total Calendar Earnings	Average Weekly Earnings
LITTLE RIVER COUNTY - TOTAL	241	3,486	\$165,619,012	\$913.65
Natural Resources & Mining	13	90	3,524,815	753.17
Construction	17	207	8,145,206	756.71
Manufacturing	16	1,265	101,104,147	1,537.00
Trade, Transportation & Utilities	57	521	14,873,259	548.99
Wholesale Trade	9	32	1,808,191	1,086.65
Retail Trade	35	360	8,603,783	459.60
Transportation, Warehousing & Utilities	13	129	4,461,285	665.07
Financial Activities	18	78	2,604,024	642.02
Professional & Business Services	18	78	2,479,719	611.37
Education & Health Services	37	162	4,202,478	498.87
Leisure & Hospitality	14	196	2,530,345	248.27
Local Government	20	715	22,141,996	595.54
State Government	11	98	2,401,541	471.26
Other	20	76	1,611,482	407.76
LOGAN COUNTY - TOTAL	480	5,379	\$160,321,658	\$573.18
Natural Resources & Mining	24	134	6,821,335	978.95
Construction	39	224	8,142,684	699.06
Manufacturing	20	1,170	40,730,981	669.48
Trade, Transportation & Utilities	107	960	25,823,878	517.31
Wholesale Trade	12	88	1,877,342	410.26
Retail Trade	67	702	15,966,239	437.38
Transportation, Warehousing & Utilities	28	170	7,980,297	902.75
Information	5	32	1,346,548	809.22
Financial Activities	43	178	7,332,449	792.18
Professional & Business Services	48	132	4,970,883	724.20
Education & Health Services	100	737	20,743,783	541.27
Leisure & Hospitality	30	321	3,709,450	222.23
Other Services	28	126	3,821,440	583.25
Local Government	22	782	23,211,883	570.82
State Government	14	583	13,666,344	450.80

Note: Data may not add due to rounding.

TABLE 6. COUNTY SUMMARY CALENDAR YEAR 2014

North American Industry Classification System - Industry Groups	Average Employing Units	Average Covered Employment	Total Calendar Earnings	Average Weekly Earnings
LONOKE COUNTY - TOTAL	1,312	13,471	\$425,184,028	\$606.98
Natural Resources & Mining	88	472	17,514,750	713.61
Construction	130	734	27,003,741	707.50
Manufacturing	37	1,726	82,915,086	923.82
Trade, Transportation & Utilities	324	2,962	81,998,175	532.37
Wholesale Trade	79	443	21,178,014	919.34
Retail Trade	182	2,226	49,240,463	425.40
Transportation, Warehousing & Utilities	63	293	11,579,698	760.02
Information	15	96	3,847,101	770.65
Financial Activities	139	516	26,147,430	974.49
Professional & Business Services	156	799	24,250,215	583.67
Education & Health Services	203	1,666	48,118,401	555.43
Leisure & Hospitality	106	1,597	20,111,677	242.18
Other Services	74	196	4,502,316	441.75
Local Government	25	2,544	83,783,851	633.34
State Government	15	163	4,991,285	588.87
MADISON COUNTY - TOTAL	241	3,146	\$93,058,903	\$568.85
Natural Resources & Mining	14	48	1,384,223	554.58
Construction	22	81	2,596,271	616.40
Manufacturing	22	1,123	34,739,810	594.90
Trade, Transportation & Utilities	48	582	16,517,264	545.77
Retail Trade	33	442	10,471,292	455.59
Other Trade, Transportation & Utilities	15	140	6,045,972	830.49
Information	6	41	2,633,939	1,235.43
Financial Activities	18	74	2,371,049	616.18
Professional & Business Services	21	149	4,552,771	587.61
Education & Health Services	46	272	6,674,214	471.88
Leisure & Hospitality	16	183	1,883,026	197.88
Other Services	12	29	1,000,598	663.53
Local Government	9	522	17,410,213	641.40
State Government	7	42	1,295,525	593.19

Note: Data may not add due to rounding.

TABLE 6. COUNTY SUMMARY CALENDAR YEAR 2014

North American Industry Classification System - Industry Groups	Average Employing Units	Average Covered Employment	Total Calendar Earnings	Average Weekly Earnings
MARION COUNTY - TOTAL	284	3,750	\$105,023,169	\$538.58
Natural Resources & Mining	4	24	521,137	417.58
Construction	20	51	1,371,236	517.06
Manufacturing	19	1,726	51,066,957	568.98
Trade, Transportation & Utilities	54	511	13,277,026	499.66
Wholesale Trade	8	62	2,793,169	866.37
Retail Trade	37	423	9,218,770	419.11
Transportation, Warehousing & Utilities	9	26	1,265,087	935.72
Information	3	50	2,905,653	1,117.56
Financial Activities	31	191	6,686,090	673.19
Professional & Business Services	25	64	1,570,386	471.87
Education & Health Services	52	344	8,467,729	473.37
Leisure & Hospitality	34	208	2,516,092	232.63
Other Services	15	31	552,004	342.43
Local Government	18	482	14,317,208	571.23
State Government	9	68	1,771,651	501.03
MILLER COUNTY - TOTAL	860	12,844	\$467,434,068	\$699.87
Natural Resources & Mining	30	164	5,735,707	672.57
Construction	77	686	25,766,134	722.31
Manufacturing	27	2,310	141,588,702	1,178.73
Trade, Transportation & Utilities	228	3,551	119,332,946	646.26
Wholesale Trade	51	523	22,851,638	840.26
Retail Trade	132	1,368	30,756,373	432.36
Transportation, Warehousing & Utilities	45	1,660	65,724,935	761.41
Information	7	72	5,304,227	1,416.73
Financial Activities	84	396	15,244,818	740.33
Professional & Business Services	87	969	24,537,095	486.96
Education & Health Services	133	981	29,714,285	582.50
Leisure & Hospitality	90	1,465	22,342,619	293.29
Other Services	56	277	5,909,750	410.29
Local Government	25	1,453	52,648,829	696.82
State Government	16	520	19,308,956	714.09

Note: Data may not add due to rounding.

TABLE 6. COUNTY SUMMARY CALENDAR YEAR 2014

North American Industry Classification System - Industry Groups	Average Employing Units	Average Covered Employment	Total Calendar Earnings	Average Weekly Earnings
MISSISSIPPI COUNTY - TOTAL	1,183	18,633	\$780,895,128	\$805.95
Natural Resources & Mining	117	634	19,419,673	589.05
Construction	54	804	41,531,065	993.38
Manufacturing	54	6,613	405,983,346	1,180.61
Trade, Transportation & Utilities	281	2,919	101,359,004	667.77
Wholesale Trade	62	471	22,001,678	898.32
Retail Trade	158	1,653	36,233,008	421.53
Transportation, Warehousing & Utilities	61	795	43,124,318	1,043.16
Information	9	67	1,972,596	566.19
Financial Activities	88	418	14,547,714	669.29
Professional & Business Services	88	1,393	41,209,035	568.90
Education & Health Services	274	1,787	53,954,337	580.63
Leisure & Hospitality	85	1,169	13,956,179	229.59
Other Services	57	181	4,420,316	469.65
Local Government	52	2,093	65,203,019	599.09
State Government	24	555	17,338,844	600.79
MONROE COUNTY - TOTAL	308	2,250	\$63,340,013	\$541.37
Natural Resources & Mining	34	155	6,141,537	761.98
Construction	11	53	1,999,120	725.37
Manufacturing	7	125	4,277,537	658.08
Trade, Transportation & Utilities	83	680	21,812,022	616.86
Wholesale Trade	19	269	11,332,780	810.18
Retail Trade	40	293	6,272,146	411.67
Transportation, Warehousing & Utilities	24	118	4,207,096	685.64
Financial Activities	22	94	3,419,309	699.53
Professional & Business Services	13	46	771,485	322.53
Education & Health Services	70	320	7,435,332	446.83
Leisure & Hospitality	21	239	2,935,960	236.24
Local Government	21	324	9,278,185	550.70
State Government	8	110	3,255,860	569.21
Other	18	104	2,013,666	372.35

Note: Data may not add due to rounding.

TABLE 6. COUNTY SUMMARY CALENDAR YEAR 2014

North American Industry Classification System - Industry Groups	Average Employing Units	Average Covered Employment	Total Calendar Earnings	Average Weekly Earnings
MONTGOMERY COUNTY - TOTAL	179	1,442	\$35,686,001	\$475.91
Natural Resources & Mining	9	36	1,393,081	744.17
Construction	23	73	1,862,280	490.59
Trade, Transportation & Utilities	40	243	6,439,203	509.59
Wholesale Trade	11	60	2,177,501	697.92
Retail Trade	21	160	3,553,362	427.09
Transportation, Warehousing & Utilities	8	23	708,340	592.26
Financial Activities	12	61	2,095,325	660.57
Professional & Business Services	16	39	1,401,460	691.06
Education & Health Services	19	71	1,580,497	428.09
Leisure & Hospitality	20	335	5,467,709	313.88
Other Services	13	61	1,106,813	348.93
Local Government	9	449	12,441,191	532.86
State Government	8	48	1,384,001	554.49
Other	10	26	514,441	380.50
NEVADA COUNTY - TOTAL	198	2,357	\$81,223,961	\$662.71
Natural Resources & Mining	11	65	2,744,569	812.00
Trade, Transportation & Utilities	42	532	15,887,557	574.30
Wholesale Trade	3	15	240,700	308.59
Retail Trade	26	301	5,431,922	347.04
Transportation, Warehousing & Utilities	13	216	10,214,935	909.45
Financial Activities	11	54	1,810,085	644.62
Professional & Business Services	12	44	1,319,004	576.49
Education & Health Services	41	410	9,190,644	431.08
Leisure & Hospitality	8	80	981,189	235.86
Local Government	27	365	9,794,819	516.06
State Government	10	83	2,065,868	478.65
Other	36	724	37,430,226	994.22

Note: Data may not add due to rounding.

TABLE 6. COUNTY SUMMARY CALENDAR YEAR 2014

North American Industry Classification System - Industry Groups	Average Employing Units	Average Covered Employment	Total Calendar Earnings	Average Weekly Earnings
NEWTON COUNTY - TOTAL	121	1,040	\$23,763,418	\$439.41
Natural Resources & Mining	3	14	301,490	414.13
Construction	5	12	251,011	402.26
Manufacturing	9	36	1,170,141	625.08
Trade, Transportation & Utilities	31	155	4,059,239	503.63
Retail Trade	17	99	1,957,267	380.20
Other Trade, Transportation & Utilities	14	56	2,101,972	721.83
Education & Health Services	25	226	4,009,041	341.14
Leisure & Hospitality	14	95	1,487,713	301.16
Other Services	3	4	92,511	444.76
Local Government	13	373	9,391,362	484.19
State Government	8	91	1,830,206	386.77
Other	10	34	1,170,704	662.16
OUACHITA COUNTY - TOTAL	658	7,007	\$217,227,250	\$596.18
Natural Resources & Mining	36	182	6,639,941	701.60
Construction	35	230	8,231,890	688.29
Manufacturing	24	506	21,040,029	799.64
Trade, Transportation & Utilities	172	1,597	45,918,487	552.94
Wholesale Trade	29	257	11,481,930	859.17
Retail Trade	116	1,047	21,309,048	391.39
Transportation, Warehousing & Utilities	27	293	13,127,509	861.61
Information	7	45	1,711,602	731.45
Financial Activities	60	284	11,016,858	746.00
Professional & Business Services	52	559	18,691,122	643.01
Education & Health Services	156	1,215	40,332,318	638.37
Leisure & Hospitality	41	504	5,727,429	218.54
Other Services	31	127	3,335,903	505.13
Local Government	30	1,065	31,809,855	574.39
State Government	14	693	22,771,816	631.92

Note: Data may not add due to rounding.

TABLE 6. COUNTY SUMMARY CALENDAR YEAR 2014

North American Industry Classification System - Industry Groups	Average Employing Units	Average Covered Employment	Total Calendar Earnings	Average Weekly Earnings
PERRY COUNTY - TOTAL	153	1,202	\$33,952,906	\$543.21
Natural Resources & Mining	9	45	\$2,189,574	\$935.72
Construction	16	117	4,221,631	693.89
Manufacturing	5	41	1,237,763	580.56
Trade, Transportation & Utilities	25	180	4,759,238	508.47
Retail Trade	15	144	2,606,287	348.06
Other Trade, Transportation & Utilities	10	36	2,152,951	1,150.08
Financial Activities	9	28	1,158,858	795.92
Professional & Business Services	18	38	1,617,034	818.34
Education & Health Services	36	232	5,656,876	468.91
Leisure & Hospitality	8	76	865,657	219.04
Local Government	10	344	9,477,075	529.80
State Government	8	60	1,377,261	441.43
Other	9	41	1,391,939	652.88
PHILLIPS COUNTY - TOTAL	846	5,751	\$175,634,692	\$587.30
Natural Resources & Mining	63	297	8,045,742	520.96
Construction	26	103	3,423,732	639.23
Manufacturing	13	363	13,720,133	726.86
Trade, Transportation & Utilities	163	1,381	44,726,695	622.83
Wholesale Trade	30	315	15,259,620	931.60
Retail Trade	88	797	18,399,418	443.96
Transportation, Warehousing & Utilities	45	269	11,067,657	791.23
Information	9	42	1,545,738	707.76
Financial Activities	39	198	7,191,983	698.52
Professional & Business Services	48	283	9,872,764	670.89
Education & Health Services	383	1,383	38,973,766	541.93
Leisure & Hospitality	29	284	3,518,697	238.26
Other Services	32	72	1,993,938	532.57
Local Government	27	825	27,709,466	645.91
State Government	14	520	14,912,038	551.48

Note: Data may not add due to rounding.

TABLE 6. COUNTY SUMMARY CALENDAR YEAR 2014

North American Industry Classification System - Industry Groups	Average Employing Units	Average Covered Employment	Total Calendar Earnings	Average Weekly Earnings
PIKE COUNTY - TOTAL	246	2,269	\$61,477,630	\$521.05
Natural Resources & Mining	22	111	4,017,127	695.97
Construction	13	42	1,252,050	573.28
Manufacturing	18	217	5,078,200	450.04
Trade, Transportation & Utilities	67	523	13,217,045	485.99
Wholesale Trade	9	118	3,540,288	576.97
Retail Trade	39	350	7,391,420	406.12
Transportation, Warehousing & Utilities	19	55	2,285,337	799.07
Information	5	24	1,095,633	877.91
Financial Activities	23	196	7,359,579	722.09
Professional & Business Services	16	45	3,217,490	1,375.00
Education & Health Services	23	284	7,049,065	477.32
Leisure & Hospitality	24	208	2,460,601	227.50
Other Services	15	37	1,072,515	557.44
Local Government	10	426	12,688,210	572.78
State Government	10	156	2,970,115	366.14
POINSETT COUNTY - TOTAL	529	5,035	\$168,431,445	\$643.31
Natural Resources & Mining	65	363	13,449,221	712.50
Construction	24	99	3,718,025	722.23
Manufacturing	20	664	27,038,139	783.08
Trade, Transportation & Utilities	130	1,273	44,542,402	672.89
Wholesale Trade	34	432	24,295,816	1,081.54
Retail Trade	69	693	14,601,128	405.18
Transportation, Warehousing & Utilities	27	148	5,645,458	733.56
Information	5	53	1,895,309	687.70
Financial Activities	37	236	8,769,450	714.59
Professional & Business Services	31	174	9,428,667	1,042.07
Education & Health Services	108	636	17,585,729	531.74
Leisure & Hospitality	45	357	4,044,836	217.89
Other Services	23	51	1,360,050	512.84
Local Government	30	990	32,373,863	628.86
State Government	11	139	4,225,754	584.64

Note: Data may not add due to rounding.

TABLE 6. COUNTY SUMMARY CALENDAR YEAR 2014

North American Industry Classification System - Industry Groups	Average Employing Units	Average Covered Employment	Total Calendar Earnings	Average Weekly Earnings
POLK COUNTY - TOTAL	518	5,958	\$170,201,221	\$549.36
Natural Resources & Mining	23	127	6,770,875	1,025.27
Construction	34	198	5,489,191	533.14
Manufacturing	37	1,412	44,449,105	605.38
Trade, Transportation & Utilities	136	1,108	27,383,006	475.27
Wholesale Trade	23	58	1,726,941	572.59
Retail Trade	77	825	16,636,779	387.80
Transportation, Warehousing & Utilities	36	225	9,019,286	770.88
Information	8	53	1,510,171	547.96
Financial Activities	46	233	7,322,588	604.37
Professional & Business Services	47	171	6,063,727	681.93
Education & Health Services	83	1,026	32,975,876	618.08
Leisure & Hospitality	40	456	5,217,410	220.03
Other Services	29	180	4,712,136	503.43
Local Government	21	719	20,899,556	558.99
State Government	14	275	7,407,580	518.01
POPE COUNTY - TOTAL	1,793	26,319	\$942,744,851	\$688.84
Natural Resources & Mining	31	731	28,719,865	755.55
Construction	154	1,359	67,204,666	950.99
Manufacturing	73	4,487	176,682,739	757.24
Trade, Transportation & Utilities	433	6,047	250,229,949	795.79
Wholesale Trade	86	611	25,734,855	809.99
Retail Trade	269	3,321	74,070,666	428.92
Transportation, Warehousing & Utilities	78	2,115	150,424,428	1,367.74
Information	25	202	7,420,626	706.46
Financial Activities	186	1,312	39,499,761	578.97
Professional & Business Services	269	2,476	91,015,694	706.91
Education & Health Services	318	3,096	102,806,343	638.58
Leisure & Hospitality	139	2,441	32,084,615	252.77
Other Services	107	426	11,914,783	537.86
Local Government	42	2,080	73,960,649	683.81
State Government	16	1,662	61,205,161	708.20

Note: Data may not add due to rounding.

TABLE 6. COUNTY SUMMARY CALENDAR YEAR 2014

North American Industry Classification System - Industry Groups	Average Employing Units	Average Covered Employment	Total Calendar Earnings	Average Weekly Earnings
PRAIRIE COUNTY - TOTAL	251	1,525	\$49,406,249	\$623.03
Natural Resources & Mining	34	156	6,381,350	786.66
Construction	11	163	8,904,614	1,050.57
Manufacturing	5	29	673,608	446.69
Trade, Transportation & Utilities	63	339	11,048,390	626.75
Wholesale Trade	10	79	5,387,818	1,311.54
Retail Trade	36	195	3,541,131	349.22
Transportation, Warehousing & Utilities	17	65	2,119,441	627.05
Financial Activities	16	59	1,919,648	625.70
Professional & Business Services	13	52	1,585,347	586.30
Education & Health Services	52	269	6,752,000	482.70
Leisure & Hospitality	16	90	1,070,721	228.79
Local Government	15	295	8,881,059	578.95
State Government	9	38	1,190,653	602.56
Other	17	35	998,859	548.82
PULASKI COUNTY - TOTAL	14,182	233,137	\$10,466,048,896	\$863.31
Natural Resources & Mining	57	651	36,998,308	1,092.94
Construction	946	8,127	385,939,229	913.24
Manufacturing	339	12,526	663,211,618	1,018.21
Trade, Transportation & Utilities	3,163	47,177	1,928,535,556	786.13
Wholesale Trade	989	11,590	699,408,527	1,160.50
Retail Trade	1,787	25,354	695,769,300	527.73
Transportation, Warehousing & Utilities	387	10,233	533,357,729	1,002.33
Information	204	5,965	393,501,574	1,268.62
Financial Activities	1,682	15,537	1,030,538,745	1,275.54
Professional & Business Services	2,783	32,938	1,569,316,617	916.24
Education & Health Services	2,397	38,071	1,763,354,176	890.72
Leisure & Hospitality	1,166	22,411	367,592,464	315.43
Other Services	1,140	6,901	240,284,547	669.59
Local Government	106	15,077	664,153,126	847.13
State Government	199	27,756	1,422,622,936	985.67

Note: Data may not add due to rounding.

TABLE 6. COUNTY SUMMARY CALENDAR YEAR 2014

North American Industry Classification System - Industry Groups	Average Employing Units	Average Covered Employment	Total Calendar Earnings	Average Weekly Earnings
RANDOLPH COUNTY - TOTAL	416	4,622	\$125,026,921	\$520.20
Natural Resources & Mining	30	118	2,827,337	460.78
Construction	28	84	2,187,617	500.83
Manufacturing	27	510	17,114,472	645.34
Trade, Transportation & Utilities	98	849	23,328,068	528.41
Wholesale Trade	21	158	5,243,697	638.23
Retail Trade	57	552	12,416,083	432.56
Transportation, Warehousing & Utilities	20	139	5,668,288	784.21
Information	5	37	1,267,377	658.72
Financial Activities	35	129	4,080,051	608.24
Professional & Business Services	37	173	4,432,344	492.70
Education & Health Services	67	1,230	34,147,450	533.89
Leisure & Hospitality	29	386	4,339,066	216.18
Other Services	25	72	1,532,891	409.43
Local Government	24	719	19,290,257	515.95
State Government	11	315	10,479,991	639.80
SAINT FRANCIS COUNTY - TOTAL	788	7,192	\$211,965,177	\$566.78
Natural Resources & Mining	44	200	6,553,995	630.19
Trade, Transportation & Utilities	160	1,965	58,950,765	576.93
Wholesale Trade	33	541	22,697,760	806.83
Retail Trade	106	1,119	23,964,439	411.85
Transportation, Warehousing & Utilities	21	305	12,288,566	774.82
Information	7	65	2,220,802	657.04
Financial Activities	64	248	8,360,214	648.28
Professional & Business Services	49	434	10,597,461	469.58
Education & Health Services	292	1,390	42,245,600	584.47
Leisure & Hospitality	45	602	7,308,474	233.47
Other Services	28	63	1,226,057	374.25
Local Government	28	910	28,788,565	608.38
State Government	16	512	16,959,593	637.00
Other	55	803	28,753,651	688.61

Note: Data may not add due to rounding.

TABLE 6. COUNTY SUMMARY CALENDAR YEAR 2014

North American Industry Classification System - Industry Groups	Average Employing Units	Average Covered Employment	Total Calendar Earnings	Average Weekly Earnings
SALINE COUNTY - TOTAL	1,894	21,886	\$716,097,620	\$629.22
Natural Resources & Mining	14	70	3,022,346	830.31
Construction	268	1,705	66,416,506	749.11
Manufacturing	84	1,347	66,091,089	943.57
Trade, Transportation & Utilities	448	5,032	158,349,491	605.16
Wholesale Trade	112	546	27,467,241	967.43
Retail Trade	267	3,982	109,363,128	528.16
Transportation, Warehousing & Utilities	69	504	21,519,122	821.09
Information	15	136	6,287,236	889.03
Financial Activities	194	734	29,922,186	783.96
Professional & Business Services	248	1,436	52,753,180	706.47
Education & Health Services	270	3,255	107,045,926	632.43
Leisure & Hospitality	162	2,886	40,656,659	270.91
Other Services	145	700	19,266,629	529.30
Local Government	31	3,639	137,724,612	727.82
State Government	15	946	28,561,760	580.62
SCOTT COUNTY - TOTAL	184	3,039	\$81,985,822	\$518.81
Natural Resources & Mining	18	166	6,113,671	708.26
Trade, Transportation & Utilities	34	406	11,628,022	550.78
Wholesale Trade	6	51	2,499,872	942.64
Retail Trade	22	292	6,324,171	416.50
Transportation, Warehousing & Utilities	6	63	2,803,979	855.92
Information	3	9	300,271	641.60
Financial Activities	21	66	1,815,154	528.89
Professional & Business Services	11	62	1,766,289	547.86
Education & Health Services	37	289	10,354,525	689.02
Leisure & Hospitality	15	134	1,883,359	270.29
Local Government	6	534	15,305,533	551.19
State Government	7	63	1,453,365	443.64
Other	32	1,310	31,365,633	460.45

Note: Data may not add due to rounding.

TABLE 6. COUNTY SUMMARY CALENDAR YEAR 2014

North American Industry Classification System - Industry Groups	Average Employing Units	Average Covered Employment	Total Calendar Earnings	Average Weekly Earnings
SEARCY COUNTY - TOTAL	183	1,607	\$38,285,979	\$458.16
Natural Resources & Mining	6	137	\$3,808,348	\$534.58
Construction	12	14	248,338	341.12
Manufacturing	17	233	5,033,677	415.46
Trade, Transportation & Utilities	39	240	5,842,129	468.12
Wholesale Trade	7	36	802,978	428.94
Retail Trade	26	184	4,048,300	423.11
Transportation, Warehousing & Utilities	6	20	990,851	952.74
Financial Activities	15	70	2,069,369	568.51
Professional & Business Services	12	26	623,426	461.11
Education & Health Services	46	312	7,993,773	492.71
Leisure & Hospitality	13	124	1,411,043	218.83
Local Government	10	330	8,608,410	501.66
State Government	7	109	2,319,643	409.25
Other	6	12	327,823	525.36
SEBASTIAN COUNTY - TOTAL	3,700	63,755	\$2,498,900,003	\$753.76
Natural Resources & Mining	54	958	79,724,347	1,600.38
Construction	264	2,277	88,629,732	748.54
Manufacturing	192	12,002	558,424,922	894.76
Trade, Transportation & Utilities	925	12,925	455,867,671	678.27
Wholesale Trade	250	2,833	134,978,736	916.25
Retail Trade	552	7,578	187,042,349	474.66
Transportation, Warehousing & Utilities	123	2,514	133,846,586	1,023.86
Information	46	930	52,194,196	1,079.28
Financial Activities	416	2,486	114,967,294	889.34
Professional & Business Services	582	8,022	313,734,296	752.10
Education & Health Services	571	10,868	472,540,702	836.15
Leisure & Hospitality	332	5,932	85,852,164	278.32
Other Services	257	1,241	34,457,952	533.97
Local Government	40	4,390	174,538,880	764.58
State Government	21	1,724	67,967,847	758.16

Note: Data may not add due to rounding.

TABLE 6. COUNTY SUMMARY CALENDAR YEAR 2014

North American Industry Classification System - Industry Groups	Average Employing Units	Average Covered Employment	Total Calendar Earnings	Average Weekly Earnings
SEVIER COUNTY - TOTAL	320	4,788	\$140,197,148	\$563.10
Natural Resources & Mining	14	170	6,384,252	722.20
Construction	18	143	6,496,947	873.72
Trade, Transportation & Utilities	97	873	26,760,499	589.49
Wholesale Trade	16	112	8,456,801	1,452.06
Retail Trade	66	676	14,545,782	413.80
Transportation, Warehousing & Utilities	15	85	3,757,916	850.21
Information	3	21	750,908	687.64
Financial Activities	29	223	8,177,204	705.17
Professional & Business Services	27	112	2,775,872	476.63
Education & Health Services	49	536	16,062,164	576.28
Leisure & Hospitality	26	269	3,193,071	228.27
Local Government	12	887	25,931,541	562.21
State Government	8	169	4,877,149	554.98
Other	37	1,385	38,787,541	538.57
SHARP COUNTY - TOTAL	391	3,672	\$97,911,197	\$512.77
Construction	23	106	3,764,799	683.02
Manufacturing	18	152	3,713,027	469.77
Trade, Transportation & Utilities	81	1,058	32,763,536	595.53
Wholesale Trade	12	38	1,004,120	508.16
Retail Trade	58	652	13,382,917	394.73
Transportation, Warehousing & Utilities	11	368	18,376,499	960.31
Information	5	39	1,601,816	789.85
Financial Activities	34	180	6,731,609	719.19
Professional & Business Services	38	145	4,822,022	639.53
Education & Health Services	89	709	17,929,248	486.31
Leisure & Hospitality	40	403	4,436,126	211.69
Local Government	25	709	18,704,964	507.35
State Government	8	75	1,949,374	499.84
Other	30	96	1494676	299.41

Note: Data may not add due to rounding.

TABLE 6. COUNTY SUMMARY CALENDAR YEAR 2014

North American Industry Classification System - Industry Groups	Average Employing Units	Average Covered Employment	Total Calendar Earnings	Average Weekly Earnings
STONE COUNTY - TOTAL	280	2,402	\$61,061,218	\$488.87
Natural Resources & Mining	7	24	335,478	268.81
Construction	18	44	966,918	422.60
Manufacturing	19	176	3,771,419	412.09
Trade, Transportation & Utilities	71	613	16,716,537	524.42
Wholesale Trade	7	59	1,872,414	610.30
Retail Trade	53	512	12,919,428	485.25
Transportation, Warehousing & Utilities	11	42	1,924,695	881.27
Financial Activities	28	86	2,346,775	524.77
Professional & Business Services	16	34	838,261	474.13
Education & Health Services	51	478	15,736,617	633.11
Leisure & Hospitality	33	336	3,663,841	209.70
Local Government	10	384	11,996,436	600.78
State Government	8	170	3,304,815	373.85
Other	19	57	1,384,121	466.98
UNION COUNTY - TOTAL	1,335	17,756	\$796,315,804	\$862.46
Natural Resources & Mining	95	575	28,561,482	955.23
Construction	79	1,433	74,007,910	993.18
Manufacturing	50	3,084	183,262,041	1,142.76
Trade, Transportation & Utilities	330	4,164	182,901,318	844.70
Wholesale Trade	67	1,020	78,869,676	1,486.98
Retail Trade	206	2,274	52,020,834	439.93
Transportation, Warehousing & Utilities	57	870	52,010,808	1,149.66
Information	10	142	4,292,590	581.34
Financial Activities	112	636	26,775,878	809.62
Professional & Business Services	140	1,366	108,967,968	1,534.07
Education & Health Services	277	2,320	82,416,353	683.16
Leisure & Hospitality	87	1,160	16,247,729	269.36
Other Services	104	525	14,114,544	517.02
Local Government	34	1,777	54,650,079	591.43
State Government	17	574	20,117,912	674.01

Note: Data may not add due to rounding.

TABLE 6. COUNTY SUMMARY CALENDAR YEAR 2014

North American Industry Classification System - Industry Groups	Average Employing Units	Average Covered Employment	Total Calendar Earnings	Average Weekly Earnings
VAN BUREN COUNTY - TOTAL	362	3,888	\$156,989,648	\$776.50
Natural Resources & Mining	13	343	32,653,405	1,830.76
Construction	37	149	5,542,174	715.30
Manufacturing	9	73	2,509,779	661.16
Trade, Transportation & Utilities	98	1,145	56,137,795	942.86
Wholesale Trade	10	80	3,667,872	881.70
Retail Trade	56	573	13,011,784	436.70
Transportation, Warehousing & Utilities	32	492	39,458,139	1,542.30
Information	9	42	1,458,082	667.62
Financial Activities	32	127	4,621,731	699.84
Professional & Business Services	32	136	4,012,382	567.36
Education & Health Services	62	701	20,447,565	560.94
Leisure & Hospitality	30	383	5,370,333	269.65
Other Services	22	58	1,620,118	537.17
Local Government	11	666	20,707,993	597.94
State Government	7	65	1,908,291	564.58
WASHINGTON COUNTY - TOTAL	5,606	93,968	\$3,864,911,088	\$790.96
Natural Resources & Mining	43	380	19,169,136	970.10
Construction	474	4,030	176,463,211	842.07
Manufacturing	218	12,148	481,524,028	762.27
Trade, Transportation & Utilities	1,343	21,654	825,027,865	732.70
Wholesale Trade	396	3,586	234,708,013	1,258.68
Retail Trade	764	11,639	304,414,944	502.98
Transportation, Warehousing & Utilities	183	6,429	285,904,908	855.21
Information	85	912	40,030,015	844.09
Financial Activities	619	3,413	161,140,865	907.96
Professional & Business Services	973	10,838	712,370,487	1,264.02
Education & Health Services	796	13,505	600,602,325	855.24
Leisure & Hospitality	601	11,065	161,776,814	281.17
Other Services	371	1,799	51,139,847	546.67
Local Government	61	7,922	316,985,121	769.49
State Government	22	6,302	318,681,374	972.47

Note: Data may not add due to rounding.

TABLE 6. COUNTY SUMMARY CALENDAR YEAR 2014

North American Industry Classification System - Industry Groups	Average Employing Units	Average Covered Employment	Total Calendar Earnings	Average Weekly Earnings
WHITE COUNTY - TOTAL	1,825	24,256	\$879,077,788	\$696.96
Natural Resources & Mining	57	1,021	65,934,901	1,241.90
Construction	163	1,099	47,246,120	826.73
Manufacturing	62	2,355	101,166,574	826.12
Trade, Transportation & Utilities	489	6,195	212,257,663	658.90
Wholesale Trade	93	621	26,571,356	822.85
Retail Trade	305	3,604	85,787,933	457.76
Transportation, Warehousing & Utilities	91	1,970	99,898,374	975.19
Information	22	174	5,730,914	633.39
Financial Activities	175	891	37,868,495	817.33
Professional & Business Services	200	1,344	40,105,422	573.85
Education & Health Services	316	5,039	209,676,320	800.21
Leisure & Hospitality	156	2,343	29,424,292	241.51
Other Services	120	530	18,363,189	666.30
Local Government	47	2,563	89,552,582	671.93
State Government	18	702	21,751,316	595.86
WOODRUFF COUNTY - TOTAL	209	1,849	\$55,722,004	\$579.54
Natural Resources & Mining	26	156	5,144,840	634.23
Construction	6	41	1,306,917	613.00
Manufacturing	7	224	7,698,564	660.93
Trade, Transportation & Utilities	43	413	14,525,390	676.35
Wholesale Trade	11	176	8,418,968	919.90
Retail Trade	23	175	3,015,323	331.35
Transportation, Warehousing & Utilities	9	62	3,091,099	958.78
Financial Activities	14	66	2,336,532	680.81
Education & Health Services	70	256	6,266,532	470.74
Leisure & Hospitality	10	82	925,943	217.15
Local Government	10	464	12,456,196	516.25
State Government	6	48	1,268,418	508.18
Other	17	99	3,792,672	736.73

Note: Data may not add due to rounding.

TABLE 6. COUNTY SUMMARY CALENDAR YEAR 2014

North American Industry Classification System - Industry Groups	Average Employing Units	Average Covered Employment	Total Calendar Earnings	Average Weekly Earnings
YELL COUNTY - TOTAL	409	6,388	\$178,627,935	\$537.75
Natural Resources & Mining	23	198	6,917,680	671.88
Construction	34	264	9,755,264	710.61
Manufacturing	20	2,435	65,553,086	517.72
Trade, Transportation & Utilities	82	660	16,216,800	472.52
Wholesale Trade	15	36	873,250	466.48
Retail Trade	50	502	10,395,886	398.25
Transportation, Warehousing & Utilities	17	122	4,947,664	779.90
Information	3	59	2,944,497	959.74
Financial Activities	29	163	5,553,038	655.15
Professional & Business Services	39	294	9,082,766	594.11
Education & Health Services	99	742	18,273,474	473.60
Leisure & Hospitality	27	291	3,258,989	215.37
Other Services	16	56	1,181,622	405.78
Local Government	25	1,129	37,438,370	637.70
State Government	12	97	2,452,349	486.19
STATEWIDE COUNTY - TOTAL	7,619	26,053	\$1,453,279,075	\$1,072.72
Natural Resources & Mining	85	366	23,449,955	1,232.13
Construction	694	2,519	118,703,014	906.21
Manufacturing	43	177	12,723,981	1,382.44
Trade, Transportation & Utilities	2,605	6,637	568,928,759	1,648.48
Wholesale Trade	2,247	5,573	513,453,712	1,771.78
Retail Trade	125	264	17,367,594	1,265.12
Transportation, Warehousing & Utilities	233	800	38,107,453	916.04
Information	193	417	28,621,968	1,319.96
Financial Activities	449	1,241	88,687,257	1,374.31
Professional & Business Services	2,890	11,420	472,895,226	796.33
Education & Health Services	314	1,836	74,557,542	780.94
Leisure & Hospitality	81	124	4,418,723	685.29
Other Services	248	580	30,751,593	1,019.62
State Government	17	736	29,541,057	771.87

Note: Statewide classification includes employment and payroll data for employers that have not provided a physical location for each employing unit. This section also includes employers without a physical location in Arkansas.

TABLE 7. FEDERAL GOVERNMENT EMPLOYMENT AND EARNINGS IN ARKANSAS

North American Industry Classification System - Industry Groups	Average Employing Units	Average Covered Employment	Total Calendar Earnings	Average Weekly Earnings
TOTAL	1,152	20,145	\$1,295,330,634	\$1,236.55
Trade, Transportation & Utilities	585	5,424	271,159,522	961.39
Information	2	43	2,527,217	1,130.24
Financial Activities	14	114	8,924,009	1,505.40
Professional & Business Services	32	772	54,664,394	1,361.71
Education & Health Services	15	5,268	377,898,815	1,379.51
Leisure & Hospitality	21	297	12,074,127	781.80
Other Services	1	1	30,593	588.33
Public Administration	482	8,226	568,051,957	1,327.99

Note: Data may not add due to rounding.

TABLE 8. WORKFORCE INVESTMENT AREA SUMMARY CALENDAR YEAR 2014

North American Industry Classification System - Industry Groups	Average Employing Units	Average Covered Employment	Total Calendar Earnings	Average Weekly Earnings
CENTRAL WORKFORCE INVESTMENT AREA	6,555	79,046	\$2,803,347,670	\$682.01
Natural Resources & Mining	230	2,004	127,755,639	1,225.97
Construction	727	5,311	212,460,409	769.30
Trade, Transportation & Utilities	1,575	16,191	492,336,959	584.77
Wholesale Trade	379	1,962	99,949,543	979.67
Retail Trade	930	12,402	307,319,367	476.54
Transportation, Warehousing & Utilities	266	1,827	85,068,049	895.42
Information	56	528	23,503,396	856.04
Financial Activities	694	2,941	133,265,837	871.41
Professional & Business Services	834	8,002	403,693,473	970.17
Education & Health Services	1,037	11,572	383,938,890	638.04
Leisure & Hospitality	549	9,588	127,436,214	255.60
Local Government	130	10,151	371,870,833	704.50
State Government	65	4,556	163,856,713	691.64
Other	658	8,202	363,229,307	851.64

*Note: Pulaski County is not included in the Central Workforce Investment Area. Please refer to Page 51 for information on Pulaski County.
Central Workforce Investment Area includes these counties: Faulkner, Lonoke, Monroe, Prairie, and Saline.

EASTERN WORKFORCE INVESTMENT AREA	3,757	36,241	\$1,147,489,117	\$608.90
Natural Resources & Mining	232	1,234	39,938,137	622.40
Trade, Transportation & Utilities	810	9,329	313,558,772	646.37
Wholesale Trade	164	2,014	94,199,112	899.46
Retail Trade	459	4,817	110,424,746	440.85
Transportation, Warehousing & Utilities	187	2,498	108,934,914	838.63
Financial Activities	264	1,261	46,225,794	704.96
Professional & Business Services	275	2,354	69,954,103	571.48
Education & Health Services	1,312	6,462	194,578,232	579.06
Leisure & Hospitality	235	3,463	50,313,563	279.40
Local Government	129	4,775	164,762,824	663.56
State Government	61	2,382	75,634,801	610.63
Other	439	4,981	192,522,891	743.30

Eastern Workforce Investment Area includes these counties: Crittenden, Cross, Lee, Phillips, and Saint Francis.

TABLE 8. WORKFORCE INVESTMENT AREA SUMMARY CALENDAR YEAR 2014

North American Industry Classification System - Industry Groups	Average Employing Units	Average Covered Employment	Total Calendar Earnings	Average Weekly Earnings
NORTH CENTRAL WORKFORCE INVESTMENT AREA	5,546	67,166	\$2,259,523,659	\$646.94
Construction	427	2,467	97,531,260	760.28
Trade, Transportation & Utilities	1,408	15,782	532,605,332	648.99
Retail Trade	901	9,478	219,673,902	445.72
Other Trade, Transportation & Utilities	507	6,304	312,931,430	954.62
Financial Activities	510	2,472	98,958,107	769.84
Education & Health Services	1,024	12,908	471,446,884	702.38
Leisure & Hospitality	480	6,192	75,683,168	235.05
Local Government	230	8,630	267,159,925	595.33
State Government	105	3,098	97,810,473	607.16
Other	1,362	15,617	618,328,510	761.41

North Central Workforce Investment Area includes these counties: Cleburne, Fulton, Independence, IZard, Jackson, Sharp, Stone, Van Buren, White, and Woodruff.

NORTHEAST WORKFORCE INVESTMENT AREA	6,543	96,561	\$3,445,220,808	\$686.14
Natural Resources & Mining	442	2,224	69,942,563	604.79
Construction	435	3,428	142,445,161	799.10
Manufacturing	310	19,707	966,526,955	943.17
Trade, Transportation & Utilities	1,710	18,959	606,406,092	615.10
Wholesale Trade	398	3,875	186,678,287	926.44
Retail Trade	993	12,004	282,022,762	451.81
Transportation, Warehousing & Utilities	319	3,080	137,705,043	859.80
Financial Activities	568	3,096	126,358,817	784.88
Professional & Business Services	651	6,865	204,155,658	571.90
Education & Health Services	1,165	16,155	616,658,108	734.06
Leisure & Hospitality	519	8,508	110,174,679	249.03
Local Government	220	10,996	364,485,453	637.44
State Government	102	4,346	169,492,666	749.99
Other	421	2,277	68,574,656	579.16

Northeast Workforce Investment Area includes these counties: Clay, Craighead, Greene, Lawrence, Mississippi, Poinsett, and Randolph.

TABLE 8. WORKFORCE INVESTMENT AREA SUMMARY CALENDAR YEAR 2014

North American Industry Classification System - Industry Groups	Average Employing Units	Average Covered Employment	Total Calendar Earnings	Average Weekly Earnings
NORTHWEST WORKFORCE INVESTMENT AREA	15,079	245,561	\$10,911,281,313	\$854.50
Natural Resources & Mining	140	1,522	77,365,484	977.53
Trade, Transportation & Utilities	3,743	54,945	2,227,475,426	779.62
Retail Trade	2,056	29,189	742,004,437	488.86
Other Trade, Transportation & Utilities	1,687	25,756	1,485,470,989	1,109.13
Education & Health Services	2,151	30,350	1,206,243,681	764.32
Leisure & Hospitality	1,549	26,317	396,170,079	289.50
Local Government	314	21,496	820,934,979	734.43
State Government	111	8,907	404,891,210	874.19
Other	7,071	102,024	5,778,200,454	1,089.15

Northwest Workforce Investment Area includes these counties: Baxter, Benton, Boone, Carroll, Madison, Marion, Newton, Searcy, and Washington.

SOUTHEAST WORKFORCE INVESTMENT AREA	6,148	68,930	\$2,431,591,208	\$678.39
Natural Resources & Mining	422	2,416	90,031,051	716.63
Construction	310	2,252	93,612,780	799.40
Manufacturing	209	14,235	675,318,808	912.32
Trade, Transportation & Utilities	1,312	12,911	419,287,495	624.52
Retail Trade	793	7,850	182,831,985	447.90
Other Trade, Transportation & Utilities	519	5,061	236,455,510	898.48
Financial Activities	419	2,531	107,675,274	818.13
Education & Health Services	1,945	10,655	340,845,289	615.18
Local Government	203	8,915	285,564,298	616.00
State Government	137	6,137	217,034,976	680.10
Other	1,191	8,878	202,221,237	438.03

Southeast Workforce Investment Area includes these counties: Arkansas, Ashley, Bradley, Chicot, Cleveland, Desha, Drew, Grant, Jefferson, and Lincoln.

TABLE 8. WORKFORCE INVESTMENT AREA SUMMARY CALENDAR YEAR 2014

North American Industry Classification System - Industry Groups	Average Employing Units	Average Covered Employment	Total Calendar Earnings	Average Weekly Earnings
SOUTHWEST WORKFORCE INVESTMENT AREA	5,751	77,671	\$2,890,800,119	\$715.74
Natural Resources & Mining	351	2,426	110,155,421	873.20
Trade, Transportation & Utilities	1422	15989	554,072,961	666.41
Retail Trade	885	9,013	199,781,730	426.27
Other Trade, Transportation & Utilities	537	6,976	354,291,231	976.68
Information	59	454	17,955,002	760.55
Financial Activities	494	2,619	103,236,642	758.05
Education & Health Services	1,141	9,208	276,752,729	577.99
Leisure & Hospitality	411	5,430	73,404,574	259.97
Other Services	388	1,822	43,102,005	454.93
Local Government	256	9,653	304,662,456	606.95
State Government	139	3,804	128,663,495	650.45
Other	1,090	26,266	1,278,794,834	936.28

Southwest Workforce Investment Area includes these counties: Calhoun, Columbia, Dallas, Hempstead, Howard, Lafayette, Little River, Miller, Nevada, Ouachita, Sevier, and Union

WEST CENTRAL WORKFORCE INVESTMENT AREA	8,163	105,582	\$3,468,507,673	\$631.76
Construction	748	4,602	181,369,880	757.91
Trade, Transportation & Utilities	1,883	21,264	711,253,873	643.24
Retail Trade	1,251	14,009	330,125,166	453.18
Other Trade, Transportation & Utilities	632	7,255	381,128,707	1,010.25
Financial Activities	818	4,085	157,762,437	742.69
Professional & Business Services	939	8,400	274,982,681	629.54
Education & Health Services	1,479	16,648	593,508,831	685.59
Leisure & Hospitality	752	12,533	176,755,025	271.21
Local Government	225	11,053	385,808,915	671.26
State Government	125	5,725	187,154,568	628.67
Other	1,194	21,272	799,911,463	723.15

West Central Workforce Investment Area includes these counties: Clark, Conway, Garland, Hot Spring, Johnson, Montgomery, Perry, Pike, Pope, and Yell

TABLE 8. WORKFORCE INVESTMENT AREA SUMMARY CALENDAR YEAR 2014

North American Industry Classification System - Industry Groups	Average Employing Units	Average Covered Employment	Total Calendar Earnings	Average Weekly Earnings
WESTERN WORKFORCE INVESTMENT AREA	6,478	101,368	\$3,697,034,163	\$701.37
Natural Resources & Mining	169	1,975	133,633,832	1,301.21
Trade, Transportation & Utilities	1,608	22,257	761,680,749	658.12
Retail Trade	934	11,920	287,236,710	463.40
Other Trade, Transportation & Utilities	674	10,337	474,444,039	882.65
Financial Activities	683	3,683	160,237,268	836.68
Professional & Business Services	870	9,878	373,029,734	726.22
Education & Health Services	1,021	14,989	596,943,207	765.87
Leisure & Hospitality	539	8,681	120,359,788	266.63
Other Services	408	1,965	55,061,089	538.86
Local Government	151	9,060	327,811,677	695.81
State Government	75	2,913	99,855,155	659.21
Other	954	25,967	1,068,421,664	791.26

Western Workforce Investment Area includes these counties: Crawford, Franklin, Logan, Polk, Scott, and Sebastian