

Arkansas Covered Employment & Earnings



First Quarter
2015

**COVERED EMPLOYMENT AND EARNINGS
STATE OF ARKANSAS
FIRST QUARTER 2015**

**ASA HUTCHINSON, GOVERNOR
STATE OF ARKANSAS**

**DARYL BASSETT, DIRECTOR
DEPARTMENT OF WORKFORCE SERVICES**

**PUBLISHED BY
LABOR MARKET INFORMATION
BUREAU OF LABOR STATISTICS PROGRAMS
POST OFFICE BOX 2981
LITTLE ROCK, ARKANSAS 72203-2981
SUSAN PRICE, BLS PROGRAMS MANAGER
TELEPHONE (501) 682-3103**

STATE OF ARKANSAS WEBPAGE: <http://www.arkansas.gov>

DEPARTMENT OF WORKFORCE SERVICES WEBPAGE: <http://www.arkansas.gov/esd/>

WEBPAGE FOR LABOR MARKET INFORMATION: <http://www.discover.arkansas.gov>

RELEASED: AUGUST 2015

TABLE OF CONTENTS

DESCRIPTION OF DATA	PAGE
Description and Classification of Data	1
Definition of Covered Employment and Earnings	2
Significant Developments During First Quarter 2015	3

LIST OF GRAPHS AND TABLES

Graph 1	Total Covered Employment for Selected Years, Arkansas	7
Graph 2	Total Covered Earnings, by Calendar Quarter for Selected Years, Arkansas	8
Table 1	Quarterly Comparison of Covered Employment and Wages, by Industry	5
Table 2	Total Covered Employment in Arkansas, 2008 – 2015	6
Table 3	Total Covered Earnings, 2008 – 2015	9
Table 4	Total Taxable Earnings, 2008 – 2015	10
Table 5	State Summary – Employment and Total Earnings, by Industry, First Quarter 2015	11
Table 6	County Summary – Employment and Total Earnings, by Industry, First Quarter 2015	22
Table 7	Federal Government Employment and Total Earnings in Arkansas, First Quarter 2015	60
Table 8	Workforce Information Area – Employment and Total Earnings, by Industry, First Quarter 2015	61

EMPLOYMENT AND EARNINGS
UNDER THE ARKANSAS EMPLOYMENT SECURITY LAW
FIRST QUARTER 2015

DESCRIPTION AND CLASSIFICATION OF DATA

This publication contains covered employment and payroll data by industry and county for the First Quarter 2015 and a record for total covered employment by month, quarterly payroll data, average weekly earnings, and total taxable earnings for 2008 through 2015. These data are compiled from quarterly contributions and wage reports submitted by employers subject to the Arkansas Employment Security Law.

Employment data have been tabulated for each month of the quarter by industry under the **North American Industry Classification System** (NAICS) by state, county, and workforce area. Payroll data represent the total wages paid during the quarter and are classified by industry for the state and by publishable industry groups for each county and workforce area.

Due to industry classification revisions, previously published data will not always be comparable with current data. For this reason, comparisons should not be made between the same industries under different revisions. For more information, visit the NAICS home page at <http://www.census.gov/naics>.

Industry Classification Revisions

- SIC (Standard Industrial Classification) 1987 to NAICS 2002
- NAICS 2002 to NAICS 2007
- NAICS 2007 to NAICS 2012

The tabulation of this data is a joint effort in conjunction with the United States Bureau of Labor Statistics. Data included in this publication are subject to revisions. Revisions are typically reflected in the Annual Covered Employment and Earnings publication.

DEFINITION OF COVERED EMPLOYMENT AND EARNINGS

Covered Employment is the total number of workers employed by establishments subject to the Arkansas Employment Security Law that worked or received pay for the payroll period including the 12th of the month. Earnings include all wages paid to any covered employee by their employer including salaries, bonuses, commissions, fees, fringe benefits, sick pay made directly to employees or dependents, deferred compensation, and reported tips. These wages include both taxable and nontaxable wages. Only the first \$12,000 paid to each worker by an employer in the calendar year is taxable under the Arkansas Employment Security Law.

An Arkansas state unemployment insurance account is required of any entity meeting the definition of an employer. As described by Arkansas Department of Workforce Services Law, the definition of an employer includes, but is not limited to, a sole proprietorship, partnership, corporation, associations, trust, estate, and receiver or trustee in bankruptcy. The entity must employ one or more individuals for ten or more days in a calendar year, whether or not the days are consecutive.

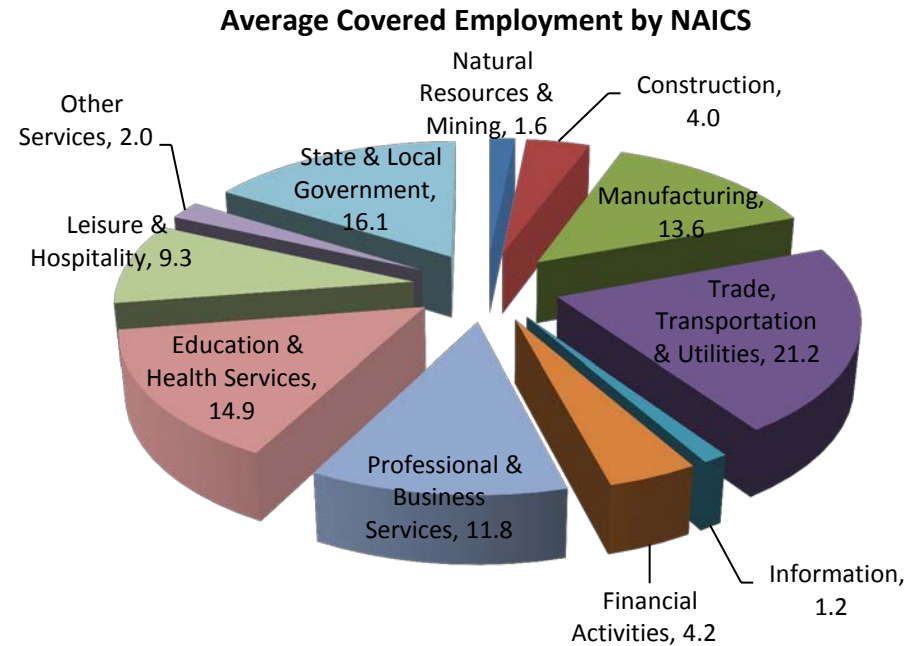
Currently excluded from coverage is employment covered by the Railroad Unemployment Insurance Act, some domestic service workers, employees of small agricultural establishments, self-employed workers, unpaid family workers, insurance and real estate agents paid only on a commission basis, and employees of churches and religious organizations except separately incorporated schools.

Civilian federal workers are covered by Unemployment Compensation for Federal Employees (UCFE).

SIGNIFICANT DEVELOPMENTS DURING FIRST QUARTER 2015

AVERAGE EMPLOYMENT CHANGES

Covered employment averaged 1,142,637 during the First Quarter 2015 (refer to Table 1), a decrease of 14,362 (-1.2%) from the previous quarter and an increase of 19,025 (1.7%) from the average recorded one year ago. The over-the-year comparison is more significant when used as an economic indicator and allows for seasonal factors that appear when comparing over-the-quarter data to be disregarded.



EMPLOYMENT CHANGES FROM FOURTH QUARTER 2014

Compared to Fourth Quarter 2014, covered employment decreased in ten major industry sectors. Trade, Transportation & Utilities experienced the largest decline of 4,912 jobs. This was primarily due to the slowdown in retail trade as business let go of temporary workers hired for the holiday season. State and Local Government decreased by 2,621 as schools were closed for winter break. Professional & Business Services dropped 2,358. Manufacturing increased 741 jobs.

EMPLOYMENT CHANGES FROM FIRST QUARTER 2014 (QUARTER YEAR AGO COMPARISON)

Over-the-year gains were recorded in seven industry groups (refer to Table 1). The largest gains occurred in Trade, Transportation & Utilities (6,722), Professional & Business Services (4,022), and Leisure & Hospitality (3,344). The most significant losses occurred in State & Local Government (-1,415), Information (-524), and Natural Resources & Mining (-98).

COVERED WAGES

Wages paid to covered workers totaled \$11,588,392,768 for the First Quarter 2015 (refer to Table 1), for an average weekly wage of \$780.14 (refer to Table 5). Benton County workers recorded the highest average weekly wage (\$1,302.71), and employees in Newton County reported the lowest (\$410.27) (refer to Table 6).

The Professional & Business Services industry recorded the highest average weekly wage for the State of Arkansas (\$1,096.78). The Leisure & Hospitality sector recorded the lowest (\$291.06) (refer to Table 5).

Average Weekly Wage by Industry

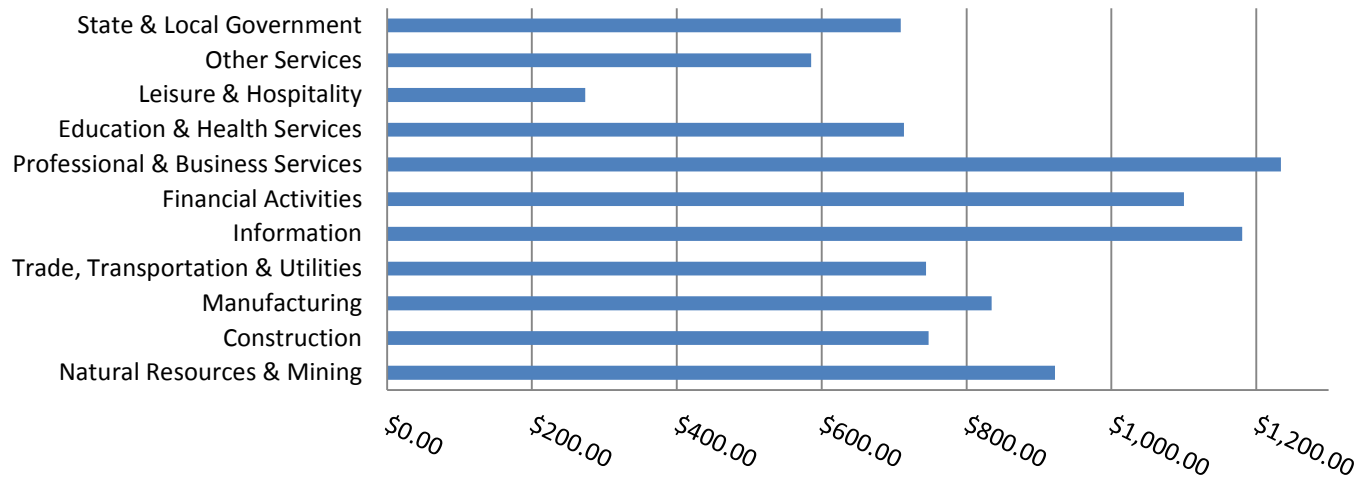


TABLE 1. QUARTERLY COMPARISON OF COVERED EMPLOYMENT AND WAGES, BY INDUSTRY

North American Industry Classification System - Industry Groups	Number of Employing Units	Monthly Employment Average	Percent of Total	Net Change From:		Total Wages Paid Jan - Mar 2015	Percent of Total
				Oct - Dec 2014	Jan - Mar 2014		
TOTAL	87,039	1,142,637	100	-14,362	19,025	\$11,588,392,768	100
Natural Resources & Mining	2,603	18,646	1.6	-1,291	-98	223,479,174	1.9
Agriculture, Forestry, Fishing & Hunting	2,083	12,078	1.1	-1,057	173	100,566,868	0.9
Mining	520	6,569	0.6	-232	-270	122,912,306	1.1
Construction	6,701	46,117	4.0	-1,507	2,476	448,174,890	3.9
Manufacturing	3,009	155,742	13.6	741	2,862	1,689,789,225	14.6
Trade, Transportation & Utilities	21,447	242,646	21.2	-4,912	6,722	2,347,181,452	20.3
Wholesale Trade	6,967	46,664	4.1	-341	918	798,493,315	6.9
Retail Trade	11,157	136,690	12.0	-3,703	3,640	808,386,454	7.0
Transportation & Warehousing	2,896	51,426	4.5	-888	2,289	555,838,946	4.8
Utilities	427	7,866	0.7	19	-125	184,462,737	1.6
Information	1,060	13,255	1.2	-359	-524	203,434,272	1.8
Financial Activities	8,146	47,636	4.2	-336	209	681,273,825	5.9
Finance & Insurance	4,845	34,781	3.0	-120	79	568,558,389	4.9
Real Estate & Rental & Leasing	3,301	12,855	1.1	-216	130	112,715,436	1.0
Professional & Business Services	13,477	135,144	11.8	-2,358	4,022	2,167,533,862	18.7
Professional & Technical Services	8,557	41,662	3.6	752	353	579,299,677	5.0
Management of Companies & Enterprises	520	32,336	2.8	-632	713	1,199,637,831	10.4
Administrative & Waste Services	4,400	61,146	5.4	-2,478	2,957	388,596,354	3.4
Education & Health Services	15,422	169,752	14.9	-592	1,477	1,574,793,736	13.6
Educational Services	779	10,897	1.0	-163	171	86,833,309	0.7
Health Care & Social Assistance	14,643	158,855	13.9	-430	1,306	1,487,960,427	12.8
Leisure & Hospitality	6,730	106,201	9.3	-623	3,344	377,466,772	3.3
Arts, Entertainment & Recreation	947	9,335	0.8	126	221	45,496,361	0.4
Accommodation & Food Services	5,783	96,865	8.5	-750	3,122	331,970,411	2.9
Other Services	5,353	23,413	2.0	-505	-51	178,194,122	1.5
State & Local Government	3,091	184,084	16.1	-2,621	-1,415	1,697,071,438	14.6
Local Government	1,954	113,448	9.9	-2,079	-1,687	964,333,185	8.3
State Government	1,137	70,636	6.2	-542	272	732,738,253	6.3
Nonclassifiable Establishments	0	0	0.0	0	0	0	0.0

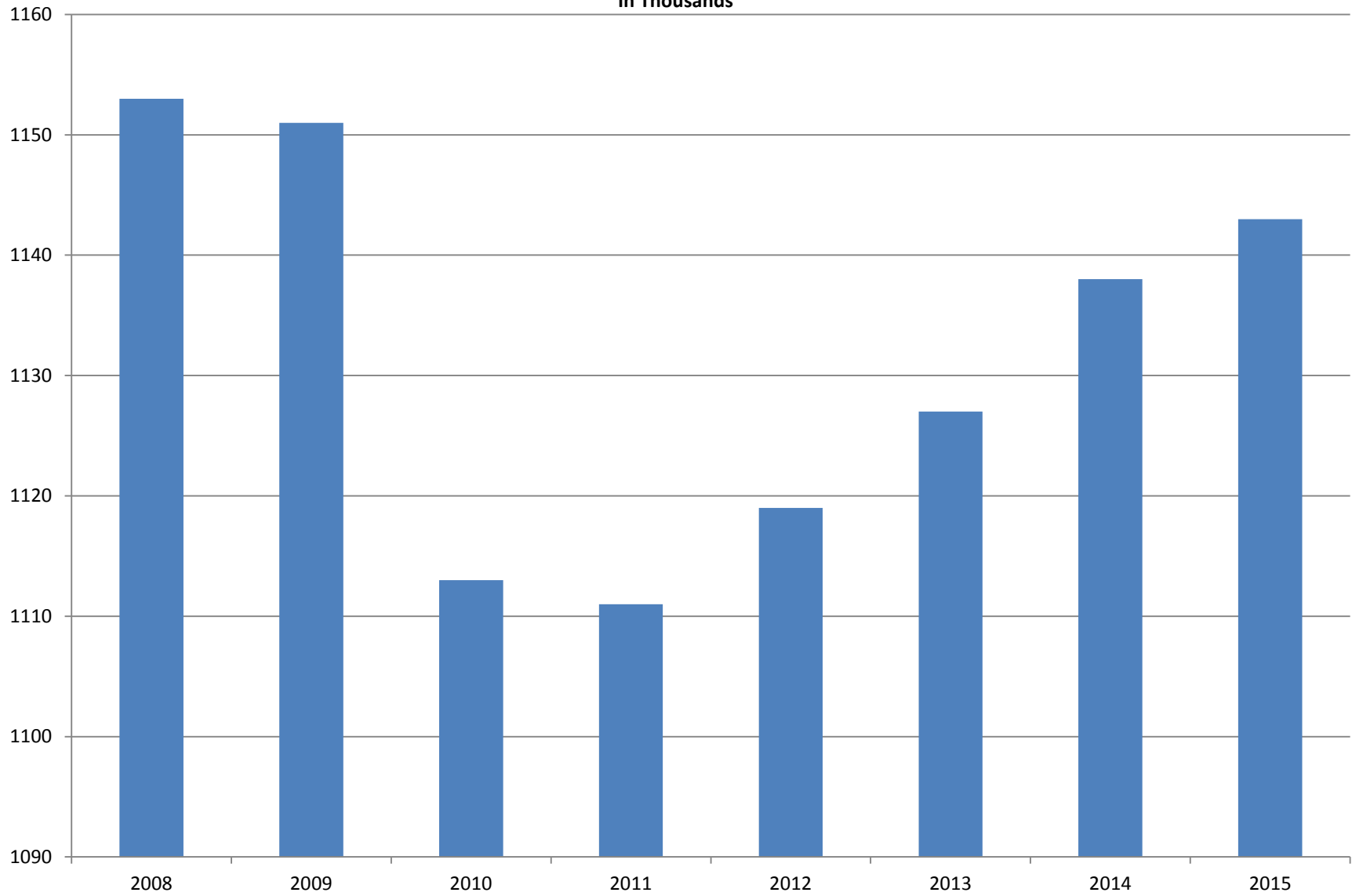
Note: Items do not necessarily add to total because of rounding. Because of industry code changes between years, substantial employment and wage shifts among industries are anticipated.

TABLE 2. TOTAL COVERED EMPLOYMENT IN ARKANSAS

PERIOD	2008	2009	2010	2011	2012	2013	2014	2015
AVERAGE	1,152,994	1,150,965	1,112,591	1,110,947	1,118,639	1,126,588	1,137,486	1,142,637
January	1,137,437	1,141,856	1,119,299	1,089,984	1,098,349	1,113,274	1,114,412	1,135,999
February	1,143,397	1,149,443	1,119,476	1,091,282	1,098,445	1,119,319	1,122,905	1,145,107
March	1,158,895	1,157,690	1,124,386	1,106,198	1,113,061	1,131,123	1,132,106	1,146,804
April	1,159,623	1,159,841	1,123,383	1,115,341	1,129,635	1,136,973	1,140,788	NA
May	1,165,224	1,166,111	1,122,322	1,123,250	1,126,371	1,143,142	1,149,046	NA
June	1,164,207	1,164,167	1,117,884	1,130,164	1,123,412	1,136,739	1,144,876	NA
July	1,110,571	1,114,279	1,071,048	1,073,743	1,080,937	1,079,329	1,096,675	NA
August	1,139,109	1,138,583	1,093,192	1,099,795	1,106,262	1,109,425	1,125,162	NA
September	1,165,135	1,162,333	1,116,580	1,124,281	1,132,779	1,136,019	1,150,545	NA
October	1,162,768	1,157,196	1,113,157	1,125,073	1,138,395	1,136,045	1,153,684	NA
November	1,164,246	1,152,159	1,115,443	1,126,781	1,138,543	1,138,302	1,158,579	NA
December	1,165,314	1,147,927	1,114,919	1,125,466	1,137,474	1,139,361	1,161,056	NA

AVERAGE TOTAL COVERED EMPLOYMENT

In Thousands



TOTAL COVERED EARNINGS BY CALENDAR YEAR

In Thousands

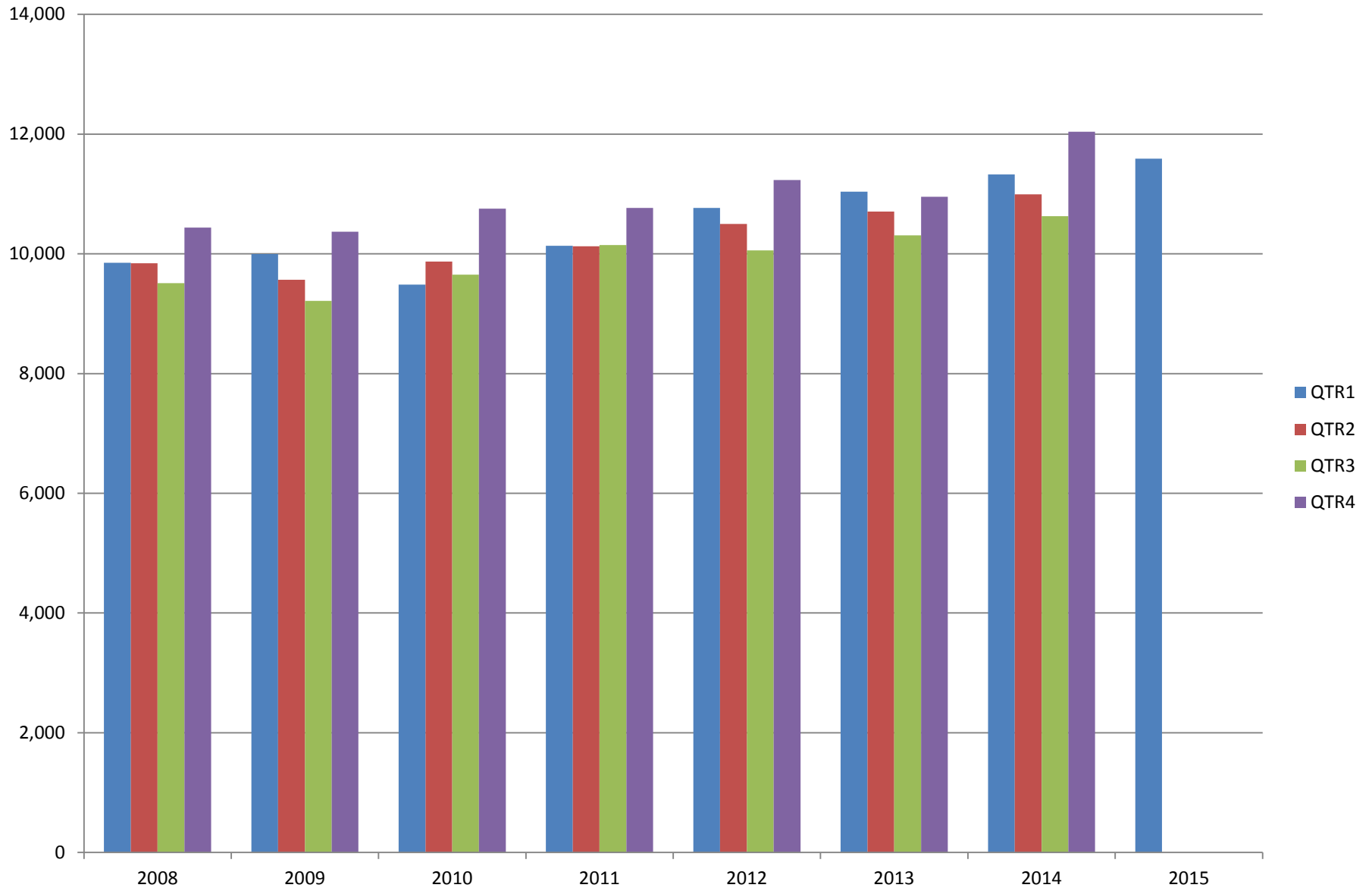


TABLE 3. TOTAL COVERED EARNINGS 2008 - 2015

PERIOD	2008	2009	2010	2011
TOTAL	\$39,643,039,342	\$39,149,476,305	\$39,769,504,992	\$41,177,659,236
January - March	9,851,866,058	9,998,452,028	9,486,245,580	10,134,035,254
April - June	9,843,711,293	9,566,968,853	9,873,489,653	10,128,274,611
July - September	9,509,150,631	9,213,797,140	9,653,588,807	10,147,287,431
October - December	10,438,311,360	10,370,258,284	10,756,180,952	10,768,061,940
Average Weekly Earnings	\$661.21	\$654.12	\$687.40	\$712.80

PERIOD	2012	2013	2014	2015
TOTAL	\$42,555,976,081	\$43,003,433,021	\$44,980,520,034	\$11,588,392,768
January - March	10,766,175,449	11,038,435,964	11,321,422,241	11,588,392,768
April - June	10,499,018,872	10,705,006,820	10,991,760,061	NA
July - September	10,058,388,682	10,306,649,458	10,619,889,280	NA
October - December	11,232,393,078	10,953,340,779	12,047,448,452	NA
Average Weekly Earnings	\$731.59	\$734.07	\$760.46	\$780.14

TABLE 4. TOTAL TAXABLE EARNINGS, 2008 - 2015

PERIOD	2008	2009	2010	2011
TOTAL	10,360,487,108	9,787,660,886	11,332,118,456	11,479,396,226
January - March	5,635,750,082	5,423,705,265	5,607,134,758	5,828,877,821
April - June	2,419,313,519	2,293,670,854	2,977,100,591	2,910,604,359
July - September	1,297,473,555	1,165,280,065	1,577,067,770	1,601,382,146
October - December	1,007,949,952	905,004,702	1,170,815,337	1,138,531,900

PERIOD	2012	2013	2014	2015
TOTAL	11,642,854,241	11,669,483,946	11,919,662,224	6,387,946,312
January - March	6,167,036,199	6,194,767,117	6,288,682,396	6,387,946,312
April - June	2,845,540,593	2,807,334,202	2,831,013,392	NA
July - September	1,505,833,030	1,509,412,524	1,552,243,963	NA
October - December	1,124,444,419	1,157,970,103	1,247,722,473	NA

TABLE 5. STATEWIDE SUMMARY

North American Industry Classification System - Industry Groups		Number of Employing Units	Employment			Total Earnings Jan - Mar 2015	Average Weekly Earnings
			Jan	Feb	Mar		
TOTAL, ALL INDUSTRIES		87,039	1,135,999	1,145,107	1,146,804	\$11,588,392,768	\$780.14
NATURAL RESOURCES & MINING		2,603	18,534	18,802	18,603	\$223,479,174	\$921.93
11	AGRICULTURE, FORESTRY, FISHING & HUNTING	2,083	11,844	12,222	12,167	100,566,868	\$640.51
111	CROP PRODUCTION	944	3,720	3,915	4,015	\$24,767,504	\$490.61
1111	Oilseed & Grain Farming	664	2,456	2,574	2,618	16,854,905	508.58
1112	Vegetable & Melon Farming	20	125	133	146	755,873	431.76
1113	Fruit & Tree Nut Farming	13	47	49	37	252,271	437.72
1114	Greenhouse & Nursery Production	45	334	372	414	2,439,808	502.71
1119	Other Crop Farming	202	758	787	800	4,464,647	439.36
112	ANIMAL PRODUCTION & AQUACULTURE	309	3,037	3,055	3,113	\$30,759,882	\$771.15
1121	Cattle Ranching & Farming	114	382	378	392	2,419,061	484.59
1122	Hog & Pig Farming	12	133	133	135	1,262,900	726.78
1123	Poultry & Egg Production	109	2,104	2,117	2,120	24,137,990	878.46
1125	Animal Aquaculture	53	362	370	410	2,633,040	532.07
	Other	21	56	57	56	306,891	419.06
113	FORESTRY & LOGGING	407	2,284	2,303	2,146	\$19,779,103	\$677.92
1131	Timber Tract Operations	38	178	179	174	2,467,778	1,072.48
1132	Forest Nursery, Gathering Forest Product	5	25	25	26	357,932	1,086.84
1133	Logging	364	2,081	2,099	1,946	16,953,393	638.64
114	FISHING, HUNTING & TRAPPING	4	27	23	23	\$129,837	\$410.44
115	SUPPORT ACTIVITIES FOR AGRICULTURE & FORESTRY	419	2,776	2,926	2,870	\$25,130,542	\$676.55
1151	Support Activities for Crop Production	288	1,224	1,241	1,278	12,776,716	787.73
1152	Support Activities for Animal Production	63	715	711	693	5,001,876	544.73
1153	Support Activities for Forestry	68	837	974	899	7,351,950	626.05
21	MINING	520	6,690	6,580	6,436	\$122,912,306	\$1,439.38
211	OIL & GAS EXTRACTION	86	1,422	1,419	1,412	\$37,735,690	\$2,047.55
212	MINING (EXCEPT OIL & GAS)	109	1,692	1,707	1,687	\$21,802,666	\$989.26
213	SUPPORT ACTIVITIES FOR MINING	325	3,576	3,454	3,337	\$63,373,950	\$1,410.70

TABLE 5. STATEWIDE SUMMARY

North American Industry Classification System - Industry Groups		Number of Employing Units	Employment			Total Earnings Jan - Mar 2015	Average Weekly Earnings
			Jan	Feb	Mar		
CONSTRUCTION		6,701	45,935	46,270	46,147	\$448,174,890	\$747.55
236	CONSTRUCTION OF BUILDINGS	1,656	9,393	9,260	9,493	\$101,293,593	\$830.51
2361	Residential Building Construction	1,092	2,847	2,843	2,843	24,381,634	659.38
2362	Nonresidential Building Construction	564	6,546	6,417	6,650	76,911,959	904.96
237	HEAVY & CIVIL ENGINEERING CONSTRUCTION	736	7,382	7,668	7,257	\$78,082,022	\$807.77
2371	Utility System Construction	404	4,357	4,452	4,030	46,031,333	827.37
2372	Land Subdivision	58	127	126	127	1,216,157	738.56
2373	Highway, Street & Bridge Construction	184	2,448	2,571	2,519	25,176,810	770.77
2379	Other Heavy Construction	90	450	519	581	5,657,722	842.34
238	SPECIALTY TRADE CONTRACTORS	4,309	29,160	29,342	29,397	\$268,799,275	\$705.70
2381	Building Foundation & Exterior Contractors	822	5,561	5,625	5,687	47,776,756	653.43
2382	Building Equipment Contractors	2,028	15,672	15,704	15,830	158,069,777	772.73
2383	Building Finishing Contractors	722	3,685	3,745	3,777	30,104,973	619.91
2389	Other Specialty Trade Contractors	737	4,242	4,268	4,103	32,847,769	600.99
MANUFACTURING		3,009	156,126	155,740	155,360	\$1,689,789,225	\$834.61
311	FOOD MANUFACTURING	272	43,516	43,289	43,039	\$352,911,555	\$627.22
3111	Animal Food Manufacturing	46	1,436	1,426	1,423	17,587,989	947.20
3112	Grain & Oilseed Milling	31	2,482	2,488	2,490	26,197,206	810.39
3114	Fruit, Vegetable & Specialty Food	20	4,437	4,387	4,369	48,477,227	847.95
3115	Dairy Product Manufacturing	8	531	525	523	5,369,231	784.71
3116	Animal Slaughtering & Processing	79	29,384	29,190	28,952	204,566,012	539.35
3118	Bakeries & Tortilla Manufacturing	58	3,317	3,318	3,318	29,470,696	683.30
3119	Other Food Manufacturing	22	1,879	1,907	1,911	20,943,164	848.35
	Other	8	50	48	53	300,030	458.53
312	BEVERAGE & TOBACCO PRODUCT MANUFACTURING	45	1,275	1,280	1,300	\$12,704,384	\$760.51
313	TEXTILE MILLS	9	62	66	67	\$614,164	\$726.82
314	TEXTILE PRODUCT MILLS	50	883	867	859	\$9,468,665	\$837.51
3141	Textile Furnishing Mills	10	37	36	35	398,369	851.22
3149	Other Textile Product Mills	40	846	831	824	9,070,296	836.92
315	APPAREL MANUFACTURING	19	867	870	886	\$5,616,787	\$494.16
3151	Apparel Knitting Mills	3	600	605	624	4,150,550	523.68
3152	Cut & Sew Apparel Manufacturing	12	159	154	150	912,636	454.88
3159	Apparel Accessories, Other Apparel Manufacturing	4	108	111	112	553,601	385.96
316	LEATHER & ALLIED PRODUCT MANUFACTURING	14	1,063	1,029	1,011	\$6,222,176	\$462.74

TABLE 5. STATEWIDE SUMMARY

North American Industry Classification System - Industry Groups		Number of Employing Units	Employment			Total Earnings	Average Weekly Earnings
			Jan	Feb	Mar	Jan - Mar 2015	
321	WOOD PRODUCT MANUFACTURING	325	9,363	9,358	9,294	\$88,071,059	\$725.47
3211	Sawmills & Wood Preservation	143	4,398	4,397	4,352	44,422,197	779.74
3212	Veneer & Engineered Wood Products	48	1,994	1,964	1,973	21,976,480	855.08
3219	Other Wood Product Manufacturing	134	2,971	2,997	2,969	21,672,382	559.62
322	PAPER MANUFACTURING	70	9,586	9,523	9,513	\$156,693,298	\$1,263.36
3221	Pulp, Paper & Paperboard Mills	12	4,039	4,028	4,028	88,667,390	1,691.75
3222	Converted Paper Product Manufacturing	58	5,547	5,495	5,485	68,025,908	949.86
323	PRINTING & RELATED SUPPORT ACTIVITIES	247	3,989	4,042	4,006	\$37,210,440	\$713.39
324	PETROLEUM & COAL PRODUCTS MANUFACTURING	19	1,093	1,112	1,112	\$20,762,774	\$1,444.50
325	CHEMICAL MANUFACTURING	113	5,159	5,115	5,151	\$78,550,591	\$1,175.17
3251	Basic Chemical Manufacturing	30	1,948	1,874	1,872	34,888,604	1,413.98
3252	Resin, Rubber & Artificial Fibers	7	302	299	303	4,833,603	1,233.90
3253	Agricultural Chemical Manufacturing	13	360	385	389	7,155,755	1,456.20
3254	Pharmaceutical & Medicine Manufacturing	13	297	297	302	3,632,270	935.51
3255	Paint, Coating & Adhesive Manufacturing	8	264	266	267	4,239,667	1,227.58
3256	Soap, Cleaning Compound, & Toilet Preparation Manufacturing	18	1,240	1,238	1,263	14,195,079	875.64
3259	Other Chemical Preparation Manufacturing	24	748	756	755	9,605,613	981.27
326	PLASTICS & RUBBER PRODUCTS MANUFACTURING	143	11,433	11,416	11,438	\$132,612,144	\$892.55
3261	Plastics Product Manufacturing	103	7,057	7,051	7,076	71,917,143	783.43
3262	Rubber Product Manufacturing	40	4,376	4,365	4,362	60,695,001	1,068.96
327	NONMETALLIC MINERAL PRODUCT MANUFACTURING	237	3,645	3,636	3,631	\$37,952,936	\$802.64
3271	Clay Product & Refractory Manufacturing	14	398	396	403	4,647,439	895.98
3272	Glass & Glass Product Manufacturing	10	374	370	370	3,707,971	768.12
3273	Cement & Concrete Product Manufacturing	174	2,012	2,022	2,007	18,534,622	708.03
3274	Lime & Gypsum Product Manufacturing	4	273	276	276	4,090,502	1,144.20
3279	Other Nonmetallic Mineral Products Manufacturing	35	588	572	575	6,972,402	927.39
331	PRIMARY METAL MANUFACTURING	74	9,240	9,106	9,021	\$139,175,477	\$1,173.58
3311	Iron & Steel Mills & Ferroalloys	9	2,530	2,537	2,537	56,872,665	1,725.99
3312	Purchased Steel Product Manufacturing	21	2,883	2,739	2,671	38,967,808	1,084.36
3313	Alumina & Aluminum Production	18	1,209	1,214	1,203	15,858,963	1,009.31
3314	Other Nonferrous Metal Production	8	503	509	514	5,869,624	887.63
3315	Foundries	18	2,115	2,107	2,096	21,606,417	789.19

TABLE 5. STATEWIDE SUMMARY

North American Industry Classification System - Industry Groups		Number of Employing Units	Employment			Total Earnings	Average Weekly Earnings
			Jan	Feb	Mar	Jan - Mar 2015	
332	FABRICATED METAL PRODUCT MANUFACTURING	540	15,065	15,079	15,056	\$175,167,826	\$894.32
3321	Forging & Stamping	10	354	358	365	3,586,831	768.55
3322	Cutlery & Hand Tool Manufacturing	11	623	630	621	7,739,994	953.12
3323	Architectural & Structural Metals	156	3,996	3,991	4,000	48,599,364	935.62
3324	Boilers, Tanks & Shipping Containers	17	766	786	764	9,463,269	942.93
3325	Hardware Manufacturing	6	278	280	280	2,999,884	826.11
3326	Spring & Wire Product Manufacturing	13	401	405	393	4,454,644	857.38
3327	Machine Shops & Threaded Products	218	2,072	2,069	2,057	18,867,426	702.49
3328	Coating, Engraving & Heat Treating Metals	38	704	711	728	5,996,287	645.71
3329	Other Fabricated Metal Product Manufacturing	71	5,871	5,849	5,848	73,460,127	964.96
333	MACHINERY MANUFACTURING	210	11,627	11,617	11,643	\$128,240,903	\$848.28
3331	Agriculture, Construction & Mining Machinery	43	3,078	3,148	3,138	28,863,865	711.33
3332	Industrial Machinery Manufacturing	21	648	647	649	10,338,470	1,227.26
3333	Commercial & Service Industry Machinery	21	763	777	764	10,769,013	1,078.63
3334	HVAC & Commercial Refrigeration Equipment	22	3,132	3,058	3,115	35,826,457	888.52
3335	Metalworking Machinery Manufacturing	58	1,153	1,146	1,127	11,357,998	765.05
3336	Turbine & Power Transmission Equipment Manufacturing	6	729	719	720	8,350,669	888.87
3339	Other General Purpose Machinery Manufacturing	39	2,124	2,122	2,130	22,734,431	822.84
334	COMPUTER & ELECTRONIC PRODUCT MANUFACTURING	59	2,483	2,505	2,512	\$28,715,285	\$883.55
3343	Audio & Video Equipment Manufacturing	6	176	176	169	1,532,293	678.71
3344	Semiconductors & Electronic Components	25	1,676	1,693	1,719	18,741,086	850.01
3345	Navigational, Measuring, Electromedical, & Control Instr, Mfg Other	20 8	485 146	487 149	480 144	6,046,492 2,395,414	960.98 1,259.20
335	ELECTRICAL EQUIPMENT & APPLIANCES	56	5,399	5,343	5,321	\$69,706,378	\$1,001.44
3351	Electric Lighting Equipment Manufacturing	11	336	333	328	3,415,789	\$790.63
3352	Household Appliance Manufacturing	5	51	49	51	944,914	\$1,444.09
3353	Electrical Equipment Manufacturing	23	3,456	3,428	3,412	45,260,201	1,014.44
3359	Other Electrical Equipment & Component Manufacturing	17	1,556	1,533	1,530	20,085,474	1,003.49
336	TRANSPORTATION EQUIPMENT MANUFACTURING	145	13,694	13,812	13,834	\$151,792,633	\$847.34
3362	Motor Vehicle Body & Trailer Manufacturing	32	1,805	1,828	1,836	16,058,624	677.61
3363	Motor Vehicle Parts Manufacturing	47	4,934	4,920	4,953	47,541,431	740.94
3364	Aerospace Product & Parts Manufacturing	29	3,344	3,340	3,366	52,018,644	1,194.46
3366	Ship & Boat Building Other	21 16	1,703 1,908	1,711 2,013	1,706 1,973	11,894,972 24,278,962	536.13 950.60
337	FURNITURE & RELATED PRODUCT MANUFACTURING	175	3,367	3,329	3,320	\$26,610,296	\$613.10
3371	Household & Institutional Furniture	143	2,342	2,307	2,307	16,255,921	539.30
3372	Office Furniture & Fixtures Manufacturing	25	916	914	906	9,639,144	813.02
3379	Other Furniture Related Product Manufacturing	7	109	108	107	715,231	509.42
339	MISCELLANEOUS MANUFACTURING	187	3,317	3,346	3,346	\$30,989,454	\$714.50
3391	Medical Equipment & Supplies Manufacturing	70	1,617	1,646	1,643	18,293,803	860.51
3399	Other Miscellaneous Manufacturing	117	1,700	1,700	1,703	12,695,651	574.13

TABLE 5. STATEWIDE SUMMARY

North American Industry Classification System - Industry Groups		Number of Employing Units	Employment			Total Earnings Jan - Mar 2015	Average Weekly Earnings
			Jan	Feb	Mar		
TRADE, TRANSPORTATION & UTILITIES		21,447	242,439	242,206	243,293	\$2,347,181,452	\$744.10
42	WHOLESALE TRADE	6,967	46,423	46,712	46,858	\$798,493,315	\$1,316.26
423	MERCHANT WHOLESALERS, DURABLE GOODS	2,192	20,972	21,026	20,964	\$287,641,508	\$1,054.27
4231	Motor Vehicle & Part Merchant Wholesalers	232	2,722	2,749	2,760	29,477,650	826.45
4232	Furniture & Furnishings Merchant Wholesalers	56	451	455	451	6,384,798	1,085.79
4233	Lumber & Supply Merchant Wholesalers	165	1,378	1,365	1,359	15,036,009	845.89
4234	Commercial Goods Merchant Wholesalers	300	2,639	2,664	2,650	48,676,255	1,412.42
4235	Metal & Mineral Merchant Wholesalers	53	885	875	876	12,317,042	1,078.30
4236	Appliances & Electronics Goods Merchant Wholesalers	209	1,864	1,876	1,886	33,324,807	1,366.93
4237	Hardware & Plumbing Merchant Wholesalers	234	2,278	2,270	2,265	30,516,061	1,033.64
4238	Machinery & Supply Merchant Wholesalers	718	6,756	6,788	6,761	89,982,554	1,022.66
4239	Miscellaneous Durable Goods Merchant Wholesalers	225	1,999	1,984	1,956	21,926,332	851.98
424	MERCHANT WHOLESALERS, NONDURABLE GOODS	1,170	14,891	14,992	15,147	\$232,634,555	\$1,192.20
4241	Paper & Paper Product Merchant Wholesalers	68	1,137	1,155	1,128	17,648,546	1,190.86
4242	Druggist' Goods Merchant Wholesalers	53	655	638	640	8,804,508	1,051.12
4243	Apparel & Piece Goods Merchant Wholesalers	39	627	625	641	7,048,851	859.30
4244	Grocery Product Merchant Wholesalers	298	4,227	4,214	4,192	69,858,180	1,276.11
4245	Farm Product & Raw Material Merchant Wholesalers	73	800	765	771	6,303,405	622.70
4246	Chemical Merchant Wholesalers	95	676	677	674	11,171,098	1,271.80
4247	Petroleum Merchant Wholesalers	135	1,771	1,779	1,767	47,874,948	2,077.88
4248	Alcoholic Beverage Merchant Wholesalers	42	1,515	1,495	1,521	19,967,235	1,016.96
4249	Miscellaneous Nondurable Goods Merchant Wholesaler	367	3,483	3,644	3,813	43,957,784	927.25
425	ELECTRONIC MARKETS & AGENTS & BROKERS	3,605	10,560	10,694	10,747	\$278,217,252	\$2,006.31
44 - 45	RETAIL TRADE	11,157	136,698	136,369	137,003	\$808,386,454	\$454.92
441	MOTOR VEHICLE & PARTS DEALERS	1,580	18,328	18,451	18,560	\$184,333,553	\$768.69
4411	Automobile Dealers	645	11,344	11,384	11,381	131,770,140	891.51
4412	Other Motor Vehicle Dealers	168	1,441	1,488	1,508	13,373,002	695.53
4413	Automotive Parts, Accessories & Tire Stores	767	5,543	5,579	5,671	39,190,411	538.55
442	FURNITURE & HOME FURNISHINGS STORES	513	3,533	3,488	3,527	\$24,601,412	\$538.23
4421	Furniture Stores	276	1,976	1,995	2,022	16,265,996	626.35
4422	Home Furnishings Stores	237	1,557	1,493	1,505	8,335,416	422.30
443	ELECTRONICS & APPLIANCE STORES	475	3,893	3,800	3,776	\$30,133,224	\$606.31
444	BUILDING MATERIAL & GARDEN SUPPLY STORES	838	10,388	10,666	10,903	\$69,167,485	\$499.48
4441	Building Material & Supplies Dealers	617	9,060	9,323	9,496	61,524,019	509.27
4442	Lawn & Garden Equipment & Supplies Stores	221	1,328	1,343	1,407	7,643,466	432.53

TABLE 5. STATEWIDE SUMMARY

North American Industry Classification System - Industry Groups		Number of Employing Units	Employment			Total Earnings	Average Weekly Earnings
			Jan	Feb	Mar	Jan - Mar 2015	
445	FOOD & BEVERAGE STORES	1,031	19,359	19,310	19,347	\$93,984,215	\$373.84
4451	Grocery Stores	552	16,755	16,767	16,755	78,995,582	362.59
4452	Specialty Food Stores	134	928	885	920	6,714,389	566.95
4453	Beer, Wine & Liquor Stores	345	1,676	1,658	1,672	8,274,244	381.43
446	HEALTH & PERSONAL CARE STORES	1,041	8,095	8,159	8,207	\$67,690,811	\$638.61
447	GASOLINE STATIONS	1,619	11,906	11,994	11,974	\$50,512,531	\$324.94
44711	Gasoline Stations with Convenience Stores	1,513	10,590	10,690	10,660	43,198,721	312.11
44719	Other Gasoline Stations	106	1,316	1,304	1,314	7,313,810	429.03
448	CLOTHING & CLOTHING ACCESSORIES STORES	1,038	8,171	7,901	7,890	\$31,978,505	\$307.97
4481	Clothing Stores	762	6,279	5,992	5,988	21,408,070	270.57
4482	Shoe Stores	136	1,097	1,130	1,148	4,508,732	308.29
4483	Jewelry, Luggage & Leather Goods Stores	140	795	779	754	6,061,703	600.88
451	SPORTING GOODS, HOBBY, BOOK & MUSIC STORES	484	4,821	4,588	4,540	\$22,153,315	\$366.50
4511	Sporting Goods & Musical Instrument Stores	420	4,236	4,078	4,043	20,223,193	377.67
4512	Book, Periodical & Music Stores	64	585	510	497	1,930,122	279.78
452	GENERAL MERCHANDISE STORES	905	39,000	38,966	39,353	\$181,940,566	\$357.88
4521	Department Stores	136	8,504	8,233	8,114	35,189,655	326.78
4529	Other General Merchandise Stores	769	30,496	30,733	31,239	146,750,911	366.24
453	MISCELLANEOUS STORE RETAILERS	1,236	7,322	7,217	7,074	\$35,139,097	\$375.19
4531	Florists	190	670	761	670	2,886,542	317.05
4532	Office Supplies, Stationery & Gift Stores	280	2,023	2,000	1,955	10,261,754	396.14
4533	Used Merchandise Stores	254	2,006	1,915	1,891	8,745,507	347.25
4539	Other Miscellaneous Store Retailers	512	2,623	2,541	2,558	13,245,294	395.83
454	NONSTORE RETAILERS	397	1,882	1,829	1,852	\$16,751,740	\$694.91
4541	Electronic Shopping & Mail-Order Houses	185	759	712	730	6,562,260	688.04
4542	Vending Machine Operators	67	418	412	420	3,241,099	598.36
4543	Direct Selling Establishments	145	705	705	702	6,948,381	759.22
48 - 49	TRANSPORTATION & WAREHOUSING	2,896	51,457	51,267	51,553	\$555,838,946	\$831.43
481	AIR TRANSPORTATION	53	625	645	623	\$5,619,636	\$685.07
4811	Scheduled Air Transportation	21	556	568	546	4,345,537	600.49
4812	Nonshceduled Air Transportation	32	69	77	77	1,274,099	1,318.49
483	WATER TRANSPORTATION	4	19	19	21	\$347,414	\$1,358.86
484	TRUCK TRANSPORTATION	1,846	32,134	32,413	32,741	\$358,068,724	\$849.35
4841	General Freight Trucking	1,092	25,596	25,911	26,314	294,892,884	874.47
4842	Specialized Freight Trucking	754	6,538	6,502	6,427	63,175,840	748.91

TABLE 5. STATEWIDE SUMMARY

North American Industry Classification System - Industry Groups		Number of Employing Units	Employment			Total Earnings	Average Weekly Earnings
			Jan	Feb	Mar	Jan - Mar 2015	
485	TRANSIT & GROUND PASSENGER TRANSPORTATION	95	1,639	1,646	1,655	\$7,026,525	\$328.24
4853	Taxi & Limousine Service	31	474	459	449	1,682,288	280.91
4854	School & Employee Bus Transportation	13	482	493	496	1,923,062	301.69
4855	Charter Bus Industry Service	8	110	114	113	643,715	440.80
4859	Other Ground Passenger Transportation	39	484	493	511	2,129,378	330.24
	Other	4	89	87	86	648,082	570.83
486	PIPELINE TRANSPORTATION	41	543	537	536	\$18,415,270	\$2,629.75
487	SCENIC & SIGHTSEEING TRANSPORTATION	6	22	28	25	\$71,644	\$220.44
488	SUPPORT ACTIVITIES FOR TRANSPORTATION	443	5,025	5,021	5,035	\$62,418,205	\$955.12
4881	Support Activities for Air Transportation	103	1,156	1,150	1,121	11,042,595	743.59
4882	Support Activities for Rail Transportation	41	452	480	500	5,292,189	852.85
4883	Support Activities for Water Transportation	22	743	706	675	9,746,430	1,058.93
4884	Support Activities for Road Transportation	140	724	727	744	5,624,413	591.32
4885	Freight Transportation Arrangement	120	1,867	1,870	1,902	29,981,388	1,226.95
4889	Other Support Activities for Transportation	17	83	88	93	731,190	639.15
491	POSTAL SERVICES	13	266	261	267	\$2,811,484	\$817.13
492	COURIERS & MESSENGERS	169	3,929	3,439	3,447	\$36,712,525	\$783.37
493	WAREHOUSING & STORAGE	226	7,255	7,258	7,203	\$64,347,519	\$683.80
22	UTILITIES	427	7,861	7,858	7,879	\$184,462,737	\$1,803.90
2211	Power Generation & Supply	166	5,560	5,547	5,552	149,682,814	2,073.49
2212	Natural Gas Distribution	75	1,379	1,381	1,392	26,635,025	1,480.38
2213	Water, Sewage & Other Systems	186	922	930	935	8,144,898	674.41
INFORMATION		1,060	13,264	13,263	13,237	\$203,434,272	\$1,180.62
511	PUBLISHING INDUSTRIES, EXCEPT INTERNET	226	3,359	3,367	3,338	\$31,939,674	\$732.38
5111	Newspaper, Book & Directory Publishers	199	3,043	3,052	3,019	26,004,941	658.45
5112	Software Publishers	27	316	315	319	5,934,733	1,441.64
512	MOTION PICTURE & SOUND RECORDING INDUSTRY	138	1,029	1,035	1,040	\$4,688,963	\$348.60
5121	Motion Picture & Video Industries	121	1,004	1,008	1,013	4,397,455	335.47
5122	Sound Recording Industries	17	25	27	27	291,508	851.53
515	BROADCASTING, EXCEPT INTERNET	123	1,616	1,617	1,619	\$16,854,385	\$801.62
5151	Radio & Television Broadcasting	118	1,586	1,587	1,588	16,598,855	804.56
5152	Cable & Other Subscription Programming	5	30	30	31	255,530	648.01

TABLE 5. STATEWIDE SUMMARY

North American Industry Classification System - Industry Groups		Number of Employing Units	Employment			Total Earnings	Average Weekly Earnings
			Jan	Feb	Mar	Jan - Mar 2015	
517	TELECOMMUNICATIONS	333	5,580	5,563	5,546	\$121,871,623	\$1,685.20
5171	Wired Telecommunications Carriers	212	3,544	3,558	3,575	75,918,931	1,640.89
5172	Wireless Telecommunications Carriers (except Satellite)	45	1,741	1,714	1,678	41,146,313	1,849.85
5174	Satellite Telecommunications Carriers	4	7	7	7	81,228	892.62
5179	Other Telecommunications	72	288	284	286	4,725,151	1,270.89
518	DATA PROCESSING, HOSTING & RELATED SERVICES	169	1,377	1,379	1,401	\$24,395,269	\$1,354.26
519	OTHER INFORMATION SERVICES	71	303	302	293	\$3,684,358	\$946.81
FINANCIAL ACTIVITIES		8,146	47,668	47,611	47,630	\$681,273,825	\$1,100.12
52	FINANCE & INSURANCE	4,845	34,787	34,810	34,746	\$568,558,389	\$1,257.45
522	CREDIT INTERMEDIATION & RELATED ACTIVITIES	1,937	18,851	18,779	18,755	\$234,146,038	\$958.30
5221	Depository Credit Intermediation	1,390	16,094	16,031	16,006	190,785,124	914.74
5222	Nondepository Credit Intermediation	393	2,293	2,293	2,287	36,533,967	1,226.67
5223	Activities Related to Credit Intermediation	154	464	455	462	6,826,947	1,140.80
523	FINANCIAL INVESTMENT & RELATED ACTIVITIES	674	3,105	3,133	3,088	\$133,464,724	\$3,302.55
524	INSURANCE CARRIERS & RELATED ACTIVITIES	2,178	12,760	12,818	12,833	\$199,694,635	\$1,199.74
5241	Insurance Carriers	302	5,373	5,383	5,383	105,707,543	1,511.50
5242	Insurance Agencies, Brokerages & Support	1,876	7,387	7,435	7,450	93,987,092	973.84
	OTHER	56	71	80	70	\$1,252,992	\$1,308.38
53	REAL ESTATE & RENTAL & LEASING	3,301	12,881	12,801	12,884	\$112,715,436	\$674.46
531	REAL ESTATE	2,637	8,711	8,669	8,684	\$70,130,592	\$620.93
5311	Lessors of Real Estate	1,107	4,033	3,997	4,009	29,681,049	568.94
5312	Offices of Real Estate Agents & Brokers	762	1,664	1,655	1,636	14,981,680	697.74
5313	Activities Related to Real Estate	768	3,014	3,017	3,039	25,467,863	647.98
532	RENTAL & LEASING SERVICES	641	4,103	4,066	4,131	\$41,504,599	\$778.70
5321	Automotive Equipment Rental & Leasing	105	881	879	889	6,975,431	607.67
5322	Consumer Goods Rental	337	1,901	1,872	1,913	14,903,466	604.86
5323	General Rental Centers	44	221	228	226	2,213,507	756.75
5324	Machinery & Equipment Rental & Leasing	155	1,100	1,087	1,103	17,412,195	1,221.34
533	LESSORS OF NONFINANCIAL INTANGIBLE ASSETS	23	67	66	69	\$1,080,245	\$1,234.10

TABLE 5. STATEWIDE SUMMARY

North American Industry Classification System - Industry Groups		Number of Employing Units	Employment			Total Earnings Jan - Mar 2015	Average Weekly Earnings
			Jan	Feb	Mar		
PROFESSIONAL & BUSINESS SERVICES		13,477	131,825	137,290	136,318	\$2,167,533,862	\$1,233.74
54	PROFESSIONAL & TECHNICAL SERVICES	8,557	41,399	41,921	41,667	\$579,299,677	\$1,069.59
5411	Legal Services	1,699	5,922	5,914	5,917	69,344,946	901.41
5412	Accounting & Bookkeeping Services	1,293	6,128	6,468	6,205	58,185,833	714.19
5413	Architectural & Engineering Services	948	5,628	5,634	5,592	76,344,414	1,045.33
5414	Specialized Design Services	179	414	413	411	4,827,722	899.91
5415	Computer Systems Design & Related Services	1,510	9,771	9,888	9,890	180,164,146	1,407.03
5416	Management & Technical Consulting Services	1,818	5,531	5,484	5,521	103,989,678	1,451.23
5417	Scientific Research & Development Services	148	895	910	905	12,073,814	1,028.14
5418	Advertising & Related Services	390	3,363	3,455	3,467	40,335,204	905.02
5419	Other Professional & Technical Services	572	3,747	3,755	3,759	34,033,920	697.45
55	MANAGEMENT OF COMPANIES & ENTERPRISES	520	32,330	32,372	32,305	\$1,199,637,831	\$2,853.81
56	ADMINISTRATIVE & SUPPORT SERVICES	4,400	58,096	62,997	62,346	\$388,596,354	\$488.86
561	ADMINISTRATIVE & SUPPORT SERVICES	4,078	55,043	59,992	59,298	\$357,632,119	\$473.41
5611	Office Administrative Services	573	4,202	4,180	4,081	45,778,203	847.65
5612	Facilities Support Services	27	204	220	203	2,141,203	788.08
5613	Employment Services	1,007	22,279	26,949	26,459	129,058,400	393.50
5614	Business Support Services	374	8,146	8,342	8,256	67,127,307	626.05
5615	Travel Arrangement & Reservation Services	99	319	325	337	3,114,382	732.62
5616	Investigation & Security Services	261	4,751	4,753	4,655	27,864,541	454.15
5617	Services to Buildings & Dwellings	1,534	13,751	13,804	13,937	70,215,772	390.52
5619	Other Support Services	203	1,391	1,419	1,370	12,332,311	680.84
562	WASTE MANAGEMENT & REMEDIATION SERVICES	322	3,053	3,005	3,048	\$30,964,235	\$784.71
5621	Waste Collection Services	132	1,108	1,100	1,107	10,764,670	749.37
5622	Waste Treatment & disposal Services	38	826	814	826	10,404,169	973.63
5629	Remediation & Other Waste Services	152	1,119	1,091	1,115	9,795,396	679.84
EDUCATION & HEALTH SERVICES		15,422	169,472	169,814	169,970	\$1,574,793,736	\$713.62
61	EDUCATIONAL SERVICES	779	10,747	11,009	10,936	\$86,833,309	\$612.95
6111	Elementary & Secondary Schools	85	3,310	3,326	3,312	25,002,843	580.00
6112	Junior Colleges	5	186	189	183	1,289,832	533.43
6113	Colleges & Universities	72	3,940	4,180	4,151	35,462,658	666.91
6114	Business, Computer, & Management Training	48	91	91	94	1,325,917	1,108.63
6115	Technical & Trade Schools	108	951	951	932	10,759,796	876.16
6116	Other Schools & Instruction	273	1,615	1,618	1,608	6,662,494	317.60
6117	Educational Support Services	188	654	654	656	6,329,769	743.75

TABLE 5. STATEWIDE SUMMARY

North American Industry Classification System - Industry Groups		Number of Employing Units	Employment			Total Earnings	Average Weekly Earnings
			Jan	Feb	Mar	Jan - Mar 2015	
62	HEALTH CARE & SOCIAL ASSISTANCE	14,643	158,725	158,805	159,034	\$1,487,960,427	\$720.52
621	AMBULATORY HEALTH CARE SERVICES	5,440	50,206	50,415	50,502	\$681,549,492	\$1,040.75
6211	Offices of Physicians	2,260	22,707	22,838	22,807	408,798,980	1,380.18
6212	Offices of Dentists	990	6,983	6,992	6,977	73,114,937	805.30
6213	Offices of Other Health Practitioners	1,368	7,817	7,856	7,821	74,423,906	731.03
6214	Outpatient Care Centers	314	4,380	4,356	4,419	46,025,631	807.40
6215	Medical & Diagnostic Laboratories	172	1,094	1,092	1,106	14,014,757	982.43
6216	Home Health Care Services	172	4,778	4,826	4,899	42,179,627	671.15
6219	Other Ambulatory Health Care Services	164	2,447	2,455	2,473	22,991,654	719.43
622	HOSPITALS	104	40,125	40,072	40,221	\$447,777,626	\$858.12
6221	General Medical & Surgical Hospitals	77	35,700	35,656	35,759	399,946,990	861.65
6222	Psychiatric & Substance Abuse Hospitals	12	2,286	2,274	2,298	22,991,192	773.65
6223	Specialty Hospitals	15	2,139	2,142	2,164	24,839,444	889.40
623	Residential & Mental Health Facilities	615	30,716	30,534	30,381	\$180,351,227	\$454.21
6231	Nursing Care Facilities (Skilled Nursing Facilities)	257	21,936	21,741	21,536	128,852,012	455.97
6232	Residential Mental Health Facilities	173	4,248	4,253	4,230	26,058,177	472.35
6233	Continuing Care & Assisted Living Facilities	146	3,506	3,500	3,578	18,601,370	405.58
6239	Other Residential Care Facilities	39	1,026	1,040	1,037	6,839,668	508.66
624	SOCIAL ASSISTANCE	8,484	37,678	37,784	37,930	\$178,282,082	\$362.83
6241	Individual & Family Services	7,290	23,192	23,208	23,343	112,109,722	370.95
6242	Emergency & Other Relief Services	139	1,313	1,306	1,304	8,029,163	472.31
6243	Vocational Rehabilitation Services	121	3,371	3,376	3,355	17,099,768	390.63
6244	Child Day Care Services	934	9,802	9,894	9,928	41,043,429	319.73
	LEISURE & HOSPITALITY	6,730	104,519	106,153	107,930	\$377,466,772	\$273.41
71	ARTS, ENTERTAINMENT & RECREATION	947	9,102	9,230	9,674	\$45,496,361	\$374.89
711	PERFORMING ARTS & SPECTATOR SPORTS	217	2,532	2,573	2,754	\$14,862,797	\$436.43
7111	Performing Arts Companies	47	352	388	339	1,820,749	389.41
7112	Spectator Sports	60	1,662	1,666	1,658	9,499,250	439.66
7113	Performing Arts & Sports Promoters	39	446	432	675	2,868,009	426.17
7114	Agents & Managers for Public Figures	23	21	36	26	228,837	636.25
7115	Independent Artists, Writers, & Performers	48	51	51	56	445,952	651.34
712	MUSEUMS, PARKS, & HISTORICAL SITES	55	510	524	534	\$4,144,844	\$610.01
713	GAMBLING, RECREATIONAL & AMUSEMENT INDUSTRY	675	6,060	6,133	6,386	\$26,488,720	\$329.02
72	ACCOMMODATION & FOOD SERVICES	5,783	95,417	96,923	98,256	\$331,970,411	\$263.63

TABLE 5. STATEWIDE SUMMARY

North American Industry Classification System - Industry Groups		Number of Employing Units	Employment			Total Earnings	Average Weekly Earnings
			Jan	Feb	Mar	Jan - Mar 2015	
721	ACCOMMODATION	887	10,178	10,395	10,604	\$43,599,464	\$322.72
7211	Travel Accommodation	803	9,776	9,991	10,164	41,582,159	320.60
7212	RV Parks & Recreational Camps	65	315	302	328	1,485,586	362.78
7213	Rooming & Boarding Houses	19	87	102	112	531,719	407.66
722	FOOD SERVICES & DRINKING PLACES	4,896	85,239	86,528	87,652	\$288,370,947	\$256.52
7223	Special Food Services	193	3,341	3,611	3,659	13,792,242	299.96
7224	Drinking Places, Alcoholic Beverages	155	1,111	1,101	1,149	3,539,877	243.05
7225	Restaurants & Other Eating Places	4,548	80,787	81,816	82,844	271,038,828	254.83
722511	Full-Service Restaurants	2,024	35,773	36,296	36,799	132,825,082	281.55
722513	Limited-Service Eating Places	2,087	40,994	41,449	41,878	124,250,886	230.64
722514	Cafeterias, Grill Buffets, & Buffets	93	1,738	1,770	1,784	6,521,503	284.38
722515	Snack & Nonalcoholic Beverage Bars	344	2,282	2,301	2,383	7,441,357	246.52
	OTHER SERVICES	5,353	23,308	23,452	23,478	\$178,194,122	\$585.46
811	REPAIR & MAINTENANCE	2,218	9,548	9,695	9,665	\$85,791,179	\$684.86
8111	Automotive Repair & Maintenance	1,411	6,017	6,000	6,053	48,460,627	618.88
8112	Electronic Equipment Repair & Maintenance	177	800	818	803	8,795,275	838.36
8113	Commercial Machinery Repair & Maintenance	445	2,173	2,312	2,244	24,672,252	846.13
8114	Household Goods Repair & Maintenance	185	558	565	565	3,863,025	528.12
812	PERSONAL & LAUNDRY SERVICES	1,315	7,508	7,516	7,572	\$41,971,683	\$428.65
8121	Personal Care Services	608	2,760	2,801	2,820	12,612,307	347.28
8122	Death Care Services	247	1,580	1,582	1,587	11,185,095	543.52
8123	Drycleaning & Laundry Service	246	2,409	2,369	2,380	14,280,235	460.39
8129	Other Personal Services	214	759	764	785	3,894,046	389.35
813	MEMBERSHIP ASSOCIATIONS & ORGANIZATIONS	1,068	5,239	5,253	5,249	\$44,799,994	\$656.79
8131	Religious Organizations	57	225	228	234	1,690,715	567.93
8132	Grantmaking & Giving Organizations	111	436	452	439	4,886,733	849.82
8133	Social Advocacy Organizations	214	1,577	1,586	1,569	12,880,023	628.13
8134	Civic & Social Organizations	197	1,126	1,108	1,106	4,730,589	326.85
8139	Professional & Similar Organizations	489	1,875	1,879	1,901	20,611,934	841.13
814	PRIVATE HOUSEHOLDS	752	1,013	988	992	\$5,631,266	\$434.19
	LOCAL GOVERNMENT	1,954	113,620	113,447	113,278	\$964,333,185	\$653.86
	STATE GOVERNMENT	1,137	69,289	71,059	71,560	\$732,738,253	\$797.96
	NONCLASSIFIABLE ESTABLISHMENTS	0	0	0	0	\$0	\$0.00

TABLE 6. COUNTY SUMMARY

North American Industry Classification System - Industry Groups	Number of Employing Units	Employment			Total Earnings	Average Weekly Earnings
		Jan	Feb	Mar	Jan - Mar 2015	
ARKANSAS COUNTY - TOTAL	753	9,876	9,770	9,770	\$85,552,493	\$671.16
Natural Resources & Mining	51	181	189	192	1,868,914	767.42
Construction	46	204	196	195	1,629,104	631.84
Manufacturing	31	3,719	3,670	3,681	34,929,982	728.16
Trade, Transportation & Utilities	202	2,474	2,432	2,455	23,082,102	723.63
Wholesale Trade	45	466	471	493	6,264,887	1,011.01
Retail Trade	97	1,069	1,028	1,023	5,872,348	434.35
Transportation, Warehousing & Utilities	60	939	933	939	10,944,867	898.52
Information	11	79	80	81	749,425	720.60
Financial Activities	45	291	293	295	2,767,267	726.51
Professional & Business Services	49	356	358	353	4,244,087	917.91
Education & Health Services	173	1,072	1,079	1,060	7,296,932	524.42
Leisure & Hospitality	53	472	455	449	1,494,624	250.66
Other Services	44	105	101	99	702,351	531.41
Local Government	32	718	714	709	5,536,847	596.79
State Government	16	205	203	201	1,250,858	473.99
ASHLEY COUNTY - TOTAL	563	6,855	6,835	6,963	\$67,143,133	\$750.23
Natural Resources & Mining	40	307	314	306	3,172,502	789.77
Construction	41	598	563	738	6,526,275	793.08
Manufacturing	23	1,778	1,762	1,766	28,824,475	1,253.64
Trade, Transportation & Utilities	113	1,140	1,143	1,158	8,484,165	568.99
Wholesale Trade	21	199	190	198	2,427,896	954.49
Retail Trade	69	699	713	726	3,605,738	389.19
Transportation, Warehousing & Utilities	23	242	240	234	2,450,531	789.81
Information	6	38	39	38	243,086	487.80
Financial Activities	34	190	187	189	1,551,768	632.69
Professional & Business Services	43	216	204	191	1,846,706	697.48
Education & Health Services	151	941	953	961	6,549,696	529.41
Leisure & Hospitality	28	381	383	370	1,095,490	222.93
Other Services	41	161	170	161	1,103,764	517.71
Local Government	32	924	929	897	6,637,088	556.96
State Government	11	181	188	188	1,108,118	459.10

TABLE 6. COUNTY SUMMARY

North American Industry Classification System - Industry Groups	Number of Employing Units	Employment			Total Earnings	Average Weekly Earnings
		Jan	Feb	Mar	Jan - Mar 2015	
BAXTER COUNTY - TOTAL	1,216	14,493	14,446	14,478	\$106,918,283	\$568.29
Natural Resources & Mining	6	57	61	51	390,236	532.87
Construction	112	542	517	512	3,683,494	541.08
Manufacturing	56	2,603	2,574	2,575	22,536,792	670.90
Trade, Transportation & Utilities	264	2,693	2,674	2,670	15,888,165	456.20
Wholesale Trade	32	211	210	210	1,809,912	661.92
Retail Trade	207	2,297	2,289	2,288	12,310,957	413.30
Transportation, Warehousing & Utilities	25	185	175	172	1,767,296	766.61
Information	18	193	193	195	1,995,542	792.62
Financial Activities	111	741	739	729	8,612,241	899.70
Professional & Business Services	130	697	710	710	5,120,458	558.17
Education & Health Services	266	3,627	3,644	3,658	30,318,327	640.18
Leisure & Hospitality	118	1,505	1,482	1,509	4,572,077	234.67
Other Services	90	344	346	345	1,759,903	392.40
Local Government	33	1,176	1,175	1,189	9,427,331	614.56
State Government	12	315	331	335	2,613,717	614.85
BENTON COUNTY - TOTAL	5,823	105,232	106,226	106,566	\$1,795,267,689	\$1,302.71
Natural Resources & Mining	43	632	650	674	9,080,372	1,071.30
Construction	547	3,777	3,865	3,868	38,999,645	781.92
Manufacturing	197	10,861	10,896	10,864	104,346,129	738.17
Trade, Transportation & Utilities	1,568	24,697	25,013	25,265	313,415,888	964.68
Wholesale Trade	718	4,880	4,885	4,909	136,142,361	2,141.03
Retail Trade	691	11,465	11,443	11,411	69,390,215	466.60
Transportation, Warehousing & Utilities	159	8,352	8,685	8,945	107,883,312	958.21
Information	68	907	904	896	11,940,659	1,017.93
Financial Activities	577	2,918	2,903	2,932	39,435,659	1,039.70
Professional & Business Services	1,131	30,502	30,685	30,613	1,044,457,042	2,625.58
Education & Health Services	705	9,944	9,952	9,944	91,075,962	704.34
Leisure & Hospitality	524	10,174	10,388	10,530	42,498,116	315.43
Other Services	364	1,738	1,755	1,776	13,596,798	595.51
Local Government	82	7,967	8,088	8,074	78,115,406	747.09
State Government	17	1,115	1,127	1,130	8,306,013	568.44

TABLE 6. COUNTY SUMMARY

North American Industry Classification System - Industry Groups	Number of Employing Units	Employment			Total Earnings	Average Weekly Earnings
		Jan	Feb	Mar	Jan - Mar 2015	
BOONE COUNTY - TOTAL	1,003	13,571	13,602	13,674	\$112,441,019	\$635.25
Natural Resources & Mining	6	10	10	10	45,319	348.61
Construction	77	377	370	370	3,045,707	629.23
Manufacturing	65	2,004	1,996	1,979	17,902,414	690.97
Trade, Transportation & Utilities	245	3,689	3,617	3,626	34,584,963	730.07
Wholesale Trade	47	319	310	308	2,573,453	633.80
Retail Trade	154	1,924	1,900	1,899	11,622,018	468.64
Transportation, Warehousing & Utilities	44	1,446	1,407	1,419	20,389,492	1,101.42
Information	14	242	241	249	2,558,975	806.74
Financial Activities	95	448	450	440	4,755,039	820.12
Professional & Business Services	110	1,002	1,048	1,066	8,296,614	614.44
Education & Health Services	167	1,409	1,392	1,413	10,586,021	579.72
Leisure & Hospitality	82	1,109	1,133	1,141	3,693,786	251.97
Other Services	66	273	265	268	2,176,376	623.13
Local Government	57	2,262	2,270	2,308	18,350,148	619.10
State Government	19	746	810	804	6,445,657	630.28
BRADLEY COUNTY - TOTAL	372	3,763	3,768	3,724	\$27,507,264	\$564.00
Natural Resources & Mining	44	321	320	276	2,440,629	614.20
Construction	16	99	99	90	738,002	591.35
Manufacturing	11	821	832	826	7,480,698	696.38
Trade, Transportation & Utilities	69	465	470	477	2,804,476	458.35
Wholesale Trade	15	93	94	101	1,055,560	845.80
Retail Trade	40	337	339	342	1,424,743	322.97
Transportation, Warehousing & Utilities	14	35	37	34	324,173	705.75
Information	3	11	11	11	47,454	331.85
Financial Activities	25	130	132	131	1,054,398	619.14
Professional & Business Services	24	90	90	90	710,616	607.36
Education & Health Services	108	631	626	630	5,295,568	647.62
Leisure & Hospitality	16	215	204	204	555,292	205.69
Other Services	31	96	95	97	537,215	430.46
Local Government	14	484	486	486	3,433,886	544.25
State Government	11	400	403	406	2,409,030	459.83

TABLE 6. COUNTY SUMMARY

North American Industry Classification System - Industry Groups	Number of Employing Units	Employment			Total Earnings Jan - Mar 2015	Average Weekly Earnings
		Jan	Feb	Mar		
CALHOUN COUNTY - TOTAL	105	2,612	2,610	2,588	\$32,529,733	\$961.19
Natural Resources & Mining	9	39	38	38	307,650	617.36
Construction	10	75	75	79	712,609	718.11
Manufacturing	10	1,815	1,801	1,799	25,953,449	1,106.05
Trade, Transportation & Utilities	20	226	233	220	1,821,799	619.17
Retail Trade	12	56	60	58	249,394	330.76
Transportation, Warehousing & Utilities	8	170	173	162	1,572,405	718.54
Financial Activities	5	80	79	74	870,969	862.63
Education & Health Services	14	54	55	55	477,813	672.34
Leisure & Hospitality	7	13	14	17	43,785	229.64
Other Services	3	6	6	6	20,970	268.85
Local Government	11	186	190	183	1,150,526	474.97
State Government	8	86	86	86	679,825	608.07
Other	8	32	33	31	490,338	1,178.70
CARROLL COUNTY - TOTAL	778	9,889	10,007	10,135	\$65,170,959	\$500.80
Natural Resources & Mining	17	218	206	211	1,571,651	571.16
Trade, Transportation & Utilities	193	1,499	1,510	1,536	9,944,710	504.94
Wholesale Trade	23	178	181	180	1,136,634	486.64
Retail Trade	150	1,064	1,071	1,093	5,467,834	390.89
Transportation, Warehousing & Utilities	20	257	258	263	3,340,242	990.78
Information	10	64	62	62	591,760	726.38
Financial Activities	63	363	364	371	3,908,154	821.39
Professional & Business Services	64	375	404	405	2,653,751	517.23
Education & Health Services	94	985	986	972	7,371,109	577.99
Leisure & Hospitality	166	1,116	1,215	1,358	3,940,852	246.52
Other Services	39	110	118	113	627,177	424.44
Local Government	24	1,068	1,079	1,071	7,513,556	538.81
State Government	10	114	112	108	818,853	565.77
Other	98	3,977	3,951	3,928	26,229,386	510.54

TABLE 6. COUNTY SUMMARY

North American Industry Classification System - Industry Groups	Number of Employing Units	Employment			Total Earnings	Average Weekly Earnings
		Jan	Feb	Mar	Jan - Mar 2015	
CHICOT COUNTY - TOTAL	496	3,209	3,180	3,215	\$22,334,757	\$536.67
Natural Resources & Mining	61	263	251	263	1,728,001	513.22
Construction	18	140	128	140	1,216,027	687.80
Manufacturing	10	18	19	21	320,955	1,277.01
Trade, Transportation & Utilities	65	663	658	656	4,283,474	500.00
Wholesale Trade	14	76	77	72	727,559	746.21
Retail Trade	38	312	311	311	1,763,962	435.83
Transportation, Warehousing & Utilities	13	275	270	273	1,791,953	505.53
Information	4	4	5	5	17,197	283.47
Financial Activities	28	137	133	132	1,636,245	939.29
Professional & Business Services	19	44	39	43	372,623	682.46
Education & Health Services	224	745	754	753	4,870,639	499.11
Leisure & Hospitality	23	169	174	174	458,794	204.79
Other Services	17	59	62	75	455,566	536.38
Local Government	17	668	660	654	4,950,670	576.42
State Government	10	299	297	299	2,024,566	522.02
CLARK COUNTY - TOTAL	613	8,904	9,037	9,009	\$69,320,903	\$593.59
Natural Resources & Mining	41	243	245	222	1,942,930	631.50
Construction	23	70	66	69	452,364	509.23
Manufacturing	32	1,426	1,412	1,423	18,552,035	1,004.75
Trade, Transportation & Utilities	124	1,330	1,322	1,330	8,568,885	496.59
Wholesale Trade	10	28	29	30	323,897	859.14
Retail Trade	94	1,141	1,136	1,141	6,476,114	437.24
Transportation, Warehousing & Utilities	20	161	157	159	1,768,874	855.77
Information	6	19	19	19	198,371	803.12
Financial Activities	70	273	268	272	2,499,857	709.58
Professional & Business Services	50	589	606	599	4,910,145	631.61
Education & Health Services	126	1,537	1,558	1,569	10,903,968	539.52
Leisure & Hospitality	59	1,024	1,067	1,049	3,049,617	224.13
Other Services	42	234	233	231	1,606,979	531.29
Local Government	26	939	954	936	7,041,599	574.40
State Government	14	1,220	1,287	1,290	9,594,153	583.10

TABLE 6. COUNTY SUMMARY

North American Industry Classification System - Industry Groups	Number of Employing Units	Employment			Total Earnings	Average Weekly Earnings
		Jan	Feb	Mar	Jan - Mar 2015	
CLAY COUNTY - TOTAL	400	3,378	3,390	3,384	\$22,562,947	\$512.89
Natural Resources & Mining	59	186	193	219	965,035	372.41
Construction	29	127	121	109	553,891	358.04
Manufacturing	15	320	316	316	2,813,862	682.09
Trade, Transportation & Utilities	103	861	857	855	6,259,728	561.43
Wholesale Trade	23	241	237	240	1,814,655	583.24
Retail Trade	49	405	411	405	2,357,804	445.63
Transportation, Warehousing & Utilities	31	215	209	210	2,087,269	759.74
Information	5	42	43	44	367,222	656.93
Financial Activities	27	120	119	120	1,035,445	665.60
Professional & Business Services	27	93	98	102	736,923	580.41
Education & Health Services	49	463	465	451	2,775,500	464.47
Leisure & Hospitality	22	265	267	271	635,182	182.54
Other Services	31	73	74	77	559,887	576.81
Local Government	22	777	785	769	5,524,418	546.92
State Government	11	51	52	51	335,854	503.28
CLEBURNE COUNTY - TOTAL	681	6,463	6,477	6,510	\$46,691,535	\$553.98
Natural Resources & Mining	29	306	307	308	3,721,140	932.38
Construction	66	396	387	376	3,030,873	603.48
Manufacturing	33	918	920	921	7,796,696	652.13
Trade, Transportation & Utilities	160	1,485	1,452	1,457	11,231,747	589.88
Wholesale Trade	34	177	172	171	1,968,477	873.58
Retail Trade	100	944	955	957	5,388,416	435.39
Transportation, Warehousing & Utilities	26	364	325	329	3,874,854	878.39
Information	7	48	50	47	332,710	529.51
Financial Activities	75	247	247	248	2,380,118	740.24
Professional & Business Services	74	384	404	386	2,771,710	544.83
Education & Health Services	93	850	844	854	5,617,133	508.74
Leisure & Hospitality	79	792	822	875	2,599,254	240.99
Other Services	38	125	125	129	642,741	391.36
Local Government	18	814	821	813	5,951,713	561.06
State Government	9	98	98	96	615,700	486.59

TABLE 6. COUNTY SUMMARY

North American Industry Classification System - Industry Groups	Number of Employing Units	Employment			Total Earnings Jan - Mar 2015	Average Weekly Earnings
		Jan	Feb	Mar		
CLEVELAND COUNTY - TOTAL	128	1,006	1,013	991	\$6,794,477	\$520.92
Natural Resources & Mining	15	149	148	136	1,193,578	636.12
Construction	5	20	24	24	99,272	336.90
Manufacturing	6	83	84	81	648,440	603.39
Trade, Transportation & Utilities	37	221	219	213	1,633,005	577.10
Wholesale Trade	4	62	59	61	530,624	672.81
Retail Trade	17	54	56	55	312,205	436.65
Transportation, Warehousing & Utilities	16	105	104	97	790,176	595.91
Financial Activities	3	18	19	19	148,755	613.00
Education & Health Services	31	140	138	134	626,763	351.06
Other Services	6	16	16	17	120,290	566.51
Local Government	11	304	309	312	1,991,746	496.90
State Government	7	42	43	42	251,106	456.28
Other	7	13	13	13	81,522	482.38
COLUMBIA COUNTY - TOTAL	750	8,152	8,330	8,259	\$74,159,711	\$691.72
Natural Resources & Mining	44	425	433	421	6,878,740	1,241.13
Construction	43	183	186	183	1,777,508	743.11
Manufacturing	35	1,969	1,983	1,959	25,547,797	997.40
Trade, Transportation & Utilities	166	1,430	1,437	1,428	10,215,903	548.90
Wholesale Trade	28	200	205	204	2,572,459	974.79
Retail Trade	99	1,010	1,000	993	5,191,740	398.97
Transportation, Warehousing & Utilities	39	220	232	231	2,451,704	828.37
Information	8	58	57	59	485,976	644.53
Financial Activities	70	376	381	374	3,979,812	812.04
Professional & Business Services	60	268	266	259	1,827,307	531.76
Education & Health Services	181	983	994	979	5,820,004	454.36
Leisure & Hospitality	54	625	683	687	2,115,875	244.75
Other Services	50	180	179	177	800,508	344.65
Local Government	26	1,106	1,112	1,113	8,961,935	620.88
State Government	13	549	619	620	5,748,346	741.91

TABLE 6. COUNTY SUMMARY

North American Industry Classification System - Industry Groups	Number of Employing Units	Employment			Total Earnings Jan - Mar 2015	Average Weekly Earnings
		Jan	Feb	Mar		
CONWAY COUNTY - TOTAL	584	6,904	6,941	6,867	\$58,749,959	\$654.58
Natural Resources & Mining	34	311	316	310	3,473,162	855.39
Construction	52	522	527	509	5,889,788	872.39
Manufacturing	20	842	870	866	12,462,343	1,115.56
Trade, Transportation & Utilities	135	1,609	1,597	1,618	12,936,628	618.86
Wholesale Trade	22	125	124	128	1,152,201	705.29
Retail Trade	85	826	819	828	4,527,398	422.48
Transportation, Warehousing & Utilities	28	658	654	662	7,257,029	848.38
Information	3	14	15	16	52,197	267.68
Financial Activities	37	174	175	179	1,855,714	811.06
Professional & Business Services	43	675	689	635	3,636,914	419.85
Education & Health Services	153	824	817	819	5,565,429	522.09
Leisure & Hospitality	41	450	460	454	1,378,082	233.15
Other Services	27	128	132	130	981,084	580.52
Local Government	29	942	940	932	7,685,096	630.24
State Government	10	413	403	399	2,833,522	538.18
CRAIGHEAD COUNTY - TOTAL	2,727	45,651	45,815	45,955	\$396,853,466	\$666.43
Natural Resources & Mining	75	234	248	263	1,939,787	600.86
Construction	220	1,831	1,836	1,821	16,299,730	685.40
Manufacturing	104	5,877	5,863	5,881	63,417,007	830.53
Trade, Transportation & Utilities	774	9,946	9,877	9,868	78,101,933	607.04
Wholesale Trade	188	1,707	1,718	1,731	24,009,461	1,074.60
Retail Trade	462	6,800	6,725	6,693	38,873,689	443.71
Transportation, Warehousing & Utilities	124	1,439	1,434	1,444	15,218,783	813.53
Information	21	426	429	426	4,515,749	813.50
Financial Activities	265	1,567	1,563	1,558	19,060,937	938.28
Professional & Business Services	360	4,046	4,103	4,171	28,328,132	530.62
Education & Health Services	450	9,408	9,419	9,434	98,839,559	807.09
Leisure & Hospitality	244	4,757	4,861	4,909	16,743,663	265.98
Other Services	155	822	830	862	5,267,222	483.50
Local Government	36	3,980	4,021	3,993	33,727,258	648.93
State Government	23	2,757	2,765	2,769	30,612,489	852.06

TABLE 6. COUNTY SUMMARY

North American Industry Classification System - Industry Groups	Number of Employing Units	Employment			Total Earnings	Average Weekly Earnings
		Jan	Feb	Mar	Jan - Mar 2015	
CRAWFORD COUNTY - TOTAL	1,258	19,110	19,120	19,067	\$155,652,249	\$626.90
Natural Resources & Mining	31	298	323	346	3,617,931	863.40
Construction	152	855	874	856	7,268,943	648.92
Manufacturing	70	4,441	4,370	4,346	38,659,619	678.08
Trade, Transportation & Utilities	320	5,942	5,968	5,954	53,018,418	684.90
Wholesale Trade	86	822	818	812	9,352,166	880.18
Retail Trade	166	1,974	1,993	2,005	12,127,257	468.62
Transportation, Warehousing & Utilities	68	3,146	3,157	3,137	31,538,995	771.00
Information	9	100	100	98	1,038,753	804.40
Financial Activities	125	499	509	500	4,527,434	692.83
Professional & Business Services	150	1,367	1,390	1,421	10,145,932	560.40
Education & Health Services	176	1,603	1,551	1,539	11,456,099	563.33
Leisure & Hospitality	95	1,489	1,522	1,497	4,586,202	234.77
Other Services	77	355	357	366	2,853,952	610.95
Local Government	43	2,013	2,008	1,996	17,407,071	667.61
State Government	10	148	148	148	1,071,895	557.12
CRITTENDEN COUNTY - TOTAL	1,326	16,359	16,409	16,406	\$126,731,262	\$594.74
Natural Resources & Mining	56	229	241	225	1,546,387	513.47
Construction	48	383	343	322	3,111,422	685.13
Manufacturing	39	1,765	1,793	1,781	19,642,771	849.03
Trade, Transportation & Utilities	308	4,460	4,377	4,379	37,821,594	660.42
Wholesale Trade	62	745	757	754	8,788,210	898.96
Retail Trade	168	1,968	1,935	1,931	10,315,874	408.05
Transportation, Warehousing & Utilities	78	1,747	1,685	1,694	18,717,510	842.65
Information	5	52	53	52	404,484	594.54
Financial Activities	95	415	412	416	4,315,478	801.19
Professional & Business Services	126	1,481	1,502	1,539	8,980,642	458.31
Education & Health Services	394	2,220	2,244	2,250	15,083,033	518.42
Leisure & Hospitality	120	2,191	2,259	2,268	9,201,259	316.07
Other Services	78	440	450	449	3,324,312	572.93
Local Government	43	2,207	2,215	2,204	19,923,082	693.88
State Government	14	516	520	521	3,376,798	500.49

TABLE 6. COUNTY SUMMARY

North American Industry Classification System - Industry Groups	Number of Employing Units	Employment			Total Earnings	Average Weekly Earnings
		Jan	Feb	Mar	Jan - Mar 2015	
CROSS COUNTY - TOTAL	504	4,921	4,939	5,004	\$36,747,335	\$570.52
Natural Resources & Mining	36	211	217	219	1,234,664	440.37
Construction	23	76	76	75	514,531	523.07
Manufacturing	11	510	511	508	4,480,027	676.16
Trade, Transportation & Utilities	134	1,196	1,200	1,231	10,336,186	657.64
Wholesale Trade	31	309	320	331	4,550,632	1,093.90
Retail Trade	76	789	781	803	4,693,197	456.40
Transportation, Warehousing & Utilities	27	98	99	97	1,092,357	857.42
Information	5	39	38	38	291,157	584.26
Financial Activities	43	310	311	314	2,699,881	666.36
Professional & Business Services	41	117	131	130	1,060,458	647.41
Education & Health Services	118	965	971	978	6,160,690	487.89
Leisure & Hospitality	33	303	303	314	839,551	210.59
Other Services	34	89	88	94	527,044	448.80
Local Government	16	721	710	720	5,622,145	603.17
State Government	10	384	383	383	2,981,001	598.19
DALLAS COUNTY - TOTAL	251	2,703	2,717	2,688	\$19,579,950	\$557.28
Natural Resources & Mining	32	181	177	155	1,373,526	617.87
Construction	18	78	70	67	487,091	522.82
Manufacturing	9	544	524	511	4,602,278	672.62
Trade, Transportation & Utilities	55	454	457	453	3,022,144	511.30
Wholesale Trade	5	11	11	11	205,209	1,435.03
Retail Trade	38	343	352	348	1,943,027	429.90
Transportation, Warehousing & Utilities	12	100	94	94	873,908	700.25
Information	4	22	22	22	130,490	456.26
Financial Activities	16	77	76	76	716,066	721.60
Professional & Business Services	11	35	35	37	528,315	1,139.43
Education & Health Services	60	748	762	758	5,949,760	605.39
Leisure & Hospitality	13	134	150	162	348,536	180.34
Other Services	12	61	60	62	296,433	373.81
Local Government	14	322	336	337	1,838,001	426.29
State Government	7	47	48	48	287,310	463.65

TABLE 6. COUNTY SUMMARY

North American Industry Classification System - Industry Groups	Number of Employing Units	Employment			Total Earnings	Average Weekly Earnings
		Jan	Feb	Mar	Jan - Mar 2015	
DESHA COUNTY - TOTAL	538	4,327	4,354	4,415	\$34,020,574	\$599.49
Natural Resources & Mining	70	242	254	255	1,647,662	506.30
Construction	20	101	107	105	688,329	507.49
Manufacturing	15	763	758	771	10,657,129	1,073.01
Trade, Transportation & Utilities	111	861	869	874	6,403,228	567.46
Wholesale Trade	22	220	222	225	2,862,978	990.54
Retail Trade	65	486	491	496	2,291,982	359.08
Transportation, Warehousing & Utilities	24	155	156	153	1,248,268	620.82
Information	3	12	12	12	93,537	599.60
Financial Activities	29	211	211	212	1,576,936	573.99
Professional & Business Services	40	82	86	89	619,042	555.86
Education & Health Services	158	712	705	715	4,160,702	450.36
Leisure & Hospitality	40	330	333	348	1,045,844	238.72
Other Services	23	46	48	54	219,598	342.41
Local Government	19	820	818	824	5,937,690	556.55
State Government	10	147	153	156	970,877	491.33
DREW COUNTY - TOTAL	527	6,263	6,317	6,323	\$47,899,051	\$584.76
Natural Resources & Mining	48	288	293	280	2,196,176	588.63
Construction	19	90	93	90	710,864	600.90
Manufacturing	21	797	803	801	6,435,467	618.54
Trade, Transportation & Utilities	129	1,180	1,184	1,191	7,832,388	508.43
Wholesale Trade	18	112	113	111	1,372,364	942.56
Retail Trade	87	961	960	966	5,257,890	420.28
Transportation, Warehousing & Utilities	24	107	111	114	1,202,134	835.59
Information	6	50	50	50	400,711	616.48
Financial Activities	47	244	234	237	2,515,515	811.89
Professional & Business Services	36	237	243	240	2,003,377	642.11
Education & Health Services	129	885	882	889	7,373,718	640.67
Leisure & Hospitality	38	608	618	618	1,896,850	237.38
Other Services	16	62	60	59	299,104	381.35
Local Government	22	1,249	1,244	1,256	10,212,488	628.63
State Government	16	573	613	612	6,022,393	772.96

TABLE 6. COUNTY SUMMARY

North American Industry Classification System - Industry Groups	Number of Employing Units	Employment			Total Earnings	Average Weekly Earnings
		Jan	Feb	Mar	Jan - Mar 2015	
FAULKNER COUNTY - TOTAL	2,837	40,050	40,227	40,288	\$376,096,230	\$719.87
Natural Resources & Mining	64	1,148	1,131	1,080	22,899,938	1,573.27
Construction	310	2,530	2,497	2,494	23,377,676	717.30
Manufacturing	103	3,242	3,248	3,237	39,535,899	937.97
Trade, Transportation & Utilities	649	7,114	7,048	7,086	51,786,411	562.44
Wholesale Trade	149	537	559	568	6,928,407	960.86
Retail Trade	409	5,734	5,707	5,741	33,904,780	455.37
Transportation, Warehousing & Utilities	91	843	782	777	10,953,224	1,052.32
Information	18	212	216	230	2,243,463	786.81
Financial Activities	322	1,535	1,537	1,552	16,305,865	813.77
Professional & Business Services	424	5,826	5,943	5,910	81,421,520	1,062.82
Education & Health Services	457	6,070	6,206	6,150	52,717,468	660.24
Leisure & Hospitality	249	4,820	4,812	4,855	15,387,330	245.11
Other Services	184	679	675	729	5,193,275	575.35
Local Government	39	3,471	3,468	3,495	33,367,090	737.98
State Government	18	3,403	3,446	3,470	31,860,295	712.51
FRANKLIN COUNTY - TOTAL	352	4,319	4,329	4,342	\$36,044,933	\$640.34
Natural Resources & Mining	16	258	257	253	4,645,974	1,396.03
Construction	34	105	98	91	686,936	539.20
Manufacturing	14	857	856	854	8,262,536	742.79
Trade, Transportation & Utilities	89	945	947	948	7,699,523	625.64
Wholesale Trade	13	40	41	42	195,940	367.62
Retail Trade	53	613	613	616	3,140,897	393.50
Transportation, Warehousing & Utilities	23	292	293	290	4,362,686	1,150.60
Information	5	21	18	22	184,193	696.82
Financial Activities	30	111	112	112	1,155,982	796.31
Professional & Business Services	37	292	290	289	2,185,218	578.97
Education & Health Services	57	555	544	556	3,299,038	460.01
Leisure & Hospitality	27	313	317	321	854,155	207.27
Other Services	15	49	46	50	285,651	454.62
Local Government	19	702	723	726	5,599,680	600.76
State Government	9	111	121	120	1,186,047	777.57

TABLE 6. COUNTY SUMMARY

North American Industry Classification System - Industry Groups	Number of Employing Units	Employment			Total Earnings Jan - Mar 2015	Average Weekly Earnings
		Jan	Feb	Mar		
FULTON COUNTY - TOTAL	200	1,864	1,843	1,857	\$11,704,504	\$485.45
Construction	8	30	30	29	187,783	486.90
Manufacturing	13	131	128	129	648,830	385.90
Trade, Transportation & Utilities	47	290	284	300	2,149,307	567.50
Retail Trade	30	168	174	188	832,876	362.65
Other Trade, Transportation, & Utilities	17	122	110	112	1,316,431	883.12
Information	4	32	33	32	256,135	609.36
Financial Activities	17	88	83	91	736,908	649.07
Professional & Business Services	14	40	44	40	287,672	535.37
Education & Health Services	51	452	437	431	2,547,379	445.35
Leisure & Hospitality	15	150	149	151	387,563	198.75
Local Government	12	533	537	532	3,648,545	525.58
State Government	10	102	102	105	778,579	581.46
Other	9	16	16	17	75,803	357.00
GARLAND COUNTY - TOTAL	3,091	35,180	35,045	35,267	\$277,805,768	\$607.71
Natural Resources & Mining	31	286	289	274	4,627,092	1,257.70
Construction	341	1,628	1,644	1,636	11,998,009	564.13
Manufacturing	96	2,514	2,515	2,502	24,639,857	755.03
Trade, Transportation & Utilities	695	7,145	7,084	7,104	49,766,815	538.35
Wholesale Trade	141	806	803	797	9,290,920	891.13
Retail Trade	494	5,756	5,710	5,735	33,968,047	455.72
Transportation, Warehousing & Utilities	60	583	571	572	6,507,848	870.11
Information	31	509	502	523	4,151,903	624.60
Financial Activities	347	1,399	1,408	1,403	16,071,425	880.95
Professional & Business Services	380	2,841	2,849	2,861	24,563,536	662.91
Education & Health Services	526	7,411	7,325	7,314	73,890,089	773.31
Leisure & Hospitality	346	6,523	6,427	6,618	25,499,721	300.72
Other Services	240	928	937	948	5,814,298	476.99
Local Government	33	2,983	2,987	3,004	28,510,279	733.15
State Government	25	1,013	1,078	1,080	8,272,744	602.05

TABLE 6. COUNTY SUMMARY

North American Industry Classification System - Industry Groups	Number of Employing Units	Employment			Total Earnings	Average Weekly Earnings
		Jan	Feb	Mar	Jan - Mar 2015	
GRANT COUNTY - TOTAL	339	3,855	3,887	3,960	\$33,079,678	\$652.35
Natural Resources & Mining	27	177	183	172	2,127,978	923.07
Construction	29	172	181	176	1,848,719	806.48
Manufacturing	17	1,140	1,133	1,174	12,986,022	869.39
Trade, Transportation & Utilities	88	615	642	660	4,114,399	495.29
Wholesale Trade	21	95	113	110	1,077,840	782.18
Retail Trade	45	452	462	480	2,440,923	404.08
Transportation, Warehousing & Utilities	22	68	67	70	595,636	670.51
Information	3	10	10	10	127,798	983.06
Financial Activities	26	88	89	83	729,241	647.26
Professional & Business Services	26	103	102	100	1,137,406	860.58
Education & Health Services	63	392	380	382	2,289,869	457.91
Leisure & Hospitality	22	279	295	292	750,983	200.12
Other Services	20	50	50	50	219,071	337.03
Local Government	10	771	764	803	6,353,201	627.08
State Government	8	58	58	58	394,991	523.86
GREENE COUNTY - TOTAL	900	15,301	15,482	15,495	\$132,994,472	\$663.19
Natural Resources & Mining	39	222	220	241	1,539,510	520.16
Construction	66	261	288	317	2,805,016	747.47
Manufacturing	67	5,722	5,806	5,776	64,226,925	856.54
Trade, Transportation & Utilities	240	2,394	2,421	2,434	16,042,052	510.69
Wholesale Trade	50	423	430	428	4,163,578	750.06
Retail Trade	158	1,733	1,751	1,762	9,916,737	436.23
Transportation, Warehousing & Utilities	32	238	240	244	1,961,737	627.02
Information	10	100	98	97	558,609	436.98
Financial Activities	79	471	473	476	4,865,412	790.70
Professional & Business Services	89	1,002	1,042	1,003	6,845,011	518.42
Education & Health Services	152	1,827	1,821	1,839	14,563,137	612.49
Leisure & Hospitality	67	1,105	1,114	1,110	3,359,584	232.89
Other Services	49	187	187	190	1,156,760	473.31
Local Government	30	1,591	1,595	1,594	13,329,459	643.52
State Government	12	419	417	418	3,702,997	681.45

TABLE 6. COUNTY SUMMARY

North American Industry Classification System - Industry Groups	Number of Employing Units	Employment			Total Earnings	Average Weekly Earnings
		Jan	Feb	Mar	Jan - Mar 2015	
HEMPSTEAD COUNTY - TOTAL	513	7,626	7,626	7,643	\$60,060,779	\$605.38
Natural Resources & Mining	22	208	212	214	1,845,952	671.91
Construction	32	181	181	183	1,654,811	700.70
Manufacturing	28	2,083	2,063	2,094	19,636,777	726.21
Trade, Transportation & Utilities	132	1,427	1,437	1,424	12,330,067	663.57
Wholesale Trade	21	198	200	192	1,649,252	645.08
Retail Trade	80	878	878	880	4,824,998	422.41
Transportation, Warehousing & Utilities	31	351	359	352	5,855,817	1,272.45
Information	7	40	42	41	288,846	541.92
Financial Activities	45	234	213	217	2,196,227	763.29
Professional & Business Services	32	176	176	175	1,194,951	523.26
Education & Health Services	94	911	918	914	5,420,575	456.03
Leisure & Hospitality	45	586	587	587	1,790,447	234.76
Other Services	32	148	149	147	899,022	467.27
Local Government	27	900	896	899	7,170,418	613.99
State Government	17	732	752	748	5,632,686	582.37
HOT SPRING COUNTY - TOTAL	619	8,256	8,373	8,374	\$66,714,871	\$615.76
Natural Resources & Mining	23	132	132	135	1,015,065	587.08
Construction	59	320	320	311	2,411,277	585.12
Manufacturing	28	1,382	1,386	1,393	15,526,066	861.08
Trade, Transportation & Utilities	151	1,568	1,567	1,569	14,245,077	698.84
Wholesale Trade	18	126	124	127	1,244,710	761.91
Retail Trade	93	868	857	861	4,524,667	403.77
Transportation, Warehousing & Utilities	40	574	586	581	8,475,700	1,123.45
Information	6	47	51	48	395,008	624.35
Financial Activities	53	206	207	212	2,017,499	744.92
Professional & Business Services	55	1,006	1,055	1,026	6,532,989	488.37
Education & Health Services	117	1,062	1,054	1,047	8,010,045	584.40
Leisure & Hospitality	49	528	551	584	1,466,485	203.50
Other Services	38	138	139	141	688,079	379.87
Local Government	27	1,020	1,008	1,007	8,015,539	609.47
State Government	13	847	903	901	6,391,742	556.40

TABLE 6. COUNTY SUMMARY

North American Industry Classification System - Industry Groups	Number of Employing Units	Employment			Total Earnings	Average Weekly Earnings
		Jan	Feb	Mar	Jan - Mar 2015	
HOWARD COUNTY - TOTAL	356	7,165	7,220	7,202	\$50,676,886	\$541.75
Natural Resources & Mining	16	241	232	226	1,839,063	607.15
Construction	18	133	144	151	1,326,914	715.45
Manufacturing	21	3,696	3,747	3,702	26,021,621	538.81
Trade, Transportation & Utilities	92	847	864	866	6,347,732	568.44
Wholesale Trade	15	72	76	77	664,740	681.78
Retail Trade	55	586	592	594	3,331,225	433.83
Transportation, Warehousing & Utilities	22	189	196	195	2,351,767	935.72
Information	4	27	27	27	136,052	387.61
Financial Activities	35	150	150	153	1,282,607	653.39
Professional & Business Services	22	154	155	147	1,101,233	557.30
Education & Health Services	74	643	628	628	4,630,612	562.72
Leisure & Hospitality	24	310	291	302	883,380	225.76
Other Services	22	141	143	158	1,007,913	526.23
Local Government	17	701	712	715	5,181,159	561.87
State Government	11	122	127	127	918,600	563.79
INDEPENDENCE COUNTY - TOTAL	905	14,526	14,622	14,577	\$119,007,151	\$628.09
Natural Resources & Mining	17	283	295	271	3,360,964	913.55
Construction	64	385	389	370	2,985,469	602.23
Manufacturing	40	2,755	2,765	2,796	27,626,101	766.63
Trade, Transportation & Utilities	239	2,894	2,901	2,911	23,679,316	627.67
Wholesale Trade	31	438	431	436	3,942,547	697.18
Retail Trade	159	1,686	1,690	1,716	9,720,936	440.55
Transportation, Warehousing & Utilities	49	770	780	759	10,015,833	1,001.02
Information	9	108	110	110	773,866	544.46
Financial Activities	78	506	506	502	5,972,829	910.40
Professional & Business Services	93	984	985	934	5,450,109	433.25
Education & Health Services	167	3,083	3,082	3,081	28,648,336	715.03
Leisure & Hospitality	71	1,026	1,058	1,060	3,100,351	227.57
Other Services	64	357	369	379	1,838,495	383.95
Local Government	47	1,563	1,540	1,536	10,641,163	529.35
State Government	16	582	622	627	4,930,152	621.37

TABLE 6. COUNTY SUMMARY

North American Industry Classification System - Industry Groups	Number of Employing Units	Employment			Total Earnings	Average Weekly Earnings
		Jan	Feb	Mar	Jan - Mar 2015	
IZARD COUNTY - TOTAL	256	3,018	3,077	3,100	\$21,865,589	\$548.77
Natural Resources & Mining	6	175	173	172	1,818,994	807.25
Construction	21	97	107	102	800,247	603.50
Manufacturing	9	259	262	273	2,134,366	620.34
Trade, Transportation & Utilities	67	565	575	575	3,518,344	473.43
Wholesale Trade	12	19	18	19	134,370	553.72
Retail Trade	43	418	415	414	2,102,891	389.16
Transportation, Warehousing & Utilities	12	128	142	142	1,281,083	717.56
Information	4	6	7	7	79,244	914.35
Financial Activities	22	138	138	140	1,198,227	664.70
Professional & Business Services	16	44	44	44	323,231	565.09
Education & Health Services	50	657	651	663	4,332,569	507.27
Leisure & Hospitality	22	114	125	139	363,086	221.66
Other Services	12	26	23	23	130,442	418.08
Local Government	17	513	507	493	3,570,546	544.59
State Government	10	424	465	469	3,596,293	611.13
JACKSON COUNTY - TOTAL	459	5,153	5,146	5,227	\$46,970,611	\$698.14
Natural Resources & Mining	54	229	236	249	1,650,584	533.48
Construction	25	127	118	125	1,250,006	779.63
Manufacturing	17	958	975	999	13,804,429	1,086.51
Trade, Transportation & Utilities	110	996	989	993	7,913,333	613.21
Wholesale Trade	21	202	203	202	2,892,941	1,099.84
Retail Trade	70	702	693	700	3,980,807	438.50
Transportation, Warehousing & Utilities	19	92	93	91	1,039,585	869.22
Information	4	38	40	38	236,426	470.34
Financial Activities	34	143	136	145	1,499,803	816.29
Professional & Business Services	30	111	111	112	947,890	654.92
Education & Health Services	91	835	837	835	7,830,226	720.77
Leisure & Hospitality	28	272	259	265	799,847	231.88
Other Services	20	64	66	65	685,507	811.25
Local Government	33	606	612	630	4,301,575	537.16
State Government	13	774	767	771	6,050,985	603.97

TABLE 6. COUNTY SUMMARY

North American Industry Classification System - Industry Groups	Number of Employing Units	Employment			Total Earnings	Average Weekly Earnings
		Jan	Feb	Mar	Jan - Mar 2015	
JEFFERSON COUNTY - TOTAL	2,196	25,818	26,058	26,122	\$231,616,600	\$685.27
Natural Resources & Mining	37	185	194	194	2,243,468	903.53
Construction	94	519	566	634	4,586,162	615.67
Manufacturing	63	4,979	4,980	4,966	59,147,169	914.53
Trade, Transportation & Utilities	428	4,529	4,583	4,603	38,064,732	640.48
Wholesale Trade	72	648	650	646	6,651,364	789.57
Retail Trade	294	3,066	3,134	3,169	18,068,564	445.05
Transportation, Warehousing & Utilities	62	815	799	788	13,344,804	1,282.09
Information	11	88	96	93	942,196	784.95
Financial Activities	158	1,110	1,102	1,086	14,291,148	999.99
Professional & Business Services	151	1,779	1,933	1,927	12,446,287	509.35
Education & Health Services	907	4,779	4,770	4,763	42,793,359	690.01
Leisure & Hospitality	141	1,745	1,791	1,769	5,716,423	248.67
Other Services	131	617	611	613	4,325,448	542.19
Local Government	39	2,407	2,069	2,072	17,367,019	612.06
State Government	36	3,081	3,363	3,402	29,693,189	695.94
JOHNSON COUNTY - TOTAL	495	8,342	8,346	8,360	\$61,001,316	\$562.01
Natural Resources & Mining	14	130	127	128	1,052,298	630.75
Construction	34	180	170	161	1,251,297	565.09
Manufacturing	36	2,665	2,644	2,649	19,839,183	575.30
Trade, Transportation & Utilities	122	1,930	1,937	1,943	14,460,889	574.38
Retail Trade	80	887	890	896	4,551,076	392.91
Other Trade, Transportation & Utilities	42	1,043	1,047	1,047	9,909,813	729.00
Information	5	42	44	41	263,112	478.10
Financial Activities	48	186	178	177	1,520,391	648.54
Professional & Business Services	51	289	299	307	1,884,432	485.89
Education & Health Services	90	1,250	1,245	1,256	10,055,471	618.63
Leisure & Hospitality	39	451	488	505	1,413,649	225.92
Other Services	33	73	73	72	400,542	424.00
Local Government	14	1,014	1,010	990	7,793,067	596.68
State Government	9	132	131	131	1,066,985	624.94

TABLE 6. COUNTY SUMMARY

North American Industry Classification System - Industry Groups	Number of Employing Units	Employment			Total Earnings Jan - Mar 2015	Average Weekly Earnings
		Jan	Feb	Mar		
LAFAYETTE COUNTY - TOTAL	170	1,201	1,208	1,195	\$9,400,548	\$601.93
Natural Resources & Mining	30	154	160	156	2,360,413	1,158.96
Construction	10	62	61	61	765,988	960.69
Manufacturing	6	29	29	29	286,075	758.82
Trade, Transportation & Utilities	30	197	193	182	1,186,112	478.53
Retail Trade	16	107	107	105	474,395	343.18
Other Trade, Transportation & Utilities	14	90	86	77	711,717	649.18
Financial Activities	13	47	49	49	352,939	561.71
Professional & Business Services	12	53	54	52	383,739	556.95
Education & Health Services	36	204	206	212	1,230,696	456.60
Leisure & Hospitality	5	38	38	36	121,673	250.70
Local Government	13	282	284	284	1,978,998	537.28
State Government	7	46	46	48	285,622	470.81
Other	8	89	88	86	448,293	393.35
LAWRENCE COUNTY - TOTAL	417	4,021	4,021	4,054	\$28,326,908	\$540.42
Natural Resources & Mining	54	193	192	191	1,487,238	595.85
Construction	23	107	102	108	819,700	596.72
Manufacturing	19	477	492	497	3,736,687	588.21
Trade, Transportation & Utilities	112	829	826	859	6,509,820	597.56
Wholesale Trade	19	230	231	231	2,284,627	761.88
Retail Trade	59	476	477	495	2,956,355	471.16
Transportation, Warehousing & Utilities	34	123	118	133	1,268,838	782.91
Financial Activities	34	142	141	140	1,132,013	617.57
Professional & Business Services	27	106	107	114	1,163,223	820.91
Education & Health Services	64	543	552	535	3,866,608	547.42
Leisure & Hospitality	29	357	346	356	984,990	214.64
Local Government	26	1,089	1,089	1,083	7,545,546	533.97
State Government	10	106	104	103	635,068	468.22
Other	19	72	70	68	446,015	490.13

TABLE 6. COUNTY SUMMARY

North American Industry Classification System - Industry Groups	Number of Employing Units	Employment			Total Earnings Jan - Mar 2015	Average Weekly Earnings
		Jan	Feb	Mar		
LEE COUNTY - TOTAL	303	1,906	1,963	1,968	\$14,978,838	\$592.20
Natural Resources & Mining	37	188	197	196	1,695,975	673.63
Construction	9	16	50	46	228,140	470.07
Trade, Transportation & Utilities	44	331	345	343	2,877,608	651.68
Wholesale Trade	9	100	107	108	1,366,090	1,000.80
Retail Trade	25	181	189	189	966,729	399.09
Transportation, Warehousing & Utilities	10	50	49	46	544,789	867.04
Financial Activities	18	67	64	65	528,535	622.29
Professional & Business Services	16	73	74	75	1,069,571	1,111.82
Education & Health Services	137	405	404	412	2,897,734	547.67
Leisure & Hospitality	9	76	76	78	247,929	248.76
Local Government	15	254	257	255	1,562,982	470.87
State Government	7	480	480	482	3,787,520	606.13
Other	11	16	16	16	82,844	398.29
LINCOLN COUNTY - TOTAL	285	2,930	2,924	2,944	\$23,613,872	\$619.39
Natural Resources & Mining	41	161	164	163	1,204,890	569.78
Construction	14	76	70	76	552,273	574.09
Manufacturing	9	320	330	330	3,717,754	875.45
Trade, Transportation & Utilities	45	358	360	359	3,483,167	746.34
Wholesale Trade	6	54	54	54	700,462	997.81
Retail Trade	24	181	182	184	873,655	368.58
Transportation, Warehousing & Utilities	15	123	124	121	1,909,050	1,197.15
Financial Activities	20	75	72	71	686,940	727.18
Professional & Business Services	10	22	21	22	150,192	533.23
Education & Health Services	98	396	386	386	2,731,779	539.74
Leisure & Hospitality	14	163	160	168	389,881	183.24
Local Government	7	355	356	356	2,491,530	538.86
State Government	12	969	972	977	7,948,320	628.59
Other	15	35	33	36	257,146	570.59

TABLE 6. COUNTY SUMMARY

North American Industry Classification System - Industry Groups	Number of Employing Units	Employment			Total Earnings	Average Weekly Earnings
		Jan	Feb	Mar	Jan - Mar 2015	
LITTLE RIVER COUNTY - TOTAL	243	3,434	3,424	3,434	\$48,161,060	\$1,079.88
Natural Resources & Mining	13	89	85	87	756,112	668.53
Construction	17	192	194	199	1,903,869	751.03
Manufacturing	15	1,234	1,225	1,237	33,048,569	2,063.47
Trade, Transportation & Utilities	58	507	518	506	3,339,115	503.31
Wholesale Trade	9	25	25	24	386,454	1,205.16
Retail Trade	36	359	364	361	2,025,379	431.18
Transportation, Warehousing & Utilities	13	123	129	121	927,282	573.69
Financial Activities	17	86	82	83	689,187	633.64
Professional & Business Services	18	78	80	84	679,038	647.53
Education & Health Services	40	155	162	160	982,008	475.09
Leisure & Hospitality	15	180	171	176	568,706	249.03
Local Government	20	741	742	738	5,290,028	549.65
State Government	11	91	93	94	577,385	479.29
Other	19	81	72	70	327,043	338.44
LOGAN COUNTY - TOTAL	487	5,293	5,366	5,389	\$37,962,784	\$545.90
Natural Resources & Mining	25	139	136	137	1,726,273	966.92
Construction	39	202	206	222	1,713,863	627.79
Manufacturing	18	1,127	1,141	1,121	9,891,498	673.55
Trade, Transportation & Utilities	106	956	1,021	1,044	6,016,836	459.62
Wholesale Trade	11	81	85	89	430,386	389.49
Retail Trade	67	699	761	779	3,782,054	389.81
Transportation, Warehousing & Utilities	28	176	175	176	1,804,396	790.13
Information	7	32	32	32	380,120	913.75
Financial Activities	44	175	179	174	1,783,038	779.30
Professional & Business Services	52	126	126	130	1,066,427	644.24
Education & Health Services	107	730	719	718	4,915,347	523.45
Leisure & Hospitality	29	321	315	325	855,355	205.40
Other Services	24	120	119	118	868,630	561.49
Local Government	22	786	792	783	5,573,989	544.81
State Government	14	579	580	585	3,171,408	419.65

TABLE 6. COUNTY SUMMARY

North American Industry Classification System - Industry Groups	Number of Employing Units	Employment			Total Earnings	Average Weekly Earnings
		Jan	Feb	Mar	Jan - Mar 2015	
LONOKE COUNTY - TOTAL	1,306	13,394	13,390	13,421	\$100,731,908	\$578.18
Natural Resources & Mining	86	414	432	462	3,329,191	587.37
Construction	128	749	756	773	6,775,054	686.34
Manufacturing	39	1,726	1,706	1,682	18,700,992	843.88
Trade, Transportation & Utilities	320	2,950	2,944	2,968	19,540,171	508.83
Wholesale Trade	77	405	417	419	4,711,147	876.06
Retail Trade	180	2,236	2,225	2,241	11,810,537	406.67
Transportation, Warehousing & Utilities	63	309	302	308	3,018,487	757.97
Information	15	92	93	92	927,756	772.92
Financial Activities	141	595	611	614	7,864,298	997.16
Professional & Business Services	158	641	628	621	4,902,776	598.63
Education & Health Services	201	1,651	1,614	1,645	11,033,918	518.59
Leisure & Hospitality	108	1,683	1,719	1,697	5,110,043	231.27
Other Services	70	169	166	168	1,069,982	490.89
Local Government	25	2,567	2,564	2,544	20,315,673	610.84
State Government	15	157	157	155	1,162,054	571.78
MADISON COUNTY - TOTAL	246	3,141	3,152	3,137	\$23,871,376	\$584.18
Natural Resources & Mining	13	46	47	44	288,131	485.34
Construction	22	77	81	86	720,449	681.38
Manufacturing	23	1,105	1,101	1,100	9,324,956	650.91
Trade, Transportation & Utilities	52	625	626	619	4,157,585	513.07
Retail Trade	35	483	485	477	2,601,531	415.47
Other Trade, Transportation & Utilities	17	142	141	142	1,556,054	844.92
Information	6	41	41	43	809,743	1,494.91
Financial Activities	18	71	71	68	584,402	642.20
Professional & Business Services	21	146	147	144	1,154,174	609.49
Education & Health Services	46	258	260	263	1,642,294	485.26
Leisure & Hospitality	17	159	162	152	410,824	200.43
Other Services	12	29	28	27	250,035	686.91
Local Government	9	541	545	548	4,228,986	597.26
State Government	7	43	43	43	299,797	536.31

TABLE 6. COUNTY SUMMARY

North American Industry Classification System - Industry Groups	Number of Employing Units	Employment			Total Earnings	Average Weekly Earnings
		Jan	Feb	Mar	Jan - Mar 2015	
MARION COUNTY - TOTAL	279	3,696	3,690	3,701	\$49,335,102	\$1,026.88
Natural Resources & Mining	4	20	21	21	102,120	380.10
Construction	17	54	50	50	239,200	358.44
Manufacturing	19	1,731	1,726	1,726	11,271,241	501.84
Trade, Transportation & Utilities	53	475	489	495	2,974,248	470.44
Wholesale Trade	7	44	48	48	445,896	734.99
Retail Trade	37	404	414	419	2,144,748	400.11
Transportation, Warehousing & Utilities	9	27	27	28	383,604	1,079.56
Information	4	49	49	48	511,447	808.40
Financial Activities	30	170	169	171	1,632,233	738.57
Professional & Business Services	28	71	75	76	25,931,462	26,955.78
Education & Health Services	49	348	342	345	2,287,751	510.09
Leisure & Hospitality	34	176	181	187	454,466	192.79
Other Services	14	28	28	22	103,676	306.73
Local Government	18	507	495	497	3,416,016	525.89
State Government	9	67	65	63	411,242	486.68
MILLER COUNTY - TOTAL	864	13,041	13,134	13,237	\$113,511,440	\$664.64
Natural Resources & Mining	28	152	152	143	1,047,760	540.92
Construction	73	605	634	628	5,141,520	635.51
Manufacturing	27	2,355	2,344	2,350	33,596,130	1,099.87
Trade, Transportation & Utilities	231	3,628	3,616	3,609	30,170,069	641.51
Wholesale Trade	53	512	505	523	5,592,327	838.01
Retail Trade	130	1,386	1,384	1,376	7,347,738	408.98
Transportation, Warehousing & Utilities	48	1,730	1,727	1,710	17,230,004	769.53
Information	8	79	70	77	1,190,238	1,215.36
Financial Activities	84	407	420	413	4,234,482	788.05
Professional & Business Services	85	1,019	1,104	1,220	5,987,219	413.30
Education & Health Services	139	1,047	1,052	1,059	8,069,361	589.66
Leisure & Hospitality	89	1,424	1,443	1,438	5,325,146	285.45
Other Services	59	279	268	282	1,551,693	431.95
Local Government	25	1,525	1,514	1,505	12,579,405	638.85
State Government	16	521	517	513	4,618,417	687.16

TABLE 6. COUNTY SUMMARY

North American Industry Classification System - Industry Groups	Number of Employing Units	Employment			Total Earnings	Average Weekly Earnings
		Jan	Feb	Mar	Jan - Mar 2015	
MISSISSIPPI COUNTY - TOTAL	1,202	18,099	17,912	17,948	\$178,509,611	\$763.44
Natural Resources & Mining	116	507	519	520	3,547,321	529.50
Construction	53	690	630	673	7,841,566	907.97
Manufacturing	56	6,542	6,452	6,349	92,515,284	1,103.74
Trade, Transportation & Utilities	291	2,904	2,905	2,891	24,335,843	645.51
Wholesale Trade	62	456	467	480	5,542,754	911.69
Retail Trade	163	1,639	1,658	1,642	8,333,725	389.38
Transportation, Warehousing & Utilities	66	809	780	769	10,459,364	1,023.62
Information	7	54	59	57	361,038	490.10
Financial Activities	88	464	460	462	3,940,631	656.12
Professional & Business Services	91	1,174	1,108	1,233	8,744,345	574.09
Education & Health Services	278	1,864	1,870	1,838	13,135,649	544.02
Leisure & Hospitality	86	1,108	1,117	1,136	3,273,518	224.76
Other Services	60	189	194	194	1,242,238	496.83
Local Government	52	2,071	2,046	2,047	15,494,375	580.08
State Government	24	532	552	548	4,077,803	576.61
MONROE COUNTY - TOTAL	310	2,152	2,158	2,175	\$14,655,780	\$521.53
Natural Resources & Mining	36	125	135	139	950,210	549.57
Construction	11	36	41	40	343,379	677.28
Manufacturing	7	132	135	128	1,181,119	690.04
Trade, Transportation & Utilities	81	623	630	648	5,340,596	648.31
Wholesale Trade	19	247	260	271	3,079,886	913.55
Retail Trade	39	262	259	266	1,370,176	401.77
Transportation, Warehousing & Utilities	23	114	111	111	890,534	611.63
Financial Activities	22	97	91	93	857,108	703.89
Professional & Business Services	13	50	57	51	143,172	209.11
Education & Health Services	71	303	306	297	1,714,091	436.60
Leisure & Hospitality	20	239	229	238	692,629	226.40
Local Government	21	334	329	336	2,190,917	506.10
State Government	8	106	104	104	745,930	548.21
Other	20	107	101	101	496,629	370.90

TABLE 6. COUNTY SUMMARY

North American Industry Classification System - Industry Groups	Number of Employing Units	Employment			Total Earnings Jan - Mar 2015	Average Weekly Earnings
		Jan	Feb	Mar		
MONTGOMERY COUNTY - TOTAL	177	1,303	1,323	1,331	\$7,727,422	\$450.66
Natural Resources & Mining	9	34	36	31	332,150	758.91
Construction	23	68	67	63	385,825	449.68
Manufacturing	9	36	39	38	211,612	432.16
Trade, Transportation & Utilities	37	218	221	225	1,262,520	438.78
Wholesale Trade	9	48	48	50	361,138	570.82
Retail Trade	20	145	148	150	736,693	383.76
Transportation, Warehousing & Utilities	8	25	25	25	164,689	506.74
Financial Activities	11	56	54	58	517,440	710.77
Professional & Business Services	17	44	44	45	355,727	617.22
Education & Health Services	20	71	72	73	372,151	397.60
Leisure & Hospitality	20	184	213	232	790,840	290.15
Local Government	9	474	461	450	2,862,335	476.92
State Government	8	49	49	49	327,483	514.10
Other	14	69	67	67	309,339	351.65
NEVADA COUNTY - TOTAL	202	2,362	2,364	2,376	\$22,777,773	\$740.13
Natural Resources & Mining	12	69	68	68	701,246	789.40
Trade, Transportation & Utilities	44	538	532	549	3,991,938	569.00
Wholesale Trade	3	16	16	16	55,081	264.81
Retail Trade	25	284	271	282	1,243,678	342.89
Transportation, Warehousing & Utilities	16	238	245	251	2,693,179	846.73
Financial Activities	11	57	52	58	448,900	620.31
Professional & Business Services	13	54	55	55	426,450	600.07
Education & Health Services	42	380	390	389	2,258,300	449.65
Leisure & Hospitality	8	75	73	75	209,721	217.03
Other Services	15	46	47	42	160,107	273.69
Local Government	27	368	378	375	2,360,641	485.96
State Government	10	80	79	80	486,706	469.94
Other	20	695	690	685	11,733,764	1,308.11

TABLE 6. COUNTY SUMMARY

North American Industry Classification System - Industry Groups	Number of Employing Units	Employment			Total Earnings Jan - Mar 2015	Average Weekly Earnings
		Jan	Feb	Mar		
NEWTON COUNTY - TOTAL	123	1,030	1,045	1,094	\$5,633,927	\$410.27
Construction	5	17	18	19	63,148	269.86
Manufacturing	7	25	25	26	207,815	631.02
Trade, Transportation & Utilities	31	160	153	159	972,023	475.24
Retail Trade	17	103	100	102	455,076	344.32
Other Trade, Transportation & Utilities	14	57	53	57	516,947	714.34
Education & Health Services	26	244	246	243	989,854	311.63
Leisure & Hospitality	15	61	89	124	328,675	276.82
Other Services	3	4	5	5	21,941	361.66
Local Government	13	391	383	388	2,338,071	464.33
State Government	8	83	82	80	417,186	392.95
Other	15	45	44	50	295,214	490.12
OUACHITA COUNTY - TOTAL	666	6,960	6,966	7,017	\$51,327,235	\$565.57
Natural Resources & Mining	36	166	164	155	1,341,175	638.15
Construction	34	245	233	232	1,976,614	642.45
Manufacturing	24	538	533	534	5,216,361	750.02
Trade, Transportation & Utilities	173	1,594	1,596	1,618	10,939,500	525.06
Wholesale Trade	29	258	255	259	2,492,880	745.18
Retail Trade	115	999	1,013	1,020	4,966,868	378.03
Transportation, Warehousing & Utilities	29	337	328	339	3,479,752	799.82
Information	6	43	43	42	432,340	779.46
Financial Activities	60	280	278	283	2,514,782	690.05
Professional & Business Services	50	547	546	547	3,825,805	538.34
Education & Health Services	172	1,226	1,219	1,223	10,230,545	643.65
Leisure & Hospitality	40	485	485	512	1,361,181	211.96
Other Services	28	129	131	135	769,399	449.50
Local Government	29	1,063	1,062	1,058	7,415,452	537.62
State Government	14	644	676	678	5,304,081	612.62

TABLE 6. COUNTY SUMMARY

North American Industry Classification System - Industry Groups	Number of Employing Units	Employment			Total Earnings Jan - Mar 2015	Average Weekly Earnings
		Jan	Feb	Mar		
PERRY COUNTY - TOTAL	158	1,194	1,217	1,220	\$8,170,755	\$519.29
Natural Resources & Mining	9	69	75	69	877,344	950.54
Construction	17	92	98	100	694,684	552.80
Manufacturing	5	40	37	39	275,576	548.23
Trade, Transportation & Utilities	25	187	185	193	1,187,572	485.05
Retail Trade	15	151	149	156	639,816	323.79
Other Trade, Transportation & Utilities	10	36	36	37	547,756	1,159.68
Financial Activities	9	26	27	26	233,505	682.10
Professional & Business Services	19	35	33	41	327,984	694.39
Education & Health Services	39	220	224	222	1,364,432	472.78
Leisure & Hospitality	8	69	72	79	199,964	209.75
Local Government	10	350	360	350	2,339,553	509.34
State Government	8	62	63	56	326,555	416.35
Other	9	44	43	45	343,586	600.67
PHILLIPS COUNTY - TOTAL	847	5,618	5,594	5,583	\$41,472,402	\$569.85
Natural Resources & Mining	66	250	262	253	1,381,656	416.79
Construction	26	98	104	93	672,249	525.88
Manufacturing	12	331	332	332	3,276,021	759.80
Trade, Transportation & Utilities	161	1,347	1,346	1,333	10,719,933	614.46
Wholesale Trade	30	302	306	307	4,010,935	1,011.59
Retail Trade	86	777	770	763	4,037,478	403.34
Transportation, Warehousing & Utilities	45	268	270	263	2,671,520	769.67
Information	8	44	43	44	421,620	742.72
Financial Activities	40	203	201	206	1,853,791	701.31
Professional & Business Services	47	280	284	269	2,353,061	651.88
Education & Health Services	382	1,336	1,318	1,347	9,518,184	548.99
Leisure & Hospitality	31	283	275	292	795,256	215.91
Other Services	33	72	69	74	491,882	527.96
Local Government	27	866	849	837	6,478,764	585.85
State Government	14	508	511	503	3,509,985	532.19

TABLE 6. COUNTY SUMMARY

North American Industry Classification System - Industry Groups	Number of Employing Units	Employment			Total Earnings Jan - Mar 2015	Average Weekly Earnings
		Jan	Feb	Mar		
PIKE COUNTY - TOTAL	251	2,322	2,286	2,282	\$15,213,126	\$509.54
Natural Resources & Mining	23	119	121	112	1,030,005	675.27
Construction	13	39	28	29	215,416	517.83
Manufacturing	18	234	227	228	1,291,804	432.67
Trade, Transportation & Utilities	66	502	502	490	3,211,558	496.07
Wholesale Trade	11	127	126	123	931,149	571.49
Retail Trade	36	322	319	318	1,740,858	418.91
Transportation, Warehousing & Utilities	19	53	57	49	539,551	783.09
Information	5	22	21	21	244,860	882.91
Financial Activities	23	205	205	201	1,978,817	747.38
Professional & Business Services	17	66	66	68	860,992	993.45
Education & Health Services	25	291	288	287	1,617,736	431.09
Leisure & Hospitality	25	188	191	205	558,181	220.57
Other Services	16	45	51	52	392,477	611.97
Local Government	10	455	430	435	3,088,246	539.90
State Government	10	156	156	154	723,034	358.06
POINSETT COUNTY - TOTAL	531	4,962	5,036	5,089	\$40,418,603	\$618.24
Natural Resources & Mining	69	382	386	397	3,352,278	664.04
Construction	23	90	90	90	548,148	468.50
Manufacturing	21	663	669	674	6,449,968	742.00
Trade, Transportation & Utilities	130	1,142	1,198	1,228	10,777,906	697.09
Wholesale Trade	32	355	372	386	6,167,048	1,278.67
Retail Trade	70	640	677	690	3,324,962	382.31
Transportation, Warehousing & Utilities	28	147	149	152	1,285,896	662.38
Information	5	52	52	52	443,551	656.14
Financial Activities	39	233	232	234	2,044,917	675.11
Professional & Business Services	31	176	187	180	2,180,607	926.73
Education & Health Services	108	698	703	699	4,711,772	517.78
Leisure & Hospitality	45	337	336	358	973,955	218.00
Other Services	19	43	43	40	264,730	484.85
Local Government	30	1,018	1,009	1,007	7,712,412	586.61
State Government	11	128	131	130	958,359	568.53

TABLE 6. COUNTY SUMMARY

North American Industry Classification System - Industry Groups	Number of Employing Units	Employment			Total Earnings	Average Weekly Earnings
		Jan	Feb	Mar	Jan - Mar 2015	
POLK COUNTY - TOTAL	502	5,892	5,880	5,884	\$40,387,286	\$527.87
Natural Resources & Mining	21	122	121	120	1,286,224	817.69
Construction	31	206	209	209	1,385,819	512.51
Manufacturing	36	1,410	1,374	1,350	10,079,192	562.64
Trade, Transportation & Utilities	131	1,079	1,096	1,108	6,762,245	475.33
Wholesale Trade	23	54	54	54	478,416	681.50
Retail Trade	74	800	801	814	3,959,890	378.39
Transportation, Warehousing & Utilities	34	225	241	240	2,323,939	759.62
Information	8	65	66	65	422,933	497.96
Financial Activities	48	247	247	248	1,981,956	616.41
Professional & Business Services	46	149	154	155	1,393,697	702.23
Education & Health Services	81	1,002	1,001	1,002	7,979,453	612.78
Leisure & Hospitality	36	439	441	453	1,160,370	200.88
Other Services	29	178	174	174	1,149,695	504.40
Local Government	21	719	718	723	4,977,194	531.75
State Government	14	276	279	277	1,808,508	501.62
POPE COUNTY - TOTAL	1,806	26,777	27,064	26,626	\$249,891,665	\$716.66
Natural Resources & Mining	32	788	909	881	7,911,104	708.16
Construction	156	1,728	1,728	1,333	19,706,439	949.60
Manufacturing	78	4,621	4,605	4,570	45,436,263	760.02
Trade, Transportation & Utilities	424	6,050	6,004	6,042	72,440,243	923.79
Wholesale Trade	80	597	598	587	6,253,568	809.84
Retail Trade	266	3,295	3,269	3,308	17,730,736	414.48
Transportation, Warehousing & Utilities	78	2,158	2,137	2,147	48,455,939	1,735.82
Information	24	190	193	190	1,749,881	704.74
Financial Activities	185	1,275	1,263	1,262	10,470,637	635.87
Professional & Business Services	275	2,254	2,290	2,284	23,574,354	796.75
Education & Health Services	327	3,087	3,074	3,067	24,366,703	609.35
Leisure & Hospitality	138	2,515	2,550	2,595	7,985,040	240.56
Other Services	109	443	467	464	3,306,927	555.41
Local Government	42	2,226	2,234	2,196	17,819,288	617.81
State Government	16	1,600	1,747	1,742	15,124,786	685.86

TABLE 6. COUNTY SUMMARY

North American Industry Classification System - Industry Groups	Number of Employing Units	Employment			Total Earnings	Average Weekly Earnings
		Jan	Feb	Mar	Jan - Mar 2015	
PRAIRIE COUNTY - TOTAL	250	1,481	1,534	1,485	\$11,423,793	\$585.84
Natural Resources & Mining	35	146	145	146	1,212,613	640.35
Trade, Transportation & Utilities	64	342	348	358	3,127,771	688.73
Wholesale Trade	11	84	88	91	1,799,400	1,578.88
Retail Trade	36	196	198	203	894,340	345.71
Transportation, Warehousing & Utilities	17	62	62	64	434,031	532.77
Financial Activities	16	57	57	58	446,206	598.67
Professional & Business Services	12	58	58	60	438,585	575.07
Education & Health Services	51	233	229	231	1,433,702	477.42
Leisure & Hospitality	16	97	88	82	278,184	240.44
Other Services	13	24	24	24	128,891	413.11
Local Government	15	318	319	301	2,112,999	519.85
State Government	9	35	35	35	272,916	599.82
Other	19	171	231	190	1,971,926	768.68
PULASKI COUNTY - TOTAL	14,312	232,508	233,065	233,238	\$2,627,259,295	\$867.60
Natural Resources & Mining	56	641	649	638	10,119,678	1,211.26
Construction	960	8,323	8,367	8,333	90,905,128	838.35
Manufacturing	338	12,684	12,713	12,723	170,831,076	1,034.17
Trade, Transportation & Utilities	3,175	47,393	47,115	47,157	491,518,031	800.67
Wholesale Trade	989	11,677	11,737	11,757	184,437,827	1,210.16
Retail Trade	1,804	25,174	24,926	24,924	166,229,124	511.31
Transportation, Warehousing & Utilities	382	10,542	10,452	10,476	140,851,080	1,032.86
Information	191	5,555	5,518	5,465	113,462,968	1,583.25
Financial Activities	1,692	15,879	15,838	15,813	322,242,336	1,564.56
Professional & Business Services	2,830	32,813	32,631	32,453	363,745,852	857.45
Education & Health Services	2,452	38,348	38,552	38,533	415,168,284	829.99
Leisure & Hospitality	1,175	21,520	21,685	22,034	88,066,362	311.52
Other Services	1,136	6,157	6,173	6,149	56,310,286	703.21
Local Government	108	15,657	15,626	15,637	159,112,658	782.57
State Government	199	27,538	28,198	28,303	345,776,636	949.49

TABLE 6. COUNTY SUMMARY

North American Industry Classification System - Industry Groups	Number of Employing Units	Employment			Total Earnings	Average Weekly Earnings
		Jan	Feb	Mar	Jan - Mar 2015	
RANDOLPH COUNTY - TOTAL	409	4,215	4,245	4,243	\$27,395,454	\$497.68
Natural Resources & Mining	29	77	88	91	373,101	336.33
Construction	27	86	76	75	457,045	445.03
Manufacturing	27	516	513	508	4,078,486	612.35
Trade, Transportation & Utilities	97	805	812	830	5,450,297	514.00
Wholesale Trade	19	142	141	148	1,101,653	589.86
Retail Trade	59	533	543	555	2,976,261	421.11
Transportation, Warehousing & Utilities	19	130	128	127	1,372,383	822.61
Information	5	35	35	34	319,374	708.67
Financial Activities	35	139	141	143	1,157,306	631.37
Professional & Business Services	37	181	177	177	1,154,350	497.92
Education & Health Services	65	889	889	892	5,814,428	502.54
Leisure & Hospitality	29	370	373	373	1,040,106	215.08
Other Services	23	64	64	63	367,695	444.25
Local Government	24	759	750	728	4,633,934	478.04
State Government	11	294	327	329	2,549,332	619.27
SAINT FRANCIS COUNTY - TOTAL	784	7,103	7,121	7,148	\$53,187,241	\$574.30
Natural Resources & Mining	43	153	161	176	1,308,014	616.02
Construction	45	160	165	168	1,329,741	622.44
Trade, Transportation & Utilities	159	1,953	1,966	1,997	13,918,901	542.94
Wholesale Trade	32	516	538	550	5,515,671	793.55
Retail Trade	105	1,129	1,125	1,138	5,589,780	380.29
Transportation, Warehousing & Utilities	22	308	303	309	2,813,450	705.71
Information	5	65	66	65	517,296	609.06
Financial Activities	62	249	249	246	1,979,895	614.11
Professional & Business Services	48	458	486	453	2,903,426	479.61
Education & Health Services	296	1,374	1,361	1,371	10,818,245	608.02
Leisure & Hospitality	44	625	614	630	1,751,531	216.27
Local Government	28	910	915	907	8,861,700	748.54
State Government	16	475	471	464	4,127,851	675.59
Other	38	681	667	671	5,670,641	648.15

TABLE 6. COUNTY SUMMARY

North American Industry Classification System - Industry Groups	Number of Employing Units	Employment			Total Earnings	Average Weekly Earnings
		Jan	Feb	Mar	Jan - Mar 2015	
SALINE COUNTY - TOTAL	1,916	22,089	22,056	22,200	\$172,154,402	\$598.81
Natural Resources & Mining	14	65	63	56	548,468	687.88
Construction	267	1,789	1,763	1,758	15,697,610	682.21
Manufacturing	83	1,374	1,366	1,372	16,567,002	929.76
Trade, Transportation & Utilities	441	5,036	5,033	5,058	37,958,924	579.08
Wholesale Trade	109	569	559	549	6,721,412	924.92
Retail Trade	265	3,969	3,974	4,014	26,383,149	509.19
Transportation, Warehousing & Utilities	67	498	500	495	4,854,363	750.33
Information	13	139	140	141	1,394,020	765.95
Financial Activities	200	701	709	705	7,337,325	800.58
Professional & Business Services	253	1,433	1,448	1,476	12,420,858	657.87
Education & Health Services	282	3,236	3,206	3,204	25,175,625	602.30
Leisure & Hospitality	168	2,871	2,931	2,935	9,881,939	261.01
Other Services	150	724	711	718	4,904,419	525.68
Local Government	30	3,769	3,735	3,822	33,618,079	684.97
State Government	15	952	951	955	6,650,133	536.97
SCOTT COUNTY - TOTAL	182	3,007	3,001	2,978	\$18,955,756	\$486.80
Natural Resources & Mining	17	151	154	149	1,391,857	707.48
Trade, Transportation & Utilities	33	400	402	400	2,803,922	538.32
Wholesale Trade	5	51	53	52	755,406	1,117.46
Retail Trade	21	281	282	280	1,373,223	375.92
Transportation, Warehousing & Utilities	7	68	67	68	675,293	767.67
Financial Activities	21	71	70	70	515,303	563.58
Professional & Business Services	11	62	62	61	391,991	488.97
Education & Health Services	37	277	278	272	2,243,298	625.98
Leisure & Hospitality	14	125	126	129	411,207	249.72
Other Services	11	44	44	44	325,620	569.27
Local Government	6	526	523	524	3,549,629	520.75
State Government	7	67	64	63	336,729	400.55
Other	25	1,284	1,278	1,266	6,986,200	421.16

TABLE 6. COUNTY SUMMARY

North American Industry Classification System - Industry Groups	Number of Employing Units	Employment			Total Earnings Jan - Mar 2015	Average Weekly Earnings
		Jan	Feb	Mar		
SEARCY COUNTY - TOTAL	180	1,507	1,488	1,518	\$8,655,274	\$442.58
Construction	12	10	5	15	29,117	223.98
Manufacturing	16	220	218	214	1,113,735	394.20
Trade, Transportation & Utilities	42	231	235	247	1,400,122	453.16
Wholesale Trade	8	46	48	51	234,614	373.39
Retail Trade	28	164	166	175	892,233	407.72
Transportation, Warehousing & Utilities	6	21	21	21	273,275	1,001.01
Financial Activities	14	43	43	43	297,564	532.31
Professional & Business Services	12	50	45	47	406,935	661.32
Education & Health Services	44	311	310	306	1,990,768	495.59
Leisure & Hospitality	12	97	91	105	251,106	197.77
Local Government	10	328	331	333	2,032,003	472.71
State Government	7	110	105	104	553,178	400.18
Other	11	107	105	104	580,746	424.11
SEBASTIAN COUNTY - TOTAL	3,729	63,838	63,813	63,959	\$631,599,464	\$760.68
Natural Resources & Mining	53	924	931	922	22,273,068	1,850.90
Construction	261	2,362	2,356	2,346	21,309,478	696.15
Manufacturing	191	12,124	11,989	11,956	142,014,414	908.61
Trade, Transportation & Utilities	925	13,104	13,023	13,034	116,623,500	687.24
Wholesale Trade	254	2,748	2,755	2,752	33,511,745	936.82
Retail Trade	546	7,642	7,624	7,639	45,558,347	459.00
Transportation, Warehousing & Utilities	125	2,714	2,644	2,643	37,553,408	1,083.14
Information	41	979	979	970	16,300,744	1,284.74
Financial Activities	412	2,476	2,474	2,462	29,004,236	903.03
Professional & Business Services	605	7,728	7,853	7,898	76,116,726	748.13
Education & Health Services	583	10,853	10,897	10,953	118,837,112	838.58
Leisure & Hospitality	334	5,815	5,858	5,959	20,988,742	274.70
Other Services	262	1,266	1,246	1,245	8,660,958	531.99
Local Government	40	4,563	4,546	4,548	43,025,505	727.02
State Government	22	1,644	1,661	1,666	16,444,981	763.43

TABLE 6. COUNTY SUMMARY

North American Industry Classification System - Industry Groups	Number of Employing Units	Employment			Total Earnings	Average Weekly Earnings
		Jan	Feb	Mar	Jan - Mar 2015	
SEVIER COUNTY - TOTAL	319	4,699	4,683	4,671	\$35,126,887	\$576.83
Natural Resources & Mining	14	146	160	152	1,396,005	703.40
Construction	17	154	134	135	1,636,838	892.98
Trade, Transportation & Utilities	99	885	889	886	6,968,575	604.56
Wholesale Trade	16	116	117	117	2,544,374	1,677.61
Retail Trade	67	684	685	682	3,467,958	390.20
Transportation, Warehousing & Utilities	16	85	87	87	956,243	852.01
Financial Activities	28	212	209	209	2,191,948	802.91
Professional & Business Services	25	107	109	109	642,659	456.33
Education & Health Services	52	530	532	527	3,848,133	558.86
Leisure & Hospitality	26	255	253	264	724,611	216.60
Local Government	12	907	917	900	6,518,474	552.23
State Government	8	159	175	198	1,202,938	521.81
Other	38	1,344	1,305	1,291	9,996,706	585.52
SHARP COUNTY - TOTAL	393	3,695	3,680	3,668	\$24,455,927	\$511.06
Natural Resources & Mining	3	7	6	8	36,829	404.71
Construction	25	103	114	113	988,650	691.36
Manufacturing	18	149	152	150	901,617	461.34
Trade, Transportation & Utilities	83	1,093	1,062	1,037	8,309,274	600.73
Wholesale Trade	13	42	42	42	262,840	481.39
Retail Trade	58	645	648	652	3,179,438	377.23
Transportation, Warehousing & Utilities	12	406	372	343	4,866,996	1,001.92
Information	6	39	35	40	425,884	862.11
Financial Activities	32	178	175	176	1,892,957	825.78
Professional & Business Services	39	134	132	133	1,148,932	664.51
Education & Health Services	89	729	746	743	4,411,618	459.00
Leisure & Hospitality	41	383	372	394	1,066,535	214.21
Other Services	25	62	65	66	264,853	316.68
Local Government	24	746	750	736	4,535,464	468.93
State Government	8	72	71	72	473,314	508.03

TABLE 6. COUNTY SUMMARY

North American Industry Classification System - Industry Groups	Number of Employing Units	Employment			Total Earnings Jan - Mar 2015	Average Weekly Earnings
		Jan	Feb	Mar		
STONE COUNTY - TOTAL	280	2,369	2,371	2,362	\$14,287,550	\$464.25
Natural Resources & Mining	7	11	11	11	54,251	379.38
Construction	16	34	37	39	169,382	355.35
Manufacturing	22	211	222	207	1,070,431	385.97
Trade, Transportation & Utilities	67	567	560	544	3,615,104	499.25
Wholesale Trade	6	40	36	25	285,241	651.73
Retail Trade	50	489	487	481	2,870,278	454.61
Transportation, Warehousing & Utilities	11	38	37	38	459,585	938.57
Financial Activities	28	90	93	99	728,836	596.43
Professional & Business Services	15	38	37	38	241,415	493.02
Education & Health Services	54	507	493	500	3,793,463	583.61
Leisure & Hospitality	35	291	305	314	711,669	180.47
Local Government	10	405	394	391	2,748,254	532.95
State Government	8	160	162	161	827,661	395.44
Other	18	55	57	58	327,084	444.01
UNION COUNTY - TOTAL	1,338	17,884	17,995	17,937	\$238,766,128	\$1,023.86
Natural Resources & Mining	96	625	605	602	7,003,619	882.22
Construction	80	1,565	1,589	1,605	18,334,590	889.06
Manufacturing	50	3,186	3,195	3,195	50,468,671	1,216.23
Trade, Transportation & Utilities	329	4,155	4,120	4,073	65,863,638	1,230.91
Wholesale Trade	69	1,052	1,040	1,029	40,556,548	2,998.78
Retail Trade	201	2,239	2,216	2,191	12,184,192	423.07
Transportation, Warehousing & Utilities	59	864	864	853	13,122,898	1,173.33
Information	9	133	135	131	986,046	570.30
Financial Activities	107	607	603	613	6,674,512	844.91
Professional & Business Services	138	1,338	1,363	1,377	42,715,570	2,417.22
Education & Health Services	286	2,343	2,337	2,329	21,741,609	715.84
Leisure & Hospitality	86	1,124	1,192	1,168	4,082,010	270.38
Other Services	107	476	470	480	2,906,905	470.42
Local Government	33	1,779	1,789	1,767	13,120,515	567.54
State Government	17	553	597	597	4,868,443	643.09

TABLE 6. COUNTY SUMMARY

North American Industry Classification System - Industry Groups	Number of Employing Units	Employment			Total Earnings	Average Weekly Earnings
		Jan	Feb	Mar	Jan - Mar 2015	
VAN BUREN COUNTY - TOTAL	360	3,856	3,874	3,892	\$42,406,430	\$842.03
Natural Resources & Mining	11	324	323	323	9,938,667	2,364.47
Construction	40	166	184	178	1,467,968	641.59
Manufacturing	8	75	81	94	529,442	488.72
Trade, Transportation & Utilities	100	1,159	1,123	1,127	16,552,404	1,120.50
Wholesale Trade	11	115	86	84	989,823	801.48
Retail Trade	57	533	542	553	3,011,657	426.90
Transportation, Warehousing & Utilities	32	511	495	490	12,550,924	1,936.07
Information	8	38	33	33	297,762	660.71
Financial Activities	30	119	119	115	1,118,070	730.92
Professional & Business Services	33	124	134	146	1,188,109	678.66
Education & Health Services	59	710	715	711	4,583,369	495.18
Leisure & Hospitality	30	330	338	353	1,170,203	264.49
Other Services	23	53	52	53	323,107	471.92
Local Government	11	693	707	696	4,793,835	527.80
State Government	7	65	65	63	443,494	530.28
WASHINGTON COUNTY - TOTAL	5,691	94,885	95,720	96,662	\$946,994,470	\$760.75
Natural Resources & Mining	41	338	353	353	4,360,305	963.82
Construction	480	3,994	4,031	3,999	41,085,417	788.53
Manufacturing	222	12,174	12,129	12,091	119,857,404	760.00
Trade, Transportation & Utilities	1,362	22,111	22,032	22,241	202,965,214	705.56
Wholesale Trade	389	3,610	3,619	3,618	62,427,715	1,328.15
Retail Trade	778	12,065	12,050	12,219	75,227,085	477.79
Transportation, Warehousing & Utilities	195	6,436	6,363	6,404	65,310,414	784.86
Information	81	962	964	974	12,163,953	967.95
Financial Activities	627	3,370	3,414	3,414	41,447,360	937.91
Professional & Business Services	997	10,876	11,109	11,199	156,543,120	1,088.64
Education & Health Services	807	13,856	13,953	14,041	152,266,551	839.63
Leisure & Hospitality	615	10,814	11,221	11,552	40,383,623	277.47
Other Services	377	1,806	1,804	1,802	12,770,499	544.54
Local Government	60	8,519	8,657	8,627	79,706,789	712.86
State Government	22	6,065	6,053	6,369	83,444,235	1,041.62

TABLE 6. COUNTY SUMMARY

North American Industry Classification System - Industry Groups	Number of Employing Units	Employment			Total Earnings Jan - Mar 2015	Average Weekly Earnings
		Jan	Feb	Mar		
WHITE COUNTY - TOTAL	1,831	24,177	24,276	24,212	\$209,085,111	\$664.01
Natural Resources & Mining	56	903	882	882	14,999,229	1,297.85
Construction	158	992	993	964	9,266,940	725.17
Manufacturing	65	2,312	2,316	2,303	23,208,842	772.74
Trade, Transportation & Utilities	490	6,207	6,218	6,283	51,276,450	632.51
Wholesale Trade	90	588	594	596	6,110,690	793.12
Retail Trade	304	3,613	3,625	3,672	20,587,022	435.46
Transportation, Warehousing & Utilities	96	2,006	1,999	2,015	24,578,738	942.20
Information	19	147	154	153	1,190,843	605.31
Financial Activities	171	859	843	845	8,988,435	814.39
Professional & Business Services	199	1,237	1,295	1,238	8,872,530	543.11
Education & Health Services	327	5,170	5,208	5,227	52,631,158	778.32
Leisure & Hospitality	162	2,434	2,470	2,465	7,154,865	224.06
Other Services	119	497	514	484	3,854,529	594.99
Local Government	47	2,692	2,670	2,665	22,194,018	638.06
State Government	18	727	713	703	5,447,272	586.59
WOODRUFF COUNTY - TOTAL	212	1,769	1,768	1,793	\$12,835,471	\$555.73
Natural Resources & Mining	26	120	126	140	890,291	532.26
Construction	9	39	41	45	269,318	497.20
Manufacturing	7	232	231	233	1,974,287	654.60
Trade, Transportation & Utilities	45	402	406	408	3,353,350	636.39
Wholesale Trade	11	159	168	173	1,920,858	886.55
Retail Trade	25	179	175	174	731,821	319.85
Transportation, Warehousing & Utilities	9	64	63	61	700,671	860.07
Financial Activities	12	63	66	67	529,481	623.41
Education & Health Services	70	222	221	222	1,376,600	477.71
Leisure & Hospitality	10	71	68	68	202,510	225.76
Local Government	9	469	458	459	2,918,204	485.88
State Government	6	49	49	48	342,658	541.61
Other	18	102	102	103	978,772	735.73

TABLE 6. COUNTY SUMMARY

North American Industry Classification System - Industry Groups	Number of Employing Units	Employment			Total Earnings	Average Weekly Earnings
		Jan	Feb	Mar	Jan - Mar 2015	
YELL COUNTY - TOTAL	413	6,326	6,263	6,245	\$41,475,500	\$508.19
Natural Resources & Mining	25	195	188	187	1,492,762	604.36
Construction	33	190	154	135	1,211,831	583.83
Manufacturing	21	2,414	2,388	2,358	15,218,393	490.49
Trade, Transportation & Utilities	79	664	661	663	4,180,589	485.29
Wholesale Trade	15	33	33	33	201,273	469.17
Retail Trade	49	494	492	497	2,322,434	361.39
Transportation, Warehousing & Utilities	15	137	136	133	1,656,882	941.77
Information	3	59	60	58	725,277	945.60
Financial Activities	29	160	160	157	1,458,429	705.58
Professional & Business Services	39	292	297	301	2,189,146	567.63
Education & Health Services	105	763	763	773	4,394,380	441.10
Leisure & Hospitality	26	263	276	295	748,186	207.02
Other Services	16	57	53	54	273,386	384.69
Local Government	25	1,176	1,171	1,170	9,002,284	590.69
State Government	12	93	92	94	580,837	480.43
STATEWIDE COUNTY - TOTAL	8,151	25,749	30,453	29,683	\$409,981,057	\$1,101.60
Natural Resources & Mining	92	404	350	323	5,780,835	1,238.66
Construction	715	2,775	2,964	3,180	31,735,111	821.11
Manufacturing	48	138	140	140	4,238,609	2,340.05
Trade, Transportation & Utilities	2,768	6,952	7,050	7,152	165,289,252	1,803.14
Wholesale Trade	2,371	5,813	5,919	5,932	150,475,426	1,965.87
Retail Trade	142	269	255	293	4,611,809	1,302.65
Transportation, Warehousing & Utilities	255	870	876	927	10,202,017	880.78
Information	202	459	476	482	9,045,052	1,473.06
Financial Activities	493	1,208	1,228	1,234	25,093,763	1,577.89
Professional & Business Services	3,105	10,324	14,590	13,623	129,128,110	773.25
Education & Health Services	359	1,989	2,027	2,039	21,146,429	805.94
Leisure & Hospitality	85	126	149	132	1,173,452	665.35
State Government	17	742	743	753	6,854,030	706.75
Other	267	632	736	625	10,496,414	1,028.79

Note: Statewide classification includes employment and payroll data for employers that have not provided a physical location for each employing unit. This section also includes employers without a physical location in Arkansas.

TABLE 7. FEDERAL GOVERNMENT EMPLOYMENT AND EARNINGS IN ARKANSAS

North American Industry Classification System - Industry Groups	Number of Employing Units	Employment			Total Earnings Jan - Mar 2015	Average Weekly Earnings
		Jan	Feb	Mar		
TOTAL	1,148	20,111	20,010	20,004	\$350,090,169	\$1,343.70
Trade, Transportation & Utilities	583	5,416	5,411	5,396	74,918,339	1,065.70
Information	2	45	43	42	676,087	1,200.15
Financial Activities	14	109	109	108	2,358,559	1,669.58
Professional & Business Services	32	760	759	755	13,946,354	1,415.30
Education & Health Services	15	5,336	5,326	5,312	105,661,541	1,526.45
Leisure & Hospitality	21	260	255	268	2,916,145	859.46
Other Services	1	1	1	1	7,059	543.00
Public Administration	480	8,184	8,106	8,122	149,606,085	1,414.24

TABLE 8. WORKFORCE INVESTMENT AREA SUMMARY

North American Industry Classification System - Industry Groups	Number of Employing Units	Employment			Total Earnings Jan - Mar 2015	Average Weekly Earnings
		Jan	Feb	Mar		
CENTRAL LOCAL WORKFORCE DEVELOPMENT AREA	6,619	79,166	79,365	79,569	\$675,062,113	\$654.28
Natural Resources & Mining	235	1,898	1,906	1,883	28,940,420	1,174.36
Trade, Transportation & Utilities	1,555	16,065	16,003	16,118	117,753,873	563.94
Wholesale Trade	365	1,842	1,883	1,898	23,240,252	953.79
Retail Trade	929	12,397	12,363	12,465	74,362,982	461.00
Transportation, Warehousing & Utilities	261	1,826	1,757	1,755	20,150,639	871.14
Information	53	503	506	520	4,847,806	731.67
Financial Activities	701	2,985	3,005	3,022	32,810,802	840.18
Professional & Business Services	860	8,008	8,134	8,118	99,326,911	944.83
Education & Health Services	1,062	11,493	11,561	11,527	92,074,804	614.44
Leisure & Hospitality	561	9,710	9,779	9,807	31,350,125	246.95
Local Government	130	10,459	10,415	10,498	91,604,758	673.84
State Government	65	4,653	4,693	4,719	40,691,328	667.64
Other	1,397	13,392	13,363	13,357	135,661,286	780.48

Note: Pulaski County is not included in the Central LOCAL WORKFORCE DEVELOPMENT AREA. Please refer to Page 51 for information on Pulaski County.
Central LOCAL WORKFORCE DEVELOPMENT AREA includes these counties: Faulkner, Lonoke, Monroe, Prairie, and Saline.

EASTERN LOCAL WORKFORCE DEVELOPMENT AREA	3,764	35,907	36,026	36,109	\$273,117,078	\$583.36
Natural Resources & Mining	238	1,031	1,078	1,069	7,166,696	520.41
Construction	151	733	738	704	5,856,083	621.34
Trade, Transportation & Utilities	806	9,287	9,234	9,283	75,674,222	628.09
Wholesale Trade	164	1,972	2,028	2,050	24,231,538	924.28
Retail Trade	460	4,844	4,800	4,824	25,603,058	408.38
Transportation, Warehousing & Utilities	182	2,471	2,406	2,409	25,839,626	818.42
Financial Activities	258	1,244	1,237	1,247	11,377,580	704.29
Professional & Business Services	278	2,409	2,477	2,466	16,367,158	513.74
Education & Health Services	1,327	6,300	6,298	6,358	44,477,886	541.47
Leisure & Hospitality	237	3,478	3,527	3,582	12,835,526	279.78
Local Government	129	4,958	4,946	4,923	42,448,673	660.68
State Government	61	2,363	2,365	2,353	17,783,155	579.55
Other	279	4,104	4,126	4,124	39,130,099	730.94

Eastern Local Workforce Development Area includes these counties: Crittenden, Cross, Lee, Phillips, and Saint Francis.

TABLE 8. WORKFORCE INVESTMENT AREA SUMMARY

North American Industry Classification System - Industry Groups	Number of Employing Units	Employment			Total Earnings	Average Weekly Earnings
		Jan	Feb	Mar	Jan - Mar 2015	
NORTH CENTRAL LOCAL WORKFORCE DEVELOPMENT AREA	5,577	66,890	67,134	67,198	\$549,309,879	\$629.97
Construction	432	2,369	2,400	2,341	20,416,636	662.66
Manufacturing	232	8,000	8,052	8,105	79,695,041	761.32
Trade, Transportation & Utilities	1,408	15,658	15,570	15,635	131,598,629	648.04
Retail Trade	896	9,377	9,404	9,507	52,406,142	427.52
Other Trade, Transportation & Utilities	512	6,281	6,166	6,128	79,192,487	983.86
Financial Activities	499	2,431	2,406	2,428	25,045,664	795.56
Education & Health Services	1,051	13,215	13,234	13,267	115,771,851	672.69
Leisure & Hospitality	493	5,863	5,966	6,084	17,555,883	226.17
Local Government	228	9,034	8,996	8,951	65,303,317	558.54
State Government	105	3,053	3,114	3,115	23,506,108	584.41
Other	1,129	7,267	7,396	7,272	70,416,750	740.83

North Central Local Workforce Development Area includes these counties: Cleburne, Fulton, Independence, IZard, Jackson, Sharp, Stone, Van Buren, White, and Woodruff.

NORTHEAST Local Workforce Development Area	6,586	95,627	95,901	96,168	\$827,061,461	\$663.41
Natural Resources & Mining	441	1,801	1,846	1,922	13,204,270	547.16
Construction	441	3,192	3,143	3,193	29,325,096	710.26
Manufacturing	309	20,117	20,111	20,001	237,238,219	908.99
Trade, Transportation & Utilities	1,747	18,881	18,896	18,965	147,477,579	599.79
Wholesale Trade	393	3,554	3,596	3,644	45,083,776	963.86
Retail Trade	1,020	12,226	12,242	12,242	68,739,533	432.12
Transportation, Warehousing & Utilities	334	3,101	3,058	3,079	33,654,270	840.70
Financial Activities	567	3,136	3,129	3,133	33,236,661	816.13
Professional & Business Services	662	6,778	6,822	6,980	49,152,591	551.16
Education & Health Services	1,166	15,692	15,719	15,688	143,706,653	704.11
Leisure & Hospitality	522	8,299	8,414	8,513	27,010,998	247.10
Local Government	220	11,285	11,295	11,221	87,967,402	600.58
State Government	102	4,287	4,348	4,348	42,871,902	762.04
Other	409	2,159	2,178	2,204	15,870,090	559.90

Northeast Local Workforce Development Area includes these counties: Clay, Craighead, Greene, Lawrence, Mississippi, Poinsett, and Randolph.

TABLE 8. WORKFORCE INVESTMENT AREA SUMMARY

North American Industry Classification System - Industry Groups	Number of Employing Units	Employment			Total Earnings	Average Weekly Earnings
		Jan	Feb	Mar	Jan - Mar 2015	
NORTHWEST LOCAL WORKFORCE DEVELOPMENT AREA	15,339	247,444	249,376	250,965	\$3,114,288,099	\$961.08
Natural Resources & Mining	139	1,429	1,454	1,469	16,401,422	869.70
Trade, Transportation & Utilities	3,810	56,180	56,349	56,858	586,302,918	798.77
Wholesale Trade	1,233	9,314	9,328	9,350	205,176,134	1,691.50
Retail Trade	2,097	29,969	29,918	30,083	180,111,697	461.98
Transportation, Warehousing & Utilities	480	16,897	17,103	17,425	201,015,087	902.05
Information	205	2,464	2,460	2,474	30,629,147	955.43
Education & Health Services	2,204	30,982	31,085	31,185	298,528,637	738.76
Leisure & Hospitality	1,583	25,211	25,962	26,658	96,533,525	286.22
Other Services	969	4,342	4,359	4,368	31,368,799	553.90
Local Government	306	22,759	23,023	23,035	205,128,306	687.87
State Government	111	8,658	8,728	9,036	103,309,878	902.31
Other	6,012	95,419	95,956	95,882	1,746,085,467	1,402.73

Northwest Local Workforce Development Area includes these counties: Baxter, Benton, Boone, Carroll, Madison, Marion, Newton, Searcy, and Washington.

SOUTHEAST LOCAL WORKFORCE DEVELOPMENT AREA	6,197	67,902	68,106	68,427	\$579,561,899	\$654.22
Natural Resources & Mining	434	2,274	2,310	2,237	19,823,798	670.68
Construction	302	2,019	2,027	2,268	18,595,027	679.63
Manufacturing	206	14,418	14,371	14,417	165,148,091	882.08
Trade, Transportation & Utilities	1,287	12,506	12,560	12,646	100,185,136	613.06
Wholesale Trade	238	2,025	2,043	2,071	23,671,534	889.83
Retail Trade	776	7,617	7,676	7,752	41,912,010	419.70
Transportation, Warehousing & Utilities	273	2,864	2,841	2,823	34,601,592	936.33
Financial Activities	415	2,494	2,472	2,455	26,958,213	838.31
Education & Health Services	2,042	10,693	10,673	10,673	83,989,025	604.95
Local Government	203	8,700	8,349	8,369	64,912,165	589.34
State Government	137	5,955	6,293	6,341	52,073,448	646.45
Other	1,171	8,843	9,051	9,021	47,876,996	410.50

Southeast Local Workforce Development Area includes these counties: Arkansas, Ashley, Bradley, Chicot, Cleveland, Desha, Drew, Grant, Jefferson, and Lincoln.

TABLE 8. WORKFORCE INVESTMENT AREA SUMMARY

North American Industry Classification System - Industry Groups	Number of Employing Units	Employment			Total Earnings	Average Weekly Earnings
		Jan	Feb	Mar	Jan - Mar 2015	
SOUTHWEST LOCAL WORKFORCE DEVELOPMENT AREA	5,777	77,839	78,277	78,247	\$756,078,130	\$744.48
Natural Resources & Mining	352	2,495	2,486	2,417	26,851,261	837.58
Trade, Transportation & Utilities	1,429	15,888	15,892	15,814	156,196,592	757.35
Wholesale Trade	251	2,509	2,495	2,494	56,998,244	1,754.26
Retail Trade	874	8,931	8,922	8,890	47,250,592	407.73
Transportation, Warehousing & Utilities	304	4,448	4,475	4,430	51,947,756	897.77
Information	55	469	463	465	4,485,349	740.93
Financial Activities	491	2,613	2,592	2,602	26,152,431	773.05
Education & Health Services	1,190	9,224	9,255	9,233	70,659,416	588.41
Leisure & Hospitality	412	5,249	5,380	5,424	17,575,071	252.65
Other Services	382	1,761	1,735	1,761	10,000,146	438.98
Local Government	254	9,880	9,932	9,874	73,565,552	571.87
State Government	139	3,630	3,815	3,837	30,610,359	626.12
Other	1,073	26,630	26,727	26,820	339,981,953	978.55

Southwest Local Workforce Development Area includes these counties: Calhoun, Columbia, Dallas, Hempstead, Howard, Lafayette, Little River, Miller, Nevada, Ouachita, Sevier, and Union

WEST CENTRAL LOCAL WORKFORCE DEVELOPMENT AREA	8,207	105,508	105,895	105,581	\$856,071,285	\$623.23
Natural Resources & Mining	241	2,307	2,438	2,349	\$23,753,912	772.72
Construction	751	4,837	4,802	4,346	\$44,216,930	729.63
Manufacturing	343	16,174	16,123	16,066	153,453,132	732.22
Trade, Transportation & Utilities	1,858	21,203	21,080	21,177	182,260,776	662.78
Wholesale Trade	332	2,101	2,095	2,076	21,662,091	797.03
Retail Trade	1,232	13,885	13,789	13,890	77,217,839	428.72
Transportation, Warehousing & Utilities	294	5,217	5,196	5,211	83,380,846	1,231.55
Financial Activities	812	3,960	3,945	3,947	38,623,714	752.04
Professional & Business Services	946	8,091	8,228	8,167	68,836,219	648.75
Education & Health Services	1,528	16,516	16,420	16,427	140,540,404	657.02
Leisure & Hospitality	751	12,195	12,295	12,616	43,089,765	267.98
Local Government	225	11,579	11,555	11,470	94,157,286	627.92
State Government	125	5,585	5,909	5,896	45,241,841	600.37
Other	627	3,061	3,100	3,120	21,897,306	544.47

West Central Local Workforce Development Area includes these counties: Clark, Conway, Garland, Hot Spring, Johnson, Montgomery, Perry, Pike, Pope, and Yell

TABLE 8. WORKFORCE INVESTMENT AREA SUMMARY

North American Industry Classification System - Industry Groups	Number of Employing Units	Employment			Total Earnings	Average Weekly Earnings
		Jan	Feb	Mar	Jan - Mar 2015	
WESTERN LOCAL WORKFORCE DEVELOPMENT AREA	6,510	101,459	101,509	101,619	\$920,602,472	\$697.49
Natural Resources & Mining	163	1,892	1,922	1,927	34,941,327	1,404.53
Trade, Transportation & Utilities	1,604	22,426	22,457	22,488	192,924,444	660.83
Wholesale Trade	392	3,796	3,806	3,801	44,724,059	905.11
Retail Trade	927	12,009	12,074	12,133	69,941,668	445.67
Transportation, Warehousing & Utilities	285	6,621	6,577	6,554	78,258,717	914.32
Financial Activities	680	3,579	3,591	3,566	38,967,949	837.61
Professional & Business Services	901	9,724	9,875	9,954	91,299,991	712.93
Education & Health Services	1,041	15,020	14,990	15,040	148,730,347	761.87
Leisure & Hospitality	535	8,502	8,579	8,684	28,856,031	258.45
Other Services	418	2,012	1,986	1,997	14,144,506	544.47
Local Government	151	9,309	9,310	9,300	80,133,068	662.35
State Government	76	2,825	2,853	2,859	24,019,568	649.29
Other	941	26,170	25,946	25,804	266,585,241	789.52

Western Local Workforce Development Area includes these counties: Crawford, Franklin, Logan, Polk, Scott, and Sebastian