

# Arkansas Covered Employment & Earnings



First Quarter  
2016



**COVERED EMPLOYMENT AND EARNINGS  
STATE OF ARKANSAS  
FIRST QUARTER 2016**

**ASA HUTCHINSON, GOVERNOR  
STATE OF ARKANSAS**

**DARYL BASSETT, DIRECTOR  
DEPARTMENT OF WORKFORCE SERVICES**

**PUBLISHED BY  
LABOR MARKET INFORMATION  
BUREAU OF LABOR STATISTICS PROGRAMS  
POST OFFICE BOX 2981  
LITTLE ROCK, ARKANSAS 72203-2981  
SUSAN PRICE, BLS PROGRAMS MANAGER  
TELEPHONE (501) 682-3103**

**STATE OF ARKANSAS WEBPAGE: <http://www.arkansas.gov>**

**DEPARTMENT OF WORKFORCE SERVICES WEBPAGE: <http://www.arkansas.gov/esd/>**

**WEBPAGE FOR LABOR MARKET INFORMATION: <http://www.discover.arkansas.gov>**

**RELEASED: DECEMBER 2016**



## TABLE OF CONTENTS

DESCRIPTION OF DATA	PAGE
Description and Classification of Data	1
Definition of Covered Employment and Earnings	2
Significant Developments During First Quarter 2016	3

### LIST OF GRAPHS AND TABLES

Graph 1	Total Covered Employment for Selected Years, Arkansas	7
Graph 2	Total Covered Earnings, by Calendar Quarter for Selected Years, Arkansas	8
Table 1	Quarterly Comparison of Covered Employment and Wages, by Industry	5
Table 2	Total Covered Employment in Arkansas, 2009 – 2016	6
Table 3	Total Covered Earnings, 2009 – 2016	9
Table 4	Total Taxable Earnings, 2009 – 2016	10
Table 5	State Summary – Employment and Total Earnings, by Industry, First Quarter 2016	11
Table 6	County Summary – Employment and Total Earnings, by Industry, First Quarter 2016	22
Table 7	Federal Government Employment and Total Earnings in Arkansas, First Quarter 2016	60
Table 8	Local Workforce Development Area – Employment and Total Earnings, by Industry, First Quarter 2016	61



EMPLOYMENT AND EARNINGS  
UNDER THE ARKANSAS EMPLOYMENT SECURITY LAW  
FIRST QUARTER 2016

**DESCRIPTION AND CLASSIFICATION OF DATA**

This publication contains covered employment and payroll data by industry and county for the First Quarter 2016 and a record for total covered employment by month, quarterly payroll data, average weekly earnings, and total taxable earnings for 2009 through 2016. These data are compiled from quarterly contributions and wage reports submitted by employers subject to the Arkansas Employment Security Law.

Employment data have been tabulated for each month of the quarter by industry under the **North American Industry Classification System** (NAICS) by state, county, and workforce area. Payroll data represent the total wages paid during the quarter and are classified by industry for the state and by publishable industry groups for each county and workforce area.

Due to industry classification revisions, previously published data will not always be comparable with current data. For this reason, comparisons should not be made between the same industries under different revisions. For more information, visit the NAICS home page at <http://www.census.gov/naics>.

Industry Classification Revisions

- SIC (Standard Industrial Classification) 1987 to NAICS 2002
- NAICS 2002 to NAICS 2007
- NAICS 2007 to NAICS 2012

The tabulation of this data is a joint effort in conjunction with the United States Bureau of Labor Statistics. Data included in this publication are subject to revisions. Revisions are typically reflected in the Annual Covered Employment and Earnings publication.

## **DEFINITION OF COVERED EMPLOYMENT AND EARNINGS**

Covered Employment is the total number of workers employed by establishments subject to the Arkansas Employment Security Law that worked or received pay for the payroll period including the 12<sup>th</sup> of the month. Earnings include all wages paid to any covered employee by their employer including salaries, bonuses, commissions, fees, fringe benefits, sick pay made directly to employees or dependents, deferred compensation, and reported tips. These wages include both taxable and nontaxable wages. Only the first \$12,000 paid to each worker by an employer in the calendar year is taxable under the Arkansas Employment Security Law.

An Arkansas state unemployment insurance account is required of any entity meeting the definition of an employer. As described by Arkansas Department of Workforce Services Law, the definition of an employer includes, but is not limited to, a sole proprietorship, partnership, corporation, associations, trust, estate, and receiver or trustee in bankruptcy. The entity must employ one or more individuals for ten or more days in a calendar year, whether or not the days are consecutive.

Currently excluded from coverage is employment covered by the Railroad Unemployment Insurance Act, some domestic service workers, employees of small agricultural establishments, self-employed workers, unpaid family workers, insurance and real estate agents paid only on a commission basis, and employees of churches and religious organizations except separately incorporated schools.

Civilian federal workers are covered by Unemployment Compensation for Federal Employees (UCFE).

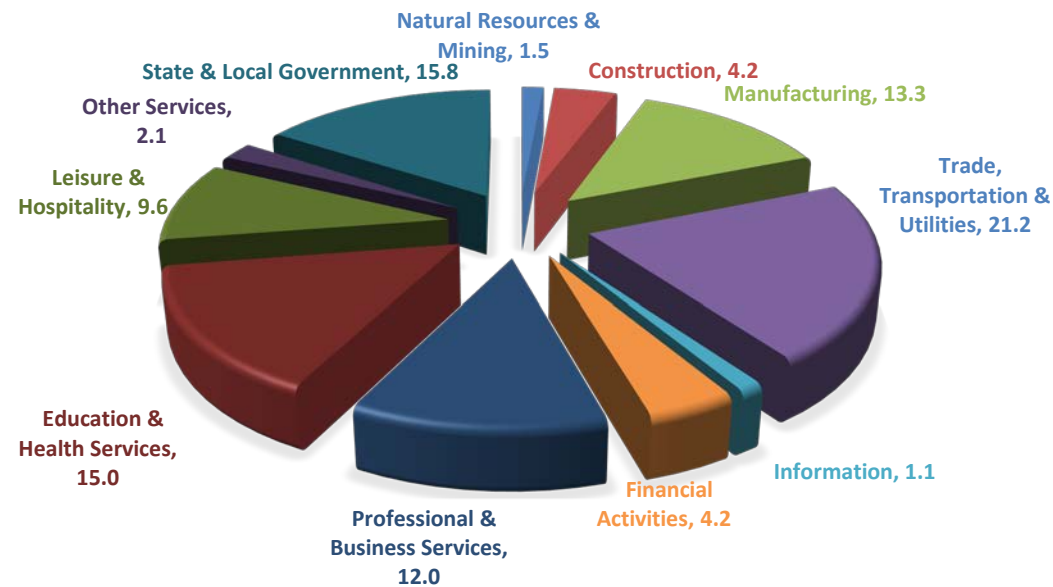


## SIGNIFICANT DEVELOPMENTS DURING FIRST QUARTER 2016

### AVERAGE EMPLOYMENT CHANGES

Covered employment averaged 1,162,325 during the First Quarter 2016 (refer to Table 1), a decrease of 15,276 (-1.3%) from the previous quarter and an increase of 19,688 (1.7%) from the average recorded one year ago. The over-the-year comparison is more significant when used as an economic indicator and allows for seasonal factors that appear when comparing over-the-quarter data to be disregarded.

#### Average Covered Employment by NAICS



### EMPLOYMENT CHANGES FROM FOURTH QUARTER 2015

Compared to Fourth Quarter 2015, covered employment declined in eight major industry sectors. Trade, Transportation & Utilities reported the largest drop (-6,516), with the majority of the decrease in Retail Trade, due to the end of the holiday season. Professional and Business Services lost 2,841 jobs, all of the losses occurred in Administrative & Waste Services. This sector includes Employment Services. Construction declined by 2,256, which can be attributed to the colder weather. Other losses occurred in State and Local Government (-1,356), Natural Resources and Mining (-1,163), Leisure and Hospitality (-1,100), Education & Health Services (-507), and Manufacturing (-134). Minor gains were reported in Financial Activities (342), Other Services (245), and Information (10).

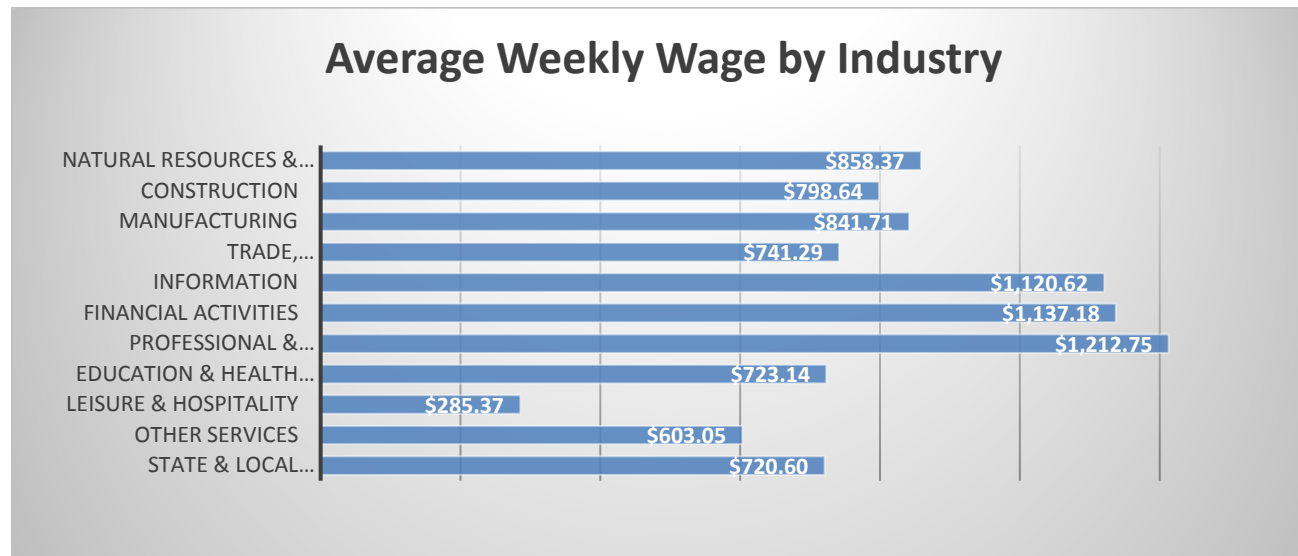
## EMPLOYMENT CHANGES FROM FIRST QUARTER 2015 (QUARTER YEAR AGO COMPARISON)

Over-the-year gains were recorded in eight industry groups (refer to Table 1). The largest gains occurred in Leisure & Hospitality (4,940), Education & Health Services (4,811), and Professional & Business Services (4,743). The most significant losses occurred in Natural Resources & Mining (-1,779) Manufacturing (-1,517), and State & Local Government (-491).

## COVERED WAGES

Wages paid to covered workers totaled \$11,847,506,815 for the First Quarter 2016 (refer to Table 1), for an average weekly wage of \$784.07 (refer to Table 5). Benton County workers recorded the highest average weekly wage (\$1,266.87), and employees in Newton County reported the lowest (\$422.44) (refer to Table 6).

The Professional & Business Services industry recorded the highest average weekly wage for the State of Arkansas (\$1,212.75). The Leisure & Hospitality sector recorded the lowest (\$285.37) (refer to Table 5).



**TABLE 1. QUARTERLY COMPARISON OF COVERED EMPLOYMENT AND WAGES, BY INDUSTRY**

North American Industry Classification System - Industry Groups	Number of Employing Units	Monthly Employment Average	Percent of Total	Net Change From:		Total Wages Paid Jan - Mar 2016	Percent of Total
				Oct - Dec 2015	Jan - Mar 2015		
<b>TOTAL</b>	<b>87,548</b>	<b>1,162,325</b>	<b>100</b>	<b>-15,276</b>	<b>19,688</b>	<b>\$11,847,506,815</b>	<b>100</b>
<b>Natural Resources &amp; Mining</b>	2,619	16,867	1.5	-1,163	-1,779	188,215,433	1.6
Agriculture, Forestry, Fishing & Hunting	2,121	12,111	1.0	-541	33	105,419,722	0.9
Mining	498	4,756	0.4	-622	-1,812	82,795,711	0.7
<b>Construction</b>	6,733	48,757	4.2	-2,256	2,640	506,216,593	4.3
<b>Manufacturing</b>	2,977	154,225	13.3	-134	-1,517	1,687,558,115	14.2
<b>Trade, Transportation &amp; Utilities</b>	21,586	246,643	21.2	-6,516	3,997	2,376,841,847	20.1
Wholesale Trade	7,092	46,093	4.0	-1,471	-571	769,387,262	6.5
Retail Trade	11,157	140,327	12.1	-4,223	3,637	872,475,771	7.4
Transportation & Warehousing	2,903	52,452	4.5	-658	1,026	557,403,463	4.7
Utilities	434	7,771	0.7	-164	-95	177,575,351	1.5
<b>Information</b>	1,078	13,317	1.1	10	62	193,997,214	1.6
<b>Financial Activities</b>	8,279	49,130	4.2	342	1,493	726,303,093	6.1
Finance & Insurance	4,925	36,084	3.1	542	1,303	611,476,970	5.2
Real Estate & Rental & Leasing	3,354	13,046	1.1	-200	190	114,826,123	1.0
<b>Professional &amp; Business Services</b>	13,891	139,888	12.0	-2,841	4,743	2,205,427,408	18.6
Professional & Technical Services	8,771	42,949	3.7	1,249	1,286	583,000,711	4.9
Management of Companies & Enterprises	530	34,355	3.0	43	2,020	1,218,289,455	10.3
Administrative & Waste Services	4,590	62,584	5.4	-4,133	1,437	404,137,242	3.4
<b>Education &amp; Health Services</b>	15,047	174,563	15.0	-507	4,811	1,641,041,156	13.9
Educational Services	802	11,118	1.0	-340	220	93,675,973	0.8
Health Care & Social Assistance	14,245	163,445	14.1	-167	4,590	1,547,365,183	13.1
<b>Leisure &amp; Hospitality</b>	6,877	111,140	9.6	-1,100	4,940	412,305,484	3.5
Arts, Entertainment & Recreation	959	9,872	0.8	312	537	47,866,380	0.4
Accommodation & Food Services	5,918	101,268	8.7	-1,413	4,403	364,439,104	3.1
<b>Other Services</b>	5,375	24,203	2.1	245	790	189,739,256	1.6
<b>State &amp; Local Government</b>	3,086	183,593	15.8	-1,356	-491	1,719,861,216	14.5
Local Government	1,947	114,249	9.8	-122	801	986,420,452	8.3
State Government	1,139	69,344	6.0	-1,234	-1,292	733,440,764	6.2
<b>Nonclassifiable Establishments</b>	0	0	0.0	0	0	0	0.0

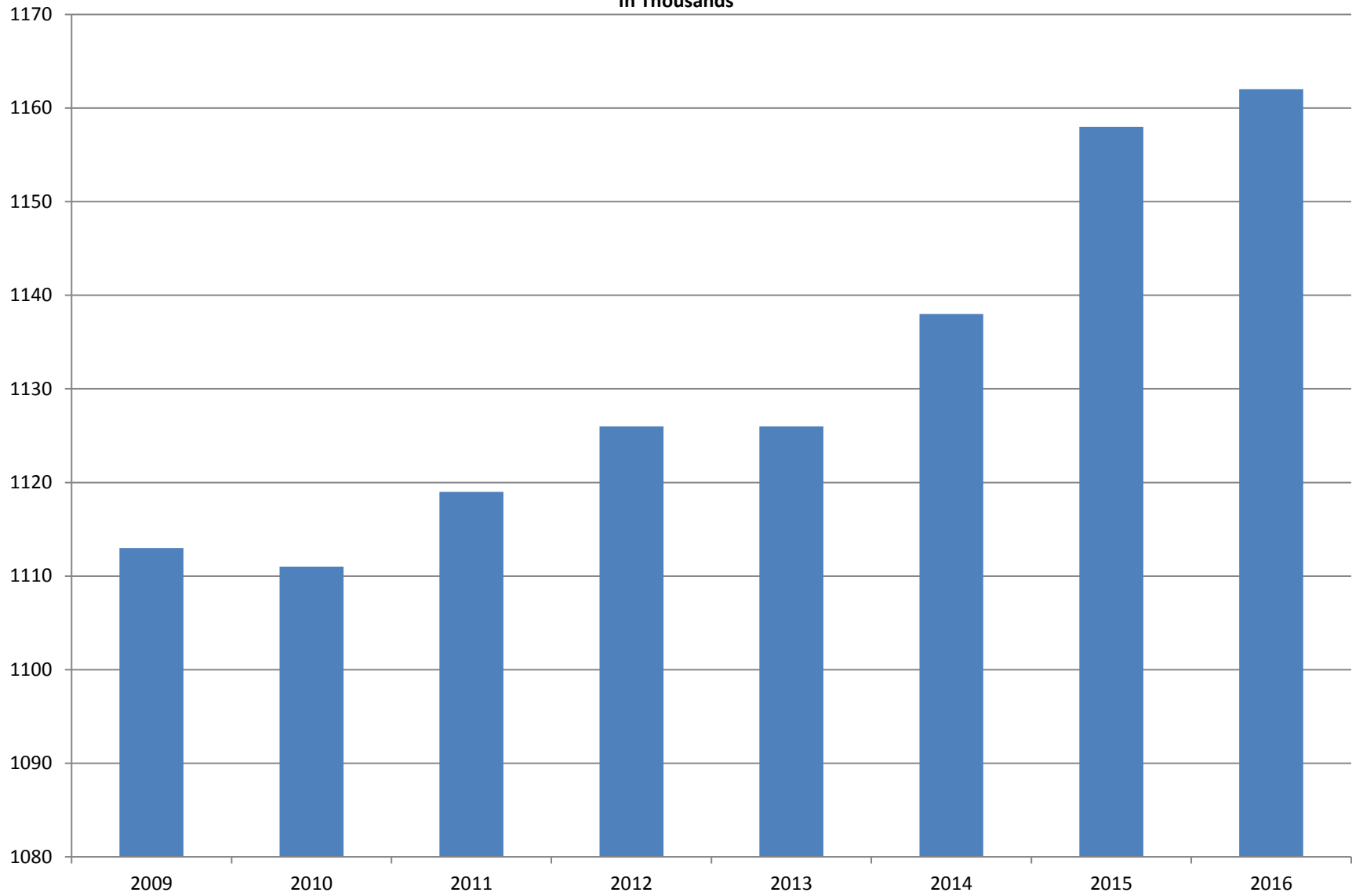
Note: Items do not necessarily add to total because of rounding. Because of industry code changes between years, substantial employment and wage shifts among industries are anticipated.

**TABLE 2. TOTAL COVERED EMPLOYMENT IN ARKANSAS**

<b>PERIOD</b>	<b>2009</b>	<b>2010</b>	<b>2011</b>	<b>2012</b>	<b>2013</b>	<b>2014</b>	<b>2015</b>	<b>2016</b>
<b>AVERAGE</b>	<b>1,112,591</b>	<b>1,110,947</b>	<b>1,118,639</b>	<b>1,126,171</b>	<b>1,125,890</b>	<b>1,137,486</b>	<b>1,157,724</b>	<b>1,162,325</b>
January	1,119,299	1,089,984	1,098,349	1,113,274	1,112,991	1,114,412	1,135,999	1,153,115
February	1,119,476	1,091,282	1,098,445	1,119,319	1,121,492	1,122,905	1,145,107	1,162,987
March	1,124,386	1,106,198	1,113,061	1,131,123	1,129,100	1,132,106	1,146,804	1,170,873
April	1,123,383	1,115,341	1,129,635	1,136,608	1,134,734	1,140,788	1,158,513	N/A
May	1,122,322	1,123,250	1,126,371	1,142,985	1,138,383	1,149,046	1,167,423	N/A
June	1,117,884	1,130,164	1,123,412	1,136,699	1,130,402	1,144,876	1,164,266	N/A
July	1,071,048	1,073,743	1,080,937	1,078,836	1,083,849	1,096,675	1,119,869	N/A
August	1,093,192	1,099,795	1,106,262	1,108,552	1,109,759	1,125,162	1,148,725	N/A
September	1,116,580	1,124,281	1,132,779	1,134,829	1,135,673	1,150,545	1,173,175	N/A
October	1,113,157	1,125,073	1,138,395	1,135,677	1,138,312	1,153,684	1,174,144	N/A
November	1,115,443	1,126,781	1,138,543	1,137,411	1,141,035	1,158,579	1,177,834	N/A
December	1,114,919	1,125,466	1,137,474	1,138,742	1,134,955	1,161,056	1,180,826	N/A

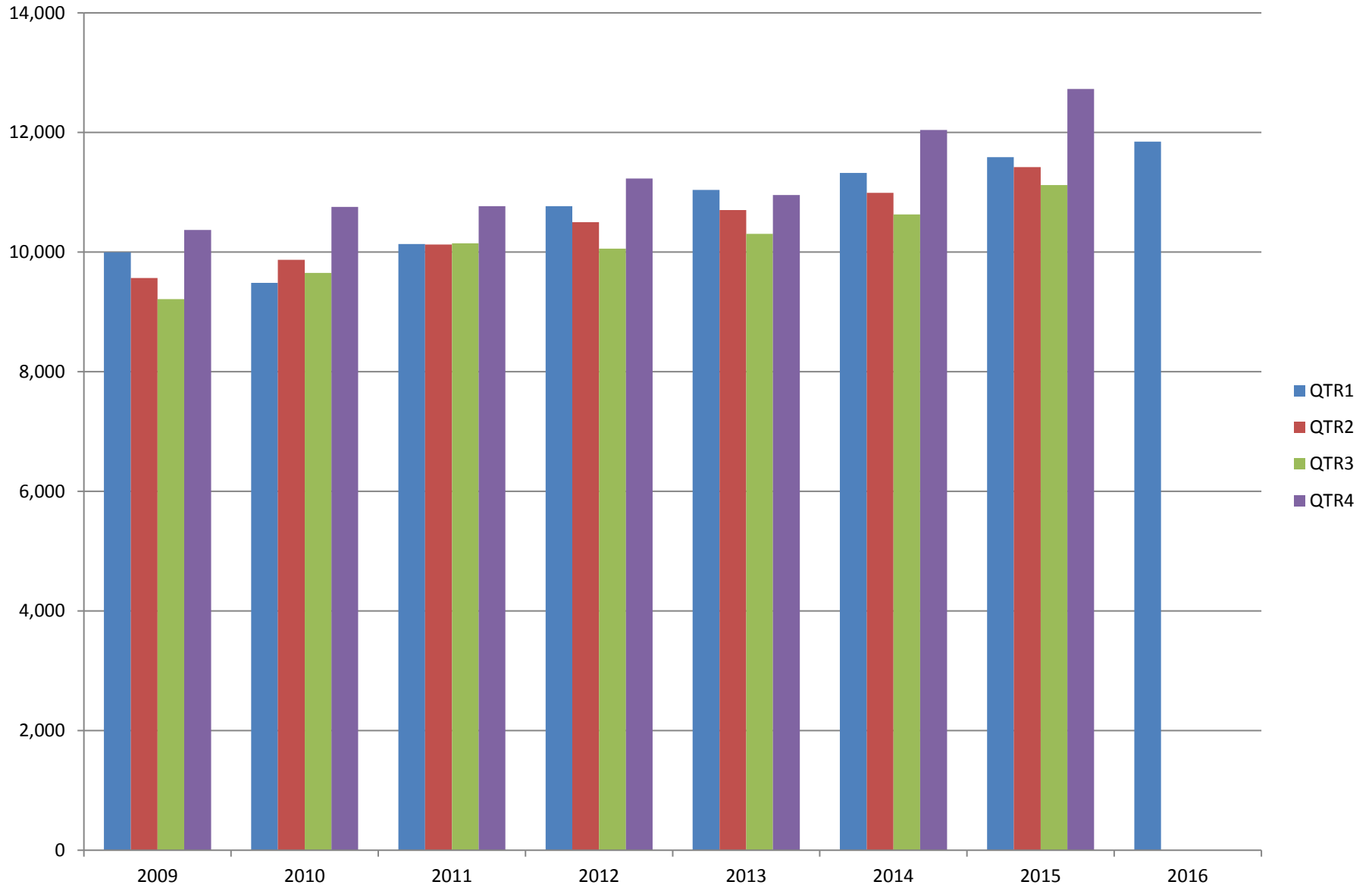
# AVERAGE TOTAL COVERED EMPLOYMENT

In Thousands



# TOTAL COVERED EARNINGS BY CALENDAR YEAR

In Thousands



**TABLE 3. TOTAL COVERED EARNINGS 2009 - 2016**

<b>PERIOD</b>	<b>2009</b>	<b>2010</b>	<b>2011</b>	<b>2012</b>
<b>TOTAL</b>	<b>\$39,149,476,305</b>	<b>\$39,769,504,992</b>	<b>\$41,177,659,236</b>	<b>\$42,551,238,929</b>
January - March	9,998,452,028	9,486,245,580	10,134,035,254	10,766,175,449
April - June	9,566,968,853	9,873,489,653	10,128,274,611	10,494,369,042
July - September	9,213,797,140	9,653,588,807	10,147,287,431	10,053,294,410
October - December	10,370,258,284	10,756,180,952	10,768,061,940	11,237,400,028
<b>Average Weekly Earnings</b>	<b>\$676.69</b>	<b>\$688.42</b>	<b>\$707.89</b>	<b>\$726.62</b>

<b>PERIOD</b>	<b>2013</b>	<b>2014</b>	<b>2015</b>	<b>2016</b>
<b>TOTAL</b>	<b>\$43,371,086,461</b>	<b>\$44,980,520,034</b>	<b>\$46,858,013,612</b>	<b>\$11,847,506,815</b>
January - March	11,050,678,946	11,321,422,241	11,588,392,768	11,847,506,815
April - June	10,692,826,528	10,991,760,061	11,421,560,368	N/A
July - September	10,322,652,747	10,619,889,280	11,121,401,679	N/A
October - December	11,304,928,240	12,047,448,452	12,726,658,797	N/A
<b>Average Weekly Earnings</b>	<b>\$740.80</b>	<b>\$760.46</b>	<b>\$778.35</b>	<b>\$784.07</b>

**TABLE 4. TOTAL TAXABLE EARNINGS, 2009 - 2016**

<b>PERIOD</b>	<b>2009</b>	<b>2010</b>	<b>2011</b>	<b>2012</b>
<b>TOTAL</b>	<b>9,787,660,886</b>	<b>11,332,118,456</b>	<b>11,479,396,226</b>	<b>11,624,348,048</b>
January - March	5,423,705,265	5,607,134,758	5,828,877,821	6,167,036,199
April - June	2,293,670,854	2,977,100,591	2,910,604,359	2,838,154,846
July - September	1,165,280,065	1,577,067,770	1,601,382,146	1,494,712,584
October - December	905,004,702	1,170,815,337	1,138,531,900	1,124,444,419

<b>PERIOD</b>	<b>2013</b>	<b>2014</b>	<b>2015</b>	<b>2016</b>
<b>TOTAL</b>	<b>11,644,747,978</b>	<b>11,919,662,224</b>	<b>12,280,544,995</b>	<b>6,607,245,841</b>
January - March	6,184,735,653	6,288,682,396	6,387,946,312	6,607,245,841
April - June	2,805,431,293	2,831,013,392	2,919,500,476	N/A
July - September	1,506,497,129	1,552,243,963	1,645,440,596	N/A
October - December	1,148,083,903	1,247,722,473	1,327,657,611	N/A



TABLE 5. STATEWIDE SUMMARY

North American Industry Classification System - Industry Groups		Number of Employing Units	Employment			Total Earnings Jan - Mar 2016	Average Weekly Earnings
			Jan	Feb	Mar		
<b>TOTAL, ALL INDUSTRIES</b>		<b>87,548</b>	<b>1,153,115</b>	<b>1,162,987</b>	<b>1,170,873</b>	<b>\$11,847,506,815</b>	<b>\$784.07</b>
<b>NATURAL RESOURCES &amp; MINING</b>		<b>2,619</b>	<b>16,676</b>	<b>16,827</b>	<b>17,098</b>	<b>\$188,215,433</b>	<b>\$858.37</b>
<b>11</b>	<b>AGRICULTURE, FORESTRY, FISHING &amp; HUNTING</b>	<b>2,121</b>	<b>11,765</b>	<b>12,075</b>	<b>12,492</b>	<b>\$105,419,722</b>	<b>\$669.59</b>
<b>111</b>	<b>CROP PRODUCTION</b>	<b>952</b>	<b>3,662</b>	<b>3,939</b>	<b>4,133</b>	<b>\$25,295,958</b>	<b>\$497.49</b>
1111	Oilseed & Grain Farming	682	2,478	2,637	2,734	17,573,980	516.69
1112	Vegetable & Melon Farming	29	175	187	195	917,999	380.33
1113	Fruit & Tree Nut Farming	14	32	35	36	196,818	440.97
1114	Greenhouse & Nursery Production	43	329	384	454	2,528,345	499.97
1119	Other Crop Farming	184	648	696	714	4,078,816	457.37
<b>112</b>	<b>ANIMAL PRODUCTION &amp; AQUACULTURE</b>	<b>318</b>	<b>3,027</b>	<b>3,077</b>	<b>3,143</b>	<b>\$31,253,776</b>	<b>\$779.97</b>
1121	Cattle Ranching & Farming	124	411	418	427	2,802,661	514.94
1122	Hog & Pig Farming	13	134	136	133	1,411,124	808.05
1123	Poultry & Egg Production	110	2,113	2,118	2,132	24,073,461	873.08
1125	Animal Aquaculture	50	315	349	395	2,609,120	568.56
	Other	21	54	56	56	357,410	496.86
<b>115</b>	<b>SUPPORT ACTIVITIES FOR AGRICULTURE &amp; FORESTRY</b>	<b>426</b>	<b>2,696</b>	<b>2,680</b>	<b>2,897</b>	<b>\$26,663,381</b>	<b>\$743.76</b>
1151	Support Activities for Crop Production	295	1,194	1,216	1,319	13,511,389	836.15
1152	Support Activities for Animal Production	63	704	696	709	5,261,952	575.77
1153	Support Activities for Forestry	68	798	768	869	7,890,040	747.75
	<b>OTHER</b>	<b>425</b>	<b>2,380</b>	<b>2,379</b>	<b>2,319</b>	<b>\$22,206,607</b>	<b>\$724.02</b>
<b>21</b>	<b>MINING</b>	<b>498</b>	<b>4,911</b>	<b>4,752</b>	<b>4,606</b>	<b>\$82,795,711</b>	<b>\$1,339.04</b>
<b>211</b>	<b>OIL &amp; GAS EXTRACTION</b>	<b>83</b>	<b>1,177</b>	<b>1,153</b>	<b>1,140</b>	<b>\$26,891,317</b>	<b>\$1,788.38</b>
<b>212</b>	<b>MINING (EXCEPT OIL &amp; GAS)</b>	<b>105</b>	<b>1,564</b>	<b>1,573</b>	<b>1,557</b>	<b>\$22,070,184</b>	<b>\$1,085.03</b>
<b>213</b>	<b>SUPPORT ACTIVITIES FOR MINING</b>	<b>310</b>	<b>2,170</b>	<b>2,026</b>	<b>1,909</b>	<b>\$33,834,210</b>	<b>\$1,278.93</b>

TABLE 5. STATEWIDE SUMMARY

North American Industry Classification System - Industry Groups		Number of Employing Units	Employment			Total Earnings	Average Weekly Earnings
			Jan	Feb	Mar	Jan - Mar 2016	
<b>CONSTRUCTION</b>		<b>6,733</b>	<b>48,363</b>	<b>48,686</b>	<b>49,223</b>	<b>\$506,216,593</b>	<b>\$798.64</b>
<b>236</b>	<b>CONSTRUCTION OF BUILDINGS</b>	<b>1,683</b>	<b>10,440</b>	<b>10,284</b>	<b>10,216</b>	<b>\$117,955,296</b>	<b>\$879.78</b>
2361	Residential Building Construction	1,109	2,939	2,996	3,033	27,625,274	710.87
2362	Nonresidential Building Construction	574	7,501	7,288	7,183	90,330,022	948.73
<b>237</b>	<b>HEAVY &amp; CIVIL ENGINEERING CONSTRUCTION</b>	<b>719</b>	<b>7,342</b>	<b>7,377</b>	<b>7,525</b>	<b>\$78,263,552</b>	<b>\$811.94</b>
2371	Utility System Construction	399	4,171	4,134	4,145	43,022,404	797.45
2372	Land Subdivision	52	85	86	85	759,553	684.69
2373	Highway, Street & Bridge Construction	182	2,550	2,606	2,686	28,218,319	830.39
2379	Other Heavy Construction	86	536	551	609	6,263,276	852.22
<b>238</b>	<b>SPECIALTY TRADE CONTRACTORS</b>	<b>4,331</b>	<b>30,581</b>	<b>31,025</b>	<b>31,482</b>	<b>\$309,997,745</b>	<b>\$768.50</b>
2381	Building Foundation & Exterior Contractors	808	5,766	5,793	5,906	54,931,222	725.82
2382	Building Equipment Contractors	2,063	16,337	16,491	16,631	178,819,124	834.35
2383	Building Finishing Contractors	715	4,143	4,303	4,480	39,486,355	704.95
2389	Other Specialty Trade Contractors	745	4,335	4,438	4,465	36,761,044	640.83
<b>MANUFACTURING</b>		<b>2,977</b>	<b>154,299</b>	<b>154,313</b>	<b>154,062</b>	<b>\$1,687,558,115</b>	<b>\$841.71</b>
<b>311</b>	<b>FOOD MANUFACTURING</b>	<b>274</b>	<b>43,888</b>	<b>44,026</b>	<b>44,006</b>	<b>\$374,685,125</b>	<b>\$655.44</b>
3111	Animal Food Manufacturing	43	1,506	1,524	1,524	21,005,959	1,064.46
3112	Grain & Oilseed Milling	34	2,548	2,577	2,585	27,074,645	810.38
3114	Fruit, Vegetable & Specialty Food	19	4,166	4,161	4,048	43,698,012	814.88
3115	Dairy Product Manufacturing	8	526	532	535	5,791,542	838.99
3116	Animal Slaughtering & Processing	79	29,538	29,625	29,601	216,791,442	563.62
3118	Bakeries & Tortilla Manufacturing	61	3,478	3,490	3,507	35,844,166	789.66
3119	Other Food Manufacturing	22	2,063	2,065	2,143	24,222,735	891.38
	Other	8	63	52	63	256,624	332.70
<b>312</b>	<b>BEVERAGE &amp; TOBACCO PRODUCT MANUFACTURING</b>	<b>52</b>	<b>1,339</b>	<b>1,346</b>	<b>1,342</b>	<b>\$16,261,134</b>	<b>\$931.85</b>
<b>313</b>	<b>TEXTILE MILLS</b>	<b>9</b>	<b>101</b>	<b>100</b>	<b>101</b>	<b>\$1,498,769</b>	<b>\$1,145.26</b>
<b>314</b>	<b>TEXTILE PRODUCT MILLS</b>	<b>46</b>	<b>955</b>	<b>948</b>	<b>957</b>	<b>\$11,171,219</b>	<b>\$901.39</b>
3141	Textile Furnishing Mills	9	37	36	35	478,559	1,022.56
3149	Other Textile Product Mills	37	918	912	922	10,692,660	896.63
<b>315</b>	<b>APPAREL MANUFACTURING</b>	<b>18</b>	<b>894</b>	<b>930</b>	<b>918</b>	<b>\$5,757,272</b>	<b>\$484.54</b>
3151	Apparel Knitting Mills	3	672	672	676	4,425,817	505.62
3152	Cut & Sew Apparel Manufacturing	12	131	169	153	885,707	451.20
3159	Apparel Accessories, Other Apparel Manufacturing	3	91	89	89	445,748	382.40

TABLE 5. STATEWIDE SUMMARY

North American Industry Classification System - Industry Groups		Number of Employing Units	Employment			Total Earnings	Average Weekly Earnings
			Jan	Feb	Mar	Jan - Mar 2016	
<b>316</b>	<b>LEATHER &amp; ALLIED PRODUCT MANUFACTURING</b>	<b>15</b>	<b>1,093</b>	<b>1,091</b>	<b>1,127</b>	<b>\$6,603,618</b>	<b>\$460.26</b>
3162	Footwear Manufacturing	6	896	898	932	5,321,271	\$450.47
3169	Other Leather & Allied Product Manufacturing	9	197	193	195	1,282,347	\$505.86
<b>321</b>	<b>WOOD PRODUCT MANUFACTURING</b>	<b>328</b>	<b>9,286</b>	<b>9,386</b>	<b>9,404</b>	<b>\$91,737,948</b>	<b>\$754.04</b>
3211	Sawmills & Wood Preservation	151	4,435	4,502	4,498	45,911,598	788.61
3212	Veneer & Engineered Wood Products	45	1,848	1,858	1,864	21,509,509	891.15
3219	Other Wood Product Manufacturing	132	3,003	3,026	3,042	24,316,841	618.63
<b>322</b>	<b>PAPER MANUFACTURING</b>	<b>73</b>	<b>9,666</b>	<b>9,626</b>	<b>9,589</b>	<b>\$157,620,759</b>	<b>\$1,259.44</b>
3221	Pulp, Paper & Paperboard Mills	12	3,976	3,969	3,913	87,675,595	1,706.26
3222	Converted Paper Product Manufacturing	61	5,690	5,657	5,676	69,945,164	948.20
<b>323</b>	<b>PRINTING &amp; RELATED SUPPORT ACTIVITIES</b>	<b>247</b>	<b>4,034</b>	<b>4,030</b>	<b>4,023</b>	<b>\$38,757,697</b>	<b>\$739.98</b>
<b>324</b>	<b>PETROLEUM &amp; COAL PRODUCTS MANUFACTURING</b>	<b>18</b>	<b>1,140</b>	<b>1,142</b>	<b>1,140</b>	<b>\$18,952,250</b>	<b>\$1,278.08</b>
<b>325</b>	<b>CHEMICAL MANUFACTURING</b>	<b>116</b>	<b>5,104</b>	<b>5,050</b>	<b>5,032</b>	<b>\$76,632,711</b>	<b>\$1,164.52</b>
3251	Basic Chemical Manufacturing	30	1,868	1,854	1,839	32,874,178	1,364.21
3252	Resin, Rubber & Artificial Fibers	7	299	290	296	4,422,787	1,153.27
3253	Agricultural Chemical Manufacturing	15	419	421	425	7,456,636	1,360.29
3254	Pharmaceutical & Medicine Manufacturing	16	297	301	301	3,923,058	1,007.03
3255	Paint, Coating & Adhesive Manufacturing	9	269	270	270	3,950,232	1,126.81
3256	Soap, Cleaning Compound, & Toilet Preparation Manufacturing	16	1,189	1,183	1,182	14,464,934	939.24
3259	Other Chemical Preparation Manufacturing	23	763	731	719	9,540,886	994.91
<b>326</b>	<b>PLASTICS &amp; RUBBER PRODUCTS MANUFACTURING</b>	<b>130</b>	<b>11,009</b>	<b>11,050</b>	<b>11,030</b>	<b>\$129,342,474</b>	<b>\$902.06</b>
3261	Plastics Product Manufacturing	100	6,765	6,772	6,774	68,157,277	774.39
3262	Rubber Product Manufacturing	30	4,244	4,278	4,256	61,185,197	1,105.00
<b>327</b>	<b>NONMETALLIC MINERAL PRODUCT MANUFACTURING</b>	<b>234</b>	<b>3,571</b>	<b>3,575</b>	<b>3,555</b>	<b>\$39,847,401</b>	<b>\$859.32</b>
3271	Clay Product & Refractory Manufacturing	14	406	403	397	3,807,312	728.53
3272	Glass & Glass Product Manufacturing	10	352	351	353	3,518,100	768.82
3273	Cement & Concrete Product Manufacturing	171	2,086	2,105	2,125	23,413,184	855.45
3274	Lime & Gypsum Product Manufacturing	3	275	275	278	4,118,272	1,147.79
3279	Other Nonmetallic Mineral Products Manufacturing	36	452	441	402	4,990,533	889.31
<b>331</b>	<b>PRIMARY METAL MANUFACTURING</b>	<b>75</b>	<b>8,472</b>	<b>8,327</b>	<b>8,233</b>	<b>\$129,872,765</b>	<b>\$1,197.29</b>
3311	Iron & Steel Mills & Ferroalloys	10	2,545	2,543	2,549	59,648,036	1,802.40
3312	Purchased Steel Product Manufacturing	21	2,291	2,183	2,138	27,711,619	967.18
3313	Alumina & Aluminum Production	18	1,264	1,248	1,239	16,596,096	1,021.03
3314	Other Nonferrous Metal Production	8	462	455	452	5,113,702	862.01
3315	Foundries	18	1,910	1,898	1,855	20,803,312	847.74

TABLE 5. STATEWIDE SUMMARY

North American Industry Classification System - Industry Groups		Number of Employing Units	Employment			Total Earnings	Average Weekly Earnings
			Jan	Feb	Mar	Jan - Mar 2016	
<b>332</b>	<b>FABRICATED METAL PRODUCT MANUFACTURING</b>	<b>530</b>	<b>14,953</b>	<b>14,921</b>	<b>14,924</b>	<b>\$180,972,790</b>	<b>\$932.25</b>
3321	Forging & Stamping	11	392	384	374	3,590,065	720.41
3322	Cutlery & Hand Tool Manufacturing	11	602	607	600	6,380,980	814.00
3323	Architectural & Structural Metals	152	4,176	4,180	4,209	55,419,372	1,017.83
3324	Boilers, Tanks & Shipping Containers	17	733	695	692	8,605,611	936.75
3325	Hardware Manufacturing	6	279	279	281	3,250,157	893.96
3326	Spring & Wire Product Manufacturing	13	393	390	381	3,994,902	792.01
3327	Machine Shops & Threaded Products	211	1,887	1,867	1,869	18,178,211	746.04
3328	Coating, Engraving & Heat Treating Metals	38	674	656	653	5,947,714	692.16
3329	Other Fabricated Metal Product Manufacturing	71	5,817	5,863	5,865	75,605,778	994.44
<b>333</b>	<b>MACHINERY MANUFACTURING</b>	<b>211</b>	<b>11,023</b>	<b>11,080</b>	<b>11,075</b>	<b>\$118,780,624</b>	<b>\$826.18</b>
3331	Agriculture, Construction & Mining Machinery	41	2,728	2,762	2,753	24,825,397	695.01
3332	Industrial Machinery Manufacturing	21	601	609	610	7,960,531	1,009.37
3333	Commercial & Service Industry Machinery	22	733	742	731	9,541,382	998.12
3334	HVAC & Commercial Refrigeration Equipment	22	3,062	3,031	3,045	33,404,973	843.60
3335	Metalworking Machinery Manufacturing	59	1,035	1,040	1,031	10,381,501	771.32
3336	Turbine & Power Transmission Equipment Manufacturing	5	654	665	670	8,006,747	928.96
3339	Other General Purpose Machinery Manufacturing	41	2,210	2,231	2,235	24,660,093	852.43
<b>334</b>	<b>COMPUTER &amp; ELECTRONIC PRODUCT MANUFACTURING</b>	<b>54</b>	<b>2,310</b>	<b>2,301</b>	<b>2,291</b>	<b>\$26,517,568</b>	<b>\$886.62</b>
3343	Audio & Video Equipment Manufacturing	6	154	154	149	1,420,208	717.16
3344	Semiconductors & Electronic Components	25	1,627	1,621	1,619	18,007,936	853.85
3345	Navigational, Measuring, Electromedical, & Control Instr, Mfg Other	17 6	413 116	409 117	410 113	5,409,181 1,680,243	1,013.21 1,120.66
<b>335</b>	<b>ELECTRICAL EQUIPMENT &amp; APPLIANCES</b>	<b>56</b>	<b>5,007</b>	<b>4,998</b>	<b>5,037</b>	<b>\$60,289,811</b>	<b>\$924.95</b>
3351	Electric Lighting Equipment Manufacturing	11	359	361	377	3,738,927	\$786.54
3352	Household Appliance Manufacturing	5	44	43	42	646,143	\$1,155.89
3353	Electrical Equipment Manufacturing	22	3,253	3,240	3,250	39,509,836	935.82
3359	Other Electrical Equipment & Component Manufacturing	18	1,351	1,354	1,368	16,394,905	928.91
<b>336</b>	<b>TRANSPORTATION EQUIPMENT MANUFACTURING</b>	<b>142</b>	<b>13,531</b>	<b>13,519</b>	<b>13,476</b>	<b>\$142,741,147</b>	<b>\$812.82</b>
3362	Motor Vehicle Body & Trailer Manufacturing	33	1,830	1,842	1,844	16,523,642	691.29
3363	Motor Vehicle Parts Manufacturing	44	4,997	4,978	4,970	50,501,193	779.80
3364	Aerospace Product & Parts Manufacturing	28	3,392	3,390	3,432	45,822,406	1,035.29
3366	Ship & Boat Building Other	22 15	1,806 1,506	1,843 1,466	1,850 1,380	13,986,407 15,907,499	586.95 843.51
<b>337</b>	<b>FURNITURE &amp; RELATED PRODUCT MANUFACTURING</b>	<b>169</b>	<b>3,511</b>	<b>3,431</b>	<b>3,379</b>	<b>\$28,526,202</b>	<b>\$637.82</b>
3371	Household & Institutional Furniture	141	2,666	2,644	2,548	19,796,945	581.39
3372	Office Furniture & Fixtures Manufacturing	21	745	683	724	7,998,949	857.77
3379	Other Furniture Related Product Manufacturing	7	100	104	107	730,308	541.91
<b>339</b>	<b>MISCELLANEOUS MANUFACTURING</b>	<b>180</b>	<b>3,412</b>	<b>3,436</b>	<b>3,423</b>	<b>\$30,988,831</b>	<b>\$696.26</b>
3391	Medical Equipment & Supplies Manufacturing	69	1,696	1,710	1,696	17,938,830	811.39
3399	Other Miscellaneous Manufacturing	111	1,716	1,726	1,727	13,050,001	582.62

TABLE 5. STATEWIDE SUMMARY

North American Industry Classification System - Industry Groups		Number of Employing Units	Employment			Total Earnings Jan - Mar 2016	Average Weekly Earnings
			Jan	Feb	Mar		
<b>TRADE, TRANSPORTATION &amp; UTILITIES</b>		<b>21,586</b>	<b>246,421</b>	<b>245,962</b>	<b>247,547</b>	<b>\$2,376,841,847</b>	<b>\$741.29</b>
<b>42</b>	<b>WHOLESALE TRADE</b>	<b>7,092</b>	<b>45,811</b>	<b>46,124</b>	<b>46,344</b>	<b>\$769,387,262</b>	<b>\$1,284.00</b>
<b>423</b>	<b>MERCHANT WHOLESALERS, DURABLE GOODS</b>	<b>2,142</b>	<b>20,289</b>	<b>20,355</b>	<b>20,398</b>	<b>\$272,788,922</b>	<b>\$1,031.28</b>
4231	Motor Vehicle & Part Merchant Wholesalers	234	2,581	2,622	2,650	27,133,661	797.35
4232	Furniture & Furnishings Merchant Wholesalers	53	440	447	451	6,053,280	1,044.03
4233	Lumber & Supply Merchant Wholesalers	166	1,401	1,395	1,402	15,925,937	875.47
4234	Commercial Goods Merchant Wholesalers	297	2,378	2,399	2,410	43,194,331	1,386.94
4235	Metal & Mineral Merchant Wholesalers	52	852	856	863	10,733,724	963.44
4236	Appliances & Electronics Goods Merchant Wholesalers	199	1,868	1,883	1,889	33,581,632	1,374.04
4237	Hardware & Plumbing Merchant Wholesalers	224	2,313	2,317	2,306	31,076,638	1,033.96
4238	Machinery & Supply Merchant Wholesalers	700	6,641	6,648	6,642	85,116,416	985.51
4239	Miscellaneous Durable Goods Merchant Wholesalers	217	1,815	1,788	1,785	19,973,303	855.46
<b>424</b>	<b>MERCHANT WHOLESALERS, NONDURABLE GOODS</b>	<b>1,165</b>	<b>14,396</b>	<b>14,534</b>	<b>14,637</b>	<b>\$202,653,828</b>	<b>\$1,073.43</b>
4241	Paper & Paper Product Merchant Wholesalers	69	1,171	1,191	1,170	19,486,114	1,273.16
4242	Druggist' Goods Merchant Wholesalers	57	605	603	606	7,688,193	978.06
4243	Apparel & Piece Goods Merchant Wholesalers	40	599	595	612	7,393,508	944.74
4244	Grocery Product Merchant Wholesalers	286	4,288	4,285	4,333	73,924,562	1,321.83
4245	Farm Product & Raw Material Merchant Wholesalers	74	834	824	827	7,309,518	678.80
4246	Chemical Merchant Wholesalers	95	638	634	640	10,719,939	1,293.85
4247	Petroleum Merchant Wholesalers	140	1,309	1,282	1,275	14,996,902	895.19
4248	Alcoholic Beverage Merchant Wholesalers	42	1,584	1,592	1,591	20,938,720	1,013.64
4249	Miscellaneous Nondurable Goods Merchant Wholesaler	362	3,368	3,528	3,583	40,196,372	885.21
<b>425</b>	<b>ELECTRONIC MARKETS &amp; AGENTS &amp; BROKERS</b>	<b>3,785</b>	<b>11,126</b>	<b>11,235</b>	<b>11,309</b>	<b>\$293,944,512</b>	<b>\$2,014.65</b>
<b>44 - 45</b>	<b>RETAIL TRADE</b>	<b>11,157</b>	<b>140,323</b>	<b>139,803</b>	<b>140,855</b>	<b>\$872,475,771</b>	<b>\$478.27</b>
<b>441</b>	<b>MOTOR VEHICLE &amp; PARTS DEALERS</b>	<b>1,564</b>	<b>19,188</b>	<b>19,353</b>	<b>19,469</b>	<b>\$201,484,709</b>	<b>\$801.53</b>
4411	Automobile Dealers	630	11,840	11,964	11,951	145,121,904	936.64
4412	Other Motor Vehicle Dealers	169	1,539	1,564	1,629	15,107,156	736.74
4413	Automotive Parts, Accessories & Tire Stores	765	5,809	5,825	5,889	41,255,649	543.32
<b>442</b>	<b>FURNITURE &amp; HOME FURNISHINGS STORES</b>	<b>505</b>	<b>3,676</b>	<b>3,584</b>	<b>3,599</b>	<b>\$26,691,301</b>	<b>\$567.23</b>
4421	Furniture Stores	271	2,045	2,061	2,064	17,867,401	668.27
4422	Home Furnishings Stores	234	1,631	1,523	1,535	8,823,900	434.27
<b>443</b>	<b>ELECTRONICS &amp; APPLIANCE STORES</b>	<b>445</b>	<b>3,869</b>	<b>3,825</b>	<b>3,814</b>	<b>\$29,465,305</b>	<b>\$590.87</b>
<b>444</b>	<b>BUILDING MATERIAL &amp; GARDEN SUPPLY STORES</b>	<b>843</b>	<b>10,844</b>	<b>11,115</b>	<b>11,569</b>	<b>\$74,483,179</b>	<b>\$512.66</b>
4441	Building Material & Supplies Dealers	600	8,962	9,222	9,536	64,054,719	533.26
4442	Lawn & Garden Equipment & Supplies Stores	243	1,882	1,893	2,033	10,428,460	414.35

TABLE 5. STATEWIDE SUMMARY

North American Industry Classification System - Industry Groups		Number of Employing Units	Employment			Total Earnings	Average Weekly Earnings
			Jan	Feb	Mar	Jan - Mar 2016	
<b>445</b>	<b>FOOD &amp; BEVERAGE STORES</b>	<b>1,067</b>	<b>19,844</b>	<b>19,682</b>	<b>19,555</b>	<b>\$102,942,668</b>	<b>\$402.09</b>
4451	Grocery Stores	570	17,153	17,008	16,772	86,458,270	391.73
4452	Specialty Food Stores	148	911	933	1,039	7,514,418	601.49
4453	Beer, Wine & Liquor Stores	349	1,780	1,741	1,744	8,969,980	393.16
<b>446</b>	<b>HEALTH &amp; PERSONAL CARE STORES</b>	<b>993</b>	<b>8,398</b>	<b>8,475</b>	<b>8,419</b>	<b>\$73,406,570</b>	<b>\$669.78</b>
<b>447</b>	<b>GASOLINE STATIONS</b>	<b>1,592</b>	<b>12,126</b>	<b>12,169</b>	<b>12,321</b>	<b>\$50,981,239</b>	<b>\$321.30</b>
44711	Gasoline Stations with Convenience Stores	1,488	10,855	10,886	11,047	44,507,611	313.25
44719	Other Gasoline Stations	104	1,271	1,283	1,274	6,473,628	390.26
<b>448</b>	<b>CLOTHING &amp; CLOTHING ACCESSORIES STORES</b>	<b>1,094</b>	<b>8,987</b>	<b>8,728</b>	<b>8,804</b>	<b>\$34,394,443</b>	<b>\$299.30</b>
4481	Clothing Stores	813	7,013	6,761	6,826	23,573,664	264.08
4482	Shoe Stores	141	1,253	1,231	1,249	4,631,657	286.32
4483	Jewelry, Luggage & Leather Goods Stores	140	721	736	729	6,189,122	653.37
<b>451</b>	<b>SPORTING GOODS, HOBBY, BOOK &amp; MUSIC STORES</b>	<b>482</b>	<b>4,866</b>	<b>4,615</b>	<b>4,575</b>	<b>\$21,100,867</b>	<b>\$346.43</b>
4511	Sporting Goods & Musical Instrument Stores	419	4,299	4,108	4,078	19,202,135	354.93
4512	Book, Periodical & Music Stores	63	567	507	497	1,898,732	278.91
<b>452</b>	<b>GENERAL MERCHANDISE STORES</b>	<b>923</b>	<b>39,257</b>	<b>39,069</b>	<b>39,685</b>	<b>\$205,284,499</b>	<b>\$401.43</b>
<b>453</b>	<b>MISCELLANEOUS STORE RETAILERS</b>	<b>1,220</b>	<b>7,333</b>	<b>7,280</b>	<b>7,143</b>	<b>\$34,944,281</b>	<b>\$370.66</b>
4531	Florists	185	699	769	697	2,959,688	315.48
4532	Office Supplies, Stationery & Gift Stores	254	1,866	1,834	1,784	9,160,798	385.49
4533	Used Merchandise Stores	266	2,072	1,961	1,949	8,464,952	326.55
4539	Other Miscellaneous Store Retailers	515	2,696	2,716	2,713	14,358,843	407.83
<b>454</b>	<b>NONSTORE RETAILERS</b>	<b>429</b>	<b>1,935</b>	<b>1,908</b>	<b>1,902</b>	<b>\$17,296,710</b>	<b>\$694.79</b>
4541	Electronic Shopping & Mail-Order Houses	208	786	748	738	7,227,100	734.06
4542	Vending Machine Operators	68	434	446	459	3,263,639	562.47
4543	Direct Selling Establishments	153	715	714	705	6,805,971	735.99
<b>48 - 49</b>	<b>TRANSPORTATION &amp; WAREHOUSING</b>	<b>2,903</b>	<b>52,350</b>	<b>52,326</b>	<b>52,680</b>	<b>\$557,403,463</b>	<b>\$817.46</b>
<b>481</b>	<b>AIR TRANSPORTATION</b>	<b>53</b>	<b>633</b>	<b>661</b>	<b>642</b>	<b>\$6,187,815</b>	<b>\$737.58</b>
4811	Scheduled Air Transportation	21	554	577	556	4,732,302	647.34
4812	Nonshceduled Air Transportation	32	79	84	86	1,455,513	1,348.95
<b>483</b>	<b>WATER TRANSPORTATION</b>	<b>4</b>	<b>18</b>	<b>17</b>	<b>20</b>	<b>\$332,194</b>	<b>\$1,393.82</b>
<b>484</b>	<b>TRUCK TRANSPORTATION</b>	<b>1,837</b>	<b>32,347</b>	<b>32,345</b>	<b>32,578</b>	<b>\$355,830,030</b>	<b>\$844.19</b>
4841	General Freight Trucking	1,067	26,029	26,165	26,430	295,082,105	866.10
4842	Specialized Freight Trucking	770	6,318	6,180	6,148	60,747,925	751.84

TABLE 5. STATEWIDE SUMMARY

North American Industry Classification System - Industry Groups		Number of Employing Units	Employment			Total Earnings	Average Weekly Earnings
			Jan	Feb	Mar	Jan - Mar 2016	
<b>485</b>	<b>TRANSIT &amp; GROUND PASSENGER TRANSPORTATION</b>	<b>109</b>	<b>1,833</b>	<b>1,838</b>	<b>1,832</b>	<b>\$8,624,804</b>	<b>\$361.68</b>
4853	Taxi & Limousine Service	32	412	416	412	1,553,935	289.19
4854	School & Employee Bus Transportation	14	465	475	480	2,187,399	355.48
4855	Charter Bus Industry Service	7	103	114	113	637,918	446.10
4859	Other Ground Passenger Transportation	52	736	721	711	3,301,849	351.46
	Other	4	117	112	116	943,703	631.24
<b>486</b>	<b>PIPELINE TRANSPORTATION</b>	<b>34</b>	<b>481</b>	<b>474</b>	<b>465</b>	<b>\$13,123,842</b>	<b>\$2,132.80</b>
<b>487</b>	<b>SCENIC &amp; SIGHTSEEING TRANSPORTATION</b>	<b>6</b>	<b>12</b>	<b>17</b>	<b>16</b>	<b>\$63,419</b>	<b>\$325.23</b>
<b>488</b>	<b>SUPPORT ACTIVITIES FOR TRANSPORTATION</b>	<b>458</b>	<b>5,037</b>	<b>5,039</b>	<b>5,031</b>	<b>\$59,021,367</b>	<b>\$901.59</b>
4881	Support Activities for Air Transportation	102	969	965	971	9,625,680	764.65
4882	Support Activities for Rail Transportation	42	647	638	636	6,852,285	823.16
4883	Support Activities for Water Transportation	20	703	676	667	9,649,251	1,088.34
4884	Support Activities for Road Transportation	152	797	826	842	6,165,045	577.16
4885	Freight Transportation Arrangement	126	1,830	1,841	1,828	25,943,674	1,088.74
4889	Other Support Activities for Transportation	16	91	93	87	785,432	668.83
<b>493</b>	<b>WAREHOUSING &amp; STORAGE</b>	<b>223</b>	<b>8,017</b>	<b>8,086</b>	<b>8,189</b>	<b>\$74,342,528</b>	<b>\$706.24</b>
	<b>OTHER</b>	<b>179</b>	<b>3,972</b>	<b>3,849</b>	<b>3,907</b>	<b>\$39,877,464</b>	<b>\$784.66</b>
<b>22</b>	<b>UTILITIES</b>	<b>434</b>	<b>7,937</b>	<b>7,709</b>	<b>7,668</b>	<b>\$177,575,351</b>	<b>\$1,757.70</b>
2211	Power Generation & Supply	163	5,633	5,584	5,578	144,681,423	1,987.97
2212	Natural Gas Distribution	83	1,324	1,147	1,143	24,190,776	1,544.68
2213	Water, Sewage & Other Systems	188	980	978	947	8,703,152	691.37
	<b>INFORMATION</b>	<b>1,078</b>	<b>13,324</b>	<b>13,318</b>	<b>13,308</b>	<b>\$193,997,214</b>	<b>\$1,120.62</b>
<b>511</b>	<b>PUBLISHING INDUSTRIES, EXCEPT INTERNET</b>	<b>222</b>	<b>3,249</b>	<b>3,236</b>	<b>3,225</b>	<b>\$31,022,270</b>	<b>\$737.28</b>
5111	Newspaper, Book & Directory Publishers	191	2,888	2,873	2,867	24,629,135	658.74
5112	Software Publishers	31	361	363	358	6,393,135	1,363.53
<b>512</b>	<b>MOTION PICTURE &amp; SOUND RECORDING INDUSTRY</b>	<b>138</b>	<b>1,036</b>	<b>1,058</b>	<b>1,055</b>	<b>\$4,961,263</b>	<b>\$363.58</b>
5121	Motion Picture & Video Industries	121	1,011	1,033	1,028	4,651,766	349.44
5122	Sound Recording Industries	17	25	25	27	309,497	927.56
<b>515</b>	<b>BROADCASTING, EXCEPT INTERNET</b>	<b>124</b>	<b>1,583</b>	<b>1,603</b>	<b>1,605</b>	<b>\$16,577,685</b>	<b>\$798.50</b>
5151	Radio & Television Broadcasting	120	1,557	1,577	1,579	16,350,435	800.59
5152	Cable & Other Subscription Programming	4	26	26	26	227,250	672.34

TABLE 5. STATEWIDE SUMMARY

North American Industry Classification System - Industry Groups		Number of Employing Units	Employment			Total Earnings Jan - Mar 2016	Average Weekly Earnings
			Jan	Feb	Mar		
<b>517</b>	<b>TELECOMMUNICATIONS</b>	<b>339</b>	<b>5,765</b>	<b>5,777</b>	<b>5,778</b>	<b>\$114,358,011</b>	<b>\$1,523.69</b>
5171	Wired Telecommunications Carriers	213	3,768	3,774	3,790	71,684,452	1,459.81
5172	Wireless Telecommunications Carriers (except Satellite)	46	1,712	1,715	1,703	38,273,194	1,721.69
5174	Satellite Telecommunications Carriers	5	6	6	6	89,426	1,146.49
5179	Other Telecommunications	75	279	282	279	4,310,939	1,184.32
<b>518</b>	<b>DATA PROCESSING, HOSTING &amp; RELATED SERVICES</b>	<b>175</b>	<b>1,324</b>	<b>1,305</b>	<b>1,312</b>	<b>\$23,212,009</b>	<b>\$1,359.20</b>
<b>519</b>	<b>OTHER INFORMATION SERVICES</b>	<b>80</b>	<b>367</b>	<b>339</b>	<b>333</b>	<b>\$3,865,976</b>	<b>\$858.66</b>
<b>FINANCIAL ACTIVITIES</b>		<b>8,279</b>	<b>49,125</b>	<b>49,143</b>	<b>49,121</b>	<b>\$726,303,093</b>	<b>\$1,137.18</b>
<b>52</b>	<b>FINANCE &amp; INSURANCE</b>	<b>4,925</b>	<b>36,099</b>	<b>36,076</b>	<b>36,077</b>	<b>\$611,476,970</b>	<b>\$1,303.53</b>
<b>522</b>	<b>CREDIT INTERMEDIATION &amp; RELATED ACTIVITIES</b>	<b>1,927</b>	<b>19,030</b>	<b>18,999</b>	<b>19,042</b>	<b>\$255,661,261</b>	<b>\$1,033.78</b>
5221	Depository Credit Intermediation	1,396	16,112	16,098	16,136	210,428,919	1,004.44
5222	Nondepository Credit Intermediation	391	1,807	1,799	1,810	31,552,435	1,344.41
5223	Activities Related to Credit Intermediation	140	1,111	1,102	1,096	13,679,907	954.03
<b>523</b>	<b>FINANCIAL INVESTMENT &amp; RELATED ACTIVITIES</b>	<b>672</b>	<b>3,117</b>	<b>3,137</b>	<b>3,093</b>	<b>\$141,213,323</b>	<b>\$3,486.43</b>
5231	Insurance Carriers	308	2,180	2,198	2,174	118,041,914	4,157.58
5239	Insurance Agencies, Brokerages & Support	364	937	939	919	23,171,409	1,913.15
<b>524</b>	<b>INSURANCE CARRIERS &amp; RELATED ACTIVITIES</b>	<b>2,248</b>	<b>13,851</b>	<b>13,820</b>	<b>13,824</b>	<b>\$212,770,634</b>	<b>\$1,183.30</b>
5231	Security & Commodity Contracts Intermediation & Brokerage	318	5,947	5,936	5,941	114,500,470	1,482.45
5239	Other Financial Investment Activities	1,930	7,904	7,884	7,883	98,270,164	958.04
	<b>OTHER</b>	<b>78</b>	<b>101</b>	<b>120</b>	<b>118</b>	<b>\$1,831,752</b>	<b>\$1,246.94</b>
<b>53</b>	<b>REAL ESTATE &amp; RENTAL &amp; LEASING</b>	<b>3,354</b>	<b>13,026</b>	<b>13,067</b>	<b>13,044</b>	<b>\$114,826,123</b>	<b>\$677.07</b>
<b>531</b>	<b>REAL ESTATE</b>	<b>2,697</b>	<b>8,923</b>	<b>8,939</b>	<b>8,926</b>	<b>\$76,832,403</b>	<b>\$661.88</b>
5311	Lessors of Real Estate	1,121	4,067	4,068	4,043	33,583,839	636.40
5312	Offices of Real Estate Agents & Brokers	790	1,710	1,735	1,730	15,981,542	712.67
5313	Activities Related to Real Estate	786	3,146	3,136	3,153	27,267,022	666.92
<b>532</b>	<b>RENTAL &amp; LEASING SERVICES</b>	<b>636</b>	<b>4,052</b>	<b>4,074</b>	<b>4,060</b>	<b>\$36,778,355</b>	<b>\$696.48</b>
5321	Automotive Equipment Rental & Leasing	110	939	955	940	7,594,905	618.44
5322	Consumer Goods Rental	333	1,952	1,964	1,961	14,515,620	569.98
5323	General Rental Centers	40	227	225	229	2,111,706	715.59
5324	Machinery & Equipment Rental & Leasing	153	934	930	930	12,556,124	1,037.07
<b>533</b>	<b>LESSORS OF NONFINANCIAL INTANGIBLE ASSETS</b>	<b>21</b>	<b>51</b>	<b>54</b>	<b>58</b>	<b>\$1,215,365</b>	<b>\$1,720.67</b>



TABLE 5. STATEWIDE SUMMARY

North American Industry Classification System - Industry Groups		Number of Employing Units	Employment			Total Earnings Jan - Mar 2016	Average Weekly Earnings
			Jan	Feb	Mar		
<b>PROFESSIONAL &amp; BUSINESS SERVICES</b>		<b>13,891</b>	<b>136,350</b>	<b>141,169</b>	<b>142,144</b>	<b>\$2,205,427,408</b>	<b>\$1,212.75</b>
<b>54</b>	<b>PROFESSIONAL &amp; TECHNICAL SERVICES</b>	<b>8,771</b>	<b>42,546</b>	<b>43,200</b>	<b>43,100</b>	<b>\$583,000,711</b>	<b>\$1,044.18</b>
5411	Legal Services	1,699	5,937	5,946	5,936	72,165,819	934.60
5412	Accounting & Bookkeeping Services	1,269	6,218	6,546	6,340	57,072,947	689.42
5413	Architectural & Engineering Services	957	5,915	5,964	6,122	85,168,860	1,091.85
5414	Specialized Design Services	179	406	404	402	4,731,728	900.94
5415	Computer Systems Design & Related Services	1,664	10,113	10,249	10,283	191,911,093	1,445.17
5416	Management & Technical Consulting Services	1,907	5,898	5,924	5,790	83,406,188	1,092.87
5417	Scientific Research & Development Services	142	849	862	855	12,095,564	1,087.80
5418	Advertising & Related Services	384	3,521	3,575	3,585	42,974,205	928.48
5419	Other Professional & Technical Services	570	3,689	3,730	3,787	33,474,307	689.35
<b>55</b>	<b>MANAGEMENT OF COMPANIES &amp; ENTERPRISES</b>	<b>530</b>	<b>34,276</b>	<b>34,345</b>	<b>34,445</b>	<b>\$1,218,289,455</b>	<b>\$2,727.80</b>
<b>56</b>	<b>ADMINISTRATIVE &amp; WASTE SERVICES</b>	<b>4,590</b>	<b>59,528</b>	<b>63,624</b>	<b>64,599</b>	<b>\$404,137,242</b>	<b>\$496.73</b>
<b>561</b>	<b>ADMINISTRATIVE &amp; SUPPORT SERVICES</b>	<b>4,283</b>	<b>56,544</b>	<b>60,671</b>	<b>61,669</b>	<b>\$374,067,434</b>	<b>\$482.57</b>
5611	Office Administrative Services	645	3,932	3,918	3,908	45,734,419	897.61
5612	Facilities Support Services	39	1,049	1,046	1,046	5,614,710	412.51
5613	Employment Services	1,072	23,785	27,796	28,542	146,712,952	422.56
5614	Business Support Services	361	8,219	8,205	8,119	61,406,778	577.39
5615	Travel Arrangement & Reservation Services	101	371	364	373	4,016,399	836.52
5616	Investigation & Security Services	320	4,671	4,642	4,585	28,462,029	472.60
5617	Services to Buildings & Dwellings	1,556	13,194	13,388	13,744	70,486,890	403.37
5619	Other Support Services	189	1,323	1,312	1,352	11,633,257	673.34
<b>562</b>	<b>WASTE MANAGEMENT &amp; REMEDIATION SERVICES</b>	<b>307</b>	<b>2,984</b>	<b>2,953</b>	<b>2,930</b>	<b>\$30,069,808</b>	<b>\$782.59</b>
5621	Waste Collection Services	126	1,142	1,151	1,138	11,346,505	763.17
5622	Waste Treatment & Disposal Services	37	822	822	830	9,614,283	896.80
5629	Remediation & Other Waste Services	144	1,020	980	962	9,109,020	709.68
<b>EDUCATION &amp; HEALTH SERVICES</b>		<b>15,047</b>	<b>173,960</b>	<b>174,781</b>	<b>174,947</b>	<b>\$1,641,041,156</b>	<b>\$723.14</b>
<b>61</b>	<b>EDUCATIONAL SERVICES</b>	<b>802</b>	<b>10,887</b>	<b>11,303</b>	<b>11,163</b>	<b>\$93,675,973</b>	<b>\$648.14</b>
6111	Elementary & Secondary Schools	94	3,558	3,594	3,560	28,271,271	609.05
6112	Junior Colleges	6	166	169	166	1,219,565	561.75
6113	Colleges & Universities	84	3,942	4,181	4,098	36,387,747	687.11
6114	Business, Computer, & Management Training	46	113	125	132	1,731,185	1,079.74
6115	Technical & Trade Schools	111	895	919	890	12,277,721	1,047.83
6116	Other Schools & Instruction	288	1,583	1,679	1,672	7,196,512	336.59
6117	Educational Support Services	173	630	636	645	6,591,972	796.04

TABLE 5. STATEWIDE SUMMARY

North American Industry Classification System - Industry Groups		Number of Employing Units	Employment			Total Earnings	Average Weekly Earnings
			Jan	Feb	Mar	Jan - Mar 2016	
<b>62</b>	<b>HEALTH CARE &amp; SOCIAL ASSISTANCE</b>	<b>14,245</b>	<b>163,073</b>	<b>163,478</b>	<b>163,784</b>	<b>\$1,547,365,183</b>	<b>\$728.25</b>
<b>621</b>	<b>AMBULATORY HEALTH CARE SERVICES</b>	<b>5,533</b>	<b>52,354</b>	<b>52,594</b>	<b>52,686</b>	<b>\$735,038,123</b>	<b>\$1,076.06</b>
6211	Offices of Physicians	2,227	23,765	23,867	23,827	431,276,429	1,392.76
6212	Offices of Dentists	990	7,087	7,063	7,108	79,992,601	868.37
6213	Offices of Other Health Practitioners	1,436	7,982	8,073	8,135	78,475,280	748.64
6214	Outpatient Care Centers	328	4,779	4,802	4,810	62,202,796	997.46
6215	Medical & Diagnostic Laboratories	185	1,120	1,125	1,103	13,665,835	941.95
6216	Home Health Care Services	191	5,000	5,001	5,032	44,448,153	682.32
6219	Other Ambulatory Health Care Services	176	2,621	2,663	2,671	24,977,029	724.57
<b>622</b>	<b>HOSPITALS</b>	<b>106</b>	<b>40,237</b>	<b>40,288</b>	<b>40,416</b>	<b>\$437,751,164</b>	<b>\$835.28</b>
6221	General Medical & Surgical Hospitals	80	35,807	35,774	35,870	392,932,078	843.89
6222	Psychiatric & Substance Abuse Hospitals	11	2,154	2,185	2,183	20,016,266	708.24
6223	Specialty Hospitals	15	2,276	2,329	2,363	24,802,820	821.43
<b>623</b>	<b>Residential &amp; Mental Health Facilities</b>	<b>630</b>	<b>31,292</b>	<b>31,340</b>	<b>31,217</b>	<b>\$185,952,996</b>	<b>\$457.25</b>
6231	Nursing Care Facilities (Skilled Nursing Facilities)	272	22,039	22,050	21,896	131,490,413	459.86
6232	Residential Mental Health Facilities	169	4,353	4,380	4,409	26,972,892	473.64
6233	Continuing Care & Assisted Living Facilities	149	3,811	3,824	3,826	20,577,294	414.33
6239	Other Residential Care Facilities	40	1,089	1,086	1,086	6,912,397	489.17
<b>624</b>	<b>SOCIAL ASSISTANCE</b>	<b>7,976</b>	<b>39,190</b>	<b>39,256</b>	<b>39,465</b>	<b>\$188,622,900</b>	<b>\$369.16</b>
6241	Individual & Family Services	6,848	24,584	24,614	24,727	120,217,005	375.28
6242	Emergency & Other Relief Services	134	1,304	1,324	1,308	8,073,434	473.35
6243	Vocational Rehabilitation Services	89	3,252	3,219	3,221	16,615,879	395.63
6244	Child Day Care Services	905	10,050	10,099	10,209	43,716,582	332.32
<b>LEISURE &amp; HOSPITALITY</b>		<b>6,877</b>	<b>108,936</b>	<b>110,763</b>	<b>113,722</b>	<b>\$412,305,484</b>	<b>\$285.37</b>
<b>71</b>	<b>ARTS, ENTERTAINMENT &amp; RECREATION</b>	<b>959</b>	<b>9,512</b>	<b>9,696</b>	<b>10,408</b>	<b>\$47,866,380</b>	<b>\$372.98</b>
<b>711</b>	<b>PERFORMING ARTS &amp; SPECTATOR SPORTS</b>	<b>209</b>	<b>2,704</b>	<b>2,772</b>	<b>3,022</b>	<b>\$16,089,025</b>	<b>\$436.91</b>
7111	Performing Arts Companies	48	292	384	328	1,702,994	391.43
7112	Spectator Sports	65	1,736	1,766	1,779	10,593,602	462.92
7113	Performing Arts & Sports Promoters	42	619	515	840	3,209,796	375.24
7114	Agents & Managers for Public Figures	15	15	53	17	182,958	496.72
7115	Independent Artists, Writers, & Performers	39	42	54	58	399,675	598.91
<b>712</b>	<b>MUSEUMS, PARKS, &amp; HISTORICAL SITES</b>	<b>56</b>	<b>595</b>	<b>610</b>	<b>626</b>	<b>\$4,055,858</b>	<b>\$511.18</b>
<b>713</b>	<b>GAMBLING, RECREATIONAL &amp; AMUSEMENT INDUSTRY</b>	<b>694</b>	<b>6,213</b>	<b>6,314</b>	<b>6,760</b>	<b>\$27,721,497</b>	<b>\$331.69</b>
7131	Amusement Parks & Arcades	36	258	270	397	1,075,704	268.37
7139	Other Amusement & Recreation Industries	658	5,955	6,044	6,363	26,645,793	334.88
<b>72</b>	<b>ACCOMMODATION &amp; FOOD SERVICES</b>	<b>5,918</b>	<b>99,424</b>	<b>101,067</b>	<b>103,314</b>	<b>\$364,439,104</b>	<b>\$276.83</b>

TABLE 5. STATEWIDE SUMMARY

North American Industry Classification System - Industry Groups		Number of Employing Units	Employment			Total Earnings	Average Weekly Earnings
			Jan	Feb	Mar	Jan - Mar 2016	
<b>721</b>	<b>ACCOMMODATION</b>	<b>882</b>	<b>10,107</b>	<b>10,414</b>	<b>10,833</b>	<b>\$44,697,971</b>	<b>\$328.98</b>
7211	Travel Accommodation	798	9,635	9,921	10,315	42,329,577	327.02
7212	RV Parks & Recreational Camps	65	356	365	385	1,733,487	361.70
7213	Rooming & Boarding Houses	19	116	128	133	634,907	388.64
<b>722</b>	<b>FOOD SERVICES &amp; DRINKING PLACES</b>	<b>5,036</b>	<b>89,317</b>	<b>90,653</b>	<b>92,481</b>	<b>\$319,741,133</b>	<b>\$270.82</b>
7223	Special Food Services	214	3,678	4,014	3,957	16,408,990	325.07
7224	Drinking Places, Alcoholic Beverages	153	1,051	1,086	1,115	3,540,274	251.23
7225	Restaurants & Other Eating Places	4,669	84,588	85,553	87,409	299,791,869	268.62
722511	Full-Service Restaurants	2,106	37,694	38,150	38,713	146,754,985	295.63
722513	Limited-Service Eating Places	2,120	42,803	43,190	44,340	137,534,693	243.52
722514	Cafeterias, Grill Buffets, & Buffets	91	1,618	1,651	1,689	6,912,073	321.72
722515	Snack & Nonalcoholic Beverage Bars	352	2,473	2,562	2,667	8,590,118	257.38
<b>OTHER SERVICES</b>		<b>5,375</b>	<b>24,064</b>	<b>24,094</b>	<b>24,450</b>	<b>\$189,739,256</b>	<b>\$603.05</b>
<b>811</b>	<b>REPAIR &amp; MAINTENANCE</b>	<b>2,198</b>	<b>9,971</b>	<b>10,007</b>	<b>10,151</b>	<b>\$87,702,680</b>	<b>\$671.75</b>
8111	Automotive Repair & Maintenance	1,402	6,233	6,313	6,390	51,187,488	623.81
8112	Electronic Equipment Repair & Maintenance	173	907	892	890	9,197,735	789.35
8113	Commercial Machinery Repair & Maintenance	452	2,258	2,229	2,277	23,328,148	795.89
8114	Household Goods Repair & Maintenance	171	573	573	594	3,989,309	529.09
<b>812</b>	<b>PERSONAL &amp; LAUNDRY SERVICES</b>	<b>1,305</b>	<b>7,758</b>	<b>7,821</b>	<b>7,972</b>	<b>\$43,960,188</b>	<b>\$430.75</b>
8121	Personal Care Services	604	2,920	2,971	3,051	14,013,032	361.64
8122	Death Care Services	247	1,613	1,619	1,636	11,261,921	533.88
8123	Drycleaning & Laundry Service	238	2,407	2,404	2,444	14,620,974	465.07
8129	Other Personal Services	216	818	827	841	4,064,261	377.28
<b>813</b>	<b>MEMBERSHIP ASSOCIATIONS &amp; ORGANIZATIONS</b>	<b>1,089</b>	<b>5,358</b>	<b>5,285</b>	<b>5,335</b>	<b>\$52,391,115</b>	<b>\$756.68</b>
8131	Religious Organizations	69	236	236	240	1,743,337	565.04
8132	Grantmaking & Giving Organizations	114	458	452	441	5,279,659	901.84
8133	Social Advocacy Organizations	212	1,522	1,535	1,554	13,044,876	652.86
8134	Civic & Social Organizations	203	1,141	1,148	1,135	4,870,831	328.28
8139	Professional & Similar Organizations	491	2,001	1,914	1,965	27,452,412	1,077.41
<b>814</b>	<b>PRIVATE HOUSEHOLDS</b>	<b>783</b>	<b>977</b>	<b>981</b>	<b>992</b>	<b>\$5,685,273</b>	<b>\$444.74</b>
	<b>LOCAL GOVERNMENT</b>	<b>1,947</b>	<b>113,628</b>	<b>114,020</b>	<b>115,099</b>	<b>\$986,420,452</b>	<b>\$664.15</b>
	<b>STATE GOVERNMENT</b>	<b>1,139</b>	<b>67,969</b>	<b>69,911</b>	<b>70,152</b>	<b>\$733,440,764</b>	<b>\$813.60</b>
	<b>NONCLASSIFIABLE ESTABLISHMENTS</b>	<b>0</b>	<b>0</b>	<b>0</b>	<b>0</b>	<b>\$0</b>	<b>\$0.00</b>

TABLE 6. COUNTY SUMMARY

North American Industry Classification System - Industry Groups	Number of Employing Units	Employment			Total Earnings Jan - Mar 2016	Average Weekly Earnings
		Jan	Feb	Mar		
<b>ARKANSAS COUNTY - TOTAL</b>	<b>761</b>	<b>9,632</b>	<b>9,619</b>	<b>9,619</b>	<b>\$85,172,483</b>	<b>\$680.82</b>
Natural Resources & Mining	54	221	222	219	1,913,955	667.19
Construction	44	240	243	243	2,072,328	658.72
Manufacturing	33	3,703	3,703	3,712	34,982,546	726.11
Trade, Transportation & Utilities	199	2,136	2,119	2,129	20,315,555	734.37
Wholesale Trade	45	492	499	508	6,572,261	1,011.79
Retail Trade	93	1,055	1,029	1,041	6,280,181	463.77
Transportation, Warehousing & Utilities	61	589	591	580	7,463,113	978.56
Information	11	88	89	88	801,298	697.79
Financial Activities	46	290	285	280	2,767,977	747.09
Professional & Business Services	50	428	429	430	5,511,758	988.30
Education & Health Services	179	1,069	1,094	1,086	7,953,607	564.93
Leisure & Hospitality	53	447	426	427	1,414,670	251.12
Other Services	44	107	100	102	652,635	487.40
Local Government	32	714	719	715	5,623,915	604.20
State Government	16	189	190	188	1,162,239	473.03
<b>ASHLEY COUNTY - TOTAL</b>	<b>551</b>	<b>6,651</b>	<b>6,637</b>	<b>6,623</b>	<b>\$65,561,537</b>	<b>\$759.86</b>
Natural Resources & Mining	40	299	293	286	3,168,817	832.88
Construction	42	572	599	585	6,494,326	853.47
Manufacturing	24	1,721	1,680	1,679	27,045,741	1,228.61
Trade, Transportation & Utilities	111	1,169	1,182	1,181	8,644,670	564.81
Wholesale Trade	22	190	192	185	2,359,920	960.49
Retail Trade	67	740	755	762	3,942,464	403.10
Transportation, Warehousing & Utilities	22	239	235	234	2,342,286	763.46
Information	6	35	34	33	222,991	504.50
Financial Activities	36	182	188	182	1,528,123	638.85
Professional & Business Services	42	230	217	217	1,745,350	606.59
Education & Health Services	143	859	854	863	6,973,656	624.73
Leisure & Hospitality	28	395	386	393	1,245,449	244.81
Other Services	36	133	136	144	897,677	501.59
Local Government	32	894	901	898	6,581,869	564.02
State Government	11	162	167	162	1,012,868	476.05

TABLE 6. COUNTY SUMMARY

North American Industry Classification System - Industry Groups	Number of Employing Units	Employment			Total Earnings Jan - Mar 2016	Average Weekly Earnings
		Jan	Feb	Mar		
<b>BAXTER COUNTY - TOTAL</b>	<b>1,207</b>	<b>14,176</b>	<b>14,242</b>	<b>14,413</b>	<b>\$111,377,651</b>	<b>\$600.09</b>
Natural Resources & Mining	7	60	62	65	538,540	664.59
Construction	108	496	489	491	3,638,204	568.82
Manufacturing	56	2,368	2,340	2,331	22,076,675	723.77
Trade, Transportation & Utilities	262	2,698	2,684	2,725	16,852,974	479.73
Wholesale Trade	32	204	200	203	1,869,302	710.67
Retail Trade	204	2,312	2,306	2,343	13,132,922	435.38
Transportation, Warehousing & Utilities	26	182	178	179	1,850,750	792.39
Information	18	189	186	190	1,993,113	814.07
Financial Activities	116	722	724	731	8,505,563	901.62
Professional & Business Services	131	694	719	737	5,349,019	574.13
Education & Health Services	259	3,689	3,707	3,737	33,996,487	704.69
Leisure & Hospitality	116	1,470	1,489	1,546	5,048,918	258.63
Other Services	89	341	343	350	1,717,026	383.21
Local Government	33	1,177	1,195	1,199	9,329,093	602.88
State Government	12	272	304	311	2,332,039	606.72
<b>BENTON COUNTY - TOTAL</b>	<b>6,019</b>	<b>110,685</b>	<b>111,707</b>	<b>112,951</b>	<b>\$1,840,953,849</b>	<b>\$1,266.87</b>
Natural Resources & Mining	43	681	676	702	9,934,035	1,113.39
Construction	572	4,447	4,484	4,586	48,482,451	827.72
Manufacturing	193	10,999	11,050	11,124	111,183,312	773.45
Trade, Transportation & Utilities	1,602	26,377	26,576	26,974	332,182,283	959.09
Wholesale Trade	725	5,207	5,196	5,246	146,988,645	2,167.58
Retail Trade	710	12,080	12,021	12,126	77,204,733	491.80
Transportation, Warehousing & Utilities	167	9,090	9,359	9,602	107,988,905	888.40
Information	70	922	902	912	11,881,082	1,002.12
Financial Activities	606	3,579	3,585	3,594	48,735,203	1,045.42
Professional & Business Services	1,171	31,183	31,328	31,624	1,031,282,197	2,528.16
Education & Health Services	725	10,513	10,550	10,570	96,495,359	703.95
Leisure & Hospitality	552	10,915	11,192	11,388	46,699,624	321.74
Other Services	386	1,996	1,990	2,000	15,784,351	608.51
Local Government	82	8,249	8,268	8,362	80,332,418	745.14
State Government	17	824	1,106	1,115	7,961,534	603.38

TABLE 6. COUNTY SUMMARY

North American Industry Classification System - Industry Groups	Number of Employing Units	Employment			Total Earnings Jan - Mar 2016	Average Weekly Earnings
		Jan	Feb	Mar		
<b>BOONE COUNTY - TOTAL</b>	<b>989</b>	<b>13,677</b>	<b>13,749</b>	<b>13,814</b>	<b>\$113,087,049</b>	<b>\$632.81</b>
Construction	73	455	442	436	3,491,405	604.43
Manufacturing	60	1,819	1,806	1,796	18,015,857	766.93
Trade, Transportation & Utilities	245	3,745	3,744	3,780	34,732,701	711.26
Wholesale Trade	46	307	317	310	2,653,419	655.60
Retail Trade	156	2,004	2,006	2,050	12,264,578	467.04
Transportation, Warehousing & Utilities	43	1,434	1,421	1,420	19,814,704	1,069.62
Information	15	292	292	295	2,935,280	770.62
Financial Activities	96	456	455	453	4,745,705	802.91
Professional & Business Services	113	1,121	1,120	1,115	8,730,969	600.37
Education & Health Services	163	1,516	1,535	1,478	10,005,515	509.82
Leisure & Hospitality	86	1,124	1,112	1,187	3,827,038	258.01
Local Government	56	2,194	2,212	2,224	18,470,990	642.92
State Government	19	714	786	797	6,175,030	620.38
Other	63	241	245	253	1,956,559	610.98
<b>BRADLEY COUNTY - TOTAL</b>	<b>355</b>	<b>3,724</b>	<b>3,701</b>	<b>3,689</b>	<b>\$27,345,605</b>	<b>\$567.80</b>
Natural Resources & Mining	46	306	292	275	2,422,706	640.42
Construction	18	72	69	64	474,243	533.86
Manufacturing	11	790	785	782	6,985,319	683.92
Trade, Transportation & Utilities	71	497	486	491	3,159,133	494.59
Wholesale Trade	13	97	94	98	1,086,804	867.82
Retail Trade	39	355	345	348	1,631,448	359.24
Transportation, Warehousing & Utilities	19	45	47	45	440,881	742.64
Information	4	29	28	27	237,242	651.76
Financial Activities	24	126	134	131	1,146,565	676.71
Professional & Business Services	25	114	113	114	766,960	519.03
Education & Health Services	90	623	637	629	5,233,645	639.37
Leisure & Hospitality	15	203	189	203	579,778	224.87
Other Services	26	98	100	99	548,895	426.49
Local Government	14	477	481	486	3,374,080	539.22
State Government	11	389	387	388	2,417,039	479.19

TABLE 6. COUNTY SUMMARY

North American Industry Classification System - Industry Groups	Number of Employing Units	Employment			Total Earnings Jan - Mar 2016	Average Weekly Earnings
		Jan	Feb	Mar		
<b>CALHOUN COUNTY - TOTAL</b>	<b>98</b>	<b>2,724</b>	<b>2,714</b>	<b>2,712</b>	<b>\$34,826,581</b>	<b>\$986.12</b>
Natural Resources & Mining	8	42	44	42	285,386	514.52
Construction	10	89	92	90	872,708	743.15
Manufacturing	9	1,907	1,894	1,900	27,959,962	1,131.78
Trade, Transportation & Utilities	19	214	211	212	1,722,487	624.01
Retail Trade	11	57	56	58	256,524	346.19
Transportation, Warehousing & Utilities	8	157	155	154	1,465,963	725.96
Financial Activities	5	81	82	80	894,136	849.13
Professional & Business Services	5	11	13	10	117,668	798.65
Education & Health Services	14	55	57	57	510,608	697.23
Leisure & Hospitality	4	16	17	16	47,004	221.37
Local Government	11	195	193	194	1,258,115	498.86
State Government	8	84	83	83	641,306	591.97
Other	5	30	28	28	517,201	1,387.84
<b>CARROLL COUNTY - TOTAL</b>	<b>779</b>	<b>10,104</b>	<b>10,267</b>	<b>10,523</b>	<b>\$70,158,344</b>	<b>\$524.06</b>
Natural Resources & Mining	16	195	194	197	1,549,537	610.21
Trade, Transportation & Utilities	193	1,502	1,507	1,544	10,652,756	539.94
Wholesale Trade	21	112	114	110	829,139	569.46
Retail Trade	150	1,115	1,118	1,162	5,858,292	398.21
Transportation, Warehousing & Utilities	22	275	275	272	3,965,325	1,113.23
Information	10	60	59	60	607,449	783.13
Financial Activities	67	355	352	363	3,974,931	857.28
Professional & Business Services	68	532	531	535	4,035,265	582.74
Education & Health Services	91	1,028	1,031	1,028	8,014,005	599.09
Leisure & Hospitality	165	1,147	1,282	1,451	4,438,108	263.96
Other Services	40	122	126	130	678,976	414.52
Local Government	24	1,034	1,046	1,052	7,413,470	546.23
State Government	10	114	112	112	770,646	526.16
Other	95	4,015	4,027	4,051	28,023,201	534.76

TABLE 6. COUNTY SUMMARY

North American Industry Classification System - Industry Groups	Number of Employing Units	Employment			Total Earnings	Average Weekly Earnings
		Jan	Feb	Mar	Jan - Mar 2016	
<b>CHICOT COUNTY - TOTAL</b>	<b>505</b>	<b>3,165</b>	<b>3,145</b>	<b>3,158</b>	<b>\$22,326,615</b>	<b>\$544.18</b>
Natural Resources & Mining	59	249	251	252	1,744,838	535.45
Construction	16	143	123	152	1,146,448	632.93
Manufacturing	8	28	29	29	311,133	834.88
Trade, Transportation & Utilities	66	683	682	685	4,255,663	479.06
Wholesale Trade	13	76	73	68	621,660	661.11
Retail Trade	38	319	321	332	1,798,122	426.90
Transportation, Warehousing & Utilities	15	288	288	285	1,835,881	492.06
Information	4	5	5	5	19,286	296.71
Financial Activities	28	137	138	136	1,935,467	1,086.73
Professional & Business Services	16	35	39	40	344,016	696.39
Education & Health Services	242	776	782	771	4,788,340	474.45
Leisure & Hospitality	21	145	135	134	405,272	225.90
Other Services	17	61	67	67	440,113	520.84
Local Government	18	622	613	611	4,948,904	618.66
State Government	10	281	281	276	1,987,135	547.22
<b>CLARK COUNTY - TOTAL</b>	<b>608</b>	<b>8,828</b>	<b>9,095</b>	<b>9,120</b>	<b>\$72,210,561</b>	<b>\$616.20</b>
Natural Resources & Mining	43	280	285	245	2,405,658	685.37
Construction	21	59	55	57	366,446	494.53
Manufacturing	32	1,455	1,453	1,445	18,288,103	969.52
Trade, Transportation & Utilities	119	1,352	1,370	1,370	9,359,921	527.85
Wholesale Trade	10	32	31	31	356,863	876.10
Retail Trade	90	1,165	1,184	1,187	7,296,357	476.18
Transportation, Warehousing & Utilities	19	155	155	152	1,706,701	852.50
Information	5	19	19	19	161,216	652.70
Financial Activities	72	280	280	287	2,585,845	704.53
Professional & Business Services	53	612	647	652	5,371,814	648.69
Education & Health Services	122	1,571	1,625	1,641	11,682,467	557.36
Leisure & Hospitality	57	944	1,032	1,030	3,842,598	294.99
Other Services	43	233	236	237	1,691,407	552.87
Local Government	26	938	918	960	7,107,070	582.42
State Government	15	1,085	1,175	1,177	9,348,016	627.65



TABLE 6. COUNTY SUMMARY

North American Industry Classification System - Industry Groups	Number of Employing Units	Employment			Total Earnings Jan - Mar 2016	Average Weekly Earnings
		Jan	Feb	Mar		
<b>CLAY COUNTY - TOTAL</b>	<b>385</b>	<b>3,280</b>	<b>3,278</b>	<b>3,315</b>	<b>\$22,217,121</b>	<b>\$519.30</b>
Natural Resources & Mining	58	173	190	227	1,020,338	399.09
Construction	27	122	124	122	698,044	437.74
Manufacturing	15	231	231	225	2,019,635	678.41
Trade, Transportation & Utilities	99	858	851	857	6,280,733	564.85
Wholesale Trade	21	232	231	244	1,825,807	595.95
Retail Trade	48	422	428	421	2,528,454	459.08
Transportation, Warehousing & Utilities	30	204	192	192	1,926,472	756.07
Information	5	40	40	40	303,437	583.53
Financial Activities	27	125	121	120	1,070,285	674.83
Professional & Business Services	25	95	92	95	696,298	569.80
Education & Health Services	47	484	468	480	3,168,256	510.57
Leisure & Hospitality	22	247	247	238	680,536	214.54
Other Services	27	71	72	76	534,811	563.55
Local Government	22	786	795	788	5,429,114	528.86
State Government	11	48	47	47	315,634	512.95
<b>CLEBURNE COUNTY - TOTAL</b>	<b>662</b>	<b>6,360</b>	<b>6,337</b>	<b>6,342</b>	<b>\$46,164,877</b>	<b>\$559.56</b>
Natural Resources & Mining	27	218	229	223	2,952,212	1,016.84
Construction	64	281	281	276	2,296,792	632.49
Manufacturing	35	1,131	1,140	1,119	9,884,063	672.84
Trade, Transportation & Utilities	156	1,343	1,246	1,240	9,491,749	572.06
Wholesale Trade	34	142	144	137	1,419,140	774.22
Retail Trade	98	955	944	944	5,717,562	464.10
Transportation, Warehousing & Utilities	24	246	158	159	2,355,047	965.32
Information	8	60	64	60	515,408	646.41
Financial Activities	73	255	253	253	2,514,331	762.46
Professional & Business Services	69	312	330	325	2,507,769	598.47
Education & Health Services	87	917	922	927	5,910,403	493.11
Leisure & Hospitality	79	792	824	869	2,717,341	252.35
Other Services	37	126	125	125	724,307	444.54
Local Government	18	814	809	812	5,906,679	559.79
State Government	9	111	114	113	743,823	507.84

TABLE 6. COUNTY SUMMARY

North American Industry Classification System - Industry Groups	Number of Employing Units	Employment			Total Earnings Jan - Mar 2016	Average Weekly Earnings
		Jan	Feb	Mar		
<b>CLEVELAND COUNTY - TOTAL</b>	<b>122</b>	<b>971</b>	<b>1,033</b>	<b>956</b>	<b>\$6,731,718</b>	<b>\$524.82</b>
Natural Resources & Mining	16	145	139	133	1,299,947	719.40
Construction	9	14	14	16	93,518	490.48
Manufacturing	5	72	74	74	584,195	612.79
Trade, Transportation & Utilities	37	189	191	184	1,295,634	530.13
Wholesale Trade	3	43	43	44	292,866	519.88
Retail Trade	19	63	62	56	238,476	304.05
Transportation, Warehousing & Utilities	15	83	86	84	764,292	697.13
Financial Activities	3	25	26	26	233,959	701.18
Education & Health Services	24	141	142	139	658,461	360.08
Other Services	4	13	13	13	99,208	587.03
Local Government	11	310	368	308	2,090,744	489.33
State Government	7	54	57	53	331,375	466.29
Other	6	8	9	10	44,677	381.85
<b>COLUMBIA COUNTY - TOTAL</b>	<b>729</b>	<b>8,133</b>	<b>8,230</b>	<b>8,216</b>	<b>\$73,786,423</b>	<b>\$692.77</b>
Natural Resources & Mining	41	372	374	359	5,107,461	1,066.65
Construction	41	165	168	169	1,414,170	650.09
Manufacturing	33	1,945	1,947	1,980	26,065,841	1,024.39
Trade, Transportation & Utilities	162	1,402	1,410	1,383	9,992,131	549.67
Wholesale Trade	30	199	204	207	2,588,372	979.21
Retail Trade	95	984	986	977	5,160,432	404.10
Transportation, Warehousing & Utilities	37	219	220	199	2,243,327	811.43
Information	8	55	56	56	495,168	684.25
Financial Activities	70	360	367	355	3,919,404	835.93
Professional & Business Services	57	296	286	288	2,229,052	591.26
Education & Health Services	182	988	995	983	5,697,696	443.31
Leisure & Hospitality	49	658	675	683	2,251,247	257.70
Other Services	47	163	165	172	843,546	389.33
Local Government	26	1,130	1,182	1,182	9,512,212	628.26
State Government	13	599	605	606	6,258,495	797.94

TABLE 6. COUNTY SUMMARY

North American Industry Classification System - Industry Groups	Number of Employing Units	Employment			Total Earnings	Average Weekly Earnings
		Jan	Feb	Mar	Jan - Mar 2016	
<b>CONWAY COUNTY - TOTAL</b>	<b>552</b>	<b>6,709</b>	<b>6,692</b>	<b>6,757</b>	<b>\$56,235,944</b>	<b>\$643.79</b>
Natural Resources & Mining	34	261	261	247	2,236,422	671.13
Construction	50	482	485	472	5,418,567	868.96
Manufacturing	20	879	863	871	12,300,932	1,086.37
Trade, Transportation & Utilities	128	1,555	1,548	1,564	12,203,828	603.44
Wholesale Trade	19	120	129	133	1,009,728	609.98
Retail Trade	81	812	811	829	4,875,049	458.81
Transportation, Warehousing & Utilities	28	623	608	602	6,319,051	795.55
Information	3	10	17	17	45,450	238.37
Financial Activities	37	152	151	150	1,593,426	811.73
Professional & Business Services	39	660	664	612	3,030,754	361.26
Education & Health Services	133	801	796	806	6,556,359	629.63
Leisure & Hospitality	43	452	453	460	1,413,980	239.05
Other Services	26	106	91	79	781,424	653.36
Local Government	29	981	998	1,115	8,014,125	597.74
State Government	10	370	365	364	2,640,677	554.49
<b>CRAIGHEAD COUNTY - TOTAL</b>	<b>2,765</b>	<b>47,058</b>	<b>47,442</b>	<b>47,786</b>	<b>\$424,674,557</b>	<b>\$688.77</b>
Natural Resources & Mining	87	264	286	312	2,153,742	576.59
Construction	221	1,916	1,981	2,035	18,500,529	719.72
Manufacturing	103	5,964	5,978	5,961	65,427,292	843.36
Trade, Transportation & Utilities	778	10,038	9,976	10,034	78,526,248	603.08
Wholesale Trade	183	1,609	1,635	1,670	21,705,320	1,019.32
Retail Trade	470	6,923	6,832	6,879	41,088,623	459.53
Transportation, Warehousing & Utilities	125	1,506	1,509	1,485	15,732,305	806.78
Information	19	430	437	429	4,723,149	841.02
Financial Activities	267	1,630	1,650	1,640	20,703,261	971.07
Professional & Business Services	366	4,173	4,226	4,296	30,944,304	562.50
Education & Health Services	462	9,941	9,968	9,957	112,851,908	871.99
Leisure & Hospitality	250	5,055	5,165	5,355	18,793,680	278.46
Other Services	154	846	857	862	5,751,828	517.48
Local Government	35	4,024	4,040	4,024	35,423,197	676.26
State Government	23	2,777	2,878	2,881	30,875,419	834.71

TABLE 6. COUNTY SUMMARY

North American Industry Classification System - Industry Groups	Number of Employing Units	Employment			Total Earnings	Average Weekly Earnings
		Jan	Feb	Mar	Jan - Mar 2016	
<b>CRAWFORD COUNTY - TOTAL</b>	<b>1,239</b>	<b>19,319</b>	<b>19,387</b>	<b>19,511</b>	<b>\$160,787,216</b>	<b>\$637.35</b>
Natural Resources & Mining	29	238	278	320	2,605,734	719.29
Construction	145	841	856	857	7,579,481	684.85
Manufacturing	69	4,402	4,446	4,466	41,581,199	720.72
Trade, Transportation & Utilities	305	5,937	5,922	5,947	53,030,895	687.29
Wholesale Trade	80	781	777	776	9,537,597	943.01
Retail Trade	159	1,988	1,981	2,008	12,972,468	500.86
Transportation, Warehousing & Utilities	66	3,168	3,164	3,163	30,520,830	741.79
Information	9	93	91	92	771,819	645.33
Financial Activities	121	492	490	487	4,389,639	689.58
Professional & Business Services	163	1,484	1,515	1,526	11,456,753	584.28
Education & Health Services	169	1,627	1,607	1,611	12,418,855	591.51
Leisure & Hospitality	97	1,641	1,610	1,644	5,352,279	252.33
Other Services	79	365	377	377	2,920,483	602.29
Local Government	43	2,058	2,053	2,040	17,673,448	663.06
State Government	10	141	142	144	1,006,631	544.03
<b>CRITTENDEN COUNTY - TOTAL</b>	<b>1,278</b>	<b>16,625</b>	<b>16,453</b>	<b>16,430</b>	<b>\$139,106,560</b>	<b>\$648.41</b>
Natural Resources & Mining	57	212	226	244	1,460,634	494.24
Construction	48	855	631	532	8,914,865	1,019.46
Manufacturing	42	1,836	1,830	1,806	23,983,952	1,011.47
Trade, Transportation & Utilities	306	4,326	4,357	4,390	37,839,123	667.95
Wholesale Trade	66	736	753	752	8,539,242	879.34
Retail Trade	160	1,992	2,000	1,999	11,460,246	441.44
Transportation, Warehousing & Utilities	80	1,598	1,604	1,639	17,839,635	850.41
Information	4	50	50	50	441,695	679.53
Financial Activities	98	460	463	463	4,890,240	814.23
Professional & Business Services	115	1,312	1,296	1,358	9,050,973	526.65
Education & Health Services	351	2,155	2,148	2,134	15,308,430	548.81
Leisure & Hospitality	121	2,165	2,218	2,222	9,703,693	339.03
Other Services	80	491	494	487	3,950,223	619.29
Local Government	42	2,257	2,232	2,241	19,846,142	680.52
State Government	14	506	508	503	3,716,590	565.38

TABLE 6. COUNTY SUMMARY

North American Industry Classification System - Industry Groups	Number of Employing Units	Employment			Total Earnings Jan - Mar 2016	Average Weekly Earnings
		Jan	Feb	Mar		
<b>CROSS COUNTY - TOTAL</b>	<b>476</b>	<b>4,813</b>	<b>4,880</b>	<b>4,945</b>	<b>\$36,759,782</b>	<b>\$579.52</b>
Natural Resources & Mining	35	223	232	245	1,424,429	469.59
Construction	21	61	62	64	430,239	530.94
Manufacturing	12	479	489	477	3,830,897	611.80
Trade, Transportation & Utilities	130	1,157	1,169	1,188	9,920,309	651.48
Wholesale Trade	30	286	289	303	3,802,238	999.36
Retail Trade	72	776	788	784	5,143,518	505.52
Transportation, Warehousing & Utilities	28	95	92	101	974,553	780.89
Information	5	45	45	42	292,316	511.04
Financial Activities	44	307	306	310	2,595,441	648.91
Professional & Business Services	39	120	125	122	1,108,848	697.24
Education & Health Services	102	923	950	969	6,938,287	563.39
Leisure & Hospitality	30	340	344	360	996,413	220.25
Other Services	32	92	86	90	607,638	523.22
Local Government	16	705	715	721	5,784,327	623.47
State Government	10	361	357	357	2,830,638	607.65
<b>DALLAS COUNTY - TOTAL</b>	<b>253</b>	<b>2,838</b>	<b>2,809</b>	<b>2,865</b>	<b>\$20,318,987</b>	<b>\$550.87</b>
Natural Resources & Mining	31	171	154	150	1,347,209	654.51
Construction	18	72	73	73	513,183	543.24
Manufacturing	9	544	545	547	4,544,759	641.07
Trade, Transportation & Utilities	57	467	467	472	3,202,787	525.68
Wholesale Trade	6	15	13	13	192,113	1,081.31
Retail Trade	39	349	352	363	2,158,814	468.22
Transportation, Warehousing & Utilities	12	103	102	96	851,860	653.10
Information	4	17	17	17	115,407	522.20
Financial Activities	16	78	79	80	742,585	723.06
Professional & Business Services	11	32	33	32	498,620	1,186.25
Education & Health Services	59	849	838	833	6,289,007	575.92
Leisure & Hospitality	13	168	162	167	427,357	198.43
Other Services	13	60	60	62	315,453	399.98
Local Government	14	336	335	386	2,040,644	445.52
State Government	8	44	46	46	281,976	478.47

TABLE 6. COUNTY SUMMARY

North American Industry Classification System - Industry Groups	Number of Employing Units	Employment			Total Earnings	Average Weekly Earnings
		Jan	Feb	Mar	Jan - Mar 2016	
<b>DESHA COUNTY - TOTAL</b>	<b>536</b>	<b>4,456</b>	<b>4,480</b>	<b>4,500</b>	<b>\$34,473,951</b>	<b>\$592.11</b>
Natural Resources & Mining	67	242	251	262	1,622,861	496.03
Construction	18	90	90	86	822,072	713.19
Manufacturing	15	808	799	792	10,959,448	1,054.23
Trade, Transportation & Utilities	109	869	859	864	6,321,594	562.82
Wholesale Trade	22	211	214	208	2,625,804	957.27
Retail Trade	63	496	488	502	2,355,399	365.78
Transportation, Warehousing & Utilities	24	162	157	154	1,340,391	653.96
Information	3	10	10	10	88,791	683.01
Financial Activities	29	204	200	200	1,601,477	611.87
Professional & Business Services	40	88	89	93	645,557	551.76
Education & Health Services	166	758	755	753	3,914,693	398.67
Leisure & Hospitality	38	373	410	408	1,256,570	243.47
Other Services	20	47	48	53	251,169	391.64
Local Government	21	814	814	825	6,004,815	564.91
State Government	10	153	155	154	984,904	491.96
<b>DREW COUNTY - TOTAL</b>	<b>522</b>	<b>6,368</b>	<b>6,417</b>	<b>6,442</b>	<b>\$50,505,560</b>	<b>\$606.19</b>
Natural Resources & Mining	53	338	346	343	2,924,795	657.21
Construction	20	84	87	83	737,663	670.20
Manufacturing	21	758	765	771	7,029,993	707.20
Trade, Transportation & Utilities	121	1,209	1,192	1,196	8,115,442	520.65
Wholesale Trade	18	114	114	115	1,463,343	984.53
Retail Trade	81	966	952	954	5,341,922	429.23
Transportation, Warehousing & Utilities	22	129	126	127	1,310,177	791.49
Information	6	43	45	47	376,026	642.78
Financial Activities	51	248	242	251	2,607,846	812.16
Professional & Business Services	33	224	221	218	1,752,218	609.89
Education & Health Services	122	921	922	922	7,516,044	627.30
Leisure & Hospitality	40	628	636	658	2,050,042	246.14
Other Services	17	68	65	69	339,954	388.37
Local Government	22	1,269	1,274	1,265	10,989,790	665.99
State Government	16	578	622	619	6,065,747	769.54

TABLE 6. COUNTY SUMMARY

North American Industry Classification System - Industry Groups	Number of Employing Units	Employment			Total Earnings Jan - Mar 2016	Average Weekly Earnings
		Jan	Feb	Mar		
<b>FAULKNER COUNTY - TOTAL</b>	<b>2,856</b>	<b>39,857</b>	<b>40,170</b>	<b>40,494</b>	<b>\$367,336,453</b>	<b>\$703.36</b>
Natural Resources & Mining	64	680	640	614	11,909,161	1,421.03
Construction	310	2,607	2,633	2,653	26,250,868	767.50
Manufacturing	107	3,141	3,149	3,161	39,369,661	961.31
Trade, Transportation & Utilities	652	7,226	7,192	7,272	51,949,241	552.71
Wholesale Trade	149	508	504	508	6,323,354	960.02
Retail Trade	414	5,978	5,945	6,009	35,807,154	460.81
Transportation, Warehousing & Utilities	89	740	743	755	9,818,733	1,012.45
Information	19	223	222	228	2,495,565	855.72
Financial Activities	321	1,469	1,467	1,467	16,233,712	850.84
Professional & Business Services	436	5,666	5,716	5,763	78,152,849	1,051.93
Education & Health Services	436	6,202	6,370	6,348	53,673,834	654.67
Leisure & Hospitality	262	4,997	5,109	5,214	16,994,878	256.00
Other Services	190	734	746	777	5,149,110	526.48
Local Government	41	3,497	3,515	3,573	32,988,570	719.20
State Government	18	3,415	3,411	3,424	32,169,004	724.26
<b>FRANKLIN COUNTY - TOTAL</b>	<b>360</b>	<b>4,274</b>	<b>4,269</b>	<b>4,292</b>	<b>\$35,175,659</b>	<b>\$632.45</b>
Natural Resources & Mining	18	210	206	211	3,458,480	1,272.90
Construction	33	108	118	115	854,378	578.19
Manufacturing	13	850	847	852	8,203,781	742.71
Trade, Transportation & Utilities	92	947	901	914	7,708,512	644.06
Wholesale Trade	12	38	37	38	211,000	430.91
Retail Trade	57	642	628	640	3,312,798	400.26
Transportation, Warehousing & Utilities	23	267	236	236	4,184,714	1,306.77
Information	5	19	18	19	156,874	646.46
Financial Activities	29	85	82	82	690,787	640.21
Professional & Business Services	37	304	305	306	2,362,341	595.80
Education & Health Services	62	557	561	556	3,546,443	488.89
Leisure & Hospitality	27	305	331	342	927,868	218.94
Other Services	16	57	55	57	335,735	458.45
Local Government	19	715	716	709	5,655,491	609.87
State Government	9	117	129	129	1,274,969	784.60

TABLE 6. COUNTY SUMMARY

North American Industry Classification System - Industry Groups	Number of Employing Units	Employment			Total Earnings	Average Weekly Earnings
		Jan	Feb	Mar	Jan - Mar 2016	
<b>FULTON COUNTY - TOTAL</b>	<b>188</b>	<b>1,781</b>	<b>1,789</b>	<b>1,817</b>	<b>\$11,959,376</b>	<b>\$512.32</b>
Natural Resources & Mining	3	6	6	6	39,770	509.87
Construction	7	35	33	30	256,093	603.04
Manufacturing	12	96	97	97	511,976	407.41
Trade, Transportation & Utilities	47	288	276	279	2,371,649	649.23
Retail Trade	31	173	173	168	850,897	382.02
Other Trade, Transportation, & Utilities	16	115	103	111	1,520,752	1,066.70
Information	4	32	31	32	201,374	489.17
Financial Activities	17	84	86	93	788,548	691.91
Professional & Business Services	13	37	37	39	306,131	625.18
Education & Health Services	40	409	415	427	2,524,206	465.63
Leisure & Hospitality	16	144	149	157	406,427	208.42
Other Services	7	15	15	14	69,821	366.19
Local Government	12	531	540	539	3,761,394	539.14
State Government	10	104	104	104	721,987	534.01
<b>GARLAND COUNTY - TOTAL</b>	<b>3,100</b>	<b>35,430</b>	<b>35,610</b>	<b>36,084</b>	<b>\$285,479,227</b>	<b>\$614.99</b>
Natural Resources & Mining	28	267	266	239	3,403,041	1,017.25
Construction	335	1,603	1,589	1,600	13,166,178	634.05
Manufacturing	95	2,541	2,548	2,548	24,157,804	729.98
Trade, Transportation & Utilities	688	7,105	7,191	7,206	51,952,261	557.58
Wholesale Trade	139	810	820	822	8,950,462	842.37
Retail Trade	486	5,858	5,911	5,926	38,045,308	496.17
Transportation, Warehousing & Utilities	63	437	460	458	4,956,491	844.14
Information	31	436	429	432	3,742,918	665.96
Financial Activities	340	1,398	1,417	1,416	16,944,666	924.20
Professional & Business Services	385	2,655	2,813	2,855	24,146,645	669.51
Education & Health Services	528	7,538	7,562	7,599	75,663,966	769.24
Leisure & Hospitality	373	6,901	6,777	7,080	28,647,568	318.48
Other Services	238	973	978	975	5,961,141	470.15
Local Government	34	3,005	2,989	3,081	29,532,454	750.98
State Government	25	1,008	1,051	1,053	8,160,585	605.15



TABLE 6. COUNTY SUMMARY

North American Industry Classification System - Industry Groups	Number of Employing Units	Employment			Total Earnings	Average Weekly Earnings
		Jan	Feb	Mar	Jan - Mar 2016	
<b>GRANT COUNTY - TOTAL</b>	<b>336</b>	<b>3,819</b>	<b>3,869</b>	<b>3,960</b>	<b>\$33,866,054</b>	<b>\$670.95</b>
Natural Resources & Mining	27	181	182	190	2,091,099	872.62
Construction	27	168	164	169	2,188,441	1,008.03
Manufacturing	18	1,155	1,175	1,164	13,275,704	876.82
Trade, Transportation & Utilities	85	615	627	646	4,250,577	519.55
Wholesale Trade	21	92	95	92	934,679	773.10
Retail Trade	42	451	465	488	2,749,018	451.84
Transportation, Warehousing & Utilities	22	72	67	66	566,880	638.14
Information	4	9	10	10	50,959	405.51
Financial Activities	25	93	93	94	849,794	700.38
Professional & Business Services	26	105	104	103	1,097,175	811.52
Education & Health Services	64	389	386	380	2,299,247	459.39
Leisure & Hospitality	24	260	281	328	802,514	213.11
Other Services	18	47	47	46	230,910	380.62
Local Government	10	741	743	773	6,386,131	652.96
State Government	8	56	57	57	343,503	466.29
<b>GREENE COUNTY - TOTAL</b>	<b>883</b>	<b>15,201</b>	<b>15,257</b>	<b>15,212</b>	<b>\$128,623,945</b>	<b>\$649.93</b>
Natural Resources & Mining	40	233	248	265	1,672,384	517.34
Construction	71	267	283	291	2,708,470	743.20
Manufacturing	63	5,240	5,163	5,065	55,134,281	822.56
Trade, Transportation & Utilities	239	2,561	2,579	2,583	18,203,378	543.93
Wholesale Trade	45	401	405	407	4,343,467	826.33
Retail Trade	157	1,802	1,814	1,805	10,743,667	457.35
Transportation, Warehousing & Utilities	37	358	360	371	3,116,244	660.36
Information	10	96	93	95	610,129	495.77
Financial Activities	75	538	534	544	5,331,501	761.35
Professional & Business Services	89	937	963	937	6,547,773	532.61
Education & Health Services	144	1,942	1,949	1,941	16,135,452	638.47
Leisure & Hospitality	64	1,154	1,202	1,234	3,607,064	231.87
Other Services	46	182	189	190	1,168,699	480.75
Local Government	30	1,636	1,636	1,652	13,824,611	647.91
State Government	12	415	418	415	3,680,203	680.51

TABLE 6. COUNTY SUMMARY

North American Industry Classification System - Industry Groups	Number of Employing Units	Employment			Total Earnings	Average Weekly Earnings
		Jan	Feb	Mar	Jan - Mar 2016	
<b>HEMPSTEAD COUNTY - TOTAL</b>	<b>507</b>	<b>7,619</b>	<b>7,708</b>	<b>7,747</b>	<b>\$61,584,725</b>	<b>\$615.93</b>
Natural Resources & Mining	22	233	241	245	2,079,867	667.55
Construction	29	193	213	207	1,982,986	746.51
Manufacturing	27	2,175	2,214	2,235	21,133,895	736.27
Trade, Transportation & Utilities	128	1,285	1,278	1,283	11,180,902	670.88
Wholesale Trade	20	180	179	185	1,611,986	683.82
Retail Trade	80	843	834	840	4,697,313	430.67
Transportation, Warehousing & Utilities	28	262	265	258	4,871,603	1,432.12
Information	8	36	37	36	334,656	708.52
Financial Activities	44	216	213	212	1,993,126	717.55
Professional & Business Services	35	196	198	200	1,370,445	532.42
Education & Health Services	92	915	925	925	5,743,374	479.35
Leisure & Hospitality	47	594	610	631	2,011,893	253.02
Other Services	31	142	143	139	966,663	526.12
Local Government	27	884	880	881	6,978,758	608.88
State Government	17	750	756	753	5,808,160	593.34
<b>HOT SPRING COUNTY - TOTAL</b>	<b>619</b>	<b>8,345</b>	<b>8,402</b>	<b>8,560</b>	<b>\$67,933,481</b>	<b>\$619.47</b>
Natural Resources & Mining	22	140	145	143	1,059,419	571.22
Construction	54	304	315	455	2,873,221	617.37
Manufacturing	29	1,370	1,345	1,344	15,918,744	905.04
Trade, Transportation & Utilities	151	1,602	1,604	1,609	14,536,085	696.67
Wholesale Trade	17	117	117	113	1,112,416	739.80
Retail Trade	96	872	877	878	4,903,413	430.74
Transportation, Warehousing & Utilities	38	613	610	618	8,520,256	1,068.01
Information	7	76	77	78	657,962	657.30
Financial Activities	55	211	213	214	2,063,100	746.24
Professional & Business Services	52	1,070	1,098	1,068	6,019,384	429.26
Education & Health Services	121	1,001	1,006	1,002	7,795,053	597.83
Leisure & Hospitality	52	579	597	635	1,666,158	212.31
Other Services	36	120	126	124	724,265	451.72
Local Government	27	1,001	987	997	8,246,541	637.54
State Government	13	871	889	891	6,373,549	554.82

TABLE 6. COUNTY SUMMARY

North American Industry Classification System - Industry Groups	Number of Employing Units	Employment			Total Earnings	Average Weekly Earnings
		Jan	Feb	Mar	Jan - Mar 2016	
<b>HOWARD COUNTY - TOTAL</b>	<b>353</b>	<b>6,918</b>	<b>6,951</b>	<b>6,945</b>	<b>\$51,603,754</b>	<b>\$572.14</b>
Natural Resources & Mining	21	261	257	263	2,244,538	663.21
Construction	19	114	116	113	1,168,479	786.15
Manufacturing	20	3,321	3,354	3,344	24,995,481	575.72
Trade, Transportation & Utilities	88	925	929	939	6,774,602	559.75
Wholesale Trade	15	74	75	76	633,015	649.25
Retail Trade	55	630	635	652	3,609,939	434.57
Transportation, Warehousing & Utilities	18	221	219	211	2,531,648	897.43
Information	3	24	24	25	133,792	422.95
Financial Activities	36	143	144	141	1,555,146	838.50
Professional & Business Services	25	159	163	140	1,120,514	559.70
Education & Health Services	69	692	683	693	5,514,193	615.33
Leisure & Hospitality	21	295	302	318	921,260	232.35
Other Services	23	154	153	151	1,065,766	537.00
Local Government	17	721	706	702	5,293,290	573.76
State Government	11	109	120	116	816,693	546.28
<b>INDEPENDENCE COUNTY - TOTAL</b>	<b>907</b>	<b>15,083</b>	<b>15,212</b>	<b>15,279</b>	<b>\$126,111,508</b>	<b>\$638.58</b>
Natural Resources & Mining	13	196	205	206	2,645,857	1,005.90
Construction	64	390	398	401	3,519,889	683.16
Manufacturing	39	2,737	2,815	2,850	27,266,954	748.91
Trade, Transportation & Utilities	237	3,073	3,081	3,089	24,884,173	621.28
Wholesale Trade	30	435	436	438	4,006,529	706.33
Retail Trade	154	1,735	1,759	1,758	10,530,788	462.72
Transportation, Warehousing & Utilities	53	903	886	893	10,346,856	890.28
Information	9	119	112	109	872,013	591.86
Financial Activities	84	499	498	492	6,426,236	995.96
Professional & Business Services	97	1,283	1,289	1,207	7,406,323	452.28
Education & Health Services	159	3,154	3,176	3,200	31,903,562	772.55
Leisure & Hospitality	78	1,170	1,165	1,175	3,514,430	231.06
Other Services	64	343	341	368	1,802,977	395.51
Local Government	47	1,528	1,505	1,547	11,005,859	554.54
State Government	16	591	627	635	4,863,235	605.66

TABLE 6. COUNTY SUMMARY

North American Industry Classification System - Industry Groups	Number of Employing Units	Employment			Total Earnings	Average Weekly Earnings
		Jan	Feb	Mar	Jan - Mar 2016	
<b>IZARD COUNTY - TOTAL</b>	<b>260</b>	<b>3,036</b>	<b>3,104</b>	<b>3,155</b>	<b>\$23,167,412</b>	<b>\$575.18</b>
Natural Resources & Mining	8	135	134	135	1,698,967	970.47
Construction	21	118	105	110	902,399	625.36
Manufacturing	11	289	309	308	2,788,925	710.37
Trade, Transportation & Utilities	68	544	545	550	3,830,509	539.33
Wholesale Trade	13	26	27	34	174,527	462.94
Retail Trade	43	384	378	377	2,135,417	432.65
Transportation, Warehousing & Utilities	12	134	140	139	1,520,565	849.64
Information	4	7	7	7	77,490	851.54
Financial Activities	24	163	159	165	1,300,216	616.12
Professional & Business Services	15	46	45	51	339,265	551.35
Education & Health Services	50	684	677	689	4,385,581	493.69
Leisure & Hospitality	22	101	113	131	331,011	221.41
Other Services	10	24	24	23	146,244	475.33
Local Government	17	506	507	510	3,678,002	557.30
State Government	10	419	479	476	3,688,803	619.55
<b>JACKSON COUNTY - TOTAL</b>	<b>453</b>	<b>5,246</b>	<b>5,205</b>	<b>5,340</b>	<b>\$45,210,302</b>	<b>\$660.70</b>
Natural Resources & Mining	56	211	232	269	1,839,422	596.18
Construction	23	96	96	99	870,989	690.71
Manufacturing	16	1,027	1,010	1,052	13,051,314	975.02
Trade, Transportation & Utilities	114	1,003	1,001	1,033	7,880,559	598.81
Wholesale Trade	21	203	205	210	2,566,808	958.48
Retail Trade	74	707	702	729	4,347,454	469.25
Transportation, Warehousing & Utilities	19	93	94	94	966,297	793.56
Information	4	69	37	28	305,125	525.47
Financial Activities	33	140	140	131	1,563,825	878.06
Professional & Business Services	31	112	114	112	960,435	655.74
Education & Health Services	83	818	805	825	6,587,246	620.97
Leisure & Hospitality	30	303	311	318	956,450	236.82
Other Services	18	67	64	61	581,632	699.08
Local Government	32	597	599	618	4,427,585	563.26
State Government	13	803	796	794	6,185,720	596.52

TABLE 6. COUNTY SUMMARY

North American Industry Classification System - Industry Groups	Number of Employing Units	Employment			Total Earnings Jan - Mar 2016	Average Weekly Earnings
		Jan	Feb	Mar		
<b>JEFFERSON COUNTY - TOTAL</b>	<b>2,106</b>	<b>26,482</b>	<b>26,854</b>	<b>27,119</b>	<b>\$242,004,733</b>	<b>\$694.14</b>
Natural Resources & Mining	37	156	159	170	1,920,069	913.59
Construction	89	483	481	584	4,660,054	694.70
Manufacturing	60	4,952	4,967	4,968	62,359,079	966.65
Trade, Transportation & Utilities	413	4,520	4,544	4,562	37,779,639	639.83
Wholesale Trade	73	643	682	672	6,798,808	785.66
Retail Trade	283	3,123	3,121	3,149	19,323,023	474.73
Transportation, Warehousing & Utilities	57	754	741	741	11,657,808	1,203.16
Information	10	82	80	80	805,932	768.53
Financial Activities	152	1,095	1,086	1,059	17,324,144	1,233.91
Professional & Business Services	156	1,946	1,979	2,064	13,577,661	523.18
Education & Health Services	853	4,694	4,722	4,721	40,052,045	653.80
Leisure & Hospitality	139	1,863	1,883	1,930	6,260,901	254.55
Other Services	121	580	576	584	4,082,364	541.43
Local Government	39	2,853	2,870	2,839	22,691,331	611.59
State Government	37	3,258	3,507	3,558	30,491,514	681.63
<b>JOHNSON COUNTY - TOTAL</b>	<b>501</b>	<b>8,362</b>	<b>8,432</b>	<b>8,440</b>	<b>\$62,304,510</b>	<b>\$569.79</b>
Natural Resources & Mining	13	126	127	135	1,128,355	671.11
Construction	36	153	152	158	1,239,176	617.63
Manufacturing	37	2,645	2,658	2,676	20,199,689	584.22
Trade, Transportation & Utilities	117	1,891	1,908	1,893	14,023,438	568.55
Retail Trade	78	919	916	911	4,878,885	410.01
Other Trade, Transportation & Utilities	39	972	992	982	9,144,553	716.32
Information	7	34	37	38	221,312	468.55
Financial Activities	50	185	180	181	1,823,860	770.86
Professional & Business Services	56	366	372	336	2,075,349	445.93
Education & Health Services	89	1,208	1,232	1,240	10,311,436	646.62
Leisure & Hospitality	39	506	521	535	1,606,645	237.37
Other Services	34	86	84	87	507,493	455.70
Local Government	14	1,035	1,036	1,036	8,199,043	608.98
State Government	9	127	125	125	968,714	592.97

TABLE 6. COUNTY SUMMARY

North American Industry Classification System - Industry Groups	Number of Employing Units	Employment			Total Earnings Jan - Mar 2016	Average Weekly Earnings
		Jan	Feb	Mar		
<b>LAFAYETTE COUNTY - TOTAL</b>	<b>175</b>	<b>1,201</b>	<b>1,184</b>	<b>1,166</b>	<b>\$8,809,966</b>	<b>\$572.53</b>
Natural Resources & Mining	31	141	137	126	1,714,038	979.08
Construction	9	62	59	59	660,691	847.04
Manufacturing	6	32	32	30	492,475	1,209.02
Trade, Transportation & Utilities	30	200	192	190	1,208,917	479.35
Retail Trade	18	121	112	114	535,319	356.01
Other Trade, Transportation & Utilities	12	79	80	76	673,598	661.47
Financial Activities	15	49	47	49	334,739	532.74
Professional & Business Services	11	49	49	46	349,171	559.57
Education & Health Services	39	204	205	202	1,162,028	438.89
Leisure & Hospitality	5	43	41	43	143,100	260.02
Local Government	13	291	291	291	2,033,258	537.47
State Government	8	45	46	45	272,791	462.88
Other	8	85	85	85	438,758	397.07
<b>LAWRENCE COUNTY - TOTAL</b>	<b>415</b>	<b>3,989</b>	<b>4,054</b>	<b>4,091</b>	<b>\$28,970,896</b>	<b>\$550.98</b>
Natural Resources & Mining	53	181	183	206	1,563,303	632.92
Construction	26	106	110	113	825,517	579.04
Manufacturing	20	497	515	505	4,043,271	615.07
Trade, Transportation & Utilities	114	820	827	843	6,410,981	594.16
Wholesale Trade	19	193	192	194	1,965,974	783.57
Retail Trade	60	502	500	517	2,961,841	449.97
Transportation, Warehousing & Utilities	35	125	135	132	1,483,166	873.14
Financial Activities	35	144	146	148	1,314,299	692.47
Professional & Business Services	27	111	114	115	1,108,836	752.60
Education & Health Services	54	540	544	544	3,983,089	564.60
Leisure & Hospitality	30	345	353	362	1,058,717	230.49
Local Government	25	1,092	1,106	1,097	7,658,446	536.37
State Government	10	91	91	91	568,343	480.43
Other	21	62	65	67	436,094	518.75

TABLE 6. COUNTY SUMMARY

North American Industry Classification System - Industry Groups	Number of Employing Units	Employment			Total Earnings Jan - Mar 2016	Average Weekly Earnings
		Jan	Feb	Mar		
<b>LEE COUNTY - TOTAL</b>	<b>289</b>	<b>1,858</b>	<b>1,887</b>	<b>1,902</b>	<b>\$14,480,712</b>	<b>\$591.77</b>
Natural Resources & Mining	39	145	175	188	2,016,126	915.87
Construction	11	25	31	29	216,549	587.92
Trade, Transportation & Utilities	44	338	333	333	2,887,002	663.58
Wholesale Trade	10	120	119	118	1,434,847	927.50
Retail Trade	23	171	166	166	890,659	408.62
Transportation, Warehousing & Utilities	11	47	48	49	561,496	899.83
Financial Activities	18	64	65	61	430,273	522.60
Professional & Business Services	14	70	68	70	933,024	1,035.16
Education & Health Services	123	419	412	415	2,703,656	500.74
Leisure & Hospitality	9	85	78	75	247,650	240.13
Local Government	15	259	261	261	1,488,604	439.85
State Government	7	439	450	456	3,467,525	594.94
Other	9	14	14	14	90,303	496.17
<b>LINCOLN COUNTY - TOTAL</b>	<b>279</b>	<b>2,799</b>	<b>2,812</b>	<b>2,812</b>	<b>\$21,303,233</b>	<b>\$583.66</b>
Natural Resources & Mining	36	161	163	160	1,190,442	567.60
Construction	16	82	85	76	693,018	658.14
Manufacturing	9	249	252	250	1,918,511	589.53
Trade, Transportation & Utilities	47	380	381	390	3,166,629	634.89
Wholesale Trade	6	47	50	53	512,452	788.39
Retail Trade	26	196	194	196	883,380	347.88
Transportation, Warehousing & Utilities	15	137	137	141	1,770,797	984.69
Information	3	6	6	6	52,426	672.13
Financial Activities	20	75	74	76	772,455	792.26
Professional & Business Services	9	16	17	17	127,932	590.46
Education & Health Services	92	391	393	388	2,470,285	486.40
Leisure & Hospitality	14	159	163	163	414,807	197.37
Other Services	14	44	43	43	369,199	655.38
Local Government	7	374	368	369	2,557,848	531.30
State Government	12	862	867	874	7,569,681	671.09

TABLE 6. COUNTY SUMMARY

North American Industry Classification System - Industry Groups	Number of Employing Units	Employment			Total Earnings	Average Weekly Earnings
		Jan	Feb	Mar	Jan - Mar 2016	
<b>LITTLE RIVER COUNTY - TOTAL</b>	<b>241</b>	<b>3,504</b>	<b>3,473</b>	<b>3,490</b>	<b>\$48,708,134</b>	<b>\$1,073.88</b>
Natural Resources & Mining	14	93	88	86	819,486	708.29
Construction	15	228	200	217	2,142,004	766.37
Manufacturing	14	1,212	1,230	1,198	32,679,061	2,071.79
Trade, Transportation & Utilities	58	556	548	573	3,625,855	498.95
Wholesale Trade	7	23	23	26	351,780	1,127.50
Retail Trade	38	414	403	427	2,358,766	437.56
Transportation, Warehousing & Utilities	13	119	122	120	915,309	585.11
Financial Activities	18	83	81	81	668,649	629.81
Professional & Business Services	17	86	83	82	705,313	648.46
Education & Health Services	41	162	164	166	1,044,764	490.04
Leisure & Hospitality	15	185	187	190	533,804	219.19
Local Government	20	725	736	734	5,569,492	585.54
State Government	11	84	86	91	536,243	474.13
Other	18	90	70	72	383,463	381.43
<b>LOGAN COUNTY - TOTAL</b>	<b>501</b>	<b>5,388</b>	<b>5,417</b>	<b>5,444</b>	<b>\$38,718,889</b>	<b>\$549.89</b>
Natural Resources & Mining	27	131	129	125	1,193,868	715.61
Construction	43	221	214	210	1,688,547	604.13
Manufacturing	21	1,205	1,192	1,183	10,606,848	683.72
Trade, Transportation & Utilities	104	1,008	1,034	1,061	6,234,816	463.68
Wholesale Trade	10	68	68	69	315,273	354.90
Retail Trade	68	772	792	812	4,229,787	410.82
Transportation, Warehousing & Utilities	26	168	174	180	1,689,756	747.02
Information	5	31	31	31	301,839	748.98
Financial Activities	49	214	213	211	2,068,966	748.36
Professional & Business Services	52	128	129	130	1,099,012	655.34
Education & Health Services	105	701	699	709	4,931,167	539.57
Leisure & Hospitality	32	326	336	339	1,016,214	234.28
Other Services	27	121	122	123	942,898	594.51
Local Government	22	779	790	791	5,658,529	553.31
State Government	14	523	528	531	2,976,185	434.14



TABLE 6. COUNTY SUMMARY

North American Industry Classification System - Industry Groups	Number of Employing Units	Employment			Total Earnings	Average Weekly Earnings
		Jan	Feb	Mar	Jan - Mar 2016	
<b>LONOKE COUNTY - TOTAL</b>	<b>1,301</b>	<b>13,609</b>	<b>13,632</b>	<b>13,644</b>	<b>\$105,820,781</b>	<b>\$597.29</b>
Natural Resources & Mining	84	388	425	452	3,524,301	642.93
Construction	123	844	854	836	7,658,734	697.47
Manufacturing	37	1,742	1,716	1,713	19,578,677	873.75
Trade, Transportation & Utilities	320	2,810	2,777	2,809	19,790,440	543.95
Wholesale Trade	75	373	395	408	4,391,299	861.71
Retail Trade	182	2,152	2,103	2,111	12,455,169	451.50
Transportation, Warehousing & Utilities	63	285	279	290	2,943,972	795.52
Information	14	93	95	90	877,059	728.05
Financial Activities	147	661	656	652	8,602,289	1,008.20
Professional & Business Services	165	841	871	855	6,115,250	549.75
Education & Health Services	197	1,651	1,666	1,661	11,309,011	524.26
Leisure & Hospitality	112	1,721	1,745	1,750	5,625,846	248.90
Other Services	62	169	169	179	1,023,804	456.99
Local Government	24	2,535	2,501	2,493	20,630,492	632.34
State Government	16	154	157	154	1,084,878	538.40
<b>MADISON COUNTY - TOTAL</b>	<b>246</b>	<b>3,064</b>	<b>3,053</b>	<b>3,070</b>	<b>\$24,150,357</b>	<b>\$606.64</b>
Natural Resources & Mining	10	51	50	53	403,556	604.73
Construction	23	73	81	82	649,460	635.07
Manufacturing	22	1,019	1,010	1,017	8,864,807	671.61
Trade, Transportation & Utilities	57	671	677	665	5,430,623	622.56
Wholesale Trade	9	31	25	24	404,776	1,167.62
Retail Trade	37	497	504	499	3,109,311	478.36
Transportation, Warehousing & Utilities	11	143	148	142	1,916,536	1,021.43
Information	6	52	51	51	717,334	1,074.93
Financial Activities	17	68	68	68	570,650	645.53
Professional & Business Services	22	102	97	96	967,203	756.61
Education & Health Services	42	231	236	245	1,354,650	439.06
Leisure & Hospitality	16	179	178	182	492,468	210.85
Other Services	15	29	28	33	269,506	691.04
Local Government	9	552	540	541	4,157,970	587.59
State Government	7	37	37	37	272,130	565.76

TABLE 6. COUNTY SUMMARY

North American Industry Classification System - Industry Groups	Number of Employing Units	Employment			Total Earnings	Average Weekly Earnings
		Jan	Feb	Mar	Jan - Mar 2016	
<b>MARION COUNTY - TOTAL</b>	<b>276</b>	<b>3,750</b>	<b>3,769</b>	<b>3,791</b>	<b>\$25,049,882</b>	<b>\$511.12</b>
Natural Resources & Mining	3	21	21	21	100,013	366.35
Construction	16	52	42	45	273,074	453.36
Manufacturing	20	1,727	1,754	1,761	12,094,719	532.45
Trade, Transportation & Utilities	57	537	545	552	3,201,960	452.21
Wholesale Trade	8	39	41	41	305,624	582.88
Retail Trade	39	465	470	476	2,470,926	404.12
Transportation, Warehousing & Utilities	10	33	34	35	425,410	962.47
Information	4	53	52	53	656,621	959.04
Financial Activities	31	170	174	179	1,678,940	740.82
Professional & Business Services	27	94	95	92	537,862	441.72
Education & Health Services	48	330	332	332	2,235,396	518.97
Leisure & Hospitality	32	179	184	190	492,495	205.52
Other Services	13	23	23	24	109,933	362.42
Local Government	17	508	490	485	3,304,530	514.22
State Government	8	56	57	57	364,339	494.58
<b>MILLER COUNTY - TOTAL</b>	<b>878</b>	<b>12,824</b>	<b>12,813</b>	<b>12,836</b>	<b>\$115,508,147</b>	<b>\$692.84</b>
Natural Resources & Mining	29	147	159	154	1,231,208	617.66
Construction	70	593	611	607	5,529,841	704.65
Manufacturing	27	2,343	2,380	2,361	35,551,545	1,158.13
Trade, Transportation & Utilities	228	3,608	3,465	3,443	29,876,041	655.62
Wholesale Trade	52	477	473	476	5,459,751	883.55
Retail Trade	127	1,286	1,266	1,259	7,597,105	460.03
Transportation, Warehousing & Utilities	49	1,845	1,726	1,708	16,819,185	735.24
Information	6	60	59	58	1,134,625	1,479.30
Financial Activities	88	416	408	405	4,019,839	754.80
Professional & Business Services	89	1,014	1,042	1,069	5,993,016	442.56
Education & Health Services	151	1,081	1,087	1,081	8,172,509	580.48
Leisure & Hospitality	92	1,349	1,390	1,435	5,161,265	285.35
Other Services	56	284	276	278	1,551,245	427.18
Local Government	25	1,419	1,428	1,436	12,720,349	685.38
State Government	17	510	508	509	4,566,664	690.14

TABLE 6. COUNTY SUMMARY

North American Industry Classification System - Industry Groups	Number of Employing Units	Employment			Total Earnings	Average Weekly Earnings
		Jan	Feb	Mar	Jan - Mar 2016	
<b>MISSISSIPPI COUNTY - TOTAL</b>	<b>1,186</b>	<b>17,496</b>	<b>17,459</b>	<b>17,546</b>	<b>\$174,730,168</b>	<b>\$768.03</b>
Natural Resources & Mining	120	482	511	519	3,415,922	521.36
Construction	54	668	673	660	8,662,988	999.08
Manufacturing	57	6,067	5,977	6,019	88,304,002	1,128.15
Trade, Transportation & Utilities	296	2,748	2,749	2,800	22,521,088	626.39
Wholesale Trade	67	423	426	378	4,880,186	917.85
Retail Trade	158	1,624	1,642	1,720	8,958,319	414.62
Transportation, Warehousing & Utilities	71	701	681	702	8,682,583	961.46
Information	7	46	46	41	301,197	522.61
Financial Activities	88	477	476	473	4,045,005	654.60
Professional & Business Services	94	1,210	1,228	1,263	8,760,590	546.25
Education & Health Services	246	1,795	1,799	1,784	13,384,426	574.32
Leisure & Hospitality	94	1,212	1,197	1,208	3,771,233	240.61
Other Services	56	227	223	215	1,653,308	573.73
Local Government	50	2,021	2,025	2,007	15,836,704	603.77
State Government	24	543	555	557	4,073,705	568.03
<b>MONROE COUNTY - TOTAL</b>	<b>303</b>	<b>2,134</b>	<b>2,175</b>	<b>2,196</b>	<b>\$14,050,263</b>	<b>\$498.44</b>
Natural Resources & Mining	34	121	134	138	901,838	529.56
Construction	12	21	22	23	131,849	461.01
Manufacturing	7	126	141	141	1,278,397	723.08
Trade, Transportation & Utilities	78	572	588	599	4,438,525	582.31
Wholesale Trade	18	205	216	222	2,179,718	782.29
Retail Trade	37	266	268	274	1,440,847	411.51
Transportation, Warehousing & Utilities	23	101	104	103	817,960	612.86
Financial Activities	21	87	87	88	839,041	739.03
Professional & Business Services	13	53	53	55	176,635	253.18
Education & Health Services	68	356	356	357	2,253,025	486.37
Leisure & Hospitality	21	235	235	220	650,566	217.58
Local Government	21	333	330	339	2,261,101	520.75
State Government	8	88	85	85	577,351	516.41
Other	20	142	144	151	541,935	286.18

TABLE 6. COUNTY SUMMARY

North American Industry Classification System - Industry Groups	Number of Employing Units	Employment			Total Earnings	Average Weekly Earnings
		Jan	Feb	Mar	Jan - Mar 2016	
<b>MONTGOMERY COUNTY - TOTAL</b>	<b>165</b>	<b>1,244</b>	<b>1,294</b>	<b>1,312</b>	<b>\$7,933,252</b>	<b>\$475.52</b>
Natural Resources & Mining	8	46	47	43	381,696	647.67
Construction	22	61	72	68	362,483	416.17
Manufacturing	9	36	38	40	233,427	472.52
Trade, Transportation & Utilities	34	215	212	212	1,235,546	446.21
Wholesale Trade	9	46	47	47	356,372	587.43
Retail Trade	19	156	152	152	801,051	401.87
Transportation, Warehousing & Utilities	6	13	13	13	78,123	462.27
Financial Activities	11	50	52	52	642,607	962.95
Professional & Business Services	16	19	19	20	102,325	407.13
Education & Health Services	18	59	58	59	458,906	601.71
Leisure & Hospitality	16	182	226	252	881,880	308.35
Local Government	9	458	451	452	2,949,561	500.12
State Government	8	43	44	43	294,568	522.90
Other	14	75	75	71	390,253	407.50
<b>NEVADA COUNTY - TOTAL</b>	<b>197</b>	<b>2,415</b>	<b>2,444</b>	<b>2,437</b>	<b>\$23,930,441</b>	<b>\$756.91</b>
Natural Resources & Mining	10	72	77	73	780,582	811.42
Trade, Transportation & Utilities	42	557	583	574	4,244,314	571.45
Retail Trade	26	285	311	306	1,422,652	363.97
Other Trade, Transportation & Utilities	16	272	272	268	2,821,662	801.91
Financial Activities	11	56	55	59	469,432	637.24
Professional & Business Services	11	46	42	43	372,349	655.93
Education & Health Services	41	405	403	408	2,373,549	450.45
Leisure & Hospitality	11	87	99	108	286,540	224.91
Other Services	13	37	40	39	165,664	329.57
Local Government	27	387	382	378	2,426,189	488.13
State Government	10	74	75	75	450,712	464.33
Other	21	694	688	680	12,361,110	1,383.40

TABLE 6. COUNTY SUMMARY

North American Industry Classification System - Industry Groups	Number of Employing Units	Employment			Total Earnings Jan - Mar 2016	Average Weekly Earnings
		Jan	Feb	Mar		
<b>NEWTON COUNTY - TOTAL</b>	<b>122</b>	<b>1,026</b>	<b>1,035</b>	<b>1,067</b>	<b>\$5,726,015</b>	<b>\$422.44</b>
Construction	6	20	16	18	104,699	447.43
Manufacturing	7	24	28	24	210,194	638.24
Trade, Transportation & Utilities	32	145	142	145	991,797	529.81
Retail Trade	18	87	84	87	429,282	383.97
Other Trade, Transportation & Utilities	14	58	58	58	562,515	746.04
Education & Health Services	26	228	235	235	988,156	326.70
Leisure & Hospitality	16	109	115	144	447,512	280.63
Other Services	3	5	5	5	25,244	388.37
Local Government	13	391	390	392	2,377,678	467.77
State Government	8	71	70	70	350,744	383.61
Other	11	33	34	34	229,991	525.49
<b>OUACHITA COUNTY - TOTAL</b>	<b>654</b>	<b>7,011</b>	<b>6,994</b>	<b>6,955</b>	<b>\$52,680,364</b>	<b>\$580.01</b>
Natural Resources & Mining	37	161	154	145	1,356,549	680.54
Construction	35	195	194	195	1,728,966	683.21
Manufacturing	25	544	545	530	5,701,829	812.73
Trade, Transportation & Utilities	163	1,614	1,590	1,580	11,196,050	540.07
Wholesale Trade	28	300	307	302	2,727,940	692.55
Retail Trade	107	985	966	968	5,061,261	400.13
Transportation, Warehousing & Utilities	28	329	317	310	3,406,849	822.38
Information	6	40	44	44	454,272	819.00
Financial Activities	57	280	278	279	2,496,339	688.27
Professional & Business Services	47	562	558	563	4,279,211	586.76
Education & Health Services	171	1,257	1,258	1,234	10,519,507	647.53
Leisure & Hospitality	40	523	518	521	1,568,931	231.79
Other Services	30	123	124	121	756,285	474.26
Local Government	29	1,073	1,073	1,072	7,606,295	545.46
State Government	14	639	658	671	5,016,130	588.20

TABLE 6. COUNTY SUMMARY

North American Industry Classification System - Industry Groups	Number of Employing Units	Employment			Total Earnings Jan - Mar 2016	Average Weekly Earnings
		Jan	Feb	Mar		
<b>PERRY COUNTY - TOTAL</b>	<b>147</b>	<b>1,280</b>	<b>1,272</b>	<b>1,278</b>	<b>\$9,751,304</b>	<b>\$587.55</b>
Construction	18	102	107	110	849,951	614.87
Manufacturing	5	40	39	39	283,817	555.05
Trade, Transportation & Utilities	25	182	181	186	1,114,044	468.28
Retail Trade	15	150	150	153	621,809	316.76
Other Trade, Transportation & Utilities	10	32	31	33	492,235	1,183.26
Financial Activities	8	27	26	28	237,965	677.96
Professional & Business Services	15	33	39	39	303,973	631.96
Education & Health Services	35	207	205	209	1,227,478	456.14
Leisure & Hospitality	8	77	78	78	207,943	205.95
Local Government	10	349	356	366	2,417,262	520.85
State Government	8	57	58	57	347,111	465.71
Other	15	206	183	166	2,761,760	1,148.34
<b>PHILLIPS COUNTY - TOTAL</b>	<b>790</b>	<b>5,387</b>	<b>5,444</b>	<b>5,520</b>	<b>\$39,378,378</b>	<b>\$555.77</b>
Natural Resources & Mining	62	222	237	257	1,298,161	418.40
Construction	30	96	104	103	704,949	536.90
Manufacturing	12	353	364	368	3,280,435	697.72
Trade, Transportation & Utilities	157	1,303	1,319	1,344	9,761,087	567.97
Wholesale Trade	29	288	292	298	3,372,725	886.47
Retail Trade	86	775	789	804	3,970,222	386.91
Transportation, Warehousing & Utilities	42	240	238	242	2,418,140	775.04
Information	8	35	34	34	355,204	795.83
Financial Activities	40	210	207	205	1,918,308	711.71
Professional & Business Services	45	221	225	224	2,050,190	706.15
Education & Health Services	326	1,352	1,350	1,364	9,606,826	545.24
Leisure & Hospitality	37	291	297	306	871,027	224.84
Other Services	31	77	76	78	443,755	443.31
Local Government	27	771	774	778	6,268,912	622.76
State Government	15	456	457	459	2,819,524	474.24

TABLE 6. COUNTY SUMMARY

North American Industry Classification System - Industry Groups	Number of Employing Units	Employment			Total Earnings Jan - Mar 2016	Average Weekly Earnings
		Jan	Feb	Mar		
<b>PIKE COUNTY - TOTAL</b>	<b>246</b>	<b>2,379</b>	<b>2,381</b>	<b>2,426</b>	<b>\$16,244,569</b>	<b>\$521.67</b>
Natural Resources & Mining	25	113	115	116	1,326,036	889.56
Construction	13	48	57	49	344,372	516.04
Manufacturing	18	268	265	267	1,587,044	457.80
Trade, Transportation & Utilities	59	501	494	504	3,367,794	518.47
Wholesale Trade	9	116	112	110	844,119	576.32
Retail Trade	35	323	335	336	1,871,611	434.52
Transportation, Warehousing & Utilities	15	62	47	58	652,064	901.06
Information	6	25	26	25	244,927	743.71
Financial Activities	23	220	218	230	2,316,964	800.43
Professional & Business Services	19	74	77	80	834,035	833.20
Education & Health Services	25	294	287	292	1,470,146	388.62
Leisure & Hospitality	25	201	203	219	621,692	230.28
Other Services	13	53	51	50	338,804	507.70
Local Government	10	446	452	457	3,152,538	536.91
State Government	10	136	136	137	640,217	361.23
<b>POINSETT COUNTY - TOTAL</b>	<b>521</b>	<b>5,042</b>	<b>5,092</b>	<b>5,167</b>	<b>\$41,592,263</b>	<b>\$627.29</b>
Natural Resources & Mining	71	380	385	392	3,680,256	734.04
Construction	21	78	85	86	501,548	464.83
Manufacturing	20	677	677	684	6,738,152	762.98
Trade, Transportation & Utilities	134	1,188	1,211	1,241	10,005,798	634.35
Wholesale Trade	31	340	347	362	4,988,083	1,097.33
Retail Trade	72	705	714	719	3,583,207	386.76
Transportation, Warehousing & Utilities	31	143	150	160	1,434,508	730.77
Information	6	55	55	55	514,537	719.63
Financial Activities	39	181	183	185	1,823,766	766.61
Professional & Business Services	27	178	190	192	2,643,154	1,089.21
Education & Health Services	102	802	798	797	5,647,777	543.74
Leisure & Hospitality	41	301	311	330	923,167	226.16
Other Services	20	48	49	46	315,001	508.34
Local Government	29	1,030	1,023	1,034	7,910,797	591.37
State Government	11	124	125	125	888,310	548.11

TABLE 6. COUNTY SUMMARY

North American Industry Classification System - Industry Groups	Number of Employing Units	Employment			Total Earnings Jan - Mar 2016	Average Weekly Earnings
		Jan	Feb	Mar		
<b>POLK COUNTY - TOTAL</b>	<b>486</b>	<b>5,618</b>	<b>5,620</b>	<b>5,735</b>	<b>\$40,558,071</b>	<b>\$551.44</b>
Natural Resources & Mining	20	129	134	128	1,425,148	841.13
Construction	30	184	186	188	1,356,462	560.99
Manufacturing	32	1,243	1,229	1,218	8,942,610	559.26
Trade, Transportation & Utilities	130	1,054	1,050	1,071	6,828,048	496.28
Wholesale Trade	22	53	53	53	381,431	553.60
Retail Trade	74	788	782	794	4,220,636	412.01
Transportation, Warehousing & Utilities	34	213	215	224	2,225,981	787.86
Information	7	61	62	63	453,861	563.10
Financial Activities	47	238	238	237	1,976,617	639.75
Professional & Business Services	43	152	154	154	1,418,554	711.65
Education & Health Services	79	988	984	983	8,587,209	670.61
Leisure & Hospitality	34	420	441	464	1,365,302	237.79
Other Services	29	175	171	172	1,124,343	500.90
Local Government	21	662	661	738	5,215,085	583.93
State Government	14	312	310	319	1,864,832	457.33
<b>POPE COUNTY - TOTAL</b>	<b>1,810</b>	<b>25,688</b>	<b>25,899</b>	<b>26,102</b>	<b>\$236,471,908</b>	<b>\$702.42</b>
Natural Resources & Mining	34	709	718	808	8,009,771	827.03
Construction	156	1,375	1,321	1,314	14,856,981	855.00
Manufacturing	73	4,520	4,492	4,388	42,727,191	735.83
Trade, Transportation & Utilities	433	6,163	6,134	6,121	68,117,933	853.49
Wholesale Trade	79	581	581	582	5,961,794	788.88
Retail Trade	267	3,284	3,270	3,272	18,989,167	445.97
Transportation, Warehousing & Utilities	87	2,298	2,283	2,267	43,166,972	1,454.67
Information	20	180	184	179	1,555,985	661.28
Financial Activities	189	1,241	1,219	1,194	11,270,481	711.79
Professional & Business Services	275	1,647	1,641	1,724	19,057,762	877.48
Education & Health Services	324	3,060	3,096	3,122	25,226,474	627.45
Leisure & Hospitality	138	2,687	2,748	2,823	9,266,019	258.94
Other Services	110	413	472	506	2,922,758	484.89
Local Government	42	2,120	2,124	2,173	18,126,000	651.85
State Government	16	1,573	1,750	1,750	15,334,553	697.56



TABLE 6. COUNTY SUMMARY

North American Industry Classification System - Industry Groups	Number of Employing Units	Employment			Total Earnings	Average Weekly Earnings
		Jan	Feb	Mar	Jan - Mar 2016	
<b>PRAIRIE COUNTY - TOTAL</b>	<b>257</b>	<b>1,469</b>	<b>1,433</b>	<b>1,431</b>	<b>\$10,377,827</b>	<b>\$552.71</b>
Natural Resources & Mining	38	153	150	153	1,323,046	669.56
Construction	11	41	36	43	330,080	634.77
Manufacturing	6	32	33	33	257,319	605.93
Trade, Transportation & Utilities	66	401	388	384	3,084,444	606.82
Wholesale Trade	12	80	81	85	1,506,773	1,413.48
Retail Trade	35	243	243	230	1,061,810	342.22
Transportation, Warehousing & Utilities	19	78	64	69	515,861	564.19
Financial Activities	16	57	57	58	461,353	618.99
Professional & Business Services	15	64	70	69	492,954	560.39
Education & Health Services	49	241	242	239	1,533,882	490.27
Leisure & Hospitality	17	103	88	88	282,797	233.91
Local Government	15	307	300	296	2,119,143	541.56
State Government	9	34	35	35	240,149	532.88
Other	15	36	34	33	252,660	566.08
<b>PULASKI COUNTY - TOTAL</b>	<b>14,304</b>	<b>235,450</b>	<b>236,311</b>	<b>237,306</b>	<b>\$2,691,406,695</b>	<b>\$875.93</b>
Natural Resources & Mining	56	613	603	609	10,313,057	1,304.07
Construction	933	8,610	8,720	8,790	100,530,490	888.18
Manufacturing	333	12,766	12,738	12,685	165,224,004	998.42
Trade, Transportation & Utilities	3,193	48,848	48,580	48,607	500,832,068	791.43
Wholesale Trade	973	11,649	11,688	11,701	176,440,981	1,162.09
Retail Trade	1,830	26,115	25,829	25,824	177,632,746	527.11
Transportation, Warehousing & Utilities	390	11,084	11,063	11,082	146,758,341	1,019.21
Information	194	5,661	5,682	5,679	104,985,058	1,423.29
Financial Activities	1,678	16,345	16,336	16,316	345,697,765	1,628.19
Professional & Business Services	2,810	32,640	32,669	32,825	373,463,138	878.23
Education & Health Services	2,441	39,199	39,429	39,418	431,264,136	843.08
Leisure & Hospitality	1,198	22,006	22,097	22,720	92,076,009	317.98
Other Services	1,161	6,389	6,375	6,459	58,484,854	702.10
Local Government	108	15,344	15,443	15,484	161,606,687	805.99
State Government	199	27,029	27,639	27,714	346,929,429	971.82

TABLE 6. COUNTY SUMMARY

North American Industry Classification System - Industry Groups	Number of Employing Units	Employment			Total Earnings Jan - Mar 2016	Average Weekly Earnings
		Jan	Feb	Mar		
<b>RANDOLPH COUNTY - TOTAL</b>	<b>399</b>	<b>4,226</b>	<b>4,312</b>	<b>4,411</b>	<b>\$29,572,253</b>	<b>\$527.02</b>
Natural Resources & Mining	26	99	110	114	1,164,876	832.25
Construction	26	78	77	76	442,320	441.88
Manufacturing	30	613	633	639	4,797,656	587.35
Trade, Transportation & Utilities	90	825	834	874	5,945,489	541.66
Wholesale Trade	17	155	154	162	1,279,280	626.79
Retail Trade	58	537	551	578	3,260,038	451.57
Transportation, Warehousing & Utilities	15	133	129	134	1,406,171	819.45
Information	5	33	33	33	303,038	706.38
Financial Activities	36	143	139	136	1,245,666	687.71
Professional & Business Services	37	163	171	171	1,077,881	492.56
Education & Health Services	64	779	782	781	4,630,447	456.26
Leisure & Hospitality	29	383	379	413	1,250,033	245.51
Other Services	21	63	64	69	423,173	498.24
Local Government	24	770	771	780	5,701,762	566.91
State Government	11	277	319	325	2,589,912	648.94
<b>SAINT FRANCIS COUNTY - TOTAL</b>	<b>744</b>	<b>7,125</b>	<b>7,159</b>	<b>7,258</b>	<b>\$52,331,268</b>	<b>\$560.60</b>
Natural Resources & Mining	46	146	158	176	1,382,872	664.84
Construction	43	157	169	179	1,439,774	657.93
Trade, Transportation & Utilities	161	1,977	2,005	2,037	14,563,833	558.38
Wholesale Trade	34	591	621	627	6,002,011	753.17
Retail Trade	103	1,073	1,077	1,097	5,664,606	402.59
Transportation, Warehousing & Utilities	24	313	307	313	2,897,216	716.60
Information	5	61	60	62	526,418	663.83
Financial Activities	59	240	232	243	1,800,680	581.18
Professional & Business Services	43	520	516	521	2,954,943	437.96
Education & Health Services	265	1,452	1,443	1,454	11,296,302	599.41
Leisure & Hospitality	44	618	628	636	1,885,628	231.21
Local Government	27	834	848	838	7,385,630	676.34
State Government	16	480	464	460	3,745,414	615.62
Other	35	640	636	652	5,349,774	640.33

TABLE 6. COUNTY SUMMARY

North American Industry Classification System - Industry Groups	Number of Employing Units	Employment			Total Earnings Jan - Mar 2016	Average Weekly Earnings
		Jan	Feb	Mar		
<b>SALINE COUNTY - TOTAL</b>	<b>1,969</b>	<b>23,217</b>	<b>23,190</b>	<b>23,612</b>	<b>\$185,173,640</b>	<b>\$610.30</b>
Natural Resources & Mining	14	53	53	55	464,059	665.16
Construction	263	2,002	1,983	1,979	19,005,669	735.40
Manufacturing	85	1,382	1,369	1,366	14,799,135	829.53
Trade, Transportation & Utilities	456	5,401	5,381	5,416	42,791,223	609.64
Wholesale Trade	115	569	574	580	7,783,858	1,042.53
Retail Trade	277	4,340	4,315	4,332	30,306,249	538.52
Transportation, Warehousing & Utilities	64	492	492	504	4,701,116	729.08
Information	13	149	146	154	1,520,933	781.70
Financial Activities	201	721	727	728	7,490,691	794.40
Professional & Business Services	267	1,734	1,750	1,741	13,640,121	602.43
Education & Health Services	293	3,324	3,306	3,304	26,321,613	611.46
Leisure & Hospitality	178	3,050	3,080	3,113	10,825,402	270.28
Other Services	154	805	798	820	5,615,573	534.83
Local Government	30	3,699	3,690	4,027	36,209,140	731.95
State Government	15	897	907	909	6,490,081	552.05
<b>SCOTT COUNTY - TOTAL</b>	<b>183</b>	<b>2,962</b>	<b>2,968</b>	<b>2,974</b>	<b>\$19,509,451</b>	<b>\$505.64</b>
Natural Resources & Mining	18	159	159	157	1,487,577	722.71
Trade, Transportation & Utilities	34	421	420	429	2,943,193	534.80
Wholesale Trade	6	76	79	85	735,152	706.88
Retail Trade	21	280	277	281	1,489,257	410.11
Transportation, Warehousing & Utilities	7	65	64	63	718,784	863.92
Financial Activities	20	64	67	67	450,334	524.86
Professional & Business Services	13	73	73	75	506,431	528.82
Education & Health Services	38	303	303	297	2,493,291	637.18
Leisure & Hospitality	15	131	127	136	439,854	257.63
Other Services	10	32	33	33	234,738	552.76
Local Government	6	519	521	516	3,696,974	548.30
State Government	7	51	51	50	300,686	456.51
Other	22	1,209	1,214	1,214	6,956,373	441.38

TABLE 6. COUNTY SUMMARY

North American Industry Classification System - Industry Groups	Number of Employing Units	Employment			Total Earnings Jan - Mar 2016	Average Weekly Earnings
		Jan	Feb	Mar		
<b>SEARCY COUNTY - TOTAL</b>	<b>172</b>	<b>1,456</b>	<b>1,492</b>	<b>1,502</b>	<b>\$8,890,750</b>	<b>\$461.06</b>
Construction	10	10	8	13	75,308	560.61
Manufacturing	18	182	219	213	1,152,515	433.17
Trade, Transportation & Utilities	39	226	216	227	1,385,678	477.98
Wholesale Trade	8	47	46	49	289,779	470.93
Retail Trade	25	159	151	158	843,357	415.86
Transportation, Warehousing & Utilities	6	20	19	20	252,542	987.78
Financial Activities	12	47	50	51	335,818	523.62
Education & Health Services	40	314	316	319	2,102,425	511.25
Leisure & Hospitality	13	112	115	118	311,310	208.23
Other Services	5	16	17	16	68,637	323.25
Local Government	10	331	334	332	2,142,776	495.97
State Government	7	105	102	101	500,192	374.77
Other	18	113	115	112	816,091	553.91
<b>SEBASTIAN COUNTY - TOTAL</b>	<b>3,693</b>	<b>64,498</b>	<b>64,674</b>	<b>64,755</b>	<b>\$638,507,704</b>	<b>\$759.81</b>
Natural Resources & Mining	53	697	682	676	14,616,902	1,641.43
Construction	256	2,425	2,461	2,447	23,619,104	743.29
Manufacturing	187	11,975	11,885	11,807	139,256,903	901.01
Trade, Transportation & Utilities	907	13,106	13,131	13,137	117,495,544	688.64
Wholesale Trade	247	2,527	2,543	2,536	31,875,689	967.12
Retail Trade	538	7,858	7,869	7,909	48,418,047	472.73
Transportation, Warehousing & Utilities	122	2,721	2,719	2,692	37,201,808	1,055.71
Information	42	929	933	940	14,722,170	1,212.50
Financial Activities	403	2,356	2,357	2,377	27,005,714	879.00
Professional & Business Services	595	8,378	8,449	8,418	83,215,100	760.68
Education & Health Services	574	11,183	11,210	11,235	127,302,650	873.60
Leisure & Hospitality	347	5,929	6,021	6,152	23,073,840	294.15
Other Services	268	1,279	1,276	1,285	8,759,886	526.44
Local Government	39	4,543	4,580	4,602	43,393,282	729.61
State Government	22	1,698	1,689	1,679	16,046,609	730.96

TABLE 6. COUNTY SUMMARY

North American Industry Classification System - Industry Groups	Number of Employing Units	Employment			Total Earnings Jan - Mar 2016	Average Weekly Earnings
		Jan	Feb	Mar		
<b>SEVIER COUNTY - TOTAL</b>	<b>319</b>	<b>4,829</b>	<b>4,792</b>	<b>4,827</b>	<b>\$37,741,193</b>	<b>\$602.82</b>
Natural Resources & Mining	17	219	208	211	1,649,737	596.72
Construction	15	158	162	165	1,920,082	913.60
Trade, Transportation & Utilities	98	855	854	829	6,925,003	629.66
Wholesale Trade	14	111	110	110	2,135,599	1,488.91
Retail Trade	67	653	653	635	3,746,518	445.43
Transportation, Warehousing & Utilities	17	91	91	84	1,042,886	904.76
Financial Activities	26	210	209	214	3,868,241	1,410.22
Professional & Business Services	30	123	121	115	683,793	439.55
Education & Health Services	52	537	519	524	4,015,706	586.52
Leisure & Hospitality	25	296	293	301	822,908	213.37
Local Government	12	906	902	915	6,426,279	544.62
State Government	8	152	160	187	1,180,365	545.88
Other	36	1,373	1,364	1,366	10,249,079	576.45
<b>SHARP COUNTY - TOTAL</b>	<b>384</b>	<b>3,750</b>	<b>3,746</b>	<b>3,734</b>	<b>\$25,386,882</b>	<b>\$521.68</b>
Construction	26	117	112	110	972,145	661.77
Manufacturing	19	172	172	164	1,009,421	458.55
Trade, Transportation & Utilities	81	1,066	1,040	1,026	8,644,395	636.93
Wholesale Trade	14	43	48	46	315,727	531.83
Retail Trade	56	646	644	649	3,352,418	398.99
Transportation, Warehousing & Utilities	11	377	348	331	4,976,250	1,087.47
Information	6	33	30	36	366,110	853.40
Financial Activities	33	168	173	173	1,726,088	774.96
Professional & Business Services	38	135	136	138	1,070,953	604.26
Education & Health Services	84	802	814	813	5,003,652	475.38
Leisure & Hospitality	38	381	382	388	1,090,594	218.66
Local Government	24	735	743	740	4,720,583	491.15
State Government	8	63	62	62	406,597	501.77
Other	27	78	82	84	376,344	355.94

TABLE 6. COUNTY SUMMARY

North American Industry Classification System - Industry Groups	Number of Employing Units	Employment			Total Earnings	Average Weekly Earnings
		Jan	Feb	Mar	Jan - Mar 2016	
<b>STONE COUNTY - TOTAL</b>	<b>280</b>	<b>2,378</b>	<b>2,397</b>	<b>2,431</b>	<b>\$15,323,586</b>	<b>\$490.73</b>
Natural Resources & Mining	8	8	8	8	53,456	514.00
Construction	17	33	39	36	187,969	401.64
Manufacturing	22	211	231	230	1,122,675	385.53
Trade, Transportation & Utilities	72	578	557	586	3,877,814	519.98
Wholesale Trade	6	39	38	40	275,130	542.66
Retail Trade	54	500	480	509	3,175,269	492.11
Transportation, Warehousing & Utilities	12	39	39	37	427,415	857.69
Financial Activities	31	126	127	127	1,392,888	845.88
Professional & Business Services	14	39	35	33	233,216	502.98
Education & Health Services	47	491	494	494	3,988,537	622.33
Leisure & Hospitality	31	312	333	347	826,260	192.21
Local Government	10	404	401	399	2,778,210	532.50
State Government	8	129	127	126	588,594	355.57
Other	20	47	45	45	273,967	461.48
<b>UNION COUNTY - TOTAL</b>	<b>1,305</b>	<b>18,100</b>	<b>18,151</b>	<b>18,101</b>	<b>\$215,408,093</b>	<b>\$914.59</b>
Natural Resources & Mining	93	478	423	400	4,749,837	842.52
Construction	81	1,942	2,002	2,010	25,626,534	993.25
Manufacturing	51	3,172	3,160	3,172	46,140,293	1,120.35
Trade, Transportation & Utilities	321	3,535	3,515	3,496	32,152,764	703.57
Wholesale Trade	67	504	502	506	7,002,903	1,068.82
Retail Trade	195	2,205	2,187	2,168	12,923,893	454.64
Transportation, Warehousing & Utilities	59	826	826	822	12,225,968	1,140.41
Information	9	127	127	121	948,965	583.98
Financial Activities	105	620	620	614	6,465,428	804.76
Professional & Business Services	135	1,847	1,856	1,849	53,174,331	2,210.19
Education & Health Services	274	2,367	2,376	2,385	20,938,417	677.88
Leisure & Hospitality	85	1,218	1,250	1,258	4,523,956	280.19
Other Services	102	462	465	467	2,917,954	483.05
Local Government	32	1,802	1,803	1,783	13,300,332	569.66
State Government	17	530	554	546	4,469,282	632.74

TABLE 6. COUNTY SUMMARY

North American Industry Classification System - Industry Groups	Number of Employing Units	Employment			Total Earnings	Average Weekly Earnings
		Jan	Feb	Mar	Jan - Mar 2016	
<b>VAN BUREN COUNTY - TOTAL</b>	<b>355</b>	<b>3,772</b>	<b>3,724</b>	<b>3,837</b>	<b>\$34,815,843</b>	<b>\$708.94</b>
Natural Resources & Mining	9	267	264	283	6,652,210	1,885.90
Construction	41	157	162	146	1,165,893	578.61
Manufacturing	8	93	86	84	551,835	484.21
Trade, Transportation & Utilities	101	1,033	989	963	11,763,024	909.39
Wholesale Trade	12	82	84	84	1,030,205	950.96
Retail Trade	60	592	593	617	3,215,401	411.77
Transportation, Warehousing & Utilities	29	359	312	262	7,517,418	1,859.37
Information	5	33	33	33	312,634	728.75
Financial Activities	33	119	118	120	1,189,498	768.91
Professional & Business Services	31	124	126	128	1,075,275	656.46
Education & Health Services	59	758	736	741	5,102,621	526.86
Leisure & Hospitality	27	336	345	354	1,161,610	259.00
Other Services	23	57	58	58	315,304	420.59
Local Government	11	738	750	872	5,140,772	502.68
State Government	7	57	57	55	385,167	525.94
<b>WASHINGTON COUNTY - TOTAL</b>	<b>5,882</b>	<b>98,958</b>	<b>99,712</b>	<b>100,369</b>	<b>\$1,016,516,007</b>	<b>\$784.45</b>
Natural Resources & Mining	42	327	324	328	3,982,090	938.66
Construction	523	4,469	4,499	4,529	48,729,787	833.17
Manufacturing	222	12,334	12,333	12,283	122,081,657	762.45
Trade, Transportation & Utilities	1,382	22,690	22,639	22,901	219,373,586	741.97
Wholesale Trade	387	3,633	3,651	3,669	59,588,258	1,255.47
Retail Trade	795	12,377	12,404	12,555	83,646,281	517.01
Transportation, Warehousing & Utilities	200	6,680	6,584	6,677	76,139,047	881.13
Information	82	898	889	917	11,755,651	1,003.27
Financial Activities	659	3,543	3,575	3,570	43,322,156	935.39
Professional & Business Services	1,052	11,798	11,947	12,024	187,831,941	1,211.83
Education & Health Services	801	14,564	14,607	14,662	153,461,434	807.93
Leisure & Hospitality	648	11,703	12,148	12,347	45,816,720	292.09
Other Services	389	1,924	1,937	1,977	14,030,170	554.60
Local Government	60	8,595	8,680	8,650	79,268,880	705.61
State Government	22	6,113	6,134	6,181	86,861,935	1,087.75

TABLE 6. COUNTY SUMMARY

North American Industry Classification System - Industry Groups	Number of Employing Units	Employment			Total Earnings Jan - Mar 2016	Average Weekly Earnings
		Jan	Feb	Mar		
<b>WHITE COUNTY - TOTAL</b>	<b>1,801</b>	<b>24,063</b>	<b>23,963</b>	<b>24,090</b>	<b>\$199,087,473</b>	<b>\$637.07</b>
Natural Resources & Mining	56	474	461	462	6,862,651	1,133.64
Construction	158	972	947	942	8,604,580	694.05
Manufacturing	60	2,062	2,053	2,053	22,478,958	841.03
Trade, Transportation & Utilities	483	6,377	6,288	6,362	51,513,976	624.79
Wholesale Trade	86	602	591	597	5,875,375	757.46
Retail Trade	304	3,715	3,628	3,660	21,480,571	450.52
Transportation, Warehousing & Utilities	93	2,060	2,069	2,105	24,158,030	894.28
Information	17	144	151	150	1,105,833	573.47
Financial Activities	175	871	867	856	9,148,874	813.91
Professional & Business Services	197	1,177	1,211	1,207	9,318,730	598.19
Education & Health Services	322	5,562	5,571	5,575	50,962,824	703.89
Leisure & Hospitality	155	2,531	2,546	2,623	7,886,020	236.34
Other Services	115	488	494	500	3,608,944	561.97
Local Government	47	2,727	2,735	2,731	22,433,393	631.87
State Government	16	678	639	629	5,162,690	612.23
<b>WOODRUFF COUNTY - TOTAL</b>	<b>207</b>	<b>1,694</b>	<b>1,700</b>	<b>1,715</b>	<b>\$12,960,363</b>	<b>\$585.41</b>
Natural Resources & Mining	28	108	123	137	925,084	580.11
Construction	8	39	41	40	299,969	576.86
Manufacturing	7	226	225	222	1,962,584	672.96
Trade, Transportation & Utilities	46	374	382	386	3,088,217	624.05
Wholesale Trade	11	128	132	137	1,549,263	900.56
Retail Trade	26	180	182	180	766,466	326.34
Transportation, Warehousing & Utilities	9	66	68	69	772,488	878.16
Financial Activities	12	65	66	68	533,447	618.61
Education & Health Services	64	219	218	222	1,646,064	576.42
Leisure & Hospitality	11	79	76	76	215,639	215.42
Local Government	9	434	419	413	2,862,173	521.72
State Government	6	43	43	43	278,807	498.76
Other	16	107	107	108	1,148,379	823.01



TABLE 6. COUNTY SUMMARY

North American Industry Classification System - Industry Groups	Number of Employing Units	Employment			Total Earnings	Average Weekly Earnings
		Jan	Feb	Mar	Jan - Mar 2016	
<b>YELL COUNTY - TOTAL</b>	<b>406</b>	<b>6,259</b>	<b>6,340</b>	<b>6,351</b>	<b>\$44,314,609</b>	<b>\$539.65</b>
Natural Resources & Mining	27	203	201	205	1,871,619	709.22
Construction	35	196	200	203	1,427,947	550.13
Manufacturing	20	2,336	2,363	2,370	15,836,368	516.98
Trade, Transportation & Utilities	74	693	722	716	4,900,957	530.73
Wholesale Trade	13	44	49	41	227,487	391.77
Retail Trade	46	483	496	508	2,527,328	392.22
Transportation, Warehousing & Utilities	15	166	177	167	2,146,142	971.10
Financial Activities	32	169	168	166	1,840,840	844.55
Professional & Business Services	38	268	266	264	2,121,200	613.42
Education & Health Services	99	782	778	763	4,808,366	477.67
Leisure & Hospitality	25	265	275	281	786,338	221.03
Local Government	25	1,137	1,158	1,172	9,082,575	604.55
State Government	12	77	74	75	447,898	457.35
Other	19	133	135	136	1,190,501	680.03
<b>STATEWIDE COUNTY - TOTAL</b>	<b>8,840</b>	<b>28,454</b>	<b>32,574</b>	<b>33,051</b>	<b>\$458,471,075</b>	<b>\$1,124.60</b>
Natural Resources & Mining	98	290	281	270	4,058,328	1,113.60
Construction	755	3,205	3,376	3,516	41,038,110	937.94
Manufacturing	45	151	153	151	4,586,504	2,326.21
Trade, Transportation & Utilities	2,946	7,537	7,584	7,667	184,481,210	1,868.20
Wholesale Trade	2,547	6,328	6,382	6,424	167,335,531	2,018.18
Retail Trade	142	318	328	348	5,461,531	1,267.96
Transportation, Warehousing & Utilities	257	891	874	895	11,684,148	1,013.66
Information	225	496	524	479	9,796,801	1,508.21
Financial Activities	556	1,371	1,385	1,398	25,112,975	1,395.11
Professional & Business Services	3,425	11,793	15,624	15,885	142,566,877	759.78
Education & Health Services	406	2,163	2,218	2,214	24,041,029	841.23
Leisure & Hospitality	79	85	96	96	1,119,006	932.25
State Government	15	740	749	756	7,074,021	727.16
Other	290	623	584	619	14,596,214	1,028.79

Note: Statewide classification includes employment and payroll data for employers that have not provided a physical location for each employing unit. This section also includes employers without a physical location in Arkansas.

**TABLE 7. FEDERAL GOVERNMENT EMPLOYMENT AND EARNINGS IN ARKANSAS**

North American Industry Classification System - Industry Groups	Number of Employing Units	Employment			Total Earnings Jan - Mar 2016	Average Weekly Earnings
		Jan	Feb	Mar		
<b>TOTAL</b>	<b>1,166</b>	<b>20,264</b>	<b>20,255</b>	<b>20,258</b>	<b>\$342,952,261</b>	<b>\$1,302.18</b>
Trade, Transportation & Utilities	597	5,411	5,521	5,516	63,934,971	897.02
Information	2	39	39	39	658,489	1,298.79
Financial Activities	14	109	106	106	2,368,345	1,702.62
Professional & Business Services	34	739	741	750	15,469,827	1,600.88
Education & Health Services	16	5,382	5,392	5,370	109,141,979	1,560.12
Leisure & Hospitality	22	272	271	272	3,108,580	880.20
Other Services	1	1	1	1	7,332	564.00
Public Administration	480	8,311	8,184	8,204	148,262,738	1,385.26

TABLE 8. LOCAL WORKFORCE DEVELOPMENT AREA SUMMARY

North American Industry Classification System - Industry Groups	Number of Employing Units	Employment			Total Earnings	Average
		Jan	Feb	Mar	Jan - Mar 2016	Weekly Earnings
<b>CENTRAL LOCAL WORKFORCE DEVELOPMENT AREA</b>	<b>6,686</b>	<b>80,286</b>	<b>80,600</b>	<b>81,377</b>	<b>\$682,758,964</b>	<b>\$650.37</b>
Natural Resources & Mining	234	1,395	1,402	1,412	18,122,405	993.61
Construction	719	5,515	5,528	5,534	53,377,200	743.07
Manufacturing	242	6,423	6,408	6,414	75,283,189	902.73
Trade, Transportation & Utilities	1,572	16,410	16,326	16,480	122,053,873	572.30
Wholesale Trade	369	1,735	1,770	1,803	22,185,002	964.51
Retail Trade	945	12,979	12,874	12,956	81,071,229	482.07
Transportation, Warehousing & Utilities	258	1,696	1,682	1,721	18,797,642	850.74
Information	54	558	556	565	5,190,432	713.40
Financial Activities	706	2,995	2,994	2,993	33,627,086	863.96
Professional & Business Services	896	8,358	8,460	8,483	98,577,809	899.12
Education & Health Services	1,043	11,774	11,940	11,909	95,091,365	616.01
Leisure & Hospitality	590	10,106	10,257	10,385	34,379,489	258.02
Other Services	433	1,793	1,798	1,867	12,286,207	519.47
Local Government	131	10,371	10,336	10,728	94,208,446	691.60
State Government	66	4,588	4,595	4,607	40,561,463	678.78

Note: Pulaski County is not included in the Central Local Workforce Development Area. Please refer to Page 51 for information on Pulaski County.

Central Local Workforce Development Area includes these counties: Faulkner, Lonoke, Monroe, Prairie, and Saline.

<b>EASTERN LOCAL WORKFORCE DEVELOPMENT AREA</b>	<b>3,577</b>	<b>35,808</b>	<b>35,823</b>	<b>36,055</b>	<b>\$282,056,700</b>	<b>\$604.44</b>
Natural Resources & Mining	239	948	1,028	1,110	7,582,222	566.99
Construction	153	1,194	997	907	11,706,376	872.00
Trade, Transportation & Utilities	798	9,101	9,183	9,292	74,971,354	627.40
Wholesale Trade	169	2,021	2,074	2,098	23,151,063	862.68
Retail Trade	444	4,787	4,820	4,850	27,129,251	433.05
Transportation, Warehousing & Utilities	185	2,293	2,289	2,344	24,691,040	822.69
Financial Activities	259	1,281	1,273	1,282	11,634,942	699.94
Professional & Business Services	256	2,243	2,230	2,295	16,097,978	548.89
Education & Health Services	1,167	6,301	6,303	6,336	45,853,501	558.69
Leisure & Hospitality	241	3,499	3,565	3,599	13,704,411	296.59
Local Government	127	4,826	4,830	4,839	40,773,615	649.14
State Government	62	2,242	2,236	2,235	16,579,691	569.95
Other	275	4,173	4,178	4,160	43,152,610	795.96

Eastern Local Workforce Development Area includes these counties: Crittenden, Cross, Lee, Phillips, and Saint Francis.

TABLE 8. LOCAL WORKFORCE DEVELOPMENT AREA SUMMARY

North American Industry Classification System - Industry Groups	Number of Employing Units	Employment			Total Earnings	Average Weekly Earnings
		Jan	Feb	Mar	Jan - Mar 2016	
<b>NORTH CENTRAL LOCAL WORKFORCE DEVELOPMENT AREA</b>	<b>5,497</b>	<b>67,163</b>	<b>67,177</b>	<b>67,740</b>	<b>\$540,187,622</b>	<b>\$616.88</b>
Construction	429	2,238	2,214	2,190	19,076,718	662.80
Manufacturing	229	8,044	8,138	8,179	80,628,705	763.79
Trade, Transportation & Utilities	1,405	15,679	15,405	15,514	127,346,065	630.66
Retail Trade	900	9,587	9,483	9,591	55,572,243	447.45
Other Trade, Transportation & Utilities	505	6,092	5,922	5,923	71,773,822	923.41
Financial Activities	515	2,490	2,487	2,478	26,583,951	822.91
Education & Health Services	995	13,814	13,828	13,913	118,014,696	655.38
Leisure & Hospitality	487	6,149	6,244	6,438	19,105,782	234.14
Local Government	227	9,014	9,008	9,181	66,714,650	565.96
State Government	103	2,998	3,048	3,037	23,025,423	585.00
Other	1,107	6,737	6,805	6,810	59,691,632	676.84

North Central Local Workforce Development Area includes these counties: Cleburne, Fulton, Independence, Izard, Jackson, Sharp, Stone, Van Buren, White, and Woodruff.

<b>NORTHEAST LOCAL WORKFORCE DEVELOPMENT AREA</b>	<b>6,554</b>	<b>96,292</b>	<b>96,894</b>	<b>97,528</b>	<b>\$850,381,203</b>	<b>\$675.03</b>
Natural Resources & Mining	455	1,812	1,913	2,035	14,670,821	587.77
Construction	446	3,235	3,333	3,383	32,339,416	749.97
Manufacturing	308	19,289	19,174	19,098	226,464,289	907.92
Trade, Transportation & Utilities	1,750	19,038	19,027	19,232	147,893,715	595.66
Wholesale Trade	383	3,353	3,390	3,417	40,988,117	930.98
Retail Trade	1,023	12,515	12,481	12,639	73,124,149	448.38
Transportation, Warehousing & Utilities	344	3,170	3,156	3,176	33,781,449	820.43
Financial Activities	567	3,238	3,249	3,246	35,533,783	842.51
Professional & Business Services	665	6,867	6,984	7,069	51,778,836	571.17
Education & Health Services	1,119	16,283	16,308	16,284	159,801,355	754.52
Leisure & Hospitality	530	8,697	8,854	9,140	30,084,430	260.11
Local Government	215	11,359	11,396	11,382	91,784,631	620.47
State Government	102	4,275	4,433	4,441	42,991,526	754.52
Other	397	2,199	2,223	2,218	17,038,401	592.16

Northeast Local Workforce Development Area includes these counties: Clay, Craighead, Greene, Lawrence, Mississippi, Poinsett, and Randolph.

TABLE 8. LOCAL WORKFORCE DEVELOPMENT AREA SUMMARY

North American Industry Classification System - Industry Groups	Number of Employing Units	Employment			Total Earnings	Average Weekly Earnings
		Jan	Feb	Mar	Jan - Mar 2016	
<b>NORTHWEST LOCAL WORKFORCE DEVELOPMENT AREA</b>	<b>15,692</b>	<b>256,896</b>	<b>259,026</b>	<b>261,500</b>	<b>\$3,215,909,904</b>	<b>\$954.61</b>
Natural Resources & Mining	132	1,423	1,419	1,455	17,039,502	915.10
Trade, Transportation & Utilities	3,869	58,591	58,730	59,513	624,804,358	815.37
Retail Trade	2,134	31,096	31,064	31,456	198,959,682	490.45
Other Trade, Transportation & Utilities	1,735	27,495	27,666	28,057	425,844,676	1,180.90
Information	207	2,468	2,433	2,480	30,574,541	955.92
Professional & Business Services	2,602	45,566	45,878	46,265	1,239,094,113	2,076.44
Education & Health Services	2,195	32,413	32,549	32,606	308,653,427	730.03
Leisure & Hospitality	1,644	26,938	27,815	28,553	107,574,193	298.00
Other Services	998	4,695	4,712	4,785	34,620,142	562.94
Local Government	304	23,031	23,155	23,237	206,797,805	687.42
State Government	110	8,306	8,708	8,781	105,588,589	944.62
Other	3,631	53,465	53,627	53,825	541,163,234	776.08

Northwest Local Workforce Development Area includes these counties: Baxter, Benton, Boone, Carroll, Madison, Marion, Newton, Searcy, and Washington.

<b>SOUTHEAST LOCAL WORKFORCE DEVELOPMENT AREA</b>	<b>6,073</b>	<b>68,067</b>	<b>68,567</b>	<b>68,878</b>	<b>\$589,291,489</b>	<b>\$661.71</b>
Natural Resources & Mining	435	2,298	2,298	2,290	20,299,529	680.29
Construction	299	1,948	1,955	2,058	19,382,111	750.34
Manufacturing	204	14,236	14,229	14,221	165,451,669	894.47
Trade, Transportation & Utilities	1,259	12,267	12,263	12,328	97,304,536	609.23
Wholesale Trade	236	2,005	2,056	2,043	23,268,597	879.70
Retail Trade	751	7,764	7,732	7,828	44,543,433	440.72
Transportation, Warehousing & Utilities	272	2,498	2,475	2,457	29,492,506	916.01
Financial Activities	414	2,475	2,466	2,435	30,767,807	962.62
Education & Health Services	1,975	10,621	10,687	10,652	81,860,023	591.08
Other Services	317	1,198	1,195	1,220	7,912,124	505.36
Local Government	206	9,068	9,151	9,089	71,249,427	602.10
State Government	138	5,982	6,290	6,329	52,366,005	649.67
Other	826	7,974	8,033	8,256	42,698,258	406.11

Southeast Local Workforce Development Area includes these counties: Arkansas, Ashley, Bradley, Chicot, Cleveland, Desha, Drew, Grant, Jefferson, and Lincoln.

TABLE 8. LOCAL WORKFORCE DEVELOPMENT AREA SUMMARY

North American Industry Classification System - Industry Groups	Number of Employing Units	Employment			Total Earnings	Average Weekly Earnings
		Jan	Feb	Mar	Jan - Mar 2016	
<b>SOUTHWEST LOCAL WORKFORCE DEVELOPMENT AREA</b>	<b>5,709</b>	<b>78,116</b>	<b>78,263</b>	<b>78,297</b>	<b>\$744,906,808</b>	<b>\$732.51</b>
Natural Resources & Mining	354	2,390	2,316	2,254	23,365,898	774.73
Construction	352	3,833	3,913	3,928	43,726,192	864.37
Manufacturing	236	19,080	19,172	19,159	246,599,504	991.23
Trade, Transportation & Utilities	1,394	15,218	15,042	14,974	122,101,853	622.92
Wholesale Trade	243	1,925	1,926	1,941	22,959,389	914.77
Retail Trade	858	8,812	8,761	8,767	49,528,536	433.93
Transportation, Warehousing & Utilities	293	4,481	4,355	4,266	49,613,928	873.86
Information	52	424	427	418	4,519,602	821.90
Financial Activities	491	2,592	2,583	2,569	27,427,064	817.32
Professional & Business Services	473	4,421	4,444	4,437	70,893,483	1,229.89
Education & Health Services	1,185	9,512	9,510	9,491	71,981,358	582.58
Leisure & Hospitality	407	5,432	5,544	5,671	18,699,265	259.22
Other Services	370	1,725	1,704	1,714	10,128,559	454.47
Local Government	253	9,869	9,911	9,954	75,165,213	583.37
State Government	142	3,620	3,697	3,728	30,298,817	633.05

Southwest Local Workforce Development Area includes these counties: Calhoun, Columbia, Dallas, Hempstead, Howard, Lafayette, Little River, Miller, Nevada, Ouachita, Sevier, and Union

<b>WEST CENTRAL LOCAL WORKFORCE DEVELOPMENT AREA</b>	<b>8,154</b>	<b>104,524</b>	<b>105,417</b>	<b>106,430</b>	<b>\$858,879,365</b>	<b>\$626.49</b>
Construction	740	4,383	4,353	4,486	\$40,905,322	713.94
Manufacturing	338	16,090	16,064	15,988	151,533,119	726.38
Trade, Transportation & Utilities	1,828	21,259	21,364	21,381	180,811,807	651.92
Wholesale Trade	321	1,932	1,954	1,944	19,550,037	773.85
Retail Trade	1,213	14,022	14,102	14,152	84,809,978	462.95
Transportation, Warehousing & Utilities	294	5,305	5,308	5,285	76,451,792	1,109.74
Financial Activities	817	3,933	3,924	3,918	41,319,754	809.79
Professional & Business Services	948	7,404	7,636	7,650	63,063,241	641.39
Education & Health Services	1,494	16,521	16,645	16,733	145,200,651	671.51
Leisure & Hospitality	776	12,794	12,910	13,393	48,940,821	288.87
Local Government	226	11,470	11,469	11,809	96,827,169	643.05
State Government	126	5,347	5,667	5,672	44,555,888	616.21
Other	861	5,323	5,385	5,400	45,721,593	655.02

West Central Local Workforce Development Area includes these counties: Clark, Conway, Garland, Hot Spring, Johnson, Montgomery, Perry, Pike, Pope, and Yell

TABLE 8. LOCAL WORKFORCE DEVELOPMENT AREA SUMMARY

North American Industry Classification System - Industry Groups	Number of Employing Units	Employment			Total Earnings	Average Weekly Earnings
		Jan	Feb	Mar	Jan - Mar 2016	
<b>WESTERN LOCAL WORKFORCE DEVELOPMENT AREA</b>	<b>6,462</b>	<b>102,059</b>	<b>102,335</b>	<b>102,711</b>	<b>\$933,256,990</b>	<b>\$701.28</b>
Natural Resources & Mining	165	1,564	1,588	1,617	24,787,709	1,199.46
Trade, Transportation & Utilities	1,572	22,473	22,458	22,559	194,241,008	664.17
Wholesale Trade	377	3,543	3,557	3,557	43,056,142	932.35
Retail Trade	917	12,328	12,329	12,444	74,642,993	464.28
Transportation, Warehousing & Utilities	278	6,602	6,572	6,558	76,541,873	895.17
Financial Activities	669	3,449	3,447	3,461	36,582,057	815.10
Professional & Business Services	903	10,519	10,625	10,609	100,058,191	727.19
Education & Health Services	1,027	15,359	15,364	15,391	159,279,615	797.09
Leisure & Hospitality	552	8,752	8,866	9,077	32,175,357	278.15
Other Services	429	2,029	2,034	2,047	14,318,083	540.78
Local Government	150	9,276	9,321	9,396	81,292,809	670.16
State Government	76	2,842	2,849	2,852	23,469,912	633.98
Other	919	25,796	25,783	25,702	267,052,249	797.45

Western Local Workforce Development Area includes these counties: Crawford, Franklin, Logan, Polk, Scott, and Sebastian