

# Arkansas Covered Employment & Earnings



Second Quarter  
2016



**COVERED EMPLOYMENT AND EARNINGS  
STATE OF ARKANSAS  
SECOND QUARTER 2016**

**ASA HUTCHINSON, GOVERNOR  
STATE OF ARKANSAS**

**DARYL BASSETT, DIRECTOR  
DEPARTMENT OF WORKFORCE SERVICES**

**PUBLISHED BY  
LABOR MARKET INFORMATION  
BUREAU OF LABOR STATISTICS PROGRAMS  
POST OFFICE BOX 2981  
LITTLE ROCK, ARKANSAS 72203-2981  
SUSAN PRICE, BLS PROGRAMS MANAGER  
TELEPHONE (501) 682-3103**

**STATE OF ARKANSAS WEBPAGE: <http://www.arkansas.gov>**

**DEPARTMENT OF WORKFORCE SERVICES WEBPAGE: <http://www.arkansas.gov/esd/>**

**WEBPAGE FOR LABOR MARKET INFORMATION: <http://www.discover.arkansas.gov>**

**RELEASED: JANUARY 2017**



## TABLE OF CONTENTS

DESCRIPTION OF DATA	PAGE
Description and Classification of Data	1
Definition of Covered Employment and Earnings	2
Significant Developments During Second Quarter 2016	3

### LIST OF GRAPHS AND TABLES

Graph 1	Total Covered Employment for Selected Years, Arkansas	7
Graph 2	Total Covered Earnings, by Calendar Quarter for Selected Years, Arkansas	8
Table 1	Quarterly Comparison of Covered Employment and Wages, by Industry	5
Table 2	Total Covered Employment in Arkansas, 2009 – 2016	6
Table 3	Total Covered Earnings, 2009 – 2016	9
Table 4	Total Taxable Earnings, 2009 – 2016	10
Table 5	State Summary – Employment and Total Earnings, by Industry, Second Quarter 2016	11
Table 6	County Summary – Employment and Total Earnings, by Industry, Second Quarter 2016	22
Table 7	Federal Government Employment and Total Earnings in Arkansas, Second Quarter 2016	60
Table 8	Local Workforce Development Area – Employment and Total Earnings, by Industry, Second Quarter 2016	61



EMPLOYMENT AND EARNINGS  
UNDER THE ARKANSAS EMPLOYMENT SECURITY LAW  
SECOND QUARTER 2016

**DESCRIPTION AND CLASSIFICATION OF DATA**

This publication contains covered employment and payroll data by industry and county for the Second Quarter 2016 and a record for total covered employment by month, quarterly payroll data, average weekly earnings, and total taxable earnings for 2009 through 2016. These data are compiled from quarterly contributions and wage reports submitted by employers subject to the Arkansas Employment Security Law.

Employment data have been tabulated for each month of the quarter by industry under the **North American Industry Classification System** (NAICS) by state, county, and workforce area. Payroll data represent the total wages paid during the quarter and are classified by industry for the state and by publishable industry groups for each county and workforce area.

Due to industry classification revisions, previously published data will not always be comparable with current data. For this reason, comparisons should not be made between the same industries under different revisions. For more information, visit the NAICS home page at <http://www.census.gov/naics>.

Industry Classification Revisions

- SIC (Standard Industrial Classification) 1987 to NAICS 2002
- NAICS 2002 to NAICS 2007
- NAICS 2007 to NAICS 2012

The tabulation of this data is a joint effort in conjunction with the United States Bureau of Labor Statistics. Data included in this publication are subject to revisions. Revisions are typically reflected in the Annual Covered Employment and Earnings publication.

## **DEFINITION OF COVERED EMPLOYMENT AND EARNINGS**

Covered Employment is the total number of workers employed by establishments subject to the Arkansas Employment Security Law that worked or received pay for the payroll period including the 12<sup>th</sup> of the month. Earnings include all wages paid to any covered employee by their employer including salaries, bonuses, commissions, fees, fringe benefits, sick pay made directly to employees or dependents, deferred compensation, and reported tips. These wages include both taxable and nontaxable wages. Only the first \$12,000 paid to each worker by an employer in the calendar year is taxable under the Arkansas Employment Security Law.

An Arkansas state unemployment insurance account is required of any entity meeting the definition of an employer. As described by Arkansas Department of Workforce Services Law, the definition of an employer includes, but is not limited to, a sole proprietorship, partnership, corporation, associations, trust, estate, and receiver or trustee in bankruptcy. The entity must employ one or more individuals for ten or more days in a calendar year, whether or not the days are consecutive.

Currently excluded from coverage is employment covered by the Railroad Unemployment Insurance Act, some domestic service workers, employees of small agricultural establishments, self-employed workers, unpaid family workers, insurance and real estate agents paid only on a commission basis, and employees of churches and religious organizations except separately incorporated schools.

Civilian federal workers are covered by Unemployment Compensation for Federal Employees (UCFE).

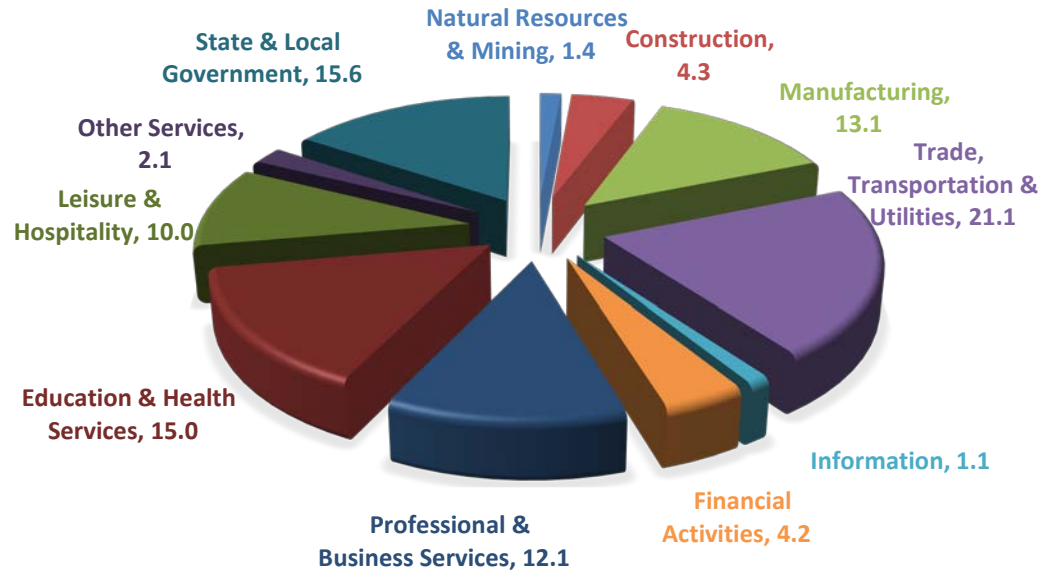


## SIGNIFICANT DEVELOPMENTS DURING SECOND QUARTER 2016

### AVERAGE EMPLOYMENT CHANGES

Covered employment averaged 1,178,949 during the Second Quarter 2016 (refer to Table 1), an increase of 16,624 (1.4%) from the previous quarter and an increase of 15,548 (1.3%) from the average recorded one year ago. The over-the-year comparison is more significant when used as an economic indicator and allows for seasonal factors that appear when comparing over-the-quarter data to be disregarded.

#### Average Covered Employment by NAICS



### EMPLOYMENT CHANGES FROM FIRST QUARTER 2016

Nine industry groups posted over the quarter increases, while two experienced minor losses. Leisure & Hospitality (+7,178) had the largest gain, as warming weather and the summer travel season impacted the industries. Professional and Business Services gained 2,248 jobs. Mainly attributed to Administrative and Waste Services industries. Jobs were added in Education and Health Services, over 95% of the increase was focused in Health Care and Social Assistance. Many construction projects started up and continued through the spring and summer months increasing 1,988 to total 50,746 employees. Trade, Transportation & Utilities reported an increase of 1,832, as retail establishments continued hiring for the season. Other additions occurred in Other Services (662), Financial Activities (288), State and Local Government (284), and Natural Resources and Mining (211). Minor losses occurred in both Manufacturing (-47) and Information (-31).

## EMPLOYMENT CHANGES FROM SECOND QUARTER 2015 (QUARTER YEAR AGO COMPARISON)

Over-the-year gains were recorded in eight industry groups (refer to Table 1). The largest gains occurred in Education & Health Services (5,483), Leisure & Hospitality (4,280), and Professional & Business Services (4,054). The only losses occurred in Natural Resources & Mining (-2,024), State & Local Government (-778), and Manufacturing (-464).

## COVERED WAGES

Wages paid to covered workers totaled \$11,935,742,777 for the Second Quarter 2016 (refer to Table 1), for an average weekly wage of \$778.77 (refer to Table 5). Benton County workers recorded the highest average weekly wage (\$993.77), and employees in Searcy County reported the lowest (\$499.69) (refer to Table 6).

The Information industry recorded the highest average weekly wage for the State of Arkansas (\$996.21). The Leisure & Hospitality sector recorded the lowest (\$294.39) (refer to Table 5).

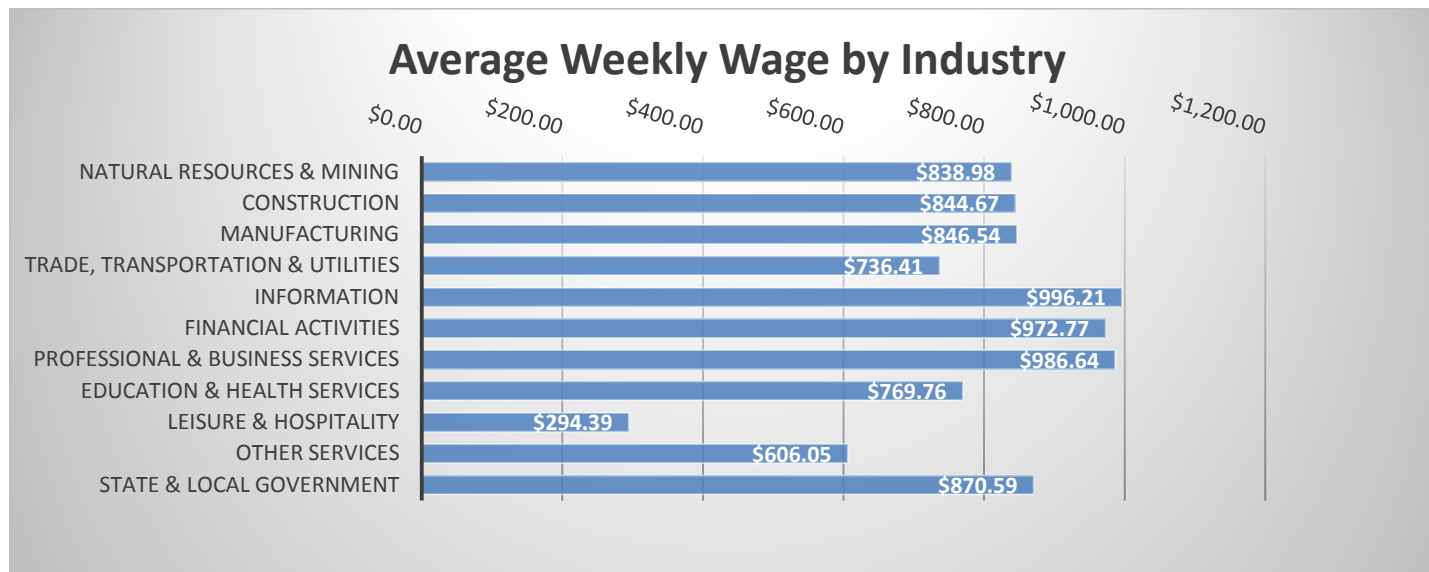


TABLE 1. QUARTERLY COMPARISON OF COVERED EMPLOYMENT AND WAGES, BY INDUSTRY

North American Industry Classification System - Industry Groups	Number of Employing Units	Monthly Employment Average	Percent of Total	Net Change From:		Total Wages Paid Apr - Jun 2016	Percent of Total
				Jan - Mar 2016	Apr - Jun 2015		
<b>TOTAL</b>	<b>87,521</b>	<b>1,178,949</b>	<b>100</b>	<b>16,624</b>	<b>15,548</b>	<b>\$11,935,742,777</b>	<b>100</b>
<b>Natural Resources &amp; Mining</b>	2,595	17,078	1.4	211	-2,024	186,269,980	1.6
Agriculture, Forestry, Fishing & Hunting	2,116	13,016	1.1	905	12	121,966,197	1.0
Mining	479	4,062	0.3	-694	-2,036	64,303,783	0.5
<b>Construction</b>	6,744	50,746	4.3	1,988	2,415	557,220,987	4.7
<b>Manufacturing</b>	2,941	154,178	13.1	-47	-464	1,696,722,137	14.2
<b>Trade, Transportation &amp; Utilities</b>	21,538	248,475	21.1	1,832	651	2,378,722,964	19.9
Wholesale Trade	7,065	46,465	3.9	372	-906	728,517,207	6.1
Retail Trade	11,138	142,248	12.1	1,921	1,960	936,088,721	7.8
Transportation & Warehousing	2,915	52,089	4.4	-363	-119	571,291,898	4.8
Utilities	420	7,672	0.7	-99	-284	142,825,138	1.2
<b>Information</b>	1,095	13,285	1.1	-31	51	172,054,594	1.4
<b>Financial Activities</b>	8,231	49,418	4.2	288	1,147	624,935,893	5.2
Finance & Insurance	4,927	36,115	3.1	31	949	510,546,327	4.3
Real Estate & Rental & Leasing	3,304	13,303	1.1	257	199	114,389,566	1.0
<b>Professional &amp; Business Services</b>	13,826	142,136	12.1	2,248	4,054	1,823,085,512	15.3
Professional & Technical Services	8,745	42,423	3.6	-526	1,311	610,644,287	5.1
Management of Companies & Enterprises	529	34,582	2.9	227	1,366	765,186,047	6.4
Administrative & Waste Services	4,552	65,131	5.5	2,547	1,377	447,255,178	3.7
<b>Education &amp; Health Services</b>	15,180	176,573	15.0	2,010	5,483	1,766,946,805	14.8
Educational Services	798	11,168	0.9	51	454	99,429,802	0.8
Health Care & Social Assistance	14,382	165,404	14.0	1,959	5,029	1,667,517,003	14.0
<b>Leisure &amp; Hospitality</b>	6,910	118,318	10.0	7,178	4,280	452,811,818	3.8
Arts, Entertainment & Recreation	957	12,406	1.1	2,534	529	57,120,064	0.5
Accommodation & Food Services	5,953	105,912	9.0	4,644	3,751	395,691,754	3.3
<b>Other Services</b>	5,376	24,865	2.1	662	733	195,899,171	1.6
<b>State &amp; Local Government</b>	3,085	183,877	15.6	284	-778	2,081,072,916	17.4
Local Government	1,948	113,844	9.7	-405	21	1,254,747,642	10.5
State Government	1,137	70,033	5.9	689	-799	826,325,274	6.9
<b>Nonclassifiable Establishments</b>	0	0	0.0	0	0	0	0.0

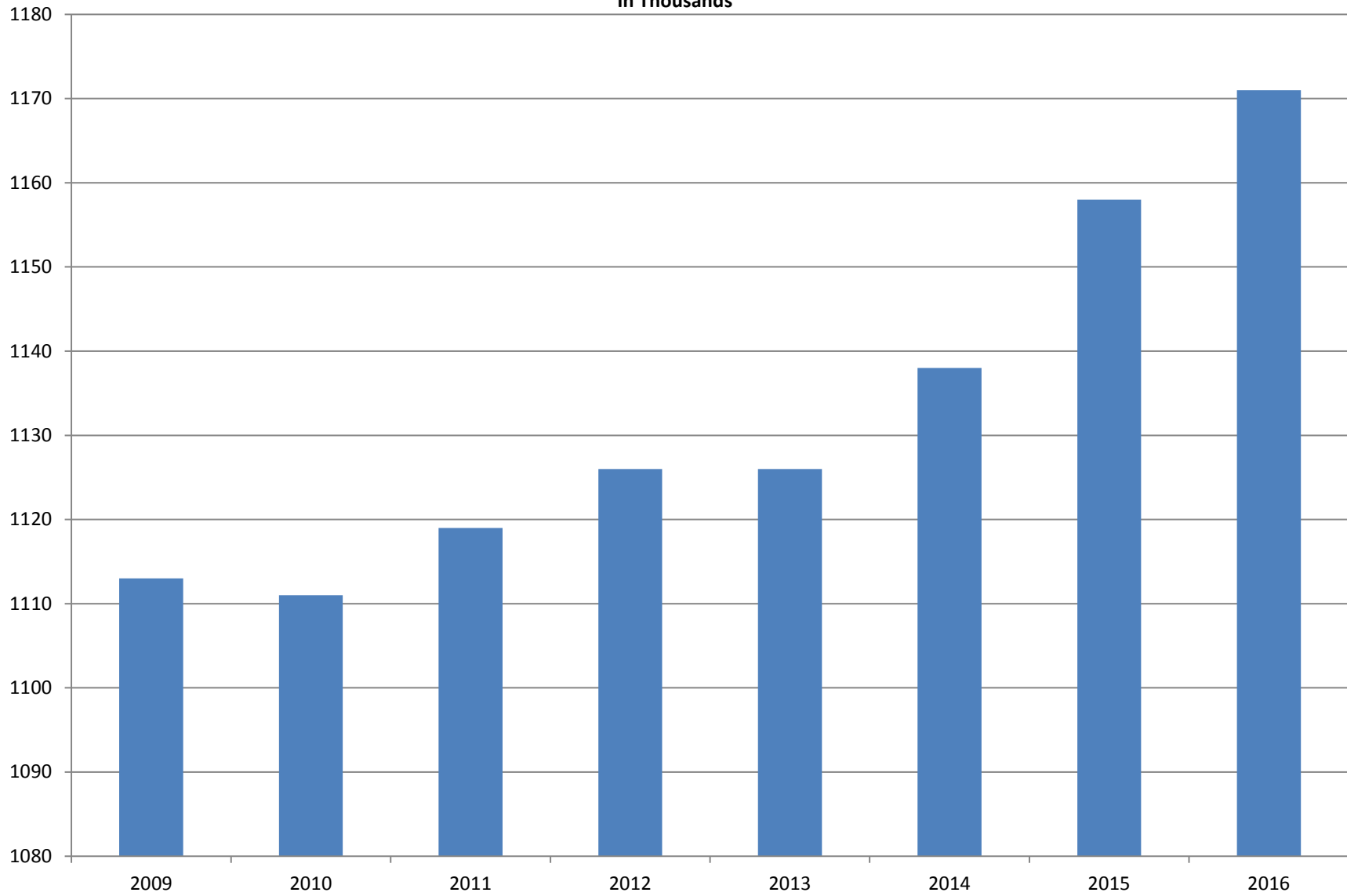
Note: Items do not necessarily add to total because of rounding. Because of industry code changes between years, substantial employment and wage shifts among industries are anticipated.

**TABLE 2. TOTAL COVERED EMPLOYMENT IN ARKANSAS**

<b>PERIOD</b>	<b>2009</b>	<b>2010</b>	<b>2011</b>	<b>2012</b>	<b>2013</b>	<b>2014</b>	<b>2015</b>	<b>2016</b>
<b>AVERAGE</b>	<b>1,112,591</b>	<b>1,110,947</b>	<b>1,118,639</b>	<b>1,126,171</b>	<b>1,125,890</b>	<b>1,137,486</b>	<b>1,157,724</b>	<b>1,170,637</b>
January	1,119,299	1,089,984	1,098,349	1,113,274	1,112,991	1,114,412	1,135,999	1,153,115
February	1,119,476	1,091,282	1,098,445	1,119,319	1,121,492	1,122,905	1,145,107	1,162,987
March	1,124,386	1,106,198	1,113,061	1,131,123	1,129,100	1,132,106	1,146,804	1,170,873
April	1,123,383	1,115,341	1,129,635	1,136,608	1,134,734	1,140,788	1,158,513	1,178,480
May	1,122,322	1,123,250	1,126,371	1,142,985	1,138,383	1,149,046	1,167,423	1,181,258
June	1,117,884	1,130,164	1,123,412	1,136,699	1,130,402	1,144,876	1,164,266	1,177,108
July	1,071,048	1,073,743	1,080,937	1,078,836	1,083,849	1,096,675	1,119,869	N/A
August	1,093,192	1,099,795	1,106,262	1,108,552	1,109,759	1,125,162	1,148,725	N/A
September	1,116,580	1,124,281	1,132,779	1,134,829	1,135,673	1,150,545	1,173,175	N/A
October	1,113,157	1,125,073	1,138,395	1,135,677	1,138,312	1,153,684	1,174,144	N/A
November	1,115,443	1,126,781	1,138,543	1,137,411	1,141,035	1,158,579	1,177,834	N/A
December	1,114,919	1,125,466	1,137,474	1,138,742	1,134,955	1,161,056	1,180,826	N/A

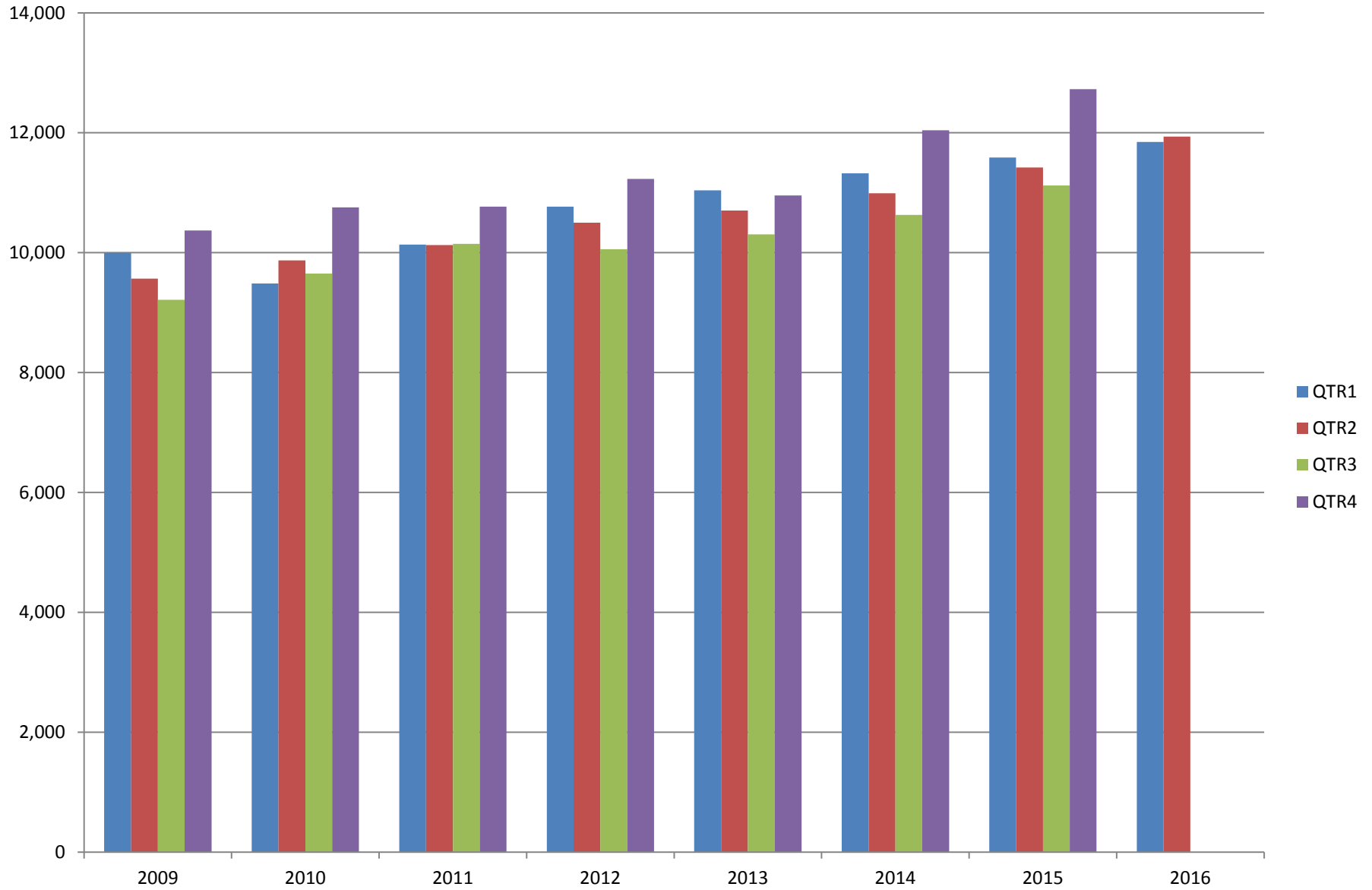
# AVERAGE TOTAL COVERED EMPLOYMENT

In Thousands



# TOTAL COVERED EARNINGS BY CALENDAR YEAR

In Thousands



**TABLE 3. TOTAL COVERED EARNINGS 2009 - 2016**

<b>PERIOD</b>	<b>2009</b>	<b>2010</b>	<b>2011</b>	<b>2012</b>
<b>TOTAL</b>	<b>\$39,149,476,305</b>	<b>\$39,769,504,992</b>	<b>\$41,177,659,236</b>	<b>\$42,551,238,929</b>
January - March	9,998,452,028	9,486,245,580	10,134,035,254	10,766,175,449
April - June	9,566,968,853	9,873,489,653	10,128,274,611	10,494,369,042
July - September	9,213,797,140	9,653,588,807	10,147,287,431	10,053,294,410
October - December	10,370,258,284	10,756,180,952	10,768,061,940	11,237,400,028
<b>Average Weekly Earnings</b>	<b>\$676.69</b>	<b>\$688.42</b>	<b>\$707.89</b>	<b>\$726.62</b>

<b>PERIOD</b>	<b>2013</b>	<b>2014</b>	<b>2015</b>	<b>2016</b>
<b>TOTAL</b>	<b>\$43,371,086,461</b>	<b>\$44,980,520,034</b>	<b>\$46,858,013,612</b>	<b>\$23,783,249,592</b>
January - March	11,050,678,946	11,321,422,241	11,588,392,768	11,847,506,815
April - June	10,692,826,528	10,991,760,061	11,421,560,368	11,935,742,777
July - September	10,322,652,747	10,619,889,280	11,121,401,679	N/A
October - December	11,304,928,240	12,047,448,452	12,726,658,797	N/A
<b>Average Weekly Earnings</b>	<b>\$740.80</b>	<b>\$760.46</b>	<b>\$778.35</b>	<b>\$781.40</b>

**TABLE 4. TOTAL TAXABLE EARNINGS, 2009 - 2016**

<b>PERIOD</b>	<b>2009</b>	<b>2010</b>	<b>2011</b>	<b>2012</b>
<b>TOTAL</b>	<b>9,787,660,886</b>	<b>11,332,118,456</b>	<b>11,479,396,226</b>	<b>11,624,348,048</b>
January - March	5,423,705,265	5,607,134,758	5,828,877,821	6,167,036,199
April - June	2,293,670,854	2,977,100,591	2,910,604,359	2,838,154,846
July - September	1,165,280,065	1,577,067,770	1,601,382,146	1,494,712,584
October - December	905,004,702	1,170,815,337	1,138,531,900	1,124,444,419

<b>PERIOD</b>	<b>2013</b>	<b>2014</b>	<b>2015</b>	<b>2016</b>
<b>TOTAL</b>	<b>11,644,747,978</b>	<b>11,919,662,224</b>	<b>12,280,544,995</b>	<b>9,617,460,165</b>
January - March	6,184,735,653	6,288,682,396	6,387,946,312	6,607,245,841
April - June	2,805,431,293	2,831,013,392	2,919,500,476	3,010,214,324
July - September	1,506,497,129	1,552,243,963	1,645,440,596	N/A
October - December	1,148,083,903	1,247,722,473	1,327,657,611	N/A



OILSEED AND GRAIN FARMING	1111	682	2914	2952	3013	22039890	0 N
CUT AND SEW APPAREL MANUFACTURING	3152	12	128	129	153	942176	0 C
APPAREL ACCESSORIES, OTHER APPAREL MANUF	3159	2	84	74	75	396169	0 C
INLAND WATER TRANSPORTATION	4832	4	19	19	17	313227	0 C
WATER TRANSPORTATION	483	4	19	19	17	313227	0 C
SCENIC/SIGHTSEEING TRANSPORTATION, LAND	4871	2	7	16	17	50116 S0000	C
SCENIC AND SIGHTSEEING TRANSPORTATION	487	6	25	39	47	127755	0 C

TABLE 5. STATEWIDE SUMMARY

North American Industry Classification System - Industry Groups		Number of Employing Units	Employment			Total Earnings Apr - Jun 2016	Average Weekly Earnings
			Apr	May	Jun		
<b>TOTAL, ALL INDUSTRIES</b>		<b>87,521</b>	<b>1,178,480</b>	<b>1,181,258</b>	<b>1,177,108</b>	<b>\$11,935,742,777</b>	<b>\$778.77</b>
<b>NATURAL RESOURCES &amp; MINING</b>		<b>2,595</b>	<b>16,963</b>	<b>16,974</b>	<b>17,298</b>	<b>\$186,269,980</b>	<b>\$838.98</b>
<b>11</b>	<b>AGRICULTURE, FORESTRY, FISHING &amp; HUNTING</b>	<b>2,116</b>	<b>12,806</b>	<b>12,952</b>	<b>13,290</b>	<b>\$121,966,197</b>	<b>\$720.81</b>
<b>111</b>	<b>CROP PRODUCTION</b>	<b>946</b>	<b>4,347</b>	<b>4,371</b>	<b>4,572</b>	<b>\$31,826,575</b>	<b>\$552.64</b>
1111	Oilseed & Grain Farming	682	2,914	2,952	3,013	22,039,890	572.83
1112	Vegetable & Melon Farming	30	186	191	189	1,099,861	448.43
1113	Fruit & Tree Nut Farming	14	53	61	190	408,131	309.82
1114	Greenhouse & Nursery Production	41	458	424	402	2,832,776	509.13
1119	Other Crop Farming	179	736	743	778	5,445,917	556.82
<b>112</b>	<b>ANIMAL PRODUCTION &amp; AQUACULTURE</b>	<b>324</b>	<b>3,205</b>	<b>3,205</b>	<b>3,246</b>	<b>\$34,677,316</b>	<b>\$828.75</b>
1121	Cattle Ranching & Farming	126	436	425	427	3,032,211	543.28
1122	Hog & Pig Farming	13	142	141	142	1,451,976	788.40
1123	Poultry & Egg Production	113	2,150	2,158	2,191	26,109,220	927.10
1125	Animal Aquaculture	50	421	423	422	3,720,358	678.15
	Other	22	56	58	64	363,551	471.33
<b>115</b>	<b>SUPPORT ACTIVITIES FOR AGRICULTURE &amp; FORESTRY</b>	<b>428</b>	<b>2,890</b>	<b>3,029</b>	<b>3,107</b>	<b>\$32,334,579</b>	<b>\$826.70</b>
1151	Support Activities for Crop Production	297	1,413	1,514	1,532	17,536,836	907.59
1152	Support Activities for Animal Production	63	681	689	700	5,455,885	608.24
1153	Support Activities for Forestry	68	796	826	875	9,341,858	863.36
	<b>OTHER</b>	<b>418</b>	<b>2,364</b>	<b>2,347</b>	<b>2,365</b>	<b>\$23,127,727</b>	<b>\$754.26</b>
<b>21</b>	<b>MINING</b>	<b>479</b>	<b>4,157</b>	<b>4,022</b>	<b>4,008</b>	<b>\$64,303,783</b>	<b>\$1,217.64</b>
<b>211</b>	<b>OIL &amp; GAS EXTRACTION</b>	<b>81</b>	<b>989</b>	<b>938</b>	<b>938</b>	<b>\$20,158,357</b>	<b>\$1,623.71</b>
<b>212</b>	<b>MINING (EXCEPT OIL &amp; GAS)</b>	<b>100</b>	<b>1,567</b>	<b>1,549</b>	<b>1,556</b>	<b>\$20,767,248</b>	<b>\$1,025.78</b>
<b>213</b>	<b>SUPPORT ACTIVITIES FOR MINING</b>	<b>298</b>	<b>1,601</b>	<b>1,535</b>	<b>1,514</b>	<b>\$23,378,178</b>	<b>\$1,160.21</b>

TABLE 5. STATEWIDE SUMMARY

North American Industry Classification System - Industry Groups		Number of Employing Units	Employment			Total Earnings Apr - Jun 2016	Average Weekly Earnings
			Apr	May	Jun		
<b>CONSTRUCTION</b>		<b>6,744</b>	<b>50,252</b>	<b>50,528</b>	<b>51,457</b>	<b>\$557,220,987</b>	<b>\$844.67</b>
<b>236</b>	<b>CONSTRUCTION OF BUILDINGS</b>	<b>1,685</b>	<b>10,467</b>	<b>10,520</b>	<b>10,682</b>	<b>\$128,754,301</b>	<b>\$938.22</b>
2361	Residential Building Construction	1,109	3,053	3,147	3,188	29,811,353	732.80
2362	Nonresidential Building Construction	576	7,414	7,373	7,494	98,942,948	1,024.77
<b>237</b>	<b>HEAVY &amp; CIVIL ENGINEERING CONSTRUCTION</b>	<b>714</b>	<b>7,679</b>	<b>7,779</b>	<b>7,791</b>	<b>\$88,379,096</b>	<b>\$877.25</b>
2371	Utility System Construction	392	4,147	4,199	4,167	47,986,222	884.98
2372	Land Subdivision	53	89	96	98	795,671	648.82
2373	Highway, Street & Bridge Construction	179	2,903	2,916	2,934	33,098,082	872.62
2379	Other Heavy Construction	90	540	568	592	6,499,121	882.23
<b>238</b>	<b>SPECIALTY TRADE CONTRACTORS</b>	<b>4,345</b>	<b>32,106</b>	<b>32,229</b>	<b>32,984</b>	<b>\$340,087,590</b>	<b>\$806.44</b>
2381	Building Foundation & Exterior Contractors	812	6,073	6,012	6,302	62,035,845	778.59
2382	Building Equipment Contractors	2,073	16,814	17,157	17,609	192,247,836	860.12
2383	Building Finishing Contractors	718	4,476	4,291	4,213	42,892,595	762.58
2389	Other Specialty Trade Contractors	742	4,743	4,769	4,860	42,911,314	689.02
<b>MANUFACTURING</b>		<b>2,941</b>	<b>153,762</b>	<b>153,880</b>	<b>154,892</b>	<b>\$1,696,722,137</b>	<b>\$846.54</b>
<b>311</b>	<b>FOOD MANUFACTURING</b>	<b>279</b>	<b>44,034</b>	<b>44,257</b>	<b>44,961</b>	<b>\$384,391,832</b>	<b>\$665.70</b>
3111	Animal Food Manufacturing	45	1,556	1,545	1,581	22,632,888	1,115.54
3112	Grain & Oilseed Milling	35	2,561	2,561	2,562	27,634,087	829.92
3114	Fruit, Vegetable & Specialty Food	19	4,130	4,147	4,196	44,411,124	821.67
3115	Dairy Product Manufacturing	8	537	542	537	5,648,680	806.65
3116	Animal Slaughtering & Processing	77	29,511	29,691	30,242	226,515,619	584.42
3118	Bakeries & Tortilla Manufacturing	64	3,546	3,574	3,642	34,825,652	746.77
3119	Other Food Manufacturing	23	2,127	2,140	2,144	22,460,332	808.48
	Other	8	66	57	57	263,450	337.76
<b>312</b>	<b>BEVERAGE &amp; TOBACCO PRODUCT MANUFACTURING</b>	<b>53</b>	<b>1,343</b>	<b>1,373</b>	<b>1,391</b>	<b>\$15,055,666</b>	<b>\$845.97</b>
<b>313</b>	<b>TEXTILE MILLS</b>	<b>8</b>	<b>101</b>	<b>104</b>	<b>108</b>	<b>\$1,372,536</b>	<b>\$1,011.95</b>
<b>314</b>	<b>TEXTILE PRODUCT MILLS</b>	<b>46</b>	<b>950</b>	<b>955</b>	<b>968</b>	<b>\$11,814,870</b>	<b>\$949.01</b>
3141	Textile Furnishing Mills	9	35	35	36	406,211	884.35
3149	Other Textile Product Mills	37	915	920	932	11,408,659	951.49
<b>315</b>	<b>APPAREL MANUFACTURING</b>	<b>17</b>	<b>886</b>	<b>886</b>	<b>908</b>	<b>\$5,829,057</b>	<b>\$501.93</b>
3151	Apparel Knitting Mills	3	674	683	680	4,490,712	508.75
	Other	14	212	203	228	1,338,345	480.32

TABLE 5. STATEWIDE SUMMARY

North American Industry Classification System - Industry Groups		Number of Employing Units	Employment			Total Earnings	Average Weekly Earnings
			Apr	May	Jun	Apr - Jun 2016	
<b>316</b>	<b>LEATHER &amp; ALLIED PRODUCT MANUFACTURING</b>	<b>15</b>	<b>1,210</b>	<b>1,241</b>	<b>1,239</b>	<b>\$8,607,557</b>	<b>\$538.31</b>
3162	Footwear Manufacturing	6	1,008	1,038	1,035	7,152,194	\$535.70
3169	Other Leather & Allied Product Manufacturing	9	202	203	204	1,455,363	\$551.48
<b>321</b>	<b>WOOD PRODUCT MANUFACTURING</b>	<b>321</b>	<b>9,417</b>	<b>9,469</b>	<b>9,537</b>	<b>\$93,318,737</b>	<b>\$757.66</b>
3211	Sawmills & Wood Preservation	149	4,524	4,534	4,578	46,717,590	790.63
3212	Veneer & Engineered Wood Products	44	1,870	1,879	1,898	22,341,747	913.01
3219	Other Wood Product Manufacturing	128	3,023	3,056	3,061	24,259,400	612.51
<b>322</b>	<b>PAPER MANUFACTURING</b>	<b>73</b>	<b>9,527</b>	<b>9,527</b>	<b>9,612</b>	<b>\$149,836,213</b>	<b>\$1,206.22</b>
3221	Pulp, Paper & Paperboard Mills	12	3,898	3,876	3,909	77,702,171	1,534.82
3222	Converted Paper Product Manufacturing	61	5,629	5,651	5,703	72,134,042	980.18
<b>323</b>	<b>PRINTING &amp; RELATED SUPPORT ACTIVITIES</b>	<b>240</b>	<b>3,965</b>	<b>3,809</b>	<b>3,707</b>	<b>\$36,958,057</b>	<b>\$742.86</b>
<b>324</b>	<b>PETROLEUM &amp; COAL PRODUCTS MANUFACTURING</b>	<b>18</b>	<b>1,145</b>	<b>1,137</b>	<b>1,161</b>	<b>\$17,923,417</b>	<b>\$1,201.33</b>
<b>325</b>	<b>CHEMICAL MANUFACTURING</b>	<b>118</b>	<b>5,045</b>	<b>5,039</b>	<b>5,051</b>	<b>\$75,167,163</b>	<b>\$1,146.10</b>
3251	Basic Chemical Manufacturing	31	1,831	1,829	1,818	32,082,650	1,351.53
3252	Resin, Rubber & Artificial Fibers	7	292	292	291	4,415,542	1,164.54
3253	Agricultural Chemical Manufacturing	16	454	453	451	7,598,013	1,291.15
3254	Pharmaceutical & Medicine Manufacturing	16	311	317	322	4,031,413	979.29
3255	Paint, Coating & Adhesive Manufacturing	9	271	273	275	3,618,371	1,019.55
3256	Soap, Cleaning Compound, & Toilet Preparation Manufacturing	16	1,177	1,167	1,192	14,078,211	918.78
3259	Other Chemical Preparation Manufacturing	23	709	708	702	9,342,963	1,017.49
<b>326</b>	<b>PLASTICS &amp; RUBBER PRODUCTS MANUFACTURING</b>	<b>130</b>	<b>11,043</b>	<b>11,033</b>	<b>10,954</b>	<b>\$127,446,732</b>	<b>\$890.43</b>
3261	Plastics Product Manufacturing	100	6,804	6,783	6,691	71,221,748	810.52
3262	Rubber Product Manufacturing	30	4,239	4,250	4,263	56,224,984	1,017.49
<b>327</b>	<b>NONMETALLIC MINERAL PRODUCT MANUFACTURING</b>	<b>232</b>	<b>3,563</b>	<b>3,587</b>	<b>3,651</b>	<b>\$40,252,167</b>	<b>\$860.01</b>
3271	Clay Product & Refractory Manufacturing	12	398	401	401	4,415,925	849.22
3272	Glass & Glass Product Manufacturing	10	355	358	354	4,051,673	876.29
3273	Cement & Concrete Product Manufacturing	172	2,133	2,146	2,189	23,489,578	838.08
3274	Lime & Gypsum Product Manufacturing	3	283	284	284	4,139,972	1,122.65
3279	Other Nonmetallic Mineral Products Manufacturing	35	394	398	423	4,155,019	789.18
<b>331</b>	<b>PRIMARY METAL MANUFACTURING</b>	<b>74</b>	<b>8,042</b>	<b>7,967</b>	<b>7,843</b>	<b>\$121,379,909</b>	<b>\$1,174.36</b>
3311	Iron & Steel Mills & Ferroalloys	9	2,522	2,504	2,506	56,968,129	1,745.42
3312	Purchased Steel Product Manufacturing	21	2,072	2,020	1,915	24,357,769	935.75
3313	Alumina & Aluminum Production	18	1,241	1,249	1,255	15,909,129	980.33
3314	Other Nonferrous Metal Production	8	433	427	421	4,701,021	846.88
3315	Foundries	18	1,774	1,767	1,746	19,443,861	848.69

TABLE 5. STATEWIDE SUMMARY

North American Industry Classification System - Industry Groups		Number of Employing Units	Employment			Total Earnings	Average Weekly Earnings
			Apr	May	Jun	Apr - Jun 2016	
<b>332</b>	<b>FABRICATED METAL PRODUCT MANUFACTURING</b>	<b>520</b>	<b>14,934</b>	<b>14,919</b>	<b>15,066</b>	<b>\$184,540,447</b>	<b>\$948.07</b>
3321	Forging & Stamping	11	374	369	366	3,886,779	808.79
3322	Cutlery & Hand Tool Manufacturing	11	580	580	578	6,733,209	894.03
3323	Architectural & Structural Metals	147	4,277	4,299	4,375	57,059,685	1,016.73
3324	Boilers, Tanks & Shipping Containers	18	690	668	669	8,700,190	990.50
3325	Hardware Manufacturing	5	250	248	247	2,964,312	918.22
3326	Spring & Wire Product Manufacturing	13	379	383	379	4,162,509	841.87
3327	Machine Shops & Threaded Products	209	1,830	1,832	1,843	18,515,434	776.17
3328	Coating, Engraving & Heat Treating Metals	38	644	644	661	6,288,171	744.54
3329	Other Fabricated Metal Product Manufacturing	68	5,910	5,896	5,948	76,230,158	990.85
<b>333</b>	<b>MACHINERY MANUFACTURING</b>	<b>209</b>	<b>10,938</b>	<b>10,946</b>	<b>10,976</b>	<b>\$122,081,116</b>	<b>\$857.35</b>
3331	Agriculture, Construction & Mining Machinery	39	2,674	2,656	2,645	24,212,772	700.63
3332	Industrial Machinery Manufacturing	20	631	630	634	8,639,133	1,052.06
3333	Commercial & Service Industry Machinery	22	725	730	739	9,373,092	985.88
3334	HVAC & Commercial Refrigeration Equipment	22	2,971	2,962	2,964	33,488,716	868.63
3335	Metalworking Machinery Manufacturing	59	1,011	1,040	1,034	10,872,005	813.27
3336	Turbine & Power Transmission Equipment Manufacturing	5	656	651	645	7,826,022	925.21
3339	Other General Purpose Machinery Manufacturing	42	2,270	2,277	2,315	27,669,376	930.52
<b>334</b>	<b>COMPUTER &amp; ELECTRONIC PRODUCT MANUFACTURING</b>	<b>54</b>	<b>2,304</b>	<b>2,309</b>	<b>2,332</b>	<b>\$27,539,685</b>	<b>\$915.09</b>
3343	Audio & Video Equipment Manufacturing	6	150	144	134	1,437,171	774.89
3344	Semiconductors & Electronic Components	25	1,630	1,637	1,672	18,969,201	886.31
3345	Navigational, Measuring, Electromedical, & Control Instr, Mfg Other	17 6	410 114	413 115	414 112	5,442,360 1,690,953	1,015.30 1,144.34
<b>335</b>	<b>ELECTRICAL EQUIPMENT &amp; APPLIANCES</b>	<b>58</b>	<b>4,943</b>	<b>4,912</b>	<b>4,892</b>	<b>\$62,340,529</b>	<b>\$975.54</b>
3351	Electric Lighting Equipment Manufacturing	11	373	379	379	4,137,916	\$844.30
3352	Household Appliance Manufacturing	5	36	38	38	839,269	\$1,729.26
3353	Electrical Equipment Manufacturing	23	3,191	3,169	3,149	40,358,933	979.45
3359	Other Electrical Equipment & Component Manufacturing	19	1,343	1,326	1,326	17,004,411	982.25
<b>336</b>	<b>TRANSPORTATION EQUIPMENT MANUFACTURING</b>	<b>144</b>	<b>13,468</b>	<b>13,506</b>	<b>13,639</b>	<b>\$147,440,565</b>	<b>\$837.78</b>
3362	Motor Vehicle Body & Trailer Manufacturing	34	1,866	1,858	1,889	17,280,785	710.47
3363	Motor Vehicle Parts Manufacturing	44	5,061	5,090	5,146	53,803,159	811.67
3364	Aerospace Product & Parts Manufacturing	29	3,375	3,355	3,329	45,107,584	1,034.84
3366	Ship & Boat Building Other	22 15	1,850 1,316	1,849 1,354	1,899 1,376	16,005,229 15,243,808	659.79 869.45
<b>337</b>	<b>FURNITURE &amp; RELATED PRODUCT MANUFACTURING</b>	<b>158</b>	<b>3,499</b>	<b>3,523</b>	<b>3,506</b>	<b>\$30,371,388</b>	<b>\$665.73</b>
3371	Household & Institutional Furniture	133	2,684	2,713	2,710	22,142,125	630.29
3372	Office Furniture & Fixtures Manufacturing	19	715	711	700	7,535,858	817.99
3379	Other Furniture Related Product Manufacturing	6	100	99	96	693,405	542.43
<b>339</b>	<b>MISCELLANEOUS MANUFACTURING</b>	<b>174</b>	<b>3,405</b>	<b>3,381</b>	<b>3,390</b>	<b>\$33,054,494</b>	<b>\$749.60</b>
3391	Medical Equipment & Supplies Manufacturing	69	1,696	1,690	1,687	19,520,578	887.99
3399	Other Miscellaneous Manufacturing	105	1,709	1,691	1,703	13,533,916	612.03

TABLE 5. STATEWIDE SUMMARY

North American Industry Classification System - Industry Groups		Number of Employing Units	Employment			Total Earnings Apr - Jun 2016	Average Weekly Earnings
			Apr	May	Jun		
<b>TRADE, TRANSPORTATION &amp; UTILITIES</b>		<b>21,538</b>	<b>247,644</b>	<b>248,791</b>	<b>248,990</b>	<b>\$2,378,722,964</b>	<b>\$736.41</b>
<b>42</b>	<b>WHOLESALE TRADE</b>	<b>7,065</b>	<b>46,386</b>	<b>46,584</b>	<b>46,426</b>	<b>\$728,517,207</b>	<b>\$1,206.06</b>
<b>423</b>	<b>MERCHANT WHOLESALERS, DURABLE GOODS</b>	<b>2,119</b>	<b>20,390</b>	<b>20,427</b>	<b>20,468</b>	<b>\$268,737,650</b>	<b>\$1,011.93</b>
4231	Motor Vehicle & Part Merchant Wholesalers	229	2,657	2,666	2,655	27,937,013	808.10
4232	Furniture & Furnishings Merchant Wholesalers	51	464	456	467	6,976,110	1,160.69
4233	Lumber & Supply Merchant Wholesalers	167	1,404	1,401	1,430	16,307,044	888.59
4234	Commercial Goods Merchant Wholesalers	293	2,427	2,426	2,440	42,523,641	1,345.56
4235	Metal & Mineral Merchant Wholesalers	51	855	855	853	10,384,816	935.04
4236	Appliances & Electronics Goods Merchant Wholesalers	199	1,886	1,891	1,887	27,735,043	1,130.01
4237	Hardware & Plumbing Merchant Wholesalers	232	2,284	2,293	2,295	30,136,090	1,012.00
4238	Machinery & Supply Merchant Wholesalers	684	6,601	6,631	6,610	86,368,074	1,004.49
4239	Miscellaneous Durable Goods Merchant Wholesalers	213	1,812	1,808	1,831	20,369,819	862.36
<b>424</b>	<b>MERCHANT WHOLESALERS, NONDURABLE GOODS</b>	<b>1,148</b>	<b>14,734</b>	<b>14,785</b>	<b>14,752</b>	<b>\$193,393,500</b>	<b>\$1,008.09</b>
4241	Paper & Paper Product Merchant Wholesalers	70	1,168	1,110	1,081	16,749,921	1,150.75
4242	Druggist' Goods Merchant Wholesalers	56	614	624	629	8,434,382	1,042.53
4243	Apparel & Piece Goods Merchant Wholesalers	40	599	597	572	6,817,098	889.81
4244	Grocery Product Merchant Wholesalers	287	4,330	4,340	4,370	69,157,949	1,223.89
4245	Farm Product & Raw Material Merchant Wholesalers	72	780	801	813	6,503,722	626.93
4246	Chemical Merchant Wholesalers	91	628	637	644	11,235,691	1,358.23
4247	Petroleum Merchant Wholesalers	140	1,276	1,281	1,274	13,571,444	817.51
4248	Alcoholic Beverage Merchant Wholesalers	42	1,604	1,612	1,621	18,855,798	899.59
4249	Miscellaneous Nondurable Goods Merchant Wholesaler	350	3,735	3,783	3,748	42,067,495	861.70
<b>425</b>	<b>ELECTRONIC MARKETS &amp; AGENTS &amp; BROKERS</b>	<b>3,798</b>	<b>11,262</b>	<b>11,372</b>	<b>11,206</b>	<b>\$266,386,057</b>	<b>\$1,816.60</b>
<b>44 - 45</b>	<b>RETAIL TRADE</b>	<b>11,138</b>	<b>141,963</b>	<b>142,566</b>	<b>142,216</b>	<b>\$936,088,721</b>	<b>\$506.21</b>
<b>441</b>	<b>MOTOR VEHICLE &amp; PARTS DEALERS</b>	<b>1,554</b>	<b>19,547</b>	<b>19,665</b>	<b>19,567</b>	<b>\$209,670,786</b>	<b>\$823.18</b>
4411	Automobile Dealers	628	11,976	12,047	11,983	149,243,611	956.53
4412	Other Motor Vehicle Dealers	169	1,684	1,718	1,732	17,696,347	795.44
4413	Automotive Parts, Accessories & Tire Stores	757	5,887	5,900	5,852	42,730,828	559.04
<b>442</b>	<b>FURNITURE &amp; HOME FURNISHINGS STORES</b>	<b>499</b>	<b>3,596</b>	<b>3,576</b>	<b>3,538</b>	<b>\$26,303,738</b>	<b>\$566.77</b>
4421	Furniture Stores	268	2,082	2,060	2,019	16,948,765	634.84
4422	Home Furnishings Stores	231	1,514	1,516	1,519	9,354,973	474.57
<b>443</b>	<b>ELECTRONICS &amp; APPLIANCE STORES</b>	<b>439</b>	<b>3,756</b>	<b>3,707</b>	<b>3,708</b>	<b>\$31,821,062</b>	<b>\$657.36</b>
<b>444</b>	<b>BUILDING MATERIAL &amp; GARDEN SUPPLY STORES</b>	<b>839</b>	<b>11,890</b>	<b>11,967</b>	<b>11,806</b>	<b>\$81,636,469</b>	<b>\$528.26</b>
4441	Building Material & Supplies Dealers	600	9,758	9,809	9,700	68,744,264	542.05
4442	Lawn & Garden Equipment & Supplies Stores	239	2,132	2,158	2,106	12,892,205	465.15

TABLE 5. STATEWIDE SUMMARY

North American Industry Classification System - Industry Groups		Number of Employing Units	Employment			Total Earnings Apr - Jun 2016	Average Weekly Earnings
			Apr	May	Jun		
<b>445</b>	<b>FOOD &amp; BEVERAGE STORES</b>	<b>1,081</b>	<b>19,805</b>	<b>19,958</b>	<b>20,075</b>	<b>\$107,263,684</b>	<b>\$413.67</b>
4451	Grocery Stores	572	17,042	17,118	17,192	89,905,982	404.03
4452	Specialty Food Stores	152	1,034	1,069	1,076	8,237,530	597.98
4453	Beer, Wine & Liquor Stores	357	1,729	1,771	1,807	9,120,172	396.58
<b>446</b>	<b>HEALTH &amp; PERSONAL CARE STORES</b>	<b>999</b>	<b>8,471</b>	<b>8,450</b>	<b>8,450</b>	<b>\$78,168,040</b>	<b>\$711.00</b>
<b>447</b>	<b>GASOLINE STATIONS</b>	<b>1,584</b>	<b>12,427</b>	<b>12,636</b>	<b>12,464</b>	<b>\$55,410,344</b>	<b>\$340.74</b>
44711	Gasoline Stations with Convenience Stores	1,481	11,166	11,370	11,205	48,352,322	330.70
44719	Other Gasoline Stations	103	1,261	1,266	1,259	7,058,022	430.21
<b>448</b>	<b>CLOTHING &amp; CLOTHING ACCESSORIES STORES</b>	<b>1,091</b>	<b>8,682</b>	<b>8,702</b>	<b>8,532</b>	<b>\$36,204,002</b>	<b>\$322.38</b>
4481	Clothing Stores	811	6,710	6,735	6,608	24,661,779	283.81
4482	Shoe Stores	141	1,235	1,231	1,194	4,935,290	311.18
4483	Jewelry, Luggage & Leather Goods Stores	139	737	736	730	6,606,933	692.09
<b>451</b>	<b>SPORTING GOODS, HOBBY, BOOK &amp; MUSIC STORES</b>	<b>480</b>	<b>4,528</b>	<b>4,466</b>	<b>4,439</b>	<b>\$19,972,311</b>	<b>\$343.11</b>
4511	Sporting Goods & Musical Instrument Stores	418	4,037	3,988	3,985	18,059,319	347.01
4512	Book, Periodical & Music Stores	62	491	478	454	1,912,992	310.23
<b>452</b>	<b>GENERAL MERCHANDISE STORES</b>	<b>920</b>	<b>40,278</b>	<b>40,372</b>	<b>40,585</b>	<b>\$234,808,937</b>	<b>\$446.96</b>
<b>453</b>	<b>MISCELLANEOUS STORE RETAILERS</b>	<b>1,216</b>	<b>7,113</b>	<b>7,171</b>	<b>7,165</b>	<b>\$37,920,265</b>	<b>\$407.98</b>
4531	Florists	183	686	692	648	3,070,782	349.77
4532	Office Supplies, Stationery & Gift Stores	258	1,790	1,800	1,825	9,918,860	422.71
4533	Used Merchandise Stores	261	1,959	1,971	1,960	9,133,082	357.83
4539	Other Miscellaneous Store Retailers	514	2,678	2,708	2,732	15,797,541	449.07
<b>454</b>	<b>NONSTORE RETAILERS</b>	<b>436</b>	<b>1,870</b>	<b>1,896</b>	<b>1,887</b>	<b>\$16,909,083</b>	<b>\$690.27</b>
4541	Electronic Shopping & Mail-Order Houses	210	728	732	719	7,196,152	762.12
4542	Vending Machine Operators	68	450	460	465	3,503,260	587.96
4543	Direct Selling Establishments	158	692	704	703	6,209,671	682.71
<b>48 - 49</b>	<b>TRANSPORTATION &amp; WAREHOUSING</b>	<b>2,915</b>	<b>51,644</b>	<b>51,991</b>	<b>52,633</b>	<b>\$571,291,898</b>	<b>\$843.66</b>
<b>481</b>	<b>AIR TRANSPORTATION</b>	<b>52</b>	<b>649</b>	<b>655</b>	<b>662</b>	<b>\$6,034,330</b>	<b>\$708.31</b>
4811	Scheduled Air Transportation	21	557	562	572	4,534,042	618.76
4812	Nonshceduled Air Transportation	31	92	93	90	1,500,288	1,258.98
<b>483</b>	<b>WATER TRANSPORTATION</b>	<b>4</b>	<b>19</b>	<b>19</b>	<b>17</b>	<b>\$313,227</b>	<b>\$1,314.24</b>
<b>484</b>	<b>TRUCK TRANSPORTATION</b>	<b>1,848</b>	<b>31,769</b>	<b>31,975</b>	<b>32,646</b>	<b>\$366,950,490</b>	<b>\$878.52</b>
4841	General Freight Trucking	1,076	25,534	25,750	26,209	302,077,403	899.57
4842	Specialized Freight Trucking	772	6,235	6,225	6,437	64,873,087	792.23

TABLE 5. STATEWIDE SUMMARY

North American Industry Classification System - Industry Groups		Number of Employing Units	Employment			Total Earnings Apr - Jun 2016	Average Weekly Earnings
			Apr	May	Jun		
<b>485</b>	<b>TRANSIT &amp; GROUND PASSENGER TRANSPORTATION</b>	<b>112</b>	<b>1,785</b>	<b>1,809</b>	<b>1,783</b>	<b>\$9,048,803</b>	<b>\$388.36</b>
4853	Taxi & Limousine Service	32	406	411	399	1,837,442	348.70
4854	School & Employee Bus Transportation	14	470	469	475	2,205,316	359.91
4855	Charter Bus Industry Service	9	110	103	112	758,934	538.89
4859	Other Ground Passenger Transportation	53	685	712	684	3,361,611	372.78
	Other	4	114	114	113	885,500	599.26
<b>486</b>	<b>PIPELINE TRANSPORTATION</b>	<b>33</b>	<b>419</b>	<b>406</b>	<b>405</b>	<b>\$10,202,865</b>	<b>\$1,914.23</b>
<b>487</b>	<b>SCENIC &amp; SIGHTSEEING TRANSPORTATION</b>	<b>6</b>	<b>25</b>	<b>39</b>	<b>47</b>	<b>\$127,755</b>	<b>\$265.60</b>
<b>488</b>	<b>SUPPORT ACTIVITIES FOR TRANSPORTATION</b>	<b>459</b>	<b>5,082</b>	<b>5,100</b>	<b>5,033</b>	<b>\$60,181,979</b>	<b>\$912.79</b>
4881	Support Activities for Air Transportation	102	963	969	963	10,260,957	817.93
4882	Support Activities for Rail Transportation	43	610	621	595	7,078,757	894.61
4883	Support Activities for Water Transportation	20	726	703	673	10,108,196	1,109.73
4884	Support Activities for Road Transportation	152	848	848	846	6,718,902	609.96
4885	Freight Transportation Arrangement	126	1,828	1,841	1,832	25,102,092	1,053.04
4889	Other Support Activities for Transportation	16	107	118	124	913,075	603.75
<b>493</b>	<b>WAREHOUSING &amp; STORAGE</b>	<b>224</b>	<b>8,142</b>	<b>8,180</b>	<b>8,175</b>	<b>\$78,749,267</b>	<b>\$741.84</b>
	<b>OTHER</b>	<b>177</b>	<b>3,754</b>	<b>3,808</b>	<b>3,865</b>	<b>\$39,683,182</b>	<b>\$801.41</b>
<b>22</b>	<b>UTILITIES</b>	<b>420</b>	<b>7,651</b>	<b>7,650</b>	<b>7,715</b>	<b>\$142,825,138</b>	<b>\$1,432.03</b>
2211	Power Generation & Supply	166	5,619	5,631	5,696	115,565,846	1,573.77
2212	Natural Gas Distribution	67	1,096	1,083	1,083	18,770,190	1,327.89
2213	Water, Sewage & Other Systems	187	936	936	936	8,489,102	697.66
	<b>INFORMATION</b>	<b>1,095</b>	<b>13,314</b>	<b>13,231</b>	<b>13,311</b>	<b>\$172,054,594</b>	<b>\$996.21</b>
<b>511</b>	<b>PUBLISHING INDUSTRIES, EXCEPT INTERNET</b>	<b>225</b>	<b>3,218</b>	<b>3,182</b>	<b>3,217</b>	<b>\$32,721,133</b>	<b>\$785.18</b>
5111	Newspaper, Book & Directory Publishers	192	2,853	2,829	2,859	25,172,059	680.12
5112	Software Publishers	33	365	353	358	7,549,074	1,619.05
<b>512</b>	<b>MOTION PICTURE &amp; SOUND RECORDING INDUSTRY</b>	<b>139</b>	<b>1,080</b>	<b>1,116</b>	<b>1,146</b>	<b>\$5,283,250</b>	<b>\$364.81</b>
5121	Motion Picture & Video Industries	123	1,052	1,090	1,120	4,971,292	351.69
5122	Sound Recording Industries	16	28	26	26	311,958	899.88
<b>515</b>	<b>BROADCASTING, EXCEPT INTERNET</b>	<b>124</b>	<b>1,604</b>	<b>1,594</b>	<b>1,592</b>	<b>\$16,996,063</b>	<b>\$818.82</b>
5151	Radio & Television Broadcasting	120	1,578	1,568	1,568	16,754,739	820.21
5152	Cable & Other Subscription Programming	4	26	26	24	241,324	732.77



TABLE 5. STATEWIDE SUMMARY

North American Industry Classification System - Industry Groups		Number of Employing Units	Employment			Total Earnings	Average Weekly Earnings
			Apr	May	Jun	Apr - Jun 2016	
<b>517</b>	<b>TELECOMMUNICATIONS</b>	<b>336</b>	<b>5,751</b>	<b>5,682</b>	<b>5,667</b>	<b>\$90,185,742</b>	<b>\$1,217.08</b>
5171	Wired Telecommunications Carriers	211	3,786	3,754	3,747	61,425,438	1,255.88
5172	Wireless Telecommunications Carriers (except Satellite)	44	1,681	1,644	1,628	24,335,129	1,133.82
5174	Satellite Telecommunications Carriers	6	6	6	6	72,201	925.65
5179	Other Telecommunications	75	278	278	286	4,352,974	1,193.03
<b>518</b>	<b>DATA PROCESSING, HOSTING &amp; RELATED SERVICES</b>	<b>188</b>	<b>1,333</b>	<b>1,324</b>	<b>1,351</b>	<b>\$23,388,460</b>	<b>\$1,346.64</b>
<b>519</b>	<b>OTHER INFORMATION SERVICES</b>	<b>83</b>	<b>328</b>	<b>333</b>	<b>338</b>	<b>\$3,479,946</b>	<b>\$803.87</b>
<b>FINANCIAL ACTIVITIES</b>		<b>8,231</b>	<b>49,348</b>	<b>49,368</b>	<b>49,537</b>	<b>\$624,935,893</b>	<b>\$972.77</b>
<b>52</b>	<b>FINANCE &amp; INSURANCE</b>	<b>4,927</b>	<b>36,104</b>	<b>36,074</b>	<b>36,166</b>	<b>\$510,546,327</b>	<b>\$1,087.45</b>
<b>522</b>	<b>CREDIT INTERMEDIATION &amp; RELATED ACTIVITIES</b>	<b>1,932</b>	<b>19,040</b>	<b>19,090</b>	<b>19,091</b>	<b>\$234,071,826</b>	<b>\$944.00</b>
5221	Depository Credit Intermediation	1,400	16,117	16,155	16,157	190,283,408	906.72
5222	Nondepository Credit Intermediation	389	1,816	1,818	1,830	29,050,358	1,226.93
5223	Activities Related to Credit Intermediation	143	1,107	1,117	1,104	14,738,060	1,021.96
<b>523</b>	<b>FINANCIAL INVESTMENT &amp; RELATED ACTIVITIES</b>	<b>678</b>	<b>3,056</b>	<b>3,047</b>	<b>3,042</b>	<b>\$79,230,293</b>	<b>\$1,999.33</b>
5231	Insurance Carriers	306	2,184	2,174	2,155	64,426,082	2,282.75
5239	Insurance Agencies, Brokerages & Support	372	872	873	887	14,804,211	1,298.01
<b>524</b>	<b>INSURANCE CARRIERS &amp; RELATED ACTIVITIES</b>	<b>2,235</b>	<b>13,901</b>	<b>13,835</b>	<b>13,936</b>	<b>\$195,604,003</b>	<b>\$1,083.21</b>
5231	Security & Commodity Contracts Intermediation & Brokerage	316	5,976	5,964	6,026	94,580,065	1,214.86
5239	Other Financial Investment Activities	1,919	7,925	7,871	7,910	101,023,938	983.43
	<b>OTHER</b>	<b>82</b>	<b>107</b>	<b>102</b>	<b>97</b>	<b>\$1,640,205</b>	<b>\$1,236.96</b>
<b>53</b>	<b>REAL ESTATE &amp; RENTAL &amp; LEASING</b>	<b>3,304</b>	<b>13,244</b>	<b>13,294</b>	<b>13,371</b>	<b>\$114,389,566</b>	<b>\$661.44</b>
<b>531</b>	<b>REAL ESTATE</b>	<b>2,655</b>	<b>9,071</b>	<b>9,051</b>	<b>9,066</b>	<b>\$75,895,777</b>	<b>\$644.20</b>
5311	Lessors of Real Estate	1,095	4,098	4,093	4,119	32,049,864	600.82
5312	Offices of Real Estate Agents & Brokers	790	1,772	1,744	1,720	16,206,209	714.27
5313	Activities Related to Real Estate	770	3,201	3,214	3,227	27,639,704	661.52
<b>532</b>	<b>RENTAL &amp; LEASING SERVICES</b>	<b>631</b>	<b>4,122</b>	<b>4,190</b>	<b>4,255</b>	<b>\$37,643,111</b>	<b>\$691.24</b>
5321	Automotive Equipment Rental & Leasing	110	940	949	958	6,838,282	554.29
5322	Consumer Goods Rental	332	2,079	2,139	2,192	15,677,194	564.40
5323	General Rental Centers	39	217	222	220	2,227,833	780.14
5324	Machinery & Equipment Rental & Leasing	150	886	880	885	12,899,802	1,122.93
<b>533</b>	<b>LESSORS OF NONFINANCIAL INTANGIBLE ASSETS</b>	<b>18</b>	<b>51</b>	<b>53</b>	<b>50</b>	<b>\$850,678</b>	<b>\$1,274.74</b>

TABLE 5. STATEWIDE SUMMARY

North American Industry Classification System - Industry Groups		Number of Employing Units	Employment			Total Earnings Apr - Jun 2016	Average Weekly Earnings
			Apr	May	Jun		
<b>PROFESSIONAL &amp; BUSINESS SERVICES</b>		<b>13,826</b>	<b>143,586</b>	<b>142,651</b>	<b>140,170</b>	<b>\$1,823,085,512</b>	<b>\$986.64</b>
<b>54</b>	<b>PROFESSIONAL &amp; TECHNICAL SERVICES</b>	<b>8,745</b>	<b>43,243</b>	<b>42,031</b>	<b>41,995</b>	<b>\$610,644,287</b>	<b>\$1,107.24</b>
5411	Legal Services	1,693	6,008	5,994	6,044	73,322,605	937.64
5412	Accounting & Bookkeeping Services	1,253	6,149	4,866	4,809	59,044,460	861.07
5413	Architectural & Engineering Services	956	6,157	6,115	6,271	91,244,759	1,135.55
5414	Specialized Design Services	178	387	388	402	4,530,141	888.20
5415	Computer Systems Design & Related Services	1,678	10,411	10,469	10,289	209,577,678	1,551.67
5416	Management & Technical Consulting Services	1,892	5,918	5,909	5,847	83,730,498	1,093.27
5417	Scientific Research & Development Services	146	852	867	886	12,471,438	1,104.81
5418	Advertising & Related Services	385	3,615	3,629	3,662	41,846,444	885.46
5419	Other Professional & Technical Services	564	3,746	3,794	3,785	34,876,264	710.67
<b>55</b>	<b>MANAGEMENT OF COMPANIES &amp; ENTERPRISES</b>	<b>529</b>	<b>34,417</b>	<b>34,479</b>	<b>34,850</b>	<b>\$765,186,047</b>	<b>\$1,702.05</b>
<b>56</b>	<b>ADMINISTRATIVE &amp; WASTE SERVICES</b>	<b>4,552</b>	<b>65,926</b>	<b>66,141</b>	<b>63,325</b>	<b>\$447,255,178</b>	<b>\$528.23</b>
<b>561</b>	<b>ADMINISTRATIVE &amp; SUPPORT SERVICES</b>	<b>4,251</b>	<b>62,954</b>	<b>63,155</b>	<b>60,312</b>	<b>\$414,717,231</b>	<b>\$513.38</b>
5611	Office Administrative Services	643	4,031	3,973	3,953	46,672,431	900.77
5612	Facilities Support Services	42	1,030	1,049	1,048	6,110,684	450.96
5613	Employment Services	1,047	28,290	28,368	25,780	159,534,870	446.59
5614	Business Support Services	358	8,593	8,370	8,313	72,150,431	658.73
5615	Travel Arrangement & Reservation Services	102	399	397	399	3,863,159	746.02
5616	Investigation & Security Services	290	4,631	4,679	4,569	29,695,559	493.75
5617	Services to Buildings & Dwellings	1,577	14,677	14,983	14,925	85,208,200	441.03
5619	Other Support Services	192	1,303	1,336	1,325	11,481,897	668.43
<b>562</b>	<b>WASTE MANAGEMENT &amp; REMEDIATION SERVICES</b>	<b>301</b>	<b>2,972</b>	<b>2,986</b>	<b>3,013</b>	<b>\$32,537,947</b>	<b>\$837.00</b>
5621	Waste Collection Services	127	1,144	1,151	1,161	11,874,802	792.92
5622	Waste Treatment & Disposal Services	34	834	837	848	11,023,293	1,009.86
5629	Remediation & Other Waste Services	140	994	998	1,004	9,639,852	742.52
<b>EDUCATION &amp; HEALTH SERVICES</b>		<b>15,180</b>	<b>176,623</b>	<b>176,735</b>	<b>176,360</b>	<b>\$1,766,946,805</b>	<b>\$769.76</b>
<b>61</b>	<b>EDUCATIONAL SERVICES</b>	<b>798</b>	<b>11,537</b>	<b>11,266</b>	<b>10,702</b>	<b>\$99,429,802</b>	<b>\$684.83</b>
6111	Elementary & Secondary Schools	95	3,615	3,620	3,407	30,308,735	657.24
6112	Junior Colleges	7	166	160	151	1,206,089	583.50
6113	Colleges & Universities	81	4,333	4,074	3,882	37,830,252	710.40
6114	Business, Computer, & Management Training	47	132	130	127	1,896,160	1,124.87
6115	Technical & Trade Schools	111	895	884	834	13,405,051	1,183.88
6116	Other Schools & Instruction	286	1,725	1,718	1,638	7,149,466	324.71
6117	Educational Support Services	171	671	680	663	7,634,049	874.73

TABLE 5. STATEWIDE SUMMARY

North American Industry Classification System - Industry Groups		Number of Employing Units	Employment			Total Earnings Apr - Jun 2016	Average Weekly Earnings
			Apr	May	Jun		
<b>62</b>	<b>HEALTH CARE &amp; SOCIAL ASSISTANCE</b>	<b>14,382</b>	<b>165,086</b>	<b>165,469</b>	<b>165,658</b>	<b>\$1,667,517,003</b>	<b>\$775.50</b>
<b>621</b>	<b>AMBULATORY HEALTH CARE SERVICES</b>	<b>5,524</b>	<b>52,942</b>	<b>53,198</b>	<b>53,382</b>	<b>\$795,039,410</b>	<b>\$1,150.13</b>
6211	Offices of Physicians	2,219	23,985	24,059	24,172	470,357,797	1,503.05
6212	Offices of Dentists	990	7,161	7,148	7,186	83,827,785	899.97
6213	Offices of Other Health Practitioners	1,442	8,081	8,143	8,132	85,294,681	808.15
6214	Outpatient Care Centers	325	4,854	4,884	4,927	63,542,891	999.91
6215	Medical & Diagnostic Laboratories	188	1,122	1,128	1,100	15,815,583	1,089.48
6216	Home Health Care Services	186	5,061	5,112	5,154	49,275,506	741.91
6219	Other Ambulatory Health Care Services	174	2,678	2,724	2,711	26,925,167	765.87
<b>622</b>	<b>HOSPITALS</b>	<b>105</b>	<b>40,787</b>	<b>40,707</b>	<b>40,898</b>	<b>\$470,681,403</b>	<b>\$887.47</b>
6221	General Medical & Surgical Hospitals	79	36,215	36,149	36,342	423,224,791	898.45
6222	Psychiatric & Substance Abuse Hospitals	11	2,202	2,210	2,204	20,670,555	721.00
6223	Specialty Hospitals	15	2,370	2,348	2,352	26,786,057	874.31
<b>623</b>	<b>Residential &amp; Mental Health Facilities</b>	<b>641</b>	<b>31,522</b>	<b>31,674</b>	<b>31,837</b>	<b>\$199,466,209</b>	<b>\$484.37</b>
6231	Nursing Care Facilities (Skilled Nursing Facilities)	287	22,065	22,160	22,370	141,425,172	490.08
6232	Residential Mental Health Facilities	167	4,490	4,505	4,499	27,571,512	471.52
6233	Continuing Care & Assisted Living Facilities	149	3,903	3,945	3,914	22,868,892	448.69
6239	Other Residential Care Facilities	38	1,064	1,064	1,054	7,600,633	551.22
<b>624</b>	<b>SOCIAL ASSISTANCE</b>	<b>8,112</b>	<b>39,835</b>	<b>39,890</b>	<b>39,541</b>	<b>\$202,329,981</b>	<b>\$391.49</b>
6241	Individual & Family Services	6,984	24,983	24,953	24,947	129,119,462	397.91
6242	Emergency & Other Relief Services	138	1,304	1,318	1,327	8,504,473	496.98
6243	Vocational Rehabilitation Services	90	3,249	3,291	3,379	18,411,738	428.36
6244	Child Day Care Services	900	10,299	10,328	9,888	46,294,308	350.10
<b>LEISURE &amp; HOSPITALITY</b>		<b>6,910</b>	<b>117,183</b>	<b>118,869</b>	<b>118,903</b>	<b>\$452,811,818</b>	<b>\$294.39</b>
<b>71</b>	<b>ARTS, ENTERTAINMENT &amp; RECREATION</b>	<b>957</b>	<b>11,471</b>	<b>12,805</b>	<b>12,943</b>	<b>\$57,120,064</b>	<b>\$354.16</b>
<b>711</b>	<b>PERFORMING ARTS &amp; SPECTATOR SPORTS</b>	<b>207</b>	<b>3,365</b>	<b>3,722</b>	<b>2,795</b>	<b>\$17,226,379</b>	<b>\$402.28</b>
7111	Performing Arts Companies	47	349	566	512	1,959,290	316.85
7112	Spectator Sports	66	2,076	1,956	1,430	10,670,442	450.83
7113	Performing Arts & Sports Promoters	44	860	1,108	764	3,975,737	335.83
7114	Agents & Managers for Public Figures	14	27	35	37	236,741	551.84
7115	Independent Artists, Writers, & Performers	36	53	57	52	384,169	547.25
<b>712</b>	<b>MUSEUMS, PARKS, &amp; HISTORICAL SITES</b>	<b>56</b>	<b>657</b>	<b>672</b>	<b>713</b>	<b>\$4,453,321</b>	<b>\$503.28</b>
<b>713</b>	<b>GAMBLING, RECREATIONAL &amp; AMUSEMENT INDUSTRY</b>	<b>694</b>	<b>7,449</b>	<b>8,411</b>	<b>9,435</b>	<b>\$35,440,364</b>	<b>\$323.33</b>
7131	Amusement Parks & Arcades	34	649	1,075	1,357	2,472,910	185.22
7139	Other Amusement & Recreation Industries	660	6,800	7,336	8,078	32,967,454	342.48
<b>72</b>	<b>ACCOMMODATION &amp; FOOD SERVICES</b>	<b>5,953</b>	<b>105,712</b>	<b>106,064</b>	<b>105,960</b>	<b>\$395,691,754</b>	<b>\$287.39</b>

TABLE 5. STATEWIDE SUMMARY

North American Industry Classification System - Industry Groups		Number of Employing Units	Employment			Total Earnings Apr - Jun 2016	Average Weekly Earnings
			Apr	May	Jun		
<b>721</b>	<b>ACCOMMODATION</b>	<b>894</b>	<b>11,148</b>	<b>11,560</b>	<b>11,820</b>	<b>\$51,268,701</b>	<b>\$342.66</b>
7211	Travel Accommodation	810	10,589	10,928	11,080	48,245,031	341.55
7212	RV Parks & Recreational Camps	65	426	500	611	2,373,812	356.41
7213	Rooming & Boarding Houses	19	133	132	129	649,858	380.63
<b>722</b>	<b>FOOD SERVICES &amp; DRINKING PLACES</b>	<b>5,059</b>	<b>94,564</b>	<b>94,504</b>	<b>94,140</b>	<b>\$344,423,053</b>	<b>\$280.65</b>
7223	Special Food Services	222	4,059	3,764	2,927	16,198,081	347.72
7224	Drinking Places, Alcoholic Beverages	155	1,122	1,135	1,129	3,875,818	264.15
7225	Restaurants & Other Eating Places	4,682	89,383	89,605	90,084	324,349,154	278.18
722511	Full-Service Restaurants	2,112	40,032	39,724	39,978	157,634,393	303.82
722513	Limited-Service Eating Places	2,116	44,810	45,283	45,437	149,574,114	254.68
722514	Cafeterias, Grill Buffets, & Buffets	90	1,679	1,686	1,715	7,131,762	323.97
722515	Snack & Nonalcoholic Beverage Bars	364	2,862	2,912	2,954	10,008,885	264.64
<b>OTHER SERVICES</b>		<b>5,376</b>	<b>24,511</b>	<b>24,654</b>	<b>25,429</b>	<b>\$195,899,171</b>	<b>\$606.05</b>
<b>811</b>	<b>REPAIR &amp; MAINTENANCE</b>	<b>2,215</b>	<b>10,207</b>	<b>10,302</b>	<b>10,447</b>	<b>\$94,483,788</b>	<b>\$704.35</b>
8111	Automotive Repair & Maintenance	1,409	6,457	6,493	6,564	54,150,898	640.38
8112	Electronic Equipment Repair & Maintenance	179	862	862	841	8,982,918	808.18
8113	Commercial Machinery Repair & Maintenance	457	2,266	2,331	2,406	26,769,199	882.12
8114	Household Goods Repair & Maintenance	170	622	616	636	4,580,773	564.09
<b>812</b>	<b>PERSONAL &amp; LAUNDRY SERVICES</b>	<b>1,305</b>	<b>7,887</b>	<b>7,930</b>	<b>7,914</b>	<b>\$48,232,148</b>	<b>\$469.03</b>
8121	Personal Care Services	609	3,003	3,020	2,960	15,649,031	402.02
8122	Death Care Services	246	1,641	1,645	1,626	12,125,345	569.66
8123	Drycleaning & Laundry Service	238	2,417	2,428	2,449	15,968,768	505.22
8129	Other Personal Services	212	826	837	879	4,489,004	407.52
<b>813</b>	<b>MEMBERSHIP ASSOCIATIONS &amp; ORGANIZATIONS</b>	<b>1,090</b>	<b>5,443</b>	<b>5,436</b>	<b>6,062</b>	<b>\$48,055,936</b>	<b>\$654.61</b>
8131	Religious Organizations	75	249	256	256	1,850,531	561.16
8132	Grantmaking & Giving Organizations	112	440	442	432	5,523,763	970.10
8133	Social Advocacy Organizations	215	1,563	1,546	1,567	13,618,811	672.11
8134	Civic & Social Organizations	201	1,144	1,153	1,572	5,324,111	317.56
8139	Professional & Similar Organizations	487	2,047	2,039	2,235	21,738,720	793.64
<b>814</b>	<b>PRIVATE HOUSEHOLDS</b>	<b>766</b>	<b>974</b>	<b>986</b>	<b>1,006</b>	<b>\$5,127,299</b>	<b>\$398.93</b>
	<b>LOCAL GOVERNMENT</b>	<b>1,948</b>	<b>114,671</b>	<b>114,842</b>	<b>112,020</b>	<b>\$1,254,747,642</b>	<b>\$847.82</b>
	<b>STATE GOVERNMENT</b>	<b>1,137</b>	<b>70,623</b>	<b>70,735</b>	<b>68,741</b>	<b>\$826,325,274</b>	<b>\$907.62</b>
	<b>NONCLASSIFIABLE ESTABLISHMENTS</b>	<b>0</b>	<b>0</b>	<b>0</b>	<b>0</b>	<b>\$0</b>	<b>\$0.00</b>



TABLE 6. COUNTY SUMMARY

North American Industry Classification System - Industry Groups	Number of Employing Units	Employment			Total Earnings	Average Weekly Earnings
		Apr	May	Jun	Apr - Jun 2016	
<b>ARKANSAS COUNTY - TOTAL</b>	<b>762</b>	<b>9,662</b>	<b>9,658</b>	<b>9,743</b>	<b>\$94,704,502</b>	<b>\$751.98</b>
Natural Resources & Mining	55	223	223	229	2,270,873	776.37
Construction	43	245	246	255	2,747,649	849.96
Manufacturing	33	3,734	3,773	3,780	41,253,218	843.45
Trade, Transportation & Utilities	198	2,129	2,097	2,123	20,362,928	740.14
Wholesale Trade	44	516	510	516	6,409,191	959.17
Retail Trade	91	1,027	1,009	1,024	6,280,547	473.65
Transportation, Warehousing & Utilities	63	586	578	583	7,673,190	1,013.59
Information	11	87	88	87	825,027	726.68
Financial Activities	44	301	300	304	3,097,178	789.76
Professional & Business Services	51	425	416	415	5,710,333	1,049.18
Education & Health Services	183	1,085	1,070	1,060	8,586,644	616.34
Leisure & Hospitality	53	426	438	448	1,437,297	252.81
Other Services	43	100	91	93	683,006	554.99
Local Government	32	721	728	768	6,325,476	658.42
State Government	16	186	188	181	1,404,873	584.15
<b>ASHLEY COUNTY - TOTAL</b>	<b>558</b>	<b>6,668</b>	<b>6,678</b>	<b>6,747</b>	<b>\$71,383,604</b>	<b>\$819.84</b>
Natural Resources & Mining	40	313	305	328	3,201,124	780.89
Construction	41	625	624	646	7,011,970	853.90
Manufacturing	25	1,673	1,669	1,682	29,916,114	1,374.15
Trade, Transportation & Utilities	112	1,193	1,187	1,187	9,171,629	593.36
Wholesale Trade	22	197	194	189	2,532,045	1,007.44
Retail Trade	67	756	762	760	4,242,844	429.81
Transportation, Warehousing & Utilities	23	240	231	238	2,396,740	780.10
Information	5	27	27	27	216,047	615.52
Financial Activities	37	182	183	190	1,512,350	628.84
Professional & Business Services	43	226	237	242	1,738,780	569.16
Education & Health Services	147	853	856	844	6,818,685	616.35
Leisure & Hospitality	28	395	407	422	1,215,524	229.17
Other Services	37	121	118	131	918,215	572.69
Local Government	32	897	907	898	8,512,132	726.99
State Government	11	163	158	150	1,151,034	563.96

TABLE 6. COUNTY SUMMARY

North American Industry Classification System - Industry Groups	Number of Employing Units	Employment			Total Earnings Apr - Jun 2016	Average Weekly Earnings
		Apr	May	Jun		
<b>BAXTER COUNTY - TOTAL</b>	<b>1,200</b>	<b>14,585</b>	<b>14,675</b>	<b>14,308</b>	<b>\$120,834,362</b>	<b>\$640.03</b>
Natural Resources & Mining	7	67	69	69	619,414	697.28
Construction	107	501	508	514	3,989,788	604.54
Manufacturing	54	2,344	2,363	2,360	22,774,394	743.69
Trade, Transportation & Utilities	261	2,761	2,747	2,751	17,758,829	496.21
Wholesale Trade	32	201	199	210	1,791,480	677.74
Retail Trade	203	2,368	2,351	2,346	14,021,201	457.98
Transportation, Warehousing & Utilities	26	192	197	195	1,946,148	769.03
Information	17	190	182	187	2,028,520	837.42
Financial Activities	114	750	761	769	9,629,972	974.69
Professional & Business Services	129	734	723	741	5,784,961	607.37
Education & Health Services	260	3,779	3,798	3,826	34,862,836	705.54
Leisure & Hospitality	121	1,604	1,624	1,664	5,986,329	282.39
Other Services	85	350	363	364	2,050,005	439.26
Local Government	33	1,193	1,208	757	12,398,381	906.01
State Government	12	312	329	306	2,950,933	719.10
<b>BENTON COUNTY - TOTAL</b>	<b>6,067</b>	<b>113,056</b>	<b>113,913</b>	<b>114,897</b>	<b>\$1,472,196,250</b>	<b>\$993.77</b>
Natural Resources & Mining	45	694	724	739	10,707,110	1,145.51
Construction	583	4,609	4,612	4,664	53,007,025	880.98
Manufacturing	188	11,061	11,142	11,323	114,043,585	785.00
Trade, Transportation & Utilities	1,609	26,530	26,775	27,115	327,393,441	939.47
Wholesale Trade	719	5,241	5,253	5,267	128,369,363	1,879.56
Retail Trade	715	12,201	12,227	12,181	84,941,656	535.44
Transportation, Warehousing & Utilities	175	9,088	9,295	9,667	114,082,422	938.56
Information	70	906	894	907	10,989,728	936.86
Financial Activities	604	3,570	3,588	3,606	48,707,772	1,044.25
Professional & Business Services	1,178	31,894	31,904	32,315	621,241,503	1,491.61
Education & Health Services	732	10,752	10,728	10,633	103,175,666	741.44
Leisure & Hospitality	572	11,667	12,024	12,069	51,939,427	335.18
Other Services	387	1,967	1,996	2,040	16,751,559	643.97
Local Government	82	8,280	8,407	8,569	103,141,725	942.43
State Government	17	1,126	1,119	917	11,097,709	809.93

TABLE 6. COUNTY SUMMARY

North American Industry Classification System - Industry Groups	Number of Employing Units	Employment			Total Earnings Apr - Jun 2016	Average Weekly Earnings
		Apr	May	Jun		
<b>BOONE COUNTY - TOTAL</b>	<b>971</b>	<b>13,982</b>	<b>14,001</b>	<b>14,004</b>	<b>\$124,936,051</b>	<b>\$686.67</b>
Construction	71	443	452	477	3,565,096	599.65
Manufacturing	61	1,793	1,794	1,805	17,692,001	757.19
Trade, Transportation & Utilities	240	3,524	3,560	3,577	30,813,368	666.99
Wholesale Trade	42	311	318	317	2,738,203	667.96
Retail Trade	157	2,136	2,165	2,184	13,693,464	487.28
Transportation, Warehousing & Utilities	41	1,077	1,077	1,076	14,381,701	1,027.51
Information	15	296	300	295	2,812,028	728.32
Financial Activities	95	450	461	453	4,947,483	837.04
Professional & Business Services	111	1,503	1,481	1,434	15,886,913	829.83
Education & Health Services	163	1,523	1,527	1,505	10,341,296	523.92
Leisure & Hospitality	82	1,201	1,215	1,241	4,167,250	262.97
Local Government	56	2,226	2,233	2,248	24,969,490	859.13
State Government	19	770	725	722	7,620,015	793.17
Other	58	253	253	247	2,121,111	650.05
<b>BRADLEY COUNTY - TOTAL</b>	<b>353</b>	<b>3,688</b>	<b>3,686</b>	<b>3,707</b>	<b>\$30,438,999</b>	<b>\$633.91</b>
Natural Resources & Mining	45	266	226	202	2,153,322	716.02
Construction	18	69	74	70	535,392	580.06
Manufacturing	11	779	807	838	7,336,759	698.47
Trade, Transportation & Utilities	72	518	520	535	3,303,244	484.61
Wholesale Trade	13	98	99	97	1,005,181	789.00
Retail Trade	40	353	346	343	1,792,092	396.89
Transportation, Warehousing & Utilities	19	67	75	95	505,971	492.67
Information	4	30	32	32	241,946	593.98
Financial Activities	24	131	132	131	1,400,726	820.42
Professional & Business Services	24	95	92	91	674,548	559.95
Education & Health Services	90	618	619	618	5,728,173	712.61
Leisure & Hospitality	14	208	219	214	642,604	231.35
Other Services	26	108	100	108	590,001	430.87
Local Government	14	472	478	478	4,832,927	781.02
State Government	11	394	387	390	2,999,357	591.08



TABLE 6. COUNTY SUMMARY

North American Industry Classification System - Industry Groups	Number of Employing Units	Employment			Total Earnings Apr - Jun 2016	Average Weekly Earnings
		Apr	May	Jun		
<b>CALHOUN COUNTY - TOTAL</b>	<b>97</b>	<b>2,723</b>	<b>2,737</b>	<b>2,748</b>	<b>\$33,698,050</b>	<b>\$947.43</b>
Natural Resources & Mining	7	45	46	45	304,897	517.36
Construction	10	89	88	90	889,293	768.62
Manufacturing	9	1,910	1,911	1,917	26,060,245	1,048.08
Trade, Transportation & Utilities	20	218	231	236	2,095,032	705.79
Retail Trade	11	57	59	59	281,700	371.47
Transportation, Warehousing & Utilities	9	161	172	177	1,813,332	820.51
Financial Activities	5	80	82	84	667,342	626.02
Professional & Business Services	4	8	7	10	69,501	641.55
Education & Health Services	14	55	55	53	527,181	746.36
Leisure & Hospitality	4	16	12	12	50,882	293.55
Local Government	11	192	193	191	1,479,955	592.93
State Government	8	82	83	82	839,320	784.17
Other	5	28	29	28	714,402	1,939.55
<b>CARROLL COUNTY - TOTAL</b>	<b>772</b>	<b>10,705</b>	<b>11,029</b>	<b>11,128</b>	<b>\$75,771,870</b>	<b>\$532.10</b>
Natural Resources & Mining	17	203	207	205	1,642,700	616.40
Trade, Transportation & Utilities	192	1,586	1,601	1,609	11,217,383	539.75
Wholesale Trade	20	110	114	116	864,394	586.69
Retail Trade	150	1,191	1,198	1,199	6,666,427	428.76
Transportation, Warehousing & Utilities	22	285	289	294	3,686,562	980.12
Information	10	62	61	61	561,946	704.78
Financial Activities	66	360	368	369	4,031,014	847.98
Professional & Business Services	65	536	524	516	4,168,737	610.42
Education & Health Services	91	1,048	1,041	1,039	8,315,177	613.45
Leisure & Hospitality	161	1,565	1,842	1,922	6,383,768	276.45
Other Services	42	129	134	135	779,405	451.92
Local Government	24	1,056	1,078	1,084	9,316,552	668.11
State Government	10	107	108	106	991,069	712.49
Other	94	4,053	4,065	4,082	28,364,119	536.52

TABLE 6. COUNTY SUMMARY

North American Industry Classification System - Industry Groups	Number of Employing Units	Employment			Total Earnings Apr - Jun 2016	Average Weekly Earnings
		Apr	May	Jun		
<b>CHICOT COUNTY - TOTAL</b>	<b>508</b>	<b>3,226</b>	<b>3,230</b>	<b>3,222</b>	<b>\$24,470,325</b>	<b>\$583.49</b>
Natural Resources & Mining	58	254	263	269	2,303,604	676.34
Construction	16	138	138	145	1,582,200	867.28
Manufacturing	7	29	29	29	322,795	856.22
Trade, Transportation & Utilities	65	673	658	664	4,610,216	533.28
Wholesale Trade	13	66	66	66	721,136	840.48
Retail Trade	39	332	322	324	1,895,978	447.38
Transportation, Warehousing & Utilities	13	275	270	274	1,993,102	561.60
Information	4	5	5	6	20,346	293.45
Financial Activities	28	154	154	147	1,592,026	807.45
Professional & Business Services	17	41	44	45	585,189	1,038.80
Education & Health Services	247	802	805	789	5,028,945	484.36
Leisure & Hospitality	21	137	136	149	424,896	232.35
Other Services	17	67	72	70	554,300	612.04
Local Government	18	645	635	616	5,002,650	608.89
State Government	10	281	291	293	2,443,158	651.80
<b>CLARK COUNTY - TOTAL</b>	<b>612</b>	<b>9,114</b>	<b>9,080</b>	<b>8,782</b>	<b>\$76,568,084</b>	<b>\$655.01</b>
Natural Resources & Mining	45	248	267	254	2,395,332	718.82
Construction	20	58	62	62	401,680	509.32
Manufacturing	32	1,451	1,456	1,457	18,553,204	981.10
Trade, Transportation & Utilities	124	1,398	1,412	1,382	10,260,658	564.85
Wholesale Trade	11	30	31	30	367,260	931.34
Retail Trade	93	1,220	1,227	1,206	8,098,294	511.59
Transportation, Warehousing & Utilities	20	148	154	146	1,795,104	924.68
Information	5	19	18	18	143,933	603.91
Financial Activities	72	285	286	291	2,662,545	712.80
Professional & Business Services	51	636	621	644	5,815,305	705.94
Education & Health Services	122	1,596	1,597	1,540	12,713,781	619.89
Leisure & Hospitality	58	1,054	1,069	1,024	3,607,671	264.55
Other Services	41	238	237	233	1,810,024	589.97
Local Government	27	949	954	914	8,407,705	688.76
State Government	15	1,182	1,101	963	9,796,246	696.45

TABLE 6. COUNTY SUMMARY

North American Industry Classification System - Industry Groups	Number of Employing Units	Employment			Total Earnings Apr - Jun 2016	Average Weekly Earnings
		Apr	May	Jun		
<b>CLAY COUNTY - TOTAL</b>	<b>381</b>	<b>3,346</b>	<b>3,341</b>	<b>3,344</b>	<b>\$24,253,884</b>	<b>\$557.98</b>
Natural Resources & Mining	59	243	248	256	1,770,227	546.87
Construction	27	151	144	156	1,183,789	605.73
Manufacturing	13	132	133	134	904,158	522.94
Trade, Transportation & Utilities	96	872	866	865	7,269,189	644.45
Wholesale Trade	21	244	245	246	2,425,520	761.54
Retail Trade	47	432	427	420	2,812,110	507.39
Transportation, Warehousing & Utilities	28	196	194	199	2,031,559	795.96
Information	5	40	40	42	282,857	535.04
Financial Activities	27	121	122	123	950,313	599.19
Professional & Business Services	25	108	113	115	837,201	575.00
Education & Health Services	47	489	490	487	3,184,538	501.29
Leisure & Hospitality	22	266	251	247	753,523	227.60
Other Services	27	80	83	80	622,385	591.06
Local Government	22	795	801	789	6,108,024	591.00
State Government	11	49	50	50	387,680	600.43
<b>CLEBURNE COUNTY - TOTAL</b>	<b>653</b>	<b>6,421</b>	<b>6,511</b>	<b>6,686</b>	<b>\$50,818,979</b>	<b>\$597.79</b>
Natural Resources & Mining	25	227	222	286	3,035,400	953.03
Construction	63	301	307	311	2,612,727	656.08
Manufacturing	36	1,125	1,122	1,126	10,313,299	705.60
Trade, Transportation & Utilities	151	1,249	1,252	1,244	9,671,962	595.99
Wholesale Trade	33	127	125	124	1,384,988	850.03
Retail Trade	96	955	963	960	6,269,055	502.68
Transportation, Warehousing & Utilities	22	167	164	160	2,017,919	948.42
Information	9	66	66	67	530,849	615.60
Financial Activities	70	258	260	259	2,589,095	768.96
Professional & Business Services	68	307	292	313	2,446,205	618.98
Education & Health Services	88	916	912	924	6,465,363	542.15
Leisure & Hospitality	80	919	1,027	1,103	3,623,700	274.27
Other Services	36	134	135	140	756,740	426.97
Local Government	18	813	814	815	7,937,108	750.06
State Government	9	106	102	98	836,531	630.87

TABLE 6. COUNTY SUMMARY

North American Industry Classification System - Industry Groups	Number of Employing Units	Employment			Total Earnings Apr - Jun 2016	Average Weekly Earnings
		Apr	May	Jun		
<b>CLEVELAND COUNTY - TOTAL</b>	<b>123</b>	<b>972</b>	<b>984</b>	<b>875</b>	<b>\$7,162,264</b>	<b>\$583.83</b>
Natural Resources & Mining	16	131	129	105	1,217,047	769.47
Construction	9	29	30	33	144,564	362.62
Manufacturing	4	76	76	75	602,014	612.01
Trade, Transportation & Utilities	36	191	198	191	1,363,620	542.55
Retail Trade	19	58	59	58	230,291	303.68
Other Trade, Transportation, & Utilities	17	133	139	133	1,133,329	645.77
Financial Activities	3	25	25	25	226,771	697.76
Education & Health Services	26	138	137	137	747,833	418.88
Other Services	4	7	12	13	99,804	719.74
Local Government	11	308	313	230	2,278,235	617.80
State Government	7	53	52	53	416,573	608.43
Other	7	14	12	13	65,803	389.37
<b>COLUMBIA COUNTY - TOTAL</b>	<b>726</b>	<b>8,157</b>	<b>8,117</b>	<b>8,062</b>	<b>\$77,333,847</b>	<b>\$733.33</b>
Natural Resources & Mining	41	346	351	351	5,153,635	1,134.83
Construction	41	169	167	177	1,512,982	680.60
Manufacturing	32	1,940	1,882	1,828	25,280,907	1,032.58
Trade, Transportation & Utilities	165	1,366	1,389	1,388	10,626,005	591.88
Wholesale Trade	30	204	214	209	2,599,339	956.69
Retail Trade	96	952	962	959	5,618,563	451.30
Transportation, Warehousing & Utilities	39	210	213	220	2,408,103	864.26
Information	8	58	56	54	512,967	704.63
Financial Activities	67	359	352	353	4,109,132	891.22
Professional & Business Services	56	296	306	313	2,881,588	726.76
Education & Health Services	181	1,018	1,023	1,000	6,370,393	483.42
Leisure & Hospitality	50	686	670	655	2,318,886	266.10
Other Services	46	164	161	160	842,181	400.72
Local Government	26	1,126	1,122	1,138	10,600,951	722.50
State Government	13	629	638	645	7,124,220	859.86

TABLE 6. COUNTY SUMMARY

North American Industry Classification System - Industry Groups	Number of Employing Units	Employment			Total Earnings Apr - Jun 2016	Average Weekly Earnings
		Apr	May	Jun		
<b>CONWAY COUNTY - TOTAL</b>	<b>544</b>	<b>6,583</b>	<b>6,545</b>	<b>6,607</b>	<b>\$60,071,313</b>	<b>\$702.44</b>
Natural Resources & Mining	34	236	253	248	2,240,660	701.59
Construction	49	486	488	507	6,770,754	1,055.02
Manufacturing	20	846	833	856	11,705,167	1,065.56
Trade, Transportation & Utilities	121	1,537	1,551	1,551	12,046,788	599.27
Wholesale Trade	16	136	139	141	1,071,393	594.34
Retail Trade	78	845	854	849	5,320,278	481.85
Transportation, Warehousing & Utilities	27	556	558	561	5,655,117	779.12
Information	3	17	17	16	45,879	211.75
Financial Activities	38	151	154	156	1,511,959	756.86
Professional & Business Services	39	612	495	469	2,899,775	424.61
Education & Health Services	133	805	812	819	7,085,733	671.25
Leisure & Hospitality	42	453	451	484	1,519,917	252.70
Other Services	26	84	79	90	727,340	663.43
Local Government	29	981	1,015	1,013	10,444,804	801.04
State Government	10	375	397	398	3,072,537	606.02
<b>CRAIGHEAD COUNTY - TOTAL</b>	<b>2,778</b>	<b>48,568</b>	<b>48,636</b>	<b>48,304</b>	<b>\$442,711,983</b>	<b>\$702.12</b>
Natural Resources & Mining	89	342	349	350	2,707,747	600.25
Construction	223	2,083	2,065	2,135	20,829,540	765.05
Manufacturing	100	5,965	6,012	6,057	65,958,778	844.03
Trade, Transportation & Utilities	781	10,057	10,135	10,024	79,518,264	607.31
Wholesale Trade	182	1,682	1,682	1,683	19,831,374	906.77
Retail Trade	471	6,887	6,925	6,816	42,763,511	478.40
Transportation, Warehousing & Utilities	128	1,488	1,528	1,525	16,923,379	860.03
Information	19	432	438	439	4,762,668	839.63
Financial Activities	267	1,635	1,633	1,627	18,598,666	876.81
Professional & Business Services	367	4,378	4,337	4,231	32,373,873	577.08
Education & Health Services	467	10,126	10,161	10,143	115,584,212	876.55
Leisure & Hospitality	251	5,621	5,596	5,369	20,903,881	290.85
Other Services	156	854	861	847	6,140,247	553.08
Local Government	35	4,091	4,085	4,145	45,427,586	850.85
State Government	23	2,984	2,964	2,937	29,906,521	776.76

TABLE 6. COUNTY SUMMARY

North American Industry Classification System - Industry Groups	Number of Employing Units	Employment			Total Earnings Apr - Jun 2016	Average Weekly Earnings
		Apr	May	Jun		
<b>CRAWFORD COUNTY - TOTAL</b>	<b>1,233</b>	<b>19,475</b>	<b>19,504</b>	<b>19,466</b>	<b>\$170,894,303</b>	<b>\$674.77</b>
Natural Resources & Mining	29	285	255	209	2,457,242	757.08
Construction	145	858	866	891	8,166,180	720.65
Manufacturing	69	4,438	4,413	4,435	42,810,690	743.59
Trade, Transportation & Utilities	305	5,922	5,975	5,950	54,043,344	698.80
Wholesale Trade	79	768	788	784	10,348,127	1,020.53
Retail Trade	160	2,008	2,003	2,003	14,133,099	542.32
Transportation, Warehousing & Utilities	66	3,146	3,184	3,163	29,562,118	718.64
Information	9	89	90	89	758,989	653.55
Financial Activities	119	503	504	498	4,426,181	678.69
Professional & Business Services	157	1,516	1,473	1,467	12,397,033	642.02
Education & Health Services	171	1,623	1,630	1,586	13,137,862	626.54
Leisure & Hospitality	96	1,677	1,695	1,680	5,987,745	273.51
Other Services	80	370	372	376	3,065,461	632.75
Local Government	43	2,044	2,060	2,113	22,279,055	826.98
State Government	10	150	171	172	1,364,521	638.72
<b>CRITTENDEN COUNTY - TOTAL</b>	<b>1,276</b>	<b>16,779</b>	<b>16,530</b>	<b>16,065</b>	<b>\$145,997,527</b>	<b>\$682.38</b>
Natural Resources & Mining	55	267	276	280	2,095,253	587.51
Construction	49	560	483	433	5,194,818	812.20
Manufacturing	42	1,871	1,890	1,902	23,208,370	945.75
Trade, Transportation & Utilities	308	4,380	4,424	4,371	40,000,515	700.64
Wholesale Trade	64	797	789	792	9,241,729	896.85
Retail Trade	163	1,999	2,033	2,024	11,717,813	446.52
Transportation, Warehousing & Utilities	81	1,584	1,602	1,555	19,040,973	926.82
Information	4	51	51	52	481,142	720.99
Financial Activities	98	453	453	460	4,287,402	724.30
Professional & Business Services	115	1,486	1,291	1,491	10,909,575	589.88
Education & Health Services	347	2,157	2,167	2,159	16,349,298	581.97
Leisure & Hospitality	123	2,381	2,413	2,415	10,882,206	348.35
Other Services	79	478	469	482	3,967,243	640.67
Local Government	42	2,192	2,194	1,614	24,811,339	954.28
State Government	14	503	419	406	3,810,366	662.13

TABLE 6. COUNTY SUMMARY

North American Industry Classification System - Industry Groups	Number of Employing Units	Employment			Total Earnings Apr - Jun 2016	Average Weekly Earnings
		Apr	May	Jun		
<b>CROSS COUNTY - TOTAL</b>	<b>474</b>	<b>5,020</b>	<b>5,035</b>	<b>5,076</b>	<b>\$40,799,773</b>	<b>\$622.25</b>
Natural Resources & Mining	37	250	249	245	1,771,582	549.50
Construction	20	55	55	61	470,003	634.28
Manufacturing	11	472	477	482	3,821,640	616.29
Trade, Transportation & Utilities	129	1,236	1,243	1,230	10,464,266	651.07
Wholesale Trade	30	317	318	318	3,916,064	948.28
Retail Trade	71	815	817	805	5,469,389	517.92
Transportation, Warehousing & Utilities	28	104	108	107	1,078,813	780.43
Information	5	40	42	40	307,879	582.37
Financial Activities	44	310	310	305	2,608,208	650.70
Professional & Business Services	38	128	118	123	1,174,661	734.62
Education & Health Services	101	988	988	1,008	7,560,656	584.71
Leisure & Hospitality	29	352	356	354	1,106,135	240.36
Other Services	34	99	92	95	679,105	547.96
Local Government	16	724	718	735	7,197,565	762.97
State Government	10	366	387	398	3,638,073	729.41
<b>DALLAS COUNTY - TOTAL</b>	<b>250</b>	<b>2,802</b>	<b>2,853</b>	<b>2,820</b>	<b>\$21,208,907</b>	<b>\$577.51</b>
Natural Resources & Mining	30	156	157	164	1,428,045	690.88
Construction	16	79	83	92	1,004,486	912.62
Manufacturing	9	539	549	550	5,109,936	719.91
Trade, Transportation & Utilities	57	473	476	481	3,334,211	538.07
Wholesale Trade	5	10	11	13	153,721	1,043.36
Retail Trade	39	368	373	369	2,276,261	473.24
Transportation, Warehousing & Utilities	13	95	92	99	904,229	729.61
Information	4	16	18	17	128,143	579.83
Financial Activities	16	78	79	79	726,659	710.55
Professional & Business Services	11	27	27	28	179,971	506.48
Education & Health Services	59	842	871	851	5,818,206	523.66
Leisure & Hospitality	13	154	152	142	462,864	238.43
Other Services	13	60	57	59	301,772	395.68
Local Government	14	334	338	311	2,352,313	552.23
State Government	8	44	46	46	362,301	614.76

TABLE 6. COUNTY SUMMARY

North American Industry Classification System - Industry Groups	Number of Employing Units	Employment			Total Earnings Apr - Jun 2016	Average Weekly Earnings
		Apr	May	Jun		
<b>DESHA COUNTY - TOTAL</b>	<b>544</b>	<b>4,550</b>	<b>4,565</b>	<b>4,554</b>	<b>\$38,281,957</b>	<b>\$646.30</b>
Natural Resources & Mining	67	299	306	301	2,111,255	537.76
Construction	19	99	102	105	986,891	744.26
Manufacturing	15	793	792	807	11,504,812	1,109.93
Trade, Transportation & Utilities	109	866	862	857	6,362,616	568.01
Wholesale Trade	22	212	210	209	2,485,192	908.88
Retail Trade	64	503	496	496	2,503,247	386.40
Transportation, Warehousing & Utilities	23	151	156	152	1,374,177	690.89
Information	3	10	10	10	98,110	754.69
Financial Activities	29	199	195	204	1,670,170	644.52
Professional & Business Services	40	92	87	93	657,063	557.46
Education & Health Services	173	748	750	732	4,625,700	478.69
Leisure & Hospitality	38	411	425	436	1,513,613	274.60
Other Services	20	57	51	52	298,368	430.34
Local Government	21	823	831	810	7,363,295	689.62
State Government	10	153	154	147	1,090,064	554.08
<b>DREW COUNTY - TOTAL</b>	<b>531</b>	<b>6,474</b>	<b>6,474</b>	<b>6,415</b>	<b>\$56,672,057</b>	<b>\$675.42</b>
Natural Resources & Mining	52	376	371	377	3,664,381	752.34
Construction	21	91	100	106	880,171	683.89
Manufacturing	21	747	748	777	7,407,086	752.34
Trade, Transportation & Utilities	123	1,222	1,236	1,222	8,600,810	539.35
Wholesale Trade	19	115	127	126	1,376,633	863.27
Retail Trade	81	962	966	951	5,799,606	464.87
Transportation, Warehousing & Utilities	23	145	143	145	1,424,571	759.23
Information	6	49	49	49	415,717	652.62
Financial Activities	49	247	248	244	2,546,509	795.20
Professional & Business Services	33	221	220	220	3,859,545	1,347.45
Education & Health Services	132	911	920	902	7,781,958	657.09
Leisure & Hospitality	39	658	626	629	2,112,552	254.84
Other Services	18	66	66	65	370,180	433.64
Local Government	22	1,282	1,285	1,254	12,982,775	784.09
State Government	15	604	605	570	6,050,373	784.85



TABLE 6. COUNTY SUMMARY

North American Industry Classification System - Industry Groups	Number of Employing Units	Employment			Total Earnings Apr - Jun 2016	Average Weekly Earnings
		Apr	May	Jun		
<b>FAULKNER COUNTY - TOTAL</b>	<b>2,820</b>	<b>40,595</b>	<b>40,482</b>	<b>40,317</b>	<b>\$404,136,526</b>	<b>\$768.26</b>
Natural Resources & Mining	60	497	467	448	7,878,287	1,287.58
Construction	309	2,722	2,794	2,865	29,815,412	820.96
Manufacturing	101	3,148	3,155	3,191	40,608,920	987.07
Trade, Transportation & Utilities	650	7,283	7,227	7,210	53,632,908	569.84
Wholesale Trade	145	498	497	488	6,357,129	989.23
Retail Trade	414	6,070	6,008	5,990	38,576,346	492.71
Transportation, Warehousing & Utilities	91	715	722	732	8,699,433	925.57
Information	20	230	235	265	2,772,572	876.47
Financial Activities	314	1,459	1,441	1,442	14,745,934	783.72
Professional & Business Services	430	5,811	5,712	5,762	91,748,524	1,224.92
Education & Health Services	434	6,404	6,463	6,495	57,798,400	688.88
Leisure & Hospitality	253	5,273	5,152	5,218	18,263,077	269.42
Other Services	190	749	820	785	6,345,749	622.09
Local Government	41	3,577	3,574	3,567	44,998,708	968.87
State Government	18	3,442	3,442	3,069	35,528,035	823.75
<b>FRANKLIN COUNTY - TOTAL</b>	<b>365</b>	<b>4,313</b>	<b>4,276</b>	<b>4,257</b>	<b>\$36,342,158</b>	<b>\$652.86</b>
Natural Resources & Mining	19	209	198	198	3,429,820	1,308.26
Construction	34	115	113	112	901,883	612.14
Manufacturing	14	856	871	868	8,236,572	732.47
Trade, Transportation & Utilities	88	902	897	900	7,309,761	625.00
Wholesale Trade	12	38	37	35	216,999	455.24
Retail Trade	56	633	628	630	3,610,687	440.63
Transportation, Warehousing & Utilities	20	231	232	235	3,482,075	1,151.23
Information	5	20	20	20	161,778	622.22
Financial Activities	30	83	81	79	684,996	650.52
Professional & Business Services	36	304	288	290	2,525,693	660.83
Education & Health Services	68	564	552	550	3,611,793	500.29
Leisure & Hospitality	27	349	346	332	1,089,548	244.82
Other Services	16	58	60	58	359,699	471.63
Local Government	19	724	722	740	6,594,065	696.11
State Government	9	129	128	110	1,436,550	903.30

TABLE 6. COUNTY SUMMARY

North American Industry Classification System - Industry Groups	Number of Employing Units	Employment			Total Earnings	Average Weekly Earnings
		Apr	May	Jun	Apr - Jun 2016	
<b>FULTON COUNTY - TOTAL</b>	<b>187</b>	<b>1,826</b>	<b>1,867</b>	<b>1,897</b>	<b>\$13,383,189</b>	<b>\$552.49</b>
Natural Resources & Mining	3	6	6	6	38,515	493.78
Construction	7	33	36	36	297,541	653.94
Manufacturing	13	88	89	99	511,602	427.76
Trade, Transportation & Utilities	45	296	304	312	2,303,499	582.87
Retail Trade	30	189	185	189	878,027	359.90
Other Trade, Transportation, & Utilities	15	107	119	123	1,425,472	942.56
Information	4	33	28	30	173,306	439.49
Financial Activities	18	95	112	112	788,458	570.38
Professional & Business Services	13	36	35	38	312,496	661.60
Education & Health Services	40	446	441	439	2,592,916	451.26
Leisure & Hospitality	16	169	178	186	545,615	236.23
Other Services	6	14	13	12	73,635	435.71
Local Government	12	506	518	520	4,839,342	723.30
State Government	10	104	107	107	906,264	657.67
<b>GARLAND COUNTY - TOTAL</b>	<b>3,093</b>	<b>37,389</b>	<b>36,830</b>	<b>36,389</b>	<b>\$313,523,860</b>	<b>\$654.13</b>
Natural Resources & Mining	27	213	221	223	3,524,012	1,237.80
Construction	331	1,643	1,638	1,663	14,326,691	668.72
Manufacturing	97	2,544	2,540	2,543	28,411,842	859.65
Trade, Transportation & Utilities	692	7,182	7,315	7,407	55,072,506	580.22
Wholesale Trade	137	830	844	846	9,564,456	875.87
Retail Trade	491	5,889	5,996	6,070	40,486,161	520.35
Transportation, Warehousing & Utilities	64	463	475	491	5,021,889	810.98
Information	31	444	427	422	4,072,946	726.92
Financial Activities	336	1,449	1,446	1,475	16,248,786	858.06
Professional & Business Services	381	2,888	2,845	2,791	25,571,651	692.30
Education & Health Services	520	7,602	7,600	7,643	81,904,461	827.36
Leisure & Hospitality	382	8,247	7,815	7,763	31,403,283	304.17
Other Services	239	972	996	1,015	6,401,763	495.25
Local Government	33	3,219	2,986	2,489	37,259,526	989.00
State Government	24	986	1,001	955	9,326,393	731.56

TABLE 6. COUNTY SUMMARY

North American Industry Classification System - Industry Groups	Number of Employing Units	Employment			Total Earnings Apr - Jun 2016	Average Weekly Earnings
		Apr	May	Jun		
<b>GRANT COUNTY - TOTAL</b>	<b>337</b>	<b>3,941</b>	<b>3,919</b>	<b>3,991</b>	<b>\$35,756,717</b>	<b>\$696.27</b>
Natural Resources & Mining	27	181	179	180	1,987,262	849.26
Construction	28	166	168	167	1,821,358	838.95
Manufacturing	17	1,188	1,176	1,182	13,801,167	898.16
Trade, Transportation & Utilities	89	639	643	658	4,678,816	556.56
Wholesale Trade	21	97	93	101	1,051,814	834.11
Retail Trade	44	470	480	482	3,012,429	485.46
Transportation, Warehousing & Utilities	24	72	70	75	614,573	653.57
Information	3	10	10	10	115,920	891.69
Financial Activities	25	94	93	98	884,822	716.46
Professional & Business Services	25	98	92	92	1,080,780	884.44
Education & Health Services	66	379	369	379	2,366,901	484.66
Leisure & Hospitality	22	334	338	331	932,968	214.66
Other Services	17	45	45	44	244,498	421.06
Local Government	10	751	748	792	7,400,231	745.41
State Government	8	56	58	58	441,994	593.02
<b>GREENE COUNTY - TOTAL</b>	<b>883</b>	<b>15,423</b>	<b>15,578</b>	<b>15,459</b>	<b>\$137,416,497</b>	<b>\$682.55</b>
Natural Resources & Mining	40	291	299	320	2,426,226	615.27
Construction	72	313	310	311	2,952,002	729.37
Manufacturing	62	5,120	5,148	5,105	55,386,339	831.42
Trade, Transportation & Utilities	239	2,710	2,745	2,687	19,910,119	564.31
Wholesale Trade	45	416	421	430	4,599,191	837.69
Retail Trade	158	1,934	1,961	1,904	12,191,081	485.14
Transportation, Warehousing & Utilities	36	360	363	353	3,119,847	669.11
Information	10	93	98	95	637,715	514.56
Financial Activities	74	551	559	550	5,216,170	725.14
Professional & Business Services	89	925	941	934	6,843,199	564.00
Education & Health Services	147	1,957	1,959	1,922	17,415,426	688.41
Leisure & Hospitality	64	1,246	1,240	1,233	4,086,104	253.55
Other Services	44	185	180	177	1,190,394	506.84
Local Government	30	1,610	1,671	1,689	16,694,916	775.19
State Government	12	422	428	436	4,657,887	835.85

TABLE 6. COUNTY SUMMARY

North American Industry Classification System - Industry Groups	Number of Employing Units	Employment			Total Earnings Apr - Jun 2016	Average Weekly Earnings
		Apr	May	Jun		
<b>HEMPSTEAD COUNTY - TOTAL</b>	<b>504</b>	<b>7,834</b>	<b>7,856</b>	<b>7,901</b>	<b>\$67,237,342</b>	<b>\$657.72</b>
Natural Resources & Mining	22	250	248	249	2,293,784	708.61
Construction	29	205	209	211	2,052,264	757.76
Manufacturing	28	2,272	2,291	2,298	21,471,327	722.19
Trade, Transportation & Utilities	123	1,276	1,292	1,306	11,038,194	657.53
Wholesale Trade	20	181	180	190	1,532,225	641.72
Retail Trade	76	830	841	847	5,017,649	459.86
Transportation, Warehousing & Utilities	27	265	271	269	4,488,320	1,286.67
Information	8	35	35	34	333,268	739.50
Financial Activities	45	214	213	211	1,967,325	711.60
Professional & Business Services	34	202	198	207	1,579,426	600.47
Education & Health Services	94	967	975	964	6,704,506	532.41
Leisure & Hospitality	46	611	613	621	2,133,313	266.83
Other Services	31	140	145	145	1,036,819	556.43
Local Government	27	886	896	905	9,598,843	824.38
State Government	17	776	741	750	7,028,273	715.44
<b>HOT SPRING COUNTY - TOTAL</b>	<b>621</b>	<b>8,602</b>	<b>8,476</b>	<b>8,429</b>	<b>\$73,885,633</b>	<b>\$668.46</b>
Natural Resources & Mining	23	141	146	156	1,124,131	585.59
Construction	55	442	364	325	3,632,372	741.15
Manufacturing	28	1,363	1,374	1,389	16,019,843	896.00
Trade, Transportation & Utilities	151	1,598	1,618	1,615	14,804,199	707.17
Wholesale Trade	17	116	111	112	1,074,913	731.73
Retail Trade	97	866	885	864	5,211,816	459.93
Transportation, Warehousing & Utilities	37	616	622	639	8,517,470	1,047.19
Information	7	79	84	77	704,310	677.22
Financial Activities	53	209	208	216	2,199,094	801.71
Professional & Business Services	52	1,101	1,008	966	5,816,489	436.51
Education & Health Services	123	1,029	1,025	1,014	8,694,443	653.98
Leisure & Hospitality	53	643	664	708	1,922,328	220.16
Other Services	36	123	120	122	751,920	475.40
Local Government	27	995	998	1,010	10,418,693	800.64
State Government	13	879	867	831	7,797,811	698.29

TABLE 6. COUNTY SUMMARY

North American Industry Classification System - Industry Groups	Number of Employing Units	Employment			Total Earnings Apr - Jun 2016	Average Weekly Earnings
		Apr	May	Jun		
<b>HOWARD COUNTY - TOTAL</b>	<b>351</b>	<b>6,939</b>	<b>6,926</b>	<b>7,008</b>	<b>\$55,965,945</b>	<b>\$618.75</b>
Natural Resources & Mining	21	260	252	248	2,200,511	668.17
Construction	18	112	112	119	1,273,783	857.00
Manufacturing	20	3,317	3,317	3,366	26,149,447	603.45
Trade, Transportation & Utilities	91	916	904	926	7,088,208	595.68
Wholesale Trade	16	72	76	79	695,674	707.23
Retail Trade	57	632	643	655	3,959,859	473.48
Transportation, Warehousing & Utilities	18	212	185	192	2,432,675	953.12
Information	3	30	30	32	147,628	370.30
Financial Activities	35	139	136	140	1,166,902	648.88
Professional & Business Services	22	146	125	129	1,061,853	612.61
Education & Health Services	70	728	731	734	6,302,324	663.19
Leisure & Hospitality	20	315	334	342	1,109,375	258.33
Other Services	23	154	150	149	1,172,920	597.51
Local Government	17	705	717	714	7,269,952	785.43
State Government	11	117	118	109	1,023,042	686.30
<b>INDEPENDENCE COUNTY - TOTAL</b>	<b>906</b>	<b>15,348</b>	<b>15,423</b>	<b>15,478</b>	<b>\$136,808,250</b>	<b>\$682.63</b>
Natural Resources & Mining	13	219	203	209	2,642,746	966.50
Construction	63	437	454	447	4,163,622	718.11
Manufacturing	39	2,792	2,807	2,806	27,562,259	756.75
Trade, Transportation & Utilities	237	3,083	3,080	3,123	25,473,725	633.06
Wholesale Trade	28	430	435	434	4,152,065	737.62
Retail Trade	154	1,783	1,777	1,787	11,253,242	485.67
Transportation, Warehousing & Utilities	55	870	868	902	10,068,418	880.11
Information	9	112	114	112	909,213	620.76
Financial Activities	84	501	502	498	5,455,855	838.80
Professional & Business Services	97	1,217	1,203	1,198	7,335,677	467.90
Education & Health Services	159	3,289	3,324	3,387	36,669,955	846.23
Leisure & Hospitality	79	1,200	1,259	1,200	4,085,353	257.66
Other Services	64	360	360	377	1,844,138	387.94
Local Government	46	1,508	1,507	1,535	14,971,248	759.32
State Government	16	630	610	586	5,694,459	719.66

TABLE 6. COUNTY SUMMARY

North American Industry Classification System - Industry Groups	Number of Employing Units	Employment			Total Earnings Apr - Jun 2016	Average Weekly Earnings
		Apr	May	Jun		
<b>IZARD COUNTY - TOTAL</b>	<b>255</b>	<b>3,190</b>	<b>3,150</b>	<b>3,105</b>	<b>\$26,060,867</b>	<b>\$636.74</b>
Natural Resources & Mining	7	136	137	139	1,458,221	816.78
Construction	21	112	112	118	1,026,900	692.91
Manufacturing	10	314	319	307	2,580,258	633.45
Trade, Transportation & Utilities	68	556	567	620	4,133,921	547.32
Wholesale Trade	13	31	31	71	226,725	393.39
Retail Trade	44	392	396	415	2,481,664	476.05
Transportation, Warehousing & Utilities	11	133	140	134	1,425,532	808.28
Information	4	19	7	6	86,410	623.15
Financial Activities	25	168	175	188	1,319,909	573.62
Professional & Business Services	15	52	52	51	400,906	596.88
Education & Health Services	47	667	666	668	4,691,361	541.04
Leisure & Hospitality	20	160	169	166	488,109	227.56
Other Services	11	26	25	26	159,705	478.64
Local Government	17	508	504	400	5,437,234	888.63
State Government	10	472	417	416	4,277,933	756.49
<b>JACKSON COUNTY - TOTAL</b>	<b>448</b>	<b>5,358</b>	<b>5,373</b>	<b>5,377</b>	<b>\$46,838,945</b>	<b>\$671.03</b>
Natural Resources & Mining	56	291	290	299	2,618,479	686.66
Construction	21	101	102	112	905,683	663.50
Manufacturing	14	1,044	1,045	1,046	11,699,665	861.22
Trade, Transportation & Utilities	108	1,034	1,036	1,019	7,968,279	595.28
Wholesale Trade	20	213	215	218	2,414,568	862.55
Retail Trade	70	728	728	709	4,527,661	482.61
Transportation, Warehousing & Utilities	18	93	93	92	1,026,050	851.73
Information	4	26	25	25	143,250	434.97
Financial Activities	33	148	146	145	1,418,121	745.46
Professional & Business Services	33	115	115	119	1,069,831	707.40
Education & Health Services	86	830	831	829	6,784,417	628.77
Leisure & Hospitality	29	295	306	306	997,855	253.89
Other Services	19	58	59	55	469,293	629.64
Local Government	32	607	609	615	5,288,476	666.53
State Government	13	809	809	807	7,475,596	711.40

TABLE 6. COUNTY SUMMARY

North American Industry Classification System - Industry Groups	Number of Employing Units	Employment			Total Earnings Apr - Jun 2016	Average Weekly Earnings
		Apr	May	Jun		
<b>JEFFERSON COUNTY - TOTAL</b>	<b>2,113</b>	<b>26,668</b>	<b>26,723</b>	<b>26,483</b>	<b>\$245,400,959</b>	<b>\$709.00</b>
Natural Resources & Mining	37	172	171	185	1,954,030	854.03
Construction	89	508	507	535	4,954,960	737.71
Manufacturing	61	4,903	4,907	4,881	58,425,356	917.76
Trade, Transportation & Utilities	415	4,588	4,637	4,586	37,261,503	622.61
Wholesale Trade	74	687	705	692	6,934,697	767.91
Retail Trade	284	3,166	3,202	3,181	20,230,742	488.91
Transportation, Warehousing & Utilities	57	735	730	713	10,096,064	1,069.72
Information	10	85	80	80	841,502	792.62
Financial Activities	151	1,004	999	991	11,252,500	867.31
Professional & Business Services	156	1,711	1,695	1,716	13,374,121	602.56
Education & Health Services	856	4,750	4,777	4,795	41,976,198	676.36
Leisure & Hospitality	140	1,975	1,957	1,892	6,559,578	259.92
Other Services	122	592	585	599	4,523,566	587.78
Local Government	39	2,831	2,856	2,958	29,037,984	775.14
State Government	37	3,549	3,552	3,265	35,239,661	784.51
<b>JOHNSON COUNTY - TOTAL</b>	<b>489</b>	<b>8,494</b>	<b>8,530</b>	<b>8,608</b>	<b>\$68,805,187</b>	<b>\$619.46</b>
Natural Resources & Mining	12	128	130	136	1,140,112	667.77
Construction	35	163	151	159	1,361,117	664.07
Manufacturing	36	2,670	2,682	2,702	20,833,773	596.94
Trade, Transportation & Utilities	114	1,922	1,944	1,951	15,132,189	600.32
Retail Trade	78	946	959	960	5,460,960	439.87
Other Trade, Transportation & Utilities	36	976	985	991	9,671,229	756.04
Information	6	33	31	33	229,908	546.97
Financial Activities	49	180	182	186	1,614,455	679.87
Professional & Business Services	54	356	350	366	1,950,989	419.99
Education & Health Services	90	1,273	1,273	1,263	11,774,550	713.36
Leisure & Hospitality	39	525	507	502	1,591,518	239.42
Other Services	31	88	87	94	551,033	472.72
Local Government	14	1,030	1,067	1,090	11,384,532	824.35
State Government	9	126	126	126	1,241,011	757.64

TABLE 6. COUNTY SUMMARY

North American Industry Classification System - Industry Groups	Number of Employing Units	Employment			Total Earnings Apr - Jun 2016	Average Weekly Earnings
		Apr	May	Jun		
<b>LAFAYETTE COUNTY - TOTAL</b>	<b>174</b>	<b>1,213</b>	<b>1,215</b>	<b>1,230</b>	<b>\$10,853,600</b>	<b>\$684.71</b>
Natural Resources & Mining	29	133	137	144	1,488,134	829.51
Construction	9	63	63	61	688,005	849.04
Manufacturing	5	31	29	27	1,424,707	3,779.06
Trade, Transportation & Utilities	30	201	199	200	1,226,742	471.82
Retail Trade	18	122	119	119	549,481	352.23
Other Trade, Transportation & Utilities	12	79	80	81	677,261	651.21
Financial Activities	13	47	47	48	352,586	573.00
Professional & Business Services	11	43	36	38	348,372	687.12
Education & Health Services	42	201	203	212	1,451,048	543.60
Leisure & Hospitality	5	43	44	43	143,786	255.24
Local Government	13	320	322	314	2,935,412	708.58
State Government	8	47	47	47	334,134	546.86
Other	9	84	88	96	460,674	396.68
<b>LAWRENCE COUNTY - TOTAL</b>	<b>416</b>	<b>4,043</b>	<b>3,970</b>	<b>3,968</b>	<b>\$32,503,222</b>	<b>\$626.05</b>
Natural Resources & Mining	51	202	200	208	1,797,870	680.15
Construction	26	118	121	126	1,006,324	636.24
Manufacturing	20	498	504	493	4,280,749	660.78
Trade, Transportation & Utilities	114	826	840	843	6,875,594	632.39
Wholesale Trade	19	201	208	213	2,228,094	826.65
Retail Trade	59	491	498	502	3,231,184	500.11
Transportation, Warehousing & Utilities	36	134	134	128	1,416,316	825.36
Financial Activities	34	148	147	144	1,297,365	681.99
Professional & Business Services	29	105	104	100	985,791	736.21
Education & Health Services	55	527	474	463	4,115,446	648.71
Leisure & Hospitality	31	364	300	315	1,047,972	247.03
Local Government	25	1,095	1,110	1,108	9,915,024	690.64
State Government	10	95	105	103	711,351	541.78
Other	21	65	65	65	469,736	555.90



TABLE 6. COUNTY SUMMARY

North American Industry Classification System - Industry Groups	Number of Employing Units	Employment			Total Earnings Apr - Jun 2016	Average Weekly Earnings
		Apr	May	Jun		
<b>LEE COUNTY - TOTAL</b>	<b>288</b>	<b>1,951</b>	<b>1,977</b>	<b>1,970</b>	<b>\$16,571,365</b>	<b>\$648.38</b>
Natural Resources & Mining	39	200	202	205	2,010,011	764.17
Construction	11	33	32	33	241,522	568.73
Trade, Transportation & Utilities	43	333	338	342	3,177,713	723.91
Wholesale Trade	10	117	120	123	1,405,161	900.74
Retail Trade	22	167	169	168	925,570	423.80
Transportation, Warehousing & Utilities	11	49	49	51	846,982	1,311.79
Financial Activities	17	61	62	61	452,214	567.16
Professional & Business Services	14	74	71	70	963,121	1,033.76
Education & Health Services	125	421	434	430	2,895,703	520.03
Leisure & Hospitality	8	78	85	90	298,535	272.30
Local Government	15	277	276	264	2,283,557	645.01
State Government	7	460	462	460	4,153,905	693.63
Other	9	14	15	15	95,084	498.69
<b>LINCOLN COUNTY - TOTAL</b>	<b>284</b>	<b>2,868</b>	<b>2,873</b>	<b>2,901</b>	<b>\$24,253,330</b>	<b>\$647.64</b>
Natural Resources & Mining	34	166	168	167	1,331,394	613.26
Construction	17	88	83	84	732,654	663.04
Manufacturing	8	259	263	265	2,122,242	622.30
Trade, Transportation & Utilities	46	383	376	385	3,247,399	655.07
Wholesale Trade	6	55	57	56	461,196	633.51
Retail Trade	24	188	180	179	900,372	379.85
Transportation, Warehousing & Utilities	16	140	139	150	1,885,831	1,014.43
Information	3	6	6	6	66,613	854.01
Financial Activities	20	78	78	79	703,486	690.82
Professional & Business Services	12	23	36	35	218,472	536.35
Education & Health Services	95	397	391	400	2,576,081	500.40
Leisure & Hospitality	16	180	184	193	485,319	201.07
Other Services	14	48	48	48	380,862	610.36
Local Government	7	368	368	367	3,302,607	690.97
State Government	12	872	872	872	9,086,201	801.54

TABLE 6. COUNTY SUMMARY

North American Industry Classification System - Industry Groups	Number of Employing Units	Employment			Total Earnings Apr - Jun 2016	Average Weekly Earnings
		Apr	May	Jun		
<b>LITTLE RIVER COUNTY - TOTAL</b>	<b>235</b>	<b>3,498</b>	<b>3,514</b>	<b>3,495</b>	<b>\$40,686,649</b>	<b>\$893.62</b>
Natural Resources & Mining	14	84	81	82	826,249	771.95
Construction	14	221	254	245	2,513,304	805.55
Manufacturing	14	1,202	1,184	1,183	23,000,432	1,487.19
Trade, Transportation & Utilities	56	561	575	568	4,084,274	553.12
Wholesale Trade	7	24	24	24	376,174	1,205.69
Retail Trade	35	421	430	420	2,637,457	478.87
Transportation, Warehousing & Utilities	14	116	121	124	1,070,643	684.41
Financial Activities	17	78	75	75	605,871	613.23
Professional & Business Services	16	83	84	83	695,944	642.41
Education & Health Services	41	171	173	163	1,100,705	501.00
Leisure & Hospitality	14	200	197	204	608,561	233.67
Local Government	20	734	726	729	6,183,321	651.86
State Government	11	91	95	86	676,405	573.87
Other	18	73	70	77	391,583	410.75
<b>LOGAN COUNTY - TOTAL</b>	<b>502</b>	<b>5,500</b>	<b>5,530</b>	<b>5,531</b>	<b>\$42,839,262</b>	<b>\$596.94</b>
Natural Resources & Mining	28	131	128	120	1,230,287	749.11
Construction	43	214	223	210	1,978,914	705.83
Manufacturing	20	1,187	1,193	1,214	11,150,669	715.98
Trade, Transportation & Utilities	105	1,074	1,060	1,046	6,780,927	492.08
Wholesale Trade	10	69	67	68	343,037	388.05
Retail Trade	70	819	811	794	4,550,382	433.20
Transportation, Warehousing & Utilities	25	186	182	184	1,887,508	789.09
Information	5	30	30	29	307,484	797.28
Financial Activities	50	199	209	208	1,939,697	726.66
Professional & Business Services	50	130	131	129	1,121,241	663.46
Education & Health Services	106	705	714	706	5,328,643	578.68
Leisure & Hospitality	32	363	364	371	1,101,874	231.58
Other Services	27	127	127	135	997,229	591.59
Local Government	22	790	789	798	7,139,424	693.13
State Government	14	550	562	565	3,762,873	517.80

TABLE 6. COUNTY SUMMARY

North American Industry Classification System - Industry Groups	Number of Employing Units	Employment			Total Earnings	Average Weekly Earnings
		Apr	May	Jun	Apr - Jun 2016	
<b>LONOKE COUNTY - TOTAL</b>	<b>1,316</b>	<b>14,078</b>	<b>14,178</b>	<b>14,194</b>	<b>\$120,133,147</b>	<b>\$653.08</b>
Natural Resources & Mining	82	481	476	495	4,887,881	776.84
Construction	123	890	876	889	8,475,922	736.72
Manufacturing	36	1,770	1,770	1,792	21,502,406	930.63
Trade, Transportation & Utilities	323	2,897	2,920	2,929	21,218,234	559.86
Wholesale Trade	76	418	421	409	4,751,046	878.52
Retail Trade	185	2,182	2,199	2,221	13,419,788	469.08
Transportation, Warehousing & Utilities	62	297	300	299	3,047,400	784.87
Information	16	94	94	95	954,515	778.35
Financial Activities	151	661	679	676	8,834,603	1,011.29
Professional & Business Services	166	857	864	841	6,617,748	596.09
Education & Health Services	198	1,658	1,668	1,695	11,779,366	541.39
Leisure & Hospitality	115	1,862	1,905	1,873	6,588,865	269.59
Other Services	66	188	180	180	1,173,670	494.25
Local Government	24	2,562	2,591	2,576	26,717,944	797.73
State Government	16	158	155	153	1,381,993	684.38
<b>MADISON COUNTY - TOTAL</b>	<b>249</b>	<b>3,069</b>	<b>3,109</b>	<b>3,114</b>	<b>\$26,011,394</b>	<b>\$646.00</b>
Natural Resources & Mining	9	52	56	54	418,906	596.73
Construction	25	69	79	89	678,113	660.29
Manufacturing	22	1,014	1,015	1,025	9,263,460	699.97
Trade, Transportation & Utilities	55	661	676	676	4,974,653	570.29
Wholesale Trade	8	23	22	20	171,709	609.62
Retail Trade	36	498	508	510	3,217,182	489.73
Transportation, Warehousing & Utilities	11	140	146	146	1,585,762	847.10
Information	6	51	50	50	884,237	1,351.36
Financial Activities	17	72	71	73	650,105	694.56
Professional & Business Services	24	102	103	100	1,057,640	800.23
Education & Health Services	44	239	247	244	1,496,799	473.17
Leisure & Hospitality	15	187	188	182	530,621	219.84
Other Services	16	32	33	34	292,408	681.60
Local Government	9	550	547	541	5,408,116	761.92
State Government	7	40	44	46	356,336	632.55

TABLE 6. COUNTY SUMMARY

North American Industry Classification System - Industry Groups	Number of Employing Units	Employment			Total Earnings Apr - Jun 2016	Average Weekly Earnings
		Apr	May	Jun		
<b>MARION COUNTY - TOTAL</b>	<b>274</b>	<b>3,870</b>	<b>3,861</b>	<b>3,891</b>	<b>\$28,205,328</b>	<b>\$560.05</b>
Natural Resources & Mining	3	19	18	18	109,882	461.04
Construction	18	45	47	48	273,885	451.46
Manufacturing	19	1,774	1,762	1,753	13,424,285	585.73
Trade, Transportation & Utilities	54	553	553	561	3,540,475	490.12
Wholesale Trade	7	40	40	39	379,253	735.46
Retail Trade	38	478	479	488	2,748,008	438.86
Transportation, Warehousing & Utilities	9	35	34	34	413,214	925.80
Information	4	54	54	53	765,174	1,096.76
Financial Activities	32	212	207	223	1,779,250	639.56
Professional & Business Services	27	93	85	89	557,728	482.05
Education & Health Services	47	337	334	337	2,325,873	532.48
Leisure & Hospitality	32	206	234	233	664,518	227.86
Other Services	13	26	25	24	113,775	350.08
Local Government	17	497	489	499	4,234,914	658.11
State Government	8	54	53	53	415,569	599.38
<b>MILLER COUNTY - TOTAL</b>	<b>878</b>	<b>12,943</b>	<b>12,887</b>	<b>13,050</b>	<b>\$121,239,999</b>	<b>\$719.61</b>
Natural Resources & Mining	29	162	156	164	1,519,910	727.69
Construction	71	589	595	606	6,103,839	786.92
Manufacturing	29	2,381	2,386	2,409	34,139,223	1,097.87
Trade, Transportation & Utilities	225	3,449	3,379	3,427	29,772,143	669.97
Wholesale Trade	50	468	476	481	5,435,961	880.32
Retail Trade	128	1,288	1,288	1,328	7,750,913	458.16
Transportation, Warehousing & Utilities	47	1,693	1,615	1,618	16,585,269	776.97
Information	6	60	60	60	1,170,253	1,500.32
Financial Activities	86	412	401	403	3,758,550	713.29
Professional & Business Services	88	1,050	1,046	1,021	6,429,298	476.00
Education & Health Services	159	1,097	1,114	1,058	8,411,214	593.77
Leisure & Hospitality	89	1,493	1,496	1,638	5,760,664	287.31
Other Services	55	284	276	274	1,585,336	438.67
Local Government	24	1,456	1,463	1,472	17,228,316	905.44
State Government	17	510	515	518	5,361,253	801.82

TABLE 6. COUNTY SUMMARY

North American Industry Classification System - Industry Groups	Number of Employing Units	Employment			Total Earnings Apr - Jun 2016	Average Weekly Earnings
		Apr	May	Jun		
<b>MISSISSIPPI COUNTY - TOTAL</b>	<b>1,178</b>	<b>17,723</b>	<b>17,747</b>	<b>17,742</b>	<b>\$189,696,591</b>	<b>\$822.67</b>
Natural Resources & Mining	120	519	529	529	4,345,035	635.83
Construction	54	770	888	1,048	12,486,617	1,064.87
Manufacturing	56	5,925	5,743	5,608	87,557,251	1,169.57
Trade, Transportation & Utilities	287	2,865	2,885	2,899	25,973,751	693.02
Wholesale Trade	63	380	380	379	4,411,947	893.89
Retail Trade	157	1,708	1,725	1,725	10,136,726	453.52
Transportation, Warehousing & Utilities	67	777	780	795	11,425,078	1,120.98
Information	6	41	41	45	302,765	550.15
Financial Activities	84	478	479	472	4,040,009	652.42
Professional & Business Services	101	1,274	1,307	1,278	9,366,546	560.12
Education & Health Services	242	1,792	1,809	1,791	14,509,345	620.98
Leisure & Hospitality	97	1,254	1,261	1,283	4,163,699	252.99
Other Services	57	223	216	222	1,667,012	581.99
Local Government	50	2,031	2,035	2,016	20,136,647	764.04
State Government	24	551	554	551	5,147,914	717.38
<b>MONROE COUNTY - TOTAL</b>	<b>301</b>	<b>2,171</b>	<b>2,156</b>	<b>2,137</b>	<b>\$15,881,928</b>	<b>\$567.00</b>
Natural Resources & Mining	33	159	162	164	1,562,379	743.40
Construction	10	25	24	26	210,778	648.55
Manufacturing	7	140	134	136	1,188,662	669.04
Trade, Transportation & Utilities	77	593	593	588	4,665,467	606.90
Wholesale Trade	18	220	221	198	2,192,951	791.96
Retail Trade	37	266	266	287	1,530,307	431.19
Transportation, Warehousing & Utilities	22	107	106	103	942,209	688.08
Financial Activities	21	88	90	87	810,190	705.54
Professional & Business Services	13	49	25	23	177,732	422.84
Education & Health Services	69	345	354	341	2,284,333	506.88
Leisure & Hospitality	22	228	225	224	791,224	269.70
Local Government	21	335	337	338	2,857,087	652.80
State Government	8	84	86	86	746,790	673.19
Other	20	125	126	124	587,286	361.41

TABLE 6. COUNTY SUMMARY

North American Industry Classification System - Industry Groups	Number of Employing Units	Employment			Total Earnings Apr - Jun 2016	Average Weekly Earnings
		Apr	May	Jun		
<b>MONTGOMERY COUNTY - TOTAL</b>	<b>164</b>	<b>1,370</b>	<b>1,404</b>	<b>1,470</b>	<b>\$9,646,492</b>	<b>\$524.53</b>
Natural Resources & Mining	8	47	47	53	398,528	625.63
Construction	24	77	80	72	432,683	436.03
Manufacturing	9	40	41	41	297,049	561.88
Trade, Transportation & Utilities	34	216	216	215	1,258,096	448.73
Wholesale Trade	9	50	47	47	365,644	585.97
Retail Trade	19	152	156	156	807,796	401.76
Transportation, Warehousing & Utilities	6	14	13	12	84,656	500.92
Financial Activities	10	58	62	69	542,030	661.82
Professional & Business Services	16	21	21	21	168,863	618.55
Education & Health Services	18	61	60	57	421,851	546.91
Leisure & Hospitality	15	277	297	361	1,453,089	358.64
Local Government	9	456	463	466	3,942,331	656.87
State Government	8	44	43	43	385,163	683.72
Other	13	73	74	72	346,809	365.45
<b>NEVADA COUNTY - TOTAL</b>	<b>192</b>	<b>2,429</b>	<b>2,478</b>	<b>2,418</b>	<b>\$20,787,085</b>	<b>\$654.88</b>
Natural Resources & Mining	10	65	75	67	757,163	844.11
Trade, Transportation & Utilities	38	571	581	556	4,663,038	630.03
Retail Trade	22	300	310	297	1,587,643	403.95
Other Trade, Transportation & Utilities	16	271	271	259	3,075,395	886.03
Financial Activities	11	60	70	64	513,357	610.65
Professional & Business Services	11	46	45	36	354,759	644.63
Education & Health Services	42	401	398	392	2,385,363	462.19
Leisure & Hospitality	10	96	106	101	323,265	246.20
Other Services	14	52	40	40	183,498	320.80
Local Government	28	380	385	392	3,338,586	665.90
State Government	10	79	83	82	579,455	548.03
Other	18	679	695	688	7,688,601	860.47

TABLE 6. COUNTY SUMMARY

North American Industry Classification System - Industry Groups	Number of Employing Units	Employment			Total Earnings Apr - Jun 2016	Average Weekly Earnings
		Apr	May	Jun		
<b>NEWTON COUNTY - TOTAL</b>	<b>118</b>	<b>1,109</b>	<b>1,129</b>	<b>1,133</b>	<b>\$7,631,919</b>	<b>\$522.46</b>
Construction	6	18	18	18	120,731	515.94
Manufacturing	8	31	30	26	229,553	608.89
Trade, Transportation & Utilities	30	163	170	171	1,065,311	487.78
Retail Trade	16	107	110	112	546,548	383.36
Other Trade, Transportation & Utilities	14	56	60	59	518,763	684.08
Education & Health Services	25	226	228	226	1,116,537	378.92
Leisure & Hospitality	16	157	168	178	670,787	307.75
Other Services	3	5	5	5	29,805	458.54
Local Government	13	394	402	398	3,608,091	697.35
State Government	8	68	66	68	438,160	500.56
Other	9	47	42	43	352,944	617.03
<b>OUACHITA COUNTY - TOTAL</b>	<b>654</b>	<b>7,001</b>	<b>7,043</b>	<b>7,059</b>	<b>\$59,251,988</b>	<b>\$647.94</b>
Natural Resources & Mining	36	154	157	157	1,460,372	720.10
Construction	34	205	200	216	1,871,756	695.56
Manufacturing	24	529	521	529	5,212,242	761.76
Trade, Transportation & Utilities	158	1,591	1,621	1,648	12,393,707	588.50
Wholesale Trade	29	314	319	320	3,276,523	793.41
Retail Trade	102	973	993	1,014	5,567,650	431.16
Transportation, Warehousing & Utilities	27	304	309	314	3,549,534	883.63
Information	6	44	43	44	483,232	851.26
Financial Activities	56	275	278	280	2,528,408	700.45
Professional & Business Services	48	568	556	535	4,527,877	629.83
Education & Health Services	178	1,255	1,267	1,261	11,770,596	718.03
Leisure & Hospitality	40	508	517	521	1,634,561	243.99
Other Services	31	126	130	128	1,073,391	645.07
Local Government	29	1,070	1,079	1,080	10,374,411	741.44
State Government	14	676	674	660	5,921,435	679.84

TABLE 6. COUNTY SUMMARY

North American Industry Classification System - Industry Groups	Number of Employing Units	Employment			Total Earnings Apr - Jun 2016	Average Weekly Earnings
		Apr	May	Jun		
<b>PERRY COUNTY - TOTAL</b>	<b>144</b>	<b>1,238</b>	<b>1,213</b>	<b>1,248</b>	<b>\$10,451,648</b>	<b>\$652.05</b>
Construction	17	108	106	103	925,367	673.65
Manufacturing	5	39	43	43	321,921	594.32
Trade, Transportation & Utilities	25	184	176	182	1,249,560	532.03
Retail Trade	15	150	142	147	677,933	356.37
Other Trade, Transportation & Utilities	10	34	34	35	571,627	1,280.72
Financial Activities	6	23	32	31	278,023	746.04
Professional & Business Services	14	39	37	36	373,755	770.10
Education & Health Services	35	206	206	214	1,321,118	487.02
Leisure & Hospitality	9	77	81	75	240,321	238.02
Local Government	10	363	358	365	2,995,713	636.57
State Government	8	53	53	54	408,407	589.05
Other	15	146	121	145	2,337,463	1,309.26
<b>PHILLIPS COUNTY - TOTAL</b>	<b>784</b>	<b>5,490</b>	<b>5,493</b>	<b>5,491</b>	<b>\$44,657,131</b>	<b>\$625.56</b>
Natural Resources & Mining	62	239	245	243	1,637,802	519.88
Construction	29	110	120	129	910,052	584.99
Manufacturing	12	370	357	359	3,619,703	769.17
Trade, Transportation & Utilities	151	1,348	1,352	1,325	10,556,896	605.27
Wholesale Trade	28	289	297	294	3,441,786	902.57
Retail Trade	84	813	810	799	4,407,032	419.90
Transportation, Warehousing & Utilities	39	246	245	232	2,708,078	864.37
Information	8	34	34	33	365,223	834.48
Financial Activities	40	191	190	191	1,732,644	699.02
Professional & Business Services	43	224	223	226	2,478,660	849.92
Education & Health Services	330	1,365	1,359	1,395	10,117,904	566.86
Leisure & Hospitality	37	304	313	314	989,517	245.27
Other Services	30	70	74	73	446,224	474.54
Local Government	27	785	778	770	8,515,230	842.29
State Government	15	450	448	433	3,287,276	569.95



TABLE 6. COUNTY SUMMARY

North American Industry Classification System - Industry Groups	Number of Employing Units	Employment			Total Earnings Apr - Jun 2016	Average Weekly Earnings
		Apr	May	Jun		
<b>PIKE COUNTY - TOTAL</b>	<b>247</b>	<b>2,451</b>	<b>2,481</b>	<b>2,507</b>	<b>\$17,454,587</b>	<b>\$541.47</b>
Natural Resources & Mining	24	114	114	118	1,067,801	712.18
Construction	13	58	48	48	354,176	530.73
Manufacturing	17	275	271	281	1,760,015	491.12
Trade, Transportation & Utilities	62	504	509	516	3,515,341	530.56
Wholesale Trade	9	111	115	116	857,510	578.62
Retail Trade	36	333	338	339	1,972,035	450.58
Transportation, Warehousing & Utilities	17	60	56	61	685,796	894.13
Information	6	25	25	22	240,149	769.71
Financial Activities	23	227	225	230	1,904,522	644.44
Professional & Business Services	18	87	85	92	896,822	783.94
Education & Health Services	26	306	299	291	1,627,867	419.27
Leisure & Hospitality	25	216	230	237	761,401	257.26
Other Services	13	52	57	57	363,587	505.45
Local Government	10	447	441	445	4,147,843	718.08
State Government	10	140	177	170	815,063	386.22
<b>POINSETT COUNTY - TOTAL</b>	<b>522</b>	<b>5,202</b>	<b>5,235</b>	<b>5,242</b>	<b>\$46,543,132</b>	<b>\$685.04</b>
Natural Resources & Mining	72	411	420	421	3,980,501	733.69
Construction	22	93	95	96	845,428	686.97
Manufacturing	19	683	682	682	7,304,482	823.47
Trade, Transportation & Utilities	133	1,255	1,269	1,256	10,514,351	641.90
Wholesale Trade	30	375	382	376	4,779,840	973.56
Retail Trade	73	719	725	716	4,120,999	440.28
Transportation, Warehousing & Utilities	30	161	162	164	1,613,512	764.58
Information	5	53	53	52	495,188	723.25
Financial Activities	38	183	183	178	1,800,351	763.72
Professional & Business Services	27	175	164	173	2,722,151	1,226.93
Education & Health Services	103	798	810	813	6,164,553	587.60
Leisure & Hospitality	43	329	332	339	1,096,464	253.03
Other Services	20	51	50	54	344,831	513.40
Local Government	29	1,043	1,047	1,050	10,213,533	750.63
State Government	11	128	130	128	1,061,299	634.50

TABLE 6. COUNTY SUMMARY

North American Industry Classification System - Industry Groups	Number of Employing Units	Employment			Total Earnings Apr - Jun 2016	Average Weekly Earnings
		Apr	May	Jun		
<b>POLK COUNTY - TOTAL</b>	<b>490</b>	<b>5,828</b>	<b>5,850</b>	<b>5,937</b>	<b>\$44,209,984</b>	<b>\$579.18</b>
Natural Resources & Mining	20	132	126	126	1,482,164	890.72
Construction	30	186	201	209	1,359,056	526.22
Manufacturing	32	1,240	1,231	1,241	10,284,712	639.38
Trade, Transportation & Utilities	133	1,087	1,089	1,096	7,155,618	504.67
Wholesale Trade	23	56	57	55	421,975	579.64
Retail Trade	76	808	814	814	4,553,001	431.32
Transportation, Warehousing & Utilities	34	223	218	227	2,180,642	753.33
Information	8	81	76	77	551,917	544.30
Financial Activities	47	243	240	239	1,943,204	621.10
Professional & Business Services	43	155	148	152	1,432,460	726.52
Education & Health Services	78	1,016	1,024	1,010	8,917,725	674.73
Leisure & Hospitality	36	463	470	490	1,497,446	242.84
Other Services	28	176	175	251	1,291,661	495.14
Local Government	21	725	728	731	6,154,397	650.30
State Government	14	324	342	315	2,139,624	503.32
<b>POPE COUNTY - TOTAL</b>	<b>1,804</b>	<b>26,287</b>	<b>26,100</b>	<b>25,821</b>	<b>\$244,641,850</b>	<b>\$721.87</b>
Natural Resources & Mining	36	736	759	768	9,037,935	921.64
Construction	158	1,319	1,332	1,359	16,142,956	929.00
Manufacturing	72	4,458	4,443	4,479	42,424,354	731.71
Trade, Transportation & Utilities	424	6,200	6,152	6,127	60,747,381	758.62
Wholesale Trade	78	577	575	571	5,847,134	783.13
Retail Trade	261	3,307	3,269	3,210	19,816,295	467.30
Transportation, Warehousing & Utilities	85	2,316	2,308	2,346	35,083,952	1,161.59
Information	20	177	178	175	1,585,261	690.24
Financial Activities	188	1,190	1,176	1,177	9,991,513	650.79
Professional & Business Services	278	1,808	1,702	1,732	20,979,228	923.57
Education & Health Services	325	3,107	3,113	3,097	29,816,844	738.52
Leisure & Hospitality	136	2,838	2,839	2,736	9,736,780	267.08
Other Services	109	546	548	555	3,561,951	498.48
Local Government	42	2,173	2,118	2,132	23,323,031	837.96
State Government	16	1,735	1,740	1,484	17,294,616	804.81

TABLE 6. COUNTY SUMMARY

North American Industry Classification System - Industry Groups	Number of Employing Units	Employment			Total Earnings Apr - Jun 2016	Average Weekly Earnings
		Apr	May	Jun		
<b>PRAIRIE COUNTY - TOTAL</b>	<b>255</b>	<b>1,457</b>	<b>1,468</b>	<b>1,467</b>	<b>\$11,461,922</b>	<b>\$602.24</b>
Natural Resources & Mining	38	155	169	172	1,794,987	835.14
Construction	10	42	43	48	377,734	655.41
Manufacturing	6	33	31	35	151,127	352.28
Trade, Transportation & Utilities	65	375	369	370	2,879,955	596.59
Wholesale Trade	12	90	92	87	1,365,984	1,171.85
Retail Trade	34	215	207	213	964,538	350.53
Transportation, Warehousing & Utilities	19	70	70	70	549,433	603.77
Financial Activities	16	61	61	61	502,313	633.43
Professional & Business Services	15	70	71	70	570,900	624.39
Education & Health Services	50	253	253	246	1,629,140	499.94
Leisure & Hospitality	16	89	91	93	321,433	271.71
Local Government	15	307	307	301	2,632,325	663.89
State Government	9	35	37	37	315,656	668.29
Other	15	37	36	34	286,352	617.58
<b>PULASKI COUNTY - TOTAL</b>	<b>14,264</b>	<b>238,669</b>	<b>239,251</b>	<b>238,468</b>	<b>\$2,736,784,575</b>	<b>\$881.60</b>
Natural Resources & Mining	56	605	609	615	8,978,363	1,132.82
Construction	932	8,905	9,049	9,101	107,829,436	919.75
Manufacturing	335	12,666	12,675	12,730	161,499,001	978.93
Trade, Transportation & Utilities	3,188	48,499	48,558	48,643	494,445,136	783.13
Wholesale Trade	967	11,723	11,689	11,729	171,541,099	1,126.50
Retail Trade	1,823	25,818	25,866	25,782	187,970,687	559.96
Transportation, Warehousing & Utilities	398	10,958	11,003	11,132	134,933,350	940.94
Information	196	5,657	5,625	5,646	82,604,886	1,126.10
Financial Activities	1,673	16,457	16,386	16,460	261,741,834	1,225.12
Professional & Business Services	2,764	33,252	32,991	33,267	380,433,067	882.25
Education & Health Services	2,451	39,838	39,743	39,906	478,968,555	925.05
Leisure & Hospitality	1,207	23,059	23,839	23,856	100,240,116	326.94
Other Services	1,153	6,423	6,496	6,827	61,313,614	716.57
Local Government	110	15,518	15,553	13,922	199,453,066	1,023.00
State Government	199	27,790	27,727	27,495	399,277,501	1,109.97

TABLE 6. COUNTY SUMMARY

North American Industry Classification System - Industry Groups	Number of Employing Units	Employment			Total Earnings Apr - Jun 2016	Average Weekly Earnings
		Apr	May	Jun		
<b>RANDOLPH COUNTY - TOTAL</b>	<b>396</b>	<b>4,550</b>	<b>4,676</b>	<b>4,861</b>	<b>\$35,240,571</b>	<b>\$577.30</b>
Natural Resources & Mining	27	152	170	190	1,599,262	720.82
Construction	26	69	79	87	528,622	519.11
Manufacturing	30	627	704	934	6,314,237	643.33
Trade, Transportation & Utilities	88	864	869	868	6,447,922	572.08
Wholesale Trade	17	169	167	168	1,552,008	710.63
Retail Trade	56	574	578	575	3,535,520	472.43
Transportation, Warehousing & Utilities	15	121	124	125	1,360,394	848.48
Information	5	31	32	32	322,918	784.42
Financial Activities	35	142	145	145	1,227,611	655.78
Professional & Business Services	36	170	167	164	1,110,586	511.56
Education & Health Services	64	902	912	877	6,492,663	556.78
Leisure & Hospitality	30	412	413	404	1,326,807	249.13
Other Services	20	68	70	66	422,506	477.95
Local Government	24	789	795	807	6,675,562	644.30
State Government	11	324	320	287	2,771,875	687.07
<b>SAINT FRANCIS COUNTY - TOTAL</b>	<b>743</b>	<b>7,301</b>	<b>7,283</b>	<b>7,413</b>	<b>\$57,708,007</b>	<b>\$605.41</b>
Natural Resources & Mining	45	188	205	212	1,841,180	702.29
Construction	42	187	200	212	1,864,402	718.27
Trade, Transportation & Utilities	159	2,045	2,052	2,103	15,821,081	588.87
Wholesale Trade	31	628	629	632	6,299,790	769.61
Retail Trade	104	1,115	1,120	1,162	6,388,972	434.02
Transportation, Warehousing & Utilities	24	302	303	309	3,132,319	790.86
Information	5	60	59	59	506,985	657.28
Financial Activities	60	250	248	248	1,980,748	612.73
Professional & Business Services	44	528	513	479	3,107,496	471.79
Education & Health Services	267	1,437	1,433	1,426	11,701,035	628.55
Leisure & Hospitality	44	639	629	638	2,096,864	253.88
Local Government	27	832	801	844	7,946,505	740.33
State Government	16	480	488	485	4,310,278	684.57
Other	34	655	655	707	6,531,433	747.28

TABLE 6. COUNTY SUMMARY

North American Industry Classification System - Industry Groups	Number of Employing Units	Employment			Total Earnings Apr - Jun 2016	Average Weekly Earnings
		Apr	May	Jun		
<b>SALINE COUNTY - TOTAL</b>	<b>1,971</b>	<b>23,595</b>	<b>23,723</b>	<b>23,814</b>	<b>\$205,965,323</b>	<b>\$668.20</b>
Natural Resources & Mining	14	53	53	59	550,459	769.87
Construction	263	2,040	2,087	2,121	21,348,283	788.50
Manufacturing	82	1,360	1,367	1,376	15,749,890	885.84
Trade, Transportation & Utilities	455	5,461	5,521	5,487	44,114,785	618.15
Wholesale Trade	116	569	566	559	6,820,819	929.18
Retail Trade	273	4,394	4,488	4,469	32,357,935	559.30
Transportation, Warehousing & Utilities	66	498	467	459	4,936,031	799.92
Information	14	154	156	158	1,817,408	896.16
Financial Activities	200	733	733	730	7,936,671	834.03
Professional & Business Services	268	1,732	1,681	1,684	16,068,658	727.52
Education & Health Services	300	3,398	3,412	3,407	28,547,701	644.80
Leisure & Hospitality	177	3,148	3,200	3,213	11,521,095	278.08
Other Services	153	818	817	883	6,086,831	557.84
Local Government	30	3,778	3,786	3,789	44,239,127	899.24
State Government	15	920	910	907	7,984,415	673.20
<b>SCOTT COUNTY - TOTAL</b>	<b>181</b>	<b>2,983</b>	<b>2,999</b>	<b>3,006</b>	<b>\$21,775,011</b>	<b>\$559.08</b>
Natural Resources & Mining	18	165	165	166	1,534,085	713.75
Trade, Transportation & Utilities	34	425	431	438	3,209,427	572.36
Wholesale Trade	6	81	83	87	881,776	810.70
Retail Trade	21	284	285	285	1,620,366	437.86
Transportation, Warehousing & Utilities	7	60	63	66	707,285	863.60
Financial Activities	20	66	68	67	438,805	503.79
Professional & Business Services	11	72	72	71	484,220	519.74
Education & Health Services	40	313	316	316	2,800,792	683.95
Leisure & Hospitality	16	127	132	127	481,489	287.86
Other Services	10	33	34	32	250,805	584.63
Local Government	6	515	517	518	5,307,796	790.24
State Government	7	49	49	48	359,028	567.48
Other	19	1,218	1,215	1,223	6,908,564	436.07

TABLE 6. COUNTY SUMMARY

North American Industry Classification System - Industry Groups	Number of Employing Units	Employment			Total Earnings Apr - Jun 2016	Average Weekly Earnings
		Apr	May	Jun		
<b>SEARCY COUNTY - TOTAL</b>	<b>170</b>	<b>1,513</b>	<b>1,536</b>	<b>1,739</b>	<b>\$10,367,621</b>	<b>\$499.69</b>
Construction	8	12	10	14	91,617	587.29
Manufacturing	18	198	210	220	1,232,711	452.98
Trade, Transportation & Utilities	40	247	250	249	1,556,675	481.55
Wholesale Trade	8	50	52	50	326,928	496.35
Retail Trade	26	177	178	179	995,877	430.37
Transportation, Warehousing & Utilities	6	20	20	20	233,870	899.50
Financial Activities	12	63	75	94	466,095	463.62
Education & Health Services	40	315	314	319	2,060,097	501.48
Leisure & Hospitality	12	125	134	147	446,876	254.00
Other Services	5	16	12	12	62,319	359.53
Local Government	10	328	321	329	2,531,291	597.28
State Government	7	98	96	95	656,609	524.31
Other	18	111	114	260	1,263,331	601.11
<b>SEBASTIAN COUNTY - TOTAL</b>	<b>3,674</b>	<b>65,167</b>	<b>65,654</b>	<b>65,973</b>	<b>\$662,722,992</b>	<b>\$777.14</b>
Natural Resources & Mining	49	617	606	604	9,255,113	1,169.02
Construction	255	2,523	2,561	2,587	25,301,763	761.16
Manufacturing	187	11,794	11,799	11,922	137,100,460	890.85
Trade, Transportation & Utilities	905	13,294	13,428	13,371	122,533,903	705.29
Wholesale Trade	246	2,581	2,597	2,587	31,144,787	925.60
Retail Trade	539	8,007	8,099	8,057	53,784,960	513.67
Transportation, Warehousing & Utilities	120	2,706	2,732	2,727	37,604,156	1,062.81
Information	40	922	930	949	15,489,875	1,276.18
Financial Activities	399	2,356	2,351	2,356	26,161,372	854.77
Professional & Business Services	585	8,603	8,621	8,805	81,809,396	725.31
Education & Health Services	575	11,256	11,314	11,361	136,270,849	926.80
Leisure & Hospitality	345	6,231	6,476	6,579	24,919,456	298.18
Other Services	273	1,324	1,301	1,402	9,419,093	539.77
Local Government	39	4,569	4,623	4,403	56,549,058	959.90
State Government	22	1,678	1,644	1,634	17,912,654	834.08

TABLE 6. COUNTY SUMMARY

North American Industry Classification System - Industry Groups	Number of Employing Units	Employment			Total Earnings Apr - Jun 2016	Average Weekly Earnings
		Apr	May	Jun		
<b>SEVIER COUNTY - TOTAL</b>	<b>318</b>	<b>4,847</b>	<b>4,916</b>	<b>4,862</b>	<b>\$37,728,279</b>	<b>\$595.32</b>
Natural Resources & Mining	16	208	210	205	1,670,761	618.88
Construction	16	163	161	173	1,823,007	846.47
Trade, Transportation & Utilities	97	857	859	864	7,006,709	626.72
Wholesale Trade	14	104	105	104	1,958,108	1,443.68
Retail Trade	67	662	663	672	4,044,392	467.36
Transportation, Warehousing & Utilities	16	91	91	88	1,004,209	858.30
Financial Activities	26	208	213	215	2,018,095	732.26
Professional & Business Services	27	109	112	108	681,484	478.01
Education & Health Services	53	528	525	530	3,980,662	580.30
Leisure & Hospitality	26	291	311	320	956,948	239.52
Local Government	12	916	936	894	8,343,363	701.16
State Government	8	187	189	162	1,440,658	617.95
Other	37	1,380	1,400	1,391	9,806,592	542.57
<b>SHARP COUNTY - TOTAL</b>	<b>383</b>	<b>3,854</b>	<b>3,871</b>	<b>3,895</b>	<b>\$28,482,989</b>	<b>\$565.66</b>
Construction	27	128	129	129	1,181,867	706.58
Manufacturing	19	166	163	169	993,694	460.47
Trade, Transportation & Utilities	81	1,082	1,075	1,052	9,081,373	653.07
Wholesale Trade	13	37	39	36	213,451	439.80
Retail Trade	57	662	667	673	3,744,307	431.60
Transportation, Warehousing & Utilities	11	383	369	343	5,123,615	1,079.79
Information	6	38	36	35	418,499	886.02
Financial Activities	33	180	180	177	1,660,500	713.58
Professional & Business Services	37	140	142	138	1,128,711	620.17
Education & Health Services	84	794	792	779	5,539,657	540.54
Leisure & Hospitality	38	434	449	433	1,379,712	241.94
Local Government	24	741	755	790	6,082,990	614.07
State Government	8	63	64	63	531,382	645.40
Other	26	88	86	130	484,604	367.87

TABLE 6. COUNTY SUMMARY

North American Industry Classification System - Industry Groups	Number of Employing Units	Employment			Total Earnings Apr - Jun 2016	Average Weekly Earnings
		Apr	May	Jun		
<b>STONE COUNTY - TOTAL</b>	<b>271</b>	<b>2,441</b>	<b>2,511</b>	<b>2,704</b>	<b>\$17,353,205</b>	<b>\$523.07</b>
Natural Resources & Mining	6	9	25	125	114,617	166.35
Construction	16	36	35	37	229,888	491.21
Manufacturing	20	216	221	220	1,326,797	466.03
Trade, Transportation & Utilities	70	585	594	594	4,016,213	522.74
Wholesale Trade	6	33	37	36	276,460	601.87
Retail Trade	53	515	519	519	3,328,852	494.65
Transportation, Warehousing & Utilities	11	37	38	39	410,901	831.78
Financial Activities	28	130	132	126	1,235,605	734.90
Professional & Business Services	13	32	24	24	176,510	509.16
Education & Health Services	51	500	507	568	4,434,075	649.68
Leisure & Hospitality	30	364	368	387	1,118,658	230.70
Local Government	10	393	397	397	3,536,118	687.47
State Government	8	130	161	178	868,803	427.49
Other	19	46	47	48	295,921	484.32
<b>UNION COUNTY - TOTAL</b>	<b>1,302</b>	<b>17,852</b>	<b>17,634</b>	<b>17,556</b>	<b>\$194,276,104</b>	<b>\$845.23</b>
Natural Resources & Mining	91	375	371	389	4,328,363	880.05
Construction	83	1,770	1,522	1,458	20,903,449	1,015.55
Manufacturing	52	3,129	3,134	3,164	47,285,888	1,157.54
Trade, Transportation & Utilities	320	3,519	3,508	3,498	32,243,728	706.97
Wholesale Trade	68	503	499	487	6,287,258	974.42
Retail Trade	191	2,184	2,183	2,160	13,258,455	468.77
Transportation, Warehousing & Utilities	61	832	826	851	12,698,015	1,167.92
Information	9	123	124	123	1,038,860	647.94
Financial Activities	104	601	601	602	6,667,050	852.85
Professional & Business Services	128	1,861	1,850	1,868	30,662,026	1,268.30
Education & Health Services	277	2,346	2,364	2,328	20,975,267	687.76
Leisure & Hospitality	88	1,300	1,320	1,362	4,906,511	284.35
Other Services	101	455	467	495	3,109,755	506.45
Local Government	32	1,827	1,828	1,699	16,947,160	730.46
State Government	17	546	545	570	5,208,047	723.57



TABLE 6. COUNTY SUMMARY

North American Industry Classification System - Industry Groups	Number of Employing Units	Employment			Total Earnings	Average Weekly Earnings
		Apr	May	Jun	Apr - Jun 2016	
<b>VAN BUREN COUNTY - TOTAL</b>	<b>357</b>	<b>3,543</b>	<b>3,548</b>	<b>3,538</b>	<b>\$31,237,588</b>	<b>\$678.21</b>
Natural Resources & Mining	10	177	155	142	3,880,727	1,889.35
Construction	41	145	134	144	1,064,927	580.97
Manufacturing	7	79	83	87	660,168	611.83
Trade, Transportation & Utilities	101	900	899	883	9,074,005	780.76
Wholesale Trade	13	80	88	82	1,009,485	931.83
Retail Trade	61	614	624	614	3,627,753	452.04
Transportation, Warehousing & Utilities	27	206	187	187	4,436,767	1,765.29
Information	5	32	32	33	310,052	737.63
Financial Activities	33	120	122	121	1,036,003	658.62
Professional & Business Services	32	130	133	136	941,537	544.56
Education & Health Services	61	759	756	740	5,714,904	584.84
Leisure & Hospitality	26	372	389	399	1,294,325	257.49
Other Services	23	57	61	62	380,471	487.78
Local Government	11	715	726	733	6,373,179	676.51
State Government	7	57	58	58	507,290	676.69
<b>WASHINGTON COUNTY - TOTAL</b>	<b>5,882</b>	<b>101,697</b>	<b>101,847</b>	<b>102,266</b>	<b>\$1,059,965,105</b>	<b>\$799.87</b>
Natural Resources & Mining	42	319	308	314	3,810,219	934.41
Construction	520	4,619	4,667	4,779	53,099,862	871.23
Manufacturing	222	12,213	12,154	12,275	127,069,746	800.28
Trade, Transportation & Utilities	1,380	23,154	23,251	23,350	222,494,688	736.08
Wholesale Trade	378	3,647	3,679	3,695	59,105,074	1,237.60
Retail Trade	799	12,835	12,850	12,850	89,660,403	536.94
Transportation, Warehousing & Utilities	203	6,672	6,722	6,805	73,729,211	842.34
Information	83	910	911	909	10,632,399	898.77
Financial Activities	650	3,587	3,573	3,557	42,930,012	924.41
Professional & Business Services	1,052	12,411	12,382	12,571	186,323,302	1,150.78
Education & Health Services	807	14,846	14,723	14,593	162,523,660	849.27
Leisure & Hospitality	654	12,570	12,592	12,381	48,002,877	295.06
Other Services	390	2,013	1,993	1,978	14,956,002	576.77
Local Government	60	8,624	8,518	8,894	105,156,059	932.05
State Government	22	6,431	6,775	6,665	82,966,279	963.52

TABLE 6. COUNTY SUMMARY

North American Industry Classification System - Industry Groups	Number of Employing Units	Employment			Total Earnings Apr - Jun 2016	Average Weekly Earnings
		Apr	May	Jun		
<b>WHITE COUNTY - TOTAL</b>	<b>1,787</b>	<b>24,070</b>	<b>23,994</b>	<b>23,847</b>	<b>\$208,280,865</b>	<b>\$668.39</b>
Natural Resources & Mining	57	425	409	433	5,990,159	1,091.04
Construction	156	981	998	1,022	9,559,226	735.08
Manufacturing	60	2,024	2,039	2,011	22,585,477	858.09
Trade, Transportation & Utilities	478	6,290	6,291	6,281	54,130,994	662.27
Wholesale Trade	88	599	596	594	6,255,390	806.90
Retail Trade	300	3,616	3,622	3,605	23,141,405	492.51
Transportation, Warehousing & Utilities	90	2,075	2,073	2,082	24,734,199	916.19
Information	17	148	143	148	1,151,464	605.29
Financial Activities	172	856	857	866	8,634,850	772.65
Professional & Business Services	197	1,321	1,278	1,283	10,161,112	604.04
Education & Health Services	320	5,522	5,488	5,433	51,759,746	726.42
Leisure & Hospitality	154	2,617	2,654	2,601	8,664,210	253.99
Other Services	113	511	516	500	3,974,343	600.63
Local Government	47	2,742	2,723	2,727	26,712,914	752.50
State Government	16	633	598	542	4,956,370	645.11
<b>WOODRUFF COUNTY - TOTAL</b>	<b>206</b>	<b>1,757</b>	<b>1,777</b>	<b>1,781</b>	<b>\$15,294,438</b>	<b>\$664.06</b>
Natural Resources & Mining	28	142	147	142	1,184,005	633.95
Construction	8	40	44	49	370,770	643.33
Manufacturing	7	221	222	222	2,183,928	757.87
Trade, Transportation & Utilities	46	394	393	407	3,337,173	644.99
Wholesale Trade	11	139	140	139	1,711,272	944.76
Retail Trade	26	188	188	197	790,005	318.17
Transportation, Warehousing & Utilities	9	67	65	71	835,896	950.24
Financial Activities	12	67	68	72	579,846	646.43
Education & Health Services	64	223	223	226	1,711,849	587.86
Leisure & Hospitality	10	76	81	76	240,055	237.76
Local Government	9	439	437	427	4,167,693	738.12
State Government	6	45	45	43	347,778	603.43
Other	16	110	117	117	1,171,341	785.78

TABLE 6. COUNTY SUMMARY

North American Industry Classification System - Industry Groups	Number of Employing Units	Employment			Total Earnings	Average Weekly Earnings
		Apr	May	Jun	Apr - Jun 2016	
<b>YELL COUNTY - TOTAL</b>	<b>406</b>	<b>6,408</b>	<b>6,447</b>	<b>6,399</b>	<b>\$48,947,833</b>	<b>\$586.67</b>
Natural Resources & Mining	27	210	211	209	1,893,065	693.43
Construction	37	206	203	207	1,860,677	697.06
Manufacturing	22	2,369	2,359	2,361	16,740,004	544.94
Trade, Transportation & Utilities	72	722	732	711	4,964,220	529.14
Wholesale Trade	13	47	55	49	241,236	368.67
Retail Trade	44	508	505	497	2,686,508	410.57
Transportation, Warehousing & Utilities	15	167	172	165	2,036,476	932.45
Financial Activities	30	166	168	171	1,674,761	765.31
Professional & Business Services	36	264	268	277	2,267,125	646.70
Education & Health Services	101	769	772	758	5,210,434	523.01
Leisure & Hospitality	25	307	320	306	879,595	217.56
Local Government	25	1,186	1,197	1,181	11,774,108	762.37
State Government	12	79	87	87	614,843	560.82
Other	19	130	130	131	1,069,001	630.93
<b>STATEWIDE COUNTY - TOTAL</b>	<b>8,956</b>	<b>32,968</b>	<b>33,489</b>	<b>29,711</b>	<b>\$455,227,752</b>	<b>\$1,092.39</b>
Natural Resources & Mining	94	286	284	308	3,776,993	992.73
Construction	771	3,850	3,930	4,026	54,281,568	1,061.03
Manufacturing	41	150	149	153	3,484,628	1,779.08
Trade, Transportation & Utilities	2,972	7,530	7,578	7,392	166,612,161	1,708.84
Wholesale Trade	2,570	6,334	6,364	6,159	150,179,876	1,837.88
Retail Trade	147	352	352	343	4,807,734	1,059.67
Transportation, Warehousing & Utilities	255	844	862	890	11,624,551	1,033.35
Information	241	508	486	501	9,555,988	1,475.07
Financial Activities	576	1,401	1,419	1,429	23,934,141	1,299.90
Professional & Business Services	3,445	15,515	15,861	12,148	149,950,805	795.06
Education & Health Services	418	2,236	2,266	2,214	24,593,018	845.04
Leisure & Hospitality	81	99	103	94	1,157,804	902.65
State Government	15	753	758	753	9,402,203	958.37
Other	302	640	655	693	8,478,443	1,028.79

Note: Statewide classification includes employment and payroll data for employers that have not provided a physical location for each employing unit. This section also includes employers without a physical location in Arkansas.

**TABLE 7. FEDERAL GOVERNMENT EMPLOYMENT AND EARNINGS IN ARKANSAS**

North American Industry Classification System - Industry Groups	Number of Employing Units	Employment			Total Earnings Apr - Jun 2016	Average Weekly Earnings
		Apr	May	Jun		
<b>TOTAL</b>	<b>1,163</b>	<b>20,205</b>	<b>20,190</b>	<b>20,365</b>	<b>\$325,757,959</b>	<b>\$1,237.24</b>
Trade, Transportation & Utilities	595	5,511	5,552	5,549	63,231,339	878.39
Information	2	39	40	39	553,597	1,082.65
Financial Activities	14	106	105	107	1,983,276	1,439.24
Professional & Business Services	34	762	772	819	13,180,577	1,292.68
Education & Health Services	18	5,340	5,311	5,283	109,556,641	1,586.69
Leisure & Hospitality	22	265	268	328	2,904,390	778.45
Other Services	1	1	1	1	8,860	681.54
Public Administration	477	8,181	8,141	8,239	134,339,279	1,262.22

TABLE 8. LOCAL WORKFORCE DEVELOPMENT AREA SUMMARY

North American Industry Classification System - Industry Groups	Number of Employing Units	Employment			Total Earnings	Average
		Apr	May	Jun	Apr - Jun 2016	Weekly Earnings
<b>CENTRAL LOCAL WORKFORCE DEVELOPMENT AREA</b>	<b>6,663</b>	<b>81,896</b>	<b>82,007</b>	<b>81,929</b>	<b>\$757,578,846</b>	<b>\$711.16</b>
Natural Resources & Mining	227	1,345	1,327	1,338	16,673,993	959.56
Construction	715	5,719	5,824	5,949	60,228,129	794.58
Manufacturing	232	6,451	6,457	6,530	79,201,005	940.28
Trade, Transportation & Utilities	1,570	16,609	16,630	16,584	126,511,349	585.97
Wholesale Trade	367	1,795	1,797	1,741	21,487,929	929.82
Retail Trade	943	13,127	13,168	13,180	86,848,914	507.72
Transportation, Warehousing & Utilities	260	1,687	1,665	1,663	18,174,506	836.31
Information	58	548	556	589	5,908,899	805.43
Financial Activities	702	3,002	3,004	2,996	32,829,711	841.60
Professional & Business Services	892	8,519	8,353	8,380	115,183,562	1,052.62
Education & Health Services	1,051	12,058	12,150	12,184	102,038,940	647.05
Leisure & Hospitality	583	10,600	10,573	10,621	37,485,694	272.08
Other Services	436	1,847	1,908	1,935	14,115,484	572.48
Local Government	131	10,559	10,595	10,571	121,445,191	883.40
State Government	66	4,639	4,630	4,252	45,956,889	784.37

Note: Pulaski County is not included in the Central Local Workforce Development Area. Please refer to Page 51 for information on Pulaski County.

Central Local Workforce Development Area includes these counties: Faulkner, Lonoke, Monroe, Prairie, and Saline.

<b>EASTERN LOCAL WORKFORCE DEVELOPMENT AREA</b>	<b>3,565</b>	<b>36,541</b>	<b>36,318</b>	<b>36,015</b>	<b>\$305,733,803</b>	<b>\$648.03</b>
Natural Resources & Mining	238	1,144	1,177	1,185	9,355,828	615.81
Construction	151	945	890	868	8,680,797	741.12
Trade, Transportation & Utilities	790	9,342	9,409	9,371	80,020,471	656.65
Wholesale Trade	163	2,148	2,153	2,159	24,304,530	868.23
Retail Trade	444	4,909	4,949	4,958	28,908,776	450.27
Transportation, Warehousing & Utilities	183	2,285	2,307	2,254	26,807,165	903.63
Financial Activities	259	1,265	1,263	1,265	11,061,216	672.97
Professional & Business Services	254	2,440	2,216	2,389	18,633,513	610.37
Education & Health Services	1,170	6,368	6,381	6,418	48,624,596	585.44
Leisure & Hospitality	241	3,754	3,796	3,811	15,373,257	312.27
Local Government	127	4,810	4,767	4,227	50,754,196	848.49
State Government	62	2,259	2,204	2,182	19,199,898	666.78
Other	273	4,214	4,215	4,299	44,030,031	798.30

Eastern Local Workforce Development Area includes these counties: Crittenden, Cross, Lee, Phillips, and Saint Francis.

TABLE 8. LOCAL WORKFORCE DEVELOPMENT AREA SUMMARY

North American Industry Classification System - Industry Groups	Number of Employing Units	Employment			Total Earnings	Average Weekly Earnings
		Apr	May	Jun	Apr - Jun 2016	
<b>NORTH CENTRAL LOCAL WORKFORCE DEVELOPMENT AREA</b>	<b>5,453</b>	<b>67,808</b>	<b>68,025</b>	<b>68,308</b>	<b>\$574,559,315</b>	<b>\$649.51</b>
Construction	423	2,314	2,351	2,405	21,413,151	698.94
Manufacturing	225	8,069	8,110	8,093	80,417,147	764.58
Trade, Transportation & Utilities	1,385	15,469	15,491	15,535	129,191,144	641.22
Retail Trade	891	9,642	9,669	9,668	60,041,971	478.13
Other Trade, Transportation & Utilities	494	5,827	5,822	5,867	69,149,173	911.02
Financial Activities	508	2,523	2,554	2,564	24,718,242	746.53
Education & Health Services	1,000	13,946	13,940	13,993	126,364,243	696.32
Leisure & Hospitality	482	6,606	6,880	6,857	22,437,592	254.53
Local Government	226	8,972	8,990	8,959	85,346,302	731.60
State Government	103	3,049	2,971	2,898	26,402,406	683.21
Other	1,101	6,860	6,738	7,004	58,269,088	652.69

North Central Local Workforce Development Area includes these counties: Cleburne, Fulton, Independence, Izard, Jackson, Sharp, Stone, Van Buren, White, and Woodruff.

<b>NORTHEAST LOCAL WORKFORCE DEVELOPMENT AREA</b>	<b>6,554</b>	<b>98,855</b>	<b>99,183</b>	<b>98,920</b>	<b>\$908,365,880</b>	<b>\$705.90</b>
Natural Resources & Mining	458	2,160	2,215	2,274	18,626,868	646.49
Construction	450	3,597	3,702	3,959	39,832,322	816.49
Manufacturing	300	18,950	18,926	19,013	227,705,994	923.69
Trade, Transportation & Utilities	1,738	19,449	19,609	19,442	156,509,190	617.39
Wholesale Trade	377	3,467	3,485	3,495	39,827,974	879.78
Retail Trade	1,021	12,745	12,839	12,658	78,791,131	475.46
Transportation, Warehousing & Utilities	340	3,237	3,285	3,289	37,890,085	891.23
Financial Activities	559	3,258	3,268	3,239	33,130,485	782.95
Professional & Business Services	674	7,135	7,133	6,995	54,239,347	588.66
Education & Health Services	1,125	16,591	16,615	16,496	167,466,183	777.56
Leisure & Hospitality	538	9,492	9,393	9,190	33,378,450	274.36
Local Government	215	11,454	11,544	11,604	115,171,292	768.11
State Government	102	4,553	4,551	4,492	44,644,527	757.77
Other	395	2,216	2,227	2,216	17,661,222	612.05

Northeast Local Workforce Development Area includes these counties: Clay, Craighead, Greene, Lawrence, Mississippi, Poinsett, and Randolph.

TABLE 8. LOCAL WORKFORCE DEVELOPMENT AREA SUMMARY

North American Industry Classification System - Industry Groups	Number of Employing Units	Employment			Total Earnings Apr - Jun 2016	Average Weekly Earnings
		Apr	May	Jun		
<b>NORTHWEST LOCAL WORKFORCE DEVELOPMENT AREA</b>	<b>15,703</b>	<b>263,586</b>	<b>265,100</b>	<b>266,480</b>	<b>\$2,925,919,900</b>	<b>\$849.15</b>
Natural Resources & Mining	132	1,444	1,468	1,485	18,017,614	945.62
Trade, Transportation & Utilities	3,861	59,179	59,583	60,059	620,814,823	801.16
Retail Trade	2,140	31,991	32,066	32,049	216,490,766	519.84
Other Trade, Transportation & Utilities	1,721	27,188	27,517	28,010	404,324,057	1,128.04
Information	207	2,471	2,454	2,464	28,709,110	896.63
Professional & Business Services	2,602	47,316	47,247	47,958	835,716,295	1,353.19
Education & Health Services	2,209	33,065	32,940	32,722	326,217,941	762.52
Leisure & Hospitality	1,665	29,282	30,021	30,017	118,792,453	306.91
Other Services	996	4,790	4,813	4,838	37,143,889	593.56
Local Government	304	23,148	23,203	23,319	270,764,619	896.86
State Government	110	9,006	9,315	8,978	107,492,679	908.68
Other	3,617	53,885	54,056	54,640	562,250,477	798.06

Northwest Local Workforce Development Area includes these counties: Baxter, Benton, Boone, Carroll, Madison, Marion, Newton, Searcy, and Washington.

<b>SOUTHEAST LOCAL WORKFORCE DEVELOPMENT AREA</b>	<b>6,113</b>	<b>68,717</b>	<b>68,790</b>	<b>68,638</b>	<b>\$628,524,714</b>	<b>\$703.60</b>
Natural Resources & Mining	431	2,381	2,341	2,343	22,194,292	724.95
Construction	301	2,058	2,072	2,146	21,397,809	786.80
Manufacturing	202	14,181	14,240	14,316	172,691,563	932.49
Trade, Transportation & Utilities	1,265	12,402	12,414	12,408	98,962,781	613.52
Retail Trade	753	7,815	7,822	7,798	46,888,148	461.72
Other Trade, Transportation & Utilities	512	4,587	4,592	4,610	52,074,633	871.51
Financial Activities	410	2,415	2,407	2,413	24,886,538	793.79
Education & Health Services	2,015	10,681	10,694	10,656	86,237,118	621.30
Other Services	318	1,211	1,188	1,223	8,662,800	551.93
Local Government	206	9,098	9,149	9,171	87,038,312	732.58
State Government	137	6,311	6,317	5,979	60,323,288	748.15
Other	828	7,979	7,968	7,983	46,130,213	444.86

Southeast Local Workforce Development Area includes these counties: Arkansas, Ashley, Bradley, Chicot, Cleveland, Desha, Drew, Grant, Jefferson, and Lincoln.

TABLE 8. LOCAL WORKFORCE DEVELOPMENT AREA SUMMARY

North American Industry Classification System - Industry Groups	Number of Employing Units	Employment			Total Earnings	Average Weekly Earnings
		Apr	May	Jun	Apr - Jun 2016	
<b>SOUTHWEST LOCAL WORKFORCE DEVELOPMENT AREA</b>	<b>5,681</b>	<b>78,238</b>	<b>78,176</b>	<b>78,209</b>	<b>\$740,267,795</b>	<b>\$728.11</b>
Natural Resources & Mining	346	2,238	2,241	2,265	23,431,824	801.80
Construction	350	3,689	3,479	3,473	40,824,656	885.36
Manufacturing	235	19,121	19,107	19,159	231,231,789	929.85
Trade, Transportation & Utilities	1,380	14,998	15,014	15,098	125,571,991	642.39
Wholesale Trade	243	1,922	1,946	1,950	22,584,034	895.79
Retail Trade	842	8,789	8,864	8,899	52,550,023	456.72
Transportation, Warehousing & Utilities	295	4,287	4,204	4,249	50,437,934	913.62
Information	52	425	428	425	4,933,554	890.85
Financial Activities	481	2,551	2,547	2,554	25,081,277	756.40
Professional & Business Services	456	4,439	4,392	4,376	49,472,099	864.44
Education & Health Services	1,210	9,609	9,699	9,546	75,797,465	606.21
Leisure & Hospitality	405	5,713	5,772	5,961	20,409,616	269.97
Other Services	371	1,725	1,718	1,756	10,962,398	486.59
Local Government	253	9,946	10,005	9,839	96,652,583	748.72
State Government	142	3,784	3,774	3,757	35,898,543	732.15
Southwest Local Workforce Development Area includes these counties: Calhoun, Columbia, Dallas, Hempstead, Howard, Lafayette, Little River, Miller, Nevada, Ouachita, Sevier, and Union						
<b>WEST CENTRAL LOCAL WORKFORCE DEVELOPMENT AREA</b>	<b>8,124</b>	<b>107,936</b>	<b>107,106</b>	<b>106,260</b>	<b>\$923,996,487</b>	<b>\$663.64</b>
Construction	739	4,560	4,472	4,505	\$46,208,473	787.73
Manufacturing	338	16,055	16,042	16,152	157,067,172	751.23
Trade, Transportation & Utilities	1,819	21,463	21,625	21,657	179,050,938	638.19
Wholesale Trade	316	1,963	1,986	1,982	20,178,603	785.13
Retail Trade	1,212	14,216	14,331	14,298	90,538,076	487.65
Transportation, Warehousing & Utilities	291	5,284	5,308	5,377	68,334,259	987.50
Financial Activities	805	3,938	3,939	4,002	38,627,688	750.41
Professional & Business Services	939	7,812	7,432	7,394	66,740,002	680.34
Education & Health Services	1,493	16,754	16,757	16,696	160,571,082	738.04
Leisure & Hospitality	784	14,637	14,273	14,196	53,115,903	284.36
Local Government	226	11,799	11,597	11,105	124,098,286	830.06
State Government	125	5,599	5,592	5,111	50,752,090	718.44
Other	856	5,319	5,377	5,442	47,764,853	683.03

West Central Local Workforce Development Area includes these counties: Clark, Conway, Garland, Hot Spring, Johnson, Montgomery, Perry, Pike, Pope, and Yell



TABLE 8. LOCAL WORKFORCE DEVELOPMENT AREA SUMMARY

North American Industry Classification System - Industry Groups	Number of Employing Units	Employment			Total Earnings	Average Weekly Earnings
		Apr	May	Jun	Apr - Jun 2016	
<b>WESTERN LOCAL WORKFORCE DEVELOPMENT AREA</b>	<b>6,445</b>	<b>103,266</b>	<b>103,813</b>	<b>104,170</b>	<b>\$978,783,710</b>	<b>\$725.70</b>
Natural Resources & Mining	163	1,539	1,478	1,423	19,388,711	1,007.73
Trade, Transportation & Utilities	1,570	22,704	22,880	22,801	201,032,980	678.40
Wholesale Trade	376	3,593	3,629	3,616	43,356,701	923.18
Retail Trade	922	12,559	12,640	12,583	82,252,495	502.39
Transportation, Warehousing & Utilities	272	6,552	6,611	6,602	75,423,784	880.62
Financial Activities	665	3,450	3,453	3,447	35,594,255	793.63
Professional & Business Services	882	10,780	10,733	10,914	99,770,043	710.02
Education & Health Services	1,038	15,477	15,550	15,529	170,067,664	842.99
Leisure & Hospitality	552	9,210	9,483	9,579	35,077,558	286.32
Other Services	434	2,088	2,069	2,254	15,383,948	553.76
Local Government	150	9,367	9,439	9,303	104,023,795	854.01
State Government	76	2,880	2,896	2,844	26,975,250	722.16
Other	915	25,771	25,832	26,076	271,469,506	806.48

Western Local Workforce Development Area includes these counties: Crawford, Franklin, Logan, Polk, Scott, and Sebastian