



Arkansas Covered  
Employment & Earnings  
Third Quarter  
2018

**COVERED EMPLOYMENT AND EARNINGS  
STATE OF ARKANSAS  
THIRD QUARTER 2018**

**ASA HUTCHINSON, GOVERNOR  
STATE OF ARKANSAS**

**DARYL BASSETT, DIRECTOR  
DEPARTMENT OF WORKFORCE SERVICES**

**PUBLISHED BY  
LABOR MARKET INFORMATION  
BUREAU OF LABOR STATISTICS PROGRAMS  
POST OFFICE BOX 2981  
LITTLE ROCK, ARKANSAS 72203-2981  
SUSAN PRICE, BLS PROGRAMS MANAGER  
TELEPHONE (501) 682-3103**

**STATE OF ARKANSAS WEBPAGE: <http://www.arkansas.gov>**

**DEPARTMENT OF WORKFORCE SERVICES WEBPAGE: <http://www.dws.arkansas.gov/>**

**WEBPAGE FOR LABOR MARKET INFORMATION: <http://www.discover.arkansas.gov>**

**RELEASED: JANUARY 2019**



## TABLE OF CONTENTS

DESCRIPTION OF DATA	PAGE
Description and Classification of Data	1
Definition of Covered Employment and Earnings	2
Significant Developments During Third Quarter 2018	3

### LIST OF GRAPHS AND TABLES

Graph 1	Total Covered Employment for Selected Years, Arkansas	7
Graph 2	Total Covered Earnings, by Calendar Quarter for Selected Years, Arkansas	8
Table 1	Quarterly Comparison of Covered Employment and Wages, by Industry	5
Table 2	Total Covered Employment in Arkansas, 2011 – 2018	6
Table 3	Total Covered Earnings, 2011 – 2018	9
Table 4	Total Taxable Earnings, 2011 – 2018	10
Table 5	State Summary – Employment and Total Earnings, by Industry, Third Quarter 2018	11
Table 6	County Summary – Employment and Total Earnings, by Industry, Third Quarter 2018	22
Table 7	Federal Government Employment and Total Earnings in Arkansas, Third Quarter 2018	60
Table 8	Local Workforce Development Area – Employment and Total Earnings, by Industry, Third Quarter 2018	61



EMPLOYMENT AND EARNINGS  
UNDER THE ARKANSAS EMPLOYMENT SECURITY LAW  
THIRD QUARTER 2018

**DESCRIPTION AND CLASSIFICATION OF DATA**

This publication contains covered employment and payroll data by industry and county for the Third Quarter 2018 and a record for total covered employment by month, quarterly payroll data, average weekly earnings, and total taxable earnings for 2011 through 2018. These data are compiled from quarterly contributions and wage reports submitted by employers subject to the Arkansas Employment Security Law.

Employment data have been tabulated for each month of the quarter by industry under the **North American Industry Classification System** (NAICS) by state, county, and workforce area. Payroll data represent the total wages paid during the quarter and are classified by industry for the state and by publishable industry groups for each county and workforce area.

Due to industry classification revisions, previously published data will not always be comparable with current data. For this reason, comparisons should not be made between the same industries under different revisions. For more information, visit the NAICS home page at <http://www.census.gov/naics>.

Industry Classification Revisions

- SIC (Standard Industrial Classification) 1987 to NAICS 2002
- NAICS 2002 to NAICS 2007
- NAICS 2007 to NAICS 2012
- NAICS 2012 to NAICS 2018

The tabulation of this data is a joint effort in conjunction with the United States Bureau of Labor Statistics. Data included in this publication are subject to revisions. Revisions are typically reflected in the Annual Covered Employment and Earnings publication.

## **DEFINITION OF COVERED EMPLOYMENT AND EARNINGS**

Covered Employment is the total number of workers employed by establishments subject to the Arkansas Employment Security Law that worked or received pay for the payroll period including the 12<sup>th</sup> of the month. Earnings include all wages paid to any covered employee by their employer including salaries, bonuses, commissions, fees, fringe benefits, sick pay made directly to employees or dependents, deferred compensation, and reported tips. These wages include both taxable and nontaxable wages. Only the first \$10,000 paid to each worker by an employer in the calendar year is taxable under the Arkansas Employment Security Law.

An Arkansas state unemployment insurance account is required of any entity meeting the definition of an employer. As described by Arkansas Department of Workforce Services Law, the definition of an employer includes, but is not limited to, a sole proprietorship, partnership, corporation, associations, trust, estate, and receiver or trustee in bankruptcy. The entity must employ one or more individuals for ten or more days in a calendar year, whether or not the days are consecutive.

Currently excluded from coverage is employment covered by the Railroad Unemployment Insurance Act, some domestic service workers, employees of small agricultural establishments, self-employed workers, unpaid family workers, insurance and real estate agents paid only on a commission basis, and employees of churches and religious organizations except separately incorporated schools.

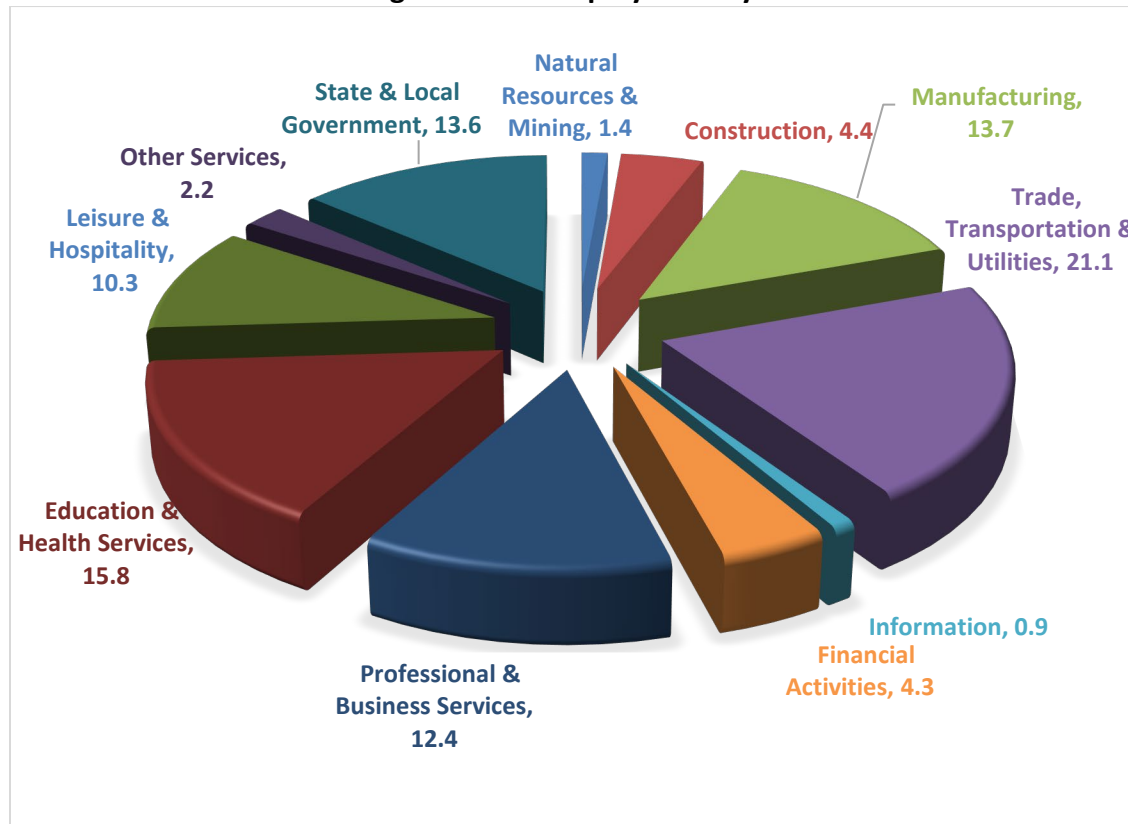
Civilian federal workers are covered by Unemployment Compensation for Federal Employees (UCFE).

## SIGNIFICANT DEVELOPMENTS DURING THIRD QUARTER 2018

### AVERAGE EMPLOYMENT CHANGES

Covered employment averaged 1,176,785 during the Third Quarter 2018 (refer to Table 1), a decrease of 20,347 (-1.7%) from the previous quarter and an increase of 10,176 (0.9%) from the average recorded one year ago. The over-the-year comparison is more significant when used as an economic indicator and allows for seasonal factors that appear when comparing over-the-quarter data to be disregarded.

**Average Covered Employment by NAICS**



### EMPLOYMENT CHANGES FROM SECOND QUARTER 2018

Over the quarter gains were recorded in seven of the eleven industry groups. Leisure & Hospitality reported the largest increase (4,628), a typical seasonal expansion. Losses occurred in four industry groups. State & Local Government recorded the largest decline (-23,713), largely due to fluctuations in public school employment.

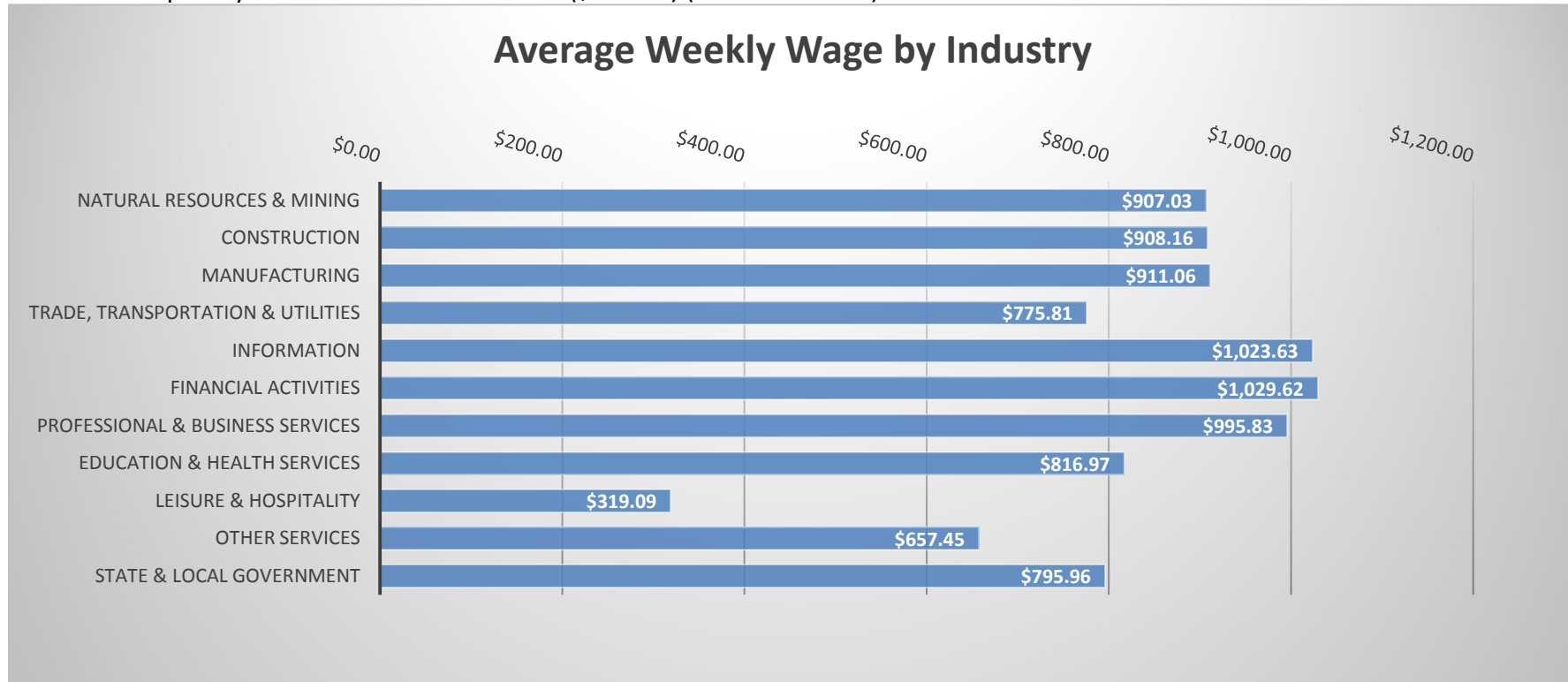


## EMPLOYMENT CHANGES FROM THIRD QUARTER 2017 (QUARTER YEAR AGO COMPARISON)

Over-the-year gains were recorded in nine industry groups (refer to Table 1). The largest gains occurred in Leisure & Hospitality (7,862), Education & Health Services (4,878) due to growth in the Healthcare industries; and Professional and Business Services (3,394). The only loss was reported in State & Local Government (-20924), a typical contraction.

## COVERED WAGES

Wages paid to covered workers totaled \$12,274,742,987 for the Third Quarter 2018 (refer to Table 1), for an average weekly wage of \$802.36 (refer to Table 5). Calhoun County workers recorded the highest average weekly wage (\$1,052.44), and employees in Newton County reported the lowest (\$468.07) (refer to Table 6). Financial Activities recorded the highest average weekly wage for the State of Arkansas (\$1,029.62). The Leisure & Hospitality sector recorded the lowest (\$319.09) (refer to Table 5).



**TABLE 1. QUARTERLY COMPARISON OF COVERED EMPLOYMENT AND WAGES, BY INDUSTRY**

North American Industry Classification System - Industry Groups	Number of Employing Units	Monthly Employment Average	Percent of Total	Net Change From:		Total Wages Paid  Jul - Sep 2018	Percent of Total
				Apr - Jun 2018	Jul - Sep 2017		
<b>TOTAL</b>	<b>89,795</b>	<b>1,176,785</b>	<b>100</b>	<b>-20,347</b>	<b>10,176</b>	<b>\$12,274,742,987</b>	<b>100</b>
<b>Natural Resources &amp; Mining</b>	2,519	16,310	1.4	-349	319	192,314,488	1.6
Agriculture, Forestry, Fishing & Hunting	2,085	12,479	1.1	-405	203	130,639,080	1.1
Mining	434	3,831	0.3	55	115	61,675,408	0.5
<b>Construction</b>	7,007	51,747	4.4	698	2,069	610,932,830	5.0
<b>Manufacturing</b>	2,923	160,847	13.7	1,882	4,723	1,905,042,213	15.5
<b>Trade, Transportation &amp; Utilities</b>	21,788	248,090	21.1	-2,958	2,378	2,502,113,584	20.4
Wholesale Trade	7,269	47,418	4.0	160	850	782,537,349	6.4
Retail Trade	11,127	138,380	11.8	-3,830	-1,519	930,207,029	7.6
Transportation & Warehousing	2,979	54,457	4.6	638	2,859	635,538,966	5.2
Utilities	413	7,835	0.7	73	187	153,830,240	1.3
<b>Information</b>	1,223	10,786	0.9	-1,838	-2,154	143,527,356	1.2
<b>Financial Activities</b>	8,431	50,975	4.3	1,044	1,761	682,296,385	5.6
Finance & Insurance	4,976	37,182	3.2	780	1,002	553,698,953	4.5
Real Estate & Rental & Leasing	3,455	13,792	1.2	264	759	128,597,432	1.0
<b>Professional &amp; Business Services</b>	14,444	146,202	12.4	118	3,394	1,892,698,287	15.4
Professional & Technical Services	9,103	43,777	3.7	781	479	663,657,849	5.4
Management of Companies & Enterprises	557	34,787	3.0	479	-1,202	718,002,843	5.8
Administrative & Waste Services	4,784	67,638	5.7	-1,142	4,117	511,037,595	4.2
<b>Education &amp; Health Services</b>	15,804	185,941	15.8	298	4,878	1,974,803,865	16.1
Educational Services	887	11,252	1.0	-777	-338	115,328,850	0.9
Health Care & Social Assistance	14,917	174,689	14.8	1,075	5,216	1,859,475,015	15.1
<b>Leisure &amp; Hospitality</b>	7,255	120,750	10.3	4,628	7,862	500,885,630	4.1
Arts, Entertainment & Recreation	984	12,340	1.0	1,918	2,366	62,167,315	0.5
Accommodation & Food Services	6,271	108,410	9.2	2,710	5,497	438,718,315	3.6
<b>Other Services</b>	5,374	25,311	2.2	719	815	216,329,597	1.8
<b>State &amp; Local Government</b>	3,027	159,827	13.6	-23,713	-20,924	1,653,798,752	13.5
Local Government	1,969	92,674	7.9	-21,567	-20,249	826,830,439	6.7
State Government	1,058	67,152	5.7	-2,146	-675	826,968,313	6.7
<b>Nonclassifiable Establishments</b>	0	0	0.0	0	0	0	0.0

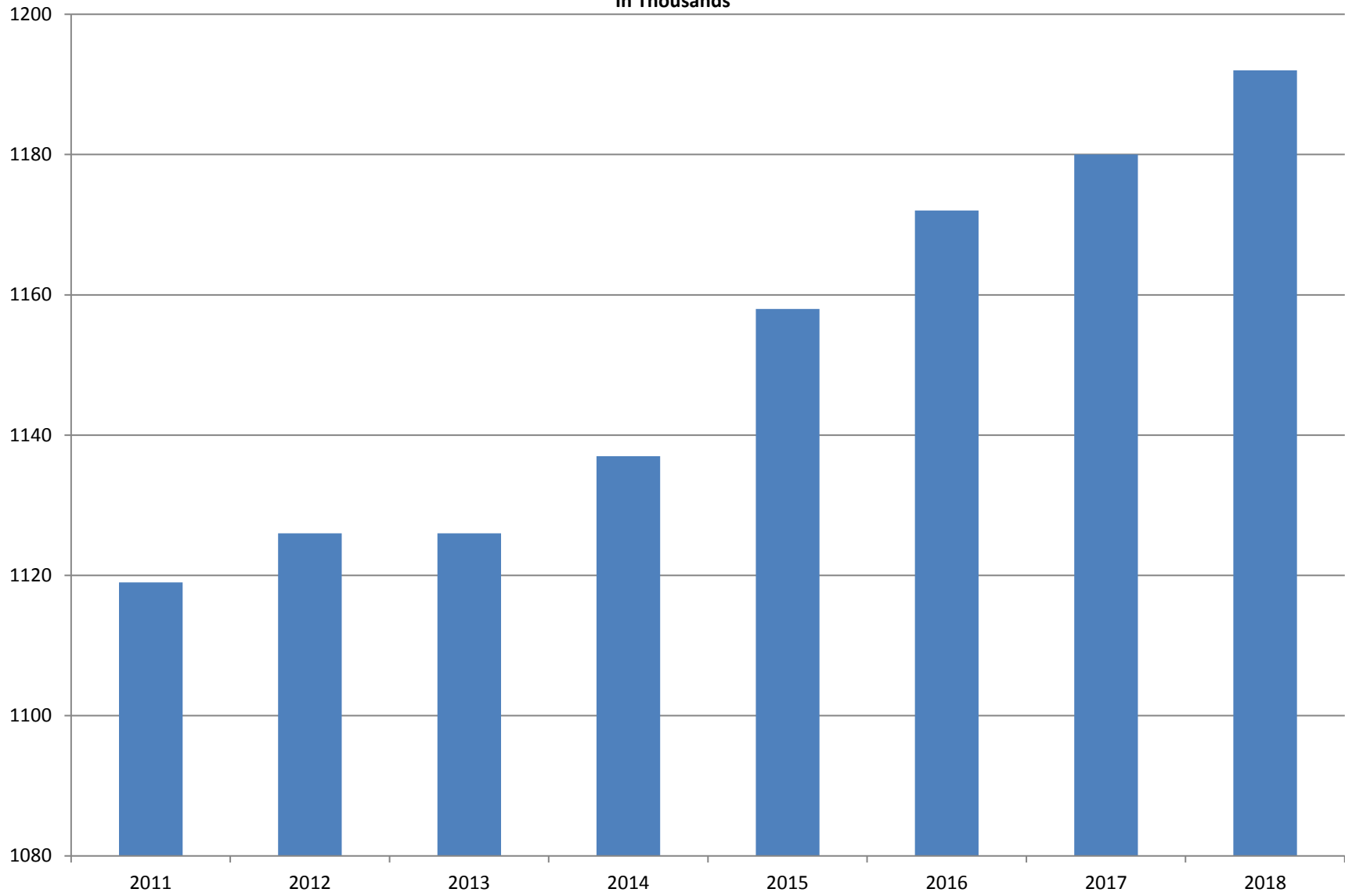
Note: Items do not necessarily add to total because of rounding. Because of industry code changes between years, substantial employment and wage shifts among industries are anticipated.

**TABLE 2. TOTAL COVERED EMPLOYMENT IN ARKANSAS**

<b>PERIOD</b>	<b>2011</b>	<b>2012</b>	<b>2013</b>	<b>2014</b>	<b>2015</b>	<b>2016</b>	<b>2017</b>	<b>2018</b>
<b>AVERAGE</b>	<b>1,118,639</b>	<b>1,126,171</b>	<b>1,125,890</b>	<b>1,137,486</b>	<b>1,157,634</b>	<b>1,171,503</b>	<b>1,180,337</b>	<b>1,192,116</b>
January	1,098,349	1,113,274	1,112,991	1,114,412	1,135,577	1,152,434	1,161,239	1,173,537
February	1,098,445	1,119,319	1,121,492	1,122,905	1,144,902	1,162,294	1,172,290	1,183,185
March	1,113,061	1,131,123	1,129,100	1,132,106	1,146,413	1,170,837	1,179,686	1,190,199
April	1,129,635	1,136,608	1,134,734	1,140,788	1,158,606	1,178,630	1,185,212	1,194,816
May	1,126,371	1,142,985	1,138,383	1,149,046	1,167,657	1,181,644	1,189,900	1,201,113
June	1,123,412	1,136,699	1,130,402	1,144,876	1,164,607	1,177,506	1,186,326	1,195,468
July	1,080,937	1,078,836	1,083,849	1,096,675	1,119,390	1,132,361	1,137,883	1,168,432
August	1,106,262	1,108,552	1,109,759	1,125,162	1,148,502	1,160,743	1,168,802	1,200,284
September	1,132,779	1,134,829	1,135,673	1,150,545	1,173,776	1,185,510	1,193,845	1,222,012
October	1,138,395	1,135,677	1,138,312	1,153,684	1,173,953	1,185,022	1,194,194	N/A
November	1,138,543	1,137,411	1,141,035	1,158,579	1,177,717	1,186,046	1,197,650	N/A
December	1,137,474	1,138,742	1,134,955	1,161,056	1,180,513	1,185,009	1,197,013	N/A

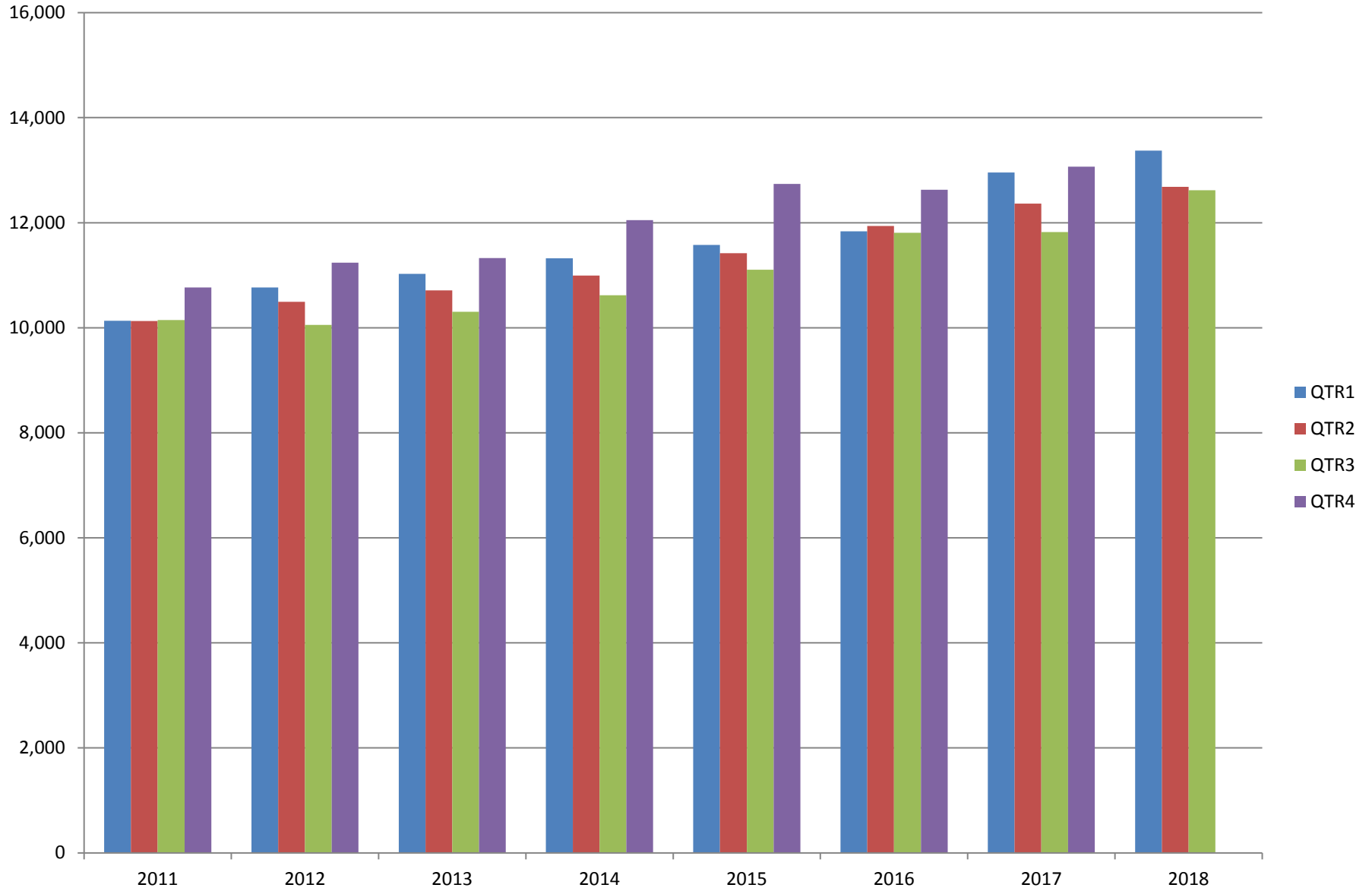
# AVERAGE TOTAL COVERED EMPLOYMENT

In Thousands



# TOTAL COVERED EARNINGS BY CALENDAR YEAR

In Thousands



**TABLE 3. TOTAL COVERED EARNINGS 2011 - 2018**

<b>PERIOD</b>	<b>2011</b>	<b>2012</b>	<b>2013</b>	<b>2014</b>
<b>TOTAL</b>	<b>\$41,177,659,236</b>	<b>\$42,551,238,929</b>	<b>\$43,371,086,461</b>	<b>\$44,980,520,034</b>
January - March	10,134,035,254	10,766,175,449	11,027,184,315	11,321,422,241
April - June	10,128,274,611	10,494,369,042	10,711,027,503	10,991,760,061
July - September	10,147,287,431	10,053,294,410	10,304,451,772	10,619,889,280
October - December	10,768,061,940	11,237,400,028	11,328,422,871	12,047,448,452
<b>Average Weekly Earnings</b>	<b>\$707.89</b>	<b>\$726.62</b>	<b>\$740.80</b>	<b>\$760.46</b>

<b>PERIOD</b>	<b>2015</b>	<b>2016</b>	<b>2017</b>	<b>2018</b>
<b>TOTAL</b>	<b>\$46,836,352,793</b>	<b>\$48,207,277,530</b>	<b>\$50,207,202,141</b>	<b>\$38,674,570,253</b>
January - March	11,575,046,688	11,836,255,664	12,955,088,347	13,372,730,974
April - June	11,419,363,330	11,935,722,186	12,363,027,711	12,682,491,819
July - September	11,104,443,452	11,809,460,297	11,823,324,966	12,619,347,460
October - December	12,737,499,323	12,625,839,383	13,065,761,117	N/A
<b>Average Weekly Earnings</b>	<b>\$778.05</b>	<b>\$791.34</b>	<b>\$818.01</b>	<b>\$831.84</b>

**TABLE 4. TOTAL TAXABLE EARNINGS, 2011 - 2018**

<b>PERIOD</b>	<b>2011</b>	<b>2012</b>	<b>2013</b>	<b>2014</b>
<b>TOTAL</b>	<b>11,479,396,226</b>	<b>11,624,348,048</b>	<b>11,644,747,978</b>	<b>11,919,662,224</b>
<b>January - March</b>	5,828,877,821	6,167,036,199	6,184,735,653	6,288,682,396
<b>April - June</b>	2,910,604,359	2,838,154,846	2,805,431,293	2,831,013,392
<b>July - September</b>	1,601,382,146	1,494,712,584	1,506,497,129	1,552,243,963
<b>October - December</b>	1,138,531,900	1,124,444,419	1,148,083,903	1,247,722,473

<b>PERIOD</b>	<b>2015</b>	<b>2016</b>	<b>2017</b>	<b>2018</b>
<b>TOTAL</b>	<b>12,258,632,610</b>	<b>12,511,938,047</b>	<b>12,744,039,136</b>	<b>10,185,012,148</b>
<b>January - March</b>	6,378,966,662	6,595,351,454	6,958,706,950	6,577,871,657
<b>April - June</b>	2,915,293,283	3,003,077,908	2,908,226,426	2,278,450,975
<b>July - September</b>	1,640,978,599	1,651,582,584	1,576,968,648	1,328,689,516
<b>October - December</b>	1,323,394,066	1,261,926,101	1,300,137,112	N/A

TABLE 5. STATEWIDE SUMMARY

North American Industry Classification System - Industry Groups		Number of Employing Units	Employment			Total Earnings Jul - Sep 2018	Average Weekly Earnings
			Jul	Aug	Sep		
<b>TOTAL, ALL INDUSTRIES</b>		<b>89,795</b>	<b>1,148,299</b>	<b>1,180,188</b>	<b>1,201,868</b>	<b>\$12,274,742,987</b>	<b>\$802.36</b>
<b>NATURAL RESOURCES &amp; MINING</b>		<b>2,519</b>	<b>16,507</b>	<b>16,269</b>	<b>16,153</b>	<b>\$192,314,488</b>	<b>\$907.03</b>
<b>11</b>	<b>AGRICULTURE, FORESTRY, FISHING &amp; HUNTING</b>	<b>2,085</b>	<b>12,670</b>	<b>12,439</b>	<b>12,327</b>	<b>\$130,639,080</b>	<b>\$805.31</b>
<b>111</b>	<b>CROP PRODUCTION</b>	<b>934</b>	<b>4,101</b>	<b>4,105</b>	<b>4,254</b>	<b>\$32,076,540</b>	<b>\$594.08</b>
1111	Oilseed & Grain Farming	697	2,854	2,870	3,003	22,912,205	605.87
1112	Vegetable & Melon Farming	32	249	231	257	1,604,144	502.29
1113	Fruit & Tree Nut Farming	12	37	34	34	217,419	477.84
1114	Greenhouse & Nursery Production	37	300	296	305	2,536,993	649.79
1119	Other Crop Farming	156	661	674	655	4,805,779	557.30
<b>112</b>	<b>ANIMAL PRODUCTION &amp; AQUACULTURE</b>	<b>330</b>	<b>3,259</b>	<b>3,172</b>	<b>3,204</b>	<b>\$38,522,458</b>	<b>\$922.66</b>
1121	Cattle Ranching & Farming	125	407	382	396	3,025,418	589.18
1122	Hog & Pig Farming	12	142	138	139	1,596,559	879.32
1123	Poultry & Egg Production	127	2,268	2,237	2,254	29,997,239	1,024.18
1125	Animal Aquaculture	44	370	349	346	3,482,577	754.62
	Other	22	72	66	69	420,665	468.97
<b>115</b>	<b>SUPPORT ACTIVITIES FOR AGRICULTURE &amp; FORESTRY</b>	<b>413</b>	<b>2,980</b>	<b>2,801</b>	<b>2,510</b>	<b>\$34,271,571</b>	<b>\$953.90</b>
1151	Support Activities for Crop Production	277	1,391	1,338	1,492	19,552,094	1,068.95
1152	Support Activities for Animal Production	65	706	726	694	6,110,423	663.26
1153	Support Activities for Forestry	71	883	737	324	8,609,054	1,021.97
	<b>OTHER</b>	<b>408</b>	<b>2,330</b>	<b>2,361</b>	<b>2,359</b>	<b>\$25,768,511</b>	<b>\$843.49</b>
<b>21</b>	<b>MINING</b>	<b>434</b>	<b>3,837</b>	<b>3,830</b>	<b>3,826</b>	<b>\$61,675,408</b>	<b>\$1,238.39</b>
<b>211</b>	<b>OIL &amp; GAS EXTRACTION</b>	<b>73</b>	<b>675</b>	<b>667</b>	<b>664</b>	<b>\$13,638,866</b>	<b>\$1,569.01</b>
<b>212</b>	<b>MINING (EXCEPT OIL &amp; GAS)</b>	<b>107</b>	<b>1,799</b>	<b>1,805</b>	<b>1,829</b>	<b>\$24,313,537</b>	<b>\$1,032.73</b>
<b>213</b>	<b>SUPPORT ACTIVITIES FOR MINING</b>	<b>254</b>	<b>1,363</b>	<b>1,358</b>	<b>1,333</b>	<b>\$23,723,005</b>	<b>\$1,350.40</b>



TABLE 5. STATEWIDE SUMMARY

North American Industry Classification System - Industry Groups		Number of Employing Units	Employment			Total Earnings	Average Weekly Earnings
			Jul	Aug	Sep	Jul - Sep 2018	
<b>CONSTRUCTION</b>		<b>7,007</b>	<b>51,698</b>	<b>51,636</b>	<b>51,908</b>	<b>\$610,932,830</b>	<b>\$908.16</b>
<b>236</b>	<b>CONSTRUCTION OF BUILDINGS</b>	<b>1,858</b>	<b>10,853</b>	<b>10,882</b>	<b>11,077</b>	<b>\$140,583,131</b>	<b>\$988.73</b>
2361	Residential Building Construction	1,249	3,604	3,616	3,645	39,159,520	831.74
2362	Nonresidential Building Construction	609	7,249	7,266	7,432	101,423,611	1,066.45
<b>237</b>	<b>HEAVY &amp; CIVIL ENGINEERING CONSTRUCTION</b>	<b>726</b>	<b>8,020</b>	<b>7,982</b>	<b>8,055</b>	<b>\$99,649,521</b>	<b>\$955.90</b>
2371	Utility System Construction	409	4,272	4,317	4,397	52,999,176	941.83
2372	Land Subdivision	44	82	82	81	770,009	725.28
2373	Highway, Street & Bridge Construction	181	2,931	2,873	2,804	36,625,567	981.88
2379	Other Heavy Construction	92	735	710	773	9,254,769	962.90
<b>238</b>	<b>SPECIALTY TRADE CONTRACTORS</b>	<b>4,423</b>	<b>32,825</b>	<b>32,772</b>	<b>32,776</b>	<b>\$370,700,178</b>	<b>\$869.61</b>
2381	Building Foundation & Exterior Contractors	830	6,021	6,043	6,056	66,510,661	847.05
2382	Building Equipment Contractors	2,147	18,024	18,019	18,034	216,564,031	924.17
2383	Building Finishing Contractors	726	3,853	3,825	3,855	37,039,665	741.14
2389	Other Specialty Trade Contractors	720	4,927	4,885	4,831	50,585,821	797.22
<b>MANUFACTURING</b>		<b>2,923</b>	<b>160,677</b>	<b>160,761</b>	<b>161,102</b>	<b>\$1,905,042,213</b>	<b>\$911.06</b>
<b>311</b>	<b>FOOD MANUFACTURING</b>	<b>294</b>	<b>48,203</b>	<b>48,315</b>	<b>48,609</b>	<b>\$460,630,857</b>	<b>\$732.46</b>
3111	Animal Food Manufacturing	48	1,981	2,006	1,995	23,842,799	919.79
3112	Grain & Oilseed Milling	33	2,638	2,646	2,717	31,415,867	906.11
3114	Fruit, Vegetable & Specialty Food	18	4,060	4,101	4,189	48,439,197	905.12
3115	Dairy Product Manufacturing	7	576	562	575	6,775,067	912.71
3116	Animal Slaughtering & Processing	79	32,764	32,792	32,881	279,504,250	655.25
3118	Bakeries & Tortilla Manufacturing	76	3,905	3,940	3,988	45,804,153	893.28
3119	Other Food Manufacturing	23	2,248	2,242	2,225	24,647,426	847.04
	Other	10	31	26	39	202,098	485.81
<b>312</b>	<b>BEVERAGE &amp; TOBACCO PRODUCT MANUFACTURING</b>	<b>61</b>	<b>1,599</b>	<b>1,559</b>	<b>1,552</b>	<b>\$21,673,274</b>	<b>\$1,061.89</b>
<b>313</b>	<b>TEXTILE MILLS</b>	<b>8</b>	<b>118</b>	<b>115</b>	<b>118</b>	<b>\$1,932,167</b>	<b>\$1,270.33</b>
<b>314</b>	<b>TEXTILE PRODUCT MILLS</b>	<b>47</b>	<b>971</b>	<b>966</b>	<b>968</b>	<b>\$11,321,240</b>	<b>\$899.34</b>
3141	Textile Furnishing Mills	10	39	39	40	498,645	975.19
3149	Other Textile Product Mills	37	932	927	928	10,822,595	896.13
<b>315</b>	<b>APPAREL MANUFACTURING</b>	<b>15</b>	<b>877</b>	<b>899</b>	<b>906</b>	<b>\$6,167,938</b>	<b>\$530.71</b>
3151	Apparel Knitting Mills	3	564	563	555	3,645,051	500.10
	Other	12	313	336	351	2,522,887	582.20

TABLE 5. STATEWIDE SUMMARY

North American Industry Classification System - Industry Groups		Number of	Employment			Total Earnings	Average
		Employing Units	Jul	Aug	Sep	Jul - Sep 2018	Weekly Earnings
<b>316</b>	<b>LEATHER &amp; ALLIED PRODUCT MANUFACTURING</b>	<b>12</b>	<b>1,134</b>	<b>1,134</b>	<b>1,133</b>	<b>\$7,213,245</b>	<b>\$489.44</b>
3162	Footwear Manufacturing	3	942	937	934	5,778,557	\$474.05
3169	Other Leather & Allied Product Manufacturing	9	192	197	199	1,434,688	\$563.06
<b>321</b>	<b>WOOD PRODUCT MANUFACTURING</b>	<b>302</b>	<b>10,038</b>	<b>10,052</b>	<b>10,086</b>	<b>\$110,699,915</b>	<b>\$846.57</b>
3211	Sawmills & Wood Preservation	142	4,836	4,860	4,859	57,300,528	908.50
3212	Veneer & Engineered Wood Products	38	1,820	1,798	1,796	23,683,742	1,009.51
3219	Other Wood Product Manufacturing	122	3,382	3,394	3,431	29,715,645	671.84
<b>322</b>	<b>PAPER MANUFACTURING</b>	<b>72</b>	<b>9,684</b>	<b>9,692</b>	<b>9,667</b>	<b>\$158,988,491</b>	<b>\$1,263.29</b>
3221	Pulp, Paper & Paperboard Mills	15	3,924	3,932	3,905	81,960,211	1,608.19
3222	Converted Paper Product Manufacturing	57	5,760	5,760	5,762	77,028,280	1,028.57
<b>323</b>	<b>PRINTING &amp; RELATED SUPPORT ACTIVITIES</b>	<b>245</b>	<b>3,870</b>	<b>3,852</b>	<b>3,848</b>	<b>\$38,344,383</b>	<b>\$764.80</b>
<b>324</b>	<b>PETROLEUM &amp; COAL PRODUCTS MANUFACTURING</b>	<b>22</b>	<b>1,279</b>	<b>1,254</b>	<b>1,211</b>	<b>\$22,937,855</b>	<b>\$1,413.82</b>
<b>325</b>	<b>CHEMICAL MANUFACTURING</b>	<b>121</b>	<b>5,512</b>	<b>5,554</b>	<b>5,570</b>	<b>\$85,055,533</b>	<b>\$1,179.86</b>
3251	Basic Chemical Manufacturing	30	1,876	1,897	1,889	34,917,140	1,423.14
3252	Resin, Rubber & Artificial Fibers	11	477	496	498	7,572,118	1,187.91
3253	Agricultural Chemical Manufacturing	14	438	449	454	7,139,699	1,228.65
3254	Pharmaceutical & Medicine Manufacturing	21	509	501	513	6,593,134	999.01
3255	Paint, Coating & Adhesive Manufacturing	10	221	211	214	3,092,865	1,104.86
3256	Soap, Cleaning Compound, & Toilet Preparation Manufacturing	14	1,255	1,259	1,248	16,156,646	991.08
3259	Other Chemical Preparation Manufacturing	21	736	741	754	9,583,931	991.34
<b>326</b>	<b>PLASTICS &amp; RUBBER PRODUCTS MANUFACTURING</b>	<b>122</b>	<b>10,928</b>	<b>10,960</b>	<b>10,956</b>	<b>\$133,303,544</b>	<b>\$936.62</b>
3261	Plastics Product Manufacturing	94	6,768	6,828	6,758	76,812,298	870.88
3262	Rubber Product Manufacturing	28	4,160	4,132	4,198	56,491,246	1,043.75
<b>327</b>	<b>NONMETALLIC MINERAL PRODUCT MANUFACTURING</b>	<b>228</b>	<b>3,657</b>	<b>3,627</b>	<b>3,609</b>	<b>\$45,129,654</b>	<b>\$956.08</b>
3271	Clay Product & Refractory Manufacturing	12	519	521	512	6,082,841	904.47
3272	Glass & Glass Product Manufacturing	8	345	361	358	4,406,365	955.69
3273	Cement & Concrete Product Manufacturing	172	2,083	2,040	2,050	25,861,098	966.78
3274	Lime & Gypsum Product Manufacturing	3	300	298	294	4,450,644	1,151.43
3279	Other Nonmetallic Mineral Products Manufacturing	33	410	407	395	4,328,706	824.20
<b>331</b>	<b>PRIMARY METAL MANUFACTURING</b>	<b>72</b>	<b>8,145</b>	<b>8,181</b>	<b>8,288</b>	<b>\$150,381,396</b>	<b>\$1,409.90</b>
3311	Iron & Steel Mills & Ferroalloys	10	3,229	3,247	3,303	81,468,799	1,922.54
3312	Purchased Steel Product Manufacturing	21	2,207	2,230	2,264	33,668,634	1,159.48
3313	Alumina & Aluminum Production	15	809	818	829	11,485,555	1,079.20
3314	Other Nonferrous Metal Production	8	318	314	316	4,239,215	1,031.94
3315	Foundries	18	1,582	1,572	1,576	19,519,193	952.31

TABLE 5. STATEWIDE SUMMARY

North American Industry Classification System - Industry Groups		Number of	Employment			Total Earnings	Average
		Employing Units	Jul	Aug	Sep	Jul - Sep 2018	Weekly Earnings
<b>332</b>	<b>FABRICATED METAL PRODUCT MANUFACTURING</b>	<b>525</b>	<b>15,816</b>	<b>15,874</b>	<b>15,850</b>	<b>\$203,477,531</b>	<b>\$987.72</b>
3321	Forging & Stamping	15	452	456	459	5,455,258	920.93
3322	Cutlery & Hand Tool Manufacturing	14	551	535	531	6,219,525	887.62
3323	Architectural & Structural Metals	149	4,546	4,569	4,558	59,649,932	1,006.76
3324	Boilers, Tanks & Shipping Containers	15	642	648	657	8,952,972	1,061.16
3325	Hardware Manufacturing	5	267	269	274	3,304,580	941.48
3326	Spring & Wire Product Manufacturing	10	353	361	350	4,370,369	947.88
3327	Machine Shops & Threaded Products	207	2,167	2,163	2,161	24,045,490	854.87
3328	Coating, Engraving & Heat Treating Metals	43	673	671	676	6,830,003	780.27
3329	Other Fabricated Metal Product Manufacturing	67	6,165	6,202	6,184	84,649,402	1,053.01
<b>333</b>	<b>MACHINERY MANUFACTURING</b>	<b>206</b>	<b>11,414</b>	<b>11,349</b>	<b>11,406</b>	<b>\$134,206,641</b>	<b>\$906.40</b>
3331	Agriculture, Construction & Mining Machinery	39	2,737	2,699	2,677	25,916,972	737.19
3332	Industrial Machinery Manufacturing	25	702	684	675	10,141,995	1,135.59
3333	Commercial & Service Industry Machinery	20	776	762	758	9,671,167	972.04
3334	HVAC & Commercial Refrigeration Equipment	24	2,775	2,770	2,799	33,077,657	914.83
3335	Metalworking Machinery Manufacturing	50	1,007	978	976	11,458,771	893.05
3336	Turbine & Power Transmission Equipment Manufacturing	5	725	739	778	8,696,150	895.10
3339	Other General Purpose Machinery Manufacturing	43	2,692	2,717	2,743	35,243,929	997.70
<b>334</b>	<b>COMPUTER &amp; ELECTRONIC PRODUCT MANUFACTURING</b>	<b>52</b>	<b>2,050</b>	<b>2,063</b>	<b>2,029</b>	<b>\$28,226,935</b>	<b>\$1,060.55</b>
3343	Audio & Video Equipment Manufacturing	5	124	122	118	1,263,357	800.94
3344	Semiconductors & Electronic Components	24	1,436	1,452	1,440	19,289,152	1,028.50
3345	Navigational, Measuring, Electromedical, & Control Instr, Mfg Other	18 5	401 89	403 86	383 88	6,261,683 1,412,743	1,217.36 1,239.61
<b>335</b>	<b>ELECTRICAL EQUIPMENT &amp; APPLIANCES</b>	<b>52</b>	<b>4,601</b>	<b>4,600</b>	<b>4,561</b>	<b>\$62,110,353</b>	<b>\$1,041.50</b>
3351	Electric Lighting Equipment Manufacturing	9	318	319	322	3,249,951	\$782.05
3352	Household Appliance Manufacturing	4	28	29	28	362,046	\$982.93
3353	Electrical Equipment Manufacturing	20	2,971	2,955	2,921	40,984,669	1,069.06
3359	Other Electrical Equipment & Component Manufacturing	19	1,284	1,297	1,290	17,513,687	1,044.08
<b>336</b>	<b>TRANSPORTATION EQUIPMENT MANUFACTURING</b>	<b>127</b>	<b>13,815</b>	<b>13,770</b>	<b>13,771</b>	<b>\$156,312,389</b>	<b>\$872.23</b>
3362	Motor Vehicle Body & Trailer Manufacturing	31	2,102	2,077	2,096	20,802,963	765.05
3363	Motor Vehicle Parts Manufacturing	40	5,279	5,283	5,227	58,450,012	854.30
3364	Aerospace Product & Parts Manufacturing	24	2,983	2,938	3,001	42,279,660	1,093.57
3366	Ship & Boat Building Other	20 12	2,179 1,272	2,205 1,267	2,171 1,276	18,855,327 15,924,427	663.80 963.27
<b>337</b>	<b>FURNITURE &amp; RELATED PRODUCT MANUFACTURING</b>	<b>166</b>	<b>3,597</b>	<b>3,609</b>	<b>3,612</b>	<b>\$33,266,488</b>	<b>\$709.64</b>
3371	Household & Institutional Furniture	140	2,889	2,886	2,851	25,358,387	678.41
3372	Office Furniture & Fixtures Manufacturing	20	641	657	694	7,452,355	863.34
3379	Other Furniture Related Product Manufacturing	6	67	66	67	455,746	525.86
<b>339</b>	<b>MISCELLANEOUS MANUFACTURING</b>	<b>174</b>	<b>3,369</b>	<b>3,336</b>	<b>3,352</b>	<b>\$33,662,384</b>	<b>\$772.42</b>
3391	Medical Equipment & Supplies Manufacturing	66	1,658	1,637	1,638	17,584,884	822.63
3399	Other Miscellaneous Manufacturing	108	1,711	1,699	1,714	16,077,500	724.08

TABLE 5. STATEWIDE SUMMARY

North American Industry Classification System - Industry Groups		Number of Employing Units	Employment			Total Earnings Jul - Sep 2018	Average Weekly Earnings
			Jul	Aug	Sep		
<b>TRADE, TRANSPORTATION &amp; UTILITIES</b>		<b>21,788</b>	<b>247,719</b>	<b>248,536</b>	<b>248,016</b>	<b>\$2,502,113,584</b>	<b>\$775.81</b>
<b>42</b>	<b>WHOLESALE TRADE</b>	<b>7,269</b>	<b>47,512</b>	<b>47,398</b>	<b>47,345</b>	<b>\$782,537,349</b>	<b>\$1,269.45</b>
<b>423</b>	<b>MERCHANT WHOLESALERS, DURABLE GOODS</b>	<b>3,063</b>	<b>23,718</b>	<b>23,735</b>	<b>23,720</b>	<b>\$363,162,386</b>	<b>\$1,177.51</b>
4231	Motor Vehicle & Part Merchant Wholesalers	289	3,091	3,153	3,178	44,151,529	1,081.39
4232	Furniture & Furnishings Merchant Wholesalers	75	454	449	443	7,700,398	1,320.22
4233	Lumber & Supply Merchant Wholesalers	221	1,557	1,556	1,535	20,231,169	1,004.46
4234	Commercial Goods Merchant Wholesalers	563	3,101	3,076	3,063	62,700,415	1,565.94
4235	Metal & Mineral Merchant Wholesalers	144	1,064	1,070	1,071	15,776,905	1,135.98
4236	Appliances & Electronics Goods Merchant Wholesalers	290	2,552	2,541	2,551	42,763,336	1,291.01
4237	Hardware & Plumbing Merchant Wholesalers	300	2,777	2,776	2,751	39,231,555	1,090.25
4238	Machinery & Supply Merchant Wholesalers	888	7,122	7,116	7,139	105,231,147	1,135.99
4239	Miscellaneous Durable Goods Merchant Wholesalers	293	2,000	1,998	1,989	25,375,932	978.12
<b>424</b>	<b>MERCHANT WHOLESALERS, NONDURABLE GOODS</b>	<b>1,924</b>	<b>18,017</b>	<b>17,899</b>	<b>17,871</b>	<b>\$305,161,314</b>	<b>\$1,309.27</b>
4241	Paper & Paper Product Merchant Wholesalers	125	1,223	1,227	1,239	20,847,838	1,304.16
4242	Druggist' Goods Merchant Wholesalers	228	1,589	1,594	1,645	42,057,056	2,010.25
4243	Apparel & Piece Goods Merchant Wholesalers	62	695	708	710	9,485,956	1,036.00
4244	Grocery Product Merchant Wholesalers	535	5,707	5,711	5,676	110,265,770	1,488.59
4245	Farm Product & Raw Material Merchant Wholesalers	81	847	897	865	8,485,700	750.57
4246	Chemical Merchant Wholesalers	226	1,143	1,143	1,148	28,319,085	1,903.08
4247	Petroleum Merchant Wholesalers	164	1,246	1,234	1,225	15,456,243	962.71
4248	Alcoholic Beverage Merchant Wholesalers	68	1,689	1,680	1,700	24,038,526	1,094.37
4249	Miscellaneous Nondurable Goods Merchant Wholesaler	435	3,878	3,705	3,663	46,205,140	948.13
<b>425</b>	<b>ELECTRONIC MARKETS &amp; AGENTS &amp; BROKERS</b>	<b>2,282</b>	<b>5,777</b>	<b>5,764</b>	<b>5,754</b>	<b>\$114,213,649</b>	<b>\$1,523.97</b>
<b>44 - 45</b>	<b>RETAIL TRADE</b>	<b>11,127</b>	<b>138,381</b>	<b>138,844</b>	<b>137,914</b>	<b>\$930,207,029</b>	<b>\$517.09</b>
<b>441</b>	<b>MOTOR VEHICLE &amp; PARTS DEALERS</b>	<b>1,532</b>	<b>19,201</b>	<b>19,283</b>	<b>19,207</b>	<b>\$213,959,324</b>	<b>\$855.86</b>
4411	Automobile Dealers	632	11,749	11,788	11,754	150,511,757	984.20
4412	Other Motor Vehicle Dealers	172	1,777	1,778	1,775	21,087,149	913.00
4413	Automotive Parts, Accessories & Tire Stores	728	5,675	5,717	5,678	42,360,418	572.67
<b>442</b>	<b>FURNITURE &amp; HOME FURNISHINGS STORES</b>	<b>494</b>	<b>3,593</b>	<b>3,609</b>	<b>3,630</b>	<b>\$29,189,595</b>	<b>\$621.87</b>
4421	Furniture Stores	266	2,028	2,034	2,008	18,272,198	694.67
4422	Home Furnishings Stores	228	1,565	1,575	1,622	10,917,397	529.06
<b>443</b>	<b>ELECTRONICS &amp; APPLIANCE STORES</b>	<b>397</b>	<b>3,367</b>	<b>3,384</b>	<b>3,412</b>	<b>\$29,159,589</b>	<b>\$662.12</b>
<b>444</b>	<b>BUILDING MATERIAL &amp; GARDEN SUPPLY STORES</b>	<b>838</b>	<b>12,219</b>	<b>11,800</b>	<b>11,613</b>	<b>\$88,314,102</b>	<b>\$571.96</b>
4441	Building Material & Supplies Dealers	598	10,143	9,772	9,603	75,840,459	592.91
4442	Lawn & Garden Equipment & Supplies Stores	240	2,076	2,028	2,010	12,473,643	470.81

TABLE 5. STATEWIDE SUMMARY

North American Industry Classification System - Industry Groups		Number of Employing Units	Employment			Total Earnings	Average Weekly Earnings
			Jul	Aug	Sep	Jul - Sep 2018	
<b>445</b>	<b>FOOD &amp; BEVERAGE STORES</b>	<b>1,073</b>	<b>19,247</b>	<b>19,160</b>	<b>19,156</b>	<b>\$106,472,223</b>	<b>\$426.85</b>
4451	Grocery Stores	564	16,680	16,572	16,534	89,563,691	415.15
4452	Specialty Food Stores	152	813	828	843	6,939,818	644.72
4453	Beer, Wine & Liquor Stores	357	1,754	1,760	1,779	9,968,714	434.63
<b>446</b>	<b>HEALTH &amp; PERSONAL CARE STORES</b>	<b>990</b>	<b>8,561</b>	<b>8,556</b>	<b>8,630</b>	<b>\$81,837,928</b>	<b>\$733.51</b>
<b>447</b>	<b>GASOLINE STATIONS</b>	<b>1,597</b>	<b>12,394</b>	<b>12,445</b>	<b>12,420</b>	<b>\$58,511,150</b>	<b>\$362.40</b>
44711	Gasoline Stations with Convenience Stores	1,496	11,150	11,170	11,196	51,627,652	355.47
44719	Other Gasoline Stations	101	1,244	1,275	1,224	6,883,498	424.39
<b>448</b>	<b>CLOTHING &amp; CLOTHING ACCESSORIES STORES</b>	<b>1,018</b>	<b>7,788</b>	<b>7,949</b>	<b>7,787</b>	<b>\$34,887,482</b>	<b>\$342.24</b>
4481	Clothing Stores	758	5,912	5,978	5,909	23,407,382	303.48
4482	Shoe Stores	131	1,197	1,285	1,185	5,408,520	340.37
4483	Jewelry, Luggage & Leather Goods Stores	129	679	686	693	6,071,580	680.82
<b>451</b>	<b>SPORTING GOODS, HOBBY, BOOK &amp; MUSIC STORES</b>	<b>452</b>	<b>4,262</b>	<b>4,381</b>	<b>4,412</b>	<b>\$21,266,172</b>	<b>\$375.92</b>
4511	Sporting Goods & Musical Instrument Stores	393	3,850	3,879	3,935	19,368,184	383.19
4512	Book, Periodical & Music Stores	59	412	502	477	1,897,988	314.88
<b>452</b>	<b>GENERAL MERCHANDISE STORES</b>	<b>1,053</b>	<b>38,998</b>	<b>39,225</b>	<b>38,747</b>	<b>\$210,520,425</b>	<b>\$415.33</b>
4522	Department Stores	131	7,643	7,647	7,653	37,273,187	374.91
4523	Gen. Merchandise Stores, Warehouse clubs & Supercenters	922	31,355	31,578	31,094	173,247,238	425.20
<b>453</b>	<b>MISCELLANEOUS STORE RETAILERS</b>	<b>1,170</b>	<b>6,960</b>	<b>7,231</b>	<b>7,079</b>	<b>\$38,132,137</b>	<b>\$413.72</b>
4531	Florists	166	586	597	589	2,704,649	352.23
4532	Office Supplies, Stationery & Gift Stores	234	1,499	1,582	1,571	8,240,415	408.78
4533	Used Merchandise Stores	251	1,973	2,209	2,077	9,670,000	356.53
4539	Other Miscellaneous Store Retailers	519	2,902	2,843	2,842	17,517,073	470.76
<b>454</b>	<b>NONSTORE RETAILERS</b>	<b>513</b>	<b>1,791</b>	<b>1,821</b>	<b>1,821</b>	<b>\$17,956,902</b>	<b>\$762.73</b>
4541	Electronic Shopping & Mail-Order Houses	264	685	712	708	7,615,260	834.85
4542	Vending Machine Operators	66	459	467	474	4,023,113	663.15
4543	Direct Selling Establishments	183	647	642	639	6,318,529	756.29
<b>48 - 49</b>	<b>TRANSPORTATION &amp; WAREHOUSING</b>	<b>2,979</b>	<b>53,977</b>	<b>54,443</b>	<b>54,952</b>	<b>\$635,538,966</b>	<b>\$897.72</b>
<b>481</b>	<b>AIR TRANSPORTATION</b>	<b>52</b>	<b>747</b>	<b>751</b>	<b>755</b>	<b>\$7,264,261</b>	<b>\$744.06</b>
4811	Scheduled Air Transportation	17	657	657	661	5,642,303	659.28
4812	Nonshceduled Air Transportation	35	90	94	94	1,621,958	1,346.40
<b>483</b>	<b>WATER TRANSPORTATION</b>	<b>5</b>	<b>28</b>	<b>29</b>	<b>32</b>	<b>\$526,520</b>	<b>\$1,365.22</b>
<b>484</b>	<b>TRUCK TRANSPORTATION</b>	<b>1,850</b>	<b>32,468</b>	<b>32,767</b>	<b>32,938</b>	<b>\$416,287,354</b>	<b>\$978.54</b>
4841	General Freight Trucking	1,078	26,261	26,594	26,769	345,969,746	1,002.70
4842	Specialized Freight Trucking	772	6,207	6,173	6,169	70,317,608	874.83

TABLE 5. STATEWIDE SUMMARY

North American Industry Classification System - Industry Groups		Number of Employing Units	Employment			Total Earnings Jul - Sep 2018	Average Weekly Earnings
			Jul	Aug	Sep		
<b>485</b>	<b>TRANSIT &amp; GROUND PASSENGER TRANSPORTATION</b>	<b>117</b>	<b>1,774</b>	<b>1,753</b>	<b>1,856</b>	<b>\$9,733,330</b>	<b>\$417.27</b>
4853	Taxi & Limousine Service	29	408	397	403	1,779,181	339.88
4854	School & Employee Bus Transportation	12	266	279	402	1,924,443	468.96
4855	Charter Bus Industry Service	8	112	95	88	736,739	576.33
4859	Other Ground Passenger Transportation	63	888	878	861	4,598,081	403.92
	Other	5	100	104	102	694,886	524.05
<b>486</b>	<b>PIPELINE TRANSPORTATION</b>	<b>39</b>	<b>403</b>	<b>421</b>	<b>408</b>	<b>\$10,201,996</b>	<b>\$1,910.96</b>
<b>487</b>	<b>SCENIC &amp; SIGHTSEEING TRANSPORTATION</b>	<b>4</b>	<b>40</b>	<b>40</b>	<b>36</b>	<b>\$155,850</b>	<b>\$310.05</b>
<b>488</b>	<b>SUPPORT ACTIVITIES FOR TRANSPORTATION</b>	<b>506</b>	<b>5,410</b>	<b>5,491</b>	<b>5,518</b>	<b>\$65,487,934</b>	<b>\$920.43</b>
4881	Support Activities for Air Transportation	107	1,043	1,029	1,029	10,612,427	789.75
4882	Support Activities for Rail Transportation	38	796	794	800	10,173,689	982.33
4883	Support Activities for Water Transportation	20	399	431	449	5,866,013	1,058.40
4884	Support Activities for Road Transportation	164	793	825	795	7,301,040	698.24
4885	Freight Transportation Arrangement	163	2,221	2,250	2,289	30,257,369	1,032.91
4889	Other Support Activities for Transportation	14	158	162	156	1,277,396	619.29
<b>493</b>	<b>WAREHOUSING &amp; STORAGE</b>	<b>230</b>	<b>8,337</b>	<b>8,370</b>	<b>8,440</b>	<b>\$78,586,898</b>	<b>\$721.18</b>
	<b>OTHER</b>	<b>176</b>	<b>4,770</b>	<b>4,821</b>	<b>4,969</b>	<b>\$47,294,823</b>	<b>\$749.60</b>
<b>22</b>	<b>UTILITIES</b>	<b>413</b>	<b>7,849</b>	<b>7,851</b>	<b>7,805</b>	<b>\$153,830,240</b>	<b>\$1,510.29</b>
2211	Power Generation & Supply	165	5,860	5,851	5,809	127,545,220	1,679.99
2212	Natural Gas Distribution	67	1,048	1,042	1,044	17,274,197	1,271.97
2213	Water, Sewage & Other Systems	181	941	958	952	9,010,823	729.37
	<b>INFORMATION</b>	<b>1,223</b>	<b>10,833</b>	<b>10,783</b>	<b>10,741</b>	<b>\$143,527,356</b>	<b>\$1,023.63</b>
<b>511</b>	<b>PUBLISHING INDUSTRIES, EXCEPT INTERNET</b>	<b>226</b>	<b>2,756</b>	<b>2,742</b>	<b>2,708</b>	<b>\$28,852,250</b>	<b>\$811.38</b>
5111	Newspaper, Book & Directory Publishers	173	2,382	2,372	2,336	21,530,550	700.79
5112	Software Publishers	53	374	370	372	7,321,700	1,514.00
<b>512</b>	<b>MOTION PICTURE &amp; SOUND RECORDING INDUSTRY</b>	<b>149</b>	<b>1,331</b>	<b>1,295</b>	<b>1,251</b>	<b>\$5,743,581</b>	<b>\$341.87</b>
5121	Motion Picture & Video Industries	136	1,315	1,279	1,236	5,573,653	335.83
5122	Sound Recording Industries	13	16	16	15	169,928	834.34
<b>515</b>	<b>BROADCASTING, EXCEPT INTERNET</b>	<b>118</b>	<b>1,535</b>	<b>1,548</b>	<b>1,586</b>	<b>\$17,440,741</b>	<b>\$862.02</b>

TABLE 5. STATEWIDE SUMMARY

North American Industry Classification System - Industry Groups		Number of Employing Units	Employment			Total Earnings	Average Weekly Earnings
			Jul	Aug	Sep	Jul - Sep 2018	
<b>517</b>	<b>TELECOMMUNICATIONS</b>	<b>341</b>	<b>3,494</b>	<b>3,459</b>	<b>3,416</b>	<b>\$58,712,815</b>	<b>\$1,306.69</b>
5173	Telecommunications Resellers	241	3,111	3,072	3,048	52,473,312	1,311.80
5174	Satellite Telecommunications Carriers	4	7	7	7	88,486	972.37
5179	Other Telecommunications	96	376	380	361	6,151,017	1,270.78
<b>518</b>	<b>DATA PROCESSING, HOSTING &amp; RELATED SERVICES</b>	<b>299</b>	<b>1,383</b>	<b>1,396</b>	<b>1,440</b>	<b>\$28,422,216</b>	<b>\$1,554.63</b>
<b>519</b>	<b>OTHER INFORMATION SERVICES</b>	<b>90</b>	<b>334</b>	<b>343</b>	<b>340</b>	<b>\$4,355,753</b>	<b>\$988.37</b>
<b>FINANCIAL ACTIVITIES</b>		<b>8,431</b>	<b>50,978</b>	<b>51,205</b>	<b>50,741</b>	<b>\$682,296,385</b>	<b>\$1,029.62</b>
<b>52</b>	<b>FINANCE &amp; INSURANCE</b>	<b>4,976</b>	<b>37,078</b>	<b>37,307</b>	<b>37,162</b>	<b>\$553,698,953</b>	<b>\$1,145.50</b>
<b>522</b>	<b>CREDIT INTERMEDIATION &amp; RELATED ACTIVITIES</b>	<b>1,941</b>	<b>19,290</b>	<b>19,334</b>	<b>19,259</b>	<b>\$255,577,906</b>	<b>\$1,018.94</b>
5221	Depository Credit Intermediation	1,403	16,315	16,329	16,297	208,177,923	981.61
5222	Nondepository Credit Intermediation	403	1,848	1,868	1,841	32,257,209	1,339.57
5223	Activities Related to Credit Intermediation	135	1,127	1,137	1,121	15,142,774	1,032.34
<b>523</b>	<b>FINANCIAL INVESTMENT &amp; RELATED ACTIVITIES</b>	<b>706</b>	<b>3,100</b>	<b>3,077</b>	<b>3,015</b>	<b>\$82,710,152</b>	<b>\$2,076.47</b>
5231	Insurance Carriers	298	2,155	2,151	2,116	63,490,079	2,281.46
5239	Insurance Agencies, Brokerages & Support	408	945	926	899	19,220,073	1,601.23
<b>524</b>	<b>INSURANCE CARRIERS &amp; RELATED ACTIVITIES</b>	<b>2,250</b>	<b>14,620</b>	<b>14,806</b>	<b>14,789</b>	<b>\$213,918,251</b>	<b>\$1,116.49</b>
5231	Security & Commodity Contracts Intermediation & Brokerage	300	6,497	6,543	6,522	107,137,200	1,263.88
5239	Other Financial Investment Activities	1,950	8,123	8,263	8,267	106,781,051	999.54
	<b>OTHER</b>	<b>79</b>	<b>68</b>	<b>90</b>	<b>99</b>	<b>\$1,492,644</b>	<b>\$1,340.30</b>
<b>53</b>	<b>REAL ESTATE &amp; RENTAL &amp; LEASING</b>	<b>3,455</b>	<b>13,900</b>	<b>13,898</b>	<b>13,579</b>	<b>\$128,597,432</b>	<b>\$717.22</b>
<b>531</b>	<b>REAL ESTATE</b>	<b>2,835</b>	<b>9,672</b>	<b>9,676</b>	<b>9,397</b>	<b>\$86,043,390</b>	<b>\$690.77</b>
5311	Lessors of Real Estate	1,108	4,437	4,441	4,272	35,380,463	620.89
5312	Offices of Real Estate Agents & Brokers	911	1,953	1,943	1,892	20,290,652	808.99
5313	Activities Related to Real Estate	816	3,282	3,292	3,233	30,372,275	714.69
<b>532</b>	<b>RENTAL &amp; LEASING SERVICES</b>	<b>606</b>	<b>4,197</b>	<b>4,189</b>	<b>4,128</b>	<b>\$41,860,795</b>	<b>\$771.95</b>
5321	Automotive Equipment Rental & Leasing	119	1,100	1,112	1,109	8,482,138	589.41
5322	Consumer Goods Rental	310	1,920	1,904	1,856	14,907,979	605.69
5323	General Rental Centers	38	230	231	229	2,708,834	905.96
5324	Machinery & Equipment Rental & Leasing	139	947	942	934	15,761,844	1,288.47
<b>533</b>	<b>LESSORS OF NONFINANCIAL INTANGIBLE ASSETS</b>	<b>14</b>	<b>31</b>	<b>33</b>	<b>54</b>	<b>\$693,247</b>	<b>\$1,355.76</b>

TABLE 5. STATEWIDE SUMMARY

North American Industry Classification System - Industry Groups		Number of Employing Units	Employment			Total Earnings	Average Weekly Earnings
			Jul	Aug	Sep	Jul - Sep 2018	
<b>PROFESSIONAL &amp; BUSINESS SERVICES</b>		<b>14,444</b>	<b>145,102</b>	<b>145,805</b>	<b>147,700</b>	<b>\$1,892,698,287</b>	<b>\$995.83</b>
<b>54</b>	<b>PROFESSIONAL &amp; TECHNICAL SERVICES</b>	<b>9,103</b>	<b>43,821</b>	<b>44,031</b>	<b>43,480</b>	<b>\$663,657,849</b>	<b>\$1,166.14</b>
5411	Legal Services	1,685	6,058	6,035	5,986	78,365,902	1,000.30
5412	Accounting & Bookkeeping Services	1,268	5,766	5,712	5,712	75,851,694	1,018.28
5413	Architectural & Engineering Services	1,017	6,382	6,333	6,307	99,511,840	1,207.25
5414	Specialized Design Services	174	310	321	326	3,854,015	929.35
5415	Computer Systems Design & Related Services	1,856	9,746	9,720	9,423	197,228,763	1,575.49
5416	Management & Technical Consulting Services	1,986	6,587	6,812	6,811	103,543,663	1,182.32
5417	Scientific Research & Development Services	127	821	794	774	13,030,805	1,258.73
5418	Advertising & Related Services	399	3,920	3,975	3,880	49,329,221	966.77
5419	Other Professional & Technical Services	591	4,231	4,329	4,261	42,941,946	772.93
<b>55</b>	<b>MANAGEMENT OF COMPANIES &amp; ENTERPRISES</b>	<b>557</b>	<b>34,935</b>	<b>34,741</b>	<b>34,686</b>	<b>\$718,002,843</b>	<b>\$1,587.68</b>
<b>56</b>	<b>ADMINISTRATIVE &amp; WASTE SERVICES</b>	<b>4,784</b>	<b>66,346</b>	<b>67,033</b>	<b>69,534</b>	<b>\$511,037,595</b>	<b>\$581.19</b>
<b>561</b>	<b>ADMINISTRATIVE &amp; SUPPORT SERVICES</b>	<b>4,455</b>	<b>62,864</b>	<b>63,538</b>	<b>65,937</b>	<b>\$467,266,394</b>	<b>\$560.63</b>
5611	Office Administrative Services	687	3,904	3,900	3,831	51,263,915	1,016.77
5612	Facilities Support Services	56	1,422	1,416	1,422	10,673,813	578.21
5613	Employment Services	1,153	27,551	27,831	30,180	176,776,052	476.78
5614	Business Support Services	374	8,035	8,133	8,179	79,967,095	757.96
5615	Travel Arrangement & Reservation Services	110	382	367	357	4,383,611	914.65
5616	Investigation & Security Services	289	4,873	4,958	5,025	34,497,118	535.87
5617	Services to Buildings & Dwellings	1,596	15,454	15,678	15,668	98,468,624	485.55
5619	Other Support Services	190	1,243	1,255	1,275	11,236,166	687.24
<b>562</b>	<b>WASTE MANAGEMENT &amp; REMEDIATION SERVICES</b>	<b>329</b>	<b>3,482</b>	<b>3,495</b>	<b>3,597</b>	<b>\$43,771,201</b>	<b>\$955.27</b>
5621	Waste Collection Services	139	1,293	1,295	1,328	14,813,411	872.95
5622	Waste Treatment & Disposal Services	40	1,017	1,032	1,054	15,774,089	1,173.11
5629	Remediation & Other Waste Services	150	1,172	1,168	1,215	13,183,701	855.81
<b>EDUCATION &amp; HEALTH SERVICES</b>		<b>15,804</b>	<b>184,365</b>	<b>186,217</b>	<b>187,240</b>	<b>\$1,974,803,865</b>	<b>\$816.97</b>
<b>61</b>	<b>EDUCATIONAL SERVICES</b>	<b>887</b>	<b>10,442</b>	<b>11,106</b>	<b>12,207</b>	<b>\$115,328,850</b>	<b>\$788.46</b>
6111	Elementary & Secondary Schools	103	3,276	4,003	4,321	41,507,626	825.75
6112	Junior Colleges	7	111	120	123	799,462	521.16
6113	Colleges & Universities	112	3,869	3,782	4,366	41,513,805	797.21
6114	Business, Computer, & Management Training	59	176	183	178	2,343,271	1,006.99
6115	Technical & Trade Schools	114	811	828	897	14,188,508	1,291.12
6116	Other Schools & Instruction	326	1,661	1,662	1,795	8,703,983	392.46
6117	Educational Support Services	166	538	528	527	6,272,195	908.62



TABLE 5. STATEWIDE SUMMARY

North American Industry Classification System - Industry Groups		Number of Employing Units	Employment			Total Earnings Jul - Sep 2018	Average Weekly Earnings
			Jul	Aug	Sep		
<b>62</b>	<b>HEALTH CARE &amp; SOCIAL ASSISTANCE</b>	<b>14,917</b>	<b>173,923</b>	<b>175,111</b>	<b>175,033</b>	<b>\$1,859,475,015</b>	<b>\$818.81</b>
<b>621</b>	<b>AMBULATORY HEALTH CARE SERVICES</b>	<b>5,944</b>	<b>58,357</b>	<b>58,575</b>	<b>58,685</b>	<b>\$893,315,937</b>	<b>\$1,173.86</b>
6211	Offices of Physicians	2,331	25,304	25,376	25,414	518,328,237	1,571.93
6212	Offices of Dentists	987	7,395	7,445	7,352	90,325,353	939.27
6213	Offices of Other Health Practitioners	1,628	9,536	9,580	9,674	97,518,253	781.67
6214	Outpatient Care Centers	357	5,213	5,232	5,234	74,845,134	1,101.60
6215	Medical & Diagnostic Laboratories	191	1,324	1,334	1,344	20,522,516	1,183.40
6216	Home Health Care Services	264	6,956	6,969	7,004	61,796,175	681.38
6219	Other Ambulatory Health Care Services	186	2,629	2,639	2,663	29,980,269	872.34
<b>622</b>	<b>HOSPITALS</b>	<b>111</b>	<b>43,770</b>	<b>43,846</b>	<b>43,808</b>	<b>\$539,168,544</b>	<b>\$946.73</b>
6221	General Medical & Surgical Hospitals	84	39,069	39,122	39,094	486,812,100	957.85
6222	Psychiatric & Substance Abuse Hospitals	9	1,935	1,937	1,917	19,728,512	786.45
6223	Specialty Hospitals	18	2,766	2,787	2,797	32,627,932	901.74
<b>623</b>	<b>Residential &amp; Mental Health Facilities</b>	<b>649</b>	<b>32,475</b>	<b>32,777</b>	<b>32,726</b>	<b>\$216,591,590</b>	<b>\$510.14</b>
6231	Nursing Care Facilities (Skilled Nursing Facilities)	283	22,984	23,320	23,219	154,511,309	512.87
6232	Residential Mental Health Facilities	176	4,435	4,383	4,397	29,530,005	515.67
6233	Continuing Care & Assisted Living Facilities	154	4,239	4,258	4,301	26,378,261	475.64
6239	Other Residential Care Facilities	36	817	816	809	6,172,015	583.26
<b>624</b>	<b>SOCIAL ASSISTANCE</b>	<b>8,213</b>	<b>39,321</b>	<b>39,913</b>	<b>39,814</b>	<b>\$210,398,944</b>	<b>\$407.85</b>
6241	Individual & Family Services	7,147	25,017	25,013	24,883	135,509,631	417.44
6242	Emergency & Other Relief Services	144	1,397	1,382	1,359	9,207,106	513.46
6243	Vocational Rehabilitation Services	92	3,340	3,326	3,331	18,917,137	436.68
6244	Child Day Care Services	830	9,567	10,192	10,241	46,765,070	359.73
<b>LEISURE &amp; HOSPITALITY</b>		<b>7,255</b>	<b>120,253</b>	<b>122,153</b>	<b>119,844</b>	<b>\$500,885,630</b>	<b>\$319.09</b>
<b>71</b>	<b>ARTS, ENTERTAINMENT &amp; RECREATION</b>	<b>984</b>	<b>13,217</b>	<b>12,703</b>	<b>11,101</b>	<b>62,167,315</b>	<b>\$387.52</b>
<b>711</b>	<b>PERFORMING ARTS &amp; SPECTATOR SPORTS</b>	<b>226</b>	<b>3,041</b>	<b>3,086</b>	<b>2,671</b>	<b>18,275,143</b>	<b>\$479.35</b>
7111	Performing Arts Companies	48	478	486	520	2,002,797	311.44
7112	Spectator Sports	69	1,416	1,399	1,216	10,753,665	615.63
7113	Performing Arts & Sports Promoters	49	1,072	1,087	841	4,635,711	356.59
7114	Agents & Managers for Public Figures	16	13	48	15	211,839	643.24
7115	Independent Artists, Writers, & Performers	44	62	66	79	671,131	748.20
<b>712</b>	<b>MUSEUMS, PARKS, &amp; HISTORICAL SITES</b>	<b>55</b>	<b>777</b>	<b>749</b>	<b>734</b>	<b>5,014,841</b>	<b>\$512.07</b>
<b>713</b>	<b>GAMBLING, RECREATIONAL &amp; AMUSEMENT INDUSTRY</b>	<b>703</b>	<b>9,399</b>	<b>8,868</b>	<b>7,696</b>	<b>38,877,331</b>	<b>\$345.56</b>
7131	Amusement Parks & Arcades	31	1,123	833	424	2,530,724	245.38
7139	Other Amusement & Recreation Industries	672	8,276	8,035	7,272	36,346,607	355.67
<b>72</b>	<b>ACCOMMODATION &amp; FOOD SERVICES</b>	<b>6,271</b>	<b>107,036</b>	<b>109,450</b>	<b>108,743</b>	<b>438,718,315</b>	<b>\$311.30</b>

TABLE 5. STATEWIDE SUMMARY

North American Industry Classification System - Industry Groups		Number of Employing Units	Employment			Total Earnings	Average Weekly Earnings
			Jul	Aug	Sep	Jul - Sep 2018	
<b>721</b>	<b>ACCOMMODATION</b>	<b>903</b>	<b>12,019</b>	<b>11,945</b>	<b>11,573</b>	<b>\$55,259,330</b>	<b>\$358.84</b>
7211	Travel Accommodation	812	11,288	11,255	10,992	51,786,214	356.36
7212	RV Parks & Recreational Camps	75	638	576	471	2,862,215	391.99
7213	Rooming & Boarding Houses	16	93	114	110	610,901	444.72
<b>722</b>	<b>FOOD SERVICES &amp; DRINKING PLACES</b>	<b>5,368</b>	<b>95,017</b>	<b>97,505</b>	<b>97,170</b>	<b>\$383,458,985</b>	<b>\$305.46</b>
7223	Special Food Services	300	3,383	4,674	5,122	19,111,400	334.65
7224	Drinking Places, Alcoholic Beverages	146	1,019	1,067	1,066	4,138,737	303.01
7225	Restaurants & Other Eating Places	4,922	90,615	91,764	90,982	360,208,848	304.09
722511	Full-Service Restaurants	2,109	38,707	39,118	38,826	169,962,590	336.23
722513	Limited-Service Eating Places	2,316	46,929	47,681	47,318	169,415,501	275.46
722514	Caterias, Grill Buffets, & Buffets	90	1,683	1,714	1,690	8,209,132	372.40
722515	Snack & Nonalcoholic Beverage Bars	407	3,296	3,251	3,148	12,621,625	300.43
	<b>OTHER SERVICES</b>	<b>5,374</b>	<b>25,384</b>	<b>25,237</b>	<b>25,312</b>	<b>\$216,329,597</b>	<b>\$657.45</b>
<b>811</b>	<b>REPAIR &amp; MAINTENANCE</b>	<b>2,222</b>	<b>10,873</b>	<b>10,947</b>	<b>11,199</b>	<b>\$107,140,869</b>	<b>\$748.81</b>
8111	Automotive Repair & Maintenance	1,402	6,718	6,719	6,744	58,889,198	673.40
8112	Electronic Equipment Repair & Maintenance	173	977	987	1,016	10,856,888	840.75
8113	Commercial Machinery Repair & Maintenance	483	2,566	2,627	2,824	32,221,302	927.49
8114	Household Goods Repair & Maintenance	164	612	614	615	5,173,481	648.50
<b>812</b>	<b>PERSONAL &amp; LAUNDRY SERVICES</b>	<b>1,337</b>	<b>7,807</b>	<b>7,877</b>	<b>7,809</b>	<b>\$51,158,290</b>	<b>\$502.52</b>
8121	Personal Care Services	630	2,860	2,887	2,871	15,648,609	419.03
8122	Death Care Services	249	1,585	1,608	1,581	11,418,419	551.95
8123	Drycleaning & Laundry Service	219	2,304	2,308	2,305	17,826,900	594.75
8129	Other Personal Services	239	1,058	1,074	1,052	6,264,362	454.03
<b>813</b>	<b>MEMBERSHIP ASSOCIATIONS &amp; ORGANIZATIONS</b>	<b>1,111</b>	<b>5,797</b>	<b>5,500</b>	<b>5,405</b>	<b>\$52,724,180</b>	<b>\$728.48</b>
8131	Religious Organizations	90	319	321	316	2,340,442	564.96
8132	Grantmaking & Giving Organizations	126	449	449	457	6,623,597	1,128.06
8133	Social Advocacy Organizations	215	1,351	1,353	1,365	14,775,254	837.96
8134	Civic & Social Organizations	195	1,435	1,217	1,191	5,951,461	357.38
8139	Professional & Similar Organizations	485	2,243	2,160	2,076	23,033,426	820.41
<b>814</b>	<b>PRIVATE HOUSEHOLDS</b>	<b>704</b>	<b>907</b>	<b>913</b>	<b>899</b>	<b>\$5,306,258</b>	<b>\$450.36</b>
	<b>LOCAL GOVERNMENT</b>	<b>1,969</b>	<b>69,506</b>	<b>94,785</b>	<b>113,732</b>	<b>\$826,830,439</b>	<b>\$686.30</b>
	<b>STATE GOVERNMENT</b>	<b>1,058</b>	<b>65,277</b>	<b>66,801</b>	<b>69,379</b>	<b>\$826,968,313</b>	<b>\$947.29</b>
	<b>NONCLASSIFIABLE ESTABLISHMENTS</b>	<b>0</b>	<b>0</b>	<b>0</b>	<b>0</b>	<b>\$0</b>	<b>\$0.00</b>

TABLE 6. COUNTY SUMMARY

North American Industry Classification System - Industry Groups	Number of Employing Units	Employment			Total Earnings	Average Weekly Earnings
		Jul	Aug	Sep	Jul - Sep 2018	
<b>ARKANSAS COUNTY - TOTAL</b>	<b>800</b>	<b>9,495</b>	<b>9,738</b>	<b>9,794</b>	<b>\$94,016,414</b>	<b>\$747.45</b>
Natural Resources & Mining	55	202	200	176	1,971,894	787.29
Construction	48	238	247	245	2,617,001	827.29
Manufacturing	33	3,607	3,675	3,752	38,967,721	814.99
Trade, Transportation & Utilities	184	2,115	2,099	2,082	21,311,270	781.13
Wholesale Trade	47	470	432	429	5,574,021	966.43
Retail Trade	85	970	976	961	6,363,491	505.16
Transportation, Warehousing & Utilities	52	675	691	692	9,373,758	1,051.11
Information	9	58	57	58	552,338	736.78
Financial Activities	52	302	308	288	3,222,327	828.08
Professional & Business Services	58	484	493	509	6,493,825	1,008.46
Education & Health Services	205	1,058	1,077	1,082	9,135,447	655.32
Leisure & Hospitality	70	593	577	578	2,010,164	265.38
Other Services	40	96	102	103	766,877	587.95
Local Government	32	570	733	760	5,461,743	610.96
State Government	14	172	170	161	1,505,807	690.84
<b>ASHLEY COUNTY - TOTAL</b>	<b>556</b>	<b>6,407</b>	<b>6,591</b>	<b>6,820</b>	<b>\$72,175,741</b>	<b>\$840.45</b>
Natural Resources & Mining	43	333	321	348	3,375,132	777.32
Construction	33	595	632	677	7,512,187	910.49
Manufacturing	24	1,667	1,666	1,674	29,851,674	1,375.84
Trade, Transportation & Utilities	108	1,201	1,230	1,223	10,042,938	634.26
Wholesale Trade	22	196	195	192	2,580,395	1,021.40
Retail Trade	62	693	721	707	4,139,390	450.37
Transportation, Warehousing & Utilities	24	312	314	324	3,323,153	807.24
Information	5	33	39	39	264,818	550.56
Financial Activities	36	180	179	183	1,618,868	689.27
Professional & Business Services	40	241	247	226	1,910,763	617.57
Education & Health Services	155	978	982	967	9,114,510	718.60
Leisure & Hospitality	34	383	376	378	1,289,783	261.78
Other Services	36	141	150	157	1,266,512	652.39
Local Government	32	574	687	843	5,002,062	548.63
State Government	10	81	82	105	926,494	797.78

TABLE 6. COUNTY SUMMARY

North American Industry Classification System - Industry Groups	Number of Employing Units	Employment			Total Earnings Jul - Sep 2018	Average Weekly Earnings
		Jul	Aug	Sep		
<b>BAXTER COUNTY - TOTAL</b>	<b>1,233</b>	<b>14,430</b>	<b>14,720</b>	<b>15,034</b>	<b>\$127,949,680</b>	<b>\$668.27</b>
Natural Resources & Mining	6	64	64	65	665,509	795.75
Construction	114	511	527	524	4,481,871	662.15
Manufacturing	55	2,482	2,483	2,469	23,502,367	729.57
Trade, Transportation & Utilities	264	2,843	2,836	2,831	19,624,121	532.16
Wholesale Trade	34	238	249	252	2,553,951	797.53
Retail Trade	205	2,382	2,385	2,372	15,000,549	484.89
Transportation, Warehousing & Utilities	25	223	202	207	2,069,621	755.70
Information	19	169	167	164	1,861,104	858.97
Financial Activities	115	696	700	696	8,970,891	989.58
Professional & Business Services	139	787	807	825	6,462,628	616.53
Education & Health Services	268	3,814	3,833	3,824	42,556,177	856.13
Leisure & Hospitality	121	1,828	1,802	1,712	7,047,632	304.45
Other Services	85	377	391	392	2,911,533	579.22
Local Government	36	606	829	1,212	7,289,045	635.47
State Government	11	253	281	320	2,576,802	696.31
<b>BENTON COUNTY - TOTAL</b>	<b>6,615</b>	<b>116,863</b>	<b>118,253</b>	<b>119,900</b>	<b>\$1,489,081,654</b>	<b>\$967.94</b>
Natural Resources & Mining	45	780	767	769	11,640,851	1,159.91
Construction	647	5,074	4,970	4,948	57,844,783	890.39
Manufacturing	193	12,242	12,215	12,229	139,816,526	879.50
Trade, Transportation & Utilities	1,697	28,631	28,736	28,804	362,010,083	969.48
Wholesale Trade	762	5,992	5,981	6,007	142,943,902	1,834.65
Retail Trade	745	12,448	12,485	12,412	87,187,560	538.77
Transportation, Warehousing & Utilities	190	10,191	10,270	10,385	131,878,621	986.63
Information	83	925	928	910	13,030,556	1,088.33
Financial Activities	667	3,918	3,977	3,922	55,083,609	1,075.70
Professional & Business Services	1,290	31,761	31,854	31,707	569,424,881	1,378.55
Education & Health Services	830	11,449	11,590	11,723	118,548,661	786.99
Leisure & Hospitality	643	13,093	13,251	12,938	61,034,708	358.56
Other Services	419	2,299	2,242	2,255	20,702,105	702.97
Local Government	84	5,814	6,834	8,595	70,715,922	768.21
State Government	17	877	889	1,100	9,228,969	743.11

TABLE 6. COUNTY SUMMARY

North American Industry Classification System - Industry Groups	Number of Employing Units	Employment			Total Earnings Jul - Sep 2018	Average Weekly Earnings
		Jul	Aug	Sep		
<b>BOONE COUNTY - TOTAL</b>	<b>960</b>	<b>13,272</b>	<b>13,546</b>	<b>14,111</b>	<b>\$134,721,980</b>	<b>\$759.60</b>
Construction	66	385	379	376	3,782,564	765.70
Manufacturing	61	1,896	1,883	1,894	20,013,693	814.13
Trade, Transportation & Utilities	252	3,591	3,587	3,547	39,727,035	854.80
Wholesale Trade	39	339	329	320	2,842,636	663.96
Retail Trade	169	2,014	2,025	1,997	13,289,515	508.09
Transportation, Warehousing & Utilities	44	1,238	1,233	1,230	23,594,884	1,471.22
Information	14	259	253	247	2,771,986	842.81
Financial Activities	96	467	474	449	5,395,055	895.69
Professional & Business Services	95	1,453	1,493	1,504	19,396,711	1,005.88
Education & Health Services	166	1,551	1,614	1,610	12,559,459	606.98
Leisure & Hospitality	80	1,248	1,212	1,217	4,903,698	307.76
Local Government	53	1,477	1,706	2,254	16,489,642	699.89
State Government	17	672	692	745	7,170,456	784.60
Other	60	273	253	268	2,511,681	730.00
<b>BRADLEY COUNTY - TOTAL</b>	<b>362</b>	<b>3,583</b>	<b>3,604</b>	<b>3,795</b>	<b>\$30,751,257</b>	<b>\$646.19</b>
Natural Resources & Mining	45	211	201	205	2,364,979	884.55
Construction	19	98	91	86	736,591	618.12
Manufacturing	12	978	951	955	9,577,355	766.35
Trade, Transportation & Utilities	71	543	520	524	3,620,197	526.42
Wholesale Trade	11	85	85	83	1,107,922	1,010.57
Retail Trade	38	311	304	313	1,641,005	408.07
Transportation, Warehousing & Utilities	22	147	131	128	871,270	495.23
Information	3	26	24	23	191,897	606.63
Financial Activities	25	134	135	132	1,317,932	758.45
Professional & Business Services	26	78	79	87	745,995	705.54
Education & Health Services	96	665	680	675	5,916,941	675.96
Leisure & Hospitality	16	179	186	184	573,375	241.02
Other Services	25	100	103	91	597,763	469.20
Local Government	14	227	285	483	2,403,413	557.42
State Government	10	344	349	350	2,704,819	598.46

TABLE 6. COUNTY SUMMARY

North American Industry Classification System - Industry Groups	Number of Employing Units	Employment			Total Earnings Jul - Sep 2018	Average Weekly Earnings
		Jul	Aug	Sep		
<b>CALHOUN COUNTY - TOTAL</b>	<b>103</b>	<b>2,992</b>	<b>3,043</b>	<b>3,065</b>	<b>\$41,501,023</b>	<b>\$1,052.44</b>
Natural Resources & Mining	6	32	36	37	316,090	694.70
Construction	11	125	128	126	1,428,846	870.01
Manufacturing	7	2,226	2,230	2,226	33,449,410	1,155.21
Trade, Transportation & Utilities	21	216	214	213	2,203,724	790.90
Retail Trade	10	51	49	52	246,470	374.20
Transportation, Warehousing & Utilities	11	165	165	161	1,957,254	919.91
Professional & Business Services	6	8	9	9	94,653	840.12
Education & Health Services	20	57	61	61	601,484	775.44
Leisure & Hospitality	4	14	12	13	46,191	273.32
Other Services	3	4	4	4	24,212	465.62
Local Government	11	122	161	190	1,095,845	534.65
State Government	7	81	82	82	904,544	852.00
Other	7	107	106	104	1,336,024	972.60
<b>CARROLL COUNTY - TOTAL</b>	<b>806</b>	<b>10,478</b>	<b>10,842</b>	<b>10,927</b>	<b>\$78,370,458</b>	<b>\$560.84</b>
Natural Resources & Mining	20	204	200	202	1,983,034	755.15
Trade, Transportation & Utilities	195	1,683	1,682	1,647	13,053,363	601.02
Wholesale Trade	22	203	213	209	1,763,943	651.30
Retail Trade	145	1,118	1,114	1,093	6,256,886	434.25
Transportation, Warehousing & Utilities	28	362	355	345	5,032,534	1,093.55
Information	10	73	73	72	776,892	822.40
Financial Activities	61	375	382	382	4,071,294	824.87
Professional & Business Services	62	234	233	241	2,085,447	679.74
Education & Health Services	103	1,114	1,122	1,126	9,080,145	623.27
Leisure & Hospitality	173	1,935	1,892	1,894	7,277,955	293.57
Other Services	47	140	140	139	855,015	470.91
Local Government	25	589	974	1,096	6,725,447	583.69
State Government	9	94	95	98	993,789	799.08
Other	101	4,037	4,049	4,030	31,468,077	599.36

TABLE 6. COUNTY SUMMARY

North American Industry Classification System - Industry Groups	Number of Employing Units	Employment			Total Earnings Jul - Sep 2018	Average Weekly Earnings
		Jul	Aug	Sep		
<b>CHICOT COUNTY - TOTAL</b>	<b>495</b>	<b>2,902</b>	<b>3,027</b>	<b>3,021</b>	<b>\$24,020,696</b>	<b>\$619.36</b>
Natural Resources & Mining	50	229	233	233	2,351,579	780.82
Construction	15	145	132	117	1,440,489	843.71
Manufacturing	6	18	19	19	269,030	1,108.64
Trade, Transportation & Utilities	69	644	656	662	4,716,959	554.81
Wholesale Trade	14	53	51	51	691,756	1,029.91
Retail Trade	41	309	307	310	1,887,255	470.32
Transportation, Warehousing & Utilities	14	282	298	301	2,137,948	560.01
Financial Activities	28	174	175	168	1,958,910	874.38
Professional & Business Services	17	47	45	47	414,975	688.95
Education & Health Services	248	651	671	686	4,513,519	518.72
Leisure & Hospitality	14	121	123	118	419,188	267.23
Local Government	17	465	563	557	4,530,636	659.64
State Government	10	316	322	324	2,751,957	660.15
Other	21	92	88	90	653,454	
<b>CLARK COUNTY - TOTAL</b>	<b>651</b>	<b>8,762</b>	<b>9,157</b>	<b>9,500</b>	<b>\$78,881,810</b>	<b>\$663.90</b>
Natural Resources & Mining	48	285	292	295	3,207,244	848.78
Construction	26	67	66	68	764,411	877.62
Manufacturing	31	1,364	1,379	1,394	18,139,598	1,011.86
Trade, Transportation & Utilities	137	1,507	1,496	1,508	11,606,205	593.74
Wholesale Trade	15	42	45	48	470,723	804.65
Retail Trade	92	1,246	1,237	1,246	8,658,245	535.82
Transportation, Warehousing & Utilities	30	219	214	214	2,477,237	883.57
Information	3	13	13	12	109,082	662.44
Financial Activities	72	303	303	305	2,795,376	708.11
Professional & Business Services	52	613	607	601	6,304,818	798.99
Education & Health Services	124	1,592	1,584	1,708	13,177,254	622.63
Leisure & Hospitality	67	1,076	1,196	1,186	4,033,782	269.19
Other Services	47	213	212	214	1,999,556	722.12
Local Government	30	759	950	972	6,600,729	568.16
State Government	14	970	1,059	1,237	10,143,755	716.74

TABLE 6. COUNTY SUMMARY

North American Industry Classification System - Industry Groups	Number of Employing Units	Employment			Total Earnings	Average Weekly Earnings
		Jul	Aug	Sep	Jul - Sep 2018	
<b>CLAY COUNTY - TOTAL</b>	<b>375</b>	<b>3,141</b>	<b>3,278</b>	<b>3,222</b>	<b>\$23,881,793</b>	<b>\$571.64</b>
Natural Resources & Mining	58	293	282	289	2,253,740	601.96
Construction	30	158	152	137	1,365,637	705.03
Manufacturing	12	104	111	112	809,008	570.93
Trade, Transportation & Utilities	89	772	751	718	6,029,566	620.90
Wholesale Trade	21	231	229	225	2,009,116	676.85
Retail Trade	42	411	390	359	2,423,343	482.10
Transportation, Warehousing & Utilities	26	130	132	134	1,597,107	930.72
Information	6	29	28	29	235,117	630.90
Financial Activities	24	96	92	90	838,418	695.98
Professional & Business Services	26	142	136	134	1,118,515	626.50
Education & Health Services	51	483	503	508	3,858,908	596.06
Leisure & Hospitality	25	265	258	256	792,307	234.71
Other Services	24	81	77	79	597,563	581.85
Local Government	21	670	840	821	5,539,706	548.43
State Government	9	48	48	49	443,308	705.53
<b>CLEBURNE COUNTY - TOTAL</b>	<b>641</b>	<b>5,972</b>	<b>6,183</b>	<b>6,337</b>	<b>\$50,799,945</b>	<b>\$633.95</b>
Natural Resources & Mining	24	187	188	184	4,683,040	1,933.28
Construction	65	305	324	337	3,165,938	756.32
Manufacturing	31	1,236	1,264	1,263	12,187,243	747.39
Trade, Transportation & Utilities	148	1,120	1,134	1,140	8,724,748	593.22
Wholesale Trade	33	116	117	124	1,244,301	804.33
Retail Trade	95	905	916	914	6,304,464	531.95
Transportation, Warehousing & Utilities	20	99	101	102	1,175,983	898.61
Information	8	50	50	48	427,771	667.00
Financial Activities	78	266	263	259	2,624,470	768.59
Professional & Business Services	65	242	233	229	2,212,075	725.11
Education & Health Services	79	869	923	914	6,785,417	578.66
Leisure & Hospitality	81	1,052	1,014	909	3,887,374	301.54
Other Services	36	122	114	117	781,390	510.82
Local Government	18	430	589	822	4,474,416	560.87
State Government	8	93	87	115	846,063	661.85



TABLE 6. COUNTY SUMMARY

North American Industry Classification System - Industry Groups	Number of Employing Units	Employment			Total Earnings Jul - Sep 2018	Average Weekly Earnings
		Jul	Aug	Sep		
<b>CLEVELAND COUNTY - TOTAL</b>	<b>127</b>	<b>919</b>	<b>1,095</b>	<b>1,118</b>	<b>\$8,128,260</b>	<b>\$598.90</b>
Natural Resources & Mining	16	178	172	172	1,650,843	729.82
Construction	8	12	11	11	87,711	595.32
Manufacturing	4	122	121	119	1,219,706	777.54
Trade, Transportation & Utilities	35	178	181	178	1,362,291	585.43
Retail Trade	19	73	75	73	284,746	297.33
Other Trade, Transportation, & Utilities	16	105	106	105	1,077,545	786.91
Financial Activities	4	25	23	23	232,220	754.78
Education & Health Services	30	206	211	218	912,184	331.50
Other Services	5	12	11	12	100,675	663.79
Local Government	11	127	305	329	2,099,559	636.68
State Government	6	28	28	28	324,067	890.29
Other	8	31	32	28	139,004	352.50
<b>COLUMBIA COUNTY - TOTAL</b>	<b>699</b>	<b>7,481</b>	<b>7,877</b>	<b>8,081</b>	<b>\$77,989,613</b>	<b>\$767.85</b>
Natural Resources & Mining	39	341	373	372	5,334,235	1,133.50
Construction	34	171	172	165	1,664,161	755.98
Manufacturing	32	1,877	1,855	1,853	27,985,657	1,156.35
Trade, Transportation & Utilities	164	1,332	1,357	1,357	10,851,050	618.90
Wholesale Trade	30	200	202	204	2,639,819	1,005.26
Retail Trade	95	911	931	929	5,387,214	448.65
Transportation, Warehousing & Utilities	39	221	224	224	2,824,017	974.13
Information	6	54	53	56	367,361	520.10
Financial Activities	63	350	343	339	3,764,133	841.71
Professional & Business Services	52	321	328	329	2,573,752	607.30
Education & Health Services	173	981	1,000	997	6,435,447	498.69
Leisure & Hospitality	55	702	753	789	2,697,852	277.44
Other Services	42	118	127	126	735,806	457.69
Local Government	27	675	927	1,101	8,177,748	698.18
State Government	12	559	589	597	7,402,411	978.94

TABLE 6. COUNTY SUMMARY

North American Industry Classification System - Industry Groups	Number of Employing Units	Employment			Total Earnings Jul - Sep 2018	Average Weekly Earnings
		Jul	Aug	Sep		
<b>CONWAY COUNTY - TOTAL</b>	<b>531</b>	<b>6,113</b>	<b>6,265</b>	<b>6,342</b>	<b>\$60,088,130</b>	<b>\$740.73</b>
Natural Resources & Mining	29	235	228	234	2,222,644	735.89
Construction	49	478	457	462	6,934,051	1,145.43
Manufacturing	19	911	909	925	13,023,233	1,094.85
Trade, Transportation & Utilities	118	1,363	1,347	1,320	11,505,089	658.81
Wholesale Trade	14	134	134	131	1,173,210	678.55
Retail Trade	79	781	769	751	5,765,302	578.21
Transportation, Warehousing & Utilities	25	448	444	438	4,566,577	792.35
Information	3	13	13	15	47,647	268.18
Financial Activities	39	165	165	158	1,698,041	802.98
Professional & Business Services	40	431	440	433	3,259,512	576.84
Education & Health Services	130	810	816	804	7,706,110	731.82
Leisure & Hospitality	38	500	448	431	1,699,606	284.42
Other Services	26	86	86	88	742,189	658.75
Local Government	31	727	956	1,071	7,893,363	661.42
State Government	9	394	400	401	3,356,645	648.21
<b>CRAIGHEAD COUNTY - TOTAL</b>	<b>2,837</b>	<b>48,430</b>	<b>50,285</b>	<b>51,579</b>	<b>\$494,154,809</b>	<b>\$758.75</b>
Natural Resources & Mining	99	401	391	450	3,315,356	616.01
Construction	239	2,205	2,233	2,255	27,033,160	932.08
Manufacturing	100	6,773	6,834	6,888	81,700,608	919.93
Trade, Transportation & Utilities	787	10,244	10,350	10,302	89,285,940	666.90
Wholesale Trade	188	1,942	1,949	1,935	24,694,131	978.14
Retail Trade	465	6,543	6,619	6,587	43,101,947	503.65
Transportation, Warehousing & Utilities	134	1,759	1,782	1,780	21,489,862	932.01
Information	20	385	389	384	4,416,041	880.04
Financial Activities	279	1,597	1,610	1,586	20,498,992	986.97
Professional & Business Services	374	4,705	4,854	5,066	37,946,564	598.76
Education & Health Services	455	10,988	10,997	11,067	140,408,770	980.33
Leisure & Hospitality	266	5,501	5,587	5,666	22,126,907	304.78
Other Services	161	744	756	770	5,666,032	576.01
Local Government	35	2,139	3,470	4,214	30,478,553	716.02
State Government	22	2,748	2,814	2,931	31,277,886	849.87

TABLE 6. COUNTY SUMMARY

North American Industry Classification System - Industry Groups	Number of Employing Units	Employment			Total Earnings Jul - Sep 2018	Average Weekly Earnings
		Jul	Aug	Sep		
<b>CRAWFORD COUNTY - TOTAL</b>	<b>1,254</b>	<b>18,529</b>	<b>19,602</b>	<b>19,608</b>	<b>\$169,305,744</b>	<b>\$676.68</b>
Natural Resources & Mining	22	224	221	229	2,321,187	794.75
Construction	146	1,098	1,076	1,075	11,200,045	795.51
Manufacturing	63	4,550	4,557	4,524	46,807,558	792.44
Trade, Transportation & Utilities	310	5,626	5,659	5,649	49,969,470	680.96
Wholesale Trade	74	737	740	731	9,381,441	980.50
Retail Trade	171	2,010	2,010	1,987	13,175,091	506.14
Transportation, Warehousing & Utilities	65	2,879	2,909	2,931	27,412,938	725.55
Information	9	48	45	45	453,427	758.24
Financial Activities	125	506	505	506	4,827,210	734.33
Professional & Business Services	166	1,665	1,638	1,645	14,290,345	666.49
Education & Health Services	187	1,626	1,645	1,669	13,512,007	631.21
Leisure & Hospitality	92	1,562	1,616	1,557	5,749,807	280.23
Other Services	82	440	437	431	3,655,742	644.98
Local Government	42	1,026	2,041	2,114	15,137,398	674.24
State Government	10	158	162	164	1,381,548	658.72
<b>CRITTENDEN COUNTY - TOTAL</b>	<b>1,202</b>	<b>15,053</b>	<b>15,444</b>	<b>16,130</b>	<b>\$141,946,395</b>	<b>\$702.53</b>
Natural Resources & Mining	56	242	229	260	1,774,291	560.13
Construction	44	447	428	463	5,109,357	881.23
Manufacturing	43	2,071	2,094	2,054	28,282,052	1,049.47
Trade, Transportation & Utilities	300	4,271	4,259	4,317	42,746,357	767.85
Wholesale Trade	57	777	761	771	9,286,908	928.16
Retail Trade	155	1,925	1,912	1,923	11,695,886	468.59
Transportation, Warehousing & Utilities	88	1,569	1,586	1,623	21,763,563	1,051.14
Information	5	51	50	47	511,893	798.17
Financial Activities	101	459	444	455	5,006,638	850.79
Professional & Business Services	106	1,052	1,030	1,022	8,316,737	618.31
Education & Health Services	287	1,940	1,980	1,962	16,450,333	645.40
Leisure & Hospitality	134	2,570	2,500	2,458	11,479,469	351.90
Other Services	72	497	514	503	4,254,837	648.54
Local Government	41	1,084	1,559	2,143	14,252,917	687.24
State Government	13	369	357	446	3,761,514	740.65

TABLE 6. COUNTY SUMMARY

North American Industry Classification System - Industry Groups	Number of Employing Units	Employment			Total Earnings	Average Weekly Earnings
		Jul	Aug	Sep	Jul - Sep 2018	
<b>CROSS COUNTY - TOTAL</b>	<b>476</b>	<b>4,460</b>	<b>4,748</b>	<b>4,719</b>	<b>\$38,742,615</b>	<b>\$641.96</b>
Natural Resources & Mining	44	300	297	307	2,404,133	613.72
Construction	22	61	61	63	519,740	648.32
Manufacturing	10	351	330	328	2,909,344	665.40
Trade, Transportation & Utilities	126	1,165	1,172	1,154	10,002,675	661.22
Wholesale Trade	26	286	278	276	3,823,659	1,050.46
Retail Trade	69	750	766	752	4,883,139	496.86
Transportation, Warehousing & Utilities	31	129	128	126	1,295,877	780.81
Information	6	40	48	41	332,496	594.81
Financial Activities	45	291	290	273	2,564,672	693.03
Professional & Business Services	41	138	141	140	1,642,417	904.58
Education & Health Services	89	976	990	997	8,225,781	640.65
Leisure & Hospitality	32	311	278	253	1,000,062	274.09
Other Services	35	116	119	107	955,483	644.73
Local Government	17	353	661	701	5,105,697	687.02
State Government	9	358	361	355	3,080,115	661.82
<b>DALLAS COUNTY - TOTAL</b>	<b>227</b>	<b>2,550</b>	<b>2,640</b>	<b>2,647</b>	<b>\$20,506,468</b>	<b>\$603.84</b>
Natural Resources & Mining	24	119	123	125	1,215,265	764.16
Construction	13	59	58	67	526,612	660.47
Manufacturing	9	568	563	566	5,824,019	791.99
Trade, Transportation & Utilities	54	445	439	431	3,283,990	576.31
Wholesale Trade	6	14	11	14	144,879	857.27
Retail Trade	35	323	320	309	2,031,466	492.44
Transportation, Warehousing & Utilities	13	108	108	108	1,107,645	788.92
Information	4	18	18	17	133,030	579.23
Financial Activities	14	70	71	68	708,992	782.84
Professional & Business Services	10	27	26	27	146,168	421.64
Education & Health Services	53	764	787	780	5,975,424	591.57
Leisure & Hospitality	13	150	155	149	470,215	239.01
Other Services	12	46	51	47	313,822	502.92
Local Government	14	258	321	342	1,629,665	408.34
State Government	7	26	28	28	279,266	785.93

TABLE 6. COUNTY SUMMARY

North American Industry Classification System - Industry Groups	Number of Employing Units	Employment			Total Earnings Jul - Sep 2018	Average Weekly Earnings
		Jul	Aug	Sep		
<b>DESHA COUNTY - TOTAL</b>	<b>546</b>	<b>4,443</b>	<b>4,664</b>	<b>4,707</b>	<b>\$40,626,331</b>	<b>\$678.68</b>
Natural Resources & Mining	62	269	279	308	2,266,496	611.03
Construction	17	99	99	94	966,277	763.65
Manufacturing	15	1,084	1,095	1,058	14,809,499	1,055.79
Trade, Transportation & Utilities	107	832	842	853	6,671,277	609.23
Wholesale Trade	19	189	187	183	2,427,152	1,001.99
Retail Trade	60	480	476	472	2,447,566	395.53
Transportation, Warehousing & Utilities	28	163	179	198	1,796,559	767.76
Information	4	17	17	17	181,839	822.80
Financial Activities	28	205	202	204	1,732,670	654.41
Professional & Business Services	35	98	95	104	873,947	679.06
Education & Health Services	186	753	750	747	5,190,525	532.36
Leisure & Hospitality	38	357	362	353	1,282,746	276.14
Other Services	24	57	58	62	317,673	414.18
Local Government	21	574	767	787	5,418,246	587.58
State Government	9	98	98	120	915,136	668.31
<b>DREW COUNTY - TOTAL</b>	<b>535</b>	<b>6,118</b>	<b>6,230</b>	<b>6,447</b>	<b>\$52,601,869</b>	<b>\$645.86</b>
Natural Resources & Mining	53	396	393	332	4,033,089	830.25
Construction	26	157	157	159	1,882,838	918.61
Manufacturing	21	920	906	904	9,257,051	782.51
Trade, Transportation & Utilities	115	1,051	1,036	1,052	7,627,193	560.73
Wholesale Trade	17	102	97	97	953,300	743.22
Retail Trade	76	821	813	828	5,300,086	496.79
Transportation, Warehousing & Utilities	22	128	126	127	1,373,807	832.11
Information	6	42	40	42	428,187	796.87
Financial Activities	49	220	227	223	2,530,370	871.54
Professional & Business Services	34	301	318	303	2,711,094	678.57
Education & Health Services	139	933	936	918	7,408,310	613.42
Leisure & Hospitality	41	671	690	673	2,345,332	266.09
Other Services	15	56	55	56	442,888	612.01
Local Government	23	879	960	1,209	8,061,721	610.37
State Government	13	492	512	576	5,873,796	857.91

TABLE 6. COUNTY SUMMARY

North American Industry Classification System - Industry Groups	Number of Employing Units	Employment			Total Earnings Jul - Sep 2018	Average Weekly Earnings
		Jul	Aug	Sep		
<b>FAULKNER COUNTY - TOTAL</b>	<b>2,885</b>	<b>38,794</b>	<b>39,556</b>	<b>41,251</b>	<b>\$386,553,547</b>	<b>\$745.85</b>
Natural Resources & Mining	43	274	274	266	5,067,818	1,436.73
Construction	328	2,808	2,805	2,825	30,693,570	839.43
Manufacturing	101	3,249	3,222	3,252	44,187,478	1,048.76
Trade, Transportation & Utilities	650	7,618	7,686	7,670	59,784,061	600.52
Wholesale Trade	140	681	681	685	8,589,967	968.39
Retail Trade	420	6,145	6,193	6,170	40,437,477	504.20
Transportation, Warehousing & Utilities	90	792	812	815	10,756,617	1,026.17
Information	22	206	212	265	2,927,709	989.20
Financial Activities	311	1,433	1,415	1,414	16,238,631	879.25
Professional & Business Services	444	4,918	4,948	4,848	72,719,645	1,140.51
Education & Health Services	460	7,302	7,294	7,432	68,544,064	718.08
Leisure & Hospitality	272	5,184	5,373	5,387	20,537,894	297.26
Other Services	194	913	982	1,019	7,092,025	561.64
Local Government	42	1,765	2,274	3,484	23,645,516	725.33
State Government	18	3,124	3,071	3,389	35,115,136	845.52
<b>FRANKLIN COUNTY - TOTAL</b>	<b>359</b>	<b>4,218</b>	<b>4,449</b>	<b>4,542</b>	<b>\$39,135,286</b>	<b>\$683.72</b>
Natural Resources & Mining	20	236	238	235	4,442,997	1,446.13
Construction	32	108	111	112	965,162	672.90
Manufacturing	14	957	961	981	9,298,656	740.20
Trade, Transportation & Utilities	85	956	945	937	8,286,292	673.79
Wholesale Trade	11	51	48	48	266,797	418.83
Retail Trade	52	615	614	606	3,602,447	453.04
Transportation, Warehousing & Utilities	22	290	283	283	4,417,048	1,190.79
Information	4	21	20	19	163,881	630.31
Financial Activities	30	77	76	79	703,746	700.01
Professional & Business Services	37	333	332	324	2,860,950	667.56
Education & Health Services	67	569	579	578	4,055,421	542.22
Leisure & Hospitality	29	341	339	353	1,132,924	253.09
Other Services	14	54	56	58	387,553	532.35
Local Government	19	451	669	731	5,365,478	668.93
State Government	8	115	123	135	1,472,226	910.84

TABLE 6. COUNTY SUMMARY

North American Industry Classification System - Industry Groups	Number of Employing Units	Employment			Total Earnings Jul - Sep 2018	Average Weekly Earnings
		Jul	Aug	Sep		
<b>FULTON COUNTY - TOTAL</b>	<b>199</b>	<b>1,829</b>	<b>1,881</b>	<b>2,056</b>	<b>\$13,972,129</b>	<b>\$559.20</b>
Manufacturing	13	125	123	126	727,443	448.85
Trade, Transportation & Utilities	47	300	310	302	2,668,887	675.33
Retail Trade	25	172	173	170	959,352	429.88
Other Trade, Transportation, & Utilities	22	128	137	132	1,709,535	993.72
Information	4	25	25	24	151,941	473.83
Financial Activities	17	94	89	88	820,457	698.66
Professional & Business Services	20	48	53	56	499,667	734.44
Education & Health Services	43	515	530	542	3,247,935	472.29
Leisure & Hospitality	15	131	131	122	480,174	288.57
Other Services	8	14	17	17	122,396	588.44
Local Government	12	384	400	564	2,971,656	508.73
State Government	9	63	64	64	571,471	690.46
Other	11	130	139	151	1,710,102	939.62
<b>GARLAND COUNTY - TOTAL</b>	<b>3,043</b>	<b>35,728</b>	<b>36,369</b>	<b>36,629</b>	<b>\$318,598,927</b>	<b>\$676.22</b>
Natural Resources & Mining	27	246	245	242	2,789,976	878.36
Construction	316	1,749	1,786	1,789	16,976,620	735.85
Manufacturing	90	2,537	2,489	2,528	28,671,047	875.88
Trade, Transportation & Utilities	679	7,268	7,246	7,132	56,949,441	607.14
Wholesale Trade	144	838	828	815	10,394,321	966.82
Retail Trade	474	5,950	5,939	5,851	41,092,616	534.55
Transportation, Warehousing & Utilities	61	480	479	466	5,462,504	884.62
Information	31	372	372	372	3,750,713	775.58
Financial Activities	329	1,516	1,511	1,515	16,464,768	836.54
Professional & Business Services	379	3,109	3,133	3,098	28,554,168	705.51
Education & Health Services	535	8,060	8,056	8,131	90,314,813	859.57
Leisure & Hospitality	379	7,335	7,188	6,786	33,392,558	361.63
Other Services	222	1,068	1,039	1,024	6,958,085	512.84
Local Government	34	1,569	2,339	3,017	24,470,253	815.45
State Government	22	899	965	995	9,306,485	751.19

TABLE 6. COUNTY SUMMARY

North American Industry Classification System - Industry Groups	Number of Employing Units	Employment			Total Earnings Jul - Sep 2018	Average Weekly Earnings
		Jul	Aug	Sep		
<b>GRANT COUNTY - TOTAL</b>	<b>338</b>	<b>3,929</b>	<b>4,074</b>	<b>4,224</b>	<b>\$40,082,810</b>	<b>\$756.51</b>
Natural Resources & Mining	26	182	179	187	2,316,066	975.32
Construction	31	218	216	216	3,046,986	1,081.77
Manufacturing	17	1,368	1,389	1,383	16,902,328	942.16
Trade, Transportation & Utilities	82	615	613	606	4,576,942	575.91
Wholesale Trade	16	69	67	71	1,006,231	1,121.77
Retail Trade	43	496	490	475	3,044,762	480.93
Transportation, Warehousing & Utilities	23	50	56	60	525,949	731.16
Financial Activities	18	102	104	103	1,365,566	1,019.84
Professional & Business Services	30	112	114	116	1,356,837	915.54
Education & Health Services	77	422	421	430	2,901,543	525.99
Leisure & Hospitality	23	319	329	313	971,106	233.20
Local Government	10	493	610	771	5,803,874	714.70
State Government	7	43	43	43	416,277	744.68
Other	17	55	56	56	425,285	587.68
<b>GREENE COUNTY - TOTAL</b>	<b>911</b>	<b>15,099</b>	<b>15,281</b>	<b>15,536</b>	<b>\$143,878,578</b>	<b>\$723.12</b>
Natural Resources & Mining	39	264	258	243	2,348,882	708.56
Construction	77	397	396	388	4,090,679	799.33
Manufacturing	65	5,011	5,009	5,084	60,440,267	923.45
Trade, Transportation & Utilities	240	2,674	2,718	2,662	20,438,855	585.63
Wholesale Trade	43	458	462	455	4,931,003	827.58
Retail Trade	162	1,903	1,945	1,895	12,371,099	497.10
Transportation, Warehousing & Utilities	35	313	311	312	3,136,753	773.36
Information	11	190	184	185	1,880,108	776.16
Financial Activities	78	553	552	550	5,643,191	786.87
Professional & Business Services	89	830	877	836	6,491,763	589.11
Education & Health Services	151	2,017	2,060	2,052	20,071,767	755.74
Leisure & Hospitality	79	1,326	1,333	1,309	4,985,527	289.95
Other Services	40	157	158	158	1,032,719	503.85
Local Government	31	1,279	1,329	1,662	12,433,565	671.96
State Government	11	401	407	407	4,021,255	763.77



TABLE 6. COUNTY SUMMARY

North American Industry Classification System - Industry Groups	Number of Employing Units	Employment			Total Earnings	Average Weekly Earnings
		Jul	Aug	Sep	Jul - Sep 2018	
<b>HEMPSTEAD COUNTY - TOTAL</b>	<b>513</b>	<b>7,386</b>	<b>7,530</b>	<b>7,880</b>	<b>\$67,495,952</b>	<b>\$683.28</b>
Natural Resources & Mining	22	261	261	254	2,888,412	858.96
Construction	28	169	171	175	2,111,536	946.17
Manufacturing	30	2,320	2,357	2,353	24,027,540	788.74
Trade, Transportation & Utilities	124	1,255	1,238	1,250	11,067,428	682.35
Wholesale Trade	21	152	149	155	1,332,243	674.21
Retail Trade	77	833	823	826	5,044,785	469.05
Transportation, Warehousing & Utilities	26	270	266	269	4,690,400	1,344.60
Information	7	24	24	23	307,699	1,000.11
Financial Activities	43	204	205	202	2,020,280	763.04
Professional & Business Services	30	221	219	222	1,983,231	691.34
Education & Health Services	108	1,015	1,039	1,043	7,536,796	561.60
Leisure & Hospitality	48	624	655	640	2,424,937	291.61
Other Services	29	108	117	117	989,101	667.41
Local Government	28	488	554	875	5,814,858	699.99
State Government	16	697	690	726	6,324,134	690.68
<b>HOT SPRING COUNTY - TOTAL</b>	<b>618</b>	<b>7,835</b>	<b>8,048</b>	<b>8,251</b>	<b>\$70,213,031</b>	<b>\$671.38</b>
Natural Resources & Mining	22	117	119	122	996,613	642.42
Construction	49	212	221	222	1,943,683	684.80
Manufacturing	28	1,446	1,431	1,417	17,602,664	946.01
Trade, Transportation & Utilities	152	1,554	1,563	1,544	15,487,500	766.80
Wholesale Trade	17	81	88	90	1,067,371	951.03
Retail Trade	98	849	858	842	5,141,072	465.44
Transportation, Warehousing & Utilities	37	624	617	612	9,279,057	1,155.60
Information	6	38	44	40	429,685	812.77
Financial Activities	49	216	210	205	2,246,749	821.68
Professional & Business Services	52	798	825	801	4,888,704	465.41
Education & Health Services	129	1,088	1,104	1,124	9,234,335	642.64
Leisure & Hospitality	55	691	736	735	2,315,621	247.17
Other Services	36	142	139	145	922,915	499.95
Local Government	27	708	785	1,003	6,547,438	605.35
State Government	13	825	871	893	7,597,124	677.17

TABLE 6. COUNTY SUMMARY

North American Industry Classification System - Industry Groups	Number of Employing Units	Employment			Total Earnings Jul - Sep 2018	Average Weekly Earnings
		Jul	Aug	Sep		
<b>HOWARD COUNTY - TOTAL</b>	<b>359</b>	<b>6,556</b>	<b>6,761</b>	<b>6,839</b>	<b>\$54,673,638</b>	<b>\$625.97</b>
Natural Resources & Mining	17	210	208	207	2,060,231	760.70
Construction	22	118	115	125	1,172,583	755.85
Manufacturing	18	3,316	3,300	3,257	27,962,728	653.59
Trade, Transportation & Utilities	85	901	891	891	7,443,374	640.22
Wholesale Trade	17	85	80	83	803,553	747.72
Retail Trade	50	613	609	600	3,968,472	502.64
Transportation, Warehousing & Utilities	18	203	202	208	2,671,349	1,005.65
Financial Activities	35	139	137	134	1,287,652	724.76
Professional & Business Services	22	147	145	138	1,295,730	695.38
Education & Health Services	86	834	850	840	6,801,781	621.89
Leisure & Hospitality	23	340	335	337	1,141,344	260.26
Local Government	17	340	578	697	3,786,150	541.01
State Government	10	90	86	96	830,439	704.56
Other	24	121	116	117	891,626	581.24
<b>INDEPENDENCE COUNTY - TOTAL</b>	<b>904</b>	<b>15,095</b>	<b>15,469</b>	<b>16,109</b>	<b>\$144,686,464</b>	<b>\$715.39</b>
Natural Resources & Mining	18	247	244	252	3,431,712	1,065.86
Construction	63	455	493	505	6,007,338	954.10
Manufacturing	41	3,162	3,169	3,197	33,692,862	816.04
Trade, Transportation & Utilities	232	2,875	2,868	2,901	24,386,436	651.05
Wholesale Trade	27	308	309	312	2,994,421	743.83
Retail Trade	159	1,850	1,829	1,866	11,596,352	482.61
Transportation, Warehousing & Utilities	46	717	730	723	9,795,663	1,041.72
Information	12	92	89	92	909,546	768.85
Financial Activities	84	553	541	546	6,911,037	972.47
Professional & Business Services	91	1,178	1,221	1,174	9,567,259	617.92
Education & Health Services	159	3,603	3,623	3,629	39,598,016	841.82
Leisure & Hospitality	83	1,241	1,348	1,337	4,738,512	278.53
Other Services	61	357	337	335	2,073,941	465.11
Local Government	45	768	1,000	1,533	8,101,092	566.34
State Government	15	564	536	608	5,268,713	711.86

TABLE 6. COUNTY SUMMARY

North American Industry Classification System - Industry Groups	Number of Employing Units	Employment			Total Earnings Jul - Sep 2018	Average Weekly Earnings
		Jul	Aug	Sep		
<b>IZARD COUNTY - TOTAL</b>	<b>253</b>	<b>2,845</b>	<b>3,105</b>	<b>3,237</b>	<b>\$23,992,652</b>	<b>\$602.67</b>
Natural Resources & Mining	8	143	139	138	1,909,629	1,049.25
Construction	23	83	82	84	704,183	652.63
Manufacturing	9	362	381	402	3,086,666	622.10
Trade, Transportation & Utilities	64	486	495	509	3,838,762	594.54
Wholesale Trade	13	31	37	45	294,427	601.28
Retail Trade	41	334	334	333	1,966,461	453.35
Transportation, Warehousing & Utilities	10	121	124	131	1,577,874	968.42
Information	4	5	4	5	71,686	1,181.64
Financial Activities	25	175	173	170	1,286,583	573.17
Professional & Business Services	16	47	45	45	349,232	588.26
Education & Health Services	49	709	721	713	5,031,002	541.76
Leisure & Hospitality	20	173	185	192	676,637	283.90
Other Services	12	34	29	33	197,420	474.57
Local Government	14	274	455	506	3,025,584	565.35
State Government	9	354	396	440	3,815,268	739.87
<b>JACKSON COUNTY - TOTAL</b>	<b>428</b>	<b>4,823</b>	<b>5,097</b>	<b>5,163</b>	<b>\$46,091,280</b>	<b>\$705.19</b>
Natural Resources & Mining	57	291	299	308	2,828,882	726.97
Construction	19	90	83	82	861,499	779.64
Manufacturing	13	857	865	868	11,206,502	998.50
Trade, Transportation & Utilities	105	1,047	1,034	1,018	8,277,375	616.38
Wholesale Trade	20	216	209	205	2,522,387	923.95
Retail Trade	69	733	726	718	4,658,442	493.81
Transportation, Warehousing & Utilities	16	98	99	95	1,096,546	866.61
Information	3	15	15	15	93,183	477.86
Financial Activities	29	136	133	137	1,477,079	839.57
Professional & Business Services	30	114	115	116	1,039,756	695.49
Education & Health Services	81	852	858	844	7,676,612	693.63
Leisure & Hospitality	28	317	346	344	1,118,763	256.38
Other Services	19	61	59	56	458,748	601.51
Local Government	32	336	538	588	3,818,862	602.79
State Government	12	707	752	787	7,234,019	743.27

TABLE 6. COUNTY SUMMARY

North American Industry Classification System - Industry Groups	Number of Employing Units	Employment			Total Earnings Jul - Sep 2018	Average Weekly Earnings
		Jul	Aug	Sep		
<b>JEFFERSON COUNTY - TOTAL</b>	<b>2,051</b>	<b>25,283</b>	<b>26,059</b>	<b>26,495</b>	<b>\$257,724,040</b>	<b>\$764.09</b>
Natural Resources & Mining	42	170	170	162	2,219,981	1,020.52
Construction	87	523	528	559	5,353,700	767.37
Manufacturing	58	4,813	4,816	4,781	67,215,284	1,076.42
Trade, Transportation & Utilities	397	4,439	4,440	4,438	35,832,822	620.94
Wholesale Trade	74	687	694	698	7,204,696	799.72
Retail Trade	272	3,077	3,063	3,067	19,360,272	485.26
Transportation, Warehousing & Utilities	51	675	683	673	9,267,854	1,053.05
Information	8	74	70	69	983,557	1,065.61
Financial Activities	149	1,006	996	1,003	11,177,182	858.35
Professional & Business Services	144	2,215	2,162	2,257	17,547,397	610.40
Education & Health Services	843	4,960	4,947	4,898	54,854,681	855.03
Leisure & Hospitality	139	1,798	1,818	1,791	6,528,775	278.65
Other Services	107	513	516	497	4,101,446	620.24
Local Government	42	1,623	2,347	2,690	18,020,434	624.41
State Government	35	3,149	3,249	3,350	33,888,781	802.27
<b>JOHNSON COUNTY - TOTAL</b>	<b>487</b>	<b>7,948</b>	<b>8,113</b>	<b>8,520</b>	<b>\$63,510,226</b>	<b>\$596.24</b>
Natural Resources & Mining	14	214	211	211	2,194,831	796.38
Construction	34	185	197	193	1,702,730	683.37
Manufacturing	34	2,600	2,597	2,596	21,805,367	645.71
Trade, Transportation & Utilities	106	1,852	1,873	1,879	13,893,915	572.14
Retail Trade	75	878	868	881	5,021,556	441.12
Other Trade, Transportation & Utilities	31	974	1,005	998	8,872,359	687.76
Information	4	19	19	19	186,133	753.57
Financial Activities	48	175	175	173	1,535,827	677.67
Professional & Business Services	50	398	394	399	2,082,910	403.59
Education & Health Services	104	1,212	1,207	1,223	10,663,889	675.70
Leisure & Hospitality	43	600	612	600	1,973,644	251.36
Other Services	28	74	76	77	513,917	522.45
Local Government	14	513	646	1,044	5,769,653	604.38
State Government	8	106	106	106	1,187,410	861.69

TABLE 6. COUNTY SUMMARY

North American Industry Classification System - Industry Groups	Number of Employing Units	Employment			Total Earnings Jul - Sep 2018	Average Weekly Earnings
		Jul	Aug	Sep		
<b>LAFAYETTE COUNTY - TOTAL</b>	<b>162</b>	<b>1,076</b>	<b>1,151</b>	<b>1,160</b>	<b>\$7,968,586</b>	<b>\$542.93</b>
Natural Resources & Mining	25	98	95	91	577,917	469.60
Construction	9	73	74	77	860,588	886.59
Manufacturing	6	42	33	33	448,103	957.49
Trade, Transportation & Utilities	31	196	204	205	1,280,735	488.52
Retail Trade	19	117	124	125	569,040	358.79
Other Trade, Transportation & Utilities	12	79	80	80	711,695	687.19
Financial Activities	13	64	66	61	633,807	765.78
Professional & Business Services	10	36	36	34	271,484	591.04
Education & Health Services	35	157	165	164	1,049,592	498.38
Leisure & Hospitality	5	36	38	38	151,859	312.90
Local Government	14	194	260	278	1,433,924	452.06
State Government	9	137	138	137	979,231	548.49
Other	5	43	42	42	281,346	511.23
<b>LAWRENCE COUNTY - TOTAL</b>	<b>401</b>	<b>3,604</b>	<b>3,884</b>	<b>4,057</b>	<b>\$30,781,054</b>	<b>\$615.27</b>
Natural Resources & Mining	51	267	267	261	2,832,390	822.17
Construction	24	99	96	101	1,079,768	841.81
Manufacturing	18	423	434	429	3,623,707	650.26
Trade, Transportation & Utilities	116	827	819	821	6,900,654	645.50
Wholesale Trade	18	193	190	187	2,081,782	842.83
Retail Trade	60	494	490	497	3,169,807	493.92
Transportation, Warehousing & Utilities	38	140	139	137	1,649,065	914.79
Financial Activities	28	120	119	120	1,258,613	809.05
Professional & Business Services	24	93	90	91	891,845	751.13
Education & Health Services	53	516	536	571	4,432,401	630.23
Leisure & Hospitality	31	307	343	356	1,056,133	242.27
Local Government	24	787	1,016	1,141	7,198,576	564.27
State Government	9	82	83	83	753,213	700.88
Other	23	83	81	83	753,754	704.22

TABLE 6. COUNTY SUMMARY

North American Industry Classification System - Industry Groups	Number of Employing Units	Employment			Total Earnings	Average Weekly Earnings
		Jul	Aug	Sep	Jul - Sep 2018	
<b>LEE COUNTY - TOTAL</b>	<b>269</b>	<b>1,844</b>	<b>1,868</b>	<b>1,916</b>	<b>\$15,143,767</b>	<b>\$620.95</b>
Natural Resources & Mining	43	207	210	262	1,695,640	576.29
Construction	6	28	26	26	207,209	597.72
Trade, Transportation & Utilities	40	329	330	326	2,958,783	693.19
Wholesale Trade	10	110	106	106	1,272,788	912.17
Retail Trade	20	168	171	167	992,801	452.78
Transportation, Warehousing & Utilities	10	51	53	53	693,194	1,018.90
Financial Activities	17	56	57	53	455,482	633.20
Professional & Business Services	13	43	44	47	676,929	1,165.78
Education & Health Services	111	433	440	432	3,196,344	565.22
Leisure & Hospitality	7	67	65	63	249,301	295.03
Local Government	15	275	286	291	1,538,997	416.85
State Government	6	386	391	397	4,055,368	797.15
Other	11	20	19	19	109,714	436.53
<b>LINCOLN COUNTY - TOTAL</b>	<b>290</b>	<b>2,682</b>	<b>2,845</b>	<b>2,813</b>	<b>\$24,694,275</b>	<b>\$683.29</b>
Natural Resources & Mining	33	148	148	149	1,259,858	653.34
Construction	19	148	153	139	1,517,107	795.69
Manufacturing	8	269	273	266	2,660,303	759.80
Trade, Transportation & Utilities	45	355	357	342	3,308,720	724.43
Wholesale Trade	9	63	58	56	630,654	822.23
Retail Trade	24	166	170	158	870,992	406.88
Transportation, Warehousing & Utilities	12	126	129	128	1,807,074	1,088.82
Financial Activities	19	74	75	73	624,822	649.50
Professional & Business Services	10	19	18	18	168,942	708.85
Education & Health Services	111	416	425	416	3,010,585	552.71
Leisure & Hospitality	15	164	161	151	411,672	199.58
Local Government	7	193	324	335	2,155,067	583.71
State Government	10	851	865	879	9,096,624	808.95
Other	13	45	46	45	480,575	815.46

TABLE 6. COUNTY SUMMARY

North American Industry Classification System - Industry Groups	Number of Employing Units	Employment			Total Earnings Jul - Sep 2018	Average Weekly Earnings
		Jul	Aug	Sep		
<b>LITTLE RIVER COUNTY - TOTAL</b>	<b>242</b>	<b>3,155</b>	<b>3,188</b>	<b>3,387</b>	<b>\$37,936,121</b>	<b>\$899.74</b>
Natural Resources & Mining	14	68	66	67	633,295	727.09
Construction	13	140	166	194	1,494,215	689.64
Manufacturing	17	1,178	1,156	1,160	22,519,824	1,487.37
Trade, Transportation & Utilities	60	575	580	583	4,211,452	559.19
Wholesale Trade	7	26	28	28	493,119	1,387.76
Retail Trade	39	416	420	421	2,459,030	451.45
Transportation, Warehousing & Utilities	14	133	132	134	1,259,303	728.34
Financial Activities	15	74	72	68	571,752	616.55
Professional & Business Services	14	57	63	80	601,935	694.54
Education & Health Services	44	201	214	213	1,476,285	542.49
Leisure & Hospitality	13	205	194	195	636,186	247.16
Local Government	20	534	550	696	4,819,315	624.80
State Government	10	72	70	76	673,430	712.88
Other	22	51	57	55	298,432	422.51
<b>LOGAN COUNTY - TOTAL</b>	<b>502</b>	<b>5,028</b>	<b>5,254</b>	<b>5,259</b>	<b>\$41,442,396</b>	<b>\$615.38</b>
Natural Resources & Mining	26	120	125	121	1,138,532	717.86
Construction	47	249	241	239	2,358,844	746.71
Manufacturing	21	1,102	1,104	1,066	11,223,050	791.54
Trade, Transportation & Utilities	100	963	973	982	6,584,442	520.73
Wholesale Trade	7	30	29	29	259,593	680.75
Retail Trade	71	777	784	795	4,528,547	443.57
Transportation, Warehousing & Utilities	22	156	160	158	1,796,302	874.54
Information	5	30	29	29	273,354	716.84
Financial Activities	50	185	184	189	2,019,031	835.00
Professional & Business Services	46	117	121	128	1,081,600	681.97
Education & Health Services	109	719	723	717	5,574,745	595.87
Leisure & Hospitality	34	311	318	321	1,099,452	267.07
Other Services	30	165	141	147	1,165,916	593.95
Local Government	22	581	805	829	5,167,391	538.36
State Government	12	486	490	491	3,756,039	590.85

TABLE 6. COUNTY SUMMARY

North American Industry Classification System - Industry Groups	Number of Employing Units	Employment			Total Earnings Jul - Sep 2018	Average Weekly Earnings
		Jul	Aug	Sep		
<b>LONOKE COUNTY - TOTAL</b>	<b>1,296</b>	<b>13,772</b>	<b>14,271</b>	<b>14,127</b>	<b>\$115,335,493</b>	<b>\$631.16</b>
Natural Resources & Mining	85	513	505	504	5,256,961	797.07
Construction	134	976	1,003	984	10,384,139	808.75
Manufacturing	33	1,698	1,670	1,662	20,489,603	940.03
Trade, Transportation & Utilities	306	2,811	2,814	2,795	21,999,634	602.95
Wholesale Trade	75	422	413	423	5,336,710	978.97
Retail Trade	175	2,064	2,076	2,035	12,447,916	465.20
Transportation, Warehousing & Utilities	56	325	325	337	4,215,008	985.51
Information	13	87	85	79	957,593	880.41
Financial Activities	151	651	659	652	9,450,044	1,111.51
Professional & Business Services	154	584	592	608	5,524,510	714.62
Education & Health Services	204	1,756	1,785	1,750	13,194,152	575.47
Leisure & Hospitality	115	2,056	2,163	2,094	7,660,989	280.04
Other Services	62	182	197	198	1,319,001	527.53
Local Government	25	2,286	2,622	2,625	17,417,189	533.57
State Government	14	172	176	176	1,681,678	740.61
<b>MADISON COUNTY - TOTAL</b>	<b>259</b>	<b>3,015</b>	<b>3,316</b>	<b>3,358</b>	<b>\$26,809,123</b>	<b>\$638.53</b>
Natural Resources & Mining	12	40	39	33	362,614	747.14
Construction	30	135	136	131	1,318,951	757.15
Manufacturing	20	1,163	1,161	1,175	10,056,044	663.23
Trade, Transportation & Utilities	54	676	671	680	5,250,731	597.78
Wholesale Trade	7	22	24	23	307,635	1,028.88
Retail Trade	35	496	492	494	3,174,838	494.37
Transportation, Warehousing & Utilities	12	158	155	163	1,768,258	857.27
Information	6	52	52	54	1,327,729	1,939.23
Financial Activities	20	87	85	83	756,674	684.77
Professional & Business Services	25	85	81	79	884,559	833.18
Education & Health Services	40	261	263	268	1,906,348	555.46
Leisure & Hospitality	16	197	199	213	567,754	215.14
Other Services	20	46	45	48	321,195	533.25
Local Government	9	233	542	551	3,672,789	639.19
State Government	7	40	42	43	383,735	708.43



TABLE 6. COUNTY SUMMARY

North American Industry Classification System - Industry Groups	Number of Employing Units	Employment			Total Earnings Jul - Sep 2018	Average Weekly Earnings
		Jul	Aug	Sep		
<b>MARION COUNTY - TOTAL</b>	<b>284</b>	<b>3,603</b>	<b>3,675</b>	<b>3,735</b>	<b>\$27,324,666</b>	<b>\$572.57</b>
Manufacturing	21	1,672	1,683	1,671	13,668,442	627.59
Trade, Transportation & Utilities	56	527	528	521	3,313,671	485.21
Wholesale Trade	6	36	35	35	315,383	686.61
Retail Trade	42	451	453	446	2,518,860	430.57
Transportation, Warehousing & Utilities	8	40	40	40	479,428	921.98
Information	3	55	55	53	746,427	1,056.76
Financial Activities	35	239	230	204	1,752,428	600.90
Professional & Business Services	24	70	71	74	548,779	589.03
Education & Health Services	47	326	320	317	2,526,477	605.43
Leisure & Hospitality	36	230	225	217	696,337	239.13
Other Services	14	30	30	31	143,118	362.94
Local Government	17	315	392	514	2,739,584	517.78
State Government	7	38	38	38	388,234	785.90
Other	24	101	103	95	801,169	618.34
<b>MILLER COUNTY - TOTAL</b>	<b>882</b>	<b>12,244</b>	<b>12,701</b>	<b>13,125</b>	<b>\$119,863,006</b>	<b>\$726.57</b>
Natural Resources & Mining	31	213	218	232	2,829,504	984.86
Construction	68	625	661	671	7,154,376	843.64
Manufacturing	26	2,290	2,261	2,279	33,208,732	1,122.04
Trade, Transportation & Utilities	220	3,453	3,472	3,446	33,132,957	737.25
Wholesale Trade	50	495	492	507	6,398,915	988.40
Retail Trade	123	1,260	1,273	1,242	7,775,143	475.30
Transportation, Warehousing & Utilities	47	1,698	1,707	1,697	18,958,899	857.53
Information	7	122	125	124	1,742,695	1,083.99
Financial Activities	81	395	384	392	4,059,965	800.10
Professional & Business Services	79	1,129	1,157	1,164	6,224,868	416.38
Education & Health Services	193	1,070	1,140	1,149	8,816,207	605.69
Leisure & Hospitality	88	1,546	1,567	1,545	5,879,991	291.31
Other Services	50	234	235	231	1,577,596	520.09
Local Government	24	702	1,012	1,424	9,702,785	713.55
State Government	15	465	469	468	5,533,330	910.79

TABLE 6. COUNTY SUMMARY

North American Industry Classification System - Industry Groups	Number of Employing Units	Employment			Total Earnings Jul - Sep 2018	Average Weekly Earnings
		Jul	Aug	Sep		
<b>MISSISSIPPI COUNTY - TOTAL</b>	<b>1,104</b>	<b>17,228</b>	<b>17,494</b>	<b>17,841</b>	<b>\$214,379,402</b>	<b>\$941.20</b>
Natural Resources & Mining	109	515	517	599	4,806,991	680.14
Construction	50	870	781	794	13,492,471	1,273.48
Manufacturing	58	6,562	6,615	6,715	117,818,293	1,366.82
Trade, Transportation & Utilities	273	2,784	2,793	2,758	26,368,380	730.06
Wholesale Trade	56	372	357	356	4,585,810	975.36
Retail Trade	148	1,594	1,579	1,544	9,439,259	461.80
Transportation, Warehousing & Utilities	69	818	857	858	12,343,311	1,124.54
Information	6	27	27	23	170,775	511.81
Financial Activities	81	457	457	459	4,270,862	717.83
Professional & Business Services	85	1,118	1,090	1,085	9,994,587	700.41
Education & Health Services	230	1,514	1,544	1,596	14,320,180	710.07
Leisure & Hospitality	92	1,184	1,192	1,185	4,079,274	264.36
Other Services	48	221	215	202	1,864,150	674.28
Local Government	49	1,486	1,771	1,897	12,616,909	564.92
State Government	23	490	492	528	4,576,530	699.42
<b>MONROE COUNTY - TOTAL</b>	<b>289</b>	<b>1,956</b>	<b>2,028</b>	<b>2,037</b>	<b>\$16,053,835</b>	<b>\$615.30</b>
Natural Resources & Mining	29	130	121	127	2,448,196	1,494.63
Manufacturing	6	147	141	142	1,215,507	652.33
Trade, Transportation & Utilities	73	519	519	523	4,310,380	637.22
Wholesale Trade	16	174	175	181	1,866,677	812.78
Retail Trade	33	240	236	233	1,419,631	462.07
Transportation, Warehousing & Utilities	24	105	108	109	1,024,072	733.93
Financial Activities	22	89	89	87	813,592	708.50
Professional & Business Services	15	26	24	22	168,082	538.72
Education & Health Services	65	368	378	374	2,629,954	541.89
Leisure & Hospitality	24	239	236	236	877,608	284.85
Local Government	21	243	330	346	2,132,633	535.52
State Government	7	69	70	70	748,146	826.07
Other	27	126	120	110	709,737	460.07

TABLE 6. COUNTY SUMMARY

North American Industry Classification System - Industry Groups	Number of Employing Units	Employment			Total Earnings Jul - Sep 2018	Average Weekly Earnings
		Jul	Aug	Sep		
<b>MONTGOMERY COUNTY - TOTAL</b>	<b>164</b>	<b>1,241</b>	<b>1,287</b>	<b>1,329</b>	<b>\$8,105,084</b>	<b>\$484.94</b>
Natural Resources & Mining	9	33	34	36	324,633	727.33
Construction	25	71	71	67	488,359	539.23
Manufacturing	9	34	34	35	313,143	701.59
Trade, Transportation & Utilities	34	236	237	232	1,483,931	485.74
Wholesale Trade	6	54	54	49	489,784	719.92
Retail Trade	22	157	160	154	825,942	404.68
Transportation, Warehousing & Utilities	6	25	23	29	168,205	504.11
Financial Activities	9	52	56	58	317,353	441.18
Professional & Business Services	13	18	18	20	141,683	583.86
Education & Health Services	20	54	57	58	444,175	606.52
Leisure & Hospitality	15	378	356	311	1,733,015	382.70
Local Government	9	289	347	441	2,315,503	496.14
State Government	7	35	36	36	349,227	753.19
Other	14	41	41	35	194,062	382.77
<b>NEVADA COUNTY - TOTAL</b>	<b>194</b>	<b>2,344</b>	<b>2,386</b>	<b>2,479</b>	<b>\$21,906,294</b>	<b>\$701.25</b>
Natural Resources & Mining	12	65	63	62	792,345	962.36
Trade, Transportation & Utilities	37	590	586	568	5,086,595	673.07
Retail Trade	22	321	315	312	1,706,602	415.43
Other Trade, Transportation & Utilities	15	269	271	256	3,379,993	979.90
Financial Activities	11	60	59	55	574,849	762.40
Professional & Business Services	12	49	48	51	655,398	1,021.93
Education & Health Services	46	424	432	436	2,457,931	439.02
Leisure & Hospitality	9	81	83	86	282,314	260.60
Other Services	13	42	43	33	204,040	399.04
Local Government	28	282	293	383	1,871,199	450.75
State Government	9	55	56	57	511,590	702.73
Other	17	696	723	748	9,470,033	1,008.49

TABLE 6. COUNTY SUMMARY

North American Industry Classification System - Industry Groups	Number of Employing Units	Employment			Total Earnings	Average Weekly Earnings
		Jul	Aug	Sep	Jul - Sep 2018	
<b>NEWTON COUNTY - TOTAL</b>	<b>117</b>	<b>890</b>	<b>1,028</b>	<b>1,030</b>	<b>\$5,979,436</b>	<b>\$468.07</b>
Construction	6	14	16	18	131,765	633.49
Manufacturing	8	35	32	33	319,201	736.62
Trade, Transportation & Utilities	27	165	159	155	1,220,109	587.82
Retail Trade	13	111	107	107	614,382	436.25
Other Trade, Transportation & Utilities	14	54	52	48	605,727	907.68
Education & Health Services	23	233	247	246	1,067,082	339.19
Leisure & Hospitality	19	154	160	152	591,529	292.93
Other Services	4	3	3	3	13,950	357.69
Local Government	14	223	346	362	2,005,903	497.21
State Government	7	36	36	36	371,032	792.80
Other	9	27	29	25	258,865	737.51
<b>OUACHITA COUNTY - TOTAL</b>	<b>658</b>	<b>6,468</b>	<b>6,641</b>	<b>6,965</b>	<b>\$57,374,241</b>	<b>\$659.57</b>
Natural Resources & Mining	33	166	166	166	1,724,563	799.15
Construction	39	209	205	213	2,053,676	755.86
Manufacturing	26	599	605	599	6,439,574	824.21
Trade, Transportation & Utilities	159	1,544	1,535	1,500	11,589,951	584.10
Wholesale Trade	26	235	242	240	2,551,271	821.14
Retail Trade	105	985	980	958	5,312,634	419.43
Transportation, Warehousing & Utilities	28	324	313	302	3,726,046	915.72
Information	6	37	37	37	400,070	831.75
Financial Activities	48	248	244	235	2,543,837	807.48
Professional & Business Services	45	639	655	663	6,714,261	791.74
Education & Health Services	194	1,240	1,269	1,283	12,529,960	762.53
Leisure & Hospitality	38	459	457	449	1,695,781	286.69
Other Services	26	116	116	115	769,408	511.69
Local Government	31	602	757	1,088	5,574,348	525.70
State Government	13	609	595	617	5,338,812	676.57

TABLE 6. COUNTY SUMMARY

North American Industry Classification System - Industry Groups	Number of Employing Units	Employment			Total Earnings Jul - Sep 2018	Average Weekly Earnings
		Jul	Aug	Sep		
<b>PERRY COUNTY - TOTAL</b>	<b>137</b>	<b>1,005</b>	<b>1,139</b>	<b>1,143</b>	<b>\$8,608,100</b>	<b>\$604.35</b>
Construction	16	91	85	95	800,777	681.90
Manufacturing	5	25	28	23	336,591	1,022.04
Trade, Transportation & Utilities	28	169	160	167	1,122,014	522.03
Retail Trade	20	136	130	136	561,769	322.49
Other Trade, Transportation & Utilities	8	33	30	31	560,245	1,375.40
Financial Activities	8	25	24	24	256,344	810.36
Professional & Business Services	14	31	31	32	279,149	685.31
Education & Health Services	28	218	217	213	1,462,322	520.77
Leisure & Hospitality	7	73	75	72	259,222	271.91
Local Government	9	184	349	347	2,051,395	537.95
State Government	7	36	36	36	331,081	707.44
Other	15	153	134	134	1,709,205	936.89
<b>PHILLIPS COUNTY - TOTAL</b>	<b>731</b>	<b>5,089</b>	<b>5,296</b>	<b>5,427</b>	<b>\$40,931,428</b>	<b>\$597.38</b>
Natural Resources & Mining	58	251	252	254	1,904,165	580.48
Construction	29	114	112	105	808,169	563.45
Manufacturing	14	399	383	395	4,199,688	823.41
Trade, Transportation & Utilities	142	1,194	1,207	1,230	9,742,334	619.18
Wholesale Trade	27	243	244	243	2,959,953	935.71
Retail Trade	75	702	717	726	4,007,799	431.18
Transportation, Warehousing & Utilities	40	249	246	261	2,774,582	846.94
Information	6	20	18	19	227,740	922.02
Financial Activities	40	211	207	213	1,963,978	718.27
Professional & Business Services	40	298	259	270	2,417,019	674.45
Education & Health Services	293	1,383	1,457	1,460	10,561,973	566.83
Leisure & Hospitality	39	356	349	356	1,208,997	262.96
Other Services	30	73	69	67	356,389	393.51
Local Government	26	455	652	747	4,414,821	549.52
State Government	14	335	331	311	3,126,155	738.40

TABLE 6. COUNTY SUMMARY

North American Industry Classification System - Industry Groups	Number of Employing Units	Employment			Total Earnings	Average Weekly Earnings
		Jul	Aug	Sep	Jul - Sep 2018	
<b>PIKE COUNTY - TOTAL</b>	<b>252</b>	<b>2,449</b>	<b>2,631</b>	<b>2,630</b>	<b>\$19,250,415</b>	<b>\$576.19</b>
Natural Resources & Mining	24	121	121	123	1,238,030	782.74
Construction	14	38	36	38	335,651	691.59
Manufacturing	17	407	434	451	4,247,367	758.64
Trade, Transportation & Utilities	66	557	530	545	3,970,221	561.40
Wholesale Trade	10	124	121	124	963,833	602.77
Retail Trade	37	357	340	345	2,145,603	475.18
Transportation, Warehousing & Utilities	19	76	69	76	860,785	898.84
Information	7	28	27	29	278,801	765.94
Financial Activities	23	222	219	214	2,133,716	751.75
Professional & Business Services	12	56	58	57	661,365	892.53
Education & Health Services	33	294	318	317	1,783,329	442.99
Leisure & Hospitality	25	283	273	231	950,283	278.65
Other Services	12	59	56	58	413,433	551.49
Local Government	10	265	439	448	2,426,580	486.09
State Government	9	119	120	119	811,639	523.19
<b>POINSETT COUNTY - TOTAL</b>	<b>500</b>	<b>4,817</b>	<b>5,146</b>	<b>5,258</b>	<b>\$45,071,205</b>	<b>\$683.34</b>
Natural Resources & Mining	65	264	263	279	3,157,475	904.03
Construction	24	101	94	90	1,265,037	1,024.32
Manufacturing	19	715	713	735	8,053,963	859.27
Trade, Transportation & Utilities	131	1,284	1,249	1,236	11,031,610	675.45
Wholesale Trade	28	403	386	384	5,505,991	1,083.22
Retail Trade	70	712	698	686	3,778,282	415.99
Transportation, Warehousing & Utilities	33	169	165	166	1,747,337	806.46
Professional & Business Services	27	190	188	187	2,995,467	1,223.47
Education & Health Services	87	791	782	771	6,577,646	647.58
Leisure & Hospitality	45	353	436	487	1,441,084	260.63
Other Services	20	64	57	62	559,599	705.67
Local Government	30	668	973	1,028	6,175,215	533.93
State Government	11	145	152	155	1,274,355	650.62
Other	41	242	239	228	2,539,754	826.65

TABLE 6. COUNTY SUMMARY

North American Industry Classification System - Industry Groups	Number of Employing Units	Employment			Total Earnings	Average Weekly Earnings
		Jul	Aug	Sep	Jul - Sep 2018	
<b>POLK COUNTY - TOTAL</b>	<b>505</b>	<b>5,450</b>	<b>5,793</b>	<b>5,824</b>	<b>\$43,972,476</b>	<b>\$594.57</b>
Natural Resources & Mining	24	175	173	169	2,141,012	955.67
Construction	33	205	204	204	1,655,473	623.22
Manufacturing	32	1,299	1,308	1,308	10,978,377	647.12
Trade, Transportation & Utilities	130	1,038	1,059	1,062	7,433,135	543.00
Wholesale Trade	23	72	71	71	698,618	753.36
Retail Trade	69	741	758	761	4,280,577	437.09
Transportation, Warehousing & Utilities	38	225	230	230	2,453,940	826.71
Information	7	53	50	48	296,205	452.68
Financial Activities	44	228	218	216	1,985,245	692.04
Professional & Business Services	43	137	141	139	1,377,199	762.15
Education & Health Services	89	1,023	1,039	1,038	8,926,255	664.49
Leisure & Hospitality	42	474	487	466	1,612,281	260.73
Other Services	28	168	163	161	1,195,381	560.69
Local Government	21	377	700	720	4,326,349	555.59
State Government	12	273	251	293	2,045,564	577.79
<b>POPE COUNTY - TOTAL</b>	<b>1,850</b>	<b>24,649</b>	<b>25,003</b>	<b>25,647</b>	<b>\$252,298,690</b>	<b>\$773.22</b>
Natural Resources & Mining	35	690	608	268	7,178,971	1,057.91
Construction	161	1,158	1,165	1,170	14,627,124	966.36
Manufacturing	75	4,525	4,525	4,560	51,250,423	868.99
Trade, Transportation & Utilities	422	6,155	6,146	6,207	67,401,849	840.41
Wholesale Trade	73	542	544	550	5,703,502	804.52
Retail Trade	268	3,091	3,103	3,111	21,023,670	521.40
Transportation, Warehousing & Utilities	81	2,522	2,499	2,546	40,674,677	1,240.45
Information	14	128	126	124	1,193,873	728.86
Financial Activities	194	956	965	953	10,601,793	851.28
Professional & Business Services	268	1,983	1,932	1,962	22,423,053	880.47
Education & Health Services	370	3,256	3,248	3,259	30,410,366	718.81
Leisure & Hospitality	141	2,609	2,723	2,767	10,764,637	306.72
Other Services	112	593	584	574	4,385,596	577.99
Local Government	43	1,154	1,437	2,098	15,468,487	761.28
State Government	15	1,442	1,544	1,705	16,592,518	816.25

TABLE 6. COUNTY SUMMARY

North American Industry Classification System - Industry Groups	Number of Employing Units	Employment			Total Earnings	Average Weekly Earnings
		Jul	Aug	Sep	Jul - Sep 2018	
<b>PRAIRIE COUNTY - TOTAL</b>	<b>249</b>	<b>1,308</b>	<b>1,442</b>	<b>1,451</b>	<b>\$10,872,660</b>	<b>\$597.26</b>
Natural Resources & Mining	34	177	180	175	2,053,935	890.95
Construction	9	51	48	47	410,033	648.10
Trade, Transportation & Utilities	60	360	356	354	2,648,210	571.15
Wholesale Trade	12	96	84	81	1,025,743	906.93
Retail Trade	36	211	220	218	1,152,750	409.89
Transportation, Warehousing & Utilities	12	53	52	55	469,717	677.48
Financial Activities	15	49	50	41	489,101	806.21
Professional & Business Services	16	67	65	65	677,724	793.90
Education & Health Services	51	233	240	244	1,466,235	471.91
Leisure & Hospitality	17	94	99	98	365,529	289.87
Local Government	16	172	293	307	1,868,202	558.45
State Government	7	29	30	30	267,476	693.54
Other	24	76	81	90	626,215	585.07
<b>PULASKI COUNTY - TOTAL</b>	<b>14,400</b>	<b>237,497</b>	<b>241,329</b>	<b>243,304</b>	<b>\$2,834,358,727</b>	<b>\$905.77</b>
Natural Resources & Mining	52	605	621	622	9,153,560	1,143.05
Construction	933	9,056	9,044	9,026	115,350,236	981.32
Manufacturing	331	13,276	13,292	13,354	179,757,276	1,039.09
Trade, Transportation & Utilities	3,149	48,905	49,134	49,055	532,315,685	835.13
Wholesale Trade	928	11,973	11,972	11,925	192,723,813	1,239.89
Retail Trade	1,829	25,062	25,215	25,009	186,447,696	571.51
Transportation, Warehousing & Utilities	392	11,870	11,947	12,121	153,144,176	983.39
Information	205	3,501	3,475	3,454	46,257,933	1,023.48
Financial Activities	1,708	17,259	17,356	17,278	284,263,743	1,264.13
Professional & Business Services	2,775	36,653	36,731	36,577	442,725,705	929.12
Education & Health Services	2,550	40,912	41,436	41,575	510,555,273	950.76
Leisure & Hospitality	1,247	23,957	23,992	22,937	107,481,195	349.90
Other Services	1,148	6,847	6,700	6,590	65,214,308	747.35
Local Government	108	9,839	12,499	15,423	142,191,545	868.98
State Government	194	26,687	27,049	27,413	399,092,268	1,134.93



TABLE 6. COUNTY SUMMARY

North American Industry Classification System - Industry Groups	Number of Employing Units	Employment			Total Earnings Jul - Sep 2018	Average Weekly Earnings
		Jul	Aug	Sep		
<b>RANDOLPH COUNTY - TOTAL</b>	<b>397</b>	<b>5,493</b>	<b>5,666</b>	<b>5,752</b>	<b>\$44,202,183</b>	<b>\$603.19</b>
Natural Resources & Mining	27	241	241	245	3,064,881	972.88
Construction	28	117	124	105	1,040,898	694.24
Manufacturing	27	1,533	1,545	1,530	13,870,819	694.65
Trade, Transportation & Utilities	89	881	869	882	6,720,852	589.27
Wholesale Trade	15	128	120	115	1,121,616	713.04
Retail Trade	54	598	593	605	3,544,730	455.46
Transportation, Warehousing & Utilities	20	155	156	162	2,054,506	1,002.36
Information	5	26	27	27	272,755	786.79
Financial Activities	33	153	154	146	1,377,975	701.97
Professional & Business Services	37	279	283	280	2,056,755	563.70
Education & Health Services	69	940	975	988	7,480,589	594.66
Leisure & Hospitality	32	407	429	424	1,400,059	256.42
Other Services	16	45	45	41	261,929	461.41
Local Government	24	654	743	798	4,592,621	482.84
State Government	10	217	231	286	2,062,050	648.31
<b>SAINT FRANCIS COUNTY - TOTAL</b>	<b>705</b>	<b>6,502</b>	<b>6,813</b>	<b>6,794</b>	<b>\$53,145,732</b>	<b>\$609.90</b>
Natural Resources & Mining	41	187	180	194	1,831,557	753.42
Construction	38	208	203	196	2,077,329	789.76
Trade, Transportation & Utilities	150	1,874	1,886	1,865	15,080,014	618.67
Wholesale Trade	29	582	575	569	6,031,808	806.46
Retail Trade	99	1,006	1,026	1,008	5,813,881	441.34
Transportation, Warehousing & Utilities	22	286	285	288	3,234,325	868.90
Information	5	47	47	47	406,797	665.79
Financial Activities	63	246	250	234	1,913,850	605.01
Professional & Business Services	48	164	164	155	1,403,983	670.80
Education & Health Services	235	1,479	1,477	1,461	12,358,887	645.70
Leisure & Hospitality	47	695	722	685	2,501,178	274.59
Local Government	28	519	781	850	5,805,338	623.11
State Government	15	424	435	461	3,907,807	683.18
Other	35	659	668	646	5,858,992	685.29

TABLE 6. COUNTY SUMMARY

North American Industry Classification System - Industry Groups	Number of Employing Units	Employment			Total Earnings Jul - Sep 2018	Average Weekly Earnings
		Jul	Aug	Sep		
<b>SALINE COUNTY - TOTAL</b>	<b>2,043</b>	<b>23,302</b>	<b>24,847</b>	<b>24,922</b>	<b>\$211,918,233</b>	<b>\$669.27</b>
Natural Resources & Mining	11	48	52	44	529,957	849.29
Construction	268	2,183	2,142	2,124	23,167,766	829.03
Manufacturing	78	1,387	1,381	1,365	17,112,173	955.47
Trade, Transportation & Utilities	467	5,812	5,718	5,715	46,638,664	624.11
Wholesale Trade	113	635	621	626	8,500,178	1,042.28
Retail Trade	283	4,607	4,517	4,514	31,740,722	537.09
Transportation, Warehousing & Utilities	71	570	580	575	6,397,764	855.89
Information	17	164	175	171	2,046,843	926.17
Financial Activities	204	798	797	789	9,169,115	887.56
Professional & Business Services	276	1,761	1,750	1,707	17,719,710	783.66
Education & Health Services	337	4,595	4,650	4,682	43,697,144	724.06
Leisure & Hospitality	188	3,354	3,620	3,558	13,531,544	296.49
Other Services	151	922	910	870	6,455,434	551.34
Local Government	32	1,466	2,836	3,081	24,554,490	767.50
State Government	14	812	816	816	7,295,393	688.85
<b>SCOTT COUNTY - TOTAL</b>	<b>179</b>	<b>2,782</b>	<b>2,909</b>	<b>3,054</b>	<b>\$20,821,357</b>	<b>\$549.45</b>
Natural Resources & Mining	18	167	171	168	1,732,552	790.16
Trade, Transportation & Utilities	34	324	344	330	2,249,370	520.13
Wholesale Trade	8	46	47	45	348,229	582.32
Retail Trade	20	207	225	217	1,087,077	386.54
Transportation, Warehousing & Utilities	6	71	72	68	814,064	890.34
Financial Activities	17	58	56	56	440,784	598.35
Professional & Business Services	13	97	99	98	659,253	517.47
Education & Health Services	42	343	350	346	3,189,288	708.36
Leisure & Hospitality	16	140	147	144	513,047	274.70
Other Services	9	28	29	26	209,244	581.77
Local Government	6	300	386	559	2,557,945	474.13
State Government	6	33	33	33	340,009	792.56
Other	18	1,292	1,294	1,294	8,929,865	531.12

TABLE 6. COUNTY SUMMARY

North American Industry Classification System - Industry Groups	Number of Employing Units	Employment			Total Earnings Jul - Sep 2018	Average Weekly Earnings
		Jul	Aug	Sep		
<b>SEARCY COUNTY - TOTAL</b>	<b>170</b>	<b>1,468</b>	<b>1,526</b>	<b>1,494</b>	<b>\$9,972,851</b>	<b>\$512.80</b>
Construction	13	13	14	18	78,291	401.49
Manufacturing	17	180	179	180	1,126,873	482.46
Trade, Transportation & Utilities	36	254	258	253	1,521,774	459.06
Wholesale Trade	6	37	37	37	238,506	495.85
Retail Trade	25	202	206	201	1,108,106	419.90
Transportation, Warehousing & Utilities	5	15	15	15	175,162	898.27
Financial Activities	12	89	76	63	544,597	551.21
Education & Health Services	38	363	357	347	2,401,099	519.31
Leisure & Hospitality	15	159	146	157	544,145	271.80
Other Services	4	6	6	9	52,369	575.48
Local Government	10	151	309	300	1,836,461	557.63
State Government	6	39	40	40	376,070	729.29
Other	19	214	141	127	1,491,172	713.93
<b>SEBASTIAN COUNTY - TOTAL</b>	<b>3,720</b>	<b>63,165</b>	<b>64,649</b>	<b>64,660</b>	<b>\$669,482,971</b>	<b>\$802.69</b>
Natural Resources & Mining	40	360	354	359	6,272,605	1,349.04
Construction	263	2,384	2,369	2,315	25,486,126	832.12
Manufacturing	193	11,606	11,564	11,543	139,324,917	926.22
Trade, Transportation & Utilities	896	13,061	13,016	12,984	124,093,384	733.13
Wholesale Trade	227	2,638	2,628	2,627	33,867,501	990.19
Retail Trade	554	7,679	7,683	7,627	50,140,723	503.32
Transportation, Warehousing & Utilities	115	2,744	2,705	2,730	40,085,160	1,131.00
Information	40	906	888	883	15,369,354	1,324.91
Financial Activities	411	2,545	2,546	2,569	31,120,536	937.55
Professional & Business Services	567	8,485	8,535	8,366	81,694,365	742.64
Education & Health Services	627	11,572	11,643	11,654	154,051,295	1,019.54
Leisure & Hospitality	355	6,260	6,253	6,233	25,756,116	317.07
Other Services	262	1,298	1,302	1,286	10,511,237	624.21
Local Government	43	3,009	4,487	4,705	36,742,448	694.95
State Government	23	1,679	1,692	1,763	19,060,588	856.76

TABLE 6. COUNTY SUMMARY

North American Industry Classification System - Industry Groups	Number of Employing Units	Employment			Total Earnings Jul - Sep 2018	Average Weekly Earnings
		Jul	Aug	Sep		
<b>SEVIER COUNTY - TOTAL</b>	<b>312</b>	<b>4,604</b>	<b>4,770</b>	<b>4,841</b>	<b>\$37,776,651</b>	<b>\$613.27</b>
Natural Resources & Mining	18	170	172	173	2,080,330	932.19
Construction	18	177	176	178	2,425,228	1,053.99
Trade, Transportation & Utilities	88	810	822	822	6,171,748	580.38
Wholesale Trade	12	81	76	80	1,204,752	1,173.08
Retail Trade	63	650	667	659	3,946,156	460.86
Transportation, Warehousing & Utilities	13	79	79	83	1,020,840	977.50
Financial Activities	25	185	184	185	1,761,448	733.73
Professional & Business Services	25	93	99	95	696,127	559.74
Education & Health Services	59	568	563	564	4,506,985	613.61
Leisure & Hospitality	26	279	302	315	959,919	247.23
Local Government	13	777	928	960	6,435,097	557.23
State Government	7	135	124	149	1,274,356	720.79
Other	33	1,410	1,400	1,400	11,465,413	628.47
<b>SHARP COUNTY - TOTAL</b>	<b>383</b>	<b>3,319</b>	<b>3,402</b>	<b>3,594</b>	<b>\$23,680,907</b>	<b>\$529.79</b>
Construction	33	152	147	148	1,452,521	749.88
Manufacturing	18	178	174	168	1,110,759	492.94
Trade, Transportation & Utilities	79	784	780	755	4,322,895	430.18
Wholesale Trade	11	39	38	33	207,500	435.31
Retail Trade	58	665	678	662	3,494,671	402.23
Transportation, Warehousing & Utilities	10	80	64	60	620,724	702.18
Information	7	24	29	30	279,573	777.31
Financial Activities	33	166	166	164	1,800,519	837.71
Professional & Business Services	33	126	125	126	1,009,493	617.93
Education & Health Services	89	888	914	920	7,421,382	629.18
Leisure & Hospitality	29	390	390	384	1,419,713	281.47
Local Government	24	465	533	756	3,880,314	510.52
State Government	7	53	53	53	498,792	723.94
Other	31	93	91	90	484,946	408.43

TABLE 6. COUNTY SUMMARY

North American Industry Classification System - Industry Groups	Number of Employing Units	Employment			Total Earnings	Average Weekly Earnings
		Jul	Aug	Sep	Jul - Sep 2018	
<b>STONE COUNTY - TOTAL</b>	<b>269</b>	<b>2,515</b>	<b>2,666</b>	<b>2,671</b>	<b>\$18,242,010</b>	<b>\$536.13</b>
Natural Resources & Mining	5	12	11	11	59,239	402.07
Construction	15	28	33	30	203,207	515.32
Manufacturing	17	242	241	246	1,512,393	478.76
Trade, Transportation & Utilities	68	629	625	615	3,983,127	491.80
Wholesale Trade	6	39	39	41	270,810	525.16
Retail Trade	51	548	543	531	3,218,046	457.85
Transportation, Warehousing & Utilities	11	42	43	43	494,271	891.11
Financial Activities	31	151	152	151	1,940,938	986.58
Professional & Business Services	12	27	26	24	123,123	369.00
Education & Health Services	51	535	560	542	4,818,751	679.30
Leisure & Hospitality	31	482	458	456	1,639,488	271.02
Local Government	11	237	382	418	2,598,666	578.30
State Government	7	128	131	131	1,024,643	606.30
Other	21	44	47	47	338,435	565.94
<b>UNION COUNTY - TOTAL</b>	<b>1,288</b>	<b>16,502</b>	<b>17,164</b>	<b>17,417</b>	<b>\$205,773,158</b>	<b>\$929.59</b>
Natural Resources & Mining	75	393	389	395	4,820,029	945.04
Construction	89	1,502	1,511	1,528	20,637,500	1,048.78
Manufacturing	50	2,851	2,882	2,843	47,796,954	1,286.16
Trade, Transportation & Utilities	307	3,425	3,417	3,383	33,318,119	751.96
Wholesale Trade	68	451	460	445	6,155,741	1,047.61
Retail Trade	179	2,090	2,067	2,061	13,249,485	491.73
Transportation, Warehousing & Utilities	60	884	890	877	13,912,893	1,211.12
Information	8	91	91	89	911,086	775.83
Financial Activities	97	613	611	611	7,021,848	883.07
Professional & Business Services	129	2,024	2,004	2,063	44,342,192	1,679.99
Education & Health Services	299	2,261	2,306	2,265	21,027,773	710.27
Leisure & Hospitality	96	1,464	1,485	1,433	6,101,490	321.32
Other Services	90	430	420	420	3,111,295	565.35
Local Government	32	959	1,557	1,861	11,667,262	615.13
State Government	16	489	491	526	5,017,610	768.86

TABLE 6. COUNTY SUMMARY

North American Industry Classification System - Industry Groups	Number of Employing Units	Employment			Total Earnings	Average Weekly Earnings
		Jul	Aug	Sep	Jul - Sep 2018	
<b>VAN BUREN COUNTY - TOTAL</b>	<b>338</b>	<b>3,273</b>	<b>3,427</b>	<b>3,576</b>	<b>\$28,810,642</b>	<b>\$647.00</b>
Natural Resources & Mining	11	131	129	128	2,989,919	1,778.30
Construction	38	147	144	129	1,061,371	583.17
Manufacturing	8	108	130	148	985,169	588.98
Trade, Transportation & Utilities	92	954	954	950	9,171,852	740.58
Wholesale Trade	11	82	83	80	811,147	764.03
Retail Trade	54	594	591	586	3,570,290	465.22
Transportation, Warehousing & Utilities	27	278	280	284	4,790,415	1,312.92
Information	5	33	31	34	86,127	202.81
Financial Activities	30	134	131	132	1,390,070	808.02
Professional & Business Services	35	165	163	161	1,398,312	659.89
Education & Health Services	58	751	751	759	5,645,265	576.18
Leisure & Hospitality	27	389	380	365	1,564,708	318.42
Other Services	17	58	62	63	437,152	551.26
Local Government	11	363	512	667	3,649,211	546.13
State Government	6	40	40	40	431,486	829.78
<b>WASHINGTON COUNTY - TOTAL</b>	<b>6,134</b>	<b>101,643</b>	<b>105,336</b>	<b>107,120</b>	<b>\$1,134,278,671</b>	<b>\$833.36</b>
Natural Resources & Mining	39	309	306	293	3,841,177	976.24
Construction	582	5,714	5,676	5,664	73,669,666	996.87
Manufacturing	221	13,046	13,042	13,059	141,508,557	834.18
Trade, Transportation & Utilities	1,381	22,582	22,887	22,858	227,871,285	769.62
Wholesale Trade	392	3,870	3,858	3,837	64,010,421	1,277.27
Retail Trade	791	12,153	12,335	12,285	87,660,729	550.12
Transportation, Warehousing & Utilities	198	6,559	6,694	6,736	76,200,135	879.72
Information	78	955	961	926	12,008,811	975.11
Financial Activities	668	3,774	3,795	3,702	46,163,079	945.17
Professional & Business Services	1,107	13,598	13,645	13,551	206,131,043	1,166.07
Education & Health Services	893	15,748	15,807	16,058	187,489,235	908.72
Leisure & Hospitality	688	12,650	13,282	13,395	55,770,194	327.26
Other Services	394	2,050	2,083	2,151	18,424,730	676.62
Local Government	61	4,739	6,860	8,353	67,727,105	783.35
State Government	22	6,478	6,992	7,110	93,673,789	1,050.39

TABLE 6. COUNTY SUMMARY

North American Industry Classification System - Industry Groups	Number of Employing Units	Employment			Total Earnings Jul - Sep 2018	Average Weekly Earnings
		Jul	Aug	Sep		
<b>WHITE COUNTY - TOTAL</b>	<b>1,788</b>	<b>22,392</b>	<b>23,610</b>	<b>23,923</b>	<b>\$210,578,346</b>	<b>\$694.96</b>
Natural Resources & Mining	52	311	303	306	3,942,866	989.01
Construction	154	1,049	1,037	1,003	11,290,791	843.50
Manufacturing	60	2,136	2,105	2,121	25,482,602	924.33
Trade, Transportation & Utilities	486	6,116	6,173	6,167	53,800,374	672.71
Wholesale Trade	84	575	583	594	6,197,065	816.26
Retail Trade	316	3,429	3,464	3,434	23,134,511	516.97
Transportation, Warehousing & Utilities	86	2,112	2,126	2,139	24,468,798	885.47
Information	17	127	120	118	1,031,695	652.28
Financial Activities	174	903	910	891	9,886,933	843.79
Professional & Business Services	185	1,184	1,164	1,172	10,116,223	663.21
Education & Health Services	318	5,504	5,558	5,641	57,086,903	788.71
Leisure & Hospitality	168	2,722	2,776	2,741	9,849,505	275.88
Other Services	113	467	470	468	4,208,086	691.17
Local Government	46	1,415	2,539	2,734	19,342,865	667.42
State Government	15	458	455	561	4,539,503	710.70
<b>WOODRUFF COUNTY - TOTAL</b>	<b>200</b>	<b>1,565</b>	<b>1,684</b>	<b>1,707</b>	<b>\$14,650,510</b>	<b>\$682.18</b>
Natural Resources & Mining	28	126	127	133	1,154,576	690.26
Construction	10	43	41	37	346,008	659.90
Manufacturing	5	191	184	183	2,144,919	887.06
Trade, Transportation & Utilities	49	382	382	384	3,654,576	734.64
Wholesale Trade	12	142	145	152	1,836,455	965.37
Retail Trade	27	173	169	170	858,134	386.78
Transportation, Warehousing & Utilities	10	67	68	62	959,987	1,124.55
Financial Activities	12	52	51	50	441,860	666.46
Education & Health Services	54	241	239	245	1,967,221	626.17
Leisure & Hospitality	12	68	70	73	286,814	313.69
Local Government	9	290	418	430	2,735,905	554.80
State Government	5	30	30	30	299,092	766.90
Other	16	142	142	142	1,619,539	877.32

TABLE 6. COUNTY SUMMARY

North American Industry Classification System - Industry Groups	Number of Employing Units	Employment			Total Earnings	Average Weekly Earnings
		Jul	Aug	Sep	Jul - Sep 2018	
<b>YELL COUNTY - TOTAL</b>	<b>412</b>	<b>5,966</b>	<b>6,168</b>	<b>6,447</b>	<b>\$46,503,607</b>	<b>\$577.56</b>
Natural Resources & Mining	23	240	238	245	2,600,236	829.95
Construction	33	232	234	243	2,183,238	710.61
Manufacturing	21	2,440	2,430	2,425	18,614,076	588.84
Trade, Transportation & Utilities	81	674	681	672	4,177,549	475.60
Wholesale Trade	14	59	62	54	310,215	409.07
Retail Trade	50	538	537	534	2,777,194	398.32
Transportation, Warehousing & Utilities	17	77	82	84	1,090,140	1,035.27
Financial Activities	28	109	111	115	1,052,712	725.17
Professional & Business Services	38	305	308	295	2,574,757	654.38
Education & Health Services	111	775	796	805	5,158,899	501.06
Leisure & Hospitality	25	319	309	305	1,037,076	256.51
Local Government	25	687	877	1,160	7,262,119	615.23
State Government	10	69	70	70	588,386	649.67
Other	17	116	114	112	1,254,559	846.53
<b>STATEWIDE COUNTY - TOTAL</b>	<b>10,341</b>	<b>31,633</b>	<b>32,131</b>	<b>34,958</b>	<b>\$497,593,433</b>	<b>\$1,163.16</b>
Natural Resources & Mining	103	339	331	305	5,313,832	1,257.71
Construction	831	3,133	3,169	3,433	45,284,086	1,073.46
Manufacturing	55	129	136	142	3,829,463	2,171.31
Trade, Transportation & Utilities	3,327	7,732	7,803	7,837	175,764,187	1,735.45
Wholesale Trade	2,834	6,242	6,278	6,280	153,910,058	1,889.24
Retail Trade	178	490	468	493	7,903,223	1,256.94
Transportation, Warehousing & Utilities	315	1,000	1,057	1,064	13,950,906	1,031.54
Information	367	625	616	638	14,780,669	1,815.29
Financial Activities	671	1,741	1,876	1,862	30,918,735	1,302.26
Professional & Business Services	3,979	13,720	13,962	16,278	172,154,940	903.73
Education & Health Services	532	2,588	2,555	2,574	27,521,864	823.01
Leisure & Hospitality	104	120	166	182	1,639,355	808.36
State Government	16	736	744	745	8,943,579	927.60
Other	356	770	773	962	11,442,723	1,028.79

Note: Statewide classification includes employment and payroll data for employers that have not provided a physical location for each employing unit. This section also includes employers without a physical location in Arkansas.



**TABLE 7. FEDERAL GOVERNMENT EMPLOYMENT AND EARNINGS IN ARKANSAS**

North American Industry Classification System - Industry Groups	Number of Employing Units	Employment			Total Earnings	Average
		Jul	Aug	Sep	Jul - Sep 2018	Weekly Earnings
<b>TOTAL</b>	<b>1,148</b>	<b>20,133</b>	<b>20,096</b>	<b>20,144</b>	<b>\$344,604,473</b>	<b>\$1,317.21</b>
Trade, Transportation & Utilities	589	5,539	5,551	5,597	68,077,323	941.46
Information	2	38	38	38	721,713	1,460.96
Financial Activities	14	107	106	101	2,372,666	1,743.75
Professional & Business Services	32	831	822	819	15,173,303	1,416.48
Education & Health Services	18	5,379	5,383	5,420	99,291,031	1,415.98
Leisure & Hospitality	23	324	318	312	3,758,298	909.12
Other Services	1	1	1	1	9,481	729.31
Public Administration	469	7,914	7,877	7,856	155,200,658	1,514.59

TABLE 8. LOCAL WORKFORCE DEVELOPMENT AREA SUMMARY

North American Industry Classification System - Industry Groups	Number of Employing Units	Employment			Total Earnings Jul - Sep 2018	Average Weekly Earnings
		Jul	Aug	Sep		
<b>CENTRAL LOCAL WORKFORCE DEVELOPMENT AREA</b>	<b>6,762</b>	<b>79,132</b>	<b>82,144</b>	<b>83,788</b>	<b>\$740,733,768</b>	<b>\$697.53</b>
Natural Resources & Mining	202	1,142	1,132	1,116	15,356,867	1,045.40
Construction	748	6,036	6,012	5,993	64,805,585	828.95
Manufacturing	223	6,511	6,450	6,465	83,278,080	989.29
Trade, Transportation & Utilities	1,556	17,120	17,093	17,057	135,380,949	609.36
Wholesale Trade	356	2,008	1,974	1,996	25,319,275	977.40
Retail Trade	947	13,267	13,242	13,170	87,198,496	507.14
Transportation, Warehousing & Utilities	253	1,845	1,877	1,891	22,863,178	939.98
Information	59	493	507	550	6,138,755	913.96
Financial Activities	703	3,020	3,010	2,983	36,160,483	925.85
Professional & Business Services	905	7,356	7,379	7,250	96,809,671	1,016.18
Education & Health Services	1,117	14,254	14,347	14,482	129,531,549	693.82
Leisure & Hospitality	616	10,927	11,491	11,373	42,973,564	293.48
Other Services	437	2,135	2,205	2,195	15,572,406	549.91
Local Government	136	5,932	8,355	9,843	69,618,030	665.80
State Government	60	4,206	4,163	4,481	45,107,829	810.08
Note: Pulaski County is not included in the Central Local Workforce Development Area. Please refer to Page 51 for information on Pulaski County. Central Local Workforce Development Area includes these counties: Faulkner, Lonoke, Monroe, Prairie, and Saline.						
<b>EASTERN LOCAL WORKFORCE DEVELOPMENT AREA</b>	<b>3,383</b>	<b>32,948</b>	<b>34,169</b>	<b>34,986</b>	<b>\$289,909,937</b>	<b>\$655.24</b>
Natural Resources & Mining	242	1,187	1,168	1,277	9,609,786	610.58
Construction	139	858	830	853	8,721,804	792.10
Manufacturing	79	3,428	3,418	3,371	40,938,819	924.68
Trade, Transportation & Utilities	758	8,833	8,854	8,892	80,530,163	699.19
Wholesale Trade	149	1,998	1,964	1,965	23,375,116	910.12
Retail Trade	418	4,551	4,592	4,576	27,393,506	460.79
Transportation, Warehousing & Utilities	191	2,284	2,298	2,351	29,761,541	990.63
Information	23	160	165	156	1,485,477	712.69
Financial Activities	266	1,263	1,248	1,228	11,904,620	734.75
Professional & Business Services	248	1,695	1,638	1,634	14,457,085	671.68
Education & Health Services	1,015	6,211	6,344	6,312	50,793,318	621.27
Leisure & Hospitality	259	3,999	3,914	3,815	16,439,007	323.47
Other Services	170	756	776	746	5,981,129	605.91
Local Government	127	2,686	3,939	4,732	31,117,770	632.30
State Government	57	1,872	1,875	1,970	17,930,959	723.79
Eastern Local Workforce Development Area includes these counties: Crittenden, Cross, Lee, Phillips, and Saint Francis.						

TABLE 8. LOCAL WORKFORCE DEVELOPMENT AREA SUMMARY

North American Industry Classification System - Industry Groups	Number of Employing Units	Employment			Total Earnings	Average Weekly Earnings
		Jul	Aug	Sep	Jul - Sep 2018	
<b>NORTH CENTRAL LOCAL WORKFORCE DEVELOPMENT AREA</b>	<b>5,403</b>	<b>63,628</b>	<b>66,524</b>	<b>68,373</b>	<b>\$575,504,885</b>	<b>\$668.98</b>
Natural Resources & Mining	209	1,461	1,452	1,472	21,080,152	1,109.38
Construction	429	2,477	2,519	2,502	26,775,608	824.08
Manufacturing	215	8,597	8,636	8,722	92,136,558	819.20
Trade, Transportation & Utilities	1,370	14,693	14,755	14,741	122,829,032	641.45
Wholesale Trade	226	1,585	1,602	1,631	16,680,578	798.95
Retail Trade	895	9,403	9,423	9,384	59,760,723	488.87
Transportation, Warehousing & Utilities	249	3,705	3,730	3,726	46,387,731	959.13
Information	66	396	388	392	3,211,659	630.23
Financial Activities	513	2,630	2,609	2,588	28,579,946	842.64
Professional & Business Services	495	3,252	3,266	3,224	27,801,945	658.57
Education & Health Services	981	14,467	14,677	14,749	139,278,504	732.26
Leisure & Hospitality	494	6,965	7,098	6,923	25,661,688	282.18
Other Services	316	1,238	1,214	1,213	9,022,172	568.09
Local Government	222	4,962	7,366	9,018	54,598,571	590.26
State Government	93	2,490	2,544	2,829	24,529,050	719.90

North Central Local Workforce Development Area includes these counties: Cleburne, Fulton, Independence, Izard, Jackson, Sharp, Stone, Van Buren, White, and Woodruff.

<b>NORTHEAST LOCAL WORKFORCE DEVELOPMENT AREA</b>	<b>6,525</b>	<b>97,812</b>	<b>101,034</b>	<b>103,245</b>	<b>\$996,349,024</b>	<b>\$761.12</b>
Natural Resources & Mining	448	2,245	2,219	2,366	21,779,715	735.88
Construction	472	3,947	3,876	3,870	49,367,650	974.30
Manufacturing	299	21,121	21,261	21,493	286,316,665	1,034.41
Trade, Transportation & Utilities	1,725	19,466	19,549	19,379	166,775,857	659.09
Wholesale Trade	369	3,727	3,693	3,657	44,929,449	936.02
Retail Trade	1,001	12,255	12,314	12,173	77,828,467	488.83
Transportation, Warehousing & Utilities	355	3,484	3,542	3,549	44,017,941	960.57
Information	56	736	733	727	7,798,477	819.51
Financial Activities	559	3,165	3,170	3,126	35,875,259	875.06
Professional & Business Services	662	7,357	7,518	7,679	61,495,496	629.21
Education & Health Services	1,096	17,249	17,397	17,553	197,150,261	871.59
Leisure & Hospitality	570	9,343	9,578	9,683	35,881,291	289.48
Other Services	329	1,369	1,364	1,369	10,464,611	588.72
Local Government	214	7,683	10,142	11,561	79,035,145	620.67
State Government	95	4,131	4,227	4,439	44,408,597	800.82

Northeast Local Workforce Development Area includes these counties: Clay, Craighead, Greene, Lawrence, Mississippi, Poinsett, and Randolph.

TABLE 8. LOCAL WORKFORCE DEVELOPMENT AREA SUMMARY

North American Industry Classification System - Industry Groups	Number of Employing Units	Employment			Total Earnings	Average Weekly Earnings
		Jul	Aug	Sep	Jul - Sep 2018	
<b>NORTHWEST LOCAL WORKFORCE DEVELOPMENT AREA</b>	<b>16,578</b>	<b>265,662</b>	<b>272,242</b>	<b>276,709</b>	<b>\$3,034,488,519</b>	<b>\$859.63</b>
Natural Resources & Mining	134	1,498	1,409	1,393	18,865,396	1,012.45
Construction	1,549	12,224	12,110	12,066	145,122,202	920.05
Manufacturing	628	36,464	36,426	36,436	378,402,864	798.75
Trade, Transportation & Utilities	3,962	60,952	61,344	61,296	673,592,172	846.68
Wholesale Trade	1,270	10,739	10,728	10,722	214,982,647	1,541.25
Retail Trade	2,170	31,375	31,602	31,407	216,811,425	530.10
Transportation, Warehousing & Utilities	522	18,838	19,014	19,167	241,798,100	978.61
Information	215	2,492	2,493	2,430	32,569,052	1,013.61
Financial Activities	1,677	9,658	9,731	9,512	122,913,396	981.44
Professional & Business Services	2,758	48,128	48,319	48,101	806,196,359	1,287.08
Education & Health Services	2,408	34,859	35,153	35,519	378,134,683	826.88
Leisure & Hospitality	1,791	31,494	32,169	31,895	138,433,952	334.31
Other Services	1,044	5,219	5,191	5,294	45,893,669	674.40
Local Government	309	14,147	18,792	23,237	179,201,898	736.16
State Government	103	8,527	9,105	9,530	115,162,876	978.43

Northwest Local Workforce Development Area includes these counties: Baxter, Benton, Boone, Carroll, Madison, Marion, Newton, Searcy, and Washington.

<b>SOUTHEAST LOCAL WORKFORCE DEVELOPMENT AREA</b>	<b>6,100</b>	<b>65,761</b>	<b>67,927</b>	<b>69,234</b>	<b>\$644,821,693</b>	<b>\$733.31</b>
Natural Resources & Mining	425	2,318	2,296	2,272	23,809,917	797.94
Construction	303	2,233	2,266	2,303	25,160,887	853.63
Manufacturing	198	14,846	14,911	14,911	190,729,951	985.37
Trade, Transportation & Utilities	1,213	11,973	11,974	11,960	99,070,609	636.71
Wholesale Trade	230	1,935	1,889	1,882	22,405,553	906.15
Retail Trade	720	7,396	7,395	7,364	45,339,565	472.26
Transportation, Warehousing & Utilities	263	2,642	2,690	2,714	31,325,491	898.45
Information	42	271	268	269	2,813,567	803.57
Financial Activities	408	2,422	2,424	2,400	25,780,867	821.06
Professional & Business Services	398	3,614	3,591	3,684	32,323,456	685.03
Education & Health Services	2,090	11,042	11,100	11,037	102,958,245	716.10
Leisure & Hospitality	393	4,596	4,633	4,549	15,864,428	265.72
Other Services	297	1,147	1,165	1,149	8,949,253	596.71
Local Government	209	5,725	7,581	8,764	58,956,755	616.47
State Government	124	5,574	5,718	5,936	58,403,758	782.32

Southeast Local Workforce Development Area includes these counties: Arkansas, Ashley, Bradley, Chicot, Cleveland, Desha, Drew, Grant, Jefferson, and Lincoln.

TABLE 8. LOCAL WORKFORCE DEVELOPMENT AREA SUMMARY

North American Industry Classification System - Industry Groups	Number of Employing Units	Employment			Total Earnings	Average Weekly Earnings
		Jul	Aug	Sep	Jul - Sep 2018	
<b>SOUTHWEST LOCAL WORKFORCE DEVELOPMENT AREA</b>	<b>5,639</b>	<b>73,358</b>	<b>75,852</b>	<b>77,886</b>	<b>\$750,764,751</b>	<b>\$762.91</b>
Natural Resources & Mining	316	2,136	2,170	2,181	25,272,216	899.04
Construction	352	3,378	3,455	3,537	41,647,780	926.81
Manufacturing	233	19,244	19,226	19,174	249,425,184	998.54
Trade, Transportation & Utilities	1,350	14,742	14,755	14,649	129,641,123	677.69
Wholesale Trade	241	1,786	1,788	1,805	22,070,644	946.87
Retail Trade	817	8,570	8,578	8,494	51,696,497	465.25
Transportation, Warehousing & Utilities	292	4,386	4,389	4,350	55,873,982	982.40
Information	48	423	424	423	4,939,992	897.64
Financial Activities	450	2,482	2,457	2,429	25,700,105	804.94
Professional & Business Services	434	4,751	4,789	4,875	65,599,799	1,050.18
Education & Health Services	1,310	9,572	9,826	9,795	79,215,665	626.20
Leisure & Hospitality	418	5,900	6,036	5,989	22,488,079	289.52
Other Services	338	1,382	1,398	1,380	9,757,459	541.28
Local Government	259	5,933	7,898	9,895	62,008,196	603.12
State Government	131	3,415	3,418	3,559	35,069,153	778.76

Southwest Local Workforce Development Area includes these counties: Calhoun, Columbia, Dallas, Hempstead, Howard, Lafayette, Little River, Miller, Nevada, Ouachita, Sevier, and Union

<b>WEST CENTRAL LOCAL WORKFORCE DEVELOPMENT AREA</b>	<b>8,145</b>	<b>101,696</b>	<b>104,180</b>	<b>106,438</b>	<b>\$926,058,020</b>	<b>\$684.27</b>
Natural Resources & Mining	238	2,294	2,189	1,868	\$24,024,162	872.94
Construction	723	4,281	4,318	4,347	46,756,644	833.46
Manufacturing	329	16,289	16,256	16,354	174,003,509	821.18
Trade, Transportation & Utilities	1,823	21,335	21,279	21,206	187,597,714	678.34
Wholesale Trade	316	1,945	1,947	1,931	21,318,037	844.85
Retail Trade	1,215	13,983	13,941	13,851	93,012,969	513.81
Transportation, Warehousing & Utilities	292	5,407	5,391	5,424	73,266,708	1,042.27
Information	76	675	679	675	6,911,673	786.10
Financial Activities	799	3,739	3,739	3,720	39,102,679	805.83
Professional & Business Services	918	7,742	7,746	7,698	71,170,119	708.35
Education & Health Services	1,584	17,359	17,403	17,642	170,355,492	750.19
Leisure & Hospitality	795	13,864	13,916	13,424	58,159,444	325.73
Other Services	514	2,368	2,323	2,305	16,906,794	557.69
Local Government	232	6,855	9,125	11,601	80,805,520	676.10
State Government	114	4,895	5,207	5,598	50,264,270	738.82

West Central Local Workforce Development Area includes these counties: Clark, Conway, Garland, Hot Spring, Johnson, Montgomery, Perry, Pike, Pope, and Yell

TABLE 8. LOCAL WORKFORCE DEVELOPMENT AREA SUMMARY

North American Industry Classification System - Industry Groups	Number of Employing Units	Employment			Total Earnings	Average Weekly Earnings
		Jul	Aug	Sep	Jul - Sep 2018	
<b>WESTERN LOCAL WORKFORCE DEVELOPMENT AREA</b>	<b>6,519</b>	<b>99,172</b>	<b>102,656</b>	<b>102,947</b>	<b>\$984,160,230</b>	<b>\$745.19</b>
Natural Resources & Mining	150	1,282	1,282	1,281	18,048,885	1,083.26
Construction	528	4,075	4,037	3,978	41,940,348	800.54
Manufacturing	333	20,772	20,749	20,680	226,223,844	839.30
Trade, Transportation & Utilities	1,555	21,968	21,996	21,944	198,616,093	695.43
Wholesale Trade	350	3,574	3,563	3,551	44,822,179	967.78
Retail Trade	937	12,029	12,074	11,993	76,814,462	491.09
Transportation, Warehousing & Utilities	268	6,365	6,359	6,400	76,979,452	928.91
Information	66	1,061	1,035	1,027	16,620,102	1,228.12
Financial Activities	677	3,599	3,585	3,615	41,096,552	878.21
Professional & Business Services	872	10,834	10,866	10,700	101,963,712	726.24
Education & Health Services	1,121	15,852	15,979	16,002	189,309,011	913.32
Leisure & Hospitality	568	9,088	9,160	9,074	35,863,627	302.91
Other Services	425	2,153	2,128	2,109	17,125,073	618.46
Local Government	153	5,744	9,088	9,658	69,297,009	652.99
State Government	71	2,744	2,751	2,879	28,055,974	773.16

Western Local Workforce Development Area includes these counties: Crawford, Franklin, Logan, Polk, Scott, and Sebastian