

Arkansas Covered
Employment & Earnings
Fourth Quarter
2019

**COVERED EMPLOYMENT AND EARNINGS
STATE OF ARKANSAS
FOURTH QUARTER 2019**

**ASA HUTCHINSON, GOVERNOR
STATE OF ARKANSAS**

**CHARISSE CHILDERS, DIRECTOR
DIVISION OF WORKFORCE SERVICES**

**PUBLISHED BY
LABOR MARKET INFORMATION
BUREAU OF LABOR STATISTICS PROGRAMS
POST OFFICE BOX 2981
LITTLE ROCK, ARKANSAS 72203-2981
SUSAN PRICE, BLS PROGRAMS MANAGER
TELEPHONE (501) 682-3103**

STATE OF ARKANSAS WEBPAGE: <http://www.arkansas.gov>

DIVISION OF WORKFORCE SERVICES WEBPAGE: <http://www.dws.arkansas.gov/>

WEBPAGE FOR LABOR MARKET INFORMATION: <http://www.discover.arkansas.gov>

RELEASED: MAY 2020

TABLE OF CONTENTS

DESCRIPTION OF DATA	PAGE
Description and Classification of Data	1
Definition of Covered Employment and Earnings	2
Significant Developments During Fourth Quarter 2019	3

LIST OF GRAPHS AND TABLES

Graph 1	Total Covered Employment for Selected Years, Arkansas	7
Graph 2	Total Covered Earnings, by Calendar Quarter for Selected Years, Arkansas	8
Table 1	Quarterly Comparison of Covered Employment and Wages, by Industry	5
Table 2	Total Covered Employment in Arkansas, 2012 – 2019	6
Table 3	Total Covered Earnings, 2012 – 2019	9
Table 4	Total Taxable Earnings, 2012 – 2019	10
Table 5	State Summary – Employment and Total Earnings, by Industry, Fourth Quarter 2019	11
Table 6	County Summary – Employment and Total Earnings, by Industry, Fourth Quarter 2019	22
Table 7	Federal Government Employment and Total Earnings in Arkansas, Fourth Quarter 2019	60
Table 8	Local Workforce Development Area – Employment and Total Earnings, by Industry, Fourth Quarter 2019	61

EMPLOYMENT AND EARNINGS
UNDER THE ARKANSAS EMPLOYMENT SECURITY LAW
FOURTH QUARTER 2019

DESCRIPTION AND CLASSIFICATION OF DATA

This publication contains covered employment and payroll data by industry and county for the Fourth Quarter 2019 and a record for total covered employment by month, quarterly payroll data, average weekly earnings, and total taxable earnings for 2012 through 2019. These data are compiled from quarterly contributions and wage reports submitted by employers subject to the Arkansas Employment Security Law.

Employment data have been tabulated for each month of the quarter by industry under the **North American Industry Classification System** (NAICS) by state, county, and workforce area. Payroll data represent the total wages paid during the quarter and are classified by industry for the state and by publishable industry groups for each county and workforce area.

Due to industry classification revisions, previously published data will not always be comparable with current data. For this reason, comparisons should not be made between the same industries under different revisions. For more information, visit the NAICS home page at <http://www.census.gov/naics>.

Industry Classification Revisions

- SIC (Standard Industrial Classification) 1987 to NAICS 2002
- NAICS 2002 to NAICS 2007
- NAICS 2007 to NAICS 2012
- NAICS 2012 to NAICS 2018

The tabulation of this data is a joint effort in conjunction with the United States Bureau of Labor Statistics. Data included in this publication are subject to revisions. Revisions are typically reflected in the Annual Covered Employment and Earnings publication.

DEFINITION OF COVERED EMPLOYMENT AND EARNINGS

Covered Employment is the total number of workers employed by establishments subject to the Arkansas Employment Security Law that worked or received pay for the payroll period including the 12th of the month. Earnings include all wages paid to any covered employee by their employer including salaries, bonuses, commissions, fees, fringe benefits, sick pay made directly to employees or dependents, deferred compensation, and reported tips. These wages include both taxable and nontaxable wages. Only the first \$10,000 paid to each worker by an employer in the calendar year is taxable under the Arkansas Employment Security Law.

An Arkansas state unemployment insurance account is required of any entity meeting the definition of an employer. As described by Arkansas Division of Workforce Services Law, the definition of an employer includes, but is not limited to, a sole proprietorship, partnership, corporation, associations, trust, estate, and receiver or trustee in bankruptcy. The entity must employ one or more individuals for ten or more days in a calendar year, whether or not the days are consecutive.

Currently excluded from coverage is employment covered by the Railroad Unemployment Insurance Act, some domestic service workers, employees of small agricultural establishments, self-employed workers, unpaid family workers, insurance and real estate agents paid only on a commission basis, and employees of churches and religious organizations except separately incorporated schools.

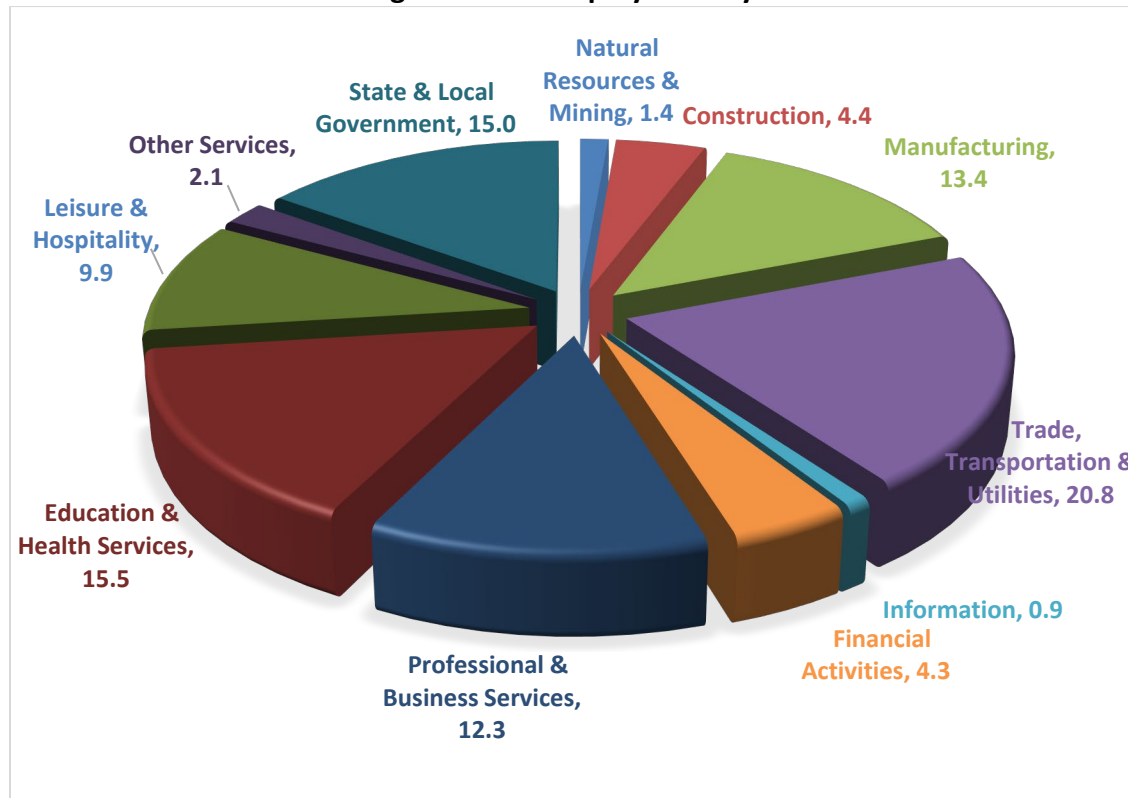
Civilian federal workers are covered by Unemployment Compensation for Federal Employees (UCFE).

SIGNIFICANT DEVELOPMENTS DURING FOURTH QUARTER 2019

AVERAGE EMPLOYMENT CHANGES

Covered employment averaged 1,212,398 during the Fourth Quarter 2019 (refer to Table 1), an increase of 31,489 (2.7%) from the previous quarter and a gain of 5,621 (0.5%) from the average recorded one year ago. The over-the-year comparison is more significant when used as an economic indicator and allows for seasonal factors that appear when comparing over-the-quarter data to be disregarded.

Average Covered Employment by NAICS



EMPLOYMENT CHANGES FROM THIRD QUARTER 2019

Over the quarter increases were recorded in seven of eleven industry groups. Large gains occurred in State & Local Government (21,865) due to the start of the school year at schools and universities. Professional & Business Services (5,448) and Trade, Transportation & Utilities (5,104) also reported significant gains. Leisure & Hospitality recorded the largest contraction (-2,048); a seasonal loss.

EMPLOYMENT CHANGES FROM THIRD QUARTER 2018 (QUARTER YEAR AGO COMPARISON)

Over-the-year gains were recorded in eight major industry groups (refer to Table 1). Large increases occurred in Leisure & Hospitality (2,685), Construction (1,827), Professional & Business Services (1,545), and Financial Activities (1,080). The only significant loss occurred in State & Local Government (-1,868), mostly attributed to the reorganization of State Government (-1,233).

COVERED WAGES

Wages paid to covered workers totaled \$13,991,492,966 for the Fourth Quarter 2019 (refer to Table 1), for an average weekly wage of \$887.72 (refer to Table 5). Calhoun County workers recorded the highest average weekly wage (\$1,130.80), and employees in Searcy County reported the lowest (\$530.55) (refer to Table 6). Professional & Business Services recorded the highest average weekly wage for the State of Arkansas (\$1,191.39). The Leisure & Hospitality sector recorded the lowest (\$341.48) (refer to Table 5).

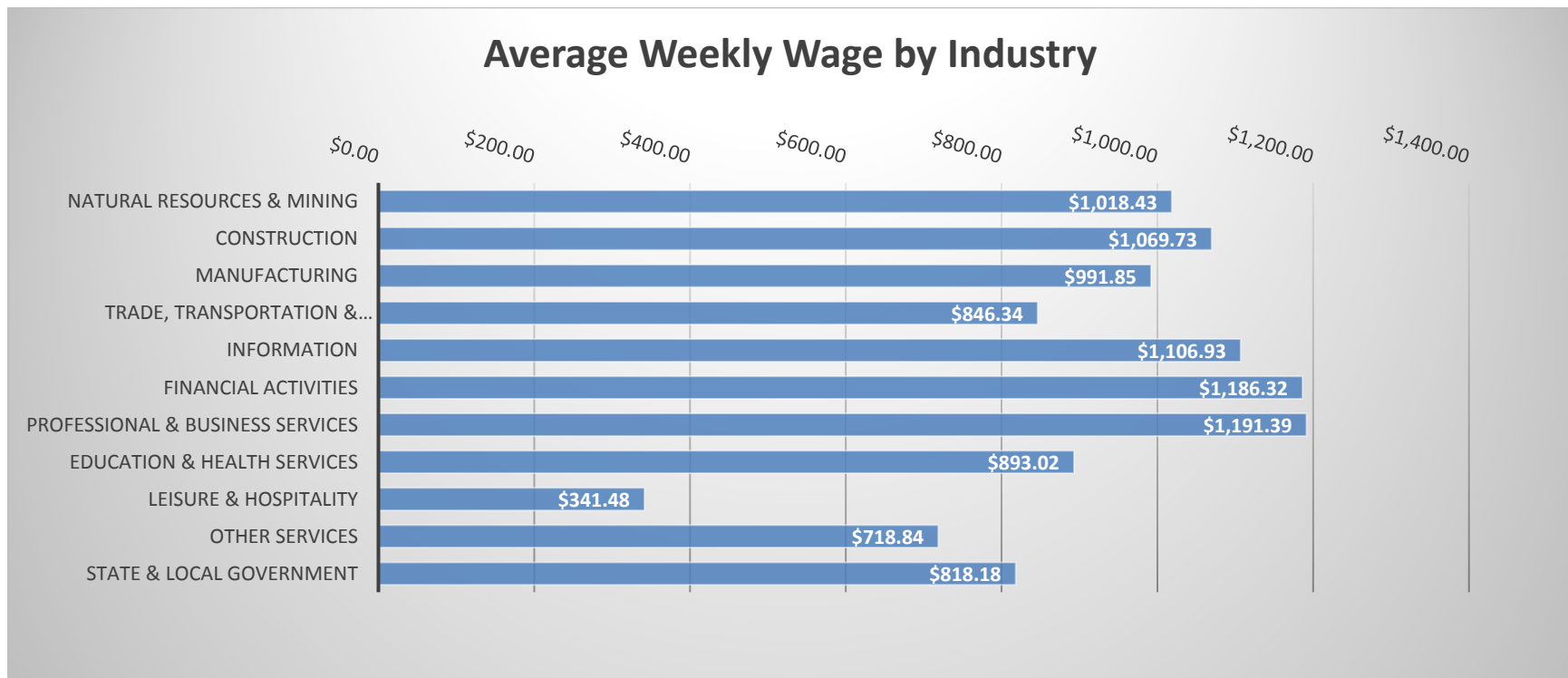


TABLE 1. QUARTERLY COMPARISON OF COVERED EMPLOYMENT AND WAGES, BY INDUSTRY

North American Industry Classification System - Industry Groups	Number of Employing Units	Monthly Employment Average	Percent of Total	Net Change From:		Total Wages Paid Oct - Dec 2019	Percent of Total
				Jul - Sep 2019	Oct- Dec 2018		
TOTAL	91,618	1,212,398	100	31,489	5,621	\$13,991,492,966	100
Natural Resources & Mining	2,603	16,617	1.4	188	141	219,998,433	1.6
Agriculture, Forestry, Fishing & Hunting	2,173	12,878	1.1	330	158	157,135,231	1.1
Mining	430	3,739	0.3	-143	-16	62,863,202	0.4
Construction	7,184	53,315	4.4	-197	1,827	741,428,835	5.3
Manufacturing	2,934	161,926	13.4	111	-180	2,087,882,673	14.9
Trade, Transportation & Utilities	21,958	252,494	20.8	5,104	70	2,778,048,436	19.9
Wholesale Trade	7,389	47,554	3.9	67	-228	870,192,549	6.2
Retail Trade	11,069	139,358	11.5	3,587	-1,557	1,014,364,830	7.2
Transportation & Warehousing	3,090	57,727	4.8	1,447	1,790	716,141,512	5.1
Utilities	410	7,854	0.6	3	66	177,349,545	1.3
Information	1,342	10,826	0.9	-51	-107	155,791,761	1.1
Financial Activities	8,697	52,481	4.3	373	1,080	809,364,251	5.8
Finance & Insurance	5,095	38,334	3.2	334	646	652,166,866	4.7
Real Estate & Rental & Leasing	3,602	14,146	1.2	38	434	157,197,385	1.1
Professional & Business Services	15,242	149,114	12.3	5,448	1,545	2,309,492,574	16.5
Professional & Technical Services	9,587	45,134	3.7	742	824	801,217,048	5.7
Management of Companies & Enterprises	551	34,169	2.8	317	-340	950,040,572	6.8
Administrative & Waste Services	5,104	69,811	5.8	4,389	1,061	558,234,954	4.0
Education & Health Services	15,790	188,434	15.5	937	427	2,187,586,982	15.6
Educational Services	947	12,680	1.0	1,078	303	116,806,460	0.8
Health Care & Social Assistance	14,843	175,754	14.5	-141	124	2,070,780,522	14.8
Leisure & Hospitality	7,416	120,348	9.9	-2,048	2,685	534,261,102	3.8
Arts, Entertainment & Recreation	1,029	11,136	0.9	-1,518	680	65,764,413	0.5
Accommodation & Food Services	6,387	109,212	9.0	-530	2,006	468,496,689	3.3
Other Services	5,402	25,099	2.1	-242	1	234,546,991	1.7
State & Local Government	3,050	181,744	15.0	21,865	-1,868	1,933,090,928	13.8
Local Government	1,985	114,313	9.4	21,205	-636	1,113,065,787	8.0
State Government	1,065	67,430	5.6	660	-1,233	820,025,141	5.9
Nonclassifiable Establishments	0	0	0.0	0	0	0	0.0

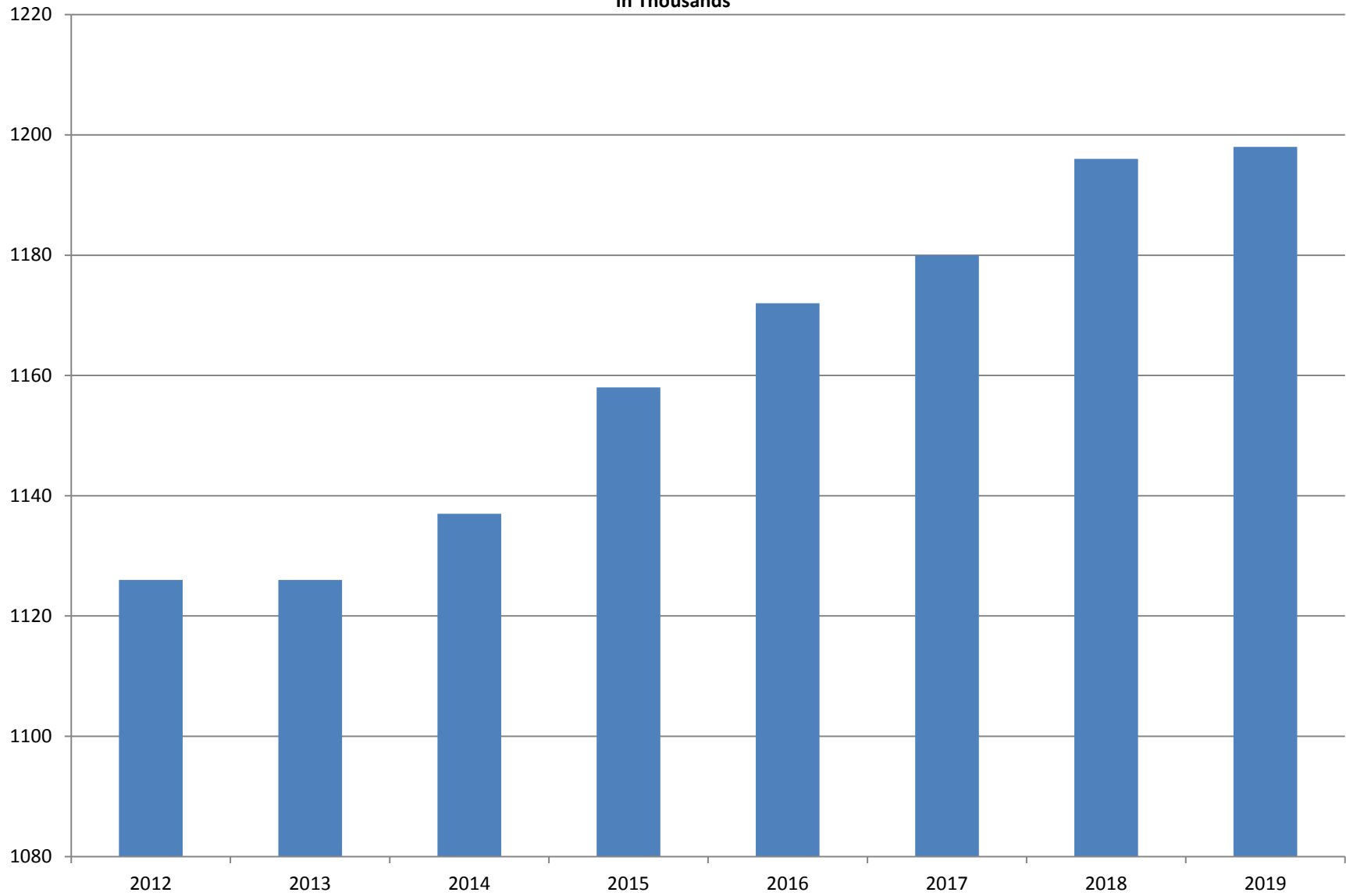
Note: Items do not necessarily add to total because of rounding. Because of industry code changes between years, substantial employment and wage shifts among industries are anticipated.

TABLE 2. TOTAL COVERED EMPLOYMENT IN ARKANSAS

PERIOD	2012	2013	2014	2015	2016	2017	2018	2019
AVERAGE	1,126,171	1,125,890	1,137,486	1,157,634	1,171,503	1,180,337	1,195,781	1,197,710
January	1,113,274	1,112,991	1,114,412	1,135,577	1,152,434	1,161,239	1,173,537	1,186,848
February	1,119,319	1,121,492	1,122,905	1,144,902	1,162,294	1,172,290	1,183,185	1,194,355
March	1,131,123	1,129,100	1,132,106	1,146,413	1,170,837	1,179,686	1,190,199	1,198,481
April	1,136,608	1,134,734	1,140,788	1,158,606	1,178,630	1,185,212	1,194,816	1,204,176
May	1,142,985	1,138,383	1,149,046	1,167,657	1,181,644	1,189,900	1,201,113	1,206,476
June	1,136,699	1,130,402	1,144,876	1,164,607	1,177,506	1,186,326	1,195,468	1,202,260
July	1,078,836	1,083,849	1,096,675	1,119,390	1,132,361	1,137,883	1,168,432	1,155,337
August	1,108,552	1,109,759	1,125,162	1,148,502	1,160,743	1,168,802	1,200,284	1,185,213
September	1,134,829	1,135,673	1,150,545	1,173,776	1,185,510	1,193,845	1,222,012	1,202,177
October	1,135,677	1,138,312	1,153,684	1,173,953	1,185,022	1,194,194	1,205,161	1,209,176
November	1,137,411	1,141,035	1,158,579	1,177,717	1,186,046	1,197,650	1,208,638	1,215,078
December	1,138,742	1,134,955	1,161,056	1,180,513	1,185,009	1,197,013	1,206,531	1,212,940

AVERAGE TOTAL COVERED EMPLOYMENT

In Thousands



TOTAL COVERED EARNINGS BY CALENDAR YEAR

In Thousands

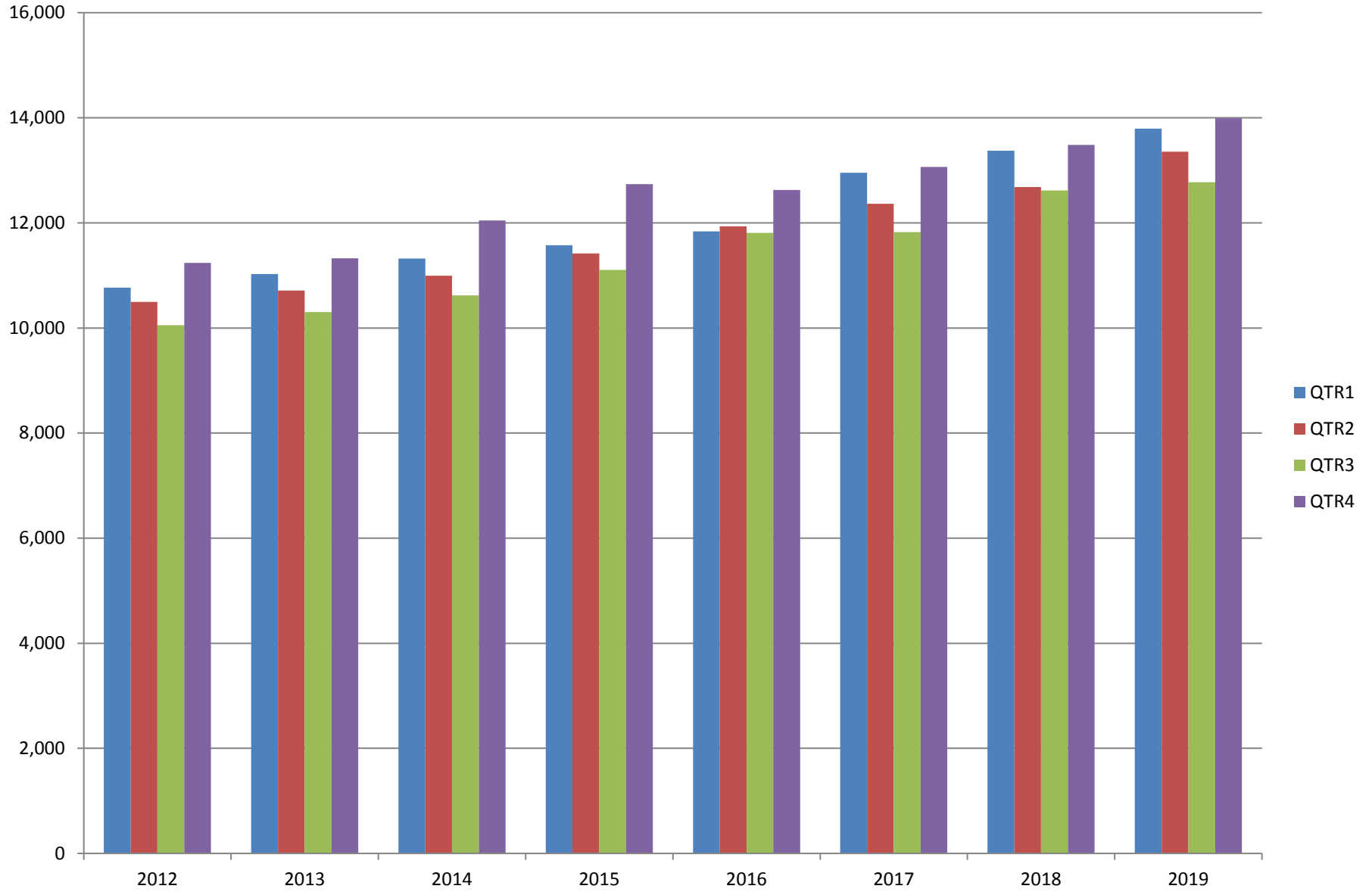


TABLE 3. TOTAL COVERED EARNINGS 2012 - 2019

PERIOD	2012	2013	2014	2015
TOTAL	\$42,551,238,929	\$43,371,086,461	\$44,980,520,034	\$46,836,352,793
January - March	10,766,175,449	11,027,184,315	11,321,422,241	11,575,046,688
April - June	10,494,369,042	10,711,027,503	10,991,760,061	11,419,363,330
July - September	10,053,294,410	10,304,451,772	10,619,889,280	11,104,443,452
October - December	11,237,400,028	11,328,422,871	12,047,448,452	12,737,499,323
Average Weekly Earnings	\$726.62	\$740.80	\$760.46	\$778.05

PERIOD	2016	2017	2018	2019
TOTAL	\$48,207,277,530	\$50,207,202,141	\$52,159,789,393	\$53,919,607,098
January - March	11,836,255,664	12,955,088,347	13,372,730,974	13,795,046,820
April - June	11,935,722,186	12,363,027,711	12,682,491,819	13,356,848,831
July - September	11,809,460,297	11,823,324,966	12,619,347,460	12,776,218,481
October - December	12,625,839,383	13,065,761,117	13,485,219,140	13,991,492,966
Average Weekly Earnings	\$791.34	\$818.01	\$838.84	\$865.75

TABLE 4. TOTAL TAXABLE EARNINGS, 2012 - 2019

PERIOD	2012	2013	2014	2015
TOTAL	11,624,348,048	11,644,747,978	11,919,662,224	12,258,632,610
January - March	6,167,036,199	6,184,735,653	6,288,682,396	6,378,966,662
April - June	2,838,154,846	2,805,431,293	2,831,013,392	2,915,293,283
July - September	1,494,712,584	1,506,497,129	1,552,243,963	1,640,978,599
October - December	1,124,444,419	1,148,083,903	1,247,722,473	1,323,394,066

PERIOD	2016	2017	2018	2019
TOTAL	12,511,938,047	12,744,039,136	11,335,932,409	11,506,122,596
January - March	6,595,351,454	6,958,706,950	6,577,871,657	6,737,833,125
April - June	3,003,077,908	2,908,226,426	2,278,450,975	2,283,514,220
July - September	1,651,582,584	1,576,968,648	1,328,868,479	1,327,818,133
October - December	1,261,926,101	1,300,137,112	1,150,741,298	1,156,957,118

TABLE 5. STATEWIDE SUMMARY

North American Industry Classification System - Industry Groups		Number of Employing Units	Employment			Total Earnings	Average Weekly Earnings
			Oct	Nov	Dec	Oct - Dec 2019	
TOTAL, ALL INDUSTRIES		91,618	1,209,176	1,215,078	1,212,940	\$13,991,492,966	\$887.72
NATURAL RESOURCES & MINING		2,603	16,925	16,440	16,485	\$219,998,433	\$1,018.43
11	AGRICULTURE, FORESTRY, FISHING & HUNTING	2,173	13,122	12,738	12,773	\$157,135,231	\$938.63
111	CROP PRODUCTION	982	4,423	4,033	4,008	\$40,491,645	\$749.70
1111	Oilseed & Grain Farming	729	2,977	2,721	2,631	28,067,338	777.65
1112	Vegetable & Melon Farming	43	384	255	236	2,166,137	571.29
1113	Fruit & Tree Nut Farming	10	29	28	31	241,850	634.22
1114	Greenhouse & Nursery Production	41	405	420	539	4,057,313	686.44
1119	Other Crop Farming	159	628	609	571	5,959,007	760.59
112	ANIMAL PRODUCTION & AQUACULTURE	345	3,235	3,201	3,211	\$48,619,389	\$1,163.04
1121	Cattle Ranching & Farming	131	407	381	385	3,458,231	680.35
1122	Hog & Pig Farming	12	134	133	138	2,167,767	1,235.19
1123	Poultry & Egg Production	133	2,301	2,298	2,322	38,530,582	1,284.74
1125	Animal Aquaculture	42	324	325	303	4,034,455	977.97
	Other	27	69	64	63	428,354	504.34
115	SUPPORT ACTIVITIES FOR AGRICULTURE & FORESTRY	419	3,165	3,218	3,256	\$40,221,144	\$962.94
1151	Support Activities for Crop Production	282	2,009	2,000	1,850	27,156,952	1,069.63
1152	Support Activities for Animal Production	63	691	682	676	6,199,379	698.21
1153	Support Activities for Forestry	74	465	536	730	6,864,813	915.19
	OTHER	427	2,299	2,286	2,298	\$27,803,053	\$932.16
21	MINING	430	3,803	3,702	3,712	\$62,863,202	\$1,293.30
211	OIL & GAS EXTRACTION	73	645	647	649	\$14,352,650	\$1,706.41
212	MINING (EXCEPT OIL & GAS)	108	1,852	1,825	1,810	\$26,001,820	\$1,093.57
213	SUPPORT ACTIVITIES FOR MINING	249	1,306	1,230	1,253	\$22,508,732	\$1,370.90

TABLE 5. STATEWIDE SUMMARY

North American Industry Classification System - Industry Groups		Number of Employing Units	Employment			Total Earnings Oct - Dec 2019	Average Weekly Earnings
			Oct	Nov	Dec		
CONSTRUCTION		7,184	53,926	52,933	53,087	\$741,428,835	\$1,069.73
236	CONSTRUCTION OF BUILDINGS	1,916	11,349	11,174	11,170	\$185,730,166	\$1,272.10
2361	Residential Building Construction	1,320	3,824	3,808	3,848	50,994,335	1,025.08
2362	Nonresidential Building Construction	596	7,525	7,366	7,322	134,735,831	1,399.76
237	HEAVY & CIVIL ENGINEERING CONSTRUCTION	747	8,836	8,641	8,646	\$122,920,399	\$1,085.87
2371	Utility System Construction	425	4,982	4,979	4,982	71,240,225	1,100.18
2372	Land Subdivision	48	95	91	97	1,295,631	1,056.51
2373	Highway, Street & Bridge Construction	178	2,936	2,818	2,760	40,049,484	1,085.53
2379	Other Heavy Construction	96	823	753	807	10,335,059	1,000.84
238	SPECIALTY TRADE CONTRACTORS	4,521	33,741	33,118	33,271	\$432,778,270	\$997.42
2381	Building Foundation & Exterior Contractors	822	6,070	5,938	5,936	76,372,800	982.19
2382	Building Equipment Contractors	2,231	18,918	18,645	18,737	261,108,346	1,070.26
2383	Building Finishing Contractors	740	3,777	3,719	3,768	41,608,060	852.44
2389	Other Specialty Trade Contractors	728	4,976	4,816	4,830	53,689,064	847.34
MANUFACTURING		2,934	161,908	162,093	161,777	\$2,087,882,673	\$991.85
311	FOOD MANUFACTURING	303	49,786	49,998	50,230	\$507,333,326	\$780.44
3111	Animal Food Manufacturing	48	1,921	1,887	1,870	24,975,313	1,015.06
3112	Grain & Oilseed Milling	34	2,825	2,745	2,764	37,619,733	1,041.69
3114	Fruit, Vegetable & Specialty Food	17	4,171	4,184	4,225	54,805,119	1,005.35
3115	Dairy Product Manufacturing	7	554	553	574	6,408,210	879.72
3116	Animal Slaughtering & Processing	82	33,871	34,204	34,350	314,896,240	709.48
3118	Bakeries & Tortilla Manufacturing	82	4,033	4,022	4,005	41,389,081	791.98
3119	Other Food Manufacturing	22	2,369	2,356	2,394	26,963,499	874.05
	Other	11	42	47	48	276,131	465.13
312	BEVERAGE & TOBACCO PRODUCT MANUFACTURING	63	1,514	1,501	1,477	\$17,420,984	\$894.97
313	TEXTILE MILLS	9	132	129	128	\$1,910,534	\$1,133.40
314	TEXTILE PRODUCT MILLS	43	872	868	871	\$11,461,089	\$1,012.97
3141	Textile Furnishing Mills	9	23	25	25	142,475	450.40
3149	Other Textile Product Mills	34	849	843	846	11,318,614	1,029.15
315	APPAREL MANUFACTURING	16	837	815	772	\$5,867,003	\$558.55
3151	Apparel Knitting Mills	3	465	458	433	3,753,110	638.72
	Other	13	372	357	339	2,113,893	456.76

TABLE 5. STATEWIDE SUMMARY

North American Industry Classification System - Industry Groups		Number of Employing Units	Employment			Total Earnings	Average Weekly Earnings
			Oct	Nov	Dec	Oct - Dec 2019	
316	LEATHER & ALLIED PRODUCT MANUFACTURING	12	1,074	1,093	1,109	\$7,812,869	\$550.36
3162	Footwear Manufacturing	4	871	892	901	5,897,901	\$510.91
3169	Other Leather & Allied Product Manufacturing	8	203	201	208	1,914,968	\$722.08
321	WOOD PRODUCT MANUFACTURING	300	9,563	9,486	9,488	\$112,654,582	\$911.00
3211	Sawmills & Wood Preservation	140	4,729	4,598	4,608	60,365,899	999.68
3212	Veneer & Engineered Wood Products	41	1,715	1,745	1,738	22,814,357	1,012.86
3219	Other Wood Product Manufacturing	119	3,119	3,143	3,142	29,474,326	723.28
322	PAPER MANUFACTURING	68	9,541	9,456	9,233	\$171,320,249	\$1,400.48
3221	Pulp, Paper & Paperboard Mills	15	3,823	3,742	3,519	89,480,172	1,862.98
3222	Converted Paper Product Manufacturing	53	5,718	5,714	5,714	81,840,077	1,101.49
323	PRINTING & RELATED SUPPORT ACTIVITIES	247	3,791	3,762	3,753	\$44,322,609	\$904.68
324	PETROLEUM & COAL PRODUCTS MANUFACTURING	22	1,213	1,221	1,215	\$21,252,053	\$1,344.02
325	CHEMICAL MANUFACTURING	125	5,659	5,662	5,689	\$93,139,704	\$1,263.60
3251	Basic Chemical Manufacturing	29	1,918	1,922	1,951	37,229,628	1,483.59
3252	Resin, Rubber & Artificial Fibers	12	497	508	513	8,513,176	1,294.19
3253	Agricultural Chemical Manufacturing	16	492	489	491	9,486,924	1,487.29
3254	Pharmaceutical & Medicine Manufacturing	25	500	498	504	6,744,495	1,036.23
3255	Paint, Coating & Adhesive Manufacturing	10	215	220	223	3,361,382	1,178.88
3256	Soap, Cleaning Compound, & Toilet Preparation Manufacturing	12	1,321	1,298	1,288	16,948,747	1,001.09
3259	Other Chemical Preparation Manufacturing	21	716	727	719	10,855,352	1,158.69
326	PLASTICS & RUBBER PRODUCTS MANUFACTURING	123	10,843	10,778	10,807	\$143,519,098	\$1,021.33
3261	Plastics Product Manufacturing	97	6,699	6,621	6,637	82,577,659	954.87
3262	Rubber Product Manufacturing	26	4,144	4,157	4,170	60,941,439	1,127.69
327	NONMETALLIC MINERAL PRODUCT MANUFACTURING	226	3,624	3,647	3,681	\$47,883,255	\$1,008.95
3271	Clay Product & Refractory Manufacturing	10	457	475	473	5,948,456	977.03
3272	Glass & Glass Product Manufacturing	8	363	373	381	5,265,116	1,087.76
3273	Cement & Concrete Product Manufacturing	171	2,177	2,174	2,195	28,015,033	987.63
3274	Lime & Gypsum Product Manufacturing	3	273	284	291	4,918,033	1,338.36
3279	Other Nonmetallic Mineral Products Manufacturing	34	354	341	341	3,736,617	832.33
331	PRIMARY METAL MANUFACTURING	70	8,490	8,454	8,416	\$176,067,142	\$1,602.16
3311	Iron & Steel Mills & Ferroalloys	9	3,345	3,349	3,336	101,026,898	2,324.42
3312	Purchased Steel Product Manufacturing	22	2,416	2,408	2,381	39,876,928	1,277.22
3313	Alumina & Aluminum Production	15	856	874	870	12,507,502	1,110.13
3314	Other Nonferrous Metal Production	6	262	264	270	3,491,422	1,012.20
3315	Foundries	18	1,611	1,559	1,559	19,164,392	935.20

TABLE 5. STATEWIDE SUMMARY

North American Industry Classification System - Industry Groups		Number of Employing Units	Employment			Total Earnings	Average Weekly Earnings
			Oct	Nov	Dec	Oct - Dec 2019	
332	FABRICATED METAL PRODUCT MANUFACTURING	518	15,020	15,063	14,736	\$206,733,805	\$1,064.45
3321	Forging & Stamping	12	455	445	443	5,271,001	905.72
3322	Cutlery & Hand Tool Manufacturing	13	541	527	513	6,475,911	945.25
3323	Architectural & Structural Metals	150	4,614	4,653	4,626	73,140,694	1,214.90
3324	Boilers, Tanks & Shipping Containers	14	570	586	558	8,321,958	1,120.45
3325	Hardware Manufacturing	5	254	259	268	3,607,321	1,065.89
3326	Spring & Wire Product Manufacturing	10	346	357	356	4,277,286	932.07
3327	Machine Shops & Threaded Products	205	2,297	2,275	2,275	27,929,208	941.32
3328	Coating, Engraving & Heat Treating Metals	40	653	660	644	6,608,963	779.33
3329	Other Fabricated Metal Product Manufacturing	69	5,290	5,301	5,053	71,101,463	1,048.84
333	MACHINERY MANUFACTURING	210	11,860	11,799	11,803	\$176,389,284	\$1,147.85
3331	Agriculture, Construction & Mining Machinery	36	2,841	2,771	2,747	55,360,597	1,528.36
3332	Industrial Machinery Manufacturing	26	682	675	702	10,593,696	1,187.32
3333	Commercial & Service Industry Machinery	23	857	870	870	13,303,329	1,182.13
3334	HVAC & Commercial Refrigeration Equipment	24	2,908	2,913	2,891	36,835,214	975.72
3335	Metalworking Machinery Manufacturing	51	877	878	892	11,094,285	967.22
3336	Turbine & Power Transmission Equipment Manufacturing	5	766	762	765	10,008,396	1,007.25
3339	Other General Purpose Machinery Manufacturing	45	2,929	2,930	2,936	39,193,767	1,028.39
334	COMPUTER & ELECTRONIC PRODUCT MANUFACTURING	51	1,883	1,874	1,847	\$24,073,839	\$991.35
3343	Audio & Video Equipment Manufacturing	4	99	92	92	869,772	709.25
3344	Semiconductors & Electronic Components	23	1,342	1,331	1,307	16,926,897	981.46
3345	Navigational, Measuring, Electromedical, & Control Instr, Mfg Other	19 5	363 79	368 83	365 83	4,864,533 1,412,637	1,024.26 1,330.58
335	ELECTRICAL EQUIPMENT & APPLIANCES	54	4,327	4,390	4,412	\$61,278,000	\$1,077.09
3351	Electric Lighting Equipment Manufacturing	9	305	315	358	3,771,159	\$889.84
3352	Household Appliance Manufacturing	5	24	24	25	370,952	\$1,172.66
3353	Electrical Equipment Manufacturing	20	2,720	2,711	2,705	39,657,456	1,124.84
3359	Other Electrical Equipment & Component Manufacturing	20	1,278	1,340	1,324	17,478,433	1,023.21
336	TRANSPORTATION EQUIPMENT MANUFACTURING	134	15,177	15,252	15,341	\$187,544,022	\$945.58
3362	Motor Vehicle Body & Trailer Manufacturing	30	2,152	2,162	2,146	23,211,172	829.17
3363	Motor Vehicle Parts Manufacturing	41	5,097	5,105	5,133	55,328,555	832.61
3364	Aerospace Product & Parts Manufacturing	28	4,154	4,183	4,242	67,754,067	1,242.99
3366	Ship & Boat Building Other	23 12	2,425 1,349	2,440 1,362	2,448 1,372	23,130,180 18,120,048	729.90 1,024.14
337	FURNITURE & RELATED PRODUCT MANUFACTURING	164	3,408	3,444	3,421	\$34,789,040	\$781.49
3371	Household & Institutional Furniture Other	131 33	2,737 671	2,738 706	2,729 692	27,253,582 7,535,458	766.61 840.48
339	MISCELLANEOUS MANUFACTURING	176	3,294	3,401	3,348	\$35,110,186	\$806.77
3391	Medical Equipment & Supplies Manufacturing	68	1,625	1,634	1,649	18,339,105	862.29
3399	Other Miscellaneous Manufacturing	108	1,669	1,767	1,699	16,771,081	753.70

TABLE 5. STATEWIDE SUMMARY

North American Industry Classification System - Industry Groups		Number of Employing Units	Employment			Total Earnings Oct - Dec 2019	Average Weekly Earnings
			Oct	Nov	Dec		
TRADE, TRANSPORTATION & UTILITIES		21,958	249,009	254,202	254,271	\$2,778,048,436	\$846.34
42	WHOLESALE TRADE	7,389	47,533	47,497	47,632	\$870,192,549	\$1,407.62
423	MERCHANT WHOLESALERS, DURABLE GOODS	3,318	24,186	24,183	24,204	\$410,273,185	\$1,304.60
4231	Motor Vehicle & Part Merchant Wholesalers	292	3,116	3,125	3,135	46,130,499	1,135.40
4232	Furniture & Furnishings Merchant Wholesalers	89	457	448	444	8,090,413	1,384.00
4233	Lumber & Supply Merchant Wholesalers	227	1,625	1,632	1,619	22,429,234	1,061.52
4234	Commercial Goods Merchant Wholesalers	666	3,289	3,285	3,334	74,480,534	1,734.74
4235	Metal & Mineral Merchant Wholesalers	137	1,027	1,036	1,038	15,413,472	1,147.03
4236	Appliances & Electronics Goods Merchant Wholesalers	347	2,738	2,715	2,716	50,837,362	1,436.12
4237	Hardware & Plumbing Merchant Wholesalers	305	2,770	2,784	2,792	44,776,614	1,238.09
4238	Machinery & Supply Merchant Wholesalers	945	7,249	7,253	7,233	119,260,787	1,266.24
4239	Miscellaneous Durable Goods Merchant Wholesalers	310	1,915	1,905	1,893	28,854,270	1,165.53
424	MERCHANT WHOLESALERS, NONDURABLE GOODS	2,063	17,832	17,798	17,877	\$331,787,874	\$1,430.96
4241	Paper & Paper Product Merchant Wholesalers	133	1,253	1,267	1,257	27,588,892	1,685.64
4242	Druggist' Goods Merchant Wholesalers	248	1,618	1,625	1,608	46,410,700	2,207.83
4243	Apparel & Piece Goods Merchant Wholesalers	86	750	777	791	11,593,770	1,154.22
4244	Grocery Product Merchant Wholesalers	575	5,844	5,836	5,909	116,728,407	1,531.49
4245	Farm Product & Raw Material Merchant Wholesalers	82	842	816	801	8,495,414	797.27
4246	Chemical Merchant Wholesalers	226	1,091	1,086	1,090	26,584,804	1,877.86
4247	Petroleum Merchant Wholesalers	174	1,132	1,139	1,141	17,218,322	1,164.55
4248	Alcoholic Beverage Merchant Wholesalers	72	1,611	1,590	1,614	24,496,839	1,174.06
4249	Miscellaneous Nondurable Goods Merchant Wholesaler	467	3,691	3,662	3,666	52,670,726	1,103.07
425	ELECTRONIC MARKETS & AGENTS & BROKERS	2,008	5,515	5,516	5,551	\$128,131,490	\$1,783.19
44 - 45	RETAIL TRADE	11,069	136,677	140,995	140,403	\$1,014,364,830	\$559.91
441	MOTOR VEHICLE & PARTS DEALERS	1,533	19,305	19,226	19,154	\$229,692,788	\$918.89
4411	Automobile Dealers	623	11,653	11,647	11,630	160,800,190	1,062.35
4412	Other Motor Vehicle Dealers	170	1,793	1,720	1,700	20,443,989	905.02
4413	Automotive Parts, Accessories & Tire Stores	740	5,859	5,859	5,824	48,448,609	637.35
442	FURNITURE & HOME FURNISHINGS STORES	500	3,601	3,748	3,751	\$33,085,740	\$687.85
4421	Furniture Stores	269	1,962	1,986	1,987	20,937,968	814.13
4422	Home Furnishings Stores	231	1,639	1,762	1,764	12,147,772	542.76
443	ELECTRONICS & APPLIANCE STORES	383	3,200	3,320	3,354	\$30,632,796	\$715.93
444	BUILDING MATERIAL & GARDEN SUPPLY STORES	842	11,698	11,759	11,740	\$89,387,903	\$586.07
4441	Building Material & Supplies Dealers	603	9,649	9,722	9,743	76,600,497	607.17
4442	Lawn & Garden Equipment & Supplies Stores	239	2,049	2,037	1,997	12,787,406	485.11

TABLE 5. STATEWIDE SUMMARY

North American Industry Classification System - Industry Groups		Number of Employing Units	Employment			Total Earnings Oct - Dec 2019	Average Weekly Earnings
			Oct	Nov	Dec		
445	FOOD & BEVERAGE STORES	1,051	19,371	19,585	19,384	\$118,203,902	\$467.57
4451	Grocery Stores	559	16,747	16,932	16,741	98,761,655	452.03
4452	Specialty Food Stores	141	794	813	804	8,957,077	857.33
4453	Beer, Wine & Liquor Stores	351	1,830	1,840	1,839	10,485,170	439.22
446	HEALTH & PERSONAL CARE STORES	1,019	8,515	8,845	8,955	\$85,853,000	\$752.89
447	GASOLINE STATIONS	1,628	12,384	12,337	12,305	\$62,270,096	\$388.11
44711	Gasoline Stations with Convenience Stores	1,531	11,199	11,138	11,111	54,670,113	377.19
44719	Other Gasoline Stations	97	1,185	1,199	1,194	7,599,983	490.17
448	CLOTHING & CLOTHING ACCESSORIES STORES	985	7,484	8,167	8,454	\$37,369,885	\$357.76
4481	Clothing Stores	754	5,764	6,253	6,485	25,512,941	318.21
4482	Shoe Stores	111	1,046	1,207	1,235	4,691,478	310.39
4483	Jewelry, Luggage & Leather Goods Stores	120	674	707	734	7,165,466	781.83
451	SPORTING GOODS, HOBBY, BOOK & MUSIC STORES	439	4,391	4,694	4,670	\$25,588,240	\$429.30
4511	Sporting Goods & Musical Instrument Stores	380	3,931	4,236	4,222	23,706,309	441.58
4512	Book, Periodical & Music Stores	59	460	458	448	1,881,931	317.93
452	GENERAL MERCHANDISE STORES	967	37,499	39,961	39,483	\$237,174,124	\$468.03
4522	Department Stores	135	7,514	8,788	8,883	40,839,887	374.21
4523	Gen. Merchandise Stores, Warehouse clubs & Supercenters	832	29,985	31,173	30,600	196,334,237	493.78
453	MISCELLANEOUS STORE RETAILERS	1,182	7,277	7,271	7,218	\$42,772,361	\$453.48
4531	Florists	161	571	587	586	3,034,231	401.49
4532	Office Supplies, Stationery & Gift Stores	235	1,623	1,615	1,559	9,421,201	453.23
4533	Used Merchandise Stores	250	2,140	2,107	2,091	10,800,619	393.26
4539	Other Miscellaneous Store Retailers	536	2,943	2,962	2,982	19,516,310	506.78
454	NONSTORE RETAILERS	540	1,952	2,082	1,935	\$22,333,995	\$863.46
4541	Electronic Shopping & Mail-Order Houses	304	745	733	744	9,164,432	951.79
4542	Vending Machine Operators	59	422	421	416	4,030,663	738.80
4543	Direct Selling Establishments	177	785	928	775	9,138,900	847.66
48 - 49	TRANSPORTATION & WAREHOUSING	3,090	56,975	57,858	58,349	\$716,141,512	\$954.28
481	AIR TRANSPORTATION	43	773	778	788	\$8,712,593	\$859.60
4811	Scheduled Air Transportation	16	670	677	691	6,362,955	720.50
4812	Nonshceduled Air Transportation	27	103	101	97	2,349,638	1,801.41
483	WATER TRANSPORTATION	8	34	36	36	\$732,238	\$1,594.13
484	TRUCK TRANSPORTATION	1,939	32,994	33,022	32,907	\$447,484,039	\$1,043.90
4841	General Freight Trucking	1,151	26,563	26,625	26,543	370,650,885	1,072.79
4842	Specialized Freight Trucking	788	6,431	6,397	6,364	76,833,154	923.86

TABLE 5. STATEWIDE SUMMARY

North American Industry Classification System - Industry Groups		Number of Employing Units	Employment			Total Earnings Oct - Dec 2019	Average Weekly Earnings
			Oct	Nov	Dec		
485	TRANSIT & GROUND PASSENGER TRANSPORTATION	124	1,860	1,884	1,840	\$12,281,434	\$507.55
4853	Taxi & Limousine Service	31	342	329	306	1,791,992	423.27
4854	School & Employee Bus Transportation	13	393	397	397	2,564,576	498.59
4859	Other Ground Passenger Transportation	68	934	968	949	6,292,517	509.34
	Other	12	191	190	188	1,632,349	662.03
486	PIPELINE TRANSPORTATION	39	414	416	416	\$9,762,620	\$1,808.12
488	SUPPORT ACTIVITIES FOR TRANSPORTATION	535	5,981	5,949	5,984	\$75,512,982	\$972.76
4881	Support Activities for Air Transportation	114	1,164	1,168	1,172	12,492,723	822.76
4882	Support Activities for Rail Transportation	38	862	869	878	11,005,209	973.42
4883	Support Activities for Water Transportation	22	490	466	461	6,349,578	1,034.08
4884	Support Activities for Road Transportation	164	941	936	928	9,812,383	807.27
4885	Freight Transportation Arrangement	184	2,416	2,406	2,443	34,752,691	1,103.90
4889	Other Support Activities for Transportation	13	108	104	102	1,100,398	808.72
493	WAREHOUSING & STORAGE	212	9,144	9,202	9,106	\$101,066,840	\$849.60
	OTHER	185	5,753	6,559	7,261	\$60,507,377	\$713.39
22	UTILITIES	410	7,824	7,852	7,887	\$177,349,545	\$1,736.91
2211	Power Generation & Supply	167	5,863	5,897	5,927	147,382,736	1,922.96
2212	Natural Gas Distribution	66	1,012	1,019	1,022	19,769,906	1,494.36
2213	Water, Sewage & Other Systems	177	949	936	938	10,196,903	833.56
	INFORMATION	1,342	10,756	10,844	10,879	\$155,791,761	\$1,106.93
511	PUBLISHING INDUSTRIES, EXCEPT INTERNET	240	2,573	2,552	2,538	\$29,242,395	\$880.63
5111	Newspaper, Book & Directory Publishers	180	2,147	2,133	2,103	20,958,862	757.74
5112	Software Publishers	60	426	419	435	8,283,533	1,493.43
512	MOTION PICTURE & SOUND RECORDING INDUSTRY	149	1,198	1,258	1,299	\$7,011,234	\$430.89
5121	Motion Picture & Video Industries	133	1,180	1,241	1,280	6,740,576	420.30
5122	Sound Recording Industries	16	18	17	19	270,658	1,156.66
515	BROADCASTING, EXCEPT INTERNET	126	1,514	1,523	1,517	\$17,501,870	\$886.89

TABLE 5. STATEWIDE SUMMARY

North American Industry Classification System - Industry Groups		Number of Employing Units	Employment			Total Earnings Oct - Dec 2019	Average Weekly Earnings
			Oct	Nov	Dec		
517	TELECOMMUNICATIONS	357	3,417	3,444	3,419	\$61,552,454	\$1,381.75
5173	Telecommunications Resellers	251	3,009	3,034	3,006	53,847,327	1,373.22
5174	Satellite Telecommunications Carriers	4	5	5	5	43,120	663.38
5179	Other Telecommunications	102	403	405	408	7,662,007	1,454.08
518	DATA PROCESSING, HOSTING & RELATED SERVICES	379	1,707	1,714	1,759	\$35,711,716	\$1,590.96
519	OTHER INFORMATION SERVICES	91	347	353	347	\$4,772,092	\$1,051.82
FINANCIAL ACTIVITIES		8,697	52,453	52,500	52,489	\$809,364,251	\$1,186.32
52	FINANCE & INSURANCE	5,095	38,210	38,324	38,469	\$652,166,866	\$1,308.66
522	CREDIT INTERMEDIATION & RELATED ACTIVITIES	1,995	19,752	19,817	19,850	\$309,643,511	\$1,202.58
5221	Depository Credit Intermediation	1,430	16,661	16,752	16,785	250,283,990	1,150.60
5222	Nondepository Credit Intermediation	423	1,994	1,973	1,976	41,560,363	1,613.81
5223	Activities Related to Credit Intermediation	142	1,097	1,092	1,089	17,799,158	1,253.05
523	FINANCIAL INVESTMENT & RELATED ACTIVITIES	730	3,139	3,107	3,123	\$96,768,035	\$2,383.51
5231	Insurance Carriers	305	2,140	2,102	2,104	69,866,329	2,540.66
5239	Insurance Agencies, Brokerages & Support	425	999	1,005	1,019	26,901,706	2,053.62
524	INSURANCE CARRIERS & RELATED ACTIVITIES	2,276	15,227	15,286	15,400	\$242,797,212	\$1,220.35
5231	Security & Commodity Contracts Intermediation & Brokerage	300	6,720	6,725	6,817	115,676,828	1,317.47
5239	Other Financial Investment Activities	1,976	8,507	8,561	8,583	127,120,384	1,143.64
	OTHER	94	92	114	96	\$2,958,108	\$2,260.40
53	REAL ESTATE & RENTAL & LEASING	3,602	14,243	14,176	14,020	\$157,197,385	\$854.79
531	REAL ESTATE	2,996	10,021	9,987	9,867	\$108,419,320	\$837.48
5311	Lessors of Real Estate	1,107	4,411	4,386	4,285	38,973,609	687.50
5312	Offices of Real Estate Agents & Brokers	1,001	2,116	2,104	2,122	31,674,952	1,152.57
5313	Activities Related to Real Estate	888	3,494	3,497	3,460	37,770,759	834.02
532	RENTAL & LEASING SERVICES	589	4,167	4,135	4,097	\$47,885,433	\$891.24
5321	Automotive Equipment Rental & Leasing	127	1,198	1,192	1,195	9,700,733	624.44
5322	Consumer Goods Rental	299	1,809	1,778	1,724	16,684,286	724.95
5323	General Rental Centers	33	216	216	222	2,732,731	964.27
5324	Machinery & Equipment Rental & Leasing	130	944	949	956	18,767,683	1,520.18
533	LESSORS OF NONFINANCIAL INTANGIBLE ASSETS	17	55	54	56	\$892,632	\$1,248.44

TABLE 5. STATEWIDE SUMMARY

North American Industry Classification System - Industry Groups		Number of Employing Units	Employment			Total Earnings Oct - Dec 2019	Average Weekly Earnings
			Oct	Nov	Dec		
PROFESSIONAL & BUSINESS SERVICES		15,242	148,350	150,085	148,907	\$2,309,492,574	\$1,191.39
54	PROFESSIONAL & TECHNICAL SERVICES	9,587	44,812	45,177	45,413	\$801,217,048	\$1,365.54
5411	Legal Services	1,692	6,040	6,079	6,075	119,770,429	1,519.15
5412	Accounting & Bookkeeping Services	1,311	6,043	6,202	6,491	83,171,986	1,024.42
5413	Architectural & Engineering Services	1,066	6,426	6,417	6,487	128,493,246	1,534.00
5414	Specialized Design Services	180	363	370	371	5,854,321	1,223.73
5415	Computer Systems Design & Related Services	2,086	9,878	9,951	9,713	215,242,422	1,681.38
5416	Management & Technical Consulting Services	2,085	6,832	6,888	6,999	127,969,147	1,425.33
5417	Scientific Research & Development Services	155	773	792	787	14,595,918	1,432.10
5418	Advertising & Related Services	405	3,922	3,912	3,904	55,299,171	1,087.18
5419	Other Professional & Technical Services	607	4,535	4,566	4,586	50,820,408	856.86
55	MANAGEMENT OF COMPANIES & ENTERPRISES	551	34,041	34,166	34,300	\$950,040,572	\$2,138.78
56	ADMINISTRATIVE & WASTE SERVICES	5,104	69,497	70,742	69,194	\$558,234,954	\$615.11
561	ADMINISTRATIVE & SUPPORT SERVICES	4,768	65,843	67,079	65,514	\$508,204,055	\$591.01
5611	Office Administrative Services	752	4,393	4,590	4,720	67,835,402	1,142.40
5612	Facilities Support Services	69	1,737	1,550	1,531	16,179,648	774.96
5613	Employment Services	1,260	30,238	31,360	30,058	186,321,292	469.12
5614	Business Support Services	390	7,450	7,684	7,688	79,479,107	803.67
5615	Travel Arrangement & Reservation Services	121	378	377	375	4,651,792	949.99
5616	Investigation & Security Services	312	5,011	5,167	5,156	38,305,230	576.48
5617	Services to Buildings & Dwellings	1,663	15,447	15,181	14,824	102,907,390	522.48
5619	Other Support Services	201	1,189	1,170	1,162	12,524,194	820.85
562	WASTE MANAGEMENT & REMEDIATION SERVICES	336	3,654	3,663	3,680	\$50,030,899	\$1,049.89
5621	Waste Collection Services	135	1,245	1,269	1,254	15,407,754	943.64
5622	Waste Treatment & Disposal Services	41	1,054	1,056	1,080	17,121,636	1,238.60
5629	Remediation & Other Waste Services	160	1,355	1,338	1,346	17,501,509	999.95
EDUCATION & HEALTH SERVICES		15,790	187,748	188,634	188,921	2,187,586,982	\$893.02
61	EDUCATIONAL SERVICES	947	12,635	12,808	12,598	116,806,460	\$708.59
6111	Elementary & Secondary Schools	104	4,692	4,730	4,709	41,590,218	679.20
6113	Colleges & Universities	129	4,366	4,477	4,391	43,744,336	762.80
6115	Technical & Trade Schools	117	845	846	832	12,167,651	1,112.93
6116	Other Schools & Instruction	330	1,859	1,877	1,797	9,271,687	386.70
6117	Educational Support Services	195	628	617	618	6,831,531	846.22
	Other	72	245	261	251	3,201,037	975.83

TABLE 5. STATEWIDE SUMMARY

North American Industry Classification System - Industry Groups		Number of Employing Units	Employment			Total Earnings Oct - Dec 2019	Average Weekly Earnings
			Oct	Nov	Dec		
62	HEALTH CARE & SOCIAL ASSISTANCE	14,843	175,113	175,826	176,323	\$2,070,780,522	\$906.33
621	AMBULATORY HEALTH CARE SERVICES	6,108	59,987	60,147	60,540	\$1,050,714,253	\$1,342.04
6211	Offices of Physicians	2,358	26,094	26,223	26,380	626,350,126	1,836.69
6212	Offices of Dentists	966	7,473	7,465	7,538	104,071,197	1,068.54
6213	Offices of Other Health Practitioners	1,729	10,080	10,000	9,982	113,532,493	871.53
6214	Outpatient Care Centers	378	5,290	5,378	5,427	79,515,650	1,140.09
6215	Medical & Diagnostic Laboratories	201	1,379	1,406	1,403	26,591,476	1,465.26
6216	Home Health Care Services	272	6,846	6,862	6,943	65,542,334	732.42
6219	Other Ambulatory Health Care Services	204	2,825	2,813	2,867	35,110,977	952.68
622	HOSPITALS	122	44,152	44,232	44,443	\$574,419,317	\$997.98
6221	General Medical & Surgical Hospitals	91	39,304	39,364	39,594	513,870,292	1,002.74
6222	Psychiatric & Substance Abuse Hospitals	11	2,007	1,996	2,008	22,911,113	879.58
6223	Speciality Hospitals	20	2,841	2,872	2,841	37,637,912	1,015.39
623	Residential & Mental Health Facilities	657	32,442	32,548	32,617	\$228,192,994	\$539.51
6231	Nursing Care Facilities (Skilled Nursing Facilities)	284	22,723	22,808	22,813	159,669,804	539.14
6232	Residential Mental Health Facilities	178	4,285	4,296	4,321	31,652,947	566.15
6233	Continuing Care & Assisted Living Facilities	160	4,427	4,457	4,507	28,585,708	492.62
6239	Other Residential Care Facilities	35	1,007	987	976	8,284,535	643.71
624	SOCIAL ASSISTANCE	7,956	38,532	38,899	38,723	\$217,453,958	\$432.03
6241	Individual & Family Services	6,885	23,276	23,484	23,420	133,632,250	439.42
6242	Emergency & Other Relief Services	150	1,393	1,407	1,430	10,295,189	561.66
6243	Vocational Rehabilitation Services	91	3,206	3,249	3,233	18,058,487	430.16
6244	Child Day Care Services	830	10,657	10,759	10,640	55,468,032	399.31
LEISURE & HOSPITALITY		7,416	121,430	120,365	119,249	\$534,261,102	\$341.48
71	ARTS, ENTERTAINMENT & RECREATION	1,029	11,821	10,899	10,689	65,764,413	\$454.26
711	PERFORMING ARTS & SPECTATOR SPORTS	238	3,312	2,823	2,881	21,709,870	\$555.68
7111	Performing Arts Companies	44	767	531	421	2,630,782	353.17
7112	Spectator Sports	68	1,339	1,379	1,699	13,533,524	707.07
7113	Performing Arts & Sports Promoters	56	1,112	792	666	4,531,730	406.92
7114	Agents & Managers for Public Figures	20	21	56	24	265,708	607.10
7115	Independent Artists, Writers, & Performers	50	73	65	71	748,126	826.05
712	MUSEUMS, PARKS, & HISTORICAL SITES	53	771	745	741	6,882,741	\$703.73
713	GAMBLING, RECREATIONAL & AMUSEMENT INDUSTRY	738	7,738	7,331	7,067	37,171,802	387.52
72	ACCOMMODATION & FOOD SERVICES	6,387	109,609	109,466	108,560	468,496,689	\$329.98

TABLE 5. STATEWIDE SUMMARY

North American Industry Classification System - Industry Groups		Number of Employing Units	Employment			Total Earnings	Average Weekly Earnings
			Oct	Nov	Dec	Oct - Dec 2019	
721	ACCOMMODATION	918	11,681	11,444	11,268	\$58,904,913	\$395.24
7211	Travel Accommodation	825	11,044	10,809	10,618	55,103,967	391.62
7212	RV Parks & Recreational Camps	76	510	509	526	3,068,880	458.38
7213	Rooming & Boarding Houses	17	127	126	124	732,066	448.11
722	FOOD SERVICES & DRINKING PLACES	5,469	97,928	98,022	97,292	\$409,591,776	\$322.33
7223	Special Food Services	309	5,370	5,290	5,146	26,941,584	393.35
7224	Drinking Places, Alcoholic Beverages	143	998	1,018	985	4,266,391	328.07
7225	Restaurants & Other Eating Places	5,017	91,560	91,714	91,161	378,383,801	318.18
722511	Full-Service Restaurants	2,136	38,906	39,199	38,981	179,040,726	352.88
722513	Limited-Service Eating Places	2,364	47,798	47,611	47,327	178,743,177	288.98
722514	Cafeterias, Grill Buffets, & Buffets	87	1,620	1,624	1,583	8,283,704	396.03
722515	Snack & Nonalcoholic Beverage Bars	430	3,236	3,280	3,270	12,316,194	290.44
OTHER SERVICES		5,402	25,245	24,950	25,102	\$234,546,991	\$718.84
811	REPAIR & MAINTENANCE	2,226	11,169	10,989	11,075	\$117,693,495	\$817.26
8111	Automotive Repair & Maintenance	1,413	6,940	6,871	6,922	65,763,792	731.99
8112	Electronic Equipment Repair & Maintenance	159	1,021	977	1,007	12,222,883	938.66
8113	Commercial Machinery Repair & Maintenance	488	2,605	2,546	2,546	34,592,976	1,037.16
8114	Household Goods Repair & Maintenance	166	603	595	600	5,113,844	656.35
812	PERSONAL & LAUNDRY SERVICES	1,362	7,704	7,715	7,815	\$54,682,589	\$543.13
8121	Personal Care Services	661	2,886	2,893	2,939	17,976,999	475.86
8122	Death Care Services	249	1,560	1,543	1,578	13,097,880	645.71
8123	Drycleaning & Laundry Service	204	2,124	2,125	2,132	16,371,200	592.07
8129	Other Personal Services	248	1,134	1,154	1,166	7,236,510	483.49
813	MEMBERSHIP ASSOCIATIONS & ORGANIZATIONS	1,131	5,501	5,390	5,354	\$56,049,000	\$796.21
8131	Religious Organizations	106	348	347	346	2,697,697	598.03
8132	Grantmaking & Giving Organizations	122	452	451	428	7,230,744	1,253.67
8133	Social Advocacy Organizations	224	1,241	1,212	1,224	13,789,776	865.45
8134	Civic & Social Organizations	194	1,287	1,266	1,232	6,098,383	371.81
8139	Professional & Similar Organizations	485	2,173	2,114	2,124	26,232,400	944.26
814	PRIVATE HOUSEHOLDS	683	871	856	858	\$6,121,907	\$546.52
	LOCAL GOVERNMENT	1,985	113,981	114,396	114,563	\$1,113,065,787	\$749.00
	STATE GOVERNMENT	1,065	67,445	67,636	67,210	\$820,025,141	\$935.47
	NONCLASSIFIABLE ESTABLISHMENTS	0	0	0	0	\$0	\$0.00

TABLE 6. COUNTY SUMMARY

North American Industry Classification System - Industry Groups	Number of Employing Units	Employment			Total Earnings Oct - Dec 2019	Average Weekly Earnings
		Oct	Nov	Dec		
ARKANSAS COUNTY - TOTAL	932	10,343	10,301	10,399	\$115,489,246	\$858.53
Natural Resources & Mining	61	206	192	198	2,119,444	820.64
Construction	69	285	278	285	4,267,763	1,161.40
Manufacturing	35	3,993	3,974	4,002	47,527,349	916.35
Trade, Transportation & Utilities	216	2,223	2,245	2,275	25,105,293	859.19
Wholesale Trade	51	434	429	427	6,461,897	1,155.97
Retail Trade	104	1,036	1,073	1,105	7,956,353	571.28
Transportation, Warehousing & Utilities	61	753	743	743	10,687,043	1,101.49
Information	11	46	48	43	402,192	677.47
Financial Activities	67	316	319	305	5,669,822	1,391.94
Professional & Business Services	81	524	503	510	8,910,742	1,337.88
Education & Health Services	213	1,071	1,082	1,078	10,142,153	724.39
Leisure & Hospitality	81	670	660	688	2,570,137	293.91
Other Services	52	121	118	116	965,553	627.66
Local Government	32	720	714	729	6,421,360	685.09
State Government	14	168	168	170	1,387,438	632.76
ASHLEY COUNTY - TOTAL	570	6,548	6,335	6,051	\$76,972,922	\$938.15
Natural Resources & Mining	48	409	407	382	4,486,403	864.21
Construction	37	600	485	492	6,240,199	913.16
Manufacturing	25	1,550	1,477	1,241	33,240,670	1,797.31
Trade, Transportation & Utilities	119	1,214	1,188	1,193	10,456,480	671.22
Wholesale Trade	24	196	183	169	2,705,234	1,139.21
Retail Trade	66	726	711	733	4,502,265	478.79
Transportation, Warehousing & Utilities	29	292	294	291	3,248,981	854.92
Information	5	40	38	39	268,757	530.09
Financial Activities	37	178	184	181	1,795,031	762.87
Professional & Business Services	37	201	196	193	1,806,440	706.56
Education & Health Services	148	885	884	888	8,208,090	712.90
Leisure & Hospitality	38	384	397	364	1,414,372	285.06
Other Services	34	134	126	152	1,135,384	635.95
Local Government	32	846	845	820	6,991,728	642.56
State Government	10	107	108	106	929,368	668.13

TABLE 6. COUNTY SUMMARY

North American Industry Classification System - Industry Groups	Number of Employing Units	Employment			Total Earnings Oct - Dec 2019	Average Weekly Earnings
		Oct	Nov	Dec		
BAXTER COUNTY - TOTAL	1,208	14,768	14,825	14,817	\$140,726,872	\$731.26
Natural Resources & Mining	8	57	53	54	616,711	867.79
Construction	103	495	491	499	4,891,998	760.22
Manufacturing	55	2,389	2,414	2,431	23,909,878	762.74
Trade, Transportation & Utilities	253	2,669	2,723	2,688	19,524,693	557.64
Wholesale Trade	32	167	161	153	1,837,652	881.65
Retail Trade	196	2,303	2,336	2,323	15,410,361	510.81
Transportation, Warehousing & Utilities	25	199	226	212	2,276,680	824.78
Information	22	165	167	166	1,929,143	893.95
Financial Activities	116	735	727	731	13,580,448	1,429.07
Professional & Business Services	141	899	881	875	8,046,917	699.43
Education & Health Services	261	3,913	3,936	3,966	46,340,154	905.11
Leisure & Hospitality	115	1,599	1,581	1,570	6,541,595	317.81
Other Services	87	307	308	310	2,155,371	537.72
Local Government	36	1,226	1,228	1,215	10,542,665	663.10
State Government	11	314	316	312	2,647,299	648.53
BENTON COUNTY - TOTAL	6,844	123,953	124,763	125,000	\$1,801,415,574	\$1,112.37
Natural Resources & Mining	47	793	785	780	18,790,038	1,838.92
Construction	680	5,273	5,361	5,324	72,261,398	1,044.97
Manufacturing	191	12,188	12,358	12,403	146,571,737	915.43
Trade, Transportation & Utilities	1,728	29,769	30,189	30,115	407,772,907	1,044.72
Wholesale Trade	762	6,119	6,155	6,192	154,383,036	1,929.32
Retail Trade	752	12,468	12,754	12,683	101,289,689	616.66
Transportation, Warehousing & Utilities	214	11,182	11,280	11,240	152,100,182	1,041.48
Information	83	945	966	1,002	15,072,271	1,194.03
Financial Activities	707	4,195	4,149	4,154	68,898,039	1,272.17
Professional & Business Services	1,362	32,959	33,197	33,273	729,539,728	1,693.22
Education & Health Services	855	12,173	12,205	12,227	141,303,936	890.82
Leisure & Hospitality	663	13,290	13,168	13,167	66,936,758	389.83
Other Services	426	2,485	2,473	2,553	25,585,109	786.08
Local Government	85	8,777	8,798	8,890	99,191,659	864.93
State Government	17	1,106	1,114	1,112	9,491,994	657.40

TABLE 6. COUNTY SUMMARY

North American Industry Classification System - Industry Groups	Number of Employing Units	Employment			Total Earnings Oct - Dec 2019	Average Weekly Earnings
		Oct	Nov	Dec		
BOONE COUNTY - TOTAL	944	14,166	14,339	14,289	\$144,311,761	\$778.21
Construction	61	376	367	374	4,314,802	891.43
Manufacturing	57	1,880	1,909	1,910	19,905,502	806.03
Trade, Transportation & Utilities	244	3,642	3,701	3,715	41,650,898	869.21
Wholesale Trade	42	332	333	343	3,435,310	786.47
Retail Trade	160	2,049	2,093	2,086	15,176,686	562.35
Transportation, Warehousing & Utilities	42	1,261	1,275	1,286	23,038,902	1,391.07
Information	14	282	295	285	3,995,016	1,069.52
Financial Activities	93	439	437	428	5,815,257	1,029.13
Professional & Business Services	95	1,392	1,425	1,388	16,530,943	907.21
Education & Health Services	168	1,656	1,690	1,706	14,440,549	659.63
Leisure & Hospitality	81	1,185	1,198	1,192	4,976,893	321.26
Local Government	53	2,243	2,238	2,222	22,814,147	785.44
State Government	17	799	801	784	7,125,326	689.73
Other	61	272	278	285	2,742,428	757.93
BRADLEY COUNTY - TOTAL	361	3,764	3,848	3,855	\$35,717,422	\$718.80
Natural Resources & Mining	46	199	254	238	2,496,560	833.76
Construction	17	95	82	78	706,489	639.36
Manufacturing	11	976	981	979	10,625,819	835.19
Trade, Transportation & Utilities	73	491	486	491	3,957,972	622.19
Wholesale Trade	11	102	101	103	1,505,838	1,135.62
Retail Trade	42	309	309	305	1,659,935	415.02
Transportation, Warehousing & Utilities	20	80	76	83	792,199	764.92
Information	3	30	29	29	234,959	616.15
Financial Activities	24	135	131	125	1,893,108	1,117.32
Professional & Business Services	26	84	119	122	1,145,777	813.57
Education & Health Services	97	656	666	670	7,058,748	817.74
Leisure & Hospitality	15	184	185	184	601,154	250.86
Other Services	25	85	86	90	859,555	760.00
Local Government	14	464	465	485	3,651,908	596.00
State Government	10	365	364	364	2,485,373	524.75

TABLE 6. COUNTY SUMMARY

North American Industry Classification System - Industry Groups	Number of Employing Units	Employment			Total Earnings Oct - Dec 2019	Average Weekly Earnings
		Oct	Nov	Dec		
CALHOUN COUNTY - TOTAL	104	3,194	3,238	3,268	\$47,531,347	\$1,130.80
Natural Resources & Mining	6	35	35	36	323,644	704.60
Construction	10	127	131	125	1,446,784	871.73
Manufacturing	9	2,391	2,429	2,463	38,538,095	1,221.12
Trade, Transportation & Utilities	19	186	186	184	1,814,801	753.24
Retail Trade	9	40	42	40	233,805	442.25
Transportation, Warehousing & Utilities	10	146	144	144	1,580,996	840.66
Professional & Business Services	7	11	11	11	111,266	778.08
Education & Health Services	22	56	58	59	674,148	899.26
Leisure & Hospitality	4	13	12	12	43,568	271.73
Other Services	3	3	3	3	19,616	502.97
Local Government	11	191	192	193	1,501,676	601.63
State Government	7	79	79	79	723,770	704.74
Other	6	102	102	103	2,333,979	1,754.43
CARROLL COUNTY - TOTAL	789	11,204	10,912	10,790	\$90,599,396	\$635.37
Natural Resources & Mining	22	236	246	252	2,365,839	743.82
Trade, Transportation & Utilities	188	1,641	1,623	1,605	13,547,127	642.07
Wholesale Trade	23	186	187	184	1,705,333	706.53
Retail Trade	140	1,163	1,165	1,149	7,246,412	480.95
Transportation, Warehousing & Utilities	25	292	271	272	4,595,382	1,270.03
Information	10	66	65	65	1,138,488	1,340.45
Financial Activities	57	380	386	386	5,285,794	1,058.85
Professional & Business Services	67	460	459	457	4,291,720	719.77
Education & Health Services	103	1,074	1,056	1,084	9,888,324	709.99
Leisure & Hospitality	165	1,870	1,588	1,445	6,989,414	328.97
Other Services	43	158	152	149	1,014,038	509.82
Local Government	25	1,112	1,110	1,104	9,343,259	648.27
State Government	9	100	98	98	878,227	684.69
Other	100	4,107	4,129	4,145	35,857,166	668.34

TABLE 6. COUNTY SUMMARY

North American Industry Classification System - Industry Groups	Number of Employing Units	Employment			Total Earnings Oct - Dec 2019	Average Weekly Earnings
		Oct	Nov	Dec		
CHICOT COUNTY - TOTAL	492	2,951	2,931	2,879	\$26,225,312	\$690.79
Natural Resources & Mining	53	268	259	233	2,583,182	784.37
Construction	14	147	136	114	1,820,652	1,058.31
Manufacturing	6	12	11	13	136,340	873.97
Trade, Transportation & Utilities	64	621	618	631	5,195,208	641.12
Wholesale Trade	11	45	48	47	929,939	1,532.87
Retail Trade	40	269	265	261	1,894,916	550.05
Transportation, Warehousing & Utilities	13	307	305	323	2,370,353	585.03
Financial Activities	29	179	187	174	2,201,975	941.01
Professional & Business Services	16	40	41	39	466,423	896.97
Education & Health Services	249	643	639	631	4,959,283	598.25
Leisure & Hospitality	15	101	95	100	363,240	283.19
Local Government	17	615	622	619	5,671,182	705.14
State Government	9	253	253	253	2,043,564	621.33
Other	20	72	70	72	784,263	845.72
CLARK COUNTY - TOTAL	663	9,320	9,399	9,304	\$84,696,489	\$697.48
Natural Resources & Mining	50	295	303	299	3,584,844	922.26
Construction	26	86	87	85	1,520,181	1,359.73
Manufacturing	34	1,391	1,368	1,349	18,556,457	1,042.42
Trade, Transportation & Utilities	140	1,448	1,476	1,472	11,440,978	600.60
Wholesale Trade	15	47	48	49	683,039	1,094.61
Retail Trade	93	1,199	1,228	1,222	8,594,833	543.55
Transportation, Warehousing & Utilities	32	202	200	201	2,163,106	827.82
Information	4	7	7	7	87,563	962.23
Financial Activities	71	315	323	317	3,037,517	734.00
Professional & Business Services	51	581	594	603	7,141,110	926.86
Education & Health Services	129	1,670	1,723	1,702	14,588,678	660.77
Leisure & Hospitality	68	1,203	1,209	1,176	4,463,434	287.07
Other Services	46	207	204	199	1,832,818	693.37
Local Government	30	939	933	945	8,071,591	661.23
State Government	14	1,178	1,172	1,150	10,371,318	683.82

TABLE 6. COUNTY SUMMARY

North American Industry Classification System - Industry Groups	Number of Employing Units	Employment			Total Earnings Oct - Dec 2019	Average Weekly Earnings
		Oct	Nov	Dec		
CLAY COUNTY - TOTAL	356	3,212	3,060	3,052	\$26,262,167	\$649.99
Natural Resources & Mining	53	384	254	234	2,056,689	544.29
Construction	29	116	83	83	735,105	601.56
Manufacturing	12	106	104	100	823,738	613.20
Trade, Transportation & Utilities	83	723	741	737	6,625,486	694.67
Wholesale Trade	19	237	245	236	2,243,953	721.22
Retail Trade	41	361	366	367	2,586,696	545.64
Transportation, Warehousing & Utilities	23	125	130	134	1,794,837	1,064.76
Information	6	25	24	24	176,006	556.39
Financial Activities	21	101	99	99	1,191,409	919.53
Professional & Business Services	26	123	113	111	1,919,646	1,276.64
Education & Health Services	50	494	512	511	3,838,010	583.85
Leisure & Hospitality	23	189	185	207	655,545	260.38
Other Services	23	80	77	77	753,918	743.51
Local Government	21	824	821	822	7,065,976	660.97
State Government	9	47	47	47	420,639	688.44
CLEBURNE COUNTY - TOTAL	646	6,247	6,238	6,225	\$55,764,313	\$687.80
Natural Resources & Mining	22	170	163	165	2,614,895	1,211.72
Construction	65	343	344	343	3,703,816	829.83
Manufacturing	32	1,241	1,242	1,231	12,913,662	802.39
Trade, Transportation & Utilities	153	1,221	1,214	1,220	10,306,742	650.75
Wholesale Trade	32	119	119	119	1,374,838	888.71
Retail Trade	99	956	953	958	7,041,332	566.77
Transportation, Warehousing & Utilities	22	146	142	143	1,890,572	1,012.26
Information	10	54	53	54	542,927	778.20
Financial Activities	74	259	262	258	2,942,519	871.69
Professional & Business Services	68	242	261	264	3,017,961	908.02
Education & Health Services	75	865	877	890	7,486,065	656.37
Leisure & Hospitality	83	846	802	778	3,527,749	335.57
Other Services	38	110	114	115	798,798	543.77
Local Government	18	785	794	794	7,017,711	682.46
State Government	8	111	112	113	891,468	612.27

TABLE 6. COUNTY SUMMARY

North American Industry Classification System - Industry Groups	Number of Employing Units	Employment			Total Earnings Oct - Dec 2019	Average Weekly Earnings
		Oct	Nov	Dec		
CLEVELAND COUNTY - TOTAL	130	1,026	990	1,036	\$9,240,524	\$698.70
Natural Resources & Mining	15	169	144	168	1,720,686	825.53
Construction	6	9	9	10	69,900	576.10
Manufacturing	3	109	109	110	1,319,499	928.35
Trade, Transportation & Utilities	31	149	141	152	1,300,143	678.81
Retail Trade	18	64	63	66	281,006	336.00
Other Trade, Transportation, & Utilities	13	85	78	86	1,019,137	944.52
Financial Activities	4	23	23	23	298,452	998.17
Education & Health Services	35	201	201	209	1,382,432	522.13
Other Services	6	12	12	13	140,524	876.45
Local Government	14	301	300	299	2,575,056	660.27
State Government	6	31	31	30	289,453	726.05
Other	10	22	20	22	144,379	520.60
COLUMBIA COUNTY - TOTAL	699	8,331	8,287	8,297	\$86,399,264	\$800.25
Natural Resources & Mining	44	420	389	403	7,786,738	1,482.62
Construction	37	159	164	170	1,679,333	786.08
Manufacturing	31	1,931	1,957	1,971	29,321,830	1,154.90
Trade, Transportation & Utilities	169	1,473	1,498	1,469	13,065,289	679.07
Wholesale Trade	30	253	254	249	3,754,696	1,146.12
Retail Trade	95	985	1,007	998	6,275,754	484.36
Transportation, Warehousing & Utilities	44	235	237	222	3,034,839	1,009.15
Information	6	31	33	32	311,179	748.03
Financial Activities	59	334	349	346	5,020,290	1,125.88
Professional & Business Services	53	297	286	296	2,443,381	641.48
Education & Health Services	165	928	914	914	6,131,496	513.41
Leisure & Hospitality	58	894	849	826	3,030,720	272.24
Other Services	38	138	132	137	917,857	520.43
Local Government	27	1,058	1,053	1,075	9,437,715	683.60
State Government	12	668	663	658	7,253,436	841.56

TABLE 6. COUNTY SUMMARY

North American Industry Classification System - Industry Groups	Number of Employing Units	Employment			Total Earnings Oct - Dec 2019	Average Weekly Earnings
		Oct	Nov	Dec		
CONWAY COUNTY - TOTAL	524	6,586	6,654	6,661	\$68,719,489	\$796.86
Natural Resources & Mining	30	266	261	270	2,976,855	861.94
Construction	47	492	485	479	8,281,709	1,312.61
Manufacturing	20	1,014	1,018	1,025	15,150,535	1,143.70
Trade, Transportation & Utilities	113	1,288	1,307	1,326	11,776,056	693.08
Wholesale Trade	15	107	100	106	1,430,461	1,054.65
Retail Trade	75	757	773	780	5,544,787	553.92
Transportation, Warehousing & Utilities	23	424	434	440	4,800,808	853.53
Information	3	12	12	11	53,756	354.44
Financial Activities	42	152	149	149	1,824,594	935.69
Professional & Business Services	39	510	571	576	4,362,235	607.53
Education & Health Services	129	784	773	762	7,673,634	763.62
Leisure & Hospitality	36	441	441	430	1,748,852	307.61
Other Services	25	108	102	106	808,670	590.56
Local Government	31	1,100	1,116	1,122	11,021,463	761.96
State Government	9	419	419	405	3,041,130	564.60
CRAIGHEAD COUNTY - TOTAL	2,857	52,822	53,093	53,242	\$554,003,569	\$803.28
Natural Resources & Mining	102	495	486	390	6,020,097	1,013.31
Construction	248	2,217	2,179	2,176	26,965,869	946.88
Manufacturing	101	7,075	7,037	7,134	88,997,728	966.67
Trade, Transportation & Utilities	769	10,558	10,952	11,014	101,761,567	722.03
Wholesale Trade	181	2,016	2,001	2,005	28,976,568	1,110.41
Retail Trade	464	6,648	6,977	6,951	47,922,215	537.47
Transportation, Warehousing & Utilities	124	1,894	1,974	2,058	24,862,784	968.20
Information	20	384	397	401	5,219,399	1,019.02
Financial Activities	285	1,758	1,769	1,770	25,808,776	1,124.39
Professional & Business Services	379	4,920	4,954	4,944	45,103,314	702.42
Education & Health Services	454	11,473	11,509	11,618	145,933,965	973.33
Leisure & Hospitality	272	5,978	5,837	5,813	24,928,510	326.34
Other Services	170	762	748	775	6,259,713	632.19
Local Government	35	4,272	4,289	4,278	42,664,428	766.85
State Government	22	2,930	2,936	2,929	34,340,203	901.04

TABLE 6. COUNTY SUMMARY

North American Industry Classification System - Industry Groups	Number of Employing Units	Employment			Total Earnings Oct - Dec 2019	Average Weekly Earnings
		Oct	Nov	Dec		
CRAWFORD COUNTY - TOTAL	1,265	19,728	19,795	19,785	\$190,461,796	\$741.09
Natural Resources & Mining	23	236	218	228	2,472,616	836.66
Construction	145	990	1,000	1,026	13,242,760	1,013.27
Manufacturing	62	4,743	4,761	4,773	53,205,879	860.00
Trade, Transportation & Utilities	319	5,670	5,741	5,732	54,727,362	736.71
Wholesale Trade	74	745	741	743	10,206,343	1,056.67
Retail Trade	167	1,980	2,001	1,994	14,961,351	577.84
Transportation, Warehousing & Utilities	78	2,945	2,999	2,995	29,559,668	763.11
Information	11	43	48	45	457,986	777.13
Financial Activities	126	499	500	510	5,823,575	890.59
Professional & Business Services	164	1,515	1,502	1,487	14,445,907	740.16
Education & Health Services	188	1,669	1,670	1,653	14,381,194	664.81
Leisure & Hospitality	93	1,658	1,656	1,640	6,410,823	298.63
Other Services	82	426	427	422	3,959,971	716.74
Local Government	42	2,115	2,108	2,106	20,095,485	732.73
State Government	10	164	164	163	1,238,238	581.97
CRITTENDEN COUNTY - TOTAL	1,191	16,416	16,445	16,350	\$160,432,919	\$752.33
Natural Resources & Mining	58	279	267	265	3,217,676	915.59
Construction	43	437	403	400	5,962,701	1,109.68
Manufacturing	41	2,098	2,112	2,139	27,858,471	1,012.58
Trade, Transportation & Utilities	298	4,183	4,199	4,198	43,182,702	792.15
Wholesale Trade	54	677	690	695	8,810,029	985.98
Retail Trade	154	1,867	1,899	1,904	12,496,012	508.59
Transportation, Warehousing & Utilities	90	1,639	1,610	1,599	21,876,661	1,041.35
Information	3	39	40	41	396,049	761.63
Financial Activities	103	448	443	447	5,845,718	1,008.23
Professional & Business Services	107	1,083	1,053	1,062	10,221,569	737.59
Education & Health Services	276	2,066	2,080	2,048	19,582,752	729.59
Leisure & Hospitality	140	2,725	2,715	2,697	14,201,373	402.76
Other Services	69	496	501	499	4,363,160	673.05
Local Government	40	2,152	2,212	2,207	22,490,124	789.84
State Government	13	410	420	347	3,110,624	609.89

TABLE 6. COUNTY SUMMARY

North American Industry Classification System - Industry Groups	Number of Employing Units	Employment			Total Earnings Oct - Dec 2019	Average Weekly Earnings
		Oct	Nov	Dec		
CROSS COUNTY - TOTAL	478	4,829	4,827	4,766	\$42,077,381	\$673.29
Natural Resources & Mining	44	293	289	262	2,828,298	773.32
Construction	23	66	65	65	597,318	703.28
Manufacturing	10	285	285	283	2,507,082	678.26
Trade, Transportation & Utilities	125	1,112	1,119	1,095	10,655,493	739.31
Wholesale Trade	27	295	298	302	4,112,503	1,060.38
Retail Trade	65	697	703	679	5,243,645	582.05
Transportation, Warehousing & Utilities	33	120	118	114	1,299,345	851.84
Information	6	45	44	45	275,488	474.43
Financial Activities	48	286	285	271	2,733,577	749.20
Professional & Business Services	41	149	158	150	1,723,175	870.14
Education & Health Services	87	959	967	947	8,425,893	676.80
Leisure & Hospitality	37	476	446	486	1,701,901	278.94
Other Services	31	109	113	110	969,165	673.66
Local Government	17	695	701	699	6,150,443	677.49
State Government	9	354	355	353	3,509,548	762.61
DALLAS COUNTY - TOTAL	230	2,634	2,633	2,624	\$23,275,645	\$680.69
Natural Resources & Mining	23	119	118	114	1,276,334	839.14
Construction	14	69	64	67	731,044	843.51
Manufacturing	9	564	545	549	5,707,510	794.40
Trade, Transportation & Utilities	56	494	498	496	4,009,518	621.82
Wholesale Trade	5	22	18	17	248,489	1,006.03
Retail Trade	36	312	319	319	2,214,502	537.94
Transportation, Warehousing & Utilities	15	160	161	160	1,546,527	741.98
Information	3	16	16	16	145,980	701.83
Financial Activities	16	67	67	67	1,118,213	1,283.83
Professional & Business Services	11	31	34	35	249,711	576.26
Education & Health Services	51	714	723	711	6,842,262	735.09
Leisure & Hospitality	13	149	153	150	446,431	227.93
Other Services	13	48	50	50	350,481	546.49
Local Government	14	334	336	340	2,138,850	488.69
State Government	7	29	29	29	259,311	687.83

TABLE 6. COUNTY SUMMARY

North American Industry Classification System - Industry Groups	Number of Employing Units	Employment			Total Earnings	Average Weekly Earnings
		Oct	Nov	Dec	Oct - Dec 2019	
DESHA COUNTY - TOTAL	520	4,654	4,605	4,648	\$43,962,535	\$729.50
Natural Resources & Mining	69	316	287	285	3,260,848	847.41
Construction	14	95	95	92	1,061,612	868.75
Manufacturing	14	1,061	1,067	1,064	14,599,562	1,055.49
Trade, Transportation & Utilities	105	842	833	816	7,789,759	721.65
Wholesale Trade	19	177	179	178	2,842,115	1,228.23
Retail Trade	58	442	447	444	2,767,409	479.09
Transportation, Warehousing & Utilities	28	223	207	194	2,180,235	806.30
Information	4	26	25	25	260,409	790.72
Financial Activities	28	200	197	200	2,208,929	853.86
Professional & Business Services	34	86	87	89	870,286	766.55
Education & Health Services	160	676	673	679	4,909,476	558.66
Leisure & Hospitality	37	359	355	361	1,250,208	268.38
Other Services	25	55	50	58	295,380	418.19
Local Government	21	819	817	860	6,512,774	602.14
State Government	9	119	119	119	943,292	609.76
DREW COUNTY - TOTAL	548	6,392	6,377	6,488	\$59,855,305	\$717.29
Natural Resources & Mining	61	332	347	439	4,611,726	951.92
Construction	24	180	172	153	2,550,529	1,165.51
Manufacturing	21	907	901	907	9,513,768	808.65
Trade, Transportation & Utilities	112	1,026	1,048	1,040	8,101,560	600.38
Wholesale Trade	17	98	101	98	1,032,768	802.46
Retail Trade	75	816	833	830	5,654,789	526.40
Transportation, Warehousing & Utilities	20	112	114	112	1,414,003	965.41
Information	6	37	39	37	321,360	656.28
Financial Activities	51	213	213	209	2,786,751	1,012.75
Professional & Business Services	39	305	305	315	3,881,728	968.41
Education & Health Services	136	826	813	836	6,610,697	616.38
Leisure & Hospitality	43	679	663	674	2,426,491	277.76
Other Services	18	71	69	71	525,422	574.65
Local Government	24	1,228	1,222	1,234	12,441,333	779.34
State Government	13	588	585	573	6,083,940	804.12

TABLE 6. COUNTY SUMMARY

North American Industry Classification System - Industry Groups	Number of Employing Units	Employment			Total Earnings Oct - Dec 2019	Average Weekly Earnings
		Oct	Nov	Dec		
FAULKNER COUNTY - TOTAL	2,895	41,605	41,818	41,727	\$441,405,814	\$813.93
Natural Resources & Mining	39	238	228	241	4,265,591	1,392.32
Construction	346	2,948	2,911	2,940	40,804,711	1,070.18
Manufacturing	96	3,348	3,336	3,280	45,617,284	1,056.51
Trade, Transportation & Utilities	625	7,648	7,919	7,896	64,638,302	635.75
Wholesale Trade	134	724	707	720	10,653,555	1,142.96
Retail Trade	409	6,078	6,364	6,311	43,030,010	529.52
Transportation, Warehousing & Utilities	82	846	848	865	10,954,737	987.89
Information	22	242	252	255	4,328,809	1,333.72
Financial Activities	311	1,436	1,463	1,449	18,046,832	957.83
Professional & Business Services	455	4,986	4,936	4,959	76,999,210	1,194.08
Education & Health Services	468	7,728	7,753	7,718	84,741,553	842.96
Leisure & Hospitality	276	5,338	5,345	5,321	21,733,147	313.38
Other Services	197	931	913	926	7,435,228	619.43
Local Government	42	3,486	3,489	3,487	37,843,923	834.76
State Government	18	3,276	3,273	3,255	34,951,224	822.69
FRANKLIN COUNTY - TOTAL	378	4,764	4,704	4,678	\$42,624,039	\$695.34
Natural Resources & Mining	17	216	210	207	3,703,673	1,350.23
Construction	35	169	163	159	1,495,444	702.86
Manufacturing	17	1,017	999	975	9,984,174	770.32
Trade, Transportation & Utilities	83	966	960	954	9,065,034	726.36
Wholesale Trade	10	55	53	53	305,777	438.29
Retail Trade	50	619	615	606	3,916,296	491.17
Transportation, Warehousing & Utilities	23	292	292	295	4,842,961	1,271.45
Information	7	28	27	28	283,928	789.42
Financial Activities	30	79	78	79	726,388	710.29
Professional & Business Services	34	357	360	359	3,149,841	675.54
Education & Health Services	67	577	559	575	4,177,854	563.48
Leisure & Hospitality	32	378	376	367	1,258,042	258.98
Other Services	16	55	55	58	399,210	548.37
Local Government	32	776	771	772	6,944,581	691.07
State Government	8	146	146	145	1,435,870	758.25

TABLE 6. COUNTY SUMMARY

North American Industry Classification System - Industry Groups	Number of Employing Units	Employment			Total Earnings Oct - Dec 2019	Average Weekly Earnings
		Oct	Nov	Dec		
FULTON COUNTY - TOTAL	204	2,113	2,115	2,114	\$17,379,851	\$632.41
Manufacturing	12	124	131	129	876,503	526.74
Trade, Transportation & Utilities	50	285	276	282	2,742,782	750.83
Retail Trade	29	174	164	163	1,090,326	502.22
Other Trade, Transportation, & Utilities	21	111	112	119	1,652,456	1,115.02
Information	5	28	29	30	257,657	683.44
Financial Activities	19	78	74	79	1,120,833	1,119.71
Professional & Business Services	17	30	28	31	238,129	617.45
Education & Health Services	44	525	527	535	3,948,098	574.10
Leisure & Hospitality	15	146	143	135	494,216	268.99
Other Services	10	19	19	17	160,420	673.09
Local Government	12	570	578	570	4,026,452	540.85
State Government	9	65	65	65	515,435	609.98
Other	11	243	245	241	2,999,326	949.45
GARLAND COUNTY - TOTAL	3,046	37,058	37,075	37,531	\$355,231,990	\$734.14
Natural Resources & Mining	29	264	261	266	3,245,712	946.92
Construction	327	1,959	1,897	1,908	20,460,030	819.14
Manufacturing	90	2,547	2,578	2,577	31,856,036	954.48
Trade, Transportation & Utilities	674	7,208	7,512	7,537	66,906,817	693.72
Wholesale Trade	141	800	801	804	15,287,953	1,466.94
Retail Trade	469	5,897	6,157	6,131	44,691,518	567.14
Transportation, Warehousing & Utilities	64	511	554	602	6,927,346	958.98
Information	31	425	413	421	3,960,901	726.02
Financial Activities	332	1,516	1,511	1,490	19,239,159	982.91
Professional & Business Services	387	2,982	2,975	2,987	29,865,189	770.57
Education & Health Services	513	8,098	8,122	8,232	96,875,465	914.28
Leisure & Hospitality	395	7,075	6,817	7,132	35,583,199	390.58
Other Services	212	1,005	998	1,001	6,965,043	535.06
Local Government	34	2,998	3,005	3,001	31,420,311	805.29
State Government	22	981	986	979	8,854,128	693.57

TABLE 6. COUNTY SUMMARY

North American Industry Classification System - Industry Groups	Number of Employing Units	Employment			Total Earnings	Average Weekly Earnings
		Oct	Nov	Dec	Oct - Dec 2019	
GRANT COUNTY - TOTAL	351	4,130	4,135	4,165	\$44,303,936	\$822.52
Natural Resources & Mining	28	193	198	193	2,968,584	1,173.04
Construction	38	226	241	244	3,980,638	1,292.00
Manufacturing	17	1,313	1,289	1,287	16,515,924	980.04
Trade, Transportation & Utilities	83	628	643	650	5,472,304	657.39
Wholesale Trade	17	70	74	74	1,468,433	1,554.45
Retail Trade	47	504	517	524	3,482,906	520.22
Transportation, Warehousing & Utilities	19	54	52	52	520,965	760.90
Financial Activities	20	119	120	120	2,012,529	1,293.68
Professional & Business Services	31	105	109	114	1,460,113	1,027.28
Education & Health Services	75	378	374	400	2,639,817	528.81
Leisure & Hospitality	24	296	293	283	987,210	261.26
Local Government	10	778	773	777	7,488,812	742.35
State Government	7	47	47	47	369,803	605.24
Other	18	47	48	50	408,202	649.66
GREENE COUNTY - TOTAL	881	15,614	15,620	15,444	\$153,302,482	\$757.91
Natural Resources & Mining	38	227	203	196	2,174,702	801.68
Construction	72	361	350	314	4,051,646	912.19
Manufacturing	63	5,116	5,110	5,111	60,707,864	913.45
Trade, Transportation & Utilities	227	2,658	2,689	2,631	21,770,348	629.72
Wholesale Trade	43	457	455	450	5,433,313	920.59
Retail Trade	153	1,892	1,929	1,883	13,097,455	529.89
Transportation, Warehousing & Utilities	31	309	305	298	3,239,580	819.73
Information	11	171	172	172	1,955,913	876.44
Financial Activities	75	566	559	568	8,040,880	1,096.04
Professional & Business Services	89	782	793	756	7,404,367	733.03
Education & Health Services	150	2,093	2,086	2,069	20,056,126	740.77
Leisure & Hospitality	77	1,434	1,462	1,427	5,943,850	317.29
Other Services	38	160	151	155	1,215,334	601.85
Local Government	31	1,650	1,649	1,649	15,573,752	726.34
State Government	10	396	396	396	4,407,700	856.20

TABLE 6. COUNTY SUMMARY

North American Industry Classification System - Industry Groups	Number of Employing Units	Employment			Total Earnings	Average Weekly Earnings
		Oct	Nov	Dec	Oct - Dec 2019	
HEMPSTEAD COUNTY - TOTAL	521	7,720	7,720	7,692	\$72,855,803	\$726.82
Natural Resources & Mining	23	267	264	268	3,151,922	910.35
Construction	26	124	129	120	1,445,122	894.07
Manufacturing	28	2,226	2,203	2,209	26,074,587	906.48
Trade, Transportation & Utilities	126	1,326	1,353	1,341	11,968,281	687.04
Wholesale Trade	24	173	163	171	1,546,219	703.79
Retail Trade	75	858	895	876	5,671,606	497.84
Transportation, Warehousing & Utilities	27	295	295	294	4,750,456	1,240.11
Information	8	18	18	16	222,446	987.19
Financial Activities	45	214	218	214	2,455,560	877.19
Professional & Business Services	34	230	233	224	2,199,167	738.72
Education & Health Services	109	984	962	959	7,010,362	556.89
Leisure & Hospitality	48	627	620	615	2,573,573	318.96
Other Services	30	120	113	122	1,079,071	701.45
Local Government	28	861	870	873	7,972,367	706.52
State Government	16	723	737	731	6,703,345	706.04
HOT SPRING COUNTY - TOTAL	602	8,205	8,336	8,270	\$78,931,616	\$734.15
Natural Resources & Mining	26	182	175	175	1,786,808	775.08
Construction	49	193	173	180	1,477,183	624.34
Manufacturing	29	1,379	1,407	1,421	18,725,138	1,027.14
Trade, Transportation & Utilities	150	1,613	1,648	1,638	17,955,712	845.81
Wholesale Trade	19	82	84	82	1,568,789	1,459.79
Retail Trade	95	869	891	890	5,789,572	504.17
Transportation, Warehousing & Utilities	36	662	673	666	10,597,351	1,222.16
Information	5	38	44	39	506,745	966.46
Financial Activities	49	221	216	200	2,468,100	894.13
Professional & Business Services	52	861	947	922	6,917,587	584.75
Education & Health Services	114	1,057	1,050	1,003	10,179,510	755.34
Leisure & Hospitality	48	664	662	689	2,322,970	266.04
Other Services	40	156	154	156	974,039	482.36
Local Government	27	952	964	960	9,153,415	734.47
State Government	13	889	896	887	6,464,409	558.30

TABLE 6. COUNTY SUMMARY

North American Industry Classification System - Industry Groups	Number of Employing Units	Employment			Total Earnings Oct - Dec 2019	Average Weekly Earnings
		Oct	Nov	Dec		
HOWARD COUNTY - TOTAL	355	6,611	6,552	6,531	\$57,034,633	\$668.32
Natural Resources & Mining	16	200	203	203	2,208,860	841.15
Construction	22	89	90	89	730,054	628.63
Manufacturing	18	3,106	3,050	3,036	27,198,628	682.83
Trade, Transportation & Utilities	80	822	835	828	7,630,698	708.62
Wholesale Trade	16	78	79	79	1,002,758	980.53
Retail Trade	47	541	552	542	3,789,625	534.88
Transportation, Warehousing & Utilities	17	203	204	207	2,838,315	1,066.77
Financial Activities	33	133	132	144	1,520,962	858.17
Professional & Business Services	23	148	148	146	1,307,096	682.44
Education & Health Services	85	868	849	856	7,172,827	643.32
Leisure & Hospitality	27	336	333	328	1,316,668	304.76
Local Government	17	697	701	689	6,167,143	681.93
State Government	10	106	105	105	878,404	641.48
Other	24	106	106	107	903,293	653.46
INDEPENDENCE COUNTY - TOTAL	917	16,240	16,414	16,490	\$197,369,888	\$926.80
Natural Resources & Mining	20	253	252	250	3,496,307	1,068.66
Construction	60	524	508	512	6,983,317	1,043.74
Manufacturing	42	3,426	3,477	3,520	66,851,165	1,480.11
Trade, Transportation & Utilities	247	2,869	2,980	2,974	27,143,909	709.96
Wholesale Trade	39	314	297	307	3,399,155	854.49
Retail Trade	162	1,823	1,920	1,902	12,777,093	522.33
Transportation, Warehousing & Utilities	46	732	763	765	10,967,661	1,119.91
Information	10	100	96	99	786,880	615.55
Financial Activities	86	580	589	591	11,101,795	1,455.65
Professional & Business Services	89	1,168	1,191	1,218	10,613,432	684.72
Education & Health Services	157	3,673	3,682	3,723	45,782,568	953.71
Leisure & Hospitality	83	1,270	1,260	1,225	4,481,441	275.41
Other Services	62	276	284	294	1,934,598	522.77
Local Government	46	1,487	1,481	1,480	12,407,183	643.70
State Government	15	614	614	604	5,787,293	729.00

TABLE 6. COUNTY SUMMARY

North American Industry Classification System - Industry Groups	Number of Employing Units	Employment			Total Earnings Oct - Dec 2019	Average Weekly Earnings
		Oct	Nov	Dec		
IZARD COUNTY - TOTAL	242	3,090	3,054	3,040	\$25,447,431	\$639.43
Natural Resources & Mining	8	116	97	95	1,351,329	1,012.48
Construction	19	68	64	69	619,672	711.45
Manufacturing	8	288	269	263	2,602,983	732.55
Trade, Transportation & Utilities	61	521	524	523	4,215,627	620.43
Wholesale Trade	11	45	45	48	364,468	609.48
Retail Trade	40	344	343	338	2,182,656	491.40
Transportation, Warehousing & Utilities	10	132	136	137	1,668,503	950.71
Information	4	7	6	6	95,983	1,165.79
Financial Activities	24	170	160	164	2,108,034	984.76
Professional & Business Services	16	40	38	36	244,616	495.17
Education & Health Services	46	674	681	682	5,516,714	624.98
Leisure & Hospitality	21	188	197	191	708,540	283.87
Other Services	12	41	30	31	179,064	405.12
Local Government	14	543	555	558	4,301,747	599.46
State Government	9	434	433	422	3,503,122	627.16
JACKSON COUNTY - TOTAL	425	5,078	5,037	5,042	\$49,042,115	\$746.68
Natural Resources & Mining	60	292	268	243	2,505,401	720.01
Construction	21	103	103	109	2,323,314	1,702.06
Manufacturing	11	949	936	930	11,241,634	921.57
Trade, Transportation & Utilities	104	933	944	938	9,021,626	739.58
Wholesale Trade	17	199	202	202	2,945,895	1,127.40
Retail Trade	69	651	655	646	4,862,578	574.86
Transportation, Warehousing & Utilities	18	83	87	90	1,213,153	1,076.76
Information	3	9	9	9	73,813	630.88
Financial Activities	31	126	123	128	1,312,387	803.34
Professional & Business Services	32	113	111	112	1,271,864	873.53
Education & Health Services	76	828	831	852	8,425,889	774.37
Leisure & Hospitality	25	320	321	311	1,202,752	291.55
Other Services	18	60	59	62	537,079	684.76
Local Government	32	562	549	568	4,635,752	637.16
State Government	12	783	783	780	6,490,604	638.46

TABLE 6. COUNTY SUMMARY

North American Industry Classification System - Industry Groups	Number of Employing Units	Employment			Total Earnings Oct - Dec 2019	Average Weekly Earnings
		Oct	Nov	Dec		
JEFFERSON COUNTY - TOTAL	2,021	25,950	25,977	25,894	\$272,200,741	\$807.18
Natural Resources & Mining	42	139	123	116	2,176,150	1,328.54
Construction	84	553	499	495	5,963,927	889.65
Manufacturing	60	4,659	4,699	4,721	70,298,097	1,152.26
Trade, Transportation & Utilities	397	4,237	4,342	4,297	39,189,574	702.37
Wholesale Trade	70	665	649	627	7,776,910	924.61
Retail Trade	275	2,879	2,988	2,931	20,288,958	532.17
Transportation, Warehousing & Utilities	52	693	705	739	11,123,706	1,201.22
Information	9	68	66	70	808,223	914.28
Financial Activities	151	1,005	1,015	1,015	12,287,244	934.27
Professional & Business Services	144	2,298	2,071	2,001	18,503,959	670.35
Education & Health Services	817	4,714	4,787	4,782	53,457,447	863.71
Leisure & Hospitality	136	2,029	2,056	2,062	8,679,217	325.83
Other Services	103	458	472	454	4,281,857	713.96
Local Government	40	2,425	2,430	2,473	23,103,518	727.56
State Government	38	3,365	3,417	3,408	33,451,528	757.56
JOHNSON COUNTY - TOTAL	475	8,400	8,469	8,473	\$73,382,410	\$668.23
Natural Resources & Mining	13	207	207	202	2,227,034	834.30
Construction	38	220	205	208	1,958,033	713.83
Manufacturing	32	2,436	2,472	2,484	23,549,247	735.18
Trade, Transportation & Utilities	97	1,889	1,912	1,916	16,293,775	657.71
Retail Trade	69	869	871	874	5,583,105	492.89
Other Trade, Transportation & Utilities	28	1,020	1,041	1,042	10,710,670	796.55
Information	4	17	16	16	169,087	796.33
Financial Activities	47	179	181	182	1,810,009	770.65
Professional & Business Services	46	387	387	389	2,227,771	442.05
Education & Health Services	106	1,250	1,260	1,249	12,326,233	756.72
Leisure & Hospitality	43	607	607	593	2,089,083	266.79
Other Services	27	79	78	76	604,955	599.16
Local Government	14	1,027	1,042	1,056	9,172,337	677.34
State Government	8	102	102	102	954,846	720.10

TABLE 6. COUNTY SUMMARY

North American Industry Classification System - Industry Groups	Number of Employing Units	Employment			Total Earnings Oct - Dec 2019	Average Weekly Earnings
		Oct	Nov	Dec		
LAFAYETTE COUNTY - TOTAL	159	1,131	1,129	1,099	\$9,317,268	\$640.11
Natural Resources & Mining	23	98	78	77	545,817	497.86
Construction	11	88	79	81	1,323,018	1,231.10
Manufacturing	6	34	34	35	359,200	804.78
Trade, Transportation & Utilities	30	199	200	195	1,512,928	587.77
Retail Trade	16	106	109	106	577,097	414.88
Other Trade, Transportation & Utilities	14	93	91	89	935,831	791.07
Financial Activities	13	67	72	65	702,715	794.93
Professional & Business Services	9	32	35	33	303,058	699.36
Education & Health Services	34	210	210	209	1,502,517	551.25
Leisure & Hospitality	6	41	39	41	155,522	296.61
Local Government	15	290	309	289	2,346,031	609.68
State Government	7	33	33	33	287,312	669.72
Other	5	39	40	41	279,150	536.83
LAWRENCE COUNTY - TOTAL	400	3,941	3,952	3,942	\$34,523,288	\$673.17
Natural Resources & Mining	54	192	193	190	2,120,493	851.03
Construction	26	126	134	137	1,510,616	878.09
Manufacturing	17	371	363	366	3,356,618	704.19
Trade, Transportation & Utilities	115	785	768	768	7,094,481	705.38
Wholesale Trade	17	175	173	174	2,001,156	884.68
Retail Trade	61	480	468	468	3,461,354	564.11
Transportation, Warehousing & Utilities	37	130	127	126	1,631,971	983.31
Financial Activities	28	123	124	127	1,413,069	871.91
Professional & Business Services	25	89	90	94	970,026	819.97
Education & Health Services	49	581	588	588	5,112,578	671.50
Leisure & Hospitality	30	347	340	333	1,202,319	272.02
Local Government	24	1,068	1,090	1,078	9,120,431	650.41
State Government	9	81	81	81	637,277	605.20
Other	23	178	181	180	1,985,380	850.03

TABLE 6. COUNTY SUMMARY

North American Industry Classification System - Industry Groups	Number of Employing Units	Employment			Total Earnings Oct - Dec 2019	Average Weekly Earnings
		Oct	Nov	Dec		
LEE COUNTY - TOTAL	260	1,814	1,821	1,822	\$17,020,237	\$719.76
Natural Resources & Mining	39	265	265	251	2,799,516	827.20
Construction	5	27	26	28	251,012	715.13
Trade, Transportation & Utilities	42	301	298	309	3,262,047	829.05
Wholesale Trade	10	99	99	101	1,495,310	1,154.09
Retail Trade	22	148	144	151	948,254	493.97
Transportation, Warehousing & Utilities	10	54	55	57	818,483	1,137.84
Financial Activities	16	60	60	59	457,140	589.35
Professional & Business Services	13	52	50	51	1,241,079	1,871.91
Education & Health Services	104	413	416	415	3,423,692	635.11
Leisure & Hospitality	7	60	60	62	262,013	332.22
Local Government	15	249	261	261	1,858,754	556.35
State Government	6	371	370	370	3,351,290	696.11
Other	13	16	15	16	113,694	558.24
LINCOLN COUNTY - TOTAL	281	2,778	2,781	2,750	\$24,598,197	\$683.18
Natural Resources & Mining	32	159	158	157	1,617,709	787.59
Construction	20	130	129	129	1,364,751	811.71
Manufacturing	9	315	322	308	2,802,193	684.30
Trade, Transportation & Utilities	42	337	324	319	3,580,955	843.24
Wholesale Trade	7	51	51	50	533,651	810.20
Retail Trade	23	158	149	148	891,496	452.15
Transportation, Warehousing & Utilities	12	128	124	121	2,155,808	1,333.76
Financial Activities	19	67	69	66	631,734	721.71
Professional & Business Services	11	28	27	28	369,051	1,026.09
Education & Health Services	105	407	417	416	2,779,436	517.26
Leisure & Hospitality	13	132	128	120	369,420	224.34
Local Government	7	324	330	329	2,797,027	656.63
State Government	10	823	821	820	7,746,380	725.50
Other	13	56	56	58	539,541	732.41

TABLE 6. COUNTY SUMMARY

North American Industry Classification System - Industry Groups	Number of Employing Units	Employment			Total Earnings Oct - Dec 2019	Average Weekly Earnings
		Oct	Nov	Dec		
LITTLE RIVER COUNTY - TOTAL	248	3,388	3,385	3,390	\$43,543,703	\$988.74
Natural Resources & Mining	15	64	81	84	726,962	732.58
Construction	14	165	132	135	1,542,938	824.22
Manufacturing	16	1,142	1,133	1,135	25,859,808	1,750.04
Trade, Transportation & Utilities	60	566	577	563	4,303,987	582.20
Wholesale Trade	6	30	30	30	523,031	1,341.11
Retail Trade	38	411	421	411	2,574,197	477.91
Transportation, Warehousing & Utilities	16	125	126	122	1,206,759	746.60
Financial Activities	13	55	53	53	520,834	746.54
Professional & Business Services	14	120	120	122	1,261,400	804.12
Education & Health Services	49	202	208	210	1,756,960	653.96
Leisure & Hospitality	19	230	229	229	787,678	264.20
Local Government	20	698	706	712	5,785,457	630.96
State Government	10	91	91	91	663,476	560.84
Other	18	55	55	56	334,203	464.60
LOGAN COUNTY - TOTAL	486	4,960	4,945	4,938	\$41,495,374	\$645.14
Natural Resources & Mining	22	111	113	114	1,117,296	762.83
Construction	40	205	181	180	2,045,741	834.09
Manufacturing	20	903	903	908	9,531,917	810.49
Trade, Transportation & Utilities	101	939	950	958	7,118,213	576.98
Wholesale Trade	8	31	31	31	278,300	690.57
Retail Trade	71	770	778	789	5,113,997	504.99
Transportation, Warehousing & Utilities	22	138	141	138	1,725,916	955.13
Information	5	27	26	26	281,512	822.33
Financial Activities	51	188	189	187	2,472,496	1,011.66
Professional & Business Services	44	104	102	105	1,077,818	799.77
Education & Health Services	105	687	692	693	5,774,939	643.18
Leisure & Hospitality	31	326	312	301	1,092,262	268.43
Other Services	33	154	155	155	1,299,427	646.27
Local Government	22	829	836	826	6,593,830	610.86
State Government	12	487	486	485	3,089,923	489.07

TABLE 6. COUNTY SUMMARY

North American Industry Classification System - Industry Groups	Number of Employing Units	Employment			Total Earnings Oct - Dec 2019	Average Weekly Earnings
		Oct	Nov	Dec		
LONOKE COUNTY - TOTAL	1,328	13,911	13,886	13,531	\$130,011,094	\$725.96
Natural Resources & Mining	91	491	478	473	6,431,708	1,029.29
Construction	140	956	944	942	13,540,684	1,099.50
Manufacturing	37	1,443	1,443	1,139	17,446,166	1,000.26
Trade, Transportation & Utilities	300	2,864	2,887	2,866	24,586,097	658.43
Wholesale Trade	71	419	419	418	6,207,800	1,140.58
Retail Trade	172	2,124	2,142	2,130	14,342,515	517.48
Transportation, Warehousing & Utilities	57	321	326	318	4,035,782	965.11
Information	14	90	94	95	1,169,580	967.39
Financial Activities	160	658	666	675	10,487,020	1,210.65
Professional & Business Services	164	541	545	544	5,544,861	785.02
Education & Health Services	200	1,801	1,804	1,808	15,109,972	644.17
Leisure & Hospitality	118	2,048	2,044	1,988	8,238,524	312.70
Other Services	66	181	168	178	1,339,584	586.59
Local Government	24	2,671	2,648	2,661	24,615,969	711.86
State Government	14	167	165	162	1,500,929	701.15
MADISON COUNTY - TOTAL	255	3,488	3,450	3,423	\$32,624,546	\$726.64
Natural Resources & Mining	12	56	52	50	451,608	659.60
Construction	32	125	122	136	1,633,110	984.00
Manufacturing	23	1,296	1,281	1,242	12,464,313	753.18
Trade, Transportation & Utilities	51	646	653	651	5,497,521	650.59
Wholesale Trade	8	34	35	35	335,517	744.49
Retail Trade	32	462	469	463	3,302,133	546.65
Transportation, Warehousing & Utilities	11	150	149	153	1,859,871	949.56
Information	5	56	53	53	1,811,441	2,580.40
Financial Activities	19	94	93	93	954,396	786.59
Professional & Business Services	26	74	84	79	1,230,620	1,198.27
Education & Health Services	34	252	259	259	2,276,889	682.38
Leisure & Hospitality	18	221	200	194	654,428	245.56
Other Services	19	40	43	39	291,312	551.03
Local Government	9	584	566	583	5,000,764	665.91
State Government	7	44	44	44	358,144	626.13

TABLE 6. COUNTY SUMMARY

North American Industry Classification System - Industry Groups	Number of Employing Units	Employment			Total Earnings Oct - Dec 2019	Average Weekly Earnings
		Oct	Nov	Dec		
MARION COUNTY - TOTAL	282	3,879	3,820	3,818	\$33,200,313	\$665.24
Manufacturing	21	1,878	1,843	1,851	17,034,581	705.50
Trade, Transportation & Utilities	59	508	507	512	3,665,779	553.99
Wholesale Trade	6	35	34	33	294,450	666.18
Retail Trade	44	436	439	440	2,871,825	503.98
Transportation, Warehousing & Utilities	9	37	34	39	499,504	1,047.91
Information	3	56	58	57	1,253,081	1,691.07
Financial Activities	32	186	176	165	1,777,796	778.48
Professional & Business Services	26	78	80	84	676,461	645.07
Education & Health Services	45	308	316	314	2,629,970	647.03
Leisure & Hospitality	35	206	181	177	708,023	289.70
Other Services	14	32	32	32	146,348	351.80
Local Government	18	492	495	486	4,088,906	640.59
State Government	7	40	40	40	357,330	687.17
Other	22	95	92	100	862,038	693.14
MILLER COUNTY - TOTAL	881	13,194	13,335	13,473	\$140,554,590	\$810.85
Natural Resources & Mining	32	338	351	357	4,407,982	972.49
Construction	66	606	571	584	7,624,168	999.10
Manufacturing	28	2,362	2,372	2,387	40,793,119	1,321.98
Trade, Transportation & Utilities	217	3,522	3,632	3,669	36,114,820	770.04
Wholesale Trade	47	488	500	500	6,896,152	1,069.50
Retail Trade	122	1,268	1,293	1,298	8,417,696	503.38
Transportation, Warehousing & Utilities	48	1,766	1,839	1,871	20,800,972	876.59
Information	5	100	99	100	2,221,621	1,714.65
Financial Activities	84	397	407	380	5,530,947	1,078.02
Professional & Business Services	76	1,134	1,167	1,239	6,876,729	448.29
Education & Health Services	188	1,249	1,267	1,266	9,860,485	601.66
Leisure & Hospitality	92	1,370	1,349	1,351	6,156,815	349.09
Other Services	52	245	241	250	1,885,840	591.30
Local Government	26	1,394	1,404	1,415	13,885,657	760.59
State Government	15	477	475	475	5,196,407	840.34

TABLE 6. COUNTY SUMMARY

North American Industry Classification System - Industry Groups	Number of Employing Units	Employment			Total Earnings Oct - Dec 2019	Average Weekly Earnings
		Oct	Nov	Dec		
MISSISSIPPI COUNTY - TOTAL	1,069	18,298	17,964	17,919	\$256,054,132	\$1,090.59
Natural Resources & Mining	108	667	612	588	7,731,017	955.59
Construction	53	1,013	862	919	14,901,675	1,230.80
Manufacturing	60	6,726	6,610	6,587	145,189,255	1,681.74
Trade, Transportation & Utilities	261	2,790	2,818	2,836	27,316,906	746.55
Wholesale Trade	55	369	367	366	5,548,322	1,161.87
Retail Trade	142	1,542	1,567	1,578	10,189,844	501.71
Transportation, Warehousing & Utilities	64	879	884	892	11,578,740	1,006.41
Information	5	28	25	27	159,125	459.01
Financial Activities	80	457	462	460	5,080,151	850.14
Professional & Business Services	83	1,250	1,191	1,143	12,500,536	804.89
Education & Health Services	213	1,590	1,600	1,583	14,722,643	711.82
Leisure & Hospitality	93	1,114	1,126	1,108	4,191,960	288.94
Other Services	45	268	260	265	2,636,287	767.18
Local Government	49	1,878	1,881	1,887	17,213,962	703.59
State Government	19	517	517	516	4,410,615	656.67
MONROE COUNTY - TOTAL	270	1,955	1,963	1,948	\$16,586,795	\$652.53
Natural Resources & Mining	27	118	121	106	1,596,640	1,067.99
Manufacturing	6	147	142	143	1,417,170	757.04
Trade, Transportation & Utilities	65	517	512	511	5,276,437	790.67
Wholesale Trade	16	177	179	174	2,376,182	1,034.62
Retail Trade	30	231	229	233	1,710,937	569.74
Transportation, Warehousing & Utilities	19	109	104	104	1,189,318	865.80
Financial Activities	22	89	91	90	981,680	839.04
Professional & Business Services	14	19	26	35	170,904	492.99
Education & Health Services	58	380	373	374	2,622,183	536.93
Leisure & Hospitality	22	214	219	213	777,221	277.65
Local Government	21	310	319	319	2,316,625	563.93
State Government	7	66	64	64	643,959	766.01
Other	28	95	96	93	783,976	637.03

TABLE 6. COUNTY SUMMARY

North American Industry Classification System - Industry Groups	Number of Employing Units	Employment			Total Earnings Oct - Dec 2019	Average Weekly Earnings
		Oct	Nov	Dec		
MONTGOMERY COUNTY - TOTAL	161	1,193	1,161	1,162	\$8,347,196	\$547.86
Natural Resources & Mining	8	28	26	29	188,299	523.54
Construction	24	72	74	78	528,403	544.37
Manufacturing	9	33	32	33	288,585	679.56
Trade, Transportation & Utilities	32	215	212	214	1,492,863	537.45
Wholesale Trade	7	57	57	56	532,672	723.08
Retail Trade	21	142	139	142	857,073	467.58
Transportation, Warehousing & Utilities	4	16	16	16	103,118	495.76
Financial Activities	8	40	30	31	294,666	673.27
Professional & Business Services	15	21	19	21	174,235	659.15
Education & Health Services	22	55	56	55	439,304	610.71
Leisure & Hospitality	14	252	226	211	1,276,061	427.40
Local Government	9	408	417	421	3,195,481	591.83
State Government	7	35	35	35	301,172	661.92
Other	13	34	34	34	168,127	380.38
NEVADA COUNTY - TOTAL	200	2,489	2,497	2,450	\$24,278,599	\$753.46
Natural Resources & Mining	13	59	58	57	821,004	1,088.86
Trade, Transportation & Utilities	38	570	576	565	5,735,976	773.63
Retail Trade	22	320	320	320	1,983,248	476.74
Other Trade, Transportation & Utilities	16	250	256	245	3,752,728	1,153.15
Financial Activities	12	69	68	57	656,918	781.43
Professional & Business Services	11	53	54	54	659,858	945.81
Education & Health Services	46	432	438	433	2,665,436	472.06
Leisure & Hospitality	9	83	86	85	322,155	292.69
Other Services	14	50	43	40	275,348	477.76
Local Government	29	394	398	390	2,919,704	570.03
State Government	9	52	52	52	411,029	608.03
Other	19	727	724	717	9,811,171	1,044.33

TABLE 6. COUNTY SUMMARY

North American Industry Classification System - Industry Groups	Number of Employing Units	Employment			Total Earnings Oct - Dec 2019	Average Weekly Earnings
		Oct	Nov	Dec		
NEWTON COUNTY - TOTAL	112	1,029	992	987	\$7,143,663	\$548.05
Construction	7	25	19	21	222,151	788.70
Manufacturing	7	30	16	23	345,179	1,154.44
Trade, Transportation & Utilities	25	158	157	155	1,244,612	611.10
Retail Trade	12	106	106	106	636,367	461.80
Other Trade, Transportation & Utilities	13	52	51	49	608,245	923.45
Education & Health Services	23	264	251	253	1,402,569	421.45
Leisure & Hospitality	15	143	139	122	636,221	363.42
Other Services	3	3	3	3	15,424	395.49
Local Government	14	340	341	345	2,522,086	567.27
State Government	7	36	36	36	321,454	686.87
Other	11	30	30	29	433,967	1,125.24
OUACHITA COUNTY - TOTAL	655	6,739	6,696	6,691	\$62,662,580	\$718.50
Natural Resources & Mining	35	174	168	170	1,934,453	871.90
Construction	43	247	220	221	2,469,435	828.30
Manufacturing	25	459	408	414	5,259,740	947.53
Trade, Transportation & Utilities	159	1,413	1,447	1,455	12,050,197	644.45
Wholesale Trade	26	209	211	215	2,274,119	826.45
Retail Trade	97	893	920	906	5,414,140	459.51
Transportation, Warehousing & Utilities	36	311	316	334	4,361,938	1,047.45
Information	6	37	34	35	374,902	816.19
Financial Activities	53	286	274	267	3,128,079	872.87
Professional & Business Services	44	561	544	559	5,524,918	766.21
Education & Health Services	180	1,252	1,261	1,269	14,549,095	887.75
Leisure & Hospitality	39	444	458	451	1,606,282	273.97
Other Services	27	111	106	103	832,210	600.15
Local Government	31	1,129	1,138	1,117	9,197,951	627.25
State Government	13	626	638	630	5,735,318	698.80

TABLE 6. COUNTY SUMMARY

North American Industry Classification System - Industry Groups	Number of Employing Units	Employment			Total Earnings Oct - Dec 2019	Average Weekly Earnings
		Oct	Nov	Dec		
PERRY COUNTY - TOTAL	149	1,107	1,094	1,110	\$9,827,605	\$684.96
Construction	14	94	88	89	814,549	693.63
Manufacturing	6	29	30	32	449,593	1,140.13
Trade, Transportation & Utilities	27	164	161	162	1,178,724	558.55
Retail Trade	17	134	131	133	593,784	344.29
Other Trade, Transportation & Utilities	10	30	30	29	584,940	1,516.70
Financial Activities	10	23	22	22	396,379	1,365.25
Professional & Business Services	20	43	43	45	491,749	866.26
Education & Health Services	32	226	219	217	1,665,832	580.70
Leisure & Hospitality	8	58	57	57	234,219	314.25
Local Government	9	339	344	343	2,819,900	634.26
State Government	7	36	36	36	327,229	699.21
Other	16	95	94	107	1,449,431	1,130.01
PHILLIPS COUNTY - TOTAL	731	5,249	5,223	5,218	\$46,679,860	\$686.57
Natural Resources & Mining	63	314	300	301	3,266,964	823.95
Construction	28	94	88	84	776,338	673.51
Manufacturing	11	399	401	409	4,660,225	889.53
Trade, Transportation & Utilities	137	1,180	1,200	1,179	11,018,587	714.46
Wholesale Trade	28	276	266	260	3,621,429	1,042.04
Retail Trade	71	679	700	681	4,462,750	499.93
Transportation, Warehousing & Utilities	38	225	234	238	2,934,408	971.55
Information	7	12	12	12	156,279	1,001.79
Financial Activities	41	217	213	218	2,148,353	765.08
Professional & Business Services	41	248	236	234	2,669,153	857.88
Education & Health Services	296	1,308	1,311	1,296	10,985,338	647.53
Leisure & Hospitality	39	345	335	334	1,198,597	272.78
Other Services	27	65	65	66	381,651	449.35
Local Government	27	729	723	742	6,418,362	675.10
State Government	14	338	339	343	3,000,013	678.74

TABLE 6. COUNTY SUMMARY

North American Industry Classification System - Industry Groups	Number of Employing Units	Employment			Total Earnings Oct - Dec 2019	Average Weekly Earnings
		Oct	Nov	Dec		
PIKE COUNTY - TOTAL	259	2,551	2,568	2,572	\$22,126,664	\$663.91
Natural Resources & Mining	23	116	112	111	1,256,503	855.35
Construction	15	62	55	61	487,472	631.99
Manufacturing	17	382	399	407	3,959,521	769.14
Trade, Transportation & Utilities	68	525	522	531	4,195,550	613.56
Wholesale Trade	10	106	107	110	1,086,657	776.37
Retail Trade	38	341	341	342	2,257,930	508.85
Transportation, Warehousing & Utilities	20	78	74	79	850,963	850.11
Information	7	26	27	29	288,654	812.35
Financial Activities	22	205	208	207	3,092,354	1,151.00
Professional & Business Services	14	57	57	55	1,214,165	1,657.94
Education & Health Services	32	298	298	293	1,788,590	464.29
Leisure & Hospitality	28	227	225	211	824,488	286.98
Other Services	14	57	57	58	497,717	667.78
Local Government	10	474	487	488	3,787,455	603.19
State Government	9	122	121	121	734,195	465.47
POINSETT COUNTY - TOTAL	483	5,213	5,169	5,174	\$52,500,910	\$778.84
Natural Resources & Mining	69	344	317	310	3,711,481	882.08
Construction	24	84	82	78	951,549	899.95
Manufacturing	19	702	708	707	8,213,901	895.38
Trade, Transportation & Utilities	119	1,178	1,182	1,181	11,904,493	775.82
Wholesale Trade	22	398	386	388	6,353,391	1,251.00
Retail Trade	70	636	650	647	3,707,901	442.66
Transportation, Warehousing & Utilities	27	144	146	146	1,843,201	975.58
Professional & Business Services	28	195	196	195	6,172,352	2,430.70
Education & Health Services	83	796	802	809	6,931,338	664.54
Leisure & Hospitality	42	451	457	445	1,557,893	265.72
Other Services	18	55	57	57	489,351	668.21
Local Government	30	1,049	1,003	1,046	8,675,057	646.20
State Government	10	111	111	111	937,425	649.64
Other	41	248	254	235	2,956,070	925.60

TABLE 6. COUNTY SUMMARY

North American Industry Classification System - Industry Groups	Number of Employing Units	Employment			Total Earnings Oct - Dec 2019	Average Weekly Earnings
		Oct	Nov	Dec		
POLK COUNTY - TOTAL	485	5,803	5,795	5,802	\$48,711,766	\$646.04
Natural Resources & Mining	24	174	174	176	2,246,292	989.27
Construction	31	209	213	218	2,216,324	799.16
Manufacturing	36	1,338	1,312	1,309	11,921,544	694.90
Trade, Transportation & Utilities	126	1,047	1,059	1,066	8,440,436	614.06
Wholesale Trade	21	64	63	64	886,018	1,070.50
Retail Trade	68	747	762	760	4,601,663	468.01
Transportation, Warehousing & Utilities	37	236	234	242	2,952,755	957.03
Information	6	50	52	42	283,954	455.05
Financial Activities	40	218	215	218	2,129,526	754.88
Professional & Business Services	41	141	140	137	1,814,661	1,001.84
Education & Health Services	84	983	992	1,003	9,337,783	723.60
Leisure & Hospitality	42	463	472	465	1,602,988	264.23
Other Services	22	154	148	140	1,139,758	595.07
Local Government	21	707	703	709	5,441,503	592.61
State Government	12	319	315	319	2,136,997	517.47
POPE COUNTY - TOTAL	1,851	26,131	26,010	26,129	\$301,611,622	\$889.26
Natural Resources & Mining	37	338	378	552	4,902,354	892.20
Construction	163	1,273	1,246	1,254	25,733,376	1,573.94
Manufacturing	74	4,662	4,664	4,677	62,169,946	1,024.56
Trade, Transportation & Utilities	415	6,139	6,243	6,235	83,659,141	1,037.01
Wholesale Trade	74	572	561	555	6,466,847	884.09
Retail Trade	264	3,107	3,181	3,165	22,049,483	538.28
Transportation, Warehousing & Utilities	77	2,460	2,501	2,515	55,142,811	1,702.15
Information	17	133	133	137	1,050,610	601.61
Financial Activities	198	900	894	903	10,546,793	902.44
Professional & Business Services	264	2,092	1,928	1,882	26,681,336	1,043.24
Education & Health Services	372	3,181	3,225	3,224	32,011,716	767.12
Leisure & Hospitality	144	2,948	2,858	2,778	11,864,624	318.96
Other Services	109	586	585	594	5,100,952	666.94
Local Government	43	2,224	2,204	2,240	20,656,436	714.89
State Government	15	1,655	1,652	1,653	17,234,338	801.85

TABLE 6. COUNTY SUMMARY

North American Industry Classification System - Industry Groups	Number of Employing Units	Employment			Total Earnings	Average Weekly Earnings
		Oct	Nov	Dec	Oct - Dec 2019	
PRAIRIE COUNTY - TOTAL	253	1,446	1,507	1,435	\$12,691,704	\$667.47
Natural Resources & Mining	36	169	165	153	2,443,593	1,157.92
Construction	11	44	40	35	357,613	693.50
Trade, Transportation & Utilities	61	329	326	332	2,948,917	689.48
Wholesale Trade	12	76	75	76	1,112,125	1,130.59
Retail Trade	35	200	199	201	1,252,895	481.88
Transportation, Warehousing & Utilities	14	53	52	55	583,897	842.16
Financial Activities	16	55	54	53	631,871	900.10
Professional & Business Services	14	58	61	61	555,611	712.32
Education & Health Services	50	267	258	262	1,788,588	524.46
Leisure & Hospitality	19	92	90	93	382,293	320.81
Local Government	15	326	326	337	2,634,822	614.80
State Government	7	30	30	30	242,015	620.55
Other	24	76	157	79	706,381	522.47
PULASKI COUNTY - TOTAL	14,553	242,100	243,789	244,009	\$3,131,038,791	\$989.93
Natural Resources & Mining	53	599	604	606	9,955,168	1,269.95
Construction	946	9,465	9,423	9,430	148,636,888	1,211.27
Manufacturing	332	13,386	13,392	13,423	196,509,494	1,128.04
Trade, Transportation & Utilities	3,136	49,396	50,717	50,825	574,413,076	878.22
Wholesale Trade	919	11,757	11,775	11,837	207,234,766	1,352.13
Retail Trade	1,809	24,575	25,676	25,673	197,787,750	601.17
Transportation, Warehousing & Utilities	408	13,064	13,266	13,315	169,390,560	986.00
Information	203	3,308	3,340	3,348	45,353,275	1,047.03
Financial Activities	1,716	17,862	17,898	18,033	327,244,926	1,403.86
Professional & Business Services	2,822	35,192	35,228	35,278	522,020,862	1,139.72
Education & Health Services	2,581	41,589	41,890	41,964	563,059,330	1,035.82
Leisure & Hospitality	1,304	22,864	22,988	22,847	110,879,413	372.46
Other Services	1,140	6,599	6,531	6,510	69,567,137	817.41
Local Government	108	15,355	15,319	15,274	173,977,246	873.78
State Government	212	26,485	26,459	26,471	389,421,976	1,131.61

TABLE 6. COUNTY SUMMARY

North American Industry Classification System - Industry Groups	Number of Employing Units	Employment			Total Earnings Oct - Dec 2019	Average Weekly Earnings
		Oct	Nov	Dec		
RANDOLPH COUNTY - TOTAL	394	5,916	5,934	5,940	\$50,254,893	\$651.90
Natural Resources & Mining	26	247	239	245	3,148,477	993.94
Construction	26	99	91	87	720,081	599.90
Manufacturing	27	1,678	1,719	1,745	16,910,606	758.94
Trade, Transportation & Utilities	97	904	909	910	7,320,071	620.36
Wholesale Trade	15	118	117	113	1,105,105	732.83
Retail Trade	55	613	620	613	4,118,831	514.90
Transportation, Warehousing & Utilities	27	173	172	184	2,096,135	914.41
Information	5	23	23	22	202,888	688.53
Financial Activities	30	151	152	152	1,578,594	800.64
Professional & Business Services	35	270	266	252	2,000,697	585.91
Education & Health Services	67	953	954	957	8,100,113	652.67
Leisure & Hospitality	30	419	414	407	1,435,372	267.13
Other Services	17	47	45	43	294,318	503.11
Local Government	24	839	834	835	6,228,269	573.08
State Government	10	286	288	285	2,315,407	622.03
SAINT FRANCIS COUNTY - TOTAL	675	6,682	6,703	6,679	\$58,897,960	\$677.42
Natural Resources & Mining	44	232	214	207	2,459,615	869.22
Construction	38	200	205	205	2,455,462	928.93
Trade, Transportation & Utilities	142	1,794	1,829	1,828	16,718,614	707.79
Wholesale Trade	29	576	567	560	7,004,162	949.12
Retail Trade	92	906	952	947	6,120,081	503.50
Transportation, Warehousing & Utilities	21	312	310	321	3,594,371	879.61
Information	5	51	51	51	461,318	695.80
Financial Activities	56	250	271	261	2,232,403	658.79
Professional & Business Services	47	176	195	190	2,181,123	897.21
Education & Health Services	220	1,426	1,419	1,405	13,414,982	728.42
Leisure & Hospitality	49	649	644	655	2,439,909	289.04
Local Government	28	792	795	818	6,721,538	644.96
State Government	14	446	445	437	3,639,767	632.49
Other	32	666	635	622	6173229	740.82

TABLE 6. COUNTY SUMMARY

North American Industry Classification System - Industry Groups	Number of Employing Units	Employment			Total Earnings Oct - Dec 2019	Average Weekly Earnings
		Oct	Nov	Dec		
SALINE COUNTY - TOTAL	2,118	24,856	25,069	25,115	\$240,754,749	\$740.39
Natural Resources & Mining	12	53	51	51	678,662	1,010.41
Construction	282	2,074	2,105	2,120	26,848,397	983.61
Manufacturing	76	1,334	1,354	1,359	18,995,345	1,083.16
Trade, Transportation & Utilities	476	5,568	5,695	5,687	48,322,857	657.90
Wholesale Trade	114	623	605	608	8,283,335	1,041.14
Retail Trade	288	4,319	4,449	4,420	32,507,245	568.83
Transportation, Warehousing & Utilities	74	626	641	659	7,532,277	902.50
Information	18	141	147	143	1,672,367	895.43
Financial Activities	217	812	809	813	10,234,805	970.37
Professional & Business Services	302	1,870	1,896	1,957	23,462,036	946.06
Education & Health Services	339	4,662	4,659	4,640	48,949,389	809.11
Leisure & Hospitality	197	3,569	3,595	3,536	14,952,550	322.48
Other Services	152	824	813	823	6,792,701	637.21
Local Government	33	3,158	3,155	3,198	33,666,017	816.85
State Government	14	791	790	788	6,179,623	601.97
SCOTT COUNTY - TOTAL	189	3,035	3,043	3,061	\$24,409,630	\$616.37
Natural Resources & Mining	19	157	142	159	1,832,507	923.33
Trade, Transportation & Utilities	36	330	336	334	2,767,832	638.73
Wholesale Trade	7	39	39	39	374,911	739.47
Retail Trade	23	220	226	223	1,496,846	516.33
Transportation, Warehousing & Utilities	6	71	71	72	896,075	966.29
Financial Activities	17	64	64	64	552,509	664.07
Professional & Business Services	14	116	111	110	720,848	493.62
Education & Health Services	41	300	303	304	3,167,507	805.91
Leisure & Hospitality	19	159	153	157	516,182	253.98
Other Services	10	35	36	35	250,557	545.48
Local Government	6	535	551	548	4,141,262	584.87
State Government	6	32	32	32	281,412	676.47
Other	21	1,307	1,315	1,318	10,179,014	596.19

TABLE 6. COUNTY SUMMARY

North American Industry Classification System - Industry Groups	Number of Employing Units	Employment			Total Earnings Oct - Dec 2019	Average Weekly Earnings
		Oct	Nov	Dec		
SEARCY COUNTY - TOTAL	164	1,452	1,525	1,427	\$10,125,016	\$530.55
Construction	12	5	5	9	32,790	398.26
Manufacturing	14	160	146	146	1,091,840	557.44
Trade, Transportation & Utilities	35	249	247	245	1,670,241	520.16
Wholesale Trade	6	38	38	37	253,760	518.23
Retail Trade	23	192	191	190	1,180,530	475.45
Transportation, Warehousing & Utilities	6	19	18	18	235,951	990.00
Financial Activities	12	52	48	46	454,066	717.70
Education & Health Services	38	320	322	319	2,372,175	569.64
Leisure & Hospitality	13	161	159	151	541,987	265.55
Local Government	10	323	327	330	2,206,669	519.62
State Government	6	42	42	42	367,323	672.75
Other	24	140	229	139	1,387,925	630.49
SEBASTIAN COUNTY - TOTAL	3,687	63,819	64,300	64,251	\$705,440,718	\$846.25
Natural Resources & Mining	41	349	328	325	5,749,265	1,324.11
Construction	261	2,437	2,403	2,406	28,659,331	912.74
Manufacturing	189	11,153	11,203	11,218	135,707,989	932.78
Trade, Transportation & Utilities	889	12,903	13,334	13,413	132,385,507	770.50
Wholesale Trade	224	2,681	2,694	2,696	37,765,662	1,079.81
Retail Trade	554	7,638	8,006	7,979	54,301,076	530.46
Transportation, Warehousing & Utilities	111	2,584	2,634	2,738	40,318,769	1,169.47
Information	39	856	842	846	13,985,617	1,268.65
Financial Activities	407	2,659	2,621	2,622	35,903,995	1,048.54
Professional & Business Services	559	8,002	7,951	7,947	84,495,501	815.86
Education & Health Services	633	11,718	11,823	11,889	164,351,945	1,070.49
Leisure & Hospitality	349	6,138	6,155	6,035	27,122,315	341.50
Other Services	256	1,183	1,176	1,143	10,212,301	672.95
Local Government	43	4,716	4,765	4,704	47,359,650	770.47
State Government	21	1,705	1,699	1,703	19,507,302	881.47

TABLE 6. COUNTY SUMMARY

North American Industry Classification System - Industry Groups	Number of Employing Units	Employment			Total Earnings Oct - Dec 2019	Average Weekly Earnings
		Oct	Nov	Dec		
SEVIER COUNTY - TOTAL	316	4,691	4,830	4,836	\$41,486,190	\$666.83
Natural Resources & Mining	18	163	165	171	1,958,371	905.67
Construction	20	158	157	169	2,511,514	1,197.48
Trade, Transportation & Utilities	86	801	830	814	6,942,403	655.25
Wholesale Trade	12	84	83	84	1,249,644	1,148.92
Retail Trade	61	616	635	628	4,306,258	528.87
Transportation, Warehousing & Utilities	13	101	112	102	1,386,501	1,015.75
Financial Activities	26	194	193	199	2,320,990	914.02
Professional & Business Services	25	170	166	180	1,229,885	550.04
Education & Health Services	63	408	451	431	3,969,487	710.11
Leisure & Hospitality	25	276	284	291	933,331	253.10
Local Government	13	917	962	946	7,211,463	589.09
State Government	7	174	173	172	1,341,685	596.57
Other	33	1,430	1,449	1,463	13,067,061	694.49
SHARP COUNTY - TOTAL	381	3,470	3,485	3,469	\$25,547,225	\$565.57
Construction	28	112	111	108	1,126,597	785.45
Manufacturing	16	138	151	159	1,393,151	717.63
Trade, Transportation & Utilities	78	721	735	725	4,650,533	492.07
Wholesale Trade	11	37	38	33	309,148	660.57
Retail Trade	58	645	659	654	3,809,647	449.00
Transportation, Warehousing & Utilities	9	39	38	38	531,738	1,067.03
Information	7	29	29	29	163,762	434.38
Financial Activities	32	157	155	157	1,938,726	953.94
Professional & Business Services	37	128	124	119	1,075,052	668.70
Education & Health Services	84	839	835	852	7,155,939	653.75
Leisure & Hospitality	35	403	393	390	1,454,252	282.97
Local Government	24	787	792	775	5,452,996	534.57
State Government	7	56	56	56	433,429	595.37
Other	33	100	104	99	702,788	535.25

TABLE 6. COUNTY SUMMARY

North American Industry Classification System - Industry Groups	Number of Employing Units	Employment			Total Earnings	Average Weekly Earnings
		Oct	Nov	Dec	Oct - Dec 2019	
STONE COUNTY - TOTAL	276	2,532	2,548	2,541	\$20,532,427	\$621.74
Natural Resources & Mining	4	8	8	9	54,363	501.81
Construction	15	34	36	35	256,922	564.66
Manufacturing	17	213	224	220	1,729,267	607.40
Trade, Transportation & Utilities	70	546	571	556	4,491,634	619.56
Wholesale Trade	6	27	39	24	345,750	886.54
Retail Trade	51	474	489	486	3,497,827	557.07
Transportation, Warehousing & Utilities	13	45	43	46	648,057	1,116.06
Financial Activities	39	172	169	177	2,404,213	1,071.08
Professional & Business Services	13	25	27	23	120,964	372.20
Education & Health Services	50	553	550	566	5,324,384	736.19
Leisure & Hospitality	29	449	427	399	1,475,731	267.10
Local Government	10	356	361	379	3,387,181	713.19
State Government	7	128	128	128	882,149	530.14
Other	22	48	47	49	405,619	650.03
UNION COUNTY - TOTAL	1,271	17,004	17,066	17,086	\$209,133,939	\$943.42
Natural Resources & Mining	80	376	375	397	5,668,571	1,139.49
Construction	79	1,457	1,475	1,468	22,837,558	1,197.77
Manufacturing	54	2,845	2,806	2,810	49,561,624	1,351.77
Trade, Transportation & Utilities	305	3,362	3,469	3,507	36,750,855	820.37
Wholesale Trade	66	458	458	461	7,374,326	1,235.85
Retail Trade	181	1,997	2,063	2,082	13,969,539	524.87
Transportation, Warehousing & Utilities	58	907	948	964	15,406,990	1,261.25
Information	8	89	86	87	803,016	707.30
Financial Activities	93	604	590	592	6,953,894	898.51
Professional & Business Services	129	1,891	1,884	1,882	34,835,348	1,421.06
Education & Health Services	291	2,179	2,211	2,195	22,253,413	779.86
Leisure & Hospitality	95	1,471	1,455	1,420	6,092,584	323.51
Other Services	89	383	383	393	3,007,566	598.84
Local Government	32	1,831	1,820	1,822	15,605,531	658.01
State Government	16	516	512	513	4,763,979	713.42

TABLE 6. COUNTY SUMMARY

North American Industry Classification System - Industry Groups	Number of Employing Units	Employment			Total Earnings Oct - Dec 2019	Average Weekly Earnings
		Oct	Nov	Dec		
VAN BUREN COUNTY - TOTAL	332	3,438	3,444	3,376	\$31,134,637	\$700.42
Natural Resources & Mining	9	92	90	90	2,015,880	1,710.31
Construction	38	126	125	126	1,138,029	696.61
Manufacturing	8	215	212	195	1,649,449	611.96
Trade, Transportation & Utilities	91	842	842	828	8,196,424	752.98
Wholesale Trade	10	44	40	38	415,519	785.98
Retail Trade	52	575	580	571	4,048,794	541.33
Transportation, Warehousing & Utilities	29	223	222	219	3,732,111	1,297.07
Information	6	38	38	37	420,141	858.01
Financial Activities	34	154	153	155	1,885,259	941.69
Professional & Business Services	31	136	129	122	1,210,355	721.74
Education & Health Services	56	720	725	734	7,198,500	762.36
Leisure & Hospitality	24	266	266	260	1,183,105	344.73
Other Services	18	154	156	136	1,106,612	572.58
Local Government	11	654	667	652	4,754,694	556.13
State Government	6	41	41	41	376,189	705.80
WASHINGTON COUNTY - TOTAL	6,330	109,270	110,002	109,494	\$1,421,535,879	\$997.81
Natural Resources & Mining	41	316	314	319	5,337,929	1,298.03
Construction	607	6,113	6,034	6,052	91,393,374	1,158.90
Manufacturing	227	13,682	13,711	13,636	154,759,590	870.45
Trade, Transportation & Utilities	1,380	23,031	23,538	23,628	273,429,009	898.88
Wholesale Trade	389	3,805	3,789	3,857	73,480,134	1,480.83
Retail Trade	793	12,378	12,868	12,822	100,755,470	610.78
Transportation, Warehousing & Utilities	198	6,848	6,881	6,949	99,193,405	1,107.01
Information	84	878	866	870	11,414,897	1,007.73
Financial Activities	718	3,842	3,820	3,821	56,088,650	1,127.19
Professional & Business Services	1,177	13,553	13,692	13,655	322,410,289	1,819.13
Education & Health Services	910	16,483	16,524	16,505	226,400,218	1,055.22
Leisure & Hospitality	711	13,770	13,616	13,329	60,962,981	345.53
Other Services	393	2,124	2,121	2,150	20,208,746	729.25
Local Government	60	8,943	9,077	9,031	96,086,996	819.71
State Government	22	6,535	6,689	6,498	103,043,200	1,205.72

TABLE 6. COUNTY SUMMARY

North American Industry Classification System - Industry Groups	Number of Employing Units	Employment			Total Earnings Oct - Dec 2019	Average Weekly Earnings
		Oct	Nov	Dec		
WHITE COUNTY - TOTAL	1,803	23,931	24,225	24,159	\$240,435,551	\$767.27
Natural Resources & Mining	52	340	332	326	5,032,996	1,163.79
Construction	166	1,089	1,037	1,044	14,051,966	1,022.95
Manufacturing	61	2,161	2,156	2,169	24,998,845	889.45
Trade, Transportation & Utilities	482	6,187	6,354	6,337	61,324,936	749.65
Wholesale Trade	86	589	590	592	7,167,374	933.94
Retail Trade	309	3,477	3,604	3,551	25,290,273	548.93
Transportation, Warehousing & Utilities	87	2,121	2,160	2,194	28,867,289	1,028.83
Information	20	116	111	114	928,167	628.13
Financial Activities	176	901	917	919	12,474,159	1,051.75
Professional & Business Services	182	1,137	1,232	1,210	11,718,029	755.56
Education & Health Services	324	5,618	5,617	5,588	65,418,647	897.38
Leisure & Hospitality	163	2,681	2,761	2,734	10,279,531	290.14
Other Services	116	477	473	473	4,425,167	717.63
Local Government	46	2,687	2,706	2,714	24,743,688	704.34
State Government	15	537	529	531	5,039,420	728.20
WOODRUFF COUNTY - TOTAL	192	1,730	1,699	1,692	\$15,860,611	\$714.73
Natural Resources & Mining	33	179	170	159	1,530,378	695.21
Construction	11	32	31	36	326,257	760.51
Manufacturing	5	181	182	185	2,096,661	882.93
Trade, Transportation & Utilities	45	367	344	345	3,655,843	798.92
Wholesale Trade	12	138	130	127	1,707,326	997.46
Retail Trade	23	164	148	150	955,685	477.37
Transportation, Warehousing & Utilities	10	65	66	68	992,832	1,151.33
Financial Activities	12	46	45	46	456,377	768.74
Education & Health Services	46	239	241	242	1,973,345	630.73
Leisure & Hospitality	12	92	94	91	348,294	290.16
Local Government	8	401	399	393	3,182,870	615.68
State Government	5	32	32	32	277,858	667.93
Other	15	161	161	163	2,012,728	957.68

TABLE 6. COUNTY SUMMARY

North American Industry Classification System - Industry Groups	Number of Employing Units	Employment			Total Earnings Oct - Dec 2019	Average Weekly Earnings
		Oct	Nov	Dec		
YELL COUNTY - TOTAL	413	6,468	6,489	6,479	\$54,425,646	\$646.21
Natural Resources & Mining	24	244	242	246	2,945,692	928.65
Construction	33	232	216	207	2,189,490	771.40
Manufacturing	22	2,442	2,444	2,465	20,547,748	645.05
Trade, Transportation & Utilities	82	719	724	721	5,294,357	564.59
Wholesale Trade	13	53	52	54	337,197	489.40
Retail Trade	48	514	523	509	3,022,243	451.13
Transportation, Warehousing & Utilities	21	152	149	158	1,934,917	972.81
Financial Activities	32	121	119	121	1,222,000	781.16
Professional & Business Services	36	327	319	321	3,088,228	736.99
Education & Health Services	109	753	777	778	5,537,903	553.72
Leisure & Hospitality	25	284	283	273	981,690	269.70
Local Government	23	1,153	1,166	1,149	10,423,721	693.62
State Government	10	78	78	78	560,575	552.84
Other	17	115	121	120	1,634,242	1,059.36
STATEWIDE COUNTY - TOTAL	11,602	37,429	38,863	37,626	\$569,713,401	\$1,154.10
Natural Resources & Mining	113	313	309	297	5,712,509	1,434.46
Construction	878	3,687	3,593	3,634	54,603,081	1,154.55
Manufacturing	69	178	189	198	5,354,880	2,187.15
Trade, Transportation & Utilities	3,597	8,151	8,254	8,267	198,731,754	1,858.83
Wholesale Trade	2,996	6,575	6,610	6,614	174,719,268	2,036.46
Retail Trade	223	488	471	473	7,769,699	1,252.10
Transportation, Warehousing & Utilities	378	1,088	1,173	1,180	16,242,787	1,089.32
Information	469	872	902	895	21,373,870	1,848.04
Financial Activities	788	2,047	2,115	2,076	38,497,727	1,424.19
Professional & Business Services	4,514	17,273	18,714	17,613	189,298,103	815.00
Education & Health Services	656	2,947	2,898	2,879	34,689,450	917.61
Leisure & Hospitality	120	355	353	258	1,916,950	457.94
State Government	14	738	738	736	7,736,950	807.17
Other	384	868	798	773	11,798,127	1,028.79

Note: Statewide classification includes employment and payroll data for employers that have not provided a physical location for each employing unit. This section also includes employers without a physical location in Arkansas.

TABLE 7. FEDERAL GOVERNMENT EMPLOYMENT AND EARNINGS IN ARKANSAS

North American Industry Classification System - Industry Groups	Number of Employing Units	Employment			Total Earnings Oct - Dec 2019	Average Weekly Earnings
		Oct	Nov	Dec		
TOTAL	1,197	20,437	20,403	20,439	\$382,479,875	\$1,440.37
Trade, Transportation & Utilities	584	5,630	5,618	5,599	81,226,428	1,112.63
Information	2	40	40	39	733,940	1,423.28
Financial Activities	14	103	102	101	2,312,695	1,744.11
Professional & Business Services	32	819	807	812	14,135,245	1,337.97
Education & Health Services	18	5,412	5,452	5,465	119,643,753	1,690.86
Leisure & Hospitality	23	263	268	267	3,371,891	975.10
Other Services	1	1	1	1	8,583	660.23
Public Administration	523	8,169	8,115	8,155	161,047,340	1,520.72

TABLE 8. LOCAL WORKFORCE DEVELOPMENT AREA SUMMARY

North American Industry Classification System - Industry Groups	Number of Employing Units	Employment			Total Earnings Oct - Dec 2019	Average Weekly Earnings
		Oct	Nov	Dec		
CENTRAL LOCAL WORKFORCE DEVELOPMENT AREA	6,864	83,773	84,243	83,756	\$841,450,156	\$771.26
Natural Resources & Mining	205	1,069	1,043	1,024	15,416,194	1,419.77
Construction	789	6,046	6,024	6,060	81,838,172	1,041.68
Manufacturing	220	6,309	6,392	5,957	83,830,159	1,036.84
Trade, Transportation & Utilities	1,527	16,926	17,339	17,292	145,772,610	652.48
Wholesale Trade	347	2,019	1,985	1,996	28,632,997	1,101.27
Retail Trade	934	12,952	13,383	13,295	92,843,602	540.64
Transportation, Warehousing & Utilities	246	1,955	1,971	2,001	24,296,011	945.97
Information	61	492	512	510	7,302,295	1,113.04
Financial Activities	726	3,050	3,083	3,080	40,382,208	1,011.50
Professional & Business Services	949	7,474	7,464	7,556	106,732,622	1,094.99
Education & Health Services	1,115	14,838	14,847	14,802	153,211,685	794.76
Leisure & Hospitality	632	11,261	11,293	11,151	46,083,735	315.52
Other Services	445	2,027	1,987	2,023	16,285,370	622.52
Local Government	135	9,951	9,937	10,002	101,077,356	780.38
State Government	60	4,330	4,322	4,299	43,517,750	775.43
Note: Pulaski County is not included in the Central Local Workforce Development Area. Please refer to Page 51 for information on Pulaski County. Central Local Workforce Development Area includes these counties: Faulkner, Lonoke, Monroe, Prairie, and Saline.						
EASTERN LOCAL WORKFORCE DEVELOPMENT AREA	3,335	34,990	35,019	34,835	\$325,108,357	\$715.59
Natural Resources & Mining	248	1,383	1,335	1,286	14,572,069	839.86
Construction	137	824	787	782	10,042,831	968.48
Manufacturing	73	3,380	3,386	3,406	40,899,498	927.88
Trade, Transportation & Utilities	744	8,570	8,645	8,609	84,837,443	758.13
Wholesale Trade	148	1,923	1,920	1,918	25,043,433	1,003.17
Retail Trade	404	4,297	4,398	4,362	29,270,742	517.33
Transportation, Warehousing & Utilities	192	2,350	2,327	2,329	30,523,268	1,005.40
Information	22	149	149	151	1,296,117	666.16
Financial Activities	264	1,261	1,272	1,256	13,417,191	817.17
Professional & Business Services	249	1,708	1,692	1,687	18,036,099	818.20
Education & Health Services	983	6,172	6,193	6,111	55,832,657	697.36
Leisure & Hospitality	272	4,255	4,200	4,234	19,803,793	360.16
Other Services	160	752	739	736	6,120,196	634.20
Local Government	127	4,617	4,692	4,727	43,639,221	717.48
State Government	56	1,919	1,929	1,850	16,611,242	672.76
Eastern Local Workforce Development Area includes these counties: Crittenden, Cross, Lee, Phillips, and Saint Francis.						

TABLE 8. LOCAL WORKFORCE DEVELOPMENT AREA SUMMARY

North American Industry Classification System - Industry Groups	Number of Employing Units	Employment			Total Earnings Oct - Dec 2019	Average Weekly Earnings
		Oct	Nov	Dec		
NORTH CENTRAL LOCAL WORKFORCE DEVELOPMENT AREA	5,418	67,869	68,259	68,148	\$678,514,049	\$766.51
Natural Resources & Mining	215	1,490	1,417	1,374	18,963,944	1,022.26
Construction	432	2,667	2,597	2,616	33,476,960	980.39
Manufacturing	212	8,936	8,980	9,001	126,353,320	1,083.27
Trade, Transportation & Utilities	1,381	14,492	14,784	14,728	135,750,056	711.91
Wholesale Trade	232	1,546	1,535	1,526	18,348,844	919.11
Retail Trade	892	9,283	9,515	9,419	65,556,211	536.14
Transportation, Warehousing & Utilities	257	3,663	3,734	3,783	51,845,001	1,070.15
Information	71	403	393	401	3,430,988	661.46
Financial Activities	527	2,643	2,647	2,674	37,744,302	1,093.70
Professional & Business Services	493	3,162	3,284	3,280	31,394,161	744.89
Education & Health Services	958	14,534	14,566	14,664	158,230,149	834.35
Leisure & Hospitality	490	6,661	6,664	6,514	25,155,611	292.61
Other Services	325	1,248	1,252	1,241	9,907,317	611.15
Local Government	221	8,832	8,882	8,883	73,910,274	641.28
State Government	93	2,801	2,793	2,772	24,196,967	667.45

North Central Local Workforce Development Area includes these counties: Cleburne, Fulton, Independence, Izard, Jackson, Sharp, Stone, Van Buren, White, and Woodruff.

NORTHEAST LOCAL WORKFORCE DEVELOPMENT AREA	6,440	105,016	104,792	104,713	\$1,126,901,441	\$826.83
Natural Resources & Mining	450	2,556	2,304	2,153	26,962,956	1,111.66
Construction	478	4,016	3,781	3,794	49,836,541	992.21
Manufacturing	299	21,774	21,651	21,750	324,199,710	1,147.91
Trade, Transportation & Utilities	1,671	19,596	20,059	20,077	183,793,352	710.07
Wholesale Trade	352	3,770	3,744	3,732	51,661,808	1,060.11
Retail Trade	986	12,172	12,577	12,507	85,084,296	527.02
Transportation, Warehousing & Utilities	333	3,654	3,738	3,838	47,047,248	966.79
Information	54	711	718	721	8,992,175	965.17
Financial Activities	556	3,343	3,358	3,351	44,959,089	1,032.15
Professional & Business Services	665	7,629	7,603	7,495	76,070,938	772.42
Education & Health Services	1,066	17,980	18,051	18,135	204,694,773	872.08
Leisure & Hospitality	567	9,932	9,821	9,740	39,915,449	312.32
Other Services	331	1,531	1,503	1,537	13,465,317	679.80
Local Government	214	11,580	11,567	11,595	106,541,875	707.69
State Government	89	4,368	4,376	4,365	47,469,266	835.64

Northeast Local Workforce Development Area includes these counties: Clay, Craighead, Greene, Lawrence, Mississippi, Poinsett, and Randolph.

TABLE 8. LOCAL WORKFORCE DEVELOPMENT AREA SUMMARY

North American Industry Classification System - Industry Groups	Number of Employing Units	Employment			Total Earnings Oct - Dec 2019	Average Weekly Earnings
		Oct	Nov	Dec		
NORTHWEST LOCAL WORKFORCE DEVELOPMENT AREA	16,928	283,209	284,628	284,045	\$3,681,683,020	\$997.34
Natural Resources & Mining	143	1,576	1,571	1,574	28,364,835	1,386.51
Construction	1,591	12,861	12,849	12,859	179,070,060	1,071.43
Manufacturing	626	37,244	37,437	37,431	408,400,640	840.64
Trade, Transportation & Utilities	3,963	62,313	63,338	63,314	768,002,787	937.91
Wholesale Trade	1,269	10,716	10,732	10,834	235,725,192	1,685.09
Retail Trade	2,152	31,557	32,421	32,262	247,869,473	594.35
Transportation, Warehousing & Utilities	542	20,040	20,185	20,218	284,408,122	1,085.86
Information	224	2,452	2,474	2,502	36,665,901	1,139.12
Financial Activities	1,757	9,936	9,849	9,837	153,036,854	1,192.23
Professional & Business Services	2,909	49,456	49,945	49,849	1,083,558,568	1,675.39
Education & Health Services	2,437	36,443	36,559	36,633	447,054,784	941.00
Leisure & Hospitality	1,816	32,445	31,830	31,347	148,948,300	359.46
Other Services	1,049	5,427	5,416	5,527	52,192,843	735.77
Local Government	310	24,040	24,180	24,206	251,797,151	802.30
State Government	103	9,016	9,180	8,966	124,590,297	1,058.52

Northwest Local Workforce Development Area includes these counties: Baxter, Benton, Boone, Carroll, Madison, Marion, Newton, Searcy, and Washington.

SOUTHEAST LOCAL WORKFORCE DEVELOPMENT AREA	6,206	68,536	68,280	68,165	\$708,566,140	\$797.71
Natural Resources & Mining	455	2,390	2,369	2,409	28,041,292	902.77
Construction	323	2,320	2,126	2,092	28,026,460	989.24
Manufacturing	201	14,895	14,830	14,632	206,579,221	1,074.74
Trade, Transportation & Utilities	1,242	11,768	11,868	11,864	110,149,248	716.03
Wholesale Trade	228	1,859	1,834	1,794	25,508,622	1,072.83
Retail Trade	748	7,203	7,355	7,347	49,380,033	520.22
Transportation, Warehousing & Utilities	266	2,706	2,679	2,723	35,260,593	1,003.58
Information	45	271	270	267	2,564,756	732.51
Financial Activities	430	2,435	2,458	2,418	31,785,575	1,003.30
Professional & Business Services	425	3,682	3,467	3,422	37,511,223	818.89
Education & Health Services	2,035	10,457	10,536	10,589	102,147,579	746.39
Leisure & Hospitality	405	4,842	4,840	4,844	18,701,292	297.10
Other Services	308	1,090	1,085	1,113	9,674,657	679.02
Local Government	211	8,520	8,518	8,625	77,654,698	698.29
State Government	126	5,866	5,913	5,890	55,730,139	727.87

Southeast Local Workforce Development Area includes these counties: Arkansas, Ashley, Bradley, Chicot, Cleveland, Desha, Drew, Grant, Jefferson, and Lincoln.

TABLE 8. LOCAL WORKFORCE DEVELOPMENT AREA SUMMARY

North American Industry Classification System - Industry Groups	Number of Employing Units	Employment			Total Earnings Oct - Dec 2019	Average Weekly Earnings
		Oct	Nov	Dec		
SOUTHWEST LOCAL WORKFORCE DEVELOPMENT AREA	5,639	77,126	77,368	77,437	\$818,073,561	\$813.98
Natural Resources & Mining	328	2,313	2,285	2,337	30,810,658	1,025.26
Construction	352	3,309	3,230	3,247	44,469,737	1,048.67
Manufacturing	236	19,072	18,972	19,047	270,357,019	1,092.82
Trade, Transportation & Utilities	1,345	14,734	15,101	15,086	141,899,753	728.97
Wholesale Trade	238	1,859	1,862	1,872	25,389,986	1,047.60
Retail Trade	799	8,347	8,576	8,526	55,427,467	502.61
Transportation, Warehousing & Utilities	308	4,528	4,663	4,688	61,082,300	1,015.63
Information	45	367	364	364	6,080,291	1,281.41
Financial Activities	451	2,497	2,500	2,462	30,756,319	951.55
Professional & Business Services	436	4,678	4,682	4,781	57,001,817	930.22
Education & Health Services	1,283	9,482	9,552	9,512	84,388,488	682.21
Leisure & Hospitality	435	5,934	5,867	5,799	23,465,327	307.67
Other Services	336	1,372	1,339	1,373	10,457,135	590.89
Local Government	263	9,794	9,889	9,861	84,169,545	657.45
State Government	129	3,574	3,587	3,568	34,217,472	735.98

Southwest Local Workforce Development Area includes these counties: Calhoun, Columbia, Dallas, Hempstead, Howard, Lafayette, Little River, Miller, Nevada, Ouachita, Sevier, and Union

WEST CENTRAL LOCAL WORKFORCE DEVELOPMENT AREA	8,143	107,019	107,255	107,691	\$1,057,300,727	\$757.82
Natural Resources & Mining	247	1,993	2,018	2,216	24,077,159	1,144.32
Construction	736	4,683	4,526	4,549	63,450,426	1,064.28
Manufacturing	333	16,315	16,412	16,470	195,252,806	915.88
Trade, Transportation & Utilities	1,798	21,208	21,717	21,752	220,193,973	785.66
Wholesale Trade	316	1,894	1,879	1,883	28,110,622	1,146.94
Retail Trade	1,189	13,829	14,235	14,188	98,984,328	540.63
Transportation, Warehousing & Utilities	293	5,485	5,603	5,681	93,099,023	1,281.20
Information	78	723	723	729	7,372,584	782.24
Financial Activities	811	3,672	3,653	3,622	43,931,571	926.10
Professional & Business Services	924	7,861	7,840	7,801	82,163,605	806.78
Education & Health Services	1,558	17,372	17,503	17,515	183,086,865	806.47
Leisure & Hospitality	809	13,759	13,385	13,550	61,388,620	348.13
Other Services	505	2,324	2,303	2,316	17,817,668	592.22
Local Government	230	11,614	11,678	11,725	109,722,110	723.09
State Government	114	5,495	5,497	5,446	48,843,340	685.70

West Central Local Workforce Development Area includes these counties: Clark, Conway, Garland, Hot Spring, Johnson, Montgomery, Perry, Pike, Pope, and Yell

TABLE 8. LOCAL WORKFORCE DEVELOPMENT AREA SUMMARY

North American Industry Classification System - Industry Groups	Number of Employing Units	Employment			Total Earnings Oct - Dec 2019	Average Weekly Earnings
		Oct	Nov	Dec		
WESTERN LOCAL WORKFORCE DEVELOPMENT AREA	6,490	102,109	102,582	102,515	\$1,053,143,323	\$791.11
Natural Resources & Mining	146	1,243	1,185	1,209	17,121,649	1,086.38
Construction	522	4,048	3,997	4,024	47,977,679	917.37
Manufacturing	333	20,419	20,452	20,462	230,145,926	865.94
Trade, Transportation & Utilities	1,554	21,855	22,380	22,457	214,504,384	742.23
Wholesale Trade	344	3,615	3,621	3,626	49,817,011	1,058.39
Retail Trade	933	11,974	12,388	12,351	84,391,229	530.46
Transportation, Warehousing & Utilities	277	6,266	6,371	6,480	80,296,144	969.29
Information	70	1,008	999	991	15,359,509	1,182.29
Financial Activities	671	3,707	3,667	3,680	47,608,489	993.90
Professional & Business Services	856	10,235	10,166	10,145	105,704,576	798.58
Education & Health Services	1,118	15,934	16,039	16,117	201,191,222	965.46
Leisure & Hospitality	566	9,122	9,124	8,965	38,002,612	322.29
Other Services	419	2,007	1,997	1,953	17,261,224	668.69
Local Government	166	9,678	9,734	9,665	90,576,311	718.86
State Government	69	2,853	2,842	2,847	27,689,742	748.06

Western Local Workforce Development Area includes these counties: Crawford, Franklin, Logan, Polk, Scott, and Sebastian