



Arkansas Covered Employment & Earnings Third Quarter 2020



Arkansas Division of
Workforce Services

**COVERED EMPLOYMENT AND EARNINGS
STATE OF ARKANSAS
THIRD QUARTER 2020**

**ASA HUTCHINSON, GOVERNOR
STATE OF ARKANSAS**

**CHARISSE CHILDERS, DIRECTOR
DIVISION OF WORKFORCE SERVICES**

**PUBLISHED BY
LABOR MARKET INFORMATION
BUREAU OF LABOR STATISTICS PROGRAMS
POST OFFICE BOX 2981
LITTLE ROCK, ARKANSAS 72203-2981
SUSAN PRICE, BLS PROGRAMS MANAGER
TELEPHONE (501) 682-3103**

STATE OF ARKANSAS WEBPAGE: <http://www.arkansas.gov>

DIVISION OF WORKFORCE SERVICES WEBPAGE: <http://www.dws.arkansas.gov/>

WEBPAGE FOR LABOR MARKET INFORMATION: <http://www.discover.arkansas.gov>

RELEASED: FEBRUARY 2021

TABLE OF CONTENTS

DESCRIPTION OF DATA	PAGE
Description and Classification of Data	1
Definition of Covered Employment and Earnings	2
Significant Developments During Third Quarter 2020	3

LIST OF GRAPHS AND TABLES

Graph 1	Total Covered Employment for Selected Years, Arkansas	7
Graph 2	Total Covered Earnings, by Calendar Quarter for Selected Years, Arkansas	8
Table 1	Quarterly Comparison of Covered Employment and Wages, by Industry	5
Table 2	Total Covered Employment in Arkansas, 2013 – 2020	6
Table 3	Total Covered Earnings, 2013 – 2020	9
Table 4	Total Taxable Earnings, 2013 – 2020	10
Table 5	State Summary – Employment and Total Earnings, by Industry, Third Quarter 2020	11
Table 6	County Summary – Employment and Total Earnings, by Industry, Third Quarter 2020	22
Table 7	Federal Government Employment and Total Earnings in Arkansas, Third Quarter 2020	60
Table 8	Local Workforce Development Area – Employment and Total Earnings, by Industry, Third Quarter 2020	61

EMPLOYMENT AND EARNINGS
UNDER THE ARKANSAS EMPLOYMENT SECURITY LAW
THIRD QUARTER 2020

DESCRIPTION AND CLASSIFICATION OF DATA

This publication contains covered employment and payroll data by industry and county for the Third Quarter 2020 and a record for total covered employment by month, quarterly payroll data, average weekly earnings, and total taxable earnings for 2013 through 2020. These data are compiled from quarterly contributions and wage reports submitted by employers subject to the Arkansas Employment Security Law.

Employment data have been tabulated for each month of the quarter by industry under the **North American Industry Classification System** (NAICS) by state, county, and workforce area. Payroll data represent the total wages paid during the quarter and are classified by industry for the state and by publishable industry groups for each county and workforce area.

Due to industry classification revisions, previously published data will not always be comparable with current data. For this reason, comparisons should not be made between the same industries under different revisions. For more information, visit the NAICS home page at <http://www.census.gov/naics>.

Industry Classification Revisions

- SIC (Standard Industrial Classification) 1987 to NAICS 2002
- NAICS 2002 to NAICS 2007
- NAICS 2007 to NAICS 2012
- NAICS 2012 to NAICS 2018

The tabulation of this data is a joint effort in conjunction with the United States Bureau of Labor Statistics. Data included in this publication are subject to revisions. Revisions are typically reflected in the Annual Covered Employment and Earnings publication.

DEFINITION OF COVERED EMPLOYMENT AND EARNINGS

Covered Employment is the total number of workers employed by establishments subject to the Arkansas Employment Security Law that worked or received pay for the payroll period including the 12th of the month. Earnings include all wages paid to any covered employee by their employer including salaries, bonuses, commissions, fees, fringe benefits, sick pay made directly to employees or dependents, deferred compensation, and reported tips. These wages include both taxable and nontaxable wages. Only the first \$7,000 paid to each worker by an employer in the calendar year is taxable under the Arkansas Employment Security Law.

An Arkansas state unemployment insurance account is required of any entity meeting the definition of an employer. As described by Arkansas Division of Workforce Services Law, the definition of an employer includes, but is not limited to, a sole proprietorship, partnership, corporation, associations, trust, estate, and receiver or trustee in bankruptcy. The entity must employ one or more individuals for ten or more days in a calendar year, whether or not the days are consecutive.

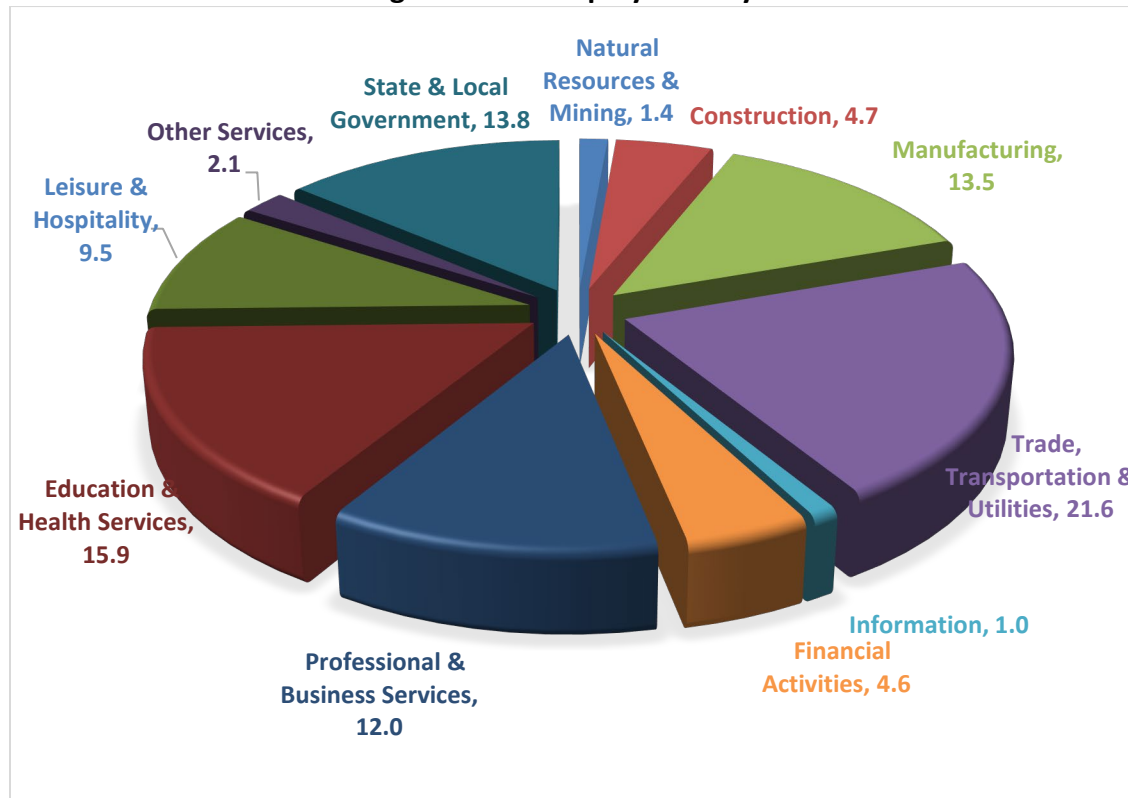
Currently excluded from coverage is employment covered by the Railroad Unemployment Insurance Act, some domestic service workers, employees of small agricultural establishments, self-employed workers, unpaid family workers, insurance and real estate agents paid only on a commission basis, and employees of churches and religious organizations except separately incorporated schools.

Civilian federal workers are covered by Unemployment Compensation for Federal Employees (UCFE).

SIGNIFICANT DEVELOPMENTS DURING THIRD QUARTER 2020

AVERAGE EMPLOYMENT CHANGES

Covered employment averaged 1,131,541 during the Third Quarter 2020 (refer to Table 1), an increase of 15,409 (1.4%) from the previous quarter and a loss of 49,368 (-4.2%) from the average recorded one year ago. The over-the-year comparison is more significant when used as an economic indicator and allows for seasonal factors that appear when comparing over-the-quarter data to be disregarded.

Average Covered Employment by NAICS**EMPLOYMENT CHANGES FROM SECOND QUARTER 2020**

Eight major industry sectors reported gains. Large increases occurred in Leisure & Hospitality (15,525), Trade, Transportation & Utilities (7,783), Education & Health Services (3,626), Professional & Business Services (3,448), Manufacturing (1,778), and Other Services (1,180). Losses occurred in three major industry sectors. The only large decline occurred in State & Local Government (-18,575).

EMPLOYMENT CHANGES FROM THIRD QUARTER 2019 (QUARTER YEAR AGO COMPARISON)

Over-the-year losses were recorded in nine major industry groups. (refer to Table 1). Significant declines occurred in Leisure & Hospitality (-14,975), Manufacturing (-9,032), Education & Health Services (-7,985), Professional & Business Services (-7,858), State & Local Government (-3,966), Trade, Transportation & Utilities (-3,110), and Other Services (-1,651). Two major industry sectors reported small gains.

COVERED WAGES

Wages paid to covered workers totaled \$12,998,944,628 for the Third Quarter 2020 (refer to Table 1), for an average weekly wage of \$883.68 (refer to Table 5). Calhoun County workers recorded the highest average weekly wage (\$1,152.57), and employees in Montgomery reported the lowest (\$555.87) (refer to Table 6). Information recorded the highest average weekly wage for the State of Arkansas (\$1,299.86). The Leisure & Hospitality sector recorded the lowest (\$356.13) (refer to Table 5).

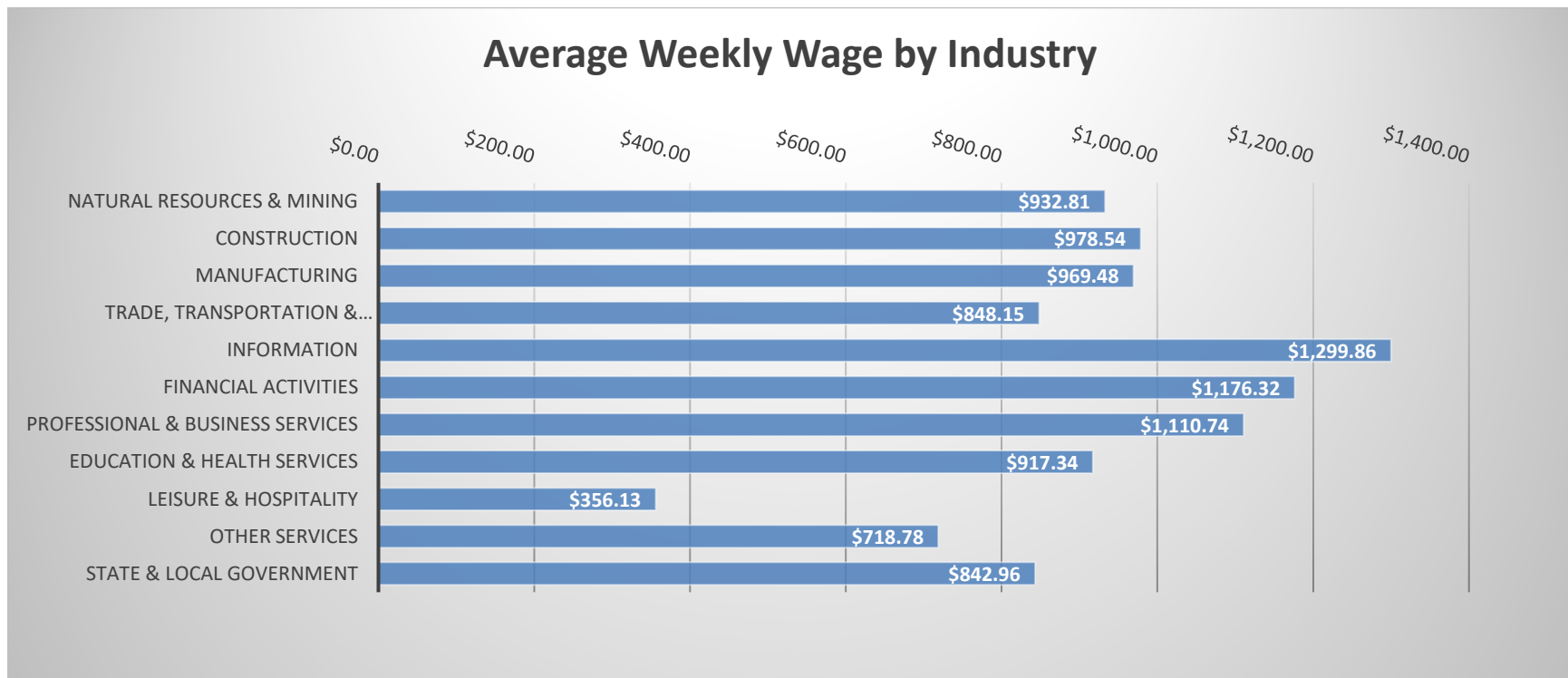


TABLE 1. QUARTERLY COMPARISON OF COVERED EMPLOYMENT AND WAGES, BY INDUSTRY

North American Industry Classification System - Industry Groups	Number of Employing Units	Monthly Employment Average	Percent of Total	Net Change From:		Total Wages Paid Jul - Sep 2020	Percent of Total
				Apr - Jun 2020	Jul - Sep 2019		
TOTAL	92,532	1,131,541	100	15,409	-49,368	\$12,998,944,628	100
Natural Resources & Mining	2,555	15,704	1.4	-311	-725	190,430,541	1.5
Agriculture, Forestry, Fishing & Hunting	2,118	12,302	1.1	-227	-245	138,575,115	1.1
Mining	437	3,402	0.3	-84	-480	51,855,426	0.4
Construction	7,310	53,560	4.7	870	48	681,334,162	5.2
Manufacturing	2,978	152,782	13.5	1,778	-9,032	1,925,550,296	14.8
Trade, Transportation & Utilities	21,886	244,280	21.6	7,783	-3,110	2,693,413,954	20.7
Wholesale Trade	7,329	45,754	4.0	-156	-1,733	824,527,494	6.3
Retail Trade	11,036	136,721	12.1	7,408	949	1,030,563,056	7.9
Transportation & Warehousing	3,108	53,892	4.8	497	-2,388	663,280,749	5.1
Utilities	413	7,914	0.7	34	63	175,042,655	1.3
Information	1,550	11,058	1.0	-204	180	186,854,785	1.4
Financial Activities	8,986	51,815	4.6	289	-293	792,361,130	6.1
Finance & Insurance	5,287	38,234	3.4	-5	234	654,429,288	5.0
Real Estate & Rental & Leasing	3,699	13,581	1.2	294	-527	137,931,842	1.1
Professional & Business Services	15,564	135,808	12.0	3,448	-7,858	1,961,009,049	15.1
Professional & Technical Services	9,834	41,888	3.7	-65	-2,504	676,001,791	5.2
Management of Companies & Enterprises	540	33,597	3.0	160	-255	766,101,080	5.9
Administrative & Waste Services	5,190	60,323	5.3	3,354	-5,099	518,906,178	4.0
Education & Health Services	15,618	179,512	15.9	3,626	-7,985	2,140,751,819	16.5
Educational Services	992	11,163	1.0	122	-440	111,564,550	0.9
Health Care & Social Assistance	14,626	168,349	14.9	3,504	-7,546	2,029,187,269	15.6
Leisure & Hospitality	7,515	107,421	9.5	15,525	-14,975	497,319,126	3.8
Arts, Entertainment & Recreation	1,077	10,690	0.9	1,717	-1,964	64,002,140	0.5
Accommodation & Food Services	6,438	96,731	8.5	13,808	-13,011	433,316,986	3.3
Other Services	5,518	23,690	2.1	1,180	-1,651	221,360,843	1.7
State & Local Government	3,052	155,912	13.8	-18,575	-3,966	1,708,558,923	13.1
Local Government	1,988	90,876	8.0	-18,986	-2,232	861,016,158	6.6
State Government	1,064	65,036	5.7	411	-1,734	847,542,765	6.5
Nonclassifiable Establishments	0	0	0.0	0	0	0	0.0

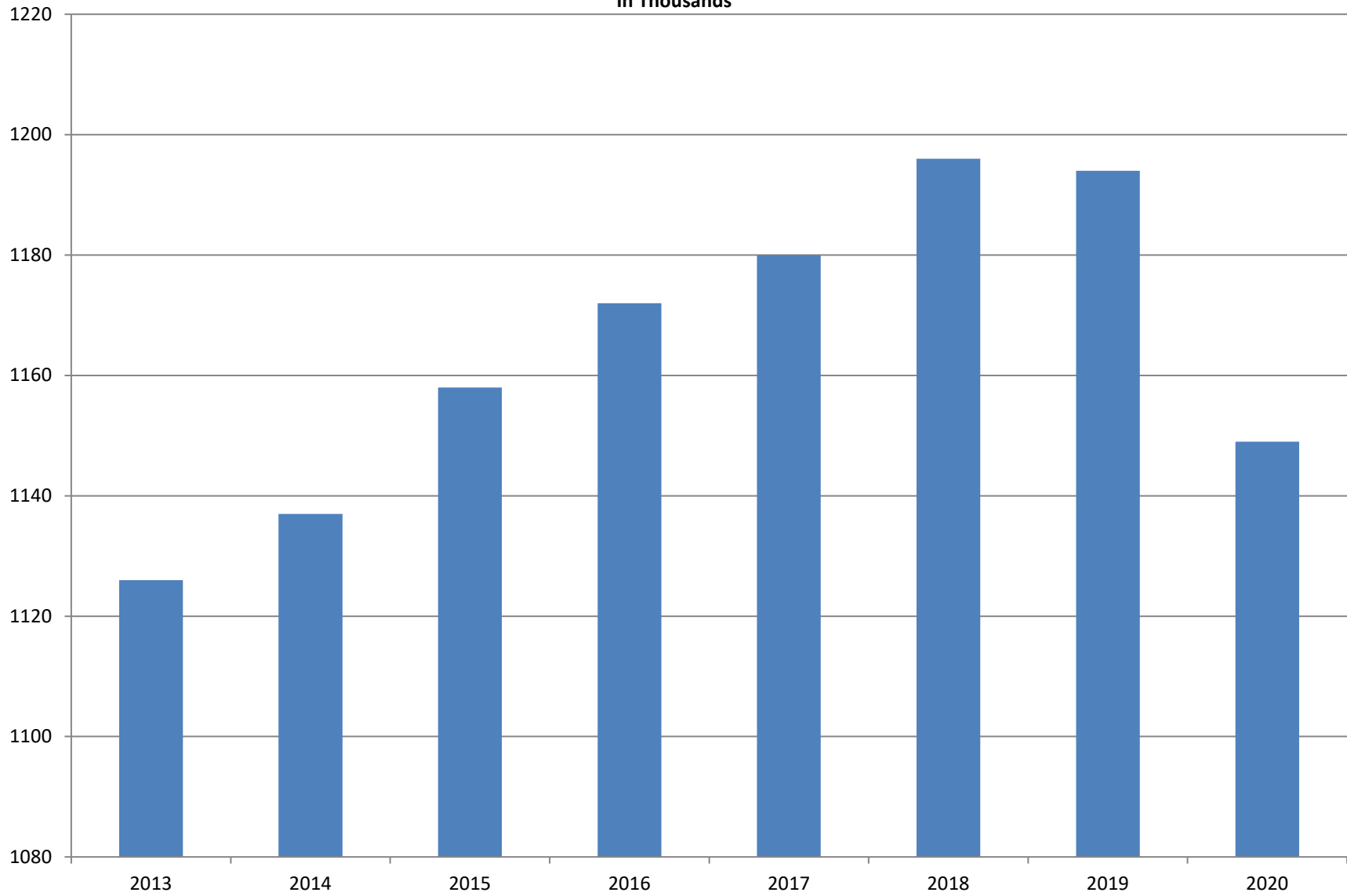
Note: Items do not necessarily add to total because of rounding. Because of industry code changes between years, substantial employment and wage shifts among industries are anticipated.

TABLE 2. TOTAL COVERED EMPLOYMENT IN ARKANSAS

PERIOD	2013	2014	2015	2016	2017	2018	2019	2020
AVERAGE	1,125,890	1,137,486	1,157,634	1,171,503	1,180,337	1,195,781	1,194,322	1,148,776
January	1,112,991	1,114,412	1,135,577	1,152,434	1,161,239	1,173,537	1,186,848	1,195,722
February	1,121,492	1,122,905	1,144,902	1,162,294	1,172,290	1,183,185	1,194,355	1,200,543
March	1,129,100	1,132,106	1,146,413	1,170,837	1,179,686	1,190,199	1,198,481	1,199,702
April	1,134,734	1,140,788	1,158,606	1,178,630	1,185,212	1,194,816	1,204,176	1,090,183
May	1,138,383	1,149,046	1,167,657	1,181,644	1,189,900	1,201,113	1,206,476	1,120,448
June	1,130,402	1,144,876	1,164,607	1,177,506	1,186,326	1,195,468	1,202,260	1,137,765
July	1,083,849	1,096,675	1,119,390	1,132,361	1,137,883	1,168,432	1,155,337	1,099,733
August	1,109,759	1,125,162	1,148,502	1,160,743	1,168,802	1,200,284	1,185,213	1,137,611
September	1,135,673	1,150,545	1,173,776	1,185,510	1,193,845	1,222,012	1,202,177	1,157,279
October	1,138,312	1,153,684	1,173,953	1,185,022	1,194,194	1,205,161	1,209,366	
November	1,141,035	1,158,579	1,177,717	1,186,046	1,197,650	1,208,638	1,194,675	
December	1,134,955	1,161,056	1,180,513	1,185,009	1,197,013	1,206,531	1,192,501	

AVERAGE TOTAL COVERED EMPLOYMENT

In Thousands



TOTAL COVERED EARNINGS BY CALENDAR YEAR

In Thousands

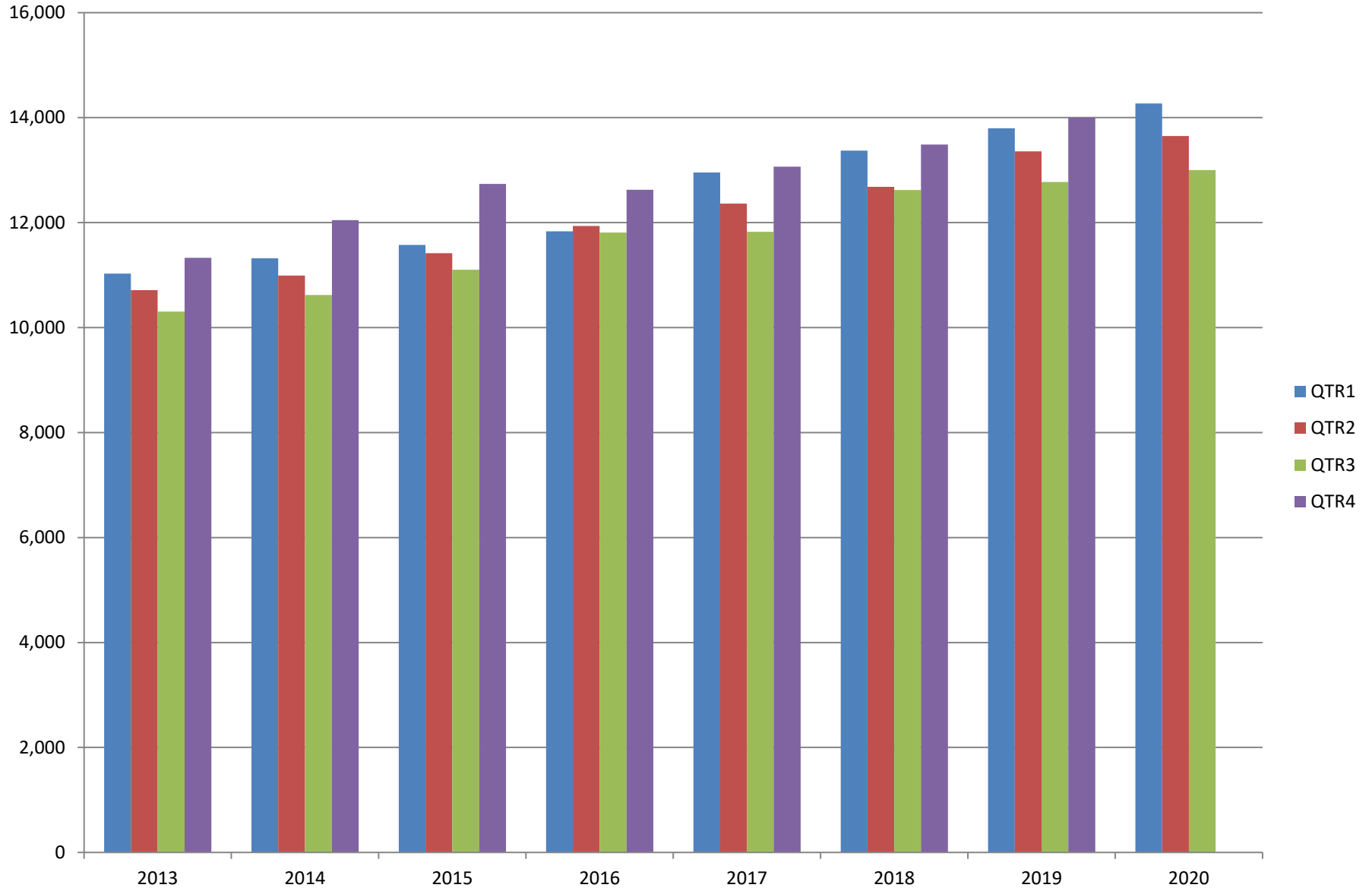


TABLE 3. TOTAL COVERED EARNINGS 2013 - 2020

PERIOD	2013	2014	2015	2016
TOTAL	\$43,371,086,461	\$44,980,520,034	\$46,836,352,793	\$48,207,277,530
January - March	11,027,184,315	11,321,422,241	11,575,046,688	11,836,255,664
April - June	10,711,027,503	10,991,760,061	11,419,363,330	11,935,722,186
July - September	10,304,451,772	10,619,889,280	11,104,443,452	11,809,460,297
October - December	11,328,422,871	12,047,448,452	12,737,499,323	12,625,839,383
Average Weekly Earnings	\$740.80	\$760.46	\$778.05	\$791.34

PERIOD	2017	2018	2019	2020
TOTAL	\$50,207,202,141	\$52,159,789,393	\$53,931,077,907	\$40,918,551,264
January - March	12,955,088,347	13,372,730,974	13,795,046,820	14,268,302,306
April - June	12,363,027,711	12,682,491,819	13,356,848,831	13,651,304,330
July - September	11,823,324,966	12,619,347,460	12,776,218,481	12,998,944,628
October - December	13,065,761,117	13,485,219,140	14,002,963,775	
Average Weekly Earnings	\$818.01	\$838.84	\$868.39	\$913.31

TABLE 4. TOTAL TAXABLE EARNINGS, 2013 - 2020

PERIOD	2013	2014	2015	2016
TOTAL	11,644,747,978	11,919,662,224	12,258,632,610	12,511,938,047
January - March	6,184,735,653	6,288,682,396	6,378,966,662	6,595,351,454
April - June	2,805,431,293	2,831,013,392	2,915,293,283	3,003,077,908
July - September	1,506,497,129	1,552,243,963	1,640,978,599	1,651,582,584
October - December	1,148,083,903	1,247,722,473	1,323,394,066	1,261,926,101

PERIOD	2017	2018	2019	2020
TOTAL	12,744,039,136	11,335,932,409	11,498,854,755	7,626,943,695
January - March	6,958,706,950	6,577,871,657	6,737,833,125	5,589,526,770
April - June	2,908,226,426	2,278,450,975	2,283,514,220	1,172,837,688
July - September	1,576,968,648	1,328,868,479	1,327,818,133	864,579,237
October - December	1,300,137,112	1,150,741,298	1,149,689,277	

TABLE 5. STATEWIDE SUMMARY

North American Industry Classification System - Industry Groups		Number of Employing Units	Employment			Total Earnings	Average Weekly Earnings
			Jul	Aug	Sep	Jul - Sep 2020	
TOTAL, ALL INDUSTRIES		92,532	1,099,733	1,137,611	1,157,279	\$12,998,944,628	\$883.68
NATURAL RESOURCES & MINING		2,555	15,878	15,735	15,498	\$190,430,541	\$932.81
11	AGRICULTURE, FORESTRY, FISHING & HUNTING	2,118	12,477	12,336	12,093	\$138,575,115	\$866.50
111	CROP PRODUCTION	944	4,033	3,991	4,161	\$34,227,198	\$648.22
1111	Oilseed & Grain Farming	696	2,721	2,668	2,804	22,657,382	638.18
1112	Vegetable & Melon Farming	38	151	136	145	1,267,121	676.88
1113	Fruit & Tree Nut Farming	13	52	56	53	437,786	627.50
1114	Greenhouse & Nursery Production	41	462	489	514	4,625,032	728.54
1119	Other Crop Farming	156	647	642	645	5,239,877	625.23
112	ANIMAL PRODUCTION & AQUACULTURE	340	3,227	3,216	3,212	\$41,344,396	\$988.19
1121	Cattle Ranching & Farming	128	395	399	402	3,298,378	636.42
1122	Hog & Pig Farming	11	127	132	132	1,476,646	871.52
1123	Poultry & Egg Production	131	2,278	2,264	2,265	32,235,839	1,092.85
1125	Animal Aquaculture	40	353	345	339	3,821,934	850.52
	Other	30	74	76	74	511,599	527.06
115	SUPPORT ACTIVITIES FOR AGRICULTURE & FORESTRY	415	2,976	2,823	2,446	\$37,086,516	\$1,038.01
1151	Support Activities for Crop Production	281	1,497	1,441	1,478	21,084,765	1,101.84
1152	Support Activities for Animal Production	62	656	645	625	5,749,620	688.91
1153	Support Activities for Forestry	72	823	737	343	10,252,131	1,243.24
	OTHER	419	2,241	2,306	2,274	\$25,917,005	\$876.83
21	MINING	437	3,401	3,399	3,405	\$51,855,426	\$1,172.62
211	OIL & GAS EXTRACTION	75	568	567	559	\$11,086,692	\$1,510.31
212	MINING (EXCEPT OIL & GAS)	108	1,763	1,741	1,734	\$24,482,517	\$1,078.62
213	SUPPORT ACTIVITIES FOR MINING	254	1,070	1,091	1,112	\$16,286,217	\$1,148.29

TABLE 5. STATEWIDE SUMMARY

North American Industry Classification System - Industry Groups		Number of Employing Units	Employment			Total Earnings Jul - Sep 2020	Average Weekly Earnings
			Jul	Aug	Sep		
CONSTRUCTION		7,310	53,363	53,631	53,685	\$681,334,162	\$978.54
236	CONSTRUCTION OF BUILDINGS	1,899	11,175	11,263	11,106	\$154,491,135	\$1,062.84
2361	Residential Building Construction	1,293	3,803	3,818	3,812	45,188,809	912.11
2362	Nonresidential Building Construction	606	7,372	7,445	7,294	109,302,326	1,140.77
237	HEAVY & CIVIL ENGINEERING CONSTRUCTION	762	8,278	8,256	8,463	\$113,297,766	\$1,045.95
2371	Utility System Construction	447	4,298	4,246	4,441	60,366,084	1,072.83
2372	Land Subdivision	48	116	114	106	1,208,362	829.92
2373	Highway, Street & Bridge Construction	174	3,039	3,058	3,078	41,381,230	1,040.82
2379	Other Heavy Construction	93	825	838	838	10,342,090	954.27
238	SPECIALTY TRADE CONTRACTORS	4,649	33,910	34,112	34,116	\$413,545,261	\$934.36
2381	Building Foundation & Exterior Contractors	853	5,952	5,961	6,001	71,948,008	926.84
2382	Building Equipment Contractors	2,297	18,845	19,052	19,088	243,006,396	984.09
2383	Building Finishing Contractors	765	3,825	3,842	3,789	39,736,240	800.45
2389	Other Specialty Trade Contractors	734	5,288	5,257	5,238	58,854,617	860.54
MANUFACTURING		2,978	151,158	153,034	154,155	1,925,550,296	\$969.48
311	FOOD MANUFACTURING	306	48,130	48,698	49,221	\$513,776,984	\$811.81
3111	Animal Food Manufacturing	45	1,769	1,804	1,850	22,792,270	969.90
3112	Grain & Oilseed Milling	33	2,683	2,684	2,701	34,318,001	981.60
3114	Fruit, Vegetable & Specialty Food	16	4,249	4,279	4,404	54,690,868	975.95
3115	Dairy Product Manufacturing	8	556	549	547	6,602,346	922.29
3116	Animal Slaughtering & Processing	88	32,657	33,109	33,331	321,200,072	747.99
3118	Bakeries & Tortilla Manufacturing	82	3,824	3,901	3,989	46,467,789	915.43
3119	Other Food Manufacturing	24	2,370	2,348	2,355	27,473,852	896.38
	Other	10	22	24	44	231,786	594.32
312	BEVERAGE & TOBACCO PRODUCT MANUFACTURING	62	1,456	1,462	1,459	\$21,116,903	\$1,113.35
313	TEXTILE MILLS	9	135	138	137	\$1,863,948	\$1,049.13
314	TEXTILE PRODUCT MILLS	44	777	789	793	\$9,630,183	\$942.07
3141	Textile Furnishing Mills	8	20	21	21	129,982	483.80
3149	Other Textile Product Mills	36	757	768	772	9,500,201	954.44
315	APPAREL MANUFACTURING	16	643	714	728	\$5,303,310	\$586.97
3151	Apparel Knitting Mills	3	333	404	400	2,575,117	522.65
	Other	13	310	310	328	2,728,193	664.12

TABLE 5. STATEWIDE SUMMARY

North American Industry Classification System - Industry Groups		Number of	Employment			Total Earnings	Average
		Employing Units	Jul	Aug	Sep	Jul - Sep 2020	Weekly Earnings
316	LEATHER & ALLIED PRODUCT MANUFACTURING	11	889	928	939	\$5,809,698	\$486.47
3162	Footwear Manufacturing	4	691	729	736	4,155,456	\$444.78
3169	Other Leather & Allied Product Manufacturing	7	198	199	203	1,654,242	\$636.25
321	WOOD PRODUCT MANUFACTURING	301	9,088	9,389	9,459	\$109,782,795	\$906.88
3211	Sawmills & Wood Preservation	134	4,347	4,415	4,476	55,647,867	970.07
3212	Veneer & Engineered Wood Products	41	1,929	1,924	1,928	26,073,559	1,040.82
3219	Other Wood Product Manufacturing	126	2,812	3,050	3,055	28,061,369	726.22
322	PAPER MANUFACTURING	72	8,829	8,923	8,955	\$156,041,013	\$1,348.32
3221	Pulp, Paper & Paperboard Mills	14	3,256	3,300	3,293	72,799,350	1,705.74
3222	Converted Paper Product Manufacturing	58	5,573	5,623	5,662	83,241,663	1,139.50
323	PRINTING & RELATED SUPPORT ACTIVITIES	249	2,905	3,008	3,141	\$31,321,253	\$798.32
324	PETROLEUM & COAL PRODUCTS MANUFACTURING	23	1,088	1,091	1,105	\$20,114,872	\$1,413.49
325	CHEMICAL MANUFACTURING	135	5,434	5,467	5,438	\$85,016,306	\$1,200.76
3251	Basic Chemical Manufacturing	30	1,892	1,901	1,906	34,256,043	1,387.13
3252	Resin, Rubber & Artificial Fibers	13	460	488	482	7,860,900	1,268.57
3253	Agricultural Chemical Manufacturing	17	463	453	455	7,243,500	1,219.24
3254	Pharmaceutical & Medicine Manufacturing	28	457	457	456	6,422,765	1,081.88
3255	Paint, Coating & Adhesive Manufacturing	12	215	211	195	3,044,891	1,131.51
3256	Soap, Cleaning Compound, & Toilet Preparation Manufacturing	15	1,336	1,347	1,343	17,535,351	1,005.12
3259	Other Chemical Preparation Manufacturing	20	611	610	601	8,652,856	1,095.95
326	PLASTICS & RUBBER PRODUCTS MANUFACTURING	126	10,077	10,171	10,290	\$137,265,303	\$1,037.28
3261	Plastics Product Manufacturing	96	6,091	6,145	6,206	77,332,510	967.68
3262	Rubber Product Manufacturing	30	3,986	4,026	4,084	59,932,793	1,143.41
327	NONMETALLIC MINERAL PRODUCT MANUFACTURING	228	3,503	3,534	3,522	\$47,037,765	\$1,028.02
3271	Clay Product & Refractory Manufacturing	11	465	467	458	5,618,159	932.73
3272	Glass & Glass Product Manufacturing	7	363	367	376	4,646,577	969.52
3273	Cement & Concrete Product Manufacturing	170	2,081	2,098	2,092	29,019,410	1,067.90
3274	Lime & Gypsum Product Manufacturing	3	277	279	278	4,310,805	1,192.81
3279	Other Nonmetallic Mineral Products Manufacturing	37	317	323	318	3,442,814	829.33
331	PRIMARY METAL MANUFACTURING	70	7,178	7,359	7,459	\$134,288,587	\$1,408.88
3311	Iron & Steel Mills & Ferroalloys	11	3,381	3,575	3,616	83,784,981	1,828.89
3312	Purchased Steel Product Manufacturing	21	1,732	1,692	1,731	21,268,417	952.10
3313	Alumina & Aluminum Production	14	811	835	855	12,272,063	1,132.35
3314	Other Nonferrous Metal Production	6	253	253	253	3,188,551	969.46
3315	Foundries	18	1,001	1,004	1,004	13,774,575	1,056.41

TABLE 5. STATEWIDE SUMMARY

North American Industry Classification System - Industry Groups		Number of Employing Units	Employment			Total Earnings	Average Weekly Earnings
			Jul	Aug	Sep	Jul - Sep 2020	
332	FABRICATED METAL PRODUCT MANUFACTURING	521	13,834	13,927	14,240	\$185,100,026	\$1,017.01
3321	Forging & Stamping	12	365	379	381	4,467,205	916.35
3322	Cutlery & Hand Tool Manufacturing	14	402	421	450	5,610,076	1,016.99
3323	Architectural & Structural Metals	153	4,583	4,550	4,527	64,950,284	1,097.26
3324	Boilers, Tanks & Shipping Containers	13	588	591	579	7,487,349	982.85
3325	Hardware Manufacturing	5	243	249	243	3,006,898	944.08
3326	Spring & Wire Product Manufacturing	11	333	323	321	3,869,312	913.94
3327	Machine Shops & Threaded Products	202	2,082	2,047	2,054	23,700,895	884.59
3328	Coating, Engraving & Heat Treating Metals	40	534	527	544	5,593,600	804.26
3329	Other Fabricated Metal Product Manufacturing	71	4,704	4,840	5,141	66,414,407	1,043.68
333	MACHINERY MANUFACTURING	215	11,180	11,068	10,795	\$145,259,839	\$1,014.48
3331	Agriculture, Construction & Mining Machinery	36	2,676	2,616	2,512	29,883,080	883.66
3332	Industrial Machinery Manufacturing	27	611	610	611	9,104,580	1,146.87
3333	Commercial & Service Industry Machinery	23	838	833	824	11,811,322	1,092.46
3334	HVAC & Commercial Refrigeration Equipment	25	2,651	2,606	2,581	32,441,017	955.14
3335	Metalworking Machinery Manufacturing	51	941	945	1,007	10,733,019	856.15
3336	Turbine & Power Transmission Equipment Manufacturing	5	673	661	417	6,522,603	859.63
3339	Other General Purpose Machinery Manufacturing	48	2,790	2,797	2,843	44,764,218	1,225.41
334	COMPUTER & ELECTRONIC PRODUCT MANUFACTURING	50	1,721	1,715	1,718	\$23,081,036	\$1,033.45
3344	Semiconductors & Electronic Components	24	1,246	1,228	1,234	16,564,621	1,030.91
3345	Navigational, Measuring, Electromedical, & Control Instr, Mfg Other	19 7	331 144	326 161	320 164	4,661,293 1,855,122	1,101.01 912.80
335	ELECTRICAL EQUIPMENT & APPLIANCES	57	4,092	4,048	4,090	\$56,799,544	\$1,071.76
3351	Electric Lighting Equipment Manufacturing	10	264	272	282	2,813,066	\$793.61
3352	Household Appliance Manufacturing	6	27	34	42	434,311	\$973.06
3353	Electrical Equipment Manufacturing	21	2,572	2,531	2,563	37,135,493	1,117.89
3359	Other Electrical Equipment & Component Manufacturing	20	1,229	1,211	1,203	16,416,674	1,039.93
336	TRANSPORTATION EQUIPMENT MANUFACTURING	137	13,613	13,895	13,858	\$167,290,250	\$933.27
3362	Motor Vehicle Body & Trailer Manufacturing	32	1,692	1,768	1,889	18,351,961	791.75
3363	Motor Vehicle Parts Manufacturing	44	4,760	4,876	4,860	53,669,413	854.39
3364	Aerospace Product & Parts Manufacturing	28	4,194	4,224	4,104	62,750,852	1,156.44
3366	Ship & Boat Building Other	21 12	1,748 1,219	1,812 1,215	1,806 1,199	17,876,653 14,641,371	768.80 930.02
337	FURNITURE & RELATED PRODUCT MANUFACTURING	158	3,177	3,279	3,342	\$33,599,241	\$791.35
3371	Household & Institutional Furniture Other	127 31	2,560 617	2,656 623	2,732 610	27,270,512 6,328,729	791.80 789.45
339	MISCELLANEOUS MANUFACTURING	188	3,409	3,431	3,466	\$36,051,440	\$807.25
3391	Medical Equipment & Supplies Manufacturing	78	1,705	1,714	1,713	19,068,506	857.45
3399	Other Miscellaneous Manufacturing	110	1,704	1,717	1,753	16,982,934	757.47

TABLE 5. STATEWIDE SUMMARY

North American Industry Classification System - Industry Groups		Number of Employing Units	Employment			Total Earnings Jul - Sep 2020	Average Weekly Earnings
			Jul	Aug	Sep		
TRADE, TRANSPORTATION & UTILITIES		21,886	242,738	245,967	244,136	\$2,693,413,954	\$848.15
42	WHOLESALE TRADE	7,329	45,868	45,846	45,547	\$824,527,494	\$1,386.23
423	MERCHANT WHOLESALERS, DURABLE GOODS	3,442	23,766	23,811	23,717	\$394,602,844	\$1,277.28
4231	Motor Vehicle & Part Merchant Wholesalers	296	3,090	3,077	3,078	52,763,766	1,317.06
4232	Furniture & Furnishings Merchant Wholesalers	101	453	442	447	8,217,121	1,413.01
4233	Lumber & Supply Merchant Wholesalers	250	1,557	1,570	1,538	21,869,940	1,081.87
4234	Commercial Goods Merchant Wholesalers	713	3,300	3,304	3,284	71,213,045	1,661.99
4235	Metal & Mineral Merchant Wholesalers	133	1,039	1,053	1,051	14,767,384	1,084.27
4236	Appliances & Electronics Goods Merchant Wholesalers	363	2,605	2,604	2,603	47,404,135	1,400.33
4237	Hardware & Plumbing Merchant Wholesalers	313	2,785	2,780	2,753	42,172,451	1,170.01
4238	Machinery & Supply Merchant Wholesalers	952	7,192	7,221	7,185	111,178,616	1,187.92
4239	Miscellaneous Durable Goods Merchant Wholesalers	321	1,745	1,760	1,778	25,016,386	1,092.75
424	MERCHANT WHOLESALERS, NONDURABLE GOODS	2,087	17,503	17,392	17,276	\$328,637,638	\$1,453.67
4241	Paper & Paper Product Merchant Wholesalers	127	1,103	1,128	1,129	21,303,082	1,463.12
4242	Druggist' Goods Merchant Wholesalers	270	1,590	1,550	1,588	46,084,452	2,249.34
4243	Apparel & Piece Goods Merchant Wholesalers	103	669	687	689	9,636,937	1,087.49
4244	Grocery Product Merchant Wholesalers	585	5,777	5,854	5,775	122,332,157	1,621.88
4245	Farm Product & Raw Material Merchant Wholesalers	85	780	811	827	8,621,617	822.83
4246	Chemical Merchant Wholesalers	219	1,106	1,107	1,100	31,306,389	2,180.67
4247	Petroleum Merchant Wholesalers	158	1,003	979	937	14,687,295	1,161.14
4248	Alcoholic Beverage Merchant Wholesalers	72	1,582	1,573	1,567	25,738,750	1,257.88
4249	Miscellaneous Nondurable Goods Merchant Wholesaler	468	3,893	3,703	3,664	48,926,959	1,002.74
425	ELECTRONIC MARKETS & AGENTS & BROKERS	1,800	4,599	4,643	4,554	\$101,287,012	\$1,694.25
44 - 45	RETAIL TRADE	11,036	135,567	138,187	136,408	\$1,030,563,056	\$579.83
441	MOTOR VEHICLE & PARTS DEALERS	1,534	18,527	18,728	18,736	\$239,458,018	\$986.94
4411	Automobile Dealers	626	11,045	11,151	11,180	166,444,448	1,150.83
4412	Other Motor Vehicle Dealers	171	1,819	1,824	1,816	26,707,008	1,128.99
4413	Automotive Parts, Accessories & Tire Stores	737	5,663	5,753	5,740	46,306,562	622.88
442	FURNITURE & HOME FURNISHINGS STORES	499	3,158	3,260	3,244	\$31,990,328	\$764.06
4421	Furniture Stores	279	1,805	1,847	1,841	20,900,811	878.07
4422	Home Furnishings Stores	220	1,353	1,413	1,403	11,089,517	613.84
443	ELECTRONICS & APPLIANCE STORES	369	2,912	2,898	2,872	\$28,955,660	\$769.65
444	BUILDING MATERIAL & GARDEN SUPPLY STORES	848	12,813	12,635	12,635	\$104,717,826	\$634.55
4441	Building Material & Supplies Dealers	610	10,561	10,404	10,367	89,659,746	660.37
4442	Lawn & Garden Equipment & Supplies Stores	238	2,252	2,231	2,268	15,058,080	514.73

TABLE 5. STATEWIDE SUMMARY

North American Industry Classification System - Industry Groups		Number of Employing Units	Employment			Total Earnings	Average Weekly Earnings
			Jul	Aug	Sep	Jul - Sep 2020	
445	FOOD & BEVERAGE STORES	1,070	20,363	20,631	20,510	\$129,557,191	\$486.11
4451	Grocery Stores	565	17,710	18,001	17,862	111,734,030	481.30
4452	Specialty Food Stores	146	754	762	758	6,711,132	681.06
4453	Beer, Wine & Liquor Stores	359	1,899	1,868	1,890	11,112,029	453.30
446	HEALTH & PERSONAL CARE STORES	1,001	8,262	8,384	8,408	\$84,182,372	\$775.39
447	GASOLINE STATIONS	1,607	12,414	12,455	12,515	\$68,897,906	\$425.30
44711	Gasoline Stations with Convenience Stores	1,514	11,385	11,391	11,444	61,178,109	412.57
44719	Other Gasoline Stations	93	1,029	1,064	1,071	7,719,797	563.05
448	CLOTHING & CLOTHING ACCESSORIES STORES	943	5,765	5,921	5,835	\$31,505,095	\$414.95
4481	Clothing Stores	724	4,328	4,426	4,405	21,190,098	371.61
4482	Shoe Stores	104	917	956	886	4,535,097	379.33
4483	Jewelry, Luggage & Leather Goods Stores	115	520	539	544	5,779,900	832.08
451	SPORTING GOODS, HOBBY, BOOK & MUSIC STORES	443	3,798	4,060	4,173	\$22,803,998	\$437.41
4511	Sporting Goods & Musical Instrument Stores	381	3,499	3,654	3,799	21,091,296	444.41
4512	Book, Periodical & Music Stores	62	299	406	374	1,712,702	366.30
452	GENERAL MERCHANDISE STORES	961	38,946	40,509	38,548	\$226,634,603	\$443.21
4522	Department Stores	131	6,176	6,386	6,289	34,425,286	421.43
4523	Gen. Merchandise Stores, Warehouse clubs & Supercenters	830	32,770	34,123	32,259	192,209,317	447.35
453	MISCELLANEOUS STORE RETAILERS	1,202	6,793	6,976	7,022	\$42,526,640	\$472.02
4531	Florists	159	486	499	515	2,574,103	396.02
4532	Office Supplies, Stationery & Gift Stores	229	1,129	1,208	1,273	6,872,691	439.34
4533	Used Merchandise Stores	259	1,886	2,127	2,054	9,974,835	379.41
4539	Other Miscellaneous Store Retailers	555	3,292	3,142	3,180	23,105,011	554.60
454	NONSTORE RETAILERS	559	1,816	1,730	1,910	\$19,333,419	\$817.73
4541	Electronic Shopping & Mail-Order Houses	341	754	757	786	8,727,473	876.81
4542	Vending Machine Operators	56	325	345	357	3,247,318	729.68
4543	Direct Selling Establishments	162	737	628	767	7,358,628	796.50
48 - 49	TRANSPORTATION & WAREHOUSING	3,108	53,372	54,011	54,292	663,280,749	\$946.74
481	AIR TRANSPORTATION	43	693	714	698	\$7,930,688	\$869.43
4811	Scheduled Air Transportation	16	585	605	593	6,007,072	777.48
4812	Nonshceduled Air Transportation	27	108	109	105	1,923,616	1,378.61
484	TRUCK TRANSPORTATION	1,956	31,278	31,181	31,220	\$415,991,750	\$1,024.76
4841	General Freight Trucking	1,183	25,218	25,159	25,209	343,314,547	1,048.16
4842	Specialized Freight Trucking	773	6,060	6,022	6,011	72,677,203	926.97

TABLE 5. STATEWIDE SUMMARY

North American Industry Classification System - Industry Groups		Number of Employing Units	Employment			Total Earnings	Average Weekly Earnings
			Jul	Aug	Sep	Jul - Sep 2020	
485	TRANSIT & GROUND PASSENGER TRANSPORTATION	127	1,278	1,412	1,416	\$9,175,650	\$515.70
4853	Taxi & Limousine Service	32	209	230	227	1,362,442	472.09
4854	School & Employee Bus Transportation	19	179	262	288	1,258,208	398.29
4859	Other Ground Passenger Transportation	64	749	776	753	5,460,782	553.20
	Other	12	141	144	148	1,094,218	583.17
486	PIPELINE TRANSPORTATION	40	384	388	387	\$9,545,602	\$1,900.63
488	SUPPORT ACTIVITIES FOR TRANSPORTATION	525	5,427	5,395	5,365	\$69,004,383	\$983.76
4881	Support Activities for Air Transportation	123	1,108	1,112	1,091	12,452,042	867.88
4882	Support Activities for Rail Transportation	37	694	653	631	8,209,936	957.84
4883	Support Activities for Water Transportation	20	443	444	430	6,325,445	1,108.37
4884	Support Activities for Road Transportation	156	909	894	899	8,982,554	767.17
4885	Freight Transportation Arrangement	179	2,160	2,175	2,190	32,007,753	1,132.02
4889	Other Support Activities for Transportation	10	113	117	124	1,026,653	669.27
493	WAREHOUSING & STORAGE	212	8,972	9,331	9,403	\$90,849,365	\$756.70
	OTHER	205	5,340	5,590	5,803	60,783,311	\$838.28
22	UTILITIES	413	7,931	7,923	7,889	\$175,042,655	\$1,701.32
2211	Power Generation & Supply	175	5,977	5,966	5,949	146,619,713	1,891.09
2212	Natural Gas Distribution	62	1,007	1,006	999	18,916,228	1,449.30
2213	Water, Sewage & Other Systems	176	947	951	941	9,506,714	772.76
	INFORMATION	1,550	11,077	11,011	11,085	\$186,854,785	\$1,299.86
511	PUBLISHING INDUSTRIES, EXCEPT INTERNET	237	2,199	2,155	2,127	\$25,515,335	\$908.53
5111	Newspaper, Book & Directory Publishers	173	1,863	1,829	1,793	18,272,342	768.77
5112	Software Publishers	64	336	326	334	7,242,993	1,678.17
512	MOTION PICTURE & SOUND RECORDING INDUSTRY	165	415	432	541	\$3,555,513	\$591.14
5121	Motion Picture & Video Industries	147	394	411	520	3,260,579	567.88
5122	Sound Recording Industries	18	21	21	21	294,934	1,080.34
515	BROADCASTING, EXCEPT INTERNET	125	1,404	1,408	1,422	\$17,168,268	\$935.74

TABLE 5. STATEWIDE SUMMARY

North American Industry Classification System - Industry Groups		Number of Employing Units	Employment			Total Earnings Jul - Sep 2020	Average Weekly Earnings
			Jul	Aug	Sep		
517	TELECOMMUNICATIONS	363	3,351	3,309	3,314	\$60,153,520	\$1,391.78
5173	Telecommunications Resellers	260	2,929	2,893	2,891	52,846,041	1,399.66
5174	Satellite Telecommunications Carriers	4	6	6	5	68,359	927.95
5179	Other Telecommunications	99	416	410	418	7,239,120	1,342.90
518	DATA PROCESSING, HOSTING & RELATED SERVICES	550	3,379	3,370	3,347	\$75,552,533	\$1,726.94
519	OTHER INFORMATION SERVICES	110	329	337	334	\$4,909,616	\$1,132.99
FINANCIAL ACTIVITIES		8,986	51,961	52,014	51,469	\$792,361,130	\$1,176.32
52	FINANCE & INSURANCE	5,287	38,304	38,299	38,098	\$654,429,288	\$1,316.66
522	CREDIT INTERMEDIATION & RELATED ACTIVITIES	2,064	19,700	19,704	19,581	\$318,073,415	\$1,244.41
5221	Depository Credit Intermediation	1,457	16,573	16,523	16,393	247,763,855	1,155.33
5222	Nondepository Credit Intermediation	433	1,952	1,982	2,007	48,308,530	1,876.47
5223	Activities Related to Credit Intermediation	174	1,175	1,199	1,181	22,001,030	1,428.17
523	FINANCIAL INVESTMENT & RELATED ACTIVITIES	786	3,073	3,045	2,973	\$87,302,047	\$2,216.11
5231	Insurance Carriers	343	2,019	2,016	1,975	67,033,102	2,573.91
5239	Insurance Agencies, Brokerages & Support	443	1,054	1,029	998	20,268,945	1,518.16
524	INSURANCE CARRIERS & RELATED ACTIVITIES	2,340	15,459	15,464	15,472	\$246,730,668	\$1,227.24
5231	Security & Commodity Contracts Intermediation & Brokerage	324	6,875	6,857	6,893	126,463,260	1,414.97
5239	Other Financial Investment Activities	2,016	8,584	8,607	8,579	120,267,408	1,076.99
	OTHER	97	72	86	72	\$2,323,158	\$2,330.93
53	REAL ESTATE & RENTAL & LEASING	3,699	13,657	13,715	13,371	\$137,931,842	\$781.25
531	REAL ESTATE	3,098	9,933	10,010	9,675	\$96,129,866	\$749.00
5311	Lessors of Real Estate	1,092	4,079	4,152	3,921	34,361,407	652.53
5312	Offices of Real Estate Agents & Brokers	1,049	2,100	2,108	2,110	22,687,378	828.67
5313	Activities Related to Real Estate	957	3,754	3,750	3,644	39,081,081	809.00
532	RENTAL & LEASING SERVICES	584	3,677	3,654	3,648	\$40,987,469	\$861.52
5321	Automotive Equipment Rental & Leasing	125	861	880	894	7,596,866	665.32
5322	Consumer Goods Rental	298	1,709	1,660	1,645	15,102,988	695.11
5323	General Rental Centers	28	189	193	188	2,209,722	894.62
5324	Machinery & Equipment Rental & Leasing	133	918	921	921	16,077,893	1,344.31
533	LESSORS OF NONFINANCIAL INTANGIBLE ASSETS	17	47	51	48	\$814,507	\$1,287.42

TABLE 5. STATEWIDE SUMMARY

North American Industry Classification System - Industry Groups		Number of Employing Units	Employment			Total Earnings Jul - Sep 2020	Average Weekly Earnings
			Jul	Aug	Sep		
PROFESSIONAL & BUSINESS SERVICES		15,564	133,753	136,041	137,630	\$1,961,009,049	\$1,110.74
54	PROFESSIONAL & TECHNICAL SERVICES	9,834	42,208	42,044	41,411	\$676,001,791	\$1,241.42
5411	Legal Services	1,705	6,039	5,999	6,039	83,935,732	1,071.52
5412	Accounting & Bookkeeping Services	1,362	5,823	5,618	5,594	71,596,908	969.91
5413	Architectural & Engineering Services	1,085	6,455	6,416	6,360	106,172,041	1,274.05
5414	Specialized Design Services	180	337	346	341	4,462,964	1,005.78
5415	Computer Systems Design & Related Services	2,180	8,893	8,921	8,409	188,806,632	1,661.55
5416	Management & Technical Consulting Services	2,149	5,947	5,927	5,833	109,399,703	1,425.77
5417	Scientific Research & Development Services	162	864	857	871	15,340,041	1,365.74
5418	Advertising & Related Services	416	3,481	3,546	3,556	47,640,966	1,038.84
5419	Other Professional & Technical Services	595	4,369	4,414	4,408	48,646,804	851.05
55	MANAGEMENT OF COMPANIES & ENTERPRISES	540	33,517	33,617	33,658	\$766,101,080	\$1,754.03
56	ADMINISTRATIVE & WASTE SERVICES	5,190	58,028	60,380	62,561	\$518,906,178	\$661.70
561	ADMINISTRATIVE & SUPPORT SERVICES	4,844	54,346	56,727	58,893	\$471,546,091	\$640.24
5611	Office Administrative Services	716	3,392	3,440	3,421	56,521,951	1,272.17
5612	Facilities Support Services	68	1,136	1,050	1,048	10,437,325	744.78
5613	Employment Services	1,290	20,104	22,270	24,269	162,538,502	562.83
5614	Business Support Services	415	8,119	8,224	8,249	81,717,788	766.83
5615	Travel Arrangement & Reservation Services	116	214	218	218	2,502,003	888.29
5616	Investigation & Security Services	319	4,848	4,888	4,759	37,488,430	596.84
5617	Services to Buildings & Dwellings	1,716	15,304	15,354	15,624	107,815,088	537.58
5619	Other Support Services	204	1,229	1,283	1,305	12,525,004	757.24
562	WASTE MANAGEMENT & REMEDIATION SERVICES	346	3,682	3,653	3,668	\$47,360,087	\$993.30
5621	Waste Collection Services	135	1,323	1,306	1,314	15,648,527	915.85
5622	Waste Treatment & Disposal Services	44	1,050	1,017	1,034	16,049,282	1,194.35
5629	Remediation & Other Waste Services	167	1,309	1,330	1,320	15,662,278	912.95
EDUCATION & HEALTH SERVICES		15,618	177,273	180,002	181,260	2,140,751,819	\$917.34
61	EDUCATIONAL SERVICES	992	10,328	11,081	12,079	111,564,550	\$768.80
6111	Elementary & Secondary Schools	111	3,525	4,249	4,650	37,471,774	696.02
6113	Colleges & Universities	131	3,602	3,635	4,069	43,491,043	887.71
6115	Technical & Trade Schools	120	760	786	834	12,499,006	1,211.93
6116	Other Schools & Instruction	341	1,529	1,523	1,617	7,940,571	392.47
6117	Educational Support Services	209	674	644	652	6,945,973	813.66
	Other	80	238	244	257	3,216,183	1,004.32

TABLE 5. STATEWIDE SUMMARY

North American Industry Classification System - Industry Groups		Number of Employing Units	Employment			Total Earnings Jul - Sep 2020	Average Weekly Earnings
			Jul	Aug	Sep		
62	HEALTH CARE & SOCIAL ASSISTANCE	14,626	166,945	168,921	169,181	\$2,029,187,269	\$927.19
621	AMBULATORY HEALTH CARE SERVICES	6,181	58,525	59,073	58,970	\$981,155,563	\$1,282.34
6211	Offices of Physicians	2,383	25,991	26,219	26,159	579,305,006	1,705.85
6212	Offices of Dentists	954	7,291	7,383	7,308	98,096,528	1,029.83
6213	Offices of Other Health Practitioners	1,745	9,343	9,492	9,545	101,905,696	828.64
6214	Outpatient Care Centers	402	5,165	5,230	5,214	76,018,552	1,123.89
6215	Medical & Diagnostic Laboratories	205	1,296	1,332	1,356	22,967,616	1,330.38
6216	Home Health Care Services	279	6,594	6,568	6,567	66,312,643	775.66
6219	Other Ambulatory Health Care Services	213	2,845	2,849	2,821	36,549,522	990.55
622	HOSPITALS	127	42,417	42,581	42,382	\$582,894,280	\$1,056.01
6221	General Medical & Surgical Hospitals	94	37,894	38,067	37,824	529,366,903	1,073.62
6222	Psychiatric & Substance Abuse Hospitals	13	1,850	1,824	1,836	20,216,643	846.71
6223	Speciality Hospitals	20	2,673	2,690	2,722	33,310,734	950.78
623	Residential & Mental Health Facilities	664	30,506	30,649	30,705	\$243,295,433	\$611.20
6231	Nursing Care Facilities (Skilled Nursing Facilities)	279	21,177	21,145	21,191	171,769,865	624.11
6232	Residential Mental Health Facilities	190	4,021	4,102	4,095	33,041,728	624.08
6233	Continuing Care & Assisted Living Facilities	156	4,435	4,520	4,563	30,768,263	525.25
6239	Other Residential Care Facilities	39	873	882	856	7,715,577	681.93
624	SOCIAL ASSISTANCE	7,654	35,497	36,618	37,124	\$221,841,993	\$468.64
6241	Individual & Family Services	6,555	22,674	22,925	23,057	141,826,216	476.71
6242	Emergency & Other Relief Services	173	1,408	1,399	1,403	10,369,347	568.39
6243	Vocational Rehabilitation Services	92	2,839	2,867	2,851	18,820,409	507.56
6244	Child Day Care Services	834	8,576	9,427	9,813	50,826,021	421.67
LEISURE & HOSPITALITY		7,515	106,000	107,891	108,372	\$497,319,126	\$356.13
71	ARTS, ENTERTAINMENT & RECREATION	1,077	10,904	10,727	10,439	64,002,140	\$460.55
711	PERFORMING ARTS & SPECTATOR SPORTS	258	1,752	1,737	1,879	15,465,439	\$664.86
7111	Performing Arts Companies	45	368	331	375	1,668,517	358.51
7112	Spectator Sports	74	1,043	1,056	1,099	10,622,653	766.54
7113	Performing Arts & Sports Promoters	57	251	233	315	2,454,737	708.98
7114	Agents & Managers for Public Figures	20	20	51	24	191,559	465.33
7115	Independent Artists, Writers, & Performers	62	70	66	66	527,973	603.17
712	MUSEUMS, PARKS, & HISTORICAL SITES	56	745	745	735	6,901,325	\$715.78
713	GAMBLING, RECREATIONAL & AMUSEMENT INDUSTRY	763	8,407	8,245	7,825	41,635,376	392.54
72	ACCOMMODATION & FOOD SERVICES	6,438	95,096	97,164	97,933	433,316,986	\$344.59

TABLE 5. STATEWIDE SUMMARY

North American Industry Classification System - Industry Groups		Number of Employing Units	Employment			Total Earnings	Average Weekly Earnings
			Jul	Aug	Sep	Jul - Sep 2020	
721	ACCOMMODATION	929	9,446	9,385	9,163	\$46,640,609	\$384.48
7211	Travel Accommodation	833	8,631	8,799	8,627	42,598,216	377.26
7212	RV Parks & Recreational Camps	78	740	494	456	3,411,142	465.79
7213	Rooming & Boarding Houses	18	75	92	80	631,251	589.77
722	FOOD SERVICES & DRINKING PLACES	5,509	85,650	87,779	88,770	\$386,676,377	\$340.33
7223	Special Food Services	310	2,374	3,610	3,838	14,489,816	340.44
7224	Drinking Places, Alcoholic Beverages	145	542	635	689	2,821,652	348.96
7225	Restaurants & Other Eating Places	5,054	82,734	83,534	84,243	369,364,909	340.26
722511	Full-Service Restaurants	2,148	31,315	32,160	32,766	155,308,298	372.40
722513	Limited-Service Eating Places	2,361	46,704	46,716	46,704	193,806,225	319.18
722514	Cafeterias, Grill Buffets, & Buffets	91	1,200	1,212	1,291	6,281,699	391.47
722515	Snack & Nonalcoholic Beverage Bars	454	3,515	3,446	3,482	13,968,687	308.68
OTHER SERVICES		5,518	23,679	23,692	23,698	\$221,360,843	\$718.78
811	REPAIR & MAINTENANCE	2,269	10,656	10,747	10,837	\$110,287,517	\$789.42
8111	Automotive Repair & Maintenance	1,463	6,785	6,863	6,915	64,870,367	728.01
8112	Electronic Equipment Repair & Maintenance	161	887	888	911	9,810,951	842.91
8113	Commercial Machinery Repair & Maintenance	475	2,341	2,368	2,389	30,186,081	981.41
8114	Household Goods Repair & Maintenance	170	643	628	622	5,420,118	660.75
812	PERSONAL & LAUNDRY SERVICES	1,407	6,998	7,065	6,967	\$50,440,878	\$553.50
8121	Personal Care Services	704	2,660	2,675	2,684	15,704,049	451.93
8122	Death Care Services	248	1,490	1,512	1,461	11,720,528	606.04
8123	Drycleaning & Laundry Service	199	1,819	1,826	1,785	16,005,852	680.23
8129	Other Personal Services	256	1,029	1,052	1,037	7,010,449	518.86
813	MEMBERSHIP ASSOCIATIONS & ORGANIZATIONS	1,144	5,223	5,071	5,073	\$54,846,024	\$823.63
8131	Religious Organizations	103	316	316	320	2,502,265	606.56
8132	Grantmaking & Giving Organizations	126	455	439	428	7,225,994	1,261.37
8133	Social Advocacy Organizations	230	1,195	1,160	1,186	14,910,189	971.71
8134	Civic & Social Organizations	195	980	891	909	5,224,130	433.66
8139	Professional & Similar Organizations	490	2,277	2,265	2,230	24,983,446	851.36
814	PRIVATE HOUSEHOLDS	698	802	809	821	\$5,786,424	\$549.07
LOCAL GOVERNMENT		1,988	70,275	94,176	108,177	\$861,016,158	\$728.82
STATE GOVERNMENT		1,064	62,578	64,417	68,114	\$847,542,765	\$1,002.45
NONCLASSIFIABLE ESTABLISHMENTS		0	0	0	0	\$0	\$0.00

TABLE 6. COUNTY SUMMARY

North American Industry Classification System - Industry Groups	Number of Employing Units	Employment			Total Earnings	Average Weekly Earnings
		Jul	Aug	Sep	Jul - Sep 2020	
ARKANSAS COUNTY - TOTAL	1,117	9,694	9,860	9,978	\$100,132,475	\$782.46
Natural Resources & Mining	64	194	186	193	1,668,200	671.85
Construction	102	319	329	339	3,496,539	817.52
Manufacturing	45	3,536	3,532	3,547	38,472,266	836.38
Trade, Transportation & Utilities	252	2,170	2,184	2,192	23,811,610	839.44
Wholesale Trade	53	455	431	422	5,777,125	1,019.25
Retail Trade	120	1,045	1,085	1,089	8,017,578	574.78
Transportation, Warehousing & Utilities	79	670	668	681	10,016,907	1,144.92
Information	10	34	33	35	367,275	830.94
Financial Activities	91	359	359	344	4,112,122	893.55
Professional & Business Services	128	587	586	589	7,597,118	994.99
Education & Health Services	211	1,095	1,075	1,093	10,210,174	722.09
Leisure & Hospitality	101	632	617	641	2,580,576	315.09
Other Services	67	120	128	133	900,112	545.19
Local Government	32	501	682	719	5,529,884	670.94
State Government	14	147	149	153	1,386,599	712.66
ASHLEY COUNTY - TOTAL	558	5,394	5,698	5,773	\$59,802,022	\$818.29
Natural Resources & Mining	46	368	340	353	3,574,239	777.40
Construction	36	469	468	461	5,542,648	914.93
Manufacturing	25	1,063	1,072	1,069	19,297,629	1,389.92
Trade, Transportation & Utilities	115	1,169	1,221	1,226	10,250,758	654.19
Wholesale Trade	24	178	177	185	2,666,490	1,139.53
Retail Trade	63	706	747	738	4,304,496	453.38
Transportation, Warehousing & Utilities	28	285	297	303	3,279,772	855.22
Information	5	29	31	30	245,565	629.65
Financial Activities	37	169	170	172	1,550,293	700.12
Professional & Business Services	38	147	150	173	1,353,902	664.76
Education & Health Services	145	857	868	865	9,289,525	827.70
Leisure & Hospitality	38	362	377	381	1,459,698	300.76
Other Services	31	118	113	130	885,488	566.05
Local Government	32	558	806	807	5,394,411	573.41
State Government	10	85	82	106	957,866	809.69

TABLE 6. COUNTY SUMMARY

North American Industry Classification System - Industry Groups	Number of Employing Units	Employment			Total Earnings Jul - Sep 2020	Average Weekly Earnings
		Jul	Aug	Sep		
BAXTER COUNTY - TOTAL	1,226	14,047	14,590	14,782	\$134,465,278	\$714.67
Natural Resources & Mining	8	60	58	59	677,938	883.88
Construction	100	527	517	512	4,591,265	680.93
Manufacturing	52	2,407	2,444	2,480	23,447,552	738.09
Trade, Transportation & Utilities	255	2,703	2,685	2,656	20,401,854	585.30
Wholesale Trade	35	168	162	163	1,750,777	819.52
Retail Trade	199	2,359	2,353	2,321	16,765,988	550.13
Transportation, Warehousing & Utilities	21	176	170	172	1,885,089	839.81
Information	21	144	144	146	1,837,935	977.28
Financial Activities	121	699	712	725	9,880,600	1,067.48
Professional & Business Services	147	914	918	909	7,739,530	651.60
Education & Health Services	256	3,845	3,914	3,924	46,349,817	915.53
Leisure & Hospitality	120	1,571	1,578	1,564	6,946,439	340.13
Other Services	99	310	316	302	2,168,859	539.34
Local Government	36	622	1,040	1,197	7,845,285	633.25
State Government	11	245	264	308	2,578,204	728.24
BENTON COUNTY - TOTAL	7,080	118,876	121,449	122,946	\$1,692,469,399	\$1,075.15
Natural Resources & Mining	50	821	817	804	12,726,531	1,202.66
Construction	702	5,558	5,585	5,557	69,186,967	956.06
Manufacturing	206	12,468	12,580	12,711	161,680,150	988.13
Trade, Transportation & Utilities	1,726	29,365	29,875	29,600	402,095,149	1,044.48
Wholesale Trade	754	6,220	6,237	6,216	159,714,150	1,973.82
Retail Trade	769	12,228	12,571	12,278	99,432,930	618.88
Transportation, Warehousing & Utilities	203	10,917	11,067	11,106	142,948,069	996.92
Information	104	922	866	898	17,328,796	1,488.81
Financial Activities	757	4,139	4,170	4,073	70,644,041	1,316.63
Professional & Business Services	1,414	33,126	33,414	33,102	654,581,725	1,516.00
Education & Health Services	878	11,626	12,101	12,154	136,661,457	878.94
Leisure & Hospitality	698	11,801	11,916	11,930	61,200,852	396.20
Other Services	443	2,287	2,263	2,304	20,833,925	701.46
Local Government	85	5,882	6,967	8,758	76,358,721	815.53
State Government	17	881	895	1,055	9,171,085	747.58

TABLE 6. COUNTY SUMMARY

North American Industry Classification System - Industry Groups	Number of Employing Units	Employment			Total Earnings Jul - Sep 2020	Average Weekly Earnings
		Jul	Aug	Sep		
BOONE COUNTY - TOTAL	956	12,526	13,038	13,585	\$134,762,113	\$794.37
Construction	66	429	440	418	4,522,550	810.93
Manufacturing	56	1,291	1,515	1,512	17,153,777	916.76
Trade, Transportation & Utilities	243	3,752	3,787	3,762	40,741,786	831.96
Wholesale Trade	42	374	381	378	4,055,686	826.06
Retail Trade	159	2,100	2,130	2,108	15,782,244	574.64
Transportation, Warehousing & Utilities	42	1,278	1,276	1,276	20,903,856	1,259.52
Information	14	271	267	269	3,209,688	917.84
Financial Activities	94	453	451	441	5,615,591	963.50
Professional & Business Services	101	1,226	1,257	1,326	15,877,834	961.96
Education & Health Services	159	1,594	1,593	1,583	14,995,897	725.49
Leisure & Hospitality	85	1,140	1,150	1,137	5,121,251	344.86
Local Government	53	1,416	1,609	2,090	16,784,076	757.23
State Government	17	657	663	752	7,477,257	832.78
Other	68	297	306	295	3,262,406	838.38
BRADLEY COUNTY - TOTAL	337	3,325	3,411	3,582	\$32,012,858	\$715.99
Natural Resources & Mining	40	184	196	189	2,176,455	882.70
Construction	15	82	86	85	832,849	759.67
Manufacturing	11	946	938	950	11,140,108	907.13
Trade, Transportation & Utilities	68	458	450	472	3,981,097	665.74
Wholesale Trade	11	100	101	101	1,384,574	1,058.00
Retail Trade	37	271	266	284	1,718,354	483.00
Transportation, Warehousing & Utilities	20	87	83	87	878,169	788.54
Information	3	24	25	26	188,578	580.24
Financial Activities	24	126	125	120	1,299,317	808.20
Professional & Business Services	27	105	86	83	770,549	648.97
Education & Health Services	87	581	576	577	4,909,959	653.44
Leisure & Hospitality	13	169	170	175	668,188	299.99
Other Services	25	76	87	80	635,352	603.37
Local Government	14	206	307	449	2,451,621	588.11
State Government	10	368	365	376	2,958,785	615.69

TABLE 6. COUNTY SUMMARY

North American Industry Classification System - Industry Groups	Number of Employing Units	Employment			Total Earnings Jul - Sep 2020	Average Weekly Earnings
		Jul	Aug	Sep		
CALHOUN COUNTY - TOTAL	101	3,329	3,362	3,404	\$50,419,205	\$1,152.57
Natural Resources & Mining	6	32	36	35	362,151	811.39
Construction	10	127	129	131	1,364,485	813.65
Manufacturing	9	2,611	2,610	2,620	42,691,983	1,256.47
Trade, Transportation & Utilities	17	181	172	179	1,788,313	775.73
Retail Trade	8	39	39	41	236,139	457.93
Transportation, Warehousing & Utilities	9	142	133	138	1,552,174	867.30
Professional & Business Services	5	11	13	12	126,398	810.24
Education & Health Services	23	62	63	63	757,587	929.93
Leisure & Hospitality	4	5	7	7	27,367	332.39
Other Services	3	3	3	3	22,031	564.90
Local Government	11	119	151	176	1,063,496	550.27
State Government	7	70	70	72	800,828	871.73
Other	6	108	108	106	1,414,566	1,013.78
CARROLL COUNTY - TOTAL	781	10,052	10,724	10,715	\$89,434,166	\$655.38
Natural Resources & Mining	21	288	291	296	3,475,261	916.55
Trade, Transportation & Utilities	181	1,506	1,560	1,476	12,659,065	643.18
Wholesale Trade	24	206	204	199	1,915,210	725.73
Retail Trade	134	1,090	1,144	1,069	6,741,869	471.03
Transportation, Warehousing & Utilities	23	210	212	208	4,001,986	1,465.93
Information	9	63	65	64	940,476	1,130.38
Financial Activities	54	356	360	361	4,440,825	951.54
Professional & Business Services	72	487	490	485	4,633,761	731.42
Education & Health Services	99	985	1,006	1,018	9,579,719	734.70
Leisure & Hospitality	168	1,578	1,610	1,625	7,802,501	374.11
Other Services	44	145	150	139	1,033,877	549.74
Local Government	25	554	1,025	1,070	7,185,699	625.99
State Government	9	91	90	91	1,000,044	848.45
Other	99	3,999	4,077	4,090	36,682,938	695.82

TABLE 6. COUNTY SUMMARY

North American Industry Classification System - Industry Groups	Number of Employing Units	Employment			Total Earnings	Average Weekly Earnings
		Jul	Aug	Sep	Jul - Sep 2020	
CHICOT COUNTY - TOTAL	470	2,734	2,785	2,852	\$24,496,058	\$675.30
Natural Resources & Mining	55	229	222	232	2,430,436	821.19
Construction	14	118	122	128	1,709,550	1,072.04
Manufacturing	5	5	6	6	66,801	906.80
Trade, Transportation & Utilities	65	619	637	681	5,199,174	619.42
Wholesale Trade	11	46	45	46	593,515	999.74
Retail Trade	41	292	287	289	1,919,034	510.20
Transportation, Warehousing & Utilities	13	281	305	346	2,686,625	665.23
Financial Activities	30	179	186	178	2,159,176	917.63
Professional & Business Services	17	44	47	39	502,904	892.73
Education & Health Services	225	560	572	577	4,644,660	627.18
Leisure & Hospitality	14	102	104	106	389,467	288.07
Local Government	17	556	570	581	4,422,051	597.82
State Government	9	244	241	248	2,272,068	715.31
Other	19	78	78	76	699,771	696.06
CLARK COUNTY - TOTAL	656	8,018	8,507	8,775	\$81,685,347	\$745.08
Natural Resources & Mining	50	295	294	292	3,267,828	855.98
Construction	27	92	93	100	1,007,764	816.00
Manufacturing	34	1,204	1,220	1,222	19,948,246	1,262.60
Trade, Transportation & Utilities	134	1,376	1,431	1,419	12,219,131	667.25
Wholesale Trade	15	46	47	47	628,300	1,035.66
Retail Trade	91	1,159	1,210	1,197	9,471,289	612.92
Transportation, Warehousing & Utilities	28	171	174	175	2,119,542	940.63
Financial Activities	77	333	339	334	3,079,863	706.50
Professional & Business Services	53	551	561	576	6,739,828	921.41
Education & Health Services	131	1,546	1,555	1,662	14,121,117	684.17
Leisure & Hospitality	64	930	1,009	1,058	3,879,508	298.72
Local Government	28	750	900	893	6,690,878	607.18
State Government	14	735	903	1,018	8,645,005	751.13
Other	44	206	202	201	2,086,179	790.52

TABLE 6. COUNTY SUMMARY

North American Industry Classification System - Industry Groups	Number of Employing Units	Employment			Total Earnings Jul - Sep 2020	Average Weekly Earnings
		Jul	Aug	Sep		
CLAY COUNTY - TOTAL	350	2,822	2,979	3,021	\$26,575,499	\$695.17
Natural Resources & Mining	50	229	224	224	2,503,377	853.33
Construction	29	124	115	105	1,261,500	846.27
Manufacturing	12	102	100	85	810,644	651.82
Trade, Transportation & Utilities	82	693	722	754	7,758,326	825.44
Wholesale Trade	19	233	251	262	2,427,367	750.89
Retail Trade	41	332	344	361	2,769,920	616.41
Transportation, Warehousing & Utilities	22	128	127	131	2,561,039	1,531.11
Information	7	24	24	24	193,794	621.13
Financial Activities	23	103	101	99	953,264	726.02
Professional & Business Services	24	85	90	93	837,659	721.29
Education & Health Services	50	476	468	481	4,208,165	681.48
Leisure & Hospitality	22	215	207	200	779,293	289.13
Other Services	22	76	80	81	729,901	710.71
Local Government	20	650	803	830	6,066,549	613.22
State Government	9	45	45	45	473,027	808.59
CLEBURNE COUNTY - TOTAL	638	5,903	5,962	6,183	\$52,532,682	\$671.70
Natural Resources & Mining	19	169	163	156	2,525,499	1,194.28
Construction	65	318	331	332	3,444,831	810.36
Manufacturing	33	1,140	1,162	1,191	11,635,848	768.74
Trade, Transportation & Utilities	153	1,237	1,267	1,250	11,008,481	676.72
Wholesale Trade	31	102	103	97	1,146,647	876.19
Retail Trade	103	993	1,023	1,010	8,041,077	613.23
Transportation, Warehousing & Utilities	19	142	141	143	1,820,757	986.33
Information	11	45	46	46	477,934	805.05
Financial Activities	72	262	260	258	3,085,435	912.85
Professional & Business Services	65	294	280	279	3,019,777	816.97
Education & Health Services	75	799	836	870	6,995,795	644.48
Leisure & Hospitality	80	962	907	860	4,290,650	362.83
Other Services	39	98	104	99	744,402	570.71
Local Government	18	490	521	737	4,433,481	585.30
State Government	8	89	85	105	870,549	720.06

TABLE 6. COUNTY SUMMARY

North American Industry Classification System - Industry Groups	Number of Employing Units	Employment			Total Earnings	Average Weekly Earnings
		Jul	Aug	Sep	Jul - Sep 2020	
CLEVELAND COUNTY - TOTAL	126	921	974	1,003	\$8,702,208	\$692.96
Natural Resources & Mining	15	143	150	147	1,532,407	803.71
Construction	5	19	19	19	201,883	817.34
Manufacturing	4	115	115	122	1,358,090	890.36
Trade, Transportation & Utilities	29	145	139	141	1,052,336	571.40
Retail Trade	16	72	69	73	297,658	320.98
Other Trade, Transportation, & Utilities	13	73	70	68	754,678	825.39
Financial Activities	5	23	23	21	302,375	1,041.48
Education & Health Services	34	197	188	205	1,602,259	626.70
Other Services	6	10	10	10	80,358	618.14
Local Government	13	212	271	283	2,083,277	627.62
State Government	6	30	30	30	339,935	871.63
Other	9	27	29	25	149,288	425.32
COLUMBIA COUNTY - TOTAL	683	7,110	7,556	7,686	\$72,127,667	\$744.67
Natural Resources & Mining	45	362	363	365	5,198,444	1,100.59
Construction	35	144	148	138	1,363,443	731.72
Manufacturing	27	1,854	1,848	1,877	26,930,666	1,113.96
Trade, Transportation & Utilities	165	1,372	1,421	1,365	11,141,476	618.35
Wholesale Trade	29	170	177	158	2,418,409	1,105.14
Retail Trade	94	995	1,035	1,013	6,083,002	461.31
Transportation, Warehousing & Utilities	42	207	209	194	2,640,065	998.76
Information	6	25	24	26	278,755	857.71
Financial Activities	63	335	336	330	4,016,096	925.87
Professional & Business Services	51	307	323	308	2,240,098	551.11
Education & Health Services	154	776	800	826	6,073,757	583.53
Leisure & Hospitality	61	704	758	734	2,950,550	310.06
Other Services	37	110	110	113	756,658	524.36
Local Government	27	629	879	1,013	8,227,385	753.12
State Government	12	492	546	591	2,950,339	417.95

TABLE 6. COUNTY SUMMARY

North American Industry Classification System - Industry Groups	Number of Employing Units	Employment			Total Earnings Jul - Sep 2020	Average Weekly Earnings
		Jul	Aug	Sep		
CONWAY COUNTY - TOTAL	513	6,198	6,593	6,713	\$65,855,905	\$779.20
Natural Resources & Mining	27	216	213	215	2,200,612	788.56
Construction	49	496	509	504	7,229,242	1,105.56
Manufacturing	19	980	997	1,006	14,772,361	1,142.81
Trade, Transportation & Utilities	115	1,328	1,355	1,353	11,553,590	660.61
Wholesale Trade	16	100	105	106	1,087,123	806.67
Retail Trade	77	809	830	825	5,766,824	540.10
Transportation, Warehousing & Utilities	22	419	420	422	4,699,643	860.06
Information	3	15	11	9	47,723	314.66
Financial Activities	37	147	148	146	1,739,183	910.09
Professional & Business Services	37	659	693	687	4,994,496	565.27
Education & Health Services	124	725	713	728	8,438,877	899.09
Leisure & Hospitality	37	435	430	429	1,829,996	326.36
Other Services	25	101	100	97	784,131	607.23
Local Government	31	715	1,030	1,134	9,194,348	736.98
State Government	9	381	394	405	3,071,346	600.65
CRAIGHEAD COUNTY - TOTAL	2,889	47,399	49,034	50,371	\$539,878,786	\$848.66
Natural Resources & Mining	103	362	362	373	3,353,509	705.46
Construction	249	2,199	2,178	2,148	28,409,985	1,004.77
Manufacturing	102	7,052	7,109	7,195	89,219,240	964.09
Trade, Transportation & Utilities	765	9,990	10,138	10,023	97,882,135	749.17
Wholesale Trade	179	2,044	2,057	2,063	27,504,362	1,029.71
Retail Trade	461	6,145	6,302	6,187	48,171,459	596.57
Transportation, Warehousing & Utilities	125	1,801	1,779	1,773	22,206,314	957.32
Information	22	328	320	336	4,798,009	1,125.24
Financial Activities	294	1,763	1,762	1,746	24,625,778	1,078.14
Professional & Business Services	382	4,494	4,696	5,043	43,720,352	708.87
Education & Health Services	457	10,742	10,897	11,008	153,289,960	1,083.55
Leisure & Hospitality	276	4,965	5,063	5,165	22,549,274	342.51
Other Services	181	763	765	783	6,422,508	641.33
Local Government	36	2,222	3,289	3,997	33,044,405	802.02
State Government	22	2,519	2,455	2,554	32,563,631	998.23

TABLE 6. COUNTY SUMMARY

North American Industry Classification System - Industry Groups	Number of Employing Units	Employment			Total Earnings Jul - Sep 2020	Average Weekly Earnings
		Jul	Aug	Sep		
CRAWFORD COUNTY - TOTAL	1,259	18,204	19,347	19,423	\$182,148,746	\$737.78
Natural Resources & Mining	22	189	189	200	2,100,085	838.47
Construction	146	1,079	1,063	1,069	11,127,274	799.70
Manufacturing	62	4,603	4,633	4,680	51,559,454	855.01
Trade, Transportation & Utilities	328	5,685	5,783	5,688	54,895,294	738.41
Wholesale Trade	72	721	729	725	10,127,639	1,074.55
Retail Trade	171	2,047	2,095	2,025	14,828,237	554.87
Transportation, Warehousing & Utilities	85	2,917	2,959	2,938	29,939,418	783.88
Information	11	34	32	32	432,190	1,017.72
Financial Activities	117	491	488	494	5,085,106	796.66
Professional & Business Services	159	1,440	1,437	1,444	15,302,928	817.27
Education & Health Services	185	1,593	1,626	1,645	14,454,875	685.80
Leisure & Hospitality	96	1,573	1,550	1,544	6,507,992	321.80
Other Services	81	396	378	392	3,459,505	684.69
Local Government	42	971	2,019	2,083	15,793,993	718.46
State Government	10	150	149	152	1,430,050	731.73
CRITTENDEN COUNTY - TOTAL	1,180	14,089	14,576	15,212	\$143,366,055	\$754.03
Natural Resources & Mining	59	260	270	289	2,168,456	611.00
Construction	41	405	404	398	4,927,494	942.10
Manufacturing	40	2,004	2,004	2,017	24,790,823	949.54
Trade, Transportation & Utilities	299	4,369	4,217	4,176	44,105,057	797.53
Wholesale Trade	55	667	673	656	9,320,043	1,077.54
Retail Trade	154	2,073	1,904	1,846	12,598,361	499.28
Transportation, Warehousing & Utilities	90	1,629	1,640	1,674	22,186,653	1,035.81
Information	5	28	27	26	409,465	1,166.57
Financial Activities	100	408	425	414	5,591,264	1,034.72
Professional & Business Services	105	902	959	862	8,746,348	741.24
Education & Health Services	271	1,773	1,775	1,836	18,014,816	772.15
Leisure & Hospitality	140	2,101	2,189	2,293	11,531,464	404.24
Other Services	67	446	458	448	3,979,126	679.19
Local Government	40	1,069	1,535	2,066	15,511,352	766.50
State Government	13	324	313	387	3,590,390	809.13

TABLE 6. COUNTY SUMMARY

North American Industry Classification System - Industry Groups	Number of Employing Units	Employment			Total Earnings Jul - Sep 2020	Average Weekly Earnings
		Jul	Aug	Sep		
CROSS COUNTY - TOTAL	474	4,295	4,529	4,601	\$38,889,512	\$668.49
Natural Resources & Mining	44	278	267	283	2,723,994	759.20
Construction	21	70	72	72	685,432	739.14
Manufacturing	10	237	270	284	1,911,017	557.53
Trade, Transportation & Utilities	121	1,118	1,111	1,081	10,328,170	720.07
Wholesale Trade	25	290	282	270	3,726,785	1,021.41
Retail Trade	65	708	708	696	5,332,505	582.66
Transportation, Warehousing & Utilities	31	120	121	115	1,268,880	822.52
Information	6	31	30	34	272,588	662.16
Financial Activities	51	239	236	221	2,386,872	791.40
Professional & Business Services	39	144	145	148	1,626,275	858.80
Education & Health Services	87	981	923	952	7,896,519	638.05
Leisure & Hospitality	39	428	423	421	1,650,910	299.51
Other Services	30	102	94	98	868,705	681.87
Local Government	17	323	615	663	4,986,476	718.75
State Government	9	344	343	344	3,552,554	795.17
DALLAS COUNTY - TOTAL	225	2,578	2,668	2,718	\$23,368,926	\$677.15
Natural Resources & Mining	21	111	117	117	1,125,651	752.94
Construction	15	72	68	68	632,644	701.90
Manufacturing	9	523	534	545	6,161,373	887.55
Trade, Transportation & Utilities	49	494	484	485	3,913,313	617.27
Wholesale Trade	5	15	15	17	238,701	1,172.02
Retail Trade	32	327	318	316	2,082,411	500.06
Transportation, Warehousing & Utilities	12	152	151	152	1,592,201	807.54
Information	3	16	16	16	128,378	617.20
Financial Activities	17	69	68	69	798,803	894.85
Professional & Business Services	14	42	43	39	264,600	492.43
Education & Health Services	51	740	786	807	7,501,873	742.05
Leisure & Hospitality	13	158	151	160	550,189	270.72
Other Services	12	47	47	47	322,303	527.50
Local Government	14	274	322	333	1,643,477	408.25
State Government	7	32	32	32	326,322	784.43

TABLE 6. COUNTY SUMMARY

North American Industry Classification System - Industry Groups	Number of Employing Units	Employment			Total Earnings	Average Weekly Earnings
		Jul	Aug	Sep	Jul - Sep 2020	
DESHA COUNTY - TOTAL	499	4,134	4,305	4,333	\$41,313,178	\$746.46
Natural Resources & Mining	64	297	294	296	2,682,903	698.01
Construction	15	92	93	91	977,322	817.16
Manufacturing	14	995	956	958	14,011,083	1,111.49
Trade, Transportation & Utilities	101	825	815	825	7,007,452	656.03
Wholesale Trade	18	195	189	183	2,657,545	1,081.62
Retail Trade	55	465	461	449	2,644,361	443.81
Transportation, Warehousing & Utilities	28	165	165	193	1,705,546	752.56
Information	5	23	23	20	284,957	996.35
Financial Activities	27	207	206	204	1,944,319	727.21
Professional & Business Services	34	101	96	99	859,230	669.88
Education & Health Services	150	583	573	583	5,056,853	671.06
Leisure & Hospitality	36	369	361	338	1,261,527	272.59
Other Services	23	47	51	59	299,082	439.61
Local Government	21	495	747	772	6,035,911	691.61
State Government	9	100	90	88	892,539	740.90
DREW COUNTY - TOTAL	536	5,750	6,022	6,141	\$53,941,145	\$694.91
Natural Resources & Mining	55	326	340	340	4,061,539	931.69
Construction	23	136	129	126	1,643,413	969.95
Manufacturing	21	852	865	866	9,503,540	849.06
Trade, Transportation & Utilities	111	1,065	1,070	1,117	8,336,518	591.58
Wholesale Trade	17	124	121	119	1,299,306	823.74
Retail Trade	73	837	861	893	5,710,438	508.60
Transportation, Warehousing & Utilities	21	104	88	105	1,326,774	1,030.90
Information	5	31	28	34	282,750	701.61
Financial Activities	52	208	216	204	2,551,038	937.42
Professional & Business Services	38	293	287	295	2,766,316	729.58
Education & Health Services	133	838	840	849	6,885,141	628.76
Leisure & Hospitality	41	584	587	591	2,372,060	310.67
Other Services	21	59	59	60	529,999	687.12
Local Government	23	886	1,126	1,171	9,424,648	683.29
State Government	13	472	475	488	5,584,183	898.02

TABLE 6. COUNTY SUMMARY

North American Industry Classification System - Industry Groups	Number of Employing Units	Employment			Total Earnings Jul - Sep 2020	Average Weekly Earnings
		Jul	Aug	Sep		
FAULKNER COUNTY - TOTAL	2,985	37,849	38,704	40,115	414,982,920	\$820.84
Natural Resources & Mining	40	263	286	291	4,230,451	1,162.21
Construction	368	2,936	2,999	3,030	35,803,983	921.63
Manufacturing	98	3,204	3,172	3,197	46,070,418	1,110.59
Trade, Transportation & Utilities	638	7,412	7,544	7,560	65,626,105	672.61
Wholesale Trade	133	710	705	706	9,640,148	1,048.87
Retail Trade	410	5,876	6,015	6,001	44,904,583	579.17
Transportation, Warehousing & Utilities	95	826	824	853	11,081,374	1,021.67
Financial Activities	323	1,451	1,472	1,468	18,926,732	994.70
Professional & Business Services	467	3,428	3,459	3,437	41,630,988	930.56
Education & Health Services	483	7,482	7,631	7,516	79,542,277	811.17
Leisure & Hospitality	280	4,634	4,747	4,764	20,550,314	335.27
Local Government	42	1,664	2,073	3,212	24,321,486	807.69
State Government	18	2,936	2,854	3,170	34,383,734	885.57
Other	228	2,439	2,467	2,470	43,896,432	1,373.37
FRANKLIN COUNTY - TOTAL	370	4,213	4,433	4,497	\$39,961,258	\$701.65
Natural Resources & Mining	18	143	146	136	2,338,164	1,269.59
Construction	31	151	157	171	1,609,481	775.40
Manufacturing	17	917	942	957	9,205,805	754.41
Trade, Transportation & Utilities	83	1,002	999	980	9,305,433	720.36
Wholesale Trade	10	46	48	42	342,910	581.86
Retail Trade	49	654	648	636	4,098,217	488.00
Transportation, Warehousing & Utilities	24	302	303	302	4,864,306	1,237.63
Information	6	26	25	26	289,940	868.95
Financial Activities	31	65	67	60	684,951	823.26
Professional & Business Services	33	362	347	350	3,331,163	725.90
Education & Health Services	66	541	538	543	4,343,146	617.92
Leisure & Hospitality	29	348	357	351	1,357,250	296.60
Other Services	16	59	57	59	429,671	566.60
Local Government	32	477	674	723	5,628,714	693.13
State Government	8	122	124	141	1,437,540	857.21

TABLE 6. COUNTY SUMMARY

North American Industry Classification System - Industry Groups	Number of Employing Units	Employment			Total Earnings Jul - Sep 2020	Average Weekly Earnings
		Jul	Aug	Sep		
FULTON COUNTY - TOTAL	202	1,859	1,837	2,000	\$15,944,045	\$645.96
Manufacturing	11	104	110	107	752,047	540.65
Trade, Transportation & Utilities	50	311	294	296	2,962,879	758.87
Retail Trade	30	187	183	184	1,157,969	482.35
Other Trade, Transportation, & Utilities	20	124	111	112	1,804,910	1,200.34
Information	5	28	26	28	326,239	918.12
Financial Activities	19	94	92	89	962,897	808.03
Professional & Business Services	16	29	22	22	207,160	654.88
Education & Health Services	43	486	472	479	3,740,917	600.76
Leisure & Hospitality	15	142	133	129	553,479	316.15
Other Services	10	16	18	21	154,554	648.48
Local Government	12	377	389	525	2,960,540	529.20
State Government	9	63	63	63	591,362	722.05
Other	12	209	218	241	2,731,971	943.79
GARLAND COUNTY - TOTAL	3,054	34,230	34,948	35,166	\$346,095,449	\$765.43
Natural Resources & Mining	28	195	155	172	1,713,601	757.56
Construction	330	1,973	1,921	1,913	20,387,838	810.21
Manufacturing	93	2,427	2,419	2,414	29,517,530	938.26
Trade, Transportation & Utilities	669	7,368	7,403	7,316	65,892,603	688.46
Wholesale Trade	138	744	746	741	10,859,411	1,123.27
Retail Trade	465	6,036	6,078	5,988	47,611,723	606.97
Transportation, Warehousing & Utilities	66	588	579	587	7,421,469	976.42
Information	30	390	377	389	3,907,614	780.07
Financial Activities	348	1,495	1,520	1,489	18,513,043	948.54
Professional & Business Services	384	2,830	2,885	2,904	28,715,565	768.84
Education & Health Services	495	7,737	7,801	7,839	101,181,858	998.83
Leisure & Hospitality	394	6,623	6,606	6,319	34,386,726	405.94
Other Services	224	869	903	927	6,676,469	570.85
Local Government	37	1,602	2,220	2,666	26,897,077	956.69
State Government	22	721	738	818	8,305,525	841.75

TABLE 6. COUNTY SUMMARY

North American Industry Classification System - Industry Groups	Number of Employing Units	Employment			Total Earnings Jul - Sep 2020	Average Weekly Earnings
		Jul	Aug	Sep		
GRANT COUNTY - TOTAL	342	3,720	3,866	4,002	\$41,796,118	\$832.35
Natural Resources & Mining	27	195	192	191	2,428,934	969.76
Construction	35	242	241	236	3,338,543	1,071.53
Manufacturing	16	1,172	1,176	1,193	15,569,082	1,014.65
Trade, Transportation & Utilities	82	676	688	661	5,358,004	610.60
Wholesale Trade	16	73	69	70	1,207,926	1,314.87
Retail Trade	47	553	573	544	3,695,046	510.60
Transportation, Warehousing & Utilities	19	50	46	47	455,032	734.32
Financial Activities	21	129	131	134	2,930,631	1,716.50
Professional & Business Services	33	133	133	128	1,526,678	894.19
Education & Health Services	70	387	378	383	2,957,361	594.48
Leisure & Hospitality	23	237	240	245	954,584	305.11
Local Government	10	446	583	728	5,844,502	767.63
State Government	7	46	46	46	444,238	742.87
Other	18	57	58	57	443,561	595.12
GREENE COUNTY - TOTAL	879	13,986	14,203	14,579	\$142,440,891	\$768.59
Natural Resources & Mining	38	243	228	214	2,182,001	735.09
Construction	67	407	418	415	4,668,619	868.85
Manufacturing	63	4,403	4,525	4,636	55,068,663	936.90
Trade, Transportation & Utilities	218	2,615	2,624	2,605	22,412,104	659.36
Wholesale Trade	43	456	445	454	6,043,245	1,029.22
Retail Trade	145	1,932	1,948	1,932	13,856,732	550.19
Transportation, Warehousing & Utilities	30	227	231	219	2,512,127	856.31
Information	10	119	117	118	1,732,683	1,129.52
Financial Activities	77	550	555	552	6,017,688	838.08
Professional & Business Services	93	776	761	754	6,170,576	621.55
Education & Health Services	145	1,827	1,862	1,887	20,118,518	832.63
Leisure & Hospitality	85	1,280	1,279	1,245	5,372,635	325.93
Other Services	42	152	156	159	1,138,440	562.56
Local Government	31	1,232	1,296	1,612	13,039,318	726.83
State Government	10	382	382	382	4,519,646	910.12

TABLE 6. COUNTY SUMMARY

North American Industry Classification System - Industry Groups	Number of Employing Units	Employment			Total Earnings Jul - Sep 2020	Average Weekly Earnings
		Jul	Aug	Sep		
HEMPSTEAD COUNTY - TOTAL	517	6,894	7,037	7,397	\$67,783,984	\$733.42
Natural Resources & Mining	22	253	251	260	3,023,264	913.19
Construction	25	120	120	119	1,218,571	783.31
Manufacturing	26	2,084	2,079	2,155	23,514,330	858.88
Trade, Transportation & Utilities	129	1,317	1,331	1,315	12,567,437	731.81
Wholesale Trade	27	187	185	171	1,881,632	799.67
Retail Trade	74	868	884	882	5,802,052	508.33
Transportation, Warehousing & Utilities	28	262	262	262	4,883,753	1,433.87
Information	7	17	17	17	245,450	1,110.63
Financial Activities	46	202	201	194	2,014,194	778.58
Professional & Business Services	38	231	237	238	2,320,413	758.47
Education & Health Services	103	900	916	912	7,332,012	620.24
Leisure & Hospitality	48	561	568	585	2,456,129	330.69
Other Services	29	110	113	111	942,422	651.14
Local Government	28	480	563	836	5,498,436	675.29
State Government	16	619	641	655	6,651,326	801.53
HOT SPRING COUNTY - TOTAL	607	7,778	8,063	8,197	\$76,130,957	\$730.87
Natural Resources & Mining	25	156	162	166	1,560,053	743.83
Construction	53	200	199	193	1,634,736	637.24
Manufacturing	29	1,372	1,394	1,376	18,274,826	1,018.17
Trade, Transportation & Utilities	154	1,688	1,730	1,703	18,213,211	820.75
Wholesale Trade	19	88	86	87	1,012,568	895.29
Retail Trade	96	889	916	896	6,178,964	527.92
Transportation, Warehousing & Utilities	39	711	728	720	11,021,679	1,178.08
Information	5	38	38	38	417,732	845.61
Financial Activities	49	208	208	199	2,362,374	886.44
Professional & Business Services	54	658	819	856	6,597,962	652.64
Education & Health Services	105	965	999	1,002	9,449,108	735.19
Leisure & Hospitality	55	641	642	639	2,462,967	295.72
Other Services	39	157	159	170	1,123,100	533.29
Local Government	27	866	896	978	6,635,827	558.88
State Government	12	829	817	877	7,399,061	676.76

TABLE 6. COUNTY SUMMARY

North American Industry Classification System - Industry Groups	Number of Employing Units	Employment			Total Earnings	Average Weekly Earnings
		Jul	Aug	Sep	Jul - Sep 2020	
HOWARD COUNTY - TOTAL	349	6,010	6,245	6,357	\$56,418,396	\$699.53
Natural Resources & Mining	17	201	204	198	2,089,421	799.63
Construction	20	85	86	79	688,724	635.75
Manufacturing	18	2,923	2,936	2,953	28,918,820	757.33
Trade, Transportation & Utilities	78	865	875	869	7,771,733	687.42
Wholesale Trade	15	91	87	90	959,986	826.62
Retail Trade	45	570	581	568	3,877,078	520.48
Transportation, Warehousing & Utilities	18	204	207	211	2,934,669	1,088.80
Financial Activities	34	142	138	140	1,435,899	788.96
Professional & Business Services	24	154	149	143	1,357,148	702.22
Education & Health Services	83	804	826	817	7,579,223	714.77
Leisure & Hospitality	26	294	303	317	1,163,605	293.79
Local Government	17	366	544	651	3,806,588	562.74
State Government	10	81	92	97	838,849	716.96
Other	22	95	92	93	768,386	633.29
INDEPENDENCE COUNTY - TOTAL	917	15,202	15,463	15,925	\$161,691,094	\$800.89
Natural Resources & Mining	20	249	262	267	3,589,711	1,064.77
Construction	60	649	651	610	9,385,090	1,133.92
Manufacturing	41	3,288	3,302	3,210	37,761,280	889.20
Trade, Transportation & Utilities	242	2,882	2,909	2,896	27,085,794	719.53
Wholesale Trade	29	198	204	203	2,571,579	980.89
Retail Trade	168	1,923	1,954	1,942	13,780,470	546.50
Transportation, Warehousing & Utilities	45	761	751	751	10,733,745	1,094.57
Information	10	74	80	88	825,444	787.14
Financial Activities	86	577	598	590	8,002,552	1,046.31
Professional & Business Services	88	1,167	1,164	1,184	10,225,164	671.31
Education & Health Services	158	3,589	3,658	3,688	44,821,323	945.90
Leisure & Hospitality	90	1,169	1,203	1,193	4,768,973	308.70
Other Services	60	269	282	280	1,891,426	525.25
Local Government	47	744	798	1,328	7,611,247	612.00
State Government	15	545	556	591	5,723,090	780.56

TABLE 6. COUNTY SUMMARY

North American Industry Classification System - Industry Groups	Number of Employing Units	Employment			Total Earnings Jul - Sep 2020	Average Weekly Earnings
		Jul	Aug	Sep		
IZARD COUNTY - TOTAL	246	2,444	2,696	2,758	\$21,463,974	\$627.15
Natural Resources & Mining	7	55	57	58	672,964	913.53
Construction	23	73	79	77	640,866	645.82
Manufacturing	9	150	155	156	1,239,667	620.56
Trade, Transportation & Utilities	66	552	549	541	4,087,085	574.41
Wholesale Trade	13	56	57	50	422,616	598.32
Retail Trade	43	390	388	395	2,513,261	494.44
Transportation, Warehousing & Utilities	10	106	104	96	1,151,208	868.18
Information	4	6	6	7	118,499	1,439.26
Financial Activities	21	176	178	173	1,382,678	605.46
Professional & Business Services	14	43	46	44	337,454	585.52
Education & Health Services	44	593	595	595	4,937,477	639.05
Leisure & Hospitality	22	159	163	181	675,523	309.92
Other Services	13	30	34	37	188,887	431.58
Local Government	14	259	458	494	3,303,186	629.46
State Government	9	348	376	395	3,879,688	800.10
JACKSON COUNTY - TOTAL	433	5,008	5,162	5,191	\$48,255,338	\$724.94
Natural Resources & Mining	58	312	291	320	2,823,839	706.02
Construction	23	116	126	123	1,263,303	798.72
Manufacturing	13	1,019	996	981	11,676,259	899.37
Trade, Transportation & Utilities	105	987	999	971	9,208,717	718.66
Wholesale Trade	17	218	211	204	2,876,350	1,048.61
Retail Trade	68	678	694	671	5,181,146	585.24
Transportation, Warehousing & Utilities	20	91	94	96	1,151,221	945.43
Information	3	9	8	8	67,033	618.77
Financial Activities	32	122	123	122	1,386,585	871.88
Professional & Business Services	33	122	124	128	1,158,485	714.82
Education & Health Services	77	798	812	805	7,999,246	764.38
Leisure & Hospitality	26	308	301	306	1,257,479	317.14
Other Services	19	59	59	57	487,333	642.64
Local Government	32	367	544	576	3,782,435	587.00
State Government	12	789	779	794	7,144,624	698.04

TABLE 6. COUNTY SUMMARY

North American Industry Classification System - Industry Groups	Number of Employing Units	Employment			Total Earnings Jul - Sep 2020	Average Weekly Earnings
		Jul	Aug	Sep		
JEFFERSON COUNTY - TOTAL	1,984	23,797	24,464	25,017	\$254,301,606	\$800.85
Natural Resources & Mining	38	139	139	141	2,103,104	1,158.31
Construction	86	503	499	472	5,739,605	898.59
Manufacturing	60	4,360	4,425	4,405	66,936,804	1,171.11
Trade, Transportation & Utilities	393	4,179	4,184	4,195	36,953,948	679.08
Wholesale Trade	68	648	599	639	6,980,763	854.16
Retail Trade	271	2,880	2,928	2,906	20,662,481	547.20
Transportation, Warehousing & Utilities	54	651	657	650	9,310,704	1,097.36
Information	10	54	47	52	756,432	1,140.92
Financial Activities	151	1,010	995	994	12,308,035	947.09
Professional & Business Services	143	1,895	1,955	2,032	17,441,733	684.29
Education & Health Services	785	4,359	4,434	4,314	46,022,664	810.30
Leisure & Hospitality	137	2,109	2,189	2,298	9,891,519	346.07
Other Services	104	445	435	418	3,812,554	677.83
Local Government	40	1,724	2,086	2,368	17,079,227	637.97
State Government	37	3,020	3,076	3,328	35,255,981	863.33
JOHNSON COUNTY - TOTAL	485	7,443	7,694	8,118	\$66,562,954	\$660.53
Natural Resources & Mining	13	204	206	201	2,420,807	914.32
Construction	41	187	192	193	1,657,051	668.53
Manufacturing	32	2,192	2,303	2,321	21,018,116	711.61
Trade, Transportation & Utilities	101	2,011	2,054	2,012	16,179,110	614.39
Retail Trade	72	948	973	959	5,970,894	478.44
Other Trade, Transportation & Utilities	29	1,063	1,081	1,053	10,208,216	736.86
Information	4	15	14	14	192,501	1,033.10
Financial Activities	47	172	175	176	1,639,917	723.60
Professional & Business Services	45	228	234	223	1,851,559	623.77
Education & Health Services	105	1,215	1,208	1,212	11,917,432	756.58
Leisure & Hospitality	46	515	547	571	2,101,499	296.98
Other Services	29	75	75	77	577,668	587.26
Local Government	14	526	584	1,013	5,843,651	635.20
State Government	8	103	102	105	1,163,643	866.24

TABLE 6. COUNTY SUMMARY

North American Industry Classification System - Industry Groups	Number of Employing Units	Employment			Total Earnings Jul - Sep 2020	Average Weekly Earnings
		Jul	Aug	Sep		
LAFAYETTE COUNTY - TOTAL	157	1,001	1,014	1,024	\$7,973,554	\$605.48
Natural Resources & Mining	23	67	57	72	476,301	560.79
Construction	11	70	77	77	896,347	923.43
Manufacturing	6	43	41	34	429,442	839.85
Trade, Transportation & Utilities	27	187	183	180	1,448,245	607.66
Retail Trade	14	100	99	99	579,531	448.78
Other Trade, Transportation & Utilities	13	87	84	81	868,714	795.53
Financial Activities	13	69	72	66	643,949	717.89
Professional & Business Services	9	35	33	31	271,334	632.48
Education & Health Services	32	183	177	189	1,490,216	626.40
Leisure & Hospitality	6	39	44	40	152,505	286.13
Local Government	15	238	261	266	1,521,620	459.01
State Government	8	32	32	32	343,036	824.61
Other	7	38	37	37	300,559	619.28
LAWRENCE COUNTY - TOTAL	399	3,396	3,667	3,790	\$32,004,134	\$680.51
Natural Resources & Mining	53	199	189	194	2,089,433	828.48
Construction	27	144	154	158	2,319,358	1,173.76
Manufacturing	17	266	278	282	2,568,832	717.68
Trade, Transportation & Utilities	115	780	783	792	7,258,388	711.26
Wholesale Trade	18	180	178	177	2,156,962	930.39
Retail Trade	61	484	493	502	3,492,445	544.93
Transportation, Warehousing & Utilities	36	116	112	113	1,608,981	1,088.87
Financial Activities	29	123	124	125	1,276,584	791.93
Professional & Business Services	23	91	86	85	916,123	806.92
Education & Health Services	47	469	548	588	4,775,159	686.58
Leisure & Hospitality	33	311	325	312	1,239,763	301.79
Local Government	24	775	948	1,026	7,048,188	591.67
State Government	9	74	73	74	703,789	734.90
Other	22	164	159	154	1,808,517	874.95

TABLE 6. COUNTY SUMMARY

North American Industry Classification System - Industry Groups	Number of Employing Units	Employment			Total Earnings Jul - Sep 2020	Average Weekly Earnings
		Jul	Aug	Sep		
LEE COUNTY - TOTAL	248	1,732	1,745	1,745	\$15,466,165	\$683.48
Natural Resources & Mining	36	181	179	204	1,470,187	601.55
Construction	3	9	9	5	42,440	425.82
Trade, Transportation & Utilities	39	330	336	332	3,305,207	764.27
Wholesale Trade	10	113	109	109	1,441,301	1,004.86
Retail Trade	19	159	170	166	946,176	441.11
Transportation, Warehousing & Utilities	10	58	57	57	917,730	1,231.30
Financial Activities	15	58	59	59	548,237	718.84
Professional & Business Services	13	51	52	49	1,037,668	1,575.41
Education & Health Services	100	401	402	401	3,456,984	662.60
Leisure & Hospitality	8	70	76	78	298,787	307.82
Local Government	15	235	241	215	1,422,994	475.23
State Government	6	379	375	385	3,746,179	759.00
Other	13	18	16	17	137,482	622.09
LINCOLN COUNTY - TOTAL	275	2,582	2,722	2,750	\$24,868,892	\$712.56
Natural Resources & Mining	32	141	138	149	1,298,917	700.35
Construction	19	142	136	133	1,504,418	844.70
Manufacturing	9	328	329	321	2,744,199	647.52
Trade, Transportation & Utilities	41	320	323	320	3,343,078	801.12
Wholesale Trade	7	52	49	48	567,977	879.68
Retail Trade	21	155	156	157	875,718	431.81
Transportation, Warehousing & Utilities	13	113	118	115	1,899,383	1,266.82
Financial Activities	18	68	67	66	649,057	745.19
Professional & Business Services	10	26	23	24	317,976	1,005.19
Education & Health Services	102	375	383	363	2,789,717	574.29
Leisure & Hospitality	14	138	140	143	397,437	217.85
Local Government	7	136	285	309	1,969,722	622.67
State Government	10	860	850	874	9,294,694	830.08
Other	13	48	48	48	559,677	896.92

TABLE 6. COUNTY SUMMARY

North American Industry Classification System - Industry Groups	Number of Employing Units	Employment			Total Earnings Jul - Sep 2020	Average Weekly Earnings
		Jul	Aug	Sep		
LITTLE RIVER COUNTY - TOTAL	250	2,886	3,003	3,124	\$37,126,452	\$950.59
Natural Resources & Mining	16	61	59	60	592,086	759.08
Construction	13	69	80	81	766,942	769.51
Manufacturing	15	946	1,008	1,011	20,888,254	1,625.76
Trade, Transportation & Utilities	59	544	537	558	4,308,784	606.67
Wholesale Trade	7	29	30	29	439,921	1,153.64
Retail Trade	36	399	402	417	2,656,723	503.36
Transportation, Warehousing & Utilities	16	116	105	112	1,212,140	840.01
Financial Activities	13	55	53	53	453,306	649.75
Professional & Business Services	17	111	112	114	1,162,362	795.96
Education & Health Services	51	205	221	202	1,666,022	612.21
Leisure & Hospitality	18	244	243	226	845,254	273.57
Local Government	20	526	562	686	5,417,235	704.70
State Government	10	71	74	79	680,619	701.19
Other	18	54	54	54	345,588	492.29
LOGAN COUNTY - TOTAL	487	4,682	5,101	5,130	\$41,840,535	\$647.46
Natural Resources & Mining	22	118	117	116	1,074,926	706.72
Construction	40	141	139	146	1,569,648	850.30
Manufacturing	20	1,109	1,177	1,168	11,646,420	778.12
Trade, Transportation & Utilities	100	947	988	973	6,925,741	549.60
Wholesale Trade	8	38	40	54	314,758	550.28
Retail Trade	71	781	821	795	4,894,764	471.24
Transportation, Warehousing & Utilities	21	128	127	124	1,716,219	1,044.99
Information	5	26	26	25	303,247	908.83
Financial Activities	52	183	181	183	2,234,172	942.56
Professional & Business Services	41	101	104	106	857,925	636.60
Education & Health Services	108	658	668	666	5,932,345	687.25
Leisure & Hospitality	32	303	302	303	1,150,563	292.42
Other Services	33	127	126	127	1,228,087	745.80
Local Government	22	498	808	837	5,276,771	568.23
State Government	12	471	465	480	3,640,690	593.33

TABLE 6. COUNTY SUMMARY

North American Industry Classification System - Industry Groups	Number of Employing Units	Employment			Total Earnings Jul - Sep 2020	Average Weekly Earnings
		Jul	Aug	Sep		
LONOKE COUNTY - TOTAL	1,324	12,886	13,425	13,827	\$117,865,125	\$677.65
Natural Resources & Mining	92	516	518	532	5,759,418	848.72
Construction	147	964	969	959	11,251,338	897.81
Manufacturing	35	944	1,046	1,367	13,244,567	910.47
Trade, Transportation & Utilities	287	2,985	3,086	2,980	25,298,064	645.01
Wholesale Trade	66	399	407	397	5,342,620	1,024.86
Retail Trade	166	2,279	2,368	2,270	15,304,027	510.58
Transportation, Warehousing & Utilities	55	307	311	313	4,651,417	1,152.96
Information	18	86	85	85	1,191,556	1,074.12
Financial Activities	168	700	711	690	10,923,510	1,199.81
Professional & Business Services	152	474	467	634	4,745,166	695.26
Education & Health Services	201	1,820	1,813	1,824	15,988,448	676.13
Leisure & Hospitality	122	1,824	1,845	1,846	8,230,464	344.39
Other Services	64	183	185	181	1,288,336	541.55
Local Government	24	2,233	2,542	2,570	18,255,118	573.55
State Government	14	157	158	159	1,689,140	822.37
MADISON COUNTY - TOTAL	257	3,026	3,415	3,362	\$29,923,721	\$704.42
Natural Resources & Mining	10	53	53	52	467,049	682.16
Construction	35	138	144	132	1,480,224	825.10
Manufacturing	23	1,180	1,245	1,239	11,762,434	740.83
Trade, Transportation & Utilities	56	685	699	678	5,649,958	632.32
Wholesale Trade	9	31	32	32	311,337	756.28
Retail Trade	37	501	513	493	3,424,576	524.41
Transportation, Warehousing & Utilities	10	153	154	153	1,914,045	960.22
Information	5	53	53	53	1,205,004	1,748.92
Financial Activities	20	87	87	88	876,567	772.08
Professional & Business Services	25	89	85	74	1,185,825	1,103.44
Education & Health Services	31	245	258	250	2,175,475	666.71
Leisure & Hospitality	16	154	153	156	565,926	282.07
Other Services	20	52	47	50	293,033	453.85
Local Government	9	248	549	548	3,833,482	657.73
State Government	7	42	42	42	428,744	785.25

TABLE 6. COUNTY SUMMARY

North American Industry Classification System - Industry Groups	Number of Employing Units	Employment			Total Earnings	Average Weekly Earnings
		Jul	Aug	Sep	Jul - Sep 2020	
MARION COUNTY - TOTAL	277	3,173	3,189	3,258	\$26,932,154	\$646.06
Manufacturing	21	1,243	1,263	1,242	11,829,119	728.33
Trade, Transportation & Utilities	59	554	545	535	3,966,441	560.18
Wholesale Trade	6	35	33	41	332,719	704.42
Retail Trade	44	487	479	461	3,144,753	508.56
Transportation, Warehousing & Utilities	9	32	33	33	488,969	1,151.42
Information	3	56	57	55	826,110	1,134.77
Financial Activities	28	222	205	205	1,810,117	660.95
Professional & Business Services	25	77	77	78	682,735	679.11
Education & Health Services	44	298	292	301	2,644,415	684.90
Leisure & Hospitality	33	191	180	186	762,469	315.90
Other Services	15	26	27	28	149,973	427.27
Local Government	18	371	407	488	2,962,168	539.95
State Government	7	40	40	40	423,079	813.61
Other	24	95	96	100	875,528	694.31
MILLER COUNTY - TOTAL	886	11,288	11,808	12,051	\$124,636,649	\$818.34
Natural Resources & Mining	30	294	286	272	3,185,714	862.87
Construction	68	582	559	554	6,679,704	909.42
Manufacturing	28	2,277	2,300	2,330	39,132,065	1,307.44
Trade, Transportation & Utilities	220	2,708	2,700	2,671	27,791,977	793.85
Wholesale Trade	48	463	475	477	6,633,969	1,081.92
Retail Trade	122	1,312	1,327	1,313	9,463,651	552.61
Transportation, Warehousing & Utilities	50	933	898	881	11,694,357	995.10
Information	5	95	96	98	1,520,155	1,213.86
Financial Activities	85	411	409	383	4,584,009	879.34
Professional & Business Services	76	927	1,013	1,061	7,267,761	558.87
Education & Health Services	186	1,212	1,222	1,207	9,650,260	611.64
Leisure & Hospitality	93	1,426	1,406	1,387	6,359,280	347.84
Other Services	54	229	227	222	1,757,589	598.23
Local Government	26	646	1,112	1,380	10,683,656	785.68
State Government	15	481	478	486	6,024,479	962.12

TABLE 6. COUNTY SUMMARY

North American Industry Classification System - Industry Groups	Number of Employing Units	Employment			Total Earnings Jul - Sep 2020	Average Weekly Earnings
		Jul	Aug	Sep		
MISSISSIPPI COUNTY - TOTAL	1,061	16,050	16,397	16,710	\$208,823,294	\$980.33
Natural Resources & Mining	104	514	506	507	4,794,252	724.54
Construction	58	804	828	846	12,657,632	1,178.77
Manufacturing	62	6,005	6,110	6,148	112,432,578	1,420.69
Trade, Transportation & Utilities	259	2,777	2,762	2,705	25,946,919	726.32
Wholesale Trade	53	353	334	333	4,840,399	1,095.11
Retail Trade	139	1,650	1,652	1,558	9,853,293	467.87
Transportation, Warehousing & Utilities	67	774	776	814	11,253,227	1,098.52
Information	6	26	27	28	178,113	507.44
Financial Activities	82	427	418	420	3,903,736	712.14
Professional & Business Services	80	872	883	942	8,946,596	765.52
Education & Health Services	204	1,162	1,270	1,313	12,590,666	775.84
Leisure & Hospitality	91	1,025	1,012	995	3,907,872	297.43
Other Services	46	264	266	261	2,654,372	774.40
Local Government	50	1,705	1,855	2,052	16,190,187	665.75
State Government	19	469	460	493	4,620,371	749.82
MONROE COUNTY - TOTAL	260	1,814	1,885	1,893	\$16,117,770	\$665.14
Natural Resources & Mining	26	118	118	120	2,115,414	1,371.27
Manufacturing	6	138	140	138	1,126,992	625.18
Trade, Transportation & Utilities	67	504	496	486	4,825,933	749.45
Wholesale Trade	16	166	151	141	2,030,723	1,023.21
Retail Trade	33	238	241	242	1,640,356	525.03
Transportation, Warehousing & Utilities	18	100	104	103	1,154,854	868.09
Financial Activities	20	85	84	82	822,252	755.98
Professional & Business Services	13	19	19	23	173,651	656.94
Education & Health Services	51	297	305	314	2,641,448	665.46
Leisure & Hospitality	24	260	259	269	1,011,684	296.28
Local Government	21	226	308	310	1,993,427	545.05
State Government	7	67	66	67	756,873	873.32
Other	25	100	90	84	650,096	547.53

TABLE 6. COUNTY SUMMARY

North American Industry Classification System - Industry Groups	Number of Employing Units	Employment			Total Earnings Jul - Sep 2020	Average Weekly Earnings
		Jul	Aug	Sep		
MONTGOMERY COUNTY - TOTAL	162	1,176	1,192	1,255	\$8,727,000	\$555.87
Natural Resources & Mining	8	27	26	20	197,263	623.59
Construction	25	53	58	64	447,605	590.25
Manufacturing	8	38	37	37	399,118	822.36
Trade, Transportation & Utilities	31	218	219	210	1,700,238	606.43
Wholesale Trade	7	65	62	57	561,763	704.55
Retail Trade	20	141	144	140	1,071,869	582.01
Transportation, Warehousing & Utilities	4	12	13	13	66,606	404.49
Financial Activities	11	57	61	63	432,103	550.92
Professional & Business Services	14	22	22	23	127,268	438.35
Education & Health Services	21	50	52	49	430,735	658.28
Leisure & Hospitality	14	347	294	276	1,998,850	503.02
Local Government	9	289	347	440	2,435,382	522.32
State Government	7	37	37	37	332,178	690.60
Other	14	38	39	36	226,260	462.07
NEVADA COUNTY - TOTAL	202	2,280	2,289	2,268	\$21,493,117	\$725.46
Natural Resources & Mining	13	52	52	50	700,566	1,049.80
Trade, Transportation & Utilities	39	507	505	501	5,180,679	790.18
Retail Trade	22	277	285	275	1,874,756	516.89
Other Trade, Transportation & Utilities	17	230	220	226	3,305,923	1,128.56
Financial Activities	11	67	63	52	471,377	597.69
Professional & Business Services	11	55	58	48	816,131	1,169.80
Education & Health Services	46	381	388	394	2,585,374	513.00
Leisure & Hospitality	9	81	88	79	286,768	266.84
Other Services	15	44	47	40	284,826	501.75
Local Government	29	367	360	375	2,026,273	424.32
State Government	9	55	55	55	482,315	674.57
Other	20	671	673	674	8,658,808	990.18

TABLE 6. COUNTY SUMMARY

North American Industry Classification System - Industry Groups	Number of Employing Units	Employment			Total Earnings Jul - Sep 2020	Average Weekly Earnings
		Jul	Aug	Sep		
NEWTON COUNTY - TOTAL	110	856	963	954	\$6,864,320	\$571.25
Construction	7	23	21	24	194,607	660.43
Manufacturing	7	41	42	43	388,747	711.99
Trade, Transportation & Utilities	24	143	140	141	1,382,563	752.48
Retail Trade	12	90	88	89	675,071	583.47
Other Trade, Transportation & Utilities	12	53	52	52	707,492	1,039.92
Education & Health Services	22	219	218	214	1,581,287	560.54
Leisure & Hospitality	14	153	151	140	725,492	377.07
Other Services	4	4	4	4	21,238	408.42
Local Government	14	214	328	331	1,950,489	515.59
State Government	7	37	37	37	360,903	750.32
Other	11	22	22	20	258,994	933.87
OUACHITA COUNTY - TOTAL	653	6,007	6,222	6,406	\$55,984,994	\$693.30
Natural Resources & Mining	38	154	158	154	1,662,816	823.45
Construction	41	193	187	198	1,977,269	789.43
Manufacturing	26	397	400	396	4,349,180	841.29
Trade, Transportation & Utilities	152	1,474	1,499	1,467	11,906,397	618.84
Wholesale Trade	24	207	204	202	2,304,350	867.49
Retail Trade	93	945	972	940	5,521,807	446.01
Transportation, Warehousing & Utilities	35	322	323	325	4,080,240	970.72
Information	6	31	30	30	373,904	948.19
Financial Activities	51	272	267	255	2,613,015	759.45
Professional & Business Services	45	496	506	501	4,734,235	726.89
Education & Health Services	183	1,222	1,240	1,244	14,184,900	883.28
Leisure & Hospitality	40	415	439	431	1,739,180	312.33
Other Services	27	108	100	100	739,932	554.39
Local Government	31	697	844	1,050	5,993,088	533.78
State Government	13	548	552	580	5,711,078	784.49

TABLE 6. COUNTY SUMMARY

North American Industry Classification System - Industry Groups	Number of Employing Units	Employment			Total Earnings Jul - Sep 2020	Average Weekly Earnings
		Jul	Aug	Sep		
PERRY COUNTY - TOTAL	150	978	1,132	1,119	\$9,148,046	\$653.79
Construction	15	92	82	81	726,086	657.09
Manufacturing	5	29	33	38	413,047	953.19
Trade, Transportation & Utilities	28	177	191	180	1,398,336	588.86
Retail Trade	16	143	157	147	747,003	385.65
Other Trade, Transportation & Utilities	12	34	34	33	651,333	1,488.19
Financial Activities	10	26	25	27	234,272	693.11
Professional & Business Services	19	52	48	47	589,365	925.22
Education & Health Services	31	211	212	210	1,747,167	636.95
Leisure & Hospitality	10	78	76	76	348,760	349.93
Local Government	9	166	310	319	2,011,116	583.78
State Government	7	36	36	36	364,279	778.37
Other	16	111	119	105	1,315,618	906.28
PHILLIPS COUNTY - TOTAL	706	4,819	5,070	5,136	\$42,003,198	\$645.13
Natural Resources & Mining	61	277	270	293	2,314,857	635.95
Construction	27	101	126	131	950,675	612.81
Manufacturing	11	413	416	425	4,696,925	864.36
Trade, Transportation & Utilities	132	1,214	1,247	1,186	9,908,241	626.96
Wholesale Trade	26	285	280	266	3,183,490	884.06
Retail Trade	69	705	736	704	4,202,924	452.17
Transportation, Warehousing & Utilities	37	224	231	216	2,521,827	867.30
Information	7	11	11	11	153,080	1,070.49
Financial Activities	41	200	198	197	2,037,033	790.06
Professional & Business Services	41	275	272	250	2,641,062	764.71
Education & Health Services	283	1,129	1,158	1,157	10,051,093	673.49
Leisure & Hospitality	39	372	362	364	1,389,833	292.10
Other Services	23	56	54	57	349,479	482.93
Local Government	27	498	673	771	4,463,983	530.46
State Government	14	273	283	294	3,046,937	827.22

TABLE 6. COUNTY SUMMARY

North American Industry Classification System - Industry Groups	Number of Employing Units	Employment			Total Earnings Jul - Sep 2020	Average Weekly Earnings
		Jul	Aug	Sep		
PIKE COUNTY - TOTAL	266	2,400	2,587	2,632	\$20,683,765	\$626.48
Natural Resources & Mining	23	113	123	116	1,308,418	857.79
Construction	17	43	46	54	367,311	592.76
Manufacturing	17	430	444	453	4,699,423	817.24
Trade, Transportation & Utilities	70	539	540	557	4,358,380	614.78
Wholesale Trade	9	100	103	109	1,018,432	753.28
Retail Trade	41	361	361	372	2,384,507	502.99
Transportation, Warehousing & Utilities	20	78	76	76	955,441	958.64
Information	7	27	24	24	273,699	842.15
Financial Activities	25	238	233	232	2,382,873	782.21
Professional & Business Services	13	56	40	55	667,293	1,019.81
Education & Health Services	32	248	266	270	1,712,900	504.19
Leisure & Hospitality	25	268	255	246	1,067,870	320.46
Other Services	18	70	72	66	498,605	553.19
Local Government	10	273	451	463	2,604,365	506.32
State Government	9	95	93	96	742,628	603.44
POINSETT COUNTY - TOTAL	470	4,715	4,952	4,988	\$52,288,953	\$823.38
Natural Resources & Mining	64	282	277	285	3,564,604	974.65
Construction	24	88	91	85	1,106,482	967.20
Manufacturing	17	680	690	709	13,460,154	1,494.08
Trade, Transportation & Utilities	115	1,176	1,158	1,129	11,980,378	798.35
Wholesale Trade	21	428	418	412	6,712,990	1,231.44
Retail Trade	65	612	613	585	3,622,950	461.91
Transportation, Warehousing & Utilities	29	136	127	132	1,644,438	960.72
Professional & Business Services	28	209	206	209	3,731,088	1,379.84
Education & Health Services	80	744	750	750	6,501,332	668.59
Leisure & Hospitality	43	472	473	491	1,910,958	307.10
Other Services	19	58	58	58	509,948	676.32
Local Government	30	682	921	951	6,347,755	573.56
State Government	10	105	104	104	961,059	708.57
Other	40	219	224	217	2,215,195	774.54

TABLE 6. COUNTY SUMMARY

North American Industry Classification System - Industry Groups	Number of Employing Units	Employment			Total Earnings	Average Weekly Earnings
		Jul	Aug	Sep	Jul - Sep 2020	
POLK COUNTY - TOTAL	475	5,209	5,527	5,592	\$46,320,260	\$654.66
Natural Resources & Mining	23	163	165	160	2,219,857	1,049.74
Construction	31	197	195	199	1,906,355	744.38
Manufacturing	35	1,205	1,195	1,221	10,755,353	685.45
Trade, Transportation & Utilities	117	1,072	1,078	1,077	8,231,537	588.65
Wholesale Trade	18	63	63	63	836,738	1,021.66
Retail Trade	63	785	792	787	4,905,757	478.89
Transportation, Warehousing & Utilities	36	224	223	227	2,489,042	852.22
Information	6	47	46	47	248,030	408.84
Financial Activities	41	210	209	208	1,977,646	727.88
Professional & Business Services	38	121	130	121	1,639,830	1,017.26
Education & Health Services	83	961	976	985	9,730,543	768.48
Leisure & Hospitality	42	449	467	469	1,639,363	273.15
Other Services	26	151	146	145	1,196,156	624.52
Local Government	21	352	648	659	4,407,391	613.07
State Government	12	281	272	301	2,368,199	639.94
POPE COUNTY - TOTAL	1,811	22,226	22,837	23,392	\$243,608,621	\$821.23
Natural Resources & Mining	35	687	680	295	8,904,021	1,236.33
Construction	159	1,057	1,086	1,122	14,170,937	1,001.60
Manufacturing	73	3,312	3,312	3,337	34,580,978	801.15
Trade, Transportation & Utilities	403	5,879	5,958	5,942	71,639,135	929.87
Wholesale Trade	73	545	547	538	6,297,749	891.61
Retail Trade	262	3,037	3,125	3,120	24,434,036	607.48
Transportation, Warehousing & Utilities	68	2,297	2,286	2,284	40,907,350	1,374.71
Information	17	107	103	104	998,656	733.95
Financial Activities	189	860	852	860	11,125,764	998.24
Professional & Business Services	255	1,781	1,847	1,868	20,720,613	870.03
Education & Health Services	367	3,051	3,118	3,134	33,933,188	841.74
Leisure & Hospitality	150	2,377	2,519	2,585	10,674,515	329.28
Other Services	104	444	442	450	3,528,532	609.49
Local Government	44	1,315	1,533	2,126	16,388,507	760.35
State Government	15	1,356	1,387	1,569	16,943,775	906.80

TABLE 6. COUNTY SUMMARY

North American Industry Classification System - Industry Groups	Number of Employing Units	Employment			Total Earnings Jul - Sep 2020	Average Weekly Earnings
		Jul	Aug	Sep		
PRAIRIE COUNTY - TOTAL	250	1,314	1,440	1,472	\$12,967,066	\$708.09
Natural Resources & Mining	35	182	169	161	2,575,028	1,160.62
Construction	12	52	60	70	948,206	1,202.29
Trade, Transportation & Utilities	59	344	346	340	2,757,055	617.71
Wholesale Trade	12	83	74	73	952,577	955.76
Retail Trade	33	210	220	215	1,293,062	462.63
Transportation, Warehousing & Utilities	14	51	52	52	511,416	761.41
Financial Activities	16	50	56	55	544,524	780.49
Professional & Business Services	15	57	56	57	587,464	797.46
Education & Health Services	48	249	262	262	2,082,678	621.76
Leisure & Hospitality	19	65	63	68	315,943	371.99
Local Government	15	182	295	306	2,090,270	616.05
State Government	7	30	30	30	293,972	753.77
Other	24	103	103	123	771,926	541.45
PULASKI COUNTY - TOTAL	14,434	221,321	226,668	227,563	\$2,970,268,828	\$1,014.65
Natural Resources & Mining	52	626	635	644	10,566,898	1,280.06
Construction	934	8,909	8,904	8,905	121,224,882	1,047.05
Manufacturing	329	12,165	12,189	11,771	166,329,459	1,062.53
Trade, Transportation & Utilities	3,096	46,490	47,462	47,201	567,496,952	927.79
Wholesale Trade	913	11,220	11,274	11,196	193,306,144	1,324.11
Retail Trade	1,778	23,151	23,654	23,432	193,389,838	635.40
Transportation, Warehousing & Utilities	405	12,119	12,534	12,573	180,800,970	1,120.81
Information	218	2,635	2,717	2,705	40,313,579	1,154.66
Financial Activities	1,736	17,544	17,471	17,406	331,037,281	1,457.30
Professional & Business Services	2,764	32,396	32,957	32,947	438,609,042	1,029.68
Education & Health Services	2,553	39,588	40,354	40,490	560,646,842	1,074.30
Leisure & Hospitality	1,283	18,416	18,754	18,975	93,858,634	385.78
Other Services	1,153	6,227	6,162	6,076	65,170,750	814.48
Local Government	108	10,125	12,673	13,222	142,516,410	913.06
State Government	208	26,200	26,390	27,221	432,498,099	1,250.55

TABLE 6. COUNTY SUMMARY

North American Industry Classification System - Industry Groups	Number of Employing Units	Employment			Total Earnings Jul - Sep 2020	Average Weekly Earnings
		Jul	Aug	Sep		
RANDOLPH COUNTY - TOTAL	396	5,698	5,777	5,913	\$50,392,739	\$668.80
Natural Resources & Mining	25	238	243	242	3,098,720	989.06
Construction	25	81	86	76	660,880	627.62
Manufacturing	30	1,614	1,682	1,712	17,668,581	814.17
Trade, Transportation & Utilities	98	916	916	935	7,647,146	637.78
Wholesale Trade	14	113	108	111	1,208,076	839.72
Retail Trade	58	633	634	645	4,229,958	510.54
Transportation, Warehousing & Utilities	26	170	174	179	2,209,112	974.75
Information	5	20	21	21	238,496	887.70
Financial Activities	34	150	151	150	1,334,134	682.65
Professional & Business Services	31	253	259	261	2,038,007	608.42
Education & Health Services	64	961	959	1,004	8,319,014	656.56
Leisure & Hospitality	31	423	423	408	1,548,043	284.88
Other Services	19	49	46	46	329,223	538.83
Local Government	24	747	742	783	5,111,752	519.21
State Government	10	246	249	275	2,398,743	718.90
SAINT FRANCIS COUNTY - TOTAL	644	5,961	6,136	6,121	\$53,581,180	\$678.72
Natural Resources & Mining	42	182	165	166	1,830,787	823.57
Construction	35	216	218	219	2,460,642	869.59
Trade, Transportation & Utilities	141	1,657	1,610	1,600	14,287,296	677.43
Wholesale Trade	29	513	511	505	5,596,310	844.64
Retail Trade	91	896	905	876	5,717,560	492.88
Transportation, Warehousing & Utilities	21	248	194	219	2,973,426	1,038.09
Information	5	42	42	45	467,619	836.53
Financial Activities	51	241	239	227	2,227,591	727.10
Professional & Business Services	46	179	177	167	1,618,797	714.28
Education & Health Services	202	1,321	1,309	1,309	13,071,197	765.79
Leisure & Hospitality	47	633	629	599	2,463,223	305.45
Local Government	28	485	752	751	5,283,496	613.31
State Government	14	324	332	366	3,419,897	772.22
Other	33	681	663	672	6450635	738.40

TABLE 6. COUNTY SUMMARY

North American Industry Classification System - Industry Groups	Number of Employing Units	Employment			Total Earnings	Average Weekly Earnings
		Jul	Aug	Sep	Jul - Sep 2020	
SALINE COUNTY - TOTAL	2,149	23,100	24,759	24,885	\$229,933,992	\$729.43
Natural Resources & Mining	15	62	64	62	607,334	745.50
Construction	290	2,305	2,312	2,343	28,068,545	930.65
Manufacturing	80	1,284	1,259	1,294	15,541,057	934.69
Trade, Transportation & Utilities	476	5,637	5,712	5,667	50,029,053	678.49
Wholesale Trade	114	546	536	529	7,438,868	1,065.59
Retail Trade	288	4,473	4,553	4,511	35,544,627	605.94
Transportation, Warehousing & Utilities	74	618	623	627	7,045,558	870.40
Information	19	132	130	135	1,836,017	1,067.24
Financial Activities	225	884	873	874	11,379,393	998.10
Professional & Business Services	295	1,757	1,778	1,801	20,912,643	904.42
Education & Health Services	341	4,520	4,592	4,619	46,683,183	784.58
Leisure & Hospitality	203	3,497	3,463	3,424	15,107,050	335.73
Other Services	158	755	725	752	6,398,173	661.51
Local Government	33	1,458	3,050	3,089	25,626,123	778.43
State Government	14	809	801	825	7,745,421	734.05
SCOTT COUNTY - TOTAL	186	2,760	2,857	2,978	\$22,941,098	\$615.95
Natural Resources & Mining	18	182	179	178	1,823,754	780.83
Trade, Transportation & Utilities	36	325	330	315	2,442,663	581.13
Wholesale Trade	7	30	29	26	175,000	475.11
Retail Trade	23	228	233	223	1,383,977	466.93
Transportation, Warehousing & Utilities	6	67	68	66	883,686	1,014.56
Financial Activities	16	57	60	60	569,278	742.21
Professional & Business Services	15	119	120	117	747,701	484.68
Education & Health Services	42	301	293	293	3,421,941	890.28
Leisure & Hospitality	18	174	168	157	575,910	266.34
Other Services	9	35	35	34	257,513	571.40
Local Government	6	278	355	508	3,029,999	612.82
State Government	6	32	32	32	342,438	823.17
Other	20	1,257	1,285	1,284	9,729,901	586.87

TABLE 6. COUNTY SUMMARY

North American Industry Classification System - Industry Groups	Number of Employing Units	Employment			Total Earnings Jul - Sep 2020	Average Weekly Earnings
		Jul	Aug	Sep		
SEARCY COUNTY - TOTAL	170	1,415	1,469	1,451	\$10,557,516	\$562.02
Construction	11	7	7	11	32,093	296.24
Manufacturing	14	144	152	153	1,111,924	571.49
Trade, Transportation & Utilities	34	255	261	262	1,953,557	579.46
Wholesale Trade	5	34	34	34	266,835	603.70
Retail Trade	23	203	210	207	1,460,574	543.64
Transportation, Warehousing & Utilities	6	18	17	21	226,148	931.93
Financial Activities	14	109	96	77	734,607	601.15
Education & Health Services	39	305	314	316	2,572,275	634.87
Leisure & Hospitality	15	139	140	145	463,883	252.48
Local Government	10	214	322	331	1,835,869	488.65
State Government	6	44	43	44	417,082	734.73
Other	27	198	134	112	1,436,226	746.48
SEBASTIAN COUNTY - TOTAL	3,686	58,069	60,176	60,642	\$671,971,685	\$866.86
Natural Resources & Mining	39	264	262	266	5,011,059	1,460.10
Construction	262	2,363	2,382	2,364	26,206,675	850.71
Manufacturing	188	10,353	10,522	10,694	132,645,906	969.64
Trade, Transportation & Utilities	871	12,439	12,665	12,544	131,539,853	806.29
Wholesale Trade	218	2,591	2,597	2,593	34,751,079	1,030.65
Retail Trade	542	7,343	7,534	7,397	54,905,954	568.85
Transportation, Warehousing & Utilities	111	2,505	2,534	2,554	41,882,820	1,272.92
Information	41	801	789	786	15,970,735	1,551.16
Financial Activities	405	2,292	2,287	2,277	32,020,210	1,077.78
Professional & Business Services	563	7,137	7,459	7,567	77,149,677	803.31
Education & Health Services	647	11,253	11,188	11,252	159,618,696	1,093.26
Leisure & Hospitality	353	5,552	5,626	5,574	25,131,099	346.20
Other Services	251	1,098	1,124	1,089	9,525,509	663.91
Local Government	43	2,971	4,330	4,596	37,590,803	729.16
State Government	23	1,546	1,542	1,633	19,561,463	956.19

TABLE 6. COUNTY SUMMARY

North American Industry Classification System - Industry Groups	Number of Employing Units	Employment			Total Earnings Jul - Sep 2020	Average Weekly Earnings
		Jul	Aug	Sep		
SEVIER COUNTY - TOTAL	312	4,487	4,616	4,628	\$39,141,194	\$657.82
Natural Resources & Mining	18	170	178	180	2,057,726	899.36
Construction	20	156	161	149	1,986,120	983.55
Trade, Transportation & Utilities	82	785	791	780	6,586,169	645.11
Wholesale Trade	11	71	73	73	892,970	949.63
Retail Trade	58	617	621	611	4,196,108	523.71
Transportation, Warehousing & Utilities	13	97	97	96	1,497,091	1,191.32
Financial Activities	27	196	198	194	2,125,626	834.23
Professional & Business Services	26	175	177	174	1,315,072	576.95
Education & Health Services	62	433	432	433	3,455,038	614.27
Leisure & Hospitality	24	259	262	255	827,825	246.18
Local Government	13	747	848	895	6,407,731	593.86
State Government	8	122	133	138	1,294,475	760.11
Other	32	1,444	1,436	1,430	13,085,412	700.63
SHARP COUNTY - TOTAL	387	3,083	3,165	3,330	\$24,500,884	\$590.32
Construction	27	110	107	110	991,517	699.73
Manufacturing	15	128	122	120	1,073,894	669.79
Trade, Transportation & Utilities	86	746	761	725	4,723,007	488.32
Wholesale Trade	13	38	46	37	238,108	454.12
Retail Trade	64	667	673	656	3,924,018	453.68
Transportation, Warehousing & Utilities	9	41	42	32	560,881	1,125.51
Information	7	20	17	19	176,698	728.15
Financial Activities	33	164	163	162	1,975,650	932.35
Professional & Business Services	38	129	121	124	1,224,503	755.56
Education & Health Services	84	828	828	833	7,695,038	713.45
Leisure & Hospitality	34	395	386	375	1,607,190	320.84
Local Government	24	430	527	731	4,046,929	553.26
State Government	7	55	54	55	528,260	743.33
Other	32	78	79	76	458,198	453.81

TABLE 6. COUNTY SUMMARY

North American Industry Classification System - Industry Groups	Number of Employing Units	Employment			Total Earnings	Average Weekly Earnings
		Jul	Aug	Sep	Jul - Sep 2020	
STONE COUNTY - TOTAL	273	2,306	2,481	2,447	\$18,530,733	\$591.14
Natural Resources & Mining	4	9	9	9	55,322	472.84
Construction	16	29	33	33	220,233	534.98
Manufacturing	18	233	239	254	1,669,806	530.77
Trade, Transportation & Utilities	66	570	581	554	4,178,957	565.62
Wholesale Trade	5	33	33	29	231,219	561.67
Retail Trade	48	495	506	483	3,406,025	529.65
Transportation, Warehousing & Utilities	13	42	42	42	541,713	992.15
Financial Activities	37	125	128	131	1,246,571	749.14
Professional & Business Services	14	27	24	24	128,026	393.93
Education & Health Services	49	528	541	513	5,653,179	824.64
Leisure & Hospitality	30	453	447	423	1,763,894	307.67
Local Government	10	191	338	362	2,453,902	635.56
State Government	7	96	96	98	853,611	679.27
Other	22	45	45	46	307,232	521.32
UNION COUNTY - TOTAL	1,253	15,446	15,894	16,230	\$203,413,487	\$986.79
Natural Resources & Mining	83	303	324	316	3,852,493	942.78
Construction	79	1,330	1,311	1,323	20,569,215	1,197.46
Manufacturing	52	2,694	2,638	2,676	45,109,544	1,299.94
Trade, Transportation & Utilities	296	3,498	3,530	3,595	36,675,838	796.73
Wholesale Trade	66	446	439	441	6,989,413	1,216.40
Retail Trade	175	2,094	2,114	2,182	14,401,052	520.08
Transportation, Warehousing & Utilities	55	958	977	972	15,285,373	1,213.41
Information	8	55	58	59	731,043	980.83
Financial Activities	95	564	566	563	6,682,822	910.92
Professional & Business Services	125	1,788	1,751	1,765	43,079,003	1,874.30
Education & Health Services	280	1,973	1,986	2,055	20,749,979	796.22
Leisure & Hospitality	98	1,276	1,292	1,272	5,595,187	336.25
Other Services	89	386	399	381	2,900,381	574.03
Local Government	32	1,085	1,542	1,723	12,225,686	648.58
State Government	16	494	497	502	5,242,296	810.29

TABLE 6. COUNTY SUMMARY

North American Industry Classification System - Industry Groups	Number of Employing Units	Employment			Total Earnings	Average Weekly Earnings
		Jul	Aug	Sep	Jul - Sep 2020	
VAN BUREN COUNTY - TOTAL	337	3,123	3,280	3,371	\$28,726,446	\$678.25
Natural Resources & Mining	10	80	81	79	1,668,290	1,604.13
Construction	36	105	108	108	937,454	673.94
Manufacturing	9	225	220	220	1,584,826	549.97
Trade, Transportation & Utilities	91	869	851	838	8,009,124	722.54
Wholesale Trade	11	43	34	34	473,079	983.53
Retail Trade	51	603	595	578	3,914,595	508.65
Transportation, Warehousing & Utilities	29	223	222	226	3,621,450	1,245.48
Information	7	35	32	34	355,056	811.25
Financial Activities	35	149	150	150	1,695,185	871.26
Professional & Business Services	28	115	121	117	1,208,851	790.27
Education & Health Services	59	699	693	707	6,754,382	742.59
Leisure & Hospitality	25	262	259	258	1,176,649	348.57
Other Services	20	194	201	206	1,273,244	488.89
Local Government	11	346	521	610	3,619,698	565.55
State Government	6	44	43	44	443,687	781.60
WASHINGTON COUNTY - TOTAL	6,378	98,332	103,421	106,533	\$1,213,359,932	\$908.27
Natural Resources & Mining	38	318	313	316	4,068,023	991.31
Construction	615	6,326	6,307	6,281	87,567,148	1,068.40
Manufacturing	229	13,294	13,580	13,766	166,248,958	944.02
Trade, Transportation & Utilities	1,366	22,127	22,237	22,241	247,434,247	857.30
Wholesale Trade	381	3,581	3,579	3,554	71,248,651	1,534.63
Retail Trade	787	12,198	12,431	12,468	99,312,370	617.79
Transportation, Warehousing & Utilities	198	6,348	6,227	6,219	76,873,226	943.92
Information	89	805	760	773	11,275,670	1,112.95
Financial Activities	744	3,886	3,894	3,824	55,847,688	1,110.65
Professional & Business Services	1,193	12,783	13,091	13,076	206,489,323	1,223.40
Education & Health Services	919	15,344	15,547	15,870	206,368,874	1,018.45
Leisure & Hospitality	706	10,396	11,078	11,506	51,337,043	359.22
Other Services	397	2,051	2,055	2,077	22,101,841	824.91
Local Government	60	4,783	6,907	8,454	70,704,837	809.99
State Government	22	6,219	7,652	8,349	83,916,280	871.53

TABLE 6. COUNTY SUMMARY

North American Industry Classification System - Industry Groups	Number of Employing Units	Employment			Total Earnings Jul - Sep 2020	Average Weekly Earnings
		Jul	Aug	Sep		
WHITE COUNTY - TOTAL	1,803	22,014	23,477	23,712	\$227,719,324	\$759.37
Natural Resources & Mining	47	369	365	362	5,358,235	1,128.21
Construction	167	1,226	1,199	1,214	15,033,052	953.33
Manufacturing	61	2,173	2,195	2,182	25,829,650	910.03
Trade, Transportation & Utilities	476	6,141	6,399	6,316	59,487,817	728.04
Wholesale Trade	82	566	582	578	6,568,600	878.23
Retail Trade	308	3,467	3,604	3,495	26,455,843	577.82
Transportation, Warehousing & Utilities	86	2,108	2,213	2,243	26,463,374	930.37
Information	21	91	94	99	884,465	718.69
Financial Activities	186	926	924	905	11,092,446	929.15
Professional & Business Services	182	1,059	1,080	1,125	9,764,002	690.33
Education & Health Services	326	5,230	5,311	5,410	61,129,843	884.39
Leisure & Hospitality	164	2,529	2,547	2,523	10,676,156	324.22
Other Services	112	468	466	471	4,529,785	744.01
Local Government	46	1,368	2,470	2,612	19,510,792	698.06
State Government	15	434	427	493	4,423,081	753.85
WOODRUFF COUNTY - TOTAL	187	1,579	1,697	1,750	\$16,789,843	\$770.91
Natural Resources & Mining	34	181	181	189	1,628,987	682.25
Construction	10	35	33	33	307,185	701.87
Manufacturing	5	171	170	189	2,112,792	919.94
Trade, Transportation & Utilities	46	347	348	357	3,532,594	774.92
Wholesale Trade	13	148	142	148	1,864,629	982.42
Retail Trade	24	139	141	141	820,162	449.57
Transportation, Warehousing & Utilities	9	60	65	68	847,803	1,013.71
Financial Activities	10	44	44	43	400,261	705.10
Education & Health Services	42	238	246	247	2,292,129	723.60
Leisure & Hospitality	11	94	88	85	394,353	340.84
Local Government	9	260	374	389	3,632,300	819.38
State Government	5	33	33	33	339,238	790.76
Other	15	176	180	185	2,150,004	917.11

TABLE 6. COUNTY SUMMARY

North American Industry Classification System - Industry Groups	Number of Employing Units	Employment			Total Earnings	Average Weekly Earnings
		Jul	Aug	Sep	Jul - Sep 2020	
YELL COUNTY - TOTAL	415	5,935	6,174	6,394	\$52,378,659	\$653.27
Natural Resources & Mining	25	242	245	246	2,894,751	911.35
Construction	32	232	224	223	2,328,650	791.43
Manufacturing	22	2,371	2,359	2,376	20,430,824	663.50
Trade, Transportation & Utilities	88	776	782	783	5,987,680	590.25
Wholesale Trade	15	66	65	61	386,292	464.29
Retail Trade	49	541	539	539	3,084,837	439.71
Transportation, Warehousing & Utilities	24	169	178	183	2,516,551	1,095.74
Financial Activities	32	161	159	157	2,099,331	1,015.64
Professional & Business Services	37	322	326	327	2,646,538	626.40
Education & Health Services	101	643	660	674	5,252,139	613.07
Leisure & Hospitality	24	304	304	296	1,104,093	281.85
Local Government	23	685	915	1,111	7,702,986	655.70
State Government	10	70	70	70	651,452	715.88
Other	21	129	130	131	1,280,215	757.52
STATEWIDE COUNTY - TOTAL	12,362	30,777	31,198	32,337	\$558,861,089	\$1,367.46
Natural Resources & Mining	118	234	242	251	3,981,535	1,263.85
Construction	918	3,699	3,832	3,950	60,266,877	1,211.37
Manufacturing	94	200	200	205	5,735,515	2,187.74
Trade, Transportation & Utilities	3,656	7,611	7,705	7,642	185,136,079	1,860.95
Wholesale Trade	2,992	6,027	6,073	5,996	159,713,932	2,036.75
Retail Trade	264	492	481	505	9,399,013	1,467.53
Transportation, Warehousing & Utilities	400	1,092	1,151	1,141	16,023,134	1,092.69
Information	622	1,131	1,140	1,134	26,760,596	1,813.66
Financial Activities	897	2,282	2,321	2,314	42,268,050	1,410.17
Professional & Business Services	4,797	11,230	11,273	12,325	179,935,922	1,192.25
Education & Health Services	708	2,661	2,672	2,650	32,844,354	949.45
Leisure & Hospitality	129	324	403	421	2,345,664	471.52
State Government	15	709	699	724	8,877,313	960.89
Other	408	696	711	721	10,709,184	1,028.79

Note: Statewide classification includes employment and payroll data for employers that have not provided a physical location for each employing unit. This section also includes employers without a physical location in Arkansas.

TABLE 7. FEDERAL GOVERNMENT EMPLOYMENT AND EARNINGS IN ARKANSAS

North American Industry Classification System - Industry Groups	Number of Employing Units	Employment			Total Earnings Jul - Sep 2020	Average Weekly Earnings
		Jul	Aug	Sep		
TOTAL	1,192	20,733	24,094	23,277	\$363,474,551	\$1,231.63
Trade, Transportation & Utilities	585	5,498	5,532	5,513	70,270,058	980.24
Information	2	36	36	37	594,215	1,258.04
Financial Activities	14	108	110	108	2,128,451	1,506.69
Professional & Business Services	32	885	891	852	18,423,430	1,617.79
Education & Health Services	18	5,325	5,329	5,305	104,522,523	1,511.41
Leisure & Hospitality	23	284	273	275	3,232,391	896.56
Other Services	1	1	1	1	9,892	760.92
Public Administration	517	8,596	11,922	11,186	164,293,591	1,195.87

TABLE 8. LOCAL WORKFORCE DEVELOPMENT AREA SUMMARY

North American Industry Classification System - Industry Groups	Number of Employing Units	Employment			Total Earnings Jul - Sep 2020	Average Weekly Earnings
		Jul	Aug	Sep		
CENTRAL LOCAL WORKFORCE DEVELOPMENT AREA	6,968	76,963	80,213	82,192	\$791,866,873	\$763.42
Natural Resources & Mining	208	1,141	1,155	1,166	15,287,645	1,019.04
Construction	825	6,277	6,359	6,417	76,228,314	923.27
Manufacturing	224	5,628	5,676	6,079	76,400,936	1,014.27
Trade, Transportation & Utilities	1,527	16,882	17,184	17,033	148,536,210	670.81
Wholesale Trade	341	1,904	1,873	1,846	25,404,936	1,042.62
Retail Trade	930	13,076	13,397	13,239	98,686,655	573.48
Transportation, Warehousing & Utilities	256	1,902	1,914	1,948	24,444,619	978.67
Information	69	1,834	1,834	1,815	39,876,729	1,678.34
Financial Activities	752	3,170	3,196	3,169	42,596,411	1,030.93
Professional & Business Services	942	5,735	5,779	5,952	68,049,912	899.11
Education & Health Services	1,124	14,368	14,603	14,535	146,938,034	779.40
Leisure & Hospitality	648	10,280	10,377	10,371	45,215,455	336.29
Other Services	454	1,886	1,873	1,917	15,581,663	633.50
Local Government	135	5,763	8,268	9,487	72,286,424	709.31
State Government	60	3,999	3,909	4,251	44,869,140	851.58
Note: Pulaski County is not included in the Central Local Workforce Development Area. Please refer to Page 51 for information on Pulaski County. Central Local Workforce Development Area includes these counties: Faulkner, Lonoke, Monroe, Prairie, and Saline.						
EASTERN LOCAL WORKFORCE DEVELOPMENT AREA	3,252	30,896	32,056	32,815	\$293,306,110	\$706.78
Natural Resources & Mining	242	1,178	1,151	1,235	10,508,281	680.41
Construction	127	801	829	825	9,066,683	852.27
Manufacturing	73	3,284	3,300	3,343	37,587,673	873.79
Trade, Transportation & Utilities	732	8,688	8,521	8,375	81,933,971	739.05
Wholesale Trade	145	1,868	1,855	1,806	23,267,929	971.16
Retail Trade	398	4,541	4,423	4,288	28,797,526	501.48
Transportation, Warehousing & Utilities	189	2,279	2,243	2,281	29,868,516	1,013.19
Information	26	115	112	118	1,314,319	879.14
Financial Activities	258	1,146	1,157	1,118	12,790,997	862.84
Professional & Business Services	244	1,551	1,605	1,476	15,670,150	780.70
Education & Health Services	943	5,605	5,567	5,655	52,490,609	719.87
Leisure & Hospitality	273	3,604	3,679	3,755	17,334,217	362.40
Other Services	151	670	673	673	5,584,952	639.30
Local Government	127	2,610	3,816	4,466	31,668,301	670.96
State Government	56	1,644	1,646	1,776	17,355,957	790.61
Eastern Local Workforce Development Area includes these counties: Crittenden, Cross, Lee, Phillips, and Saint Francis.						

TABLE 8. LOCAL WORKFORCE DEVELOPMENT AREA SUMMARY

North American Industry Classification System - Industry Groups	Number of Employing Units	Employment			Total Earnings Jul - Sep 2020	Average Weekly Earnings
		Jul	Aug	Sep		
NORTH CENTRAL LOCAL WORKFORCE DEVELOPMENT AREA	5,423	62,521	65,220	66,667	\$616,154,363	\$731.40
Natural Resources & Mining	206	1,437	1,421	1,454	18,428,655	986.26
Construction	437	2,865	2,881	2,875	34,906,727	934.39
Manufacturing	215	8,631	8,671	8,610	95,336,069	849.05
Trade, Transportation & Utilities	1,381	14,642	14,958	14,744	134,284,455	698.83
Wholesale Trade	222	1,440	1,440	1,412	16,687,664	897.25
Retail Trade	907	9,542	9,761	9,555	69,194,566	553.33
Transportation, Warehousing & Utilities	252	3,660	3,757	3,777	48,402,225	997.83
Information	74	333	334	354	3,366,081	760.81
Financial Activities	531	2,639	2,660	2,623	31,230,260	909.74
Professional & Business Services	486	3,142	3,144	3,214	29,298,470	711.70
Education & Health Services	957	13,788	13,992	14,147	152,019,329	836.73
Leisure & Hospitality	497	6,473	6,434	6,333	27,164,346	325.82
Other Services	323	1,243	1,273	1,278	9,968,271	606.32
Local Government	223	4,832	6,940	8,364	55,354,510	634.39
State Government	93	2,496	2,512	2,671	24,797,190	745.20

North Central Local Workforce Development Area includes these counties: Cleburne, Fulton, Independence, Izard, Jackson, Sharp, Stone, Van Buren, White, and Woodruff.

NORTHEAST LOCAL WORKFORCE DEVELOPMENT AREA	6,444	94,066	97,009	99,372	\$1,052,404,296	\$836.17
Natural Resources & Mining	437	2,067	2,029	2,039	21,585,896	811.96
Construction	479	3,847	3,870	3,833	51,084,456	1,020.67
Manufacturing	303	20,122	20,494	20,767	291,228,692	1,094.87
Trade, Transportation & Utilities	1,652	18,947	19,103	18,943	180,885,396	732.42
Wholesale Trade	347	3,807	3,791	3,812	50,893,401	1,029.33
Retail Trade	970	11,788	11,986	11,770	85,996,757	558.33
Transportation, Warehousing & Utilities	335	3,352	3,326	3,361	43,995,238	1,011.33
Information	56	580	573	592	7,809,474	1,032.77
Financial Activities	575	3,276	3,275	3,248	39,695,350	934.84
Professional & Business Services	661	6,780	6,981	7,387	66,360,401	724.13
Education & Health Services	1,047	16,381	16,754	17,031	209,802,814	965.12
Leisure & Hospitality	581	8,691	8,782	8,816	37,307,838	327.49
Other Services	349	1,522	1,526	1,538	13,555,559	682.12
Local Government	215	8,013	9,854	11,251	86,848,154	688.30
State Government	89	3,840	3,768	3,927	46,240,266	925.08

Northeast Local Workforce Development Area includes these counties: Clay, Craighead, Greene, Lawrence, Mississippi, Poinsett, and Randolph.

TABLE 8. LOCAL WORKFORCE DEVELOPMENT AREA SUMMARY

North American Industry Classification System - Industry Groups	Number of Employing Units	Employment			Total Earnings Jul - Sep 2020	Average Weekly Earnings
		Jul	Aug	Sep		
NORTHWEST LOCAL WORKFORCE DEVELOPMENT AREA	17,235	262,303	272,258	277,586	\$3,338,768,599	\$948.70
Natural Resources & Mining	140	1,653	1,577	1,553	21,894,871	1,056.38
Construction	1,625	13,473	13,489	13,409	172,593,019	986.58
Manufacturing	640	35,686	36,515	36,851	426,098,771	901.68
Trade, Transportation & Utilities	3,944	61,090	61,789	61,351	736,284,620	922.28
Wholesale Trade	1,256	10,649	10,662	10,617	239,595,365	1,731.75
Retail Trade	2,164	31,256	31,919	31,494	246,740,375	601.46
Transportation, Warehousing & Utilities	524	19,185	19,208	19,240	249,948,880	1,000.82
Information	248	2,318	2,216	2,262	36,669,621	1,245.18
Financial Activities	1,835	9,966	9,990	9,809	150,069,511	1,163.49
Professional & Business Services	2,996	48,799	49,432	49,146	892,194,106	1,397.04
Education & Health Services	2,447	34,461	35,243	35,630	422,929,216	926.57
Leisure & Hospitality	1,855	27,123	27,956	28,389	134,925,856	373.04
Other Services	1,092	5,174	5,171	5,201	49,875,704	740.37
Local Government	310	14,304	19,154	23,267	189,460,626	770.77
State Government	103	8,256	9,726	10,718	105,772,678	850.49
Northwest Local Workforce Development Area includes these counties: Baxter, Benton, Boone, Carroll, Madison, Marion, Newton, Searcy, and Washington.						
SOUTHEAST LOCAL WORKFORCE DEVELOPMENT AREA	6,244	62,051	64,107	65,431	\$641,366,560	\$772.53
Natural Resources & Mining	436	2,216	2,197	2,231	23,957,134	832.11
Construction	350	2,122	2,122	2,090	24,986,770	910.35
Manufacturing	210	13,372	13,414	13,437	179,099,602	1,027.54
Trade, Transportation & Utilities	1,257	11,626	11,711	11,830	105,293,975	690.95
Wholesale Trade	226	1,885	1,795	1,827	23,303,626	976.53
Retail Trade	744	7,276	7,433	7,422	49,845,164	519.76
Transportation, Warehousing & Utilities	287	2,465	2,483	2,581	32,145,185	985.27
Information	44	214	206	216	2,331,668	846.03
Financial Activities	456	2,478	2,478	2,437	29,806,363	930.39
Professional & Business Services	473	3,349	3,383	3,478	33,256,780	751.68
Education & Health Services	1,942	9,832	9,887	9,809	94,368,313	737.51
Leisure & Hospitality	420	4,710	4,793	4,926	19,996,316	319.81
Other Services	322	1,040	1,049	1,053	8,647,497	635.13
Local Government	209	5,720	7,463	8,187	60,235,254	650.47
State Government	125	5,372	5,404	5,737	59,386,888	829.93
Southeast Local Workforce Development Area includes these counties: Arkansas, Ashley, Bradley, Chicot, Cleveland, Desha, Drew, Grant, Jefferson, and Lincoln.						

TABLE 8. LOCAL WORKFORCE DEVELOPMENT AREA SUMMARY

North American Industry Classification System - Industry Groups	Number of Employing Units	Employment			Total Earnings Jul - Sep 2020	Average Weekly Earnings
		Jul	Aug	Sep		
SOUTHWEST LOCAL WORKFORCE DEVELOPMENT AREA	5,588	69,316	71,714	73,293	\$759,887,625	\$818.20
Natural Resources & Mining	332	2,060	2,085	2,079	24,326,633	901.97
Construction	348	2,962	2,939	2,931	38,244,039	999.27
Manufacturing	227	18,327	18,367	18,566	258,572,621	1,079.82
Trade, Transportation & Utilities	1,313	13,932	14,028	13,965	131,080,361	721.51
Wholesale Trade	238	1,745	1,748	1,718	23,206,107	1,027.68
Retail Trade	773	8,543	8,677	8,657	56,774,310	506.31
Transportation, Warehousing & Utilities	302	3,644	3,603	3,590	51,099,944	1,088.15
Information	46	312	315	318	4,315,400	1,053.82
Financial Activities	459	2,465	2,454	2,380	26,686,821	843.75
Professional & Business Services	441	4,332	4,415	4,434	64,954,555	1,137.21
Education & Health Services	1,254	8,891	9,057	9,149	83,026,241	707.09
Leisure & Hospitality	440	5,462	5,561	5,493	22,953,839	320.72
Other Services	334	1,302	1,303	1,275	9,866,482	586.82
Local Government	263	6,174	7,988	9,384	64,514,671	632.29
State Government	131	3,097	3,202	3,319	31,345,962	752.10
Southwest Local Workforce Development Area includes these counties: Calhoun, Columbia, Dallas, Hempstead, Howard, Lafayette, Little River, Miller, Nevada, Ouachita, Sevier, and Union						
WEST CENTRAL LOCAL WORKFORCE DEVELOPMENT AREA	8,119	96,382	99,727	101,761	\$970,876,703	\$752.17
Natural Resources & Mining	242	2,207	2,185	1,790	25,325,148	945.37
Construction	748	4,425	4,410	4,447	49,957,220	867.99
Manufacturing	332	14,355	14,518	14,580	164,054,469	871.26
Trade, Transportation & Utilities	1,793	21,360	21,663	21,475	209,141,414	748.29
Wholesale Trade	316	1,834	1,829	1,814	22,600,266	952.25
Retail Trade	1,189	14,064	14,333	14,183	106,721,946	578.40
Transportation, Warehousing & Utilities	288	5,462	5,501	5,478	79,819,202	1,120.36
Information	76	667	642	651	6,772,568	797.40
Financial Activities	825	3,697	3,720	3,683	43,608,723	906.63
Professional & Business Services	911	7,159	7,475	7,566	73,650,487	765.60
Education & Health Services	1,512	16,391	16,584	16,780	188,184,521	872.82
Leisure & Hospitality	819	12,518	12,682	12,495	59,854,784	366.43
Other Services	516	2,053	2,085	2,120	16,304,340	601.24
Local Government	232	7,187	9,186	11,143	86,404,137	724.65
State Government	113	4,363	4,577	5,031	47,618,892	786.56
West Central Local Workforce Development Area includes these counties: Clark, Conway, Garland, Hot Spring, Johnson, Montgomery, Perry, Pike, Pope, and Yell						

TABLE 8. LOCAL WORKFORCE DEVELOPMENT AREA SUMMARY

North American Industry Classification System - Industry Groups	Number of Employing Units	Employment			Total Earnings	Average Weekly Earnings
		Jul	Aug	Sep	Jul - Sep 2020	
WESTERN LOCAL WORKFORCE DEVELOPMENT AREA	6,463	93,137	97,441	98,262	\$1,005,183,582	\$803.09
Natural Resources & Mining	142	1,059	1,058	1,056	14,567,845	1,059.51
Construction	519	3,983	3,996	4,003	42,775,175	823.84
Manufacturing	331	19,388	19,690	19,946	225,106,489	880.11
Trade, Transportation & Utilities	1,535	21,470	21,843	21,577	213,340,521	758.71
Wholesale Trade	333	3,489	3,506	3,503	46,548,124	1,023.23
Retail Trade	919	11,838	12,123	11,863	85,016,906	547.66
Transportation, Warehousing & Utilities	283	6,143	6,214	6,211	81,775,491	1,016.33
Information	71	938	922	920	17,324,750	1,438.14
Financial Activities	662	3,298	3,292	3,282	42,571,363	995.15
Professional & Business Services	849	9,280	9,597	9,705	99,029,224	799.56
Education & Health Services	1,131	15,307	15,289	15,384	197,501,546	991.24
Leisure & Hospitality	570	8,399	8,470	8,398	36,362,177	332.10
Other Services	416	1,866	1,866	1,846	16,096,441	665.93
Local Government	166	5,547	8,834	9,406	71,727,671	695.86
State Government	71	2,602	2,584	2,739	28,780,380	838.06

Western Local Workforce Development Area includes these counties: Crawford, Franklin, Logan, Polk, Scott, and Sebastian