



# Arkansas Covered Employment & Earnings Fourth Quarter 2020



Arkansas Division of  
Workforce Services

**COVERED EMPLOYMENT AND EARNINGS  
STATE OF ARKANSAS  
FOURTH QUARTER 2020**

**ASA HUTCHINSON, GOVERNOR  
STATE OF ARKANSAS**

**CHARISSE CHILDERS, DIRECTOR  
DIVISION OF WORKFORCE SERVICES**

**PUBLISHED BY  
LABOR MARKET INFORMATION  
BUREAU OF LABOR STATISTICS PROGRAMS  
POST OFFICE BOX 2981  
LITTLE ROCK, ARKANSAS 72203-2981  
SUSAN PRICE, BLS PROGRAMS MANAGER  
TELEPHONE (501) 682-3103**

**STATE OF ARKANSAS WEBPAGE: <http://www.arkansas.gov>**

**DIVISION OF WORKFORCE SERVICES WEBPAGE: <http://www.dws.arkansas.gov/>**

**WEBPAGE FOR LABOR MARKET INFORMATION: <http://www.discover.arkansas.gov>**

**RELEASED: APRIL 2021**



## TABLE OF CONTENTS

DESCRIPTION OF DATA	PAGE
Description and Classification of Data	1
Definition of Covered Employment and Earnings	2
Significant Developments During Fourth Quarter 2020	3

### LIST OF GRAPHS AND TABLES

Graph 1	Total Covered Employment for Selected Years, Arkansas	7
Graph 2	Total Covered Earnings, by Calendar Quarter for Selected Years, Arkansas	8
Table 1	Quarterly Comparison of Covered Employment and Wages, by Industry	5
Table 2	Total Covered Employment in Arkansas, 2013 – 2020	6
Table 3	Total Covered Earnings, 2013 – 2020	9
Table 4	Total Taxable Earnings, 2013 – 2020	10
Table 5	State Summary – Employment and Total Earnings, by Industry, Fourth Quarter 2020	11
Table 6	County Summary – Employment and Total Earnings, by Industry, Fourth Quarter 2020	22
Table 7	Federal Government Employment and Total Earnings in Arkansas, Fourth Quarter 2020	60
Table 8	Local Workforce Development Area – Employment and Total Earnings, by Industry, Fourth Quarter 2020	61



EMPLOYMENT AND EARNINGS  
UNDER THE ARKANSAS EMPLOYMENT SECURITY LAW  
FOURTH QUARTER 2020

**DESCRIPTION AND CLASSIFICATION OF DATA**

This publication contains covered employment and payroll data by industry and county for the Fourth Quarter 2020 and a record for total covered employment by month, quarterly payroll data, average weekly earnings, and total taxable earnings for 2013 through 2020. These data are compiled from quarterly contributions and wage reports submitted by employers subject to the Arkansas Employment Security Law.

Employment data have been tabulated for each month of the quarter by industry under the **North American Industry Classification System** (NAICS) by state, county, and workforce area. Payroll data represent the total wages paid during the quarter and are classified by industry for the state and by publishable industry groups for each county and workforce area.

Due to industry classification revisions, previously published data will not always be comparable with current data. For this reason, comparisons should not be made between the same industries under different revisions. For more information, visit the NAICS home page at <http://www.census.gov/naics>.

Industry Classification Revisions

- SIC (Standard Industrial Classification) 1987 to NAICS 2002
- NAICS 2002 to NAICS 2007
- NAICS 2007 to NAICS 2012
- NAICS 2012 to NAICS 2018

The tabulation of this data is a joint effort in conjunction with the United States Bureau of Labor Statistics. Data included in this publication are subject to revisions. Revisions are typically reflected in the Annual Covered Employment and Earnings publication.

## **DEFINITION OF COVERED EMPLOYMENT AND EARNINGS**

Covered Employment is the total number of workers employed by establishments subject to the Arkansas Employment Security Law that worked or received pay for the payroll period including the 12<sup>th</sup> of the month. Earnings include all wages paid to any covered employee by their employer including salaries, bonuses, commissions, fees, fringe benefits, sick pay made directly to employees or dependents, deferred compensation, and reported tips. These wages include both taxable and nontaxable wages. Only the first \$7,000 paid to each worker by an employer in the calendar year is taxable under the Arkansas Employment Security Law.

An Arkansas state unemployment insurance account is required of any entity meeting the definition of an employer. As described by Arkansas Division of Workforce Services Law, the definition of an employer includes, but is not limited to, a sole proprietorship, partnership, corporation, associations, trust, estate, and receiver or trustee in bankruptcy. The entity must employ one or more individuals for ten or more days in a calendar year, whether or not the days are consecutive.

Currently excluded from coverage is employment covered by the Railroad Unemployment Insurance Act, some domestic service workers, employees of small agricultural establishments, self-employed workers, unpaid family workers, insurance and real estate agents paid only on a commission basis, and employees of churches and religious organizations except separately incorporated schools.

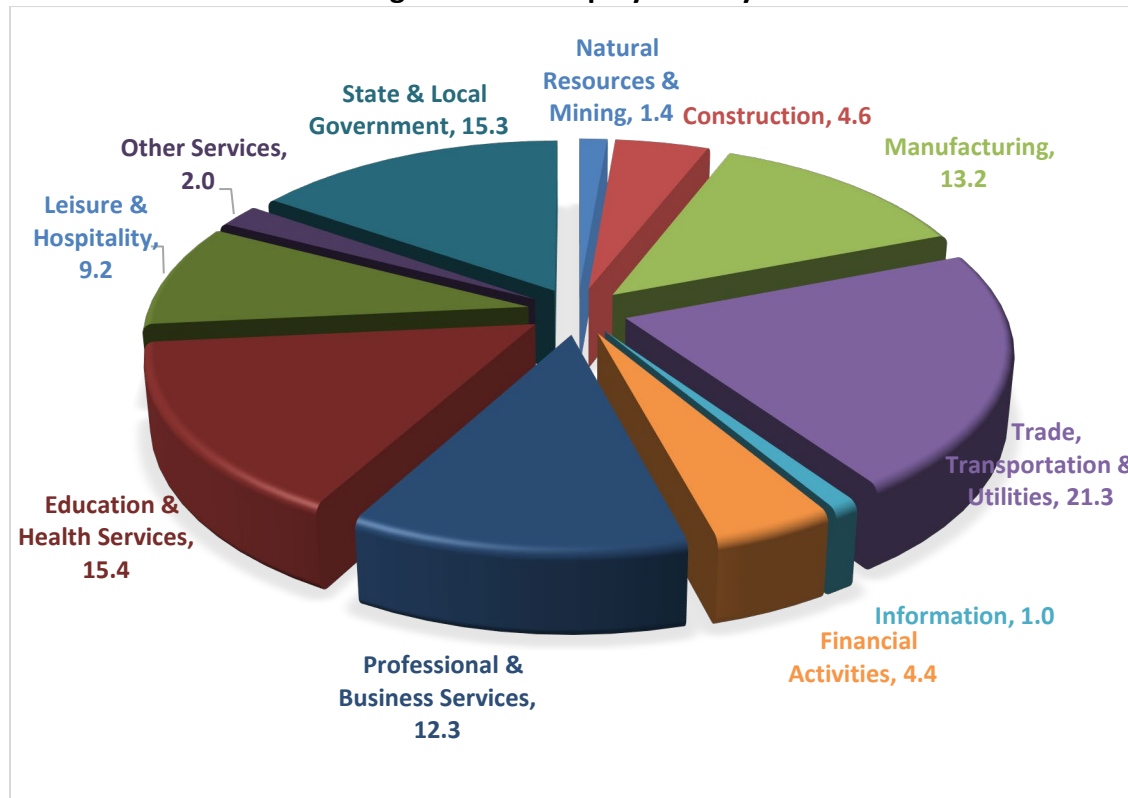
Civilian federal workers are covered by Unemployment Compensation for Federal Employees (UCFE).

## SIGNIFICANT DEVELOPMENTS DURING FOURTH QUARTER 2020

### AVERAGE EMPLOYMENT CHANGES

Covered employment averaged 1,178,136 during the Fourth Quarter 2020 (refer to Table 1), an increase of 46,595 (4.0%) from the previous quarter and a loss of 34,262 (-2.8%) from the average recorded one year ago. The over-the-year comparison is more significant when used as an economic indicator and allows for seasonal factors that appear when comparing over-the-quarter data to be disregarded.

**Average Covered Employment by NAICS**



### EMPLOYMENT CHANGES FROM THIRD QUARTER 2020

Gains were recorded in all eleven major industry groups. (refer to Table 1). Significant increases occurred in State & Local Government (24,767), Professional & Business Services (8,616), Trade, Transportation & Utilities (6,350), Manufacturing (2,344), and Education & Health Services (1,983).



### EMPLOYMENT CHANGES FROM FOURTH QUARTER 2019 (QUARTER YEAR AGO COMPARISON)

Over-the-year losses were recorded in nine major industry groups. (refer to Table 1). Large decreases occurred in Leisure & Hospitality (-12,281), Education & Health Services (-6,940), Manufacturing (-6,799), Professional & Business Services (-4,690), Trade, Transportation, and Utilities (-1,863), Other Services (-1,169), and State & Local Government (-1,064). Small gains occurred in Construction and Information.

### COVERED WAGES

Wages paid to covered workers totaled \$15,336,876,677 for the Fourth Quarter 2020 (refer to Table 1), for an average weekly wage of \$1001.38 (refer to Table 5). Benton County workers recorded the highest average weekly wage (\$1,330.63), and employees in Newton reported the lowest (\$578.14) (refer to Table 6). Information recorded the highest average weekly wage for the State of Arkansas (\$1,475.23). The Leisure & Hospitality sector recorded the lowest (\$374.33) (refer to Table 5).

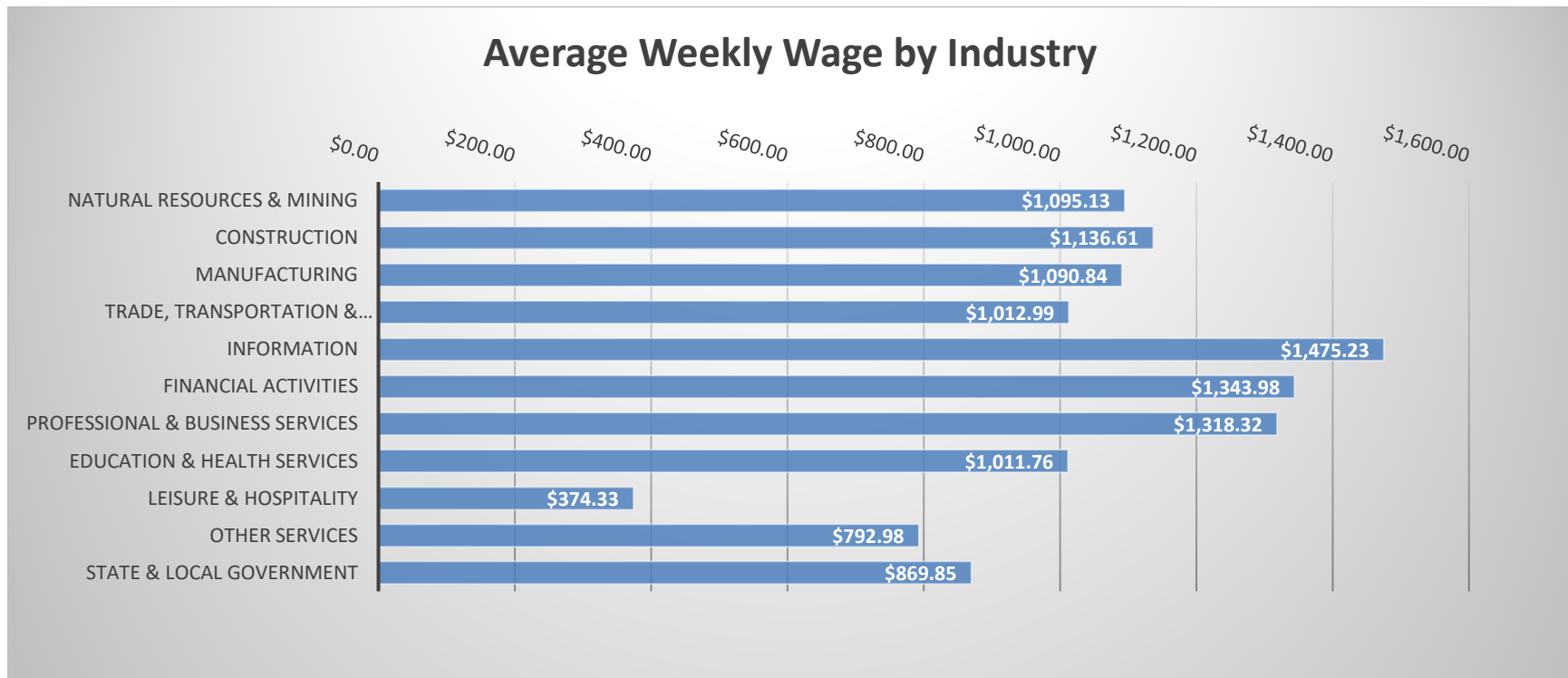


TABLE 1. QUARTERLY COMPARISON OF COVERED EMPLOYMENT AND WAGES, BY INDUSTRY

North American Industry Classification System - Industry Groups	Number of Employing Units	Monthly Employment Average	Percent of Total	Net Change From:		Total Wages Paid Oct - Dec 2020	Percent of Total
				Jul - Sep 2020	Oct - Dec 2019		
<b>TOTAL</b>	<b>93,408</b>	<b>1,178,136</b>	<b>100</b>	<b>46,595</b>	<b>-34,262</b>	<b>\$15,336,876,677</b>	<b>100</b>
<b>Natural Resources &amp; Mining</b>	2,577	16,093	1.4	390	-523	229,116,676	1.5
Agriculture, Forestry, Fishing & Hunting	2,143	12,652	1.1	350	-226	167,787,405	1.1
Mining	434	3,442	0.3	40	-297	61,329,271	0.4
<b>Construction</b>	7,401	54,212	4.6	652	896	801,028,799	5.2
<b>Manufacturing</b>	3,006	155,127	13.2	2,344	-6,799	2,199,840,520	14.3
<b>Trade, Transportation &amp; Utilities</b>	22,037	250,631	21.3	6,350	-1,863	3,300,513,646	21.5
Wholesale Trade	7,375	46,350	3.9	597	-1,204	1,182,588,173	7.7
Retail Trade	11,114	140,162	11.9	3,441	803	1,141,284,485	7.4
Transportation & Warehousing	3,134	56,257	4.8	2,365	-1,471	785,817,909	5.1
Utilities	414	7,862	0.7	-52	8	190,823,079	1.2
<b>Information</b>	1,664	11,287	1.0	230	461	216,468,762	1.4
<b>Financial Activities</b>	9,080	52,192	4.4	377	-289	911,879,558	5.9
Finance & Insurance	5,320	38,531	3.3	298	197	742,990,615	4.8
Real Estate & Rental & Leasing	3,760	13,660	1.2	79	-486	168,888,943	1.1
<b>Professional &amp; Business Services</b>	15,882	144,424	12.3	8,616	-4,690	2,475,162,686	16.1
Professional & Technical Services	10,040	42,790	3.6	902	-2,344	830,472,979	5.4
Management of Companies & Enterprises	542	34,027	2.9	430	-142	1,011,089,924	6.6
Administrative & Waste Services	5,300	67,607	5.7	7,284	-2,204	633,599,783	4.1
<b>Education &amp; Health Services</b>	15,582	181,494	15.4	1,983	-6,940	2,387,170,645	15.6
Educational Services	1,005	12,285	1.0	1,122	-395	122,551,682	0.8
Health Care & Social Assistance	14,577	169,209	14.4	860	-6,545	2,264,618,963	14.8
<b>Leisure &amp; Hospitality</b>	7,561	108,067	9.2	646	-12,281	525,886,890	3.4
Arts, Entertainment & Recreation	1,081	10,000	0.8	-690	-1,136	68,763,433	0.4
Accommodation & Food Services	6,480	98,067	8.3	1,336	-11,145	457,123,457	3.0
<b>Other Services</b>	5,568	23,930	2.0	240	-1,169	246,685,064	1.6
<b>State &amp; Local Government</b>	3,050	180,679	15.3	24,767	-1,064	2,043,123,431	13.3
Local Government	1,992	110,948	9.4	20,072	-3,365	1,155,081,231	7.5
State Government	1,058	69,731	5.9	4,695	2,301	888,042,200	5.8
<b>Nonclassifiable Establishments</b>	0	0	0.0	0	0	0	0.0

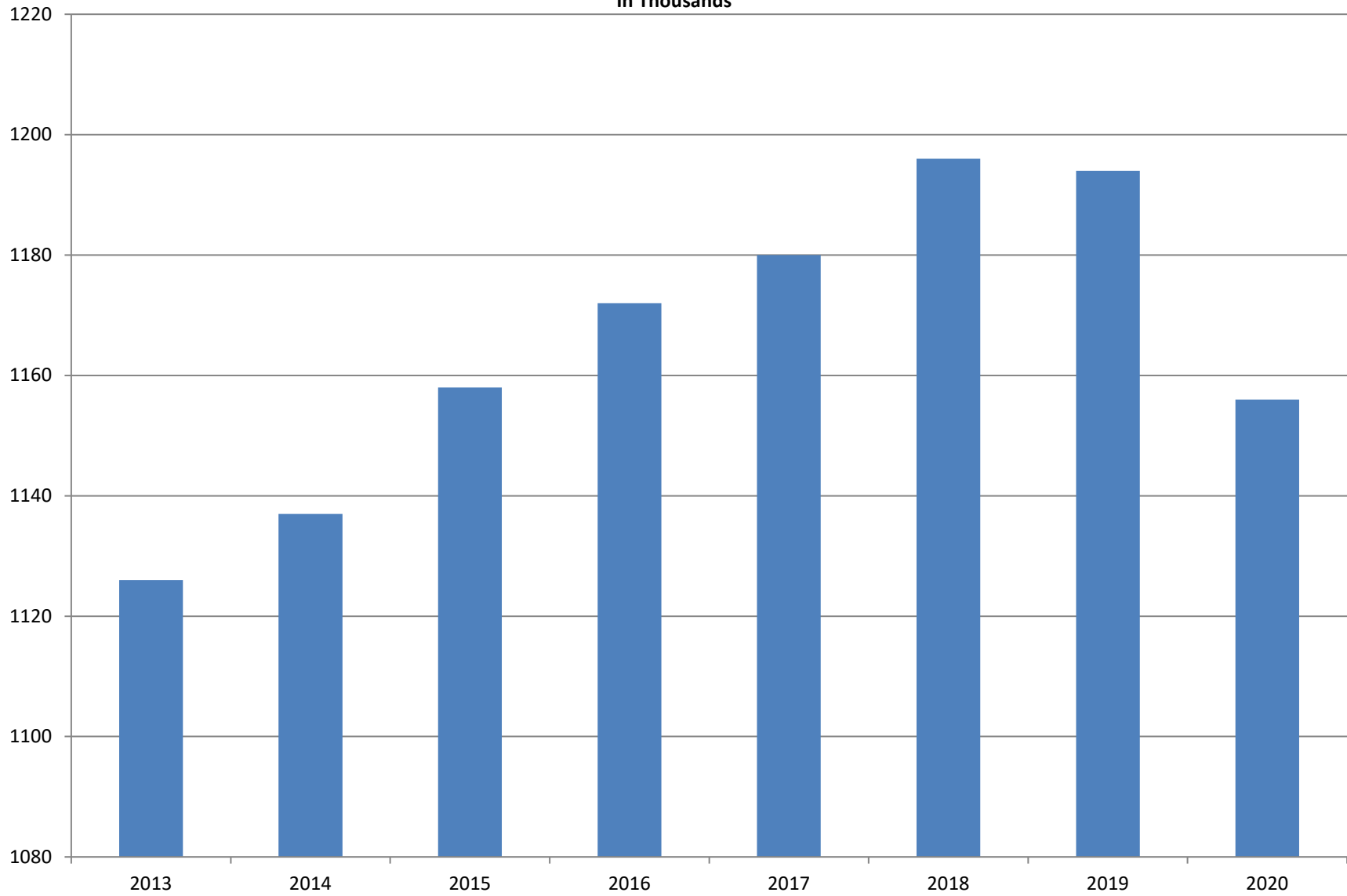
Note: Items do not necessarily add to total because of rounding. Because of industry code changes between years, substantial employment and wage shifts among industries are anticipated.

**TABLE 2. TOTAL COVERED EMPLOYMENT IN ARKANSAS**

<b>PERIOD</b>	<b>2013</b>	<b>2014</b>	<b>2015</b>	<b>2016</b>	<b>2017</b>	<b>2018</b>	<b>2019</b>	<b>2020</b>
<b>AVERAGE</b>	<b>1,125,890</b>	<b>1,137,486</b>	<b>1,157,634</b>	<b>1,171,503</b>	<b>1,180,337</b>	<b>1,195,781</b>	<b>1,194,322</b>	<b>1,156,116</b>
January	1,112,991	1,114,412	1,135,577	1,152,434	1,161,239	1,173,537	1,186,848	1,195,722
February	1,121,492	1,122,905	1,144,902	1,162,294	1,172,290	1,183,185	1,194,355	1,200,543
March	1,129,100	1,132,106	1,146,413	1,170,837	1,179,686	1,190,199	1,198,481	1,199,702
April	1,134,734	1,140,788	1,158,606	1,178,630	1,185,212	1,194,816	1,204,176	1,090,183
May	1,138,383	1,149,046	1,167,657	1,181,644	1,189,900	1,201,113	1,206,476	1,120,448
June	1,130,402	1,144,876	1,164,607	1,177,506	1,186,326	1,195,468	1,202,260	1,137,765
July	1,083,849	1,096,675	1,119,390	1,132,361	1,137,883	1,168,432	1,155,337	1,099,733
August	1,109,759	1,125,162	1,148,502	1,160,743	1,168,802	1,200,284	1,185,213	1,137,611
September	1,135,673	1,150,545	1,173,776	1,185,510	1,193,845	1,222,012	1,202,177	1,157,279
October	1,138,312	1,153,684	1,173,953	1,185,022	1,194,194	1,205,161	1,209,366	1,173,041
November	1,141,035	1,158,579	1,177,717	1,186,046	1,197,650	1,208,638	1,194,675	1,180,121
December	1,134,955	1,161,056	1,180,513	1,185,009	1,197,013	1,206,531	1,192,501	1,181,246

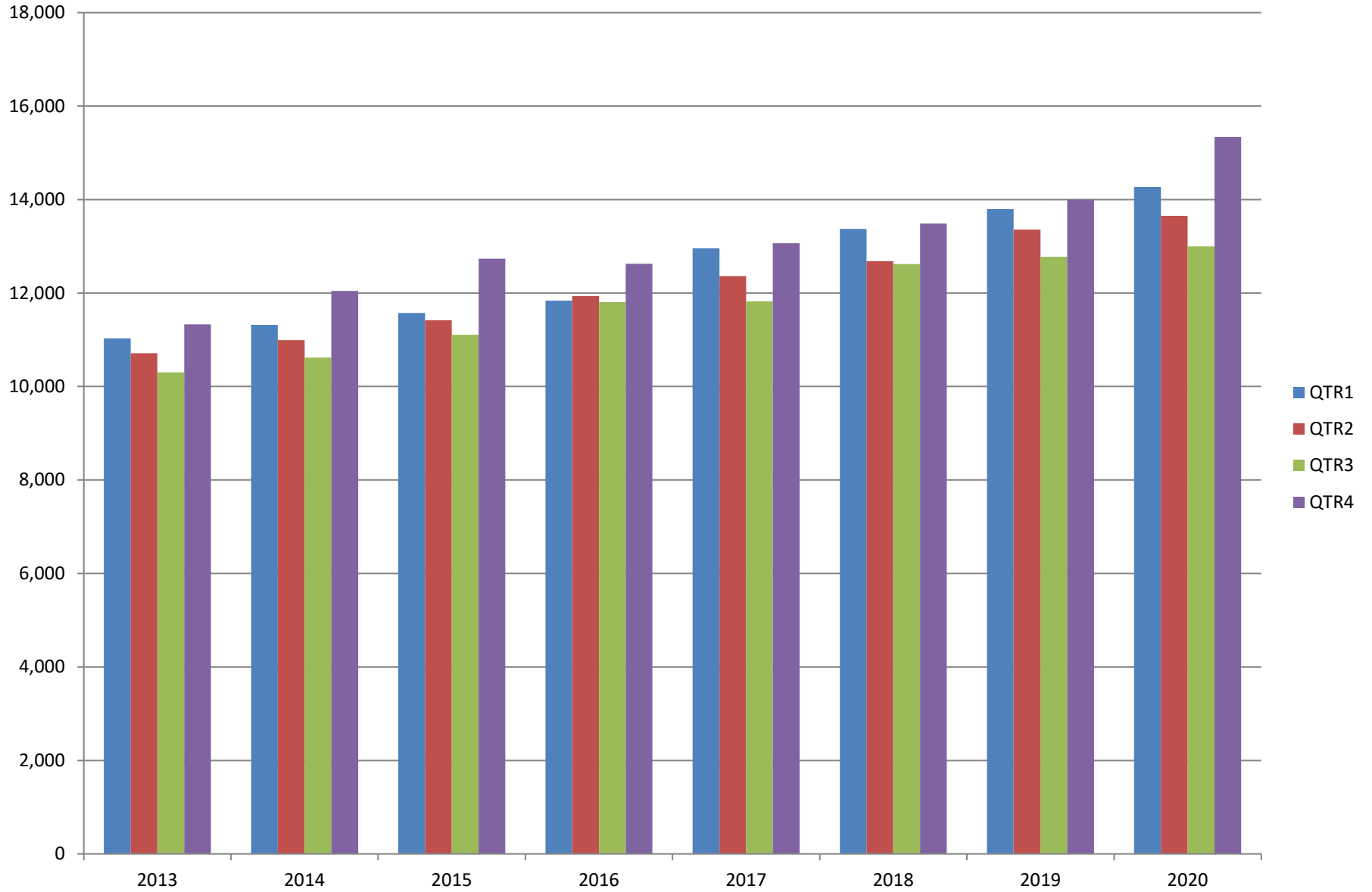
# AVERAGE TOTAL COVERED EMPLOYMENT

In Thousands



# TOTAL COVERED EARNINGS BY CALENDAR YEAR

In Thousands



**TABLE 3. TOTAL COVERED EARNINGS 2013 - 2020**

<b>PERIOD</b>	<b>2013</b>	<b>2014</b>	<b>2015</b>	<b>2016</b>
<b>TOTAL</b>	<b>\$43,371,086,461</b>	<b>\$44,980,520,034</b>	<b>\$46,836,352,793</b>	<b>\$48,207,277,530</b>
January - March	11,027,184,315	11,321,422,241	11,575,046,688	11,836,255,664
April - June	10,711,027,503	10,991,760,061	11,419,363,330	11,935,722,186
July - September	10,304,451,772	10,619,889,280	11,104,443,452	11,809,460,297
October - December	11,328,422,871	12,047,448,452	12,737,499,323	12,625,839,383
<b>Average Weekly Earnings</b>	<b>\$740.80</b>	<b>\$760.46</b>	<b>\$778.05</b>	<b>\$791.34</b>

<b>PERIOD</b>	<b>2017</b>	<b>2018</b>	<b>2019</b>	<b>2020</b>
<b>TOTAL</b>	<b>\$50,207,202,141</b>	<b>\$52,159,789,393</b>	<b>\$53,931,077,907</b>	<b>\$56,255,427,941</b>
January - March	12,955,088,347	13,372,730,974	13,795,046,820	14,268,302,306
April - June	12,363,027,711	12,682,491,819	13,356,848,831	13,651,304,330
July - September	11,823,324,966	12,619,347,460	12,776,218,481	12,998,944,628
October - December	13,065,761,117	13,485,219,140	14,002,963,775	15,336,876,677
<b>Average Weekly Earnings</b>	<b>\$818.01</b>	<b>\$838.84</b>	<b>\$868.39</b>	<b>\$935.75</b>

**TABLE 4. TOTAL TAXABLE EARNINGS, 2013 - 2020**

<b>PERIOD</b>	<b>2013</b>	<b>2014</b>	<b>2015</b>	<b>2016</b>
<b>TOTAL</b>	<b>11,644,747,978</b>	<b>11,919,662,224</b>	<b>12,258,632,610</b>	<b>12,511,938,047</b>
January - March	6,184,735,653	6,288,682,396	6,378,966,662	6,595,351,454
April - June	2,805,431,293	2,831,013,392	2,915,293,283	3,003,077,908
July - September	1,506,497,129	1,552,243,963	1,640,978,599	1,651,582,584
October - December	1,148,083,903	1,247,722,473	1,323,394,066	1,261,926,101

<b>PERIOD</b>	<b>2017</b>	<b>2018</b>	<b>2019</b>	<b>2020</b>
<b>TOTAL</b>	<b>12,744,039,136</b>	<b>11,335,932,409</b>	<b>11,498,854,755</b>	<b>8,527,228,792</b>
January - March	6,958,706,950	6,577,871,657	6,737,833,125	5,589,526,770
April - June	2,908,226,426	2,278,450,975	2,283,514,220	1,172,837,688
July - September	1,576,968,648	1,328,868,479	1,327,818,133	864,579,237
October - December	1,300,137,112	1,150,741,298	1,149,689,277	900,285,097

TABLE 5. STATEWIDE SUMMARY

North American Industry Classification System - Industry Groups		Number of Employing Units	Employment			Total Earnings Oct - Dec 2020	Average Weekly Earnings
			Oct	Nov	Dec		
<b>TOTAL, ALL INDUSTRIES</b>		<b>93,408</b>	<b>1,173,041</b>	<b>1,180,121</b>	<b>1,181,246</b>	<b>\$15,336,876,677</b>	<b>\$1,001.38</b>
<b>NATURAL RESOURCES &amp; MINING</b>		<b>2,577</b>	<b>16,305</b>	<b>16,149</b>	<b>15,826</b>	<b>\$229,116,676</b>	<b>\$1,095.13</b>
<b>11</b>	<b>AGRICULTURE, FORESTRY, FISHING &amp; HUNTING</b>	<b>2,143</b>	<b>12,838</b>	<b>12,715</b>	<b>12,402</b>	<b>\$167,787,405</b>	<b>\$1,020.16</b>
<b>111</b>	<b>CROP PRODUCTION</b>	<b>964</b>	<b>4,223</b>	<b>4,038</b>	<b>3,791</b>	<b>\$44,580,088</b>	<b>\$853.61</b>
1111	Oilseed & Grain Farming	712	2,840	2,696	2,493	29,313,539	842.53
1112	Vegetable & Melon Farming	36	153	130	127	1,954,388	1,100.03
1113	Fruit & Tree Nut Farming	13	50	47	48	417,255	664.07
1114	Greenhouse & Nursery Production	40	512	498	521	5,729,533	863.62
1119	Other Crop Farming	163	668	667	602	7,165,373	853.66
<b>112</b>	<b>ANIMAL PRODUCTION &amp; AQUACULTURE</b>	<b>345</b>	<b>3,225</b>	<b>3,207</b>	<b>3,213</b>	<b>\$55,171,009</b>	<b>\$1,320.04</b>
1121	Cattle Ranching & Farming	129	409	416	424	3,710,649	685.59
1122	Hog & Pig Farming	11	131	131	139	2,349,547	1,352.13
1123	Poultry & Egg Production	135	2,291	2,281	2,282	43,626,765	1,468.88
1125	Animal Aquaculture	40	319	305	286	4,925,237	1,249.00
	Other	30	75	74	82	558,811	558.25
<b>115</b>	<b>SUPPORT ACTIVITIES FOR AGRICULTURE &amp; FORESTRY</b>	<b>417</b>	<b>3,121</b>	<b>3,213</b>	<b>3,171</b>	<b>\$39,994,538</b>	<b>\$971.02</b>
1151	Support Activities for Crop Production	283	2,046	2,012	1,794	27,254,719	1,074.77
1152	Support Activities for Animal Production	63	634	616	609	5,871,907	728.92
1153	Support Activities for Forestry	71	441	585	768	6,867,912	883.45
	<b>OTHER</b>	<b>417</b>	<b>2,269</b>	<b>2,257</b>	<b>2,227</b>	<b>\$28,041,770</b>	<b>\$958.27</b>
<b>21</b>	<b>MINING</b>	<b>434</b>	<b>3,467</b>	<b>3,434</b>	<b>3,424</b>	<b>\$61,329,271</b>	<b>\$1,370.74</b>
<b>211</b>	<b>OIL &amp; GAS EXTRACTION</b>	<b>74</b>	<b>566</b>	<b>557</b>	<b>557</b>	<b>\$11,860,805</b>	<b>\$1,629.23</b>
<b>212</b>	<b>MINING (EXCEPT OIL &amp; GAS)</b>	<b>107</b>	<b>1,761</b>	<b>1,764</b>	<b>1,758</b>	<b>\$28,878,785</b>	<b>\$1,261.47</b>
<b>213</b>	<b>SUPPORT ACTIVITIES FOR MINING</b>	<b>253</b>	<b>1,140</b>	<b>1,113</b>	<b>1,109</b>	<b>\$20,589,681</b>	<b>\$1,413.29</b>



TABLE 5. STATEWIDE SUMMARY

North American Industry Classification System - Industry Groups		Number of Employing Units	Employment			Total Earnings Oct - Dec 2020	Average Weekly Earnings
			Oct	Nov	Dec		
<b>CONSTRUCTION</b>		<b>7,401</b>	<b>54,204</b>	<b>54,051</b>	<b>54,380</b>	<b>\$801,028,799</b>	<b>\$1,136.61</b>
<b>236</b>	<b>CONSTRUCTION OF BUILDINGS</b>	<b>1,935</b>	<b>11,070</b>	<b>11,098</b>	<b>11,343</b>	<b>\$189,006,723</b>	<b>\$1,301.57</b>
2361	Residential Building Construction	1,326	3,897	3,880	3,959	59,128,429	1,162.66
2362	Nonresidential Building Construction	609	7,173	7,218	7,384	129,878,294	1,376.44
<b>237</b>	<b>HEAVY &amp; CIVIL ENGINEERING CONSTRUCTION</b>	<b>764</b>	<b>8,481</b>	<b>8,368</b>	<b>8,389</b>	<b>\$129,937,776</b>	<b>\$1,188.11</b>
2371	Utility System Construction	450	4,418	4,438	4,452	69,978,547	1,213.47
2372	Land Subdivision	48	108	101	106	1,294,859	948.61
2373	Highway, Street & Bridge Construction	171	3,113	3,039	3,031	47,365,525	1,190.30
2379	Other Heavy Construction	95	842	790	800	11,298,845	1,072.13
<b>238</b>	<b>SPECIALTY TRADE CONTRACTORS</b>	<b>4,702</b>	<b>34,653</b>	<b>34,585</b>	<b>34,648</b>	<b>\$482,084,300</b>	<b>\$1,070.89</b>
2381	Building Foundation & Exterior Contractors	870	6,038	5,972	5,939	84,065,592	1,080.83
2382	Building Equipment Contractors	2,312	19,435	19,401	19,523	286,534,102	1,133.04
2383	Building Finishing Contractors	776	3,815	3,834	3,803	44,771,597	902.19
2389	Other Specialty Trade Contractors	744	5,365	5,378	5,383	66,713,009	954.69
<b>MANUFACTURING</b>		<b>3,006</b>	<b>154,608</b>	<b>155,219</b>	<b>155,553</b>	<b>2,199,840,520</b>	<b>\$1,090.84</b>
<b>311</b>	<b>FOOD MANUFACTURING</b>	<b>310</b>	<b>49,848</b>	<b>49,637</b>	<b>49,678</b>	<b>\$571,116,723</b>	<b>\$883.57</b>
3111	Animal Food Manufacturing	44	1,912	1,906	1,876	26,190,577	1,061.46
3112	Grain & Oilseed Milling	32	2,794	2,692	2,715	41,167,935	1,158.43
3114	Fruit, Vegetable & Specialty Food	16	4,395	4,439	4,429	62,043,771	1,079.53
3115	Dairy Product Manufacturing	8	609	607	606	7,574,899	959.41
3116	Animal Slaughtering & Processing	90	33,612	33,455	33,461	357,199,265	819.98
3118	Bakeries & Tortilla Manufacturing	86	4,060	4,032	4,094	45,025,475	852.66
3119	Other Food Manufacturing	24	2,425	2,464	2,447	31,639,467	995.29
	Other	10	41	42	50	275,334	477.73
<b>312</b>	<b>BEVERAGE &amp; TOBACCO PRODUCT MANUFACTURING</b>	<b>64</b>	<b>1,467</b>	<b>1,473</b>	<b>1,488</b>	<b>\$20,239,789</b>	<b>\$1,054.81</b>
<b>313</b>	<b>TEXTILE MILLS</b>	<b>11</b>	<b>131</b>	<b>129</b>	<b>126</b>	<b>\$1,997,653</b>	<b>\$1,194.29</b>
<b>314</b>	<b>TEXTILE PRODUCT MILLS</b>	<b>44</b>	<b>815</b>	<b>808</b>	<b>782</b>	<b>\$11,793,479</b>	<b>\$1,131.63</b>
3141	Textile Furnishing Mills	8	19	19	20	134,878	536.65
3149	Other Textile Product Mills	36	796	789	762	11,658,601	1,146.33
<b>315</b>	<b>APPAREL MANUFACTURING</b>	<b>17</b>	<b>728</b>	<b>697</b>	<b>681</b>	<b>\$5,656,332</b>	<b>\$619.80</b>
3151	Apparel Knitting Mills	3	396	397	385	3,220,055	630.81
	Other	14	332	300	296	2,436,277	605.84

TABLE 5. STATEWIDE SUMMARY

North American Industry Classification System - Industry Groups		Number of	Employment			Total Earnings	Average
		Employing Units	Oct	Nov	Dec	Oct - Dec 2020	Weekly Earnings
<b>316</b>	<b>LEATHER &amp; ALLIED PRODUCT MANUFACTURING</b>	<b>11</b>	<b>964</b>	<b>995</b>	<b>962</b>	<b>\$7,116,718</b>	<b>\$562.25</b>
3162	Footwear Manufacturing	3	761	793	760	5,122,927	\$510.90
3169	Other Leather & Allied Product Manufacturing	8	203	202	202	1,993,791	\$758.00
<b>321</b>	<b>WOOD PRODUCT MANUFACTURING</b>	<b>302</b>	<b>9,544</b>	<b>9,607</b>	<b>9,738</b>	<b>\$130,199,129</b>	<b>\$1,040.05</b>
3211	Sawmills & Wood Preservation	135	4,477	4,512	4,575	67,335,357	1,145.60
3212	Veneer & Engineered Wood Products	40	1,999	2,013	2,031	30,372,202	1,159.85
3219	Other Wood Product Manufacturing	127	3,068	3,082	3,132	32,491,570	807.81
<b>322</b>	<b>PAPER MANUFACTURING</b>	<b>72</b>	<b>8,818</b>	<b>8,943</b>	<b>8,774</b>	<b>\$168,254,433</b>	<b>\$1,463.27</b>
3221	Pulp, Paper & Paperboard Mills	14	3,267	3,217	3,210	77,909,513	1,854.66
3222	Converted Paper Product Manufacturing	58	5,551	5,726	5,564	90,344,920	1,237.98
<b>323</b>	<b>PRINTING &amp; RELATED SUPPORT ACTIVITIES</b>	<b>252</b>	<b>3,139</b>	<b>3,114</b>	<b>3,110</b>	<b>\$36,767,387</b>	<b>\$906.20</b>
<b>324</b>	<b>PETROLEUM &amp; COAL PRODUCTS MANUFACTURING</b>	<b>23</b>	<b>1,116</b>	<b>1,123</b>	<b>1,095</b>	<b>\$22,721,314</b>	<b>\$1,572.70</b>
<b>325</b>	<b>CHEMICAL MANUFACTURING</b>	<b>135</b>	<b>5,427</b>	<b>5,398</b>	<b>5,414</b>	<b>\$100,735,456</b>	<b>\$1,431.53</b>
3251	Basic Chemical Manufacturing	28	1,860	1,809	1,795	40,659,988	1,717.25
3252	Resin, Rubber & Artificial Fibers	13	481	479	479	8,724,004	1,399.05
3253	Agricultural Chemical Manufacturing	17	460	467	474	9,827,423	1,618.75
3254	Pharmaceutical & Medicine Manufacturing	29	454	468	465	7,925,294	1,318.61
3255	Paint, Coating & Adhesive Manufacturing	11	204	206	202	3,254,292	1,227.11
3256	Soap, Cleaning Compound, & Toilet Preparation Manufacturing	15	1,359	1,355	1,370	20,070,295	1,134.09
3259	Other Chemical Preparation Manufacturing	22	609	614	629	10,274,160	1,280.22
<b>326</b>	<b>PLASTICS &amp; RUBBER PRODUCTS MANUFACTURING</b>	<b>125</b>	<b>10,229</b>	<b>10,320</b>	<b>10,268</b>	<b>\$161,847,048</b>	<b>\$1,211.97</b>
3261	Plastics Product Manufacturing	95	6,137	6,212	6,186	91,947,848	1,144.79
3262	Rubber Product Manufacturing	30	4,092	4,108	4,082	69,899,200	1,313.35
<b>327</b>	<b>NONMETALLIC MINERAL PRODUCT MANUFACTURING</b>	<b>229</b>	<b>3,553</b>	<b>3,577</b>	<b>3,562</b>	<b>\$51,745,677</b>	<b>\$1,116.85</b>
3271	Clay Product & Refractory Manufacturing	11	471	468	457	6,204,041	1,025.57
3272	Glass & Glass Product Manufacturing	7	380	379	383	5,837,558	1,179.62
3273	Cement & Concrete Product Manufacturing	171	2,105	2,126	2,134	31,204,188	1,131.34
3274	Lime & Gypsum Product Manufacturing	3	285	284	280	4,983,170	1,354.49
3279	Other Nonmetallic Mineral Products Manufacturing	37	312	320	308	3,516,720	863.35
<b>331</b>	<b>PRIMARY METAL MANUFACTURING</b>	<b>70</b>	<b>7,402</b>	<b>7,451</b>	<b>7,474</b>	<b>\$168,215,683</b>	<b>\$1,738.66</b>
3311	Iron & Steel Mills & Ferroalloys	12	3,610	3,635	3,626	106,389,899	2,258.44
3312	Purchased Steel Product Manufacturing	21	1,708	1,714	1,712	26,996,710	1,213.48
3313	Alumina & Aluminum Production	13	887	888	896	14,105,030	1,218.65
3314	Other Nonferrous Metal Production	6	239	243	249	3,680,018	1,161.74
3315	Foundries	18	958	971	991	17,044,026	1,347.00

TABLE 5. STATEWIDE SUMMARY

North American Industry Classification System - Industry Groups		Number of Employing Units	Employment			Total Earnings	Average Weekly Earnings
			Oct	Nov	Dec	Oct - Dec 2020	
<b>332</b>	<b>FABRICATED METAL PRODUCT MANUFACTURING</b>	<b>525</b>	<b>14,077</b>	<b>14,061</b>	<b>14,337</b>	<b>\$214,798,314</b>	<b>\$1,167.01</b>
3321	Forging & Stamping	12	392	395	402	5,389,426	1,046.02
3322	Cutlery & Hand Tool Manufacturing	14	486	482	509	6,331,743	989.28
3323	Architectural & Structural Metals	156	4,550	4,554	4,549	78,710,534	1,330.40
3324	Boilers, Tanks & Shipping Containers	13	560	562	570	8,135,087	1,109.53
3325	Hardware Manufacturing	5	237	234	235	3,350,691	1,095.24
3326	Spring & Wire Product Manufacturing	9	324	327	323	4,240,399	1,004.68
3327	Machine Shops & Threaded Products	205	2,055	2,075	2,081	26,592,469	988.04
3328	Coating, Engraving & Heat Treating Metals	40	542	550	552	6,298,810	884.17
3329	Other Fabricated Metal Product Manufacturing	71	4,931	4,882	5,116	75,749,155	1,170.91
<b>333</b>	<b>MACHINERY MANUFACTURING</b>	<b>215</b>	<b>10,736</b>	<b>10,977</b>	<b>11,117</b>	<b>\$164,441,807</b>	<b>\$1,155.90</b>
3331	Agriculture, Construction & Mining Machinery	36	2,564	2,718	2,791	35,137,529	1,004.42
3332	Industrial Machinery Manufacturing	27	635	648	649	11,833,112	1,413.42
3333	Commercial & Service Industry Machinery	23	823	827	838	14,573,237	1,351.71
3334	HVAC & Commercial Refrigeration Equipment	25	2,415	2,485	2,507	39,791,820	1,239.74
3335	Metalworking Machinery Manufacturing	51	1,053	1,024	1,021	12,804,942	953.84
3336	Turbine & Power Transmission Equipment Manufacturing	5	348	330	319	4,634,943	1,072.82
3339	Other General Purpose Machinery Manufacturing	48	2,898	2,945	2,992	45,666,224	1,192.80
<b>334</b>	<b>COMPUTER &amp; ELECTRONIC PRODUCT MANUFACTURING</b>	<b>51</b>	<b>1,716</b>	<b>1,725</b>	<b>1,699</b>	<b>\$24,728,370</b>	<b>\$1,110.22</b>
3344	Semiconductors & Electronic Components	24	1,236	1,250	1,224	17,526,165	1,090.16
3345	Navigational, Measuring, Electromedical, & Control Instr, Mfg Other	20 7	313 167	305 170	303 172	4,915,370 2,286,835	1,231.61 1,036.80
<b>335</b>	<b>ELECTRICAL EQUIPMENT &amp; APPLIANCES</b>	<b>56</b>	<b>4,139</b>	<b>4,202</b>	<b>4,213</b>	<b>\$69,836,452</b>	<b>\$1,283.74</b>
3351	Electric Lighting Equipment Manufacturing	11	275	316	302	3,761,854	\$972.14
3352	Household Appliance Manufacturing	6	49	51	66	707,009	\$982.87
3353	Electrical Equipment Manufacturing	21	2,609	2,628	2,638	47,119,189	1,380.78
3359	Other Electrical Equipment & Component Manufacturing	18	1,206	1,207	1,207	18,248,400	1,163.31
<b>336</b>	<b>TRANSPORTATION EQUIPMENT MANUFACTURING</b>	<b>138</b>	<b>13,765</b>	<b>13,968</b>	<b>14,002</b>	<b>\$186,221,917</b>	<b>\$1,029.69</b>
3362	Motor Vehicle Body & Trailer Manufacturing	32	1,910	1,952	1,990	22,528,845	888.41
3363	Motor Vehicle Parts Manufacturing	44	4,794	4,883	4,890	61,582,920	975.59
3364	Aerospace Product & Parts Manufacturing	28	4,060	4,079	4,029	65,506,329	1,242.34
3366	Ship & Boat Building Other	21 13	1,833 1,168	1,889 1,165	1,914 1,179	20,262,222 16,341,601	829.65 1,073.79
<b>337</b>	<b>FURNITURE &amp; RELATED PRODUCT MANUFACTURING</b>	<b>157</b>	<b>3,433</b>	<b>3,453</b>	<b>3,455</b>	<b>\$38,548,286</b>	<b>\$860.24</b>
3371	Household & Institutional Furniture Other	126 31	2,830 603	2,850 603	2,878 577	32,016,483 6,531,803	863.33 845.39
<b>339</b>	<b>MISCELLANEOUS MANUFACTURING</b>	<b>199</b>	<b>3,561</b>	<b>3,561</b>	<b>3,578</b>	<b>\$42,858,553</b>	<b>\$924.34</b>
3391	Medical Equipment & Supplies Manufacturing	87	1,733	1,744	1,751	20,515,626	905.58
3399	Other Miscellaneous Manufacturing	112	1,828	1,817	1,827	22,342,927	942.26

TABLE 5. STATEWIDE SUMMARY

North American Industry Classification System - Industry Groups		Number of	Employment			Total Earnings	Average
		Employing Units	Oct	Nov	Dec	Oct - Dec 2020	Weekly Earnings
<b>TRADE, TRANSPORTATION &amp; UTILITIES</b>		<b>22,037</b>	<b>247,139</b>	<b>251,787</b>	<b>252,966</b>	<b>\$3,300,513,646</b>	<b>\$1,012.99</b>
<b>42</b>	<b>WHOLESALE TRADE</b>	<b>7,375</b>	<b>46,151</b>	<b>46,367</b>	<b>46,533</b>	<b>\$1,182,588,173</b>	<b>\$1,962.62</b>
<b>423</b>	<b>MERCHANT WHOLESALERS, DURABLE GOODS</b>	<b>3,490</b>	<b>23,917</b>	<b>23,979</b>	<b>24,089</b>	<b>\$450,437,472</b>	<b>\$1,444.01</b>
4231	Motor Vehicle & Part Merchant Wholesalers	303	3,104	3,087	3,117	51,520,919	1,277.34
4232	Furniture & Furnishings Merchant Wholesalers	109	457	471	480	9,508,655	1,558.46
4233	Lumber & Supply Merchant Wholesalers	257	1,573	1,585	1,574	25,872,122	1,261.73
4234	Commercial Goods Merchant Wholesalers	729	3,328	3,342	3,377	82,401,948	1,892.69
4235	Metal & Mineral Merchant Wholesalers	132	1,028	1,039	1,038	17,037,773	1,266.28
4236	Appliances & Electronics Goods Merchant Wholesalers	364	2,615	2,631	2,640	52,245,799	1,528.88
4237	Hardware & Plumbing Merchant Wholesalers	314	2,799	2,773	2,776	49,174,958	1,359.38
4238	Machinery & Supply Merchant Wholesalers	956	7,211	7,232	7,243	130,487,101	1,388.56
4239	Miscellaneous Durable Goods Merchant Wholesalers	326	1,802	1,819	1,844	32,188,197	1,359.20
<b>424</b>	<b>MERCHANT WHOLESALERS, NONDURABLE GOODS</b>	<b>2,124</b>	<b>17,511</b>	<b>17,587</b>	<b>17,636</b>	<b>\$606,755,638</b>	<b>\$2,655.22</b>
4241	Paper & Paper Product Merchant Wholesalers	130	1,130	1,129	1,127	28,043,216	1,911.26
4242	Druggist' Goods Merchant Wholesalers	282	1,617	1,629	1,668	51,469,408	2,417.09
4243	Apparel & Piece Goods Merchant Wholesalers	111	725	726	746	11,598,046	1,218.24
4244	Grocery Product Merchant Wholesalers	582	5,856	5,918	5,964	368,218,604	4,790.48
4245	Farm Product & Raw Material Merchant Wholesalers	87	841	827	824	9,993,443	925.43
4246	Chemical Merchant Wholesalers	226	1,109	1,109	1,115	33,227,698	2,300.61
4247	Petroleum Merchant Wholesalers	158	976	974	956	17,369,248	1,379.31
4248	Alcoholic Beverage Merchant Wholesalers	74	1,555	1,579	1,591	28,141,565	1,374.44
4249	Miscellaneous Nondurable Goods Merchant Wholesaler	474	3,702	3,696	3,645	58,694,410	1,226.56
<b>425</b>	<b>ELECTRONIC MARKETS &amp; AGENTS &amp; BROKERS</b>	<b>1,761</b>	<b>4,723</b>	<b>4,801</b>	<b>4,808</b>	<b>\$125,395,063</b>	<b>\$2,019.07</b>
<b>44 - 45</b>	<b>RETAIL TRADE</b>	<b>11,114</b>	<b>137,980</b>	<b>141,087</b>	<b>141,418</b>	<b>\$1,141,284,485</b>	<b>\$626.36</b>
<b>441</b>	<b>MOTOR VEHICLE &amp; PARTS DEALERS</b>	<b>1,540</b>	<b>18,763</b>	<b>18,679</b>	<b>18,586</b>	<b>\$255,603,292</b>	<b>\$1,052.78</b>
4411	Automobile Dealers	624	11,277	11,287	11,249	177,454,159	1,211.10
4412	Other Motor Vehicle Dealers	174	1,753	1,686	1,678	25,886,898	1,167.46
4413	Automotive Parts, Accessories & Tire Stores	742	5,733	5,706	5,659	52,262,235	705.38
<b>442</b>	<b>FURNITURE &amp; HOME FURNISHINGS STORES</b>	<b>498</b>	<b>3,270</b>	<b>3,396</b>	<b>3,441</b>	<b>\$37,187,242</b>	<b>\$849.08</b>
4421	Furniture Stores	278	1,875	1,863	1,877	24,712,027	1,015.63
4422	Home Furnishings Stores	220	1,395	1,533	1,564	12,475,215	640.89
<b>443</b>	<b>ELECTRONICS &amp; APPLIANCE STORES</b>	<b>367</b>	<b>2,971</b>	<b>3,144</b>	<b>3,101</b>	<b>\$31,640,427</b>	<b>\$792.28</b>
<b>444</b>	<b>BUILDING MATERIAL &amp; GARDEN SUPPLY STORES</b>	<b>851</b>	<b>12,624</b>	<b>12,660</b>	<b>12,586</b>	<b>\$105,649,681</b>	<b>\$643.80</b>
4441	Building Material & Supplies Dealers	610	10,363	10,434	10,409	89,830,164	664.30
4442	Lawn & Garden Equipment & Supplies Stores	241	2,261	2,226	2,177	15,819,517	547.82

TABLE 5. STATEWIDE SUMMARY

North American Industry Classification System - Industry Groups		Number of Employing Units	Employment			Total Earnings Oct - Dec 2020	Average Weekly Earnings
			Oct	Nov	Dec		
<b>445</b>	<b>FOOD &amp; BEVERAGE STORES</b>	<b>1,084</b>	<b>20,607</b>	<b>20,626</b>	<b>20,759</b>	<b>\$131,397,056</b>	<b>\$489.13</b>
4451	Grocery Stores	575	17,963	17,942	18,058	109,292,521	467.38
4452	Specialty Food Stores	147	754	787	770	9,832,366	981.83
4453	Beer, Wine & Liquor Stores	362	1,890	1,897	1,931	12,272,169	495.28
<b>446</b>	<b>HEALTH &amp; PERSONAL CARE STORES</b>	<b>1,023</b>	<b>8,594</b>	<b>8,786</b>	<b>8,872</b>	<b>\$95,630,417</b>	<b>\$840.64</b>
<b>447</b>	<b>GASOLINE STATIONS</b>	<b>1,619</b>	<b>12,443</b>	<b>12,429</b>	<b>12,499</b>	<b>\$71,564,791</b>	<b>\$441.92</b>
44711	Gasoline Stations with Convenience Stores	1,525	11,373	11,377	11,439	64,517,919	435.48
44719	Other Gasoline Stations	94	1,070	1,052	1,060	7,046,872	511.06
<b>448</b>	<b>CLOTHING &amp; CLOTHING ACCESSORIES STORES</b>	<b>943</b>	<b>6,236</b>	<b>6,612</b>	<b>6,764</b>	<b>\$36,538,304</b>	<b>\$429.94</b>
4481	Clothing Stores	724	4,783	5,075	5,146	24,215,995	372.45
4482	Shoe Stores	104	909	962	1,024	4,988,368	397.64
4483	Jewelry, Luggage & Leather Goods Stores	115	544	575	594	7,333,941	988.00
<b>451</b>	<b>SPORTING GOODS, HOBBY, BOOK &amp; MUSIC STORES</b>	<b>440</b>	<b>4,306</b>	<b>4,489</b>	<b>4,448</b>	<b>\$29,353,281</b>	<b>\$511.50</b>
4511	Sporting Goods & Musical Instrument Stores	379	3,944	4,117	4,070	27,465,291	522.47
4512	Book, Periodical & Music Stores	61	362	372	378	1,887,990	391.81
<b>452</b>	<b>GENERAL MERCHANDISE STORES</b>	<b>965</b>	<b>39,135</b>	<b>41,044</b>	<b>41,178</b>	<b>\$270,260,580</b>	<b>\$513.92</b>
4522	Department Stores	131	6,528	7,342	7,497	41,960,762	453.19
4523	Gen. Merchandise Stores, Warehouse clubs & Supercenters	834	32,607	33,702	33,681	228,299,818	526.90
<b>453</b>	<b>MISCELLANEOUS STORE RETAILERS</b>	<b>1,203</b>	<b>7,146</b>	<b>7,132</b>	<b>7,133</b>	<b>\$51,383,280</b>	<b>\$553.81</b>
4531	Florists	163	525	539	566	3,251,932	460.40
4532	Office Supplies, Stationery & Gift Stores	227	1,340	1,282	1,233	8,485,279	507.95
4533	Used Merchandise Stores	256	2,031	2,033	2,036	12,199,572	461.52
4539	Other Miscellaneous Store Retailers	557	3,250	3,278	3,298	27,446,497	644.60
<b>454</b>	<b>NONSTORE RETAILERS</b>	<b>581</b>	<b>1,885</b>	<b>2,090</b>	<b>2,051</b>	<b>\$25,076,134</b>	<b>\$960.31</b>
4541	Electronic Shopping & Mail-Order Houses	358	857	962	1,027	12,813,377	1,038.98
4542	Vending Machine Operators	55	335	337	348	3,631,949	821.71
4543	Direct Selling Establishments	168	693	791	676	8,630,808	922.09
<b>48 - 49</b>	<b>TRANSPORTATION &amp; WAREHOUSING</b>	<b>3,134</b>	<b>55,157</b>	<b>56,484</b>	<b>57,129</b>	<b>785,817,909</b>	<b>\$1,074.50</b>
<b>481</b>	<b>AIR TRANSPORTATION</b>	<b>43</b>	<b>704</b>	<b>678</b>	<b>661</b>	<b>\$8,745,785</b>	<b>\$987.89</b>
4811	Scheduled Air Transportation	17	599	575	556	6,243,970	832.90
4812	Nonshceduled Air Transportation	26	105	103	105	2,501,815	1,844.54
<b>484</b>	<b>TRUCK TRANSPORTATION</b>	<b>1,978</b>	<b>31,472</b>	<b>31,391</b>	<b>31,428</b>	<b>\$484,577,391</b>	<b>\$1,185.96</b>
4841	General Freight Trucking	1,208	25,409	25,355	25,406	404,299,993	1,224.89
4842	Specialized Freight Trucking	770	6,063	6,036	6,022	80,277,398	1,022.33

TABLE 5. STATEWIDE SUMMARY

North American Industry Classification System - Industry Groups		Number of Employing Units	Employment			Total Earnings	Average Weekly Earnings
			Oct	Nov	Dec	Oct - Dec 2020	
<b>485</b>	<b>TRANSIT &amp; GROUND PASSENGER TRANSPORTATION</b>	<b>125</b>	<b>1,399</b>	<b>1,392</b>	<b>1,401</b>	<b>\$10,768,313</b>	<b>\$592.79</b>
4853	Taxi & Limousine Service	33	228	233	220	1,533,011	519.49
4854	School & Employee Bus Transportation	19	308	300	305	2,152,761	544.13
4859	Other Ground Passenger Transportation	62	705	704	717	5,707,587	619.54
	Other	11	158	155	159	1,374,954	672.24
<b>486</b>	<b>PIPELINE TRANSPORTATION</b>	<b>40</b>	<b>387</b>	<b>384</b>	<b>364</b>	<b>\$9,485,740</b>	<b>\$1,928.65</b>
<b>488</b>	<b>SUPPORT ACTIVITIES FOR TRANSPORTATION</b>	<b>526</b>	<b>5,451</b>	<b>5,494</b>	<b>5,492</b>	<b>\$78,453,191</b>	<b>\$1,101.45</b>
4881	Support Activities for Air Transportation	121	1,090	1,115	1,088	13,175,303	923.31
4882	Support Activities for Rail Transportation	38	637	630	639	9,814,195	1,188.26
4883	Support Activities for Water Transportation	21	469	481	480	7,376,902	1,190.46
4884	Support Activities for Road Transportation	156	908	892	894	9,901,406	848.16
4885	Freight Transportation Arrangement	180	2,233	2,264	2,283	37,080,268	1,262.09
4889	Other Support Activities for Transportation	10	114	112	108	1,105,117	763.55
<b>493</b>	<b>WAREHOUSING &amp; STORAGE</b>	<b>210</b>	<b>9,706</b>	<b>9,897</b>	<b>9,968</b>	<b>\$117,924,008</b>	<b>\$920.27</b>
	<b>OTHER</b>	<b>212</b>	<b>6,038</b>	<b>7,248</b>	<b>7,815</b>	<b>75,863,481</b>	<b>\$829.67</b>
<b>22</b>	<b>UTILITIES</b>	<b>414</b>	<b>7,851</b>	<b>7,849</b>	<b>7,886</b>	<b>\$190,823,079</b>	<b>\$1,867.04</b>
2211	Power Generation & Supply	175	5,906	5,894	5,920	159,409,616	2,076.01
2212	Natural Gas Distribution	62	1,010	1,016	1,023	20,575,877	1,557.32
2213	Water, Sewage & Other Systems	177	935	939	943	10,837,586	887.82
	<b>INFORMATION</b>	<b>1,664</b>	<b>11,255</b>	<b>11,283</b>	<b>11,324</b>	<b>\$216,468,762</b>	<b>\$1,475.23</b>
<b>511</b>	<b>PUBLISHING INDUSTRIES, EXCEPT INTERNET</b>	<b>235</b>	<b>2,132</b>	<b>2,144</b>	<b>2,192</b>	<b>\$26,845,754</b>	<b>\$957.82</b>
5111	Newspaper, Book & Directory Publishers	174	1,794	1,803	1,835	20,452,272	868.88
5112	Software Publishers	61	338	341	357	6,393,482	1,424.15
<b>512</b>	<b>MOTION PICTURE &amp; SOUND RECORDING INDUSTRY</b>	<b>164</b>	<b>533</b>	<b>567</b>	<b>558</b>	<b>\$5,748,801</b>	<b>\$800.15</b>
5121	Motion Picture & Video Industries	146	511	543	536	5,389,219	782.18
5122	Sound Recording Industries	18	22	24	22	359,582	1,220.30
<b>515</b>	<b>BROADCASTING, EXCEPT INTERNET</b>	<b>123</b>	<b>1,439</b>	<b>1,417</b>	<b>1,420</b>	<b>\$17,902,466</b>	<b>\$966.17</b>

TABLE 5. STATEWIDE SUMMARY

North American Industry Classification System - Industry Groups		Number of Employing Units	Employment			Total Earnings Oct - Dec 2020	Average Weekly Earnings
			Oct	Nov	Dec		
<b>517</b>	<b>TELECOMMUNICATIONS</b>	<b>364</b>	<b>3,339</b>	<b>3,340</b>	<b>3,354</b>	<b>\$65,433,427</b>	<b>\$1,505.04</b>
5173	Telecommunications Resellers	266	2,912	2,919	2,926	57,318,304	1,510.48
5174	Satellite Telecommunications Carriers	4	5	4	4	76,484	1,357.70
5179	Other Telecommunications	94	422	417	424	8,038,639	1,468.78
<b>518</b>	<b>DATA PROCESSING, HOSTING &amp; RELATED SERVICES</b>	<b>656</b>	<b>3,444</b>	<b>3,439</b>	<b>3,415</b>	<b>\$95,208,862</b>	<b>\$2,133.55</b>
<b>519</b>	<b>OTHER INFORMATION SERVICES</b>	<b>122</b>	<b>368</b>	<b>376</b>	<b>385</b>	<b>\$5,329,452</b>	<b>\$1,089.35</b>
<b>FINANCIAL ACTIVITIES</b>		<b>9,080</b>	<b>52,146</b>	<b>52,193</b>	<b>52,236</b>	<b>\$911,879,558</b>	<b>\$1,343.98</b>
<b>52</b>	<b>FINANCE &amp; INSURANCE</b>	<b>5,320</b>	<b>38,435</b>	<b>38,569</b>	<b>38,590</b>	<b>\$742,990,615</b>	<b>\$1,483.29</b>
<b>522</b>	<b>CREDIT INTERMEDIATION &amp; RELATED ACTIVITIES</b>	<b>2,064</b>	<b>19,762</b>	<b>19,814</b>	<b>19,866</b>	<b>\$372,613,624</b>	<b>\$1,446.58</b>
5221	Depository Credit Intermediation	1,439	16,433	16,471	16,523	278,177,484	1,298.78
5222	Nondepository Credit Intermediation	429	2,082	2,095	2,107	71,022,773	2,608.19
5223	Activities Related to Credit Intermediation	196	1,247	1,248	1,236	23,413,367	1,448.16
<b>523</b>	<b>FINANCIAL INVESTMENT &amp; RELATED ACTIVITIES</b>	<b>807</b>	<b>3,039</b>	<b>3,075</b>	<b>3,002</b>	<b>\$99,787,644</b>	<b>\$2,526.10</b>
5231	Security & Commodity Contracts Intermediation & Brokerage	346	1,958	1,969	1,946	71,791,603	2,820.93
5239	Other Financial Investment Activities	461	1,081	1,106	1,056	27,996,041	1,992.18
<b>524</b>	<b>INSURANCE CARRIERS &amp; RELATED ACTIVITIES</b>	<b>2,352</b>	<b>15,563</b>	<b>15,607</b>	<b>15,642</b>	<b>\$268,072,530</b>	<b>\$1,321.52</b>
5241	Insurance Carriers	310	6,909	6,982	7,010	132,790,803	1,466.15
5242	Insurance Agencies and Brokerages	2,042	8,654	8,625	8,632	135,281,727	1,204.85
	<b>OTHER</b>	<b>97</b>	<b>71</b>	<b>73</b>	<b>80</b>	<b>\$2,516,817</b>	<b>\$2,592.87</b>
<b>53</b>	<b>REAL ESTATE &amp; RENTAL &amp; LEASING</b>	<b>3,760</b>	<b>13,711</b>	<b>13,624</b>	<b>13,646</b>	<b>\$168,888,943</b>	<b>\$951.04</b>
<b>531</b>	<b>REAL ESTATE</b>	<b>3,149</b>	<b>10,091</b>	<b>10,051</b>	<b>10,102</b>	<b>\$122,099,867</b>	<b>\$931.65</b>
5311	Lessors of Real Estate	1,098	4,092	4,059	3,993	39,251,729	745.89
5312	Offices of Real Estate Agents & Brokers	1,094	2,188	2,186	2,267	36,515,939	1,268.90
5313	Activities Related to Real Estate	957	3,811	3,806	3,842	46,332,199	933.07
<b>532</b>	<b>RENTAL &amp; LEASING SERVICES</b>	<b>591</b>	<b>3,558</b>	<b>3,510</b>	<b>3,483</b>	<b>\$45,726,330</b>	<b>\$1,000.12</b>
5321	Automotive Equipment Rental & Leasing	125	895	897	890	8,608,497	740.71
5322	Consumer Goods Rental	308	1,558	1,505	1,476	15,899,861	808.37
5323	General Rental Centers	28	186	187	186	2,449,264	1,011.12
5324	Machinery & Equipment Rental & Leasing	130	919	921	931	18,768,708	1,563.06
<b>533</b>	<b>LESSORS OF NONFINANCIAL INTANGIBLE ASSETS</b>	<b>20</b>	<b>62</b>	<b>63</b>	<b>61</b>	<b>\$1,062,746</b>	<b>\$1,318.54</b>

TABLE 5. STATEWIDE SUMMARY

North American Industry Classification System - Industry Groups		Number of Employing Units	Employment			Total Earnings Oct - Dec 2020	Average Weekly Earnings
			Oct	Nov	Dec		
<b>PROFESSIONAL &amp; BUSINESS SERVICES</b>		<b>15,882</b>	<b>143,106</b>	<b>144,705</b>	<b>145,462</b>	<b>\$2,475,162,686</b>	<b>\$1,318.32</b>
<b>54</b>	<b>PROFESSIONAL &amp; TECHNICAL SERVICES</b>	<b>10,040</b>	<b>42,525</b>	<b>42,800</b>	<b>43,045</b>	<b>\$830,472,979</b>	<b>\$1,492.93</b>
5411	Legal Services	1,719	6,095	6,078	6,094	121,168,935	1,530.74
5412	Accounting & Bookkeeping Services	1,378	5,606	5,673	6,058	84,810,703	1,128.90
5413	Architectural & Engineering Services	1,106	6,473	6,470	6,502	141,488,165	1,679.15
5414	Specialized Design Services	188	356	356	370	5,688,991	1,213.35
5415	Computer Systems Design & Related Services	2,212	8,909	8,955	8,712	201,675,151	1,751.22
5416	Management & Technical Consulting Services	2,238	6,137	6,255	6,380	140,973,664	1,733.03
5417	Scientific Research & Development Services	169	885	893	902	17,863,748	1,538.21
5418	Advertising & Related Services	420	3,628	3,645	3,517	60,419,709	1,292.22
5419	Other Professional & Technical Services	610	4,436	4,475	4,510	56,383,913	969.50
<b>55</b>	<b>MANAGEMENT OF COMPANIES &amp; ENTERPRISES</b>	<b>542</b>	<b>33,775</b>	<b>34,109</b>	<b>34,198</b>	<b>\$1,011,089,924</b>	<b>\$2,285.70</b>
<b>56</b>	<b>ADMINISTRATIVE &amp; WASTE SERVICES</b>	<b>5,300</b>	<b>66,806</b>	<b>67,796</b>	<b>68,219</b>	<b>\$633,599,783</b>	<b>\$720.91</b>
<b>561</b>	<b>ADMINISTRATIVE &amp; SUPPORT SERVICES</b>	<b>4,950</b>	<b>63,125</b>	<b>64,102</b>	<b>64,456</b>	<b>\$580,059,383</b>	<b>\$698.34</b>
5611	Office Administrative Services	734	3,560	3,602	3,654	87,411,631	1,865.01
5612	Facilities Support Services	69	1,049	1,006	1,011	10,010,767	753.48
5613	Employment Services	1,327	27,797	28,531	28,864	211,859,799	573.89
5614	Business Support Services	435	8,661	9,128	9,298	98,645,356	840.41
5615	Travel Arrangement & Reservation Services	115	212	210	222	2,564,270	918.87
5616	Investigation & Security Services	329	5,020	4,993	4,928	40,981,317	632.97
5617	Services to Buildings & Dwellings	1,738	15,595	15,387	15,265	115,734,069	577.50
5619	Other Support Services	203	1,231	1,245	1,214	12,852,174	803.76
<b>562</b>	<b>WASTE MANAGEMENT &amp; REMEDIATION SERVICES</b>	<b>350</b>	<b>3,681</b>	<b>3,694</b>	<b>3,763</b>	<b>\$53,540,400</b>	<b>\$1,109.31</b>
5621	Waste Collection Services	138	1,319	1,326	1,324	17,480,712	1,016.38
5622	Waste Treatment & Disposal Services	43	1,019	1,028	1,073	17,421,536	1,288.58
5629	Remediation & Other Waste Services	169	1,343	1,340	1,366	18,638,152	1,062.27
<b>EDUCATION &amp; HEALTH SERVICES</b>		<b>15,582</b>	<b>181,298</b>	<b>181,725</b>	<b>181,460</b>	<b>2,387,170,645</b>	<b>\$1,011.76</b>
<b>61</b>	<b>EDUCATIONAL SERVICES</b>	<b>1,005</b>	<b>12,286</b>	<b>12,449</b>	<b>12,120</b>	<b>122,551,682</b>	<b>\$767.36</b>
6111	Elementary & Secondary Schools	114	4,646	4,711	4,661	44,485,210	732.33
6113	Colleges & Universities	135	4,154	4,205	4,045	44,035,481	819.25
6115	Technical & Trade Schools	123	894	913	895	13,862,825	1,183.98
6116	Other Schools & Instruction	349	1,696	1,712	1,656	9,840,944	448.46
6117	Educational Support Services	204	643	643	653	6,933,955	825.24
	Other	80	253	265	210	3,393,267	1,075.63



TABLE 5. STATEWIDE SUMMARY

North American Industry Classification System - Industry Groups		Number of Employing Units	Employment			Total Earnings Oct - Dec 2020	Average Weekly Earnings
			Oct	Nov	Dec		
<b>62</b>	<b>HEALTH CARE &amp; SOCIAL ASSISTANCE</b>	<b>14,577</b>	<b>169,012</b>	<b>169,276</b>	<b>169,340</b>	<b>\$2,264,618,963</b>	<b>\$1,029.50</b>
<b>621</b>	<b>AMBULATORY HEALTH CARE SERVICES</b>	<b>6,237</b>	<b>59,743</b>	<b>59,855</b>	<b>60,055</b>	<b>\$1,138,776,578</b>	<b>\$1,462.79</b>
6211	Offices of Physicians	2,407	26,479	26,580	26,704	682,174,571	1,973.66
6212	Offices of Dentists	958	7,475	7,466	7,474	111,946,596	1,152.52
6213	Offices of Other Health Practitioners	1,772	9,735	9,767	9,809	118,835,352	935.61
6214	Outpatient Care Centers	395	5,244	5,299	5,375	88,634,958	1,284.97
6215	Medical & Diagnostic Laboratories	205	1,430	1,495	1,431	27,992,866	1,482.99
6216	Home Health Care Services	285	6,544	6,444	6,422	70,382,766	836.79
6219	Other Ambulatory Health Care Services	215	2,836	2,804	2,840	38,809,469	1,056.14
<b>622</b>	<b>HOSPITALS</b>	<b>128</b>	<b>43,122</b>	<b>43,271</b>	<b>43,327</b>	<b>\$639,425,505</b>	<b>\$1,137.52</b>
6221	General Medical & Surgical Hospitals	93	38,440	38,628	38,674	576,265,336	1,148.97
6222	Psychiatric & Substance Abuse Hospitals	13	1,902	1,865	1,816	22,951,835	948.70
6223	Speciality Hospitals	22	2,780	2,778	2,837	40,208,334	1,105.28
<b>623</b>	<b>Residential &amp; Mental Health Facilities</b>	<b>642</b>	<b>30,047</b>	<b>29,990</b>	<b>29,904</b>	<b>\$253,242,589</b>	<b>\$649.77</b>
6231	Nursing Care Facilities (Skilled Nursing Facilities)	272	20,664	20,592	20,493	179,234,351	669.84
6232	Residential Mental Health Facilities	182	4,040	4,061	4,070	33,702,639	639.02
6233	Continuing Care & Assisted Living Facilities	150	4,465	4,462	4,457	31,756,312	547.55
6239	Other Residential Care Facilities	38	878	875	884	8,549,287	748.17
<b>624</b>	<b>SOCIAL ASSISTANCE</b>	<b>7,570</b>	<b>36,100</b>	<b>36,160</b>	<b>36,054</b>	<b>\$233,174,291</b>	<b>\$496.79</b>
6241	Individual & Family Services	6,458	21,930	21,899	21,887	144,729,661	508.23
6242	Emergency & Other Relief Services	172	1,434	1,434	1,429	11,558,127	620.73
6243	Vocational Rehabilitation Services	98	2,871	2,861	2,839	19,039,162	512.62
6244	Child Day Care Services	842	9,865	9,966	9,899	57,847,341	449.02
<b>LEISURE &amp; HOSPITALITY</b>		<b>7,561</b>	<b>108,734</b>	<b>108,183</b>	<b>107,284</b>	<b>\$525,886,890</b>	<b>\$374.33</b>
<b>71</b>	<b>ARTS, ENTERTAINMENT &amp; RECREATION</b>	<b>1,081</b>	<b>10,272</b>	<b>9,913</b>	<b>9,815</b>	<b>68,763,433</b>	<b>\$528.95</b>
<b>711</b>	<b>PERFORMING ARTS &amp; SPECTATOR SPORTS</b>	<b>256</b>	<b>1,940</b>	<b>1,758</b>	<b>1,923</b>	<b>17,868,828</b>	<b>\$733.60</b>
7111	Performing Arts Companies	44	393	259	285	1,710,307	421.22
7112	Spectator Sports	73	1,122	1,142	1,282	12,519,175	814.73
7113	Performing Arts & Sports Promoters	57	332	240	235	2,624,432	750.48
7114	Agents & Managers for Public Figures	20	20	43	38	289,527	661.52
7115	Independent Artists, Writers, & Performers	62	73	74	83	725,387	727.81
<b>712</b>	<b>MUSEUMS, PARKS, &amp; HISTORICAL SITES</b>	<b>56</b>	<b>745</b>	<b>737</b>	<b>731</b>	<b>8,181,430</b>	<b>\$853.15</b>
<b>713</b>	<b>GAMBLING, RECREATIONAL &amp; AMUSEMENT INDUSTRY</b>	<b>769</b>	<b>7,587</b>	<b>7,418</b>	<b>7,161</b>	<b>42,713,175</b>	<b>444.68</b>
<b>72</b>	<b>ACCOMMODATION &amp; FOOD SERVICES</b>	<b>6,480</b>	<b>98,462</b>	<b>98,270</b>	<b>97,469</b>	<b>457,123,457</b>	<b>\$358.56</b>

TABLE 5. STATEWIDE SUMMARY

North American Industry Classification System - Industry Groups		Number of Employing Units	Employment			Total Earnings	Average Weekly Earnings
			Oct	Nov	Dec	Oct - Dec 2020	
<b>721</b>	<b>ACCOMMODATION</b>	<b>935</b>	<b>9,213</b>	<b>9,057</b>	<b>8,770</b>	<b>\$48,105,591</b>	<b>\$410.55</b>
7211	Travel Accommodation	837	8,712	8,548	8,292	44,631,648	403.08
7212	RV Parks & Recreational Camps	80	406	420	395	2,791,339	527.56
7213	Rooming & Boarding Houses	18	95	89	83	682,604	589.98
<b>722</b>	<b>FOOD SERVICES &amp; DRINKING PLACES</b>	<b>5,545</b>	<b>89,249</b>	<b>89,213</b>	<b>88,699</b>	<b>\$409,017,866</b>	<b>\$353.30</b>
7223	Special Food Services	317	4,301	4,209	3,952	23,085,682	427.50
7224	Drinking Places, Alcoholic Beverages	149	752	720	650	3,118,439	339.13
7225	Restaurants & Other Eating Places	5,079	84,196	84,284	84,097	382,813,745	349.76
722511	Full-Service Restaurants	2,147	33,031	33,170	32,794	166,522,672	388.18
722513	Limited-Service Eating Places	2,368	46,472	46,361	46,488	193,787,612	320.99
722514	Cafeterias, Grill Buffets, & Buffets	95	1,209	1,233	1,207	6,806,087	430.43
722515	Snack & Nonalcoholic Beverage Bars	469	3,484	3,520	3,608	15,697,374	341.36
<b>OTHER SERVICES</b>		<b>5,568</b>	<b>23,974</b>	<b>23,901</b>	<b>23,914</b>	<b>\$246,685,064</b>	<b>\$792.98</b>
<b>811</b>	<b>REPAIR &amp; MAINTENANCE</b>	<b>2,264</b>	<b>11,162</b>	<b>11,129</b>	<b>11,191</b>	<b>\$127,515,821</b>	<b>\$878.88</b>
8111	Automotive Repair & Maintenance	1,455	7,043	7,063	7,080	72,557,155	790.33
8112	Electronic Equipment Repair & Maintenance	163	940	943	956	12,224,927	993.71
8113	Commercial Machinery Repair & Maintenance	477	2,554	2,507	2,534	36,960,809	1,123.03
8114	Household Goods Repair & Maintenance	169	625	616	621	5,772,930	715.48
<b>812</b>	<b>PERSONAL &amp; LAUNDRY SERVICES</b>	<b>1,448</b>	<b>6,967</b>	<b>7,029</b>	<b>7,038</b>	<b>\$54,651,761</b>	<b>\$599.60</b>
8121	Personal Care Services	735	2,663	2,695	2,675	17,393,497	499.67
8122	Death Care Services	247	1,466	1,480	1,500	14,031,235	728.29
8123	Drycleaning & Laundry Service	197	1,786	1,781	1,771	15,109,266	653.19
8129	Other Personal Services	269	1,052	1,073	1,092	8,117,763	582.32
<b>813</b>	<b>MEMBERSHIP ASSOCIATIONS &amp; ORGANIZATIONS</b>	<b>1,163</b>	<b>5,024</b>	<b>4,931</b>	<b>4,885</b>	<b>\$58,499,347</b>	<b>\$909.69</b>
8131	Religious Organizations	109	332	329	324	2,767,229	648.32
8132	Grantmaking & Giving Organizations	131	442	431	429	7,473,277	1,324.58
8133	Social Advocacy Organizations	230	1,186	1,176	1,172	14,452,923	943.77
8134	Civic & Social Organizations	196	934	935	917	5,483,150	454.18
8139	Professional & Similar Organizations	497	2,130	2,060	2,043	28,322,768	1,048.62
<b>814</b>	<b>PRIVATE HOUSEHOLDS</b>	<b>693</b>	<b>821</b>	<b>812</b>	<b>800</b>	<b>\$6,018,135</b>	<b>\$570.82</b>
	<b>LOCAL GOVERNMENT</b>	<b>1,992</b>	<b>110,614</b>	<b>111,155</b>	<b>111,075</b>	<b>\$1,155,081,231</b>	<b>\$800.85</b>
	<b>STATE GOVERNMENT</b>	<b>1,058</b>	<b>69,658</b>	<b>69,770</b>	<b>69,766</b>	<b>\$888,042,200</b>	<b>\$979.63</b>
	<b>NONCLASSIFIABLE ESTABLISHMENTS</b>	<b>0</b>	<b>0</b>	<b>0</b>	<b>0</b>	<b>\$0</b>	<b>\$0.00</b>

TABLE 6. COUNTY SUMMARY

North American Industry Classification System - Industry Groups	Number of Employing Units	Employment			Total Earnings Oct - Dec 2020	Average Weekly Earnings
		Oct	Nov	Dec		
<b>ARKANSAS COUNTY - TOTAL</b>	<b>1,155</b>	<b>10,191</b>	<b>10,208</b>	<b>10,279</b>	<b>\$123,085,546</b>	<b>\$925.89</b>
Natural Resources & Mining	68	189	183	180	2,243,808	938.05
Construction	107	352	364	354	5,618,055	1,211.66
Manufacturing	49	3,615	3,563	3,619	47,739,723	1,020.36
Trade, Transportation & Utilities	259	2,252	2,307	2,347	28,078,458	938.26
Wholesale Trade	53	421	407	420	7,033,183	1,300.51
Retail Trade	124	1,108	1,152	1,151	9,082,796	614.49
Transportation, Warehousing & Utilities	82	723	748	776	11,962,479	1,228.56
Information	11	45	48	50	440,976	711.63
Financial Activities	96	379	383	373	5,831,996	1,185.77
Professional & Business Services	134	610	608	619	10,126,321	1,272.10
Education & Health Services	210	1,076	1,060	1,047	11,010,585	798.27
Leisure & Hospitality	106	653	670	663	2,811,702	326.71
Other Services	69	131	130	128	1,017,177	603.43
Local Government	32	721	724	731	6,729,619	713.69
State Government	14	168	168	168	1,437,126	658.02
<b>ASHLEY COUNTY - TOTAL</b>	<b>562</b>	<b>5,703</b>	<b>5,756</b>	<b>5,636</b>	<b>\$64,573,876</b>	<b>\$871.70</b>
Natural Resources & Mining	46	352	360	331	4,223,671	934.51
Construction	35	441	488	447	5,446,713	913.47
Manufacturing	27	1,064	1,081	1,058	19,637,269	1,414.82
Trade, Transportation & Utilities	118	1,208	1,193	1,194	11,336,832	727.73
Wholesale Trade	24	185	177	173	2,898,850	1,250.40
Retail Trade	65	730	732	727	4,872,443	513.66
Transportation, Warehousing & Utilities	29	293	284	294	3,565,539	944.68
Information	4	31	30	29	272,595	698.96
Financial Activities	37	172	169	167	1,631,266	741.04
Professional & Business Services	37	170	184	181	1,687,960	728.09
Education & Health Services	148	855	838	839	9,456,278	861.86
Leisure & Hospitality	37	366	372	372	1,425,747	296.41
Other Services	31	118	121	110	1,045,978	691.63
Local Government	32	822	814	804	7,353,273	695.45
State Government	10	104	106	104	1,056,294	776.31

TABLE 6. COUNTY SUMMARY

North American Industry Classification System - Industry Groups	Number of Employing Units	Employment			Total Earnings Oct - Dec 2020	Average Weekly Earnings
		Oct	Nov	Dec		
<b>BAXTER COUNTY - TOTAL</b>	<b>1,231</b>	<b>14,742</b>	<b>14,827</b>	<b>14,886</b>	<b>\$163,946,121</b>	<b>\$851.06</b>
Natural Resources & Mining	8	58	60	59	677,867	883.79
Construction	99	502	520	529	5,461,326	812.58
Manufacturing	54	2,469	2,493	2,518	26,569,727	819.72
Trade, Transportation & Utilities	258	2,648	2,700	2,706	32,448,034	929.73
Wholesale Trade	35	170	164	164	12,357,087	5,726.18
Retail Trade	202	2,304	2,345	2,346	17,909,078	590.83
Transportation, Warehousing & Utilities	21	174	191	196	2,181,869	897.52
Information	21	151	151	150	2,051,550	1,047.42
Financial Activities	121	726	726	729	11,515,320	1,218.42
Professional & Business Services	150	924	899	935	9,065,707	758.55
Education & Health Services	254	3,935	3,956	3,975	53,124,295	1,033.16
Leisure & Hospitality	120	1,473	1,462	1,436	6,629,830	350.03
Other Services	99	305	313	319	2,415,426	594.88
Local Government	36	1,249	1,242	1,229	11,183,046	693.74
State Government	11	302	305	301	2,803,993	712.64
<b>BENTON COUNTY - TOTAL</b>	<b>7,195</b>	<b>124,698</b>	<b>125,614</b>	<b>125,793</b>	<b>\$2,168,650,399</b>	<b>\$1,330.63</b>
Natural Resources & Mining	50	810	791	789	21,878,026	2,112.46
Construction	727	5,712	5,714	5,715	81,026,457	1,090.86
Manufacturing	211	12,836	12,824	12,869	177,261,806	1,061.71
Trade, Transportation & Utilities	1,731	30,205	30,632	30,801	631,119,879	1,589.33
Wholesale Trade	750	6,274	6,329	6,373	349,307,992	4,247.97
Retail Trade	770	12,560	12,847	12,941	111,033,945	668.18
Transportation, Warehousing & Utilities	211	11,371	11,456	11,487	170,777,942	1,148.52
Information	106	929	916	948	31,655,201	2,615.48
Financial Activities	768	4,179	4,186	4,194	76,475,620	1,405.22
Professional & Business Services	1,451	33,415	33,938	33,951	790,464,167	1,800.67
Education & Health Services	894	12,394	12,399	12,339	153,366,828	953.15
Leisure & Hospitality	708	12,050	12,058	11,973	65,776,471	420.70
Other Services	448	2,297	2,294	2,325	23,094,939	770.62
Local Government	84	8,829	8,812	8,844	106,076,764	924.27
State Government	17	1,042	1,050	1,045	10,454,241	769.05

TABLE 6. COUNTY SUMMARY

North American Industry Classification System - Industry Groups	Number of Employing Units	Employment			Total Earnings Oct - Dec 2020	Average Weekly Earnings
		Oct	Nov	Dec		
<b>BOONE COUNTY - TOTAL</b>	<b>956</b>	<b>13,741</b>	<b>13,771</b>	<b>13,833</b>	<b>\$157,290,256</b>	<b>\$877.92</b>
Construction	67	427	428	421	5,041,138	911.71
Manufacturing	56	1,499	1,533	1,539	22,294,365	1,125.54
Trade, Transportation & Utilities	244	3,779	3,807	3,849	46,512,062	938.66
Wholesale Trade	42	384	385	388	4,527,448	903.02
Retail Trade	160	2,103	2,103	2,121	16,710,810	609.51
Transportation, Warehousing & Utilities	42	1,292	1,319	1,340	25,273,804	1,476.19
Information	13	275	274	288	3,747,217	1,033.15
Financial Activities	96	468	462	456	6,120,751	1,019.11
Professional & Business Services	103	1,322	1,297	1,302	17,860,479	1,051.17
Education & Health Services	156	1,617	1,631	1,652	16,385,591	771.69
Leisure & Hospitality	83	1,149	1,147	1,122	5,295,065	357.50
Local Government	53	2,189	2,186	2,191	23,821,295	837.23
State Government	16	730	727	724	7,177,249	759.42
Other	69	286	279	289	3,035,044	820.13
<b>BRADLEY COUNTY - TOTAL</b>	<b>333</b>	<b>3,566</b>	<b>3,602</b>	<b>3,631</b>	<b>\$37,428,837</b>	<b>\$799.84</b>
Natural Resources & Mining	39	195	243	239	2,438,636	831.26
Construction	15	76	75	70	781,213	815.75
Manufacturing	11	941	946	952	13,161,740	1,069.86
Trade, Transportation & Utilities	68	467	466	473	4,311,230	707.61
Wholesale Trade	11	105	99	97	1,488,593	1,141.27
Retail Trade	37	294	295	304	1,935,823	500.26
Transportation, Warehousing & Utilities	20	68	72	72	886,814	965.33
Information	3	28	28	27	217,082	603.56
Financial Activities	24	120	124	115	1,854,007	1,191.78
Professional & Business Services	25	86	85	123	1,068,639	838.81
Education & Health Services	86	581	573	563	5,480,297	736.57
Leisure & Hospitality	13	165	160	164	612,130	288.88
Other Services	25	83	80	82	714,435	672.94
Local Government	14	448	447	448	3,862,638	663.72
State Government	10	376	375	375	2,926,790	599.83

TABLE 6. COUNTY SUMMARY

North American Industry Classification System - Industry Groups	Number of Employing Units	Employment			Total Earnings Oct - Dec 2020	Average Weekly Earnings
		Oct	Nov	Dec		
<b>CALHOUN COUNTY - TOTAL</b>	<b>102</b>	<b>3,427</b>	<b>3,465</b>	<b>3,492</b>	<b>\$56,136,929</b>	<b>\$1,247.56</b>
Natural Resources & Mining	6	33	33	33	386,267	900.39
Construction	11	137	136	134	1,606,340	910.80
Manufacturing	9	2,644	2,688	2,719	47,236,379	1,353.96
Trade, Transportation & Utilities	17	177	170	169	1,725,991	771.91
Retail Trade	8	43	42	44	260,929	466.78
Transportation, Warehousing & Utilities	9	134	128	125	1,465,062	873.62
Professional & Business Services	5	11	11	13	106,862	704.58
Education & Health Services	23	56	55	55	680,171	945.56
Leisure & Hospitality	4	5	5	6	21,216	306.00
Other Services	3	2	3	3	21,157	610.30
Local Government	11	188	188	183	1,465,994	605.20
State Government	7	72	72	72	788,231	842.13
Other	6	102	104	105	2,098,321	1,557.00
<b>CARROLL COUNTY - TOTAL</b>	<b>783</b>	<b>10,840</b>	<b>10,609</b>	<b>10,473</b>	<b>\$101,030,087</b>	<b>\$730.36</b>
Natural Resources & Mining	21	303	288	283	3,331,684	879.69
Trade, Transportation & Utilities	180	1,528	1,514	1,535	14,702,190	741.27
Wholesale Trade	24	208	204	205	2,811,925	1,051.71
Retail Trade	133	1,108	1,110	1,126	7,435,048	513.09
Transportation, Warehousing & Utilities	23	212	200	204	4,455,217	1,669.04
Information	9	62	61	64	1,798,259	2,219.16
Financial Activities	54	376	378	381	5,698,541	1,158.63
Professional & Business Services	73	482	492	491	5,028,022	792.02
Education & Health Services	97	995	999	990	10,511,083	812.88
Leisure & Hospitality	173	1,655	1,460	1,327	7,677,306	398.85
Other Services	45	155	139	126	1,104,684	606.97
Local Government	25	1,079	1,098	1,089	9,631,882	680.57
State Government	9	92	92	92	981,721	820.84
Other	97	4,113	4,088	4,095	40,564,715	761.31

TABLE 6. COUNTY SUMMARY

North American Industry Classification System - Industry Groups	Number of Employing Units	Employment			Total Earnings Oct - Dec 2020	Average Weekly Earnings
		Oct	Nov	Dec		
<b>CHICOT COUNTY - TOTAL</b>	<b>464</b>	<b>2,745</b>	<b>2,736</b>	<b>2,754</b>	<b>\$27,743,700</b>	<b>\$777.46</b>
Natural Resources & Mining	55	252	250	238	2,812,591	877.11
Construction	14	111	114	119	1,903,536	1,276.97
Manufacturing	5	6	6	6	75,248	964.72
Trade, Transportation & Utilities	66	679	693	722	6,779,059	747.09
Wholesale Trade	11	46	47	48	868,254	1,421.04
Retail Trade	41	268	265	255	2,048,865	600.02
Transportation, Warehousing & Utilities	14	365	381	419	3,861,940	764.99
Financial Activities	28	177	173	172	2,325,618	1,028.12
Professional & Business Services	17	36	34	32	468,098	1,059.05
Education & Health Services	219	519	516	514	4,683,147	697.69
Leisure & Hospitality	14	103	97	100	393,939	303.03
Local Government	17	540	533	531	5,294,251	761.69
State Government	9	248	248	248	2,256,079	699.78
Other	20	74	72	72	752,134	796.19
<b>CLARK COUNTY - TOTAL</b>	<b>650</b>	<b>8,643</b>	<b>8,658</b>	<b>8,484</b>	<b>\$91,452,585</b>	<b>\$818.48</b>
Natural Resources & Mining	50	306	304	301	3,551,423	899.63
Construction	25	101	102	103	1,612,505	1,216.07
Manufacturing	35	1,152	1,137	1,154	22,115,874	1,482.33
Trade, Transportation & Utilities	138	1,423	1,413	1,362	13,234,711	727.53
Wholesale Trade	15	45	47	48	696,025	1,147.29
Retail Trade	95	1,206	1,193	1,138	10,193,992	665.10
Transportation, Warehousing & Utilities	28	172	173	176	2,344,694	1,038.55
Financial Activities	75	325	332	326	3,205,417	752.50
Professional & Business Services	54	581	581	602	8,312,664	1,087.48
Education & Health Services	125	1,613	1,630	1,588	15,440,935	737.59
Leisure & Hospitality	63	1,022	1,031	980	4,128,780	314.14
Local Government	28	891	896	920	7,838,414	668.22
State Government	14	1,028	1,027	944	9,693,795	745.93
Other	43	201	205	204	2,318,067	876.95

TABLE 6. COUNTY SUMMARY

North American Industry Classification System - Industry Groups	Number of Employing Units	Employment			Total Earnings	Average Weekly Earnings
		Oct	Nov	Dec	Oct - Dec 2020	
<b>CLAY COUNTY - TOTAL</b>	<b>349</b>	<b>3,099</b>	<b>3,081</b>	<b>3,059</b>	<b>\$28,784,757</b>	<b>\$718.98</b>
Natural Resources & Mining	50	252	229	214	2,056,720	682.92
Construction	31	108	123	112	1,123,809	756.09
Manufacturing	11	97	101	101	850,055	656.08
Trade, Transportation & Utilities	82	783	777	792	7,595,528	745.24
Wholesale Trade	19	280	283	294	2,828,532	761.65
Retail Trade	42	370	363	367	2,879,498	604.09
Transportation, Warehousing & Utilities	21	133	131	131	1,887,498	1,102.73
Information	7	27	29	24	196,300	566.25
Financial Activities	24	99	99	101	1,277,722	986.15
Professional & Business Services	23	104	96	88	1,005,060	805.34
Education & Health Services	48	481	489	488	4,761,388	753.62
Leisure & Hospitality	22	207	209	209	750,542	277.12
Other Services	22	79	79	80	1,128,678	1,094.39
Local Government	20	818	806	806	7,581,743	720.01
State Government	9	44	44	44	457,212	799.32
<b>CLEBURNE COUNTY - TOTAL</b>	<b>644</b>	<b>6,140</b>	<b>6,160</b>	<b>6,129</b>	<b>\$61,257,215</b>	<b>\$767.07</b>
Natural Resources & Mining	20	158	156	145	2,594,848	1,304.60
Construction	65	332	334	337	3,850,175	885.84
Manufacturing	35	1,201	1,211	1,179	13,534,855	869.79
Trade, Transportation & Utilities	152	1,261	1,286	1,287	12,633,896	760.44
Wholesale Trade	31	104	105	105	1,390,603	1,022.00
Retail Trade	102	1,026	1,045	1,039	9,206,711	683.16
Transportation, Warehousing & Utilities	19	131	136	143	2,036,582	1,146.29
Information	13	50	50	51	531,979	813.01
Financial Activities	73	256	253	248	4,362,161	1,329.79
Professional & Business Services	66	291	306	330	3,548,099	883.27
Education & Health Services	74	843	845	833	7,927,275	725.65
Leisure & Hospitality	79	791	759	757	3,733,153	373.43
Other Services	41	98	97	102	814,807	633.11
Local Government	18	751	757	750	6,782,257	693.15
State Government	8	108	106	110	943,710	672.16



TABLE 6. COUNTY SUMMARY

North American Industry Classification System - Industry Groups	Number of Employing Units	Employment			Total Earnings Oct - Dec 2020	Average Weekly Earnings
		Oct	Nov	Dec		
<b>CLEVELAND COUNTY - TOTAL</b>	<b>125</b>	<b>984</b>	<b>971</b>	<b>977</b>	<b>\$9,905,686</b>	<b>\$779.65</b>
Natural Resources & Mining	16	141	137	134	1,578,914	884.38
Construction	4	20	20	19	257,916	1,008.80
Manufacturing	4	116	116	116	1,516,196	1,005.44
Trade, Transportation & Utilities	29	131	130	135	1,107,281	645.27
Retail Trade	16	65	67	69	301,872	346.58
Other Trade, Transportation, & Utilities	13	66	63	66	805,409	953.15
Financial Activities	4	22	23	25	385,715	1,271.59
Education & Health Services	34	191	189	192	1,751,097	706.47
Other Services	6	11	11	11	99,699	697.20
Local Government	13	297	292	289	2,695,573	708.49
State Government	6	30	30	30	332,065	851.45
Other	9	25	23	26	181,230	565.17
<b>COLUMBIA COUNTY - TOTAL</b>	<b>682</b>	<b>7,771</b>	<b>7,850</b>	<b>7,710</b>	<b>\$88,608,884</b>	<b>\$876.44</b>
Natural Resources & Mining	44	357	361	368	6,293,162	1,337.26
Construction	35	138	141	138	1,459,035	807.43
Manufacturing	27	1,876	1,923	1,844	32,615,954	1,333.82
Trade, Transportation & Utilities	169	1,376	1,398	1,380	12,377,567	687.62
Wholesale Trade	29	172	180	152	2,846,740	1,303.45
Retail Trade	97	1,001	1,015	1,014	6,636,141	505.42
Transportation, Warehousing & Utilities	43	203	203	214	2,894,686	1,077.43
Information	6	26	26	25	301,792	904.47
Financial Activities	61	337	332	327	5,638,998	1,306.53
Professional & Business Services	51	313	308	306	2,703,343	672.98
Education & Health Services	157	993	984	986	9,007,399	701.53
Leisure & Hospitality	57	799	806	757	2,932,851	286.54
Other Services	37	119	116	118	905,651	592.06
Local Government	27	831	832	842	7,295,507	672.09
State Government	11	606	623	619	7,077,625	883.82

TABLE 6. COUNTY SUMMARY

North American Industry Classification System - Industry Groups	Number of Employing Units	Employment			Total Earnings Oct - Dec 2020	Average Weekly Earnings
		Oct	Nov	Dec		
<b>CONWAY COUNTY - TOTAL</b>	<b>506</b>	<b>6,783</b>	<b>6,739</b>	<b>6,908</b>	<b>74,190,530</b>	<b>\$838.03</b>
Natural Resources & Mining	27	270	263	260	2,613,422	760.53
Construction	49	501	503	514	8,094,251	1,230.50
Manufacturing	19	993	1,000	1,006	15,169,627	1,167.28
Trade, Transportation & Utilities	111	1,370	1,384	1,398	13,336,575	741.25
Wholesale Trade	15	103	106	103	1,384,083	1,023.73
Retail Trade	75	839	851	854	6,581,774	597.04
Transportation, Warehousing & Utilities	21	428	427	441	5,370,718	956.32
Financial Activities	37	144	145	145	1,986,472	1,056.26
Professional & Business Services	36	710	724	735	5,772,481	614.16
Education & Health Services	122	705	689	691	8,678,882	960.58
Leisure & Hospitality	38	434	431	420	1,851,599	332.52
Local Government	31	1,172	1,133	1,271	12,765,469	823.79
State Government	9	376	374	369	3,051,189	629.24
Other	27	108	93	99	870,563	669.66
<b>CRAIGHEAD COUNTY - TOTAL</b>	<b>2,901</b>	<b>51,449</b>	<b>51,583</b>	<b>51,805</b>	<b>\$619,157,894</b>	<b>\$922.79</b>
Natural Resources & Mining	106	514	490	407	6,274,623	1,026.22
Construction	251	2,111	2,103	2,086	30,169,460	1,105.11
Manufacturing	100	7,271	7,282	7,356	102,332,992	1,077.88
Trade, Transportation & Utilities	769	10,175	10,443	10,620	119,201,392	880.59
Wholesale Trade	181	2,043	2,051	2,077	38,138,338	1,426.21
Retail Trade	463	6,297	6,476	6,556	53,782,864	642.11
Transportation, Warehousing & Utilities	125	1,835	1,916	1,987	27,280,190	1,097.15
Information	23	343	342	347	5,238,481	1,171.40
Financial Activities	290	1,767	1,758	1,772	27,385,649	1,193.08
Professional & Business Services	383	5,165	5,110	5,077	52,344,059	786.83
Education & Health Services	459	11,159	11,099	11,181	167,014,117	1,152.60
Leisure & Hospitality	278	5,162	5,164	5,153	23,978,886	357.49
Other Services	185	787	773	776	6,793,595	671.13
Local Government	36	4,089	4,113	4,121	42,904,415	803.46
State Government	21	2,906	2,906	2,909	35,520,225	939.91

TABLE 6. COUNTY SUMMARY

North American Industry Classification System - Industry Groups	Number of Employing Units	Employment			Total Earnings Oct - Dec 2020	Average Weekly Earnings
		Oct	Nov	Dec		
<b>CRAWFORD COUNTY - TOTAL</b>	<b>1,267</b>	<b>19,325</b>	<b>19,282</b>	<b>19,341</b>	<b>\$207,249,617</b>	<b>\$825.34</b>
Natural Resources & Mining	23	205	193	208	2,453,875	934.45
Construction	145	1,022	1,051	1,046	14,712,096	1,088.52
Manufacturing	62	4,687	4,650	4,652	57,931,007	955.66
Trade, Transportation & Utilities	333	5,609	5,619	5,691	60,535,615	825.68
Wholesale Trade	73	733	739	758	11,394,652	1,179.16
Retail Trade	171	2,053	2,089	2,126	16,997,735	625.81
Transportation, Warehousing & Utilities	89	2,823	2,791	2,807	32,143,228	880.85
Information	12	31	30	32	466,149	1,156.70
Financial Activities	123	501	494	493	5,952,264	923.12
Professional & Business Services	159	1,449	1,436	1,430	16,711,045	893.72
Education & Health Services	185	1,602	1,606	1,608	15,758,034	755.08
Leisure & Hospitality	92	1,557	1,536	1,506	6,770,705	339.74
Other Services	81	395	399	398	4,001,320	774.65
Local Government	42	2,115	2,116	2,125	20,549,152	746.08
State Government	10	152	152	152	1,408,355	712.73
<b>CRITTENDEN COUNTY - TOTAL</b>	<b>1,178</b>	<b>15,322</b>	<b>15,508</b>	<b>15,193</b>	<b>\$167,927,561</b>	<b>\$842.02</b>
Natural Resources & Mining	59	301	300	281	3,971,408	1,039.09
Construction	41	397	414	419	6,399,855	1,200.72
Manufacturing	38	1,952	2,062	2,156	27,989,502	1,046.86
Trade, Transportation & Utilities	301	4,225	4,303	4,227	49,233,845	890.76
Wholesale Trade	51	660	682	682	10,039,325	1,144.65
Retail Trade	158	1,854	1,893	1,839	14,273,466	589.67
Transportation, Warehousing & Utilities	92	1,711	1,728	1,706	24,921,054	1,117.79
Information	5	32	35	38	467,508	1,027.49
Financial Activities	100	419	418	427	7,275,827	1,328.35
Professional & Business Services	108	956	943	784	9,806,485	843.47
Education & Health Services	268	1,851	1,874	1,788	19,985,124	836.56
Leisure & Hospitality	138	2,304	2,267	2,225	12,923,385	438.83
Other Services	68	432	447	445	4,408,402	768.37
Local Government	39	2,058	2,056	2,066	21,797,793	813.96
State Government	13	395	389	337	3,668,427	755.18

TABLE 6. COUNTY SUMMARY

North American Industry Classification System - Industry Groups	Number of Employing Units	Employment			Total Earnings Oct - Dec 2020	Average Weekly Earnings
		Oct	Nov	Dec		
<b>CROSS COUNTY - TOTAL</b>	<b>474</b>	<b>4,570</b>	<b>4,558</b>	<b>4,525</b>	<b>\$43,719,691</b>	<b>\$738.97</b>
Natural Resources & Mining	44	300	270	274	3,120,081	853.10
Construction	21	63	66	68	704,850	825.67
Manufacturing	10	290	290	279	2,559,179	687.52
Trade, Transportation & Utilities	121	1,074	1,081	1,077	11,522,219	822.70
Wholesale Trade	25	272	265	272	4,131,151	1,178.42
Retail Trade	64	685	706	696	6,006,174	664.13
Transportation, Warehousing & Utilities	32	117	110	109	1,384,894	951.16
Information	6	33	34	34	259,066	591.93
Financial Activities	49	225	223	211	2,652,311	928.79
Professional & Business Services	42	145	167	146	1,952,273	983.68
Education & Health Services	85	937	923	914	8,559,535	712.07
Leisure & Hospitality	41	397	398	415	1,695,811	323.42
Other Services	29	97	97	104	962,737	745.54
Local Government	17	664	664	659	6,467,622	751.15
State Government	9	345	345	344	3,264,007	728.46
<b>DALLAS COUNTY - TOTAL</b>	<b>231</b>	<b>2,667</b>	<b>2,735</b>	<b>2,686</b>	<b>\$26,868,280</b>	<b>\$766.61</b>
Natural Resources & Mining	21	115	113	107	1,283,638	884.25
Construction	15	68	68	68	1,139,446	1,288.97
Manufacturing	9	546	554	566	6,821,956	944.96
Trade, Transportation & Utilities	53	488	492	493	4,315,223	676.05
Wholesale Trade	5	16	15	15	257,619	1,292.40
Retail Trade	36	327	326	327	2,390,223	562.85
Transportation, Warehousing & Utilities	12	145	151	151	1,667,381	860.81
Information	3	16	16	16	155,975	749.88
Financial Activities	16	72	70	71	1,268,148	1,373.94
Professional & Business Services	14	34	39	40	343,756	702.02
Education & Health Services	54	783	795	778	7,995,987	783.20
Leisure & Hospitality	13	145	144	149	520,335	274.15
Other Services	12	42	42	46	382,136	678.35
Local Government	14	327	371	321	2,319,907	525.38
State Government	7	31	31	31	321,773	798.44

TABLE 6. COUNTY SUMMARY

North American Industry Classification System - Industry Groups	Number of Employing Units	Employment			Total Earnings Oct - Dec 2020	Average Weekly Earnings
		Oct	Nov	Dec		
<b>DESHA COUNTY - TOTAL</b>	<b>500</b>	<b>4,379</b>	<b>4,364</b>	<b>4,346</b>	<b>\$46,968,519</b>	<b>\$828.09</b>
Natural Resources & Mining	68	325	309	283	3,280,250	825.50
Construction	15	86	86	85	1,146,295	1,029.30
Manufacturing	14	989	995	980	15,350,337	1,195.14
Trade, Transportation & Utilities	99	859	857	850	8,776,824	789.33
Wholesale Trade	18	180	176	176	2,960,758	1,284.31
Retail Trade	53	466	469	474	3,342,085	547.37
Transportation, Warehousing & Utilities	28	213	212	200	2,473,981	913.47
Information	5	23	22	21	346,692	1,212.21
Financial Activities	27	201	203	202	2,424,691	923.34
Professional & Business Services	34	88	96	99	1,043,209	850.67
Education & Health Services	148	548	534	541	4,982,540	708.45
Leisure & Hospitality	37	324	332	339	1,210,215	280.68
Other Services	23	54	51	61	307,196	427.06
Local Government	21	762	760	765	7,111,349	717.57
State Government	9	120	119	120	988,921	635.69
<b>DREW COUNTY - TOTAL</b>	<b>539</b>	<b>6,258</b>	<b>6,265</b>	<b>6,259</b>	<b>\$64,751,619</b>	<b>\$795.59</b>
Natural Resources & Mining	56	375	417	365	4,706,680	938.77
Construction	24	137	133	141	1,733,760	973.48
Manufacturing	22	873	878	881	12,330,641	1,081.13
Trade, Transportation & Utilities	113	1,112	1,097	1,101	9,367,249	653.07
Wholesale Trade	17	118	117	118	1,478,070	966.27
Retail Trade	75	885	870	877	6,451,407	565.65
Transportation, Warehousing & Utilities	21	109	110	106	1,437,772	1,020.90
Information	5	29	29	28	294,631	790.60
Financial Activities	52	210	211	210	3,040,842	1,112.10
Professional & Business Services	38	289	277	281	3,808,000	1,037.51
Education & Health Services	132	793	801	839	7,457,121	707.31
Leisure & Hospitality	41	602	598	580	2,427,194	314.68
Other Services	20	57	60	60	522,795	681.61
Local Government	23	1,237	1,220	1,227	12,969,474	812.42
State Government	13	544	544	546	6,093,232	860.54

TABLE 6. COUNTY SUMMARY

North American Industry Classification System - Industry Groups	Number of Employing Units	Employment			Total Earnings	Average Weekly Earnings
		Oct	Nov	Dec	Oct - Dec 2020	
<b>FAULKNER COUNTY - TOTAL</b>	<b>3,014</b>	<b>40,364</b>	<b>40,858</b>	<b>40,866</b>	<b>504,165,508</b>	<b>\$952.97</b>
Natural Resources & Mining	39	282	266	271	4,389,116	1,236.72
Construction	366	2,945	2,942	3,000	44,672,983	1,160.03
Manufacturing	99	2,942	3,055	2,855	45,246,260	1,179.56
Trade, Transportation & Utilities	638	7,699	7,947	7,953	105,581,109	1,032.45
Wholesale Trade	134	740	738	770	44,665,544	4,585.16
Retail Trade	410	6,099	6,298	6,250	48,052,406	594.68
Transportation, Warehousing & Utilities	94	860	911	933	12,863,159	1,097.79
Financial Activities	329	1,464	1,506	1,528	20,913,020	1,072.94
Professional & Business Services	477	3,562	3,654	3,757	47,635,329	1,001.80
Education & Health Services	489	7,639	7,674	7,730	95,657,782	957.99
Leisure & Hospitality	290	4,850	4,852	4,798	22,208,879	353.46
Local Government	42	3,393	3,390	3,383	39,127,114	888.19
State Government	18	3,172	3,159	3,155	35,919,132	873.82
Other	227	2,416	2,413	2,436	42,814,784	1,359.99
<b>FRANKLIN COUNTY - TOTAL</b>	<b>371</b>	<b>4,508</b>	<b>4,500</b>	<b>4,495</b>	<b>\$44,001,869</b>	<b>\$752.00</b>
Natural Resources & Mining	17	138	135	140	2,057,189	1,149.48
Construction	32	164	158	161	1,731,995	827.52
Manufacturing	17	984	958	947	10,813,119	863.74
Trade, Transportation & Utilities	82	983	989	998	10,043,569	780.39
Wholesale Trade	10	47	48	47	298,836	485.65
Retail Trade	49	625	638	640	4,537,242	550.21
Transportation, Warehousing & Utilities	23	311	303	311	5,207,491	1,299.17
Information	6	27	27	29	322,255	895.98
Financial Activities	32	67	67	66	714,886	824.87
Professional & Business Services	33	349	361	354	3,388,413	734.91
Education & Health Services	66	526	538	534	4,722,470	681.98
Leisure & Hospitality	30	328	322	322	1,263,905	300.07
Other Services	16	55	54	55	456,903	642.92
Local Government	32	748	751	749	7,032,218	721.89
State Government	8	139	140	140	1,454,947	801.33

TABLE 6. COUNTY SUMMARY

North American Industry Classification System - Industry Groups	Number of Employing Units	Employment			Total Earnings	Average Weekly Earnings
		Oct	Nov	Dec	Oct - Dec 2020	
<b>FULTON COUNTY - TOTAL</b>	<b>201</b>	<b>2,070</b>	<b>2,038</b>	<b>2,053</b>	<b>\$19,314,522</b>	<b>\$723.45</b>
Manufacturing	11	109	113	118	1,144,164	776.58
Trade, Transportation & Utilities	50	287	285	309	3,211,404	841.20
Retail Trade	31	176	174	195	1,204,934	510.20
Other Trade, Transportation, & Utilities	19	111	111	114	2,006,470	1,378.07
Information	5	29	27	32	374,106	981.05
Financial Activities	22	87	79	83	1,194,545	1,107.09
Professional & Business Services	15	23	20	22	205,060	728.02
Education & Health Services	41	484	475	469	4,263,969	689.07
Leisure & Hospitality	15	129	129	118	499,511	306.57
Other Services	10	22	22	21	190,176	675.18
Local Government	12	572	569	575	4,235,820	569.64
State Government	9	60	60	60	582,515	746.81
Other	11	268	259	246	3,413,252	1,018.98
<b>GARLAND COUNTY - TOTAL</b>	<b>3,073</b>	<b>35,597</b>	<b>35,859</b>	<b>35,661</b>	<b>\$383,134,197</b>	<b>\$825.41</b>
Natural Resources & Mining	28	197	200	193	2,423,647	947.97
Construction	334	1,977	1,952	1,922	22,360,498	881.92
Manufacturing	94	2,420	2,469	2,476	32,859,674	1,029.60
Trade, Transportation & Utilities	664	7,301	7,605	7,606	76,051,731	779.60
Wholesale Trade	135	733	750	764	16,937,304	1,739.48
Retail Trade	464	6,006	6,224	6,204	50,365,496	630.51
Transportation, Warehousing & Utilities	65	562	631	638	8,748,931	1,102.67
Information	29	394	399	361	4,122,254	824.34
Financial Activities	356	1,534	1,519	1,513	20,270,875	1,024.51
Professional & Business Services	395	2,974	3,022	3,057	33,119,293	844.24
Education & Health Services	488	7,837	7,802	7,757	106,197,826	1,047.49
Leisure & Hospitality	398	6,169	6,049	6,078	35,038,424	441.94
Other Services	226	925	934	919	7,388,110	613.73
Local Government	40	3,020	3,065	2,930	34,611,956	886.01
State Government	21	849	843	849	8,689,909	789.20

TABLE 6. COUNTY SUMMARY

North American Industry Classification System - Industry Groups	Number of Employing Units	Employment			Total Earnings Oct - Dec 2020	Average Weekly Earnings
		Oct	Nov	Dec		
<b>GRANT COUNTY - TOTAL</b>	<b>345</b>	<b>4,011</b>	<b>4,087</b>	<b>4,064</b>	<b>\$49,297,863</b>	<b>\$935.41</b>
Natural Resources & Mining	27	192	190	188	2,960,201	1,198.46
Construction	36	235	235	235	3,887,289	1,272.44
Manufacturing	16	1,190	1,190	1,210	18,251,820	1,173.25
Trade, Transportation & Utilities	82	674	687	692	6,002,876	674.76
Wholesale Trade	16	75	76	75	1,424,353	1,454.41
Retail Trade	48	553	567	573	4,100,625	558.95
Transportation, Warehousing & Utilities	18	46	44	44	477,898	823.02
Financial Activities	22	141	141	142	4,133,778	2,249.88
Professional & Business Services	33	129	130	129	1,701,508	1,012.00
Education & Health Services	71	380	381	392	3,061,525	612.75
Leisure & Hospitality	23	256	245	258	962,543	292.66
Local Government	10	716	789	719	7,425,531	770.50
State Government	7	46	46	46	438,436	733.17
Other	18	52	53	53	472,356	689.91
<b>GREENE COUNTY - TOTAL</b>	<b>888</b>	<b>14,743</b>	<b>14,867</b>	<b>14,869</b>	<b>\$167,672,402</b>	<b>\$869.93</b>
Natural Resources & Mining	40	218	207	206	2,746,310	1,004.38
Construction	67	398	397	387	5,701,675	1,113.17
Manufacturing	63	4,637	4,673	4,656	64,772,220	1,070.27
Trade, Transportation & Utilities	225	2,673	2,721	2,758	25,201,267	713.40
Wholesale Trade	44	458	459	475	6,732,202	1,116.08
Retail Trade	151	1,997	2,041	2,063	15,649,308	591.93
Transportation, Warehousing & Utilities	30	218	221	220	2,819,757	987.43
Information	10	116	115	117	1,701,044	1,128.01
Financial Activities	75	548	549	555	8,391,780	1,172.25
Professional & Business Services	93	858	869	913	9,045,817	790.72
Education & Health Services	148	1,933	1,961	1,927	22,872,574	906.77
Leisure & Hospitality	83	1,205	1,208	1,196	5,390,985	344.71
Other Services	43	166	165	164	1,358,593	633.38
Local Government	31	1,609	1,620	1,610	16,316,969	778.15
State Government	10	382	382	380	4,173,168	841.82



TABLE 6. COUNTY SUMMARY

North American Industry Classification System - Industry Groups	Number of Employing Units	Employment			Total Earnings Oct - Dec 2020	Average Weekly Earnings
		Oct	Nov	Dec		
<b>HEMPSTEAD COUNTY - TOTAL</b>	<b>516</b>	<b>7,432</b>	<b>7,488</b>	<b>7,450</b>	<b>\$79,227,524</b>	<b>\$817.31</b>
Natural Resources & Mining	22	260	262	255	3,694,954	1,097.40
Construction	25	123	124	126	1,414,014	874.83
Manufacturing	26	2,212	2,214	2,200	29,187,202	1,016.53
Trade, Transportation & Utilities	129	1,341	1,368	1,363	13,882,541	786.75
Wholesale Trade	27	200	201	192	1,973,571	768.03
Retail Trade	75	882	903	899	6,406,828	550.86
Transportation, Warehousing & Utilities	27	259	264	272	5,502,142	1,597.14
Information	7	17	17	17	251,633	1,138.61
Financial Activities	46	186	195	187	2,586,874	1,051.01
Professional & Business Services	38	245	251	241	2,575,130	806.32
Education & Health Services	103	847	839	845	6,899,596	629.09
Leisure & Hospitality	47	566	571	571	2,570,539	347.31
Other Services	29	109	115	107	1,053,850	734.73
Local Government	28	827	836	839	8,355,321	770.64
State Government	16	699	696	699	6,755,870	744.53
<b>HOT SPRING COUNTY - TOTAL</b>	<b>601</b>	<b>8,112</b>	<b>8,164</b>	<b>8,218</b>	<b>\$89,983,728</b>	<b>\$847.78</b>
Natural Resources & Mining	25	163	161	165	1,628,373	768.46
Construction	52	203	194	201	1,791,493	691.34
Manufacturing	29	1,398	1,381	1,388	21,019,228	1,164.05
Trade, Transportation & Utilities	156	1,675	1,721	1,709	22,192,765	1,003.21
Wholesale Trade	19	90	86	87	1,786,180	1,567.28
Retail Trade	97	873	894	891	6,645,985	577.01
Transportation, Warehousing & Utilities	40	712	741	731	13,760,600	1,453.99
Information	5	37	37	37	529,547	1,100.93
Financial Activities	53	205	201	194	2,654,368	1,020.91
Professional & Business Services	53	862	873	949	8,787,772	755.57
Education & Health Services	99	971	986	979	10,604,168	833.49
Leisure & Hospitality	54	614	627	629	2,812,563	347.09
Other Services	36	157	160	159	1,209,487	586.37
Local Government	27	955	956	946	9,374,727	757.23
State Government	12	872	867	862	7,379,237	654.71

TABLE 6. COUNTY SUMMARY

North American Industry Classification System - Industry Groups	Number of Employing Units	Employment			Total Earnings Oct - Dec 2020	Average Weekly Earnings
		Oct	Nov	Dec		
<b>HOWARD COUNTY - TOTAL</b>	<b>351</b>	<b>6,418</b>	<b>6,504</b>	<b>6,462</b>	<b>\$64,746,242</b>	<b>\$770.81</b>
Natural Resources & Mining	17	206	214	211	2,433,551	890.00
Construction	21	76	78	78	749,285	745.31
Manufacturing	18	3,028	3,051	3,074	32,079,051	808.79
Trade, Transportation & Utilities	80	854	846	844	8,747,732	793.52
Wholesale Trade	15	86	85	82	1,115,347	1,017.34
Retail Trade	47	558	549	548	4,274,514	596.03
Transportation, Warehousing & Utilities	18	210	212	214	3,357,871	1,218.39
Financial Activities	34	137	139	139	1,901,515	1,057.38
Professional & Business Services	24	138	142	143	1,503,308	820.14
Education & Health Services	81	801	808	798	8,044,165	771.23
Leisure & Hospitality	28	308	320	308	1,308,886	322.70
Local Government	17	675	706	669	6,162,655	693.73
State Government	10	100	103	101	931,862	707.39
Other	21	95	97	97	884,232	706.07
<b>INDEPENDENCE COUNTY - TOTAL</b>	<b>922</b>	<b>16,001</b>	<b>16,312</b>	<b>16,335</b>	<b>\$186,162,591</b>	<b>\$883.09</b>
Natural Resources & Mining	21	269	295	290	4,454,420	1,203.68
Construction	59	663	730	730	11,849,086	1,287.99
Manufacturing	43	3,228	3,330	3,411	47,618,936	1,102.32
Trade, Transportation & Utilities	243	2,906	2,897	2,946	29,396,070	775.37
Wholesale Trade	27	208	212	213	2,766,337	1,008.51
Retail Trade	170	1,945	1,939	1,943	14,671,414	581.04
Transportation, Warehousing & Utilities	46	753	746	790	11,958,319	1,205.60
Information	10	85	83	89	1,167,873	1,048.67
Financial Activities	88	594	596	592	9,248,379	1,197.67
Professional & Business Services	88	1,186	1,207	1,230	12,307,326	783.92
Education & Health Services	158	3,572	3,572	3,564	44,936,324	968.43
Leisure & Hospitality	88	1,179	1,176	1,165	4,772,502	312.88
Other Services	62	285	293	292	2,266,018	601.07
Local Government	47	1,439	1,539	1,432	12,366,391	647.12
State Government	15	595	594	594	5,779,266	748.00

TABLE 6. COUNTY SUMMARY

North American Industry Classification System - Industry Groups	Number of Employing Units	Employment			Total Earnings Oct - Dec 2020	Average Weekly Earnings
		Oct	Nov	Dec		
<b>IZARD COUNTY - TOTAL</b>	<b>249</b>	<b>2,750</b>	<b>2,754</b>	<b>2,736</b>	<b>\$28,699,778</b>	<b>\$803.77</b>
Natural Resources & Mining	7	54	55	56	868,649	1,214.89
Construction	24	64	68	72	658,238	744.61
Manufacturing	10	169	167	168	1,685,384	771.70
Trade, Transportation & Utilities	67	549	564	565	7,953,125	1,093.76
Wholesale Trade	13	63	65	66	4,012,539	4,773.04
Retail Trade	43	388	395	395	2,708,393	530.57
Transportation, Warehousing & Utilities	11	98	104	104	1,232,193	929.26
Information	4	8	10	10	181,376	1,494.86
Financial Activities	21	170	166	161	2,181,641	1,012.99
Professional & Business Services	14	45	57	44	353,198	558.27
Education & Health Services	43	591	575	573	5,662,505	751.43
Leisure & Hospitality	23	152	151	151	662,759	336.88
Other Services	13	33	30	32	183,275	445.20
Local Government	14	497	491	489	4,167,682	651.17
State Government	9	418	420	415	4,141,946	762.84
<b>JACKSON COUNTY - TOTAL</b>	<b>433</b>	<b>5,196</b>	<b>5,224</b>	<b>5,138</b>	<b>\$53,783,755</b>	<b>\$797.77</b>
Natural Resources & Mining	60	323	322	283	3,270,531	813.30
Construction	23	134	133	118	1,402,947	840.93
Manufacturing	12	1,004	1,063	1,006	13,343,899	1,002.07
Trade, Transportation & Utilities	105	984	973	984	10,229,423	802.66
Wholesale Trade	17	201	200	202	3,181,359	1,217.51
Retail Trade	68	692	685	689	5,687,978	635.34
Transportation, Warehousing & Utilities	20	91	88	93	1,360,086	1,153.92
Information	3	8	8	8	80,480	773.85
Financial Activities	31	119	123	120	1,500,547	956.57
Professional & Business Services	33	130	129	128	1,300,477	775.48
Education & Health Services	77	777	775	783	8,693,335	859.17
Leisure & Hospitality	27	322	309	321	1,386,654	336.13
Other Services	18	62	58	56	511,110	670.16
Local Government	32	548	547	550	4,806,449	674.27
State Government	12	785	784	781	7,257,903	712.72

TABLE 6. COUNTY SUMMARY

North American Industry Classification System - Industry Groups	Number of Employing Units	Employment			Total Earnings Oct - Dec 2020	Average Weekly Earnings
		Oct	Nov	Dec		
<b>JEFFERSON COUNTY - TOTAL</b>	<b>1,986</b>	<b>25,342</b>	<b>25,392</b>	<b>25,351</b>	<b>\$293,043,271</b>	<b>\$888.81</b>
Natural Resources & Mining	38	132	129	117	2,279,617	1,391.71
Construction	89	536	486	490	6,344,604	968.35
Manufacturing	60	4,403	4,450	4,503	79,792,400	1,378.68
Trade, Transportation & Utilities	397	4,180	4,240	4,279	41,218,129	749.03
Wholesale Trade	68	604	600	608	7,706,834	981.51
Retail Trade	275	2,933	2,965	2,979	22,624,353	588.15
Transportation, Warehousing & Utilities	54	643	675	692	10,886,942	1,249.94
Information	11	58	57	58	844,664	1,126.72
Financial Activities	151	996	992	995	13,409,075	1,037.35
Professional & Business Services	142	2,162	2,007	1,945	20,330,823	767.37
Education & Health Services	781	4,241	4,301	4,263	51,904,870	935.42
Leisure & Hospitality	138	2,483	2,585	2,540	13,113,527	397.77
Other Services	102	439	436	430	4,517,096	798.78
Local Government	41	2,344	2,344	2,357	22,685,093	743.08
State Government	36	3,368	3,365	3,374	36,603,373	835.75
<b>JOHNSON COUNTY - TOTAL</b>	<b>490</b>	<b>8,143</b>	<b>8,198</b>	<b>8,195</b>	<b>\$76,436,073</b>	<b>\$718.91</b>
Natural Resources & Mining	13	203	201	196	2,535,426	975.16
Construction	42	196	193	195	1,870,596	739.17
Manufacturing	33	2,319	2,343	2,328	23,376,636	771.76
Trade, Transportation & Utilities	101	2,001	2,033	2,026	18,441,863	702.28
Retail Trade	72	958	972	953	6,472,555	518.09
Other Trade, Transportation & Utilities	29	1,043	1,061	1,073	11,969,308	869.42
Information	5	14	14	15	181,854	975.96
Financial Activities	46	164	165	164	1,726,312	808.07
Professional & Business Services	46	217	231	226	2,058,091	704.66
Education & Health Services	104	1,217	1,205	1,240	12,839,397	809.10
Leisure & Hospitality	48	575	569	554	2,023,722	275.04
Other Services	30	78	75	81	656,900	647.83
Local Government	14	1,053	1,063	1,064	9,575,945	694.92
State Government	8	106	106	106	1,149,331	834.06

TABLE 6. COUNTY SUMMARY

North American Industry Classification System - Industry Groups	Number of Employing Units	Employment			Total Earnings Oct - Dec 2020	Average Weekly Earnings
		Oct	Nov	Dec		
<b>LAFAYETTE COUNTY - TOTAL</b>	<b>158</b>	<b>1,052</b>	<b>1,049</b>	<b>1,024</b>	<b>\$9,930,646</b>	<b>\$733.34</b>
Natural Resources & Mining	23	65	70	68	545,646	620.29
Construction	11	77	77	74	1,297,839	1,313.60
Manufacturing	5	35	32	33	463,719	1,070.12
Trade, Transportation & Utilities	29	182	194	189	1,732,356	707.57
Retail Trade	16	103	108	106	691,746	503.58
Other Trade, Transportation & Utilities	13	79	86	83	1,040,610	968.31
Financial Activities	13	93	72	68	1,018,200	1,008.45
Professional & Business Services	10	32	32	34	337,065	793.72
Education & Health Services	31	189	183	182	1,379,833	574.77
Leisure & Hospitality	6	41	39	40	211,774	407.26
Local Government	15	271	283	269	2,296,264	643.87
State Government	8	31	31	31	336,964	836.14
Other	7	36	36	36	310,986	664.50
<b>LAWRENCE COUNTY - TOTAL</b>	<b>401</b>	<b>3,792</b>	<b>3,826</b>	<b>3,811</b>	<b>\$38,066,479</b>	<b>\$768.62</b>
Natural Resources & Mining	54	183	183	190	2,648,816	1,099.40
Construction	27	178	171	178	3,112,791	1,363.07
Manufacturing	16	268	276	262	2,890,024	827.45
Trade, Transportation & Utilities	117	798	804	783	7,822,641	756.91
Wholesale Trade	19	177	175	167	2,130,308	947.22
Retail Trade	62	489	499	503	3,984,688	616.73
Transportation, Warehousing & Utilities	36	132	130	113	1,707,645	1,050.86
Financial Activities	27	117	119	118	1,423,305	927.84
Professional & Business Services	23	93	91	94	1,165,457	967.45
Education & Health Services	48	582	589	581	6,008,383	791.41
Leisure & Hospitality	33	319	327	328	1,400,088	331.72
Local Government	24	1,023	1,032	1,047	9,154,577	681.04
State Government	9	73	73	73	694,733	732.07
Other	23	158	161	157	1,745,664	846.31

TABLE 6. COUNTY SUMMARY

North American Industry Classification System - Industry Groups	Number of Employing Units	Employment			Total Earnings Oct - Dec 2020	Average Weekly Earnings
		Oct	Nov	Dec		
<b>LEE COUNTY - TOTAL</b>	<b>245</b>	<b>1,717</b>	<b>1,717</b>	<b>1,683</b>	<b>\$17,683,050</b>	<b>\$797.48</b>
Natural Resources & Mining	36	242	260	220	2,747,363	878.13
Construction	4	7	6	6	37,803	459.15
Trade, Transportation & Utilities	39	331	324	321	3,798,907	898.23
Wholesale Trade	10	110	110	110	1,888,853	1,320.88
Retail Trade	19	163	155	155	1,040,312	507.55
Transportation, Warehousing & Utilities	10	58	59	56	869,742	1,160.17
Financial Activities	13	53	48	48	512,789	794.20
Professional & Business Services	13	51	51	51	1,378,431	2,079.08
Education & Health Services	98	332	328	333	3,212,543	746.58
Leisure & Hospitality	8	78	73	72	296,541	306.87
Local Government	15	219	224	229	1,837,377	630.97
State Government	6	387	386	386	3,713,619	739.42
Other	13	17	17	17	147,677	668.22
<b>LINCOLN COUNTY - TOTAL</b>	<b>271</b>	<b>2,699</b>	<b>2,709</b>	<b>2,684</b>	<b>\$27,043,785</b>	<b>\$771.24</b>
Natural Resources & Mining	34	148	150	145	1,815,218	945.59
Construction	19	131	126	129	1,662,515	993.93
Manufacturing	9	311	311	306	2,920,977	726.37
Trade, Transportation & Utilities	43	323	316	307	3,750,360	914.87
Wholesale Trade	7	47	45	47	535,809	889.56
Retail Trade	23	163	158	149	1,045,386	513.28
Transportation, Warehousing & Utilities	13	113	113	111	2,169,165	1,485.39
Financial Activities	18	66	68	66	645,132	744.38
Professional & Business Services	10	26	25	25	332,963	1,011.02
Education & Health Services	92	331	339	344	2,838,979	646.10
Leisure & Hospitality	16	118	123	113	370,849	241.75
Local Government	7	324	329	326	2,865,580	675.47
State Government	10	872	871	871	9,192,989	811.58
Other	13	49	51	52	648,223	984.14

TABLE 6. COUNTY SUMMARY

North American Industry Classification System - Industry Groups	Number of Employing Units	Employment			Total Earnings Oct - Dec 2020	Average Weekly Earnings
		Oct	Nov	Dec		
<b>LITTLE RIVER COUNTY - TOTAL</b>	<b>248</b>	<b>3,058</b>	<b>3,004</b>	<b>2,987</b>	<b>\$42,724,711</b>	<b>\$1,089.57</b>
Natural Resources & Mining	16	66	66	68	684,672	790.01
Construction	12	76	72	74	849,073	882.61
Manufacturing	15	994	937	904	24,798,972	2,018.64
Trade, Transportation & Utilities	59	544	543	543	4,723,733	668.77
Wholesale Trade	7	30	31	30	501,253	1,271.14
Retail Trade	36	408	408	404	2,942,184	556.53
Transportation, Warehousing & Utilities	16	106	104	109	1,280,296	926.18
Financial Activities	13	55	56	57	499,766	686.49
Professional & Business Services	17	115	110	121	1,327,254	885.23
Education & Health Services	50	180	179	177	1,521,007	654.85
Leisure & Hospitality	18	213	218	219	804,145	285.50
Local Government	20	677	683	688	6,434,273	725.02
State Government	10	82	85	83	710,173	655.54
Other	18	56	55	53	371,643	522.95
<b>LOGAN COUNTY - TOTAL</b>	<b>489</b>	<b>5,102</b>	<b>5,119</b>	<b>5,115</b>	<b>\$47,244,881</b>	<b>\$710.92</b>
Natural Resources & Mining	22	116	116	119	1,360,047	894.18
Construction	40	156	153	153	1,781,396	889.81
Manufacturing	21	1,178	1,201	1,202	13,464,172	867.67
Trade, Transportation & Utilities	101	986	987	992	7,553,852	587.92
Wholesale Trade	8	62	57	57	411,241	539.21
Retail Trade	71	800	808	808	5,411,473	516.89
Transportation, Warehousing & Utilities	22	124	122	127	1,731,138	1,071.03
Information	5	25	23	23	288,779	938.61
Financial Activities	53	181	184	184	2,698,934	1,134.48
Professional & Business Services	43	95	93	100	968,723	776.22
Education & Health Services	107	642	649	638	6,196,985	741.35
Leisure & Hospitality	31	296	294	289	1,096,158	287.78
Other Services	32	126	125	125	1,339,074	821.85
Local Government	22	826	819	815	6,896,401	646.94
State Government	12	475	475	475	3,600,360	583.05

TABLE 6. COUNTY SUMMARY

North American Industry Classification System - Industry Groups	Number of Employing Units	Employment			Total Earnings Oct - Dec 2020	Average Weekly Earnings
		Oct	Nov	Dec		
<b>LONOKE COUNTY - TOTAL</b>	<b>1,330</b>	<b>13,524</b>	<b>13,518</b>	<b>13,693</b>	<b>\$135,612,617</b>	<b>\$768.26</b>
Natural Resources & Mining	93	500	472	450	7,278,250	1,181.15
Construction	152	965	961	964	12,681,449	1,012.63
Manufacturing	36	1,125	1,124	1,310	13,991,628	907.23
Trade, Transportation & Utilities	283	3,004	3,027	3,044	28,166,043	716.24
Wholesale Trade	66	401	399	411	6,590,650	1,255.92
Retail Trade	164	2,292	2,313	2,339	17,036,398	566.17
Transportation, Warehousing & Utilities	53	311	315	294	4,538,995	1,138.54
Information	17	87	88	86	1,258,507	1,112.74
Financial Activities	166	712	716	716	13,395,456	1,441.82
Professional & Business Services	156	617	627	610	5,723,827	712.45
Education & Health Services	203	1,799	1,838	1,821	17,144,626	724.89
Leisure & Hospitality	120	1,828	1,810	1,819	8,505,069	359.67
Other Services	65	168	165	180	1,482,799	667.03
Local Government	25	2,552	2,523	2,526	24,307,396	737.98
State Government	14	167	167	167	1,677,567	772.72
<b>MADISON COUNTY - TOTAL</b>	<b>257</b>	<b>3,383</b>	<b>3,359</b>	<b>3,352</b>	<b>\$35,165,449</b>	<b>\$803.95</b>
Natural Resources & Mining	11	54	51	55	480,506	693.04
Construction	35	143	144	148	2,264,904	1,201.54
Manufacturing	23	1,277	1,229	1,197	13,943,086	868.93
Trade, Transportation & Utilities	54	653	664	670	5,950,019	691.03
Wholesale Trade	9	29	32	31	349,933	877.76
Retail Trade	36	481	479	496	3,577,801	567.06
Transportation, Warehousing & Utilities	9	143	153	143	2,022,285	1,063.06
Information	5	51	51	51	1,514,234	2,283.91
Financial Activities	20	87	88	88	853,715	749.09
Professional & Business Services	25	82	83	85	1,322,566	1,220.83
Education & Health Services	34	230	243	255	2,440,178	773.51
Leisure & Hospitality	14	157	152	154	585,544	291.85
Other Services	20	50	55	54	350,281	508.39
Local Government	9	558	558	554	5,036,909	696.03
State Government	7	41	41	41	423,507	794.57



TABLE 6. COUNTY SUMMARY

North American Industry Classification System - Industry Groups	Number of Employing Units	Employment			Total Earnings	Average Weekly Earnings
		Oct	Nov	Dec	Oct - Dec 2020	
<b>MARION COUNTY - TOTAL</b>	<b>277</b>	<b>3,247</b>	<b>3,218</b>	<b>3,250</b>	<b>\$30,957,056</b>	<b>\$735.35</b>
Manufacturing	22	1,253	1,240	1,264	13,722,630	842.90
Trade, Transportation & Utilities	57	537	540	545	4,162,979	592.29
Wholesale Trade	6	39	38	38	305,887	613.82
Retail Trade	43	464	466	470	3,282,947	541.15
Transportation, Warehousing & Utilities	8	34	36	37	574,145	1,238.27
Information	3	54	54	56	993,239	1,397.62
Financial Activities	30	195	188	180	1,952,648	800.37
Professional & Business Services	25	74	71	80	791,286	811.58
Education & Health Services	41	295	286	282	2,933,616	784.46
Leisure & Hospitality	33	185	172	173	686,300	298.82
Other Services	16	29	24	30	176,407	490.47
Local Government	18	483	506	498	4,157,923	645.27
State Government	7	40	40	40	416,898	801.73
Other	25	102	97	102	963,130	738.41
<b>MILLER COUNTY - TOTAL</b>	<b>886</b>	<b>11,911</b>	<b>11,980</b>	<b>12,001</b>	<b>\$143,671,610</b>	<b>\$923.74</b>
Natural Resources & Mining	31	255	270	272	3,986,413	1,154.26
Construction	68	578	572	565	7,603,694	1,023.15
Manufacturing	28	2,332	2,334	2,354	45,530,571	1,496.73
Trade, Transportation & Utilities	217	2,602	2,709	2,757	29,780,115	851.80
Wholesale Trade	47	462	460	472	7,046,897	1,166.58
Retail Trade	121	1,279	1,323	1,338	9,739,670	570.46
Transportation, Warehousing & Utilities	49	861	926	947	12,993,548	1,096.75
Information	5	95	91	92	2,270,152	1,884.46
Financial Activities	85	391	392	388	5,916,629	1,165.99
Professional & Business Services	78	1,084	1,056	1,007	8,510,923	624.11
Education & Health Services	184	1,218	1,198	1,224	10,567,925	669.99
Leisure & Hospitality	94	1,347	1,338	1,341	6,414,774	367.69
Other Services	55	229	232	225	1,867,164	628.11
Local Government	26	1,291	1,300	1,286	15,209,149	905.29
State Government	15	489	488	490	6,014,101	946.06

TABLE 6. COUNTY SUMMARY

North American Industry Classification System - Industry Groups	Number of Employing Units	Employment			Total Earnings Oct - Dec 2020	Average Weekly Earnings
		Oct	Nov	Dec		
<b>MISSISSIPPI COUNTY - TOTAL</b>	<b>1,061</b>	<b>17,005</b>	<b>16,898</b>	<b>16,771</b>	<b>\$254,218,374</b>	<b>\$1,157.71</b>
Natural Resources & Mining	102	671	651	599	7,902,275	949.30
Construction	58	944	812	775	14,501,266	1,322.18
Manufacturing	64	6,098	6,093	6,087	139,464,777	1,760.82
Trade, Transportation & Utilities	261	2,716	2,756	2,782	29,906,502	836.14
Wholesale Trade	53	329	330	338	6,200,999	1,435.31
Retail Trade	142	1,581	1,597	1,609	10,718,617	516.72
Transportation, Warehousing & Utilities	66	806	829	835	12,986,886	1,213.35
Information	7	30	28	27	200,163	543.43
Financial Activities	77	409	413	411	4,753,865	889.74
Professional & Business Services	83	1,011	930	951	11,171,784	891.46
Education & Health Services	202	1,293	1,322	1,330	13,640,895	797.95
Leisure & Hospitality	92	1,039	1,053	1,023	3,976,137	294.57
Other Services	46	255	250	242	2,868,734	886.23
Local Government	50	2,040	2,090	2,048	21,126,769	789.16
State Government	19	499	500	496	4,705,207	726.30
<b>MONROE COUNTY - TOTAL</b>	<b>262</b>	<b>1,904</b>	<b>1,868</b>	<b>1,905</b>	<b>\$18,190,362</b>	<b>\$739.44</b>
Natural Resources & Mining	26	114	86	83	1,544,670	1,259.58
Manufacturing	6	131	135	136	1,580,156	907.09
Trade, Transportation & Utilities	68	484	492	491	6,006,471	944.86
Wholesale Trade	17	145	145	144	2,304,371	1,225.29
Retail Trade	33	241	241	237	2,253,611	723.32
Transportation, Warehousing & Utilities	18	98	106	110	1,448,489	1,064.54
Financial Activities	20	82	79	81	1,088,525	1,038.01
Professional & Business Services	13	20	20	33	189,243	598.24
Education & Health Services	51	321	314	313	2,865,895	697.64
Leisure & Hospitality	25	287	277	297	1,064,810	285.40
Local Government	21	316	317	323	2,475,822	597.64
State Government	7	67	67	67	747,245	857.92
Other	25	82	81	81	627,525	593.50

TABLE 6. COUNTY SUMMARY

North American Industry Classification System - Industry Groups	Number of Employing Units	Employment			Total Earnings Oct - Dec 2020	Average Weekly Earnings
		Oct	Nov	Dec		
<b>MONTGOMERY COUNTY - TOTAL</b>	<b>159</b>	<b>1,134</b>	<b>1,105</b>	<b>1,080</b>	<b>\$8,675,906</b>	<b>\$603.23</b>
Natural Resources & Mining	7	20	19	20	152,643	597.04
Construction	25	66	61	67	513,646	611.00
Manufacturing	8	38	39	46	439,546	824.66
Trade, Transportation & Utilities	32	210	217	223	1,613,870	572.97
Wholesale Trade	7	58	58	57	549,288	732.71
Retail Trade	21	136	145	152	973,670	518.92
Transportation, Warehousing & Utilities	4	16	14	14	90,912	476.81
Financial Activities	11	49	39	39	379,651	689.86
Professional & Business Services	13	22	23	23	191,946	651.40
Education & Health Services	19	51	49	46	439,426	694.56
Leisure & Hospitality	14	230	213	173	1,240,668	464.79
Local Government	9	376	372	373	3,166,657	651.89
State Government	7	37	37	37	332,819	691.93
Other	14	35	36	33	205,034	454.96
<b>NEVADA COUNTY - TOTAL</b>	<b>201</b>	<b>2,314</b>	<b>2,351</b>	<b>2,271</b>	<b>\$24,296,852</b>	<b>\$808.39</b>
Natural Resources & Mining	13	51	53	54	830,390	1,212.84
Trade, Transportation & Utilities	38	509	499	510	5,195,904	789.89
Retail Trade	22	287	280	295	2,026,229	542.45
Other Trade, Transportation & Utilities	16	222	219	215	3,169,675	1,115.04
Financial Activities	11	59	62	54	666,834	879.34
Professional & Business Services	11	53	55	55	665,356	941.99
Education & Health Services	46	390	387	397	2,885,584	567.21
Leisure & Hospitality	9	99	84	85	357,079	307.47
Other Services	15	48	47	39	318,293	548.15
Local Government	29	376	440	379	3,300,842	637.43
State Government	9	55	55	55	477,249	667.48
Other	20	674	669	643	9,599,321	1,115.42

TABLE 6. COUNTY SUMMARY

North American Industry Classification System - Industry Groups	Number of Employing Units	Employment			Total Earnings Oct - Dec 2020	Average Weekly Earnings
		Oct	Nov	Dec		
<b>NEWTON COUNTY - TOTAL</b>	<b>114</b>	<b>965</b>	<b>955</b>	<b>959</b>	<b>\$7,212,676</b>	<b>\$578.14</b>
Construction	7	24	23	25	216,180	692.88
Manufacturing	7	43	41	43	471,720	857.15
Trade, Transportation & Utilities	26	157	156	159	1,399,873	684.42
Retail Trade	13	104	103	107	721,830	530.50
Other Trade, Transportation & Utilities	13	53	53	52	678,043	990.33
Education & Health Services	22	210	203	216	1,287,362	472.31
Leisure & Hospitality	14	146	143	130	671,178	369.66
Other Services	4	4	3	3	19,324	445.94
Local Government	14	324	330	329	2,493,283	585.32
State Government	7	36	36	36	355,544	759.71
Other	13	21	20	18	298,212	1,166.41
<b>OUACHITA COUNTY - TOTAL</b>	<b>650</b>	<b>6,401</b>	<b>6,467</b>	<b>6,541</b>	<b>\$65,729,608</b>	<b>\$781.51</b>
Natural Resources & Mining	36	157	152	151	1,924,492	965.46
Construction	42	194	199	191	2,354,342	930.32
Manufacturing	26	399	400	406	5,808,083	1,112.30
Trade, Transportation & Utilities	152	1,444	1,487	1,536	13,118,207	677.70
Wholesale Trade	24	201	204	199	2,442,894	933.35
Retail Trade	92	935	956	991	6,178,804	494.75
Transportation, Warehousing & Utilities	36	308	327	346	4,496,509	1,057.75
Information	6	30	31	31	375,502	941.89
Financial Activities	51	254	259	245	3,331,037	1,014.12
Professional & Business Services	47	505	529	585	6,277,097	894.73
Education & Health Services	181	1,228	1,227	1,238	15,547,856	971.56
Leisure & Hospitality	40	430	420	416	1,706,312	311.03
Other Services	25	96	94	96	905,133	730.34
Local Government	31	1,056	1,064	1,042	8,900,568	649.58
State Government	13	608	605	604	5,480,979	696.12

TABLE 6. COUNTY SUMMARY

North American Industry Classification System - Industry Groups	Number of Employing Units	Employment			Total Earnings Oct - Dec 2020	Average Weekly Earnings
		Oct	Nov	Dec		
<b>PERRY COUNTY - TOTAL</b>	<b>150</b>	<b>1,130</b>	<b>1,110</b>	<b>1,114</b>	<b>\$10,846,072</b>	<b>\$746.26</b>
Construction	16	86	80	77	871,123	827.28
Manufacturing	5	24	27	26	447,841	1,342.18
Trade, Transportation & Utilities	27	183	174	178	1,606,603	693.00
Retail Trade	16	146	140	142	757,766	408.57
Other Trade, Transportation & Utilities	11	37	34	36	848,837	1,830.71
Financial Activities	10	26	25	25	388,922	1,180.94
Professional & Business Services	19	46	46	50	456,392	741.70
Education & Health Services	30	204	205	213	1,897,982	704.17
Leisure & Hospitality	10	72	73	70	327,961	352.02
Local Government	9	316	311	314	2,808,679	688.80
State Government	7	35	35	35	358,608	788.15
Other	17	138	134	126	1,681,961	975.24
<b>PHILLIPS COUNTY - TOTAL</b>	<b>700</b>	<b>5,038</b>	<b>5,034</b>	<b>5,070</b>	<b>\$48,808,772</b>	<b>\$743.86</b>
Natural Resources & Mining	62	322	320	303	3,061,038	747.51
Construction	28	120	127	117	1,158,399	734.40
Manufacturing	11	402	416	409	5,022,069	944.53
Trade, Transportation & Utilities	133	1,226	1,216	1,226	12,036,414	757.26
Wholesale Trade	27	279	278	261	4,113,049	1,160.35
Retail Trade	68	706	704	724	4,773,711	516.23
Transportation, Warehousing & Utilities	38	241	234	241	3,149,654	1,015.14
Information	7	11	12	13	181,485	1,163.37
Financial Activities	39	191	189	194	2,174,291	874.15
Professional & Business Services	41	265	241	259	2,917,557	880.11
Education & Health Services	274	1,101	1,095	1,086	11,220,050	788.92
Leisure & Hospitality	40	341	346	350	1,376,659	306.36
Other Services	24	58	58	56	387,201	519.50
Local Government	27	692	701	746	6,077,673	655.70
State Government	14	309	313	311	3,195,936	790.49

TABLE 6. COUNTY SUMMARY

North American Industry Classification System - Industry Groups	Number of Employing Units	Employment			Total Earnings Oct - Dec 2020	Average Weekly Earnings
		Oct	Nov	Dec		
<b>PIKE COUNTY - TOTAL</b>	<b>261</b>	<b>2,570</b>	<b>2,584</b>	<b>2,556</b>	<b>\$25,588,042</b>	<b>\$765.88</b>
Natural Resources & Mining	23	117	115	117	1,509,842	998.35
Construction	17	40	57	45	427,232	694.31
Manufacturing	17	449	442	465	5,871,706	999.27
Trade, Transportation & Utilities	69	529	532	536	4,683,483	676.77
Wholesale Trade	8	110	109	107	1,126,601	797.50
Retail Trade	41	346	343	350	2,438,839	541.68
Transportation, Warehousing & Utilities	20	73	80	79	1,118,043	1,112.11
Information	7	24	24	25	298,308	943.02
Financial Activities	25	224	226	229	3,413,849	1,160.25
Professional & Business Services	13	56	58	32	1,315,973	2,080.04
Education & Health Services	29	264	261	261	1,875,702	550.71
Leisure & Hospitality	25	232	230	214	906,668	309.51
Other Services	17	70	67	71	582,253	645.99
Local Government	10	469	476	465	3,970,526	649.84
State Government	9	96	96	96	732,500	586.94
<b>POINSETT COUNTY - TOTAL</b>	<b>476</b>	<b>5,161</b>	<b>5,180</b>	<b>5,102</b>	<b>\$58,535,600</b>	<b>\$874.71</b>
Natural Resources & Mining	69	348	323	291	4,446,509	1,066.65
Construction	24	87	91	87	1,168,770	1,017.80
Manufacturing	17	729	748	754	11,627,797	1,202.75
Trade, Transportation & Utilities	114	1,147	1,165	1,159	13,763,699	915.08
Wholesale Trade	20	399	391	391	7,613,906	1,487.77
Retail Trade	65	615	641	638	4,141,988	504.67
Transportation, Warehousing & Utilities	29	133	133	130	2,007,805	1,170.05
Professional & Business Services	28	215	236	228	4,139,728	1,406.95
Education & Health Services	79	752	757	741	7,648,834	784.50
Leisure & Hospitality	46	486	474	464	1,959,288	317.52
Other Services	19	62	62	65	563,095	687.54
Local Government	30	1,011	1,001	996	9,223,967	707.65
State Government	10	105	105	104	1,047,826	770.08
Other	40	219	218	213	2,946,087	1,045.95

TABLE 6. COUNTY SUMMARY

North American Industry Classification System - Industry Groups	Number of Employing Units	Employment			Total Earnings Oct - Dec 2020	Average Weekly Earnings
		Oct	Nov	Dec		
<b>POLK COUNTY - TOTAL</b>	<b>471</b>	<b>5,612</b>	<b>5,613</b>	<b>5,584</b>	<b>\$51,524,696</b>	<b>\$707.38</b>
Natural Resources & Mining	23	161	156	159	2,296,172	1,113.21
Construction	30	202	196	196	2,032,814	789.75
Manufacturing	36	1,228	1,203	1,191	12,298,060	783.55
Trade, Transportation & Utilities	117	1,069	1,105	1,098	9,447,005	666.28
Wholesale Trade	18	63	56	58	1,054,971	1,375.45
Retail Trade	64	785	821	811	5,520,084	527.04
Transportation, Warehousing & Utilities	35	221	228	229	2,871,950	977.52
Information	6	42	43	43	277,631	500.54
Financial Activities	40	206	206	208	2,175,835	809.86
Professional & Business Services	37	132	128	131	1,832,182	1,081.36
Education & Health Services	82	965	955	952	9,939,045	798.62
Leisure & Hospitality	40	475	472	484	1,762,030	284.15
Other Services	27	152	156	153	1,283,349	642.42
Local Government	21	663	677	664	5,885,012	677.68
State Government	12	317	316	305	2,295,561	564.76
<b>POPE COUNTY - TOTAL</b>	<b>1,820</b>	<b>23,760</b>	<b>23,948</b>	<b>24,175</b>	<b>\$277,029,791</b>	<b>\$889.36</b>
Natural Resources & Mining	36	378	421	604	5,139,659	845.38
Construction	160	1,159	1,160	1,180	21,177,649	1,396.73
Manufacturing	74	3,382	3,361	3,400	41,053,391	934.03
Trade, Transportation & Utilities	407	5,916	6,099	6,067	81,609,763	1,041.53
Wholesale Trade	73	545	538	532	7,196,004	1,028.25
Retail Trade	263	3,079	3,194	3,170	24,491,392	598.52
Transportation, Warehousing & Utilities	71	2,292	2,367	2,365	49,922,367	1,640.17
Information	16	99	102	103	1,016,479	771.62
Financial Activities	190	872	874	886	11,645,706	1,021.08
Professional & Business Services	260	1,941	1,944	2,026	24,952,113	974.15
Education & Health Services	362	3,137	3,131	3,137	36,363,624	892.25
Leisure & Hospitality	152	2,647	2,613	2,532	11,711,751	346.86
Other Services	104	443	454	454	3,903,347	666.74
Local Government	44	2,208	2,209	2,208	21,528,950	749.92
State Government	15	1,578	1,580	1,578	16,927,359	824.81

TABLE 6. COUNTY SUMMARY

North American Industry Classification System - Industry Groups	Number of Employing Units	Employment			Total Earnings Oct - Dec 2020	Average Weekly Earnings
		Oct	Nov	Dec		
<b>PRAIRIE COUNTY - TOTAL</b>	<b>251</b>	<b>1,503</b>	<b>1,494</b>	<b>1,498</b>	<b>\$14,617,278</b>	<b>\$750.44</b>
Natural Resources & Mining	35	166	164	155	2,496,729	1,187.98
Construction	12	60	56	54	1,042,022	1,414.51
Trade, Transportation & Utilities	61	354	354	351	3,105,153	676.65
Wholesale Trade	12	73	72	69	1,112,204	1,199.36
Retail Trade	35	230	231	229	1,367,481	457.35
Transportation, Warehousing & Utilities	14	51	51	53	625,468	931.22
Financial Activities	16	55	55	55	683,618	956.11
Professional & Business Services	13	54	57	58	647,714	884.45
Education & Health Services	50	251	242	252	2,249,045	696.66
Leisure & Hospitality	18	71	80	91	376,791	359.30
Local Government	15	320	316	324	2,758,654	663.14
State Government	7	29	29	29	288,087	764.16
Other	24	143	141	129	969,465	541.70
<b>PULASKI COUNTY - TOTAL</b>	<b>14,534</b>	<b>231,113</b>	<b>232,855</b>	<b>233,461</b>	<b>\$3,400,713,103</b>	<b>\$1,125.25</b>
Natural Resources & Mining	52	632	633	629	11,743,428	1,430.85
Construction	947	8,972	8,978	9,019	154,565,272	1,322.59
Manufacturing	331	11,961	11,817	11,821	190,487,245	1,234.83
Trade, Transportation & Utilities	3,108	48,238	49,372	49,748	633,080,702	991.43
Wholesale Trade	909	11,401	11,444	11,516	218,503,359	1,467.47
Retail Trade	1,788	24,014	24,682	24,836	218,058,708	684.34
Transportation, Warehousing & Utilities	411	12,823	13,246	13,396	196,518,635	1,149.13
Information	224	2,687	2,697	2,698	43,109,537	1,230.93
Financial Activities	1,740	17,535	17,585	17,715	382,946,745	1,672.61
Professional & Business Services	2,807	33,378	33,758	33,958	574,018,647	1,310.32
Education & Health Services	2,557	40,629	40,814	40,645	622,384,529	1,176.42
Leisure & Hospitality	1,293	19,141	19,267	19,210	99,540,562	398.68
Other Services	1,159	6,206	6,180	6,105	71,950,923	897.95
Local Government	108	14,446	14,409	14,393	179,889,811	959.88
State Government	208	27,288	27,345	27,520	436,995,702	1,227.53



TABLE 6. COUNTY SUMMARY

North American Industry Classification System - Industry Groups	Number of Employing Units	Employment			Total Earnings Oct - Dec 2020	Average Weekly Earnings
		Oct	Nov	Dec		
<b>RANDOLPH COUNTY - TOTAL</b>	<b>397</b>	<b>5,962</b>	<b>5,930</b>	<b>5,913</b>	<b>\$57,336,797</b>	<b>\$743.14</b>
Natural Resources & Mining	25	248	236	236	3,540,379	1,134.74
Construction	26	75	68	68	564,375	617.25
Manufacturing	30	1,758	1,749	1,740	20,406,234	897.49
Trade, Transportation & Utilities	97	939	952	912	8,386,846	690.48
Wholesale Trade	14	112	110	103	1,244,991	884.02
Retail Trade	57	648	660	627	4,723,167	563.29
Transportation, Warehousing & Utilities	26	179	182	182	2,418,688	1,027.92
Information	5	17	17	18	241,329	1,070.99
Financial Activities	35	151	155	153	1,601,863	805.36
Professional & Business Services	31	264	265	277	2,240,317	641.43
Education & Health Services	65	978	974	985	9,831,207	772.47
Leisure & Hospitality	30	427	417	416	1,581,514	289.65
Other Services	19	45	44	44	336,986	584.71
Local Government	24	796	788	802	6,246,029	604.10
State Government	10	264	265	262	2,359,718	688.43
<b>SAINT FRANCIS COUNTY - TOTAL</b>	<b>640</b>	<b>6,218</b>	<b>6,217</b>	<b>6,147</b>	<b>\$61,588,311</b>	<b>\$764.86</b>
Natural Resources & Mining	42	226	212	200	2,296,813	830.77
Construction	34	214	220	212	2,879,529	1,028.65
Trade, Transportation & Utilities	142	1,595	1,632	1,625	16,562,124	787.72
Wholesale Trade	29	484	484	477	6,681,375	1,067.03
Retail Trade	91	882	900	887	6,464,718	558.96
Transportation, Warehousing & Utilities	22	229	248	261	3,416,031	1,068.18
Information	5	46	47	47	469,195	773.40
Financial Activities	50	236	243	233	2,303,798	746.69
Professional & Business Services	45	176	177	180	2,354,933	1,019.60
Education & Health Services	200	1,304	1,310	1,291	14,280,497	843.92
Leisure & Hospitality	47	615	590	566	2,450,291	319.28
Local Government	28	776	768	785	7,113,108	704.80
State Government	14	366	365	367	3,820,963	803.06
Other	33	664	653	641	705,7060	831.74

TABLE 6. COUNTY SUMMARY

North American Industry Classification System - Industry Groups	Number of Employing Units	Employment			Total Earnings Oct - Dec 2020	Average Weekly Earnings
		Oct	Nov	Dec		
<b>SALINE COUNTY - TOTAL</b>	<b>2,168</b>	<b>25,170</b>	<b>25,178</b>	<b>25,526</b>	<b>\$264,338,173</b>	<b>\$803.98</b>
Natural Resources & Mining	14	62	61	61	813,320	1,020.05
Construction	292	2,378	2,369	2,367	32,253,531	1,046.26
Manufacturing	79	1,324	1,322	1,344	19,431,229	1,123.84
Trade, Transportation & Utilities	481	5,799	5,845	5,908	55,512,495	729.86
Wholesale Trade	112	523	523	526	8,210,239	1,205.26
Retail Trade	292	4,602	4,644	4,677	39,087,798	647.87
Transportation, Warehousing & Utilities	77	674	678	705	8,214,458	921.56
Information	20	134	131	136	1,835,536	1,056.32
Financial Activities	232	882	881	887	13,351,966	1,162.73
Professional & Business Services	298	1,887	1,896	1,919	24,994,426	1,011.57
Education & Health Services	345	4,644	4,644	4,585	52,319,577	870.31
Leisure & Hospitality	203	3,397	3,381	3,432	15,338,210	346.68
Other Services	157	762	734	720	6,954,327	724.21
Local Government	33	3,082	3,096	3,348	33,883,075	820.82
State Government	14	819	818	819	7,650,481	718.85
<b>SCOTT COUNTY - TOTAL</b>	<b>186</b>	<b>2,985</b>	<b>2,970</b>	<b>2,953</b>	<b>\$26,265,763</b>	<b>\$680.44</b>
Natural Resources & Mining	18	164	164	163	1,853,396	871.09
Trade, Transportation & Utilities	36	320	313	320	2,834,882	686.47
Wholesale Trade	7	18	19	20	181,775	735.93
Retail Trade	23	234	230	231	1,683,086	558.86
Transportation, Warehousing & Utilities	6	68	64	69	970,021	1,113.69
Financial Activities	15	63	61	61	627,544	782.80
Professional & Business Services	15	122	124	122	855,449	536.44
Education & Health Services	42	290	293	283	3,665,321	976.72
Leisure & Hospitality	19	157	150	142	532,651	273.76
Other Services	9	34	31	35	281,932	650.61
Local Government	6	514	511	513	4,354,702	653.40
State Government	6	32	32	32	337,487	811.27
Other	20	1,289	1,291	1,282	10,922,399	652.66

TABLE 6. COUNTY SUMMARY

North American Industry Classification System - Industry Groups	Number of Employing Units	Employment			Total Earnings Oct - Dec 2020	Average Weekly Earnings
		Oct	Nov	Dec		
<b>SEARCY COUNTY - TOTAL</b>	<b>169</b>	<b>1,368</b>	<b>1,350</b>	<b>1,370</b>	<b>\$10,636,724</b>	<b>\$600.45</b>
Construction	10	2	1	6	49,561	1,270.79
Manufacturing	14	143	145	142	1,224,293	657.04
Trade, Transportation & Utilities	34	256	249	248	1,898,807	581.92
Wholesale Trade	5	34	35	35	306,646	680.43
Retail Trade	23	204	196	194	1,325,883	515.11
Transportation, Warehousing & Utilities	6	18	18	19	266,278	1,117.25
Financial Activities	13	62	52	48	552,064	786.42
Education & Health Services	40	304	303	304	2,648,894	671.00
Leisure & Hospitality	15	155	151	148	528,521	268.65
Local Government	10	310	315	313	2,204,543	542.37
State Government	6	44	44	44	409,476	715.87
Other	27	92	90	117	1,120,565	864.86
<b>SEBASTIAN COUNTY - TOTAL</b>	<b>3,690</b>	<b>60,992</b>	<b>61,514</b>	<b>61,565</b>	<b>\$762,004,272</b>	<b>\$955.32</b>
Natural Resources & Mining	38	264	263	267	6,799,155	1,976.12
Construction	260	2,393	2,417	2,414	29,891,754	954.89
Manufacturing	187	10,641	10,714	10,704	146,528,826	1,054.75
Trade, Transportation & Utilities	873	12,831	13,179	13,247	146,048,759	858.54
Wholesale Trade	219	2,620	2,626	2,626	39,592,718	1,160.67
Retail Trade	544	7,576	7,799	7,807	60,712,354	604.37
Transportation, Warehousing & Utilities	110	2,635	2,754	2,814	45,743,687	1,286.87
Information	38	792	797	802	17,377,493	1,677.20
Financial Activities	410	2,281	2,252	2,255	33,315,731	1,132.62
Professional & Business Services	567	7,723	7,684	7,788	91,274,225	908.10
Education & Health Services	645	11,262	11,339	11,282	182,725,256	1,244.50
Leisure & Hospitality	356	5,492	5,535	5,480	26,311,281	367.83
Other Services	251	1,075	1,084	1,074	10,583,941	755.47
Local Government	43	4,598	4,608	4,613	50,669,119	846.14
State Government	22	1,640	1,642	1,639	20,478,732	960.35

TABLE 6. COUNTY SUMMARY

North American Industry Classification System - Industry Groups	Number of Employing Units	Employment			Total Earnings Oct - Dec 2020	Average Weekly Earnings
		Oct	Nov	Dec		
<b>SEVIER COUNTY - TOTAL</b>	<b>315</b>	<b>4,705</b>	<b>4,709</b>	<b>4,757</b>	<b>\$44,900,694</b>	<b>\$731.19</b>
Natural Resources & Mining	18	168	163	162	2,009,056	940.42
Construction	20	163	163	182	2,286,728	1,038.79
Trade, Transportation & Utilities	83	760	769	773	7,066,898	708.44
Wholesale Trade	10	70	68	71	1,006,958	1,111.84
Retail Trade	59	583	594	603	4,569,053	592.36
Transportation, Warehousing & Utilities	14	107	107	99	1,490,887	1,099.20
Financial Activities	27	194	194	191	2,545,612	1,014.59
Professional & Business Services	26	176	172	174	1,813,777	801.85
Education & Health Services	62	437	438	440	4,582,121	804.12
Leisure & Hospitality	23	254	256	256	881,072	265.44
Local Government	13	910	920	910	7,442,300	626.81
State Government	8	160	159	160	1,435,635	691.65
Other	35	1,483	1,475	1,509	14,837,495	766.52
<b>SHARP COUNTY - TOTAL</b>	<b>382</b>	<b>3,375</b>	<b>3,365</b>	<b>3,371</b>	<b>\$33,426,306</b>	<b>\$762.91</b>
Construction	26	110	113	110	1,220,954	846.12
Manufacturing	15	132	130	122	1,342,325	806.69
Trade, Transportation & Utilities	86	761	772	750	10,861,931	1,097.94
Wholesale Trade	15	45	42	39	5,881,659	10,772.27
Retail Trade	62	674	688	672	4,357,703	494.41
Transportation, Warehousing & Utilities	9	42	42	39	622,569	1,168.05
Information	7	16	21	21	176,673	702.94
Financial Activities	33	165	165	162	2,302,040	1,079.76
Professional & Business Services	37	120	120	122	1,224,099	780.34
Education & Health Services	82	809	798	836	8,052,030	760.61
Leisure & Hospitality	32	372	366	374	1,509,603	313.28
Local Government	24	753	750	738	5,718,748	588.89
State Government	7	54	54	54	508,956	725.01
Other	33	83	76	82	508,947	487.34

TABLE 6. COUNTY SUMMARY

North American Industry Classification System - Industry Groups	Number of Employing Units	Employment			Total Earnings Oct - Dec 2020	Average Weekly Earnings
		Oct	Nov	Dec		
<b>STONE COUNTY - TOTAL</b>	<b>279</b>	<b>2,486</b>	<b>2,461</b>	<b>2,440</b>	<b>\$20,507,719</b>	<b>\$640.66</b>
Natural Resources & Mining	5	12	11	11	68,968	468.11
Construction	17	32	34	34	248,212	572.80
Manufacturing	19	256	257	254	2,152,658	647.68
Trade, Transportation & Utilities	67	562	577	555	4,949,704	674.29
Wholesale Trade	5	31	34	19	293,252	805.64
Retail Trade	49	488	500	492	4,021,698	627.08
Transportation, Warehousing & Utilities	13	43	43	44	634,754	1,126.78
Financial Activities	37	123	123	130	1,342,782	824.13
Professional & Business Services	15	28	30	33	181,414	460.05
Education & Health Services	49	529	529	516	5,352,378	784.73
Leisure & Hospitality	30	421	379	378	1,565,075	306.60
Local Government	10	387	384	388	3,464,435	689.81
State Government	7	98	98	98	849,166	666.54
Other	23	38	39	43	332,927	640.24
<b>UNION COUNTY - TOTAL</b>	<b>1,233</b>	<b>16,145</b>	<b>16,252</b>	<b>16,203</b>	<b>\$213,802,552</b>	<b>\$1,015.21</b>
Natural Resources & Mining	82	344	336	343	4,883,004	1,101.51
Construction	75	1,328	1,361	1,390	21,234,012	1,201.31
Manufacturing	50	2,747	2,775	2,733	52,491,259	1,467.40
Trade, Transportation & Utilities	295	3,541	3,557	3,520	40,532,631	880.93
Wholesale Trade	66	443	439	439	7,718,356	1,348.34
Retail Trade	174	2,114	2,102	2,083	15,775,989	577.97
Transportation, Warehousing & Utilities	55	984	1,016	998	17,038,286	1,311.51
Information	8	57	55	56	729,975	1,002.71
Financial Activities	95	568	568	565	7,633,602	1,035.63
Professional & Business Services	124	1,743	1,755	1,744	33,667,072	1,482.13
Education & Health Services	271	1,960	1,991	1,986	22,747,266	884.18
Leisure & Hospitality	96	1,261	1,258	1,271	5,660,884	344.69
Other Services	89	390	382	390	3,256,470	646.72
Local Government	32	1,700	1,712	1,707	15,710,126	708.23
State Government	16	506	502	498	5,256,251	805.43

TABLE 6. COUNTY SUMMARY

North American Industry Classification System - Industry Groups	Number of Employing Units	Employment			Total Earnings Oct - Dec 2020	Average Weekly Earnings
		Oct	Nov	Dec		
<b>VAN BUREN COUNTY - TOTAL</b>	<b>335</b>	<b>3,406</b>	<b>3,393</b>	<b>3,334</b>	<b>\$32,789,614</b>	<b>\$746.75</b>
Natural Resources & Mining	10	81	79	77	1,839,556	1,791.19
Construction	35	109	111	119	951,531	647.74
Manufacturing	9	223	206	186	1,548,730	581.14
Trade, Transportation & Utilities	93	859	873	867	9,175,122	814.67
Wholesale Trade	11	40	40	41	495,617	945.23
Retail Trade	52	596	608	599	4,579,618	586.15
Transportation, Warehousing & Utilities	30	223	225	227	4,099,887	1,401.67
Information	7	29	32	32	413,242	1,025.41
Financial Activities	36	154	158	162	1,895,791	922.98
Professional & Business Services	28	122	119	114	1,444,999	939.33
Education & Health Services	55	694	704	711	7,656,692	837.80
Leisure & Hospitality	25	273	254	254	1,221,493	360.93
Other Services	20	185	170	169	1,464,590	645.00
Local Government	11	634	644	600	4,746,413	583.24
State Government	6	43	43	43	431,455	771.83
<b>WASHINGTON COUNTY - TOTAL</b>	<b>6,430</b>	<b>108,994</b>	<b>109,782</b>	<b>109,769</b>	<b>\$1,541,508,886</b>	<b>\$1,082.75</b>
Natural Resources & Mining	39	316	318	311	6,124,668	1,495.65
Construction	623	6,421	6,436	6,466	100,571,519	1,201.10
Manufacturing	231	13,808	13,991	14,029	184,103,458	1,015.72
Trade, Transportation & Utilities	1,365	22,466	23,013	22,947	300,120,271	1,012.17
Wholesale Trade	385	3,580	3,615	3,613	79,886,701	1,705.72
Retail Trade	784	12,536	12,961	12,835	112,374,158	676.52
Transportation, Warehousing & Utilities	196	6,350	6,437	6,499	107,859,412	1,290.61
Information	90	811	813	818	12,926,262	1,221.53
Financial Activities	754	3,917	3,898	3,904	63,207,561	1,244.68
Professional & Business Services	1,206	13,404	13,300	13,271	338,718,007	1,955.36
Education & Health Services	926	16,061	16,165	16,275	245,473,312	1,167.97
Leisure & Hospitality	715	11,789	11,633	11,517	58,572,612	386.87
Other Services	399	2,122	2,157	2,150	24,233,861	869.88
Local Government	60	8,687	8,793	8,827	102,450,354	898.71
State Government	22	9,192	9,265	9,254	105,007,001	874.47

TABLE 6. COUNTY SUMMARY

North American Industry Classification System - Industry Groups	Number of Employing Units	Employment			Total Earnings	Average Weekly Earnings
		Oct	Nov	Dec	Oct - Dec 2020	
<b>WHITE COUNTY - TOTAL</b>	<b>1,799</b>	<b>23,902</b>	<b>23,901</b>	<b>24,043</b>	<b>\$258,864,688</b>	<b>\$831.47</b>
Natural Resources & Mining	44	365	358	361	5,521,730	1,175.50
Construction	167	1,220	1,184	1,212	16,576,606	1,057.90
Manufacturing	58	2,256	2,259	2,291	28,902,733	980.00
Trade, Transportation & Utilities	475	6,372	6,464	6,552	68,399,472	814.14
Wholesale Trade	81	599	590	586	7,851,448	1,020.77
Retail Trade	308	3,526	3,581	3,643	28,532,487	612.50
Transportation, Warehousing & Utilities	86	2,247	2,293	2,323	32,015,537	1,076.53
Information	22	102	94	95	1,011,592	802.21
Financial Activities	189	939	942	947	13,526,773	1,103.81
Professional & Business Services	185	1,140	1,112	1,136	11,736,111	799.39
Education & Health Services	321	5,411	5,392	5,387	67,848,068	967.09
Leisure & Hospitality	163	2,489	2,476	2,432	10,295,207	321.19
Other Services	114	473	469	482	4,797,808	777.52
Local Government	46	2,639	2,658	2,645	25,189,871	731.94
State Government	15	496	493	503	5,058,717	782.44
<b>WOODRUFF COUNTY - TOTAL</b>	<b>188</b>	<b>1,755</b>	<b>1,751</b>	<b>1,760</b>	<b>\$18,703,706</b>	<b>\$819.64</b>
Natural Resources & Mining	34	186	187	164	1,980,256	850.99
Construction	12	26	27	30	286,802	797.41
Manufacturing	5	194	197	215	2,739,454	1,043.20
Trade, Transportation & Utilities	46	360	355	343	4,012,242	875.14
Wholesale Trade	13	154	150	138	2,015,875	1,052.49
Retail Trade	24	142	139	141	1,039,689	568.55
Transportation, Warehousing & Utilities	9	64	66	64	956,678	1,138.00
Financial Activities	10	40	42	45	421,337	765.60
Education & Health Services	42	237	236	236	2,586,508	841.87
Leisure & Hospitality	11	105	105	111	458,611	329.70
Local Government	9	391	384	395	3,206,231	632.39
State Government	5	30	30	30	333,165	854.27
Other	14	186	188	191	2,679,100	1,094.25

TABLE 6. COUNTY SUMMARY

North American Industry Classification System - Industry Groups	Number of Employing Units	Employment			Total Earnings Oct - Dec 2020	Average Weekly Earnings
		Oct	Nov	Dec		
<b>YELL COUNTY - TOTAL</b>	<b>416</b>	<b>6,394</b>	<b>6,396</b>	<b>6,437</b>	<b>\$60,126,593</b>	<b>\$721.66</b>
Natural Resources & Mining	26	249	245	248	3,210,472	998.49
Construction	32	232	234	240	2,549,439	833.33
Manufacturing	21	2,381	2,397	2,406	22,630,855	726.96
Trade, Transportation & Utilities	90	774	780	794	6,652,056	653.79
Wholesale Trade	16	64	64	64	452,411	543.76
Retail Trade	50	523	533	544	3,493,408	503.86
Transportation, Warehousing & Utilities	24	187	183	186	2,706,237	1,123.23
Financial Activities	31	157	160	161	2,917,176	1,408.36
Professional & Business Services	38	320	321	313	3,073,662	743.51
Education & Health Services	100	666	673	674	5,563,969	637.85
Leisure & Hospitality	24	292	260	278	1,082,903	301.09
Local Government	23	1,126	1,127	1,124	10,108,917	690.80
State Government	10	68	68	68	641,621	725.82
Other	21	129	131	131	1,695,523	1,000.70
<b>STATEWIDE COUNTY - TOTAL</b>	<b>12,842</b>	<b>36,359</b>	<b>37,404</b>	<b>37,879</b>	<b>\$665,590,551</b>	<b>\$1,375.81</b>
Natural Resources & Mining	118	246	239	226	4,439,062	1,440.79
Construction	947	3,854	3,713	3,996	65,205,152	1,301.34
Manufacturing	102	232	229	230	6,621,637	2,211.39
Trade, Transportation & Utilities	3,732	7,866	8,087	8,149	225,079,488	2,155.07
Wholesale Trade	3,049	6,176	6,278	6,272	195,444,518	2,408.55
Retail Trade	281	528	659	711	11,632,631	1,414.36
Transportation, Warehousing & Utilities	402	1,162	1,150	1,166	18,002,339	1,194.48
Information	726	1,241	1,283	1,267	31,695,276	1,929.38
Financial Activities	941	2,465	2,509	2,450	49,270,734	1,531.54
Professional & Business Services	4,962	15,608	16,541	16,725	219,820,120	1,037.93
Education & Health Services	738	2,775	2,765	2,750	36,969,430	1,029.12
Leisure & Hospitality	129	451	456	473	2,926,353	489.36
State Government	15	720	718	719	8,782,688	939.63
Other	432	901	864	894	14,780,611	1,282.78

Note: Statewide classification includes employment and payroll data for employers that have not provided a physical location for each employing unit. This section also includes employers without a physical location in Arkansas.



**TABLE 7. FEDERAL GOVERNMENT EMPLOYMENT AND EARNINGS IN ARKANSAS**

North American Industry Classification System - Industry Groups	Number of Employing Units	Employment			Total Earnings Oct - Dec 2020	Average Weekly Earnings
		Oct	Nov	Dec		
<b>TOTAL</b>	<b>1,194</b>	<b>21,599</b>	<b>20,536</b>	<b>20,828</b>	<b>\$418,009,364</b>	<b>\$1,532.07</b>
Trade, Transportation & Utilities	586	5,518	5,627	5,696	85,694,080	1,174.25
Information	2	36	36	36	693,977	1,482.86
Financial Activities	14	108	111	111	2,530,709	1,769.73
Professional & Business Services	32	845	844	834	17,834,906	1,631.29
Education & Health Services	20	5,337	5,345	5,478	130,164,409	1,858.78
Leisure & Hospitality	23	251	243	244	3,468,110	1,084.46
Other Services	1	1	1	1	10,390	799.23
Public Administration	516	9,503	8,329	8,428	177,612,783	1,560.84

TABLE 8. LOCAL WORKFORCE DEVELOPMENT AREA SUMMARY

North American Industry Classification System - Industry Groups	Number of Employing Units	Employment			Total Earnings Oct - Dec 2020	Average Weekly Earnings
		Oct	Nov	Dec		
<b>CENTRAL LOCAL WORKFORCE DEVELOPMENT AREA</b>	<b>7,025</b>	<b>82,465</b>	<b>82,916</b>	<b>83,488</b>	<b>\$936,923,938</b>	<b>\$868.78</b>
Natural Resources & Mining	207	1,124	1,049	1,020	16,522,085	1,194.11
Construction	829	6,365	6,343	6,399	90,776,500	1,096.37
Manufacturing	225	5,624	5,738	5,732	80,800,346	1,090.81
Trade, Transportation & Utilities	1,531	17,340	17,665	17,747	198,371,271	867.80
Wholesale Trade	341	1,882	1,877	1,920	62,883,008	2,555.28
Retail Trade	934	13,464	13,727	13,732	107,797,694	607.88
Transportation, Warehousing & Utilities	256	1,994	2,061	2,095	27,690,569	1,039.05
Information	69	1,800	1,785	1,790	38,371,039	1,647.41
Financial Activities	763	3,195	3,237	3,267	49,432,585	1,176.15
Professional & Business Services	957	6,140	6,254	6,377	79,190,539	973.56
Education & Health Services	1,138	14,654	14,712	14,701	170,236,925	891.49
Leisure & Hospitality	656	10,433	10,400	10,437	47,493,759	350.50
Other Services	454	1,873	1,851	1,877	16,894,316	696.07
Local Government	136	9,663	9,642	9,904	102,552,061	810.22
State Government	60	4,254	4,240	4,237	46,282,512	838.94
Note: Pulaski County is not included in the Central Local Workforce Development Area. Please refer to Page 51 for information on Pulaski County. Central Local Workforce Development Area includes these counties: Faulkner, Lonoke, Monroe, Prairie, and Saline.						
<b>EASTERN LOCAL WORKFORCE DEVELOPMENT AREA</b>	<b>3,237</b>	<b>32,865</b>	<b>33,034</b>	<b>32,618</b>	<b>\$339,727,385</b>	<b>\$795.79</b>
Natural Resources & Mining	243	1,391	1,362	1,278	15,196,703	869.99
Construction	128	801	833	822	11,180,436	1,050.53
Manufacturing	72	3,265	3,375	3,438	42,364,749	970.08
Trade, Transportation & Utilities	736	8,451	8,556	8,476	93,153,509	843.58
Wholesale Trade	142	1,805	1,819	1,802	26,853,753	1,142.10
Retail Trade	400	4,290	4,358	4,301	32,558,381	580.24
Transportation, Warehousing & Utilities	194	2,356	2,379	2,373	33,741,375	1,095.45
Information	26	124	130	134	1,387,518	825.25
Financial Activities	251	1,124	1,121	1,113	14,919,016	1,025.27
Professional & Business Services	249	1,593	1,579	1,420	18,409,679	925.17
Education & Health Services	925	5,525	5,530	5,412	57,257,749	802.41
Leisure & Hospitality	274	3,735	3,674	3,628	18,742,687	391.89
Other Services	151	645	663	667	6,158,814	719.63
Local Government	126	4,409	4,413	4,485	43,293,573	750.79
State Government	56	1,802	1,798	1,745	17,662,952	762.59
Eastern Local Workforce Development Area includes these counties: Crittenden, Cross, Lee, Phillips, and Saint Francis.						

TABLE 8. LOCAL WORKFORCE DEVELOPMENT AREA SUMMARY

North American Industry Classification System - Industry Groups	Number of Employing Units	Employment			Total Earnings Oct - Dec 2020	Average Weekly Earnings
		Oct	Nov	Dec		
<b>NORTH CENTRAL LOCAL WORKFORCE DEVELOPMENT AREA</b>	<b>5,432</b>	<b>67,081</b>	<b>67,359</b>	<b>67,339</b>	<b>\$713,509,894</b>	<b>\$816.02</b>
Natural Resources & Mining	208	1,463	1,478	1,403	20,711,744	1,100.28
Construction	437	2,951	2,986	3,001	40,400,590	1,043.10
Manufacturing	217	8,772	8,933	8,950	114,013,138	987.08
Trade, Transportation & Utilities	1,384	14,901	15,046	15,158	160,822,389	822.81
Wholesale Trade	220	1,475	1,470	1,442	28,233,623	1,485.17
Retail Trade	909	9,653	9,754	9,808	76,010,625	600.41
Transportation, Warehousing & Utilities	255	3,773	3,822	3,908	56,578,141	1,135.05
Information	78	352	351	365	4,108,023	887.65
Financial Activities	540	2,647	2,647	2,650	37,975,996	1,103.18
Professional & Business Services	488	3,253	3,269	3,330	34,841,813	816.12
Education & Health Services	942	13,947	13,901	13,908	162,979,084	900.72
Leisure & Hospitality	493	6,233	6,104	6,061	26,104,568	327.43
Other Services	329	1,264	1,239	1,263	10,981,453	672.91
Local Government	223	8,611	8,723	8,562	74,684,297	665.54
State Government	93	2,687	2,682	2,688	25,886,799	741.45

North Central Local Workforce Development Area includes these counties: Cleburne, Fulton, Independence, Izard, Jackson, Sharp, Stone, Van Buren, White, and Woodruff.

<b>NORTHEAST LOCAL WORKFORCE DEVELOPMENT AREA</b>	<b>6,473</b>	<b>101,211</b>	<b>101,365</b>	<b>101,330</b>	<b>\$1,223,772,303</b>	<b>\$929.26</b>
Natural Resources & Mining	446	2,434	2,319	2,143	29,615,632	991.06
Construction	484	3,901	3,765	3,693	56,342,146	1,144.65
Manufacturing	301	20,858	20,922	20,956	342,344,099	1,259.28
Trade, Transportation & Utilities	1,665	19,231	19,618	19,806	211,877,875	833.60
Wholesale Trade	350	3,798	3,799	3,845	64,889,276	1,308.73
Retail Trade	982	11,997	12,277	12,363	95,880,130	603.93
Transportation, Warehousing & Utilities	333	3,436	3,542	3,598	51,108,469	1,115.19
Information	58	597	596	598	8,292,636	1,068.50
Financial Activities	564	3,250	3,250	3,262	47,104,329	1,113.52
Professional & Business Services	664	7,710	7,597	7,628	81,112,222	816.14
Education & Health Services	1,049	17,178	17,191	17,233	231,777,398	1,036.53
Leisure & Hospitality	584	8,845	8,852	8,789	39,037,440	340.13
Other Services	355	1,548	1,530	1,524	14,755,968	739.94
Local Government	215	11,386	11,450	11,430	112,554,469	758.01
State Government	88	4,273	4,275	4,268	48,958,089	881.56

Northeast Local Workforce Development Area includes these counties: Clay, Craighead, Greene, Lawrence, Mississippi, Poinsett, and Randolph.

TABLE 8. LOCAL WORKFORCE DEVELOPMENT AREA SUMMARY

North American Industry Classification System - Industry Groups	Number of Employing Units	Employment			Total Earnings Oct - Dec 2020	Average Weekly Earnings
		Oct	Nov	Dec		
<b>NORTHWEST LOCAL WORKFORCE DEVELOPMENT AREA</b>	<b>17,412</b>	<b>281,978</b>	<b>283,485</b>	<b>283,685</b>	<b>\$4,216,397,654</b>	<b>\$1,145.87</b>
Natural Resources & Mining	143	1,588	1,558	1,569	32,822,864	1,606.47
Construction	1,657	13,702	13,722	13,758	199,855,139	1,119.92
Manufacturing	649	37,061	37,214	37,339	475,815,887	983.78
Trade, Transportation & Utilities	3,949	62,229	63,275	63,460	1,038,314,114	1,268.02
Wholesale Trade	1,256	10,718	10,802	10,847	449,853,619	3,207.35
Retail Trade	2,164	31,864	32,610	32,636	274,371,500	652.01
Transportation, Warehousing & Utilities	529	19,647	19,863	19,977	314,088,995	1,218.45
Information	250	2,337	2,324	2,379	54,743,705	1,794.48
Financial Activities	1,859	10,024	9,989	9,991	166,578,843	1,281.20
Professional & Business Services	3,054	49,763	50,136	50,171	1,164,166,961	1,790.19
Education & Health Services	2,464	36,041	36,185	36,288	488,171,159	1,038.16
Leisure & Hospitality	1,875	28,759	28,378	27,980	146,422,827	396.98
Other Services	1,101	5,247	5,264	5,299	54,420,526	794.34
Local Government	309	23,708	23,840	23,874	267,055,999	862.88
State Government	102	11,519	11,600	11,577	128,029,630	851.55
Northwest Local Workforce Development Area includes these counties: Baxter, Benton, Boone, Carroll, Madison, Marion, Newton, Searcy, and Washington.						
<b>SOUTHEAST LOCAL WORKFORCE DEVELOPMENT AREA</b>	<b>6,280</b>	<b>65,878</b>	<b>66,090</b>	<b>65,981</b>	<b>\$743,842,702</b>	<b>\$867.17</b>
Natural Resources & Mining	447	2,301	2,368	2,220	28,339,586	949.33
Construction	358	2,125	2,127	2,089	28,781,896	1,047.47
Manufacturing	217	13,508	13,536	13,631	210,776,351	1,195.84
Trade, Transportation & Utilities	1,274	11,885	11,986	12,100	120,728,298	774.52
Wholesale Trade	226	1,795	1,758	1,776	26,560,452	1,150.18
Retail Trade	757	7,465	7,540	7,558	55,805,655	570.77
Transportation, Warehousing & Utilities	291	2,625	2,688	2,766	38,362,191	1,095.78
Information	44	233	233	231	2,676,523	886.17
Financial Activities	459	2,484	2,487	2,467	35,682,120	1,107.06
Professional & Business Services	475	3,613	3,462	3,452	40,701,338	892.24
Education & Health Services	1,921	9,515	9,532	9,534	102,626,439	828.63
Leisure & Hospitality	428	5,077	5,188	5,136	23,367,058	350.13
Other Services	323	1,050	1,047	1,042	9,845,407	723.80
Local Government	210	8,211	8,252	8,197	78,992,381	739.21
State Government	124	5,876	5,872	5,882	61,325,305	802.72
Southeast Local Workforce Development Area includes these counties: Arkansas, Ashley, Bradley, Chicot, Cleveland, Desha, Drew, Grant, Jefferson, and Lincoln.						

TABLE 8. LOCAL WORKFORCE DEVELOPMENT AREA SUMMARY

North American Industry Classification System - Industry Groups	Number of Employing Units	Employment			Total Earnings Oct - Dec 2020	Average Weekly Earnings
		Oct	Nov	Dec		
<b>SOUTHWEST LOCAL WORKFORCE DEVELOPMENT AREA</b>	<b>5,573</b>	<b>73,301</b>	<b>73,854</b>	<b>73,584</b>	<b>\$860,644,532</b>	<b>\$899.75</b>
Natural Resources & Mining	329	2,077	2,093	2,092	28,955,245	1,067.07
Construction	346	2,973	3,006	3,036	42,109,880	1,077.94
Manufacturing	225	18,830	18,913	18,840	300,130,948	1,224.06
Trade, Transportation & Utilities	1,321	13,818	14,032	14,077	143,198,898	788.18
Wholesale Trade	236	1,738	1,749	1,715	25,459,403	1,129.42
Retail Trade	783	8,520	8,606	8,652	61,892,310	554.07
Transportation, Warehousing & Utilities	302	3,560	3,677	3,710	55,847,185	1,177.29
Information	46	312	306	308	5,802,007	1,445.92
Financial Activities	456	2,423	2,418	2,372	33,895,248	1,084.43
Professional & Business Services	445	4,449	4,460	4,463	59,830,943	1,032.54
Education & Health Services	1,243	9,082	9,084	9,106	91,858,910	777.29
Leisure & Hospitality	435	5,468	5,459	5,419	23,389,867	330.21
Other Services	334	1,301	1,298	1,293	10,992,967	651.81
Local Government	263	9,129	9,335	9,135	84,892,906	709.83
State Government	130	3,439	3,450	3,443	35,586,713	794.84
Southwest Local Workforce Development Area includes these counties: Calhoun, Columbia, Dallas, Hempstead, Howard, Lafayette, Little River, Miller, Nevada, Ouachita, Sevier, and Union						
<b>WEST CENTRAL LOCAL WORKFORCE DEVELOPMENT AREA</b>	<b>8,126</b>	<b>102,266</b>	<b>102,761</b>	<b>102,828</b>	<b>\$1,097,463,517</b>	<b>\$822.66</b>
Natural Resources & Mining	243	2,001	2,023	2,190	23,950,493	889.45
Construction	752	4,561	4,536	4,544	61,268,432	1,036.50
Manufacturing	335	14,556	14,596	14,695	184,984,378	973.58
Trade, Transportation & Utilities	1,795	21,382	21,958	21,899	239,423,420	846.91
Wholesale Trade	311	1,820	1,826	1,832	30,972,969	1,304.78
Retail Trade	1,194	14,112	14,489	14,398	112,414,877	603.31
Transportation, Warehousing & Utilities	290	5,450	5,643	5,669	96,035,574	1,322.16
Information	74	651	654	621	7,487,651	897.15
Financial Activities	834	3,700	3,686	3,682	48,588,748	1,013.08
Professional & Business Services	927	7,729	7,823	8,013	88,040,387	862.17
Education & Health Services	1,478	16,665	16,631	16,586	199,901,911	924.81
Leisure & Hospitality	826	12,287	12,096	11,928	61,125,039	388.47
Other Services	515	2,103	2,117	2,111	17,986,450	655.62
Local Government	235	11,586	11,608	11,615	115,750,240	767.38
State Government	112	5,045	5,033	4,944	48,956,368	752.07
West Central Local Workforce Development Area includes these counties: Clark, Conway, Garland, Hot Spring, Johnson, Montgomery, Perry, Pike, Pope, and Yell						

TABLE 8. LOCAL WORKFORCE DEVELOPMENT AREA SUMMARY

North American Industry Classification System - Industry Groups	Number of Employing Units	Employment			Total Earnings	Average Weekly Earnings
		Oct	Nov	Dec	Oct - Dec 2020	
<b>WESTERN LOCAL WORKFORCE DEVELOPMENT AREA</b>	<b>6,474</b>	<b>98,524</b>	<b>98,998</b>	<b>99,053</b>	<b>\$1,138,291,098</b>	<b>\$885.72</b>
Natural Resources & Mining	141	1,048	1,027	1,056	16,819,834	1,239.70
Construction	516	3,999	4,042	4,023	50,543,356	966.83
Manufacturing	332	19,941	19,946	19,921	251,501,742	970.42
Trade, Transportation & Utilities	1,542	21,798	22,192	22,346	236,463,682	822.61
Wholesale Trade	335	3,543	3,545	3,566	52,934,193	1,146.57
Retail Trade	922	12,073	12,385	12,423	94,861,974	593.56
Transportation, Warehousing & Utilities	285	6,182	6,262	6,357	88,667,515	1,088.33
Information	69	921	924	933	18,794,847	1,561.29
Financial Activities	673	3,299	3,264	3,267	45,485,194	1,067.81
Professional & Business Services	854	9,870	9,826	9,925	115,030,037	896.17
Education & Health Services	1,127	15,287	15,380	15,297	223,007,111	1,119.64
Leisure & Hospitality	568	8,305	8,309	8,223	37,736,730	350.63
Other Services	416	1,837	1,849	1,840	17,946,519	749.46
Local Government	166	9,464	9,482	9,479	95,386,604	774.40
State Government	70	2,755	2,757	2,743	29,575,442	826.78

Western Local Workforce Development Area includes these counties: Crawford, Franklin, Logan, Polk, Scott, and Sebastian