

ARKANSAS

COVERED EMPLOYMENT & EARNINGS

FIRST QUARTER 2021



Arkansas Division of
Workforce Services



**COVERED EMPLOYMENT AND EARNINGS
STATE OF ARKANSAS
FIRST QUARTER 2021**

**ASA HUTCHINSON, GOVERNOR
STATE OF ARKANSAS**

**CHARISSE CHILDERS, DIRECTOR
DIVISION OF WORKFORCE SERVICES**

**PUBLISHED BY
LABOR MARKET INFORMATION
BUREAU OF LABOR STATISTICS PROGRAMS
POST OFFICE BOX 2981
LITTLE ROCK, ARKANSAS 72203-2981
SUSAN PRICE, BLS PROGRAMS MANAGER
TELEPHONE (501) 682-3103**

STATE OF ARKANSAS WEBPAGE: <http://www.arkansas.gov>

DIVISION OF WORKFORCE SERVICES WEBPAGE: <http://www.dws.arkansas.gov/>

WEBPAGE FOR LABOR MARKET INFORMATION: <http://www.discover.arkansas.gov>

RELEASED: JULY 2021

TABLE OF CONTENTS

DESCRIPTION OF DATA	PAGE
Description and Classification of Data	1
Definition of Covered Employment and Earnings	2
Significant Developments During First Quarter 2021	3

LIST OF GRAPHS AND TABLES

Graph 1	Total Covered Employment for Selected Years, Arkansas	7
Graph 2	Total Covered Earnings, by Calendar Quarter for Selected Years, Arkansas	8
Table 1	Quarterly Comparison of Covered Employment and Wages, by Industry	5
Table 2	Total Covered Employment in Arkansas, 2014 – 2021	6
Table 3	Total Covered Earnings, 2014 – 2021	9
Table 4	Total Taxable Earnings, 2014 – 2021	10
Table 5	State Summary – Employment and Total Earnings, by Industry, First Quarter 2021	11
Table 6	County Summary – Employment and Total Earnings, by Industry, First Quarter 2021	22
Table 7	Federal Government Employment and Total Earnings in Arkansas, First Quarter 2021	60
Table 8	Local Workforce Development Area – Employment and Total Earnings, by Industry, First Quarter 2021	61

EMPLOYMENT AND EARNINGS
UNDER THE ARKANSAS EMPLOYMENT SECURITY LAW
FIRST QUARTER 2021

DESCRIPTION AND CLASSIFICATION OF DATA

This publication contains covered employment and payroll data by industry and county for the First Quarter 2021 and a record for total covered employment by month, quarterly payroll data, average weekly earnings, and total taxable earnings for 2014 through 2021. These data are compiled from quarterly contributions and wage reports submitted by employers subject to the Arkansas Employment Security Law.

Employment data have been tabulated for each month of the quarter by industry under the **North American Industry Classification System** (NAICS) by state, county, and workforce area. Payroll data represent the total wages paid during the quarter and are classified by industry for the state and by publishable industry groups for each county and workforce area.

Due to industry classification revisions, previously published data will not always be comparable with current data. For this reason, comparisons should not be made between the same industries under different revisions. For more information, visit the NAICS home page at <http://www.census.gov/naics>.

Industry Classification Revisions

- SIC (Standard Industrial Classification) 1987 to NAICS 2002
- NAICS 2002 to NAICS 2007
- NAICS 2007 to NAICS 2012
- NAICS 2012 to NAICS 2018

The tabulation of this data is a joint effort in conjunction with the United States Bureau of Labor Statistics. Data included in this publication are subject to revisions. Revisions are typically reflected in the Annual Covered Employment and Earnings publication.

DEFINITION OF COVERED EMPLOYMENT AND EARNINGS

Covered Employment is the total number of workers employed by establishments subject to the Arkansas Employment Security Law that worked or received pay for the payroll period including the 12th of the month. Earnings include all wages paid to any covered employee by their employer including salaries, bonuses, commissions, fees, fringe benefits, sick pay made directly to employees or dependents, deferred compensation, and reported tips. These wages include both taxable and nontaxable wages. Only the first \$10,000 paid to each worker by an employer in the calendar year is taxable under the Arkansas Employment Security Law.

An Arkansas state unemployment insurance account is required of any entity meeting the definition of an employer. As described by Arkansas Division of Workforce Services Law, the definition of an employer includes, but is not limited to, a sole proprietorship, partnership, corporation, associations, trust, estate, and receiver or trustee in bankruptcy. The entity must employ one or more individuals for ten or more days in a calendar year, whether or not the days are consecutive.

Currently excluded from coverage is employment covered by the Railroad Unemployment Insurance Act, some domestic service workers, employees of small agricultural establishments, self-employed workers, unpaid family workers, insurance and real estate agents paid only on a commission basis, and employees of churches and religious organizations except separately incorporated schools.

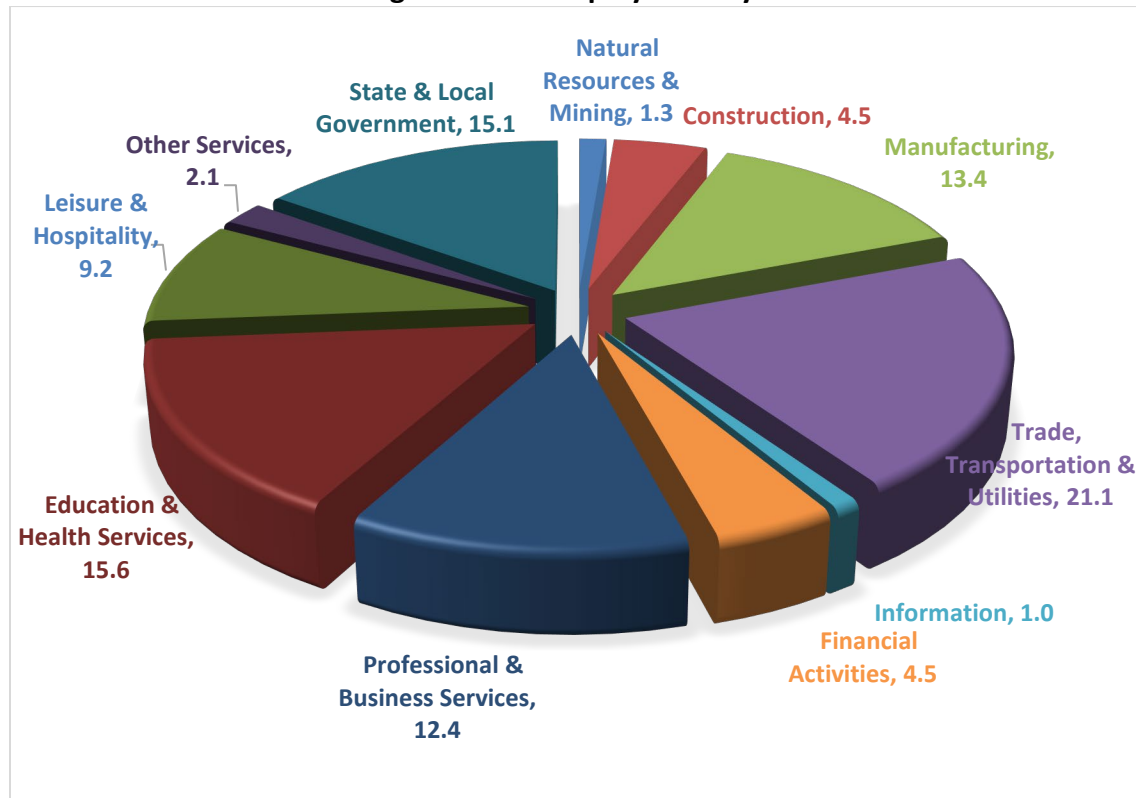
Civilian federal workers are covered by Unemployment Compensation for Federal Employees (UCFE).

SIGNIFICANT DEVELOPMENTS DURING FIRST QUARTER 2021

AVERAGE EMPLOYMENT CHANGES

Covered employment averaged 1,166,553 during the First Quarter 2021 (refer to Table 1), a decrease of 11,583 (-1.0%) from the previous quarter and a loss of 32,103 (-2.7%) from the average recorded one year ago. The over-the-year comparison is more significant when used as an economic indicator and allows for seasonal factors that appear when comparing over-the-quarter data to be disregarded.

Average Covered Employment by NAICS



EMPLOYMENT CHANGES FROM FOURTH QUARTER 2020

Losses were recorded in eight major industry groups. (refer to Table 1). Significant decreases occurred in State & Local Government (-5,085), Trade, Transportation & Utilities (-4,439), Construction (-1,233), and Leisure & Hospitality (-1,181). Small gains occurred in three major industries.

EMPLOYMENT CHANGES FROM FIRST QUARTER 2020 (QUARTER YEAR AGO COMPARISON)

Over-the-year losses were recorded in eight major industry groups. (refer to Table 1). Large decreases occurred in Leisure & Hospitality (-12,507), Education & Health Services (-7,055), Manufacturing (-4,656), State & Local Government (-4,177), and Professional & Business Services (-2,899). Three major industry sectors saw small increases.

COVERED WAGES

Wages paid to covered workers totaled \$14,382,938,962 for the First Quarter 2021 (refer to Table 1), for an average weekly wage of \$948.42 (refer to Table 5). Benton County workers recorded the highest average weekly wage (\$1,621.18), and employees in Searcy reported the lowest (\$515.09) (refer to Table 6). Information recorded the highest average weekly wage for the State of Arkansas (\$1,645.80). The Leisure & Hospitality sector recorded the lowest (\$352.03) (refer to Table 5).

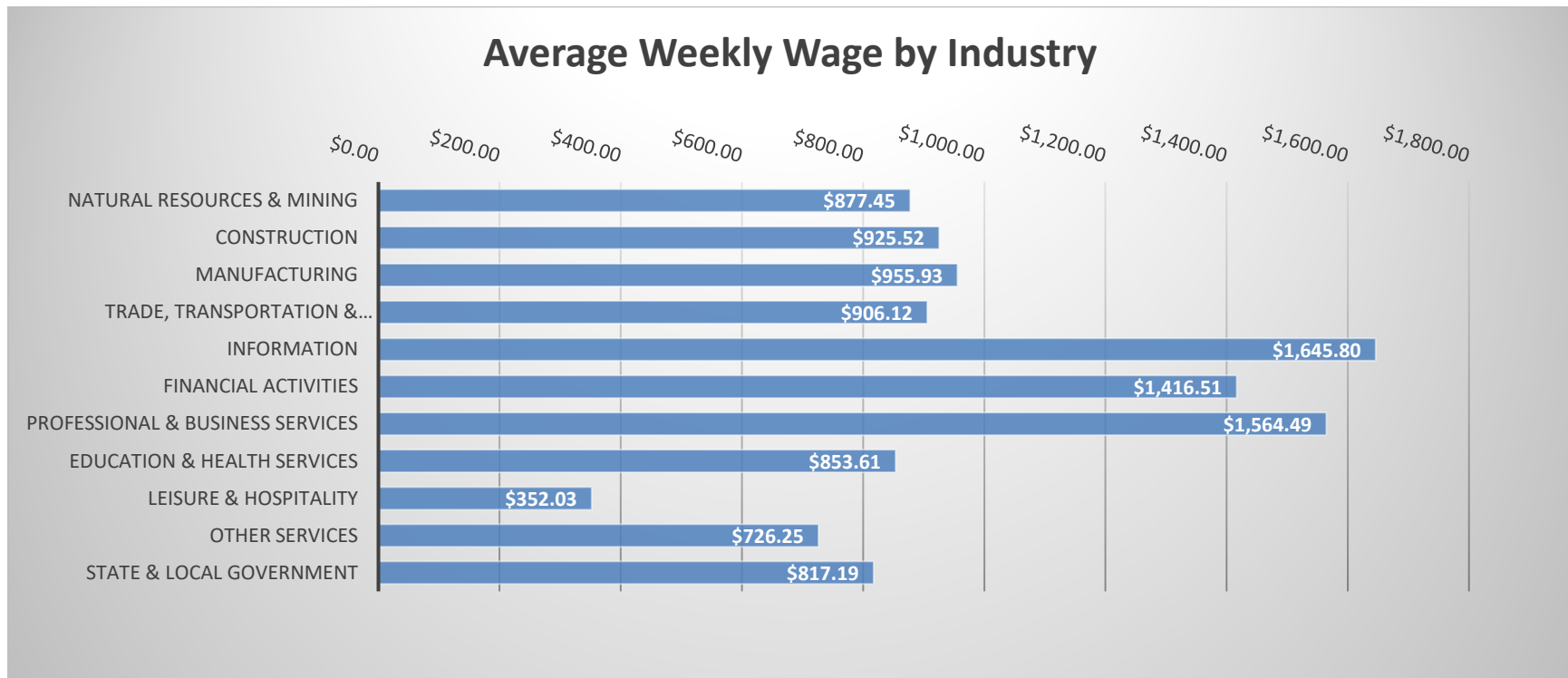


TABLE 1. QUARTERLY COMPARISON OF COVERED EMPLOYMENT AND WAGES, BY INDUSTRY

North American Industry Classification System - Industry Groups	Number of Employing Units	Monthly Employment Average	Percent of Total	Net Change From:		Total Wages Paid Jan - Mar 2021	Percent of Total
				Oct - Dec 2020	Jan - Mar 2020		
TOTAL	94,157	1,166,553	100	-11,583	-32,103	\$14,382,938,962	100
Natural Resources & Mining	2,585	15,278	1.3	-816	-440	174,270,175	1.2
Agriculture, Forestry, Fishing & Hunting	2,164	12,007	1.0	-645	-124	120,864,136	0.8
Mining	421	3,271	0.3	-171	-316	53,406,039	0.4
Construction	7,522	52,979	4.5	-1,233	790	637,433,378	4.4
Manufacturing	3,005	155,984	13.4	858	-4,656	1,938,433,917	13.5
Trade, Transportation & Utilities	22,103	246,192	21.1	-4,439	-871	2,900,018,184	20.2
Wholesale Trade	7,421	46,650	4.0	300	-644	943,935,504	6.6
Retail Trade	11,084	136,885	11.7	-3,277	1,553	1,039,016,609	7.2
Transportation & Warehousing	3,189	54,852	4.7	-1,405	-1,706	702,065,712	4.9
Utilities	409	7,806	0.7	-56	-75	215,000,359	1.5
Information	1,808	11,152	1.0	-135	340	238,608,156	1.7
Financial Activities	9,235	52,121	4.5	-71	39	959,787,836	6.7
Finance & Insurance	5,436	38,452	3.3	-79	73	812,450,662	5.6
Real Estate & Rental & Leasing	3,799	13,669	1.2	8	-33	147,337,174	1.0
Professional & Business Services	16,215	144,124	12.4	-300	-2,899	2,931,248,989	20.4
Professional & Technical Services	10,279	43,782	3.8	992	-1,643	717,643,347	5.0
Management of Companies & Enterprises	551	34,312	2.9	285	-173	1,657,433,218	11.5
Administrative & Waste Services	5,385	66,030	5.7	-1,577	-1,083	556,172,424	3.9
Education & Health Services	15,479	182,027	15.6	533	-7,055	2,019,943,550	14.0
Educational Services	1,036	12,363	1.1	78	-276	116,989,090	0.8
Health Care & Social Assistance	14,443	169,665	14.5	455	-6,778	1,902,954,460	13.2
Leisure & Hospitality	7,578	106,886	9.2	-1,181	-12,507	489,153,401	3.4
Arts, Entertainment & Recreation	1,085	9,808	0.8	-192	-1,769	62,239,624	0.4
Accommodation & Food Services	6,493	97,078	8.3	-989	-10,737	426,913,777	3.0
Other Services	5,574	24,215	2.1	285	-667	228,620,078	1.6
State & Local Government	3,053	175,594	15.1	-5,085	-4,177	1,865,421,298	13.0
Local Government	1,998	110,167	9.4	-781	-4,800	1,053,644,194	7.3
State Government	1,055	65,427	5.6	-4,304	623	811,777,104	5.6
Nonclassifiable Establishments	0	0	0.0	0	0	0	0.0

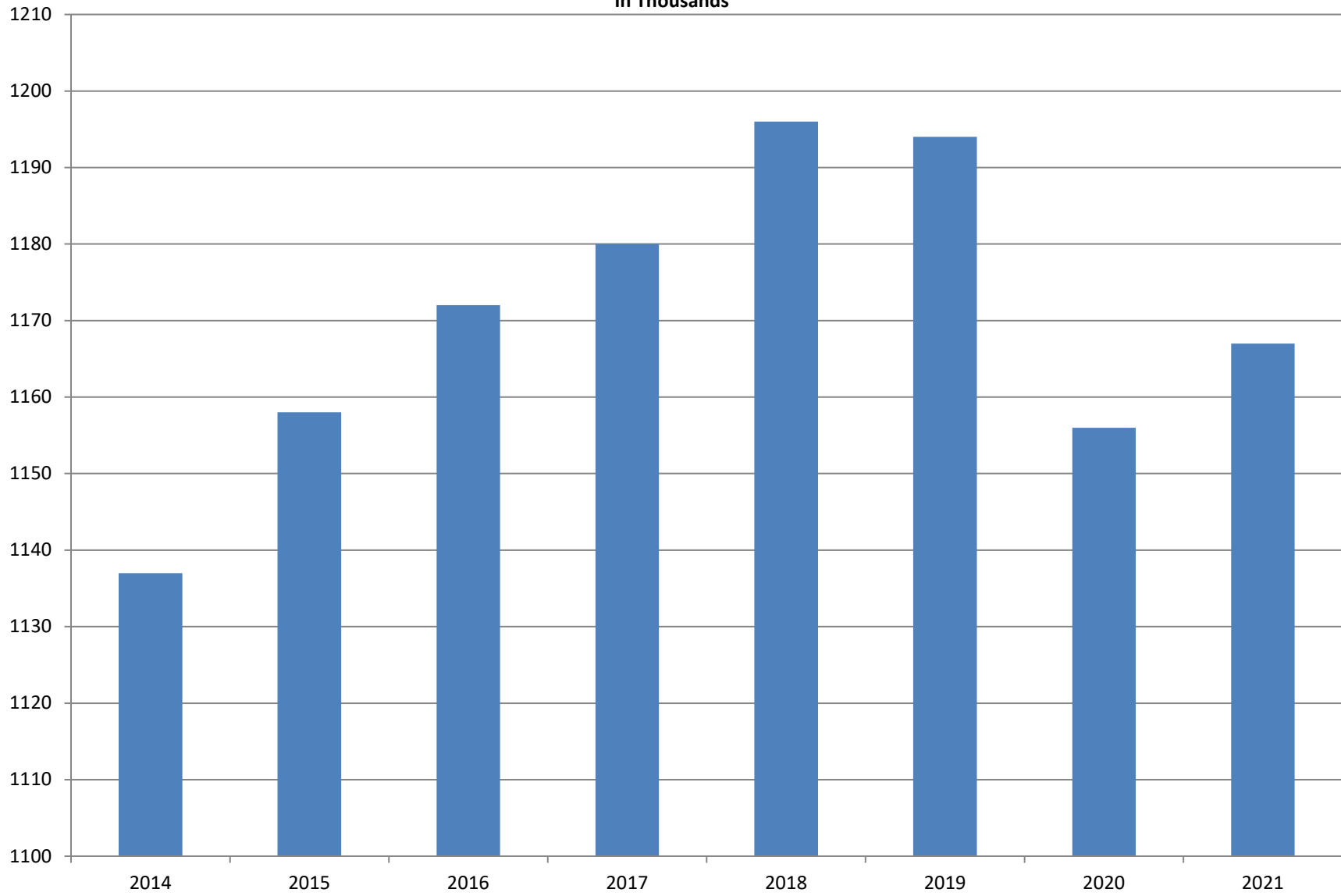
Note: Items do not necessarily add to total because of rounding. Because of industry code changes between years, substantial employment and wage shifts among industries are anticipated.

TABLE 2. TOTAL COVERED EMPLOYMENT IN ARKANSAS

PERIOD	2014	2015	2016	2017	2018	2019	2020	2021
AVERAGE	1,137,486	1,157,634	1,171,503	1,180,337	1,195,781	1,194,322	1,155,490	1,166,553
January	1,114,412	1,135,577	1,152,434	1,161,239	1,173,537	1,186,848	1,195,722	1,162,474
February	1,122,905	1,144,902	1,162,294	1,172,290	1,183,185	1,194,355	1,200,543	1,160,490
March	1,132,106	1,146,413	1,170,837	1,179,686	1,190,199	1,198,481	1,199,702	1,176,694
April	1,140,788	1,158,606	1,178,630	1,185,212	1,194,816	1,204,176	1,090,183	
May	1,149,046	1,167,657	1,181,644	1,189,900	1,201,113	1,206,476	1,120,448	
June	1,144,876	1,164,607	1,177,506	1,186,326	1,195,468	1,202,260	1,137,765	
July	1,096,675	1,119,390	1,132,361	1,137,883	1,168,432	1,155,337	1,099,733	
August	1,125,162	1,148,502	1,160,743	1,168,802	1,200,284	1,185,213	1,137,611	
September	1,150,545	1,173,776	1,185,510	1,193,845	1,222,012	1,202,177	1,157,279	
October	1,153,684	1,173,953	1,185,022	1,194,194	1,205,161	1,209,366	1,170,351	
November	1,158,579	1,177,717	1,186,046	1,197,650	1,208,638	1,194,675	1,177,588	
December	1,161,056	1,180,513	1,185,009	1,197,013	1,206,531	1,192,501	1,178,954	

AVERAGE TOTAL COVERED EMPLOYMENT

In Thousands



TOTAL COVERED EARNINGS BY CALENDAR YEAR

In Thousands

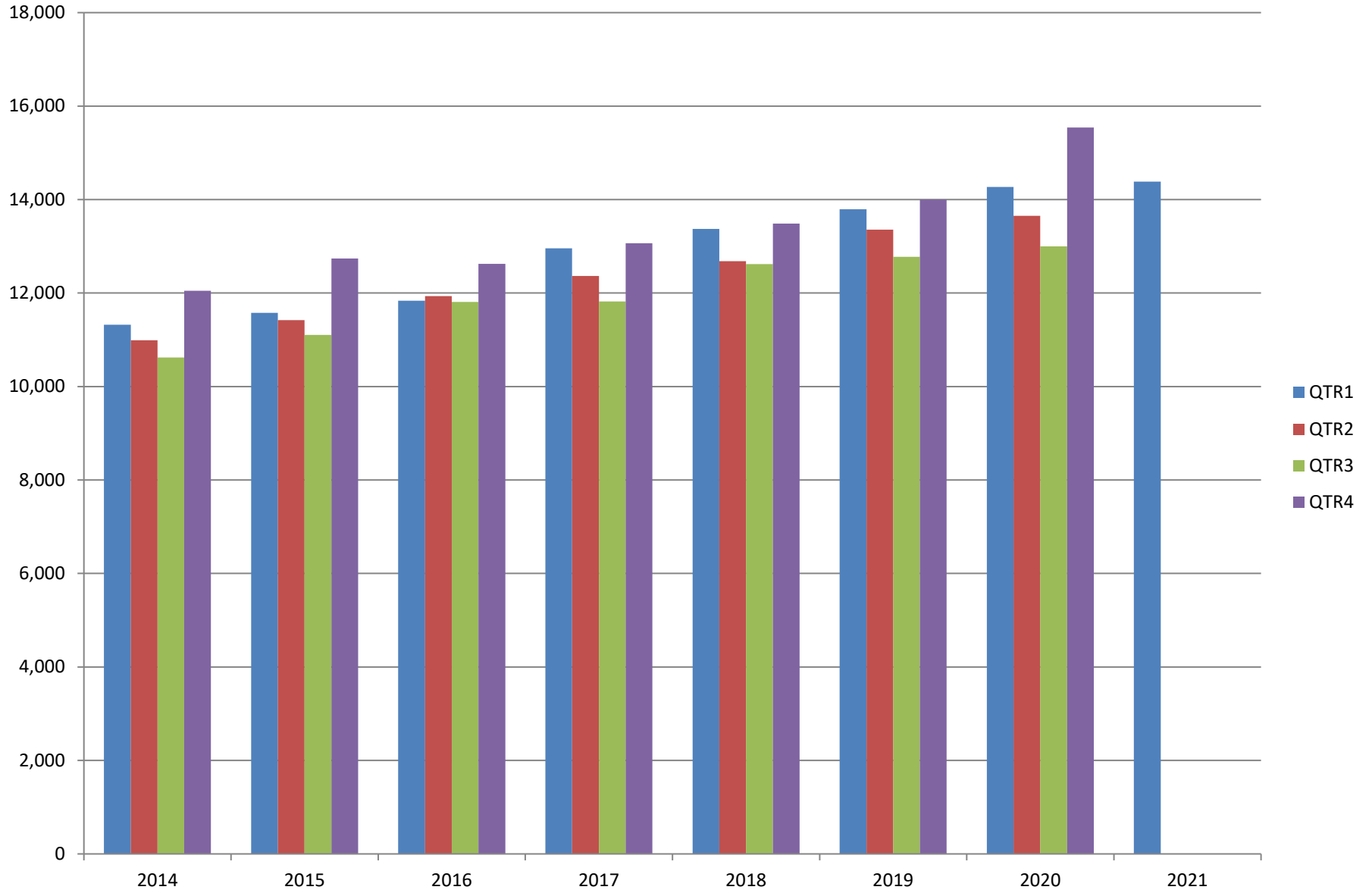


TABLE 3. TOTAL COVERED EARNINGS 2014- 2020

PERIOD	2014	2015	2016	2017
TOTAL	\$44,980,520,034	\$46,836,352,793	\$48,207,277,530	\$50,207,202,141
January - March	11,321,422,241	11,575,046,688	11,836,255,664	12,955,088,347
April - June	10,991,760,061	11,419,363,330	11,935,722,186	12,363,027,711
July - September	10,619,889,280	11,104,443,452	11,809,460,297	11,823,324,966
October - December	12,047,448,452	12,737,499,323	12,625,839,383	13,065,761,117
Average Weekly Earnings	\$760.46	\$778.05	\$791.34	\$818.01

PERIOD	2018	2019	2020	2021
TOTAL	\$52,159,789,393	\$53,931,077,907	\$56,460,080,884	\$14,382,938,962
January - March	13,372,730,974	13,795,046,820	14,268,302,306	14,382,938,962
April - June	12,682,491,819	13,356,848,831	13,651,304,330	
July - September	12,619,347,460	12,776,218,481	12,998,944,628	
October - December	13,485,219,140	14,002,963,775	15,123,520,256	
Average Weekly Earnings	\$838.84	\$868.39	\$932.71	\$948.42

TABLE 4. TOTAL TAXABLE EARNINGS, 2014 - 2021

PERIOD	2014	2015	2016	2017
TOTAL	11,919,662,224	12,258,632,610	12,511,938,047	12,744,039,136
January - March	6,288,682,396	6,378,966,662	6,595,351,454	6,958,706,950
April - June	2,831,013,392	2,915,293,283	3,003,077,908	2,908,226,426
July - September	1,552,243,963	1,640,978,599	1,651,582,584	1,576,968,648
October - December	1,247,722,473	1,323,394,066	1,261,926,101	1,300,137,112

PERIOD	2018	2019	2020	2021
TOTAL	11,335,932,409	11,498,854,755	8,525,235,479	6,792,133,353
January - March	6,577,871,657	6,737,833,125	5,589,526,770	6,792,133,353
April - June	2,278,450,975	2,283,514,220	1,172,837,688	
July - September	1,328,868,479	1,327,818,133	864,579,237	
October - December	1,150,741,298	1,149,689,277	898,291,784	

TABLE 5. STATEWIDE SUMMARY

North American Industry Classification System - Industry Groups		Number of Employing Units	Employment			Total Earnings Jan - Mar 2021	Average Weekly Earnings
			Jan	Feb	Mar		
TOTAL, ALL INDUSTRIES		94,157	1,162,475	1,160,490	1,176,694	\$14,382,938,962	\$948.42
NATURAL RESOURCES & MINING		2,585	15,111	15,066	15,656	\$174,270,175	\$877.45
11	AGRICULTURE, FORESTRY, FISHING & HUNTING	2,164	11,822	11,831	12,367	\$120,864,136	\$774.34
111	CROP PRODUCTION	966	3,636	3,621	3,933	\$29,956,384	\$617.78
1111	Oilseed & Grain Farming	716	2,238	2,226	2,408	18,158,055	609.77
1112	Vegetable & Melon Farming	34	103	97	113	1,222,208	901.11
1113	Fruit & Tree Nut Farming	15	37	35	50	298,209	564.08
1114	Greenhouse & Nursery Production	43	706	717	767	6,043,018	636.78
1119	Other Crop Farming	158	552	546	595	4,234,894	577.25
112	ANIMAL PRODUCTION & AQUACULTURE	357	3,135	3,196	3,243	\$37,221,263	\$897.17
1121	Cattle Ranching & Farming	137	408	413	432	3,160,867	582.15
1122	Hog & Pig Farming	11	135	133	131	1,430,963	827.62
1123	Poultry & Egg Production	139	2,236	2,252	2,253	29,134,673	997.39
1125	Animal Aquaculture	39	275	321	348	2,952,882	721.86
	Other	31	81	77	79	541,878	527.63
115	SUPPORT ACTIVITIES FOR AGRICULTURE & FORESTRY	414	2,870	2,849	2,994	\$29,571,078	\$783.21
1151	Support Activities for Crop Production	282	1,284	1,244	1,325	14,001,625	838.60
1152	Support Activities for Animal Production	61	615	601	609	5,110,532	646.22
1153	Support Activities for Forestry	71	971	1,004	1,060	10,458,921	795.25
	OTHER	427	2,181	2,165	2,197	\$24,115,411	\$850.54
21	MINING	421	3,289	3,235	3,289	\$53,406,039	\$1,255.93
211	OIL & GAS EXTRACTION	67	434	430	433	\$10,018,678	\$1,782.58
212	MINING (EXCEPT OIL & GAS)	107	1,824	1,783	1,817	\$27,568,284	\$1,172.92
213	SUPPORT ACTIVITIES FOR MINING	247	1,031	1,022	1,039	\$15,819,077	\$1,180.65

TABLE 5. STATEWIDE SUMMARY

North American Industry Classification System - Industry Groups		Number of Employing Units	Employment			Total Earnings Jan - Mar 2021	Average Weekly Earnings
			Jan	Feb	Mar		
CONSTRUCTION		7,522	52,928	51,808	54,201	\$637,433,378	\$925.52
236	CONSTRUCTION OF BUILDINGS	1,964	10,652	10,363	10,734	\$139,523,554	\$1,014.13
2361	Residential Building Construction	1,350	3,856	3,745	3,954	43,943,606	877.61
2362	Nonresidential Building Construction	614	6,796	6,618	6,780	95,579,948	1,092.25
237	HEAVY & CIVIL ENGINEERING CONSTRUCTION	779	8,350	8,004	8,639	\$106,735,783	\$985.53
2371	Utility System Construction	463	4,446	4,328	4,627	56,871,295	979.34
2372	Land Subdivision	47	103	93	93	937,476	748.58
2373	Highway, Street & Bridge Construction	172	2,981	2,826	3,110	40,069,009	1,036.97
2379	Other Heavy Construction	97	820	757	809	8,858,003	856.73
238	SPECIALTY TRADE CONTRACTORS	4,779	33,926	33,441	34,828	\$391,174,041	\$883.32
2381	Building Foundation & Exterior Contractors	905	5,785	5,543	5,930	65,676,589	878.21
2382	Building Equipment Contractors	2,346	19,258	19,305	19,755	236,533,684	935.98
2383	Building Finishing Contractors	782	3,767	3,693	3,817	36,875,126	754.60
2389	Other Specialty Trade Contractors	746	5,116	4,900	5,326	52,088,642	783.50
MANUFACTURING		3,005	155,502	155,626	156,825	1,938,433,917	\$955.93
311	FOOD MANUFACTURING	311	49,419	49,511	49,529	\$497,029,687	\$772.60
3111	Animal Food Manufacturing	44	1,926	1,971	1,972	31,046,169	1,220.74
3112	Grain & Oilseed Milling	31	2,781	2,770	2,813	31,129,180	858.88
3114	Fruit, Vegetable & Specialty Food	15	4,417	4,471	4,498	53,789,758	927.31
3115	Dairy Product Manufacturing	8	597	589	598	6,546,585	846.83
3116	Animal Slaughtering & Processing	91	33,207	33,248	33,135	304,798,010	706.28
3118	Bakeries & Tortilla Manufacturing	85	4,036	4,049	4,055	39,211,929	745.38
3119	Other Food Manufacturing	27	2,425	2,387	2,426	30,236,487	964.03
	Other	10	30	26	32	271,569	712.16
312	BEVERAGE & TOBACCO PRODUCT MANUFACTURING	68	1,457	1,470	1,499	\$21,036,507	\$1,096.83
313	TEXTILE MILLS	14	126	131	129	\$2,053,898	\$1,227.92
314	TEXTILE PRODUCT MILLS	44	753	751	757	\$9,354,008	\$954.72
3141	Textile Furnishing Mills	8	18	19	19	107,798	444.22
3149	Other Textile Product Mills	36	735	732	738	9,246,210	967.68
315	APPAREL MANUFACTURING	18	675	654	662	\$4,418,575	\$512.14
3151	Apparel Knitting Mills	4	382	379	373	2,311,335	470.36
	Other	14	293	275	289	2,107,240	567.43

TABLE 5. STATEWIDE SUMMARY

North American Industry Classification System - Industry Groups		Number of Employing Units	Employment			Total Earnings	Average Weekly Earnings
			Jan	Feb	Mar	Jan - Mar 2021	
316	LEATHER & ALLIED PRODUCT MANUFACTURING	11	921	955	976	\$5,925,375	\$479.45
3162	Footwear Manufacturing	3	715	750	766	4,174,011	\$431.75
3169	Other Leather & Allied Product Manufacturing	8	206	205	210	1,751,364	\$650.82
321	WOOD PRODUCT MANUFACTURING	301	9,730	9,695	9,849	\$114,573,481	\$903.19
3211	Sawmills & Wood Preservation	135	4,554	4,551	4,617	58,811,153	989.05
3212	Veneer & Engineered Wood Products	38	2,043	2,015	2,039	26,401,146	999.27
3219	Other Wood Product Manufacturing	128	3,133	3,129	3,193	29,361,182	716.62
322	PAPER MANUFACTURING	72	8,695	8,696	8,712	\$150,437,244	\$1,329.97
3221	Pulp, Paper & Paperboard Mills	14	3,193	3,189	3,178	76,756,946	1,852.84
3222	Converted Paper Product Manufacturing	58	5,502	5,507	5,534	73,680,298	1,027.82
323	PRINTING & RELATED SUPPORT ACTIVITIES	250	3,013	2,932	3,000	\$31,323,242	\$808.10
324	PETROLEUM & COAL PRODUCTS MANUFACTURING	21	1,120	1,119	1,142	\$21,385,822	\$1,459.68
325	CHEMICAL MANUFACTURING	134	5,421	5,445	5,470	\$92,089,218	\$1,300.89
3251	Basic Chemical Manufacturing	29	1,847	1,862	1,848	37,138,442	1,542.27
3252	Resin, Rubber & Artificial Fibers	13	408	411	412	6,865,011	1,286.95
3253	Agricultural Chemical Manufacturing	18	495	482	489	8,814,861	1,387.58
3254	Pharmaceutical & Medicine Manufacturing	30	466	466	472	6,944,776	1,141.48
3255	Paint, Coating & Adhesive Manufacturing	9	208	209	214	3,140,232	1,148.45
3256	Soap, Cleaning Compound, & Toilet Preparation Manufacturing	14	1,372	1,396	1,414	19,785,360	1,091.79
3259	Other Chemical Preparation Manufacturing	21	625	619	621	9,400,536	1,163.19
326	PLASTICS & RUBBER PRODUCTS MANUFACTURING	124	10,453	10,580	10,650	\$134,345,839	\$978.53
3261	Plastics Product Manufacturing	96	6,364	6,436	6,468	71,368,259	854.76
3262	Rubber Product Manufacturing	28	4,089	4,144	4,182	62,977,580	1,170.62
327	NONMETALLIC MINERAL PRODUCT MANUFACTURING	222	3,539	3,432	3,526	\$48,212,407	\$1,059.92
3271	Clay Product & Refractory Manufacturing	11	453	453	459	5,394,994	912.09
3272	Glass & Glass Product Manufacturing	7	373	370	364	4,559,786	950.55
3273	Cement & Concrete Product Manufacturing	165	2,107	2,024	2,101	29,949,803	1,109.03
3274	Lime & Gypsum Product Manufacturing	3	278	278	278	4,910,394	1,358.71
3279	Other Nonmetallic Mineral Products Manufacturing	36	328	307	324	3,397,430	817.54
331	PRIMARY METAL MANUFACTURING	71	7,765	7,736	7,774	\$169,893,016	\$1,684.47
3311	Iron & Steel Mills & Ferroalloys	12	3,616	3,613	3,621	114,948,571	2,444.85
3312	Purchased Steel Product Manufacturing	22	1,693	1,674	1,678	22,272,441	1,018.79
3313	Alumina & Aluminum Production	13	891	882	888	13,224,328	1,146.85
3314	Other Nonferrous Metal Production	5	241	245	242	3,281,698	1,040.27
3315	Foundries	19	1,324	1,322	1,345	16,165,978	934.76

TABLE 5. STATEWIDE SUMMARY

North American Industry Classification System - Industry Groups		Number of Employing Units	Employment			Total Earnings	Average Weekly Earnings
			Jan	Feb	Mar	Jan - Mar 2021	
332	FABRICATED METAL PRODUCT MANUFACTURING	524	14,499	14,588	14,830	\$195,447,542	\$1,027.01
3321	Forging & Stamping	12	402	392	419	5,005,990	952.37
3322	Cutlery & Hand Tool Manufacturing	14	522	553	594	6,478,362	895.75
3323	Architectural & Structural Metals	159	4,762	4,727	4,786	69,867,815	1,129.48
3324	Boilers, Tanks & Shipping Containers	15	587	580	588	7,408,628	974.18
3325	Hardware Manufacturing	5	233	238	240	3,159,669	1,025.53
3326	Spring & Wire Product Manufacturing	9	320	318	314	3,879,824	940.49
3327	Machine Shops & Threaded Products	200	2,068	2,052	2,101	23,017,371	853.83
3328	Coating, Engraving & Heat Treating Metals	40	539	539	549	5,625,977	797.97
3329	Other Fabricated Metal Product Manufacturing	70	5,066	5,189	5,239	71,003,906	1,057.54
333	MACHINERY MANUFACTURING	215	10,972	11,092	11,207	\$134,125,004	\$930.30
3331	Agriculture, Construction & Mining Machinery	35	2,814	2,836	2,937	30,855,293	829.21
3332	Industrial Machinery Manufacturing	25	583	580	581	8,756,836	1,158.72
3333	Commercial & Service Industry Machinery	22	770	770	780	10,609,037	1,055.28
3334	HVAC & Commercial Refrigeration Equipment	25	2,428	2,475	2,486	30,407,811	949.68
3335	Metalworking Machinery Manufacturing	54	1,033	1,043	1,037	11,491,857	851.90
3336	Turbine & Power Transmission Equipment Manufacturing	6	276	265	264	3,307,120	948.05
3339	Other General Purpose Machinery Manufacturing	48	3,068	3,123	3,122	38,697,050	958.88
334	COMPUTER & ELECTRONIC PRODUCT MANUFACTURING	49	1,724	1,746	1,744	\$22,479,085	\$994.91
3344	Semiconductors & Electronic Components	23	1,258	1,280	1,279	16,830,610	1,017.55
3345	Navigational, Measuring, Electromedical, & Control Instr, Mfg Other	20 6	306 160	304 162	300 165	3,927,271 1,721,204	995.93 815.61
335	ELECTRICAL EQUIPMENT & APPLIANCES	56	4,183	4,138	4,172	\$59,315,480	\$1,095.67
3351	Electric Lighting Equipment Manufacturing	11	267	255	255	2,657,833	\$789.38
3352	Household Appliance Manufacturing	6	75	78	81	919,756	\$907.06
3353	Electrical Equipment Manufacturing	21	2,645	2,612	2,608	39,296,640	1,153.01
3359	Other Electrical Equipment & Component Manufacturing	18	1,196	1,193	1,228	16,441,251	1,048.97
336	TRANSPORTATION EQUIPMENT MANUFACTURING	143	14,068	14,002	14,214	\$160,269,564	\$874.69
3362	Motor Vehicle Body & Trailer Manufacturing	31	2,006	2,051	2,127	18,996,144	708.88
3363	Motor Vehicle Parts Manufacturing	45	4,861	4,702	4,708	49,821,693	805.64
3364	Aerospace Product & Parts Manufacturing	29	4,042	4,054	4,116	59,580,622	1,125.89
3366	Ship & Boat Building Other	22 16	1,963 1,196	2,009 1,186	2,059 1,204	18,345,335 13,525,770	701.96 870.42
337	FURNITURE & RELATED PRODUCT MANUFACTURING	157	3,468	3,423	3,415	\$30,458,741	\$682.02
3371	Household & Institutional Furniture Other	126 31	2,877 591	2,859 564	2,856 559	24,353,554 6,105,187	654.10 821.99
339	MISCELLANEOUS MANUFACTURING	200	3,501	3,530	3,568	\$34,260,182	\$745.94
3391	Medical Equipment & Supplies Manufacturing	87	1,742	1,748	1,750	18,699,751	823.54
3399	Other Miscellaneous Manufacturing	113	1,759	1,782	1,818	15,560,431	670.06

TABLE 5. STATEWIDE SUMMARY

North American Industry Classification System - Industry Groups		Number of Employing Units	Employment			Total Earnings Jan - Mar 2021	Average Weekly Earnings
			Jan	Feb	Mar		
TRADE, TRANSPORTATION & UTILITIES		22,103	246,285	244,628	247,663	\$2,900,018,184	\$906.12
42	WHOLESALE TRADE	7,421	46,446	46,491	47,013	\$943,935,504	\$1,556.49
423	MERCHANT WHOLESALERS, DURABLE GOODS	3,569	24,347	24,393	24,613	\$448,212,279	\$1,410.08
4231	Motor Vehicle & Part Merchant Wholesalers	309	3,156	3,139	3,143	50,136,101	1,225.88
4232	Furniture & Furnishings Merchant Wholesalers	116	499	495	503	9,622,717	1,483.38
4233	Lumber & Supply Merchant Wholesalers	263	1,574	1,575	1,609	26,360,248	1,278.51
4234	Commercial Goods Merchant Wholesalers	758	3,475	3,498	3,488	83,685,771	1,846.10
4235	Metal & Mineral Merchant Wholesalers	128	1,036	1,036	1,036	15,896,816	1,180.34
4236	Appliances & Electronics Goods Merchant Wholesalers	377	2,727	2,734	2,770	60,972,352	1,709.46
4237	Hardware & Plumbing Merchant Wholesalers	315	2,805	2,815	2,839	50,004,396	1,364.17
4238	Machinery & Supply Merchant Wholesalers	975	7,246	7,260	7,344	118,661,960	1,253.25
4239	Miscellaneous Durable Goods Merchant Wholesalers	328	1,829	1,841	1,881	32,871,918	1,366.57
424	MERCHANT WHOLESALERS, NONDURABLE GOODS	2,177	17,828	17,839	18,085	\$388,128,577	\$1,666.32
4241	Paper & Paper Product Merchant Wholesalers	131	1,340	1,343	1,343	31,676,237	1,815.67
4242	Druggist' Goods Merchant Wholesalers	299	1,746	1,770	1,800	63,543,509	2,758.44
4243	Apparel & Piece Goods Merchant Wholesalers	122	770	775	790	11,786,007	1,164.82
4244	Grocery Product Merchant Wholesalers	588	5,936	5,932	5,921	145,583,353	1,888.59
4245	Farm Product & Raw Material Merchant Wholesalers	86	786	732	767	7,114,677	718.53
4246	Chemical Merchant Wholesalers	231	1,127	1,141	1,139	28,774,409	1,949.00
4247	Petroleum Merchant Wholesalers	159	914	914	913	14,639,644	1,232.54
4248	Alcoholic Beverage Merchant Wholesalers	79	1,608	1,609	1,614	28,744,033	1,373.06
4249	Miscellaneous Nondurable Goods Merchant Wholesaler	482	3,601	3,623	3,798	56,266,708	1,178.06
425	ELECTRONIC MARKETS & AGENTS & BROKERS	1,675	4,271	4,259	4,315	\$107,594,648	\$1,933.01
44 - 45	RETAIL TRADE	11,084	136,879	135,953	137,822	\$1,039,016,609	\$583.88
441	MOTOR VEHICLE & PARTS DEALERS	1,554	18,593	18,619	18,825	\$223,888,866	\$922.01
4411	Automobile Dealers	624	11,240	11,234	11,322	157,237,689	1,073.67
4412	Other Motor Vehicle Dealers	177	1,658	1,709	1,746	20,442,537	922.65
4413	Automotive Parts, Accessories & Tire Stores	753	5,695	5,676	5,757	46,208,640	622.58
442	FURNITURE & HOME FURNISHINGS STORES	477	3,393	3,337	3,345	\$31,960,644	\$732.06
4421	Furniture Stores	270	1,873	1,886	1,878	20,897,959	855.53
4422	Home Furnishings Stores	207	1,520	1,451	1,467	11,062,685	575.24
443	ELECTRONICS & APPLIANCE STORES	366	3,080	3,058	3,063	\$29,955,590	\$751.31
444	BUILDING MATERIAL & GARDEN SUPPLY STORES	845	12,774	12,667	13,214	\$102,589,548	\$612.46
4441	Building Material & Supplies Dealers	605	10,658	10,586	10,990	88,298,590	632.15
4442	Lawn & Garden Equipment & Supplies Stores	240	2,116	2,081	2,224	14,290,958	513.61

TABLE 5. STATEWIDE SUMMARY

North American Industry Classification System - Industry Groups		Number of Employing Units	Employment			Total Earnings	Average Weekly Earnings
			Jan	Feb	Mar	Jan - Mar 2021	
445	FOOD & BEVERAGE STORES	1,084	20,515	20,575	20,675	\$120,007,824	\$448.38
4451	Grocery Stores	573	17,910	17,971	18,063	102,232,546	437.34
4452	Specialty Food Stores	146	734	756	739	6,779,195	701.85
4453	Beer, Wine & Liquor Stores	365	1,871	1,848	1,873	10,996,083	453.78
446	HEALTH & PERSONAL CARE STORES	1,003	8,584	8,546	8,622	\$81,599,989	\$731.24
447	GASOLINE STATIONS	1,625	12,380	12,174	12,435	\$66,032,506	\$411.97
44711	Gasoline Stations with Convenience Stores	1,535	11,361	11,187	11,419	59,070,539	401.32
44719	Other Gasoline Stations	90	1,019	987	1,016	6,961,967	531.64
448	CLOTHING & CLOTHING ACCESSORIES STORES	930	6,451	6,133	6,203	\$37,218,812	\$457.18
4481	Clothing Stores	712	4,984	4,725	4,801	26,528,831	421.92
4482	Shoe Stores	101	892	847	845	4,081,817	364.53
4483	Jewelry, Luggage & Leather Goods Stores	117	575	561	557	6,608,164	900.74
451	SPORTING GOODS, HOBBY, BOOK & MUSIC STORES	445	4,037	3,908	3,959	\$22,092,842	\$428.29
4511	Sporting Goods & Musical Instrument Stores	384	3,636	3,546	3,596	20,453,750	437.94
4512	Book, Periodical & Music Stores	61	401	362	363	1,639,092	335.93
452	GENERAL MERCHANDISE STORES	953	38,000	37,734	38,061	\$256,973,580	\$521.13
4522	Department Stores	109	6,214	5,843	5,888	34,586,620	444.78
4523	Gen. Merchandise Stores, Warehouse clubs & Supercenters	844	31,786	31,891	32,173	222,386,960	535.42
453	MISCELLANEOUS STORE RETAILERS	1,208	7,006	6,993	7,250	\$42,808,374	\$464.91
4531	Florists	163	586	657	589	3,060,288	385.49
4532	Office Supplies, Stationery & Gift Stores	229	1,174	1,147	1,166	6,728,618	445.30
4533	Used Merchandise Stores	256	2,037	1,993	2,188	9,827,358	364.72
4539	Other Miscellaneous Store Retailers	560	3,209	3,196	3,307	23,192,110	551.07
454	NONSTORE RETAILERS	594	2,066	2,209	2,170	\$23,888,034	\$855.33
4541	Electronic Shopping & Mail-Order Houses	370	1,051	1,062	1,163	11,791,920	830.65
4542	Vending Machine Operators	53	342	341	340	3,140,615	708.46
4543	Direct Selling Establishments	171	673	806	667	8,955,499	963.03
48 - 49	TRANSPORTATION & WAREHOUSING	3,189	55,105	54,414	55,036	702,065,712	\$984.57
481	AIR TRANSPORTATION	43	641	646	643	\$7,006,516	\$837.77
4811	Scheduled Air Transportation	17	537	539	539	5,217,230	745.50
4812	Nonshceduled Air Transportation	26	104	107	104	1,789,286	1,310.83
484	TRUCK TRANSPORTATION	2,024	31,072	30,990	31,393	\$434,038,532	\$1,071.78
4841	General Freight Trucking	1,234	25,167	25,208	25,426	362,710,889	1,104.24
4842	Specialized Freight Trucking	790	5,905	5,782	5,967	71,327,643	932.38

TABLE 5. STATEWIDE SUMMARY

North American Industry Classification System - Industry Groups		Number of Employing Units	Employment			Total Earnings	Average Weekly Earnings
			Jan	Feb	Mar	Jan - Mar 2021	
485	TRANSIT & GROUND PASSENGER TRANSPORTATION	123	1,293	1,295	1,329	\$8,453,737	\$498.05
4853	Taxi & Limousine Service	32	214	224	227	1,383,933	480.25
4854	School & Employee Bus Transportation	18	286	300	299	1,753,569	457.25
4859	Other Ground Passenger Transportation	62	633	624	649	4,067,699	492.50
	Other	11	160	147	154	1,248,536	625.00
486	PIPELINE TRANSPORTATION	37	568	557	555	\$15,380,453	\$2,112.70
488	SUPPORT ACTIVITIES FOR TRANSPORTATION	528	5,476	5,466	5,502	\$75,867,210	\$1,064.69
4881	Support Activities for Air Transportation	123	1,072	1,065	1,082	12,210,784	875.39
4882	Support Activities for Rail Transportation	39	625	618	619	8,158,958	1,011.19
4883	Support Activities for Water Transportation	20	485	497	487	6,993,853	1,098.68
4884	Support Activities for Road Transportation	156	904	879	893	8,594,669	741.18
4885	Freight Transportation Arrangement	179	2,283	2,301	2,314	38,966,297	1,303.60
4889	Other Support Activities for Transportation	11	107	106	107	942,649	679.79
493	WAREHOUSING & STORAGE	210	9,529	9,461	9,617	\$98,445,002	\$794.14
	OTHER	224	6,526	5,999	5,997	62,874,262	\$783.36
22	UTILITIES	409	7,855	7,770	7,792	\$215,000,359	\$2,118.78
2211	Power Generation & Supply	175	5,920	5,874	5,887	181,166,606	2,364.55
2212	Natural Gas Distribution	58	984	961	962	24,531,636	1,947.42
2213	Water, Sewage & Other Systems	176	951	935	943	9,302,117	758.80
	INFORMATION	1,808	11,157	11,152	11,148	\$238,608,156	\$1,645.80
511	PUBLISHING INDUSTRIES, EXCEPT INTERNET	234	1,967	1,945	1,932	\$22,401,157	\$884.58
5111	Newspaper, Book & Directory Publishers	170	1,548	1,532	1,518	14,340,800	719.75
5112	Software Publishers	64	419	413	414	8,060,357	1,492.84
512	MOTION PICTURE & SOUND RECORDING INDUSTRY	171	514	522	541	\$4,400,077	\$643.88
5121	Motion Picture & Video Industries	151	488	496	517	4,015,135	617.30
5122	Sound Recording Industries	20	26	26	24	384,942	1,168.85
515	BROADCASTING, EXCEPT INTERNET	121	1,396	1,387	1,385	\$17,214,788	\$953.13

TABLE 5. STATEWIDE SUMMARY

North American Industry Classification System - Industry Groups		Number of Employing Units	Employment			Total Earnings	Average Weekly Earnings
			Jan	Feb	Mar	Jan - Mar 2021	
517	TELECOMMUNICATIONS	364	3,258	3,293	3,312	\$63,336,266	\$1,481.91
5173	Telecommunications Resellers	267	2,832	2,863	2,881	55,199,988	1,485.36
5174	Satellite Telecommunications Carriers	5	6	6	6	98,833	1,267.09
5179	Other Telecommunications	92	420	424	425	8,037,445	1,461.62
518	DATA PROCESSING, HOSTING & RELATED SERVICES	778	3,600	3,592	3,549	\$124,591,375	\$2,676.83
519	OTHER INFORMATION SERVICES	140	422	413	429	\$6,664,493	\$1,216.74
FINANCIAL ACTIVITIES		9,235	52,045	52,188	52,130	\$959,787,836	\$1,416.51
52	FINANCE & INSURANCE	5,436	38,389	38,552	38,416	\$812,450,662	\$1,625.29
522	CREDIT INTERMEDIATION & RELATED ACTIVITIES	2,096	19,568	19,613	19,593	\$352,377,158	\$1,383.57
5221	Depository Credit Intermediation	1,446	16,214	16,231	16,213	270,264,135	1,281.78
5222	Nondepository Credit Intermediation	442	2,175	2,184	2,191	58,615,168	2,065.13
5223	Activities Related to Credit Intermediation	208	1,179	1,198	1,189	23,497,855	1,520.63
523	FINANCIAL INVESTMENT & RELATED ACTIVITIES	831	3,092	3,070	3,053	\$170,045,862	\$4,258.42
5231	Security & Commodity Contracts Intermediation & Brokerage	351	2,046	2,016	2,003	138,615,072	5,274.21
5239	Other Financial Investment Activities	480	1,046	1,054	1,050	31,430,790	2,302.62
524	INSURANCE CARRIERS & RELATED ACTIVITIES	2,412	15,664	15,792	15,708	\$288,087,932	\$1,409.59
5241	Insurance Carriers	310	7,304	7,334	7,321	156,257,879	1,642.13
5242	Insurance Agencies and Brokerages	2,102	8,360	8,458	8,387	131,830,053	1,207.00
	OTHER	97	65	77	62	\$1,939,710	\$2,194.24
53	REAL ESTATE & RENTAL & LEASING	3,799	13,656	13,636	13,714	\$147,337,174	\$829.17
531	REAL ESTATE	3,181	10,104	10,103	10,159	\$104,664,394	\$795.41
5311	Lessors of Real Estate	1,110	4,084	4,067	4,106	41,544,057	782.17
5312	Offices of Real Estate Agents & Brokers	1,097	2,150	2,163	2,195	22,457,778	796.34
5313	Activities Related to Real Estate	974	3,870	3,873	3,858	40,662,559	808.87
532	RENTAL & LEASING SERVICES	597	3,489	3,471	3,494	\$41,566,365	\$917.57
5321	Automotive Equipment Rental & Leasing	123	902	898	853	8,636,558	751.24
5322	Consumer Goods Rental	307	1,438	1,428	1,477	14,150,717	751.91
5323	General Rental Centers	28	186	188	190	2,018,502	825.90
5324	Machinery & Equipment Rental & Leasing	139	963	957	974	16,760,588	1,336.50
533	LESSORS OF NONFINANCIAL INTANGIBLE ASSETS	21	63	62	61	\$1,106,415	\$1,372.72

TABLE 5. STATEWIDE SUMMARY

North American Industry Classification System - Industry Groups		Number of Employing Units	Employment			Total Earnings Jan - Mar 2021	Average Weekly Earnings
			Jan	Feb	Mar		
PROFESSIONAL & BUSINESS SERVICES		16,215	143,640	143,705	145,028	\$2,931,248,989	\$1,564.49
54	PROFESSIONAL & TECHNICAL SERVICES	10,279	43,438	43,883	44,026	\$717,643,347	\$1,260.86
5411	Legal Services	1,744	6,000	5,999	6,079	82,970,218	1,059.13
5412	Accounting & Bookkeeping Services	1,440	6,544	6,720	6,768	77,568,128	893.59
5413	Architectural & Engineering Services	1,122	6,454	6,518	6,602	106,460,302	1,255.12
5414	Specialized Design Services	193	373	391	387	5,557,398	1,114.23
5415	Computer Systems Design & Related Services	2,248	8,902	8,870	8,695	194,522,318	1,696.07
5416	Management & Technical Consulting Services	2,314	6,238	6,309	6,309	128,346,652	1,570.77
5417	Scientific Research & Development Services	180	953	958	966	17,085,169	1,370.43
5418	Advertising & Related Services	431	3,645	3,769	3,840	57,525,199	1,179.58
5419	Other Professional & Technical Services	607	4,329	4,349	4,380	47,607,963	841.36
55	MANAGEMENT OF COMPANIES & ENTERPRISES	551	33,849	34,337	34,750	\$1,657,433,218	\$3,715.75
56	ADMINISTRATIVE & WASTE SERVICES	5,385	66,353	65,485	66,252	\$556,172,424	\$647.93
561	ADMINISTRATIVE & SUPPORT SERVICES	5,031	62,587	61,715	62,441	\$507,902,697	\$627.65
5611	Office Administrative Services	745	3,525	3,532	3,574	62,469,319	1,356.03
5612	Facilities Support Services	68	899	902	937	7,234,546	609.76
5613	Employment Services	1,386	27,826	27,338	27,563	193,219,843	538.99
5614	Business Support Services	437	9,194	8,999	8,776	93,689,190	801.68
5615	Travel Arrangement & Reservation Services	113	206	199	206	2,463,097	930.29
5616	Investigation & Security Services	330	4,868	4,856	4,890	38,275,530	604.41
5617	Services to Buildings & Dwellings	1,755	14,870	14,764	15,293	99,013,652	508.59
5619	Other Support Services	197	1,199	1,125	1,202	11,537,520	755.11
562	WASTE MANAGEMENT & REMEDIATION SERVICES	354	3,766	3,770	3,811	\$48,269,727	\$981.68
5621	Waste Collection Services	139	1,345	1,332	1,343	15,385,590	883.21
5622	Waste Treatment & Disposal Services	43	1,059	1,072	1,084	16,465,568	1,181.88
5629	Remediation & Other Waste Services	172	1,362	1,366	1,384	16,418,569	921.43
EDUCATION & HEALTH SERVICES		15,479	181,927	181,431	182,724	2,019,943,550	\$853.61
61	EDUCATIONAL SERVICES	1,036	12,022	12,477	12,589	116,989,090	\$727.93
6111	Elementary & Secondary Schools	112	4,806	4,814	4,829	43,620,960	696.68
6113	Colleges & Universities	145	3,684	4,088	4,104	42,835,269	832.36
6115	Technical & Trade Schools	127	945	906	916	12,373,008	1,031.92
6116	Other Schools & Instruction	355	1,685	1,731	1,798	8,204,026	363.11
6117	Educational Support Services	209	689	698	692	6,765,441	750.96
	Other	88	213	240	250	3,190,386	1,047.29

TABLE 5. STATEWIDE SUMMARY

North American Industry Classification System - Industry Groups		Number of Employing Units	Employment			Total Earnings	Average Weekly Earnings
			Jan	Feb	Mar	Jan - Mar 2021	
62	HEALTH CARE & SOCIAL ASSISTANCE	14,443	169,905	168,954	170,135	\$1,902,954,460	\$862.77
621	AMBULATORY HEALTH CARE SERVICES	6,296	60,188	60,034	60,423	\$924,890,805	\$1,181.52
6211	Offices of Physicians	2,398	26,455	26,449	26,520	534,992,815	1,554.44
6212	Offices of Dentists	967	7,502	7,459	7,483	89,880,570	924.15
6213	Offices of Other Health Practitioners	1,787	9,869	9,884	10,010	101,549,621	787.37
6214	Outpatient Care Centers	437	5,478	5,453	5,472	80,513,135	1,132.72
6215	Medical & Diagnostic Laboratories	201	1,462	1,490	1,506	23,161,630	1,198.97
6216	Home Health Care Services	294	6,538	6,393	6,487	60,632,258	720.57
6219	Other Ambulatory Health Care Services	212	2,884	2,906	2,945	34,160,776	902.49
622	HOSPITALS	126	43,456	43,345	43,520	\$545,853,345	\$966.58
6221	General Medical & Surgical Hospitals	92	38,844	38,712	38,871	490,320,517	971.86
6222	Psychiatric & Substance Abuse Hospitals	12	1,795	1,778	1,772	19,126,456	825.78
6223	Speciality Hospitals	22	2,817	2,855	2,877	36,406,372	982.74
623	Residential & Mental Health Facilities	647	29,014	28,620	28,510	\$217,786,978	\$583.42
6231	Nursing Care Facilities (Skilled Nursing Facilities)	271	19,720	19,368	19,296	151,099,177	597.24
6232	Residential Mental Health Facilities	185	4,011	4,005	4,024	30,131,951	577.54
6233	Continuing Care & Assisted Living Facilities	153	4,394	4,342	4,301	28,565,156	505.63
6239	Other Residential Care Facilities	38	889	905	889	7,990,694	687.29
624	SOCIAL ASSISTANCE	7,374	37,247	36,955	37,682	\$214,423,332	\$442.26
6241	Individual & Family Services	6,262	23,039	22,874	23,240	134,408,284	448.53
6242	Emergency & Other Relief Services	170	1,474	1,470	1,471	10,492,745	548.45
6243	Vocational Rehabilitation Services	93	2,655	2,598	2,667	15,561,610	453.43
6244	Child Day Care Services	849	10,079	10,013	10,304	53,960,693	409.67
LEISURE & HOSPITALITY		7,578	105,127	105,318	110,212	\$489,153,401	\$352.03
71	ARTS, ENTERTAINMENT & RECREATION	1,085	9,513	9,661	10,250	62,239,624	\$488.14
711	PERFORMING ARTS & SPECTATOR SPORTS	255	1,823	2,141	2,152	17,205,065	\$649.18
7111	Performing Arts Companies	43	238	235	272	1,523,247	471.84
7112	Spectator Sports	74	1,292	1,513	1,523	12,596,971	671.67
7113	Performing Arts & Sports Promoters	56	201	229	240	2,249,945	774.95
7114	Agents & Managers for Public Figures	21	19	90	45	302,986	454.02
7115	Independent Artists, Writers, & Performers	61	73	74	72	531,916	560.50
712	MUSEUMS, PARKS, & HISTORICAL SITES	57	689	683	719	6,400,089	\$706.33
713	GAMBLING, RECREATIONAL & AMUSEMENT INDUSTRY	773	7,001	6,837	7,379	38,634,470	420.21
72	ACCOMMODATION & FOOD SERVICES	6,493	95,614	95,657	99,962	426,913,777	\$338.28

TABLE 5. STATEWIDE SUMMARY

North American Industry Classification System - Industry Groups		Number of Employing Units	Employment			Total Earnings	Average Weekly Earnings
			Jan	Feb	Mar	Jan - Mar 2021	
721	ACCOMMODATION	939	8,420	8,500	9,140	\$41,955,646	\$371.53
7211	Travel Accommodation	840	7,962	8,069	8,666	39,017,117	364.58
7212	RV Parks & Recreational Camps	81	364	337	379	2,313,464	494.33
7213	Rooming & Boarding Houses	18	94	94	95	625,065	509.70
722	FOOD SERVICES & DRINKING PLACES	5,554	87,194	87,157	90,822	\$384,958,131	\$335.01
7223	Special Food Services	335	4,029	4,254	4,259	19,189,581	353.08
7224	Drinking Places, Alcoholic Beverages	150	629	691	826	3,123,990	335.94
7225	Restaurants & Other Eating Places	5,069	82,536	82,212	85,737	362,644,560	334.10
722511	Full-Service Restaurants	2,138	32,597	32,736	34,409	160,864,139	372.19
722513	Limited-Service Eating Places	2,355	45,296	44,762	46,429	181,343,696	306.61
722514	Cafeterias, Grill Buffets, & Buffets	89	1,152	1,161	1,195	6,259,623	411.78
722515	Snack & Nonalcoholic Beverage Bars	487	3,491	3,553	3,704	14,177,102	304.40
OTHER SERVICES		5,574	23,994	23,957	24,694	\$228,620,078	\$726.25
811	REPAIR & MAINTENANCE	2,276	11,329	11,360	11,860	\$118,262,821	\$789.93
8111	Automotive Repair & Maintenance	1,471	7,123	7,051	7,237	64,252,590	692.52
8112	Electronic Equipment Repair & Maintenance	165	899	888	869	9,329,607	810.61
8113	Commercial Machinery Repair & Maintenance	469	2,698	2,802	3,115	39,673,072	1,062.72
8114	Household Goods Repair & Maintenance	171	609	619	639	5,007,552	618.95
812	PERSONAL & LAUNDRY SERVICES	1,446	6,986	6,930	7,135	\$48,763,981	\$534.57
8121	Personal Care Services	722	2,603	2,596	2,710	15,569,537	454.29
8122	Death Care Services	248	1,489	1,460	1,489	12,094,521	628.90
8123	Drycleaning & Laundry Service	195	1,779	1,758	1,790	13,441,604	582.30
8129	Other Personal Services	281	1,115	1,116	1,146	7,658,319	523.34
813	MEMBERSHIP ASSOCIATIONS & ORGANIZATIONS	1,172	4,843	4,847	4,890	\$55,234,613	\$874.24
8131	Religious Organizations	113	338	336	340	2,678,347	609.55
8132	Grantmaking & Giving Organizations	132	449	450	454	7,458,172	1,272.07
8133	Social Advocacy Organizations	233	1,163	1,157	1,175	14,046,008	927.44
8134	Civic & Social Organizations	197	904	922	922	4,926,201	413.69
8139	Professional & Similar Organizations	497	1,989	1,982	1,999	26,125,885	1,009.89
814	PRIVATE HOUSEHOLDS	680	836	820	809	\$6,358,663	\$595.29
	LOCAL GOVERNMENT	1,998	110,237	109,992	110,272	\$1,053,644,194	\$735.70
	STATE GOVERNMENT	1,055	64,522	65,619	66,141	\$811,777,104	\$954.41
	NONCLASSIFIABLE ESTABLISHMENTS	0	0	0	0	\$0	\$0.00

TABLE 6. COUNTY SUMMARY

North American Industry Classification System - Industry Groups	Number of Employing Units	Employment			Total Earnings Jan - Mar 2021	Average Weekly Earnings
		Jan	Feb	Mar		
ARKANSAS COUNTY - TOTAL	1,116	10,061	9,964	10,234	\$99,892,713	\$761.83
Natural Resources & Mining	67	166	168	177	1,517,698	685.40
Construction	99	330	310	331	2,998,461	712.62
Manufacturing	49	3,671	3,666	3,725	37,693,340	786.34
Trade, Transportation & Utilities	257	2,177	2,149	2,230	24,865,887	875.27
Wholesale Trade	51	397	395	439	5,589,285	1,047.79
Retail Trade	125	1,079	1,063	1,084	7,778,078	556.40
Transportation, Warehousing & Utilities	81	701	691	707	11,498,524	1,264.18
Information	11	47	53	54	382,473	573.14
Financial Activities	90	370	367	378	4,475,655	926.32
Professional & Business Services	127	584	574	597	7,852,600	1,032.56
Education & Health Services	206	1,077	1,068	1,098	9,380,031	667.48
Leisure & Hospitality	95	643	622	648	2,569,073	309.91
Other Services	69	126	123	126	875,186	538.58
Local Government	32	715	710	710	6,006,303	649.21
State Government	14	155	154	160	1,276,006	627.85
ASHLEY COUNTY - TOTAL	549	5,530	5,526	5,589	\$58,240,766	\$807.46
Natural Resources & Mining	47	317	298	316	3,261,381	808.41
Construction	35	375	372	384	4,382,960	894.30
Manufacturing	27	1,090	1,112	1,113	18,696,080	1,301.50
Trade, Transportation & Utilities	117	1,157	1,150	1,198	10,642,871	700.73
Wholesale Trade	21	163	167	172	2,540,454	1,167.85
Retail Trade	67	717	715	735	4,788,413	509.93
Transportation, Warehousing & Utilities	29	277	268	291	3,314,004	914.80
Information	3	23	24	24	220,208	715.74
Financial Activities	37	185	184	185	1,833,496	763.74
Professional & Business Services	35	171	169	165	1,368,353	625.29
Education & Health Services	138	829	823	834	8,171,723	758.56
Leisure & Hospitality	36	361	359	367	1,396,574	296.49
Other Services	32	117	115	114	859,819	573.47
Local Government	32	809	821	785	6,461,109	617.40
State Government	10	96	99	104	946,192	730.27

TABLE 6. COUNTY SUMMARY

North American Industry Classification System - Industry Groups	Number of Employing Units	Employment			Total Earnings	Average Weekly Earnings
		Jan	Feb	Mar	Jan - Mar 2021	
BAXTER COUNTY - TOTAL	1,243	14,746	14,721	14,905	\$133,394,184	\$693.75
Natural Resources & Mining	9	75	43	46	468,555	659.32
Construction	104	513	531	533	4,477,714	655.24
Manufacturing	54	2,555	2,576	2,574	25,286,336	757.34
Trade, Transportation & Utilities	256	2,694	2,656	2,717	20,454,769	585.14
Wholesale Trade	34	158	158	164	1,979,429	951.65
Retail Trade	202	2,351	2,313	2,379	16,685,743	546.72
Transportation, Warehousing & Utilities	20	185	185	174	1,789,597	759.16
Information	21	149	147	142	1,841,260	970.11
Financial Activities	123	717	719	727	9,727,785	1,037.85
Professional & Business Services	154	911	901	915	7,454,098	630.79
Education & Health Services	260	3,943	3,922	3,926	42,709,224	835.89
Leisure & Hospitality	121	1,420	1,420	1,502	6,128,777	325.73
Other Services	94	305	308	316	2,216,671	550.63
Local Government	36	1,201	1,204	1,215	10,125,598	645.49
State Government	11	263	294	292	2,503,397	680.46
BENTON COUNTY - TOTAL	7,268	124,123	124,814	126,127	\$2,634,863,208	\$1,621.18
Natural Resources & Mining	49	743	745	760	11,110,520	1,140.55
Construction	752	5,739	5,662	5,793	68,897,944	924.71
Manufacturing	210	12,770	12,834	12,723	154,227,603	928.61
Trade, Transportation & Utilities	1,731	30,603	30,643	30,986	473,923,741	1,185.78
Wholesale Trade	755	6,671	6,685	6,734	204,701,015	2,351.35
Retail Trade	764	12,478	12,420	12,594	99,731,208	613.86
Transportation, Warehousing & Utilities	212	11,454	11,538	11,658	169,491,518	1,128.81
Information	119	837	833	811	20,520,115	1,908.67
Financial Activities	778	4,257	4,250	4,200	82,703,627	1,501.96
Professional & Business Services	1,469	33,059	33,656	34,011	1,504,641,086	3,447.22
Education & Health Services	905	12,238	12,371	12,479	133,410,546	830.11
Leisure & Hospitality	703	11,716	11,712	12,126	59,698,791	387.49
Other Services	450	2,324	2,284	2,346	20,559,770	682.28
Local Government	85	8,839	8,816	8,882	96,432,354	838.59
State Government	17	998	1,008	1,010	8,737,111	668.52

TABLE 6. COUNTY SUMMARY

North American Industry Classification System - Industry Groups	Number of Employing Units	Employment			Total Earnings	Average Weekly Earnings
		Jan	Feb	Mar	Jan - Mar 2021	
BOONE COUNTY - TOTAL	955	13,884	13,822	14,048	\$136,828,202	\$756.23
Construction	68	431	390	442	4,399,340	803.83
Manufacturing	57	1,854	1,852	1,867	18,404,648	762.11
Trade, Transportation & Utilities	240	3,751	3,716	3,756	39,764,278	817.64
Wholesale Trade	41	373	369	376	4,740,593	978.52
Retail Trade	156	2,049	2,039	2,053	14,877,904	559.09
Transportation, Warehousing & Utilities	43	1,329	1,308	1,327	20,145,781	1,172.81
Information	14	281	279	282	3,524,188	965.88
Financial Activities	96	460	448	430	6,494,434	1,120.12
Professional & Business Services	106	1,309	1,284	1,328	14,896,541	876.73
Education & Health Services	154	1,591	1,566	1,559	14,152,449	692.53
Leisure & Hospitality	86	1,151	1,151	1,241	5,181,918	337.52
Local Government	53	2,134	2,121	2,127	20,544,740	742.89
State Government	16	651	754	752	6,937,935	742.26
Other	65	271	261	264	2,527,731	732.82
BRADLEY COUNTY - TOTAL	330	3,591	3,596	3,574	\$32,116,277	\$688.73
Natural Resources & Mining	40	268	276	314	2,699,692	726.11
Construction	15	64	64	68	604,552	711.80
Manufacturing	11	942	932	913	11,000,687	910.88
Trade, Transportation & Utilities	68	437	455	437	3,840,212	666.82
Wholesale Trade	11	96	101	98	1,412,915	1,105.28
Retail Trade	36	280	293	275	1,655,509	450.52
Transportation, Warehousing & Utilities	21	61	61	64	771,788	957.55
Information	3	26	26	27	169,112	494.00
Financial Activities	22	118	120	121	1,232,220	792.08
Professional & Business Services	24	105	98	94	848,282	659.12
Education & Health Services	84	554	552	539	4,455,057	624.98
Leisure & Hospitality	14	168	171	178	644,029	287.47
Other Services	25	79	83	81	538,313	511.22
Local Government	14	468	457	440	3,619,883	611.98
State Government	10	362	362	362	2,464,238	523.64

TABLE 6. COUNTY SUMMARY

North American Industry Classification System - Industry Groups	Number of Employing Units	Employment			Total Earnings	Average Weekly Earnings
		Jan	Feb	Mar	Jan - Mar 2021	
CALHOUN COUNTY - TOTAL	103	3,520	3,509	3,544	\$52,487,435	\$1,145.61
Natural Resources & Mining	7	37	35	38	339,279	711.77
Construction	11	129	130	131	1,501,175	888.27
Manufacturing	9	2,742	2,751	2,762	44,692,429	1,249.38
Trade, Transportation & Utilities	19	168	156	163	1,512,894	716.90
Retail Trade	10	45	44	45	230,954	397.74
Transportation, Warehousing & Utilities	9	123	112	118	1,281,940	838.05
Professional & Business Services	5	13	11	14	89,695	544.71
Education & Health Services	22	61	60	61	699,193	886.55
Leisure & Hospitality	4	8	8	8	32,078	308.44
Other Services	2	3	3	3	22,889	586.90
Local Government	11	185	183	188	1,323,970	549.52
State Government	7	70	70	70	664,908	730.67
Other	6	104	102	106	1,608,925	1,190.03
CARROLL COUNTY - TOTAL	786	10,229	10,319	10,699	\$85,465,847	\$631.19
Natural Resources & Mining	21	270	270	277	2,625,006	741.46
Trade, Transportation & Utilities	184	1,455	1,443	1,495	12,846,461	674.84
Wholesale Trade	26	202	207	199	1,934,485	734.24
Retail Trade	132	1,048	1,039	1,093	6,762,020	490.71
Transportation, Warehousing & Utilities	26	205	197	203	4,149,956	1,582.95
Information	9	61	62	65	778,084	955.09
Financial Activities	55	373	372	375	5,145,200	1,060.14
Professional & Business Services	72	487	490	511	4,796,965	743.95
Education & Health Services	96	1,018	1,017	1,014	9,053,078	685.20
Leisure & Hospitality	173	1,178	1,260	1,472	5,892,188	347.76
Other Services	42	136	125	133	904,192	529.59
Local Government	25	1,076	1,076	1,090	8,482,714	603.81
State Government	9	89	89	89	830,595	717.89
Other	100	4,086	4,115	4,178	34,111,364	635.90

TABLE 6. COUNTY SUMMARY

North American Industry Classification System - Industry Groups	Number of Employing Units	Employment			Total Earnings	Average Weekly Earnings
		Jan	Feb	Mar	Jan - Mar 2021	
CHICOT COUNTY - TOTAL	453	2,730	2,718	2,763	\$22,877,915	\$642.98
Natural Resources & Mining	55	201	205	209	1,817,599	682.03
Construction	14	128	121	139	1,318,046	783.93
Manufacturing	4	6	6	6	61,488	788.31
Trade, Transportation & Utilities	66	697	686	705	5,297,330	585.47
Wholesale Trade	11	46	47	49	464,347	754.63
Retail Trade	41	249	244	250	1,645,641	511.12
Transportation, Warehousing & Utilities	14	402	395	406	3,187,342	611.42
Financial Activities	29	173	173	171	2,295,616	1,024.68
Professional & Business Services	17	37	38	41	375,449	746.91
Education & Health Services	209	542	544	543	4,363,805	618.19
Leisure & Hospitality	13	98	93	93	374,207	304.07
Local Government	17	549	536	537	4,532,112	644.80
State Government	9	239	239	239	1,902,382	612.29
Other	20	60	77	80	539,881	574.14
CLARK COUNTY - TOTAL	649	8,298	8,362	8,463	\$78,201,025	\$718.32
Natural Resources & Mining	53	302	307	310	3,046,148	764.92
Construction	25	86	82	88	886,247	798.90
Manufacturing	34	1,085	1,063	1,093	15,778,617	1,123.49
Trade, Transportation & Utilities	134	1,337	1,347	1,369	11,447,651	651.80
Wholesale Trade	17	57	61	62	933,386	1,196.65
Retail Trade	89	1,103	1,116	1,138	8,613,750	592.13
Transportation, Warehousing & Utilities	28	177	170	169	1,900,515	849.96
Financial Activities	75	336	333	330	3,500,084	808.52
Professional & Business Services	53	603	609	626	7,664,041	962.26
Education & Health Services	125	1,566	1,594	1,586	13,731,792	667.69
Leisure & Hospitality	65	930	976	981	3,606,034	288.24
Local Government	28	884	868	867	7,710,293	679.38
State Government	13	954	973	998	8,865,112	699.42
Other	44	215	210	215	1,965,006	708.54

TABLE 6. COUNTY SUMMARY

North American Industry Classification System - Industry Groups	Number of Employing Units	Employment			Total Earnings	Average Weekly Earnings
		Jan	Feb	Mar	Jan - Mar 2021	
CLAY COUNTY - TOTAL	349	2,907	2,814	2,897	\$22,595,402	\$605.05
Natural Resources & Mining	51	184	176	213	1,356,470	546.30
Construction	32	88	92	104	600,855	488.24
Manufacturing	12	122	124	126	954,934	592.39
Trade, Transportation & Utilities	81	732	692	719	6,496,516	699.58
Wholesale Trade	18	256	221	248	2,523,224	803.15
Retail Trade	41	344	343	339	2,284,993	513.94
Transportation, Warehousing & Utilities	22	132	128	132	1,688,299	993.90
Information	7	25	24	24	158,284	500.37
Financial Activities	23	97	97	99	1,048,546	825.84
Professional & Business Services	23	98	104	92	815,449	640.07
Education & Health Services	48	424	407	405	3,106,810	580.06
Leisure & Hospitality	22	207	193	202	651,114	249.60
Other Services	21	77	78	78	668,588	662.19
Local Government	20	810	784	792	6,341,461	613.33
State Government	9	43	43	43	396,375	709.08
CLEBURNE COUNTY - TOTAL	640	6,008	5,978	6,138	\$52,323,354	\$666.22
Natural Resources & Mining	20	149	135	139	2,505,527	1,366.90
Construction	65	307	301	312	2,770,848	695.03
Manufacturing	35	1,203	1,204	1,214	11,422,115	727.94
Trade, Transportation & Utilities	149	1,264	1,227	1,270	11,039,726	677.38
Wholesale Trade	31	100	95	94	1,116,760	891.74
Retail Trade	98	1,016	992	1,031	8,116,897	616.36
Transportation, Warehousing & Utilities	20	148	140	145	1,806,069	962.55
Information	13	48	49	51	503,131	784.51
Financial Activities	70	252	251	252	3,194,615	976.45
Professional & Business Services	71	316	330	326	3,104,203	736.99
Education & Health Services	74	825	806	808	6,859,932	649.06
Leisure & Hospitality	79	692	723	804	3,255,589	338.57
Other Services	38	95	96	103	736,130	577.81
Local Government	18	764	752	751	6,083,140	619.23
State Government	8	93	104	108	848,398	641.92

TABLE 6. COUNTY SUMMARY

North American Industry Classification System - Industry Groups	Number of Employing Units	Employment			Total Earnings	Average Weekly Earnings
		Jan	Feb	Mar	Jan - Mar 2021	
CLEVELAND COUNTY - TOTAL	123	973	978	946	\$8,250,831	\$657.24
Natural Resources & Mining	17	127	128	120	1,273,189	783.50
Construction	3	4	3	5	24,644	473.92
Manufacturing	4	113	115	117	1,343,574	898.71
Trade, Transportation & Utilities	29	131	125	132	991,722	589.84
Retail Trade	16	61	60	59	259,335	332.48
Other Trade, Transportation, & Utilities	13	70	65	73	732,387	812.56
Financial Activities	4	24	26	26	326,847	992.45
Education & Health Services	33	216	216	207	1,582,659	571.56
Other Services	5	7	7	7	56,427	620.08
Local Government	13	302	304	276	2,220,965	581.10
State Government	6	29	29	29	288,797	766.04
Other	9	20	25	27	142,007	455.15
COLUMBIA COUNTY - TOTAL	675	7,742	7,735	7,818	\$79,013,933	\$782.74
Natural Resources & Mining	43	364	367	357	5,193,016	1,101.46
Construction	36	128	112	127	1,157,133	727.60
Manufacturing	27	1,861	1,849	1,873	29,461,402	1,217.77
Trade, Transportation & Utilities	168	1,337	1,342	1,352	11,075,474	634.06
Wholesale Trade	30	156	179	172	2,400,524	1,092.64
Retail Trade	94	971	956	974	5,997,524	477.09
Transportation, Warehousing & Utilities	44	210	207	206	2,677,426	991.76
Information	6	29	29	29	274,828	728.99
Financial Activities	59	323	320	317	4,240,144	1,019.27
Professional & Business Services	51	327	337	357	2,741,873	619.73
Education & Health Services	153	972	978	987	7,788,260	611.95
Leisure & Hospitality	57	786	804	822	2,736,059	261.77
Other Services	37	115	111	114	750,357	509.29
Local Government	27	844	844	842	6,793,814	619.69
State Government	11	656	642	641	6,801,573	809.49

TABLE 6. COUNTY SUMMARY

North American Industry Classification System - Industry Groups	Number of Employing Units	Employment			Total Earnings	Average Weekly Earnings
		Jan	Feb	Mar	Jan - Mar 2021	
CONWAY COUNTY - TOTAL	509	6,677	6,588	6,592	68,423,946	\$795.19
Natural Resources & Mining	28	208	210	212	2,140,752	784.16
Construction	50	511	507	508	7,604,300	1,149.96
Manufacturing	19	973	980	1,002	15,207,393	1,187.61
Trade, Transportation & Utilities	109	1,385	1,368	1,377	12,052,201	673.43
Wholesale Trade	14	104	111	109	1,186,518	845.10
Retail Trade	75	847	826	838	6,058,623	556.81
Transportation, Warehousing & Utilities	20	434	431	430	4,807,060	856.62
Financial Activities	37	146	140	140	2,016,540	1,092.38
Professional & Business Services	37	759	691	663	5,982,923	653.42
Education & Health Services	121	694	682	684	7,003,529	784.56
Leisure & Hospitality	39	417	427	449	1,800,023	321.26
Local Government	31	1,130	1,127	1,095	11,120,520	765.59
State Government	9	358	359	365	2,693,422	574.45
Other	29	96	97	97	802,343	638.47
CRAIGHEAD COUNTY - TOTAL	2,916	50,783	50,488	51,335	\$538,718,363	\$814.64
Natural Resources & Mining	107	317	304	330	2,756,702	668.94
Construction	256	2,222	2,103	2,239	27,843,241	978.88
Manufacturing	103	7,412	7,504	7,640	89,453,411	915.19
Trade, Transportation & Utilities	764	10,195	10,073	10,314	103,079,151	777.83
Wholesale Trade	176	2,043	2,048	2,088	30,881,822	1,153.35
Retail Trade	457	6,193	6,102	6,275	48,690,267	605.07
Transportation, Warehousing & Utilities	131	1,959	1,923	1,951	23,507,062	930.00
Information	23	330	327	330	5,285,044	1,235.69
Financial Activities	299	1,760	1,750	1,763	27,028,959	1,182.90
Professional & Business Services	388	4,738	4,723	4,653	40,820,547	667.43
Education & Health Services	456	11,024	10,920	11,092	139,543,432	974.76
Leisure & Hospitality	277	5,045	5,062	5,266	22,664,284	340.22
Other Services	187	767	773	788	6,400,752	634.49
Local Government	35	4,070	4,059	4,035	39,699,944	753.17
State Government	21	2,903	2,890	2,885	34,142,896	907.94

TABLE 6. COUNTY SUMMARY

North American Industry Classification System - Industry Groups	Number of Employing Units	Employment			Total Earnings	Average Weekly Earnings
		Jan	Feb	Mar	Jan - Mar 2021	
CRAWFORD COUNTY - TOTAL	1,252	18,955	18,974	19,148	\$181,365,130	\$733.28
Natural Resources & Mining	22	197	218	259	2,233,294	764.65
Construction	136	931	917	920	9,257,068	771.77
Manufacturing	63	4,732	4,722	4,730	50,183,999	816.48
Trade, Transportation & Utilities	332	5,483	5,496	5,529	56,802,220	794.05
Wholesale Trade	71	750	747	754	10,900,875	1,117.54
Retail Trade	173	2,066	2,079	2,088	15,643,469	579.18
Transportation, Warehousing & Utilities	88	2,667	2,670	2,687	30,257,876	870.21
Information	10	32	32	32	443,441	1,065.96
Financial Activities	126	489	489	490	5,264,541	827.58
Professional & Business Services	157	1,391	1,366	1,380	13,058,040	728.40
Education & Health Services	183	1,604	1,612	1,620	13,697,251	653.62
Leisure & Hospitality	91	1,457	1,460	1,516	6,341,459	330.12
Other Services	81	394	403	413	3,377,304	644.11
Local Government	41	2,098	2,113	2,112	19,509,674	712.04
State Government	10	147	146	147	1,196,839	627.71
CRITTENDEN COUNTY - TOTAL	1,168	15,014	14,778	15,069	\$141,440,656	\$727.58
Natural Resources & Mining	56	226	215	248	1,808,741	605.81
Construction	39	410	373	376	5,598,324	1,114.69
Manufacturing	38	2,119	1,943	1,975	22,387,536	855.78
Trade, Transportation & Utilities	306	4,127	4,113	4,189	42,033,394	780.43
Wholesale Trade	51	684	687	692	8,657,237	968.41
Retail Trade	157	1,754	1,780	1,839	11,896,512	510.95
Transportation, Warehousing & Utilities	98	1,689	1,646	1,658	21,479,645	992.76
Information	6	30	30	31	293,314	743.82
Financial Activities	99	419	426	414	6,442,210	1,180.83
Professional & Business Services	106	821	892	911	8,323,611	732.02
Education & Health Services	260	1,841	1,810	1,844	16,626,002	698.23
Leisure & Hospitality	137	2,184	2,162	2,272	11,653,272	406.35
Other Services	69	446	438	446	3,770,918	654.29
Local Government	39	2,017	2,000	1,989	19,388,752	744.98
State Government	13	374	376	374	3,114,582	639.46

TABLE 6. COUNTY SUMMARY

North American Industry Classification System - Industry Groups	Number of Employing Units	Employment			Total Earnings	Average Weekly Earnings
		Jan	Feb	Mar	Jan - Mar 2021	
CROSS COUNTY - TOTAL	480	4,499	4,487	4,552	\$38,066,075	\$648.88
Natural Resources & Mining	47	260	264	267	2,286,293	667.01
Construction	22	69	72	75	619,314	661.66
Manufacturing	11	267	274	287	1,994,859	555.98
Trade, Transportation & Utilities	122	1,059	1,039	1,041	10,077,529	740.87
Wholesale Trade	26	265	259	263	3,308,088	970.02
Retail Trade	65	697	682	677	5,579,303	626.23
Transportation, Warehousing & Utilities	31	97	98	101	1,190,138	927.86
Information	5	29	28	28	244,166	662.89
Financial Activities	51	224	225	230	2,407,143	818.11
Professional & Business Services	41	160	164	168	1,611,063	755.66
Education & Health Services	84	920	913	929	7,475,016	624.55
Leisure & Hospitality	41	421	414	430	1,552,213	283.16
Other Services	30	96	98	99	818,117	644.36
Local Government	17	654	655	657	5,819,703	683.12
State Government	9	340	341	341	3,160,659	713.68
DALLAS COUNTY - TOTAL	224	2,676	2,632	2,693	\$23,700,714	\$683.59
Natural Resources & Mining	21	104	106	102	909,036	672.36
Construction	16	70	59	68	596,508	698.76
Manufacturing	9	564	548	579	6,162,566	841.00
Trade, Transportation & Utilities	51	477	471	477	3,830,841	620.38
Wholesale Trade	5	15	16	16	277,345	1,361.76
Retail Trade	35	317	315	321	2,203,936	533.68
Transportation, Warehousing & Utilities	11	145	140	140	1,349,560	732.79
Information	3	16	16	16	136,612	656.79
Financial Activities	15	67	66	67	800,752	923.94
Professional & Business Services	13	36	35	36	556,363	1,199.92
Education & Health Services	51	808	802	812	7,639,830	727.93
Leisure & Hospitality	12	144	136	145	515,212	279.75
Other Services	12	45	42	48	312,694	534.52
Local Government	14	315	321	313	1,961,305	476.93
State Government	7	30	30	30	278,995	715.37

TABLE 6. COUNTY SUMMARY

North American Industry Classification System - Industry Groups	Number of Employing Units	Employment			Total Earnings Jan - Mar 2021	Average Weekly Earnings
		Jan	Feb	Mar		
DESHA COUNTY - TOTAL	489	4,174	4,210	4,278	\$41,261,481	\$752.00
Natural Resources & Mining	68	229	235	270	2,016,818	634.09
Construction	14	79	74	79	764,057	760.00
Manufacturing	14	954	981	985	14,543,409	1,149.37
Trade, Transportation & Utilities	98	798	779	792	7,013,112	683.16
Wholesale Trade	18	178	181	186	2,297,563	972.86
Retail Trade	54	457	435	441	2,711,335	469.39
Transportation, Warehousing & Utilities	26	163	163	165	2,004,214	941.98
Information	5	21	22	22	308,373	1,094.82
Financial Activities	28	203	204	208	1,993,235	747.93
Professional & Business Services	35	93	94	96	820,931	669.42
Education & Health Services	140	563	565	570	4,478,234	608.62
Leisure & Hospitality	35	325	324	338	1,187,640	277.68
Other Services	22	59	54	70	356,251	449.24
Local Government	21	736	761	734	6,888,520	712.53
State Government	9	114	117	114	890,901	595.92
DREW COUNTY - TOTAL	536	6,280	6,279	6,305	\$57,373,123	\$701.86
Natural Resources & Mining	55	489	474	448	3,997,169	653.74
Construction	24	162	158	159	1,672,978	806.00
Manufacturing	22	882	892	904	9,955,051	857.85
Trade, Transportation & Utilities	112	1,049	1,032	1,041	8,852,273	654.33
Wholesale Trade	17	110	106	113	1,520,542	1,066.55
Retail Trade	72	836	825	822	5,770,222	536.28
Transportation, Warehousing & Utilities	23	103	101	106	1,561,509	1,162.41
Information	5	28	29	29	261,607	701.99
Financial Activities	50	218	217	209	3,312,598	1,187.03
Professional & Business Services	38	290	298	309	2,966,220	763.11
Education & Health Services	132	839	842	839	6,784,902	621.33
Leisure & Hospitality	42	541	529	550	2,278,042	324.51
Other Services	20	57	57	60	514,970	682.98
Local Government	23	1,224	1,217	1,214	11,022,105	695.91
State Government	13	501	534	543	5,755,208	841.65

TABLE 6. COUNTY SUMMARY

North American Industry Classification System - Industry Groups	Number of Employing Units	Employment			Total Earnings	Average Weekly Earnings
		Jan	Feb	Mar	Jan - Mar 2021	
FAULKNER COUNTY - TOTAL	3,052	40,126	39,880	40,579	423,424,403	\$810.33
Natural Resources & Mining	38	213	223	235	2,811,099	966.79
Construction	382	2,980	2,840	2,995	31,813,023	832.84
Manufacturing	102	2,865	2,850	2,856	36,449,260	981.38
Trade, Transportation & Utilities	643	7,659	7,595	7,762	66,390,663	665.66
Wholesale Trade	134	763	787	805	12,013,991	1,177.27
Retail Trade	414	6,001	5,948	6,079	43,381,141	555.30
Transportation, Warehousing & Utilities	95	895	860	878	10,995,531	963.70
Financial Activities	338	1,463	1,484	1,491	21,331,751	1,109.22
Professional & Business Services	471	3,608	3,624	3,692	44,698,795	944.26
Education & Health Services	494	7,724	7,743	7,710	79,456,256	791.13
Leisure & Hospitality	292	4,870	4,805	5,060	21,145,575	331.17
Local Government	44	3,283	3,282	3,293	37,017,854	866.56
State Government	18	3,041	3,072	3,070	32,980,575	828.80
Other	230	2,420	2,362	2,415	49,329,552	1,581.73
FRANKLIN COUNTY - TOTAL	369	4,453	4,424	4,477	\$39,657,562	\$685.32
Natural Resources & Mining	17	130	129	131	1,563,693	925.26
Construction	34	155	156	160	1,297,919	635.92
Manufacturing	16	932	928	946	9,315,316	766.10
Trade, Transportation & Utilities	83	999	983	994	9,888,538	766.79
Wholesale Trade	10	46	44	43	251,964	437.18
Retail Trade	50	642	631	645	4,161,713	500.73
Transportation, Warehousing & Utilities	23	311	308	306	5,474,861	1,365.87
Information	6	27	27	29	319,653	888.75
Financial Activities	32	66	65	61	785,950	944.65
Professional & Business Services	31	386	393	388	3,418,056	675.91
Education & Health Services	65	531	517	527	3,887,519	569.60
Leisure & Hospitality	29	310	310	324	1,215,804	297.21
Other Services	16	51	47	50	355,142	553.76
Local Government	32	742	733	731	6,268,066	655.70
State Government	8	124	136	136	1,341,906	782.00

TABLE 6. COUNTY SUMMARY

North American Industry Classification System - Industry Groups	Number of Employing Units	Employment			Total Earnings	Average Weekly Earnings
		Jan	Feb	Mar	Jan - Mar 2021	
FULTON COUNTY - TOTAL	199	2,055	1,983	2,016	\$16,383,685	\$624.52
Manufacturing	11	123	117	121	819,774	524.04
Trade, Transportation & Utilities	49	303	284	290	2,747,236	722.89
Retail Trade	31	190	188	188	1,186,014	483.56
Other Trade, Transportation, & Utilities	18	113	96	102	1,561,222	1,158.46
Information	5	33	32	34	345,902	806.30
Financial Activities	23	78	79	79	877,202	857.76
Professional & Business Services	13	20	23	25	155,766	528.62
Education & Health Services	40	458	449	446	3,503,941	597.64
Leisure & Hospitality	15	126	90	103	410,850	297.21
Other Services	9	20	17	21	156,490	622.64
Local Government	12	580	577	576	3,921,763	522.23
State Government	9	59	59	59	497,414	648.52
Other	13	255	256	262	2,947,347	879.89
GARLAND COUNTY - TOTAL	3,095	35,044	35,236	35,958	\$334,294,648	\$726.15
Natural Resources & Mining	29	188	196	194	2,404,331	959.94
Construction	346	1,842	1,776	1,859	17,477,035	736.38
Manufacturing	94	2,379	2,373	2,385	26,558,745	858.76
Trade, Transportation & Utilities	662	7,395	7,360	7,385	66,460,011	692.72
Wholesale Trade	133	771	753	761	12,195,720	1,231.68
Retail Trade	464	6,023	6,021	6,039	46,781,425	597.01
Transportation, Warehousing & Utilities	65	601	586	585	7,482,866	974.50
Information	29	351	347	352	3,601,629	791.57
Financial Activities	363	1,518	1,537	1,522	19,992,034	1,007.98
Professional & Business Services	401	3,009	2,968	2,985	31,317,954	806.43
Education & Health Services	485	7,803	7,764	7,830	87,891,327	866.89
Leisure & Hospitality	405	6,007	6,272	6,740	33,449,908	405.87
Other Services	220	892	902	939	6,417,000	541.84
Local Government	40	2,904	2,909	2,939	30,865,756	813.86
State Government	21	756	832	828	7,858,918	750.66

TABLE 6. COUNTY SUMMARY

North American Industry Classification System - Industry Groups	Number of Employing Units	Employment			Total Earnings	Average Weekly Earnings
		Jan	Feb	Mar	Jan - Mar 2021	
GRANT COUNTY - TOTAL	346	4,009	3,982	4,034	\$42,968,803	\$824.61
Natural Resources & Mining	26	175	178	178	2,315,329	1,006.23
Construction	34	245	249	250	3,517,602	1,091.07
Manufacturing	16	1,200	1,182	1,214	16,047,431	1,029.83
Trade, Transportation & Utilities	83	661	660	657	5,392,936	629.18
Wholesale Trade	16	74	75	76	1,290,768	1,323.86
Retail Trade	48	544	544	536	3,717,849	528.30
Transportation, Warehousing & Utilities	19	43	41	45	384,319	687.51
Financial Activities	23	149	149	150	2,867,415	1,477.03
Professional & Business Services	34	128	127	133	1,517,100	902.32
Education & Health Services	70	379	372	366	2,634,408	544.26
Leisure & Hospitality	24	256	249	265	930,275	278.80
Local Government	10	718	717	721	6,897,182	738.25
State Government	7	45	45	45	378,243	646.57
Other	19	53	54	55	470,882	670.77
GREENE COUNTY - TOTAL	899	14,736	14,741	15,033	\$139,067,503	\$721.02
Natural Resources & Mining	41	201	191	228	1,535,114	571.38
Construction	70	367	362	393	3,964,264	815.36
Manufacturing	61	4,636	4,636	4,695	51,291,104	847.46
Trade, Transportation & Utilities	226	2,674	2,677	2,749	22,558,379	642.69
Wholesale Trade	46	471	467	484	5,619,457	911.95
Retail Trade	150	1,976	1,981	2,030	14,626,808	563.79
Transportation, Warehousing & Utilities	30	227	229	235	2,312,114	772.16
Information	9	121	118	118	1,521,115	983.27
Financial Activities	76	540	538	546	6,593,226	936.89
Professional & Business Services	97	831	850	836	6,666,000	611.17
Education & Health Services	152	1,974	1,974	1,999	19,354,789	751.05
Leisure & Hospitality	84	1,207	1,199	1,266	5,208,087	327.31
Other Services	42	160	163	164	1,159,099	549.25
Local Government	31	1,650	1,658	1,662	15,201,944	705.86
State Government	10	375	375	377	4,014,382	822.00

TABLE 6. COUNTY SUMMARY

North American Industry Classification System - Industry Groups	Number of Employing Units	Employment			Total Earnings Jan - Mar 2021	Average Weekly Earnings
		Jan	Feb	Mar		
HEMPSTEAD COUNTY - TOTAL	513	7,371	7,315	7,375	\$71,465,245	\$747.56
Natural Resources & Mining	22	247	245	246	2,864,639	895.76
Construction	27	125	133	131	1,160,634	688.53
Manufacturing	26	2,167	2,149	2,166	25,021,995	890.82
Trade, Transportation & Utilities	126	1,345	1,314	1,330	14,035,790	811.99
Wholesale Trade	26	192	183	190	1,781,002	727.43
Retail Trade	73	881	871	871	6,040,843	531.47
Transportation, Warehousing & Utilities	27	272	260	269	6,213,945	1,790.25
Information	7	17	17	17	215,530	975.25
Financial Activities	45	199	199	192	2,307,558	902.57
Professional & Business Services	37	250	251	255	2,371,038	723.76
Education & Health Services	101	849	827	840	6,696,476	614.21
Leisure & Hospitality	47	568	552	557	2,401,684	330.49
Other Services	31	105	105	111	893,165	642.10
Local Government	28	849	841	849	7,372,712	670.10
State Government	16	650	682	681	6,124,024	702.05
HOT SPRING COUNTY - TOTAL	599	8,345	8,289	8,290	\$77,942,166	\$721.66
Natural Resources & Mining	25	163	161	149	1,422,889	694.21
Construction	55	206	207	214	1,755,837	646.24
Manufacturing	30	1,515	1,514	1,523	19,173,470	972.02
Trade, Transportation & Utilities	153	1,662	1,671	1,667	17,273,994	797.26
Wholesale Trade	19	87	89	87	985,892	865.07
Retail Trade	93	875	883	874	6,164,462	540.49
Transportation, Warehousing & Utilities	41	700	699	706	10,123,640	1,109.85
Information	5	37	37	37	423,830	881.14
Financial Activities	53	207	200	207	2,388,144	897.57
Professional & Business Services	51	967	918	897	7,873,428	653.11
Education & Health Services	99	1,018	1,005	985	9,088,929	697.29
Leisure & Hospitality	55	625	630	658	2,588,053	312.20
Other Services	34	148	146	146	942,267	494.20
Local Government	27	959	951	956	8,816,208	709.88
State Government	12	838	849	851	6,195,117	563.29

TABLE 6. COUNTY SUMMARY

North American Industry Classification System - Industry Groups	Number of Employing Units	Employment			Total Earnings	Average Weekly Earnings
		Jan	Feb	Mar	Jan - Mar 2021	
HOWARD COUNTY - TOTAL	351	6,434	6,470	6,584	\$58,850,223	\$696.88
Natural Resources & Mining	20	209	214	203	2,148,848	792.15
Construction	21	82	83	85	651,878	601.73
Manufacturing	19	3,087	3,118	3,149	29,937,452	738.58
Trade, Transportation & Utilities	78	854	845	852	7,935,235	717.84
Wholesale Trade	15	89	89	87	1,010,153	879.67
Retail Trade	45	553	552	556	4,026,448	559.41
Transportation, Warehousing & Utilities	18	212	204	209	2,898,634	1,070.26
Financial Activities	34	137	136	137	1,576,577	887.38
Professional & Business Services	22	148	147	142	1,308,316	690.89
Education & Health Services	80	786	792	829	7,047,661	675.69
Leisure & Hospitality	29	300	300	310	1,183,989	300.25
Local Government	17	642	641	681	5,600,119	658.01
State Government	10	96	101	102	677,662	523.02
Other	21	93	93	94	782,486	644.91
INDEPENDENCE COUNTY - TOTAL	932	16,049	15,969	16,335	\$165,935,485	\$791.94
Natural Resources & Mining	22	294	303	306	3,756,481	960.00
Construction	61	499	475	591	6,247,140	921.18
Manufacturing	45	3,480	3,467	3,533	39,671,202	873.56
Trade, Transportation & Utilities	242	2,833	2,793	2,827	26,974,032	736.40
Wholesale Trade	29	235	230	237	2,905,883	955.25
Retail Trade	168	1,856	1,844	1,854	13,389,705	556.34
Transportation, Warehousing & Utilities	45	742	719	736	10,678,444	1,121.65
Information	10	78	77	80	761,106	747.40
Financial Activities	88	597	607	608	9,454,256	1,204.06
Professional & Business Services	92	1,190	1,164	1,165	9,691,545	635.55
Education & Health Services	157	3,586	3,601	3,645	45,415,689	967.55
Leisure & Hospitality	90	1,159	1,165	1,248	4,643,809	300.01
Other Services	62	285	283	281	1,906,193	518.13
Local Government	48	1,470	1,455	1,460	12,082,148	635.85
State Government	15	578	579	591	5,331,884	703.91

TABLE 6. COUNTY SUMMARY

North American Industry Classification System - Industry Groups	Number of Employing Units	Employment			Total Earnings	Average Weekly Earnings
		Jan	Feb	Mar	Jan - Mar 2021	
IZARD COUNTY - TOTAL	245	2,702	2,722	2,757	\$22,059,833	\$622.26
Natural Resources & Mining	7	89	87	90	1,324,093	1,148.72
Construction	22	70	61	69	557,455	643.22
Manufacturing	10	170	170	166	1,260,530	574.88
Trade, Transportation & Utilities	66	524	533	533	3,832,385	556.22
Wholesale Trade	13	51	51	54	424,176	627.48
Retail Trade	42	381	389	387	2,430,082	484.69
Transportation, Warehousing & Utilities	11	92	93	92	978,127	814.88
Information	4	10	9	9	174,588	1,438.91
Financial Activities	21	149	150	168	1,377,619	680.75
Professional & Business Services	14	46	47	54	372,494	584.76
Education & Health Services	40	552	547	541	4,696,718	660.89
Leisure & Hospitality	24	169	169	173	643,479	290.60
Other Services	14	32	30	32	173,020	424.76
Local Government	14	511	508	511	4,091,328	617.09
State Government	9	380	411	411	3,556,124	682.73
JACKSON COUNTY - TOTAL	433	5,059	5,011	5,121	\$48,724,754	\$740.19
Natural Resources & Mining	57	268	267	305	2,368,304	650.63
Construction	22	91	94	98	940,392	766.83
Manufacturing	12	1,029	979	1,004	13,049,600	999.82
Trade, Transportation & Utilities	103	936	941	980	9,178,914	741.41
Wholesale Trade	16	198	200	204	2,621,122	1,004.77
Retail Trade	67	653	651	684	5,360,220	622.22
Transportation, Warehousing & Utilities	20	85	90	92	1,197,572	1,035.07
Information	3	7	7	6	65,864	759.97
Financial Activities	33	125	121	121	1,830,072	1,150.75
Professional & Business Services	34	123	121	128	1,188,450	737.25
Education & Health Services	76	776	775	763	7,424,967	740.47
Leisure & Hospitality	31	332	325	337	1,273,965	295.77
Other Services	18	53	55	56	673,020	947.03
Local Government	32	541	548	545	4,398,022	621.13
State Government	12	778	778	778	6,333,184	626.18

TABLE 6. COUNTY SUMMARY

North American Industry Classification System - Industry Groups	Number of Employing Units	Employment			Total Earnings	Average Weekly Earnings
		Jan	Feb	Mar	Jan - Mar 2021	
JEFFERSON COUNTY - TOTAL	1,968	24,996	24,794	24,975	\$261,658,078	\$807.63
Natural Resources & Mining	38	118	123	133	1,884,675	1,162.90
Construction	91	481	484	520	4,655,078	723.40
Manufacturing	58	4,430	4,398	4,407	66,736,084	1,163.63
Trade, Transportation & Utilities	405	4,260	4,163	4,194	39,185,595	716.72
Wholesale Trade	70	622	630	633	7,396,744	905.54
Retail Trade	277	2,948	2,897	2,923	20,603,134	542.26
Transportation, Warehousing & Utilities	58	690	636	638	11,185,717	1,314.32
Information	11	59	58	56	737,626	983.94
Financial Activities	147	990	985	986	14,133,375	1,101.50
Professional & Business Services	144	1,920	1,821	1,830	17,696,469	733.05
Education & Health Services	760	4,314	4,286	4,318	44,614,779	797.01
Leisure & Hospitality	137	2,500	2,462	2,456	13,769,582	428.36
Other Services	100	443	434	439	3,841,180	673.58
Local Government	41	2,327	2,328	2,327	21,424,853	708.13
State Government	36	3,154	3,252	3,309	32,978,782	783.38
JOHNSON COUNTY - TOTAL	488	8,039	8,013	8,094	\$68,161,229	\$651.43
Natural Resources & Mining	13	198	202	206	2,039,381	776.61
Construction	41	189	170	181	1,494,166	638.53
Manufacturing	33	2,283	2,272	2,308	19,669,343	661.38
Trade, Transportation & Utilities	104	1,981	1,984	2,026	17,523,624	675.00
Retail Trade	73	929	938	941	6,219,636	511.15
Other Trade, Transportation & Utilities	31	1,052	1,046	1,085	11,303,988	819.55
Information	4	12	12	12	171,241	1,097.70
Financial Activities	45	155	148	153	1,638,867	829.39
Professional & Business Services	46	222	222	223	1,576,603	545.47
Education & Health Services	104	1,229	1,230	1,214	11,438,690	718.68
Leisure & Hospitality	47	546	539	552	2,092,726	295.01
Other Services	28	79	78	81	618,444	599.65
Local Government	14	1,042	1,053	1,035	8,925,061	658.03
State Government	9	103	103	103	973,083	726.72

TABLE 6. COUNTY SUMMARY

North American Industry Classification System - Industry Groups	Number of Employing Units	Employment			Total Earnings	Average Weekly Earnings
		Jan	Feb	Mar	Jan - Mar 2021	
LAFAYETTE COUNTY - TOTAL	155	1,047	1,042	1,072	\$8,291,340	\$605.31
Natural Resources & Mining	23	59	64	71	428,753	510.02
Construction	11	74	73	71	827,535	876.01
Manufacturing	5	34	30	40	360,382	799.66
Trade, Transportation & Utilities	30	194	192	197	1,512,348	598.63
Retail Trade	15	106	104	105	597,619	437.82
Other Trade, Transportation & Utilities	15	88	88	92	914,729	787.65
Financial Activities	13	74	74	77	694,540	712.35
Professional & Business Services	10	38	37	39	276,131	558.97
Education & Health Services	29	194	192	196	1,411,637	559.73
Leisure & Hospitality	6	35	36	36	152,734	329.40
Local Government	15	278	277	279	2,082,222	576.15
State Government	7	29	29	29	284,453	754.52
Other	6	38	38	37	260,605	532.21
LAWRENCE COUNTY - TOTAL	404	3,825	3,799	3,855	\$31,960,751	\$642.53
Natural Resources & Mining	56	186	184	188	1,761,608	728.54
Construction	27	171	173	184	2,174,087	950.21
Manufacturing	16	293	290	299	2,542,163	665.14
Trade, Transportation & Utilities	118	793	782	798	7,253,845	705.42
Wholesale Trade	19	186	185	192	1,991,924	816.47
Retail Trade	63	496	485	491	3,760,355	589.52
Transportation, Warehousing & Utilities	36	111	112	115	1,501,566	1,025.19
Financial Activities	28	114	117	118	1,304,587	862.63
Professional & Business Services	23	97	90	94	896,881	736.56
Education & Health Services	46	557	564	559	4,247,021	583.38
Leisure & Hospitality	34	350	340	356	1,337,227	295.02
Local Government	24	1,028	1,021	1,016	8,369,098	630.12
State Government	9	72	72	72	592,645	633.17
Other	23	164	166	171	1,481,589	682.45

TABLE 6. COUNTY SUMMARY

North American Industry Classification System - Industry Groups	Number of Employing Units	Employment			Total Earnings	Average Weekly Earnings
		Jan	Feb	Mar	Jan - Mar 2021	
LEE COUNTY - TOTAL	248	1,600	1,616	1,600	\$13,978,633	\$669.82
Natural Resources & Mining	36	131	141	149	1,211,856	664.27
Construction	5	5	5	7	57,696	783.20
Trade, Transportation & Utilities	40	342	341	342	3,303,243	743.69
Wholesale Trade	10	112	114	118	1,649,710	1,106.69
Retail Trade	21	173	172	168	973,661	437.99
Transportation, Warehousing & Utilities	9	57	55	56	679,872	933.89
Financial Activities	16	56	55	48	525,180	762.24
Professional & Business Services	16	55	55	57	790,654	1,092.57
Education & Health Services	93	327	329	326	2,935,936	689.94
Leisure & Hospitality	8	62	70	72	251,565	284.58
Local Government	15	234	231	210	1,636,947	559.64
State Government	6	370	370	370	3,124,013	649.48
Other	13	18	19	19	141,543	583.28
LINCOLN COUNTY - TOTAL	273	2,603	2,604	2,634	\$22,989,267	\$676.60
Natural Resources & Mining	35	131	128	139	1,474,512	854.95
Construction	19	129	131	137	1,367,245	794.76
Manufacturing	9	298	294	300	2,425,860	627.59
Trade, Transportation & Utilities	44	325	326	336	3,275,446	765.83
Wholesale Trade	7	48	48	49	601,131	956.71
Retail Trade	24	163	163	166	902,236	423.19
Transportation, Warehousing & Utilities	13	114	115	121	1,772,079	1,168.40
Financial Activities	18	65	65	60	670,463	814.33
Professional & Business Services	10	23	23	23	275,184	920.35
Education & Health Services	90	319	320	319	2,353,291	566.88
Leisure & Hospitality	16	101	104	106	393,145	291.72
Local Government	7	322	322	320	2,527,806	605.12
State Government	10	840	841	841	7,702,147	704.77
Other	15	50	50	53	524,168	790.60

TABLE 6. COUNTY SUMMARY

North American Industry Classification System - Industry Groups	Number of Employing Units	Employment			Total Earnings	Average Weekly Earnings
		Jan	Feb	Mar	Jan - Mar 2021	
LITTLE RIVER COUNTY - TOTAL	247	2,932	2,978	3,002	\$43,112,847	\$1,116.37
Natural Resources & Mining	16	56	59	57	491,518	659.46
Construction	12	68	71	67	659,676	738.99
Manufacturing	15	898	892	921	27,182,895	2,313.90
Trade, Transportation & Utilities	58	524	532	527	4,128,323	601.83
Wholesale Trade	7	29	29	31	425,459	1,103.18
Retail Trade	36	400	411	411	2,889,883	545.74
Transportation, Warehousing & Utilities	15	95	92	85	812,981	689.75
Financial Activities	13	52	54	55	459,068	658.00
Professional & Business Services	18	123	142	139	1,354,320	773.60
Education & Health Services	48	199	193	193	1,488,486	587.17
Leisure & Hospitality	19	206	221	221	813,960	289.87
Local Government	20	684	683	690	5,684,518	637.73
State Government	10	71	81	82	506,800	499.80
Other	18	51	50	50	343,283	524.63
LOGAN COUNTY - TOTAL	493	5,076	5,099	5,141	\$42,132,323	\$634.82
Natural Resources & Mining	24	122	123	120	1,083,273	684.89
Construction	42	167	156	169	1,626,374	762.84
Manufacturing	21	1,190	1,216	1,220	11,561,233	735.79
Trade, Transportation & Utilities	102	937	941	970	7,117,772	576.74
Wholesale Trade	9	51	52	59	347,891	495.57
Retail Trade	71	756	758	778	5,030,668	506.51
Transportation, Warehousing & Utilities	22	130	131	133	1,739,213	1,018.67
Information	5	24	24	24	256,695	822.74
Financial Activities	51	184	182	180	2,409,542	1,018.40
Professional & Business Services	44	101	115	108	885,609	630.78
Education & Health Services	107	645	646	646	5,697,174	678.75
Leisure & Hospitality	30	283	280	282	1,048,267	286.28
Other Services	33	137	133	137	1,159,896	657.66
Local Government	22	828	825	827	6,261,716	582.67
State Government	12	458	458	458	3,024,772	508.02

TABLE 6. COUNTY SUMMARY

North American Industry Classification System - Industry Groups	Number of Employing Units	Employment			Total Earnings	Average Weekly Earnings
		Jan	Feb	Mar	Jan - Mar 2021	
LONOKE COUNTY - TOTAL	1,339	13,499	13,574	13,936	\$122,848,901	\$691.31
Natural Resources & Mining	93	448	492	515	4,287,493	680.01
Construction	154	892	891	935	9,804,728	832.46
Manufacturing	37	1,286	1,365	1,391	14,834,628	846.95
Trade, Transportation & Utilities	287	3,000	2,981	3,024	25,420,492	651.45
Wholesale Trade	68	415	406	424	5,631,676	1,043.87
Retail Trade	165	2,276	2,266	2,290	15,637,093	528.19
Transportation, Warehousing & Utilities	54	309	309	310	4,151,723	1,032.42
Information	18	88	81	82	1,135,067	1,043.58
Financial Activities	171	733	736	739	11,931,348	1,247.01
Professional & Business Services	156	637	616	629	5,024,146	616.06
Education & Health Services	202	1,760	1,766	1,815	15,158,933	654.97
Leisure & Hospitality	117	1,803	1,795	1,899	7,975,440	334.82
Other Services	65	184	190	197	1,401,238	566.31
Local Government	25	2,514	2,507	2,557	24,390,170	742.74
State Government	14	154	154	153	1,485,218	743.48
MADISON COUNTY - TOTAL	260	3,350	3,303	3,347	\$30,903,913	\$713.17
Natural Resources & Mining	10	58	57	56	443,886	599.04
Construction	37	189	133	136	1,574,696	793.43
Manufacturing	22	1,192	1,199	1,219	11,470,851	733.27
Trade, Transportation & Utilities	54	655	657	669	5,989,563	697.73
Wholesale Trade	9	31	31	30	782,297	1,962.28
Retail Trade	36	486	489	501	3,520,725	550.46
Transportation, Warehousing & Utilities	9	138	137	138	1,686,541	942.38
Information	5	51	52	50	1,303,477	1,966.03
Financial Activities	19	83	82	84	928,993	860.98
Professional & Business Services	26	78	71	75	1,090,809	1,123.77
Education & Health Services	35	254	260	265	2,096,836	621.16
Leisure & Hospitality	15	146	146	148	532,024	279.03
Other Services	21	50	51	49	326,924	502.96
Local Government	9	554	555	556	4,782,559	662.86
State Government	7	40	40	40	363,295	698.64

TABLE 6. COUNTY SUMMARY

North American Industry Classification System - Industry Groups	Number of Employing Units	Employment			Total Earnings	Average Weekly Earnings
		Jan	Feb	Mar	Jan - Mar 2021	
MARION COUNTY - TOTAL	279	3,242	3,282	3,360	\$27,543,444	\$643.08
Manufacturing	23	1,292	1,332	1,354	12,439,506	721.63
Trade, Transportation & Utilities	56	513	520	542	3,863,329	566.06
Wholesale Trade	6	38	35	37	239,979	503.45
Retail Trade	42	442	451	469	3,136,888	531.50
Transportation, Warehousing & Utilities	8	33	34	36	486,462	1,089.91
Information	3	54	55	55	731,456	1,029.25
Financial Activities	30	163	161	176	1,727,970	797.52
Professional & Business Services	25	85	92	91	794,989	684.55
Education & Health Services	41	277	271	263	2,353,771	669.76
Leisure & Hospitality	35	187	190	206	675,300	267.30
Other Services	15	26	26	28	134,082	386.78
Local Government	18	506	499	503	3,649,191	558.44
State Government	7	39	39	39	358,311	706.73
Other	26	100	97	103	815,539	627.34
MILLER COUNTY - TOTAL	881	11,894	11,917	12,042	\$120,178,979	\$773.54
Natural Resources & Mining	31	277	282	289	3,157,526	859.27
Construction	68	587	556	601	6,023,476	797.04
Manufacturing	25	2,361	2,392	2,390	36,535,162	1,180.34
Trade, Transportation & Utilities	216	2,575	2,540	2,536	25,599,404	772.13
Wholesale Trade	47	468	489	493	6,580,259	1,047.26
Retail Trade	119	1,261	1,244	1,244	8,603,777	529.60
Transportation, Warehousing & Utilities	50	846	807	799	10,415,368	980.24
Information	6	92	87	87	1,646,099	1,428.08
Financial Activities	86	402	405	411	4,755,914	901.08
Professional & Business Services	79	1,039	1,063	1,085	6,952,636	503.44
Education & Health Services	180	1,234	1,225	1,225	9,290,426	581.96
Leisure & Hospitality	95	1,308	1,360	1,398	5,980,595	339.43
Other Services	54	257	246	249	1,752,370	537.76
Local Government	26	1,283	1,283	1,289	13,044,230	780.86
State Government	15	479	478	482	5,441,141	872.58

TABLE 6. COUNTY SUMMARY

North American Industry Classification System - Industry Groups	Number of Employing Units	Employment			Total Earnings Jan - Mar 2021	Average Weekly Earnings
		Jan	Feb	Mar		
MISSISSIPPI COUNTY - TOTAL	1,054	16,303	16,196	16,429	\$235,679,544	\$1,111.58
Natural Resources & Mining	101	483	445	458	4,256,978	708.79
Construction	58	683	674	702	9,595,938	1,075.50
Manufacturing	61	6,035	5,989	6,053	138,517,439	1,768.30
Trade, Transportation & Utilities	263	2,689	2,674	2,734	26,846,572	765.14
Wholesale Trade	53	337	337	346	5,302,492	1,199.66
Retail Trade	145	1,559	1,549	1,600	10,212,095	500.56
Transportation, Warehousing & Utilities	65	793	788	788	11,331,985	1,103.87
Information	8	26	26	26	182,672	540.45
Financial Activities	78	399	393	388	4,113,181	804.40
Professional & Business Services	79	883	915	930	10,026,878	848.20
Education & Health Services	197	1,336	1,321	1,337	11,876,631	686.22
Leisure & Hospitality	92	1,004	1,002	1,007	3,824,282	292.91
Other Services	48	248	237	259	2,433,316	754.75
Local Government	50	2,052	2,040	2,051	19,806,970	744.07
State Government	19	465	480	484	4,198,687	678.05
MONROE COUNTY - TOTAL	260	1,857	1,846	1,854	\$14,750,799	\$612.57
Natural Resources & Mining	26	76	83	85	749,813	709.15
Manufacturing	6	129	130	126	1,031,183	618.09
Trade, Transportation & Utilities	66	485	475	477	4,873,145	782.58
Wholesale Trade	17	137	132	137	2,208,211	1,255.14
Retail Trade	31	240	241	238	1,516,482	486.73
Transportation, Warehousing & Utilities	18	108	102	102	1,148,452	849.45
Financial Activities	20	83	80	78	937,643	897.84
Professional & Business Services	13	31	28	31	175,809	450.79
Education & Health Services	50	322	321	318	2,561,348	615.07
Leisure & Hospitality	24	270	266	269	1,016,052	291.27
Local Government	21	316	314	312	2,203,823	539.89
State Government	7	65	65	65	635,040	751.53
Other	27	80	84	93	566,943	509.08

TABLE 6. COUNTY SUMMARY

North American Industry Classification System - Industry Groups	Number of Employing Units	Employment			Total Earnings	Average Weekly Earnings
		Jan	Feb	Mar	Jan - Mar 2021	
MONTGOMERY COUNTY - TOTAL	160	1,132	1,131	1,191	\$7,958,171	\$531.70
Natural Resources & Mining	7	21	21	20	143,841	535.39
Construction	25	60	61	67	413,746	507.87
Manufacturing	8	46	45	37	363,054	654.54
Trade, Transportation & Utilities	34	218	216	220	1,458,825	514.76
Wholesale Trade	7	54	58	58	505,096	685.65
Retail Trade	22	151	146	146	862,609	449.35
Transportation, Warehousing & Utilities	5	13	12	16	91,120	512.87
Financial Activities	11	47	39	38	339,186	631.24
Professional & Business Services	13	21	21	21	152,008	556.81
Education & Health Services	18	49	48	48	383,573	610.46
Leisure & Hospitality	14	184	188	242	1,053,797	396.07
Local Government	9	415	422	430	3,171,692	577.69
State Government	7	36	36	36	292,565	625.14
Other	14	35	34	32	185,884	424.72
NEVADA COUNTY - TOTAL	201	2,282	2,274	2,300	\$26,063,986	\$877.30
Natural Resources & Mining	13	50	49	48	737,057	1,157.08
Trade, Transportation & Utilities	40	513	514	529	4,744,404	703.64
Retail Trade	23	303	301	309	2,062,857	521.41
Other Trade, Transportation & Utilities	17	210	213	220	2,681,547	962.39
Financial Activities	11	64	63	60	473,254	584.02
Professional & Business Services	12	56	57	55	826,771	1,135.67
Education & Health Services	44	384	378	385	2,421,982	487.29
Leisure & Hospitality	9	81	83	89	288,751	263.38
Other Services	15	43	42	44	255,463	457.00
Local Government	29	392	388	387	2,932,293	579.85
State Government	9	54	54	54	408,500	581.91
Other	19	645	646	649	12,975,511	1,543.48

TABLE 6. COUNTY SUMMARY

North American Industry Classification System - Industry Groups	Number of Employing Units	Employment			Total Earnings	Average Weekly Earnings
		Jan	Feb	Mar	Jan - Mar 2021	
NEWTON COUNTY - TOTAL	113	967	962	993	\$6,768,521	\$534.55
Construction	7	24	18	22	189,900	684.74
Manufacturing	7	40	40	35	338,550	679.36
Trade, Transportation & Utilities	26	161	164	159	1,314,596	626.79
Retail Trade	13	107	112	109	679,918	478.37
Other Trade, Transportation & Utilities	13	54	52	50	634,678	938.87
Education & Health Services	23	214	208	210	1,302,286	475.52
Leisure & Hospitality	13	125	130	158	602,997	336.93
Other Services	4	3	3	3	13,247	339.67
Local Government	14	344	343	344	2,347,714	525.49
State Government	7	35	35	35	303,459	666.94
Other	12	21	21	27	355,772	1,189.87
OUACHITA COUNTY - TOTAL	639	6,387	6,354	6,524	\$58,216,640	\$697.36
Natural Resources & Mining	35	147	144	148	1,450,149	762.30
Construction	42	198	196	217	2,110,595	797.15
Manufacturing	26	394	387	392	4,086,051	803.87
Trade, Transportation & Utilities	147	1,467	1,444	1,519	12,543,016	653.40
Wholesale Trade	22	185	187	181	2,568,326	1,071.77
Retail Trade	90	927	908	987	5,713,160	467.19
Transportation, Warehousing & Utilities	35	355	349	351	4,261,530	932.16
Information	7	30	30	30	369,392	947.16
Financial Activities	52	255	256	258	2,641,470	792.68
Professional & Business Services	45	503	512	528	4,595,351	687.28
Education & Health Services	172	1,272	1,260	1,276	14,413,719	873.49
Leisure & Hospitality	44	407	406	426	1,656,576	308.54
Other Services	25	102	96	101	717,597	553.84
Local Government	31	1,039	1,039	1,026	8,298,304	616.94
State Government	13	573	584	603	5,334,420	699.44

TABLE 6. COUNTY SUMMARY

North American Industry Classification System - Industry Groups	Number of Employing Units	Employment			Total Earnings	Average Weekly Earnings
		Jan	Feb	Mar	Jan - Mar 2021	
PERRY COUNTY - TOTAL	154	1,147	1,129	1,172	\$9,275,920	\$620.82
Construction	16	77	79	86	672,335	641.13
Manufacturing	6	28	28	28	361,525	993.20
Trade, Transportation & Utilities	28	191	190	191	1,400,894	565.18
Retail Trade	17	148	147	148	671,411	349.75
Other Trade, Transportation & Utilities	11	43	43	43	729,483	1,304.98
Financial Activities	10	24	26	28	329,824	975.81
Professional & Business Services	20	45	45	54	379,022	607.41
Education & Health Services	30	215	214	223	1,817,203	643.18
Leisure & Hospitality	11	76	73	76	301,027	308.75
Local Government	9	346	348	352	2,592,648	571.99
State Government	7	34	34	34	308,447	697.84
Other	17	111	92	100	1,112,995	847.67
PHILLIPS COUNTY - TOTAL	698	4,864	4,837	4,901	\$41,808,329	\$660.74
Natural Resources & Mining	62	196	191	215	1,504,722	576.82
Construction	29	117	108	109	807,688	558.05
Manufacturing	11	399	401	402	4,353,831	835.88
Trade, Transportation & Utilities	131	1,131	1,111	1,108	9,519,748	655.78
Wholesale Trade	26	258	252	258	2,912,014	875.00
Retail Trade	69	655	646	640	4,080,056	485.09
Transportation, Warehousing & Utilities	36	218	213	210	2,527,678	910.00
Information	7	12	12	11	149,102	983.09
Financial Activities	40	191	195	193	2,423,567	965.95
Professional & Business Services	42	245	254	273	2,494,305	745.61
Education & Health Services	272	1,131	1,123	1,118	10,237,529	700.62
Leisure & Hospitality	39	340	347	357	1,238,840	273.84
Other Services	24	52	51	52	334,151	497.50
Local Government	27	754	752	751	5,895,540	602.80
State Government	14	296	292	312	2,849,306	730.59

TABLE 6. COUNTY SUMMARY

North American Industry Classification System - Industry Groups	Number of Employing Units	Employment			Total Earnings	Average Weekly Earnings
		Jan	Feb	Mar	Jan - Mar 2021	
PIKE COUNTY - TOTAL	264	2,581	2,563	2,640	\$21,980,207	\$651.64
Natural Resources & Mining	25	151	151	151	1,861,726	948.41
Construction	17	34	37	49	359,181	690.73
Manufacturing	16	412	420	437	4,215,070	766.52
Trade, Transportation & Utilities	68	539	518	536	4,211,781	610.14
Wholesale Trade	8	111	102	109	1,077,827	772.45
Retail Trade	40	352	346	357	2,313,277	506.00
Transportation, Warehousing & Utilities	20	76	70	70	820,677	876.79
Information	7	26	26	26	787,473	2,329.80
Financial Activities	25	233	231	239	2,469,422	810.62
Professional & Business Services	13	62	64	71	805,691	943.80
Education & Health Services	29	264	260	260	1,664,313	489.89
Leisure & Hospitality	26	204	199	219	770,254	285.77
Other Services	19	76	78	78	538,245	535.39
Local Government	10	487	486	481	3,673,872	583.09
State Government	9	93	93	93	623,179	515.45
POINSETT COUNTY - TOTAL	476	5,066	5,032	5,128	\$53,650,932	\$813.15
Natural Resources & Mining	68	247	244	252	2,726,023	846.68
Construction	24	80	80	87	694,066	648.46
Manufacturing	15	758	766	779	9,496,264	951.56
Trade, Transportation & Utilities	117	1,138	1,133	1,151	16,097,045	1,085.54
Wholesale Trade	21	390	393	408	10,755,145	2,083.93
Retail Trade	67	616	612	614	3,808,959	477.19
Transportation, Warehousing & Utilities	29	132	128	129	1,532,941	909.40
Professional & Business Services	27	229	235	236	3,922,149	1,293.02
Education & Health Services	78	756	754	758	6,622,578	673.85
Leisure & Hospitality	46	464	433	473	1,739,786	293.06
Other Services	19	61	60	58	478,468	616.85
Local Government	30	1,001	994	1,006	8,493,210	653.11
State Government	10	103	103	103	894,050	667.70
Other	42	229	230	225	2,487,293	839.17

TABLE 6. COUNTY SUMMARY

North American Industry Classification System - Industry Groups	Number of Employing Units	Employment			Total Earnings	Average Weekly Earnings
		Jan	Feb	Mar	Jan - Mar 2021	
POLK COUNTY - TOTAL	467	5,600	5,542	5,590	\$45,588,167	\$628.76
Natural Resources & Mining	25	169	165	163	2,016,787	936.44
Construction	31	193	182	196	1,813,128	732.77
Manufacturing	36	1,212	1,198	1,205	10,307,687	658.01
Trade, Transportation & Utilities	116	1,098	1,068	1,090	8,330,179	590.40
Wholesale Trade	16	41	41	40	412,042	779.40
Retail Trade	65	828	799	820	5,353,292	504.85
Transportation, Warehousing & Utilities	35	229	228	230	2,564,845	861.55
Information	5	39	41	41	246,724	470.55
Financial Activities	40	198	199	199	2,036,069	788.36
Professional & Business Services	35	139	140	147	1,621,789	878.54
Education & Health Services	79	963	951	942	9,030,932	729.71
Leisure & Hospitality	40	472	471	478	1,635,932	265.67
Other Services	27	154	151	147	1,185,666	605.34
Local Government	21	661	675	671	5,289,724	608.22
State Government	12	302	301	311	2,073,550	523.54
POPE COUNTY - TOTAL	1,813	23,804	23,883	24,286	\$255,360,017	\$818.77
Natural Resources & Mining	39	813	808	818	8,162,111	772.27
Construction	159	1,100	1,093	1,206	14,139,127	959.95
Manufacturing	74	3,344	3,354	3,367	33,805,787	775.10
Trade, Transportation & Utilities	402	5,964	5,925	5,948	81,117,862	1,049.48
Wholesale Trade	72	527	528	529	6,173,300	899.37
Retail Trade	259	3,096	3,064	3,077	21,523,601	537.73
Transportation, Warehousing & Utilities	71	2,341	2,333	2,342	53,420,961	1,757.11
Information	17	109	103	106	994,700	721.84
Financial Activities	194	887	887	891	12,451,214	1,078.18
Professional & Business Services	265	1,949	1,969	2,012	24,256,361	943.95
Education & Health Services	353	3,122	3,110	3,137	30,609,301	753.94
Leisure & Hospitality	148	2,445	2,440	2,560	10,646,434	330.00
Other Services	103	466	460	478	3,739,547	614.65
Local Government	44	2,216	2,201	2,226	19,423,039	674.73
State Government	15	1,389	1,533	1,537	16,014,534	828.81

TABLE 6. COUNTY SUMMARY

North American Industry Classification System - Industry Groups	Number of Employing Units	Employment			Total Earnings	Average Weekly Earnings
		Jan	Feb	Mar	Jan - Mar 2021	
PRAIRIE COUNTY - TOTAL	247	1,416	1,377	1,437	\$12,046,990	\$657.23
Natural Resources & Mining	38	149	143	153	1,640,975	850.98
Construction	12	52	49	54	618,555	920.93
Trade, Transportation & Utilities	58	336	329	354	2,959,558	670.24
Wholesale Trade	12	71	72	74	1,211,387	1,288.25
Retail Trade	33	213	208	225	1,290,328	460.94
Transportation, Warehousing & Utilities	13	52	49	55	457,843	677.28
Financial Activities	16	53	53	53	527,899	766.18
Professional & Business Services	13	56	59	59	536,088	710.99
Education & Health Services	46	254	247	258	2,038,854	619.90
Leisure & Hospitality	18	88	75	77	362,430	348.49
Local Government	15	305	304	304	2,456,850	620.99
State Government	7	29	29	29	253,565	672.59
Other	24	94	89	96	652,216	539.47
PULASKI COUNTY - TOTAL	14,578	229,455	228,429	230,991	\$3,112,705,345	\$1,042.74
Natural Resources & Mining	50	614	616	628	12,567,007	1,560.86
Construction	957	8,992	8,895	9,092	119,394,078	1,021.26
Manufacturing	323	11,683	11,659	11,817	167,450,958	1,099.08
Trade, Transportation & Utilities	3,102	47,839	47,220	47,563	601,567,652	973.37
Wholesale Trade	902	11,375	11,364	11,385	207,467,554	1,403.03
Retail Trade	1,774	23,718	23,340	23,599	193,063,044	630.55
Transportation, Warehousing & Utilities	426	12,746	12,516	12,579	201,037,054	1,226.00
Information	222	2,601	2,617	2,619	66,758,583	1,965.78
Financial Activities	1,757	17,064	17,088	17,066	429,481,211	1,935.08
Professional & Business Services	2,824	33,981	33,783	34,316	482,560,417	1,090.91
Education & Health Services	2,568	41,129	40,924	41,186	513,435,143	961.42
Leisure & Hospitality	1,300	18,662	18,555	19,260	92,661,325	378.62
Other Services	1,161	6,214	6,196	6,271	66,184,192	817.58
Local Government	108	14,323	14,287	14,291	159,550,934	858.24
State Government	206	26,353	26,589	26,882	401,093,845	1,159.55

TABLE 6. COUNTY SUMMARY

North American Industry Classification System - Industry Groups	Number of Employing Units	Employment			Total Earnings	Average Weekly Earnings
		Jan	Feb	Mar	Jan - Mar 2021	
RANDOLPH COUNTY - TOTAL	403	5,855	5,876	5,927	\$49,711,086	\$649.67
Natural Resources & Mining	26	229	230	238	2,843,669	941.51
Construction	25	71	76	80	501,926	510.26
Manufacturing	30	1,731	1,752	1,761	17,649,977	776.71
Trade, Transportation & Utilities	101	910	904	926	7,832,393	659.66
Wholesale Trade	15	107	105	111	1,148,430	820.50
Retail Trade	57	627	625	640	4,399,844	536.65
Transportation, Warehousing & Utilities	29	176	174	175	2,284,119	1,004.01
Information	5	17	18	17	206,562	916.70
Financial Activities	36	149	148	152	1,440,820	740.53
Professional & Business Services	32	272	269	264	1,954,116	560.19
Education & Health Services	63	969	966	970	7,612,807	604.75
Leisure & Hospitality	29	418	434	436	1,603,990	287.38
Other Services	19	43	43	47	314,202	545.17
Local Government	27	800	776	771	5,526,764	543.42
State Government	10	246	260	265	2,223,860	665.63
SAINT FRANCIS COUNTY - TOTAL	640	6,065	5,984	6,091	\$55,469,208	\$705.66
Natural Resources & Mining	43	153	154	162	1,316,782	647.92
Construction	34	178	157	171	1,917,850	874.67
Trade, Transportation & Utilities	140	1,663	1,636	1,660	17,242,059	802.37
Wholesale Trade	28	493	488	493	7,228,929	1,131.76
Retail Trade	88	898	875	890	6,275,658	543.83
Transportation, Warehousing & Utilities	24	272	273	277	3,737,472	1,049.26
Information	5	44	43	43	435,738	773.50
Financial Activities	52	217	198	198	1,763,129	663.75
Professional & Business Services	46	188	190	191	1,836,209	744.71
Education & Health Services	199	1,314	1,296	1,291	13,013,807	769.85
Leisure & Hospitality	48	559	554	587	2,184,551	296.55
Local Government	28	764	754	772	6,139,092	618.65
State Government	13	324	350	358	3,379,549	755.71
Other	32	661	652	658	6240442	730.65

TABLE 6. COUNTY SUMMARY

North American Industry Classification System - Industry Groups	Number of Employing Units	Employment			Total Earnings	Average Weekly Earnings
		Jan	Feb	Mar	Jan - Mar 2021	
SALINE COUNTY - TOTAL	2,164	24,698	24,707	24,999	\$230,630,245	\$715.32
Natural Resources & Mining	15	58	58	61	527,605	687.88
Construction	292	2,284	2,256	2,278	25,327,683	857.27
Manufacturing	79	1,322	1,307	1,312	16,142,010	945.21
Trade, Transportation & Utilities	478	5,718	5,740	5,753	49,591,796	664.94
Wholesale Trade	108	530	541	534	7,923,608	1,139.27
Retail Trade	288	4,501	4,524	4,524	34,495,664	587.54
Transportation, Warehousing & Utilities	82	687	675	695	7,172,524	804.67
Information	22	126	125	135	1,631,249	975.24
Financial Activities	237	890	889	870	12,263,676	1,068.36
Professional & Business Services	289	1,742	1,728	1,771	20,651,571	909.32
Education & Health Services	346	4,605	4,611	4,673	45,437,673	754.96
Leisure & Hospitality	204	3,376	3,408	3,543	14,700,444	328.50
Other Services	155	694	700	709	5,906,648	648.16
Local Government	33	3,094	3,095	3,104	32,015,035	795.02
State Government	14	789	790	790	6,434,855	626.83
SCOTT COUNTY - TOTAL	184	2,963	2,950	2,980	\$22,704,882	\$589.18
Natural Resources & Mining	18	164	170	178	1,632,682	735.88
Trade, Transportation & Utilities	35	312	312	314	2,232,733	549.30
Wholesale Trade	7	22	21	21	150,541	542.82
Retail Trade	22	225	224	224	1,273,564	436.70
Transportation, Warehousing & Utilities	6	65	67	69	808,628	928.39
Financial Activities	15	61	59	59	520,888	671.54
Professional & Business Services	14	125	128	126	788,183	479.92
Education & Health Services	42	294	292	290	3,463,419	912.39
Leisure & Hospitality	19	149	137	142	502,449	270.91
Other Services	9	34	35	35	237,004	525.90
Local Government	6	518	505	508	3,975,303	599.20
State Government	6	31	31	31	294,823	731.57
Other	20	1,275	1,281	1,297	9,057,398	542.48

TABLE 6. COUNTY SUMMARY

North American Industry Classification System - Industry Groups	Number of Employing Units	Employment			Total Earnings Jan - Mar 2021	Average Weekly Earnings
		Jan	Feb	Mar		
SEARCY COUNTY - TOTAL	170	1,398	1,379	1,521	\$9,593,398	\$515.09
Construction	10	5	6	10	29,754	326.97
Manufacturing	15	154	142	150	1,058,235	547.55
Trade, Transportation & Utilities	34	254	253	261	1,597,234	479.94
Wholesale Trade	5	33	34	33	225,927	521.37
Retail Trade	23	203	200	209	1,145,274	431.85
Transportation, Warehousing & Utilities	6	18	19	19	226,033	931.45
Financial Activities	13	49	49	54	538,510	817.58
Education & Health Services	39	316	311	317	2,195,835	536.79
Leisure & Hospitality	15	139	123	148	431,128	242.66
Local Government	10	312	313	315	2,209,764	542.50
State Government	6	43	43	43	352,303	630.24
Other	28	126	139	223	1,180,635	558.31
SEBASTIAN COUNTY - TOTAL	3,691	60,871	60,779	61,349	\$709,058,466	\$894.15
Natural Resources & Mining	36	234	236	236	5,009,131	1,637.33
Construction	260	2,368	2,350	2,401	26,385,780	855.32
Manufacturing	187	10,810	10,868	10,904	140,957,272	998.36
Trade, Transportation & Utilities	878	12,869	12,735	12,763	146,921,160	883.70
Wholesale Trade	219	2,677	2,684	2,690	39,437,762	1,130.42
Retail Trade	547	7,589	7,489	7,491	55,408,880	566.56
Transportation, Warehousing & Utilities	112	2,603	2,562	2,582	52,074,518	1,551.21
Information	39	792	787	770	17,902,532	1,758.77
Financial Activities	409	2,284	2,299	2,293	34,872,948	1,170.39
Professional & Business Services	570	7,472	7,367	7,524	78,277,142	807.76
Education & Health Services	638	11,435	11,398	11,483	158,746,803	1,067.55
Leisure & Hospitality	361	5,427	5,452	5,707	24,881,300	346.19
Other Services	249	1,063	1,064	1,047	9,369,111	681.19
Local Government	43	4,620	4,610	4,604	47,108,443	785.83
State Government	21	1,497	1,613	1,617	18,626,844	909.35

TABLE 6. COUNTY SUMMARY

North American Industry Classification System - Industry Groups	Number of Employing Units	Employment			Total Earnings	Average Weekly Earnings
		Jan	Feb	Mar	Jan - Mar 2021	
SEVIER COUNTY - TOTAL	313	4,662	4,623	4,658	\$41,332,902	\$684.10
Natural Resources & Mining	17	145	149	150	2,130,692	1,107.43
Construction	20	177	161	161	1,956,788	904.94
Trade, Transportation & Utilities	84	770	752	756	6,459,520	654.37
Wholesale Trade	10	71	71	69	909,632	994.86
Retail Trade	59	597	585	596	4,248,850	551.46
Transportation, Warehousing & Utilities	15	102	96	91	1,301,038	1,038.89
Financial Activities	27	189	190	192	1,989,178	803.92
Professional & Business Services	27	183	180	178	1,309,154	558.43
Education & Health Services	60	439	446	467	3,634,740	620.40
Leisure & Hospitality	24	242	236	249	850,678	270.03
Local Government	13	910	894	901	7,027,787	599.56
State Government	8	146	163	172	1,526,412	732.33
Other	33	1,461	1,452	1,432	14,447,953	767.35
SHARP COUNTY - TOTAL	392	3,282	3,270	3,378	\$26,506,025	\$615.99
Construction	26	110	100	107	1,009,262	734.72
Manufacturing	16	134	135	139	1,078,842	610.20
Trade, Transportation & Utilities	87	738	734	755	4,987,024	516.77
Wholesale Trade	15	47	43	44	255,219	439.53
Retail Trade	64	658	659	678	4,290,201	496.26
Transportation, Warehousing & Utilities	8	33	32	33	441,604	1,039.88
Information	8	23	22	17	206,181	767.42
Financial Activities	36	170	178	174	2,860,871	1,264.75
Professional & Business Services	38	109	108	116	1,170,546	811.19
Education & Health Services	81	807	801	829	7,558,104	715.71
Leisure & Hospitality	35	348	339	385	1,386,942	298.57
Local Government	24	720	722	720	5,354,809	571.57
State Government	7	53	53	53	435,354	631.86
Other	34	70	78	83	458,090	457.63

TABLE 6. COUNTY SUMMARY

North American Industry Classification System - Industry Groups	Number of Employing Units	Employment			Total Earnings	Average Weekly Earnings
		Jan	Feb	Mar	Jan - Mar 2021	
STONE COUNTY - TOTAL	281	2,451	2,386	2,479	\$19,154,185	\$604.18
Natural Resources & Mining	5	10	7	7	46,326	445.44
Construction	16	34	29	33	217,634	523.16
Manufacturing	20	273	266	272	1,834,981	522.14
Trade, Transportation & Utilities	66	557	551	559	4,369,406	604.87
Wholesale Trade	5	31	35	34	231,458	534.13
Retail Trade	49	487	478	486	3,574,773	568.54
Transportation, Warehousing & Utilities	12	39	38	39	563,175	1,120.37
Financial Activities	38	128	123	125	1,376,979	845.12
Professional & Business Services	19	39	39	40	257,231	503.06
Education & Health Services	47	532	529	521	5,461,154	796.63
Leisure & Hospitality	31	337	321	396	1,308,692	286.53
Local Government	10	406	388	394	3,233,759	628.16
State Government	7	95	95	95	753,941	610.48
Other	22	40	38	37	294,082	590.13
UNION COUNTY - TOTAL	1,221	16,142	16,091	16,545	\$222,813,836	\$1,054.13
Natural Resources & Mining	83	341	323	353	4,518,378	1,025.27
Construction	75	1,393	1,369	1,541	21,898,613	1,174.42
Manufacturing	50	2,763	2,775	2,805	46,113,331	1,275.50
Trade, Transportation & Utilities	292	3,421	3,355	3,426	37,647,406	851.58
Wholesale Trade	65	453	456	453	8,002,132	1,355.83
Retail Trade	171	2,024	1,992	2,086	14,092,051	532.94
Transportation, Warehousing & Utilities	56	944	907	887	15,553,223	1,310.89
Information	8	54	53	54	646,464	926.61
Financial Activities	95	573	573	579	8,453,855	1,130.95
Professional & Business Services	122	1,762	1,779	1,792	56,411,917	2,441.05
Education & Health Services	265	2,019	2,013	2,020	19,946,747	760.59
Leisure & Hospitality	97	1,253	1,265	1,361	5,356,738	318.68
Other Services	86	387	388	395	2,874,635	566.99
Local Government	32	1,695	1,719	1,736	14,197,550	636.19
State Government	16	481	479	483	4,748,202	759.35

TABLE 6. COUNTY SUMMARY

North American Industry Classification System - Industry Groups	Number of Employing Units	Employment			Total Earnings	Average Weekly Earnings
		Jan	Feb	Mar	Jan - Mar 2021	
VAN BUREN COUNTY - TOTAL	330	3,397	3,433	3,497	\$32,927,088	\$735.80
Natural Resources & Mining	9	37	35	36	608,434	1,300.07
Construction	36	110	105	116	840,638	586.08
Trade, Transportation & Utilities	91	1,022	1,048	1,080	13,359,114	978.69
Wholesale Trade	11	40	37	45	419,349	793.22
Retail Trade	52	563	591	615	4,181,604	545.50
Transportation, Warehousing & Utilities	28	419	420	420	8,758,161	1,605.33
Information	7	32	33	32	346,882	825.25
Financial Activities	38	155	160	165	1,853,580	891.14
Professional & Business Services	29	111	115	115	962,695	651.50
Education & Health Services	50	697	699	709	6,678,687	732.18
Leisure & Hospitality	24	230	238	249	974,640	313.69
Other	29	339	333	327	2,431,187	561.60
Local Government	11	622	625	626	4,501,163	554.58
State Government	6	42	42	42	370,068	677.78
WASHINGTON COUNTY - TOTAL	6,463	105,945	106,065	107,173	\$1,245,489,966	\$900.49
Natural Resources & Mining	41	312	314	316	3,879,674	950.43
Construction	637	6,437	6,338	6,514	81,635,303	976.67
Manufacturing	227	13,977	14,039	14,034	158,495,345	869.82
Trade, Transportation & Utilities	1,358	22,507	22,505	22,457	254,440,367	870.28
Wholesale Trade	381	3,628	3,626	3,648	74,804,661	1,583.44
Retail Trade	781	12,628	12,701	12,656	100,474,781	610.41
Transportation, Warehousing & Utilities	196	6,251	6,178	6,153	79,160,925	983.10
Information	93	802	806	794	13,963,319	1,341.51
Financial Activities	767	3,836	3,908	3,891	61,020,984	1,210.29
Professional & Business Services	1,218	13,333	13,336	13,514	214,616,385	1,232.53
Education & Health Services	928	15,964	15,948	16,074	192,680,166	926.62
Leisure & Hospitality	705	11,188	11,300	11,805	52,838,214	355.57
Other Services	406	2,122	2,106	2,159	22,015,115	795.43
Local Government	61	8,730	8,742	8,881	92,263,670	807.94
State Government	22	6,737	6,723	6,734	97,641,424	1,115.81

TABLE 6. COUNTY SUMMARY

North American Industry Classification System - Industry Groups	Number of Employing Units	Employment			Total Earnings Jan - Mar 2021	Average Weekly Earnings
		Jan	Feb	Mar		
WHITE COUNTY - TOTAL	1,795	23,887	23,719	24,302	\$232,161,547	\$745.06
Natural Resources & Mining	40	337	336	351	6,227,026	1,403.33
Construction	167	1,236	1,129	1,303	13,360,069	840.54
Manufacturing	56	2,214	2,226	2,250	25,792,986	889.72
Trade, Transportation & Utilities	473	6,327	6,240	6,460	61,127,115	741.38
Wholesale Trade	81	571	552	558	6,782,882	931.16
Retail Trade	310	3,553	3,521	3,673	26,872,176	577.02
Transportation, Warehousing & Utilities	82	2,203	2,167	2,229	27,472,057	960.71
Information	23	100	94	99	900,058	708.89
Financial Activities	189	941	946	955	12,226,994	992.83
Professional & Business Services	183	1,180	1,186	1,189	10,031,141	651.16
Education & Health Services	321	5,496	5,514	5,536	59,873,633	835.07
Leisure & Hospitality	166	2,469	2,427	2,517	9,846,910	306.54
Other Services	116	523	517	522	4,545,323	671.52
Local Government	46	2,637	2,634	2,633	23,563,654	687.98
State Government	15	427	470	487	4,666,638	778.12
WOODRUFF COUNTY - TOTAL	185	1,730	1,715	1,765	\$16,716,576	\$740.44
Natural Resources & Mining	34	183	182	202	1,836,093	747.29
Construction	12	30	26	31	200,895	532.88
Manufacturing	5	217	217	216	2,494,645	885.67
Trade, Transportation & Utilities	45	336	341	352	3,524,183	790.35
Wholesale Trade	14	135	136	141	1,782,501	998.41
Retail Trade	22	137	141	143	817,790	448.27
Transportation, Warehousing & Utilities	9	64	64	68	923,892	1,087.78
Financial Activities	10	40	40	41	385,152	734.56
Education & Health Services	40	242	236	244	2,283,842	729.97
Leisure & Hospitality	11	87	83	83	347,667	317.12
Local Government	9	373	368	368	2,947,152	613.27
State Government	5	29	29	29	290,613	770.86
Other	14	193	193	199	2,406,334	949.24

TABLE 6. COUNTY SUMMARY

North American Industry Classification System - Industry Groups	Number of Employing Units	Employment			Total Earnings	Average Weekly Earnings
		Jan	Feb	Mar	Jan - Mar 2021	
YELL COUNTY - TOTAL	420	6,330	6,309	6,387	\$52,757,756	\$639.91
Natural Resources & Mining	27	247	244	243	2,910,904	915.19
Construction	32	224	217	224	2,041,734	708.53
Manufacturing	21	2,400	2,390	2,426	19,503,646	623.73
Trade, Transportation & Utilities	90	733	719	742	5,620,867	591.21
Wholesale Trade	17	69	64	66	403,126	467.48
Retail Trade	51	514	513	526	3,258,711	484.23
Transportation, Warehousing & Utilities	22	150	142	150	1,959,030	1,022.81
Financial Activities	31	157	161	163	2,112,929	1,013.72
Professional & Business Services	39	321	319	324	2,501,678	598.87
Education & Health Services	101	688	690	687	5,217,485	583.07
Leisure & Hospitality	24	258	255	262	1,017,024	302.84
Local Government	23	1,111	1,120	1,122	10,028,134	690.18
State Government	10	66	66	66	547,363	637.95
Other	22	125	128	128	1,255,992	760.75
STATEWIDE COUNTY - TOTAL	13,500	38,051	38,314	38,873	\$692,623,633	\$1,387.01
Natural Resources & Mining	111	190	193	197	3,592,043	1,429.19
Construction	976	3,487	3,531	3,810	53,982,373	1,150.49
Manufacturing	114	220	234	232	6,793,896	2,285.46
Trade, Transportation & Utilities	3,832	7,921	8,049	8,344	231,299,180	2,195.31
Wholesale Trade	3,112	6,063	6,126	6,230	195,776,554	2,452.86
Retail Trade	306	792	854	936	19,931,678	1,781.42
Transportation, Warehousing & Utilities	414	1,066	1,069	1,178	15,590,948	1,086.00
Information	850	1,399	1,446	1,452	38,264,222	2,054.97
Financial Activities	1,011	2,939	2,994	2,967	66,652,080	1,728.23
Professional & Business Services	5,238	16,915	16,760	16,431	225,856,772	1,040.21
Education & Health Services	772	2,805	2,844	2,901	34,824,841	939.94
Leisure & Hospitality	132	470	456	461	2,826,187	470.22
State Government	17	695	695	695	7,381,094	816.94
Other	447	1,010	1,112	1,383	21,150,945	1,392.58

Note: Statewide classification includes employment and payroll data for employers that have not provided a physical location for each employing unit. This section also includes employers without a physical location in Arkansas.

TABLE 7. FEDERAL GOVERNMENT EMPLOYMENT AND EARNINGS IN ARKANSAS

North American Industry Classification System - Industry Groups	Number of Employing Units	Employment			Total Earnings Jan - Mar 2021	Average Weekly Earnings
		Jan	Feb	Mar		
TOTAL	1,191	20,394	20,345	20,339	\$353,936,087	\$1,337.27
Trade, Transportation & Utilities	584	5,549	5,579	5,576	72,917,679	1,007.37
Information	2	36	36	36	555,188	1,186.30
Financial Activities	14	112	113	113	2,245,407	1,533.05
Professional & Business Services	32	832	836	849	15,155,443	1,389.52
Education & Health Services	20	5,374	5,387	5,384	111,718,480	1,596.85
Leisure & Hospitality	23	239	235	240	2,776,049	897.24
Other Services	1	1	1	1	9,085	698.85
Public Administration	515	8,251	8,158	8,140	148,558,756	1,396.50

TABLE 8. LOCAL WORKFORCE DEVELOPMENT AREA SUMMARY

North American Industry Classification System - Industry Groups	Number of Employing Units	Employment			Total Earnings Jan - Mar 2021	Average Weekly Earnings
		Jan	Feb	Mar		
CENTRAL LOCAL WORKFORCE DEVELOPMENT AREA	7,062	81,596	81,384	82,805	\$803,701,338	\$754.60
Natural Resources & Mining	210	944	999	1,049	10,016,985	772.60
Construction	847	6,221	6,049	6,277	67,663,460	841.90
Manufacturing	229	5,654	5,703	5,740	68,801,680	928.66
Trade, Transportation & Utilities	1,532	17,198	17,120	17,370	149,235,654	666.29
Wholesale Trade	339	1,916	1,938	1,974	28,988,873	1,147.86
Retail Trade	931	13,231	13,187	13,356	96,320,708	558.85
Transportation, Warehousing & Utilities	262	2,051	1,995	2,040	23,926,073	907.23
Information	70	1,781	1,740	1,759	45,291,415	1,979.52
Financial Activities	782	3,222	3,242	3,231	46,992,317	1,118.55
Professional & Business Services	942	6,074	6,055	6,182	71,086,409	895.89
Education & Health Services	1,138	14,665	14,688	14,774	144,653,064	756.49
Leisure & Hospitality	655	10,407	10,349	10,848	45,199,941	330.05
Other Services	459	1,840	1,827	1,898	14,887,428	617.35
Local Government	138	9,512	9,502	9,570	98,083,732	791.87
State Government	60	4,078	4,110	4,107	41,789,253	784.36
Note: Pulaski County is not included in the Central Local Workforce Development Area. Please refer to Page 51 for information on Pulaski County. Central Local Workforce Development Area includes these counties: Faulkner, Lonoke, Monroe, Prairie, and Saline.						
EASTERN LOCAL WORKFORCE DEVELOPMENT AREA	3,234	32,042	31,702	32,213	\$290,762,901	\$699.26
Natural Resources & Mining	244	966	965	1,041	8,128,394	631.15
Construction	129	779	715	738	9,000,872	930.61
Manufacturing	73	3,401	3,222	3,273	34,729,717	809.88
Trade, Transportation & Utilities	739	8,322	8,240	8,340	82,175,973	761.53
Wholesale Trade	141	1,812	1,800	1,824	23,755,978	1,008.49
Retail Trade	400	4,177	4,155	4,214	28,805,190	529.84
Transportation, Warehousing & Utilities	198	2,333	2,285	2,302	29,614,805	987.60
Information	26	118	117	118	1,139,979	745.25
Financial Activities	258	1,107	1,099	1,083	13,561,229	951.51
Professional & Business Services	251	1,469	1,555	1,600	15,055,842	751.39
Education & Health Services	908	5,533	5,471	5,508	50,288,290	702.82
Leisure & Hospitality	273	3,566	3,547	3,718	16,880,441	359.66
Other Services	152	654	650	660	5,294,021	622.05
Local Government	126	4,423	4,392	4,379	38,880,034	680.03
State Government	55	1,704	1,729	1,755	15,628,109	695.16
Eastern Local Workforce Development Area includes these counties: Crittenden, Cross, Lee, Phillips, and Saint Francis.						

TABLE 8. LOCAL WORKFORCE DEVELOPMENT AREA SUMMARY

North American Industry Classification System - Industry Groups	Number of Employing Units	Employment			Total Earnings Jan - Mar 2021	Average Weekly Earnings
		Jan	Feb	Mar		
NORTH CENTRAL LOCAL WORKFORCE DEVELOPMENT AREA	5,432	66,620	66,186	67,788	\$632,892,532	\$728.10
Natural Resources & Mining	202	1,384	1,374	1,457	18,820,950	1,030.44
Construction	437	2,733	2,567	2,913	29,014,861	815.26
Manufacturing	219	9,021	8,956	9,094	98,635,207	840.82
Trade, Transportation & Utilities	1,371	14,840	14,692	15,106	141,139,135	729.66
Wholesale Trade	222	1,441	1,397	1,439	16,801,359	906.53
Retail Trade	903	9,494	9,454	9,739	70,219,462	564.87
Transportation, Warehousing & Utilities	246	3,905	3,841	3,928	54,118,314	1,069.80
Information	80	350	342	346	3,453,409	767.77
Financial Activities	546	2,635	2,655	2,688	35,437,340	1,025.05
Professional & Business Services	500	3,314	3,314	3,345	29,231,719	676.40
Education & Health Services	926	13,971	13,957	14,042	149,756,667	823.43
Leisure & Hospitality	506	5,949	5,880	6,295	24,092,543	306.77
Other Services	328	1,265	1,252	1,265	10,050,145	613.24
Local Government	224	8,624	8,577	8,584	70,176,938	628.07
State Government	93	2,534	2,620	2,653	23,083,618	682.33

North Central Local Workforce Development Area includes these counties: Cleburne, Fulton, Independence, Izard, Jackson, Sharp, Stone, Van Buren, White, and Woodruff.

NORTHEAST LOCAL WORKFORCE DEVELOPMENT AREA	6,501	99,475	98,946	100,604	\$1,071,383,581	\$826.83
Natural Resources & Mining	450	1,847	1,774	1,907	17,236,564	719.55
Construction	492	3,682	3,560	3,789	45,374,377	949.23
Manufacturing	298	20,987	21,061	21,353	309,905,292	1,128.00
Trade, Transportation & Utilities	1,670	19,131	18,935	19,391	190,163,901	763.77
Wholesale Trade	348	3,790	3,756	3,877	58,222,494	1,176.22
Retail Trade	980	11,811	11,697	11,989	87,783,321	570.69
Transportation, Warehousing & Utilities	342	3,530	3,482	3,525	44,158,086	967.10
Information	58	584	579	583	8,055,004	1,064.63
Financial Activities	578	3,227	3,211	3,227	43,362,965	1,035.37
Professional & Business Services	669	7,148	7,186	7,105	65,102,020	700.76
Education & Health Services	1,040	17,040	16,906	17,120	192,364,068	869.30
Leisure & Hospitality	584	8,695	8,663	9,006	37,028,770	324.12
Other Services	357	1,516	1,516	1,561	12,888,334	647.56
Local Government	217	11,411	11,332	11,333	103,439,391	700.51
State Government	88	4,207	4,223	4,229	46,462,895	847.00

Northeast Local Workforce Development Area includes these counties: Clay, Craighead, Greene, Lawrence, Mississippi, Poinsett, and Randolph.

TABLE 8. LOCAL WORKFORCE DEVELOPMENT AREA SUMMARY

North American Industry Classification System - Industry Groups	Number of Employing Units	Employment			Total Earnings Jan - Mar 2021	Average Weekly Earnings
		Jan	Feb	Mar		
NORTHWEST LOCAL WORKFORCE DEVELOPMENT AREA	17,537	277,884	278,667	282,173	\$4,310,850,683	\$1,186.10
Natural Resources & Mining	143	1,531	1,502	1,561	18,959,332	952.38
Construction	1,708	13,796	13,527	13,914	165,553,426	926.46
Manufacturing	646	37,551	37,766	37,762	412,233,766	841.28
Trade, Transportation & Utilities	3,939	62,593	62,557	63,042	814,194,338	998.40
Wholesale Trade	1,257	11,134	11,145	11,221	289,408,386	1,993.63
Retail Trade	2,149	31,792	31,764	32,063	247,014,461	596.15
Transportation, Warehousing & Utilities	533	19,667	19,648	19,758	277,771,491	1,085.12
Information	267	2,239	2,238	2,203	42,713,691	1,475.60
Financial Activities	1,884	9,949	10,000	9,954	168,501,094	1,300.37
Professional & Business Services	3,092	49,326	49,907	50,573	1,749,168,718	2,694.51
Education & Health Services	2,481	35,815	35,874	36,107	399,954,191	856.22
Leisure & Hospitality	1,866	27,250	27,432	28,806	131,981,337	364.81
Other Services	1,098	5,243	5,170	5,304	48,724,656	715.41
Local Government	311	23,696	23,669	23,913	240,838,304	779.74
State Government	102	8,895	9,025	9,034	118,027,830	1,010.51
Northwest Local Workforce Development Area includes these counties: Baxter, Benton, Boone, Carroll, Madison, Marion, Newton, Searcy, and Washington.						
SOUTHEAST LOCAL WORKFORCE DEVELOPMENT AREA	6,183	64,947	64,651	65,332	\$647,629,254	\$766.70
Natural Resources & Mining	448	2,221	2,213	2,304	22,258,062	762.31
Construction	348	1,997	1,966	2,072	21,305,623	814.69
Manufacturing	214	13,586	13,578	13,684	178,503,004	1,008.45
Trade, Transportation & Utilities	1,279	11,692	11,525	11,722	109,357,384	722.30
Wholesale Trade	223	1,749	1,764	1,829	23,296,410	1,006.38
Retail Trade	760	7,334	7,239	7,291	49,831,752	525.96
Transportation, Warehousing & Utilities	296	2,609	2,522	2,602	36,229,222	1,081.16
Information	44	223	231	232	2,310,425	777.22
Financial Activities	448	2,495	2,490	2,494	33,140,920	1,022.58
Professional & Business Services	469	3,363	3,259	3,307	33,834,999	786.39
Education & Health Services	1,862	9,632	9,588	9,633	88,818,889	710.38
Leisure & Hospitality	415	5,000	4,920	5,008	23,563,312	364.26
Other Services	322	1,033	1,036	1,066	8,352,902	614.86
Local Government	210	8,170	8,173	8,064	71,600,838	676.99
State Government	124	5,535	5,672	5,746	54,582,896	743.00
Southeast Local Workforce Development Area includes these counties: Arkansas, Ashley, Bradley, Chicot, Cleveland, Desha, Drew, Grant, Jefferson, and Lincoln.						

TABLE 8. LOCAL WORKFORCE DEVELOPMENT AREA SUMMARY

North American Industry Classification System - Industry Groups	Number of Employing Units	Employment			Total Earnings Jan - Mar 2021	Average Weekly Earnings
		Jan	Feb	Mar		
SOUTHWEST LOCAL WORKFORCE DEVELOPMENT AREA	5,523	73,089	72,940	74,157	\$805,528,080	\$844.25
Natural Resources & Mining	331	2,036	2,037	2,062	24,368,891	916.64
Construction	350	3,047	2,957	3,218	38,669,151	967.65
Manufacturing	222	18,838	18,850	19,016	275,665,512	1,121.88
Trade, Transportation & Utilities	1,309	13,645	13,457	13,664	131,024,655	741.71
Wholesale Trade	234	1,724	1,769	1,763	24,465,224	1,074.17
Retail Trade	770	8,385	8,283	8,505	56,707,902	519.86
Transportation, Warehousing & Utilities	305	3,536	3,405	3,396	49,851,529	1,112.91
Information	47	311	304	306	4,240,452	1,062.50
Financial Activities	454	2,415	2,414	2,427	29,530,498	939.19
Professional & Business Services	441	4,478	4,551	4,620	78,793,565	1,332.20
Education & Health Services	1,205	9,217	9,166	9,291	82,479,157	687.78
Leisure & Hospitality	443	5,338	5,407	5,622	21,969,054	309.76
Other Services	329	1,313	1,291	1,321	9,671,231	568.62
Local Government	263	9,116	9,113	9,181	76,318,824	642.54
State Government	129	3,335	3,393	3,429	32,797,090	745.16
Southwest Local Workforce Development Area includes these counties: Calhoun, Columbia, Dallas, Hempstead, Howard, Lafayette, Little River, Miller, Nevada, Ouachita, Sevier, and Union						
WEST CENTRAL LOCAL WORKFORCE DEVELOPMENT AREA	8,151	101,397	101,503	103,073	\$974,355,085	\$734.87
Natural Resources & Mining	254	2,362	2,352	2,363	24,783,087	808.14
Construction	766	4,329	4,229	4,482	46,843,708	828.99
Manufacturing	335	14,465	14,439	14,606	154,636,650	820.17
Trade, Transportation & Utilities	1,784	21,405	21,298	21,461	218,567,710	786.09
Wholesale Trade	311	1,855	1,843	1,864	24,251,597	1,006.21
Retail Trade	1,183	14,038	14,000	14,084	102,467,505	561.38
Transportation, Warehousing & Utilities	290	5,512	5,455	5,513	91,848,608	1,286.15
Information	77	633	623	630	7,158,441	875.90
Financial Activities	844	3,710	3,702	3,711	47,238,244	980.05
Professional & Business Services	938	7,958	7,826	7,876	82,509,709	804.76
Education & Health Services	1,465	16,648	16,597	16,654	168,846,142	780.87
Leisure & Hospitality	834	11,692	11,999	12,739	57,325,280	363.13
Other Services	507	2,074	2,075	2,137	15,747,151	578.10
Local Government	235	11,494	11,485	11,503	106,327,223	711.59
State Government	112	4,627	4,878	4,911	44,371,740	710.30
West Central Local Workforce Development Area includes these counties: Clark, Conway, Garland, Hot Spring, Johnson, Montgomery, Perry, Pike, Pope, and Yell						

TABLE 8. LOCAL WORKFORCE DEVELOPMENT AREA SUMMARY

North American Industry Classification System - Industry Groups	Number of Employing Units	Employment			Total Earnings	Average Weekly Earnings
		Jan	Feb	Mar	Jan - Mar 2021	
WESTERN LOCAL WORKFORCE DEVELOPMENT AREA	6,456	97,918	97,768	98,685	\$1,040,506,530	\$815.69
Natural Resources & Mining	142	1,016	1,041	1,087	13,538,860	993.75
Construction	512	3,865	3,812	3,896	40,631,449	810.20
Manufacturing	332	20,096	20,158	20,248	231,078,235	881.39
Trade, Transportation & Utilities	1,546	21,698	21,535	21,660	231,292,602	822.51
Wholesale Trade	332	3,587	3,589	3,607	51,501,075	1,102.19
Retail Trade	928	12,106	11,980	12,046	86,871,586	554.83
Transportation, Warehousing & Utilities	286	6,005	5,966	6,007	92,919,941	1,192.74
Information	67	918	915	900	19,222,535	1,623.11
Financial Activities	673	3,282	3,293	3,282	45,889,938	1,074.36
Professional & Business Services	851	9,614	9,509	9,673	98,048,819	785.76
Education & Health Services	1,114	15,472	15,416	15,508	194,523,098	967.54
Leisure & Hospitality	570	8,098	8,110	8,449	35,625,211	333.42
Other Services	415	1,833	1,833	1,829	15,684,123	658.67
Local Government	165	9,467	9,461	9,453	88,412,926	718.90
State Government	69	2,559	2,685	2,700	26,558,734	771.52

Western Local Workforce Development Area includes these counties: Crawford, Franklin, Logan, Polk, Scott, and Sebastian