

ARKANSAS

COVERED EMPLOYMENT & EARNINGS

THIRD QUARTER 2021



Arkansas Division of
Workforce Services



**COVERED EMPLOYMENT AND EARNINGS
STATE OF ARKANSAS
THIRD QUARTER 2021**

**ASA HUTCHINSON, GOVERNOR
STATE OF ARKANSAS**

**CHARISSE CHILDERS, DIRECTOR
DIVISION OF WORKFORCE SERVICES**

**PUBLISHED BY
LABOR MARKET INFORMATION
BUREAU OF LABOR STATISTICS PROGRAMS
POST OFFICE BOX 2981
LITTLE ROCK, ARKANSAS 72203-2981
SUSAN PRICE, BLS PROGRAMS MANAGER
TELEPHONE (501) 682-3103**

STATE OF ARKANSAS WEBPAGE: <http://www.arkansas.gov>

DIVISION OF WORKFORCE SERVICES WEBPAGE: <http://www.dws.arkansas.gov/>

WEBPAGE FOR LABOR MARKET INFORMATION: <http://www.discover.arkansas.gov>

RELEASED: JANUARY 2022

TABLE OF CONTENTS

DESCRIPTION OF DATA	PAGE
Description and Classification of Data	1
Definition of Covered Employment and Earnings	2
Significant Developments During Third Quarter 2021	3

LIST OF GRAPHS AND TABLES

Graph 1	Total Covered Employment for Selected Years, Arkansas	7
Graph 2	Total Covered Earnings, by Calendar Quarter for Selected Years, Arkansas	8
Table 1	Quarterly Comparison of Covered Employment and Wages, by Industry	5
Table 2	Total Covered Employment in Arkansas, 2014 – 2021	6
Table 3	Total Covered Earnings, 2014 – 2021	9
Table 4	Total Taxable Earnings, 2014 – 2021	10
Table 5	State Summary – Employment and Total Earnings, by Industry, Third Quarter 2021	11
Table 6	County Summary – Employment and Total Earnings, by Industry, Third Quarter 2021	22
Table 7	Federal Government Employment and Total Earnings in Arkansas, Third Quarter 2021	60
Table 8	Local Workforce Development Area – Employment and Total Earnings, by Industry, Third Quarter 2021	61

EMPLOYMENT AND EARNINGS
UNDER THE ARKANSAS EMPLOYMENT SECURITY LAW
THIRD QUARTER 2021

DESCRIPTION AND CLASSIFICATION OF DATA

This publication contains covered employment and payroll data by industry and county for the Third Quarter 2021 and a record for total covered employment by month, quarterly payroll data, average weekly earnings, and total taxable earnings for 2014 through 2021. These data are compiled from quarterly contributions and wage reports submitted by employers subject to the Arkansas Employment Security Law.

Employment data have been tabulated for each month of the quarter by industry under the **North American Industry Classification System** (NAICS) by state, county, and workforce area. Payroll data represent the total wages paid during the quarter and are classified by industry for the state and by publishable industry groups for each county and workforce area.

Due to industry classification revisions, previously published data will not always be comparable with current data. For this reason, comparisons should not be made between the same industries under different revisions. For more information, visit the NAICS home page at <http://www.census.gov/naics>.

Industry Classification Revisions

- SIC (Standard Industrial Classification) 1987 to NAICS 2002
- NAICS 2002 to NAICS 2007
- NAICS 2007 to NAICS 2012
- NAICS 2012 to NAICS 2018

The tabulation of this data is a joint effort in conjunction with the United States Bureau of Labor Statistics. Data included in this publication are subject to revisions. Revisions are typically reflected in the Annual Covered Employment and Earnings publication.

DEFINITION OF COVERED EMPLOYMENT AND EARNINGS

Covered Employment is the total number of workers employed by establishments subject to the Arkansas Employment Security Law that worked or received pay for the payroll period including the 12th of the month. Earnings include all wages paid to any covered employee by their employer including salaries, bonuses, commissions, fees, fringe benefits, sick pay made directly to employees or dependents, deferred compensation, and reported tips. These wages include both taxable and nontaxable wages. Only the first \$10,000 paid to each worker by an employer in the calendar year is taxable under the Arkansas Employment Security Law.

An Arkansas state unemployment insurance account is required of any entity meeting the definition of an employer. As described by Arkansas Division of Workforce Services Law, the definition of an employer includes, but is not limited to, a sole proprietorship, partnership, corporation, associations, trust, estate, and receiver or trustee in bankruptcy. The entity must employ one or more individuals for ten or more days in a calendar year, whether or not the days are consecutive.

Currently excluded from coverage is employment covered by the Railroad Unemployment Insurance Act, some domestic service workers, employees of small agricultural establishments, self-employed workers, unpaid family workers, insurance and real estate agents paid only on a commission basis, and employees of churches and religious organizations except separately incorporated schools.

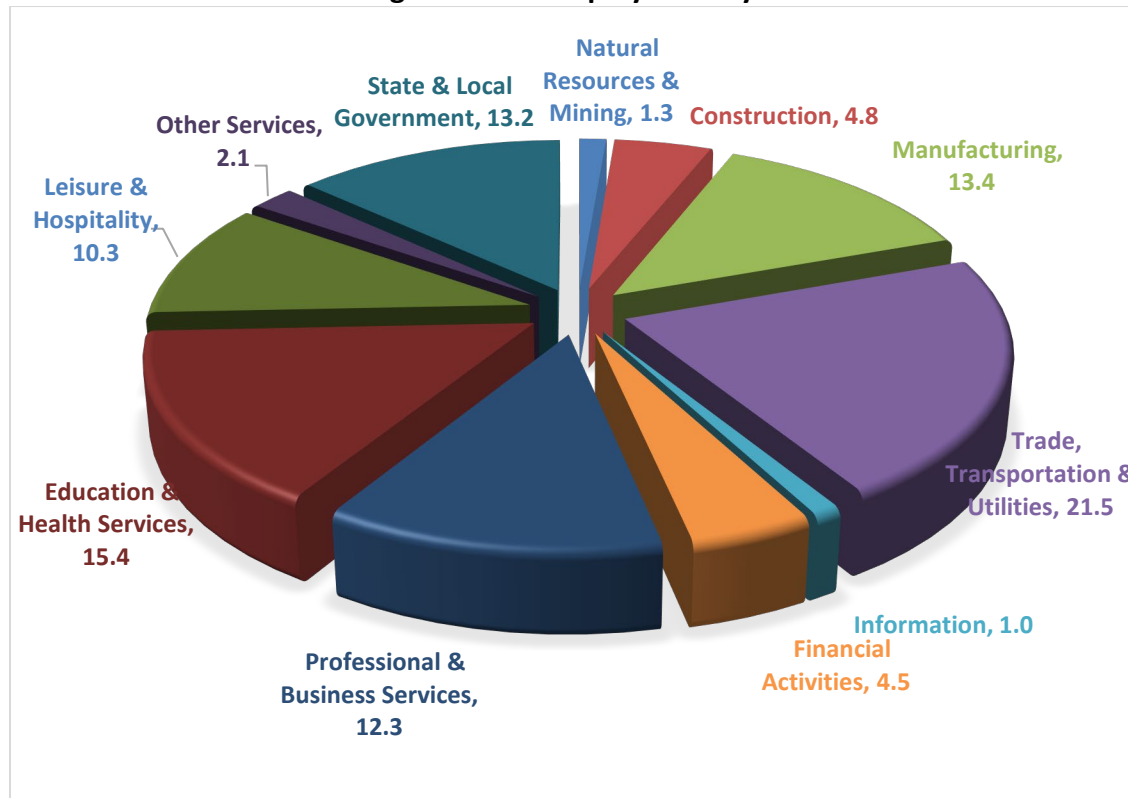
Civilian federal workers are covered by Unemployment Compensation for Federal Employees (UCFE).

SIGNIFICANT DEVELOPMENTS DURING THIRD QUARTER 2021

AVERAGE EMPLOYMENT CHANGES

Covered employment averaged 1,173,101 during the Third Quarter 2021 (refer to Table 1), a decrease of 10,414 (-0.9%) from the previous quarter and a gain of 41,560 (3.7%) from the average recorded one year ago. The over-the-year comparison is more significant when used as an economic indicator and allows for seasonal factors that appear when comparing over-the-quarter data to be disregarded.

Average Covered Employment by NAICS



EMPLOYMENT CHANGES FROM SECOND QUARTER 2021

Gains were recorded in seven major industry groups. (refer to Table 1). Significant gains occurred in Trade, Transportation & Utilities (4,414), Leisure & Hospitality (3,881) and Manufacturing (1,577). Losses were reported in four major industry groups. Large losses occurred in State & Local Government (-19,720) and Professional & Business Services (-1,044).

EMPLOYMENT CHANGES FROM THIRD QUARTER 2020 (QUARTER YEAR AGO COMPARISON)

Over-the-year gains were recorded in nine major industry groups. (refer to Table 1). Large increases occurred in Leisure & Hospitality (13,263), Professional & Business Services (8,706), Trade, Transportation & Utilities (8,364), Manufacturing (4,824), Construction (2,693), Other Services (1,399) and Education & Health Services (1,267). Small Losses were reported in two major industry sectors.

COVERED WAGES

Wages paid to covered workers totaled \$14,562,361,042 for the Third Quarter 2021 (refer to Table 1), for an average weekly wage of \$954.89 (refer to Table 5). Calhoun County workers recorded the highest average weekly wage (\$1,216.18), and employees in Montgomery reported the lowest (\$587.08) (refer to Table 6). Information recorded the highest average weekly wage for the State of Arkansas (\$1,320.51). The Leisure & Hospitality sector recorded the lowest (\$398.64) (refer to Table 5).

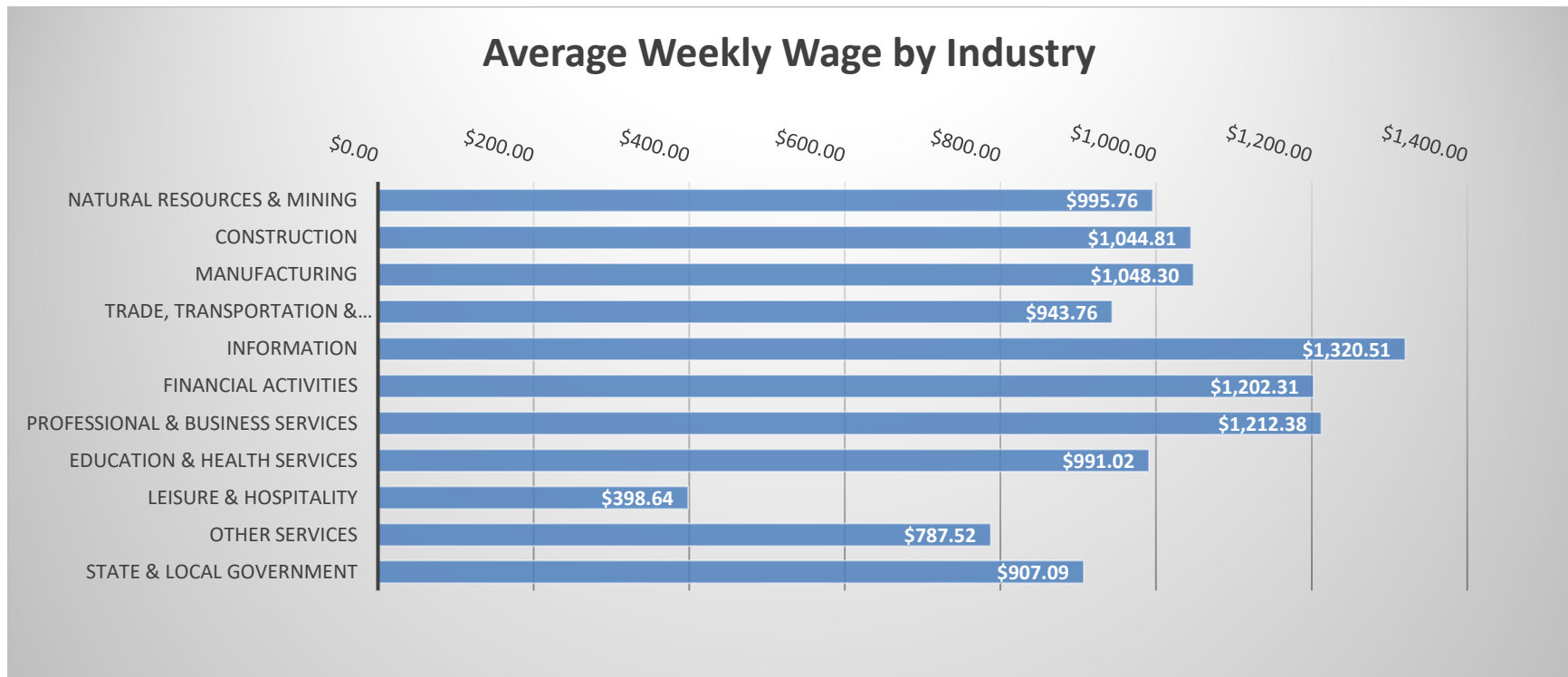


TABLE 1. QUARTERLY COMPARISON OF COVERED EMPLOYMENT AND WAGES, BY INDUSTRY

North American Industry Classification System - Industry Groups	Number of Employing Units	Monthly Employment Average	Percent of Total	Net Change From:		Total Wages Paid Jul - Sep 2021	Percent of Total
				Apr - Jun 2021	Jul - Sep 2020		
TOTAL	96,242	1,173,101	100	-10,414	41,560	\$14,562,361,042	100
Natural Resources & Mining	2,579	15,458	1.3	-316	-246	200,097,721	1.4
Agriculture, Forestry, Fishing & Hunting	2,167	12,096	1.0	-278	-206	145,722,663	1.0
Mining	412	3,362	0.3	-38	-40	54,375,058	0.4
Construction	7,694	56,252	4.8	635	2,693	764,045,926	5.2
Manufacturing	3,064	157,606	13.4	1,577	4,824	2,147,842,853	14.7
Trade, Transportation & Utilities	22,315	252,645	21.5	4,417	8,364	3,099,677,098	21.3
Wholesale Trade	7,531	47,806	4.1	554	2,052	936,033,023	6.4
Retail Trade	11,110	139,502	11.9	1,187	2,781	1,177,242,514	8.1
Transportation & Warehousing	3,253	57,799	4.9	2,625	3,908	818,921,852	5.6
Utilities	421	7,538	0.6	51	-376	167,479,709	1.2
Information	2,048	11,787	1.0	343	729	202,337,448	1.4
Financial Activities	9,435	52,948	4.5	255	1,134	827,584,896	5.7
Finance & Insurance	5,527	38,628	3.3	86	395	671,512,987	4.6
Real Estate & Rental & Leasing	3,908	14,320	1.2	169	739	156,071,909	1.1
Professional & Business Services	16,992	144,514	12.3	-1,044	8,706	2,277,684,815	15.6
Professional & Technical Services	10,819	44,730	3.8	167	2,842	757,732,083	5.2
Management of Companies & Enterprises	545	34,495	2.9	798	897	879,745,914	6.0
Administrative & Waste Services	5,628	65,290	5.6	-2,009	4,967	640,206,818	4.4
Education & Health Services	15,662	180,779	15.4	-543	1,267	2,329,009,420	16.0
Educational Services	1,080	12,178	1.0	-138	1,015	124,557,360	0.9
Health Care & Social Assistance	14,582	168,601	14.4	-404	252	2,204,452,060	15.1
Leisure & Hospitality	7,718	120,684	10.3	3,881	13,263	625,431,975	4.3
Arts, Entertainment & Recreation	1,099	12,626	1.1	938	1,936	80,656,669	0.6
Accommodation & Food Services	6,619	108,059	9.2	2,942	11,328	544,775,306	3.7
Other Services	5,678	25,089	2.1	101	1,399	256,855,726	1.8
State & Local Government	3,057	155,339	13.2	-19,720	-573	1,831,793,164	12.6
Local Government	1,998	92,446	7.9	-17,701	1,570	919,929,985	6.3
State Government	1,059	62,894	5.4	-2,018	-2,143	911,863,179	6.3
Nonclassifiable Establishments	0	0	0.0	0	0	0	0.0

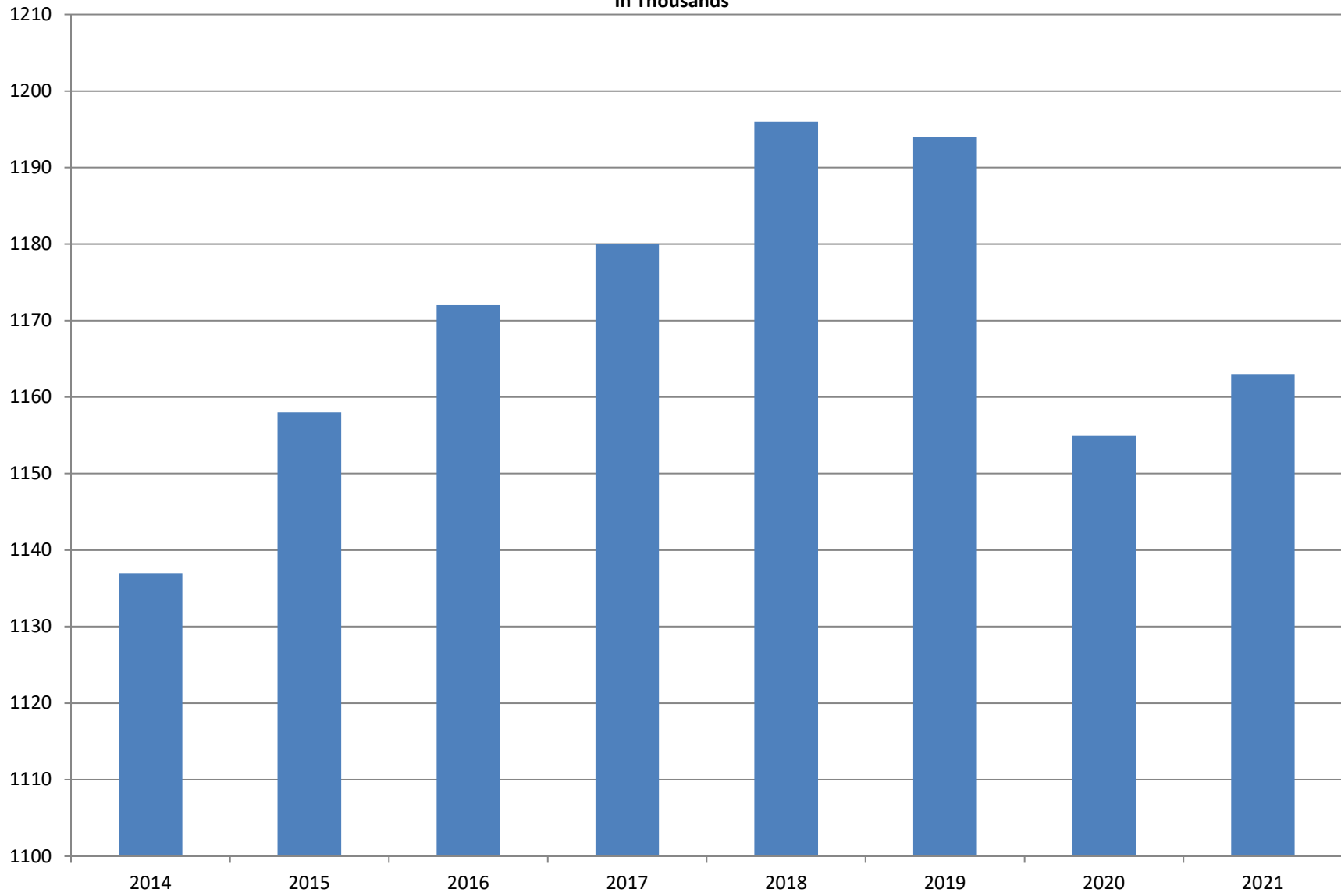
Note: Items do not necessarily add to total because of rounding. Because of industry code changes between years, substantial employment and wage shifts among industries are anticipated.

TABLE 2. TOTAL COVERED EMPLOYMENT IN ARKANSAS

PERIOD	2014	2015	2016	2017	2018	2019	2020	2021
AVERAGE	1,137,486	1,157,634	1,171,503	1,180,337	1,195,781	1,194,322	1,155,490	1,163,279
January	1,114,412	1,135,577	1,152,434	1,161,239	1,173,537	1,186,848	1,195,722	1,162,474
February	1,122,905	1,144,902	1,162,294	1,172,290	1,183,185	1,194,355	1,200,543	1,160,490
March	1,132,106	1,146,413	1,170,837	1,179,686	1,190,199	1,198,481	1,199,702	1,176,694
April	1,140,788	1,158,606	1,178,630	1,185,212	1,194,816	1,204,176	1,090,183	1,181,663
May	1,149,046	1,167,657	1,181,644	1,189,900	1,201,113	1,206,476	1,120,448	1,184,368
June	1,144,876	1,164,607	1,177,506	1,186,326	1,195,468	1,202,260	1,137,765	1,184,514
July	1,096,675	1,119,390	1,132,361	1,137,883	1,168,432	1,155,337	1,099,733	1,148,094
August	1,125,162	1,148,502	1,160,743	1,168,802	1,200,284	1,185,213	1,137,611	1,078,344
September	1,150,545	1,173,776	1,185,510	1,193,845	1,222,012	1,202,177	1,157,279	1,192,866
October	1,153,684	1,173,953	1,185,022	1,194,194	1,205,161	1,209,366	1,170,351	
November	1,158,579	1,177,717	1,186,046	1,197,650	1,208,638	1,194,675	1,177,588	
December	1,161,056	1,180,513	1,185,009	1,197,013	1,206,531	1,192,501	1,178,954	

AVERAGE TOTAL COVERED EMPLOYMENT

In Thousands



TOTAL COVERED EARNINGS BY CALENDAR YEAR

In Millions

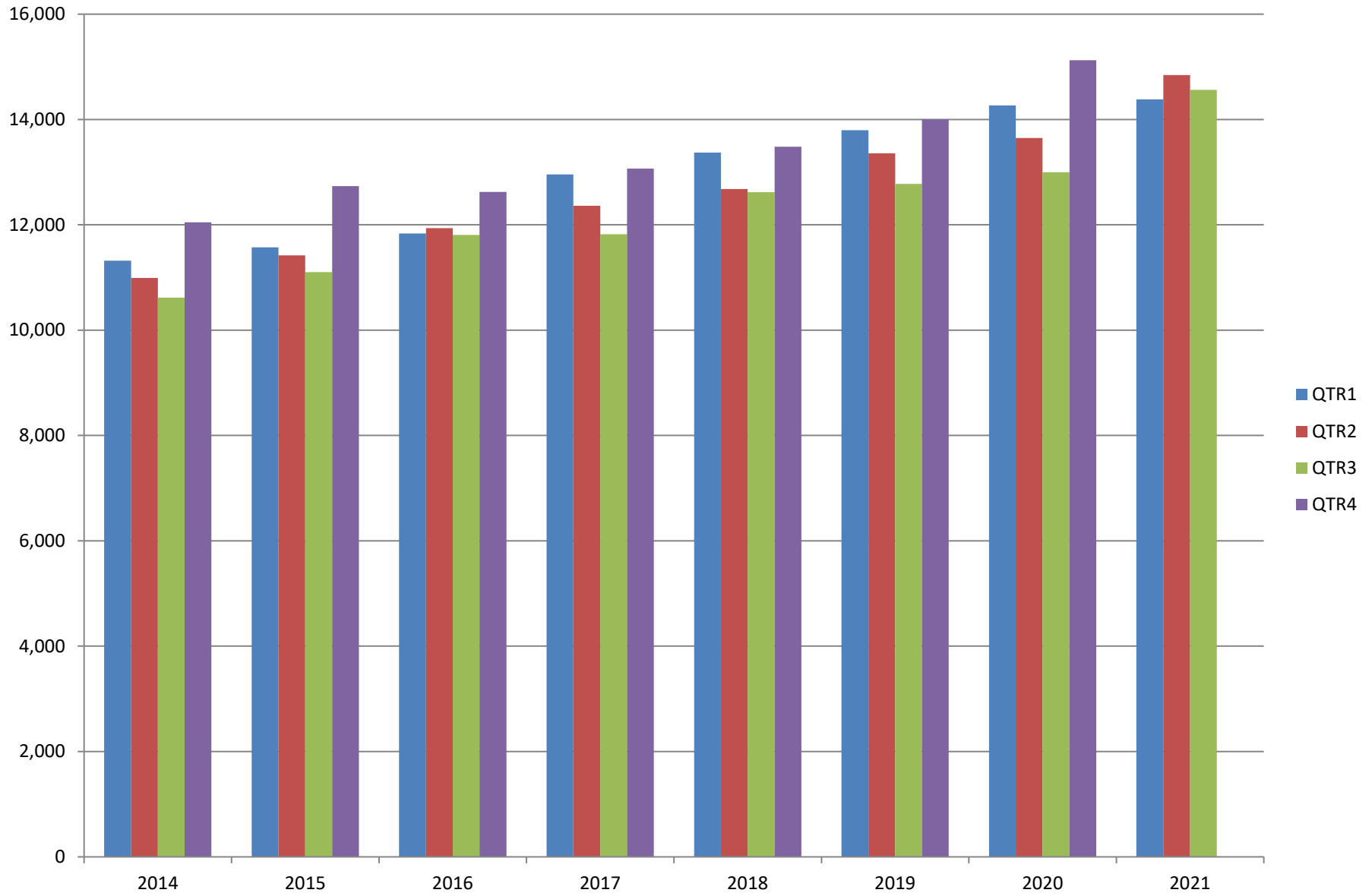


TABLE 3. TOTAL COVERED EARNINGS 2014- 2021

PERIOD	2014	2015	2016	2017
TOTAL	\$44,980,520,034	\$46,836,352,793	\$48,207,277,530	\$50,207,202,141
January - March	11,321,422,241	11,575,046,688	11,836,255,664	12,955,088,347
April - June	10,991,760,061	11,419,363,330	11,935,722,186	12,363,027,711
July - September	10,619,889,280	11,104,443,452	11,809,460,297	11,823,324,966
October - December	12,047,448,452	12,737,499,323	12,625,839,383	13,065,761,117
Average Weekly Earnings	\$760.46	\$778.05	\$791.34	\$818.01

PERIOD	2018	2019	2020	2021
TOTAL	\$52,159,789,393	\$53,931,077,907	\$56,042,071,520	\$43,789,493,612
January - March	13,372,730,974	13,795,046,820	14,268,302,306	14,382,938,962
April - June	12,682,491,819	13,356,848,831	13,651,304,330	14,844,193,608
July - September	12,619,347,460	12,776,218,481	12,998,944,628	14,562,361,042
October - December	13,485,219,140	14,002,963,775	15,123,520,256	
Average Weekly Earnings	\$838.84	\$868.39	\$932.71	\$965.21

TABLE 4. TOTAL TAXABLE EARNINGS, 2014 - 2021

PERIOD	2014	2015	2016	2017
TOTAL	11,919,662,224	12,258,632,610	12,511,938,047	12,744,039,136
January - March	6,288,682,396	6,378,966,662	6,595,351,454	6,958,706,950
April - June	2,831,013,392	2,915,293,283	3,003,077,908	2,908,226,426
July - September	1,552,243,963	1,640,978,599	1,651,582,584	1,576,968,648
October - December	1,247,722,473	1,323,394,066	1,261,926,101	1,300,137,112

PERIOD	2018	2019	2020	2021
TOTAL	11,335,932,409	11,498,854,755	8,525,235,479	10,603,048,664
January - March	6,577,871,657	6,737,833,125	5,589,526,770	6,792,133,353
April - June	2,278,450,975	2,283,514,220	1,172,837,688	2,317,659,412
July - September	1,328,868,479	1,327,818,133	864,579,237	1,493,255,899
October - December	1,150,741,298	1,149,689,277	898,291,784	

TABLE 5. STATEWIDE SUMMARY

North American Industry Classification System - Industry Groups		Number of Employing Units	Employment			Total Earnings	Average Weekly Earnings
			Jul	Aug	Sep	Jul - Sep 2021	
TOTAL, ALL INDUSTRIES		96,242	1,148,094	1,178,344	1,192,866	\$14,562,361,042	\$954.89
NATURAL RESOURCES & MINING		2,579	15,655	15,436	15,282	\$200,097,721	\$995.76
11	AGRICULTURE, FORESTRY, FISHING & HUNTING	2,167	12,273	12,088	11,926	\$145,722,663	\$926.73
111	CROP PRODUCTION	966	3,994	3,931	4,097	\$36,024,657	\$691.51
1111	Oilseed & Grain Farming	707	2,540	2,482	2,621	22,468,585	678.41
1112	Vegetable & Melon Farming	31	149	122	126	1,379,692	801.99
1113	Fruit & Tree Nut Farming	16	66	70	66	565,352	645.87
1114	Greenhouse & Nursery Production	44	557	564	572	5,434,854	740.81
1119	Other Crop Farming	168	682	693	712	6,176,174	682.93
112	ANIMAL PRODUCTION & AQUACULTURE	358	3,228	3,209	3,209	\$44,422,330	\$1,062.75
1121	Cattle Ranching & Farming	138	437	440	440	3,465,337	607.21
1122	Hog & Pig Farming	11	132	131	133	1,704,562	993.33
1123	Poultry & Egg Production	140	2,245	2,234	2,226	35,299,541	1,214.92
1125	Animal Aquaculture	39	329	319	318	3,339,918	797.88
	Other	30	85	85	92	612,972	539.90
115	SUPPORT ACTIVITIES FOR AGRICULTURE & FORESTRY	418	2,877	2,743	2,410	\$37,871,495	\$1,088.37
1151	Support Activities for Crop Production	285	1,507	1,486	1,521	21,800,219	1,114.49
1152	Support Activities for Animal Production	61	554	540	569	5,230,774	725.86
1153	Support Activities for Forestry	72	816	717	320	10,840,502	1,350.06
	OTHER	425	2,174	2,205	2,210	\$27,404,181	\$959.79
21	MINING	412	3,382	3,348	3,356	\$54,375,058	\$1,244.11
211	OIL & GAS EXTRACTION	67	439	430	435	\$8,437,137	\$1,493.12
212	MINING (EXCEPT OIL & GAS)	103	1,918	1,910	1,924	\$29,771,791	\$1,194.44
213	SUPPORT ACTIVITIES FOR MINING	242	1,025	1,008	997	\$16,166,130	\$1,231.24

TABLE 5. STATEWIDE SUMMARY

North American Industry Classification System - Industry Groups		Number of Employing Units	Employment			Total Earnings Jul - Sep 2021	Average Weekly Earnings
			Jul	Aug	Sep		
CONSTRUCTION		7,694	56,477	56,171	56,109	\$764,045,926	\$1,044.81
236	CONSTRUCTION OF BUILDINGS	2,013	11,060	11,025	11,090	\$159,590,127	\$1,110.13
2361	Residential Building Construction	1,379	4,172	4,152	4,168	51,580,526	952.87
2362	Nonresidential Building Construction	634	6,888	6,873	6,922	108,009,601	1,205.11
237	HEAVY & CIVIL ENGINEERING CONSTRUCTION	791	9,392	9,453	9,465	\$140,744,344	\$1,147.28
2371	Utility System Construction	471	5,032	5,113	5,125	76,980,265	1,163.37
2372	Land Subdivision	47	81	81	84	927,317	869.90
2373	Highway, Street & Bridge Construction	173	3,485	3,451	3,449	52,142,395	1,158.68
2379	Other Heavy Construction	100	794	808	807	10,694,367	1,024.46
238	SPECIALTY TRADE CONTRACTORS	4,890	36,025	35,693	35,554	\$463,711,455	\$997.56
2381	Building Foundation & Exterior Contractors	941	6,041	5,960	5,975	77,979,923	1,001.08
2382	Building Equipment Contractors	2,386	20,521	20,369	20,300	276,454,908	1,042.61
2383	Building Finishing Contractors	792	3,899	3,884	3,838	43,820,931	870.19
2389	Other Specialty Trade Contractors	771	5,564	5,480	5,441	65,455,693	916.30
MANUFACTURING		3,064	157,627	157,254	157,937	2,147,842,853	\$1,048.30
311	FOOD MANUFACTURING	319	48,865	48,799	49,311	\$582,446,470	\$914.51
3111	Animal Food Manufacturing	42	2,009	2,049	2,045	27,414,550	1,036.61
3112	Grain & Oilseed Milling	32	2,741	2,741	2,770	35,780,776	1,000.62
3114	Fruit, Vegetable & Specialty Food	15	4,431	4,391	4,479	59,278,234	1,028.46
3115	Dairy Product Manufacturing	10	488	483	481	6,991,757	1,111.21
3116	Animal Slaughtering & Processing	95	32,666	32,603	32,968	369,123,829	867.11
3118	Bakeries & Tortilla Manufacturing	86	4,193	4,191	4,216	53,052,879	971.66
3119	Other Food Manufacturing	30	2,300	2,304	2,305	30,510,911	1,019.10
	Other	9	37	37	47	293,534	559.82
312	BEVERAGE & TOBACCO PRODUCT MANUFACTURING	76	1,693	1,754	1,762	\$23,712,341	\$1,050.50
313	TEXTILE MILLS	16	139	146	147	\$2,176,516	\$1,162.67
314	TEXTILE PRODUCT MILLS	40	769	772	757	\$10,196,272	\$1,023.93
3141	Textile Furnishing Mills	7	18	18	19	129,669	544.07
3149	Other Textile Product Mills	33	751	754	738	10,066,603	1,035.69
315	APPAREL MANUFACTURING	22	639	625	628	\$5,156,560	\$628.95
3151	Apparel Knitting Mills	5	353	342	339	2,706,564	604.05
	Other	17	286	283	289	2,449,996	658.96

TABLE 5. STATEWIDE SUMMARY

North American Industry Classification System - Industry Groups		Number of Employing Units	Employment			Total Earnings	Average Weekly Earnings
			Jul	Aug	Sep	Jul - Sep 2021	
316	LEATHER & ALLIED PRODUCT MANUFACTURING	11	911	890	863	\$6,892,007	\$597.02
3162	Footwear Manufacturing	3	703	686	662	4,789,518	\$538.89
3169	Other Leather & Allied Product Manufacturing	8	208	204	201	2,102,489	\$791.50
321	WOOD PRODUCT MANUFACTURING	300	10,152	10,104	10,151	\$126,565,105	\$960.55
3211	Sawmills & Wood Preservation	133	4,905	4,866	4,843	64,441,691	1,017.60
3212	Veneer & Engineered Wood Products	37	2,027	2,004	2,031	28,944,529	1,101.87
3219	Other Wood Product Manufacturing	130	3,220	3,234	3,277	33,178,885	786.83
322	PAPER MANUFACTURING	71	8,507	8,476	8,518	\$147,751,665	\$1,337.07
3221	Pulp, Paper & Paperboard Mills	16	3,097	3,080	3,092	69,715,521	1,735.70
3222	Converted Paper Product Manufacturing	55	5,410	5,396	5,426	78,036,144	1,109.43
323	PRINTING & RELATED SUPPORT ACTIVITIES	257	3,031	3,094	3,086	\$35,147,690	\$880.58
324	PETROLEUM & COAL PRODUCTS MANUFACTURING	23	1,140	1,129	1,122	\$21,959,104	\$1,494.39
325	CHEMICAL MANUFACTURING	143	5,472	5,443	5,382	\$92,527,920	\$1,310.22
3251	Basic Chemical Manufacturing	32	1,865	1,859	1,851	35,987,049	1,489.63
3252	Resin, Rubber & Artificial Fibers	12	402	394	386	6,893,556	1,345.87
3253	Agricultural Chemical Manufacturing	19	470	467	444	7,987,185	1,334.68
3254	Pharmaceutical & Medicine Manufacturing	35	472	483	494	7,681,830	1,223.42
3255	Paint, Coating & Adhesive Manufacturing	10	220	216	200	3,140,673	1,139.58
3256	Soap, Cleaning Compound, & Toilet Preparation Manufacturing	16	1,430	1,409	1,403	20,935,155	1,138.89
3259	Other Chemical Preparation Manufacturing	19	613	615	604	9,902,472	1,247.37
326	PLASTICS & RUBBER PRODUCTS MANUFACTURING	123	10,721	10,724	10,759	\$149,292,589	\$1,069.81
3261	Plastics Product Manufacturing	95	6,517	6,540	6,544	83,105,683	978.43
3262	Rubber Product Manufacturing	28	4,204	4,184	4,215	66,186,906	1,211.93
327	NONMETALLIC MINERAL PRODUCT MANUFACTURING	218	3,508	3,449	3,475	\$49,012,977	\$1,084.23
3271	Clay Product & Refractory Manufacturing	10	484	479	479	6,549,872	1,048.20
3272	Glass & Glass Product Manufacturing	7	390	388	389	5,397,421	1,067.32
3273	Cement & Concrete Product Manufacturing	163	2,061	2,030	2,048	29,743,409	1,118.08
3274	Lime & Gypsum Product Manufacturing	3	284	282	288	4,485,642	1,212.12
3279	Other Nonmetallic Mineral Products Manufacturing	35	289	270	271	2,836,633	788.68
331	PRIMARY METAL MANUFACTURING	71	7,892	7,854	7,717	\$167,699,414	\$1,649.40
3311	Iron & Steel Mills & Ferroalloys	13	3,720	3,767	3,763	111,511,278	2,287.41
3312	Purchased Steel Product Manufacturing	21	1,650	1,554	1,388	22,837,178	1,147.67
3313	Alumina & Aluminum Production	14	882	876	891	13,413,748	1,168.55
3314	Other Nonferrous Metal Production	5	253	267	271	3,545,333	1,034.33
3315	Foundries	18	1,387	1,390	1,404	16,391,877	904.75

TABLE 5. STATEWIDE SUMMARY

North American Industry Classification System - Industry Groups		Number of Employing Units	Employment			Total Earnings	Average Weekly Earnings
			Jul	Aug	Sep	Jul - Sep 2021	
332	FABRICATED METAL PRODUCT MANUFACTURING	526	15,230	15,263	15,376	\$214,926,022	\$1,081.30
3321	Forging & Stamping	12	428	465	458	6,009,514	1,026.51
3322	Cutlery & Hand Tool Manufacturing	15	671	675	664	9,293,059	1,066.94
3323	Architectural & Structural Metals	161	4,798	4,785	4,832	70,607,471	1,130.35
3324	Boilers, Tanks & Shipping Containers	15	550	595	615	8,106,377	1,062.90
3325	Hardware Manufacturing	4	249	247	249	3,475,033	1,076.42
3326	Spring & Wire Product Manufacturing	9	313	308	290	4,180,859	1,059.07
3327	Machine Shops & Threaded Products	202	2,142	2,144	2,145	29,170,784	1,046.76
3328	Coating, Engraving & Heat Treating Metals	39	560	541	556	7,341,017	1,022.38
3329	Other Fabricated Metal Product Manufacturing	69	5,519	5,503	5,567	76,741,908	1,067.56
333	MACHINERY MANUFACTURING	224	11,643	11,520	11,621	\$163,347,294	\$1,083.70
3331	Agriculture, Construction & Mining Machinery	36	3,088	2,903	2,973	33,669,262	866.78
3332	Industrial Machinery Manufacturing	27	643	634	638	11,936,823	1,438.46
3333	Commercial & Service Industry Machinery	23	822	818	816	11,305,965	1,062.32
3334	HVAC & Commercial Refrigeration Equipment	23	2,562	2,592	2,563	34,406,326	1,028.89
3335	Metalworking Machinery Manufacturing	54	1,077	1,057	1,086	13,902,484	996.36
3336	Turbine & Power Transmission Equipment Manufacturing	7	236	248	239	3,443,630	1,099.15
3339	Other General Purpose Machinery Manufacturing	54	3,215	3,268	3,306	54,682,804	1,289.11
334	COMPUTER & ELECTRONIC PRODUCT MANUFACTURING	57	1,737	1,720	1,660	\$26,273,856	\$1,184.91
3344	Semiconductors & Electronic Components	27	1,269	1,254	1,192	19,438,581	1,207.49
3345	Navigational, Measuring, Electromedical, & Control Instr, Mfg Other	22 8	302 166	298 168	298 170	4,943,353 1,891,922	1,270.35 866.26
335	ELECTRICAL EQUIPMENT & APPLIANCES	58	4,332	4,321	4,380	61,520,491	\$1,089.31
3353	Electrical Equipment Manufacturing	24	2,709	2,729	2,756	39,781,329	1,120.37
3359	Other Electrical Equipment & Component Manufacturing Other	17 17	1,279 344	1,280 312	1,298 326	18,044,941 3,694,221	1,079.65
336	TRANSPORTATION EQUIPMENT MANUFACTURING	143	14,247	14,176	14,204	\$186,591,033	\$1,010.15
3362	Motor Vehicle Body & Trailer Manufacturing	29	2,175	2,105	2,120	24,228,798	873.63
3363	Motor Vehicle Parts Manufacturing	46	4,677	4,688	4,712	59,392,686	973.65
3364	Aerospace Product & Parts Manufacturing	29	4,106	4,107	4,071	65,210,089	1,225.05
3366	Ship & Boat Building Other	21 18	2,032 1,257	2,033 1,243	2,083 1,218	22,218,447 15,541,013	833.98 964.60
337	FURNITURE & RELATED PRODUCT MANUFACTURING	157	3,417	3,423	3,462	\$35,919,691	\$804.62
3371	Household & Institutional Furniture Other	126 31	2,824 593	2,820 603	2,867 595	28,654,979 7,264,712	776.96 936.05
339	MISCELLANEOUS MANUFACTURING	209	3,582	3,572	3,556	\$38,727,836	\$834.47
3391	Medical Equipment & Supplies Manufacturing	88	1,769	1,757	1,768	20,137,848	877.82
3399	Other Miscellaneous Manufacturing	121	1,813	1,815	1,788	18,589,988	792.10

TABLE 5. STATEWIDE SUMMARY

North American Industry Classification System - Industry Groups		Number of Employing Units	Employment			Total Earnings Jul - Sep 2021	Average Weekly Earnings
			Jul	Aug	Sep		
TRADE, TRANSPORTATION & UTILITIES		22,315	250,147	253,005	254,782	\$3,099,677,098	\$943.76
42	WHOLESALE TRADE	7,531	47,974	48,022	47,421	\$936,033,023	\$1,506.15
423	MERCHANT WHOLESALERS, DURABLE GOODS	3,692	25,253	25,267	24,988	\$465,855,015	\$1,423.76
4231	Motor Vehicle & Part Merchant Wholesalers	312	3,263	3,280	3,285	63,194,037	1,483.85
4232	Furniture & Furnishings Merchant Wholesalers	127	538	538	507	10,046,444	1,464.57
4233	Lumber & Supply Merchant Wholesalers	275	1,665	1,662	1,614	25,597,730	1,195.54
4234	Commercial Goods Merchant Wholesalers	769	3,467	3,489	3,380	80,586,310	1,799.23
4235	Metal & Mineral Merchant Wholesalers	132	1,052	1,049	1,018	21,478,529	1,589.16
4236	Appliances & Electronics Goods Merchant Wholesalers	390	2,861	2,851	2,871	55,266,574	1,485.94
4237	Hardware & Plumbing Merchant Wholesalers	331	2,892	2,878	2,834	46,827,216	1,255.96
4238	Machinery & Supply Merchant Wholesalers	1,011	7,481	7,474	7,426	131,550,254	1,356.41
4239	Miscellaneous Durable Goods Merchant Wholesalers	345	2,034	2,046	2,053	31,307,921	1,178.04
424	MERCHANT WHOLESALERS, NONDURABLE GOODS	2,260	18,390	18,429	18,284	\$366,000,265	\$1,532.79
4241	Paper & Paper Product Merchant Wholesalers	126	1,319	1,322	1,324	25,369,294	1,476.53
4242	Druggist' Goods Merchant Wholesalers	328	1,713	1,712	1,749	53,879,451	2,403.12
4243	Apparel & Piece Goods Merchant Wholesalers	130	763	773	769	11,886,155	1,190.00
4244	Grocery Product Merchant Wholesalers	608	6,056	6,095	6,045	131,134,859	1,663.11
4245	Farm Product & Raw Material Merchant Wholesalers	92	843	916	959	10,052,584	853.51
4246	Chemical Merchant Wholesalers	232	1,148	1,165	1,111	32,101,795	2,163.58
4247	Petroleum Merchant Wholesalers	160	919	937	902	15,212,276	1,272.85
4248	Alcoholic Beverage Merchant Wholesalers	84	1,689	1,693	1,690	30,783,078	1,400.59
4249	Miscellaneous Nondurable Goods Merchant Wholesaler	500	3,940	3,816	3,735	55,580,773	1,116.21
425	ELECTRONIC MARKETS & AGENTS & BROKERS	1,579	4,331	4,326	4,149	\$104,177,743	\$1,877.32
44 - 45	RETAIL TRADE	11,110	138,598	139,857	140,050	\$1,177,242,514	\$649.15
441	MOTOR VEHICLE & PARTS DEALERS	1,559	19,476	19,482	19,194	\$292,607,346	\$1,161.18
4411	Automobile Dealers	620	11,527	11,535	11,307	207,535,082	1,393.49
4412	Other Motor Vehicle Dealers	183	1,994	1,975	1,973	31,199,679	1,211.70
4413	Automotive Parts, Accessories & Tire Stores	756	5,955	5,972	5,914	53,872,585	696.83
442	FURNITURE & HOME FURNISHINGS STORES	480	3,432	3,424	3,435	\$36,328,774	\$814.65
4421	Furniture Stores	271	1,976	1,975	1,958	23,678,539	924.74
4422	Home Furnishings Stores	209	1,456	1,449	1,477	12,650,235	666.20
443	ELECTRONICS & APPLIANCE STORES	360	2,973	2,999	2,961	\$31,349,977	\$809.87
444	BUILDING MATERIAL & GARDEN SUPPLY STORES	846	13,338	13,032	12,764	\$112,033,212	\$660.65
4441	Building Material & Supplies Dealers	604	10,904	10,648	10,419	95,327,651	688.08
4442	Lawn & Garden Equipment & Supplies Stores	242	2,434	2,384	2,345	16,705,561	538.20

TABLE 5. STATEWIDE SUMMARY

North American Industry Classification System - Industry Groups		Number of Employing Units	Employment			Total Earnings	Average Weekly Earnings
			Jul	Aug	Sep	Jul - Sep 2021	
445	FOOD & BEVERAGE STORES	1,085	19,805	19,866	19,842	\$129,436,335	\$501.91
4451	Grocery Stores	576	17,088	17,122	17,106	109,625,388	492.99
4452	Specialty Food Stores	148	778	806	808	7,803,574	752.85
4453	Beer, Wine & Liquor Stores	361	1,939	1,938	1,928	12,007,373	477.34
446	HEALTH & PERSONAL CARE STORES	995	8,615	8,651	8,708	\$86,950,701	\$772.52
447	GASOLINE STATIONS	1,634	12,993	13,043	13,006	\$76,635,465	\$452.98
44711	Gasoline Stations with Convenience Stores	1,543	11,974	12,036	12,012	69,597,232	445.86
44719	Other Gasoline Stations	91	1,019	1,007	994	7,038,233	537.82
448	CLOTHING & CLOTHING ACCESSORIES STORES	918	6,728	6,838	6,670	\$39,609,187	\$451.70
4481	Clothing Stores	703	5,212	5,248	5,187	28,032,531	413.44
4482	Shoe Stores	99	935	1,001	897	5,484,684	446.77
4483	Jewelry, Luggage & Leather Goods Stores	116	581	589	586	6,091,972	800.59
451	SPORTING GOODS, HOBBY, BOOK & MUSIC STORES	435	4,088	4,175	4,138	\$25,207,309	\$469.08
4511	Sporting Goods & Musical Instrument Stores	377	3,743	3,803	3,763	23,212,780	473.68
4512	Book, Periodical & Music Stores	58	345	372	375	1,994,529	421.50
452	GENERAL MERCHANDISE STORES	970	37,268	38,099	39,015	\$267,508,680	\$539.71
4522	Department Stores	98	6,171	6,254	6,375	38,852,592	476.91
4523	Gen. Merchandise Stores, Warehouse clubs & Supercenters	872	31,097	31,845	32,640	228,656,088	552.06
453	MISCELLANEOUS STORE RETAILERS	1,217	7,494	7,775	7,790	\$51,459,233	\$514.99
4531	Florists	159	589	590	585	3,290,072	430.41
4532	Office Supplies, Stationery & Gift Stores	226	1,256	1,373	1,363	8,128,602	469.90
4533	Used Merchandise Stores	255	2,199	2,349	2,294	11,255,623	379.63
4539	Other Miscellaneous Store Retailers	577	3,450	3,463	3,548	28,784,936	634.99
454	NONSTORE RETAILERS	611	2,388	2,473	2,527	\$28,116,295	\$878.23
4541	Electronic Shopping & Mail-Order Houses	380	1,313	1,395	1,426	15,726,210	877.87
4542	Vending Machine Operators	53	345	352	369	3,724,975	806.39
4543	Direct Selling Establishments	178	730	726	732	8,665,110	913.91
48 - 49	TRANSPORTATION & WAREHOUSING	3,253	56,007	57,577	59,814	818,921,852	\$1,089.87
481	AIR TRANSPORTATION	42	703	697	692	\$8,003,284	\$882.84
4811	Scheduled Air Transportation	15	595	592	587	5,977,203	777.54
4812	Nonshceduled Air Transportation	27	108	105	105	2,026,081	1,470.31
484	TRUCK TRANSPORTATION	2,083	31,719	31,517	31,744	\$505,066,820	\$1,227.14
4841	General Freight Trucking	1,293	25,674	25,519	25,737	424,075,919	1,272.11
4842	Specialized Freight Trucking	790	6,045	5,998	6,007	80,990,901	1,035.47

TABLE 5. STATEWIDE SUMMARY

North American Industry Classification System - Industry Groups		Number of Employing Units	Employment			Total Earnings	Average Weekly Earnings
			Jul	Aug	Sep	Jul - Sep 2021	
485	TRANSIT & GROUND PASSENGER TRANSPORTATION	121	1,225	1,228	1,335	\$10,079,887	\$614.08
4853	Taxi & Limousine Service	31	223	220	225	1,701,950	587.96
4854	School & Employee Bus Transportation	18	197	202	300	1,587,242	524.02
4859	Other Ground Passenger Transportation	61	648	665	681	5,290,523	612.28
	Other	11	157	141	129	1,500,172	810.76
486	PIPELINE TRANSPORTATION	37	532	530	533	\$11,823,900	\$1,710.72
488	SUPPORT ACTIVITIES FOR TRANSPORTATION	530	5,568	5,576	5,585	\$82,854,352	\$1,142.94
4881	Support Activities for Air Transportation	124	1,126	1,125	1,111	13,956,086	957.95
4882	Support Activities for Rail Transportation	39	575	568	539	7,918,124	1,086.36
4883	Support Activities for Water Transportation	19	493	508	515	7,738,488	1,177.97
4884	Support Activities for Road Transportation	157	947	928	938	10,211,749	837.74
4885	Freight Transportation Arrangement	181	2,333	2,356	2,391	42,122,376	1,372.96
4889	Other Support Activities for Transportation	10	94	91	91	907,529	758.80
493	WAREHOUSING & STORAGE	208	9,933	11,774	13,569	\$130,868,393	\$856.12
	OTHER	232	6,327	6,255	6,356	70,225,216	\$855.73
22	UTILITIES	421	7,568	7,549	7,497	\$167,479,709	\$1,709.08
2211	Power Generation & Supply	181	5,665	5,652	5,600	139,066,884	1,897.05
2212	Natural Gas Distribution	58	945	944	949	18,310,578	1,488.91
2213	Water, Sewage & Other Systems	182	958	953	948	10,102,247	815.42
	INFORMATION	2,048	11,800	11,854	11,706	\$202,337,448	\$1,320.51
511	PUBLISHING INDUSTRIES, EXCEPT INTERNET	267	1,869	1,871	1,820	\$23,219,425	\$963.73
5111	Newspaper, Book & Directory Publishers	176	1,499	1,496	1,438	15,157,047	789.03
5112	Software Publishers	91	370	375	382	8,062,378	1,650.89
512	MOTION PICTURE & SOUND RECORDING INDUSTRY	174	898	919	911	\$6,348,588	\$537.05
5121	Motion Picture & Video Industries	154	872	895	886	5,995,727	521.53
5122	Sound Recording Industries	20	26	24	25	352,861	1,085.73
515	BROADCASTING, EXCEPT INTERNET	125	1,351	1,360	1,371	\$16,670,138	\$942.42

TABLE 5. STATEWIDE SUMMARY

North American Industry Classification System - Industry Groups		Number of Employing Units	Employment			Total Earnings	Average Weekly Earnings
			Jul	Aug	Sep	Jul - Sep 2021	
517	TELECOMMUNICATIONS	376	3,304	3,315	3,274	\$60,688,504	\$1,415.65
5173	Telecommunications Resellers	275	2,850	2,857	2,839	52,350,915	1,413.64
5174	Satellite Telecommunications Carriers	4	8	5	5	79,092	1,014.00
5179	Other Telecommunications	97	446	453	430	8,258,497	1,434.02
518	DATA PROCESSING, HOSTING & RELATED SERVICES	946	3,902	3,907	3,842	\$88,269,022	\$1,748.33
519	OTHER INFORMATION SERVICES	160	476	482	488	\$7,141,771	\$1,139.77
FINANCIAL ACTIVITIES		9,435	53,194	53,132	52,519	\$827,584,896	\$1,202.31
52	FINANCE & INSURANCE	5,527	38,740	38,698	38,447	\$671,512,987	\$1,337.23
522	CREDIT INTERMEDIATION & RELATED ACTIVITIES	2,099	19,652	19,619	19,522	\$313,908,834	\$1,232.13
5221	Depository Credit Intermediation	1,424	16,154	16,110	16,034	238,322,636	1,138.71
5222	Nondepository Credit Intermediation	445	2,234	2,240	2,218	51,273,406	1,768.13
5223	Activities Related to Credit Intermediation	230	1,264	1,269	1,270	24,312,792	1,475.32
523	FINANCIAL INVESTMENT & RELATED ACTIVITIES	852	3,119	3,094	3,015	\$99,334,697	\$2,484.11
5231	Security & Commodity Contracts Intermediation & Brokerage	356	2,021	2,001	1,928	76,168,066	2,954.16
5239	Other Financial Investment Activities	496	1,098	1,093	1,087	23,166,631	1,630.92
524	INSURANCE CARRIERS & RELATED ACTIVITIES	2,474	15,894	15,912	15,840	\$256,466,579	\$1,242.17
5241	Insurance Carriers	326	7,304	7,278	7,214	131,574,220	1,393.07
5242	Insurance Agencies and Brokerages	2,148	8,590	8,634	8,626	124,892,359	1,114.94
	OTHER	102	75	73	70	\$1,802,877	\$1,908.48
53	REAL ESTATE & RENTAL & LEASING	3,908	14,454	14,434	14,072	\$156,071,909	\$838.38
531	REAL ESTATE	3,292	10,459	10,417	10,142	\$108,243,104	\$805.31
5311	Lessors of Real Estate	1,137	4,115	4,081	3,977	37,399,285	709.00
5312	Offices of Real Estate Agents & Brokers	1,131	2,274	2,258	2,244	25,756,779	877.19
5313	Activities Related to Real Estate	1,024	4,070	4,078	3,921	45,087,040	862.10
532	RENTAL & LEASING SERVICES	593	3,941	3,962	3,874	\$46,900,619	\$919.01
5321	Automotive Equipment Rental & Leasing	126	924	942	929	8,870,934	732.43
5322	Consumer Goods Rental	303	1,784	1,751	1,680	16,400,993	725.76
5323	General Rental Centers	28	186	193	183	2,325,862	955.05
5324	Machinery & Equipment Rental & Leasing	136	1,047	1,076	1,082	19,302,830	1,389.86
533	LESSORS OF NONFINANCIAL INTANGIBLE ASSETS	23	54	55	56	\$928,186	\$1,298.16

TABLE 5. STATEWIDE SUMMARY

North American Industry Classification System - Industry Groups		Number of Employing Units	Employment			Total Earnings Jul - Sep 2021	Average Weekly Earnings
			Jul	Aug	Sep		
PROFESSIONAL & BUSINESS SERVICES		16,992	143,450	144,796	145,297	\$2,277,684,815	\$1,212.38
54	PROFESSIONAL & TECHNICAL SERVICES	10,819	44,906	45,004	44,280	\$757,732,083	\$1,303.09
5411	Legal Services	1,754	6,190	6,151	6,135	86,364,283	1,078.71
5412	Accounting & Bookkeeping Services	1,485	5,682	5,675	5,662	76,725,522	1,040.36
5413	Architectural & Engineering Services	1,151	6,905	6,926	6,857	120,234,992	1,341.19
5414	Specialized Design Services	195	414	424	429	5,611,678	1,022.10
5415	Computer Systems Design & Related Services	2,438	8,977	8,925	8,515	203,422,321	1,777.02
5416	Management & Technical Consulting Services	2,512	6,977	7,123	6,998	137,691,462	1,506.06
5417	Scientific Research & Development Services	203	1,005	990	970	18,909,479	1,471.75
5418	Advertising & Related Services	448	4,140	4,131	4,071	55,031,634	1,028.97
5419	Other Professional & Technical Services	633	4,616	4,659	4,643	53,740,712	891.05
55	MANAGEMENT OF COMPANIES & ENTERPRISES	545	34,464	34,464	34,556	\$879,745,914	\$1,961.83
56	ADMINISTRATIVE & WASTE SERVICES	5,628	64,080	65,328	66,461	\$640,206,818	\$754.28
561	ADMINISTRATIVE & SUPPORT SERVICES	5,264	60,185	61,382	62,543	\$584,416,624	\$732.53
5611	Office Administrative Services	790	3,632	3,686	3,588	66,274,826	1,402.36
5612	Facilities Support Services	68	750	761	756	8,408,530	855.95
5613	Employment Services	1,504	25,700	26,533	28,143	242,984,185	697.64
5614	Business Support Services	466	8,074	8,163	8,038	87,662,081	833.36
5615	Travel Arrangement & Reservation Services	115	252	250	254	2,865,283	874.63
5616	Investigation & Security Services	327	4,666	4,754	4,563	40,886,761	674.78
5617	Services to Buildings & Dwellings	1,797	15,864	15,995	16,033	122,027,348	587.99
5619	Other Support Services	197	1,247	1,240	1,168	13,307,610	840.22
562	WASTE MANAGEMENT & REMEDIATION SERVICES	364	3,895	3,946	3,918	\$55,790,194	\$1,094.88
5621	Waste Collection Services	136	1,332	1,363	1,352	17,073,826	973.59
5622	Waste Treatment & Disposal Services	47	1,112	1,124	1,122	18,719,303	1,286.43
5629	Remediation & Other Waste Services	181	1,451	1,459	1,444	19,997,065	1,059.88
EDUCATION & HEALTH SERVICES		15,662	180,181	181,453	180,702	2,329,009,420	\$991.02
61	EDUCATIONAL SERVICES	1,080	11,394	12,158	12,982	124,557,360	\$786.77
6111	Elementary & Secondary Schools	115	4,177	4,882	5,163	44,101,726	715.60
6113	Colleges & Universities	158	3,639	3,781	4,234	45,144,087	893.93
6115	Technical & Trade Schools	135	827	829	906	13,630,541	1,227.76
6116	Other Schools & Instruction	363	1,892	1,826	1,834	9,806,527	407.61
6117	Educational Support Services	216	610	589	589	8,416,571	1,086.29
	Other	93	249	251	256	3,457,908	1,055.53

TABLE 5. STATEWIDE SUMMARY

North American Industry Classification System - Industry Groups		Number of Employing Units	Employment			Total Earnings Jul - Sep 2021	Average Weekly Earnings
			Jul	Aug	Sep		
62	HEALTH CARE & SOCIAL ASSISTANCE	14,582	168,787	169,295	167,720	\$2,204,452,060	\$1,005.77
621	AMBULATORY HEALTH CARE SERVICES	6,490	61,805	61,949	61,285	\$1,073,461,849	\$1,338.76
6211	Offices of Physicians	2,443	27,214	27,201	27,037	633,420,779	1,794.60
6212	Offices of Dentists	983	7,687	7,731	7,475	105,540,240	1,063.88
6213	Offices of Other Health Practitioners	1,815	10,449	10,438	10,349	113,078,490	835.42
6214	Outpatient Care Centers	454	5,531	5,590	5,617	87,964,682	1,212.78
6215	Medical & Diagnostic Laboratories	216	1,530	1,522	1,512	26,610,399	1,345.50
6216	Home Health Care Services	358	6,449	6,490	6,343	67,523,480	808.13
6219	Other Ambulatory Health Care Services	221	2,945	2,977	2,952	39,323,779	1,022.62
622	HOSPITALS	126	44,105	44,341	44,107	\$662,089,841	\$1,152.67
6221	General Medical & Surgical Hospitals	91	39,331	39,558	39,371	600,740,383	1,172.27
6222	Psychiatric & Substance Abuse Hospitals	12	1,794	1,814	1,754	20,330,882	875.00
6223	Speciality Hospitals	23	2,980	2,969	2,982	41,018,576	1,059.88
623	Residential & Mental Health Facilities	655	27,978	27,690	27,194	\$231,506,481	\$644.74
6231	Nursing Care Facilities (Skilled Nursing Facilities)	270	18,712	18,475	18,078	159,593,037	666.41
6232	Residential Mental Health Facilities	189	4,061	4,035	4,028	32,382,722	616.38
6233	Continuing Care & Assisted Living Facilities	159	4,280	4,289	4,226	31,225,218	563.17
6239	Other Residential Care Facilities	37	925	891	862	8,305,504	715.70
624	SOCIAL ASSISTANCE	7,311	34,899	35,315	35,134	\$237,393,889	\$520.02
6241	Individual & Family Services	6,202	20,797	20,864	20,746	148,236,803	548.15
6242	Emergency & Other Relief Services	176	1,465	1,455	1,440	11,560,450	611.88
6243	Vocational Rehabilitation Services	95	2,625	2,624	2,559	16,930,642	500.39
6244	Child Day Care Services	838	10,012	10,372	10,389	60,665,994	454.94
LEISURE & HOSPITALITY		7,718	121,142	121,296	119,615	\$625,431,975	\$398.64
71	ARTS, ENTERTAINMENT & RECREATION	1,099	13,155	12,736	11,986	80,656,669	\$491.41
711	PERFORMING ARTS & SPECTATOR SPORTS	259	2,525	2,652	2,528	21,666,545	\$648.93
7111	Performing Arts Companies	48	501	471	552	2,593,366	392.70
7112	Spectator Sports	73	1,425	1,379	1,207	13,031,202	749.74
7113	Performing Arts & Sports Promoters	57	484	682	669	5,028,122	632.34
7114	Agents & Managers for Public Figures	19	44	52	31	364,844	662.95
7115	Independent Artists, Writers, & Performers	62	71	68	69	649,011	720.06
712	MUSEUMS, PARKS, & HISTORICAL SITES	58	820	799	777	7,390,022	\$711.77
713	GAMBLING, RECREATIONAL & AMUSEMENT INDUSTRY	782	9,810	9,285	8,681	51,600,102	428.71
72	ACCOMMODATION & FOOD SERVICES	6,619	107,987	108,560	107,629	544,775,306	\$387.81

TABLE 5. STATEWIDE SUMMARY

North American Industry Classification System - Industry Groups		Number of Employing Units	Employment			Total Earnings	Average Weekly Earnings
			Jul	Aug	Sep	Jul - Sep 2021	
721	ACCOMMODATION	970	11,495	11,155	10,806	\$62,948,284	\$434.20
7211	Travel Accommodation	860	10,580	10,508	10,196	58,149,190	428.94
7212	RV Parks & Recreational Camps	92	841	564	527	4,129,449	493.25
7213	Rooming & Boarding Houses	18	74	83	83	669,645	643.89
722	FOOD SERVICES & DRINKING PLACES	5,649	96,492	97,405	96,823	\$481,827,022	\$382.47
7223	Special Food Services	375	3,560	4,813	4,991	24,169,939	417.37
7224	Drinking Places, Alcoholic Beverages	150	961	948	972	5,148,681	412.41
7225	Restaurants & Other Eating Places	5,124	91,971	91,644	90,860	452,508,402	380.45
722511	Full-Service Restaurants	2,154	37,465	37,219	36,974	203,504,903	420.59
722513	Limited-Service Eating Places	2,382	48,783	48,651	48,165	220,697,263	349.80
722514	Cafeterias, Grill Buffets, & Buffets	91	1,299	1,319	1,330	8,020,937	468.84
722515	Snack & Nonalcoholic Beverage Bars	497	4,424	4,455	4,391	20,285,299	352.77
OTHER SERVICES		5,678	25,261	25,152	24,854	\$256,855,726	\$787.52
811	REPAIR & MAINTENANCE	2,326	11,710	11,677	11,688	\$131,501,323	\$865.19
8111	Automotive Repair & Maintenance	1,514	7,385	7,374	7,441	75,941,901	789.42
8112	Electronic Equipment Repair & Maintenance	166	919	917	897	10,543,724	890.29
8113	Commercial Machinery Repair & Maintenance	473	2,692	2,675	2,632	38,617,919	1,114.12
8114	Household Goods Repair & Maintenance	173	714	711	718	6,397,779	688.95
812	PERSONAL & LAUNDRY SERVICES	1,469	7,382	7,408	7,229	\$59,875,447	\$627.52
8121	Personal Care Services	735	2,734	2,710	2,674	18,958,641	538.93
8122	Death Care Services	243	1,502	1,522	1,479	12,876,421	659.89
8123	Drycleaning & Laundry Service	188	1,819	1,806	1,806	18,177,319	772.37
8129	Other Personal Services	303	1,327	1,370	1,270	9,863,066	573.76
813	MEMBERSHIP ASSOCIATIONS & ORGANIZATIONS	1,209	5,371	5,281	5,154	\$59,747,395	\$872.32
8131	Religious Organizations	119	366	367	378	2,861,935	594.46
8132	Grantmaking & Giving Organizations	136	469	461	447	8,251,395	1,382.84
8133	Social Advocacy Organizations	240	1,198	1,192	1,182	15,388,166	994.15
8134	Civic & Social Organizations	206	1,056	989	1,007	5,984,026	452.47
8139	Professional & Similar Organizations	508	2,282	2,272	2,140	27,261,873	939.83
814	PRIVATE HOUSEHOLDS	674	798	786	783	\$5,731,561	\$558.80
	LOCAL GOVERNMENT	1,998	71,375	96,267	109,695	\$919,929,985	\$765.46
	STATE GOVERNMENT	1,059	61,785	62,528	64,368	\$911,863,179	\$1,115.27
	NONCLASSIFIABLE ESTABLISHMENTS	0	0	0	0	\$0	\$0.00

TABLE 6. COUNTY SUMMARY

North American Industry Classification System - Industry Groups	Number of Employing Units	Employment			Total Earnings Jul - Sep 2021	Average Weekly Earnings
		July	Aug	Sep		
ARKANSAS COUNTY - TOTAL	1,093	10,275	10,428	10,332	\$115,076,144	\$855.68
Natural Resources & Mining	67	202	198	198	1,967,662	759.32
Construction	103	350	344	357	3,772,726	828.38
Manufacturing	44	3,677	3,682	3,641	43,933,644	921.68
Trade, Transportation & Utilities	245	2,334	2,293	2,279	27,665,571	924.47
Wholesale Trade	47	440	405	391	5,970,580	1,114.75
Retail Trade	122	1,066	1,057	1,055	8,558,008	621.44
Transportation, Warehousing & Utilities	76	828	831	833	13,136,983	1,216.54
Information	11	65	70	47	483,376	612.90
Financial Activities	86	371	364	362	4,440,276	934.07
Professional & Business Services	125	697	735	712	9,859,143	1,061.19
Education & Health Services	205	1,032	1,038	1,022	11,432,155	853.23
Leisure & Hospitality	93	709	709	709	2,936,747	318.62
Other Services	68	155	144	140	1,248,644	656.37
Local Government	32	536	702	714	5,810,726	686.96
State Government	14	147	149	151	1,525,474	787.54
ASHLEY COUNTY - TOTAL	538	5,503	5,632	5,624	\$61,906,147	\$852.44
Natural Resources & Mining	45	345	325	320	3,651,761	851.23
Construction	36	456	418	451	5,910,367	1,029.38
Manufacturing	26	1,119	1,102	1,113	18,697,915	1,294.21
Trade, Transportation & Utilities	117	1,213	1,227	1,200	11,302,830	716.58
Wholesale Trade	23	184	184	185	2,911,306	1,214.90
Retail Trade	65	730	743	719	4,790,695	504.35
Transportation, Warehousing & Utilities	29	299	300	296	3,600,829	928.45
Information	5	21	21	26	212,578	721.42
Financial Activities	35	179	177	175	1,617,331	702.88
Professional & Business Services	31	150	150	144	1,398,510	726.88
Education & Health Services	132	814	811	801	9,530,124	906.54
Leisure & Hospitality	35	386	404	376	1,691,751	334.82
Other Services	34	120	127	129	976,251	599.17
Local Government	32	603	773	790	5,886,615	627.17
State Government	10	97	97	99	1,030,114	811.33

TABLE 6. COUNTY SUMMARY

North American Industry Classification System - Industry Groups	Number of Employing Units	Employment			Total Earnings Jul - Sep 2021	Average Weekly Earnings
		July	Aug	Sep		
BAXTER COUNTY - TOTAL	1,266	14,535	14,972	15,056	\$147,994,394	\$766.39
Natural Resources & Mining	7	32	32	28	350,214	878.46
Construction	107	557	558	561	5,428,590	747.47
Manufacturing	55	2,622	2,632	2,631	25,079,813	734.01
Trade, Transportation & Utilities	256	2,693	2,699	2,675	23,551,835	673.74
Wholesale Trade	34	164	155	166	1,844,753	877.76
Retail Trade	202	2,344	2,367	2,330	19,667,603	644.61
Transportation, Warehousing & Utilities	20	185	177	179	2,039,479	869.96
Information	23	157	162	155	1,868,752	909.81
Financial Activities	122	723	722	709	10,433,179	1,117.76
Professional & Business Services	162	939	941	931	8,624,973	708.07
Education & Health Services	263	3,860	3,868	3,876	50,560,329	1,005.50
Leisure & Hospitality	127	1,723	1,695	1,640	7,997,740	364.89
Other Services	97	312	309	305	2,382,373	593.71
Local Government	36	682	1,101	1,248	9,099,150	692.78
State Government	11	235	253	297	2,617,446	769.46
BENTON COUNTY - TOTAL	7,459	125,331	126,718	128,718	\$1,948,530,573	\$1,180.93
Natural Resources & Mining	51	782	776	758	13,158,951	1,311.17
Construction	778	5,997	5,978	5,982	79,507,546	1,021.77
Manufacturing	218	12,737	12,678	12,758	171,189,240	1,034.90
Trade, Transportation & Utilities	1,760	31,306	31,434	31,534	490,008,669	1,199.47
Wholesale Trade	766	6,623	6,610	6,538	172,555,869	2,014.09
Retail Trade	777	12,791	12,898	12,875	117,148,214	701.02
Transportation, Warehousing & Utilities	217	11,892	11,926	12,121	200,304,586	1,286.18
Information	121	835	840	810	14,913,319	1,384.92
Financial Activities	798	4,270	4,254	4,216	73,096,715	1,324.06
Professional & Business Services	1,504	33,842	33,947	33,752	760,949,093	1,729.39
Education & Health Services	921	12,429	12,636	12,795	151,980,740	926.37
Leisure & Hospitality	721	13,757	13,816	13,656	79,749,258	446.38
Other Services	485	2,441	2,394	2,357	24,163,446	775.33
Local Government	85	6,080	7,092	9,079	81,634,422	846.65
State Government	17	855	873	1,021	8,179,174	686.61

TABLE 6. COUNTY SUMMARY

North American Industry Classification System - Industry Groups	Number of Employing Units	Employment			Total Earnings Jul - Sep 2021	Average Weekly Earnings
		July	Aug	Sep		
BOONE COUNTY - TOTAL	960	13,488	13,669	14,165	\$158,681,002	\$886.18
Construction	68	461	457	454	5,368,553	902.99
Manufacturing	57	1,862	1,874	1,888	19,892,095	816.23
Trade, Transportation & Utilities	239	3,849	3,841	3,875	51,980,634	1,037.23
Wholesale Trade	41	373	370	379	4,165,004	856.64
Retail Trade	156	2,134	2,135	2,146	17,163,294	617.42
Transportation, Warehousing & Utilities	42	1,342	1,336	1,350	30,652,336	1,756.11
Information	15	301	284	266	3,308,858	897.28
Financial Activities	89	445	445	411	6,485,478	1,150.38
Professional & Business Services	109	1,306	1,288	1,312	19,507,749	1,152.53
Education & Health Services	160	1,585	1,591	1,495	16,836,991	831.83
Leisure & Hospitality	89	1,315	1,313	1,321	6,358,984	371.60
Local Government	53	1,410	1,637	2,106	18,286,842	818.95
State Government	16	665	655	747	7,757,114	866.04
Other	65	289	284	290	2,897,704	774.86
BRADLEY COUNTY - TOTAL	334	3,299	3,361	3,415	\$33,582,609	\$769.21
Natural Resources & Mining	46	262	253	201	2,624,561	845.90
Construction	15	72	74	68	756,868	816.18
Manufacturing	11	896	893	883	11,388,129	983.54
Trade, Transportation & Utilities	70	458	449	450	4,103,464	697.83
Wholesale Trade	11	100	106	107	1,467,454	1,081.93
Retail Trade	38	279	272	269	1,797,448	505.85
Transportation, Warehousing & Utilities	21	79	71	74	838,562	863.90
Information	3	24	25	25	169,538	528.70
Financial Activities	22	124	123	123	1,322,366	824.76
Professional & Business Services	24	90	78	75	661,972	628.65
Education & Health Services	81	531	529	526	5,085,280	739.93
Leisure & Hospitality	14	207	204	201	800,456	301.83
Other Services	24	81	77	70	587,571	594.71
Local Government	14	212	316	448	3,117,239	737.05
State Government	10	342	340	345	2,965,165	666.28

TABLE 6. COUNTY SUMMARY

North American Industry Classification System - Industry Groups	Number of Employing Units	Employment			Total Earnings Jul - Sep 2021	Average Weekly Earnings
		July	Aug	Sep		
CALHOUN COUNTY - TOTAL	108	3,502	3,514	3,516	\$55,505,021	\$1,216.18
Natural Resources & Mining	8	40	40	42	400,383	757.34
Construction	12	124	119	125	1,399,691	877.73
Manufacturing	9	2,795	2,790	2,773	47,492,619	1,311.30
Trade, Transportation & Utilities	19	168	159	157	1,858,055	885.91
Retail Trade	10	45	42	42	251,230	449.43
Transportation, Warehousing & Utilities	9	123	117	115	1,606,825	1,044.52
Professional & Business Services	5	11	13	16	125,145	721.99
Leisure & Hospitality	4	7	7	7	30,684	337.19
Other Services	2	2	2	2	17,942	690.08
Local Government	11	130	160	174	1,086,892	540.56
State Government	7	66	66	67	802,792	930.95
Other	31	159	158	153	2,290,818	1,124.79
CARROLL COUNTY - TOTAL	812	10,801	11,196	11,173	\$101,592,105	\$706.79
Natural Resources & Mining	21	281	278	273	3,297,476	914.61
Trade, Transportation & Utilities	185	1,538	1,559	1,559	14,035,102	695.63
Wholesale Trade	27	215	218	225	2,273,205	797.24
Retail Trade	133	1,105	1,119	1,118	7,514,532	518.89
Transportation, Warehousing & Utilities	25	218	222	216	4,247,365	1,494.15
Information	8	67	64	60	836,930	1,011.19
Financial Activities	60	381	379	377	5,539,372	1,124.29
Professional & Business Services	73	493	470	455	5,135,101	835.70
Education & Health Services	104	992	976	985	10,299,546	804.88
Leisure & Hospitality	181	1,981	1,943	1,959	9,914,477	388.91
Other Services	42	152	151	151	1,093,758	555.96
Local Government	25	596	1,054	1,077	7,583,831	641.77
State Government	9	86	86	86	998,263	892.90
Other	104	4,234	4,236	4,191	42,858,249	781.17

TABLE 6. COUNTY SUMMARY

North American Industry Classification System - Industry Groups	Number of Employing Units	Employment			Total Earnings Jul - Sep 2021	Average Weekly Earnings
		July	Aug	Sep		
CHICOT COUNTY - TOTAL	450	2,784	2,787	2,777	\$25,895,306	\$715.84
Natural Resources & Mining	57	237	234	236	2,374,294	774.98
Construction	14	132	130	119	1,914,589	1,159.65
Manufacturing	3	5	5	6	69,338	1,000.07
Trade, Transportation & Utilities	69	761	752	740	6,462,671	661.96
Wholesale Trade	11	46	46	46	625,142	1,045.39
Other Trade, Warehousing & Utilities	58	715	706	694	5,837,529	636.94
Financial Activities	28	170	179	175	2,159,847	951.20
Professional & Business Services	18	42	43	44	423,325	757.29
Education & Health Services	201	510	511	509	4,735,060	714.19
Leisure & Hospitality	14	107	96	97	403,635	310.49
Local Government	17	514	530	542	4,359,903	634.38
State Government	9	227	225	228	2,286,448	775.94
Other	20	79	82	81	706,196	673.42
CLARK COUNTY - TOTAL	659	7,874	8,165	8,558	\$82,417,630	\$773.24
Natural Resources & Mining	54	308	308	316	3,598,666	891.05
Construction	27	89	90	90	1,065,907	914.42
Manufacturing	33	990	986	1,022	15,429,954	1,187.71
Trade, Transportation & Utilities	133	1,342	1,346	1,338	12,895,256	739.15
Wholesale Trade	19	64	65	64	933,382	1,116.04
Retail Trade	86	1,114	1,116	1,112	9,778,110	675.19
Transportation, Warehousing & Utilities	28	164	165	162	2,183,764	1,026.37
Financial Activities	76	331	322	314	3,098,113	739.35
Professional & Business Services	54	591	605	602	7,393,569	948.95
Education & Health Services	130	1,522	1,513	1,604	15,909,388	791.42
Leisure & Hospitality	65	997	1,053	1,115	4,642,535	338.50
Local Government	28	763	928	936	7,205,010	632.93
State Government	13	718	797	996	8,858,353	814.11
Other	46	223	217	225	2,320,879	805.39

TABLE 6. COUNTY SUMMARY

North American Industry Classification System - Industry Groups	Number of Employing Units	Employment			Total Earnings Jul - Sep 2021	Average Weekly Earnings
		July	Aug	Sep		
CLAY COUNTY - TOTAL	351	2,877	3,025	3,025	\$27,606,956	\$713.66
Natural Resources & Mining	51	247	243	244	2,777,277	873.17
Construction	33	138	133	132	1,353,469	775.03
Manufacturing	13	125	123	120	1,016,192	637.24
Trade, Transportation & Utilities	83	704	721	707	7,048,877	762.98
Wholesale Trade	19	224	234	234	2,543,522	848.22
Retail Trade	42	347	351	337	2,668,438	594.97
Transportation, Warehousing & Utilities	22	133	136	136	1,836,917	1,046.68
Information	7	21	21	23	179,116	635.91
Financial Activities	20	96	97	96	900,047	718.70
Professional & Business Services	21	92	90	91	944,647	798.52
Education & Health Services	50	433	441	439	4,974,468	874.30
Leisure & Hospitality	23	228	217	206	839,678	297.65
Other Services	21	86	84	87	870,347	781.51
Local Government	20	665	813	838	6,228,621	620.63
State Government	9	42	42	42	474,217	868.53
CLEBURNE COUNTY - TOTAL	644	5,990	6,118	6,335	\$57,424,985	\$718.53
Natural Resources & Mining	20	122	123	126	2,094,812	1,303.01
Construction	64	327	328	338	3,600,427	836.72
Manufacturing	34	1,205	1,207	1,218	12,888,143	819.34
Trade, Transportation & Utilities	145	1,306	1,276	1,301	13,031,168	774.45
Wholesale Trade	30	92	92	102	1,138,846	918.92
Retail Trade	95	1,064	1,040	1,051	9,824,725	718.62
Transportation, Warehousing & Utilities	20	150	144	148	2,067,597	1,079.50
Information	13	48	44	44	513,614	871.52
Financial Activities	72	250	247	238	2,878,755	903.85
Professional & Business Services	73	332	345	327	3,559,247	818.09
Education & Health Services	73	768	802	806	7,495,314	727.98
Leisure & Hospitality	87	1,009	999	952	4,907,863	382.63
Other Services	37	110	112	115	834,176	571.22
Local Government	18	429	539	764	4,730,688	630.31
State Government	8	84	96	106	890,778	718.76

TABLE 6. COUNTY SUMMARY

North American Industry Classification System - Industry Groups	Number of Employing Units	Employment			Total Earnings Jul - Sep 2021	Average Weekly Earnings
		July	Aug	Sep		
CLEVELAND COUNTY - TOTAL	121	913	979	986	\$9,166,895	\$735.04
Natural Resources & Mining	18	124	128	128	1,509,184	916.51
Construction	3	6	6	5	29,547	401.09
Manufacturing	4	124	123	123	1,419,160	885.13
Trade, Transportation & Utilities	30	142	136	120	1,085,512	629.40
Retail Trade	17	65	69	67	304,712	349.84
Other Trade, Transportation, & Utilities	13	77	67	53	780,800	914.64
Financial Activities	4	22	26	29	374,228	1,121.56
Education & Health Services	30	207	215	216	1,765,940	638.75
Other Services	5	6	6	7	59,899	727.52
Local Government	13	219	272	290	2,379,581	703.12
State Government	6	28	28	28	344,362	946.05
Other	8	35	39	40	199,482	403.81
COLUMBIA COUNTY - TOTAL	670	7,247	7,707	7,888	\$82,630,705	\$834.81
Natural Resources & Mining	44	372	369	348	5,958,438	1,262.65
Construction	34	136	133	123	1,480,228	871.41
Manufacturing	27	1,859	1,859	1,876	28,400,407	1,171.60
Trade, Transportation & Utilities	164	1,430	1,460	1,503	12,514,257	657.39
Wholesale Trade	29	182	181	184	2,599,752	1,096.79
Retail Trade	92	1,043	1,072	1,118	6,883,310	491.33
Transportation, Warehousing & Utilities	43	205	207	201	3,031,195	1,141.12
Information	6	25	25	24	272,893	851.02
Financial Activities	60	326	329	324	4,161,849	981.03
Professional & Business Services	52	351	380	371	3,162,774	662.31
Education & Health Services	151	951	941	942	9,558,594	778.34
Leisure & Hospitality	58	734	759	772	3,183,330	324.33
Other Services	36	117	109	116	841,957	568.12
Local Government	27	464	757	840	5,805,519	650.04
State Government	11	482	586	649	7,290,459	979.86

TABLE 6. COUNTY SUMMARY

North American Industry Classification System - Industry Groups	Number of Employing Units	Employment			Total Earnings Jul - Sep 2021	Average Weekly Earnings
		July	Aug	Sep		
CONWAY COUNTY - TOTAL	519	6,370	6,650	6,773	71,581,519	\$834.58
Natural Resources & Mining	31	221	230	266	2,338,718	752.73
Construction	50	547	548	527	7,998,949	1,138.05
Manufacturing	21	1,037	1,063	1,052	15,697,415	1,149.26
Trade, Transportation & Utilities	106	1,375	1,358	1,361	13,008,342	733.25
Wholesale Trade	14	130	127	124	1,401,102	848.64
Retail Trade	73	812	799	810	6,201,512	591.13
Transportation, Warehousing & Utilities	19	433	432	427	5,405,728	965.54
Financial Activities	37	151	151	152	1,812,989	921.55
Professional & Business Services	39	638	644	642	4,902,487	588.02
Education & Health Services	122	654	659	653	8,243,984	967.68
Leisure & Hospitality	42	524	475	462	2,207,135	348.62
Local Government	32	760	1,054	1,182	11,327,463	872.51
State Government	9	367	367	369	3,204,372	670.42
Other	30	96	101	107	839,665	637.40
CRAIGHEAD COUNTY - TOTAL	2,947	49,614	50,783	52,139	\$599,045,055	\$906.29
Natural Resources & Mining	104	339	333	350	3,640,928	822.13
Construction	261	2,454	2,452	2,441	34,812,665	1,093.47
Manufacturing	103	7,745	7,763	7,897	101,681,744	1,002.56
Trade, Transportation & Utilities	764	10,356	10,338	10,496	112,931,942	835.56
Wholesale Trade	178	2,159	2,138	2,139	31,287,234	1,121.84
Retail Trade	454	6,272	6,305	6,391	55,004,382	669.20
Transportation, Warehousing & Utilities	132	1,925	1,895	1,966	26,640,326	1,062.52
Information	26	391	388	386	5,498,330	1,089.14
Financial Activities	298	1,813	1,813	1,802	25,670,602	1,091.38
Professional & Business Services	405	4,365	4,391	4,622	44,923,641	774.93
Education & Health Services	457	11,057	10,985	11,097	165,827,458	1,154.77
Leisure & Hospitality	283	5,502	5,519	5,536	27,652,570	385.42
Other Services	190	817	830	839	8,325,589	772.84
Local Government	35	2,278	3,509	4,115	34,715,938	809.07
State Government	21	2,497	2,462	2,558	33,363,648	1,024.25

TABLE 6. COUNTY SUMMARY

North American Industry Classification System - Industry Groups	Number of Employing Units	Employment			Total Earnings Jul - Sep 2021	Average Weekly Earnings
		July	Aug	Sep		
CRAWFORD COUNTY - TOTAL	1,260	18,271	19,336	19,403	\$203,706,046	\$824.58
Natural Resources & Mining	22	189	191	209	2,358,845	924.19
Construction	138	1,000	996	1,001	11,620,424	894.77
Manufacturing	61	4,678	4,692	4,726	62,490,963	1,023.06
Trade, Transportation & Utilities	326	5,545	5,591	5,599	60,712,746	837.21
Wholesale Trade	69	782	781	775	12,510,707	1,234.85
Retail Trade	169	2,059	2,094	2,095	16,560,702	611.67
Transportation, Warehousing & Utilities	88	2,704	2,716	2,729	31,641,337	896.04
Information	11	45	44	44	739,995	1,283.97
Financial Activities	123	503	498	494	5,396,952	833.08
Professional & Business Services	165	1,357	1,352	1,364	15,026,192	851.36
Education & Health Services	186	1,645	1,608	1,579	15,471,161	738.88
Leisure & Hospitality	92	1,665	1,640	1,640	7,837,607	365.76
Other Services	84	419	426	443	3,963,988	710.22
Local Government	42	1,084	2,159	2,163	16,655,278	710.97
State Government	10	141	139	141	1,431,895	784.89
CRITTENDEN COUNTY - TOTAL	1,152	14,339	14,855	15,146	\$157,525,771	\$819.85
Natural Resources & Mining	56	257	246	249	2,166,591	664.87
Construction	35	380	368	348	5,087,082	1,071.11
Manufacturing	37	1,921	1,883	1,872	26,568,084	1,080.18
Trade, Transportation & Utilities	304	4,166	4,277	4,223	49,634,898	904.33
Wholesale Trade	49	704	699	689	9,919,183	1,094.19
Retail Trade	157	1,736	1,802	1,773	13,059,078	567.43
Transportation, Warehousing & Utilities	98	1,726	1,776	1,761	26,656,637	1,168.83
Information	4	26	26	26	275,112	813.94
Financial Activities	95	431	434	429	6,011,413	1,072.06
Professional & Business Services	102	968	998	996	10,402,664	810.47
Education & Health Services	259	1,809	1,816	1,730	18,326,156	789.75
Leisure & Hospitality	139	2,454	2,463	2,424	14,642,414	460.29
Other Services	69	455	444	451	4,301,514	735.30
Local Government	39	1,157	1,594	2,031	16,470,660	794.84
State Government	13	315	306	367	3,639,183	850.01

TABLE 6. COUNTY SUMMARY

North American Industry Classification System - Industry Groups	Number of Employing Units	Employment			Total Earnings Jul - Sep 2021	Average Weekly Earnings
		July	Aug	Sep		
CROSS COUNTY - TOTAL	475	4,277	4,527	4,544	\$41,174,129	\$711.85
Natural Resources & Mining	47	259	242	252	2,515,130	770.80
Construction	26	77	70	82	856,434	863.05
Manufacturing	11	304	310	303	2,338,401	588.47
Trade, Transportation & Utilities	121	1,070	1,070	1,052	10,900,510	788.06
Wholesale Trade	26	245	238	230	3,269,782	1,058.30
Retail Trade	66	703	720	703	6,156,852	668.30
Transportation, Warehousing & Utilities	29	122	112	119	1,473,876	963.53
Information	5	21	22	25	144,729	491.16
Financial Activities	49	218	215	210	2,321,693	833.24
Professional & Business Services	41	149	149	148	1,697,040	878.08
Education & Health Services	82	969	960	958	8,694,178	694.96
Leisure & Hospitality	40	438	420	412	1,943,164	353.09
Other Services	27	88	87	80	743,422	672.78
Local Government	17	342	643	687	5,308,612	732.69
State Government	9	342	339	335	3,710,816	842.86
DALLAS COUNTY - TOTAL	221	2,593	2,611	2,654	\$24,903,344	\$731.35
Natural Resources & Mining	20	95	91	96	996,352	815.35
Construction	16	57	51	61	672,339	918.08
Manufacturing	9	607	600	581	7,082,811	914.15
Trade, Transportation & Utilities	52	465	457	477	3,988,228	657.87
Wholesale Trade	6	20	18	19	307,433	1,244.67
Retail Trade	35	315	308	326	2,253,795	548.06
Transportation, Warehousing & Utilities	11	130	131	132	1,427,000	837.93
Information	3	19	19	18	166,681	686.87
Financial Activities	14	63	60	59	749,280	950.06
Professional & Business Services	14	37	35	18	229,986	589.71
Education & Health Services	48	800	791	791	7,660,508	742.15
Leisure & Hospitality	12	143	144	149	557,753	295.21
Other Services	12	39	43	43	320,165	591.07
Local Government	14	239	291	332	2,147,056	574.80
State Government	7	29	29	29	332,185	881.13

TABLE 6. COUNTY SUMMARY

North American Industry Classification System - Industry Groups	Number of Employing Units	Employment			Total Earnings	Average Weekly Earnings
		July	Aug	Sep	Jul - Sep 2021	
DESHA COUNTY - TOTAL	480	4,002	4,219	4,278	\$43,314,637	\$799.72
Natural Resources & Mining	65	284	288	298	2,731,251	724.47
Construction	13	82	78	77	906,871	883.03
Manufacturing	14	1,000	992	974	15,390,113	1,197.43
Trade, Transportation & Utilities	100	803	802	803	7,785,533	746.12
Wholesale Trade	21	198	197	193	3,009,627	1,181.17
Retail Trade	51	439	446	447	2,974,866	515.40
Transportation, Warehousing & Utilities	28	166	159	163	1,801,040	851.69
Information	4	18	18	19	276,636	1,160.71
Financial Activities	28	211	214	210	2,039,074	741.03
Professional & Business Services	34	83	87	91	796,687	704.41
Education & Health Services	131	483	488	493	4,485,658	707.07
Leisure & Hospitality	39	379	369	381	1,453,886	297.18
Other Services	22	60	73	74	398,422	444.17
Local Government	21	502	718	742	6,076,985	714.77
State Government	9	97	92	116	973,521	736.59
DREW COUNTY - TOTAL	540	5,783	6,048	6,242	\$62,261,802	\$795.00
Natural Resources & Mining	54	283	285	281	3,834,022	1,042.14
Construction	27	179	190	192	2,480,694	1,020.44
Manufacturing	22	941	944	939	11,732,292	958.73
Trade, Transportation & Utilities	115	1,026	1,004	1,056	9,077,188	678.79
Wholesale Trade	18	122	114	116	1,547,159	1,014.31
Retail Trade	74	808	811	839	6,277,763	589.39
Transportation, Warehousing & Utilities	23	96	79	101	1,252,266	1,047.05
Information	5	35	35	33	332,953	745.97
Financial Activities	51	202	206	203	2,553,713	964.51
Professional & Business Services	37	279	290	277	5,771,997	1,574.47
Education & Health Services	128	807	800	798	7,357,458	705.98
Leisure & Hospitality	44	652	681	678	3,065,409	351.77
Other Services	21	53	50	53	482,276	713.43
Local Government	23	915	1,176	1,247	9,633,235	665.98
State Government	13	411	387	485	5,940,565	1,068.51

TABLE 6. COUNTY SUMMARY

North American Industry Classification System - Industry Groups	Number of Employing Units	Employment			Total Earnings Jul - Sep 2021	Average Weekly Earnings
		July	Aug	Sep		
FAULKNER COUNTY - TOTAL	3,127	39,610	40,136	41,428	445,811,598	\$849.02
Natural Resources & Mining	37	220	220	220	2,939,216	1,027.70
Construction	382	3,099	3,126	3,101	41,400,454	1,024.44
Manufacturing	101	2,841	2,869	2,873	37,983,472	1,021.25
Trade, Transportation & Utilities	650	7,859	7,979	8,009	77,814,879	753.02
Wholesale Trade	131	900	898	890	13,080,290	1,122.96
Retail Trade	419	6,081	6,208	6,222	52,718,553	657.22
Transportation, Warehousing & Utilities	100	878	873	897	12,016,036	1,047.18
Financial Activities	350	1,509	1,508	1,482	19,465,512	998.45
Professional & Business Services	487	3,714	3,644	3,633	45,743,660	960.44
Education & Health Services	509	7,787	7,784	7,728	89,817,081	889.61
Leisure & Hospitality	307	5,568	5,648	5,618	26,891,431	368.64
Local Government	44	1,728	2,120	3,240	25,799,682	839.98
State Government	18	2,816	2,750	3,031	35,110,991	942.48
Other	242	2,469	2,488	2,493	42,845,220	1,327.16
FRANKLIN COUNTY - TOTAL	375	4,278	4,575	4,599	\$44,478,345	\$763.03
Natural Resources & Mining	15	121	125	153	2,521,552	1,458.39
Construction	36	158	168	168	1,535,161	717.14
Manufacturing	17	1,012	1,052	1,075	11,986,038	881.18
Trade, Transportation & Utilities	83	1,020	1,015	995	10,025,227	763.54
Wholesale Trade	9	50	50	45	400,314	637.10
Retail Trade	49	656	651	645	4,339,303	513.00
Transportation, Warehousing & Utilities	25	314	314	305	5,285,610	1,307.35
Information	6	31	31	30	490,479	1,230.30
Financial Activities	32	61	60	59	639,148	819.42
Professional & Business Services	32	370	383	373	3,777,356	774.15
Education & Health Services	68	509	495	480	4,183,948	650.62
Leisure & Hospitality	30	347	357	341	1,489,424	328.91
Other Services	16	52	51	52	401,490	597.75
Local Government	32	481	723	747	6,063,165	717.17
State Government	8	116	115	126	1,365,357	882.58

TABLE 6. COUNTY SUMMARY

North American Industry Classification System - Industry Groups	Number of Employing Units	Employment			Total Earnings Jul - Sep 2021	Average Weekly Earnings
		July	Aug	Sep		
FULTON COUNTY - TOTAL	203	1,934	1,969	2,107	\$18,254,484	\$700.93
Manufacturing	10	127	102	121	1,059,423	698.52
Trade, Transportation & Utilities	50	308	322	316	3,249,727	792.75
Retail Trade	32	197	208	209	1,387,370	521.44
Other Trade, Transportation, & Utilities	18	111	114	107	1,862,357	1,294.50
Information	5	28	27	27	403,857	1,136.56
Financial Activities	22	97	95	93	1,104,591	894.41
Professional & Business Services	12	22	21	20	164,062	600.96
Education & Health Services	41	457	476	460	3,989,715	660.95
Leisure & Hospitality	18	157	162	152	575,571	282.00
Other Services	10	23	21	21	157,493	559.15
Local Government	12	407	418	562	3,413,300	567.91
State Government	9	57	56	58	595,410	803.52
Other	14	251	269	277	3,541,335	1,025.38
GARLAND COUNTY - TOTAL	3,148	35,509	36,053	36,287	\$369,804,634	\$791.29
Natural Resources & Mining	29	213	224	235	3,193,423	1,096.64
Construction	353	1,945	1,943	1,887	20,977,203	838.25
Manufacturing	92	2,322	2,331	2,315	30,297,984	1,003.42
Trade, Transportation & Utilities	660	7,464	7,488	7,491	72,242,066	742.83
Wholesale Trade	132	793	794	805	12,509,766	1,206.89
Retail Trade	464	6,112	6,133	6,128	52,267,738	656.50
Transportation, Warehousing & Utilities	64	559	561	558	7,464,562	1,026.57
Information	30	426	446	477	4,455,796	762.24
Financial Activities	372	1,556	1,536	1,492	19,706,082	992.05
Professional & Business Services	405	2,909	2,896	2,940	31,536,621	832.21
Education & Health Services	503	7,758	7,792	7,793	99,800,077	986.62
Leisure & Hospitality	416	7,738	7,475	7,143	43,875,948	452.91
Other Services	227	936	964	971	7,639,009	614.02
Local Government	40	1,545	2,233	2,739	27,564,480	976.07
State Government	21	697	725	804	8,515,945	882.85

TABLE 6. COUNTY SUMMARY

North American Industry Classification System - Industry Groups	Number of Employing Units	Employment			Total Earnings Jul - Sep 2021	Average Weekly Earnings
		July	Aug	Sep		
GRANT COUNTY - TOTAL	357	3,928	4,107	4,291	\$47,178,204	\$883.28
Natural Resources & Mining	25	176	177	177	2,456,669	1,069.67
Construction	35	271	274	274	3,776,775	1,064.18
Manufacturing	19	1,255	1,299	1,355	18,023,020	1,064.00
Trade, Transportation & Utilities	87	677	681	666	6,155,527	701.83
Wholesale Trade	16	72	72	73	1,400,133	1,488.98
Retail Trade	50	554	560	548	4,230,265	587.37
Transportation, Warehousing & Utilities	21	51	49	45	525,129	835.75
Financial Activities	26	162	171	173	3,457,951	1,577.05
Professional & Business Services	34	142	145	143	1,608,096	863.02
Education & Health Services	67	363	362	359	3,010,277	640.85
Leisure & Hospitality	26	290	287	280	1,172,910	315.84
Local Government	10	485	608	757	6,559,828	818.27
State Government	7	44	44	45	451,911	784.11
Other	21	63	59	62	505,240	633.66
GREENE COUNTY - TOTAL	888	14,799	14,968	15,206	\$161,285,383	\$827.60
Natural Resources & Mining	40	227	218	218	2,205,274	767.59
Construction	72	422	440	460	5,486,121	957.66
Manufacturing	58	4,737	4,767	4,739	62,330,065	1,009.89
Trade, Transportation & Utilities	227	2,742	2,747	2,779	25,281,667	705.64
Wholesale Trade	48	506	512	521	6,519,691	977.61
Retail Trade	152	2,023	2,026	2,050	16,126,699	610.19
Transportation, Warehousing & Utilities	27	213	209	208	2,635,277	965.30
Information	9	130	127	126	1,654,811	997.07
Financial Activities	75	560	561	552	6,540,300	902.15
Professional & Business Services	100	785	801	786	7,105,642	691.30
Education & Health Services	139	2,025	2,061	2,058	24,311,670	913.15
Leisure & Hospitality	84	1,303	1,296	1,271	6,061,375	361.44
Other Services	43	172	178	188	1,370,321	587.78
Local Government	31	1,319	1,400	1,660	14,221,307	749.45
State Government	10	377	372	369	4,716,830	973.61

TABLE 6. COUNTY SUMMARY

North American Industry Classification System - Industry Groups	Number of Employing Units	Employment			Total Earnings Jul - Sep 2021	Average Weekly Earnings
		July	Aug	Sep		
HEMPSTEAD COUNTY - TOTAL	523	7,053	7,172	7,370	\$75,173,021	\$803.32
Natural Resources & Mining	23	240	245	244	3,415,241	1,081.11
Construction	28	143	131	117	1,366,637	806.59
Manufacturing	27	2,174	2,202	2,221	27,626,092	966.39
Trade, Transportation & Utilities	129	1,321	1,332	1,303	13,134,975	766.22
Wholesale Trade	26	195	196	179	1,901,124	769.69
Retail Trade	75	856	856	856	6,076,418	546.05
Transportation, Warehousing & Utilities	28	270	280	268	5,157,433	1,454.98
Information	7	16	16	16	241,188	1,159.56
Financial Activities	45	192	195	191	2,038,581	813.91
Professional & Business Services	38	258	263	256	2,857,594	848.71
Education & Health Services	106	830	824	823	7,517,605	700.38
Leisure & Hospitality	46	604	594	583	2,794,029	362.03
Other Services	30	113	112	113	1,021,479	697.41
Local Government	28	515	603	853	5,891,383	689.78
State Government	16	647	655	650	7,268,217	859.26
HOT SPRING COUNTY - TOTAL	611	8,005	8,024	8,292	\$83,575,614	\$793.01
Natural Resources & Mining	22	167	163	164	1,740,795	813.20
Construction	61	221	205	198	1,913,507	707.66
Manufacturing	29	1,516	1,502	1,534	20,952,855	1,062.23
Trade, Transportation & Utilities	155	1,696	1,692	1,711	19,712,912	892.16
Wholesale Trade	19	82	88	81	1,048,029	963.56
Retail Trade	95	881	909	936	6,931,991	586.83
Transportation, Warehousing & Utilities	41	733	695	694	11,732,892	1,275.96
Information	5	35	35	35	461,889	1,015.14
Financial Activities	54	194	188	195	2,286,336	914.41
Professional & Business Services	54	733	753	809	7,082,398	712.16
Education & Health Services	98	966	975	960	10,385,039	826.11
Leisure & Hospitality	56	734	736	708	3,290,736	348.67
Other Services	38	160	164	167	1,131,706	531.90
Local Government	27	781	804	981	7,058,368	634.78
State Government	12	802	807	830	7,559,073	715.21

TABLE 6. COUNTY SUMMARY

North American Industry Classification System - Industry Groups	Number of Employing Units	Employment			Total Earnings Jul - Sep 2021	Average Weekly Earnings
		July	Aug	Sep		
HOWARD COUNTY - TOTAL	357	6,165	6,200	6,397	\$62,220,452	\$765.30
Natural Resources & Mining	19	206	199	206	2,434,968	919.67
Construction	20	69	62	69	616,672	711.54
Manufacturing	19	3,187	2,942	3,006	33,075,348	835.55
Trade, Transportation & Utilities	82	873	885	874	8,577,689	752.08
Wholesale Trade	17	86	87	87	1,039,853	922.95
Retail Trade	47	571	583	572	4,420,659	591.05
Transportation, Warehousing & Utilities	18	216	215	215	3,117,177	1,113.54
Financial Activities	33	138	139	138	1,319,688	733.84
Professional & Business Services	23	141	143	141	1,428,400	775.60
Education & Health Services	82	739	775	791	7,615,896	762.48
Leisure & Hospitality	30	317	311	304	1,471,432	364.34
Local Government	17	311	563	674	4,035,856	601.65
State Government	10	94	92	101	777,088	624.84
Other	22	90	89	93	867,415	735.93
INDEPENDENCE COUNTY - TOTAL	922	15,640	15,710	16,239	\$176,408,260	\$855.44
Natural Resources & Mining	22	293	288	293	3,914,506	1,033.58
Construction	61	522	510	539	6,180,968	907.94
Manufacturing	45	3,636	3,600	3,636	43,233,743	917.68
Trade, Transportation & Utilities	235	2,848	2,872	2,835	29,253,263	789.10
Wholesale Trade	27	233	236	228	3,060,468	1,013.29
Retail Trade	164	1,887	1,904	1,885	14,773,842	600.66
Transportation, Warehousing & Utilities	44	728	732	722	11,418,953	1,207.67
Information	10	71	72	75	822,019	870.17
Financial Activities	88	626	618	613	8,406,454	1,044.67
Professional & Business Services	90	1,235	1,227	1,213	11,357,866	713.21
Education & Health Services	162	3,498	3,459	3,472	49,688,737	1,099.49
Leisure & Hospitality	88	1,247	1,271	1,237	5,775,914	354.97
Other Services	58	281	291	270	2,194,560	601.47
Local Government	48	845	942	1,500	9,667,160	678.70
State Government	15	538	560	556	5,913,070	825.00

TABLE 6. COUNTY SUMMARY

North American Industry Classification System - Industry Groups	Number of Employing Units	Employment			Total Earnings Jul - Sep 2021	Average Weekly Earnings
		July	Aug	Sep		
IZARD COUNTY - TOTAL	250	2,432	2,630	2,711	\$23,568,201	\$699.71
Natural Resources & Mining	7	92	95	101	1,604,083	1,285.32
Construction	22	68	70	75	699,290	757.63
Manufacturing	10	143	138	142	1,392,727	759.81
Trade, Transportation & Utilities	67	558	538	528	4,511,646	641.10
Wholesale Trade	13	55	51	54	456,570	658.51
Retail Trade	43	411	396	382	2,801,064	543.65
Transportation, Warehousing & Utilities	11	92	91	92	1,254,012	1,052.32
Information	5	9	9	9	177,419	1,516.40
Financial Activities	21	165	165	160	1,432,646	674.72
Professional & Business Services	17	55	53	51	511,756	742.75
Education & Health Services	39	538	546	546	4,764,671	674.56
Leisure & Hospitality	24	185	169	167	891,694	394.96
Other Services	15	37	39	35	194,171	403.68
Local Government	14	257	453	524	3,481,168	651.01
State Government	9	325	355	373	3,906,930	856.22
JACKSON COUNTY - TOTAL	425	5,045	5,285	5,207	\$51,909,352	\$771.00
Natural Resources & Mining	57	330	334	333	3,343,019	773.79
Construction	22	130	129	134	1,271,183	746.44
Manufacturing	10	1,052	1,062	979	12,646,897	943.59
Trade, Transportation & Utilities	104	991	1,012	1,005	10,376,559	796.07
Wholesale Trade	16	217	214	205	3,212,921	1,165.79
Retail Trade	68	686	704	705	5,899,021	649.79
Transportation, Warehousing & Utilities	20	88	94	95	1,264,617	1,053.55
Information	3	8	8	8	63,542	610.98
Financial Activities	31	129	134	135	1,472,364	853.71
Professional & Business Services	32	126	126	127	1,314,075	800.13
Education & Health Services	73	739	725	718	7,750,949	819.74
Leisure & Hospitality	32	380	392	389	1,548,874	307.87
Other Services	17	55	56	56	538,697	744.40
Local Government	32	363	569	577	4,397,811	672.55
State Government	12	742	738	746	7,185,382	744.91

TABLE 6. COUNTY SUMMARY

North American Industry Classification System - Industry Groups	Number of Employing Units	Employment			Total Earnings Jul - Sep 2021	Average Weekly Earnings
		July	Aug	Sep		
JEFFERSON COUNTY - TOTAL	1,978	23,915	24,321	24,727	\$273,401,431	\$864.72
Natural Resources & Mining	34	135	124	128	2,145,933	1,279.63
Construction	90	462	442	448	4,947,725	844.51
Manufacturing	59	4,366	4,333	4,328	72,889,563	1,291.22
Trade, Transportation & Utilities	404	4,091	4,078	4,108	40,803,972	766.99
Wholesale Trade	69	597	605	620	8,109,686	1,027.15
Retail Trade	275	2,841	2,836	2,831	22,145,428	600.67
Transportation, Warehousing & Utilities	60	653	637	657	10,548,858	1,250.31
Information	11	56	50	55	766,178	1,098.20
Financial Activities	147	1,007	998	999	12,491,735	959.62
Professional & Business Services	144	1,971	2,002	2,058	19,422,755	743.19
Education & Health Services	780	4,100	4,135	4,094	46,971,029	879.18
Leisure & Hospitality	137	2,672	2,652	2,660	14,460,354	417.96
Other Services	95	426	423	413	4,291,547	784.75
Local Government	41	1,645	2,009	2,277	17,922,133	697.33
State Government	36	2,984	3,075	3,159	36,288,507	908.47
JOHNSON COUNTY - TOTAL	486	7,579	7,716	8,177	\$75,988,258	\$747.09
Natural Resources & Mining	13	215	220	218	2,813,092	994.14
Construction	41	197	198	177	1,784,445	719.92
Manufacturing	33	2,235	2,248	2,246	23,591,739	809.07
Trade, Transportation & Utilities	104	1,990	2,000	2,042	20,495,935	784.12
Retail Trade	71	917	933	943	6,682,662	552.15
Other Trade, Transportation & Utilities	33	1,073	1,067	1,099	13,813,273	984.16
Information	4	13	12	11	162,842	1,043.86
Financial Activities	42	153	148	150	1,504,574	769.87
Professional & Business Services	48	255	251	239	2,114,642	655.03
Education & Health Services	102	1,223	1,243	1,230	12,841,895	801.82
Leisure & Hospitality	47	592	611	605	2,537,797	323.92
Other Services	29	80	81	82	656,907	623.84
Local Government	14	525	606	1,076	6,275,265	656.16
State Government	9	101	98	101	1,209,125	930.10

TABLE 6. COUNTY SUMMARY

North American Industry Classification System - Industry Groups	Number of Employing Units	Employment			Total Earnings Jul - Sep 2021	Average Weekly Earnings
		July	Aug	Sep		
LAFAYETTE COUNTY - TOTAL	157	950	1,023	1,053	\$8,804,413	\$671.44
Natural Resources & Mining	22	66	58	64	498,745	612.21
Construction	11	84	81	82	1,087,831	1,016.35
Manufacturing	5	30	33	31	377,280	926.22
Trade, Transportation & Utilities	29	202	202	207	1,820,984	687.77
Retail Trade	16	113	114	117	687,558	461.24
Other Trade, Transportation & Utilities	13	89	88	90	1,133,426	979.62
Financial Activities	13	81	86	82	824,122	763.78
Professional & Business Services	9	33	32	34	313,683	731.20
Education & Health Services	33	153	149	147	1,322,967	679.96
Leisure & Hospitality	7	65	58	61	277,801	348.41
Local Government	15	179	257	276	1,610,374	521.94
State Government	7	28	28	28	337,720	927.80
Other	6	29	39	41	332,906	704.81
LAWRENCE COUNTY - TOTAL	391	3,462	3,740	3,798	\$35,141,593	\$737.24
Natural Resources & Mining	55	185	183	186	2,188,366	911.57
Construction	25	177	181	187	3,555,003	1,505.29
Manufacturing	15	283	286	268	2,801,738	772.47
Trade, Transportation & Utilities	113	787	786	811	7,687,133	744.11
Wholesale Trade	19	195	192	191	2,259,437	902.09
Retail Trade	61	480	479	498	3,816,496	604.48
Transportation, Warehousing & Utilities	33	112	115	122	1,611,200	1,065.37
Financial Activities	28	124	127	122	1,289,185	797.60
Professional & Business Services	22	97	97	91	1,003,763	812.76
Education & Health Services	44	519	538	550	5,123,217	735.71
Leisure & Hospitality	35	327	340	319	1,398,093	327.22
Local Government	24	727	967	1,029	7,727,603	654.90
State Government	9	71	70	71	711,563	774.56
Other	21	165	165	164	1,655,929	773.56

TABLE 6. COUNTY SUMMARY

North American Industry Classification System - Industry Groups	Number of Employing Units	Employment			Total Earnings Jul - Sep 2021	Average Weekly Earnings
		July	Aug	Sep		
LEE COUNTY - TOTAL	235	1,576	1,595	1,612	\$15,577,225	\$751.57
Natural Resources & Mining	37	166	179	188	1,548,918	670.62
Construction	5	8	6	8	52,806	553.91
Trade, Transportation & Utilities	37	357	349	342	3,601,495	793.05
Wholesale Trade	10	127	125	126	1,719,879	1,049.99
Retail Trade	18	176	171	165	1,127,622	508.24
Transportation, Warehousing & Utilities	9	54	53	51	753,994	1,101.26
Financial Activities	13	50	50	50	516,403	794.47
Professional & Business Services	14	42	44	43	677,557	1,212.09
Education & Health Services	87	331	317	308	3,315,989	800.45
Leisure & Hospitality	10	73	75	79	332,452	337.97
Local Government	15	179	208	222	1,603,047	607.44
State Government	6	351	349	354	3,767,395	824.86
Other	11	19	18	18	161,163	676.21
LINCOLN COUNTY - TOTAL	269	2,465	2,533	2,571	\$26,328,083	\$802.71
Natural Resources & Mining	36	133	134	134	1,379,259	793.74
Construction	18	147	143	135	1,750,058	950.26
Manufacturing	9	317	315	317	3,105,741	755.23
Trade, Transportation & Utilities	44	342	333	331	3,701,742	849.15
Wholesale Trade	7	52	52	50	635,131	951.74
Retail Trade	24	164	157	164	1,045,677	497.55
Transportation, Warehousing & Utilities	13	126	124	117	2,020,934	1,270.76
Financial Activities	19	65	67	65	621,576	728.12
Professional & Business Services	10	22	22	22	316,849	1,107.86
Education & Health Services	85	279	272	273	2,513,286	703.87
Leisure & Hospitality	16	120	109	112	452,867	306.47
Local Government	7	184	289	321	2,546,030	739.98
State Government	10	800	791	803	9,292,305	895.73
Other	15	56	58	58	648,370	869.91

TABLE 6. COUNTY SUMMARY

North American Industry Classification System - Industry Groups	Number of Employing Units	Employment			Total Earnings Jul - Sep 2021	Average Weekly Earnings
		July	Aug	Sep		
LITTLE RIVER COUNTY - TOTAL	244	2,832	2,859	3,029	\$34,644,500	\$916.84
Natural Resources & Mining	16	61	67	68	623,310	733.88
Construction	12	77	73	73	821,752	850.38
Manufacturing	15	887	888	892	18,141,200	1,569.72
Trade, Transportation & Utilities	59	518	534	558	4,295,895	615.75
Wholesale Trade	7	30	30	28	453,783	1,189.99
Retail Trade	38	417	429	455	3,039,817	539.20
Transportation, Warehousing & Utilities	14	71	75	75	802,295	837.76
Financial Activities	12	55	55	54	423,459	595.86
Professional & Business Services	16	126	133	134	1,493,549	877.01
Education & Health Services	48	186	186	181	1,579,589	659.17
Leisure & Hospitality	18	243	226	228	956,463	316.67
Local Government	20	552	570	710	5,344,837	673.27
State Government	10	76	74	78	598,668	605.94
Other	18	51	53	53	365,778	537.65
LOGAN COUNTY - TOTAL	488	4,793	5,068	5,130	\$45,282,373	\$697.07
Natural Resources & Mining	24	124	124	121	1,275,816	797.88
Construction	42	174	174	170	1,973,711	879.29
Manufacturing	22	1,132	1,135	1,136	12,712,060	862.05
Trade, Transportation & Utilities	103	987	1,016	1,043	7,777,731	589.25
Wholesale Trade	11	57	62	59	435,098	564.09
Retail Trade	71	802	826	851	5,445,176	506.89
Transportation, Warehousing & Utilities	21	128	128	133	1,897,457	1,125.64
Information	5	24	24	23	316,514	1,028.76
Financial Activities	47	177	179	180	2,088,440	899.16
Professional & Business Services	43	106	105	106	923,658	672.40
Education & Health Services	105	631	630	632	6,342,321	773.17
Leisure & Hospitality	30	325	310	322	1,303,973	314.44
Other Services	33	129	128	129	1,293,986	773.61
Local Government	22	549	812	832	5,628,326	592.27
State Government	12	435	431	436	3,645,837	646.20

TABLE 6. COUNTY SUMMARY

North American Industry Classification System - Industry Groups	Number of Employing Units	Employment			Total Earnings Jul - Sep 2021	Average Weekly Earnings
		July	Aug	Sep		
LONOKE COUNTY - TOTAL	1,347	13,576	14,173	14,263	\$129,429,304	\$710.95
Natural Resources & Mining	92	528	525	524	5,481,574	802.14
Construction	159	924	921	934	10,569,628	877.71
Manufacturing	36	1,566	1,562	1,547	18,300,993	903.38
Trade, Transportation & Utilities	293	3,112	3,129	3,106	28,683,068	708.16
Wholesale Trade	68	426	439	430	5,997,535	1,068.76
Retail Trade	168	2,349	2,340	2,324	17,599,049	579.11
Transportation, Warehousing & Utilities	57	337	350	352	5,086,484	1,129.74
Information	18	88	88	82	1,175,428	1,051.37
Financial Activities	168	753	748	752	10,616,793	1,087.45
Professional & Business Services	159	552	523	622	5,442,988	740.17
Education & Health Services	203	1,865	1,853	1,788	16,444,892	689.24
Leisure & Hospitality	118	2,081	2,098	2,040	10,128,766	375.85
Other Services	64	174	167	169	1,379,163	624.06
Local Government	23	1,785	2,412	2,549	19,421,101	664.36
State Government	14	148	147	150	1,784,910	925.62
MADISON COUNTY - TOTAL	269	3,163	3,484	3,523	\$34,267,222	\$777.56
Natural Resources & Mining	10	55	56	55	483,736	672.48
Construction	36	176	181	182	1,652,850	707.66
Manufacturing	23	1,266	1,313	1,313	14,451,643	856.88
Trade, Transportation & Utilities	58	676	664	695	6,310,193	715.58
Wholesale Trade	7	32	33	32	555,067	1,320.54
Retail Trade	38	501	494	524	3,774,066	573.36
Transportation, Warehousing & Utilities	13	143	137	139	1,981,060	1,091.09
Information	6	42	42	45	1,118,969	2,001.73
Financial Activities	19	82	85	83	870,198	803.26
Professional & Business Services	26	85	85	85	997,261	902.50
Education & Health Services	41	251	250	242	2,553,556	793.11
Leisure & Hospitality	13	173	163	170	708,394	323.07
Other Services	21	88	63	66	420,355	447.03
Local Government	9	230	543	548	4,264,154	744.92
State Government	7	39	39	39	435,913	859.79

TABLE 6. COUNTY SUMMARY

North American Industry Classification System - Industry Groups	Number of Employing Units	Employment			Total Earnings Jul - Sep 2021	Average Weekly Earnings
		July	Aug	Sep		
MARION COUNTY - TOTAL	292	3,322	3,300	3,465	\$30,737,435	\$703.21
Manufacturing	22	1,375	1,366	1,435	14,828,203	819.42
Trade, Transportation & Utilities	57	528	512	545	4,019,109	585.17
Wholesale Trade	7	40	39	40	331,844	643.52
Retail Trade	42	451	439	470	3,172,356	538.30
Transportation, Warehousing & Utilities	8	37	34	35	514,909	1,120.99
Information	4	53	52	51	772,706	1,143.06
Financial Activities	32	241	231	215	1,773,566	595.76
Professional & Business Services	26	80	78	75	773,741	766.33
Education & Health Services	44	263	261	258	2,747,855	810.90
Leisure & Hospitality	38	234	224	215	949,912	325.72
Other Services	15	29	29	29	161,193	427.57
Local Government	18	367	395	494	3,225,069	592.55
State Government	7	38	38	38	426,945	864.26
Other	29	114	114	110	1,059,136	723.12
MILLER COUNTY - TOTAL	899	11,685	12,162	12,247	\$137,215,975	\$877.30
Natural Resources & Mining	32	304	292	282	3,845,218	1,010.66
Construction	70	661	625	641	8,001,196	958.19
Manufacturing	25	2,377	2,324	2,335	43,798,232	1,436.51
Trade, Transportation & Utilities	215	2,564	2,595	2,599	28,205,296	838.99
Wholesale Trade	46	496	501	513	7,216,081	1,102.81
Retail Trade	119	1,265	1,278	1,261	9,575,265	580.88
Transportation, Warehousing & Utilities	50	803	816	825	11,413,950	1,077.74
Information	7	86	85	81	1,520,096	1,392.03
Financial Activities	89	409	401	379	4,753,271	922.55
Professional & Business Services	82	1,149	1,163	1,142	9,325,820	623.08
Education & Health Services	188	1,211	1,187	1,186	10,291,861	662.68
Leisure & Hospitality	98	1,575	1,602	1,564	7,499,080	365.02
Other Services	52	227	228	225	1,904,908	646.46
Local Government	26	656	1,196	1,344	11,689,046	844.02
State Government	15	466	464	469	6,381,951	1,052.72

TABLE 6. COUNTY SUMMARY

North American Industry Classification System - Industry Groups	Number of Employing Units	Employment			Total Earnings Jul - Sep 2021	Average Weekly Earnings
		July	Aug	Sep		
MISSISSIPPI COUNTY - TOTAL	1,042	16,032	16,555	16,743	\$252,668,310	\$1,182.00
Natural Resources & Mining	107	497	506	563	5,259,851	775.10
Construction	59	733	786	817	14,401,222	1,422.67
Manufacturing	60	5,982	6,062	6,071	140,979,125	1,795.95
Trade, Transportation & Utilities	258	2,767	2,764	2,796	32,611,191	903.77
Wholesale Trade	58	353	351	324	8,542,705	1,917.70
Retail Trade	135	1,578	1,568	1,610	10,921,151	529.91
Transportation, Warehousing & Utilities	65	836	845	862	13,147,335	1,193.08
Information	8	19	23	24	194,393	679.70
Financial Activities	75	414	407	407	4,174,005	784.39
Professional & Business Services	80	1,015	1,034	1,026	11,333,700	850.56
Education & Health Services	188	1,091	1,291	1,228	13,229,844	845.72
Leisure & Hospitality	90	1,057	1,045	1,023	4,529,307	334.47
Other Services	48	314	299	305	3,896,771	979.58
Local Government	50	1,710	1,902	2,008	17,373,817	713.41
State Government	19	433	436	475	4,685,084	804.44
MONROE COUNTY - TOTAL	259	1,774	1,882	1,869	\$17,281,742	\$721.83
Natural Resources & Mining	24	117	116	105	2,235,385	1,526.21
Manufacturing	6	126	130	128	1,304,065	783.69
Trade, Transportation & Utilities	64	491	479	478	5,002,956	797.33
Wholesale Trade	16	139	128	131	2,010,221	1,165.57
Retail Trade	31	244	240	240	1,662,043	529.76
Transportation, Warehousing & Utilities	17	108	111	107	1,330,692	941.97
Financial Activities	20	80	81	78	912,834	881.40
Professional & Business Services	13	17	18	19	165,086	705.50
Education & Health Services	52	309	309	307	2,880,238	718.56
Leisure & Hospitality	24	279	277	280	1,250,577	345.21
Local Government	21	207	322	331	2,149,973	576.92
State Government	7	63	62	63	762,099	935.47
Other	28	85	88	80	618,529	564.18

TABLE 6. COUNTY SUMMARY

North American Industry Classification System - Industry Groups	Number of Employing Units	Employment			Total Earnings Jul - Sep 2021	Average Weekly Earnings
		July	Aug	Sep		
MONTGOMERY COUNTY - TOTAL	155	1,148	1,203	1,219	\$9,082,149	\$587.08
Natural Resources & Mining	6	18	20	17	155,873	654.01
Construction	24	69	64	75	559,465	620.71
Manufacturing	7	35	36	34	398,366	875.53
Trade, Transportation & Utilities	34	239	249	245	1,790,562	563.72
Wholesale Trade	7	59	65	58	615,775	780.78
Retail Trade	22	166	169	170	1,072,880	490.27
Transportation, Warehousing & Utilities	5	14	15	17	101,907	511.24
Financial Activities	12	57	61	64	391,687	496.64
Professional & Business Services	12	21	20	18	159,853	625.24
Education & Health Services	17	46	45	46	397,608	669.75
Leisure & Hospitality	14	365	324	264	2,139,387	518.05
Local Government	9	229	315	385	2,528,345	628.06
State Government	7	35	35	36	344,069	749.06
Other	13	34	34	35	216,934	486.04
NEVADA COUNTY - TOTAL	198	2,192	2,191	2,182	\$20,642,421	\$725.61
Natural Resources & Mining	12	47	50	39	689,580	1,170.10
Trade, Transportation & Utilities	42	523	512	497	4,776,281	719.46
Retail Trade	25	329	319	307	2,233,659	539.75
Other Trade, Transportation & Utilities	17	194	193	190	2,542,622	1,016.91
Financial Activities	10	61	73	65	476,738	552.85
Professional & Business Services	12	51	51	74	689,026	903.44
Education & Health Services	40	323	286	304	2,046,176	517.19
Leisure & Hospitality	10	88	116	112	388,927	284.03
Other Services	15	52	43	43	335,150	560.45
Local Government	29	389	385	382	2,215,731	442.32
State Government	9	52	52	53	488,986	718.74
Other	19	606	623	613	8,535,826	1,069.38

TABLE 6. COUNTY SUMMARY

North American Industry Classification System - Industry Groups	Number of Employing Units	Employment			Total Earnings Jul - Sep 2021	Average Weekly Earnings
		July	Aug	Sep		
NEWTON COUNTY - TOTAL	116	849	944	937	\$7,287,187	\$615.99
Construction	7	19	21	23	229,326	840.02
Manufacturing	9	33	32	32	435,779	1,036.75
Trade, Transportation & Utilities	27	162	160	150	1,477,229	722.24
Retail Trade	14	109	108	101	747,949	542.78
Other Trade, Transportation & Utilities	13	53	52	49	729,280	1,092.83
Education & Health Services	22	188	192	192	1,344,229	542.32
Leisure & Hospitality	14	164	153	144	838,675	419.83
Other Services	4	3	2	2	15,670	516.59
Local Government	14	221	329	337	2,246,363	584.43
State Government	7	34	34	35	366,520	821.18
Other	12	25	21	22	333,396	1,131.43
OUACHITA COUNTY - TOTAL	631	6,132	6,331	6,639	\$65,695,433	\$793.66
Natural Resources & Mining	32	152	157	156	1,902,367	944.10
Construction	41	207	211	213	2,543,120	930.07
Manufacturing	26	722	715	715	9,442,157	1,012.53
Trade, Transportation & Utilities	149	1,517	1,530	1,534	13,353,064	672.66
Wholesale Trade	22	186	185	189	2,377,625	979.79
Retail Trade	91	961	979	980	6,153,440	486.31
Transportation, Warehousing & Utilities	36	370	366	365	4,821,999	1,010.69
Information	6	30	29	30	371,232	962.57
Financial Activities	53	255	255	262	2,845,138	850.48
Professional & Business Services	45	337	360	340	3,260,801	725.64
Education & Health Services	167	1,210	1,224	1,230	16,754,644	1,055.26
Leisure & Hospitality	44	448	450	455	1,895,977	323.38
Other Services	24	101	99	99	747,442	576.88
Local Government	31	584	767	1,045	6,613,498	636.97
State Government	13	569	534	560	5,965,993	827.88

TABLE 6. COUNTY SUMMARY

North American Industry Classification System - Industry Groups	Number of Employing Units	Employment			Total Earnings	Average Weekly Earnings
		July	Aug	Sep	Jul - Sep 2021	
PERRY COUNTY - TOTAL	154	974	1,109	1,120	\$9,597,272	\$691.46
Construction	18	85	75	69	776,623	782.62
Trade, Transportation & Utilities	27	182	179	172	1,475,546	638.86
Retail Trade	17	143	143	137	724,964	395.51
Other Trade, Transportation & Utilities	10	39	36	35	750,582	1,574.65
Financial Activities	10	22	23	21	297,197	1,039.15
Professional & Business Services	21	55	52	49	465,518	688.64
Education & Health Services	29	202	206	204	1,840,914	694.16
Leisure & Hospitality	10	85	84	88	363,243	326.17
Local Government	9	192	343	346	2,369,589	620.69
State Government	7	33	33	33	368,831	859.75
Other	23	118	114	138	1,639,811	1,022.75
PHILLIPS COUNTY - TOTAL	689	4,594	4,721	4,793	\$44,492,287	\$727.78
Natural Resources & Mining	65	289	285	303	2,637,172	693.93
Construction	27	111	111	107	922,860	647.32
Manufacturing	12	402	403	404	4,849,633	925.68
Trade, Transportation & Utilities	134	1,145	1,134	1,112	10,597,812	721.22
Wholesale Trade	28	274	266	254	3,555,813	1,033.47
Retail Trade	71	656	653	652	4,503,764	530.00
Transportation, Warehousing & Utilities	35	215	215	206	2,538,235	920.99
Information	7	11	11	10	139,829	1,008.38
Financial Activities	39	191	189	190	2,202,064	891.52
Professional & Business Services	41	276	252	243	2,744,226	821.38
Education & Health Services	260	987	999	996	10,184,874	788.18
Leisure & Hospitality	39	362	386	377	1,645,985	337.64
Other Services	24	49	49	51	351,330	544.14
Local Government	27	495	621	712	4,851,489	612.46
State Government	14	276	281	288	3,365,013	918.98

TABLE 6. COUNTY SUMMARY

North American Industry Classification System - Industry Groups	Number of Employing Units	Employment			Total Earnings Jul - Sep 2021	Average Weekly Earnings
		July	Aug	Sep		
PIKE COUNTY - TOTAL	265	2,435	2,612	2,587	\$21,909,123	\$662.29
Natural Resources & Mining	25	144	143	144	1,692,094	905.99
Construction	19	62	55	53	417,347	566.53
Manufacturing	16	433	427	411	4,364,767	792.49
Trade, Transportation & Utilities	70	523	513	512	4,472,024	666.67
Wholesale Trade	7	98	97	96	1,087,132	862.12
Retail Trade	41	356	345	346	2,500,035	551.03
Transportation, Warehousing & Utilities	22	69	71	70	884,857	972.37
Information	8	25	25	26	266,018	807.75
Financial Activities	23	233	233	233	2,394,948	790.67
Professional & Business Services	14	53	63	58	824,241	1,093.16
Education & Health Services	29	249	256	254	1,873,237	569.55
Leisure & Hospitality	24	281	261	259	1,189,107	342.58
Other Services	18	74	72	70	581,225	620.97
Local Government	10	268	476	477	3,087,431	583.53
State Government	9	90	88	90	746,684	642.95
POINSETT COUNTY - TOTAL	471	4,844	5,084	5,161	\$62,677,935	\$958.59
Natural Resources & Mining	67	271	261	273	3,570,456	1,023.54
Construction	25	88	88	87	744,361	653.14
Manufacturing	15	773	778	773	19,265,409	1,913.02
Trade, Transportation & Utilities	121	1,202	1,219	1,217	13,582,021	861.55
Wholesale Trade	24	438	453	446	7,741,795	1,336.25
Retail Trade	67	632	639	640	4,132,764	499.07
Transportation, Warehousing & Utilities	30	132	127	131	1,707,462	1,010.33
Professional & Business Services	27	257	251	239	4,636,971	1,432.49
Education & Health Services	71	742	743	720	7,351,069	769.34
Leisure & Hospitality	45	491	476	473	2,043,781	327.53
Other Services	19	59	59	58	598,725	785.04
Local Government	30	617	864	988	7,236,169	676.34
State Government	10	105	105	106	971,497	709.47
Other	41	239	240	227	2,677,476	875.18

TABLE 6. COUNTY SUMMARY

North American Industry Classification System - Industry Groups	Number of Employing Units	Employment			Total Earnings Jul - Sep 2021	Average Weekly Earnings
		July	Aug	Sep		
POLK COUNTY - TOTAL	470	5,378	5,623	5,676	\$50,983,223	\$705.48
Natural Resources & Mining	27	169	165	177	2,365,634	1,068.33
Construction	31	213	220	223	2,247,084	790.48
Manufacturing	36	1,188	1,193	1,196	12,258,384	790.85
Trade, Transportation & Utilities	115	1,076	1,085	1,109	9,297,422	656.13
Wholesale Trade	15	42	42	41	654,505	1,208.32
Retail Trade	65	788	792	811	5,643,645	544.70
Transportation, Warehousing & Utilities	35	246	251	257	2,999,272	917.96
Information	6	42	41	43	266,773	488.60
Financial Activities	41	201	200	200	2,003,972	769.48
Professional & Business Services	35	136	140	137	1,662,884	929.16
Education & Health Services	78	957	950	955	10,854,464	875.22
Leisure & Hospitality	41	490	519	506	2,007,038	305.72
Other Services	27	133	136	128	1,096,196	637.20
Local Government	21	503	679	690	4,640,502	572.05
State Government	12	270	295	312	2,282,870	600.70
POPE COUNTY - TOTAL	1,813	23,400	24,027	24,273	\$270,336,160	\$870.09
Natural Resources & Mining	39	670	656	312	9,372,099	1,320.39
Construction	160	1,178	1,229	1,240	17,509,573	1,107.94
Manufacturing	75	3,350	3,344	3,384	39,666,186	908.29
Trade, Transportation & Utilities	402	6,050	6,064	6,089	77,725,072	985.36
Wholesale Trade	71	553	549	545	6,922,524	969.95
Retail Trade	259	3,091	3,125	3,145	26,461,194	652.33
Transportation, Warehousing & Utilities	72	2,406	2,390	2,399	44,341,354	1,422.18
Information	17	111	114	107	1,062,281	738.38
Financial Activities	191	855	862	869	11,661,246	1,040.63
Professional & Business Services	255	2,003	2,008	2,097	26,116,821	986.73
Education & Health Services	355	3,285	3,303	3,278	36,324,473	849.64
Leisure & Hospitality	152	2,682	2,721	2,791	13,134,011	369.90
Other Services	108	480	486	487	4,152,123	659.45
Local Government	44	1,420	1,943	2,194	17,461,067	725.12
State Government	15	1,316	1,297	1,425	16,151,208	923.03

TABLE 6. COUNTY SUMMARY

North American Industry Classification System - Industry Groups	Number of Employing Units	Employment			Total Earnings Jul - Sep 2021	Average Weekly Earnings
		July	Aug	Sep		
PRAIRIE COUNTY - TOTAL	244	1,344	1,439	1,436	\$13,694,659	\$749.07
Natural Resources & Mining	38	172	158	157	2,532,063	1,199.84
Construction	12	49	49	50	590,398	920.58
Trade, Transportation & Utilities	61	377	368	364	3,242,423	674.71
Wholesale Trade	14	79	78	79	1,141,226	1,115.93
Retail Trade	34	241	236	229	1,550,274	506.74
Transportation, Warehousing & Utilities	13	57	54	56	550,923	761.29
Financial Activities	15	44	52	52	526,691	821.24
Professional & Business Services	13	62	57	55	511,717	678.67
Education & Health Services	41	244	246	240	2,248,953	710.94
Leisure & Hospitality	18	80	89	75	396,042	374.57
Local Government	15	195	302	321	2,494,135	703.63
State Government	7	28	28	29	301,239	817.84
Other	24	93	90	93	850,998	711.54
PULASKI COUNTY - TOTAL	14,563	230,365	234,780	235,193	\$3,271,085,535	\$1,077.86
Natural Resources & Mining	52	671	667	670	11,617,097	1,335.09
Construction	962	9,849	9,750	9,718	145,941,622	1,148.78
Manufacturing	326	11,941	11,938	11,768	176,278,080	1,141.18
Trade, Transportation & Utilities	3,079	48,205	50,154	51,629	647,152,452	995.70
Wholesale Trade	897	11,708	11,732	11,568	217,433,972	1,433.30
Retail Trade	1,745	23,949	24,226	24,091	224,441,690	716.72
Transportation, Warehousing & Utilities	437	12,548	14,196	15,970	205,276,790	1,109.04
Information	218	2,702	2,685	2,659	40,996,315	1,175.83
Financial Activities	1,742	17,139	17,024	16,825	325,550,839	1,473.43
Professional & Business Services	2,814	34,120	34,127	33,852	490,992,132	1,109.76
Education & Health Services	2,601	40,974	41,587	41,161	617,827,732	1,152.39
Leisure & Hospitality	1,295	21,687	21,667	21,074	120,005,599	429.84
Other Services	1,159	6,678	6,603	6,334	74,794,064	879.95
Local Government	108	10,594	12,796	13,266	155,035,106	976.03
State Government	207	25,805	25,782	26,237	464,894,497	1,378.54

TABLE 6. COUNTY SUMMARY

North American Industry Classification System - Industry Groups	Number of Employing Units	Employment			Total Earnings Jul - Sep 2021	Average Weekly Earnings
		July	Aug	Sep		
RANDOLPH COUNTY - TOTAL	393	5,777	5,866	5,942	\$53,415,868	\$700.98
Natural Resources & Mining	26	234	231	241	3,063,785	1,001.46
Construction	25	77	79	82	668,550	648.24
Manufacturing	28	1,777	1,751	1,757	18,796,013	820.73
Trade, Transportation & Utilities	101	919	916	955	8,393,837	694.28
Wholesale Trade	14	111	114	106	1,288,786	898.53
Retail Trade	59	635	638	669	4,654,419	553.09
Transportation, Warehousing & Utilities	28	173	164	180	2,450,632	1,093.87
Information	5	11	12	12	167,167	1,102.20
Financial Activities	35	145	145	146	1,338,507	708.45
Professional & Business Services	29	250	249	250	2,018,922	622.04
Education & Health Services	58	965	978	960	9,663,071	768.15
Leisure & Hospitality	29	468	466	460	1,818,430	301.03
Other Services	20	47	48	50	338,732	539.10
Local Government	27	655	765	765	4,822,394	509.32
State Government	10	229	226	264	2,326,460	746.70
SAINT FRANCIS COUNTY - TOTAL	641	5,865	6,093	6,119	\$57,521,623	\$734.32
Natural Resources & Mining	41	165	155	160	1,837,307	883.32
Construction	34	139	136	136	1,413,538	793.68
Trade, Transportation & Utilities	140	1,657	1,673	1,674	16,602,251	765.65
Wholesale Trade	26	453	460	432	5,804,910	995.98
Retail Trade	90	900	917	946	6,469,158	540.31
Transportation, Warehousing & Utilities	24	304	296	296	4,328,183	1,114.74
Information	5	48	48	47	441,562	712.58
Financial Activities	54	202	198	196	1,778,129	688.49
Professional & Business Services	48	189	187	172	1,643,928	692.28
Education & Health Services	201	1,301	1,296	1,302	14,192,834	840.03
Leisure & Hospitality	48	666	648	631	2,907,428	344.96
Local Government	28	496	774	782	6,393,888	719.06
State Government	13	320	326	354	3,463,767	799.33
Other	29	682	652	665	684,691	790.43

TABLE 6. COUNTY SUMMARY

North American Industry Classification System - Industry Groups	Number of Employing Units	Employment			Total Earnings Jul - Sep 2021	Average Weekly Earnings
		July	Aug	Sep		
SALINE COUNTY - TOTAL	2,207	23,798	25,344	25,199	\$252,918,321	\$785.11
Natural Resources & Mining	15	71	68	71	709,413	779.57
Construction	299	2,306	2,309	2,288	28,603,570	956.23
Manufacturing	81	1,387	1,378	1,376	18,820,956	1,048.85
Trade, Transportation & Utilities	481	5,752	5,779	5,671	56,367,910	756.19
Wholesale Trade	109	536	536	530	8,895,537	1,281.41
Retail Trade	292	4,483	4,511	4,408	38,753,237	667.29
Transportation, Warehousing & Utilities	80	733	732	733	8,719,136	915.43
Information	25	128	126	128	1,797,618	1,085.96
Financial Activities	246	960	984	966	12,925,450	1,025.02
Professional & Business Services	300	1,784	1,806	1,819	23,412,043	998.85
Education & Health Services	347	4,726	4,690	4,652	50,502,589	828.44
Leisure & Hospitality	207	3,640	3,582	3,543	17,712,146	379.70
Other Services	160	848	817	813	7,643,501	711.82
Local Government	32	1,448	3,062	3,121	26,684,915	806.98
State Government	14	748	743	751	7,738,210	796.49
SCOTT COUNTY - TOTAL	181	2,739	2,824	2,964	\$25,496,631	\$690.02
Natural Resources & Mining	18	136	137	137	1,961,864	1,104.24
Trade, Transportation & Utilities	35	329	331	315	2,443,925	578.44
Wholesale Trade	6	20	20	20	176,489	678.80
Retail Trade	23	244	246	233	1,360,908	434.38
Transportation, Warehousing & Utilities	6	65	65	62	906,528	1,089.58
Financial Activities	16	61	59	59	557,432	718.65
Professional & Business Services	13	127	131	133	971,483	573.37
Education & Health Services	41	273	273	280	3,627,129	1,013.35
Leisure & Hospitality	18	157	162	158	632,279	305.89
Other Services	9	35	37	36	271,102	579.28
Local Government	6	289	357	521	3,241,968	641.09
State Government	6	30	30	30	349,152	895.26
Other	19	1,302	1,307	1,295	11,440,297	676.25

TABLE 6. COUNTY SUMMARY

North American Industry Classification System - Industry Groups	Number of Employing Units	Employment			Total Earnings Jul - Sep 2021	Average Weekly Earnings
		July	Aug	Sep		
SEARCY COUNTY - TOTAL	167	1,551	1,561	1,541	\$12,699,773	\$629.86
Construction	10	7	6	9	45,153	473.63
Manufacturing	14	135	129	132	1,064,482	620.33
Trade, Transportation & Utilities	32	233	238	230	1,734,566	571.02
Wholesale Trade	5	34	34	35	297,885	667.40
Retail Trade	21	180	185	176	1,207,085	514.89
Transportation, Warehousing & Utilities	6	19	19	19	229,596	929.54
Financial Activities	13	106	84	69	731,270	651.56
Education & Health Services	38	401	404	409	3,787,413	719.95
Leisure & Hospitality	15	166	162	153	624,473	299.60
Local Government	10	207	319	318	1,954,959	534.53
State Government	6	42	42	42	419,553	768.41
Other	29	254	177	179	2,337,904	884.45
SEBASTIAN COUNTY - TOTAL	3,718	60,734	62,099	62,405	\$742,353,101	\$924.82
Natural Resources & Mining	33	240	241	243	3,726,165	1,187.69
Construction	271	2,423	2,404	2,378	27,765,887	889.31
Manufacturing	184	11,002	10,914	11,125	149,019,691	1,040.80
Trade, Transportation & Utilities	884	13,010	13,156	13,199	150,151,674	880.23
Wholesale Trade	222	2,757	2,760	2,792	41,908,977	1,163.96
Retail Trade	551	7,533	7,652	7,629	63,051,299	637.78
Transportation, Warehousing & Utilities	111	2,720	2,744	2,778	45,191,398	1,265.32
Information	40	800	791	790	16,193,008	1,569.44
Financial Activities	423	2,334	2,319	2,328	33,777,697	1,116.58
Professional & Business Services	561	7,665	7,553	7,561	78,695,879	797.25
Education & Health Services	641	11,416	11,394	11,316	181,293,973	1,225.96
Leisure & Hospitality	369	6,382	6,296	6,125	31,776,882	390.00
Other Services	248	1,158	1,135	1,099	11,678,346	794.52
Local Government	43	2,932	4,382	4,624	38,987,257	753.65
State Government	21	1,372	1,514	1,617	19,286,642	988.40

TABLE 6. COUNTY SUMMARY

North American Industry Classification System - Industry Groups	Number of Employing Units	Employment			Total Earnings Jul - Sep 2021	Average Weekly Earnings
		July	Aug	Sep		
SEVIER COUNTY - TOTAL	318	4,474	4,561	4,690	\$43,025,634	\$723.42
Natural Resources & Mining	16	141	149	151	1,942,873	1,016.68
Construction	20	166	169	166	2,404,575	1,107.59
Trade, Transportation & Utilities	85	771	788	791	7,027,260	690.07
Wholesale Trade	11	76	79	79	1,003,491	989.64
Retail Trade	58	602	616	627	4,515,227	564.76
Transportation, Warehousing & Utilities	16	93	93	85	1,508,542	1,284.59
Financial Activities	28	193	189	188	1,928,578	780.80
Professional & Business Services	26	160	167	167	1,352,764	631.94
Education & Health Services	62	442	453	452	3,718,282	637.02
Leisure & Hospitality	25	297	287	318	1,075,674	275.20
Local Government	13	772	864	915	7,054,523	638.17
State Government	8	151	152	177	1,820,510	875.25
Other	35	1,381	1,343	1,365	14,700,595	829.65
SHARP COUNTY - TOTAL	376	3,162	3,295	3,521	\$27,643,011	\$639.32
Construction	29	111	106	108	1,086,325	771.36
Manufacturing	16	162	171	186	2,001,806	890.09
Trade, Transportation & Utilities	85	773	792	804	5,405,475	526.56
Wholesale Trade	16	43	44	42	275,225	492.35
Retail Trade	62	691	709	724	4,560,661	495.51
Transportation, Warehousing & Utilities	7	39	39	38	569,589	1,133.13
Information	8	16	17	20	162,110	705.85
Financial Activities	35	182	183	187	2,295,989	959.86
Professional & Business Services	34	108	109	110	1,145,662	808.51
Education & Health Services	70	791	803	790	8,285,174	802.00
Leisure & Hospitality	34	411	405	401	1,635,842	310.19
Local Government	24	464	572	784	4,457,835	565.24
State Government	7	52	52	52	521,012	770.73
Other	34	92	85	79	645,781	582.13

TABLE 6. COUNTY SUMMARY

North American Industry Classification System - Industry Groups	Number of Employing Units	Employment			Total Earnings	Average Weekly Earnings
		July	Aug	Sep	Jul - Sep 2021	
STONE COUNTY - TOTAL	281	2,310	2,468	2,532	\$20,253,695	\$639.39
Natural Resources & Mining	6	12	12	12	59,316	380.23
Construction	15	37	36	38	283,521	589.44
Manufacturing	20	258	252	267	2,241,284	665.66
Trade, Transportation & Utilities	64	539	560	553	4,559,253	636.89
Wholesale Trade	5	30	32	30	261,020	654.73
Retail Trade	47	471	489	484	3,702,512	591.71
Transportation, Warehousing & Utilities	12	38	39	39	595,721	1,185.12
Financial Activities	38	131	133	133	1,335,255	776.16
Professional & Business Services	19	29	39	40	209,539	447.73
Education & Health Services	48	485	496	491	5,653,253	886.28
Leisure & Hospitality	33	483	456	492	2,087,455	336.63
Local Government	10	210	359	377	2,671,163	651.61
State Government	7	91	89	91	892,625	760.11
Other	21	35	36	38	261,031	552.64
UNION COUNTY - TOTAL	1,213	15,927	16,284	16,428	\$207,799,665	\$985.91
Natural Resources & Mining	80	340	333	343	4,703,393	1,068.31
Construction	75	1,469	1,430	1,452	23,615,292	1,252.51
Manufacturing	52	2,930	2,939	2,960	50,883,823	1,329.98
Trade, Transportation & Utilities	294	3,280	3,319	3,347	38,078,630	883.51
Wholesale Trade	64	437	439	437	7,122,444	1,251.82
Retail Trade	175	1,973	2,005	2,045	15,848,301	607.22
Transportation, Warehousing & Utilities	55	870	875	865	15,107,885	1,335.80
Information	8	57	62	61	760,643	975.18
Financial Activities	93	564	563	565	7,103,202	968.79
Professional & Business Services	118	1,837	1,805	1,811	33,520,956	1,418.60
Education & Health Services	260	1,880	1,908	1,889	20,473,132	832.23
Leisure & Hospitality	98	1,429	1,422	1,380	6,591,956	359.54
Other Services	87	411	408	407	3,498,569	658.53
Local Government	32	1,260	1,624	1,735	13,203,873	659.68
State Government	16	470	471	478	5,366,196	872.69

TABLE 6. COUNTY SUMMARY

North American Industry Classification System - Industry Groups	Number of Employing Units	Employment			Total Earnings Jul - Sep 2021	Average Weekly Earnings
		July	Aug	Sep		
VAN BUREN COUNTY - TOTAL	331	3,287	3,461	3,589	\$33,947,349	\$757.86
Natural Resources & Mining	9	33	33	32	559,586	1,317.71
Construction	35	137	153	131	1,376,142	754.33
Trade, Transportation & Utilities	87	1,070	1,060	1,092	12,584,255	901.32
Wholesale Trade	10	45	45	44	521,422	897.97
Retail Trade	51	623	611	639	4,771,621	587.90
Transportation, Warehousing & Utilities	26	402	404	409	7,291,212	1,384.85
Information	6	34	33	33	352,917	814.42
Financial Activities	40	162	162	161	1,786,989	850.27
Professional & Business Services	30	131	137	130	1,201,359	696.57
Education & Health Services	48	665	679	665	7,556,502	868.00
Leisure & Hospitality	27	311	305	280	1,403,309	361.43
Other	32	356	382	401	3,029,418	613.78
Local Government	11	347	476	623	3,655,213	583.34
State Government	6	41	41	41	441,659	828.63
WASHINGTON COUNTY - TOTAL	6,570	104,470	107,817	109,003	\$1,378,139,187	\$989.86
Natural Resources & Mining	41	328	325	327	4,754,602	1,119.61
Construction	651	6,673	6,679	6,647	96,271,849	1,110.88
Manufacturing	231	13,950	13,897	14,065	189,093,148	1,041.15
Trade, Transportation & Utilities	1,379	22,525	22,438	22,533	280,914,927	960.45
Wholesale Trade	388	3,768	3,767	3,728	81,291,589	1,665.60
Retail Trade	789	12,653	12,669	12,793	114,988,254	696.20
Transportation, Warehousing & Utilities	202	6,104	6,002	6,012	84,635,084	1,078.00
Information	100	907	890	893	12,431,545	1,066.48
Financial Activities	772	3,911	3,947	3,832	58,945,251	1,163.62
Professional & Business Services	1,227	13,700	13,781	13,723	241,469,245	1,352.39
Education & Health Services	956	15,946	16,082	16,274	219,984,574	1,051.01
Leisure & Hospitality	716	12,494	12,910	12,981	68,605,103	412.45
Other Services	414	2,244	2,260	2,265	26,116,694	890.37
Local Government	61	4,908	7,311	8,650	73,230,826	809.79
State Government	22	6,884	7,297	6,813	106,321,423	1,168.70

TABLE 6. COUNTY SUMMARY

North American Industry Classification System - Industry Groups	Number of Employing Units	Employment			Total Earnings Jul - Sep 2021	Average Weekly Earnings
		July	Aug	Sep		
WHITE COUNTY - TOTAL	1,812	23,410	24,606	24,737	\$253,331,145	\$803.55
Natural Resources & Mining	42	365	357	356	5,762,188	1,233.52
Construction	178	1,453	1,438	1,478	18,304,427	966.83
Manufacturing	56	2,258	2,229	2,268	27,337,496	933.92
Trade, Transportation & Utilities	462	6,418	6,561	6,537	67,848,553	802.28
Wholesale Trade	80	566	579	577	6,772,455	907.59
Retail Trade	303	3,658	3,741	3,687	30,668,082	638.40
Transportation, Warehousing & Utilities	79	2,194	2,241	2,273	30,408,016	1,046.10
Information	24	99	112	100	1,008,685	748.47
Financial Activities	189	942	939	936	11,343,555	929.27
Professional & Business Services	182	1,204	1,217	1,202	11,701,317	745.32
Education & Health Services	328	5,428	5,474	5,481	66,861,171	941.80
Leisure & Hospitality	172	2,696	2,706	2,701	12,324,178	350.99
Other Services	118	526	537	529	5,532,058	801.90
Local Government	46	1,591	2,584	2,666	20,871,224	704.05
State Government	15	430	452	483	4,436,293	750.01
WOODRUFF COUNTY - TOTAL	185	1,688	1,768	1,840	\$18,951,559	\$825.80
Natural Resources & Mining	31	221	216	228	2,143,027	743.68
Construction	12	29	29	29	321,963	854.01
Manufacturing	5	226	217	235	3,013,034	1,025.54
Trade, Transportation & Utilities	48	346	351	357	4,056,038	888.05
Wholesale Trade	13	144	149	155	2,065,051	1,063.73
Retail Trade	25	142	139	140	976,097	535.04
Transportation, Warehousing & Utilities	10	60	63	62	1,014,890	1,265.98
Financial Activities	10	41	41	41	385,891	724.00
Education & Health Services	39	247	253	249	2,659,109	819.28
Leisure & Hospitality	11	74	72	78	360,038	370.92
Local Government	9	260	340	380	2,770,791	652.46
State Government	5	28	28	28	345,550	949.31
Other	15	216	221	215	2,896,118	1,025.05

TABLE 6. COUNTY SUMMARY

North American Industry Classification System - Industry Groups	Number of Employing Units	Employment			Total Earnings Jul - Sep 2021	Average Weekly Earnings
		July	Aug	Sep		
YELL COUNTY - TOTAL	426	5,913	6,122	6,288	\$56,497,394	\$711.56
Natural Resources & Mining	27	247	250	251	3,063,139	945.02
Construction	34	208	207	205	2,143,491	797.83
Manufacturing	20	2,364	2,351	2,357	22,912,564	747.67
Trade, Transportation & Utilities	89	737	739	732	5,838,641	610.23
Wholesale Trade	17	65	66	62	448,386	536.13
Retail Trade	49	539	542	541	3,363,956	478.61
Transportation, Warehousing & Utilities	23	133	131	129	2,026,299	1,189.84
Financial Activities	31	168	165	165	2,355,744	1,091.63
Professional & Business Services	43	316	327	334	2,982,609	704.50
Education & Health Services	104	672	676	662	5,361,691	615.58
Leisure & Hospitality	23	294	303	279	1,244,908	327.95
Local Government	23	715	914	1,113	8,618,286	725.32
State Government	10	64	63	64	655,721	792.25
Other	22	128	127	126	1,320,600	799.88
STATEWIDE COUNTY - TOTAL	15,053	38,144	39,571	39,764	\$742,925,515	\$1,459.36
Natural Resources & Mining	114	189	185	177	4,019,293	1,683.36
Construction	1,023	3,988	3,878	3,836	65,730,798	1,296.24
Manufacturing	172	305	319	288	7,895,522	1,997.85
Trade, Transportation & Utilities	4,018	8,768	8,884	8,684	227,791,870	1,996.03
Wholesale Trade	3,205	6,458	6,503	6,269	189,235,506	2,270.92
Retail Trade	342	1,094	1,176	1,226	18,777,447	1,239.49
Transportation, Warehousing & Utilities	471	1,216	1,205	1,189	19,778,917	1,264.37
Information	1,069	1,663	1,746	1,703	42,898,063	1,936.53
Financial Activities	1,192	3,405	3,494	3,498	63,823,883	1,416.62
Professional & Business Services	5,932	15,338	16,439	17,111	266,050,785	1,255.86
Education & Health Services	885	2,611	2,635	2,476	38,334,481	1,145.61
Leisure & Hospitality	145	338	444	443	3,118,380	587.45
State Government	20	659	653	664	8,920,429	1,041.78
Other	483	880	894	884	14,342,011	1,245.18

Note: Statewide classification includes employment and payroll data for employers that have not provided a physical location for each employing unit. This section also includes employers without a physical location in Arkansas.

TABLE 7. FEDERAL GOVERNMENT EMPLOYMENT AND EARNINGS IN ARKANSAS

North American Industry Classification System - Industry Groups	Number of Employing Units	Employment			Total Earnings Jul - Sep 2021	Average Weekly Earnings
		Jul	Aug	Sep		
TOTAL	1,191	20,626	20,587	20,605	\$390,866,460	\$1,459.12
Trade, Transportation & Utilities	582	5,585	5,591	5,659	72,859,873	998.74
Information	2	31	32	32	538,695	1,308.57
Financial Activities	14	108	105	103	2,146,063	1,567.23
Professional & Business Services	33	902	898	854	19,696,513	1,712.64
Education & Health Services	20	5,399	5,409	5,442	131,978,524	1,874.25
Leisure & Hospitality	22	262	260	242	3,252,654	982.48
Other Services	1	1	1	1	10,662	820.15
Public Administration	517	8,338	8,291	8,272	160,383,476	1,486.35

TABLE 8. LOCAL WORKFORCE DEVELOPMENT AREA SUMMARY

North American Industry Classification System - Industry Groups	Number of Employing Units	Employment			Total Earnings Jul - Sep 2021	Average Weekly Earnings
		Jul	Aug	Sep		
CENTRAL LOCAL WORKFORCE DEVELOPMENT AREA	7,184	80,102	82,974	84,195	\$859,135,624	\$801.80
Natural Resources & Mining	206	1,108	1,087	1,077	13,897,651	980.18
Construction	859	6,393	6,421	6,390	81,310,402	977.08
Manufacturing	229	5,975	5,992	5,987	76,919,095	988.67
Trade, Transportation & Utilities	1,549	17,591	17,734	17,628	171,111,236	745.70
Wholesale Trade	338	2,080	2,079	2,060	31,124,809	1,154.95
Retail Trade	944	13,398	13,535	13,423	112,283,156	642.07
Transportation, Warehousing & Utilities	267	2,113	2,120	2,145	27,703,271	1,002.36
Information	76	1,783	1,770	1,755	37,426,527	1,627.15
Financial Activities	799	3,346	3,373	3,330	44,447,280	1,020.71
Professional & Business Services	972	6,129	6,048	6,148	75,275,494	947.95
Education & Health Services	1,152	14,931	14,882	14,715	161,893,753	839.02
Leisure & Hospitality	674	11,648	11,694	11,556	56,378,962	372.82
Other Services	473	2,032	2,025	2,023	18,227,969	691.85
Local Government	135	5,363	8,218	9,562	76,549,806	763.31
State Government	60	3,803	3,730	4,024	45,697,449	912.48

Note: Pulaski County is not included in the Central Local Workforce Development Area. Please refer to Page 51 for information on Pulaski County.

Central Local Workforce Development Area includes these counties: Faulkner, Lonoke, Monroe, Prairie, and Saline.

EASTERN LOCAL WORKFORCE DEVELOPMENT AREA	3,192	30,651	31,791	32,214	\$316,291,035	\$771.11
Natural Resources & Mining	246	1,136	1,107	1,152	10,705,118	727.66
Construction	127	715	691	681	8,332,720	921.39
Manufacturing	72	3,259	3,200	3,197	40,337,221	964.02
Trade, Transportation & Utilities	736	8,395	8,503	8,403	91,336,966	833.08
Wholesale Trade	139	1,803	1,788	1,731	24,269,567	1,052.36
Retail Trade	402	4,171	4,263	4,239	31,316,474	570.26
Transportation, Warehousing & Utilities	195	2,421	2,452	2,433	35,750,925	1,129.24
Information	23	111	111	112	1,025,549	708.58
Financial Activities	250	1,092	1,086	1,075	12,829,702	910.14
Professional & Business Services	246	1,624	1,630	1,602	17,165,415	815.74
Education & Health Services	889	5,397	5,388	5,294	54,714,031	785.27
Leisure & Hospitality	276	3,993	3,992	3,923	21,471,443	416.10
Other Services	146	656	642	643	5,799,000	689.45
Local Government	126	2,669	3,840	4,434	34,627,696	730.24
State Government	55	1,604	1,601	1,698	17,946,174	844.67

Eastern Local Workforce Development Area includes these counties: Crittenden, Cross, Lee, Phillips, and Saint Francis.

TABLE 8. LOCAL WORKFORCE DEVELOPMENT AREA SUMMARY

North American Industry Classification System - Industry Groups	Number of Employing Units	Employment			Total Earnings Jul - Sep 2021	Average Weekly Earnings
		Jul	Aug	Sep		
NORTH CENTRAL LOCAL WORKFORCE DEVELOPMENT AREA	5,429	64,898	67,310	68,818	\$681,692,041	\$782.55
Natural Resources & Mining	202	1,485	1,474	1,497	19,640,104	1,017.13
Construction	449	3,057	3,061	3,139	36,569,360	911.64
Manufacturing	216	9,240	9,159	9,239	107,201,377	895.10
Trade, Transportation & Utilities	1,347	15,157	15,344	15,328	154,875,937	779.87
Wholesale Trade	216	1,456	1,475	1,466	18,057,852	947.74
Retail Trade	890	9,830	9,941	9,906	79,364,995	617.14
Transportation, Warehousing & Utilities	241	3,871	3,928	3,956	57,453,090	1,127.89
Information	81	329	338	332	3,634,511	839.57
Financial Activities	546	2,725	2,717	2,697	32,442,489	919.86
Professional & Business Services	497	3,444	3,480	3,421	33,925,146	756.78
Education & Health Services	921	13,616	13,713	13,678	164,704,595	926.88
Leisure & Hospitality	526	6,953	6,937	6,849	31,510,738	350.63
Other Services	327	1,331	1,368	1,347	11,942,722	681.17
Local Government	224	5,173	7,252	8,757	60,116,353	654.94
State Government	93	2,388	2,467	2,534	25,128,709	784.81

North Central Local Workforce Development Area includes these counties: Cleburne, Fulton, Independence, Izard, Jackson, Sharp, Stone, Van Buren, White, and Woodruff.

NORTHEAST LOCAL WORKFORCE DEVELOPMENT AREA	6,483	97,405	100,021	102,014	\$1,191,841,100	\$918.52
Natural Resources & Mining	450	2,000	1,975	2,075	22,705,937	866.09
Construction	500	4,089	4,159	4,206	61,021,391	1,130.71
Manufacturing	292	21,422	21,530	21,625	346,870,286	1,239.56
Trade, Transportation & Utilities	1,667	19,477	19,491	19,761	207,536,668	815.49
Wholesale Trade	360	3,986	3,994	3,961	60,183,170	1,163.09
Retail Trade	970	11,967	12,006	12,195	97,324,349	620.98
Transportation, Warehousing & Utilities	337	3,524	3,491	3,605	50,029,149	1,087.12
Information	61	643	642	634	8,462,877	1,017.70
Financial Activities	568	3,323	3,322	3,292	41,844,755	971.77
Professional & Business Services	684	6,861	6,913	7,105	71,967,286	795.43
Education & Health Services	1,007	16,832	17,037	17,052	230,480,797	1,044.52
Leisure & Hospitality	589	9,376	9,359	9,288	44,343,234	365.17
Other Services	360	1,657	1,660	1,688	17,032,721	785.34
Local Government	217	7,971	10,220	11,403	92,325,849	719.94
State Government	88	3,754	3,713	3,885	47,249,299	960.51

Northeast Local Workforce Development Area includes these counties: Clay, Craighead, Greene, Lawrence, Mississippi, Poinsett, and Randolph.

TABLE 8. LOCAL WORKFORCE DEVELOPMENT AREA SUMMARY

North American Industry Classification System - Industry Groups	Number of Employing Units	Employment			Total Earnings Jul - Sep 2021	Average Weekly Earnings
		Jul	Aug	Sep		
NORTHWEST LOCAL WORKFORCE DEVELOPMENT AREA	17,911	277,510	283,661	287,581	\$3,819,928,878	\$1,038.61
Natural Resources & Mining	145	1,585	1,497	1,470	22,505,474	1,140.94
Construction	1,756	14,391	14,375	14,353	194,022,093	1,038.39
Manufacturing	660	37,814	37,763	38,047	474,355,076	963.41
Trade, Transportation & Utilities	3,993	63,510	63,545	63,796	874,032,264	1,056.84
Wholesale Trade	1,275	11,249	11,226	11,143	263,315,216	1,807.52
Retail Trade	2,172	32,268	32,414	32,533	285,383,353	677.44
Transportation, Warehousing & Utilities	546	19,993	19,905	20,120	325,333,695	1,250.91
Information	280	2,367	2,339	2,285	35,313,970	1,165.70
Financial Activities	1,908	10,173	10,159	9,926	158,060,632	1,205.48
Professional & Business Services	3,151	50,608	50,751	50,497	1,039,484,344	1,579.66
Education & Health Services	2,549	35,915	36,260	36,526	460,095,233	976.77
Leisure & Hospitality	1,914	32,007	32,379	32,239	175,747,016	419.74
Other Services	1,142	5,561	5,495	5,467	57,264,809	799.79
Local Government	311	14,701	19,781	23,857	201,525,616	797.17
State Government	102	8,878	9,317	9,118	127,522,351	1,077.44
Northwest Local Workforce Development Area includes these counties: Baxter, Benton, Boone, Carroll, Madison, Marion, Newton, Searcy, and Washington.						
SOUTHEAST LOCAL WORKFORCE DEVELOPMENT AREA	6,160	62,867	64,415	65,243	\$698,111,258	\$836.79
Natural Resources & Mining	447	2,181	2,146	2,101	24,674,596	885.83
Construction	354	2,157	2,099	2,126	26,246,220	949.05
Manufacturing	211	13,700	13,688	13,679	196,648,915	1,105.04
Trade, Transportation & Utilities	1,281	11,847	11,755	11,753	118,144,010	771.15
Wholesale Trade	224	1,828	1,797	1,795	25,884,485	1,102.09
Retail Trade	759	7,218	7,220	7,199	54,026,296	576.22
Transportation, Warehousing & Utilities	298	2,801	2,738	2,759	38,233,229	1,063.27
Information	45	242	242	229	2,444,894	791.31
Financial Activities	446	2,513	2,525	2,514	31,078,097	949.66
Professional & Business Services	462	3,500	3,580	3,595	40,427,504	873.95
Education & Health Services	1,840	9,126	9,161	9,091	96,886,267	816.65
Leisure & Hospitality	420	5,532	5,521	5,504	26,461,487	368.82
Other Services	320	1,077	1,077	1,064	9,708,621	696.22
Local Government	210	5,815	7,393	8,128	64,292,275	695.38
State Government	124	5,177	5,228	5,459	61,098,372	888.78
Southeast Local Workforce Development Area includes these counties: Arkansas, Ashley, Bradley, Chicot, Cleveland, Desha, Drew, Grant, Jefferson, and Lincoln.						

TABLE 8. LOCAL WORKFORCE DEVELOPMENT AREA SUMMARY

North American Industry Classification System - Industry Groups	Number of Employing Units	Employment			Total Earnings Jul - Sep 2021	Average Weekly Earnings
		Jul	Aug	Sep		
SOUTHWEST LOCAL WORKFORCE DEVELOPMENT AREA	5,539	70,752	72,615	74,093	\$818,260,584	\$868.34
Natural Resources & Mining	324	2,064	2,050	2,039	27,410,868	1,028.05
Construction	350	3,210	3,102	3,139	44,131,743	1,077.58
Manufacturing	226	19,410	19,119	19,221	288,171,598	1,151.53
Trade, Transportation & Utilities	1,319	13,632	13,773	13,847	137,630,614	769.92
Wholesale Trade	235	1,774	1,782	1,781	24,654,813	1,066.06
Retail Trade	781	8,490	8,601	8,706	61,938,679	554.08
Transportation, Warehousing & Utilities	303	3,368	3,390	3,360	51,037,122	1,164.04
Information	47	312	317	310	4,457,684	1,095.52
Financial Activities	454	2,421	2,428	2,387	27,534,662	878.13
Professional & Business Services	440	4,491	4,545	4,504	57,760,498	984.44
Education & Health Services	1,210	8,771	8,772	8,783	89,321,229	782.97
Leisure & Hospitality	450	5,950	5,976	5,933	26,723,106	345.31
Other Services	327	1,310	1,293	1,311	10,989,229	647.92
Local Government	263	6,051	8,037	9,280	66,698,588	658.68
State Government	129	3,130	3,203	3,339	37,430,765	893.08
Southwest Local Workforce Development Area includes these counties: Calhoun, Columbia, Dallas, Hempstead, Howard, Lafayette, Little River, Miller, Nevada, Ouachita, Sevier, and Union						
WEST CENTRAL LOCAL WORKFORCE DEVELOPMENT AREA	8,236	99,207	101,681	103,574	\$1,050,789,753	\$796.45
Natural Resources & Mining	254	2,257	2,265	1,984	28,711,707	1,018.41
Construction	787	4,601	4,614	4,521	55,146,510	926.48
Manufacturing	332	14,309	14,315	14,396	173,753,293	932.05
Trade, Transportation & Utilities	1,780	21,598	21,628	21,693	229,656,356	816.37
Wholesale Trade	310	1,924	1,931	1,915	25,787,543	1,031.36
Retail Trade	1,177	14,131	14,214	14,268	115,985,042	628.11
Transportation, Warehousing & Utilities	293	5,543	5,483	5,510	87,883,771	1,226.47
Information	78	703	730	754	7,626,046	804.69
Financial Activities	848	3,720	3,689	3,655	45,508,916	949.21
Professional & Business Services	945	7,574	7,619	7,788	83,578,759	839.28
Education & Health Services	1,489	16,577	16,668	16,684	192,978,306	891.94
Leisure & Hospitality	849	14,292	14,043	13,714	74,624,807	409.55
Other Services	526	2,155	2,184	2,208	18,096,368	637.86
Local Government	236	7,198	9,616	11,429	93,495,304	763.94
State Government	112	4,223	4,310	4,748	47,613,381	827.32
West Central Local Workforce Development Area includes these counties: Clark, Conway, Garland, Hot Spring, Johnson, Montgomery, Perry, Pike, Pope, and Yell						

TABLE 8. LOCAL WORKFORCE DEVELOPMENT AREA SUMMARY

North American Industry Classification System - Industry Groups	Number of Employing Units	Employment			Total Earnings	Average Weekly Earnings
		Jul	Aug	Sep	Jul - Sep 2021	
WESTERN LOCAL WORKFORCE DEVELOPMENT AREA	6,492	96,193	99,525	100,177	\$1,112,299,719	\$867.49
Natural Resources & Mining	139	979	983	1,040	14,209,876	1,092.34
Construction	527	4,027	4,021	4,000	45,593,067	873.30
Manufacturing	328	20,252	20,231	20,490	259,412,390	981.82
Trade, Transportation & Utilities	1,546	21,967	22,194	22,260	240,408,725	835.26
Wholesale Trade	332	3,708	3,715	3,732	56,086,090	1,160.28
Retail Trade	928	12,082	12,261	12,264	96,401,033	607.71
Transportation, Warehousing & Utilities	286	6,177	6,218	6,264	87,921,602	1,087.39
Information	70	945	934	933	18,051,012	1,481.37
Financial Activities	682	3,337	3,315	3,320	44,463,641	1,028.97
Professional & Business Services	849	9,761	9,664	9,674	101,057,452	801.43
Education & Health Services	1,119	15,431	15,350	15,242	221,772,996	1,112.02
Leisure & Hospitality	580	9,366	9,284	9,092	45,047,203	374.72
Other Services	417	1,926	1,913	1,887	18,705,108	753.85
Local Government	166	5,838	9,112	9,577	75,216,496	707.70
State Government	69	2,364	2,524	2,662	28,361,753	866.89

Western Local Workforce Development Area includes these counties: Crawford, Franklin, Logan, Polk, Scott, and Sebastian