

# ARKANSAS

## COVERED EMPLOYMENT & EARNINGS

FOURTH QUARTER 2021



Arkansas Division of  
Workforce Services



**COVERED EMPLOYMENT AND EARNINGS  
STATE OF ARKANSAS  
FOURTH QUARTER 2021**

**ASA HUTCHINSON, GOVERNOR  
STATE OF ARKANSAS**

**CHARISSE CHILDERS, DIRECTOR  
DIVISION OF WORKFORCE SERVICES**

**PUBLISHED BY  
LABOR MARKET INFORMATION  
BUREAU OF LABOR STATISTICS PROGRAMS  
POST OFFICE BOX 2981  
LITTLE ROCK, ARKANSAS 72203-2981  
SUSAN PRICE, BLS PROGRAMS MANAGER  
TELEPHONE (501) 682-3103**

**STATE OF ARKANSAS WEBPAGE: <http://www.arkansas.gov>**

**DIVISION OF WORKFORCE SERVICES WEBPAGE: <http://www.dws.arkansas.gov/>**

**WEBPAGE FOR LABOR MARKET INFORMATION: <http://www.discover.arkansas.gov>**

**RELEASED: JUNE 2022**



## TABLE OF CONTENTS

DESCRIPTION OF DATA	PAGE
Description and Classification of Data	1
Definition of Covered Employment and Earnings	2
Significant Developments During Fourth Quarter 2021	3

### LIST OF GRAPHS AND TABLES

Graph 1	Total Covered Employment for Selected Years, Arkansas	7
Graph 2	Total Covered Earnings, by Calendar Quarter for Selected Years, Arkansas	8
Table 1	Quarterly Comparison of Covered Employment and Wages, by Industry	5
Table 2	Total Covered Employment in Arkansas, 2014 – 2021	6
Table 3	Total Covered Earnings, 2014 – 2021	9
Table 4	Total Taxable Earnings, 2014 – 2021	10
Table 5	State Summary – Employment and Total Earnings, by Industry, Fourth Quarter 2021	11
Table 6	County Summary – Employment and Total Earnings, by Industry, Fourth Quarter 2021	22
Table 7	Federal Government Employment and Total Earnings in Arkansas, Fourth Quarter 2021	60
Table 8	Local Workforce Development Area – Employment and Total Earnings, by Industry, Fourth Quarter 2021	61



EMPLOYMENT AND EARNINGS  
UNDER THE ARKANSAS EMPLOYMENT SECURITY LAW  
FOURTH QUARTER 2021

**DESCRIPTION AND CLASSIFICATION OF DATA**

This publication contains covered employment and payroll data by industry and county for the Fourth Quarter 2021 and a record for total covered employment by month, quarterly payroll data, average weekly earnings, and total taxable earnings for 2014 through 2021. These data are compiled from quarterly contributions and wage reports submitted by employers subject to the Arkansas Employment Security Law.

Employment data have been tabulated for each month of the quarter by industry under the **North American Industry Classification System** (NAICS) by state, county, and workforce area. Payroll data represent the total wages paid during the quarter and are classified by industry for the state and by publishable industry groups for each county and workforce area.

Due to industry classification revisions, previously published data will not always be comparable with current data. For this reason, comparisons should not be made between the same industries under different revisions. For more information, visit the NAICS home page at <http://www.census.gov/naics>.

Industry Classification Revisions

- SIC (Standard Industrial Classification) 1987 to NAICS 2002
- NAICS 2002 to NAICS 2007
- NAICS 2007 to NAICS 2012
- NAICS 2012 to NAICS 2018

The tabulation of this data is a joint effort in conjunction with the United States Bureau of Labor Statistics. Data included in this publication are subject to revisions. Revisions are typically reflected in the Annual Covered Employment and Earnings publication.

## **DEFINITION OF COVERED EMPLOYMENT AND EARNINGS**

Covered Employment is the total number of workers employed by establishments subject to the Arkansas Employment Security Law that worked or received pay for the payroll period including the 12<sup>th</sup> of the month. Earnings include all wages paid to any covered employee by their employer including salaries, bonuses, commissions, fees, fringe benefits, sick pay made directly to employees or dependents, deferred compensation, and reported tips. These wages include both taxable and nontaxable wages. Only the first \$10,000 paid to each worker by an employer in the calendar year is taxable under the Arkansas Employment Security Law.

An Arkansas state unemployment insurance account is required of any entity meeting the definition of an employer. As described by Arkansas Division of Workforce Services Law, the definition of an employer includes, but is not limited to, a sole proprietorship, partnership, corporation, associations, trust, estate, and receiver or trustee in bankruptcy. The entity must employ one or more individuals for ten or more days in a calendar year, whether or not the days are consecutive.

Currently excluded from coverage is employment covered by the Railroad Unemployment Insurance Act, some domestic service workers, employees of small agricultural establishments, self-employed workers, unpaid family workers, insurance and real estate agents paid only on a commission basis, and employees of churches and religious organizations except separately incorporated schools.

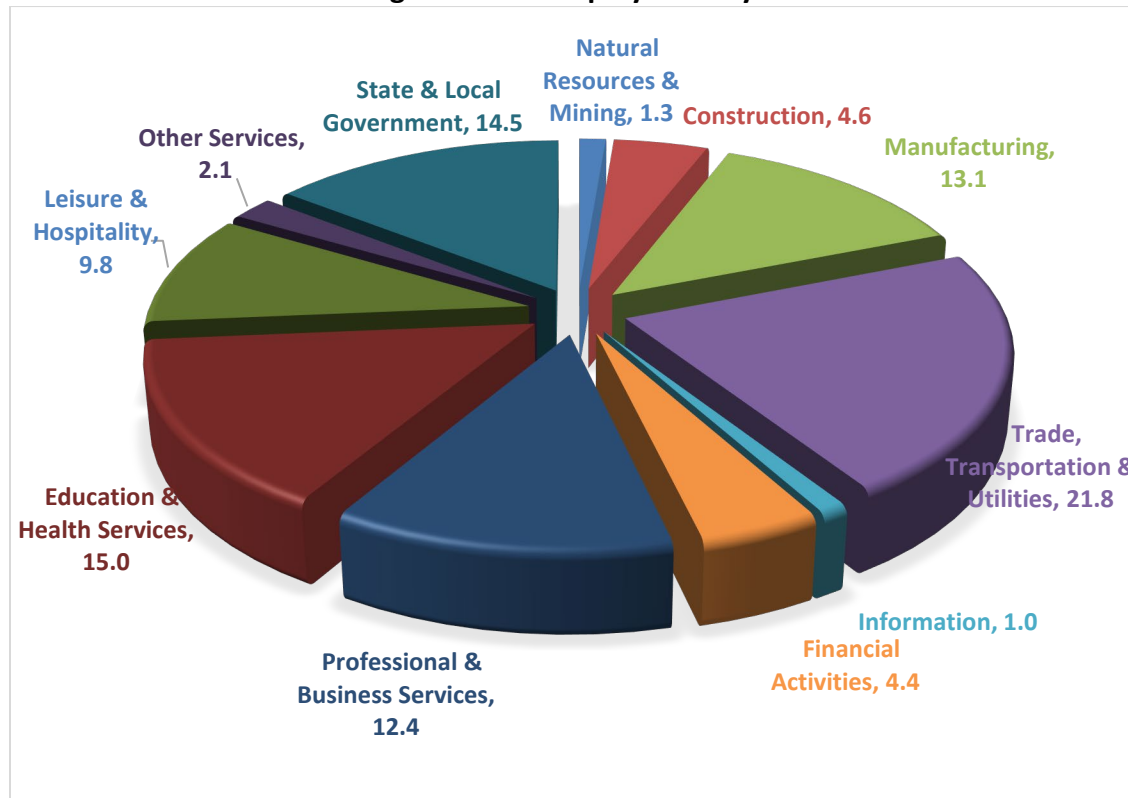
Civilian federal workers are covered by Unemployment Compensation for Federal Employees (UCFE).

## SIGNIFICANT DEVELOPMENTS DURING FOURTH QUARTER 2021

### AVERAGE EMPLOYMENT CHANGES

Covered employment averaged 1,212,970 during the Fourth Quarter 2021 (refer to Table 1), an increase of 39,868 (3.4%) from the previous quarter and a gain of 34,834 (3.0%) from the average recorded one year ago. The over-the-year comparison is more significant when used as an economic indicator and allows for seasonal factors that appear when comparing over-the-quarter data to be disregarded.

**Average Covered Employment by NAICS**



### EMPLOYMENT CHANGES FROM THIRD QUARTER 2021

Gains were recorded in nine major industry groups. (refer to Table 1). Significant increases occurred in State & Local Government (20,168), Trade, Transportation & Utilities (11,310), Professional & Business Services (5,773), Manufacturing (1,619) and Education & Health Services (1,002). The only losses were in Leisure & Hospitality (-1,661) and Construction.

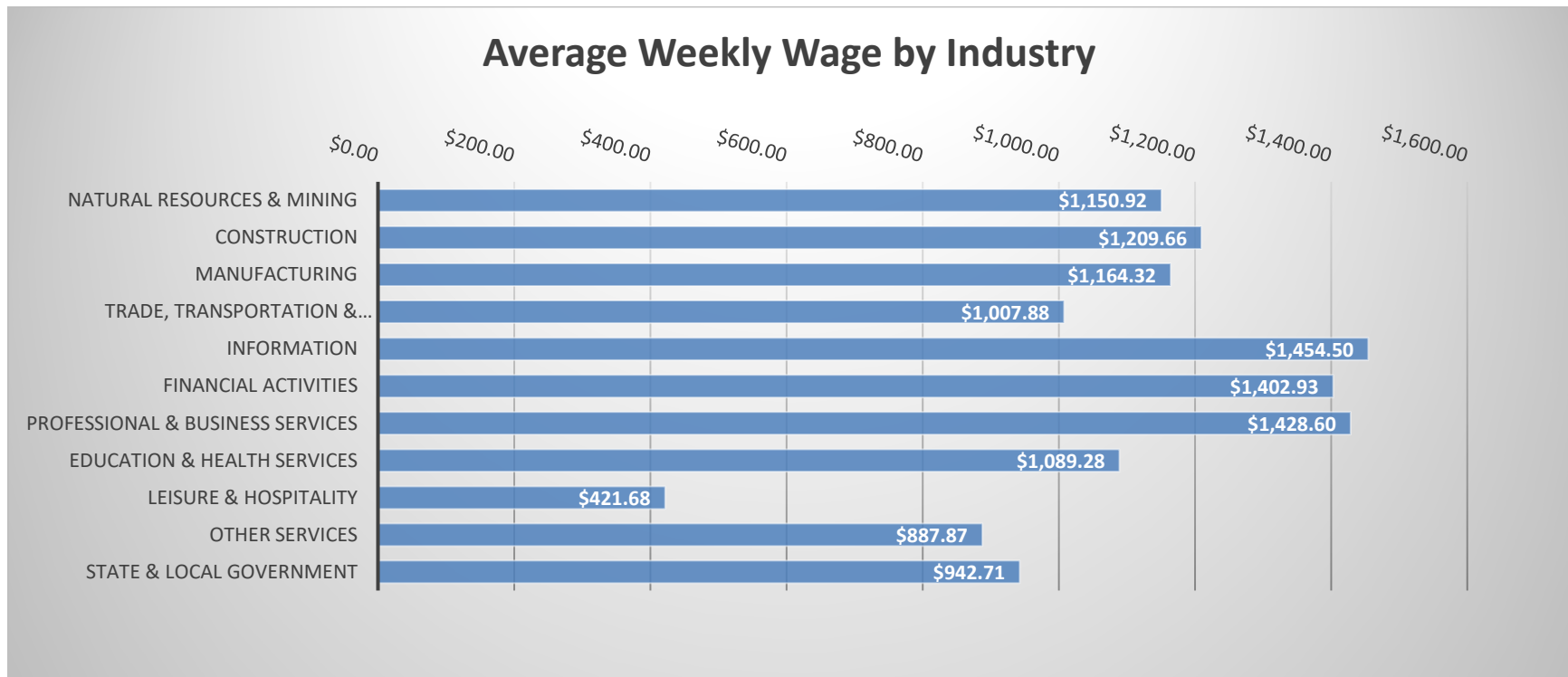


### EMPLOYMENT CHANGES FROM FOURTH QUARTER 2020 (QUARTER YEAR AGO COMPARISON)

Over-the-year gains were recorded in nine major industry groups. (refer to Table 1). Large increases occurred in Trade, Transportation & Utilities (13,324), Leisure & Hospitality (10,957), Professional & Business Services (5,863), Manufacturing (4,098), Construction (1,858) Financial Activities (1,524) and Other Services (1,200). Losses were reported in State & Local Government (-5,172) and Natural Resources & Mining.

### COVERED WAGES

Wages paid to covered workers totaled \$16,657,538,193 for the Fourth Quarter 2021 (refer to Table 1), for an average weekly wage of \$1,056.37 (refer to Table 5). Mississippi County workers recorded the highest average weekly wage (\$1,515.70), and employees in Newton reported the lowest (\$650.09) (refer to Table 6). Information recorded the highest average weekly wage for the State of Arkansas (\$1,454.50). The Leisure & Hospitality sector recorded the lowest (\$421.68) (refer to Table 5).



**TABLE 1. QUARTERLY COMPARISON OF COVERED EMPLOYMENT AND WAGES, BY INDUSTRY**

North American Industry Classification System - Industry Groups	Number of Employing Units	Monthly Employment Average	Percent of Total	Net Change From:		Total Wages Paid Oct - Dec 2021	Percent of Total
				Jul - Sep 2021	Oct - Dec 2020		
<b>TOTAL</b>	<b>96,100</b>	<b>1,212,970</b>	<b>100</b>	<b>39,868</b>	<b>34,834</b>	<b>\$16,657,538,193</b>	<b>100</b>
<b>Natural Resources &amp; Mining</b>	2,557	15,776	1.3	319	-317	236,045,406	1.4
Agriculture, Forestry, Fishing & Hunting	2,154	12,493	1.0	397	-159	173,726,503	1.0
Mining	403	3,283	0.3	-79	-158	62,318,903	0.4
<b>Construction</b>	7,535	56,069	4.6	-183	1,858	881,720,312	5.3
<b>Manufacturing</b>	3,003	159,225	13.1	1,619	4,098	2,410,046,733	14.5
<b>Trade, Transportation &amp; Utilities</b>	22,225	263,955	21.8	11,310	13,324	3,458,447,434	20.8
Wholesale Trade	7,525	48,922	4.0	1,117	2,572	1,059,235,848	6.4
Retail Trade	11,013	144,261	11.9	4,759	4,099	1,259,506,034	7.6
Transportation & Warehousing	3,267	63,279	5.2	5,480	7,022	943,673,710	5.7
Utilities	420	7,493	0.6	-45	-369	196,031,842	1.2
<b>Information</b>	2,157	12,231	1.0	444	944	231,269,767	1.4
<b>Financial Activities</b>	9,579	53,716	4.4	768	1,524	979,674,969	5.9
Finance & Insurance	5,628	39,340	3.2	711	808	785,688,377	4.7
Real Estate & Rental & Leasing	3,951	14,376	1.2	56	716	193,986,592	1.2
<b>Professional &amp; Business Services</b>	17,271	150,288	12.4	5,773	5,863	2,791,102,895	16.8
Professional & Technical Services	11,073	46,000	3.8	1,270	3,210	957,162,140	5.7
Management of Companies & Enterprises	545	34,678	2.9	184	651	1,039,385,498	6.2
Administrative & Waste Services	5,653	69,610	5.7	4,320	2,003	794,555,257	4.8
<b>Education &amp; Health Services</b>	15,449	181,780	15.0	1,002	286	2,574,131,540	15.5
Educational Services	1,099	13,476	1.1	1,298	1,191	137,443,944	0.8
Health Care & Social Assistance	14,350	168,305	13.9	-296	-905	2,436,687,596	14.6
<b>Leisure &amp; Hospitality</b>	7,616	119,024	9.8	-1,661	10,957	652,462,410	3.9
Arts, Entertainment & Recreation	1,095	11,559	1.0	-1,067	1,559	88,817,478	0.5
Accommodation & Food Services	6,521	107,465	8.9	-594	9,398	563,644,932	3.4
<b>Other Services</b>	5,604	25,130	2.1	41	1,200	290,054,799	1.7
<b>State &amp; Local Government</b>	3,058	175,507	14.5	20,168	-5,172	2,150,893,838	12.9
Local Government	1,998	111,488	9.2	19,043	540	1,235,245,608	7.4
State Government	1,060	64,019	5.3	1,125	-5,712	915,648,230	5.5
<b>Nonclassifiable Establishments</b>	46	269	0.0	269	269	1,688,090	0.0

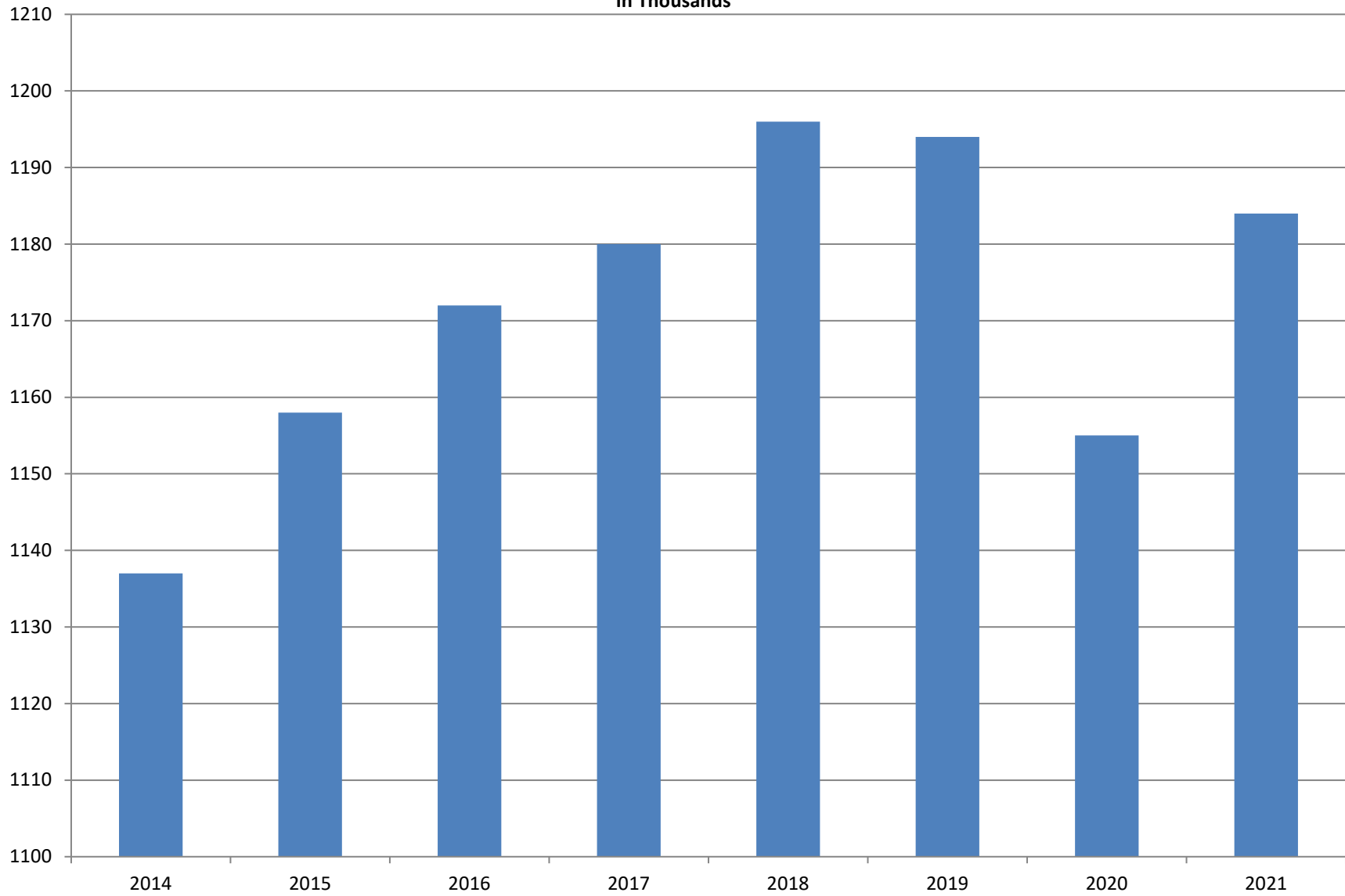
Note: Items do not necessarily add to total because of rounding. Because of industry code changes between years, substantial employment and wage shifts among industries are anticipated.

**TABLE 2. TOTAL COVERED EMPLOYMENT IN ARKANSAS**

<b>PERIOD</b>	<b>2014</b>	<b>2015</b>	<b>2016</b>	<b>2017</b>	<b>2018</b>	<b>2019</b>	<b>2020</b>	<b>2021</b>
<b>AVERAGE</b>	<b>1,137,486</b>	<b>1,157,634</b>	<b>1,171,503</b>	<b>1,180,337</b>	<b>1,195,781</b>	<b>1,194,322</b>	<b>1,155,490</b>	<b>1,184,035</b>
January	1,114,412	1,135,577	1,152,434	1,161,239	1,173,537	1,186,848	1,195,722	1,162,474
February	1,122,905	1,144,902	1,162,294	1,172,290	1,183,185	1,194,355	1,200,543	1,160,490
March	1,132,106	1,146,413	1,170,837	1,179,686	1,190,199	1,198,481	1,199,702	1,176,694
April	1,140,788	1,158,606	1,178,630	1,185,212	1,194,816	1,204,176	1,090,183	1,181,663
May	1,149,046	1,167,657	1,181,644	1,189,900	1,201,113	1,206,476	1,120,448	1,184,368
June	1,144,876	1,164,607	1,177,506	1,186,326	1,195,468	1,202,260	1,137,765	1,184,514
July	1,096,675	1,119,390	1,132,361	1,137,883	1,168,432	1,155,337	1,099,733	1,148,094
August	1,125,162	1,148,502	1,160,743	1,168,802	1,200,284	1,185,213	1,137,611	1,178,344
September	1,150,545	1,173,776	1,185,510	1,193,845	1,222,012	1,202,177	1,157,279	1,192,866
October	1,153,684	1,173,953	1,185,022	1,194,194	1,205,161	1,209,366	1,170,351	1,208,960
November	1,158,579	1,177,717	1,186,046	1,197,650	1,208,638	1,194,675	1,177,588	1,213,376
December	1,161,056	1,180,513	1,185,009	1,197,013	1,206,531	1,192,501	1,178,954	1,216,573

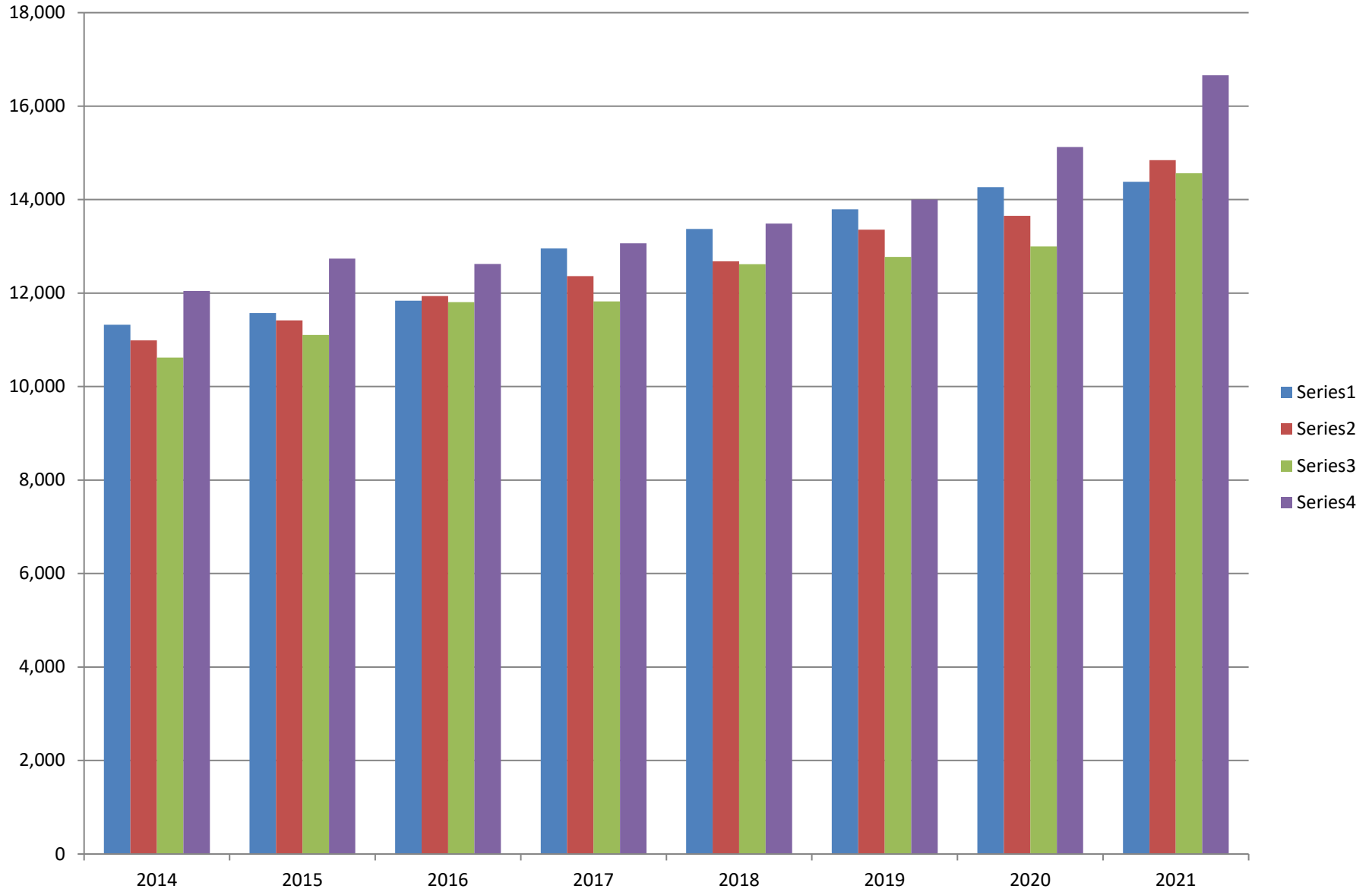
# AVERAGE TOTAL COVERED EMPLOYMENT

In Thousands



# TOTAL COVERED EARNINGS BY CALENDAR YEAR

In Millions



**TABLE 3. TOTAL COVERED EARNINGS 2014- 2021**

<b>PERIOD</b>	<b>2014</b>	<b>2015</b>	<b>2016</b>	<b>2017</b>
<b>TOTAL</b>	<b>\$44,980,520,034</b>	<b>\$46,836,352,793</b>	<b>\$48,207,277,530</b>	<b>\$50,207,202,141</b>
January - March	11,321,422,241	11,575,046,688	11,836,255,664	12,955,088,347
April - June	10,991,760,061	11,419,363,330	11,935,722,186	12,363,027,711
July - September	10,619,889,280	11,104,443,452	11,809,460,297	11,823,324,966
October - December	12,047,448,452	12,737,499,323	12,625,839,383	13,065,761,117
<b>Average Weekly Earnings</b>	<b>\$760.46</b>	<b>\$778.05</b>	<b>\$791.34</b>	<b>\$818.01</b>

<b>PERIOD</b>	<b>2018</b>	<b>2019</b>	<b>2020</b>	<b>2021</b>
<b>TOTAL</b>	<b>\$52,159,789,393</b>	<b>\$53,931,077,907</b>	<b>\$56,042,071,520</b>	<b>\$60,447,031,805</b>
January - March	13,372,730,974	13,795,046,820	14,268,302,306	14,382,938,962
April - June	12,682,491,819	13,356,848,831	13,651,304,330	14,844,193,608
July - September	12,619,347,460	12,776,218,481	12,998,944,628	14,562,361,042
October - December	13,485,219,140	14,002,963,775	15,123,520,256	16,657,538,193
<b>Average Weekly Earnings</b>	<b>\$838.84</b>	<b>\$868.39</b>	<b>\$932.71</b>	<b>\$981.76</b>

**TABLE 4. TOTAL TAXABLE EARNINGS, 2014 - 2021**

<b>PERIOD</b>	<b>2014</b>	<b>2015</b>	<b>2016</b>	<b>2017</b>
<b>TOTAL</b>	<b>11,919,662,224</b>	<b>12,258,632,610</b>	<b>12,511,938,047</b>	<b>12,744,039,136</b>
<b>January - March</b>	6,288,682,396	6,378,966,662	6,595,351,454	6,958,706,950
<b>April - June</b>	2,831,013,392	2,915,293,283	3,003,077,908	2,908,226,426
<b>July - September</b>	1,552,243,963	1,640,978,599	1,651,582,584	1,576,968,648
<b>October - December</b>	1,247,722,473	1,323,394,066	1,261,926,101	1,300,137,112

<b>PERIOD</b>	<b>2018</b>	<b>2019</b>	<b>2020</b>	<b>2021</b>
<b>TOTAL</b>	<b>11,335,932,409</b>	<b>11,498,854,755</b>	<b>8,525,235,479</b>	<b>12,037,233,970</b>
<b>January - March</b>	6,577,871,657	6,737,833,125	5,589,526,770	6,792,133,353
<b>April - June</b>	2,278,450,975	2,283,514,220	1,172,837,688	2,317,659,412
<b>July - September</b>	1,328,868,479	1,327,818,133	864,579,237	1,493,255,899
<b>October - December</b>	1,150,741,298	1,149,689,277	898,291,784	1,434,185,306

TABLE 5. STATEWIDE SUMMARY

North American Industry Classification System - Industry Groups		Number of Employing Units	Employment			Total Earnings Oct - Dec 2021	Average Weekly Earnings
			Oct	Nov	Dec		
<b>TOTAL, ALL INDUSTRIES</b>		<b>96,100</b>	<b>1,208,960</b>	<b>1,213,376</b>	<b>1,216,573</b>	<b>\$16,657,538,193</b>	<b>\$1,056.37</b>
<b>NATURAL RESOURCES &amp; MINING</b>		<b>2,557</b>	<b>15,974</b>	<b>15,650</b>	<b>15,705</b>	<b>\$236,045,406</b>	<b>\$1,150.92</b>
<b>11</b>	<b>AGRICULTURE, FORESTRY, FISHING &amp; HUNTING</b>	<b>2,154</b>	<b>12,700</b>	<b>12,372</b>	<b>12,407</b>	<b>\$173,726,503</b>	<b>\$1,069.69</b>
<b>111</b>	<b>CROP PRODUCTION</b>	<b>960</b>	<b>4,403</b>	<b>3,958</b>	<b>3,854</b>	<b>\$46,279,940</b>	<b>\$874.33</b>
1111	Oilseed & Grain Farming	702	2,734	2,531	2,392	\$28,779,518	867.37
1112	Vegetable & Melon Farming	31	279	110	101	\$1,907,300	898.26
1113	Fruit & Tree Nut Farming	15	70	58	66	\$553,743	658.70
1114	Greenhouse & Nursery Production	43	582	584	651	\$7,263,429	922.50
1119	Other Crop Farming	169	738	675	644	\$7,775,950	872.36
<b>112</b>	<b>ANIMAL PRODUCTION &amp; AQUACULTURE</b>	<b>357</b>	<b>3,088</b>	<b>3,065</b>	<b>3,061</b>	<b>\$56,488,059</b>	<b>\$1,414.77</b>
1121	Cattle Ranching & Farming	135	435	429	440	\$4,004,920	708.75
1122	Hog & Pig Farming	13	111	115	116	\$2,404,659	1,622.58
1123	Poultry & Egg Production	142	2,147	2,129	2,131	\$44,562,320	1,605.06
1125	Animal Aquaculture	36	314	314	290	\$4,747,084	1,193.33
	Other	67	395	392	374	\$5,516,160	1,096.43
<b>115</b>	<b>SUPPORT ACTIVITIES FOR AGRICULTURE &amp; FORESTRY</b>	<b>418</b>	<b>3,038</b>	<b>3,161</b>	<b>3,312</b>	<b>\$41,413,695</b>	<b>\$1,004.84</b>
1151	Support Activities for Crop Production	281	1,890	1,923	1,703	\$26,878,048	1,124.48
1152	Support Activities for Animal Production	63	588	563	558	\$5,998,869	810.04
1153	Support Activities for Forestry	74	560	675	1,051	\$8,536,778	861.78
	<b>OTHER</b>	<b>419</b>	<b>2,171</b>	<b>2,188</b>	<b>2,180</b>	<b>\$29,544,809</b>	<b>\$1,042.67</b>
<b>21</b>	<b>MINING</b>	<b>403</b>	<b>3,274</b>	<b>3,278</b>	<b>3,298</b>	<b>\$62,318,903</b>	<b>\$1,460.03</b>
<b>211</b>	<b>OIL &amp; GAS EXTRACTION</b>	<b>66</b>	<b>430</b>	<b>429</b>	<b>448</b>	<b>\$12,235,388</b>	<b>\$2,160.33</b>
<b>212</b>	<b>MINING (EXCEPT OIL &amp; GAS)</b>	<b>102</b>	<b>1,810</b>	<b>1,795</b>	<b>1,827</b>	<b>\$30,330,034</b>	<b>\$1,288.52</b>
<b>213</b>	<b>SUPPORT ACTIVITES FOR MINING</b>	<b>235</b>	<b>1,034</b>	<b>1,054</b>	<b>1,023</b>	<b>\$19,753,481</b>	<b>\$1,465.28</b>



TABLE 5. STATEWIDE SUMMARY

North American Industry Classification System - Industry Groups		Number of Employing Units	Employment			Total Earnings Oct - Dec 2021	Average Weekly Earnings
			Oct	Nov	Dec		
<b>CONSTRUCTION</b>		<b>7,535</b>	<b>56,332</b>	<b>55,786</b>	<b>56,090</b>	<b>\$881,720,312</b>	<b>\$1,209.66</b>
<b>236</b>	<b>CONSTRUCTION OF BUILDINGS</b>	<b>1,957</b>	<b>11,360</b>	<b>11,132</b>	<b>11,216</b>	<b>\$200,077,187</b>	<b>\$1,369.75</b>
2361	Residential Building Construction	1,345	4,155	4,155	4,249	\$65,425,747	1,202.19
2362	Nonresidential Building Construction	612	7,205	6,977	6,967	\$134,651,440	1,469.26
<b>237</b>	<b>HEAVY &amp; CIVIL ENGINEERING CONSTRUCTION</b>	<b>780</b>	<b>9,423</b>	<b>9,280</b>	<b>9,282</b>	<b>\$156,648,384</b>	<b>\$1,291.75</b>
2371	Utility System Construction	469	5,183	5,088	5,119	\$85,095,176	1,275.98
2372	Land Subdivision	45	84	84	76	\$1,456,471	1,377.49
2373	Highway, Street & Bridge Construction	167	3,401	3,388	3,336	\$58,967,937	1,344.00
2379	Other Heavy Construction	99	755	720	751	\$11,128,800	1,153.72
<b>238</b>	<b>SPECIALTY TRADE CONTRACTORS</b>	<b>4,798</b>	<b>35,549</b>	<b>35,374</b>	<b>35,592</b>	<b>\$524,994,741</b>	<b>\$1,137.42</b>
2381	Building Foundation & Exterior Contractors	907	5,823	5,800	5,928	\$89,538,109	1,177.29
2382	Building Equipment Contractors	2,366	20,392	20,291	20,408	\$316,198,530	1,194.43
2383	Building Finishing Contractors	770	3,975	4,006	4,035	\$50,207,916	964.25
2389	Other Specialty Trade Contractors	755	5,359	5,277	5,221	\$69,050,186	1,004.90
<b>MANUFACTURING</b>		<b>3,003</b>	<b>158,656</b>	<b>159,098</b>	<b>159,920</b>	<b>\$2,410,046,733</b>	<b>\$1,164.32</b>
<b>311</b>	<b>FOOD MANUFACTURING</b>	<b>311</b>	<b>49,904</b>	<b>49,556</b>	<b>49,816</b>	<b>\$626,333,401</b>	<b>\$968.26</b>
3111	Animal Food Manufacturing	42	2,066	2,036	2,024	\$30,579,595	1,151.95
3112	Grain & Oilseed Milling	30	2,878	2,722	2,770	\$41,536,110	1,145.19
3114	Fruit, Vegetable & Specialty Food	15	4,483	4,481	4,488	\$61,930,868	1,062.42
3115	Dairy Product Manufacturing	9	502	514	519	\$7,470,778	1,123.14
3116	Animal Slaughtering & Processing	95	33,307	33,113	33,237	\$401,558,923	929.86
3118	Bakeries & Tortilla Manufacturing	84	4,207	4,224	4,312	\$48,567,475	879.53
3119	Other Food Manufacturing	27	2,410	2,415	2,411	\$34,294,256	1,093.71
	Other	36	51	51	55	\$395,396	581.18
<b>312</b>	<b>BEVERAGE &amp; TOBACCO PRODUCT MANUFACTURING</b>	<b>76</b>	<b>1,730</b>	<b>1,725</b>	<b>1,712</b>	<b>\$22,960,034</b>	<b>\$1,025.44</b>
<b>313</b>	<b>TEXTILE MILLS</b>	<b>17</b>	<b>151</b>	<b>150</b>	<b>149</b>	<b>\$2,480,841</b>	<b>\$1,272.23</b>
<b>314</b>	<b>TEXTILE PRODUCT MILLS</b>	<b>41</b>	<b>764</b>	<b>760</b>	<b>781</b>	<b>\$10,880,674</b>	<b>\$1,089.34</b>
3141	Textile Furnishing Mills	7	19	20	21	\$134,624	517.78
3149	Other Textile Product Mills	34	745	740	760	\$10,746,050	1,104.61
<b>315</b>	<b>APPAREL MANUFACTURING</b>	<b>23</b>	<b>656</b>	<b>658</b>	<b>660</b>	<b>\$5,890,002</b>	<b>\$688.57</b>
3151	Apparel Knitting Mills	5	363	369	367	\$3,151,362	661.73
3152	Cut & Sew Apparel Manufacturing	12	159	158	163	\$1,446,117	695.25
3159	Accessories & Other Apparel Manufacturing	6	134	131	130	\$1,292,523	

TABLE 5. STATEWIDE SUMMARY

North American Industry Classification System - Industry Groups		Number of Employing Units	Employment			Total Earnings	Average Weekly Earnings
			Oct	Nov	Dec	Oct - Dec 2021	
<b>316</b>	<b>LEATHER &amp; ALLIED PRODUCT MANUFACTURING</b>	<b>11</b>	<b>879</b>	<b>876</b>	<b>876</b>	<b>\$6,746,871</b>	<b>\$591.78</b>
3162	Footwear Manufacturing	3	676	669	658	\$4,732,372	\$545.23
3169	Other Leather & Allied Product Manufacturing	8	203	207	218	\$2,014,499	\$740.26
<b>321</b>	<b>WOOD PRODUCT MANUFACTURING</b>	<b>294</b>	<b>9,980</b>	<b>10,095</b>	<b>10,278</b>	<b>\$152,109,356</b>	<b>\$1,156.46</b>
3211	Sawmills & Wood Preservation	126	4,800	4,779	4,883	\$75,535,001	1,205.31
3212	Veneer & Engineered Wood Products	38	2,045	2,129	2,169	\$33,372,521	1,214.15
3219	Other Wood Product Manufacturing	130	3,135	3,187	3,226	\$43,201,834	1,044.16
<b>322</b>	<b>PAPER MANUFACTURING</b>	<b>70</b>	<b>8,521</b>	<b>8,572</b>	<b>8,571</b>	<b>\$157,156,708</b>	<b>\$1,413.14</b>
3221	Pulp, Paper & Paperboard Mills	15	3,073	3,071	3,054	\$74,723,157	1,874.73
3222	Converted Paper Product Manufacturing	55	5,448	5,501	5,517	\$82,433,551	1,155.30
<b>323</b>	<b>PRINTING &amp; RELATED SUPPORT ACTIVITIES</b>	<b>252</b>	<b>3,103</b>	<b>3,126</b>	<b>3,113</b>	<b>\$39,554,323</b>	<b>\$977.08</b>
<b>324</b>	<b>PETROLEUM &amp; COAL PRODUCTS MANUFACTURING</b>	<b>23</b>	<b>1,124</b>	<b>1,110</b>	<b>1,128</b>	<b>\$21,831,022</b>	<b>\$1,498.49</b>
<b>325</b>	<b>CHEMICAL MANUFACTURING</b>	<b>137</b>	<b>5,365</b>	<b>5,392</b>	<b>5,414</b>	<b>\$105,422,010</b>	<b>\$1,504.43</b>
3251	Basic Chemical Manufacturing	33	1,853	1,859	1,857	\$43,328,034	1,795.43
3252	Resin, Rubber & Artificial Fibers	12	405	395	406	\$7,501,325	1,435.39
3253	Agricultural Chemical Manufacturing	18	464	467	465	\$10,396,934	1,718.69
3254	Pharmaceutical & Medicine Manufacturing	34	414	423	415	\$8,163,641	1,504.73
3255	Paint, Coating & Adhesive Manufacturing	9	219	218	218	\$3,393,462	1,195.58
3256	Soap, Cleaning Compound, & Toilet Preparation Manufacturing	13	1,427	1,433	1,446	\$22,783,308	1,221.01
3259	Other Chemical Preparation Manufacturing	18	583	597	607	\$9,855,306	1,272.69
<b>326</b>	<b>PLASTICS &amp; RUBBER PRODUCTS MANUFACTURING</b>	<b>125</b>	<b>10,601</b>	<b>10,713</b>	<b>10,715</b>	<b>\$167,793,626</b>	<b>\$1,208.95</b>
3261	Plastics Product Manufacturing	96	6,456	6,552	6,552	\$96,807,113	1,142.13
3262	Rubber Product Manufacturing	29	4,145	4,161	4,163	\$70,986,513	1,313.78
<b>327</b>	<b>NONMETALLIC MINERAL PRODUCT MANUFACTURING</b>	<b>215</b>	<b>3,445</b>	<b>3,476</b>	<b>3,481</b>	<b>\$53,941,273</b>	<b>\$1,196.69</b>
3271	Clay Product & Refractory Manufacturing	10	483	487	491	\$6,513,119	1,028.77
3272	Glass & Glass Product Manufacturing	7	399	425	415	\$7,030,003	1,309.37
3273	Cement & Concrete Product Manufacturing	161	2,004	2,004	2,012	\$32,327,478	1,239.23
3274	Lime & Gypsum Product Manufacturing	3	287	292	290	\$5,034,954	1,337.07
3279	Other Nonmetallic Mineral Products Manufacturing	34	272	268	273	\$3,035,719	861.69
<b>331</b>	<b>PRIMARY METAL MANUFACTURING</b>	<b>72</b>	<b>7,695</b>	<b>7,754</b>	<b>7,873</b>	<b>\$237,693,844</b>	<b>\$2,351.96</b>
3311	Iron & Steel Mills & Ferroalloys	12	3,775	3,803	3,867	\$176,405,632	3,556.92
3312	Purchased Steel Product Manufacturing	22	1,384	1,407	1,428	\$25,052,415	1,370.31
3313	Alumina & Aluminum Production	14	889	892	907	\$14,438,631	1,239.58
3314	Other Nonferrous Metal Production	5	258	255	261	\$3,677,750	1,096.53
3315	Foundries	19	1,389	1,397	1,410	\$18,119,416	996.52

TABLE 5. STATEWIDE SUMMARY

North American Industry Classification System - Industry Groups		Number of Employing Units	Employment			Total Earnings Oct - Dec 2021	Average Weekly Earnings
			Oct	Nov	Dec		
<b>332</b>	<b>FABRICATED METAL PRODUCT MANUFACTURING</b>	<b>513</b>	<b>15,463</b>	<b>15,485</b>	<b>15,526</b>	<b>\$245,132,920</b>	<b>\$1,217.22</b>
3321	Forging & Stamping	12	413	414	418	\$6,008,299	1,113.68
3322	Cutlery & Hand Tool Manufacturing	14	661	647	637	\$9,193,055	1,090.73
3323	Architectural & Structural Metals	154	4,832	4,815	4,835	\$88,003,497	1,402.33
3324	Boilers, Tanks & Shipping Containers	14	577	567	569	\$8,821,831	1,188.45
3325	Hardware Manufacturing	4	257	261	257	\$4,163,263	1,239.68
3326	Spring & Wire Product Manufacturing	10	287	295	294	\$4,124,106	1,086.43
3327	Machine Shops & Threaded Products	200	2,138	2,145	2,146	\$30,806,222	1,105.79
3328	Coating, Engraving & Heat Treating Metals	39	564	564	562	\$8,310,762	1,134.83
3329	Other Fabricated Metal Product Manufacturing	66	5,734	5,777	5,808	\$85,701,885	1,141.95
<b>333</b>	<b>MACHINERY MANUFACTURING</b>	<b>218</b>	<b>11,792</b>	<b>11,999</b>	<b>12,126</b>	<b>\$174,586,556</b>	<b>\$1,121.73</b>
3331	Agriculture, Construction & Mining Machinery	35	3,042	3,077	3,109	\$38,866,440	971.95
3332	Industrial Machinery Manufacturing	25	618	613	612	\$12,094,820	1,514.44
3333	Commercial & Service Industry Machinery	23	834	844	842	\$14,585,745	1,335.69
3334	HVAC & Commercial Refrigeration Equipment	23	2,578	2,669	2,724	\$39,832,800	1,153.20
3335	Metalworking Machinery Manufacturing	53	1,148	1,170	1,190	\$14,318,030	941.89
3336	Turbine & Power Transmission Equipment Manufacturing	6	245	247	256	\$3,363,647	1,037.74
3339	Other General Purpose Machinery Manufacturing	53	3,327	3,379	3,393	\$51,525,074	1,177.38
<b>334</b>	<b>COMPUTER &amp; ELECTRONIC PRODUCT MANUFACTURING</b>	<b>53</b>	<b>1,636</b>	<b>1,643</b>	<b>1,672</b>	<b>\$25,364,250</b>	<b>\$1,182.24</b>
3344	Semiconductors & Electronic Components	25	1,173	1,186	1,211	\$18,453,626	1,192.87
3345	Navigational, Measuring, Electromedical, & Control Instr, Mfg Other	21 7	295 168	293 164	295 166	\$4,775,069 \$2,135,555	1,247.95 989.60
<b>335</b>	<b>ELECTRICAL EQUIPMENT &amp; APPLIANCES</b>	<b>55</b>	<b>4,482</b>	<b>4,538</b>	<b>4,570</b>	<b>\$74,735,826</b>	<b>\$1,269.07</b>
3353	Electrical Equipment Manufacturing	24	2,812	2,831	2,834	\$49,322,586	1,342.71
3359	Other Electrical Equipment & Component Manufacturing Other	15 16	1,339 331	1,348 359	1,357 379	\$20,675,178 \$4,738,062	1,179.82 1,022.82
<b>336</b>	<b>TRANSPORTATION EQUIPMENT MANUFACTURING</b>	<b>137</b>	<b>14,288</b>	<b>14,353</b>	<b>14,353</b>	<b>\$196,697,466</b>	<b>\$1,055.77</b>
3362	Motor Vehicle Body & Trailer Manufacturing	29	2,168	2,155	2,189	\$26,693,612	945.96
3363	Motor Vehicle Parts Manufacturing	45	4,684	4,729	4,677	\$56,915,843	932.18
3364	Aerospace Product & Parts Manufacturing	29	4,082	4,054	4,092	\$70,822,004	1,336.57
3366	Ship & Boat Building Other	21 13	2,121 1,233	2,147 1,268	2,112 1,283	\$25,391,346 \$16,874,661	918.42 1,029.11
<b>337</b>	<b>FURNITURE &amp; RELATED PRODUCT MANUFACTURING</b>	<b>156</b>	<b>3,404</b>	<b>3,459</b>	<b>3,407</b>	<b>\$38,582,373</b>	<b>\$866.95</b>
3371	Household & Institutional Furniture Other	125 31	2,807 597	2,864 595	2,811 596	\$31,187,984 \$7,394,389	848.53 954.36
<b>339</b>	<b>MISCELLANEOUS MANUFACTURING</b>	<b>204</b>	<b>3,673</b>	<b>3,658</b>	<b>3,699</b>	<b>\$44,153,357</b>	<b>\$923.77</b>
3391	Medical Equipment & Supplies Manufacturing	85	1,776	1,793	1,822	\$22,594,437	967.19
3399	Other Miscellaneous Manufacturing	119	1,897	1,865	1,877	\$21,558,920	882.27

TABLE 5. STATEWIDE SUMMARY

North American Industry Classification System - Industry Groups		Number of Employing Units	Employment			Total Earnings Oct - Dec 2021	Average Weekly Earnings
			Oct	Nov	Dec		
<b>TRADE, TRANSPORTATION &amp; UTILITIES</b>		<b>22,225</b>	<b>260,414</b>	<b>264,586</b>	<b>266,865</b>	<b>\$3,458,447,434</b>	<b>\$1,007.88</b>
<b>42</b>	<b>WHOLESALE TRADE</b>	<b>7,525</b>	<b>48,691</b>	<b>48,890</b>	<b>49,186</b>	<b>\$1,059,235,848</b>	<b>\$1,665.49</b>
<b>423</b>	<b>MERCHANT WHOLESALERS, DURABLE GOODS</b>	<b>3,783</b>	<b>25,520</b>	<b>25,602</b>	<b>25,865</b>	<b>\$522,849,201</b>	<b>\$1,567.25</b>
4231	Motor Vehicle & Part Merchant Wholesalers	315	3,333	3,347	3,439	\$62,569,322	1,426.93
4232	Furniture & Furnishings Merchant Wholesalers	137	511	512	511	\$11,325,480	1,703.76
4233	Lumber & Supply Merchant Wholesalers	273	1,665	1,645	1,673	\$30,417,500	1,408.67
4234	Commercial Goods Merchant Wholesalers	809	3,438	3,464	3,455	\$90,103,862	2,007.65
4235	Metal & Mineral Merchant Wholesalers	131	1,075	1,089	1,105	\$29,241,481	2,064.25
4236	Appliances & Electronics Goods Merchant Wholesalers	401	2,918	2,945	2,961	\$63,282,666	1,655.00
4237	Hardware & Plumbing Merchant Wholesalers	338	2,896	2,884	2,931	\$54,572,352	1,445.71
4238	Machinery & Supply Merchant Wholesalers	1,037	7,570	7,592	7,642	\$141,490,706	1,431.84
4239	Miscellaneous Durable Goods Merchant Wholesalers	342	2,114	2,124	2,148	\$39,845,832	1,439.90
<b>424</b>	<b>MERCHANT WHOLESALERS, NONDURABLE GOODS</b>	<b>2,274</b>	<b>18,893</b>	<b>18,958</b>	<b>18,948</b>	<b>\$410,377,368</b>	<b>\$1,667.33</b>
4241	Paper & Paper Product Merchant Wholesalers	129	1,343	1,365	1,337	\$33,729,343	1,924.28
4242	Druggist' Goods Merchant Wholesalers	335	1,773	1,813	1,831	\$56,765,873	2,418.28
4243	Apparel & Piece Goods Merchant Wholesalers	135	793	797	786	\$14,394,067	1,398.03
4244	Grocery Product Merchant Wholesalers	621	6,268	6,269	6,251	\$142,883,242	1,755.01
4245	Farm Product & Raw Material Merchant Wholesalers	99	1,043	1,044	1,093	\$12,739,419	924.49
4246	Chemical Merchant Wholesalers	227	1,193	1,195	1,198	\$32,702,152	2,104.48
4247	Petroleum Merchant Wholesalers	158	942	947	937	\$17,536,228	1,432.00
4248	Alcoholic Beverage Merchant Wholesalers	86	1,765	1,771	1,773	\$32,344,965	1,405.96
4249	Miscellaneous Nondurable Goods Merchant Wholesaler	484	3,773	3,757	3,742	\$67,282,079	1,377.45
<b>425</b>	<b>ELECTRONIC MARKETS &amp; AGENTS &amp; BROKERS</b>	<b>1,468</b>	<b>4,278</b>	<b>4,330</b>	<b>4,373</b>	<b>\$126,009,279</b>	<b>\$2,240.13</b>
<b>44 - 45</b>	<b>RETAIL TRADE</b>	<b>11,013</b>	<b>142,697</b>	<b>144,872</b>	<b>145,214</b>	<b>\$1,259,506,034</b>	<b>\$671.60</b>
<b>441</b>	<b>MOTOR VEHICLE &amp; PARTS DEALERS</b>	<b>1,547</b>	<b>19,254</b>	<b>19,225</b>	<b>19,191</b>	<b>\$304,010,980</b>	<b>\$1,216.51</b>
4411	Automobile Dealers	611	11,302	11,324	11,322	\$213,914,464	1,454.13
4412	Other Motor Vehicle Dealers	186	1,958	1,881	1,878	\$31,718,835	1,280.34
4413	Automotive Parts, Accessories & Tire Stores	750	5,994	6,020	5,991	\$58,377,681	748.22
<b>442</b>	<b>FURNITURE &amp; HOME FURNISHINGS STORES</b>	<b>473</b>	<b>3,509</b>	<b>3,594</b>	<b>3,607</b>	<b>\$41,246,815</b>	<b>\$888.75</b>
4421	Furniture Stores	269	1,980	1,988	1,996	\$27,322,627	1,057.21
4422	Home Furnishings Stores	204	1,529	1,606	1,611	\$13,924,188	677.05
<b>443</b>	<b>ELECTRONICS &amp; APPLIANCE STORES</b>	<b>351</b>	<b>3,007</b>	<b>3,111</b>	<b>3,115</b>	<b>\$34,618,121</b>	<b>\$865.24</b>
<b>444</b>	<b>BUILDING MATERIAL &amp; GARDEN SUPPLY STORES</b>	<b>838</b>	<b>12,798</b>	<b>12,790</b>	<b>12,855</b>	<b>\$116,671,200</b>	<b>\$700.36</b>
4441	Building Material & Supplies Dealers	600	10,484	10,481	10,600	\$99,266,164	725.73
4442	Lawn & Garden Equipment & Supplies Stores	238	2,314	2,309	2,255	\$17,405,036	583.97

TABLE 5. STATEWIDE SUMMARY

North American Industry Classification System - Industry Groups		Number of Employing Units	Employment			Total Earnings Oct - Dec 2021	Average Weekly Earnings
			Oct	Nov	Dec		
<b>445</b>	<b>FOOD &amp; BEVERAGE STORES</b>	<b>1,064</b>	<b>20,180</b>	<b>20,261</b>	<b>20,144</b>	<b>\$148,541,850</b>	<b>\$565.80</b>
4451	Grocery Stores	559	17,461	17,525	17,424	\$123,674,382	544.56
4452	Specialty Food Stores	149	812	820	810	\$12,038,456	1,137.64
4453	Beer, Wine & Liquor Stores	356	1,907	1,916	1,910	\$12,829,012	516.40
<b>446</b>	<b>HEALTH &amp; PERSONAL CARE STORES</b>	<b>993</b>	<b>9,047</b>	<b>9,137</b>	<b>9,203</b>	<b>\$101,731,730</b>	<b>\$857.22</b>
<b>447</b>	<b>GASOLINE STATIONS</b>	<b>1,622</b>	<b>13,003</b>	<b>12,889</b>	<b>12,841</b>	<b>\$79,694,462</b>	<b>\$474.82</b>
44711	Gasoline Stations with Convenience Stores	1,531	11,986	11,854	11,819	\$72,772,735	470.95
44719	Other Gasoline Stations	91	1,017	1,035	1,022	\$6,921,727	519.62
<b>448</b>	<b>CLOTHING &amp; CLOTHING ACCESSORIES STORES</b>	<b>917</b>	<b>7,026</b>	<b>7,492</b>	<b>7,671</b>	<b>\$45,003,303</b>	<b>\$468.04</b>
4481	Clothing Stores	702	5,465	5,836	5,989	\$30,698,893	409.74
4482	Shoe Stores	98	934	998	1,008	\$5,483,651	430.43
4483	Jewelry, Luggage & Leather Goods Stores	117	627	658	674	\$8,820,759	1,039.08
<b>451</b>	<b>SPORTING GOODS, HOBBY, BOOK &amp; MUSIC STORES</b>	<b>430</b>	<b>4,383</b>	<b>4,604</b>	<b>4,587</b>	<b>\$31,586,003</b>	<b>\$536.99</b>
4511	Sporting Goods & Musical Instrument Stores	374	3,990	4,208	4,160	\$29,439,507	549.74
4512	Book, Periodical & Music Stores	56	393	396	427	\$2,146,496	407.36
<b>452</b>	<b>GENERAL MERCHANDISE STORES</b>	<b>971</b>	<b>39,835</b>	<b>41,113</b>	<b>41,478</b>	<b>\$261,571,273</b>	<b>\$493.05</b>
4522	Department Stores	98	6,516	7,041	7,054	\$43,808,114	490.49
4523	Gen. Merchandise Stores, Warehouse clubs & Supercenters	873	33,319	34,072	34,424	\$217,763,159	493.57
<b>453</b>	<b>MISCELLANEOUS STORE RETAILERS</b>	<b>1,194</b>	<b>7,807</b>	<b>7,702</b>	<b>7,727</b>	<b>\$59,338,599</b>	<b>\$589.32</b>
4531	Florists	154	605	624	638	\$3,731,095	461.18
4532	Office Supplies, Stationery & Gift Stores	222	1,432	1,260	1,262	\$9,732,487	568.02
4533	Used Merchandise Stores	250	2,223	2,215	2,229	\$13,250,803	458.66
4539	Other Miscellaneous Store Retailers	568	3,547	3,603	3,598	\$32,624,214	700.47
<b>454</b>	<b>NONSTORE RETAILERS</b>	<b>613</b>	<b>2,848</b>	<b>2,954</b>	<b>2,795</b>	<b>\$35,491,698</b>	<b>\$952.70</b>
4541	Electronic Shopping & Mail-Order Houses	387	1,433	1,494	1,544	\$20,250,811	1,045.24
4542	Vending Machine Operators	51	543	543	488	\$5,097,137	747.31
4543	Direct Selling Establishments	175	872	917	763	\$10,143,750	917.27
<b>48 - 49</b>	<b>TRANSPORTATION &amp; WAREHOUSING</b>	<b>3,267</b>	<b>61,548</b>	<b>63,338</b>	<b>64,951</b>	<b>\$943,673,710</b>	<b>\$1,147.15</b>
<b>481</b>	<b>AIR TRANSPORTATION</b>	<b>47</b>	<b>694</b>	<b>693</b>	<b>679</b>	<b>\$9,557,678</b>	<b>\$1,067.58</b>
4811	Scheduled Air Transportation	15	588	582	567	\$6,787,936	901.81
4812	Nonshceduled Air Transportation	32	106	111	112	\$2,769,742	1,942.77
<b>483</b>	<b>WATER TRANSPORTATION</b>	<b>8</b>	<b>31</b>	<b>35</b>	<b>34</b>	<b>\$675,080</b>	<b>\$1,557.88</b>
<b>484</b>	<b>TRUCK TRANSPORTATION</b>	<b>2,091</b>	<b>31,940</b>	<b>32,063</b>	<b>32,346</b>	<b>\$552,526,352</b>	<b>\$1,323.38</b>
4841	General Freight Trucking	1,301	25,750	25,914	26,212	\$457,997,536	1,357.18
4842	Specialized Freight Trucking	790	6,190	6,149	6,134	\$94,528,816	1,180.88

TABLE 5. STATEWIDE SUMMARY

North American Industry Classification System - Industry Groups		Number of Employing Units	Employment			Total Earnings Oct - Dec 2021	Average Weekly Earnings
			Oct	Nov	Dec		
<b>485</b>	<b>TRANSIT &amp; GROUND PASSENGER TRANSPORTATION</b>	<b>118</b>	<b>1,387</b>	<b>1,369</b>	<b>1,386</b>	<b>\$11,577,530</b>	<b>\$645.04</b>
4853	Taxi & Limousine Service	31	215	217	218	\$1,726,267	612.88
4854	School & Employee Bus Transportation	18	329	326	332	\$2,336,247	546.23
4855	Charter Bus Industry	7	76	79	70	\$747,274	766.43
4859	Other Ground Passenger Transportation	57	680	663	682	\$5,873,646	669.36
	Other	5	87	84	84	894,096	809.14
<b>486</b>	<b>PIPELINE TRANSPORTATION</b>	<b>37</b>	<b>526</b>	<b>524</b>	<b>519</b>	<b>\$13,437,541</b>	<b>\$1,976.40</b>
<b>487</b>	<b>SCENIC &amp; SIGHTSEEING TRANSPORTATION</b>	<b>4</b>	<b>10</b>	<b>8</b>	<b>8</b>	<b>\$29,250</b>	<b>\$259.62</b>
<b>488</b>	<b>SUPPORT ACTIVITIES FOR TRANSPORTATION</b>	<b>531</b>	<b>5,686</b>	<b>5,733</b>	<b>5,788</b>	<b>\$92,825,286</b>	<b>\$1,244.91</b>
4881	Support Activities for Air Transportation	122	1,110	1,126	1,145	\$15,409,160	1,051.75
4882	Support Activities for Rail Transportation	40	562	563	585	\$8,859,062	1,195.55
4883	Support Activities for Water Transportation	19	512	508	499	\$8,806,282	1,337.87
4884	Support Activities for Road Transportation	158	948	933	935	\$11,127,646	911.90
4885	Freight Transportation Arrangement	182	2,474	2,520	2,539	\$47,698,756	1,461.22
4889	Other Support Activities for Transportation	10	80	83	85	\$924,380	860.16
<b>491</b>	<b>POSTAL SERVICE</b>	<b>16</b>	<b>275</b>	<b>276</b>	<b>281</b>	<b>\$4,350,719</b>	<b>\$1,206.75</b>
<b>492</b>	<b>COURIERS &amp; MESSENGERS</b>	<b>212</b>	<b>6,281</b>	<b>7,470</b>	<b>8,289</b>	<b>\$80,291,455</b>	
<b>493</b>	<b>WAREHOUSING &amp; STORAGE</b>	<b>203</b>	<b>14,718</b>	<b>15,167</b>	<b>15,621</b>	<b>\$178,402,819</b>	<b>\$904.71</b>
<b>22</b>	<b>UTILITIES</b>	<b>420</b>	<b>7,478</b>	<b>7,486</b>	<b>7,514</b>	<b>\$196,031,842</b>	<b>\$2,012.55</b>
2211	Power Generation & Supply	180	5,586	5,575	5,597	\$162,309,693	2,235.12
2212	Natural Gas Distribution	57	956	962	969	\$22,373,419	1,788.40
2213	Water, Sewage & Other Systems	183	936	949	948	\$11,348,730	924.44
<b>INFORMATION</b>		<b>2,157</b>	<b>12,094</b>	<b>12,254</b>	<b>12,345</b>	<b>\$231,269,767</b>	<b>\$1,454.50</b>
<b>511</b>	<b>PUBLISHING INDUSTRIES, EXCEPT INTERNET</b>	<b>256</b>	<b>1,843</b>	<b>1,863</b>	<b>1,877</b>	<b>\$26,056,081</b>	<b>\$1,077.01</b>
5111	Newspaper, Book & Directory Publishers	168	1,450	1,458	1,437	\$17,137,986	910.22
5112	Software Publishers	88	393	405	440	\$8,918,095	1,662.38
<b>512</b>	<b>MOTION PICTURE &amp; SOUND RECORDING INDUSTRY</b>	<b>179</b>	<b>932</b>	<b>976</b>	<b>1,041</b>	<b>\$7,599,901</b>	<b>\$594.72</b>
5121	Motion Picture & Video Industries	158	905	950	1,016	\$7,152,316	574.90
5122	Sound Recording Industries	21	27	26	25	\$447,585	1,324.22
<b>515</b>	<b>BROADCASTING, EXCEPT INTERNET</b>	<b>121</b>	<b>1,384</b>	<b>1,372</b>	<b>1,345</b>	<b>\$17,860,025</b>	<b>\$1,005.01</b>

TABLE 5. STATEWIDE SUMMARY

North American Industry Classification System - Industry Groups		Number of Employing Units	Employment			Total Earnings Oct - Dec 2021	Average Weekly Earnings
			Oct	Nov	Dec		
<b>517</b>	<b>TELECOMMUNICATIONS</b>	<b>362</b>	<b>3,381</b>	<b>3,371</b>	<b>3,363</b>	<b>\$68,796,837</b>	<b>\$1,569.57</b>
5173	Telecommunications Resellers	266	2,912	2,912	2,902	\$58,961,633	1,559.31
5174	Satellite Telecommunications Carriers	5	6	7	6	\$74,569	905.70
5179	Other Telecommunications	91	463	452	455	\$9,760,635	1,644.13
<b>518</b>	<b>DATA PROCESSING, HOSTING &amp; RELATED SERVICES</b>	<b>1,070</b>	<b>4,044</b>	<b>4,150</b>	<b>4,191</b>	<b>\$102,712,591</b>	<b>\$1,913.84</b>
<b>519</b>	<b>OTHER INFORMATION SERVICES</b>	<b>169</b>	<b>510</b>	<b>522</b>	<b>528</b>	<b>\$8,244,332</b>	<b>\$1,219.58</b>
<b>FINANCIAL ACTIVITIES</b>		<b>9,579</b>	<b>53,647</b>	<b>53,858</b>	<b>53,643</b>	<b>\$979,674,969</b>	<b>\$1,402.93</b>
<b>52</b>	<b>FINANCE &amp; INSURANCE</b>	<b>5,628</b>	<b>39,198</b>	<b>39,414</b>	<b>39,407</b>	<b>\$785,688,377</b>	<b>\$1,536.30</b>
<b>522</b>	<b>CREDIT INTERMEDIATION &amp; RELATED ACTIVITIES</b>	<b>2,105</b>	<b>19,706</b>	<b>19,844</b>	<b>19,879</b>	<b>\$374,298,062</b>	<b>\$1,453.44</b>
5221	Depository Credit Intermediation	1,422	16,117	16,219	16,268	\$290,281,075	1,378.24
5222	Nondepository Credit Intermediation	451	2,282	2,296	2,282	\$54,782,222	1,842.86
5223	Activities Related to Credit Intermediation	232	1,307	1,329	1,329	\$29,234,765	1,701.51
<b>523</b>	<b>FINANCIAL INVESTMENT &amp; RELATED ACTIVITIES</b>	<b>860</b>	<b>3,243</b>	<b>3,225</b>	<b>3,153</b>	<b>\$115,378,674</b>	<b>\$2,767.47</b>
5231	Security & Commodity Contracts Intermediation & Brokerage	369	2,091	2,095	1,987	\$82,321,574	3,077.48
5239	Other Financial Investment Activities	491	1,152	1,130	1,166	\$33,057,100	2,212.46
<b>524</b>	<b>INSURANCE CARRIERS &amp; RELATED ACTIVITIES</b>	<b>2,559</b>	<b>16,135</b>	<b>16,206</b>	<b>16,249</b>	<b>\$293,147,902</b>	<b>\$1,392.25</b>
5241	Insurance Carriers	332	7,274	7,263	7,260	\$140,710,244	1,489.73
5242	Insurance Agencies and Brokerages	2,227	8,861	8,943	8,989	\$152,437,658	1,312.95
	<b>OTHER</b>	<b>104</b>	<b>114</b>	<b>139</b>	<b>126</b>	<b>\$2,863,739</b>	<b>\$1,743.70</b>
<b>53</b>	<b>REAL ESTATE &amp; RENTAL &amp; LEASING</b>	<b>3,951</b>	<b>14,449</b>	<b>14,444</b>	<b>14,236</b>	<b>\$193,986,592</b>	<b>\$1,037.96</b>
<b>531</b>	<b>REAL ESTATE</b>	<b>3,348</b>	<b>10,511</b>	<b>10,556</b>	<b>10,367</b>	<b>\$139,728,850</b>	<b>\$1,025.80</b>
5311	Lessors of Real Estate	1,130	4,054	4,025	3,874	\$41,839,577	807.77
5312	Offices of Real Estate Agents & Brokers	1,161	2,366	2,410	2,395	\$44,731,226	1,439.49
5313	Activities Related to Real Estate	1,057	4,091	4,121	4,098	\$53,158,047	996.53
<b>532</b>	<b>RENTAL &amp; LEASING SERVICES</b>	<b>578</b>	<b>3,878</b>	<b>3,826</b>	<b>3,806</b>	<b>\$53,022,410</b>	<b>\$1,063.07</b>
5321	Automotive Equipment Rental & Leasing	124	942	942	943	\$9,952,820	812.45
5322	Consumer Goods Rental	294	1,634	1,579	1,551	\$17,094,375	828.06
5323	General Rental Centers	28	193	198	202	\$2,787,138	1,084.63
5324	Machinery & Equipment Rental & Leasing	132	1,109	1,107	1,110	\$23,188,077	1,608.87
<b>533</b>	<b>LESSORS OF NONFINANCIAL INTANGIBLE ASSETS</b>	<b>25</b>	<b>60</b>	<b>62</b>	<b>63</b>	<b>\$1,235,332</b>	<b>\$1,540.95</b>

TABLE 5. STATEWIDE SUMMARY

North American Industry Classification System - Industry Groups		Number of Employing Units	Employment			Total Earnings Oct - Dec 2021	Average Weekly Earnings
			Oct	Nov	Dec		
<b>PROFESSIONAL &amp; BUSINESS SERVICES</b>		<b>17,271</b>	<b>149,697</b>	<b>150,554</b>	<b>150,612</b>	<b>\$2,791,102,895</b>	<b>\$1,428.60</b>
<b>54</b>	<b>PROFESSIONAL &amp; TECHNICAL SERVICES</b>	<b>11,073</b>	<b>45,758</b>	<b>45,985</b>	<b>46,256</b>	<b>\$957,162,140</b>	<b>\$1,600.62</b>
5411	Legal Services	1,754	6,200	6,205	6,263	\$130,943,483	1,618.69
5412	Accounting & Bookkeeping Services	1,500	5,791	5,911	6,131	\$94,689,356	1,225.33
5413	Architectural & Engineering Services	1,166	6,981	6,998	7,044	\$163,866,860	1,798.76
5414	Specialized Design Services	203	468	471	474	\$7,420,936	1,211.98
5415	Computer Systems Design & Related Services	2,564	9,093	9,096	8,846	\$225,759,776	1,927.07
5416	Management & Technical Consulting Services	2,569	7,458	7,576	7,740	\$189,854,661	1,923.80
5417	Scientific Research & Development Services	212	1,005	995	1,012	\$21,943,957	1,681.27
5418	Advertising & Related Services	462	4,075	4,039	3,983	\$62,937,192	1,200.63
5419	Other Professional & Technical Services	643	4,687	4,694	4,763	\$59,745,919	974.80
<b>55</b>	<b>MANAGEMENT OF COMPANIES &amp; ENTERPRISES</b>	<b>545</b>	<b>34,492</b>	<b>34,669</b>	<b>34,874</b>	<b>\$1,039,385,498</b>	<b>\$2,305.55</b>
<b>56</b>	<b>ADMINISTRATIVE &amp; WASTE SERVICES</b>	<b>5,653</b>	<b>69,447</b>	<b>69,900</b>	<b>69,482</b>	<b>\$794,555,257</b>	<b>\$878.03</b>
<b>561</b>	<b>ADMINISTRATIVE &amp; SUPPORT SERVICES</b>	<b>5,293</b>	<b>65,406</b>	<b>65,886</b>	<b>65,448</b>	<b>\$731,204,054</b>	<b>\$857.68</b>
5611	Office Administrative Services	820	3,802	3,870	3,914	\$78,271,201	1,559.00
5612	Facilities Support Services	69	833	791	747	\$11,179,306	1,088.08
5613	Employment Services	1,536	30,073	30,597	30,359	\$351,687,036	891.57
5614	Business Support Services	481	8,320	8,636	8,722	\$99,999,111	898.70
5615	Travel Arrangement & Reservation Services	120	275	273	275	\$3,792,589	1,063.44
5616	Investigation & Security Services	322	4,805	4,736	4,626	\$44,137,600	718.97
5617	Services to Buildings & Dwellings	1,760	16,043	15,796	15,600	\$127,853,897	621.95
5619	Other Support Services	185	1,255	1,187	1,205	\$14,283,314	903.80
<b>562</b>	<b>WASTE MANAGEMENT &amp; REMEDIATION SERVICES</b>	<b>360</b>	<b>4,041</b>	<b>4,014</b>	<b>4,034</b>	<b>\$63,351,203</b>	<b>\$1,209.32</b>
5621	Waste Collection Services	135	1,398	1,355	1,315	\$19,360,326	1,098.27
5622	Waste Treatment & Disposal Services	48	1,176	1,177	1,234	\$21,222,551	1,365.35
5629	Remediation & Other Waste Services	177	1,467	1,482	1,485	\$22,768,326	1,184.99
<b>EDUCATION &amp; HEALTH SERVICES</b>		<b>15,449</b>	<b>181,658</b>	<b>181,974</b>	<b>181,709</b>	<b>\$2,574,131,540</b>	<b>\$1,089.28</b>
<b>61</b>	<b>EDUCATIONAL SERVICES</b>	<b>1,099</b>	<b>13,433</b>	<b>13,512</b>	<b>13,482</b>	<b>\$137,443,944</b>	<b>\$784.57</b>
6111	Elementary & Secondary Schools	117	5,145	5,150	5,142	\$51,484,443	769.65
6113	Colleges & Universities	160	4,409	4,388	4,332	\$46,213,116	812.29
6115	Technical & Trade Schools	131	979	1,048	1,094	\$15,408,861	1,139.34
6116	Other Schools & Instruction	366	2,017	2,032	2,011	\$11,445,777	435.86
6117	Educational Support Services	224	595	612	610	\$8,247,999	1,047.54
	Other	101	288	282	293	\$4,643,748	1,241.75



TABLE 5. STATEWIDE SUMMARY

North American Industry Classification System - Industry Groups		Number of Employing Units	Employment			Total Earnings Oct - Dec 2021	Average Weekly Earnings
			Oct	Nov	Dec		
<b>62</b>	<b>HEALTH CARE &amp; SOCIAL ASSISTANCE</b>	<b>14,350</b>	<b>168,225</b>	<b>168,462</b>	<b>168,227</b>	<b>\$2,436,687,596</b>	<b>\$1,113.68</b>
<b>621</b>	<b>AMBULATORY HEALTH CARE SERVICES</b>	<b>6,446</b>	<b>62,096</b>	<b>62,228</b>	<b>62,459</b>	<b>\$1,228,418,992</b>	<b>\$1,517.70</b>
6211	Offices of Physicians	2,428	27,216	27,325	27,359	\$729,484,284	2,055.46
6212	Offices of Dentists	980	7,769	7,751	7,785	\$116,162,099	1,150.25
6213	Offices of Other Health Practitioners	1,843	10,451	10,448	10,545	\$127,148,299	933.15
6214	Outpatient Care Centers	446	5,622	5,646	5,684	\$97,455,066	1,326.67
6215	Medical & Diagnostic Laboratories	217	1,601	1,594	1,583	\$32,544,209	1,571.83
6216	Home Health Care Services	309	6,418	6,456	6,417	\$81,094,853	970.10
6219	Other Ambulatory Health Care Services	223	3,019	3,008	3,086	\$44,530,182	1,127.64
<b>622</b>	<b>HOSPITALS</b>	<b>125</b>	<b>43,564</b>	<b>43,464</b>	<b>43,289</b>	<b>\$700,299,942</b>	<b>\$1,240.11</b>
6221	General Medical & Surgical Hospitals	91	38,841	38,715	38,580	\$630,300,271	1,252.44
6222	Psychiatric & Substance Abuse Hospitals	12	1,784	1,789	1,784	\$23,496,077	1,012.17
6223	Speciality Hospitals	22	2,939	2,960	2,925	\$46,503,594	1,216.18
<b>623</b>	<b>Residential &amp; Mental Health Facilities</b>	<b>641</b>	<b>27,378</b>	<b>27,534</b>	<b>27,533</b>	<b>\$246,654,808</b>	<b>\$690.40</b>
6231	Nursing Care Facilities (Skilled Nursing Facilities)	264	18,347	18,449	18,393	\$169,046,515	706.86
6232	Residential Mental Health Facilities	185	3,960	3,976	3,958	\$35,711,522	692.88
6233	Continuing Care & Assisted Living Facilities	155	4,178	4,224	4,260	\$32,579,211	593.77
6239	Other Residential Care Facilities	37	893	885	922	\$9,317,560	796.37
<b>624</b>	<b>SOCIAL ASSISTANCE</b>	<b>7,138</b>	<b>35,187</b>	<b>35,236</b>	<b>34,946</b>	<b>\$261,313,854</b>	<b>\$572.30</b>
6241	Individual & Family Services	6,064	20,627	20,646	20,381	\$161,731,594	605.36
6242	Emergency & Other Relief Services	174	1,414	1,413	1,447	\$12,429,276	671.10
6243	Vocational Rehabilitation Services	94	2,602	2,605	2,641	\$17,874,240	525.59
6244	Child Day Care Services	806	10,544	10,572	10,477	\$69,278,744	506.04
<b>LEISURE &amp; HOSPITALITY</b>		<b>7,616</b>	<b>119,364</b>	<b>118,634</b>	<b>119,073</b>	<b>\$652,462,410</b>	<b>\$421.68</b>
<b>71</b>	<b>ARTS, ENTERTAINMENT &amp; RECREATION</b>	<b>1,095</b>	<b>11,883</b>	<b>11,154</b>	<b>11,639</b>	<b>\$88,817,478</b>	<b>\$591.08</b>
<b>711</b>	<b>PERFORMING ARTS &amp; SPECTATOR SPORTS</b>	<b>263</b>	<b>2,721</b>	<b>2,321</b>	<b>2,934</b>	<b>\$27,571,200</b>	<b>\$797.72</b>
7111	Performing Arts Companies	44	548	415	494	\$3,291,442	521.32
7112	Spectator Sports	77	1,188	1,296	1,694	\$15,937,504	880.30
7113	Performing Arts & Sports Promoters	60	874	473	625	\$6,736,617	788.34
7114	Agents & Managers for Public Figures	19	37	57	37	\$648,683	1,142.72
7115	Independent Artists, Writers, & Performers	63	74	80	84	\$956,954	927.88
<b>712</b>	<b>MUSEUMS, PARKS, &amp; HISTORICAL SITES</b>	<b>59</b>	<b>798</b>	<b>783</b>	<b>787</b>	<b>\$8,234,898</b>	<b>\$802.52</b>
<b>713</b>	<b>GAMBLING, RECREATIONAL &amp; AMUSEMENT INDUSTRY</b>	<b>773</b>	<b>8,364</b>	<b>8,050</b>	<b>7,918</b>	<b>\$53,011,380</b>	<b>502.77</b>
<b>72</b>	<b>ACCOMMODATION &amp; FOOD SERVICES</b>	<b>6,521</b>	<b>107,481</b>	<b>107,480</b>	<b>107,434</b>	<b>\$563,644,932</b>	<b>\$403.46</b>

TABLE 5. STATEWIDE SUMMARY

North American Industry Classification System - Industry Groups		Number of Employing Units	Employment			Total Earnings	Average Weekly Earnings
			Oct	Nov	Dec	Oct - Dec 2021	
<b>721</b>	<b>ACCOMMODATION</b>	<b>972</b>	<b>10,803</b>	<b>10,711</b>	<b>10,575</b>	<b>\$66,158,511</b>	<b>\$475.78</b>
7211	Travel Accommodation	860	10,238	10,156	10,012	\$62,211,081	472.16
7212	RV Parks & Recreational Camps	94	468	459	463	\$3,218,098	534.27
7213	Rooming & Boarding Houses	18	97	96	100	\$729,332	574.43
<b>722</b>	<b>FOOD SERVICES &amp; DRINKING PLACES</b>	<b>5,549</b>	<b>96,678</b>	<b>96,769</b>	<b>96,859</b>	<b>\$497,486,421</b>	<b>\$395.46</b>
7223	Special Food Services	385	5,059	5,062	4,984	\$30,792,802	470.44
7224	Drinking Places, Alcoholic Beverages	147	1,011	981	966	\$5,531,396	431.53
7225	Restaurants & Other Eating Places	5,017	90,608	90,726	90,909	\$461,162,223	390.91
722511	Full-Service Restaurants	2,093	37,134	37,323	37,314	\$212,267,837	438.26
722513	Limited-Service Eating Places	2,336	48,783	48,651	48,165	\$220,697,263	349.80
722514	Cafeterias, Grill Buffets, & Buffets	91	1,285	1,280	1,314	\$8,151,522	484.95
722515	Snack & Nonalcoholic Beverage Bars	497	4,402	4,485	4,504	\$21,833,217	376.26
<b>OTHER SERVICES</b>		<b>5,604</b>	<b>25,094</b>	<b>25,124</b>	<b>25,171</b>	<b>\$290,054,799</b>	<b>\$887.87</b>
<b>811</b>	<b>REPAIR &amp; MAINTENANCE</b>	<b>2,298</b>	<b>11,789</b>	<b>11,758</b>	<b>11,749</b>	<b>\$146,272,704</b>	<b>\$956.35</b>
8111	Automotive Repair & Maintenance	1,490	7,317	7,318	7,350	\$80,420,229	844.14
8112	Electronic Equipment Repair & Maintenance	161	930	927	913	\$12,402,703	1,033.27
8113	Commercial Machinery Repair & Maintenance	471	2,838	2,810	2,770	\$46,580,734	1,276.95
8114	Household Goods Repair & Maintenance	176	704	703	716	\$6,869,038	746.66
<b>812</b>	<b>PERSONAL &amp; LAUNDRY SERVICES</b>	<b>1,431</b>	<b>7,383</b>	<b>7,418</b>	<b>7,432</b>	<b>\$62,904,032</b>	<b>\$652.92</b>
8121	Personal Care Services	718	2,759	2,742	2,762	\$20,872,264	582.92
8122	Death Care Services	240	1,490	1,510	1,496	\$14,899,012	764.73
8123	Drycleaning & Laundry Service	178	1,779	1,769	1,760	\$16,436,495	714.59
8129	Other Personal Services	295	1,355	1,397	1,414	\$10,696,261	592.50
<b>813</b>	<b>MEMBERSHIP ASSOCIATIONS &amp; ORGANIZATIONS</b>	<b>1,228</b>	<b>5,191</b>	<b>5,222</b>	<b>5,261</b>	<b>\$74,703,650</b>	<b>\$1,099.87</b>
8131	Religious Organizations	115	339	360	361	\$2,971,071	646.82
8132	Grantmaking & Giving Organizations	143	500	517	526	\$9,386,925	1,403.90
8133	Social Advocacy Organizations	245	1,200	1,198	1,241	\$16,171,821	1,025.55
8134	Civic & Social Organizations	209	1,040	1,027	1,017	\$6,171,884	461.83
8139	Professional & Similar Organizations	516	2,112	2,120	2,116	\$40,001,949	1,454.19
<b>814</b>	<b>PRIVATE HOUSEHOLDS</b>	<b>647</b>	<b>731</b>	<b>726</b>	<b>729</b>	<b>\$6,174,413</b>	<b>\$651.81</b>
	<b>LOCAL GOVERNMENT</b>	<b>1,998</b>	<b>111,669</b>	<b>111,415</b>	<b>111,381</b>	<b>\$1,235,245,608</b>	<b>\$852.28</b>
	<b>STATE GOVERNMENT</b>	<b>1,060</b>	<b>64,099</b>	<b>64,175</b>	<b>63,783</b>	<b>\$915,648,230</b>	<b>\$1,100.21</b>
	<b>NONCLASSIFIABLE ESTABLISHMENTS</b>	<b>46</b>	<b>262</b>	<b>268</b>	<b>276</b>	<b>\$1,688,090</b>	<b>\$483.32</b>

TABLE 6. COUNTY SUMMARY

North American Industry Classification System - Industry Groups	Number of Employing Units	Employment			Total Earnings Oct - Dec 2021	Average Weekly Earnings
		Oct	Nov	Dec		
<b>ARKANSAS COUNTY - TOTAL</b>	<b>1,065</b>	<b>10,390</b>	<b>10,275</b>	<b>10,397</b>	<b>\$136,891,141</b>	<b>\$1,017.01</b>
Natural Resources & Mining	66	187	182	178	\$2,428,011	\$1,024.33
Construction	96	333	327	321	\$5,188,402	\$1,220.51
Manufacturing	44	3,679	3,594	3,641	\$50,208,744	\$1,061.63
Trade, Transportation & Utilities	241	2,314	2,296	2,332	\$31,841,263	\$1,058.48
Wholesale Trade	48	412	405	412	\$7,429,204	\$1,394.98
Retail Trade	120	1,081	1,088	1,105	\$9,296,173	\$655.24
Transportation, Warehousing & Utilities	73	821	803	815	\$15,115,886	\$1,430.21
Information	10	68	69	70	\$507,814	\$566.12
Financial Activities	85	375	369	361	\$5,945,766	\$1,241.72
Professional & Business Services	124	738	741	742	\$15,949,039	\$1,657.16
Education & Health Services	200	1,034	1,048	1,073	\$11,662,930	\$853.07
Leisure & Hospitality	88	657	652	668	\$3,048,588	\$355.85
Other Services	65	147	141	148	\$1,381,266	\$731.09
Local Government	32	703	699	704	\$7,166,393	\$785.27
State Government	14	155	157	159	\$1,562,925	\$765.76
<b>ASHLEY COUNTY - TOTAL</b>	<b>525</b>	<b>5,747</b>	<b>5,684</b>	<b>5,679</b>	<b>\$68,406,933</b>	<b>\$922.63</b>
Natural Resources & Mining	42	343	355	338	\$4,151,167	\$924.67
Construction	34	491	441	483	\$6,353,225	\$1,036.13
Manufacturing	27	1,077	1,100	1,110	\$20,850,533	\$1,463.85
Trade, Transportation & Utilities	116	1,272	1,245	1,200	\$11,827,058	\$734.28
Wholesale Trade	21	218	210	169	\$2,962,696	\$1,145.22
Retail Trade	67	750	745	745	\$4,928,333	\$507.73
Transportation, Warehousing & Utilities	28	304	290	286	\$3,936,029	\$1,032.18
Information	5	30	30	30	\$261,178	\$669.69
Financial Activities	35	183	180	177	\$1,904,442	\$813.86
Professional & Business Services	30	169	175	175	\$1,628,323	\$724.02
Education & Health Services	124	795	787	784	\$10,193,956	\$994.27
Leisure & Hospitality	35	373	372	363	\$1,653,022	\$344.28
Other Services	35	112	104	121	\$998,578	\$683.80
Local Government	32	801	796	799	\$7,489,000	\$721.30
State Government	10	101	99	99	\$1,096,451	\$846.24

TABLE 6. COUNTY SUMMARY

North American Industry Classification System - Industry Groups	Number of Employing Units	Employment			Total Earnings Oct - Dec 2021	Average Weekly Earnings
		Oct	Nov	Dec		
<b>BAXTER COUNTY - TOTAL</b>	<b>1,243</b>	<b>15,226</b>	<b>15,295</b>	<b>15,284</b>	<b>\$168,554,865</b>	<b>\$849.19</b>
Natural Resources & Mining	6	78	77	80	\$907,836	\$891.49
Construction	111	549	550	555	\$6,377,369	\$889.78
Manufacturing	55	2,623	2,656	2,660	\$28,906,220	\$840.24
Trade, Transportation & Utilities	246	2,726	2,789	2,771	\$24,975,904	\$695.59
Wholesale Trade	32	162	163	165	\$2,296,335	\$1,081.48
Retail Trade	192	2,378	2,414	2,391	\$20,365,207	\$654.28
Transportation, Warehousing & Utilities	22	186	212	215	\$2,314,362	\$871.26
Information	23	155	154	159	\$2,184,183	\$1,077.01
Financial Activities	129	756	737	748	\$12,598,978	\$1,297.39
Professional & Business Services	159	949	951	970	\$10,746,369	\$864.09
Education & Health Services	253	3,894	3,904	3,946	\$56,945,951	\$1,118.99
Leisure & Hospitality	126	1,641	1,617	1,558	\$8,152,829	\$390.66
Other Services	88	310	307	305	\$2,773,819	\$694.26
Local Government	36	1,247	1,249	1,234	\$11,142,972	\$689.40
State Government	11	298	304	298	\$2,842,435	\$728.83
<b>BENTON COUNTY - TOTAL</b>	<b>7,476</b>	<b>129,594</b>	<b>130,139</b>	<b>130,483</b>	<b>\$2,096,226,893</b>	<b>\$1,239.68</b>
Natural Resources & Mining	52	709	696	701	\$21,506,934	\$2,356.67
Construction	778	6,087	6,028	6,012	\$92,333,091	\$1,175.46
Manufacturing	213	12,742	12,812	12,866	\$184,188,920	\$1,106.33
Trade, Transportation & Utilities	1,760	32,183	32,726	32,923	\$512,667,102	\$1,209.30
Wholesale Trade	763	6,685	6,791	6,879	\$187,753,569	\$2,128.60
Retail Trade	782	13,210	13,500	13,556	\$126,455,353	\$724.73
Transportation, Warehousing & Utilities	215	12,288	12,435	12,488	\$198,458,180	\$1,230.77
Information	131	834	849	888	\$16,926,377	\$1,519.29
Financial Activities	819	4,332	4,336	4,367	\$90,241,099	\$1,597.61
Professional & Business Services	1,514	33,975	34,132	34,306	\$768,945,223	\$1,732.68
Education & Health Services	908	12,775	12,785	12,680	\$173,808,285	\$1,048.89
Leisure & Hospitality	718	13,763	13,558	13,726	\$85,136,765	\$478.65
Other Services	481	2,421	2,429	2,433	\$27,383,957	\$867.69
Local Government	85	8,760	8,769	8,782	\$112,417,246	\$985.99
State Government	17	1,013	1,019	799	\$10,671,894	\$869.92

TABLE 6. COUNTY SUMMARY

North American Industry Classification System - Industry Groups	Number of Employing Units	Employment			Total Earnings Oct - Dec 2021	Average Weekly Earnings
		Oct	Nov	Dec		
<b>BOONE COUNTY - TOTAL</b>	<b>939</b>	<b>14,393</b>	<b>14,366</b>	<b>14,332</b>	<b>\$164,324,186</b>	<b>\$880.02</b>
Natural Resources & Mining	6	22	19	17	\$159,231	\$633.55
Construction	64	447	453	459	\$6,069,218	\$1,030.60
Manufacturing	55	1,870	1,852	1,880	\$20,773,272	\$855.74
Trade, Transportation & Utilities	236	3,951	3,997	4,020	\$50,053,735	\$965.15
Wholesale Trade	41	389	393	392	\$4,751,095	\$933.91
Retail Trade	154	2,199	2,217	2,233	\$18,369,459	\$637.56
Transportation, Warehousing & Utilities	41	1,363	1,387	1,395	\$26,933,181	\$1,499.48
Information	15	271	261	261	\$3,821,173	\$1,111.99
Financial Activities	93	454	454	438	\$6,677,676	\$1,144.88
Professional & Business Services	110	1,302	1,299	1,293	\$18,265,763	\$1,082.48
Education & Health Services	151	1,563	1,520	1,506	\$17,043,177	\$857.06
Leisure & Hospitality	86	1,297	1,287	1,255	\$6,697,432	\$402.59
Other Services	54	281	287	288	\$3,122,211	
Local Government	53	2,182	2,185	2,171	\$24,141,810	\$852.12
State Government	16	753	752	744	\$7,499,488	\$769.52
<b>BRADLEY COUNTY - TOTAL</b>	<b>337</b>	<b>3,498</b>	<b>3,618</b>	<b>3,608</b>	<b>\$40,072,136</b>	<b>\$862.31</b>
Natural Resources & Mining	48	255	308	311	\$2,744,787	\$724.73
Construction	15	72	71	68	\$639,608	\$699.53
Manufacturing	11	890	916	928	\$14,625,783	\$1,234.52
Trade, Transportation & Utilities	74	460	460	456	\$4,665,897	\$782.52
Wholesale Trade	12	108	106	106	\$1,637,261	\$1,180.72
Retail Trade	39	282	284	283	\$2,160,215	\$587.17
Transportation, Warehousing & Utilities	23	70	70	67	\$868,421	\$968.14
Information	3	20	20	18	\$153,424	\$610.44
Financial Activities	20	129	129	121	\$2,166,323	\$1,319.05
Professional & Business Services	24	75	118	107	\$1,058,255	\$814.04
Education & Health Services	80	532	534	524	\$5,476,349	\$794.83
Leisure & Hospitality	14	190	194	195	\$731,234	\$291.44
Other Services	24	68	63	67	\$678,731	\$791.06
Local Government	14	470	468	476	\$4,167,800	\$680.20
State Government	10	337	337	337	\$2,963,945	\$676.55

TABLE 6. COUNTY SUMMARY

North American Industry Classification System - Industry Groups	Number of Employing Units	Employment			Total Earnings Oct - Dec 2021	Average Weekly Earnings
		Oct	Nov	Dec		
<b>CALHOUN COUNTY - TOTAL</b>	<b>108</b>	<b>3,483</b>	<b>3,521</b>	<b>3,527</b>	<b>\$58,702,361</b>	<b>\$1,286.36</b>
Natural Resources & Mining	7	34	34	35	\$383,602	\$859.45
Construction	12	111	120	118	\$1,412,780	\$934.17
Manufacturing	9	2,747	2,773	2,783	\$49,363,627	\$1,371.99
Trade, Transportation & Utilities	20	155	158	155	\$1,860,509	\$917.41
Retail Trade	10	35	37	38	\$286,226	\$600.47
Transportation, Warehousing & Utilities	10	120	121	117	\$1,574,283	\$1,014.79
Professional & Business Services	5	15	13	14	\$169,508	\$931.36
Education & Health Services	24	56	56	56	\$807,519	
Leisure & Hospitality	4	7	7	7	\$28,291	\$310.89
Local Government	11	186	184	183	\$1,592,376	\$664.51
State Government	7	66	66	66	\$802,006	\$934.74
Other	9	106	110	110	2,282,143	\$1,615.49
<b>CARROLL COUNTY - TOTAL</b>	<b>819</b>	<b>11,179</b>	<b>10,944</b>	<b>10,854</b>	<b>\$111,314,001</b>	<b>\$778.96</b>
Natural Resources & Mining	21	276	274	271	\$3,133,662	\$880.82
Trade, Transportation & Utilities	188	1,593	1,640	1,624	\$15,784,603	\$749.97
Wholesale Trade	28	220	234	241	\$2,874,298	\$954.39
Retail Trade	134	1,169	1,201	1,175	\$8,335,406	\$542.61
Transportation, Warehousing & Utilities	26	204	205	208	\$4,574,899	\$1,711.10
Information	9	56	55	58	\$2,241,279	\$3,060.46
Financial Activities	59	390	387	383	\$6,109,219	\$1,215.36
Professional & Business Services	71	453	450	461	\$5,461,940	\$924.08
Education & Health Services	104	977	988	966	\$11,592,330	\$912.71
Leisure & Hospitality	185	1,875	1,648	1,558	\$9,246,742	\$419.97
Other Services	43	151	154	149	\$1,154,372	\$586.77
Local Government	25	1,124	1,114	1,126	\$10,057,647	\$689.95
State Government	9	85	85	85	\$997,694	\$902.89
Other	105	4,199	4,149	4,173	45,534,513	\$839.23

TABLE 6. COUNTY SUMMARY

North American Industry Classification System - Industry Groups	Number of Employing Units	Employment			Total Earnings Oct - Dec 2021	Average Weekly Earnings
		Oct	Nov	Dec		
<b>CHICOT COUNTY - TOTAL</b>	<b>439</b>	<b>2,728</b>	<b>2,741</b>	<b>2,721</b>	<b>\$29,597,288</b>	<b>\$833.96</b>
Natural Resources & Mining	57	262	265	253	\$2,937,733	\$869.15
Construction	13	125	131	113	\$2,018,626	\$1,262.43
Trade, Transportation & Utilities	72	766	774	805	\$7,296,891	\$718.08
Wholesale Trade	12	53	53	54	\$951,391	\$1,372.20
Retail Trade	46	269	272	284	\$1,940,404	\$542.77
Transportation, Warehousing & Utilities	14	444	449	467	\$4,405,096	
Financial Activities	28	181	178	166	\$2,424,997	\$1,065.93
Professional & Business Services	18	39	43	44	\$458,045	\$838.91
Education & Health Services	187	448	452	462	\$5,569,501	\$943.66
Leisure & Hospitality	14	106	101	99	\$410,002	\$309.20
Local Government	17	497	500	489	\$5,437,422	\$844.41
State Government	9	223	223	223	\$2,285,632	\$788.42
Other	24	81	74	67	758,439	\$788.40
<b>CLARK COUNTY - TOTAL</b>	<b>660</b>	<b>8,557</b>	<b>8,564</b>	<b>8,502</b>	<b>\$88,007,832</b>	<b>\$792.63</b>
Natural Resources & Mining	51	314	311	311	\$3,884,731	\$957.77
Construction	27	89	89	88	\$1,387,062	\$1,203.35
Manufacturing	33	1,025	1,043	1,037	\$16,440,819	\$1,221.91
Trade, Transportation & Utilities	137	1,370	1,359	1,358	\$12,972,743	\$732.50
Wholesale Trade	18	69	64	64	\$1,004,316	\$1,176.47
Retail Trade	88	1,146	1,133	1,131	\$9,596,868	\$649.46
Transportation, Warehousing & Utilities	31	155	162	163	\$2,371,559	\$1,140.17
Financial Activities	82	320	320	324	\$3,573,846	\$855.53
Professional & Business Services	55	601	621	644	\$8,270,308	\$1,022.79
Education & Health Services	126	1,608	1,627	1,621	\$16,028,551	\$761.72
Leisure & Hospitality	64	1,102	1,087	1,059	\$4,773,661	\$339.17
Local Government	28	933	936	931	\$8,291,457	\$683.36
State Government	13	979	952	905	\$9,559,026	\$777.83
Other	44	216	219	224	2,825,628	\$989.48

TABLE 6. COUNTY SUMMARY

North American Industry Classification System - Industry Groups	Number of Employing Units	Employment			Total Earnings Oct - Dec 2021	Average Weekly Earnings
		Oct	Nov	Dec		
<b>CLAY COUNTY - TOTAL</b>	<b>339</b>	<b>3,232</b>	<b>3,045</b>	<b>3,000</b>	<b>\$31,191,502</b>	<b>\$775.90</b>
Natural Resources & Mining	49	397	234	214	\$2,347,387	\$641.07
Construction	32	127	129	108	\$1,178,839	\$747.36
Manufacturing	13	123	126	122	\$1,127,516	\$701.34
Trade, Transportation & Utilities	82	744	750	748	\$8,442,090	\$868.94
Wholesale Trade	19	245	259	268	\$2,821,675	\$843.47
Retail Trade	40	350	354	341	\$3,371,717	\$744.58
Transportation, Warehousing & Utilities	23	149	137	139	\$2,248,698	\$1,221.01
Information	6	24	24	25	\$203,848	\$644.41
Financial Activities	19	98	97	96	\$1,353,719	\$1,073.53
Professional & Business Services	19	98	91	89	\$1,064,831	\$883.92
Education & Health Services	49	453	450	445	\$4,880,252	\$835.47
Leisure & Hospitality	19	213	198	204	\$828,811	\$311.00
Other Services	22	86	83	81	\$1,065,614	\$983.64
Local Government	20	827	821	826	\$8,225,102	\$767.22
State Government	9	42	42	42	\$473,493	\$867.20
<b>CLEBURNE COUNTY - TOTAL</b>	<b>632</b>	<b>6,251</b>	<b>6,174</b>	<b>6,193</b>	<b>\$64,644,015</b>	<b>\$801.26</b>
Natural Resources & Mining	18	123	124	122	\$2,132,580	\$1,333.70
Construction	62	324	314	304	\$3,863,735	\$946.53
Manufacturing	34	1,214	1,213	1,251	\$14,619,611	\$917.28
Trade, Transportation & Utilities	148	1,338	1,337	1,337	\$14,357,223	\$825.82
Wholesale Trade	29	102	103	102	\$1,736,807	\$1,305.54
Retail Trade	98	1,095	1,093	1,089	\$10,369,085	\$730.20
Transportation, Warehousing & Utilities	21	141	141	146	\$2,251,331	\$1,213.87
Information	12	43	46	45	\$508,759	\$876.16
Financial Activities	70	240	239	242	\$4,218,243	\$1,350.13
Professional & Business Services	71	353	327	331	\$4,070,691	\$929.17
Education & Health Services	72	773	770	775	\$7,644,872	\$761.09
Leisure & Hospitality	82	883	851	826	\$4,390,887	\$395.81
Other Services	37	108	108	108	\$881,262	\$627.68
Local Government	18	749	746	754	\$6,989,996	\$717.24
State Government	8	103	99	98	\$966,156	\$743.20



TABLE 6. COUNTY SUMMARY

North American Industry Classification System - Industry Groups	Number of Employing Units	Employment			Total Earnings Oct - Dec 2021	Average Weekly Earnings
		Oct	Nov	Dec		
<b>CLEVELAND COUNTY - TOTAL</b>	<b>118</b>	<b>987</b>	<b>976</b>	<b>999</b>	<b>\$10,622,406</b>	<b>\$827.59</b>
Natural Resources & Mining	18	124	120	129	\$1,519,921	\$940.35
Manufacturing	4	121	118	120	\$1,591,082	\$1,022.77
Trade, Transportation & Utilities	29	133	129	132	\$1,200,563	\$703.18
Retail Trade	17	63	63	63	\$373,150	\$455.62
Other Trade, Transportation, & Utilities	12	70	66	69	827,413	\$931.42
Financial Activities	4	26	28	29	\$523,646	\$1,455.92
Professional & Business Services	4	23	25	26	\$210,536	\$656.56
Education & Health Services	30	220	215	216	\$2,147,536	\$761.27
Other Services	5	7	7	7	\$66,523	\$731.02
Local Government	13	292	293	298	\$2,944,634	\$769.57
State Government	6	28	28	28	\$343,917	\$944.83
Other	5	13	13	14	74,048	\$427.20
<b>COLUMBIA COUNTY - TOTAL</b>	<b>650</b>	<b>7,867</b>	<b>7,924</b>	<b>7,889</b>	<b>\$92,989,980</b>	<b>\$906.22</b>
Natural Resources & Mining	45	369	375	368	\$6,895,862	\$1,431.07
Construction	32	119	118	135	\$1,398,173	\$867.35
Manufacturing	26	1,840	1,828	1,819	\$31,584,538	\$1,328.37
Trade, Transportation & Utilities	159	1,496	1,548	1,508	\$13,618,275	\$690.40
Wholesale Trade	29	200	205	199	\$3,257,823	\$1,244.71
Retail Trade	90	1,100	1,161	1,112	\$7,221,190	\$494.05
Transportation, Warehousing & Utilities	40	196	182	197	\$3,139,262	\$1,259.90
Information	6	25	25	25	\$281,570	\$866.37
Financial Activities	55	334	332	325	\$6,473,125	\$1,507.36
Professional & Business Services	53	349	335	338	\$3,190,253	\$720.36
Education & Health Services	147	961	978	993	\$9,553,941	\$751.96
Leisure & Hospitality	52	767	763	759	\$3,318,280	\$334.54
Other Services	37	116	116	115	\$987,536	\$656.75
Local Government	27	847	839	850	\$8,241,089	\$749.92
State Government	11	644	667	654	\$7,447,338	\$874.61

TABLE 6. COUNTY SUMMARY

North American Industry Classification System - Industry Groups	Number of Employing Units	Employment			Total Earnings Oct - Dec 2021	Average Weekly Earnings
		Oct	Nov	Dec		
<b>CONWAY COUNTY - TOTAL</b>	<b>505</b>	<b>6,943</b>	<b>6,854</b>	<b>6,901</b>	<b>79,856,360</b>	<b>\$890.35</b>
Natural Resources & Mining	29	213	219	219	\$2,679,420	\$949.81
Construction	52	563	559	556	\$9,015,708	\$1,239.90
Manufacturing	21	1,071	1,102	1,119	\$17,580,929	\$1,232.42
Trade, Transportation & Utilities	104	1,328	1,328	1,328	\$13,946,111	\$807.81
Wholesale Trade	13	114	114	114	\$1,567,887	\$1,057.95
Retail Trade	71	812	803	815	\$6,515,289	\$618.74
Transportation, Warehousing & Utilities	20	402	411	399	\$5,862,935	\$1,116.32
Information	4	14	12	14	\$65,321	\$376.85
Financial Activities	36	152	153	163	\$2,073,920	\$1,022.64
Professional & Business Services	37	685	712	720	\$5,988,335	\$652.77
Education & Health Services	120	649	681	685	\$8,932,266	\$1,022.97
Leisure & Hospitality	38	448	446	449	\$2,119,748	\$364.24
Other Services	23	97	93	98	\$914,042	\$732.41
Local Government	32	1,364	1,190	1,193	\$13,328,442	\$820.87
State Government	9	359	359	357	\$3,212,118	\$689.54
<b>CRAIGHEAD COUNTY - TOTAL</b>	<b>2,935</b>	<b>53,028</b>	<b>53,083</b>	<b>53,121</b>	<b>\$676,067,757</b>	<b>\$979.80</b>
Natural Resources & Mining	107	440	454	351	\$6,556,982	\$1,215.38
Construction	260	2,434	2,422	2,388	\$40,611,825	\$1,293.75
Manufacturing	102	8,044	8,066	8,098	\$113,387,048	\$1,080.89
Trade, Transportation & Utilities	762	10,701	10,854	11,055	\$123,849,258	\$876.44
Wholesale Trade	178	2,118	2,073	2,098	\$34,479,873	\$1,265.21
Retail Trade	452	6,522	6,660	6,783	\$59,049,596	\$682.54
Transportation, Warehousing & Utilities	132	2,061	2,121	2,174	\$30,319,789	\$1,100.83
Information	25	390	399	402	\$5,728,191	\$1,109.90
Financial Activities	296	1,792	1,796	1,796	\$29,917,263	\$1,282.31
Professional & Business Services	404	4,662	4,574	4,569	\$53,824,252	\$899.75
Education & Health Services	446	11,268	11,225	11,193	\$182,602,780	\$1,250.94
Leisure & Hospitality	288	5,712	5,682	5,690	\$30,112,407	\$406.76
Other Services	189	849	834	826	\$9,187,600	\$845.04
Local Government	35	4,080	4,125	4,126	\$44,590,071	\$834.48
State Government	21	2,656	2,652	2,627	\$35,700,080	\$1,038.25

TABLE 6. COUNTY SUMMARY

North American Industry Classification System - Industry Groups	Number of Employing Units	Employment			Total Earnings Oct - Dec 2021	Average Weekly Earnings
		Oct	Nov	Dec		
<b>CRAWFORD COUNTY - TOTAL</b>	<b>1,247</b>	<b>19,418</b>	<b>19,431</b>	<b>19,468</b>	<b>\$227,817,443</b>	<b>\$901.51</b>
Natural Resources & Mining	22	199	187	191	\$2,624,145	\$1,049.52
Construction	136	1,001	1,009	1,026	\$16,234,200	\$1,233.98
Manufacturing	61	4,766	4,741	4,732	\$64,778,002	\$1,049.85
Trade, Transportation & Utilities	321	5,585	5,644	5,650	\$68,634,602	\$938.37
Wholesale Trade	68	809	835	827	\$13,932,776	\$1,301.20
Retail Trade	169	2,097	2,117	2,110	\$18,373,524	\$670.47
Transportation, Warehousing & Utilities	84	2,679	2,692	2,713	\$36,328,302	\$1,037.04
Information	11	46	46	47	\$788,812	\$1,309.59
Financial Activities	122	507	503	504	\$6,586,797	\$1,003.98
Professional & Business Services	162	1,377	1,369	1,369	\$17,528,237	\$982.98
Education & Health Services	185	1,581	1,579	1,577	\$15,987,490	\$778.85
Leisure & Hospitality	94	1,616	1,605	1,599	\$7,498,655	\$359.02
Other Services	81	424	426	443	\$4,367,892	\$779.56
Local Government	42	2,178	2,184	2,192	\$21,359,488	\$752.08
State Government	10	138	138	138	\$1,429,123	\$796.61
	1,247	19,418	19,431	19,468	227,817,443	\$901.51
<b>CRITTENDEN COUNTY - TOTAL</b>	<b>1,132</b>	<b>15,235</b>	<b>15,212</b>	<b>15,037</b>	<b>\$178,604,785</b>	<b>\$906.18</b>
Natural Resources & Mining	56	275	259	264	\$3,603,679	\$1,042.13
Construction	34	385	381	380	\$5,515,298	\$1,110.61
Manufacturing	37	1,920	1,928	1,889	\$27,704,161	\$1,114.39
Trade, Transportation & Utilities	307	4,300	4,325	4,335	\$57,149,942	\$1,017.63
Wholesale Trade	51	748	747	754	\$14,363,244	\$1,473.81
Retail Trade	156	1,789	1,800	1,785	\$13,955,839	\$599.29
Transportation, Warehousing & Utilities	100	1,763	1,778	1,796	\$28,830,859	\$1,246.63
Information	3	18	16	20	\$254,125	\$1,086.00
Financial Activities	95	429	435	417	\$7,439,188	\$1,340.15
Professional & Business Services	98	941	934	873	\$11,253,698	\$945.05
Education & Health Services	247	1,812	1,840	1,829	\$20,231,393	\$851.81
Leisure & Hospitality	133	2,426	2,396	2,389	\$16,061,917	\$514.02
Other Services	70	463	460	468	\$4,814,602	\$798.75
Local Government	39	1,895	1,866	1,838	\$20,820,889	\$858.16
State Government	13	371	372	335	\$3,755,893	\$804.03

TABLE 6. COUNTY SUMMARY

North American Industry Classification System - Industry Groups	Number of Employing Units	Employment			Total Earnings Oct - Dec 2021	Average Weekly Earnings
		Oct	Nov	Dec		
<b>CROSS COUNTY - TOTAL</b>	<b>456</b>	<b>4,612</b>	<b>4,588</b>	<b>4,569</b>	<b>\$45,615,941</b>	<b>\$764.53</b>
Natural Resources & Mining	46	247	238	218	\$2,627,305	\$862.45
Construction	24	82	80	84	\$879,684	\$825.22
Manufacturing	10	295	303	315	\$2,505,769	\$633.36
Trade, Transportation & Utilities	114	1,085	1,088	1,084	\$12,192,895	\$863.91
Wholesale Trade	25	235	235	246	\$3,755,281	\$1,210.34
Retail Trade	63	736	745	737	\$6,901,751	\$718.08
Transportation, Warehousing & Utilities	26	114	108	101	\$1,535,863	\$1,097.31
Information	4	27	27	26	\$145,986	\$421.11
Financial Activities	50	232	223	212	\$2,565,221	\$887.52
Professional & Business Services	37	144	142	139	\$1,965,258	\$1,067.11
Education & Health Services	80	969	958	953	\$9,450,377	\$757.24
Leisure & Hospitality	37	423	423	424	\$1,933,807	\$351.39
Other Services	28	82	87	83	\$816,674	\$747.87
Local Government	17	694	687	698	\$7,204,690	\$799.72
State Government	9	332	332	333	\$3,328,275	\$770.37
<b>DALLAS COUNTY - TOTAL</b>	<b>218</b>	<b>2,681</b>	<b>2,701</b>	<b>2,661</b>	<b>\$28,922,068</b>	<b>\$829.83</b>
Natural Resources & Mining	19	97	97	93	\$1,208,639	\$971.84
Construction	16	66	65	56	\$870,249	\$1,073.94
Manufacturing	9	598	595	592	\$7,701,457	\$995.66
Trade, Transportation & Utilities	52	479	486	481	\$4,400,698	\$702.31
Wholesale Trade	5	19	18	18	\$386,321	\$1,620.93
Retail Trade	35	325	335	329	\$2,401,545	\$560.37
Transportation, Warehousing & Utilities	12	135	133	134	\$1,612,832	\$925.85
Information	3	18	18	18	\$205,095	\$876.47
Financial Activities	14	62	66	65	\$1,218,015	\$1,456.38
Professional & Business Services	13	35	37	38	\$232,521	\$487.81
Education & Health Services	47	790	798	791	\$9,369,783	\$908.89
Leisure & Hospitality	12	137	138	149	\$516,918	\$281.34
Other Services	12	39	42	50	\$379,488	\$668.50
Local Government	14	331	330	299	\$2,487,322	\$597.91
State Government	7	29	29	29	\$331,883	\$880.33

TABLE 6. COUNTY SUMMARY

North American Industry Classification System - Industry Groups	Number of Employing Units	Employment			Total Earnings Oct - Dec 2021	Average Weekly Earnings
		Oct	Nov	Dec		
<b>DESHA COUNTY - TOTAL</b>	<b>472</b>	<b>4,229</b>	<b>4,203</b>	<b>4,228</b>	<b>\$49,077,666</b>	<b>\$894.60</b>
Natural Resources & Mining	68	323	281	260	\$3,297,553	\$880.76
Construction	13	71	80	77	\$1,055,309	\$1,068.13
Manufacturing	14	940	946	969	\$15,534,990	\$1,255.69
Trade, Transportation & Utilities	94	849	847	871	\$9,705,435	\$872.50
Wholesale Trade	20	208	203	209	\$3,282,038	\$1,221.60
Retail Trade	47	456	457	479	\$3,372,535	\$559.11
Transportation, Warehousing & Utilities	27	185	187	183	\$3,050,862	\$1,268.55
Information	4	17	19	19	\$278,835	\$1,169.94
Financial Activities	29	213	209	216	\$2,620,461	\$947.84
Professional & Business Services	33	86	81	85	\$981,380	\$898.70
Education & Health Services	127	448	453	455	\$4,478,724	\$762.21
Leisure & Hospitality	38	361	369	368	\$1,442,479	\$303.17
Other Services	22	61	52	63	\$384,192	\$503.75
Local Government	21	746	753	729	\$8,230,587	\$852.50
State Government	9	114	113	116	\$1,067,721	\$718.36
<b>DREW COUNTY - TOTAL</b>	<b>540</b>	<b>6,205</b>	<b>6,209</b>	<b>6,330</b>	<b>\$66,885,154</b>	<b>\$823.47</b>
Natural Resources & Mining	55	311	345	397	\$4,669,760	\$1,023.40
Construction	27	169	173	182	\$2,263,004	\$996.63
Manufacturing	23	941	957	994	\$12,507,690	\$998.06
Trade, Transportation & Utilities	116	1,044	1,028	1,031	\$9,254,598	\$688.26
Wholesale Trade	18	107	102	103	\$1,455,507	\$1,076.56
Retail Trade	74	840	852	836	\$6,387,200	\$583.06
Transportation, Warehousing & Utilities	24	97	74	92	\$1,411,891	\$1,238.86
Information	5	33	34	36	\$329,233	\$737.64
Financial Activities	51	203	202	196	\$2,962,576	\$1,137.56
Professional & Business Services	35	285	295	289	\$3,896,190	\$1,034.66
Education & Health Services	128	779	786	834	\$8,083,869	\$777.62
Leisure & Hospitality	44	678	659	651	\$2,948,025	\$342.21
Other Services	20	46	47	46	\$402,435	\$668.13
Local Government	23	1,231	1,200	1,189	\$13,063,993	\$832.81
State Government	13	485	483	485	\$6,503,781	\$1,032.95

TABLE 6. COUNTY SUMMARY

North American Industry Classification System - Industry Groups	Number of Employing Units	Employment			Total Earnings Oct - Dec 2021	Average Weekly Earnings
		Oct	Nov	Dec		
<b>FAULKNER COUNTY - TOTAL</b>	<b>3,072</b>	<b>41,679</b>	<b>42,041</b>	<b>42,148</b>	<b>500,272,966</b>	<b>\$917.21</b>
Natural Resources & Mining	35	212	208	213	\$3,294,883	\$1,201.20
Construction	375	3,123	3,112	3,182	\$48,105,051	\$1,178.84
Manufacturing	101	2,858	2,889	2,929	\$40,642,840	\$1,081.04
Trade, Transportation & Utilities	622	8,081	8,327	8,428	\$82,184,815	\$763.64
Wholesale Trade	126	891	894	917	\$14,515,939	\$1,239.76
Retail Trade	407	6,310	6,508	6,527	\$53,918,287	\$643.20
Transportation, Warehousing & Utilities	89	880	925	984	\$13,750,589	\$1,137.76
Financial Activities	357	1,489	1,516	1,513	\$22,742,813	\$1,161.65
Professional & Business Services	480	3,616	3,629	3,658	\$50,854,231	\$1,076.36
Education & Health Services	498	7,801	7,803	7,724	\$98,809,542	\$977.46
Leisure & Hospitality	302	5,705	5,710	5,645	\$28,751,755	\$388.92
Local Government	44	3,443	3,467	3,425	\$40,378,035	\$901.60
State Government	18	2,862	2,873	2,884	\$36,265,972	\$971.00
Other	240	2,489	2,507	2,547	\$48,243,029	\$1,475.94
<b>FRANKLIN COUNTY - TOTAL</b>	<b>372</b>	<b>4,679</b>	<b>4,636</b>	<b>4,587</b>	<b>\$48,494,708</b>	<b>\$805.00</b>
Natural Resources & Mining	15	123	111	109	\$2,109,426	\$1,419.21
Construction	38	164	159	159	\$1,705,132	\$816.37
Manufacturing	17	1,117	1,080	1,054	\$12,882,072	\$914.42
Trade, Transportation & Utilities	81	997	1,009	995	\$10,861,819	\$835.25
Wholesale Trade	8	44	46	47	\$331,223	\$557.93
Retail Trade	50	641	651	642	\$4,763,550	\$568.40
Transportation, Warehousing & Utilities	23	312	312	306	\$5,767,046	\$1,431.03
Information	6	28	31	32	\$530,861	\$1,346.22
Financial Activities	32	67	64	68	\$730,131	\$846.69
Professional & Business Services	32	378	384	367	\$3,806,315	\$778.02
Education & Health Services	64	496	498	495	\$4,670,582	\$723.86
Leisure & Hospitality	29	361	356	362	\$1,503,286	\$321.51
Other Services	18	50	52	53	\$444,495	\$661.78
Local Government	32	772	766	764	\$7,856,658	\$787.61
State Government	8	126	126	129	\$1,393,931	\$844.29

TABLE 6. COUNTY SUMMARY

North American Industry Classification System - Industry Groups	Number of Employing Units	Employment			Total Earnings Oct - Dec 2021	Average Weekly Earnings
		Oct	Nov	Dec		
<b>FULTON COUNTY - TOTAL</b>	<b>196</b>	<b>2,153</b>	<b>2,153</b>	<b>2,169</b>	<b>\$21,839,014</b>	<b>\$778.34</b>
Manufacturing	10	127	123	121	\$1,304,218	\$811.25
Trade, Transportation & Utilities	48	311	315	321	\$3,487,862	\$849.94
Retail Trade	30	192	189	194	\$1,353,196	\$543.09
Other Trade, Transportation, & Utilities	18	119	126	127	\$2,134,666	\$1,324.23
Information	4	35	34	35	\$447,337	\$992.61
Financial Activities	20	85	82	89	\$1,420,968	\$1,280.92
Professional & Business Services	9	21	18	21	\$172,303	\$662.70
Education & Health Services	44	469	468	467	\$4,595,445	\$755.33
Leisure & Hospitality	17	155	150	147	\$571,852	\$291.96
Other Services	9	19	21	21	\$184,142	\$696.63
Local Government	12	577	577	578	\$4,661,694	\$621.12
State Government	9	58	57	58	\$595,035	\$793.73
Other	14	296	308	311	\$4,398,158	\$1,109.25
<b>GARLAND COUNTY - TOTAL</b>	<b>3,164</b>	<b>36,407</b>	<b>36,515</b>	<b>37,095</b>	<b>\$413,478,557</b>	<b>\$867.30</b>
Natural Resources & Mining	28	200	202	208	\$3,058,346	\$1,157.00
Construction	350	1,879	1,852	1,859	\$22,724,063	\$938.11
Manufacturing	89	2,314	2,350	2,308	\$31,505,349	\$1,042.81
Trade, Transportation & Utilities	660	7,588	7,663	7,790	\$83,264,775	\$833.95
Wholesale Trade	129	799	796	810	\$18,824,370	\$1,806.27
Retail Trade	467	6,227	6,268	6,364	\$56,200,978	\$687.71
Transportation, Warehousing & Utilities	64	562	599	616	\$8,239,427	\$1,070.01
Information	29	423	431	408	\$4,466,958	\$816.83
Financial Activities	391	1,525	1,519	1,520	\$22,411,730	\$1,133.20
Professional & Business Services	415	2,943	2,963	2,983	\$34,938,103	\$907.04
Education & Health Services	504	7,819	7,803	7,824	\$112,830,148	\$1,110.54
Leisure & Hospitality	415	7,049	7,038	7,522	\$45,042,437	\$481.02
Other Services	222	934	925	917	\$8,024,207	\$667.05
Local Government	40	2,925	2,948	2,938	\$36,462,000	\$954.98
State Government	21	808	821	818	\$8,750,441	\$825.23

TABLE 6. COUNTY SUMMARY

North American Industry Classification System - Industry Groups	Number of Employing Units	Employment			Total Earnings Oct - Dec 2021	Average Weekly Earnings
		Oct	Nov	Dec		
<b>GRANT COUNTY - TOTAL</b>	<b>351</b>	<b>4,294</b>	<b>4,285</b>	<b>4,371</b>	<b>\$55,197,053</b>	<b>\$983.61</b>
Natural Resources & Mining	25	179	178	177	\$2,998,800	\$1,295.94
Construction	35	277	261	277	\$5,142,253	\$1,456.04
Manufacturing	18	1,396	1,396	1,443	\$20,665,214	\$1,126.07
Trade, Transportation & Utilities	87	678	685	677	\$6,925,485	\$783.43
Wholesale Trade	18	85	86	84	\$2,411,419	\$2,182.28
Retail Trade	49	549	554	550	\$3,992,549	\$557.39
Transportation, Warehousing & Utilities	20	44	45	43	\$521,517	\$911.74
Financial Activities	25	181	179	179	\$4,300,031	\$1,841.03
Professional & Business Services	33	142	144	142	\$1,789,518	\$964.87
Education & Health Services	64	338	342	350	\$3,479,799	\$779.64
Leisure & Hospitality	26	268	273	286	\$1,163,078	\$324.55
Local Government	10	734	726	739	\$7,696,955	\$807.74
State Government	7	45	44	45	\$451,441	\$777.45
Other	21	56	57	56	\$584,479	\$798.11
<b>GREENE COUNTY - TOTAL</b>	<b>880</b>	<b>15,229</b>	<b>15,278</b>	<b>15,294</b>	<b>\$176,090,607</b>	<b>\$887.24</b>
Natural Resources & Mining	41	235	219	196	\$3,060,961	\$1,086.73
Construction	70	448	440	406	\$6,560,524	\$1,169.99
Manufacturing	53	4,693	4,707	4,764	\$63,420,347	\$1,033.29
Trade, Transportation & Utilities	227	2,821	2,825	2,849	\$27,558,674	\$748.64
Wholesale Trade	46	514	520	524	\$7,475,661	\$1,107.29
Retail Trade	153	2,096	2,099	2,106	\$17,085,233	\$625.73
Transportation, Warehousing & Utilities	28	211	206	219	\$2,997,780	\$1,087.73
Information	9	120	120	119	\$1,872,506	\$1,203.67
Financial Activities	76	561	561	563	\$9,071,022	\$1,242.32
Professional & Business Services	96	795	825	813	\$8,970,066	\$850.81
Education & Health Services	142	2,071	2,066	2,049	\$25,404,794	\$947.73
Leisure & Hospitality	82	1,276	1,300	1,312	\$6,306,345	\$374.31
Other Services	43	180	177	176	\$1,517,203	\$656.89
Local Government	31	1,662	1,672	1,680	\$18,087,362	\$832.47
State Government	10	367	366	367	\$4,260,803	\$893.87



TABLE 6. COUNTY SUMMARY

North American Industry Classification System - Industry Groups	Number of Employing Units	Employment			Total Earnings Oct - Dec 2021	Average Weekly Earnings
		Oct	Nov	Dec		
<b>HEMPSTEAD COUNTY - TOTAL</b>	<b>515</b>	<b>7,393</b>	<b>7,384</b>	<b>7,325</b>	<b>\$86,417,386</b>	<b>\$902.29</b>
Natural Resources & Mining	24	242	237	233	\$3,627,172	\$1,175.62
Construction	28	118	121	125	\$1,396,406	\$885.30
Manufacturing	27	2,225	2,188	2,174	\$32,985,210	\$1,155.61
Trade, Transportation & Utilities	125	1,326	1,334	1,315	\$13,604,075	\$789.79
Wholesale Trade	26	203	200	202	\$2,088,963	\$796.81
Retail Trade	72	841	855	841	\$6,036,762	\$549.11
Transportation, Warehousing & Utilities	27	282	279	272	\$5,478,350	\$1,517.69
Information	7	15	15	15	\$234,701	\$1,203.59
Financial Activities	45	190	193	188	\$2,685,886	\$1,085.50
Professional & Business Services	36	257	257	265	\$3,299,942	\$977.57
Education & Health Services	104	840	845	852	\$7,870,183	\$715.88
Leisure & Hospitality	45	567	564	554	\$2,776,074	\$380.20
Other Services	30	111	108	101	\$1,117,444	\$805.85
Local Government	28	841	852	836	\$9,825,613	\$896.58
State Government	16	661	670	667	\$6,994,680	\$807.89
<b>HOT SPRING COUNTY - TOTAL</b>	<b>604</b>	<b>8,281</b>	<b>8,220</b>	<b>8,242</b>	<b>\$93,829,111</b>	<b>\$875.11</b>
Natural Resources & Mining	22	160	155	158	\$1,773,037	\$865.04
Construction	57	215	209	209	\$2,004,647	\$730.82
Manufacturing	28	1,534	1,545	1,566	\$23,020,950	\$1,143.71
Trade, Transportation & Utilities	153	1,681	1,670	1,684	\$22,326,045	\$1,023.27
Wholesale Trade	21	84	86	93	\$1,825,349	\$1,601.65
Retail Trade	92	927	924	925	\$7,045,382	\$585.68
Transportation, Warehousing & Utilities	40	670	660	666	\$13,455,314	\$1,555.65
Information	5	39	38	38	\$527,621	\$1,058.77
Financial Activities	54	203	203	190	\$2,890,199	\$1,119.08
Professional & Business Services	56	844	841	839	\$8,462,119	\$773.69
Education & Health Services	100	926	892	901	\$10,429,267	\$885.16
Leisure & Hospitality	54	733	729	727	\$3,408,011	\$359.28
Other Services	35	148	143	145	\$1,120,084	\$592.85
Local Government	28	977	976	971	\$10,234,841	\$807.76
State Government	12	821	819	814	\$7,632,290	\$717.73

TABLE 6. COUNTY SUMMARY

North American Industry Classification System - Industry Groups	Number of Employing Units	Employment			Total Earnings Oct - Dec 2021	Average Weekly Earnings
		Oct	Nov	Dec		
<b>HOWARD COUNTY - TOTAL</b>	<b>355</b>	<b>6,430</b>	<b>6,386</b>	<b>6,412</b>	<b>\$67,316,654</b>	<b>\$807.92</b>
Natural Resources & Mining	19	203	201	198	\$2,588,975	\$992.45
Construction	21	70	68	70	\$693,181	\$769.06
Manufacturing	19	3,068	3,043	3,060	\$33,702,041	\$848.04
Trade, Transportation & Utilities	80	892	880	884	\$9,417,126	\$818.22
Wholesale Trade	16	91	91	88	\$1,333,582	\$1,139.81
Retail Trade	45	584	574	573	\$4,385,391	\$584.64
Transportation, Warehousing & Utilities	19	217	215	223	\$3,698,153	\$1,302.93
Financial Activities	34	140	137	155	\$1,715,958	\$916.64
Professional & Business Services	22	137	136	136	\$1,533,179	\$865.06
Education & Health Services	80	728	740	718	\$8,146,959	\$860.05
Leisure & Hospitality	30	310	315	306	\$1,458,068	\$361.41
Local Government	17	682	668	682	\$6,312,918	\$716.94
State Government	10	104	103	103	\$801,308	\$596.51
Other	23	96	95	100	\$946,941	\$750.94
<b>INDEPENDENCE COUNTY - TOTAL</b>	<b>919</b>	<b>16,444</b>	<b>16,549</b>	<b>16,585</b>	<b>\$199,629,415</b>	<b>\$929.21</b>
Natural Resources & Mining	24	291	287	289	\$4,506,118	\$1,199.39
Construction	57	584	580	563	\$8,597,088	\$1,148.78
Manufacturing	43	3,657	3,712	3,707	\$52,189,324	\$1,087.37
Trade, Transportation & Utilities	232	2,863	2,901	2,924	\$31,039,019	\$824.45
Wholesale Trade	28	230	217	226	\$3,292,186	\$1,128.88
Retail Trade	161	1,934	1,958	1,931	\$15,587,478	\$617.74
Transportation, Warehousing & Utilities	43	699	726	767	\$12,159,355	\$1,280.11
Information	9	83	81	93	\$1,116,534	\$1,002.57
Financial Activities	90	642	626	645	\$10,268,618	\$1,238.73
Professional & Business Services	90	1,264	1,259	1,246	\$14,177,155	\$868.04
Education & Health Services	164	3,434	3,440	3,454	\$48,912,150	\$1,092.89
Leisure & Hospitality	86	1,270	1,289	1,296	\$5,938,578	\$355.50
Other Services	61	298	322	323	\$2,785,594	\$681.69
Local Government	48	1,496	1,485	1,479	\$14,462,598	\$748.32
State Government	15	562	567	566	\$5,636,639	\$767.41

TABLE 6. COUNTY SUMMARY

North American Industry Classification System - Industry Groups	Number of Employing Units	Employment			Total Earnings Oct - Dec 2021	Average Weekly Earnings
		Oct	Nov	Dec		
<b>IZARD COUNTY - TOTAL</b>	<b>237</b>	<b>2,768</b>	<b>2,785</b>	<b>2,762</b>	<b>\$26,722,755</b>	<b>\$741.65</b>
Natural Resources & Mining	7	89	86	89	\$1,473,764	\$1,288.26
Construction	21	76	70	72	\$671,616	\$710.96
Manufacturing	8	137	140	141	\$1,539,655	\$850.01
Trade, Transportation & Utilities	62	527	539	533	\$4,676,057	\$674.85
Wholesale Trade	12	57	58	59	\$554,129	\$734.92
Retail Trade	40	376	383	373	\$2,882,908	\$587.71
Transportation, Warehousing & Utilities	10	94	98	101	\$1,239,020	\$975.86
Financial Activities	21	171	166	164	\$2,194,612	\$1,010.88
Professional & Business Services	18	55	56	57	\$617,640	\$848.41
Education & Health Services	36	573	582	573	\$5,576,286	\$744.70
Leisure & Hospitality	23	178	178	170	\$815,045	\$357.58
Local Government	14	519	511	509	\$4,503,210	\$675.25
State Government	9	397	395	395	\$4,151,697	\$807.15
Other	18	46	62	59	\$503,173	
<b>JACKSON COUNTY - TOTAL</b>	<b>406</b>	<b>5,113</b>	<b>5,100</b>	<b>5,036</b>	<b>\$57,481,234</b>	<b>\$869.89</b>
Natural Resources & Mining	51	337	319	298	\$3,754,931	\$908.30
Construction	21	116	119	117	\$1,645,052	\$1,078.49
Manufacturing	9	976	968	970	\$13,493,576	\$1,068.60
Trade, Transportation & Utilities	101	981	1,005	993	\$10,939,332	\$847.42
Wholesale Trade	16	199	201	200	\$3,325,149	\$1,278.90
Retail Trade	66	695	708	695	\$6,042,939	\$664.69
Transportation, Warehousing & Utilities	19	87	96	98	\$1,571,244	\$1,290.37
Information	3	8	8	8	\$70,841	\$681.16
Financial Activities	31	135	134	135	\$1,567,155	\$895.18
Professional & Business Services	31	104	105	107	\$1,426,811	\$1,041.97
Education & Health Services	73	729	724	725	\$8,974,351	\$950.87
Leisure & Hospitality	25	378	381	350	\$1,492,295	\$310.53
Other Services	17	53	55	51	\$874,369	\$1,269.04
Local Government	32	567	558	555	\$5,881,553	\$807.91
State Government	12	729	724	727	\$7,360,968	\$779.21

TABLE 6. COUNTY SUMMARY

North American Industry Classification System - Industry Groups	Number of Employing Units	Employment			Total Earnings Oct - Dec 2021	Average Weekly Earnings
		Oct	Nov	Dec		
<b>JEFFERSON COUNTY - TOTAL</b>	<b>1,928</b>	<b>24,733</b>	<b>24,663</b>	<b>24,518</b>	<b>\$311,329,928</b>	<b>\$972.01</b>
Natural Resources & Mining	32	111	109	100	\$2,365,222	\$1,705.69
Construction	82	445	417	406	\$5,341,098	\$972.05
Manufacturing	59	4,309	4,291	4,249	\$79,167,991	\$1,421.86
Trade, Transportation & Utilities	399	4,162	4,276	4,284	\$47,255,964	\$857.19
Wholesale Trade	68	623	615	620	\$9,151,623	\$1,136.66
Retail Trade	273	2,907	2,973	2,936	\$26,242,805	\$686.94
Transportation, Warehousing & Utilities	58	632	688	728	\$11,861,536	\$1,336.56
Information	11	57	58	55	\$821,383	\$1,115.00
Financial Activities	140	992	1,000	1,006	\$14,152,149	\$1,089.35
Professional & Business Services	144	2,102	1,991	1,916	\$22,582,037	\$867.24
Education & Health Services	761	4,028	4,009	3,978	\$55,473,114	\$1,065.46
Leisure & Hospitality	131	2,714	2,712	2,685	\$18,047,604	\$513.48
Other Services	92	412	402	406	\$4,514,541	\$853.95
Local Government	41	2,263	2,236	2,258	\$24,079,480	\$822.38
State Government	36	3,138	3,162	3,175	\$37,529,345	\$914.05
<b>JOHNSON COUNTY - TOTAL</b>	<b>470</b>	<b>8,289</b>	<b>8,326</b>	<b>8,436</b>	<b>\$86,714,752</b>	<b>\$798.81</b>
Natural Resources & Mining	10	208	218	224	\$2,954,702	\$1,049.01
Construction	41	191	188	206	\$2,001,564	\$789.57
Manufacturing	32	2,306	2,322	2,337	\$25,715,684	\$852.03
Trade, Transportation & Utilities	104	2,051	2,096	2,115	\$21,763,078	\$802.02
Retail Trade	75	956	967	967	\$6,985,180	\$557.77
Other Trade, Transportation & Utilities	29	1095	1129	1148	\$14,777,898	\$1,011.35
Information	5	11	11	26	\$180,263	\$866.65
Financial Activities	40	148	150	147	\$1,866,681	\$968.03
Professional & Business Services	47	273	253	260	\$2,442,806	\$717.21
Education & Health Services	93	1,239	1,238	1,215	\$13,163,489	\$822.79
Leisure & Hospitality	44	603	588	607	\$2,526,438	\$324.26
Other Services	31	86	87	88	\$738,146	\$652.65
Local Government	14	1,074	1,076	1,112	\$12,153,806	\$859.82
State Government	9	99	99	99	\$1,208,095	\$938.69

TABLE 6. COUNTY SUMMARY

North American Industry Classification System - Industry Groups	Number of Employing Units	Employment			Total Earnings Oct - Dec 2021	Average Weekly Earnings
		Oct	Nov	Dec		
<b>LAFAYETTE COUNTY - TOTAL</b>	<b>153</b>	<b>1,060</b>	<b>1,061</b>	<b>1,069</b>	<b>\$10,579,365</b>	<b>\$765.33</b>
Natural Resources & Mining	22	63	70	64	\$563,320	\$659.88
Construction	10	90	92	92	\$1,549,904	\$1,305.37
Manufacturing	5	33	32	34	\$366,384	\$854.04
Trade, Transportation & Utilities	29	203	196	197	\$1,830,281	\$708.68
Wholesale Trade	3	53	51	54	\$471,752	\$689.02
Retail Trade	16	124	117	115	\$786,284	\$509.69
Transportation, Warehousing & Utilities	10	26	28	28	\$572,245	\$1,610.45
Financial Activities	13	73	76	70	\$999,384	\$1,053.09
Professional & Business Services	8	35	34	36	\$414,756	\$911.55
Education & Health Services	30	145	142	147	\$1,320,445	\$702.12
Leisure & Hospitality	8	50	54	68	\$353,275	\$473.98
Local Government	15	295	292	288	\$2,461,633	\$649.22
State Government	7	28	28	28	\$337,659	\$927.63
Other	6	45	45	45	\$382,324	\$653.55
<b>LAWRENCE COUNTY - TOTAL</b>	<b>382</b>	<b>3,843</b>	<b>3,852</b>	<b>3,829</b>	<b>\$39,226,301</b>	<b>\$785.51</b>
Natural Resources & Mining	55	186	191	193	\$2,503,864	\$1,013.71
Construction	24	175	182	190	\$3,739,631	\$1,577.68
Manufacturing	14	257	258	258	\$2,695,004	\$804.56
Trade, Transportation & Utilities	110	819	812	811	\$8,565,589	\$809.45
Wholesale Trade	20	191	192	194	\$2,494,746	\$997.77
Retail Trade	58	498	494	495	\$4,191,386	\$650.47
Transportation, Warehousing & Utilities	32	130	126	122	\$1,879,457	\$1,147.41
Financial Activities	27	118	118	116	\$1,415,403	\$927.93
Professional & Business Services	22	89	94	99	\$1,325,153	\$1,084.41
Education & Health Services	43	568	562	566	\$5,733,052	\$780.08
Leisure & Hospitality	34	365	351	336	\$1,530,699	\$335.78
Local Government	24	1,026	1,044	1,019	\$9,404,000	\$702.54
State Government	9	70	70	70	\$710,874	\$781.18
Other	20	170	170	171	\$1,603,032	\$723.93

TABLE 6. COUNTY SUMMARY

North American Industry Classification System - Industry Groups	Number of Employing Units	Employment			Total Earnings Oct - Dec 2021	Average Weekly Earnings
		Oct	Nov	Dec		
<b>LEE COUNTY - TOTAL</b>	<b>228</b>	<b>1,656</b>	<b>1,655</b>	<b>1,631</b>	<b>\$18,726,399</b>	<b>\$874.44</b>
Natural Resources & Mining	36	229	216	203	\$2,582,515	\$919.70
Construction	4	5	8	8	\$59,933	\$658.60
Trade, Transportation & Utilities	35	350	357	355	\$4,061,001	\$882.44
Wholesale Trade	10	127	124	120	\$1,990,565	\$1,238.17
Retail Trade	17	168	176	177	\$1,238,392	\$548.53
Transportation, Warehousing & Utilities	8	55	57	58	\$832,044	\$1,129.47
Financial Activities	13	51	50	47	\$732,797	\$1,142.61
Professional & Business Services	15	43	49	44	\$1,241,911	\$2,107.32
Education & Health Services	84	312	312	314	\$3,624,809	\$891.79
Leisure & Hospitality	10	77	75	70	\$356,519	\$370.60
Other Services	6	9	9	9	\$72,397	\$618.78
Local Government	15	223	223	224	\$2,129,745	\$733.55
State Government	6	347	346	347	\$3,764,958	\$835.42
Other	4	10	10	10	\$99,814	\$767.80
<b>LINCOLN COUNTY - TOTAL</b>	<b>262</b>	<b>2,594</b>	<b>2,593</b>	<b>2,576</b>	<b>\$28,530,992</b>	<b>\$848.14</b>
Natural Resources & Mining	37	152	158	150	\$1,914,206	\$960.30
Construction	18	130	129	133	\$1,682,951	\$990.75
Manufacturing	9	322	322	315	\$3,256,247	\$783.57
Trade, Transportation & Utilities	41	323	327	315	\$3,881,258	\$928.16
Wholesale Trade	7	48	49	49	\$571,659	\$903.57
Retail Trade	23	151	155	146	\$999,182	\$510.13
Transportation, Warehousing & Utilities	11	124	123	120	\$2,310,417	\$1,452.79
Financial Activities	19	60	62	60	\$634,405	\$804.40
Professional & Business Services	10	22	21	21	\$338,484	\$1,220.50
Education & Health Services	80	299	316	319	\$3,240,591	\$800.67
Leisure & Hospitality	15	113	116	119	\$427,659	\$283.59
Local Government	7	340	313	311	\$3,195,471	\$764.95
State Government	10	786	784	786	\$9,288,215	\$909.78
Other	16	47	45	47	\$671,505	\$1,114.84

TABLE 6. COUNTY SUMMARY

North American Industry Classification System - Industry Groups	Number of Employing Units	Employment			Total Earnings Oct - Dec 2021	Average Weekly Earnings
		Oct	Nov	Dec		
<b>LITTLE RIVER COUNTY - TOTAL</b>	<b>238</b>	<b>2,985</b>	<b>3,015</b>	<b>3,026</b>	<b>\$42,363,843</b>	<b>\$1,083.12</b>
Natural Resources & Mining	14	80	86	88	\$936,640	\$850.98
Construction	10	75	75	72	\$895,471	\$930.84
Manufacturing	15	901	934	944	\$22,952,967	\$1,906.02
Trade, Transportation & Utilities	59	554	551	551	\$4,547,939	\$633.77
Wholesale Trade	7	31	31	30	\$542,491	\$1,360.76
Retail Trade	38	452	446	442	\$3,080,993	\$530.60
Transportation, Warehousing & Utilities	14	71	74	79	\$924,455	\$952.39
Financial Activities	12	53	53	53	\$493,611	\$716.42
Professional & Business Services	16	94	80	73	\$1,526,637	\$1,426.32
Education & Health Services	47	179	181	183	\$1,639,703	\$696.86
Leisure & Hospitality	17	236	225	221	\$842,587	\$285.11
Other Services	18	48	49	50	\$350,626	\$550.43
Local Government	20	684	698	709	\$7,568,040	\$835.23
State Government	10	81	83	82	\$609,622	\$571.88
<b>LOGAN COUNTY - TOTAL</b>	<b>473</b>	<b>5,054</b>	<b>5,096</b>	<b>5,071</b>	<b>\$48,657,884</b>	<b>\$737.71</b>
Natural Resources & Mining	24	118	119	124	\$1,470,872	\$940.25
Construction	40	170	170	172	\$2,022,969	\$911.79
Manufacturing	21	1,086	1,115	1,109	\$12,044,696	\$839.74
Trade, Transportation & Utilities	102	1,045	1,050	1,035	\$8,426,432	\$621.27
Wholesale Trade	11	59	56	61	\$503,572	\$660.28
Retail Trade	71	860	865	842	\$5,900,663	\$530.46
Transportation, Warehousing & Utilities	20	126	129	132	\$2,022,197	\$1,205.84
Information	5	22	22	22	\$284,295	\$994.04
Financial Activities	48	181	183	182	\$2,550,549	\$1,078.00
Professional & Business Services	39	101	103	108	\$1,063,278	\$786.45
Education & Health Services	99	636	627	627	\$6,748,364	\$823.98
Leisure & Hospitality	29	323	320	308	\$1,244,520	\$301.99
Other Services	32	129	130	133	\$1,515,838	\$892.37
Local Government	22	817	832	825	\$7,642,037	\$712.83
State Government	12	426	425	426	\$3,644,034	\$658.52

TABLE 6. COUNTY SUMMARY

North American Industry Classification System - Industry Groups	Number of Employing Units	Employment			Total Earnings Oct - Dec 2021	Average Weekly Earnings
		Oct	Nov	Dec		
<b>LONOKE COUNTY - TOTAL</b>	<b>1,336</b>	<b>14,529</b>	<b>14,461</b>	<b>14,537</b>	<b>\$152,561,743</b>	<b>\$808.84</b>
Natural Resources & Mining	90	516	500	478	\$7,411,006	\$1,144.73
Construction	159	947	938	972	\$13,006,255	\$1,050.56
Manufacturing	35	1,608	1,606	1,604	\$22,441,812	\$1,074.90
Trade, Transportation & Utilities	290	3,144	3,160	3,158	\$30,138,431	\$735.05
Wholesale Trade	68	417	429	428	\$7,137,592	\$1,292.89
Retail Trade	164	2,390	2,394	2,385	\$18,075,494	\$581.85
Transportation, Warehousing & Utilities	58	337	337	345	\$4,925,345	\$1,115.43
Information	16	86	89	91	\$1,214,891	\$1,053.98
Financial Activities	171	758	755	765	\$12,723,395	\$1,288.92
Professional & Business Services	158	668	645	648	\$6,684,059	\$786.58
Education & Health Services	201	1,823	1,814	1,803	\$18,258,987	\$774.56
Leisure & Hospitality	116	2,022	1,999	2,077	\$10,039,351	\$379.92
Other Services	63	166	166	172	\$1,552,106	\$710.67
Local Government	23	2,643	2,641	2,621	\$27,312,643	\$797.33
State Government	14	148	148	148	\$1,778,807	\$924.54
<b>MADISON COUNTY - TOTAL</b>	<b>266</b>	<b>3,553</b>	<b>3,548</b>	<b>3,549</b>	<b>\$40,221,794</b>	<b>\$871.54</b>
Natural Resources & Mining	11	55	54	57	\$506,712	\$704.42
Construction	33	161	159	163	\$2,202,118	\$1,052.13
Manufacturing	22	1,398	1,361	1,334	\$17,197,472	\$969.62
Trade, Transportation & Utilities	60	689	699	709	\$6,745,073	\$742.28
Wholesale Trade	7	34	35	36	\$359,651	\$790.44
Retail Trade	40	511	524	524	\$4,183,435	\$619.25
Transportation, Warehousing & Utilities	13	144	140	149	\$2,201,987	\$1,173.56
Information	6	55	52	52	\$1,476,247	\$2,142.59
Financial Activities	19	84	86	85	\$1,012,648	\$916.42
Professional & Business Services	25	82	84	88	\$1,148,365	\$1,043.34
Education & Health Services	40	234	240	258	\$2,576,411	\$812.24
Leisure & Hospitality	14	157	154	161	\$574,586	\$280.93
Other Services	20	44	46	44	\$393,652	\$677.93
Local Government	9	555	574	559	\$5,953,137	\$813.86
State Government	7	39	39	39	\$435,373	\$858.72



TABLE 6. COUNTY SUMMARY

North American Industry Classification System - Industry Groups	Number of Employing Units	Employment			Total Earnings Oct - Dec 2021	Average Weekly Earnings
		Oct	Nov	Dec		
<b>MARION COUNTY - TOTAL</b>	<b>283</b>	<b>3,421</b>	<b>3,487</b>	<b>3,518</b>	<b>\$37,911,609</b>	<b>\$839.14</b>
Manufacturing	24	1,431	1,480	1,494	\$18,729,729	\$981.21
Trade, Transportation & Utilities	55	549	552	565	\$4,445,485	\$615.78
Wholesale Trade	7	40	43	41	\$370,781	\$690.04
Retail Trade	39	475	476	491	\$3,511,417	\$561.95
Transportation, Warehousing & Utilities	9	34	33	33	\$563,287	\$1,299.89
Information	3	51	53	54	\$1,066,859	\$1,558.22
Financial Activities	32	185	183	180	\$2,071,484	\$872.33
Professional & Business Services	25	71	74	80	\$956,795	\$981.33
Education & Health Services	42	263	266	270	\$3,155,185	\$911.29
Leisure & Hospitality	36	183	184	176	\$852,919	\$362.48
Other Services	14	26	33	33	\$197,584	\$495.61
Local Government	17	511	506	504	\$4,832,803	\$733.24
State Government	7	38	38	38	\$426,755	\$863.88
Other	28	113	118	124	\$1,176,011	\$764.47
<b>MILLER COUNTY - TOTAL</b>	<b>885</b>	<b>12,346</b>	<b>12,416</b>	<b>12,371</b>	<b>\$153,511,243</b>	<b>\$954.02</b>
Natural Resources & Mining	30	287	273	276	\$4,236,208	\$1,169.36
Construction	65	647	620	609	\$9,528,522	\$1,172.12
Manufacturing	22	2,331	2,343	2,316	\$46,165,635	\$1,524.12
Trade, Transportation & Utilities	213	2,648	2,761	2,791	\$30,689,204	\$863.67
Wholesale Trade	44	512	518	516	\$8,108,833	\$1,210.39
Retail Trade	120	1,301	1,299	1,288	\$9,768,052	\$579.78
Transportation, Warehousing & Utilities	49	835	944	987	\$12,812,319	\$1,068.94
Information	7	89	88	89	\$2,855,266	\$2,477.10
Financial Activities	91	403	398	398	\$6,556,534	\$1,261.92
Professional & Business Services	80	1,189	1,202	1,189	\$10,674,316	\$688.07
Education & Health Services	186	1,209	1,220	1,202	\$11,513,309	\$731.73
Leisure & Hospitality	98	1,507	1,500	1,495	\$7,601,326	\$389.64
Other Services	52	227	215	215	\$1,914,897	\$672.60
Local Government	26	1,349	1,336	1,334	\$15,620,179	\$896.90
State Government	15	460	460	457	\$6,155,847	\$1,031.65

TABLE 6. COUNTY SUMMARY

North American Industry Classification System - Industry Groups	Number of Employing Units	Employment			Total Earnings Oct - Dec 2021	Average Weekly Earnings
		Oct	Nov	Dec		
<b>MISSISSIPPI COUNTY - TOTAL</b>	<b>1,018</b>	<b>17,053</b>	<b>16,955</b>	<b>16,901</b>	<b>\$334,371,906</b>	<b>\$1,515.70</b>
Natural Resources & Mining	108	663	622	559	\$7,709,754	\$964.84
Construction	50	757	660	658	\$12,162,396	\$1,352.63
Manufacturing	60	6,166	6,219	6,284	\$210,814,030	\$2,605.89
Trade, Transportation & Utilities	255	2,884	2,913	2,921	\$35,396,128	\$936.95
Wholesale Trade	55	375	380	384	\$9,959,309	\$2,017.82
Retail Trade	134	1,672	1,657	1,654	\$11,385,375	\$527.27
Transportation, Warehousing & Utilities	66	837	876	883	\$14,051,444	\$1,249.09
Information	8	25	24	24	\$200,942	\$635.22
Financial Activities	74	397	406	395	\$4,772,420	\$919.31
Professional & Business Services	79	1,000	948	943	\$12,730,448	\$1,016.19
Education & Health Services	177	1,251	1,266	1,263	\$14,498,379	\$885.13
Leisure & Hospitality	91	1,042	1,020	1,005	\$4,729,695	\$355.87
Other Services	47	317	321	310	\$4,047,181	\$985.19
Local Government	50	2,073	2,083	2,060	\$22,565,288	\$837.74
State Government	19	478	473	479	\$4,745,245	\$765.77
<b>MONROE COUNTY - TOTAL</b>	<b>245</b>	<b>1,860</b>	<b>1,852</b>	<b>1,871</b>	<b>\$18,524,633</b>	<b>\$765.70</b>
Natural Resources & Mining	25	97	86	79	\$1,101,437	\$970.14
Manufacturing	6	124	136	134	\$1,315,226	\$770.34
Trade, Transportation & Utilities	61	484	469	486	\$6,308,246	\$1,011.64
Wholesale Trade	16	127	132	129	\$2,209,973	\$1,314.42
Retail Trade	30	245	231	249	\$2,572,784	\$818.92
Transportation, Warehousing & Utilities	45	357	337	357	\$4,098,273	\$899.86
Financial Activities	20	79	79	75	\$1,144,558	\$1,133.60
Professional & Business Services	12	16	16	20	\$169,101	\$750.45
Education & Health Services	48	312	315	314	\$3,149,972	\$772.49
Leisure & Hospitality	20	275	279	284	\$1,166,696	\$321.29
Other Services	16	57	59	63	\$491,152	\$633.20
Local Government	21	332	332	334	\$2,739,251	\$633.40
State Government	7	62	62	62	\$761,594	\$944.91
Other	9	22	19	20	\$177,400	\$671.12

TABLE 6. COUNTY SUMMARY

North American Industry Classification System - Industry Groups	Number of Employing Units	Employment			Total Earnings Oct - Dec 2021	Average Weekly Earnings
		Oct	Nov	Dec		
<b>MONTGOMERY COUNTY - TOTAL</b>	<b>155</b>	<b>1,121</b>	<b>1,099</b>	<b>1,059</b>	<b>\$9,352,563</b>	<b>\$658.21</b>
Natural Resources & Mining	6	21	21	19	\$158,817	\$600.82
Construction	24	69	70	72	\$708,049	\$774.39
Manufacturing	7	32	32	36	\$451,128	\$1,041.06
Trade, Transportation & Utilities	34	238	240	239	\$1,889,414	\$608.12
Wholesale Trade	7	58	58	56	\$617,761	\$828.84
Retail Trade	22	165	168	167	\$1,154,308	\$532.76
Transportation, Warehousing & Utilities	5	15	14	16	\$117,345	\$601.77
Financial Activities	12	46	37	35	\$395,733	\$773.92
Professional & Business Services	11	19	20	19	\$161,681	\$643.29
Education & Health Services	17	22	23	21	\$454,230	\$1,588.22
Leisure & Hospitality	14	225	212	170	\$1,345,813	\$511.65
Local Government	9	381	378	382	\$3,225,516	\$652.37
State Government	7	36	36	36	\$344,016	\$735.08
Other	14	32	30	30	\$218,166	\$547.24
<b>NEVADA COUNTY - TOTAL</b>	<b>196</b>	<b>2,157</b>	<b>2,147</b>	<b>2,129</b>	<b>\$23,284,694</b>	<b>\$835.29</b>
Natural Resources & Mining	13	50	51	49	\$762,955	\$1,173.78
Construction	12	29	29	28	\$205,955	\$552.65
Trade, Transportation & Utilities	42	466	455	453	\$4,636,555	\$778.73
Retail Trade	25	294	288	279	\$2,037,795	\$546.18
Other Trade, Transportation & Utilities	17	172	167	174	\$2,598,760	\$1,169.03
Financial Activities	10	66	67	56	\$678,190	\$828.07
Professional & Business Services	12	86	88	90	\$966,315	\$844.68
Education & Health Services	35	272	270	272	\$2,185,010	\$619.45
Other Services	15	53	47	51	\$327,436	\$500.41
Local Government	29	389	396	390	\$3,653,877	\$717.62
State Government	9	53	53	53	\$488,603	\$709.15
Other	19	693	691	687	\$9,379,798	\$1,045.18

TABLE 6. COUNTY SUMMARY

North American Industry Classification System - Industry Groups	Number of Employing Units	Employment			Total Earnings Oct - Dec 2021	Average Weekly Earnings
		Oct	Nov	Dec		
<b>NEWTON COUNTY - TOTAL</b>	<b>116</b>	<b>958</b>	<b>957</b>	<b>980</b>	<b>\$8,155,387</b>	<b>\$650.09</b>
Natural Resources & Mining	4	6	12	13	\$69,644	\$518.44
Construction	7	19	19	16	\$213,867	\$913.96
Manufacturing	8	34	37	37	\$523,740	\$1,119.10
Trade, Transportation & Utilities	27	165	161	165	\$1,753,290	\$824.04
Retail Trade	14	111	108	111	\$924,505	\$646.51
Other Trade, Transportation & Utilities	13	54	53	54	\$828,785	\$1,187.94
Financial Activities	5	15	15	15	\$192,731	\$988.36
Professional & Business Services	4	6	5	5	\$141,637	\$2,042.84
Education & Health Services	22	196	197	219	\$1,348,252	\$508.39
Leisure & Hospitality	14	146	147	142	\$726,977	\$385.66
Other Services	4	2	2	2	\$17,183	\$660.88
Local Government	14	334	327	331	\$2,802,198	\$651.88
State Government	7	35	35	35	\$365,868	\$804.11
<b>OUACHITA COUNTY - TOTAL</b>	<b>619</b>	<b>6,586</b>	<b>6,635</b>	<b>6,629</b>	<b>\$71,916,346</b>	<b>\$836.07</b>
Natural Resources & Mining	32	160	158	161	\$2,019,705	\$973.04
Construction	39	206	203	191	\$2,646,329	\$1,017.82
Manufacturing	27	697	706	710	\$12,067,410	\$1,317.93
Trade, Transportation & Utilities	145	1,520	1,573	1,588	\$14,137,934	\$696.99
Wholesale Trade	21	184	184	188	\$2,442,511	\$1,013.77
Retail Trade	88	968	997	991	\$6,268,002	\$489.33
Transportation, Warehousing & Utilities	36	368	392	409	\$5,427,421	\$1,071.41
Information	6	31	30	29	\$374,987	\$961.51
Financial Activities	50	262	263	245	\$3,226,476	\$966.98
Professional & Business Services	44	265	258	266	\$3,517,007	\$1,028.67
Education & Health Services	166	1,229	1,238	1,231	\$15,931,759	\$994.20
Leisure & Hospitality	45	453	450	450	\$1,886,791	\$321.81
Other Services	21	103	103	103	\$873,193	\$652.12
Local Government	31	1,068	1,055	1,053	\$9,531,863	\$692.59
State Government	13	592	598	602	\$5,702,892	\$734.40

TABLE 6. COUNTY SUMMARY

North American Industry Classification System - Industry Groups	Number of Employing Units	Employment			Total Earnings Oct - Dec 2021	Average Weekly Earnings
		Oct	Nov	Dec		
<b>PERRY COUNTY - TOTAL</b>	<b>150</b>	<b>1,106</b>	<b>1,086</b>	<b>1,111</b>	<b>\$11,459,244</b>	<b>\$800.62</b>
Construction	16	72	65	67	\$841,592	\$952.03
Trade, Transportation & Utilities	27	179	178	180	\$1,705,703	\$733.01
Retail Trade	17	143	141	143	\$889,412	\$480.68
Other Trade, Transportation & Utilities	10	36	37	37	\$816,291	\$1,712.50
Information	3	7	7	10	\$119,691	\$1,150.88
Financial Activities	10	22	18	23	\$414,730	\$1,519.16
Professional & Business Services	22	39	35	37	\$664,915	\$1,382.36
Education & Health Services	29	198	198	203	\$1,915,870	\$738.10
Leisure & Hospitality	10	88	81	84	\$355,390	\$324.16
Other Services	6	29	30	29	\$352,092	\$923.32
Local Government	9	340	345	345	\$3,196,529	\$716.18
State Government	7	33	33	33	\$368,476	\$858.92
Other	11	99	96	100	\$1,524,256	\$1,192.38
<b>PHILLIPS COUNTY - TOTAL</b>	<b>662</b>	<b>4,831</b>	<b>4,842</b>	<b>4,804</b>	<b>\$51,954,625</b>	<b>\$828.18</b>
Natural Resources & Mining	62	334	325	302	\$3,458,703	\$830.55
Construction	24	107	99	100	\$985,971	\$743.57
Manufacturing	12	406	414	420	\$5,409,232	\$1,006.68
Trade, Transportation & Utilities	128	1,108	1,118	1,101	\$11,574,117	\$802.81
Wholesale Trade	27	257	259	262	\$4,078,014	\$1,209.61
Retail Trade	68	652	660	639	\$4,530,764	\$535.91
Transportation, Warehousing & Utilities	33	199	199	200	\$2,965,339	\$1,144.33
Information	6	10	10	10	\$156,501	\$1,203.85
Financial Activities	38	188	191	187	\$2,452,569	\$999.96
Professional & Business Services	41	261	248	242	\$2,975,356	\$914.28
Education & Health Services	251	985	976	988	\$11,605,819	\$908.19
Leisure & Hospitality	37	377	379	368	\$1,698,994	\$348.82
Other Services	22	46	48	48	\$428,912	\$697.04
Local Government	27	707	724	723	\$7,772,398	\$832.70
State Government	14	302	310	315	\$3,436,053	\$855.38

TABLE 6. COUNTY SUMMARY

North American Industry Classification System - Industry Groups	Number of Employing Units	Employment			Total Earnings Oct - Dec 2021	Average Weekly Earnings
		Oct	Nov	Dec		
<b>PIKE COUNTY - TOTAL</b>	<b>265</b>	<b>2,595</b>	<b>2,607</b>	<b>2,573</b>	<b>\$26,327,332</b>	<b>\$781.42</b>
Natural Resources & Mining	25	135	136	133	\$1,654,211	\$944.90
Construction	18	47	53	51	\$442,585	\$676.39
Manufacturing	16	423	420	417	\$5,418,884	\$992.47
Trade, Transportation & Utilities	72	520	518	519	\$4,937,472	\$731.80
Wholesale Trade	7	97	95	93	\$1,184,877	\$959.41
Retail Trade	43	354	352	353	\$2,577,674	\$561.71
Transportation, Warehousing & Utilities	22	69	71	73	\$1,174,921	\$1,272.94
Information	7	25	25	25	\$319,195	\$982.14
Financial Activities	23	220	221	220	\$3,573,900	\$1,247.72
Professional & Business Services	15	59	67	62	\$1,453,653	\$1,784.35
Education & Health Services	29	255	254	255	\$1,940,299	\$586.08
Leisure & Hospitality	23	257	248	234	\$1,015,049	\$316.97
Other Services	18	73	75	74	\$685,132	\$712.20
Local Government	10	493	502	495	\$4,140,659	\$641.30
State Government	9	88	88	88	\$746,293	\$652.35
<b>POINSETT COUNTY - TOTAL</b>	<b>462</b>	<b>5,402</b>	<b>5,388</b>	<b>5,360</b>	<b>\$64,235,831</b>	<b>\$917.87</b>
Natural Resources & Mining	67	312	303	288	\$4,283,190	\$1,094.61
Construction	22	101	97	94	\$1,369,622	\$1,082.42
Manufacturing	14	789	796	817	\$13,655,569	\$1,311.94
Trade, Transportation & Utilities	119	1,287	1,276	1,273	\$15,221,397	\$915.70
Wholesale Trade	24	460	448	440	\$8,521,657	\$1,458.85
Retail Trade	65	685	698	691	\$4,528,737	\$503.90
Transportation, Warehousing & Utilities	30	142	130	142	\$2,171,003	\$1,210.15
Financial Activities	36	175	176	168	\$2,821,678	\$1,254.64
Professional & Business Services	27	263	261	273	\$4,877,030	\$1,412.13
Education & Health Services	72	726	746	735	\$7,948,687	\$831.13
Leisure & Hospitality	43	463	452	453	\$2,011,034	\$339.24
Local Government	30	1,069	1,059	1,036	\$9,659,862	\$704.55
State Government	10	99	98	97	\$1,026,086	\$805.41
Other	22	118	124	126	\$1,361,676	\$853.89

TABLE 6. COUNTY SUMMARY

North American Industry Classification System - Industry Groups	Number of Employing Units	Employment			Total Earnings Oct - Dec 2021	Average Weekly Earnings
		Oct	Nov	Dec		
<b>POLK COUNTY - TOTAL</b>	<b>470</b>	<b>5,677</b>	<b>5,719</b>	<b>5,678</b>	<b>\$56,859,116</b>	<b>\$768.50</b>
Natural Resources & Mining	26	170	169	175	\$2,564,352	\$1,151.31
Construction	32	222	229	232	\$2,622,500	\$886.08
Manufacturing	35	1,265	1,262	1,250	\$14,021,088	\$856.67
Trade, Transportation & Utilities	113	1,076	1,093	1,093	\$10,026,286	\$709.31
Wholesale Trade	15	40	42	50	\$1,290,895	\$2,256.81
Retail Trade	63	820	829	824	\$5,689,349	\$530.90
Transportation, Warehousing & Utilities	35	216	222	219	\$3,046,042	\$1,069.91
Information	6	43	44	43	\$312,697	\$555.08
Financial Activities	42	200	201	203	\$2,199,526	\$840.37
Professional & Business Services	36	138	136	137	\$2,028,524	\$1,138.98
Education & Health Services	78	953	954	929	\$11,251,846	\$915.58
Leisure & Hospitality	41	493	500	499	\$2,033,816	\$314.57
Other Services	28	125	128	128	\$1,158,221	\$701.53
Local Government	21	677	693	690	\$6,273,242	\$702.75
State Government	12	315	310	299	\$2,367,018	\$591.16
<b>POPE COUNTY - TOTAL</b>	<b>1,781</b>	<b>24,676</b>	<b>24,674</b>	<b>24,931</b>	<b>\$323,198,384</b>	<b>\$1,004.08</b>
Natural Resources & Mining	38	445	456	820	\$6,532,670	\$875.97
Construction	154	1,273	1,235	1,225	\$26,545,969	\$1,641.04
Manufacturing	73	3,390	3,374	3,406	\$44,885,507	\$1,018.50
Trade, Transportation & Utilities	389	6,171	6,252	6,265	\$97,722,099	\$1,206.72
Wholesale Trade	68	543	549	545	\$7,829,737	\$1,103.76
Retail Trade	251	3,185	3,205	3,210	\$27,155,675	\$652.78
Transportation, Warehousing & Utilities	70	2443	2498	2510	\$62,736,687	\$1,943.05
Information	16	123	122	127	\$1,148,501	\$712.47
Financial Activities	199	853	836	818	\$13,396,110	\$1,233.11
Professional & Business Services	250	2,153	2,126	2,057	\$33,824,102	\$1,231.94
Education & Health Services	350	3,289	3,330	3,297	\$39,419,882	\$917.40
Leisure & Hospitality	148	2,813	2,767	2,750	\$13,859,598	\$383.96
Other Services	105	491	487	475	\$5,128,139	\$814.46
Local Government	44	2,243	2,252	2,218	\$24,616,052	\$846.21
State Government	15	1,432	1,437	1,473	\$16,119,755	\$856.74

TABLE 6. COUNTY SUMMARY

North American Industry Classification System - Industry Groups	Number of Employing Units	Employment			Total Earnings Oct - Dec 2021	Average Weekly Earnings
		Oct	Nov	Dec		
<b>PRAIRIE COUNTY - TOTAL</b>	<b>231</b>	<b>1,509</b>	<b>1,517</b>	<b>1,515</b>	<b>\$15,596,060</b>	<b>\$792.58</b>
Natural Resources & Mining	38	175	158	166	\$2,622,549	\$1,212.83
Construction	12	43	42	43	\$535,968	\$966.29
Manufacturing	3	129	128	101	\$642,089	
Trade, Transportation & Utilities	56	343	351	349	\$3,716,700	\$822.34
Wholesale Trade	12	79	78	81	\$1,171,150	\$1,135.57
Retail Trade	32	212	219	220	\$1,850,309	\$655.91
Transportation, Warehousing & Utilities	12	52	54	48	\$695,241	\$1,041.82
Financial Activities	14	52	53	49	\$698,875	\$1,047.27
Professional & Business Services	12	58	60	61	\$690,397	\$890.07
Education & Health Services	39	245	251	251	\$2,519,911	\$778.47
Leisure & Hospitality	17	79	78	87	\$410,612	\$388.35
Local Government	15	323	331	343	\$3,044,686	\$704.73
State Government	7	29	29	29	\$300,768	\$797.79
Other	18	33	36	36	\$413,505	\$908.80
<b>PULASKI COUNTY - TOTAL</b>	<b>14,375</b>	<b>239,418</b>	<b>240,560</b>	<b>241,868</b>	<b>\$3,671,975,322</b>	<b>\$1,173.91</b>
Natural Resources & Mining	51	635	627	624	\$11,431,936	\$1,398.80
Construction	940	9,765	9,806	9,851	\$176,166,730	\$1,381.75
Manufacturing	322	11,959	11,903	11,931	\$196,636,532	\$1,267.78
Trade, Transportation & Utilities	3,047	53,834	55,074	56,321	\$748,232,540	\$1,045.03
Wholesale Trade	879	11,886	11,940	12,026	\$238,767,318	\$1,536.88
Retail Trade	1,725	24,600	25,027	25,284	\$239,445,135	\$737.63
Transportation, Warehousing & Utilities	443	17,348	18,107	19,011	\$270,020,087	\$1,144.06
Information	216	2,737	2,749	2,721	\$45,000,502	\$1,265.35
Financial Activities	1,722	17,116	17,207	17,107	\$372,162,660	\$1,669.91
Professional & Business Services	2,784	34,469	34,371	34,504	\$605,745,644	\$1,352.64
Education & Health Services	2,568	41,265	41,342	41,322	\$676,343,394	\$1,259.42
Leisure & Hospitality	1,275	20,846	20,741	20,999	\$122,885,025	\$453.11
Other Services	1,135	6,455	6,475	6,500	\$81,187,119	\$964.26
Local Government	108	14,523	14,493	14,398	\$188,020,893	\$999.43
State Government	207	25,814	25,772	25,590	\$448,162,347	\$1,340.08



TABLE 6. COUNTY SUMMARY

North American Industry Classification System - Industry Groups	Number of Employing Units	Employment			Total Earnings Oct - Dec 2021	Average Weekly Earnings
		Oct	Nov	Dec		
<b>RANDOLPH COUNTY - TOTAL</b>	<b>382</b>	<b>5,937</b>	<b>5,988</b>	<b>5,915</b>	<b>\$59,777,989</b>	<b>\$773.26</b>
Natural Resources & Mining	24	241	232	226	\$3,544,989	\$1,170.35
Construction	22	71	72	70	\$609,632	\$660.49
Manufacturing	28	1,735	1,753	1,731	\$20,442,442	\$903.91
Trade, Transportation & Utilities	98	962	978	964	\$9,120,157	\$724.74
Wholesale Trade	14	115	114	108	\$1,298,842	\$889.41
Retail Trade	56	665	675	660	\$5,071,667	\$585.19
Transportation, Warehousing & Utilities	28	182	189	196	\$2,749,648	\$1,119.11
Information	4	13	12	12	\$193,502	\$1,206.87
Financial Activities	32	140	140	138	\$1,599,034	\$882.79
Professional & Business Services	30	265	260	254	\$2,411,189	\$714.29
Education & Health Services	56	969	982	956	\$10,533,203	\$836.17
Leisure & Hospitality	31	445	452	483	\$1,862,321	\$311.42
Other Services	20	48	48	48	\$360,691	\$578.03
Local Government	27	784	798	778	\$6,755,220	\$660.55
State Government	10	264	261	255	\$2,345,609	\$693.97
<b>SAINT FRANCIS COUNTY - TOTAL</b>	<b>629</b>	<b>6,143</b>	<b>6,107</b>	<b>6,080</b>	<b>\$64,707,471</b>	<b>\$814.65</b>
Natural Resources & Mining	42	198	182	180	\$2,113,149	\$870.80
Construction	30	140	149	153	\$1,904,440	\$994.31
Trade, Transportation & Utilities	138	1,675	1,685	1,682	\$17,499,484	\$800.94
Wholesale Trade	25	395	395	389	\$6,004,508	\$1,175.28
Retail Trade	88	981	973	967	\$6,826,401	\$539.31
Transportation, Warehousing & Utilities	25	299	317	326	\$4,668,575	\$1,143.70
Information	5	46	46	45	\$445,323	\$750.12
Financial Activities	54	194	189	176	\$2,029,804	\$837.95
Professional & Business Services	48	177	175	162	\$2,126,471	\$954.72
Education & Health Services	196	1,346	1,332	1,342	\$16,524,132	\$948.57
Leisure & Hospitality	48	589	599	616	\$2,722,580	\$348.27
Local Government	28	750	741	731	\$7,772,964	\$807.27
State Government	13	353	361	349	\$3,771,360	\$818.73
Other	27	675	648	644	\$7,797,764	\$914.84

TABLE 6. COUNTY SUMMARY

North American Industry Classification System - Industry Groups	Number of Employing Units	Employment			Total Earnings Oct - Dec 2021	Average Weekly Earnings
		Oct	Nov	Dec		
<b>SALINE COUNTY - TOTAL</b>	<b>2,216</b>	<b>25,005</b>	<b>25,074</b>	<b>25,276</b>	<b>\$285,847,424</b>	<b>\$875.39</b>
Natural Resources & Mining	16	51	50	54	\$667,460	\$993.74
Construction	295	2,283	2,278	2,310	\$33,728,159	\$1,132.79
Manufacturing	80	1,373	1,374	1,366	\$20,616,902	\$1,156.76
Trade, Transportation & Utilities	489	5,636	5,714	5,801	\$59,071,617	\$794.82
Wholesale Trade	111	536	533	547	\$9,801,183	\$1,399.64
Retail Trade	294	4,430	4,488	4,544	\$40,288,292	\$690.63
Transportation, Warehousing & Utilities	84	670	693	710	\$8,982,142	\$999.90
Information	25	129	126	127	\$1,978,792	\$1,195.40
Financial Activities	248	963	966	969	\$15,457,356	\$1,230.88
Professional & Business Services	302	1,796	1,793	1,841	\$26,579,875	\$1,129.62
Education & Health Services	345	4,537	4,485	4,538	\$58,253,995	\$991.39
Leisure & Hospitality	213	3,593	3,632	3,630	\$18,604,143	\$395.51
Other Services	157	808	811	821	\$8,156,172	\$771.39
Local Government	32	3,102	3,111	3,085	\$34,996,796	\$868.59
State Government	14	734	734	734	\$7,736,157	\$810.75
<b>SCOTT COUNTY - TOTAL</b>	<b>178</b>	<b>2,862</b>	<b>2,793</b>	<b>2,840</b>	<b>\$28,183,173</b>	<b>\$765.60</b>
Natural Resources & Mining	18	130	114	114	\$1,843,441	\$1,188.29
Construction	9	25	24	25	\$282,329	\$880.44
Trade, Transportation & Utilities	35	324	313	325	\$3,068,289	\$736.04
Wholesale Trade	6	19	20	21	\$191,310	\$735.81
Retail Trade	24	242	233	244	\$1,872,308	\$600.93
Transportation, Warehousing & Utilities	5	63	60	60	\$1,004,671	\$1,266.92
Financial Activities	16	62	61	60	\$738,433	\$931.19
Professional & Business Services	13	139	134	137	\$1,163,546	\$654.90
Education & Health Services	39	208	211	214	\$3,468,169	\$1,264.37
Leisure & Hospitality	17	158	154	161	\$588,802	\$287.27
Other Services	9	33	34	33	\$285,661	\$659.22
Local Government	6	513	511	508	\$4,511,144	\$679.53
State Government	6	30	30	30	\$348,917	\$894.66
Other	10	1240	1207	1233	\$11,884,442	\$745.26

TABLE 6. COUNTY SUMMARY

North American Industry Classification System - Industry Groups	Number of Employing Units	Employment			Total Earnings Oct - Dec 2021	Average Weekly Earnings
		Oct	Nov	Dec		
<b>SEARCY COUNTY - TOTAL</b>	<b>164</b>	<b>1,473</b>	<b>1,508</b>	<b>1,437</b>	<b>\$12,632,570</b>	<b>\$659.85</b>
Construction	10	4	6	10	\$74,252	\$856.75
Manufacturing	14	123	123	116	\$1,121,512	\$714.95
Trade, Transportation & Utilities	32	236	237	236	\$2,159,822	\$702.99
Wholesale Trade	5	35	35	35	\$325,629	\$715.67
Retail Trade	21	181	183	182	\$1,541,879	\$651.68
Transportation, Warehousing & Utilities	6	20	19	19	\$292,314	\$1,163.05
Financial Activities	13	55	53	52	\$556,362	\$802.45
Professional & Business Services	19	117	123	61	\$1,212,547	\$929.63
Education & Health Services	35	416	412	414	\$3,661,848	\$680.39
Leisure & Hospitality	15	165	153	156	\$601,426	\$292.81
Local Government	10	235	241	231	\$2,230,074	\$727.91
State Government	6	41	41	41	\$419,368	\$786.81
Other	10	81	119	120	\$595,359	\$429.35
<b>SEBASTIAN COUNTY - TOTAL</b>	<b>3,704</b>	<b>62,765</b>	<b>63,316</b>	<b>63,390</b>	<b>\$825,112,471</b>	<b>\$1,004.96</b>
Natural Resources & Mining	34	232	231	225	\$5,565,920	\$1,866.92
Construction	267	2,397	2,410	2,416	\$32,435,880	\$1,036.30
Manufacturing	183	11,136	11,322	11,395	\$164,836,873	\$1,123.66
Trade, Transportation & Utilities	886	13,401	13,713	13,813	\$165,166,938	\$931.30
Wholesale Trade	226	2,853	2,859	2,857	\$49,625,122	\$1,336.44
Retail Trade	549	7,767	7,948	8,016	\$66,187,096	\$643.63
Transportation, Warehousing & Utilities	111	2,781	2,906	2,940	\$49,354,720	\$1,320.22
Information	40	793	795	798	\$16,561,736	\$1,601.82
Financial Activities	426	2,318	2,331	2,349	\$37,662,591	\$1,241.98
Professional & Business Services	554	7,733	7,755	7,649	\$90,698,769	\$904.63
Education & Health Services	644	11,328	11,328	11,291	\$196,125,517	\$1,333.25
Leisure & Hospitality	365	5,973	6,010	6,021	\$32,345,987	\$414.60
Other Services	241	1,090	1,095	1,076	\$11,010,969	\$779.21
Local Government	43	4,668	4,688	4,695	\$52,298,253	\$858.93
State Government	21	1,696	1,638	1,662	\$20,403,038	\$942.43

TABLE 6. COUNTY SUMMARY

North American Industry Classification System - Industry Groups	Number of Employing Units	Employment			Total Earnings Oct - Dec 2021	Average Weekly Earnings
		Oct	Nov	Dec		
<b>SEVIER COUNTY - TOTAL</b>	<b>312</b>	<b>4,645</b>	<b>4,617</b>	<b>4,694</b>	<b>\$46,889,335</b>	<b>\$775.34</b>
Natural Resources & Mining	17	141	145	147	\$2,049,775	\$1,092.44
Construction	20	176	182	186	\$2,737,970	\$1,161.47
Trade, Transportation & Utilities	82	790	806	801	\$7,240,953	\$697.12
Wholesale Trade	11	75	75	74	\$1,055,651	\$1,087.55
Retail Trade	57	622	637	633	\$4,718,278	\$575.49
Transportation, Warehousing & Utilities	14	93	94	94	\$1,467,024	\$1,204.78
Financial Activities	28	185	188	189	\$2,617,297	\$1,074.72
Professional & Business Services	24	152	156	155	\$1,328,850	\$662.33
Education & Health Services	60	430	437	449	\$4,293,662	\$752.92
Other Services	27	101	99	101	\$1,021,324	\$783.02
Local Government	13	931	869	930	\$8,207,284	\$693.77
State Government	8	180	177	170	\$1,942,738	\$850.71
Other	33	1559	1558	1566	\$15,449,482	\$761.32
<b>SHARP COUNTY - TOTAL</b>	<b>377</b>	<b>3,511</b>	<b>3,547</b>	<b>3,563</b>	<b>\$32,015,709</b>	<b>\$695.63</b>
Natural Resources & Mining	5	7	7	8	\$63,934	\$670.64
Construction	31	100	101	107	\$1,224,413	\$917.39
Manufacturing	15	176	198	227	\$2,639,919	\$1,013.66
Trade, Transportation & Utilities	84	808	814	821	\$5,731,445	\$541.40
Wholesale Trade	16	48	46	46	\$509,458	\$839.77
Retail Trade	61	726	734	741	\$4,643,157	\$486.82
Transportation, Warehousing & Utilities	7	34	34	34	\$578,830	\$1,309.57
Information	8	24	25	24	\$208,794	\$660.04
Financial Activities	35	184	186	182	\$2,657,778	\$1,111.11
Professional & Business Services	32	117	115	114	\$1,285,218	\$857.19
Education & Health Services	73	801	815	824	\$8,630,270	\$816.23
Leisure & Hospitality	34	360	368	358	\$1,637,546	\$347.97
Other Services	29	76	76	75	\$864,766	\$879.13
Local Government	24	807	791	772	\$6,550,986	\$637.88
State Government	7	51	51	51	\$520,640	\$785.28

TABLE 6. COUNTY SUMMARY

North American Industry Classification System - Industry Groups	Number of Employing Units	Employment			Total Earnings	Average Weekly Earnings
		Oct	Nov	Dec	Oct - Dec 2021	
<b>STONE COUNTY - TOTAL</b>	<b>278</b>	<b>2,518</b>	<b>2,525</b>	<b>2,523</b>	<b>\$29,700,322</b>	<b>\$905.88</b>
Natural Resources & Mining	6	11	11	11	\$80,759	\$564.75
Construction	14	38	37	41	\$295,681	\$588.22
Manufacturing	20	264	275	292	\$9,700,887	\$2,693.94
Trade, Transportation & Utilities	64	570	571	567	\$5,173,551	\$699.00
Wholesale Trade	5	32	24	15	\$272,138	\$884.52
Retail Trade	48	500	508	510	\$4,185,196	\$636.24
Transportation, Warehousing & Utilities	11	38	39	42	\$716,217	\$1,388.91
Financial Activities	37	124	121	127	\$1,523,530	\$945.12
Professional & Business Services	19	38	44	45	\$291,904	\$530.41
Education & Health Services	50	470	469	486	\$5,810,999	\$941.05
Leisure & Hospitality	31	491	487	451	\$1,876,860	\$303.09
Local Government	10	381	379	373	\$3,768,237	\$767.51
State Government	7	90	90	90	\$869,281	\$742.98
Other	20	41	41	40	\$308,633	\$583.80
<b>UNION COUNTY - TOTAL</b>	<b>1,187</b>	<b>16,596</b>	<b>16,651</b>	<b>16,571</b>	<b>\$227,335,311</b>	<b>\$1,053.07</b>
Natural Resources & Mining	81	349	360	346	\$6,096,538	\$1,333.55
Construction	74	1,450	1,403	1,445	\$23,165,542	\$1,243.81
Manufacturing	50	2,947	2,929	2,955	\$58,225,183	\$1,521.52
Trade, Transportation & Utilities	289	3,396	3,459	3,381	\$40,897,590	\$922.03
Wholesale Trade	63	427	436	441	\$8,168,618	\$1,445.60
Retail Trade	172	2,075	2,092	2,047	\$16,722,577	\$621.03
Transportation, Warehousing & Utilities	54	894	931	893	\$16,006,395	\$1,359.01
Information	7	59	58	60	\$722,003	\$941.33
Financial Activities	92	572	577	577	\$7,954,389	\$1,063.52
Professional & Business Services	110	1,809	1,802	1,810	\$33,616,590	\$1,431.04
Education & Health Services	254	1,915	1,931	1,913	\$23,772,916	\$952.61
Leisure & Hospitality	97	1,405	1,413	1,373	\$6,599,174	\$363.37
Other Services	85	485	493	491	\$4,116,877	\$646.73
Local Government	32	1,730	1,749	1,750	\$17,260,938	\$761.77
State Government	16	479	477	470	\$4,907,571	\$794.19

TABLE 6. COUNTY SUMMARY

North American Industry Classification System - Industry Groups	Number of Employing Units	Employment			Total Earnings Oct - Dec 2021	Average Weekly Earnings
		Oct	Nov	Dec		
<b>VAN BUREN COUNTY - TOTAL</b>	<b>321</b>	<b>3,630</b>	<b>3,611</b>	<b>3,604</b>	<b>\$37,494,833</b>	<b>\$797.85</b>
Natural Resources & Mining	9	33	31	30	\$560,886	\$1,376.97
Construction	34	125	117	123	\$1,213,258	\$767.08
Manufacturing	10	197	190	193	\$1,628,019	\$647.75
Trade, Transportation & Utilities	85	1,109	1,106	1,089	\$13,749,379	\$960.33
Wholesale Trade	10	47	45	45	\$596,561	\$1,004.88
Retail Trade	50	662	661	647	\$4,800,599	\$562.35
Transportation, Warehousing & Utilities	25	400	400	397	\$8,352,219	\$1,610.22
Information	6	34	34	36	\$438,189	\$972.31
Financial Activities	40	168	161	171	\$2,109,169	\$973.46
Professional & Business Services	28	127	131	131	\$1,284,596	\$762.07
Education & Health Services	49	682	685	690	\$7,875,791	\$883.56
Leisure & Hospitality	23	274	263	278	\$1,327,945	\$376.01
Other Services	20	207	212	199	\$1,656,283	\$618.48
Local Government	11	634	641	624	\$5,209,892	\$633.11
State Government	6	40	40	40	\$441,426	\$848.90
<b>WASHINGTON COUNTY - TOTAL</b>	<b>6,557</b>	<b>111,257</b>	<b>112,069</b>	<b>112,625</b>	<b>\$1,780,939,749</b>	<b>\$1,223.35</b>
Natural Resources & Mining	43	342	341	343	\$6,870,290	\$1,545.27
Construction	654	6,670	6,715	6,776	\$109,103,311	\$1,248.83
Manufacturing	225	13,938	14,009	14,168	\$198,370,747	\$1,086.97
Trade, Transportation & Utilities	1,372	23,066	23,519	23,638	\$334,966,361	\$1,100.78
Wholesale Trade	387	3,795	3,808	3,806	\$91,132,959	\$1,843.34
Retail Trade	784	13,183	13,531	13,461	\$128,417,396	\$737.64
Transportation, Warehousing & Utilities	201	6088	6180	6371	\$115,416,006	\$1,428.96
Information	96	945	930	931	\$14,575,672	\$1,198.72
Financial Activities	776	3,936	3,948	3,916	\$70,591,037	\$1,380.53
Professional & Business Services	1,222	14,348	14,472	14,475	\$454,894,382	\$2,424.66
Education & Health Services	959	16,570	16,589	16,539	\$258,076,461	\$1,198.36
Leisure & Hospitality	719	13,115	13,130	13,041	\$74,530,683	\$437.80
Other Services	408	2,364	2,399	2,401	\$28,005,803	\$902.13
Local Government	61	8,903	8,816	9,095	\$113,974,288	\$980.90
State Government	22	7,060	7,201	7,302	\$116,980,714	\$1,251.94

TABLE 6. COUNTY SUMMARY

North American Industry Classification System - Industry Groups	Number of Employing Units	Employment			Total Earnings Oct - Dec 2021	Average Weekly Earnings
		Oct	Nov	Dec		
<b>WHITE COUNTY - TOTAL</b>	<b>1,793</b>	<b>24,762</b>	<b>24,906</b>	<b>24,850</b>	<b>\$282,999,183</b>	<b>\$876.40</b>
Natural Resources & Mining	42	350	338	365	\$8,407,150	\$1,842.46
Construction	177	1,457	1,447	1,466	\$20,634,579	\$1,089.66
Manufacturing	57	2,309	2,336	2,371	\$31,231,061	\$1,027.25
Trade, Transportation & Utilities	456	6,612	6,702	6,670	\$71,344,522	\$823.87
Wholesale Trade	79	575	572	563	\$8,167,687	\$1,102.25
Retail Trade	300	3,739	3,764	3,743	\$31,950,529	\$655.63
Transportation, Warehousing & Utilities	77	2,298	2,366	2,364	\$31,226,306	\$1,025.34
Information	23	107	106	101	\$1,105,957	\$812.81
Financial Activities	184	947	961	937	\$13,554,043	\$1,099.42
Professional & Business Services	180	1,162	1,173	1,213	\$13,139,827	\$854.64
Education & Health Services	326	5,470	5,467	5,419	\$73,459,111	\$1,036.45
Leisure & Hospitality	171	2,725	2,752	2,685	\$12,375,963	\$349.91
Other Services	116	492	492	494	\$5,314,226	\$829.74
Local Government	46	2,667	2,686	2,695	\$27,374,438	\$784.94
State Government	15	464	446	434	\$5,058,306	\$868.53
<b>WOODRUFF COUNTY - TOTAL</b>	<b>183</b>	<b>1,840</b>	<b>1,847</b>	<b>1,844</b>	<b>\$22,219,599</b>	<b>\$927.07</b>
Natural Resources & Mining	32	234	219	204	\$2,926,979	\$1,028.09
Construction	12	35	28	28	\$318,405	\$807.45
Manufacturing	6	231	242	239	\$3,087,817	\$1,000.80
Trade, Transportation & Utilities	46	339	333	343	\$4,294,219	\$976.33
Wholesale Trade	13	152	135	135	\$2,256,688	\$1,234.06
Retail Trade	23	140	144	151	\$1,065,516	\$565.26
Transportation, Warehousing & Utilities	10	47	54	57	\$972,015	\$1,419.69
Financial Activities	10	42	42	42	\$456,995	\$836.99
Education & Health Services	37	249	255	260	\$3,149,145	\$951.21
Leisure & Hospitality	11	83	89	87	\$405,507	\$361.31
Local Government	9	378	384	381	\$3,611,285	\$729.11
State Government	5	28	28	28	\$345,167	\$948.26
Other	15	221	227	232	\$3,624,080	\$1,229.89

TABLE 6. COUNTY SUMMARY

North American Industry Classification System - Industry Groups	Number of Employing Units	Employment			Total Earnings	Average Weekly Earnings
		Oct	Nov	Dec	Oct - Dec 2021	
<b>YELL COUNTY - TOTAL</b>	<b>415</b>	<b>6,289</b>	<b>6,271</b>	<b>6,320</b>	<b>\$65,322,326</b>	<b>\$798.43</b>
Natural Resources & Mining	26	236	227	227	\$3,208,234	\$1,072.99
Construction	32	192	187	199	\$2,232,066	\$891.16
Manufacturing	20	2,344	2,327	2,370	\$25,404,898	\$832.65
Trade, Transportation & Utilities	87	738	740	746	\$6,162,949	\$639.49
Wholesale Trade	16	64	64	61	\$481,912	\$588.42
Retail Trade	50	532	524	534	\$3,333,216	\$483.78
Transportation, Warehousing & Utilities	21	142	152	151	\$2,347,821	\$1,217.54
Information	6	54	53	53	\$1,144,784	
Financial Activities	30	171	173	174	\$3,429,953	\$1,528.05
Professional & Business Services	42	366	369	361	\$3,808,721	\$801.95
Education & Health Services	96	653	657	670	\$6,179,271	\$720.19
Leisure & Hospitality	24	281	280	263	\$1,189,332	\$333.08
Other Services	19	71	68	68	\$584,798	
Local Government	23	1,120	1,127	1,126	\$11,322,041	\$774.62
State Government	10	63	63	63	\$655,279	\$800.10
<b>STATEWIDE COUNTY - TOTAL</b>	<b>15,783</b>	<b>44,100</b>	<b>45,188</b>	<b>45,416</b>	<b>\$935,963,169</b>	<b>\$1,603.45</b>
Natural Resources & Mining	111	181	188	190	\$3,918,188	\$1,617.53
Construction	990	3927	3714	3724	\$69,871,130	\$1,418.75
Manufacturing	163	293	276	299	\$9,252,896	\$2,460.00
Trade, Transportation & Utilities	4,114	9,322	9,427	9,552	266,210,063	\$2,170.70
Wholesale Trade	3,246	6,731	6,767	6,818	219,422,522	\$2,492.42
Retail Trade	349	1,277	1,309	1,370	22,588,102	\$1,317.65
Transportation, Warehousing & Utilities	519	1,314	1,351	1,364	24,199,439	\$1,386.07
Information	1,188	1,873	1,988	2,034	51,311,979	\$2,008.69
Financial Activities	1,308	3,914	4,043	4,044	80,819,013	\$1,554.08
Professional & Business Services	6,308	19,631	20,487	20,452	368,220,973	\$1,402.91
Education & Health Services	935	2,872	2,995	3,026	45,164,943	\$1,172.01
Leisure & Hospitality	143	482	491	548	5,494,020	\$833.56
State Government	21	647	648	648	8,941,582	\$1,061.99
Other	502	958	931	899	26,758,382	\$2,214.85

Note: Statewide classification includes employment and payroll data for employers that have not provided a physical location for each employing unit. This section also includes employers without a physical location in Arkansas.



**TABLE 7. FEDERAL GOVERNMENT EMPLOYMENT AND EARNINGS IN ARKANSAS**

North American Industry Classification System - Industry Groups	Number of Employing Units	Employment			Total Earnings Oct - Dec 2021	Average Weekly Earnings
		Oct	Nov	Dec		
<b>TOTAL</b>	<b>1,185</b>	<b>20,530</b>	<b>20,781</b>	<b>20,909</b>	<b>\$425,460,687</b>	<b>\$1,578.00</b>
Trade, Transportation & Utilities	578	5,538	5,773	5,795	87,835,256	1,184.95
Information	2	32	32	32	673,641	1,619.33
Financial Activities	14	103	102	102	2,458,869	1,848.31
Professional & Business Services	33	851	837	827	17,784,787	1,631.88
Education & Health Services	20	5,439	5,484	5,502	137,003,244	1,924.88
Leisure & Hospitality	22	237	245	238	3,497,312	1,120.93
Other Services	1	1	1	1	11,336	872.00
Public Administration	515	8,329	8,307	8,412	176,196,242	1,623.31

TABLE 8. LOCAL WORKFORCE DEVELOPMENT AREA SUMMARY

North American Industry Classification System - Industry Groups	Number of Employing Units	Employment			Total Earnings Oct - Dec 2021	Average Weekly Earnings
		Oct	Nov	Dec		
<b>CENTRAL LOCAL WORKFORCE DEVELOPMENT AREA</b>	<b>7,100</b>	<b>84,582</b>	<b>84,945</b>	<b>85,347</b>	<b>\$972,802,826</b>	<b>\$880.80</b>
Natural Resources & Mining	204	1,051	1,002	990	\$15,097,335	\$1,144.92
Construction	846	6,414	6,386	6,524	\$95,527,185	\$1,140.80
Manufacturing	225	6,092	6,133	6,134	\$85,658,869	\$1,076.72
Trade, Transportation & Utilities	1,518	17,688	18,021	18,222	\$181,419,809	\$776.29
Wholesale Trade	333	2,050	2,066	2,102	\$34,835,837	\$1,292.87
Retail Trade	927	13,587	13,840	13,925	\$116,705,166	\$651.29
Transportation, Warehousing & Utilities	258	2,051	2,115	2,195	\$29,878,806	\$1,083.97
Information	75	1,779	1,797	1,803	\$42,295,250	\$1,814.55
Financial Activities	810	3,341	3,369	3,371	\$52,766,997	\$1,207.92
Professional & Business Services	964	6,154	6,143	6,228	\$84,977,663	\$1,058.58
Education & Health Services	1,131	14,718	14,668	14,630	\$180,992,407	\$948.92
Leisure & Hospitality	668	11,674	11,698	11,723	\$58,972,557	\$387.78
Other Services	464	1,993	2,000	2,057	\$19,780,045	\$754.48
Local Government	135	9,843	9,882	9,808	\$108,471,411	\$847.59
State Government	60	3,835	3,846	3,857	\$46,843,298	\$936.90
Note: Pulaski County is not included in the Central Local Workforce Development Area. Please refer to Page 51 for information on Pulaski County. Central Local Workforce Development Area includes these counties: Faulkner, Lonoke, Monroe, Prairie, and Saline.						
<b>EASTERN LOCAL WORKFORCE DEVELOPMENT AREA</b>	<b>3,107</b>	<b>32,477</b>	<b>32,404</b>	<b>32,121</b>	<b>\$359,609,221</b>	<b>\$855.52</b>
Natural Resources & Mining	242	1,283	1,220	1,167	\$14,385,351	\$904.55
Construction	116	719	717	725	\$9,345,326	\$997.97
Manufacturing	70	3,248	3,242	3,217	\$43,160,827	\$1,026.08
Trade, Transportation & Utilities	722	8,518	8,573	8,557	\$102,477,439	\$922.05
Wholesale Trade	138	1,762	1,760	1,771	\$30,191,612	\$1,316.32
Retail Trade	392	4,326	4,354	4,305	\$33,453,147	\$594.53
Transportation, Warehousing & Utilities	192	2,430	2,459	2,481	\$38,832,680	\$1,215.93
Information	20	105	103	105	\$1,024,908	\$755.65
Financial Activities	250	1,094	1,088	1,039	\$15,219,579	\$1,090.41
Professional & Business Services	239	1,566	1,548	1,460	\$19,562,694	\$986.98
Education & Health Services	858	5,424	5,418	5,426	\$61,436,530	\$871.51
Leisure & Hospitality	265	3,892	3,872	3,867	\$22,773,817	\$451.85
Other Services	144	654	661	665	\$6,465,525	\$753.56
Local Government	126	4,269	4,241	4,214	\$45,700,686	\$828.85
State Government	55	1,705	1,721	1,679	\$18,056,539	\$816.24
Eastern Local Workforce Development Area includes these counties: Crittenden, Cross, Lee, Phillips, and Saint Francis.						

TABLE 8. LOCAL WORKFORCE DEVELOPMENT AREA SUMMARY

North American Industry Classification System - Industry Groups	Number of Employing Units	Employment			Total Earnings Oct - Dec 2021	Average Weekly Earnings
		Oct	Nov	Dec		
<b>NORTH CENTRAL LOCAL WORKFORCE DEVELOPMENT AREA</b>	<b>5,342</b>	<b>68,990</b>	<b>69,197</b>	<b>69,129</b>	<b>\$774,746,079</b>	<b>\$862.39</b>
Natural Resources & Mining	197	1,487	1,435	1,429	\$24,018,041	\$1,273.87
Construction	440	3,139	3,108	3,119	\$42,751,045	\$1,053.34
Manufacturing	212	9,288	9,397	9,512	\$131,434,087	\$1,075.68
Trade, Transportation & Utilities	1,326	15,458	15,623	15,598	\$164,792,609	\$814.69
Wholesale Trade	215	1,482	1,447	1,440	\$21,110,421	\$1,115.05
Retail Trade	877	10,059	10,142	10,074	\$82,880,603	\$631.75
Transportation, Warehousing & Utilities	234	3,917	4,034	4,084	\$60,801,585	\$1,165.86
Information	76	367	379	386	\$4,294,254	\$875.43
Financial Activities	538	2,738	2,718	2,734	\$39,971,111	\$1,126.26
Professional & Business Services	486	3,450	3,442	3,483	\$39,954,838	\$888.71
Education & Health Services	924	13,650	13,675	13,673	\$174,628,420	\$982.95
Leisure & Hospitality	503	6,797	6,808	6,648	\$30,832,478	\$351.32
Other Services	323	1,319	1,357	1,340	\$13,109,992	\$753.33
Local Government	224	8,775	8,758	8,720	\$83,013,889	\$729.71
State Government	93	2,522	2,497	2,487	\$25,945,315	\$797.68

North Central Local Workforce Development Area includes these counties: Cleburne, Fulton, Independence, IZard, Jackson, Sharp, Stone, Van Buren, White, and Woodruff.

<b>NORTHEAST LOCAL WORKFORCE DEVELOPMENT AREA</b>	<b>6,398</b>	<b>103,724</b>	<b>103,589</b>	<b>103,420</b>	<b>\$1,380,961,893</b>	<b>\$1,025.59</b>
Natural Resources & Mining	451	2,474	2,255	2,027	\$30,007,127	\$1,024.97
Construction	480	4,113	4,002	3,914	\$66,232,469	\$1,270.63
Manufacturing	284	21,807	21,925	22,074	\$425,541,956	\$1,492.30
Trade, Transportation & Utilities	1,653	20,218	20,408	20,621	\$228,153,293	\$859.65
Wholesale Trade	356	4,018	3,986	4,016	\$67,051,763	\$1,287.31
Retail Trade	958	12,488	12,637	12,730	\$104,683,711	\$638.17
Transportation, Warehousing & Utilities	339	3,712	3,785	3,875	\$56,417,819	\$1,144.87
Information	58	644	653	657	\$8,976,031	\$1,060.08
Financial Activities	560	3,281	3,294	3,272	\$50,950,539	\$1,194.05
Professional & Business Services	677	7,172	7,053	7,040	\$85,202,969	\$924.63
Education & Health Services	985	17,306	17,297	17,207	\$251,601,147	\$1,120.67
Leisure & Hospitality	588	9,516	9,455	9,483	\$47,381,312	\$384.27
Other Services	357	1,696	1,683	1,663	\$18,365,955	\$840.60
Local Government	217	11,521	11,602	11,525	\$119,286,905	\$794.50
State Government	88	3,976	3,962	3,937	\$49,262,190	\$957.32

Northeast Local Workforce Development Area includes these counties: Clay, Craighead, Greene, Lawrence, Mississippi, Poinsett, and Randolph.

TABLE 8. LOCAL WORKFORCE DEVELOPMENT AREA SUMMARY

North American Industry Classification System - Industry Groups	Number of Employing Units	Employment			Total Earnings Oct - Dec 2021	Average Weekly Earnings
		Oct	Nov	Dec		
<b>NORTHWEST LOCAL WORKFORCE DEVELOPMENT AREA</b>	<b>17,863</b>	<b>291,054</b>	<b>292,313</b>	<b>293,062</b>	<b>\$4,420,281,054</b>	<b>\$1,163.89</b>
Natural Resources & Mining	149	1,565	1,588	1,598	\$33,672,877	\$1,635.58
Construction	1,756	14,411	14,414	14,479	\$222,411,544	\$1,185.24
Manufacturing	647	37,985	38,101	38,352	\$510,391,809	\$1,029.23
Trade, Transportation & Utilities	3,976	65,158	66,320	66,651	\$953,551,375	\$1,110.64
Wholesale Trade	1,270	11,360	11,502	11,595	\$289,864,317	\$1,941.31
Retail Trade	2,160	33,417	34,154	34,124	\$312,104,057	\$708.24
Transportation, Warehousing & Utilities	546	20,381	20,664	20,932	\$351,583,001	\$1,309.11
Information	286	2,373	2,359	2,408	\$42,376,324	\$1,369.63
Financial Activities	1,944	10,207	10,199	10,184	\$190,051,234	\$1,433.74
Professional & Business Services	3,149	51,303	51,590	51,739	\$1,261,773,021	\$1,883.04
Education & Health Services	2,514	36,888	36,901	36,798	\$528,207,900	\$1,102.25
Leisure & Hospitality	1,913	32,342	31,878	31,773	\$186,520,359	\$448.40
Other Services	1,117	5,609	5,668	5,666	\$63,132,847	\$859.89
Local Government	310	23,851	23,781	24,033	\$287,552,175	\$925.95
State Government	102	9,362	9,514	9,381	\$140,639,589	\$1,148.58
Northwest Local Workforce Development Area includes these counties: Baxter, Benton, Boone, Carroll, Madison, Marion, Newton, Searcy, and Washington.						
<b>SOUTHEAST LOCAL WORKFORCE DEVELOPMENT AREA</b>	<b>6,037</b>	<b>65,405</b>	<b>65,247</b>	<b>65,427</b>	<b>\$796,610,697</b>	<b>\$937.55</b>
Natural Resources & Mining	448	2,247	2,301	2,293	\$29,027,160	\$979.18
Construction	335	2,118	2,035	2,065	\$29,708,086	\$1,102.56
Manufacturing	212	13,682	13,647	13,776	\$218,488,240	\$1,226.62
Trade, Transportation & Utilities	1,269	12,001	12,067	12,103	\$133,854,412	\$853.98
Wholesale Trade	225	1,875	1,841	1,818	\$30,019,038	\$1,251.80
Retail Trade	755	7,348	7,443	7,427	\$59,692,546	\$620.00
Transportation, Warehousing & Utilities	289	2,778	2,783	2,858	\$44,142,828	\$1,209.98
Information	44	248	252	252	\$2,590,114	\$794.84
Financial Activities	436	2,543	2,536	2,511	\$37,634,796	\$1,144.26
Professional & Business Services	455	3,681	3,634	3,547	\$48,891,807	\$1,038.73
Education & Health Services	1,781	8,921	8,942	8,995	\$109,806,369	\$943.48
Leisure & Hospitality	407	5,467	5,455	5,442	\$29,913,934	\$421.85
Other Services	316	1,008	964	998	\$10,130,671	\$787.15
Local Government	210	8,077	7,984	7,992	\$83,471,735	\$800.84
State Government	124	5,412	5,430	5,453	\$63,093,373	\$893.53
Southeast Local Workforce Development Area includes these counties: Arkansas, Ashley, Bradley, Chicot, Cleveland, Desha, Drew, Grant, Jefferson, and Lincoln.						

TABLE 8. LOCAL WORKFORCE DEVELOPMENT AREA SUMMARY

North American Industry Classification System - Industry Groups	Number of Employing Units	Employment			Total Earnings Oct - Dec 2021	Average Weekly Earnings
		Oct	Nov	Dec		
<b>SOUTHWEST LOCAL WORKFORCE DEVELOPMENT AREA</b>	<b>5,436</b>	<b>74,229</b>	<b>74,458</b>	<b>74,303</b>	<b>\$910,228,586</b>	<b>\$941.98</b>
Natural Resources & Mining	323	2,075	2,087	2,058	\$31,369,391	\$1,163.84
Construction	339	3,157	3,096	3,127	\$46,500,482	\$1,144.02
Manufacturing	220	19,228	19,209	19,230	\$318,161,926	\$1,273.21
Trade, Transportation & Utilities	1,295	13,925	14,207	14,105	\$146,881,139	\$802.51
Wholesale Trade	228	1,800	1,816	1,821	\$27,917,688	\$1,184.94
Retail Trade	768	8,721	8,838	8,688	\$63,713,095	\$560.18
Transportation, Warehousing & Utilities	299	3,404	3,553	3,596	\$55,250,356	\$1,208.20
Information	46	318	315	311	\$6,543,050	\$1,599.51
Financial Activities	448	2,418	2,431	2,401	\$35,604,211	\$1,133.29
Professional & Business Services	423	4,423	4,398	4,410	\$60,469,874	\$1,054.69
Education & Health Services	1,180	8,754	8,836	8,807	\$96,405,189	\$842.80
Leisure & Hospitality	445	5,825	5,815	5,775	\$26,838,365	\$355.64
Other Services	325	1,396	1,385	1,394	\$12,169,680	\$672.67
Local Government	263	9,333	9,268	9,304	\$92,763,132	\$767.13
State Government	129	3,377	3,411	3,381	\$36,522,147	\$828.81
Southwest Local Workforce Development Area includes these counties: Calhoun, Columbia, Dallas, Hempstead, Howard, Lafayette, Little River, Miller, Nevada, Ouachita, Sevier, and Union						
<b>WEST CENTRAL LOCAL WORKFORCE DEVELOPMENT AREA</b>	<b>8,169</b>	<b>104,264</b>	<b>104,216</b>	<b>105,170</b>	<b>\$1,197,546,461</b>	<b>\$881.10</b>
Natural Resources & Mining	242	2,004	2,016	2,391	\$26,939,844	\$969.72
Construction	771	4,590	4,507	4,532	\$67,903,305	\$1,149.75
Manufacturing	323	14,466	14,540	14,624	\$190,912,728	\$1,009.78
Trade, Transportation & Utilities	1,767	21,864	22,044	22,224	\$266,690,389	\$930.62
Wholesale Trade	301	1,903	1,907	1,916	\$34,180,434	\$1,377.54
Retail Trade	1,176	14,447	14,485	14,609	\$121,453,982	\$643.71
Transportation, Warehousing & Utilities	290	5,514	5,652	5,699	\$111,055,973	\$1,519.61
Information	78	716	719	724	\$8,338,644	\$891.29
Financial Activities	877	3,660	3,630	3,614	\$54,026,802	\$1,143.41
Professional & Business Services	950	7,982	8,007	7,982	\$100,014,743	\$962.84
Education & Health Services	1,464	16,658	16,703	16,692	\$211,293,273	\$974.17
Leisure & Hospitality	834	13,599	13,476	13,865	\$75,635,477	\$426.34
Other Services	514	2,157	2,137	2,125	\$20,224,124	\$727.08
Local Government	237	11,850	11,730	11,711	\$126,971,343	\$830.27
State Government	112	4,718	4,707	4,686	\$48,595,789	\$794.73
West Central Local Workforce Development Area includes these counties: Clark, Conway, Garland, Hot Spring, Johnson, Montgomery, Perry, Pike, Pope, and Yell						

TABLE 8. LOCAL WORKFORCE DEVELOPMENT AREA SUMMARY

North American Industry Classification System - Industry Groups	Number of Employing Units	Employment			Total Earnings Oct - Dec 2021	Average Weekly Earnings
		Oct	Nov	Dec		
<b>WESTERN LOCAL WORKFORCE DEVELOPMENT AREA</b>	<b>6,444</b>	<b>100,455</b>	<b>100,991</b>	<b>101,034</b>	<b>\$1,235,124,795</b>	<b>\$942.31</b>
Natural Resources & Mining	139	972	931	938	\$16,178,156	\$1,314.12
Construction	522	3,979	4,001	4,030	\$55,303,010	\$1,062.63
Manufacturing	325	20,608	20,725	20,771	\$280,406,863	\$1,041.95
Trade, Transportation & Utilities	1,538	22,428	22,822	22,911	\$266,184,366	\$901.21
Wholesale Trade	334	3,824	3,858	3,863	\$65,874,898	\$1,316.75
Retail Trade	926	12,427	12,643	12,678	\$102,786,490	\$628.38
Transportation, Warehousing & Utilities	278	6,177	6,321	6,370	\$97,522,978	\$1,192.78
Information	70	934	940	944	\$18,518,711	\$1,516.52
Financial Activities	686	3,335	3,343	3,366	\$50,468,027	\$1,159.54
Professional & Business Services	836	9,866	9,881	9,767	\$116,288,669	\$909.26
Education & Health Services	1,109	15,202	15,197	15,133	\$238,251,968	\$1,207.53
Leisure & Hospitality	575	8,924	8,945	8,950	\$45,215,066	\$389.06
Other Services	409	1,851	1,865	1,866	\$18,783,076	\$776.52
Local Government	166	9,625	9,674	9,674	\$99,940,822	\$796.03
State Government	69	2,731	2,667	2,684	\$29,586,061	\$844.79

Western Local Workforce Development Area includes these counties: Crawford, Franklin, Logan, Polk, Scott, and Sebastian