

# ARKANSAS

## COVERED EMPLOYMENT & EARNINGS

SECOND QUARTER 2022



Arkansas Division of  
Workforce Services



**COVERED EMPLOYMENT AND EARNINGS  
STATE OF ARKANSAS  
SECOND QUARTER 2022**

**ASA HUTCHINSON, GOVERNOR  
STATE OF ARKANSAS**

**CHARISSE CHILDERS, DIRECTOR  
DIVISION OF WORKFORCE SERVICES**

**PUBLISHED BY  
LABOR MARKET INFORMATION  
BUREAU OF LABOR STATISTICS PROGRAMS  
POST OFFICE BOX 2981  
LITTLE ROCK, ARKANSAS 72203-2981  
SUSAN PRICE, BLS PROGRAMS MANAGER  
TELEPHONE (501) 682-3103**

**STATE OF ARKANSAS WEBPAGE: <http://www.arkansas.gov>**

**DIVISION OF WORKFORCE SERVICES WEBPAGE: <http://www.dws.arkansas.gov/>**

**WEBPAGE FOR LABOR MARKET INFORMATION: <http://www.discover.arkansas.gov>**

**RELEASED: OCTOBER 2022**



## TABLE OF CONTENTS

DESCRIPTION OF DATA	PAGE
Description and Classification of Data	1
Definition of Covered Employment and Earnings	2
Significant Developments During Second Quarter 2022	3

### LIST OF GRAPHS AND TABLES

Graph 1	Total Covered Employment for Selected Years, Arkansas	7
Graph 2	Total Covered Earnings, by Calendar Quarter for Selected Years, Arkansas	8
Table 1	Quarterly Comparison of Covered Employment and Wages, by Industry	5
Table 2	Total Covered Employment in Arkansas, 2015 – 2022	6
Table 3	Total Covered Earnings, 2015 – 2022	9
Table 4	Total Taxable Earnings, 2015 – 2022	10
Table 5	State Summary – Employment and Total Earnings, by Industry, Second Quarter 2022	11
Table 6	County Summary – Employment and Total Earnings, by Industry, Second Quarter 2022	22
Table 7	Federal Government Employment and Total Earnings in Arkansas, Second Quarter 2022	60
Table 8	Local Workforce Development Area – Employment and Total Earnings, by Industry, Second Quarter 2022	61



EMPLOYMENT AND EARNINGS  
UNDER THE ARKANSAS EMPLOYMENT SECURITY LAW  
SECOND QUARTER 2022

**DESCRIPTION AND CLASSIFICATION OF DATA**

This publication contains covered employment and payroll data by industry and county for the Second Quarter 2022 and a record for total covered employment by month, quarterly payroll data, average weekly earnings, and total taxable earnings for 2015 through 2022. These data are compiled from quarterly contributions and wage reports submitted by employers subject to the Arkansas Employment Security Law.

Employment data have been tabulated for each month of the quarter by industry under the **North American Industry Classification System** (NAICS) by state, county, and workforce area. Payroll data represent the total wages paid during the quarter and are classified by industry for the state and by publishable industry groups for each county and workforce area.

Due to industry classification revisions, previously published data will not always be comparable with current data. For this reason, comparisons should not be made between the same industries under different revisions. For more information, visit the NAICS home page at <http://www.census.gov/naics>.

Industry Classification Revisions

- SIC (Standard Industrial Classification) 1987 to NAICS 2002
- NAICS 2002 to NAICS 2007
- NAICS 2007 to NAICS 2012
- NAICS 2012 to NAICS 2018
- NAICS 2018 to NAICS 2022

The tabulation of this data is a joint effort in conjunction with the United States Bureau of Labor Statistics. Data included in this publication are subject to revisions. Revisions are typically reflected in the Annual Covered Employment and Earnings publication.

## **DEFINITION OF COVERED EMPLOYMENT AND EARNINGS**

Covered Employment is the total number of workers employed by establishments subject to the Arkansas Employment Security Law that worked or received pay for the payroll period including the 12<sup>th</sup> of the month. Earnings include all wages paid to any covered employee by their employer including salaries, bonuses, commissions, fees, fringe benefits, sick pay made directly to employees or dependents, deferred compensation, and reported tips. These wages include both taxable and nontaxable wages. Only the first \$10,000 paid to each worker by an employer in the calendar year is taxable under the Arkansas Employment Security Law.

An Arkansas state unemployment insurance account is required of any entity meeting the definition of an employer. As described by Arkansas Division of Workforce Services Law, the definition of an employer includes, but is not limited to, a sole proprietorship, partnership, corporation, associations, trust, estate, and receiver or trustee in bankruptcy. The entity must employ one or more individuals for ten or more days in a calendar year, whether or not the days are consecutive.

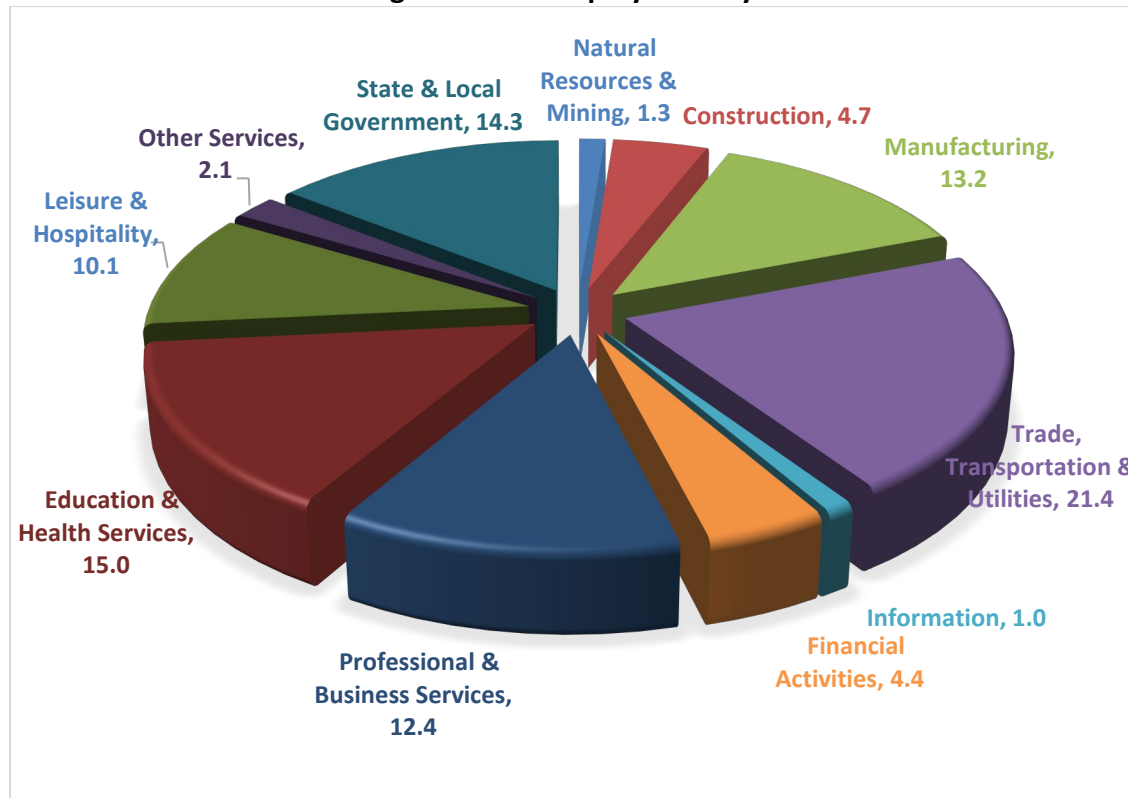
Currently excluded from coverage is employment covered by the Railroad Unemployment Insurance Act, some domestic service workers, employees of small agricultural establishments, self-employed workers, unpaid family workers, insurance and real estate agents paid only on a commission basis, and employees of churches and religious organizations except separately incorporated schools.

Civilian federal workers are covered by Unemployment Compensation for Federal Employees (UCFE).

## SIGNIFICANT DEVELOPMENTS DURING SECOND QUARTER 2022

**AVERAGE EMPLOYMENT CHANGES**

Covered employment averaged 1,222,309 during the Second Quarter 2022 (refer to Table 1), an increase of 13,973 (1.2%) from the previous quarter and a gain of 38,794 (3.3%) from the average recorded one year ago. The over-the-year comparison is more significant when used as an economic indicator and allows for seasonal factors that appear when comparing over-the-quarter data to be disregarded.

**Average Covered Employment by NAICS****EMPLOYMENT CHANGES FROM FIRST QUARTER 2022**

Gains were recorded in all major industry groups. (refer to Table 1). Significant increases occurred in Leisure & Hospitality (6,230), Professional & Business Services (2,408), Construction (1,287), Manufacturing (1,187), and Trade, Transportation & Utilities (1,030).

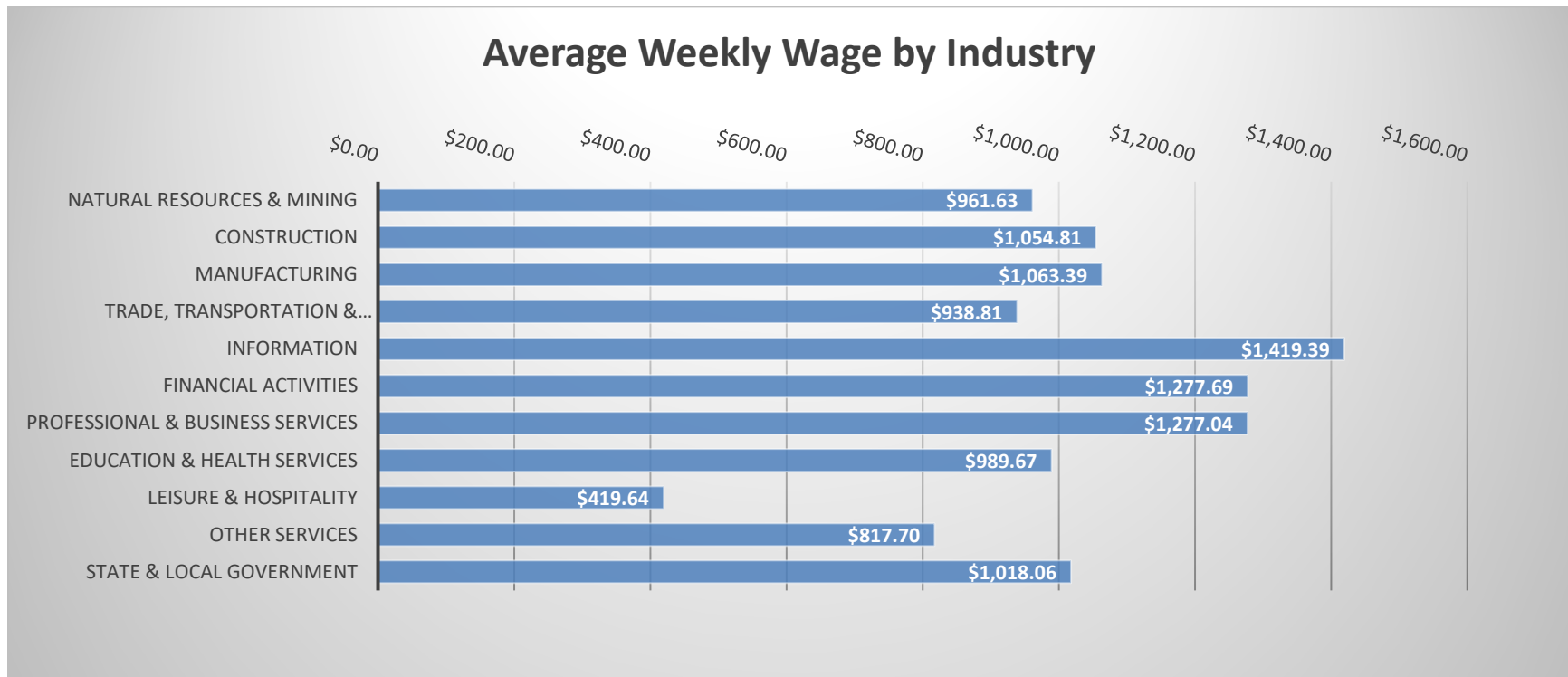


### EMPLOYMENT CHANGES FROM SECOND QUARTER 2021 (QUARTER YEAR AGO COMPARISON)

Over-the-year gains were recorded in ten major industry groups. (refer to Table 1). Large increases occurred in Trade, Transportation & Utilities (13,854), Leisure & Hospitality (6,926), Professional & Business Services (6,350), Manufacturing (5,586), Education & Health Services (1,671) Financial Activities (1,457), Construction (1,236) and Information (1,073). The only loss was reported in Natural Resources & Mining (-239).

### COVERED WAGES

Wages paid to covered workers totaled \$15,680,117,825 for the Second Quarter 2022 (refer to Table 1), for an average weekly wage of \$986.79 (refer to Table 5). Mississippi County workers recorded the highest average weekly wage (\$1,203.71), and employees in Montgomery reported the lowest (\$649.47) (refer to Table 6). Information recorded the highest average weekly wage for the State of Arkansas (\$1,419.39). The Leisure & Hospitality sector recorded the lowest (\$419.64) (refer to Table 5).



**TABLE 1. QUARTERLY COMPARISON OF COVERED EMPLOYMENT AND WAGES, BY INDUSTRY**

North American Industry Classification System - Industry Groups	Number of Employing Units	Monthly Employment Average	Percent of Total	Net Change From:		Total Wages Paid Apr - Jun 2022	Percent of Total
				Jan - Mar 2022	Apr - Jun 2021		
<b>TOTAL</b>	<b>97,317</b>	<b>1,222,309</b>	<b>100</b>	<b>13,973</b>	<b>38,794</b>	<b>\$15,680,117,825</b>	<b>100</b>
<b>Natural Resources &amp; Mining</b>	2,481	15,535	1.3	277	-239	194,201,660	1.2
Agriculture, Forestry, Fishing & Hunting	2,101	12,236	1.0	288	-138	138,187,158	0.9
Mining	380	3,299	0.3	-11	-101	56,014,502	0.4
<b>Construction</b>	7,571	56,853	4.7	1,287	1,236	779,602,227	5.0
<b>Manufacturing</b>	2,977	161,615	13.2	1,187	5,586	2,234,162,220	14.2
<b>Trade, Transportation &amp; Utilities</b>	22,333	262,081	21.4	1,030	13,854	3,198,568,346	20.4
Wholesale Trade	7,721	50,002	4.1	158	2,751	973,437,121	6.2
Retail Trade	10,875	143,122	11.7	2,730	4,808	1,183,954,842	7.6
Transportation & Warehousing	3,318	61,377	5.0	-1,921	6,203	857,464,465	5.5
Utilities	419	7,579	0.6	62	92	183,711,918	1.2
<b>Information</b>	2,370	12,517	1.0	152	1,073	230,964,669	1.5
<b>Financial Activities</b>	9,798	54,150	4.4	263	1,457	899,434,468	5.7
Finance & Insurance	5,806	39,635	3.2	116	1,093	725,778,246	4.6
Real Estate & Rental & Leasing	3,992	14,515	1.2	147	365	173,656,222	1.1
<b>Professional &amp; Business Services</b>	18,234	151,909	12.4	2,408	6,350	2,521,923,907	16.1
Professional & Technical Services	11,774	46,868	3.8	-447	2,305	832,160,271	5.3
Management of Companies & Enterprises	571	36,982	3.0	1,526	3,285	949,581,418	6.1
Administrative & Waste Services	5,889	68,059	5.6	1,329	760	740,182,218	4.7
<b>Education &amp; Health Services</b>	15,211	182,993	15.0	313	1,671	2,354,338,293	15.0
Educational Services	1,130	13,000	1.1	-387	683	137,587,871	0.9
Health Care & Social Assistance	14,081	169,993	13.9	700	988	2,216,750,422	14.1
<b>Leisure &amp; Hospitality</b>	7,631	123,730	10.1	6,230	6,926	674,984,196	4.3
Arts, Entertainment & Recreation	1,084	13,811	1.1	2,432	2,124	99,166,634	0.6
Accommodation & Food Services	6,547	109,918	9.0	3,798	4,802	575,817,562	3.7
<b>Other Services</b>	5,636	25,832	2.1	696	844	274,598,395	1.8
<b>State &amp; Local Government</b>	3,075	175,094	14.3	130	35	2,317,339,444	14.8
Local Government	2,014	111,775	9.1	1,002	1,628	1,440,939,371	9.2
State Government	1,061	63,319	5.2	-872	-1,593	876,400,073	5.6
<b>Nonclassifiable Establishments</b>	0	0	0.0	0	0	0	0.0

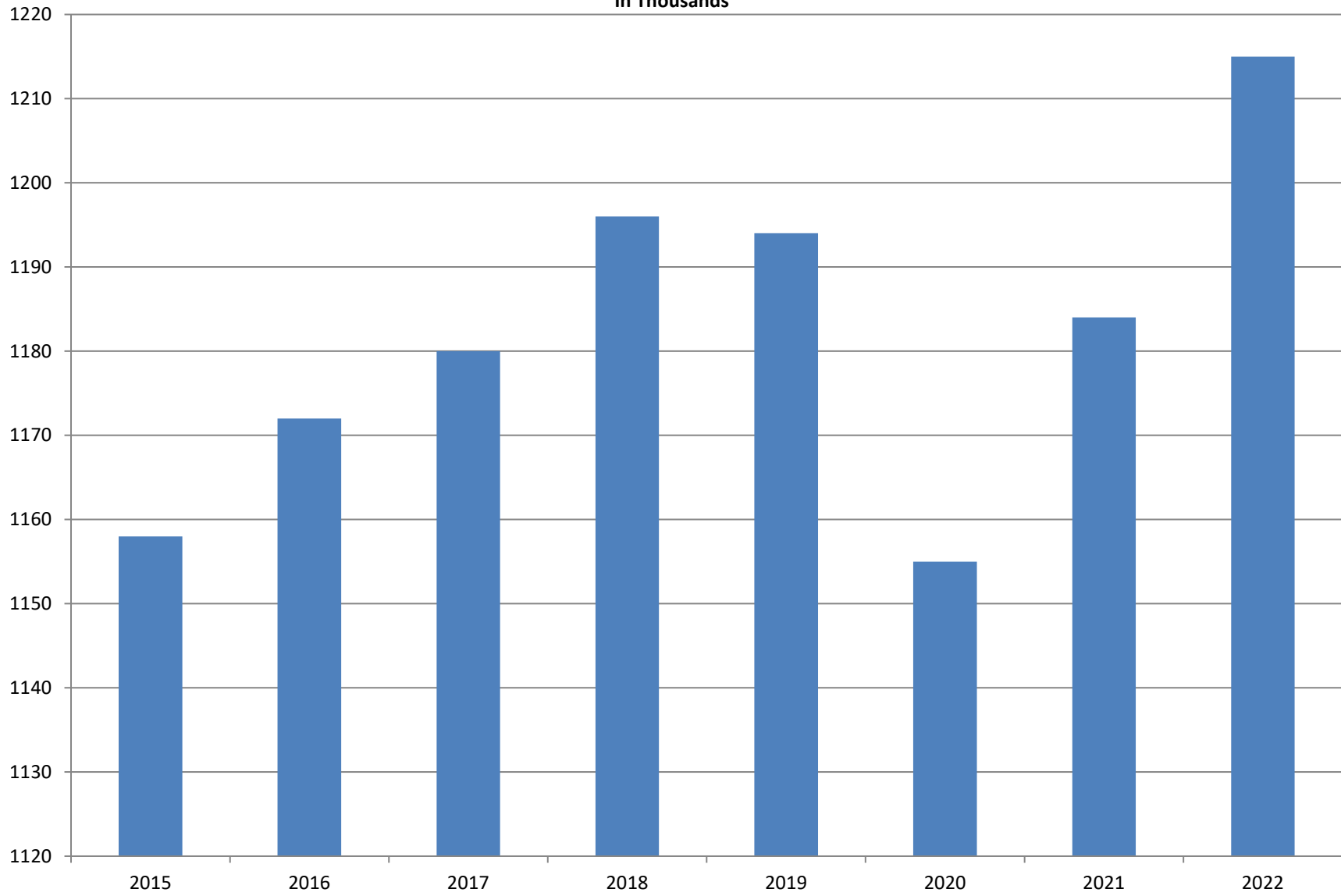
Note: Items do not necessarily add to total because of rounding. Because of industry code changes between years, substantial employment and wage shifts among industries are anticipated.

**TABLE 2. TOTAL COVERED EMPLOYMENT IN ARKANSAS**

<b>PERIOD</b>	<b>2015</b>	<b>2016</b>	<b>2017</b>	<b>2018</b>	<b>2019</b>	<b>2020</b>	<b>2021</b>	<b>2022</b>
<b>AVERAGE</b>	<b>1,157,634</b>	<b>1,171,503</b>	<b>1,180,337</b>	<b>1,195,781</b>	<b>1,194,322</b>	<b>1,155,490</b>	<b>1,183,930</b>	<b>1,215,322</b>
January	1,135,577	1,152,434	1,161,239	1,173,537	1,186,848	1,195,722	1,162,013	1,200,134
February	1,144,902	1,162,294	1,172,290	1,183,185	1,194,355	1,200,543	1,160,167	1,211,259
March	1,146,413	1,170,837	1,179,686	1,190,199	1,198,481	1,199,702	1,176,533	1,213,614
April	1,158,606	1,178,630	1,185,212	1,194,816	1,204,176	1,090,183	1,183,176	1,220,528
May	1,167,657	1,181,644	1,189,900	1,201,113	1,206,476	1,120,448	1,186,529	1,226,451
June	1,164,607	1,177,506	1,186,326	1,195,468	1,202,260	1,137,765	1,186,796	1,219,945
July	1,119,390	1,132,361	1,137,883	1,168,432	1,155,337	1,099,733	1,145,902	
August	1,148,502	1,160,743	1,168,802	1,200,284	1,185,213	1,137,611	1,175,791	
September	1,173,776	1,185,510	1,193,845	1,222,012	1,202,177	1,157,279	1,189,491	
October	1,173,953	1,185,022	1,194,194	1,205,161	1,209,366	1,170,351	1,209,530	
November	1,177,717	1,186,046	1,197,650	1,208,638	1,194,675	1,177,588	1,213,903	
December	1,180,513	1,185,009	1,197,013	1,206,531	1,192,501	1,178,954	1,217,329	

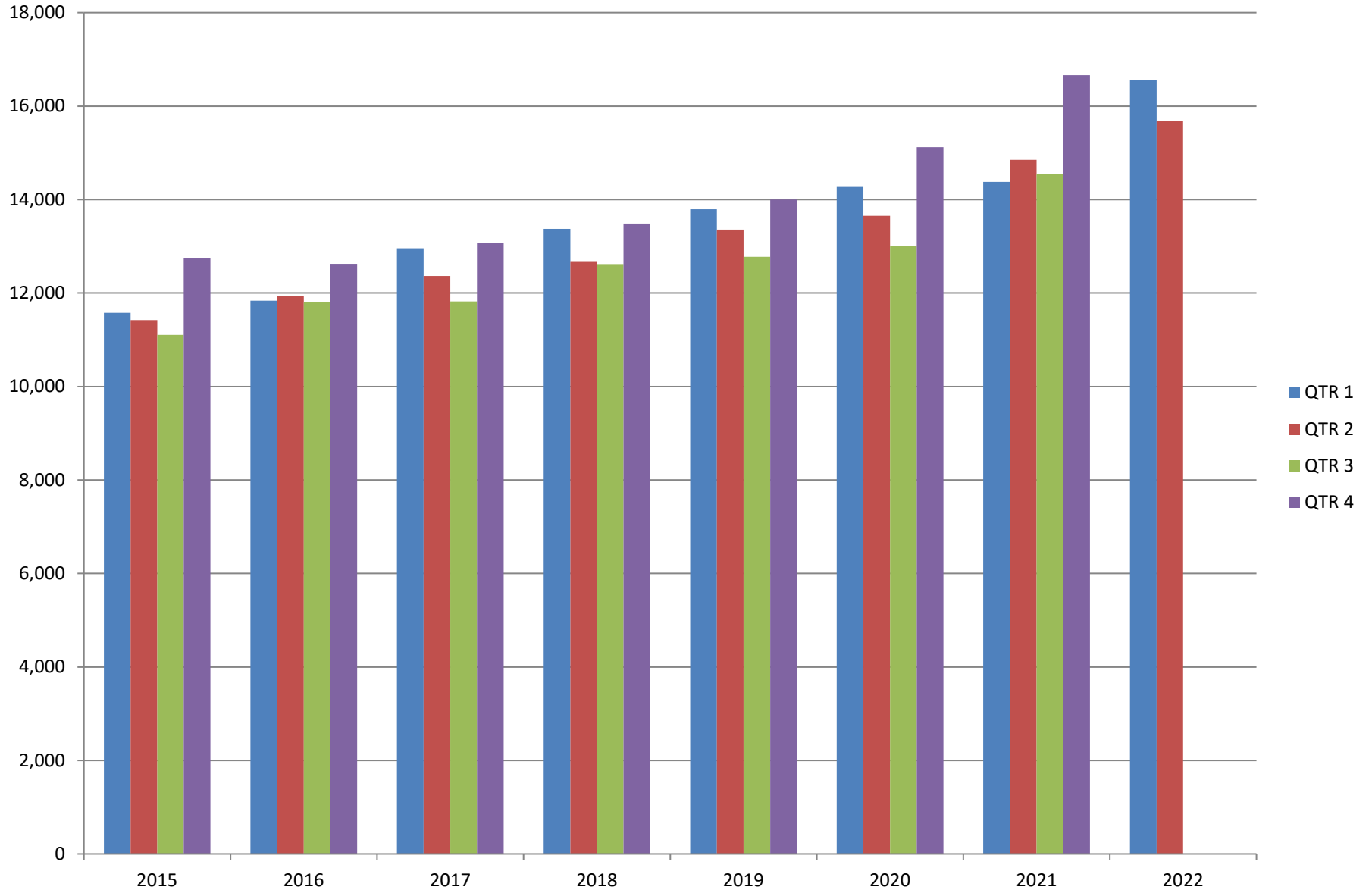
# AVERAGE TOTAL COVERED EMPLOYMENT

In Thousands



# TOTAL COVERED EARNINGS BY CALENDAR YEAR

In Millions



**TABLE 3. TOTAL COVERED EARNINGS 2015- 2022**

<b>PERIOD</b>	<b>2015</b>	<b>2016</b>	<b>2017</b>	<b>2018</b>
<b>TOTAL</b>	<b>\$46,836,352,793</b>	<b>\$48,207,277,530</b>	<b>\$50,207,202,141</b>	<b>\$52,159,789,393</b>
January - March	11,575,046,688	11,836,255,664	12,955,088,347	13,372,730,974
April - June	11,419,363,330	11,935,722,186	12,363,027,711	12,682,491,819
July - September	11,104,443,452	11,809,460,297	11,823,324,966	12,619,347,460
October - December	12,737,499,323	12,625,839,383	13,065,761,117	13,485,219,140
<b>Average Weekly Earnings</b>	<b>\$778.05</b>	<b>\$791.34</b>	<b>\$818.01</b>	<b>\$838.84</b>

<b>PERIOD</b>	<b>2019</b>	<b>2020</b>	<b>2021</b>	<b>2022</b>
<b>TOTAL</b>	<b>\$53,931,077,907</b>	<b>\$56,042,071,520</b>	<b>\$60,442,740,956</b>	<b>\$32,233,203,317</b>
January - March	13,795,046,820	14,268,302,306	14,379,756,373	16,553,085,492
April - June	13,356,848,831	13,651,304,330	14,854,193,705	15,680,117,825
July - September	12,776,218,481	12,998,944,628	14,544,909,536	
October - December	14,002,963,775	15,123,520,256	16,663,881,342	
<b>Average Weekly Earnings</b>	<b>\$868.39</b>	<b>\$932.71</b>	<b>\$981.78</b>	<b>\$1,020.09</b>

**TABLE 4. TOTAL TAXABLE EARNINGS, 2015 - 2022**

<b>PERIOD</b>	<b>2015</b>	<b>2016</b>	<b>2017</b>	<b>2018</b>
<b>TOTAL</b>	<b>12,258,632,610</b>	<b>12,511,938,047</b>	<b>12,744,039,136</b>	<b>11,335,932,409</b>
January - March	6,378,966,662	6,595,351,454	6,958,706,950	6,577,871,657
April - June	2,915,293,283	3,003,077,908	2,908,226,426	2,278,450,975
July - September	1,640,978,599	1,651,582,584	1,576,968,648	1,328,868,479
October - December	1,323,394,066	1,261,926,101	1,300,137,112	1,150,741,298
<b>PERIOD</b>	<b>2019</b>	<b>2020</b>	<b>2021</b>	<b>2022</b>
<b>TOTAL</b>	<b>11,498,854,755</b>	<b>8,525,235,479</b>	<b>12,092,994,279</b>	<b>9,750,126,619</b>
January - March	6,737,833,125	5,589,526,770	6,791,670,990	7,417,028,137
April - June	2,283,514,220	1,172,837,688	2,364,465,896	2,333,098,482
July - September	1,327,818,133	864,579,237	1,501,070,061	
October - December	1,149,689,277	898,291,784	1,435,787,332	

TABLE 5. STATEWIDE SUMMARY

North American Industry Classification System - Industry Groups		Number of Employing Units	Employment			Total Earnings Apr - Jun 2022	Average Weekly Earnings
			Apr	May	Jun		
<b>TOTAL, ALL INDUSTRIES</b>		<b>97,317</b>	<b>1,220,528</b>	<b>1,226,451</b>	<b>1,219,947</b>	<b>\$15,680,117,825</b>	<b>\$986.79</b>
<b>NATURAL RESOURCES &amp; MINING</b>		<b>2,481</b>	<b>15,360</b>	<b>15,517</b>	<b>15,727</b>	<b>\$194,201,660</b>	<b>\$961.63</b>
<b>11</b>	<b>AGRICULTURE, FORESTRY, FISHING &amp; HUNTING</b>	<b>2,101</b>	<b>12,062</b>	<b>12,228</b>	<b>12,417</b>	<b>\$138,187,158</b>	<b>\$868.75</b>
<b>111</b>	<b>CROP PRODUCTION</b>	<b>938</b>	<b>4,038</b>	<b>4,160</b>	<b>4,187</b>	<b>36,827,983</b>	<b>\$686.21</b>
1111	Oilseed & Grain Farming	693	2,391	2,499	2,539	22,441,915	697.12
1112	Vegetable & Melon Farming	30	94	98	115	988,316	742.91
1113	Fruit & Tree Nut Farming	14	51	54	71	282,303	370.15
1114	Greenhouse, Nursery & Floriculture Production	41	853	830	762	6,612,163	624.08
1119	Other Crop Farming	160	649	679	700	6,503,286	740.02
<b>112</b>	<b>ANIMAL PRODUCTION &amp; AQUACULTURE</b>	<b>356</b>	<b>3,108</b>	<b>3,164</b>	<b>3,223</b>	<b>\$42,599,748</b>	<b>\$1,035.36</b>
1121	Cattle Ranching & Farming	131	403	424	417	3,303,873	612.89
1122	Hog & Pig Farming	14	133	138	134	1,679,158	956.79
1123	Poultry & Egg Production	142	2,148	2,180	2,237	32,771,084	1,151.95
1125	Aquaculture	36	321	320	333	3,975,134	941.83
	Other	33	103	102	102	870,499	654.35
<b>115</b>	<b>SUPPORT ACTIVITIES FOR AGRICULTURE &amp; FORESTRY</b>	<b>413</b>	<b>2,960</b>	<b>2,977</b>	<b>3,064</b>	<b>\$34,564,522</b>	<b>\$886.17</b>
1151	Support Activities for Crop Production	275	1,400	1,394	1,441	18,011,439	981.46
1152	Support Activities for Animal Production	66	561	575	608	5,941,772	786.23
1153	Support Activities for Forestry	72	999	1,008	1,015	10,611,311	810.31
	<b>OTHER</b>	<b>394</b>	<b>1,956</b>	<b>1,927</b>	<b>1,943</b>	<b>\$24,194,905</b>	<b>\$958.37</b>
<b>21</b>	<b>MINING, QUARRYING, &amp; OIL &amp; GAS EXTRACTION</b>	<b>380</b>	<b>3,298</b>	<b>3,289</b>	<b>3,310</b>	<b>\$56,014,502</b>	<b>\$1,306.10</b>
<b>211</b>	<b>OIL &amp; GAS EXTRACTION</b>	<b>64</b>	<b>449</b>	<b>448</b>	<b>459</b>	<b>\$8,907,265</b>	<b>\$1,515.87</b>
<b>212</b>	<b>MINING (EXCEPT OIL &amp; GAS)</b>	<b>99</b>	<b>1,833</b>	<b>1,840</b>	<b>1,866</b>	<b>\$30,047,667</b>	<b>\$1,251.86</b>
<b>213</b>	<b>SUPPORT ACTIVITES FOR MINING</b>	<b>217</b>	<b>1,016</b>	<b>1,001</b>	<b>985</b>	<b>\$17,059,570</b>	<b>\$1,311.40</b>



TABLE 5. STATEWIDE SUMMARY

North American Industry Classification System - Industry Groups		Number of Employing Units	Employment			Total Earnings Apr - Jun 2022	Average Weekly Earnings
			Apr	May	Jun		
<b>CONSTRUCTION</b>		<b>7,571</b>	<b>56,195</b>	<b>56,874</b>	<b>57,491</b>	<b>\$779,602,227</b>	<b>\$1,054.81</b>
<b>236</b>	<b>CONSTRUCTION OF BUILDINGS</b>	<b>1,960</b>	<b>11,304</b>	<b>11,522</b>	<b>11,771</b>	<b>\$168,421,374</b>	<b>\$1,123.41</b>
2361	Residential Building Construction	1,344	4,296	4,434	4,480	54,773,918	956.86
2362	Nonresidential Building Construction	616	7,008	7,088	7,291	113,647,456	1,226.27
<b>237</b>	<b>HEAVY &amp; CIVIL ENGINEERING CONSTRUCTION</b>	<b>799</b>	<b>9,310</b>	<b>9,449</b>	<b>9,540</b>	<b>\$141,446,527</b>	<b>\$1,153.45</b>
2371	Utility System Construction	490	5,299	5,397	5,406	81,994,000	1,175.11
2372	Land Subdivision	44	79	83	84	896,923	841.39
2373	Highway, Street & Bridge Construction	168	3,127	3,145	3,215	47,795,384	1,162.61
2379	Other Heavy & Civil Engineering Construction	97	805	824	835	10,760,220	1,007.76
<b>238</b>	<b>SPECIALTY TRADE CONTRACTORS</b>	<b>4,812</b>	<b>35,581</b>	<b>35,903</b>	<b>36,180</b>	<b>\$469,734,326</b>	<b>\$1,006.84</b>
2381	Building Foundation & Exterior Contractors	918	5,867	5,905	5,941	76,239,485	993.27
2382	Building Equipment Contractors	2,360	20,498	20,683	20,859	282,040,529	1,049.10
2383	Building Finishing Contractors	770	4,073	4,043	4,024	49,942,494	949.36
2389	Other Specialty Trade Contractors	764	5,143	5,272	5,356	61,511,818	900.07
<b>MANUFACTURING</b>		<b>2,977</b>	<b>160,775</b>	<b>161,662</b>	<b>162,407</b>	<b>\$2,234,162,220</b>	<b>\$1,063.39</b>
<b>311</b>	<b>FOOD MANUFACTURING</b>	<b>312</b>	<b>49,302</b>	<b>49,612</b>	<b>49,634</b>	<b>\$577,248,382</b>	<b>\$896.76</b>
3111	Animal Food Manufacturing	43	1,955	1,982	1,930	33,722,110	1,326.41
3112	Grain & Oilseed Milling	33	2,825	2,844	2,871	35,367,785	955.71
3114	Fruit & Vegetable Preserving & Specialty Food Manufacturing	15	4,486	4,473	4,452	60,693,491	1,044.38
3115	Dairy Product Manufacturing	9	518	524	489	6,944,626	1,046.77
3116	Animal Slaughtering & Processing	94	32,609	32,890	33,001	357,536,869	837.65
3118	Bakeries & Tortilla Manufacturing	84	4,326	4,309	4,297	47,708,976	851.36
3119	Other Food Manufacturing	26	2,546	2,551	2,561	35,010,034	1,055.01
	Other	8	37	39	33	264,491	559.97
<b>312</b>	<b>BEVERAGE &amp; TOBACCO PRODUCT MANUFACTURING</b>	<b>84</b>	<b>1,799</b>	<b>1,813</b>	<b>1,830</b>	<b>\$24,087,700</b>	<b>\$1,021.44</b>
<b>313</b>	<b>TEXTILE MILLS</b>	<b>17</b>	<b>160</b>	<b>160</b>	<b>165</b>	<b>\$2,491,899</b>	<b>\$1,185.68</b>
<b>314</b>	<b>TEXTILE PRODUCT MILLS</b>	<b>43</b>	<b>781</b>	<b>800</b>	<b>803</b>	<b>\$10,569,301</b>	<b>\$1,023.10</b>
3141	Textile Furnishing Mills	7	20	20	20	120,179	462.23
3149	Other Textile Product Mills	36	761	780	783	10,449,122	1,037.58
<b>315</b>	<b>APPAREL MANUFACTURING</b>	<b>22</b>	<b>728</b>	<b>713</b>	<b>698</b>	<b>\$5,821,074</b>	<b>\$628.02</b>
3151	Apparel Knitting Mills	5	423	423	425	3,389,555	615.42
3152	Cut & Sew Apparel Manufacturing	12	182	169	155	1,133,411	516.91
3159	Apparel Accessories & Other Apparel Manufacturing	5	123	121	118	1,298,108	827.52

TABLE 5. STATEWIDE SUMMARY

North American Industry Classification System - Industry Groups		Number of Employing Units	Employment			Total Earnings	Average Weekly Earnings
			Apr	May	Jun	Apr - Jun 2022	
<b>316</b>	<b>LEATHER &amp; ALLIED PRODUCT MANUFACTURING</b>	<b>10</b>	<b>807</b>	<b>793</b>	<b>825</b>	<b>\$6,050,913</b>	<b>\$575.82</b>
3162	Footwear Manufacturing	3	624	615	647	4,280,497	\$523.76
	Other	7	183	178	178	1,770,416	\$757.99
<b>321</b>	<b>WOOD PRODUCT MANUFACTURING</b>	<b>296</b>	<b>10,301</b>	<b>10,390</b>	<b>10,380</b>	<b>\$137,577,039</b>	<b>\$1,021.81</b>
3211	Sawmills & Wood Preservation	128	4,874	4,914	4,898	72,047,562	1,132.12
3212	Veneer, Plywood & Engineered Wood Products	38	2,124	2,171	2,182	30,771,247	1,096.35
3219	Other Wood Product Manufacturing	130	3,303	3,305	3,300	34,758,230	809.56
<b>322</b>	<b>PAPER MANUFACTURING</b>	<b>74</b>	<b>8,676</b>	<b>8,755</b>	<b>8,731</b>	<b>\$153,286,904</b>	<b>\$1,352.11</b>
3221	Pulp, Paper & Paperboard Mills	14	2,502	2,552	2,542	60,923,322	1,850.87
3222	Converted Paper Product Manufacturing	60	6,174	6,203	6,189	92,363,582	1,148.05
<b>323</b>	<b>PRINTING &amp; RELATED SUPPORT ACTIVITIES</b>	<b>241</b>	<b>2,992</b>	<b>2,903</b>	<b>2,918</b>	<b>\$35,184,760</b>	<b>\$921.32</b>
<b>324</b>	<b>PETROLEUM &amp; COAL PRODUCTS MANUFACTURING</b>	<b>21</b>	<b>1,123</b>	<b>1,141</b>	<b>1,162</b>	<b>\$22,948,356</b>	<b>\$1,545.76</b>
<b>325</b>	<b>CHEMICAL MANUFACTURING</b>	<b>132</b>	<b>5,481</b>	<b>5,510</b>	<b>5,337</b>	<b>\$105,107,290</b>	<b>\$1,485.52</b>
3251	Basic Chemical Manufacturing	32	1,845	1,842	1,853	43,637,936	1,817.74
3252	Rubber & Synthetic Fibers & Filament Manufacturing	11	360	366	378	6,551,767	1,369.52
3253	Pesticide, Fertilizer & Other Agricultural Chemical Manufacturing	17	481	485	475	10,220,476	1,636.76
3254	Pharmaceutical & Medicine Manufacturing	30	439	450	444	8,224,524	1,423.83
3259	Other Chemical Product & Preparation Manufacturing	19	595	610	606	10,594,645	1,350.04
	Other	23	1,761	1,757	1,581	25,877,942	1,171.18
<b>326</b>	<b>PLASTICS &amp; RUBBER PRODUCTS MANUFACTURING</b>	<b>128</b>	<b>11,028</b>	<b>11,137</b>	<b>11,251</b>	<b>\$155,971,948</b>	<b>\$1,077.13</b>
3261	Plastics Product Manufacturing	99	6,826	6,895	6,903	89,488,981	1,001.32
3262	Rubber Product Manufacturing	29	4,202	4,242	4,348	66,482,967	1,199.36
<b>327</b>	<b>NONMETALLIC MINERAL PRODUCT MANUFACTURING</b>	<b>204</b>	<b>3,469</b>	<b>3,475</b>	<b>3,461</b>	<b>\$47,953,284</b>	<b>\$1,063.54</b>
3271	Clay Product & Refractory Manufacturing	10	504	512	509	6,520,803	986.75
3272	Glass & Glass Product Manufacturing	7	420	415	411	5,919,172	1,096.28
3279	Other Nonmetallic Mineral Product Manufacturing	34	285	263	265	2,918,501	828.41
	Other	153	2,260	2,285	2,276	32,594,808	1,102.75
<b>331</b>	<b>PRIMARY METAL MANUFACTURING</b>	<b>72</b>	<b>7,909</b>	<b>7,973</b>	<b>8,046</b>	<b>\$168,777,634</b>	<b>\$1,627.75</b>
3311	Iron & Steel Mills & Ferroalloy Manufacturing	11	3,788	3,770	3,799	107,149,902	2,177.24
3312	Steel Product Manufacturing from Purchased Steel	22	1,574	1,635	1,702	27,021,048	1,269.73
3313	Alumina & Aluminum Production & Processing	14	925	932	929	14,895,851	1,233.85
3314	Nonferrous Metal (except Aluminum) Production & Processing	6	263	261	255	3,706,658	1,098.05
3315	Foundries	19	1,359	1,375	1,361	16,004,175	901.90

TABLE 5. STATEWIDE SUMMARY

North American Industry Classification System - Industry Groups		Number of Employing Units	Employment			Total Earnings	Average Weekly Earnings
			Apr	May	Jun	Apr - Jun 2022	
<b>332</b>	<b>FABRICATED METAL PRODUCT MANUFACTURING</b>	<b>506</b>	<b>15,707</b>	<b>15,821</b>	<b>15,926</b>	<b>\$233,526,032</b>	<b>\$1,135.64</b>
3321	Forging & Stamping	12	432	450	450	5,909,060	1,023.75
3322	Cutlery & Hand Tool Manufacturing	13	677	684	763	9,673,421	1,051.00
3323	Architectural & Structural Metals Manufacturing	150	4,897	4,914	4,963	78,069,224	1,219.44
3324	Boiler, Tank & Shipping Container Manufacturing	14	598	600	596	8,663,086	1,114.37
3325	Hardware Manufacturing	4	264	258	257	4,280,168	1,267.95
3326	Spring & Wire Product Manufacturing	10	312	325	277	4,176,124	1,054.40
3327	Machine Shops; Turned Product; and Screw, Nut & Bolt Mfg	199	2,199	2,220	2,225	28,631,336	994.47
3328	Coating, Engraving Heat Treating & Allied Activities	39	573	565	555	7,827,777	1,066.99
3329	Other Fabricated Metal Product Manufacturing	65	5,755	5,805	5,840	86,295,836	1,144.51
<b>333</b>	<b>MACHINERY MANUFACTURING</b>	<b>219</b>	<b>12,632</b>	<b>12,686</b>	<b>13,123</b>	<b>\$179,732,066</b>	<b>\$1,078.97</b>
3331	Agriculture, Construction & Mining Machinery Manufacturing	36	3,127	3,102	3,096	36,553,444	904.60
3332	Industrial Machinery Manufacturing	26	686	692	701	13,986,917	1,552.55
3333	Commercial & Service Industry Machinery Manufacturing	22	834	854	854	11,699,036	1,062.07
3334	HVAC & Commercial Refrigeration Equipment Manufacturing	22	2,964	3,056	3,498	42,690,424	1,035.05
3335	Metalworking Machinery Manufacturing	54	1,183	1,178	1,189	14,162,577	920.64
3336	Engine, Turbine & Power Transmission Equipment Manufacturing	6	272	271	268	3,369,869	958.89
3339	Other General Purpose Machinery Manufacturing	53	3,566	3,533	3,517	57,269,799	1,244.92
<b>336</b>	<b>TRANSPORTATION EQUIPMENT MANUFACTURING</b>	<b>137</b>	<b>14,727</b>	<b>14,828</b>	<b>14,944</b>	<b>\$198,725,896</b>	<b>\$1,030.58</b>
3362	Motor Vehicle Body & Trailer Manufacturing	29	2,299	2,327	2,370	27,462,424	905.87
3363	Motor Vehicle Parts Manufacturing	44	4,735	4,776	4,809	60,429,660	973.83
3364	Aerospace Product & Parts Manufacturing	29	4,103	4,121	4,164	71,858,165	1,338.61
3366	Ship & Boat Building	22	2,253	2,280	2,287	23,705,050	802.11
	Other	13	1,337	1,324	1,314	15,270,597	886.54
<b>337</b>	<b>FURNITURE &amp; RELATED PRODUCT MANUFACTURING</b>	<b>152</b>	<b>3,411</b>	<b>3,419</b>	<b>3,464</b>	<b>\$38,760,510</b>	<b>\$868.93</b>
<b>339</b>	<b>MISCELLANEOUS MANUFACTURING</b>	<b>201</b>	<b>3,567</b>	<b>3,555</b>	<b>3,548</b>	<b>\$40,422,687</b>	<b>\$874.26</b>
3391	Medical Equipment & Supplies Manufacturing	82	1,793	1,771	1,779	22,251,475	961.06
3399	Other Miscellaneous Manufacturing	119	1,774	1,784	1,769	18,171,212	787.19
	<b>OTHER</b>	<b>106</b>	<b>6,175</b>	<b>6,178</b>	<b>6,161</b>	<b>\$89,918,545</b>	<b>\$1,120.80</b>

TABLE 5. STATEWIDE SUMMARY

North American Industry Classification System - Industry Groups		Number of Employing Units	Employment			Total Earnings Apr - Jun 2022	Average Weekly Earnings
			Apr	May	Jun		
<b>TRADE, TRANSPORTATION &amp; UTILITIES</b>		<b>22,333</b>	<b>262,651</b>	<b>263,193</b>	<b>260,400</b>	<b>\$3,198,568,346</b>	<b>\$938.81</b>
<b>42</b>	<b>WHOLESALE TRADE</b>	<b>7,721</b>	<b>49,974</b>	<b>50,349</b>	<b>49,684</b>	<b>\$973,437,121</b>	<b>\$1,497.53</b>
<b>423</b>	<b>MERCHANT WHLS (WHOLESALE), DURABLE GOODS</b>	<b>4,028</b>	<b>26,464</b>	<b>26,727</b>	<b>26,531</b>	<b>\$491,289,875</b>	<b>\$1,422.12</b>
4231	Motor Vehicle & Motor Vehicle Part & Supplies Merchant Whls	324	3,379	3,444	3,399	59,756,042	1,349.04
4232	Furniture & Home Furnishings Merchant Whls	138	535	550	538	10,765,010	1,530.64
4233	Lumber & Other Construction Materials Merchant Whls	288	1,706	1,710	1,704	26,343,144	1,187.34
4234	Professional & Commercial Equipment & Supplies Merchant Whls	890	3,671	3,717	3,666	90,035,036	1,879.62
4235	Metal & Mineral (except Petroleum) Merchant Whls	133	1,099	1,108	1,117	19,847,487	1,377.91
4236	Household Appliance & Electrical Apparatus Merchant Whls	439	3,027	3,062	3,039	62,290,128	1,574.79
4237	Hardware, Plumbing, Heating Equip & Supplies Merchant Whls	357	2,991	2,999	2,973	52,587,998	1,353.98
4238	Machinery, Equipment & Supplies Merchant Whls	1,098	7,814	7,839	7,826	133,442,842	1,311.58
4239	Miscellaneous Durable Goods Merchant Whls	361	2,242	2,298	2,269	36,222,188	1,227.63
<b>424</b>	<b>MERCHANT WHLS (WHOLESALE), NONDURABLE GOODS</b>	<b>2,360</b>	<b>19,501</b>	<b>19,619</b>	<b>19,289</b>	<b>\$387,128,974</b>	<b>\$1,529.52</b>
4241	Paper & Paper Product Merchant Whls	124	1,270	1,240	1,245	24,977,956	1,535.06
4242	Drugs & Druggists' Sundries Merchant Whls	367	1,861	1,876	1,867	56,634,879	2,332.19
4243	Apparel, Piece Goods, & Notions Merchant Whls	140	820	833	816	14,180,992	1,325.45
4244	Grocery & Related Product Merchant Whls	644	6,315	6,331	6,181	136,969,226	1,678.88
4245	Farm Product Raw Material Merchant Whls	98	1,115	1,111	1,117	11,487,548	792.99
4246	Chemical & Allied Product Merchant Whls	239	1,231	1,245	1,210	29,406,432	1,841.05
4247	Petroleum & Petroleum Product Merchant Whls	156	973	986	949	16,338,259	1,296.55
4248	Beer, Wine & Distilled Alcoholic Beverage Merchant Whls	85	1,784	1,801	1,776	31,618,780	1,361.06
4249	Miscellaneous Nondurable Goods Merchant Whls	507	4,132	4,196	4,128	65,514,902	1,213.78
<b>425</b>	<b>WHOLESALE TRADE AGENTS &amp; BROKERS</b>	<b>1,333</b>	<b>4,009</b>	<b>4,003</b>	<b>3,864</b>	<b>\$95,018,272</b>	<b>\$1,846.35</b>
<b>44 - 45</b>	<b>RETAIL TRADE</b>	<b>10,875</b>	<b>143,458</b>	<b>143,754</b>	<b>142,155</b>	<b>\$1,183,954,842</b>	<b>\$636.33</b>
<b>441</b>	<b>MOTOR VEHICLE &amp; PARTS DEALERS</b>	<b>1,561</b>	<b>19,705</b>	<b>19,785</b>	<b>19,616</b>	<b>\$303,103,121</b>	<b>\$1,183.41</b>
4411	Automobile Dealers	608	11,849	11,828	11,721	217,961,484	1,420.95
4412	Other Motor Vehicle Dealers	190	1,887	1,920	1,917	29,568,371	1,192.08
4413	Automotive Parts, Accessories & Tire Stores	763	5,969	6,037	5,978	55,573,266	713.11
<b>444</b>	<b>BUILDING MATERIAL &amp; GARDEN EQUIPMENT &amp; SUPPLIES DEALER</b>	<b>858</b>	<b>13,442</b>	<b>13,497</b>	<b>13,267</b>	<b>\$111,593,619</b>	<b>\$640.51</b>
4441	Building Material & Supplies Dealers	618	11,011	11,028	10,820	95,195,006	668.56
4442	Lawn & Garden Equipment & Supplies Retailers	240	2,431	2,469	2,447	16,398,613	515.08

TABLE 5. STATEWIDE SUMMARY

North American Industry Classification System - Industry Groups		Number of Employing Units	Employment			Total Earnings	Average Weekly Earnings
			Apr	May	Jun	Apr - Jun 2022	
<b>445</b>	<b>FOOD &amp; BEVERAGE RETAILERS</b>	<b>1,138</b>	<b>21,809</b>	<b>21,887</b>	<b>21,872</b>	<b>\$135,624,008</b>	<b>\$477.33</b>
4451	Grocery & Convenience Retailers	607	19,023	19,107	19,138	114,221,473	460.27
4452	Specialty Food Retailers	170	881	897	870	9,370,581	816.63
4453	Beer, Wine & Liquor Retailers	361	1,905	1,883	1,864	12,031,954	491.26
<b>449</b>	<b>FURNITURE, FURNISHINGS, ELECTRONICS &amp; APPLIANCE RETAILERS</b>	<b>862</b>	<b>6,565</b>	<b>6,538</b>	<b>6,416</b>	<b>\$70,079,226</b>	<b>\$828.53</b>
4491	Furniture and Home Furnishings Retailers	503	3,569	3,539	3,442	37,930,110	\$829.68
4492	Electronics and Appliance Retailers	359	2,996	2,999	2,974	32,149,116	\$827.19
<b>455</b>	<b>GENERAL MERCHANDISE RETAILERS</b>	<b>1,010</b>	<b>40,178</b>	<b>40,254</b>	<b>39,657</b>	<b>\$260,537,339</b>	<b>\$500.66</b>
4551	Department Stores	97	6,239	6,201	6,138	52,475,916	651.84
4552	Warehouse clubs, Supercenters, & Other General Merch Retailers	913	33,939	34,053	33,519	208,061,423	472.99
<b>456</b>	<b>HEALTH AND PERSONAL CARE RETAILERS</b>	<b>1,065</b>	<b>8,927</b>	<b>8,945</b>	<b>8,857</b>	<b>\$92,973,203</b>	<b>\$802.70</b>
<b>457</b>	<b>GASOLINE STATIONS &amp; FUEL DEALERS</b>	<b>1,682</b>	<b>13,478</b>	<b>13,544</b>	<b>13,703</b>	<b>\$84,749,649</b>	<b>\$480.24</b>
4571	Gasoline Stations	1,600	12,991	13,084	13,255	78,234,960	459.04
457110	Gasoline Stations with Convenience Stores	1,511	11,989	12,080	12,243	71,117,704	451.97
457120	Other Gasoline Stations	89	1,002	1,004	1,012	7,117,256	544.22
4572	Fuel Dealers	82	487	460	448	6,514,689	1,077.70
457210	Fuel Dealers	82	487	460	448	6,514,689	1,077.70
<b>458</b>	<b>CLOTHING, CLOTHING ACCESSORIES, SHOE &amp; JEWELRY RETAILERS</b>	<b>990</b>	<b>7,200</b>	<b>7,043</b>	<b>6,827</b>	<b>\$42,684,059</b>	<b>\$467.50</b>
4581	Clothing & Clothing Accessories Retailers	759	5,572	5,432	5,255	29,157,668	413.84
4582	Shoe Retailers	103	963	947	921	4,824,318	393.25
4583	Jewelry, Luggage and Leather Goods Retailers	128	665	664	651	8,702,073	1,014.23
<b>459</b>	<b>SPORT GOODS, HOBBY, MUSICAL INSTR, BOOK, &amp; MISC RETAIL</b>	<b>1,709</b>	<b>12,154</b>	<b>12,261</b>	<b>11,940</b>	<b>\$82,610,618</b>	<b>\$524.38</b>
4591	Sporting Goods, Hobby, and Musical Instrument Retailers	415	3,899	3,888	3,843	26,068,694	517.27
4592	Book Retailers and News Dealers	71	378	378	367	2,026,032	416.34
4593	Florists	156	660	691	629	3,771,979	439.62
4594	Office Supplies, Stationery, and Gift Retailers	241	1,276	1,281	1,301	8,464,088	506.29
4595	Used Merchandise Retailers	261	2,435	2,493	2,376	13,870,417	438.23
4599	Other Miscellaneous Retailers	565	3,506	3,530	3,424	28,409,408	626.77
<b>48 - 49</b>	<b>TRANSPORTATION &amp; WAREHOUSING</b>	<b>3,318</b>	<b>61,670</b>	<b>61,506</b>	<b>60,956</b>	<b>\$857,464,465</b>	<b>\$1,074.64</b>
<b>481</b>	<b>AIR TRANSPORTATION</b>	<b>47</b>	<b>692</b>	<b>700</b>	<b>684</b>	<b>\$7,971,116</b>	<b>\$886.07</b>
4811	Scheduled Air Transportation	16	619	627	610	5,999,819	746.00
4812	Nonshceduled Air Transportation	31	73	73	74	1,971,297	2,067.79
<b>483</b>	<b>WATER TRANSPORTATION</b>	<b>6</b>	<b>25</b>	<b>26</b>	<b>28</b>	<b>\$515,283</b>	<b>\$1,505.21</b>
<b>484</b>	<b>TRUCK TRANSPORTATION</b>	<b>2,128</b>	<b>31,500</b>	<b>31,609</b>	<b>31,582</b>	<b>\$514,532,854</b>	<b>\$1,253.96</b>
4841	General Freight Trucking	1,330	25,395	25,425	25,485	429,325,056	1,298.41
4842	Specialized Freight Trucking	798	6,105	6,184	6,097	85,207,798	1,069.47

TABLE 5. STATEWIDE SUMMARY

North American Industry Classification System - Industry Groups		Number of Employing Units	Employment			Total Earnings Apr - Jun 2022	Average Weekly Earnings
			Apr	May	Jun		
486	PIPELINE TRANSPORTATION	38	625	627	622	\$14,417,016	\$1,775.35
488	SUPPORT ACTIVITIES FOR TRANSPORTATION	543	5,786	5,807	5,838	\$91,298,556	\$1,208.70
4881	Support Activities for Air Transportation	122	1,139	1,129	1,128	15,280,247	1,038.34
4882	Support Activities for Rail Transportation	41	603	589	582	8,747,304	1,137.89
4884	Support Activities for Road Transportation	166	929	916	924	10,542,311	878.60
4885	Freight Transportation Arrangement Other	185 29	2,600 515	2,659 514	2,682 522	49,970,442 6,758,252	1,452.16 1,005.54
491	POSTAL SERVICE	16	94	94	92	\$995,204	\$820.22
492	COURIERS & MESSENGERS	216	6,089	6,098	6,062	\$65,900,487	\$833.35
493	WAREHOUSING & STORAGE	202	15,412	15,072	14,683	\$150,187,143	\$767.34
	OTHER	122	1,447	1,473	1,365	\$11,646,806	\$627.24
22	UTILITIES	419	7,549	7,584	7,605	\$183,711,918	\$1,864.50
2211	Electric Power Generation, Transmission & Distribution	181	5,586	5,594	5,641	155,764,029	2,136.94
2212	Natural Gas Distribution	57	995	1,012	986	16,890,344	1,302.30
2213	Water, Sewage & Other Systems	181	968	978	978	11,057,545	872.69
	<b>INFORMATION</b>	<b>2,370</b>	<b>12,479</b>	<b>12,516</b>	<b>12,556</b>	<b>\$230,964,669</b>	<b>\$1,419.39</b>
512	MOTION PICTURE & SOUND RECORDING INDUSTRIES	186	1,076	1,113	1,180	\$7,684,137	\$526.35
5121	Motion Picture & Video Industries	164	1,050	1,086	1,152	7,270,764	510.30
5122	Sound Recording Industries	22	26	27	28	413,373	1,177.70
513	PUBLISHING INDUSTRIES	341	2,090	2,080	2,066	\$27,918,895	\$1,033.17
5131	Newspaper, Periodical, Book & Directory Publishers	230	1,516	1,517	1,501	16,870,051	858.64
5132	Software Publishers	111	574	563	565	11,048,844	1,498.08
516	BROADCASTING AND CONTENT PROVIDERS	190	1,435	1,407	1,425	\$18,804,037	\$1,016.97
5161	Radio and Television Broadcasting Stations	93	1,036	1,013	1,027	12,920,111	\$969.30
5162	Media Strm Dist Svcs, Scl Ntwks, & Oth Media Netwk & Content Pro	97	399	394	398	5,883,926	\$1,140.07

TABLE 5. STATEWIDE SUMMARY

North American Industry Classification System - Industry Groups		Number of Employing Units	Employment			Total Earnings Apr - Jun 2022	Average Weekly Earnings
			Apr	May	Jun		
<b>517</b>	<b>TELECOMMUNICATIONS</b>	<b>378</b>	<b>3,251</b>	<b>3,251</b>	<b>3,221</b>	<b>\$61,427,515</b>	<b>\$1,457.94</b>
5171	Wired & Wireless Telecommunications (except Satellite)	348	3,140	3,139	3,108	59,625,306	1,465.82
5174	Satellite Telecommunications	3	6	6	3	59,019	907.98
5178	All Other Telecommunications	27	105	106	110	1,743,190	1,253.19
<b>518</b>	<b>DATA PROCESSING, WEB HOSTING, &amp; RELATED SERVICES</b>	<b>1,248</b>	<b>4,453</b>	<b>4,485</b>	<b>4,484</b>	<b>\$113,044,535</b>	<b>\$1,943.61</b>
<b>519</b>	<b>WEB SEARCH PORTALS, LIBRARIES, ARCHIVES &amp; OTHER INFO SVCS</b>	<b>27</b>	<b>174</b>	<b>180</b>	<b>180</b>	<b>\$2,085,550</b>	<b>\$901.27</b>
<b>FINANCIAL ACTIVITIES</b>		<b>9,798</b>	<b>54,165</b>	<b>54,415</b>	<b>53,871</b>	<b>\$899,434,468</b>	<b>\$1,277.69</b>
<b>52</b>	<b>FINANCE &amp; INSURANCE</b>	<b>5,806</b>	<b>39,655</b>	<b>39,757</b>	<b>39,493</b>	<b>\$725,778,246</b>	<b>\$1,408.58</b>
<b>522</b>	<b>CREDIT INTERMEDIATION &amp; RELATED ACTIVITIES</b>	<b>2,153</b>	<b>20,014</b>	<b>20,079</b>	<b>20,027</b>	<b>\$339,852,068</b>	<b>\$1,304.51</b>
5221	Depository Credit Intermediation	1,441	16,303	16,374	16,462	265,893,041	1,248.70
5222	Nondepository Credit Intermediation	453	2,312	2,312	2,243	46,765,130	1,571.57
5223	Activities Related to Credit Intermediation	259	1,399	1,393	1,322	27,193,897	1,525.40
<b>523</b>	<b>FINANCIAL INVESTMENT &amp; RELATED ACTIVITIES</b>	<b>904</b>	<b>3,171</b>	<b>3,185</b>	<b>3,094</b>	<b>\$105,661,899</b>	<b>\$2,580.27</b>
5231	Securities & Commodity Contracts Intermediation & Brokerage	375	1,988	2,011	1,942	79,026,452	3,069.66
5239	Other Financial Investment Activities	529	1,183	1,174	1,152	26,635,447	1,751.68
<b>524</b>	<b>INSURANCE CARRIERS &amp; RELATED ACTIVITIES</b>	<b>2,648</b>	<b>16,304</b>	<b>16,348</b>	<b>16,235</b>	<b>\$277,466,185</b>	<b>\$1,309.77</b>
5241	Insurance Carriers	342	7,303	7,318	7,332	134,079,911	1,409.44
5242	Agencies, Brokerages, & Other Insurance Related Activities	2,306	9,001	9,030	8,903	143,386,274	1,228.53
	<b>OTHER</b>	<b>101</b>	<b>166</b>	<b>145</b>	<b>137</b>	<b>\$2,798,094</b>	<b>\$1,441.33</b>
<b>53</b>	<b>REAL ESTATE &amp; RENTAL &amp; LEASING</b>	<b>3,992</b>	<b>14,510</b>	<b>14,658</b>	<b>14,378</b>	<b>\$173,656,222</b>	<b>\$920.28</b>
<b>531</b>	<b>REAL ESTATE</b>	<b>3,374</b>	<b>10,584</b>	<b>10,617</b>	<b>10,275</b>	<b>121,648,318</b>	<b>\$891.88</b>
5311	Lessors of Real Estate	1,077	3,888	3,918	3,832	41,363,028	820.19
5312	Offices of Real Estate Agents & Brokers	1,184	2,327	2,332	2,264	28,720,911	957.37
5313	Activities Related to Real Estate	1,113	4,369	4,367	4,179	51,564,379	921.37
<b>532</b>	<b>RENTAL &amp; LEASING SERVICES</b>	<b>591</b>	<b>3,866</b>	<b>3,979</b>	<b>4,043</b>	<b>\$50,799,339</b>	<b>\$986.11</b>
5321	Automotive Equipment Rental & Leasing	129	934	949	937	9,648,879	789.60
5322	Consumer Goods Rental	293	1,580	1,661	1,750	16,111,466	744.95
5323	General Rental Centers	26	192	195	186	2,509,159	1,010.54
5324	Commercial & Industrial Machinery & Equip Rental and Leasing	143	1,160	1,174	1,170	22,529,835	1,483.79
<b>533</b>	<b>LESSORS OF INTANGIBLE ASSETS (EXCEPT COPYRIGHTS)</b>	<b>27</b>	<b>60</b>	<b>62</b>	<b>60</b>	<b>\$1,208,565</b>	<b>\$1,532.42</b>

TABLE 5. STATEWIDE SUMMARY

North American Industry Classification System - Industry Groups		Number of Employing Units	Employment			Total Earnings Apr - Jun 2022	Average Weekly Earnings
			Apr	May	Jun		
<b>PROFESSIONAL &amp; BUSINESS SERVICES</b>		<b>18,234</b>	<b>151,649</b>	<b>152,471</b>	<b>151,607</b>	<b>\$2,521,923,907</b>	<b>\$1,277.04</b>
<b>54</b>	<b>PROFESSIONAL, SCIENTIFIC, AND TECHNICAL SERVICES</b>	<b>11,774</b>	<b>47,565</b>	<b>46,803</b>	<b>46,237</b>	<b>\$832,160,271</b>	<b>\$1,365.79</b>
5412	Accounting, Tax Prep, Bookkeeping, and Payroll Services	1,582	6,893	6,113	5,925	91,609,594	1,116.72
5413	Architectural, Engineering, & Related Services	1,205	7,138	7,131	7,215	128,004,262	1,374.95
5414	Specialized Design Services	224	483	477	497	6,841,953	1,083.67
5415	Computer Systems Design and Related Services	2,892	9,055	9,037	8,663	214,821,286	1,852.89
5416	Management, Scientific and Technical Consulting Services	2,735	7,900	7,942	7,896	160,734,229	1,562.58
5417	Scientific Research & Development Services	226	978	987	1,042	18,847,076	1,446.40
5418	Advertising, Public Relations, and Related Services	494	4,251	4,222	4,175	63,456,222	1,157.79
	Other	2,416	10,867	10,894	10,824	147,845,649	1,047.05
<b>55</b>	<b>MANAGEMENT OF COMPANIES &amp; ENTERPRISES</b>	<b>571</b>	<b>36,306</b>	<b>36,954</b>	<b>37,686</b>	<b>\$949,581,418</b>	<b>\$1,975.14</b>
<b>56</b>	<b>ADMINISTRATIVE &amp; SUPPORT &amp; WASTE MGT &amp; REMED SERVICES</b>	<b>5,889</b>	<b>67,778</b>	<b>68,714</b>	<b>67,684</b>	<b>\$740,182,218</b>	<b>\$836.59</b>
<b>561</b>	<b>ADMINISTRATIVE &amp; SUPPORT SERVICES</b>	<b>5,535</b>	<b>63,733</b>	<b>64,644</b>	<b>63,593</b>	<b>\$678,560,476</b>	<b>\$815.70</b>
5611	Office Administrative Services	898	4,402	4,386	4,312	76,097,553	1,340.53
5612	Facilities Support Services	67	744	691	708	9,844,665	1,060.12
5613	Employment Services	1,620	28,242	28,809	28,148	310,242,484	840.32
5614	Business Support Services	503	8,063	7,858	7,839	91,973,354	893.29
5615	Travel Arrangement & Reservation Services	136	273	296	281	6,632,476	1,800.67
5616	Investigation & Security Services	337	4,899	4,865	4,705	42,702,418	681.07
5617	Services to Buildings & Dwellings	1,787	15,915	16,546	16,405	127,999,684	604.48
5619	Other Support Services	187	1,195	1,193	1,195	13,067,842	841.66
<b>562</b>	<b>WASTE MANAGEMENT &amp; REMEDIATION SERVICES</b>	<b>354</b>	<b>4,045</b>	<b>4,070</b>	<b>4,091</b>	<b>\$61,621,742</b>	<b>\$1,165.03</b>
5621	Waste Collection	136	1,338	1,347	1,344	17,727,968	1,015.41
5622	Waste Treatment & Disposal	45	1,242	1,242	1,251	22,482,334	1,389.08
5629	Remediation & Other Waste Management Services	173	1,465	1,481	1,496	21,411,440	1,112.36
<b>EDUCATION &amp; HEALTH SERVICES</b>		<b>15,211</b>	<b>183,208</b>	<b>184,090</b>	<b>181,680</b>	<b>\$2,354,338,293</b>	<b>\$989.67</b>
<b>61</b>	<b>EDUCATIONAL SERVICES</b>	<b>1,130</b>	<b>13,407</b>	<b>13,104</b>	<b>12,488</b>	<b>\$137,587,871</b>	<b>\$814.15</b>
6111	Elementary & Secondary Schools	111	5,118	5,092	4,737	53,812,164	830.81
6113	Colleges, Universities, & Professional Schools	161	4,170	3,910	3,541	45,612,223	905.77
6115	Technical & Trade Schools	135	1,157	1,165	1,115	14,200,158	953.44
6116	Other Schools & Instruction	375	2,015	2,022	1,953	10,239,041	394.47
6117	Educational Support Services	226	649	643	849	8,300,324	894.66
	Other	122	298	272	293	5,423,961	1,450.39



TABLE 5. STATEWIDE SUMMARY

North American Industry Classification System - Industry Groups		Number of Employing Units	Employment			Total Earnings Apr - Jun 2022	Average Weekly Earnings
			Apr	May	Jun		
<b>62</b>	<b>HEALTH CARE &amp; SOCIAL ASSISTANCE</b>	<b>14,081</b>	<b>169,801</b>	<b>170,986</b>	<b>169,192</b>	<b>\$2,216,750,422</b>	<b>\$1,003.10</b>
<b>621</b>	<b>AMBULATORY HEALTH CARE SERVICES</b>	<b>6,626</b>	<b>62,079</b>	<b>62,358</b>	<b>61,721</b>	<b>\$1,059,199,774</b>	<b>\$1,313.03</b>
6211	Offices of Physicians	2,399	26,807	26,907	26,723	598,397,322	1,716.77
6212	Offices of Dentists	977	7,659	7,693	7,552	103,808,701	1,045.92
6213	Offices of Other Health Practitioners	1,948	10,795	10,864	10,727	120,753,212	860.44
6214	Outpatient Care Centers	458	5,715	5,747	5,685	91,870,559	1,236.42
6215	Medical & Diagnostic Laboratories	217	1,658	1,663	1,623	32,138,404	1,500.11
	Other	627	9,445	9,484	9,411	112,231,576	913.89
<b>622</b>	<b>HOSPITALS</b>	<b>171</b>	<b>44,235</b>	<b>44,239</b>	<b>44,453</b>	<b>\$672,873,357</b>	<b>\$1,168.15</b>
6222	Psychiatric & Substance Abuse Hospitals	12	1,728	1,766	1,750	24,065,876	1,059.05
	Other	159	42,507	42,473	42,703	648,807,481	1,172.63
<b>623</b>	<b>NURSING &amp; RESIDENTIAL CARE FACILITIES</b>	<b>634</b>	<b>26,424</b>	<b>26,795</b>	<b>26,261</b>	<b>\$228,761,250</b>	<b>\$664.21</b>
6231	Nursing Care Facilities	267	17,331	17,694	17,234	153,679,417	678.63
6232	Residential Developmental Disability & Mental Health Facilities	187	3,983	3,976	3,939	34,839,072	675.73
6233	Retirement Communities & Assisted Living Facilities	143	4,180	4,147	4,128	30,449,817	564.18
6239	Other Residential Care Facilities	37	930	978	960	9,792,944	787.97
<b>624</b>	<b>SOCIAL ASSISTANCE</b>	<b>6,650</b>	<b>37,063</b>	<b>37,594</b>	<b>36,757</b>	<b>\$255,916,041</b>	<b>\$530.07</b>
6241	Individual & Family Services	5,601	22,414	22,773	22,232	159,723,223	546.72
6242	Community Food & Housing, & Emergency & Other Relief Services	169	1,470	1,467	1,441	12,272,648	646.90
6243	Vocational Rehabilitation Services	92	2,544	2,532	2,517	17,090,619	519.42
6244	Child Care Services	788	10,635	10,822	10,567	66,829,551	481.58
	<b>LEISURE &amp; HOSPITALITY</b>	<b>7,631</b>	<b>122,562</b>	<b>123,968</b>	<b>124,659</b>	<b>\$674,984,196</b>	<b>\$419.64</b>
<b>71</b>	<b>ARTS, ENTERTAINMENT &amp; RECREATION</b>	<b>1,084</b>	<b>13,215</b>	<b>13,629</b>	<b>14,590</b>	<b>\$99,166,634</b>	<b>\$552.31</b>
<b>711</b>	<b>PERFORMING ARTS, SPECTATOR SPORTS &amp; RELATED INDUSTRIES</b>	<b>271</b>	<b>3,163</b>	<b>2,748</b>	<b>2,668</b>	<b>\$27,307,423</b>	<b>\$734.55</b>
7111	Performing Arts Companies	44	581	505	631	3,078,364	413.74
7112	Spectator Sports	75	1,466	1,241	1,066	14,616,363	893.99
7113	Promoters of Performing Arts, Sports, & Similar Events	67	987	855	826	8,086,361	699.43
7114	Agents for Artists, Athletes, Entertainers & Public Figures	20	36	50	49	480,001	820.51
7115	Independent Artists, Writers, & Performers	65	93	97	96	1,046,334	844.27
<b>712</b>	<b>MUSEUMS, HISTORICAL SITES &amp; SIMILAR INSTITUTIONS</b>	<b>62</b>	<b>832</b>	<b>836</b>	<b>910</b>	<b>\$8,569,863</b>	<b>\$767.13</b>
<b>713</b>	<b>AMUSEMENT, GAMBLING, &amp; RECREATION INDUSTRIES</b>	<b>751</b>	<b>9,220</b>	<b>10,045</b>	<b>11,012</b>	<b>\$63,289,348</b>	<b>\$482.39</b>
<b>72</b>	<b>ACCOMMODATION &amp; FOOD SERVICES</b>	<b>6,547</b>	<b>109,347</b>	<b>110,339</b>	<b>110,069</b>	<b>\$575,817,562</b>	<b>\$402.97</b>

TABLE 5. STATEWIDE SUMMARY

North American Industry Classification System - Industry Groups		Number of Employing Units	Employment			Total Earnings	Average Weekly Earnings
			Apr	May	Jun	Apr - Jun 2022	
<b>721</b>	<b>ACCOMMODATION</b>	<b>976</b>	<b>11,128</b>	<b>11,376</b>	<b>11,798</b>	<b>\$66,825,481</b>	<b>\$449.57</b>
7211	Traveler Accommodation	865	10,529	10,713	10,879	62,370,686	448.09
7212	Recreational Vehicle Parks & Recreational Camps	93	506	580	853	3,770,298	448.72
7213	Rooming & Boarding Houses, Dormitories, & Workers' Camps	18	93	83	66	684,497	652.73
<b>722</b>	<b>FOOD SERVICES &amp; DRINKING PLACES</b>	<b>5,571</b>	<b>98,219</b>	<b>98,963</b>	<b>98,271</b>	<b>\$508,992,081</b>	<b>\$397.56</b>
7223	Special Food Services	391	5,213	4,961	4,242	28,781,848	460.74
7224	Drinking Places	143	966	986	977	5,552,738	437.49
7225	Restaurants & Other Eating Places	5,037	92,040	93,016	93,052	474,657,495	393.86
722511	Full-Service Restaurants	2,079	38,051	38,484	38,511	218,493,084	438.27
722513	Limited-Service Eating Places	2,341	47,704	48,088	48,021	225,025,583	361.09
722514	Cafeterias, Grill Buffets, & Buffets	88	1,372	1,387	1,407	8,435,868	467.29
722515	Snack & Nonalcoholic Beverage Bars	529	4,913	5,057	5,113	22,702,960	347.35
<b>OTHER SERVICES (EXCEPT PUBLIC ADMINISTRATION)</b>		<b>5,636</b>	<b>25,747</b>	<b>25,860</b>	<b>25,889</b>	<b>\$274,598,395</b>	<b>\$817.70</b>
<b>811</b>	<b>REPAIR &amp; MAINTENANCE</b>	<b>2,311</b>	<b>12,036</b>	<b>11,921</b>	<b>11,975</b>	<b>\$143,469,537</b>	<b>\$921.42</b>
8113	Other Commercial & Industrial Machinery & Equipment Repair	486	2,862	2,793	2,763	44,874,909	1,230.19
8114	Personal & Household Goods Repair & Maintenance	180	783	770	768	7,329,042	728.70
	Other	1,645	8,391	8,358	8,444	91,265,586	836.00
<b>812</b>	<b>PERSONAL &amp; LAUNDRY SERVICES</b>	<b>1,463</b>	<b>7,510</b>	<b>7,564</b>	<b>7,518</b>	<b>\$60,968,315</b>	<b>\$622.77</b>
8121	Personal Care Services	740	2,864	2,884	2,857	21,057,209	564.71
8122	Death Care Services	234	1,476	1,503	1,465	13,641,636	708.39
8123	Drycleaning & Laundry Services	178	1,789	1,796	1,799	15,758,437	675.44
8129	Other Personal Services	311	1,381	1,381	1,397	10,511,033	583.22
<b>813</b>	<b>RELIGIOUS, GRANTMAKING, CIVIC, PROFESSIONAL &amp; SIMILAR ORG</b>	<b>1,253</b>	<b>5,502</b>	<b>5,678</b>	<b>5,710</b>	<b>\$64,457,575</b>	<b>\$880.69</b>
8131	Religious Organizations	109	387	386	385	3,059,357	609.68
8132	Grantmaking & Giving Services	157	557	556	550	9,798,230	1,359.67
8133	Social Advocacy Organizations	258	1,237	1,264	1,213	15,527,827	964.82
8134	Civic & Social Organizations	211	1,085	1,187	1,108	6,607,396	451.12
8139	Business, Professional, Labor, Political & Similar Organizations	518	2,236	2,285	2,454	29,464,765	974.85
<b>814</b>	<b>PRIVATE HOUSEHOLDS</b>	<b>609</b>	<b>699</b>	<b>697</b>	<b>686</b>	<b>\$5,702,968</b>	<b>\$632.12</b>
	<b>LOCAL GOVERNMENT</b>	<b>2,014</b>	<b>111,625</b>	<b>112,359</b>	<b>111,341</b>	<b>\$1,440,939,371</b>	<b>\$991.65</b>
	<b>STATE GOVERNMENT</b>	<b>1,061</b>	<b>64,112</b>	<b>63,526</b>	<b>62,319</b>	<b>\$876,400,073</b>	<b>\$1,064.69</b>
	<b>NONCLASSIFIABLE ESTABLISHMENTS</b>	<b>0</b>	<b>0</b>	<b>0</b>	<b>0</b>	<b>\$0</b>	<b>#DIV/0!</b>

TABLE 6. COUNTY SUMMARY

North American Industry Classification System - Industry Groups	Number of Employing Units	Employment			Total Earnings	Average Weekly Earnings
		Apr	May	Jun	Apr - Jun 2022	
<b>ARKANSAS COUNTY - TOTAL</b>	<b>1,006</b>	<b>9,836</b>	<b>10,048</b>	<b>10,553</b>	<b>\$120,647,457</b>	<b>\$914.73</b>
Natural Resources & Mining	62	169	173	171	1,723,214	775.17
Construction	93	307	311	313	3,417,510	847.11
Manufacturing	44	3,525	3,731	4,192	49,947,096	1,006.84
Trade, Transportation & Utilities	223	2,144	2,169	2,159	27,166,897	968.68
Wholesale Trade	48	415	422	422	7,016,363	1,286.07
Retail Trade	109	1,097	1,120	1,096	8,298,527	578.04
Transportation, Warehousing & Utilities	66	632	627	641	11,852,007	1,439.52
Information	10	65	65	87	506,660	538.81
Financial Activities	78	362	350	354	4,790,013	1,036.95
Professional & Business Services	118	595	576	602	9,227,361	1,201.01
Education & Health Services	188	1,052	1,049	1,017	11,197,674	828.76
Leisure & Hospitality	86	644	647	635	2,880,634	345.15
Other Services	58	129	127	141	1,345,757	782.27
Local Government	32	685	692	731	6,954,215	761.30
State Government	14	159	158	151	1,490,426	734.92
<b>ASHLEY COUNTY - TOTAL</b>	<b>510</b>	<b>5,711</b>	<b>5,881</b>	<b>5,843</b>	<b>\$67,119,310</b>	<b>\$888.39</b>
Natural Resources & Mining	42	302	310	331	3,607,718	882.87
Construction	35	457	534	509	7,042,483	1,083.46
Manufacturing	26	1,139	1,162	1,165	19,002,252	1,265.19
Trade, Transportation & Utilities	113	1,213	1,213	1,210	11,980,078	760.35
Wholesale Trade	20	181	177	178	3,241,328	1,395.52
Retail Trade	65	744	735	730	4,590,460	479.55
Transportation, Warehousing & Utilities	28	288	301	302	4,148,290	1,074.41
Information	5	29	28	29	338,946	909.52
Financial Activities	36	188	187	197	1,850,009	746.37
Professional & Business Services	29	169	183	174	1,633,081	716.47
Education & Health Services	117	817	839	836	9,983,396	924.50
Leisure & Hospitality	32	371	382	386	1,615,265	327.26
Other Services	34	137	137	135	1,065,366	601.11
Local Government	31	791	803	770	7,948,193	775.89
State Government	10	98	103	101	1,052,523	804.27

TABLE 6. COUNTY SUMMARY

North American Industry Classification System - Industry Groups	Number of Employing Units	Employment			Total Earnings	Average Weekly Earnings
		Apr	May	Jun	Apr - Jun 2022	
<b>BAXTER COUNTY - TOTAL</b>	<b>1,223</b>	<b>15,431</b>	<b>15,589</b>	<b>15,655</b>	<b>\$162,719,262</b>	<b>\$804.51</b>
Construction	109	551	570	564	5,452,458	746.74
Manufacturing	54	2,576	2,625	2,625	27,773,398	818.97
Trade, Transportation & Utilities	252	2,807	2,807	2,812	23,168,191	634.52
Wholesale Trade	34	164	173	173	2,175,722	984.49
Retail Trade	194	2,407	2,409	2,425	18,425,498	587.22
Transportation, Warehousing & Utilities	24	236	225	214	2,566,971	877.60
Information	24	167	167	151	2,264,533	1,077.49
Financial Activities	127	761	767	762	11,708,715	1,179.92
Professional & Business Services	162	1,111	1,095	1,105	11,229,981	782.70
Education & Health Services	236	3,924	3,946	3,948	52,360,980	1,022.45
Leisure & Hospitality	123	1,610	1,656	1,692	7,984,759	371.65
Local Government	36	1,228	1,253	1,282	14,294,608	876.63
State Government	11	305	311	324	3,006,609	738.12
Other	89	391	392	390	3,475,030	683.66
<b>BENTON COUNTY - TOTAL</b>	<b>7,649</b>	<b>130,946</b>	<b>132,203</b>	<b>132,132</b>	<b>\$2,056,684,962</b>	<b>\$1,200.71</b>
Natural Resources & Mining	52	695	702	736	11,951,761	1,293.06
Construction	800	6,190	6,261	6,341	85,576,733	1,050.90
Manufacturing	215	12,956	13,124	13,217	169,002,632	992.46
Trade, Transportation & Utilities	1,764	31,588	31,655	31,503	478,603,539	1,165.72
Wholesale Trade	766	6,773	6,819	6,720	172,082,990	1,955.07
Retail Trade	777	13,459	13,436	13,385	116,460,724	667.22
Transportation, Warehousing & Utilities	221	11,356	11,400	11,398	190,059,825	1,284.18
Information	130	983	982	1,014	16,917,830	1,310.55
Financial Activities	848	4,197	4,228	4,141	79,306,164	1,456.42
Professional & Business Services	1,581	35,139	35,658	35,768	784,472,320	1,698.79
Education & Health Services	929	12,707	12,820	12,639	171,902,113	1,039.40
Leisure & Hospitality	716	14,403	14,572	14,777	88,708,527	467.89
Other Services	504	2,434	2,433	2,352	26,186,320	837.10
Local Government	93	8,673	8,786	8,765	134,792,386	1,186.16
State Government	17	981	982	879	9,264,637	752.28

TABLE 6. COUNTY SUMMARY

North American Industry Classification System - Industry Groups	Number of Employing Units	Employment			Total Earnings	Average Weekly Earnings
		Apr	May	Jun	Apr - Jun 2022	
<b>BOONE COUNTY - TOTAL</b>	<b>933</b>	<b>14,304</b>	<b>14,324</b>	<b>14,215</b>	<b>\$160,434,180</b>	<b>\$864.16</b>
Natural Resources & Mining	5	18	19	18	166,921	700.37
Construction	64	473	468	468	5,552,265	909.36
Manufacturing	52	1,757	1,762	1,746	19,529,214	855.98
Trade, Transportation & Utilities	234	3,985	4,013	3,948	46,139,915	891.32
Wholesale Trade	42	392	395	345	4,562,475	930.10
Retail Trade	151	2,247	2,253	2,241	17,544,222	600.60
Transportation, Warehousing & Utilities	41	1,346	1,365	1,362	24,033,218	1,361.68
Information	16	220	219	213	2,685,204	950.40
Financial Activities	93	465	468	447	6,682,527	1,117.48
Professional & Business Services	114	1,316	1,316	1,341	17,043,647	989.97
Education & Health Services	152	1,595	1,569	1,506	16,724,050	826.42
Leisure & Hospitality	83	1,322	1,338	1,368	6,702,532	384.00
Other Services	51	270	265	277	2,689,672	764.40
Local Government	53	2,126	2,167	2,188	29,493,475	1,050.18
State Government	16	757	720	695	7,024,758	746.36
<b>BRADLEY COUNTY - TOTAL</b>	<b>330</b>	<b>3,527</b>	<b>3,573</b>	<b>3,561</b>	<b>36,786,046</b>	<b>\$796.27</b>
Natural Resources & Mining	47	198	234	233	2,204,168	764.89
Construction	15	61	62	67	550,104	668.14
Manufacturing	11	953	953	939	12,722,015	1,031.93
Trade, Transportation & Utilities	73	450	457	455	4,128,217	699.46
Wholesale Trade	12	105	105	106	1,473,205	1,075.86
Retail Trade	38	282	287	283	1,923,109	520.89
Transportation, Warehousing & Utilities	23	63	65	66	731,903	870.62
Financial Activities	21	124	126	127	1,400,194	857.09
Professional & Business Services	21	90	88	92	871,953	745.26
Education & Health Services	77	569	581	576	5,495,718	734.79
Leisure & Hospitality	14	183	179	186	771,066	324.70
Local Government	14	468	466	454	5,237,761	870.83
State Government	10	341	341	345	2,700,903	606.90
Other	27	90	86	87	703,947	617.68

TABLE 6. COUNTY SUMMARY

North American Industry Classification System - Industry Groups	Number of Employing Units	Employment			Total Earnings	Average Weekly Earnings
		Apr	May	Jun	Apr - Jun 2022	
<b>CALHOUN COUNTY - TOTAL</b>	<b>103</b>	<b>1,946</b>	<b>1,965</b>	<b>2,002</b>	<b>\$28,658,886</b>	<b>\$1,118.48</b>
Natural Resources & Mining	7	29	27	29	300,008	814.50
Construction	12	53	58	54	559,963	783.17
Manufacturing	5	1,241	1,255	1,297	20,704,022	1,259.65
Trade, Transportation & Utilities	19	168	169	173	2,048,111	926.75
Retail Trade	10	53	52	54	321,543	466.68
Other Trade, Transportation & Utilities	9	115	117	119	1,726,568	1,135.15
Professional & Business Services	6	13	13	13	109,721	649.24
Education & Health Services	22	65	63	58	805,144	998.94
Leisure & Hospitality	5	12	12	11	44,161	291.17
Local Government	11	188	189	185	1,812,751	744.35
State Government	7	66	66	67	731,944	848.79
Other	9	111	113	115	1,543,061	1,050.42
<b>CARROLL COUNTY - TOTAL</b>	<b>807</b>	<b>10,807</b>	<b>10,908</b>	<b>11,191</b>	<b>\$100,086,536</b>	<b>\$701.91</b>
Natural Resources & Mining	22	280	283	284	3,045,518	829.77
Trade, Transportation & Utilities	182	1,595	1,609	1,620	14,347,375	686.35
Retail Trade	129	1,163	1,177	1,177	7,803,156	512.01
Other Trade, Transportation & Utilities	53	432	432	443	6,544,219	1,155.47
Information	8	46	46	48	687,794	1,133.73
Financial Activities	64	389	391	393	5,047,304	992.98
Professional & Business Services	68	446	446	455	4,984,776	854.00
Education & Health Services	100	843	827	834	9,329,307	859.79
Leisure & Hospitality	183	1,697	1,748	1,972	9,145,651	389.61
Other Services	40	154	163	177	1,175,504	549.13
Local Government	25	1,113	1,119	1,148	11,057,296	754.94
State Government	9	85	85	85	911,809	825.17
Other	106	4,159	4,191	4,175	40,354,202	743.51

TABLE 6. COUNTY SUMMARY

North American Industry Classification System - Industry Groups	Number of Employing Units	Employment			Total Earnings	Average Weekly Earnings
		Apr	May	Jun	Apr - Jun 2022	
<b>CHICOT COUNTY - TOTAL</b>	<b>415</b>	<b>2,760</b>	<b>2,763</b>	<b>2,729</b>	<b>\$28,149,729</b>	<b>\$787.21</b>
Natural Resources & Mining	56	217	223	236	2,289,371	781.53
Construction	14	127	105	109	1,684,373	1,139.89
Trade, Transportation & Utilities	72	766	765	788	5,935,948	590.70
Retail Trade	46	290	284	285	1,989,424	534.46
Other Trade, Transportation & Utilities	26	476	481	503	3,946,524	623.79
Financial Activities	27	140	140	135	2,850,690	1,585.18
Professional & Business Services	15	38	36	37	850,763	1,768.74
Education & Health Services	170	508	527	467	5,255,183	807.41
Leisure & Hospitality	13	114	120	117	520,963	342.51
Local Government	16	541	544	531	5,945,932	849.10
State Government	9	225	225	227	2,084,507	710.55
Other	23	84	78	82	731,999	692.31
<b>CLARK COUNTY - TOTAL</b>	<b>652</b>	<b>8,154</b>	<b>8,136</b>	<b>7,924</b>	<b>\$81,026,539</b>	<b>\$772.22</b>
Natural Resources & Mining	49	286	290	292	3,364,691	894.55
Construction	24	88	88	87	1,085,957	952.87
Manufacturing	32	1,034	1,053	1,041	15,844,122	1,168.91
Trade, Transportation & Utilities	141	1,377	1,385	1,389	12,255,345	681.32
Wholesale Trade	19	61	64	64	889,179	1,085.69
Retail Trade	89	1,146	1,151	1,164	9,161,359	610.85
Transportation, Warehousing & Utilities	33	170	170	161	2,204,807	1,015.57
Financial Activities	79	302	301	312	3,266,074	823.73
Professional & Business Services	54	585	588	585	7,442,376	976.95
Education & Health Services	125	1,573	1,609	1,499	15,000,321	739.50
Leisure & Hospitality	62	1,032	1,041	1,016	4,782,156	357.26
Local Government	28	893	917	927	9,290,532	783.33
State Government	12	764	642	557	6,564,025	771.66
Other	46	220	222	219	2,130,940	743.96

TABLE 6. COUNTY SUMMARY

North American Industry Classification System - Industry Groups	Number of Employing Units	Employment			Total Earnings	Average Weekly Earnings
		Apr	May	Jun	Apr - Jun 2022	
<b>CLAY COUNTY - TOTAL</b>	<b>345</b>	<b>3,012</b>	<b>3,058</b>	<b>3,020</b>	<b>\$29,597,679</b>	<b>\$751.40</b>
Natural Resources & Mining	50	184	192	189	1,726,012	704.97
Construction	31	104	115	124	1,135,337	763.85
Manufacturing	16	198	176	172	1,468,027	620.47
Trade, Transportation & Utilities	81	782	793	781	7,753,831	759.48
Retail Trade	39	369	381	383	2,905,509	591.79
Other Trade, Transportation & Utilities	42	413	412	398	4,848,322	914.84
Information	5	17	17	16	163,067	752.62
Financial Activities	19	96	96	97	936,128	747.51
Professional & Business Services	22	95	94	90	1,008,025	833.77
Education & Health Services	48	438	436	435	4,627,452	815.79
Leisure & Hospitality	22	180	187	179	681,016	287.83
Other Services	22	82	86	84	864,418	791.59
Local Government	20	793	823	811	8,795,300	836.29
State Government	9	43	43	42	439,066	791.59
<b>CLEBURNE COUNTY - TOTAL</b>	<b>619</b>	<b>6,167</b>	<b>6,334</b>	<b>6,403</b>	<b>\$61,292,983</b>	<b>\$748.23</b>
Natural Resources & Mining	16	129	127	128	2,208,359	1,327.14
Construction	64	277	288	285	2,991,152	812.08
Manufacturing	33	1,259	1,246	1,284	14,398,918	876.97
Trade, Transportation & Utilities	146	1,298	1,307	1,322	12,754,845	749.54
Wholesale Trade	27	87	91	89	1,182,658	1,022.18
Retail Trade	97	1,059	1,063	1,074	9,317,015	672.74
Transportation, Warehousing & Utilities	22	152	153	159	2,255,172	1,121.60
Information	13	52	48	51	633,388	967.99
Financial Activities	63	234	234	233	2,782,849	916.11
Professional & Business Services	71	320	325	304	3,116,661	757.88
Education & Health Services	69	795	798	786	7,376,195	715.51
Leisure & Hospitality	82	868	1,008	1,040	4,875,182	385.82
Other Services	36	93	93	90	753,577	630.08
Local Government	18	736	749	785	8,525,689	866.73
State Government	8	106	111	95	876,168	648.05



TABLE 6. COUNTY SUMMARY

North American Industry Classification System - Industry Groups	Number of Employing Units	Employment			Total Earnings	Average Weekly Earnings
		Apr	May	Jun	Apr - Jun 2022	
<b>CLEVELAND COUNTY - TOTAL</b>	<b>114</b>	<b>986</b>	<b>978</b>	<b>899</b>	<b>\$9,845,823</b>	<b>\$793.61</b>
Natural Resources & Mining	16	119	118	119	1,417,358	918.77
Manufacturing	4	118	117	121	1603573	1,039.48
Trade, Transportation & Utilities	29	128	125	126	1,087,532	662.19
Retail Trade	17	57	59	58	341,589	453.04
Other Trade, Transportation & Utilities	12	71	66	68	745,943	839.71
Education & Health Services	27	236	237	237	2,137,318	694.69
Other Services	4	7	7	7	62,248	684.04
Local Government	13	288	285	214	2,660,964	780.27
State Government	6	28	28	28	319,433	877.56
Other	15	62	61	47	557,397	756.65
<b>COLUMBIA COUNTY - TOTAL</b>	<b>644</b>	<b>7,967</b>	<b>7,992</b>	<b>7,831</b>	<b>\$89,838,558</b>	<b>\$871.46</b>
Natural Resources & Mining	43	363	360	367	6,064,301	1,283.90
Construction	30	120	120	122	1,384,102	882.34
Manufacturing	25	1,857	1,876	1,870	31,816,245	1,310.41
Trade, Transportation & Utilities	166	1,402	1,417	1,364	12,293,182	678.19
Wholesale Trade	30	186	193	204	2,726,334	1,079.17
Retail Trade	92	999	1,001	942	6,306,608	494.69
Transportation, Warehousing & Utilities	44	217	223	218	3,260,240	1,143.41
Information	5	21	21	20	252,389	939.41
Financial Activities	57	356	348	346	4,597,792	1,010.50
Professional & Business Services	51	309	304	326	2,737,595	672.79
Education & Health Services	141	1,055	1,069	1,066	9,849,553	712.53
Leisure & Hospitality	54	892	874	841	3,589,875	317.77
Other Services	34	105	112	117	878,243	606.80
Local Government	27	826	829	815	8,633,457	806.61
State Government	11	661	662	577	7,741,824	940.30

TABLE 6. COUNTY SUMMARY

North American Industry Classification System - Industry Groups	Number of Employing Units	Employment			Total Earnings	Average Weekly Earnings
		Apr	May	Jun	Apr - Jun 2022	
<b>CONWAY COUNTY - TOTAL</b>	<b>501</b>	<b>6,830</b>	<b>6,942</b>	<b>6,904</b>	<b>76,156,485</b>	<b>\$850.00</b>
Natural Resources & Mining	27	187	190	191	1,987,323	807.42
Construction	54	537	530	550	8,127,154	1,159.86
Manufacturing	21	1,061	1,071	1,076	15,606,603	1,122.67
Trade, Transportation & Utilities	102	1,266	1,262	1,253	11,782,584	719.14
Retail Trade	69	792	791	788	5,691,866	553.99
Other Trade, Transportation & Utilities	33	474	471	465	6,090,718	996.84
Information	5	17	19	18	123,678	528.54
Financial Activities	35	156	167	167	2,035,961	958.85
Professional & Business Services	41	767	846	846	7,089,519	665.33
Education & Health Services	112	656	663	543	7,542,533	934.79
Leisure & Hospitality	39	443	445	477	2,016,581	340.93
Other Services	25	105	105	107	935,505	681.03
Local Government	31	1,277	1,287	1,328	15,750,660	933.91
State Government	9	358	357	348	3,158,384	685.66
<b>CRAIGHEAD COUNTY - TOTAL</b>	<b>2,927</b>	<b>52,730</b>	<b>52,897</b>	<b>52,896</b>	<b>\$638,028,639</b>	<b>\$928.81</b>
Natural Resources & Mining	102	305	311	317	3,634,572	898.98
Construction	261	2,536	2,581	2,656	35,590,305	1,056.63
Manufacturing	100	8,213	8,189	8,123	111,653,538	1,050.61
Trade, Transportation & Utilities	747	10,426	10,384	10,295	114,928,012	852.66
Wholesale Trade	183	1,966	1,955	1,984	30,979,666	1,210.69
Retail Trade	437	6,391	6,342	6,212	55,986,528	681.97
Transportation, Warehousing & Utilities	127	2,069	2,087	2,099	27,961,818	1,031.61
Information	29	409	412	408	5,227,147	981.50
Financial Activities	301	1,824	1,853	1,849	27,679,093	1,155.90
Professional & Business Services	406	4,303	4,391	4,357	44,169,949	781.02
Education & Health Services	439	11,199	11,255	11,423	168,675,025	1,149.01
Leisure & Hospitality	296	5,896	5,870	5,850	30,335,443	397.39
Other Services	190	873	890	929	9,306,771	797.81
Local Government	35	4,187	4,221	4,173	53,437,934	980.19
State Government	21	2,559	2,540	2,516	33,390,850	1,011.90

TABLE 6. COUNTY SUMMARY

North American Industry Classification System - Industry Groups	Number of Employing Units	Employment			Total Earnings	Average Weekly Earnings
		Apr	May	Jun	Apr - Jun 2022	
<b>CRAWFORD COUNTY - TOTAL</b>	<b>1,250</b>	<b>18,892</b>	<b>19,108</b>	<b>18,999</b>	<b>\$217,039,595</b>	<b>\$878.72</b>
Natural Resources & Mining	20	234	207	180	2,702,262	1,004.19
Construction	137	1,057	1,085	1,085	12,793,646	914.90
Manufacturing	61	4,710	4,780	4,800	60,992,135	984.96
Trade, Transportation & Utilities	322	5,459	5,532	5,501	65,012,845	909.71
Wholesale Trade	70	845	863	829	13,189,959	1,199.78
Retail Trade	171	2,147	2,173	2,166	16,279,730	579.23
Transportation, Warehousing & Utilities	81	2,467	2,496	2,506	35,543,156	1,098.17
Information	12	33	34	40	489,328	1,055.34
Financial Activities	125	506	512	514	5,709,753	860.08
Professional & Business Services	160	904	898	897	12,185,269	1,041.86
Education & Health Services	177	1,582	1,601	1,513	15,570,177	765.14
Leisure & Hospitality	95	1,554	1,552	1,575	7,296,548	359.71
Other Services	88	455	465	486	4,452,414	730.78
Local Government	43	2,259	2,302	2,267	28,529,969	964.24
State Government	10	139	140	141	1,305,249	717.17
<b>CRITTENDEN COUNTY - TOTAL</b>	<b>1,123</b>	<b>15,641</b>	<b>15,882</b>	<b>15,692</b>	<b>\$176,196,000</b>	<b>\$861.18</b>
Natural Resources & Mining	55	228	232	234	2,091,338	695.41
Construction	33	359	359	357	5,427,423	1,165.10
Manufacturing	37	1,788	1,859	1,792	24,811,457	1,052.72
Trade, Transportation & Utilities	309	4,543	4,569	4,493	53,573,379	908.72
Wholesale Trade	53	797	781	768	11,566,927	1,137.81
Retail Trade	158	1,829	1,880	1,866	12,574,527	520.50
Transportation, Warehousing & Utilities	98	1,917	1,908	1,859	29,431,925	1,194.93
Information	3	23	22	20	261,716	929.17
Financial Activities	94	446	442	424	7,890,825	1,387.93
Professional & Business Services	101	869	853	856	9,916,542	887.68
Education & Health Services	238	1,869	1,901	1,839	18,889,214	777.15
Leisure & Hospitality	135	2,690	2,852	2,846	18,484,513	508.54
Other Services	67	450	439	477	4,499,665	760.16
Local Government	38	2,017	2,033	2,023	26,643,994	1,012.45
State Government	13	359	321	331	3,705,934	845.91

TABLE 6. COUNTY SUMMARY

North American Industry Classification System - Industry Groups	Number of Employing Units	Employment			Total Earnings	Average Weekly Earnings
		Apr	May	Jun	Apr - Jun 2022	
<b>CROSS COUNTY - TOTAL</b>	<b>446</b>	<b>4,638</b>	<b>4,680</b>	<b>4,602</b>	<b>\$44,044,341</b>	<b>\$730.18</b>
Natural Resources & Mining	47	246	254	253	2,238,429	686.00
Construction	25	74	76	74	833,391	858.58
Manufacturing	9	326	321	318	2,676,627	640.09
Trade, Transportation & Utilities	112	1,117	1,135	1,104	11,016,415	757.52
Wholesale Trade	25	270	277	271	3,557,381	1,003.59
Retail Trade	60	757	766	748	6,227,512	632.81
Transportation, Warehousing & Utilities	27	90	92	85	1,231,522	1,064.41
Information	4	22	23	21	128,756	450.20
Financial Activities	47	210	213	209	2,559,136	934.45
Professional & Business Services	35	145	143	146	1,923,548	1,022.80
Education & Health Services	79	920	941	907	9,120,448	760.38
Leisure & Hospitality	35	455	451	447	1,950,358	332.66
Other Services	27	104	105	105	955,595	702.30
Local Government	17	689	685	680	7,443,572	836.29
State Government	9	330	333	338	3,198,066	737.28
<b>DALLAS COUNTY - TOTAL</b>	<b>222</b>	<b>2,607</b>	<b>2,629</b>	<b>2,557</b>	<b>\$26,372,299</b>	<b>\$780.95</b>
Natural Resources & Mining	18	91	95	91	952,911	793.87
Construction	17	56	53	70	861,331	1,110.44
Manufacturing	9	534	536	490	6,427,263	950.78
Trade, Transportation & Utilities	52	477	481	479	3,997,488	641.96
Retail Trade	34	324	324	317	2,164,911	517.71
Other Trade, Transportation, & Utilities	18	153	157	162	1,832,577	895.98
Information	3	19	19	19	220,101	891.10
Financial Activities	16	63	63	63	766,735	936.18
Professional & Business Services	13	35	31	15	235,914	672.12
Education & Health Services	47	780	796	798	8,869,807	862.21
Leisure & Hospitality	14	136	141	163	550,976	288.97
Other Services	12	48	48	44	345,381	569.31
Local Government	14	339	337	296	2,836,741	673.49
State Government	7	29	29	29	307,651	816.05

TABLE 6. COUNTY SUMMARY

North American Industry Classification System - Industry Groups	Number of Employing Units	Employment			Total Earnings	Average Weekly Earnings
		Apr	May	Jun	Apr - Jun 2022	
<b>DESHA COUNTY - TOTAL</b>	<b>468</b>	<b>4,285</b>	<b>4,282</b>	<b>4,328</b>	<b>\$46,111,973</b>	<b>\$825.22</b>
Natural Resources & Mining	67	245	250	264	2,320,725	705.60
Construction	13	75	72	75	780,699	811.54
Manufacturing	15	1,035	1,042	1,053	15,268,859	1,125.75
Trade, Transportation & Utilities	98	842	833	860	8,920,646	812.08
Retail Trade	49	467	459	460	2,800,403	466.27
Transportation, Warehousing & Utilities	49	375	374	400	6,120,243	1,229.21
Financial Activities	28	212	208	209	2,071,006	759.82
Professional & Business Services	34	92	90	98	890,979	734.32
Education & Health Services	119	472	490	477	4,132,073	662.65
Leisure & Hospitality	40	382	382	394	1,529,619	304.83
Local Government	20	739	718	700	8,557,943	915.58
State Government	9	117	114	115	1,035,065	690.35
Other	25	74	83	83	604,359	581.11
<b>DREW COUNTY - TOTAL</b>	<b>533</b>	<b>6,270</b>	<b>6,220</b>	<b>6,051</b>	<b>\$69,333,438</b>	<b>\$862.95</b>
Natural Resources & Mining	52	466	465	431	3,962,657	671.41
Construction	28	173	184	169	2,640,265	1,158.35
Manufacturing	20	953	980	985	12,297,448	972.54
Trade, Transportation & Utilities	117	1,039	1,039	1,011	8,627,502	644.53
Wholesale Trade	18	106	105	107	1,235,785	896.80
Retail Trade	76	856	862	815	6,278,495	572.00
Transportation, Warehousing & Utilities	23	77	72	89	1,113,222	1,079.40
Information	5	39	41	42	300,978	569.32
Financial Activities	52	200	203	203	2,753,030	1,048.37
Professional & Business Services	38	285	277	270	6,367,441	1,766.12
Education & Health Services	120	784	760	738	7,289,441	737.15
Leisure & Hospitality	45	652	624	621	2,856,221	347.46
Other Services	21	48	49	47	428,629	686.91
Local Government	22	1,243	1,240	1,215	15,489,551	966.61
State Government	13	388	358	319	6,320,275	1,369.51

TABLE 6. COUNTY SUMMARY

North American Industry Classification System - Industry Groups	Number of Employing Units	Employment			Total Earnings	Average Weekly Earnings
		Apr	May	Jun	Apr - Jun 2022	
<b>FAULKNER COUNTY - TOTAL</b>	<b>3,076</b>	<b>42,501</b>	<b>42,378</b>	<b>42,025</b>	<b>490,068,975</b>	<b>\$891.17</b>
Natural Resources & Mining	31	218	216	212	3,052,991	1,090.61
Construction	375	3,155	3,102	3,174	40,437,850	989.48
Manufacturing	101	2,992	2,959	2,968	39,032,623	1,009.93
Trade, Transportation & Utilities	625	8,238	8,241	8,108	77,249,288	725.05
Wholesale Trade	126	913	921	925	13,154,924	1,100.31
Retail Trade	409	6,425	6,406	6,316	51,587,079	621.75
Transportation, Warehousing & Utilities	90	900	914	867	12,507,285	1,076.57
Financial Activities	353	1,488	1,484	1,494	20,360,112	1,052.06
Professional & Business Services	484	3,709	3,781	3,855	51,106,900	1,039.57
Education & Health Services	494	8,045	8,032	7,925	94,997,844	913.36
Leisure & Hospitality	304	5,629	5,641	5,668	28,451,949	387.64
Local Government	44	3,397	3,403	3,315	52,452,468	1,196.68
State Government	18	3,040	3,019	2,806	33,744,000	878.41
Other	247	2,590	2,500	2,500	49,182,950	1,495.38
<b>FRANKLIN COUNTY - TOTAL</b>	<b>382</b>	<b>4,670</b>	<b>4,664</b>	<b>4,660</b>	<b>\$46,397,205</b>	<b>\$765.12</b>
Natural Resources & Mining	16	104	120	132	1,836,227	1,190.29
Construction	39	162	161	159	1,367,484	654.72
Manufacturing	17	1,044	1,044	1,042	11,477,391	846.21
Trade, Transportation & Utilities	81	1,038	1,014	1,058	10,494,676	778.73
Wholesale Trade	8	42	44	44	250,141	444.04
Retail Trade	53	677	679	712	4,570,259	510.00
Transportation, Warehousing & Utilities	20	319	291	302	5,674,276	1,435.80
Information	6	34	34	34	512,358	1,159.18
Financial Activities	36	82	82	83	834,046	779.24
Professional & Business Services	29	397	374	367	3,537,079	717.27
Education & Health Services	66	498	511	517	4,568,273	690.84
Leisure & Hospitality	33	371	386	380	1,586,332	321.97
Other Services	19	55	57	53	452,524	632.90
Local Government	32	761	757	726	8,308,430	854.43
State Government	8	124	124	109	1,422,385	919.45

TABLE 6. COUNTY SUMMARY

North American Industry Classification System - Industry Groups	Number of Employing Units	Employment			Total Earnings	Average Weekly Earnings
		Apr	May	Jun	Apr - Jun 2022	
<b>FULTON COUNTY - TOTAL</b>	<b>197</b>	<b>2,094</b>	<b>2,130</b>	<b>2,116</b>	<b>\$21,914,226</b>	<b>\$797.65</b>
Manufacturing	9	122	96	96	1,049,601	771.39
Trade, Transportation & Utilities	48	315	330	328	3,393,524	804.85
Retail Trade	30	185	199	199	1,310,766	518.84
Other Trade, Transportation, & Utilities	18	130	131	129	2,082,758	1,232.40
Information	4	29	27	26	418,805	1,178.63
Financial Activities	21	86	105	104	1,232,441	964.10
Professional & Business Services	10	24	23	24	205,331	667.38
Education & Health Services	45	437	473	466	4,473,266	750.21
Leisure & Hospitality	16	129	133	130	523,280	308.05
Other Services	8	19	18	20	162,693	658.68
Local Government	12	567	563	559	5,570,181	761.06
State Government	9	58	58	58	546,722	725.10
Other	15	308	304	305	4,338,382	1,091.78
<b>GARLAND COUNTY - TOTAL</b>	<b>3,191</b>	<b>37,649</b>	<b>37,691</b>	<b>37,150</b>	<b>\$397,687,996</b>	<b>\$815.84</b>
Natural Resources & Mining	29	236	237	233	2,725,192	890.78
Construction	356	1,848	1,822	1,827	20,870,159	876.15
Manufacturing	94	2,470	2,468	2,446	32,714,433	1,022.41
Trade, Transportation & Utilities	664	7,681	7,668	7,670	73,111,193	732.95
Wholesale Trade	135	792	828	819	12,093,527	1,144.25
Retail Trade	463	6,321	6,277	6,278	53,406,116	652.92
Transportation, Warehousing & Utilities	66	568	563	573	7,611,550	1,030.82
Information	29	393	402	359	4,216,225	843.13
Financial Activities	389	1,476	1,483	1,470	20,640,236	1,075.44
Professional & Business Services	432	3,015	3,013	2,942	33,017,786	849.44
Education & Health Services	507	7,905	7,845	7,794	100,832,588	988.32
Leisure & Hospitality	416	7,888	7,912	7,880	48,997,102	477.49
Other Services	214	983	983	966	7,764,903	611.15
Local Government	40	2,956	3,089	2,884	44,609,929	1,152.94
State Government	21	798	769	679	8,188,250	841.32

TABLE 6. COUNTY SUMMARY

North American Industry Classification System - Industry Groups	Number of Employing Units	Employment			Total Earnings	Average Weekly Earnings
		Apr	May	Jun	Apr - Jun 2022	
<b>GRANT COUNTY - TOTAL</b>	<b>343</b>	<b>4,280</b>	<b>4,361</b>	<b>4,353</b>	<b>\$51,464,690</b>	<b>\$914.00</b>
Natural Resources & Mining	23	161	167	168	2,289,026	1,064.99
Construction	33	269	279	283	4,314,469	1,198.13
Manufacturing	18	1,440	1,469	1,426	19,713,932	1,049.45
Trade, Transportation & Utilities	88	652	666	649	5,937,274	696.56
Wholesale Trade	19	95	96	97	1,957,010	1,568.12
Retail Trade	50	516	533	516	3,543,415	522.50
Transportation, Warehousing & Utilities	19	41	37	36	436,849	884.31
Financial Activities	22	170	168	166	3,488,781	1,597.43
Professional & Business Services	33	140	142	146	1,921,028	1,035.78
Education & Health Services	64	355	360	359	2,673,560	574.46
Leisure & Hospitality	25	257	267	289	1,175,905	333.78
Local Government	10	733	740	764	8,935,503	921.79
State Government	7	46	46	45	417,331	702.97
Other	20	57	57	58	597,881	802.17
<b>GREENE COUNTY - TOTAL</b>	<b>892</b>	<b>15,441</b>	<b>15,503</b>	<b>15,629</b>	<b>\$168,519,168</b>	<b>\$835.01</b>
Natural Resources & Mining	41	213	225	244	2,122,235	718.10
Construction	73	399	393	418	5,533,569	1,055.35
Manufacturing	51	4,755	4,761	4,781	61,387,424	990.86
Trade, Transportation & Utilities	227	2,816	2,859	2,839	26,242,662	711.30
Wholesale Trade	46	526	536	526	7,327,392	1,064.82
Retail Trade	151	2,050	2,084	2,078	15,905,496	590.87
Transportation, Warehousing & Utilities	30	240	239	235	3,009,774	972.78
Information	10	127	120	135	1,973,823	1,192.40
Financial Activities	77	580	578	587	7,342,050	970.96
Professional & Business Services	103	855	845	839	8,013,285	728.33
Education & Health Services	140	2,107	2,101	2,084	23,572,437	864.56
Leisure & Hospitality	82	1,353	1,373	1,378	6,680,500	375.65
Other Services	46	181	182	178	1,470,887	627.42
Local Government	32	1,691	1,697	1,773	20,094,764	898.52
State Government	10	364	369	373	4,085,532	852.45



TABLE 6. COUNTY SUMMARY

North American Industry Classification System - Industry Groups	Number of Employing Units	Employment			Total Earnings	Average Weekly Earnings
		Apr	May	Jun	Apr - Jun 2022	
<b>HEMPSTEAD COUNTY - TOTAL</b>	<b>513</b>	<b>7,708</b>	<b>7,804</b>	<b>7,779</b>	<b>\$81,084,816</b>	<b>\$803.40</b>
Natural Resources & Mining	24	239	247	253	3,222,167	1,006.19
Construction	29	132	137	130	1,421,359	822.07
Manufacturing	28	2,172	2,212	2,269	27,042,987	938.03
Trade, Transportation & Utilities	124	1,311	1,335	1,278	12,927,498	760.26
Retail Trade	70	839	859	828	5,890,212	538.12
Other Trade, Transportation & Utilities	54	472	476	450	7,037,286	1,161.65
Information	7	17	20	21	257,059	1,022.78
Financial Activities	45	171	176	169	2,201,881	984.74
Professional & Business Services	39	583	582	569	4,697,978	625.23
Education & Health Services	95	862	855	819	7,275,317	662.03
Leisure & Hospitality	47	600	613	603	2,932,228	372.61
Other Services	31	110	112	111	1,081,771	749.67
Local Government	28	826	826	879	11,333,437	1,033.35
State Government	16	685	689	678	6,691,134	752.49
<b>HOT SPRING COUNTY - TOTAL</b>	<b>603</b>	<b>8,054</b>	<b>8,056</b>	<b>8,038</b>	<b>\$89,749,791</b>	<b>\$857.69</b>
Natural Resources & Mining	21	153	150	154	1,756,135	886.79
Construction	61	197	199	203	1,985,269	764.84
Manufacturing	29	1,584	1,609	1,618	21,843,289	1,047.76
Trade, Transportation & Utilities	149	1,722	1,724	1,721	20,294,631	906.40
Wholesale Trade	21	92	90	94	1,238,127	1,035.22
Retail Trade	91	928	918	888	6,812,808	575.05
Transportation, Warehousing & Utilities	37	702	716	739	12,243,696	1,309.91
Financial Activities	55	219	218	224	2,508,029	875.61
Professional & Business Services	57	583	574	578	6,063,198	806.46
Education & Health Services	95	882	884	828	9,896,745	880.44
Leisure & Hospitality	55	678	685	727	3,105,846	342.93
Local Government	27	959	952	944	13,092,321	1,058.25
State Government	13	897	875	867	7,651,630	669.10
Other	41	180	186	174	1552698	663.55

TABLE 6. COUNTY SUMMARY

North American Industry Classification System - Industry Groups	Number of Employing Units	Employment			Total Earnings	Average Weekly Earnings
		Apr	May	Jun	Apr - Jun 2022	
<b>HOWARD COUNTY - TOTAL</b>	<b>349</b>	<b>6,465</b>	<b>6,494</b>	<b>6,547</b>	<b>\$65,012,152</b>	<b>\$769.14</b>
Natural Resources & Mining	18	188	185	189	2,209,371	907.22
Construction	22	82	83	84	872,337	808.47
Manufacturing	19	3,066	3,050	3,072	30,831,103	774.37
Trade, Transportation & Utilities	82	896	900	893	8,408,743	721.64
Wholesale Trade	15	90	89	86	1,149,016	1,000.59
Retail Trade	47	589	594	590	4,167,987	542.49
Transportation, Warehousing & Utilities	20	217	217	217	3,091,740	1,095.97
Financial Activities	33	122	125	136	1,318,041	794.16
Professional & Business Services	23	116	134	137	1,492,230	889.82
Education & Health Services	73	778	785	782	8,209,492	807.89
Leisure & Hospitality	30	318	339	326	1,469,896	345.07
Local Government	17	699	696	727	8,339,127	906.89
State Government	10	99	97	91	877,735	705.76
Other	22	101	100	110	984,077	730.21
<b>INDEPENDENCE COUNTY - TOTAL</b>	<b>903</b>	<b>16,507</b>	<b>16,706</b>	<b>16,744</b>	<b>\$187,587,386</b>	<b>\$866.53</b>
Natural Resources & Mining	21	281	291	289	3,952,572	1,059.39
Construction	58	555	569	573	7,207,080	980.07
Manufacturing	46	3,735	3,756	3,791	45,785,585	936.53
Trade, Transportation & Utilities	237	2,905	2,924	2,882	30,093,560	797.23
Wholesale Trade	31	233	241	236	3,306,322	1,074.64
Retail Trade	163	1,978	1,988	1,952	15,152,637	590.87
Transportation, Warehousing & Utilities	43	694	695	694	11,634,601	1,288.96
Information	9	85	85	93	1,070,416	939.24
Financial Activities	85	641	658	661	10,717,140	1,261.83
Professional & Business Services	89	1,304	1,339	1,409	12,841,774	731.36
Education & Health Services	154	3,384	3,385	3,367	45,047,661	1,025.61
Leisure & Hospitality	82	1,282	1,264	1,255	5,923,279	359.62
Other Services	60	271	267	263	2,216,589	638.60
Local Government	47	1,500	1,602	1,609	17,241,298	844.57
State Government	15	564	566	552	5,490,432	753.28

TABLE 6. COUNTY SUMMARY

North American Industry Classification System - Industry Groups	Number of Employing Units	Employment			Total Earnings	Average Weekly Earnings
		Apr	May	Jun	Apr - Jun 2022	
<b>IZARD COUNTY - TOTAL</b>	<b>232</b>	<b>2,789</b>	<b>2,780</b>	<b>2,778</b>	<b>\$27,102,928</b>	<b>\$749.31</b>
Natural Resources & Mining	7	106	109	118	1,914,932	1,327.05
Construction	21	72	70	69	646,656	707.24
Manufacturing	8	156	161	171	1,601,058	757.12
Trade, Transportation & Utilities	60	538	524	516	4,147,269	606.50
Wholesale Trade	11	62	63	58	577,049	727.68
Retail Trade	40	376	359	362	2,311,613	486.28
Transportation, Warehousing & Utilities	9	100	102	96	1,258,607	974.66
Financial Activities	21	171	166	167	1,548,751	709.14
Professional & Business Services	19	54	53	55	798,457	1,137.40
Education & Health Services	35	543	540	541	5,374,826	763.76
Leisure & Hospitality	21	174	189	196	782,000	322.83
Local Government	14	516	510	507	5,663,899	852.61
State Government	9	390	390	378	3,980,043	793.15
Other	17	69	68	60	645,037	755.61
<b>JACKSON COUNTY - TOTAL</b>	<b>408</b>	<b>5,078</b>	<b>5,125</b>	<b>5,150</b>	<b>\$56,304,024</b>	<b>\$846.30</b>
Natural Resources & Mining	52	321	332	338	3,503,595	815.86
Construction	21	127	125	129	1,651,545	1,000.33
Manufacturing	9	1,012	1,004	1,048	13,108,550	987.29
Trade, Transportation & Utilities	105	1,001	1,016	1,010	10,785,483	822.25
Wholesale Trade	18	208	216	221	3,863,551	1,382.31
Retail Trade	67	703	709	700	5,652,394	617.61
Transportation, Warehousing & Utilities	20	90	91	89	1,269,538	1,085.08
Information	3	8	8	8	72,785	699.86
Financial Activities	31	133	128	129	1,430,457	846.42
Professional & Business Services	31	98	101	101	1,348,531	1,037.33
Education & Health Services	73	747	740	752	9,343,547	963.02
Leisure & Hospitality	23	306	319	323	1,387,577	337.77
Other Services	16	48	51	51	477,431	734.51
Local Government	32	542	568	537	6,164,111	863.68
State Government	12	735	733	724	7,030,412	740.15

TABLE 6. COUNTY SUMMARY

North American Industry Classification System - Industry Groups	Number of Employing Units	Employment			Total Earnings	Average Weekly Earnings
		Apr	May	Jun	Apr - Jun 2022	
<b>JEFFERSON COUNTY - TOTAL</b>	<b>1,864</b>	<b>24,451</b>	<b>24,689</b>	<b>24,451</b>	<b>\$289,736,431</b>	<b>\$908.57</b>
Natural Resources & Mining	29	94	92	98	1,443,243	1,172.73
Construction	82	444	426	463	4,774,879	826.63
Manufacturing	57	4,048	4,106	4,066	64,907,955	1,225.76
Trade, Transportation & Utilities	393	4,163	4,163	4,127	43,736,099	810.48
Wholesale Trade	70	623	630	609	8,792,531	1,089.71
Retail Trade	266	2,905	2,897	2,876	23,482,664	624.46
Transportation, Warehousing & Utilities	57	635	636	642	11,460,904	1,382.55
Information	11	58	47	58	709,596	1,004.62
Financial Activities	137	1,007	1,014	1,009	13,811,780	1,051.93
Professional & Business Services	147	1,963	2,010	2,043	20,403,978	782.68
Education & Health Services	721	4,221	4,291	4,170	53,942,871	981.58
Leisure & Hospitality	125	2,614	2,643	2,666	19,983,659	582.05
Other Services	85	412	416	400	4,027,378	756.84
Local Government	41	2,239	2,286	2,271	26,780,043	909.36
State Government	36	3,188	3,195	3,080	35,214,950	858.77
<b>JOHNSON COUNTY - TOTAL</b>	<b>464</b>	<b>8,457</b>	<b>8,568</b>	<b>8,516</b>	<b>\$81,867,061</b>	<b>\$739.69</b>
Natural Resources & Mining	10	222	230	225	2,643,940	901.24
Construction	42	177	177	185	1,716,355	734.85
Manufacturing	32	2,332	2,361	2,342	23,907,276	784.23
Trade, Transportation & Utilities	102	2,202	2,250	2,237	20,046,494	691.60
Retail Trade	74	988	1,010	1,016	6,567,513	502.85
Other Trade, Transportation & Utilities	28	1,214	1,240	1,221	13,478,981	846.40
Information	5	23	22	21	184,362	644.62
Financial Activities	42	141	150	149	1,679,784	881.01
Professional & Business Services	45	198	196	197	1,617,360	631.53
Education & Health Services	90	1,269	1,250	1,231	12,561,062	772.99
Leisure & Hospitality	44	625	611	598	2,567,277	323.04
Other Services	29	95	93	83	758,335	645.76
Local Government	14	1,074	1,129	1,147	13,076,834	900.82
State Government	9	99	99	101	1,107,982	855.14

TABLE 6. COUNTY SUMMARY

North American Industry Classification System - Industry Groups	Number of Employing Units	Employment			Total Earnings	Average Weekly Earnings
		Apr	May	Jun	Apr - Jun 2022	
<b>LAFAYETTE COUNTY - TOTAL</b>	<b>153</b>	<b>1,096</b>	<b>1,071</b>	<b>1,036</b>	<b>\$10,337,000</b>	<b>\$744.76</b>
Natural Resources & Mining	22	65	63	68	476,091	560.55
Construction	9	69	70	64	869,028	987.91
Trade, Transportation & Utilities	30	206	201	190	1,737,015	671.44
Retail Trade	17	122	119	112	744,503	486.71
Other Trade, Transportation & Utilities	13	84	82	78	992,512	938.69
Financial Activities	13	73	72	73	806,103	853.32
Professional & Business Services	8	41	37	37	342,326	686.94
Education & Health Services	29	165	166	162	1,372,107	642.27
Leisure & Hospitality	8	79	79	81	403,053	389.17
Local Government	15	301	282	265	3,373,362	918.00
State Government	7	28	28	28	311,885	856.83
Other	12	69	73	68	646,030	709.92
<b>LAWRENCE COUNTY - TOTAL</b>	<b>378</b>	<b>3,910</b>	<b>3,855</b>	<b>3,852</b>	<b>\$39,570,991</b>	<b>\$786.07</b>
Natural Resources & Mining	55	181	185	181	2,050,056	864.88
Construction	23	185	178	189	3,232,968	1,351.58
Manufacturing	14	270	269	275	2,701,790	765.96
Trade, Transportation & Utilities	111	850	851	874	8,416,844	754.31
Wholesale Trade	20	217	213	213	2,724,073	977.66
Retail Trade	58	504	507	530	3,838,992	574.90
Transportation, Warehousing & Utilities	33	129	131	131	1,853,779	1,094.11
Financial Activities	25	112	116	113	1,359,885	920.29
Professional & Business Services	22	101	90	96	1,027,864	826.48
Education & Health Services	43	575	578	569	5,633,544	754.96
Leisure & Hospitality	32	386	361	350	1,568,243	329.90
Local Government	24	995	980	965	10,933,388	858.19
State Government	9	70	70	70	652,939	717.52
Other	20	185	177	170	1,993,470	864.72

TABLE 6. COUNTY SUMMARY

North American Industry Classification System - Industry Groups	Number of Employing Units	Employment			Total Earnings	Average Weekly Earnings
		Apr	May	Jun	Apr - Jun 2022	
<b>LEE COUNTY - TOTAL</b>	<b>227</b>	<b>1,654</b>	<b>1,672</b>	<b>1,669</b>	<b>16,677,254</b>	<b>\$770.49</b>
Natural Resources & Mining	36	153	154	164	1,561,251	764.94
Construction	4	7	7	7	53,600	589.01
Trade, Transportation & Utilities	39	331	339	343	3,468,548	790.16
Retail Trade	21	171	180	181	1,158,996	502.75
Other Trade, Transportation, & Utilities	18	160	159	162	2,309,552	1,108.05
Financial Activities	14	83	85	80	837,559	779.37
Professional & Business Services	12	39	36	36	805,154	1,673.92
Education & Health Services	81	359	363	355	3,695,636	791.87
Leisure & Hospitality	10	71	79	74	349,567	360.13
Local Government	15	240	237	236	2,305,410	746.17
State Government	6	352	352	354	3,429,747	748.09
Other	10	19	20	20	170,782	667.99
<b>LINCOLN COUNTY - TOTAL</b>	<b>250</b>	<b>2,647</b>	<b>2,666</b>	<b>2,718</b>	<b>\$27,580,006</b>	<b>\$792.51</b>
Natural Resources & Mining	38	148	144	146	1,538,383	810.53
Construction	17	138	139	147	1,725,046	938.89
Manufacturing	8	339	348	361	3,320,168	731.10
Trade, Transportation & Utilities	39	336	340	335	4,207,392	960.37
Retail Trade	22	155	156	158	1,011,386	497.65
Other Trade, Transportation & Utilities	17	181	184	177	3,196,006	1,360.77
Financial Activities	18	62	61	59	591,771	750.34
Professional & Business Services	9	21	22	20	326,670	1,196.59
Education & Health Services	72	329	335	339	3,080,570	708.77
Leisure & Hospitality	16	132	131	136	449,112	259.75
Local Government	7	292	297	320	3,182,649	807.98
State Government	10	795	796	804	8,440,095	813.24
Other	16	55	53	51	718,150	1,042.31

TABLE 6. COUNTY SUMMARY

North American Industry Classification System - Industry Groups	Number of Employing Units	Employment			Total Earnings	Average Weekly Earnings
		Apr	May	Jun	Apr - Jun 2022	
<b>LITTLE RIVER COUNTY - TOTAL</b>	<b>232</b>	<b>3,059</b>	<b>3,058</b>	<b>2,998</b>	<b>\$43,659,342</b>	<b>\$1,105.35</b>
Natural Resources & Mining	14	73	72	71	811,574	867.07
Construction	9	52	53	51	619,960	917.10
Manufacturing	11	938	970	948	24,999,522	2,020.00
Trade, Transportation & Utilities	59	546	550	531	4,399,324	623.99
Wholesale Trade	7	30	31	32	565,022	1,402.04
Retail Trade	37	447	444	442	3,043,112	526.82
Transportation, Warehousing & Utilities	15	69	75	57	791,190	908.37
Financial Activities	12	54	52	53	444,746	645.49
Professional & Business Services	18	147	111	90	1,587,336	1,052.61
Education & Health Services	44	189	193	197	1,660,731	661.91
Leisure & Hospitality	16	249	245	241	952,507	299.06
Local Government	20	677	680	685	7,144,396	807.40
State Government	10	82	80	79	709,483	679.36
Other	19	52	52	52	329,763	487.82
<b>LOGAN COUNTY - TOTAL</b>	<b>473</b>	<b>5,086</b>	<b>5,095</b>	<b>5,092</b>	<b>\$46,713,716</b>	<b>\$705.83</b>
Natural Resources & Mining	26	126	127	129	1,284,594	776.03
Construction	38	164	163	168	1,858,038	866.22
Manufacturing	22	1,134	1,138	1,136	12,148,270	822.61
Trade, Transportation & Utilities	102	1,029	1,030	1,009	7,177,908	539.91
Wholesale Trade	11	78	82	75	510,127	500.94
Retail Trade	72	836	832	820	5,020,725	465.69
Transportation, Warehousing & Utilities	19	115	116	114	1,647,056	1,101.71
Information	5	21	21	22	260,635	939.79
Financial Activities	47	175	175	175	2,238,301	983.87
Professional & Business Services	40	115	116	119	1,248,491	823.18
Education & Health Services	96	634	638	637	6,305,251	762.21
Leisure & Hospitality	29	297	306	311	1,163,943	293.88
Other Services	34	129	129	131	1,340,059	794.97
Local Government	22	829	819	818	8,371,536	783.41
State Government	12	433	433	437	3,316,690	587.41

TABLE 6. COUNTY SUMMARY

North American Industry Classification System - Industry Groups	Number of Employing Units	Employment			Total Earnings	Average Weekly Earnings
		Apr	May	Jun	Apr - Jun 2022	
<b>LONOKE COUNTY - TOTAL</b>	<b>1,336</b>	<b>14,776</b>	<b>14,867</b>	<b>14,831</b>	<b>\$151,152,866</b>	<b>\$784.31</b>
Natural Resources & Mining	87	484	486	494	5,530,096	871.70
Construction	161	959	961	949	11,559,950	929.83
Manufacturing	34	1,635	1,643	1,654	25,790,386	1,206.74
Trade, Transportation & Utilities	293	3,182	3,264	3,232	28,200,106	672.42
Wholesale Trade	70	415	429	415	6,334,683	1,161.12
Retail Trade	162	2,430	2,497	2,485	17,358,063	540.44
Transportation, Warehousing & Utilities	61	337	338	332	4,507,360	1,032.93
Information	16	89	76	90	1,091,292	987.59
Financial Activities	170	763	770	764	11,645,709	1,169.99
Professional & Business Services	161	759	741	717	6,342,230	660.17
Education & Health Services	199	1,843	1,813	1,847	17,064,761	715.61
Leisure & Hospitality	114	2,022	2,070	2,068	10,200,714	382.14
Other Services	64	199	213	208	1,933,159	719.54
Local Government	23	2,691	2,680	2,659	30,123,714	865.71
State Government	14	150	150	149	1,670,749	858.70
<b>MADISON COUNTY - TOTAL</b>	<b>261</b>	<b>3,519</b>	<b>3,577</b>	<b>3,543</b>	<b>36,962,837</b>	<b>\$801.76</b>
Natural Resources & Mining	11	63	62	65	596,306	724.26
Construction	35	166	168	167	2,023,575	932.09
Manufacturing	21	1,305	1,297	1,293	14,362,869	850.96
Trade, Transportation & Utilities	59	724	746	725	6,111,758	642.55
Retail Trade	40	541	556	544	3,720,197	523.16
Other Trade, Transportation & Utilities	19	183	190	181	2,391,561	996.21
Information	4	41	41	42	1,311,841	2,441.39
Financial Activities	20	88	87	89	1,022,536	893.83
Professional & Business Services	25	86	87	80	1,113,264	1,015.44
Education & Health Services	39	248	244	241	2,255,007	709.94
Leisure & Hospitality	12	135	156	154	583,286	302.48
Other Services	19	65	69	70	502,272	568.18
Local Government	9	558	581	578	6,678,885	897.66
State Government	7	40	39	39	401,238	784.69



TABLE 6. COUNTY SUMMARY

North American Industry Classification System - Industry Groups	Number of Employing Units	Employment			Total Earnings	Average Weekly Earnings
		Apr	May	Jun	Apr - Jun 2022	
<b>MARION COUNTY - TOTAL</b>	<b>282</b>	<b>3,598</b>	<b>3,651</b>	<b>3,671</b>	<b>\$35,552,665</b>	<b>\$751.32</b>
Manufacturing	24	1,530	1,559	1,572	16,942,280	838.82
Trade, Transportation & Utilities	56	582	596	581	4,056,105	532.13
Retail Trade	39	499	517	505	3,142,964	476.86
Other Trade, Transportation & Utilities	17	83	79	76	913,141	885.40
Information	4	53	54	58	790,788	1,106.00
Financial Activities	29	195	217	229	2,108,524	759.10
Professional & Business Services	28	86	82	79	835,407	780.51
Education & Health Services	41	287	286	279	3,105,590	841.17
Leisure & Hospitality	32	183	185	207	868,123	348.41
Other Services	15	36	36	37	213,946	452.96
Local Government	17	517	504	496	5,439,495	827.47
State Government	7	38	38	38	393,506	796.57
Other	29	91	94	95	798,901	658.43
<b>MILLER COUNTY - TOTAL</b>	<b>887</b>	<b>12,255</b>	<b>12,262</b>	<b>12,355</b>	<b>\$144,475,347</b>	<b>\$904.22</b>
Natural Resources & Mining	29	258	251	256	3,859,029	1,164.11
Construction	63	638	636	620	7,688,439	936.78
Manufacturing	20	2,404	2,400	2,443	40,883,409	1,301.87
Trade, Transportation & Utilities	212	2,647	2,660	2,679	29,280,500	846.11
Retail Trade	121	1,266	1,280	1,277	9,042,152	545.81
Other Trade, Transportation & Utilities	91	1,381	1,380	1,402	20,238,348	1,121.88
Information	8	127	129	130	2,009,355	1,201.29
Financial Activities	95	431	433	413	5,651,137	1,021.23
Professional & Business Services	86	981	962	957	10,495,751	835.21
Education & Health Services	187	1,246	1,269	1,240	11,040,147	678.49
Leisure & Hospitality	96	1,464	1,461	1,557	7,554,703	388.98
Other Services	50	229	236	227	1,968,993	656.62
Local Government	26	1,372	1,367	1,371	18,120,371	1,017.43
State Government	15	458	458	462	5,923,513	991.99

TABLE 6. COUNTY SUMMARY

North American Industry Classification System - Industry Groups	Number of Employing Units	Employment			Total Earnings	Average Weekly Earnings
		Apr	May	Jun	Apr - Jun 2022	
<b>MISSISSIPPI COUNTY - TOTAL</b>	<b>999</b>	<b>16,738</b>	<b>16,716</b>	<b>16,839</b>	<b>\$262,331,586</b>	<b>\$1,203.71</b>
Natural Resources & Mining	110	520	525	546	5,282,038	766.14
Construction	49	700	696	701	12,460,120	1,371.20
Manufacturing	57	6,363	6,262	6,351	143,186,683	1,741.31
Trade, Transportation & Utilities	254	2,755	2,769	2,802	29,608,282	820.64
Wholesale Trade	54	410	415	419	7,962,687	1,477.12
Retail Trade	133	1,577	1,583	1,584	10,329,030	502.45
Transportation, Warehousing & Utilities	67	768	771	799	11,316,565	1,116.99
Information	9	20	17	18	152,559	640.11
Financial Activities	66	382	383	389	4,315,414	862.97
Professional & Business Services	86	998	1,023	1,069	14,974,501	1,118.33
Education & Health Services	162	1,284	1,279	1,244	13,963,059	846.40
Leisure & Hospitality	91	994	1,032	1,048	4,745,982	356.29
Other Services	46	289	282	283	3,670,823	991.94
Local Government	50	1,963	1,979	1,932	25,382,428	997.19
State Government	19	470	469	456	4,589,697	759.26
<b>MONROE COUNTY - TOTAL</b>	<b>241</b>	<b>1,812</b>	<b>1,815</b>	<b>1,809</b>	<b>\$18,440,171</b>	<b>\$782.82</b>
Natural Resources & Mining	25	86	98	92	1,199,006	1,002.51
Manufacturing	6	135	141	145	1,363,343	747.31
Trade, Transportation & Utilities	58	469	464	444	5,527,694	926.38
Wholesale Trade	15	131	128	125	2,295,420	1,379.46
Retail Trade	30	246	245	230	1,636,777	523.88
Transportation, Warehousing & Utilities	13	92	91	89	1,595,497	1,353.65
Financial Activities	20	74	77	76	825,890	839.60
Professional & Business Services	11	15	15	18	159,036	764.60
Education & Health Services	49	319	311	303	3,858,623	954.40
Leisure & Hospitality	20	248	246	256	1,097,900	337.82
Other Services	14	63	62	70	437,016	517.18
Local Government	21	322	321	324	3,112,889	742.87
State Government	7	63	62	62	697,865	861.21
Other	10	18	18	19	160,909	675.14

TABLE 6. COUNTY SUMMARY

North American Industry Classification System - Industry Groups	Number of Employing Units	Employment			Total Earnings	Average Weekly Earnings
		Apr	May	Jun	Apr - Jun 2022	
<b>MONTGOMERY COUNTY - TOTAL</b>	<b>154</b>	<b>1,155</b>	<b>1,197</b>	<b>1,275</b>	<b>\$10,207,682</b>	<b>\$649.47</b>
Natural Resources & Mining	6	19	19	20	142,091	565.35
Construction	25	76	80	78	613,764	605.29
Manufacturing	7	34	33	34	317,663	725.81
Trade, Transportation & Utilities	34	242	243	239	1,808,653	576.49
Retail Trade	21	168	172	166	1,055,249	481.26
Other Trade, Transportation & Utilities	13	74	71	73	753,404	797.53
Financial Activities	12	35	38	36	312,044	660.64
Professional & Business Services	11	21	19	19	193,173	755.57
Education & Health Services	16	45	44	45	434,336	748.00
Leisure & Hospitality	14	255	291	391	1,824,545	449.36
Local Government	9	357	359	341	4,009,653	875.41
State Government	7	37	37	36	321,226	673.90
Other	13	34	34	36	230,534	511.54
<b>NEVADA COUNTY - TOTAL</b>	<b>193</b>	<b>2,104</b>	<b>2,109</b>	<b>2,115</b>	<b>\$24,068,069</b>	<b>\$877.71</b>
Natural Resources & Mining	12	46	46	42	667,953	1,150.32
Construction	12	28	28	28	169,338	465.21
Trade, Transportation & Utilities	42	461	469	475	4,407,066	723.85
Retail Trade	23	290	288	295	2,061,122	544.84
Other Trade, Transportation & Utilities	19	171	181	180	2,345,944	1,017.62
Financial Activities	10	58	54	54	531,778	739.27
Professional & Business Services	12	88	92	87	1,026,682	887.37
Education & Health Services	33	268	276	263	2,117,606	605.55
Other Services	15	44	39	44	304,661	553.59
Local Government	29	358	367	361	3,910,225	830.90
State Government	9	53	53	53	449,590	652.53
Other	19	700	685	708	10,483,170	1,155.85

TABLE 6. COUNTY SUMMARY

North American Industry Classification System - Industry Groups	Number of Employing Units	Employment			Total Earnings	Average Weekly Earnings
		Apr	May	Jun	Apr - Jun 2022	
<b>NEWTON COUNTY - TOTAL</b>	<b>115</b>	<b>983</b>	<b>1,000</b>	<b>999</b>	<b>8,546,657</b>	<b>\$661.40</b>
Construction	6	17	18	17	195,696	868.47
Manufacturing	9	28	27	31	446,184	1,197.27
Trade, Transportation & Utilities	27	158	163	161	1,439,148	689.03
Retail Trade	14	105	112	110	732,342	516.83
Other Trade, Transportation & Utilities	13	53	51	51	706,806	1,052.32
Professional & Business Services	5	5	6	6	126,972	1,723.60
Education & Health Services	21	202	205	201	1,389,865	527.53
Local Government	14	330	327	324	3,337,351	785.07
State Government	7	35	35	35	336,347	739.22
Other	26	208	219	224	1,275,094	452.00
<b>OUACHITA COUNTY - TOTAL</b>	<b>614</b>	<b>8,106</b>	<b>8,201</b>	<b>8,166</b>	<b>\$101,593,673</b>	<b>\$957.98</b>
Natural Resources & Mining	33	166	171	175	2,213,259	997.56
Construction	42	236	268	255	3,275,336	995.85
Manufacturing	31	2,192	2,195	2,204	39,351,532	1,377.81
Trade, Transportation & Utilities	143	1,537	1,545	1,518	13,489,397	676.73
Wholesale Trade	20	185	182	171	2,111,889	905.87
Retail Trade	88	989	983	968	6,158,060	483.36
Transportation, Warehousing & Utilities	35	363	380	379	5,219,448	1,073.52
Information	5	26	27	27	320,521	924.58
Financial Activities	50	251	250	259	2,765,828	839.83
Professional & Business Services	44	266	283	301	3,756,076	1,019.75
Education & Health Services	157	1,264	1,300	1,287	15,829,073	948.55
Leisure & Hospitality	45	429	434	425	1,974,839	353.83
Other Services	20	89	91	89	985,825	845.72
Local Government	31	1,057	1,045	1,055	12,178,417	890.21
State Government	13	593	592	571	5,453,570	716.69

TABLE 6. COUNTY SUMMARY

North American Industry Classification System - Industry Groups	Number of Employing Units	Employment			Total Earnings	Average Weekly Earnings
		Apr	May	Jun	Apr - Jun 2022	
<b>PERRY COUNTY - TOTAL</b>	<b>142</b>	<b>1,071</b>	<b>1,086</b>	<b>992</b>	<b>\$10,187,803</b>	<b>\$746.60</b>
Construction	17	66	73	78	754,354	802.22
Trade, Transportation & Utilities	25	194	196	187	1,595,313	638.04
Retail Trade	17	155	158	149	776,828	388.03
Other Trade, Transportation & Utilities	8	39	38	38	818,485	1,642.44
Financial Activities	9	20	22	22	268,601	968.51
Professional & Business Services	20	46	53	51	472,197	726.46
Education & Health Services	28	204	204	219	1,921,217	707.11
Leisure & Hospitality	10	80	79	74	339,472	336.22
Other Services	6	29	29	29	316,370	839.18
Local Government	9	354	350	251	3,378,935	816.50
State Government	7	33	33	33	340,035	792.62
Other	11	45	47	48	801,309	1,320.84
<b>PHILLIPS COUNTY - TOTAL</b>	<b>634</b>	<b>4,784</b>	<b>4,770</b>	<b>4,665</b>	<b>\$48,766,083</b>	<b>\$791.46</b>
Natural Resources & Mining	58	277	279	287	2,610,545	714.63
Construction	24	102	100	103	877,473	663.91
Manufacturing	12	429	427	428	5,785,217	1,039.76
Trade, Transportation & Utilities	120	1,060	1,054	1,016	10,584,499	780.38
Wholesale Trade	27	283	279	272	4,108,654	1,136.87
Retail Trade	60	578	576	548	3,865,903	524.17
Transportation, Warehousing & Utilities	33	199	199	196	2,609,942	1,013.96
Information	6	11	11	11	143,101	1,000.71
Financial Activities	38	176	178	185	2,321,495	993.93
Professional & Business Services	44	197	191	184	2,093,218	844.49
Education & Health Services	234	1,033	1,048	974	10,933,329	825.88
Leisure & Hospitality	35	369	359	374	1,586,193	332.16
Other Services	22	70	70	71	556,147	608.25
Local Government	27	747	739	733	7,965,420	828.38
State Government	14	313	314	299	3,309,446	824.75

TABLE 6. COUNTY SUMMARY

North American Industry Classification System - Industry Groups	Number of Employing Units	Employment			Total Earnings	Average Weekly Earnings
		Apr	May	Jun	Apr - Jun 2022	
<b>PIKE COUNTY - TOTAL</b>	<b>266</b>	<b>2,604</b>	<b>2,628</b>	<b>2,650</b>	<b>\$25,050,222</b>	<b>\$733.42</b>
Natural Resources & Mining	21	125	122	125	1,502,845	932.29
Construction	17	37	41	40	274,709	537.24
Manufacturing	16	450	450	453	5,408,928	922.55
Trade, Transportation & Utilities	75	506	501	497	4,540,335	696.66
Wholesale Trade	9	102	103	102	1,233,840	927.47
Retail Trade	41	327	324	327	2,317,489	546.84
Transportation, Warehousing & Utilities	25	77	74	68	989,006	1,042.16
Information	7	32	34	33	432,897	1,009.08
Financial Activities	21	225	227	223	2,644,235	904.01
Professional & Business Services	18	91	73	73	907,558	883.70
Education & Health Services	31	242	257	244	1,754,679	544.99
Leisure & Hospitality	23	253	276	288	1,151,569	325.27
Other Services	18	72	69	69	440,668	484.25
Local Government	10	483	490	516	5,307,604	822.59
State Government	9	88	88	89	684,195	595.82
<b>POINSETT COUNTY - TOTAL</b>	<b>450</b>	<b>5,282</b>	<b>5,293</b>	<b>5,246</b>	<b>65,202,944</b>	<b>\$951.07</b>
Natural Resources & Mining	67	246	262	267	3,596,100	1,070.80
Construction	22	101	100	104	1,081,502	818.29
Manufacturing	14	810	808	792	17,534,143	1,678.98
Trade, Transportation & Utilities	116	1,266	1,271	1,276	13,363,080	808.76
Wholesale Trade	23	441	448	448	6,967,047	1,202.53
Retail Trade	65	692	695	693	4,556,265	505.50
Transportation, Warehousing & Utilities	28	133	128	135	1,839,768	1,072.13
Financial Activities	34	171	166	163	1,810,664	835.69
Professional & Business Services	28	262	254	252	4,262,365	1,280.76
Education & Health Services	64	690	694	699	7,185,248	796.03
Leisure & Hospitality	44	472	481	457	1,915,618	313.52
Local Government	30	1,035	1,027	1,007	12,185,529	916.27
State Government	10	98	98	96	996,463	787.51
Other	21	131	132	133	1,272,232	741.39

TABLE 6. COUNTY SUMMARY

North American Industry Classification System - Industry Groups	Number of Employing Units	Employment			Total Earnings	Average Weekly Earnings
		Apr	May	Jun	Apr - Jun 2022	
<b>POLK COUNTY - TOTAL</b>	<b>475</b>	<b>5,738</b>	<b>5,729</b>	<b>5,723</b>	<b>\$56,988,242</b>	<b>\$765.05</b>
Natural Resources & Mining	25	168	159	161	2,334,157	1,103.79
Construction	33	233	223	228	2,541,816	857.56
Manufacturing	35	1,279	1,289	1,276	15,570,851	934.77
Trade, Transportation & Utilities	114	1,128	1,127	1,131	9,237,688	629.58
Wholesale Trade	15	42	41	41	788,536	1,467.50
Retail Trade	65	872	878	886	5,647,573	494.42
Transportation, Warehousing & Utilities	34	214	208	204	2,801,579	1,032.78
Information	6	41	39	41	274,525	523.57
Financial Activities	43	206	202	205	2,107,908	793.54
Professional & Business Services	38	151	150	154	2,157,678	1,094.34
Education & Health Services	74	928	943	945	10,071,933	825.39
Leisure & Hospitality	42	497	490	504	2,001,709	309.81
Other Services	32	129	127	120	1,060,994	651.18
Local Government	21	674	676	678	7,215,519	821.06
State Government	12	304	304	280	2,413,464	627.20
<b>POPE COUNTY - TOTAL</b>	<b>1,777</b>	<b>24,964</b>	<b>25,060</b>	<b>24,677</b>	<b>\$283,562,777</b>	<b>\$875.99</b>
Natural Resources & Mining	39	870	858	864	9,175,910	816.94
Construction	152	1,165	1,172	1,179	15,946,878	1,046.66
Manufacturing	75	3,584	3,611	3,649	43,534,165	926.44
Trade, Transportation & Utilities	381	6,210	6,237	6,209	82,870,556	1,025.08
Retail Trade	246	3,211	3,194	3,153	24,721,582	596.88
Other Trade, Transportation & Utilities	135	2,999	3,043	3,056	58,148,974	1,474.94
Professional & Business Services	255	1,936	1,945	1,931	24,009,822	953.33
Education & Health Services	347	3,385	3,338	3,275	33,787,210	779.86
Leisure & Hospitality	149	2,798	2,774	2,718	13,380,201	372.47
Other Services	106	476	505	485	4,706,471	740.87
Local Government	44	2,171	2,245	2,167	27,982,046	980.92
State Government	15	1,414	1,418	1,254	16,666,478	941.29
Other	214	955	957	946	11,503,040	928.81

TABLE 6. COUNTY SUMMARY

North American Industry Classification System - Industry Groups	Number of Employing Units	Employment			Total Earnings	Average Weekly Earnings
		Apr	May	Jun	Apr - Jun 2022	
<b>PRAIRIE COUNTY - TOTAL</b>	<b>224</b>	<b>1,443</b>	<b>1,458</b>	<b>1,445</b>	<b>\$14,381,205</b>	<b>\$763.63</b>
Natural Resources & Mining	37	164	156	157	2,039,041	986.47
Construction	12	34	33	39	420,292	915.00
Trade, Transportation & Utilities	56	364	360	356	3,699,963	790.59
Retail Trade	31	223	227	228	1,578,666	537.33
Other Trade, Transportation & Utilities	25	141	133	128	2,121,297	1,217.74
Financial Activities	13	50	53	51	556,730	834.26
Professional & Business Services	12	73	70	72	770,380	826.88
Education & Health Services	38	250	261	251	2,172,097	657.81
Leisure & Hospitality	15	76	85	80	371,068	355.32
Local Government	15	319	321	315	3,332,059	805.17
State Government	7	29	29	29	281,282	746.11
Other	19	84	90	95	738,293	633.37
<b>PULASKI COUNTY - TOTAL</b>	<b>14,256</b>	<b>240,718</b>	<b>240,727</b>	<b>238,899</b>	<b>\$3,402,047,658</b>	<b>\$1,089.88</b>
Natural Resources & Mining	43	639	650	665	12,068,522	1,425.30
Construction	915	9,741	9,754	9,789	148,409,909	1,169.53
Manufacturing	312	12,176	12,160	11,932	189,132,196	1,203.43
Trade, Transportation & Utilities	3,034	54,550	54,301	53,297	692,983,803	986.26
Wholesale Trade	885	12,365	12,481	12,332	223,706,291	1,388.58
Retail Trade	1,703	24,268	24,274	23,902	230,413,772	733.98
Transportation, Warehousing & Utilities	446	17,917	17,546	17,063	238,863,740	1,049.43
Information	214	2,662	2,686	2,642	44,055,337	1,272.42
Financial Activities	1,719	17,185	17,155	17,011	341,654,216	1,535.38
Professional & Business Services	2,791	33,869	33,713	33,728	533,676,487	1,215.64
Education & Health Services	2,532	41,335	41,558	40,977	586,634,244	1,092.90
Leisure & Hospitality	1,274	21,510	21,930	22,181	126,902,319	446.28
Other Services	1,107	6,625	6,714	6,821	78,993,577	904.23
Local Government	108	14,369	14,362	14,099	211,255,442	1,138.25
State Government	207	26,057	25,744	25,757	436,281,606	1,298.13



TABLE 6. COUNTY SUMMARY

North American Industry Classification System - Industry Groups	Number of Employing Units	Employment			Total Earnings	Average Weekly Earnings
		Apr	May	Jun	Apr - Jun 2022	
<b>RANDOLPH COUNTY - TOTAL</b>	<b>381</b>	<b>5,903</b>	<b>5,926</b>	<b>5,823</b>	<b>\$56,389,862</b>	<b>\$737.20</b>
Natural Resources & Mining	25	226	234	248	3,261,237	1,062.98
Construction	23	72	70	73	527,750	566.46
Manufacturing	27	1,564	1,553	1,516	17,712,434	882.25
Trade, Transportation & Utilities	96	900	915	881	7,661,522	655.80
Retail Trade	57	656	667	646	4,317,859	506.06
Other Trade, Transportation & Utilities	39	244	248	235	3,343,663	1,061.37
Information	4	12	12	12	174,667	1,119.66
Financial Activities	31	141	146	131	1,443,535	796.95
Professional & Business Services	30	331	347	371	2,437,102	536.14
Education & Health Services	57	953	968	883	9,310,023	766.21
Leisure & Hospitality	32	492	466	486	2,023,674	323.41
Other Services	19	139	141	143	1,302,254	710.45
Local Government	27	811	811	835	8,200,569	770.22
State Government	10	262	263	244	2,335,095	700.74
<b>SAINT FRANCIS COUNTY - TOTAL</b>	<b>604</b>	<b>6,299</b>	<b>6,340</b>	<b>6,290</b>	<b>\$61,716,568</b>	<b>\$752.41</b>
Natural Resources & Mining	41	170	175	191	1,781,873	767.17
Construction	29	193	204	204	2,364,490	907.91
Trade, Transportation & Utilities	137	1,692	1,698	1,720	16,735,027	755.76
Wholesale Trade	25	475	471	474	6,565,526	1,066.99
Retail Trade	85	920	930	946	6,123,609	505.42
Transportation, Warehousing & Utilities	27	297	297	300	4,045,892	1,044.37
Information	5	49	49	49	375,708	589.81
Financial Activities	51	200	200	198	1,802,974	695.77
Professional & Business Services	47	191	193	187	2,032,028	821.24
Education & Health Services	182	1,370	1,388	1,336	15,168,677	855.02
Leisure & Hospitality	46	635	625	626	2,785,242	340.80
Local Government	28	761	777	766	8,147,753	816.08
State Government	13	357	359	344	3,531,769	768.89
Other	25	681	672	669	6,991,027	797.88

TABLE 6. COUNTY SUMMARY

North American Industry Classification System - Industry Groups	Number of Employing Units	Employment			Total Earnings	Average Weekly Earnings
		Apr	May	Jun	Apr - Jun 2022	
<b>SALINE COUNTY - TOTAL</b>	<b>2,290</b>	<b>25,911</b>	<b>26,232</b>	<b>26,392</b>	<b>\$284,153,341</b>	<b>\$834.96</b>
Natural Resources & Mining	16	62	66	65	785,880	939.67
Construction	305	2,223	2,290	2,324	29,130,483	983.24
Manufacturing	80	1,433	1,428	1,445	20,189,849	1,082.02
Trade, Transportation & Utilities	490	5,969	5,967	5,987	58,378,333	751.66
Wholesale Trade	111	524	534	536	8,561,118	1,239.42
Retail Trade	295	4,611	4,614	4,618	39,777,573	663.11
Transportation, Warehousing & Utilities	84	834	819	833	10,039,642	931.96
Information	25	150	149	154	1,993,340	1,015.46
Financial Activities	256	932	950	945	13,511,290	1,102.93
Professional & Business Services	318	2,024	2,033	2,050	27,182,333	1,027.16
Education & Health Services	349	4,726	4,807	4,838	55,688,422	894.24
Leisure & Hospitality	222	3,664	3,793	3,797	19,445,306	398.74
Other Services	166	879	872	919	8,472,086	732.25
Local Government	49	3,106	3,132	3,118	42,331,358	1,044.12
State Government	14	743	745	750	7,044,661	726.40
<b>SCOTT COUNTY - TOTAL</b>	<b>176</b>	<b>2,880</b>	<b>2,846</b>	<b>2,899</b>	<b>\$26,180,903</b>	<b>\$700.49</b>
Natural Resources & Mining	15	106	107	111	1,609,885	1,146.64
Construction	8	22	19	24	239,094	848.85
Trade, Transportation & Utilities	36	361	360	363	2,720,870	579.24
Retail Trade	23	267	266	270	1,489,586	428.08
Other Trade, Transportation & Utilities	13	94	94	93	1,231,284	1,011.18
Financial Activities	16	60	59	58	587,340	765.76
Professional & Business Services	12	134	136	134	1,324,167	756.38
Education & Health Services	40	190	192	200	1,985,944	787.45
Leisure & Hospitality	17	159	162	163	613,419	292.48
Other Services	10	35	35	35	272,059	597.93
Local Government	6	517	472	504	5,546,368	857.29
State Government	6	30	30	30	324,764	832.73
Other	10	1,266	1,274	1,277	10,956,993	662.44

TABLE 6. COUNTY SUMMARY

North American Industry Classification System - Industry Groups	Number of Employing Units	Employment			Total Earnings Apr - Jun 2022	Average Weekly Earnings
		Apr	May	Jun		
<b>SEARCY COUNTY - TOTAL</b>	<b>165</b>	<b>1,432</b>	<b>1,605</b>	<b>1,629</b>	<b>\$13,639,808</b>	<b>\$674.59</b>
Construction	12	13	10	7	117,917	907.05
Manufacturing	12	98	102	108	1,067,913	800.13
Trade, Transportation & Utilities	32	236	238	247	1,721,305	550.94
Retail Trade	21	185	186	195	1,173,997	478.66
Other Trade, Transportation & Utilities	11	51	52	52	547,308	814.85
Financial Activities	13	62	78	95	627,946	616.64
Education & Health Services	38	422	423	413	4,101,417	752.37
Leisure & Hospitality	16	162	164	166	624,438	292.89
Local Government	10	308	307	311	3,282,461	818.02
State Government	6	42	42	41	386,926	714.32
Other	26	89	241	241	1,709,485	690.89
<b>SEBASTIAN COUNTY - TOTAL</b>	<b>3,685</b>	<b>64,049</b>	<b>64,261</b>	<b>64,153</b>	<b>\$804,371,485</b>	<b>\$964.47</b>
Natural Resources & Mining	33	221	218	218	3,533,489	1,241.13
Construction	270	2,350	2,412	2,432	28,526,915	915.09
Manufacturing	180	11,765	11,798	11,923	165,446,447	1,075.92
Trade, Transportation & Utilities	878	13,700	13,679	13,532	158,063,190	891.60
Wholesale Trade	231	2,928	2,965	2,920	43,005,494	1,126.10
Retail Trade	539	7,914	7,856	7,771	67,042,594	657.21
Transportation, Warehousing & Utilities	108	2,858	2,858	2,841	48,015,102	1,294.89
Information	40	811	818	861	17,660,361	1,636.73
Financial Activities	424	2,365	2,369	2,370	37,660,717	1,223.39
Professional & Business Services	550	7,982	8,039	8,004	103,365,225	992.86
Education & Health Services	642	11,094	11,113	11,015	165,833,063	1,151.92
Leisure & Hospitality	366	6,262	6,323	6,460	32,719,194	396.46
Other Services	239	1,140	1,132	1,165	10,710,333	719.12
Local Government	42	4,764	4,760	4,664	61,184,895	995.18
State Government	21	1,595	1,600	1,509	19,667,656	964.86

TABLE 6. COUNTY SUMMARY

North American Industry Classification System - Industry Groups	Number of Employing Units	Employment			Total Earnings	Average Weekly Earnings
		Apr	May	Jun	Apr - Jun 2022	
<b>SEVIER COUNTY - TOTAL</b>	<b>305</b>	<b>4,677</b>	<b>4,738</b>	<b>4,781</b>	<b>\$46,319,669</b>	<b>\$752.97</b>
Natural Resources & Mining	15	135	136	141	1,861,007	1,042.39
Construction	17	190	187	193	2,934,929	1,188.23
Trade, Transportation & Utilities	79	794	823	821	6,709,153	635.06
Wholesale Trade	11	73	77	80	953,520	956.71
Retail Trade	54	625	653	661	4,466,600	531.59
Transportation, Warehousing & Utilities	14	96	93	80	1,289,033	1,105.83
Financial Activities	29	176	177	182	2,078,068	896.36
Professional & Business Services	24	170	163	154	1,422,324	673.98
Education & Health Services	60	457	472	471	4,409,688	726.87
Other Services	26	98	96	105	1,017,130	785.02
Local Government	13	903	922	887	8,255,622	702.49
State Government	8	183	186	173	1,623,524	691.25
Other	34	1,571	1,576	1,654	16,008,224	769.47
<b>SHARP COUNTY - TOTAL</b>	<b>374</b>	<b>3,652</b>	<b>3,760</b>	<b>3,678</b>	<b>\$34,560,803</b>	<b>\$719.17</b>
Construction	29	119	118	130	1,327,107	834.48
Trade, Transportation & Utilities	87	832	876	874	5,493,536	490.99
Wholesale Trade	15	43	42	45	258,715	459.26
Retail Trade	62	750	796	791	4,638,535	458.04
Transportation, Warehousing & Utilities	10	39	38	38	596,286	1,196.56
Information	8	24	20	20	182,573	658.32
Financial Activities	35	184	181	182	2,505,279	1,056.93
Professional & Business Services	31	114	109	113	1,152,511	791.56
Education & Health Services	73	835	843	791	8,959,276	837.39
Leisure & Hospitality	34	393	425	424	1,816,206	337.46
Other Services	28	82	112	77	923,139	786.10
Local Government	23	773	767	746	8,651,355	873.34
State Government	7	52	52	51	478,866	712.95
Other	19	244	257	270	3,070,955	919.17

TABLE 6. COUNTY SUMMARY

North American Industry Classification System - Industry Groups	Number of Employing Units	Employment			Total Earnings	Average Weekly Earnings
		Apr	May	Jun	Apr - Jun 2022	
<b>STONE COUNTY - TOTAL</b>	<b>277</b>	<b>2,574</b>	<b>2,613</b>	<b>2,549</b>	<b>\$22,010,300</b>	<b>\$656.58</b>
Natural Resources & Mining	6	8	8	8	64,807	623.14
Construction	14	31	32	34	239,378	569.50
Manufacturing	19	291	288	289	2,535,157	674.00
Trade, Transportation & Utilities	61	584	582	528	4,770,386	649.86
Wholesale Trade	7	35	36	18	319,131	827.48
Retail Trade	42	509	505	469	3,771,283	586.85
Transportation, Warehousing & Utilities	12	40	41	41	679,972	1,286.20
Financial Activities	39	142	144	146	1,522,941	813.54
Professional & Business Services	20	36	31	38	246,657	542.10
Education & Health Services	52	498	506	492	5,357,198	826.39
Leisure & Hospitality	31	476	502	509	1,960,594	304.27
Local Government	9	384	392	376	4,223,310	846.02
State Government	7	91	92	92	824,645	692.01
Other	19	33	36	37	265,227	577.42
<b>UNION COUNTY - TOTAL</b>	<b>1,174</b>	<b>16,440</b>	<b>16,523</b>	<b>16,502</b>	<b>\$240,257,853</b>	<b>\$1,120.88</b>
Natural Resources & Mining	76	318	311	326	4,712,771	1,138.81
Construction	71	1,407	1,425	1,431	21,804,596	1,180.35
Manufacturing	49	2,925	2,951	3,001	60,121,357	1,562.93
Trade, Transportation & Utilities	293	3,349	3,369	3,355	40,585,737	929.81
Wholesale Trade	63	454	454	464	8,007,896	1,346.92
Retail Trade	172	2,057	2,075	2,061	15,949,749	594.33
Transportation, Warehousing & Utilities	58	838	840	830	16,628,092	1,530.00
Information	7	60	61	62	654,869	825.81
Financial Activities	91	573	572	561	7,616,366	1,030.26
Professional & Business Services	112	1,867	1,858	1,860	47,096,716	1,946.01
Education & Health Services	247	1,912	1,952	1,934	21,310,515	848.19
Leisure & Hospitality	95	1,366	1,382	1,443	6,584,450	362.56
Other Services	85	424	419	417	3,604,454	660.16
Local Government	32	1,726	1,747	1,618	20,442,823	926.65
State Government	16	513	476	494	5,723,199	890.59

TABLE 6. COUNTY SUMMARY

North American Industry Classification System - Industry Groups	Number of Employing Units	Employment			Total Earnings	Average Weekly Earnings
		Apr	May	Jun	Apr - Jun 2022	
<b>VAN BUREN COUNTY - TOTAL</b>	<b>318</b>	<b>3,767</b>	<b>3,825</b>	<b>3,843</b>	<b>\$36,992,326</b>	<b>\$746.54</b>
Construction	33	115	124	132	1,058,946	658.69
Trade, Transportation & Utilities	90	1,105	1,107	1,106	12,410,009	863.12
Retail Trade	52	663	661	656	4,603,189	536.50
Other Trade, Transportation & Utilities	38	442	446	450	7,806,820	1,346.47
Information	6	41	41	41	383,159	718.87
Financial Activities	37	166	171	172	1,885,188	854.70
Professional & Business Services	30	154	159	172	1,549,789	737.41
Education & Health Services	46	670	678	666	7,049,583	807.76
Leisure & Hospitality	21	261	273	271	1,148,711	329.30
Other Services	19	218	242	257	1,860,815	598.91
Local Government	11	651	649	647	6,613,526	783.87
State Government	6	40	40	40	406,585	781.89
Other	19	346	341	339	2,626,015	590.65
<b>WASHINGTON COUNTY - TOTAL</b>	<b>6,587</b>	<b>113,885</b>	<b>114,065</b>	<b>112,753</b>	<b>\$1,502,718,558</b>	<b>\$1,017.84</b>
Natural Resources & Mining	47	320	323	328	4,343,827	1,032.36
Construction	657	6,803	6,926	6,990	99,460,201	1,107.79
Manufacturing	220	14,191	14,192	14,227	185,140,986	1,002.70
Trade, Transportation & Utilities	1,364	23,673	23,701	23,316	281,975,253	920.52
Wholesale Trade	379	3,701	3,740	3,721	73,916,300	1,528.19
Retail Trade	772	13,652	13,618	13,269	118,647,639	675.40
Transportation, Warehousing & Utilities	213	6,320	6,343	6,326	89,411,314	1,086.60
Information	93	895	910	909	14,141,570	1,202.45
Financial Activities	783	4,056	4,117	3,982	65,065,676	1,235.31
Professional & Business Services	1,226	14,946	14,878	14,593	270,967,989	1,407.82
Education & Health Services	951	16,666	16,777	16,499	234,259,145	1,082.45
Leisure & Hospitality	738	13,772	13,647	13,190	78,562,481	446.45
Other Services	424	2,448	2,471	2,431	28,952,480	909.03
Local Government	62	9,166	9,172	9,274	130,534,805	1,090.95
State Government	22	6,949	6,951	7,014	109,314,145	1,206.19

TABLE 6. COUNTY SUMMARY

North American Industry Classification System - Industry Groups	Number of Employing Units	Employment			Total Earnings	Average Weekly Earnings
		Apr	May	Jun	Apr - Jun 2022	
<b>WHITE COUNTY - TOTAL</b>	<b>1,780</b>	<b>24,996</b>	<b>25,039</b>	<b>24,839</b>	<b>\$275,729,120</b>	<b>\$849.82</b>
Natural Resources & Mining	40	434	416	397	6,628,978	1,226.76
Construction	171	1,405	1,490	1,523	18,387,252	960.44
Manufacturing	57	2,356	2,410	2,446	30,037,786	961.15
Trade, Transportation & Utilities	461	6,629	6,679	6,670	66,560,728	768.85
Wholesale Trade	81	624	620	640	7,506,590	919.47
Retail Trade	301	3,661	3,713	3,691	29,925,804	624.13
Transportation, Warehousing & Utilities	79	2,344	2,346	2,339	29,128,334	956.31
Information	21	111	108	107	958,490	678.50
Financial Activities	187	970	982	975	12,370,582	975.32
Professional & Business Services	183	1,271	1,194	1,163	11,812,310	751.36
Education & Health Services	314	5,385	5,301	5,271	73,232,466	1,059.08
Leisure & Hospitality	169	2,749	2,754	2,643	12,062,390	341.72
Other Services	116	514	514	511	5,338,858	800.55
Local Government	46	2,689	2,673	2,713	33,830,369	966.81
State Government	15	483	518	420	4,508,911	732.24
<b>WOODRUFF COUNTY - TOTAL</b>	<b>178</b>	<b>1,844</b>	<b>1,849</b>	<b>1,849</b>	<b>\$19,203,653</b>	<b>\$799.64</b>
Natural Resources & Mining	30	219	227	224	2,058,691	709.08
Construction	13	40	39	36	372,183	746.86
Trade, Transportation & Utilities	47	332	346	355	3,579,931	799.75
Retail Trade	24	145	150	163	954,686	481.03
Other Trade, Transportation, & Utilities	23	187	196	192	2,625,245	1,053.61
Financial Activities	9	39	38	39	363,856	723.85
Education & Health Services	33	274	267	266	2,833,618	810.30
Leisure & Hospitality	12	91	94	94	422,091	349.12
Local Government	9	370	364	358	3,762,191	795.05
State Government	5	29	29	28	321,090	861.60
Other	20	450	445	449	5,490,002	942.65

TABLE 6. COUNTY SUMMARY

North American Industry Classification System - Industry Groups	Number of Employing Units	Employment			Total Earnings	Average Weekly Earnings
		Apr	May	Jun	Apr - Jun 2022	
<b>YELL COUNTY - TOTAL</b>	<b>411</b>	<b>6,315</b>	<b>6,347</b>	<b>6,272</b>	<b>\$64,661,827</b>	<b>\$788.10</b>
Natural Resources & Mining	25	225	232	241	3,239,294	1,070.96
Construction	33	201	212	220	2,184,819	796.51
Manufacturing	20	2,349	2,368	2,339	24,483,187	800.73
Trade, Transportation & Utilities	88	759	754	752	5,869,298	597.99
Wholesale Trade	15	56	54	54	395,982	557.20
Retail Trade	50	552	547	552	3,172,370	443.42
Transportation, Warehousing & Utilities	23	151	153	146	2,300,946	1,179.97
Information	5	49	49	50	865,844	1,350.07
Financial Activities	29	172	178	172	2,354,476	1,040.88
Professional & Business Services	45	384	390	376	3,373,382	676.93
Education & Health Services	92	641	644	625	6,050,878	731.08
Leisure & Hospitality	23	282	274	273	1,215,338	338.31
Other Services	18	64	67	64	543,386	643.06
Local Government	23	1,125	1,115	1,097	13,880,161	959.88
State Government	10	64	64	63	601,764	727.06
<b>STATEWIDE COUNTY - TOTAL</b>	<b>17,356</b>	<b>47,211</b>	<b>47,578</b>	<b>46,505</b>	<b>\$926,487,384</b>	<b>\$1,513.19</b>
Natural Resources & Mining	104	238	234	229	4,647,222	1,529.87
Construction	1,007	4,008	4,093	4,156	68,463,459	1,289.00
Manufacturing	175	326	325	315	9,928,947	2,371.94
Trade, Transportation & Utilities	4,276	10,053	10,089	9,824	268,732,820	2,069.52
Wholesale Trade	3,412	7,243	7,257	7,047	215,460,854	2,307.59
Retail Trade	319	1,204	1,203	1,123	20,214,347	1,321.49
Transportation, Warehousing & Utilities	545	1,606	1,629	1,654	33,057,619	1,560.38
Information	1,402	2,166	2,179	2,159	57,180,308	2,028.82
Financial Activities	1,523	4,378	4,381	4,267	83,616,796	1,481.36
Professional & Business Services	7,110	20,684	20,898	20,124	356,205,331	1,332.14
Education & Health Services	1,034	3,319	3,327	3,410	46,619,906	1,069.85
Leisure & Hospitality	152	454	487	503	6,271,803	1,002.31
State Government	22	661	661	665	8,156,720	947.32
Other	551	924	904	853	16,664,072	1,434.37

Note: Statewide classification includes employment and payroll data for employers that have not provided a physical location for each employing unit. This section also includes employers without a physical location in Arkansas.



**TABLE 7. FEDERAL GOVERNMENT EMPLOYMENT AND EARNINGS IN ARKANSAS**

North American Industry Classification System - Industry Groups	Number of Employing Units	Employment			Total Earnings Apr - Jun 2022	Average Weekly Earnings
		Apr	May	Jun		
<b>TOTAL</b>	<b>1,195</b>	<b>20,503</b>	<b>20,537</b>	<b>20,506</b>	<b>\$425,064,684</b>	<b>\$1,593.80</b>
Trade, Transportation & Utilities	589	5,680	5,626	5,562	85,822,373	1,174.13
Information	2	35	35	35	689,685	1,515.79
Financial Activities	15	100	98	97	2,467,636	1,930.35
Professional & Business Services	33	851	895	902	18,877,198	1,645.12
Education & Health Services	20	5,497	5,506	5,498	135,397,716	1,893.56
Leisure & Hospitality	22	229	243	291	3,449,448	1,043.29
Other Services	1	1	1	1	14,088	1,083.69
Public Administration	513	8,110	8,133	8,120	178,346,540	1,689.32

TABLE 8. LOCAL WORKFORCE DEVELOPMENT AREA SUMMARY

North American Industry Classification System - Industry Groups	Number of Employing Units	Employment			Total Earnings Apr - Jun 2022	Average Weekly Earnings
		Apr	May	Jun		
<b>CENTRAL LOCAL WORKFORCE DEVELOPMENT AREA</b>	<b>7,167</b>	<b>86,443</b>	<b>86,750</b>	<b>86,502</b>	<b>\$958,196,558</b>	<b>\$851.47</b>
Natural Resources & Mining	196	1,014	1,022	1,020	12,607,014	952.00
Construction	859	6,385	6,400	6,501	81,689,680	977.47
Manufacturing	224	6,248	6,229	6,274	86,806,836	1,068.33
Trade, Transportation & Utilities	1,522	18,222	18,296	18,127	173,055,384	730.82
Wholesale Trade	335	2,072	2,095	2,082	31,874,735	1,177.10
Retail Trade	927	13,935	13,989	13,877	111,938,158	617.97
Transportation, Warehousing & Utilities	260	2,215	2,212	2,168	29,242,491	1,023.24
Information	78	1,814	1,795	1,822	42,648,991	1,812.20
Financial Activities	812	3,307	3,334	3,330	46,899,731	1,085.45
Professional & Business Services	986	6,580	6,640	6,712	85,560,879	990.61
Education & Health Services	1,129	15,183	15,224	15,164	173,781,747	880.02
Leisure & Hospitality	675	11,639	11,835	11,869	59,566,937	388.94
Other Services	474	2,191	2,113	2,156	20,788,314	742.62
Local Government	152	9,835	9,857	9,731	131,352,488	1,030.22
State Government	60	4,025	4,005	3,796	43,438,557	847.65

Note: Pulaski County is not included in the Central Local Workforce Development Area. Please refer to Page 51 for information on Pulaski County.

Central Local Workforce Development Area includes these counties: Faulkner, Lonoke, Monroe, Prairie, and Saline.

<b>EASTERN LOCAL WORKFORCE DEVELOPMENT AREA</b>	<b>3,034</b>	<b>33,016</b>	<b>33,344</b>	<b>32,918</b>	<b>\$347,400,246</b>	<b>\$807.52</b>
Natural Resources & Mining	237	1,074	1,094	1,129	10,283,436	719.78
Construction	115	735	746	745	9,556,377	990.71
Manufacturing	68	3,176	3,233	3,161	40,003,995	964.65
Trade, Transportation & Utilities	717	8,743	8,795	8,676	95,377,868	839.64
Wholesale Trade	140	1,935	1,920	1,899	27,362,366	1,097.39
Retail Trade	384	4,255	4,332	4,289	29,950,547	536.79
Transportation, Warehousing & Utilities	193	2,553	2,543	2,488	38,064,955	1,158.26
Information	20	109	110	106	936,158	664.73
Financial Activities	244	1,115	1,118	1,096	15,411,989	1,068.37
Professional & Business Services	239	1,441	1,416	1,409	16,770,490	907.20
Education & Health Services	814	5,551	5,641	5,411	57,807,304	803.48
Leisure & Hospitality	261	4,220	4,366	4,367	25,155,873	448.17
Other Services	139	687	675	714	6,415,645	713.17
Local Government	125	4,454	4,471	4,438	52,506,149	906.74
State Government	55	1,711	1,679	1,666	17,174,962	783.91

Eastern Local Workforce Development Area includes these counties: Crittenden, Cross, Lee, Phillips, and Saint Francis.

TABLE 8. LOCAL WORKFORCE DEVELOPMENT AREA SUMMARY

North American Industry Classification System - Industry Groups	Number of Employing Units	Employment			Total Earnings Apr - Jun 2022	Average Weekly Earnings
		Apr	May	Jun		
<b>NORTH CENTRAL LOCAL WORKFORCE DEVELOPMENT AREA</b>	<b>5,286</b>	<b>69,468</b>	<b>70,161</b>	<b>69,949</b>	<b>\$742,697,749</b>	<b>\$817.79</b>
Natural Resources & Mining	189	1,639	1,652	1,641	21,416,020	1,002.06
Construction	436	3,037	3,147	3,204	38,122,254	937.09
Manufacturing	211	9,614	9,646	9,828	115,780,002	918.54
Trade, Transportation & Utilities	1,342	15,539	15,691	15,591	153,989,271	758.98
Wholesale Trade	221	1,522	1,538	1,535	19,579,711	983.33
Retail Trade	878	10,029	10,143	10,057	77,637,922	592.69
Transportation, Warehousing & Utilities	243	3,988	4,010	3,999	56,771,638	1,092.04
Information	73	398	385	395	4,256,585	833.86
Financial Activities	528	2,766	2,807	2,808	36,359,484	1,001.15
Professional & Business Services	492	3,589	3,549	3,593	35,891,432	771.84
Education & Health Services	894	13,568	13,531	13,398	169,047,636	963.31
Leisure & Hospitality	491	6,729	6,961	6,885	30,901,310	346.59
Other Services	316	1,313	1,366	1,331	12,223,952	703.47
Local Government	221	8,728	8,837	8,837	100,245,929	876.21
State Government	93	2,548	2,589	2,438	24,463,874	745.28

North Central Local Workforce Development Area includes these counties: Cleburne, Fulton, Independence, IZard, Jackson, Sharp, Stone, Van Buren, White, and Woodruff.

<b>NORTHEAST LOCAL WORKFORCE DEVELOPMENT AREA</b>	<b>6,372</b>	<b>103,016</b>	<b>103,248</b>	<b>103,305</b>	<b>\$1,259,640,869</b>	<b>\$939.00</b>
Natural Resources & Mining	450	1,875	1,934	1,992	21,672,250	862.14
Construction	482	4,097	4,133	4,265	59,561,551	1,100.04
Manufacturing	279	22,173	22,018	22,010	355,644,039	1,239.74
Trade, Transportation & Utilities	1,632	19,795	19,842	19,748	207,974,233	808.18
Wholesale Trade	357	3,918	3,927	3,924	59,755,859	1,171.71
Retail Trade	940	12,239	12,259	12,126	97,839,679	616.49
Transportation, Warehousing & Utilities	335	3,638	3,656	3,698	50,378,695	1,057.66
Information	63	663	657	668	8,398,032	974.85
Financial Activities	553	3,306	3,338	3,329	44,886,769	1,038.65
Professional & Business Services	697	6,945	7,044	7,074	75,893,091	831.50
Education & Health Services	953	17,246	17,311	17,337	232,966,788	1,035.99
Leisure & Hospitality	599	9,773	9,770	9,748	47,950,476	377.78
Other Services	358	1,802	1,811	1,841	19,174,086	811.29
Local Government	218	11,475	11,538	11,496	139,029,912	929.72
State Government	88	3,866	3,852	3,797	46,489,642	931.69

Northeast Local Workforce Development Area includes these counties: Clay, Craighead, Greene, Lawrence, Mississippi, Poinsett, and Randolph.

TABLE 8. LOCAL WORKFORCE DEVELOPMENT AREA SUMMARY

North American Industry Classification System - Industry Groups	Number of Employing Units	Employment			Total Earnings Apr - Jun 2022	Average Weekly Earnings
		Apr	May	Jun		
<b>NORTHWEST LOCAL WORKFORCE DEVELOPMENT AREA</b>	<b>18,022</b>	<b>294,905</b>	<b>296,922</b>	<b>295,788</b>	<b>\$4,077,345,465</b>	<b>\$1,060.06</b>
Natural Resources & Mining	152	1,497	1,512	1,557	21,348,770	1,078.98
Construction	1,786	14,696	14,912	15,049	203,512,853	1,051.67
Manufacturing	636	38,196	38,470	38,581	470,182,647	941.49
Trade, Transportation & Utilities	3,970	65,348	65,528	64,913	857,562,589	1,010.78
Wholesale Trade	1,270	11,351	11,448	11,279	255,780,457	1,732.09
Retail Trade	2,137	34,258	34,264	33,851	287,650,739	648.42
Transportation, Warehousing & Utilities	563	19,739	19,816	19,783	314,131,393	1,221.68
Information	281	2,411	2,425	2,441	38,895,051	1,233.45
Financial Activities	1,982	10,244	10,388	10,173	171,821,239	1,287.16
Professional & Business Services	3,227	53,203	53,788	53,646	1,092,291,031	1,569.17
Education & Health Services	2,507	36,894	37,097	36,560	495,427,474	1,034.18
Leisure & Hospitality	1,917	33,446	33,633	33,698	194,093,252	444.45
Other Services	1,143	5,719	5,750	5,654	62,259,822	839.08
Local Government	319	24,019	24,216	24,366	338,910,762	1,077.26
State Government	102	9,232	9,203	9,150	131,039,975	1,096.25
Northwest Local Workforce Development Area includes these counties: Baxter, Benton, Boone, Carroll, Madison, Marion, Newton, Searcy, and Washington.						
<b>SOUTHEAST LOCAL WORKFORCE DEVELOPMENT AREA</b>	<b>5,833</b>	<b>64,753</b>	<b>65,461</b>	<b>65,486</b>	<b>\$746,774,903</b>	<b>\$880.60</b>
Natural Resources & Mining	432	2,119	2,176	2,197	22,795,863	810.32
Construction	332	2,053	2,114	2,137	26,939,015	986.15
Manufacturing	205	13,556	13,914	14,314	198,838,822	1,098.17
Trade, Transportation & Utilities	1,245	11,733	11,770	11,720	121,727,585	797.52
Wholesale Trade	228	1,881	1,897	1,901	29,730,079	1,208.10
Retail Trade	738	7,369	7,392	7,277	54,259,472	568.17
Transportation, Warehousing & Utilities	279	2,483	2,481	2,542	37,738,034	1,160.24
Information	45	256	248	280	2,668,438	785.45
Financial Activities	423	2,492	2,485	2,471	33,909,961	1,050.67
Professional & Business Services	449	3,413	3,443	3,502	42,630,237	949.77
Education & Health Services	1,675	9,343	9,469	9,216	105,187,804	866.07
Leisure & Hospitality	398	5,356	5,381	5,437	31,809,460	453.85
Other Services	299	1,028	1,026	1,027	9,499,456	711.52
Local Government	206	8,019	8,071	7,970	91,692,754	879.46
State Government	124	5,385	5,364	5,215	59,075,508	853.97
Southeast Local Workforce Development Area includes these counties: Arkansas, Ashley, Bradley, Chicot, Cleveland, Desha, Drew, Grant, Jefferson, and Lincoln.						

TABLE 8. LOCAL WORKFORCE DEVELOPMENT AREA SUMMARY

North American Industry Classification System - Industry Groups	Number of Employing Units	Employment			Total Earnings	Average Weekly Earnings
		Apr	May	Jun	Apr - Jun 2022	
<b>SOUTHWEST LOCAL WORKFORCE DEVELOPMENT AREA</b>	<b>5,389</b>	<b>74,430</b>	<b>74,846</b>	<b>74,669</b>	<b>\$901,677,664</b>	<b>\$929.15</b>
Natural Resources & Mining	311	1,971	1,964	2,008	27,350,442	1,062.03
Construction	333	3,063	3,118	3,102	42,460,718	1,055.55
Manufacturing	214	19,192	19,297	19,514	307,147,101	1,222.01
Trade, Transportation & Utilities	1,301	13,794	13,919	13,756	140,283,214	780.66
Wholesale Trade	226	1,805	1,815	1,804	26,298,509	1,118.90
Retail Trade	765	8,600	8,672	8,547	60,316,559	539.11
Transportation, Warehousing & Utilities	310	3,389	3,432	3,405	53,668,146	1,211.12
Information	45	349	358	363	4,864,425	1,049.12
Financial Activities	455	2,407	2,403	2,392	29,705,671	951.84
Professional & Business Services	436	4,616	4,570	4,546	75,000,649	1,260.40
Education & Health Services	1,135	9,041	9,196	9,077	92,749,180	783.61
Leisure & Hospitality	447	5,961	5,998	6,136	27,571,534	351.63
Other Services	320	1,314	1,320	1,329	11,618,949	676.58
Local Government	263	9,272	9,287	9,144	106,380,729	886.16
State Government	129	3,450	3,416	3,302	36,545,052	829.41
Southwest Local Workforce Development Area includes these counties: Calhoun, Columbia, Dallas, Hempstead, Howard, Lafayette, Little River, Miller, Nevada, Ouachita, Sevier, and Union						
<b>WEST CENTRAL LOCAL WORKFORCE DEVELOPMENT AREA</b>	<b>8,161</b>	<b>105,253</b>	<b>105,711</b>	<b>104,398</b>	<b>\$1,120,158,183</b>	<b>\$819.69</b>
Natural Resources & Mining	232	2,335	2,341	2,358	26,711,507	876.34
Construction	781	4,392	4,394	4,447	53,559,418	934.02
Manufacturing	330	14,923	15,050	15,025	184,151,590	944.41
Trade, Transportation & Utilities	1,761	22,159	22,220	22,154	234,174,402	812.23
Wholesale Trade	305	1,918	1,948	1,943	25,900,904	1,028.94
Retail Trade	1,161	14,588	14,542	14,481	113,683,180	601.56
Transportation, Warehousing & Utilities	295	5,653	5,730	5,730	94,590,318	1,275.55
Information	78	708	724	679	7,818,095	854.65
Financial Activities	868	3,571	3,607	3,589	46,030,547	986.57
Professional & Business Services	978	7,626	7,697	7,598	84,186,371	847.59
Education & Health Services	1,443	16,802	16,738	16,303	189,781,569	878.67
Leisure & Hospitality	835	14,334	14,388	14,442	79,380,087	424.39
Other Services	508	2,202	2,237	2,174	18,701,953	652.63
Local Government	235	11,649	11,933	11,602	150,378,675	986.32
State Government	112	4,552	4,382	4,027	45,283,969	806.28
West Central Local Workforce Development Area includes these counties: Clark, Conway, Garland, Hot Spring, Johnson, Montgomery, Perry, Pike, Pope, and Yell						

TABLE 8. LOCAL WORKFORCE DEVELOPMENT AREA SUMMARY

North American Industry Classification System - Industry Groups	Number of Employing Units	Employment			Total Earnings	Average Weekly Earnings
		Apr	May	Jun	Apr - Jun 2022	
<b>WESTERN LOCAL WORKFORCE DEVELOPMENT AREA</b>	<b>6,441</b>	<b>101,315</b>	<b>101,703</b>	<b>101,526</b>	<b>\$1,197,691,146</b>	<b>\$907.55</b>
Natural Resources & Mining	135	959	938	931	13,300,614	1,085.35
Construction	525	3,988	4,063	4,096	47,326,993	899.12
Manufacturing	323	21,195	21,320	21,451	276,546,045	997.69
Trade, Transportation & Utilities	1,533	22,715	22,742	22,594	252,707,177	856.96
Wholesale Trade	342	3,964	4,023	3,938	57,987,356	1,122.15
Retail Trade	923	12,713	12,684	12,625	100,050,467	607.24
Transportation, Warehousing & Utilities	268	6,038	6,035	6,031	94,669,354	1,206.74
Information	71	943	949	1,001	19,243,249	1,535.00
Financial Activities	691	3,394	3,399	3,405	49,138,065	1,111.94
Professional & Business Services	829	9,683	9,713	9,675	123,817,909	982.88
Education & Health Services	1,095	14,926	14,998	14,827	204,334,641	1,053.70
Leisure & Hospitality	582	9,140	9,219	9,393	45,381,145	377.36
Other Services	422	1,943	1,945	1,990	18,288,383	718.00
Local Government	166	9,804	9,786	9,657	119,156,717	940.19
State Government	69	2,625	2,631	2,506	28,450,208	845.84

Western Local Workforce Development Area includes these counties: Crawford, Franklin, Logan, Polk, Scott, and Sebastian